

Witness to PC-047
DOSSIER CONTENT
2012 REMON
T.3N., R.14E.,
Chesterfield Township, Macomb County, Michigan

Section One

Index

Pictures in cardinal directions; before and after setting the required monumentation.

Section Two

LCRC

Surveyor's Report

Section Three

1 Field Notes

2 Sketch

3 Township Map

4 Tax Map 1959

5 Tax Map 1974

6 Aerial Pictures 2009

Section Four

1 1810 PC Survey notes

Greely

2 1817 Township map

Preston

3 1817 Township map

4 1818 Township map

Surveyor General Office

5 1818 Township Map

Preston

6 1937 Plat-Supervisors Plat No 14

RCE

L18, P42

7 1954 Plat-Verschave Subdivision

Fuller

1645

L29, P37

8 1984 Sketch of Lottie M. Schmidt Inc. Properties

Bridges

5779

Not recorded

9 1995 Sketch of Lottie M. Schmidt Inc. Parcels

METCO

Not recorded



BEFORE



AFTER





LAND CORNER RECORDATION CERTIFICATE
Filing Requirement of Act 74, Mich. P.A. 1970
REMONUMENTATION CORNER

For corners in:

MACOMB COUNTY
(County)

Located In: CHESTERFIELD TOWNSHIP Corner Code #

Reference to PC-047

- 1. Public Land Survey T 3N R 14E
2. Property Controlling in Section S T
3. Miscellaneous Property in Sec. S T
4. Lot No. Recorded Plat
5. Private Claims PC-342 PC-047, PC-047 is a North corner of PC 342.

2175904 PAGE 1 OF 2
LIBER 21777 PAGE 141
12/13/2012 09:52:07 A.M.
MACOMB COUNTY, MI SEAL
CARMELLA SABAUGH, REGISTER OF DEEDS

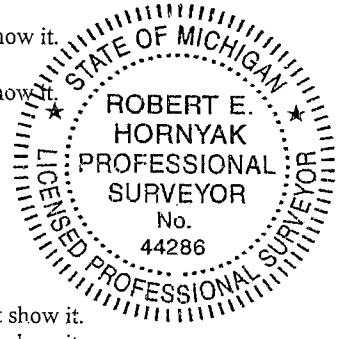
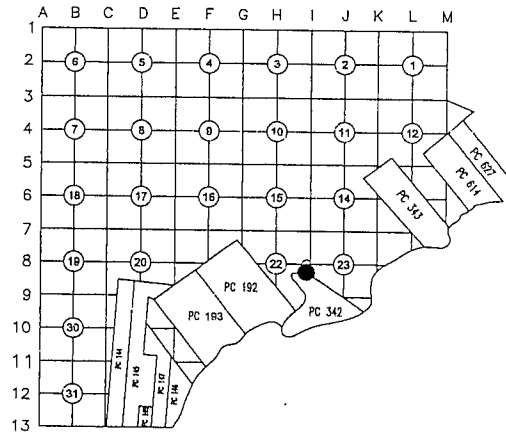
Register of Deeds Stamp & File Number

I, ROBERT E. HORNYAK, in a field survey on August 17, 2012 do hereby certify that under requirements of P.A. 74, Michigan P.A. of 1970, the corner points mentioned in lines 1 and 2 above were in conformance with regulations and rules therefore as required in the current manual of survey instructions of the United States Department of the Interior, Bureau of Land Management or by a decree of a Court of Law and /or that the corner points mentioned in lines 3, 4 and 5 above were in conformance with the rules of the Michigan Board of Land Surveyors or by a Decree of a Court of Law; established, re-established, monumented, re-monumented, recovered, found as expressed below:

NOTE: Not more than 2 corners, all in the same town and range, may be recorded on this certificate.

A. Description of original monument and accessories and/or subsequent restoration:

Table with 4 columns: Item number, Description, Surveyor, and Monument/Restoration details. Includes items 1 through 16.



B. Description of corner evidence found and/or method applied in restoring or reestablishing corner:

Corner falls in swamp/marsh area and is inaccessible. No field evidence was found. I consider it a lost corner.

Occupation: none.

Northeasterly line of PC-342 is defined by PC-047 and PC-050. I consider both corners as lost corners.

The following procedure was applied to restore the corner:

- 1. Established the direction of the Northeasterly line of PC-342 by PCC-048 close to the Northwesterly end and by found monumentation at Items 10-14 close to the Southeasterly end.
2. Established the intersection of the CL Jefferson Avenue with the Northeasterly line of PC-342 by found monumentation at Items 10-14.
3. Established the location of the intersection of the Northeasterly line of PC-342 with the Northwesterly line of Indian Reservation based on record distance at Items 10-14 from the intersection of CL Jefferson Avenue with the Northeasterly line of PC-342.
4. Established the location of PC-047 at record distance shown at Item 2 from the intersection of the Northeasterly line of PC-342 with the Northwesterly line of Indian Reservation.

Distances:

PC-047 to PCC-048 848.72' Remon 2012
PC-047 to Ref to PCC-047 650.35' Southeasterly Remon 2012

C. Description of monument for corner and accessories established to perpetuate locating the position of the corner:

I set Reference Point on the Northeasterly line of PC-342 in solid ground at the Southerly border of swamp/marsh, 650.35' Southeasterly from PC-047. I placed a 2" aluminum cap stamped "MACOMB COUNTY MONUMENT MI ACT 345; REF PC-047; 44286" on 1/2"x36" steel bar encased in 4" diameter concrete monument. A carsonite witness post was set by the monument.

Witnesses:

Table listing witness directions and distances: North 10.00', East 10.00', South 10.00', West 10.00', N58°W 650.35', S58°E 198.37'.

ACCEPTED BY THE MACOMB COUNTY SURVEY PEER GROUP AS THE OFFICIAL CORNER UNDER MICHIGAN PUBLIC ACT 345 OF 1990 AT A MEETING HELD ON 9-25-2012

Martin C. Dunn
MARTIN C. DUNN, P.S. CHAIRMAN

THE SELECTED LOCATION IS ACCEPTED BY ME AND IS GENERALLY ACCEPTED BY PROFESSIONAL SURVEYORS AS THE BEST AVAILABLE EVIDENCE OF THE POSITION OF THIS CORNER.

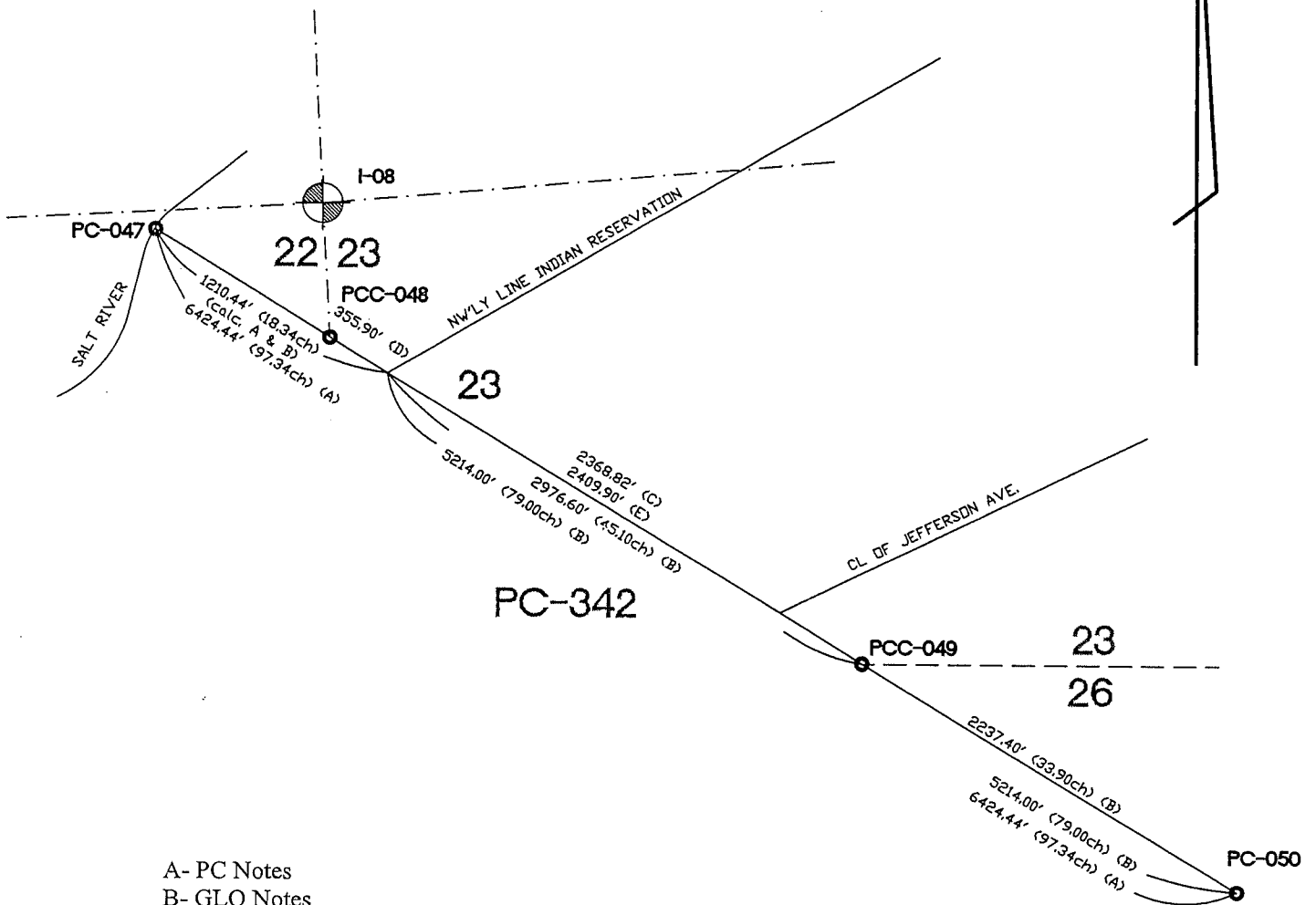
Signed by [Signature] Date October 29, 2012

Surveyor's Michigan License No. 44286

FORM APPROVED BY MICHIGAN STATE BOARD OF LAND SURVEYORS, JAN. 28, 1971

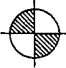

REVISED MAY 14, 1975
REVISED JAN., 1983
REVISED OCT. 1995

NE'LY LINE OF PC-342 REMON 2012 CHESTERFIELD TWP., T3N, R14E



- A- PC Notes
- B- GLO Notes
- C- Supervisor's Plat No. 15
- D- Supervisor's Plat of James
Fuller Small Farms Subdivision
- E- Lottivue Plat No. 6

Distances:	
PC-047	0+00.00'
Ref to PC-047	6+50.35'
PCC-048	8+48.72'
Ref to PCC-049	41+47.17'
PCC-049	41+87.04'
Ref to PC-050	63+79.62'
PC-050	64+24.44'

- SECTION LINE MEASURED DURING GLO SURVEY
AZIMUTH & LENGTH USED FOR INDEXATION
- SECTION LINE NOT MEASURED DURING GLO SURVEY
-  SECTION CORNER
-  PC, PCC CORNERS

Reference point to PC-047 CHESTERFIELD TOWNSHIP

PC-047 is a North corner of PC 342.
Survey of PC 342 was performed by A. Greeley in 1810.

Corner history:

1	1810	PC Survey notes	Greeley			Standing post
2	1817	GLO notes	Preston			Corner not set
2a	1817	Township map	Preston			Object not stated
3	1817	Township map				Object not stated
4	1818	Township map	Surveyor General Office			Object not stated
5	1818	Township Map	Preston			Object not stated
6	1937	Plat-Supervisors Plat No 14		RCE	L18, P42	Plat encompasses corner but does not show it.
7	1937	Plat-Supervisors Plat No 15		RCE	L18, P51	Plat does not show corner
8	1954	Plat-Verschave Subdivision	Fuller	1645	L29, P37	Plat encompasses corner but does not show it.
9	1956	Plat-Supervisors Plat of James Fuller Small Farms Subdivision	Fuller	1645	L36, P40	Set concrete monument
10	1959	plat-Lottivue	Earl Philips	1728	L37, P18	Plat shows NE'ly line of PC 342
11	1961	plat-Lottivue No. 2	Earl Philips	1728	L49, P 1	Plat shows NE'ly line of PC 342
12	1964	plat-Lottivue No. 3	Earl Philips	1728	L53, P35	Plat shows NE'ly line of PC 342
13	1969	plat-Lottivue No. 4	Fitz Bridges	5779	L60, P34	Plat shows NE'ly line of PC 342
14	1969	plat-Lottivue No. 6	Fitz Bridges	5779	L64, P48	Plat shows NE'ly line of PC 342
15	1984	Sketch of Lottie M. Schmidt Inc. Properties	Bridges	5779	Not recorded	Sketch encompasses corner but does not show it.
16	1995	Sketch of Lottie M. Schmidt Inc. Parcels	METCO		Not recorded	Sketch encompasses corner but does not show it.

Field evidence:

Corner falls in swamp/marsh area and is inaccessible. No field evidence was found. I consider it a lost corner.
Occupation: none.

Distances:

PC-047 to PCC-048	PC-047 to Ref to PCC-047
848.47' Remon 2012	650.35' SE'ly Remon 2012

Recommendation:

Northeasterly line of PC-342 is defined by the PC-047 and the PC-050. I consider both corners as lost corners.
The following procedure was applied to restore the corner:
1. Established direction of Northeasterly line of PC-342 by PCC-048 close to the Northwesterly end and by found monumentation at Items 10-14 close to the Southeasterly end.
2. Established intersection of CL Jefferson Ave. with NE'ly line of PC-342 by found monumentation at Items 10-14.
3. Established location of intersection of NE'ly line of PC-342 with NW'ly line of Indian Reservation based on record distance at Items 10-14 from intersection of CL Jefferson Ave. with NE'ly line of PC-342.
4. Established location of PC-047 at record distance shown at Item 2 from intersection of NE'ly line of PC-342 with NW'ly line of Indian Reservation.

I recommend to the Peer Review Board to set Reference point on Northeasterly line of PC 342 in solid ground at the Southerly border of swamp/marsh, 650.35' SE'ly.
I recommend placing 1/2" iron with a 2" aluminum cap stamped "MACOMB COUNTY MONUMENT MI ACT 345; REF PC-047; 44286" placed on a 1/2"x36" steel bar encased in 4" diameter concrete monument.

Witnesses:

North	10.00'	Set iron w/blue cap "MACOMB COUNTY WITNESS"
East	10.00'	Set iron w/blue cap "MACOMB COUNTY WITNESS"
South	10.00'	Set iron w/blue cap "MACOMB COUNTY WITNESS"
West	10.00'	Set iron w/blue cap "MACOMB COUNTY WITNESS"

WITNESS TO

PC-047

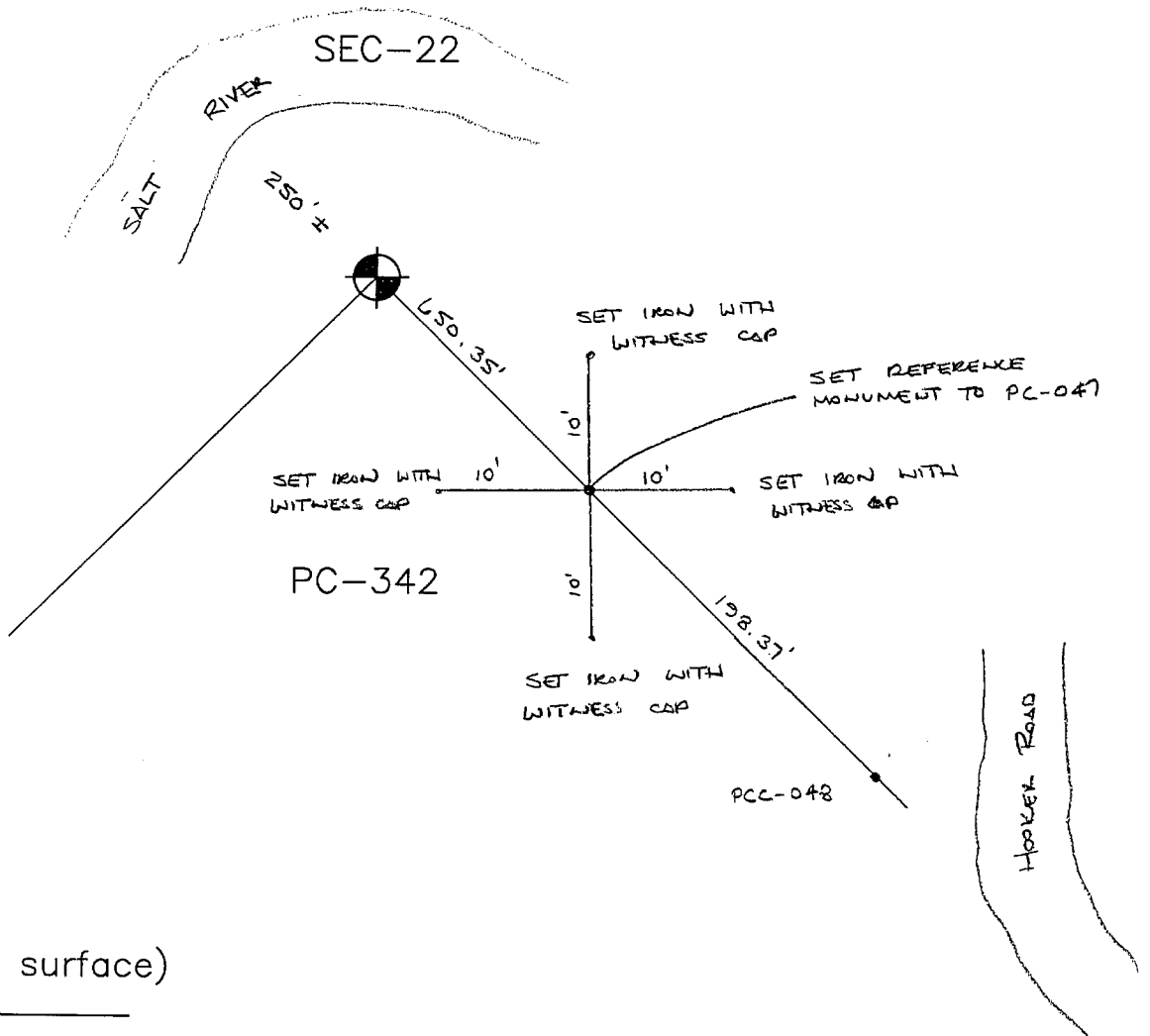
REMON 2012

CHESTERFIELD TWP., T3N, R14E



DATE: 08/16/12
 CREW: RH JK
 OBJECT FOUND: NONE
 POINT No.: PC-047
 CTRL. PTS.: _____

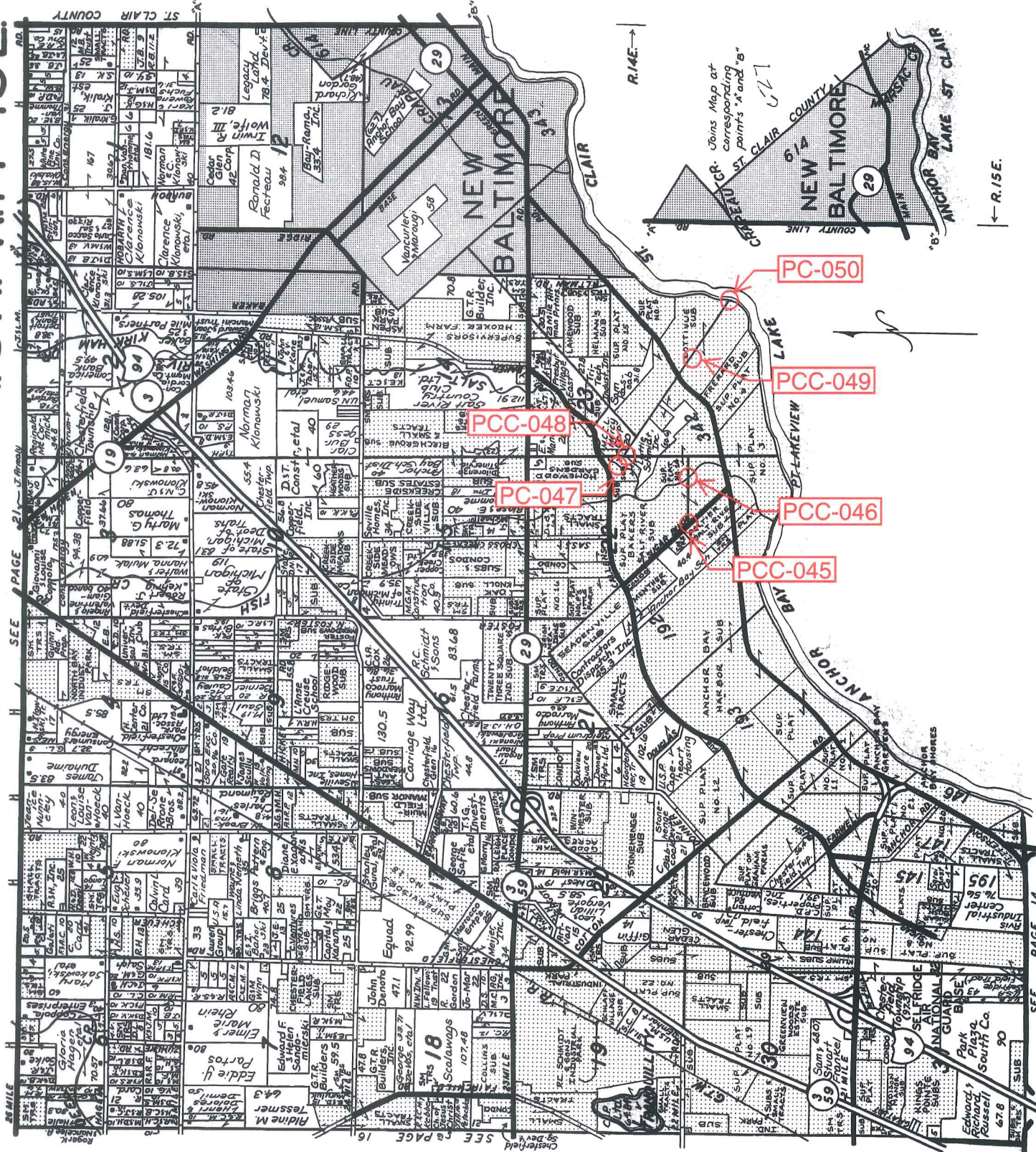
NORTH	10.00'	SET IRON WITH 'MACOMB COUNTY REMON WITNESS POINT' CAP
EAST	10.00'	SET IRON WITH 'MACOMB COUNTY REMON WITNESS POINT' CAP
SOUTH	10.00'	SET IRON WITH 'MACOMB COUNTY REMON WITNESS POINT' CAP
WEST	10.00'	SET IRON WITH 'MACOMB COUNTY REMON WITNESS POINT' CAP



OCCUPATION
 (if road state surface)
NONE

T.3N.-R.14-15E.

CHESTERFIELD



← R.15E.

SEE PAGE 14
©1999 Rockford Map Publishers, Inc.



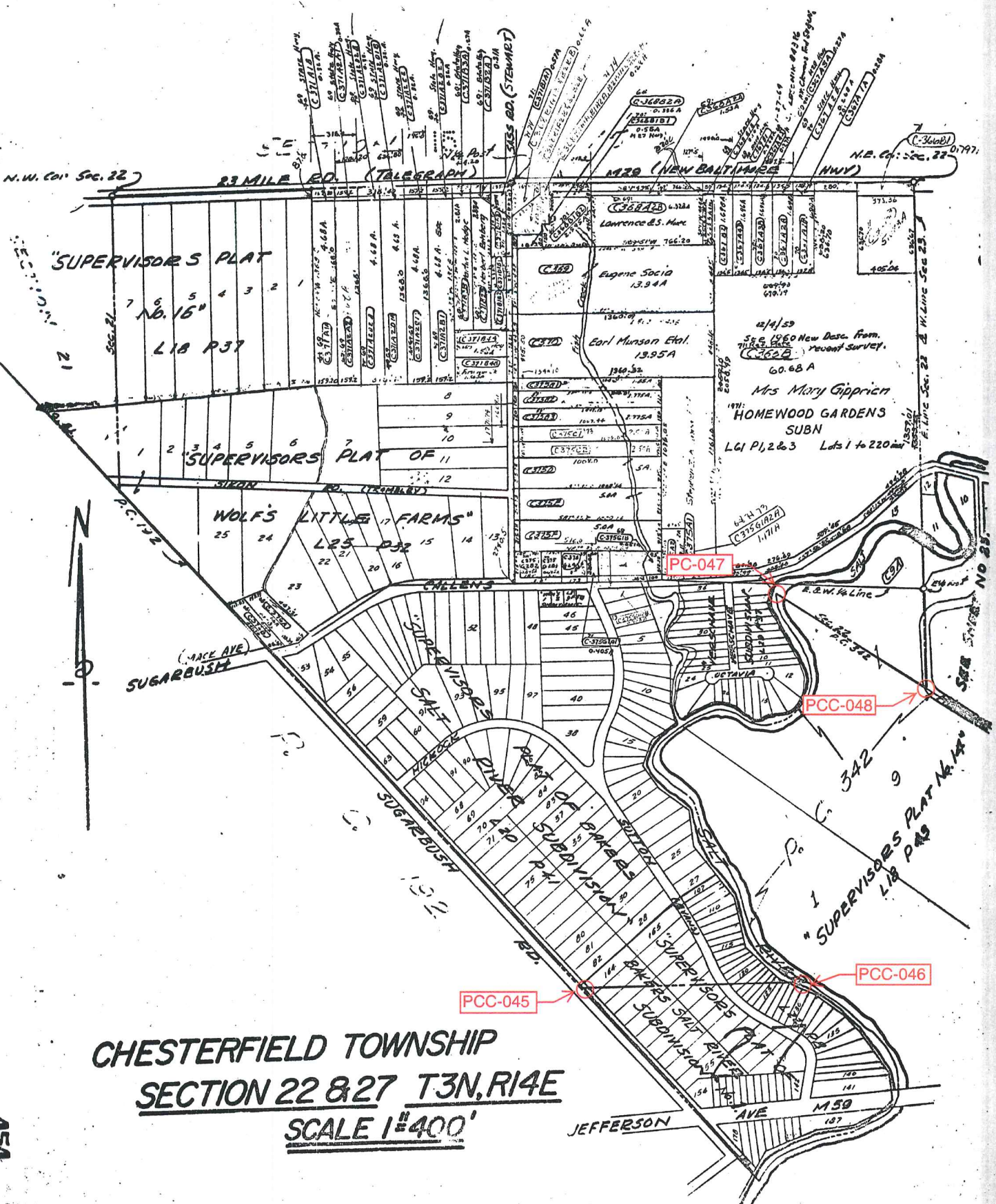
LINCOLN TITLE COMPANY

Flexible closing schedule ❖ Personalized service ❖ Knowledgeable staff

25962 Knollwood Drive South • Chesterfield, Michigan 48051 • Telephone: (810) 598-2930 • Fax: (810) 598-2936

OFFICES ALSO IN PORT HURON & ROSELVILLE

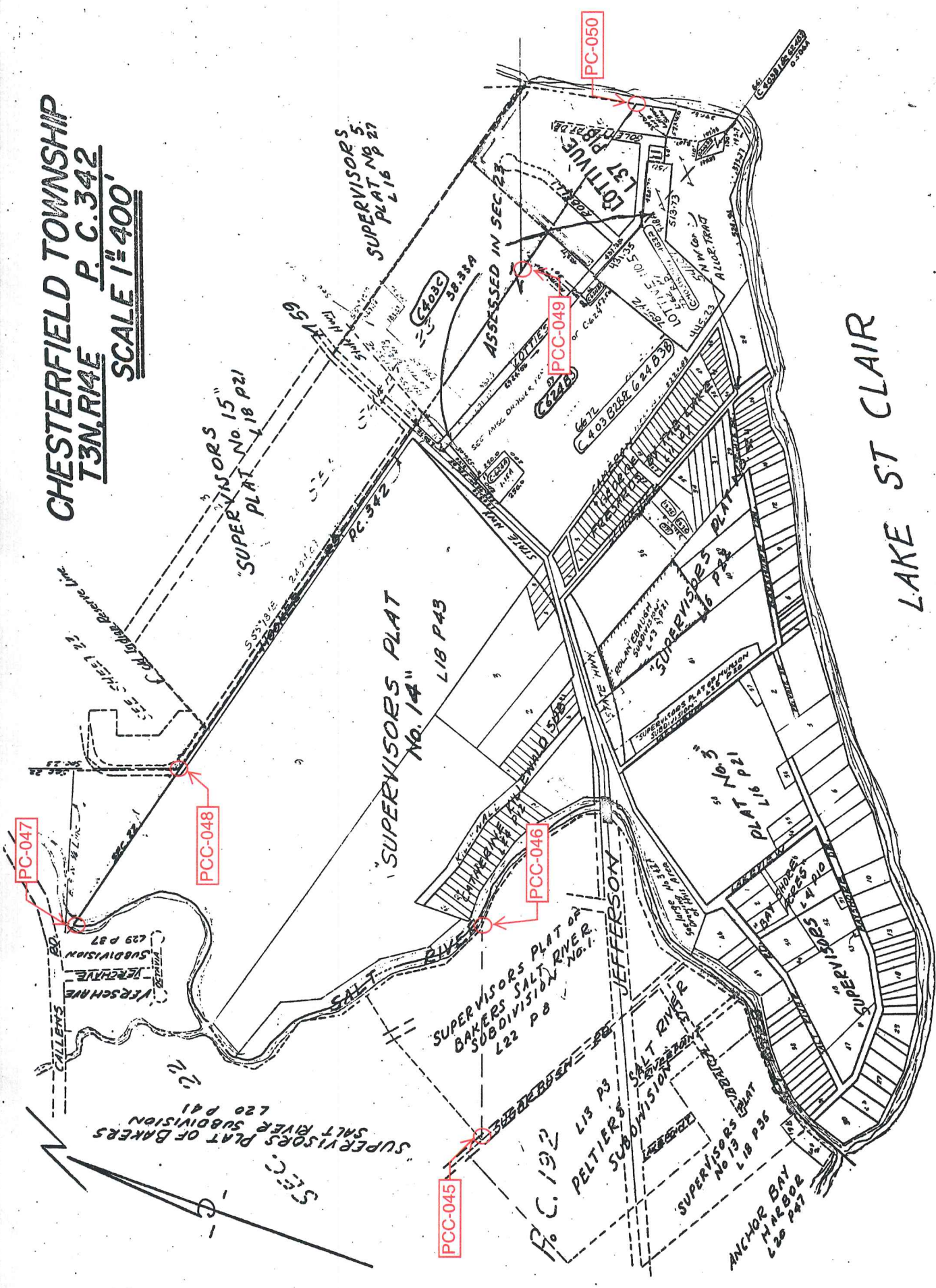
Reproduced with permission of Rockford Map Publishers, Inc.
Rockford, Illinois



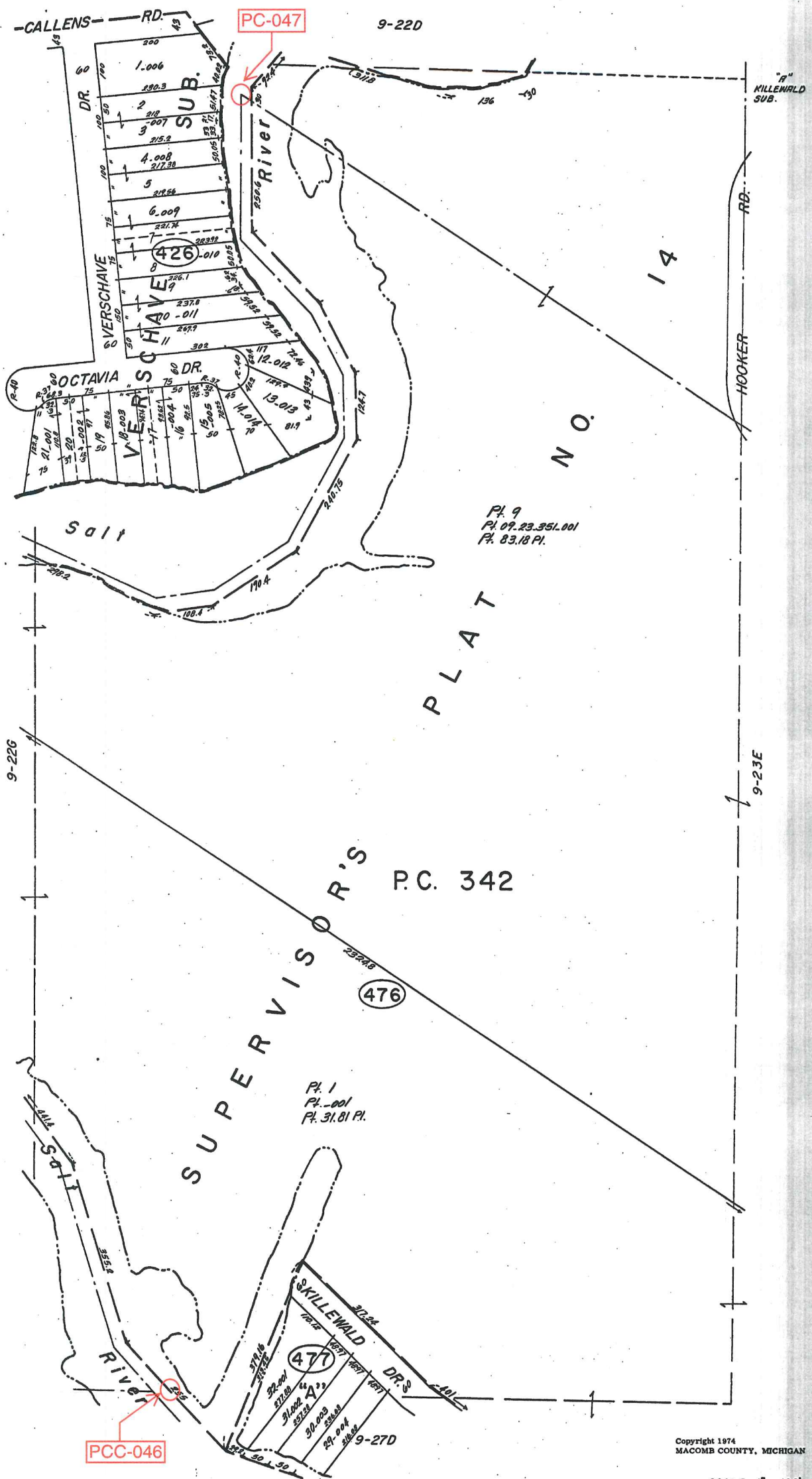
CHESTERFIELD TOWNSHIP
SECTION 22 & 27 T3N, R14E
SCALE 1"=400'

SHEET NO 22 8 27
 454

CHESTERFIELD TOWNSHIP
T3N,R14E
SCALE 1"=400'



LAKE ST CLAIR



MACOMB CO. MICH.

Copyright 1974
MACOMB COUNTY, MICHIGAN

CHESTERFIELD TWP.
PT. S.E. 1/4 SEC. 22 & PT. P.C. 342 T.3N. R.14E.

SCALE: 1" = 100'
669
9-22H

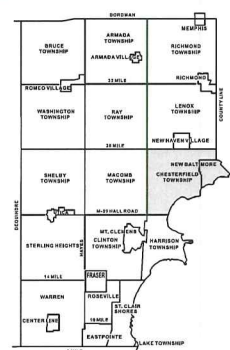


Date of Photography: Spring 2010
 100 50 0 100 200 Feet

CHESTERFIELD TWP SHEET INDEX

DESCRIPTION OF PERMANENT REAL ESTATE INDEX NUMBER
13-19-302-018

09-22D
 CHESTERFIELD TWP.
 E. 1/2 N.E. 1/4 SEC. 22 T. 3N. R. 14E.



PARCEL	AREA NUMBER	SUB AREA NUMBER	BLOCK NUMBER	PARCEL NUMBER
1	13	19	302	018
2	13	19	302	019
3	13	19	302	020
4	13	19	302	021
5	13	19	302	022
6	13	19	302	023
7	13	19	302	024
8	13	19	302	025
9	13	19	302	026
10	13	19	302	027
11	13	19	302	028
12	13	19	302	029
13	13	19	302	030
14	13	19	302	031
15	13	19	302	032
16	13	19	302	033
17	13	19	302	034
18	13	19	302	035
19	13	19	302	036
20	13	19	302	037
21	13	19	302	038
22	13	19	302	039
23	13	19	302	040
24	13	19	302	041
25	13	19	302	042
26	13	19	302	043
27	13	19	302	044
28	13	19	302	045
29	13	19	302	046
30	13	19	302	047
31	13	19	302	048
32	13	19	302	049
33	13	19	302	050
34	13	19	302	051
35	13	19	302	052
36	13	19	302	053
37	13	19	302	054
38	13	19	302	055
39	13	19	302	056
40	13	19	302	057
41	13	19	302	058
42	13	19	302	059
43	13	19	302	060
44	13	19	302	061
45	13	19	302	062
46	13	19	302	063
47	13	19	302	064
48	13	19	302	065
49	13	19	302	066
50	13	19	302	067
51	13	19	302	068
52	13	19	302	069
53	13	19	302	070
54	13	19	302	071
55	13	19	302	072
56	13	19	302	073
57	13	19	302	074
58	13	19	302	075
59	13	19	302	076
60	13	19	302	077
61	13	19	302	078
62	13	19	302	079
63	13	19	302	080
64	13	19	302	081
65	13	19	302	082
66	13	19	302	083
67	13	19	302	084
68	13	19	302	085
69	13	19	302	086
70	13	19	302	087
71	13	19	302	088
72	13	19	302	089
73	13	19	302	090
74	13	19	302	091
75	13	19	302	092
76	13	19	302	093
77	13	19	302	094
78	13	19	302	095
79	13	19	302	096
80	13	19	302	097
81	13	19	302	098
82	13	19	302	099
83	13	19	302	100

- Legend**
- Platted Area Boundary Line
 - Property Line
 - Property Split Line
 - Property Combined Line
 - Township Boundary Line
 - Traverse Line
 - Dimension Extent Marks
 - Dimension Start Marks

Source: Macomb County Department of Planning and Economic Development
 - 2008 Digital Orthophotography Project
 - Parcel Conversion Project

Note:
 Digital Orthophotography horizontal positioning accuracy is 3 feet. Parcel boundary lines should be considered a graphical representation and not in any way a legal survey or engineering document. In general, the horizontal positioning and length accuracy is within 15 feet.

This map is intended for general planning purposes. Site specific evaluation should be verified by field inspection. This is a work in progress and may contain errors and omissions. Please report any potential revisions to (586)469-5285.



GIS MACOMB COUNTY
 Planning and Economic
 Development Department
 Published: Nov 01, 2010



Date of Photography: Spring 2010
 100 50 0 100 200 Feet
 1:1,200

CHESTERFIELD TWP SHEET INDEX

DESCRIPTION OF PERMANENT REAL ESTATE INDEX NUMBER
13-19-3021-018

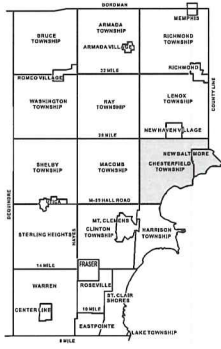
09-22H
 CHESTERFIELD TWP.
 E. 1/2 S.E. 1/4 SEC. 22 T. 3N. R. 14E.

Source: Macomb County Department of Planning and Economic Development
 - 2008 Digital Orthophotography Project - Parcel Conversion Project

Note:
 Digital Orthophotography horizontal positioning accuracy is 3 feet. Parcel boundary lines should be considered a graphical representation and not in any way a legal survey or engineering document. In general, the horizontal positioning and length accuracy is within 15 feet.

This map is intended for general planning purposes. Site specific evaluation should be verified by field inspection. This is a work in progress and may contain errors and omissions. Please report any potential revisions to (580)468-5265.

- Legend**
- Platted Area Boundary Line
 - Property Line
 - Property Split Line
 - Property Combined Line
 - Township Boundary Line
 - Traverse Line
 - Dimension Extent Marks
 - Dimension Start Marks



TOWNSHIP	RANGE	SECTION	INDEX NUMBER
BRUCE	14E	1	13-19-3021-001
		2	13-19-3021-002
		3	13-19-3021-003
		4	13-19-3021-004
		5	13-19-3021-005
		6	13-19-3021-006
		7	13-19-3021-007
		8	13-19-3021-008
		9	13-19-3021-009
		10	13-19-3021-010
		11	13-19-3021-011
		12	13-19-3021-012
ARMA	14E	1	13-19-3021-013
		2	13-19-3021-014
		3	13-19-3021-015
		4	13-19-3021-016
		5	13-19-3021-017
		6	13-19-3021-018
		7	13-19-3021-019
		8	13-19-3021-020
		9	13-19-3021-021
		10	13-19-3021-022
		11	13-19-3021-023
		12	13-19-3021-024
ROUND	14E	1	13-19-3021-025
		2	13-19-3021-026
		3	13-19-3021-027
		4	13-19-3021-028
		5	13-19-3021-029
		6	13-19-3021-030
		7	13-19-3021-031
		8	13-19-3021-032
		9	13-19-3021-033
		10	13-19-3021-034
		11	13-19-3021-035
		12	13-19-3021-036
POWELL	14E	1	13-19-3021-037
		2	13-19-3021-038
		3	13-19-3021-039
		4	13-19-3021-040
		5	13-19-3021-041
		6	13-19-3021-042
		7	13-19-3021-043
		8	13-19-3021-044
		9	13-19-3021-045
		10	13-19-3021-046
		11	13-19-3021-047
		12	13-19-3021-048
WASH	14E	1	13-19-3021-049
		2	13-19-3021-050
		3	13-19-3021-051
		4	13-19-3021-052
		5	13-19-3021-053
		6	13-19-3021-054
		7	13-19-3021-055
		8	13-19-3021-056
		9	13-19-3021-057
		10	13-19-3021-058
		11	13-19-3021-059
		12	13-19-3021-060
SAG	14E	1	13-19-3021-061
		2	13-19-3021-062
		3	13-19-3021-063
		4	13-19-3021-064
		5	13-19-3021-065
		6	13-19-3021-066
		7	13-19-3021-067
		8	13-19-3021-068
		9	13-19-3021-069
		10	13-19-3021-070
		11	13-19-3021-071
		12	13-19-3021-072
LEBO	14E	1	13-19-3021-073
		2	13-19-3021-074
		3	13-19-3021-075
		4	13-19-3021-076
		5	13-19-3021-077
		6	13-19-3021-078
		7	13-19-3021-079
		8	13-19-3021-080
		9	13-19-3021-081
		10	13-19-3021-082
		11	13-19-3021-083
		12	13-19-3021-084
SHELBY	14E	1	13-19-3021-085
		2	13-19-3021-086
		3	13-19-3021-087
		4	13-19-3021-088
		5	13-19-3021-089
		6	13-19-3021-090
		7	13-19-3021-091
		8	13-19-3021-092
		9	13-19-3021-093
		10	13-19-3021-094
		11	13-19-3021-095
		12	13-19-3021-096
MACOMB	14E	1	13-19-3021-097
		2	13-19-3021-098
		3	13-19-3021-099
		4	13-19-3021-100
		5	13-19-3021-101
		6	13-19-3021-102
		7	13-19-3021-103
		8	13-19-3021-104
		9	13-19-3021-105
		10	13-19-3021-106
		11	13-19-3021-107
		12	13-19-3021-108
NEW BAL	14E	1	13-19-3021-109
		2	13-19-3021-110
		3	13-19-3021-111
		4	13-19-3021-112
		5	13-19-3021-113
		6	13-19-3021-114
		7	13-19-3021-115
		8	13-19-3021-116
		9	13-19-3021-117
		10	13-19-3021-118
		11	13-19-3021-119
		12	13-19-3021-120
STERLING H	14E	1	13-19-3021-121
		2	13-19-3021-122
		3	13-19-3021-123
		4	13-19-3021-124
		5	13-19-3021-125
		6	13-19-3021-126
		7	13-19-3021-127
		8	13-19-3021-128
		9	13-19-3021-129
		10	13-19-3021-130
		11	13-19-3021-131
		12	13-19-3021-132
MT CLEM	14E	1	13-19-3021-133
		2	13-19-3021-134
		3	13-19-3021-135
		4	13-19-3021-136
		5	13-19-3021-137
		6	13-19-3021-138
		7	13-19-3021-139
		8	13-19-3021-140
		9	13-19-3021-141
		10	13-19-3021-142
		11	13-19-3021-143
		12	13-19-3021-144
CLINTON	14E	1	13-19-3021-145
		2	13-19-3021-146
		3	13-19-3021-147
		4	13-19-3021-148
		5	13-19-3021-149
		6	13-19-3021-150
		7	13-19-3021-151
		8	13-19-3021-152
		9	13-19-3021-153
		10	13-19-3021-154
		11	13-19-3021-155
		12	13-19-3021-156
HARBOR	14E	1	13-19-3021-157
		2	13-19-3021-158
		3	13-19-3021-159
		4	13-19-3021-160
		5	13-19-3021-161
		6	13-19-3021-162
		7	13-19-3021-163
		8	13-19-3021-164
		9	13-19-3021-165
		10	13-19-3021-166
		11	13-19-3021-167
		12	13-19-3021-168
TAPLE	14E	1	13-19-3021-169
		2	13-19-3021-170
		3	13-19-3021-171
		4	13-19-3021-172
		5	13-19-3021-173
		6	13-19-3021-174
		7	13-19-3021-175
		8	13-19-3021-176
		9	13-19-3021-177
		10	13-19-3021-178
		11	13-19-3021-179
		12	13-19-3021-180
ROSEV	14E	1	13-19-3021-181
		2	13-19-3021-182
		3	13-19-3021-183
		4	13-19-3021-184
		5	13-19-3021-185
		6	13-19-3021-186
		7	13-19-3021-187
		8	13-19-3021-188
		9	13-19-3021-189
		10	13-19-3021-190
		11	13-19-3021-191
		12	13-19-3021-192
CO	14E	1	13-19-3021-193
		2	13-19-3021-194
		3	13-19-3021-195
		4	13-19-3021-196
		5	13-19-3021-197
		6	13-19-3021-198
		7	13-19-3021-199
		8	13-19-3021-200
		9	13-19-3021-201
		10	13-19-3021-202
		11	13-19-3021-203
		12	13-19-3021-204
WARREN	14E	1	13-19-3021-205
		2	13-19-3021-206
		3	13-19-3021-207
		4	13-19-3021-208
		5	13-19-3021-209
		6	13-19-3021-210
		7	13-19-3021-211
		8	13-19-3021-212
		9	13-19-3021-213
		10	13-19-3021-214
		11	13-19-3021-215
		12	13-19-3021-216
CENTER	14E	1	13-19-3021-217
		2	13-19-3021-218
		3	13-19-3021-219
		4	13-19-3021-220
		5	13-19-3021-221
		6	13-19-3021-222
		7	13-19-3021-223
		8	13-19-3021-224
		9	13-19-3021-225
		10	13-19-3021-226
		11	13-19-3021-227
		12	13-19-3021-228
EASTW	14E	1	13-19-3021-229
		2	13-19-3021-230
		3	13-19-3021-231
		4	13-19-3021-232
		5	13-19-3021-233
		6	13-19-3021-234
		7	13-19-3021-235
		8	13-19-3021-236
		9	13-19-3021-237
		10	13-19-3021-238
		11	13-19-3021-239
		12	13-19-3021-240
LAKE	14E	1	13-19-3021-241
		2	13-19-3021-242
		3	13-19-3021-243
		4	13-19-3021-244
		5	13-19-3021-245
		6	13-19-3021-246
		7	13-19-3021-247
		8	13-19-3021-248
		9	13-19-3021-249
		10	13-19-3021-250
		11	13-19-3021-251
		12	13-19-3021-252

COPYRIGHT 2009
 MACOMB COUNTY, MI
 All Rights Reserved



GIS MACOMB COUNTY
 Planning and Economic
 Development Department
 Published: Nov 01, 2010

No. 435

No. 342 Confirmed to
Francois Dupre'

LAKE ST. CLAIR

Description No. 342 Confirmed to Francois Dupre' commencing at a post standing on the west border of Salt River it being the north east corner of a tract confirmed to George Meldrum thence along the border of Salt River down stream South forty five degrees west thirty chains eighty links to the confluence of said River with Lake St. Clair thence along the border of said lake south seventy four degrees thirty minutes East twenty five chains, thence North sixty one degrees east twenty chains, thence north sixty three degrees East nineteen chains, thence north eighty degrees East thirty three chains thence north sixty five degrees East nineteen chains fifty links, thence North six degrees West six chains Seventy five links to a **post standing** PC-050
on the border of Lake St. Clair between this tract and a tract reserved for Maccanse, (a Chipawa Indian Chief), thence north sixty ^{97.34 ch = 6424.44'} degrees west ninety seven chains thirty four links to a **post standing** PC-047
on the border of Salt River thence along the border of said River down stream, South eleven degrees East ten chains thirty seven links, thence south seventy degrees west fifteen chains, thence south thirty degrees East twenty five chains, thence South fifty eight degrees East fifteen chains thence south forty six degrees west twenty chains seventy three links to the place of beginning, containing four hundred and twenty two acres, seventeen hundredths of an acre _____

Detroit July 24, 1810 _____

Aaron Greeley Surveyor of
private claims

Lake St. Clair.

N. 497"

Lake St. Clair

Description N. 192 Confirmed to
Melbourne and Park commencing

at a post standing on the border of
Lake St. Clair between this tract and a
tract confirmed to the Claimants, thence
north forty five degrees west ninety two
chains eighty links, to a post, thence
north forty five degrees East sixty three
chains four links, to a post the boundary
between this tract and a tract of uncon-
ceded lands, thence south forty five degrees
East one hundred and four chains fifty
four links, to a post standing on the
border of Salt River, thence along the
border of said River down stream -
south forty five degrees west thirty chains
eighty links, to the confluence of said
River with Lake St. Clair, thence along
the border of said Lake south sixty
five degrees west thirty three chains -
twenty six links, to the place of beginning
containing six hundred and forty -
acres.

Detroit July 24. 1810

Aaron Greeley Surveyor
of private Claims.

192

Transect 3 North Range 14 East

RESERVE

Beyond at post Elm 18 N.W. Cor. of Reserve Thence

S52°E ~~S57°E~~ along westerly line of Reserve

17.20 Elm 18

20.10 Buck 18

35.00 Enter fields

PCC-049

45.10 To post Between Sects 23 & 26

62.00 Leave fields & enter wet marsh

PC-050

79.00 To Lake St. Clair & set post in Marsh

(?) No trees

Sound pulling second rate Sugar Buck
Lynn Ironwood 40.00

Beyond at Elm 18 N.W. Cor. of Reserve Thence
N50°E N50°E along Northerly line of Reserve

11.60 Maple 36

31.70 Buck 12

64.25 Buck 18

72.70 W Oak 36

84.50 To Sycamore 36 Cor. on Reserve 14 & 23

98.80 To post Bet Sects 13 & 14

116.30 Buck 18

123.30 To Lynn 16 N.E. Cor. of Reserve

Sound pulling second rate Buck

Lynn Elm 40.00

Beyond at Lynn 12 N.E. Cor. of Reserve
Thence

S49°E ~~S47°E~~ along Easterly line of Reserve

3.72 Buck 18

25.72 Buck 18

33.72 To post Bet Sects 13 & 24

40.12 To Lake St. Clair & set post

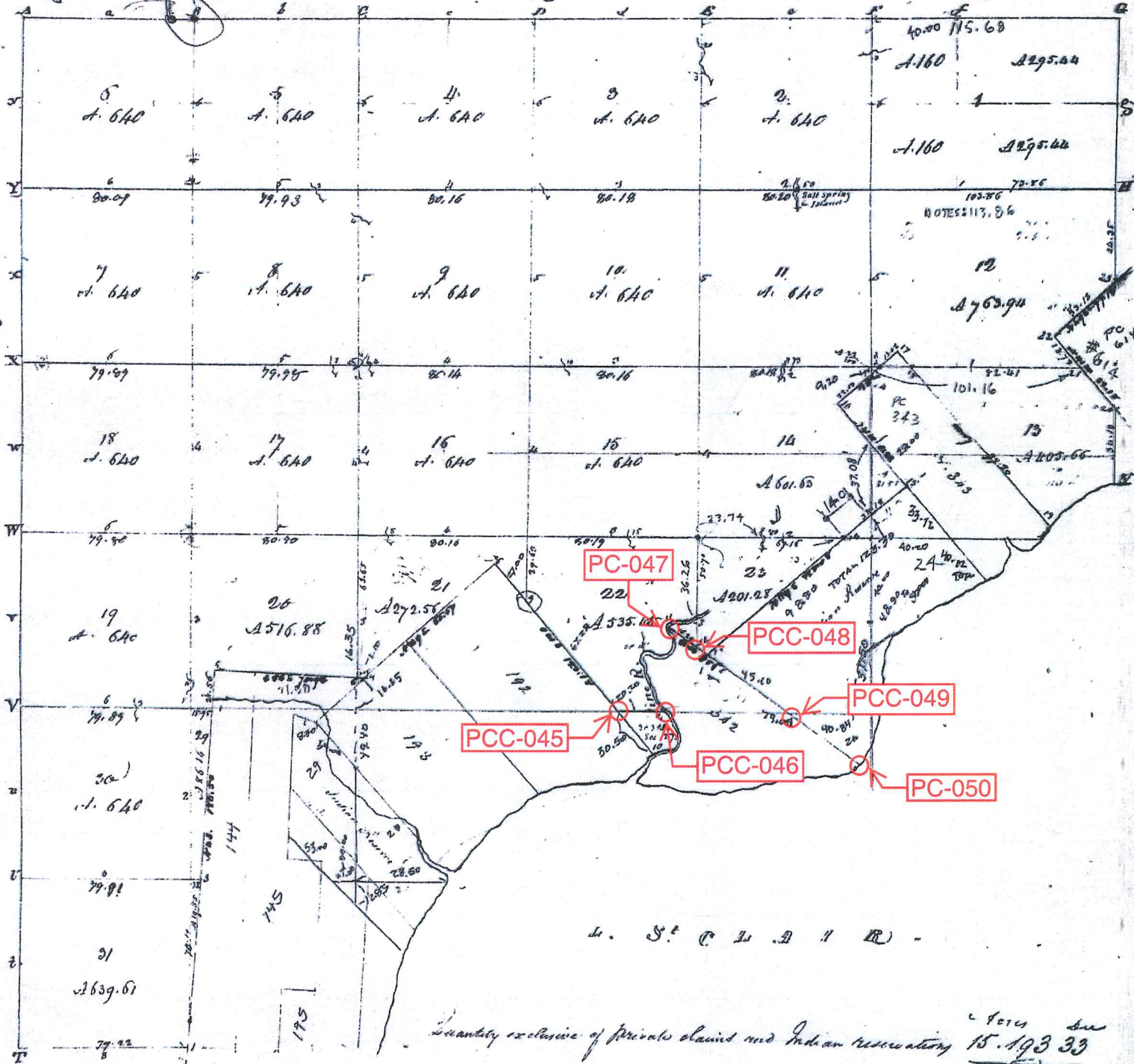
No trees

Thence along line Stone

1818

576

Township N. III North, Range N. XIV East of the Mer. (Mich. Ter.)



A true Copy from the Original on file in this Office
 Surveyor General's Office,
 Sept 20 1818.

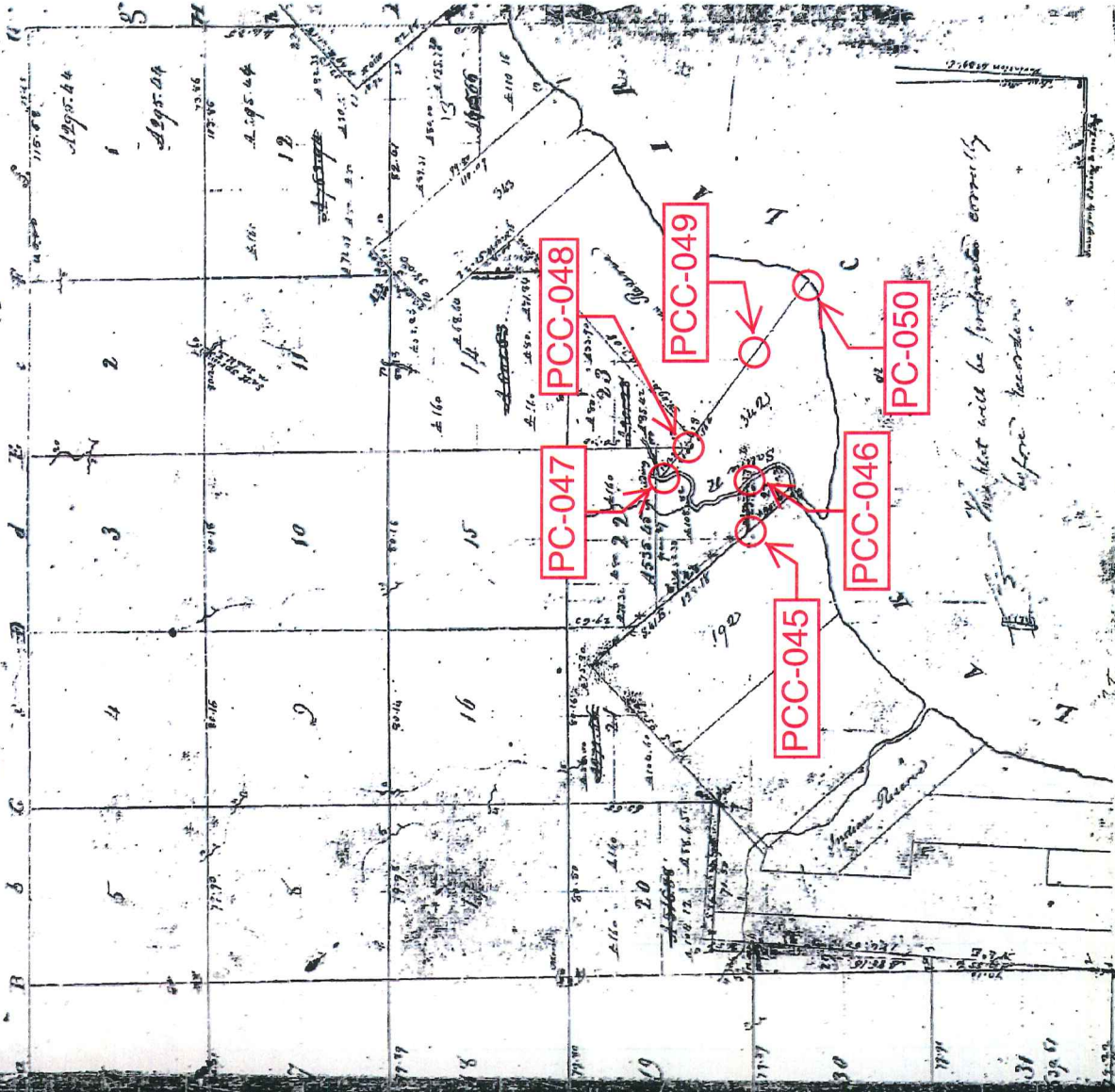
Edward Tappan
 Surveyor General
 3 N. 14 E CHESTERFIELD

1818

26-38-92

26-38-92

Ship No III North Range No XIV East of Meridian Michigan Territory



Proceeding to a contract with and specifications from Edward J. Phipps Esquire, Surveyor General of the United States bearing date 20th day of November 1816 I had administered said act and conveyed the same divided fractional Township and hereby certify that it had been made at a board held at the same place and witnessed as is shown on said plat and described in the plat made by me and returned with this plat into the Surveyor General's Office at Grand Rapids Michigan this 26th day of June 1838

Wm. H. Phipps

1937

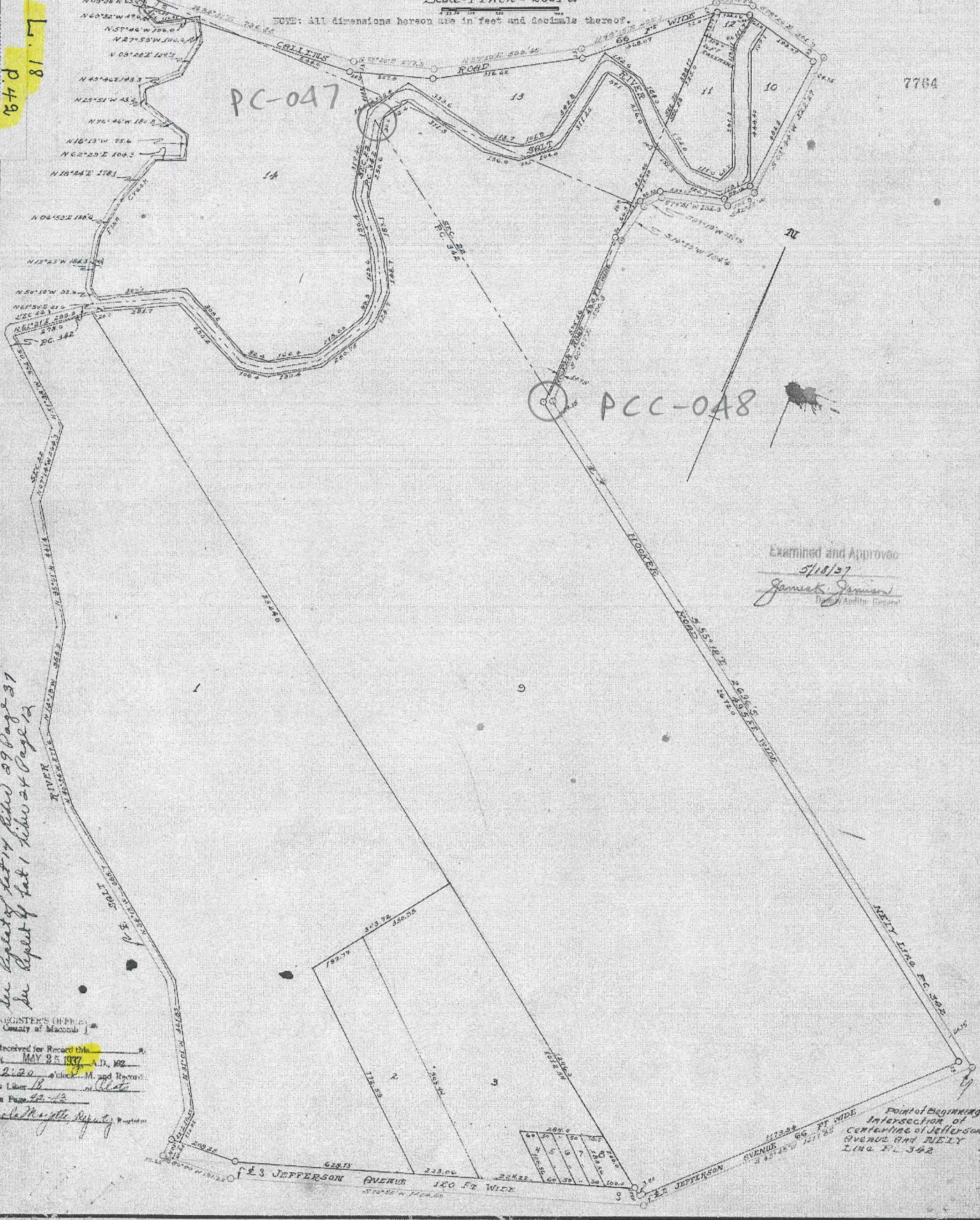
Sheet 1 of 2 Sheets

Original

"SUPERVISORS PLAT N^o 14"
 PART OF FRL SEC.s 22 & 23, & PART OF P.C. 342, T3N, R14E,
 CHESTERFIELD TOWNSHIP, MACOMB COUNTY, MICHIGAN.

Scale - 1 Inch = 200 Ft.

NOTE: All dimensions hereon are in feet and decimals thereof.



Examined and Approved
 5/18/37
Jamieson
 By Auditor

See Report of Plat 14 filed 29 Page 37
 See Report of Plat 1 filed 24 Page 12

RECORDED IN OFFICE OF
 County of Macomb
 Received for Record this
 MAY 25 1937 A.D. 1937
 2:20 o'clock P.M. and Return
 to Liber 18 of
 at Page 42-43
 Clerk of the Registry

See Account Jan 3088 Page 385 & John 3088 Page 388 See Account in A.L.S. 376 Page 504-508

"SUPERVISORS PLAT NO. 15"

PART OF FR'1 SEC. 23, IN INDIAN RESERVE, T3N, R14E,
CHESTERFIELD TOWNSHIP, MACOMB COUNTY, MICHIGAN

Scale - 1 Inch = 200 Ft.

NOTE: All dimensions hereon are in feet and decimals thereof.

DEDICATION

KNOW ALL MEN BY THESE PRESENTS, That I, Walter Collins, Supervisor of the Township of Chesterfield, Macomb County, State of Michigan, by virtue of authority in me vested by Section 51, Act 172, of 1929, having been duly authorized by the Township Board, have caused the land described in the annexed plat to be surveyed, laid out and platted, to be known as "SUPERVISORS PLAT NO. 15", part of Fr'1 Sec. 23, in Indian Reserve, Chesterfield Township, Macomb County, Michigan, and that the streets and alleys as shown on said plat are now being used for such purposes.

Witnesses:

Walter Collins
John Spivey

Walter Collins
Supervisor of the Township of Chesterfield.

SURVEYOR'S CERTIFICATE

I hereby certify that the plat hereon delineated is a correct one and that permanent metal monuments of not less than one inch in diameter and fifteen inches in length set in a concrete base at least four inches in diameter and forty-eight inches in depth have been placed at points marked thus: "o", as thereon shown at all angles in the boundaries of the land platted, at all the intersections of streets, intersections of alleys, or of streets and alleys, and at the intersections of streets and alleys with the boundaries of the plat as shown on said plat.

Donald W. Hanson
Registered Civil Engineer

ACKNOWLEDGMENT

STATE OF MICHIGAN, }
County of Macomb } ss

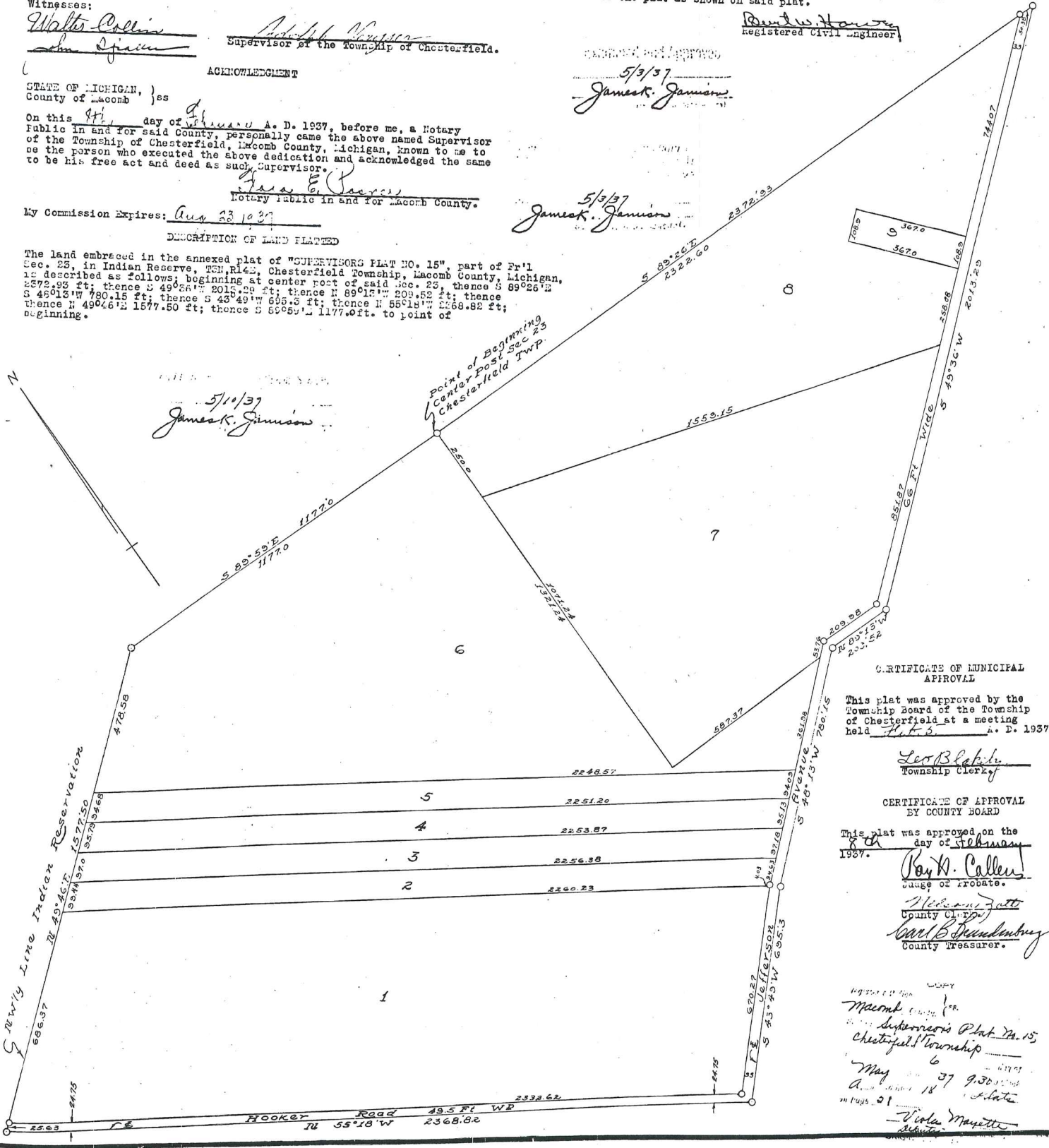
On this 9th day of September A. D. 1937, before me, a Notary Public in and for said County, personally came the above named Supervisor of the Township of Chesterfield, Macomb County, Michigan, known to me to be the person who executed the above dedication and acknowledged the same to be his free act and deed as such Supervisor.

James K. Jamison
Notary Public in and for Macomb County.

My Commission Expires: Aug 23 1939

DESCRIPTION OF LAND PLATTED

The land embraced in the annexed plat of "SUPERVISORS PLAT NO. 15", part of Fr'1 Sec. 23, in Indian Reserve, T3N, R14E, Chesterfield Township, Macomb County, Michigan, is described as follows: beginning at center point of said Sec. 23, thence S 89°26' E 2572.98 ft; thence S 49°26' W 2016.29 ft; thence N 89°15' W 209.52 ft; thence S 46°13' W 780.15 ft; thence S 43°49' W 695.5 ft; thence N 56°18' W 2368.82 ft; thence N 49°46' E 1577.50 ft; thence S 89°52' E 1177.0 ft. to point of beginning.



CERTIFICATE OF MUNICIPAL APPROVAL

This plat was approved by the Township Board of the Township of Chesterfield at a meeting held Oct 3 A. D. 1937.

Leo B. Blahut
Township Clerk

CERTIFICATE OF APPROVAL BY COUNTY BOARD

This plat was approved on the day of February 1937.

Ray W. Callen
Judge of Probate.

William J. Gatt
County Clerk

Carl B. Spaulding
County Treasurer.

Macomb County
Supervisor's Plat No. 15
Chesterfield Township
May 27 9 30 AM 1937
Page 31
Viola Mayette

1954
L 29, P 37

ORIGINAL

"VERSCHAVE SUBDIVISION" OF LOT 14 SUPERVISORS PLAT NO. 14 FRAG. SEC. 22 T. 3 N. R. 14 E. CHESTERFIELD TWP. MACOMB CO. MICH.

166388

SCALE 1" = 100'

EXAMINED AND APPROVED

Date FEB 8 1954

NOTE: ALL DIMENSIONS ARE IN FEET AND DECIMALS THEREOF.

John B. Martin
John B. Martin
AUDITOR GENERAL
By: *H. J. Fuller*
Plat Engineer

HARRY J. FULLER
REGISTERED CIVIL ENGINEER
MT. OLEMUS MICH.

PC-047

NOTE: ALL LOT DEPTHS GO TO THE WATERS EDGE AND THIS PLAT EXTENDS TO THE WATERS EDGE.



CURVE DATA

A B D
R = 40 LENGTH = 147.2
B B C
R = 37 LENGTH = 32.3

REGISTER'S OFFICE
COUNTY OF MACOMB

Received for Record
Subscribed 15, 1954
at 11:22 o'clock A.M. and recorded
in Vol. 27 of Plats on
Page 37
Thomas Mayette
Register of Deeds

CERTIFICATE OF APPROVAL BY
BOARD OF COUNTY ROAD COMMISSIONERS

This plat is hereby approved and may be used as the 29th December 5
by the Board of County Road Commissioners of Macomb County

Ray Connor
Wm. E. Malow

MUNICIPAL APPROVAL

This plat was approved by the Chesterfield Board of the Township of Chesterfield Mich. at a meeting held on January 15, 1954. Reapproved Feb. 11, 1954. Leo Blahy 1954

APPROVAL BY COUNTY BOARD

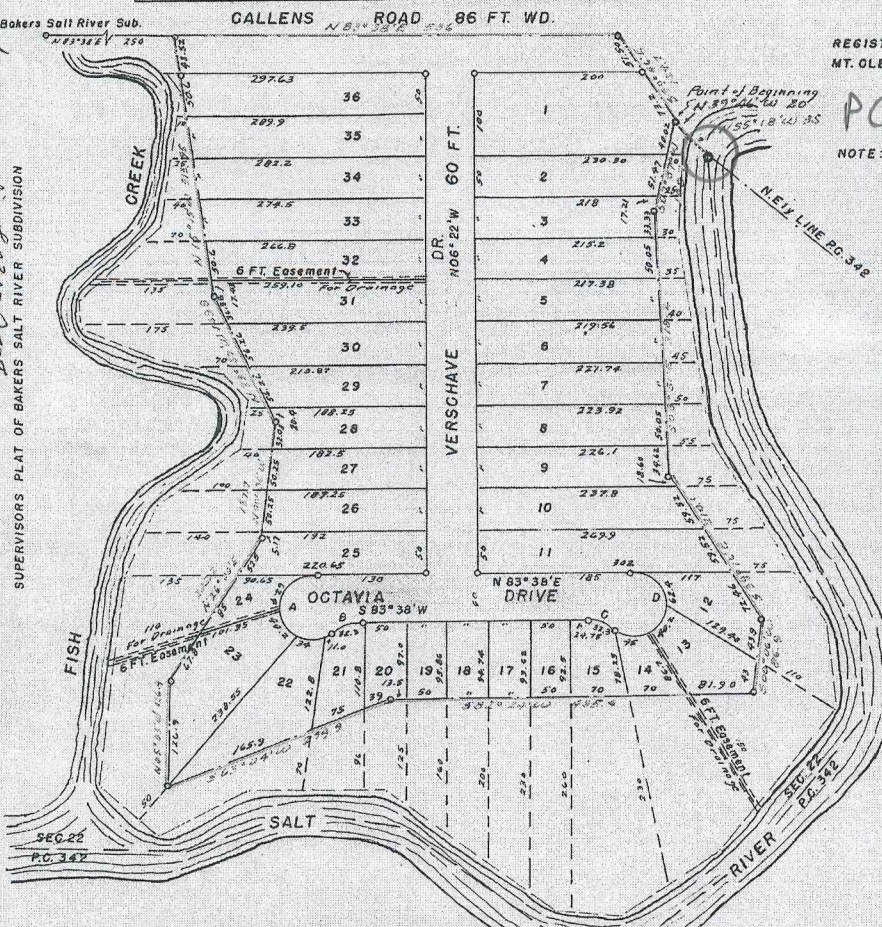
This plat was approved on the 13th day of January, 1954.

Harold C. Becker
Albert A. Wagner
Frank C. Cook

APPROVAL BY BOARD OF COUNTY AUDITORS

Approved by the Board of County Auditors of Macomb County, Michigan, this 13th day of January, 1954.

THIS IS TO CERTIFY THAT ACCORDING TO THE COUNTY REGISTER'S RECORD, THERE ARE NO TAX LIENS ON THIS PROPERTY AND THE TAXES ARE PAID FOR FIVE YEARS PREVIOUS TO DATE OF THIS INSTRUMENT. CERTIFIED AS TO 1946, 1947, 1948, 1949, 1950. LYNX REGISTER, MACOMB COUNTY REGISTER. FEB 8 1954



Vertical text on the left margin: 'SUPERVISORS PLAT OF BAKERS SALT RIVER SUBDIVISION' and other handwritten notes.

DEDICATION

KNOW ALL MEN BY THESE PRESENTS, That We, William Verschave, Victor Verschave and George Verschave, single men and co-proprietors...

have caused the land described in the annexed plat to be surveyed, laid out and platted, to be known as 'Vershave Subdivision' of Lot 14, Supervisor's Plat No. 14, Fractional Sec. 22, Town 3 North, Range 14 East, Chesterfield Twp., Macomb County, Mich., being Lot 14 of Supervisor's Plat No. 14 part of Fractional Sections 22 & 23, and part of Private Claim 342, Town 3 North, Range 14 East, Chesterfield Township, Macomb County, Michigan

and that the streets and alleys as shown on said plat are hereby dedicated to the use of the public.

ACKNOWLEDGMENT

STATE OF MICHIGAN
County of Macomb
On this 7th day of February, A.D. 1954, before me, a Notary Public in and for said county, personally came the above named William Verschave, Victor Verschave and George Verschave, known to me to be the persons who executed the above dedication, and acknowledged the same to be his free act and deed.

DESCRIPTION OF LAND PLATTED

The land embraced in the annexed plat of 'Vershave Subdivision' of Lot 14 Supervisor's Plat No. 14, Fractional Section 22, Town 3 North, Range 14 East, Chesterfield Township, Macomb County, Mich. being Lot 14 of Supervisor's Plat No. 14 part of Fractional Sections 22 and 23, and part of Private Claim 342, Town 3 North, Range 14 East, Chesterfield Township, Macomb County, Michigan, is described as follows:
Commencing at the intersection of the Northeast line of Private Claim 342 and the Section line of Fractional Section 22 in the center of Salt River, thence North 55°18' West 35 feet, thence North 39°46' West 20 feet to the point of beginning, thence South 07°37' West 108.7 feet, thence South 08°51' East 318.2 feet, thence South 39°16' East 210.1 feet, thence South 00°06' West 86.9 feet, thence South 82°24' West 435.4 feet, thence South 63°04' West 270.9 feet, thence North 05°03' West 126.9 feet, thence North 26°00' East 205.2 feet, thence North 00°56' West 137.7 feet, thence North 33°37' West 169.8 feet, thence North 15°15' West 313.95 feet, thence North 83°38' East 536 feet, thence South 39°46' East 124.7 feet to the point of beginning.

SURVEYOR'S CERTIFICATE

I hereby certify that the plat herein delineated is a correct one and that permanent metal monuments consisting of bars not less than one-half inch in diameter and 48 inches in length, or shorter bars of not less than one-half inch in diameter lapped over each other at least 6 inches with an over-all length of not less than 48 inches, secured in a concrete cylinder of at least 4 inches in diameter and 48 inches in depth have been placed at points marked thus (P. . . .) as thereon shown at all angles in the boundaries of the land platted, at all the intersections of streets, intersections of alleys, or of streets and alleys, and of the intersections of streets and alleys with the boundaries of the plat as shown on said plat.

Harry J. Fuller
Registered Land Surveyor (or Professional Engineer)
Harry J. Fuller

1956
L 36, P 40

38124

JUL 24 1956

"SUPERVISORS PLAT OF JAMES FULLER SMALL FARMS SUBDIVISION"

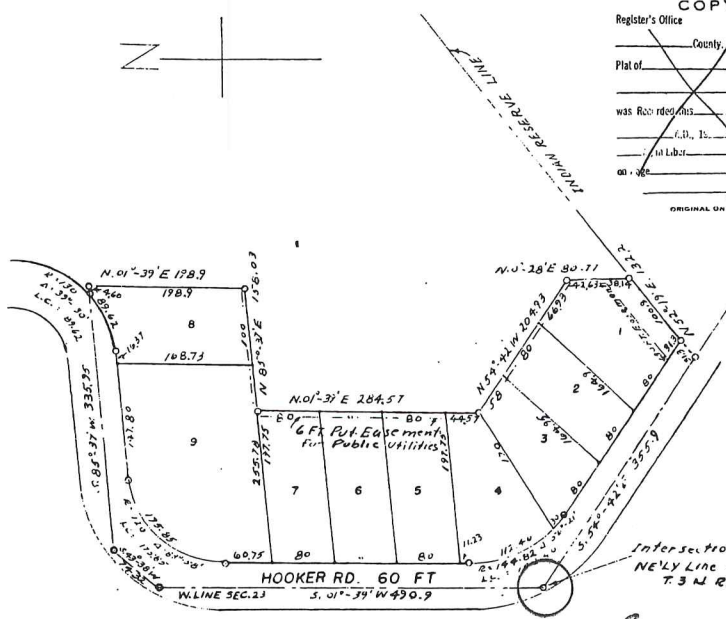
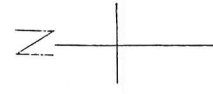
PART OF FRLSEC23T3NRI4E CHESTERFIELD TWP. MACOMB CO. MICH.

SCALE 1" = 100'



NOTE: ALL MEASUREMENTS ARE IN FEET AND DECIMALS THEREOF.
ALL CURVE MEASUREMENTS ARE GIVEN ALONG THE ARC OF THE CURVE.

HARRY J. FULLER
REGISTERED LAND SURVEYOR
MT. CLEMENS MICH.



COPY
Register's Office
County
Plat of
was recorded this day of
A.D. 1956 at O'clock
M.L. Labor
ORIGINAL ON FILE

COPY
Register's Office
County
Plat of
was recorded this day of
A.D. 1956 at O'clock
M.L. Labor
ORIGINAL ON FILE

I hereby certify this copy is a true and correct copy of the original plat forwarded the Register of Deeds for recording.
Date July 24 1956
FILED
Date
Date

Intersection of W. Line Sec. 23 & N.E. 1/4 Line of P.C. 342 T. 3 N. R. 14 E. is Point of Beginning T. 3 N. R. 14 E.

PCC-048

DEDICATION

KNOW ALL MEN BY THESE PRESENTS, that I Keith Bovenschen, Supervisor of the Township of Chesterfield of Macomb County, State of Michigan, by virtue of authority in me vested by Section 51, Act 172 of 1929, having been duly authorized by the Township Board have caused the land described in the annexed plat to be surveyed, laid out and platted to be known as "SUPERVISORS PLAT OF JAMES FULLER SMALL FARMS SUBDIVISION" part of Fractional Section 23 T. 3 N. R. 14 E. Chesterfield Township, Macomb County, Michigan, and that the streets as shown on said plat are now being used for such purposes.

George C. Nagas
George C. Nagas (Witness)
Phil Gascara
Phil Gascara (Witness)

Keith Bovenschen
Keith Bovenschen
Supervisor of Township of Chesterfield

DESCRIPTION OF LAND PLATTED

The land embraced in the annexed plat of "SUPERVISORS PLAT OF JAMES FULLER SMALL FARMS SUBDIVISION" part of Fractional Section 23 T. 3 N. R. 14 E. Chesterfield Township, Macomb County, Michigan is described as follows:
Commencing at the intersection of the West Line of Sec. 23 and the Northeastern Line of P.C. 342 T. 3 N. R. 14 E. as the point of beginning thence S. 54°-42' E. 355.9 feet along the Northeastern line of P.C. 342 thence N. 52°-19' E. 132.2 feet along the Indian Reserve line thence N. 0°-28' E. 80.77 feet, thence N. 54°-42' W. 204.93 feet, thence N. 01°-39' E. 284.57 feet, thence N. 85°-37' E. 158.03 feet, thence N. 01°-39' E. 198.9 feet, thence S. 85°-37' W. 335.95 feet, thence S. 01°-39' W. 490.9 feet along the West Line of Fractional Section 23 to the point of beginning.

APPROVAL BY COUNTY BOARD

This plat was approved on the 24th day of July 1956
Aaron Burr
Aaron Burr (County Register of Deeds)
Albert Wagner
Albert Wagner (County Clerk)
John W. Shallen
John W. Shallen (County Treasurer)
Frank Lohr
Frank Lohr (County Drain Commissioner)

SURVEYOR'S CERTIFICATE

I hereby certify that the plat hereon delineated is a correct one and that permanent metal monuments consisting of bars not less than one-half inch in diameter and 36 inches in length, or shorter bars of not less than one-half inch in diameter looped over each other at least 6 inches with an over-all length of not less than 36 inches, encased in a concrete cylinder at least 4 inches in diameter and 36 inches in depth have been placed at points marked thus (O) as thereon shown at all angles in the boundaries of the land platted, at all intersections of streets, intersections of alleys, or of streets and alleys, and at the intersections of streets and alleys with the boundaries of the plat as shown on said plat.

Harry J. Fuller
HARRY J. FULLER REGISTERED LAND SURVEYOR

ACKNOWLEDGEMENT

STATE OF MICHIGAN)
COUNTY OF MACOMB) ss.

On this 24th day of July A.D. 1956, before me, a Notary Public in and for said county personally came the above named Keith Bovenschen, Supervisor of the Township of Chesterfield, known to me to be the person who executed the above dedication and acknowledged the same to be his free act and deed as such Supervisor.

Helen Blakely
Notary Public, Macomb Co., Mich.
HELEN BLAKELY

My Commission expires Oct. 1, 1957

MUNICIPAL APPROVAL

This plat was approved by the Township Board of the Township of Chesterfield at a meeting held July 14 - 1956

Leo J. Blakely
Leo J. Blakely (Clerk)
BOARD OF COUNTY ROAD COMMISSIONERS

This plat has been examined and approved on the 24th day of July 1956 by the Board of County Road Commissioners of Macomb County.
Ernest W. McCollum Ernest W. McCollum
Ray Conner Ray Conner
Lawrence Schmitke Lawrence Schmitke

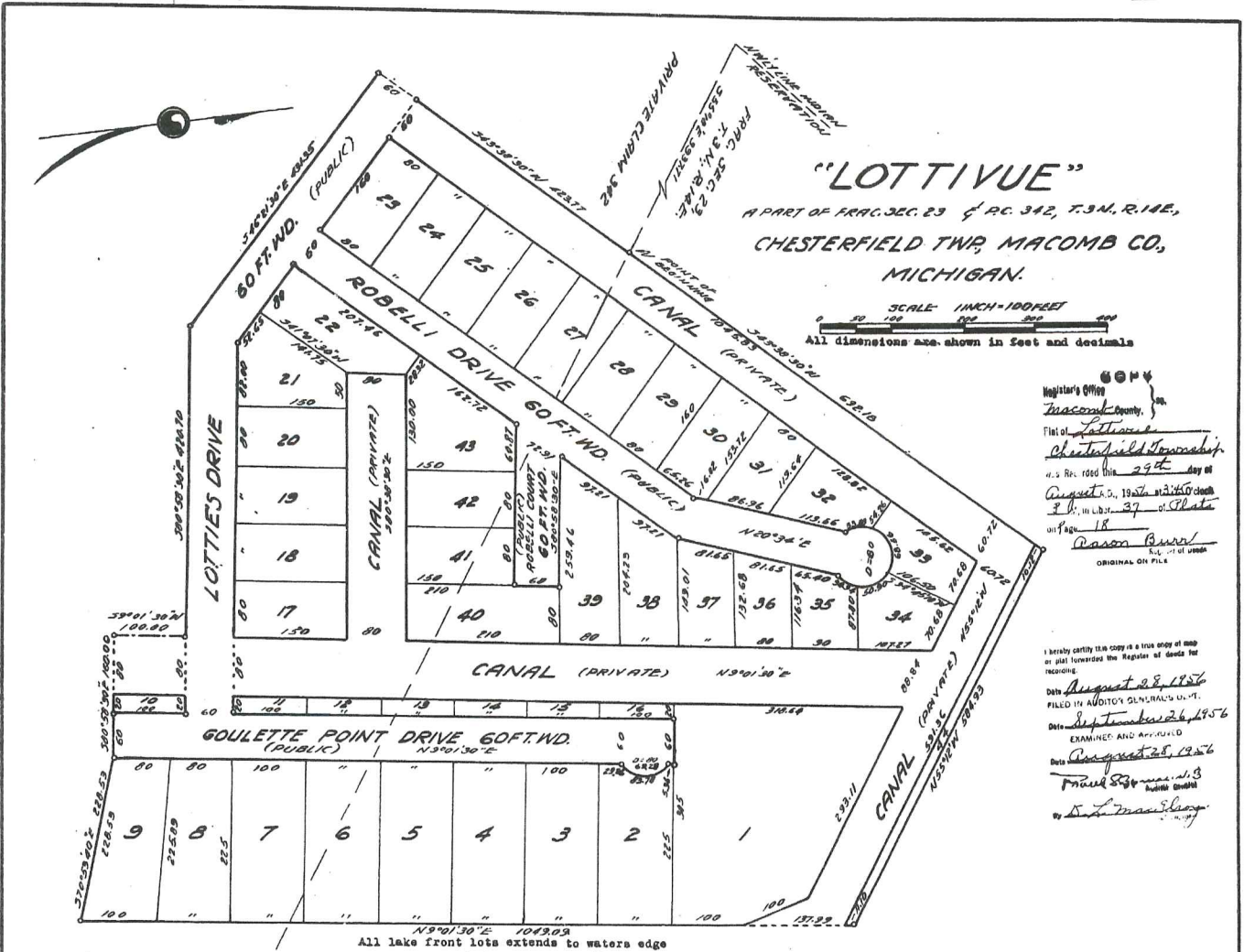
9

AUG 28 1956

1956
L 37, P 18

COPY

38395



"LOTTIVUE"
 A PART OF FRAC. SEC. 23 & AC. 342, T.3N., R.14E.,
 CHESTERFIELD TWP., MACOMB CO.,
 MICHIGAN.

SCALE 1 INCH = 100 FEET
 All dimensions are shown in feet and decimals

664
 Registrar's Office
 Macomb County
 Filed at Lottery
Chesterfield Township
 as per road this 29th day of
August, 1956 at 10:00 o'clock
 P.M. in Lot 37 of Plate
 of Page 18
Ramon Burr
 Reg. of Deeds
 ORIGINAL ON FILE

I hereby certify this copy is a true copy of map
 as plat forwarded the Registrar of deeds for
 recording.
 Date August 28, 1956
 FILED IN ADDITION GENERAL'S OFFICE
September 26, 1956
 EXAMINED AND APPROVED
 Date August 28, 1956
Ramon Burr
 Reg. of Deeds

All lake front lots extends to waters edge
LAKE ST. CLAIR

DEDICATION

KNOW ALL MEN BY THESE PRESENTS, that we, Lottie M. Schmidt, Inc., a Michigan Corporation by Betty C. Niemetta President, and Arnold Schmidt Secretary, as proprietors, have caused the land embraced in the annexed plat to be surveyed, laid out and platted, to be known as "LOTTIVUE" a part of Frac. Sec. 23 & P.C. 342, T.3 N., R.14 E., Chesterfield Twp., Macomb Co., Michigan and that the canals marked private as shown on said plat, are hereby dedicated to the sole and only use of the owners of lots thereof in common and that the streets as shown on said plat are hereby dedicated to the use of the public

Signed and Sealed in the presence of
Carl Phillips (Witness)
Earl Phillips (Witness)
Lottie M. Schmidt, Inc.
Betty C. Niemetta (President)
Arnold Schmidt (Secretary)

DESCRIPTION OF LAND PLATTED

The land embraced in the annexed plat of "LOTTIVUE" a part of Frac. Sec. 23 & P.C. 342, T.3 N., R.14 E., Chesterfield Twp., Macomb Co., Michigan is described as follows: Commencing South 55°18' East 3937.71 feet along the line between Frac. Sec. 23 and Private Claim 342, T.3 N., R.14 E., from the North westerly line of the Indian Reservation, thence South 43°38'30" West 423.77 feet, thence South 46°21'30" East 431.35 feet, thence South 80°58'30" East 420.70 feet, thence South 9°01'30" West 100.00 feet, thence South 80°58'30" East 160.00 feet, thence South 70°53'40" East 228.53 feet, thence North 9°01'30" East 1049.09 feet, thence North 55°12' West 504.93 feet, thence South 43°38'30" West 692.18 feet to the point of beginning and includes Lots 1 to 44 inclusive.

SURVEYOR'S CERTIFICATE

I hereby certify that the plat hereto delineated is a correct one, and that permanent monuments consisting of iron rods at least one half inch in diameter and 36 inches in length, encased in concrete cylinders four inches in diameter and 36 inches in length, have been set at points marked thus (O) as shown shown on said plat to the boundaries of the land platted, at all intersections of the lines of streets and at intersections of the lines of streets with the boundaries of the plat.

Earl Phillips
 Earl Phillips
 Registered Land Surveyor

APPROVAL BY COUNTY PLAT BOARD

This plat was approved on the 28th day of August, 1956, by the Macomb County Plat Board

Ramon Burr (County Register of Deeds)
Albert A. Wagner (County Clerk)
Frank E. Lohr (County Drain Commissioner)

APPROVAL BY BOARD OF COUNTY ROAD COMMISSIONERS

This plat has been examined and was approved on the 1st day of May, 1956, by the Macomb County Board of Road Commissioners.

Ernest W. McCallion (Chairman)
Roy Connor (Member)
Lawrence Osborne (Member)

MUNICIPAL APPROVAL

This plat was approved by the Township Board of the Township of Chesterfield at a meeting held on August 28, 1956, by Lee Blakely (Clerk)

ACKNOWLEDGMENT

STATE OF Michigan }
 County of St. Clair }
 On this 28th day of August, A.D. 1956, before me, a Notary Public in and for said county appeared Betty C. Niemetta and Arnold Schmidt to me personally known, who being each by me duly sworn did say that they are the President and Secretary respectively of the Lottie M. Schmidt, Inc., a Michigan corporation, and that the seal affixed to said instrument is the corporate seal of said corporation and that said instrument was signed and sealed in behalf of said corporation by authority of its Board of Directors and the said Betty C. Niemetta and Arnold Schmidt acknowledged said instrument to be the free act and deed of said corporation.
Earl Phillips
 Notary Public
 My Commission expires November 24, 1959

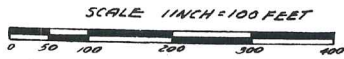
THIS IS TO CERTIFY THAT PURSUANT TO THE PROVISIONS OF THE ACTS REFERRED TO ABOVE, THERE ARE NO TAX DEDUCTIONS OR OTHER BENEFITS AVAILABLE TO THE TAXPAYER FOR FIVE YEARS PREVIOUS TO DATE OF THIS INSTRUMENT EXCEPT AS PROVIDED.
 No. 11281 Lynn Wheeler, MACOMB COUNTY TREASURER
 DATE 7-28-56 PER Ramon Burr

COPY

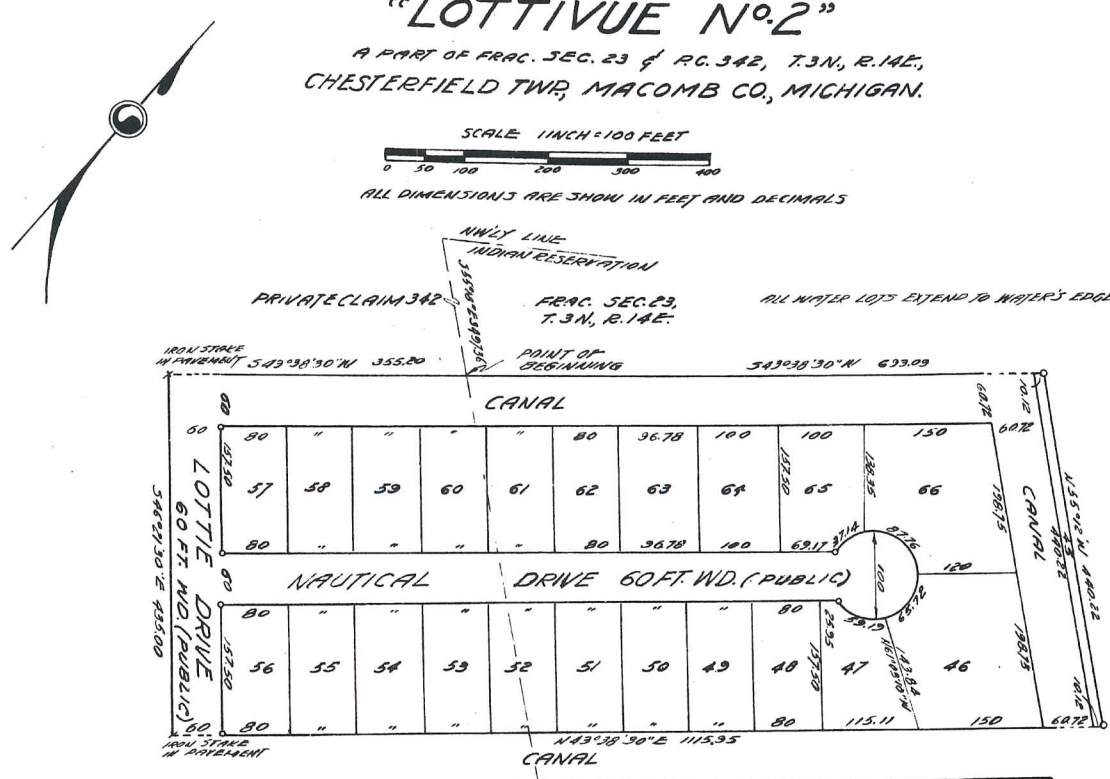
44006

"LOTTIVUE No. 2"

A PART OF FRAC. SEC. 23 & P.C. 342, T.3N., R.14E.,
CHESTERFIELD TWP., MACOMB CO., MICHIGAN.



ALL DIMENSIONS ARE SHOWN IN FEET AND DECIMALS



DEDICATION

KNOW ALL MEN BY THESE PRESENTS, that we, Lottie M. Schmidt, Inc., a Michigan Corporation by Betty C. Niemetta, President, and John Niemetta Jr., Secretary, as proprietors, have caused the land embraced in the annexed plat to be surveyed, laid out and platted, to be known as "Lottivue No. 2" a part of Frac. Sec. 23 and P.C. 342, T.3 N., R.14 E., Chesterfield Twp., Macomb Co., Michigan

and that the streets as shown on said plat are hereby dedicated to the use of the public, and the canals to be used for public storm drainage purposes only.

Signed and Sealed in the Presence of:
Earl Phillips (Witness) Betty C. Niemetta, President (I.S.)
Beulah Phillips (Witness) John Niemetta Jr., Secretary (I.S.)

ACKNOWLEDGMENT

STATE of Michigan)
County of St. Clair) ss.
On this 12th day of May, A.D. 1961, before me, Richard E. Loney, a Notary Public in and for said county appeared Betty C. Niemetta and John Niemetta Jr.

to me personally known, who being each by me duly sworn did say that they are the President and Secretary respectively of the Lottie M. Schmidt, Inc., Michigan corporation, and that the seal affixed to said instrument is the corporate seal of said corporation and that said instrument was signed and sealed in behalf of said corporation by authority of its Board of Directors and the said Betty C. Niemetta and John Niemetta Jr. acknowledged said instrument to be the free act and deed of said corporation.

Beulah Phillips Notary Public, St. Clair, Michigan
My Commission expires Nov. 9, 1963

APPROVAL BY BOARD OF COUNTY ROAD COMMISSIONERS

This plat has been examined and was approved on the 25th day of April, 1961 by the Macomb County Board of Road Commissioners.

Lawrence DeBorke (Chairman)
Lawrence Gehlke
Keith Bovenschen (Member)
Ernest W. McGollom (Member)

APPROVAL BY COUNTY PLAT BOARD

This plat was approved on the 12th day of May, 1961 by the Macomb County Plat Board

Baron Burr (County Register of Deeds)
Arthur J. Miler (County Clerk)
Lynn Whalen (County Treasurer)
Thomas J. Mohan (County Drain Commissioner)

DESCRIPTION OF LAND PLATTED

The land embraced in the annexed plat of "Lottivue No. 2" a part of Frac. Sec. 23 and P.C. 342, T.3 N., R.14 E., Chesterfield Twp., Macomb Co., Michigan is described as follows: Commencing South 55°18' East 3497.36 feet along the line between Frac. Sec. 23 and Private Claim 342, T.3 N., R.14 E., from the North Westerly line of the Indian Reservation, thence South 43°38'30" West 355.20 feet, thence South 46°21'30" East 435.00 feet, thence North 43°38'30" East 115.95 feet, thence North 55°12' West 440.22 feet, thence South 43°38'30" West 693.09 feet to the point of beginning and includes Lots 45 to 66 inclusive.

SURVEYOR'S CERTIFICATE

I hereby certify that the plat herein delineated is a correct one and that permanent metal monuments consisting of bars not less than one-half inch in diameter and 36 inches in length, or shorter bars of not less than one-half inch in diameter lapped over each other at least 6 inches with an over-all length of not less than 36 inches, enclosed in a concrete cylinder of at least 4 inches in diameter and 36 inches in depth have been placed at points marked thus (O) as thereon shown at all angles in the boundaries of the land platted, at all the intersections of streets, intersections of alleys, or of streets and alleys, and at the intersections of streets and alleys with the boundaries of the plat as shown on said plat.

Earl Phillips
Registered Land Surveyor

CERTIFICATE OF MUNICIPAL APPROVAL

This plat was approved by the Township Board of the Township of Chesterfield at a meeting held May 11, 1961, and that the width of lots is in compliance with requirements of Section 30, Act 172, of 1929, as amended.

Joseph Weisenboeger Clerk

I hereby certify that this is a true copy of the original plat as filed in the Register of Deeds for Macomb County, Michigan.

Date June 5, 1961
I, Richard E. Loney, Notary Public, do hereby certify that this is a true copy of the original plat as filed in the Register of Deeds for Macomb County, Michigan.

Richard E. Loney
Notary Public, St. Clair, Michigan

COPIED
Register's Office
Macomb County, Michigan
List of
Lottivue No. 2
was recorded this 6th day of June, A.D., 1961 at 1:20 P.M., in Liber 49 of plate 1 at Page 1
Raymond P. Craig
Register of Deeds

THIS IS TO CERTIFY THAT ACCORDING TO THE COUNTY TREASURER'S RECORDS THERE ARE NO TAX DUES DUE ON THIS PLAT AND THAT TAXES ARE PAID FOR FIVE YEARS PREVIOUS TO DATE OF RECORDING OF THIS PLAT UNDER SECTION 19, ACT 172, OF 1929, AS AMENDED.

COPY

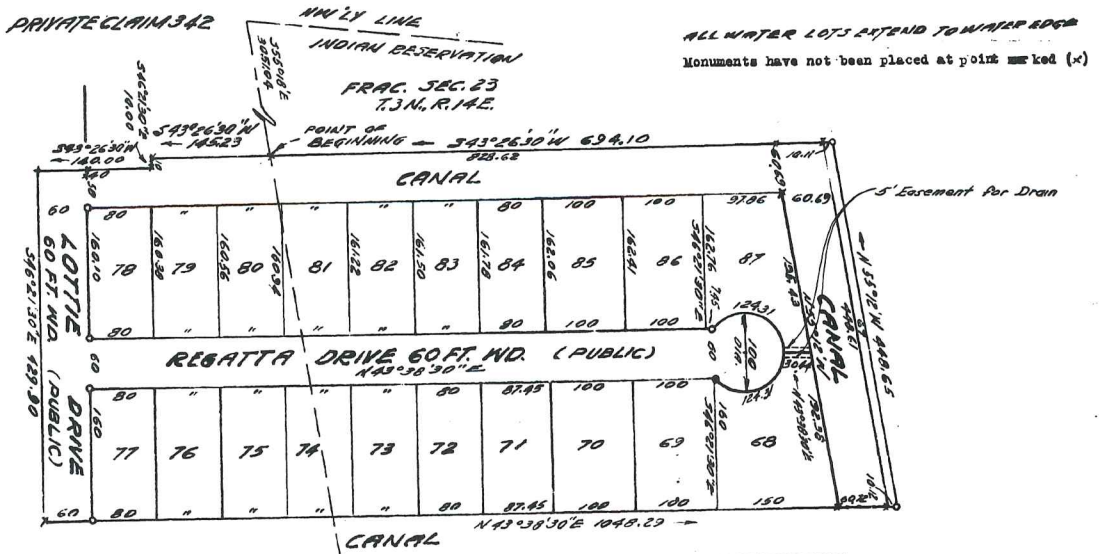
"LOTTIVUE No. 3"

A PART OF FRAC. SEC. 23 & P.C. 342, T.3N., R.14E.,
CHESTERFIELD TWP., MACOMB CO., MICHIGAN.

46792



ALL DIMENSIONS ARE SHOWN IN FEET AND DECIMALS



DESCRIPTION OF LAND PLATTED

The land embraced in the annexed plat of "Lottivue No. 3" a part of Frac. Sec. 23 and P.C. 342, T.3 N., R.14 E., Chesterfield Twp., Macomb Co., Michigan.

is described as follows: Commencing South 55° 15' East 3051.04 feet along the line between Frac. Sec. 23 and Private Claim 342, T.3 N., R.14 E., from the North westerly line of the Indian reservation, thence South 43° 26' 30" West 145.23 feet, thence South 46° 21' 30" East 10.00 feet, thence South 43° 26' 30" West 140.00 feet, thence South 46° 21' 30" East 429.98 feet, thence North 43° 30' 30" East 1048.29 feet, thence North 55° 15' West 446.65 feet, thence South 43° 26' 30" West 654.10 feet to the point of beginning and includes Lots 67 to 87 inclusive.

APPROVAL BY BOARD OF COUNTY ROAD COMMISSIONERS

This plat has been examined and was approved on the 15th day of June, 1964, by the Macomb County Board of Road Commissioners.

Keith Rosenbush (Chairman)
Ernest W. McGallon (Member)
Lawrence Osinski (Member)

APPROVAL BY COUNTY PLAT BOARD

This plat was approved on the 24th day of June, 1964, by the Macomb County Plat Board.

Baron Burr (County Register of Deeds)
Edna Miller (County Clerk)
John W. ... (County Treasurer)
Thomas S. Welch (County Drain Commissioner)
 By: Arnold F. Rockness

SURVEYOR'S CERTIFICATE

I hereby certify that the plat hereon delineated is a correct one and that permanent metal monuments consisting of bars not less than one-half inch in diameter and 36 inches in length, or shorter bars of not less than one-half inch in diameter lapped over each other at least 6 inches with an over-all length of not less than 36 inches, encased in a concrete cylinder of at least 4 inches in diameter and 36 inches in depth have been placed at points marked thus (O) as thereon shown at all angles in the boundaries of the land platted, of all the intersections of streets, intersections of alleys, or of streets and alleys, and of all the intersections of streets and alleys with the boundaries of the plat as shown on said plat.

Earl Phillips
 Registered Land Surveyor
 Earl Phillips
 Fair Haven, Michigan

DEDICATION

KNOW ALL MEN BY THESE PRESENTS, that we, Lottie M. Schmidt, Inc., a Michigan Corporation by Betty C. Niemetta, President, and John Niemetta Jr., Secretary, as proprietors, have caused the land embraced in the annexed plat to be surveyed, laid out and platted, to be known as "Lottivue No. 3", a part of Frac. Sec. 23 and P.C. 342, T.3 N., R.14 E., Chesterfield Twp., Macomb Co., Michigan, and that the streets and easement as shown on said plat are hereby dedicated to the use of the public and the canals to be used for public storm drainage purposes only.

Signed and Sealed in the Presence of
Earl Phillips (Witness) Betty C. Niemetta, President
Beulah Phillips (Witness) John Niemetta Jr., Secretary

COPY

Register's Office } S.S.
 Macomb County }
 Plat of "Lottivue No. 3"
 was Recorded this 17th day of July A.D. 1964 at 10:00'clock A.M. in Liber 23 of plate on Page 26
Raymond J. Craig, Jr.
 REGISTER

ACKNOWLEDGMENT

STATE of Michigan }
 County of Macomb } ss.
 On this 7th day of March, A.D. 1964 before me, Beulah Phillips, a Notary Public in and for said county appeared Betty C. Niemetta and John Niemetta Jr. 48400 Jefferson Ave., New Baltimore, Michigan to me personally known, who being each by me duly sworn did say that they are the President and Secretary respectively of the Lottie M. Schmidt, Inc., a Michigan corporation, and that the seal affixed to said instrument is the corporate seal of said corporation and that said instrument was signed and sealed in behalf of said corporation by authority of its Board of Directors and the said Betty C. Niemetta and John Niemetta, Jr., acknowledged said instrument to be the free act and deed of said corporation.
Beulah Phillips
 Notary Public
 My Commission expires October 13, 1967.

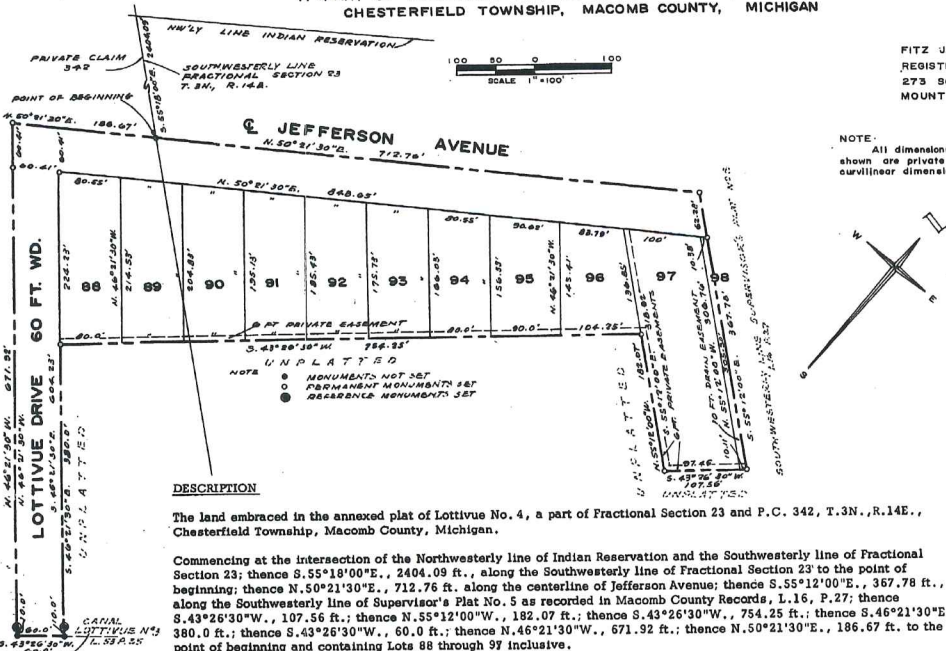
CERTIFICATE OF MUNICIPAL APPROVAL

This plat was approved by the Township Board of the Township of Chesterfield at a meeting held March 12, 1964, and that the width of lots is in compliance with requirements of Section 30, Act 172, of 1929, as amended and complies with Section 198 of the Charter of the Township of Chesterfield.
Joseph Weisenberger
 Clerk

THIS IS TO CERTIFY THAT ACCORDING TO THE COUNTY TREASURER'S RECORDS THERE ARE NO TAX LIENS ON THIS PROPERTY AND THAT TAXES ARE PAID IN FULL FOR THE YEARS PREVIOUS TO DATE OF THIS INSTRUMENT EXCEPT 1964.
 443 DATE 4-27-64 Lynn Wilkins, MACOMB COUNTY REGISTRAR PER: E. Berry THIS CERTIFICATION DOES NOT INCLUDE CHANGING TAXES NOW BEING COLLECTED.

LOTTIVUE No 4

A PART OF FRACTIONAL SECTION 23 AND P.C. 342, T. 3N., R. 14E., CHESTERFIELD TOWNSHIP, MACOMB COUNTY, MICHIGAN



FITZ J. BRIDGES, P.E.
REGISTERED ENGINEER AND SURVEYOR
273 SOUTH GRATIOT AVENUE
MOUNT CLEMENS, MICHIGAN 48043

NOTE: All dimensions in feet and decimals thereof. Easements shown are private for public utilities and drainage. All curvilinear dimensions are in chord lengths.

RECORDING DATA

Certified true copy of the plat recorded 26 1969, at 8:30 a.m. in Liber 600 of plats on page 17 of Book 147 by Richard E. Lester Notary Public, Recorder of Deeds.
A Notary Public
STATE OF MICHIGAN
By Richard E. Lester
Richard E. Lester - Notary Public
Date July 19, 1969

DESCRIPTION

The land embraced in the annexed plat of Lottivue No. 4, a part of Fractional Section 23 and P.C. 342, T. 3N., R. 14E., Chesterfield Township, Macomb County, Michigan.

Commencing at the intersection of the Northwestern line of Indian Reservation and the Southwesterly line of Fractional Section 23; thence S. 55° 18' 00" E., 2404.09 ft., along the Southwesterly line of Fractional Section 23 to the point of beginning; thence N. 50° 21' 30" E., 712.76 ft. along the centerline of Jefferson Avenue; thence S. 55° 12' 00" E., 367.78 ft., along the Southwesterly line of Supervisor's Plat No. 5 as recorded in Macomb County Records, L. 16, P. 27; thence S. 43° 26' 30" W., 107.56 ft.; thence N. 55° 12' 00" W., 182.07 ft.; thence S. 43° 26' 30" W., 754.25 ft.; thence S. 46° 21' 30" E., 380.0 ft.; thence S. 43° 26' 30" W., 60.0 ft.; thence N. 46° 21' 30" W., 671.92 ft.; thence N. 50° 21' 30" E., 186.67 ft. to the point of beginning and containing Lots 88 through 97 inclusive.

DEDICATION

KNOW ALL MEN BY THESE PRESENTS, that we, Lottivue No. 4, a Michigan Corporation, with seal, Betty C. Niemetta, President, and John Niemetta, Jr., Secretary Treasurer as proprietors; Raymond W. Trempler and Gina E. Trempler, his wife, as proprietors; The Citizens State Savings Bank of New Baltimore as mortgagages in part by Thomas M. Stapleton, President, Paul J. Kolarik, Head Cashier, have caused the land embraced in the annexed plat to be surveyed, laid out and platted to be known as LOTTIVUE NO. 4 - a part of fractional Section 23 and P.C. 342, T. 3N., R. 14E., Chesterfield Township, Macomb County, Michigan and that the streets as shown on said plat are hereby dedicated to the use of public utilities, or for the specific utilities thereon noted, subject to the regulations and control of the use thereof by the local governmental authorities and that no permanent structures are to be erected within the lines of said easements.

ACKNOWLEDGEMENT

STATE OF MICHIGAN - County of MACOMB)ss
On this 14th day of JULY A.D., 1969, before me, a Notary Public in and for said county appeared Thomas M. Stapleton and Paul J. Kolarik to me personally known, who being each by me duly sworn did say that they are the President and Head-Cashier respectively of The Citizens State Savings Bank of New Baltimore, a National Corporation, with seal, and that the seal affixed to said instrument is the corporate seal of said corporation and that said instrument was signed and sealed in behalf of said corporation by authority of its Board of Directors and the Thomas M. Stapleton and Paul J. Kolarik acknowledged said instrument to be the free act and deed of said corporation.
My commission expires Aug 4, 1972 Notary Public Richard E. Lester County, Michigan

CERTIFICATION OF MUNICIPAL APPROVAL

This plat was approved by the Township Board of Chesterfield Township, at a meeting held on the 22nd day of JULY A.D., 1969. The foregoing plat as approved conforms with the provisions of 19A of the Plat Act as added by Act 150 of Public Acts of 1961. The width of lots is in compliance with requirements of Section 30, Act 172, of 1929 as amended.

Gloria Golke
Gloria Golke, Clerk

CERTIFICATE OF APPROVAL BY THE COUNTY PLAT BOARD

This plat was approved on the 22nd day of December A.D., 1969, by the Macomb County Plat Board.

Edna Miller
Edna Miller, Clerk Register of Deeds
Adam E. Nowakowski
Adam E. Nowakowski, County Treasurer
Thomas S. Welsh
Thomas S. Welsh, Deed Commissioner
Norman Hill
Norman Hill, Chairman-Board of Supervisors

CERTIFICATE OF APPROVAL BY THE BOARD OF COUNTY ROAD COMMISSIONERS

This plat has been examined and was approved on the 25th day of November A.D., 1969, by the Macomb County Board of Road Commissioners.

Keith Bovenachen
Keith Bovenachen, Chairman
Ernest W. McCollom
Ernest W. McCollom, Vice-Chairman
Lawrence Oehmke
Lawrence Oehmke, Member

SURVEYOR'S CERTIFICATE

I hereby certify the Plat hereon delineated is a correct one and that permanent metal monuments consisting of bars not less than one-half inch in diameter and 36 inches in length, encased in a concrete cylinder at least 4 inches in diameter and 36 inches in depth have been placed at points marked thus (0) as the reason shown at all angles in the boundaries of the land platted at all the intersections of the lines of streets, and at the intersections of the lines of streets with the boundaries of the plat as shown on said plat.

Prepared and Drafted By:
This is to certify that according to the County Treasurer's records there are no tax liens on this property and that taxes are paid by the year ending to date of this recording. No. 678
Date DEC 5 - 1969
ADAM E. NOWAKOWSKI, REGISTERED LAND SURVEYOR, P.E.
This certification does not include current taxes now being collected.

Fitz J. Bridges
Fitz J. Bridges, P.E.
Registered Land Surveyor No. 5779
273 South Gratiot Avenue
Mount Clemens, Michigan 48043

Signed and sealed in the presence of:

Witness: Mary R. Willough

Witness: Mary R. Willough

Witness: Mary R. Willough

Witness: Mary R. Willough

Witness: Mary R. Willough

Witness: Mary R. Willough

Witness: Mary R. Willough

Witness: Mary R. Willough

Witness: Mary R. Willough

Witness: Mary R. Willough

Witness: Mary R. Willough

Witness: Mary R. Willough

Witness: Mary R. Willough

Witness: Mary R. Willough

Witness: Mary R. Willough

Witness: Mary R. Willough

Witness: Mary R. Willough

Witness: Mary R. Willough

Witness: Mary R. Willough

Witness: Mary R. Willough

Witness: Mary R. Willough

Witness: Mary R. Willough

Witness: Mary R. Willough

Witness: Mary R. Willough

Witness: Mary R. Willough

Witness: Mary R. Willough

Witness: Mary R. Willough

Witness: Mary R. Willough

Witness: Mary R. Willough

Witness: Mary R. Willough

Witness: Mary R. Willough

Witness: Mary R. Willough

Witness: Mary R. Willough

Witness: Mary R. Willough

Witness: Mary R. Willough

Witness: Mary R. Willough

Witness: Mary R. Willough

Witness: Mary R. Willough

Witness: Mary R. Willough

Witness: Mary R. Willough

Witness: Mary R. Willough

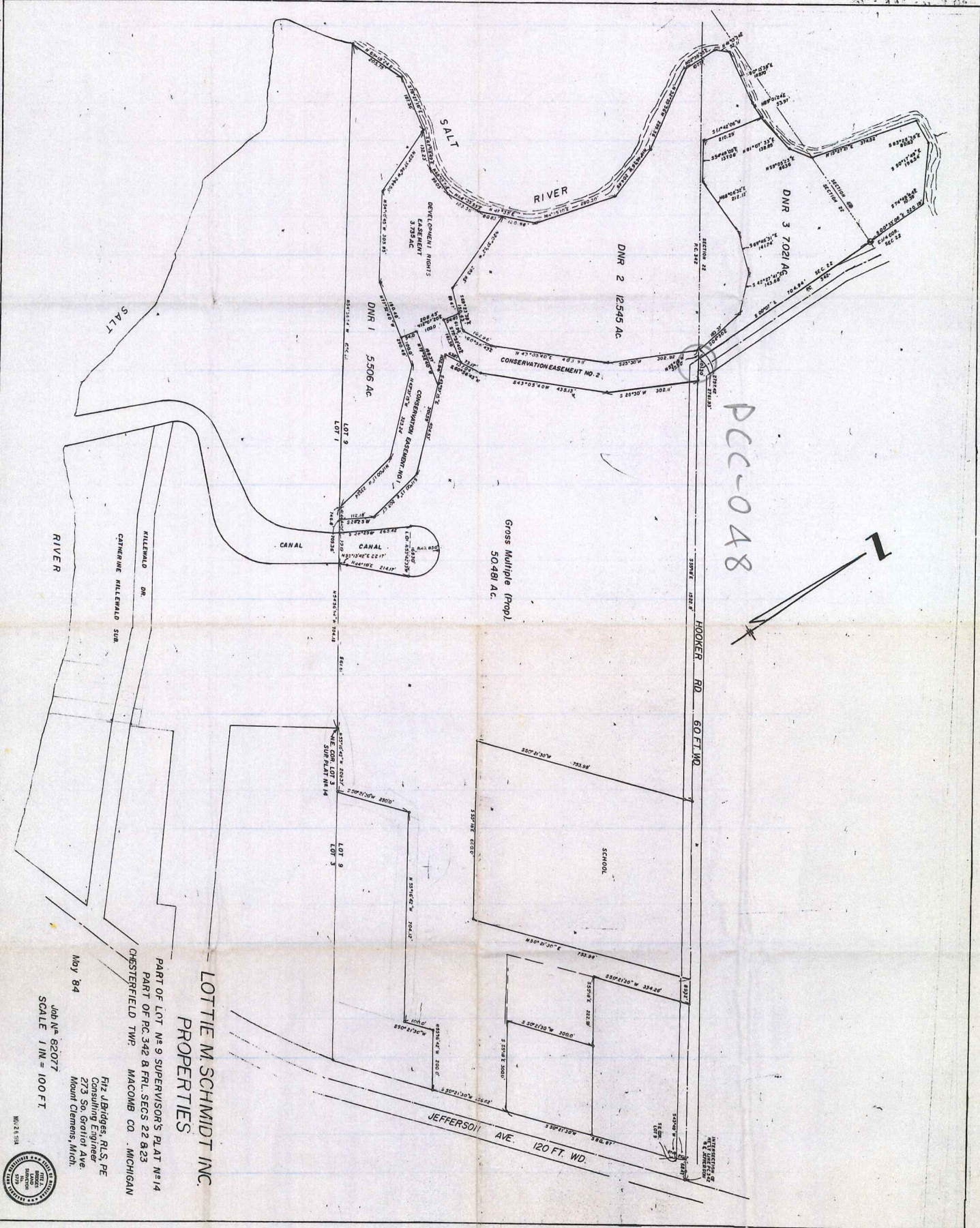
Witness: Mary R. Willough

Witness: Mary R. Willough

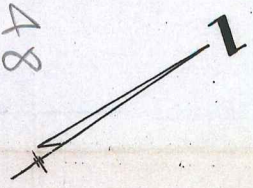
Witness: Mary R. Willough

51568

15



PCC-048



LOTTIE M. SCHMIDT INC.
PROPERTIES

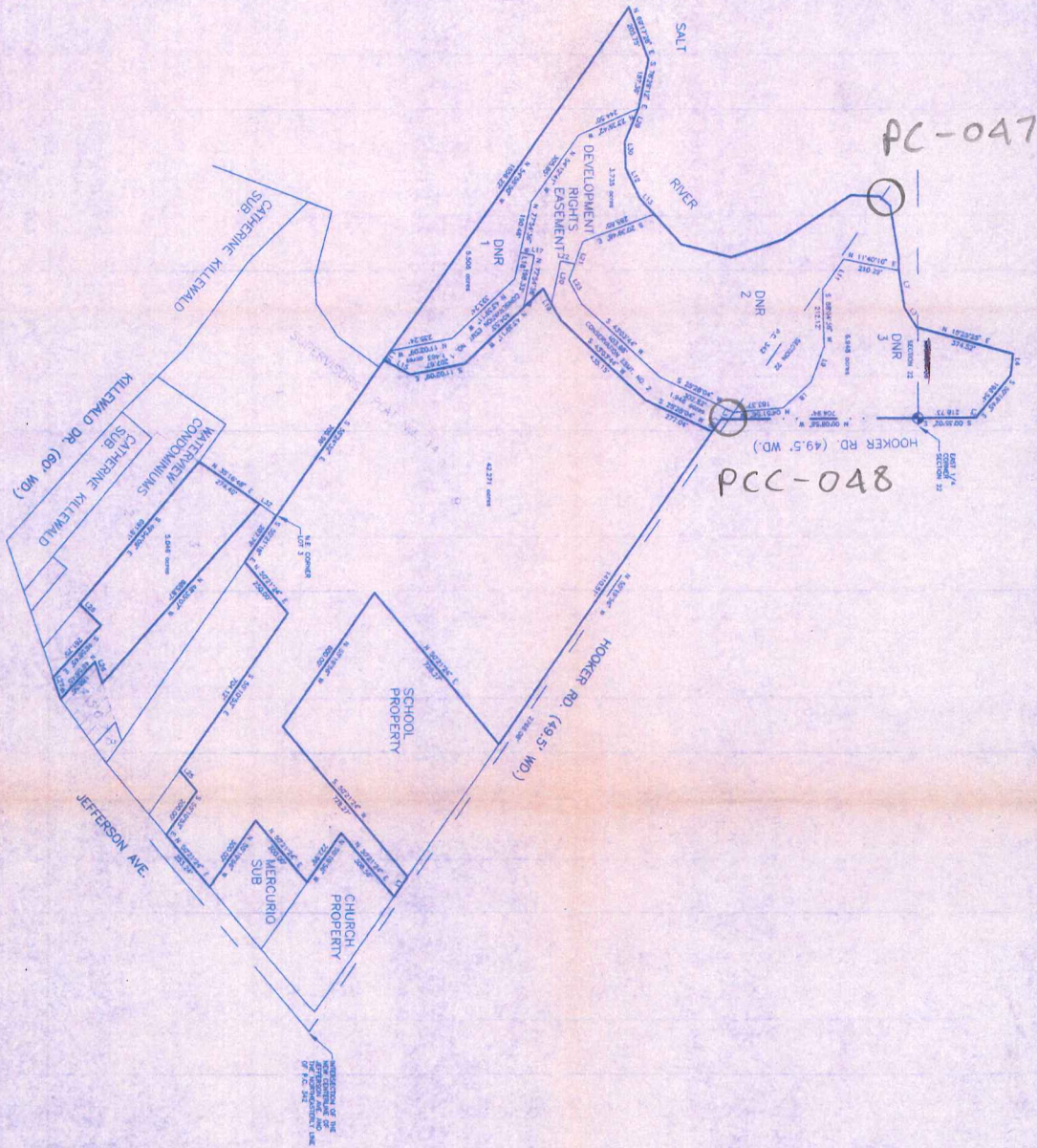
PART OF LOT N^o 9 SUPERVISOR'S PLAT N^o 14
 PART OF PC 342 & FRL SECS 22 & 23
 CHESTERFIELD TWP MACOMB CO MICHIGAN

May 84
 Job N^o 82077
 SCALE 1 IN = 100 FT



MAY 84

15



LINE	DIRECTION	DISTANCE
L1	N 55°19'56" W	89.32
L2	S 74°51'40" E	6.84
L3	N 59°03'27" E	86.36
L4	S 83°27'32" E	80.63
L7	N 81°05'37" E	138.85
L8	N 42°29'37" E	143.68
L9	N 69°48'27" W	141.74
L10	N 55°19'56" W	56.78
L11	N 54°50'05" W	137.06
L12	N 64°33'59" E	123.56
L13	N 47°33'04" E	80.83
L15	S 28°23'04" W	112.18
L16	N 54°58'50" W	41.44
L17	N 12°05'24" E	54.00
L18	N 77°54'36" W	100.00
L19	S 60°54'47" W	137.04
L20	N 77°54'36" W	181.37
L21	S 69°25'54" E	150.64
L22	N 12°05'24" E	54.46
L23	S 60°54'47" W	102.93
L25	N 50°21'24" E	100.00
L26	N 71°05'59" E	85.00
L27	N 71°11'43" E	85.08
L28	N 45°10'25" E	111.52
L29	S 67°20'45" E	132.23
L30	N 86°13'55" E	99.05
L31	N 55°19'56" W	31.32
L32	N 35°18'48" E	76.55



1995

15-1

