

**PCC-046**  
**DOSSIER CONTENT**  
2012 REMON  
T.3N., R.14E.,  
Chesterfield Township, Macomb County, Michigan

**Section One**

Index

Pictures in cardinal directions; before and after setting the required monumentation.

**Section Two**

LCRC

Surveyor's Report

**Section Three**

- 1 Field Notes
- 2 Sketch
- 3 Township Map
- 4 Tax Map 1959
- 5 Tax Map 1974
- 6 Aerial Pictures 2009

**Section Four**

- 1 1810 PC notes Greely
- 2 1817 GLO notes Preston
- 3 1817 Township map Preston
- 4 1817 Township map
- 5 1818 Township map Surveyor General Office
- 6 1818 Township Map Preston
- 7 1937 Plat-Supervisors Plat No 14 RCE L18, P42
- 8 1942 Plat-Supervisors Plat of Bakers Salt River Subdivision No. 1  
Fuller 1645 L22, P8
- 9 1946 Plat-Catherine Killewald Sub. Lehner 123 L24, P12



**BEFORE**



**AFTER**





LAND CORNER RECORDATION CERTIFICATE
Filing Requirement of Act 74, Mich. P.A. 1970
REMONUMENTATION CORNER

For corners in:

MACOMB COUNTY
(County)

Located In: CHESTERFIELD TOWNSHIP Corner Code #

PCC-046

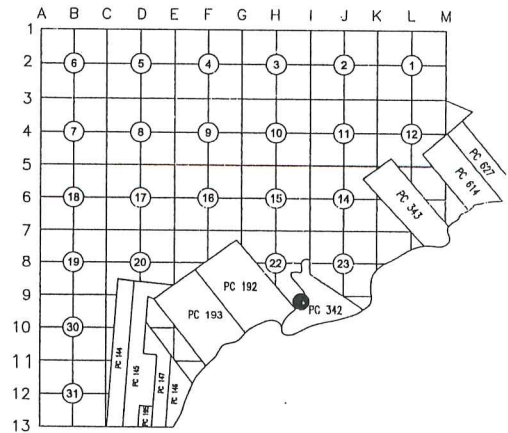
- 1. Public Land Survey T 3N R 14E
2. Property Controlling in Section S 22 T 3N R 14E
3. Miscellaneous Property in Sec. S T R
4. Lot No. Recorded Plat

2175903 PAGE 1 OF 2
LIBER 21777 PAGE 139
12/13/2012 09:52:07 A.M.
MACOMB COUNTY, MI SEAL
CARMELLA SABAUGH, REGISTER OF DEEDS

Register of Deeds Stamp & File Number

5. Private Claims PC-342 PCC-046 is an intersection of the section line common to Fractional Sections 22 and 27 with the Westerly line of PC 342.

I, ROBERT E. HORNYAK, in a field survey on August 17, 2012 do hereby certify that under requirements of P.A. 74, Michigan P.A. of 1970, the corner points mentioned in lines 1 and 2 above were in conformance with regulations and rules therefore as required in the current manual of survey instructions of the United States Department of the Interior, Bureau of Land Management or by a decree of a Court of Law and /or that the corner points mentioned in lines 3, 4 and 5 above were in conformance with the rules of the Michigan Board of Land Surveyors or by a Decree of a Court of Law; established, re-established, monumented, re-monumented, recovered, found as expressed below:



NOTE: Not more than 2 corners, all in the same town and range, may be recorded on this certificate.

A. Description of original monument and accessories and/or subsequent restoration:

- 1 1810 PC Survey notes Greely Corner not set
2 1817 GLO Survey Preston Set post
Subsequent Restorations:
3 1817 Township map Preston Object not stated
4 1817 Township map Object not stated
5 1818 Township map Surveyor General Office Object not stated
6 1818 Township Map Preston Object not stated
7 1937 Plat-Supervisors Plat No 14 RCE L18, P42 Plat encompasses corner but does not show it.
8 1942 Plat-Supervisors Plat of Bakers Salt River Subdivision No. 1 Fuller 1645 L22, P8 Plat encompasses corner but does not show it.
9 1946 Plat-Catherine Killewald Sub. Lehner 123 L24, P12 Plat encompasses corner but does not show it.



B. Description of corner evidence found and/or method applied in restoring or reestablishing corner:

I did not find any field evidence of the corner. I consider it a lost corner.
Items 2 & 5 show distance from PCC-046 to PCC-045.
Items 7-9 encompass corner but do not show it and they don't show the line between Sections 22 & 27. Tax Maps from 1959 show the line between Sections 22 & 27. It does intersect Northeasterly line of PC 192 in the vicinity of the West corner of Supervisors Plat of Baker's Salt River Subdivision No.1 (Item 9). Tax Maps from 1978 show the line between Sections 22 & 27. It does intersect Northeasterly line of PC 192 in the vicinity of the West corner of Lot 79 of Supervisors Plat of Baker's Salt River Subdivision (Item 8) which is ~400' Northwesterly from the location shown on 1959 Tax Maps. There is no evidence of the section line common to Fractional Sections 22 and 27. Location of PCC-045 was reestablished using proportionate distances to PCC-043 (Remon 11) & PC-042 (Remon 11) as shown at Items 2-5. I reestablished location of PCC-046 on line between Sections 22 & 27 at compass indexed direction from Sections 15 and 22 to the north and chain indexed distance from PCC-045 using the index that was applied for establishing PCC-045 from PCC-043 and PC-042.

C. Distances:

- PCC-046 to PCC-045
1333.20' (20.20 ch) GLO
1338.89' GLO indexed, Remon 2012

C. Description of monument for corner and accessories established to perpetuate locating the position of the corner:

I placed a 2" aluminum cap stamped "MACOMB COUNTY MONUMENT MI ACT 345; PCC-046; 44286" on 1/2"x36" steel bar encased in 4" diameter concrete monument.

Witnesses:

- AZ 73° 39.14' Set "X" in top of seawall
AZ 102° 61.49' Angle point in seawall between 32815 and 32825 Sutton Road
AZ 163° 52.73' Set PK w/"MACOMB COUNTY WITNESS TAG" in East face of twin 24" Maple behind 32815 Sutton Road
AZ 233° 72.34' East corner of house 32805 Sutton Road
AZ. 4° 49.65' Set "X" in top of seawall

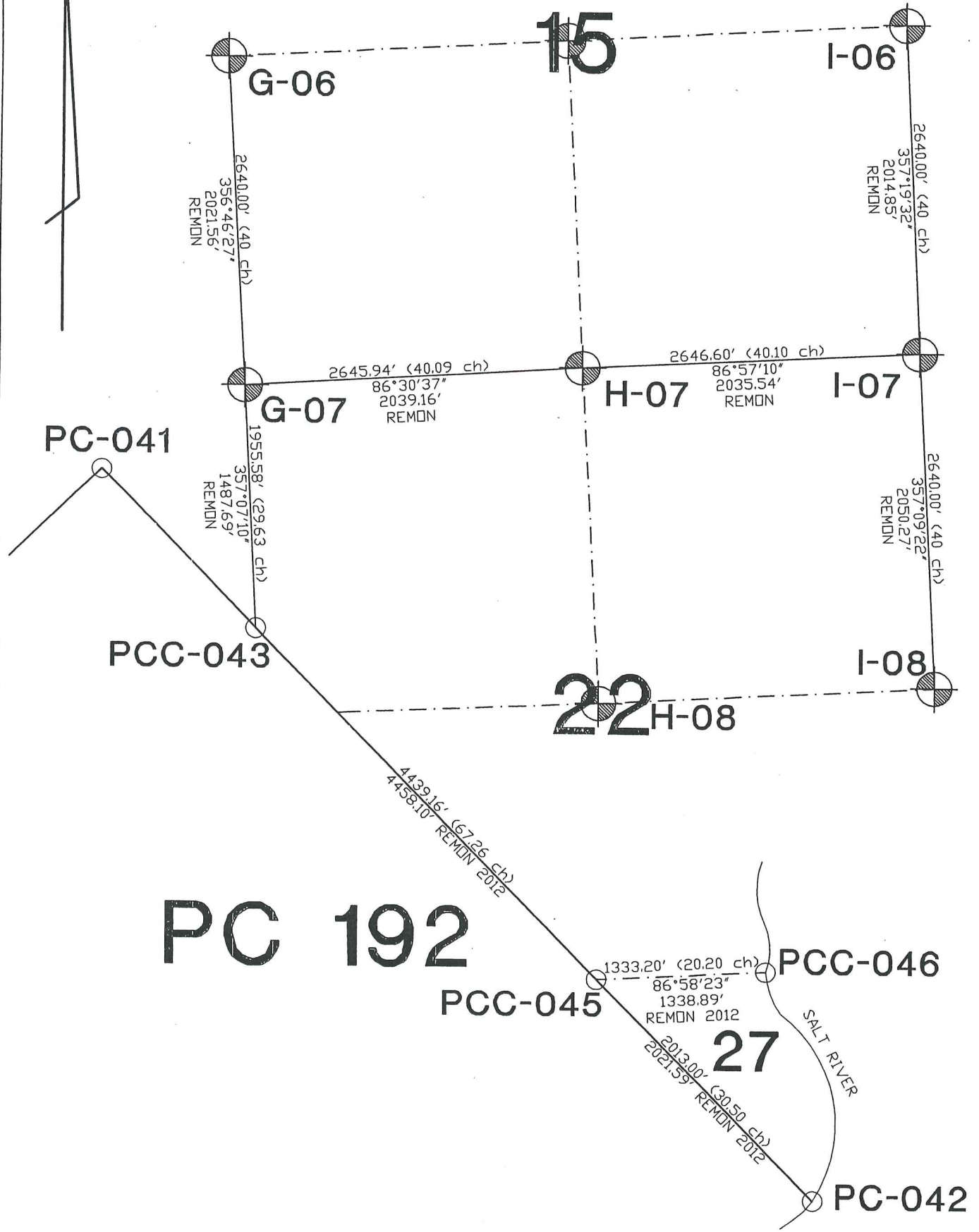
THE SELECTED LOCATION IS ACCEPTED BY ME AND IS GENERALLY ACCEPTED BY PROFESSIONAL SURVEYORS AS THE BEST AVAILABLE EVIDENCE OF THE POSITION OF THIS CORNER.

Signed by [Signature] Date December 3, 2012

Surveyor's Michigan License No. 44286

ACCEPTED BY THE MACOMB COUNTY SURVEY PEER GROUP AS THE OFFICIAL CORNER UNDER MICHIGAN PUBLIC ACT 345 OF 1990 AT A MEETING HELD ON 9-25-2012
Manton C. Duvorn

# PCC-045, -046 REMON 2012 CHESTERFIELD TWP., T3N, R14E



## PC 192

- SECTION LINE MEASURED DURING GLO SURVEY  
AZIMUTH & LENGTH USED FOR INDEXATION
- - - SECTION LINE NOT MEASURED DURING GLO SURVEY
- ⊗ SECTION CORNER
- PCC CORNERS

## PCC-046 CHESTERFIELD TOWNSHIP

PCC-046 is an intersection of the section line common to Fractional Sections 22 and 27 with the Westerly line of PC 342.

Private Claim 342 was surveyed by Greely in 1810.

GLO survey performed by Preston in 1817.

### Corner history:

1	1810	PC notes	Greely		Corner not set
2	1817	GLO notes	Preston		Set post
3	1817	Township map	Preston		Object not stated
4	1817	Township map			Object not stated
5	1818	Township map	Surveyor General Office		Object not stated
6	1818	Township Map	Preston		Object not stated
7	1937	Plat-Supervisors Plat No 14		L18, P42	Plat encompasses corner but does not show it.
		RCE			
8	1942	Plat-Supervisors Plat of Bakers Salt River Subdivision No. 1		L22, P8	Plat encompasses corner but does not show it.
		Fuller	1645		
9	1946	Plat-Catherine Killewald Sub.		L24, P12	Plat encompasses corner but does not show it.
		Lehner	123		

### Field evidence:

I did not find any field evidence of the corner. I consider it a lost corner.

Items 2 & 5 show distance from PCC-046 to PCC-045.

Items 7-9 encompass corner but do not show it and they don't show the line between Sections 22 & 27. Tax Maps from 1959 show the line between Sections 22 & 27. It does intersect Northeasterly line of PC 192 in the vicinity of the West corner of Supervisors Plat of Baker's Salt River Subdivision No.1 (Item 9). Tax Maps from 1978 show the line between Sections 22 & 27. It does intersect Northeasterly line of PC 192 in the vicinity of the West corner of Lot 79 of Supervisors Plat of Baker's Salt River Subdivision (Item 8) which is ~400' Northwesterly from the location shown on 1959 Tax Maps.

### Distances:

PCC-046 to PCC-045

1333.20' (20.2 ch) GLO

1338.89' GLO indexed, Remon 2012

### Recommendation:

Location of the Easterly line of PC 192 is defined by PC-041 and PC-042. There is no evidence of the section line common to Fractional Sections 22 and 27.

Location of PCC-045 was reestablished using proportionate distances to PCC-043 (Remon 11) & PC-042 (Remon 11) as shown at Items 2-5.

I recommend reestablishing location of PCC-046 on line between Sections 22 & 27 at compass indexed direction from Sections 15 and 22 to the north and chain indexed distance from PCC-045 using GLO corners at the vicinity of PCC-046.

I recommend monumenting PCC-046 with 1/2" iron with a 2" aluminum cap stamped "MACOMB COUNTY MONUMENT MI ACT 345; PCC-046; 44286" placed on a 1/2"x36" steel bar encased in 4" diameter concrete monument.

### Witnesses:

AZ 73° 39.14' Set "X" in top of seawall

AZ 102° 61.49' Angle point in seawall between #32815 and #32825 Sutton Rd.

AZ 163° 52.73' Set PK w/"MACOMB COUNTY WITNESS TAG" in East face of twin 24" Maple behind 32815 Sutton Rd.

AZ 233° 72.34' East corner of house #32805 Sutton Rd.

AZ 4° 49.65' Set "X" in top of seawall

Respectfully submitted,

---

Robert E. Hornyak, PS # 44286

# PCC-046

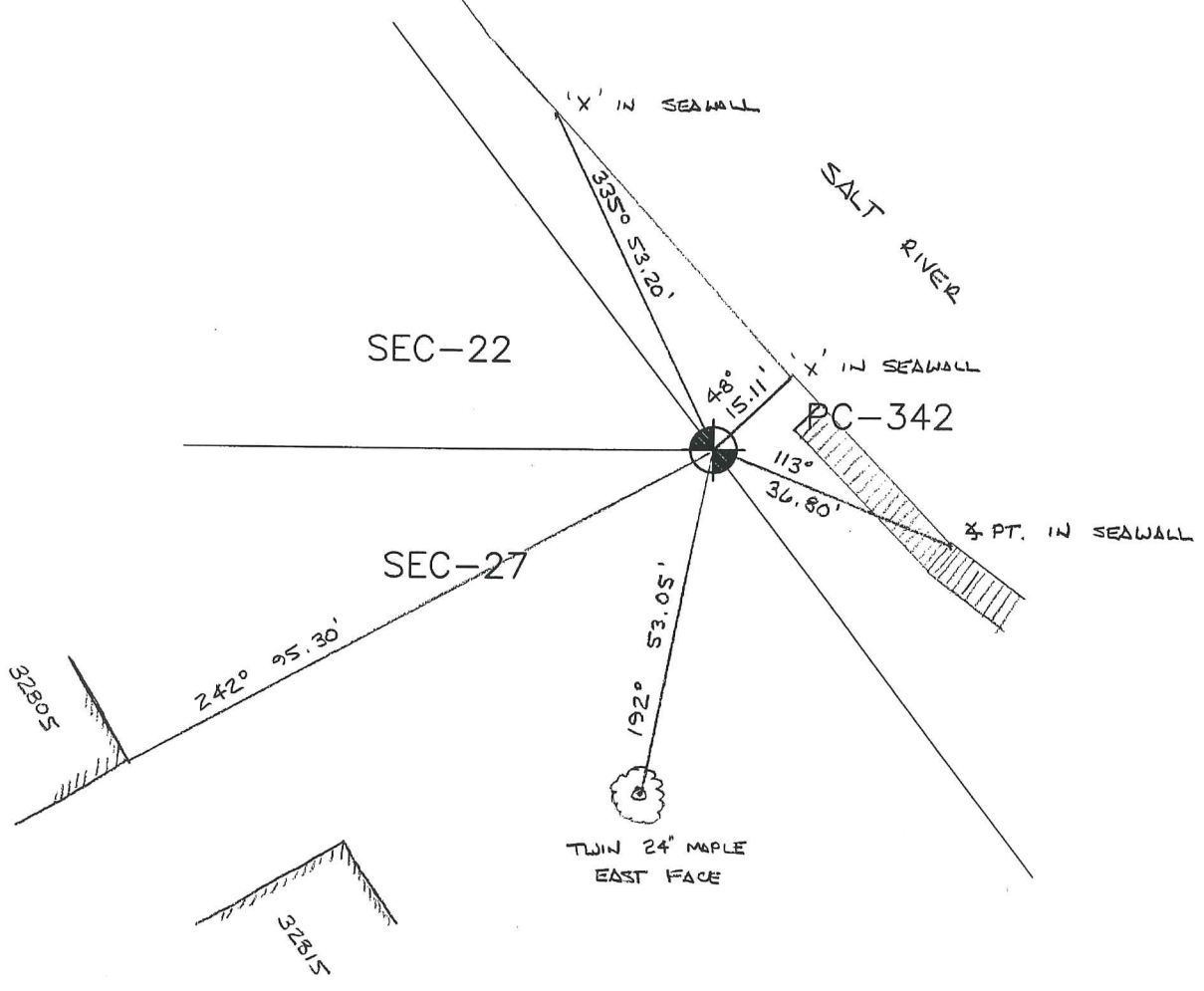
## REMON 2012

### CHESTERFIELD TWP., T3N, R14E



DATE: 09/19/12  
 CREW: RL JL  
 OBJECT FOUND: NONE  
 POINT No.: PCC-046  
 CTRL. PTS.: \_\_\_\_\_

48° 15.11' SET 'X' IN TOP OF SEAWALL  
 113° 36.80' ANGLE POINT IN SEAWALL BETWEEN #32815 & #32825 SUTTON ROAD  
 EAST FACE OF  
 192° 53.05' SET NAIL & MAGNIFY CO. WITNESS T36 IN A TWIN 24" MAPLE BEHIND  
 #32815 SUTTON ROAD



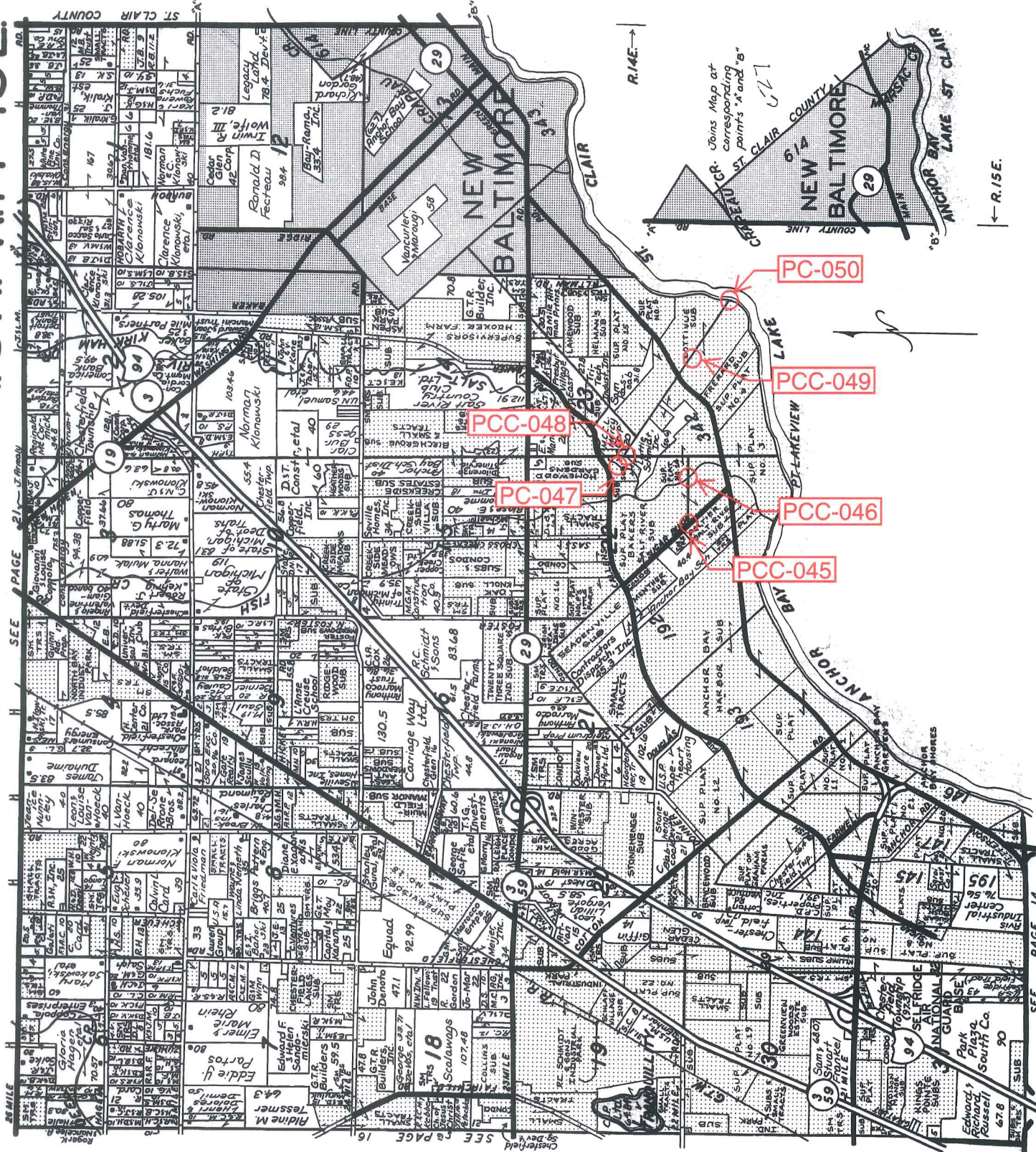
242° 95.30' EAST CORNER #32805 SUTTON ROAD  
 335° 53.20' SET 'X' IN TOP OF SEAWALL

OCCUPATION  
 (if road state surface)  
 NONE  
 \_\_\_\_\_  
 \_\_\_\_\_  
 \_\_\_\_\_  
 \_\_\_\_\_



T.3N.-R.14-15E.

CHESTERFIELD



← R.15E.

SEE PAGE 14  
©1999 Rockford Map Publishers, Inc.



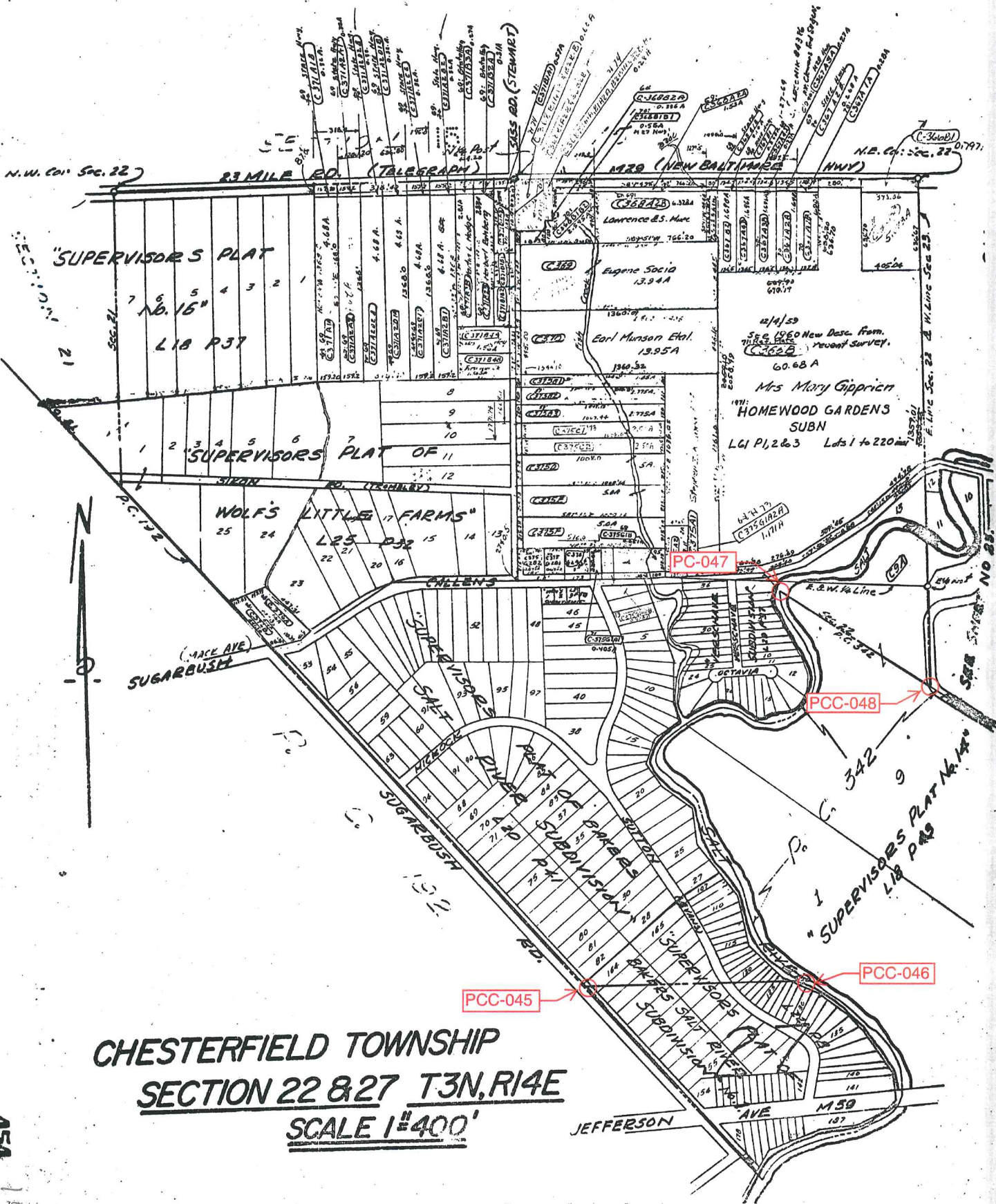
# LINCOLN TITLE COMPANY

Flexible closing schedule ❖ Personalized service ❖ Knowledgeable staff

25962 Knollwood Drive South • Chesterfield, Michigan 48051 • Telephone: (810) 598-2930 • Fax: (810) 598-2936

OFFICES ALSO IN PORT HURON & ROSELVILLE

Reproduced with permission of Rockford Map Publishers, Inc.  
Rockford, Illinois

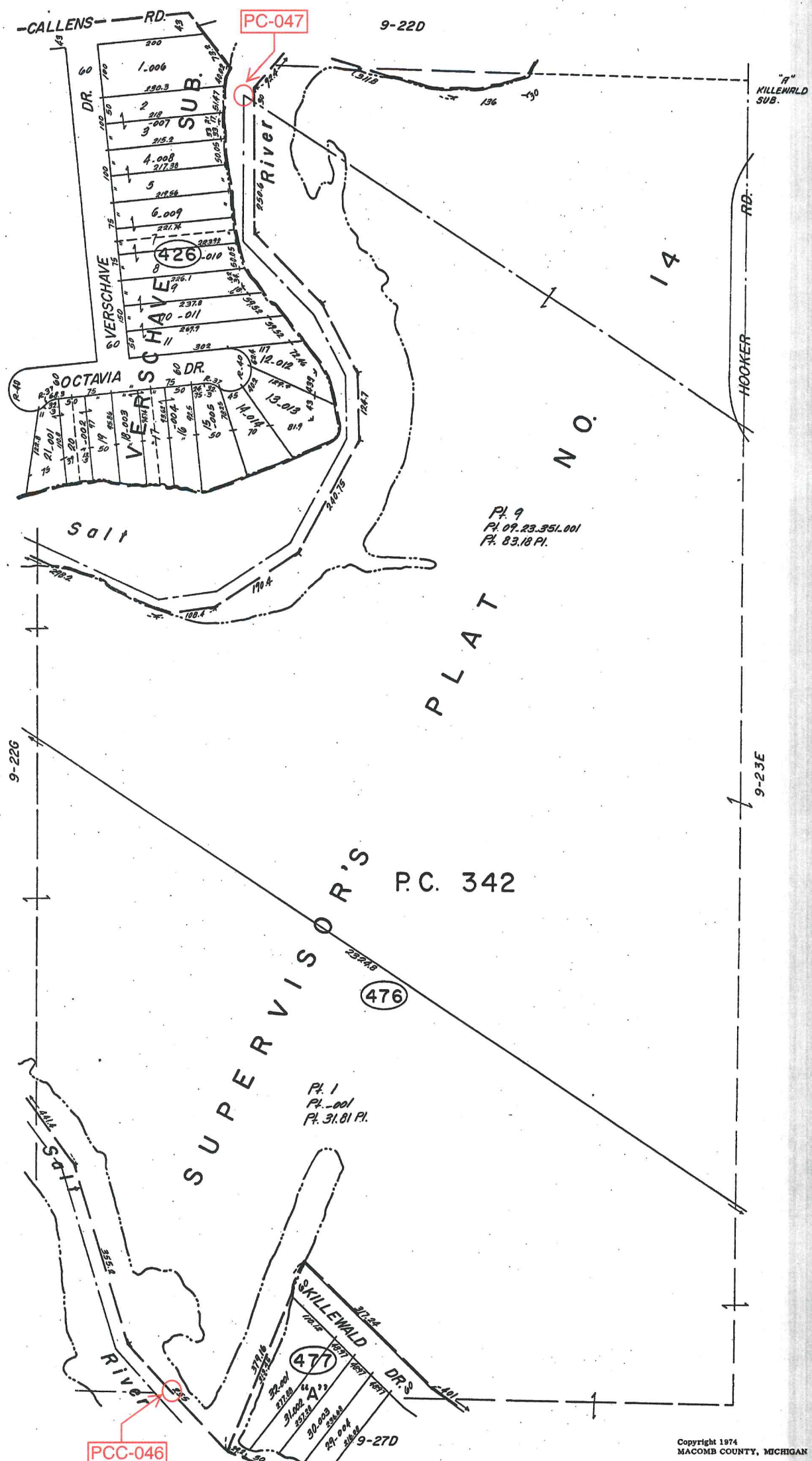


**CHESTERFIELD TOWNSHIP**  
**SECTION 22 & 27 T3N, R14E**  
**SCALE 1"=400'**

SHEET NO 22 8 27

454  
1859





MACOMB CO. MICH.

Copyright 1974  
MACOMB COUNTY, MICHIGAN

CHESTERFIELD TWP.  
PT. S.E. 1/4 SEC. 22 & PT. P.C. 342 T.3N. R.14E.

SCALE: 1" = 100'  
669  
9-22H

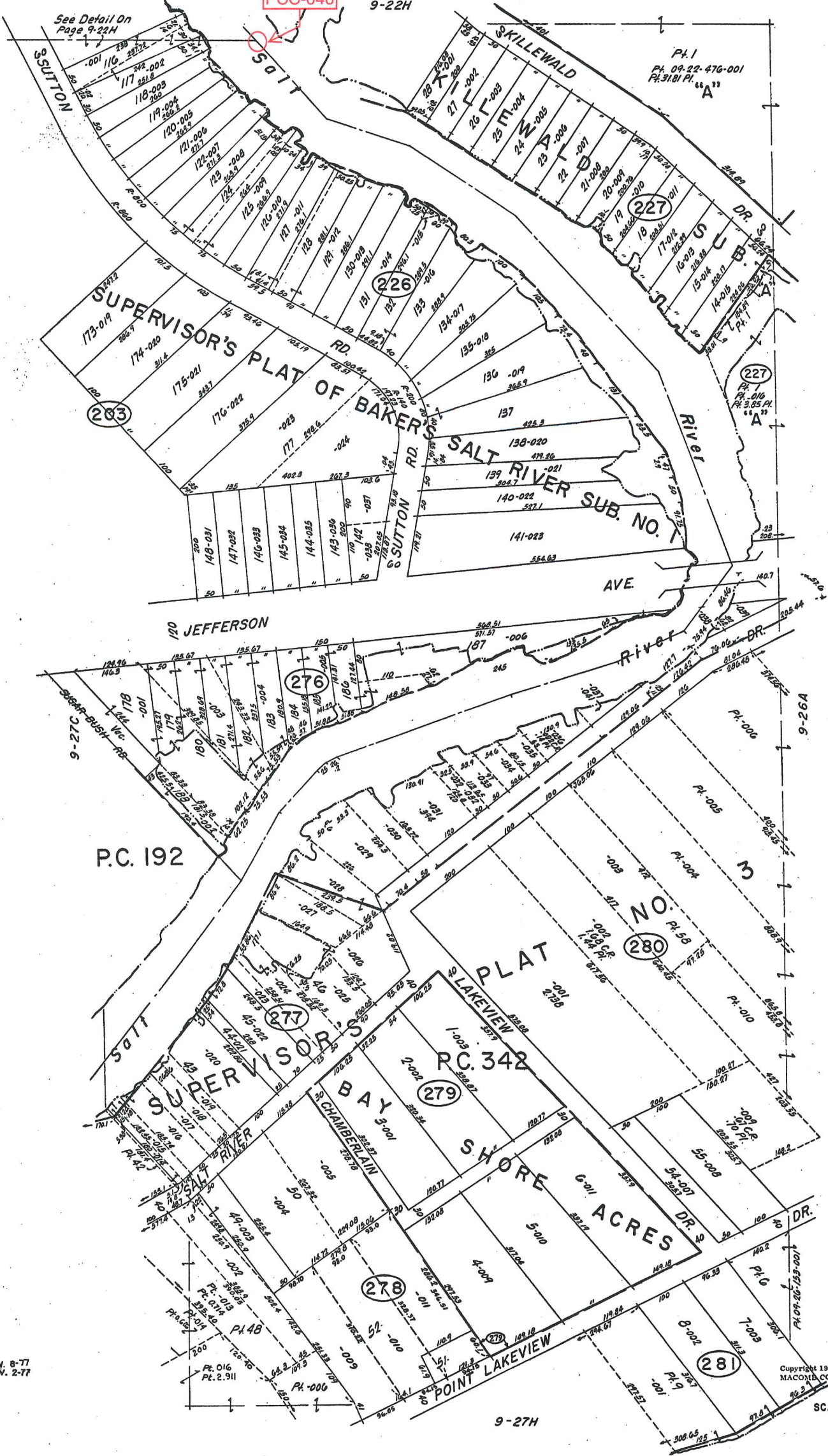
PCC-046

9-22H

See Detail On Page 9-22H

Pt. 1  
Pt. 09-22-476-001  
Pt. 3181 Pt. "A"

"A"  
SUPERVISOR'S  
PLAT NO. 14



P.C. 192

9-27H

Copyright 1974  
MACOMB COUNTY, MICHIGAN

SCALE: 1" = 100'

CHESTERFIELD TWP.  
PT. SEC. 27 & PT. P.C. 192, 342 T.3N. R.14E.

691  
9-27D

MACOMB CO. MICH.

REV. 8-77  
REV. 2-77



Date of Photography: Spring 2010  
 100 50 0 100 200 Feet

CHESTERFIELD TWP SHEET INDEX

DESCRIPTION OF PERMANENT REAL ESTATE INDEX NUMBER  
**13-19-302-018**

**09-22H**

CHESTERFIELD TWP.  
 E. 1/2 S.E. 1/4 SEC. 22 T. 3N. R. 14E.

Source: Macomb County Department of Planning and Economic Development  
 - 2008 Digital Orthophotography Project  
 - Parcel Conversion Project

Note:  
 Digital Orthophotography horizontal positioning accuracy is 3 feet. Parcel boundary lines should be considered a graphical representation and not in any way a legal survey or engineering document. In general, the horizontal positioning and length accuracy is within 15 feet.

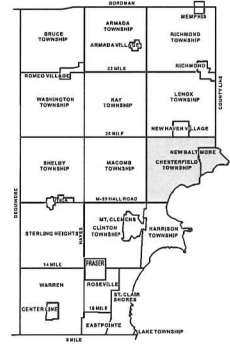
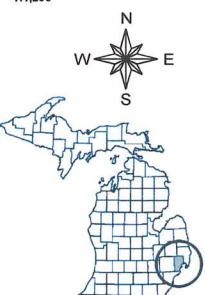
This map is intended for general planning purposes. Site specific evaluation should be verified by field inspection. This is a work in progress and may contain errors and omissions. Please report any potential revisions to (586) 469-5025.

**Legend**

- Platted Area Boundary Line
- Property Line
- Property Spill Line
- Property Combined Line
- Township Boundary Line
- Traverse Line
- Dimension Extent Marks
- Dimension Start Marks



**GIS** **MACOMB COUNTY**  
 Planning and Economic  
 Development Department  
 Published: Nov 01, 2010



SECTION	1	2	3	4	5	6	7	8	9	10	11	12	13	14	15	16	17	18	19	20	21	22	23	24
301	302	303	304	305	306	307	308	309	310	311	312	313	314	315	316	317	318	319	320	321	322	323	324	325
326	327	328	329	330	331	332	333	334	335	336	337	338	339	340	341	342	343	344	345	346	347	348	349	350
351	352	353	354	355	356	357	358	359	360	361	362	363	364	365	366	367	368	369	370	371	372	373	374	375
376	377	378	379	380	381	382	383	384	385	386	387	388	389	390	391	392	393	394	395	396	397	398	399	400
401	402	403	404	405	406	407	408	409	410	411	412	413	414	415	416	417	418	419	420	421	422	423	424	425
426	427	428	429	430	431	432	433	434	435	436	437	438	439	440	441	442	443	444	445	446	447	448	449	450
451	452	453	454	455	456	457	458	459	460	461	462	463	464	465	466	467	468	469	470	471	472	473	474	475
476	477	478	479	480	481	482	483	484	485	486	487	488	489	490	491	492	493	494	495	496	497	498	499	500

COPYRIGHT 2009  
 MACOMB COUNTY, MI  
 All Rights Reserved

No. 435

No. 342 Confirmed to  
Francois Dupre'

LAKE ST. CLAIR

Description No. 342 Confirmed to Francois Dupre' commencing at a post standing on the west border of Salt River it being the north east corner of a tract confirmed to George Meldrum thence along the border of Salt River down stream South forty five degrees west thirty chains eighty links to the confluence of said River with Lake St. Clair thence along the border of said lake south seventy four degrees thirty minutes East twenty five chains, thence North sixty one degrees east twenty chains, thence north sixty three degrees East nineteen chains, thence north eighty degrees East thirty three chains thence north sixty five degrees East nineteen chains fifty links, thence North six degrees West six chains Seventy five links to a post standing on the border of Lake St. Clair between this tract and a tract reserved for Maccanse, (a Chipawa Indian Chief), thence north sixty degrees west ninety seven chains thirty four links to a post standing on the border of Salt River thence along the border of said River down stream, South eleven degrees East ten chains thirty seven links, thence south seventy degrees west fifteen chains, thence south thirty degrees East twenty five chains, thence South fifty eight degrees East fifteen chains thence south forty six degrees west twenty chains seventy three links to the place of beginning, containing four hundred and twenty two acres, seventeen hundredths of an acre\_\_\_\_\_

Detroit July 24, 1810\_\_\_\_\_

Aaron Greeley Surveyor of  
private claims

N. 435.

Lake St. Clair

Description N. 342, Confirmed to Francis Dupre commencing at a post standing on the west bank of Salt River it being the south east corner of a tract confirmed to George Meldrum, thence along the border of Salt River down stream south forty five degrees west thirty chains eighty links, to the confluence of said River with Lake St. Clair, thence along the border of said Lake south seventy four degrees thirty minutes east twenty five chains, thence north sixty one degrees east twenty chains thence north sixty three degrees east nineteen chains, thence north eighty degrees east thirty three chains, thence north sixty five degrees east nineteen chains fifty links, thence north six degrees west six chains seventy five links, to a post standing on the border of Lake St. Clair between this tract and a tract reserved for Maccany a Chipawa Indian Chief, thence north sixty degrees west ninety seven chains thirty four links, to a post standing on the border of Salt River thence along the border of said River down stream south eleven degrees east ten chains thirty seven links, thence south seventy degrees west fifteen chains, thence south thirty degrees east twenty five chains, thence south fifty eight degrees east fifteen chains, thence south forty six degrees west twenty chains seventy three links, to the place of beginning containing four hundred and twenty two acres seventeen hundredths of an acre.

Detroit July 24. 1810

Arnon Greeley Surveyor  
of private Claims.



## Town 3 North Range 14 East

Land 3<sup>rd</sup> Nat. Land and not Pind  
B. Oak Buck Elm Lym 10

East Between Sections 20 & 24

16.07  
12.00 Made con. for sec. sections 20 & 24 on  
a Lym 16 in diam in the west line  
of P. Claim No. 144 and 21.56 South of  
N.W. cor. thereof.

East Between Sect. 27, 32

5.50 Permitted west line of survey No. 144 and  
Set post from which Cottonwood 40 N 26 W  
25 N Oak 1 N 18 W 19. Oak  
Set post in the N. easterly line of survey  
No. 192 corner of sec. 22, 27  
Lym 10 N 55 W 13  
Oak 12 S 23 E 34 Hence

East Between Sect. 22, 27

20.20 To west bank of Saline river  
Set post corner of sec. 22, 27 or oak  
10 S 72 W 5 Oak 9 N 33 W 13  
Good land, well timbered or Oak  
Oak Elm Lym 10.  
Set a post in the N. E. line of Indian  
Reservation 25.00 S 20 W of North cor. thereof  
corner of sec. 13, 14 from which  
a Buck 16 N 20 W 12. Oak 12 S 77 W 12.  
Hence between Sect. 13 & 14, S. 3 N. R. 14 E.

North

37.08 To S westerly line of survey No. 343  
28.00 N.W. of North cor. of Indian  
Reservation Set post cor. of sec. 13 & 14  
B. Oak 7 S 10 E 10 oak 12 S 73 W 22

Town 3 North Range 14 East

Thence from the N easterly cor. of survey  
No. 192

**PCC-043** S 111 E 27.00 To the cor. of sec 21.22

**PCC-045** ——— 67.20 Set post cor. Sec. 22.27  
Lynn 10 N 58 W 13  
Do. 12 S 23 E 34

**PC-042** ——— 30.50 To the easterly cor. of private survey  
No. 192 on the west bank of Saline River  
and part good land  
East. Btwn sec. 22-27 - T3N R14

**PCC-046** 20.20 west bank Saline river set post on  
Sec. 22.27 white oak 10 S 72 W 5  
Do. 7 N 35 W 13

Good land well timbered. No. Oak  
Elm Lymns & other trees have not  
been run

Thence from the easterly cor. of  
private survey No. 192 up & on the  
west bank of Saline River

N 34 E 5.73

N 14 E 6.00

N 26 E 7.50

N 55 W 12.80 Intersected post cor. sec. 22-27

N 33 W 2.15

N 8 W 5.00

N 33 W 12.00

N 47 E 8.50 at 6.50 cross 10 wide course N.W.

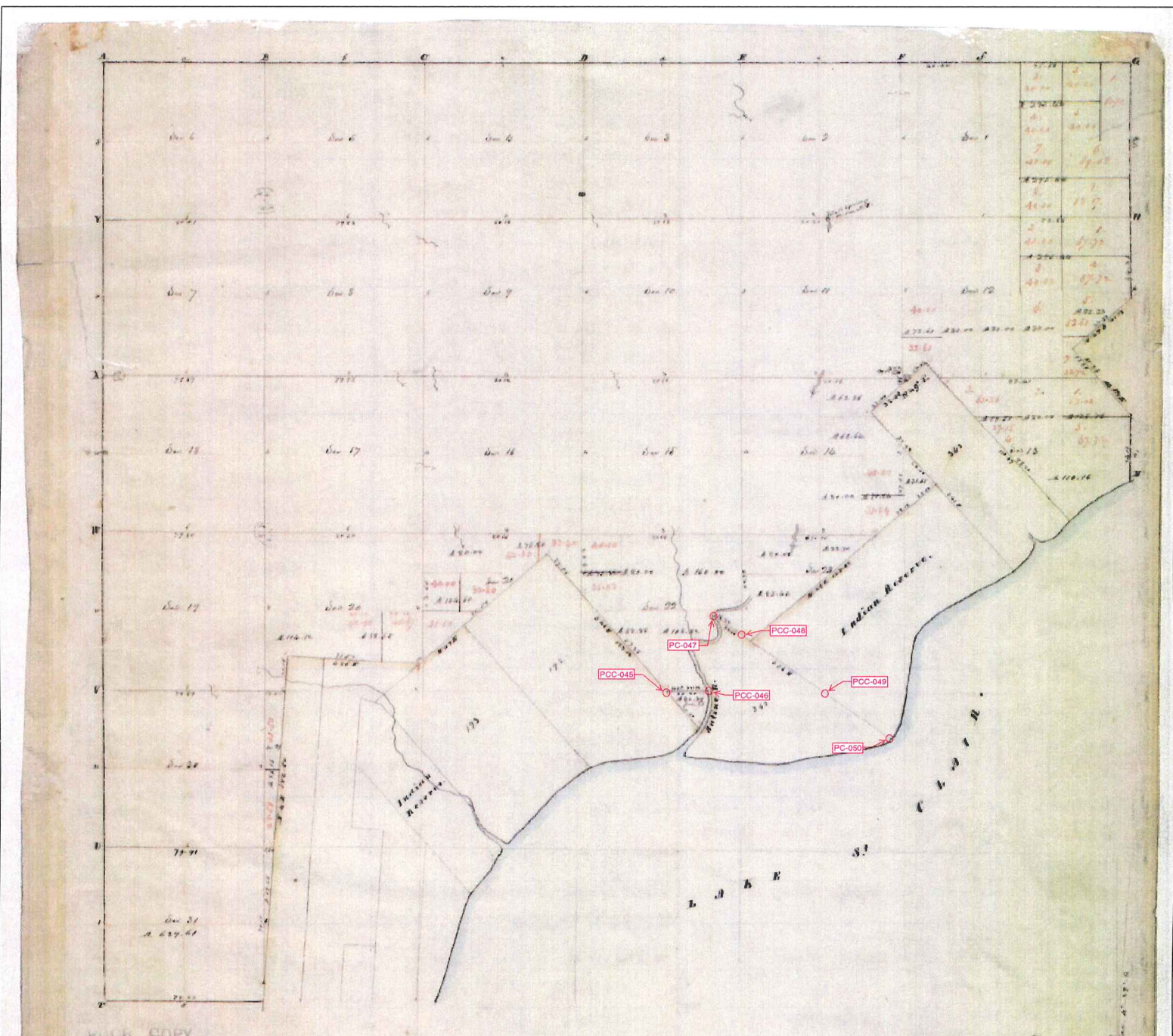
N 60 E 4.00

S 75 E 6.00

N 27 E 4.00

N 33 W 8.14

N 17 E 117 to a wash 10 on the west bank

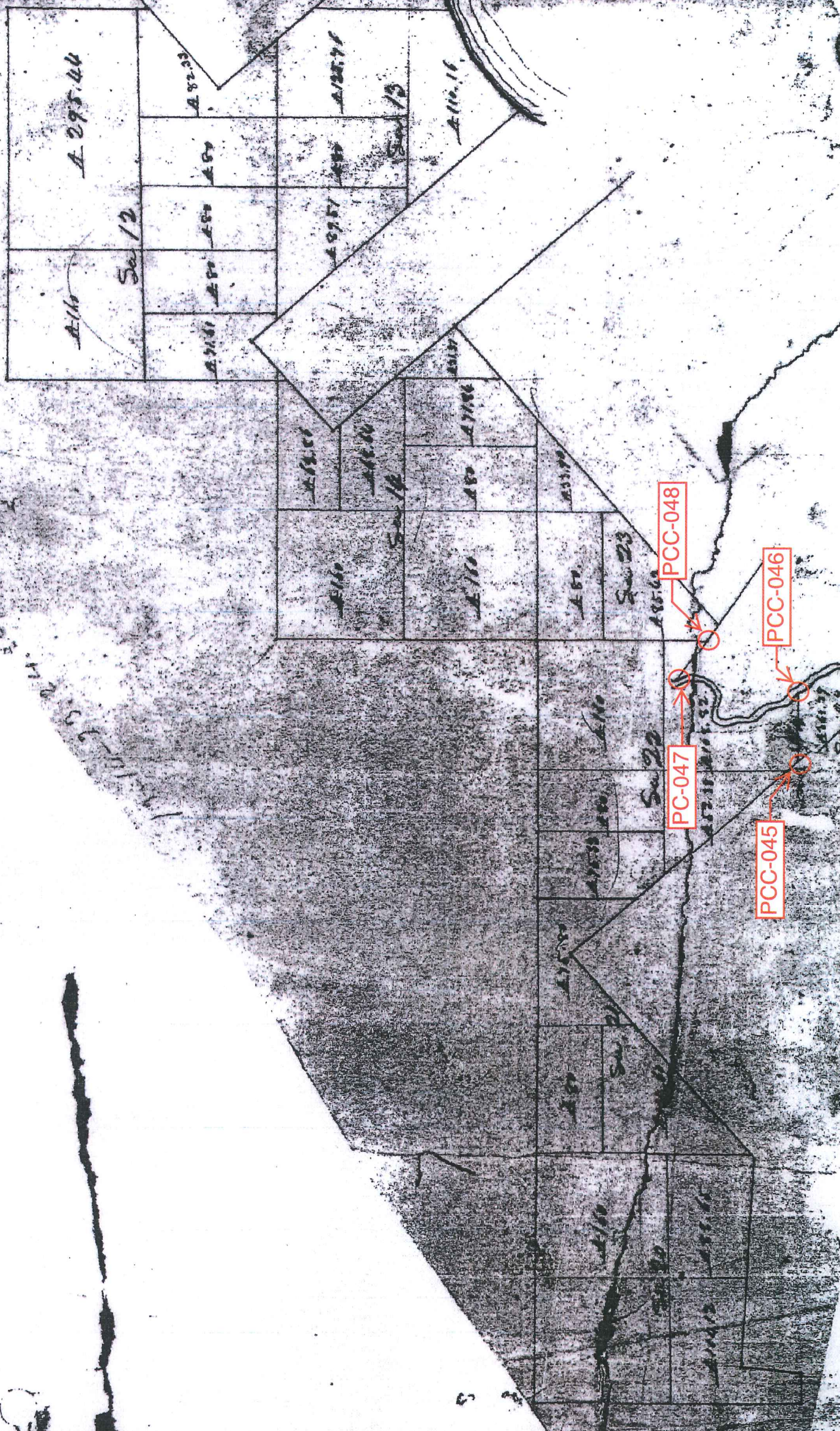


Township N: III North . Range N: XIV East of Mer. (Mish. Ter.) surveyed by W<sup>m</sup> Preston. 1817.

Description of the soil on the interior sectional lines.

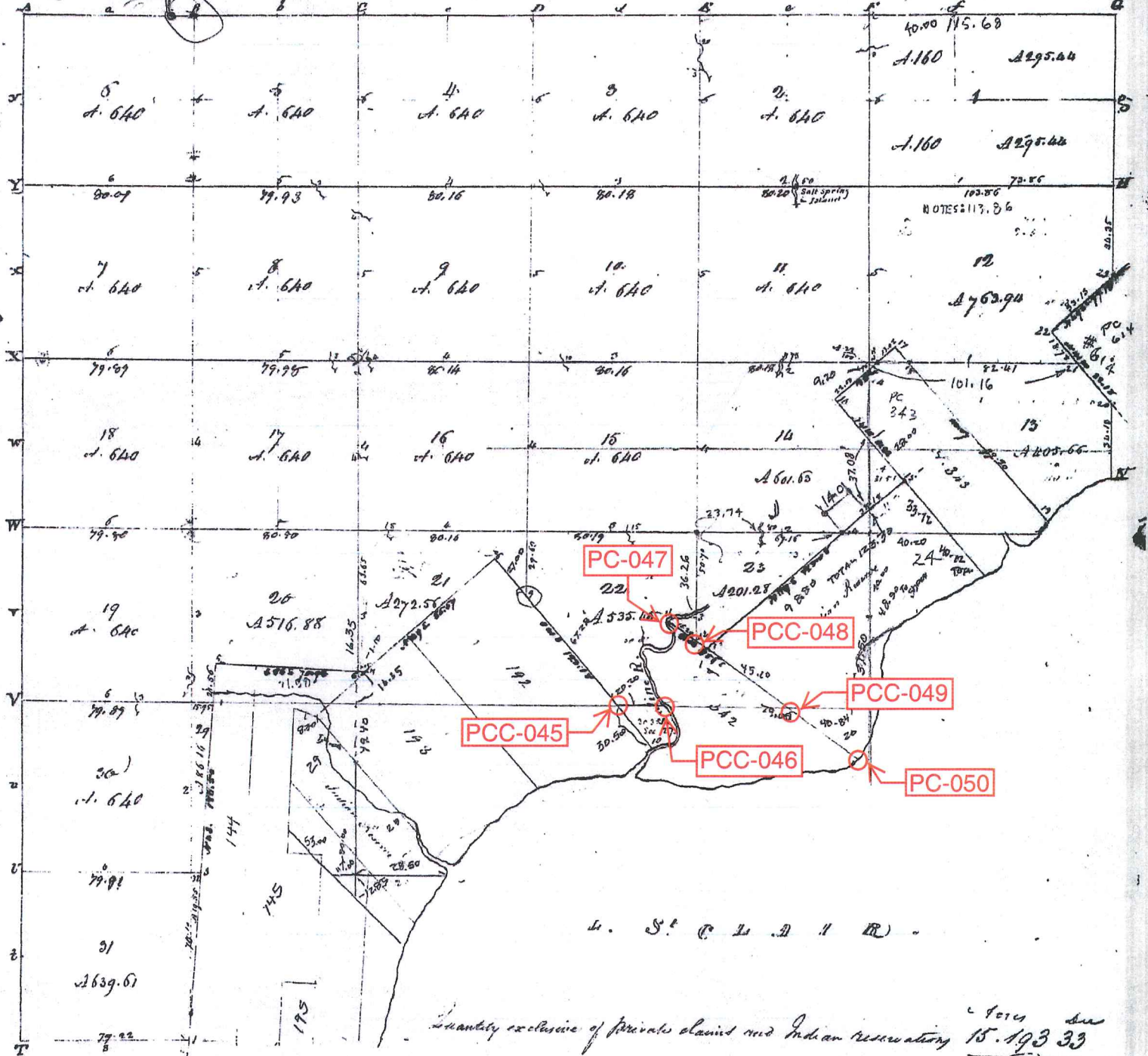
Between sections	Quality &c.	Between sections	Quality &c.
1-2	1/2 mile front land 1/2 mile back 1/2 mile out 1/2 mile back	21-22	2/3 mile front land 1/2 mile back 1/2 mile out 1/2 mile back
2-3	2/3 mile front land 1/2 mile back 1/2 mile out 1/2 mile back	22-23	2/3 mile front land 1/2 mile back 1/2 mile out 1/2 mile back
3-4	2/3 mile front land 1/2 mile back 1/2 mile out 1/2 mile back	23-24	2/3 mile front land 1/2 mile back 1/2 mile out 1/2 mile back
4-5	2/3 mile front land 1/2 mile back 1/2 mile out 1/2 mile back	24-25	2/3 mile front land 1/2 mile back 1/2 mile out 1/2 mile back
5-6	2/3 mile front land 1/2 mile back 1/2 mile out 1/2 mile back	25-26	2/3 mile front land 1/2 mile back 1/2 mile out 1/2 mile back
6-7	2/3 mile front land 1/2 mile back 1/2 mile out 1/2 mile back	26-27	2/3 mile front land 1/2 mile back 1/2 mile out 1/2 mile back
7-8	2/3 mile front land 1/2 mile back 1/2 mile out 1/2 mile back	27-28	2/3 mile front land 1/2 mile back 1/2 mile out 1/2 mile back
8-9	2/3 mile front land 1/2 mile back 1/2 mile out 1/2 mile back	28-29	2/3 mile front land 1/2 mile back 1/2 mile out 1/2 mile back
9-10	2/3 mile front land 1/2 mile back 1/2 mile out 1/2 mile back	29-30	2/3 mile front land 1/2 mile back 1/2 mile out 1/2 mile back
10-11	2/3 mile front land 1/2 mile back 1/2 mile out 1/2 mile back	30-31	2/3 mile front land 1/2 mile back 1/2 mile out 1/2 mile back
11-12	2/3 mile front land 1/2 mile back 1/2 mile out 1/2 mile back	31-32	2/3 mile front land 1/2 mile back 1/2 mile out 1/2 mile back
12-13	2/3 mile front land 1/2 mile back 1/2 mile out 1/2 mile back	32-33	2/3 mile front land 1/2 mile back 1/2 mile out 1/2 mile back
13-14	2/3 mile front land 1/2 mile back 1/2 mile out 1/2 mile back	33-34	2/3 mile front land 1/2 mile back 1/2 mile out 1/2 mile back
14-15	2/3 mile front land 1/2 mile back 1/2 mile out 1/2 mile back	34-35	2/3 mile front land 1/2 mile back 1/2 mile out 1/2 mile back
15-16	2/3 mile front land 1/2 mile back 1/2 mile out 1/2 mile back	35-36	2/3 mile front land 1/2 mile back 1/2 mile out 1/2 mile back
16-17	2/3 mile front land 1/2 mile back 1/2 mile out 1/2 mile back		
17-18	2/3 mile front land 1/2 mile back 1/2 mile out 1/2 mile back		
18-19	2/3 mile front land 1/2 mile back 1/2 mile out 1/2 mile back		
19-20	2/3 mile front land 1/2 mile back 1/2 mile out 1/2 mile back		
20-21	2/3 mile front land 1/2 mile back 1/2 mile out 1/2 mile back		
21-22	2/3 mile front land 1/2 mile back 1/2 mile out 1/2 mile back		
22-23	2/3 mile front land 1/2 mile back 1/2 mile out 1/2 mile back		
23-24	2/3 mile front land 1/2 mile back 1/2 mile out 1/2 mile back		
24-25	2/3 mile front land 1/2 mile back 1/2 mile out 1/2 mile back		
25-26	2/3 mile front land 1/2 mile back 1/2 mile out 1/2 mile back		
26-27	2/3 mile front land 1/2 mile back 1/2 mile out 1/2 mile back		
27-28	2/3 mile front land 1/2 mile back 1/2 mile out 1/2 mile back		
28-29	2/3 mile front land 1/2 mile back 1/2 mile out 1/2 mile back		
29-30	2/3 mile front land 1/2 mile back 1/2 mile out 1/2 mile back		
30-31	2/3 mile front land 1/2 mile back 1/2 mile out 1/2 mile back		
31-32	2/3 mile front land 1/2 mile back 1/2 mile out 1/2 mile back		
32-33	2/3 mile front land 1/2 mile back 1/2 mile out 1/2 mile back		
33-34	2/3 mile front land 1/2 mile back 1/2 mile out 1/2 mile back		
34-35	2/3 mile front land 1/2 mile back 1/2 mile out 1/2 mile back		
35-36	2/3 mile front land 1/2 mile back 1/2 mile out 1/2 mile back		

Township 2 N, Range 14 W



1818

Township N. III North, Range N. XIV East of the Mer. (Mich. Ter.)



A true copy from the Original on file in this Office

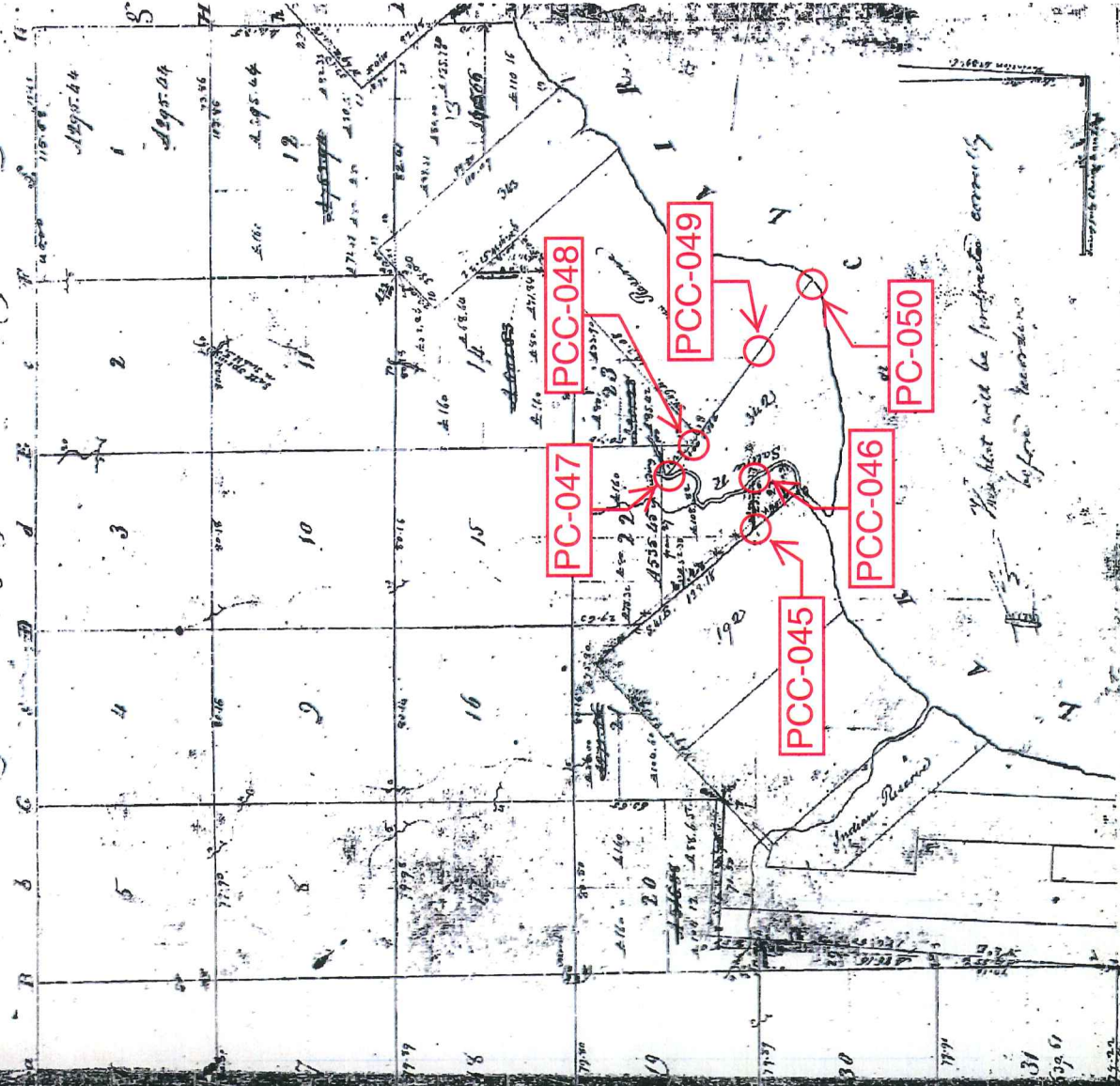
Surveyor General's Office,  
Chesterfield 1818.

Richard Telford  
Surveyor General  
3 N. 14 E CHESTERFIELD

1818

26-35  
26-34

Ship No III North Range No XIV East of Meridian Michigan Territory 139



Received to a contract with and instructions from Edward Piffin Esquire Surveyor General  
 the United States being date 20th day of November 1818 I have acknowledged said tract and  
 conveyed the same divided fractional Township and hereby certify that it had been made  
 a return for the material and contained as mentioned on said plat and declared in the list  
 to which they are referred with this tract into the Surveyor General's office. Great Falls  
 Wm. H. Patten

1937

Sheet 1 of 2 Sheets

Original

# "SUPERVISORS PLAT N<sup>o</sup> 14"

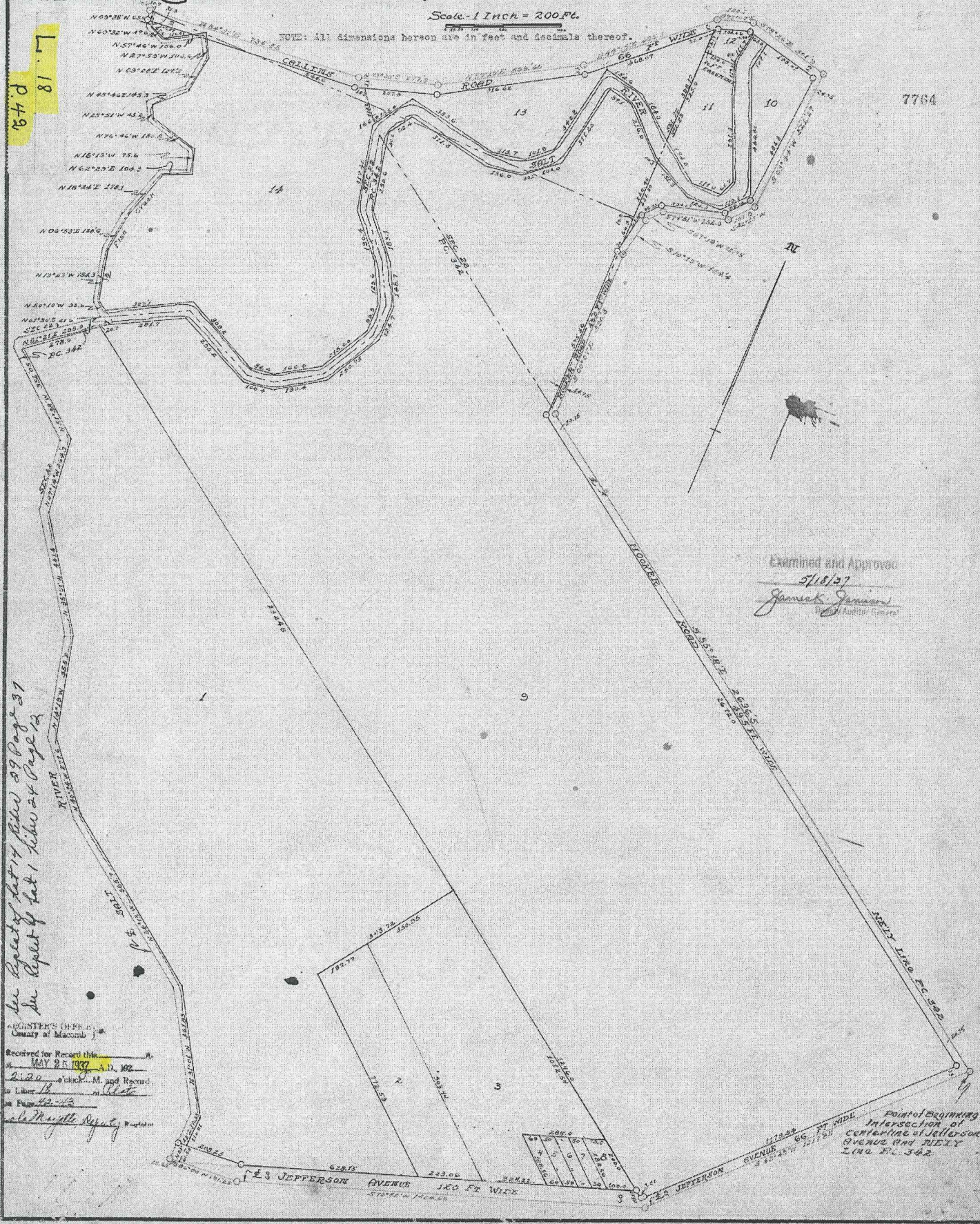
PART OF FRL SEC. S 22 & 23, & PART OF P.C. 342, T3N, R14E,  
CHESTERFIELD TOWNSHIP, MACOMB COUNTY, MICHIGAN.

Scale - 1 Inch = 200 Ft.

NOTE: All dimensions hereon are in feet and decimals thereof.

L. 18  
P. 48

7764



Examined and Approved  
 5/18/37  
*James J. Janney*  
 Auditor General

In Reply of Plat 14, Plats 29, 30, 31  
 In Reply of Plat 1, Plats 2, 3, 4, 5, 6, 7, 8, 9, 10, 11, 12, 13, 14, 15, 16, 17, 18, 19, 20, 21, 22, 23, 24, 25, 26, 27, 28, 29, 30, 31, 32, 33, 34, 35, 36, 37, 38, 39, 40, 41, 42, 43, 44, 45, 46, 47, 48, 49, 50, 51, 52, 53, 54, 55, 56, 57, 58, 59, 60, 61, 62, 63, 64, 65, 66, 67, 68, 69, 70, 71, 72, 73, 74, 75, 76, 77, 78, 79, 80, 81, 82, 83, 84, 85, 86, 87, 88, 89, 90, 91, 92, 93, 94, 95, 96, 97, 98, 99, 100

REGISTER'S OFFICE  
 County of Macomb  
 Received for Record this  
 MAY 25 1937 A.M. 1937  
 2:20  
 in Lib. 14  
 on Page 42-43  
*Charles M. Myrtle* Register

See Comment Plats 388, 389 & 390 & 391 & 392 & 393 & 394 & 395 & 396 & 397 & 398 & 399 & 400 & 401 & 402 & 403 & 404 & 405 & 406 & 407 & 408 & 409 & 410 & 411 & 412 & 413 & 414 & 415 & 416 & 417 & 418 & 419 & 420 & 421 & 422 & 423 & 424 & 425 & 426 & 427 & 428 & 429 & 430 & 431 & 432 & 433 & 434 & 435 & 436 & 437 & 438 & 439 & 440 & 441 & 442 & 443 & 444 & 445 & 446 & 447 & 448 & 449 & 450 & 451 & 452 & 453 & 454 & 455 & 456 & 457 & 458 & 459 & 460 & 461 & 462 & 463 & 464 & 465 & 466 & 467 & 468 & 469 & 470 & 471 & 472 & 473 & 474 & 475 & 476 & 477 & 478 & 479 & 480 & 481 & 482 & 483 & 484 & 485 & 486 & 487 & 488 & 489 & 490 & 491 & 492 & 493 & 494 & 495 & 496 & 497 & 498 & 499 & 500

1942  
L 22, P 8

MAR 26 1942 DEJ

COPY

28647

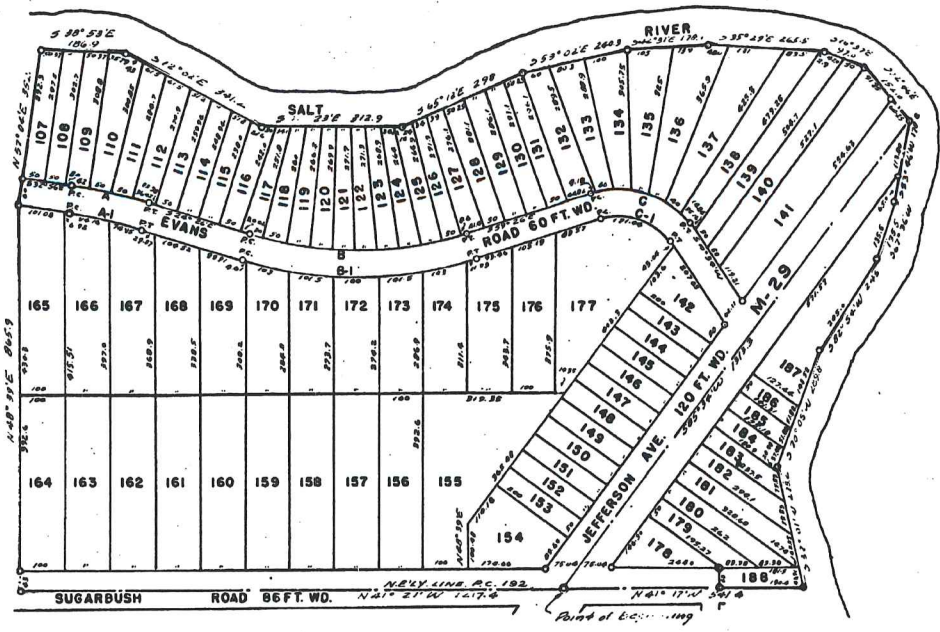
# SUPERVISORS PLAT OF BAKERS SALT RIVER SUBDIVISION NO. 1. OF PART OF FRAC. SEC. 22 T. 3 N. R. 14 E. CHESTERFIELD TWP MACOMB CO. MICH.

HARRY J. FULLER  
REG. CIVIL ENGINEER & LAND SURVEYOR  
MT. CLEMENS MICH.



NOTE: ALL MEASUREMENTS ARE IN FEET AND DECIMALS THEREOF.

**CURVE DATA:**  
A: R=1200 I=8° 30'  
L.C.=178.02 T=89.17  
A-1: R=1140 I=8° 30'  
L.C.=169.11 T=84.71  
B: R=800 I=35°  
L.C.=488.60 T=252.24  
B-1: R=860 I=35°  
L.C.=525.34 T=271.15  
C: R=200 I=70°  
L.C.=244.34 T=140.04  
C-1: R=140 I=70°  
L.C.=171.04 T=78.82



### DEDICATION

KNOW ALL MEN BY THESE PRESENTS, That I, Adolph Verseyer Supervisor of the Township of Chesterfield, of Macomb County, STATE of Michigan, by virtue of authority in me vested by Section 51, Act 172, of 1929, having been duly authorized by the Township Board have caused the land described in the annexed plat to be surveyed, laid out and platted, to be known as "SUPERVISORS PLAT OF BAKERS SALT RIVER SUBDIVISION NO. 1" of part of Frac. Sec. 22, T. 3, N. R. 14 E. Chesterfield Twp. Macomb Co. Mich., and that the streets and alleys as shown on said plat are now being used for such purposes.

WITNESSES:  
Fred W. Barth Adolph Verseyer  
Thodore J. Foster Supervisor of the township of Chesterfield.  
Thodore Furton

### ACKNOWLEDGEMENT

STATE OF MICHIGAN) as  
County of Macomb)  
On this 16th day of February A.D. 1942 before me, a Notary Public in and for said county, personally ca me the above named Adolph Verseyer, Supervisor of the Township of Chesterfield, known to me to be the person who executed the above dedication, and acknowledged the same to be his free act and deed as such Supervisor.

April 20, 1942 Veris A. Boelter  
Notary Public in and for Macomb County  
My commission expires Notary Public in and for Macomb County

### CERTIFICATE OF MUNICIPAL APPROVAL

This plat was approved by the Township Board of the townsh ip of Chesterfield at a meeting held, January 16th 1942

Leo Blakely  
Leo Blakely Clerk

### CERTIFICATE OF APPROVAL BY COUNTY BOARD

This plat was approved on the 20th day of February 1942

Examined and Approved  
Allice L. Tucker Register of Deeds  
Walter L. Tucker Register of Deeds  
Thodore J. Foster County Clerk  
Carl B. Brandenburg County Treasurer

FILED IN AUDITOR GENERAL'S DEPT.  
April 28, 1942  
Thodore J. Foster  
Mayme Jewell Purdy DEPUTY AUDITOR GENERAL

### DESCRIPTION OF LAND PLATTED

The land embraced in the annexed plat of SUPERVISORS PLAT OF BAKERS SALT RIVER SUBDIVISION NO. 1 of part of Frac. Sec. 22 T. 3 N. R. 14 E. Chesterfield Twp. Macomb Co. Mich. is described as follows: Commencing at the intersection of the N.E. 1/4 line of P.C. 192 and the centerline of Jefferson Ave., the nec N 47° 21' W, 1217.4 ft.; N 48° 39' E, 865.9 ft.; N 57° 04' E, 352.3 ft.; S 38° 53' E, 156.9 ft.; S 12° 02' E, 341.2 ft.; S 41° 23' E, 312.9 ft.; S 66° 12' E, 298 ft.; S 53° 02' E, 240.3 ft.; S 42° 31' E, 178.9 ft.; S 75° 29' E, 265.5 ft.; S 16° 37' E, 97 ft.; S 02° 46' E, 152 ft.; S 53° 46' W, 178.8 ft.; S 67° 36' W, 135.5 ft.; S 82° 54' W, 245 ft.; S 70° 05' W, 289.8 ft.; S 37° 01' W, 278.2 ft.; N 41° 17' W, 541.4 ft., to the point of beginning.

### SURVEYOR'S CERTIFICATE

I hereby certify that the plat hereon delineated is a correct one and that permanent metal monuments consisting of bars not less than one-half inch in diameter and 48 inches in length, or shorter bars of not less than one half inch in diameter lapped over each other at least 6 inches with an over-all length of not less than forty eight inches, encased in a concrete cylinder at least 4 inches in diameter and forty eight inches in depth have been placed at points marked thus " as thereon shown at all angles in the boundaries of the land platted, at all the intersections of streets, intersections of alleys, or of streets and alleys, and at the intersections of streets and alleys with the boundaries of the plat as shown on said plat.

Harry J. Fuller  
Harry J. Fuller Registered Land Surveyor

I HEREBY CERTIFY THAT THIS COPY IS A TRUE COPY OF THE DEED AS FILED FOR RECORDING.  
Thodore J. Foster  
Mayme Jewell Purdy DEPUTY AUDITOR GENERAL

### CERTIFICATE OF APPROVAL BY BOARD OF COUNTY ROAD SUPERVISORS

This plat has been examined and approved on the 2nd day of February 1942 by the Board of County Road Supervisors of Macomb County.

Harry W. Purdy  
Harry W. Purdy Chairman  
F. S. Finch  
F. S. Finch Vice-Chairman  
N. F. Rind  
N. F. Rind Member

Register's Office  
Macomb County, Mich.  
Plat of Supervisors Plat of Bakers Salt River Subdivision No. 1 of part of Frac. Sec. 22, T. 3, N. R. 14 E. Chesterfield Township, Mich. was recorded this 28th day of March A.D., 1942, at 10:20 o'clock A. M. in Liber 22 of Plats.  
Page 8  
Walter L. Tucker  
Walter L. Tucker Register of Deeds

Finding that width and location of State Trunk Line and Federal Aid Roads conform to plans on file, I hereby approve this plat.  
Donald Kennedy  
Donald Kennedy  
State Highway Commissioner



1946 L24, P12

Copy

30059

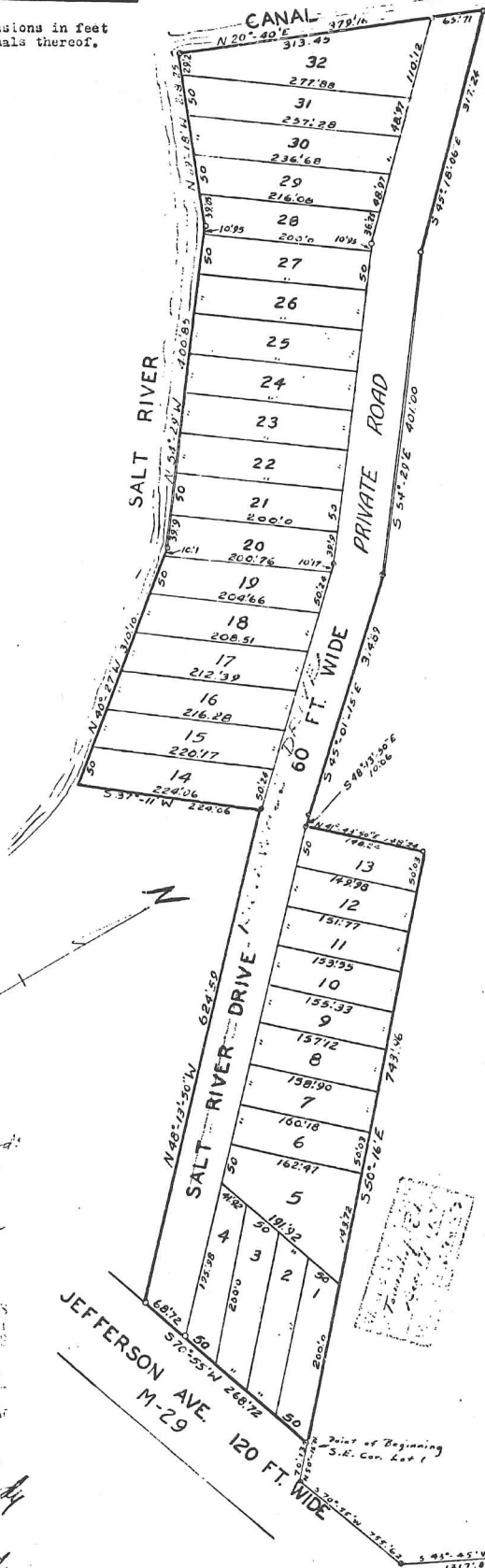
# CATHERINE KILLEWALD SUB.

PART OF LOT NO 1 OF SUPERVISORS PLAT NO 14  
PART OF FR. SECS. 22 & 23 & PART OF P.C. 342 T.3 N.R.14 E.  
CHESTERFIELD TWP. MACOMB CO., MICH.

Scale 1" = 100'

NOTE: All dimensions in feet and decimals thereof.

Walter J. Lehner, Reg. C.E.  
Mount Clemens, Mich



**DEDICATION**  
 KNOW ALL MEN BY THESE PRESENTS, That we, Leo M. Meldrum and Catherine K. Meldrum, his wife, as proprietors, have caused the land embraced in the annexed plat to be surveyed, laid out and platted, to be known as "CATHERINE KILLEWALD SUB.", Part of Lot No. 1 of Supervisors Plat No. 14, Part of Fr. Sections 22 and 23 and part of P.C. 342 T. 3 N. R. 14 E., Chesterfield Township, Macomb County, Michigan, and that the streets as shown on said plat are hereby dedicated to the use of lot owners only.

Witnesses:  
 Leo M. Meldrum  
 Catherine K. Meldrum  
 John D. Lehner

STATE OF MICHIGAN, )  
 COUNTY OF MACOMB, )  
 On this 13<sup>th</sup> day of August 1946, before me, a Notary Public in and for said county, personally came the above named Leo M. Meldrum and Catherine K. Meldrum, his wife, known to me to be the persons who executed the above dedication, and acknowledged the same to be their free act and deed.

My Commission expires Nov 27-1950  
 Notary Public Macomb County, Michigan

**DESCRIPTION OF LAND PLATTED**  
 The land embraced in the annexed plat of "CATHERINE KILLEWALD SUB." Part of Lot No. 1 of Supervisors Plat No. 14 Part of Fr. Sections 22 and 23 and Part of P.C. 342 T. 3 N. R. 14 E., Chesterfield Township, Macomb County, Michigan, is described as follows:  
 Commencing at the intersection of the centerline of Jefferson Avenue and North Easterly line of said P.C. 342, and thence extending S. 43°-49' W. 1217.69 ft. and S. 70°-18' W. 755.02 ft. along center line of Jefferson Avenue, thence N 50°-16' W. 70.13 ft. to the South East corner of said Lot No. 1, the point of beginning of this description. Thence extending S. 70°-18' W. 224.06 ft.; thence N. 40°-13'-50" W. 624.59 ft.; thence S. 70°-11' W. 224.06 ft. to bank of Salt River; thence upstream along river and canal on the following courses and distances, N. 40°-27' W. 310.10 ft.; thence N. 54°-28' W. 400.21 ft.; thence N. 69°-18' W. 318.25 ft.; bearing S. 49°-01'-15" E. 317.24 ft.; thence S. 49°-22' E. 401.0 ft.; thence S. 49°-01'-15" E. 314.80 ft.; thence S. 40°-13'-50" W. 10.06 ft.; thence N. 40°-43'-50" E. 146.24 ft.; thence S. 50°-16' E. 743.96 ft. to the point of beginning of this description.

**SURVEYOR'S CERTIFICATE**  
 I hereby certify that the plat hereon delineated is a correct one and that permanent metal monuments consisting of bars not less than one-half inch in diameter and 48 inches in length enclosed in a concrete cylinder at least 4 inches in diameter and 48 inches in depth have been placed at points marked thus (o) as thereon shown at all angles in the boundaries of the land platted, at all the intersections of streets, or at the intersections of streets with the boundaries of the plat as shown on said plat.

Walter J. Lehner  
 Registered Land Surveyor

**CERTIFICATE OF TOWNSHIP APPROVAL**  
 This plat was approved by the Township Board of the Township of Chesterfield at a meeting held  
 Aug. 16-46

**CERTIFICATE OF APPROVAL BY COUNTY BOARD**  
 This plat was approved on the 12<sup>th</sup> day of Dec. 1946.

Henry L. French  
 Register of Deeds  
 Charles M. Ziegler  
 County Clerk  
 William G. Miller  
 County Treasurer

**APPROVED**  
 Charles M. Ziegler  
 County Clerk

**CERTIFICATE OF APPROVAL BY BOARD OF COUNTY ROAD COMMISSIONERS**  
 This plat has been examined and approved on the 15<sup>th</sup> day of December 1946 by the Board of County Road Commissioners of Macomb County.  
 Wm. B. Malow  
 Vice-Chairman

Notary Public  
 Catherine Killewald  
 Chesterfield Township  
 February 5, 1946  
 Leo M. Meldrum  
 Catherine K. Meldrum  
 Examined and Approved  
 February 5, 1946  
 Thomas J. Hardy  
 Filed in Macomb County Records  
 February 11, 1946  
 Thomas J. Hardy