

**PCC-040**  
**DOSSIER CONTENT**  
2011 REMON  
T.3N., R.14E.,  
Chesterfield Township, Macomb County, Michigan

**Section One**

Index

Pictures in cardinal directions; before and after setting the required monumentation.

**Section Two**

LCRC

Surveyor's Report

**Section Three**

1 Field Notes

2 Sketch

4 Township Map

5 Tax Map 1974

6 Aerial Pictures 2009

**Section Four**

1 1810 PC notes

Greely

2 1817 GLO notes

Preston

3 1817 Township map

Preston

4 1818 Township map

Surveyor General Office

5 1818 Township Map

6 1931 Assessor's Plat No. 9

Fuller RCE&S L26, P40

7 1996 LCRC

Dunn 30081 L6853, P215

8 1996 Plat-Aspen Park

Dunn 30081 L113, P20

9 2000 Field notes

Dunn 30081 unrecorded



**BEFORE**



**AFTER**



**BEFORE**

**AFTER**



**NORTHEAST**



**SOUTHWEST**





LAND CORNER RECORDATION CERTIFICATE
Filing Requirement of Act 74, Mich. P.A. 1970
REMONUMENTATION CORNER

For corners in:

MACOMB COUNTY

(County)

Located In: CHESTERFIELD TOWNSHIP Corner Code #

PCC-040

- 1. Public Land Survey T 3N R 14E
2. Property Controlling in Section S 13 T R
3. Miscellaneous Property in Sec. S T R
4. Lot No. Recorded Plat

1237157
LIBER 21034 PAGE 643
12/15/2011 08:39:38 A.M.
MACOMB COUNTY, MI SEAL
CARMELLA SABAUGH, REGISTER OF DEEDS

5. Private Claims PC-343 PCC-040 is an intersection of East line of Section 14 with Northwesterly line of PC 343.

I, ROBERT E. HORNYAK, in a field survey on, June 18, 2011 do hereby certify that under requirements of P.A. 74, Michigan P.A. of 1970, the corner points mentioned in lines 1 and 2 above were in conformance with regulations and rules therefore as required in the current manual of survey instructions of the United States Department of the Interior, Bureau of Land Management or by a decree of a Court of Law and/or that the corner points mentioned in lines 3, 4 and 5 above were in conformance with the rules of the Michigan Board of Land Surveyors or by a Decree of a Court of Law; established, re-established, monumented, re-monumented, recovered, found as expressed below:

NOTE: Not more than 2 corners, all in the same town and range, may be recorded on this certificate.

A. Description of original monument and accessories and/or subsequent restoration:

- 1 1810 PC notes Greely Corner not set
2 1817 GLO notes Preston W. Oak 24" diameter

Subsequent Restorations:

- 3 1817 Township map Preston Object not stated
4 1818 Township map Surveyor General Office Object not stated
5 1818 Township Map Object not stated
6 1931 Assessor's Plat No. 9 Fuller RCE&S L26, P40 Object not stated
7 1996 LCRC Dunn 30081 L6853, P215 Iron rod w/plastic cap #30081 (0 of 4 wit. find.)
8 1996 Plat-Aspen Park Dunn 30081 L113, P20 Refers to Item 7
9 2000 Field notes Dunn 30081 unrecorded Object not stated

B. Description of corner evidence found and/or method applied in restoring or reestablishing corner:

The corner was perpetuated with the found 1/2" iron rod with cap #30081.

Occupation: none

Distances from Item 8 were used to verify the location of the corner.

I recommend to the Peer Review Board to accept the found 1/2" iron rod as proper location for the corner.

Distances:

Table with 4 columns: Distance 1, Distance 2, Distance 3, Distance 4. Rows include PCC-040 to K-05, PCC-040 to PCC-037, PCC-040 to PC-033, and various other measurements.

C. Description of monument for corner and accessories established to perpetuate locating the position of the corner:

I replaced the found 1/2" iron with a 2" aluminum cap stamped "MACOMB COUNTY MONUMENT MI ACT 345; PCC-040; 44286" placed on a 1/2"x36" steel bar encased in 4" diameter concrete monument.

Witnesses:

- N32°E 60.65' SE corner of house #34950
S23°E 35.50' N corner of brick pillar for cemetery fence
S30°W 90.15' Set iron w/blue cap "MC REMON WIT POINT" at privacy fence 5' N of 6' aluminum fence
N50°W 50.10' SW corner of house #34950

THE SELECTED LOCATION IS ACCEPTED BY ME AND IS GENERALLY ACCEPTED BY PROFESSIONAL SURVEYORS AS THE BEST AVAILABLE EVIDENCE OF THE POSITION OF THIS CORNER.

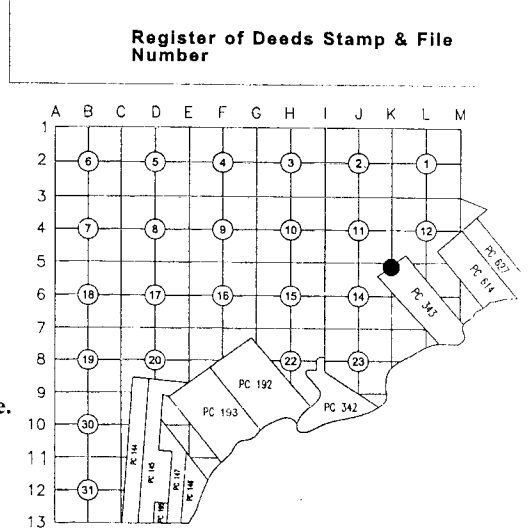
Signed by [Signature] Date October 12, 2011.

Surveyor's Michigan License No. 44286

FORM APPROVED BY MICHIGAN STATE BOARD OF LAND SURVEYORS, JAN. 28, 1971
REVISED MAY 14, 1975
REVISED JAN., 1983
REVISED OCT. 1995



ACCEPTED BY THE MACOMB COUNTY SURVEY PEER GROUP AS THE OFFICIAL CORNER UNDER MICHIGAN PUBLIC ACT 345 OF 1990 AT A MEETING HELD ON 10-11-2011
[Signature]
MARTIN C. DUNN, P.S. CHAIRMAN



# PCC-040 CHESTERFIELD TOWNSHIP

PCC-040 is an intersection of East line of Section 14 with Northwesterly line of PC 343.

Private Claim 343 was surveyed by Greely in 1810.

GLO survey performed by Preston in 1817.

## Corner history:

1	1810	PC notes	Greely		Corner not set
2	1817	GLO notes	Preston		W. Oak 24" diameter
3	1817	Township map	Preston		Object not stated
4	1818	Township map	Surveyor General Office		Object not stated
5	1818	Township Map			Object not stated
6	1931	Assessor's Plat No. 9	Fuller	RCE&S L26, P40	Object not stated
7	1996	LCRC	Dunn	30081 L6853, P215	Iron rod w/plastic cap #30081
			<u>Witnesses:</u>		
			AZ 30°	32.81'	Set PK nail and METCO TAG in W face of 24" oak
			EAST	9.98'	Set PK nail and METCO TAG in N face of 24" oak
			SOUTH	26.75'	Set PK nail and METCO TAG in W face of 6" oak
			AZ 330°	19.97'	NE corner of flag pole
8	1996	Plat-Aspen Park	Dunn	30081 L113, P20	Refers to Item 7
9	2000	Field notes	Dunn	30081 unrecorded	Object not stated

\* denotes matching witnesses

## Field evidence:

The corner was perpetuated with the found 1/2" iron rod with cap #30081.

Occupation: none

## Distances:

PCC-040 to K-05	PCC-040 to PCC-037	PCC-040 to PC-033
129.36' (1.96 ch) 2,3		1716.00' (26.00 ch) 2
		1452.00' (22.00 ch) 3,4
143.88' 8		1511.85' 8
144.17' Remon 2011	215.96' Remon 2011	1511.59' Remon 2011

SPC: N= 437,885.94 E=13,556,022.71

## Recommendation:

Distances from Item 8 were used to verify the location of the corner.

I recommend to the Peer Review Board to accept the found 1/2" iron rod as proper location for the corner.

I recommend replacing the found 1/2" iron with a 2" aluminum cap stamped "MACOMB COUNTY MONUMENT MI ACT 345; PCC-040; 44286" placed on a 1/2"x36" steel bar encased in 4" diameter concrete monument.

## Witnesses:

N32°E	60.65'	SE corner of house #34950
S23°E	35.50'	N corner of brick pillar for cemetery fence
S30°W	90.15'	Set iron at privacy fence 5' N of 6' aluminum fence
N50°W	50.10'	SW corner of house #34950

Respectfully submitted,

---

Robert E. Hornyak, PS # 44286



# PCC-040

REMON 2011

CHESTERFIELD TWP., T3N, R14E



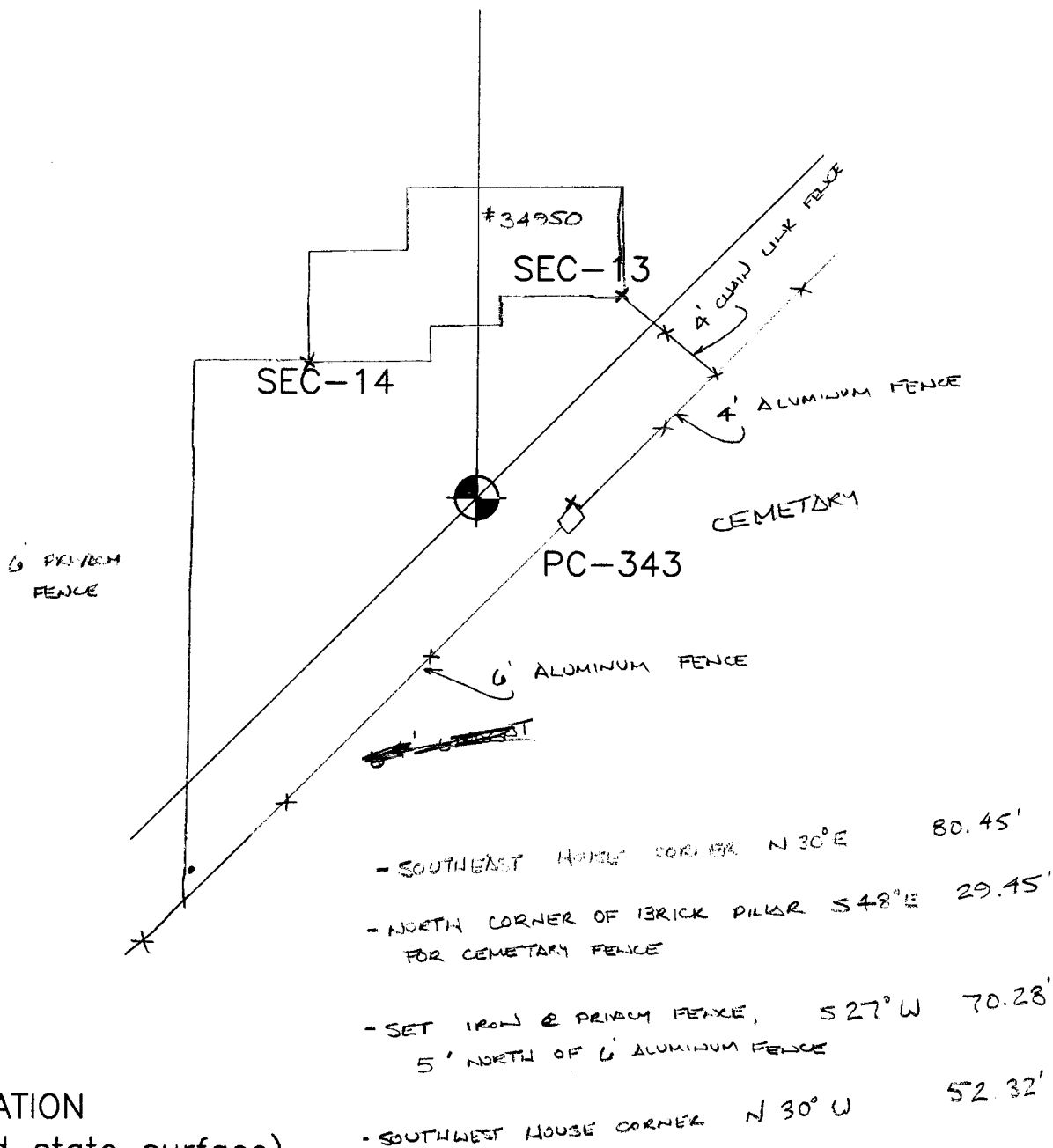
DATE: 07/06/11

CREW: RH, TK

OBJECT FOUND: 1/2" IRON ROD W/CAP 30103

POINT No.: \_\_\_\_\_

CTRL. PTS.: \_\_\_\_\_



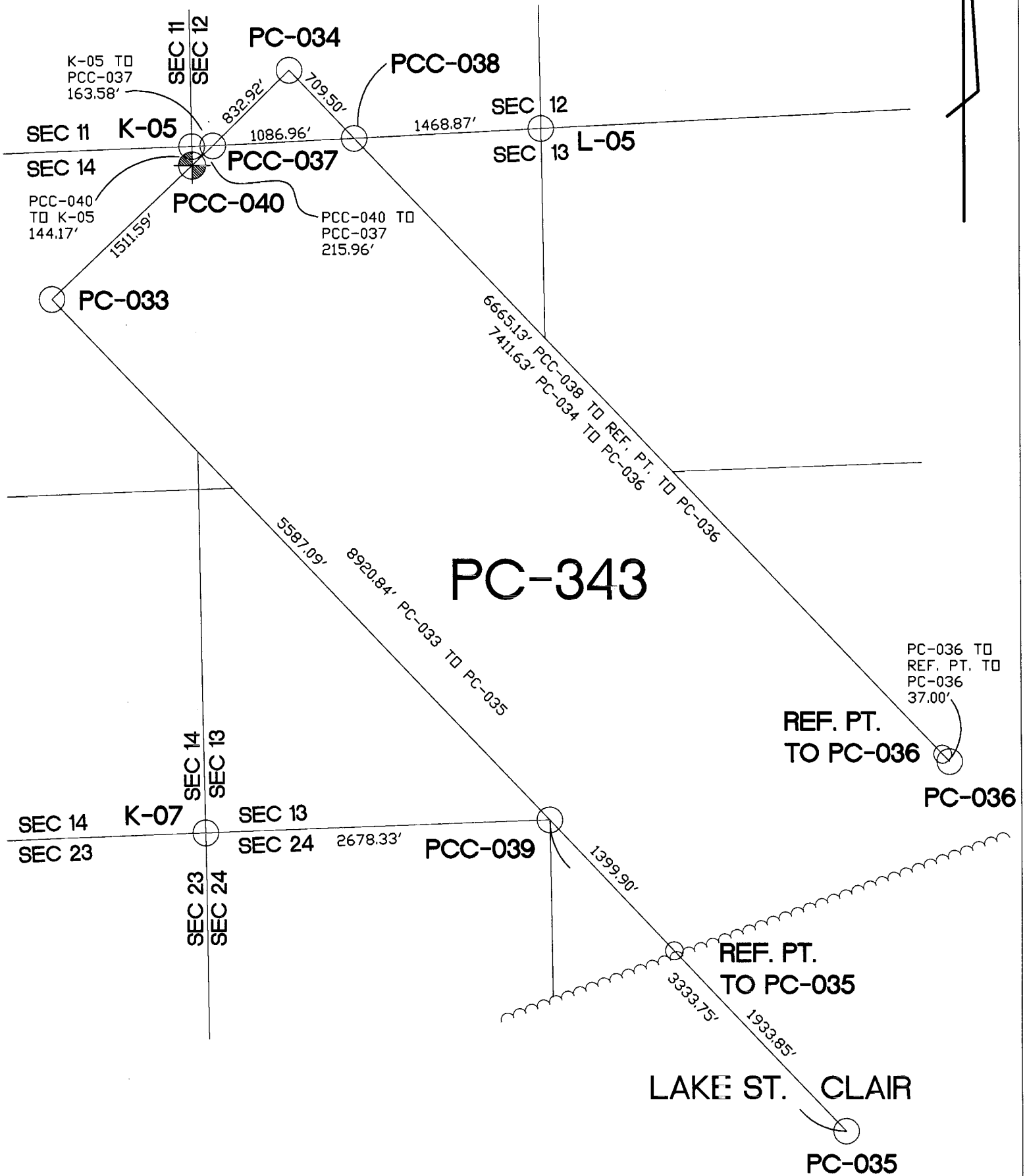
OCCUPATION  
(if road state surface)

NONE  
\_\_\_\_\_  
\_\_\_\_\_  
\_\_\_\_\_

# PC-343

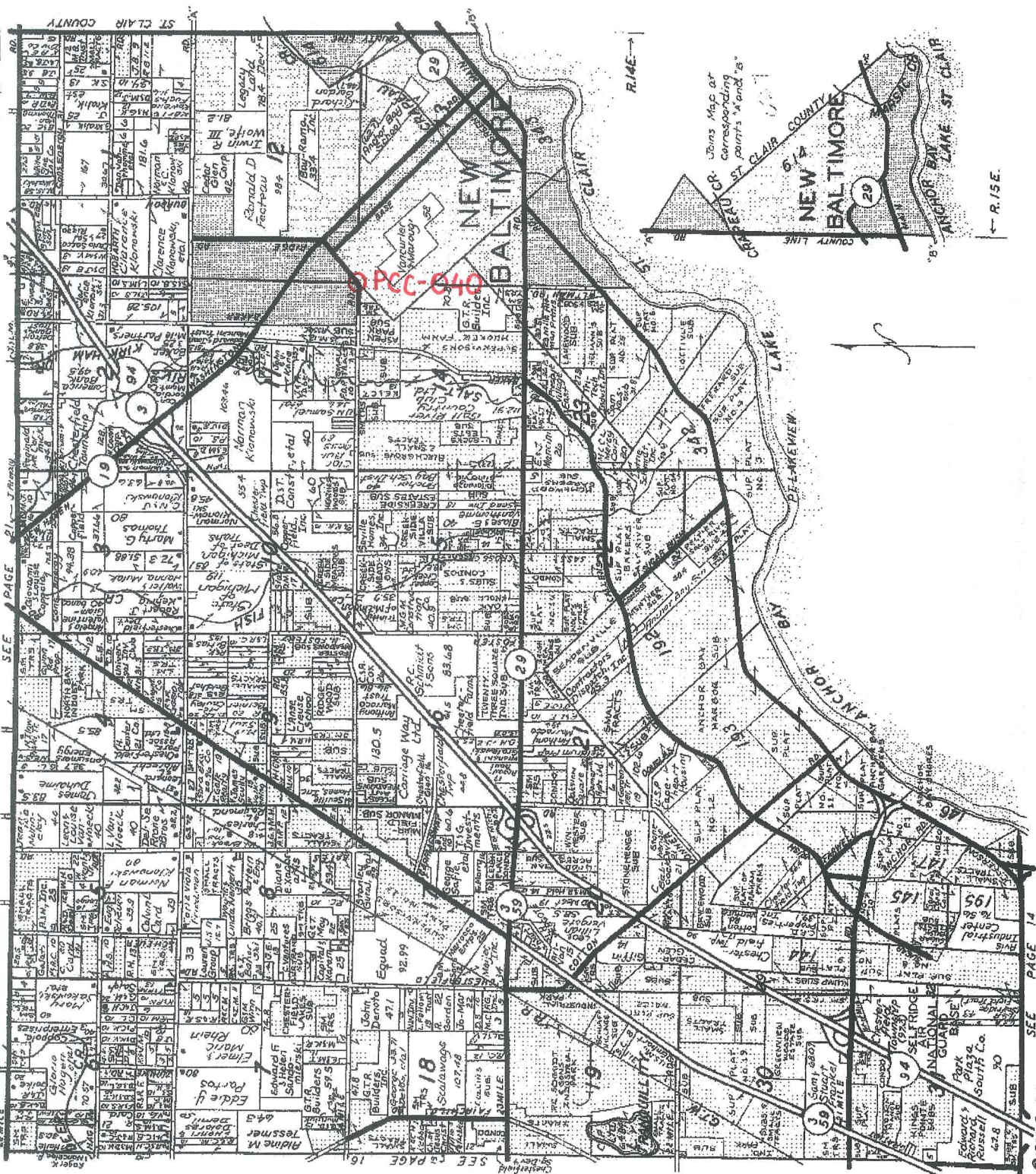
## REMON 2011

### CHESTERFIELD TWP., T3N, R14E



Reproduced with permission of Rockford Map Publishers, Inc.  
 Rockford, Illinois

CHESTERFIELD T.3N.-R.14-15E.



Macomb County, Mich.

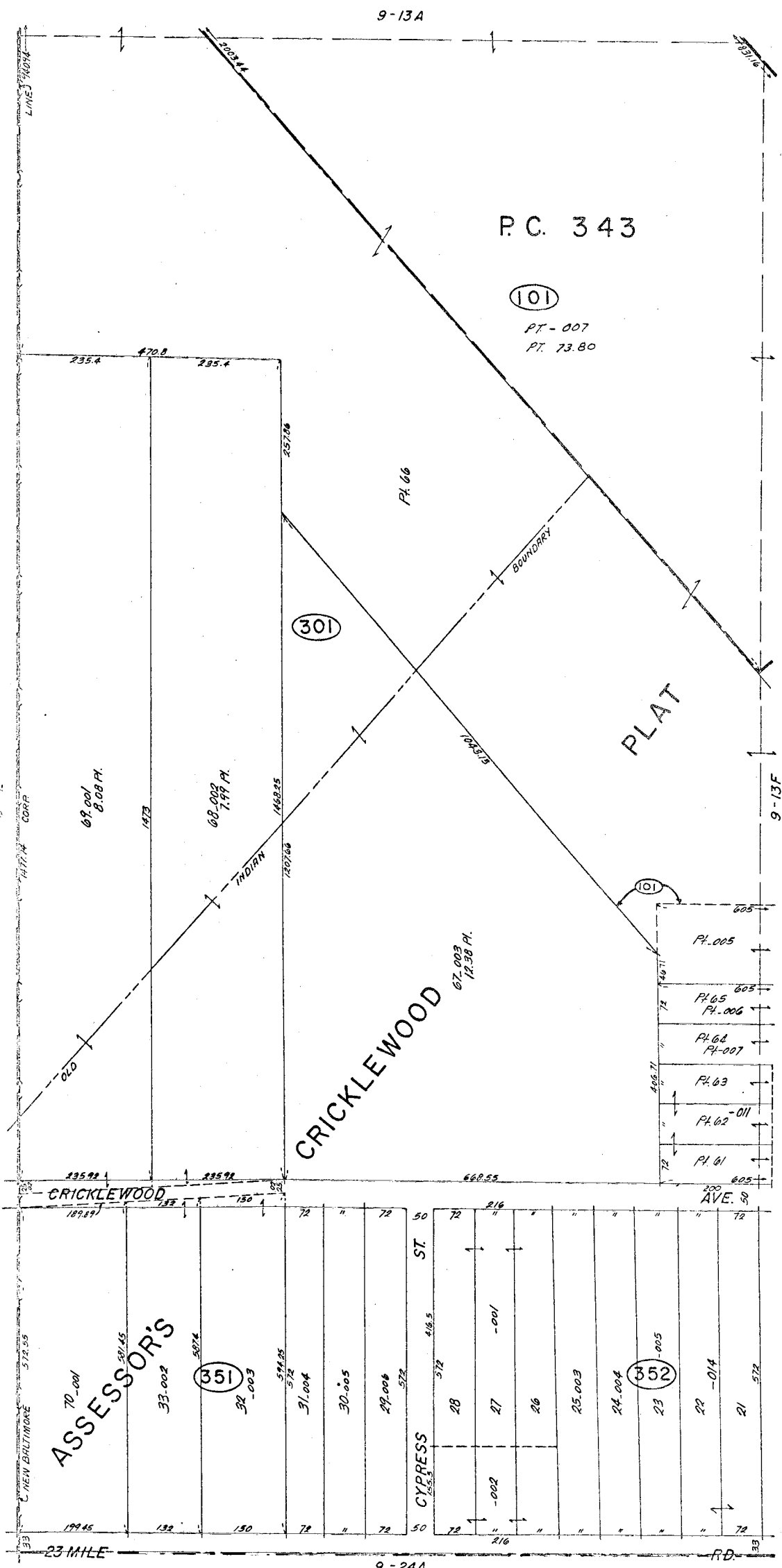


# LINCOLN TITLE COMPANY

Flexible closing schedule ❖ Personalized service ❖ Knowledgeable staff

25962 Knollwood Drive South • Chesterfield, Michigan 48051 • Telephone: (810) 598-2930 • Fax: (810) 598-2936

OFFICES ALSO IN PORT HURON & ROSEVILLE



SCALE: 1" = 100'

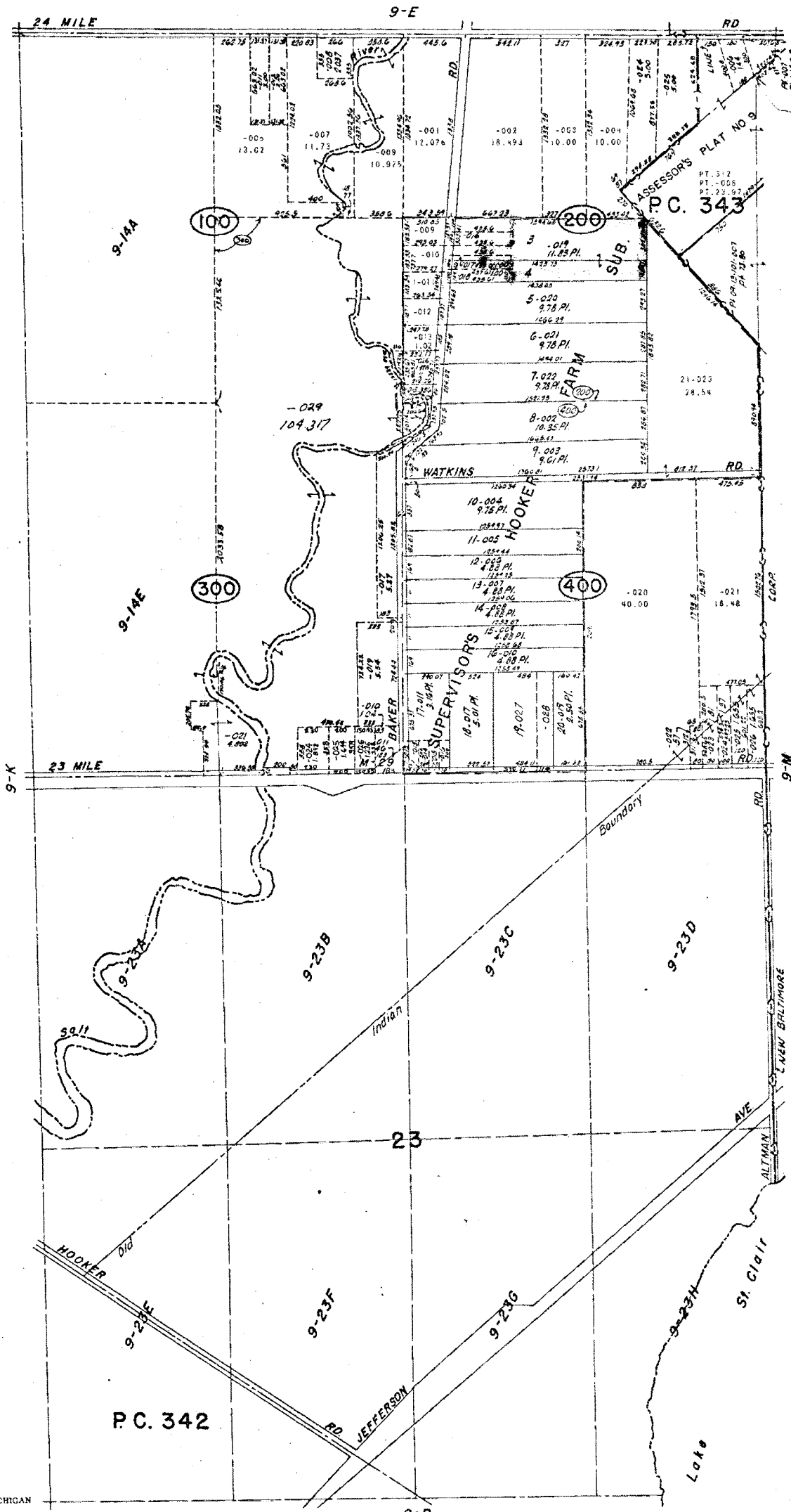
624  
9-13E

Copyright 1974  
MACOMB COUNTY, MICHIGAN

NEW BALTIMORE

W. 1/2 S.W. 1/4 SEC. 13 & PT. P.C. 343 T.3N. R.14E.





PCC-343

REV 3-77  
 REV 7-77  
 REV 4-78  
 REV 1-79  
 REV 10-76  
 REV 12-75  
 REV 3-75

Copyright 1974  
 MACOMB COUNTY, MICHIGAN

SCALE: 1" = 400'  
 596  
 9-L

NEW BALTIMORE & CHESTERFIELD TWP  
 SECS. 14, 23 & PT. P.C. 342, 343 T.3N. R.14E.

MACOMB CO. MICH

09-11H

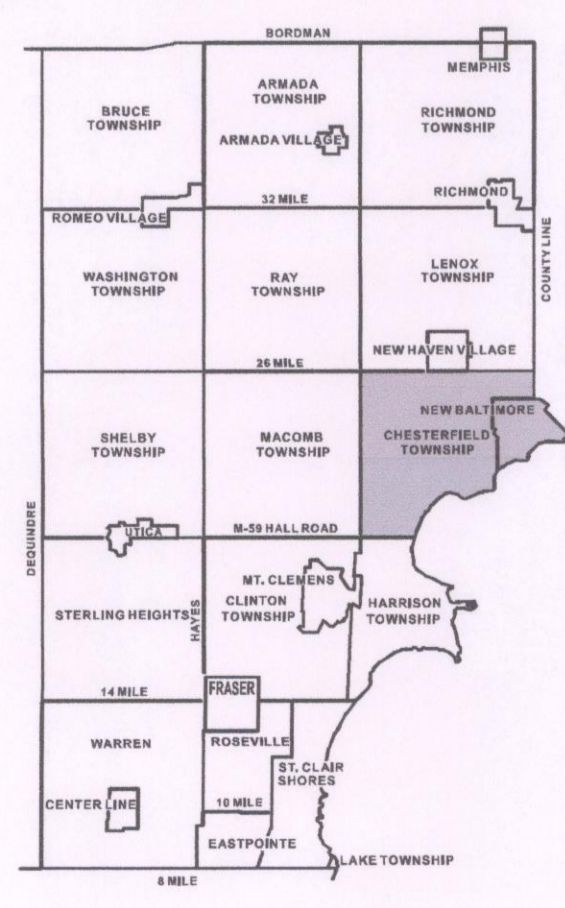
09-12E

09-12F

09-13A



Date of Photography: Spring 2008  
 100 50 0 100 200 Feet  
 1:1,200



CHESTERFIELD TWP SHEET INDEX



DESCRIPTION OF PERMANENT REAL ESTATE INDEX NUMBER  
**13-19-302-018**

AREA NUMBER (TOWNSHIP AND RANGE)  
 SUB AREA NUMBER (SECTION WITH SECTION NUMBER)  
 BLOCK NUMBER (LOT WITH SECTION)  
 PARCEL NUMBER (BLOCK AND HOUSE LOT OR SUB LOT)

- Legend**
- Platted Area Boundary Line
  - Property Line
  - - - Property Split Line
  - - - Property Combined Line
  - - - Township Boundary Line
  - Traverse Line
  - Dimension Extent Marks
  - Dimension Start Marks

**09-13A**

NEW BALTIMORE  
 W. 1/2 N.W. 1/4 SEC. 13 T.3N. R.14E.

Source: Macomb County Department of Planning and Economic Development  
 - 2008 Digital Orthophotography Project  
 - Parcel Conversion Project

Note:  
 Digital Orthophotography horizontal positioning accuracy is 3 feet. Parcel boundary lines should be considered a graphical representation and not in any way a legal survey or engineering document. In general, the horizontal positioning and length accuracy is within 15 feet.

This map is intended for general planning purposes. Site specific evaluation should be verified by field inspection. This is a work in progress and may contain errors and omissions. Please report any potential revisions to (586)469-5285.



**GIS** MACOMB COUNTY  
 Planning and Economic  
 Development  
 Published: Jan 26, 2009



Date of Photography: Spring 2008  
 100 50 0 100 200 Feet  
 1:1,200

CHESTERFIELD TWP SHEET INDEX

DESCRIPTION OF PERMANENT REAL ESTATE INDEX NUMBER

13	-19	-302	-018
AREA NUMBER (TOWNSHIP UNDER GOVERNMENTAL SURVEY)	SUB AREA NUMBER (SUBDIVISION)	BLOCK NUMBER (CITY BLOCK OR BLOCK SECTION)	PARCEL NUMBER (LOT OR PARCEL)

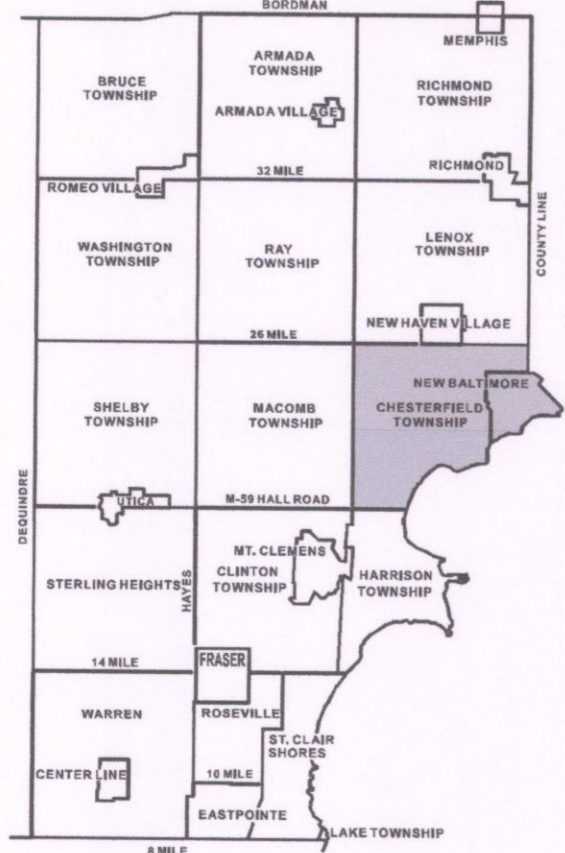
**09-14D**  
 BALTIMORE & CHESTERFIELD TWP.  
 E. 1/2 N.E. 1/4 SEC. 14 T.3N. R.14E.

Source: Macomb County Department of Planning and Economic Development  
 - 2008 Digital Orthophotography Project  
 - Parcel Conversion Project

Note:  
 Digital Orthophotography horizontal positioning accuracy is 3 feet. Parcel boundary lines should be considered a graphical representation and not in any way a legal survey or engineering document. In general, the horizontal positioning and length accuracy is within 15 feet.

This map is intended for general planning purposes. Site specific evaluation should be verified by field inspection. This is a work in progress and may contain errors and omissions. Please report any potential revisions to (586)469-5265.

- Legend**
- Platted Area Boundary Line
  - Property Line
  - Property Split Line
  - Property Combined Line
  - Township Boundary Line
  - Traverse Line
  - Dimension Extent Marks
  - Dimension Start Marks



**GIS** MACOMB COUNTY  
 Planning and Economic  
 Development Department  
 Published: Jan 26, 2009

COPYRIGHT 2009  
 MACOMB COUNTY, MI  
 All Rights Reserved



N<sup>o</sup>. 434.

Lake St. Clair

Description N<sup>o</sup>. 343 Confirmed to  
Pierre Yax commencing at an Old tree  
standing on the border of Lake St. Clair  
between this tract and a tract reserved  
for Macconse, thence north forty five  
degrees west one hundred and thirty two  
chains forty links, to a Beech tree, thence  
north forty five degrees East thirty eight  
chains, to a white Oak tree; thence south  
forty five degrees East one hundred and  
Ten chains, to a white Oak tree standing  
on the border of Lake St. Clair between  
this tract and unceded land, thence  
along the border of said Lake south  
seventeen degrees East twelve chains six-  
ty six links, thence south forty eight  
degrees west ten chains, thence south  
seventeen degrees west twenty five ch-  
ains, to the place of beginning contain-  
ing four hundred and sixty eight  
acres sixty seven hundredths of an  
acre.

Detroit July 18. 1810

Aaron Gocceley Surveyor  
of private Claims.

343

No. 434

No. 343 Confirmed to  
Pierre Yax

LAKE ST. CLAIR

Description No. 343 Confirmed to Pierre Yax commencing at  
an Elm Tree standing on the border of Lake St. Clair between  
this tract and a tract reserved for Macconse, thence north  
forty five degrees west one hundred and thirty two chains forty  
links to a Beech Tree thence north forty five degrees East thirty  
eight chains to a White Oak Tree thence south forty five degrees  
East one hundred and ten chains to a White Oak Tree standing on  
the border of Lake St. Clair between this tract and unconceded  
land thence along the border of said Lake south seventeen degrees  
east twelve chains sixty six links, thence south forty eight degrees  
west ten chains thence south seventeen degrees west twenty five  
chains to the place of beginning \_\_\_\_ Containing four hundred and  
sixty eight acres sixty seven hundredths of an acre \_\_\_\_.

Detroit July 24th, 1810

Aaron Greeley Surveyor  
of private claims

## Town 3 North Range 14 East

West on Boundary between 11 & 14

110.00 Saline River 73 links wide corner S.W. corner

Set temporary half mile post

80.18 Intersected West boundary line 24 links

East of corner land fast rolling and  
fronted by 2<sup>nd</sup> rate Timber W. Oak Buck  
B. Ash Elm Undergrowth Burwood

East Corrected between 11 & 14

110.09 Made 14 Sections corner on a Lynn  
14 ins diam on the West Bank of Saline

80.18 To Section corner

This cor on Riv from which a Lynn  
14 in bears West by the dist

South Between Sections 14 & 13

PC-040 1.76 Intersected Private Claims

26 chains West of the N.E. Cor. of No 343  
cont. to P. Buck -

Made corner for sections fractional 14 & 13  
on a W. Oak 24 ins diam

East Between Sections 14 & 12

110.39 on Elm 30 ins diam

110.00 Set half mile post from which a

stick by 14 ins diam bears S 85° W

16 links dist also a B. Ash 14 ins diam  
bears N 58° 22 links dist

117.74 a W Oak 10 ins diam

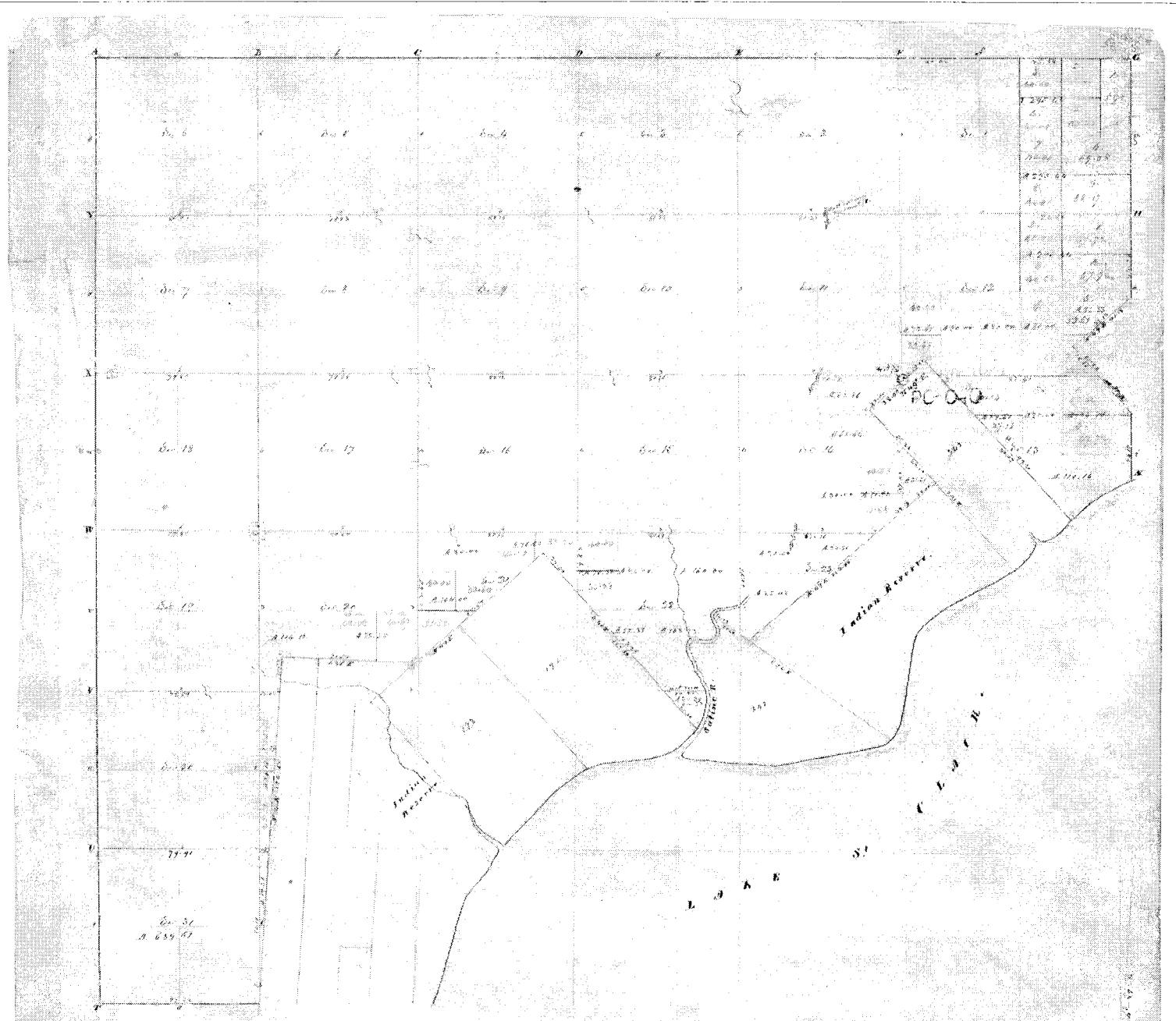
113.86 Intersected Town line at the corner

1<sup>st</sup> half mile land and dry good 2<sup>nd</sup>  
rate the Balance level with 1<sup>st</sup> & 2<sup>nd</sup>

rate Timber W Oak Buck Sugar Elm

Lynn B. Ash & Undergrowth Spice

Burwood &c.



Township N: III South , Range N: XIV East of Mer. (Mich. Ter)

Surveyed by W. D. Preston

1817

Description of the Soil on the interior sectional lines

Section	Soil	Section	Soil
1	Dark loam, part of the ...	21	Dark loam, part of the ...
2	Dark loam, part of the ...	22	Dark loam, part of the ...
3	Dark loam, part of the ...	23	Dark loam, part of the ...
4	Dark loam, part of the ...	24	Dark loam, part of the ...
5	Dark loam, part of the ...	25	Dark loam, part of the ...
6	Dark loam, part of the ...	26	Dark loam, part of the ...
7	Dark loam, part of the ...	27	Dark loam, part of the ...
8	Dark loam, part of the ...	28	Dark loam, part of the ...
9	Dark loam, part of the ...	29	Dark loam, part of the ...
10	Dark loam, part of the ...	30	Dark loam, part of the ...
11	Dark loam, part of the ...	31	Dark loam, part of the ...
12	Dark loam, part of the ...	32	Dark loam, part of the ...
13	Dark loam, part of the ...	33	Dark loam, part of the ...
14	Dark loam, part of the ...	34	Dark loam, part of the ...
15	Dark loam, part of the ...	35	Dark loam, part of the ...
16	Dark loam, part of the ...	36	Dark loam, part of the ...
17	Dark loam, part of the ...	37	Dark loam, part of the ...
18	Dark loam, part of the ...	38	Dark loam, part of the ...
19	Dark loam, part of the ...	39	Dark loam, part of the ...
20	Dark loam, part of the ...	40	Dark loam, part of the ...



1818

Township N<sup>o</sup> III North Range N<sup>o</sup> XIV East of the Mer. (Mich. Ter.)



Quantity exclusive of Grants claimed and Indian Reservations B. 1818 33

A True Copy from the Original on file in this Office

Survey General's Office  
1818

Richard Duffin  
Survey General

Township No 3 N, Range 4 W. P.

127.00

Sec 12

171.51 250 150 150

PCC-040

127.51 280 122.71

Sec 14

Sec 13

110.16

162.50

167.60

1100

171.86

250

103.80

150

Sec 22

127.60

2160

Sec 22

162.3 1100.2

150.30

170.30

175.32 180

Sec 21

1101.50

1100

Sec 20

1100

1100.50

25524

# ASSESSOR'S PLAT NO. 9

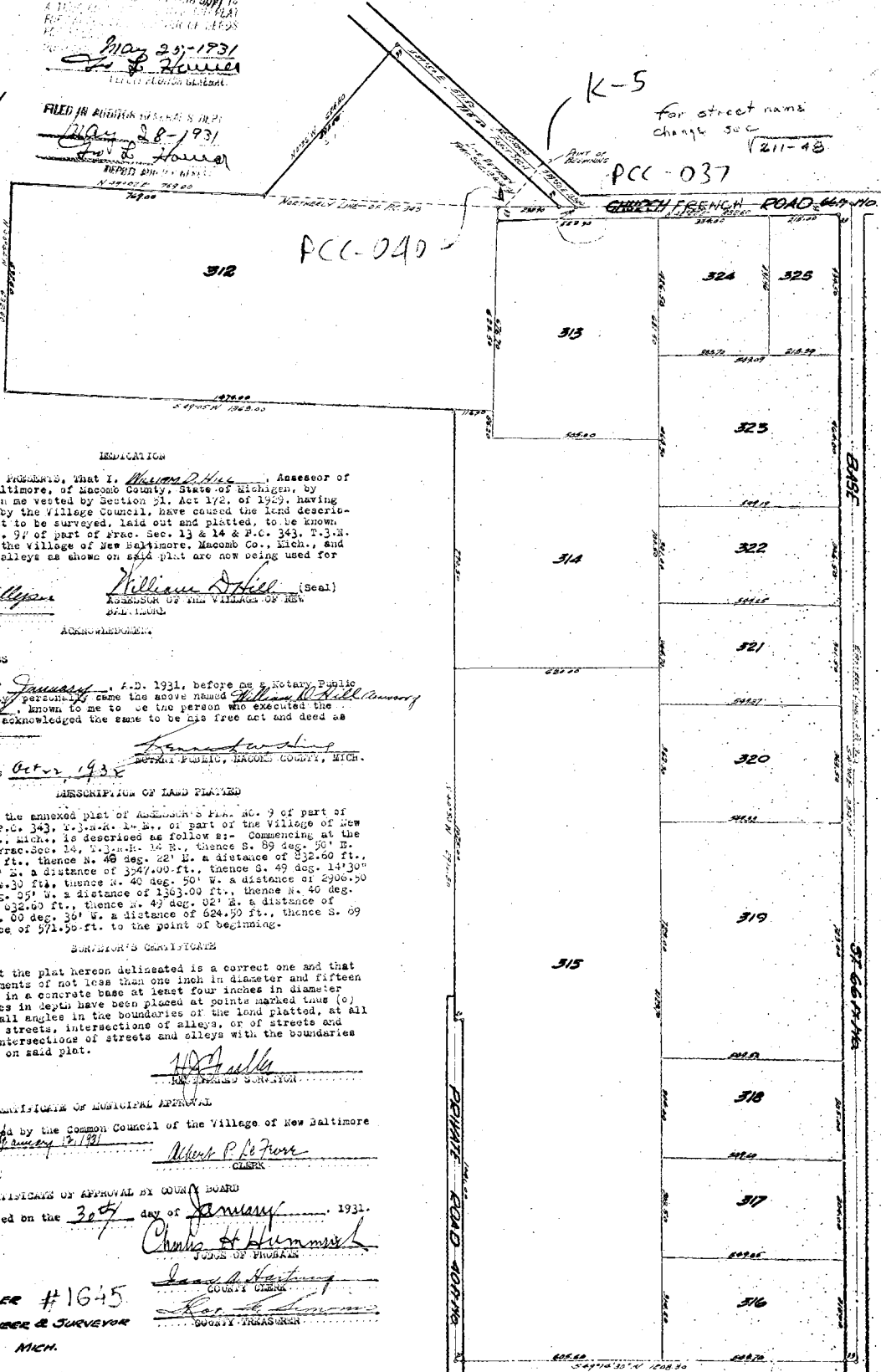
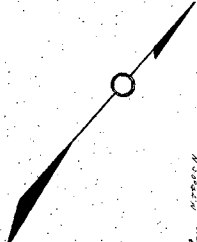
OF PART OF FRAC. SEC. 13 & 14. & P.C. 343 T.31N.R.14E.  
OF PART OF THE VILLAGE OF NEW BALTIMORE, MACOMB CO., MICH.  
SCALE 1"=200'

May 25-1931  
J. P. Howell

COPY  
Macomb  
Assessor's Plat No. 9  
May 26  
May 31  
May 26  
May 10  
May 26  
Lida Maszelle

May 25-1931  
J. P. Howell  
May 28-1931  
J. P. Howell

K-5  
for street name  
change see  
211-48  
PCC-037



RECITATION  
Know all men by these presents, that I, William D. Hill, Assessor of the Village of New Baltimore, of Macomb County, State of Michigan, by virtue of authority in me vested by Section 51, Act 172, of 1929, having been duly authorized by the Village Council, have caused the land described in the annexed plat to be surveyed, laid out and platted, to be known as Assessor's Plat No. 9, of part of frac. sec. 13 & 14 & P.C. 343, T.31N., R. 14E., of part of the Village of New Baltimore, Macomb Co., Mich., and that the streets and alleys as shown on said plat are now being used for such purposes.

Witness my hand and seal this 25th day of May, 1931, at New Baltimore, Mich.  
William D. Hill (Seal)  
Assessor of the Village of New Baltimore, Mich.

ACKNOWLEDGMENT  
I, John C. ..., Clerk of said County, do hereby certify that on this 27th day of January, A.D. 1931, before me a Notary Public in and for said county personally came the above named William D. Hill and John C. ... of New Baltimore, Mich., known to me to be the person who executed the above recitation and acknowledged the same to be his free act and deed as such assessor.

My commission expires Oct 2, 1932  
Notary Public, Macomb County, Mich.  
DESCRIPTION OF LAND PLATED  
The land embraced in the annexed plat of Assessor's Plat No. 9 of part of frac. sec. 13 & 14 & P.C. 343, T.31N., R. 14E., of part of the Village of New Baltimore, Macomb Co., Mich., is described as follows:— Commencing at the corner post of frac. sec. 14, T.31N., R. 14E., thence S. 89 deg. 50' E. a distance of 163.44 ft., thence N. 48 deg. 22' E. a distance of 352.50 ft., thence S. 41 deg. 00' E. a distance of 324.00 ft., thence S. 49 deg. 14' 30" E. a distance of 1204.30 ft., thence S. 40 deg. 50' W. a distance of 2906.50 ft., thence S. 49 deg. 59' W. a distance of 1363.00 ft., thence N. 40 deg. 44' W. a distance of 832.50 ft., thence N. 49 deg. 02' E. a distance of 759.00 ft., thence N. 00 deg. 30' W. a distance of 624.50 ft., thence S. 09 deg. 50' E. a distance of 571.50 ft. to the point of beginning.

CERTIFICATE OF SURVEYOR  
I hereby certify that the plat hereon delineated is a correct one and that permanent metal monuments of not less than one inch in diameter and fifteen inches in length set in a concrete base at least four inches in diameter and forty-eight inches in depth have been placed at points marked (a) and (b) thereon shown at all angles in the boundaries of the land platted, at all the intersections of streets, intersections of alleys, or of streets and alleys, and at the intersections of streets and alleys with the boundaries of the plat as shown on said plat.

CERTIFICATE OF MUNICIPAL APPROVAL  
This plat was approved by the Common Council of the Village of New Baltimore at a meeting held January 17, 1931  
Walter P. ...  
CLERK

CERTIFICATE OF APPROVAL BY COUNTY BOARD  
This plat was approved on the 30th day of January, 1931.  
Charles H. ...  
JUDGE OF PROBATE

Harry J. Fuller #1645  
REGISTERED CIVIL ENGINEER & SURVEYOR  
MICH.  
James H. ...  
COUNTY CLERK  
John C. ...  
COUNTY TREASURER



**LAND CORNER RECORDATION CERTIFICATE**  
**Filing Requirement of Act 74, Mich. P.A. 1970**

For corners in

<u>MACOMB</u> (County)	Located In: <u>CHESTERFIELD TWP.</u>	Corner Code # _____
1. Public Land Survey	T <u>3N</u> R <u>14E</u>	_____
	T _____ R _____	_____
	T _____ R _____	_____
	T _____ R _____	_____
2. Property Controlling in Section	S <u>14</u> T <u>3N</u> R <u>14E</u>	_____
	S _____ T _____ R _____	_____
3. Miscellaneous Property in Sec.	S _____ T _____ R _____	_____
	S _____ T _____ R _____	_____

Register of Deeds Stamp & File Number

4. Lot No. \_\_\_\_\_, Recorded Plat \_\_\_\_\_  
 5. Private Claims INTERSECTION OF NW LINE P.C. #343 & EAST LINE SECTION 14

A	B	C	D	E	F	G	H	I	J	K	L	M
2	8	5	4	3	2	1						
3												
4	7	8	9	10	11	12						
6												
6	18	17	16	15	14	13						
7												
8	19	20	21	22	23	24						
8												
10	30	29	28	27	26	25						
11												
12	31	32	33	34	35	36						
13												

I, MARTIN C. DUNN, in a field survey on DECEMBER 7, 19 95, do hereby certify that under requirements of P.A. 74, Michigan P.A. of 1970, the corner points mentioned in lines 1 and 2 above were in conformance with regulations and rules therefore as required in the current manual of survey instructions of the United States Department of the Interior, Bureau of Land Management or by a decree of a Court of Law and/or that the corner points mentioned in lines 3, 4 and 5 above were in conformance with the rules of the Michigan Board of Land Surveyors or by a Decree of a Court of Law; established, re-established, monumented, re-monumented, recovered, found as expressed below:

**NOTE: Not more than 4 corners, all in the same town and range, may be recorded on this certificate.**

A. Description of original monument and accessories and/or subsequent restoration:  
 GLO POST - NO EVIDENCE OF ORIGINAL CORNER FOUND

C0288451 LIBER:06853 PAGE:215 11:03A 12/14/1995  
 CARMELLA SABAUGH-MACOMB COUNTY, MI REG/DEEDS

B. Description of corner evidence found and/or method applied in restoring or reestablishing corner:  
 NO EVIDENCE OF CORNER FOUND  
 HELD FOUND IRONS FROM "ASSESSOR'S PLAT No. 9" (L-15,P.40(M.C.R.)) TO ESTABLISH P.C. LINE  
 EXTENDED EAST LINE OF SECTION 11 SOUTHERLY TO INTERSECT P.C. LINE  
 SET IRON ROD WITH PLASTIC CAP #30081



C. Description of monument for corner and accessories established to perpetuate locating the position of the corner:  
 T.3N., R.14E. IRON ROD WITH PLASTIC CAP #30081 FOUND 1/2" IRON W/CAP 30103

<u>WITNESSES</u>		
AZ. 30°	32.81'	SET PK NAIL AND METCO TAG IN WEST FACE OF 24" OAK GONE
EAST	9.98'	SET PK NAIL AND METCO TAG IN NORTH FACE OF 24" OAK GONE
SOUTH	26.75'	SET PK NAIL AND METCO TAG IN WEST FACE OF 6" OAK GONE
AZ. 330°	19.97'	NORTHEAST CORNER OF FLAG POLE GONE

THE SELECTED LOCATION IS FOR THIS PROPERTY CONTROLLING MONUMENT IS ACCEPTED AS A CAREFUL AND FAITHFUL DETERMINATION OF THE POSITION INDICATED.

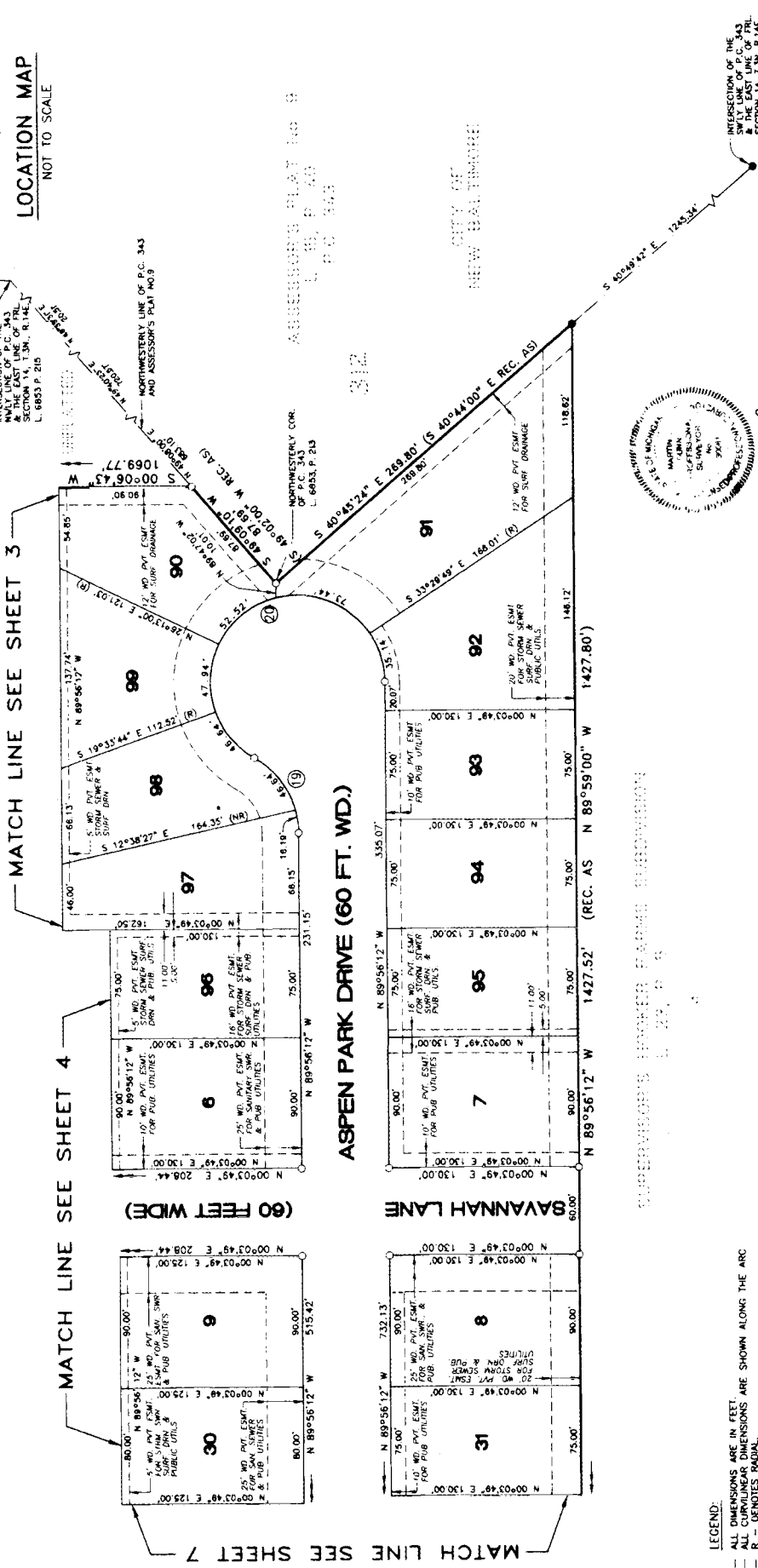
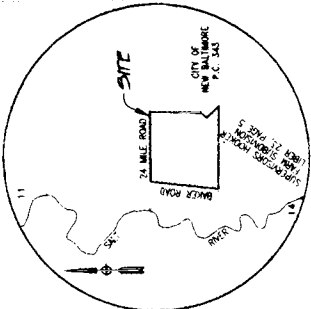
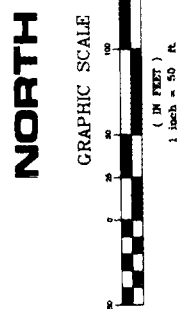
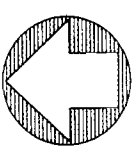
Signed by Martin C. Dunn Date 12/14/95  
 Surveyor's Michigan License No. 30081

02520

L 113-P 20  
1996

# "ASPEN PARK"

PART OF THE NORTHEAST 1/4 OF FRACTIONAL SECTION 14, TOWN 3 NORTH  
RANGE 14 EAST, CHESTERFIELD TOWNSHIP, MACOMB COUNTY, MICHIGAN



CURVE	RADIUS	LENGTH	CHORD	BEARING	DELTA
19	60.00	62.83	60.00	N 60°03'52" E	60°00'07"
20	60.00	255.88	103.97	S 79°56'11" E	240°00'06"



**MATCO SERVICES**  
12504 STEPHENS WARREN, MI 48080

63563



SEC. 11

SEC. 14

SEC. 12

SEC. 13

② ③ - 1584.68' N. 1584.60' P.

832.60' R.

AP #10

752.00' R.

1584.78' N. 832.92' N.

10.76NW ④ - 1/2" I. PIPE 751.86' N.

1584.67' N. 832.21' N.

S. 51' NW ④ - P.C. NAIL 752.46' N.

137° 26' 15" N. ④

④

138° 12' 00" R.

② N. 47° 23' 28" E. 832.92' N.

NE COR PC 343

NORTHERLY LINE PC 343

89° 22' 00" R.

90° 00' 00" R.

② 89° 15' 48" N

② 89° 11' 06" N.

③ 89° 37' 50" N.

③ 89° 34' 12" N.

④ 90° 00' 12" CALC.

④ 89° 59' 48" CALC.

EASTERLY LINE PC 343 & BASE LINE EQ.

N. 41° 16' 46" W. 3547.47' N.

② 3547.47' N.

③ 3542.28' N.

3547.00' E.

④ 3536.77' CALC.

72-147 50 SHEETS  
22-102 104 SHEETS  
22-144 284 SHEETS



K-5

158.38

163.58'

FRENCH ROAD

832.92 M. 832.60 R.

PCC-037

REC. PLAT  
NO CALC.

PCC-038

46

47

48

49

50

51

52

53

54

55

56

57

58

59

60

61

62

63

64

65

66

67

68

69

70

71

72

73

74

75

76

77

78

79

80

81

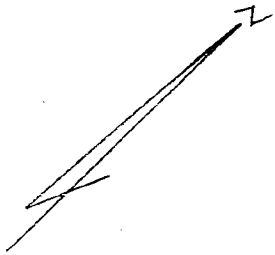
82

83

84

85

FILE: TRODINO  
WEB99144.CRS



50 SHEETS  
100 SHEETS  
200 SHEETS

N. 41° 30' 43" W. 790.61 M.  
N. 41° 27' 26" W. (PLAT) 790.50 R.

619.90 M. (620.00 R.)  
N. 48° 18' 36" E.  
N. 48° 21' 54" E. (PLAT)

1414.05 M.  
1415.00 R.

N. 41° 12' 52" W.  
1896.6 M.  
190.00 R.

1224.39 M.  
1225.00 R.

1837.97 M.  
1838.00 R.

714.50' E.  
713.52' M.

1117.95'  
5.41° 12' 52" E. 1117.95'  
5.41° 09' 05" E. 1414.07 M. (59) TO (48)  
1117.95' M.  
1118.50' R.

106.44 M.  
N. 49° 24' 09" E. 549.05' (2) (64)  
11.3417 ACRES  
SELY 106.50' LOT 322  
S. 49° 24' 09" W. 549.17'

3547.47 M. 3547.00 R.  
5.46° 16' 46" E.  
BASE 5X

1,3308.91015143,1884.82773717,100.00000000,  
2,3369.00056715,2343.28646632,100.00000000,  
3,3921.64117998,2965.50971816,100.00000000,  
4,1258.05164976,5300.68393023,100.00000000,  
5,1072.54170424,5087.60274513,100.00000000,  
6,1099.09152531,4407.41070566,100.00000000,  
7,2061.18746948,2998.26389035,100.00000000,  
8,2558.37780679,2552.66510432,100.00000000,  
9,2873.83329635,2095.76565015,100.00000000,  
10,3309.04169122,1884.92718579,100.00000000,  
11,2454.44657204,3124.61435368,100.00000000,  
12,3052.91092262,3683.80994082,100.00000000,  
13,2473.02924558,3461.56232568,-181.00000000,  
14,2692.18920548,3270.41583636,-181.00000000,  
15,2695.71664522,3266.44512847,-181.00000000,  
16,2767.33946753,3204.05482429,-181.00000000,  
17,3007.33206224,2994.06213099,-181.00000000,  
18,2665.81584165,2621.34975689,-181.00000000,  
19,2972.84325333,3753.94297108,-181.00000000,  
20,3921.64120473,2965.50974602,-181.00000000,  
21,3370.70004643,2179.71531841,100.00000000,  
22,3337.91089998,2306.11390003,100.00000000,  
23,3513.66606362,2551.67414895,100.00000000,  
24,3925.97696221,2962.58504141,100.00000000,  
25,4413.42454039,3535.02289987,100.00000000,  
26,3212.93125013,2165.66997100,100.00000000,  
27,3191.40861597,2183.39857943,100.00000000,  
28,3369.00056715,2343.28646632,-462.00000000,  
29,3537.59809661,2530.74900635,0.00000000,  
30,2695.84969549,3266.60059149,0.00000000,  
31,2615.74481763,3336.69014526,0.00000000,  
32,3065.33890359,3314.70910759,-181.00000000,  
33,3921.64121485,2965.50973703,-181.00000000,  
34,1258.05161632,5300.68385187,-181.00000000,  
35,1072.54168604,5087.60271622,-181.00000000,  
36,1099.09149030,4407.41070390,-181.00000000,  
37,2061.18752499,2998.26398688,-181.00000000,  
38,2558.37775429,2552.66503130,-181.00000000,  
39,2873.83330959,2095.76569070,-181.00000000,  
40,3537.59791098,2530.74879009,0.00000000,  
- 41,3370.70006738,2179.71529497,-181.00000000,  
42,3337.91087323,2306.11386174,-181.00000000,  
43,3513.66604465,2551.67418674,-181.00000000,  
44,3925.97694740,2962.58499238,-181.00000000,  
45,4413.42446622,3535.02288831,-181.00000000,  
- 46,3212.93125344,2165.66996199,-181.00000000,  
47,3191.40863742,2183.39855593,-181.00000000,  
48,2473.08783336,3461.52850181,-181.00000000,  
49,2695.84651012,3266.45953191,-181.00000000,  
50,2767.41111664,3204.06845832,-181.00000000,  
51,2843.31894750,3138.92893044,-181.00000000,  
52,2917.80640687,3072.73548642,-181.00000000,  
53,3007.43842174,2994.12590027,-181.00000000,  
54,2665.99420436,2621.40605834,-181.00000000,

55,2667.02630096,2623.42850426,-181.00000000,  
56,2733.21310867,2567.69097299,-181.00000000,  
57,2729.65052625,2562.82150594,-181.00000000,  
58,2653.65891084,2474.76942977,-181.00000000,  
59,3538.63751893,2531.90472363,-181.00000000,  
60,2695.99070533,3266.62807271,0.00000000,  
61,2615.86236746,3336.69019124,0.00000000,  
62,3903.89394192,2938.03103779,0.00000000,  
63,1236.30166554,5275.86572052,-462.00000000,  
64,3052.92446823,3683.82577344,0.00000000,  
65,2972.87447304,3753.97946186,0.00000000,  
66,3000.45401170,3000.41333741,-462.00000000,  
67,3337.91090000,2306.11390000,100.00000000,  
100,3369.02600000,2340.84820000,-181.00000000,  
101,3537.64830000,2529.08500000,-181.00000000,  
102,3512.82260000,2550.82940000,-181.00000000,  
103,3879.13750000,2959.75470000,-181.00000000,