

PC-033
DOSSIER CONTENT
2010 REMON
T.3N., R.14E.,
Chesterfield Township, Macomb County, Michigan

Section One

Index

Pictures in the four cardinal directions; before and after setting the required monumentation.

Section Two

LCRC

Surveyor's Report

Section Three

1 Field Notes

2 Sketch

4 Township Map

5 Tax Map 1974

6 Aerial Pictures 2009

Section Four

1 1810 Survey of PC 343 A. Greeley

2 1817 Township map Preston

3 1818 Township map Surveyor General Office

4 1818 Township Map

5 1995 LCRC Dunn 30081 L6853, P213

6 1996 Plat-Aspen Park Dunn 30081 L113, P20

7 2001 Plat-Riverside Estates Jerome 19837 L150, P4

8 2001 Plat-Amended Plat of Lot 365 of Amended Plat of Lots 272 and 288 of
Assessor's Plat No.8

Jerome 19837 L150, P32

9 2006 Plat-Amended Plat of Lots 91, 92 and "Crapau Creek Park 1" of "Riverside
Estates"

Kosicki 43058 L159, P14

10 2007 Plat-Amended Plat of Lot 5 New Baltimore Industrial Center

Sycko 47976 L161, P37

LAND CORNER RECORDATION CERTIFICATE
Filing Requirement of Act 74, Mich. P.A. 1970
REMONUMENTATION CORNER

For corners in:

MACOMB COUNTY

(County)

Located In: CHESTERFIELD TOWNSHIP

Corner Code #

NEW BALTIMORE

PC-033

1. Public Land Survey

T 3N R 14E

2. Property Controlling in Section

S T R

3. Miscellaneous Property in Sec.

S T R

S T R

S T R

4. Lot No. Recorded Plat

5. Private Claims PC-343 PC-033 Northwest corner of PC 343.

130671
LIBER 20515 PAGE 768
11/29/2010 01:40:38 P.M.
MACOMB COUNTY, MI
CARNELLA SABAUGH, REGISTER OF DEEDS

Register of Deeds Stamp & File Number

I, ROBERT E. HORNYAK, in a field survey on, July 18, 2010 do hereby certify that under requirements of P.A. 74, Michigan P.A. of 1970, the corner points mentioned in lines 1 and 2 above were in conformance with regulations and rules therefore as required in the current manual of survey instructions of the United States Department of the Interior, Bureau of Land Management or by a decree of a Court of Law and /or that the corner points mentioned in lines 3, 4 and 5 above were in conformance with the rules of the Michigan Board of Land Surveyors or by a Decree of a Court of Law; established, re-established, monumented, re-monumented, recovered, found as expressed below:

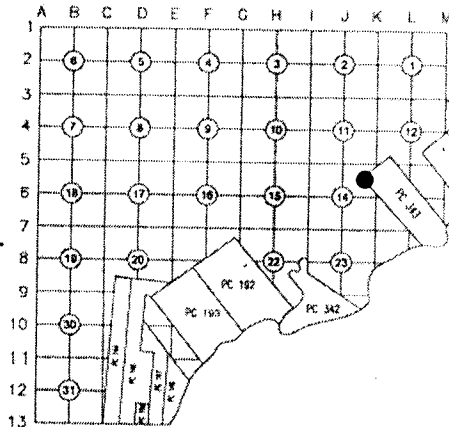
NOTE: Not more than 2 corners, all in the same town and range, may be recorded on this certificate.

A. Description of original monument and accessories and/or subsequent restoration:

1 Survey of PC 343 was performed by A. Greeley in 1810. Beech tree

Subsequent Restorations:

- 2 1817 Township map Preston Object not stated
3 1818 Township map Surveyor General Office Object not stated
4 1818 Township Map Object not stated
5 1995 LCRC Dunn 30081 L6853, P213 Iron rod with plastic cap #30081 (1 of 4 wit. found)
6 1996 Plat-Aspen Park Dunn 30081 L113, P20 Refers to LCRC: L6853, P213
7 2001 Plat-Riverside Estates Jerome 19837 L150, P4 Iron #30081, Refers to LCRC: L6853, P213
8 2001 Plat-Amended Plat of Lot 365 of Amended Plat of Lots 272 and 288 of Assessor's Plat No.8 Jerome 19837 L150, P32 Iron #30081, Refers to LCRC: L6853, P213
9 2006 Plat-Amended Plat of Lots 91, 92 and "Crapau Creek Park 1" of "Riverside Estates" Kosicki 43058 L159, P14 Found Iron #30081, Refers to LCRC: L6853, P213
10 2007 Plat-Amended Plat of Lot 5 New Baltimore Industrial Center Sycko 47976 L161, P37 Refers to LCRC: L6853, P213



B. Description of corner evidence found and/or method applied in restoring or reestablishing corner:

The corner is perpetuated with the found concrete monument. Occupation: NE- tree/field line; SE- tree field line. The witness from Items 5-10, the distance from Item 10 were used to verify the location of the corner.

Distances:

PC-033 to PC-035 8712.00' (132.00 ch) 1
PC-033 to PCC-037 1648.68' (24.98 ch)(c) 2
PC-033 to PCC-039 5587.11' (c) 10
8920.84' (prorated) Remon 10 1727.54' Remon 10 5587.09' Remon 10

C. Description of monument for corner and accessories established to perpetuate locating the position of the corner:

Placed a 2" aluminum cap stamped "MACOMB COUNTY MONUMENT MI ACT 345; PC-033; 44286" on found concrete monument.

Witnesses:

- N40°E 39.24' SE'ly garage corner #34283
S35°E 2.90' Set mag nail w/"MACOMB COUNTY WITNESS TAG" in W face 18" oak
S45°W 27.98' To center of nut of water shut off in concrete drive
S88°W 10.24' Fnd 1/2" iron
N65°W 96.21' CL top nut of hydrant

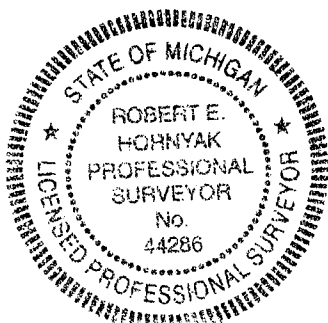
THE SELECTED LOCATION IS ACCEPTED BY ME AND IS GENERALLY ACCEPTED BY PROFESSIONAL SURVEYORS AS THE BEST AVAILABLE EVIDENCE OF THE POSITION OF THIS CORNER.



Signed by [Signature] Date August 28, 2010.

Surveyor's Michigan License No. 44286

FORM APPROVED BY MICHIGAN STATE BOARD OF LAND SURVEYORS, JAN. 28, 1971
REVISED MAY 14, 975
REVISED JAN. 983
REVISED OCT. 995



ACCEPTED BY THE MACOMB COUNTY SURVEY PEER GROUP AS THE OFFICIAL CORNER UNDER MICHIGAN PUBLIC ACT 345 OF 1990 AT A MEETING HELD ON 8-24-10

[Signature]
MARTIN C. DUNN, P.S. CHAIRMAN

[Handwritten mark]

PC-033 CHESTERFIELD TOWNSHIP

PC-033 is a Northwest corner of PC 343.
Survey of PC 343 was performed by A. Greeley in 1810.

Corner history:

1	1810	PC Survey notes	Greeley		Beech tree
2	1817	Township map	Preston		Object not stated
3	1818	Township map	Surveyor General Office		Object not stated
4	1818	Township Map			Object not stated
5	1995	LCRC	Dunn	30081 L6853, P213	Iron rod with plastic cap #30081 45° 8.33' Set PK nail w/Metco tag in SW face 8" maple 145° 12.10' Set PK nail w/Metco tag in SW face 3" ash * South 3.38' Set PK nail w/Metco tag in W face 15" oak 320° 12.90' Set "x" on rim sating manhole
6	1996	Plat-Aspen Park	Dunn	30081 L113, P20	Refers to LCRC: L6853, P213
7	2001	Plat-Riverside Estates	Jerome	19837 L150, P4	Iron #30081 Refers to LCRC: L6853, P213
8	2001	Plat-Amended Plat of Lot 365 of Amended Plat of Lots 272 and 288 of Assessor's Plat No. 8	Jerome	19837 L150, P32	Iron #30081 Refers to LCRC: L6853, P213
9	2006	Plat-Amended Plat of Lots 91, 92 and "Crapau Creek Park 1" of "Riverside Estates"	Kosicki	43058 L159, P14	Found Iron #30081 Refers to LCRC: L6853, P213
10	2007	Plat-Amended Plat of Lot 5 New Baltimore Industrial Center	Sycko	47976 L161, P37	Refers to LCRC: L6853, P213

* denotes matching witnesses

Field evidence:

The corner is perpetuated with the found concrete monument.
Occupation: NE- tree/field line; SE- tree field line.

Distances:

PC-033 to PCC-037	PC-033 to PCC-039
1648.68' (24.98 ch)(c) 2	5587.11' (c) 10
1727.54' Remon 10	5587.09' Remon 10

Recommendation:

The witness from Items 5-10, the distance from Item 10 were used to verify the location of the corner.
I recommend to the Peer Review Board to accept the concrete monument as proper location for the corner.
I recommend placing a 2" aluminum cap stamped "MACOMB COUNTY MONUMENT MI ACT 345; PC-033; 44286" on found concrete monument.

Witnesses:

N40°E	39.24'	SE'ly garage corner #34283
S35°E	2.90'	Set mag nail w/"MACOMB COUNTY WITNESS TAG" in W face 18" oak
S45°W	27.98'	To center of nut of water shut off in concrete drive
S88°W	10.24'	Fnd 1/2" iron
N65°W	96.21'	CL top nut of hydrant

Respectfully submitted,

Robert E. Hornyak, PS # 44286

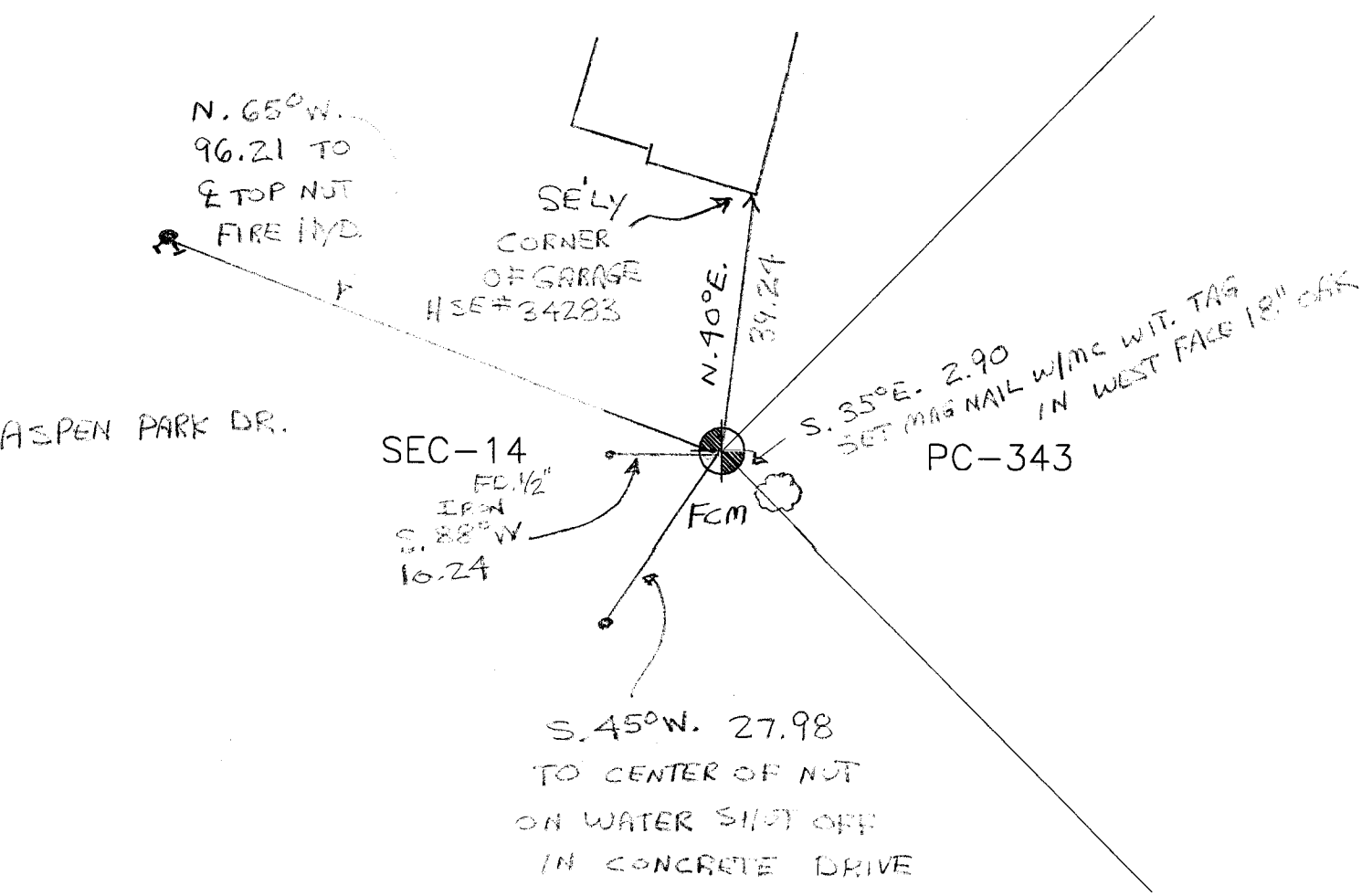
PC-033

REMON 2010

CHESTERFIELD TWP., T3N, R14E



DATE: 7-15-10
CREW: TD/JK
OBJECT FOUND: CONC. MON.
POINT No.: 107
CTRL. PTS.: _____

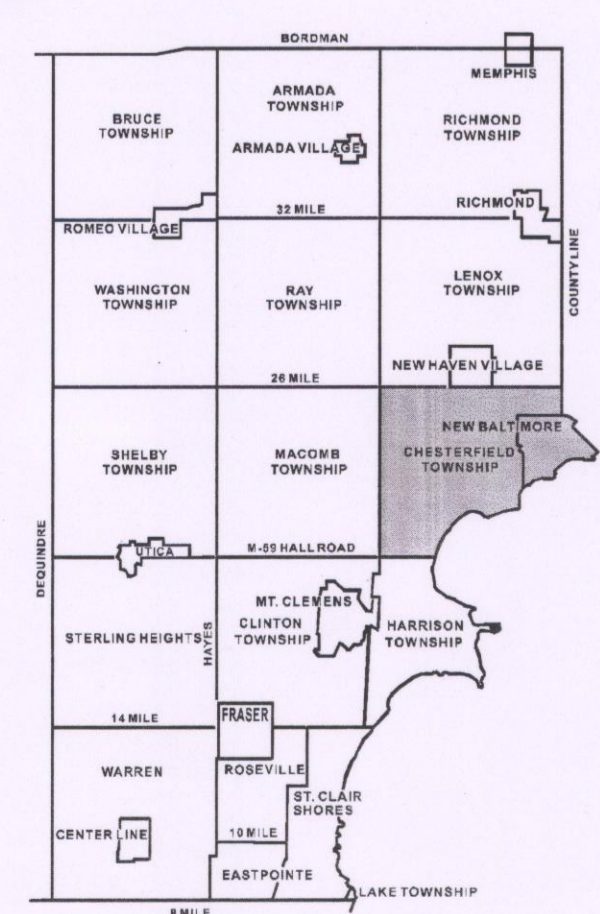


OCCUPATION
(if road state surface)



Date of Photography: Spring 2008
 100 50 0 100 200 Feet
 1:1,200

CHESTERFIELD TWP SHEET INDEX



DESCRIPTION OF PERMANENT REAL ESTATE INDEX NUMBER
13-19-302-018

09-14D

BALTIMORE & CHESTERFIELD TWP.
 E.1/2 N.E.1/4 SEC.14 T.3N. R.14E.

- Legend**
- Platted Area Boundary Line
 - Property Line
 - - - Property Split Line
 - · - · - Property Combined Line
 - - - Township Boundary Line
 - - - Traverse Line
 - Dimension Extent Marks
 - Dimension Start Marks

Source: Macomb County Department of Planning and Economic Development
 - 2008 Digital Orthophotography Project
 - Parcel Conversion Project

Note:
 Digital Orthophotography horizontal positioning accuracy is 3 feet. Parcel boundary lines should be considered a graphical representation and not in any way a legal survey or engineering document. In general, the horizontal positioning and length accuracy is within 15 feet.

This map is intended for general planning purposes. Site specific evaluation should be verified by field inspection. This is a work in progress and may contain errors and omissions. Please report any potential revisions to (586)469-5285.



GIS MACOMB COUNTY
 Planning and Economic
 Development Department
 Published: Jan 26, 2009

N. 3434

Lake St. Clair

Description N. 343 Confirmed to
Pierre Yax commencing at an Old tree
standing on the border of Lake St. Clair
between this tract and a tract Reserved
for Maccorse, thence north forty five
degrees west one hundred and thirty two
chains forty links, to a Beech tree, thence
north forty five degrees East thirty eight
chains, to a white Oak tree, thence South
forty five degrees East one hundred and
Ten chains, to a white Oak tree standing
on the border of Lake St. Clair between
this Tract and unconceded land, thence
along the border of said Lake South
seventeen degrees East twelve chains six-
ty six links, thence South forty eight
degrees west ten chains, thence South
seventeen degrees west twenty five ch-
ains, to the place of beginning contain-
ing Four hundred and sixty eight -
aces Sixty seven hundredths of an
acre.

Detroit July 18. 1810

Aaron Gselle Surveyor
of private Claims.

343

No. 434

No. 343 Confirmed to
Pierre Yax

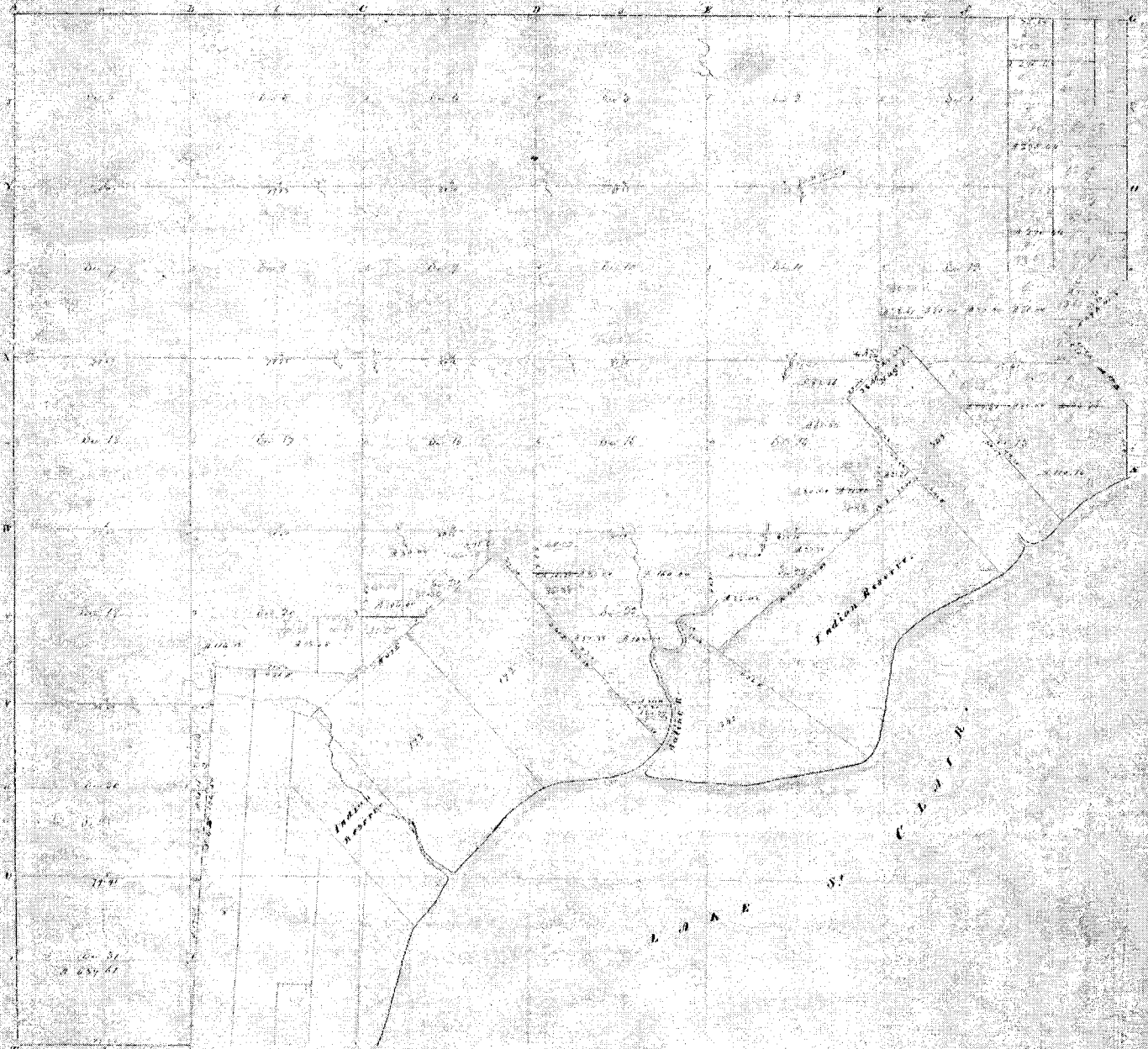
LAKE ST. CLAIR

Description No. 343 Confirmed to Pierre Yax commencing at
an Elm Tree standing on the border of Lake St. Clair between
this tract and a tract reserved for Macconse, thence north
forty five degrees west one hundred and thirty two chains forty
links to a Beech Tree thence north forty five degrees East thirty
eight chains to a White Oak Tree thence south forty five degrees
East one hundred and ten chains to a White Oak Tree standing on
the border of Lake St. Clair between this tract and unconceded
land thence along the border of said Lake south seventeen degrees
east twelve chains sixty six links, thence south forty eight degrees
west ten chains thence south seventeen degrees west twenty five
chains to the place of beginning ____ Containing four hundred and
sixty eight acres sixty seven hundredths of an acre ____.

Detroit July 24th, 1810

Aaron Greeley Surveyor
of private claims

1817



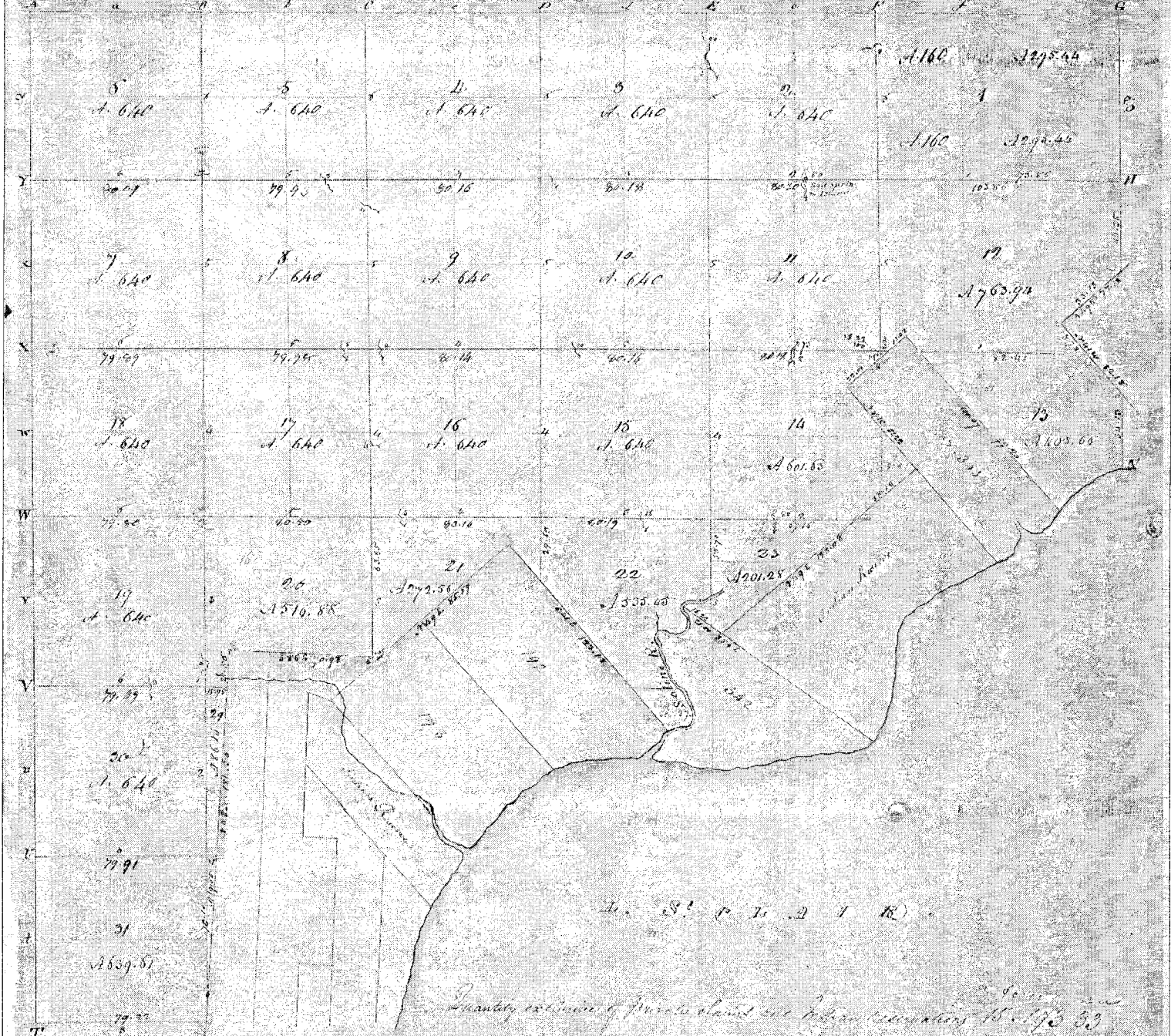
Township N: III north , Range N: XV East of Mer. (Black Top) surveyed by Wm Preston 1817

Description of the soil on the exterior sectional lines.

Section	Soil Description	Section	Soil Description
1	Black loam, rich soil, with a little sand, and a few stones.	17	Black loam, rich soil, with a little sand, and a few stones.
2	Black loam, rich soil, with a little sand, and a few stones.	18	Black loam, rich soil, with a little sand, and a few stones.
3	Black loam, rich soil, with a little sand, and a few stones.	19	Black loam, rich soil, with a little sand, and a few stones.
4	Black loam, rich soil, with a little sand, and a few stones.	20	Black loam, rich soil, with a little sand, and a few stones.
5	Black loam, rich soil, with a little sand, and a few stones.	21	Black loam, rich soil, with a little sand, and a few stones.
6	Black loam, rich soil, with a little sand, and a few stones.	22	Black loam, rich soil, with a little sand, and a few stones.
7	Black loam, rich soil, with a little sand, and a few stones.	23	Black loam, rich soil, with a little sand, and a few stones.
8	Black loam, rich soil, with a little sand, and a few stones.	24	Black loam, rich soil, with a little sand, and a few stones.
9	Black loam, rich soil, with a little sand, and a few stones.	25	Black loam, rich soil, with a little sand, and a few stones.
10	Black loam, rich soil, with a little sand, and a few stones.	26	Black loam, rich soil, with a little sand, and a few stones.
11	Black loam, rich soil, with a little sand, and a few stones.	27	Black loam, rich soil, with a little sand, and a few stones.
12	Black loam, rich soil, with a little sand, and a few stones.	28	Black loam, rich soil, with a little sand, and a few stones.
13	Black loam, rich soil, with a little sand, and a few stones.	29	Black loam, rich soil, with a little sand, and a few stones.
14	Black loam, rich soil, with a little sand, and a few stones.	30	Black loam, rich soil, with a little sand, and a few stones.
15	Black loam, rich soil, with a little sand, and a few stones.	31	Black loam, rich soil, with a little sand, and a few stones.
16	Black loam, rich soil, with a little sand, and a few stones.	32	Black loam, rich soil, with a little sand, and a few stones.
17	Black loam, rich soil, with a little sand, and a few stones.	33	Black loam, rich soil, with a little sand, and a few stones.
18	Black loam, rich soil, with a little sand, and a few stones.	34	Black loam, rich soil, with a little sand, and a few stones.
19	Black loam, rich soil, with a little sand, and a few stones.	35	Black loam, rich soil, with a little sand, and a few stones.
20	Black loam, rich soil, with a little sand, and a few stones.	36	Black loam, rich soil, with a little sand, and a few stones.

1818

Township N. 3 North Range N. 14 East of the Mer. (Mich. Ter.)



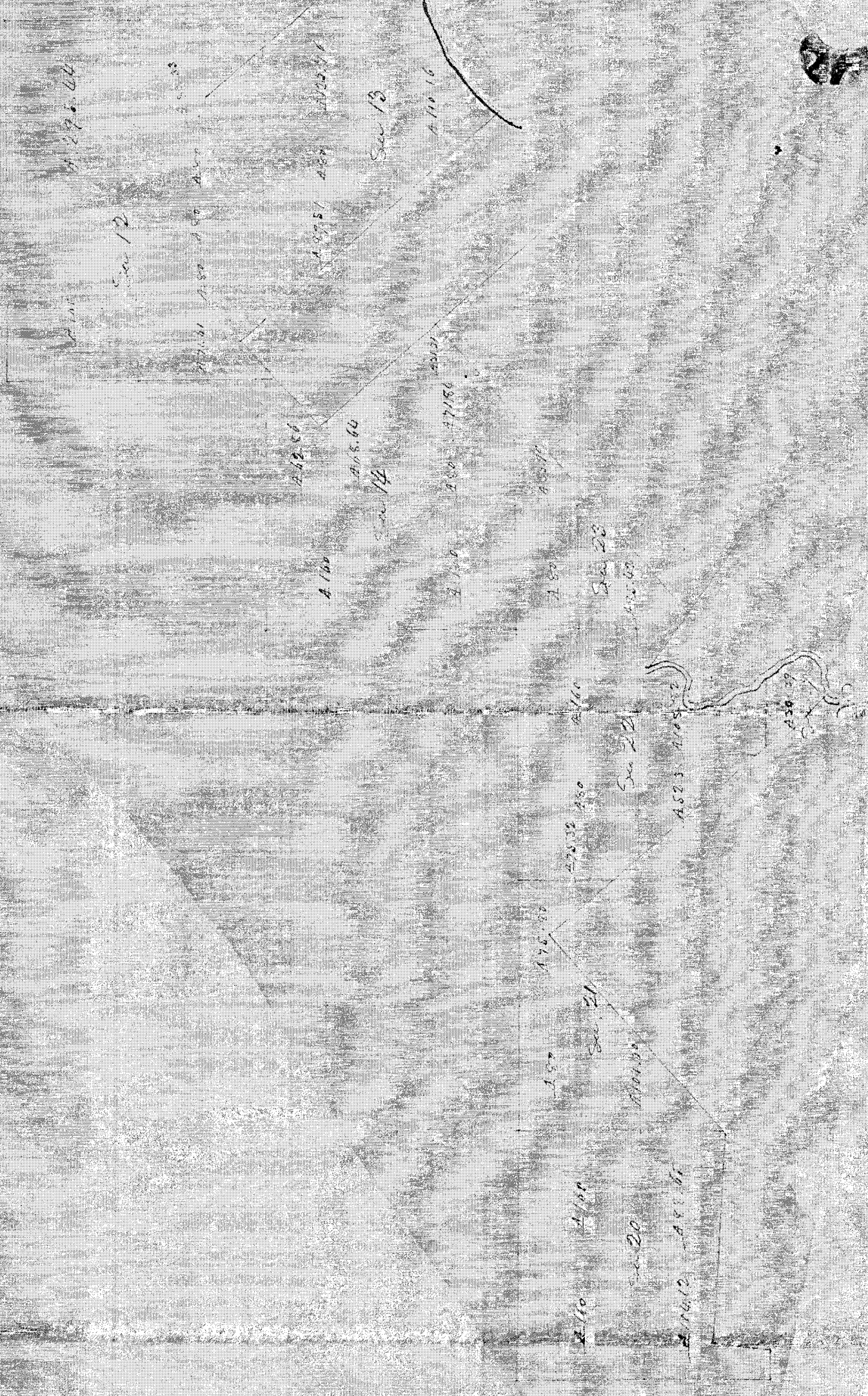
A. S. P. L. A. I. R.

Quantity exclusive of private land and Indian reservations 18. 1/2 33

A true copy from the original kept in his office
Surveyor General's Office
July 16 1815.

Surveyor General

Township No 3 N, Range 14 E.



A 276.66

Sec 12

A 50.00

A 1.80 2.50 4.00

A 68.66

A 160

A 68.66

Sec 14

Sec 13

A 110.16

A 20.00

A 100 200 300 400 500

A 68.66

A 50

Sec 23

A 28.32 280

A 100.00

Sec 22

A 623 1105.00

A 76.00

A 50

Sec 21

A 110

Sec 20

A 116.12 251.66

A 100.00

PC-033

LAND CORNER RECORDATION CERTIFICATE
Filing Requirement of Act 74, Mich. P.A. 1970

For corners in

MACOMB

(County)

Located in:
CHESTERFIELD TWP.

Corner Code #

- 1. Public Land Survey T 3N R 14E
 T R
 T R
 T R
- 2. Property Controlling S 14 T 3N R 14E
 in Section S T R
- 3. Miscellaneous S T R
 Property in Sec. S T R

Register of Deeds Stamp & File Number

- 4. Lot No. _____, Recorded Plat _____
- 5. Private Claims NW CORNER OF PRIVATE CLAIM 343

	A	B	C	D	E	F	G	H	I	J	K	L	M
2	8	6	4	3	2	1							
3													
4	7	8	9	10	11	12							
5													
6	18	17	16	15	14	13							
7													
8	19	20	21	22	23	24							
9													
10	30	29	28	27	26								
11													
12	31	32	33	34	35	36							
13													

I, MARTIN C. DUNN, in a field survey on DECEMBER 7, 19 95, do hereby certify that under requirements of P.A. 74, Michigan P.A. of 1970, the corner points mentioned in lines 1 and 2 above were in conformance with regulations and rules therefore as required in the current manual of survey instructions of the United States Department of the Interior, Bureau of Land Management or by a decree of a Court of Law and for that the corner points mentioned in lines 3, 4 and 5 above were in conformance with the rules of the Michigan Board of Land Surveyors or by a Decree of a Court of Law; established, re-established, monumented, re-monumented, recovered, found as expressed below:

NOTE: Not more than 4 corners, all in the same town and range, may be recorded on this certificate.

A. Description of original monument and accessories and/or subsequent restoration:

GLO POST - NO EVIDENCE OF ORIGINAL CORNER FOUND

*C0288449 LIBER:06853 PAGE:213 11:03A 12/14/1995
CARMELLA SABAUGH-MACOMB COUNTY, MI REG/DEEDS*



B. Description of corner evidence found and/or method applied in restoring or reestablishing corner:

FOUND IRON ROD

RESET USING RECORD ANGLE FROM PROPERTY DESCRIPTIONS AND FOUND MONUMENTS IN "SUPERVISOR'S HOOKER FARM SUBDIVISION" L.23,P.5 (M.C.R.)

C. Description of monument for corner and accessories established to perpetuate locating the position of the corner:

T.3N., R.14E. IRON ROD WITH PLASTIC CAP #30081

WITNESSES FCM

- GONE AZ. 45° 8.33' SET PK NAIL AND METCO TAG IN SOUTHWEST FACE OF 8" MAPLE
- GONE AZ. 145° 12.10' SET PK NAIL AND METCO TAG IN SOUTHWEST FACE OF 3" ASH
- 2.95 SOUTH 3.38' SET PK NAIL AND METCO TAG IN WEST FACE OF 15" OAK
- AZ. 320° 12.90' SET "X" ON RIM CASTING OF MANHOLE

THE SELECTED LOCATION IS FOR THIS PROPERTY CONTROLLING MONUMENT IS ACCEPTED AS A CAREFUL AND FAITHFUL DETERMINATION OF THE POSITION INDICATED.

Signed by Martin C. Dunn

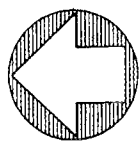
Date 12/14/95

Surveyor's Michigan License No. 30081

02518

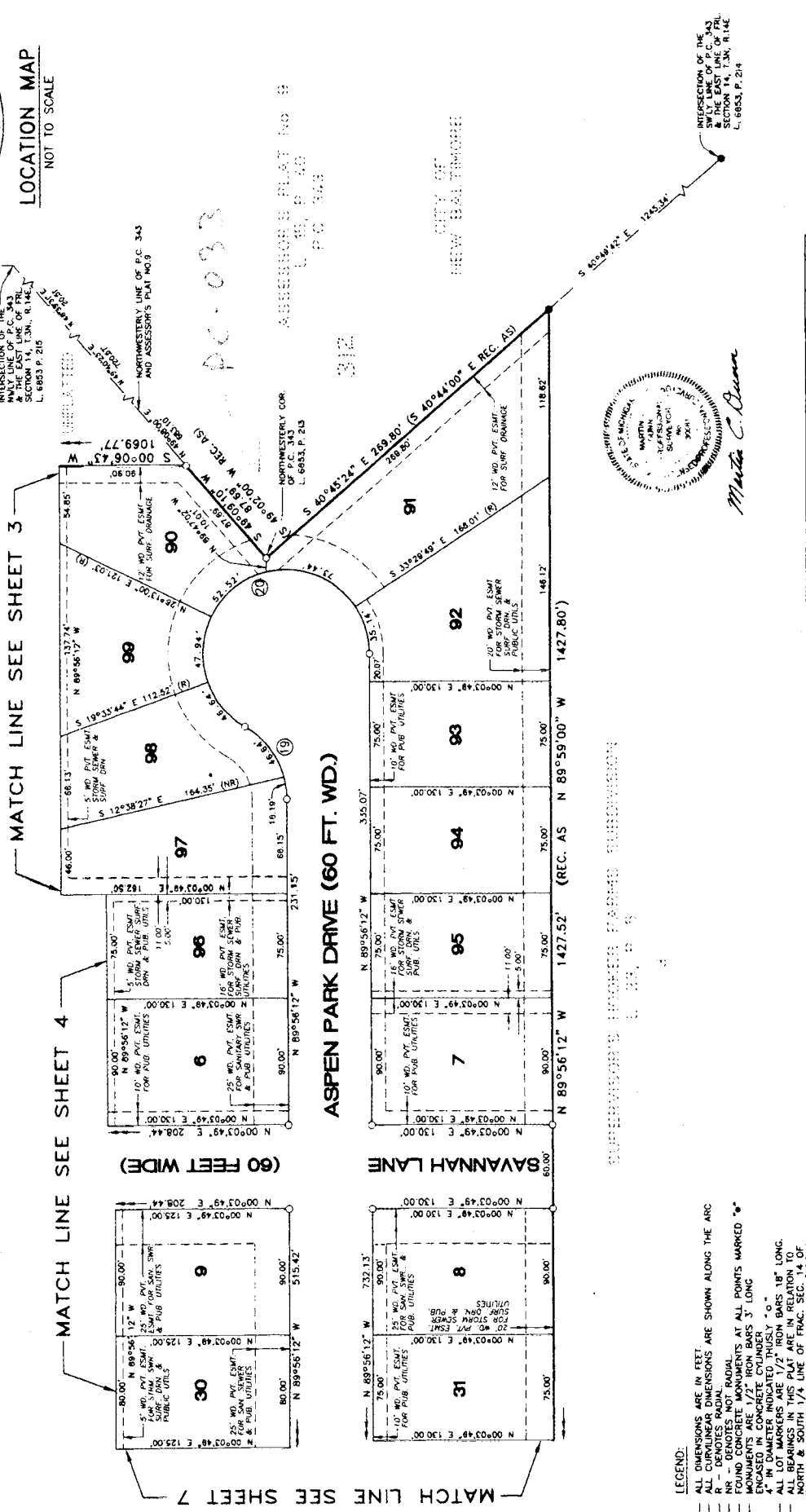
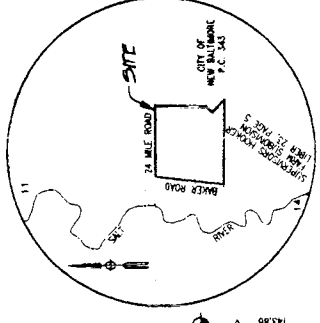
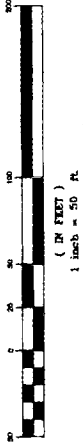
"ASPEN PARK"

PART OF THE NORTHEAST 1/4 OF FRACTIONAL SECTION 14, TOWN 3 NORTH
RANGE 14 EAST, CHESTERFIELD TOWNSHIP, MACOMB COUNTY, MICHIGAN



NORTH

GRAPHIC SCALE



CURVE	RADIUS	LENGTH	CHORD	BEARING	DELTA
19	60.00	62.83	60.00	N 89°03'52" E	60°00'00"
20	60.00	255.84	103.97	S 89°56'11" E	240°00'00"

SEAL OF MICHIGAN
STATE OF MICHIGAN
SUPERVISOR OF HIGHWAYS
MARTIN J. HARRIS
SACRAMENTO, CALIF.
MAY 19 1996

Martin C. Harris

LEGEND:
 - ALL DIMENSIONS ARE IN FEET
 - ALL CURVILINEAR DIMENSIONS ARE SHOWN ALONG THE ARC
 - R - DENOTES RADIAL
 - NR - DENOTES NOT RADIAL
 - FOUND CONCRETE DIMENSIONS AT ALL POINTS MARKED "o"
 - MARKERS IN CONCRETE DIMENSIONS ARE 3" LONG
 - 4" IN DIAMETER INDICATED THUSLY "o"
 - ALL LOT MARKERS ARE 1/2" IRON BARS 18" LONG
 - NORTH IS INDICATED BY AN ARROW
 - "SUPERVISOR'S HOOKER FARMS SUBDIVISION" BEING PART OF THE FRAC. SEC. 14, T.3 N., R. 14 E., CHESTERFIELD TWP., MACOMB COUNTY, MICHIGAN AS SHOWN ON PLAT NO. 312, P. 214
 - "SUPERVISOR'S HOOKER FARMS SUBDIVISION" BEING PART OF THE FRAC. SEC. 14, T.3 N., R. 14 E., CHESTERFIELD TWP., MACOMB COUNTY, MICHIGAN AS SHOWN ON PLAT NO. 312, P. 214

MEVCO SERVICES
17304 STEPHENS AVE., W. 48089

63563

2-113-7-88
1996

" ASPEN PARK "

PART OF THE NORTHEAST 1/4 OF FRACTIONAL SECTION 14, TOWN 3 NORTH
RANGE 14 EAST, CHESTERFIELD TOWNSHIP, MACOMB COUNTY, MICHIGAN

PROPRIETOR'S CERTIFICATE - CORPORATION

HUNTINGTON BANKS OF MICHIGAN, A CORPORATION DULY ORGANIZED AND EXISTING UNDER THE LAWS OF THE STATE OF MICHIGAN, BY LOUIS J. PETERS, SR. VICE PRESIDENT, AND ROBERT P. JOHNSON, VICE PRESIDENT AS PROPRIETORS, HAVE CAUSED THE LAND TO BE SURVEYED, DIVIDED, MAPPED AND DEDICATED AS REPRESENTED ON THIS PLAT AND THAT THE STREETS ARE FOR THE USE OF THE PUBLIC, THAT THE PUBLIC UTILITY EASEMENTS ARE PRIVATE EASEMENTS AND THERE SHALL BE NO DIRECT VEHICULAR ACCESS FROM BAKER RD. TO LOTS 50 THRU 51 AND LOTS 51 & 60 AND FROM 24 MILE RD. TO LOTS 60 THRU 79.

WITNESSES
HUNTINGTON BANKS OF MICHIGAN
801 WEST BIG BEAVER
TROY, MICHIGAN 48064

John Kelly
FILE # 18-5430
Robert P. Johnson
FILE # 18-5430
John Kelly
FILE # 18-5430
Robert P. Johnson
FILE # 18-5430

Louis J. Peters
LOUIS J. PETERS
SR. VICE PRESIDENT
Robert P. Johnson
ROBERT P. JOHNSON
VICE PRESIDENT

ACKNOWLEDGEMENT

STATE OF MICHIGAN)
MACOMB COUNTY) S. S.

PERSONALLY CAME BEFORE ME THIS 16th DAY OF October, 1995, THE ABOVE NAMED LOUIS J. PETERS, SR. VICE PRESIDENT AND ROBERT P. JOHNSON, VICE PRESIDENT OF THE ABOVE NAMED CORPORATION, TO ME KNOWN TO BE THE PERSONS WHO EXECUTED THE FOREGOING INSTRUMENT, AND TO ME KNOWN TO BE SUCH SR. VICE PRESIDENT AND VICE PRESIDENT OF SAID CORPORATION AND ACKNOWLEDGED THAT THEY EXECUTED THE FOREGOING INSTRUMENT AS SUCH OFFICERS AS THE FREE ACT AND DEED OF SAID CORPORATION.

MY COMMISSION EXPIRES:

July 29, 1998

Elizabeth A. Cassel
ELIZABETH A. CASSEL
NOTARY PUBLIC
MACOMB COUNTY, MICHIGAN

COUNTY TREASURER'S CERTIFICATE

THE RECORDS IN MY OFFICE SHOW NO UNPAID TAXES OR SPECIAL ASSESSMENTS FOR THE FIVE YEARS PRECEDING 10-16-95, 1995, INVOLVING THE LANDS INCLUDED IN THIS PLAT.

Rose Barkatt
ROSE BARKATT, DEPUTY TREASURER
MACOMB COUNTY, MICHIGAN

COUNTY DRAIN COMMISSIONER'S CERTIFICATE

APPROVED ON November 1, 1995, AS COMPLYING WITH SECTION 192 OF ACT 288, P.A. 1967 AND THE APPLICABLE RULES AND REGULATIONS PUBLISHED BY MY OFFICE IN THE COUNTY OF MACOMB.

Anthony V. Marocco
ANTHONY V. MAROCCO
DRAIN COMMISSIONER



Mauro C. Deam

CERTIFICATE OF COUNTY ROAD COMMISSIONERS

APPROVED ON Nov. 7th, 1995, AS COMPLYING WITH SECTION 183 OF ACT 288, P.A. 1967 AND THE APPLICABLE PUBLISHED RULES AND REGULATIONS OF THE BOARD OF ROAD COMMISSIONERS OF MACOMB COUNTY.

Wally Lawrence
WALLY LAWRENCE, CHAIRMAN
Thomas S. Mielsh
THOMAS S. MIELSH, VICE-CHAIRPERSON
John J. Zebola
JOHN J. ZEBOLA, COMMISSIONER

CERTIFICATE OF MUNICIPAL APPROVAL

I CERTIFY THAT THIS PLAT WAS APPROVED BY THE TOWNSHIP BOARD OF THE CHARTER TOWNSHIP OF CHESTERFIELD AT A MEETING HELD October 10th, 1995, AND WAS REVIEWED AND FOUND TO BE IN COMPLIANCE WITH ACT 288, P. A. 1967 AND ALSO ADEQUATE SURETY HAS BEEN DEPOSITED WITH THE CLERK FOR THE PLACING OF MONUMENTS AND LOT MARKERS WITHIN A REASONABLE LENGTH OF TIME, NOT TO EXCEED ONE YEAR FROM THE ABOVE DATE, AND THAT SURETY HAS BEEN POSTED TO INSURE THE INSTALLATION OF PUBLIC SEWER AND PUBLIC WATER SERVICES.

Jan Lugin
JAN LUGIN, CLERK
TOWNSHIP OF CHESTERFIELD

COUNTY PLAT BOARD CERTIFICATE

THIS PLAT HAS BEEN REVIEWED AND IS APPROVED BY THE MACOMB COUNTY PLAT BOARD ON December 8, 1995, 1995, AS BEING IN COMPLIANCE WITH ALL OF THE PROVISIONS OF ACT 288, P. A. 1967 AND THE PLAT BOARD'S APPLICABLE RULES AND REGULATIONS.

Diana Kolowski
DIANA KOLAKOWSKI, CHAIRMAN
BOARD OF COMMISSIONERS
Carmella Sabough
CARMELLA SABAUGH
REGISTER OF DEEDS/COUNTY CLERK

Ted B. Wahby
TED B. WAHBY
COUNTY TREASURER

RECORDING CERTIFICATE

STATE OF MICHIGAN
COUNTY OF MACOMB

THIS PLAT WAS RECEIVED FOR RECORD ON THE 9th DAY OF Nov
1995 AT 11:20 A.M. AND IS RECORDED IN LIBER 113 OF PLATS ON
PAGES 62-63

Carmella Sabough
CARMELLA SABAUGH
REGISTER OF DEEDS/COUNTY CLERK

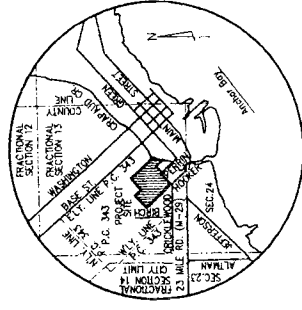
"RIVERSIDE ESTATES"

PART OF P.C. 343, T. 3 N., R. 14 E.

CITY OF NEW BALTIMORE, MACOMB COUNTY, MICHIGAN

LIBER SHEET 1 OF 8
PAGE 8

L 150, P 3
2001



LOCATION MAP PC-033
NO SCALE

NORTHWESTERLY CORNER OF PRIVATE CLAIM NO. 343 OF ASSASSORS' PLAT NO. 9, L.S. 1, P. 14E, M.C.R. 106853, P. 213, L.C.R.C.

SOUTHERLY LINE OF WESTERLY LINE OF LOT 91 OF ASPEN PARK SUBDIVISION NO. 1, L.S. 1, P. 20-28, M.C.R. AND L.C.R.C. L. 8613, P. 445

SOUTHWEST CORNER OF LOT 317 OF ASSASSORS' PLAT NO. 9, L.S. 1, P. 14E, M.C.R.

INTERSECTION OF THE EAST LINE OF SEC. 14 AND WEST LINE OF SEC. 13, T. 3 N., R. 14 E., M.C.R. 106853, P. 214.

EASTERN LINE OF NEW CENTER, L.S. 1, P. 28 THRU 32, M.C.R. CONINGTON PARK SUBDIVISION NO. 1, L.S. 1, P. 31-45, M.C.R.

SOUTHWEST CORNER OF LOT 68 OF CONINGTON PARK SUBDIVISION NO. 1, L.S. 1, P. 31-45, M.C.R.

POINT OF BEGINNING

POINT ON THE WESTERLY LINE OF CONINGTON PARK SUBDIVISION NO. 1, L.S. 1, P. 31-45, M.C.R.

NORTHEAST CORNER OF LOT 12 OF NEW BALTIMORE INDUSTRIAL CENTER, L.S. 1, P. 28-32, M.C.R.

NORTHWESTERLY CORNER OF CONINGTON PARK SUBDIVISION NO. 1, L.S. 1, P. 31-45, M.C.R.

SOUTHWEST CORNER OF LOT 68 OF CONINGTON PARK SUBDIVISION NO. 1, L.S. 1, P. 31-45, M.C.R.

SOUTHWEST CORNER OF LOT 68 OF CONINGTON PARK SUBDIVISION NO. 1, L.S. 1, P. 31-45, M.C.R.

SOUTHWEST CORNER OF LOT 68 OF CONINGTON PARK SUBDIVISION NO. 1, L.S. 1, P. 31-45, M.C.R.

SOUTHWEST CORNER OF LOT 68 OF CONINGTON PARK SUBDIVISION NO. 1, L.S. 1, P. 31-45, M.C.R.

SOUTHWEST CORNER OF LOT 68 OF CONINGTON PARK SUBDIVISION NO. 1, L.S. 1, P. 31-45, M.C.R.

SOUTHWEST CORNER OF LOT 68 OF CONINGTON PARK SUBDIVISION NO. 1, L.S. 1, P. 31-45, M.C.R.

SOUTHWEST CORNER OF LOT 68 OF CONINGTON PARK SUBDIVISION NO. 1, L.S. 1, P. 31-45, M.C.R.

SOUTHWEST CORNER OF LOT 68 OF CONINGTON PARK SUBDIVISION NO. 1, L.S. 1, P. 31-45, M.C.R.

SOUTHWEST CORNER OF LOT 68 OF CONINGTON PARK SUBDIVISION NO. 1, L.S. 1, P. 31-45, M.C.R.

SOUTHWEST CORNER OF LOT 68 OF CONINGTON PARK SUBDIVISION NO. 1, L.S. 1, P. 31-45, M.C.R.

SOUTHWEST CORNER OF LOT 68 OF CONINGTON PARK SUBDIVISION NO. 1, L.S. 1, P. 31-45, M.C.R.

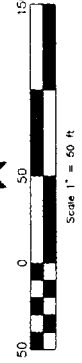
SOUTHWEST CORNER OF LOT 68 OF CONINGTON PARK SUBDIVISION NO. 1, L.S. 1, P. 31-45, M.C.R.



- FLAT LEGEND**
- ALL DIMENSIONS ARE IN FEET.
 - ALL CURVILINEAR DIMENSIONS ARE SHOWN ALONG THE ARC.
 - (R) DENOTES RADIAL LINE.
 - (NR) DENOTES NON-RADIAL LINE.
 - (D) DENOTES DIAMETER OF CURVE.
 - (D) DENOTES DIAMETER OF CURVE.
 - ALL OTHER LOT CORNERS ARE MARKED WITH AN IRON BAR 1/2" IN DIAMETER AND 18" IN LENGTH.
 - BEARINGS FOR THIS SUBDIVISION ARE BASED ON THE WESTERLY LINE OF LOTS 68-73 CONINGTON PARK SUBDIVISION NO. 1 AS RECORDED IN LIBER 139, PAGES 31-45 OF PLATS, MACOMB COUNTY RECORDS, WHICH BEARS N 40° 33' 15" W.
 - THE SYMBOL "M" INDICATES A FOUND MONUMENT WHICH IS A DIAMETER CONCRETE CYPHER.

CURVE DATA TABLE

NUMBER	ARC LENGTH	RADIUS	CENTRAL ANGLE	BEARING	CHORD LENGTH
C13	43.36'	60.00'	41°24'35"	N25°02'17"E	42.43'
C14	181.48'	60.00'	173°18'09"	N85°00'36"W	119.80'
C15	43.36'	60.00'	41°24'35"	N20°04'08"W	42.43'
C16	63.74'	320.00'	11°24'47"	N46°28'50"W	63.64'
C17	75.70'	380.00'	11°24'47"	N46°28'50"W	75.57'



THIS PLAT IS SUBJECT TO RESTRICTIONS AS REQUIRED BY ACT 248 OF 1987 AS AMENDED ON CERTAIN LOTS WITH RESPECT TO THE IMPROVEMENTS THEREON, WHICH ARE RECORDED IN LIBER 139, PAGES 31-45 OF PLATS, MACOMB COUNTY RECORDS.

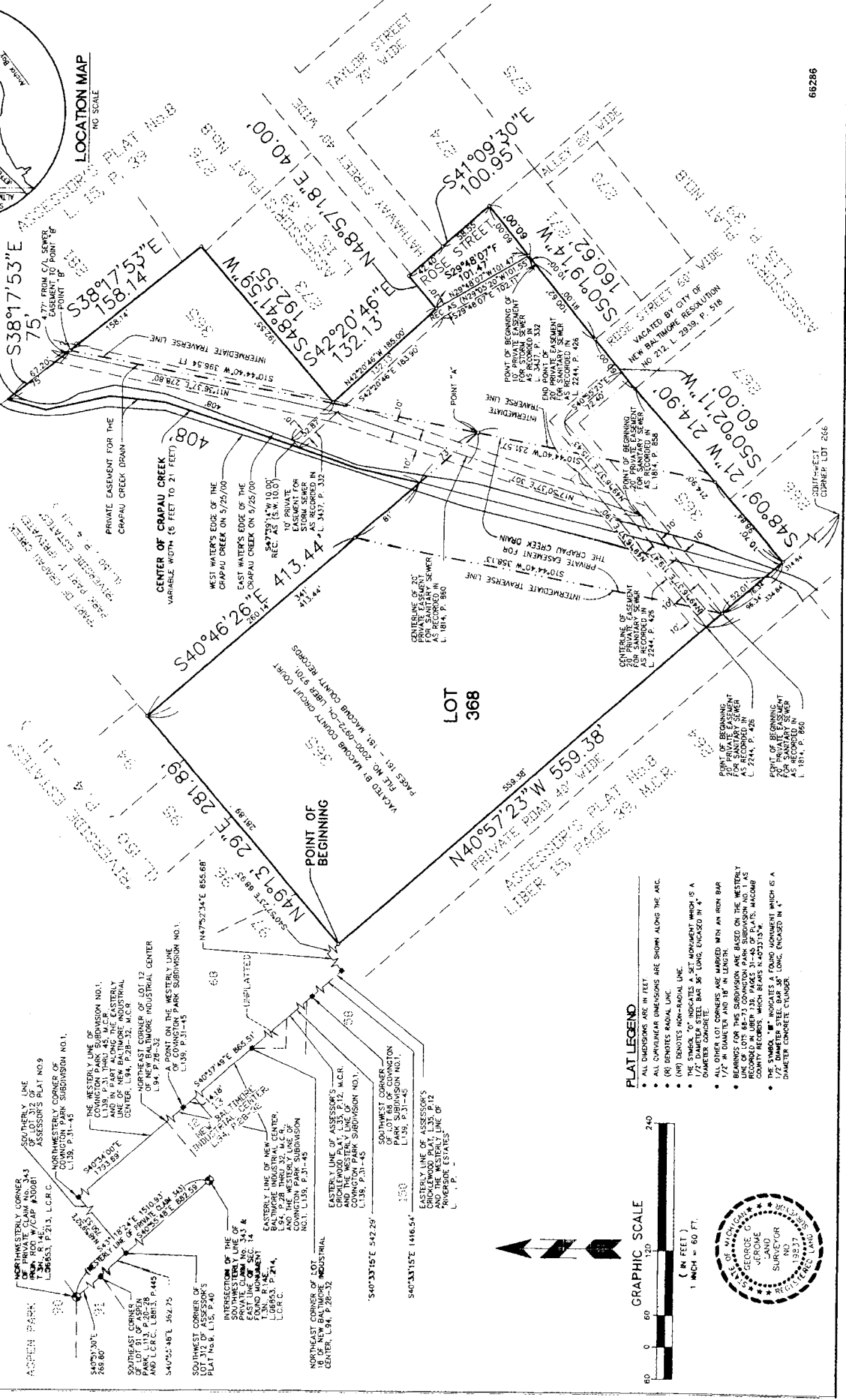
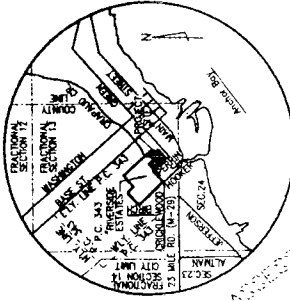
68265

"AMENDED PLAT OF LOT 365 OF AMENDED PLAT OF LOTS 272 AND 288 OF ASSESSOR'S PLAT NO. 8"

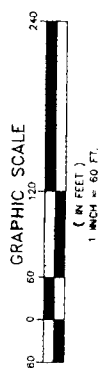
PART OF P.C. 343, T. 3 N., R. 14 E.

CITY OF NEW BALTIMORE, MACOMB COUNTY, MICHIGAN

PC-0023



- PLAT LEGEND**
- ALL DIMENSIONS ARE IN FEET
 - ALL CURVILINEAR DIMENSIONS ARE SHOWN ALONG THE ARC
 - (R) DENOTES RADIAL LINE
 - (NR) DENOTES NON-RADIAL LINE
 - THE SYMBOL "O" INDICATES A SET MONUMENT WHICH IS A DIAMETER CONCRETE
 - 1/2" IN DIAMETER AND 18" IN LENGTH
 - ALL OTHER LOT CORNERS ARE MARKED WITH AN IRON BAR
 - DIMENSIONS FOR THIS SUBDIVISION ARE BASED ON THE WESTERLY CORNER OF LOT 31 OF ASSESSOR'S PLAT NO. 8, MACOMB COUNTY RECORDS, WHICH BEARS N-40°31'31\"/>
 - 1/2" DIAMETER STEEL BAR, 36" LONG, ENCASED IN 4\"/>
 - 1/2" DIAMETER CONCRETE CYPINDER

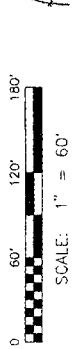


L 150 + 80
2001

L159, P. 13
2006

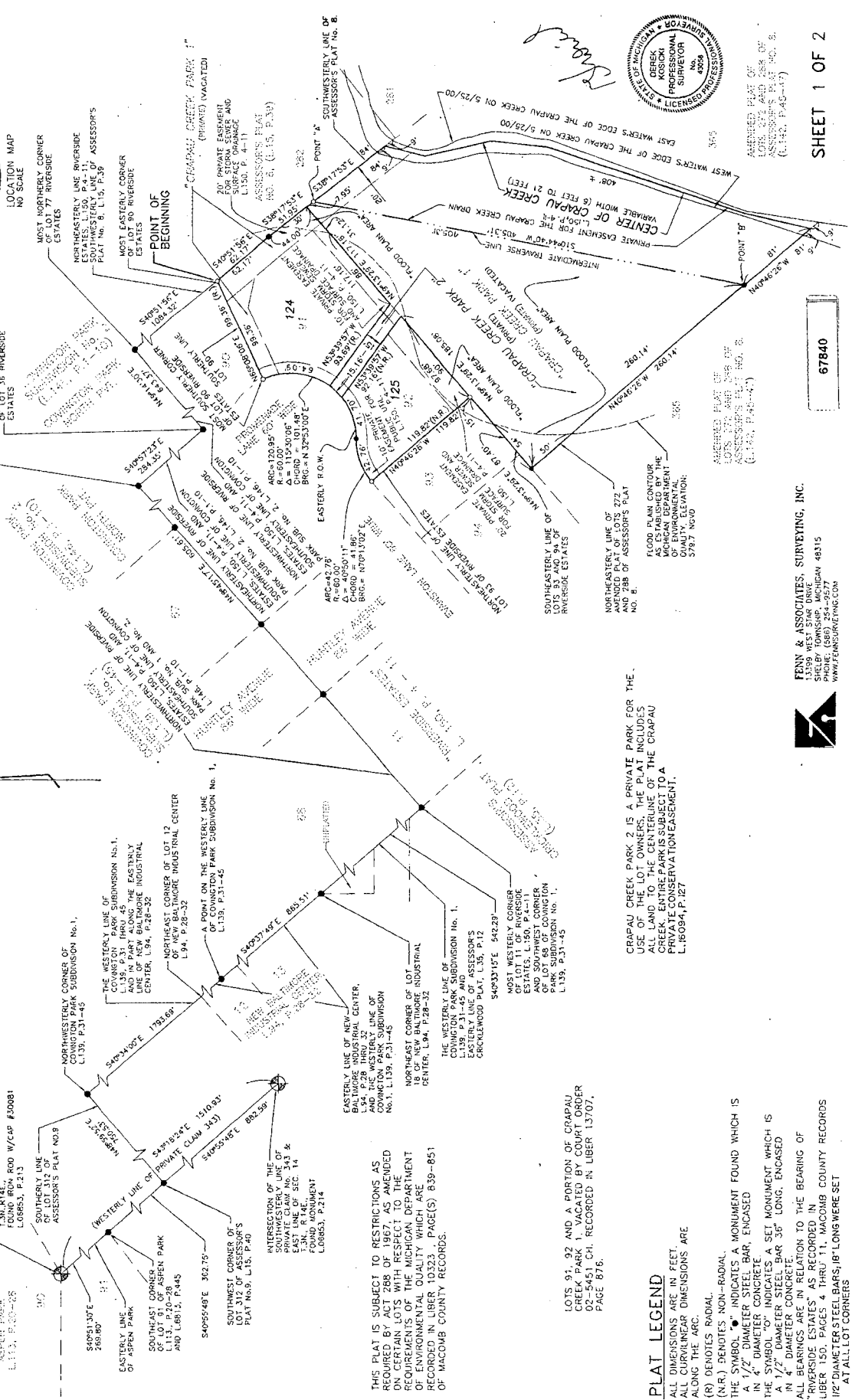
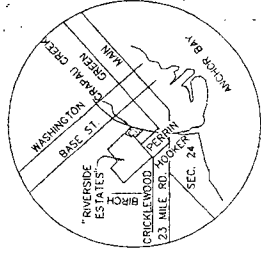
AMENDED PLAT of Lots 91, 92 and "Crapau Creek Park 1" of "RIVERSIDE ESTATES"

PART OF PRIVATE CLAIM 343, T3N, R14E
CITY OF NEW BALTIMORE, MACOMB COUNTY, MICHIGAN



ASBESTOS FREE:
L.113, P.20-28
L.68653, P.213

PC-033



CRAPAU CREEK PARK 2 IS A PRIVATE PARK FOR THE USE OF THE LOTS OWNERS. THIS PLAT INCLUDES AS PART OF THE CENTERLINE OF THE CRAPAU CREEK. ENTIRE PARK IS SUBJECT TO A PRIVATE CONSERVATION EASEMENT. L.18094, P.127

PLAT LEGEND

- ALL DIMENSIONS ARE IN FEET
- ALL CURVILINEAR DIMENSIONS ARE ALONG THE ARC.
- (R) DENOTES RADIAL.
- (N.R.) DENOTES NON-RADIAL.
- THE SYMBOL "M" INDICATES A MONUMENT FOUND WHICH IS A 1/2" DIAMETER STEEL BAR, ENCASED IN 4" DIAMETER CONCRETE.
- THE SYMBOL "O" INDICATES A SET MONUMENT WHICH IS A 1/2" DIAMETER STEEL BAR 36" LONG, ENCASED IN 4" DIAMETER CONCRETE.
- ALL BEARINGS ARE IN RELATION TO THE BEARING OF "RIVERSIDE ESTATES" AS RECORDED IN UBER 18094, P.127, MACOMB COUNTY RECORDS.
- 1/2" DIAMETER STEEL BARS 18" LONG WERE SET AT ALL LOT CORNERS.

LOTS 91, 92 AND A PORTION OF CRAPAU CREEK PARK 1 WERE ORDERED BY SUPERIOR COURT OF MACOMB COUNTY, RECORDED IN UBER 15707, PAGE 876.

THIS PLAT IS SUBJECT TO RESTRICTIONS AS REQUIRED BY ACT 288 OF 1967, AS AMENDED ON CERTAIN LOTS WITH RESPECT TO THE REQUIREMENTS OF THE MICHIGAN DEPARTMENT OF ENVIRONMENTAL QUALITY WHICH ARE RECORDED IN UBER 15707, PAGE(S) 839-851 OF MACOMB COUNTY RECORDS.



ASSIGNED PLAT OF ASSESSOR'S PLAT NO. 8 (L.140, P.43-47)

SHEET 1 OF 2

67840

FENY & ASSOCIATES, SURVEYING, INC.
1539 WEST 24th DRIVE
SHELBY TOWNSHIP, MICHIGAN 48315
PHONE: (586) 254-8577
WWW.FENYSURVEYING.COM

