

LAND CORNER RECORDATION CERTIFICATE
Filing Requirement of Act 74, Mich. P.A. 1970
REMONUMENTATION CORNER

For corners in:

MACOMB COUNTY (County)

Located In: CHESTERFIELD TOWNSHIP Corner Code #

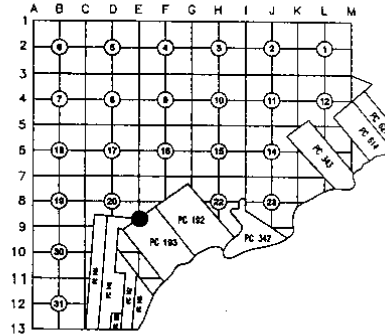
- 1. Public Land Survey T R
2. Property Controlling in Section S T 3N R 14 E PCC-032
3. Miscellaneous Property in Sec. S T R
4. Lot No. Recorded Plat
5. Private Claims S T R

9136007
LIBER 20074 PAGE 664
12/22/2009 10:49:40 A.M.
MACOMB COUNTY, MI SEAL
CARMELLA SABAUGH, REGISTER OF DEEDS

Register of Deeds Stamp & File Number

PCC-032 is an intersection of the East line of fractional Section 20 with the Northwesternly line of PC 193.

I, ROBERT E. HORNYAK, in a field survey on, August 18, 2009 do hereby certify that under requirements of P.A. 74, Michigan P.A. of 1970, the corner points mentioned in lines 1 and 2 above were in conformance with regulations and rules therefore as required in the current manual of survey instructions of the United States Department of the Interior, Bureau of Land Management or by a decree of a Court of Law and for that the corner points mentioned in lines 3, 4 and 5 above were in conformance with the rules of the Michigan Board of Land Surveyors or by a Decree of a Court of Law; established, re-established, monumented, re-monumented, recovered, found as expressed below:



NOTE: Not more than 2 corners, all in the same town and range, may be recorded on this certificate.

A. Description of original monument and accessories and/or subsequent restoration:
PC 193 was surveyed by Aaron Greeley Surveyor of private claims in 1810. Corner not set.
GLO Survey performed in 1817 by William Preston, D.S. Set post.

Subsequent Restorations:

Table with 6 rows of restoration data including year, plat name, surveyor, date, and object found.

(2 of 4 witnesses find.)

B. Description of corner evidence found and/or method applied in restoring or reestablishing corner:

The corner was perpetuated with the found 1/2" iron rod.
Occupation: North, Southwest - Donner Rd. (asphalt), East, South, West-none.
The witness from Items 2-5, the distances from Items 1, 3 & 5 along with the found monumentation of Items 1 & 5 were used to verify the location of the corner.

Distances:

Table showing distances from PCC-032 to various points (E-08, PC-031, etc.) and how they were determined (written or calculated).



C. Description of monument for corner and accessories established to perpetuate locating the position of the corner:

I replaced the found 1/2" iron with a 2" aluminum cap stamped "MACOMB COUNTY MONUMENT MI ACT 345; PCC-032; 44286" placed on a 1/2"x36" steel bar encased in 4" diameter concrete monument.

Witnesses:

Table listing witness bearings and distances, and the location of the monument box.

THE SELECTED LOCATION IS ACCEPTED BY ME AND IS GENERALLY ACCEPTED BY PROFESSIONAL SURVEYORS AS THE BEST AVAILABLE EVIDENCE OF THE POSITION OF THIS CORNER.

Signed by [Signature] Date October 28, 2009.

Surveyor's Michigan License No. 44286

FORM APPROVED BY MICHIGAN STATE BOARD OF LAND SURVEYORS, JAN. 28, 1971
REVISED MAY 14, 1975
REVISED JAN. 1983
REVISED OCT. 1995



ACCEPTED BY THE MACOMB COUNTY SURVEY PEER GROUP AS THE OFFICIAL CORNER UNDER MICHIGAN PUBLIC ACT 345 OF 1990 AT A MEETING HELD ON 10-13-09
[Signature]
MARTIN C. DUNN, P.S. CHAIRMAN

## PCC-032 CHESTERFIELD TOWNSHIP

### Private Claim 193 Survey:

North line of PC 193 was surveyed by Aaron Greeley Surveyor of private claims in 1810.

### GLO Survey History:

Researching the government survey records for Macomb County I have found that the Chesterfield Township was surveyed and subdivided not according to then in force Manual of Surveying Instructions. Due to presence of Lake St. Clair in the Southeast portion of the Township and numerous Private Claims along the shore exterior boundaries of the Township were established by William Preston, D.S. in 1817 in the following manner and order:

1. South boundary was run East from the Southwest corner.
2. East boundary was run South from the Northeast Twp. corner.
3. North boundary was run West from the Northeast Twp. corner.
4. West boundary was run South from the Northwest Twp. corner.

The subdivision of the Township commenced at the Northeast corner of Section 6; thence run South & West. Thus, the closing Sections are along the East and South Township boundaries.

**PCC-032** is an intersection of the East line of fractional Section 20 with the North line of PC 193. GLO performed by William Preston, D.S. in 1817. Set post.

### Subsequent Restorations:

1	1991	Plat-Stonchenge No.1 Stecker	30103	L93, P10	Object found not stated.
2	1992	LCRC-Smith	16052	L5557, P150	Set iron * NNE 60.64 Top of fire hydrant * E 56.36 SW corner bldg #48740 S 85.70 Cut "x" on W face of anchor post W 104.80 PK and tag N face 20" elm
3	1992	Plat-Stonchenge No.2 Smith	16052	L97, P34	Refers to LCRC: L5557, P150
4	1993	Plat-Stonchenge Estates Smith	16052	L101, P7	Refers to LCRC: L5557, P150
5	1994	Plat-Stonchenge No.3 Smith	16052	L103, P13	Refers to LCRC: L5557, P150
6	2006	Condo-Timber Woods Higgins	21570	MCCSP 1021	Object found not stated

\* denotes matching witnesses

### Field evidence:

The corner was perpetuated with the found 1/2" iron rod.  
Occupation: North, Southwest - Donner Rd. (asphalt), East, South, West-none.

### Distances:

PCC-032 to E-08		PCC-032 to PC-031	
1581.28	1, 3, 5	64.31	1 written
1381.28	4	54.70	1 calculated
1575.70	6		
1580.53	Remon 09	59.39	Remon 09

### Recommendation:

The witness from Items 2-5, the distances from Items 1, 3 & 5 along with the found monumentation of Items 1 & 5 were used to verify the location of the corner.

I recommend to the Peer Review Board to accept the found 1/2" iron rod as proper location for the corner.  
I recommend replacing the found 1/2" iron with a 2" aluminum cap stamped "MACOMB COUNTY MONUMENT MI ACT 345; PCC-032; 44286" placed on a 1/2"x36" steel bar encased in 4" diameter concrete monument.

### Witnesses:

N35°E	60.70'	Top of hydrant
S80°E	56.30'	SW corner of building #48740
S34°W	87.92'	Found Mag nail w/cap "PEA #43047" in NW face of 16" power pole
S52°W	59.41'	Set 2" aluminum cap stamped "MACOMB COUNTY MONUMENT MI ACT 345; PC-031; 44286" placed on a 3/4"x24" steel bar in monument box
N36°W	42.46'	Set PK nail w/"MACOMB COUNTY WITNESS TAG" in S face of 18" maple

Respectfully submitted,

Robert E. Hornyak, PS # 44286

**PCC-032**  
**DOSSIER CONTENT**  
**2009 REMON**  
**T.3N., R.14E.,**  
**Chesterfield Township, Macomb County, Michigan**

**Section One**

Index

Pictures in the four cardinal directions; before and after setting the required monumentation.

**Section Two**

LCRC

Surveyor's Report

**Section Three**

- 1 Field Notes
- 2 Sketch
- 3 Township Map
- 4 Tax Map                    1875
- 5 Tax Map                    1895
- 6 Tax Map                    1916
- 7 Tax Map                    1961
- 8 Tax Map                    1974
- 9 Aerial Pictures            2009

**Section Four**

- 0 1810 Field notes of Survey of PC. 193 (original & transcript)
- 1 1991 Plat-Stonehenge No.1    Stecker 30103    L93, P10
- 2 1992 LCRC                    Smith 16052    L5557, P150
- 3 1992 Plat-Stonehenge No.2    Smith 16052    L97, P34
- 4 1993 Plat-Stonehenge Estates    Smith 16052    L101, P7
- 5 1994 Plat-Stonehenge No.3    Smith 16052    L103, P13
- 6 2006 Condo-Timber Woods    Higgins 21570    MCCSP 1021

# PCC-032

REMON 2009

CHESTERFIELD TWP., T3N, R14E



DATE: 9.1.09  
CREW: TD/DM  
OBJECT FOUND: 1/2" rebar  
POINT No.: 137  
CTRL. PTS.: \_\_\_\_\_

S. FACE 18" MAPLE  
N 36 W 42.46  
SET PK w/MCW TAG

N 35 E 60.7  
TO TOP OF HYD.

EX FENCE

CORNER PK.

EX BLDG

S 80 E 56.3  
SW CORN OF  
BLDG

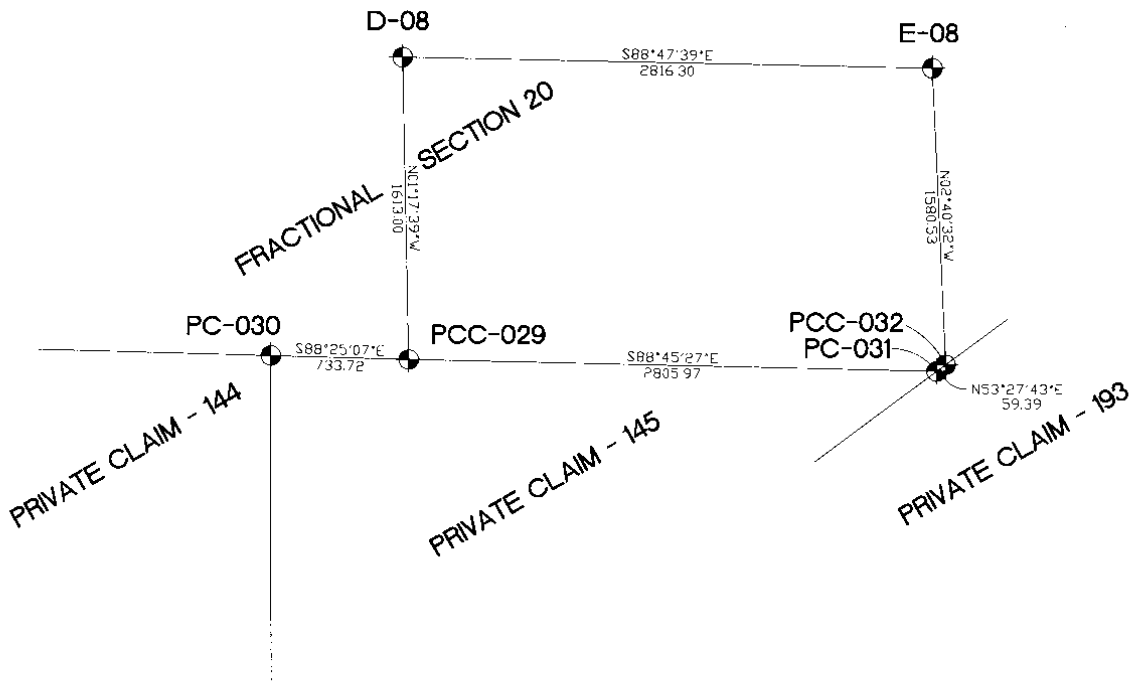
~~S. FACE PK  
N 87 W  
TO PK NAIL  
w/ALUM TAG~~

NW FACE PP  
S 34 W 87.92  
MAG NAIL w/ (EA TAG 43047)

OCCUPATION  
(if road state surface)  
NORTH: Road  
EAST: residential  
SOUTH: "  
WEST: "

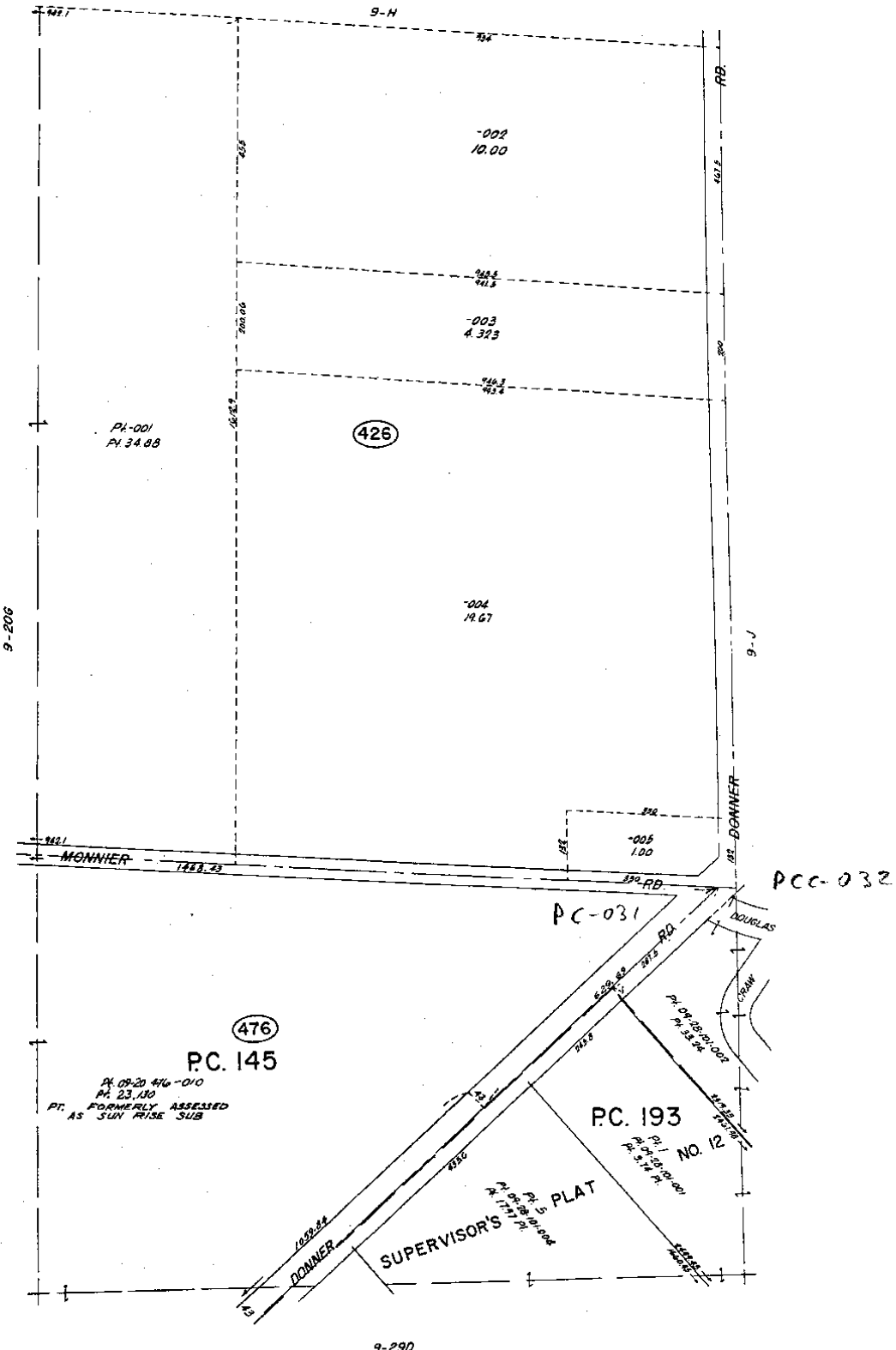


# REMON 2009 CHESTERFIELD TWP., T3N, R14E



● SECTION, PRIVATE CLAIM CORNER





CHESTERFIELD TWP.  
 E.1/2 SE.1/4 SEC. 20 & PT. PC. 145, 143 T.3N. R.14E.

Copyright 1974  
 MACOMB COUNTY, MICHIGAN  
 SCALE: 1" = 100'  
 654  
 9-20H

Group 3 North Range 1/1 East

East Between fractional Sections 12103  
 230 Intersected Private claim 302 chains  
 East of corner of Lot N<sup>o</sup> 343 P. Yack  
 Made corner for fractional Section 12103  
 on a W Oak 24 ins diam continued  
 1675 through the claim made corner on  
 a 16 cm beam 6 ins diam 7970 chains  
 North of corner of lot  
 11000 Made half mile corner on a B. Ash  
 11043 on Elm 30 in diam 6 ins  
 11517 on W Oak 24 ins  
 10116 Intersection Private claim 63110 chains  
 North of corner of Lot N<sup>o</sup> 614 Fran Massar  
 Set post for fractional section 12103  
 from Whiteb on B. Ash 10 in diam beam  
 N73 or 18 links also on Elm 12 ins diam  
 beam 874 or 25 links dist 1<sup>st</sup> half mile  
 rolling and dry 7<sup>th</sup> part last half mile  
 frost dry 2<sup>th</sup> part  
 Timber W Oak Beech Sugar Elm  
 B. Ash & Undergrowth Spruce &  
 Fir

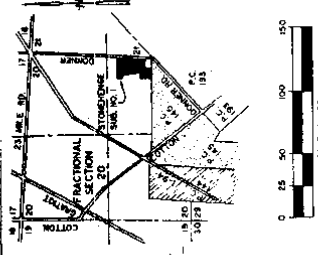
South Between Sections 20421

657 Beech 12 in diam  
 11000 Set 74 Sec. post from which a Birch  
 14 in diam beam N50 E 114 lbs dist  
 also a Beech 12 in beam S33 or 15 lbs dist  
 5903 Elm 40 ins  
 PCC-032 6365 Intersected Private claim N<sup>o</sup> 193, 110 N8  
 from the N.E. Cor. of Section N<sup>o</sup> 145  
 Set post for cor of fractional sections  
 2172 from which on Elm 20 in diam  
 beam N11 E 25 lbs dist also on Elm  
 18 in diam beam N14 or 27 lbs dist

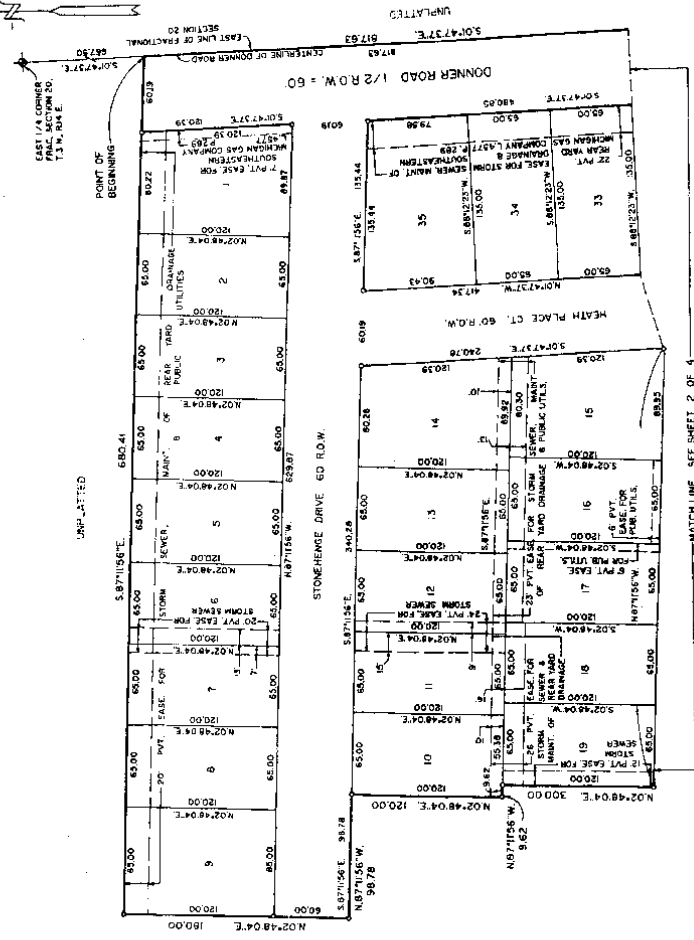


L 93, P 10

STONEHENGE SUBDIVISION NO. 1  
PART OF THE S.E. FRACTIONAL 1/4 OF SECTION 20, T.3 N., R.14 E.,  
CHESTERFIELD TOWNSHIP, MACOMB COUNTY, MICHIGAN



LEGEND  
ALL DIMENSIONS ARE SHOWN IN FEET.  
ALL CURVILINEAR DIMENSIONS ARE SHOWN  
ALONG THE CHORDS. A 4" DIAMETER  
36" LONG W/1/2" STEEL ROD CENTER  
CONCRETE MONUMENT.  
ALL LOT MARKERS ARE 1/2" STEEL RODS &  
CONCRETE MONUMENTS.  
(R) INDICATES RADIAL LOT LINES.  
(R) INDICATES NOT RADIAL LOT LINES.  
BEARINGS BASED ON THE EAST LINE OF  
DONNER ROAD. ALL BEARINGS  
RECORDED IN LIBER 76 PAGE 20 MACOMB  
COUNTY RECORDS.  
THERE SHALL BE NO DIRECT MEASUREMENTS  
AND FROM LOTS 28 THRU 33 INCLUSIVE.



CERTIFIED TRUE COPY OF  
RECORDED PLAT  
BY DEPARTMENT OF COMMERCE  
MICHAEL J. LORANT, L.L.M.  
Surveyor, Not Public



*Michael J. Lorant*  
MICHAEL J. LORANT

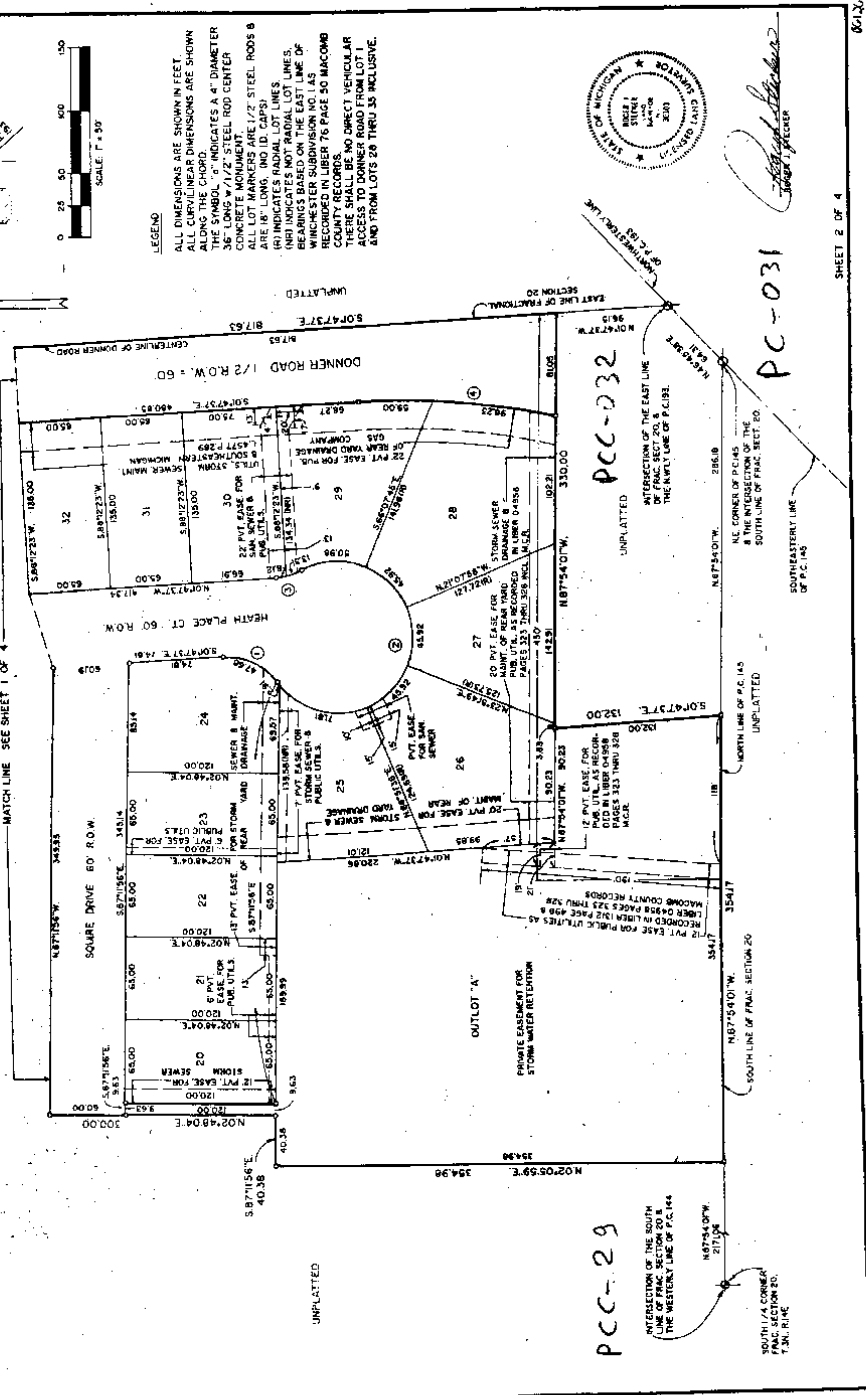
061280

SHEET 1 OF 4

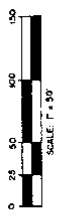
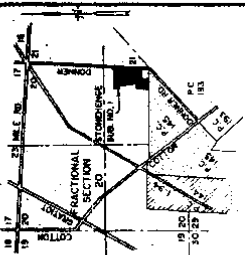
MATCH LINE SEE SHEET 2 OF 4

**STONEHENGE SUBDIVISION NO. 1  
PART OF THE S.E. FRACTIONAL 1/4 OF SECTION 20, T.3 N., R.14 E.,  
CHESTERFIELD TOWNSHIP, MACOMB COUNTY, MICHIGAN**

CURVE DATA	CHORD BEARINGS	CHORD	DELTA
1	43° 17' 00" W	126.4541' W	263.333°
2	30° 00' 00" W	141.0600' W	243.333°
3	30° 00' 00" W	141.0600' W	243.333°
4	57° 00' 00" W	107.2712' W	176.562°



**LEGEND**  
 ALL DIMENSIONS ARE SHOWN IN FEET.  
 ALL CURVILINEAR DIMENSIONS ARE SHOWN IN FEET.  
 THE SYMBOL "Ø" INDICATES A 4" DIAMETER 36" LONG 1/2" STEEL ROD CENTER CONCRETE MONUMENT.  
 THE SYMBOL "Ø" WITH A NUMBER IN CIRCLES ARE 1/2" LONG 1/2" STEEL RODS & ARE IN LINES AND ID. CAPS.  
 (R) INDICATES RADIAL LOT LINES.  
 (NR) INDICATES NOT RADIAL LOT LINES.  
 (S) INDICATES A SURVEY LINE OF THE WASHINGTON SUBDIVISION A.C.I.A.S. RECORDED IN LIBER 76 PAGE 50 MACOMB COUNTY RECORDS.  
 (M) INDICATES A MORTGAGE INSTRUMENT AS RECORDED IN LIBER 76 PAGE 50 MACOMB COUNTY RECORDS.  
 (A) INDICATES A DIRECT VEHICULAR ACCESS TO DONNER ROAD FROM LOT 1 AND FROM LOTS 28 THRU 35 INCLUSIVE.



*[Signature]*  
 SURVEYOR

PCC-032

PCC-031

PCC-29

SHEET 2 OF 4

66120

LIBER 055576150

1762907

LAND CORNER RECORDATION CERTIFICATE  
Filing Requirement of Act 74, Mich. P.A. 1970

RECORDED IN MACOMB COUNTY  
RECORDS AT: 16:14A. M.

SEP -4 1992

*Edna Hill*

CLERK - REGISTER OF DEEDS  
MACOMB COUNTY, MICHIGAN

Register of Deeds Stamp & File Number

For corners in

MACOMB  
County

Located in:

Corner Code //  
INTERSECTION OF EAST  
LINE OF SEC 20 & NW 1/4  
LINE OF P.C. 193

1	Public Land Survey	T	3N	R	14E
		T		R	
		T		R	
		T		R	
2	Property Controlling in Section	S	T	R	
		S	T	R	
3	Miscellaneous	S	T	R	
	Property in Sec.	S	T	R	

4 Lot No. Recorded Plat  
5 Private Claims 193

1. ROBERT L. SMITH in a field survey on 9/4 19 92  
do hereby certify that under requirements of P.A. 74, Michigan P.A. of 1970, the corner points mentioned in lines 1 and 2 above were in conformance with regulations and rules therefore as required in the current manual of survey instructions of the United States Department of the Interior, Bureau of Land Management or by a decree of a Court of Law and/or that the corner points mentioned in lines 3, 4 and 5 above were in conformance with the rules of the Michigan Board of Land Surveyors or by a Decree of a Court of Law, established, re-established, monumented, re-monumented, recovered, found as expressed below

NOTE: Not more than 4 corners, all in the same town and range, may be recorded on this certificate.

A. Description of original monument and accessories and/or subsequent restoration.

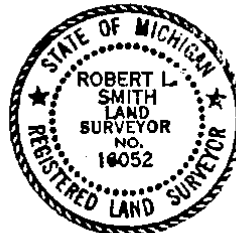
NA

B. Description of corner evidence found and/or method applied in restoring or reestablishing corner

NA

C. Description of monument for corner and accessories established to perpetuate locating the position of the corner

SET IRON  
N.N.E. 60.64 TOP OF FIRE HYDRANT  
EAST 56.36 S.W. CORNER BLDG #48740  
SOUTH 85.70 CUT "X" ON WEST FACE OF ANCHOR POST  
WEST 104.80 P.K. AND TAG N. FACE 20" ELM



Signed by *Robert L. Smith*  
ROBERT L. SMITH  
Surveyor's Michigan License No. 18052

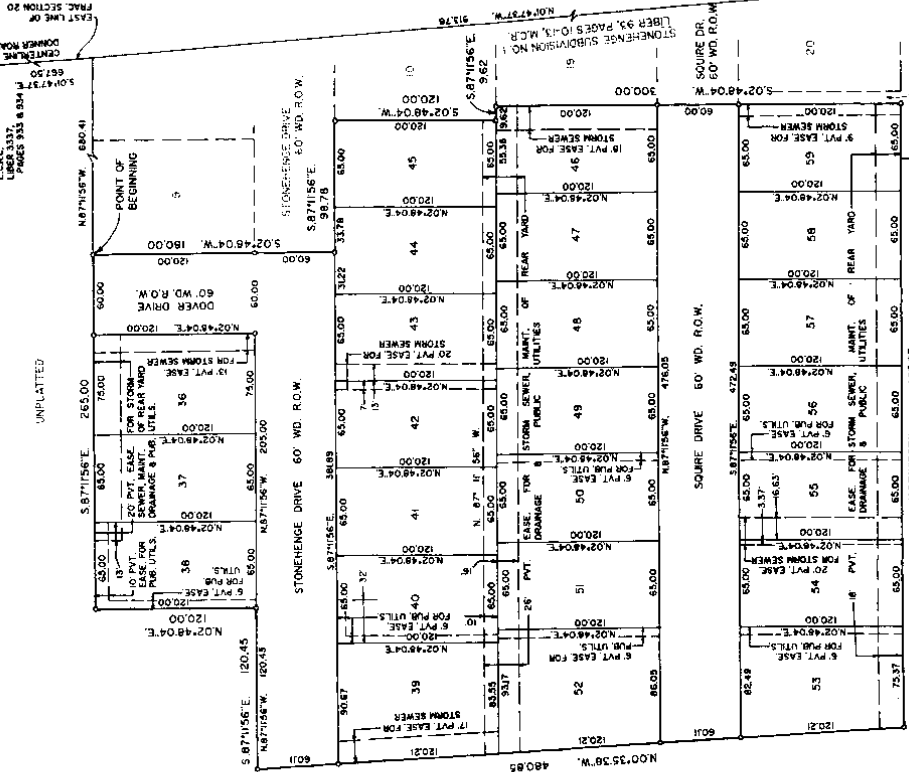
Date 9-3-92

# STONEHENGE SUBDIVISION NO. 2 PART OF THE S.E. FRACTIONAL 1/4 OF SECTION 20, T.3N., R.14E., CHESTERFIELD TOWNSHIP, MACOMB COUNTY, MICHIGAN

**LEGEND**

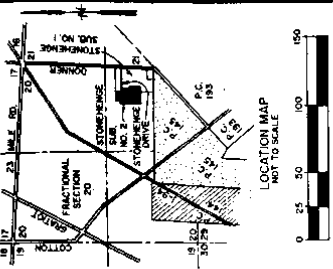
ALL DIMENSIONS ARE IN FEET.  
ALL CURVILINEAR DIMENSIONS ARE SHOWN  
ALONG THE CHORD.  
CHORD INDICATES A 4" DIAMETER  
36" LONG 3/12" STEEL ROD CENTER  
CONCRETE MONUMENT.  
ALL LOT MARKERS ARE 1/2" STEEL RODS AND  
ARE 18" LONG (NO ID. CHIPS) WITH LINE OF  
STONEHENGE SUBDIVISION NO. 1 AS  
RECORDED IN LIBER 93, PAGES 10-13, INCL.  
MACOMB COUNTY RECORDS.

UNPLATTED



UNPLATTED

UNPLATTED



CERTIFIED TRUE COPY OF  
RECORDED MAP  
BY DEPARTMENT OF COMMUNITY  
AND ECONOMIC DEVELOPMENT  
ON 05/11/2011  
BY: [Signature]  
DATE: 05/11/2011



ROBERT L. SMITH

051975

SHEET 1 OF 3

PCC-032

# STONEHENGE ESTATES SUBDIVISION PART OF THE SE. FRACTIONAL 1/4 OF SECTION 20, T.3N., R.14E., CHESTERFIELD TOWNSHIP, MACOMB COUNTY, MICHIGAN

COURSE	TR. BEGINS	ARC	ANG.	END	CHORD	DELTA
1	50.00	54.05	3.28	40.53	53.22	67.57
2	60.00	254.43	5.81	19.08	102.34	242.57

DATE DATA

COURSE	TR. BEGINS	ARC	ANG.	END	CHORD	DELTA
1	50.00	54.05	3.28	40.53	53.22	67.57
2	60.00	254.43	5.81	19.08	102.34	242.57

WINCHESTER SUB NO. 1  
LIBER 76, PAGES 48-51, INCL., M.C.R.

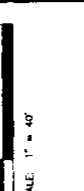
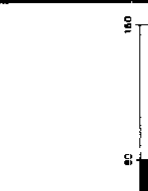
STONEHENGE SUB NO. 2  
LIBER 97, PAGES 34-36, INCL., M.C.R.

STONEHENGE SUB NO. 1  
LIBER 94, PAGES 10-13, INCL., M.C.R.

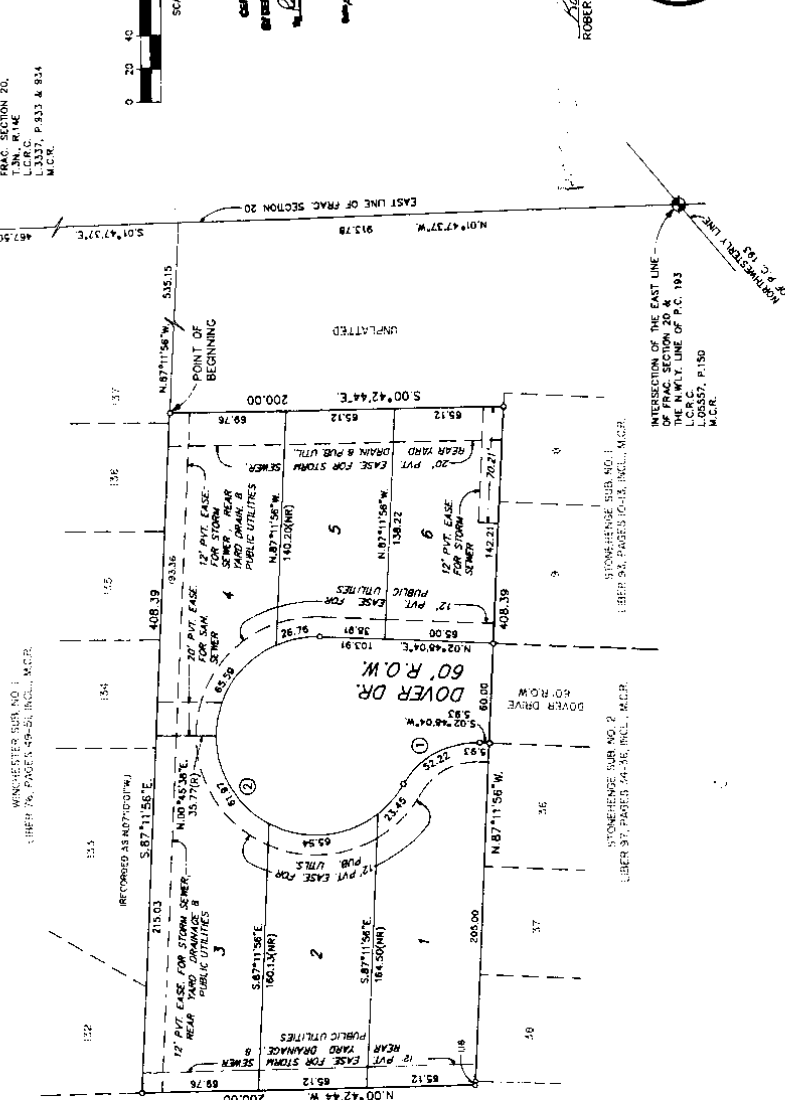
STONEHENGE SUB NO. 1  
LIBER 94, PAGES 10-13, INCL., M.C.R.

LEGEND  
ALL DIMENSIONS ARE SHOWN IN FEET.  
ALL CURVES ARE SHOWN WITH DIMENSIONS AS SHOWN.  
THE SYMBOL "R" INDICATES A 4" DIAMETER  
36" LONG 7/16" STEEL ROD CENTER  
CONCRETE MONUMENT.  
ARE 18" LONG (NO I.D. CAPS)  
(R) INDICATES RADIAL LOT LINES.  
(NR) INDICATES NOT RADIAL LOT LINES.  
BEARINGS BASED ON THE N.Y.L. LINE OF  
SECTION 20, T.3N., R.14E., AS SHOWN IN  
LIBER 97, PAGES 34-36, INCL., MACOMB COUNTY  
RECORDS.

EAST 1/4 CORNER  
FRAC. SECTION 20,  
T.3N., R.14E.  
L.3337, P.833 & 834  
M.C.R.



CERTIFIED TRUE COPY OF  
AS PREPARED BY ME  
*Robert L. Smith*  
Surveyor  
No. 10000  
L.3337, P.833 & 834  
M.C.R.



UNPLATTED

UNPLATTED

UNPLATTED

UNPLATTED

INTERSECTION OF THE EAST LINE  
OF THE N.W. 1/4 OF SECTION 20,  
T.3N., R.14E., WITH THE N.W. 1/4 LINE OF P.C. 193  
L.C.R.C.  
L.00357, P.150  
M.C.R.

INTERSECTION OF THE EAST LINE  
OF THE N.W. 1/4 OF SECTION 20,  
T.3N., R.14E., WITH THE N.W. 1/4 LINE OF P.C. 193  
L.C.R.C.  
L.00357, P.150  
M.C.R.

INTERSECTION OF THE EAST LINE  
OF THE N.W. 1/4 OF SECTION 20,  
T.3N., R.14E., WITH THE N.W. 1/4 LINE OF P.C. 193  
L.C.R.C.  
L.00357, P.150  
M.C.R.

INTERSECTION OF THE EAST LINE  
OF THE N.W. 1/4 OF SECTION 20,  
T.3N., R.14E., WITH THE N.W. 1/4 LINE OF P.C. 193  
L.C.R.C.  
L.00357, P.150  
M.C.R.

SHEET 1 OF 3

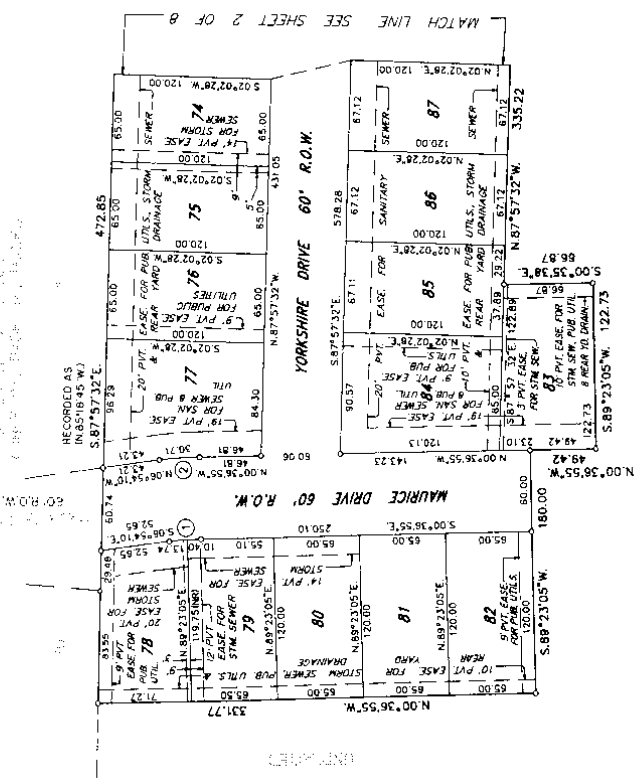
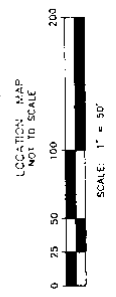
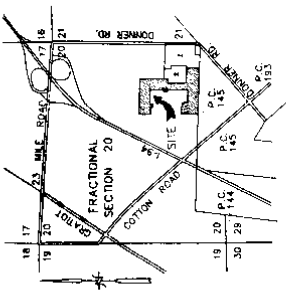
052400

L 103, P 13

# STONEHENGE SUBDIVISION NO. 3 PART OF THE S.E. FRACTIONAL 1/4 OF SECTION 20, T.3N., R.14E., CHESTERFIELD TOWNSHIP, MACOMB COUNTY, MICHIGAN

CURVE #	FRANCS	ARC	CHORD	CURSES	ANG. IN.
1	180.00	30.73	183.45	30.71	087°17'15"
2	180.00	30.73	183.45	30.71	087°17'15"

**LEGEND**  
ALL DIMENSIONS ARE SHOWN IN FEET  
DIMENSIONS ARE SHOWN  
ALONG THE CHORD  
THE SYMBOL "O" INDICATES A 4" DIAMETER  
36" LONG 7/16" STEEL ROD CENTER  
MARKER  
ALL LOT MARKERS ARE 1/2" STEEL RODS AND  
ARE 18" LONG. (NO I.D. CAPS)  
(R) INDICATES RADIAL LOT LINES  
(NR) INDICATES NON RADIAL LOT LINES  
THIS PLAN IS A PART OF THE RECORDS OF  
STONEHENGE SUBDIVISION NO. 2 AS RECORDED  
IN LIBER 97, PAGES 34-36, INCL., MACOMB  
COUNTY RECORDS.



*Robert L. Smith*  
ROBERT L. SMITH



SHEET 1 OF 8

062707

CERTIFIED TRUE COPY OF  
RECORDED PLAT  
BY DEPARTMENT OF COMMERCE

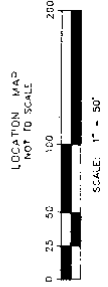
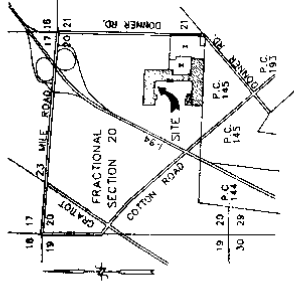
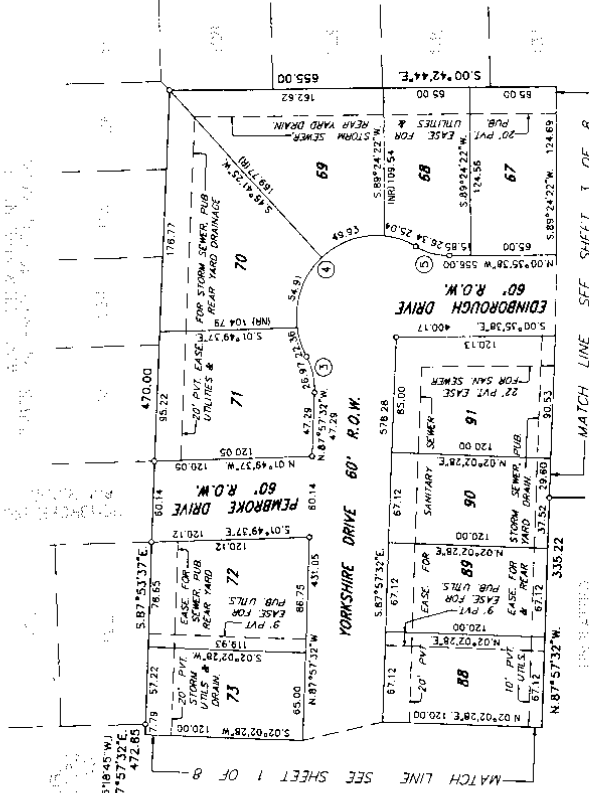
*Richard L. Smith*  
Richard L. Smith, P.E.  
Michigan Licensed Professional Engineer  
Surveying Division License

DATE: NOV 8 1997

# STONEHENGE SUBDIVISION NO. 3 PART OF THE S.E. FRACTIONAL 1/4 OF SECTION 20, T.3N., R.14E., CHESTERFIELD TOWNSHIP, MACOMB COUNTY, MICHIGAN

CURVE #	RADIUS	ARC	LONG.	CHORD	DELTA
1	50.00	27.31	5.76	21.45	28.97
2	50.00	158.24	1.44	35.54	112.00
3	50.00	28.08	1.14	40.45	26.34
4	30.00	20.00	1.10	34.64	20.32

RECORDED AS IN 85°18'45" W.J.  
S. 87°57'32"E.  
472.85



STATIONING ON DONNER ROAD  
FROM MILE ROAD

**LEGEND**  
ALL DIMENSIONS ARE SHOWN IN FEET.  
DIMENSIONS ARE SHOWN ALONG THE CHORD.  
THE SYMBOL "O" INDICATES A 4" DIAMETER  
36" LONG #7/2" STEEL ROD CENTER  
MARKER.  
ALL LOT MARKERS ARE 1/2" STEEL RODS AND  
ARE 18" LONG. (NO I.D. CAPS)  
(R) INDICATES RADIAL LOT LINES.  
(R) INDICATES NOT RADIAL LOT LINES.  
STONEHENGE SUBDIVISION NO. 2 AS RECORDED  
IN LIBER 97, PAGES 34-36, INCL., MACOMB  
COUNTY RECORDS.

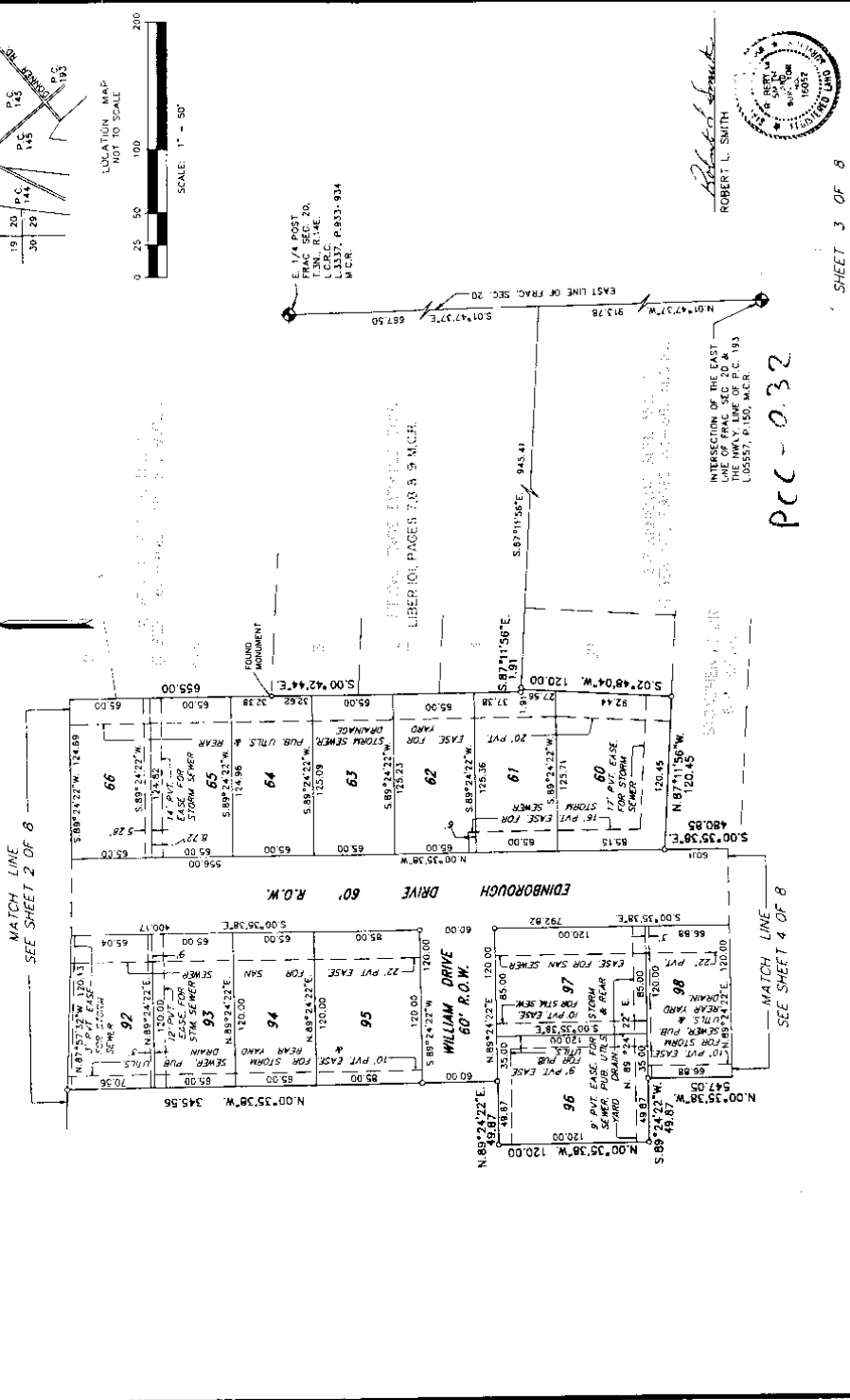
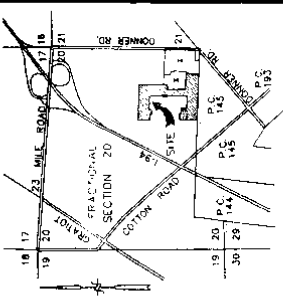
*Robert L. Smith*  
ROBERT L. SMITH



SHEET 2 OF 8  
062707

**STONEHENGE SUBDIVISION NO. 3**  
**PART OF THE S.E. FRACTIONAL 1/4 OF SECTION 20, T.3N., R.14E.,**  
**CHESTERFIELD TOWNSHIP, MACOMB COUNTY, MICHIGAN**

**LEGEND**  
 ALL DIMENSIONS ARE SHOWN IN FEET.  
 DIMENSIONS ALONG THE CHAINS ARE SHOWN  
 ALONG THE CHAINS. THE SYMBOL "S" INDICATES A 4" DIAMETER  
 36" LONG #1/2" STEEL ROD CENTER  
 CONCRETE MARKERS ARE 1/2" STEEL RODS AND  
 ARE 18" LONG. (NO I.D. CAPS)  
 (R) INDICATES RADIAL LOT LINES.  
 (RT) INDICATES NOT RADIAL LOT LINES.  
 (S) INDICATES STORM SEWER LINES.  
 STONEHENGE SUBDIVISION NO. 2, AS RECORDED  
 IN LIBER 87, PAGES 34-36, INCL., MACOMB  
 COUNTY RECORDS.



*Robert L. Smith*  
**ROBERT L. SMITH**  
 REGISTERED LAND SURVEYOR  
 NO. 10025  
 MICHIGAN

PCC-032

SHEET 3 OF 8

062707

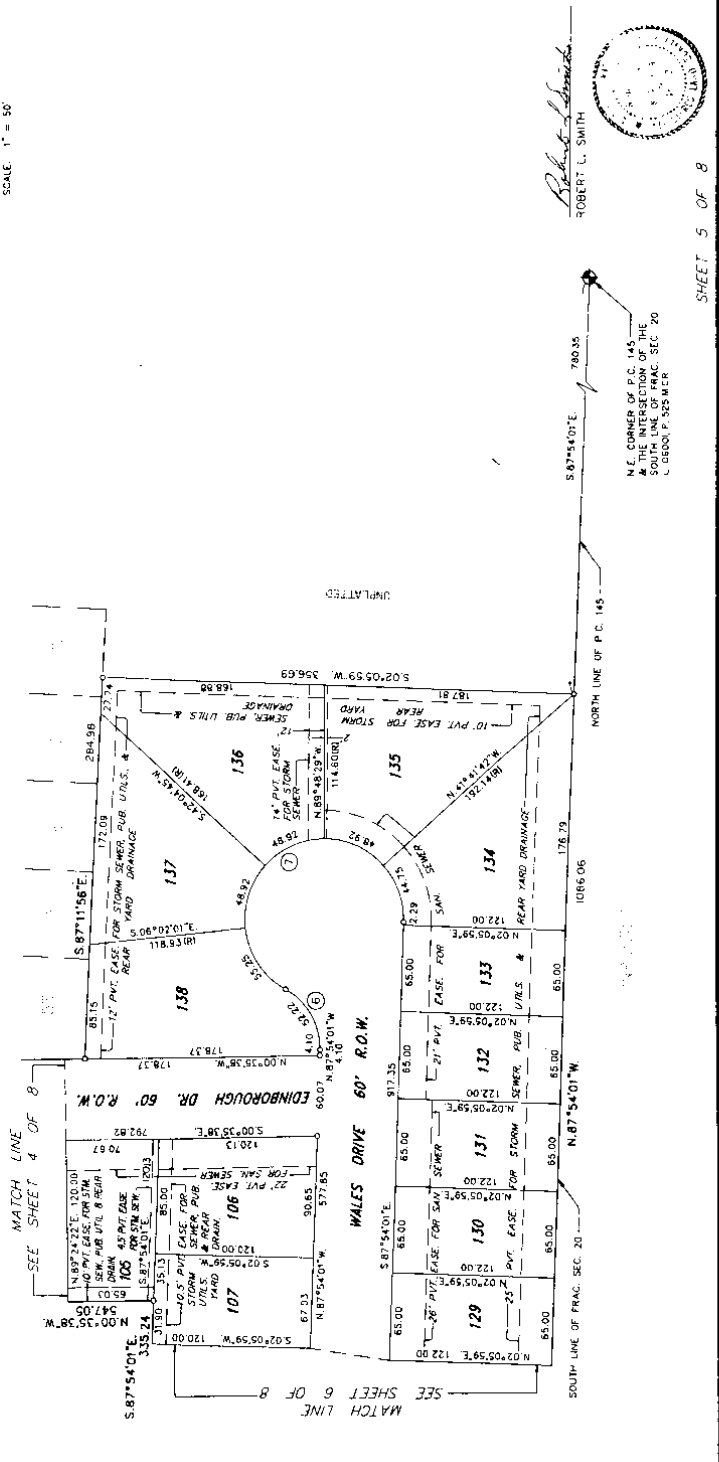
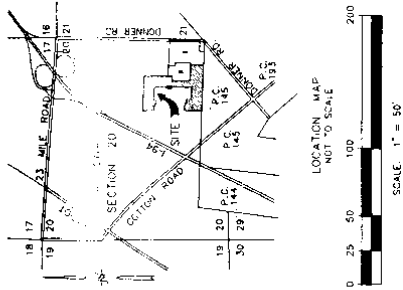




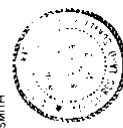
# STONEHENGE SUBDIVISION NO. 3 PART OF THE S.E. FRACTIONAL 1/4 OF SECTION 20, T.3N., R.14E., CHESTERFIELD TOWNSHIP, MACOMB COUNTY, MICHIGAN

CURVE #	RADIUS	ARC	LONG CHORD	CHORD BEYOND	DELTA
1	100.00	157.08	100.00	0.00	90° 00' 00"
2	100.00	254.13	171.83	102.34	124° 52' 32"

**LEGEND**  
 ALL DIMENSIONS ARE SHOWN IN FEET.  
 ALL CURVILINEAR DIMENSIONS ARE SHOWN  
 ALONG THE CHORD.  
 ALL DIMENSIONS ARE IN METERS.  
 CONCRETE MONUMENTS  
 ALL L.C.T. MARKERS ARE 7/8" STEEL RODS AND  
 ARE 18" LONG AND 1/2" DIA. CAPS  
 ARE 1/2" DIA. AND 1/2" LONG  
 (A-S) INDICATES NOT RADIAL LINES  
 BEARINGS BASED ON THE W/LY. LINE OF  
 STONEHENGE SUBDIVISION NO. 2 AS RECORDED  
 COUNTY RECORDS.



*Robert L. Smith*  
 ROBERT L. SMITH

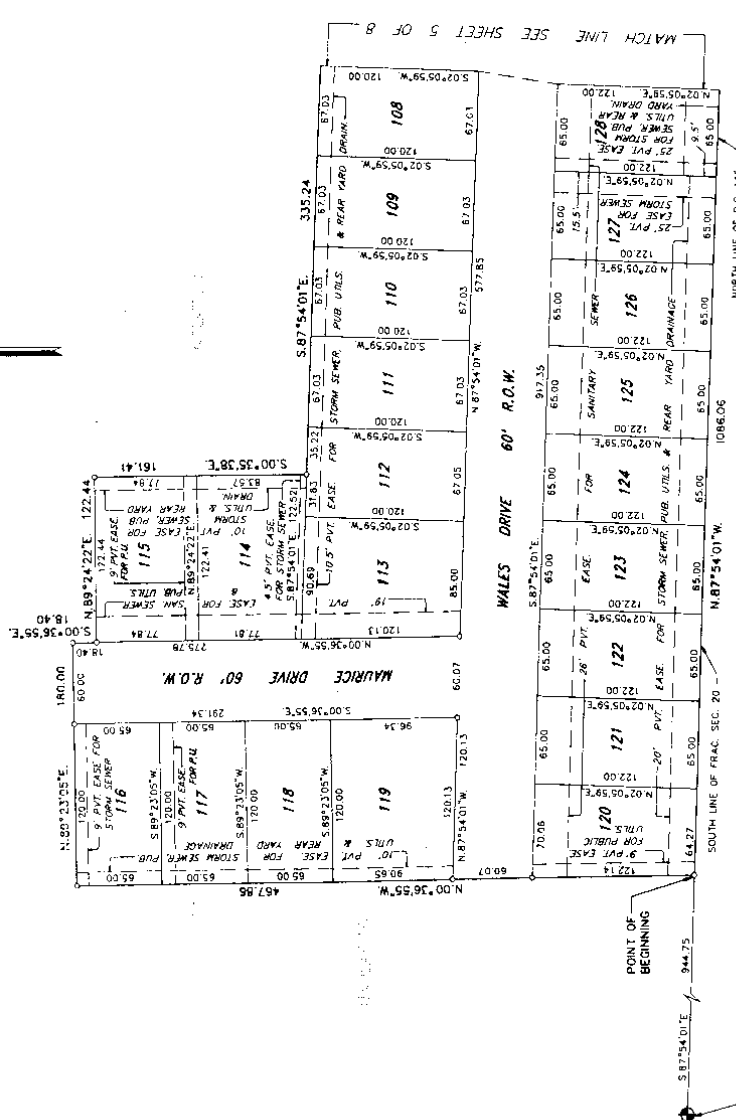
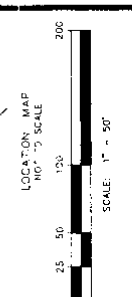


SHEET 5 OF 8  
 062707

N.E. CORNER OF P.C. 145  
 1/4 SECTION 20, T.3N., R.14E.,  
 S.W. 1/4 OF CHAS. SEC. 20  
 L. 68000 P. 525 MER

**STONEHENGE SUBDIVISION NO. 3**  
 PART OF THE S.E. FRACTIONAL 1/4 OF SECTION 20, T.3N., R.14E.,  
 CHESTERFIELD TOWNSHIP, MACOMB COUNTY, MICHIGAN

**LEGEND**  
 ALL DIMENSIONS ARE SHOWN IN FEET.  
 ALL CURVILINEAR DIMENSIONS ARE SHOWN  
 USING THE STATE CALCULATOR.  
 1. ALL DIMENSIONS ARE SHOWN IN FEET.  
 2. ALL DIMENSIONS ARE SHOWN IN FEET.  
 3. ALL DIMENSIONS ARE SHOWN IN FEET.  
 4. ALL DIMENSIONS ARE SHOWN IN FEET.  
 5. ALL DIMENSIONS ARE SHOWN IN FEET.  
 6. ALL DIMENSIONS ARE SHOWN IN FEET.  
 7. ALL DIMENSIONS ARE SHOWN IN FEET.  
 8. ALL DIMENSIONS ARE SHOWN IN FEET.  
 9. ALL DIMENSIONS ARE SHOWN IN FEET.  
 10. ALL DIMENSIONS ARE SHOWN IN FEET.  
 11. ALL DIMENSIONS ARE SHOWN IN FEET.  
 12. ALL DIMENSIONS ARE SHOWN IN FEET.  
 13. ALL DIMENSIONS ARE SHOWN IN FEET.  
 14. ALL DIMENSIONS ARE SHOWN IN FEET.  
 15. ALL DIMENSIONS ARE SHOWN IN FEET.  
 16. ALL DIMENSIONS ARE SHOWN IN FEET.  
 17. ALL DIMENSIONS ARE SHOWN IN FEET.  
 18. ALL DIMENSIONS ARE SHOWN IN FEET.  
 19. ALL DIMENSIONS ARE SHOWN IN FEET.  
 20. ALL DIMENSIONS ARE SHOWN IN FEET.  
 21. ALL DIMENSIONS ARE SHOWN IN FEET.  
 22. ALL DIMENSIONS ARE SHOWN IN FEET.  
 23. ALL DIMENSIONS ARE SHOWN IN FEET.  
 24. ALL DIMENSIONS ARE SHOWN IN FEET.  
 25. ALL DIMENSIONS ARE SHOWN IN FEET.  
 26. ALL DIMENSIONS ARE SHOWN IN FEET.  
 27. ALL DIMENSIONS ARE SHOWN IN FEET.  
 28. ALL DIMENSIONS ARE SHOWN IN FEET.  
 29. ALL DIMENSIONS ARE SHOWN IN FEET.  
 30. ALL DIMENSIONS ARE SHOWN IN FEET.  
 31. ALL DIMENSIONS ARE SHOWN IN FEET.  
 32. ALL DIMENSIONS ARE SHOWN IN FEET.  
 33. ALL DIMENSIONS ARE SHOWN IN FEET.  
 34. ALL DIMENSIONS ARE SHOWN IN FEET.  
 35. ALL DIMENSIONS ARE SHOWN IN FEET.  
 36. ALL DIMENSIONS ARE SHOWN IN FEET.  
 37. ALL DIMENSIONS ARE SHOWN IN FEET.  
 38. ALL DIMENSIONS ARE SHOWN IN FEET.  
 39. ALL DIMENSIONS ARE SHOWN IN FEET.  
 40. ALL DIMENSIONS ARE SHOWN IN FEET.  
 41. ALL DIMENSIONS ARE SHOWN IN FEET.  
 42. ALL DIMENSIONS ARE SHOWN IN FEET.  
 43. ALL DIMENSIONS ARE SHOWN IN FEET.  
 44. ALL DIMENSIONS ARE SHOWN IN FEET.  
 45. ALL DIMENSIONS ARE SHOWN IN FEET.  
 46. ALL DIMENSIONS ARE SHOWN IN FEET.  
 47. ALL DIMENSIONS ARE SHOWN IN FEET.  
 48. ALL DIMENSIONS ARE SHOWN IN FEET.  
 49. ALL DIMENSIONS ARE SHOWN IN FEET.  
 50. ALL DIMENSIONS ARE SHOWN IN FEET.  
 51. ALL DIMENSIONS ARE SHOWN IN FEET.  
 52. ALL DIMENSIONS ARE SHOWN IN FEET.  
 53. ALL DIMENSIONS ARE SHOWN IN FEET.  
 54. ALL DIMENSIONS ARE SHOWN IN FEET.  
 55. ALL DIMENSIONS ARE SHOWN IN FEET.  
 56. ALL DIMENSIONS ARE SHOWN IN FEET.  
 57. ALL DIMENSIONS ARE SHOWN IN FEET.  
 58. ALL DIMENSIONS ARE SHOWN IN FEET.  
 59. ALL DIMENSIONS ARE SHOWN IN FEET.  
 60. ALL DIMENSIONS ARE SHOWN IN FEET.  
 61. ALL DIMENSIONS ARE SHOWN IN FEET.  
 62. ALL DIMENSIONS ARE SHOWN IN FEET.  
 63. ALL DIMENSIONS ARE SHOWN IN FEET.  
 64. ALL DIMENSIONS ARE SHOWN IN FEET.  
 65. ALL DIMENSIONS ARE SHOWN IN FEET.  
 66. ALL DIMENSIONS ARE SHOWN IN FEET.  
 67. ALL DIMENSIONS ARE SHOWN IN FEET.  
 68. ALL DIMENSIONS ARE SHOWN IN FEET.  
 69. ALL DIMENSIONS ARE SHOWN IN FEET.  
 70. ALL DIMENSIONS ARE SHOWN IN FEET.  
 71. ALL DIMENSIONS ARE SHOWN IN FEET.  
 72. ALL DIMENSIONS ARE SHOWN IN FEET.  
 73. ALL DIMENSIONS ARE SHOWN IN FEET.  
 74. ALL DIMENSIONS ARE SHOWN IN FEET.  
 75. ALL DIMENSIONS ARE SHOWN IN FEET.  
 76. ALL DIMENSIONS ARE SHOWN IN FEET.  
 77. ALL DIMENSIONS ARE SHOWN IN FEET.  
 78. ALL DIMENSIONS ARE SHOWN IN FEET.  
 79. ALL DIMENSIONS ARE SHOWN IN FEET.  
 80. ALL DIMENSIONS ARE SHOWN IN FEET.  
 81. ALL DIMENSIONS ARE SHOWN IN FEET.  
 82. ALL DIMENSIONS ARE SHOWN IN FEET.  
 83. ALL DIMENSIONS ARE SHOWN IN FEET.  
 84. ALL DIMENSIONS ARE SHOWN IN FEET.  
 85. ALL DIMENSIONS ARE SHOWN IN FEET.  
 86. ALL DIMENSIONS ARE SHOWN IN FEET.  
 87. ALL DIMENSIONS ARE SHOWN IN FEET.  
 88. ALL DIMENSIONS ARE SHOWN IN FEET.  
 89. ALL DIMENSIONS ARE SHOWN IN FEET.  
 90. ALL DIMENSIONS ARE SHOWN IN FEET.  
 91. ALL DIMENSIONS ARE SHOWN IN FEET.  
 92. ALL DIMENSIONS ARE SHOWN IN FEET.  
 93. ALL DIMENSIONS ARE SHOWN IN FEET.  
 94. ALL DIMENSIONS ARE SHOWN IN FEET.  
 95. ALL DIMENSIONS ARE SHOWN IN FEET.  
 96. ALL DIMENSIONS ARE SHOWN IN FEET.  
 97. ALL DIMENSIONS ARE SHOWN IN FEET.  
 98. ALL DIMENSIONS ARE SHOWN IN FEET.  
 99. ALL DIMENSIONS ARE SHOWN IN FEET.  
 100. ALL DIMENSIONS ARE SHOWN IN FEET.



5.1/4 6087  
 T.3N. R.14E.  
 L.C.R.C. 06001  
 L.06001 P.325  
 M.C.R.

ROBERT L. SMITH  
 062707



**STONEHENGE SUBDIVISION NO. 3**  
**PART OF THE S.E. FRACTIONAL 1/4 OF SECTION 20, T.3N., R.14E.,**  
**CHESTERFIELD TOWNSHIP, MACOMB COUNTY, MICHIGAN**

CERTIFICATE OF MUNICIPAL APPEAL

I CERTIFY THAT THIS PLAT WAS APPROVED BY THE BOARD OF TRUSTEES OF THE TOWNSHIP OF CHESTERFIELD, AT A MEETING HELD ON November 30, 1993 AND WAS REVIEWED AND FOUND TO BE IN COMPLIANCE WITH ACT 288, P.A. OF 1987 THAT THE LOTS CONFORM WITH THE LEGALLY ADOPTED ZONING SUBDIVISION MAP OF THE TOWNSHIP OF CHESTERFIELD, MICHIGAN, IN ACCORDANCE WITH SECTION 19B, ALSO THAT ADEQUATE SURETY HAS BEEN DEPOSITED WITH THE TOWNSHIP CLERK FOR THE PLACING OF MONUMENTS AND LOT MARKERS WITHIN A REASONABLE LENGTH OF TIME, NOT TO EXCEED ONE (1) YEAR FROM THE ABOVE DATE, AND THAT THE PUBLIC WATER AND PUBLIC SEWER SERVICES HAVE BEEN INSTALLED AND ARE READY FOR USE WITHIN THIS PLAT.

*Janice M. Uguis*  
 JANICE M. UGUIS, CLERK

COUNTY PLAT BOARD CERTIFICATE

THIS PLAT HAS BEEN REVIEWED AND IS APPROVED BY THE MACOMB COUNTY PLAT BOARD ON March 11, 1994, AS BEING IN COMPLIANCE WITH ALL OF THE PROVISIONS OF ACT 288, P.A. 1987, AND THE PLAT BOARD'S APPLICABLE RULES AND REGULATIONS.

*Mark A. Steenbergh*  
 MARK A. STEENBERGH, CHAIRPERSON OF THE COUNTY BOARD OF COMMISSIONERS

*Carmella Sabauhn*  
 CARMELLA SABAUHN, CLERK - REGISTER OF DEEDS

*Caroline S. Miller*  
 CAROLINE S. MILLER, MACOMB COUNTY TREASURER

RECORDING CERTIFICATE

STATE OF MICHIGAN )  
 COUNTY OF MACOMB )

THIS PLAT WAS RECEIVED FOR RECORD ON THE 31st DAY OF MARCH, 1994 AT 3:35 P.m. AND RECORDED IN LIBER 105 OF PLATS ON PAGE(S) 13-20

*Colette M. Dymasuk*  
 COLETTE M. DYMASUK, DEPUTY REGISTER OF DEEDS

*Robert L. Smith*  
 ROBERT L. SMITH



SHEET 8 OF 8

061707

COUNTY TREASURER'S CERTIFICATE

THE RECORDS IN MY OFFICE SHOW NO UNPAID TAXES OR SPECIAL ASSESSMENTS FOR THE FIVE (5) YEARS PRECEDING Sept. 13, 1993, INVOLVING THE LANDS INCLUDED IN THIS PLAT

*Anthony V. Manigeco*  
 ANTHONY V. MANIGECO, MACOMB COUNTY DRAIN COMMISSIONER

COUNTY DRAIN COMMISSIONER'S CERTIFICATE

APPROVED ON OCTOBER 20, 1993, AS COMPLYING WITH SECTION 192 OF ACT 288, P.A. 1987, AND THE APPLICABLE RULES AND REGULATIONS PUBLISHED BY MY OFFICE IN THE COUNTY OF MACOMB.

*Anthony V. Manigeco*  
 ANTHONY V. MANIGECO, MACOMB COUNTY DRAIN COMMISSIONER

CERTIFICATE OF COUNTY ROAD COMMISSIONERS

APPROVED ON September 21, 1993, AS COMPLYING WITH SECTION 183 OF ACT 288, P.A. 1987 AND THE APPLICABLE PUBLISHED RULES AND REGULATIONS OF THE BOARD OF ROAD COMMISSIONERS OF MACOMB COUNTY.

*John J. Czekala*  
 JOHN J. CZEKALA, CHAIRPERSON

*Mary Louise Omer*  
 MARY LOUISE OMER, VICE CHAIRPERSON

*Thomas S. Welsh*  
 THOMAS S. WELSH, COMMISSIONER

# TIMBER WOODS CONDOMINIUMS

MACOMB COUNTY CONDOMINIUM SUBDIVISION PLAN NO. 1021, MACOMB  
RECORDED IN LIBER 18333, PAGES 653-700,  
COUNTY RECORDS. EXHIBIT "B" TO THE MASTER DEED OF TIMBER WOODS  
CONDOMINIUMS, CHESTERFIELD TOWNSHIP, MACOMB COUNTY, MICHIGAN.

ATTENTION: COUNTY REGISTER OF DEEDS  
CONDOMINIUM SUBDIVISION PLANS SHALL BE NUMBERED  
CONSECUTIVELY WHEN RECORDED BY THE REGISTER OF  
DEEDS. THE NUMBER OF SHEETS IN AN INSTRUMENT  
MUST BE PROPERLY SHOWN ON THIS SHEET  
IN THE SURVEYOR'S CERTIFICATE.

DEVELOPER:  
SUNRISE GROUP, INC.  
8155 ANNSBURY, SUITE 112  
SHELBY TOWNSHIP, MICHIGAN 48316  
PHONE (586) 786-9220

ARCHITECT:  
G.E.S.  
8155 ANNSBURY SUITE 109  
SHELBY TOWNSHIP, MICHIGAN 48316  
PHONE (586) 788-5533

ENGINEERS & SURVEYORS  
FAZAL KHAN & ASSOCIATES, INC.  
43345 SCHOENHERR ROAD  
STERLING HEIGHTS, MICHIGAN 48313  
PHONE (586) 739-8007

- SHEET INDEX
- 1) COVER SHEET
  - 2) SURVEY PLAN
  - 3) SITE PLAN (WEST HALF)
  - 4) SITE PLAN (EAST HALF)
  - 5) UTILITY PLAN (WEST HALF)
  - 6) UTILITY PLAN (EAST HALF)
  - 7) EASEMENT PLAN (WEST HALF)
  - 8) EASEMENT PLAN (EAST HALF)
  - 9) FOUNDATION AND FIRST FLOOR PLAN
  - 10) SECOND FLOOR PLAN AND CROSS SECTION

### SURVEYOR'S CERTIFICATE

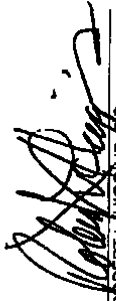
I, ROBERT L. HIGGINS, A PROFESSIONAL SURVEYOR OF THE STATE OF MICHIGAN, HEREBY CERTIFY:

THAT THE CONDOMINIUM SUBDIVISION PLAN KNOWN AS, MACOMB COUNTY CONDOMINIUM SUBDIVISION PLAN NO. 1021, AS SHOWN ON THE ACCOMPANYING DRAWINGS, REPRESENTS A SURVEY ON THE GROUND MADE UNDER MY DIRECTION AND THAT THERE ARE NO EXISTING ENCROACHMENTS UPON THE LANDS AND PROPERTY HEREIN DESCRIBED.

THAT THE REQUIRED MONUMENTS AND IRON MARKERS HAVE BEEN LOCATED IN THE GROUND AS REQUIRED BY RULES PROMULGATED UNDER SECTION 142 OF ACT NO. 59 OF THE PUBLIC ACTS OF 1978, AS AMENDED.


THAT THE ACCURACY OF THIS SURVEY IS WITHIN THE LIMITS REQUIRED BY THE RULES PROMULGATED UNDER SECTION 142 OF ACT NO. 59 OF THE PUBLIC ACTS OF 1978, AS AMENDED

THAT THE BEARINGS SHOWN ARE NOTED ON SURVEY PLAN AS REQUIRED BY THE RULES PROMULGATED UNDER SECTION 142 OF ACT NO. 59 OF THE PUBLIC ACTS OF 1978, AS AMENDED

  
ROBERT L. HIGGINS, P.S.  
PROFESSIONAL SURVEYOR  
REGISTRATION NO. 21570  
FAZAL KHAN & ASSOCIATES, INC.  
43345 SCHOENHERR ROAD  
STERLING HEIGHTS, MICHIGAN 48313

10-30-06  
DATE



  
PROPOSED DATE 10-30-06  
ROBERT L. HIGGINS P.S. 21570

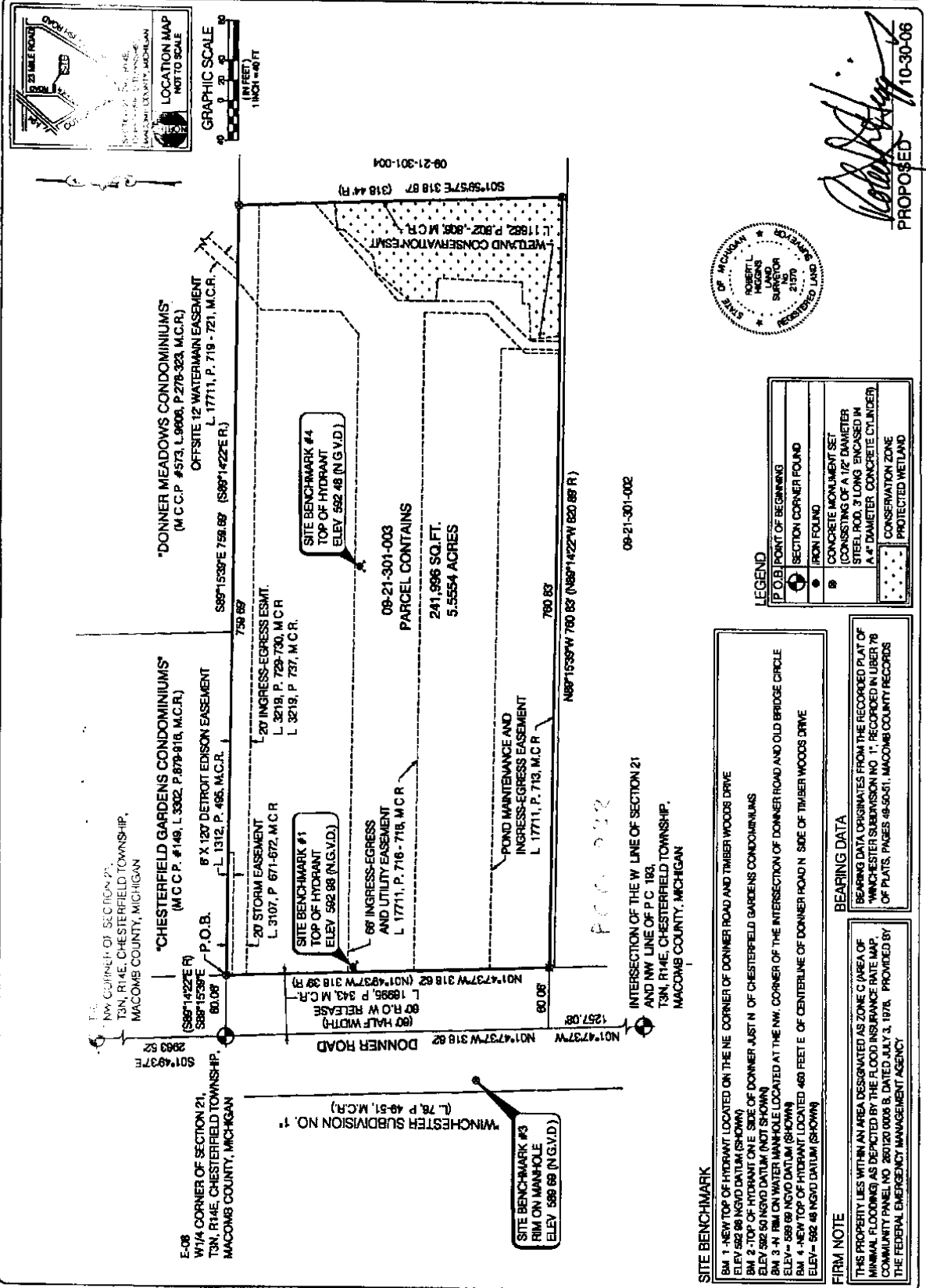
### DESCRIPTION OF PROPERTY

PART OF THE W1/2 OF FRACTIONAL SECTION 21, T3N, R14E, CHESTERFIELD TOWNSHIP, MACOMB COUNTY, MICHIGAN, DESCRIBED AS, COMMENCING AT THE NW CORNER OF FRACTIONAL SECTION 21; THENCE S01°49'37"E 2693.52 FEET ALONG THE WEST LINE OF SECTION 21 AND CENTERLINE OF DONNER ROAD TO THE W1/4 CORNER OF SECTION 21; THENCE S89°15'38"E 60.06 FEET (S89°14'22"E RECORD) TO THE EAST RIGHT OF WAY OF DONNER ROAD (60 FEET HALF WIDTH) AND FOR A POINT OF BEGINNING; THENCE CONTINUING S89°15'39"E 759.69 FEET (S89°14'22"E RECORD) ALONG THE SOUTH LINE OF "CHESTERFIELD GARDENS CONDOMINIUMS", MCCP NO. 148 AND "DONNER MEADOWS CONDOMINIUMS", MCCP NO. 573; THENCE S01°59'57"E 318.67 FEET (318.44 FEET RECORD); THENCE N89°15'39"W 760.83 FEET (N89°14'22"W RECORD) TO THE EAST RIGHT OF WAY OF DONNER ROAD (60 FEET HALF WIDTH); THENCE N01°47'37"W 318.62 FEET (N01°49'37"W 318.39 FEET RECORD) ALONG THE EAST RIGHT OF WAY OF DONNER ROAD (60 FEET HALF WIDTH) AND TO THE POINT OF BEGINNING. CONTAINING 241996 SQUARE FEET OR 5.554 ACRES, MORE OR LESS.

ALL UTILITIES SHOWN ON THESE PLANS ARE PROPOSED UNLESS DESIGNATED OTHERWISE.

ALL EASEMENTS SHOWN ON THESE PLANS ARE PROPOSED UNLESS DESIGNATED OTHERWISE.

THE BUILDING WITH UNITS 1 THRU 4 MUST BE BUILT, ALL OTHER BUILDINGS NEED NOT BE BUILT.



*Robert L. Higgins*  
 PROPOSED 10-30-08



**LEGEND**

⊙	P.O.B. POINT OF BEGINNING
⊙	SECTION CORNER FOUND
●	IRON FOUND
⊙	CONCRETE MONUMENT SET (CONSISTING OF A 1/2" DIAMETER STEEL ROD, 3' LONG ENCASED IN A 4" DIAMETER CONCRETE CYLINDER)
⊙	CONSERVATION ZONE
⊙	PROTECTED WETLAND

**BEARING DATA**

BEARING DATA ORIGINATES FROM THE RECORDED PLAT OF "WINCHESTER SUBDIVISION NO. 1", RECORDED IN LIBER 78 OF PLATS, PAGES 49-50-51, MACOMB COUNTY RECORDS.

**FIRM NOTE**

THIS PROPERTY LIES WITHIN AN AREA DESIGNATED AS ZONE C (AREA OF MINIMAL FLOODING) AS DEPICTED BY THE FLOOD INSURANCE RATE MAP COMMUNITY PANEL NO. 260120 0008 B, DATED JULY 3, 1978. PROVIDED BY THE FEDERAL EMERGENCY MANAGEMENT AGENCY.

**SITE BENCHMARK**

- BM 1 - NEW TOP OF HYDRANT LOCATED ON THE NE CORNER OF DONNER ROAD AND TIMBER WOODS DRIVE. ELEV = 582.85 (NGVD DATUM) (SHOWING)
- BM 2 - TOP OF HYDRANT ON E. SIDE OF DONNER, JUST N. OF CHESTERFIELD GARDENS CONDOMINIUMS. ELEV = 582.80 (NGVD DATUM) (NOT SHOWN)
- BM 3 - 4" DIA. CAST IRON WATER MANHOLE LOCATED AT THE NW CORNER OF THE INTERSECTION OF DONNER ROAD AND OLD BRIDGE CIRCLE. ELEV = 580.49 (NGVD DATUM) (SHOWING)
- BM 4 - 4" DIA. TOP OF HYDRANT LOCATED 400 FEET E. OF CENTERLINE OF DONNER ROAD N. SIDE OF TIMBER WOODS DRIVE. ELEV = 582.48 (NGVD DATUM) (SHOWING)

INTERSECTION OF THE W. LINE OF SECTION 21 AND NW LINE OF P.C. 193, T3N, R14E, CHESTERFIELD TOWNSHIP, MACOMB COUNTY, MICHIGAN

SITE BENCHMARK #3  
 RIM ON MANHOLE  
 ELEV 589.69 (N.G.V.D.)

WINCHESTER SUBDIVISION NO. 1  
 (L. 78, P. 49-51, M.C.R.)

SITE BENCHMARK #1  
 TOP OF HYDRANT  
 ELEV 592.88 (N.G.V.D.)

SITE BENCHMARK #4  
 TOP OF HYDRANT  
 ELEV 592.48 (N.G.V.D.)

08-21-301-003  
 PARCEL CONTAINS  
 241,996 SQ. FT.  
 5.5554 ACRES

"DONNER MEADOWS CONDOMINIUMS"  
 (M.C.C.P. #573, L. 960B, P. 278-323, M.C.R.)  
 OFFSITE 12' WATERMAN EASEMENT  
 L. 17711, P. 718 - 721, M.C.R.  
 S89°15'39"E 759.89' (S89°14'22"E R.)

"CHESTERFIELD GARDENS CONDOMINIUMS"  
 (M.C.C.P. #149, L. 3302, P. 879-919, M.C.R.)  
 B X 120' DETROIT EDISON EASEMENT  
 L. 1312, P. 495, M.C.R.

