

LAND CORNER RECORDATION CERTIFICATE
Filing Requirement of Act 74, Mich. P.A. 1970
REMONUMENTATION CORNER

For corners in:

MACOMB COUNTY
(County)

Located In: CHESTERFIELD TOWNSHIP Corner Code #

- 1. Public Land Survey T R
2. Property Controlling in Section S 20 T 3N R 14 E PCC-029
3. Miscellaneous Property in Sec. S T
4. Lot No. Recorded Plat
5. Private Claims PCC-029 is an intersection of the North line of PC 145 with the North-South 1/4 line of fractional Section 20.

9136002
LIBER 20074 PAGE 661
12/22/2009 10:49:31 A.M.
MACOMB COUNTY, MI SEAL
CARMELLA SABAUGH, REGISTER OF DEEDS

Register of Deeds Stamp & File Number

I, ROBERT E. HORNYAK, in a field survey on, August 18, 2009 do hereby certify that under requirements of P.A. 74, Michigan P.A. of 1970, the corner points mentioned in lines 1 and 2 above were in conformance with regulations and rules therefore as required in the current manual of survey instructions of the United States Department of the Interior, Bureau of Land Management or by a decree of a Court of Law and /or that the corner points mentioned in lines 3, 4 and 5 above were in conformance with the rules of the Michigan Board of Land Surveyors or by a Decree of a Court of Law; established, re-established, monumented, re-monumented, recovered, found as expressed below:

NOTE: Not more than 2 corners, all in the same town and range, may be recorded on this certificate.

A. Description of original monument and accessories and/or subsequent restoration:
PC 145 was surveyed by Aaron Greeley Surveyor of private claims in 1810.
GLO Survey performed in 1817 by William Preston, D.S. Corner not set.

Subsequent Restorations:

Table with 5 columns: Year, Description, Surveyor, Object, and Notes. Includes entries for MDOT ROW Map, Plat-Stonehenge No. 1-6, Condo-Cotton Creek Condo, and Condominium-Waterside Marketplace.

B. Description of corner evidence found and/or method applied in restoring or reestablishing corner:

The corner was perpetuated with the found 4" concrete monument, which falls at the South corner common to Lots 201 & 202 Plat-Stonehenge No.5 (Item 8). Occupation: East, West-Subdivision line on North side; North, South-none. The witness from Items 3, 5 & 7, distance from Item 11, along with the monumentation of Item 8 were used to verify the location of the corner.

Distances:

Table with 3 columns: Distance, PCC-029 to D-08, PCC-029 to PC-031, PCC-029 to PC-030. Includes values for Tax 75, 8, 11, Remon 09.

C. Description of monument for corner and accessories established to perpetuate locating the position of the corner:

I placed a 2" aluminum cap stamped "MACOMB COUNTY MONUMENT MI ACT 345; PCC-029; 44286" on found 4" concrete monument.

Witnesses:

Table with 3 columns: Bearing/Distance, Description, and Location. Includes witnesses for SE corner of house #28484, SE corner of house #28508, Found PK nail w/tag "PEA #43047", Found concrete monument, and Found PK nail w/tag #17635.

THE SELECTED LOCATION IS ACCEPTED BY ME AND IS GENERALLY ACCEPTED BY PROFESSIONAL SURVEYORS AS THE BEST AVAILABLE EVIDENCE OF THE POSITION OF THIS CORNER.

Signed by [Signature] Date October 28, 2009.

Surveyor's Michigan License No. 44286



FORM APPROVED BY MICHIGAN STATE BOARD OF LAND SURVEYORS, JAN. 28, 1971
REVISED MAY 14, 1975
REVISED JAN. 1983
REVISED OCT. 1995



ACCEPTED BY THE MACOMB COUNTY SURVEY PEER GROUP AS THE OFFICIAL CORNER UNDER MICHIGAN PUBLIC ACT 345 OF 1990 AT A MEETING HELD ON 10-13-09
MARTIN C. DUNN, P.S. CHAIRMAN

PCC-029 CHESTERFIELD TOWNSHIP

Private Claim 145 Survey:

PC 145 was surveyed by Aaron Greeley Surveyor of private claims in 1810.

GLO Survey History:

Researching the government survey records for Macomb County I have found that the Chesterfield Township was surveyed and subdivided not according to then in force Manual of Surveying Instructions. Due to presence of Lake St. Clair in the Southeast portion of the Township and numerous Private Claims along the shore exterior boundaries of the Township were established by William Preston, D.S. in 1817 in the following manner and order:

1. South boundary was run East from the Southwest corner.
2. East boundary was run South from the Northeast Twp. corner.
3. North boundary was run West from the Northeast Twp. corner.
4. West boundary was run South from the Northwest Twp. corner.

The subdivision of the Township commenced at the Northeast corner of Section 6; thence run South & West. Thus, the closing Sections are along the East and South Township boundaries.

PCC-029 is an intersection of the North line of PC 145 with the North-South 1/4 line of fractional Section 20.

Subsequent Restorations:

1	1981	MDOT ROW Map		unrecorded	Object not stated
2	1991	Plat-Stonehenge No.1 Stecker 30103		L93, P10	Object not stated
3	1993	LCRC-Stecker 30103		L6001, P525	Found 1/2" iron & cap * West 74.60 1/2" iron * WNW 114.78 PK & tag #17635 in S face UP South 51.05 Form nail & MSHD tag in E face UP WSW 177.87 PK & tag #17635 in S face UP
4	1994	Plat-Stonehenge No.3 Smith 16052		L103, P13	Refers to LCRC: L6001, P525
5	1994	LCRC-Soderberg 17635		L6325, P318	Set 1/2" rebar with cap #17635 * W 150.22 Found 1/2" rebar with cap #17635 WNW 118.30 Found PK nail w/tag #17635 in the S face of UP S 51.78 Found double headed nail w/MDOT tag in the E face of UP S 82.53 Found the centerline of ROW marker SW 122.68 Found PK nail in the edge of Cotton Rd. W 185.78 Found PK nail in the centerline of Cotton Rd.
6	1995	Plat-Stonehenge No.4 Smith 16052		L110, P26	Refers to LCRC: L6001, P525
7	1998	LCRC-Smith 16052		L7937, P885	Set 4" concrete monument * W 150.22 Found 1/2" rebar with cap #17635 WNW 118.30 Found PK nail w/tag #17635 in the S face of UP S 51.78 Found double headed nail w/MDOT tag in the E face of UP S 82.53 Found the centerline of ROW marker SW 122.68 Found PK nail in the edge of Cotton Rd. W 185.78 Found PK nail in the centerline of Cotton Rd.
8	1999	Plat-Stonehenge No.5 Smith 16052		L127, P29	Refers to LCRC: L7937, P885
9	2000	Plat-Stonehenge No.6 Smith 16052		L146, P25	Refers to LCRC: L7937, P885
10	2004	Condo-Cotton Creek Condo Smith 16052		MCCSP 808	Object found not stated
11	2007	Condominium-Waterside Marketplace Dandar 49330		MCCSP 1036	Object found not stated

* denotes matching witnesses

Field evidence:

The corner was perpetuated with the found 4" concrete monument, which falls at the South corner common to Lots 201 & 202 Plat-Stonehenge No.5 (Item 8).

Occupation: East, West-Subdivision line on North side; North, South-none.

Distances:

PCC-029 to D-08		PCC-029 to PC-031		PCC-029 to PC-030	
1625	Tax 75	2807.35	Tax 75		
		2811.41	2.8		
1614.22	8	2811.16	4.6	815.55	8.9
1613.09	11				
1613.00	Remon 09	2805.97	Remon 09	733.72	Remon 09

Recommendation:

The witness from Items 3, 5 & 7, distance from Item 11, along with the monumentation of Item 8 were used to verify the location of the corner.

I recommend to the Peer Review Board to accept the found 4" concrete monument as proper location for the corner.

I recommend placing a 2" aluminum cap stamped "MACOMB COUNTY MONUMENT MI ACT 345: PCC-029: 44286" on found 4" concrete monument.

Witnesses:

N20°E	92.87'	SE corner of house #28484
N72°E	132.00	SE corner of house #28508
South	52.67'	Found PK nail w/tag "PEA #43047" in W face of utility pole
N80°W	74.39'	Found concrete monument
N65°W	113.94'	Found PK nail w/tag #17635 in S face of utility pole

Respectfully submitted.

Robert E. Hornyak, PS # 44286

PCC-029
DOSSIER CONTENT
2009 REMON
T.3N., R.14E.,
Chesterfield Township, Macomb County, Michigan

Section One

Index

Pictures in the four cardinal directions; before and after setting the required monumentation.

Section Two

LCRC

Surveyor's Report

Section Three

- 1 Field Notes
- 2 Sketch
- 3 Township Map
- 4 Tax Map 1875
- 5 Tax Map 1895
- 6 Tax Map 1916
- 7 Tax Map 1961
- 8 Tax Map 1974
- 9 Aerial Pictures 2009

Section Four

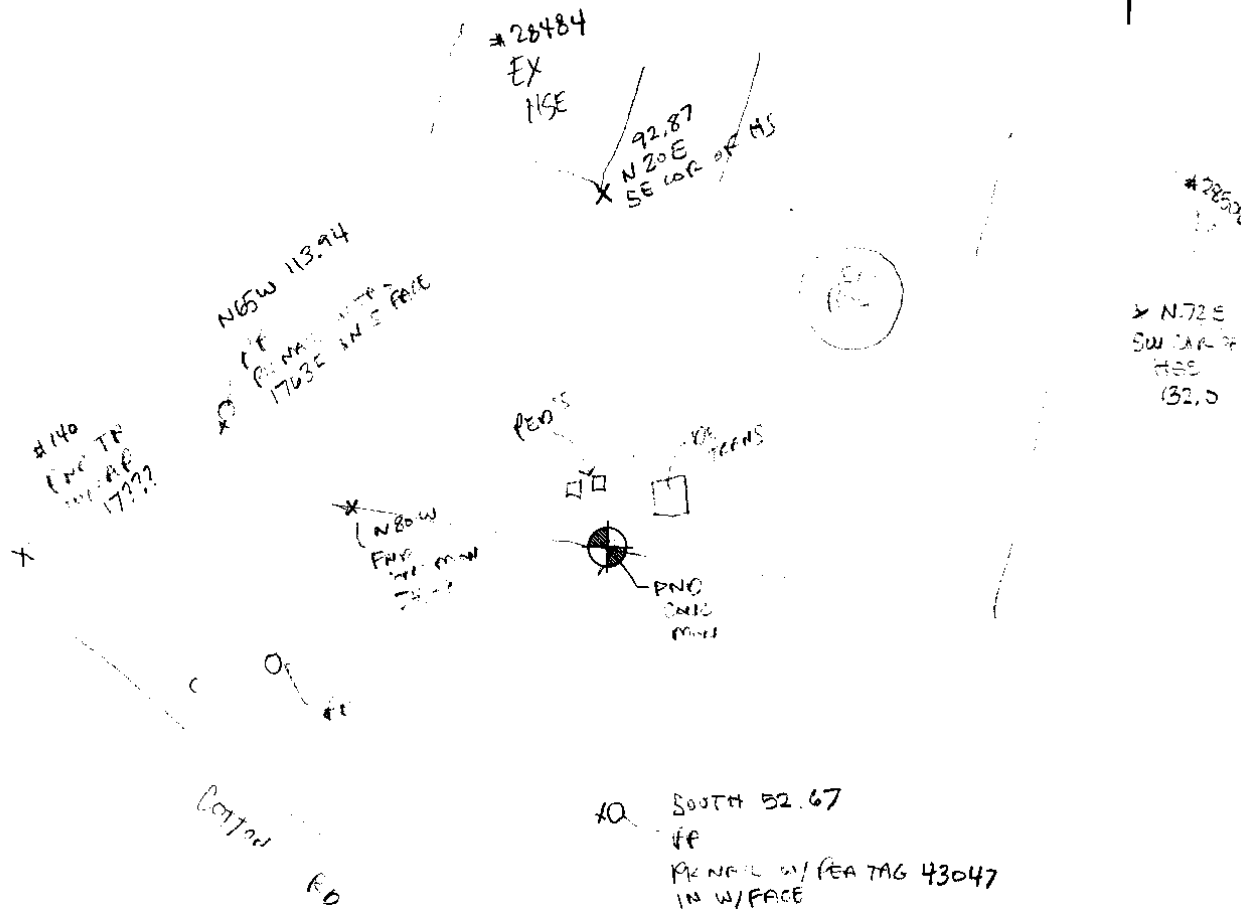
- 0 1810 Field notes of Survey of PC. 145 (original & transcript)
- 1 1981 MDOT ROW Map unrecorded
- 2 1991 Plat-Stonehenge No.1 Stecker 30103 L93, P10
- 3 1993 LCRC Stecker 30103 L6001, P525
- 4 1994 Plat-Stonehenge No.3 Smith 16052 L103, P13
- 5 1994 LCRC Soderberg 17635 L6325, P318
- 6 1995 Plat-Stonehenge No.4 Smith 16052 L110, P26
- 7 1998 LCRC Smith 16052 L7937, P885
- 8 1999 Plat-Stonehenge No.5 Smith 16052 L127, P29
- 9 2000 Plat-Stonehenge No.6 Smith 16052 L146, P25
- 10 2004 Condo-Cotton Creek Condo Smith 16052 MCCSP 808
- 11 2007 Condominium-Waterside Marketplace Dandar 49330 MCCSP 1036

PCC-029

REMON 2009

CHESTERFIELD TWP., T3N, R14E

DATE: 9.1.09
CREW: TO / CM
OBJECT FOUND: FND Conc. Man
POINT No.: 139
CTRL. PTS.: _____



OCCUPATION

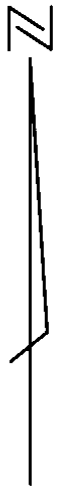
(if road state surface)

NORTH: RES. SUB

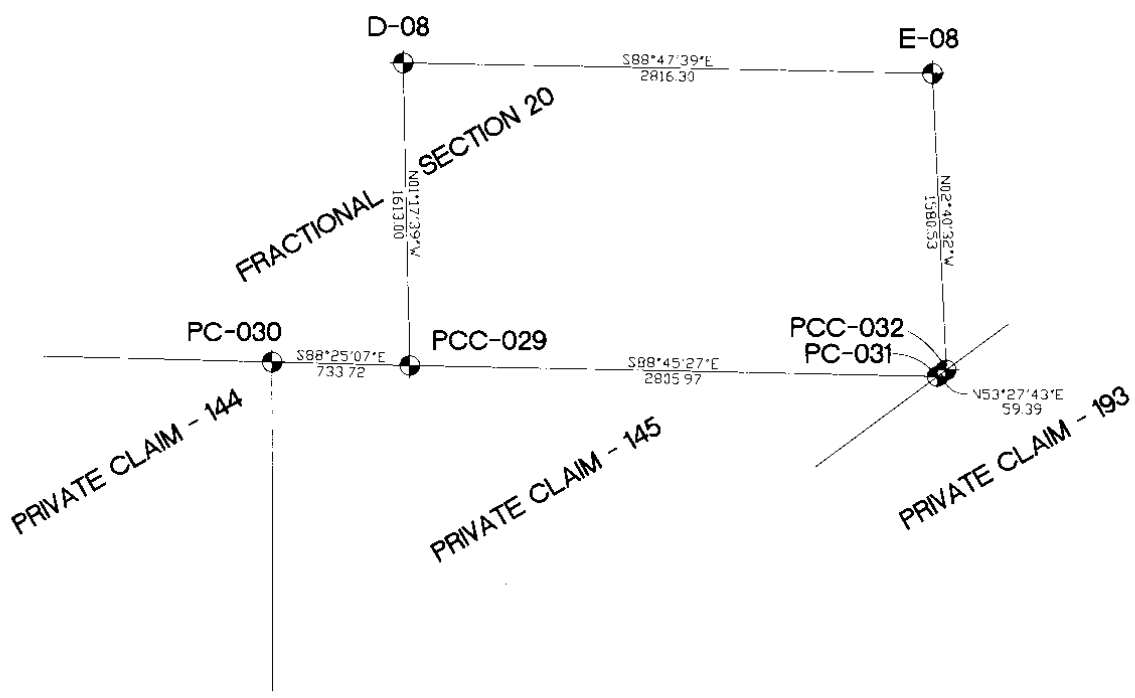
EAST: RES SUB / CONDO

SOUTH: ROAD

WEST: RES SUB / ROAD



REMON 2009 CHESTERFIELD TWP., T3N, R14E



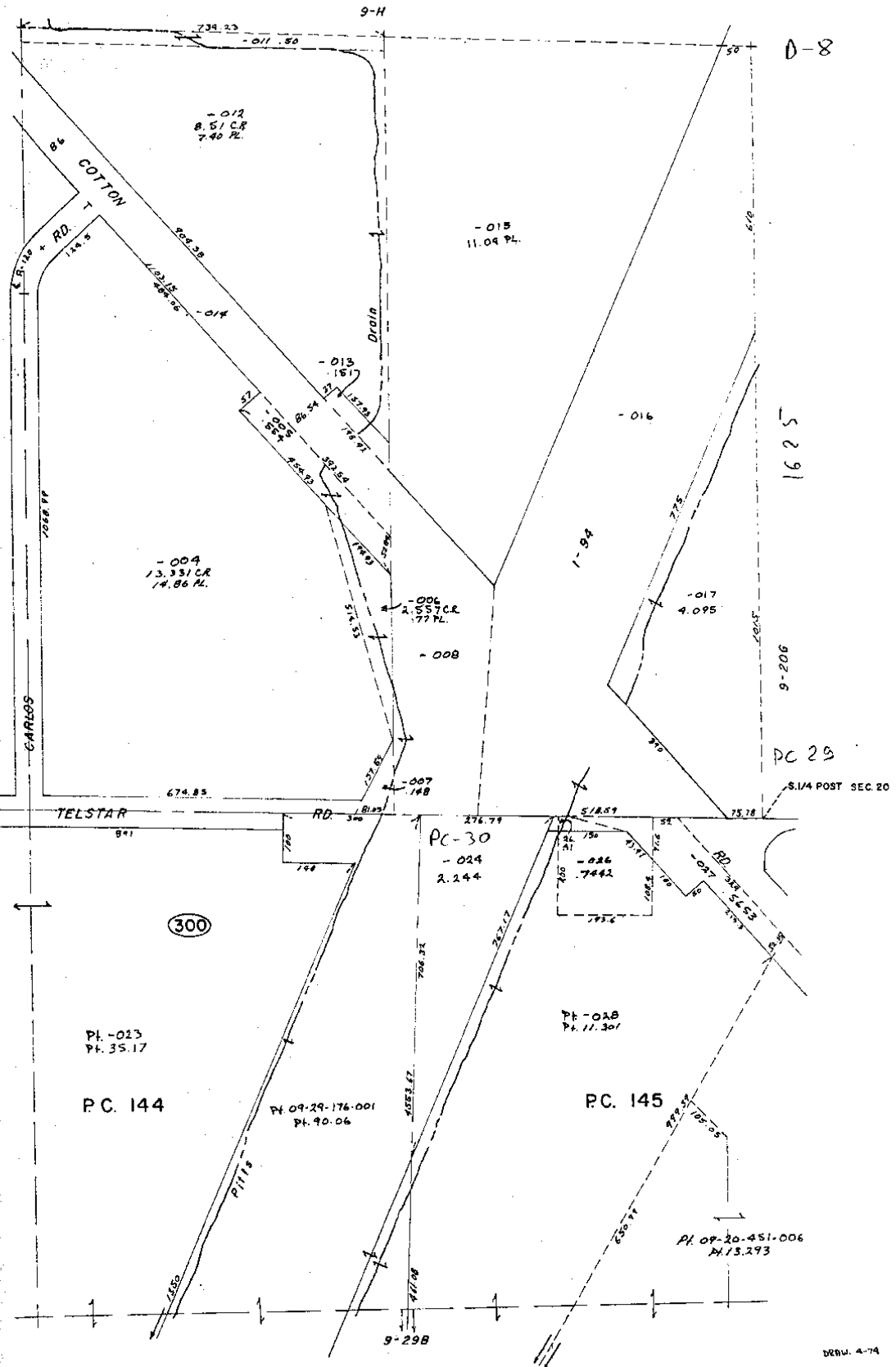
◆ SECTION, PRIVATE CLAIM CORNER

D-8

1625

PC 29

S.1/4 POST SEC. 20



Pl. -013
Pl. 35.17

PC. 144

Pl. 09-29-176-001
Pl. 90.06

PC-30
-024
2.244

Pl. -028
Pl. 11.307

PC. 145

Pl. 09-20-451-006
Pl. 13.293

DEBU. 4-74

SCALE 1"=100'

652

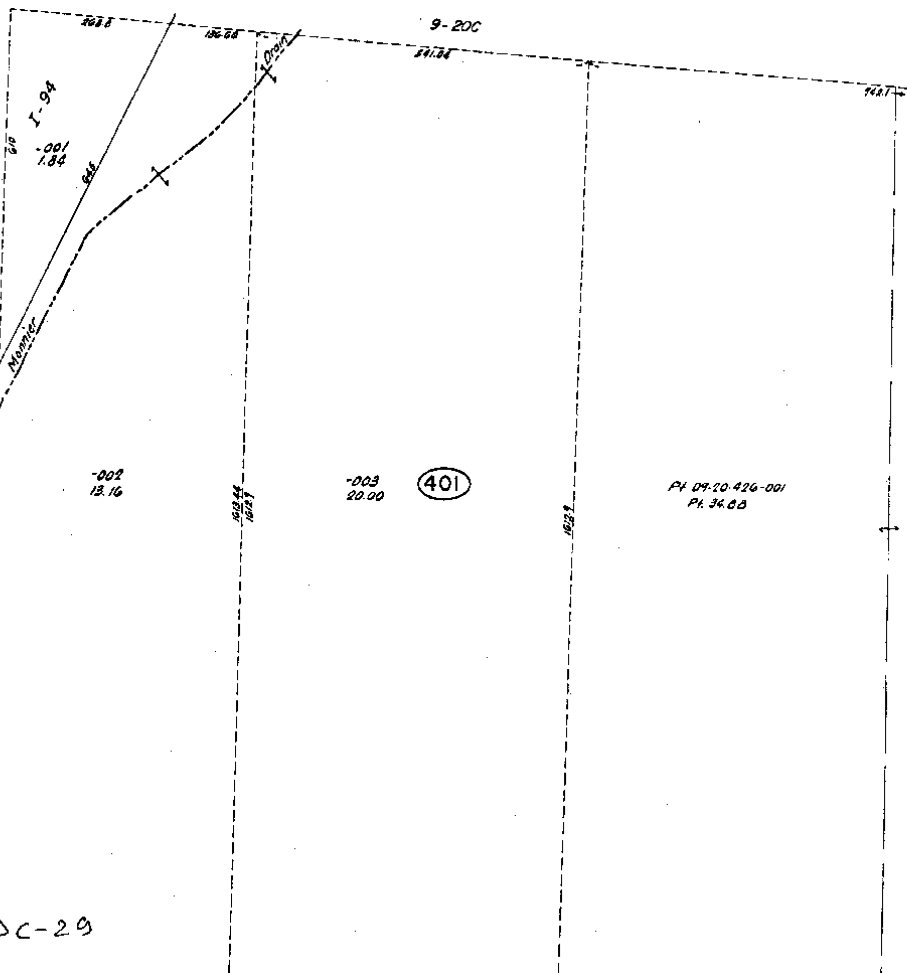
9-20F

CHESTERFIELD TWP
E.1/2 SW.1/4 SEC. 20 & PT. PC. 144 & 145 T. 3N, R. 14E

D-8

9-20C

1625



PC-29

S 1/4 POOR SEC. 20

MONNIER

PC. 145

476

PT. FORMERLY ASSESSED AS SUN RISE SUB

PH-010 PH. 23.130

PH-009 PH. 21.953

451

452

PH-006 PH. 18.273

9-29C

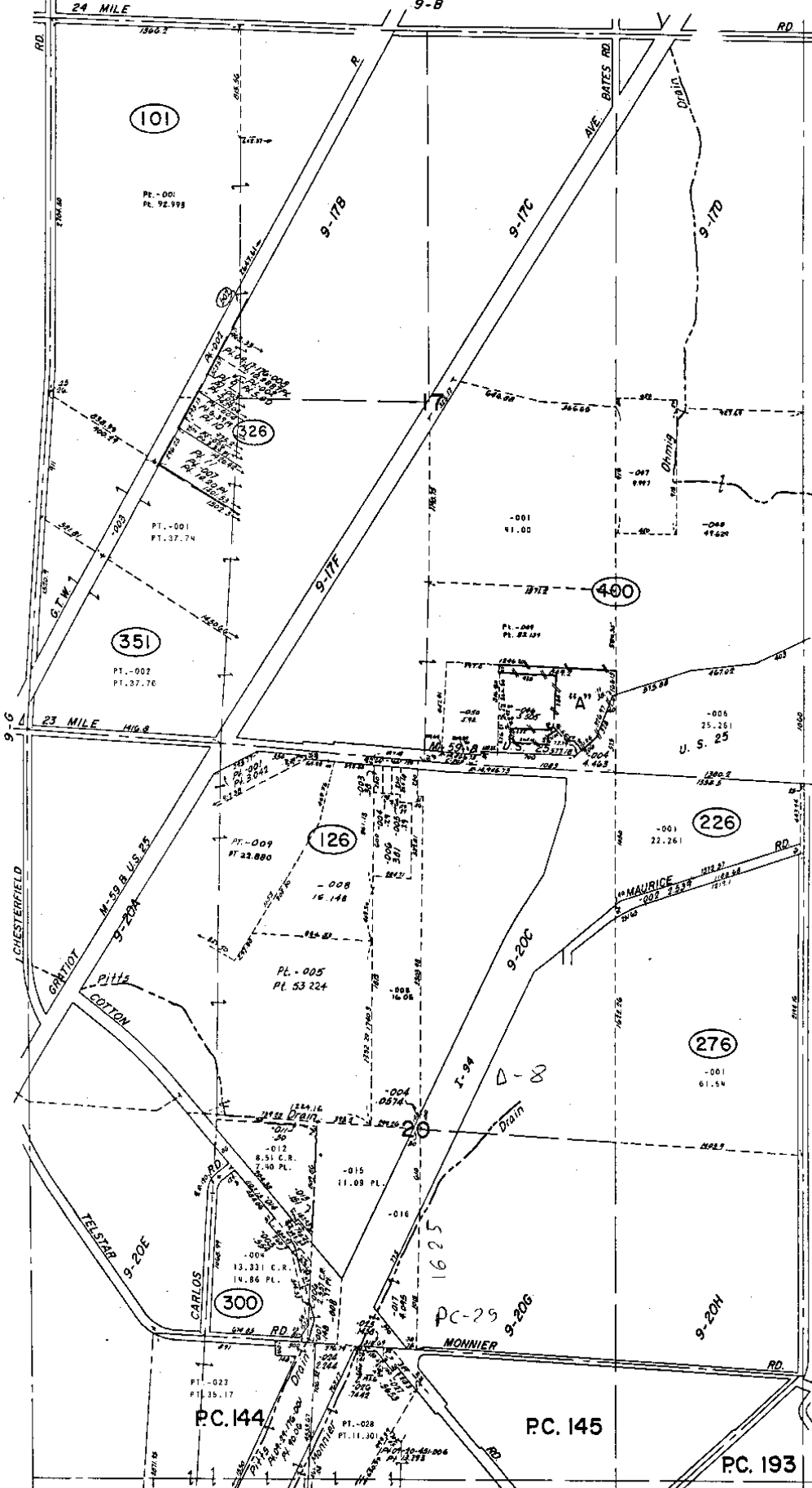
REV. 6-78
REV. 11-78
REV. 1-79

COPYRIGHT 1974
MACOMB COUNTY, MICHIGAN

SCALE: 1" = 100'
653
9-20G

CHESTERFIELD TWP.

W 1/2 SE 1/4 SEC. 20 & PT. PC. 145 T3N. R14E.



RALEIGH PLACE
 N.C.C.P. No. 61
 -DIO to -087
 -028 to -067

CHESTERFIELD TWP.

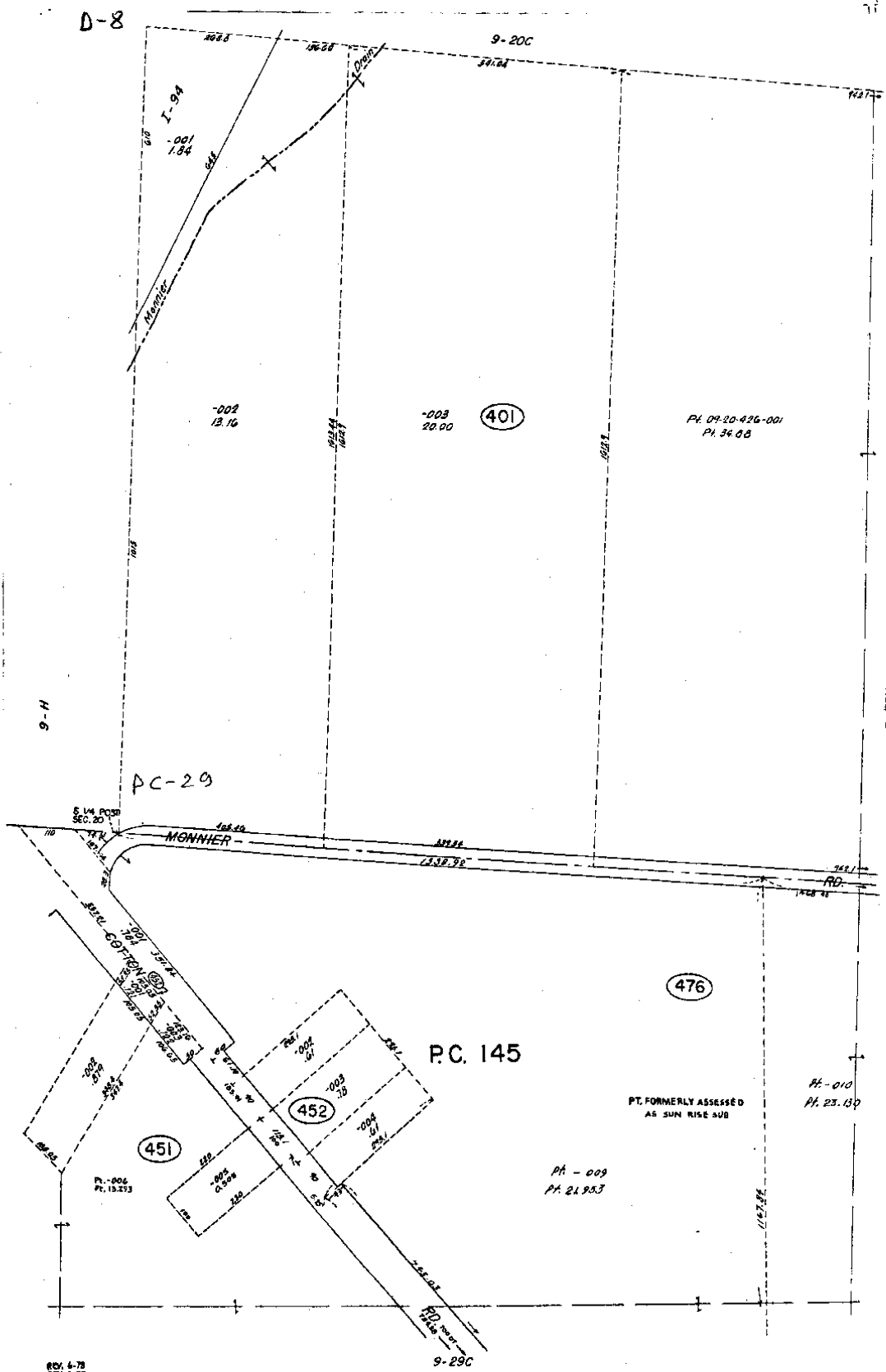
SECS. 17 & 20 & PT. P.C. 144, 145, 193 T.3N. R.14E.

SCALE: 1" = 400'
 593
 9-H

Copyright 1974
 MACOMB COUNTY, MICHIGAN

D-8

7i



REV. 6-78
 REV. 12-78
 REV. 8-79
 Copyright 1974
 MADONN COUNTY, MICHIGAN

SCALE: 1" = 100'
653
 9-20G

CHESTERFIELD TWP.
 W 1/2 SE 1/4 SEC. 20 & PT. P.C. 145 T.3N. R.14E.

N. 488. North Side of River Huron.

Description N. 145 Confirmed to Edward Tucker commencing at a post standing on the border of River Huron between this tract and a tract confirmed to John Tucker, thence north three hundred and forty eight chains forty one links, to a post thence east forty six chains ninety four links, to a post standing on the north west (or Rear) line of a Tract Confirmed to George Meldrum.

thence south forty five degrees west thirty two chains eighty links, to a post thence west six chains fifty links, to a post a boundary between this tract and Maconses Reserve thence south fifty six chains ninety nine links, to a post thence east sixteen chains, to a post thence south fifty eight chains twelve links, to a post thence west seventeen chains, to a post the north west corner of a tract confirmed to Mitchel Tremble, thence south one hundred and ninety eight chains eighty nine links, to a post standing on the border of River Huron thence along the border of said River upstream north eighty degrees west seven chains, thence south seventy four degrees west eight chains thirty links, to the place of beginning containing six hundred and forty acres.

Detroit July 14. 1810

Aaron G. Seeley Surveyor
of private Claims.

No. 488

No. 145 Confirmed to
Edward Tucker

NORTH SIDE OF RIVER HURON

Description No. 145 Confirmed to Edward Tucker commencing at a post standing on the border of River Huron between this tract and a tract confirmed to John Tucker thence north three hundred and forty eight chains forty one links, to a post thence east forty six chains ninety four links to a post standing on the north west (or rear) line of a tract confirmed to George Meldrum thence south forty five degrees west thirty two chains eighty links to a post thence west six chains fifty links to a post a boundary between this tract and Macconses Reserve thence south sixty six chains ninety nine links to a post thence east seventeen chains to a post, thence south fifty eight chains twelve links to a post thence west seventeen chains to a post the northwest corner of a tract confirmed to Mitchell Tremble, thence south one hundred and ninety eight chains eighty nine links to a post standing on the border of River Huron, thence along the border of said River up stream north eighty degrees west seven chains thence south seventy four degrees west eight chains thirty links to the place of beginning, _____

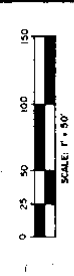
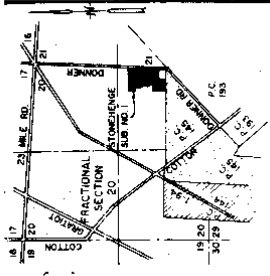
Containing six hundred and forty acres.

Detroit July 14, 1810

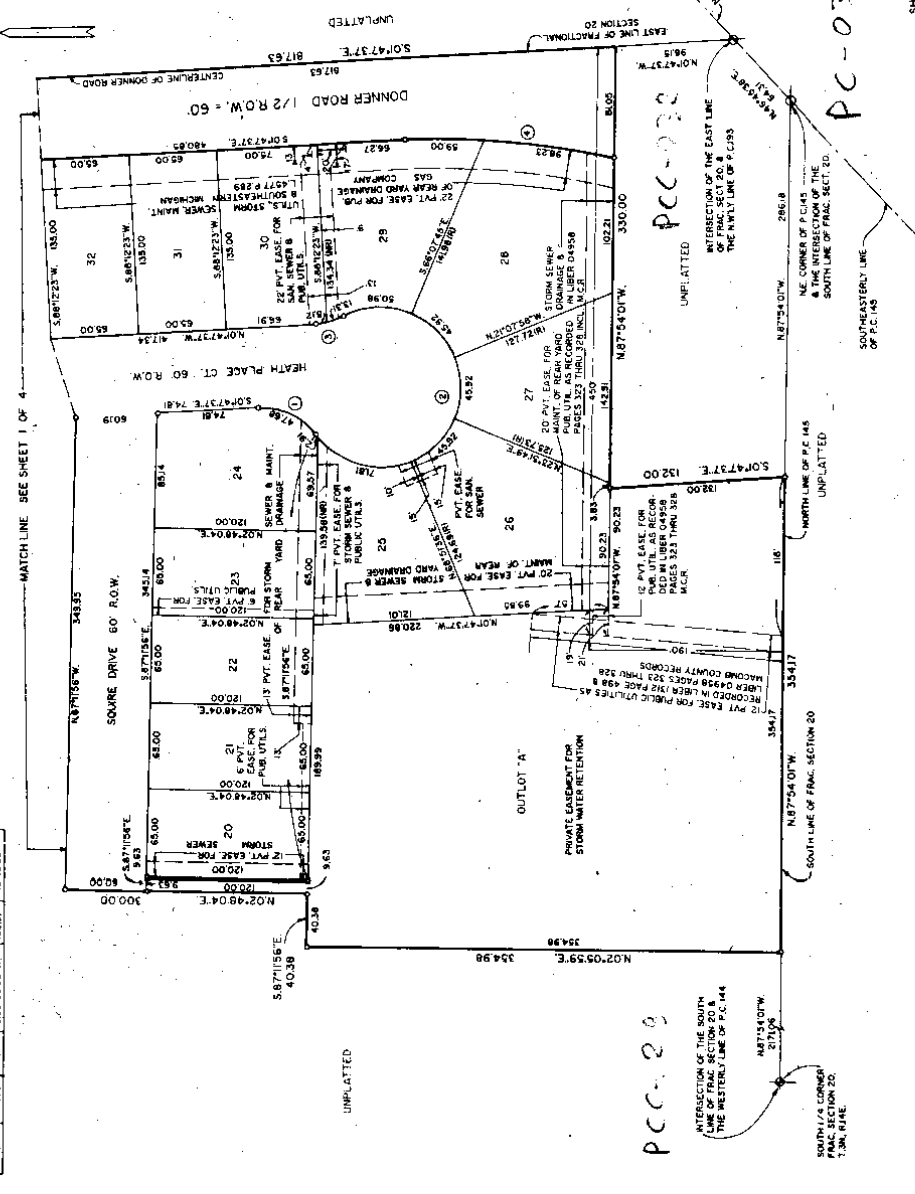
Aaron Greeley Surveyor
of private claims

STONEHENGE SUBDIVISION NO. 1
PART OF THE S.E. FRACTIONAL 1/4 OF SECTION 20, T.3 N., R.14 E.,
CHESTERFIELD TOWNSHIP, MACOMB COUNTY, MICHIGAN

CURVE #	RADIUS	ARC	CHORD BEARING	CHORD	EXC'L
1	50.00	43.70	S.25.42°W.	47.68	50°45'51"
2	60.00	21.90	S.75.37°E.	50.87	56°13'33"
3	50.00	25.48	N.10°07'W.	27.1	79°56'48"
4	190.00	151.21	S.02°03'2" W.	158.53	17°46'38"



LEGEND
 ALL DIMENSIONS ARE SHOWN IN FEET.
 ALL CURVILINEAR DIMENSIONS ARE SHOWN ALONG THE CHORD.
 THE RADIUS INDICATES A 4" DIAMETER 3/8" LONG, 1/2" STEEL ROD CENTER CONCRETE MONUMENT.
 ALL LOT MARKERS ARE 1/2" STEEL RODS & ARE 18" LONG, 1/2" I.D. CAPS.
 (RI) INDICATES RADIAL LOT LINES.
 BEARINGS AND DISTANCES ARE BASED ON THE EAST LINE OF WINCHESTER SUBDIVISION NO. 1 AS RECORDED IN LIBER 76 PAGE 50 MACOMB COUNTY RECORDS. THIS DIRECT VEHICULAR ACCESS TO DOWNER ROAD FROM LOT 1 AND FROM LOTS 28 THRU 35 INCLUSIVE.



William J. ...
 Surveyor

SHEET 2 OF 4

86130

LIBER 060016525

11937469

93 SEP -7 PM 3:12

LAND CORNER RECORDATION CERTIFICATE
Filing Requirement of Act 74, Mich. P.A. 1970

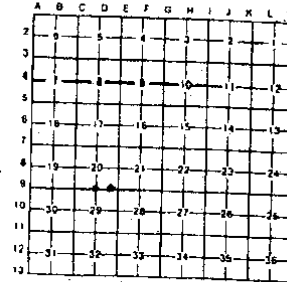
CARMELLA SABAUGH
REGISTER OF DEEDS
MACOMB COUNTY, MI

For corners in
MACOMB County

Located In Corner Code //

1	Public Land Survey	T 3N R 14E	D-9
	CHESTERFIELD	T 3N R 14E	NE CORNER OF PC 145 & INT. OF SOUTH LINE OF FRAC SECTION 20
2	Property Controlling in Section	S 20 T R	
	Miscellaneous	S 29 T R	
3	Property in Sec.	S T R	
4	Lot No	Recorded Plat	
5	Private Claims	145	

Register of Deeds Stamp & File Number



I, **ROGER J. STECKER**, in a field survey on **SEPTEMBER 1**, 19 **93**, do hereby certify that under requirements of P.A. 74, Michigan P.A. of 1970, the corner points mentioned in lines 1 and 2 above were in conformance with regulations and rules therefor as required in the current manual of survey instructions of the United States Department of the Interior, Bureau of Land Management or by a decree of a Court of Law and/or that the corner points mentioned in lines 3, 4 and 5 above were in conformance with the rules of the Michigan Board of Land Surveyors or by a Decree of a Court of Law, established, re-established, monumented, re-monumented, recovered, found as expressed below.

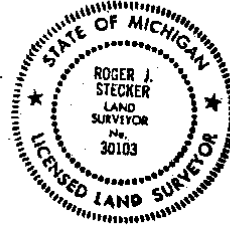
NOTE: Not more than 4 corners, all in the same town and range, may be recorded on this certificate.

A Description of original monument and accessions and/or subsequent restoration

D-9 1/2" IRON & CAP #16052
N.E. CORNER OF PC 145 AND THE INTERSECTION OF THE SOUTH LINE OF FRACTIONAL SECTION 20 - 1/2" IRON

B Description of corner evidence found and/or method applied in restoring or reestablishing corner

D-9 FOUND 1/2" IRON & CAP
FOUND 1/2" IRON N.E. CORNER OF PC 145 AND THE INTERSECTION OF THE SOUTH LINE OF FRACTIONAL SECTION 20



PCC-029

PC-31

C Description of monument for corner and accessions established to perpetuate locating the position of the corner

D-9
74.39 WEST 74.60 FT. 1/2" IRON
114.8 WEST NORTHWEST 114.78 P.K. & TAG #17635
IN SOUTH FACE UTILITY POLE
SOUTH 51.05 FORM NAIL & MSHD TAG IN EAST FACE UTILITY POLE
WEST SOUTHWEST 177.87 P.K. & GAC #17635 IN SOUTH FACE UTILITY POLE

N.E. CORNER OF P.C. 145 & INTERSECTION OF SOUTH LINE OF FRACTIONAL SECTION 20
EAST NORTHEAST 37.55 FT. TO WEST FACE OF 8" GATE POST
WEST NORTHWEST 23.33 FT. NAIL & TAG IN EAST FACE UTILITY POLE
SOUTH SOUTHEAST 47.34 FT. NAIL & TAG IN WEST FACE UTILITY POLE
NORTHEAST 65.84 FT. TO IRON ON EDGE OF ROAD

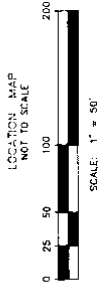
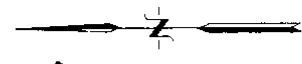
Signed by Roger J. Stecker
ROGER J. STECKER, PS
Surveyor's Michigan License No. 30103

Date 9-1-93

FORM APPROVED BY MICHIGAN STATE BOARD OF LAND SURVEYORS, APR. 26, 1971
REVISED MAY 14, 1978
REVISED JAN., 1983

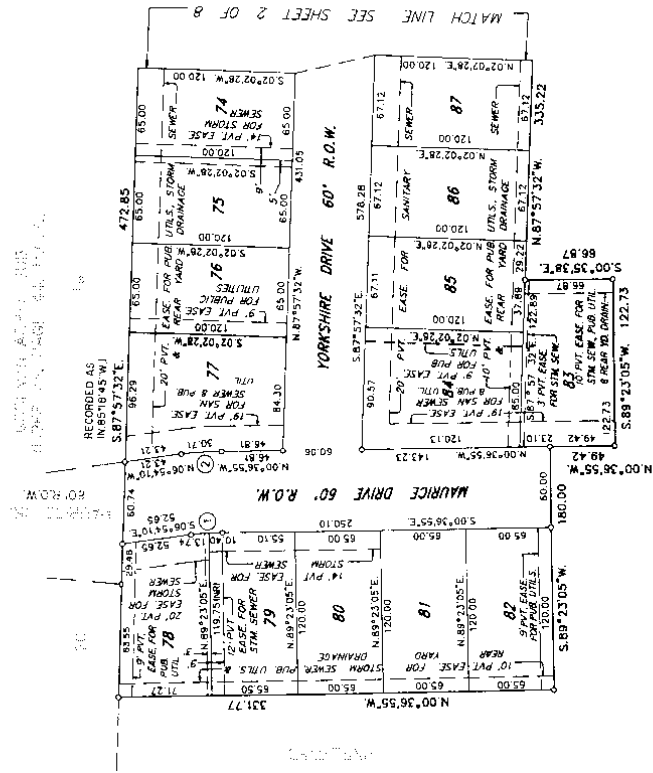
L 103, F 12

LEGEND
 ALL DIMENSIONS ARE SHOWN IN FEET.
 ALL CURVILINEAR DIMENSIONS ARE SHOWN
 IN PARENTHESIS. "C" INDICATES A 4" DIAMETER
 36" LONG W/1/2" STEEL ROD CENTER
 CONCRETE MONUMENT.
 ALL LOT MARKERS ARE 1/8" STEEL RODS AND
 CAPS.
 (R) INDICATES RADIAL LOT LINES.
 BEARINGS BASED ON THE WLY. LINE OF
 SECTION 20. ALL SURVEYS AND RECORDS
 IN LIBER 97, PAGES 34-38, INCL. MACOMB
 COUNTY RECORDS.

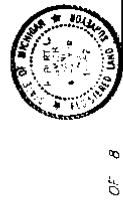


**STONEHENGE SUBDIVISION NO. 3
 PART OF THE S.E. FRACTIONAL 1/4 OF SECTION 20, T.3N., R.14E.,
 CHESTERFIELD TOWNSHIP, MACOMB COUNTY, MICHIGAN**

CURVE #	RADIUS	ARC	LONG.	CHORD	CHORD	DELTA
1	220.00	74.14	5.074537°E	30.71	30.71	88°17'15"
2	289.00	30.73	1.053492°E	30.71	30.71	88°17'15"



CERTIFIED TRUE COPY OF
 RECORDED PLAT
 BY DEPARTMENT OF COMMENCE
 MICHAEL J. [Signature]
 Subdivision Registrar
 Date: April 8, 1994

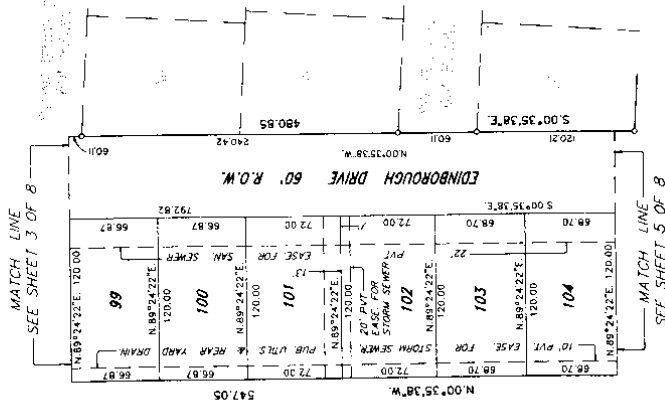
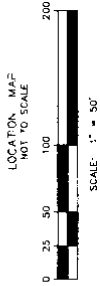
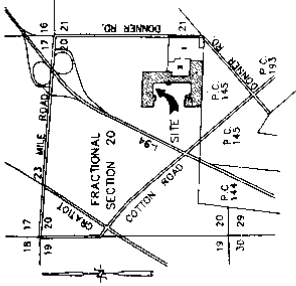


ROBERT L. SMITH

062707

**STONEHENGE SUBDIVISION NO. 3
PART OF THE S.E. FRACTIONAL 1/4 OF SECTION 20, T.3N., R.14E.,
CHESTERFIELD TOWNSHIP, MACOMB COUNTY, MICHIGAN**

LEGEND
ALL DIMENSIONS ARE SHOWN IN FEET.
ALL CURVILINEAR DIMENSIONS ARE SHOWN
ALONG THE CHORD.
THE SYMBOL "o" INDICATES A 4" DIAMETER
STEEL ROD CENTER
CONCRETE MANHOLE
ALL LOT MARKERS ARE 1/2" STEEL RODS AND
ARE 18" LONG (NO I.D. CAPS).
(R) INDICATES RADIAL LOT LINES.
ALL DIMENSIONS ARE BASED ON THE W.P.L. LINE OF
STONEHENGE SUBDIVISION NO. 2 AS RECORDED
IN LIBER 97, PAGES 34-36, INCL., MACOMB
COUNTY RECORDS.



Robert L. Smith
ROBERT L. SMITH



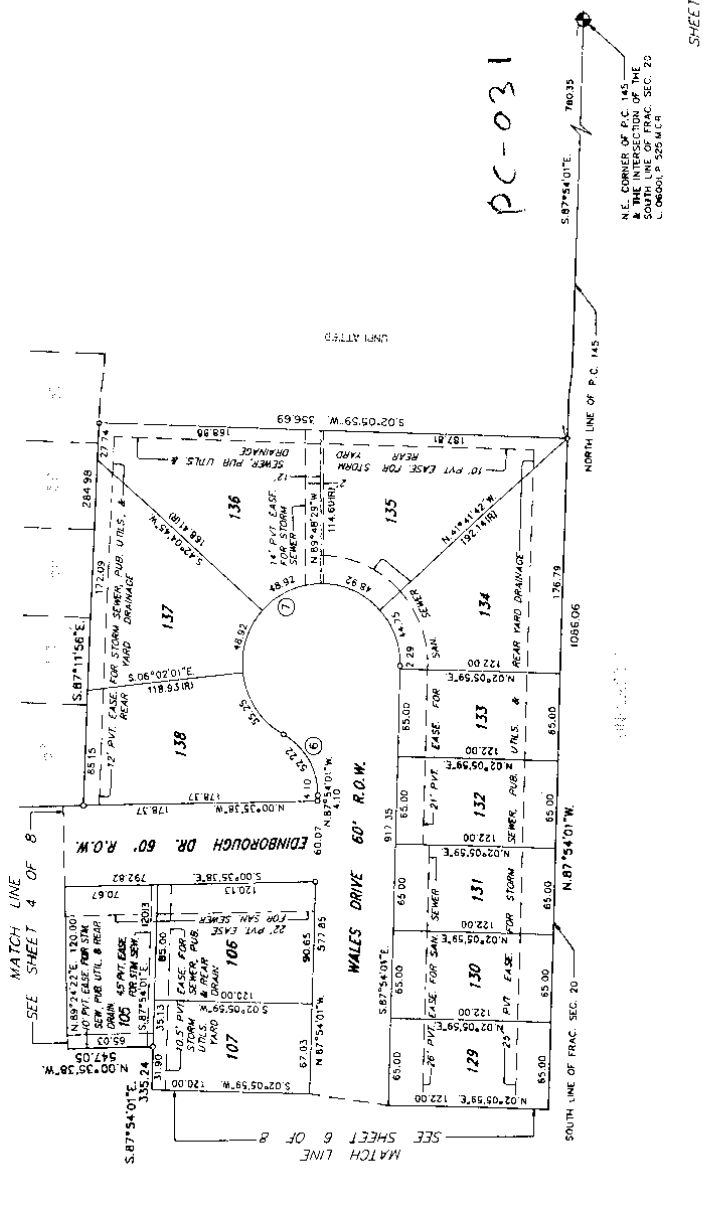
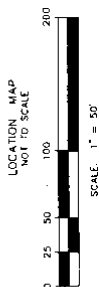
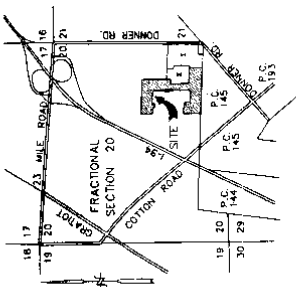
SHEET 4 OF 8

062707

STONEHENGE SUBDIVISION NO. 3 PART OF THE S.E. FRACTIONAL 1/4 OF SECTION 20, T.3N., R.14E., CHESTERFIELD TOWNSHIP, MACOMB COUNTY, MICHIGAN

CURVE DATA				
CURVE #	RADIUS	ARC	LONG CHORD	CHORD DELTA
6	30.00	54.45	5.80	57.03
7	60.00	254.43	28.24	282.57

LEGEND
 ALL DIMENSIONS ARE SHOWN IN FEET.
 ALL CURVILINEAR DIMENSIONS ARE SHOWN ALONG THE CHORD.
 THE SYMBOL "C" INDICATES A 4" DIAMETER 36" LONG WOODEN STEEL ROD CENTER MARKER.
 ALL LOT MARKERS ARE 1/2" STEEL RODS AND ARE 18" LONG (NO I.D. CAPS).
 (R) INDICATES RADIAL LOT LINES.
 (S) INDICATES THE SUBDIVISION BOUNDARY. BEARINGS BASED ON THE WLY. LINE OF STONEHENGE SUBDIVISION NO. 2 AS RECORDED IN LIBER 97, PAGES 34-36, INCL., MACOMB COUNTY RECORDS.



PC-031

Robert L. Smith
 ROBERT L. SMITH



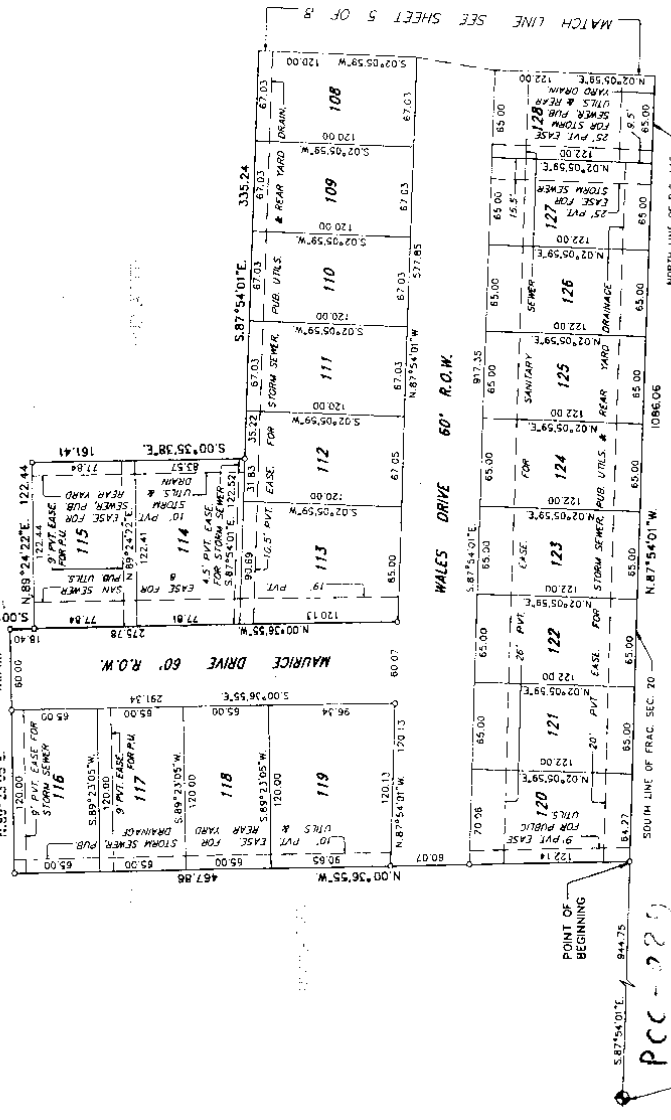
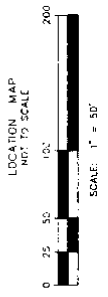
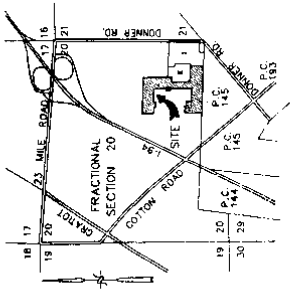
N.E. CORNER OF P.C. 145
 & THE INTERSECTION OF THE
 W. LINE OF P.C. 145 & SEC. 20
 L. 06000 P. 525 M.C.R.

SHEET 5 OF 8

062707

STONEHENGE SUBDIVISION NO. 3 PART OF THE S.E. FRACTIONAL 1/4 OF SECTION 20, T.3N., R.14E., CHESTERFIELD TOWNSHIP, MACOMB COUNTY, MICHIGAN

LEGEND
 ALL DIMENSIONS ARE SHOWN IN FEET.
 ALL CURVILINEAR DIMENSIONS ARE SHOWN ALONG THE CHORD.
 THE SYMBOL "P" INDICATES A 4" DIAMETER CONCRETE PIPING.
 ALL LOT MARKERS ARE 1/2" STEEL RODS AND ARE 18" LONG (NO I.D. CAPS).
 (R) INDICATES RADIAL LOT LINES.
 BEARINGS AND DISTANCES OF ALL LINES AND BEARINGS BASED ON THE W.L.Y. LINE OF STONEHENGE SUBDIVISION NO. 2 AS RECORDED IN LIBER 97, PAGES 34-36, INCL., WALCUMB COUNTY RECORDS.



ROBERT L. SMITH
 062707
 SHEET 6 OF 8

**STONEHENGE SUBDIVISION NO. 3
PART OF THE S.E. FRACTIONAL 1/4 OF SECTION 20, T.3N., R.14E.,
CHESTERFIELD TOWNSHIP, MACOMB COUNTY, MICHIGAN**

CERTIFICATE OF MUNICIPAL APPROVAL

I CERTIFY THAT THIS PLAT WAS APPROVED BY THE BOARD OF TRUSTEES OF THE TOWNSHIP OF CHESTERFIELD, AT A MEETING HELD ON October 20, 1993, AND WAS REVIEWED AND FOUND TO BE IN COMPLIANCE WITH ACT 288, P.A. OF 1987, THAT THE LOTS CONFORM WITH THE LEGALLY ADOPTED ZONING SUBDIVISION CONTROL ORDINANCE OF THE TOWNSHIP, AND WAIVE THE MINIMUM LOT SIZES IN SECTION 186, ALSO THAT ADEQUATE SURETY HAS BEEN DEPOSITED WITH THE COUNTY REGISTER OF DEEDS TO COVER THE COST OF THE PLAT AND A REASONABLE LENGTH OF TIME NOT TO EXCEED ONE (1) YEAR FROM THE ABOVE DATE, AND THAT THE PUBLIC WATER AND PUBLIC SEWER SERVICES HAVE BEEN INSTALLED AND ARE READY FOR USE WITHIN THIS PLAT.

[Signature]
JANICE M. JOLIS, CLERK

COUNTY PLAT BOARD CERTIFICATE

THIS PLAT HAS BEEN REVIEWED AND IS APPROVED BY THE MACOMB COUNTY PLAT BOARD ON October 20, 1993, AS BEING IN COMPLIANCE WITH ALL OF THE PROVISIONS OF ACT 288, P.A. 1987, AND THE PLAT BOARD'S APPLICABLE RULES AND REGULATIONS.

[Signature]
MARK A. STEINBERG, CHAIRPERSON OF THE COUNTY BOARD OF COMMISSIONERS

[Signature]
CARMELLA SABAUGH, CLERK - REGISTER OF DEEDS

[Signature]
CANDICE S. MILLER, MACOMB COUNTY TREASURER

RECORDING CERTIFICATE

STATE OF MICHIGAN
COUNTY OF MACOMB

THIS PLAT WAS RECEIVED FOR RECORD ON THE 3rd DAY OF DECEMBER, 1993, AT 10:33 P.M., AND RECORDED IN LIBER 105 OF PLATS ON PAGE(S) 13-140.

[Signature]
COLETTE M. DYMASUK, DEPUTY REGISTER OF DEEDS

[Signature]
ROBERT L. SMITH



062787

COUNTY TREASURER'S CERTIFICATE

THE RECORDS IN MY OFFICE SHOW NO UNPAID TAXES OR SPECIAL ASSESSMENTS FOR THE FIVE (5) YEARS PRECEDING Sept. 13, 1993, INVOLVING THE LANDS INCLUDED IN THIS PLAT.

[Signature]
MACOMB COUNTY TREASURER'S OFFICE

COUNTY DRAIN COMMISSIONER'S CERTIFICATE

APPROVED ON October 20, 1993, AS COMPLYING WITH SECTION 192 OF ACT 288, P.A. 1987, AND THE APPLICABLE RULES AND REGULATIONS PUBLISHED BY MY OFFICE IN THE COUNTY OF MACOMB.

[Signature]
ANTHONY V. MARICCO, MACOMB COUNTY DRAIN COMMISSIONER

CERTIFICATE OF COUNTY ROAD COMMISSIONERS

APPROVED ON October 20, 1993, AS COMPLYING WITH SECTION 183 OF ACT 288, P.A. 1987 AND THE APPLICABLE PUBLISHED RULES AND REGULATIONS OF THE BOARD OF ROAD COMMISSIONERS OF MACOMB COUNTY.

[Signature]
JOHN J. CROGAN, CHAIRPERSON

[Signature]
MARY LOUISE DANGER, VICE CHAIRPERSON

[Signature]
THOMAS S. WELSH, COMMISSIONER

LIBER 06325PC318

LAND CORNER RECORDATION CERTIFICATE
Filing Requirement of Act 74, Mich. P.A. 1970

C065827
94 MAY 11 AM 10:58

CARMELLA SABAUGH
REGISTER OF DEEDS
MACOMB COUNTY, MI

For corners in

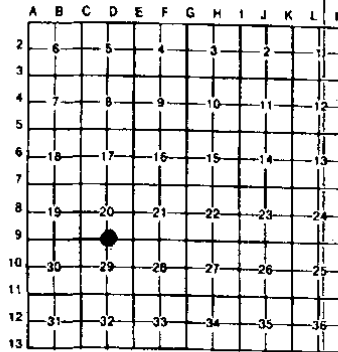
MACOMB
(County)

Located In: Chesterfield Corner Code #:

1. Public Land Survey	T	3N	R	14E	D-9
	T		R		
	T		R		
	T		R		
2. Property Controlling in Section	S		T	R	
	S		T	R	
3. Miscellaneous Property in Sec.	S		T	R	
	S		T	R	

Register of Deeds Stamp & File Number

- 4. Lot No. _____, Recorded Plat _____
- 5. Private Claims _____



I, William E. Soderberg, a field survey on May 6, 1994, do hereby certify that under requirements of P.A. 74, Michigan P.A. of 1970, the corner points mentioned in lines 1 and 2 above were in conformance with regulations and rules therefore as required in the current manual of survey instructions of the United States Department of the Interior, Bureau of Land Management or by a decree of a Court of Law and/or that the corner points mentioned in lines 3, 4 and 5 above were in conformance with the rules of the Michigan Board of Land Surveyors or by a Decree of a Court of Law, established, re-established, monumented, re-monumented, recovered, found as expressed below:

NOTE: Not more than 4 corners, all in the same town and range, may be recorded on this certificate.

A. Description of original monument and accessories and/or subsequent restoration:

D-9	G.L.O. (1817)	PRESTON	NO WITNESSES FOUND
	SURVEY (1991) UNRECORDED	ANDERSON, ECKSTEIN & WESTRICK, INC.	FOUND 1/2" REBAR
	LCRC (1993) LIBER 6001 PAGE 525	ROGER J. STECKER, P.S. #30103	FOUND 1/2" IRON

B. Description of corner evidence found and/or method applied in restoring or reestablishing corner:

D-9 CORNER WITNESSES IN LIBER 6001 PAGE 525 IS COVERED BY 3-4 FEET OF DIRT WITNESSES FROM 1991 SURVEY BY ANDERSON, ECKSTEIN & WESTRICK, INC. (UNRECORDED) RIGHT-OF-WAY MARKERS SET BY M.D.O.T. COTTON ROAD ALIGNMENT BY M.D.O.T.

C. Description of monument for corner and accessories established to perpetuate locating the position of the corner:

D-9 SET 1/2" REBAR WITH CAP #17635
 WEST 150.22' FOUND, 1/2" REBAR WITH CAP #17635
 WEST/NORTHWEST 118.30' FOUND, PK'NAIL W/TAG #17635 IN THE SOUTH FACE OF A UTILITY POLE
 SOUTH 51.78' FOUND, DOUBLE HEADED NAIL W/MCOT TAG IN THE EAST FACE OF A UTILITY POLE
 SOUTH 82.53' FOUND, THE CENTERLINE OF A RIGHT-OF-WAY MARKER
 SOUTHWEST 122.68' FOUND, PK'NAIL IN THE EDGE OF COTTON ROAD
 WEST 185.78' FOUND, PK'NAIL IN THE CENTERLINE OF COTTON ROAD



Signed by William E. Soderberg Date May 9, 1994

Surveyor's Michigan License No. 17635

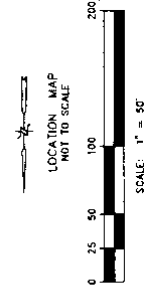
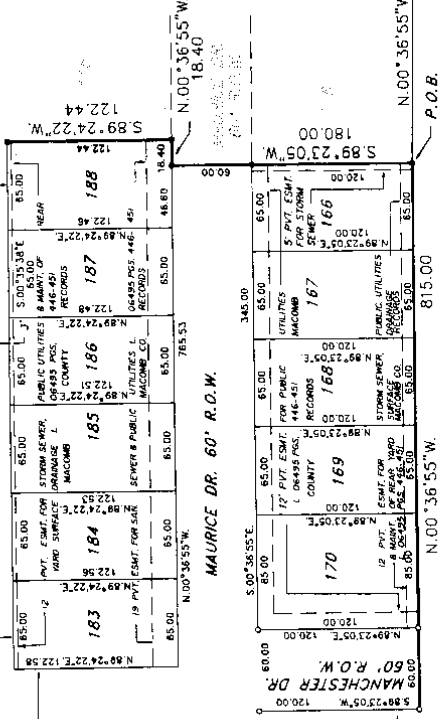
2110, P 26

**STONEHENGE SUBDIVISION NO. 4
PART OF THE S.E. FRACTIONAL 1/4 OF SECTION 20, T.3N., R.14E.,
CHESTERFIELD TOWNSHIP, MACOMB COUNTY, MICHIGAN**



LEGEND
ALL DIMENSIONS ARE SHOWN IN FEET.
ALL CURVILINEAR DIMENSIONS ARE SHOWN
ALONG THE CHORD.
THE SYMBOL "O" INDICATES A 4" DIAMETER
36" LONG WITH 1/2" STEEL ROD CENTER
MARKER.
ALL LOT MARKERS ARE 1/2" STEEL RODS AND
ARE 18" LONG (NO I.D. CAPS).
(R) INDICATES RADIAL LOT LINES.
(NR) INDICATES NOT RADIAL LOT LINES.
ALL LINES ARE 1/4" WIDE UNLESS NOTED
OTHERWISE.
STONEHENGE SUBDIVISION NO. 3 AS RECORDED
IN LIBER 103, PAGES 13-20, INCL., MACOMB
COUNTY RECORDS.
● = FOUND MONUMENT 1/2" STEEL ROD IN
4" DIAMETER CONCRETE

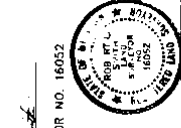
MATCH LINE
SEE SHEET 4 OF 6



PC-031

NORTHEAST CORNER OF
SECTION 20
FRL SECTION 20
L. 0501
P. 0501
MACOMB COUNTY RECORDS

SOUTH LINE OF FRL SECTION 20
1866.41
N 87°54'01\"/>



ROBERT L. SMITH
PROFESSIONAL SURVEYOR NO. 16052

PC-029
SOUTH 1/4 CORNER
FRL SECTION 20
L. 0501
P. 0501
MACOMB COUNTY RECORDS

SHEET 1 OF 6

MATCH LINE
SEE SHEET 2 OF 6

CERTIFIED TRUE COPY OF
RECORDED
BY DEPARTMENT OF COMMERCE
By *Michael A. Dyer*
Michael A. Dyer, M.A.S.
Manager
Subdivision Control Unit
Date APR 21 1995

LAND CORNER RECORDATION CERTIFICATE
 Filing Requirement of Act 74, Mich. P.A. 1970

For corners in

MACOMB (County) Located In: _____ Corner Code ≠ _____

1. Public Land Survey T 3N R 14E D-9/PC-29
 T _____ R _____
 T _____ R _____
 T _____ R _____

2. Property Controlling S _____ T _____ R _____
 in Section S _____ T _____ R _____

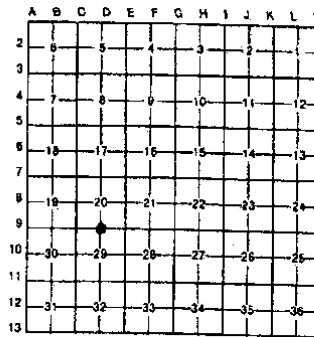
3. Miscellaneous S _____ T _____ R _____
 Property in Sec. S _____ T _____ R _____

Register of Deeds Stamp & File Number

4. Lot No. _____ Recorded Plat _____
 5. Private Claims _____

I, ROBERT L. SMITH, in a field survey on MARCH 18, 1998, do hereby certify that under requirements of P.A. 74, Michigan P.A. of 1970, the corner points mentioned in lines 1 and 2 above were in conformance with regulations and rules therefore as required in the current manual of survey instructions of the United States Department of the Interior, Bureau of Land Management or by a decree of a Court of Law and/or that the corner points mentioned in lines 3, 4 and 5 above were in conformance with the rules of the Michigan Board of Land Surveyors or by a Decree of a Court of Law: established, re-established, monumented, re-monumented, recovered, found as expressed below:

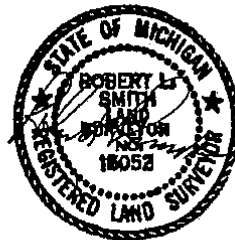
NOTE: Not more than 4 corners, all in the same town and range, may be recorded on this certificate.



A. Description of original monument and accessories and/or subsequent restoration:
 D-9 G.L.O (1817) PRESTON NO WITNESS FOUND
 SURVEY (1991) UNRECORDED ANDERSON, ECKSTEIN & WESTRICK, INC. FOUND 1/2" REBAR
 LCRC (1993) LIBER 6001 PAGE 525 ROGER J. STECKER, P.S. #30103 FOUND 1/2" IRON
 LCRC (1994) LIBER 6325 PAGE 318 WILLIAM E. SODERBERG P.S. #17635 SET 3/4" REBAR WITH CAP #17635

C0671309 LIBER:07937 PAGE:885 09:20A 03/19/1998
CARMELLA SABAUGH-MACOMB COUNTY, MI REG/DEEDS

B. Description of corner evidence found and/or method applied in restoring or reestablishing corner:
 D-9 CORNER WITNESSES IN LIBER 6325 PAGE 318 SURVEY BY WILLIAM E. SODERBERG, 1994



PCC-029

C. Description of monument for corner and accessories established to perpetuate locating the position of the corner:
 D-9 SET 4" CONCRETE MONUMENT
 WEST 150.22' FOUND, 3/4" REBAR WITH CAP #17635 *FND TO w/ cap 17??*
 WEST/NORTHWEST 118.30' FOUND, PK NAIL W/TAG #17635 IN THE SOUTH FACE OF A UTILITY POLE
 SOUTH 51.78' FOUND, DOUBLE HEADED NAIL W/MDOT TAG IN THE EAST FACE OF A UTILITY POLE
 SOUTH 82.53' FOUND, THE CENTERLINE OF A RIGHT-OF-WAY MARKER
 SOUTHWEST 122.68' FOUND, PK NAIL IN THE EDGE OF COTTON ROAD
 WEST 185.78' FOUND, PK NAIL IN THE CENTERLINE OF COTTON ROAD

Signed by Robert L. Smith Date MARCH 18, 1998
 Surveyor's Michigan License No. 16052

FORM APPROVED BY MICHIGAN STATE BOARD OF LAND SURVEYORS, JAN. 28, 1971
 REVISED MAY 14, 1975
 REVISED JAN., 1993

02982 (7)

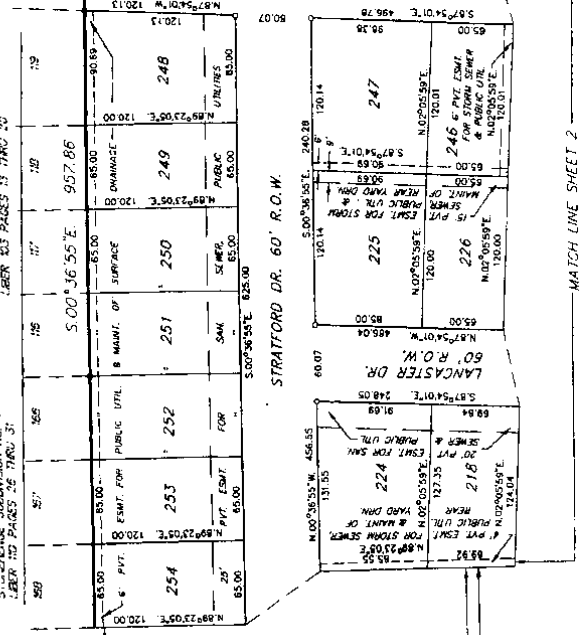
STONEHENGE SUBDIVISION NO. 5 PART OF THE S.E. 1/4 & S.W. 1/4 OF FRL SEC. 20, T.3N., R.14E., CHESTERFIELD TOWNSHIP, MACOMB COUNTY, MICHIGAN



LEGEND

- ALL DIMENSIONS ARE SHOWN IN FEET
- FRACTIONAL SUBDIVISIONS ARE SHOWN ALONG THE CORNER
- THE SYMBOL "O" INDICATES A 4" DIAMETER STEEL ROD WITH 1/2" STEEL ROD CENTER
- ALL LOT MARKERS ARE 1/2" DIAMETER STEEL ROD
- "R" INDICATES RADIAL LOT LINES
- "S" INDICATES SURFACE LOT LINES
- STONEHENGE SUBDIVISION NO. 4
- RECORDED IN LIBER 100, PAGES 26 THRU 31
- STONEHENGE SUBDIVISION NO. 5
- RECORDED IN LIBER 100, PAGES 32 THRU 37
- DENOTES FOUND MONUMENT (CONCRETE) 1/2" DIAMETER STEEL ROD IN 4" DIAMETER CONCRETE

STONEHENGE SUBDIVISION NO. 3
LIBER 103 PAGES 13 THRU 20

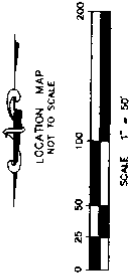
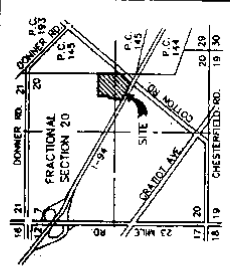
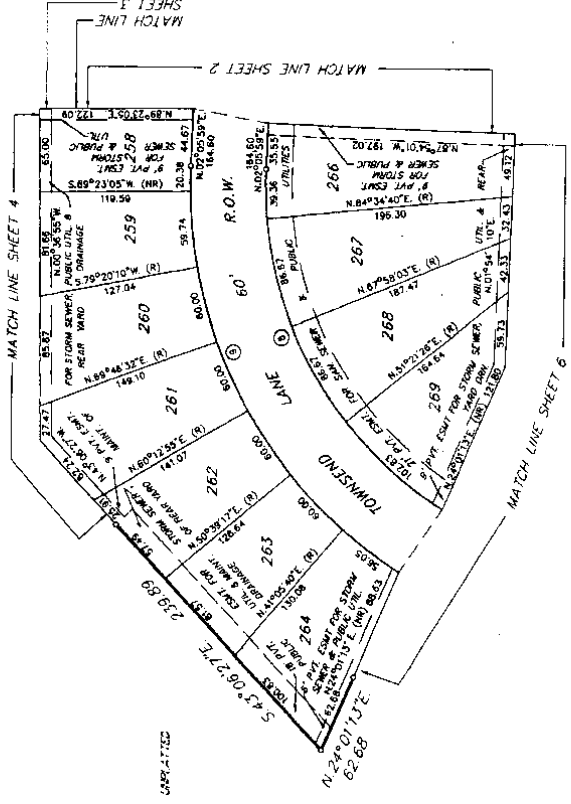


STONEHENGE SUBDIVISION NO. 5 PART OF THE S.E. 1/4 & S.W. 1/4 OF FRL SEC. 20, T.3N., R.14E., CHESTERFIELD TOWNSHIP, MACOMB COUNTY, MICHIGAN

CURVE DATA	CHORD BEARING	CHORD	DELTA
1	S 30.00° 137.76'	3.31	35.27° E
2	S 30.00° 137.76'	3.31	35.27° E
3	S 30.00° 137.76'	3.31	35.27° E
4	S 30.00° 137.76'	3.31	35.27° E



LEGEND
 ALL DIMENSIONS ARE SHOWN IN FEET.
 ALL DIMENSIONS ARE SHOWN ALONG THE CURVES ARE SHOWN AS "C".
 THE SYMBOL "O" INDICATES A 4" DIAMETER 36' LONG WITH 1/2" STEEL ROD CENTER.
 ALL LOT MARKERS ARE 1/2" DIAMETER STEEL ROD 18" LONG (NO ID CAPS).
 (R) INDICATES RADIAL LOT LINES.
 (S) INDICATES SUBDIVISION LINES.
 BEARINGS BASED ON THE WEST LINE OF STONEHENGE SUBDIVISION NO. 4 RECORDED IN JUBER 110, PAGES 26 THRU 31 MACOMB COUNTY RECORDS.



Robert L. Smith
 ROBERT L. SMITH
 PROFESSIONAL SURVEYOR NO 18052



LEHNER ASSOCIATES, INC.
 CONSULTING ENGINEERS & SURVEYORS
 10000 W. LANSING
 QUINCY TOWNSHIP, MACOMB COUNTY, MICHIGAN 48034
 (810) 483-4584
 FAX: (810) 483-0672

64804
 SHEET 5 OF 8

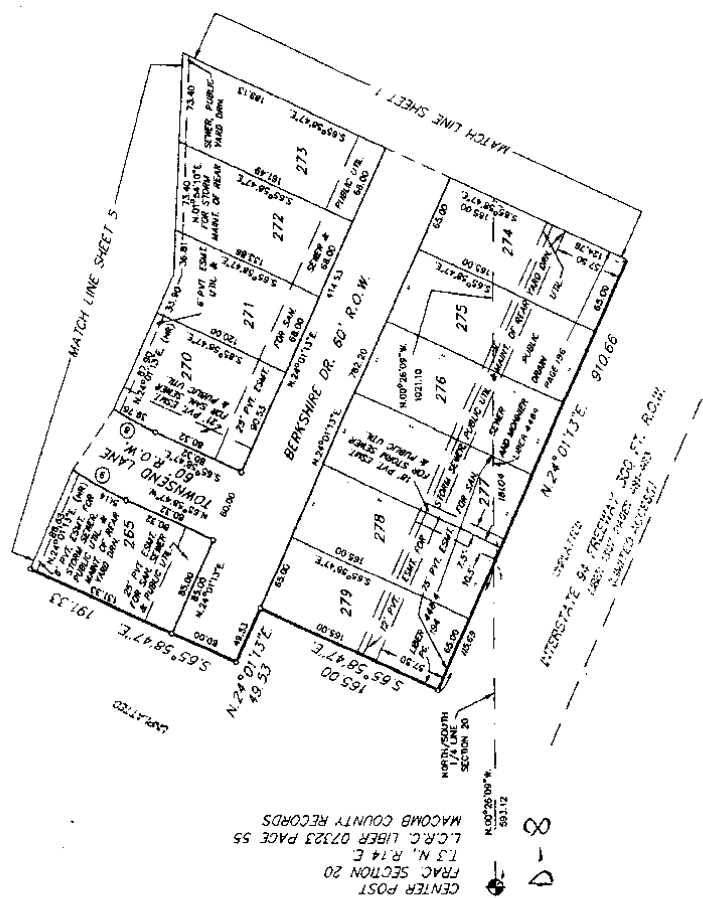
STONEHENGE SUBDIVISION NO. 5

PART OF THE S.E. 1/4 & S.W. 1/4 OF PRL SEC. 20, T.3N., R.14E.,
CHESTERFIELD TOWNSHIP, MACOMB COUNTY, MICHIGAN

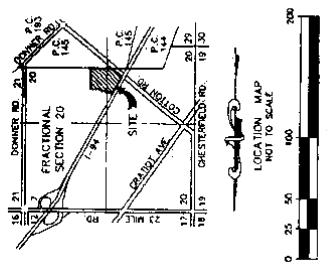
CURVE #	RADIUS	ARC	CHORD	BEARING	CHORD	DELTA
1	200.00	338.47	5.31	99.27%	338.97	89.04°
2	200.00	338.47	5.31	99.27%	338.97	89.04°
3	200.00	338.47	5.31	99.27%	338.97	89.04°



- LEGEND**
- ALL DIMENSIONS ARE SHOWN IN FEET. ALL CURVILINEAR DIMENSIONS ARE SHOWN ALONG THE CHORD.
 - ALL DIMENSIONS ARE SHOWN IN FEET. ALL CURVILINEAR DIMENSIONS ARE SHOWN ALONG THE CHORD.
 - THE 3/4" LONG WITH 1/2" LEVEL ROD CENTER CONCRETE MONUMENT.
 - ALL 1/2" MONUMENTS ARE 1/2" DIAMETER STEEL ROD.
 - (R) INDICATES RADIAL LOT LINES.
 - (B) INDICATES BOUNDARY LINES OF STONEHENGE SUBDIVISION NO. 4.
 - RECORDED IN LIBER 110, PAGES 26 THRU 31.
 - INDICATES FOUND MONUMENT (1/2" DIAMETER STEEL ROD IN 4" DIAMETER CONCRETE.)



MACOMB COUNTY RECORDS
L.C.R.C. LIBER 07323 PAGE 55
T.3 N., R.14 E.
FRAC. SECTION 20
CENTER POST



SCALE: 1" = 50'

LOCATION MAP
NOT TO SCALE

Robert Smith
ROBERT L. SMITH
PROFESSIONAL SURVEYOR NO. 16032



LEHNER ASSOCIATES, INC.
CONSULTING ENGINEERS & SURVEYORS
2200 W. WASHINGTON ST. SUITE 200
ANN ARBOR, MI 48106
(810) 463-6344
FAX: (810) 463-0572

L 146, P 25

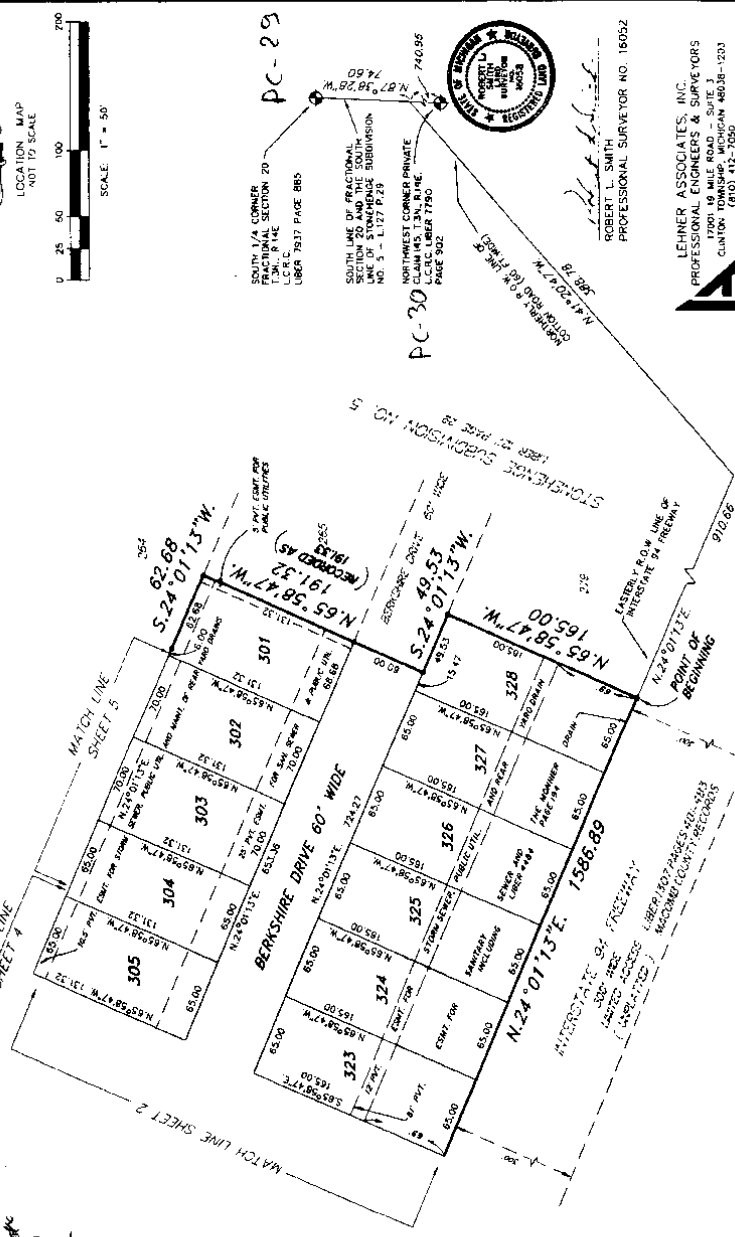
STONEHENGE SUBDIVISION NO. 6

PART OF THE S.E. 1/4 & N.E. 1/4 OF FRL SECTION 20, T.3N., R.14E.,
CHESTERFIELD TOWNSHIP, MACOMB COUNTY, MICHIGAN



CERTIFIED TRUE COPY OF
THIS SURVEY
BY DEPARTMENT OF CONSUMER
AND INDUSTRY SERVICES
BY *Robert L. Smith*
MICHIGAN SURVEYOR AND
SURVEY & REMEDIATION
SPECIALIST
DATE: 1/14/20

- LEGEND**
- ALL DIMENSIONS ARE SHOWN IN FEET.
 - ALL DIMENSIONS ALONG THE CHORD ARE SHOWN.
 - THE SYMBOL "O" INDICATES A 4" DIAMETER STEEL ROD WITH A 1/2" STEEL ROD CENTER.
 - ALL LOT MARKERS ARE 1/2" DIAMETER STEEL ROD 18" LONG (NO I.D. CAPS).
 - (R) INDICATES ROUND LOT LINES.
 - BEARINGS BASED ON THE WEST LINE OF STONEHENGE SUBDIVISION NO. 5.
 - RECORD COUNTY RECORDS PAGE 29.
 - MACOMB COUNTY RECORDS PAGE 29.
 - DENOTES FOUND MONUMENT (1/2" DIAMETER STEEL ROD IN 4" DIAMETER CONCRETE)



THESE SHALL BE NO DIRECT ACCESS TO INTERSTATE 54 FROM LOTS 315, 316, 317, 318, 319, 320, 321, 322, 323, 324, 325, 326, 327, 328, 329.



ROBERT L. SMITH
PROFESSIONAL SURVEYOR NO. 16052

LEHNER ASSOCIATES, INC.
PROFESSIONAL ENGINEERS & SURVEYORS
17000 19 MILE ROAD, SUITE 300
CLINTON TOWNSHIP, MICHIGAN 48835-1203
(810) 412-7050
FAX (810) 412-7114

SHEET 1 OF 7 66077

REPLAT 1
 COTTON CREEK CONDOMINIUMS
 MACOMB COUNTY CONDOMINIUM
 PLAN No. 808, LIBER 013859, PAGE 00518
 EXHIBIT "B" TO THE MASTER DEED OF
 COTTON CREEK CONDOMINIUMS
 CHESTERFIELD TWP., MACOMB CO., MICHIGAN

DEVELOPER

COTTON CREEK DEVELOPMENT, INC.
 46700 GRATIOT AVE.
 CHESTERFIELD TWP., MICHIGAN 48045

SURVEYORS & ENGINEERS

LEHNER ASSOCIATES, INC.
 17001 NINETEEN MILE ROAD, SUITE 3
 CLINTON TOWNSHIP, MICHIGAN 48038

SHEET INDEX

- *1. TITLE SHEET
- *2. SURVEY PLAN
- *3. SITE PLAN
- *4. UTILITY PLAN
- *5. UNIT TYPE - BASEMENT & FIRST FLOOR PLAN

PROPERTY DESCRIPTION

A PARCEL OF LAND LOCATED IN AND BEING A PART OF P.C. CLAIM 145, T.3N., R.14E., CHESTERFIELD TOWNSHIP, MACOMB COUNTY, MICHIGAN AND BEING MORE PARTICULARLY DESCRIBED AS FOLLOWS:
 BEGINNING AT THE SOUTH 1/4 CORNER OF SECTION 20, T.3N., R.14N.; THENCE S.87°54'01"E. 1336.97 FT. ALONG THE SOUTHERLY LINE OF "STONEHENGE SUBDIVISION NO. 5" AS RECORDED IN LIBER 127 OF PLATS ON PAGES 29-36 (INCLUSIVE)(MACOMB COUNTY RECORDS) AND THE SOUTHERLY LINE OF "STONEHENGE SUBDIVISION NO. 3" AS RECORDED IN LIBER 103 OF PLATS ON PAGES 19-20 (INCLUSIVE)(MACOMB COUNTY RECORDS), AND ; THENCE S.02°54'26"W. 1168.53 FT.; THENCE N.86°52'21"W. 318.36 FT.; THENCE N.42°01'51"W. 748.59 FT. ALONG THE NORTHEASTERLY RIGHT OF WAY OF COTTON ROAD; THENCE N.47°58'09"E. 252.10 FT.; THENCE N.42°01'51"W. 295.10 FT.; THENCE S.47°58'09"W. 235.10 FT.; THENCE N.42°01'51"W. 412.94 FT.; THENCE N.02°03'06"E. 28.75 FT.; THENCE N.42°01'51"W. 107.21 FT.; THENCE S.87°38'28"E. 74.52 FT. TO THE POINT OF BEGINNING, AND CONTAINING 21.81 ACRES OF LAND.

NOTE: THE ASTERISK (*) AS SHOWN IN THE SHEET INDEX ABOVE INDICATE NEW SHEETS OR ARE REVISED SHEETS, DATED 2-6-04 THESE SHEETS, WITH THIS SUBMISSION, ARE TO REPLACE OR BE SUPPLEMENTAL SHEETS TO THOSE PREVIOUSLY RECORDED.



Robert L. Smith
 ROBERT L. SMITH #16052
 PROPOSED DATE FEBRUARY 6, 2004

MACOMB COUNTY CONDOMINIUM
SUBDIVISION PLAN NO. 1026
EXHIBIT "B" TO THE MASTER DEED OF

WATERSIDE MARKETPLACE CONDOMINIUM

CHESTERFIELD TWP., MACOMB COUNTY, MICHIGAN.

DEVELOPER

WATERSIDE MARKETPLACE, LLC
ONE TOWNE SQUARE, SUITE 1600
SOUTHFIELD, MI 48076

SURVEYOR & PREPARER

PROFESSIONAL ENGINEERING ASSOCIATES, INC.
2430 ROCHESTER COURT, SUITE 100
TROY, MI 48063-1872

LEGAL DESCRIPTION

Lot in fractional section 20, T. 3 N., R. 14 E., Chesterfield Township, Macomb County, Michigan described as:

Commencing at the N 1/4 corner of said fractional section 20,
thence along the north line of said fractional section 20, S89°15'00"E, 95.44 feet;
thence S02°58'20"W, 60.07 feet to the Point of Beginning.

thence S88°15'00"E, 80.71 feet;
thence S01°07'11"W, 344.59 feet;
thence S05°32'40"E, 100.00 feet;

thence S01°07'11"W, 1450.81 feet to the northerly line of I-84 (300 feet wide);
thence along the said northerly line of I-84, S26°21'43"W, 2044.09 feet to the northerly line of Cotton Road (80 feet half width);
thence along the said northerly line of Cotton Road (80 feet half width), N39°06'45"W, 498.35 feet;

thence S50°53'15"W, 37.00 feet to the northerly line of Cotton Road (43 feet half width);
thence along the said northerly line of Cotton Road (43 feet half width), N39°06'45"W, 1415.10 feet to a point on the easterly line of
Vergate Drive (70 feet wide) and the beginning of a non-tangent curve;

thence along said easterly line of Vergate Drive the following arc courses:

- 1) 118.01 feet along a curve to the left, having a radius of 385.00 feet, a central angle of 17°33'46", and a chord which bears
N40°27'22"E, 117.85 feet to a point of tangency;
- 2) and N31°40'20"E, 502.36 feet to a point of curvature;
- 3) and 88.89 feet along a curve to the left, having a radius of 365.00 feet, a central angle of 12°34'08", and a chord which bears
N25°13'27"E, 88.51 feet to a point of tangency;
- 4) and N67°24'E, 100.00 feet to a point of curvature;
- 5) and N16°13'27"E, 70.78 feet to the Point of Beginning, having a radius of 315.00 feet, a central angle of 12°34'08", and a chord which bears
N25°13'27"E, 70.78 feet to a point of tangency;
- 6) and N31°40'20"E, 398.25 feet;

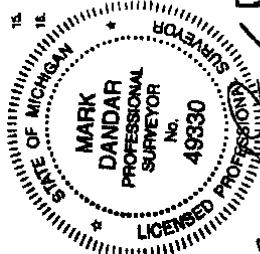
thence bearing said easterly line S89°02'44"E, 9155.31 feet;
thence N00°53'31"E, 879.97 feet;
thence S64°49'28"E, 142.98 feet;
thence N00°58'20"E, 183.81 feet to the Point of Beginning, containing 85.492 acres more or less.

ATTENTION: COUNTY REGISTER OF DEEDS

THE CONDOMINIUM SUBDIVISION PLAN NUMBER
MUST BE ASSIGNED IN CONSECUTIVE SEQUENCE.
WHEN A NUMBER HAS BEEN ASSIGNED TO THIS
PROJECT, IT MUST BE SHOWN PROPERLY IN THE
TITLE ON THIS SHEET AND IN THE SURVEYOR'S
CERTIFICATE SHOWN ON SHEET NO. 2.

INDEX OF DRAWINGS

1. COVER SHEET
2. SURVEY PLAN
3. SITE PLAN
4. RECREATIONAL USE PLAN
5. UTILITY PLAN NORTH
6. UTILITY PLAN NORTHWEST
7. UTILITY PLAN NORTHEAST
8. UTILITY PLAN SOUTHWEST
9. UTILITY PLAN SOUTHEAST
10. UTILITY PLAN SOUTH
11. EASEMENT PLAN NORTH
12. EASEMENT PLAN NORTHWEST
13. EASEMENT PLAN NORTHEAST
14. EASEMENT PLAN SOUTHWEST
15. EASEMENT PLAN SOUTHEAST
16. EASEMENT PLAN SOUTH



WATERSIDE MARKETPLACE CONDOMINIUM		PEA PROFESSIONAL ENGINEERING ASSOCIATES, INC. 2430 ROCHESTER COURT TROY, MI 48063-1872
COVER SHEET		
DATE	BY	SCALE
APR 23 2007	MARK DANDAR	AS SHOWN

PROPOSED DATED APRIL 23, 2007

Mark Dandar

