

**LAND CORNER RECORDATION CERTIFICATE**  
**Filing Requirement of Act 74, Mich. P.A. 1970**

For corners in

MACOMB Located In: CHESTERFIELD TOWNSHIP Corner Code # PCC 001  
 (County)

5044766

LIBER 16481 PAGE 910



03/15/2005 10:58:09 A.M.  
 MACOMB COUNTY, MI SEAL  
 CARMELLA SABAUGH, REGISTER OF DEEDS

Register of Deeds Stamp & File Number

1. Public Land Survey T R  
 T R  
 T R  
 T R
2. Property Controlling in Section S 18 T 3N R 13E 14E  
 S T R  
 S T R
3. Miscellaneous Property in Sec. S T R

4. Lot No. \_\_\_\_\_, Recorded Plat \_\_\_\_\_  
 5. Private Claims \_\_\_\_\_

I, CRAIG P. AMEY, in a field survey on AUGUST 8, 19 95 do hereby certify that under requirements of P.A. 74, Michigan P.A. of 1970, the corner points mentioned in lines 1 and 2 above were in conformance with regulations and rules therefore as required in the current manual of survey instructions of the United States Department of the Interior, Bureau of Land Management or by a decree of a Court of Law and/or that the corner points mentioned in lines 3, 4 and 5 above were in conformance with the rules of the Michigan Board of Land Surveyors or by a Decree of a Court of Law, established, re-established, monumented, re-monumented, recovered, found as expressed below:

A	B	C	D	E	F	G	H	I	J	K	L	M
1												
2	6	5	4	3	2	1						
3												
4	7	8	9	10	11	12						
5												
6	18	17	16	15	14	13						
7												
8	19	20	21	22	23	24						
9												
10	30	29	28	27	26	25						
11												
12	31	32	33	34	35	36						
13												

**NOTE: Not more than 4 corners, all in the same town and range, may be recorded on this certificate.**

*\* DOCUMENT IS BEING RECORDED TO INCLUDE CORNER CODE AND CORRECT RANGE.*

**A. Description of original monument and accessories and/or subsequent restoration:**

1817 G.L.O. PAGES 55-57	WILLIAM PRESTON	NO WITNESSES FOUND
1976 LCRC LIBER 2699 PAGE 500	GEORGE J. AVENDT, JR. #16034	SET, IRON WITH CAP
1987 LCRC LIBER 4306 PAGE 693	DONALD H. KING, #30085	FOUND, 1/2" PIPE
1993 LCRC UNRECORDED	GEORGE M. PLATZ, #38121	FOUND, 1/2" IRON #5787

**B. Description of corner evidence found and/or method applied in restoring or reestablishing corner:**

Found 1/2" Iron With cap #5787 as recorded in Liber 2699 page 500 and described in an unrecorded survey. A 1/2" pipe was also found as recorded in Liber 4306 page 693, 66.02 feet north of the 1/2" iron. GLO notes indicate the corner as common to section 18, T3N, R14E and section 13, T3N, R13E. Occupation supports the location of either corner. To determine the correct location for the common quarter post, deeds were researched for information. A deed was recorded in Liber 100, page 445 in 1892 conveying the south 28 acres of the southwest quarter of the northwest quarter of section 18 and the north 2 acres of the northwest quarter of the southwest quarter of section 18. The calculated width of a 2 acre strip is 66.16 feet using the GLO distance of 19.95 chains (prorated from GLO plat). This would support the location of the fence line and tree row in section 18 as the south line of the property conveyed and not the east and west section line. The east and west section line would be approximately 66.16 feet north which supports the position of the 1/2" pipe and the fence line and tree row to the west in section 13. Therefore, the 1/2" pipe as recorded in Liber 4306, page 693, is the best evidence of the location of the west quarter post of section 18, T3N, R14E and the east quarter post of section 13, T3N, R13E and the 1/2" iron is a property controlling corner

**C. Description of monument for corner and accessories established to perpetuate locating the position of the corner:**

REPLACED 1/2" IRON WITH A 3/4" PIPE, AND A MACOMB COUNTY REMONUMENTATION CAP STAMPED:  
 "MACOMB COUNTY MONUMENT"  
 "34970"  
 "MI ACT 345"  
 30° 26.45 SET PK AND MACOMB COUNTY WITNESS TAG IN THE NW FACE OF A 12" CHEERY  
 86° 21.98 FOUND PK AND TAG IN THE S FACE OF A 13" BEECH  
 344° 16.58 SET PK AND MACOMB COUNTY WITNESS TAG IN THE WEST FACE OF A 10" MAPLE  
 0° 66.02 SET 3/4" x 24" IRON AND MCR CAP (WEST QUARTER POST OF SECTION 18)

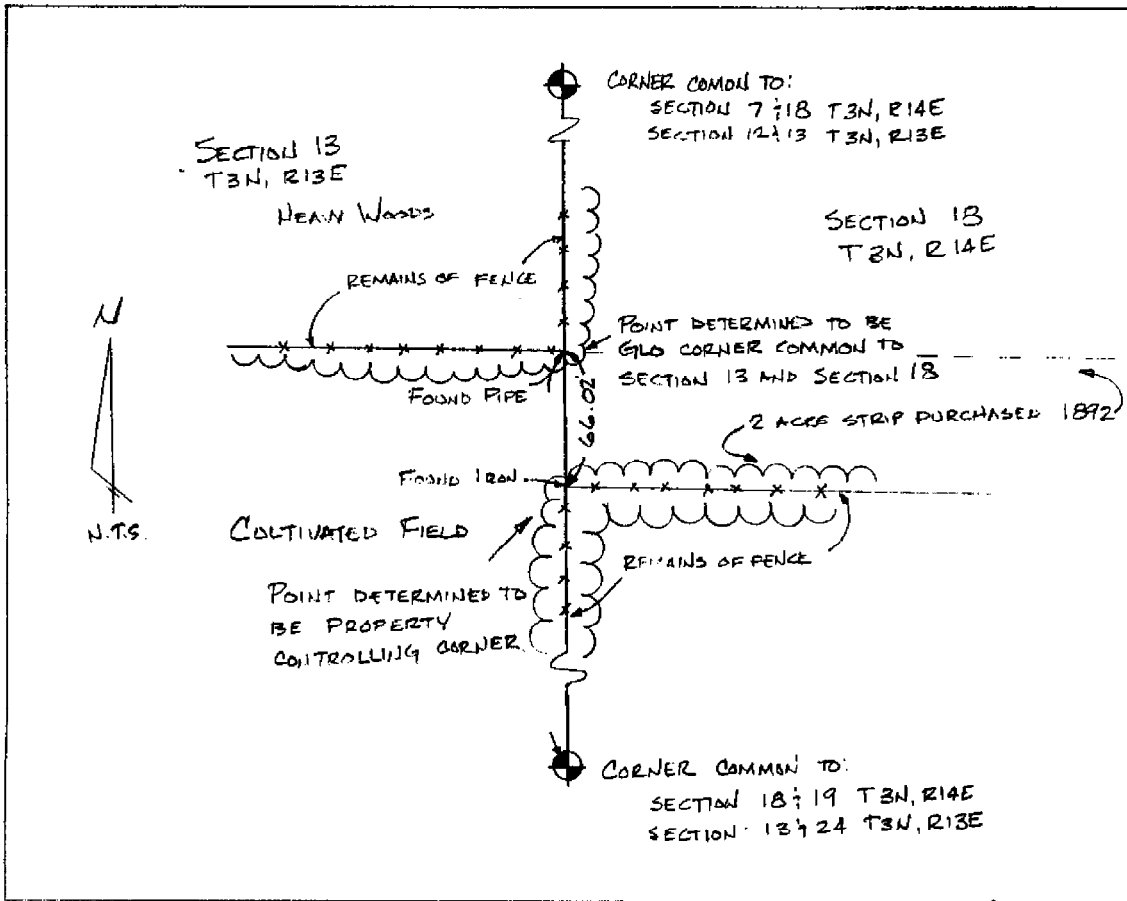
THE SELECTED LOCATION IS ACCEPTED BY ME AND IS GENERALLY ACCEPTED BY PROFESSIONAL SURVEYORS AS THE BEST AVAILABLE EVIDENCE OF THE POSITION OF THE ORIGINAL CORNER.

SEE BACK

ACCEPTED BY THE MACOMB COUNTY SURVEY PEER GROUP AS THE OFFICIAL CORNER UNDER MICHIGAN PUBLIC ACT 345 OF 1990 AT A MEETING HELD ON 8-15-95  
*William E. Soderberg*  
 WILLIAM E. SODERBERG, P.S., CHAIRMAN



Signed by Craig P. Amey Date 12-15-95  
 Surveyor's Michigan License No. 34970



C0292283 LIBER:06862 PAGE:844 11:11A 12/21/1995  
CARMELLA SABAUGH-MACOMB COUNTY, MI REG/DEEDS

CLERK'S OFFICE  
40 NORTH MAIN  
MOUNT CLEMENS, MI 48043  
(586) 469-5120  
FAX: (586) 783-8184

*Carmella Sabaugh*

MACOMB COUNTY  
CLERK/REGISTER OF DEEDS

REGISTER OF DEEDS  
10 NORTH MAIN  
MOUNT CLEMENS, MI 48043  
(586) 469-5175  
FAX: (586) 469-5130

REMONUMENTATION PROGRAM  
MARTIN C. DUNN, SURVEYOR REPRESENTATIVE  
OFFICE: (586) 469-7916 + CELLULAR: (810) 217-7275

May 20, 2005

COPY

Mr. Maynard R. Dyer, P.S., Director  
Michigan Department of Labor & Economic Growth  
Bureau of Construction Codes & Fire Safety  
Office of Land Survey & Remonumentation  
P.O. Box 30704  
Lansing, MI 48909

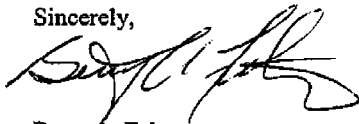
Dear Mr. Dyer,

Please find enclosed recorded copies of the following Land Corner Recordation Certificates in reference to your correspondence dated May 2, 2005. New entries have been made into the on-line database for the re-recorded corner records.

T3N, R14E: PCC-001 and PCC-016.

If you have any questions, please contact the Remonumentation office at (586) 469-7916 or (586) 469-6752. Thank you.

Sincerely,



Betty A. Felton  
Macomb County Grant Administrator  
Enclosure

BAF/mj

[HTTP://WWW.MACOMBCOUNTYMI.GOV](http://www.macombcountymi.gov)

FAX-ON-DEMAND  
MICHIGAN: (888) 99-CLERK  
OUT-OF-STATE: (310) 575-5035



ANDERSON,  
ECKSTEIN AND  
WESTRICK, INC.

51301 Schoenherr Road, Shelby Township, Michigan 48315

Phone 810/726-1234

October 17, 1994

Remonumentation Peer Group  
Macomb County Building  
Mount Clemens, Michigan 48043

Reference: Additional Property Controlling Corners

Dear Members:

As a result of research performed for A-6 Chesterfield Township and discussions during Peer Group review Anderson, Eckstein and Westrick, Inc. would like to submit two additional corners for research and remonumentation.

Corner A-6, is designated by GLO notes as common to Chesterfield and Macomb Townships. A field investigation uncovered two corners, (66.02 feet apart) instead of one. After researching the deeds of adjacent parcels, We determined which corner was the correct perpetuation of the GLO corner. We submitted both corners (one as a Township corner, the other as a property controlling corner due to its history) for review. These corners were approved as submitted.

To avoid further confusion, a field investigation of the approximate intersection of the East and West Quarter line of Section 18, Chesterfield Township and the centerline of Fairchild Road was performed. An iron was found at this location. Another iron was found 65.98 feet south, indicating the same situation exists on Fairchild Road that exists on the Township line.

Therefore, we believe these corners need to be recorded and submit these corners for research and remonumentation reimbursement. By remonumenting these corners, any additional confusion can be limited.

Sincerely,

ANDERSON, ECKSTEIN AND WESTRICK, INC.

  
\_\_\_\_\_  
Craig P. Amey, P.S.

CPA/gac  
rpg.cpa

Enclosure: Sketch of area

**LAND CORNER RECORDATION CERTIFICATE**  
**Filing Requirement of Act 74, Mich. P.A. 1970**

For corners in

MACOMB Located In: Corner Code #  
(County) CHESTERFIELD TOWNSHIP

1. Public Land Survey T      R       
T      R       
T      R       
T      R     

2. Property Controlling S 18 T 3N R 14E  
in Section S 19 T 3N R 14E

3. Miscellaneous S      T      R       
Property in Sec. S      T      R     

Register of Deeds Stamp & File Number

4. Lot No. \_\_\_\_\_, Recorded Plat \_\_\_\_\_  
5. Private Claims \_\_\_\_\_

I, CRAIG P. AMFY, in a field survey on OCTOBER 13, 1994 do hereby certify that under requirements of P.A. 74, Michigan P.A. of 1970, the corner points mentioned in lines 1 and 2 above were in conformance with regulations and rules therefore as required in the current manual of survey instructions of the United States Department of the Interior, Bureau of Land Management or by a decree of a Court of Law and for that the corner points mentioned in lines 3, 4 and 5 above were in conformance with the rules of the Michigan Board of Land Surveyors or by a Decree of a Court of Law; established, re-established, monumented, re-monumented, recovered, found as expressed below:

NOTE: Not more than 4 corners, all in the same town and range, may be recorded on this certificate.

	A	B	C	D	E	F	G	H	I	J	K	L	M
1													
2	6	5	4	3	2	1							
3													
4	7	8	9	10	11	12							
5													
6	18	17	16	15	14	13							
7													
8	19	20	21	22	23	24							
9													
10	30	29	28	27	26	25							
11													
12	31	32	33	34	35	36							
13													

A. Description of original monument and accessories and/or subsequent restoration:

CERTIFICATE OF SURVEY 1983 UNRECORDED SHELBY MONEY, #30092 FOUND IRON

B. Description of corner evidence found and/or method applied in restoring or reestablishing corner:

FOUND IRON AT THE INTERSECTION OF THE CENTERLINE OF 23 MILE ROAD AND THE INTERSECTION OF THE CENTERLINE OF FAIRCHILD ROAD, 0.3' BELOW THE SURFACE (ASPHALT).

1993 CERTIFICATE OF SURVEY UNRECORDED

*IRON FOUND  
IN 1993*

C. Description of monument for corner and accessories established to perpetuate locating the position of the corner:

REPLACED IRON WITH 3/4" X 24" REBAR WITH ALUMINUM MACOMB COUNTY REMONUMENTATION CAP #34970 IN A NEW MONUMENT BOX

AZIMUTH 167° 81.29' FOUND, PK NAIL WITH TAG #17635 IN THE WEST FACE OF A UTILITY POLE  
AZIMUTH 228° 54.72' FOUND, PK NAIL IN THE SOUTHEAST FACE OF A UTILITY POLE  
AZIMUTH 324° 50.41' FOUND, PK NAIL WITH TAG #17635 IN THE NORTHEAST FACE OF A UTILITY POLE  
AZIMUTH 60° 70.65' FOUND, PK NAIL IN THE NORTH FACE OF A 36" MAPLE

THE SELECTED LOCATION IS ACCEPTED BY ME AND IS GENERALLY ACCEPTED BY PROFESSIONAL SURVEYORS AS THE BEST AVAILABLE EVIDENCE OF THE POSITION OF THE CORNER.

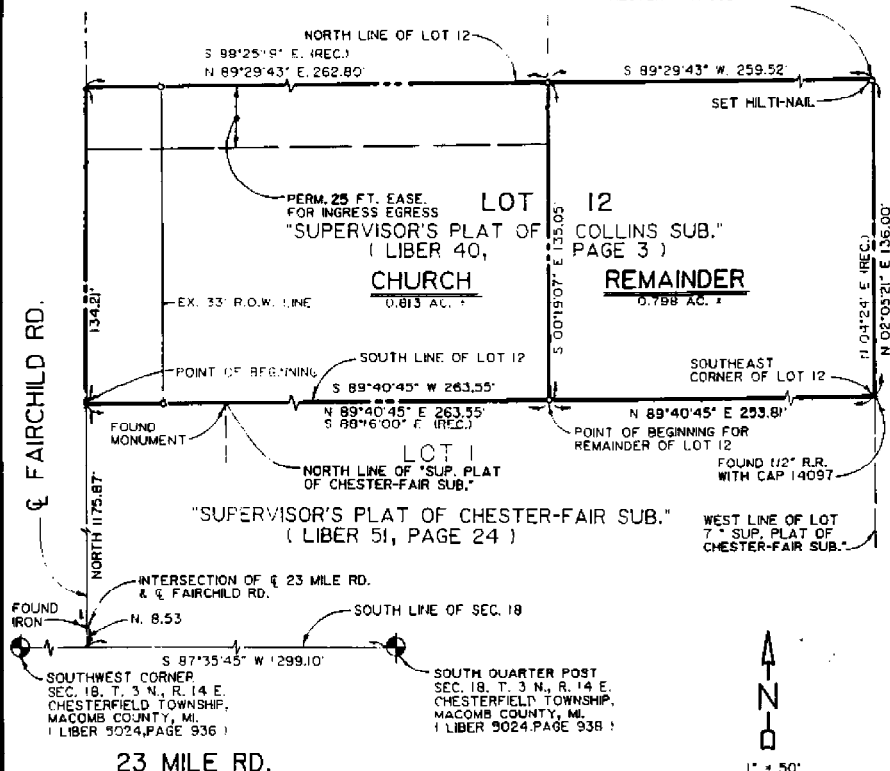
Signed by \_\_\_\_\_ Date \_\_\_\_\_  
Surveyor's Michigan License No. 34970

# CERTIFICATE OF SURVEY



ANDERSON, ECKSTEIN AND WESTRICK, INC.  
 3503 SCHOENBERG ROAD  
 SHELBY TOWNSHIP, MICH. 48323

PHONE: (313) 726-1234  
 NORTHEAST CORNER OF LOT 12 OF  
 "S.P. OF COLLINS SUB" ALSO THE  
 NORTHWEST CORNER OF LOT 7  
 OF "S.P. OF CHESTER-FAIR SUB"



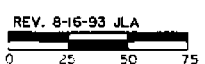
### LEGEND

○ SET 1/2" R.R. WITH CAP # 30092

WITNESS:  
 INTERSECTION FAIRCHILD AND 23 MILE ROAD  
 FOUND IRON IN ASPHALT  
 81.29' S.E. TO P.K. NAIL W/ITAG #17635 IN WEST FACE OF UTILITY POLE  
 54.72' S.W. TO P.K. NAIL IN S.E. FACE OF UTILITY POLE  
 50.41' N.W. TO P.K. NAIL W/ITAG #17635 IN N.E. FACE OF UTILITY POLE  
 70.65' N.E. TO P.K. NAIL IN NORTH FACE OF UTILITY POLE

FOR DESCRIPTIONS, SEE ATTACHED SHEETS

CERTIFY TO: CHARTER TOWNSHIP OF CHESTERFIELD  
 ADDRESS: 47275 SUGARBUSH ROAD  
 CITY, PT., & ZIP: MT. CLEMENS, MI. 48045  
 TWP: CHESTERFIELD SEC. 18 COUNTY: MACOMB  
 DATE: APRIL, 1993 DRAWN BY: D.W.  
 A.E.W. NO. 125-758 SHEET NO. 1 OF 2  
 SCALE: 1" = 50'  
 BOOK NO.: 1057  
 PLAN NO.: 100



I hereby certify that I have surveyed and mapped the land above and/or described on APRIL 6 1993, and that the ratio of unadjusted field observations of such survey was 1/ 2000, and that all requirements of Public Act 132 of 1976 have been complied with. Bearings shown on this survey were determined as follows:

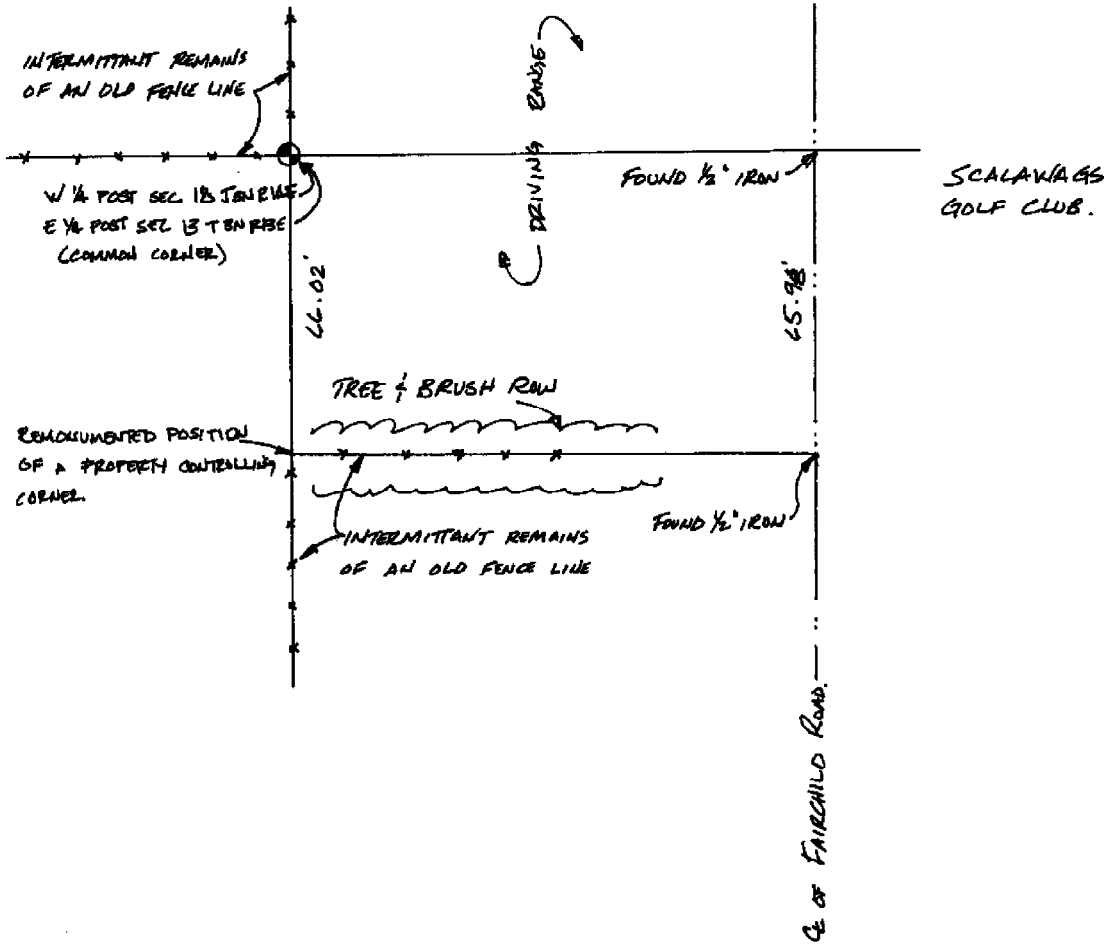
SHELBY W. MONEY #30092 PROFESSIONAL SURVEYOR

PROJECT N° : \_\_\_\_\_  
DESCRIPTION : \_\_\_\_\_



INDICATE  
NORTH

DATE : \_\_\_\_\_  
CREW : \_\_\_\_\_  
PAGE N° : \_\_\_\_\_ OF \_\_\_\_\_



(313) 726-1234

ANDERSON, ECKSTEIN & WESTRICK, INC.  
Civil Engineers  
Land Surveyors

