

B-01
DOSSIER CONTENT
 2011 REMON
 T.2N., R.14E.,
 Harrison Township, Macomb County, Michigan

Section One

Index

Pictures in cardinal directions; before and after setting the required monumentation.

Section Two

LCRC

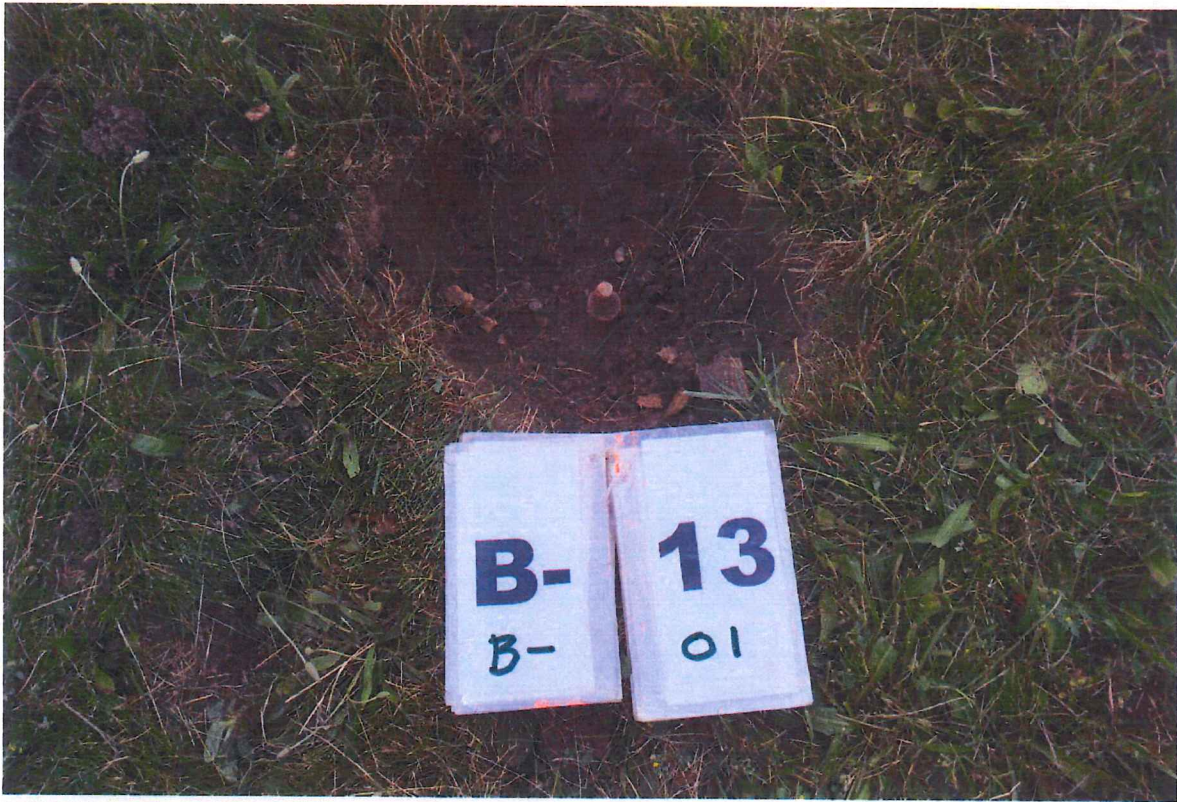
Surveyor's Report

Section Three

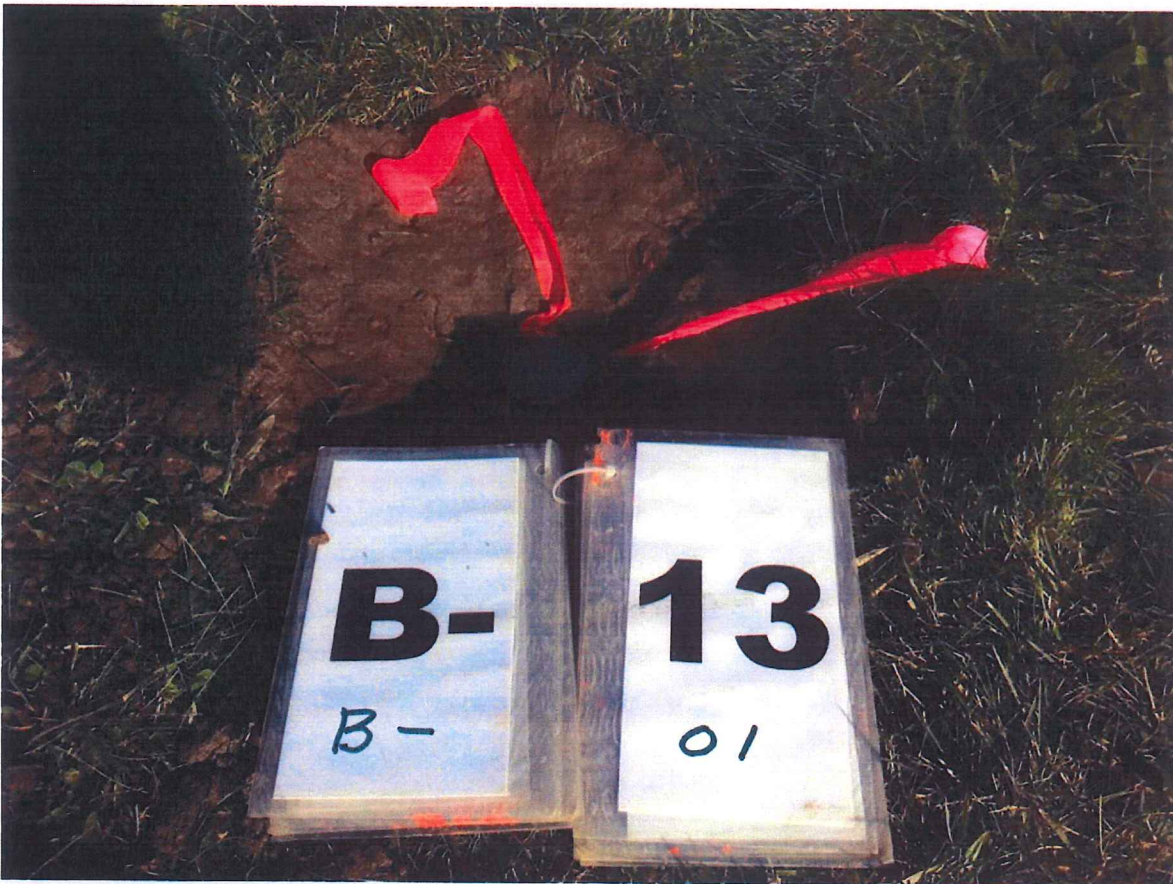
- 1 Field Notes
- 2 Sketch
- 3 Township Maps
- 4 Tax Map 1959
- 5 Tax Map 1974
- 6 Aerial Pictures 2009

Section Four

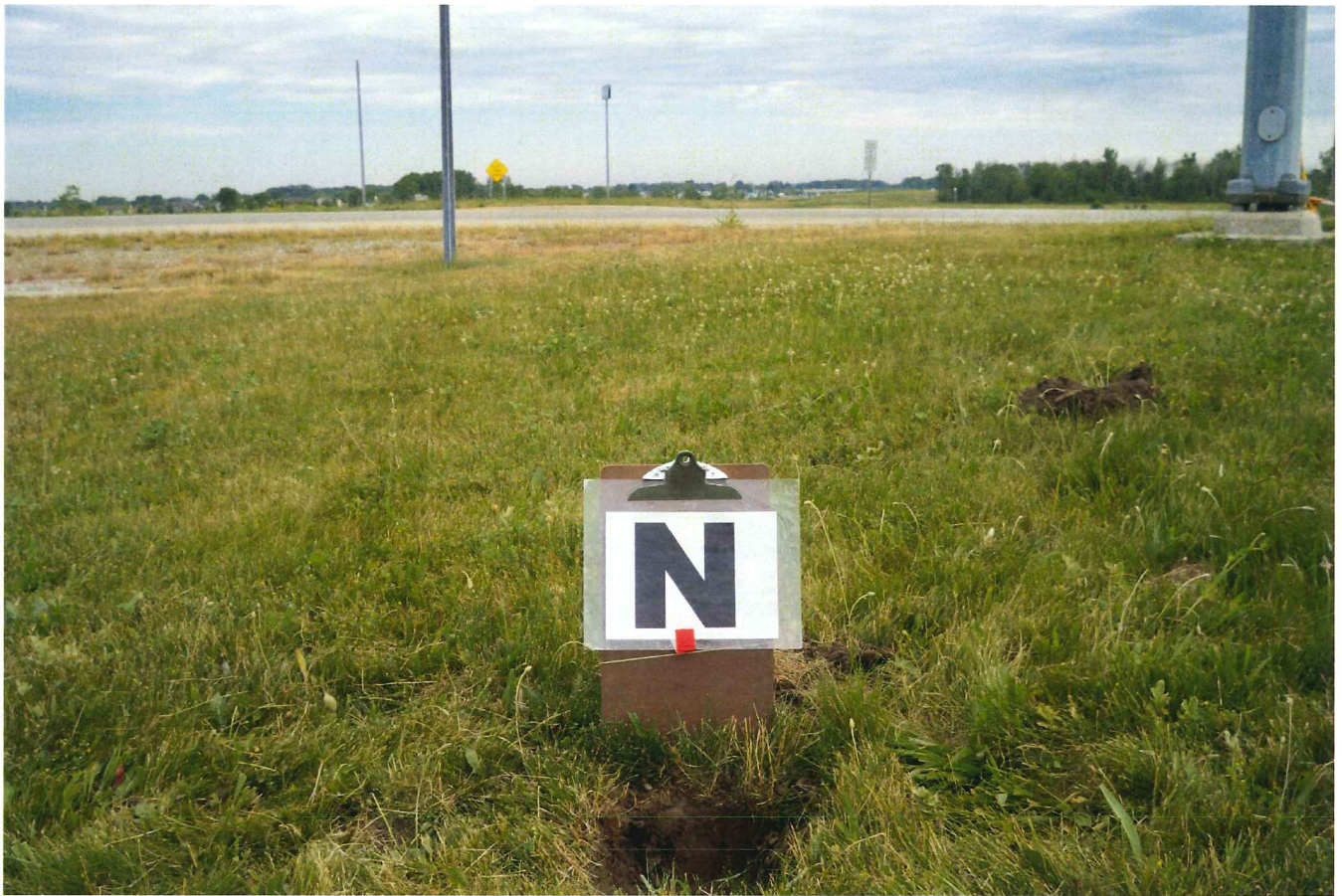
- 1 1817 GLO notes Preston
- 2 1817 Township map Preston
- 3 1818 Township map Surveyor General Office
- 4 1853 Survey Morgan
- 5 Private Claims map
- 6 Private Claims map
- 7 1934 Witness sheet MCRC
- 8 1956 Plat-Edsel Ford-Rosso Subdivision Phillips 1728 L38, P13
- 9 1959 Witness sheet MCRC
- 10 1989 LCRC Gorman 17622 L4686, P40
- 11 1992 Certificate of Survey Donnelly 21563 unrecorded
- 12 1999 LCRC Hein 43056 L9200, P552
- 13 2003 Survey Kosicki 43058 unrecorded



BEFORE B01-B13



AFTER B01-B13





LAND CORNER RECORDATION CERTIFICATE
Filing Requirement of Act 74, Mich. P.A. 1970
REMONUMENTATION CORNER

For corners in:

MACOMB COUNTY
(County)

Located In: HARRISON TOWNSHIP Corner Code #B-01
CHESTERFIELD TOWNSHIP B-13

1237154
LIBER 21034 PAGE 640
12/15/2011 08:39:38 A.M.
MACOMB COUNTY, MI SEAL
CARNELLA SABAUGH, REGISTER OF DEEDS

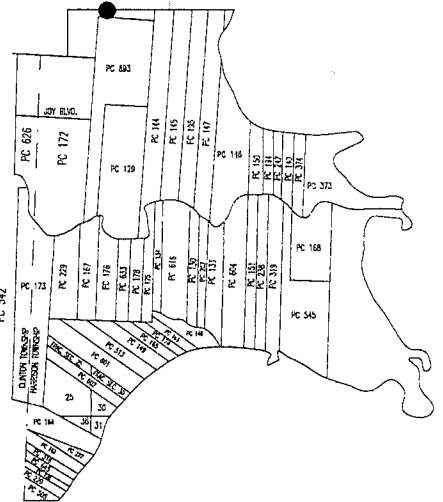
- 1. Public Land Survey S 6 T 2N R 14E
S 31 T 3N R 14E
2. Property Controlling in Section S T R
S T R
3. Miscellaneous S T R
Property in Sec. S T R

4. Lot No. Recorded Plat

5. Private Claims

ACCEPTED BY THE MACOMB COUNTY SURVEY PEER GROUP AS THE OFFICIAL CORNER UNDER MICHIGAN PUBLIC ACT 345 OF 1990 AT A MEETING HELD ON 9-27-2011
MARTIN C. DUNN, P.S. CHAIRMAN

Register of Deeds Stamp & File Number



I, ROBERT E. HORNYAK, in a field survey on, June 18, 2011 do hereby certify that under requirements of P.A. 74, Michigan P.A. of 1970, the corner points mentioned in lines 1 and 2 above were in conformance with regulations and rules therefore as required in the current manual of survey instructions of the United States Department of the Interior, Bureau of Land Management or by a decree of a Court of Law and/or that the corner points mentioned in lines 3, 4 and 5 above were in conformance with the rules of the Michigan Board of Land Surveyors or by a Decree of a Court of Law; established, re-established, monumented, re-monumented, recovered, found as expressed below:

NOTE: Not more than 2 corners, all in the same town and range, may be recorded on this certificate.

A. Description of original monument and accessories and/or subsequent restoration:

- 1 1817 GLO notes Preston B Oak 10" diameter
Subsequent Restorations:
2 1817 Township map Preston Object not stated
3 1818 Township map Surveyor General Office Object not stated
4 1853 Survey Morgan Object not stated
5 Private Claims map Object not stated
6 Private Claims map Object not stated
7 1934 Witness sheet MCRC 2" Oak stake 2" below surface (0 of 3 wit. fnd.)
8 1956 Plat-Edsel Ford-Rosso Subdivision Phillips 1728 L38, P13 Corner shown, not described.
1" Iron Rod (0 of 3 wit. fnd.)
9 1959 Witness sheet MCRC Gorman 17622 L4686, P40 1" dia. iron pin (0 of 7 wit. fnd.)
10 1989 LCRC Donnelly 21563 unrecorded Object not stated
11 1992 Certificate of Survey Hein 43056 L9200, P552 Placed 1/2" Rerod, at the location of the corner prior to road construction. (3 of 4 wit. fnd.)
12 1999 LCRC Kosicki 43058 unrecorded Found iron #24615 (2 of 3 wit. fnd.)
13 2003 Survey

B. Description of corner evidence found and/or method applied in restoring or reestablishing corner:

The corner was perpetuated with the found 1/2" iron rod.

Occupation: N, S - none

E, W - median for divided Highway

The witnesses from Items 12 & 13, the distances from Items 8, 10, 11 & 13 were used to verify the location of the corner.

I recommend to the Peer Review Board to accept the found 1/2" iron rod as proper location for the corner.

Distances:

Table with columns for distance measurements (e.g., B-01 to B-12, B-01 to C-13, B-01 to A-13) and their corresponding values in feet and inches.

C. Description of monument for corner and accessories established to perpetuate locating the position of the corner:

I replaced the found 1/2" iron with a 2" aluminum cap stamped "MACOMB COUNTY MONUMENT MI ACT 345; B-01, B-13; 44286" placed on a 1/2"x36" steel bar encased in 4" diameter concrete monument.

Witnesses:

- N39°E 24.19' Set iron w/blue cap "MACOMB COUNTY WITNESS" at S side of traffic signal base pole
S10°E 35.42' Set iron w/blue cap "MACOMB COUNTY WITNESS" at back of curb
S48°W 76.21' Set iron w/blue cap "MACOMB COUNTY WITNESS" on E side of S'y leg of "LEFT 2 LANES MUST TURN LEFT" sign
N54°W 71.83' Set nail w/tag "MACOMB COUNTY WITNESS TAG" in S'yly painted white line of Westbound Hall Road

THE SELECTED LOCATION IS ACCEPTED BY ME AND IS GENERALLY ACCEPTED BY PROFESSIONAL SURVEYORS AS THE BEST AVAILABLE EVIDENCE OF THE POSITION OF THIS CORNER.

Signed by [Signature] Date September 28, 2011.

Surveyor's Michigan License No. 44286



B-01 HARRISON TOWNSHIP, T02N, R14E

Corner common with

B-13 CHESTERFIELD TOWNSHIP, T03N, R14E

GLO survey was performed by Preston in 1817.

GLO Survey History:

Researching the government survey records for Macomb County I have found that the Chesterfield Township was surveyed and subdivided not according to then in force Manual of Surveying Instructions. Due to presence of Lake St. Clair in the Southeast portion of the Township and numerous Private Claims along the shore exterior boundaries of the Township were established by William Preston, D.S. in 1817 in the following manner and order:

1. South boundary was run East from the Southwest corner.
2. East boundary was run South from the Northeast Twp. corner.
3. North boundary was run West from the Northeast Twp. corner.
4. West boundary was run South from the Northwest Twp. corner.

The subdivision of the Township commenced at the Northeast corner of Section 6; thence run South & West. Thus, the closing Sections are along the East and South Township boundaries.

Corner history:

1	1817	GLO notes	Preston		B Oak 10" diameter
2	1817	Township map	Preston		Object not stated
3	1818	Township map	Surveyor General Office		Object not stated
4	1853	Survey	Morgan		Object not stated
5		Private Claims map			Object not stated
6		Private Claims map			Object not stated
7	1934	Witness sheet	MCRC		2" Oak stake 2" below surface
			<u>Witnesses:</u>		
			N5°E	57.6'	18" Oak
			N60°W	86.8'	24" Elm
			S15°W	27.4'	Anchor post
8	1956	Plat-Edsel Ford-Rosso Subdivision	Phillips 1728	L38, P13	Corner shown, not described.
9	1959	Witness sheet	MCRC		1" Iron Rod
			<u>Witnesses:</u>		
			N2°E	54.49'	Nail & cap 26" Oak
			S25°W	39.04'	Nail & cap 12" Elm
			S57°E	47.30'	Nail & cap T.P.
10	1989	LCRC	Gorman 17622	L4686, P40	1" dia. iron pin
			<u>Witnesses:</u>		
			N05°E	54.44'	MDOT tag & spike in 31" oak
			N40°E	71.08'	MDOT tag & spike in 5" ash
			N25°W	63.95'	MDOT tag & spike in 9" twin ash
			S75°W	65.21'	MDOT tag & spike in 8" elm
			South	65.42'	North EM of Rosso Hwy.
			S86°54'24"W	2676.50'	1" dia. pipe SW Cor. Sec. 31 (2676.58' recorded)
			N87°17'E	662.21'	1/2" rerod & cap (LLS#5779) (662.08' recorded)
11	1992	Certificate of Survey	Donnelly 21563	unrecorded	Object not stated
12	1999	LCRC	Hein 43056	L9200, P552	Placed 1/2" Rerod, at the location of the corner prior to road construction.
			<u>Witnesses:</u>		
			N39°E	24.85'	Set Chiseled 'X' in South Light Pole base
			* N89°E	27.85'	Set Chiseled 'X' on back of West curb in median turnaround
			* S30°W	60.87'	Set Chiseled 'X' in center of curb scupper on North edge of EB M-59
			* N15°W	39.33'	West end of 18" C.S.P.
13	2003	Survey	Kosicki 43058	unrecorded	Found iron #24615
			<u>Witnesses:</u>		
			N39°E	24.85'	Fd. chiseled 'X' in South Light Pole base
			* N89°E	27.85'	Fd. chiseled 'X' on back of West curb in median turnaround
			* S30°W	60.87'	Fd. chiseled 'X' in center of curb scupper on North edge of EB M-59

* denotes matching witnesses

Field evidence:

The corner was perpetuated with the found 1/2" iron rod.

Occupation: N, S - none

E, W - median for divided Highway

Distances:

B-13 to B-12		B-13 to C-13		B-13 to A-13	
		2589.18' (39.23 ch)	1	2640.00'(40.00 ch)	1
				2676.58'	8, 10
2689.90'	11	2598.08'	11	2676.50'	10
2689.72'	13	2598.11'	13	2676.53	11
2689.62'	Remon 2011	2597.81'	Remon 2011	2676.08	Remon 2011

SPC: N=415,631.33 E=13,532,463.03

Recommendation:

The witnesses from Items 12 & 13, the distances from Items 8, 10, 11 & 13 were used to verify the location of the corner. I recommend to the Peer Review Board to accept the found 1/2" iron rod as proper location for the corner. I recommend replacing the found 1/2" iron with a 2" aluminum cap stamped "MACOMB COUNTY MONUMENT MI ACT 345; B-01, B-13; 44286" placed on a 1/2"x36" steel bar encased in 4" diameter concrete monument.

Witnesses:

N39°E	24.19'	Set iron w/blue cap "MACOMB COUNTY WITNESS" at S side of traffic signal base pole
S10°E	35.42'	Set iron w/blue cap "MACOMB COUNTY WITNESS" at back of curb
S48°W	76.21'	Set iron w/blue cap "MACOMB COUNTY WITNESS" on E side of S'ly leg of "LEFT 2 LANES MUST TURN LEFT" sign
N54°W	71.83'	Set nail w/tag "MACOMB COUNTY WITNESS TAG" in S'ly painted white line of Westbound Hall Road

Respectfully submitted,

Robert E. Hornyak, PS # 44286

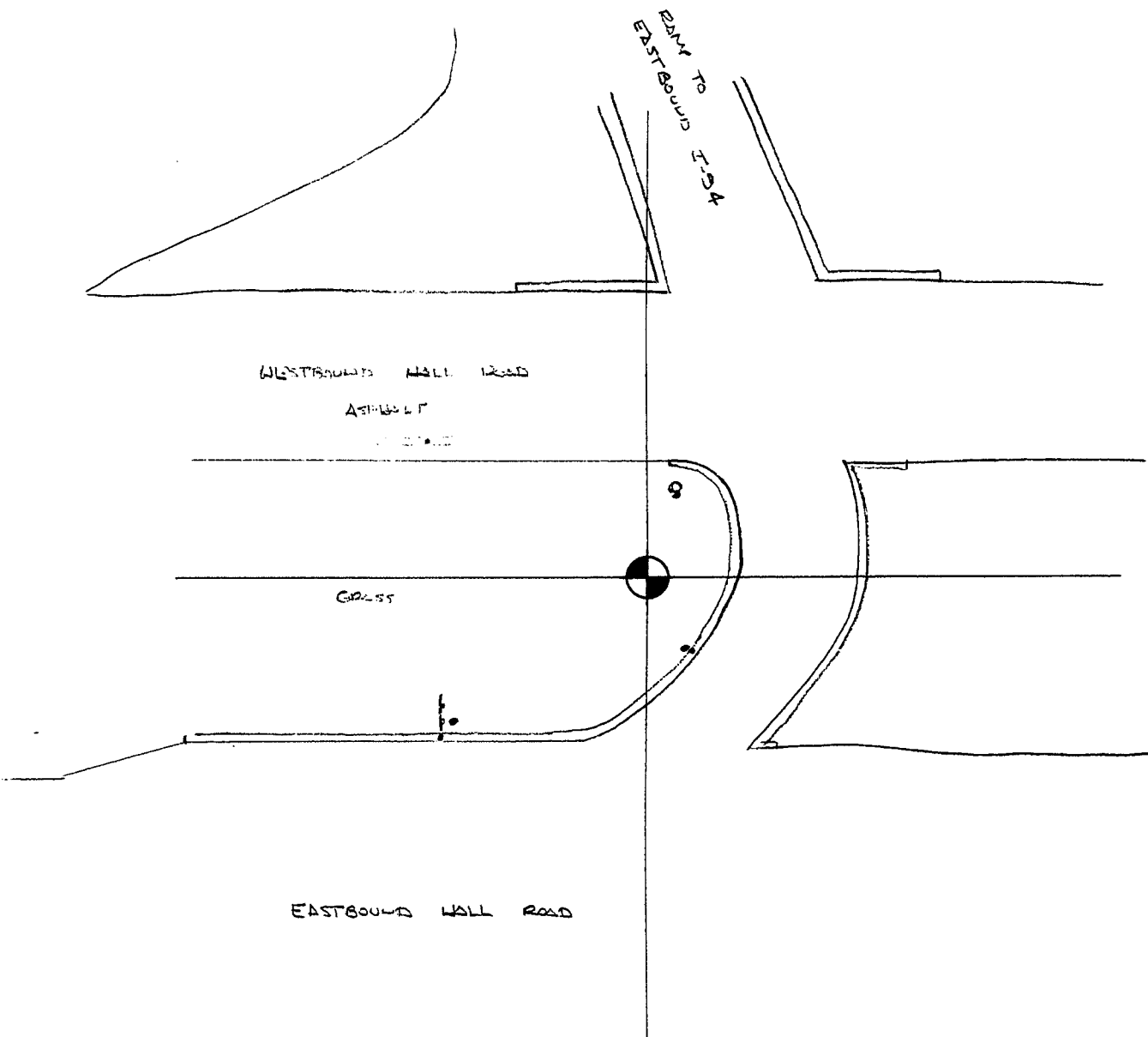
REMON 2011

B-13 CHESTERFIELD TWP., T3N, R14E

B-01 HARRISON TWP., T2N, R14E



DATE: 07/06/11
 CREW: RH, TK
 OBJECT FOUND: 1/2" IRON
 POINT No.: _____
 CTRL. PTS.: _____



- SET IRON NAIL & REMON TAG IN SOUTH SIDE OF TRAFFIC SIGNAL POLE BASE N 39° E 24.19'
- SET IRON NAIL & REMON TAG AT TOP BACK OF CURB S 10° E 35.42'
- SET IRON NAIL & REMON TAG ON EAST SIDE OF S'LY LEG OF "LEFT 2 LANES MUST TURN LEFT" SIGN S 48° W 76.21'
- SET NAIL & REMON TAG IN S'LY PAINTED FOG LINE OF WESTBOUND WALL ROAD N 54° W 71.83'

OCCUPATION
 (if road state surface)

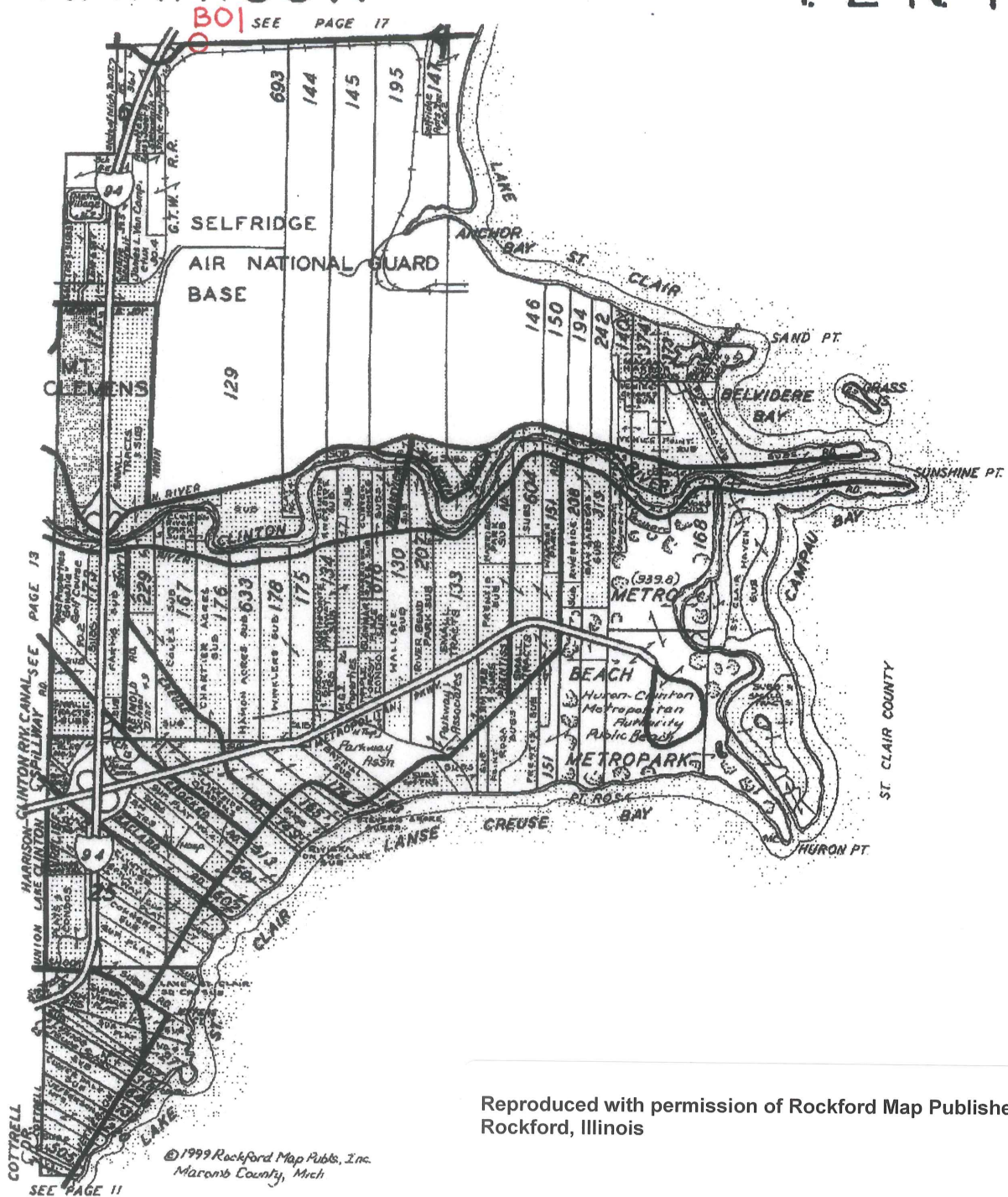
NORTH - NONE

SOUTH - NONE

EAST, WEST - MEDIAN FOR DIVIDED HIGHWAY

HARRISON

T. 2 N.-R. 14 E.



Reproduced with permission of Rockford Map Publishers, Inc. Rockford, Illinois

©1999 Rockford Map Publs, Inc.
Macomb County, Mich



PHILIP R. SEAVER TITLE COMPANY INC.

JOHN R. COOK
Eastern Regional Manager

37500 GARFIELD, SUITE 150 • CLINTON TOWNSHIP, MICHIGAN 48036
OFFICE: (810) 263-9900 • PAGER: (810) 717-7539 • FAX: (810) 263-9910

MAIN OFFICE
2700 North Woodward
Bloomfield Hills, Michigan 48304
(248) 338-7135 or (248) 647-2171
Fax: (248) 338-3045

CLARKSTON OFFICE
6715 Dixie Highway (at M-15)
Clarkston, Michigan 48346
(248) 625-6100
Fax: (248) 625-8933

OXFORD
830 South Lapeer
Oxford, Michigan 48371
(248) 969-9522
Fax: (248) 969-9525

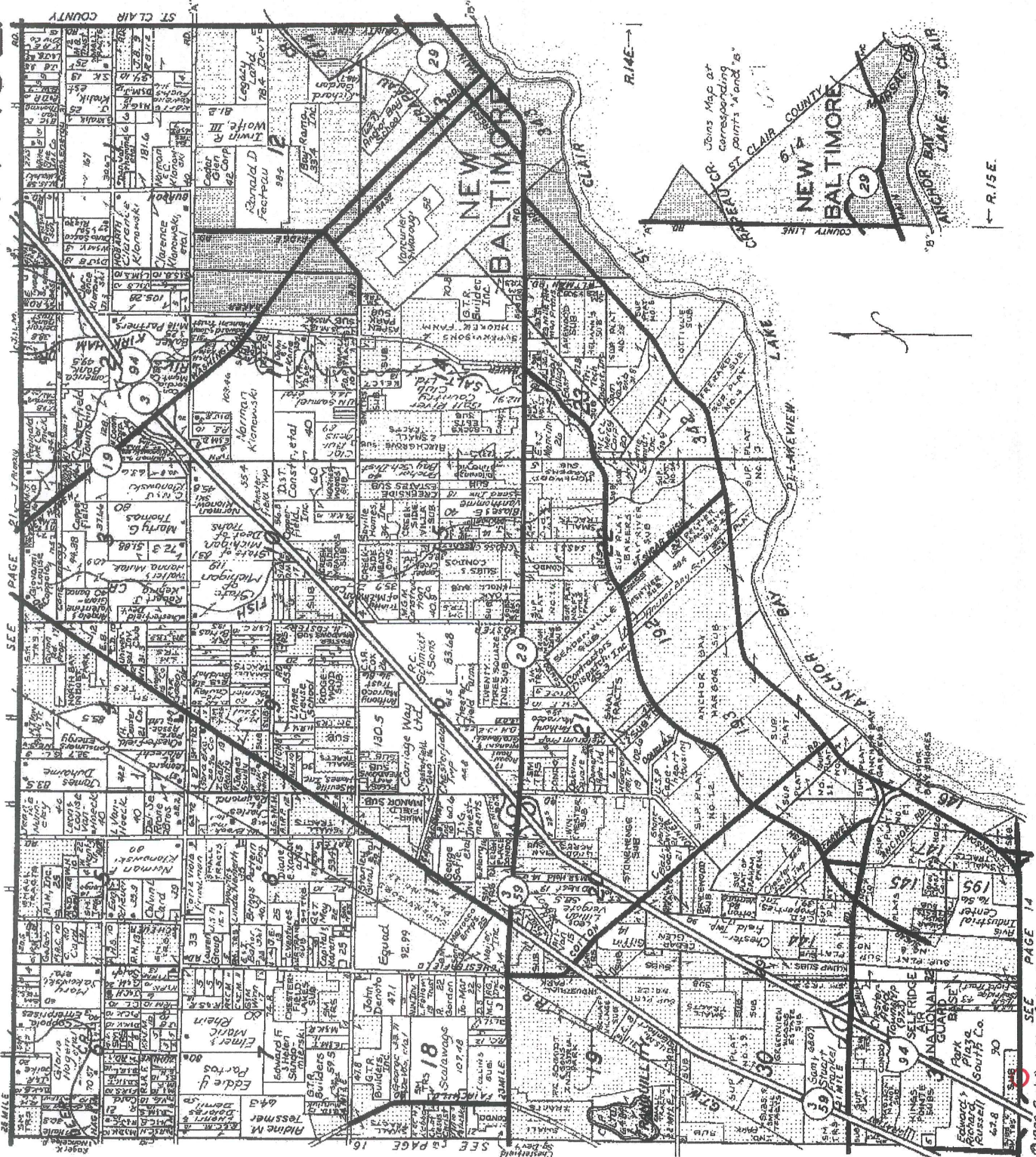
FARMINGTON HILLS OFFICE
30640 West 12 Mile Road
Farmington Hills, Michigan 48334
(248) 932-0660
Fax: (248) 932-0664

SOUTHFIELD
30233 Southfield Road #221
Southfield, Michigan 48075
(248) 540-1777
Fax: (248) 540-9553

Reproduced with permission of Rockford Map Publishers, Inc.
 Rockford, Illinois

T3N-R14-15E

CHESTERFIELD



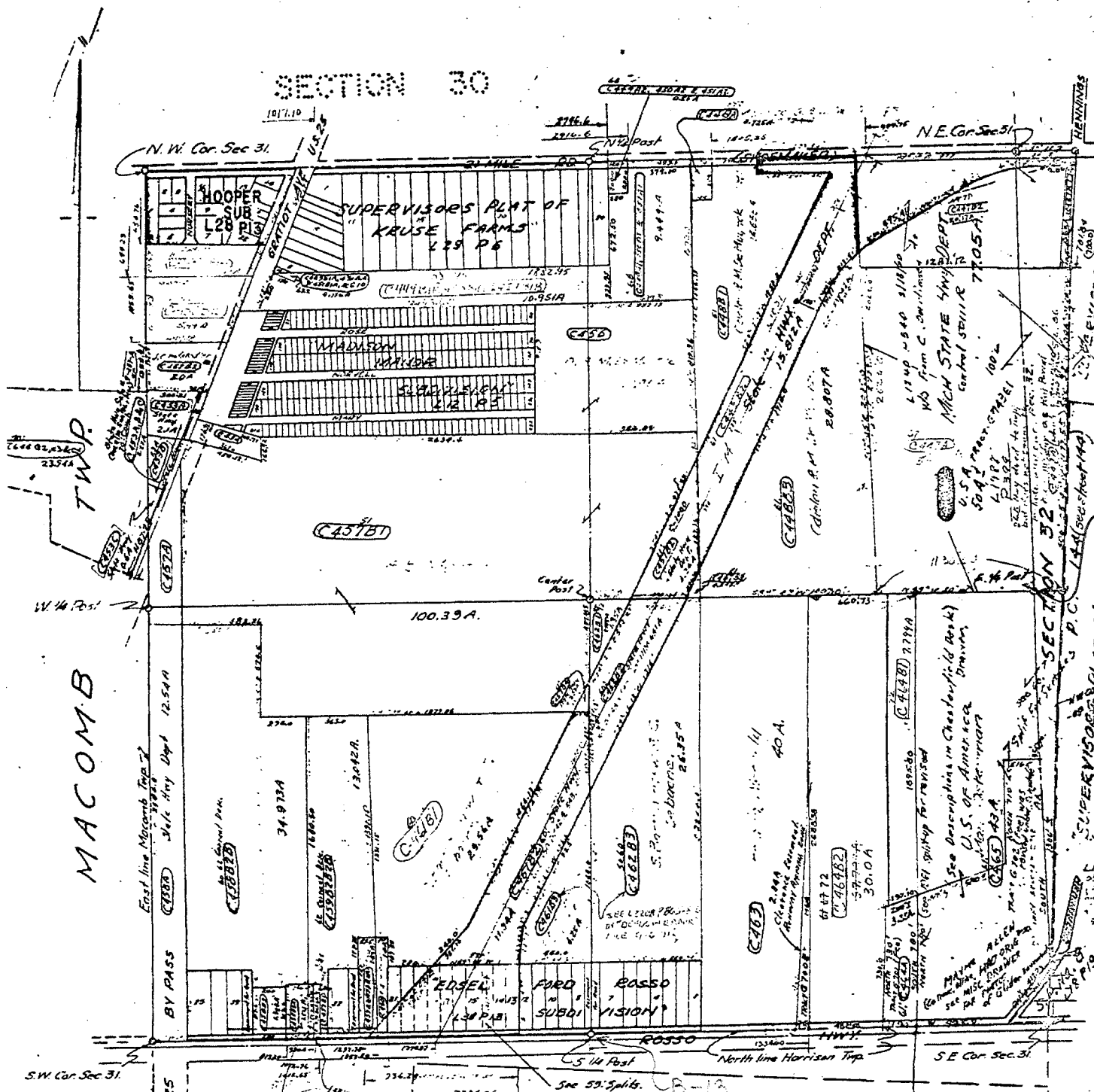
LINCOLN TITLE COMPANY

Flexible closing schedule ❖ Personalized service ❖ Knowledgeable staff

25962 Knollwood Drive South • Chesterfield, Michigan 48051 • Telephone: (810) 598-2930 • Fax: (810) 598-2936

OFFICES ALSO IN PORT HURON & ROSEVILLE

SECTION 30



MACOMB TWP.

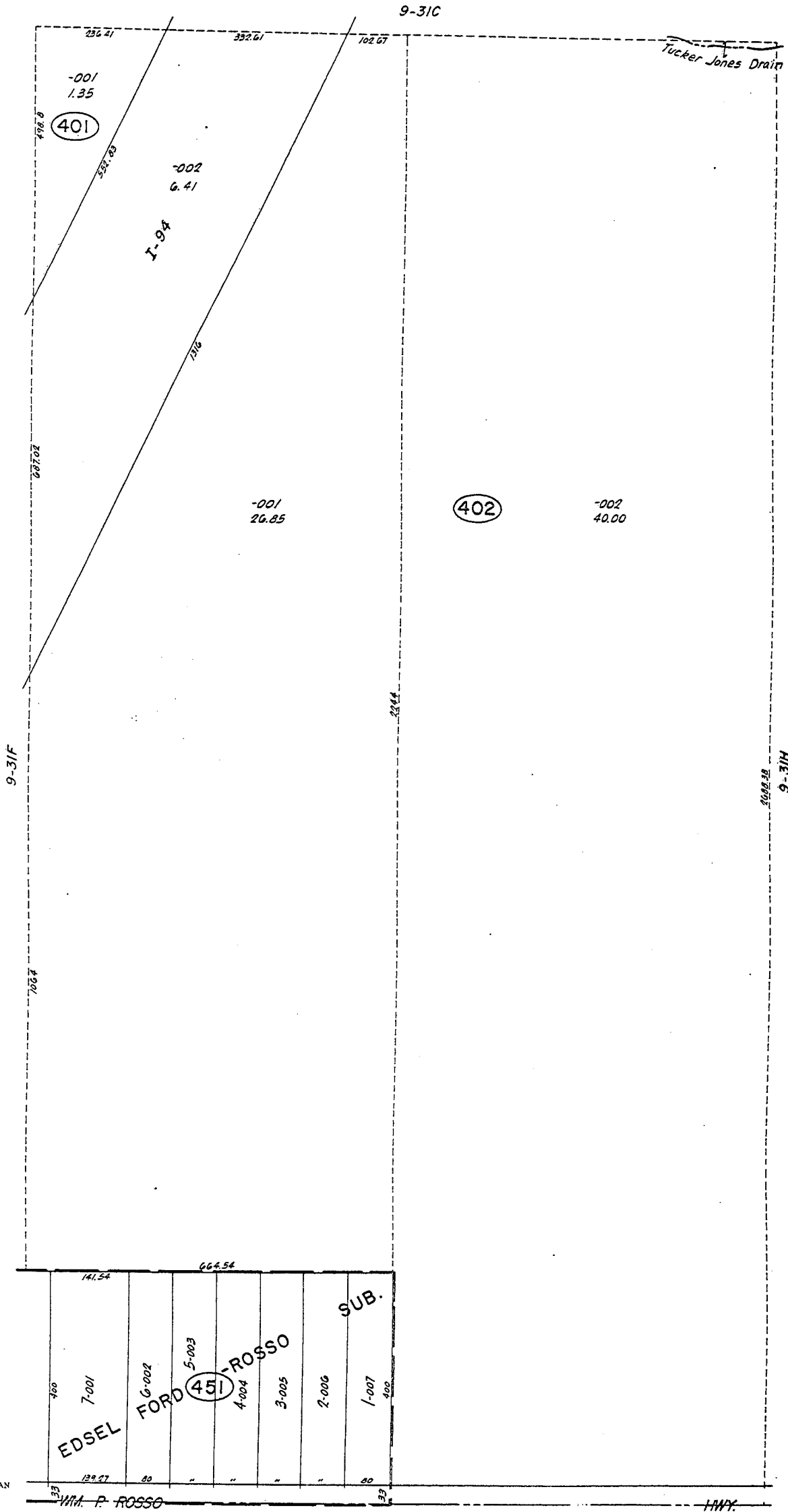
FRL SEC. 6.

HARRISON TWP.

CHESTERFIELD TOWNSHIP
T3N, R14E SEC. 31 & PART OF 32

SCALE 1" = 400'

RETURN TO
ADDRESSOGRAPH COPY
COUNTY BUILDING
MT. CLEMENS, MICH.
PHONE HOWARD 587



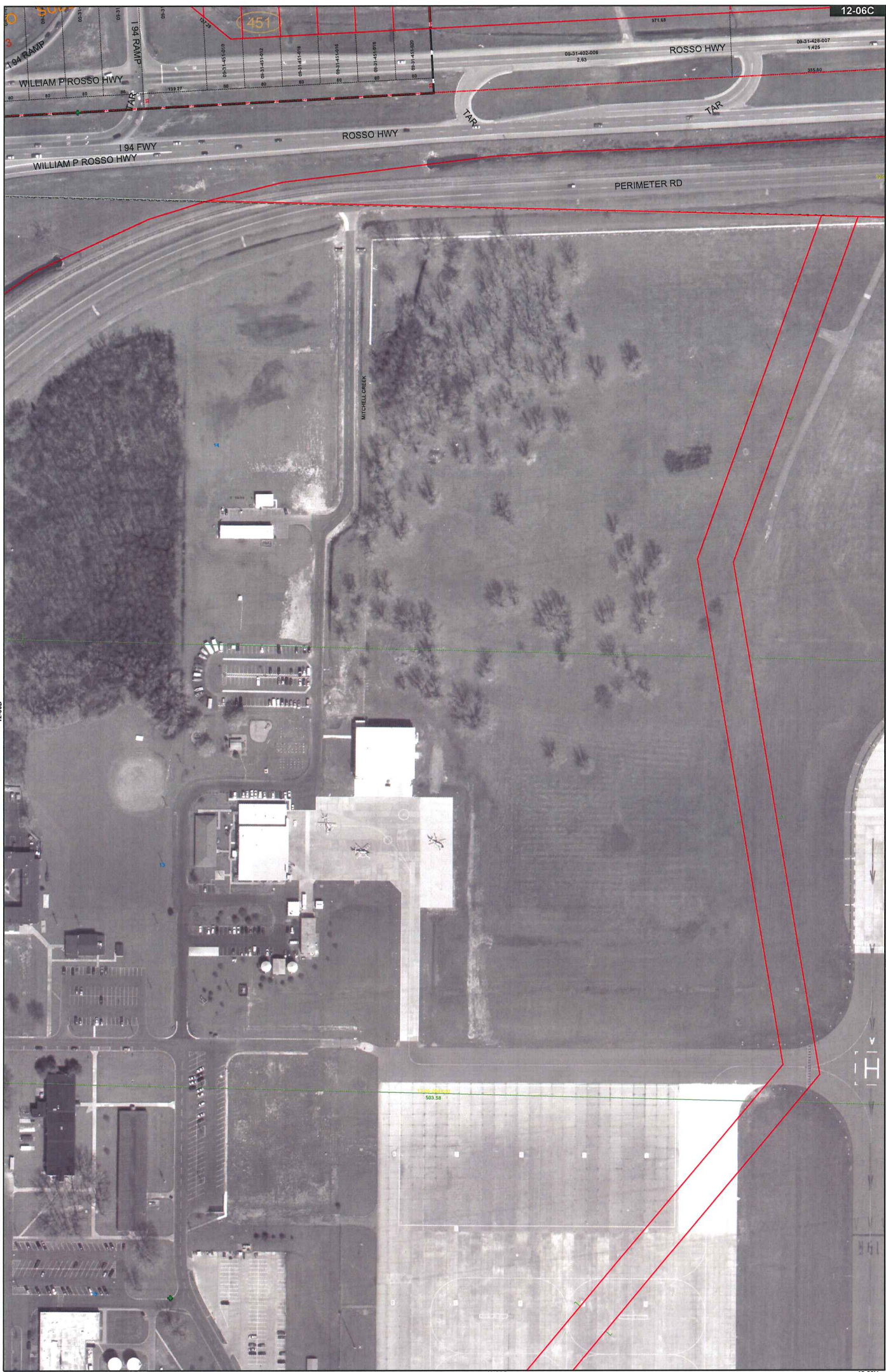
Copyright 1974
MACOMB COUNTY, MICHIGAN

SCALE: 1" = 100'
725
9-31G

B-13

12-A
CHESTERFIELD TWP.
W. 1/2 SE. 1/4 SEC. 31 T. 3N. R. 14E.

HWY.

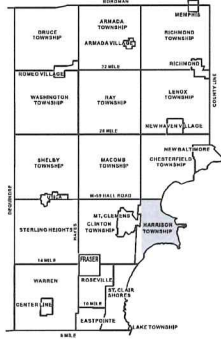


Date of Photography: April 2004
 100 50 0 100 200 Feet

1:1,200



COPYRIGHT © 2001
 MACOMB COUNTY, MI
 All Rights Reserved



HARRISON TWP SHEET INDEX

12-07A	12-07B	12-07C	12-07D	12-07E	12-07F	12-07G	12-07H	12-07I	12-07J	12-07K	12-07L	12-07M	12-07N	12-07O	12-07P	12-07Q	12-07R	12-07S	12-07T	12-07U	12-07V	12-07W	12-07X	12-07Y	12-07Z
12-08A	12-08B	12-08C	12-08D	12-08E	12-08F	12-08G	12-08H	12-08I	12-08J	12-08K	12-08L	12-08M	12-08N	12-08O	12-08P	12-08Q	12-08R	12-08S	12-08T	12-08U	12-08V	12-08W	12-08X	12-08Y	12-08Z
12-09A	12-09B	12-09C	12-09D	12-09E	12-09F	12-09G	12-09H	12-09I	12-09J	12-09K	12-09L	12-09M	12-09N	12-09O	12-09P	12-09Q	12-09R	12-09S	12-09T	12-09U	12-09V	12-09W	12-09X	12-09Y	12-09Z
12-10A	12-10B	12-10C	12-10D	12-10E	12-10F	12-10G	12-10H	12-10I	12-10J	12-10K	12-10L	12-10M	12-10N	12-10O	12-10P	12-10Q	12-10R	12-10S	12-10T	12-10U	12-10V	12-10W	12-10X	12-10Y	12-10Z
12-11A	12-11B	12-11C	12-11D	12-11E	12-11F	12-11G	12-11H	12-11I	12-11J	12-11K	12-11L	12-11M	12-11N	12-11O	12-11P	12-11Q	12-11R	12-11S	12-11T	12-11U	12-11V	12-11W	12-11X	12-11Y	12-11Z
12-12A	12-12B	12-12C	12-12D	12-12E	12-12F	12-12G	12-12H	12-12I	12-12J	12-12K	12-12L	12-12M	12-12N	12-12O	12-12P	12-12Q	12-12R	12-12S	12-12T	12-12U	12-12V	12-12W	12-12X	12-12Y	12-12Z
12-13A	12-13B	12-13C	12-13D	12-13E	12-13F	12-13G	12-13H	12-13I	12-13J	12-13K	12-13L	12-13M	12-13N	12-13O	12-13P	12-13Q	12-13R	12-13S	12-13T	12-13U	12-13V	12-13W	12-13X	12-13Y	12-13Z
12-14A	12-14B	12-14C	12-14D	12-14E	12-14F	12-14G	12-14H	12-14I	12-14J	12-14K	12-14L	12-14M	12-14N	12-14O	12-14P	12-14Q	12-14R	12-14S	12-14T	12-14U	12-14V	12-14W	12-14X	12-14Y	12-14Z
12-15A	12-15B	12-15C	12-15D	12-15E	12-15F	12-15G	12-15H	12-15I	12-15J	12-15K	12-15L	12-15M	12-15N	12-15O	12-15P	12-15Q	12-15R	12-15S	12-15T	12-15U	12-15V	12-15W	12-15X	12-15Y	12-15Z
12-16A	12-16B	12-16C	12-16D	12-16E	12-16F	12-16G	12-16H	12-16I	12-16J	12-16K	12-16L	12-16M	12-16N	12-16O	12-16P	12-16Q	12-16R	12-16S	12-16T	12-16U	12-16V	12-16W	12-16X	12-16Y	12-16Z
12-17A	12-17B	12-17C	12-17D	12-17E	12-17F	12-17G	12-17H	12-17I	12-17J	12-17K	12-17L	12-17M	12-17N	12-17O	12-17P	12-17Q	12-17R	12-17S	12-17T	12-17U	12-17V	12-17W	12-17X	12-17Y	12-17Z
12-18A	12-18B	12-18C	12-18D	12-18E	12-18F	12-18G	12-18H	12-18I	12-18J	12-18K	12-18L	12-18M	12-18N	12-18O	12-18P	12-18Q	12-18R	12-18S	12-18T	12-18U	12-18V	12-18W	12-18X	12-18Y	12-18Z
12-19A	12-19B	12-19C	12-19D	12-19E	12-19F	12-19G	12-19H	12-19I	12-19J	12-19K	12-19L	12-19M	12-19N	12-19O	12-19P	12-19Q	12-19R	12-19S	12-19T	12-19U	12-19V	12-19W	12-19X	12-19Y	12-19Z

DESCRIPTION OF PERMANENT REAL ESTATE INDEX NUMBER

13-19-302-018

- Platted Area Boundary Line
- Property Line
- Property Split Line
- Property Combined Line
- Township Boundary Line
- Traverse Line
- Dimension Extent Marks
- Dimension Start Marks

12-06C

Previously part of 12-A
 HARRISON TWP.
 W.1/2 N.E.1/4 SEC.6 T.2N. R.14E.

Source: Macomb County Department of Planning and Economic Development
 - 2004 Digital Orthophotography Project
 - Parcel Conversion Project

Note: Digital Orthophotography horizontal positioning accuracy is 3 feet. Parcel boundary lines should be considered a graphical representation and not in any way a legal survey or engineering document. In general, the horizontal positioning and length accuracy is within 15 feet.

This map is intended for general planning purposes. Site specific evaluation should be verified by field inspection. This is a work in progress and may contain errors and omissions. Please report any potential revisions to (586)469-5285.



GIS **MACOMB COUNTY**
 Planning and Economic
 Development Department
 Published: Aug 30, 2005

Case 100

Town 3 North Range 14 East
CHESTERFIELD

Mich.

Town Lines
Seneca Boundary

East Between Townships 2 & 3 N Range 14 E

1191 B. Oak 36 in diam

B-13

1110 Corn on a B. Oak 10 in diam

17.23 Dissected Seneca Claim N^o 1111 - 1114
North of cor.

Lot N^o 693 Set post for tract sections

6 & 31 from which a B. Oak Indian

beard N 5 west 15. Has also a sugar tree

8 in beard 500 x 10 the dist. at

Land 3rd rate land & wet.

Timber Birch Beech Maple Lyrus Bl.

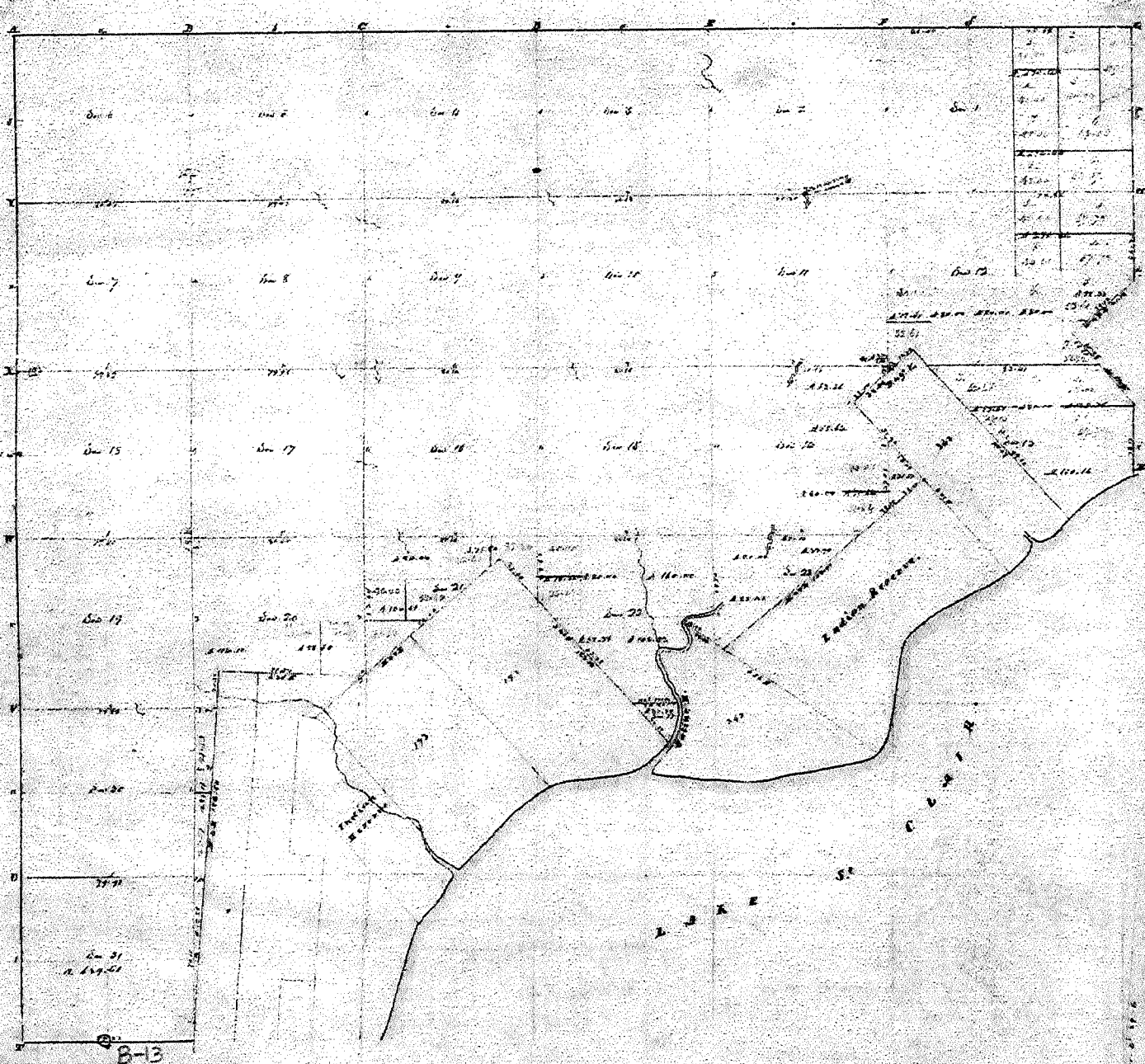
Surveyed 1817 by W^o Preston J.S.

CHESTERFIELD TWP

T 3 N R 14 E

MACOMB Co.

1. 3 N, R. 14 E, Mer.



PLAN COPY

Township N: III North, Range N: IV East of Mer. (Mich. Ter.) Surveyed by W. T. Preston. 1867.

Prescriptions of the soil on the interior sectional lines.

Section	Prescription	Section	Prescription
1	1/2 sec. 1st cont. back from 1st cont. 1/2 sec. 1st cont. 1st cont.	21	1/2 sec. 1st cont. back from 1st cont. 1st cont. 1st cont.
2	1/2 sec. 1st cont. back from 1st cont. 1st cont. 1st cont.	22	1/2 sec. 1st cont. back from 1st cont. 1st cont. 1st cont.
3	1/2 sec. 1st cont. back from 1st cont. 1st cont. 1st cont.	23	1/2 sec. 1st cont. back from 1st cont. 1st cont. 1st cont.
4	1/2 sec. 1st cont. back from 1st cont. 1st cont. 1st cont.	24	1/2 sec. 1st cont. back from 1st cont. 1st cont. 1st cont.
5	1/2 sec. 1st cont. back from 1st cont. 1st cont. 1st cont.	25	1/2 sec. 1st cont. back from 1st cont. 1st cont. 1st cont.
6	1/2 sec. 1st cont. back from 1st cont. 1st cont. 1st cont.	26	1/2 sec. 1st cont. back from 1st cont. 1st cont. 1st cont.
7	1/2 sec. 1st cont. back from 1st cont. 1st cont. 1st cont.	27	1/2 sec. 1st cont. back from 1st cont. 1st cont. 1st cont.
8	1/2 sec. 1st cont. back from 1st cont. 1st cont. 1st cont.	28	1/2 sec. 1st cont. back from 1st cont. 1st cont. 1st cont.
9	1/2 sec. 1st cont. back from 1st cont. 1st cont. 1st cont.	29	1/2 sec. 1st cont. back from 1st cont. 1st cont. 1st cont.
10	1/2 sec. 1st cont. back from 1st cont. 1st cont. 1st cont.	30	1/2 sec. 1st cont. back from 1st cont. 1st cont. 1st cont.
11	1/2 sec. 1st cont. back from 1st cont. 1st cont. 1st cont.	31	1/2 sec. 1st cont. back from 1st cont. 1st cont. 1st cont.
12	1/2 sec. 1st cont. back from 1st cont. 1st cont. 1st cont.	32	1/2 sec. 1st cont. back from 1st cont. 1st cont. 1st cont.
13	1/2 sec. 1st cont. back from 1st cont. 1st cont. 1st cont.		
14	1/2 sec. 1st cont. back from 1st cont. 1st cont. 1st cont.		
15	1/2 sec. 1st cont. back from 1st cont. 1st cont. 1st cont.		
16	1/2 sec. 1st cont. back from 1st cont. 1st cont. 1st cont.		
17	1/2 sec. 1st cont. back from 1st cont. 1st cont. 1st cont.		
18	1/2 sec. 1st cont. back from 1st cont. 1st cont. 1st cont.		
19	1/2 sec. 1st cont. back from 1st cont. 1st cont. 1st cont.		
20	1/2 sec. 1st cont. back from 1st cont. 1st cont. 1st cont.		

T. 3 N., R. 14 E.
CHESTERFIELD TWP.

INTERSECTION OF TOWNSHIP LINE
WITH WEST LINE P.C. 144

COMMON WITH D-1, T. 2 N., R. 14 E.

79.91

54.31
A. 639.61

77.22

15' B-13

4-17.55

70.12

D

A-B

DETAIL OF 1817 TOWNSHIP MAP

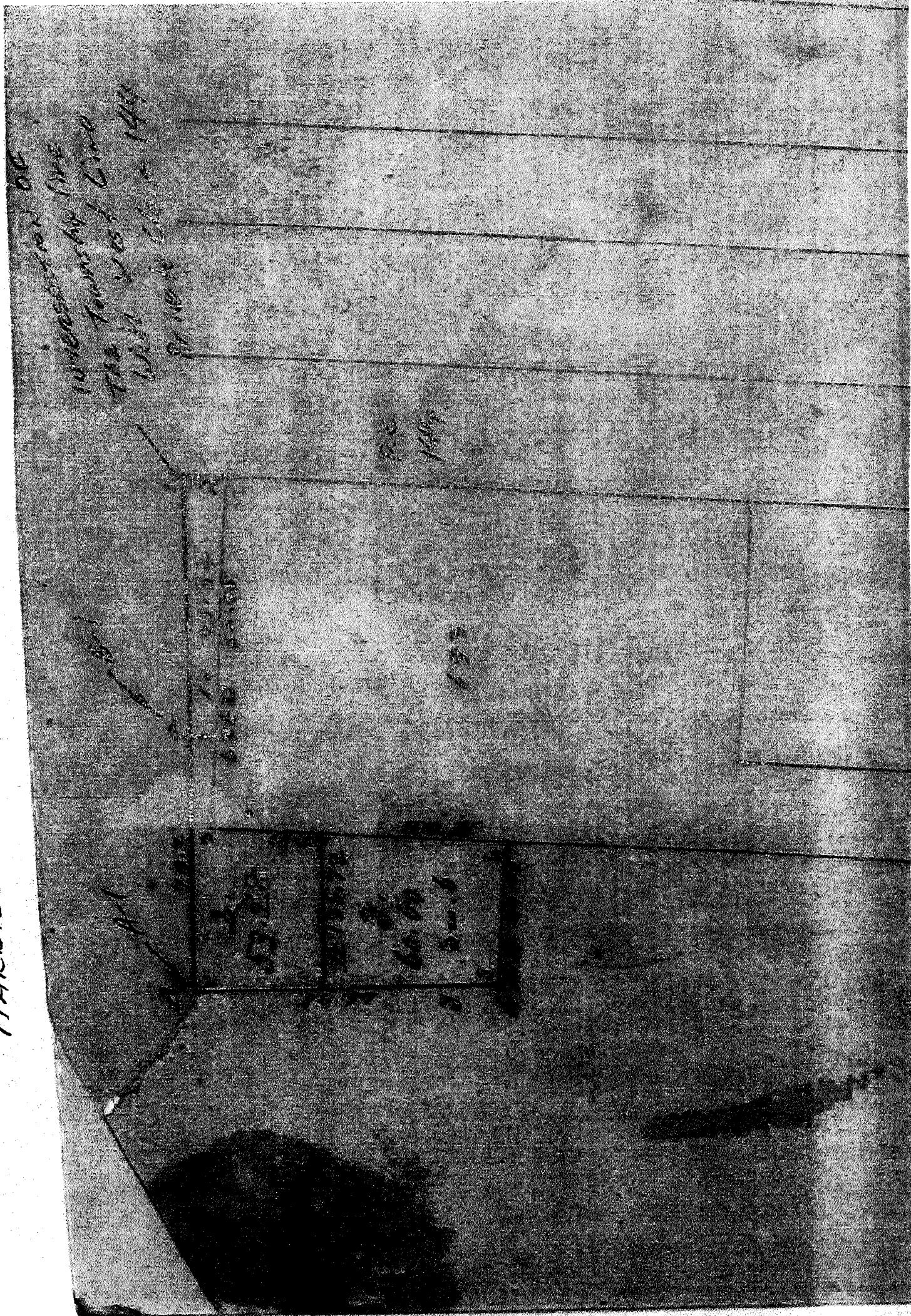
HARRISON TOWNSHIP

Township N. 11 North, Range N. 11

1105700
1105700
1105700
1105700

150
194
242
290
338
156
197
195
195
194
129

HARRISON TOWNSHIP



168

Road File No. _____

File Point No. _____ Date Filed 6-27 1934
 Assessment District No. _____ Station No. _____
 Township Chatterfield Section Corner 5/4 Sec. 31
 Type of Surface Gravel Width 8
 Description of Monument 2" x Oak Stake 2" below Surface

Monument in Relation to Center Line of Pavement

WITNESSES:

1. 18" Oak. N 5° E 57.6'
2. 24" Elm. N 60° W 86.8'
3. Anchor Post S 15° W 27.4'
4. _____

L38, P13
1956

MUNICIPAL APPROVAL

This plot was approved by the Township Board of the Township of Chesterfield at a meeting held August 22-56 by Leo Blakely (Clerk)

APPROVAL BY BOARD OF COUNTY ROAD COMMISSIONERS

This plot has been examined and was approved on the 5th day of September 1956 by the County Board of Road Commissioners
 Ernest J. McCollom (Chairman)
 Roy C. Jones (Member)
 Lawrence Oulince (Member)

APPROVAL BY COUNTY PLAT BOARD

This plot was approved on the 6th day of September 1956 by the County Plat Board
 Aaron Burr (County Register of Deeds)
 Albert J. Wagner (County Clerk)
 Frank E. Lohr (County Drain Commissioner)

CERTIFICATE AS TO STATE TRUNK LINE OR FEDERAL AID ROADS

We hereby certify that said plot appears to include land located on a state trunk line or federal aid road.
 Aaron Burr
 Albert J. Wagner
 Frank E. Lohr

DESCRIPTION OF LAND PLATTED

The land embraced in the annexed plot of Edsel Ford-Rosso Subdivision, a part of the S.W. 1/4 and the N.W. 1/2 of the N. 1/2 of the S.E. 1/4 of Sec. 31, T.3 N., R.14 E., Chesterfield Township, Macomb County, Michigan, is described as follows: Commencing at a point on the South line of section 31, T.3 N., R.14 E., distant south 89°44'30" West 218.82 feet from the South West corner of Section 31, thence South 89°44'30" East 2457.76 feet and South 89°26'30" East 662.06 feet along the South line of Section 31, thence North 0°56'30" East 433.00 feet, thence North 89°26'30" West 664.54 feet, thence North 89°44'30" West 1250.61 feet, thence South 0°49'30" West 400.00 feet, thence North 89°44'30" West 157.50 feet, thence North 0°49'30" East 400.00 feet, thence North 89°44'30" West 187.97 feet, thence South 0°11'30" West 400.00 feet, thence North 89°44'30" West 469.91 feet, thence North 1°07'30" East 400.00 feet, thence North 89°44'30" West 397.91 feet, thence South 0°39'30" West 433.00 feet along the East line of the Edsel Ford Highway to the point of beginning and includes Lots 1 to 25 inclusive.

THIS IS TO CERTIFY THAT ACCORDING TO THE COUNTY RECORDS THERE ARE NO TAX DUES ON THIS PROPERTY AND THAT SAID TAX DUES HAVE BEEN PAID TO DATE OF THIS CERTIFICATE.

DEDICATION
 KNOW ALL MEN BY THESE PRESENTS, that we, Gustaf Noteboom and Elizabeth Noteboom, his wife, Cyril DeBeane and Perrine DeBeane, his wife, Stanley P. Bartholomew and Gertrude M. Bartholomew, his wife, Henry Crawford, survivor of Evelyn Crawford

as proprietors, have caused the land embraced in the annexed plot to be surveyed, laid out and platted, to be known as, "Edsel Ford-Rosso Subdivision" a part of the S.W. 1/4 and the N.W. 1/2 of the N. 1/2 of the S.E. 1/4 of Sec. 31, T.3 N., R.14 E., Chesterfield Township, Macomb County, Michigan.

Signed and Sealed to the Presence of
 Edgar C. Willis (Witness) Gustaf Noteboom
 John Whithead (Witness) Elizabeth Noteboom
 John Whithead (Witness) Stanley P. Bartholomew
 Edgar C. Willis (Witness) Stanley P. Bartholomew
 John Whithead (Witness) Gertrude M. Bartholomew
 Henry Crawford

ACKNOWLEDGMENT

STATE OF MICHIGAN
 County of Macomb
 On this 22nd day of August 1956 before me, a Notary Public in and for said County, personally came the above named Gustaf Noteboom and Elizabeth Noteboom, his wife, Cyril DeBeane and Perrine DeBeane, his wife, Stanley P. Bartholomew and Gertrude M. Bartholomew, his wife, Henry Crawford, survivor of Evelyn Crawford

SURVEYOR'S CERTIFICATE

I hereby certify that the plat herein delineated is a correct one, and that permanent monuments consisting of two rods or less in diameter and 36 inches in length, secured in concrete cylinders four inches in diameter and 36 inches in length, have been set at points marked thus (o) on the corners of all angles in the boundaries of the land platted, at all intersections of the lines of streets and at intersections of the lines of streets with the boundaries of the plot.

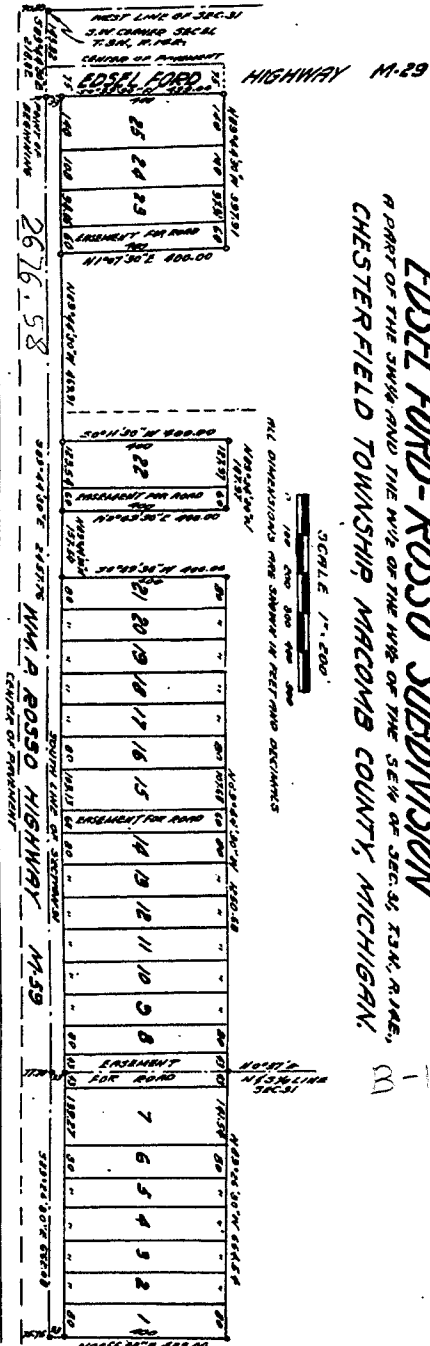
Carl Phillips
 Licensed Land Surveyor

COPY

Register's Office
 Macomb County
 Plat of Edsel Ford-Rosso Subdivision
 was recorded this 20th day of Nov. A.D. 1956 at 11:15 P.M. in Liber 32 of plats on page 19
 Aaron Burr
 Register of Deeds

I hereby certify this copy is a true copy of map or plat forwarded the Register of Deeds for recording
 Date: November 22, 1956
 FILED IN AUDITOR GENERAL'S OFFICE
 November 22, 1956
 EXAMINED AND APPROVED
 Date: November 19, 1956
 Frank E. Lohr
 D. L. MacLachlan

38888



APPROVED
 Charles M. Jones
 768 CHARLES M. JONES
 STATE HIGHWAY ENGINEER

168

Road File No.

File Point No.

Date Filed

March 10 1957

Assessment District No.

Station No.

Township *Chesterfield*

Section Corner *S 1/4 Sec. 31 R14E T3N*

Type of Surface

Width

Description of Monument

1" Iron Rod

Monument in Relation to Center Line of Pavement

WITNESSES:

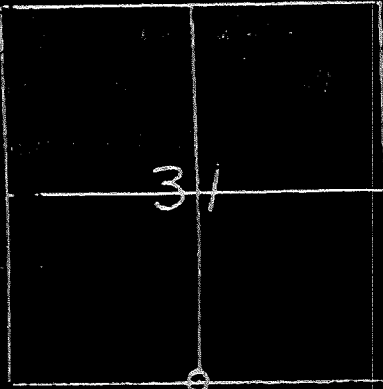
1. *Nail & cap 26" Oak N 2° E 54.49'*

2. *" " 12" Elm S 25° W 39.04'*

3. *" " T.P. S 57° E 47.30'*

4.

T. 3 N. R. 14 E.



*South 1/4 Cor. SEC. 31
Chesterfield Twp. Macomb Co.*

REMARKS

1" Iron Rod

WITNESSES

Nail & Cap 26" Oak N 2° E 54.49'

" " 12" Elm S 25° W 39.04'

" " T.P. S 57° E 47.30'

LIBER 046861040

B376414

LAND CORNER RECORDATION CERTIFICATE
Filing Requirement of Act 74, Mich. P.A. 1970

For corners in

RECORDED IN MACOMB COUNTY,
RECORDS AT: 1:15p. M.

<u>Macomb</u> <small>(County)</small>	Located In:	Corner Code #
1. Public Land Survey	T <u>3</u> N R <u>14</u> E	<u>B-13</u>
	T _____ R _____	_____
	T _____ R _____	_____
	T _____ R _____	_____
2. Property Controlling in Section	S _____ T _____ R _____	_____
	S _____ T _____ R _____	_____
3. Miscellaneous Property in Sec.	S _____ T _____ R _____	_____
	S _____ T _____ R _____	_____

JUL 19 1989

Edna Hill

CLERK - REGISTER OF DEEDS
MACOMB COUNTY, MICHIGAN

Register of Deeds Stamp & File Number

4. Lot No. _____, Recorded Plat _____
5. Private Claims _____

A	B	C	D	E	F	G	H	I	J	K	L	M
2	6	5	4	3	2	1						
3												
4	7	8	9	10	11	12						
5												
6	18	17	16	15	14	13						
7												
8	19	20	21	22	23	24						
9												
10	30	29	28	27	26	25						
11												
12	31	32	33	34	35	36						
13												

I, Donald A. Gorman in a field survey on May 8, 19 89, do hereby certify that under requirements of P.A. 74, Michigan P.A. of 1970, the corner points mentioned in lines 1 and 2 above were in conformance with regulations and rules therefore as required in the current manual of survey instructions of the United States Department of the Interior, Bureau of Land Management or by a decree of a Court of Law and/or that the corner points mentioned in lines 3, 4 and 5 above were in conformance with the rules of the Michigan Board of Land Surveyors or by a Decree of a Court of Law; established, re-established, monumented, re-monumented, recovered, found as expressed below:

NOTE: Not more than 4 corners, all in the same town and range, may be recorded on this certificate.

A. Description of original monument and accessories and/or subsequent restoration:

B. Description of corner evidence found and/or method applied in restoring or reestablishing corner:

B-13
As per MDOT corner tie records by C. J. Lisee (4-3-61) Fd. 1" iron.

N 02 E 54.50' 26" oak
S 25 E 33.70' 16" ash
S 25 W 39.03' 14" elm

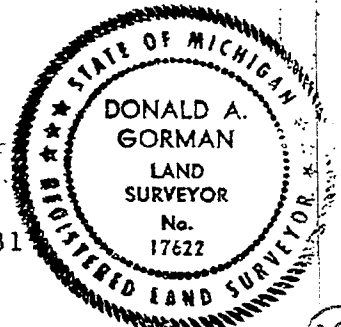
by B. H. Reynolds (7-27-64) Found 1" iron in center line of abandoned M-59.

N 03 E 53.95' 26" oak
N 34 E 33.71' 14" elm
S 24 W 38.65' 12" elm
N 73 W 88.70' 31" elm

C. Description of monument for corner and accessories established to perpetuate locating the position of the corner:

1" dia. iron pin

N 05 E 54.44' MDOT tag & spike in 31" oak GONE
N 40 E 71.08' MDOT tag & spike in 5" ash GONE
N 25 W 63.95' MDOT tag & spike in 9" twin ash GONE
S 75 W 65.21' MDOT tag & spike in 8" elm GONE
SOUTH 65.42' North EM of Rosso Hwy. ROAD MODIFIED
S 86-54-24 W 2676.50' 1" dia. pipe SW Cor. Sec. 31
(2676.58' recorded)
N 87-17 E 662.21' 1/2" rerod & cap (LLS #5779)
(662.08' recorded)



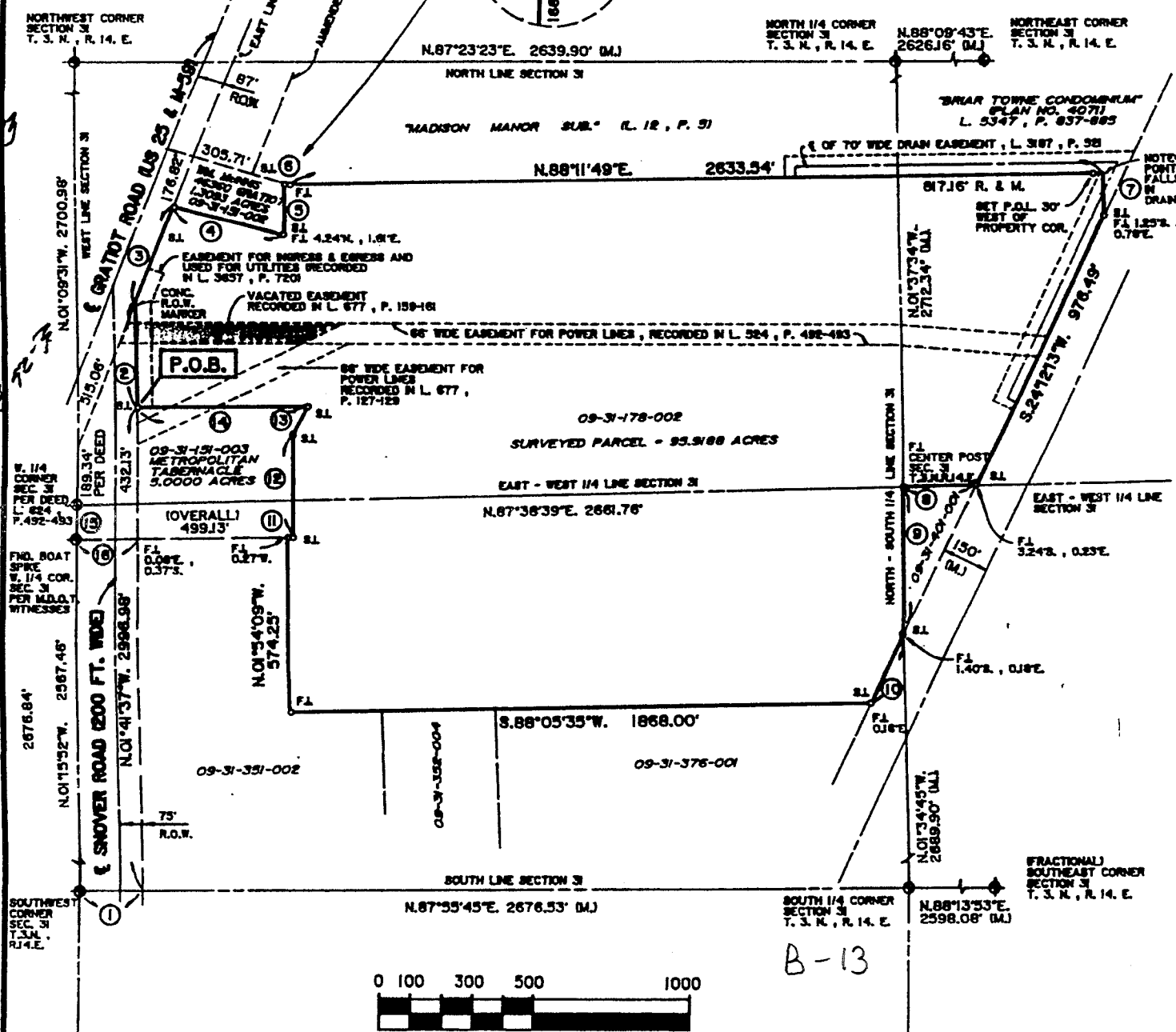
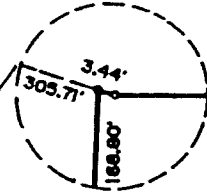
Signed by Donald A. Gorman Date June 7, 1989
Surveyor's Michigan License No. 17622

CERTIFICATE OF SURVEY

LEGEND

- S.I. SET IRON
- F.I. FOUND IRON
- F.I.P. FOUND IRON PIPE
- F.M. FOUND MONUMENT
- P.K. P.K. MARK
- R. RECORD
- M. MEASURED
- C. CALCULATED

SCALE: 1"=500'



B-13

- | | | |
|--|---------------------------|---------------------------------|
| 1. N.87°55'45"E. 219.0' (R.), 216.92' (M.) | 8. S.87°57'01"W. 235.50' | 15. 109.38' C. |
| 2. N.01°41'37"W. 343.62' | 9. S.01°34'45"E. 485.56' | 16. 200.00' R., 199.68' C. & M. |
| 3. N.20°46'49"E. 338.10' | 10. S.24°12'13"W. 250.76' | |
| 4. S.76°18'55"E. 367.00' | 11. N.88°37'15"E. 16.77' | |
| 5. N.00°05'44"E. 166.80' | 12. N.01°46'45"W. 339.94' | |
| 6. S.74°10'47"E. 3.44' | 13. N.26°14'11"E. 104.05' | |
| 7. S.01°35'14"E. 142.43' | 14. S.88°37'15"W. 547.36' | |

BEARING BASE DIRECTLY RELATED TO M.D.O.T. R.O.W.
BEARING FOR I-94 EXPRESSWAY
ERROR OF CLOSURE = 1/576,818

I HEREBY CERTIFY THAT WE SURVEYED THE ABOVE DESCRIBED PROPERTY AND FOUND OR SET THE EXTERIOR BOUNDARIES AS SHOWN, THAT THE DRAWING IS A CORRECT REPRESENTATION OF THE LAND SURVEY, THAT THERE ARE NO ENCROACHMENTS ACROSS THE PROPERTY LINES, EXCEPT AS SHOWN, AND THAT THE SURVEY COMPLES WITH THE ACCURACY REQUIREMENTS OF ACT 152, PUBLIC ACTS OF 1979.

RAYMOND J. DONNELLY R.L.S. NO. 21363

CLIENT:
MCS ASSOCIATES, INC.
4180 TECHNOLOGY PARK DR.
SUITE 102
STERLING HEIGHTS, MICH. 48310-1642

REV	DRAWN BY
DATE	FIELD BOOK
SHEET NO	PROJECT NO.

Raymond J. Donnelly & Associates, Inc.
Land Surveying • Mapping • Site Development Consultants
5915 Rochester Rd. • Suite 100
Troy, MI 48098-1259
TEL (313) 879-8510
FAX 879-9129

AEW-



LAND CORNER RECORDATION CERTIFICATE
Filing Requirement of Act 74, Mich. P.A. 1970

For corners in

<u>Macomb</u> <small>(County)</small>	Located In:	Corner Code #
1. Public Land Survey	T <u>03</u> R <u>14E</u>	<u>B - 13</u>
	T _____ R _____	_____
	T _____ R _____	_____
	T _____ R _____	_____
2. Property Controlling in Section	S _____ T _____ R _____	_____
	S _____ T _____ R _____	_____
3. Miscellaneous Property in Sec.	S _____ T _____ R _____	_____
	S _____ T _____ R _____	_____

1067999
 LIBER 9200 PAGE 552
 11/03/1999 01:40:21 P.M.
 MACOMB COUNTY, MI
 CARMELLA SABAUGH, REG/DEEDS

Register of Deeds Stamp & File Number

4. Lot No. _____, Recorded Plat _____
 5. Private Claims _____

	A	B	C	D	E	F	G	H	I	J	K	L	M
1													
2	6		5		4		3		2		1		
3													
4	7		8		9		10		11		12		
5													
6	18		17		16		15		14		13		
7													
8	19		20		21		22		23		24		
9													
10	30		29		28		27		26		25		
11													
12	31		32		33		34		35		36		
13													

I, Charles H. Hein P.S., in a field survey on October, 1999 do hereby state that under requirements of P.A. 74, Michigan P.A. of 1970, the corner points mentioned in lines 1 and 2 above were in conformance with regulations and rules therefore as required in the current manual of survey instructions of the United States Department of the Interior, Bureau of Land Management or by a decree of a Court of Law and for that the corner points mentioned in lines 3, 4 and 5 above were in conformance with the rules of the Michigan Board of Land Surveyors or by a Decree of a Court of Law; established, re-established, monumented, recovered, found as expressed below:

NOTE: Not more than 2 corners, all in the same town and range, may be recorded on this certificate.

A. Description of original monument and accessories and/or subsequent restoration:

1817		G.L.O. Notes	Set Post	No witnesses remain.
1964	Reynolds	M.D.O.T.	Witness Card	Fd. 1" Iron Rod.
1989	Gorman	M.D.O.T.	Witness Card	Fd. 1" Iron Pin.

B. Description of corner evidence found and/or method applied in restoring or reestablishing corner:

Found 1" Iron form pin.
 Witnesses: By Reynolds from M.D.O.T.
 N03°E 53.95' 26" Oak
 S34°E 33.71' 14" Elm
 S24°W 38.65' 12" Elm
 N73°W 88.70' 31" Elm

Corner was further witnessed and offset by Wilcox Associates Inc. to allow its replacement after road construction.

C. Description of monument for corner and accessories established to perpetuate locating the position of

B-13 Placed 1/2" Rerod, at the location of the corner prior to road construction.

WITNESSES:
 24.65' N39°E 24.85' Set Chiseled 'X' in South Light Pole base.
 27.85' N89°E 27.85' Set Chiseled 'X' on back of west curb in median turnaround.
 60.87' S30°W 60.85' Set Chiseled 'X' in center of curb scupper on north edge of EB M-59.
 39.33' N15°W 39.33' West end of 18" C.S.P.



Signed by Charles H. Hein Date 01 Oct 99
 Surveyor's Michigan License No. 43056

