

MACOMB COUNTY  
INDEX OF SUPPORTING DOCUMENTS FOR

**OC-067 277-NE/164-SE**

HARRISON TOWNSHIP  
T. 02 N., R. 14 E.

**SECTION 1**

<u>DATE</u>	<u>ITEM DESCRIPTION</u>
2017	INDEX
2017	PHOTOS OF CORNER

**SECTION 2**

<u>DATE</u>	<u>ITEM DESCRIPTION</u>
1 2017	LCRC
2 2017	SURVEYOR'S REPORT
3 2017	FIELD NOTES
4 2017	Overall Map of 2017 Corners

**SECTION 3**

<u>DATE</u>	<u>ITEM DESCRIPTION</u>
1 1875	Atlas Harrison Twp
2 1895	Atlas Harrison Twp
3 1916	Atlas Harrison Twp
4 2017	PLAT BOOK MAP
5 2017	COMPOSITE MAPS WITH AERIAL IMAGE & TAX MAP

**SECTION 4**

<u>DATE</u>	<u>RECORD ITEM AND SOURCE</u>	<u>SURVEYOR &amp; LICENSE</u>
1 1810	PC 277 GLO notes - Handwritten & Transcribed	Aaron Greeley
2 1810	PC 164 GLO notes - Handwritten & Transcribed	Aaron Greeley
3 1818	GLO Plats, County records	WM Preston
4 1926	Rosecroft Shores Sub L11, Pgs5-6	HR O'Mara (CE)
5 1933	Supervisors Plat No. 4 L16, P17	WJ Lehner #123
6 1950 est	Private Claims map	n/a
7 1980 est 2010 rev	MDOT ROW sheet153	n/a

2017 MACOMB COUNTY REMONUMENTATION

HARRISON TOWNSHIP

WITNESS CORNER TO OC-067 277-NE/164-SE





# 2017 MACOMB COUNTY REMONUMENTATION

NORTH



EAST



# 2017 MACOMB COUNTY REMONUMENTATION

SOUTH



WEST



OC-067

OC-067 277-NE/164-SE

Google Earth

700 ft





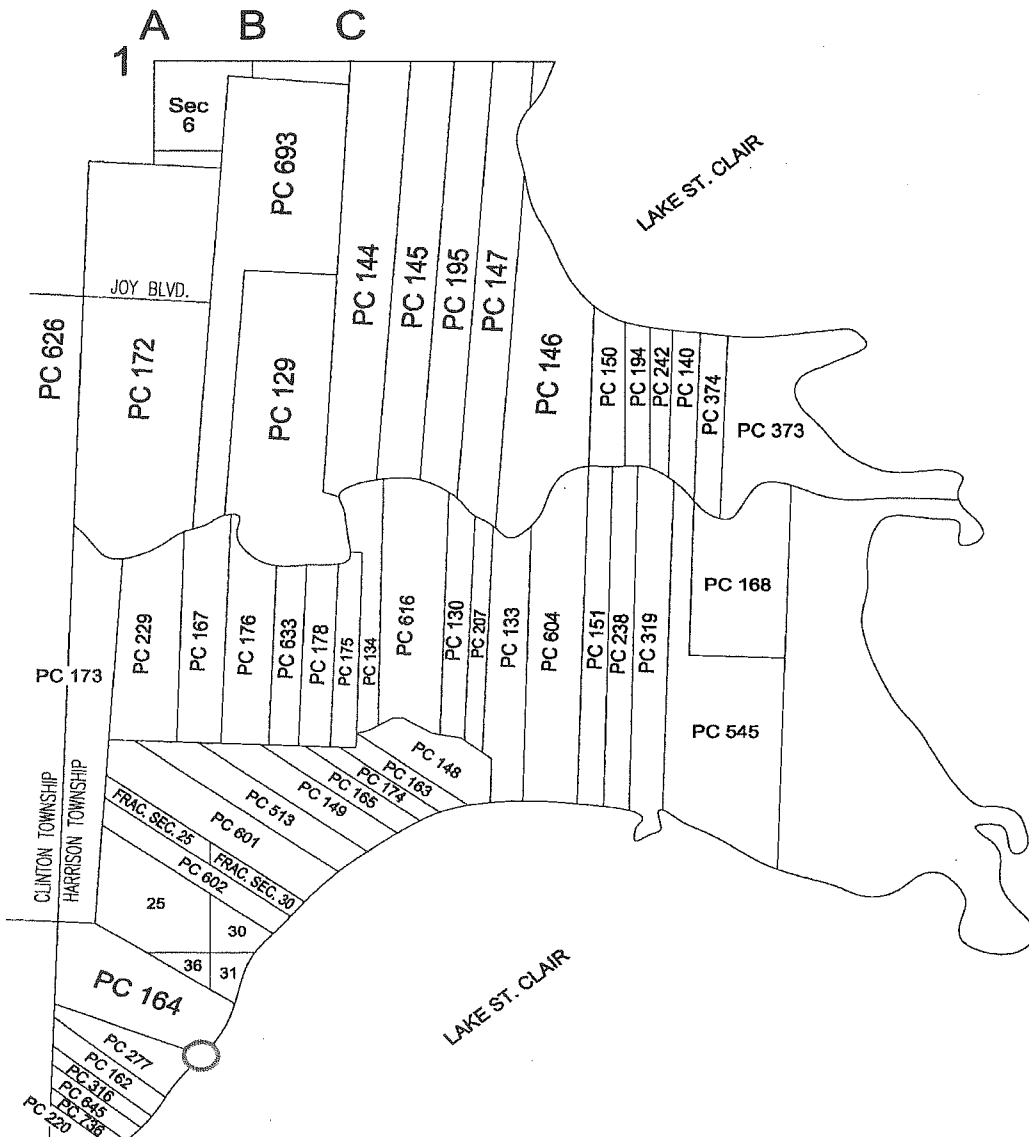
**Land Corner Recordation Certificate**  
**2017 Annual Grant Agreement**  
Authority: MICH. 1970 PA 74, MCL 54.205

Surveyor's Name: Christopher A. Asiala  
For Corner(s) in: Macomb County

Field Survey Date: 11-10-2017  
Municipality: Harrison Township

Corner Type	Section Private Claim	Survey Township	Corner Code	Other Code
Original Public Land Survey Corner	Sec. PC 277/164	T 02 N R 14 E	277-NE/164-SE	067

Other Code Corner Description: Northeast corner of Private Claim 277 common with the Southeast corner of Private Claim 164, located on the border of Lake St. Clair



*med  
3*

*U*



**Part A: Corner History:**

	<u>DATE</u>	<u>RECORD ITEM AND SOURCE</u>	<u>SURVEYOR &amp; LICENSE</u>	<u>CORNER DESCRIPTION</u>
1	1810	PC 277 GLO notes - Handwritten & Transcribed	Aaron Greeley	Post
2	1810	PC 164 GLO notes - Handwritten & Transcribed	Aaron Greeley	Post
3	1818	GLO Plats, County records	WM Preston	
4	1926	Rosecroft Shores Sub L11, Pgs5-6	HR O'Mara (CE)	Southwesterly Plat line is line between PC 277 & PC 164
5	1933	Supervisors Plat No. 4 L16, P17	WJ Lehner #123	Northeasterly Plat line is line between PC 277 & PC 164
6	1950 est	Private Claims map	n/a	
7	1956	Bidigares Casa Grande Sub L36, Pgs 42-43	JD Lehner #5787	South Plat line is the line between PC 277 & PC 164
8	1980 est 2010 rev	MDOT ROW sheet153	n/a	

**Part B: Surveyor's Report on Perpetuation, Restoration, Reestablishment or Monumentation of Corner:**

Nothing was found at the corners position at the shore of Lake St. Claire. There is no occupation on the private claim line near the lake shore. Several irons, pipes and monuments were recovered within Supervisor's Plat No. 4 and Bidigares Casa Grande Sub. The Southwest Corner of Private Claim 164 was remonumented in 2015 as PC-041. I held said corner along with a found iron at the Southeast corner of Bidigares Sub to establish the PC line. The line was then extended to the shore of Lake St Clair where I set a concrete monument approximately 21' from the top bank of the lake shore as a Witness Corner to OC-067 which falls into the lake.

The true corner position based upon the original notes is S 70° 37' 07" E, 999.24' further into the lake.

Please note that the PC line is very near the line between lots 25 and 26 of Supervisor's Plat No. 4, however the plat does not label the lot line as the PC line. The set monument is not intended to monument the lot line. The lot line's calculated position is 1.44' south of the reference monument and is 0.61' north of the PC line near the road.

**Part C: Field Evidence of Perpetuation or Monumentation of Corner:**

I set a concrete monument (4" x 36" with a 1/2" iron rebar) with a 2" aluminum cap stamped "MACOMB COUNTY MONUMENT MI ACT 345, CAA 49376, WC OC-067" approximately 21' from the top bank of the lake shore.

**Accessories for Witness Corner:**

- N15°E 53.10' Set MAG nail W/MCR tag in east face of 21" Willow.
- Due E 21.00' Waters edge of Lake St. Clair
- S50°W 20.88 Set MAG nail W/MCR tag in northwesterly face of 9" Cottonwood.
- N35°W 31.13' Set MAG nail W/MCR tag in south face of 21" Cottonwood.

<u>Date of Observation</u>	<u>Latitude</u>	<u>Longitude</u>	<u>Datum and Adjustment Year</u>	<u>Epoch Date</u>
11-10-2017 Witness Corner	N42°32'57.26846"	W82°51'00.83621"	NAD83(2011)	2010.0000
True Corner	N42°32'53.82565"	W82°50'48.32562"	(Calculated Position)	

Method for Latitude-Longitude determination: NGS OPUS Solution

State Plane Coordinates in international feet:

<u>Witness Corner</u>	<u>Calculated Corner Position (in lake)</u>
N: 386051.56	N: 385719.98
E: 13531940.13	E: 13532882.65

Standard Deviation: N-0.02 / E-0.01  
 South Zone  
 Combined Factor: 0.99990184  
 NGSPID: NE0173  
 Survey Method: MC GPS  
 Orthometric Height: 576.74  
 Elev. Datum: NAVD88

I, **Christopher A. Asiala P.S.**, in a field survey on **November 10, 2017**, certify under the requirements of the State Survey and Remonumentation Act, 1990 PA 345, MCL 54.261 to 54.279, and the Corner Recordation Act, 1970 PA 74, MCL 54.201 to 54.210d, that the corner identified and described hereon has been perpetuated or monumented as described in Parts A, B, and C above, pursuant to the laws and rules of the State of Michigan.

*Christopher A. Asiala*

Christopher A. Asiala, P.S.

11-22-17

Date

Professional Surveyor's License No.: 49376

Prepared By:  
 Giffels Webster  
 28 W. Adams, Suite 1200  
 Detroit, MI 48226





I, **Martin C. Dunn**, state that the corner(s) identified and described hereon and perpetuated or monumented as described in Parts A, B, and C above was presented to and reviewed by the Peer Review Group on **October 31, 2017** and is accepted for filing in the Macomb County Remonumentation Program.

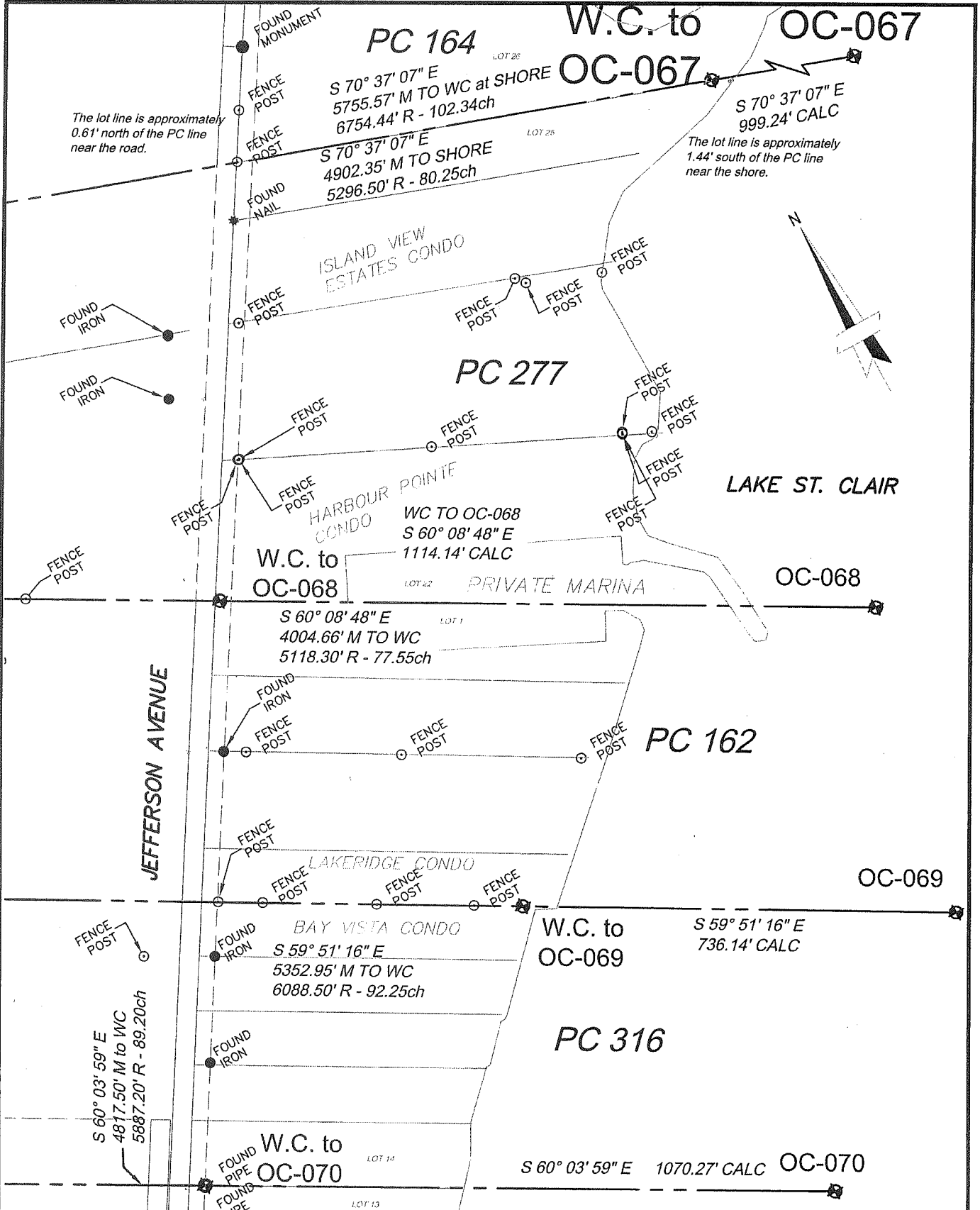
*Martin C. Dunn*

12-26-2017

Martin C. Dunn, P.S.  
Macomb County Surveyor Representative  
License No. 30081

Date

SKETCH OF CORNER LOCATION



CLINTON TOWNSHIP

2017 MACOMB COUNTY REMON

OC-067

28 West Adams Road  
Suite 1200  
Detroit, MI 48226  
p (313) 962-4442  
f (313) 962-5068  
www.giffelswebster.com

Executive: JNR  
Manager: CAA  
Designer: CAA  
Quality Control: Reviewer  
Section: Section 32  
T-02-N R-13-E

Developed For:  
Macomb County Register of Deeds

DATE:	ISSUE:

Date: 12-19-2017  
Scale: NTS  
Sheet:  
Project: 13784.72  
Copyright © 2017 Giffels Webster.  
No reproduction shall be made without the prior written consent of Giffels Webster.

## OC-067 277-NE/164-SE

**Northeast corner of Private Claim 277 common with the Southeast corner of Private Claim 164, located on the border of Lake St. Clair**

Harrison Township T-02-N, R-14-E  
2017 Macomb Remonumentation Report.

The Private Claims were surveyed in 1810 by Aaron Greeley a post was set at the corner in 1810.

### **Records:**

	<u>DATE</u>	<u>RECORD ITEM AND SOURCE</u>	<u>SURVEYOR &amp; LICENSE</u>	<u>CORNER DESCRIPTION</u>
1	1810	PC 277 GLO notes - Handwritten & Transcribed	Aaron Greeley	Post
2	1810	PC 164 GLO notes - Handwritten & Transcribed	Aaron Greeley	Post
3	1818	GLO Plats, County records	WM Preston	
4	1926	Rosecroft Shores Sub L11, Pgs5-6	HR O'Mara (CE)	Southwesterly Plat line is line between PC 277 & PC 164
5	1933	Supervisors Plat No. 4 L16, P17	WJ Lehner #123	Northeasterly Plat line is line between PC 277 & PC 164
6	1950 est	Private Claims map	n/a	
7	1956	Bidigares Casa Grande Sub L36, Pgs 42-43	JD Lehner #5787	South Plat line is the line between PC 277 & PC 164
8	1980 est 2010 rev	MDOT ROW sheet153	n/a	

### **Summary:**

Nothing was found at the corners position at the shore of Lake St. Clair. There is no occupation on the private claim line near the lake shore. Several irons, pipes and monuments were recovered within Supervisor's Plat No. 4 and Bidigares Casa Grande Sub. The Southwest Corner of Private Claim 164 was remonumented in 2015 as PC-041. I held said corner along with a found iron at the Southeast corner of Bidigares Sub to establish the PC line. The line was then extended to the shore of Lake St Clair where I set a concrete monument approximately 21' from the top bank of the lake shore as a Witness Corner to OC-067 which falls into the lake.

The true corner position based upon the original notes is S 70° 37' 07" E, 999.24' further into the lake.

Please note that the PC line is very near the line between lots 25 and 26 of Supervisor's Plat No. 4, however the plat does not label the lot line as the PC line. The set monument is not intended to monument the lot line. The lot line's calculated position is 1.44' south of the reference monument and is 0.61' north of the PC line near the road.

### **Measurements to adjacent corners:**

Witness corner for 067 to 058 T-02-N, R-13-E  
4902.35' M from Witness Corner  
5296.50' R PC notes (80.25 ch)

From Witness Corner to calculated corner in lake  
999.24' Calc



# REMONUMENTATION FIELD REPORT

DATE: 11-10-17 CREW: MG JB

WEATHER: Partly Cloudy, 30°F

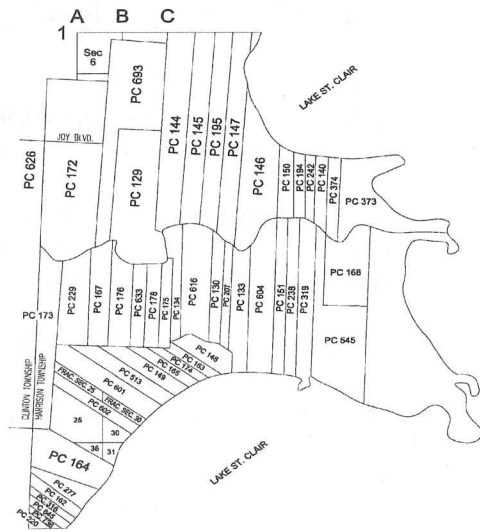
TOWNSHIP: Harrison Twp

TOWN \_\_\_\_\_

RANGE \_\_\_\_\_

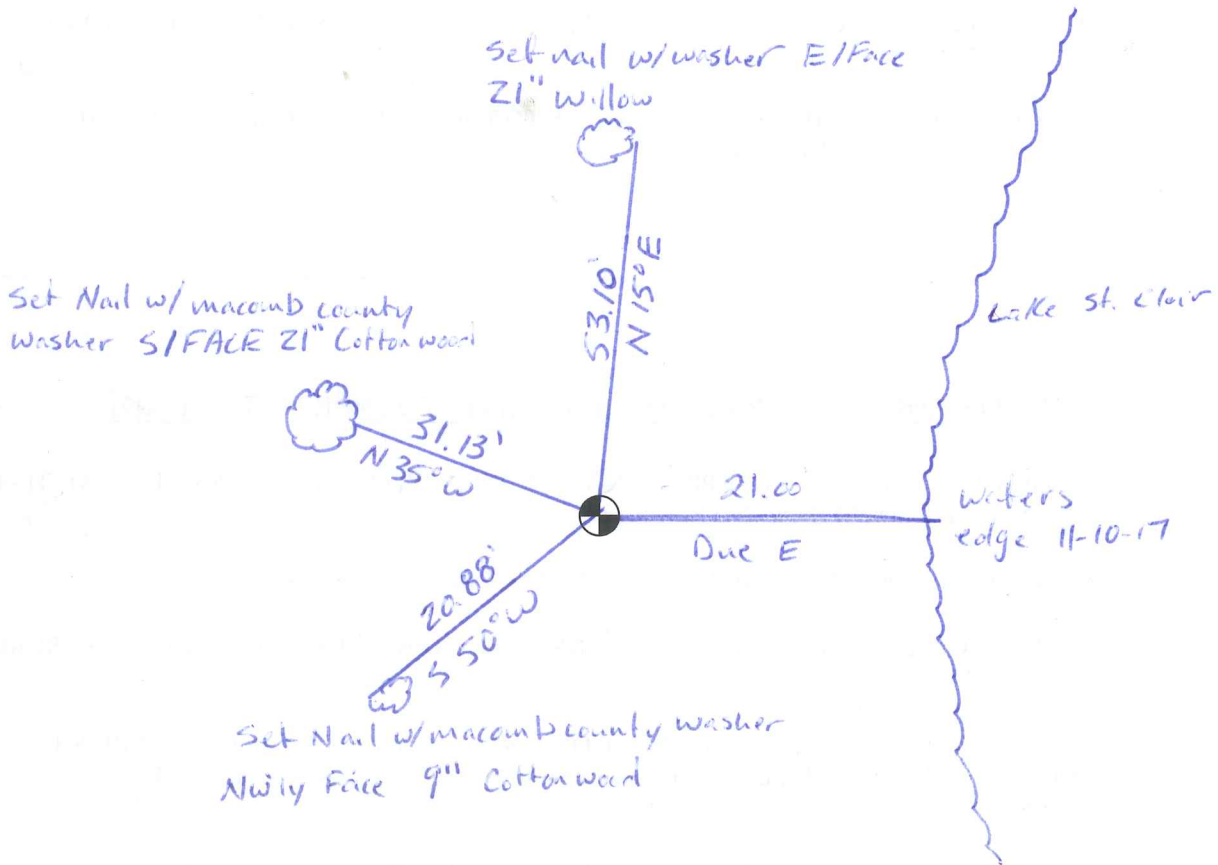
CORNER CODE: OC-067

DEPTH: Flush



LOCATION OF CORNER Between House #8 35000 Jefferson & Vacant Lot  
21' West  
21' from water's edge of Lake St. Clair

WHAT WAS FOUND? Nothing, set 3' cone monument, 4" dia at ground level  
with inset Macomb County Remon Aluminum cap w/ survey #49376 stamped, along  
w/ corner # "OC-067"

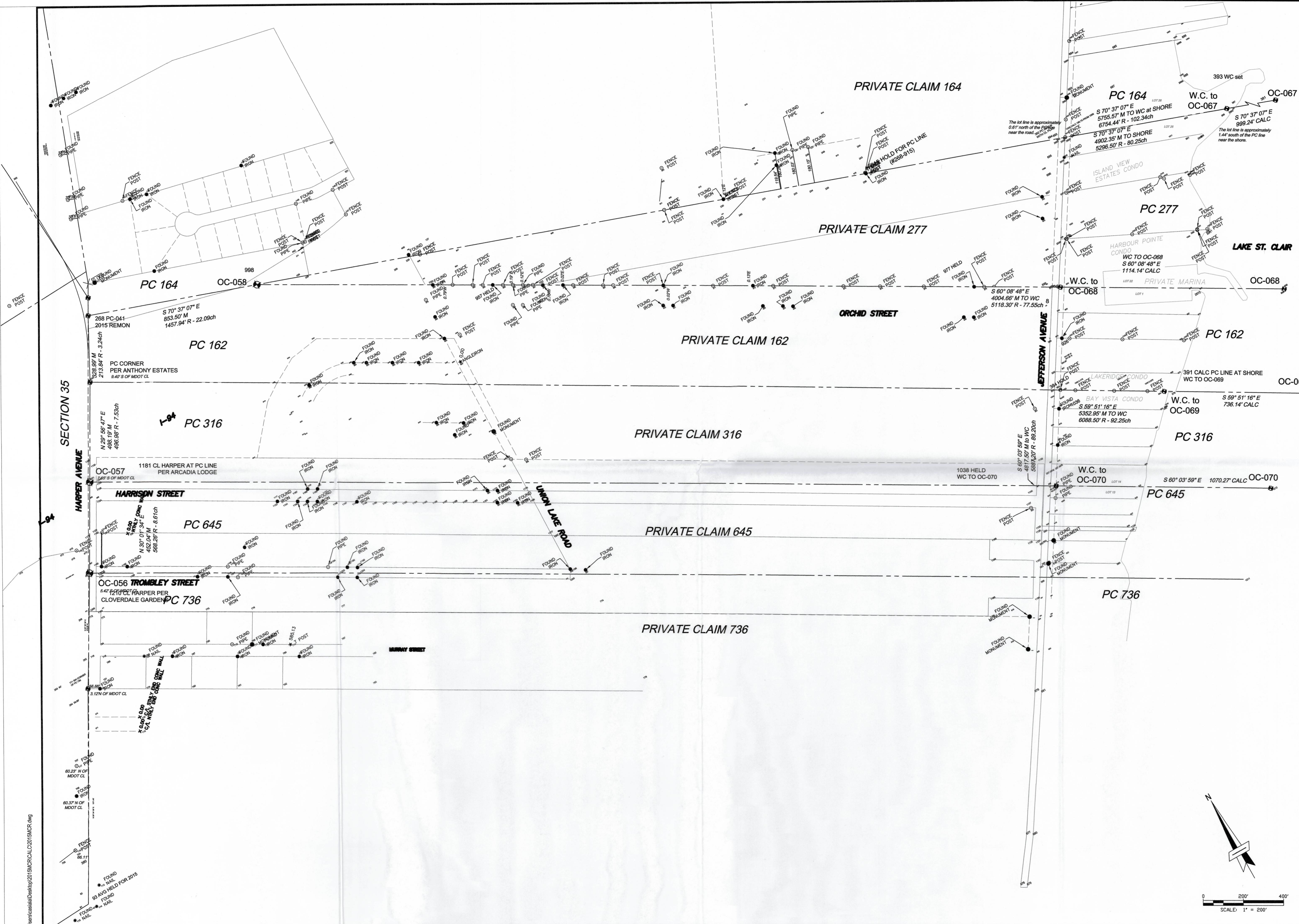


1.266 m  
 ✓ 4.16 ft  
 1.268  
 3.29  
 501









Engineers  
 Surveyors  
 Planners  
 Landscape Architects

28 West Adams Road  
 Suite 1200  
 Detroit, MI 48226  
 p (313) 962-4442  
 f (313) 962-5068  
 www.giffelswebster.com

Executive: JNR  
 Manager: CAA  
 Designer: CAA  
 Quality Control:  
 Section: PRIVATE CLAIMS  
 T-02-N R-13&14-E

Professional Seal:



Know what's below.  
 Call before you dig.

DATE:	ISSUE:
Date	Issue

Developed For:  
 MACOMB COUNTY  
 REGISTER OF DEEDS

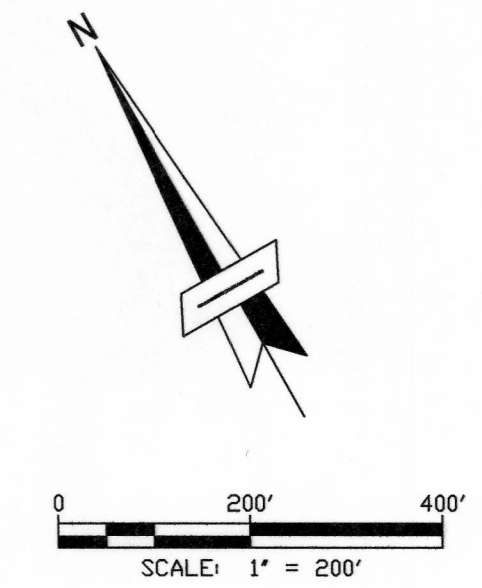
OVERALL 2017

MACOMB COUNTY REMON

CLINTON AND HARRISON  
 TOWNSHIPS  
 MACOMB COUNTY

Date: 12.20.17  
 Scale: 1"=200'  
 Sheet: 1  
 Project: 13784.77

Copyright © 2017 Giffels Webster  
 No reproduction shall be made without the  
 prior written consent of Giffels Webster.



C:\Users\casalid\Desktop\2017\MCRCALC\2017\MCRCR.dwg







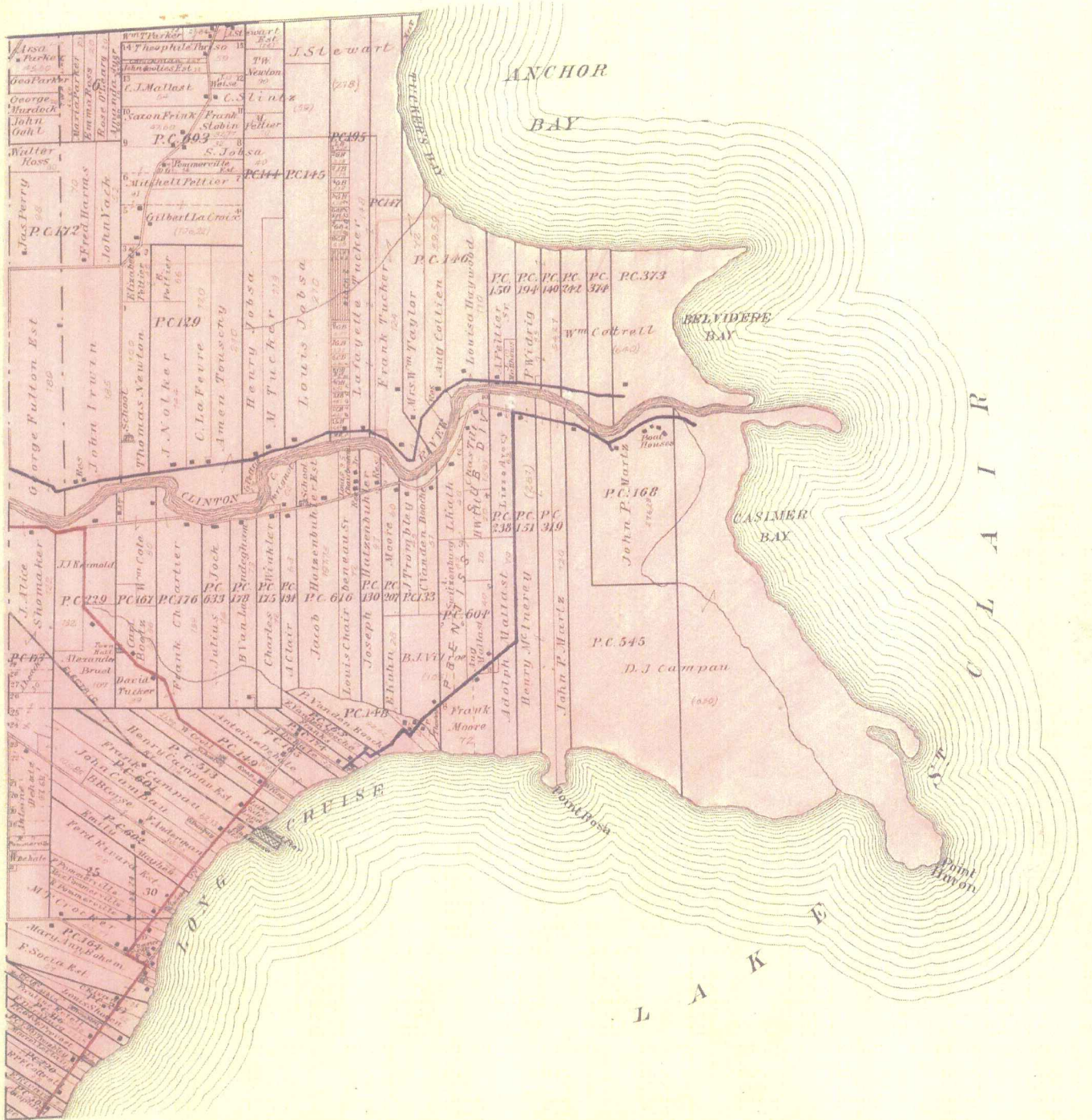
1895

# MAP OF HARRISON

Township 2 North Range 14 East

Scale 2 Inches to one Mile.

of the Meridian of Michigan.



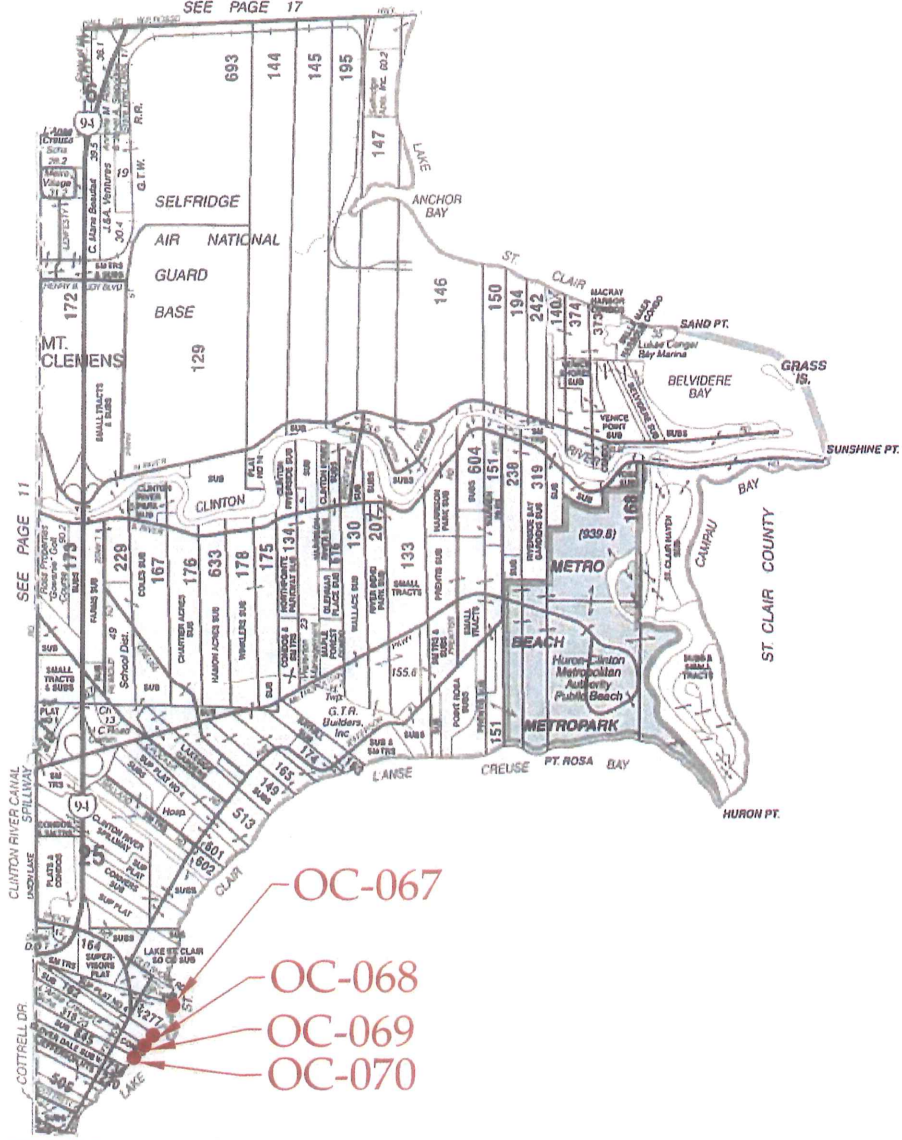






# HARRISON

T.2N.-R.14E.



**Other Codes:**

- OC-067 277-NE/164-SE: Northeast corner of Private Claim 736 common with the Southwest corner of Private Claim 164, located on the border of Lake St. Clair (GLO notes),
- OC-068 162-NE/277-SE: Northeast corner of Private Claim 162 common with the Southeast corner of Private Claim 277, located on the border of Lake St. Clair (GLO notes),
- OC-069 316-NE/162-SE: Northeast corner of Private Claim 316 common with the Southeast corner of Private Claim 162, located on the border of Lake St. Clair (GLO notes),
- OC-070 645-NE/316-SE: Northeast corner of Private Claim 645 common with the Southeast corner of Private Claim 316, located on the border of Lake St. Clair (GLO notes).

N:\13137001\3784.77 - Macomb 2017 ARCHIVE 2017-08-25 SEE DESKTOP\Drawings\Macomb County Locations 2017.dwg

**giffels webster**  
 Engineers Surveyors Planners  
 Landscape Architects  
 Environmental Specialists

6303 26 Mile Road  
 Suite 100  
 Washington, MI 48094  
 p (586) 781-8950  
 f (586) 781-8951  
 www.giffelswebster.com

Executive:	J.N.R.
Manager:	C.A.A.
Designer:	J.Z.B.
Quality Control:	C.A.A.
OC-067 244-NE/164-SE	
OC-068 162-NE/277-SE	
OC-069 316-NE/162-SE	
OC-070 645-NE/316-SE	
T-02-N R-14-E	

**MACOMB COUNTY  
 REMONUMENTATION  
 PROGRAM 2017**

Date:	09/11/17
Scale:	N.T.S.
Sheet:	2 OF 2
Project:	13784.77

Copyright © 2013 Giffels Webster.  
 No reproduction shall be made  
 without the prior written consent  
 of Giffels Webster.

Reproduced with permission of Rockford Map Publishers, Inc.  
 Rockford, Illinois





Date of Photography: Spring 2012  
 100 50 0 100 200 Feet  
 1:1,200

CLINTON TWP SHEET INDEX

DESCRIPTION OF PERMANENT REAL ESTATE INDEX NUMBER

**13-19-302-018**  
 AREA NUMBER SUB AREA NUMBER BLOCK NUMBER PARCEL NUMBER

**11-36D**

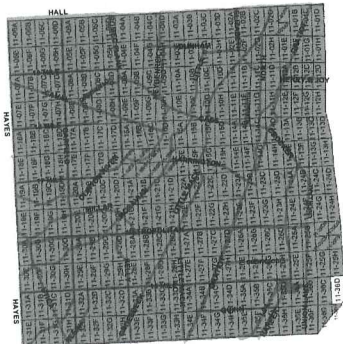
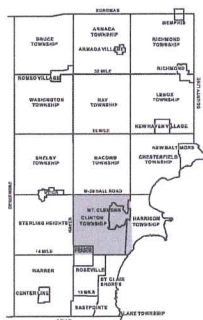
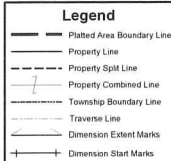
HARRISON TWP.

E. 1/2 N.E. 1/4 SEC. 36 T. 2N. R. 13E.

Source: Macomb County Department of Planning and Economic Development  
 - 2008 Digital Orthophotography Project  
 - Parcel Conversion Project

Note:  
 Digital Orthophotography horizontal positioning accuracy is 3 feet. Parcel boundary lines should be considered a graphical representation and not in any way a legal survey or engineering document. In general, the horizontal positioning and length accuracy is within 15 feet.

This map is intended for general planning purposes. Site specific evaluation should be verified by field inspection. This is a work in progress and may contain errors and omissions. Please report any potential revisions to: (586)469-5285.



**GIS** MACOMB COUNTY  
 Planning and Economic  
 Development Department

Published: May 16 2014

COPYRIGHT 2009  
 MACOMB COUNTY, MI  
 All Rights Reserved







No. 453

No. 164 Confirmed to  
Joseph Mitresse' dit  
Sansfacon

LAKE ST. CLAIR

Description No. 164 Confirmed to Joseph Mitresse' dit  
Sansfacon commencing at a <sup>OC-067</sup>post standing on the border of Lake  
St. Clair between this tract and a tract confirmed to Charles  
Chovin thence north seventy two degrees west one hundred and two  
chains thirty four links to a post thence north eighteen degrees  
east twenty three chains ninety two links to a post the south  
west corner of a tract confirmed to James Abbott on the south  
side of River Huron, thence along on the rear of said tract  
east thirty three chains eighteen links to a post the south  
east corner of said Abbotts tract, thence south sixty three  
degrees thirty minutes east fifty six chains to a post standing  
on the border of Lake St. Clair between this tract and a tract  
of unconceded land thence along the border of said lake south  
twelve degrees forty five minutes east thirty one chains twelve  
links to the place of beginning, containing two hundred and  
seventy seven acres & eighty seven hundredths of an acre \_\_\_\_.

Detroit July 18th, 1810

Aaron Greeley Surveyor  
of private claims



N. 453.

Lake St. Clair

Description N. 164 Confirmed to Joseph Mettraise dit Sansfacon commencing at a post <sup>OC-067</sup> standing on the border of Lake St. Clair between this tract and a tract confirmed to Charles Choivin, thence north seventy two degrees west one hundred and two chains thirty four links, to a post thence north eighteen degrees East twenty three chains ninety two links, to a post the south west corner of a tract confirmed to James Abbott, on the south side of River Huron, thence along on the Rear of said tract East thirty three chains Eighteen links, to a post the southeast corner of said Abbott's tract thence south sixty three degrees thirty minutes East fifty six chains, to a post standing on the border of Lake St. Clair between this tract and a tract of un-conceded land, thence along the border of said Lake south twelve degrees forty five minutes East

thirty one chains twelve links, to the place of beginning containing two hundred and seventy seven acres, & eighty seven hundredths of an acre.  
Detroit July 18. 1810

Aaron Greeley Surveyor  
of private Claims.



No. 452

No. 277 Confirmed to  
Charles Chovin

LAKE ST. CLAIR

Description No. 277, Confirmed to Charles Chovin commencing  
at a post <sup>OC-068</sup> standing on the border of Lake St. Clair between this  
tract and a tract confirmed to Jean Marsac thence north sixty one  
degrees thirty minutes west seventy seven chains fifty five links  
to a maple tree <sup>OC-058</sup> standing on the south line of a tract confirmed  
to Joseph Sansfacon thence south seventy two degrees east eighty  
chains twenty five links to a post <sup>OC-067</sup> standing on the border of  
Lake St. Clair thence along the border of said Lake south thirty  
four degrees west fourteen chains seventy links to the place of  
beginning, containing fifty six acres sixty five hundredths of an  
acre.

Detroit July 18, 1810

Aaron Greeley Surveyor  
of private claims



N<sup>o</sup>. 452.

Lake St. Clair

Description N<sup>o</sup>. 277 Confirmed to

OC-068

Charles Obovin commencing at a post standing on the border of Lake St. Clair between this tract and a tract Confirmed to Jean Marsac thence north sixty one degree thirty minutes west seventy seven chains fifty five links to a scrapple

OC-058

tree standing on the south line of a tract Confirmed to Joseph Sanderson, thence south seventy two

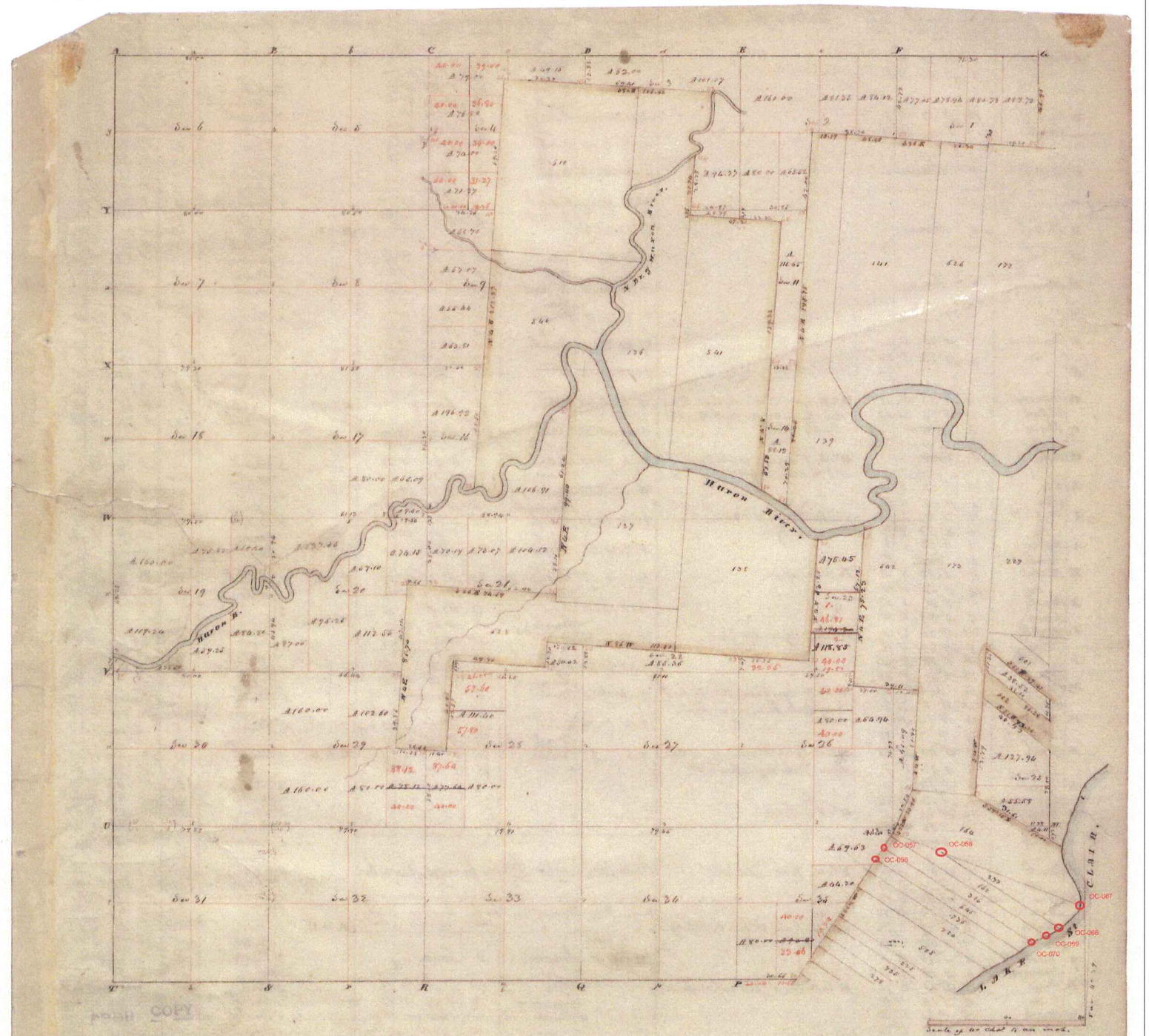
OC-067.

degrees East, eighty chains twenty five links is a post standing on the border of Lake St. Clair thence along the border of said Lake south thirty four degrees west fourteen chains seventy links to the place of beginning containing fifty six acres, sixty five hundredths of an acre

Detroit - July 18. 1810

Asen Greeley Surveyor  
of private Claims.





Township N: II North, Range N: XIII East of Mer. (Mich. Ter.)

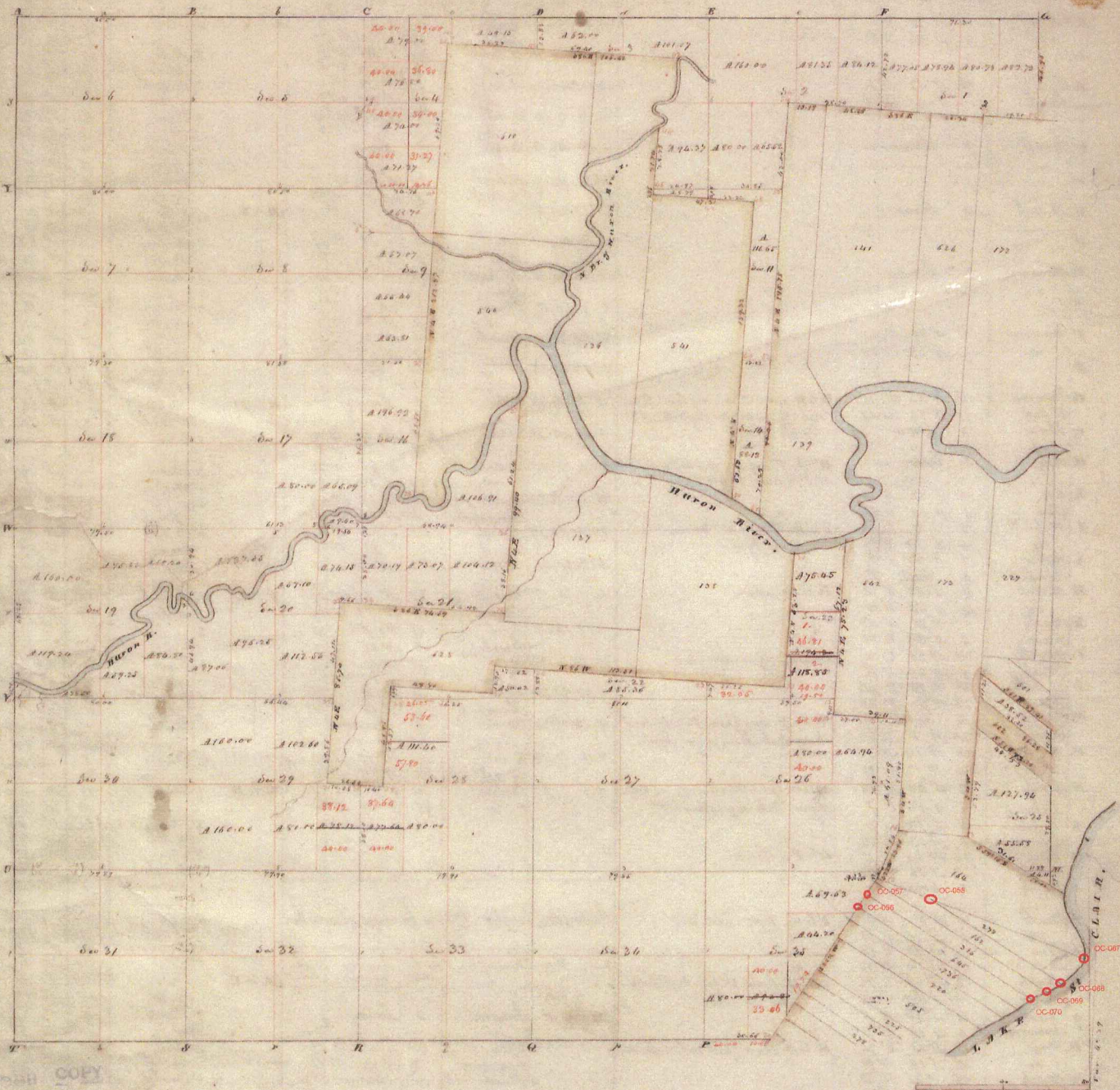
Surveyed by W. Preston.

1847

Description of the soil on the interior sectional lines

Section	Quality of Soil	Section	Quality of Soil
6-8	Wet day 2 <sup>nd</sup> rate, N. Oak, B. Oak, Sugar, Spruce & Elm	29-30	Level 1 <sup>st</sup> day 2 <sup>nd</sup> rate - W. Oak, B. Oak, Sugar
6-7	Level 1 <sup>st</sup> rate, B. Oak, Birch, Elm, Sugar	19-20	Same
7-8	Same (hard day)	19-20	1 <sup>st</sup> of the Rain same
7-18	Same	22-23	1 <sup>st</sup> 2 <sup>nd</sup> same - but 2 <sup>nd</sup> with 2 <sup>nd</sup> rate W. Oak, B. Oak, Elm
17-18	Wet day 2 <sup>nd</sup> rate, N. Oak, Birch, Sugar, Spruce, Elm, Ash, Maple	29-30	Level, hard day W. Oak, Birch, B. Oak, Sugar & Spruce
18-19	Same	23-24	2 <sup>nd</sup> rate W. Oak, Birch
19-20	Excellent 2 <sup>nd</sup> rate, level day, W. Oak, Birch, B. Oak, Sugar & Elm	20-21	Same
2-3	Dry 2 <sup>nd</sup> rate - Birch, Sugar, Spruce	16-17	Same
3-8	Same	20-21	Same
8-9	Same - (6x wet)	22-23	Same with Birch, Sugar, Spruce - good land
8-19	Level 1 <sup>st</sup> rate, B. Oak, Elm, Sugar	23-24	Same
16-17	2 <sup>nd</sup> rate 2 <sup>nd</sup> rate - 1 <sup>st</sup> day very good, W. Oak, Birch, Sugar	27-28	Same
17-20	Level good 2 <sup>nd</sup> rate, W. Oak, Birch, Sugar, Spruce, Elm	27-28	Same
3-6	Dry 2 <sup>nd</sup> rate - Birch, W. Oak, Ash, Sugar	30-31	Same
6-7	Same	32-33	Same
2-3	Same	34-35	Same
3-10	Level & Swampy 2 <sup>nd</sup> rate, Tamarac, B. Oak, Elm	36-37	Same
10-11	Same	37-38	Same
1-4	Level dry 2 <sup>nd</sup> rate - W. Oak, Birch, Sugar	38-39	Same
		40-41	Same





Township N: II North, Range N: XIII East of Mer. (Mich. Ter.) Surveyed by W. Preston, 1857

Description of the soil on the interior sectional lines

Section	Quality of Soil	Section	Quality of Soil
6-8	Wet clay sandy, sand, 1/2 oak, 1/2 Ash, Sugar, & Spruce	29-30	Level & dry 2 <sup>nd</sup> rate - 1/2 Oak, 1/2 Birch, Sugar
6-7	Level & wet 2 <sup>nd</sup> rate, 1/2 Oak, 1/2 Birch, Elm, Sugar	19-20	Same
7-8	Same (first clay)	19-20	1/2 of the same same
7-18	Same	21-22	1/2 <sup>nd</sup> rate same - 1/2 oak, 1/2 Birch, Sugar, Elm, Spruce
12-18	Wet clay 2 <sup>nd</sup> rate, 1/2 Oak, 1/2 Birch, Sugar, Spruce, Elm, Ash, Spruce	29-30	Level, first clay 1/2 Oak, 1/2 Birch, 1/2 Ash, Sugar & Spruce
18-19	Same	29-29	2 <sup>nd</sup> rate, 1/2 Oak, 1/2 Birch
19-20	Excellent 2 <sup>nd</sup> rate, level & dry, 1/2 Oak, 1/2 Birch, 1/2 Sugar, 1/2 Ash	20-21	Same
4-5	Dry 2 <sup>nd</sup> rate - Birch, Sugar, Spruce	16-17	Same
5-8	Same	20-29	Same
8-9	Same - (1/2 oak)	22-23	Same with Birch, Sugar, Spruce, good land
8-19	Level & wet 2 <sup>nd</sup> rate, 1/2 Oak, 1/2 Birch, Sugar	28-29	Same
14-17	1/2 oak 2 <sup>nd</sup> rate - 1/2 clay, very good, 1/2 Oak, 1/2 Birch, Sugar	27-28	Same
17-20	Level good 2 <sup>nd</sup> rate, 1/2 Oak, 1/2 Birch, Sugar, Spruce, Elm	28-28	Same
3-6	Dry 2 <sup>nd</sup> rate - Oak, 1/2 Oak, 1/2 Birch, Sugar	29-29	Same
4-9	Same	27-28	Same
2-5	Same	28-27	Same
2-10	Level & swampy 2 <sup>nd</sup> rate, 1/2 Oak, 1/2 Birch, Elm	22-29	Same
10-11	Same	21-22	Same
2-11	Level dry 2 <sup>nd</sup> rate - 1/2 Oak, 1/2 Birch, Sugar	22-26	Same
		26-26	Same



Township N.° II North, Range N.° XIII East of Mer. (Mich. Ter.)



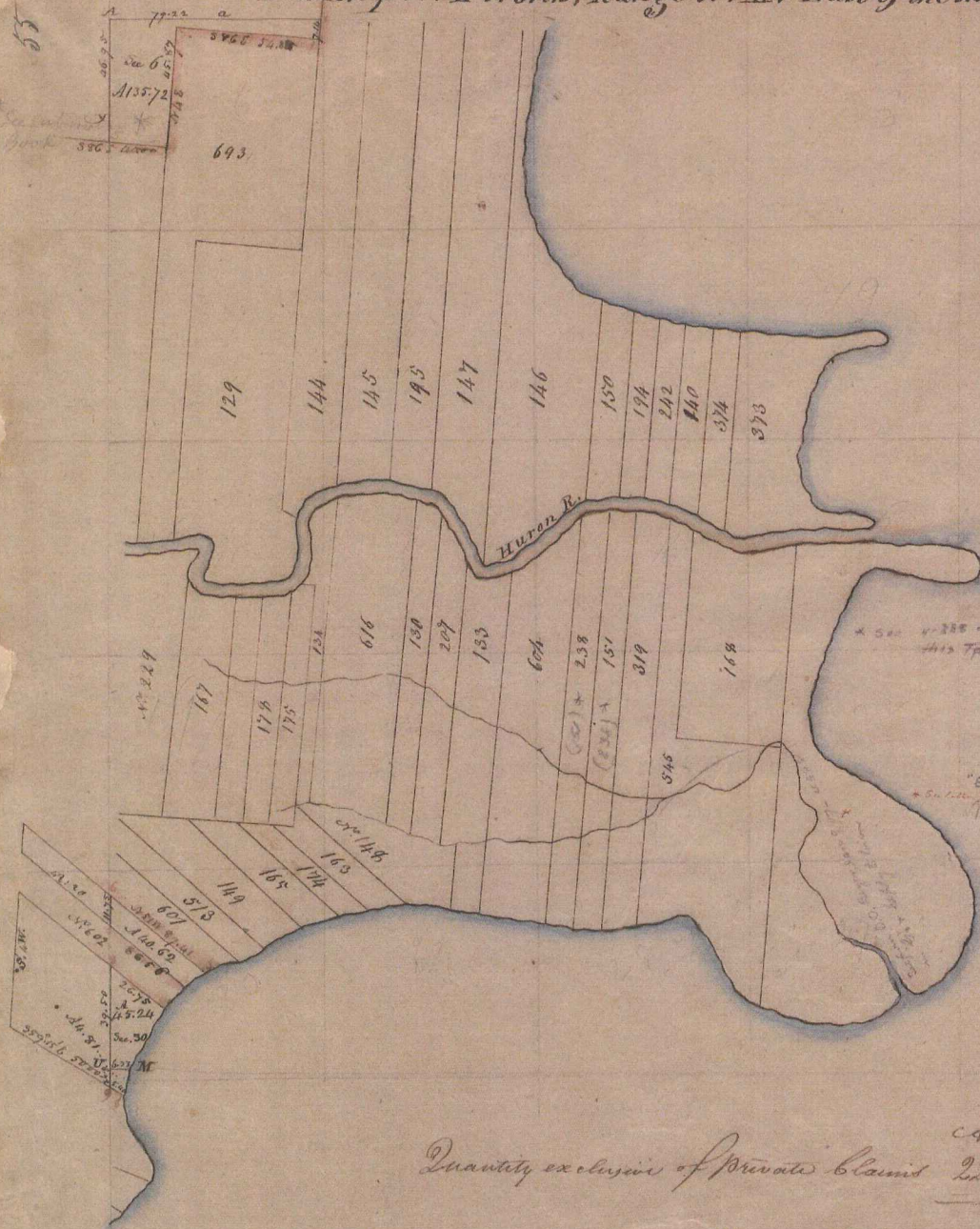
A true copy from the Original on file in this Office April Dec  
 Quantity exclusive of Private Claims — 14, 202, 99  
 Surveyor General's Office }  
 July 20<sup>th</sup> 1898 }

Edward Tiffin  
 Surveyor General

FOUR



Township N. II North, Range N. XIV East of the Mer. (Mich. Ter.)



L. S. C. L. A. I. R.

Quantity exclusive of Private Claims <sup>Army Sec</sup> 226-39

A true Copy from the Original on file in this Office

Surveyor General's Office  
July 20 1818

Edward Tiffin  
Surveyor General

POOR COPY



AND WHEREBY THESE PRESENTS, That we Joseph Couchez, Attorney in-Fact for Bruno Couchez and Catherine Couchez, his wife, and Rose Rattell and Odellia Rattell, his wife, and Catherine Prevost widow of the late Clemons Savinns - Bank a Michigan corporation by Henry C. Chapoton, President, and Edward A. Heine, Cashier, as mortgagors have caused the land embraced in the annexed plat to be surveyed, laid out and platted, to be known as "ROSECROFT SHORES SUBDIVISION" of the SE 1/4 of the SE 1/4 of Sec. 26 and a part of the NE 1/4 of fractional Sec. 25, 22, 12, 11, 10, 9, 8, 7, 6, 5, 4, 3, 2, 1, of Township 35 N. and Range 104 W. Harrison Township and Clinton Township, Macomb County, Michigan, and that the streets and alleys as shown on said plat are hereby dedicated to the use of the public.

Catherine Couchez (L.S.)  
 Bruno Couchez (L.S.)  
 Attorney in-Fact  
 Rose Rattell (L.S.)  
 Odellia Rattell (L.S.)  
 Catherine Prevost (L.S.)  
 Henry C. Chapoton (Pres.)  
 Edward A. Heine (Cashier)

SIGNED AND SEALED IN  
 PRESENCE OF  
 H. R. D. Mara  
 Raymond A. Wain

STATE OF MICHIGAN }  
 COUNTY OF MACOMB }

On this 15th day of May 1926 before me, a Notary Public in and for said county, personally came the above named Joseph Couchez, Attorney-in-Fact for Bruno Couchez and Catherine Couchez, his wife, and Rose Rattell and Odellia Rattell, his wife, and Catherine Prevost, widow, known to me to be the persons who executed the above dedication, and acknowledged the same to be their free act and deed.

H. R. D. Mara  
 Notary Public Macomb Co. Mich.  
 My Commission expires Oct 14 1929

STATE OF MICHIGAN }  
 COUNTY OF MACOMB }

On this 15th day of May 1926, before me, a Notary Public in and for said county appeared Henry C. Chapoton and Edward A. Heine to me personally known, who being by me duly sworn did say that they are the President and Cashier respectively of the late Clemons Savinns - Bank a Michigan corporation, and that the seal affixed to said instrument is the corporate seal of said corporation and that said instrument was signed and sealed in behalf of said corporation by authority of its Board of Directors and the said Henry C. Chapoton and Edward A. Heine so acknowledged said instrument to be the free act and deed of said corporation.

H. R. D. Mara  
 Notary Public Macomb Co. Mich.  
 My Commission expires Oct 14 1929

CERTIFICATE OF CLINTON TOWNSHIP BOARD

This plat was approved by the Twp. Board of the Twp. of Clinton at a meeting held April 29 1926  
 Wm. H. ... Clerk

CERTIFICATE OF HARRISON TOWNSHIP BOARD

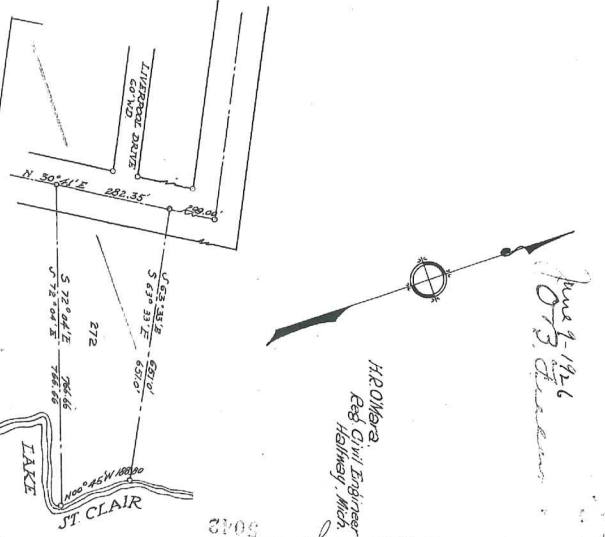
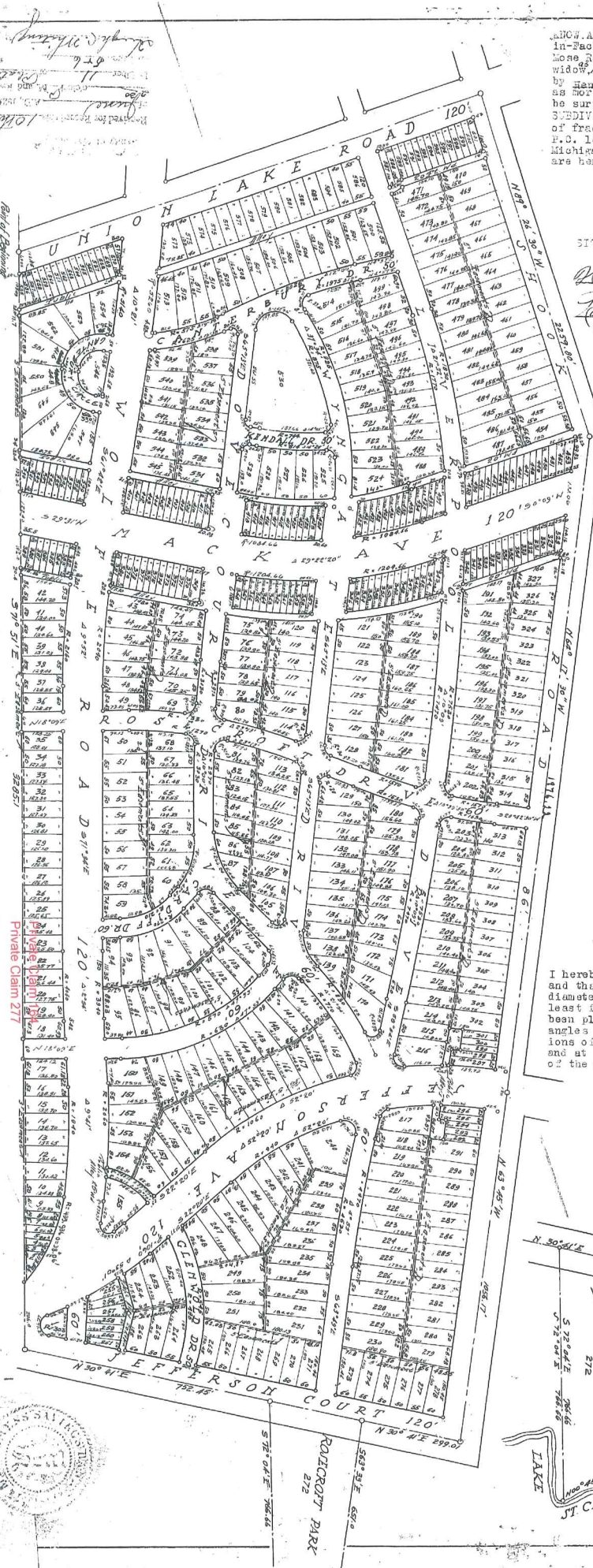
This plat was approved by the Twp. Board of the Twp. of Harrison at a meeting held March 15 1926  
 Carl ... Clerk

ENGINEER'S CERTIFICATE

I hereby certify that the plat hereon delineated is a correct one and that permanent metal monuments of not less than one inch in diameter and fifteen inches in length set in a concrete base at least four inches in diameter and forty-eight inches in depth have been placed at points marked thus (o) as thereon shown at all angles in the boundaries of the land platted, at all the intersections of streets, intersections of alleys, or of streets and alleys, and at the intersections of streets and alleys with the boundaries of the plat as shown on said plat.

H. P. ...  
 Registered Civil Engineer

See Order to a water ...  
 ROSECROFT SHORES SUBDIVISION  
 HARRISON TOWNSHIP AND CLINTON TOWNSHIP, MACOMB COUNTY, MICHIGAN.  
 SCALE: 80 FT. = 1 INCH  
 SHEET No. 1  
 OF 2 SHEETS.



Private Claim 277  
 P. 5  
 11  
 7-29  
 10/10





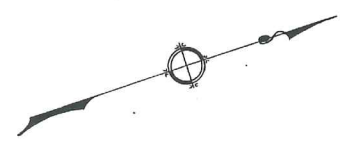
*See Order to private plat... this plat is a private plat... see order to private plat... this plat is a private plat...*

DESCRIPTION OF LAND PLATTED

The land embraced in the annexed plat of ROSECROFT SHORES SUBDIVISION of the SE 1/4 of the SE 1/4 of Section 26 and a part of 1/2 of fractional Section 25, T2N, R13E, Clinton Township and a part of P.O. 164, Harrison Township and Clinton Township, Macomb County, Michigan, is described as follows:  
Beginning at the point where the boundary common to Clinton Township, T2N, R13E, Macomb County, Michigan and Harrison Township, T2N, R13E, Macomb County, Michigan, intersects the 51y line of P.O. 164, thence S. 71° 51' E. a distance of 3265.1 ft. thence N. 30° 41' E. a distance of 752.45 ft. thence S. 72° 04' E. a distance of 766.66 ft. thence N. 00° 45' W. a distance of 188.90 ft. thence N. 65° 33' E. a distance of 651.0 ft. thence N. 30° 41' E. a distance of 299.0 ft. thence N. 65° 45' W. a distance of 1056.17 ft. thence N. 64° 17' 30" W. a distance of 1976.22 ft. thence N. 85° 26' 30" W. a distance of 2259.80 ft. thence S. 19° 10' 30" W. a distance of 32.66 ft. thence N 00° 00' W. a distance of 711.13 ft. thence S. 86° 20' 00" W. a distance of 1392.05 ft. thence S. 03° 48' 00" E. a distance of 1344.62 ft. thence S. 86° 26' 00" E. a distance of 1423.65 ft. thence S. 19° 10' 30" W. a distance of 59.95 ft. thence S. 72° 20' E. a distance of 1086.80 ft. thence S. 17° 14' W. a distance of 164.6 ft. thence S. 71° 51' E. a distance of 509.30 ft. to the point of beginning.

ROSECROFT SHORES SUBDIVISION  
HARRISON TOWNSHIP AND CLINTON TOWNSHIP  
MACOMB COUNTY MICHIGAN

SCALE FOOT=1 IN.



COUNTY CLERK  
This is to certify that the above described plat was filed for record by the State of Michigan on the 26th day of June 1926 and is a true and correct copy of the original as filed in the office of the County Clerk of Macomb County, Michigan, on the 26th day of June 1926.  
James L. Gullitt  
County Clerk

This plat was approved by the Board for Standard Platting, Michigan, at a public hearing held June 8-1926.  
Charles H. Hummelich, Board of Public Plats  
Marion E. Steffen, County Clerk  
James L. Gullitt, County Treasurer

June 9-1926

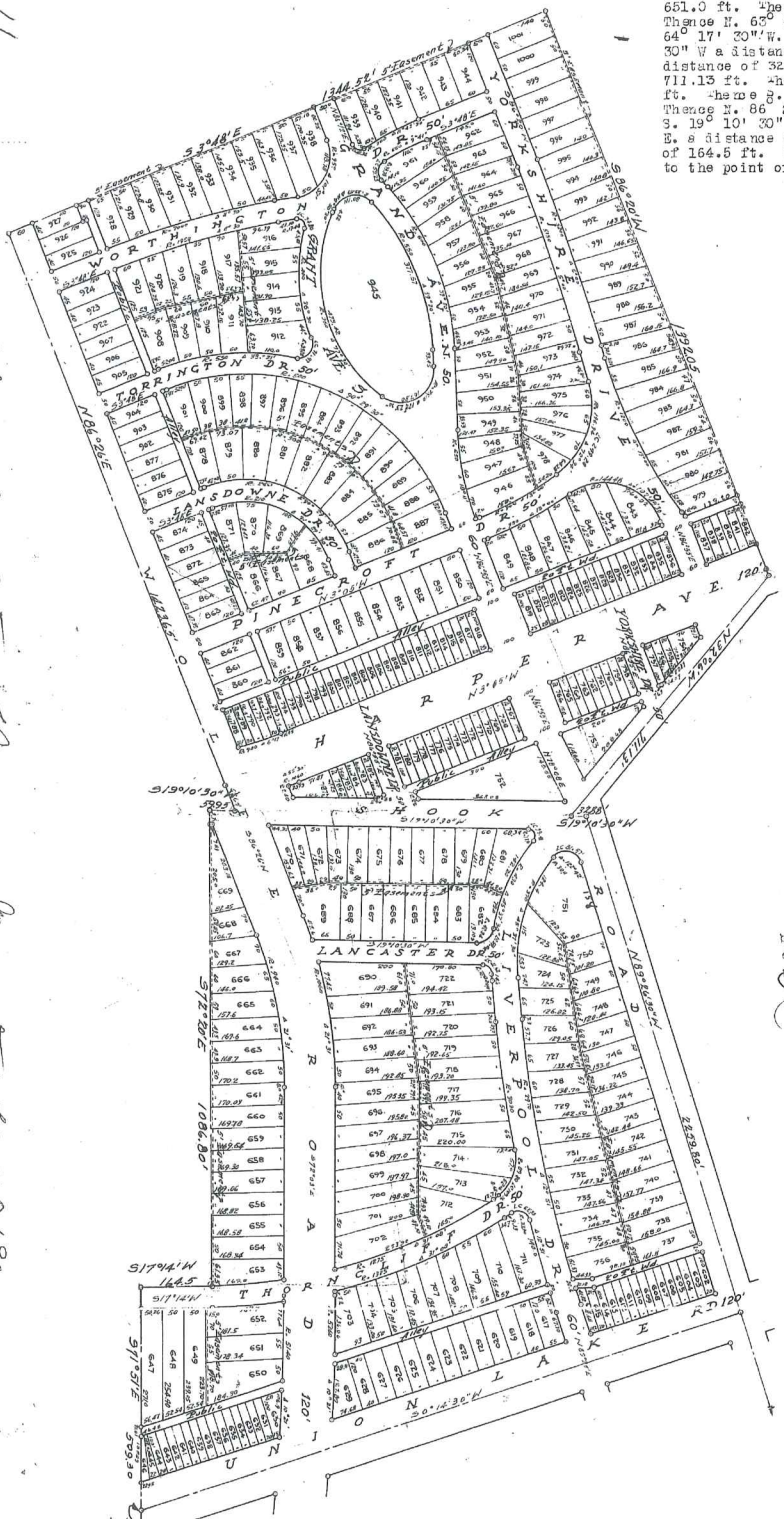
H.P. O'NEAL  
REG. CIVIL ENGINEER  
HAWTHORNE, MICHIGAN

SHEET NO. 2  
OF 2 SHEETS

*Handwritten notes and signatures at the top left of the page.*

L.P. 11  
6.

*See order to private plat... this plat is a private plat... see order to private plat... this plat is a private plat...*



Private Claim 164  
Point of Private Claim 277  
Beginning

*See order to private plat... this plat is a private plat... see order to private plat... this plat is a private plat...*



Mar 8-1933  
Stellwagen

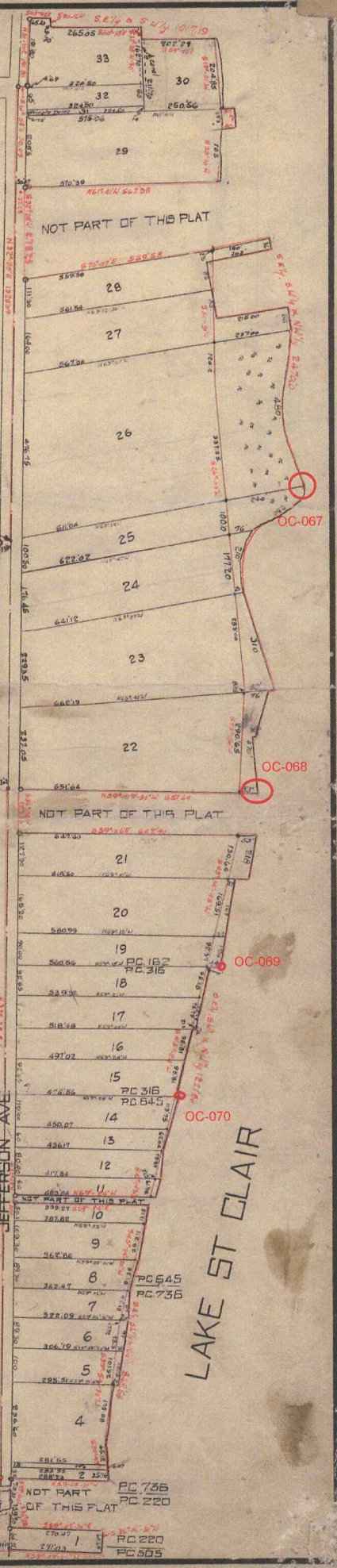
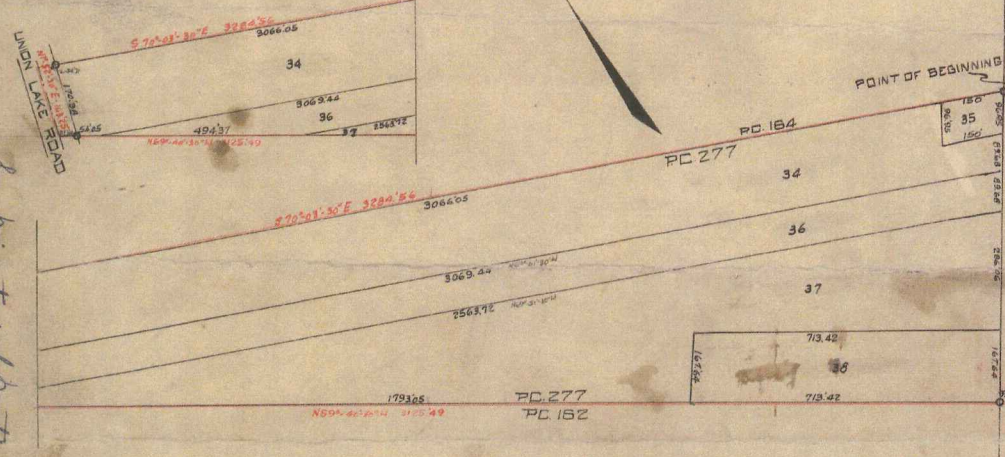
# SUPERVISOR'S PLAT NO 4

OF PARTS OF P.C.S. 164,277, 162,316, 645,736  
220 & 505 HARRISON TOWNSHIP, MACOMB  
COUNTY, MICH

L. 16  
P. 17

SCALE 1"=200'

WALTER J. LEHNER REG. CE.  
MT. CLEMENS, MICH.



### DEDICATION.

KNOW ALL MEN BY THESE PRESENTS, That I, Floyd W. Rosso, Supervisor of the Township of Harrison, Macomb County, State of Michigan, by virtue of authority in me vested by Section 51 Act 172 of P.A. 1929 having been duly authorized by the Township Board have caused the land embraced in the annexed plat to be surveyed, laid out and platted, to be known as SUPERVISOR'S PLAT NO. 4 of parts of P.C.S. 164, 277, 162, 316, 645, 736, 220 & 505 Harrison Township, Macomb County, Michigan, and that the streets as shown on said plat have been dedicated to the use of the public.

Witnesses:  
Walter J. Lehner  
Wm. J. Peters  
Supervisor for Harrison Twp.

STATE OF MICHIGAN } ss.  
COUNTY OF MACOMB }  
On this 5th day of Mar A.D. 1932 before me a Notary Public in and for said county personally came the above named Floyd W. Rosso, Supervisor of Harrison Twp., known to me to be the person who executed the above dedication and acknowledged the same to be his free act and deed as such Supervisor.

Karl J. Jobe  
Notary Public in and for Macomb County.  
My commission expires March 6, 1933

### TOWNSHIP APPROVAL.

This plat was approved by the Township Board of the Township of Harrison at a meeting held Dec 5, 1932

Karl J. Jobe  
TOWNSHIP CLERK.

This plat was approved by the County Board for Harrison County Michigan, at a meeting held February 22, 1933

Walter J. Lehner County Clerk.  
Wm. J. Peters County Treasurer.

### DESCRIPTION.

The land embraced in the annexed plat of SUPERVISOR'S PLAT NO. 4, of parts of P.C.S. 164, 277, 162, 316, 645, 736, 220, & 505 Harrison Township, Macomb County, Mich., is described as follows:  
Beginning at the intersection of the southerly line of P.C. 164 and the center line of Jefferson Ave., so called, and thence extending S. 32°-28' E. 1324.08 ft. along the center line of said Jefferson Ave.; thence S. 61°-56' E. 30.08 ft.; thence S. 60°-16' E. 151.60 ft.; thence S. 63°-42' E. 46.50 ft.; to the shore of Lake St. Clair; thence S. 21° E. S. 1/4' along the shore line 117.23 ft.; thence N. 61°-41' W. 267.58 ft. to the easterly side line of Jefferson Ave.; thence S. 32°-28' E. 275.23 ft.; thence S. 70°-07' E. 559.55 ft.; thence S. 1/4' S. 1/4' along the shore line 247.00 ft.; thence shore line of Lake St. Clair 247.00 ft.; to the easterly side line of Jefferson Ave.; thence S. 32°-28' E. 127.30 ft.; thence S. 59°-06' E. 647.40 ft.; thence S. 1/4' S. 1/4' along the shore line of Lake St. Clair 405.57 ft.; to the westerly side line of Jefferson Ave.; thence S. 32°-28' E. 20 ft.; thence S. 59°-24' E. 236.27 ft.; thence S. 1/4' S. 1/4' along the shore line of Lake St. Clair 506.54 ft.; thence S. 59°-06' E. 235.23 ft.; to the easterly side line of Jefferson Ave.; thence S. 33°-21' W. 710.30 ft.; thence S. 26°-38' E. 189.70 ft.; thence S. 59°-06' E. 270.47 ft.; thence S. 1/4' S. 1/4' along the shore line of Lake St. Clair 80.69 ft.; thence S. 59°-06' E. 204.20 ft. to the center line of Jefferson Ave.; thence S. 32°-28' E. 322.66 ft.; thence S. 33°-21' W. 709.10 ft.; thence S. 32°-28' E. 2028.07 ft.; thence S. 59°-40' E. 3123.49 ft.; thence S. 1°-52' E. 304.10 ft.; thence S. 70°-35' E. 3284.56 ft. to the place of beginning.

### SURVEYOR'S CERTIFICATE.

I hereby certify that the plat hereon delineated is a correct one and that permanent metal monuments of not less than one inch in diameter and thirteen inches in length set in a concrete base at least four inches in diameter and forty eight inches in depth have been placed at points marked thus (a) as shown thereon at all angles in the boundaries of the land platted, at all intersections of streets with the boundaries of the plat as shown on said plat.

Walter J. Lehner  
Registered Civil Engineer.

Page 17  
Walter J. Lehner

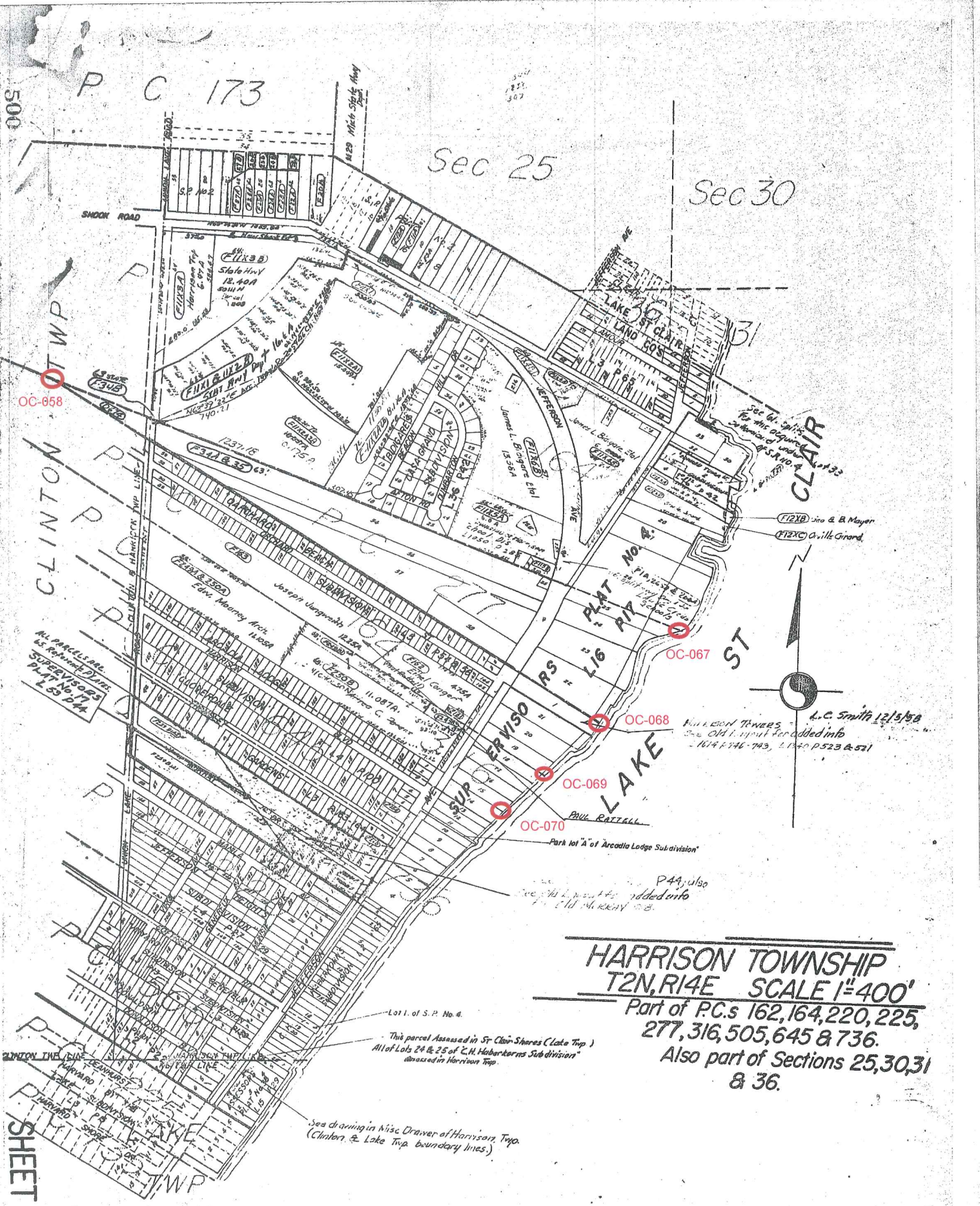


500

P C 173

Sec 25

Sec 30



**HARRISON TOWNSHIP**  
**T2N, R14E SCALE 1"=400'**  
 Part of P.C.s 162, 164, 220, 225,  
 277, 316, 505, 645 & 736.  
 Also part of Sections 25, 30, 31  
 & 36.

SHEET N. 1

See drawing in Misc. Drawer of Harrison Twp.  
 (Clinton & Lake Twp. boundary lines.)

This parcel Assessed in St. Clair-Shores (Lake Twp.)  
 All of Lots 24 & 25 of C.H. Haberkorn's Subdivision  
 assessed in Harrison Twp.

P44, also  
 See plat layout for added info  
 PL 110 MURKIN 108.

PHILIP H. THOMAS  
 See Old plat for added info  
 104 P. 746-743, 1140 P. 523 & 571

A.C. Smith 12/5/58

F12XB Leo & B. Mayer  
 F12XC O. Will Girard

