

**INDEX**  
**OC-059**  
**SOUTHEAST CORNER OF P.C. 148**  
**COMMON WITH THE**  
**SOUTHWEST CORNER P.C. 133 ON THE NORTHERLY**  
**SHORELINE OF LAKE ST. CLAIR**  
**HARRISON TOWNSHIP**  
**T2N, R14E**

**SECTION 1:**

1. Index
2. Before Pictures of Point and in Each Cardinal Direction
3. After Pictures of Point

**SECTION 2:**

1. LCRC
2. Surveyor's Report
3. Sketch of Private Claims (3 pages)(PC 148, PC 133 and 207)
4. Sketch of 2016 Private Claims Overview

**SECTION 3:**

1. 1818 Original Government Survey map (1 page)
2. 1875 Map of Harrison Township (1 page)
3. 1895 Map of Harrison Township (1 page)
4. 1916 Map of Harrison Township (1 page)
5. 2006 Map of Harrison Township (1 page)
6. 2012 Harrison Township Aerial Composite Maps (2 pages - 12-20G, 12-29C)
7. 2016 Field Notes with Corner Witnesses (1 page)
8. Recorded LCRS's (10 pages - PC-048, PC-049, PC-053, PC-54 and PC-058)

**SECTION 4:**

- |         |  |       |               |                              |
|---------|--|-------|---------------|------------------------------|
| 1. 1810 | Original Private Claim Notes   | PC148 | Aaron Greeley | (2 pages, 1 Orig. 1 Transc.) |
| 2. 1810 | Original Private Claim Notes   | PC133 | Aaron Greeley | (2 pages, 1 Orig. 1 Transc.) |
| 3. 1818 | Surveyor Generals Office Map   |       | Greeley       |                              |
| 4. 1995 | "Sea Watch Condominium and Marina"   |       |               | (3 Pages)                    |
| 5. 1999 | "Sea Watch Condominium and Marina" Second Replat Macomb County Condominium Subdivision Plan No.497 |       |               | (5 pages)                    |





**OC - 059**

**S.E. Corner of PC 148 common with the S.W.  
Corner of PC 133 on Northerly Shoreline of  
Lake St. Clair**

**T.2N.,R.14E. Harrison Twp.**





A photograph of a rocky shoreline. The ground is covered with numerous smooth, rounded stones of various colors, including white, grey, tan, and blue-grey. Some of the stones have small holes or pits. In the center, a white rectangular label is placed on the rocks. Below the label, a small orange plastic marker is visible on the ground. The background shows some green grass and brown soil.

**OC - 059**

**S.E. Corner of PC 148 common with the S.W.  
Corner of PC 133 on Northerly Shoreline of  
Lake St. Clair**

**T.2N.,R.14E. Harrison Twp.**



















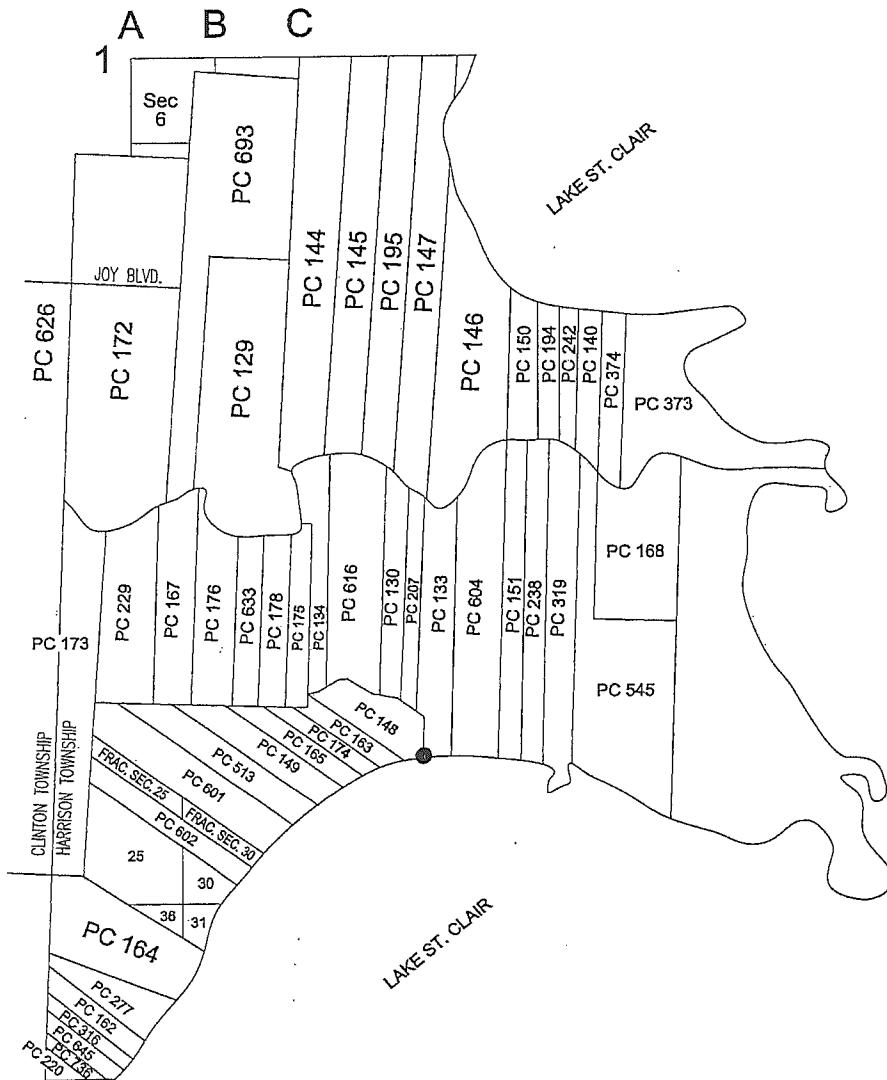
**Land Corner Recordation Certificate**  
**2016 Annual Grant Agreement**  
Authority: MICH. 1970 PA 74, MCL 54.205

Surveyor's Name: Roger J. Stecker  
For Corner(s) in: Macomb County

Field Survey Date: 09/08/2016  
Municipality: Harrison Township

| Corner Type                           | Section<br>Private Claim | Survey Township            | Corner Code |
|---------------------------------------|--------------------------|----------------------------|-------------|
| Original Public<br>Land Survey Corner | S/PC <u>148/133</u>      | T <u>2</u> N R <u>14</u> E | <u>059</u>  |

Other Corner Code Description: S.E. corner of PC 148 common with the S.W. corner of PC 133 on the Northerly shoreline of Lake St. Clair



3  
MCD

C



**Part A: Corner History:**

| Date    | Document                         | Surveyor Name                   | License #  | Liber & Page | Item              |
|---------|----------------------------------|---------------------------------|------------|--------------|-------------------|
| 1. 1810 | PC 148 Survey notes              | Aaron Greeley                   | Surveyor   |              | Post              |
| 2. 1810 | PC 133 Survey notes              | Aaron Greeley                   | Surveyor   |              | Post              |
| 3. 1818 | Surveyor general office map      | Aaron Greeley                   | Surveyor   |              | Object not stated |
| 4. 1995 | Sea Watch Condominium and Marina | Robert C. Hall (Architect)      | 13012516   |              | Corner not shown  |
| 5. 1999 | Sea Watch Condominium and Marina | Jacqueline S. Hoist (Architect) | 1301037420 |              | Corner not shown  |
|         |                                  | Robert C. Hall (Architect)      | 13012516   |              |                   |

**Part B: Surveyor's Report on Perpetuation, Restoration, Reestablishment or Monumentation of Corner:**

No evidence of the original post was found. I considered it a lost corner. I established the Private Claim Line between Private Claim 604 and Private Claim 133 from previously remonumentated PC-049 Liber 23851 Pages 424,425 and previously remonumented PC-054 Liber 23761 Pages 607,608. I then established the private claim line between Private Claim 133 and Private Claim 207 from previously remonumentated PC-048 Liber 23761 Pages 597,598 and previously remonumented PC-053 Liber 23761 Pages 605,606. Then I located and occupied remonumented PC-058 Liber 23761 Pages 617,618. Using an average bearing between the East line of Private Claim 133 and West line of Private Claim 133 I ran the average bearing South to north shore Line of Lake St. Clair and set a witness monument for OC-059. The witness monument falls 22'± North of the water's edge. There are no lines of occupation. The corner falls in the "Sea Watch Condominium and Marina" property "Second Re-plat Macomb County Condominium Subdivision Plan No.497". The corner is between the water's edge and Building No.1. I believe this position best represents the Private Claim Line between Private Claim 133 and Private Claim 148.

**Distances:**

OC-059 Witness Mon. to PC-058  
 1,386.00' (21 chains 00 links private claim notes)  
 1,058.95' (Remon 2016)  
 OC-059 Witness Mon. to OC-059 327.05'

**Part C: Field Evidence of Perpetuation or Monumentation of Corner:**

I set a 4" diameter by 36" concrete monument with a 1/2" steel rod with a 2" diameter aluminum cap stamped "Macomb County Ref Monument MI. Act #345" #30103 OC-059

**Accessories:**

S.60°W. 23.69' to S.W. corner of building #1, #37828  
 N.50°E. 103.38' to N.E. corner of building #1, #37840  
 S.10°E. 25.20' end of steel sea wall  
 S.80°W. 16.86' face of aluminum flag pole

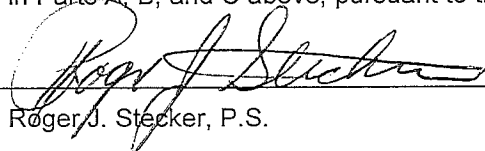
| Date of Observation     | Latitude             | Longitude                              | Datum and Adjustment Year | Epoch Date |
|-------------------------|----------------------|--|---------------------------|------------|
| Witness Mon. 10-27-2016 | N.42°34'14.878575"   | W.82°49'17.33863"                      | NAD83 (2011)              | 2010.0000  |
| True Corner             | N.42°34'11.6205"long | W.82°49'17.0493" (calculated position) |                           |            |

Method for Latitude-Longitude determination: NGS OPUS Solution

Disclaimer on accuracy of values reported relative to their use: 1'±

State Plane Coordinates in international feet: N-394044.30' E-13539543.51' (witness monument OC-059)  
 Standard Deviation: 0.01'N-0.02'E  
 South Zone  
 Combined Factor: 0.99989615  
 NGSPID: NEO177  
 Survey Method: MC GPS  
 Orthometric Height: 579.02  
 Elev. Datum: NAVD 88  
 State Plane Coordinates in international feet: N-393717.25', E-3539541.78' True corner (calculated position)

I, Roger J. Stecker P.S., in a field survey on 09/08/2016 certify under the requirements of the State Survey and Remonumentation Act, 1990 PA 345, MCL 54.261 to 54.279, and the Corner Recordation Act, 1970 PA 74, MCL 54.201 to 54.210d, that the corner identified and described hereon has been perpetuated or monumented as described in Parts A, B, and C above, pursuant to the laws and rules of the State of Michigan.

  
 Roger J. Stecker, P.S.

12-8-2016  
 Date

Professional Surveyor's License No.: 30103

Prepared By: Lehner Associates, Inc.  
 17001 19 Mile Road, Ste 3  
 Clinton Twp., MI 48038









**SURVEYOR'S REPORT  
OC-059  
SOUTHEAST CORNER OF P.C. 148  
COMMON WITH THE  
SOUTHWEST CORNER P.C. 133 ON THE NORTHERLY  
SHORELINE OF LAKE ST. CLAIR  
HARRISON TOWNSHIP  
T2N, R14E**

**NO GLO HISTORY:**

**Description of P.C. 148**

Confirmed to Phillis Peltier Commencing at a post standing on the border of Lake St. Clair, between this tract and a tract confirmed to Jean Baptis Nontie thence north fifty five degrees west fifty two chains fifty seven links to an ash tree standing on the border of a coulee (called Ventre de bouef) thence along the border of said coulee down stream north seventy four degrees east six chains, thence north fifty eight degrees east thirteen chains thence north eighty five degrees east five chains, thence south fifty nine degrees east five chains thence south sixty one degrees east eleven chains eighteen lines, thence south eighty one degrees east eight chains eighty four links, to a post the southwest corner of a tract confirmed to Laurent Maure on the south side of River Huron thence south eighty one degrees thirty minutes east five chains thence south fifty five degrees east six chains sixty two links, to a post the south east corner of said Maure's Tract thence south fifty four degrees east six chains forty six links to a post thence south twenty one chains, to a post standing on the border of lake St. Clair thence along the border of said lake west seventeen chains nine links to the place of beginning, containing one hundred and twenty six acres and nine tenths of an acre.

Detroit July 18, 1810

Aaron Greeley Surveyor  
of Private Claims

**Description of P.C. 133**

Confirmed to Joseph Campeau commencing at a post standing on the border of River Huron, between this tract and a tract confirmed to claimant thence south one hundred and thirty two chains fifty links to a post standing on the border of Lake St. Clair thence along the border of sd. lake west ten chains sixteen links to a post standing on the border of said lake the boundary between this tract and a tract confirmed to Phillis Peltier thence north twenty one chains to a post standing on the north border on the Ventre de boef, thence along the border of the said Ventre de boef north fifty four degrees west six chains forty six links to a post the southeast corner of a tract confirmed to Laurent Maure thence north ninety chains to a post standing on the border of River Huron between this tract and a tract confirmed to said Maure, thence along the border of said river down stream north seventy two degrees east two chains, thence north thirty nine degrees east twenty one chains, thence north nineteen degrees east eighty links to the place of beginning, containing one hundred and seventy six acres seventy two hundredths of an acre.

Detroit July 18, 1810

Aaron Greeley Surveyor  
of private claims

**EXISTING CONDITIONS:**

No evidence of the original post was found. I considered it a lost corner. I established the Private Claim Line between Private Claim 604 and Private Claim 133 from previously remonumentated PC-049 Liber 23851 Pages 424,425 and previously remonumented PC-054 Liber 23761 Pages 607,608. I then established the private claim line between Private Claim 133 and Private Claim 207 from previously remonumentated PC-048 Liber 23761 Pages 597,598 and previously remonumented PC-053 Liber 23761 Pages 605,606. Then I located and occupied remonumented PC-058 Liber 23761 Pages 617,618. Using an average bearing between the East line of Private Claim 133 and West line of Private Claim 133 I ran the average bearing South to north shore Line of Lake St. Clair and set a reference monument for PC-059. The point falls 22'+- from the water's edge. There are no lines of occupation. The corner falls in the "Sea Watch Condominium and Marina" property "Second Re-plat Macomb County Condominium Subdivision Plan No.497". The corner is between the water's edge and Building No.1. I believe this position best represents the Private Claim Line between Private Claim 133 and Private Claim 148.

**RECORDED & UNRECORDED SURVEYS & FIELD NOTES:**

|    |      |                                  |                                    |            |                   |
|----|------|----------------------------------|------------------------------------|------------|-------------------|
| 1. | 1810 | PC 148 Survey notes              | Aaron Greeley                      | Surveyor   | Post              |
| 2. | 1810 | PC 133 Survey notes              | Aaron Greeley                      | Surveyor   | Post              |
| 3. | 1818 | Surveyor general office map      | Aaron Greeley                      | Surveyor   | Object not stated |
| 4. | 1995 | Sea Watch Condominium and Marina | Robert C. Hall<br>(Architect)      | 13012516   | Corner not shown  |
|    | 1999 | Sea Watch Condominium and Marina | Jacqueline S. Hoist<br>(Architect) | 1301037420 | Corner not shown  |
|    |      |                                  | Robert C. Hall<br>(Architect)      | 13012516   |                   |



**DISTANCES:**

OC-059 Ref. Mon. to PC-058  
1,386.00' (21 chains 00 links private claim notes)  
1,058.95' (Remon 2016)  
OC-059 Ref. Mon. to PC-059 327.05'

**RECOMMENDATIONS:**

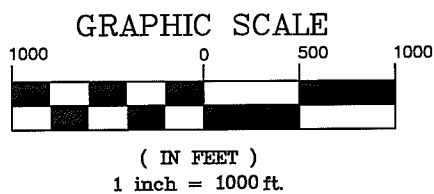
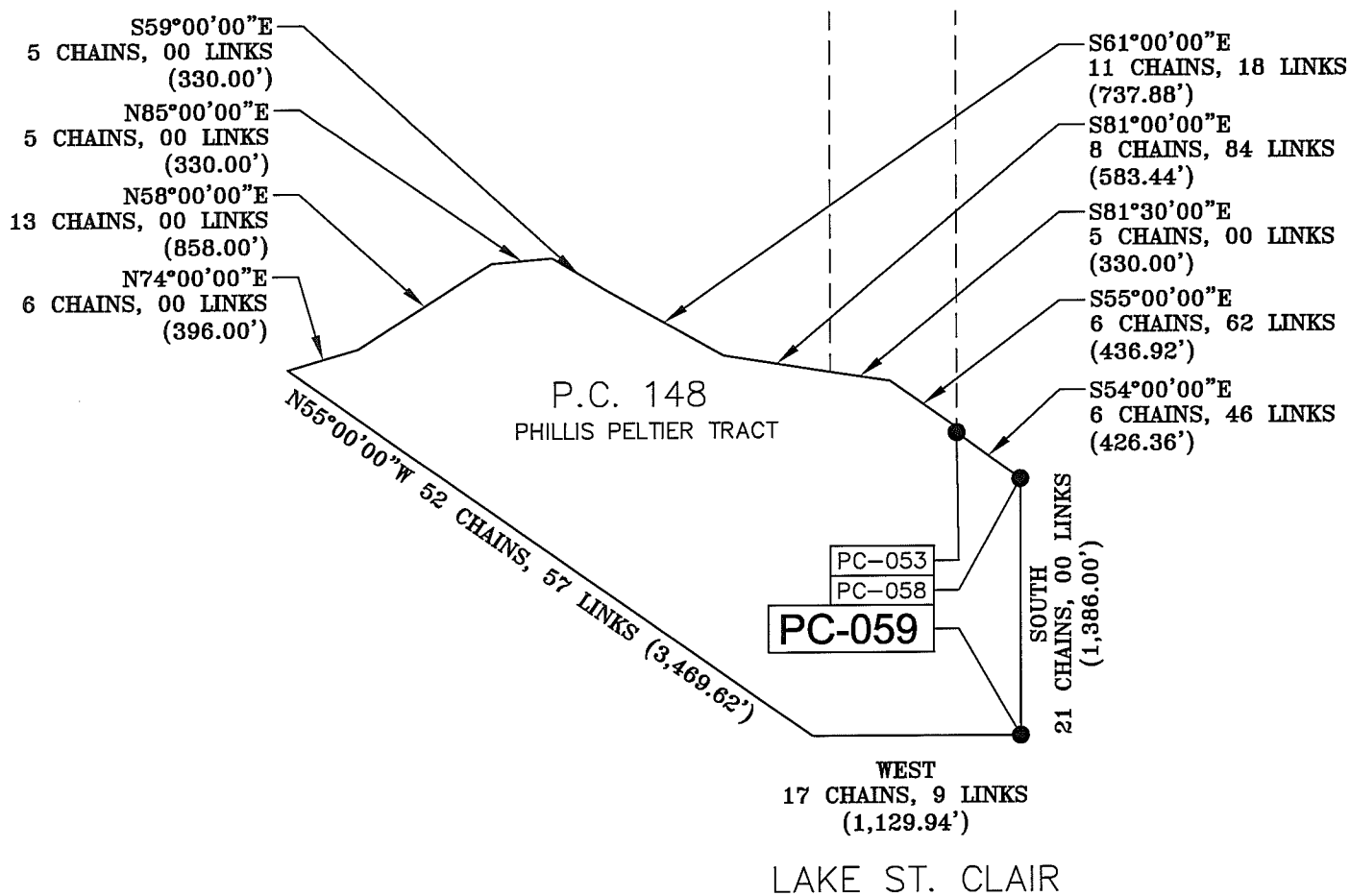
I set a 4" diameter by 36" concrete monument with a 1/2" steel rod with a 2" diameter aluminum cap stamped "Macomb County Ref Monument MI. Act #345" #30103 PC-059

**ACCESSORIES: OC-059 REF. MONUMENT**

S.60°W. 23.69' to S.W. corner of building #1, Unit #37828  
N.50°E. 103.38' to N.E. corner of building #1, Unit #37840  
S.10°E. 25.20' end of steel sea wall  
S.80°W. 16.86' face of aluminum flag pole



# SKETCH OF PRIVATE CLAIM 148



P.C. 148

CONFIRMED TO PHILLIS PELTIER

COMMENCING AT A POST STANDING ON THE BORDER OF LAKE ST. CLAIR, BETWEEN THIS TRACT AND A TRACT CONFIRMED TO JEAN BAPTIST NONTIE THENCE NORTH FIFTY FIVE DEGREES WEST FIFTY TWO CHAINS FIFTY SEVEN LINKS TO AN ASH TREE STANDING ON THE BORDER OF A COULEE (CALLED VENTRE DE BOUEF) THENCE ALONG THE BORDER OF SAID COULEE DOWN STREAM NORTH SEVENTY FOUR DEGREES EAST SIX CHAINS, THENCE NORTH FIFTY EIGHT DEGREES EAST THIRTEEN CHAINS THENCE NORTH EIGHTY FIVE DEGREES EAST FIVE CHAINS, THENCE SOUTH FIFTY NINE DEGREES EAST FIVE CHAINS THENCE SOUTH SIXTY ONE DEGREES EAST ELEVEN CHAINS EIGHTEEN LINKS, THENCE SOUTH EIGHTY ONE DEGREES EAST EIGHT CHAINS EIGHTY FOUR LINKS, TO A POST THE SOUTHWEST CORNER OF A TRACT CONFIRMED TO LAURENT MAURE ON THE SOUTH SIDE OF RIVER HURON THENCE SOUTH EIGHTY ONE DEGREES THIRTY MINUTES EAST FIVE CHAINS THENCE SOUTH FIFTY FIVE DEGREES EAST SIX CHAINS SIXTY TWO LINKS, TO A POST THE SOUTH EAST CORNER OF SAID MAURE'S TRACT THENCE SOUTH FIFTY FOUR DEGREES EAST SIX CHAINS FORTY SIX LINKS TO A POST THENCE SOUTH TWENTY ONE CHAINS, TO A POST STANDING ON THE BORDER OF LAKE ST. CLAIR THENCE ALONG THE BORDER OF SAID LAKE WEST SEVENTEEN CHAINS NINE LINKS TO THE PLACE OF BEGINNING, CONTAINING ONE HUNDRED AND TWENTY SIX ACRES AND NINE TENTHS OF AN ACRE.

DETROIT JULY 18, 1810

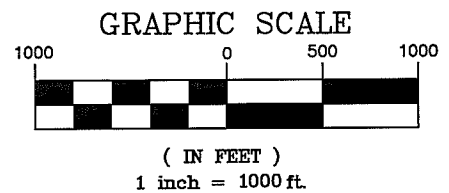
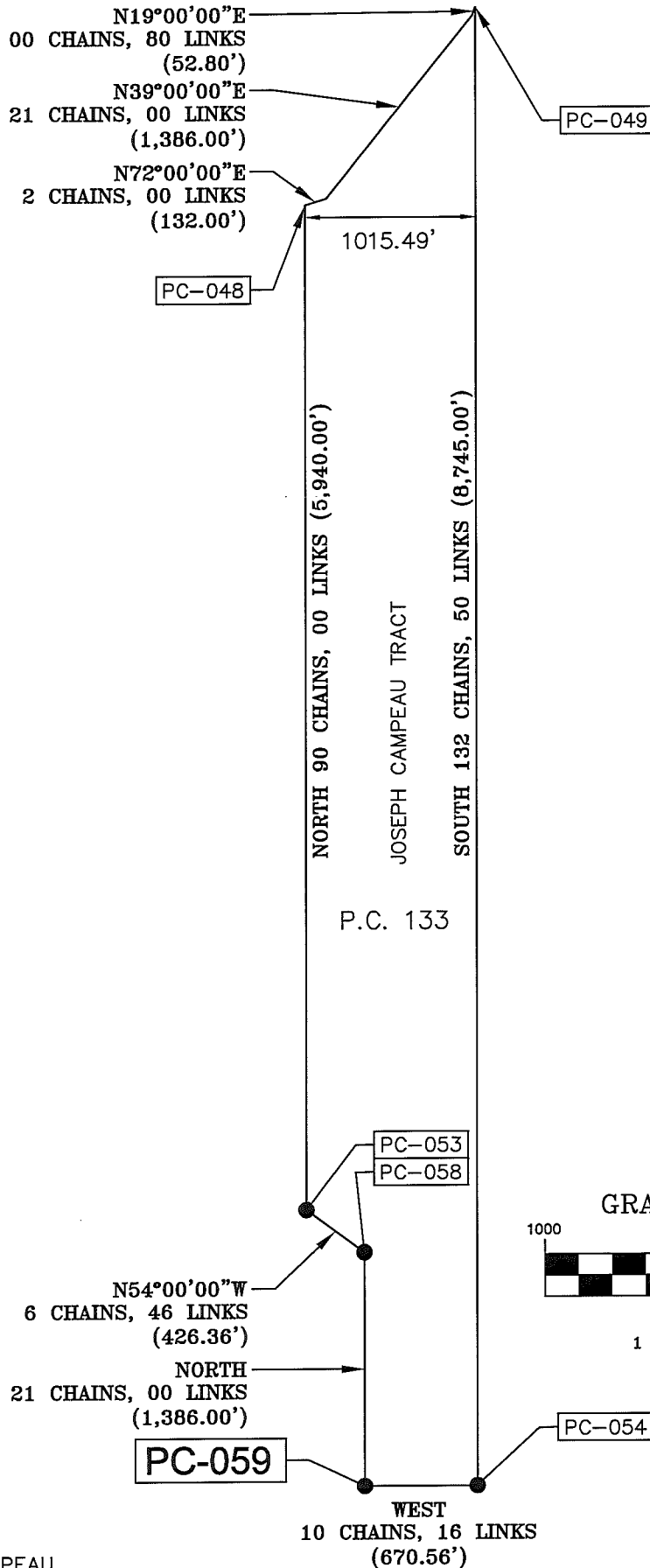
AARON GREELEY SURVEYOR  
OF PRIVATE CLAIMS



# SKETCH OF PRIVATE CLAIM 133

RIVER HURON (NOW KNOWN AS CLINTON RIVER)

FLOW



P.C. 133

CONFIRMED TO JOSEPH CAMPEAU

COMMENCING AT A POST STANDING ON THE BORDER OF RIVER HURON, BETWEEN THIS TRACT AND A TRACT CONFIRMED TO CLAIMANT THENCE SOUTH ONE HUNDRED AND THIRTY TWO CHAINS FIFTY LINKS TO A POST STANDING ON THE BORDER OF LAKE ST. CLAIR THENCE ALONG THE BORDER OF SAID LAKE WEST TEN CHAINS SIXTEEN LINKS TO A POST STANDING ON THE BORDER OF SAID LAKE THE BOUNDARY BETWEEN THIS TRACT AND A TRACT CONFIRMED TO PHILLIS PELTIER THENCE NORTH TWENTY ONE CHAINS TO A POST STANDING ON THE NORTH BORDER OF THE VENTRE DE BOEF, THENCE ALONG THE BORDER OF THE SAID VENTRE DE BOEF NORTH FIFTY FOUR DEGREES WEST SIX CHAINS FORTY SIX LINKS TO A POST THE SOUTHEAST CORNER OF A TRACT CONFIRMED TO LAURENT MAURE THENCE NORTH NINETY CHAINS TO A POST STANDING ON THE BORDER OF RIVER HURON BETWEEN THIS TRACT AND A TRACT CONFIRMED TO SAID MAURE, THENCE ALONG THE BORDER OF SAID RIVER DOWN STREAM NORTH SEVENTY TWO DEGREES EAST TWO CHAINS, THENCE NORTH THIRTY NINE DEGREES EAST TWENTY ONE CHAINS, THENCE NORTH NINETEEN DEGREES EAST EIGHTY LINKS TO THE PLACE OF BEGINNING, CONTAINING ONE HUNDRED AND SEVENTY SIX ACRES SEVENTY TWO HUNDREDTHS OF AN ACRE.

DETROIT JULY 18, 1810

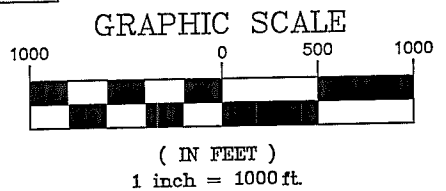
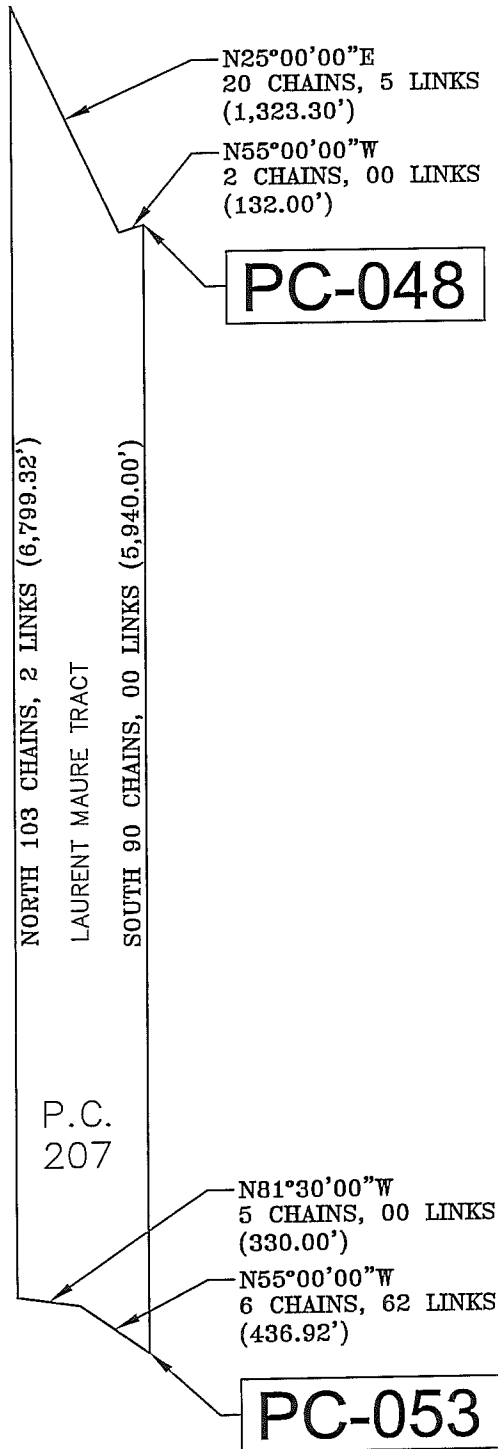
AARON GREELEY SURVEYOR  
OF PRIVATE CLAIMS



# SKETCH OF PRIVATE CLAIM 207



RIVER HURON (NOW KNOWN AS CLINTON RIVER)  
 FLOW →



P.C. 207

CONFIRMED TO LAURENT MAURE

COMMENCING AT A POST STANDING ON THE BORDER OF RIVER HURON, BETWEEN THIS TRACT AND A TRACT CONFIRMED TO JOSEPH CAMPEAU THENCE SOUTH NINETY CHAINS TO A POST STANDING ON THE BORDER OF VENTRE DE BOEF THENCE ALONG THE BORDER OF SAID VENTRE DE BOEF NORTH FIFTY FIVE DEGREES WEST SIX CHAINS SIXTY TWO LINKS, THENCE NORTH EIGHTY ONE DEGREES THIRTY MINUTES WEST FIVE CHAINS TO A WHITE OAK SAPLING THE SOUTHEAST CORNER OF A TRACT CONFIRMED TO JOSEPH CAMPEAU, THENCE NORTH ONE HUNDRED AND THREE CHAINS TWO LINKS TO A POST STANDING ON THE BORDER OF RIVER HURON THENCE ALONG THE BORDER OF SAID RIVER DOWN STREAM SOUTH TWENTY FIVE DEGREES EAST TWENTY CHAINS FIVE LINKS THENCE NORTH SEVENTY TWO DEGREES EAST TWENTY CHAINS 5 LINKS THENCE NORTH SEVENTY TWO DEGREES EAST TWO CHAINS TO THE PLACE OF BEGINNING, CONTAINING NINETY SEVEN ACRES AND THIRTY FIVE HUNDREDTHS OF AN ACRE.

DETROIT JULY 18, 1810

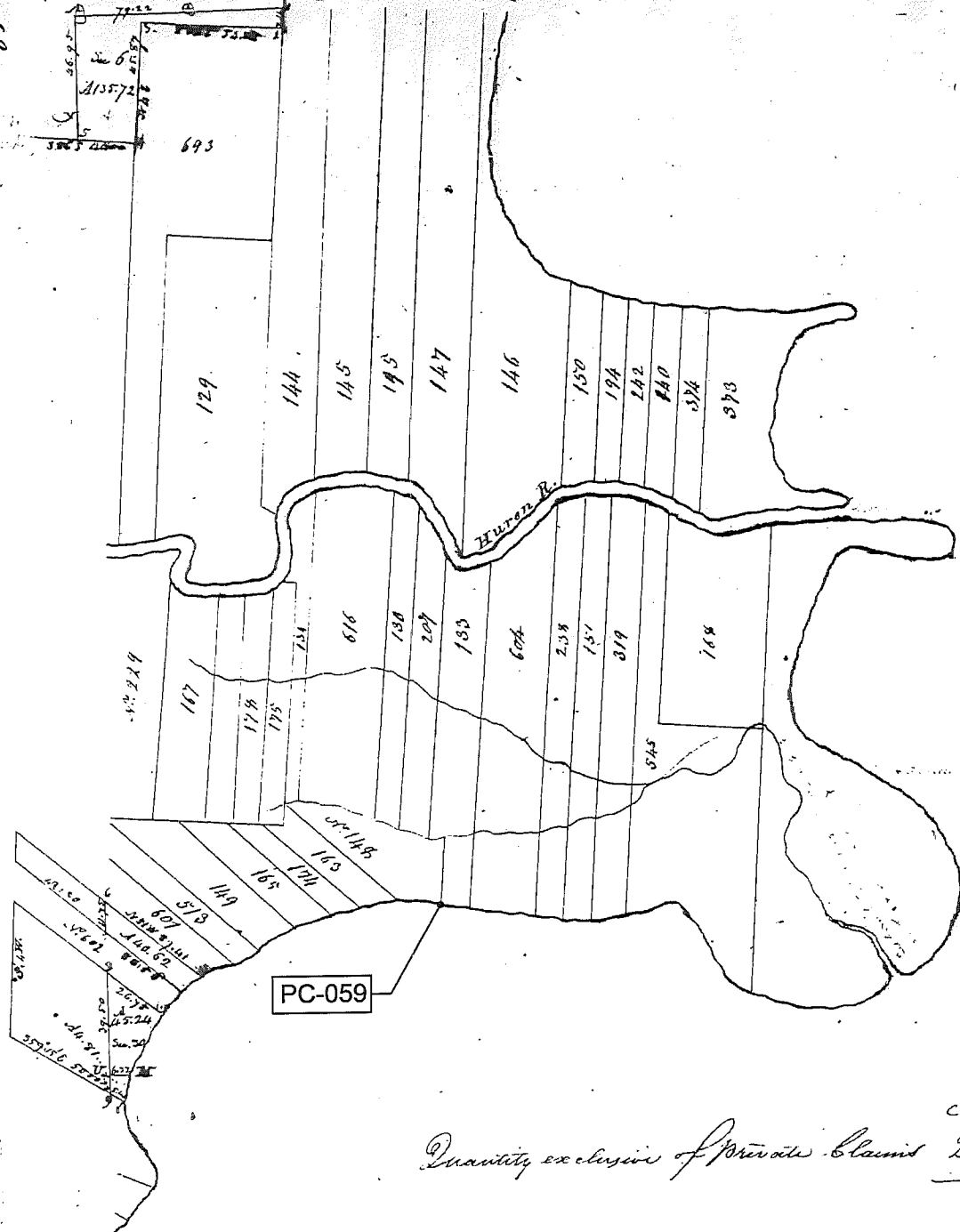
AARON GREELEY SURVEYOR  
 OF PRIVATE CLAIMS







Township N.° II North, Range N.° XIV East of the Mer. (Mich. Ter.)



H. S. C. L. A. I. R.

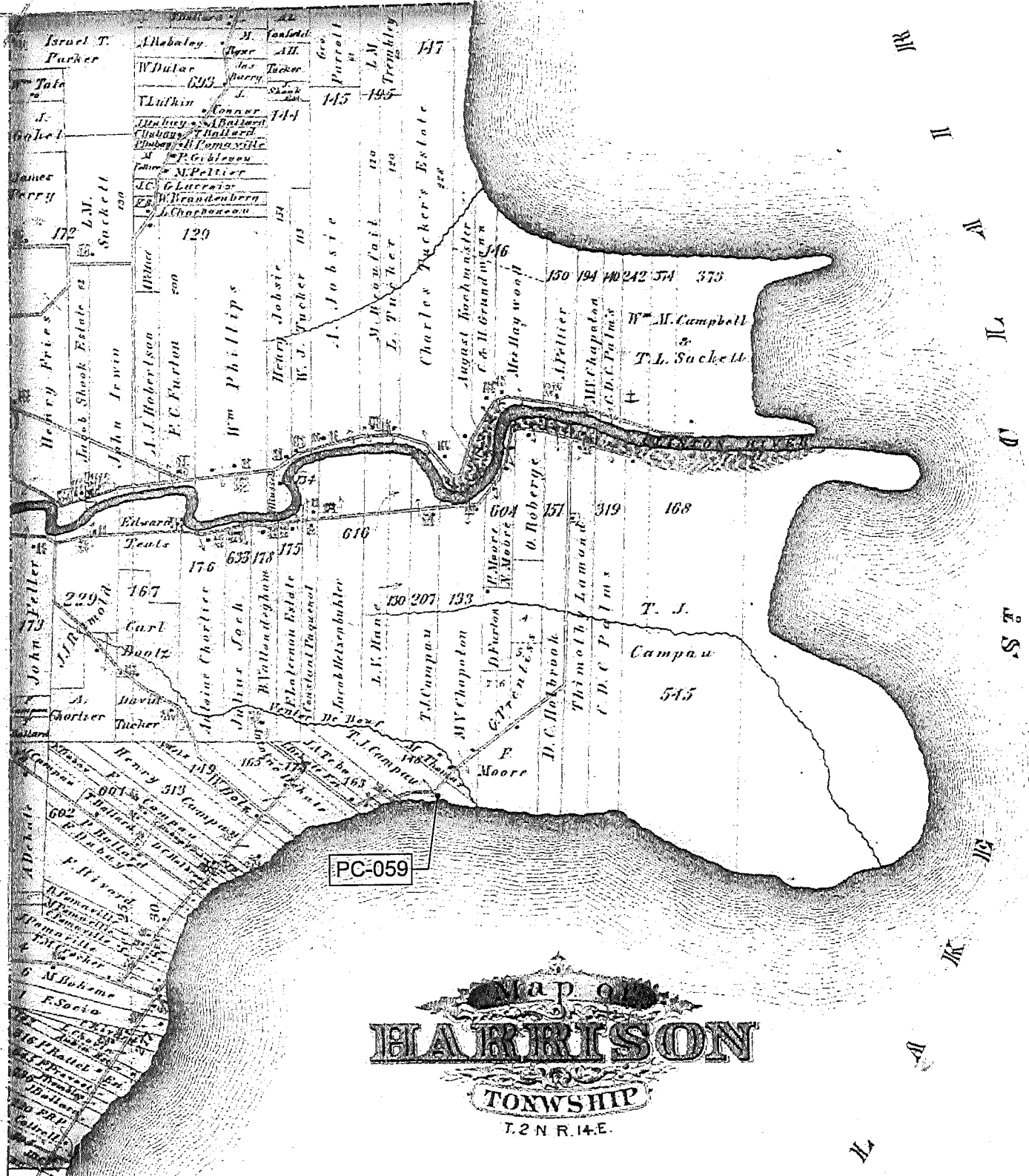
Quantity exclusive of private claims 236-39  
C. A. H. see

A true copy from the Original on file in this Office

Surveyor General's Office  
July 20 1818

2N, 14E HARRISON

Edward  
Surveyor



PC-059

Map of  
**HARRISON**  
 TOWNSHIP  
 T.2 N. R.14. E.

1875

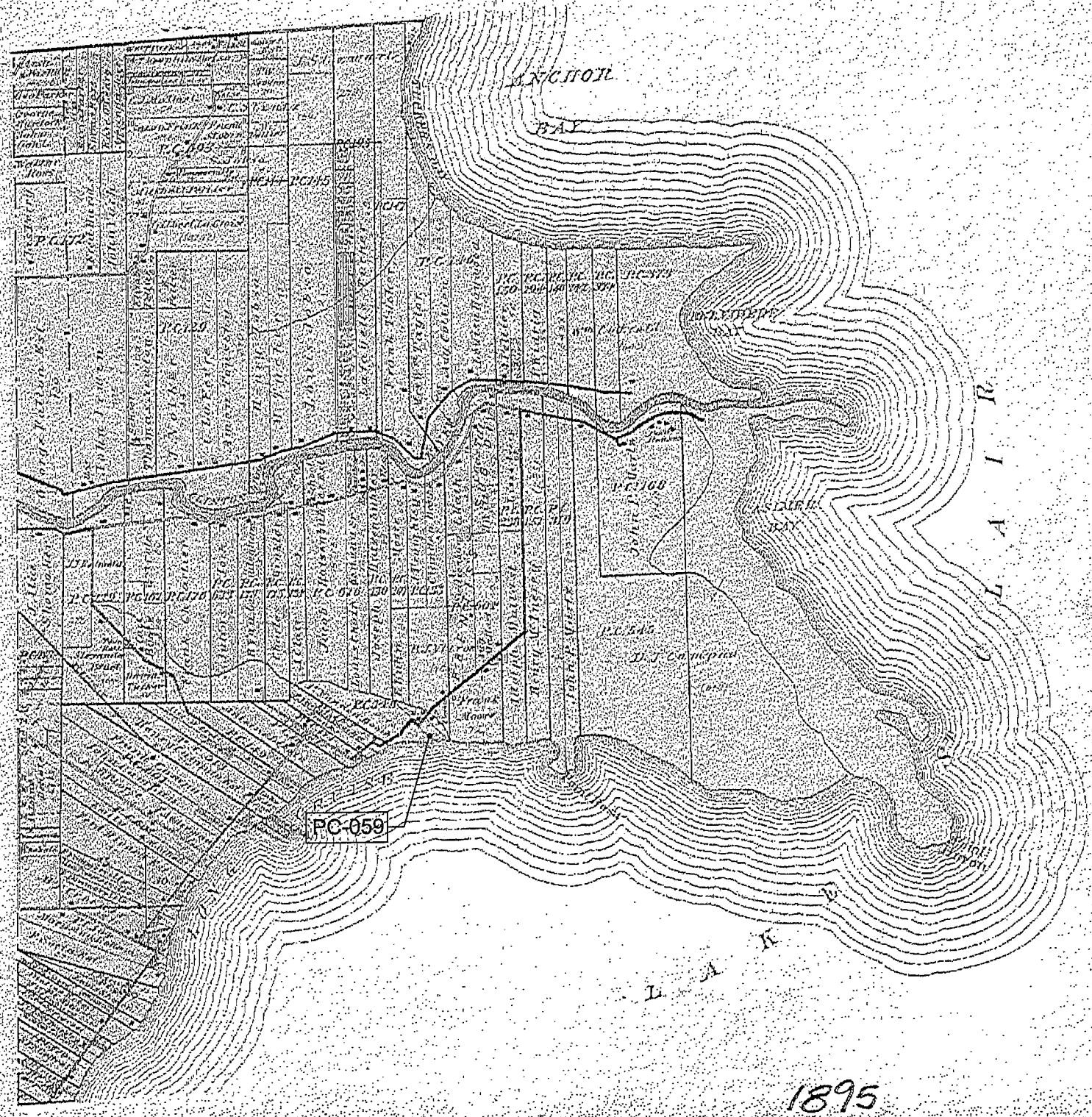


# MAP OF HARRISON

Township 2 North Range 14 East

Scale 2 Inches To one Mile

of the Division of Geography



1895













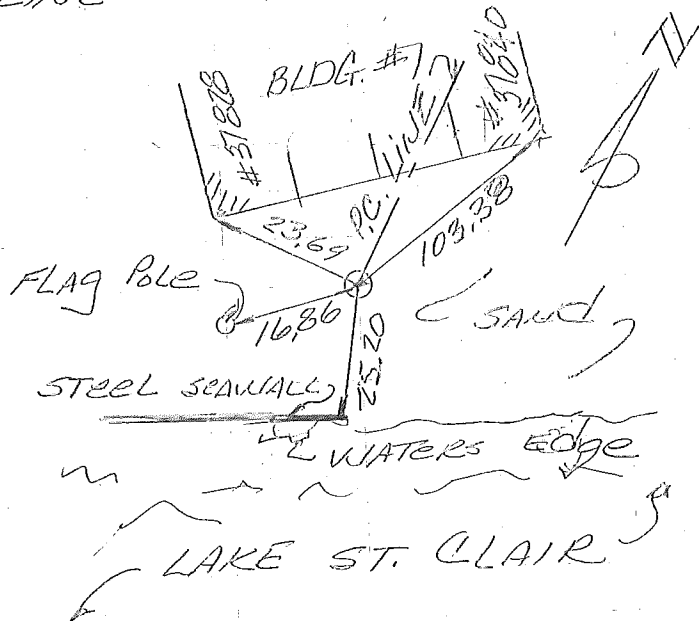




9-8-2016  
RS JR

T.2N., R.14E.  
HARRISON TWP.  
PC-059

S.E. COR. OF PC-148 COMMON  
WITH THE S.W. COR. OF PC133  
ON THE NORTHERLY SHORE-  
LINE OF LAKE ST. CLAIR



SET TEMPORARY 1/2"  
IRON IN STONE  
LANDSCAPE AREA  
BETWEEN BLDG. AND  
LAKE

SET A 4" DIAMETER BY 36"  
LONG CONCRETE MONUMENT  
WITH A 1/2" IRON ROD WITH  
A 2" CAP.

PC-059  
WITNESSES

S. 60° W. 23.69' TO THE S.W.  
COR. OF BLDG. #1, UNIT #37828

N. 50° E. 103.38' TO THE  
N.E. OF BLDG. #1 UNIT #37840

S. 10° E. 25.20' END OF  
STEEL SEAWALL

S. 80° W. 10.86' TO THE FACE OF  
AN ALUMINUM FLAG POLE

*Return to the Point*



**Land Corner Recordation Certificate**  
**Attachment B to 2015 Annual Grant Agreement**  
 Authority: MCL 54.205 and R54.202

This form is **ONLY** for corners filed under the 2015 State Survey and Remonumentation Grant Agreement  
 Filing Requirement: MCL 54.268(2)(a), 54.268(2)(d), 54.201 – 54.210d and 2015 State Survey and Remonumentation Grant Agreement

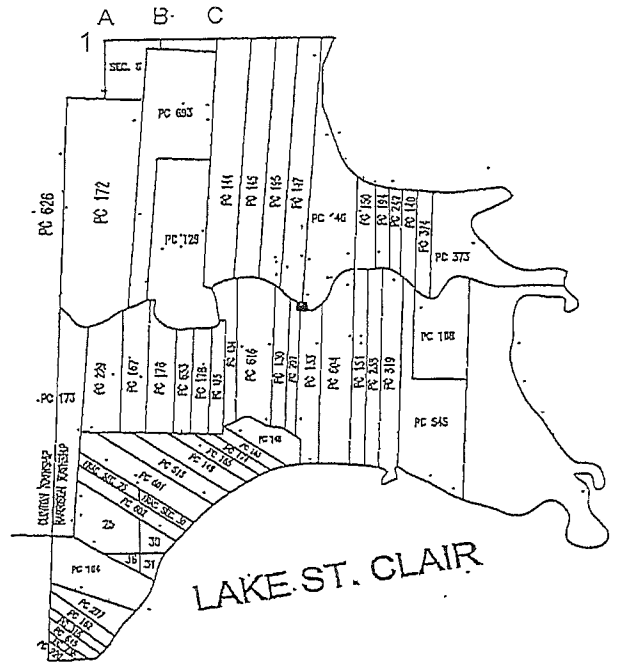
**Notes:**

- No more than two Original Public Land Survey Corners can be recorded on this certificate
- If a corner reported hereon is common to two or more survey townships, each Town, Range and Corner Code for the corner may be identified on this certificate
- If a corner reported hereon is common to two or more counties, each county may be identified on this certificate and a copy of this certificate filed with the Register of Deeds in each county

For corner in: Macomb County

Harrison Township

| Corner Type                          | Survey Township |                | Corner Code   |
|--------------------------------------|-----------------|----------------|---------------|
| Original Public Land Survey Corner   | T _____         | R _____        | _____         |
| • MCL 54.202(g)                      | T <u>2 N.</u>   | R <u>14 E.</u> | <u>PC-048</u> |
| • MCL 54.262(g)                      | T _____         | R _____        | _____         |
| Property Controlling Corner          | S _____         | T _____        | R _____       |
| • MCL 54.202(j)                      | S _____         | T _____        | R _____       |
| • MCL 54.262(h)                      | S _____         | T _____        | R _____       |
| Protracted Public Land Survey Corner | T _____         | R _____        | _____         |
| • MCL 54.202(k)                      | T _____         | R _____        | _____         |
| • MCL 54.262(i)                      | T _____         | R _____        | _____         |



PC-048 Northeast Corner Private Claim 207, common with the Northwest Corner Private Claim 133 on the south bank of the Clinton River (aka River Huron).

**Part A: Corner(s) History**

|    |      |                                    |                         |                    |
|----|------|------------------------------------|-------------------------|--------------------|
| 1. | 1810 | Original Private Claim Notes       | Aaron Greeley           | (2 pages)          |
| 2. | 1959 | "Sunkist Subdivision"              | Earnest Pettingill      | L. 45, P. 2        |
| 3. | 1967 | "Sunkist Subdivision No. 2"        | Fitz Bridges #5779      | L.57, P.37         |
| 4. | 1988 | "Sunkist Subdivision No. 3"        | Fitz Bridges #5779      | L.86, P.26 - P.28  |
| 5. | 1998 | Sketch of Survey                   | Roger J. Stecker #30103 | Unrecorded         |
| 6. | 1999 | L.C.R.C.                           | Mariusz Lukowicz #38119 | L.8627, P.493      |
| 7. | 1999 | "River Bend Park Subdivision No.1" | Mariusz Lukowicz #38119 | L.138, P.26 - P.34 |
| 8. | 2000 | "River Bend Park Subdivision No.2" | Mariusz Lukowicz #38119 | L.142, P.5 - P.13  |





**CORRECTIVE Land Corner Recordation Certificate**  
**Attachment B to 2015 Annual Grant Agreement**  
 Authority: MCL 54.205 and R54.202

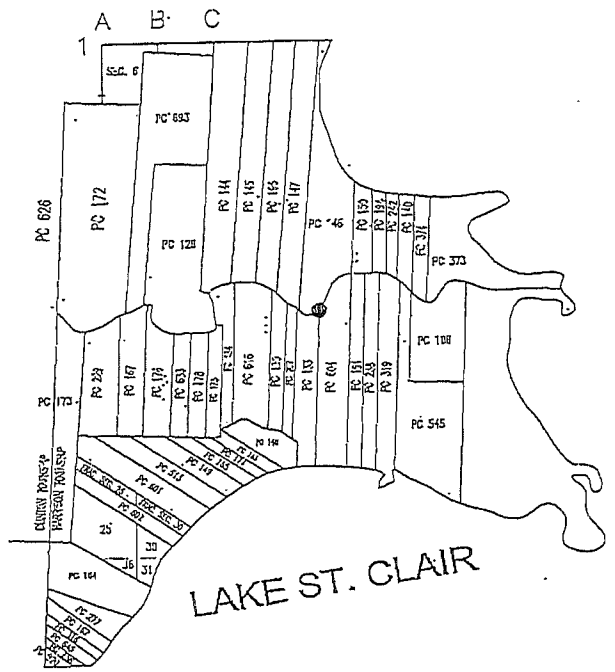
CORRECTING A PREVIOUSLY RECORDED LAND CORNER RECORDATION CERTIFICATE, LIBER 23761, PAGES 599-600 TO CORRECT LATITUDE AND LONGITUDE AND DATUM & ADJUSTMENT YEAR.

This form is ONLY for corners filed under the 2015 State Survey and Remonumentation Grant Agreement  
 Filing Requirement: MCL 54.268(2)(a), 54.268(2)(d), 54.201 – 54.210d and 2015 State Survey and Remonumentation Grant Agreement

**Notes:**

- No more than two Original Public Land Survey Corners can be recorded on this certificate
- If a corner reported hereon is common to two or more survey townships, each Town, Range and Corner Code for the corner may be identified on this certificate
- If a corner reported hereon is common to two or more counties, each county may be identified on this certificate and a copy of this certificate filed with the Register of Deeds in each county

|                                      |                              |                    |  |  |
|--------------------------------------|------------------------------|--------------------|--|--|
| For corner in:                       | Macomb County                | Harrison Township  |  |  |
| <b>Corner Type</b>                   | <b>Survey Township</b>       | <b>Corner Code</b> |  |  |
| Original Public Land Survey Corner   | T _____ R _____              | _____              |  |  |
| • MCL 54.202(g)                      | T <u>2 N.</u> R <u>14 E.</u> | <u>PC-049</u>      |  |  |
| • MCL 54.262(g)                      | T _____ R _____              | _____              |  |  |
| Property Controlling Corner          | S _____ T _____ R _____      | _____              |  |  |
| • MCL 54.202(i)                      | S _____ T _____ R _____      | _____              |  |  |
| • MCL 54.262(h)                      | S _____ T _____ R _____      | _____              |  |  |
| Protracted Public Land Survey Corner | T _____ R _____              | _____              |  |  |
| • MCL 54.202(k)                      | T _____ R _____              | _____              |  |  |
| • MCL 54.262(i)                      | T _____ R _____              | _____              |  |  |



PC-049 Northeast Corner Private Claim 133, common with the Northwest Corner Private Claim 604 on the south bank of the Clinton River (aka River Huron).

**Part A: Corner(s) History**

|          |   |                                      |                   |
|----------|---|--------------------------------------|-------------------|
| 1. 1810  | Original Private Claim Notes  | Aaron Greeley                        | (2 pages)         |
| 2. 1871  | "Map and Plat of G.H. Prentis Sub. of Private Claim 604"            | Geo. E. Adair,<br>County Surveyor    | L. 1, P. 25       |
| 3. 1921  | "Sunny Brook Park Sub."   | Samuel Crocker,<br>Surveyor Engineer | L.5, P.24         |
| 4. 1921  | "Harrison Park Sub."  | Walter J. Lehner #123                | L.5, P.60         |
| 5. 1922  | "Fresh Air Park Sub."   | W. Irwin, Civil Engineer             | L.5, P.86         |
| 6. 1964  | "Steibers Homesite Sub."  | Fitz J. Bridges #5779                | L.54, P.32 & 33   |
| 7. 1973  | Foxcroft Manor Condominium  | Fitz J. Bridges #5779                | L.2466, P.158-160 |
| 8. 1998  | L.C.R.C.  | William Soderberg #17635             | L.8709, P.823     |
| 9. 1998  | L.C.R.C.  | William Soderberg #17635             | L.8709, P.824     |
| 10. 1999 | "A.G. Helzer Estates"   | John Fenn #23505                     | L.136, P.25 & 26  |
| 11. 2001 | "Amended Plat of Part of Lot 3 of Map and Plat of G.H. Prentis Sub" | John Fenn # 23505                    | L.148, P.9 – P.1  |
| 12. 2005 | Riverside Common Condominium  | Robert Higgins #21570                | Plan No. 688      |
| 13. 2005 | L.C.R.C.  | Charles DeWinter #25839              | L.17221, P.341    |
| 14. 2005 | L.C.R.C.  | Charles DeWinter #25839              | L.17221, P.343    |
| 15. 2007 | "Sunkist Sub. No. 4   | Charles DeWinter #25839              | L.1641, P.38-41   |
| 16. 2010 | Certificate of Survey   | Robert Drouillard #52517             | Unrecorded        |





**Land Corner Recordation Certificate**  
**Attachment B to 2015 Annual Grant Agreement**  
 Authority: MCL 54.205 and R54.202

This form is **ONLY** for corners filed under the 2015 State Survey and Remonumentation Grant Agreement

Filing Requirement: MCL 54.268(2)(a), 54.268(2)(d), 54.201 – 54.210d and 2015 State Survey and Remonumentation Grant Agreement

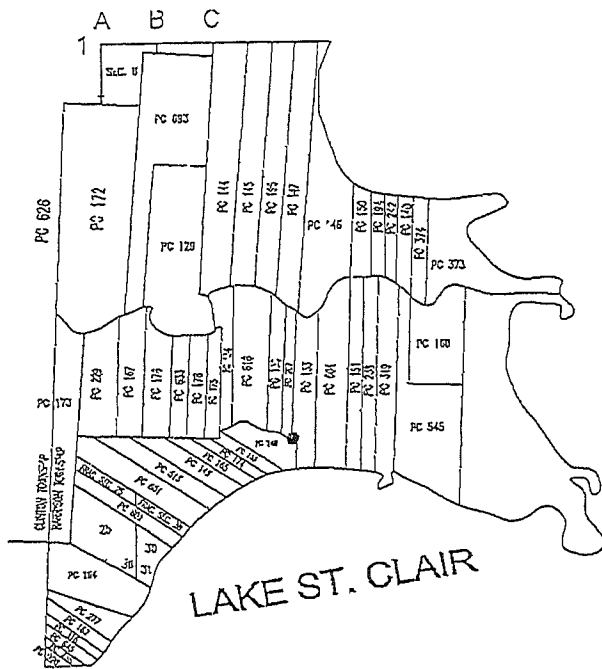
**Notes:**

- No more than two Original Public Land Survey Corners can be recorded on this certificate
- If a corner reported hereon is common to two or more survey townships, each Town, Range and Corner Code for the corner may be identified on this certificate
- If a corner reported hereon is common to two or more counties, each county may be identified on this certificate and a copy of this certificate filed with the Register of Deeds in each county

For corner in: Macomb County

Harrison Township

| Corner Type                          | Survey Township |                | Corner Code   |
|--------------------------------------|-----------------|----------------|---------------|
| Original Public Land Survey Corner   | T _____         | R _____        | _____         |
| • MCL 54.202(g)                      | T <u>2 N.</u>   | R <u>14 E.</u> | <u>PC-053</u> |
| • MCL 54.262(g)                      | T _____         | R _____        | _____         |
| Property Controlling Corner          | S _____         | T _____        | R _____       |
| • MCL 54.202(i)                      | S _____         | T _____        | R _____       |
| • MCL 54.262(h)                      | S _____         | T _____        | R _____       |
| Protracted Public Land Survey Corner | T _____         | R _____        | _____         |
| • MCL 54.202(k)                      | T _____         | R _____        | _____         |
| • MCL 54.262(i)                      | T _____         | R _____        | _____         |



PC-053 Southeast Corner Private Claim 207, common with a Southwest Corner Private Claim 133 on the Northerly line of Private Claim 148.

**Part A: Corner(s) History**

| Year    | Description                         | Surveyor                | Reference             |
|---------|-------------------------------------|-------------------------|-----------------------|
| 1. 1810 | Original Private Claim Notes        | Aaron Greeley           | (3 pages)             |
| 2. 1959 | "Sunkist Subdivision"               | Earnest Pettingill      | L. 45, P. 2           |
| 3. 1967 | "Sunkist Subdivision No. 2"         | Fitz Bridges #5779      | L. 57, P. 37          |
| 4. 1988 | "Sunkist Subdivision No. 3"         | Fitz Bridges #5779      | L. 86, P. 26 - P. 28  |
| 5. 1998 | Sketch of Survey                    | Roger J. Stecker #30103 | Unrecorded            |
| 6. 1999 | L.C.R.C.                            | Mariusz Lukowicz #38119 | L. 8627, P. 493       |
| 7. 1999 | "River Bend Park Subdivision No. 1" | Mariusz Lukowicz #38119 | L. 138, P. 26 - P. 34 |
| 8. 2000 | "River Bend Park Subdivision No. 2" | Mariusz Lukowicz #38119 | L. 142, P. 5 - P. 13  |

**Part B: Surveyor's Report on Perpetuation or Monumentation of Corner(s)**

No evidence of the original post was found. I consider it an obliterated corner.  
I established the private claim line between Private Claim 207 and Private Claim 133 from found evidence in items 2, 3, 4, 5, 6, 7 and 8. I extended the established private claim south to the north bank of the Ventre de Bouef Drain and set a 1/2" steel rod.  
There are no lines of occupation. The corner position is three feet from the water's edge in cattails and brush.  
The area is heavily wooded.

**Distances:**

PC-053 to PC-048  
5940.0' (90 Chains, Private Claim Notes)  
5634.50' (Measured 2015)

PC-053 to PC-058  
426.36' (6 Chains 46 Links, Private Claim Notes)  
460.57' (Measured 2015)

**Part C: Field Evidence of Perpetuation or Monumentation of Corner(s)**

I set a 4" diameter by 36" long concrete monument with a 1/2" steel rod with  
A 2 inch diameter aluminum cap stamped "MACOMB COUNTY MONUMENT MI ACT 345 30103 PC-053

**Witnesses:**

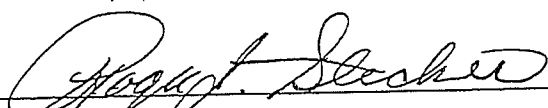
|       |        |   |
|-------|--------|---|
| N85°E | 24.04' | set Mag nail and Macomb County Witness tag in N. face of twin 30" Poplar.     |
| N50°E | 32.42' | set Mag nail and Macomb County Witness tag in N. face of twin 24"-12" Poplar. |
| NORTH | 38.84' | set Mag nail and Macomb County Witness tag in W. face of triple 27" Poplar.   |
| N25°W | 27.93' | set Mag nail and Macomb County Witness tag in E. face of 15" Elm.             |

| Date of Observation | Latitude     | Longitude     | Datum and Adjustment Year | Epoch Date |
|---------------------|--------------|---------------|---------------------------|------------|
| 11/16/2015          | 42°34'28.07" | -82°49'21.42" | August 2011               | 2010       |

Method for coordinate determination: GPS Survey

Disclaimer on accuracy of values reported relative to their use: +/- 1 foot.

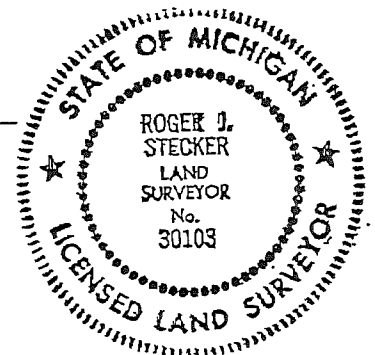
I, Roger J. Stecker, in a field survey on 09/30/2015, certify under the requirements of the State Survey and Remonumentation Act, 1990 PA 345, MCL 54.261 to 54.279, and the Corner Recordation Act, 1970 PA 74, MCL 54.201 to 54.210d, that the corner identified and described hereon has been perpetuated or monumented as described in Parts A, B, and C above, pursuant to the laws and rules of the State of Michigan.

  
\_\_\_\_\_  
Roger J. Stecker, P.S.

12-4-2015  
\_\_\_\_\_  
Date

Professional Surveyor's License No.: 30103

Lehner Associates, Inc.  
17001 19 Mile Rd., Suite 3  
Clinton Township, MI 48038



I, Martin C. Dunn, P.S., Macomb County Surveyor Representative, confirm that the corner identified and described hereon and perpetuated or monumented as described in Parts A, B, and C above was presented to and reviewed by the Peer Review Group on October 27, 2015 and is accepted for filing in the Macomb County Remonumentation Program.

  
\_\_\_\_\_  
Martin C. Dunn, P.S.

12-8-2015  
\_\_\_\_\_  
Date

Professional Surveyor's License No.: 30081



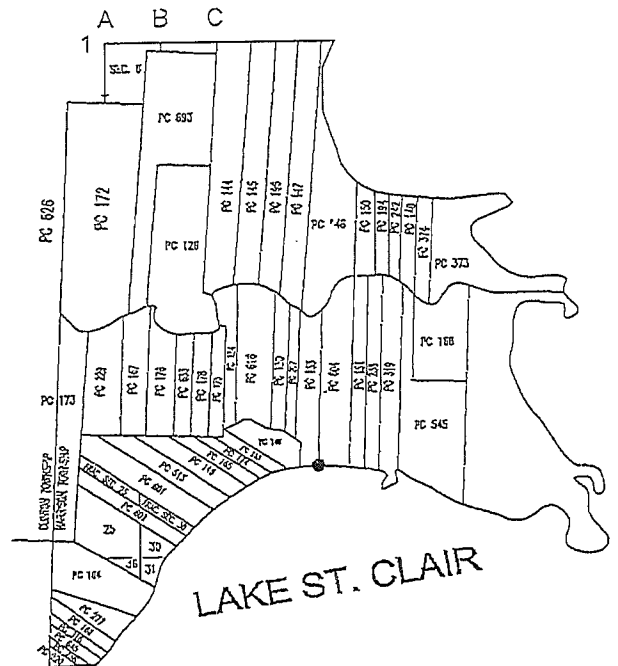
**Land Corner Recordation Certificate**  
**Attachment B to 2015 Annual Grant Agreement**  
 Authority: MCL 54.205 and R54.202

This form is ONLY for corners filed under the 2015 State Survey and Remonumentation Grant Agreement  
 Filing Requirement: MCL 54.268(2)(a), 54.268(2)(d), 54.201 – 54.210d and 2015 State Survey and Remonumentation Grant Agreement

**Notes:**

- No more than two Original Public Land Survey Corners can be recorded on this certificate
- If a corner reported hereon is common to two or more survey townships, each Town, Range and Corner Code for the corner may be identified on this certificate
- If a corner reported hereon is common to two or more counties, each county may be identified on this certificate and a copy of this certificate filed with the Register of Deeds in each county

|                                      |                              |                    |  |  |
|--------------------------------------|------------------------------|--------------------|--|--|
| For corner in:                       | Macomb County                | Harrison Township  |  |  |
| <b>Corner Type</b>                   | <b>Survey Township</b>       | <b>Corner Code</b> |  |  |
| Original Public Land Survey Corner   | T _____ R _____              | _____              |  |  |
| • MCL 54.202(g)                      | T <u>2 N.</u> R <u>14 E.</u> | <u>PC-054</u>      |  |  |
| • MCL 54.262(g)                      | T _____ R _____              | _____              |  |  |
|                                      | T _____ R _____              | _____              |  |  |
| Property Controlling Corner          | S _____ T _____ R _____      | _____              |  |  |
| • MCL 54.202(i)                      | S _____ T _____ R _____      | _____              |  |  |
| • MCL 54.262(h)                      | S _____ T _____ R _____      | _____              |  |  |
|                                      | S _____ T _____ R _____      | _____              |  |  |
| Protracted Public Land Survey Corner | T _____ R _____              | _____              |  |  |
| • MCL 54.202(k)                      | T _____ R _____              | _____              |  |  |
| • MCL 54.262(i)                      | T _____ R _____              | _____              |  |  |
|                                      | T _____ R _____              | _____              |  |  |



PC-054 Southeast Corner Private Claim 133, common with the Southwest Corner Private Claim 604 on the northerly shoreline of Lake St. Clair.

**Part A: Corner(s) History**

|     |      |   |                                      |                   |
|-----|------|---|--------------------------------------|-------------------|
| 1.  | 1810 | Original Private Claim Notes  | Aaron Greeley                        | (2 pages)         |
| 2.  | 1871 | "Map and Plat of G.H. Prentis Sub. of Private Claim 604"            | Geo. E. Adair,<br>County Surveyor    | L 1, P. 25        |
| 3.  | 1921 | "Sunny Brook Park Sub."   | Samuel Crocker,<br>Surveyor Engineer | L.5, P.24         |
| 4.  | 1921 | "Harrison Park Sub."  | Walter J. Lehner #123                | L.5, P.60         |
| 5.  | 1922 | "Fresh Air Park Sub."   | W. Irwin, Civil Engineer             | L.5, P.86         |
| 6.  | 1964 | "Steibers Homesite Sub."  | Fitz J. Bridges #5779                | L.54, P.32 & 33   |
| 7.  | 1973 | Foxcroft Manor Condominium  | Fitz J. Bridges #5779                | L.2466, P.158-160 |
| 8.  | 1998 | L.C.R.C.  | William Soderberg #17635             | L.8709, P.823     |
| 9.  | 1998 | L.C.R.C.  | William Soderberg #17635             | L.8709, P.824     |
| 10. | 1999 | "A.G. Helzer Estates"   | John Fenn #23505                     | L.136, P.25 & 26  |
| 11. | 2001 | "Amended Plat of Part of Lot 3 of Map and Plat of G.H. Prentis Sub" | John Fenn # 23505                    | L.148, P.9 – P.1  |
| 12. | 2005 | Riverside Common Condominium  | Robert Higgins #21570                | Plan No. 688      |
| 13. | 2005 | L.C.R.C.  | Charles DeWinter #25839              | L.17221, P.341    |
| 14. | 2005 | L.C.R.C.  | Charles DeWinter #25839              | L.17221, P.343    |
| 15. | 2007 | "Sunkist Sub. No. 4   | Charles DeWinter #25839              | L.1641, P.38-41   |
| 16. | 2010 | Certificate of Survey   | Robert Drouillard #52517             | Unrecorded        |

C

**Part B: Surveyor's Report on Perpetuation or Monumentation of Corner(s)**

No evidence of the original post was found. I consider it an obliterated corner. I established the private claim line between Private Claim 133 and Private Claim 604 from found evidence in items 4, 5, 8, 12, 13, 15 and 16. I extended the established private claim south to the north bank of Lake St. Clair and set a 1/2" steel rod 5 feet from the water's edge. There are no lines of occupation. The corner falls in a grass area in front of house no. 37680 Maplehill Drive.

**Distances:**

PC-054 Ref. Mon. to PC-049  
 8745.0' (132 Chains, 50 Links Private Claim Notes)  
 7722.0' (117 Chains) Item No. 2  
 8030.71' (Measured 2015)

**Part C: Field Evidence of Perpetuation or Monumentation of Corner(s)**

I set a 4" diameter by 36-inch long concrete monument with a 1/2" steel rod with A 2inch diameter aluminum cap stamped "MACOMB COUNTY REF MONUMENT MI ACT 345 30103 PC-054

**Witnesses:**

|       |        |   |
|-------|--------|---|
| NORTH | 54.28' | to southwest corner of house # 37680 Maplehill Drive.               |
| N15°E | 59.85' | to southeast corner of house # 37680 Maplehill Drive.               |
| WEST  | 14.87' | to east face of 2" anchor post.                                     |
| N10°W | 44.21' | set Mag nail and Macomb County Witness tag in E. face of 20" Maple. |
| N85°E | 28.15' | set Mag nail and Macomb County Witness tag in S. face of 24" Maple. |
| SOUTH | 5.0'   | to the lake face of 3' catwalk.                                     |

| Date of Observation  | Latitude     | Longitude     | Datum and Adjustment Year | Epoch Date |
|----------------------|--------------|---------------|---------------------------|------------|
| Ref Mon. 11/16/2015  | 42°34'13.03" | -82°49'08.18" | August 2011               | 2010       |
| True Cor. 11/16/2015 | 42°34'05.98" | -82°49'08.62" |                           |            |

Method for coordinate determination: GPS Survey

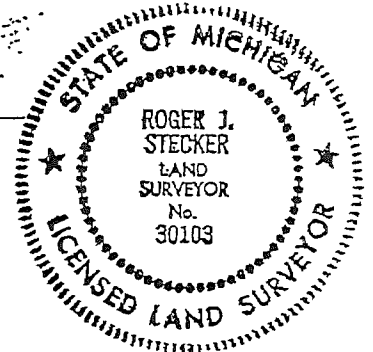
Disclaimer on accuracy of values reported relative to their use: +/- 1 foot.

I, Roger J. Stecker, in a field survey on 09/30/2015, certify under the requirements of the State Survey and Remonumentation Act, 1990 PA 345, MCL 54.261 to 54.279, and the Corner Recordation Act, 1970 PA 74, MCL 54.201 to 54.210d, that the corner identified and described hereon has been perpetuated or monumented as described in Parts A, B, and C above, pursuant to the laws and rules of the State of Michigan.

*Roger J. Stecker*      12-4-2015  
 Roger J. Stecker, P.S.      Date

Professional Surveyor's License No.: 30103

Lehner Associates, Inc.  
 17001 19 Mile Rd., Suite 3  
 Clinton Township, MI 48038



I, Martin C. Dunn, P.S., Macomb County Surveyor Representative, confirm that the corner identified and described hereon and perpetuated or monumented as described in Parts A, B, and C above was presented to and reviewed by the Peer Review Group on October 27, 2015 and is accepted for filing in the Macomb County Remonumentation Program.

*Martin C. Dunn*      12-8-2015  
 Martin C. Dunn, P.S.      Date

Professional Surveyor's License No.: 30081



**Land Corner Recordation Certificate**  
**Attachment B to 2015 Annual Grant Agreement**  
 Authority: MCL 54.205 and R54.202

This form is ONLY for corners filed under the 2015 State Survey and Remonumentation Grant Agreement

Filing Requirement: MCL 54.268(2)(a), 54.268(2)(d), 54.201 – 54.210d and 2015 State Survey and Remonumentation Grant Agreement

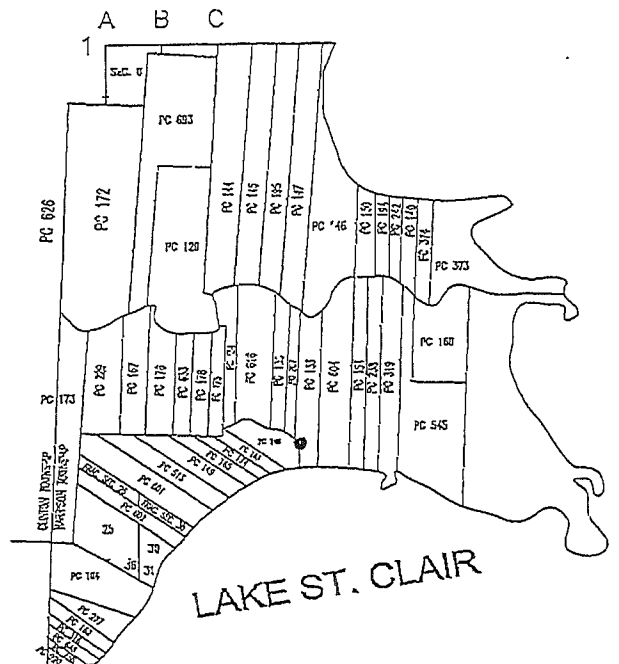
**Notes:**

- No more than two Original Public Land Survey Corners can be recorded on this certificate
- If a corner reported hereon is common to two or more survey townships, each Town, Range and Corner Code for the corner may be identified on this certificate
- If a corner reported hereon is common to two or more counties, each county may be identified on this certificate and a copy of this certificate filed with the Register of Deeds in each county

For corner in: Macomb County

Harrison Township

| Corner Type                          | Survey Township |                | Corner Code   |
|--------------------------------------|-----------------|----------------|---------------|
| Original Public Land Survey Corner   | T _____         | R _____        | _____         |
| • MCL 54.202(g)                      | T <u>2 N.</u>   | R <u>14 E.</u> | <u>PC-058</u> |
| • MCL 54.262(g)                      | T _____         | R _____        | _____         |
| Property Controlling Corner          | S _____         | T _____        | R _____       |
| • MCL 54.202(i)                      | S _____         | T _____        | R _____       |
| • MCL 54.262(h)                      | S _____         | T _____        | R _____       |
| Protracted Public Land Survey Corner | T _____         | R _____        | _____         |
| • MCL 54.202(k)                      | T _____         | R _____        | _____         |
| • MCL 54.262(j)                      | T _____         | R _____        | _____         |



PC-058 Northeast Corner Private Claim 148, common with a deflection point controlling a southerly and westerly line of Private Claim 133.

**Part A: Corner(s) History**

|          |                                    |                          |                  |
|----------|------------------------------------|--------------------------|------------------|
| 1. 1810  | Original Private Claim Notes       | Aaron Greeley            | (2 pages)        |
| 2. 1921  | "Harrison Park Sub."               | Walter J. Lehner #123    | L.5, P.60        |
| 3. 1922  | "Fresh Air Park Sub."              | W. Irwin, Civil Engineer | L.5, P.86        |
| 4. 1959  | "Sunkist Subdivision"              | Earnest Pettingill       | L. 45, P. 2      |
| 5. 1967  | "Sunkist Subdivision No. 2"        | Fitz Bridges #5779       | L.57, P.37       |
| 6. 1988  | "Sunkist Subdivision No. 3"        | Fitz Bridges #5779       | L.86, P.26-P.28  |
| 7. 1998  | Sketch of Survey                   | Roger J. Stecker #30103  | Unrecorded       |
| 8. 1998  | L.C.R.C.                           | William Soderberg #17635 | L.8709, P.823    |
| 9. 1998  | L.C.R.C.                           | William Soderberg #17635 | L.8709, P.824    |
| 10. 1999 | L.C.R.C.                           | Mariusz Lukowicz #38119  | L.8627, P.493    |
| 11. 1999 | "River Bend Park Subdivision No.1" | Mariusz Lukowicz #38119  | L.138, P.26-P.34 |
| 12. 2000 | "River Bend Park Subdivision No.2" | Mariusz Lukowicz #38119  | L.142, P.5-P.13  |
| 13. 2005 | Riverside Common Condominium       | Robert Higgins #21570    | Plan No. 688     |
| 14. 2005 | L.C.R.C.                           | Charles DeWinter #25839  | L.17221, P.341   |
| 15. 2007 | "Sunkist Sub. No. 4                | Charles DeWinter #25839  | L.1641, P.38-41  |
| 16. 2010 | Certificate of Survey              | Robert Drouillard #52517 | Unrecorded       |

Land Corner Recordation Certificate  
 Attachment B to 2015 Annual Grant Agreement  
 T2N R14E Code PC-058  
 Page 2 of 2

**Part B: Surveyor's Report on Perpetuation or Monumentation of Corner(s)**

No evidence of the original post was found. I consider it an obliterated corner. I established the private claim line between Private Claim 207 and Private Claim 133 from found evidence in items 4, 5, 6, 7, 10, 11 and 12. Then I established private claim line between Private Claim 133 and Private Claim 604 from found evidence in items 2, 3, 8, 13 and 16. I used proration across the width of Private Claim 133 to establish a width of Private Claim 133 at the north shore of Lake St. Clair (670.56 feet 10 chains, 16 links private claim notes) 688.91 feet prorated distance 2015. From the point on the north shore of Lake St. Clair, I used an average bearing between the west line and east line of Private Claim 133 and extended it north to the north bank of the Ventre de Bouef Drain and set a temporary 1/2" steel rod 3 feet from the bank. There are no lines of occupation. The corner position falls in an overgrown area along the river bank.

**Distances:**

PC-058 to PC-053  
 426.36' (6 Chains 46 links, Private Claim Notes)  
 460.57' (Measured 2015)

**Part C: Field Evidence of Perpetuation or Monumentation of Corner(s)**

I set a 4" diameter by 36" long concrete monument with a 1/2" steel rod with A 2 inch diameter aluminum cap stamped "MACOMB COUNTY MONUMENT MI ACT 345 30103 PC-058

**Witnesses:**

|       |        |  |
|-------|--------|--|
| N31°E | 7.07'  | set Mag nail and Macomb County Witness tag in S. face of 6" Elm.         |
| N56°W | 34.44' | set Mag nail and Macomb County Witness tag in S. face of twin 6"-4" Elm. |
| S40°E | 15.81' | to south face of 2" - 6' high chain link fence anchor post.              |
| N77°E | 26.53' | to south face of 2" - 6' high chain link fence anchor post.              |

| Date of Observation | Latitude     | Longitude     | Datum and Adjustment Year | Epoch Date |
|---------------------|--------------|---------------|---------------------------|------------|
| 11/16/2015          | 42°34'25.25" | -82°49'16.59" | August 2011               | 2010       |

Method for coordinate determination: GPS Survey

Disclaimer on accuracy of values reported relative to their use: +/- 1 foot.

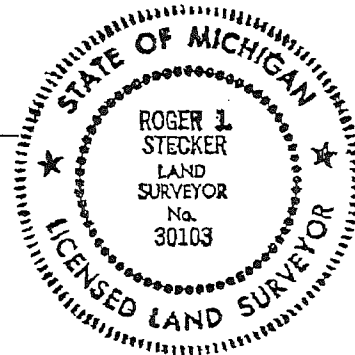
I, Roger J. Stecker, in a field survey on 09/30/2015, certify under the requirements of the State Survey and Remonumentation Act, 1990 PA 345, MCL 54.261 to 54.279, and the Corner Recordation Act, 1970 PA 74, MCL 54.201 to 54.210d, that the corner identified and described hereon has been perpetuated or monumented as described in Parts A, B, and C above, pursuant to the laws and rules of the State of Michigan.

*Roger J. Stecker*  
 Roger J. Stecker, P.S.

12-4-2015  
 Date

Professional Surveyor's License No.: 30103

Lehner Associates, Inc.  
 17001 19 Mile Rd., Suite 3  
 Clinton Township, MI 48038



I, Martin C. Dunn, P.S., Macomb County Surveyor Representative, confirm that the corner identified and described hereon and perpetuated or monumented as described in Parts A, B, and C above was presented to and reviewed by the Peer Review Group on November 10, 2015 and is accepted for filing in the Macomb County Remonumentation Program.

*Martin C. Dunn*  
 Martin C. Dunn, P.S.

12-8-2015  
 Date

Professional Surveyor's License No.: 30081



Description N<sup>o</sup> 143 Confirmed to  
 Phillis Pettier, commencing at a post-  
 standing on the border of Lake St. Clair be-  
 tween this tract and a tract Confirmed  
 to Jean Baptist Maritay, thence north  
 fifty five degrees west fifty two chains  
 fifty seven links, to an ash tree stand-  
 ing on the border of a Coulee (Called ventre  
 de Bouef) thence along the border of  
 said Coulee down stream north seventy  
 four degrees East six chains, thence -  
 north fifty eight degrees East thirteen  
 chains, thence north Eighty five degrees  
 East five chains, thence south fifty nine  
 degrees East five chains, thence south  
 sixty one degrees East Eleven chains ei-  
 ghteen links, thence south Eighty  
 one degrees East eight chains eighty  
 four links, to a post the south west  
 corner of a tract Confirmed to Lau-  
 rent Maure on the south side  
 of River Heron thence south eighty  
 one degrees thirty minutes East five  
 chains thence south fifty five degrees  
 East six chains sixty two links, to a  
 post the south east corner of said -  
 Maures Tract thence south fifty four  
 degrees East six chains forty six links  
 to a post thence south twenty one chains,  
 to a post standing on the border of  
 Lake St. Clair thence along the bor-  
 der of said Lake west seventeen chains  
 nine links, to the place of beginning.  
 Containing one hundred and twenty  
 six acres, and nine tenths of an acre.

Detroit July 18. 1810

Huron Greeley Surveyor  
 of private Claims.

No. 409

No. 148 Confirmed to  
Phillis Peltier

LAKE ST. CLAIR

Description No. 148 Confirmed to Phillis Peltier commencing at a post standing on the border of Lake St. Clair between this tract and a tract confirmed to Jean Baptist Montie thence north fifty five degrees west fifty two chains fifty seven links to an Ash Tree standing on the border of a Coulee (called Ventre de Zouef) thence along the border of said Coulee down stream north seventy four degrees east six chains, thence north fifty eight degrees east thirteen chains thence north eighty five degrees east five chains, thence south fifty nine degrees east five chains, thence south sixty one degrees east eleven chains eighteen links, thence south eighty one degrees east eight chains eighty four links, to a post the southwest corner of a tract confirmed to Laurent Maure on the south side of River Huron thence South eighty one degrees thirty minutes East five chains thence south fifty five degrees east six chains sixty two links, to a post the south east corner of said Maure's tract thence south fifty four degrees east six chains forty six links \_\_\_ to a post thence south twenty one chains, to a post standing on the border of Lake St. Clair thence along the border of said Lake west seventeen chains nine links to the place of beginning \_\_\_\_, containing one hundred and twenty six acres and nine tenths of an acre \_\_\_\_.

Detroit July 18, 1810

Aaron Greeley Surveyor  
of private claims



South Side of River Huron.

N<sup>o</sup> 468.

South side of River Huron

Description N<sup>o</sup> 133 Confirmed to Joseph Camppear, commencing at a post standing on the border of River Huron between this tract and a tract Confirmed to the Claimant thence South one hundred and thirty two chains fifty links, to a post standing on the border of Lake St. Clair, thence along the border of said Lake West ten chains sixteen links to a post standing on the border of said Lake. The boundary between this tract and a tract Confirmed to Phillis Pettier thence north twenty one chains to a post standing on the north border of the said Ventre de Boef. Thence along the border of the said ventre de boef north fifty four degrees west six chains forty six links, to a post the south East corner of a Tract Confirmed to Laurent Maure, thence north ninety chains to a post standing on the border of River Huron between this tract and a tract Confirmed to said Maure, thence along the border of said River down stream north seventy two degrees East two chains, thence north thirty nine degrees East twenty one chains, thence north nineteen degrees East eighty links, to the place of beginning containing one hundred & seventy six acres seventy two hundredths of an acre.

Detroit July 18. 1810

Aaron Greeley Surveyor  
of private Claims.

No. 468

No. 133 Confirmed to  
Joseph Campeau

SOUTH SIDE OF RIVER HURON

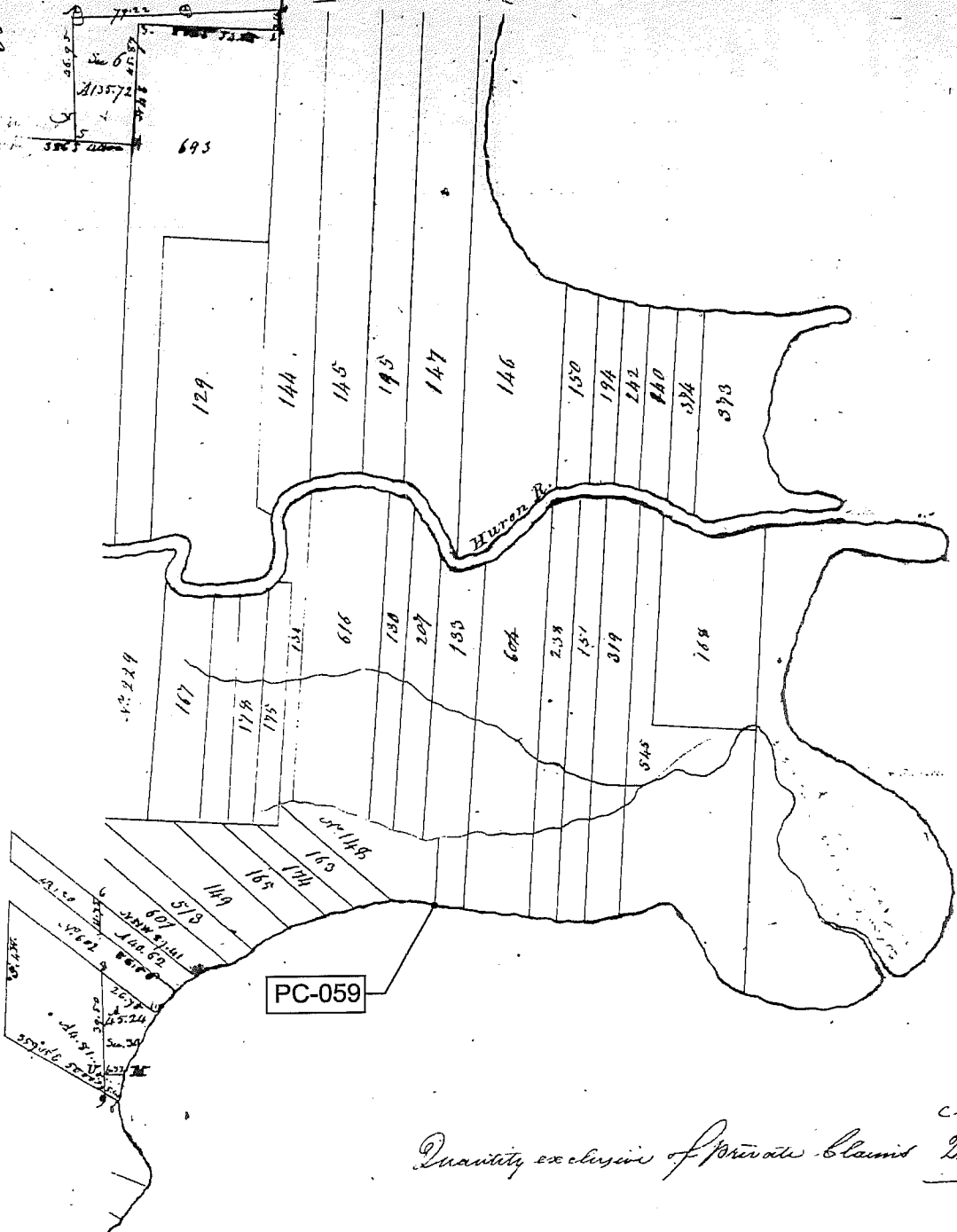
Description No. 133, confirmed to Joseph Campeau commencing at a post standing on the border of River Huron between this tract and a tract confirmed to the claimant thence south one hundred and thirty two chains fifty links, to a post standing on the border of Lake St. Clair thence along the border of sd. lake west ten chains sixteen links to a post standing on the border of said lake the boundary between this tract and a tract confirmed to Phillis Feltier thence north twenty one chains to a post standing on the north border of the Ventre de boef, thence along the border of the said Ventre de boef north fifty four degrees west six chains forty six links to a post the southeast corner of a tract confirmed to Laurent Maure thence north ninety chains to a post standing on the border of River Huron between this tract and a tract confirmed to said Maure, thence along the border of said river down stream north seventy two degrees east two chains, thence north thirty nine degrees east twenty one chains, thence north nineteen degrees east eighty links to the place of beginning, containing one hundred and seventy six acres seventy two hundredths of an acre.

Detroit July 18, 1810

Aaron Greeley Surveyor  
of private claims



Township N. II North, Range N. XIV East of the Mer. (Mich. Ter.)



D. S. C. L. A. I. R.

Quantity exclusive of private claims 226-39  
*(Handwritten signature)*

A true copy from the Original on file in this Office

Surveyor General's Office  
 July 20 1818

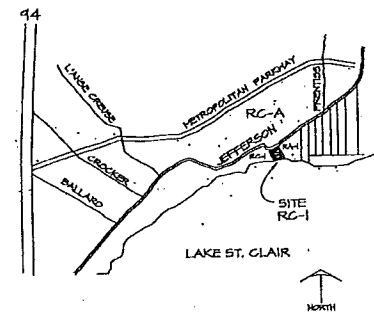
2N, 14E HARRISON

*(Handwritten signature)*  
 Surveyor

1818

MACOMB COUNTY CONDOMINIUM  
SUBDIVISION PLAN NO. 497

LOCATION MAP  
NO SCALE



PHASE I

EXHIBIT B TO THE MASTER DEED OF

SEA WATCH

CONDOMINIUMS AND MARINA  
HARRISON TOWNSHIP MACOMB COUNTY, MICHIGAN

PROPERTY DESCRIPTION

PHASE I

A PARCEL OF LAND BEING A PART OF PRIVATE CLAIM 148, T. 2N., R. 14 E., HARRISON TOWNSHIP MACOMB COUNTY, MICHIGAN IS DESCRIBED AS FOLLOWS:

BEGINNING AT A POINT WHICH IS THE INTERSECTION OF THE CENTERLINE OF JEFFERSON AVE WITH THE WESTERLY LINE OF SIESTA PARK SUBDIVISION RECORDED IN LIBER 3 OF PLATS, ON PG. 89 OF MACOMB COUNTY RECORDS; THENCE ALONG THE CENTERLINE OF JEFFERSON AVE, S. 53° 24' 49" W., 399.13' TO P.O.B. THENCE S 53° 29' 44" W. 33.11'; ALONG THE CENTERLINE OF JEFFERSON AVE TO A POINT OF CURVATURE; THENCE ALONG THE ARC TANGENT CURVE TO 242.49' SAID CURVE HAVING A RADIUS OF 284.50 FT. WITH A CENTRAL ANGLE OF 54° 35' 28" AND WHOSE LONG CHORD BEARS S. 80° 41' 33" W., 233.42 FT.; THENCE S. 51° 20' 13" E., 1101.39 FT.; THENCE N. 19° 43' 47" W. 316.25'; THENCE N 84° 03' 10" W. 53.88'; THENCE N 51° 17' 10" W. 202.52'; THENCE S 38° 42' 50" W. 126.83'; THENCE N 51° 17' 01" W. 171.72'; THENCE N 80° 59' 26" W. 180.75'; THENCE N 34° 29' 55" W. 84.35'; TO THE P.O.B. SUBJECT TO 1/2 (60') R.O.W. FOR JEFFERSON AVE.

DEVELOPER/BUILDER:

SEA WATCH LAND COMPANY, L.P., L.P.C.,  
2101 TROY CENTER DRIVE SUITE 400  
TROY, MICHIGAN 48064

SHEET INDEX

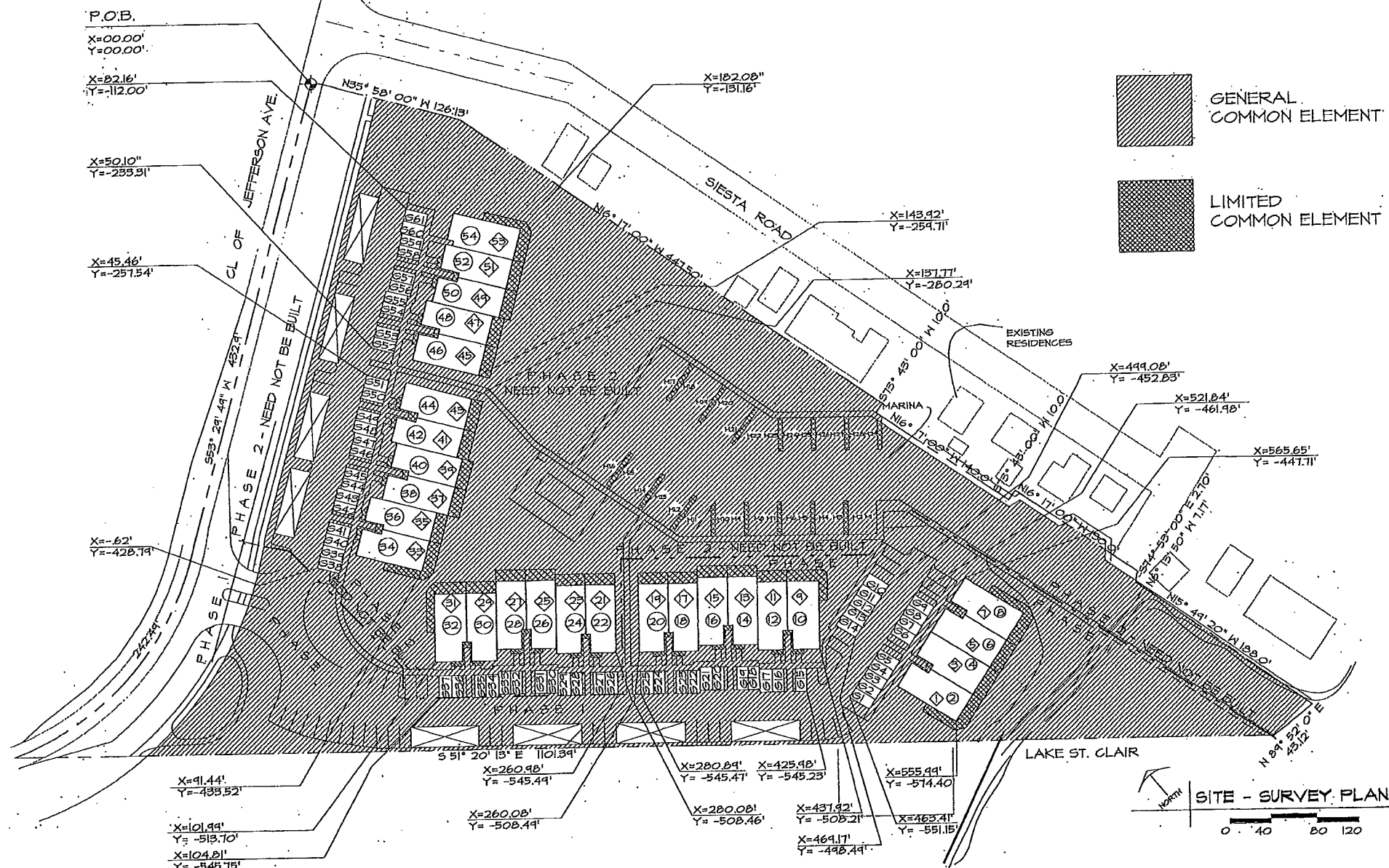
- 1 TITLE SHEET
- 2 SITE - SURVEY PLAN
- 3 UTILITY PLAN
- 4 FLOOR PLANS - UNIT A
- 5 FLOOR PLANS - UNIT B
- 6 FLOOR PLANS - UNIT C
- 7 FLOOR PLANS - UNIT D
- 8 FLOOR PLANS - UNIT D-1
- 9 GROSS SECTIONS UNIT "A"
- 10 GROSS SECTIONS UNIT "B"
- 11 GROSS SECTIONS UNIT "C"
- 12 GROSS SECTIONS UNIT "D"
- 13 PERIMETER PLAN BUILDING 1
- 14 PERIMETER PLAN BUILDING 2
- 15 PERIMETER PLAN BUILDING 3
- 16 PERIMETER PLAN BUILDING 4
- 17 PERIMETER PLAN BUILDING 5
- 18 GARAGE SECTION, PLAN, AND PERIMETER PLAN BUILDINGS 1 AND 1A
- 19 PERIMETER PLAN GARAGE BUILDINGS 2, 3, 4, & 5

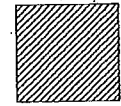
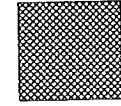
DATE



ROBERT C. HALL



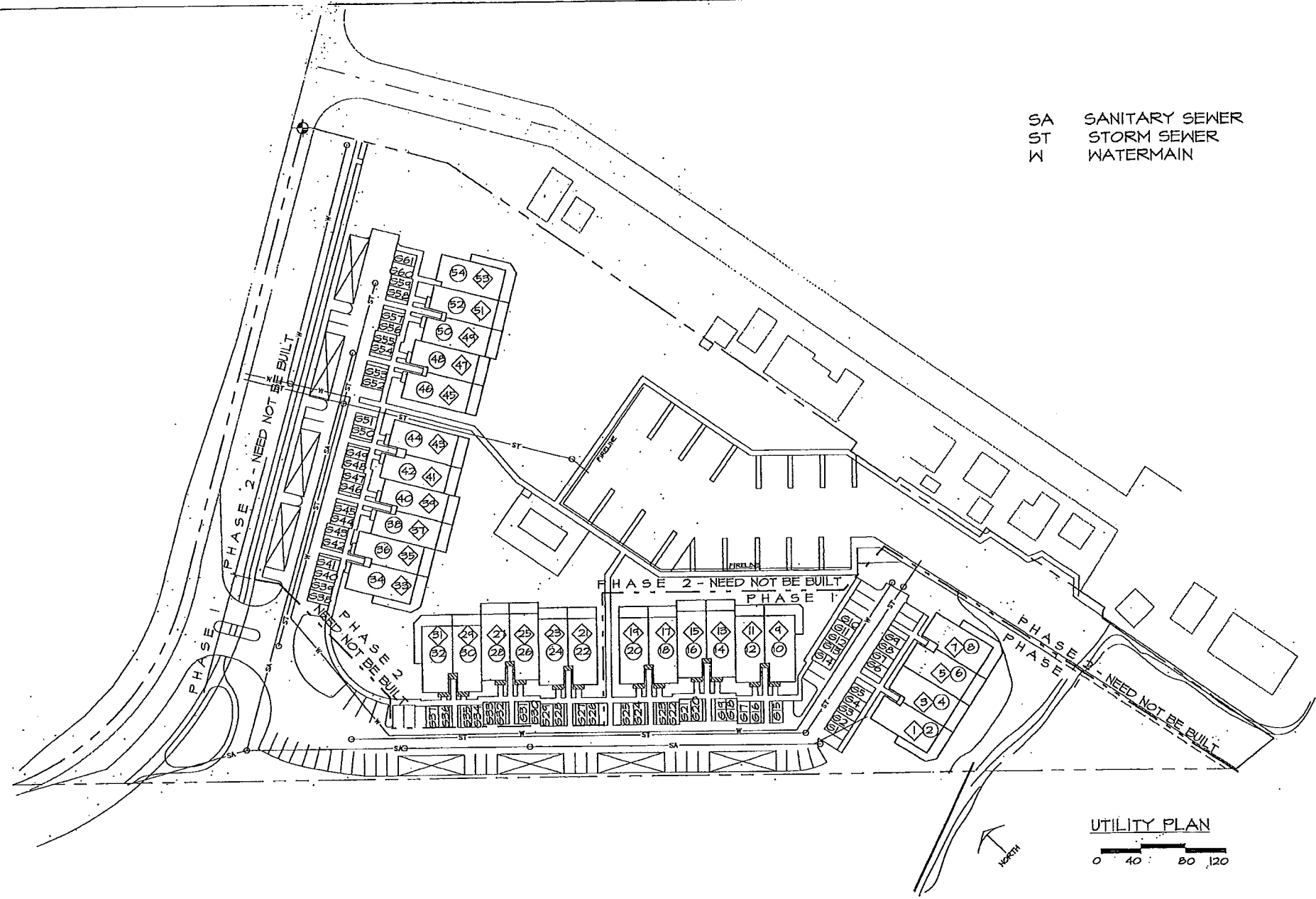


 GENERAL COMMON ELEMENT  
 LIMITED COMMON ELEMENT

NORTH  
 SITE - SURVEY PLAN  
 0 40 80 120

**SEA WATCH**  
 CONDOMINIUM AND MARINA  
 HARRISON TOWNSHIP MACOMB COUNTY, MICHIGAN  
 ◆ DESIGNATES LOWER UNIT  
 ○ DESIGNATES UPPER UNIT

SA SANITARY SEWER  
 ST STORM SEWER  
 W WATERMAIN



UTILITY PLAN  
 0 40 80 120

SEA WATCH  
 CONDOMINIUMS AND MARINA  
 HARRISON TOWNSHIP MACOMB COUNTY, MICHIGAN

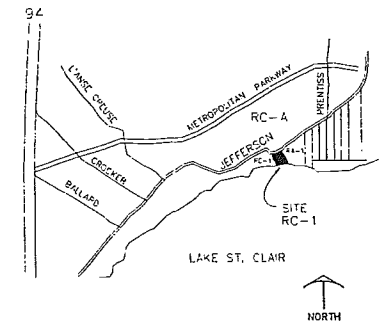




SECOND REPLAT:  
MACOMB COUNTY CONDOMINIUM  
SUBDIVISION PLAN NO. 497

LOCATION MAP

NO SCALE



SECOND AMENDMENT TO EXHIBIT "B" OF THE MASTER DEED FOR:

**S E A - C -**

CONDOMINIUM AND MARINA  
HARRISON TOWNSHIP MACOMB COUNTY, MICHIGAN

DEVELOPER/BUILDER:

SEA WATCH LAND COMPANY LLC  
1994 WOODWARD AVE. SUITE 345  
BLOOMFIELD HILLS, MICH 48304

CONDOMINIUM LEGAL DESCRIPTION

THE LEGAL DESCRIPTION OF THE ENTIRE PROJECT WHICH  
CONSISTS OF PHASE I, II, AND III IS AS FOLLOWS:

A PARCEL OF LAND BEING A PART OF PRIVATE CLAIM 148, T2N, R14E, HARRISON TWP., MACOMB CO., MICHIGAN, IS DESCRIBED AS FOLLOWS:  
COMMENCING AT A POINT WHICH IS (P.O.B. #1 FOR ENTIRE PROJECT) THE INTERSECTION OF THE CENTERLINE OF JEFFERSON AVE. WITH THE WESTERLY LINE OF SIESTA PARK SUBDIVISION RECORDED IN LIBER 3 OF PLATS, PG. 89, MACOMB COUNTY RECORDS; THENCE ALONG THE CENTERLINE OF JEFFERSON AVE. S 53°29'49" W 432.90'; TO A POINT OF CURVATURE; THENCE ALONG THE ARC OF A TANGENT CURVE TO THE RIGHT 242.49', SAID CURVE HAVING A RADIUS OF 254.50' WITH A CENTRAL ANGLE OF 54°35'28" AND WHOSE LONG CHORD BEARS S 80°47'33" W 233.42'; THENCE S 51°20'13" E 1101.39'; THENCE N 85°52'00" E 42.73'; THENCE N 15°39'48" W 184.90'; THENCE N 70°48'05" E 4.00'; THENCE N 16°17'00" W 727.62'; THENCE N 35°57'53" W 126.13'; TO THE POINT OF BEGINNING (P.O.B. #1 FOR ENTIRE PROJECT) SUBJECT TO 1/2 (60') R.O.W. FOR JEFFERSON AVE., CONTAINING 7.831 ACRES MORE OR LESS.

SHEET INDEX

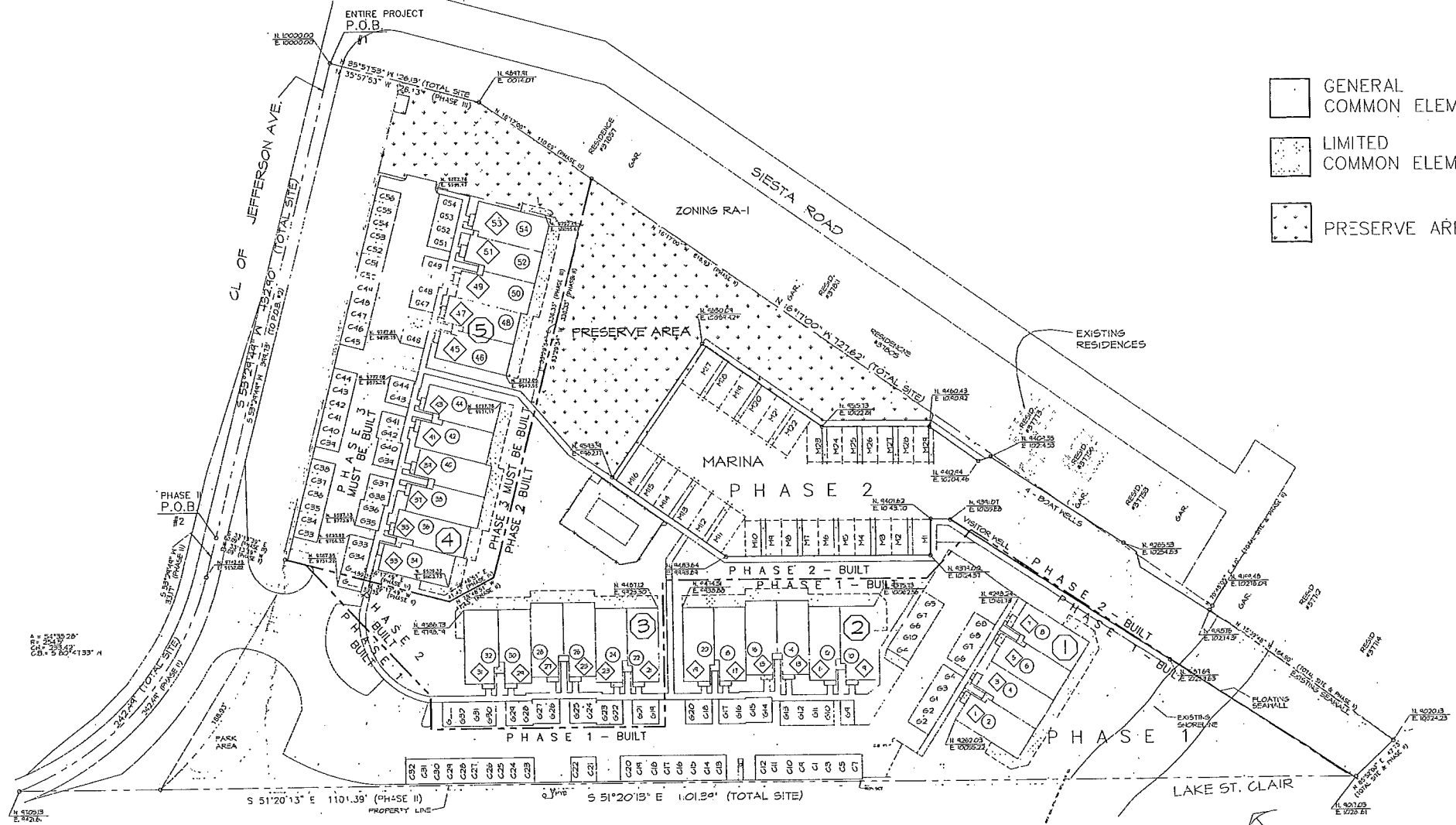
|    |   |
|----|---|
| 1  | TITLE SHEET   |
| 2  | SITE - SURVEY PLAN  |
| 3  | UTILITY PLAN  |
| 4  | MARINA PLAN   |
| 5  | FLOOR PLANS - UNIT A  |
| 6  | FLOOR PLANS - UNIT A-1                                      |
| 7  | FLOOR PLANS - UNIT B  |
| 8  | FLOOR PLANS - UNIT C  |
| 9  | FLOOR PLANS - UNIT C-1                                      |
| 10 | FLOOR PLANS - UNIT D  |
| 11 | FLOOR PLANS - UNIT D-1                                      |
| 12 | CROSS SECTIONS UNIT "A"                                     |
| 13 | CROSS SECTIONS UNIT "B"                                     |
| 14 | CROSS SECTIONS UNIT "C"                                     |
| 15 | CROSS SECTIONS UNIT "D"                                     |
| 16 | PERIMETER PLAN BUILDING 1                                   |
| 17 | PERIMETER PLAN BUILDING 2                                   |
| 18 | PERIMETER PLAN BUILDING 3                                   |
| 19 | PERIMETER PLAN BUILDING 4                                   |
| 20 | PERIMETER PLAN BUILDING 5                                   |
| 21 | GARAGE SECTION, PLAN, AND PERIMETER PLAN BUILDINGS 1 AND 1A |
| 22 | PERIMETER PLAN GARAGE BUILDINGS 2,3,4,& 5                   |

11-23-99  
DATE

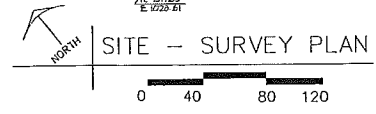
*Jacqueline S. Hoist*  
JACQUELINE S. HOIST

AutoCAD LT(Release 2), L.A.L. 11/19/99 01:39 PM CDSHT1

AutoCAD LT(Release 2), L.A.L.II/19/99 02:06 PMCD5HT2



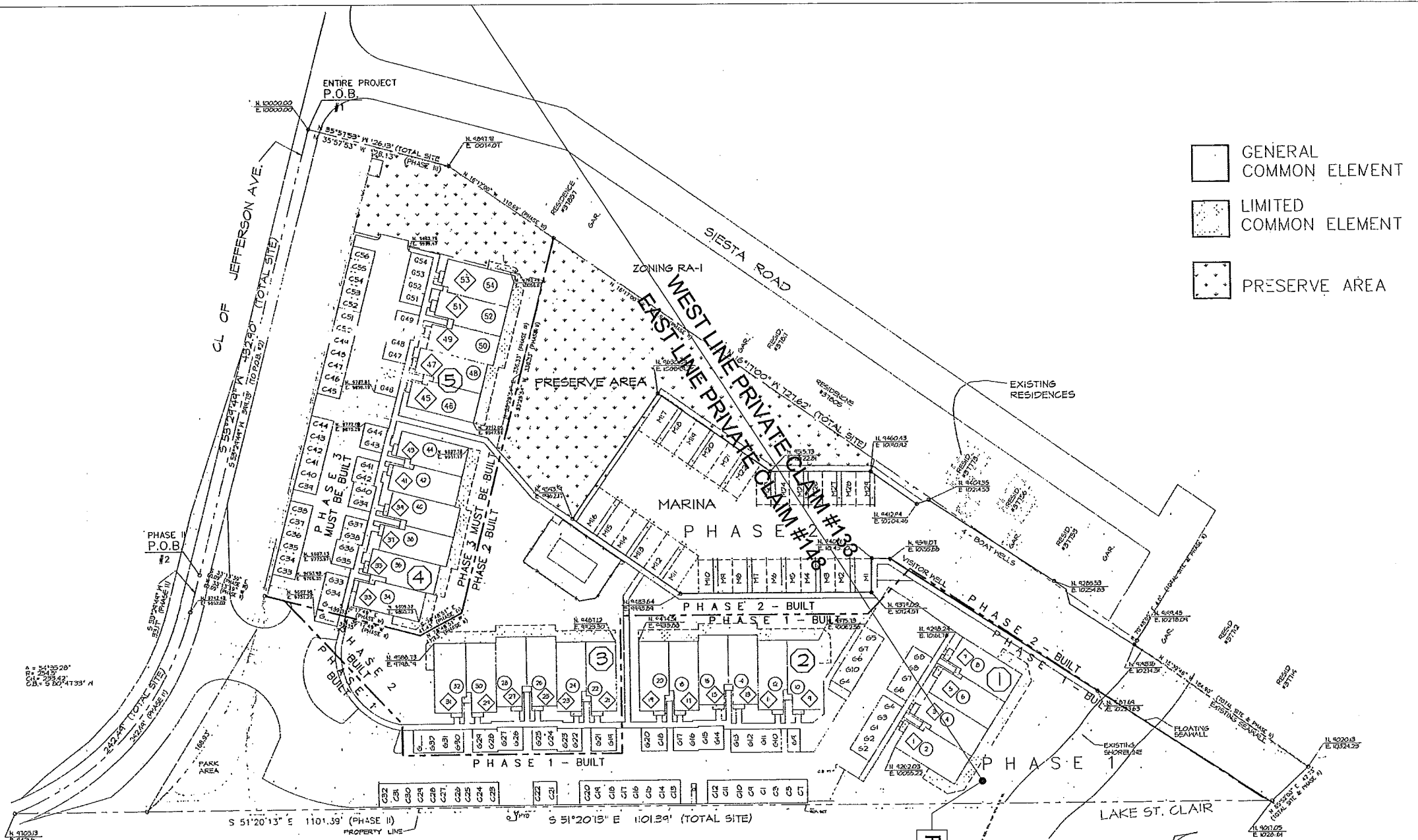
- GENERAL COMMON ELEMENT
- LIMITED COMMON ELEMENT
- PRESERVE AREA



S E A W A T C H  
 CONDOMINIUMS AND MARINA  
 HARRISON TOWNSHIP MACOMB COUNTY, MICHIGAN

- DESIGNATES LOWER UNIT
- DESIGNATES UPPER UNIT





- GENERAL COMMON ELEMENT
- LIMITED COMMON ELEMENT
- PRESERVE AREA

NORTH

**SITE - SURVEY PLAN**

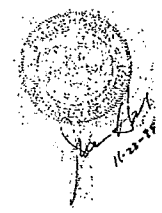
0 40 80 120

**SEA WATCH**

CONDOMINIUMS AND MARINA  
HARRISON TOWNSHIP MACOMB COUNTY, MICHIGAN

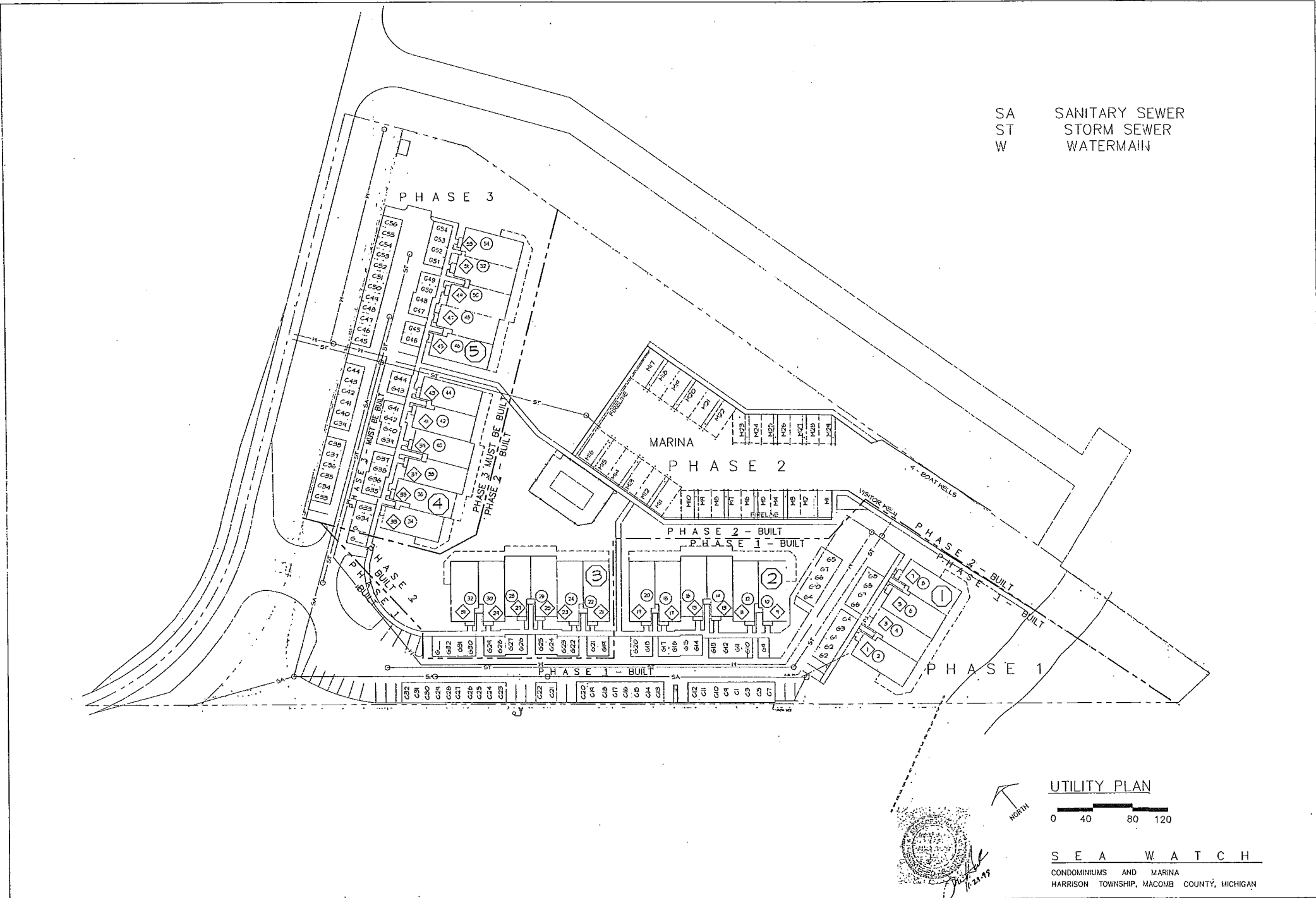
- DESIGNATES LOWER UNIT
- DESIGNATES UPPER UNIT

PC-059





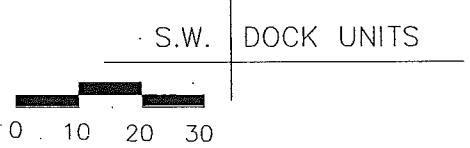
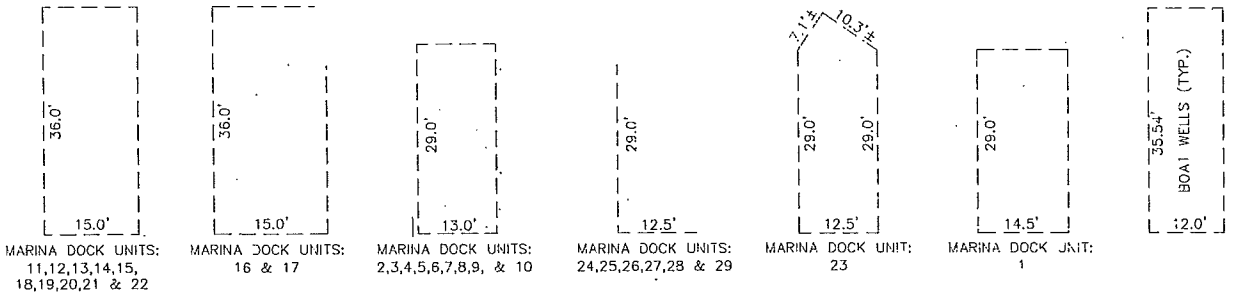
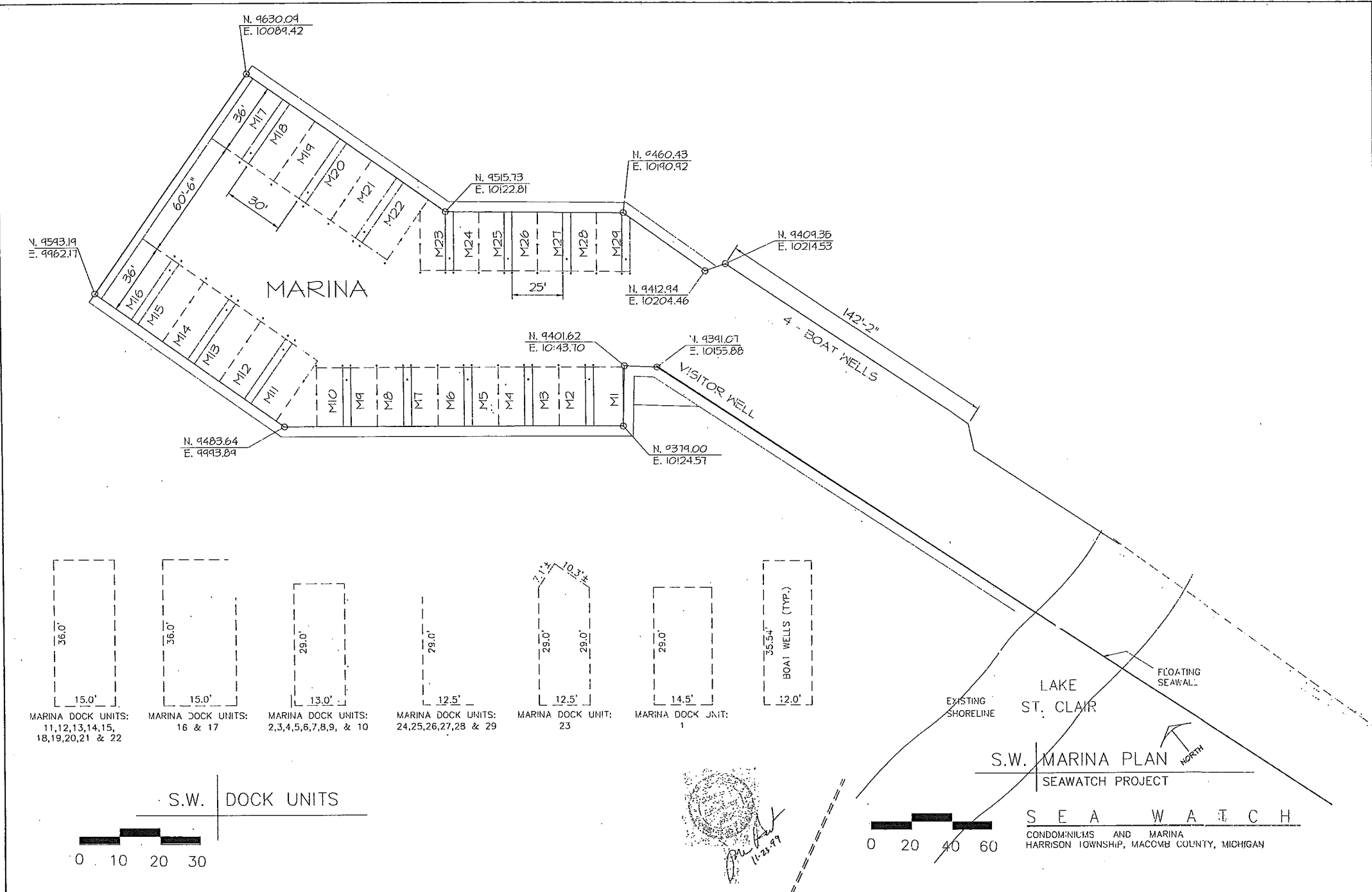
AutoCAD LT(Release 2), L.A.L. 11/19/99 02:19 PM CDSHT3



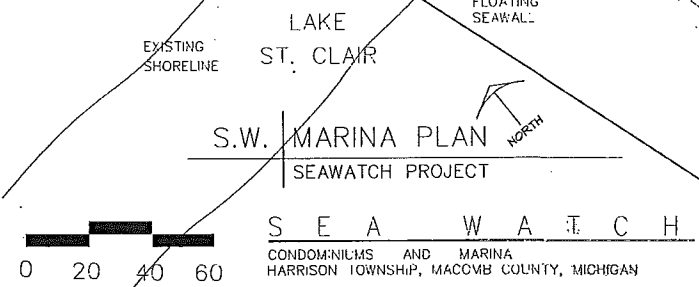
SA    SANITARY SEWER  
 ST    STORM SEWER  
 W    WATERMAIN

UTILITY PLAN  
 0    40    80    120

SEA WATCH  
 CONDOMINIUMS AND MARINA  
 HARRISON TOWNSHIP, MACOMB COUNTY, MICHIGAN



*Handwritten signature and date:*  
 11-23-97



**S.W. MARINA PLAN**  
 SEAWATCH PROJECT