

INDEX
PC-039
SOUTHEAST CORNER P.C. 145
COMMON WITH
SOUTHWEST CORNER P.C. 195
HARRISON TOWNSHIP,
T2N, R14E

SECTION 1:

1. Index
2. Before Pictures of Point and in Each Cardinal Direction
3. After Pictures of Point

SECTION 2:

1. LCRC
2. Surveyor's Report
3. Sketch of Private Claims (2 pages) (PC 145, PC 195)
4. Sketch of 2014 Private Claims Overview

SECTION 3:

1. 1818 Original Government Survey map (1 page)
2. 1875 Map of Harrison Township (1 page)
3. 1895 Map of Harrison Township (1 page)
4. 1916 Map of Harrison Township (1 page)
5. 2006 Map of Harrison Township (1 page)
6. 2004 Harrison Township Composite Maps (5 pages)
7. 2014 Field Notes with Corner Witnesses (1 page)
8. Undated Addressograph Department drawing of P.C.'s 129,144,145 and 195 (1 page)
9. Undated Selfridge Air Force Base Real Estate Map (1 page)
10. 2004 Boundary Survey S.A.N.G. Base, Metco Services Inc., Steven Dunn, P.S. #28408 (1 page)

SECTION 4:


- | | | | |
|---------|------------------------------|--|------------------------------|
| 1. 1810 | Original Private Claim Notes | Aaron Greeley | (4 pages, 2 Orig, 2 Transc.) |
| 2. 1937 | "Supervisor's Plat No. 13" | P.K. Mcbethy, Civil Engineer | L. 18, P. 25 |
| 3. 1937 | "Supervisor's Plat No. 14" | P.K. Mcbethy, Civil Engineer | L. 18, P. 24 |
| 4. 1989 | Boundary Survey | Dunn & Assoc. Land Surveyors, Inc. | Unrecorded |
| 5. 1997 | Boundary Survey | Mickalich and Assoc.,
Raymond J. McCoy #21270 | Unrecorded |

PC - 039

**S.E. Corner of PC 145 common with the S.W.
Corner of PC 195**

T.2N.,R.14E. Harrison Twp.



A photograph of a survey marker. A white rectangular label is placed on the ground, which is covered with dark mulch and green grass. The label contains the text 'PC - 039' in large blue letters, followed by 'S.E. Corner of PC 145 common with the S.W. Corner of PC 195' and 'T.2N.,R.14E. Harrison Twp.' in smaller black letters. A wooden stake is partially visible on the right side of the frame, and a piece of orange plastic is on the ground near the label.

PC - 039

S.E. Corner of PC 145 common with the S.W.
Corner of PC 195

T.2N.,R.14E. Harrison Twp.









LAND CORNER RECORDATION CERTIFICATE
Filing Requirement of Act 74, Mich. P.A. 1970

For corners in

<u>MACOMB</u> (County)	Located In: Harrison Township	Corner Code # <u>PC-039</u>
1. Public Land Survey	T <u>2N</u> R <u>14E</u>	<u>PC-039</u>
	T _____ R _____	_____
	T _____ R _____	_____
	T _____ R _____	_____
2. Property Controlling in Section	S _____ T _____ R _____	_____
	S _____ T _____ R _____	_____
3. Miscellaneous Property in Section	S _____ T _____ R _____	_____
	S _____ T _____ R _____	_____

4138504 PAGE 1 OF 1
 LIBER 23116 PAGE 465
 11/18/2014 09:13:52 A.M.
 MACOMB COUNTY, MI SEAL
 CARMELLA SABAUGH, REGISTER OF DEEDS

Register of Deeds Stamp & File Number

4. Lot No. _____, Recorded Plat _____
 5. Private Claims Southeast Corner of Private Claim 145 Common with the Southwest Corner of Private Claim 195

I, ROGER J. STECKER, in a field survey on May 20, 2014, do hereby state that under requirements of P.A. 74, Michigan P.A. of 1970, the corner points mentioned in lines 1 and 2 above were in conformance with regulations and rules therefore as required in the current manual of survey instructions of the United States Department of the Interior, Bureau of Land Management or by a decree of a Court of Law and/or that the corner points mentioned in lines 3, 4 and 5 above were in conformance with the rules of the Michigan Board of Land Surveyors or by a Decree of a Court of Law; re-established, monumented, recovered, found as expressed below:

NOTE: Not more than 2 corners, all in the same town and range, may be recorded on this certificate.

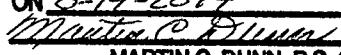
A. Description of original monument and accessories and/or subsequent restoration:
 *Post set by Aaron Greeley according to Private Claim Notes, not found.

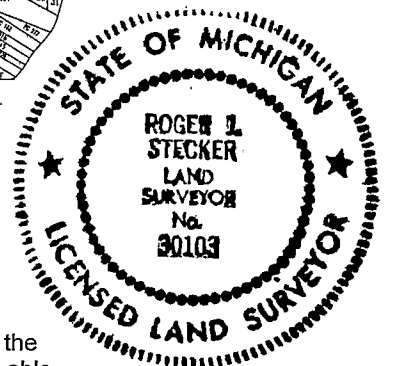
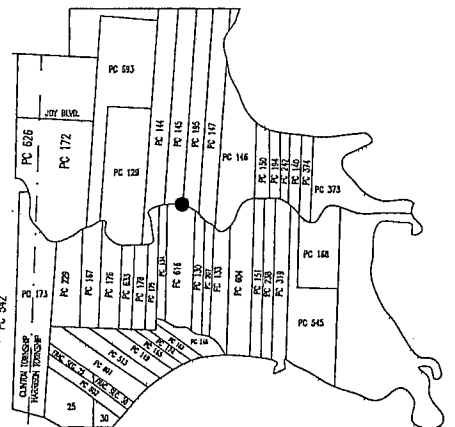
1. 1810	Original Private Claim Notes	Aaron Greeley	(2 pages)
2. 1937	"Supervisor's Plat No. 13"	P.K. Mcbethy, Civil Engineer	L. 18, P. 25
3. 1937	"Supervisor's Plat No. 14"	P.K. Mcbethy, Civil Engineer	L. 18, P. 24
4. 1989	Boundary Survey	Dunn & Assoc. Land Surveyors, Inc.	Unrecorded
5. 1997	Boundary Survey	Mickalich and Assoc., Raymond J. McCoy #21270	Unrecorded

B. Description of corner evidence found and/or method applied in restoring or reestablishing corner:
 No evidence of the original post was found. I consider it an obliterated corner.

"Supervisor's Plat No. 13" shows the East line as Private Claim Line 195/145 and the west line as Private Claim Line 145/144. The entire plat of "Supervisor's Plat No. 13" (now vacated) falls within the bounds of Selfridge Air National Guard Base with no evidence that it ever physically existed. I was able to establish Private Claim Line 144/129 from monumentation found in "Supervisor's Plat No. 14", a boundary survey by Mickalich and associates, Inc. (June 12, 1997) and a boundary survey by Dunn and Associates (February 22, 1989). Private Claim Line 147/195 was established with the research and remonumentation of PC-038. I found there to be a surplus of 97.85 feet across Private Claims 195, 145 and 144. To establish Private Claim Line 195/145 and Private Claim Line 145/144 I held the record width of "Supervisor's Plat No. 13" at a record distance of 984.53 feet and prorated the surplus between Private Claim 195 and 144. Record width of Private claim 195 is 1122.00 feet with a prorated distance 1169.80 feet (47.80 feet surplus). Record width of Private Claim 144 is 1174.80 feet with a prorated distance of 1224.85 feet (50.05 feet surplus). Having established Private Claim Line 195/145, I set PC-039 at the top of bank on the Clinton River. No line of occupation exists to the north.
 Measurements Between Corners:

FROM SOUTHEAST CORNER OF PRIVATE CLAIM 145 (PC-039)
TO SOUTHEAST CORNER OF PRIVATE CLAIM 195 (PC-038)
 1194.60' (18 Chains 10 Links Private Claim Notes)
 1175.61' (Measured Stecker #30103, 2014)

ACCEPTED BY THE MACOMB COUNTY SURVEY PEER GROUP AS THE OFFICIAL CORNER UNDER MICHIGAN PUBLIC ACT 345 OF 1990 AT A MEETING HELD ON 8-19-2014

MARTIN C. DUNN, P.S. CHAIRMAN



C. Description of monument for corner and accessories established to perpetuate locating the position of the corner:
 I replaced the temporary 1/2" iron rod with a 4" diameter by 36" long concrete monument with a 1/2" iron rod w/2" diameter Aluminum cap stamped "Macomb County Monument, MI Act #345, 30103, PC-039"

Witnesses:

N80°W	177.80'	Mag nail and Macomb County Witness tag in N. face of Utility Pole.
N45°E	71.20'	Mag nail and Macomb County Witness tag in W. face of Utility Pole.
S45°W	17.21'	Mag nail and Macomb County Witness tag in N. face of 18" Willow tree.
West	13.92'	Mag nail and Macomb County Witness tag in top of guard rail post.
East	5.28'	Mag nail and Macomb County Witness tag in top of guard rail post.

The selected location is accepted by me and is generally accepted by Professional Surveyors as the best available evidence of the position of the original corner.

Signed by Roger J. Stecker
 Surveyor's Michigan License No. 30103

Date OCT. 27, 2014

SURVEYOR'S REPORT
PC-039
SOUTHEAST CORNER P.C. 145
COMMON WITH
SOUTHWEST CORNER P.C. 195
HARRISON TOWNSHIP,
T2N, R14E

GLO HISTORY:

Description of P.C. 145

Commencing at a post standing on the border of the River Huron between this tract and a tract confirmed to John Tucker thence north three hundred and forty eight chains forty one links, to a post thence east forty six chains ninety four links to a post standing on the north west (or rear) line of a tract confirmed to George Meldrum thence south forty five degrees west thirty two chains eighty links to a post thence west six chains fifty links to a post a boundary between this tract and Macconses Reserve thence south sixty six chains ninety nine links to a post thence east seventeen chains to a post, thence south fifty eight chains twelve links to a post thence west seventeen chains to a post the northwest corner of a tract confirmed to Mitchell Tremble, thence south one hundred and ninety eight chains eighty nine links to a post standing on the border of said River up stream north eighty degrees west seven chains thence south seventy four degrees west eight chains thirty links to the place of beginning. Containing six hundred and forty acres.

Description of P.C. 195

Commencing at a post standing on the border of River Huron between this tract and a tract confirmed to Edward Tucker thence north one hundred and forty one chains to a post thence east seventeen chains to a post standing on the west line of a tract confirmed to the widow Tucker in trust for her sons two sons Jacob & Charles thence south one hundred forty seven chains nineteen links to a post standing on the border of River Huron thence along the border of said river north eighty degrees west eighteen chains ten links to the place of beginning, containing two hundred and forty four acres and ninety six hundredths of an acre.

EXISTING CONDITIONS:

No evidence of the original post or the common line between Private Claims 195 and 145 were found at the described location. "Supervisor's Plat No. 13" shows the East line as Private Claim Line 195/145 and the west line as Private Claim Line 145/144. The entire plat of "Supervisor's Plat No. 13" (now vacated) falls within the bounds of Selfridge Air National Guard Base with no evidence that it ever physically existed. I was able to establish Private Claim Line 144/129 from monumentation found in "Supervisor's Plat No. 14", a boundary survey by Mickalich and Associates, Inc. (June 12, 1997) and a boundary survey by Dunn and Associates (February 22, 1989). Private Claim Line 147/195 was established with the research and remonumentation of PC-038. I found there to be a surplus of 97.85 feet across Private Claims 195, 145 and 144. To establish Private Claim Line 195/145 and Private Claim Line 145/144 I held the record width of "Supervisor's Plat No. 13" at a record distance of 984.53 feet and prorated the surplus between Private Claim 195 and 144. Record width of Private claim 195 is 1122.00 feet with a prorated distance 1169.80 feet (47.80 feet surplus). Record width of Private Claim 144 is 1174.80 feet with a prorated distance of 1224.85 feet (50.05 feet surplus). Having established Private Claim Line 195/145, I set PC-039 at the top of bank on the Clinton River. No line of occupation exists to the north.

I recommend to the Peer Group to accept the established position of PC-039 as the best evidence of the corner position.

RECORDED & UNRECORDED SURVEYS, & FIELD NOTES:

- | | | | |
|----|--|-------------------------|-------------------------------|
| 1. | Aaron Greeley | Copy of Original Survey | Post cited in notes (2 pages) |
| 2. | “Supervisor’s Plat No. 13” | Plat | L. 18, P. 25 |
| 3. | “Supervisor’s Plat No. 14” | Plat | L. 18, P. 24 |
| 4. | Dunn & Assoc.
Land Surveyors, Inc. | Boundary Survey | Unrecorded |
| 5. | Mickalich & Assoc.,
Raymond J. McCoy #21270 | Boundary Survey | Unrecorded |

MEASUREMENTS BETWEEN CORNERS:

FROM SOUTHEAST CORNER OF PRIVATE CLAIM 145 (PC-039)

TO SOUTHEAST CORNER OF PRIVATE CLAIM 195 (PC-038)

1194.60’ (18 Chains 10 Links Private Claim Notes)

1175.61’ (Measured Stecker #30103, 2014)

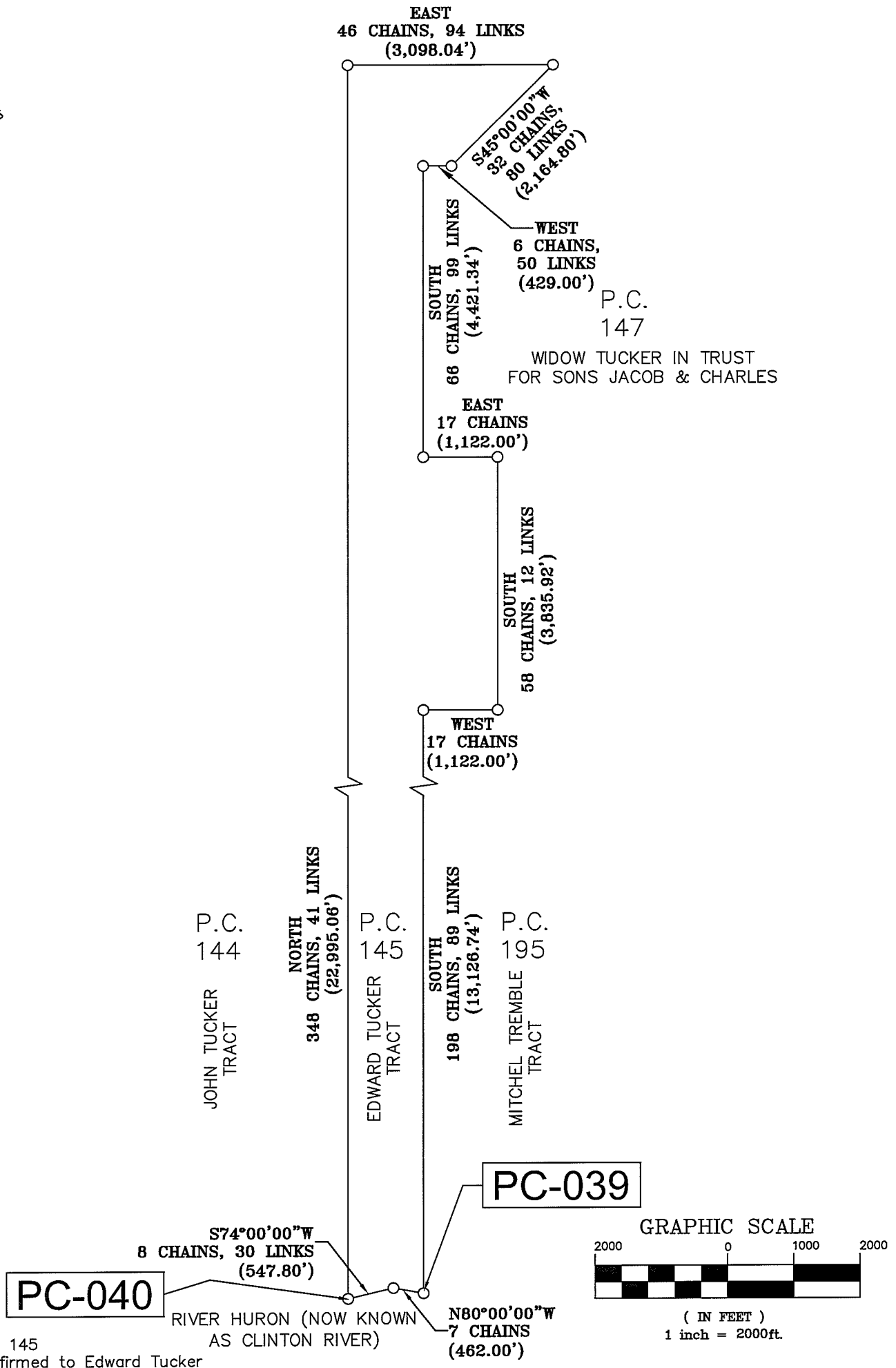
RECOMMENDATIONS:

I replace the 1/2" temporary iron rod with a 4" diameter concrete monument, 36" long with a 1/2" iron rod having a 2" diameter aluminum cap stamped “Macomb County Monument, MI Act # 345, 30103, PC-039”.

WITNESSES: PC-039 CORNER

- | | | |
|-------|---------|---|
| N80°W | 177.80’ | Mag nail and Macomb County Witness tag in N. face of Utility Pole. |
| N45°E | 71.20’ | Mag nail and Macomb County Witness tag in W. face of Utility Pole. |
| S45°W | 17.21’ | Mag nail and Macomb County Witness tag in N. face of 18” Willow tree. |
| West | 13.92’ | Mag nail and Macomb County Witness tag in top of guard rail post. |
| East | 5.28’ | Mag nail and Macomb County Witness tag in top of guard rail post. |

SKETCH OF PRIVATE CLAIM 145



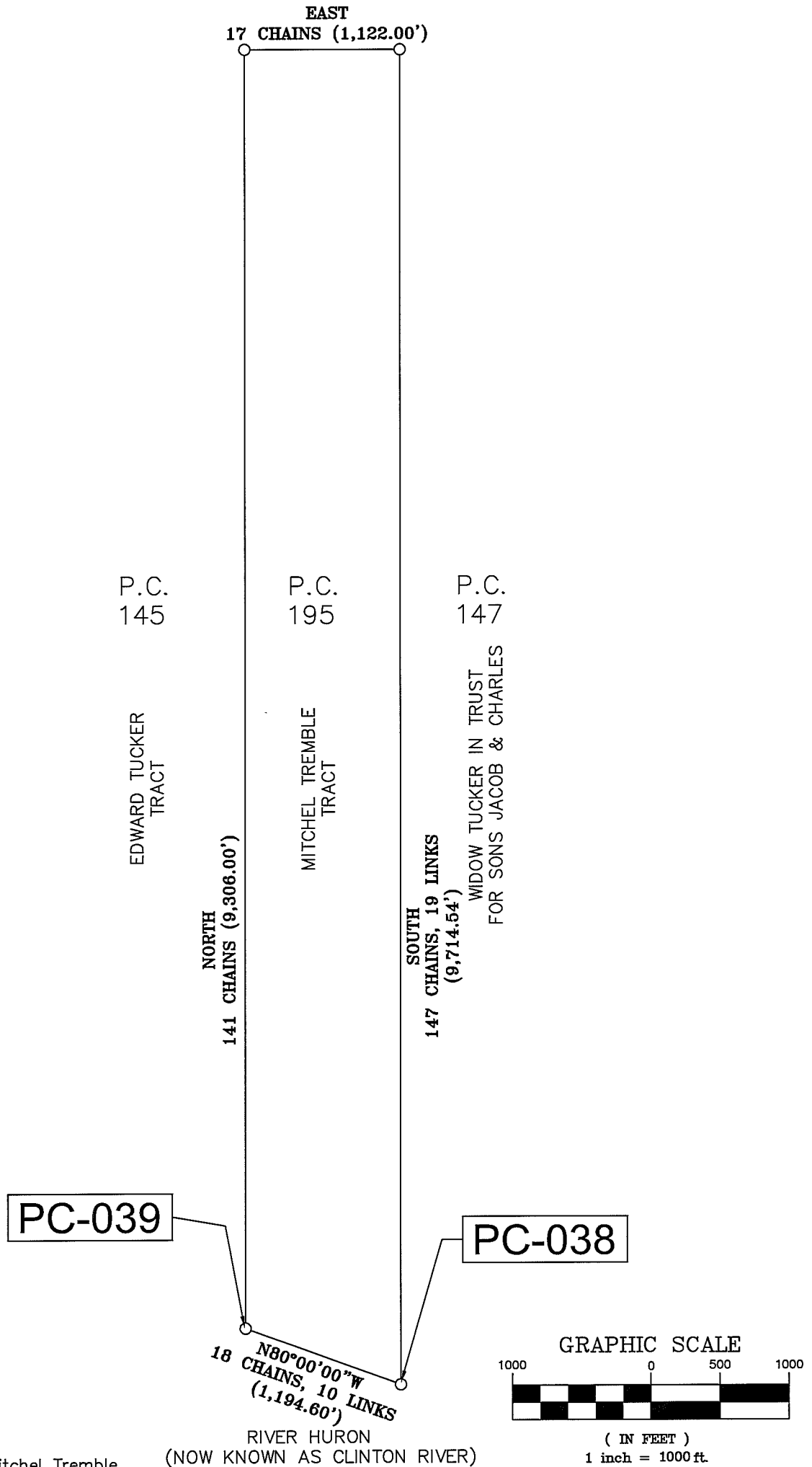
P.C. 145
Confirmed to Edward Tucker

Commencing at a post standing on the border of the River Huron between this tract and a tract confirmed to John Tucker thence north three hundred and forty eight chains forty one links, to a post thence east forty six chains ninety four links to a post standing on the north west (or rear) line of a tract confirmed to George Meldrum thence south forty five degrees west thirty two chains eighty links to a post thence west six chains fifty links to a post a boundary between this tract and Macconses Reserve thence south sixty six chains ninety nine links to a post thence east seventeen chains to a post, thence south fifty eight chains twelve links to a post thence west seventeen chains to a post the northwest corner of a tract confirmed to Mitchell Tremble, thence south one hundred and ninety eight chains eighty nine links to a post standing on the border of said River up stream north eighty degrees west seven chains thence south seventy four degrees west eight chains thirty links to the place of beginning. Containing six hundred and forty acres.

Detroit July 14, 1810

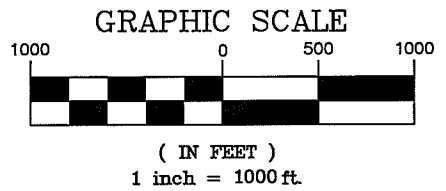
Aaron Greeley Surveyor
of private claims

SKETCH OF PRIVATE CLAIM 195



P.C. 195
Confirmed to Mitchel Tremble

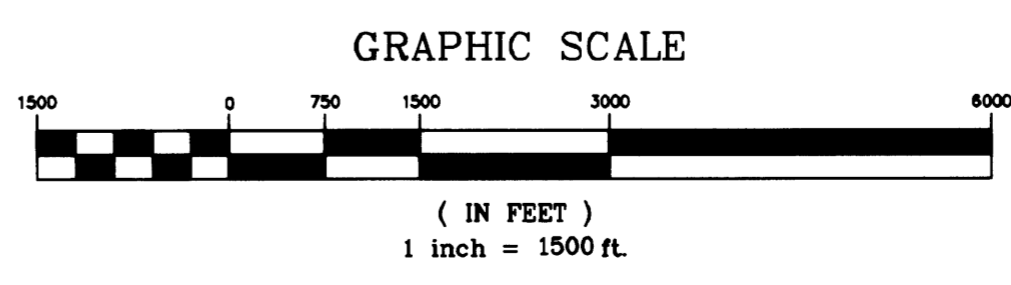
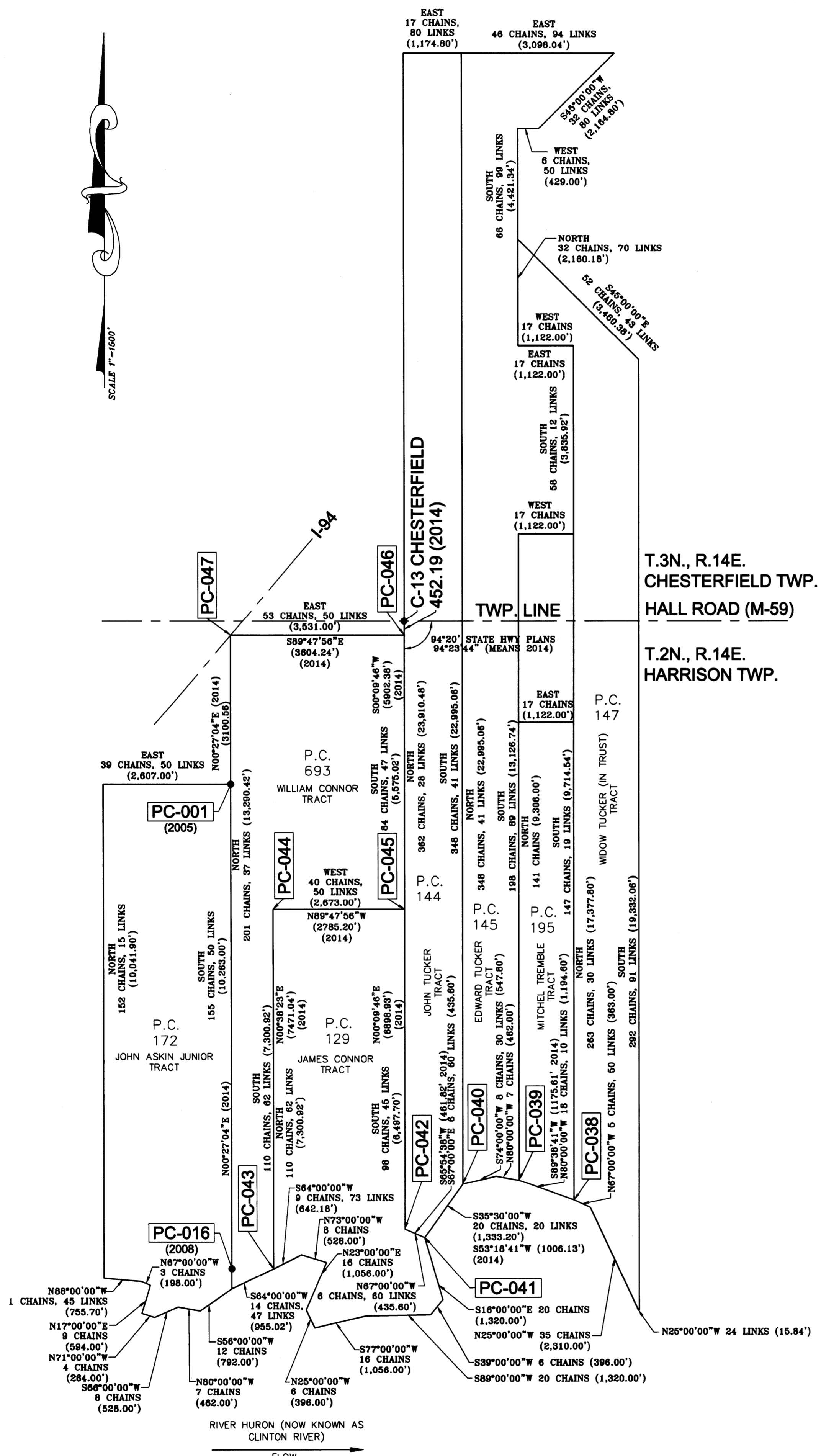
RIVER HURON
(NOW KNOWN AS CLINTON RIVER)



Commencing at a post standing on the border of the River Huron between this tract and a tract confirmed to Edward Tucker thence north one hundred and forty one chains to a post thence east seventeen chains to a post standing on the west line of a tract confirmed to the widow Tucker in trust for her sons two sons Jacob & Charles thence south one hundred forty seven chains nineteen links to a post standing on the border of River Huron thence along the border of said river up stream north eighty degrees west eighteen chains ten links to the place of beginning, containing two hundred and forty four acres and ninety six hundredths of an acre.

Detroit July 14, 1810

Aaron Greeley Surveyor
of private claims



REV. #	REV. DATE	REV. INFO	CHECKED BY
1	11-20-14	CORRECTIONS PER MACOMB COUNTY REVIEW	R.S.

FILE TRACING:	CHECKED BY:
TWP. DRAWER	R.S.
DATE:	DRAWING FILE NAME
07-14-14	14-089-OA.DWG
DRAWN BY:	SCALE:
R.P.	1" = 1500'

SEAL



Architecture
Engineering

17001 Nineteen Mile Road, Suite 3
Clinton Township, MI 48038
586-412-7050 phone 586-412-7114 fax

Surveying
Planning

www.lehnerfindlan.com

© COPYRIGHT 2011
PROJECT NAME AND SHEET TITLE:

2014
PRIVATE CLAIMS
OVERVIEW

CLIENT INFO:
MACOMB COUNTY
REGISTER OF DEEDS
32 MARKET STREET
MT. CLEMENS, MI 48043
(586)469-5175

PROJECT LOCATION:
T.2N., R.14E.
HARRISON TOWNSHIP,
MACOMB COUNTY,
MICHIGAN

JOB No.:	PAGE No.:
14-089	1

Township N. 11 North, Range N. 31 West of the 10th (Main Ter.)



Quantity as shown of Private Claims 226-39

A true copy from the Original on file in this Office

Surveyor General's Office
May 20 - 1878

Richard T. Miller
Surveyor General

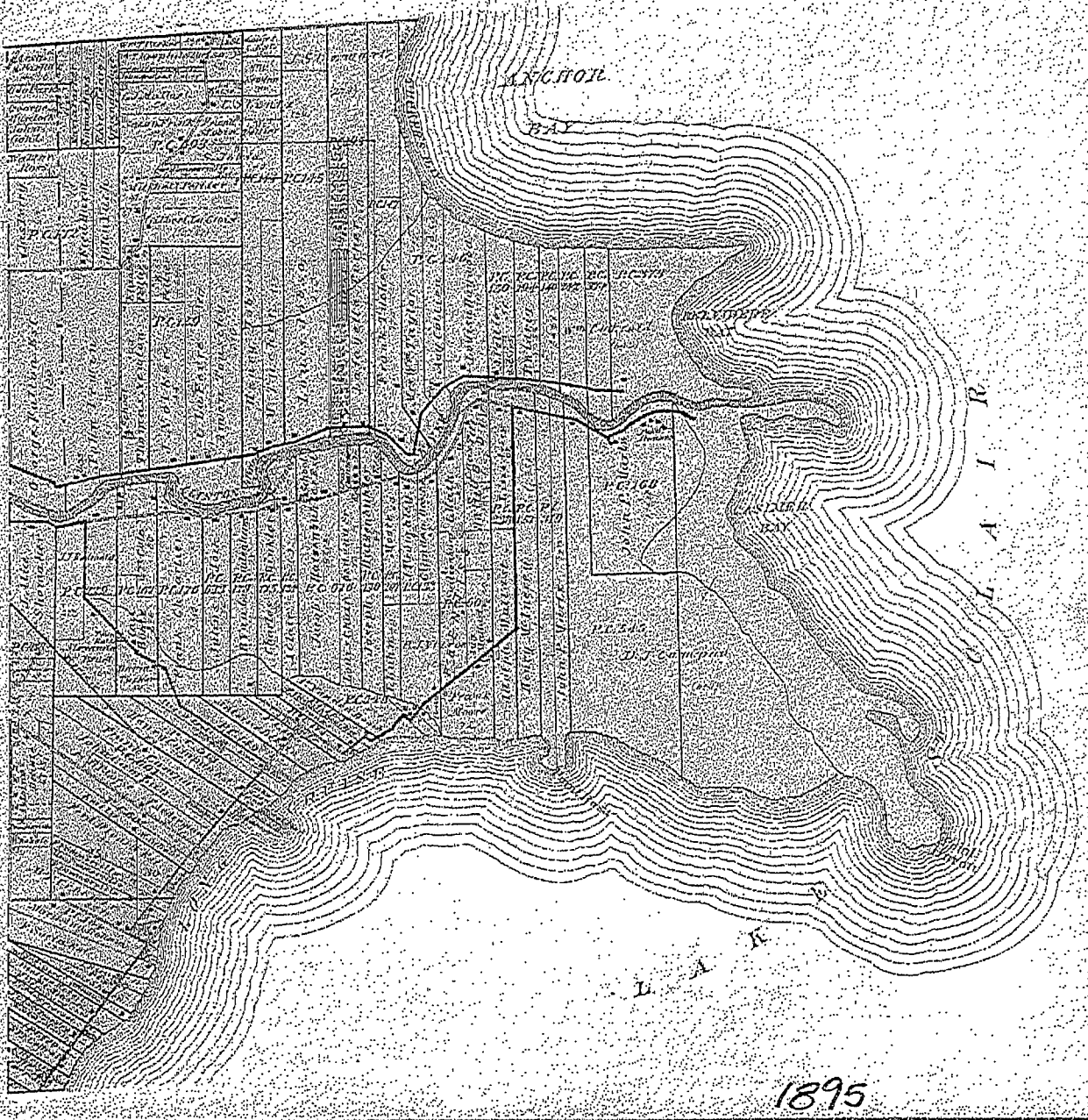
POOR COPY

MAP OF HARRISON

Township 2 North Range 14 East

Scale 2 Inches to one Mile.

of the Variation of Meridian.



1895

CHESTERFIELD TWP.

TWP.

ANCHOR BAY

CLARE

CLARE

CLINTON

LAKE TWP.

MAP OF
HARRISON
 TOWNSHIP

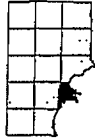
Scale 2 1/2 inches to 1 mile.

Part of Fractional Township 2 North, Range 14 East and Fractional Township 2 North, Range 14 East of the Michigan Meridian

1916

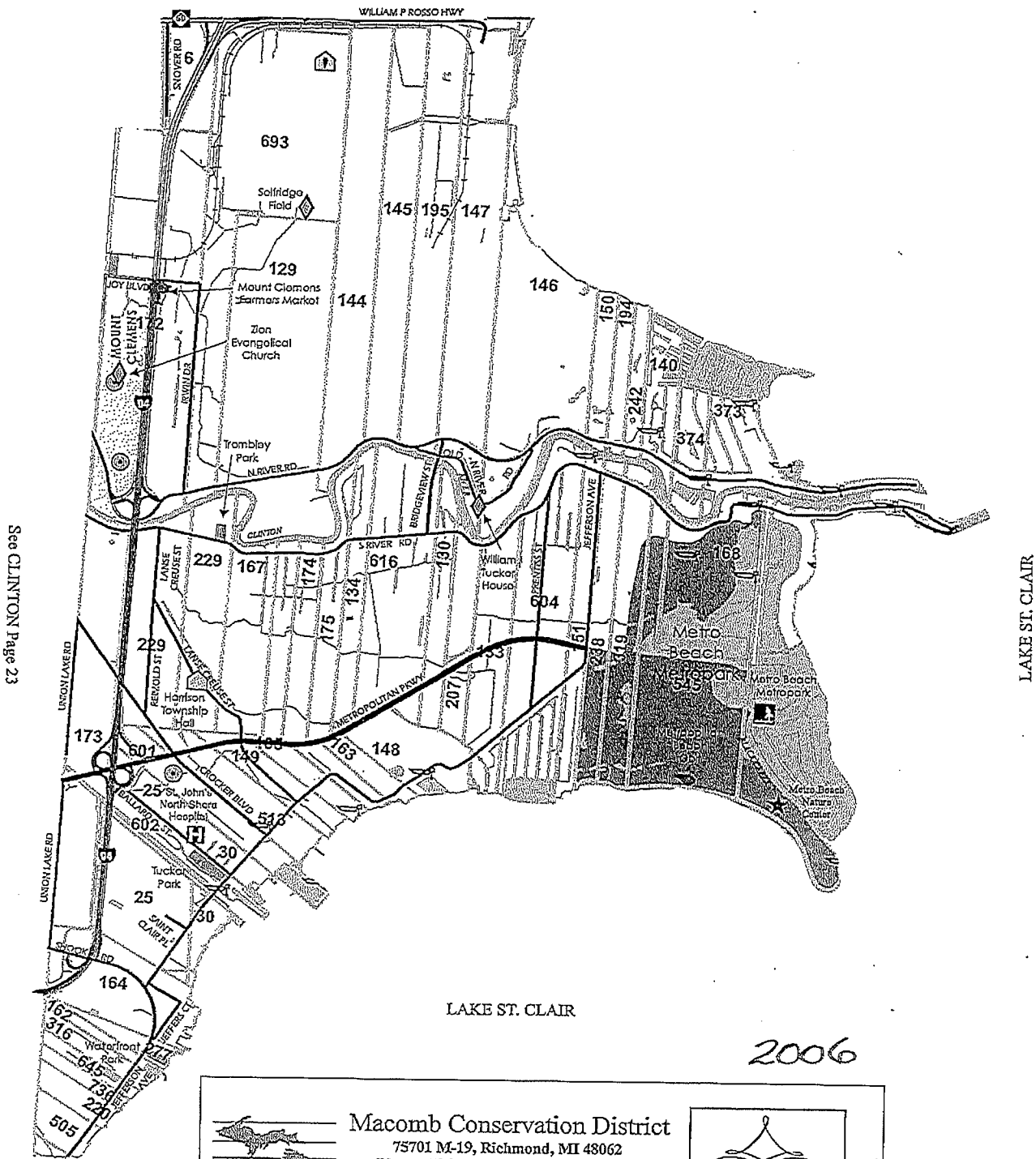
METCO

HARRISON



T. 2N. - R. 14E.

See CHESTERFIELD Page 31



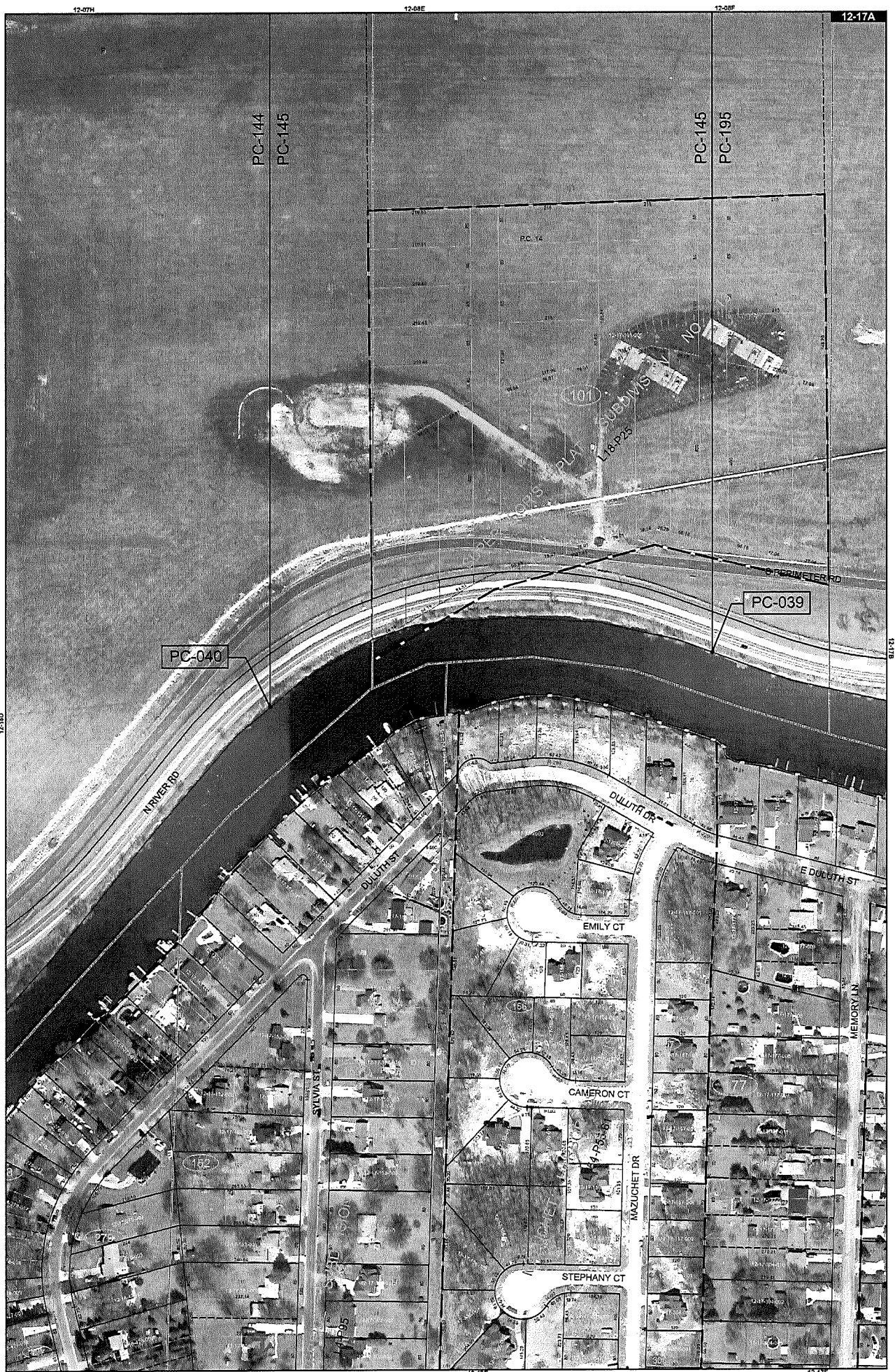
See CLINTON Page 23

LAKE ST. CLAIR

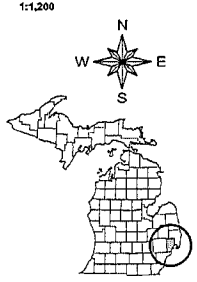
LAKE ST. CLAIR

2006

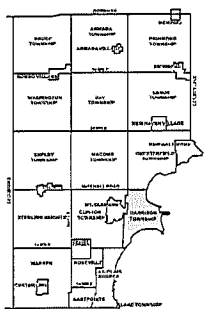
	<p>Macomb Conservation District 75701 M-19, Richmond, MI 48062 Phone: 586-727-2666 Fax: 586-727-2621 E-mail: macombcd@klondyke.net Website: www.macombcd.com</p>	<p><i>Celebrating 55 Years of Managing Macomb County's Natural Resources</i></p>
<p>Assistance available for : Tree Sales Forestry Native Plants Conservation Education</p>		



Date of Photography: April 2004
 100 50 0 100 200 Feet
 1:1,200

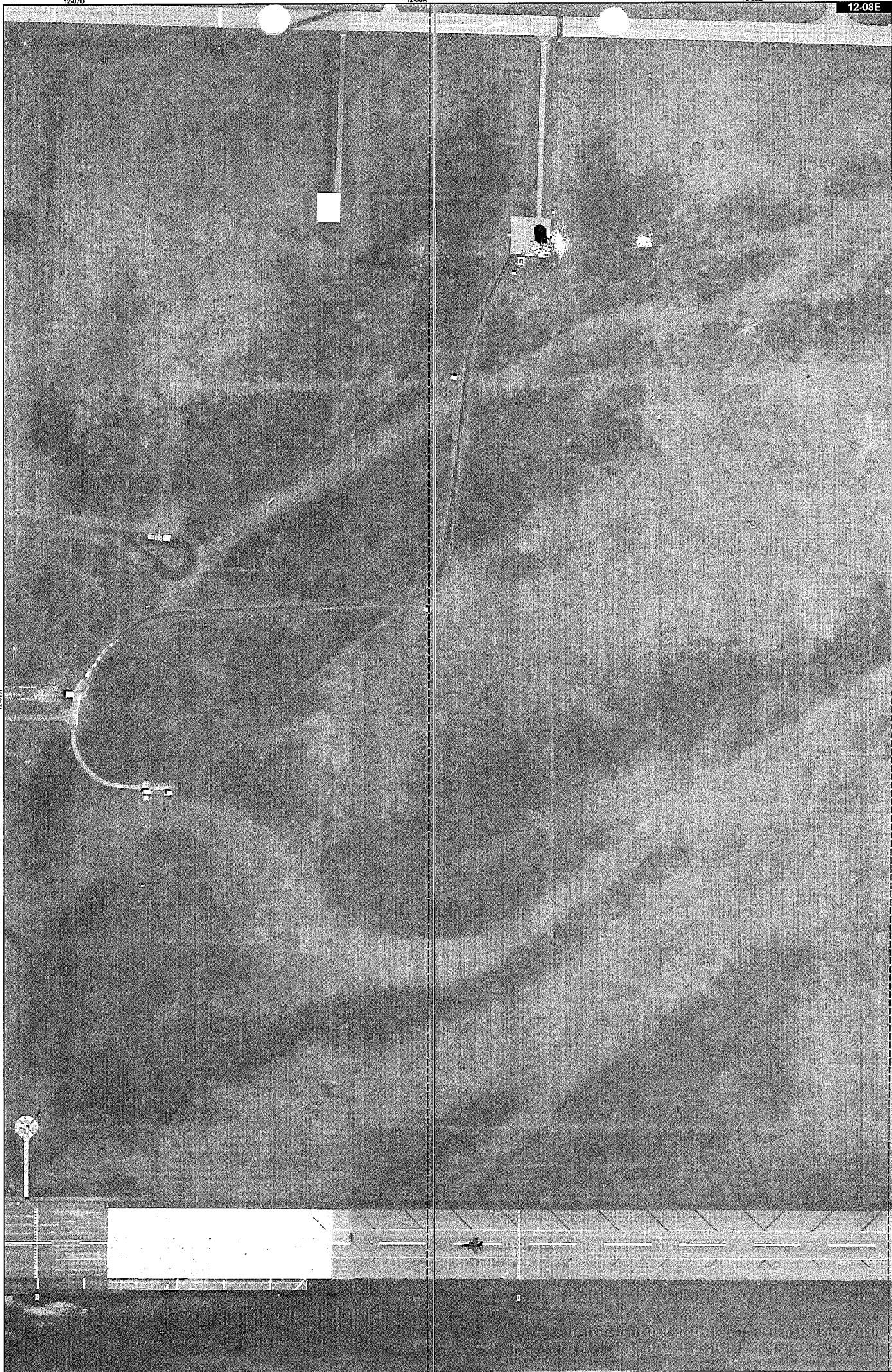


Copyright 2001
 MACOMB COUNTY, MI
 All Rights Reserved

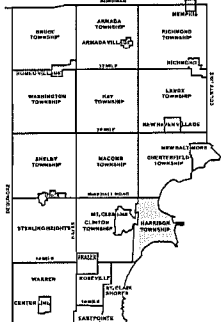
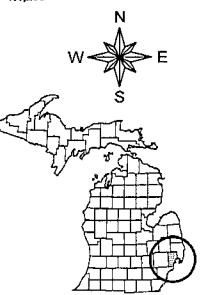


HARRISON TWP SHEET INDEX

12-07H	12-08E	12-08F	12-17A
12-18A	12-17E	12-17F	
12-18B	12-17G	12-17H	
12-18C	12-17I	12-17J	
12-18D	12-17K	12-17L	
12-18E	12-17M	12-17N	
12-18F	12-17O	12-17P	
12-18G	12-17Q	12-17R	
12-18H	12-17S	12-17T	
12-18I	12-17U	12-17V	
12-18J	12-17W	12-17X	
12-18K	12-17Y	12-17Z	
12-18L	12-17AA	12-17AB	
12-18M	12-17AC	12-17AD	
12-18N	12-17AE	12-17AF	
12-18O	12-17AG	12-17AH	
12-18P	12-17AI	12-17AJ	
12-18Q	12-17AK	12-17AL	
12-18R	12-17AM	12-17AN	
12-18S	12-17AO	12-17AP	
12-18T	12-17AQ	12-17AR	
12-18U	12-17AS	12-17AT	
12-18V	12-17AU	12-17AV	
12-18W	12-17AW	12-17AX	
12-18X	12-17AY	12-17AZ	
12-18Y	12-17BA	12-17BB	
12-18Z	12-17BC	12-17BD	
12-19A	12-17BE	12-17BF	
12-19B	12-17BG	12-17BH	
12-19C	12-17BI	12-17BJ	
12-19D	12-17BK	12-17BL	
12-19E	12-17BM	12-17BN	
12-19F	12-17BO	12-17BP	
12-19G	12-17BQ	12-17BR	
12-19H	12-17BS	12-17BT	
12-19I	12-17BU	12-17BV	
12-19J	12-17BW	12-17BX	
12-19K	12-17BY	12-17BZ	
12-19L	12-17CA	12-17CB	
12-19M	12-17CC	12-17CD	
12-19N	12-17CE	12-17CF	
12-19O	12-17CG	12-17CH	
12-19P	12-17CI	12-17CJ	
12-19Q	12-17CK	12-17CL	
12-19R	12-17CM	12-17CN	
12-19S	12-17CO	12-17CP	
12-19T	12-17CQ	12-17CR	
12-19U	12-17CS	12-17CT	
12-19V	12-17CU	12-17CV	
12-19W	12-17CW	12-17CX	
12-19X	12-17CY	12-17CZ	
12-19Y	12-17DA	12-17DB	
12-19Z	12-17DC	12-17DD	
12-20A	12-17DE	12-17DF	
12-20B	12-17DG	12-17DH	
12-20C	12-17DI	12-17DJ	
12-20D	12-17DK	12-17DL	
12-20E	12-17DM	12-17DN	
12-20F	12-17DO	12-17DP	
12-20G	12-17DQ	12-17DR	
12-20H	12-17DS	12-17DT	
12-20I	12-17DU	12-17DV	
12-20J	12-17DW	12-17DX	
12-20K	12-17DY	12-17DZ	
12-20L	12-17EA	12-17EB	
12-20M	12-17EC	12-17ED	
12-20N	12-17EE	12-17EF	
12-20O	12-17EG	12-17EH	
12-20P	12-17EI	12-17EJ	
12-20Q	12-17EK	12-17EL	
12-20R	12-17EM	12-17EN	
12-20S	12-17EO	12-17EP	
12-20T	12-17EQ	12-17ER	
12-20U	12-17ES	12-17ET	
12-20V	12-17EU	12-17EV	
12-20W	12-17EW	12-17EX	
12-20X	12-17EY	12-17EZ	
12-20Y	12-17FA	12-17FB	
12-20Z	12-17FC	12-17FD	
12-21A	12-17FE	12-17FF	
12-21B	12-17FG	12-17FH	
12-21C	12-17FI	12-17FJ	
12-21D	12-17FK	12-17FL	
12-21E	12-17FM	12-17FN	
12-21F	12-17FO	12-17FP	
12-21G	12-17FQ	12-17FR	
12-21H	12-17FS	12-17FT	
12-21I	12-17FU	12-17FV	
12-21J	12-17FW	12-17FX	
12-21K	12-17FY	12-17FZ	
12-21L	12-17GA	12-17GB	
12-21M	12-17GC	12-17GD	
12-21N	12-17GE	12-17GF	
12-21O	12-17GG	12-17GH	
12-21P	12-17GI	12-17GJ	
12-21Q	12-17GK	12-17GL	
12-21R	12-17GM	12-17GN	
12-21S	12-17GO	12-17GP	
12-21T	12-17GQ	12-17GR	
12-21U	12-17GS	12-17GT	
12-21V	12-17GU	12-17GV	
12-21W	12-17GW	12-17GX	
12-21X	12-17GY	12-17GZ	
12-21Y	12-17HA	12-17HB	
12-21Z	12-17HC	12-17HD	
12-22A	12-17HE	12-17HF	
12-22B	12-17HG	12-17HH	
12-22C	12-17HI	12-17HJ	
12-22D	12-17HK	12-17HL	
12-22E	12-17HM	12-17HN	
12-22F	12-17HO	12-17HP	
12-22G	12-17HQ	12-17HR	
12-22H	12-17HS	12-17HT	
12-22I	12-17HU	12-17HV	
12-22J	12-17HW	12-17HX	
12-22K	12-17HY	12-17HZ	
12-22L	12-17IA	12-17IB	
12-22M	12-17IC	12-17ID	
12-22N	12-17IE	12-17IF	
12-22O	12-17IG	12-17IH	
12-22P	12-17II	12-17IJ	
12-22Q	12-17IK	12-17IL	
12-22R	12-17IM	12-17IN	
12-22S	12-17IO	12-17IP	
12-22T	12-17IQ	12-17IR	
12-22U	12-17IS	12-17IT	
12-22V	12-17IU	12-17IV	
12-22W	12-17IW	12-17IX	
12-22X	12-17IY	12-17IZ	
12-22Y	12-17JA	12-17JB	
12-22Z	12-17JC	12-17JD	
12-23A	12-17JE	12-17JF	
12-23B	12-17JG	12-17JH	
12-23C	12-17JI	12-17JJ	
12-23D	12-17JK	12-17JL	
12-23E	12-17JM	12-17JN	
12-23F	12-17JO	12-17JP	
12-23G	12-17JQ	12-17JR	
12-23H	12-17JS	12-17JT	
12-23I	12-17JU	12-17JV	
12-23J	12-17JW	12-17JX	
12-23K	12-17JY	12-17JZ	
12-23L	12-17KA	12-17KB	
12-23M	12-17KC	12-17KD	
12-23N	12-17KE	12-17KF	
12-23O	12-17KG	12-17KH	
12-23P	12-17KI	12-17KJ	
12-23Q	12-17KK	12-17KL	
12-23R	12-17KM	12-17KN	
12-23S	12-17KO	12-17KP	
12-23T	12-17KQ	12-17KR	
12-23U	12-17KS	12-17KT	
12-23V	12-17KU	12-17KV	
12-23W	12-17KW	12-17KX	
12-23X	12-17KY	12-17KZ	
12-23Y	12-17LA	12-17LB	
12-23Z	12-17LC	12-17LD	
12-24A	12-17LE	12-17LF	
12-24B	12-17LG	12-17LH	
12-24C	12-17LI	12-17LJ	
12-24D	12-17LK	12-17LL	
12-24E	12-17LM	12-17LN	
12-24F	12-17LO	12-17LP	
12-24G	12-17LQ	12-17LR	
12-24H	12-17LS	12-17LT	
12-24I	12-17LU	12-17LV	
12-24J	12-17LW	12-17LX	
12-24K	12-17LY	12-17LZ	
12-24L	12-17MA	12-17MB	
12-24M	12-17MC	12-17MD	
12-24N	12-17ME	12-17MF	
12-24O	12-17MG	12-17MH	
12-24P	12-17MI	12-17MJ	
12-24Q	12-17MK	12-17ML	
12-24R	12-17MM	12-17MN	
12-24S	12-17MO	12-17MP	
12-24T	12-17MQ	12-17MR	
12-24U	12-17MS	12-17MT	
12-24V	12-17MU	12-17MV	
12-24W	12-17MW	12-17MX	
12-24X	12-17MY	12-17MZ	
12-24Y	12-17NA	12-17NB	
12-24Z	12-17NC	12-17ND	
12-25A	12-17NE	12-17NF	
12-25B	12-17NG	12-17NH	
12-25C	12-17NI	12-17NJ	
12-25D	12-17NK	12-17NL	
12-25E	12-17NM	12-17NN	
12-25F	12-17NO	12-17NP	
12-25G	12-17NQ	12-17NR	
12-25H	12-17NS	12-17NT	
12-25I	12-17NU	12-17NV	
12-25J	12-17NW	12-17NX	
12-25K	12-17NY	12-17NZ	
12-25L	12-17OA	12-17OB	
12-25M	12-17OC	12-17OD	
12-25N	12-17OE	12-17OF	
12-25O	12-17OG	12-17OH	
12-25P	12-17OI	12-17OJ	
12-25Q	12-17OK	12-17OL	
12-25R	12-17OM	12-17ON	
12-25S	12-17OO	12-17OP	
12-25T	12-17OQ	12-17OR	
12-25U	12-17OS	12-17OT	
12-25V	12-17OU	12-17OV	
12-25W	12-17OW	12-17OX	
12-25X	12-17OY	12-17OZ	
12-25Y	12-17PA	12-17PB	
12-25Z	12-17PC	12-17PD	
12-26A	12-17PE	12-17PF	
12-26B	12-17PG	12-17PH	
12-26C	12-17PI	12-17PJ	
12-26D	12-17PK	12-17PL	
12-26E	12-17PM	12-17PN	
12-26F	12-17PO	12-17PP	
12-26G	12-17PQ	12-17PR	
12-26H	12-17PS	12-17PT	
12-26I	12-17PU	12-17PV	
12-26J	12-17PW	12-17PX	
12-26K	12-17PY	12-17PZ	
12-26L	12-17QA	12-17QB	
12-26M	12-17QC	12-17QD	
12-26N	12-17QE	12-17QF	
12-26O	12-17QG	12-17QH	
12-26P	12-17QI	12-17QJ	
12-26Q	12-17QK	12-17QL	
12-26R	12-17QM	12-17QN	
12-26S	12-17QO	12-17QP	
12-26T	12-17QQ	12-17QR	
12-26U	12-17QS	12-17QT	
12-26V	12-17QU	12-17QV	
12-26W	12-17QW	12-17QX	
12-26X	12-17QY	12-17QZ	
12-26Y	12-17RA	12-17RB	
12-26Z	12-17RC	12-17RD	
12-27A	12-17RE	12-17RF	
12-27B	12-17RG	12-17RH	
12-27C	12-17RI	12-17RJ	
12-27D	12-17RK	12-17RL	
12-27E	12-17RM	12-17RN	
12-27F	12-17RO	12-17RP	
12-27G	12-17RQ	12-17RR	
12-27H	12-17RS	12-17RT	
12-27I	12-17RU	12-17RV	
12-27J	12-17RW	12-17RX	
12-27K	12-17RY	12-1	

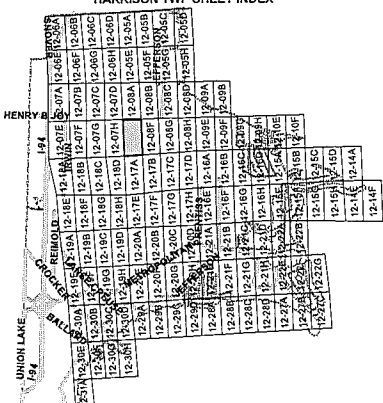


Date of Photography: April 2004
 100 50 0 100 200 Feet
 1:1,200



COPYRIGHT 2001
 MACOMB COUNTY, MI
 All Rights Reserved

HARRISON TWP SHEET INDEX



DESCRIPTION OF PERMANENT REAL ESTATE INDEX NUMBER

13-19-302-018

AREA NUMBER	SUB AREA NUMBER	BLOCK NUMBER	PARCEL NUMBER
13-19-302-018	13-19-302-018	13-19-302-018	13-19-302-018

Legend

- Platted Area Boundary Line
- Property Line
- Property Split Line
- Property Combined Line
- Township Boundary Line
- Traverse Line
- Dimension Extent Marks
- Dimension Start Marks

12-08E

Previously part of 12-8
 HARRISON TWP.
 W.1/2 S.W.1/4 SEC.8 T.2N. R.14E.

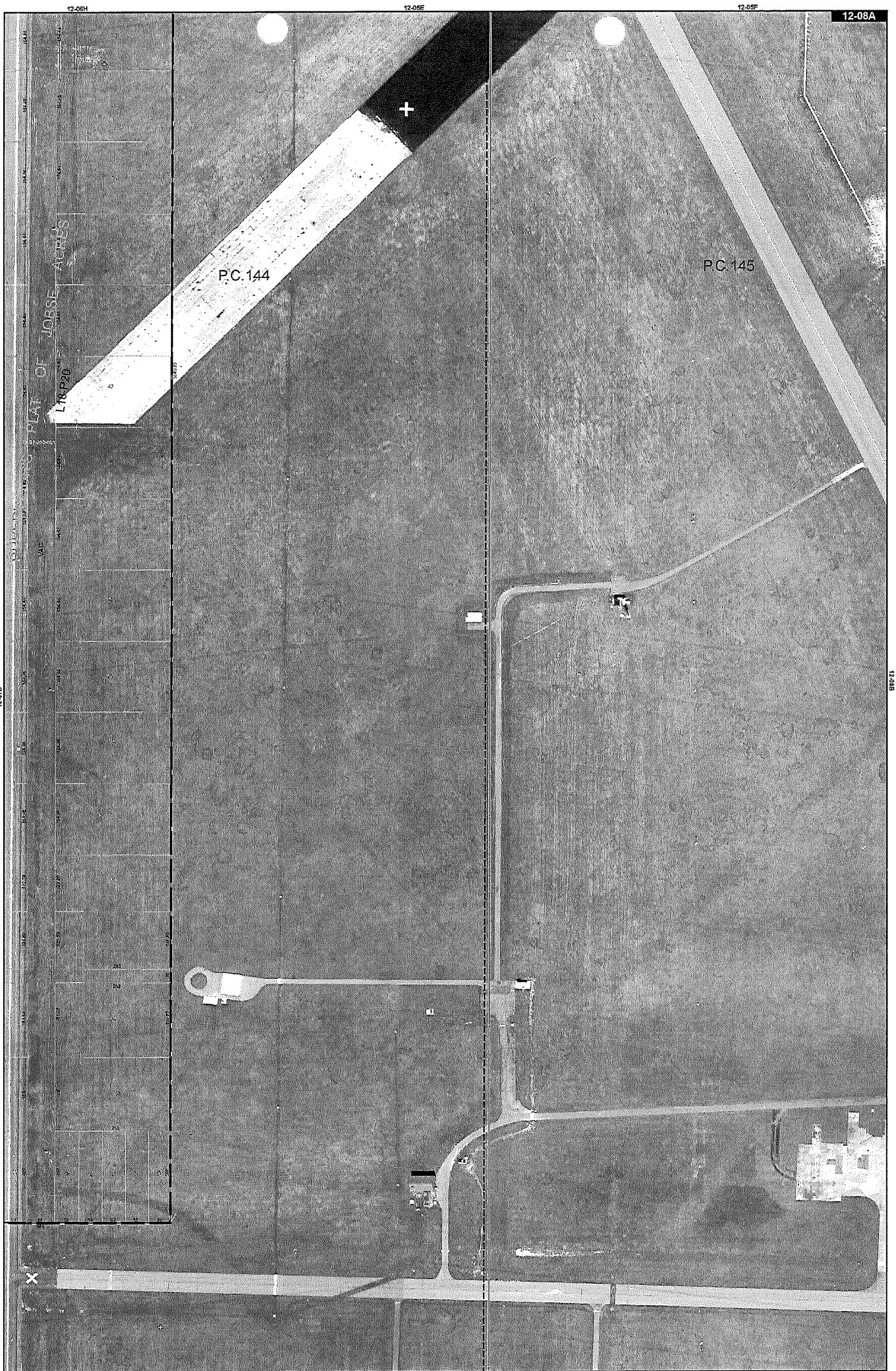
Source: Macomb County Department of Planning and Economic Development
 - 2004 Digital Orthophotography Project
 - Parcel Conversion Project

Note:
 Digital Orthophotography horizontal positioning accuracy is 3 feet. Parcel boundary lines should be considered a graphical representation and not in any way a legal survey or engineering document. In general, the horizontal positioning and length accuracy is within 15 feet.

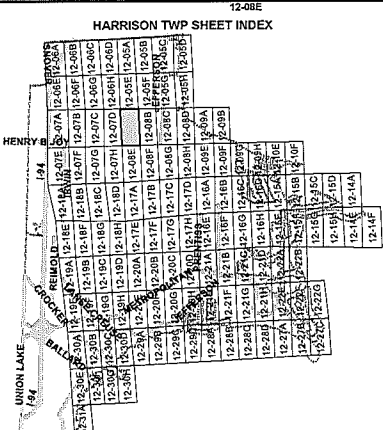
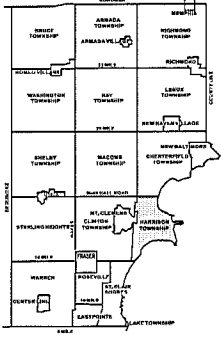
This map is intended for general planning purposes. Site specific evaluation should be verified by field inspection. This is a work in progress and may contain errors and omissions. Please report any potential revisions to (586)469-5285.



GIS MACOMB COUNTY
 Planning and Economic
 Development Department



Date of Photography: April 2004
 100 50 0 100 200 Feet
 1:1,200



DESCRIPTION OF PERMANENT REAL ESTATE INDEX NUMBER

13-19-302-018

AREA NUMBER (OWNER MAP) 13-19-302-018
 GIS AREA NUMBER (MUNICIPALITY) 13-19-302-018
 BLOCK NUMBER (CITY BLOCK) 13-19-302-018
 PARCEL NUMBER (MUNICIPAL) 13-19-302-018

Legend

- Platted Area Boundary Line
- Property Line
- Property Split Line
- Property Combined Line
- Township Boundary Line
- Traverse Line
- Dimension Extent Marks
- Dimension Start Marks

12-08A
 Previously part of 12-8
 HARRISON TWP.
 W. 1/2 N.W. 1/4 SEC. 8 T. 2N. R. 14E.

Source: Macomb County Department of Planning and Economic Development
 - 2004 Digital Orthophotography Project
 - Parcel Conversion Project

Note:
 Digital Orthophotography horizontal positioning accuracy is 3 feet. Parcel boundary lines should be considered a graphical representation and not in any way a legal survey or engineering document. In general, the horizontal positioning and length accuracy is within 15 feet.

This map is intended for general planning purposes. Site specific evaluation should be verified by field inspection. This is a work in progress and may contain errors and omissions. Please report any potential revisions to (586) 469-5265.

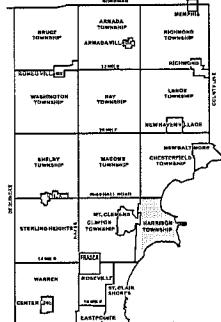
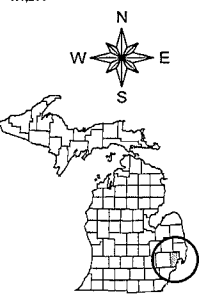


GIS MACOMB COUNTY
 Planning and Economic
 Development Department

Published: Aug 30, 2005



Date of Photography: April 2004
 100 50 0 100 200 Feet
 1:1,200



HARRISON TWP SHEET INDEX

12-07D	12-07E	12-07F	12-07G	12-07H	12-07I	12-07J	12-07K	12-07L	12-07M	12-07N	12-07O	12-07P	12-07Q	12-07R	12-07S	12-07T	12-07U	12-07V	12-07W	12-07X	12-07Y	12-07Z
12-08A	12-08B	12-08C	12-08D	12-08E	12-08F	12-08G	12-08H	12-08I	12-08J	12-08K	12-08L	12-08M	12-08N	12-08O	12-08P	12-08Q	12-08R	12-08S	12-08T	12-08U	12-08V	12-08W

DESCRIPTION OF PERMANENT REAL ESTATE INDEX NUMBER
13 - 19 - 302 - 018

Legend

- Platted Area Boundary Line
- Property Line
- Property Split Line
- Property Combined Line
- Township Boundary Line
- Traversa Line
- Dimension Extent Marks
- Dimension Start Marks

12-05E
 Previously part of 12-0
 HARRISON TWP.
 W.1/2 S.W.1/4 SEC.5 T.2N. R.14E.

Source: Macomb County Department of Planning and Economic Development
 - 2004 Digital Orthophotography Project
 - Parcel Conversion Project

Note: Digital Orthophotography horizontal positioning accuracy is 3 feet. Parcel boundary lines should be considered a graphical representation and not in any way a legal survey or engineering document. In general, the horizontal positioning and length accuracy is within 15 feet.

This map is intended for general planning purposes. Site specific evaluation should be verified by field inspection. This is a work in progress and may contain errors and omissions. Please report any potential revisions to (586)469-5285.



GIS MACOMB COUNTY
 Planning and Economic
 Development Department

Published: Aug 30, 2005

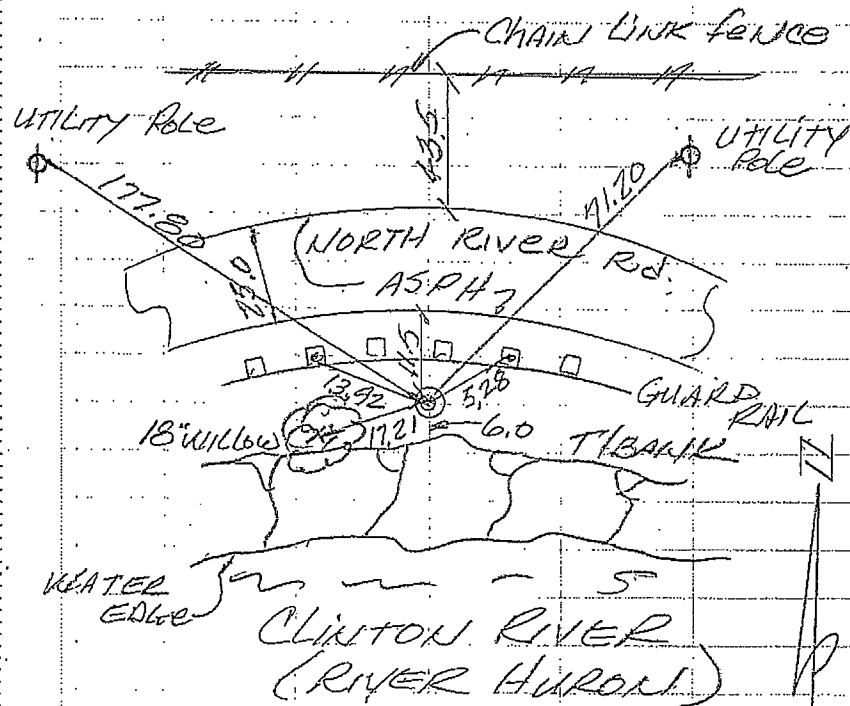
6-19-2014

PC-039

RS BS

S.E. CORNER OF PC-145 COMMON
WITH THE S.W. CORNER OF PC 195

SELRIDGE
ALIGN BASE



SET TEMPORARY 1/2" IRON AT
PROPOSED LOCATION

SET MONUMENT
PC-039

WITNESSES

N. 80° W. 177.80 FT. SET NAIL &
TAG IN NORTH FACE OF UTILITY
POLE

N. 45° E. 71.20 FT. SET NAIL & TAG
IN WEST FACE OF UTILITY POLE

S. 45° W. 17.21 FT. SET NAIL & TAG
IN NORTH FACE OF 18" WILLOW

WEST 13.92 FT. SET NAIL & TAG
IN TOP OF GUARD RAIL POST

EAST 5.28 FT. SET NAIL & TAG
IN TOP OF GUARD RAIL POST

QUINCY RIVER

Jim Keady

14539

129

SEAFRIDGE

P. C. 144

129/144 /
145/195

P. C. 145

FIELD

P. C. 195

PC-039

P. C. 147

SCALE 1" = 400'

HARRISON TOWNSHIP
T2N, R4E, P. C. 129,
144, 145 & 147

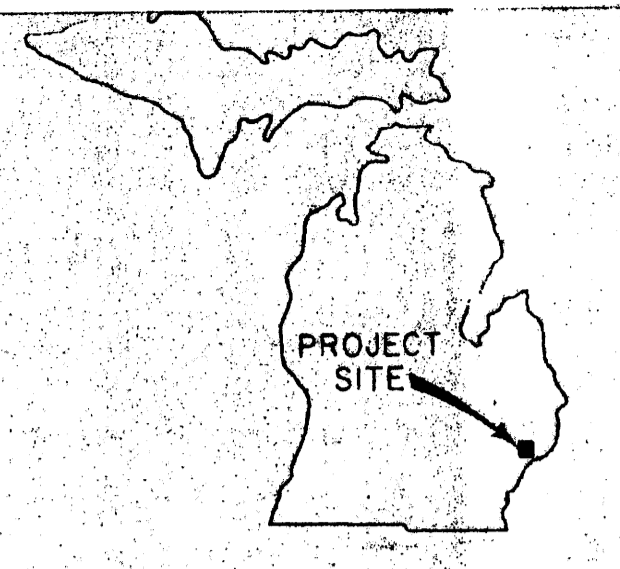


2 MILES EAST OF MT. CLEMENS
 23 MILES NE OF DETROIT
 USING COMMAND _____
 JOINT USE WITH _____

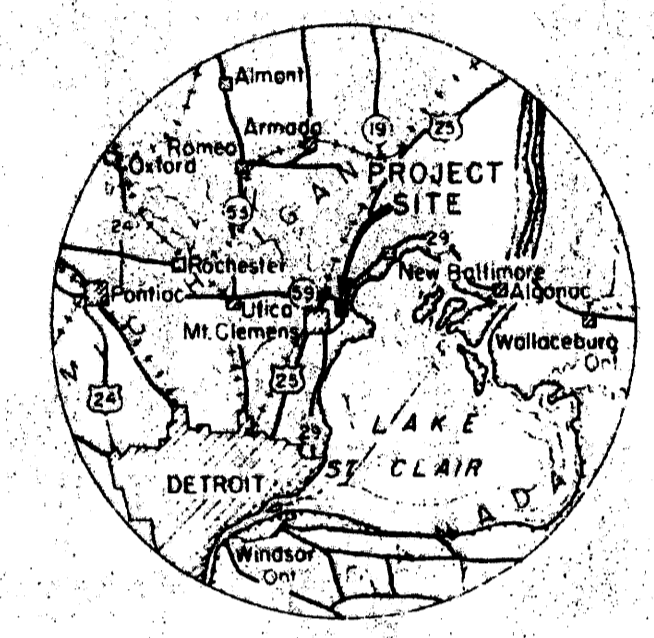
LAND AREA (PRESENT)
 ACRES FEE _____ 3089.76
 ACRES DONATED _____
 ACRES PUBLIC DOMAIN _____
 ACRES LEASED _____ .27
 ACRES EASEMENT _____ 372.74
 ACRES LESSER INTEREST (NO. LIC.) 35

DISPOSALS
 ACRES SOLD _____
 ACRES TRANSFERRED _____
 ACRES EXCHANGED _____
 ACRES OTHERWISE _____

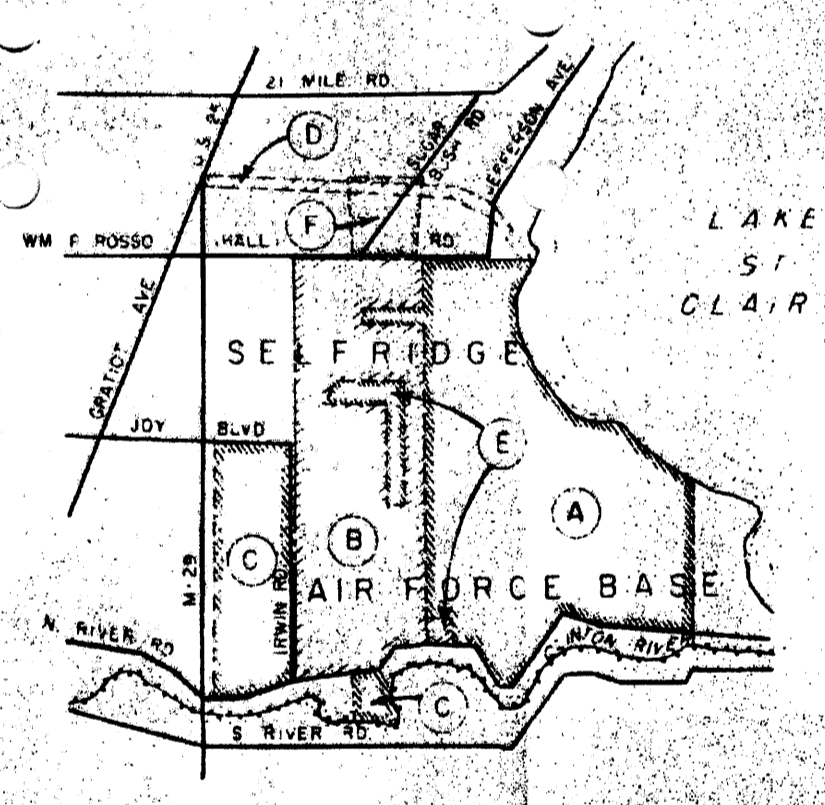
LEGEND
 RESERVATION BOUNDARY _____
 EASEMENT BOUNDARY _____
 STATE LINE _____
 COUNTY LINE _____
 CITY, VILLAGE _____
 CEMETERY, SMALL PARK, ETC. _____
 TOWNSHIP LINE _____
 SECTION LINE _____
 DISPOSAL _____
 PRIVATE CLAIM _____
 TRACT NUMBER _____



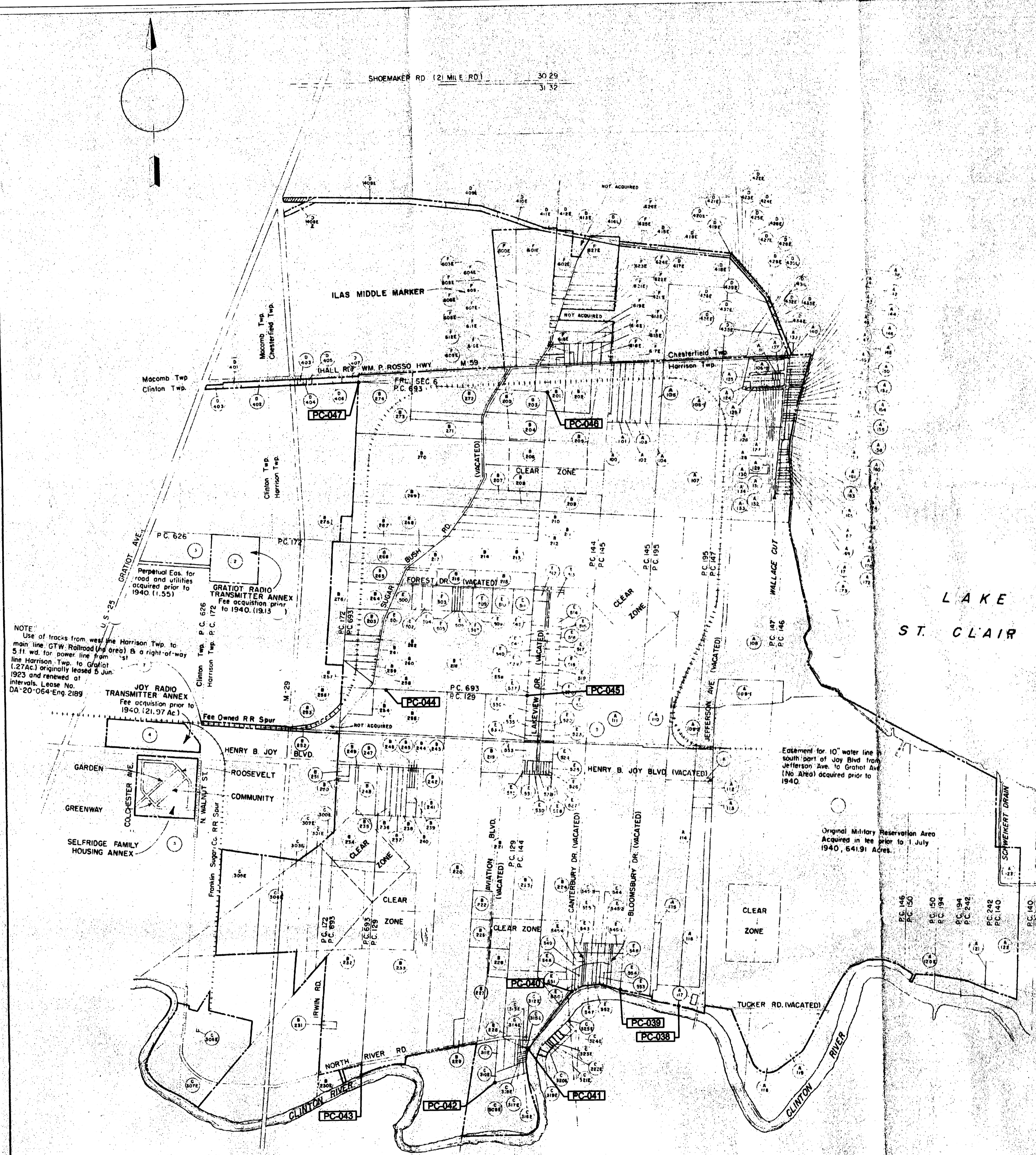
STATE INDEX



VICINITY MAP



TRACT NO. INDEX



NOTE:
 Use of tracks from west of Harrison Twp. to main line G.T.W. Railroad (4.27 Ac) & a right-of-way line Harrison Twp. to Gratiot (1.27 Ac) originally leased 5 Jun 1923 and renewed at intervals. Lease No. DA-20-064-Eng 2185
 JOY RADIO TRANSMITTER ANNEX Fee acquisition prior to 1940 (21.97 Ac)
 GRATIOT RADIO TRANSMITTER ANNEX Fee acquisition prior to 1940 (11.55)

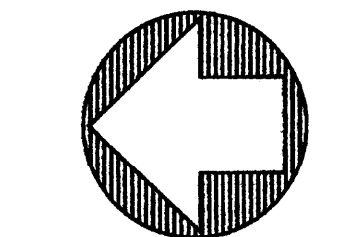
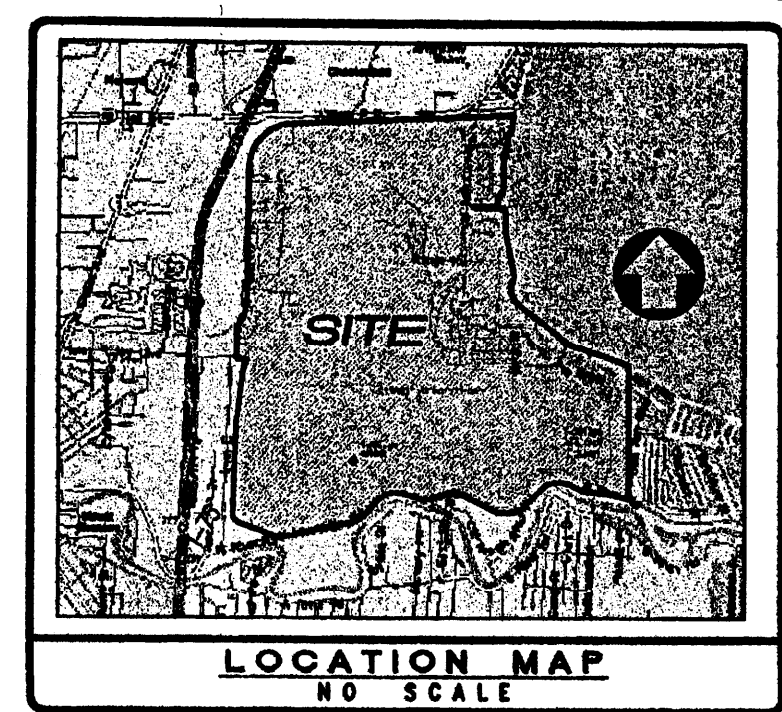
Entitlement for 10" water line south part of Joy Blvd from Jefferson Ave. to Gratiot Ave. (16.4 Ac) acquired prior to 1940.

Original Military Reservation Area Acquired in fee prior to 1 July 1940, 64191 Acres.

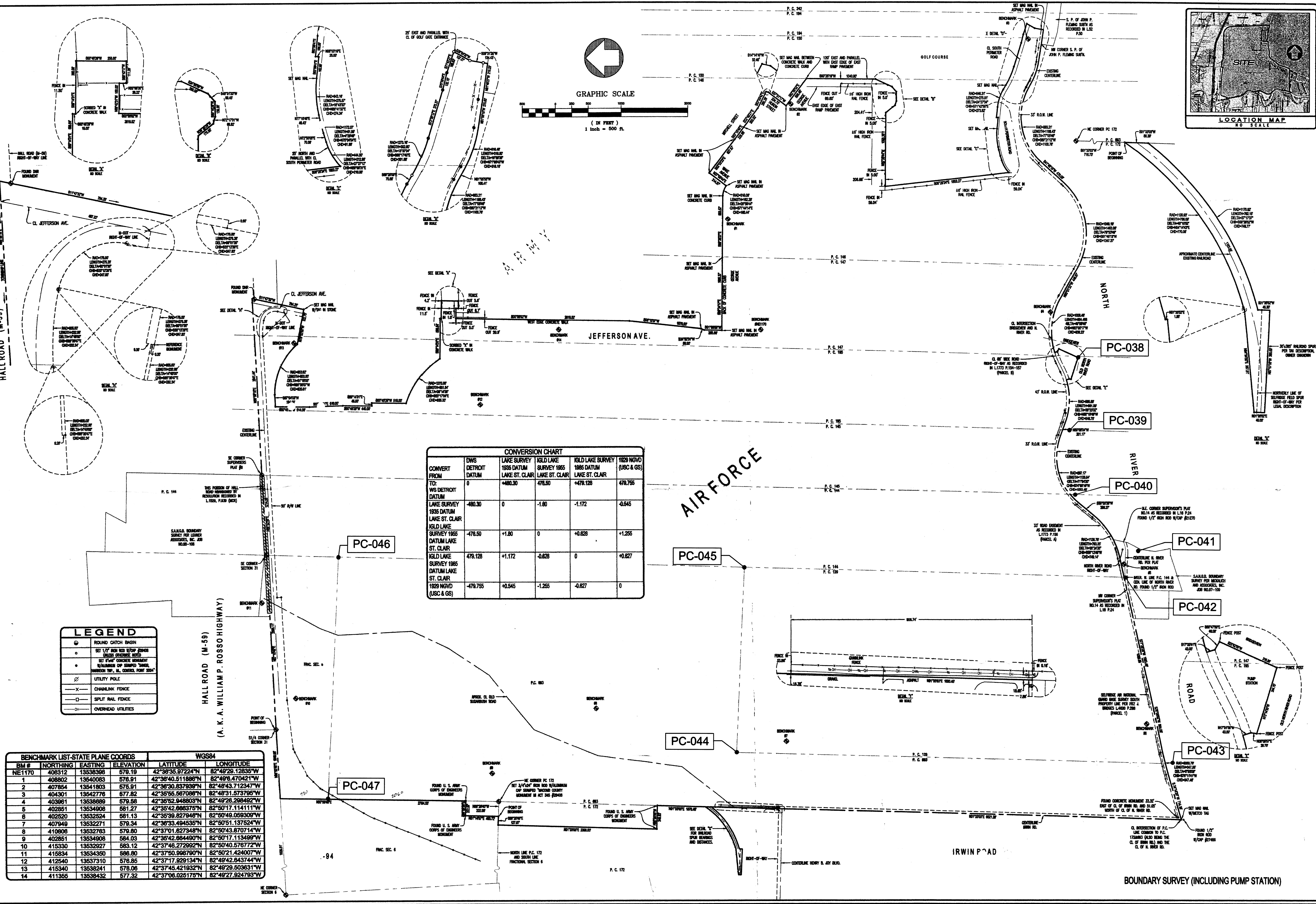
SELFRIDGE FAMILY HOUSING - PERM. INSTL. NO. - 1475
 GRATIOT TRANSMITTER - PERM. INSTL. NO. - 1477
 JOY RADIO TRANSMITTER - PERM. INSTL. NO. - 1478
 ILAS MIDDLE MARKER - PERM. INSTL. NO. - 4624

NO.	DATE	DESCRIPTION	BY
DEPARTMENT OF THE AIR FORCE AIR DEFENSE COMMAND DIRECTORATE OF INSTALLATIONS			
SELFRIDGE AIR FORCE BASE, MICHIGAN			
REAL ESTATE MAP			
SELFRIDGE		AIR FORCE BASE	
Permit Instl. No. 1480		M.T. CLEMENS, MICHIGAN	
SUBMITTED		RECOMMENDED	
		APPROVED	

TRACTS



GRAPHIC SCALE
(IN FEET)
1 inch = 500 ft.



CONVERSION CHART					
CONVERT FROM	DWS DETROIT DATUM	LAKE SURVEY 1935 DATUM LAKE ST. CLAIR	IGLD LAKE SURVEY 1985 DATUM LAKE ST. CLAIR	IGLD LAKE SURVEY 1985 DATUM LAKE ST. CLAIR	1929 NGVD (USC & GS)
TO:	WS DETROIT DATUM	+480.30	-1.00	-1.172	-0.545
LAKE SURVEY 1935 DATUM LAKE ST. CLAIR	-480.30	0	-1.00	-1.172	-0.545
IGLD LAKE SURVEY 1985 DATUM LAKE ST. CLAIR	-478.50	+1.80	0	+0.828	+1.255
IGLD LAKE SURVEY 1985 DATUM LAKE ST. CLAIR	-478.50	+1.80	0	+0.828	+1.255
1929 NGVD (USC & GS)	-479.755	+0.545	-1.255	-0.827	0

LEGEND	
	ROUND CATCH BASIN
	SET 1/2" IRON ROD WITH CONCRETE MONUMENT (UNLESS OTHERWISE NOTED)
	SET 3/4" CONCRETE MONUMENT (UNLESS OTHERWISE NOTED)
	SET 1" CONCRETE MONUMENT (UNLESS OTHERWISE NOTED)
	UTILITY POLE
	CHAINLINK FENCE
	SPLIT RAIL FENCE
	OVERHEAD UTILITIES

BENCHMARK LIST-STATE PLANE COORDS			WGS84	
BM #	NORTHING	EASTING	LATITUDE	LONGITUDE
NE1170	408312	13638308	42°36'35.97224"N	82°49'29.12835"W
1	408802	13640083	42°36'40.511888"N	82°49'6.470421"W
2	407854	13641803	42°36'30.837938"N	82°48'43.712347"W
3	404301	13642776	42°36'55.587088"N	82°48'31.573795"W
4	403961	13638889	42°36'52.948803"N	82°48'28.298492"W
5	402851	13634908	42°35'42.866375"N	82°50'17.114111"W
6	402620	13632624	42°35'39.827946"N	82°50'49.059306"W
7	407949	13632271	42°36'33.494535"N	82°50'51.137524"W
8	410808	13632783	42°37'01.827348"N	82°50'43.870714"W
9	402851	13634908	42°35'42.866490"N	82°50'17.113499"W
10	415330	13632927	42°37'46.272992"N	82°50'40.576772"W
11	415834	13634360	42°37'50.998790"N	82°50'21.424007"W
12	412540	13637310	42°37'17.929134"N	82°49'42.643744"W
13	415340	13638241	42°37'45.421932"N	82°49'29.503631"W
14	411355	13638432	42°37'06.025178"N	82°49'27.924793"W

DATE 05/11/04	REVISOR	DATE 02/14/05	BY CSD	DRAWN BY: CSD	 22804 STEPHENS WARREN, MI 48090 TEL: (800) 785-5770 • FAX (800) 785-5774 HTTP: www.metcoinc.com		S. A. N. G. BASE BOUNDARY SURVEY	CLIENT: S. A. N. G. BASE	JOB NUMBER 03-132
SCALE 1" = 500'	ADDED WGS84 COORDINATES								SHEET NUMBER 1 OF 3

No. 486

No. 195 Confirmed to
Mitchel Tremble

NORTH SIDE OF RIVER HURON

Description No. 195 Confirmed to Mitchel Tremble commencing at a post standing on the border of River Huron between this tract and a tract confirmed to Edward Tucker thence north one hundred and forty one chains to a post thence east seventeen chains to a post standing on the west line of a tract confirmed to the widow Tucker in trust for her two sons Jacob & Charles thence south one hundred and forty seven chains nineteen links to a post standing on the border of River Huron thence along the border of said river up stream north eighty degrees west eighteen chains ten links to the place of beginning, containing two hundred and forty four acres and ninety six hundredths of an acre.

Detroit July 14, 1810

Aaron Greeley Surveyor
of private claims

N^o. 486. North side of River Huron

Description N^o. 145 Confirmed to
Mitchel Lemble commencing at a post
standing on the border of River Huron
between this tract and a tract confir-
med to Edward Tucker, thence north
one hundred and forty one chains
to a post, thence East seventeen chains
to a post standing on the west line
of a tract confirmed to the widow
Tucker in trust for her two Sons Jacob
& Charles Tucker, thence South one hun-

dred and forty seven chains in a
line to a post standing on the border
of River Huron thence along the bor-
der of said River upstream, with a
slight degree west, eighteen chains two
links, to the place of beginning con-
taining two hundred and forty four
acres and sixtey six hundredths of
an acre.

Detroit - July 14. 1810

Harvee Greeley Surveyor
of private Claims.

No. 488

No. 145 Confirmed to
Edward Tucker

NORTH SIDE OF RIVER HURON

Description No. 145 Confirmed to Edward Tucker commencing at a post standing on the border of River Huron between this tract and a tract confirmed to John Tucker thence north three hundred and forty eight chains forty one links, to a post thence east forty six chains ninety four links to a post standing on the north west (or rear) line of a tract confirmed to George Meldrum thence south forty five degrees west thirty two chains eighty___ links to a post thence west six chains fifty links to a post a boundary between this tract and Macconses Reserve thence south sixty six chains ninety nine links to a post thence east seventeen chains to a post, thence south fifty eight chains twelve links to a post thence west seventeen chains to a post the northwest corner of a tract confirmed to Mitchell Trumble, thence south one hundred and ninety eight chains eighty nine links to a post standing on the border of River Huron, thence along the border of said River up stream north eighty degrees west seven chains thence south seventy four degrees west eight chains thirty links to the place of beginning. _____

Containing six hundred and forty acres.

Detroit July 14, 1810

Aaron Greeley Surveyor
of private claims

N. 488. North Side of River Huron.

Description N. 145 Confirmed to Edward Tucker commencing at a post standing on the border of River Huron between this tract and a tract confirmed to John Tucker, thence north three hundred and forty eight chains forty one links, to a post thence east forty six chains ninety four links, to a post standing on the north west (or Near) line of a tract confirmed to George Meldrum.

thence south forty five degrees west thirty two chains eighty links, to a post thence west six chains fifty links, to a post a boundary between this tract and Macomber's Reserve thence south fifty six chains ninety nine links, to a post thence east seventeen chains, to a post thence south fifty eight chains twelve links, to a post thence west seventeen chains, to a post the north west corner of a tract confirmed to Mitchel Semble, thence south one hundred and ninety eight chains eighty nine links, to a post standing on the border of River Huron thence along the border of said River upstream north eighty degrees west seven chains, thence south seventy four degrees west eight chains thirty links, to the place of beginning containing six hundred and forty acres.

Detroit July 14. 1810

Aaron Greeley Surveyor
of private Claims.

"SUPERVISORS PLAT NO. 13"

PART OF P.C. 145, T 2 N, R 14 E,

HARRISON TOWNSHIP, MACOMB COUNTY, MICHIGAN.

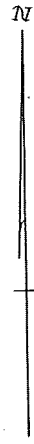
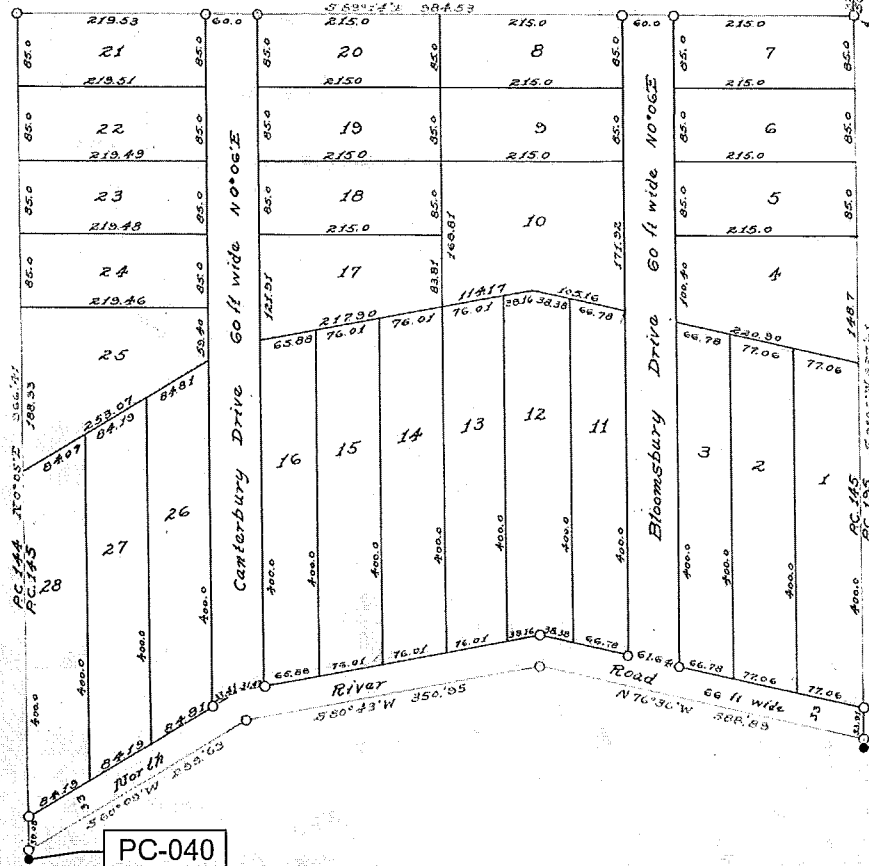
Scale: 1 Inch = 100 Feet



NOTE: All dimensions hereon are in feet and decimals thereof.

Intersection of E Line P.C. 145 and Center Line of Joy Blvd.

Point of Beginning



PC-040

PC-039

DEDICATION

SURVIVOR'S CERTIFICATE

KNOW ALL MEN BY THESE PRESENTS, that St. Clair M. Ross Supervisor of the Township of Harrison, Macomb County, State of Michigan, by virtue of authority in me vested by Section 51, Act 178, of 1929, having been duly authorized by the Township Board, have caused the land described in the annexed plat to be surveyed, laid out and platted, to be known as "SUPERVISORS PLAT NO. 13", part of P. C. 145, T2N, R14E, Harrison Township, Macomb County, Michigan, and that the streets and alleys as shown on said plat are now being used for such purposes.

I hereby certify that the plat hereon delineated is a correct one and that permanent metal monuments of not less than one inch in diameter and fifteen inches in length set in a concrete base at least four inches in diameter and forty-eight inches in depth have been placed at joints marked thus "o" as thereon shown at all angles in the boundaries of the land platted, at all the intersections of streets, intersections of alleys, or of streets and alleys, and at the intersections of streets and alleys with the boundaries of the plat as shown on said plat.

Witnesses:

St. Clair M. Ross
Supervisor of the Township of Harrison

St. Clair M. Ross
 Supervisor of the Township of Harrison

R. K. M. Weddy
 Registered Civil Engineer.

ACKNOWLEDGMENT

CERTIFICATE OF MUNICIPAL APPROVAL

STATE OF MICHIGAN }
 County of Macomb } ss

On this 13 day of Nov, A. D. 1936, before me, a Notary Public in and for said County, personally came the above named Supervisor of the Township of Harrison, Macomb County, Michigan, known to me to be the person who executed the above dedication, and acknowledged the same to be his free act and deed as such Supervisor.

This plat was approved by the Township Board of the Township of Harrison at a meeting held Nov 11, A. D. 1936.

Carl H. Jones
 Township Clerk.

CERTIFICATE OF APPROVAL BY COUNTY BOARD

This plat was approved on the 15 day of Nov, 1936.

Medford M. Mullen
 Judge of Probate,
James E. Jones, Acting
 County Clerk,
Carl B. Brumback
 County Treasurer.

My Commission Expires: Mar 14 1937

DESCRIPTION OF LAND PLATTED

The land embraced in the annexed plat of "SUPERVISORS PLAT NO. 13", part of P. C. 145, T2N, R14E, Harrison Township, Macomb County, Michigan, is described as follows: beginning at a point 229.58 ft. S 0°02' W of the intersection of E 1/4 line of P. C. 145 and the centerline of Joy Boulevard; thence S 0°06' W 87.61 ft.; thence N 76°36' W 288.89 ft.; thence S 80°43' W 350.95 ft.; thence S 80°09' W 229.63 ft.; thence N 0°06' W 966.41 ft.; thence S 89°14' E 984.53 ft. to the point of beginning.

Examined and Approved

5/5/37
James K. Jamison

RECORDED IN BOOK

Received for Record this 8 day of MAY 1937 A.D. 1937
11:30 o'clock AM and Registered in Liber 14 of Plats on Page 5

W. H. Maguire Deputy Registrar

"SUPERVISORS PLAT N^o 14"

PART OF P.C.s 129 & 144, T 2 N, R 14 E,
HARRISON TOWNSHIP, MACOMB COUNTY, MICHIGAN.

Scale: 1 Inch = 100 Ft.

NOTE: All dimensions hereon are in feet and decimals thereof.

DEDICATION

KNOW ALL MEN BY THESE PRESENTS, That I, Carl H. Ross, Supervisor of the Township of Harrison, Macomb County, State of Michigan, by virtue of authority in me vested by Section 51, Act 172, of 1929, having been duly authorized by the Township Board have caused the land described in the annexed plat to be surveyed, laid out and platted, to be known as "SUPERVISORS PLAT NO. 14", part of P. C.s 129, & 144, T2N, R14E, Harrison Township, Macomb County, Michigan, and that the streets and alleys as shown on said plat are now being used for such purposes.

Witnesses:

Carl H. Ross
Supervisor of the Township of Harrison.

SURVEYOR'S CERTIFICATE

I hereby certify that the plat hereon delineated is a correct one and that permanent metal monuments of not less than one inch in diameter and fifteen inches in length set in a concrete base at least four inches in diameter and forty-eight inches in depth have been placed at points marked thus "o", as hereon shown at all angles in the boundaries of the land platted, at all the intersections of streets, intersections of alleys, or of streets and alleys, and at the intersections of streets and alleys with the boundaries of the plat as shown on said plat.

P. K. Munday
Registered Civil Engineer.

ACKNOWLEDGMENT

STATE OF MICHIGAN,
County of Macomb

On this 15th day of May, A. D. 1936, before me, a Notary public in and for said County, personally came the above named Supervisor of the Township of Harrison, Macomb County, Michigan, known to me to be the person who executed the above dedication and acknowledged the same to be his free act and deed as such Supervisor.

Carl H. Ross
Notary public in and for Macomb County.

My Commission Expires: 11/11/1937

DESCRIPTION OF LAND PLATTED

The land embraced in the annexed plat of "SUPERVISORS PLAT NO. 14", part of P. C.s 129 & 144, T2N, R14E, Harrison Township, Macomb County, Michigan, is described as follows: beginning at the intersection of the West line of P. C. 144 and the center line of the North River Road; thence in a westerly direction along the centerline of said Road on a curve of 1548.66 ft. radius a dist. of 173.21 ft; thence S 30°35'30" W 640.93 ft; thence S 30°27' 203.10 ft; thence N 72°46' E 657.30 ft; thence N 90°30' W 207.0 ft; thence N 90°5' E 222.0 ft; thence N 28°13' E 214.15 ft; thence N 15°00' E 69.4 ft. to center of North River Road; thence in a westerly direction along the centerline of said Road on a curve of 286.61 ft. radius a dist. of 186.21 ft. to P. O. of curve; thence N 86°27' W 149.3 ft. to P. O. of curve of 1548.66 ft. radius; thence in a westerly direction along said curve a dist of 191.63 ft. to point of beginning.

CERTIFICATE OF MUNICIPAL APPROVAL

This plat was approved by the Township Board of the Township of Harrison at a meeting held May 9, A. D. 1936.

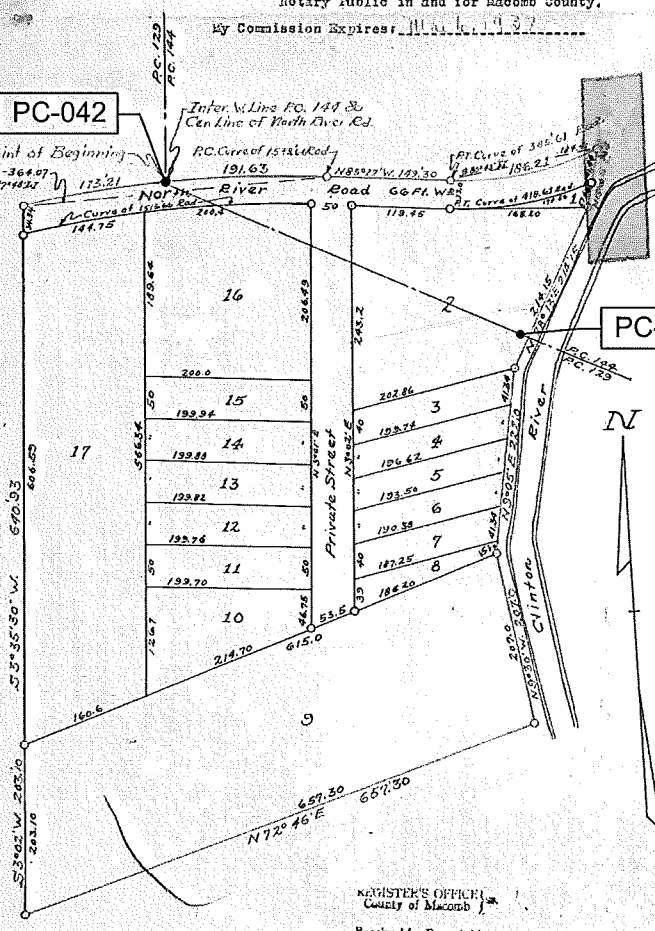
Carl H. Ross
Township Clerk.

CERTIFICATE OF APPROVAL BY COUNTY BOARD

This plat was approved on the 15th day of May, 1936.

Arthur C. Mills
Judge of Probate,
Frank E. James, Acting
County Clerk.
Carl B. Brandenburg
County Treasurer.

Examined and Approved
5/5/36
James K. Jamison



REGISTER'S OFFICE
County of Macomb

Received for Record this 15th day of May, A. D. 1936
at 12:24 o'clock P.M. and Registered
in Liber 13 of Plats
on Page 24
W. A. M. [Signature]

See Resolutions for Change of street name: See Lib 563 of Deeds - Page 527
See comment to plat 1319 Page 43 of deeds

NORTH RIVER ROAD

PC-042

NORTHWEST CORNER OF SUPERVISOR'S PLAT NO. 14, L.B. P. 24, (M.C.R.)
INTERSECTION OF THE CENTERLINE OF NORTH RIVER ROAD & EAST LINE PRIVATE CLAIM 129, DEED.

THIS LINE (DOTTED) RELATED TO AND PLACED RECORD DISTANCE FROM THE WESTERN LINE OF S.P. S.M. ACCORDING TO OLD RECORDS AS PER LAMBERT ASSOCIATED SURVEY #74-808

DESCRIPTION

Part of Private Claim 129, Town 2 North, Range 14 East, Harrison Township, Macomb County, Michigan and being more particularly described as follows:

Commencing at the Northwest corner of SUPERVISOR'S PLAT NO. 14, 14th part of P.C.'s 129 & 144, T.2N., R.14E., Harrison Township, Macomb County, Michigan, as recorded in Liber 18 of Plats, page 24, Macomb County Records; thence S.03°40'00"W. along the westerly line of said SUPERVISOR'S PLAT NO. 14 636.56 feet to the point of beginning;

Thence S.03°12'00"W. along the westerly line of said SUPERVISOR'S PLAT NO. 14 202.63 feet to the southwest corner of said SUPERVISOR'S PLAT NO. 14;

Thence N.72°43'20"S. along the southerly line of said SUPERVISOR'S PLAT NO. 14 567.30 feet;

Thence S.89°30'50"E. 25.57 feet to a point on the westerly bank of the Clinton River;

Thence along a meander line on the bank of the Clinton River the following 12 courses and distances: S.17°58'00"E. 827.60 feet, S.17°36'30"W. 327.60 feet, S.28°00"W. 991.20 feet, S.78°50'00"W. 429.30 feet, S.78°49'00"W. 382.28 feet, S.78°41'00"W. 261.86 feet, N.87°0'00"W. 208.00 feet, N.07°19'00"W. 174.21 feet, N.38°05'00"E. 311.03 feet, N.24°12'00"E. 314.85 feet, thence N.09°22'00"E. 505.17 feet, and N.25°43'00"W. 177.72 feet;

Thence leaving said meander line along the bank of the Clinton River N.78°44'30"E. 48.78 feet;

Thence N.11°15'30"W. 338.00 feet to a point on the centerline of North River Road;

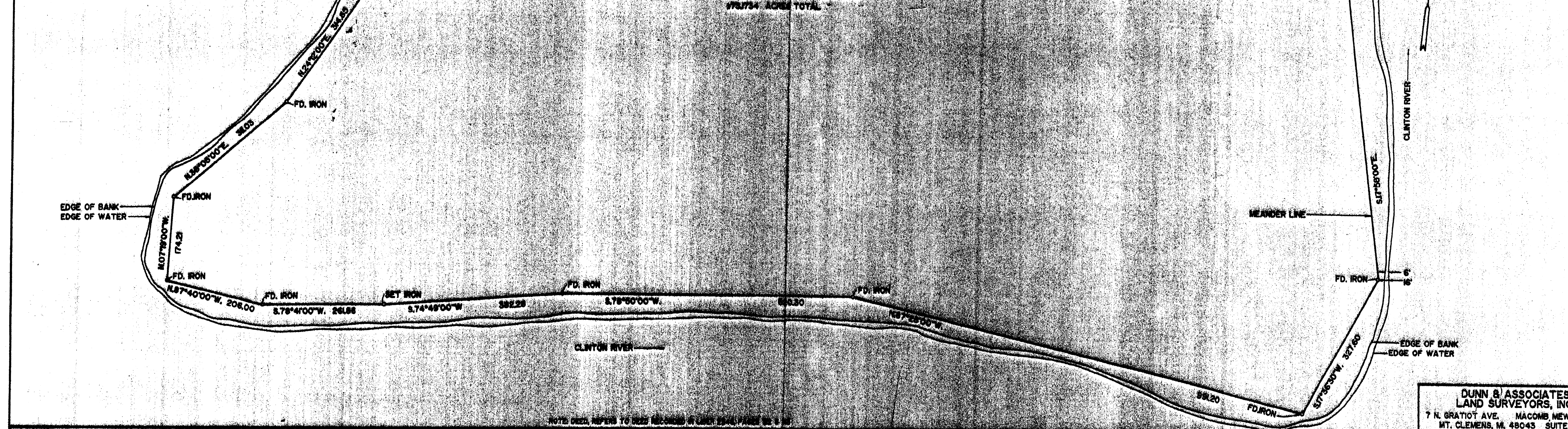
Thence N.78°44'30"E. along the centerline of North River Road 1,042.84 feet;

Thence S.01°29'10"W. 534.50 feet;

Thence S.88°30'50"E. 425.00 feet to the point of beginning.

Containing 73.1734 Acres more or less to the water's edge of the Clinton River.

Subject to any and all easements and rights of way of record.



DATE	BY	REVISION	DATE	BY	REVISION

BOUNDARY SURVEY

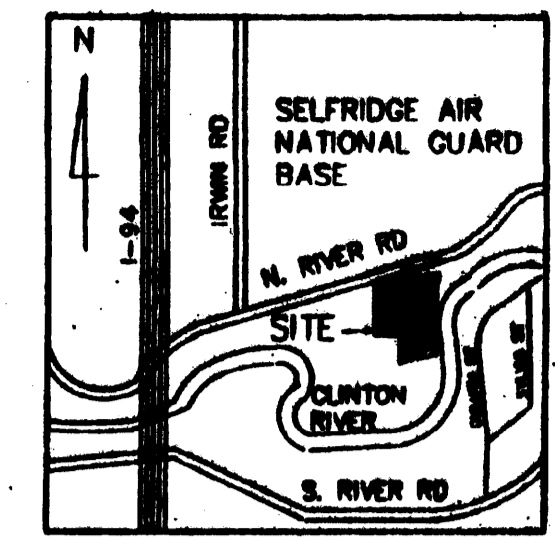
PART OF PRIVATE CLAIM 129
HARRISON TOWNSHIP, MACOMB COUNTY, MICHIGAN.

**DUNN & ASSOCIATES
LAND SURVEYORS, INC.**
7 N. GRATIOT AVE. MACOMB, MICHIGAN BLDG.
MT. CLEMENS, MI 48043 SUITE 208
(313) 465-5555

SCALE 1"=100' FOR SOURCE VERIFICATION DATE 2/21/20
SURVEY BY: J.E.D. JOB NO. 22-023
DRAWN BY: J.E.D. & J.R.D. FIELD BOOK: COL. F. 7

LOCATION MAP

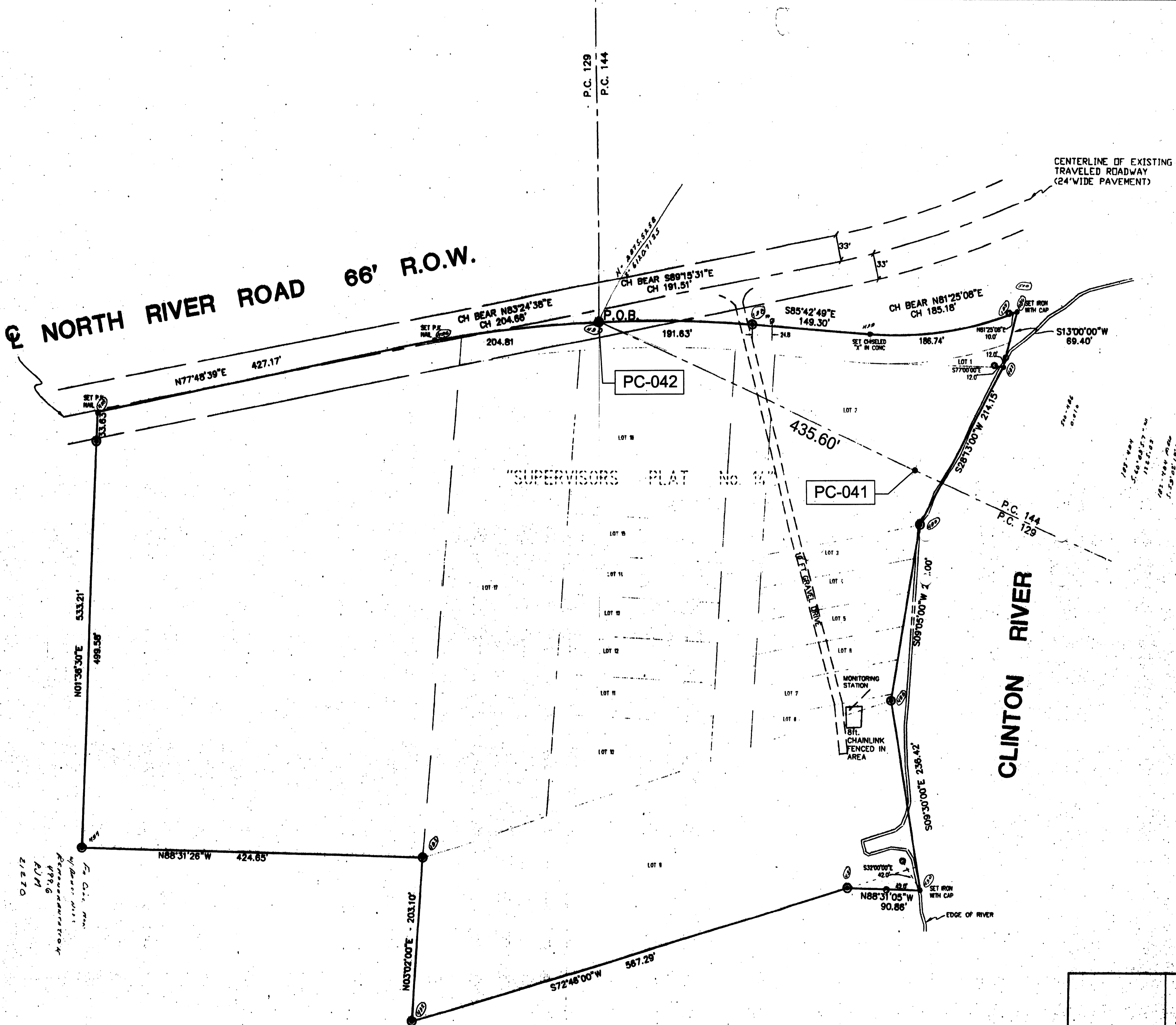
SCALE: 1" = 3000'



LEGEND

- SET PROPERTY CORNER:
4"x4" CONCRETE MONUMENT/BRASS CAP
- SET WITNESS POINT:
4"x4" CONCRETE MONUMENT/BRASS CAP

NORTH RIVER ROAD 66' R.O.W.



LEGAL DESCRIPTION (PARCEL #2)

A Parcel of land being a part of P.C. 129 AND 144, 1.26± ACRES, and that portion being previously platted as "SUPERVISORS PLAT No. 14" as recorded in Liber 15, Page 24, Washtenaw Co. Register of Deeds, all being in Harrison Township, Washtenaw Co. Michigan and being more particularly described as hereinafter at the point of intersection of the East line of P.C. 129 and the centerline of Old North River Road, (and point located as plotted and shown on said "SUPERVISORS PLAT No. 14"), thence along a curve to the right (Radius=1548.00ft, L.C. Bears S89°15'31"E, 191.51ft.) an arc distance of 191.53ft; thence S89°42'49"E, 149.30ft; thence along a curve to the left (Radius=415.70ft, L.C. Bears N81°25'08"E, 185.18ft) an arc distance of 188.74ft; thence S13°00'00"W, 89.40ft; thence S28°13'00"W, 214.13ft; thence S28°13'00"W, 214.13ft; thence S09°30'00"E, 238.42ft; thence N88°31'05"W, 90.86ft; thence N88°31'05"W, 90.86ft; thence N88°31'26"W, 424.85ft; thence N01°36'30"E, 533.21ft; thence N77°48'39"E, 427.17ft; thence along a curve to the right (Radius=1548.00ft, L.C. Bears N83°24'26"E, 204.88ft); to the Point of Beginning, Containing 16.502 Acres.

ADDITIONAL NOTES

I HEREBY CERTIFY THAT I HAVE EXAMINED THE PROPERTY RECORDS TO BEHOLD THE PROPERTY LINES AND MONUMENTS.



James J. Maly
JAMES J. MALY
P.L.S. No. 71270

SANG PROJECT NUMBER: VLS1009

<p>MICKALICH and ASSOCIATES, INC. CIVIL ENGINEERING SURVEYING PLANNING</p> <p>20 WEST HURON ST. FORTIAC, MICHIGAN 48104 PHONE (313) 255-6555 FAX (313) 255-6559</p>		
PROJECT	DRAWN BY: AS	DATE: JUNE 12 1997
SELFDRIDGE AIR NATIONAL GUARD	CHECKED BY: RJM	PROJECT No.:
TITLE	APPROVED BY: APR	97109
BOUNDARY SURVEY	SCALE:	SHEET No.:
CLIENT	1" = 30'	1 of 1
SELFDRIDGE AIR NATIONAL GUARD	DATE:	