

INDEX

NORTHWEST CORNER P.C. 373 OTHER CODE: PC-025 HARRISON TOWNSHIP, T2N, R14E

SECTION 1:

1. Index
2. Before Pictures of Point and in each cardinal direction
3. After Pictures of Point

SECTION 2:

1. LCRC
2. Surveyor's Dossier Report
3. Overall Sketch
4. P.C. Sketch

SECTION 3:

1. Original Private Claim Notes (2 pages)
2. Field Notes (1 page)
3. 1819 Map of Harrison Township from GLO (1 page)
4. Map of Harrison Township (1 page)
5. 1916 Map of Harrison Township (1 page)
6. 2006 Map of Harrison Township (1 page)
7. Harrison Township Composite Map (1 page)

SECTION 4:

Belvidere Subdivision	Plat	L.6, P.66, (1 page)
Venice Shores Subdivision	Plat	L.33, P.44 (3 pages)
Venice Shores Subdivision No. 1	Plat	L.34, P.31 (3 pages)
Venice Shores Subdivision No. 2	Plat	L.39, P.46 (2 pages)
Venice Shores Subdivision No. 3	Plat	L.41, P.49 (2 pages)
Walter J. Lehner, C.E.	Sketch of Survey	Unrecorded

REFERENCE MONUMENT
FOR PC-025

MACOMB CO.
HARRISON TWP.



PC-025
HARRISON
TWP.











LAND CORNER RECORDATION CERTIFICATE
Filing Requirement of Act 74, Mich. P.A. 1970

For corners in

<u>MACOMB</u> (County)	Located In: Harrison Township	Corner Code # <u>PC-025</u>
1. Public Land Survey	T <u>2N</u> R <u>14E</u>	<u>PC-025</u>
	T _____ R _____	_____
	T _____ R _____	_____
	T _____ R _____	_____
2. Property Controlling in Section	S _____ T _____ R _____	_____
	S _____ T _____ R _____	_____
3. Miscellaneous Property in Section	S _____ T _____ R _____	_____
	S _____ T _____ R _____	_____

2156196 PAGE 1 OF 2
 LIBER 21700 PAGE 185
 11/09/2012 03:30:27 P.M.
 MACOMB COUNTY, MI
 CARMELLA SABAUGH, REGISTER OF DEEDS

Register of Deeds Stamp & File Number

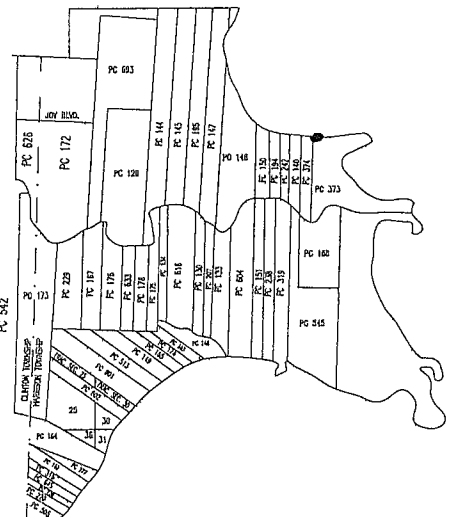
4. Lot No. _____, Recorded Plat _____
 5. Private Claims Northwest Corner of Private Claim 373 Common with Northeast
 Corner of Private Claim 374

I, ROBERT R. DROUILLARD, JR., in a field survey on May 25, 2012, do hereby state that under requirements of P.A. 74, Michigan P.A. of 1970, the corner points mentioned in lines 1 and 2 above were in conformance with regulations and rules therefore as required in the current manual of survey instructions of the United States Department of the Interior, Bureau of Land Management or by a decree of a Court of Law and/or that the corner points mentioned in lines 3, 4 and 5 above were in conformance with the rules of the Michigan Board of Land Surveyors or by a Decree of a Court of Law; re-established, monumented, recovered, found as expressed below:

NOTE: Not more than 2 corners, all in the same town and range, may be recorded on this certificate.

- A. Description of original monument and accessories and/or subsequent restoration:
 Post set by Aaron Greeley according to Private Claim Notes, not found

1	1810	Private claim notes	Aaron Greeley
2	1923	Belvidere Subdivision	James Wm. Irwin N/A L.6, P.66
3	1955	Venice Shores Subdivision	Fitz J. Bridges #5779 L.33, P.44-46
4	1955	Venice Shores Subdivision No.1	Fitz J. Bridges #5779 L.34, P.31-33
5	1957	Venice Shores Subdivision No.2	Fitz J. Bridges #5779 L.39, P.46-47
6	1958	Venice Shores Subdivision No.3	Fitz J. Bridges #5779 L.41, P.49-50
7	No Date	Sketch of Survey	Walter J. Lehner N/A Unrecorded



Description of corner evidence found and/or method applied in restoring or reestablishing corner:

No physical evidence of the original post was found at the location described in the Aaron Greeley original survey notes. I established the location of the P.C. monument using distances and existing evidence found in recorded plat of Belvidere Subdivision and in an unrecorded Sketch of Survey by Walter J. Lehner. After establishing the point described as West line of P.C. 373 in the "Belvidere Subdivision" and described as East line of P.C. 374 on the Sketch of Survey by Walter J. Lehner, a line was projected in a north and south direction parallel with the line common to P.C. 140 and P.C. 242 previously established. Said line was projected south to the bank of the Clinton River and north to the bank of Lake St. Clair. The reference monument was placed 5.27 feet south of the north terminus of the line at Lake St. Clair.

FROM NORTHWEST CORNER PC 373 (PC-025) TO SOUTHWEST CORNER PC 373 (PC-024)
 5148.00' (78 Chains Private Claim Notes -Original Survey)
 5149.68' from REF PC-025 to REF PC-024 (measured Drouillard #52517, 2012)
 5.27' from REF PC-025 to edge of steel seawall (PC-025 Corner, shore line).

- C. Description of monument for corner and accessories established to perpetuate locating the position of the corner:

Reference Corner to PC-025 I installed a 4" diameter concrete monument, 36" long with a 1/2" iron rod having a 2" diameter aluminum cap stamped "Macomb County Monument, MI Act #345, #52517, "REF PC-025".

Witnesses:

N35°W	6.64'	To the Northeast corner of a 5' x 12' concrete pad for Edison transformer.
N70°W	88.74'	To the face of light pole
S40°E	52.41'	To the edge of round catch basin
S60°E	110.50'	To face of a light pole.
S65°E	53.37'	To the top center of fire hydrant.
N35°E	4.32'	To notch in seawall.

The selected location is accepted by me and is generally accepted by Professional Surveyors as the best available evidence of the position of the original corner.

Signed by [Signature]
 Surveyor's Michigan License No. 52517

Date 11/2/12

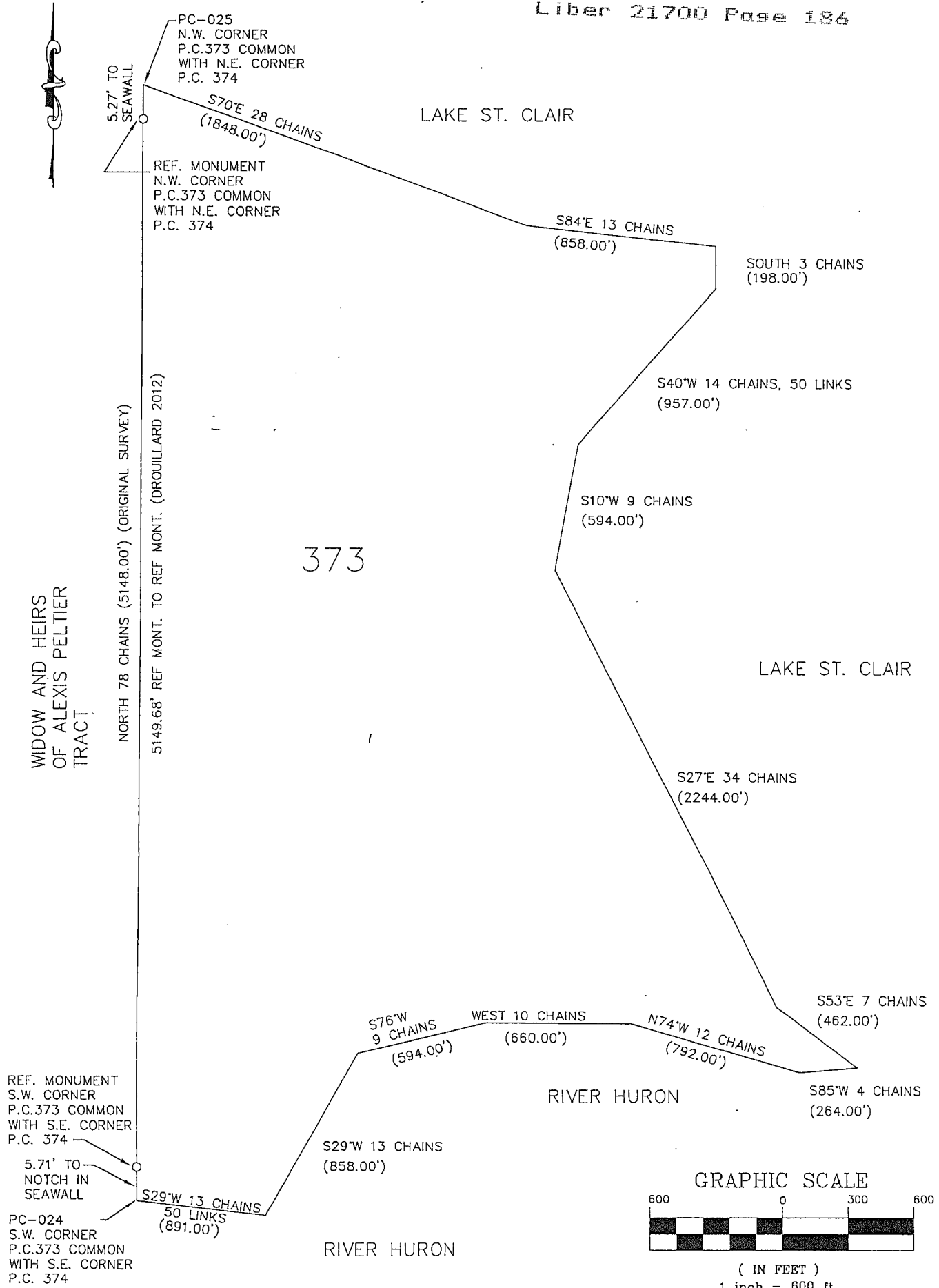


FORM APPROVED BY MICHIGAN STATE BOARD OF PROFESSIONAL SURVEYORS, JAN. 28, 1971
 REVISED MAY 14, 1975
 REVISED JAN., 1983
 REVISED OCT., 1995

ACCEPTED BY THE MACOMB COUNTY SURVEY PEER GROUP AS THE OFFICIAL CORNER UNDER MICHIGAN PUBLIC ACT 345 OF 1990 AT A MEETING HELD ON 7-24-2012
[Signature]
 MARTIN C. DUNN, P.S. CHAIRMAN

SKETCH OF PRIVATE CLAIM 373

Liber 21700 Page 186



P.C. 373
Confirmed to: Ignace Morass

Commencing at a post standing on the North border of River Huron between this tract and a tract confirmed to the Widow and Heirs of Alexis Peltier deceased thence North Seventy Eight Chains (5148.00 feet) to a post standing on the border of Lake St. Clair thence along the border of said Lake South Seventy Degrees East Twenty Eight Chains (1848.00 feet), thence South Eighty Four Degrees East Thirteen Chains (858.00 feet), thence South Three Chains (198.00 feet), thence South Forty Degrees West Fourteen Chains Fifty Links, thence South Ten Degrees West Nine Chains (594.00 feet) thence South Twenty Seven Degrees East Thirty Four Chains (2244.00 feet), thence South Fifty Three Degrees East Seven Chains (462.00 feet) to the border of River Huron at its confluence with Lake St. Clair, thence along the border of said River up stream South Eighty Five Degrees West Four Chains (264.00 feet) thence North Seventy Four Degrees West Twelve Chains (792.00 feet), thence West Ten Chains (660.00 feet), thence South Seventy Six Degrees West Nine Chains (594.00 feet), thence South Twenty Nine Degrees West Thirteen Chains (858.00 feet), thence West Eighty Five Chains Fifty Links (5643.00 feet) to the place of beginning, containing two hundred and eight acres eighty seven hundredths of an acre.

Detroit July 14th, 1810

Aaron Greeley Surveyor
of Private Claims

DOSSIER
NORTHWEST CORNER P.C. 373
OTHER CODE: PC-025
HARRISON TOWNSHIP,
T2N, R14E

GLO HISTORY:

Private Claim survey performed by Aaron Greeley on July 14, 1810. Commencing at a post standing on the north border of River Huron between this tract and a tract confirmed to the widow and heirs of Alexis Peltier deceased thence north seventy eight chains to a post standing on the border of Lake St. Clair thence along the border of said lake south seventy degrees east twenty eight chains, thence south eighty four degrees east thirteen chains, thence south three chains, thence south forty degrees west fourteen chains fifty links, thence south ten degrees west nine chains thence south twenty seven degrees east thirty four chains, thence south fifty three degrees east seven chains to the border of River Huron at its confluence with Lake St. Clair, thence along the border of said river up stream south eighty five degrees west four chains, thence north seventy four degrees west twelve chains, thence west ten chains, thence south seventy six degrees west nine chains, thence south twenty nine degrees west thirteen chains, thence west eight chains fifty links to the place of beginning, containing two hundred and eight acres eighty seven hundredths of an acre. Description No. 373 Confirmed to Ignace Morass.

EXISTING CONDITIONS:

No physical evidence of original post found at above described location. The reference monument position was established using found evidence from the following plats: "Belvidere Subdivision" as recorded in liber 6 of plats, page 66, Macomb County Records, "Venice Shores Subdivision" as recorded in liber 33 of plats, page 44, Macomb County Records, "Venice Shores Subdivision No.1" as recorded in liber 34 of plats, page 31, Macomb County Records, "Venice Shores Subdivision No.2" as recorded in liber 39 of plats, page 46, Macomb County Records, "Venice Shores Subdivision No.3" as recorded in liber 41 of plats, page 49, Macomb County Records and an unrecorded Sketch of Survey by Walter J. Lehner, C.E.

RECORDED & UNRECORDED SURVEYS, & FIELD NOTES:

1. Aaron Greeley	Copy of Original Survey	Post sighted in notes (2 pages)
2. Belvidere Subdivision	Plat	L.6, P.66
3. Venice Shores Subdivision	Plat	L.33, P.44-46, (3 pages)
4. Venice Shores Subdivision No.1	Plat	L.34, P.31-33 (3 pages)
5. Venice Shores Subdivision No.2	Plat	L.39, P.46, 47 (2 pages)
6. Venice Shores Subdivision No.3	Plat	L.41, P.49, 50 (2 pages)
7. Walter J. Lehner, C.E.	Sketch of Survey	Unrecorded

FIELD MEASUREMENTS BETWEEN CORNERS:

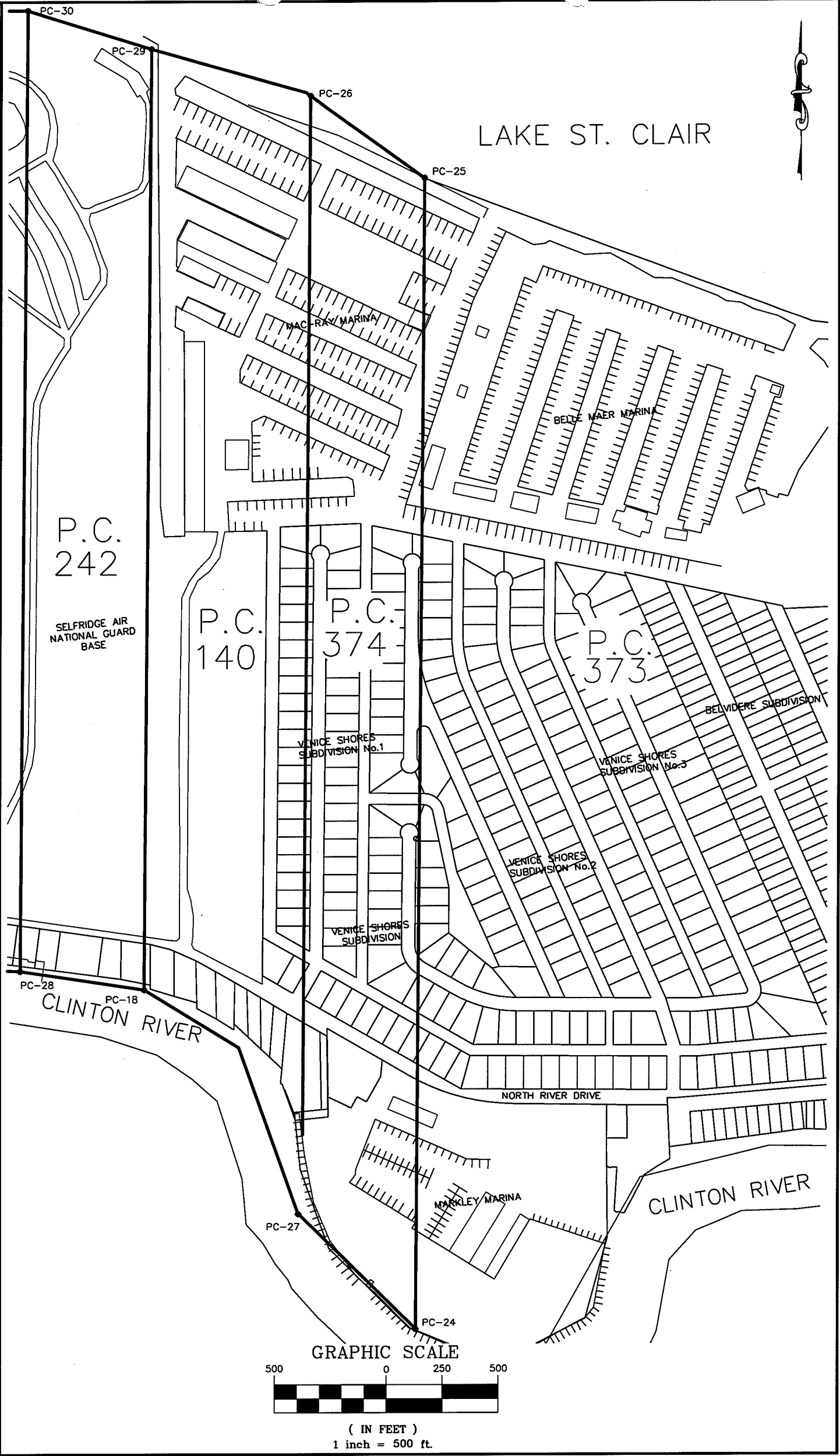
FROM CORNER FOR NORTHWEST PC 373 (PC-025) TO SOUTHWEST CORNER PC 373 (PC-024)
5148.00' (78 Chains Private Claim Notes)
5144.58' (measured Drouillard #52517, 2012)

RECOMMENDATIONS:

Replace 1/2" diameter iron rod and cap with a 4" diameter concrete monument, 36" long with a 1/2" iron rod having a 2" diameter aluminum cap stamped "Macomb County Monument, MI Act #345, #52517, "PC-025".

WITNESSES: PC-025 CORNER

N35°W	6.64'	To the Northeast corner of a 5'x12' concrete pad for Edison transformer.
N70°W	88.74'	To the face of light pole.
S40°E	52.41'	To the edge of round catch basin.
S60°E	110.50'	To face of a light pole.
S65°E	53.37'	To the top center of fire hydrant.
N35°E	4.32'	To notch in seawall.



LAKE ST. CLAIR

P.C.
242

SELFRIDGE AIR
NATIONAL GUARD
BASE

P.C.
140

P.C.
374

P.C.
373

VENICE SHORES
SUBDIVISION No.1

VENICE SHORES
SUBDIVISION No.3

BELLIDERE SUBDIVISION

VENICE SHORES
SUBDIVISION No.2

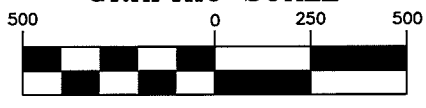
VENICE SHORES
SUBDIVISION

CLINTON RIVER

NORTH RIVER DRIVE

CLINTON RIVER

GRAPHIC SCALE



(IN FEET)
1 inch = 500 ft.

N^o 478. North Side of River Huron.

Description N^o 378 Confirmed to Ignace Morays, commencing at a post standing on the north border of River Huron between this tract and a tract confirmed to the widow and heirs of Alexis Peltier deceased. thence north seventy eight chains, to a post standing on the border of Lake St. Clair. thence along the border of said Lake south seventy degrees east twenty eight chains, thence south eighty four degrees east thirteen chains, thence south three chains, thence south forty degrees west fourteen chains fifty links, - thence south ten degrees west nine chains, thence south twenty seven degrees east thirty four chains, thence south fifty three degrees east seven chains, to the border of River Huron at its confluence with Lake St. Clair, thence along the border of said River up stream south eighty five degrees west four chains, thence north seventy four degrees west twelve chains, thence west ten chains, thence south seventy six degrees west nine chains, thence south twenty nine degrees west thirteen chains, thence west eight chains fifty links, to the place of beginning containing two hundred and eight acres eighty seven hundredths of an acre. -

Detroit July 14. 1810

Arnon Greeley Surveyor
of private Claims.

No. 478

No. 373 Confirmed to
Ignace Morass

NORTH SIDE OF RIVER HURON

Description No. 373 Confirmed to Ignace Morass commencing at a post standing on the north border of River Huron between this tract and a tract confirmed to the widow and heirs of Alexis Peltier deceased thence north seventy eight chains to a post standing on the border of Lake St. Clair thence along the border of said lake south seventy degrees east twenty eight chains, thence south eighty four degrees east thirteen chains, thence south three chains, thence south forty degrees west fourteen chains fifty links, thence south ten degrees west nine chains thence south twenty seven degrees east thirty four chains, thence south fifty three degrees east seven chains to the border of River Huron at its confluence with Lake St. Clair, thence along the border of said river up stream south eighty five degrees west four chains, thence north seventy four degrees west twelve chains, thence west ten chains, thence south seventy six degrees west nine chains, thence south twenty nine degrees west thirteen chains, thence west eight chains fifty links to the place of beginning, containing two hundred and eight acres eighty seven hundredths of an acre _____

Detroit July 14, 1810

Aaron Greeley Surveyor
of private claims

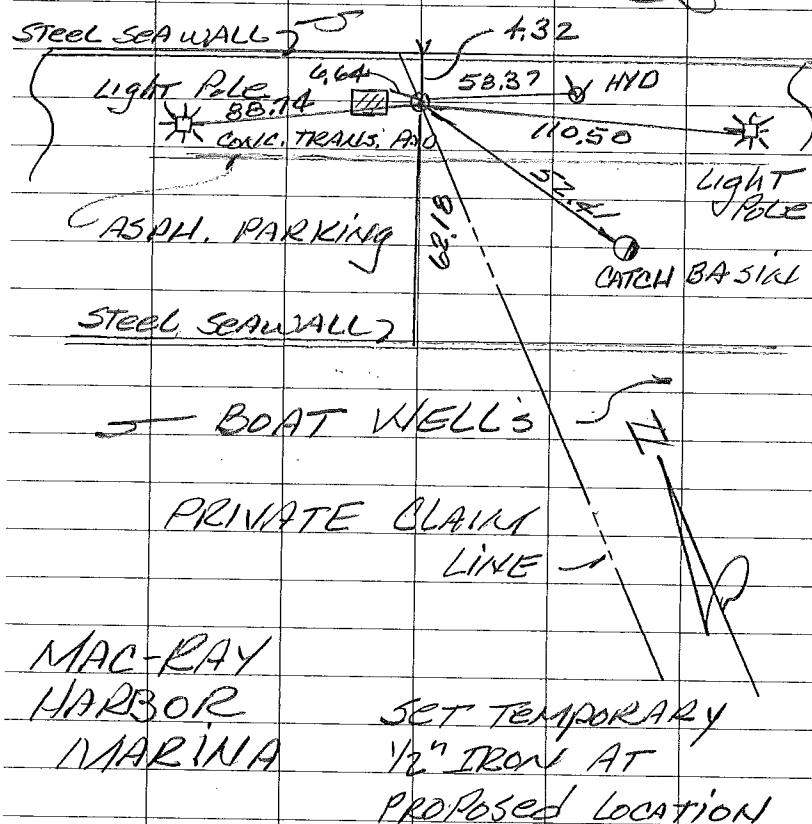
5-25-2012

PC-025

RS BS

N.E. CORNER OF
PRIVATE CLAIM 374
& N.W. CORNER PRIVATE
CLIMATE 373

LAKE ST. CLAIR



SET WITNESS MONT. FOR
PC-025

WITNESS

N. 35° W. 6.64 ft. TO THE N.E. COR.
OF A 5X12' CONC. PAD FOR
EDISON TRANSFORMER

N. 70° W. 88.74 FT. TO FACE
OF LIGHT POLE

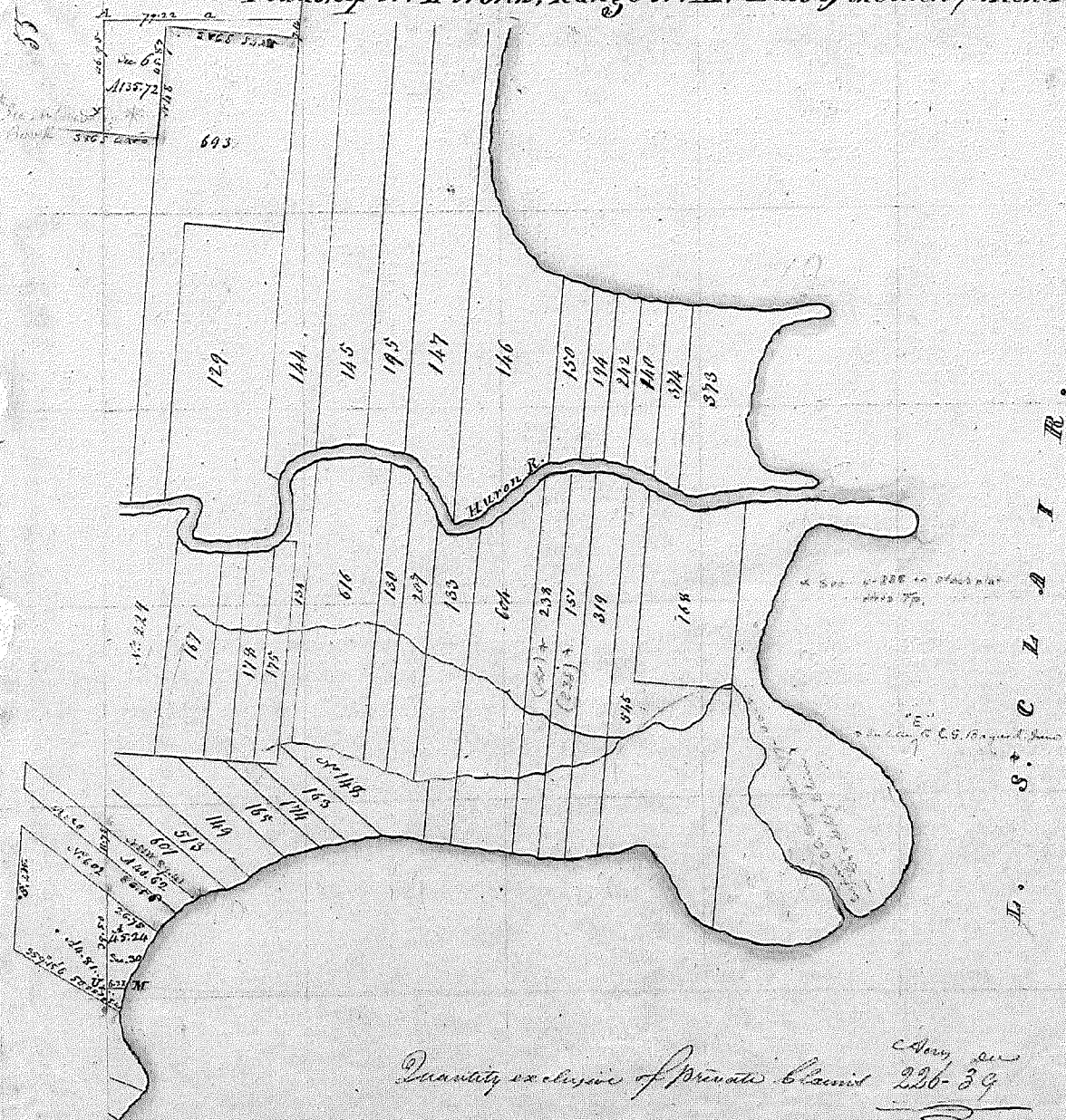
S. 40° E. 52.41 FT. TO THE
EDGE OF ROUND CATCH
BASIN

S. 60° E. 110.50 FT. TO FACE
OF LIGHT POLE

S. 65° E. 53.37 FT. TO THE
TOP CENTER OF FIRE HYD

N. 35° E. 4.32 FT. TO NOTCH
IN STEEL SEAWALL

Township N. II North, Range N. XIV East of the Mer. (Mich. Ter.)



D. S. C. L. A. I. R.

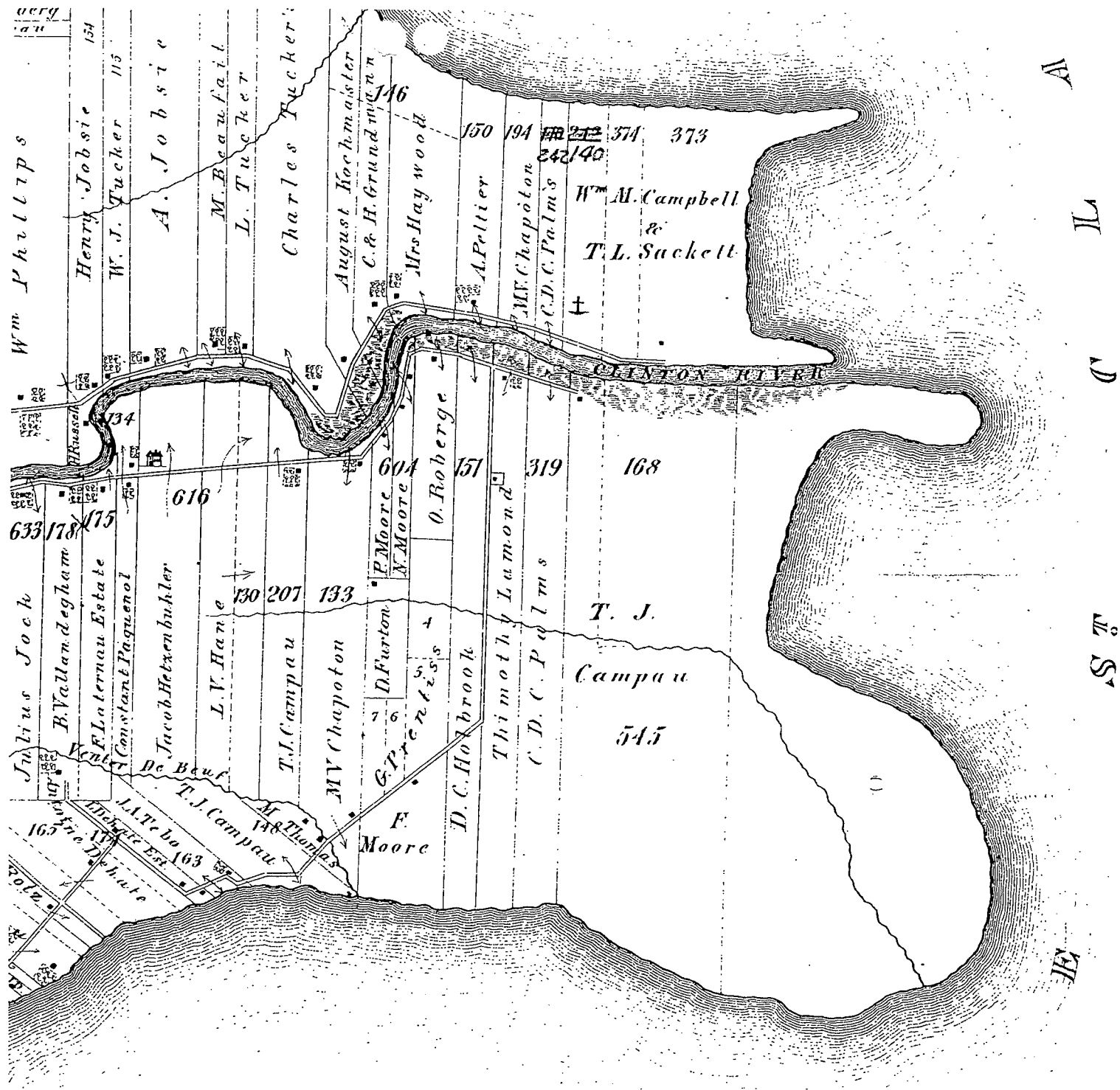
Quantity exclusive of Private Claim 230-39

A true copy from the Original on file in this Office

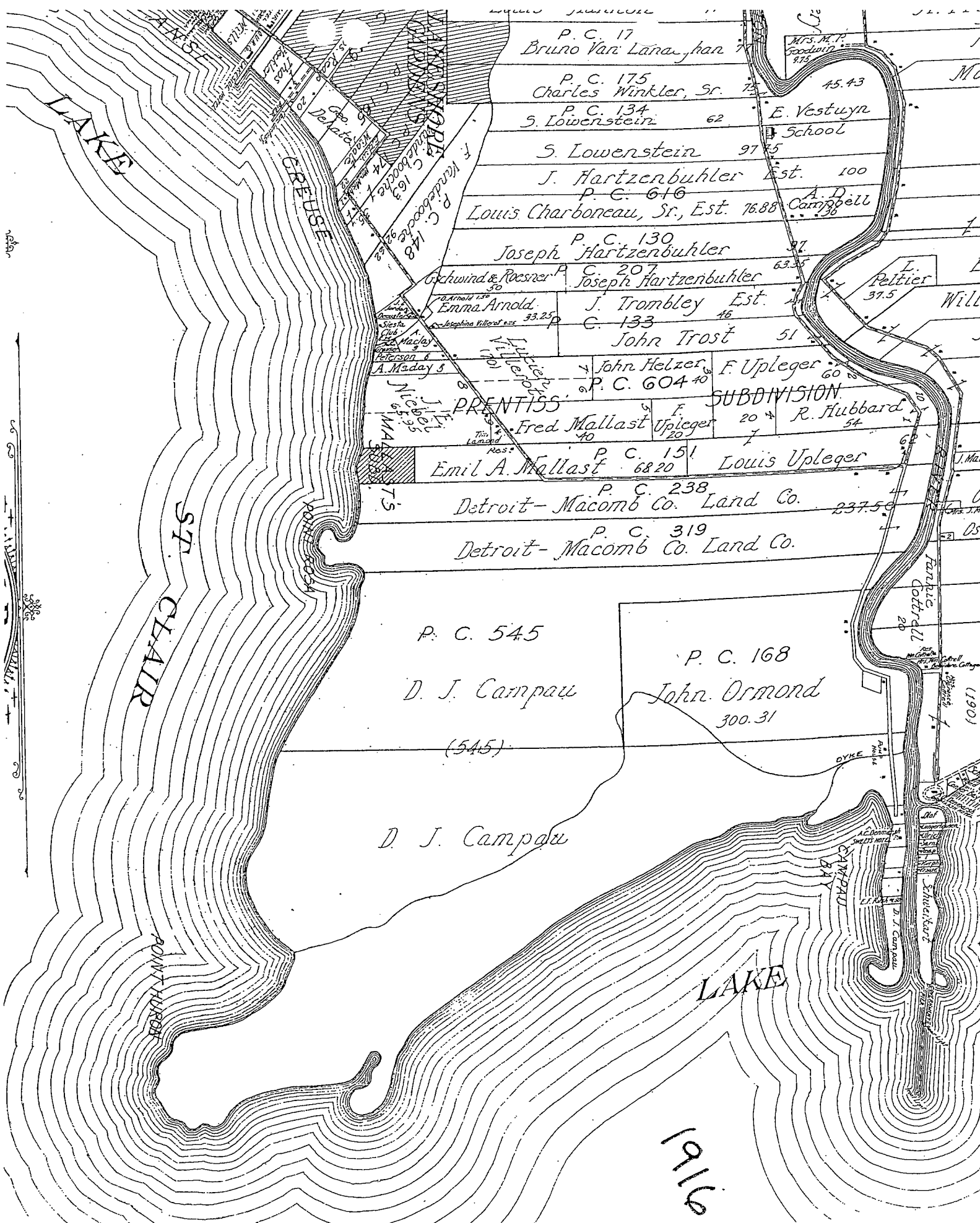
Surveyor General's Office
July 20 - 1818

Richard Tiffin
Surveyor General

POOR COPY




Map of
HARRISON
TONWSHIP
 T. 2 N. R. 14. E.



P. C. 17
Bruno Van Lina, Jan 7

Mrs. M. F. Goodwin
975

P. C. 175
Charles Winkler, Sr. 75

45.43

P. C. 134
S. Lowenstein 62

E. Vestuzyn
School

S. Lowenstein 97.75

J. Hartzembuhler Est. 100

P. C. 616

Louis Charboneau, Sr., Est. 76.88 Carriggell

P. C. 130
Joseph Hartzembuhler 31

Schwind & Poescher
C. 207
Emma Arnold
Josephine Wilford 33.25

Joseph Hartzembuhler 63.55

L. Peltier
37.5

J. Trombley Est. 46
C. 133

John Trost 51

John Helzer
P. C. 604 40

F. Upleger 60

PRENTISS
Fred Mallast 40

F. Upleger 20
R. Hubbard 54

P. C. 151
Emil A. Mallast 68.20

Louis Upleger

P. C. 238
Detroit-Macomb Co. Land Co. 237.50

P. C. 319
Detroit-Macomb Co. Land Co.

P. C. 545

D. J. Campau

(545)

P. C. 168

John Ormond

300.31

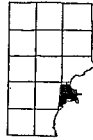
D. J. Campau

1919

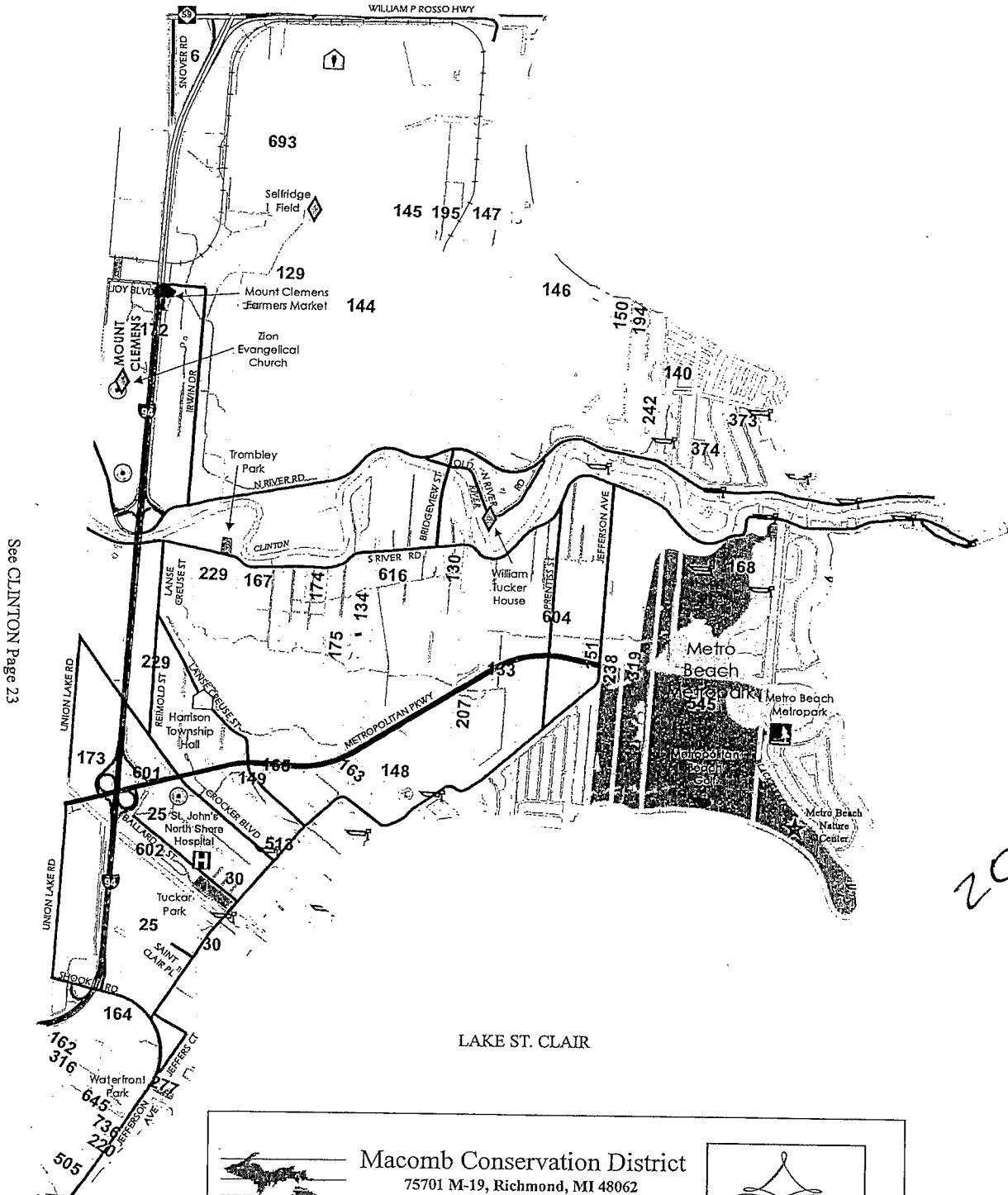
(5)

HARRISON

T. 2N. - R. 14E.



See CHESTERFIELD Page 31

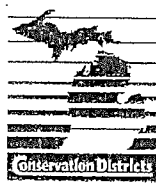


See CLINTON Page 23

LAKE ST. CLAIR

LAKE ST. CLAIR


2006



Macomb Conservation District
 75701 M-19, Richmond, MI 48062
 Phone: 586-727-2666 Fax: 586-727-2621
 E-mail: macombcd@klondyke.net
 Website: www.macombcd.com

Assistance available for :

Tree Sales Forestry Native Plants
 Conservation Education



*Celebrating
 55 Years of
 Managing
 Macomb County's
 Natural Resources*

Copyright Macomb Conservation District; Macomb County Planning & Economic Development Department

6



Date of Photography: April 2004
100 50 0 100 200 Feet

HARRISON TWP SHEET INDEX

DESCRIPTION OF PERMANENT REAL ESTATE INDEX NUMBER
13-19-302-018

12-09H

1:1,200

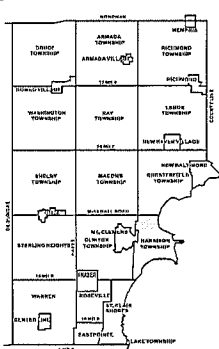


Table listing parcel numbers and their corresponding descriptions. The table is organized into columns and rows, with some cells containing specific parcel numbers and others containing descriptions.

Legend

- Platted Area Boundary Line
- Property Line
- Property Split Line
- Property Combined Line
- Township Boundary Line
- Traverse Line
- Dimension Extent Marks
- Dimension Start Marks

HARRISON TWP.
E. 1/2 S.E. 1/4 SEC. 9 T. 2N. R. 14E.

Source: Macomb County Department of Planning and Economic Development
- 2004 Digital Orthophotography Project
- Parcel Conversion Project

Note:
Digital Orthophotography horizontal positioning accuracy is 3 feet. Parcel boundary lines should be considered a graphical representation and not in any way a legal survey or engineering document. In general, the horizontal positioning and length accuracy is within 15 feet.

This map is intended for general planning purposes. Site specific evaluation should be verified by field inspection. This is a work in progress and may contain errors and omissions. Please report any potential revisions to (586) 465-5265.



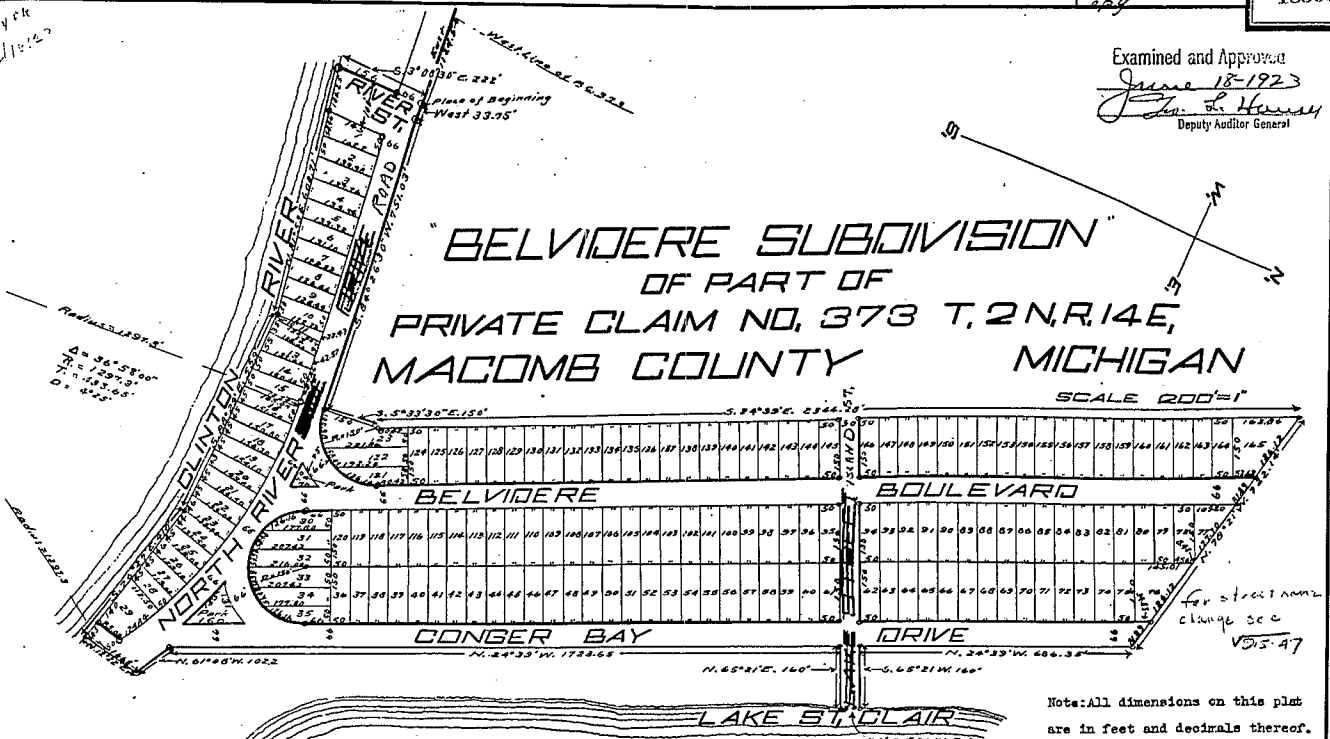
GIS MACOMB COUNTY Planning and Economic Development Department
Published: Aug 30, 2005

7

Copy

Examined and Approved
June 18-1923
J. F. Hursey
Deputy Auditor General

BELVIDERE SUBDIVISION OF PART OF PRIVATE CLAIM NO. 373 T. 2 N. R. 14 E, MACOMB COUNTY MICHIGAN



Note: All dimensions on this plat are in feet and decimals thereof.

DEDICATION

KNOW ALL MEN BY THESE PRESENTS, That we William C. Cottrell and Fannie A. Cottrell his wife, and Clarence Cottrell (unmarried) and William A. Mickel and Augusta Mickel his wife, and John N. Tucker (a widower) as proprietors have caused the land embraced in the annexed plat to be surveyed, laid out and platted, to be known as "BELVIDERE SUBDIVISION" OF PART OF PRIVATE CLAIM NO. 373 T. 2 N. R. 14 E. MACOMB COUNTY MICHIGAN and that the streets and parks as shown on said plat are hereby dedicated to the use of the public.

Signed and Sealed in Presence of
J. W. J. J. J.
Geo. S. Bankers

William C. Cottrell (L.S.)
Fannie A. Cottrell (L.S.)
Clarence Cottrell (L.S.)
William A. Mickel (L.S.)
Augusta Mickel (L.S.)
John N. Tucker (L.S.)

STATE OF MICHIGAN } ss.
County of Macomb }

On this 24th day of May 1923 before me, a Notary Public in and for said county, personally came the above named William C. Cottrell and Fannie A. Cottrell his wife, and Clarence Cottrell (unmarried) and William A. Mickel and Augusta Mickel his wife, and John N. Tucker (a widower), known to me to be the persons who executed the above dedication, and acknowledged the same to be their free act and deed.

J. W. J. J. J.
Notary Public Macomb Co. Mich.

My Commission expires January 3rd, 1927.

DESCRIPTION

The land embraced in the annexed plat "BELVIDERE SUBDIVISION" OF PART OF PRIVATE CLAIM NO. 373 T. 2 N. R. 14 E. MACOMB COUNTY MICHIGAN is described as follows:- Beginning on the north side line of North Riverside Drive at a point 1124.5 feet east from where said north side line of North Riverside Drive is intersected by the west line of private claim No. 373; thence S. 3°08'30"E. a distance of 222 feet to the shore line of the Clinton River; thence N. 81°53'E. 608.71 feet; thence S. 88°29'E. 559 feet; thence S. 76°27'E. 410 feet; thence N. 12°22'E. 166.8 feet; thence N. 61°08'W. 102.2 feet; thence N. 24°39'W. 1723.65 feet; thence N. 65°21'E. 160 feet; thence N. 24°79'W. 50 feet; thence S. 65°21'W. 160 feet; thence N. 24°39'W. 686.35 feet; thence N. 78°21'W. 722.14 feet; thence S. 24°39'E. 2344.28 feet; thence S. 5°33'30"E. 150 feet; thence S. 84°26'30"W. 751.03 feet; thence west 33.75 feet to the place of beginning. All the above described lands are in private claim No. 373 T. 2 N. R. 14 E. Macomb County Michigan.

ENGINEER'S CERTIFICATE

I hereby certify that the plat hereon delineated is a correct one, and that permanent monuments, consisting of iron gas pipe 15 inches long have been planted at all points marked thus (o) as thereon shown at all angles in the boundaries of the land platted and at all intersections of streets.

J. W. J. J. J.
Registered Civil Engineer

COUNTY TREASURER'S CERTIFICATE RELATING TO TAXES

Office of County Treasurer Macomb County Michigan May 27-1923
I hereby certify, that there are no tax liens or titles held by the State on the lands described on the annexed plat, and that there are no tax liens or titles held by individuals on said lands for the five years preceding the 24th day of May A.D. 1923 and that the taxes for said period of five years have been paid, as shown by the records of this office.

James C. Gillett, County Treasurer

CERTIFICATE OF TOWNSHIP BOARD

This plat was approved by the Township Board of the Township of Harrison Macomb County Michigan, at a meeting held May 28 A.D. 1923.

Barth J. J. J.
Clerk

CERTIFICATE OF COUNTY PLATTING BOARD

This plat was approved on the 25th day of May 1923

Neil E. King, Judge of Probate
Halter B. Stephens, County Clerk
James C. Gillett, County Treasurer

Register's Office
Macomb County, Mich.
Plat of
Belvidere Subd.
Recorded this 19th day of
June 1923 at 10 o'clock
A.M.
Hugh C. Voluntary
Register of Deeds

I HEREBY CERTIFY THAT THIS IS A TRUE COPY OF THE PLAT AS FORWARDED TO THE REGISTER OF DEEDS FOR RECORDATION
CORRECTED June 18-1923
J. F. Hursey
DEPUTY AUDITOR GENERAL

FILED IN AUDITOR GENERAL'S DEPT.
June 20-1923
J. F. Hursey
DEPUTY AUDITOR GENERAL

36813

SEP 23 1955

" VENICE SHORES SUBDIVISION "

PART OF P.C.s 140, 373 and 374 T.2 N., R.14 E.

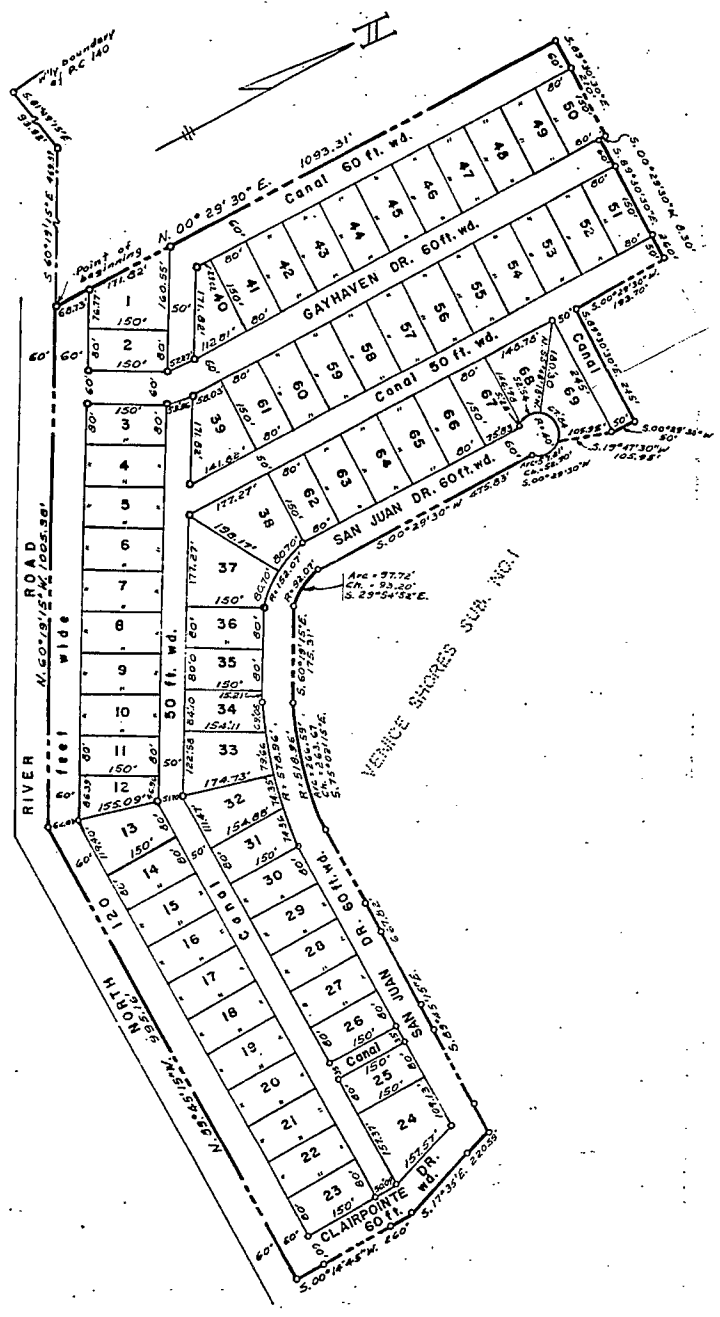
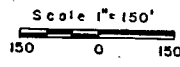
HARRISON TWP.

MACOMB CO. MICHIGAN

Note: All dimensions are in feet and decimals thereof.

Note: All curvilinear dimensions are shown as arc lengths

Walter J. Lehner & Sons
Reg. Civil Engineers & Surveyors
Mt. Clemens, Michigan



COPY

36813

SHEET 2 OF 2 SHEETS

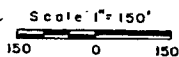
SEP 23 1955

" VENICE SHORES SUBDIVISION "
 PART OF P.C.s 140, 373 and 374 T.2 N., R.14 E.
 HARRISON TWP.
 MACOMB CO. MICHIGAN

Note: All dimensions are in feet and decimals thereof.

Note: All curvilinear dimensions are shown as arc lengths

Walter J. Lehner & Sons
Reg. Civil Engineers & Surveyors
Mt. Clemens, Michigan



DEDICATION

KNOW ALL MEN BY THESE PRESENTS, That we Venice Shores Development Co., a Michigan Corporation, by Stanley Krause, President, and Carl Siegel, Secretary, as proprietor, and Fannie A. Cottrell, a widow, Clarence Cottrell and Fannie Cottrell, his wife, vendees under land contract, have caused the land embraced in the annexed plat to be surveyed, laid out and platted to be known as "Venice Shores Subdivision" Part of P. C. s 140, 373, and 374, T. 2 N., R. 14 E., Harrison Twp., Macomb Co., Michigan, and that the streets as shown on said plat are hereby dedicated to the use of the public, and that the private easements shown on said plat are hereby reserved for the use of the Public Utilities, or for the use of specific utilities as thereon noted, subject to the regulation and control of the use thereof by the local governmental authorities, and that no permanent structures are to be erected within the lines of said easements.

Signed and Sealed in the Presence of:

Edna Neikirk
EDNA NEIKIRK
Morris Aaron
MORRIS AARON

VENICE SHORES DEVELOPMENT CO.

Stanley S. Krause
Stanley Krause, President
Carl Siegel
Carl Siegel, Secretary

John J. Bridges
JOHN J. BRIDGES
Chas. F. Graulich Jr.
CHAS. F. GRAULICH JR.

Fannie A. Cottrell (W.S.)
Fannie A. Cottrell
Clarence Cottrell (W.S.)
Clarence Cottrell
Fannie Cottrell (W.S.)
Fannie Cottrell

STATE OF MICHIGAN) ss.
COUNTY OF Macomb)

On this 21 day of July, A.D., 1955, before me, a Notary Public in and for said county appeared Stanley Krause and Carl Siegel to me personally known, who being each by me duly sworn did say that they are the President and Secretary respectively of the Venice Shores Development Co., a Michigan Corporation, and that the seal affixed to said instrument is the corporate seal of said corporation and that said instrument was signed and sealed in behalf of said corporation by authority of its Board of Directors and the said Stanley Krause and Carl Siegel acknowledged said instrument to be the free act and deed of said corporation.

My Commission expires: 2 March 1956

John J. Bridges
JOHN J. BRIDGES
Notary Public, Macomb Co., Mich.

STATE OF MICHIGAN) ss.
COUNTY OF Macomb)

On this 21 day of July, A.D., 1955, before me, a Notary Public in and for said county, personally came the above named Fannie A. Cottrell, widow, Clarence Cottrell and Fannie Cottrell, his wife, known to me to be the persons who executed the above dedication and acknowledged the same to be their free act and deed.

My Commission expires: 2 MARCH 1956

John J. Bridges
JOHN J. BRIDGES
Notary Public, Macomb Co., Mich.

DESCRIPTION OF LAND PLATTED

The land embraced in the annexed plat of "Venice Shores Subdivision", Part of P. C. s 140, 373, and 374, T. 2 N., R. 14 E., Harrison Twp., Macomb Co., Michigan, is described as follows: Commencing at the intersection of West line of P. C. 140 and the Centerline of North River Road; thence S. 81°-49'-15"E. 93.92 feet, thence S. 60°-19'-15"E. 469.57 feet following the centerline of the said North River Road to the point of beginning, thence N. 00°-29'-30"E. 1093.31 feet, thence S. 89°-30'-30"E. 210 feet, thence S. 00°-29'-30"W. 8.30 feet, thence S. 89°-30'-30"E. 260 feet, thence S. 00°-29'-30"W. 193.70 feet, thence S. 89°-30'-30"E. 245.0 feet, thence S. 00°-29'-30"W. 50 feet, thence S. 19°-47'-30"W. 105.95 feet, thence on a curve (R = 40.0 feet) concave to the West, and whose long chord bears S. 00°-29'-30"W. 52.90 feet, thence S. 00°-29'-30"W. 475.83 feet, thence on a curve (R = 92.07 feet) concave to the East and whose long chord bears S. 29°-54'-52"E. 93.20 feet, thence S. 60°-19'-15"E. 175.31 feet, thence on a curve (R = 518.96 feet) concave to the East whose long chord bears S. 75°-02'-15"E. 263.67 feet, thence S. 89°-45'-15"E. 667.82 feet, thence S. 17°-35'E. 220.59 feet, thence S. 00°-14'-45"W. 260 feet, thence N. 89°-45'-15"W. 995.16 feet, thence N. 60°-19'-15"W. 1005.38 feet to the point of beginning.

SURVEYORS CERTIFICATE

I hereby certify that the plat hereon delineated is a correct one and that permanent metal monuments consisting of bars not less than one-half inch in diameter and 36 inches in length, encased in a concrete cylinder at least 4 inches in diameter and 36 inches in depth have been placed at points marked thus (O) as thereon shown at all angles in the boundaries of the land platted, at all the intersections of the lines of streets, and at the intersections of the lines of streets with the boundaries of the plat as shown on said plat.

John J. Bridges
JOHN J. BRIDGES
Registered Land Surveyor
No. 5779

CERTIFICATE OF APPROVAL BY BOARD OF COUNTY ROAD COMMISSIONERS

This plat has been examined and was approved on the 20th day of July, 1955, by the Macomb County Board of Road Commissioners.

Raymond W. E. Malow Chairman
Ray Jones, Chairman Wm. E. Malow, Member Ernest W. McCollom, Member

CERTIFICATE OF MUNICIPAL APPROVAL

This plat was approved by the Township Board of the Township of Harrison at a meeting held July 11, 1955.

Howard M. Phillips
HOWARD M. PHILLIPS
Clerk

CERTIFICATE OF APPROVAL BY COUNTY BOARD

This plat was approved on the 22 day of Sept, 1955, by the Macomb County Plat Board.

Carson Berry Aaron Burr, Register of Deeds
John Whalen John Whalen, County Treasurer
Albert A. Wagner Albert A. Wagner, County Clerk
Frank E. Lohr Frank E. Lohr, Drain Commissioner

COPY

Register's Office
Macomb County, Mich.
Plat of Venice Shores Subd.
Harrison Township
was recorded this 23rd day of
September, 1955 at 4:07 O'clock
P. M. in Lib. 33 of Plats
of Page 46 & 45
Carson Berry
Register of Deeds

I hereby certify this copy to be a true copy of map or plat forwarded the Register of Deeds for recording.
Date September 23, 1955
Filed in Auditor General's Dept.
Date October 20, 1955
Examined and approved
Date September 23, 1955

Vlad Pergamini
Vlad Pergamini, Auditor General
D. L. MacGregor
D. L. MacGregor, Plat Registrar

THIS IS TO CERTIFY THAT ACCORDING TO THE COUNTY TREASURER'S RECORDS THERE ARE NO TAX DUES ON THIS PROPERTY AND THAT TAXES ARE PAID FOR Five years previous to date of this instrument.
RECORDED AS TO STATE P.C. 573-374 & 374 NO. 14504 DATE 8-17-55
THIS CERTIFICATE DOES NOT APPLY TO TAXES, IF ANY, NOW IN PROCESS OF COLLECTION BY TOWNSHIP OR STATE COLLECTING AGENCIES.
John Whalen, MACOMB COUNTY TREASURER, T.P.

UHR 05652N580

36813
37664

B798539

RESOLUTION CHANGING NAME
OF GAYHAVEN DRIVE TO BAYHAVEN DRIVE

A regular meeting of the Township Board of the Charter Township of Harrison, Macomb County, Michigan, held the 26th day of October, 1992, at the Rosão Memorial Hall, 38255 L'Anse Creuse, in said Township, at 7:30 o'clock p.m.

PRESENT: Miller, Lyon, Siefert, Glasgow, Huth, Kennard and Weeks
EXCUSED: None

The following preamble and resolution were introduced by Huth and supported by Weeks.

WHEREAS, the Charter Township of Harrison has received a Petition signed by over seventy five (75%) percent of the residents on Gayhaven Drive, requesting that the Township change the name of Gayhaven Drive to Bayhaven Drive, and

WHEREAS, MCL 560.256 allows a municipality to change by Resolution of the Township Board the name of a street within its boundaries;

NOW THEREFORE, BE IT RESOLVED:

That the name of Gayhaven Drive be changed to Bayhaven Drive.

BE IT FURTHER RESOLVED that the name of the Plat or Plats affected are Venice Shores Subdivision and Venice Shores Subdivision No. 1.

BE IT FURTHER RESOLVED that the Clerk shall within thirty (30) days record a copy of this Resolution with the Macomb County Register of Deeds, and shall further forward a copy thereof to the State Treasurer.

UHR 05652N581

36813
37664

BE IT FURTHER RESOLVED that in accordance with the provisions of MCL 560.256, said name change shall be effective upon recording of this Resolution as set forth above.

AYES: Huth, Weeks, Kennard, Siefert

NAYS: Lyon, Miller

EXCUSED: Glasgow

RESOLUTION DECLARED ADOPTED.

Kathleen M. Lyon
KATHLEEN M. LYON, Clerk
CHARTER TOWNSHIP OF HARRISON

When recorded, return to
KATHLEEN M. LYON, CLERK
CHARTER TOWNSHIP OF HARRISON
38151 L'ANSE CREUSE ROAD
HARRISON TOWNSHIP, MICHIGAN 48043

RECORDED IN MACOMB COUNTY
RECORDS AT: 10.50A
NOV 19 1992

[Signature]
CLERK - REGISTER OF DEEDS
MACOMB COUNTY, MICHIGAN

UHR 05652N582

36813
37664

CERTIFICATION

I, KATHLEEN M. LYON, Clerk, do hereby certify that the foregoing is a true and complete copy of a Resolution adopted by the Township Board of the Charter Township of Harrison, County of Macomb, Michigan, at a Regular Meeting held on Monday, October 26, 1992, and that said meeting was conducted and public notice of said meeting was given pursuant to and in full compliance with the Open Meetings Act, being Act 267, Public Acts of Michigan, 1976, and that the minutes of said meeting were kept and will be or have been made available as required by said Act.

Kathleen M. Lyon
KATHLEEN M. LYON, Clerk
CHARTER TOWNSHIP OF HARRISON



16 X

DEC 14 1956

COPY

37664

"VENICE SHORES SUBDIVISION NO. 1"

PART OF P.C.s 140, 373 and 374 T.2 N., R.14 E.
HARRISON TWP.
MACOMB CO. MICHIGAN

DEDICATION

KNOW ALL MEN BY THESE PRESENTS, THAT WE, VENICE SHORES DEVELOPMENT CO., INC., A MICHIGAN CORPORATION BY N. A. NICHOLSON, PRESIDENT, AND H. AARON, SECRETARY, VENUEES UNDER LAND CONTRACT, AND FANNIE A. COTTRELL, A WIDOW, AND CLARENCE COTTRELL AND FANNIE COTTRELL, HIS WIFE, AS PROPRIETORS, HAVE CAUSED THE LAND EMBRACED IN THE ANNEXED PLAT TO BE SURVEYED, LAID OUT AND PLATTED TO BE KNOWN AS "VENICE SHORES SUBDIVISION NO. 1", PART OF P.C.'s 140, 373 AND 374, T. 2 N., R. 14 E., HARRISON TWP., MACOMB CO., MICHIGAN, AND THAT THE STREETS AS SHOWN ON SAID PLAT ARE HEREBY DEDICATED TO THE USE OF THE PUBLIC, AND THAT THE PRIVATE EASEMENTS OF SPECIFIC UTILITIES AS THEREON NOTED, SUBJECT TO THE REGULATION AND CONTROL OF THE USE THEREOF BY THE LOCAL GOVERNMENTAL AUTHORITY, AND THAT NO PERMANENT STRUCTURES ARE TO BE ERRECTED WITHIN THE LINES OF SAID EASEMENTS.

Walter J. Lehner & Sons
Reg. Civil Eng. & Surveyors
Mt. Clemens, Michigan

SURVEYOR'S CERTIFICATE

I HEREBY CERTIFY THAT THE PLAT HEREON DELINEATED IS A CORRECT ONE AND THAT PERMANENT METAL MONUMENTS CONSISTING OF BARS NOT LESS THAN ONE-HALF INCH IN DIAMETER AND 36 INCHES IN LENGTH, ENGRAVED IN A CONCRETE CYLINDER AT LEAST 4 INCHES IN DIAMETER AND 36 INCHES IN DEPTH HAVE BEEN PLACED AT POINTS MARKED THUS (O) AS THEREON SHOWN AT ALL ANGLES IN THE BOUNDARIES OF THE LAND PLATTED, AT ALL THE INTERSECTIONS OF THE LINES OF STREETS AND AT THE INTERSECTIONS OF THE LINES OF STREETS WITH THE BOUNDARIES OF THE PLAT AS SHOWN ON SAID PLAT.

Signed and Sealed in the Presence of

Walter J. Lehner & Sons
DUNCAN K. ALLAN JR.
Paul G. Ganzenmueller
PAUL G. GANZENMUELLER
Ellis Mavis
ELLIS MAVIS
Stanley J. Palmer
STANLEY J. PALMER

VENICE SHORES DEVELOPMENT CO., INC.

N. A. Nicholson
N. A. NICHOLSON, PRESIDENT
H. Aaron
H. AARON, SECRETARY
Fannie A. Cottrell
FANNIE A. COTTRELL
Clarence Cottrell
CLARENCE COTTRELL
Fannie Cottrell
FANNIE COTTRELL

Walter J. Lehner & Sons
WALTER J. LEHNER & SONS
REGISTERED LAND SURVEYOR
No. 5779

CERTIFICATE OF APPROVAL BY MACOMB COUNTY BOARD OF ROAD COMMISSIONERS

THIS PLAT HAS BEEN EXAMINED AND WAS APPROVED ON THE 30th DAY OF Sept, 1956, BY THE MACOMB COUNTY PLAT BOARD.

Ray Connor
RAY CONNOR, CHAIRMAN
William E. Malow
WILLIAM E. MALOW, MEMBER
Ernest W. McCallum
ERNEST W. MCCALLUM, MEMBER

DESCRIPTION OF LAND PLATTED

THE LAND EMBRACED IN THE ANNEXED PLAT OF "VENICE SHORES SUBDIVISION NO. 1", PART OF P.C.s 140, 373 AND 374, T. 2 N., R. 14 E., HARRISON TWP., MACOMB CO., MICHIGAN, IS DESCRIBED AS FOLLOWS: COMMENCING AT THE INTERSECTION OF THE WEST LINE OF P.C. 140 AND CENTER LINE OF NORTH RIVER ROAD; THENCE S. 81° 49' 15" E. 93.92 FEET; THENCE S. 60° 19' 15" E. 469.57 FEET FOLLOWING THE CENTER LINE OF THE SAID NORTH RIVER ROAD; THENCE N. 00° 29' 30" E. 1093.31 FEET TO THE POINT OF BEGINNING, AND THENCE EXTENDING N. 00° 29' 30" E. 982.36 FEET; THENCE N. 87° 35' 30" E. 420.54 FEET; THENCE S. 78° 34' 40" E. 466.50 FEET; THENCE S. 00° 29' 30" W. 399.63 FEET; THENCE ON A CURVE RADIUS 560 FEET CONVEX TO THE EAST WHOSE LONG CHORD BEARS S. 11° 52' 42" E. 239.94 FEET; THENCE S. 24° 14' 55" E. 1532.04 FEET; THENCE N. 89° 45' 15" W. 437.06 FEET; THENCE ON A CURVE RADIUS 518.96 FEET CONVEX TO THE NORTHEAST WHOSE LONG CHORD BEARS N. 17° 02' 15" W. 263.67 FEET; THENCE N. 60° 19' 15" W. 175.31 FEET; THENCE ON A CURVE RADIUS 92.07 FEET CONVEX TO THE EAST WHOSE LONG CHORD BEARS N. 29° 54' 52" W. 93.20 FEET; THENCE N. 00° 29' 30" E. 455.93 FEET; THENCE ON A CURVE RADIUS 40 FEET CONVEX TO THE EAST WHOSE LONG CHORD BEARS N. 00° 29' 30" E. 52.90 FEET; THENCE N. 19° 47' 30" E. 105.95 FEET; THENCE N. 00° 29' 30" E. 30 FEET; THENCE N. 89° 30' 30" W. 245 FEET; THENCE N. 00° 29' 30" E. 193.70 FEET; THENCE N. 89° 30' 30" W. 260.0 FEET; THENCE N. 00° 29' 30" E. 8.30 FEET; THENCE N. 89° 30' 30" W. 210.0 FEET TO THE POINT OF BEGINNING, COMPRISING LOTS 70 THROUGH 154 INCLUSIVE.

ACKNOWLEDGMENT

STATE OF MICHIGAN,) ss.
COUNTY OF Macomb

ON THIS 24th DAY OF Sept, 1956, BEFORE ME, A NOTARY PUBLIC IN AND FOR SAID COUNTY, PERSONALLY CAME THE ABOVE NAMED FANNIE A. COTTRELL, A WIDOW, CLARENCE COTTRELL AND FANNIE COTTRELL, HIS WIFE KNOWN TO ME TO BE THE PERSONS WHO EXECUTED THE ABOVE DEDICATION, AND ACKNOWLEDGED THE SAME TO BE THEIR FREE ACT AND DEED.

MY COMMISSION EXPIRES 2 MAR 1956
Walter J. Lehner & Sons
WALTER J. LEHNER & SONS
NOTARY PUBLIC Macomb Co., Mich.

CERTIFICATE OF MUNICIPAL APPROVAL

THIS PLAT WAS APPROVED BY THE TOWNSHIP BOARD OF THE TOWNSHIP OF HARRISON AT A MEETING HELD Sept 26 1956

Howard W. Phillips
HOWARD W. PHILLIPS, CLERK

CERTIFICATE OF APPROVAL BY COUNTY BOARD

THIS PLAT WAS APPROVED ON THE 30th DAY OF Sept, 1956, BY THE Macomb COUNTY PLAT BOARD.

James Burr
JAMES BURR, REGISTER OF DEEDS
Albert J. Wagner
ALBERT J. WAGNER, COUNTY CLERK
Frank E. Lohr
FRANK E. LOHR, DRAIN COMMISSIONER

ACKNOWLEDGMENT

STATE OF MICHIGAN) ss.
COUNTY OF Macomb

ON THIS 24th DAY OF September, A.D., 1956, BEFORE ME A NOTARY PUBLIC IN AND FOR SAID COUNTY APPEARED N. A. NICHOLSON AND H. AARON TO ME PERSONALLY RESPECTIVELY OF THE VENICE SHORES DEVELOPMENT CO., INC., A MICHIGAN CORPORATION, AND THAT SAID INSTRUMENT WAS SIGNED IN BEHALF OF SAID CORPORATION BY AUTHORITY OF ITS BOARD OF DIRECTORS AND THE SAID N. A. NICHOLSON AND H. AARON ACKNOWLEDGED SAID INSTRUMENT TO BE THE FREE ACT AND DEED OF SAID CORPORATION. CORPORATION HAS NO CORPORATE SEAL.

MY COMMISSION EXPIRES April 19 1959
Linné Ann Feleski
LINNÉ ANN FELESKI
NOTARY PUBLIC Macomb Co., Mich.

COPY

Recorder's Office
Macomb County

Plat of _____

was recorded this _____ day of _____ A.D., 1956 at _____ o'clock _____ M. in Liber _____ of Plats _____

Page 3-1-3
Walter J. Lehner & Sons
WALTER J. LEHNER & SONS
REGISTERED LAND SURVEYOR

I hereby certify this copy is a true copy of map or plat forwarded the Registrar of Deeds for recording.

Date December 14 1956
Filed in Auditor General's Dept. _____, 1956

Date Examined and approved _____, 1956

Walter J. Lehner & Sons
WALTER J. LEHNER & SONS
REGISTERED LAND SURVEYOR

Plat Engineer

COPY

Recorder's Office
Macomb County

Plat of Venice Shores Subdivision No. 1

was recorded this 15th day of Dec A.D., 1956 at 11:30 o'clock P. M. in Liber _____ of Plats _____

Page 3-1-3
Walter J. Lehner & Sons
WALTER J. LEHNER & SONS
REGISTERED LAND SURVEYOR

I hereby certify this copy is a true copy of map or plat forwarded the Registrar of Deeds for recording.

Date Dec 14 1956
Filed in Auditor General's Dept. _____, 1956

Date Examined and approved _____, 1956

Walter J. Lehner & Sons
WALTER J. LEHNER & SONS
REGISTERED LAND SURVEYOR

Plat Engineer

DEC 14 1955

COPY

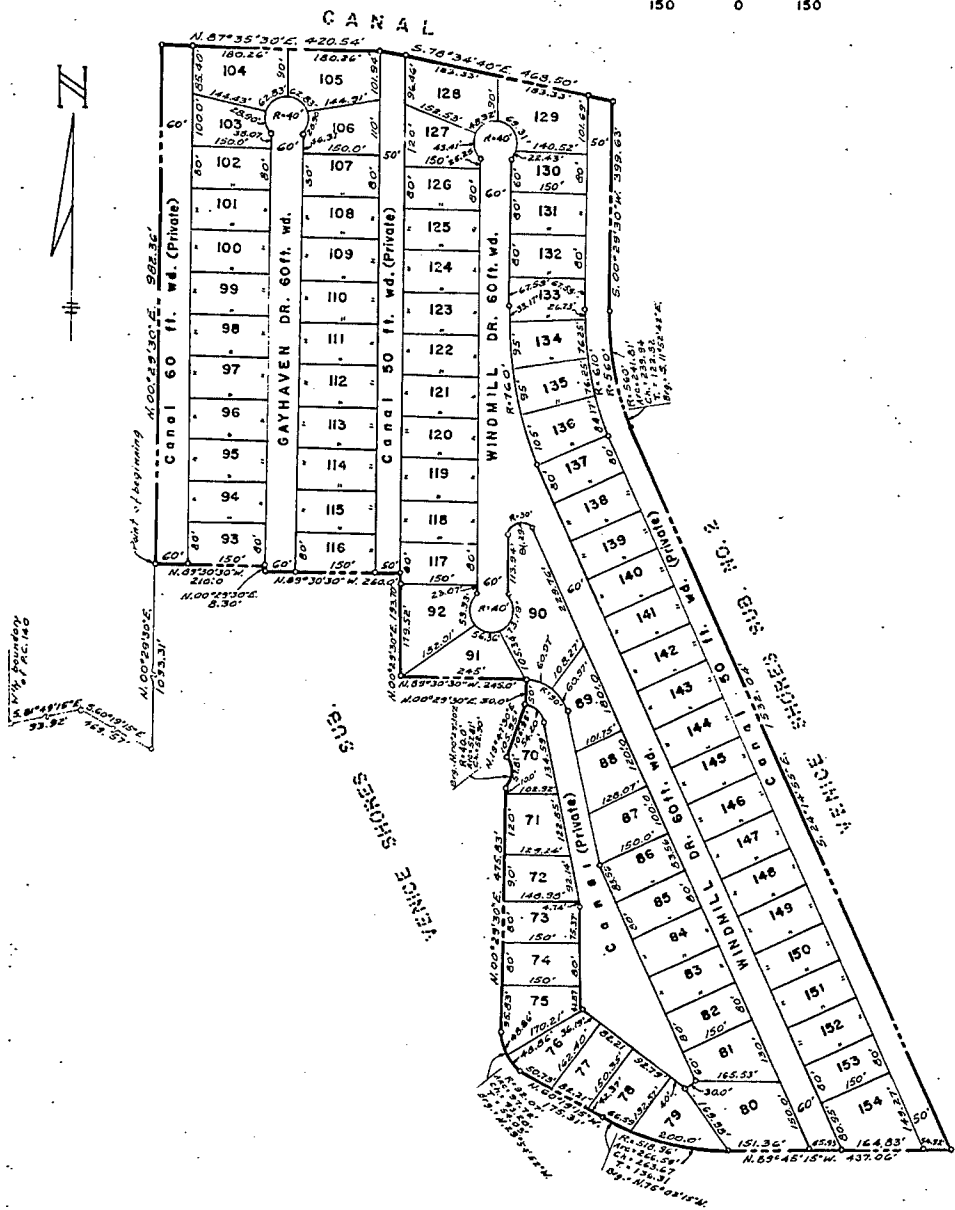
37664

"VENICE SHORES SUBDIVISION NO. 1"

PART OF P.C.s 140, 373 and 374 T.2 N., R.14 E.
HARRISON TWP.
MACOMB CO. MICHIGAN

NOTE: All dimension are in feet
and decimals thereof.
All curvilinear dimensions
are shown as arc lengths.
Scale: 1" = 150'

Walter J. Lehner & Sons
Reg. Civil Eng. & Surveyors
Mt. Clemens, Michigan



WR 05652N580

36813
37664

B798539

RESOLUTION CHANGING NAME
OF GAYHAVEN DRIVE TO BAYHAVEN DRIVE

A regular meeting of the Township Board of the Charter Township of Harrison, Macomb County, Michigan, held the 26th day of October, 1992, at the Rosso Memorial Hall, 38255 L'Anse Creuse, in said Township, at 7:30 o'clock p.m.
PRESENT: Miller, Lyon, Siefert, Glasgow, Huth, Kennard and Weeks
EXCUSED: None

The following preamble and resolution were introduced by Huth and supported by Weeks.

WHEREAS, the Charter Township of Harrison has received a Petition signed by over seventy five (75%) percent of the residents on Gayhaven Drive, requesting that the Township change the name of Gayhaven Drive to Bayhaven Drive, and

WHEREAS, MCL 560.256 allows a municipality to change by Resolution of the Township Board the name of a street within its boundaries;

NOW THEREFORE, BE IT RESOLVED:

That the name of Gayhaven Drive be changed to Bayhaven Drive.

BE IT FURTHER RESOLVED that the name of the Plat or Plats affected are Venice Shores Subdivision and Venice Shores Subdivision No. 1.

BE IT FURTHER RESOLVED that the Clerk shall within thirty (30) days record a copy of this Resolution with the Macomb County Register of Deeds, and shall further forward a copy thereof to the State Treasurer.

-1-

WR 05652N581

36813
37664

BE IT FURTHER RESOLVED that in accordance with the provisions of MCL 560.256, said name change shall be effective upon recording of this Resolution as set forth above.

AYES: Huth, Weeks, Kennard, Siefert

NAYS: Lyon, Miller

EXCUSED: Glasgow

RESOLUTION DECLARED ADOPTED.

Kathleen M. Lyon
KATHLEEN M. LYON, Clerk
CHARTER TOWNSHIP OF HARRISON

When recorded, return to
KATHLEEN M. LYON, CLERK
CHARTER TOWNSHIP OF HARRISON
38151 L'ANSE CREUSE ROAD
HARRISON TOWNSHIP, MICHIGAN 48045

RECORDED IN MACOMB COUNTY
RECORDS AT: 10.50A
NOV 19 1992

[Signature]
CLERK-REGISTER OF DEEDS
MACOMB COUNTY, MICHIGAN

-2-

WR 05652N582

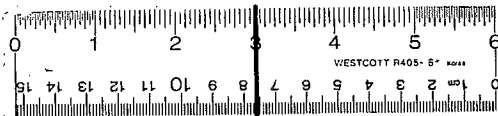
36813
37664

CERTIFICATION

I, KATHLEEN M. LYON, Clerk, do hereby certify that the foregoing is a true and complete copy of a Resolution adopted by the Township Board of the Charter Township of Harrison, County of Macomb, Michigan, at a Regular Meeting held on Monday, October 26, 1992, and that said meeting was conducted and public notice of said meeting was given pursuant to and in full compliance with the Open Meetings Act, being Act 267, Public Acts of Michigan, 1976, and that the minutes of said meeting were kept and will be or have been made available as required by said Act.

Kathleen M. Lyon
KATHLEEN M. LYON, Clerk
CHARTER TOWNSHIP OF HARRISON

-3-



16 X

COPY

39787

"VENICE SHORES SUBDIVISION NO. 2"

PART OF P.C. 373 T. 2 N., R. 14 E.
HARRISON TWP.
MACOMB CO. MICHIGAN

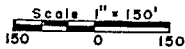
NOTE: All dimension are in feet and decimals thereof.

Note: All curvilinear dimensions are shown as arc lengths.

Walter J. Lehner & Sons
Reg. Civil Eng. & Surveyors
Mt. Clemens, Michigan

Recorder's Office
Macomb County, Mich.
Subdivision No. 2
Recorded this 25th day of July 1957
A.B. [Signature]
[Signature]
[Signature]

I hereby certify this copy is a true copy of map as recorded and the Register of deeds has recorded.
Date August 26, 1957
FILED BY REGISTER GENERAL'S OFFICE
Date September 10, 1957
EMERSON AND MURPHY
Date August 26, 1957
Frank [Signature]
Bob [Signature]



DESCRIPTION OF LAND PLATTED

THE LAND ENBRACED IN THE ANNEXED PLAT OF "VENICE SHORES SUBDIVISION NO. 2", PART OF P.C. 373 T. 2 N., R. 14 E., HARRISON TWP., MACOMB CO., MICHIGAN, IS DESCRIBED AS FOLLOWS: COMMENCING AT THE INTERSECTION OF THE WEST LINE OF P.C. # 140 AND CENTER LINE OF NORTH RIVER ROAD, THENCE S. 81° 49' 15" E. 93.92 FEET; THENCE S. 60° 15' 15" E. 469.57 FEET FOLLOWING THE CENTER LINE OF THE SAID NORTH RIVER ROAD; THENCE N. 00° 29' 30" E. 2075.67 FEET; THENCE N. 87° 35' 30" E. 420.54 FEET; THENCE S. 78° 34' 40" E. 468.50 FEET TO THE POINT OF BEGINNING; THENCE EXTENDING S. 78° 34' 40" E. 417.58 FEET; THENCE S. 00° 29' 30" W. 320.47 FEET; THENCE ON A CURVE RADIUS 150 FEET CONCAVE TO THE EAST WHOSE LONG CHORD BEARS S. 11° 52' 42" E. 64.27 FEET; THENCE S. 24° 14' 55" E. 1709.72 FEET; THENCE S. 64° 50' 30" W. 87.75 FEET; THENCE N. 89° 45' 15" W. 359.42 FEET; THENCE N. 24° 14' 55" W. 1522.04 FEET; THENCE ON A CURVE RADIUS 560 FEET CONCAVE TO THE EAST WHOSE LONG CHORD BEARS N. 11° 52' 42" W. 239.94 FEET; THENCE N. 00° 29' 30" E. 399.63 FEET TO THE POINT OF BEGINNING, CONTAINING LOTS 155 THROUGH 206 INCLUSIVE.

SURVEYOR'S CERTIFICATE

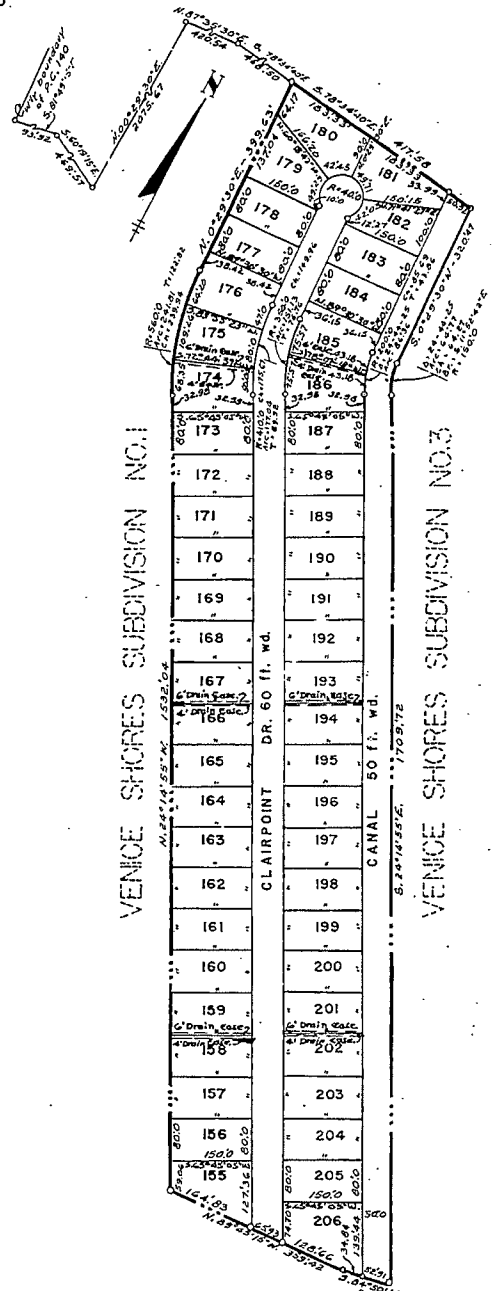
I HEREBY CERTIFY THAT THE PLAT HEREON DELINEATED IS A CORRECT ONE AND THAT PERMANENT METAL MONUMENTS CONSISTING OF BARS NOT LESS THAN ONE-HALF INCH IN DIAMETER AND 36 INCHES IN LENGTH, ENCASED IN A CONCRETE CYLINDER AT LEAST 4 INCHES IN DIAMETER AND 36 INCHES IN DEPTH HAVE BEEN PLACED AT POINTS MARKED THUS (O) AS THEREON SHOWN AT ALL ANGLES IN THE BOUNDARIES OF THE LAND PLATTED, AT ALL THE INTERSECTIONS OF THE LINES OF STREETS AND AT THE INTERSECTIONS OF THE LINES OF STREETS WITH THE BOUNDARIES OF THE PLAT AS SHOWN ON SAID PLAT.

[Signature]
FITZ J. BRIDGES
REGISTERED LAND SURVEYOR
No. 5779

CERTIFICATE OF APPROVAL BY BOARD OF COUNTY ROAD COMMISSIONERS

THIS PLAT HAS BEEN EXAMINED AND WAS APPROVED ON THE 25th DAY OF July, 1957 BY THE Macomb COUNTY BOARD OF ROAD COMMISSIONERS.

[Signature]
BOY CONNER, CHAIRMAN
Lawrence [Signature]
ERNEST W. McCOLLON, MEMBER



COPY

39187

"VENICE SHORES SUBDIVISION NO.2"
 PART OF P.C. 373 T.2 N.,R.14 E.
 HARRISON TWP.
 MACOMB CO. MICHIGAN

Walter J. Lehner & Sons
 Reg. Civil Eng. & Surveyors
 Mt. Clemens, Michigan

DEDICATION

KNOW ALL MEN BY THESE PRESENTS, THAT WE, VENICE SHORES DEVELOPMENT CO., INC., A MICHIGAN CORPORATION BY N. A. NICHOLSON, PRESIDENT, AND V. AARON, SECRETARY, VENDEES UNDER LAND CONTRACT, AND FANNIE A. COTTRELL, A WIDOW, AND CLARENCE COTTRELL, A WIDOWER, AS PROPRIETORS, HAVE CAUSED THE LAND EMBRACED IN THE ANNEXED PLAT TO BE SURVEYED, LAID OUT AND PLATTED TO BE KNOWN AS "VENICE SHORES SUBDIVISION NO. 2", PART OF P.C. 373 T. 2 N., R. 14 E., HARRISON TWP., MACOMB CO., MICHIGAN, AND THAT THE STREETS AS SHOWN ON SAID PLAT ARE HEREBY DEDICATED TO THE USE OF THE PUBLIC, AND THAT THE PRIVATE EASEMENTS SHOWN ON SAID PLAT ARE HEREBY RESERVED FOR THE USE OF THE PUBLIC, AND THAT THE PRIVATE EASEMENTS SHOWN ON SAID PLAT ARE THEREON NOTED, SUBJECT TO THE REGULATION AND CONTROL OF THE USE THEREOF BY THE LOCAL GOVERNMENTAL AUTHORITIES, AND THAT NO PERMANENT STRUCTURES ARE TO BE ERRECTED WITHIN THE LINES OF SAID EASEMENTS.

SIGNED AND SEALED IN THE PRESENCE OF
Ellis H. Mavis
 ELLIS H. MAVIS
DUNCAN K. ALLAN, JR.
 DUNCAN K. ALLAN, JR.
RONALD KENDRICKS
 RONALD KENDRICKS
JAMES R. SHANNON
 JAMES R. SHANNON

VENICE SHORES DEVELOPMENT CO., INC.
N. A. Nicholson
 N. A. NICHOLSON, PRESIDENT
V. Aaron
 V. AARON, SECRETARY
Fannie A. Cottrell
 FANNIE A. COTTRELL
Clarence Cottrell
 CLARENCE COTTRELL

ACKNOWLEDGMENT

STATE OF MICHIGAN } ss.
 COUNTY OF Macomb
 ON THIS 22nd DAY OF July, 1957, BEFORE ME, A NOTARY PUBLIC IN AND FOR SAID COUNTY, PERSONALLY CAME THE ABOVE NAMED FANNIE A. COTTRELL, A WIDOW, CLARENCE COTTRELL, A WIDOWER, KNOWN TO ME TO BE THE PERSONS WHO EXECUTED THE ABOVE DEDICATION, AND ACKNOWLEDGED THE SAME TO BE THEIR FREE ACT AND DEED.
 MY COMMISSION EXPIRES April 19, 1959 Marion E. Harris
 MARION E. HARRIS
 NOTARY PUBLIC Macomb Co., Mich

CERTIFICATE OF MUNICIPAL APPROVAL

THIS PLAT WAS APPROVED BY THE TOWNSHIP BOARD OF HARRISON AT A MEETING HELD August 12, 1957
Howard W. Phillips
 HOWARD W. PHILLIPS, CLERK

CERTIFICATE OF APPROVAL BY COUNTY BOARD

THIS PLAT WAS APPROVED ON THE 19th DAY OF August, 1957, BY THE COUNTY PLAT BOARD.
Frank E. Lohr
 FRANK E. LOHR, CHAIRMAN
Alfred Burr
 ALFRED BURR, REGISTER OF DEEDS
Albert A. Sagner
 ALBERT A. SAGNER, COUNTY CLERK

ACKNOWLEDGMENT

STATE OF MICHIGAN } ss.
 COUNTY OF Macomb
 ON THIS 22nd DAY OF July, A.D., 1957, BEFORE ME: _____ A NOTARY PUBLIC IN AND FOR SAID COUNTY APPEARED N. A. NICHOLSON AND V. AARON TO ME PERSONALLY KNOWN, WHO BEING EACH BY ME DULY SWORN DID SAY THAT THEY ARE THE PRESIDENT AND SECRETARY RESPECTIVELY OF THE VENICE SHORES DEVELOPMENT CO., INC., A MICHIGAN CORPORATION, AND THAT SAID INSTRUMENT WAS SIGNED IN BEHALF OF SAID CORPORATION BY AUTHORITY OF ITS BOARD OF DIRECTORS AND THE SAID N. A. NICHOLSON AND V. AARON ACKNOWLEDGED SAID INSTRUMENT TO BE THE FREE ACT AND DEED OF SAID CORPORATION. CORPORATION HAS NO CORPORATE SEAL.
 MY COMMISSION EXPIRES April 19, 1959 Marion E. Harris
 MARION E. HARRIS
 NOTARY PUBLIC Macomb Co.

THIS IS TO CERTIFY THAT ACCORDING TO THE COUNTY CLERK'S RECORDS THE ABOVE PLAT IS ON FILE IN THE PUBLIC RECORDS TO DATE OF THIS CERTIFICATE.
Lynd Whalen
 LYND WHALEN, MACOMB COUNTY TREASURER
M. ALLEN
 M. ALLEN

COPY

SHEET 1 OF 2

40803

"VENICE SHORES SUBDIVISION NO. 3"

PART OF P.G. 373 T. 2 N., R. 14 E.

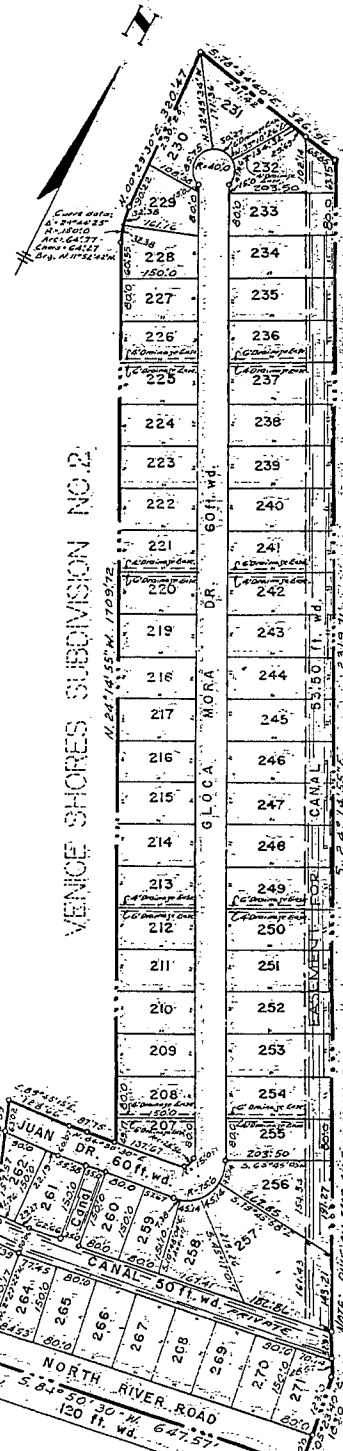
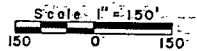
HARRISON TWP.

MACOMB CO. MICHIGAN

NOTE: All dimensions are in feet and decimals thereof.

Note: All curvilinear dimensions are shown as arc lengths.

Lehner-Bridges, Inc.
Reg. Civil Eng. & Surveyors
Mt. Clemens, Michigan



DESCRIPTION OF LAND PLATTED

THE LAND embraced in the annexed plat of "VENICE SHORES SUBDIVISION NO. 3", PART OF P.G. 373, T. 2 N., R. 14 E., HARRISON TWP., MACOMB CO., MICHIGAN, IS DESCRIBED AS FOLLOWS: COMMENCING AT THE INTERSECTION OF THE WEST LINE OF P.C. # 140 AND THE CENTERLINE OF NORTH RIVER ROAD; THENCE S. 81° 49' 15" E. 93.92 FEET; THENCE S. 60° 19' 15" E. 1474.95 FEET; THENCE S. 89° 45' 15" E. 995.16 FEET TO THE POINT OF BEGINNING; AND THENCE EXTENDING N. 0° 14' 45" E. 260.0 FEET; THENCE N. 17° 35' N. 220.59 FEET; THENCE S. 89° 45' 15" E. 129.66 FEET; THENCE N. 84° 50' 30" E. 87.75 FEET; THENCE N. 24° 14' 55" N. 1709.72 FEET; THENCE ON A CURVE RADIUS 150 FEET CONCAVE TO THE EAST WHOSE LONG CHORD BEARS N. 11° 52' 42" N. 64.27 FEET; THENCE N. 00° 29' 30" E. 320.47 FEET; THENCE S. 78° 34' 40" E. 326.96 FEET; THENCE S. 24° 14' 55" E. 2319.71 FEET; THENCE S. 05° 23' 40" E. 183.0 FEET; THENCE S. 84° 50' 30" W. 647.57 FEET; THENCE N. 89° 45' 15" W. 83.30 FEET TO THE POINT OF BEGINNING, CONTAINING LOTS 207 THROUGH 271 INCLUSIVE.

SURVEYOR'S CERTIFICATE

I HEREBY CERTIFY THAT THE PLAT HEREON DELINEATED IS A CORRECT ONE AND THAT PERMANENT METAL MONUMENTS CONSISTING OF BARS NOT LESS THAN ONE-HALF INCH IN DIAMETER AND 36 INCHES IN LENGTH, ENCASED IN A CONCRETE CYLINDER AT LEAST 4 INCHES IN DIAMETER AND 3/4 INCHES IN DEPTH HAVE BEEN PLACED AT POINTS MARKED THUS (O) AS THEREON SHOWN AT ALL ANGLES IN THE BOUNDARIES OF THE LAND PLATTED, AT ALL THE INTERSECTIONS OF THE LINES OF STREETS AND AT THE INTERSECTIONS OF THE LINES OF STREETS WITH THE BOUNDARIES OF THE PLAT AS SHOWN ON SAID PLAT.

FITZ J. BRIDGES
REGISTERED LAND SURVEYOR
NO. 5779

CERTIFICATE OF APPROVAL BY BOARD OF COUNTY ROAD COMMISSIONERS

THIS PLAT HAS BEEN EXAMINED AND HAS APPROVED ON THE 16th DAY OF June, 1958, BY THE BOARD OF COUNTY ROAD COMMISSIONERS.

Lawrence DeWitt
Lawrence DeWitt

Ernest W. McCallum
Ernest W. McCallum

VENICE SHORES SUBDIVISION NO. 2

BELVIDERE SUBDIVISION

OTTO, MICHIGAN

THIS IS TO CERTIFY THAT THE PLAT HEREON DELINEATED IS A CORRECT ONE AND THAT PERMANENT METAL MONUMENTS CONSISTING OF BARS NOT LESS THAN ONE-HALF INCH IN DIAMETER AND 36 INCHES IN LENGTH, ENCASED IN A CONCRETE CYLINDER AT LEAST 4 INCHES IN DIAMETER AND 3/4 INCHES IN DEPTH HAVE BEEN PLACED AT POINTS MARKED THUS (O) AS THEREON SHOWN AT ALL ANGLES IN THE BOUNDARIES OF THE LAND PLATTED, AT ALL THE INTERSECTIONS OF THE LINES OF STREETS AND AT THE INTERSECTIONS OF THE LINES OF STREETS WITH THE BOUNDARIES OF THE PLAT AS SHOWN ON SAID PLAT.

Point of beginning

NOTE: DIRECTION EAST SIDE OF CANAL ENCLOSURE ON LOTS 267-271 INCL. TO BE MAINTAINED AT A MINIMUM OF 150.0 FEET BY OWNER.

"VENICE SHORES SUBDIVISION NO. 3"
 PART OF P.C. 373 T. 2 N., R. 14 E.
 HARRISON TWP.
 MACOMB CO. MICHIGAN

DEDICATION

KNOW ALL MEN BY THESE PRESENTS, THAT WE, VENICE SHORES DEVELOPMENT CO., INC., A MICHIGAN CORPORATION, BY N. A. NICHOLSON, PRESIDENT, AND MORRIS AARON, SECRETARY, LAND CONTRACT VENDEES, AND AS PROPRIETORS, HAVE CAUSED THE LAND EMBRACED IN THE ANNEXED PLAT TO BE SURVEYED, LAID OUT AND PLATTED TO BE KNOWN AS "VENICE SHORES SUBDIVISION NO. 3", PART OF P.C. 373, T. 2 N., R. 14 E., HARRISON TWP., MACOMB CO., MICHIGAN, AND THAT THE STREETS AS SHOWN ON SAID PLAT ARE HEREBY DEDICATED TO THE USE OF THE PUBLIC, AND THAT THE PRIVATE EASEMENTS SHOWN ON SAID PLAT ARE HEREBY RESERVED FOR THE USE OF THE PUBLIC UTILITIES, OR FOR THE USE OF SPECIFIC LOCAL GOVERNMENTAL AUTHORITIES, SUBJECT TO THE REGULATION AND CONTROL OF THE USE THEREOF BY THE LOCAL GOVERNMENTAL AUTHORITIES, AND THAT NO PERMANENT STRUCTURES ARE TO BE ERRECTED WITHIN THE LINES OF SAID EASEMENTS. *CONSIDER AS SHOWN ON PLAT DEDICATED TO USE OF PROPRIETORS*

Lehner - Bridges, Inc.,
 Reg. Civil Eng. & Surveyors
 Mt. Clemens, Michigan

ACKNOWLEDGMENT

STATE OF MICHIGAN)
 COUNTY OF) ss.

ON THIS _____ DAY OF _____, 19____, BEFORE ME, A NOTARY PUBLIC IN AND FOR SAID COUNTY, PERSONALLY CAME THE ABOVE NAMED LEONIE A. COTTRELL, A WIDOW, CLARENCE COTTRELL AND FANNIE COTTRELL, HIS WIFE KNOWN TO ME TO BE THE PERSONS WHO EXECUTED THE ABOVE DEDICATION, AND ACKNOWLEDGED THE SAME TO BE THEIR FREE ACT AND DEED.

MY COMMISSION EXPIRES _____

NOTARY PUBLIC _____ CO., MICHIGAN

SIGNED AND SEALED IN THE PRESENCE OF

VENICE SHORES DEVELOPMENT CO., INC.

James K. Shannon

N. A. Nicholson, President

William A. Miller

Morris Aaron, Secretary

N. A. Nicholson

Leonie Nicholson

Morris Aaron

ACKNOWLEDGMENT

STATE OF MICHIGAN)
 COUNTY OF) ss.

ON THIS _____ DAY OF _____, A.D., 19____, BEFORE ME A NOTARY PUBLIC IN AND FOR SAID COUNTY APPEARED N. A. NICHOLSON AND MORRIS AARON TO ME PERSONALLY KNOWN WHO BEING EACH BY ME DULY SWORN DID SAY THAT THEY ARE THE PRESIDENT AND SECRETARY RESPECTIVELY OF THE VENICE SHORES DEVELOPMENT CO., INC., A MICHIGAN CORPORATION, AND THAT SAID INSTRUMENT WAS SIGNED IN BEHALF OF SAID CORPORATION BY AUTHORITY OF ITS BOARD OF DIRECTORS AND THE SAID N. A. NICHOLSON AND MORRIS AARON ACKNOWLEDGED SAID INSTRUMENT TO BE THE FREE ACT AND DEED OF SAID CORPORATION. CORPORATION HAS NO CORPORATE SEAL.

MY COMMISSION EXPIRES _____

NOTARY PUBLIC _____ Co.

ACKNOWLEDGMENT

STATE OF MICHIGAN)
 County of) ss.

On this _____ day of _____, 19____, before me a Notary Public in and for said county, personally came the above named N. A. Nicholson and Leonie Nicholson, his wife, and Morris Aaron and Bertha Aaron, his wife, known to me to be the persons who executed the above dedication, and acknowledged the same to be their free act and deed.

My Commission expires _____

Notary Public, _____ County, Michigan.

CERTIFICATE OF MUNICIPAL APPROVAL

THIS PLAT WAS APPROVED BY THE TOWNSHIP BOARD OF THE TOWNSHIP OF HARRISON AT A MEETING HELD 11:15 AM, May 12, 1953

Howard W. Phillips
 HOWARD W. PHILLIPS, CLERK

CERTIFICATE OF APPROVAL BY COUNTY BOARD

THIS PLAT WAS APPROVED ON THE 23rd DAY OF June, 1953, BY THE Macomb COUNTY PLAT BOARD.

James K. Shannon
 JAMES K. SHANNON, REGISTER OF DEEDS
Albert A. Wagner
 ALBERT A. WAGNER, COUNTY CLERK
John Whelan
 JOHN WHELAN, COUNTY TREASURER
Frank E. Lohr
 FRANK E. LOHR, DRAIN COMMISSIONER

FILED FOR RECORD IN THE REGISTER OF DEEDS OFFICE
 FILED FOR RECORD IN THE COUNTY CLERK'S OFFICE
 FILED FOR RECORD IN THE COUNTY TREASURER'S OFFICE
 FILED FOR RECORD IN THE DRAIN COMMISSIONER'S OFFICE

Otto Andrews (Clerk)

