

# INDEX

## SOUTHWEST CORNER P.C. 168 OTHER CODE: PC-023 HARRISON TOWNSHIP, T2N, R14E

### SECTION 1:

1. Index
2. After Pictures of Point of Witness Corners

### SECTION 2:

1. LCRC
2. Surveyor's Dossier Report
3. Sketch

### SECTION 3:

1. Original Private Claim Notes (2 pages)
2. Field Notes (3 page)
3. 1819 Map of Harrison Township from GLO (1 page)
4. Map of Harrison Township (1 page)
5. 1916 Map of Harrison Township (1 page)
6. 2006 Map of Harrison Township (1 page)
7. Harrison Township Composite Map (1 page)

### SECTION 4:

- |                          |                  |                       |
|--------------------------|------------------|-----------------------|
| 1. Claud Postiff         | Sketch of Survey | No Corner Information |
| 2. Huron Metro Authority | Field Notes      | No Corner Information |

LAND CORNER RECORDATION CERTIFICATE
Filing Requirement of Act 74, Mich. P.A. 1970

For corners in

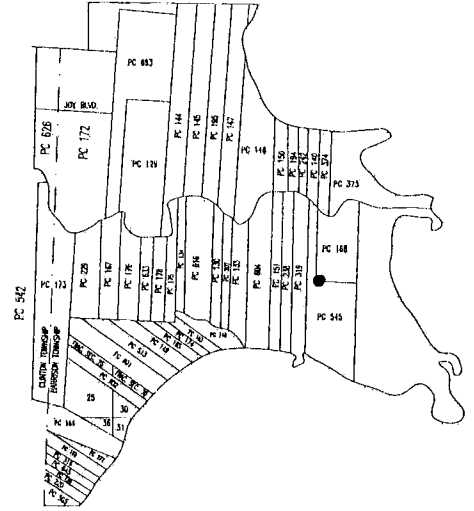
MACOMB (County) Located In: Harrison Township Corner Code #
1. Public Land Survey T\_2N R\_14E PC-023
2. Property Controlling in Section S T R
3. Miscellaneous Property in Section S T R
4. Lot No. , Recorded Plat

1219984
LIBER 20966 PAGE 205
General Index Date 11/02/2011 08:25:49 A.M.
MACOMB COUNTY, MI SEAL
CARNELLA SABAUGH, REGISTER OF DEEDS

Register of Deeds Stamp & File Number

5. Private Claims Southwest Corner of Private Claim 168

I, ROBERT R. DROUILLARD, JR., in a field survey on June 16, 2011 do hereby state that under requirements of P.A. 74, Michigan P.A. of 1970, the corner points mentioned in lines 1 and 2 above were in conformance with regulations and rules therefore as required in the current manual of survey instructions of the United States Department of the Interior, Bureau of Land Management or by a decree of a Court of Law and/or that the corner points mentioned in lines 3, 4 and 5 above were in conformance with the rules of the Michigan Board of Land Surveyors or by a Decree of a Court of Law; re-established, monumented, recovered, found as expressed below:



NOTE: Not more than 2 corners, all in the same town and range, may be recorded on this certificate.

A. Description of original monument and accessories and/or subsequent restoration:
\*Post set by Aaron Greeley according to GLO Notes, not found\*

Table with 4 columns: Line number, Date, Description, and Authority. Row 1: 1, 1810, Private claim notes, Aaron Greeley. Row 2: 2, 1926, Sketch of Survey, Claud Postiff N/A L.249, P.303. Row 3: 3, Field Notes, Huron-Clinton Metropolitan Authority.

B. Description of corner evidence found and/or method applied in restoring or reestablishing corner:
I established the Location of the P.C. corner using distances and existing evidence found in field notes provided by the Huron-Clinton Metropolitan Authority and recorded sketch of survey by Claud Postiff. The corner location falls in 5' deep water approximately 7' south of a 3' deep swamp area.

CORNER FOR SOUTHWEST PC CORNER 168 (PC-023) TO NORTHWEST PC CORNER 168 (PC-020)
4092.00' (62 Chains Private Claim Notes)
3970.47' (measured Drouillard #52517, 2011) to control monument set on bank of Clinton River.

CORNER FOR SOUTHWEST PC CORNER 168 (PC-023) TO SOUTHEAST PC CORNER 168 (PC-022)
2688.84' (40 Chains 74 Links Private Claim Notes)
2684.02' (Huron Metro Authority)
2684.72' (measured Drouillard #52517, 2011)

C. Description of monument for corner and accessories established to perpetuate locating the position of the corner:

I Set 2 (two) witness monuments South of the original corner on the extension of the Westerly established line of said Private Claim Corner (PC-023) at a distance of 210.00 feet and 420.00 feet from PC-023 corner. Both witnesses are 4" diameter concrete monument, 36" long with a 1/2" iron rod having a 2" diameter aluminum cap stamped "Macomb County Monument, MI Act #345, #52517, "WIT. MON. PC-023".

WITNESSES: FOR MONUMENT No.1 (210.00 FEET SOUTH OF PC CORNER 168 (PC-023))

Table with 3 columns: Bearing, Distance, and Description. Row 1: N80°E, 27.14', Set nail and Macomb County Witness tag monument #1 in South face of 15" Poplar Tree. Row 2: S50°E, 246.48', To cut "x" in Northwest face of concrete light pole base. Row 3: S25°W, 109.69', To cut "x" in Northwest face of concrete light pole base. Row 4: N75°W, 105.23', Set nail and Macomb County Witness tag monument #1 in South face of 15" Poplar Tree. Row 5: N45°W, 36.51', Set nail and Macomb County Witness tag monument #1 in Northeast face of 18" Poplar Tree. Row 6: South, 125.4' +/-, To centerline of a 20' wide asphalt road.

WITNESSES: FOR MONUMENT No.2 (420.00 FEET SOUTH OF PC CORNER 168 (PC-023))

Table with 3 columns: Bearing, Distance, and Description. Row 1: North, 84.6' +/-, To centerline of a 20' wide asphalt road. Row 2: S75°E, 354.25', To Southwest corner of base of steel sign. Row 3: S50°E, 283.66', To top center of a fire hydrant. Row 4: South, 32.2' +/-, To centerline of a 20' wide asphalt road. Row 5: S70°W, 118.36', To top center of a fire hydrant. Row 6: N25°W, 121.29', To cut "x" in Southeast face of concrete base of a light pole.



The selected location is accepted by me and is generally accepted by Professional Surveyors as the best available evidence of the position of the original corner.

Signed by [Signature]
Surveyor's Michigan License No. 52517

Date Oct. 13, 2011

ACCEPTED BY THE MACOMB COUNTY SURVEY PEER GROUP AS THE OFFICIAL CORNER UNDER MICHIGAN PUBLIC ACT 345 OF 1990 AT A MEETING HELD ON 9-13-2011

[Signature]

FORM APPROVED BY MICHIGAN STATE BOARD OF PROFESSIONAL SURVEYORS, JAN. 28, 1971
REVISED MAY 14, 1975
REVISED JAN., 1983
REVISED OCT., 1995

**DOSSIER**  
**SOUTHWEST CORNER P.C. 168**  
**OTHER CODE: PC-023**  
**HARRISON TOWNSHIP,**  
**T2N, R14E**

**PRIVATE CLAIM HISTORY:**

Private claim survey performed by Aaron Greeley on July 18, 1810. Commencing at a post standing on the border of River Huron between this tract and unconceded land thence south seventy chains forty eight links to a post thence west forty chains 74 links to a post thence North 62 chains to a post standing on the border of River Huron between this tract and a tract confirmed to Joseph Campeau thence along the border of said river down stream south forty six degrees east seven chains thirty links thence east eight chains fifty links, thence north twenty nine degrees east thirteen chains, thence north seventy six degrees east 9 chain thence east eleven chains ninety five links to the place of beginning, containing three hundred and ten acres thirty one hundredths of an acre. Description No. 168, confirmed to Louis Campeau.

**EXISTING CONDITIONS:**

The corner falls within the banks of the Black river therefore no physical evidence of original post found at above described location. The post was re-established using found evidence from a Sketch of Survey for P.C. 545, performed by Claud Postiff and recored in liber 249, page 303 and information provided by the Huron Metro Park Authority.

**RECORDED & UNRECORDED SURVEYS, & FIELD NOTES:**

- |   |  |                       |
|---|--|-----------------------|
| 1. Aaron Greeley                        | Copy of Original Survey                      | Post sighted in notes |
| 2. Claud Postiff                        | Sketch of Survey<br>(reference L.249, P.303) | No Corner Information |
| 3. Huron-Clinton Metropolitan Authority | Field Notes                                  | No Corner Information |

**FIELD MEASUREMENTS BETWEEN CORNERS:**

**CORNER FOR SOUTHWEST PC CORNER 168 (PC-023) TO NORTHWEST PC CORNER 168 (PC-020)**

4092.00' (62 Chains Private Claim Notes)  
3970.47' (measured Drouillard #52517, 2011) to control monument set on bank of Clinton River.

**CORNER FOR SOUTHWEST PC 168 (PC-023) TO SOUTHEAST PC 168 (PC-022)**

2688.84' (40 Chains 74 Links GLO)  
2684.02' (Huron Metro Authority)  
2684.72' (measured Drouillard 2011)

**CORNER FOR SOUTHWEST PC CORNER 168 (PC-023) TO SOUTHEAST PC CORNER 168 (PC-022)**

2688.84' (40 Chains 74 Links Private Claim Notes)  
2684.02' (Huron Metro Authority)  
2684.72' (measured Drouillard #52517, 2011)

**RECOMMENDATIONS:**

Set 2 (two) Witness Controlling Corners South of the original corner on line at a distance of 210.00 feet and 420.00 feet from PC-023 corner. Both witness monuments are 1/2" iron and cap with a 4" diameter concrete monument, 36" long with a 1/2" iron rod having a 2" diameter aluminum cap stamped "Macomb County Monument, MI Act #345, #52517, "PC-023".

**WITNESSES: FOR MONUMENT No.1 (210.00 FEET SOUTH OF PC CORNER 168 (PC-023))**

N80°E	27.14'	Set nail and Macomb County Witness tag monument #1 in South face of 15" Poplar Tree.
S50°E	246.48'	To cut "x" in Northwest face of concrete light pole base.
S25°W	109.69'	To cut "x" in Northwest face of concrete light pole base.
N75°W	105.23'	Set nail and Macomb County Witness tag monument #1 in South face of 15" Poplar Tree.
N45°W	36.51'	Set nail and Macomb County Witness tag monument #1 in Northeast face of 18" Poplar Tree.
South	125.4' +/-	To centerline of a 20' wide asphalt road.

**WITNESSES: FOR MONUMENT No.2 (420.00 FEET SOUTH OF PC CORNER 168 (PC-023))**

North	84.6' +/-	To centerline of a 20' wide asphalt road.
S75°E	354.25'	To Southwest corner of base of steel sign.
S50°E	283.66'	To top center of a fire hydrant.
South	32.2' +/-	To centerline of a 20' wide asphalt road.
S70°W	118.36'	To top center of a fire hydrant.
N25°W	121.29'	To cut "x" in Southeast face of concrete base of a light pole.

NORTH LINE OF PRIVATE CLAIM 168

CORNER FALLS IN RIVER

CLINTON RIVER N.E. CORNER OF PRIVATE CLAIM 168  
11 CHAINS 95 LINKS (P.C. NOTES) SET MARKER

CORNER FALLS IN RIVER

8 CHAINS (P.C. NOTES)  
N76°00'00"E  
594.00'

788.94'(C) 788.70'(R)  
GLOUCESTER-ON-THE-CLINTON SUBDIVISION

N.W. CORNER OF PRIVATE CLAIM 168  
FALLS IN RIVER

7 CHAINS 30 LINKS (P.C. NOTES)  
S46°00'00"E  
481.80'

CORNER FALLS IN RIVER

13 CHAINS (P.C. NOTES)  
N22°00'00"E  
858.00'

CLINTON RIVER

9 CHAINS (P.C. NOTES)  
N90°00'00"E  
561.00'

SOUTH RIVER DRIVE

CONTROL POINT

RIVERSIDE-BAY GARDENS SUBDIVISION

RITA LOZON PARCEL  
17-12-16-405-040

NORTH 3970.47' TO CONTROL MONUMENT JUNE 2011 (LEHNER ASSOC.)  
62 CHAINS (4092.00' P.C. NOTES)

WEST LINE OF PRIVATE CLAIM 168

PRIVATE CLAIM 168

EAST LINE OF PRIVATE CLAIM 168

70 CHAINS 48 LINKS (4651.68' P.C. NOTES)  
4724.99' (ST. CLAIR HAVEN PLAT)  
SOUTH 4724.99' R&S JUNE 2011 (LEHNER ASSOC.)

VENETIAN DRIVE 60 FEET WIDE

ST. CLAIR HAVEN SUBDIVISION

SOUTH LINE OF PRIVATE CLAIM 168

40 CHAINS 74 LINKS (2688.84' P.C. NOTES)  
2684.02' (HURON METROPOLITAN AUTHORITY NOTES)  
WEST 2684.72'(M) JUNE 2011 (LEHNER ASSOC.)

FALLS IN RIVER

S.W. CORNER OF PRIVATE CLAIM 168

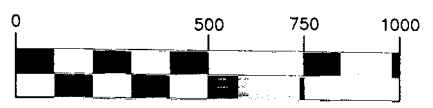
BLACK RIVER

SET MONUMENT 1  
S.E. CORNER OF PRIVATE CLAIM 168

CONTROL POINT

CONTROL POINT

ST. CLAIR HAVEN No. 1 (VACATED)  
HURON-CLINTON METROPOLITAN AUTHORITY  
"HURON METRO BEACH"



( IN FEET )  
1 inch = 500 ft.

No. 407

No. 168 Confirmed to  
Louis Campeau

SOUTH SIDE OF RIVER HURON

Description No. 168 Confirmed to Louis Campeau commencing at a post standing on the border of River Huron between this tract and unconceded land thence south seventy chains forty eight links to a post thence west forty chains seventy four links to a post thence north sixty two chains to a post standing on the border of River Huron between this tract and a tract confirmed to Joseph Campeau thence along the border of said river down stream south forty six degrees east seven chains thirty links thence east eight chains fifty links, thence north twenty nine degrees east thirteen chains, thence north seventy six degrees east nine chains , thence east eleven chains ninety five links to the place of beginning, containing three hundred and ten acres thirty one hundredths of an acre.

Detroit July 18, 1810

Aaron Greeley Surveyor  
of private claims

①

N<sup>o</sup>. 407.

South side of River Huron.

Description - N<sup>o</sup>. 168 confirmed to Louis Campeau. Commencing at a post standing on the border of River Huron between this tract and a tract of unconceded land thence South seventy chains forty eight links, to a post thence west forty chains seventy four links, to a post thence north sixty two chains, to a post standing on the border of River Huron between this tract and a tract confirmed to Joseph Campeau, thence along the border of said River down stream - south forty six degrees East seven chains thirty links, thence East eight chains fifty links thence north twenty nine degrees East thirteen chains, thence north seventy six degrees East nine chains, thence East eleven chains ninety five links, to the place of beginning containing three hundred and ten acres thirty one hundredths of an acre.

Detroit July 18. 1810

168

(1)

6-24-2011

RS BS

#13

S.W. CORNER  
OF P.C. #168

15' wd.  
BERM WITH  
BRUSH

SWAMP

SWAMP

3' DEEP  
WATER

10' wd  
BERM

5 1/2' DEEP  
WATER

7 1/2'

BLACK RIVER

TRUE POSITION  
OF S.W. CAR.

20.00

EDGE OF WATER

WITNESS  
MONT.

TOP OF BANK

← EXTENDED  
WEST LINE  
OF P.C. #168

SET IRON & CAP

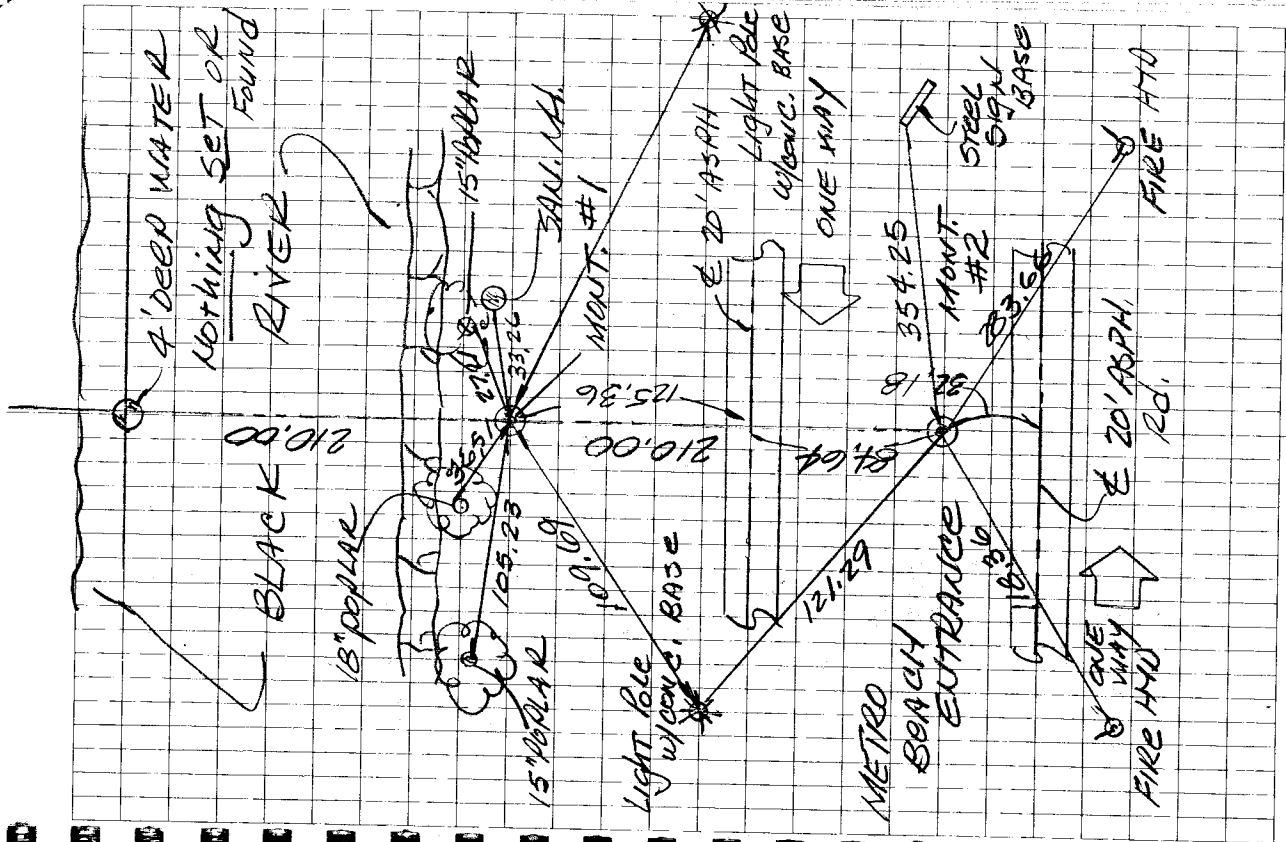
METRO

BEACH

ENTRANCE

WITNESS  
MONT.

← SET IRON & CAP





Witness Iron #2

NORTH 84.64 FT. TO E  
OF 20' ASPH. RD.

S. 75° E. 354.25 FT.

SW CORNER OF STEEL  
SIGN BASE.

S. 50° E. 283.66 FT. E OF  
FIRE HYD.

SOUTH 32.18 FT. TO E  
OF 20' ASPH. RD.

S. 70° W. 118.36 FT. E OF  
FIRE HYD.

N. 25° W. 121.29 FT. CONC.  
LIGHT POLE BASE.

6-24-2011

RS BS

SET 2 IRONS ON THE  
EXTENDED WEST LINE  
OF P.C. #108. SAID IRONS  
ARE 210.00 FT. AND 420.00 FT.  
FROM THE S.W. CORNER  
OF SAID P.C.

WITNESS IRON #1 IS  
210.00 FT. FROM SAID P.C.  
CORNER

WITNESS IRON #2 IS  
420.00 FT. FROM SAID  
P.C. CORNER.

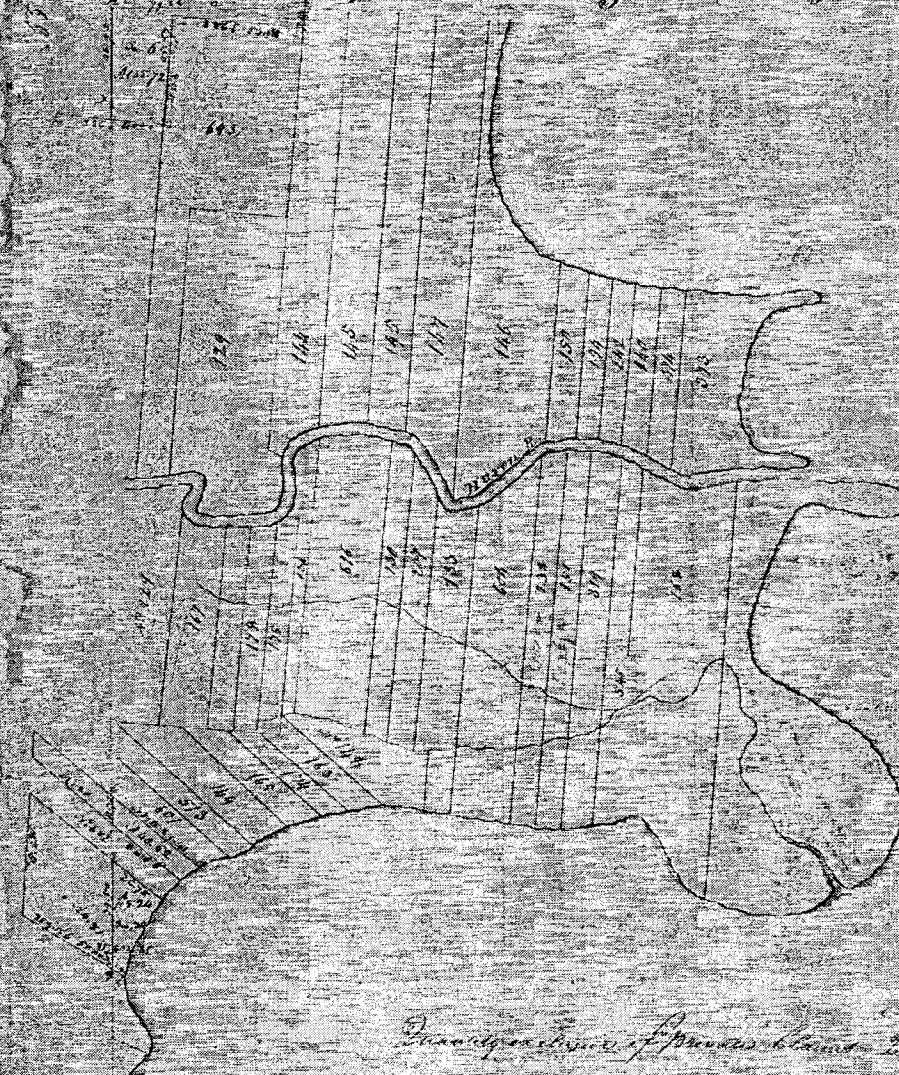
### WITNESS

SET TAG NAILS & MACOMBS  
CO. WITNESS TAGS.

### WITNESS IRON #1

N. 80° E. 27.14 FT. SET NAIL &  
TAG IN SOUTH FACE OF 15" BPLAR  
EAST 33.26 FT. W. CHAIN JAN. NAIL.  
S. 50° E. 246.48 FT. CONC. LIGHT  
POLE BASE.  
S. 25° W. 109.69 FT. CONC. LIGHT  
POLE BASE.  
N. 75° W. 105.23 FT. SET NAIL  
& TAG IN SOUTH FACE OF  
15" BPLAR.  
N. 45° W. 36.51 FT. SET NAIL  
& TAG IN N.E. FACE OF  
18" BPLAR.  
SOUTH 125.36 FT. TO E OF  
A 20' WED. ASPH. RD.

Township N: II North, Range N: XIV East of the Mer. (Mich. Ter.)



Continuation of Survey of Previous Land - 24th 3rd

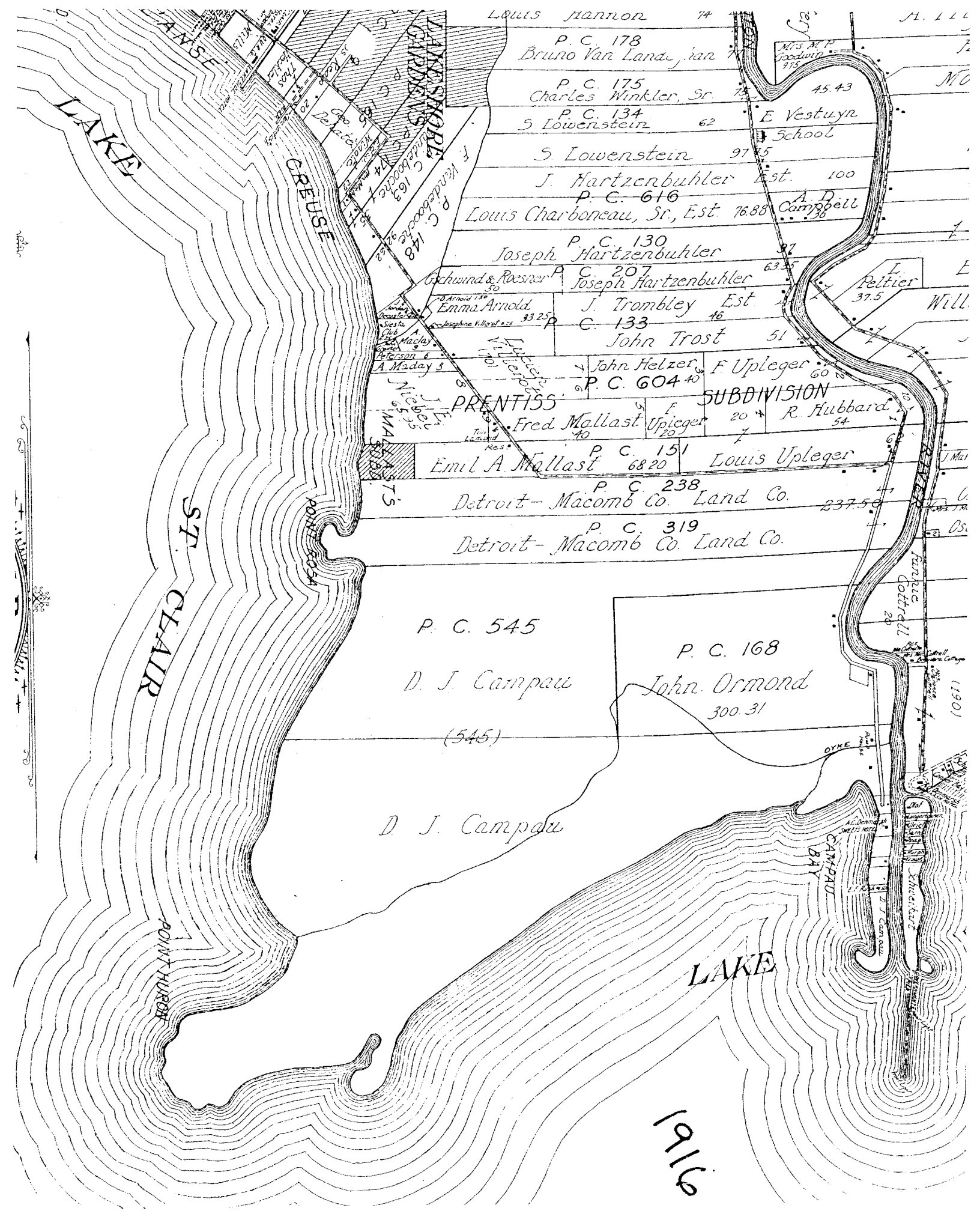
Survey for the Company - 1st 11th 1858

Survey for the Company  
1858

Survey for the Company  
1858

1858



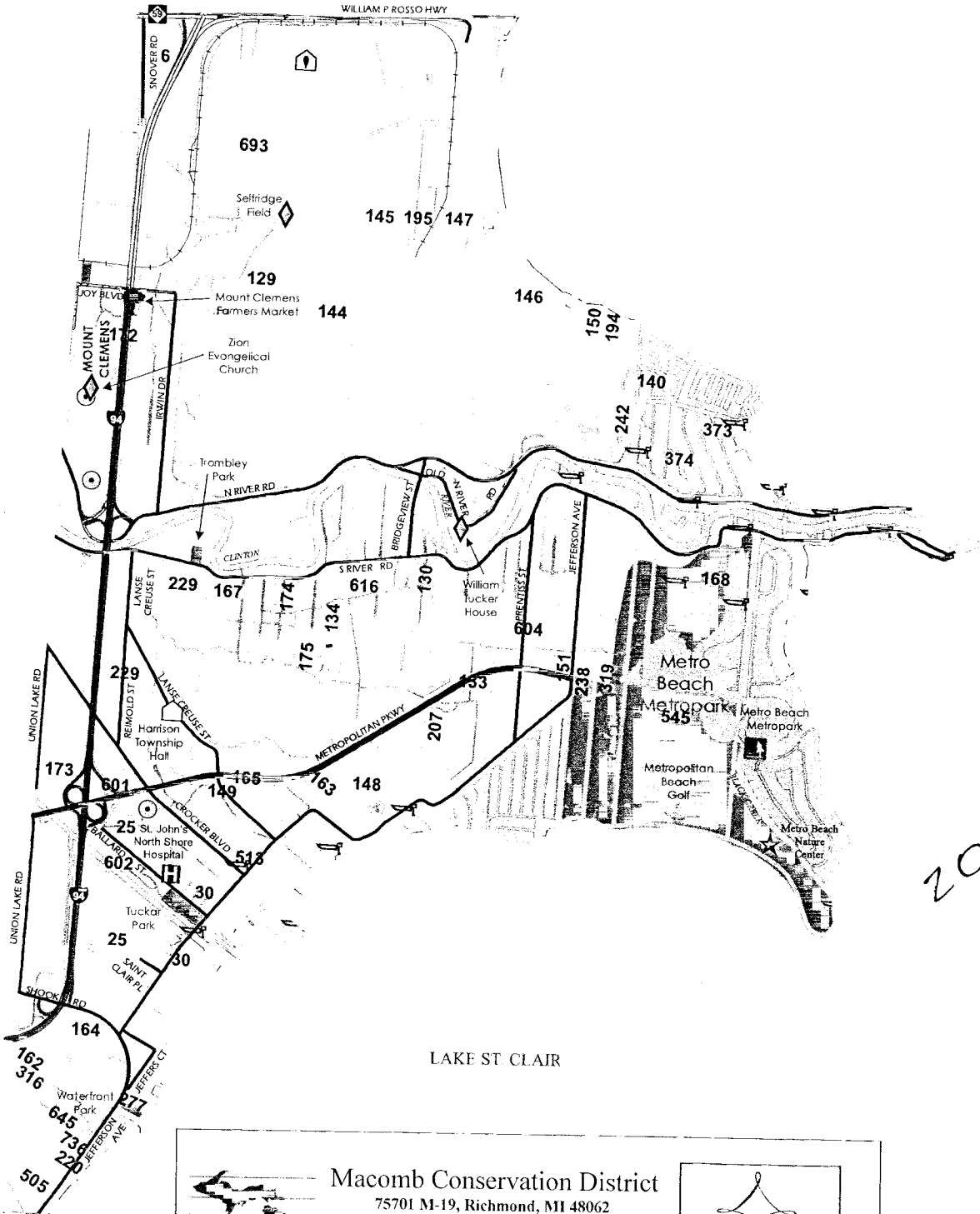


1919



See CHESTERFIELD Page 31


See CLINTON Page 23




LAKE ST. CLAIR

2006

LAKE ST CLAIR



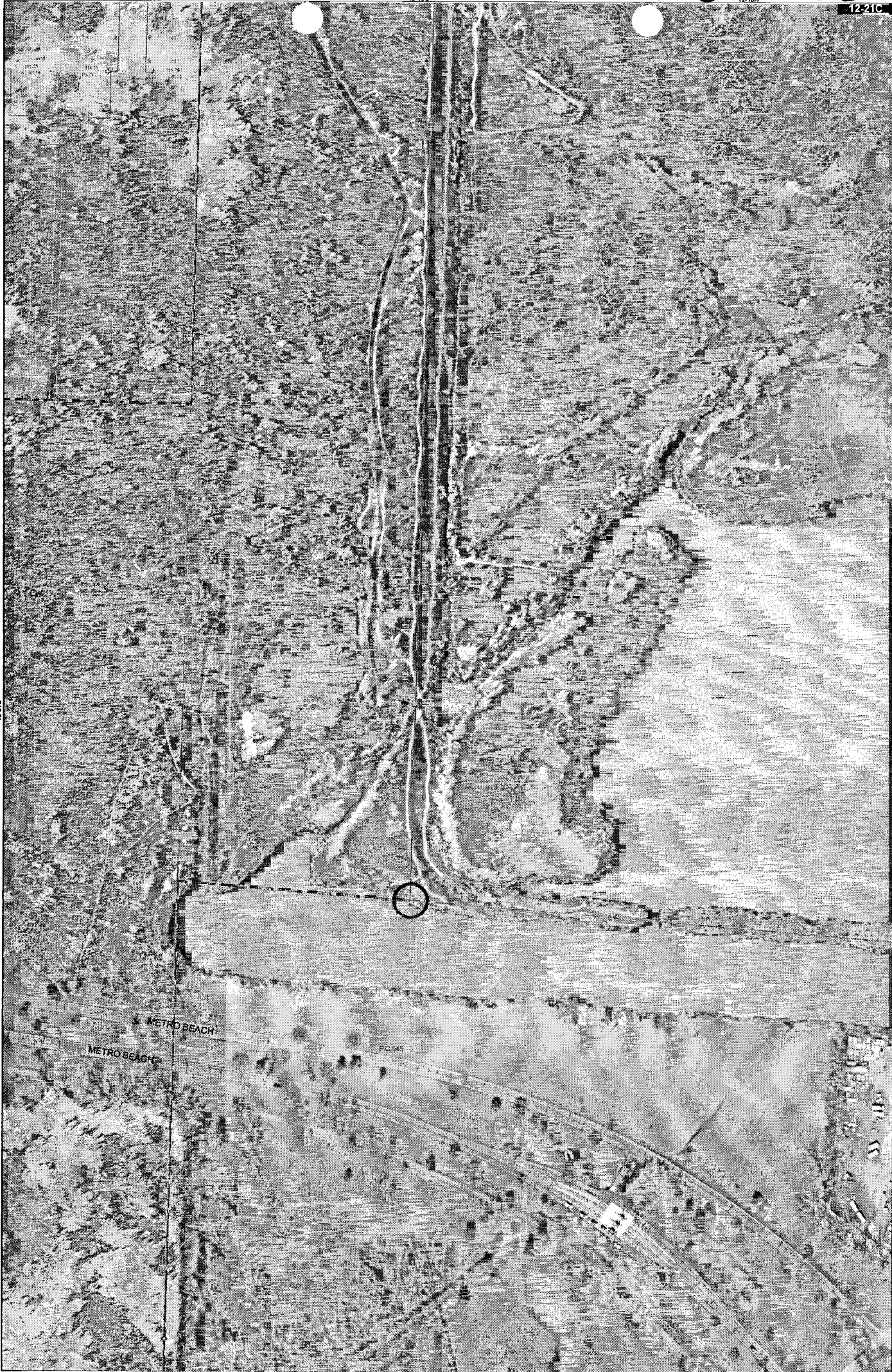
**Macomb Conservation District**  
 75701 M-19, Richmond, MI 48062  
 Phone: 586-727-2666 Fax: 586-727-2621  
 E-mail: [macombcd@klondyke.net](mailto:macombcd@klondyke.net)  
 Website: [www.macombcd.com](http://www.macombcd.com)



*Celebrating  
55 Years of  
Managing  
Macomb County's  
Natural Resources*

Assistance available for :

Tree Sales      Forestry      Native Plants  
 Conservation      Education



Date of Photography: April 2004  
 100 50 0 100 200 Feet  
 1:1,200

HARRISON TWP SHEET INDEX

DESCRIPTION OF PERMANENT REAL ESTATE INDEX NUMBER  
**13-19-302-018**  
 AREA: 13-19-302-018  
 BLOCK NUMBER: 13-19-302-018  
 LOT NUMBER: 13-19-302-018

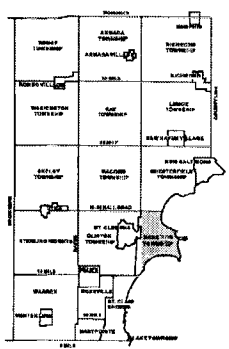
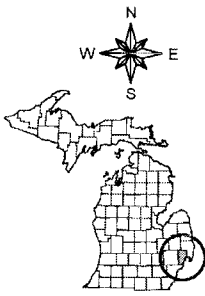
12-21C  
 HARRISON TWP.  
 W. 1/2 N.E. 1/4 SEC. 21 T. 2N. R. 14E.

Source: Macomb County Department of Planning and Economic Development  
 - 2004 Digital Orthophotography Project  
 - Parcel Conversion Project

Note: Digital Orthophotography horizontal positioning accuracy is 3 feet. Parcel boundary lines should be considered a graphical representation and not in any way a legal survey or engineering document. In general, the horizontal positioning and length accuracy is within 15 feet.

This map is intended for general planning purposes. Site specific evaluation should be verified by field inspection. This is a work in progress and may contain errors and omissions. Please report any potential revisions to (586)469-5285

- Legend**
- Platted Area Boundary Line
  - Property Line
  - Property Split Line
  - Property Combined Line
  - Township Boundary Line
  - Traverse Line
  - Dimension Extent Marks
  - Dimension Start Marks



DESCRIPTION OF PERMANENT REAL ESTATE INDEX NUMBER
13-19-302-018
13-19-302-019
13-19-302-020
13-19-302-021
13-19-302-022
13-19-302-023
13-19-302-024
13-19-302-025
13-19-302-026
13-19-302-027
13-19-302-028
13-19-302-029
13-19-302-030
13-19-302-031
13-19-302-032
13-19-302-033
13-19-302-034
13-19-302-035
13-19-302-036
13-19-302-037
13-19-302-038
13-19-302-039
13-19-302-040
13-19-302-041
13-19-302-042
13-19-302-043
13-19-302-044
13-19-302-045
13-19-302-046
13-19-302-047
13-19-302-048
13-19-302-049
13-19-302-050
13-19-302-051
13-19-302-052
13-19-302-053
13-19-302-054
13-19-302-055
13-19-302-056
13-19-302-057
13-19-302-058
13-19-302-059
13-19-302-060
13-19-302-061
13-19-302-062
13-19-302-063
13-19-302-064
13-19-302-065
13-19-302-066
13-19-302-067
13-19-302-068
13-19-302-069
13-19-302-070
13-19-302-071
13-19-302-072
13-19-302-073
13-19-302-074
13-19-302-075
13-19-302-076
13-19-302-077
13-19-302-078
13-19-302-079
13-19-302-080
13-19-302-081
13-19-302-082
13-19-302-083
13-19-302-084
13-19-302-085
13-19-302-086
13-19-302-087
13-19-302-088
13-19-302-089
13-19-302-090
13-19-302-091
13-19-302-092
13-19-302-093
13-19-302-094
13-19-302-095
13-19-302-096
13-19-302-097
13-19-302-098
13-19-302-099
13-19-302-100
13-19-302-101
13-19-302-102
13-19-302-103
13-19-302-104
13-19-302-105
13-19-302-106
13-19-302-107
13-19-302-108
13-19-302-109
13-19-302-110
13-19-302-111
13-19-302-112
13-19-302-113
13-19-302-114
13-19-302-115
13-19-302-116
13-19-302-117
13-19-302-118
13-19-302-119
13-19-302-120
13-19-302-121
13-19-302-122
13-19-302-123
13-19-302-124
13-19-302-125
13-19-302-126
13-19-302-127
13-19-302-128
13-19-302-129
13-19-302-130
13-19-302-131
13-19-302-132
13-19-302-133
13-19-302-134
13-19-302-135
13-19-302-136
13-19-302-137
13-19-302-138
13-19-302-139
13-19-302-140
13-19-302-141
13-19-302-142
13-19-302-143
13-19-302-144
13-19-302-145
13-19-302-146
13-19-302-147
13-19-302-148
13-19-302-149
13-19-302-150
13-19-302-151
13-19-302-152
13-19-302-153
13-19-302-154
13-19-302-155
13-19-302-156
13-19-302-157
13-19-302-158
13-19-302-159
13-19-302-160
13-19-302-161
13-19-302-162
13-19-302-163
13-19-302-164
13-19-302-165
13-19-302-166
13-19-302-167
13-19-302-168
13-19-302-169
13-19-302-170
13-19-302-171
13-19-302-172
13-19-302-173
13-19-302-174
13-19-302-175
13-19-302-176
13-19-302-177
13-19-302-178
13-19-302-179
13-19-302-180
13-19-302-181
13-19-302-182
13-19-302-183
13-19-302-184
13-19-302-185
13-19-302-186
13-19-302-187
13-19-302-188
13-19-302-189
13-19-302-190
13-19-302-191
13-19-302-192
13-19-302-193
13-19-302-194
13-19-302-195
13-19-302-196
13-19-302-197
13-19-302-198
13-19-302-199
13-19-302-200

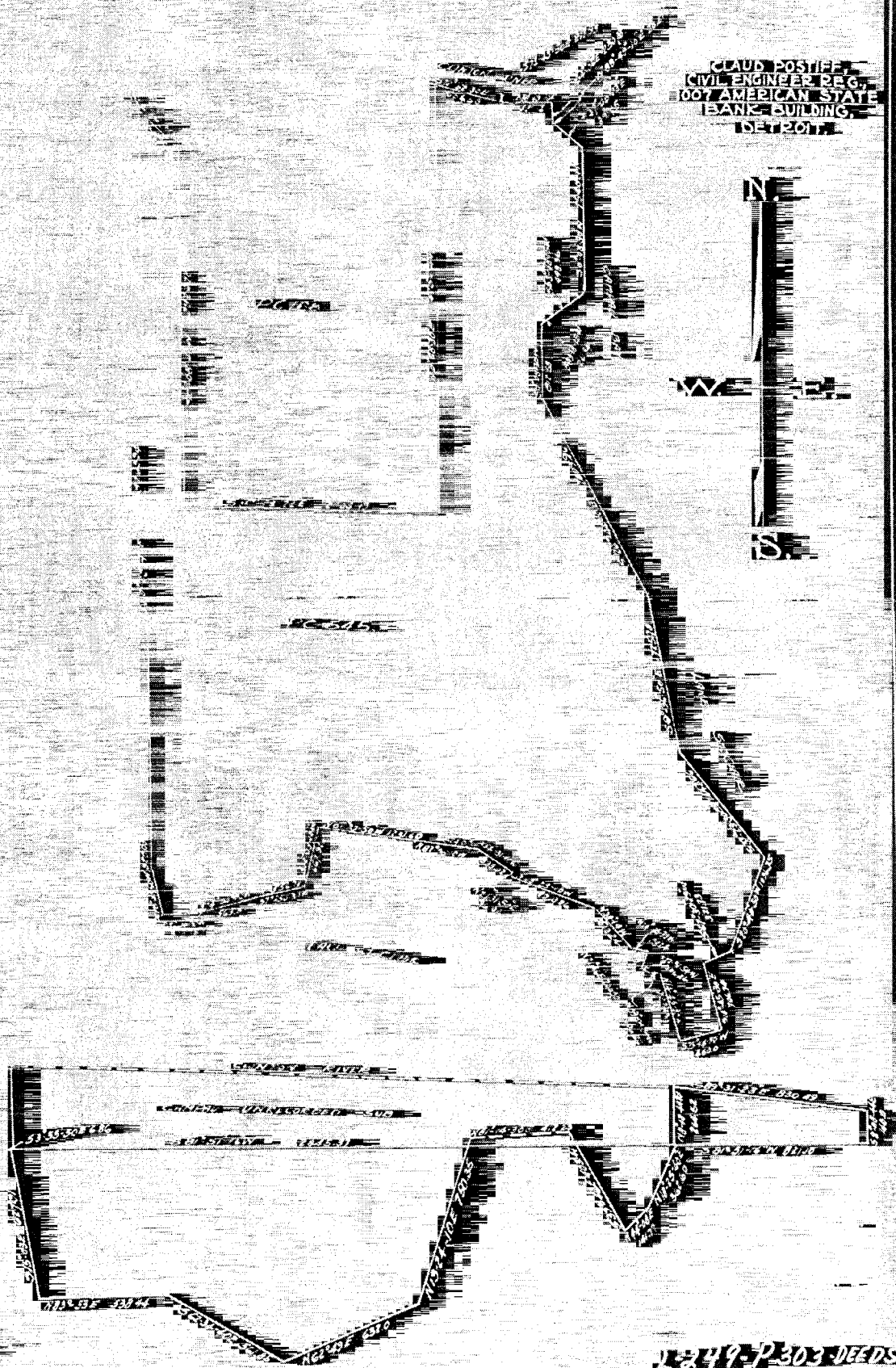


GIS MACOMB COUNTY  
 Planning and Economic  
 Development Department

**SKETCH OF SURVEY  
PRIVATE CLAIMS  
HARRISON TWP, MACOMB CO, MICH.**

1887

CLAU POSTER  
CIVIL ENGINEER REG.  
1007 AMERICAN STATE  
BANK BUILDING  
DETROIT

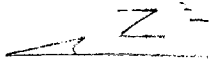


249-303 ALLEYS

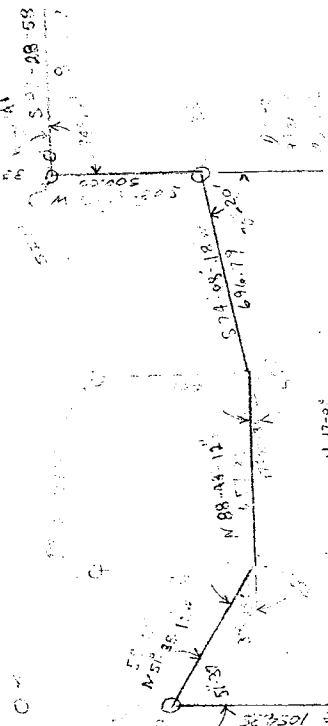
249-303 DEEDS







P.C. 545  
 S 08-09-58



1) 27-37  
 3) 54-51  
 2) 27-37

1) I have been set up to be  
 located with GPS. I have  
 been found. THE FACT  
 IS TO BE MARKED  
 WITH A POSTS OF 400'  
 TO THE DIAMETER WITH  
 600' INTERVALS  
 THE BOUNDARY IS TO  
 BE MARKED WITH  
 500' TO 600' INTERVALS  
 5 P.M. 2/2/75  
 2/2/75

3

BEARING	DISTANCE	LENGTH	WIDTH	SAWM
S 87	83.74	103		
N 0-18-30	38.00	39.00		
S 08-09-58	296.19			
S 08-09-58	500.00			49
S 74-05-18	296.19			19
N 88-44-12	146.00			14.60
N 88-44-12	59.00			3.66
S 08-09-58	105.00			10
S 08-09-58	34.33			24
				43
				43

N 08-19-38  
 296.61

P.C. 545

WEST POINT