

REC'D. MACOMB CO. AUG 12 2008

REC'D. MACOMB CO. SEP 26 2008

4:00 P.M.
11:00 A.M.



LAND CORNER RECORDATION CERTIFICATE
Filing Requirement of Act 74, Mich. P.A. 1970

For corners in

<u>MACOMB</u> (County)	Located In: Harrison Twp. & Clinton Twp.	Corner Code #
1. Public Land Survey	T ___ R ___	_____
2. Property Controlling in Section	S ___ T ___ R ___	_____
3. Miscellaneous Property in Sec.	S ___ T ___ R ___	_____

8095122
LIBER 19452 PAGE 179
08/15/2008 09:41:17 A.M.
MACOMB COUNTY, MI SEAL
CARMELLA SABAUGH, REGISTER OF DEEDS

8110081
LIBER 19502 PAGE 769
09/26/2008 02:47:51 P.M.
MACOMB COUNTY, MI SEAL
CARMELLA SABAUGH, REGISTER OF DEEDS

4. Lot No. _____, Recorded Plat _____
5. Private Claims Property Controlling Corner on line common with west line of Private Claim 172 and east line of Private Claim 626. Town 2 North, Range 13 East, @ centerline intersection of Henry B. Joy Road east-west and North Walnut south.

I, Steven E. Dunn, in a field survey on January 7, 2008, do hereby certify that under requirements of P.A. 74, Michigan P.A. of 1970, the corner points mentioned in lines 1 and 2 above were in conformance with regulations and rules therefore as required in the current manual of survey instructions of the United States Department of the Interior, Bureau of Land Management or by a decree of a Court of Law and/or that the corner points mentioned in lines 3, 4 and 5 above were in conformance with the rules of the Michigan Board of Land Surveyors or by a Decree of a Court of Law, established, re-established, monumented, re-monumented, recovered, found as expressed below:

NOTE: Not more than 2 corners, all in the same town and range, may be recorded on this certificate.

A. Description of original monument and accessories and/or subsequent restoration:

- | | |
|-------------------|--|
| 1810 N/A | GLO Original survey performed by Aaron Greeley, |
| 1921 1" Pipe | L. 5, P. 32, "Ascot Park Subdivision" |
| 1928 N&S PC Line | L. 13, P. 40, Assessors Plat No. 24 |
| 1934 N&S PC Line | L. 16, P. 23, Supervisors Plat No. 5 |
| 1968 N&S PC Line | L. 59, P. 7 & 8, Supervisor's Plat No. 19 |
| 1972 N&S PC Line | Certificate of Survey, unrecorded, Charles G. Melching, #14767
(this corner not located on survey) |
| 1974 N&S PC Line | Certificate of Survey, unrecorded, William E. Soderberg, #17635
(this corner not located on survey) |
| 1990 North PC Cor | L. 92, P. 47-50, East Pointe Industrial Subdivision |
| 2005 PK Nail | L. 16876, P. 688, LCRC, Jack N. Owens, #20709 (match 4 witness ties) |

B. Description of corner evidence found and/or method applied in restoring or reestablishing corner:
PCC-004 West line of Private Claim 172, common with the east line of Private Claim 626 Town 2 North, Range 13 East.
Found PK nail at the centerline pavement intersection of Henry B. Joy Road east-west and North Walnut south.

FIELD MEASUREMENTS AND RECORD MEASUREMENTS (see back):

C. Description of monument for corner and accessories established to perpetuate locating the position of the corner:
PCC-004 West line of Private Claim 172, common with the east line of Private Claim 626 Town 2 North, Range 13 East.
Found PK nail at the centerline pavement intersection of Henry B. Joy Road east-west and North Walnut south.

I replaced the found PK nail with a 3/4" X 36" steel rod with an aluminum cap stamped "Macomb County Monument Mi Act 345 1990 MCL, 28408, PCC-004, PCC-002" in a new monument box in asphalt pavement. Corner falls at the centerline of asphalt pavement intersection of Henry B. Joy Road east-west and North Walnut south.

WITNESSES:

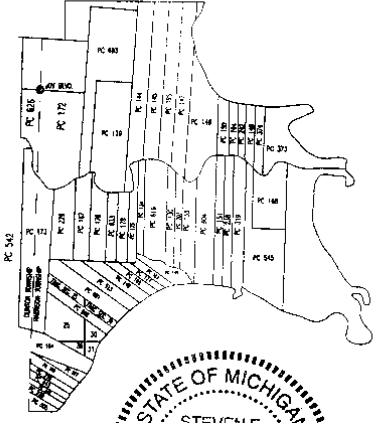
- S.41°W. 81.72' Found form nail w/tag "Rowe" on southeast face of utility pole. (81.72'-Record, LCRC).
- N.29°W. 51:88' Found form nail w/tag "Rowe" on southwest face of utility pole. (51.88'-Record, LCRC).
- N.51°E. 68.59' Found form nail w/tag "Rowe" on west face of utility pole. (68.51'-Record, LCRC).
- S.38°E. 98.12' Center top nut of hydrant. (98.18'-Record, LCRC).

THE SELECTED LOCATION IS ACCEPTED BY ME AND IS GENERALLY ACCEPTED BY PROFESSIONAL SURVEYORS AS THE BEST AVAILABLE EVIDENCE OF THE POSITION OF THE ORIGINAL CORNER.

ACCEPTED BY THE MACOMB COUNTY SURVEY PEER GROUP AS THE OFFICIAL CORNER UNDER MICHIGAN PUBLIC ACT 345 OF 1990 AT A MEETING HELD ON 6-3-08

MARTIN C. DUNN, P.S. CHAIRMAN

Signed by Steven E. Dunn Date August 11, 2008
Surveyor's Michigan License No. 28408



*DOCUMENT BEING RECORDED TO CORRECT OTHER CODE FROM PCC-001 TO PCC-019 AND PCC-003 TO PCC-004.

For corners in

<u>MACOMB</u> (County)	Located In: Harrison Twp. & Clinton Twp.	Corner Code #
1. Public Land Survey	T ___ R ___ T ___ R ___	_____
2. Property Controlling in Section	S ___ T 02N. R 14E. S ___ T ___ R ___	<u>PCC-001 019 M.B.B.</u>

5. Private Claims Property Controlling Corner on line common with west line of Private Claim 172 and east line of Private Claim 626, Town 2 North, Range 13 East, @ centerline intersection of Henry B. Joy Road east-west and North Walnut south.

A. Description of original monument and accessories and/or subsequent restoration:

B. ⁰¹⁹ Description of corner evidence found and/or method applied in restoring or reestablishing corner:
PCC-001 West line of Private Claim 172, common with the east line of Private Claim 626, Town 2 North, Range 13 East. Found PK nail at the centerline pavement intersection of Henry B. Joy Road east-west and North Walnut south.

FIELD MEASUREMENTS AND RECORD MEASUREMENTS:

⁰¹⁹ **PCC-001 (centerline intersection of Henry B. Joy Road and the line common with PC 172 and PC 626) to PC 012:**
4209.77' - Record, Tax Descriptions, west side.
4220.48' - Record, Tax Descriptions, east side.
4215.13' - Mean of record above.
4215.94' - Field. 2008 Remon.

⁰¹⁹ **PCC-001 to found 3/4" steel rod at the intersection of the north right-of-way line of North River Road and the line common with PC 172 and PC 626):**
4393.20' - Record, Plats.
4394.82' - Field. 2008 Remon.

⁰¹⁹ **PCC-001 to found PK nail at east line of Private Claim 172 (also being the centerline of Irwin Road south) and centerline of Henry B. Joy Road:**
2668.57' - Record, LCRC.
2668.35' - Field. 2008 Remon.

LCRC: L. 16876, P. 688, Jack N. Owens, #20709:
Found PK nail
N50°E 68.51' Set n/Rowe tag W. FC. P. Pole (68.59'-Field, 2008 Remon).
S25°E 98.18' Top Ctr. Hydrant (98.12'-Field, 2008 Remon).
S60°W 81.70' Set n/Rowe tag E. FC. P. Pole (81.72'-Field, 2008 Remon).
N20°W 51.88' Set n/Rowe tag W. FC. P. Pole (51.88'-Field, 2008 Remon).

REC'D. MACOMB CO. AUG 12 2008 4:00 p.m.
REC'D. MACOMB CO. SEP 26 2008 11:00 am



LAND CORNER RECORDATION CERTIFICATE
Filing Requirement of Act 74, Mich. P.A. 1970

For corners in

MACOMB (County)
Located In: Clinton Twp. & Harrison Twp.
Corner Code #
1. Public Land Survey T R
2. Property Controlling in Section S T R
3. Miscellaneous Property in Sec. S T R

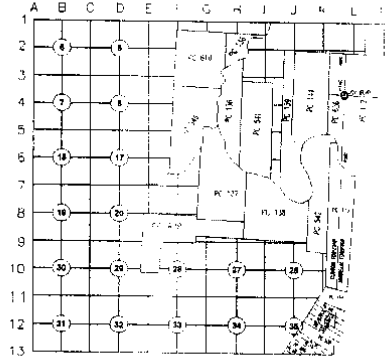
8095124
LIBER 19452 PAGE 185
08/15/2008 08:41:24 A.M.
MACOMB COUNTY, MI
CARMELLA SABAUGH, REGISTER OF DEEDS

8110082
LIBER 19502 PAGE 771
09/26/2008 02:47:51 P.M.
MACOMB COUNTY, MI
CARMELLA SABAUGH, REGISTER OF DEEDS

4. Lot No. _____, Recorded Plat _____
5. Private Claims Property Controlling Corner on line common with the east line of Private Claim 626 and the west line of Private Claim 172, Town 2 North, Range 14 East, @ centerline intersection of Henry B. Joy Boulevard east-west and North Walnut south.

I, Steven E. Dunn, in a field survey on January 7, 2008, do hereby certify that under requirements of P.A. 74, Michigan P.A. of 1970, the corner points mentioned in lines 1 and 2 above were in conformance with regulations and rules therefore as required in the current manual of survey instructions of the United States Department of the Interior, Bureau of Land Management or by a decree of a Court of Law and for that the corner points mentioned in lines 3, 4 and 5 above were in conformance with the rules of the Michigan Board of Land Surveyors or by a Decree of a Court of Law, established, re-established, monumented, re-monumented, recovered, found as expressed below:

NOTE: Not more than 2 corners, all in the same town and range, may be recorded on this certificate.



A. Description of original monument and accessories and/or subsequent restoration:

- 1810 N/A GLO Original survey performed by Aaron Greeley, L. 5, P. 32, "Ascot Park Subdivision"
- 1921 1" Pipe L. 13, P. 40, Assessors Plat No. 24
- 1928 N&S PC Line L. 16, P. 23, Supervisors Plat No. 5
- 1934 N&S PC Line L. 59, P. 7 & 8, Supervisor's Plat No. 19
- 1968 N&S PC Line Certificate of Survey, unrecorded, Charles G. Melching, #14767 (this corner not located on survey)
- 1972 N&S PC Line Certificate of Survey, unrecorded, William E. Soderberg, #17635 (this corner not located on survey)
- 1974 N&S PC Line Certificate of Survey, unrecorded, William E. Soderberg, #17635 (this corner not located on survey)
- 1990 North PC Corner L. 92, P. 47-50, East Pointe Industrial Subdivision
- 2005 PK nail L. 16876, P. 688, LCRC, Jack N. Owens, #20709, (match 4 witness ties)



B. Description of corner evidence found and/or method applied in restoring or reestablishing corner:
PCC 002 East line of Private Claim 626 common with the West line of Private Claim 172, Town 2 North, Range 14 East. Found PK nail at the centerline pavement intersection of Henry B. Joy Road east-west and North Walnut south.

I verified the location of the found PK nail by comparing field measurements with record measurements.

FIELD MEASUREMENTS AND RECORD MEASUREMENTS (see back):

C. Description of monument for corner and accessories established to perpetuate locating the position of the corner:
PCC 002 East line of Private Claim 626 common with the West line of Private Claim 172, Town 2 North, Range 14 East. Found PK nail at the centerline pavement intersection of Henry B. Joy Road east-west and North Walnut south.

I replaced the found PK nail with a 1/4" X 3/8" steel rod with an aluminum cap stamped "Macomb County Monument Mi Act 345 1990 MCL, 28408, PCC 002" in a new monument box in asphalt pavement. Corner falls at the centerline of pavement intersection of Henry B. Joy Road east-west and North Walnut south.

WITNESSES:

- S.41°W. 81.72' Found form nail w/tag "Rowe" on southeast face of utility pole. (81.70'-Record, LCRC).
- N.29°W. 51.88' Found form nail w/tag "Rowe" on southwest face of utility pole. (51.88'-Record, LCRC).
- N.51°E. 68.59' Found form nail w/tag "Rowe" on west face of utility pole. (68.51'-Record, LCRC).
- S.38°E. 98.12' Center top nut of hydrant. (98.18'-Record, LCRC).

THE SELECTED LOCATION IS ACCEPTED BY ME AND IS GENERALLY ACCEPTED BY PROFESSIONAL SURVEYORS AS THE BEST AVAILABLE EVIDENCE OF THE POSITION OF THE ORIGINAL CORNER.

ACCEPTED BY THE MACOMB COUNTY SURVEY PEER GROUP AS THE OFFICIAL CORNER UNDER MICHIGAN PUBLIC ACT 345 OF 1990 AT A MEETING HELD ON 6-3-08

Signed by Steven E. Dunn Date August 11, 2008
Surveyor's Michigan License No. 28408

* DOCUMENT BEING RECORDED TO CORRECT OTHER CODE FROM PCC 002 TO PCC 004, PCC 001 TO PCC 019, PCC 001 TO PCC 002.

For corners in

MACOMB
(County)

Located In:
Clinton Twp.
& Harrison Twp.

Corner Code #

- 1. Public Land Survey T ___ R ___
T ___ R ___
- 2. Property Controlling S ___ T 02N, R 13E PCC-002
in Section S ___ T ___ R ___ 004 M.C.R.

5. Private Claims Property Controlling Corner on line common with the east line of Private Claim 626 and the west line of Private Claim 172, Town 2 North, Range 14 East, @ centerline intersection of Henry B. Joy Boulevard east-west and North Walnut south.

A. Description of original monument and accessories and/or subsequent restoration:

⁰⁰⁴
B. Description of corner evidence found and/or method applied in restoring or reestablishing corner:
~~PCC-002~~ East line of Private Claim 626 common with the West line of Private Claim 172, Town 2 North, Range 14 East. Found PK nail at the centerline pavement intersection of Henry B. Joy Road east-west and North Walnut south.

FIELD MEASUREMENTS AND RECORD MEASUREMENTS:

⁰⁰⁴
PCC-002 (centerline intersection of Henry B. Joy Road and the line common with PC 172 and PC 626) to PC-~~001~~ ⁰⁰²
4209.77' - Record, Tax Descriptions, west side.
4220.48' - Record, Tax Descriptions, east side.
4215.13' - Mean of record above.
4215.94' - Field. 2008 Remon.

⁰⁰⁴
PCC-002 to found 3/4" steel rod at the intersection of the north right-of-way line of North River Road and the line common with PC 172 and PC 626):
4393.20' - Record, Plats.
4394.82' - Field. 2008 Remon.

⁰⁰⁴
PCC-002 to found PK nail at east line of Private Claim 172 (also being the centerline of Irwin Road south) and centerline of Henry B. Joy Road:
2668.57' - Record, LCRC.
2668.35' - Field. 2008 Remon.

LCRC: L. 16876, P. 688, Jack N. Owens, #20709:

- Found PK nail
- N50°E 68.51' Set n/Rowe tag W. FC. P. Pole (68.59'-Field, 2008 Remon).
- S25°E 98.18' Top Ctr. Hydrant (98.12'-Field, 2008 Remon).
- S60°W 81.70' Set n/Rowe tag E. FC. P. Pole (81.72'-Field, 2008 Remon).
- N20°W 51.88' Set n/Rowe tag W. FC. P. Pole (51.88'-Field, 2008 Remon).

MACOMB COUNTY
INDEX OF SUPPORTING DOCUMENTATION FOR

Town 2 North, Range 14 East

Harrison Township and Clinton Township

Corner Code: PCC-019 Property Controlling Corner on line common with Private Claim 172 and Private Claim 626, Town 2 North, Range 13 East. Corner falls at the centerline intersection of Henry B. Joy Boulevard east-west and North Walnut south.

Section One:

- A. Index
- B. Pictures
 - 1. Before Pictures (3) – January 7, 2008
 - 2. After Picture – June 4, 2008

Section Two:

- A. Preliminary LCRC
- B. Surveyor's Report – April 28, 2008

Section Three:

- A. Field Notes – January 7, 2008
- B. Legal Description – N/A
- C. Tax Description – N/A
- D. Sketches – Field Measurement and Record Measurement Comparisons April 28, 2008
- E. Maps (6) – Macomb County Atlas
 - Harrison Township – 1875, 1895 and 1916
 - Clinton Township – 1875, 1895 and 1916
- F. Macomb County Composite Maps (7) – Date of photography April, 2004
 - 11-01H, 11-12D & H, 11-13C, D, F and G

Section Four:

- A. Copies of original government notes – No corner set originally.
- B. Recorded LCRC's
 - 1. L. 16876, P. 688, Jack N. Owens, #20709, Found PK nail July 6, 2005
- C. Recorded and unrecorded surveys
 - 1. Plat of Survey, Charles G. Melching, #14767, May, 1972
 - 2. Certificate of Survey, William E. Soderberg #17635, December 2, 1974
- D. Copies of all items listed in "Part A" of LCRC.
 - 1. Plats:
 - a. L. 5, P. 32 "Ascot Park Subdivision" April 26, 1921
 - b. L. 13, P. 40 Assessors Plat No. 24 November 22, 1928
 - c. L. 16, P. 23 Supervisors Plat No. 5 January 10, 1934
 - d. L. 59, P. 7 & 8 Supervisor's Plat No. 19 July 14, 1968
 - e. L. 92, P. 47-50 East Pointe Industrial Subdivision December 13, 1992

Survey Report
PCC-019
T.2N., R.14E., Harrison Twp.

Letters asking for unrecorded information were sent to:

AEW, Inc. – Shelby Twp.
Fenn & Associates, Inc. – Shelby Twp.
GWE – Rochester Hills
Kennedy Surveying, Inc. – Oxford
Lehner Associates, Inc. – Clinton Twp.
GLA Surveyor – Plymouth
Professional Engineering Assoc. Inc. – Troy
R. J. Donnelly & Associates Inc. – Troy
George Jerome & Company – Roseville
King Surveying, Inc. – Armada
Michigan Surveying Inc. – Livonia
David C. Adams & Son – Redford
Urban Land Consultants – Shelby Township

CORNER: Property Controlling Corner on west line of Private Claim 172 common with the east line of Private Claim 626, Clinton Township, Town 2 North, Range 13 East.

OBSERVATIONS: Found PK nail in asphalt pavement. Corner falls at the centerline pavement intersection of Henry B. Joy Boulevard east-west and North Walnut Avenue south.

PCC 019 to PC 012(Northwest Corner of Private Claim 172, Harrison Township, common with the Northeast Corner of Private Claim 626, Town 2 North, Range 13 East, Clinton Township) field measures 4215.94', within 0.81' of the mean of the record measurements tax descriptions (4209.77' record west side, 4220.48' record east side, 4215.13' mean).

PCC 019 to found 1/2" steel rod at the intersection of the north right-of-way line of North River Road and the line common with Private 626 and Private Claim 172 field measures 4394.82', within 1.62' of record (4393.20'), Plats

PCC 019 to found PK nail at east line of Private Claim 172 (also being the centerline of Irwin Road south) field measures 2668.35', within 0.22' of record (2668.57' LCRC).

Also matches 4 of 4 witness ties of LCRC recorded by Jack N. Owens, #20709.

RECOMMENDATION: My recommendation to the Peer Review Board is to accept the found PK nail as the proper location for the corner.

Respectfully submitted,

Steven E Dunn, PS #28408

April 28, 2008

TB SK

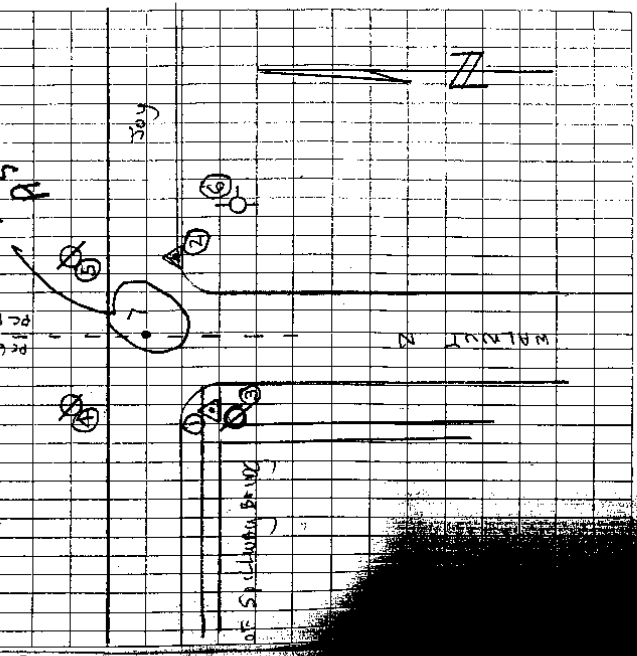
JAN 17, 2007, FB-545

GPS FILE: 08100TG17JAN08
 DATA FILE: 17JAN08TG

WASHER "ROW" ON S.E. SIDE OF U.D.

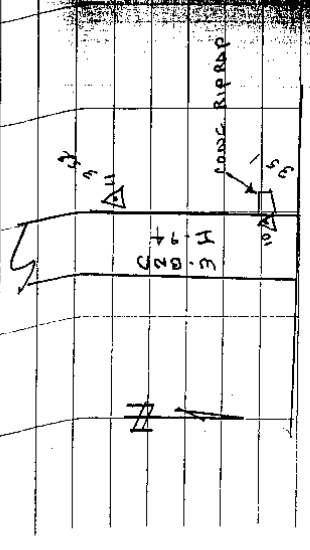
SW
 N
 S
 P
 F
 50

IN E ASPHALT ROAD



STATION	ANGLE	DIST	SET
1337			SET MAG NAIL
1359			SET MAG NAIL
B52 GPS	0°-0'0.00"	92.618	SET MAG NAIL
B41	175°49'41"	20.615	FD FORM NAIL
B42	287°49'58"	101.440	
B43	324°12'20"	131.813	
B44	25°44'20"	96.849	CTN HUY
B45	314°09'31"	65.118	FD PK NAIL

B46 GPS ID SET MAG NAIL IN ASPHALT N.W. COR
 B47 GPS 11 SET 1/2" I.R. & REMON WITNESS CAP



CLINTON AVE SPILLWAY BRIDGE

CLINTON PC001,002, PC002 HARRISON PC012, 013, PC001 4-28-08

SOUTH 1/4 COR. 2295.83' N. 2295.70' E. SE COR. FRAC. SEC. 1
FRAC. SEC. 1 0.36' SOUTH FRAC. SEC. 1
FR. 3/4" R.O.D. W/ CAP 30103 PC001 PC012 FR. CONC. T.P.O.N.
1009.81' N. 1009.85' E. 1286.03' N. 1285.85' E.

90°05'30" R. 89°54'30" R.
30°04'09" N. 89°58'04" N.
PC 626 PC 172

TOWNSHIP

TOWNSHIP

1347-1348
1411-1437

HENRY B. JOY PC002 845 PC001 2668.35' N. 183

90°18'32" N.

90°03'55" N.

CLINTON

HARRISON

IRWIN ROAD

10725.28' N.

2114.58' N. 1394.82' N. 4208.77' E. 4220.48' E.

N. RIVER

FR. 3/4" ST. ROAD



PC002 1340 PC013 FR. 3/4" ST. ROAD

CLINTON RIVER



CLINTON

WILSON PARK 5180
PART OF THE LAKE TWP

MAP OF
HARRISON
 TOWNSHIP

Scale 2 1/2 inches to 1 mile

Part of Fractional Township 8 North, Range 13 East and
 Fractional Township 2 North, Range 14 East
 of the Michigan Meridian

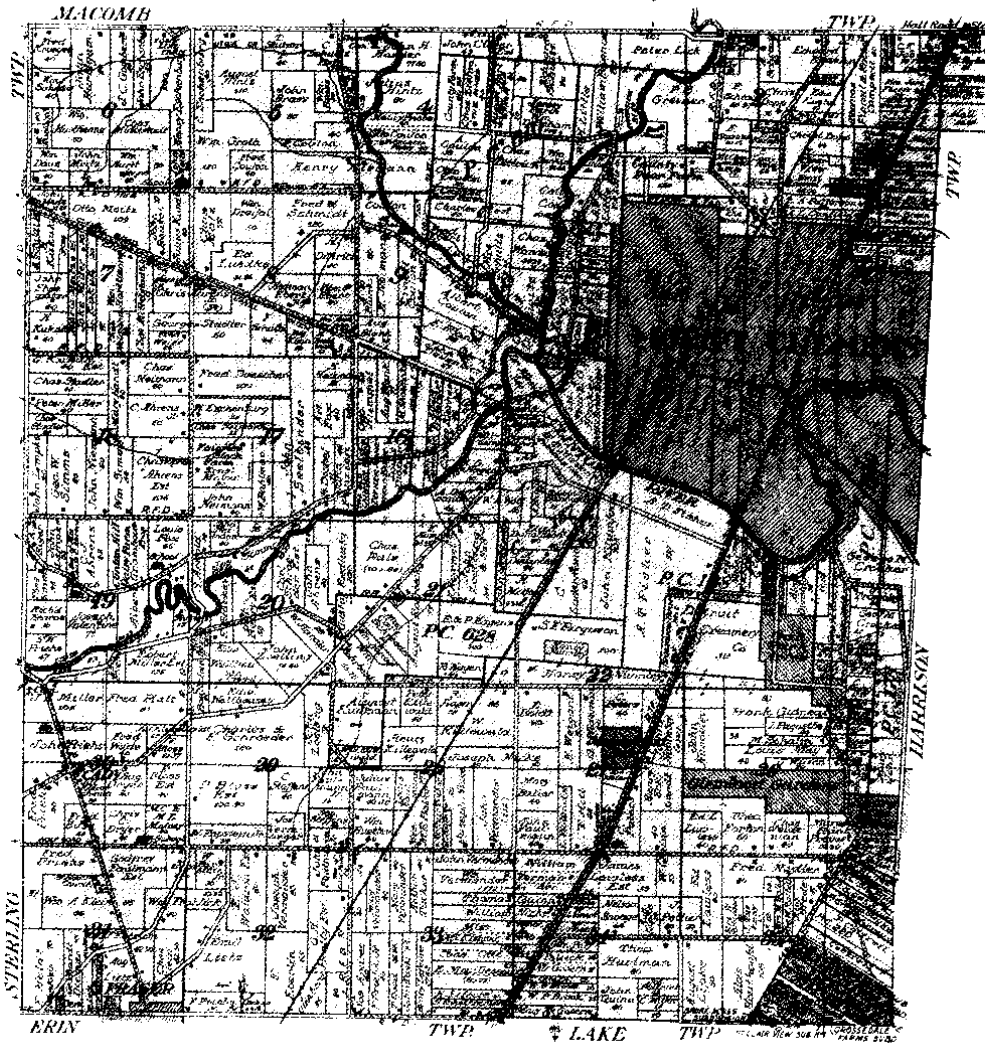
Surveyed by
METCO
 Engineers, Whitefish Bay, Wis.



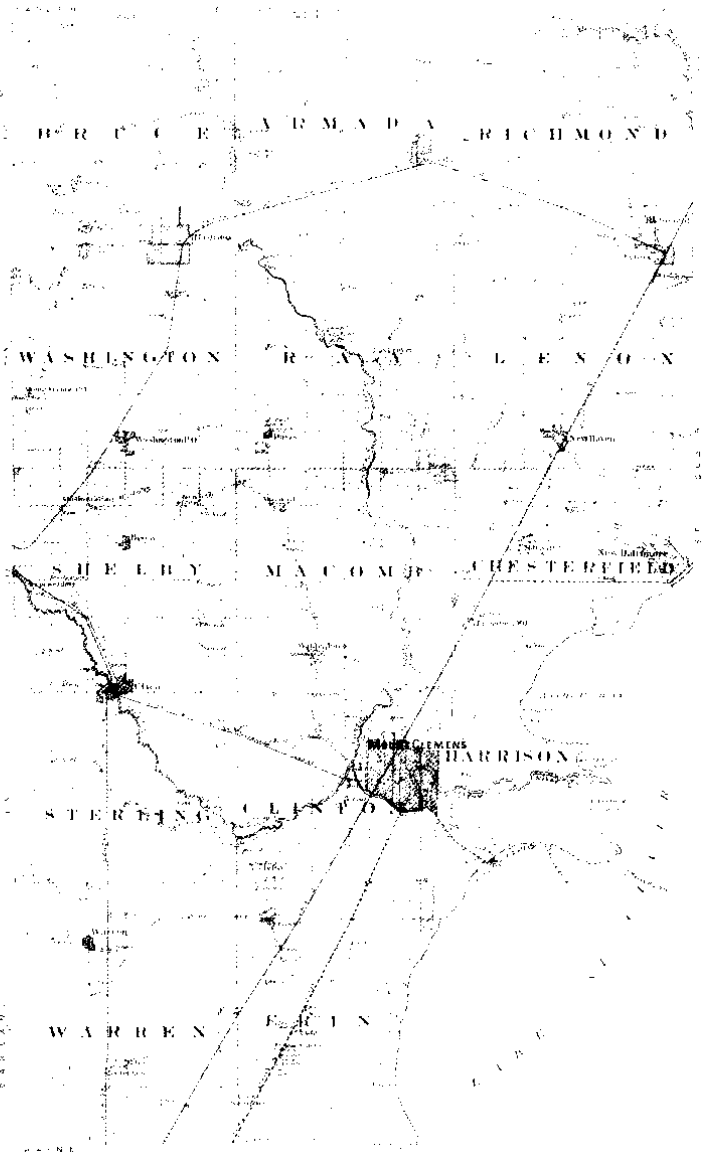
CLINTON

 TOWNSHIP

Fractional Township 2 North, Range 13 East of the Michigan Meridian



OUTLINE MAP
of
MACOMB COUNTY MICHIGAN



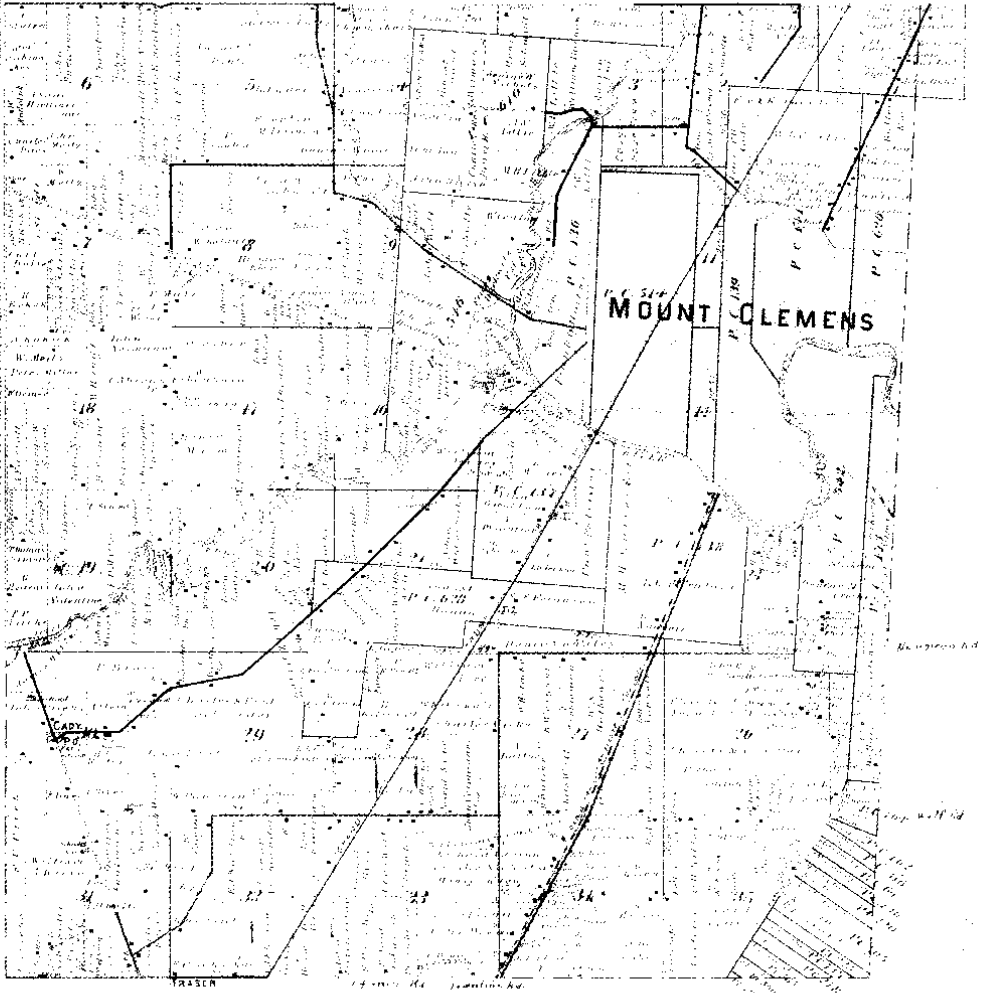
METCO
Engineering, Planning & Surveying

MAP OF CLINTON

Township 2 North Range 13 East

Scale 1 inch to one mile

By Wm. H. P. Whittaker



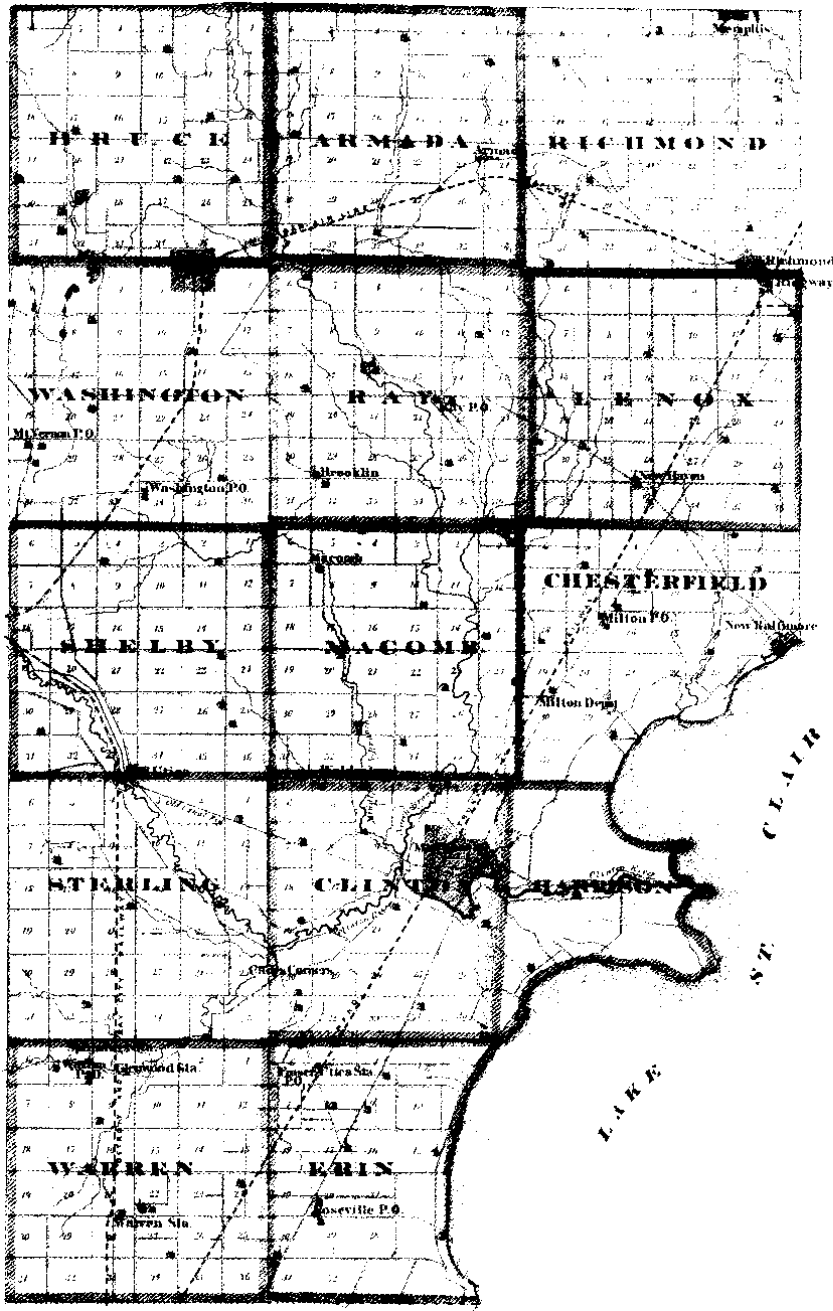
WABOMB CO.

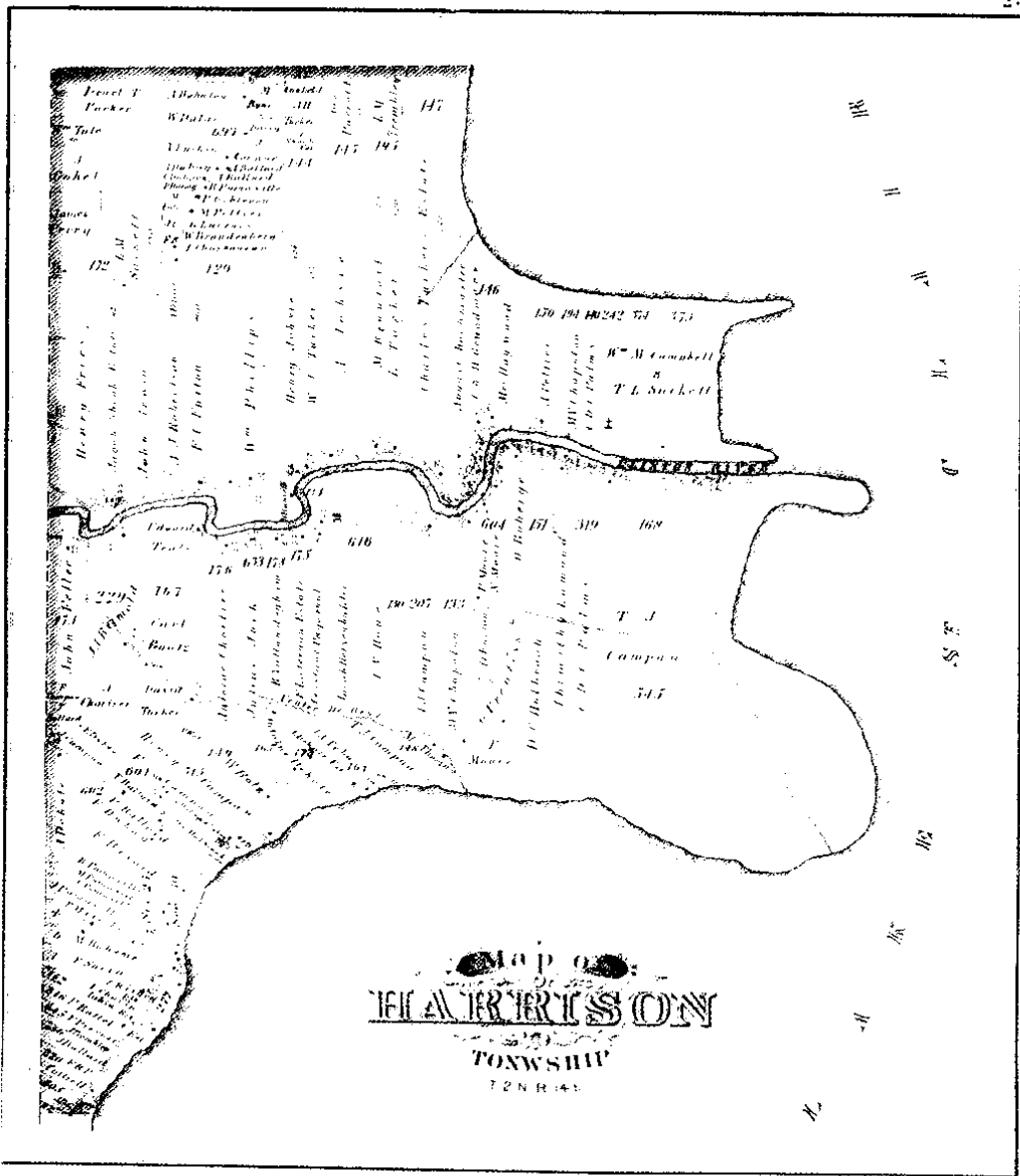
RYOUGHTIAN

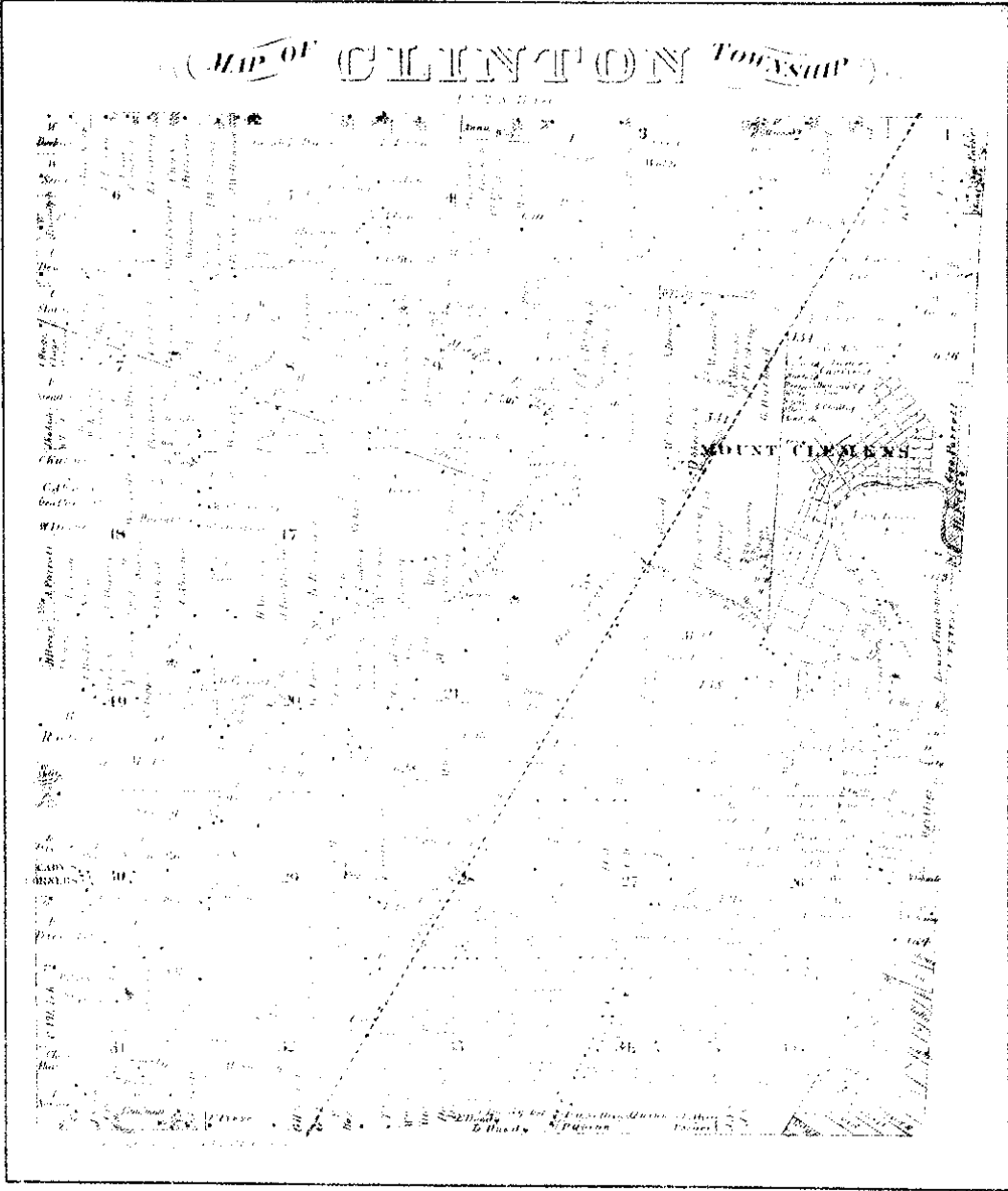
1875

COMPILED DRAWN BY QUINCY WAGGONER D. C.

SCALE 7 MILES TO AN INCH

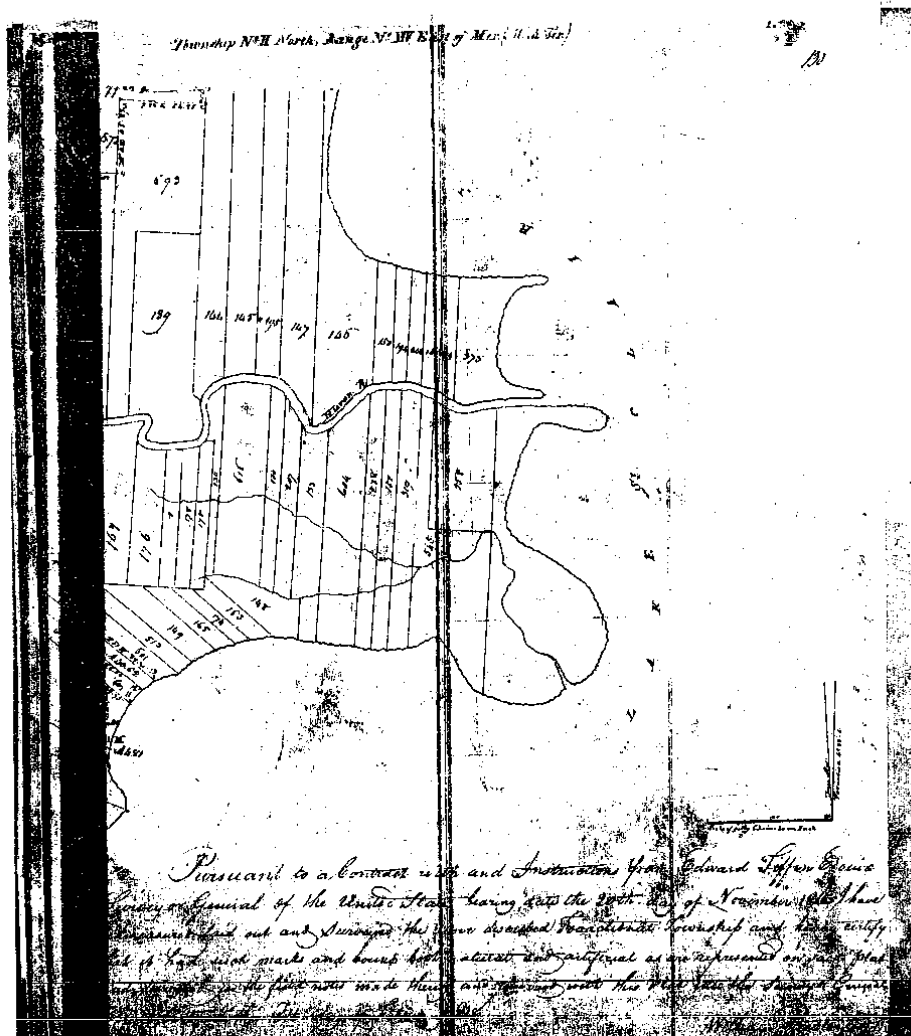






Scanned By:
METCO
 Engineers, Architects & Surveyors

METCO



Management, Engineering & Technical Consultants

12504 Stephens Warren, MI 48089 (586) 755-5770 Fax (586) 755-5774

North Side of River Huron

Chains fifteen links, to a Buttonwood tree standing on the border of said River. Thence along the border of said River up Stream north Eighty eight degrees west seven chains. Thence north forty one degrees west six chains. Thence north three chains. Thence north twenty four degrees east seventeen chains. Thence south forty one degrees west seven chains. Thence north eighty one degree thirty minutes west eighty nine chains, to the place of beginning containing three hundred and fifty one acres and one tenth of an acre.

Detroit July 14 1810

Arnon G. Seeley Surveyor of Private Claims.

North

west four or
degrees
Eighty seven
Thence 12
Gleason Chain
of beginning
and will
with the
Detroit

N. 571.

Description
William G. Seeley
standing on
between the
and to follow
two hundred
seven links
this tract is
East fifty six
standing on
is joined to
Eighty four
and above the
said Corry's
West forty
the North
Corners
and less
foot standing
River Huron
of said
Eighty four
seven links

N. 490. North Side of River Huron

Description N. 172. Confirmed to John Ashby Junior commencing at a Buttonwood tree standing on the border of River Huron between this tract and a tract confirmed to Christian Gleason Thence north one hundred and fifty two chains fifteen links, to a Black ash tree Thence East thirty seven chains fifty links to a Black ash tree. Thence south one hundred and fifty five chains fifty links to a post standing on the border of River Huron between this tract and unincorporated land, Thence along the border of said River up Stream north fifty six degrees west twelve chains, Thence north Eighty degrees west seven chains Thence South Sixty six degrees west eight chains. Thence north seventy one degree

1 - 1 8457
North Side of River Huron

420

west four chains, thence north eleven and a half degrees east nine chains, thence north fifty seven degrees west three chains, thence north eighty eight degrees west eleven chains forty five links, to the place of beginning containing four hundred and thirteen acres and one hundred and thirty six rods.

Detroit July 14, 1810

James G. Greenleaf Surveyor
of private Claims.

No. 571. North Side of River Huron.
Description No. 698 Confirmed to
William Connor commencing at a post
standing on the North border of River Huron
between this tract and a tract confirmed
to John Ashkin Junior, thence North
two hundred and one chains thirty
seven links, to a post standing between
this tract and unconfirmed lands, thence
East fifty three chains fifty links, to a post
standing on the west line of a tract con-
firmed to John Sucker, thence South
Eighty four chains forty seven links, to
an Elm tree. The North east corner of a
tract confirmed to James Connor, thence
West forty chains fifty links, to a post
the North west corner of said James
Connor tract. Thence South one hundred
and ten chains sixty two links, to a
post standing on the North border of
River Huron. Thence along the border
of said River up stream South Six-
ty four degrees East fourteen chains forty
seven links, to the place of beginning.

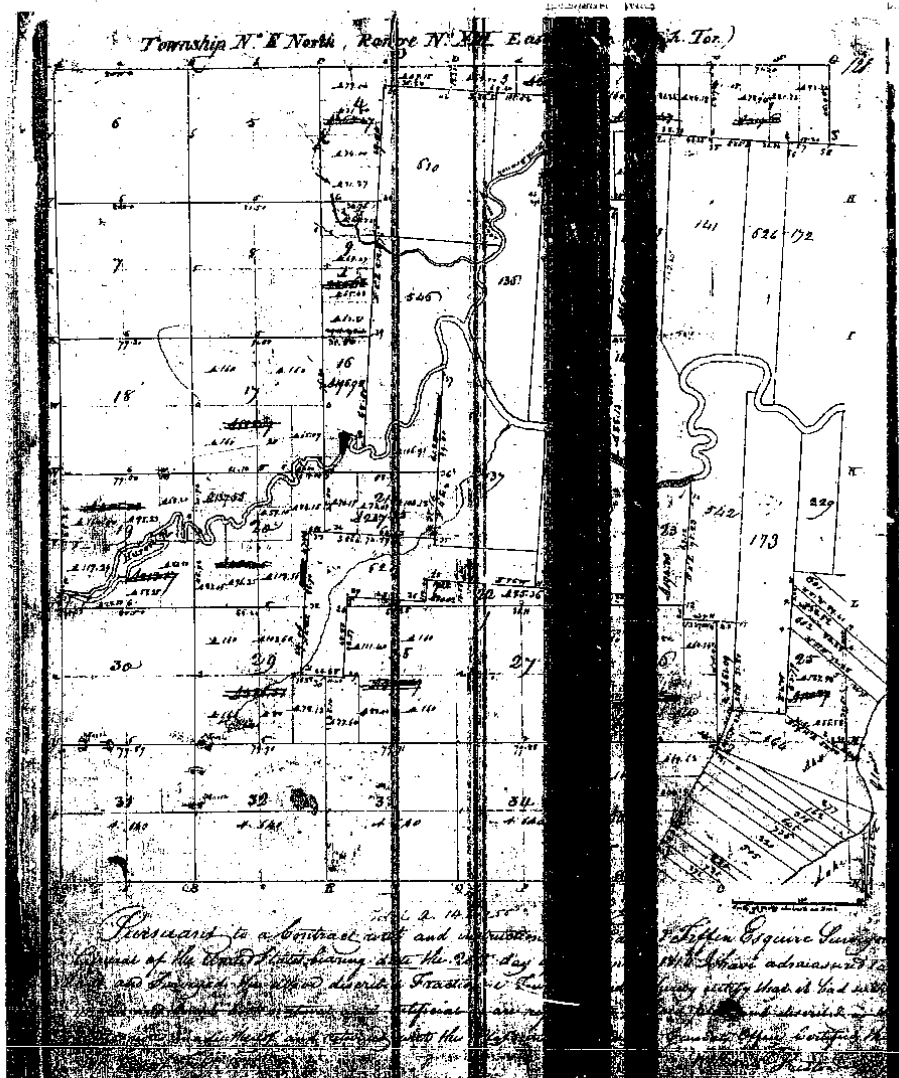
+ Huron

Billow wood
er of River Huron
of said River
the segment
forty one deg-
- north three
y four degrees
e north forty
ams, thence
ly ninety
place of begin-
enced and
with four are

Surveyor
Claims.

Huron
confirmed to
commencing at a
on the border
is tract and
James Greenleaf
and fifty two
Black Ashkin
and fifty links
South one
and fifty link
border of
act and
long the
North
chains, thence
seven chains
west eight
y one degree

METCO



Management, Engineering & Technical Consultants

12504 Stephens Warren, MI 48089 (586) 755-5770 Fax (586) 755-5774

No. 491

No. 626 Confirmed to
Christian Clemans

NORTH SIDE OF RIVER HURON

Description No. 626 Confirmed to Christian Clemans commencing at a post standing on the border of River Huron between this tract and a tract confirmed to the claimant thence north one hundred and twenty six chains twenty three links to a post thence east twenty six chains forty one links to a post the northwest corner of a tract confirmed to John Askin Junior thence south one hundred and fifty two chains fifteen links to a buttonwood tree standing on the border of River Huron thence along the border of said river up stream north eighty eight degrees west seven chains thence north forty one degrees west six chains thence north north three chains thence north twenty four degrees east seventeen chains thence north forty one degrees west seven chains thence south eighty one degrees thirty minutes west eighteen chains to the place of beginning, containing three hundred and fifty one acres and one tenth of an acre ____

Detroit July 14th, 1810

Aaron Greeley Surveyor
of private claims

PCC 001
HARRISON


LAND CORNER RECORDATION CERTIFICATE
Filing Requirement of Act 74, Mich. P.A. 1970

For corners in HARRISON TWP (2N) (14E)
MACOMB (County) Located In: Corner Code #

1. Public Land Survey	T	R	
	T	R	
	T	R	
2. Property Controlling In Section	S	T	R
	S	T	R
3. Miscellaneous Property in Sec.	S	PC172	T
	S	T	R
	S	T	R

4. Lot No. _____ Recorded Plat _____
5. Private Claims 172 POINTS ON W. LINE & E. LINE PC172 (E. LINE PC626 & W. LINE PC693)

5120565
LIBER 16876 PAGE 688

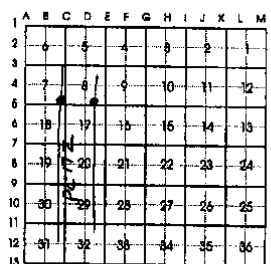


07/06/2005 02:36:34 P.M.
MACOMB COUNTY, MI SEAL
CARMELLA SABAUGH, REGISTER OF DEEDS

Register of Deeds Stamp & File Number

I, Jack N. Owens, P.S., in a field survey on June 24, 2005 do hereby certify that under requirements of P.A. 74, Michigan P.A. of 1970, the corner points mentioned in lines 1 and 2 above were in conformance with regulations and rules therefore as required in the current manual of survey instructions of the United States Department of the Interior, Bureau of Land Management or by a decree of a Court of Law and/or that the corner points mentioned in lines 3, 4 and 5 above were in conformance with the rules of the Michigan Board of Land Surveyors or by a Decree of a Court of Law; established, re-established, monumented, re-monumented, recovered, found as expressed below:

NOTE: Not more than 4 corners, all in the same town and range, may be recorded on this certificate.



A. Description of original monument and accessories and/or subsequent restoration:
GLO: NOT SET; GLO MARKED LINES BUT NOT MONUMENT ANY POINTS.

ONLY RECORD OBTAINED WAS A SURVEY BY LEHNER ASSOCIATES, INC., BY ^{ROBT} L. SMITH, PS, JOB NO. 96-757. SHOWS INTERSECTION OF C/L JOY RD. & CLINTON/HARRISON TWP. LINE (LINE BETWEEN PC 626 & 172). NOT DESCRIBE MONUMENT AT POSITION.

B. Description of corner evidence found and/or method applied in restoring or reestablishing corner:
RECOVERED A PK NAIL AT C/L CONC. PVMT. OF JOY ROAD AT W. LINE OF PC 172 AND C/L WALNUT RD. TO SOUTH. FOUND ANOTHER PK NAIL AT E. LINE PC 172 WHICH IS IT A GATE TO SELFRIDGE FIELD AN ON C/L IRWIN RD WHICH RUNS S ALONG E. LINE PC 172. FROM THE W'LY PK IT IS S²⁵³⁰E 2668.57 FT. TO THE E'LY PK NAIL POSITIONS AGREE WITH USGS QUAD MAPS (BASED ON AERIAL MAPPING) SHOWING ROADS AND PC LINES/NOS. AND PLSS LINES AND SECTIONS.

C. Description of monument for corner and accessories established to perpetuate locating the position of the corner:
FOUND PK NAIL W. LINE PC 172 FOUND PK NAIL E. LINE PC 172

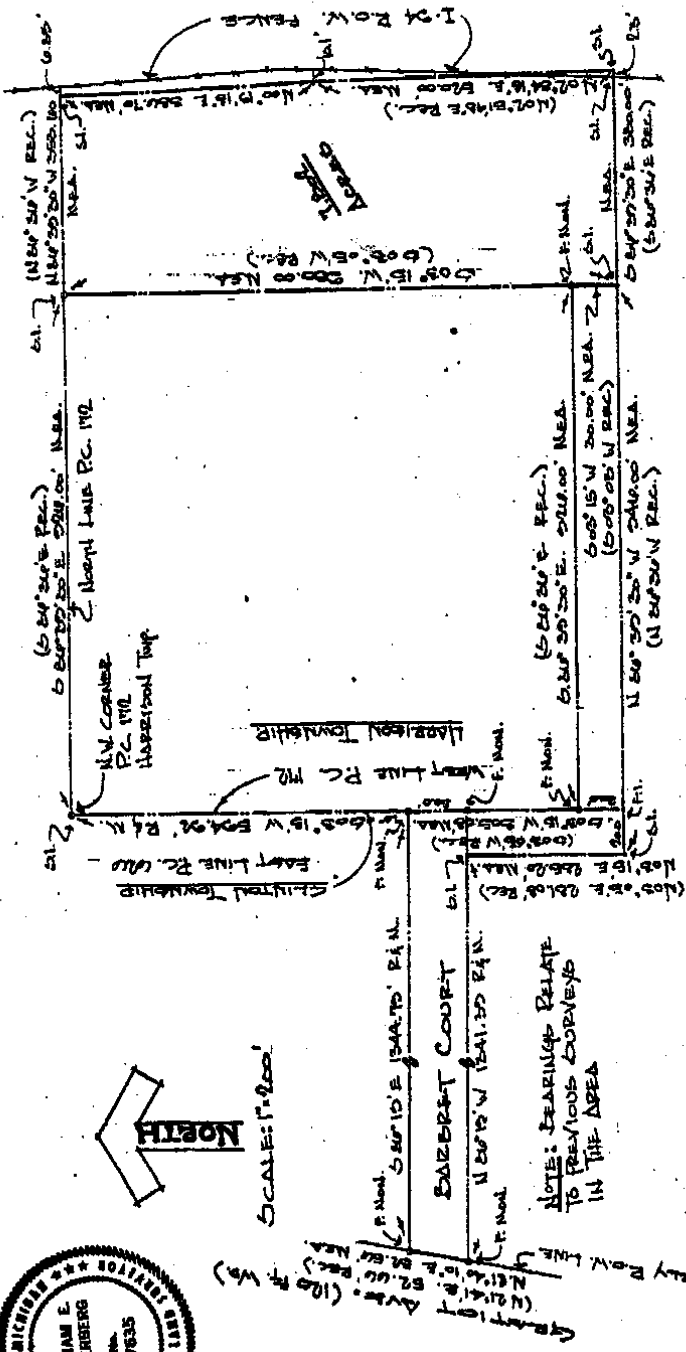
N50°E 68.51' SET N/ROWE TAG W. FC. P.POLE	N40°E 48.13' SET N/ROWE TAG SE. FC. P.POLE
S25°E 98.18' TOP CTR. HYDRANT	S20°E 80.56' SET N/ROWE TAG W. FC. P.POLE
S60°W 81.70' SET N/ROWE TAG E. FC. P.POLE	S40°W 87.07' SET N/ROWE TAG SE. FC. 12" ASH
N20°W 51.88' SET N/ROWE TAG W.F.C. P.POLE	N60°W 93.82' SET N/ROWE TAG SE. FC. P.POLE

Signed by Jack N. Owens
Surveyor's Michigan License No. 20709

Date June 30, 2005



REVISED MAY 14, 1978
REVISED JAN. 1983
ADAPTED FOR WORD PROCESSING MARCH, 1983



SCALE: 1"=200'

CERTIFICATE OF SURVEY

PART OF P.C. 170, T.2N., R.14E.
 HARRISON TOWNSHIP, MACOMB COUNTY, MICHIGAN



Anderson Associates, Inc.
 10000 W. 30th St., Livonia, MI 48150

Job No. 1404 Date: 11/14/02

DESCRIPTION

A parcel of land in and being a part of P.C. 172, T.2N., R.14E., Harrison Township, Macomb County, Michigan and being more particularly described as follows: *Pooler Set*

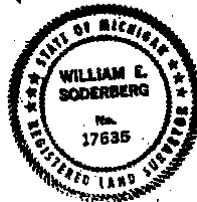
Beginning at a point on the North line of P.C. 172, S. 86° 39' 30" E. (S. 86° 36' E. Record) 926.0 feet from the Northwest corner of P.C. 172; thence S. 3° 15' W. (S. 3° 05' W. Record) 930.0 feet; thence S. 86° 39' 30" E. (S. 86° 22' E. Record) 380.0 feet; thence N. 2° 34' 18" E. (N. 2° 51' 48" E. Record) 520.0 feet; thence N. 00° 19' 18" E. 386.70 feet to the North line of P.C. 172; thence N. 86° 39' 30" W. (N. 86° 36' W. Record) 353.60 feet along the North line of P.C. 172 to the Point of Beginning and containing 7.802 Acres. Subject to Easements of Record.

Together with the following easement for ingress and egress; beginning at a point on the West line of P.C. 172 S. 3° 15' W. 594.92 feet; thence S. 3° 15' W. (S. 3° 05' W. Record) 305.08 feet along the West line of P.C. 172; thence E. 86° 39' 20" E. (S. 86° 36' E. Record) 926.0 feet; thence S. 3° 15' W. (S. 3° 05' W. Record) 30.0 feet; thence N. 86° 39' 30" W. (N. 86° 36' W. Record) 946.0 feet; thence N. 3° 15' W. (N. 3° 05' W. Record) 285.20 feet to the South line of Barbret Court; thence N. 86° 19' W. 1341.39 feet along the South line of Barbret Court to the Easterly line of Gratiot Avenue; thence N. 21° 40' 10" W. 52.56 feet (N. 21° 41' E. 52.66 Record) along said line to the North line of Barbret Court; thence S. 86° 19' E. 1344.79 feet along said line to the Point of Beginning.

SURVEYOR'S CERTIFICATE: I hereby certify that I have surveyed and mapped the land above platted and/or described on 27. November, 1974 and that the ratio of closure on the unadjusted field observations of such survey was 1:5,000 and that all of the requirements of P.A. 132, 1970, have been complied with.

ANDERSON, ECKSTEIN AND WESTRICK, INC.

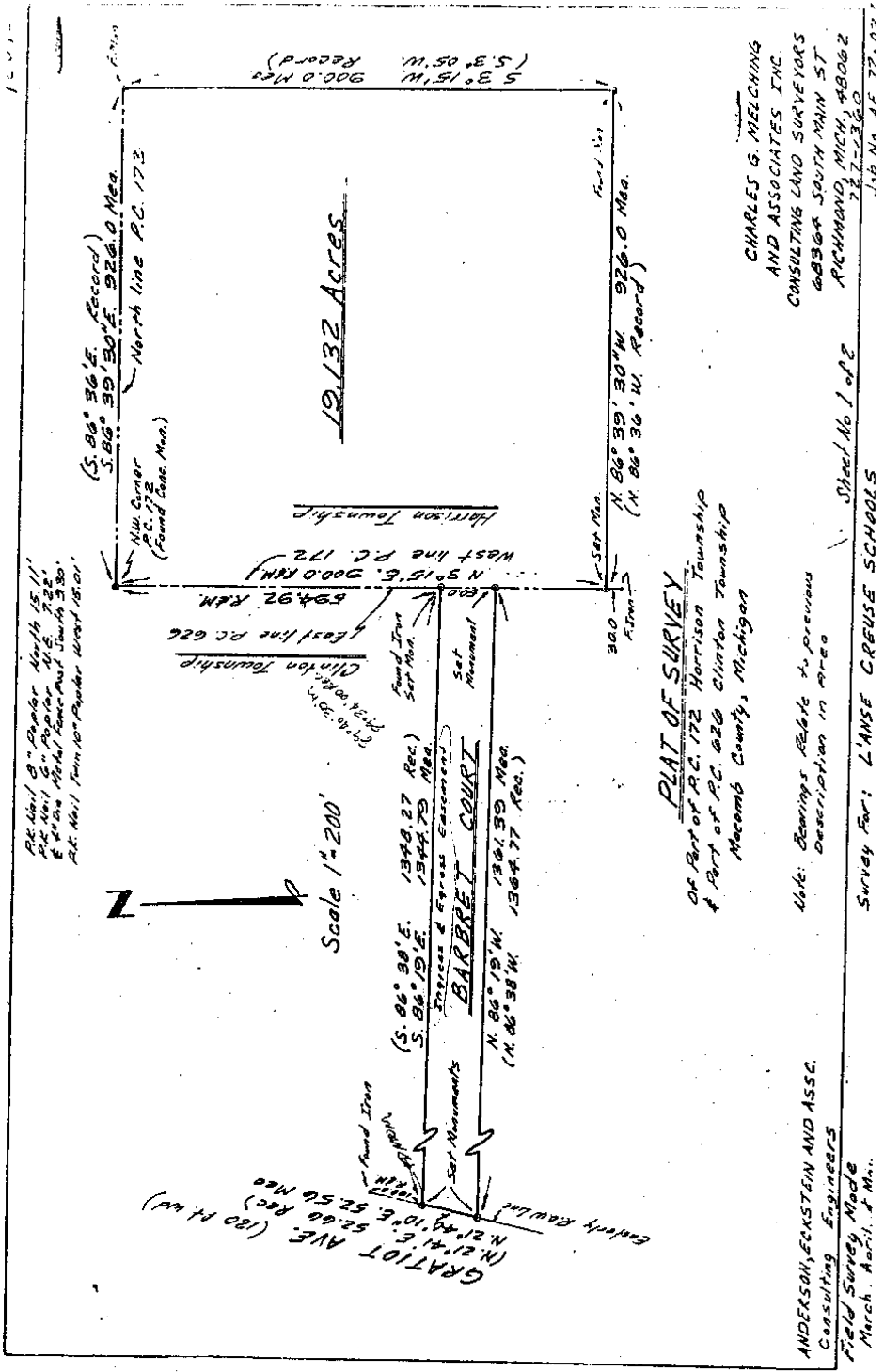
William E. Soderberg
 William E. Soderberg, R.L.S. No. 17635
 42800 Garfield Road
 Mount Clemens, Michigan, 48043



WITNESSES:

NW Corner P.C. 172
 Set ReRod. from previous survey in area

Back Curb South 24.20
 Center Storm Manhole S.W. 20.82
 Center Gatewell W.S.W. 33.13



P.C. 172 of 8" Paper North 15' 11"
 6" x 10" Paper N.E. 1/4 Sec.
 P.C. 626 of 10 1/2" Paper N.W. 1/4 Sec.
 P.C. 173 of 10 1/2" Paper West 1/2 Sec.

PLAT OF SURVEY
 OF Part of P.C. 172 Harrison Township
 & Part of P.C. 626 Clinton Township
 Mecomb County, Michigan

Note: Bearings relate to previous
 Description in Area

ANDERSON, ECKSTEIN AND ASSC.
 Consulting Engineers
 Field Survey Made
 March, April, & May.

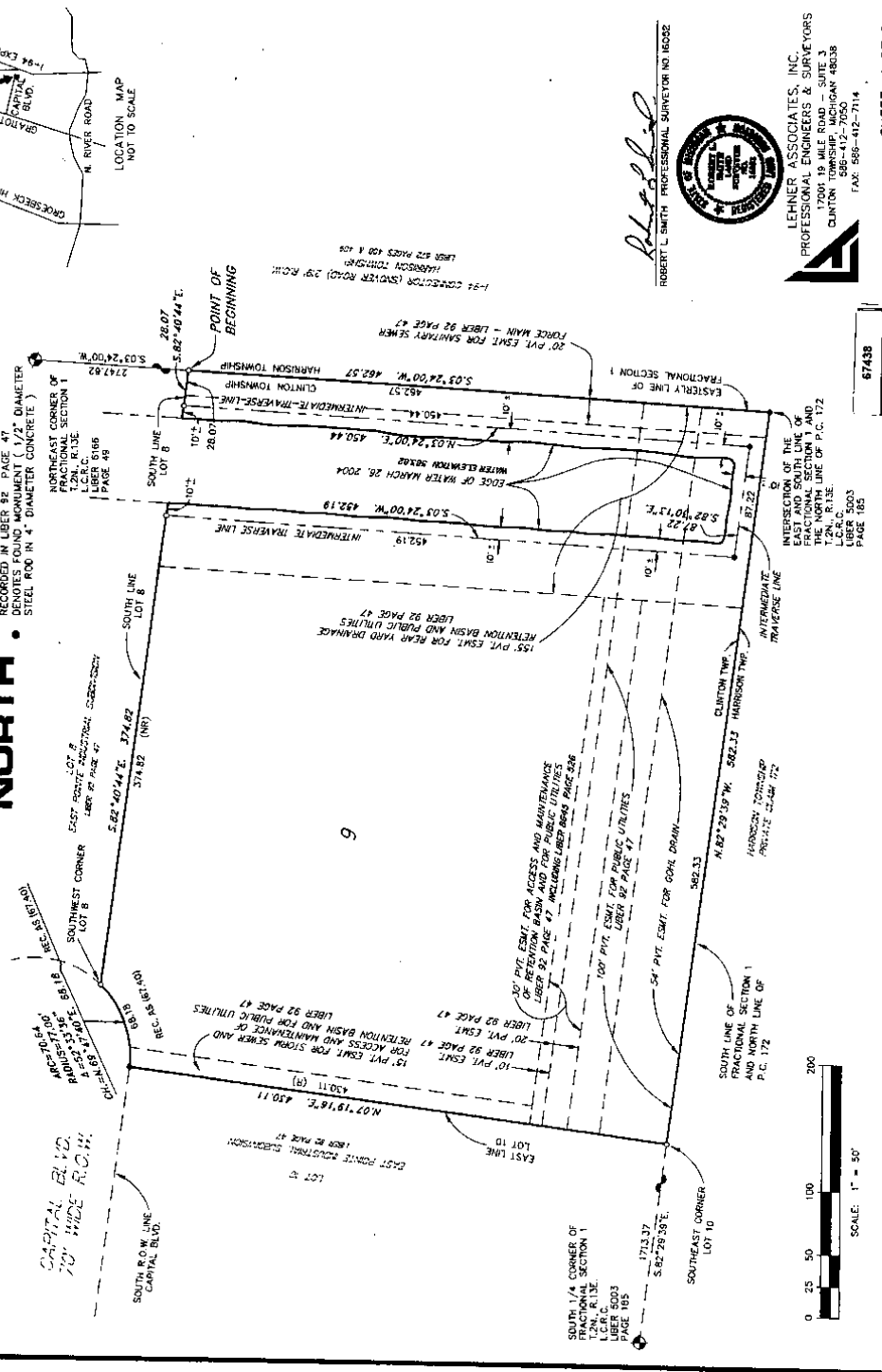
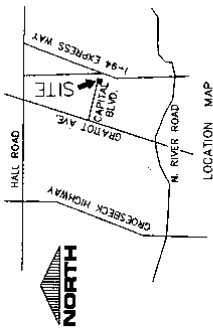
CHARLES G. WEECHING
 AND ASSOCIATES INC.
 CONSULTING LAND SURVEYORS
 6836 SOUTH MAIN ST
 RICHMOND MICH, 48062
 727-2360

Survey For: **L'ANSE CREUSE SCHOOLS**
 Sheet No 1 of 2
 156 N. 11 77.00

AMENDED PLAT OF LOT 9 OF
EAST POINTE INDUSTRIAL SUBDIVISION
 A SUBDIVISION OF PART OF EAST 1/2 & WEST 1/2 OF
 FRACTIONAL SECTION 1, T.2N., R.13E.,
 CLINTON TOWNSHIP, MACOMB COUNTY, MICHIGAN



LEGEND
 ALL DIMENSIONS ARE SHOWN IN FEET.
 ALL CURVILINEAR DIMENSIONS ARE SHOWN
 ALONG THE CHORD.
 THE CHORDS OF 1/2" DIAMETER
 35' LONG WITH 1/2" STEEL ROD CENTER
 CONCRETE MONUMENT HAS BEEN SET.
 (R) INDICATES RADIAL LOT LINES.
 BEARINGS BASED ON RADIAL LOT LINES
 OF EAST POINTE INDUSTRIAL SUBDIVISION
 RECORDED IN LIBER 82 PAGE 47
 DENOTES FOUND MONUMENT (1/2" DIAMETER
 STEEL ROD IN 4" DIAMETER CONCRETE)



ROBERT L. SMITH PROFESSIONAL SURVEYOR NO. 16032

 LEHNER ASSOCIATES, INC.
 PROFESSIONAL ENGINEERS & SURVEYORS
 17001 19 MILE ROAD - SUITE 3
 CLINTON TOWNSHIP, MICHIGAN 48038
 PHONE: 586-412-7000 FAX: 586-412-7114

8-3-2004

AMENDED PLAT OF LOT 9 OF
EAST POINTE INDUSTRIAL SUBDIVISION
 A SUBDIVISION OF PART OF EAST 1/2 & WEST 1/2 OF
 FRACTIONAL SECTION 1, T.2N., R.13E., CLINTON TOWNSHIP,
 MACOMB COUNTY, MICHIGAN

SURVEYOR'S CERTIFICATE

I, ROBERT L. SMITH, SURVEYOR, CERTIFY THAT I HAVE SURVEYED, DIVIDED AND MAPPED THE LAND SHOWN ON THIS PLAT DESCRIBED AS

AMENDED PLAT OF LOT 9 OF EAST POINTE INDUSTRIAL SUBDIVISION

A SUBDIVISION OF PART OF EAST 1/2 AND WEST 1/2 OF FRACTIONAL SECTION 1, T.2N., R.13E., CLINTON TOWNSHIP, MACOMB COUNTY, MICHIGAN, AND BEING MORE PARTICULARLY DESCRIBED AS FOLLOWS:

COMMENCING AT THE NORTHEAST CORNER OF FRACTIONAL SECTION 1, THENCE S.03°24'00"W. 2747.62 FT. ALONG THE EAST LINE OF SAID SECTION 1 TO THE POINT OF BEGINNING, THENCE CONTINUING ALONG SAID LINE S.03°24'00"W. 100.00 FT. TO THE POINT OF BEGINNING OF FRACTIONAL SECTION 1, ALSO BEING THE NORTH LINE OF P.C. 172, THENCE N.82°59'53"W. 562.33 FT. TO THE SOUTHEAST CORNER OF SAID LOT 9 OF EAST POINTE INDUSTRIAL SUBDIVISION, AS RECORDED IN LIBER 92 PAGE 47, THENCE ALONG THE EAST LINE OF SAID LOT 9 OF EAST POINTE INDUSTRIAL SUBDIVISION, BEARING S.89°11'00"E. 112.00 FT. TO THE POINT OF BEGINNING OF A CURVE (R.A.D.=77.00 FT.) TO THE LEFT, WITH A CENTRAL ANGLE OF 52°33'36", WHOSE LONG CHORD BEARS ALONG AN ARC OF 68.19 FT. TO THE SOUTH WEST CORNER OF LOT 8 OF SAID EAST POINTE INDUSTRIAL SUBDIVISION, AS RECORDED IN LIBER 92 PAGE 47, THENCE ALONG SAID LINE S.89°11'00"E. 68.19 FT. TO THE POINT OF BEGINNING OF A CURVE (R.A.D.=77.00 FT.) TO THE RIGHT, WITH A CENTRAL ANGLE OF 52°33'36", WHOSE LONG CHORD BEARS ALONG AN ARC OF 68.19 FT. TO THE SOUTH WEST CORNER OF LOT 8 OF SAID EAST POINTE INDUSTRIAL SUBDIVISION, AS RECORDED IN LIBER 92 PAGE 47, THENCE ALONG SAID LINE THREE BEARINGS AND DISTANCES, S.03°24'00"W. 493.16 FT., S.82°30'17"E. 87.22 FT. AND S.03°24'00"W. 100.00 FT. TO THE POINT OF BEGINNING, CONTAINING ONE LOT NUMBERED 9 AND CONTAINING 5.08 ACRES OF LAND.

THAT I HAVE MADE SUCH SURVEY, LAND DIVISION AND PLAT BY THE DIRECTION OF THE OWNERS OF SUCH LAND, AND THAT SUCH PLAT IS A CORRECT REPRESENTATION OF ALL THE EXTERIOR BOUNDARIES OF THE LAND SURVEYED, AND THE BEARINGS AND DISTANCES THEREON, AND THAT THE REQUIRED MONUMENTS AND LOT MARKERS HAVE BEEN LOCATED IN THE GROUND, AS REQUIRED BY SECTION 125 OF THE ACT, AND THAT THE NECESSARY RECORDS OF SAID SURVEY ARE KEPT IN MY OFFICE, AND THAT THE BEARINGS SHOWN ON THE PLAT ARE EXPRESSED AS REQUIRED BY SECTION 126 (3) OF THE ACT AND AS EXPLAINED IN THE LEGEND.



MAY 18 2004
 DATE

LEHNER ASSOCIATES, INC.
 CLINTON TOWNSHIP, MICHIGAN 48038

Robert L. Smith
 ROBERT L. SMITH
 PROFESSIONAL SURVEYOR NO. 16052
 VICE PRESIDENT, LEHNER ASSOCIATES, INC.

CERTIFIED TRUE COPY OF
 RECORDED PLAT
 AND RETURNED TO LABOR
 BY *Margaret J. Lebler*
 MARGARET J. LEBLER, CLERK
 REGISTER OF DEEDS AND SURVEY
 AND RECORDS DIVISION
 DATE 8-12-2004

I, ROBERT L. SMITH, SURVEYOR, DO HEREBY CERTIFY THAT THE AMENDED PLAT OF LOT 9 OF EAST POINTE INDUSTRIAL SUBDIVISION, A SUBDIVISION OF PART OF EAST 1/2 & WEST 1/2 OF FRACTIONAL SECTION 1, T.2N., R.13E., CLINTON TOWNSHIP, MACOMB COUNTY, MICHIGAN IS A TRUE AND EXACT COPY OF THE PORTION OF THE PLAT AS AMENDED BY THE ORDER IN THE MATTER OF DRANK ENTERPRISES, INC. A MICHIGAN CORPORATION, PETITIONER WHICH WAS ENTERED BY CIRCUIT COURT, CLINTON COUNTY, MICHIGAN, UNDER CASE NO. 02-5722-AM, IN THE MATTER OF DRANK ENTERPRISES, INC. A MICHIGAN CORPORATION, PETITIONER WHICH WAS ENTERED BY CIRCUIT COURT, CLINTON COUNTY, MICHIGAN, IN TESTIMONY WHEREOF, I HAVE HEREUNTO SET MY HAND AND OFFICIAL SEAL AT THE COUNTY OF MACOMB, STATE OF MICHIGAN, THIS 18th DAY OF MAY 2004.



Carmella Sabatich
 CARMELLA SABATICH
 PROFESSIONAL SURVEYOR NO. 16052

I, CARMELLA SABATICH, COUNTY CLERK, DO HEREBY CERTIFY THAT THE AMENDED PLAT OF LOT 9 OF EAST POINTE INDUSTRIAL SUBDIVISION, A SUBDIVISION OF PART OF EAST 1/2 & WEST 1/2 OF FRACTIONAL SECTION 1, T.2N., R.13E., CLINTON TOWNSHIP, MACOMB COUNTY, MICHIGAN IS A TRUE AND EXACT COPY OF THE PORTION OF THE PLAT AS AMENDED BY THE ORDER IN THE MATTER OF DRANK ENTERPRISES, INC. A MICHIGAN CORPORATION, PETITIONER WHICH WAS ENTERED BY CIRCUIT COURT, CLINTON COUNTY, MICHIGAN, UNDER CASE NO. 02-5722-AM, IN THE MATTER OF DRANK ENTERPRISES, INC. A MICHIGAN CORPORATION, PETITIONER WHICH WAS ENTERED BY CIRCUIT COURT, CLINTON COUNTY, MICHIGAN, IN TESTIMONY WHEREOF, I HAVE HEREUNTO SET MY HAND AND OFFICIAL SEAL AT THE COUNTY OF MACOMB, STATE OF MICHIGAN, THIS 21st DAY OF JUNE 2004.

Carmella Sabatich
 CARMELLA SABATICH
 COUNTY CLERK
 REGISTER OF DEEDS

REGARDING CERTIFICATE
 STATE OF MICHIGAN)
 COUNTY OF MACOMB)

THIS PLAT WAS RECEIVED FOR RECORD ON
 THE DAY OF JUNE
 2004, AT 11:17 A.M. AND RECORDED
 IN LIBER 157 OF PLATS ON PAGE 64, 65.

Carmella Sabatich
 CARMELLA SABATICH - CLERK
 REGISTER OF DEEDS

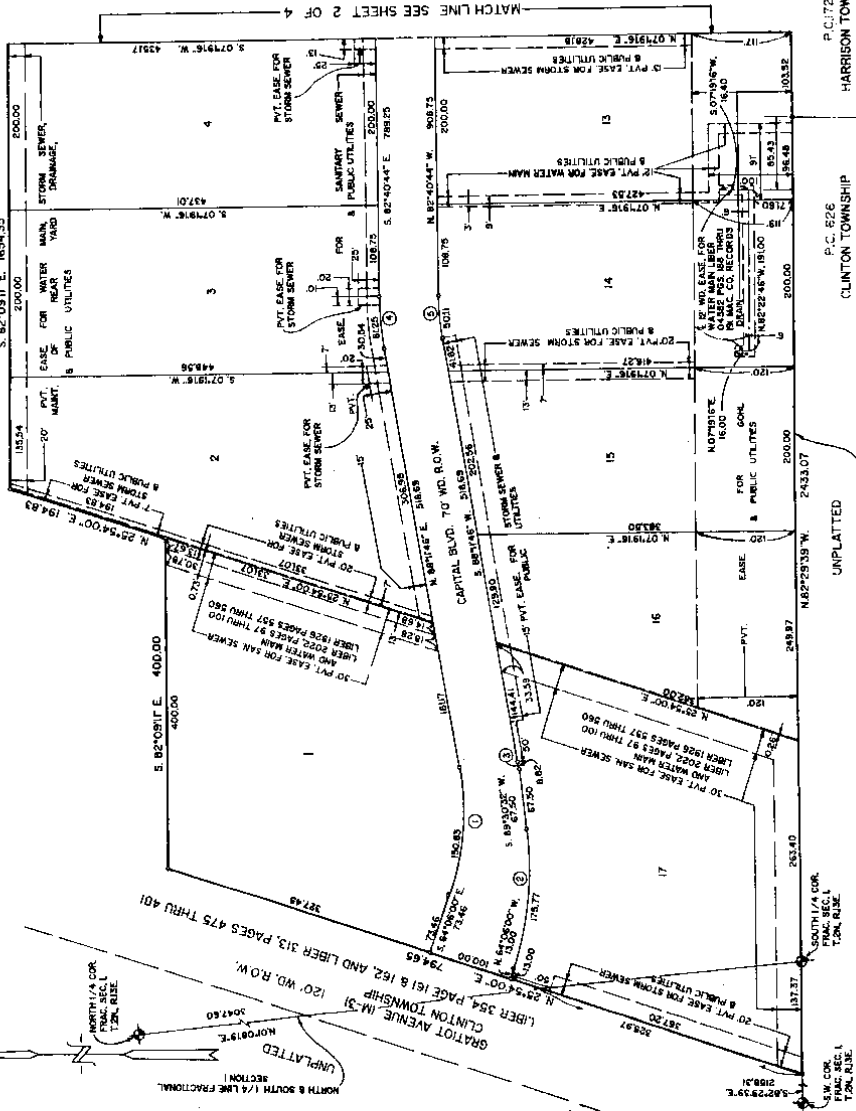
LEHNER ASSOCIATES, INC.
 PROFESSIONAL ENGINEERS & SURVEYORS
 17007 19 MILE ROAD - SUITE 3
 CLINTON TOWNSHIP, MICHIGAN 48038
 PHONE: 588-412-7114
 FAX: 588-412-7114

67438

EAST POINTE INDUSTRIAL SUBDIVISION
 A SUBDIVISION OF PART OF EAST 1/2 & WEST 1/2 OF
 FRACTIONAL SECTION 1, T.2N., R.13E., CLINTON TOWNSHIP,
 MACOMB CO., MICHIGAN

CURVE #	BEARINGS	ARC	LONG CHORD	CHORD	DELTA
1	S. 82°08'11" E.	1654.35	2000.00	2000.00	27°42'15"
2	S. 82°08'11" E.	400.00	400.00	400.00	27°42'15"
3	S. 82°08'11" E.	400.00	400.00	400.00	27°42'15"
4	S. 82°08'11" E.	400.00	400.00	400.00	27°42'15"
5	S. 82°08'11" E.	400.00	400.00	400.00	27°42'15"

UNPLATTED,



CLINTON TOWNSHIP
 P.C. 826

CLINTON TOWNSHIP
 P.C. 172

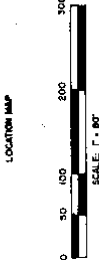
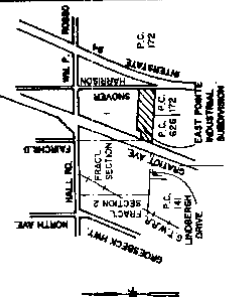
HARRISON TOWNSHIP
 P.C. 172

UNPLATTED

UNPLATTED

SOUTH LINE OF FRACTIONAL SECTION 1

12.13.1994



CERTIFIED TRUE COPY OF
 RECORDED PLAT
 BY DEPARTMENT OF COMMERCE
 STATE OF MICHIGAN
 REGISTERED PROFESSIONAL SURVEYOR
 ROBERT L. SMITH
 No. 10000
 EXPIRES 12/31/2018

LEGEND
 ALL DIMENSIONS ARE SHOWN IN FEET.
 ALL CURVILINEAR DIMENSIONS ARE SHOWN
 ALONG THE CHORD.
 A 4" DIAMETER
 1/2" LONG W/ 1/2" IRON ROD CENTER CONCRETE
 MONUMENT.
 ALL LOT MARKERS ARE 10" LONG 1/2" IRONS.
 R1 INDICATES RADIAL LOT LINES.
 R2 INDICATES RADIAL LOT LINES.
 R3 INDICATES RADIAL LOT LINES.
 BEARINGS BASED ON THE WESTERLY LINE OF
 NORTH GRATIOT HEIGHTS SUB. AS RECORDED IN
 LIBER 21 PAGE 3, MACOMB COUNTY RECORDS.
 THERE SHALL BE NO DIRECT VEHICULAR ACCESS
 TO GRATIOT HEIGHTS SUB. FROM ANY PART OF THIS
 PLAT. THESE SHALL BE NO DIRECT VEHICULAR
 ACCESS TO THE I-94 CONNECTOR (SNOWY ROAD)
 FROM LOTS 8 AND 9.



Robert L. Smith
 ROBERT L. SMITH

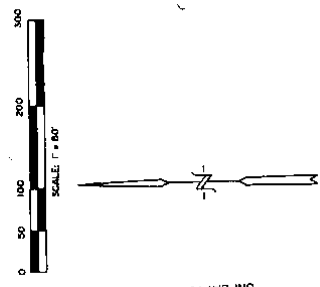
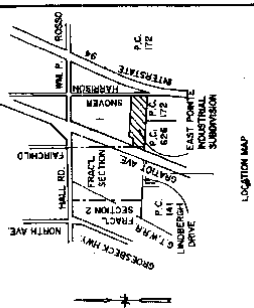
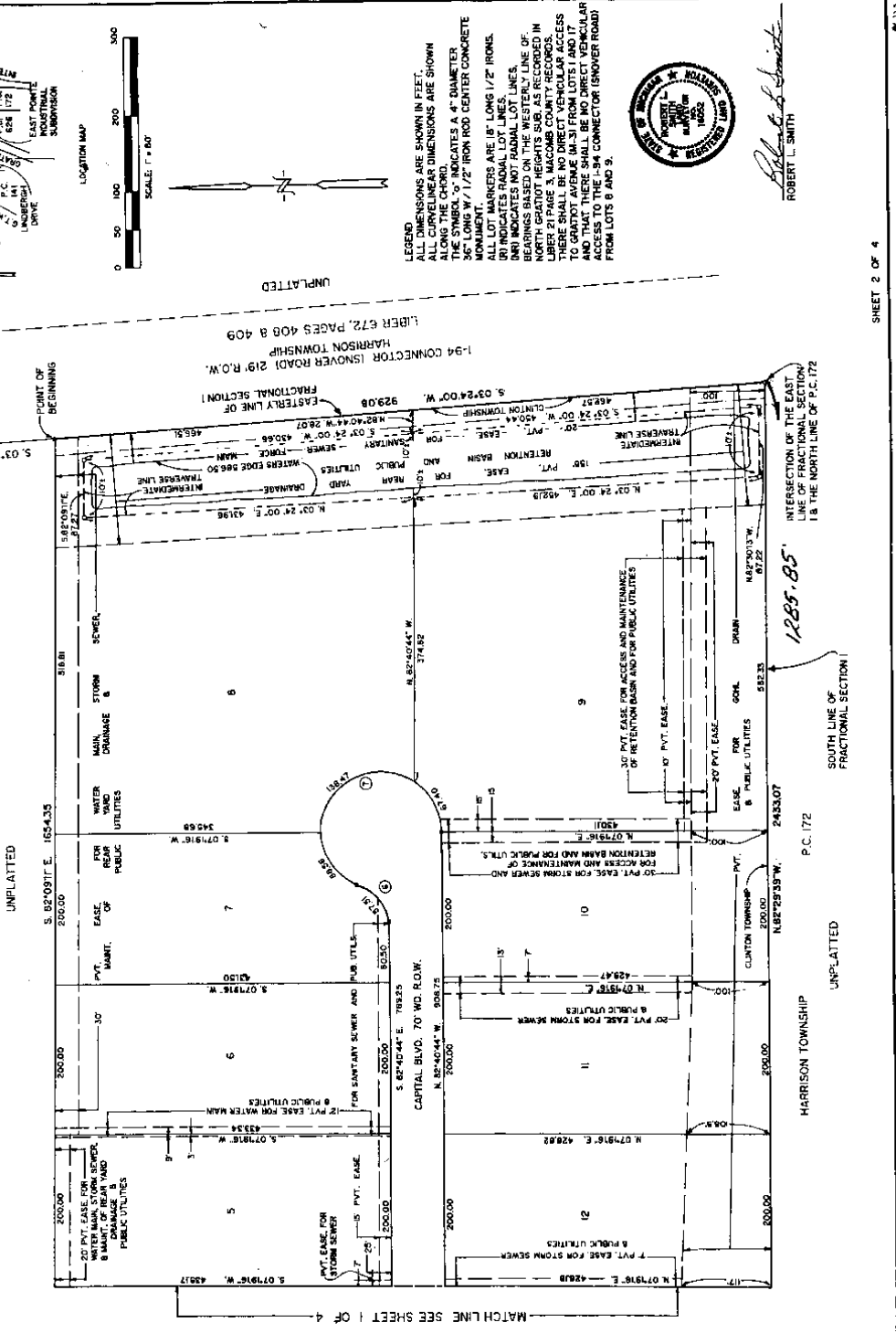
061220

SHEET 1 OF 4

1. 921, P. 47-50

EAST POINTE INDUSTRIAL SUBDIVISION
 A SUBDIVISION OF PART OF EAST 1/2 & WEST 1/2 OF
 FRACTIONAL SECTION 1, T.2N., R.13E., CLINTON TOWNSHIP,
 MACOMB CO., MICHIGAN

CURVE DATA				
CURVE #	RADIUS	ARC	LONG CHORD	CHORD DELTA
6	50.00	62.7	8.621235' W	37.34
7	77.00	336.28	S. 27° 44' 00" E	15.59
				250° 29' 24"



LEGEND
 ALL DIMENSIONS ARE SHOWN IN FEET.
 ALL CURVILINEAR DIMENSIONS ARE SHOWN
 ALONG THE CHORD.
 THE SYMBOL 'S' INDICATES A 4" DIAMETER
 MONUMENT 1/2" IRON ROD CENTER CONCRETE
 MONUMENT 1/2" IRON ROD CENTER CONCRETE
 ALL LOT MARKERS ARE 15' LONG 1/2" IRONS.
 (R) INDICATES RADIAL LOT LINES.
 BEARINGS BASED ON THE EAST-THEMATIC OF
 THE MACOMB COUNTY RECORDS, LIBERTY
 LIBERTY 20 PAGE 3, MACOMB COUNTY RECORDS.
 THERE SHALL BE NO DIRECT VEHICULAR ACCESS
 TO GRATIOT AVENUE (M-31 FROM LOTS 1 AND 17
 AND THAT THERE SHALL BE NO DIRECT VEHICULAR
 ACCESS TO THE 1-94 CONNECTOR (SNOOVER ROAD)
 FROM LOTS 8 AND 9.



Robert L. Smith
 ROBERT L. SMITH

EAST POINTE INDUSTRIAL SUBDIVISION
A SUBDIVISION OF PART OF EAST 1/2 & WEST 1/2 OF
FRACTIONAL SECTION 1, T.2N., R.13E., CLINTON TOWNSHIP,
MACOMB CO., MICHIGAN

CERTIFICATE OF MUNICIPAL APPROVAL

I certify that this plat was approved by the Township Board of the Township of Clinton, Michigan, on 10/15/1960 and that the public sewer and public water services have been installed and are ready for use within this plat.

and that surety is posted for one year to insure the placement of monuments and lot markers.

Robert L. Smith
 DEPUTY TOWNSHIP CLERK

COUNTY TREASURER'S CERTIFICATE

The records in my office show no unpaid taxes or special assessments for the lots included in this plat.

Robert L. Smith
 CLINTON TOWNSHIP CLERK
 TREASURER COUNTY OF MACOMB

COUNTY DRAIN COMMISSIONER'S CERTIFICATE

Approved on 10/15/1960, as complying with Section 136 of Act 289, Public Act 1959, as amended, and regulations of the Board of Road Commissioners in the County of Macomb.

Robert L. Smith
 ROBERT L. SMITH, COMMISSIONER OF PUBLIC WORKS

MICHIGAN DEPARTMENT OF TRANSPORTATION
 APPROVED ON 10/15/1960 AS COMPLYING WITH ACT 289, P.A. OF 1959 AND REGULATIONS OF THE DEPARTMENT OF TRANSPORTATION.

James E. Tate
 JAMES E. TATE, DIRECTOR

CERTIFICATE OF COUNTY ROAD COMMISSIONER'S

Approved on 10/15/1960, as complying with Section 143 of Act 289, P.A. of 1959, and the applicable regulations and regulations of the Board of Road Commissioners of Macomb County.

Robert L. Smith
 ROBERT L. SMITH, VICE-CHAIRPERSON
 JAMES J. QUINCY, CHAIRMAN

COUNTY PLAT BOARD CERTIFICATE

This plat has been reviewed and is approved by the Macomb County Plat Board on 10/15/1960, as being in compliance with all of the applicable rules and regulations.

Robert L. Smith
 ROBERT L. SMITH, CHAIRMAN
 COUNTY BOARD OF COMMISSIONERS

Robert L. Smith
 DEPUTY REGISTER OF DEEDS

RECORDING CERTIFICATE

STATE OF MICHIGAN
 MACOMB COUNTY

This plat was prepared for record on the 15 day of Oct, 1960, at 11:00 A.M. and recorded in Liber 134 of Plats on Record in the Office of the Register of Deeds.



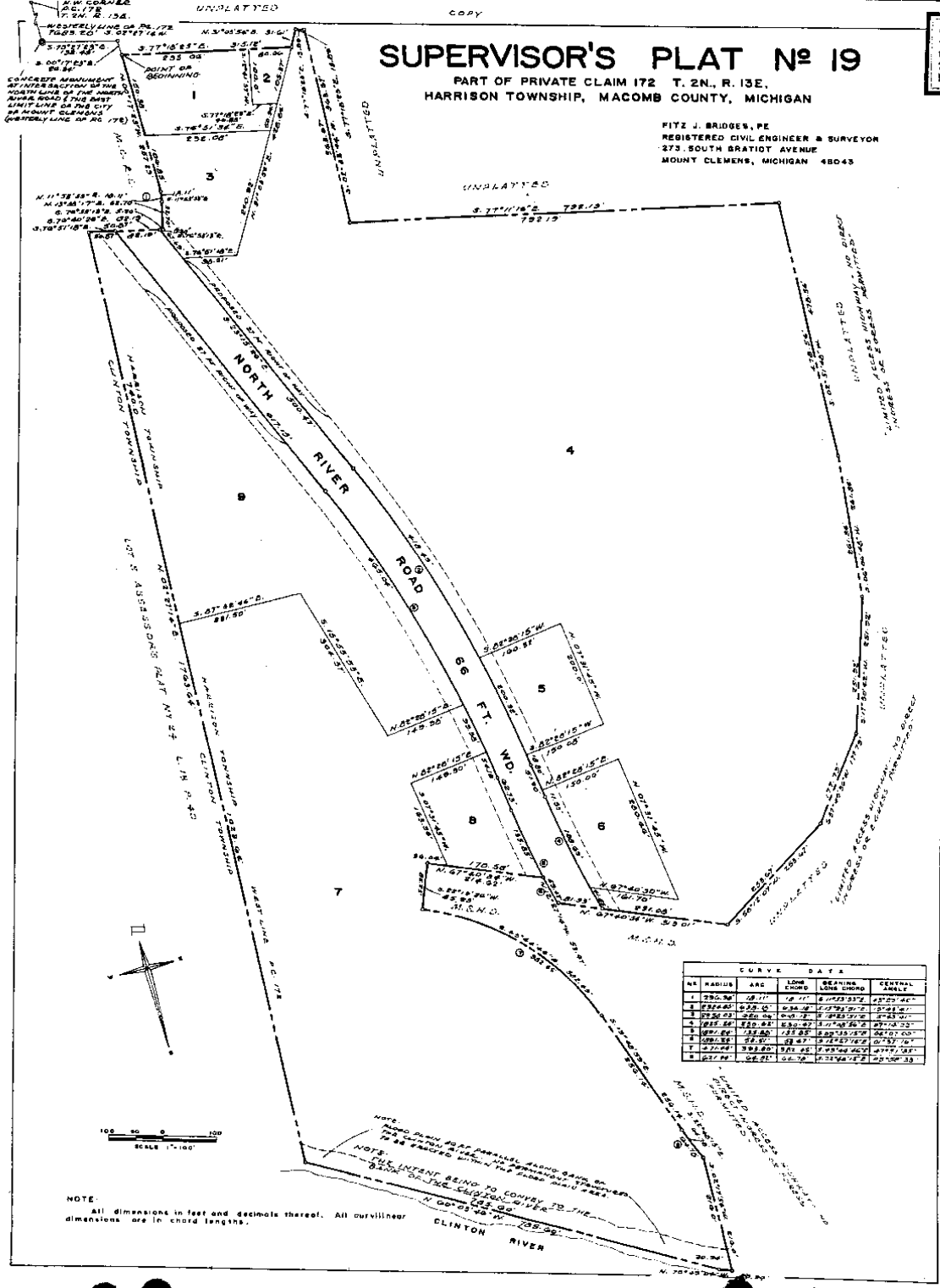
Robert L. Smith
 ROBERT L. SMITH

SUPERVISOR'S PLAT No 19

PART OF PRIVATE CLAIM 172 T. 2N. R. 13E.
HARRISON TOWNSHIP, MACOMB COUNTY, MICHIGAN

FITZ J. BRIDGES, P.E.
REGISTERED CIVIL ENGINEER & SURVEYOR
273 SOUTH BRATTON AVENUE
MOUNT CLEMENS, MICHIGAN 48043

50279



CURVE DATA					
NO.	RADIUS	ARC	LONG CHORD	BEARING LONG CHORD	CENTRAL ANGLE
1	250.76	28.77	18.77	S 17°23'37" E	28°29'46"
2	225.45	22.00	14.88	S 17°23'37" E	28°29'46"
3	225.45	22.00	14.88	S 17°23'37" E	28°29'46"
4	225.45	22.00	14.88	S 17°23'37" E	28°29'46"
5	225.45	22.00	14.88	S 17°23'37" E	28°29'46"
6	225.45	22.00	14.88	S 17°23'37" E	28°29'46"
7	225.45	22.00	14.88	S 17°23'37" E	28°29'46"
8	225.45	22.00	14.88	S 17°23'37" E	28°29'46"
9	225.45	22.00	14.88	S 17°23'37" E	28°29'46"

NOTE:
THE CURVE DATA ARE FOR THE PURPOSES OF THIS PLAT ONLY.
THE CURVE DATA ARE NOT TO BE USED FOR ANY OTHER PURPOSE.
THE CURVE DATA ARE NOT TO BE USED FOR ANY OTHER PURPOSE.
THE CURVE DATA ARE NOT TO BE USED FOR ANY OTHER PURPOSE.

1.59, P. 7-8 6-14-1968

copy

5074

SUPERVISOR'S PLAT No 19

PART OF PRIVATE CLAIM 172 T. 2N., R. 13E,
HARRISON TOWNSHIP, MACOMB COUNTY, MICHIGAN

FITZ J. BRIDGES REG. CIVIL ENGINEER & SURVEYOR MOUNT CLEMENS, MICHIGAN

DESCRIPTION

The land embraced in the annexed plat of Supervisor's Plat No. 19 part of Private Claim 172 T. 2N., R. 13E., Harrison Township, Macomb County, Michigan and being more particularly described as follows:

Commencing at the N. W. corner of P. C. 172; thence S. 02°27'14"W. 7683.20 ft., along the Westerly line of P. C. 172 to a monument at the intersection of the North line of the North River Road and East limit line City of Mount Clemens (Westerly line of P. C. 172); thence S. 75°27'23"E. 138.48 ft.; thence S. 00°17'23"E. 26.34 ft., to the point of beginning; thence S. 77°18'23"E. 315.12 ft.; thence N. 31°03'54"E. 31.61 ft.; thence S. 77°18'23"E. 13.89 ft.; thence S. 02°33'54"W. 363.57 ft.; thence S. 77°11'16"E. 792.19 ft.; thence S. 02°51'48"W. 478.56 ft.; thence S. 06°04'48"W. 261.64 ft.; thence S. 17°50'42"W. 251.92 ft.; thence S. 37°49'36"W. 177.79 ft.; thence S. 58°12'07"W. 253.67 ft.; thence N. 67°40'34"W. 313.01 ft.; thence along a curve to the left (R) radius 1891.24 ft., central angle 3°37'16" whose long chord bears N. 12°27'14"W. 53.47 ft.; thence N. 67°40'34"W. 214.62 ft.; thence S. 22°19'26"W. 85.23 ft.; thence along a curve to the right (L) radius 473.46 ft., central angle 47°51'35" whose long chord bears S. 43°44'46"E. 382.45 ft.; thence S. 15°48'59"E. 255.14 ft.; thence along a curve to the left (R) radius 621.44 ft., central angle 5°58'29" whose long chord bears S. 22°48'15"E. 64.78 ft.; thence S. 02°17'54"W. 216.0 ft.; thence N. 70°49'04"W. 20.94 ft.; thence N. 60°03'46"W. 785.60 ft.; thence N. 02°27'14"E. 1763.64 ft.; thence S. 76°51'18"E. 50.87 ft.; thence S. 76°40'26"E. 82.19 ft.; thence S. 76°53'13"E. 5.20 ft.; thence N. 13°38'17"E. 52.70 ft.; thence along a curve to the left (R) radius 296.98 ft., central angle 3°29'40" whose long chord bears N. 11°53'33"E. 18.11 ft.; thence N. 00°17'23"W. 257.23 ft. to the point of beginning. Containing lots 1 through 9 inclusive.

DEDICATION

KNOW ALL MEN BY THESE PRESENTS, that I, Ralph E. Beaufait, Supervisor of the Township of Harrison of Macomb County, State of Michigan, by virtue of authority in me vested by Section 51, Act 172, of 1929, having been duly authorized by the Township Board have caused the land described in the annexed plat to be surveyed, laid out and platted, to be known as, Supervisor's Plat No. 19, part of Private Claim 172, T. 2N., R. 13E., Harrison Township, Macomb County, Michigan and that the streets and easement as shown on said plat are now being used for such purposes, and that the plat conforms with the requirements of Section 51, Act 172, of Public Acts of 1929, as amended.

Signed and Sealed in the presence of:
Witness: *George Phillips*
Witness: *George Phillips*
Witness: *George Phillips*

Ralph E. Beaufait
Ralph E. Beaufait, Supervisor
Township of Harrison
38151 L'Anse Croix
Mount Clemens, Michigan 48043

CERTIFICATE OF APPROVAL BY THE BOARD OF COUNTY ROAD COMMISSIONERS

This Plat has been examined and was approved on the 3 day of October, A.D. 1967 by the Macomb County Board of Road Commissioners.

Lawrence Chubka
Lawrence Chubka, Chairman
Keth Bovenchen
Keth Bovenchen, Vice Chairman
Ernest W. McCollom
Ernest W. McCollom, Member

CERTIFICATE OF APPROVAL BY THE COUNTY BOARD

This Plat was approved on the 29 day of November, A. D. 1967 by the Macomb County Plat Board.

Edward Burr
Edward Burr, Chairman
Raymond Charles Dwyer
Raymond Charles Dwyer, Registrar of Deeds
Kenneth R. Clark, Deputy
Edna Miller
Edna Miller, County Clerk
Lynn Shelton
Lynn Shelton, County Treasurer
Thomas S. Hurd
Thomas S. Hurd, Deputy
William S. Welch
William S. Welch, District Commissioner
W. J. Hayes, Deputy

SURVEYOR'S CERTIFICATE

I hereby certify the plat hereon delineated is a correct one and that permanent metal monuments consisting of base not less than one-half inch in diameter and 36 inches in length, encased in a concrete cylinder at least 4 inches in diameter and 36 inches in depth have been placed at points marked thus (O) as thereon shown at all angles in the boundaries of the land platted, at all the intersections of the lines of streets, and at the intersections of the lines of streets with the boundaries of the plat as shown on said plat.

Prepared and Drafted by:

Fitz J. Bridges
Fitz J. Bridges, P. E.
Registered Land Surveyor No. 5779
271 South Gratiot Avenue
Mount Clemens, Michigan 48043

ACKNOWLEDGEMENT

State of Michigan }
County of Macomb }

On this 29 day of Nov, 1967, before me a Notary Public in and for said County, personally came the above named, Ralph E. Beaufait, Supervisor of the Township of Harrison known to me to be the person who executed the above dedication and acknowledged the same to be his free act and deed as such Supervisor.

My commission expires 10-21

Richard W. Munroe
Richard W. Munroe
Notary Public, Macomb County,
Michigan

CERTIFICATE OF MUNICIPAL APPROVAL

This Plat was approved by the Township Board of the Township of Harrison at a meeting held 27 day of Nov, 1967 and complies with Section 19A and the width of lots is in compliance with requirements of Section 30, Act 172, of 1929, as amended.

Richard W. Munroe
Richard W. Munroe, Clerk

Fitz J. Bridges
Fitz J. Bridges
G. F. L. S. 1967
Professional Land Surveyor

APPROVED *Fitz J. Bridges*

MICHIGAN COUNTY ROAD COMMISSION
Richard W. Munroe
Richard W. Munroe, Clerk

COPY

Register's Office
Raymond Charles Dwyer
Notary Public
Richard W. Munroe
Notary Public
Fitz J. Bridges
Registered Land Surveyor
Raymond Charles Dwyer
Registrar of Deeds
Richard W. Munroe
Notary Public

Raymond Charles Dwyer
Notary Public
Richard W. Munroe
Notary Public
Fitz J. Bridges
Registered Land Surveyor
Raymond Charles Dwyer
Registrar of Deeds
Richard W. Munroe
Notary Public

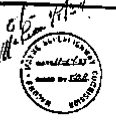
26085

SUPERVISORS PLAT NO. 5.

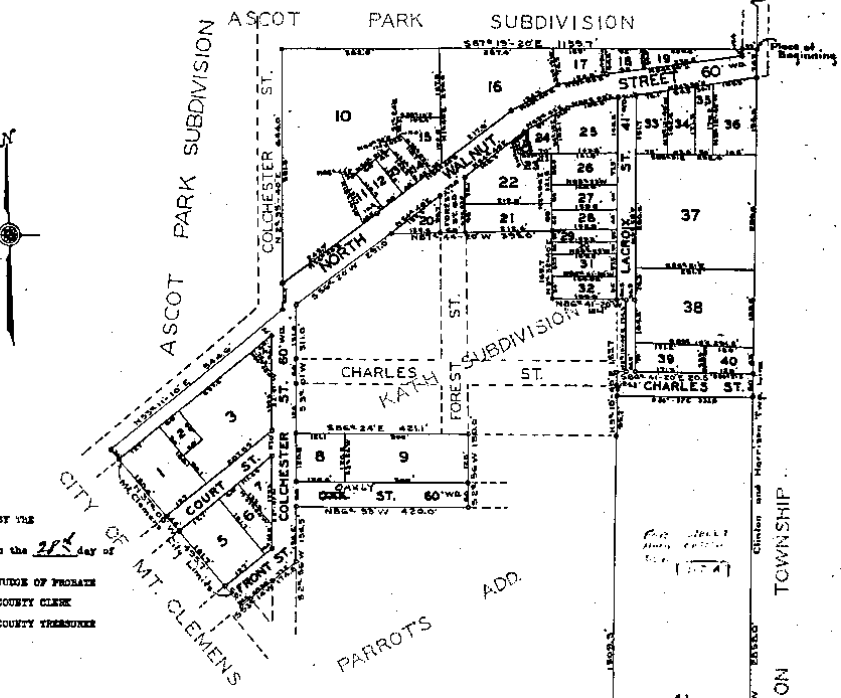
PART OF P. C. 626 T. 2. N. R. 13 E.
CLINTON TOWNSHIP
MACOMB CO. MICHIGAN.
SCALE 1"=50'

Examined and
Jan. 7, 1934
Geo. B. Hauerl
Twp. Clerk

Information of
Henry B. Jolly
and Charles
Harrison Top
Line.



Supervisor
Jan 9 1934
Jan 17 1934
Geo. B. Hauerl



RECOMMENDATION OF APPROVAL BY THE
COUNTY BOARD
This plat was approved on the 28th day of
December 1933
J. H. Woodard JUDGE OF PROBATE
Henry B. Jolly COUNTY CLERK
J. H. Woodard COUNTY TREASURER

Dedication

KNOW ALL MEN BY THESE PRESENTS, that I, Otto Sherbeck Supervisor
of Clinton Township Macomb County, State of Michigan, by virtue of
authority in me vested by Section 61, Act 478, of 1929, having
been duly authorized by the Township Board have caused the land
described in the annexed plat to be surveyed, laid out and located
to be known as Supervisors Plat No. 5 of part of P. C. 626, and
that the streets and alleys as shown on said plat are now being
used for such purposes.

Otto Sherbeck
Supervisor of Clinton Twp.

Description of Land Platting

The land embraced in the annexed plat of
Supervisors Plat No. 5 part of P. C. 626
Clinton Township Macomb County Michigan
is described as follows:
Commencing at the
intersection of Henry B. Jolly Road and the
Clinton Harrison Township Line, Thence S 30°
18'-40" W 1150.0 feet along the township
line to the place of beginning, Thence S 30°
18'-40" W 2250.0 feet along the township
line S 70° 00'-20" W 413.2 feet along the
E. C. Clemens City Line, Thence S 30°-11'-20" W
1905.2 feet along the east boundary of Parrots
Add., Thence N 3°-18'-40" E 155.7 feet
along the east boundary of Kath Subdivision,
Thence S 85°-41'-30" E 202.2 feet along the
south boundary of Kath Subdivision, Thence S
85°-41'-30" E 174.3 feet along the east
boundary of Kath Subdivision, Thence S 85°-
41'-30" E 101.1 feet along the north boundary of Kath Sub
Thence S 30°-11'-20" W 125.7 feet along the
east boundary of Kath Subdivision, Thence N
65°-45'-20" E 255.0 feet along the north bound-
ary of Kath Subdivision, Thence S 85°-00' W
201.0 feet along Kath Subdivision and south
side of Walnut Street, Thence S 30°-11'-20" W
311.0 feet along the east side of Colchester Street,
Thence S 85°-24' E 421.1 feet along the Kath
Subdivision, Thence S 30°-11'-20" W 420.0 feet along
Parrots Addition, Thence N 65°-33' W 420.0
feet along Parrots Addition and south side of
Oak Street, Thence S 50°-20' W 156.0 feet along
Parrots Addition and east side of Colchester street,
Thence S 85°-16' W 176.0 feet along Parrots Addition
and south side of Front street, Thence N 30°-00' W 405.
feet along the E. C. Clemens City line, Thence N 53°-11'-
10" E 544.0 feet along the center line of North Walnut St.,
Thence N 87°-31'-40" E 644.0 feet along the east side of
Colchester street, Thence S 87°-15'-20" W 1150.7 feet along
the south line of Ascot Park Subdivision to the point of beginning

TOWNSHIP APPROVAL
This plat was approved by the Township Board of the Township
of Clinton at a meeting held on Jan. 7, 1934
Geo. B. Hauerl
Township Clerk

SURVEYOR'S CERTIFICATE

I hereby certify that the plat herein delineated is a correct one
and that permanent metal monuments of not less than one inch in
diameter and fifteen inches in length set in concrete base at least
four inches in diameter and forty-eight inches in depth have been
placed at points marked thereon as thereon shown at all angles in the
boundaries of the land platting, at all the intersections of streets,
intersections of alleys, or of streets and alleys, and at the inter-
sections of streets and alleys with the boundaries of the plat as
shown on said plat.

1-16, P. 23 1-10-1934

24926

ASSESSORS PLAT NO. 24

OF THE CITY OF
MT. CLEMENS, MACOMB CO., MICHIGAN.

SCALE - 1"=200'

Note: All dimensions hereon are in feet and decimals thereof

FILE IN DEPT. OF RECORDS
MAY 28 1928
J. F. HANLEY

MAY 21 1928
Geo. P. [Signature]

DEDICATION

KNOW ALL MEN BY THESE PRESENTS, That I Geo. H. Miller Assessor of the City of Mt. Clemens Macomb County Michigan, by virtue of authority in me vested by section 3550, Compiled Laws of 1915 as amended, having been duly authorized by the City Commission, have caused the land described in the annexed plat to be surveyed, laid out and platted to be known as "Assessors Plat No. 24" of the City of Mt. Clemens Macomb County Michigan, and that the streets and alleys as shown on said plat are hereby dedicated to the use of the public.

Joseph H. [Signature]
Maria [Signature]

Geo. H. Miller Assessor of the City of Mt. Clemens Macomb County Michigan.

CONY
Macomb
[Handwritten notes and signatures]

ACKNOWLEDGMENT

STATE OF MICHIGAN | SS
COUNTY OF MACOMB | SS
On this 21 day of May A.D. 1928 before me a Notary Public in and for said County, personally came the above named Geo. H. Miller Assessor of the City of Mt. Clemens, known to be the person who executed the above dedication and acknowledged the same to be his free act and deed as such Assessor. My Commission expires Jan 1 1929.

Joseph H. [Signature]
Notary Public in and for said County

DESCRIPTION

The land embraced in the annexed plat of Assessors Plat No. 24 of the City of Mt. Clemens Macomb County Michigan, is described as follows:-
Beginning at the intersection of the N 1/2 line of East Broadway with the Clinton-Harrison P.W. line, Thence S 20°49'2" E, 247.2 ft. Thence E 87°00'7" N, 613.2 ft. Thence E 87°00'2" E, 62.0 ft. Thence N 82°59'7" W, 500.0 ft. Thence S 1°00'15" E, 304.4 ft. Thence S 40°15'1" E, 37.6 ft. Thence S 75°50'2" E, 110.2 ft. Thence S 80°25'2" E, 106.0 ft. Thence S 78°21'2" E, 117.8 ft. Thence S 74°50'3" E, 320.5 ft. Thence S 69°11'5" E, 11.5 ft. Thence S 30°55'4" E, 222.3 ft. Thence S 0°42'4" E, 304.5 ft. Thence S 31°31'3" E, 25.5 ft. Thence S 26°42'7" E, 412.4 ft. Thence S 18°51'5" E, 259.7 ft. Thence S 44°16'2" E, 222.5 ft. Thence S 56°19'5" E, 417.4 ft. Thence T 0°49'5" E, 1127.2 ft. to place of begin.

ENGINEERS CERTIFICATE

I hereby certify that the plat hereon delineated is a correct one and that permanent metal monuments not less than one inch in diameter and fifteen inches in length set in a concrete base at least four inches in diameter and forty-eight inches in depth have been placed at points marked thus o as shown at all angles in the boundaries of the land platted, at all intersections of streets, intersections of alleys or of streets and alleys and at the intersections of streets and alleys with the boundaries of the plat as shown on said plat.

Joseph H. [Signature]
Registered Civil Engineer

CERTIFICATE OF MUNICIPAL APPROVAL

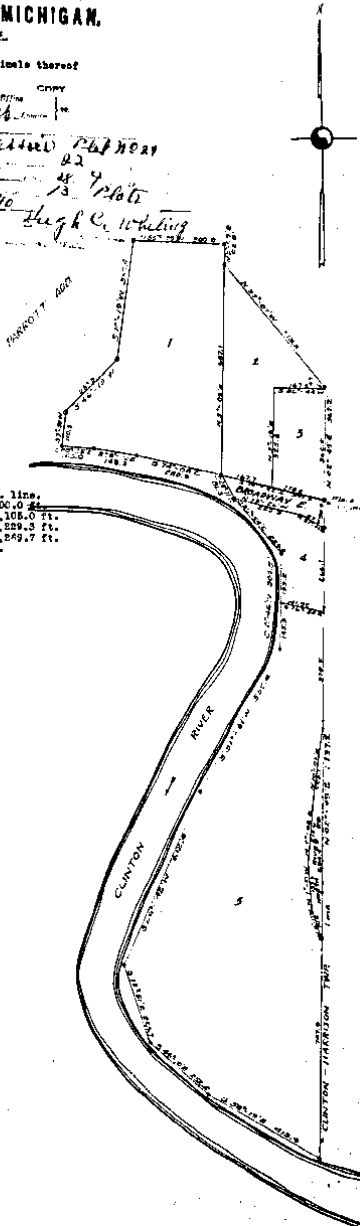
This plat was approved by the City Commission of the City of Mt. Clemens Macomb County Michigan, at a meeting held May 14 1928 A.M. at

Joseph H. [Signature] City Clerk

CERTIFICATE OF APPROVAL BY THE COUNTY BOARD

This plat was approved on the 16 day of November 1928.

Charles H. [Signature] Judge of Probate
Arthur K. [Signature] County Clerk
James L. [Signature] County Treasurer



11-22-1928

17963

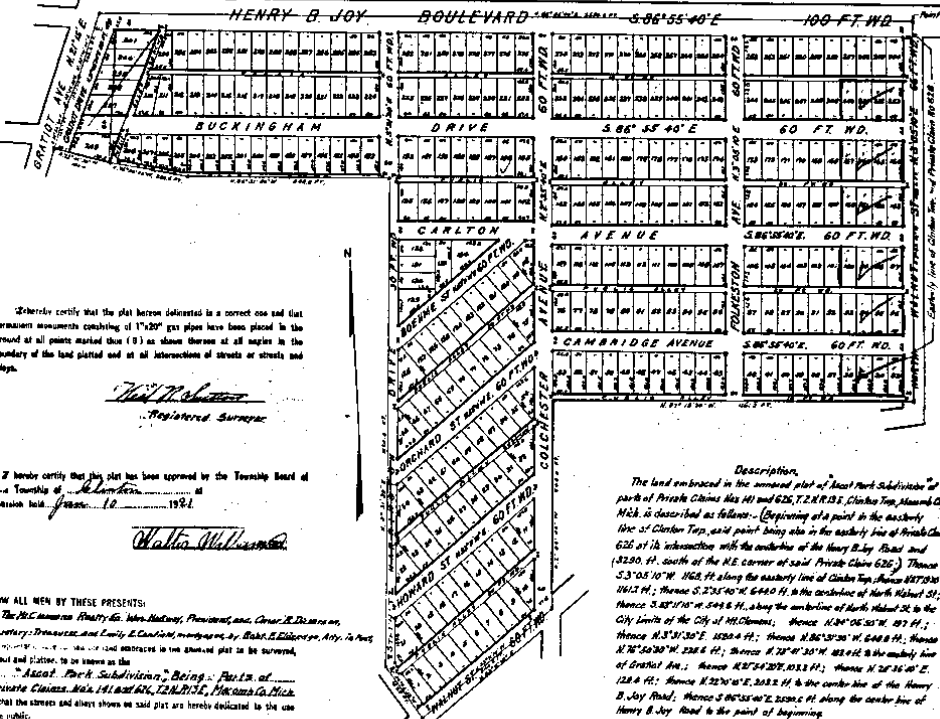
'ASCOT PARK SUBDIVISION'

Being parts of Private Claims Nos 41 and 626, T2.N.R3.E.

Clinton Twp. Macomb Co.,
MICHIGAN

Scale 200 Feet = 1 Inch.

Examined and Approved
April 25-1921
Chas. E. Newman
Deputy Auditor General



I hereby certify that the plat herein delineated is a correct one and that permanent monuments consisting of 1 1/2\"/>

Walter M. Williams
Registered Surveyor

I hereby certify that this plat has been approved by the Township Board of the Township of Clinton, Michigan, on this 10th day of March, 1921.

Walter M. Williams

KNOW ALL MEN BY THESE PRESENTS:

The Michigan Realty Co., John H. Hartley, President, and Charles E. DeWitt, Secretary, Treasurer and Emily E. Canfield, Mortgagee, by *Walter M. Williams*, Notary Public, do hereby certify that the above plat is a true and correct copy of the original plat on file in the office of the Register of Deeds for Macomb County, Michigan, and that the streets and alleys shown on said plat are hereby dedicated to the use of the public.

SHOWN AND SEALED IN PRESENCE OF
Witness my hand and seal this 25th day of March, 1921.

Walter M. Williams
Notary Public

John H. Hartley
President

Charles E. DeWitt
Secretary, Treasurer

Emily E. Canfield
Mortgagee

Description.
The land embraced in the annexed plat of Ascot Park Subdivision of parts of Private Claims Nos 41 and 626, T2.N.R3.E., Clinton Twp., Macomb Co., Mich., is described as follows: (Beginning at a point in the easterly line of Clinton Twp., said point being also in the easterly line of Private Claim 626 at its intersection with the centerline of the Henry B Joy Road and 4220 ft. south of the N.E. corner of said Private Claim 626.) Thence S 3° 05' 10\"/>

Witness my hand and seal this 25th day of March, 1921.

Walter M. Williams
Notary Public

Walter M. Williams
Notary Public

John H. Hartley
President

Charles E. DeWitt
Secretary, Treasurer

Emily E. Canfield
Mortgagee

I HEREBY CERTIFY THAT THIS COPY IS A TRUE COPY OF THE ORIGINAL PLAT FORWARDED TO THE REGISTER OF DEEDS FOR RECORD.

Walter M. Williams
DEPUTY PLATON GENERAL

FILED IN AUDITOR GENERAL'S DEPT.
April 27-1921

STATE OF MICHIGAN) s.s.
COUNTY OF MACOMB)

ON THIS 25th day of March, 1921, before me a Notary Public in and for said County, personally appeared ROBERT F. ELDRIDGE to me personally known, who being by me duly sworn did say that he was ATTORNEY IN FACT FOR EMILY E. CANFIELD, MORTGAGEE AND ACKNOWLEDGED SIGNATURE OF SAID INSTRUMENT OF THE TRUE ACT AND DEED OF SAID EMILY E. CANFIELD, ACTING THROUGH HIM, HER ATTORNEY IN FACT.

Robert F. Eldridge
NOTARY PUBLIC IN AND FOR MACOMB COUNTY, MICHIGAN.

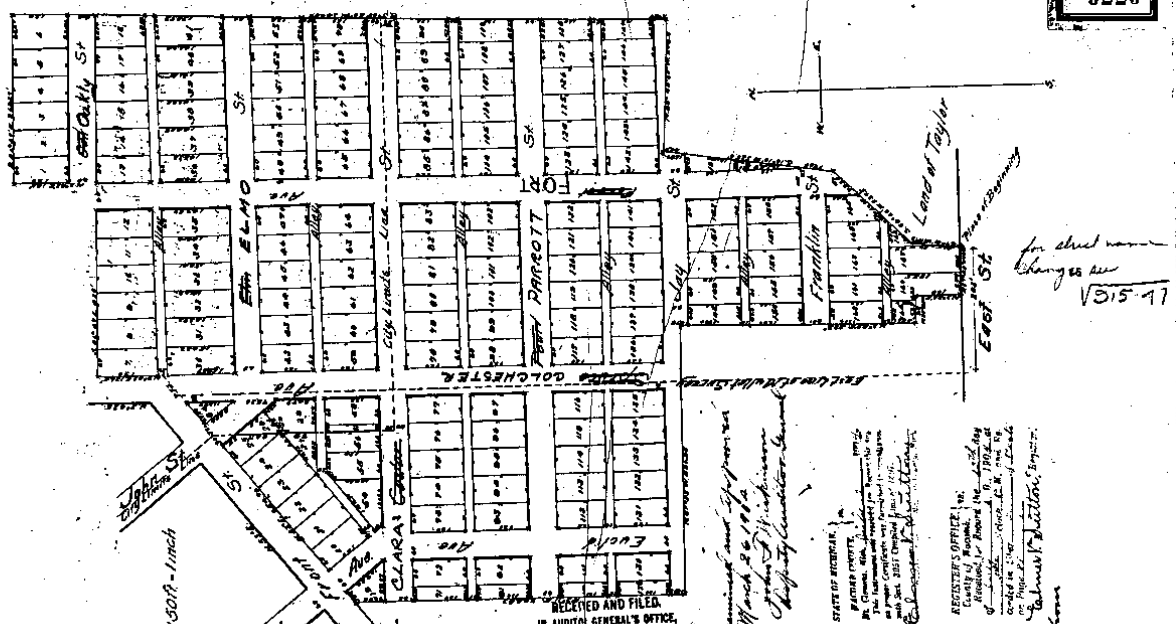
MY COMMISSION EXPIRES *March 22-1925*

NOTE: All dimensions on this plat are given in feet and decimals thereof.

H-26-1921
1-5, P. 32

5540

9229



Scale 1/3200 - 1 inch

Dedication
 of
Parrott's Addition
 to the
City of Macomb
 by
 J. H. D. Drinn
 and
 Emily E. Drinn

State of Michigan
 County of Macomb
 ss. I, the undersigned, Clerk of the County of Macomb, do hereby certify that the within and foregoing plat of Parrott's Addition to the City of Macomb, Michigan, was duly filed for record in my office on the 14th day of March, 1914, and that the same is a true and correct copy of the original plat as filed for record in my office.

Description
 The above mentioned plat of Parrott's Addition to the City of Macomb, Michigan, contains 100 lots, each of 1/4 acre, and is bounded on the north by the City of Macomb, on the east by the City of Macomb, on the south by the City of Macomb, and on the west by the City of Macomb.

Surveyor's Certificate
 I hereby certify that the part here described is a true and correct copy of the original plat as filed for record in my office.

State of Michigan
 County of Macomb
 ss. I, the undersigned, Register of Deeds, do hereby certify that the within and foregoing plat of Parrott's Addition to the City of Macomb, Michigan, was duly filed for record in my office on the 14th day of March, 1914, and that the same is a true and correct copy of the original plat as filed for record in my office.

State of Michigan
 County of Macomb
 ss. I, the undersigned, Register of Deeds, do hereby certify that the within and foregoing plat of Parrott's Addition to the City of Macomb, Michigan, was duly filed for record in my office on the 14th day of March, 1914, and that the same is a true and correct copy of the original plat as filed for record in my office.

State of Michigan
 County of Macomb
 ss. I, the undersigned, Register of Deeds, do hereby certify that the within and foregoing plat of Parrott's Addition to the City of Macomb, Michigan, was duly filed for record in my office on the 14th day of March, 1914, and that the same is a true and correct copy of the original plat as filed for record in my office.

RECEIVED AND FILED
 IN AUDITOR GENERAL'S OFFICE
 March 14, 1914

REGISTRY OFFICE
 REGISTER OF DEEDS
 J. H. D. Drinn
 Emily E. Drinn