

LAND CORNER RECORDATION CERTIFICATE
Filing Requirement of Act 74, Mich. P.A. 1970

For corners in

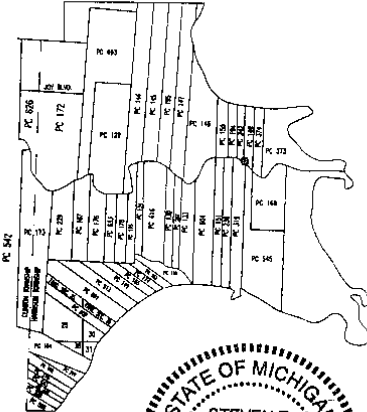
MACOMB (County) Located In: Harrison Twp. Corner Code #
1. Public Land Survey T.02N. R.14E. PC-018
2. Property Controlling S. T. R. Reference
in Section S. T. R. Monument
3. Miscellaneous S. T. R.
Property in Sec. S. T. R.

8095121
LIBER 19452 PAGE 178
08/15/2008 08:41:01 A.M.
MACOMB COUNTY, MI SEAL
CARNELLA SABAUGH, REGISTER OF DEEDS

Register of Deeds Stamp & File Number

4. Lot No. , Recorded Plat
5. Private Claims Reference Monument to the Southeast Corner Private Claim 242
and to the Southwest Corner Private Claim 140 @ northerly border of the
Clinton River (a.k.a. River Huron).

I, Steven E. Dunn, in a field survey on April 14 and May 1, 2008, do hereby certify that
under requirements of P.A. 74, Michigan P.A. of 1970, the corner points mentioned in lines 1 and 2 above
were in conformance with regulations and rules therefore as required in the current manual of survey
instructions of the United States Department of the Interior, Bureau of Land Management or by a decree
of a Court of Law and /or that the corner points mentioned in lines 3, 4 and 5 above were in conformance
with the rules of the Michigan Board of Land Surveyors or by a Decree of a Court of Law; established, re-
established, monumented, re-monumented, recovered, found as expressed below:



NOTE: Not more than 2 corners, all in the same town and range, may be
recorded on this certificate.



A. Description of original monument and accessories and/or subsequent restoration:

1810 Post GLO, Survey performed by Aaron Greeley
1964 Conc. Monument Supervisor's Plat of John P. Fleming Sub'n., L. 52, P. 50
2008 N/A Certificate of Survey, Steven E. Dunn #28408, L. 19128, P. 138-150



B. Description of corner evidence found and/or method applied in restoring or reestablishing corner:
PC 018 Reference Monument to the Southwest Corner of Private Claim 242 to the Southeast Corner of Private Claim 140
at the border of the Clinton River (a.k.a. River Huron). Found no evidence of an existing corner. Did not set actual corner
as it falls in the rear yard of housing to the south. I established a reference corner near the location of the corner using
found monumentation along North River Road and Supervisor's Plat of John P. Fleming Subdivision and set a Mag nail at
the intersection of the line common with Private Claim 242 and Private Claim 140 with the centerline of North River Road
as monumented and set a Mag nail in the asphalt pavement. Corner falls ± 1.2' south of the centerline of asphalt
pavement of North River Road. Occupation line south.

FIELD MEASUREMENTS AND RECORD MEASUREMENTS: None.

C. Description of monument for corner and accessories established to perpetuate locating the position of the corner:
PC 018 Reference Monument to the Southwest Corner of Private Claim 242 to the Southeast Corner of Private Claim 140
at the border of the Clinton River (a.k.a. River Huron) on the line common with Private Claim 242 and Private Claim 140
with the centerline of North River Road. Set Mag nail.

I replaced the Mag nail with a 3/4" X 36" steel rod with an aluminum cap stamped "Macomb County Monument Mi Act 345
1990 MCL, 28408, REF MON, PC 018" in a new monument box in asphalt pavement. Corner falls ± 1.2' south of the
centerline of asphalt pavement of North River Road. Occupation line south.

WITNESSES:

N.04°W. 32.42' Set Mag nail w/MCR witness tag in east face of utility pole.
N.74°E. 76.28' Set Mag nail w/MCR witness tag in southwest face of utility pole.
S.59°E. 126.07' Set Mag nail w/MCR witness tag in northeast face of utility pole.
S.03°W. 33.54' Set Mag nail w/MCR witness tag on top of cutoff wood utility pole.
N.12°E. 33.09' Found 1/2" steel rod w/cap #28408.
South 36.57' Found 1/2" steel rod.
South 121.93' Record to GLO Post. Nothing found.
South ±223' North bank of the Clinton River.

THE SELECTED LOCATION IS ACCEPTED BY ME AND IS GENERALLY ACCEPTED BY PROFESSIONAL
SURVEYORS AS THE BEST AVAILABLE EVIDENCE OF THE POSITION OF THE ORIGINAL CORNER.

ACCEPTED BY THE MACOMB COUNTY SURVEY PEER
GROUP AS THE OFFICIAL CORNER UNDER MICHIGAN
PUBLIC ACT 345 OF 1990 AT A MEETING HELD
ON 7-15-08

Signed by Steven E. Dunn MARTIN C. DUNN, P.S. CHAIRMAN Date August 11, 2008
Surveyor's Michigan License No. 28408

MACOMB COUNTY
INDEX OF SUPPORTING DOCUMENTATION FOR

Town 2 North, Range 14 East

Harrison Township

Corner Code: PC-018 Reference Monument Southeast Corner of Private Claim 242 common with the Southwest Corner of Private Claim 140 @ the northerly border of the Clinton River.

Section One:

- A. Index
- B. Pictures
 - 1. Before Pictures (3) – April 30, 2008
 - 2. After Picture – August 7, 2008

Section Two:

- A. Preliminary LCRC
- B. Surveyor's Report – April 28, 2008

Section Three:

- A. Field Notes (2) – April 14 and May 1, 2008
- B. Legal Description – N/A
- C. Tax Description – N/A
- D. Sketches – Field Measurement and Record Measurement Comparisons April 28, 2008
- E. Maps (3) – Macomb County Atlas
Harrison Township – 1875, 1895 and 1916
- F. Macomb County Composite Maps (2) – Date of photography April, 2004
12-09G & 12-16C

Section Four:

- A. Copies of original government notes (3)
 - Private Claim 140 – Post. Original Survey performed by Aaron Greeley July 18, 1810
 - Private Claim 242 – Post. Original Survey performed by Aaron Greeley July 18, 1810
- B. Recorded LCRC's – N/A
- C. Recorded and unrecorded surveys
 - 1. L. 19128, P. 138-150 Steven E. Dunn, #28408 No mention of corner type
January 9, 2008
- D. Copies of all items listed in "Part A" of LCRC.
 - I.Plats:
 - a. L. 52, P. 50 Supervisor's Plat of John P. Fleming Sub'n. February 3, 1964

Survey Report
PC-018
T.2N., R.14E., Harrison Twp.

Letters asking for unrecorded information were sent to:

AEW, Inc. – Shelby Twp.
Fenn & Associates, Inc. – Shelby Twp.
GWE – Rochester Hills
Kennedy Surveying, Inc. - Oxford
Lehner Associates, Inc. – Clinton Twp.
GLA Surveyor – Plymouth
Professional Engineering Assoc. Inc. – Troy
R. J. Donnelly & Associates Inc. – Troy
George Jerome & Company – Roseville
King Surveying, Inc. – Armada
Michigan Surveying Inc. – Livonia
David C. Adams & Son – Redford
Urban Land Consultants – Shelby Township

CORNER: Reference Monument to the Southeast Corner of Private Claim 242 and to the Southwest Corner of Private Claim 140 @ the northerly border of the Clinton River (a.k.a. River Huron). Found no evidence of an existing corner.

OBSERVATIONS: Did not set the actual corner as it falls in the rear yard of housing to the south . I established a reference corner near the location of the corner using found monumentation along North River Road and Supervisor's Plat of John P. Fleming Subdivision and set a Mag nail at the intersection of the line common with Private Claim 242 and Private Claim 140 with the centerline of North River Road as monumented and set a Mag nail in the asphalt pavement. Corner falls $\pm 1.2'$ south of the centerline of asphalt pavement of North River Road. Occupation line south.

RECOMMENDATION: My recommendation to the Peer Review Board is to accept the Mag nail as the proper location for a reference monument.

Respectfully submitted,

Steven E Dunn, PS #28408

April 28, 2008

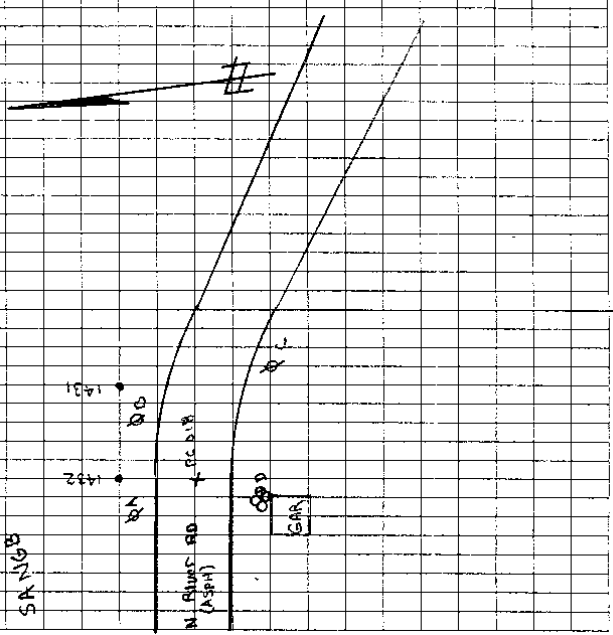
TG
DD
AS

33

MAY 1, 2008 FB-520

PC 018
HARRISON TWP

SOUTH OF CRAND
E MCR WASHFA. C.N. EAST SIDE OF U.P.
WEST SIDE OF U.P.
NORTH SIDE OF U.P.
TOP OF CUTOFF UNDER TRIP POLE



08-100	HARRISON TWP. MRCOMB CO.	RIGHT	DIST	DESK
K201432				FO 1/2" IR WITH YRAN CAP
B5 1431		0-00-00	75.58	FO 1/2" IR WITH YRAN CAP
FS 510		85-55-35	33.09	SET MAG NAIL L16
1445 A		163-4A-28	32.72	SET MAG NAIL L16
1446 D		553-59-16	9.094	SET MAG NAIL
1447 C		27-57-21	76.28	
1448 D		81-72-14	67.618	
B5 V		0-00-02	126.87	
			140.467	
			37.57	
			66.429	
			75.579	
PC 016				
K201				FO 1/2" IR WITH YRAN CAP
B5 101		0-00-00	314.58	FO CUT "1"
FS 51 200		15-56	183.22	check FO 1/2" I.R
80, 202-34-02			149.18	SET MAG NAIL IN ASPH

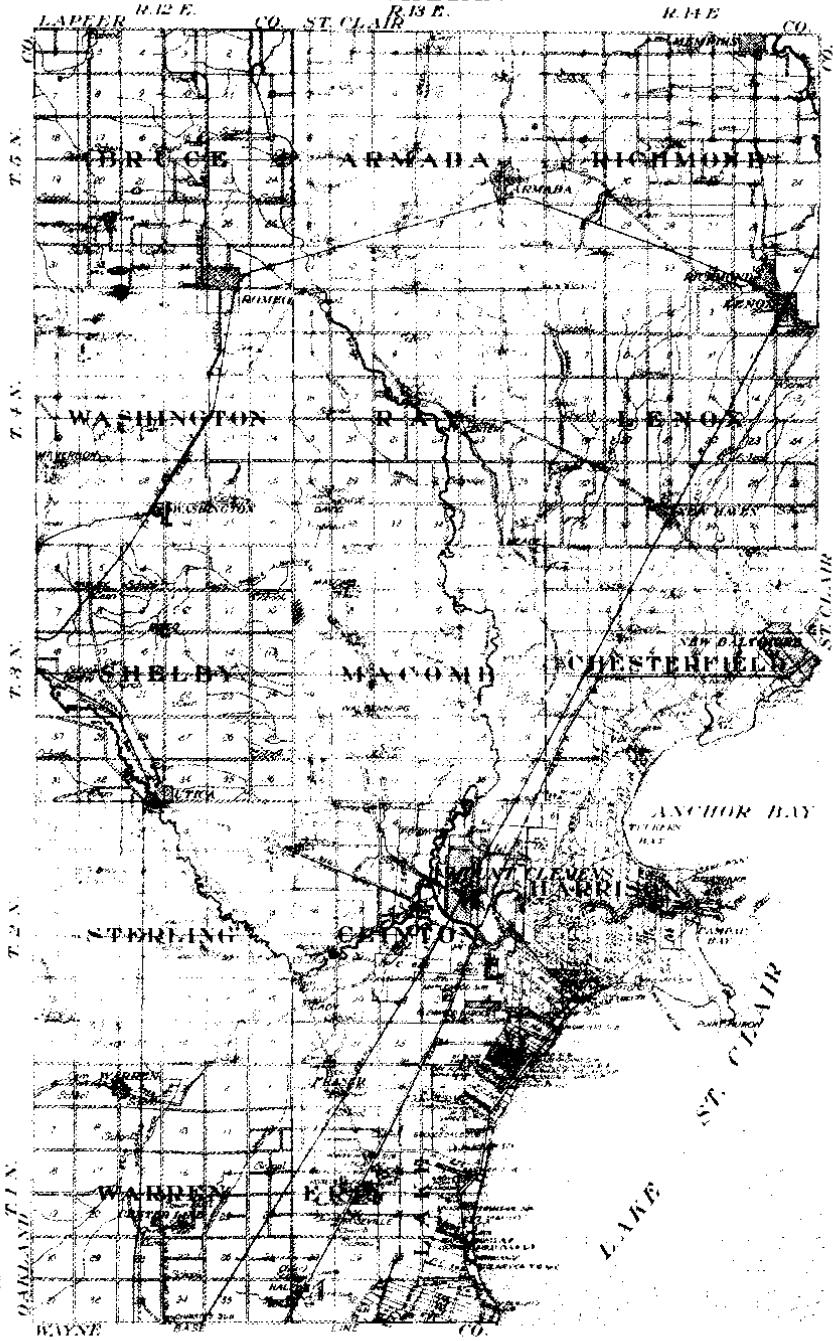
OUTLINE MAP OF
MACOMB COUNTY

Copyright 1904 by Geo. A. Ogle & Co.

MICHIGAN

Scale 1/2 inch to 1 mile

7



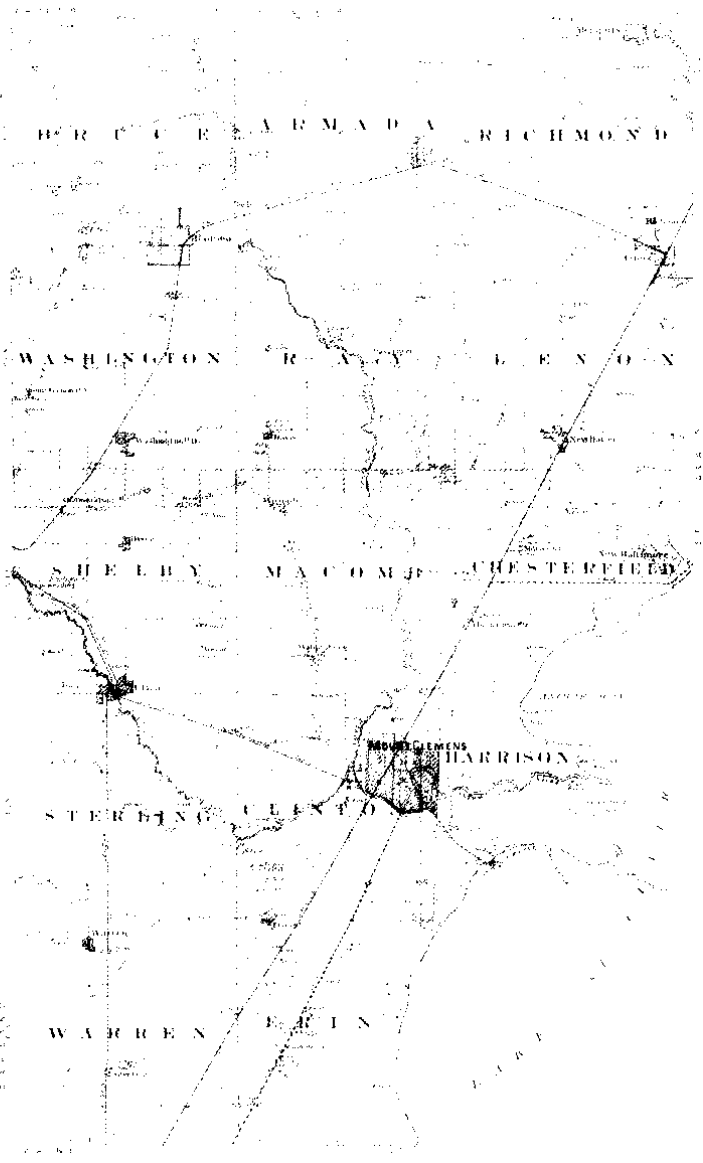
Scanned By:
METCO
Engineers, Architects & Surveyors



Part of Fractional Township 2 North, Range 13 East and
 Fractional Township 2 North, Range 14 East
 of the Michigan Meridian

Prepared by
METCO
 Engineers - Surveyors - Planners

OUTLINE MAP
of
MACOMB COUNTY MICHIGAN



As shown by
METCO
Engineers, Architects & Surveyors

MAP OF HARRISON

Township 2 North Range 14 East

Scale 1 inch = 40 rods



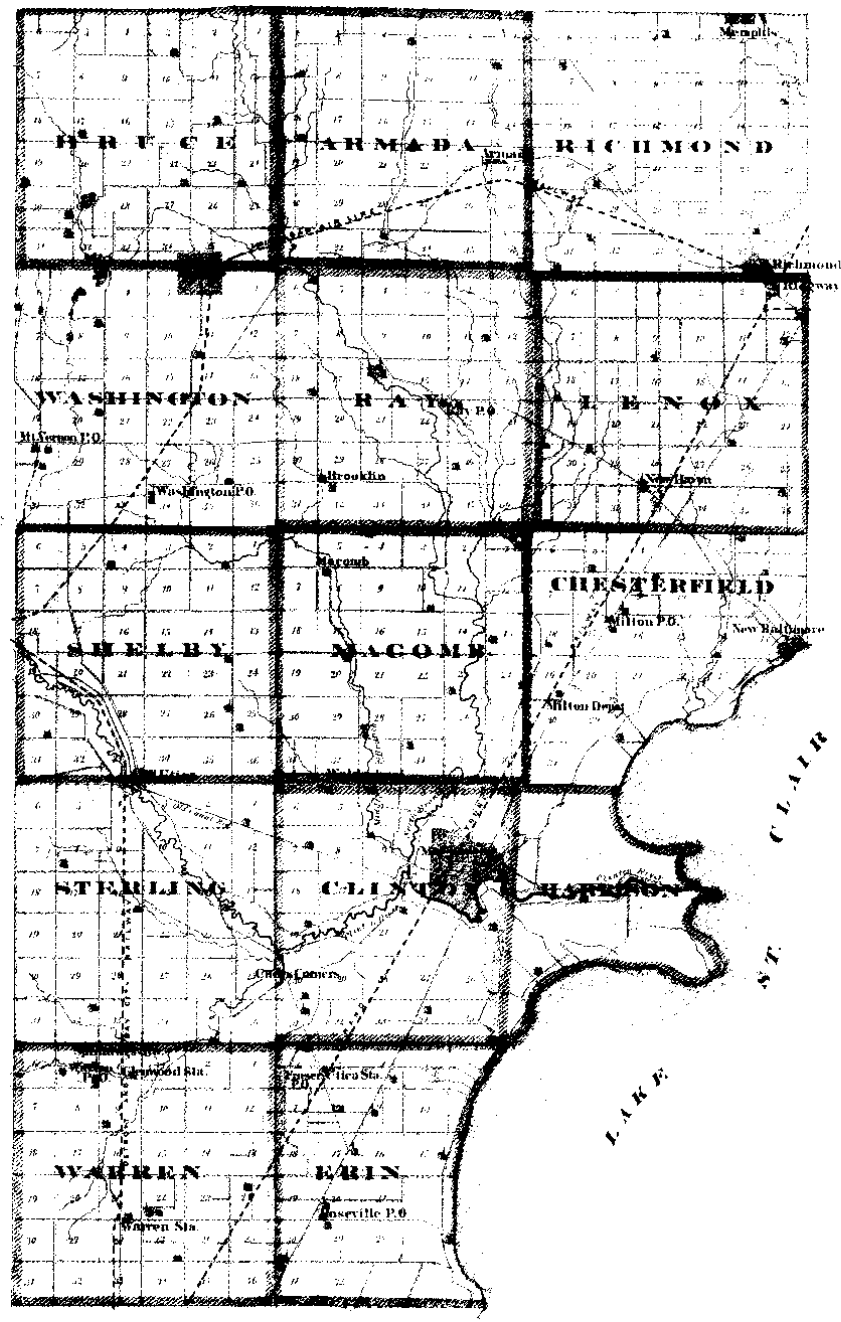
WASHINGTON CO.

NAVIGATION

1875

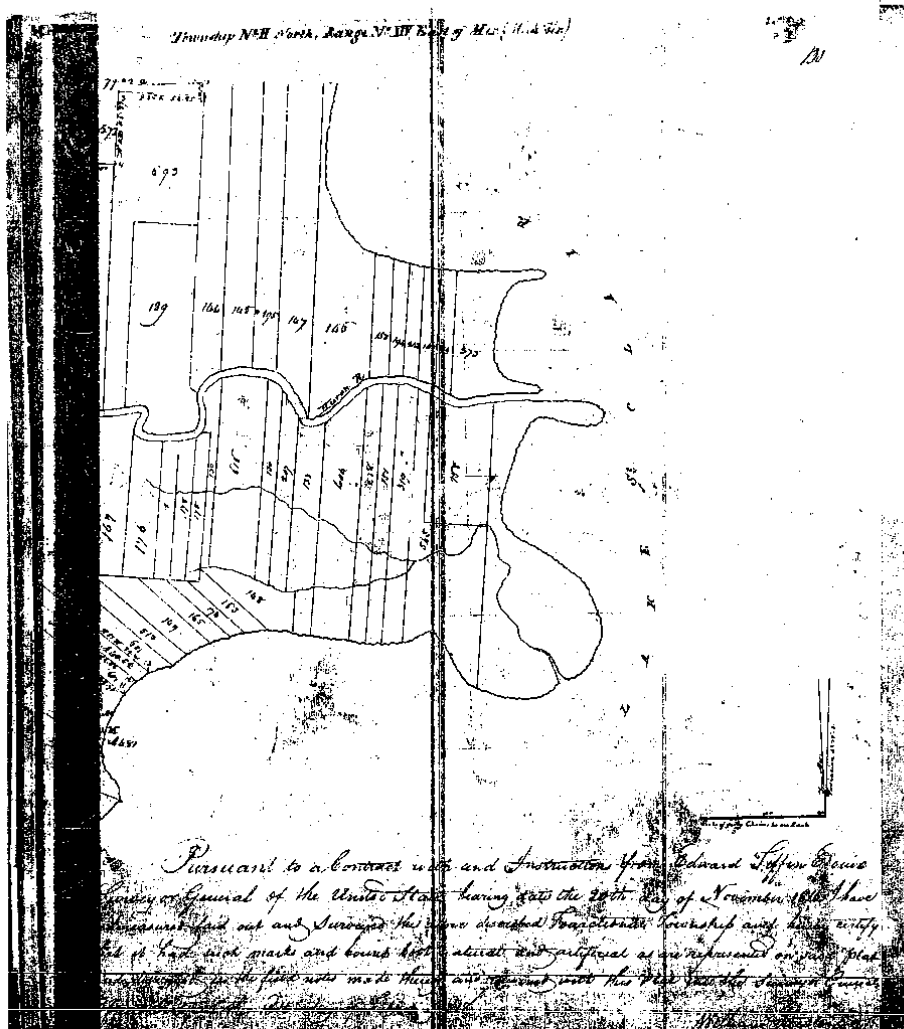
COMPILED & DRAWN BY DIVISION OF INDIAN AFFAIRS

SCALE 2 MILES TO AN INCH



MADE BY
MEICO
LITHO. & CO. N.Y.

METCO



Management, Engineering & Technical Consultants

12504 Stephens Warren, MI 48089 (586) 755-5770 Fax (586) 755-5774

No. 480

No. 140 Confirmed to
Joseph Robertjean

NORTH SIDE OF RIVER HURON

Description No. 140 Confirmed to Joseph Robertjean commencing at a post standing on the north border of River Huron between this tract and a tract confirmed to Robert Robertjean thence north sixty three chains seventy seven links to a post standing on the border of Lake St. Clair thence along the border of said Lake south seventy four degrees thirty minutes east ten chains ninety four links to a post the boundary between this tract and a tract confirmed to the widow and heirs of Alexis Peltier thence south seventy six chains to a post standing on the border of River Huron thence along the border of said river up stream north twenty degrees west twelve chains, thence north fifty nine degrees west seven chains fifty one links to the place of beginning ____
Containing seventy two acres and seven hundredths of an acre ____

Detroit July 14, 1810

Aaron Greeley Surveyor
of private claims

No. 481

No. 242 Confirmed to
Robert Robertjean

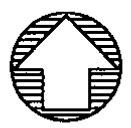
NORTH SIDE OF RIVER HURON

Description No. 242 Confirmed to Robert Robertjean commencing on the north border of River Huron between this tract and a tract confirmed to Mitchel Tremble thence north sixty five chains fifteen links to a post standing on the border of Lake St. Clair thence along the border of said Lake south seventy three degrees east eight chains eighty links to a post the boundary between this tract and a tract confirmed to Joseph Robertjean thence south sixty three chains seventy seven links to a post standing on the border of River Huron thence along the border of said river up stream north eighty three degrees west eight chains forty eight links to the place of beginning, containing fifty four acres twenty seven hundredths of an acre__

Detroit July 14, 1810

Aaron Greeley Surveyor
of private claims

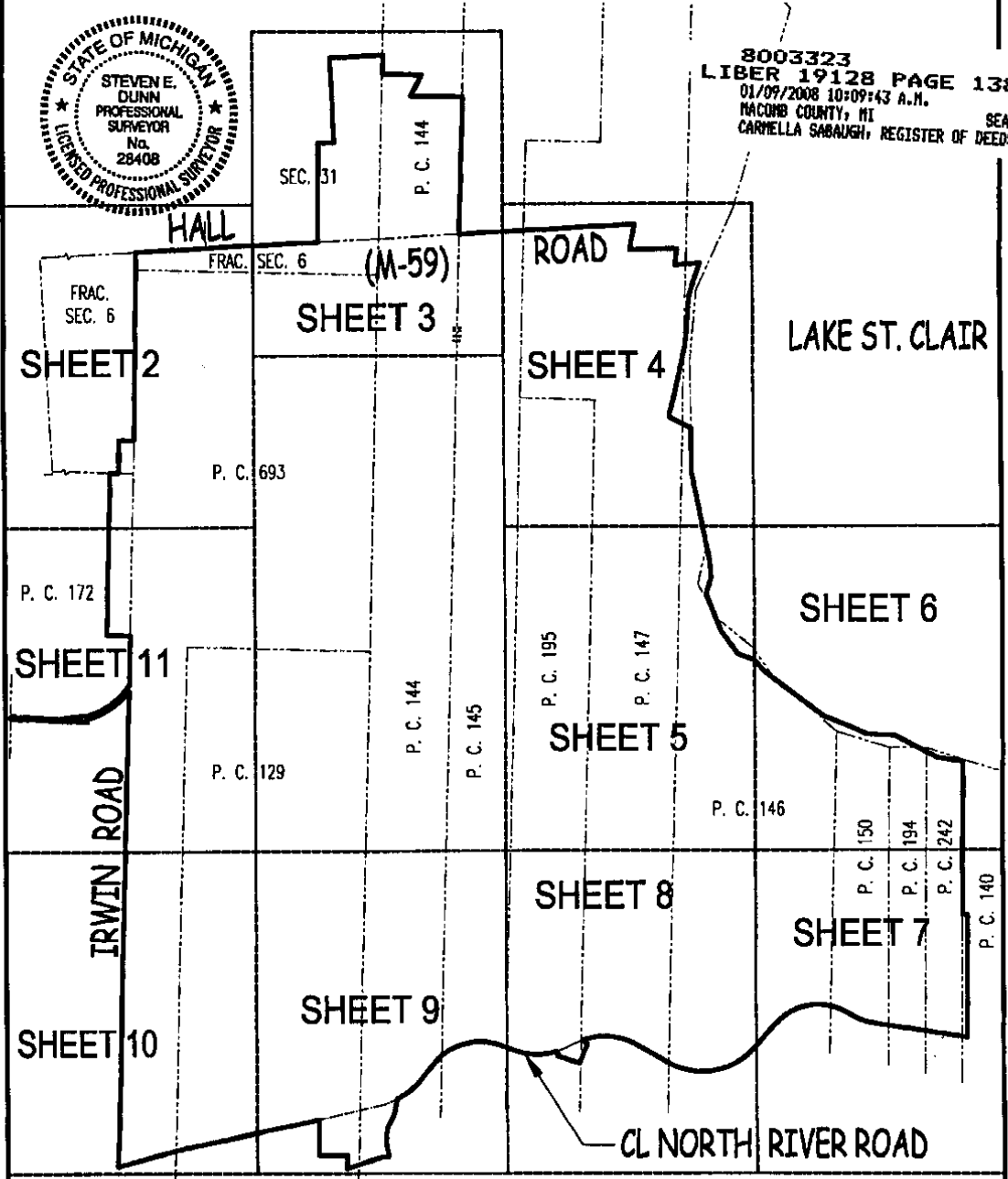
METCO
SERVICES, INC.
12504 STEPHENS, WARREN, MI 48099
TEL - (586) 755-5770 • FAX (586) 755-5774
www.metcoservices.com



CERTIFICATE OF SURVEY



8003323
LIBER 19128 PAGE 138
01/09/2008 10:09:43 A.M.
MACOMB COUNTY, MI
CARNELLA SABAUGH, REGISTER OF DEEDS



CLIENT: S. A. N. G.
ADDRESS: 28700 RAILROAD AVE. BLDG. 127
CITY, STATE & ZIP: HARRISON TOWNSHIP, MI 48045
TWP.: HARRISON P.C.: VARIOUS COUNTY: MACOMB
DATE: 01/07/08 DRAWN BY: CSD
JOB NO.: 07-125 SHEET NO.: 1 OF 13
SCALE: 1" = 2000'
BOOK/PAGE: N/A



LEGAL DESCRIPTION: SEE SHEETS 12 & 13 OF 13
I hereby certify that I have surveyed and mapped the land above and/or described on December 7, 2007 and that the ratio of closure is within the positional tolerance accepted by the profession of land surveying for GPS observations and that all requirements of Public Act 132, 1970 have been complied with. Bearings are based on State Plane Coordinates from GPS observations.
Steven E. Dunn
STEVEN E. DUNN, PROFESSIONAL SURVEYOR #28408

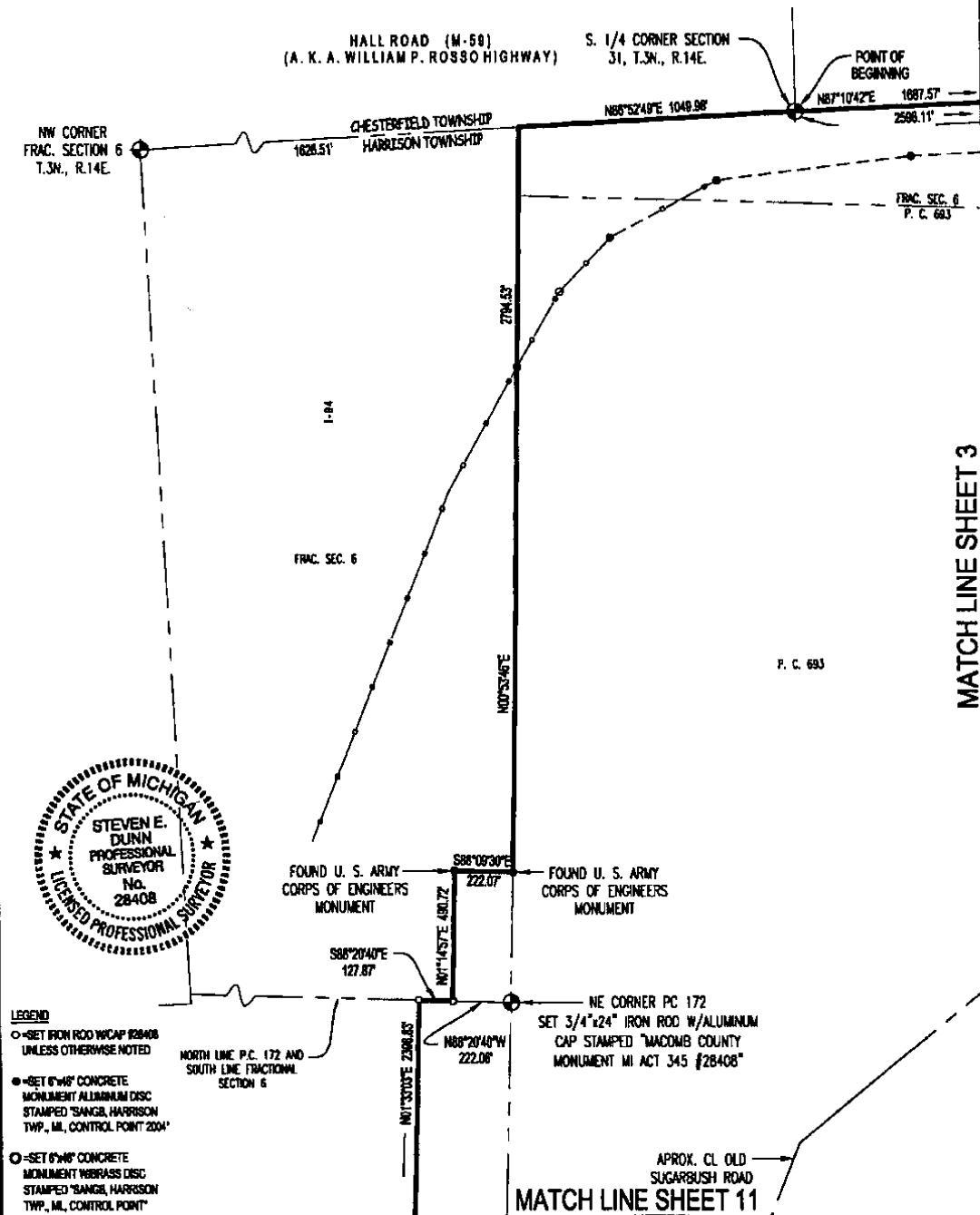
METCO

SERVICES, INC.

12504 STEPHENS, WARREN, MI 48090
 TEL - (586) 755-5770 • FAX (586) 755-5774
 www.metcoservices.com



CERTIFICATE OF SURVEY



LEGEND

- - SET IRON ROD W/CAP #28408 UNLESS OTHERWISE NOTED
- - SET 6"x6" CONCRETE MONUMENT ALUMINUM DISC STAMPED "SANGH, HARRISON TWP., MI., CONTROL POINT 2004"
- - SET 6"x6" CONCRETE MONUMENT BRASS DISC STAMPED "SANGH, HARRISON TWP., MI., CONTROL POINT"

CLIENT: S. A. N. G.
 ADDRESS: 28700 RAILROAD AVE. BLDG. 127
 CITY, STATE & ZIP: HARRISON TOWNSHIP, MI 48045
 TWP.: HARRISON P.C.: VARIOUS COUNTY: MACOMB
 DATE: 01/07/08 DRAWN BY: CSD
 JOB NO.: 07-125 SHEET NO.: 2 OF 13

LEGAL DESCRIPTION: SEE SHEETS 12 & 13 OF 13

SCALE: 1" = 500'

BOOK/PAGE: N/A

Steven E. Dunn
 STEVEN E. DUNN, PROFESSIONAL SURVEYOR #28408

Jan 08, 2008 - 11:12am
 L:\2007\jobs\07125\dwg\03132.dwg

METCO

SERVICES, INC.

12504 STEPHENS, WARREN, MI 48089
 TEL - (586) 755-5770 • FAX (586) 755-5774
 www.metcoservices.com

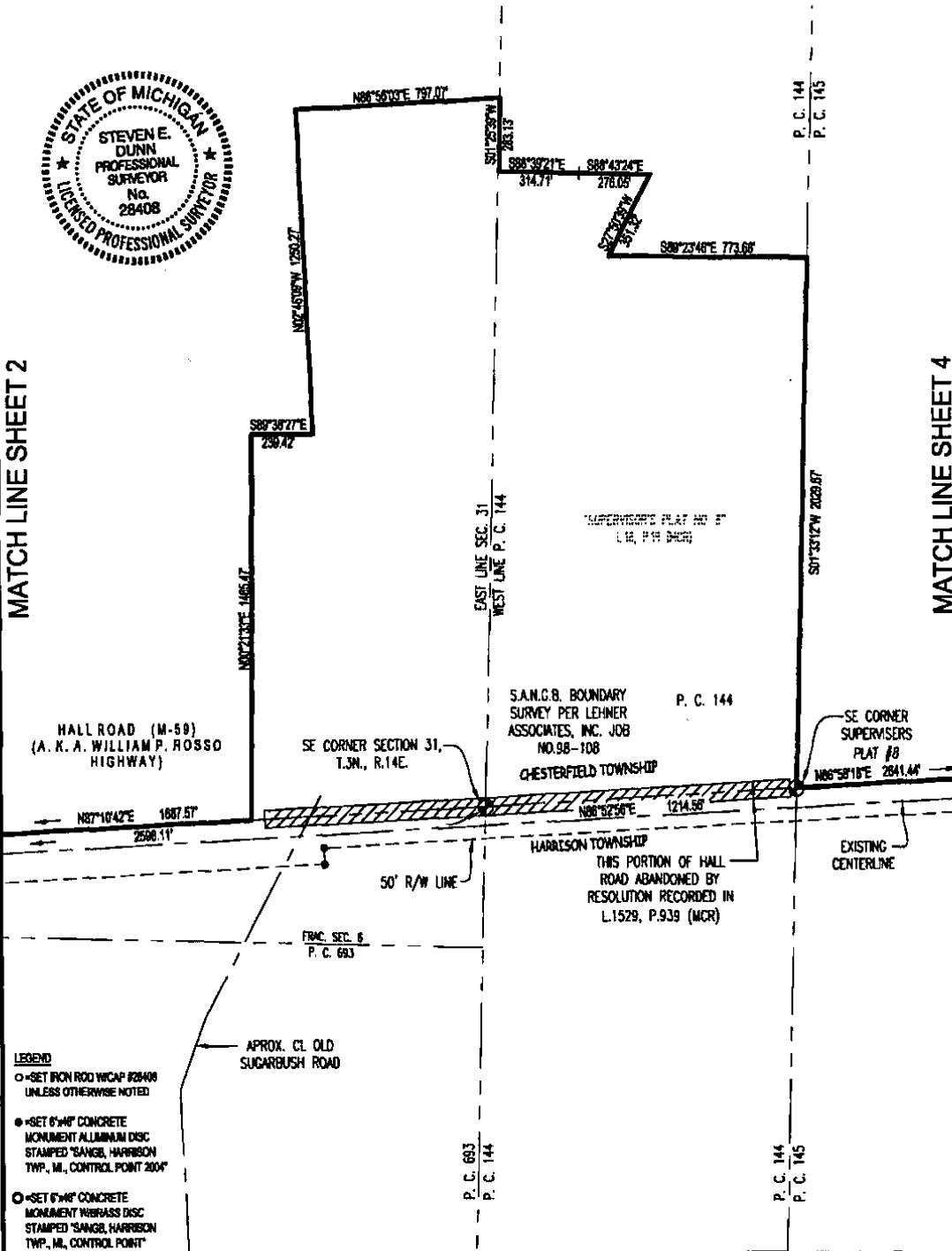


CERTIFICATE OF SURVEY



MATCH LINE SHEET 2

MATCH LINE SHEET 4



- LEGEND**
- = SET IRON ROD W/ CAP #28408 UNLESS OTHERWISE NOTED
 - = SET 6\"/>

CLIENT: S. A. N. G.
 ADDRESS: 28700 RAILROAD AVE. BLDG. 127
 CITY, STATE & ZIP: HARRISON TOWNSHIP, MI 48045
 TWP.: HARRISON P.C.: VARIOUS COUNTY: MACOMB
 DATE: 01/07/08 DRAWN BY: CSD
 JOB NO.: 07-125 SHEET NO.: 3 OF 13
 SCALE: 1" = 500'
 BOOK/PAGE: N/A

LEGAL DESCRIPTION: SEE SHEETS 12 & 13 OF 13

Steven E. Dunn
 STEVEN E. DUNN, PROFESSIONAL SURVEYOR #28408

METCO

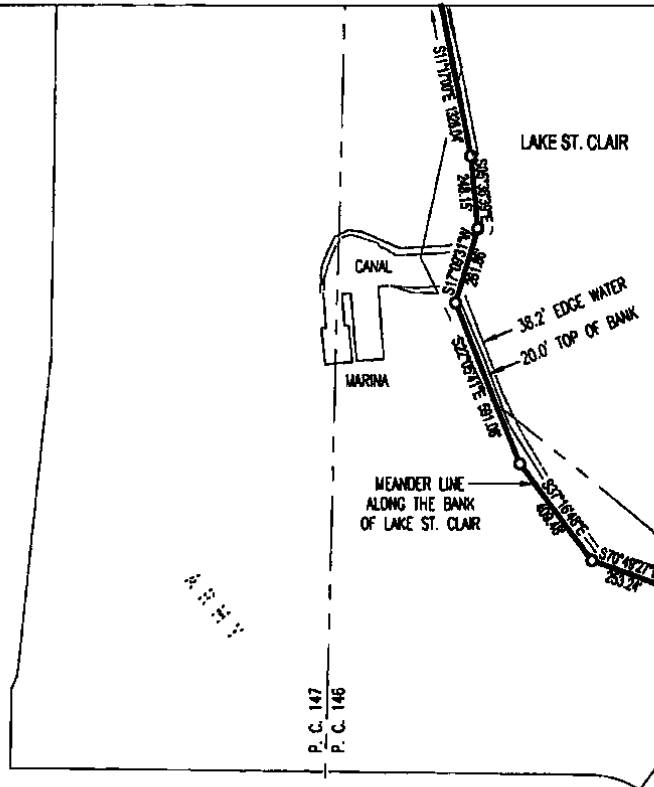
SERVICES, INC.

12504 STEPHENS, WARREN, MI 48090
 TEL. - (586) 755-5770 • FAX (586) 755-5774
 www.metcoservices.com



CERTIFICATE OF SURVEY

MATCH LINE SHEET 4



P. C. 145
 P. C. 195

P. C. 195
 P. C. 147

P. C. 147
 P. C. 146

AIR FORCE

MATCH LINE SHEET 6

LEGEND

- = SET IRON ROD W/CAP #28408 UNLESS OTHERWISE NOTED
- = SET 6" x 4" CONCRETE MONUMENT ALUMINUM DISC STAMPED "SANGH, HARRISON TWP., MI., CONTROL POINT 2004"
- = SET 6" x 4" CONCRETE MONUMENT W/BRASS DISC STAMPED "SANGH, HARRISON TWP., MI., CONTROL POINT"



CLIENT: S. A. N. G.
 ADDRESS: 28700 RAILROAD AVE. BLDG. 127
 CITY, STATE & ZIP: HARRISON TOWNSHIP, MI 48045
 TWP.: HARRISON P.C.: VARIOUS COUNTY: MAGOMB
 DATE: 01/07/08 DRAWN BY: CSD
 JOB NO.: 07-125 SHEET NO.: 5 OF 13
 SCALE: 1" = 50'

BOOK/PAGE: N/A

Jan 08, 2008 - 11:14am
 L:\2007\jobs\07125\dwg\03132.dwg

LEGAL DESCRIPTION: SEE SHEETS 12 & 13 OF 13

Steven E. Dunn
 STEVEN E. DUNN, PROFESSIONAL SURVEYOR #28408

METCO

SERVICES, INC.

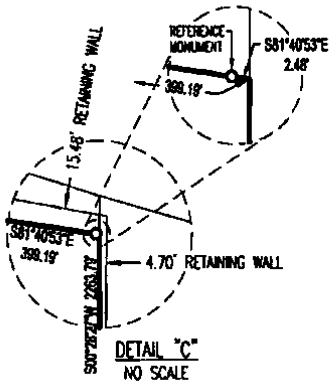
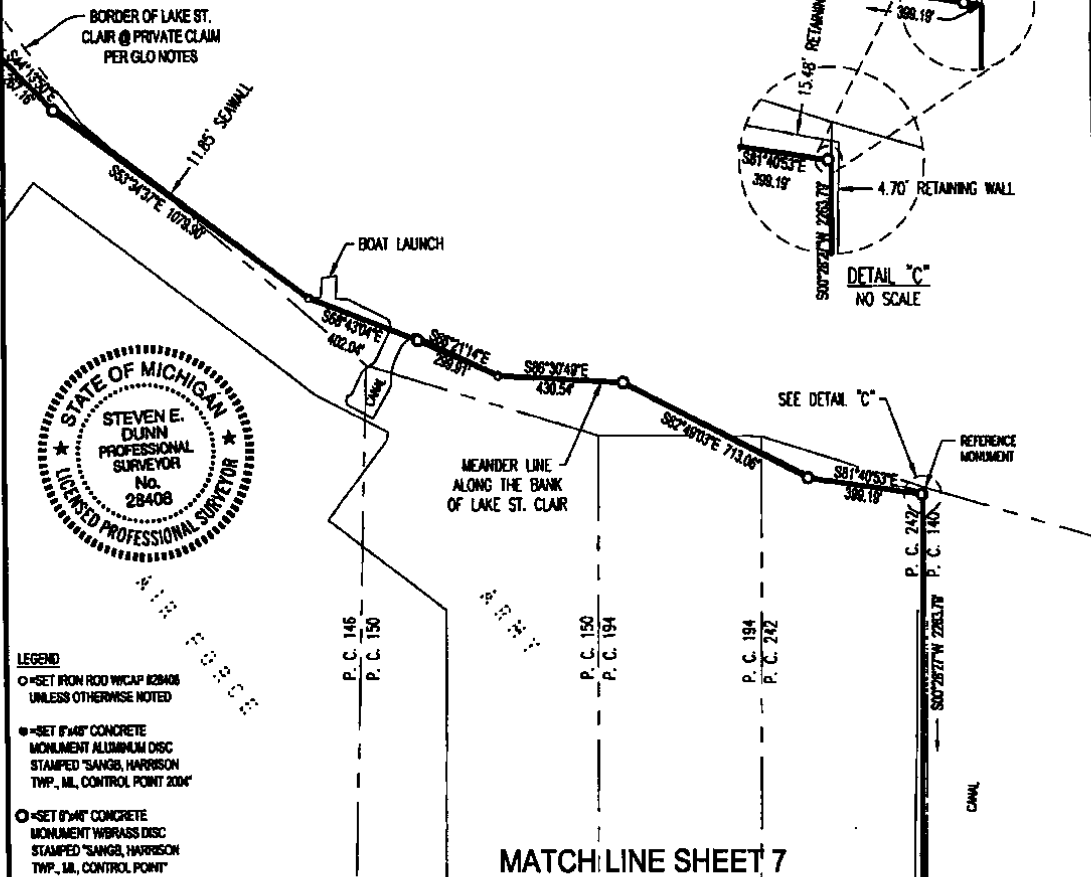
12504 STEPHENS, WARREN, MI 48099
 TEL. - (586) 755-5770 • FAX (586) 755-5774
 www.metcoservices.com



CERTIFICATE OF SURVEY

MATCH LINE SHEET 5

LAKE ST. CLAIR



- LEGEND**
- - SET IRON ROD W/ CAP #28408 UNLESS OTHERWISE NOTED
 - - SET 8" x 8" CONCRETE MONUMENT ALUMINUM DISC STAMPED "SANGS, HARRISON TWP., MI., CONTROL POINT 2004"
 - - SET 8" x 8" CONCRETE MONUMENT W/ BRASS DISC STAMPED "SANGS, HARRISON TWP., MI., CONTROL POINT"

MATCH LINE SHEET 7

CLIENT: S. A. N. G.

ADDRESS: 28700 RAILROAD AVE. BLDG. 127

CITY, STATE & ZIP: HARRISON TOWNSHIP, MI 48045

TWP.: HARRISON P.C.: VARIOUS COUNTY: MACOMB

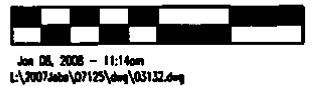
DATE: 01/07/08 DRAWN BY: CSD

JOB NO.: 07-125 SHEET NO.: 8 OF 13

SCALE: 1" = 500'

BOOK/PAGE: N/A

LEGAL DESCRIPTION: SEE SHEETS 12 & 13 OF 13



Steven E. Dunn
 STEVEN E. DUNN, PROFESSIONAL SURVEYOR #28408

METCO

SERVICES, INC.

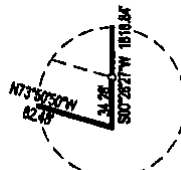
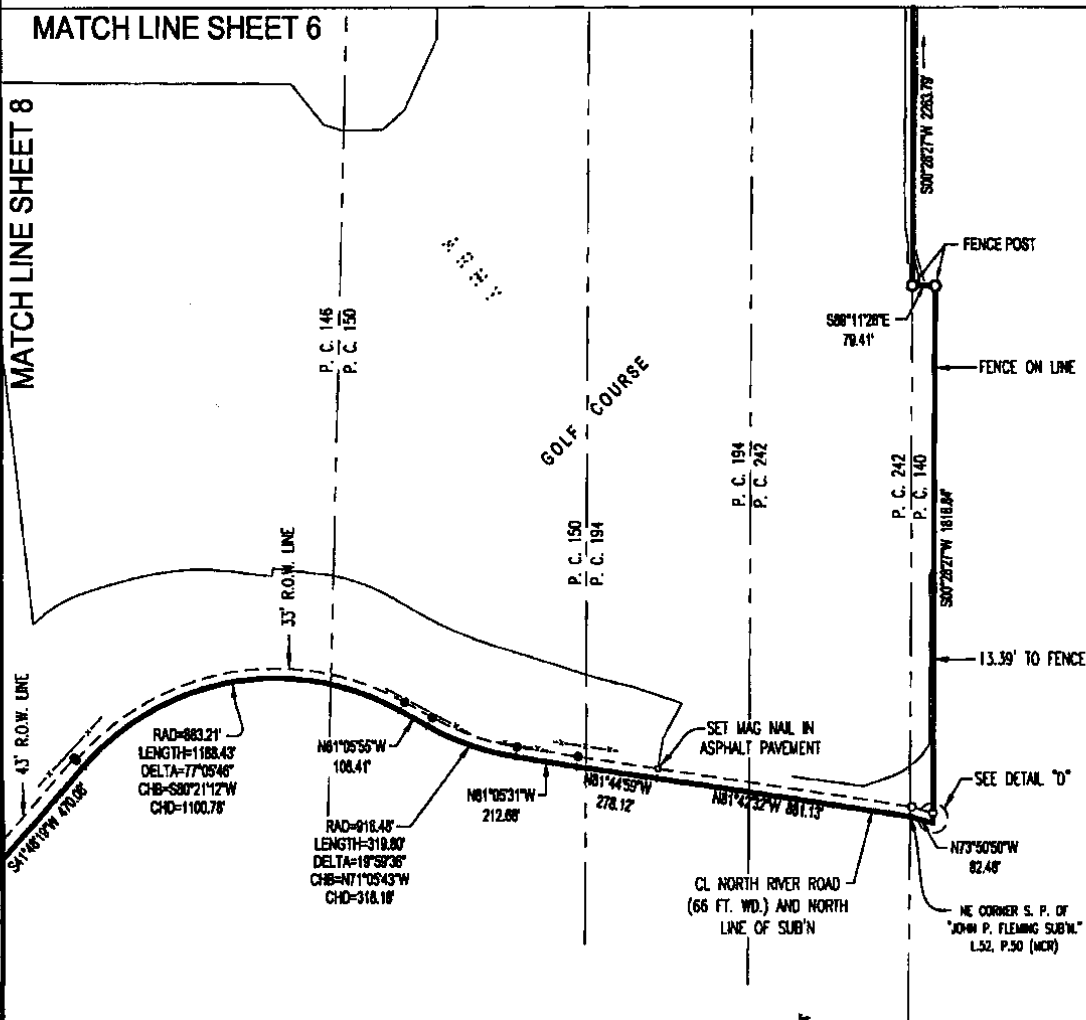
12504 STEPHENS, WARRIEN, MI 48089
 TEL. (586) 755-5770 • FAX (586) 755-5774
 www.metcoservices.com



CERTIFICATE OF SURVEY

MATCH LINE SHEET 6

MATCH LINE SHEET 8



DETAIL "D"
NO SCALE

- LEGEND**
- - SET IRON ROD W/ CAP #28408 UNLESS OTHERWISE NOTED
 - - SET 6" x 6" CONCRETE MONUMENT ALUMINUM DISC STAMPED "SANGS, HARRISON TWP., MI., CONTROL POINT 2004"
 - ⊙ - SET 6" x 6" CONCRETE MONUMENT W/ BRASS DISC STAMPED "SANGS, HARRISON TWP., MI., CONTROL POINT"



CLIENT: S. A. N. G.

ADDRESS: 28700 RAILROAD AVE. BLDG. 127

CITY, STATE & ZIP: HARRISON TOWNSHIP, MI 48045

TWP.: HARRISON P.C.: VARIOUS COUNTY: MACOMB

DATE: 01/07/08 DRAWN BY: CSD

JOB NO.: 07-125 SHEET NO.: 7 OF 13

SCALE: 1" = 500'

BOOK/PAGE: N/A

LEGAL DESCRIPTION: SEE SHEETS 12 & 13 OF 13

Steven E. Dunn
 STEVEN E. DUNN, PROFESSIONAL SURVEYOR #28408

Jan 08, 2008 - 11:15am
 L:\2007\book\07125\dwg\03132.dwg

METCO

SERVICES, INC.

12504 STEPHENS, WARREN, MI 48089
 TEL - (586) 755-5770 • FAX (586) 755-5774
 www.metcoservices.com

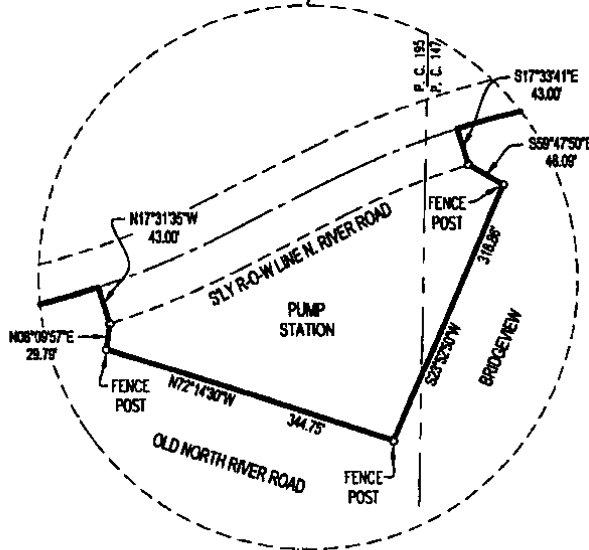


CERTIFICATE OF SURVEY

MATCH LINE SHEET 9

P. C. 195

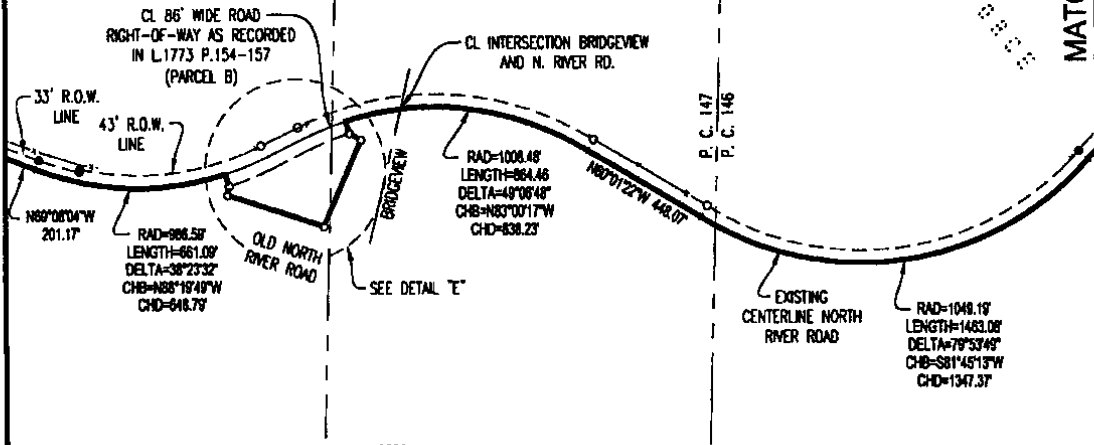
P. C. 195
P. C. 147



MATCH LINE SHEET 7

DETAIL "E"
NO SCALE

MATCH LINE SHEET 7



LEGEND

- - SET IRON ROD W/CAP #28408 UNLESS OTHERWISE NOTED
- - SET 6"x6" CONCRETE MONUMENT ALUMINUM DISC STAMPED "SANGH, HARRISON TWP., MI, CONTROL POINT 2004"
- - SET 6"x6" CONCRETE MONUMENT W/BRASS DISC STAMPED "SANGH, HARRISON TWP., MI, CONTROL POINT"



CLIENT: S. A. N. G.
 ADDRESS: 28700 RAILROAD AVE. BLDG. 127
 CITY, STATE & ZIP: HARRISON TOWNSHIP, MI 48045
 TWP.: HARRISON P.C.: VARIOUS COUNTY: MACOMB
 DATE: 01/07/08 DRAWN BY: CSD
 JOB NO.: 07-125 SHEET NO.: 8 OF 13

LEGAL DESCRIPTION: SEE SHEETS 12 & 13 OF 13

SCALE: 1" = 500'



BOOKPAGE: N/A

Jan 08, 2008 - 11:15am
 L:\2007\jobs\07125\dwg\03132.dwg

Steven E. Dunn
 STEVEN E. DUNN, PROFESSIONAL SURVEYOR #28408

METCO

SERVICES, INC.

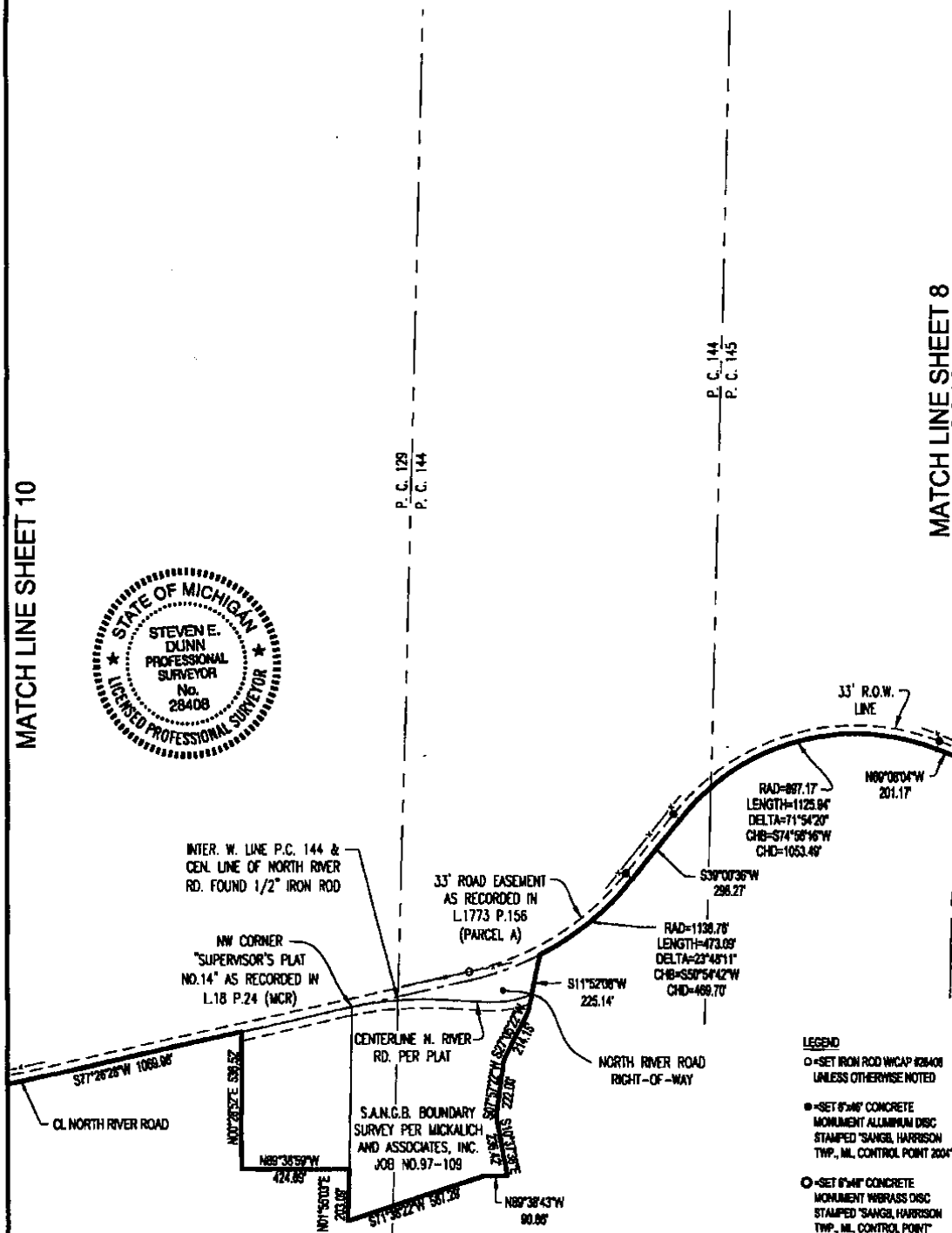
12504 STEPHENS, WARREN, MI 48099
 TEL. - (386) 735-5770 • FAX (386) 735-5774
 www.metcoservices.com



CERTIFICATE OF SURVEY

MATCH LINE SHEET 10

MATCH LINE SHEET 8



CLIENT: S. A. N. G.
 ADDRESS: 28700 RAILROAD AVE. BLDG. 127
 CITY, STATE & ZIP: HARRISON TOWNSHIP, MI 48045
 TWP.: HARRISON P.C.: VARIOUS COUNTY: MACOMB
 DATE: 01/07/08 DRAWN BY: CSD
 JOB NO.: 07-125 SHEET NO.: 9 OF 13
 SCALE: 1" = 50'

BOOK/PAGE: N/A

LEGAL DESCRIPTION: SEE SHEETS 12 & 13 OF 13

Steven E. Dunn
 STEVEN E. DUNN, PROFESSIONAL SURVEYOR #28408

METCO

SERVICES, INC.

12504 STEPHENS, WARREN, MI 48089
 TEL. - (586) 733-5770 • FAX (586) 733-5774
 www.metcoeservices.com



CERTIFICATE OF SURVEY

MATCH LINE SHEET 11

MATCH LINE SHEET 9

P. C. 172

P. C. 693
 P. C. 129

6021.28'
 101°30'00" E 7088.85'
 CENTERLINE IRWIN RD.
 P. C. 172
 P. C. 693

LEGEND

- = SET IRON ROD W/CAP #28408 UNLESS OTHERWISE NOTED
- = SET 8"X8" CONCRETE MONUMENT ALUMINUM DISC STAMPED "SANGH, HARRISON TWP., MI., CONTROL POINT 2004"
- = SET 8"X8" CONCRETE MONUMENT W/BRASS DISC STAMPED "SANGH, HARRISON TWP., MI., CONTROL POINT"



CL. INTERSECTION OF P.C. LINE COMMON TO P.C. 172&693 (ALSO BEING THE CL. OF IRWIN RD. AND THE CL. OF N. RIVER RD.) SET MAG NAIL W/METCO TAG

FOUND 1/2" IRON ROD W/CAP #27486

FOUND CONCRETE MONUMENT 33.32' EAST OF CL. OF IRWIN RD. AND 51.05' NORTH OF CL. OF N. RIVER RD.

RAD=5080.79'
 LENGTH=348.87'
 DELTA=3°54'42"
 CHB=578°11'27"W
 CHD=348.81'

CLIENT: S. A. N. G.
 ADDRESS: 28700 RAILROAD AVE. BLDG. 127
 CITY, STATE & ZIP: HARRISON TOWNSHIP, MI 48045
 TWP.: HARRISON P.C.: VARIOUS COUNTY: MACOMB
 DATE: 01/07/08 DRAWN BY: CSD
 JOB NO.: 07-125 SHEET NO.: 10 OF 13
 SCALE: 1" = 500'

BOOK/PAGE: N/A

LEGAL DESCRIPTION: SEE SHEETS 12 & 13 OF 13

Steven E. Dunn
 STEVEN E. DUNN, PROFESSIONAL SURVEYOR #28408

METCO

SERVICES, INC.

12504 STEPHENS, WARREN, MI 48069
 TEL. - (586) 755-5770 • FAX (586) 755-5774
 www.metcoservices.com

CERTIFICATE OF SURVEY

LEGAL DESCRIPTION: Part of Section 31 and part of Private Claim 144, Town 3 North, Range 14 East, Chesterfield Township, Macomb County, Michigan, ALSO being part of Fractional Section 6 and part of Private Claims 172, 693, 129, 144, 145, 195, 147, 146, 150, 194, 242 and 140, Town 2 North, Range 14 East, Harrison Township, Macomb County, Michigan, described as:

Beginning at the south 1/4 corner of said Section 31, Town 3 North, Range 14 East:
 Thence along the township line common with Chesterfield Township and Harrison Township N.87°10'42"E. 1687.57 feet;
 Thence N.00°21'33"E. 1465.47 feet;
 Thence S.89°38'27"E. 239.42 feet;
 Thence N.02°46'09"W. 1250.27 feet;
 Thence N.86°56'03"E. to the line common with the east line of said section and the west line of said Private Claim 144 797.07 feet;
 Thence along said line S.01°25'39"W. 283.13 feet;
 Thence S.88°39'21"E. 314.71 feet;
 Thence S.88°43'24"E. 276.05 feet;
 Thence S.27°50'39"W. 351.32 feet;
 Thence S.89°23'48"E. to the line common with the east line of said Private Claim 144 and the west line of Private Claim 145 773.68 feet;
 Thence along said line S.01°33'12"W. to said township line 2029.87 feet (also being the southeast corner of "Supervisor's Plat No. 8", as recorded in Liber 18 of Plats on Page 19, Macomb County Records),
 Thence along said line N.86°58'18"E. 2641.44 feet to the easterly line of Jefferson Avenue (120' wide)
 Thence along said line S.11°47'32"W. 385.93 feet;
 Thence N.88°42'32"E. 714.00 feet;
 Thence S.07°12'32"W. 247.48 feet;
 Thence N.84°20'52"E. to a point on the meander line along the bank of Lake St. Clair 373.08 feet;
 Thence along said meander line the following courses:
 S.18°20'04"W. 492.53 feet and S.05°18'43"W. 734.00 feet and S.12°12'07"W. 746.91 feet and S.14°35'52"W. 376.86 feet and S.63°29'58"E. 369.52 feet and S.00°28'32"E. 667.39 feet and S.11°17'00"E. 4326.04 feet and S.05°36'39"E. 248.15 feet and S.17°09'31"W. 261.86 feet and S.22°05'41"E. 591.08 feet and S.37°16'48"E. 409.48 feet and S.70°49'27"E. 253.24 feet and S.44°13'50"E. 267.16 feet and S.53°34'37"E. 1079.90 feet and S.68°43'04"E. 402.04 feet and S.86°21'14"E. 299.81 feet and S.86°30'49"E. 430.54 feet and S.62°49'03"E. 713.06 feet and S.81°40'53"E. to the easterly line of Private Claim 242 (also being the westerly line of Private Claim 140) 399.19 feet;
 Thence along said line S.00°28'27"W. 2263.79 feet;
 Thence S.89°11'28"E. 79.41 feet;
 Thence S.00°28'27"W. to the centerline of North River Road (66' wide) 1818.84 feet;
 Thence along said centerline N.73°50'50"W. 82.48 feet and N.81°42'32"W. 881.13 feet and N.81°44'59"W. 278.12 feet and N.81°05'31"W. 212.68 feet to a point of curve, concave to the north, having a length of 319.80 feet, a radius of 916.48 feet, delta of 19°59'36" and whose chord bears N.71°05'43"W. 318.18 feet and N.61°05'55"W. 108.41 feet to a point of curve, concave to the south, having a length of 1188.43 feet, a radius of 883.21 feet, delta of 77°05'48" and whose chord bears S.80°21'12"W. 1100.78 feet and S.41°48'19"W. 470.08 feet to a point of curve concave to the north, having a length of 1463.06 feet, a radius of 1049.19 feet, delta of 79°53'49" and whose chord bears S.81°45'13"W. 1347.37 feet and N.60°01'22"W. 448.07 feet to a point of curve, concave to the south, having a length of 864.46 feet, a radius of 1008.48 feet, delta of 49°06'48" and whose chord bears N.83°00'17"W. 838.23 feet;
 Thence S.17°33'41"E. to the southerly right-of-way line of said North River Road (86' wd.) 43.00 feet
 Thence S.58°47'50"E. 46.08 feet;
 Thence S.23°52'50"W. 316.86 feet;
 Thence N.72°14'30"W. 344.75 feet;
 Thence N.08°09'57"E. to the southerly right-of-way line of said North River Road (86' wd.) 29.79 feet;
 Thence N.17°31'35"W. to the centerline of said North River Road 43.00 feet;
 Thence along said centerline, on a curve concave to the north, having a length of 661.09 feet, a radius of 986.59 feet, delta of 38°23'32", and whose chord bears N.88°19'49"W. 648.79 feet and N.69°08'04"W. 201.17 feet to a curve concave to the south, having a length of 1125.94 feet, a radius of 897.17 feet, delta of 71°54'20", and whose chord bears S.74°56'16"W. 1053.49 feet and S.39°00'36"W. 296.27 feet to a curve concave to the northwest, having a length of 473.09 feet, a radius of 1138.76 feet, delta of 23°48'11", and whose chord bears S.50°54'42"W. 469.70 feet;
 Thence S.11°52'08"W. 225.14 feet;
 Thence S.27°05'22"W. 214.15 feet;
 Thence S.07°57'22"W. 222.00 feet;
 Thence S.10°37'38"E. 236.42 feet;
 Thence N.89°38'43"W. 90.86 feet;
 Thence S.71°38'22"W. 567.29 feet;
 Thence N.01°55'03"E. 203.09 feet;
 Thence N.89°38'59"W. 424.69 feet;

(CONTINUED ON PAGE 13 OF 13)



CLIENT: S. A. N. G.
 ADDRESS: 28700 RAILROAD AVE. BLDG. 127
 CITY, STATE & ZIP: HARRISON TOWNSHIP, MI 48045
 TWP.: HARRISON P.C.: VARIOUS COUNTY: MACOMB
 DATE: 01/07/08 DRAWN BY: CSD
 JOB NO.: 07-125 SHEET NO.: 12 OF 13
 SCALE: N/A
 BOOK/PAGE: N/A



Jan 08, 2008 - 11:11am
 L:\2007\jobs\07125\dwg\03132.dwg

Steven E. Dunn
 STEVEN E. DUNN, PROFESSIONAL SURVEYOR #28408

METCO

SERVICES, INC.

12504 STEPHENS, WARREN, MI 48089
 TEL. - (586) 755-5770 • FAX (586) 755-5774
 www.metcoservices.com

CERTIFICATE OF SURVEY

Thence N.00°28'52"E. to the centerline of said North River Road 536.52 feet;
 Thence along said centerline S.77°26'28"W. 1069.98 feet and S.78°09'02"W. 964.75 feet to a curve concave to the south, having a length of 346.87 feet, a radius of 5080.79 feet, delta of 03°54'42", and whose chord bears S.78°11'27"W. 346.81 feet and S.74°14'20"W. to the intersection with the west line of Private Claim 693 (also being the east line of Private Claim 172) and the centerline of Irwin Road (variable width) 714.16 feet;
 Thence along said line N.01°33'03"E. 7086.63 feet to a non-tangent curve concave to the northwest, having a length of 762.15 feet, a radius of 1170.92 feet, delta of 37°17'37" and whose chord bears S.56°26'52"W. 748.77 feet;
 Thence S.01°35'52"W. 45.30 feet;
 Thence N.87°07'08"W. 385.00 feet;
 Thence N.87°14'25"W. to the west line of Harrison Township, (also being the east line of Clinton Township, T.2N., R.13E.) 1674.42 feet;
 Thence N.01°16'10"E. along said line 30.01 feet;
 Thence S.87°14'25"E. 1674.59 feet;
 Thence N.01°35'51"E. 10.00 feet;
 Thence N.84°34'50"E. 387.81 feet;
 Thence N.01°35'52"E. 1.55 feet to a point of non-tangent curve, concave to the northwest, having a length of 786.09 feet, a radius of 1120.93 feet, delta of 40°10'52" and whose chord bears N.54°14'43"E. 779.08 feet to the line common with Private Claim 172 and Private Claim 693;
 Thence along said line N.01°33'03"E. 716.73 feet;
 Thence N.88°09'55"W. 349.93 feet;
 Thence N.01°33'03"E. to the north line of said Private Claim 172 (also being the south line of said Fractional Section 6) 2398.83 feet;
 Thence along said line S.88°20'40"E. 127.87 feet;
 Thence N.01°14'57"E. 490.72 feet;
 Thence S.88°09'30"E. to the line common with said Fractional Section 6 and said Private Claim 693 222.07 feet;
 Thence along said line and its extension N.00°53'46"E. to the said township line common with Harrison Township and Chesterfield Township 2794.53 feet;
 Thence along said line N.86°52'49"E. 1049.98 feet to the point of beginning.

Containing 3,070.376 acres of land (gross), more or less.
 Containing 3,020.969 acres of land (net-less right-of-way), more or less.
 Subject to any and all easements and/or rights-of-way of record or otherwise.



CLIENT: S. A. N. G.
 ADDRESS: 28700 RAILROAD AVE. BLDG. 127
 CITY, STATE & ZIP: HARRISON TOWNSHIP, MI 48045
 TWP.: HARRISON P.C.: VARIOUS COUNTY: MACOMB
 DATE: 01/07/08 DRAWN BY: CSD
 JOB NO.: 07-125 SHEET NO.: 13 OF 13
 SCALE: N/A
 BOOK/PAGE: N/A



Steven E. Dunn
 STEVEN E. DUNN, PROFESSIONAL SURVEYOR #28408

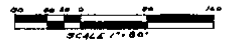
COPY

46439

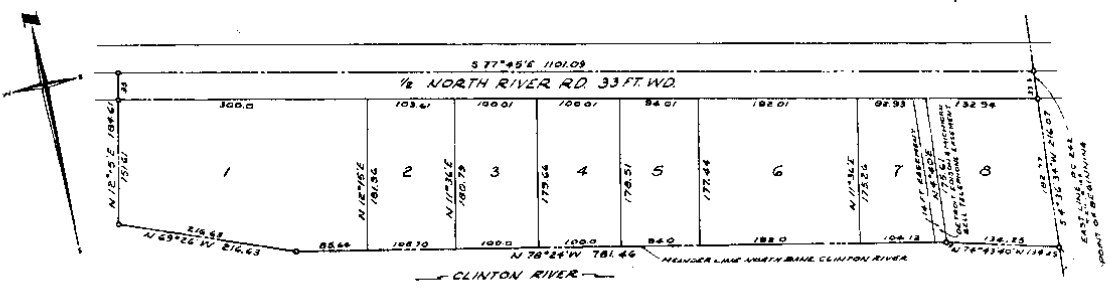
SUPERVISOR'S PLAT OF JOHN P. FLEMING SUB'N

PART OF PRIVATE CLAIMS 194 & 242, T.2N., R.14E., HARRISON TOWNSHIP, MACOMB COUNTY, MICHIGAN

NOTE: All dimensions are in feet and decimals thereof.



FITZ J. BRIDGES
REG. CIVIL ENGR & SURVEYOR
MT. CLEMENS, MICHIGAN



DEDICATION

KNOW ALL MEN BY THESE PRESENTS, that I, Ralph E. Beaufait, Supervisor of Harrison Township, Macomb County, State of Michigan, by virtue of authority in me vested by Section 51, Act 172, of 1929, having been duly authorized by the Township Board have ceded the land described in the annexed plat to be surveyed, laid out and platted, to be known as Supervisor's Plat of John P. Fleming Sub'n, part of Private Claim's 194 & 242, T.2N., R.14E., Harrison Township, Macomb County, Michigan, and that the streets and alleys as shown on said plat are now being used for such purposes, and that the plat conforms with the requirements of Section 51, Act 172, of Public Acts of 1929, as amended.

Witnesses:

Alphonse Trombley
MAYOR OF ROSS
Ralph E. Beaufait
Supervisor of the
Township of Harrison

CERTIFICATION OF MUNICIPAL APPROVAL

This plat was approved by the Township Board of Harrison Township at a meeting held on _____ day of _____ A. D. 196 _____. The foregoing plat as approved complies with the provisions of Sec. 19a of the plat act as added by Act 150 of Public Acts of 1961.

Richard W. Munroe, Clerk

DESCRIPTION OF LAND PLATTED

The land embraced in the annexed plat of Supervisor's Plat of John P. Fleming Sub'n, part of Private Claim's 194 & 242, T.2N., R.14E., Harrison Township, Macomb County, Michigan, is described as follows:

Beginning at the intersection of the East line of P. C. 242 and the North Bank of the Clinton River, thence along a meander line on the North Bank of the Clinton River the following bearings and distances N. 74° 34' 00" W. 134.25 ft. and N. 78° 24' W. 781.46 ft., and N. 69° 26' W. 216.63 ft., the intent being to convey to the channel bank of the Clinton River, thence N. 12° 15' E. 184.41 ft., to the center line of North River Road, thence S. 77° 45' E. 1101.05 ft., along the center line of North River Road to the East line of P. C. 242, thence S. 4° 36' 34" W. 216.07 ft., along the East line of P. C. 242 to the point of beginning and containing Lots 1 thru 8 inclusive.

CERTIFICATE OF APPROVAL BY THE COUNTY BOARD

This Plat was approved on the 22nd day of JANUARY, 1964 by the Macomb County Plat Board.

Arthur J. Miller
County Clerk
Lynn Whalen
County Treasurer
Thomas S. Walsh
Drain Commissioner

SURVEYOR'S CERTIFICATE

I hereby certify the plat hereon delineated is a correct one and that permanent metal monuments consisting of bars not less than one-half inch in diameter and 36 inches in length, encased in a concrete cylinder at least 4 inches in diameter and 36 inches in depth have been placed at points marked thus (o) as thereon shown at all angles in the boundaries of the land platted, at all the intersections of the lines of streets, and at the intersections of the lines of streets with the boundaries of the plat as shown on said plat.

Fitz J. Bridges
Registered Land Surveyor
No. 5779

ACKNOWLEDGEMENT

STATE OF MICHIGAN
County of _____

On this 22nd day of JANUARY, A. D. 1964, before me, _____ a Notary Public in and for said County, personally came the above named Ralph E. Beaufait, Supervisor of Harrison Township known to me to be the person who executed the above dedication and acknowledged the same to be his free act and deed as such supervisor.

Notary Public
Notary Public
My Commission expires: 4-21-67

CERTIFICATE OF APPROVAL BOARD OF COUNTY ROAD COMMISSIONERS

This Plat has been certified and was approved on the _____ day of _____ 1964 by the Macomb County Board of Road Commissioners

Ernest W. McGowan
Vice-Chairman
Lawrence G. Gombke
Member