

REC'D. MACOMB CO. AUG 12 2008 4:10 p.m.
 REC'D. MACOMB CO. SEP 26 2008 11:20 a.m.

LAND CORNER RECORDATION CERTIFICATE
 Filing Requirement of Act 74, Mich. P.A. 1970

For corners in

MACOMB Located In: Corner Code #
 (County) Harrison Twp. & Clinton Twp.

1. Public Land Survey T 02N, R 14E PC-012
 T R
 2. Property Controlling S T R
 in Section S T R
 3. Miscellaneous S T R
 Property in Sec. S T R

8110077
 LIBER 19502 PAGE 761
 09/26/2008 02:46:53 P.M.
 MACOMB COUNTY, MI SEAL
 CARMELLA SABAUGH, REGISTER OF DEEDS

8095117
 LIBER 19502 PAGE 167
 09/15/2008 10:01:15 A.M.
 MACOMB COUNTY, MI SEAL
 CARMELLA SABAUGH, REGISTER OF DEEDS

Register of Deeds Stamp & File Number

4. Lot No. _____, Recorded Plat _____
 5. Private Claims Northwest Corner Private Claim 172 common with the
Northeast Corner of Private Claim 626, T. 2N., R. 13E.

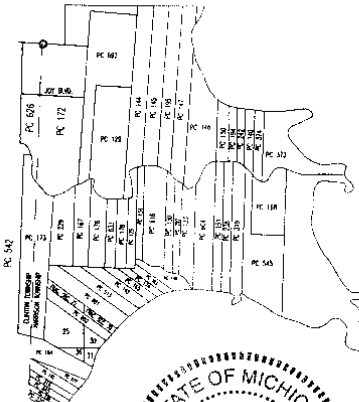
I, Steven E. Dunn, in a field survey on January 7, 2008, do hereby certify that under requirements of P.A. 74, Michigan P.A. of 1970, the corner points mentioned in lines 1 and 2 above were in conformance with regulations and rules therefore as required in the current manual of survey instructions of the United States Department of the Interior, Bureau of Land Management or by a decree of a Court of Law and /or that the corner points mentioned in lines 3, 4 and 5 above were in conformance with the rules of the Michigan Board of Land Surveyors or by a Decree of a Court of Law, established, re-established, monumented, re-monumented, recovered, found as expressed below:

NOTE: Not more than 2 corners, all in the same town and range, may be recorded on this certificate.



A. Description of original monument and accessories and/or subsequent restoration:

- | | |
|---------------------|--|
| 1810 Black Ash | GLO Original survey performed by Aaron Greeley, |
| 1921 N&S PC Line | L. 5, P. 32, "Ascot Park Subdivision" |
| 1928 N&S PC Line | L. 13, P. 40, Assessors Plat No. 24 |
| 1934 N&S PC Line | L. 16, P. 23, Supervisors Plat No. 5 |
| 1968 N&S PC Line | L. 59, P. 7 & 8, Supervisor's Plat No. 19 |
| 1972 Conc. Monument | Certificate of Survey, unrecorded, Charles G. Melching, #14767 (no witnesses found) |
| 1974 Iron | Certificate of Survey, unrecorded, William E. Soderberg, #17635 (no witnesses found) |
| 1990 Conc. Monument | L. 92, P. 47-50, East Pointe Industrial Subdivision |
| 2004 North PC Line | L. 157, P. 16 & 17, Amended Plat of Lot 9 of East Pointe Industrial Subdivision |



B. Description of corner evidence found and/or method applied in restoring or reestablishing corner:

PC 012 Northwest Corner of Private Claim 172 common with the Northeast Corner of Private Claim 626, Town 2 North, Range 13 East. Found concrete monument ± 2' north of south toe of slope of Gohl Drain and ± 20' north of chain link fence along the south bank of the Gohl Drain.

I verified the location of the found concrete monument by comparing field measurements with record measurements.

FIELD MEASUREMENTS AND RECORD MEASUREMENTS (see back):

C. Description of monument for corner and accessories established to perpetuate locating the position of the corner:

PC 012 Northwest Corner of Private Claim 172 common with the Northeast Corner of Private Claim 626, Town 2 North, Range 13 East. Found concrete monument ± 2' north of south toe of slope of Gohl Drain and ± 20' north of chain link fence along the south bank of the Gohl Drain.

I accepted the found concrete monument ± 2' north of the south toe of slope of the Gohl Drain and set an aluminum cap stamped "Macomb County Monument Mi Act 345 1990 MCL, 28408, PC 012 PC 004" on the 1/2" steel rod.

WITNESSES:

- S.33°E 29.60' Set 1/2" steel rod w/blue cap stamped "MC REMON WIT POINT".
- S.22°W. 26.31' Set 1/2" steel rod w/blue cap stamped "MC REMON WIT POINT".
- N.36°W. 87.67' Set 1/2" steel rod w/blue cap stamped "MC REMON WIT POINT".
- N.36°E. 84.24' Set 1/2" steel rod w/blue cap stamped "MC REMON WIT POINT".
- South ± 20' Chain link fence along the south bank of the Gohl Drain.

ACCEPTED BY THE MACOMB COUNTY SURVEY PEEF GROUP AS THE OFFICIAL CORNER UNDER MICHIGAN PUBLIC ACT 345 OF 1990 AT A MEETING HELD ON 6-3-08

Martin C. Dunn
 MARTIN C. DUNN, P.S. CHAIRMAN

THE SELECTED LOCATION IS ACCEPTED BY ME AND IS GENERALLY ACCEPTED BY PROFESSIONAL SURVEYORS AS THE BEST AVAILABLE EVIDENCE OF THE POSITION OF THE ORIGINAL CORNER.



Signed by Steven E. Dunn Date August 8, 2008
 Surveyor's Michigan License No. 28408

DOCUMENT BEING RECORDED TO CORRECT OTHER CODE FROM PC 001 TO PC 004

For corners in

<u>MACOMB</u> (County)	Located In: Harrison Twp. & Clinton Twp.	Corner Code #
---------------------------	--	---------------

1. Public Land Survey	T <u>02N</u> , R <u>14E</u>	PC- <u>012</u>
	T <u> </u> , R <u> </u>	

5. Private Claims Northwest Corner Private Claim 172 common with the Northeast Corner of Private Claim 626, T.2N., R. 13E.

A. Description of original monument and accessories and/or subsequent restoration:

B. Description of corner evidence found and/or method applied in restoring or reestablishing corner:
PC 012 Northwest Corner of Private Claim 172 common with the Northeast Corner of Private Claim 626, Town 2 North, Range 13 East. Found concrete monument ± 2' north of south toe of slope of Gohl Drain and ± 20' north of chain link fence along the south bank of the Gohl Drain.

FIELD MEASUREMENTS AND RECORD MEASUREMENTS:

PC 012 to M3, T.2N., R.13E. (not a remon corner):
1285.85' – Record, East Pointe Industrial Subdivision.
1286.03' – Field. 2008 Remon.

PC 012 to L3, T.2N., R.13E. (not a remon corner):
1009.85' – Record, East Pointe Industrial Subdivision.
1009.81' – Field. 2008 Remon.

PC 012 to PCC ~~001~~ (centerline intersection of Henry B. Joy Road and the line common with PC 172 and PC 626):
4209.77' – Record, Tax Descriptions, west side.
4220.48' – Record, Tax Descriptions, east side.
4215.13' – Mean of record above.
4215.94' – Field. 2008 Remon.

Angle M3 (not a remon corner)/PC 012/PCC ~~001~~:
89°54'30" – Record, Certificate of Survey (2).
89°58'04" – Field. 2008 Remon.

Angle PCC ~~001~~/PC 012/L3 (not a remon corner):
90°04'09" – Field. 2008 Remon.

REC'D. MACOMB CO. AUG 12 2008 4:00 p.m.
REC'D. MACOMB CO. SEP 26 2008 11:00 a.m.

LAND CORNER RECORDATION CERTIFICATE
Filing Requirement of Act 74, Mich. P.A. 1970

For corners in

MACOMB
(County)

Located In:
Clinton Twp.
& Harrison Twp.

Corner Code #

- 1. Public Land Survey T 02N, R13E PC-001
- 2. Property Controlling in Section S T R
- 3. Miscellaneous Property in Sec. S T R

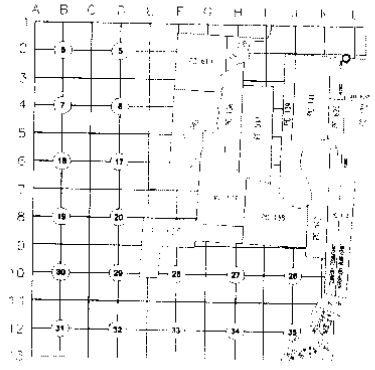
8095124
LIBER 19452 PAGE 181
08/15/2008 02:41:24 A.M.
MACOMB COUNTY, MI
SEAL
CARMELLA SABAUGH, REGISTER OF DEEDS

8110078
LIBER 19502 PAGE 763
09/26/2008 02:47:14 P.M.
MACOMB COUNTY, MI
SEAL
CARMELLA SABAUGH, REGISTER OF DEEDS

- 4. Lot No. _____, Recorded Plat _____
- 5. Private Claims Northeast Corner Private Claim 626 common with the Northwest Corner of Private Claim 172, Town 2 North, Range 14 East

I, Steven E. Dunn, in a field survey on January 7, 2008, do hereby certify that under requirements of P.A. 74, Michigan P.A. of 1970, the corner points mentioned in lines 1 and 2 above were in conformance with regulations and rules therefore as required in the current manual of survey instructions of the United States Department of the Interior, Bureau of Land Management or by a decree of a Court of Law and/or that the corner points mentioned in lines 3, 4 and 5 above were in conformance with the rules of the Michigan Board of Land Surveyors or by a Decree of a Court of Law, established, re-established, monumented, re-monumented, recovered, found as expressed below.

NOTE: Not more than 2 corners, all in the same town and range, may be recorded on this certificate.



A. Description of original monument and accessories and/or subsequent restoration:

- 1810 Post GLO Original survey performed by Aaron Greeley,
- 1921 N&S PC Line L. 5, P. 32, "Ascot Park Subdivision"
- 1928 N&S PC Line L. 13, P. 40, Assessors Plat No. 24
- 1934 N&S PC Line L. 16, P. 23, Supervisors Plat No. 5
- 1968 N&S PC Line L. 59, P. 7 & 8, Supervisor's Plat No. 19
- 1972 Conc. Monument Certificate of Survey, unrecorded, Charles G. Melching, #14767 (no witnesses found)
- 1974 Iron Certificate of Survey, unrecorded, William E. Soderberg, #17635 (no witnesses found)
- 1990 Conc. Monument L. 92, P. 47-50, East Pointe Industrial Subdivision
- 2004 North PC Line L. 157, P. 16 & 17, Amended Plat of Lot 9 of East Pointe Industrial Subdivision

ACCEPTED BY THE MACOMB COUNTY SURVEY PEER GROUP AS THE OFFICIAL CORNER UNDER MICHIGAN PUBLIC ACT 345 OF 1990 AT A MEETING HELD ON 6-3-08
Martin C. Dunn
MARTIN C. DUNN, P.S. CHAIRMAN

B. Description of corner evidence found and/or method applied in restoring or reestablishing corner:

PC-001 Northeast Corner of Private Claim 626 common with the Northwest Corner of Private Claim 172, Town 2 North, Range 14 East. Found concrete monument ± 2' north of south toe of slope of Gohl Drain and ± 20' north of chain link fence along the south bank of the Gohl Drain.

I verified the location of the found concrete monument by comparing field measurements with record measurements.

FIELD MEASUREMENTS AND RECORD MEASUREMENTS (see back):

C. Description of monument for corner and accessories established to perpetuate locating the position of the corner:

PC-001 Northeast Corner of Private Claim 626 common with the Northwest Corner of Private Claim 172, Town 2 North, Range 14 East. Found concrete monument ± 2' north of south toe of slope of Gohl Drain and ± 20' north of chain link fence along the south bank of the Gohl Drain.

I accepted the found concrete monument ± 2' north of the south toe of slope of the Gohl Drain and set an aluminum cap stamped "Macomb County Monument Mi Act 345 1990 MCL, PC-001, PC 012, 28408" on the 1/2" steel rod.

WITNESSES:

- S.33°E 29.60' Set 1/2" steel rod w/blue cap stamped "MC REMON WIT POINT".
- S.22°W 26.31' Set 1/2" steel rod w/blue cap stamped "MC REMON WIT POINT".
- N.36°W 87.67' Set 1/2" steel rod w/blue cap stamped "MC REMON WIT POINT".
- N.36°E 84.24' Set 1/2" steel rod w/blue cap stamped "MC REMON WIT POINT".
- South ± 20' Chain link fence along the south bank of the Gohl Drain.

THE SELECTED LOCATION IS ACCEPTED BY ME AND IS GENERALLY ACCEPTED BY PROFESSIONAL SURVEYORS AS THE BEST AVAILABLE EVIDENCE OF THE POSITION OF THE ORIGINAL CORNER.



Signed by Steven E. Dunn
Surveyor's Michigan License No. 28408

Date August 8, 2008



DOCUMENT BEING RECORDED TO CORRECT OTHER CODE FROM PC 001 TO PC 002 AND PC 002 TO PC 003.

For corners in

<u>MACOMB</u> (County)	Located In: Clinton Twp. & Harrison Twp.	Corner Code # <i>M.A.D.</i> <i>002</i> <u>PC-001</u>
1. Public Land Survey	T <u>02N</u> , R <u>13E</u> .	
	T ___ R ___	
2. Property Controlling in Section	S ___ T ___ R ___	
	S ___ T ___ R ___	
3. Miscellaneous Property in Sec.	S ___ T ___ R ___	
	S ___ T ___ R ___	

4. Lot No. _____, Recorded Plat _____

5. Private Claims Northeast Corner Private Claim 626 common with the Northwest Corner of Private Claim 172, T.2N., R. 14E.

A. Description of original monument and accessories and/or subsequent restoration:

002
B. Description of corner evidence found and/or method applied in restoring or reestablishing corner:
~~PC-001~~ *002* Northeast Corner of Private Claim 626 common with the Northwest Corner of Private Claim 172, Town 2 North, Range 14 East. Found concrete monument ± 2' north of south toe of slope of Gohl Drain and ± 20' north of chain link fence along the south bank of the Gohl Drain.

FIELD MEASUREMENTS AND RECORD MEASUREMENTS:

002
PC-001 to M3 (not a remon corner):
1285.85' - Record, East Pointe Industrial Subdivision.
1286.03' - Field. 2008 Remon.

002
PC-001 to L3:
1009.85' - Record, East Pointe Industrial Subdivision.
1009.81' - Field. 2008 Remon.

002 003
PC-001 to PCC-002 (centerline intersection of Henry B. Joy Road and the line common with PC 172 and PC 626):
4209.77' - Record, Tax Descriptions, west side.
4220.48' - Record, Tax Descriptions, east side.
4215.13' - Mean of record above.
4215.94' - Field. 2008 Remon.

002 003
Angle M3 (not a remon corner)/PC-001/PCC-002:
89°54'30" - Record, Certificate of Survey (2).
89°58'04" - Field. 2008 Remon.

003 002
Angle PCC-002/PC-001/L3 (not a remon corner):
90°04'09" - Field. 2008 Remon.

MACOMB COUNTY
INDEX OF SUPPORTING DOCUMENTATION FOR

Town 2 North, Range 14 East

Harrison Township and Clinton Township

Corner Code: PC-012 Northwest corner of Private Claim 172 common with the Northeast corner of Private Claim 626, Town 2 North, Range 13 East.

Section One:

- A. Index
- B. Pictures
 - 1. Before Pictures (3) – January 7, 2008
 - 2. After Picture – August 7, 2008

Section Two:

- A. Preliminary LCRC
- B. Surveyor's Report – April 28, 2008

Section Three:

- A. Field Notes – January 7, 2008
- B. Legal Description – N/A
- C. Tax Description – N/A
- D. Sketches – Field Measurement and Record Measurement Comparisons April 28, 2008
- E. Maps (6) – Macomb County Atlas
 - Harrison Township – 1875, 1895 and 1916
 - Clinton Township – 1875, 1895 and 1916
- F. Macomb County Composite Maps (7) – Date of photography April, 2004
 - 11-01H, 11-12D & H, 11-13C, D, F and G

Section Four:

- A. Copies of original government notes (5)
 - Private Claim 172 (3) – Black Ash. Original Survey performed by Aaron Greeley
July 18, 1810
 - Private Claim 626 (2) – Post. Original Survey performed by Aaron Greeley
July 14, 1810
- B. Recorded LCRC's – N/A
- C. Recorded and unrecorded surveys
 - 1. Plat of Survey, Charles G. Melching #14767, Found concrete monument May, 1972
 - 2. Certificate of Survey, William E. Soderberg #17635, Set ReRod December 2, 1974
- D. Copies of all items listed in "Part A" of LCRC.
 - 1. Plats:
 - a. L. 5, P. 32 "Ascot Park Subdivision" April 26, 1921
 - b. L. 13, P. 40 Assessors Plat No. 24 November 22, 1928
 - c. L. 16, P. 23 Supervisors Plat No. 5 January 10, 1934
 - d. L. 59, P. 7 & 8 Supervisor's Plat No. 19 July 14, 1968
 - e. L. 92, P. 47-50 East Pointe Industrial Subdivision December 13, 1992
 - f. L. 157, P. 16 & 17 Amended Plat of Lot 9 of East Point
Industrial Subdivision August 3, 2004

Survey Report
PC-012
T.2N., R.14E., Harrison Twp.

Letters asking for unrecorded information were sent to:

AEW, Inc. – Shelby Twp.
Fenn & Associates, Inc. – Shelby Twp.
GWE – Rochester Hills
Kennedy Surveying, Inc. – Oxford
Lehner Associates, Inc. – Clinton Twp.
GLA Surveyor – Plymouth
Professional Engineering Assoc. Inc. – Troy
R. J. Donnelly & Associates Inc. – Troy
George Jerome & Company – Roseville
King Surveying, Inc. – Armada
Michigan Surveying Inc. – Livonia
David C. Adams & Son – Redford
Urban Land Consultants – Shelby Township

CORNER: Northwest Corner of Private Claim 172, Harrison Township, common with the Northeast Corner of Private Claim 626, Town 2 North, Range 13 East, Clinton Township. Found a concrete monument $\pm 2'$ north of south toe of slope of Gohi Drain.

OBSERVATIONS: The found monument falls 0.36' south of the line from L03 (not a remon corner) and M03 (not a remon corner), both in Town 2 North, Range 13 East, Clinton Township.

PC 012 to L03 field measures 1009.81', within 0.04' of record (1009.85') of East Pointe Industrial Subdivision, as recorded in Liber 92 of Plats on Pages 47-50.

PC 012 to M03 field measures 1286.03', within 0.18' of record (1285.85') of said East Pointe Industrial Subdivision.

PC 012 to PCC 019 (centerline intersection of Henry B. Joy Road and the line common with Private Claim 172 and Private Claim 626) field measures 4215.94', within 0.81' of the mean of the record measurements tax descriptions (4209.77' record west side, 4220.48' record east side, 4215.13' mean).

RECOMMENDATION: My recommendation to the Peer Review Board is to accept the found concrete monument as the proper location for the corner.

Respectfully submitted,

Steven E Dunn, PS #28408

April 28, 2008

TG
A5

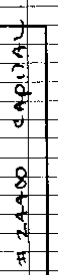
CLINTON TWP.
MACOMB CO

08-100

08-100	DESC	FRAC COR SEC 1
1325	FD 1/2" IR # 30092	
1326	FD 1/2" IR 30103	
1327	FD 1/2" I.R.	
1328	FD 1/2" I.R.	
1329	FD 1/2" I.R.	
1330	FD CONC MON IN PITCH 2' NO	
	OE SOUTH TOE OF Slope	
1331	FO 1/2" E.P. # 28419	
1330A	SET 1/2" IR WITH BLUE " MC REMON WIT POINT "	
1330B	SET 1/2" IR WITH BLUE " MC REMON WIT POINT "	
1330C	SET 1/2" IR WITH BLUE " MC REMON WIT POINT "	
1330D	SET 1/2" IR WITH BLUE " MC REMON WIT POINT "	
1332	FD 3/4" IRON PIPE 0.50 EAST OF	
1333	FD 1" IRON SPIKE 0.66 EAST OF	
1334	FD 1/2" IRON ROD # 47955 ALONG FENCE	

JAN 7, 2007 FB-520

GPS FILE 08100.TG 07JAN08



ABRAHAM

RTH 1330C 1330D

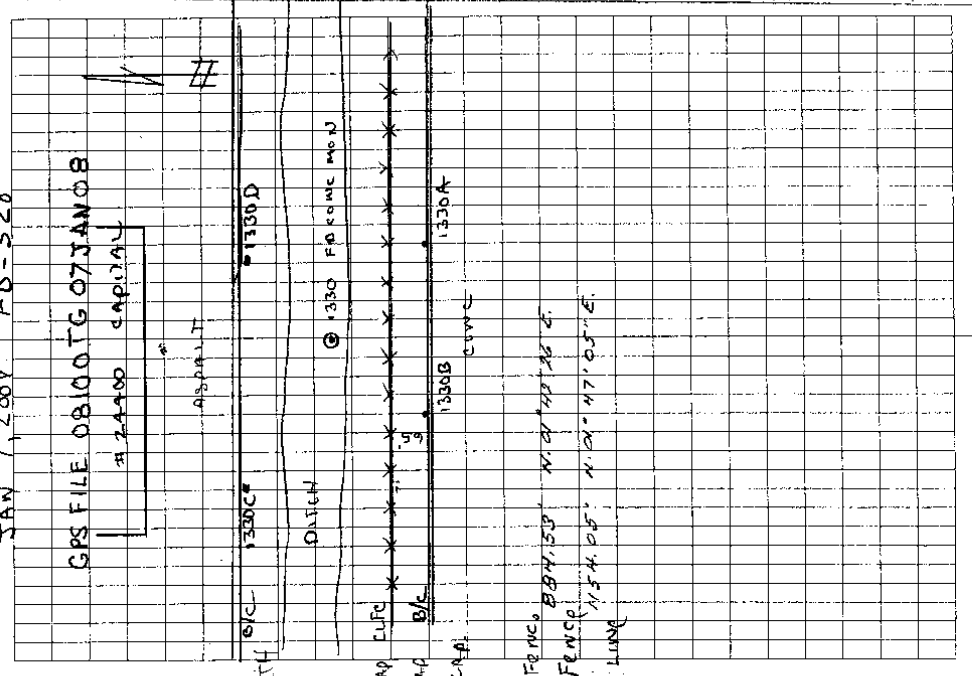
DITCH

1330 FENCE MON

CAP CLIP
CAP B/C
CAP

1330B 1330A

FENCE BBH 1330 N 21' 47.25" E
FENCE N 54.05° N 21' 47.05" E
LINE



HARRISON

CLINTON PCC006, 002, PCC002 PCC012, 013, PCC001

4-23-08

SOUTH 1/4 COR. 2295.83' N. 2295.70' E. SE COR.
 FRAC. SEC. 1 0.36' SOUTH FRAC. SEC. 1
 FD. 3/4" Rod w/CAP 30103 PCC001 PCC012 FD. CONC. MON.
 1009.81' N. 1009.85' E. 1286.03' N. 1285.85' E.

90°05'30" R.
90°04'09" N.

89°54'30" R.
89°58'04" N.

PC 626

PC 172

TOWNSHIP

TOWNSHIP

90°18'32" N.

HENRY B. JOY PCC002 PCC001
 2668.35' N.

90°03'55" N.

CLINTON

HARRISON

IRWIN ROAD

10725.28' N.

N. RIVER BR.

FD. 3/4" ST. ROD

2114.58' N. H394.82' N. H293.20' E.

PCC002

PCC013
FD. 3/4" ST. ROD

CLINTON RIVER

1347-1349
1411-1437



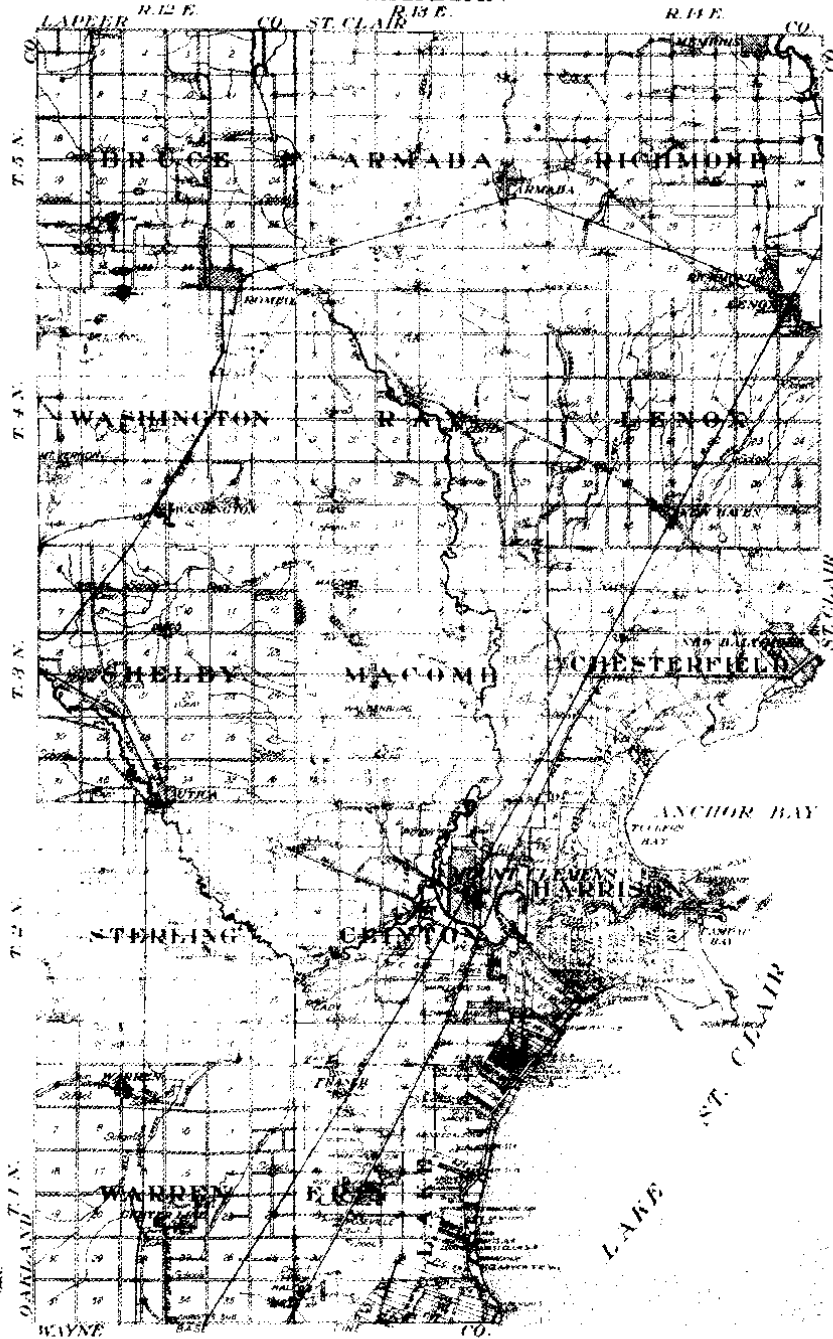
OUTLINE MAP OF
MACOMB COUNTY

Copyright 1966 by Geo. Vogel & Co.

MICHIGAN

Scale 1/4 inch to 1 mile

7



Scanned By:
METCO
Engineers, Architects & Surveyors



MAP OF
CLINTON
 TOWNSHIP

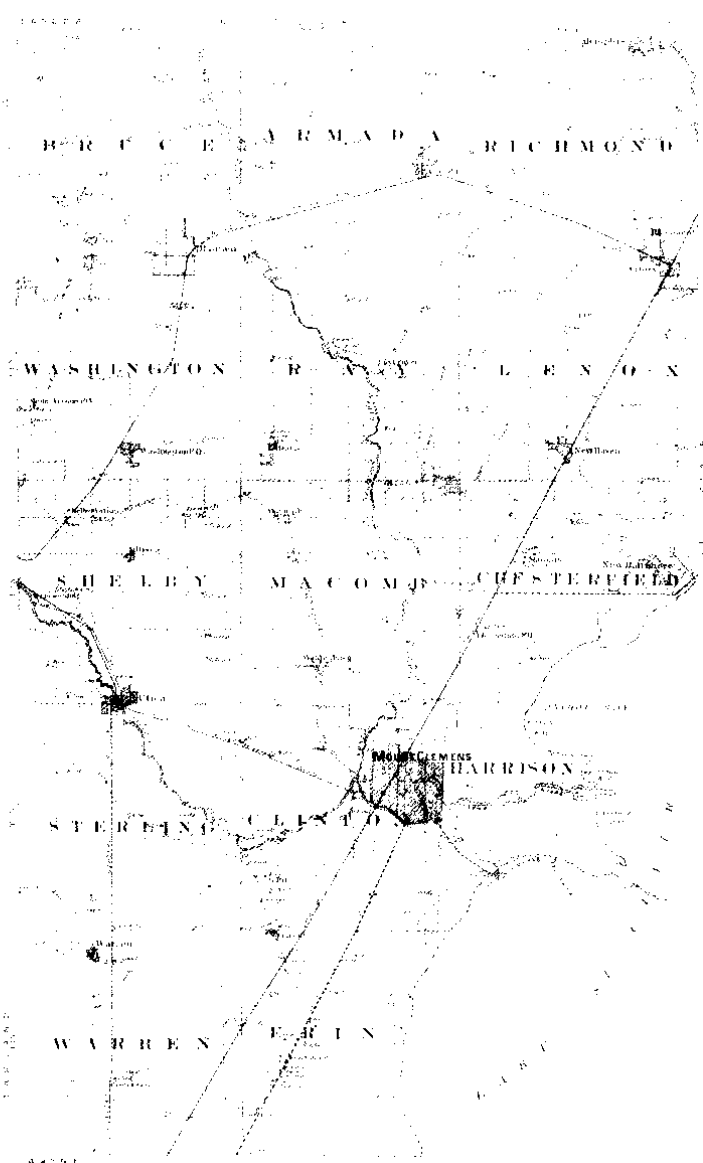
Fractional Township 2 North, Range 73 East of the Michigan Meridian

Scale 2 inches to a mile



Prepared by
METCO
 ENGINEERS & SURVEYORS

OUTLINE MAP
OF **MACOMB COUNTY** MICHIGAN



Scanned by
NETCO
Engineering, Architecture & Surveying

MAP OF HARRISON

Township 2 North Range 11 East

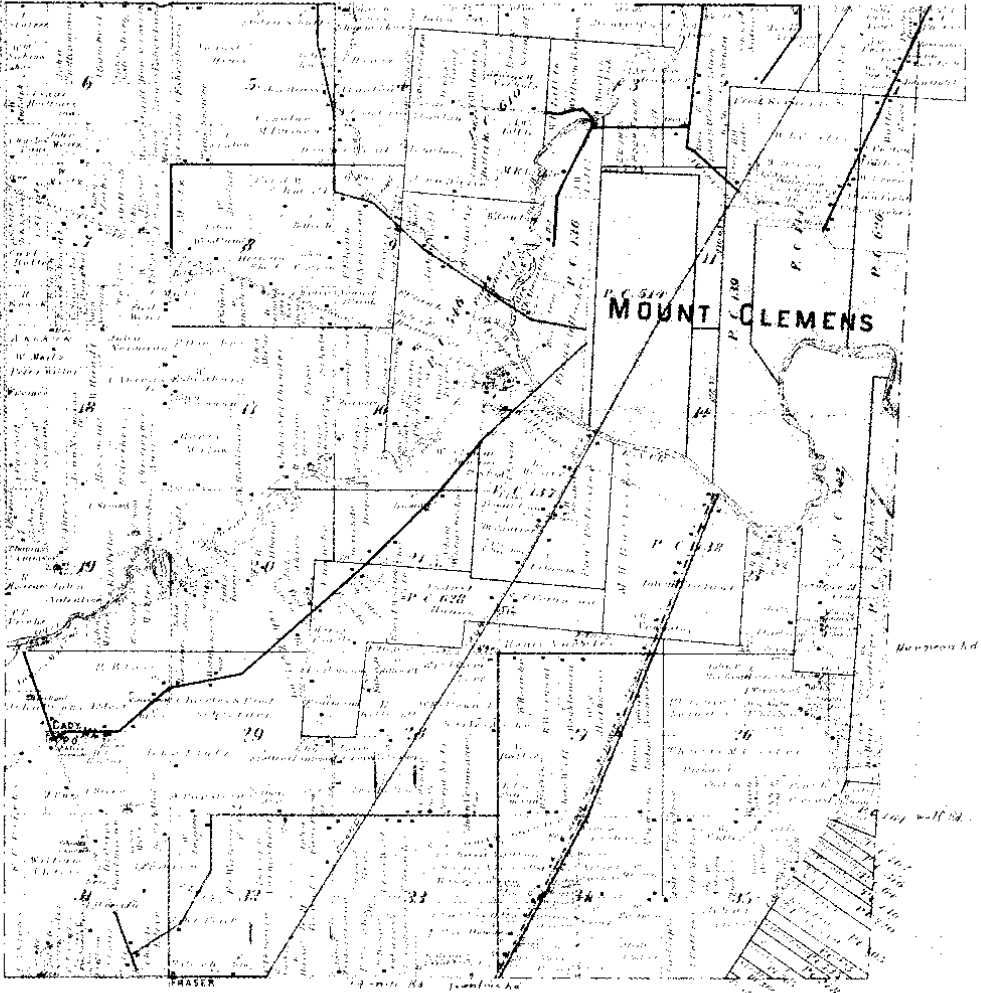


MAP OF CLINTON

Township 2 North Range 13 East

Scale 2 inches to one Mile.

Copyright 1908 by Metc...



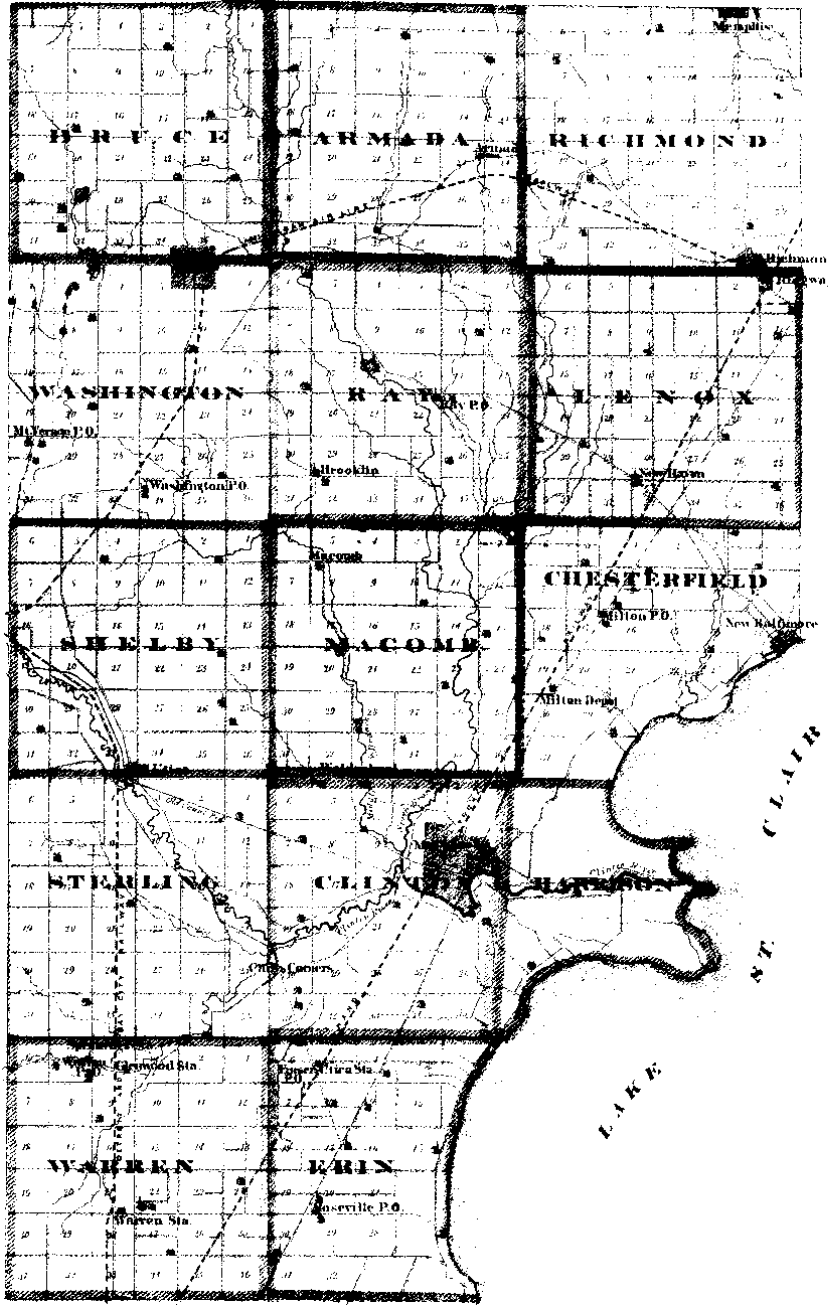
WABASH RIVER

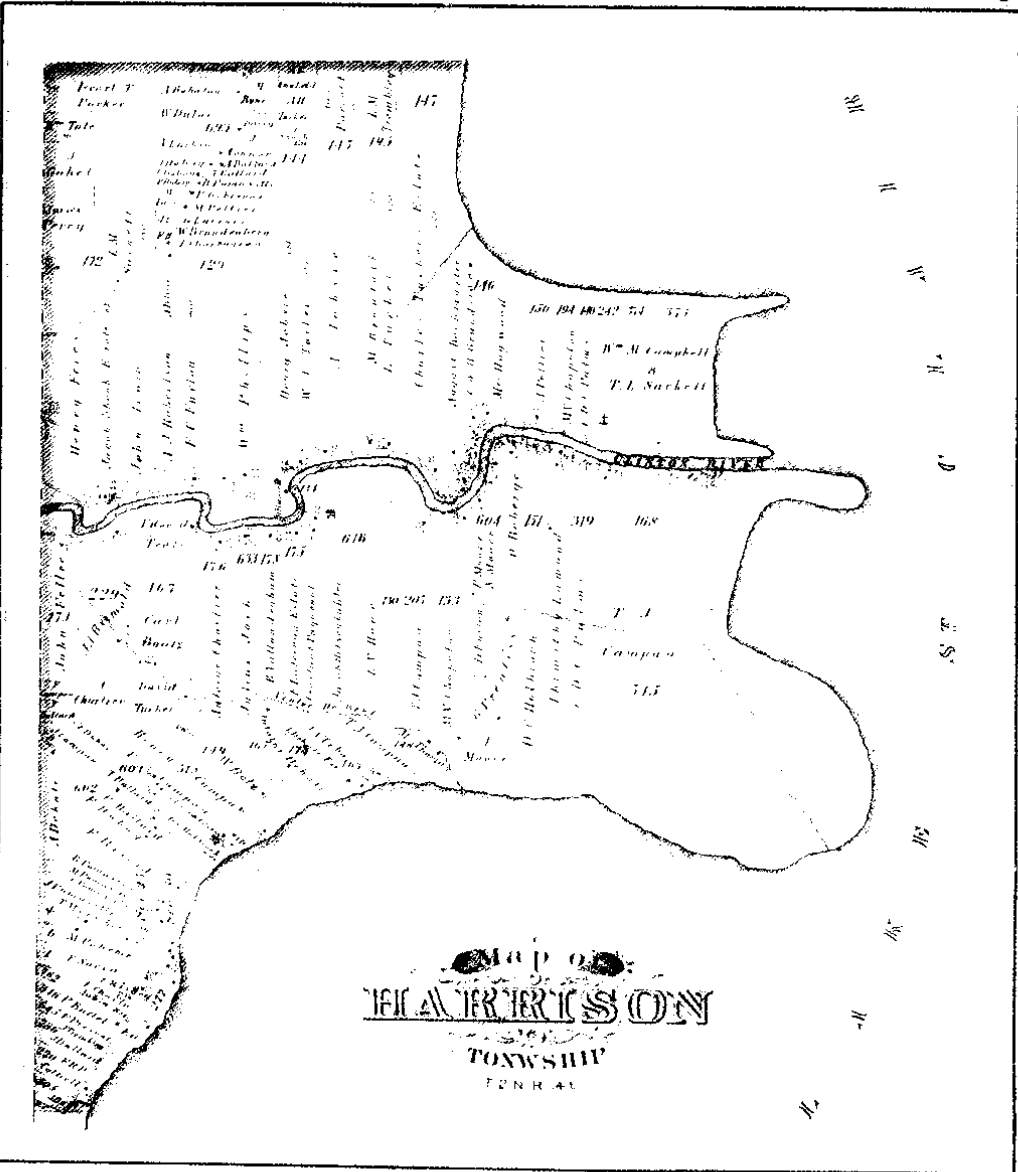
NAVIGATION

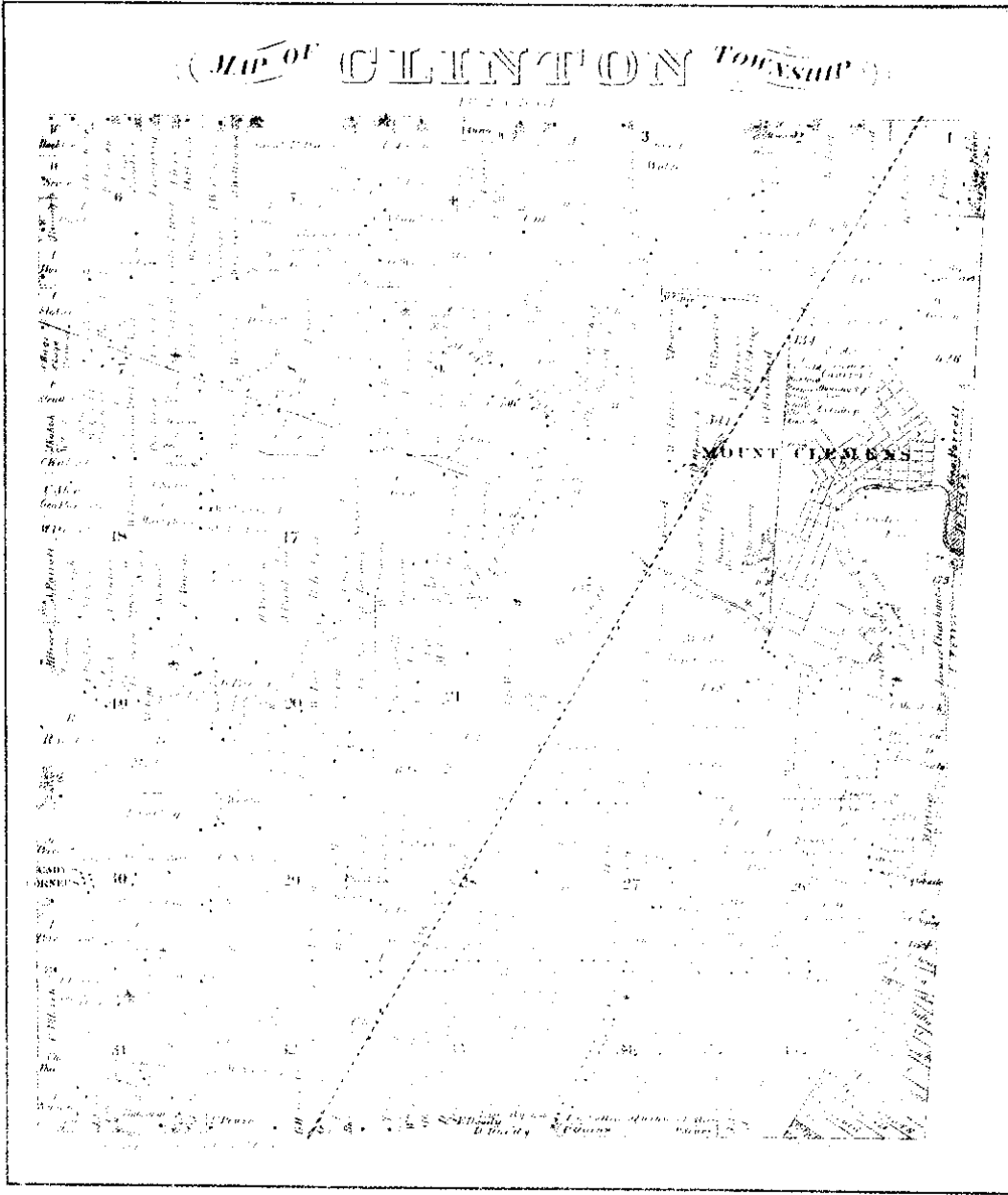
1875

COMPILED FROM SURVEYS BY WAGGON & C.

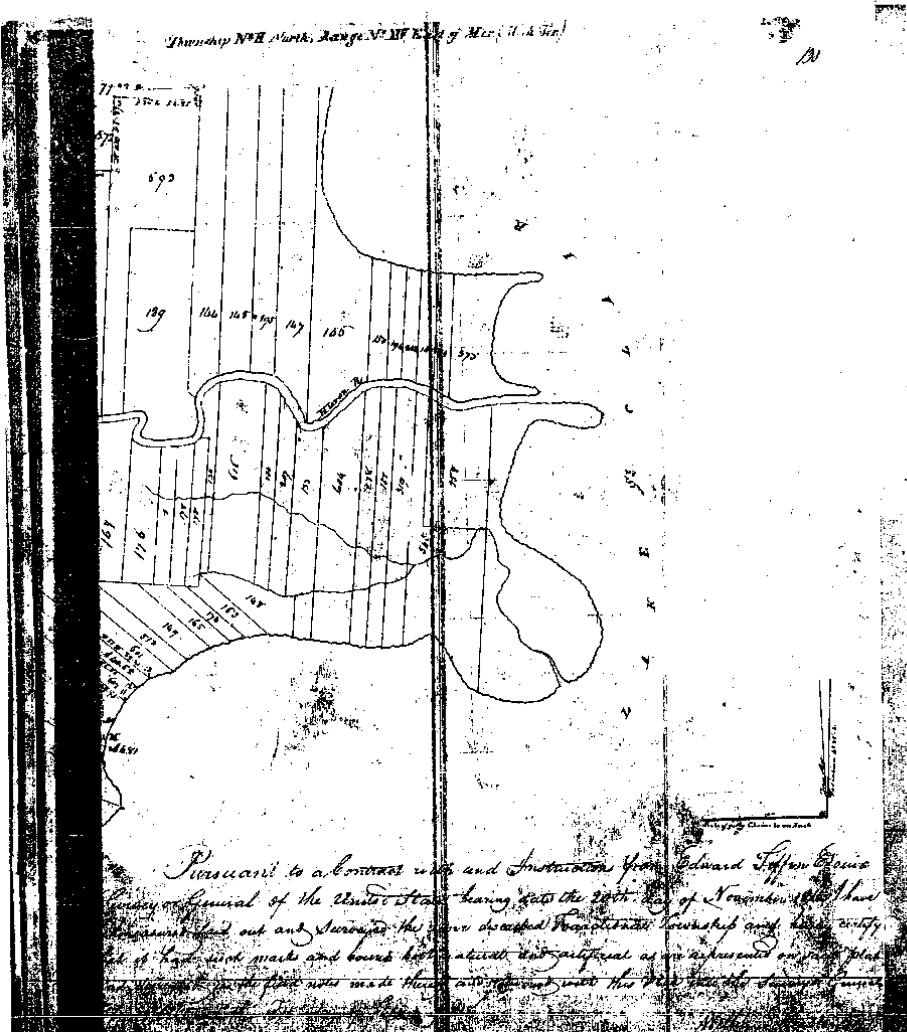
SCALE 7 MILES TO AN INCH







METCO



Management, Engineering & Technical Consultants

12504 Stephens Warren, MI 48089 (586) 755-5770 Fax (586) 755-5774

North Side of River Huron

Chains fifteen links, to a Buttonwood tree standing on the border of said River from thence along the border of said River up stream north Eighty eight degrees west seven chains, thence north forty one degrees west six chains, thence north three chains, thence north twenty four degrees East seventeen chains, thence south forty one degrees west seven chains, thence south Eighty one degrees thirty minutes west Eighteen chains, to the place of beginning containing three hundred and fifty one acres and one tenth of an acre.

Detroit July 14 1810

Harou Greeley Surveyor of Private Claims.

North

west four or
degrees
fifty seven
thence 12
degrees
of beginning
and
with the
Detroit

N. 571.
D. W. S.
William G.
standing on
between the
ed to John
two hundred
seven links
the tract is
East fifty six
standing on
ferred to
Eighty four
an acre
tract
West forty
the North
Common tra
and ten
foot
River Huron
of said
ty four degrees
seven links

N. 440. North Side of River Huron

Description N. 172. Confirmed to John Ashlin Junior commencing at a Buttonwood tree standing on the border of River Huron between this tract and a tract confirmed to Christian Gleason thence north one hundred and fifty two chains fifteen links, to a Black ash tree thence East thirty seven chains fifty links to a Black ash tree; thence south one hundred and fifty five chains fifty links to a post standing on the border of River Huron between this tract and unoccupied land, thence along the border of said River up stream North fifty six degrees west twelve chains, thence north Eighty degrees west seven chains thence South Sixty six degrees west eight chains, thence north Seventy one degree

1 - 1 8457
North Side of River Huron

420

west four chains, thence north eleven
degrees east nine chains, thence north
eighty seven degrees west three chains,
thence north eighty eight degrees west
eleven chains forty five links, to the place
of beginning containing four hundred
and six and one fourth acres and one hundred
and thirty six rods.

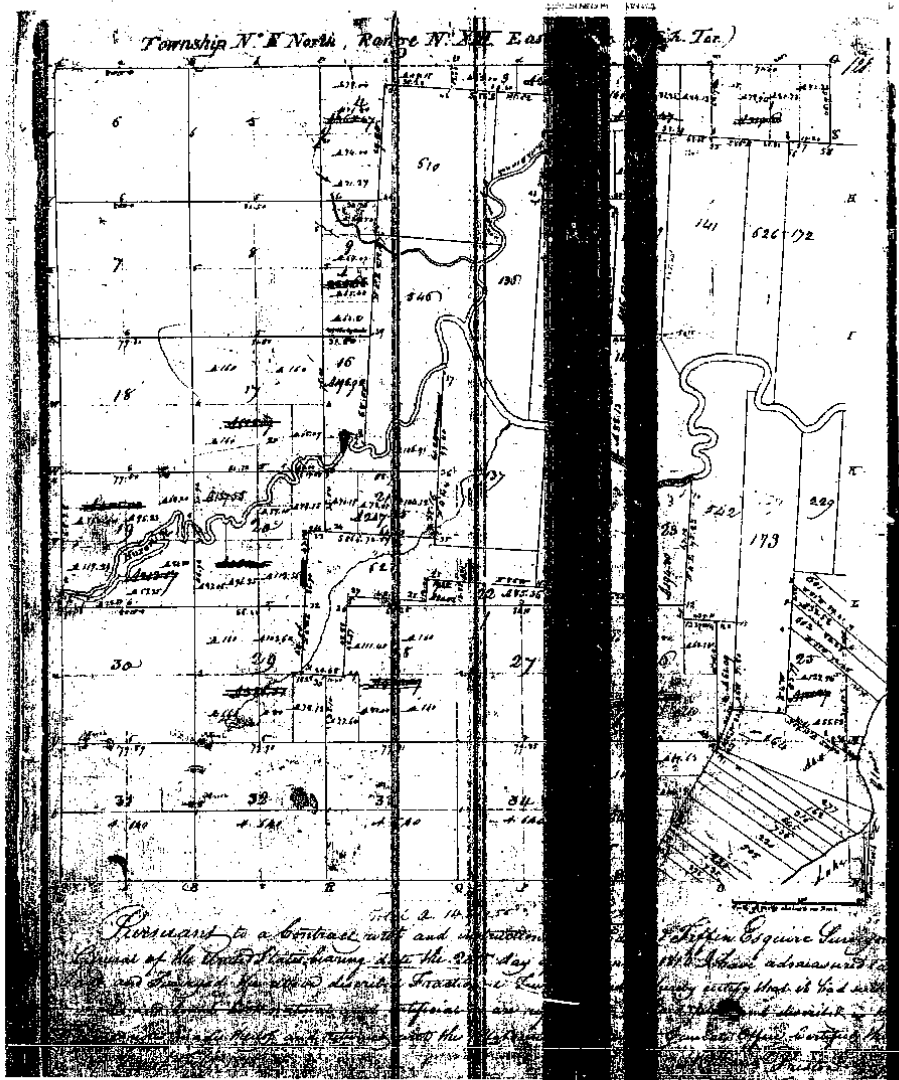
Detroit July 14, 1810
James G. Gentry Surveyor
of Judicial Claims.

No. 571. North Side of River Huron.
Description. No. 698 Confirmed to
William Connor commencing at a post
standing on the North border of River Huron
between this tract and a tract belonging
to John Ashlin Junior, thence North
two hundred and one chains thirty
seven links, to a post standing between
this tract and unrecorded lands, thence
East fifty three chains fifty links, to a post
standing on the west line of a tract con-
firmed to John Tucker, thence South
Eighty four chains forty seven links, to
an old line the North east corner of a
tract confirmed to James Connor, thence
West forty chains fifty links, to a post
the North west corner of said James
Connor's tract. Thence South five hundred
and ten chains sixty two links, to a
post standing on the North border of
River Huron thence along the border
of said River up stream South Six-
ty four degrees east fourteen chains forty
seven links, to the place of beginning.

Huron
Bitterwood
of River Huron
of said River
the equal west
forty one deg-
- north three
by four degrees
- north forty
- north forty
- by minutes
place of begin-
- and
- are
Surveyor
Claims.

Huron
- confirmed to
- commencing at a
- on the border
- is tract and
- James Glesman
- and fifty two
- Black ash tree
- in fifty links
- South one
- in fifty link
- border of
- act and
- long thi-
- South
- chains, thence
- seven chains
- west eight
- y one degree

METCO



Management, Engineering & Technical Consultants

12504 Stephens Warren, MI 48089 (586) 755-5770 Fax (586) 755-5774

No. 491

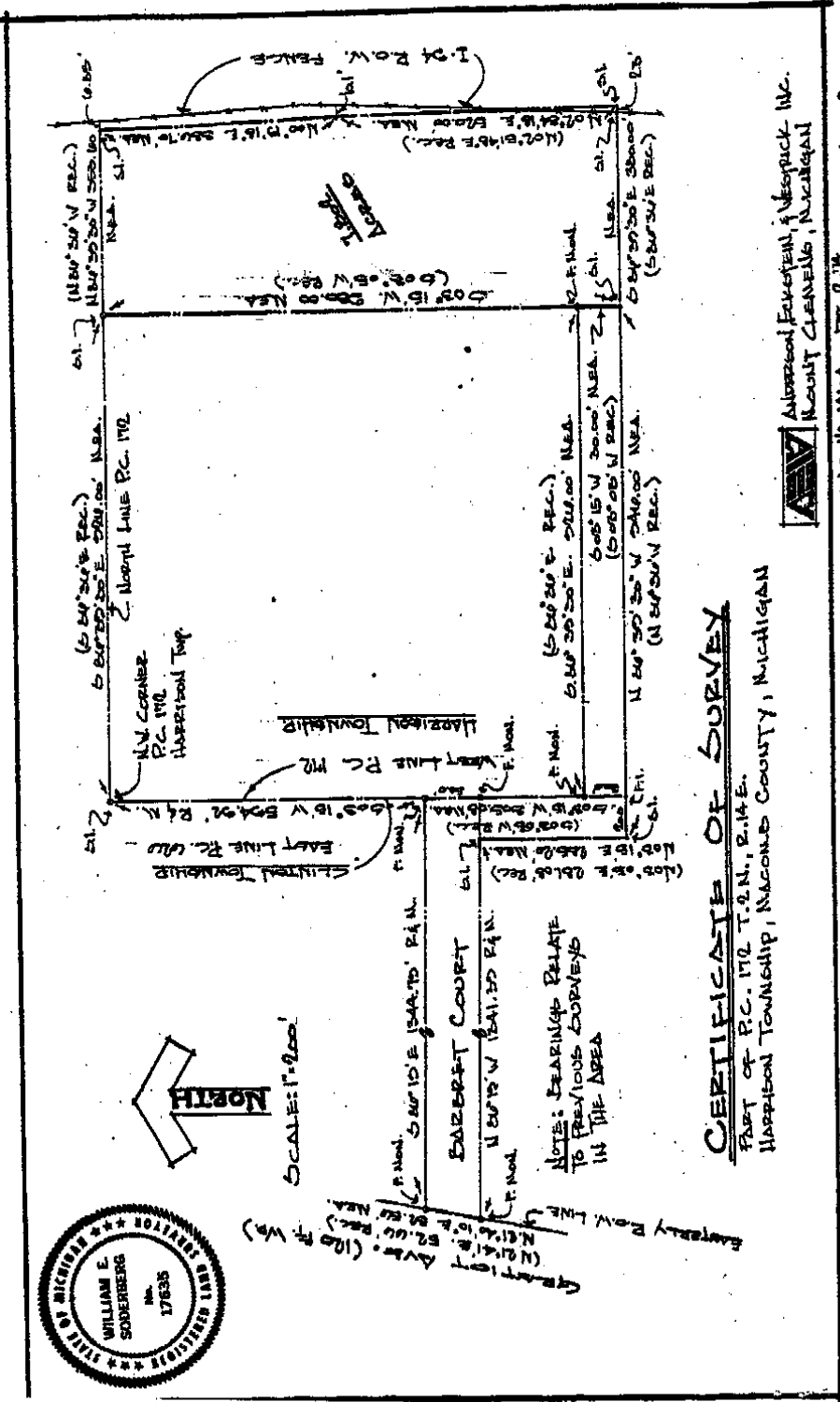
No. 626 Confirmed to
Christian Clemans

NORTH SIDE OF RIVER HURON

Description No. 626 Confirmed to Christian Clemans commencing at a post standing on the border of River Huron between this tract and a tract confirmed to the claimant thence north one hundred and twenty six chains twenty three links to a post thence east twenty six chains forty one links to a post the northwest corner of a tract confirmed to John Askin Junior thence south one hundred and fifty two chains fifteen links to a buttonwood tree standing on the border of River Huron thence along the border of said river up stream north eighty eight degrees west seven chains thence north forty one degrees west six chains thence north north three chains thence north twenty four degrees east seventeen chains thence north forty one degrees west seven chains thence south eighty one degrees thirty minutes west eighteen chains to the place of beginning, containing three hundred and fifty one acres and one tenth of an acre ____

Detroit July 14th, 1810

Aaron Greeley Surveyor
of private claims



Apartment Ave. (100 Ft. W.)
 (N 61° 15' E, 52.00' REC.)
 (N 61° 15' E, 52.00' REC.)
 (N 61° 15' E, 52.00' REC.)

NOTE: BEARINGS RELATIVE TO PREVIOUS SURVEYS IN THE AREA

CERTIFICATE OF SURVEY
 PART OF P.C. 170 T.2N., R.14E.
 HARRISON TOWNSHIP, MACOMB COUNTY, MICHIGAN

Addressed FORTSHELL & WESSPICK INC.
 MOUNT CLEMENS, MICHIGAN

JOHN H. HICKS INC. 2174 LURET COURT

DESCRIPTION

A parcel of land in and being a part of P.C. 172, T.2N., R.14E., Harrison Township, Macomb County, Michigan and being more particularly described as follows: *ReRod Set*

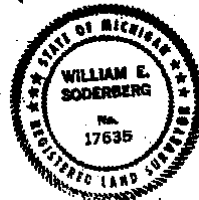
Beginning at a point on the North line of P.C. 172, S. 86° 39' 30" E. (S. 86° 36' E. Record) 926.0 feet from the Northwest corner of P.C. 172; thence S. 3° 15' W. (S. 3° 05' W. Record) 930.0 feet; thence S. 86° 39' 30" E. (S. 86° 22' E. Record) 380.0 feet; thence N. 2° 34' 18" E. (N. 2° 51' 48" E. Record) 520.0 feet; thence N. 00° 19' 18" E. 386.70 feet to the North line of P.C. 172; thence N. 86° 39' 30" W. (N. 86° 36' W. Record) 353.60 feet along the North line of P.C. 172 to the Point of Beginning and containing 7.802 Acres. Subject to Easements of Record.

Together with the following easement for ingress and egress; beginning at a point on the West line of P.C. 172 S. 3° 15' W. 594.92 feet; thence S. 3° 15' W. (S. 3° 05' W. Record) 305.08 feet along the West line of P.C. 172; thence S. 86° 39' 20" E. (S. 86° 36' E. Record) 926.0 feet; thence S. 3° 15' W. (S. 3° 05' W. Record) 30.0 feet; thence N. 86° 39' 30" W. (N. 86° 36' W. Record) 946.0 feet; thence N. 3° 15' W. (N. 3° 05' W. Record) 285.20 feet to the South line of Barbret Court; thence N. 86° 19' W. 1341.39 feet along the South line of Barbret Court to the Easterly line of Gratiot Avenue; thence N. 21° 40' 10" W. 52.56 feet (N. 21° 41' E. 52.66 Record) along said line to the North line of Barbret Court; thence S. 86° 19' E. 1344.79 feet along said line to the Point of Beginning.

SURVEYOR'S CERTIFICATE: I hereby certify that I have surveyed and mapped the land above platted and/or described on 27. November, 1974 and that the ratio of closure on the unadjusted field observations of such survey was 1:5,000 and that all of the requirements of P.A. 132, 1970, have been complied with.

ANDERSON, ECKSTEIN AND WESTRICK, INC.

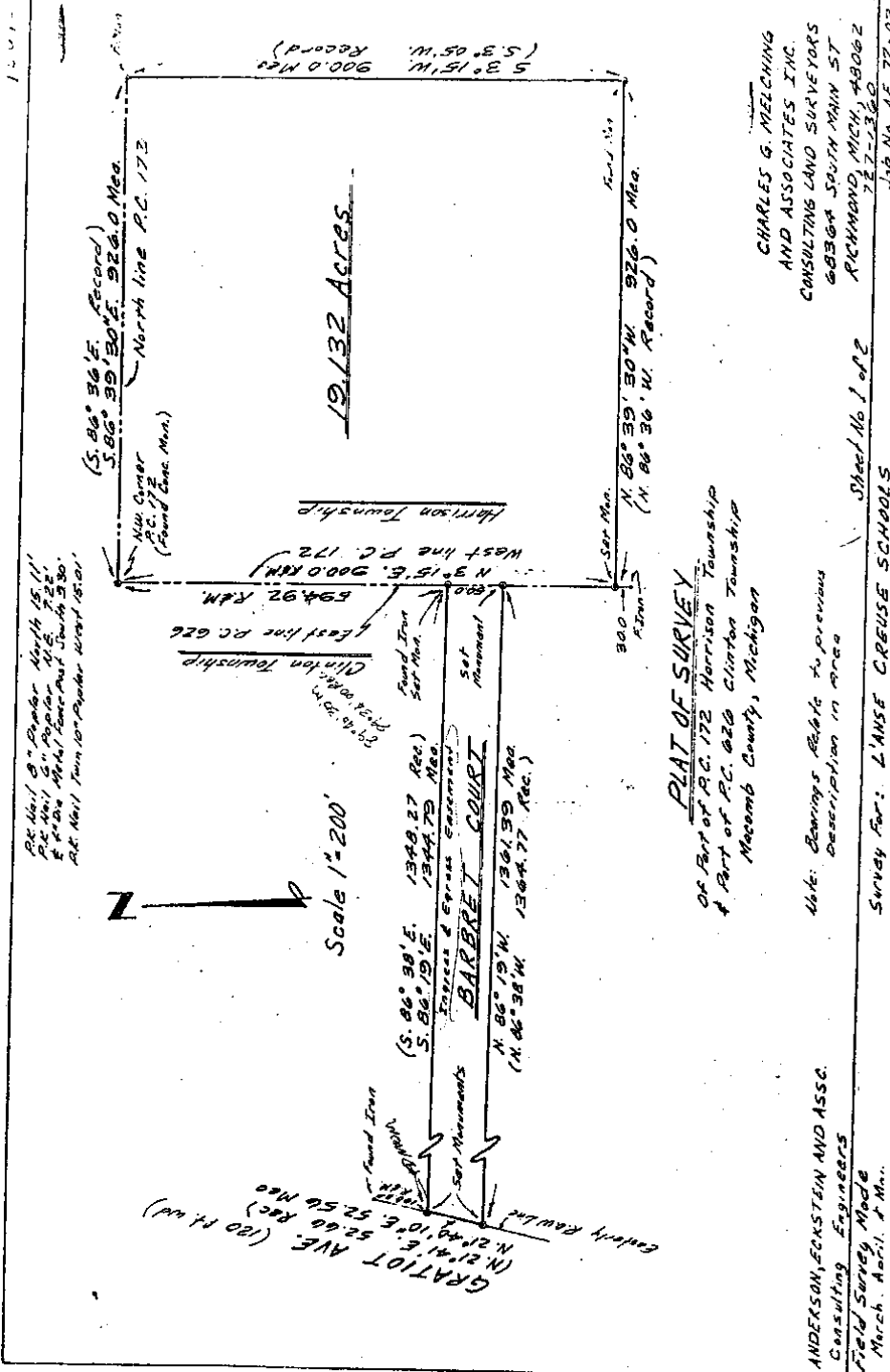
William E. Soderberg
 William E. Soderberg, R.L.S. No. 17635
 42800 Garfield Road
 Mount Clemens, Michigan, 48043



WITNESSES:

NW Corner P.C. 172
 Set ReRod from previous survey in area

Back Curb South 24.20
 Center Storm Manhole S.W. 20.82
 Center Gatewell W.S.W. 31.13



Plat No. 1 of 2
 Pl. 1511
 Pl. 1512
 Pl. 1513
 Pl. 1514
 Pl. 1515
 Pl. 1516
 Pl. 1517
 Pl. 1518
 Pl. 1519
 Pl. 1520
 Pl. 1521
 Pl. 1522
 Pl. 1523
 Pl. 1524
 Pl. 1525
 Pl. 1526
 Pl. 1527
 Pl. 1528
 Pl. 1529
 Pl. 1530

GRATIOT AVE. (120 ft. wide)
 N 21° 41' E, 52.66' Rec.
 N 21° 41' E, 52.56' Rec.

Scale 1" = 200'
 BARBET COURT
 N 86° 19' W, 1361.59' Mea.
 N 86° 38' W, 1304.77' Rec.

Clinton Township
 East line P.C. 626
 594.92' R.M.
 West line P.C. 172
 N 3° 15' E, 900.0' R.M.

Harrison Township
 North line P.C. 172
 S 86° 39' 30" E, 926.0' Mea.
 (S. 86° 39' 30" E, Record)

PLAT OF SURVEY
 ON Part of P.C. 172 Harrison Township
 & Part of P.C. 626 Clinton Township
 Macomb County, Michigan

CHARLES G. MELCHING
 AND ASSOCIATES INC.
 CONSULTING LAND SURVEYORS
 6836A SOUTH MAIN ST
 RICHMOND MICH, 48062
 717-2380

ANDERSON, ECKSTEIN AND ASSC.
 Consulting Engineers
 Field Survey Made
 March, April, & May

Survey For: L'ANSE CREUSE SCHOOLS
 Sheet No. 1 of 2

AMENDED PLAT OF LOT 9 OF
EAST POINTE INDUSTRIAL SUBDIVISION
 A SUBDIVISION OF PART OF EAST 1/2 & WEST 1/2 OF
 FRACTIONAL SECTION 1, T.2N., R.13E.,
 CLINTON TOWNSHIP, MACOMB COUNTY, MICHIGAN

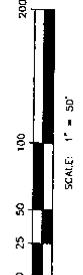
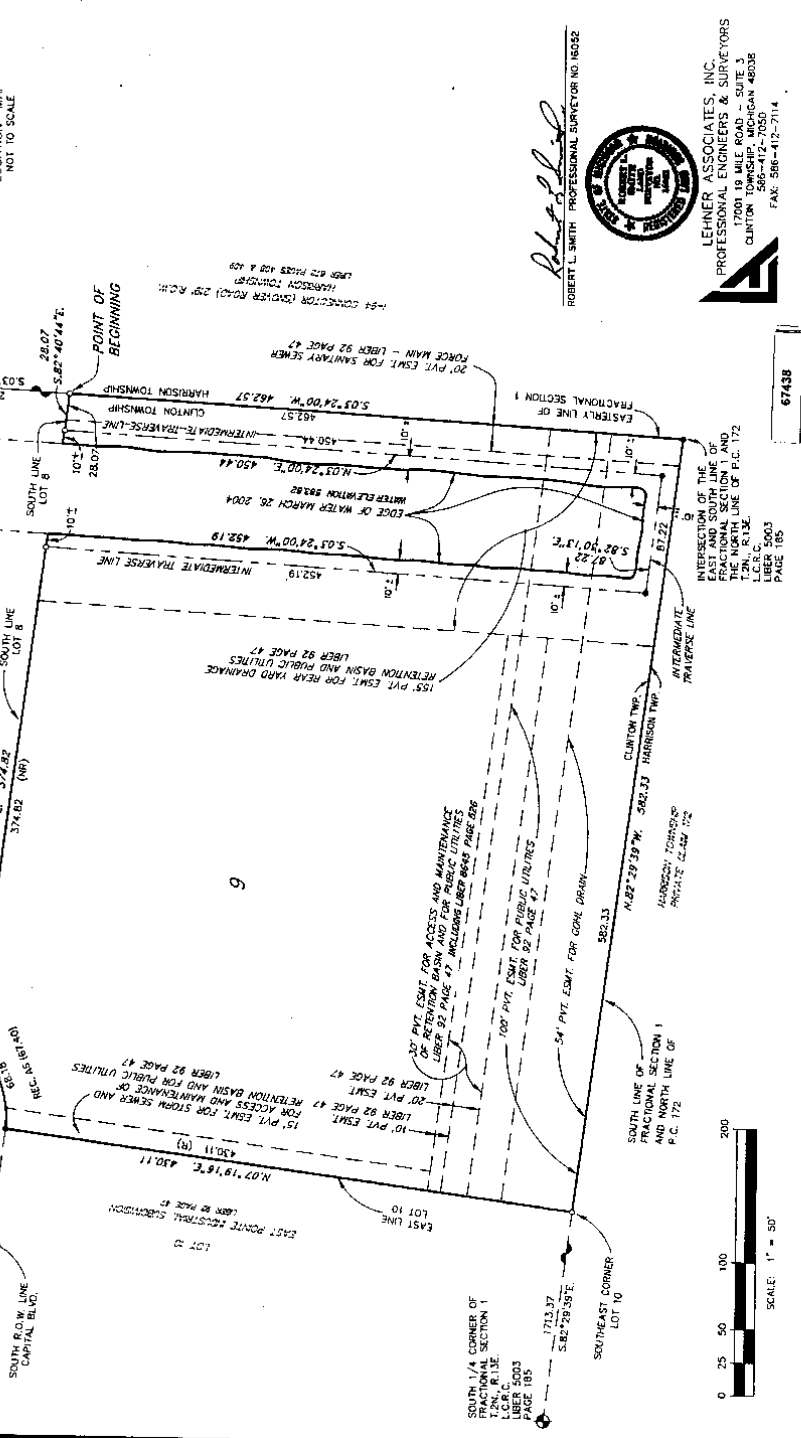
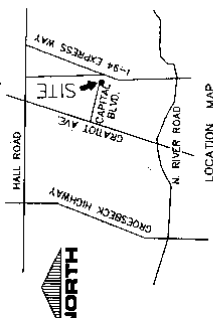


LEGEND

ALL DIMENSIONS ARE SHOWN IN FEET.
 ALL CURVILINEAR DIMENSIONS ARE SHOWN
 ALONG THE CHORD.
 DIMENSIONS OF 1/2" DIAMETER
 35' LONG WITH 1/2" STEEL BORN SETS FOR
 CONCRETE MONUMENT HAS BEEN SET.
 (P) INDICATES RADIAL LOT LINES.
 BEARINGS BASED ON RADIAL LOT LINES.
 OF EAST POINTE INDUSTRIAL SUBDIVISION
 RECORDED IN LIBER 92, PAGE 47.
 DENOTES FOUND MONUMENT (1/2" DIAMETER
 STEEL ROD IN 4" DIAMETER CONCRETE)



NORTH



67438

ROBERT L SMITH PROFESSIONAL SURVEYOR NO 18052

 LEHNER ASSOCIATES, INC.
 PROFESSIONAL ENGINEERS & SURVEYORS
 17201 19 MILE ROAD - SUITE 3
 CLINTON TOWNSHIP, MICHIGAN 48038
 PHONE: 568-412-7114
 FAX: 568-412-7114

4-157, P.16-17
 8-3-2004

EAST POINTE INDUSTRIAL SUBDIVISION
 A SUBDIVISION OF PART OF EAST 1/2 & WEST 1/2 OF
 FRACTIONAL SECTION 1, T.2N., R.13E., CLINTON TOWNSHIP,
 MACOMB CO., MICHIGAN

CURVE #	BACKS	ARC	LONG CHORD	DELTA
1	352.00	124.31	5.717207° E.	85.683
2	385.00	177.53	5.779748° E.	175.77
3	385.00	177.53	5.779748° W.	175.77
4	385.00	177.53	5.779748° W.	175.77
5	385.00	177.53	5.779748° E.	175.77

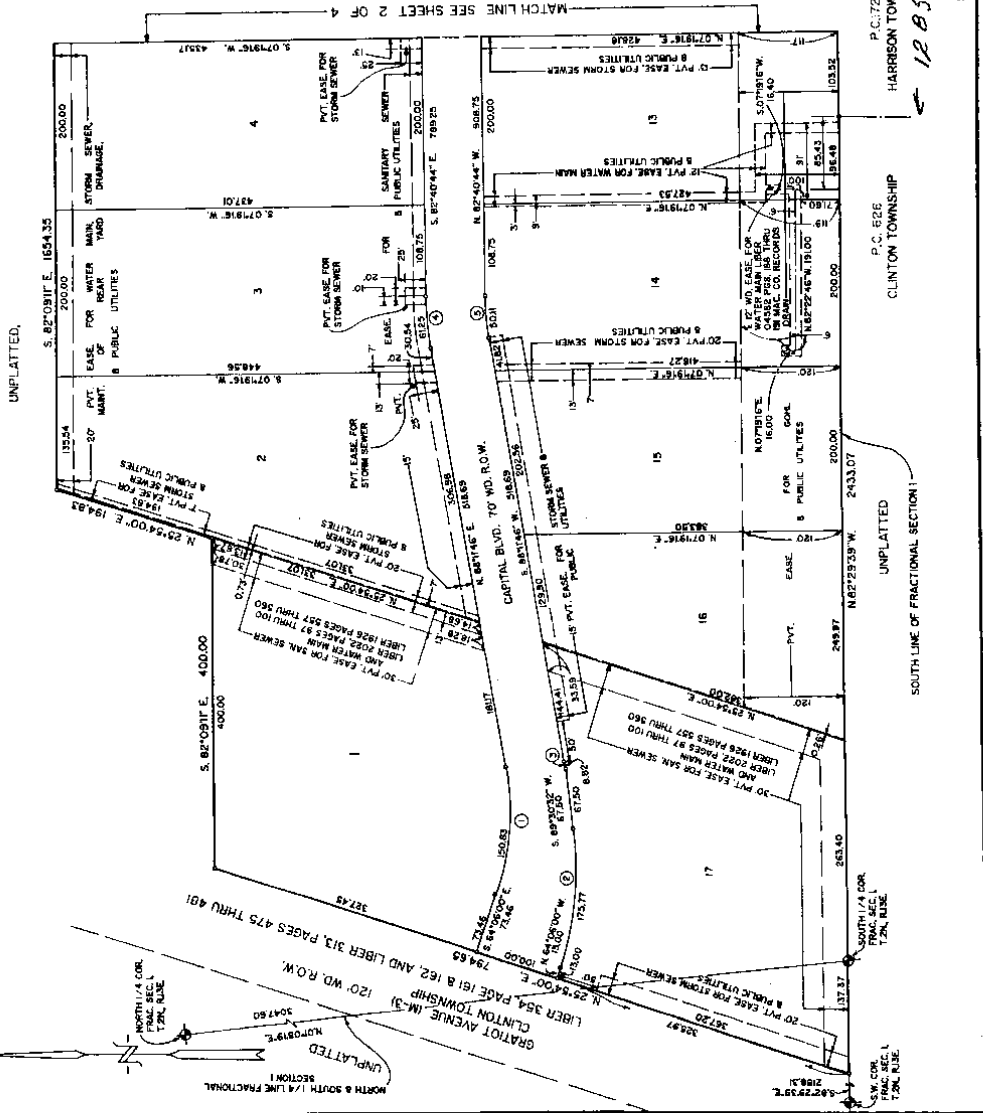


CERTIFIED TRUE COPY OF
 RECORDED PLAT
 BY DEPARTMENT OF COMMERCE
 STATE OF MICHIGAN
 REGISTERED PROFESSIONAL LAND SURVEYOR
 ROBERT L. SMITH
 No. 1281

LEGEND
 ALL DIMENSIONS ARE SHOWN IN FEET.
 ALL CURVILINEAR DIMENSIONS ARE SHOWN
 ALONG THE CHORD.
 THE DIMENSIONS 10' INDICATES A 4" DIAMETER
 MONUMENT.
 ALL LOT MARKERS ARE 10' LONG 1/2" IRONS.
 90° INDICATES RADIAL LOT LINES.
 180° INDICATES NOT RADIAL LOT LINES.
 NORTH GRATIOT HEIGHTS SUB. AS RECORDED IN
 LIBER 21 PAGE 3, MACOMB COUNTY RECORDS.
 THERE SHALL BE NO DIRECT VEHICULAR ACCESS
 TO GRATIOT AVENUE (M-31) FROM ANY LOT WITH
 VEHICULAR ACCESS TO THE L-S-M CONNECTOR (SHOWER ROAD)
 FROM LOTS 8 AND 9.



ROBERT L. SMITH



061220

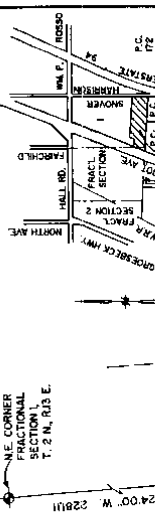
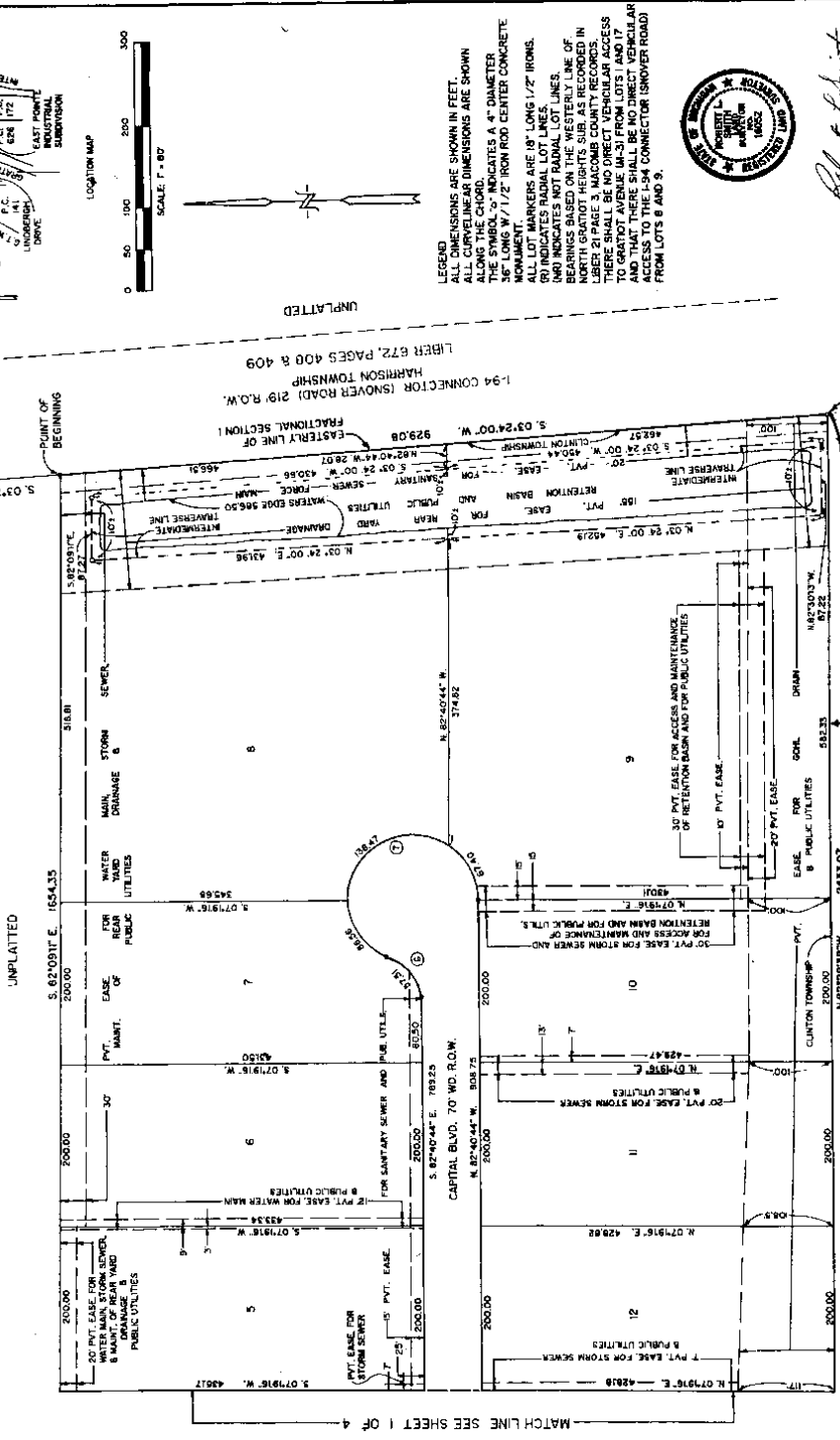
SHEET 1 OF 4

12-13-1997

1. 92, P. 47-50

EAST POINTE INDUSTRIAL SUBDIVISION
 A SUBDIVISION OF PART OF EAST 1/2 & WEST 1/2 OF
 FRACTIONAL SECTION 1, T.2N., R.13E., CLINTON TOWNSHIP,
 MACOMB CO., MICHIGAN

CURVE #	RADIUS	ARC	LONG CHORD	CHORD	DELTA
1	50.00	82.7	S. 62°29'30" W.	57.3	107°23'41"
2	77.00	335.28	S. 27°47'07" E.	123.98	250°25'21"



LEGEND
 ALL DIMENSIONS ARE SHOWN IN FEET.
 ALL CURVILINEAR DIMENSIONS ARE SHOWN ALONG THE CHORD.
 THE SYMBOL "S" INDICATES A 4" DIAMETER SCHEDULE 40 W/1/2 IRON RIGID CENTER CONCRETE PIPE.
 ALL LOT MARKERS ARE 18" LONG 1/2" IRONS.
 (R) INDICATES RADIAL LOT LINES.
 BEARINGS BASED ON THE ESTABLISHED MERIDIAN OF THE 1853 PLAT OF THE S.W. 1/4 OF SECTION 1, T.2N., R.13E., MACOMB COUNTY RECORDS, LIBER 21 PAGE 3.
 THERE SHALL BE NO DIRECT VEHICULAR ACCESS TO GRANT AVENUE (M-31) FROM LOTS 1 AND 17 AND THAT THERE SHALL BE NO DIRECT VEHICULAR ACCESS TO GRANT AVENUE (M-31) FROM LOTS 8 AND 9.
 UNPLATTED



Robert L. Smith
 ROBERT L. SMITH

SHEET 2 OF 4

EAST POINTE INDUSTRIAL SUBDIVISION
A SUBDIVISION OF PART OF EAST 1/2 & WEST 1/2 OF
FRACTIONAL SECTION 1, T.2N., R.13E., CLINTON TOWNSHIP,
MACOMB CO., MICHIGAN

COUNTY TREASURER'S CERTIFICATE

The records in my office show no unpaid taxes or special assessments for the property described above, involving the lands included in this plat.

Robert L. Smith
 ROBERT L. SMITH
 TREASURER COUNTY OF MACOMB

COUNTY BOARD COMMISSIONER'S CERTIFICATE

Approved on April 23, 1980, in compliance with Section 136 of Act 289, P.A. 1977, as amended, and the rules and regulations of the Board of Road Commissioners of Macomb County.

Robert S. Helsen
 ROBERT S. HELSEN, COMMISSIONER OF PUBLIC WORKS

MICHIGAN DEPARTMENT OF TRANSPORTATION
 APPROVED ON April 23, 1980 AS COMPLYING WITH ACT 289, P.A. 1977 AND REGULATED FIELDS AND REGULATIONS OF THE DEPARTMENT OF TRANSPORTATION.

MICHIGAN DEPARTMENT OF TRANSPORTATION
James R. Pate
 JAMES R. PATE, DIRECTOR

CERTIFICATE OF COUNTY ROAD COMMISSIONERS

Approved on April 23, 1980 AS COMPLYING WITH SECTION 136 OF ACT 289, P.A. 1977 AND THE APPLICABLE PUBLISHED RULES AND REGULATIONS OF THE BOARD OF ROAD COMMISSIONERS OF MACOMB COUNTY.

Robert L. Smith
 ROBERT L. SMITH, VICE-CHAIRPERSON
Robert S. Helsen
 ROBERT S. HELSEN, COMMISSIONER

CERTIFICATE OF MUNICIPAL APPROVAL

I certify that this plat was approved by the Township Board of the Township of Clinton, Michigan, and was reviewed and found to be in compliance with Act 289, P.A. 1977, and that the public sewer and public water services have been installed and are ready for use within this plat.

and that surety is posted for one year to insure the placement of monuments and lot markers.

Robert L. Smith
 ROBERT L. SMITH, TOWNSHIP CLERK

COUNTY PLAT BOARD CERTIFICATE

This plat has been reviewed and is approved by the Macomb County Plat Board on April 23, 1980 as being in compliance with the rules and regulations of the Plat Board's applicable rules and regulations.

Mark J. Stebbins
 MARK J. STEBBINS
 CHAIRMAN, COUNTY BOARD OF COMMISSIONERS

Robert L. Smith
 ROBERT L. SMITH, CLERK, REGISTER OF DEEDS

RECORDING CERTIFICATE

STATE OF MICHIGAN
 MACOMB COUNTY

This plat was prepared for record on the 15 day of Dec, 1980 at 1:00 p.m. and recorded in Liber 385 of Plats on Record in the Office of the Register of Deeds.

Robert L. Smith
 ROBERT L. SMITH, REGISTER OF DEEDS



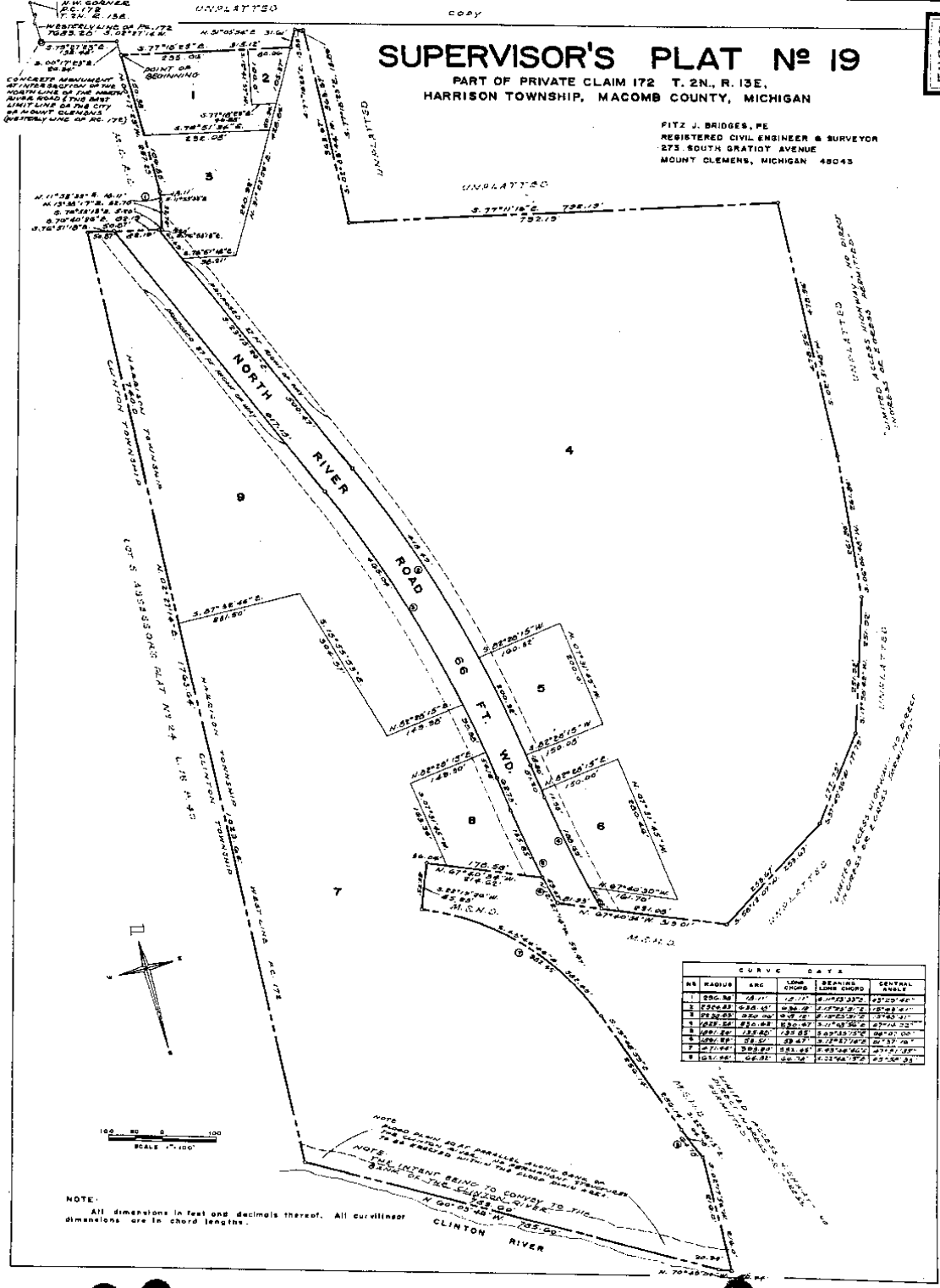
Robert L. Smith
 ROBERT L. SMITH

SUPERVISOR'S PLAT No 19

PART OF PRIVATE CLAIM 172 T. 2N., R. 13E.
HARRISON TOWNSHIP, MACOMB COUNTY, MICHIGAN

FITZ J. BRIDGES, PE
REGISTERED CIVIL ENGINEER & SURVEYOR
275 SOUTH GRATIOT AVENUE
MOUNT CLEMENS, MICHIGAN 48043

50279



CURVE DATA					
NO	RADIUS	ARC	CHORD	BEARING	CENTRAL ANGLE
1	250.00	12.17	12.17	S 89° 53' 33" W	89° 53' 33"
2	250.00	12.17	12.17	S 89° 53' 33" W	89° 53' 33"
3	250.00	12.17	12.17	S 89° 53' 33" W	89° 53' 33"
4	250.00	12.17	12.17	S 89° 53' 33" W	89° 53' 33"
5	250.00	12.17	12.17	S 89° 53' 33" W	89° 53' 33"
6	250.00	12.17	12.17	S 89° 53' 33" W	89° 53' 33"
7	250.00	12.17	12.17	S 89° 53' 33" W	89° 53' 33"
8	250.00	12.17	12.17	S 89° 53' 33" W	89° 53' 33"
9	250.00	12.17	12.17	S 89° 53' 33" W	89° 53' 33"

NOTE: All dimensions in feet and decimals thereof. All curvilinear dimensions are in chord lengths.

L. 5-9, P. 7-8 B 761-1-9

copy

53074

SUPERVISOR'S PLAT No 19

PART OF PRIVATE CLAIM 172 T. 2N., R. 13E.
HARRISON TOWNSHIP, MACOMB COUNTY, MICHIGAN

FITZ J BRIDGES REG CIVIL ENGINEER & SURVEYOR MOUNT CLEMENS, MICHIGAN

DESCRIPTION

The land embraced in the annexed plat of Supervisor's Plat No. 19 part of Private Claim 172 T. 2N., R. 13E., Harrison Township, Macomb County, Michigan and being more particularly described as follows:
Commencing at the N.W. corner of P. C. 172; thence S. 02°27'14"W. 7683.20 ft. along the Westerly line of P. C. 172 to a monument at the intersection of the North line of the North River Road and East line of the City of Mount Clemens (Westerly line of P. C. 172); thence S. 75°27'25"E. 138.48 ft.; thence S. 00°17'23"E. 26.34 ft. to the point of beginning; thence S. 77°18'23"E. 315.12 ft.; thence N. 31°03'54"E. 31.61 ft.; thence S. 77°18'23"E. 13.89 ft.; thence S. 02°33'44"W. 563.67 ft.; thence S. 77°13'16"E. 792.19 ft.; thence S. 02°51'48"W. 478.36 ft.; thence S. 06°06'48"W. 261.84 ft.; thence S. 17°50'42"W. 251.92 ft.; thence S. 37°49'36"W. 177.79 ft.; thence S. 58°12'07"W. 253.67 ft.; thence N. 67°40'34"W. 313.01 ft.; thence along a curve to the left (D) radius 1891.24 ft., central angle 1°37'16" whose long chord bears N. 32°27'14"W. 53.47 ft.; thence N. 57°40'34"W. 214.62 ft.; thence S. 22°19'26"W. 85.23 ft.; thence along a curve to the right (D) radius 471.44 ft., central angle 47°51'35" whose long chord bears S. 43°44'46"E. 382.45 ft.; thence S. 19°48'59"E. 256.14 ft.; thence along a curve to the left (D) radius 421.44 ft., central angle 5°58'39" whose long chord bears S. 22°48'15"E. 64.78 ft.; thence S. 02°17'54"W. 216.0 ft.; thence N. 70°49'04"W. 20.94 ft.; thence N. 60°03'46"W. 785.60 ft.; thence N. 02°27'14"E. 1763.64 ft.; thence S. 76°51'18"E. 50.87 ft.; thence S. 76°40'26"E. 82.19 ft.; thence S. 76°53'13"E. 5.20 ft.; thence N. 13°38'17"E. 52.70 ft.; thence along a curve to the left (D) radius 296.98 ft., central angle 3°29'40" whose long chord bears N. 11°53'53"E. 16.11 ft.; thence N. 00°17'23"W. 257.23 ft. to the point of beginning. Containing lots 1 through 9 inclusive.

DEDICATION

KNOW ALL MEN BY THESE PRESENTS, that I, Ralph E. Besaufit, Supervisor of the Township of Harrison of Macomb County, State of Michigan, by virtue of authority in me vested by Section 31, Act 172, of 1929, having been duly authorized by the Township Board have caused the land described in the annexed plat to be surveyed, laid out and platted, to be known as, Supervisor's Plat No. 19, part of Private Claim 172, T. 2N., R. 13E., Harrison Township, Macomb County, Michigan and that the streets and easement as shown on said plat are now being used for such purposes, and that the plat conforms with the requirements of Section 31, Act 172, of Public Acts of 1929, as amended.

Signed and Sealed in the presence of:
Ralph E. Besaufit
Ralph E. Besaufit, Supervisor
Township of Harrison
38151 L'Anse Creuse
Mount Clemens, Michigan 48043

ACKNOWLEDGEMENT

State of Michigan } ss
County of Macomb }

On this 29th day of July, 1967, before me a Notary Public in and for said County, personally came the above named, Ralph E. Besaufit, Supervisor of the Township of Harrison known to me to be the person who executed the above dedication and acknowledged the same to be his free act and deed as such Supervisor.

My commission expires 10-10-71

Richard W. Munroe
Richard W. Munroe
Notary Public, Macomb County,
Michigan

CERTIFICATE OF MUNICIPAL APPROVAL

This Plat was approved by the Township Board of the Township of Harrison at a meeting held July 27 day of July, 1967 and complies with Section 19A and the width of lots in compliance with requirements of Section 30, Act 172, of 1929, as amended.

Richard W. Munroe
Richard W. Munroe, Clerk

CERTIFICATE OF APPROVAL BY THE BOARD OF COUNTY ROAD COMMISSIONERS

This Plat has been examined and was approved on the 29 day of July, A.D. 1967 by the Macomb County Board of Road Commissioners.

Lawrence C. Gierke
Lawrence C. Gierke, Chairman
Keith E. Svendsen
Keith E. Svendsen, Vice Chairman

Ernest W. McCollom, Member

CERTIFICATE OF APPROVAL BY THE COUNTY BOARD

This Plat was approved on the 29th day of July, A.D. 1967 by the Macomb County Plat Board.

Donna R. Burt
Donna R. Burt, Registrar of Deeds
Raymond R. Cleary
Raymond R. Cleary, Deputy
Edna Miller
Edna Miller, County Clerk
Lynn Whiles
Lynn Whiles, County Treasurer
Thomas S. Stahl
Thomas S. Stahl, Deputy
W. J. Hannes
W. J. Hannes, Deputy

SURVEYOR'S CERTIFICATE

I hereby certify the plat hereon delineated is a correct one and that permanent metal monuments consisting of bars not less than one-half inch in diameter and 36 inches in length, incased in a concrete cylinder at least 4 inches in diameter and 36 inches in depth have been placed at points marked thus (D) as thereon shown at all angles in the boundaries of the land platted, at all the intersections of the lines of streets, and at the intersections of the lines of streets with the boundaries of the plat as shown on said plat.

Prepared and Drafted by:

Fitz J. Bridges
Fitz J. Bridges, P.E.
Registered Land Surveyor No. 5779
273 South Gratiot Avenue
Mount Clemens, Michigan 48043

Fitz J. Bridges
Fitz J. Bridges
July 13, 1967

APPROVED July 26, 1967
MICHIGAN HIGHWAY COMMISSION
Henric E. Stansh
HENRIC E. STANSH
State Highway Director

COPY

Register's Office
Macomb County
All the 19
1967
1968
1969
1970
1971
1972
1973
1974
1975
1976
1977
1978
1979
1980
1981
1982
1983
1984
1985
1986
1987
1988
1989
1990
1991
1992
1993
1994
1995
1996
1997
1998
1999
2000
2001
2002
2003
2004
2005
2006
2007
2008
2009
2010
2011
2012
2013
2014
2015
2016
2017
2018
2019
2020
2021
2022
2023
2024
2025
2026
2027
2028
2029
2030
2031
2032
2033
2034
2035
2036
2037
2038
2039
2040
2041
2042
2043
2044
2045
2046
2047
2048
2049
2050
2051
2052
2053
2054
2055
2056
2057
2058
2059
2060
2061
2062
2063
2064
2065
2066
2067
2068
2069
2070
2071
2072
2073
2074
2075
2076
2077
2078
2079
2080
2081
2082
2083
2084
2085
2086
2087
2088
2089
2090
2091
2092
2093
2094
2095
2096
2097
2098
2099
2100

I hereby certify that this is a true and correct copy of the original as filed in my office.
Notary Public, Macomb County,
Michigan
Richard W. Munroe
Richard W. Munroe

26085

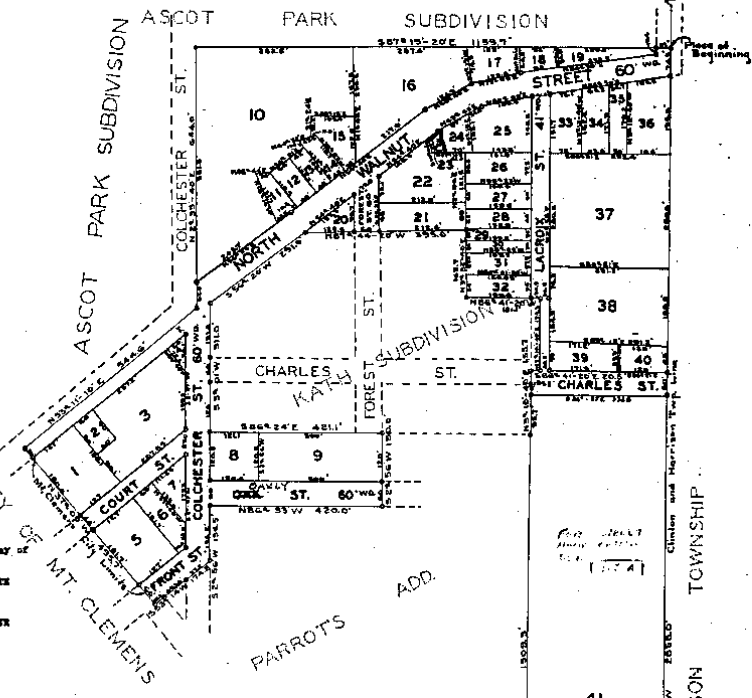
SUPERVISORS PLAT NO. 5.

PART OF P. C. 626 T. 2. N. R. 13 E.
CLINTON TOWNSHIP
MACOMB CO. MICHIGAN.

Examined and
Jan. 9 1934
J. B. Hurrell
Deputy Registrar

SCALE 1"=50'

Reference of
Henry B. Jey
and Charles
Harrison Top
Line.



Supervisor
Jan 9 1934
J. B. Hurrell

Supervisor
Jan 17 1934
J. B. Hurrell

CERTIFICATE OF APPROVAL BY THE
COUNTY BOARD
This plat was approved on the 27th day of
December, 1933
J. B. Hurrell JUDGE OF PROBATE
James B. ... COUNTY CLERK
J. P. ... COUNTY TREASURER

Dedication

KNOW ALL MEN BY THESE PRESENTS, that I, Otto Shebeck Supervisor of Clinton Township Macomb County, State of Michigan, by virtue of authority in me vested by Section 51, Act 172, of 1929, having been duly authorized by the Township Board have caused the land described in the annexed plat to be surveyed, laid out and planned to be known as Supervisors Plat No. 5 of part of P. C. 626, and that the streets and alleys as shown on said plat are now being used for such purposes.

Otto Shebeck
Supervisor of Clinton Twp.

Witness:
H. P. ...
Charles ...

Acknowledgment

STATE OF MICHIGAN)
COUNTY OF MACOMB)
On this 10th day of December A. D. 1933
before me, a Notary Public in and for said county, personally came the above named Otto Shebeck Supervisor of Clinton Township known to me to be the person who executed the above dedications, and acknowledged the same to be his free act and deed as such Supervisor.

Notary Public in and for Macomb County.
My commission expires Jan 10 1934

SURVEYORS CERTIFICATE

I hereby certify that the plat hereto delineated in a correct one and that permanent metal monuments of not less than one inch in diameter and fifteen inches in length set in concrete have at least four inches in diameter and forty-eight inches in depth have been placed at points marked thereon as shown on all angles in the boundaries of the land plotted, at all the intersections of streets, intersections of alleys, or of streets and alleys, and at the intersections of streets and alleys with the boundaries of the plat as shown on said plat.

Description of Land Platted

The land embraced in the annexed plat of Supervisors Plat No. 5 part of P. C. 626 Clinton Township Macomb County Michigan is described as follows:

Commencing at the intersection of Henry B. Jey Road and the Clinton Harrison Township line, Thence S 30° 12' 40" W 2168.0 feet along the township line to the place of beginning, Thence S 30° 12' 40" W 2058.0 feet along the township line, Thence N 89° 50' 20" W 218.3 feet along the E. C. Clement City Line, Thence S 89° 50' 20" W 1809.3 feet along the east boundary of Parrotts Add., Thence N 89° 50' 20" W 455.7 feet along the east boundary of Kath Subdivision, Thence S 89° 50' 20" W 205.7 feet along the south boundary of Kath Subdivision, Thence N 89° 50' 20" W 1811.1 feet along the north boundary of Kath Sub., Thence N 3° 32' 40" W 455.7 feet along the east boundary of Kath Subdivision, Thence W 89° 50' 20" W 130.5 feet along the north boundary of Kath Sub., Thence S 89° 50' 20" W 205.7 feet along Kath Subdivision and south side of Forest Street, Thence S 89° 50' 20" W 1111.0 feet along the east side of Colchester Street Thence S 89° 50' 20" W 421.1 feet along the Kath Subdivision, Thence S 89° 50' 20" W 120.0 feet along Parrotts Addition, Thence N 89° 50' 20" W 420.0 feet along Parrotts Addition and south side of Col. Street, Thence S 89° 50' 20" W 130.5 feet along Parrotts Addition and east side of Colchester street, Thence N 89° 50' 20" W 174.5 feet along Parrotts Addition and south side of Forest street, Thence N 89° 50' 20" W 420.0 feet along the E. C. Clement City line, Thence N 89° 50' 20" W 54.8 feet along the center line of North Walnut St., Thence N 89° 50' 20" W 844.0 feet along the east side of Colchester street, Thence S 89° 50' 20" W 1159.7 feet along the south line of Ascot Park Subdivision to the point of beginning.

TOWNSHIP APPROVAL
This plat was approved by the Township Board of the Township of Clinton at a meeting held on Jan 9 1934
Towship Clerk

1.16, P. 23 1-10-1934

FILED IN... DEPT.
Nov 23 1928
L. H. Miller

ASSESSORS PLAT NO. 24

OF THE CITY OF
MT. CLEMENS, MACOMB CO. MICHIGAN.

SCALE - 1"=50'

Note: All dimensions hereon are in feet and decimals thereof.

DEDICATION

KNOW ALL MEN BY THESE PRESENTS, That I L. H. Miller Assessor of the City of Mt. Clemens Macomb County Michigan, by virtue of authority as so vested by section 3360, Compiled Laws of 1914 as amended, having been duly authorized by the City Commission, have caused the land described in the annexed plat to be surveyed, laid out and platted and that the streets and alleys as shown on said plat are hereby dedicated to the use of the public.

Witness my hand and seal of office this 21st day of November 1928.
L. H. Miller
Assessor of the City of Mt. Clemens Macomb County Michigan.

ACKNOWLEDGMENT

STATE OF MICHIGAN)
COUNTY OF MACOMB)
On this 21st day of November 1928 before me a Notary Public in and for said County, personally came the above named L. H. Miller Assessor of the City of Mt. Clemens, known to be the person who executed the above dedication and he acknowledged the same to be his free act and deed as such Assessor.

Thos. J. Sullivan
Notary Public in and for said County

DESCRIPTION

The land embraced in the annexed plat of Assessors Plat No. 24 of the City of Mt. Clemens Macomb County Michigan, is described as follows:
Beginning at the intersection of the N.W. 1/4 line of 2nd Broadway with the Clinton-Harrison Trg. line.
Thence S 84°45' E, 307.2 ft. Thence N 27°07' W, 512.2 ft. Thence E 34°09' E, 62.8 ft. Thence S 85°59' W, 300.0 ft.
Thence S 10°19' W, 326.6 ft. Thence S 45°18' E, 37.6 ft. Thence S 7°20' W, 110.2 ft. Thence S 80°25' E, 108.0 ft.
Thence S 78°25' E, 125.2 ft. Thence S 74°08' E, 200.3 ft. Thence S 75°11' E, 61.5 ft. Thence S 35°04' E, 123.2 ft.
Thence S 0°47' E, 504.8 ft. Thence S 21°21' E, 325.4 ft. Thence S 26°42' E, 412.4 ft. Thence S 10°01' E, 292.7 ft.
Thence S 44°10' E, 222.5 ft. Thence S 26°19' E, 415.4 ft. Thence N 2°49' E, 1127.2 ft. to place of begin.

ENGINEERS CERTIFICATE

I hereby certify that the plat hereon delineated is a correct one and that permanent metal monuments not less than one inch in diameter and fifteen inches in length set in a concrete base at least four inches in diameter and forty-eight inches in depth have been placed at points marked thus * as shown at all angles in the boundaries of the land platted, at all intersections of streets, intersections of alleys or of streets and alleys and at the intersections of streets and alleys with the boundaries of the plat * as shown on said plat.

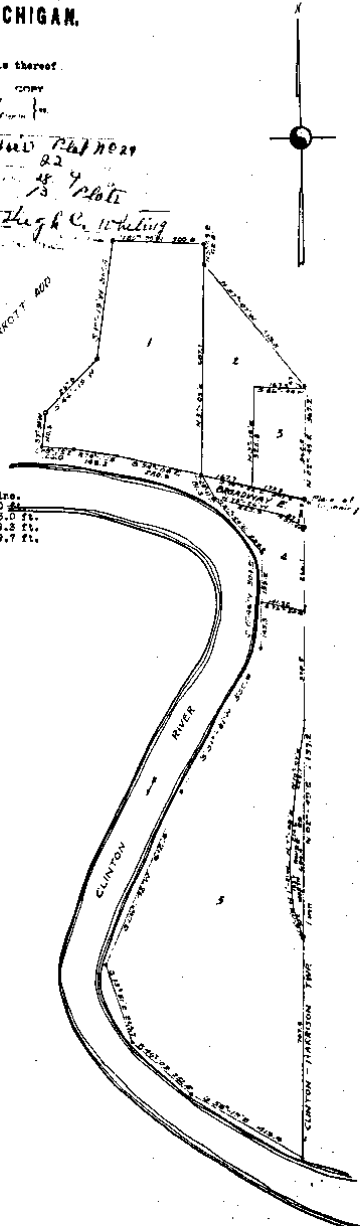
Paul H. Thompson
Registered Civil Engineer

CERTIFICATE OF MUNICIPAL APPROVAL

This plat was approved by the City Commission of the City of Mt. Clemens Macomb County Michigan, at a meeting held November 1, 1928.

CERTIFICATE OF APPROVAL BY THE COUNTY BOARD

This plat was approved on the 16th day of November 1928.
Charles H. Thompson Judge of Probate
W. J. Sullivan County Clerk
James G. Smith County Treasurer



11-22-1928
1:13, P. 40

17460

'ASCOT PARK SUBDIVISION'

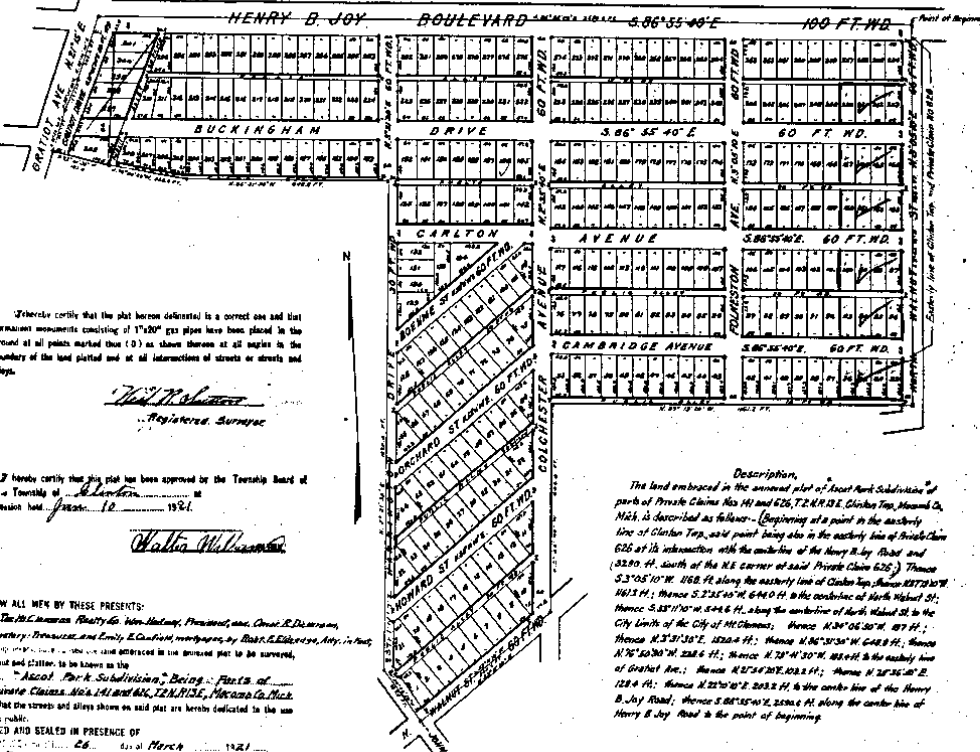
Being parts of Private Claims Nos 141 and 626, T.2.N.R.3 E.

Clinton Twp. Macomb Co.,

MICHIGAN

Scale 200 Feet = 1 Inch.

Examined and Approved
April 25-1921
Chas. F. Newman
Deputy Auditor General



I hereby certify that the plat delineated is a correct one and that permanent monuments consisting of 1 1/2\"/>

Walter M. Williams
Registered Surveyor

I hereby certify that this plat has been approved by the Township Board of the Township of Clinton, Michigan held on March 10, 1921.

Walter M. Williams

Description.
The land embraced in the annexed plat of Ascot Park Subdivision of parts of Private Claims Nos 141 and 626, T.2.N.R.3 E., Clinton Twp., Macomb Co., Mich., is described as follows—(beginning at a point in the westerly line of Clinton Twp., said point being also in the westerly line of Private Claim 626 of 1/2 section with the centerline of the Henry B. Joy Road and 320.00 ft. south of the N.E. corner of said Private Claim 626.) Thence S. 86° 55' 40\"/>

KNOW ALL MEN BY THESE PRESENTS: That the Macomb Realty Co., Inc., President, and Charles R. Dickerson, Secretary, have caused this plat to be surveyed, laid out and plotted, to be known as the 'Ascot Park Subdivision', Being: Parts of Private Claims Nos 141 and 626, T.2.N.R.3 E., Macomb Co., Mich. and that the streets and ways shown on said plat are hereby dedicated to the use of the public.

WITNESSED AND SEALED IN PRESENCE OF me, Clerk of the County, on this 26th day of March, 1921.

Walter M. Williams
Edwin C. Kelly
Paul C. Lady

The M. C. Stevens Realty Co.

Walter M. Williams
Edwin C. Kelly
Paul C. Lady

Witness my hand and the Seal of said County, this 26th day of March, 1921.
Walter M. Williams
Clerk of the County

COPY
REGISTERED
COUNTY

Walter M. Williams
Edwin C. Kelly
Paul C. Lady

I HEREBY CERTIFY THAT THIS COPY IS A TRUE COPY OF THE ORIGINAL PLAT FORWARDED TO THE REGISTER OF DEEDS FOR RECORDATION.
CORPORATION No. 25791
Chas. F. Newman
DEPUTY AUDITOR GENERAL

FILED IN AUDITOR GENERAL'S DEPT.
April 27-1921
Chas. F. Newman
DEPUTY AUDITOR GENERAL

STATE OF MICHIGAN
COUNTY OF MACOMB
On this 26th day of March, 1921, before me a Notary Public in and for said county, personally came the above named *Walter M. Williams* and *Charles R. Dickerson*, who being sworn by me duly sworn did say that they are the President and Secretary, respectively of the *Macomb Realty Co.*, a Michigan Corporation and that the seal affixed to said instrument is the corporate seal of said corporation and the said instrument was signed and sealed in behalf of said corporation by the authority of its Board of Directors and the said *Walter M. Williams* and *Charles R. Dickerson* acknowledged said instrument to be the free act and deed of said corporation.

Walter M. Williams
Charles R. Dickerson

Walter M. Williams
Notary Public in and for Macomb County, Michigan.
My commission expires Feb 6 - 1922

STATE OF MICHIGAN
COUNTY OF MACOMB

ON THIS 26th DAY OF MARCH 1921 BEFORE ME A NOTARY PUBLIC IN AND FOR SAID COUNTY, PERSONALLY APPEARED ROBERT E. ELDERIDGE TO ME PERSONALLY KNOWN, WHO BEING BY ME DULY SWORN DID SAY THAT HE WAS ATTORNEY IN FACT FOR EMILY E. CAMPFIELD, MORTGAGEE AND ACKNOWLEDGED SIGNATURE OF SAID INSTRUMENT OF THE FREE ACT AND DEED OF SAID EMILY E. CAMPFIELD, ACTING THROUGH HIM, HER ATTORNEY IN FACT.

Robert E. Elderidge
NOTARY PUBLIC IN AND FOR MACOMB COUNTY, MICHIGAN.

MY COMMISSION EXPIRES March 22-1925

NOTE: All dimensions on this plat are given in feet and decimals thereof.

4-16-1921
1.5, P. 92

CHARLESKATHS SUBDIV

OF PART OF P.C. 626

CLINTONTWP. MACOMB CO., MICH.

Scale = 50 ft per inch

Witness
 Charles K. ...
 ...
 ...

3 copies of this plat shall be filed in the office of the Register of Deeds for the County of Macomb, Michigan, and one copy shall be filed in the office of the Register of Deeds for the County of Clinton, Michigan. The original of this plat shall be retained by the Surveyor.

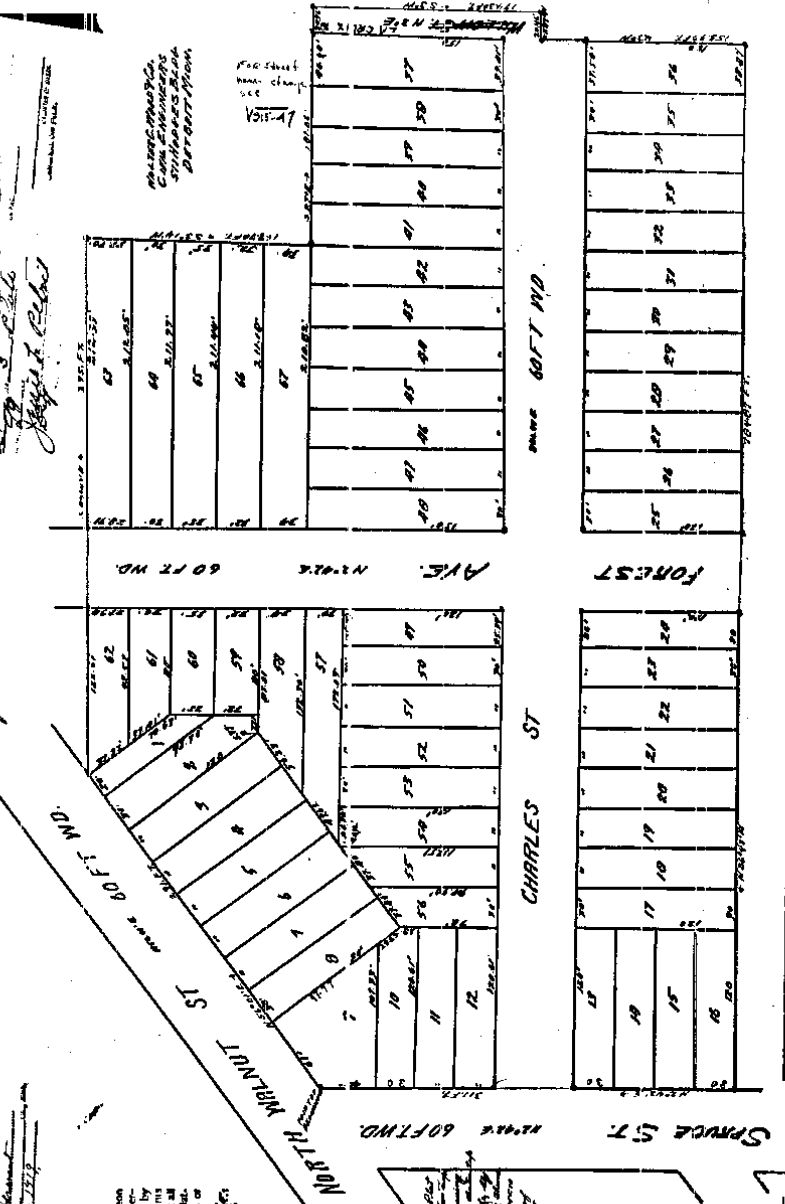
The Originator of this plat is the Charleskaths Subdivision, as shown on the plat, and the same is being offered for sale by the originator.

Witness
 ...
 ...

STATE OF MICHIGAN
 COUNTY OF MACOMB
 I, the undersigned, County Clerk, do hereby certify that the above is a true and correct copy of the original of this plat as the same appears on file in my office.

Witness my hand and the seal of my office this 17th day of May, 1917.

...
 ...



I hereby certify that the plat hereon shown is a true and correct copy of the original of this plat as the same appears on file in my office.

Witness my hand and the seal of my office this 17th day of May, 1917.

...
 ...

DESCRIPTION:
 The land hereon shown is a portion of the Charleskaths Subdivision, as shown on the plat, and the same is being offered for sale by the originator.

Witness my hand and the seal of my office this 17th day of May, 1917.

...
 ...

9322

5-18-1917

43, A, 99

