



CORRECTIVE LAND CORNER RECORDATION CERTIFICATE
Filing Requirement of Act 74, Mich. P.A. 1970

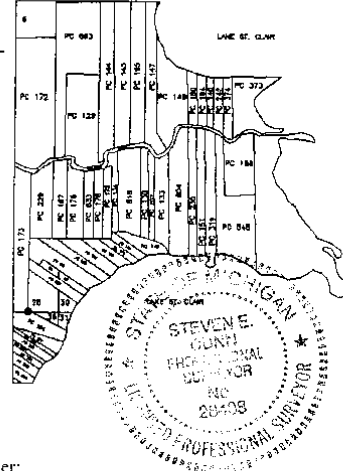
For corners in *Correcting Corner Location on Map on LCRC prev. rec. in L.19039 P. 438 11/08/2007

MACOMB (County) Located In: HARRISON TWP. Corner Code # PC-008
1. Public Land Survey T 2N R 14E
2. Property Controlling in Section S T R
3. Miscellaneous Number S T R
Property in Sec. S T R

9024047
LIBER 19690 PAGE 822
03/12/2009 09:08:29 A.M.
MACOMB COUNTY, MI SEAL
CARMELLA SABAUGH, REGISTER OF DEEDS
Register of Deeds Stamp & File

4. Lot No. , Recorded Plat
5. Private Claims PC-008, Southeast Corner of Private Claim 173 Common w/Southwest Corner of Fractional Section 25

I, Steven E. Dunn, in a field survey on February 2, 22 and July 28, 2007, do hereby certify that under requirements of P.A. 74, Michigan P.A. of 1970, the corner points mentioned in lines 1 and 2 above were in conformance with regulations and rules therefore as required in the current manual of survey instructions of the United States Department of the Interior, Bureau of Land Management or by a decree of a Court of Law and for that the corner points mentioned in lines 3, 4 and 5 above were in conformance with the rules of the Michigan Board of Land Surveyors or by a Decree of a Court of Law; established, re-established, monumented, re-monumented, recovered, found as expressed below:



NOTE: Not more than 2 corners, all in the same town and range, may be recorded on this certificate.

A. Description of original monument and accessories and/or subsequent restoration:

Found no evidence of original corner.

(see back)

B. Description of corner evidence found and/or method applied in restoring or reestablishing corner:

PC 008 Southeast corner of Private Claim 173 common with the northeast corner of Private Claim 164 and a corner of Fractional Section 25. No evidence of existing monument found. Using monumentation found in "Supervisors Plat No. 2", as recorded in Liber 16 of Plats on Page 8 (M.C.R.) and "Jefferson Villa Sub. No. 2", as recorded in Liber 47 of Plats on Page 31 (M.C.R.), I re-established the location of the corner as follows:

Found a 3/4" steel pipe at the southwest corner of Lot No. 21 and found a 1/2" steel rod at the southwest corner of Lot No. 33 of said "Supervisors Plat No. 2". Then using record plat angles and distances I set a point at the southeast corner of Lot No. 34 of said plat, being on the line common with the east line of Private Claim 173 and the west line of Fractional Section 25.

Found a 1/2" steel pipe at the northeast corner of Lot No. 1 of said "Supervisors Plat No. 2", being on the line common with the south line of Fractional Section 25 and the north line of Private Claim 164. Also found a 5/8" steel rod at the northwest corner of Lot No. 58 and a 1/2" steel pipe at the northwest corner of Lot No. 54 of said "Jefferson Villa Sub. No. 2". Then using record plat angle and distance I set a point at the southwest corner of said Lot No. 54, being on the line common with the south line of Fractional Section 25 and the north line of Private Claim 164.

(continued on back)

FIELD MEASUREMENTS AND RECORD MEASUREMENTS (see back):

C. Description of monument for corner and accessories established to perpetuate locating the position of the corner:

PC 008 Southeast corner of Private Claim 173 common with the northeast corner of Private Claim 164 and a corner of Fractional Section 25. No evidence of existing monument found. I re-established the location of the corner and set a 1/2" steel rod in the west slope of the west drainage ditch of westbound I-94.

I replaced the 1/2" steel rod with a 4" X 36" concrete monument with aluminum disc stamped "Macomb County Monument Mi. Act # 345, PC 008".

WITNESSES:

- S.84°W. 69.65' Set 1/2" steel rod w/traverse cap, west side of west right-of-way fence I-94.
N.27°W. 86.51' Set 1/2" steel rod w/traverse cap, west side of west right-of-way fence I-94.
S.45°W. 62.70' Set Mag nail w/Macomb County Witness tag in northwest face of 12" Maple.
S.10°W. 52.21' Set Mag nail w/Macomb County Witness tag in east face of 6" Cedar.
North 41.91' Set Mag nail w/Macomb County Witness tag in east face of 6" Cedar.

THE SELECTED LOCATION IS ACCEPTED BY ME AND IS GENERALLY ACCEPTED BY PROFESSIONAL SURVEYORS AS THE BEST AVAILABLE EVIDENCE OF THE POSITION OF THE ORIGINAL CORNER.

ACCEPTED BY THE MACOMB COUNTY SURVEY PEER GROUP AS THE OFFICIAL CORNER UNDER MICHIGAN PUBLIC ACT 345 OF 1990 AT A MEETING HELD ON 9-18-07
MARTIN C. OUNN, P.S. CHAIRMAN

Signed by Steven E. Dunn
Surveyor's Michigan License No. 28408

Date October 23, 2007

For corners in

MACOMB Located In: Corner Code #
 (County) HARRISON TWP.

1. Public Land Survey T 2N R 14E PC-008
 T R

5. Private Claims PC-008, Southeast Corner of Private Claim 173 Common w/Southwest Corner of Fractional Section 25

A. Description of original monument and accessories and/or subsequent restoration:

- | | | | |
|-----------------------|----------------------------------|---------------|-------------------|
| 1) Black Ash Tree | GLO Survey – PC 173 | Aaron Greeley | July 18, 1810 |
| 2) Post | GLO Survey – PC 164 | Aaron Greeley | July 18, 1810 |
| 3) Metal Monument | Plat, Supervisors Plat No. 2 | | May 11, 1932 |
| 4) Metal Monument | Plat, "Supervisor's Plat No. 6" | | November 20, 1935 |
| 5) No mention of type | Plat, Jefferson Villa Sub. No. 2 | | July 25, 1960 |

B. Description of corner evidence found and/or method applied in restoring or reestablishing corner:

PC 008 Southeast corner of Private Claim 173 common with the northeast corner of Private Claim 164 and a corner of Fractional Section 25. No evidence of existing monument found. I re-established the location of the corner and set a 1/2" steel rod in the west slope of the west drainage ditch of westbound I-94.

(continued from front)

I then did a line-line intersection from the southwest corner of Private Claim 229 (also being the west line of Private Claim 173) south through the southeast corner of said Lot No. 34 and from the northeast corner of said Lot No. 1 west-north-west through the southwest corner of said Lot No. 54 to re-establish the location of the corner and set a 1/2" steel rod in the west slope of the west drainage ditch of westbound I-94.

FIELD MEASUREMENTS AND RECORD MEASUREMENTS:

PC 008 to Northeast Corner of Lot No. 1 of "Supervisors Plat No. 2":

2085.96' – Record.
 2087.83' – Field.

PC 008 to Southeast Corner of Lot No. 35 of "Supervisor's Plat No. 6":

2085.95' – Record.
 2087.83' – Field.

PC 008 to Southeast Corner of Lot No. 34 of "Supervisors Plat No. 2":

1.60' – Record.
 1.44' – Field.

Angle PC 002 (the southwest corner of Private Claim No. 229)/PC 008/Northeast Corner of Lot No.1 of "Supervisors Plat No. 2 (also being the southeast corner of Lot No. 35 of "Supervisor's Plat No. 6"):

117°13'00" – Record, Supervisors Plat No. 2.
 117°01'20" – Record, Supervisor's Plat No. 6.
 116°46'09" – Field.

Survey Report
PC 008
SE Corner PC 173
Common w/NE Corner PC 164 and a
Corner of Fractional Sec. 25
T.2N., R.14E., Harrison

Letters asking for unrecorded information were sent to:

AEW, Inc. – Shelby Twp.
Fenn & Associates, Inc.- Shelby Twp.
GWE – Rochester Hills
Kennedy Surveying, Inc. - Oxford
Lehner Associates, Inc. – Clinton Twp.
GLA Surveyor – Plymouth
Professional Engineering Assoc. Inc. – Troy
R. J. Donnelly & Associates Inc. – Troy
George Jerome & Company – Roseville
King Surveying, Inc. – Armada
Michigan Surveying Inc. – Livonia
David C. Adams & Son – Redford
Urban Land Consultants – Shelby Township

GENERAL: Traverse points were set and points located then tied in with a Leica System 500 GPS unit. Corners from previous years were shot also and used to apply a scale factor to match the coordinates of the existing corners. Points not able to locate by GPS were side-shot off previously located points with a Leica TCA1103 Electronic Theodolite.

CORNER: Southeast corner of Private Claim 173 common with the southwest corner of Fractional Section 25. No evidence of existing monument found. Using monumentation found in "Supervisors Plat No. 2", as recorded in Liber 16 of Plats on Page 8 (M.C.R.) and "Jefferson Villa Sub. No. 2", as recorded in Liber 47 of Plats on Page 31 (M.C.R.), I re-established the location of the corner as follows:

Found a ¾" steel pipe at the southwest corner of Lot No. 21 and found a ½" steel rod at the southwest corner of Lot No. 33 of said "Supervisors Plat No. 2". Then using record plat angles and distances I set a point at the southeast corner of Lot No. 34 of said plat, being on the line common with the east line of Private Claim 173 and the west line of Fractional Section 25.

Found a ½" steel pipe at the northeast corner of Lot No. 1 of said "Supervisors Plat No. 2", being on the line common with the south line of Fractional Section 25 and the north line of Private Claim 164. Also found a 5/8" steel rod at the northwest corner of Lot No. 58 and a ½" steel pipe at the northwest corner of Lot No. 54 of said "Jefferson Villa Sub. No. 2". Then using record plat angle and distance I set a point at the southwest corner of said Lot No. 54, being on the line common with the south line of Fractional Section 25 and the north line of Private Claim 164.

I then did a line-line intersection from the southwest corner of Private Claim 229 (also being the west line of Private Claim 173) south through the southeast corner of said Lot No. 34 and from the northeast corner of said Lot No. 1 west-north-west through the southwest corner of said Lot No. 54 to re-establish the location of the corner and set a ½" steel rod in the west slope of the west drainage ditch of westbound I-94.

OBSERVATIONS: Field measurement from PC 008 to the southwest corner of Private Claim 229 is 5842.26'.

Field measurement from PC 08 the the southeast corner of said Lot No.34 is 1.44' (1.60'-record).

Field measurement from PC 008 to the northeast corner of said Lot No.1 is 2087.83' (2085.96'-record).

Angle southwest corner of Private Claim 229/PC 008/ northeast corner of said Lot No.1 is 116°46'09"
(117°13'00"-record, Supervisors Plat No. 2. 117°01'20"-record, Supervisors Plat No. 6).

RECOMMENDATION: My recommendation to the Peer Review Board is to accept the ½" steel rod as the proper location for the corner.

Respectfully submitted,

Steven E Dunn, PS #28408

07-100 Macoad

PA 008

S. 84° 10' 69.65

N. 27° 14' 86.51

AS 27 00° 00' 00" 90.282

P. 90' 63° 58' 22" 69.649 SET 2" IRON W/ COP

S. 74° 00' 62.70

125° 36' 32" 46.807 SET NAIL W/ MCB

WITNESS TAG NW CORNER 12" NAIL

S. 10° 16' 52.21' SET NAIL NAIL W/ MCB TAG

IN EAST FACE 4" CLEAR

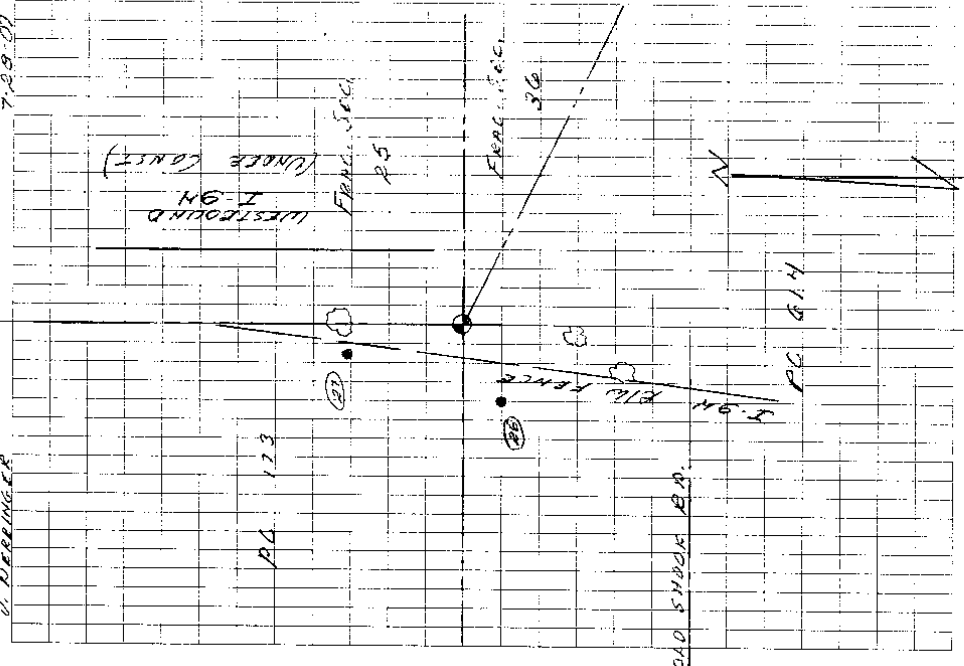
NORTH 41.91' SET NAIL NAIL W/ MCB TAG

IN EAST FACE 6" CLEAR

S. DUNN
P. TEASDALEY
W. DERRINGER

Be 520

7-28-07



TC
SK

35

JUNE 4 2007 FB-520

FILE: 07100TC060407

HARRISON TWP
MACOMB REMOVAL

DESC

07-100

1210	ED	9.00"	1/2" IRON PIPE
1211	FP	5/8"	I R
1212	ED	1/2"	IRON PIPE
1213	EO	1/2"	IRON PIPE

TG
00

23

MAY 25 2007 FB-526

FILE: 0710 TG 052507TG

07-161	HARRISON TWP MACOMB CO. DESC
1200	SET MAG @ N. R. DW @ ENTRANCE OF OLD SHOOK RD FROM SHOOK RD
1201	SET MAG NAIL AT TOP OF RAMP TO OLD SHOOK & SHOOK ROAD
1205	FO 1/2" IR # 17641
1206	SET MAG NAIL IN SIDEWALK @ NW CORNER OF OLD SHOOK & UNION LAKE

07-161

1200

1201

1205

1206

	HARRISON TWP MACOMB CO. DESC
	SET MAG @ N. R. DW @ ENTRANCE OF OLD SHOOK RD FROM SHOOK RD
	SET MAG NAIL AT TOP OF RAMP TO OLD SHOOK & SHOOK ROAD
	FO 1/2" IR # 17641
	SET MAG NAIL IN SIDEWALK @ NW CORNER OF OLD SHOOK & UNION LAKE

HARRISON TWP

MISC REMAINS

4 DIST. REMAINS

07-100

TR01200

BS 1201 0-0-0-00 104.470

FS 1202 222-21-27 121.613

1203 258-28-37 329.955

1204 261-50-12 408.043

BS 1201 0-00-01 104.480

TR01206

BS 1205 0-0-0-00 152.167

FS 1207 20-31-58 195.266

1208 64-19-07 138.174

1209 62-26-41 63.235

BS 1205 0-00-02 152.168

TG
DD

Cloody 68°

(24)

May 25-2007

FILE: 052507TG

FD 3/4" IRON ROD BENT

FD 1/2" IRON PIPE

FD 3/4 IRON PIPE

SET W/ 80 NAIL

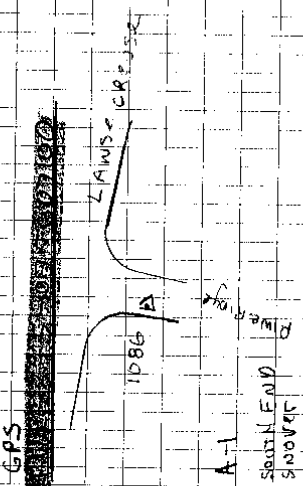
FD 1/2" IR # 17641

FD 1/2" IR # 17641

FD 1/2" IR

FD 1/2" IR

TG RD DD GPS
MARCH 5, 2007 FB-520



HARRISON TWP
MACOMB TWP
DESC
23 1086 SET MGY NAIL IN ASPH NEAR S.W. COR
OF PINE RIDGE AND LANSE CAUSE
3' OFF WEST EDGE OF PINE RIDGE
25 SOUTH OF LANSE CREEK

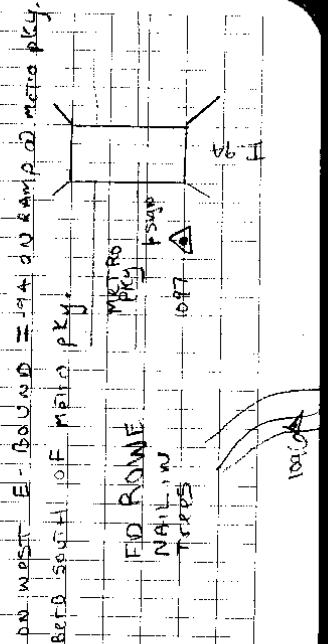
1 FD 1/2" IR # 14102
22 97 FD M-DOT MONUMENT # 50352

24 1092 FD SANGB MONUMENT @
NE CORNER OF IRWIN & N. RIVER RD
25 1093 FD SANGB MONUMENT JUST
WEST OF GOLFGATE TO BASE

26 1094 SET 1/2" IR & TRAV CAP }
27 1095 SET 1/2" IR & TRAV CAP }

28 1096 SET 1/2" IR & TRAV CAP IN ASPH
29 1097 SET 1/2" IR & TRAV CAP ON TOP OF

NEAR PC CORNER 16A & 173

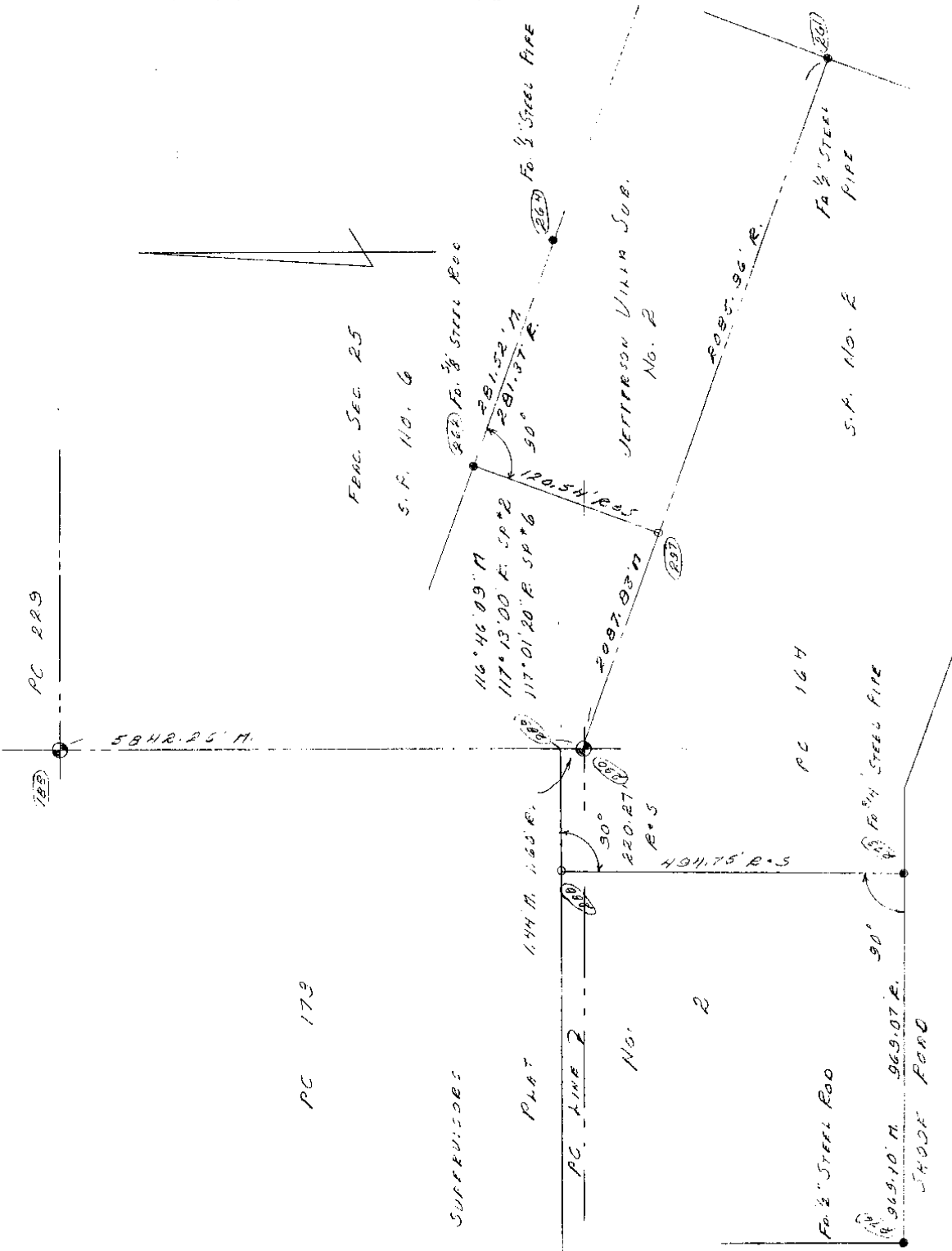


30 WEST E-BOUND = 194 DIV RAMP @ METRO PKY
BETD SOUTH OF METRO PKY.

07-100 HARRISON

PC 010

7-27-2007





Bureau of Land Management - General Land Office Records

[View Cart](#) | [Contact Us](#)

[Search Land Patents](#) |

[Search Surveys](#) |

[Visitors Center](#) |

[FAQ](#)

Survey Details

[Quick Help](#) [Bookmark](#)

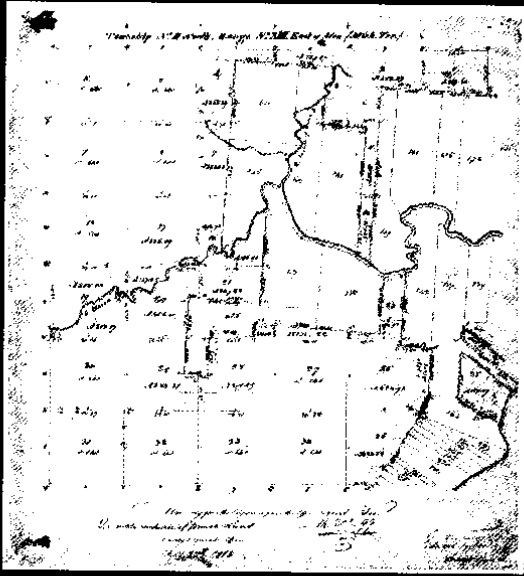
[Home](#) > [Survey Search](#) > [Results List](#) > [Survey Details](#)

[Help](#)

Original Survey • Twp 2N-13E, MI, Michigan - Toledo Strip (Subdiv. Lines)

[Survey Details](#) |
 [Plat Details](#) |
 [Plat Image](#) |
 [Field Note Images](#)

Description: ---



zoom view

[Basic Viewer](#) |
 [JavaScript Viewer](#) |
 [Plug-In Viewer](#) |
 [Download Image File](#)

- **Problems?** Please check our [Browser Compatibility Guide for Image Viewers](#).
- **A Note about printing:** You will not get satisfactory print results from any of our image viewers. For information about printing, check this [Help page](#)

[Home](#) | [Search Land Patents](#) | [Search Surveys](#) | [Visitors Center](#) | [FAQ](#) | [View Cart](#) | [Contact Us](#) | [Privacy Statement](#) | [Help](#)

Survey Details

[? Quick Help](#) [✓ Bookmark](#)

[Home](#) > [Survey Search](#) > [Results List](#) > [Survey Details](#)

[Help](#)

Original Survey • Twp 2N-13E, MI, Michigan - Toledo Strip (Subdiv. Lines)

[Survey Details](#) |
 [Plat Details](#) |
 [Plat Image](#) |
 [Field Note Images](#)

Description: --

Basic Viewer | **JavaScript Viewer** | [Plug-In Viewer](#) | [Download Image File](#)

- **Problems?** Please check our [Browser Compatibility Guide](#) for Image Viewers.
- **A Note about printing:** You will not get satisfactory print results from any of our image viewers. For information about printing, check this [Help](#) page

Bureau of Land Management - General Land Office Records

[View Cart](#) | [Contact Us](#)

[Search Land Patents](#) | [Search Surveys](#) | [Visitors Center](#) | [FAQ](#)

Survey Details

[? Quick Help](#) [✓ Bookmark](#)

[Home](#) > [Survey Search](#) > [Results List](#) > [Survey Details](#)

[Help](#)

Original Survey • Twp 2N-13E, MI, Michigan - Toledo Strip (Subdiv. Lines)

[Survey Details Plat Details Plat Image Field Note Images]

Description: —

zoom view

Basic Viewer JavaScript Viewer Plug-In Viewer Download Image File

- **Problems?** Please check our [Browser Compatibility Guide for Image Viewers](#).
- **A Note about printing:** You will not get satisfactory print results from any of our image viewers. For information about printing, check this [Help page](#)

[Home](#) | [Search Land Patents](#) | [Search Surveys](#) | [Visitors Center](#) | [FAQ](#) | [View Cart](#) | [Contact Us](#) | [Privacy Statement](#) | [Help](#)

Survey Details

[? Quick Help](#) [✓ Bookmark](#)

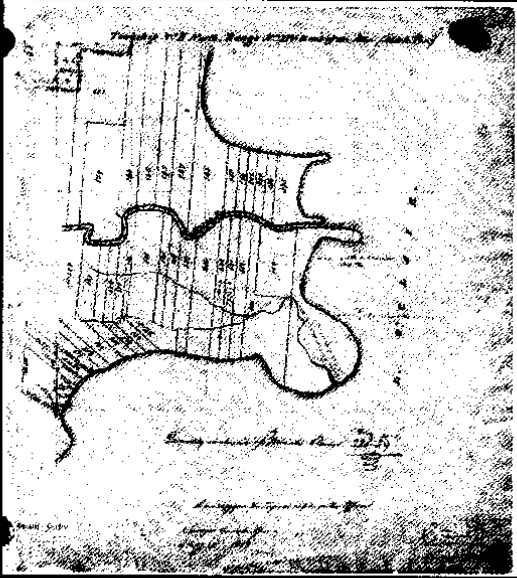
[Home](#) > [Survey Search](#) > [Results List](#) > [Survey Details](#)

[Help](#)

Original Survey • Twp 2N-14E, MI, Michigan - Toledo Strip (Subdiv. Lines)

[Survey Details](#)
[Plat Details](#)
[Plat Image](#)
[Field Note Images](#)

Page 1 Description: --



zoom
view

[Basic Viewer](#)
 [JavaScript Viewer](#)
 [Plug-In Viewer](#)
 [Download Image File](#)

- **Problems?** Please check our [Browser Compatibility Guide for Image Viewers](#).
- **A Note about printing:** You will not get satisfactory print results from any of our image viewers. For information about printing, check this [Help page](#)

Survey Details

[? Quick Help](#) [✓ Bookmark](#)

[Home](#) > [Survey Search](#) > [Results List](#) > [Survey Details](#)

[Help](#)

Original Survey • Twp 2N-14E, MI, Michigan - Toledo Strip (Subdiv. Lines)

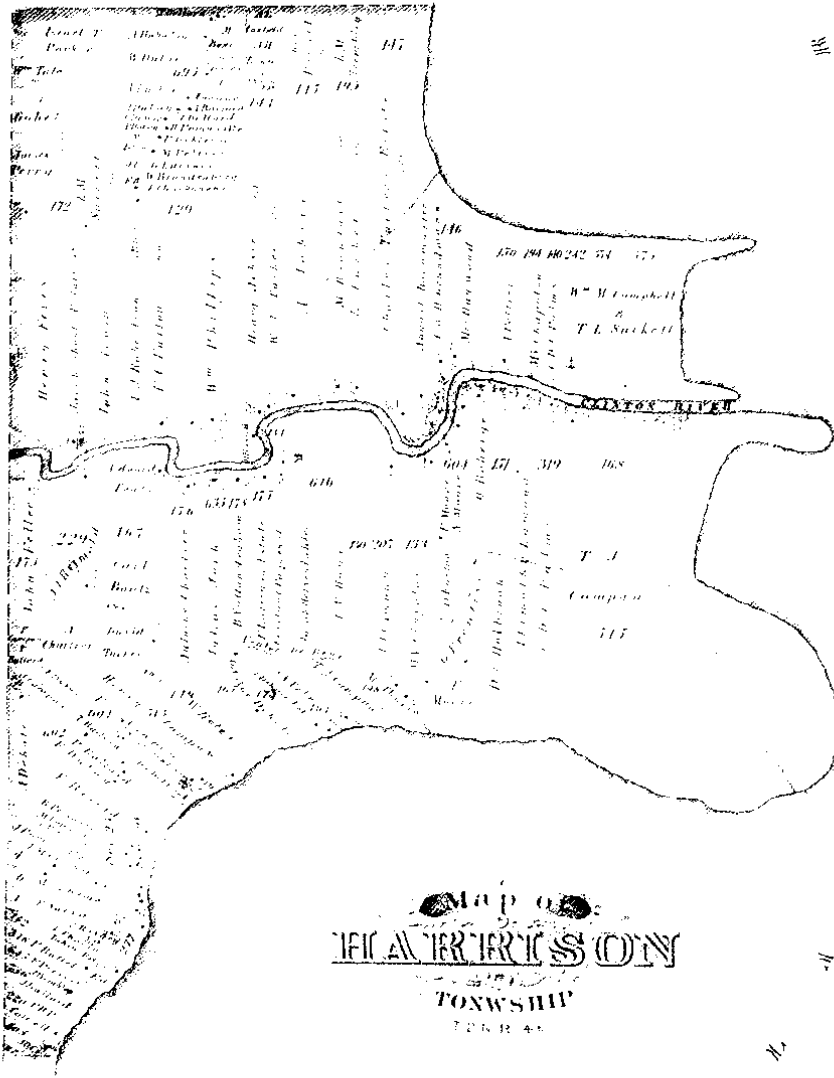
[Survey Details](#)
[Plat Details](#)
[Plat Image](#)
[Field Note Images](#)

Page 1 Description: --

zoom
view

[Basic Viewer](#)
 [JavaScript Viewer](#)
 [Plug-in Viewer](#)
 [Download Image File](#)

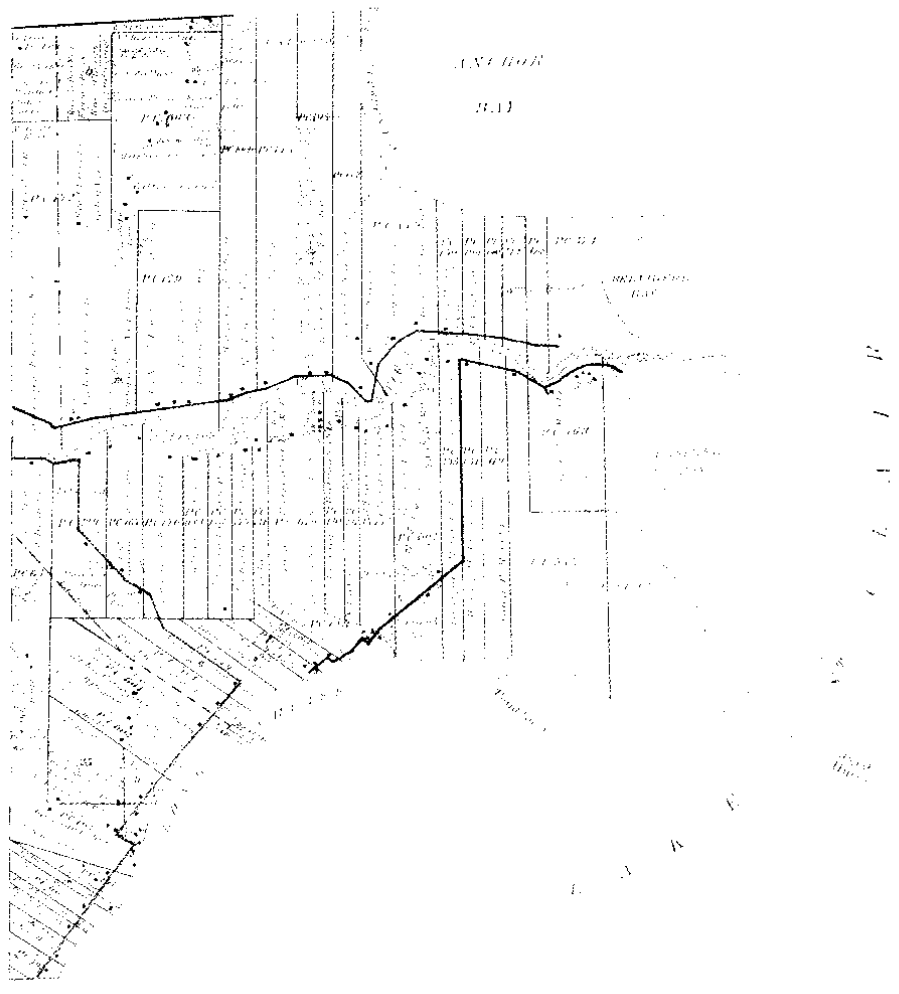
- **Problems?** Please check our [Browser Compatibility Guide for Image Viewers](#).
- **A Note about printing:** You will not get satisfactory print results from any of our image viewers. For information about printing, check this [Help page](#)

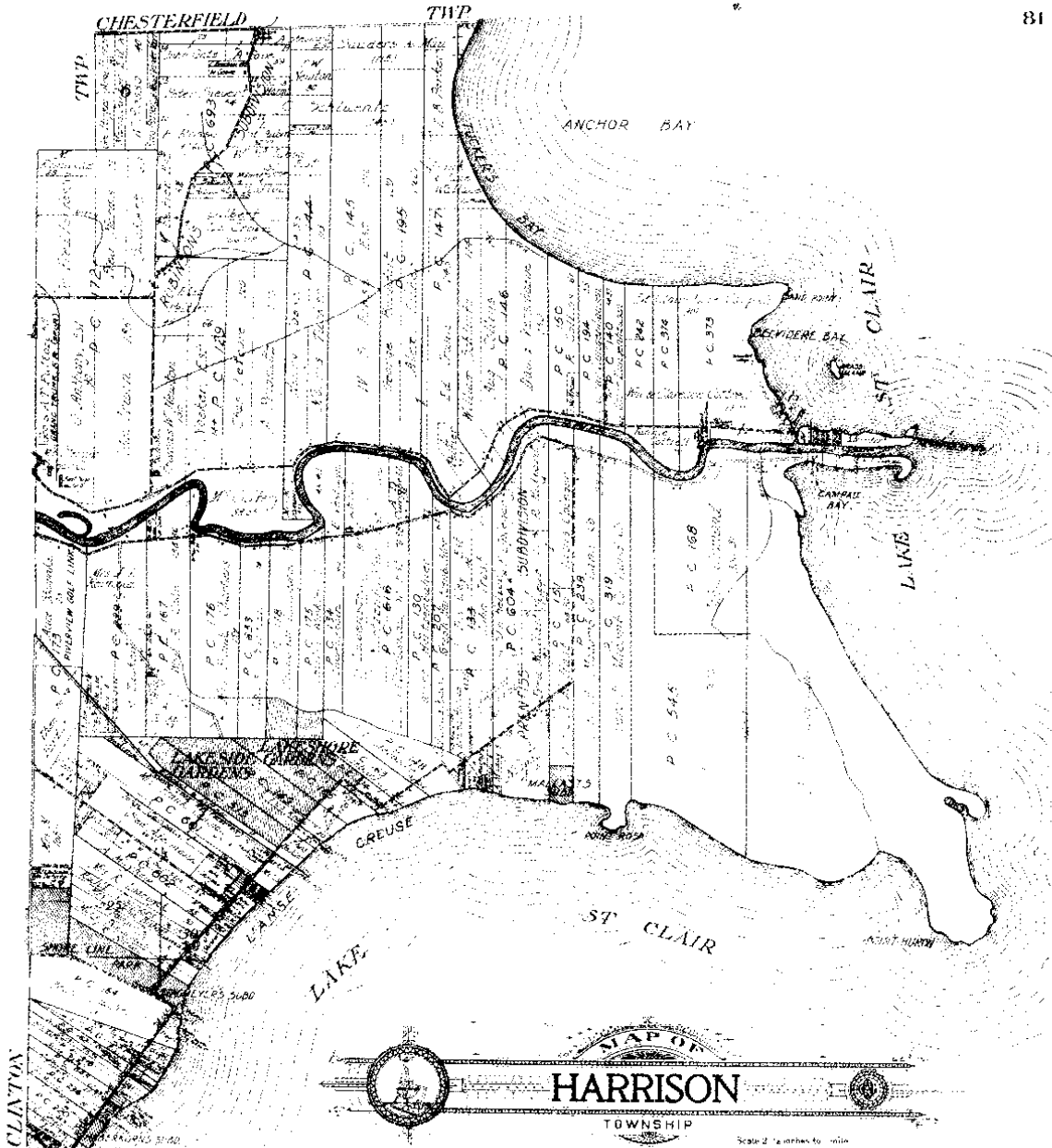


Map of
THE TOWNSHIP OF TONAWANDA
 TONAWANDA
 1884

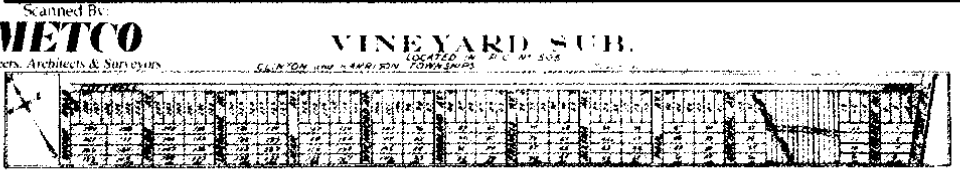
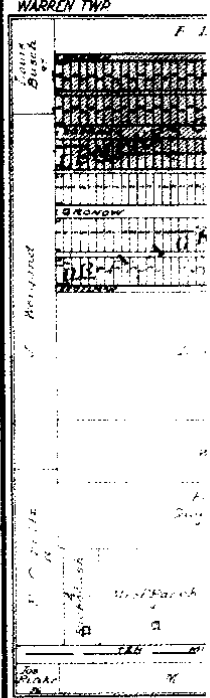
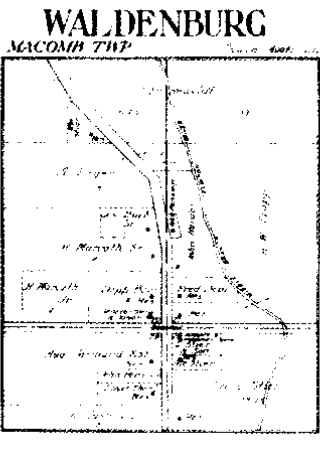
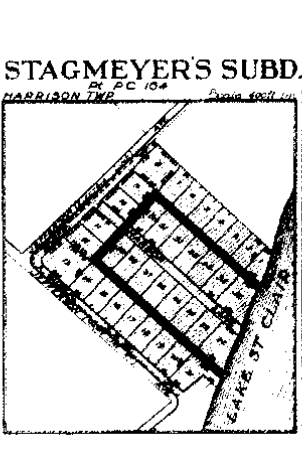
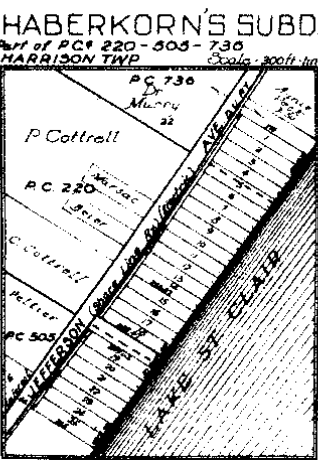
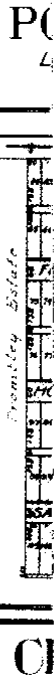
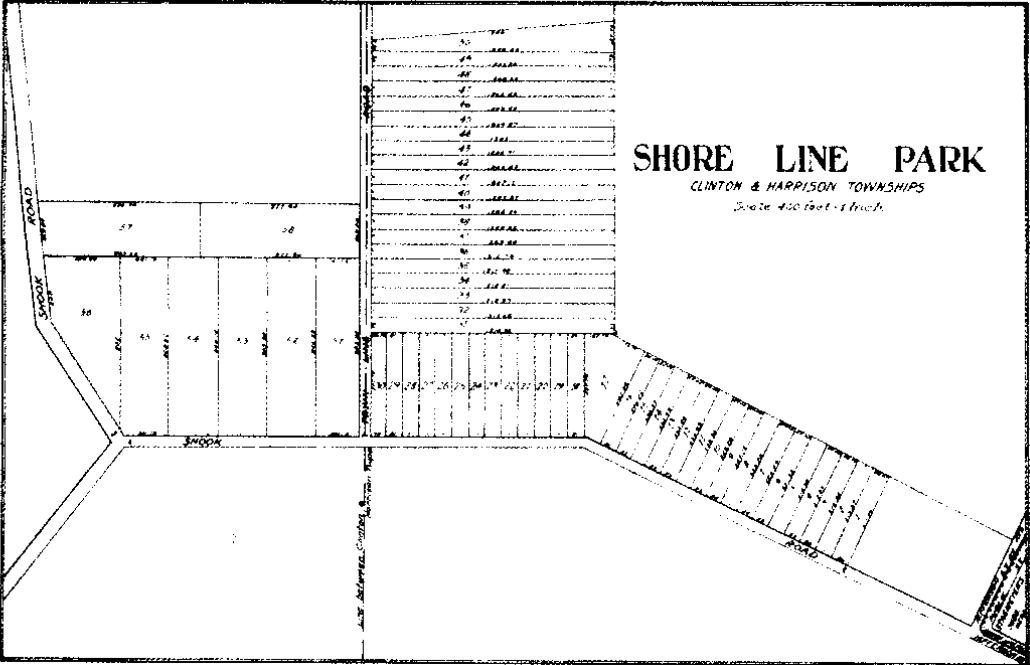
MAP OF HARRISON

Township 2 North Range 11 East

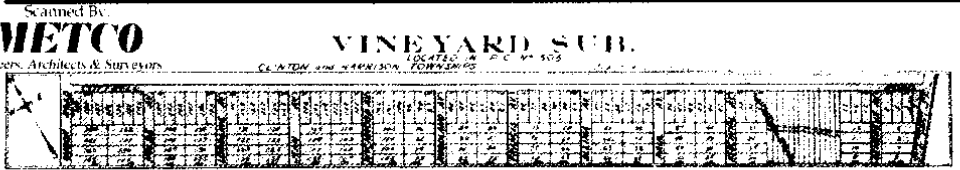
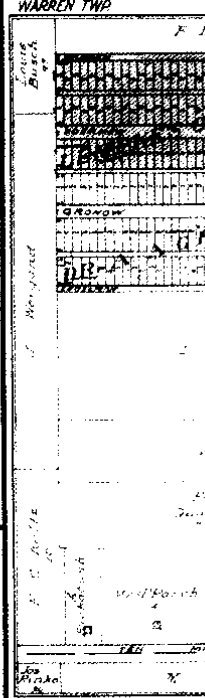
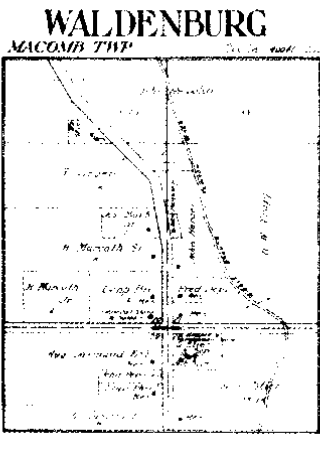
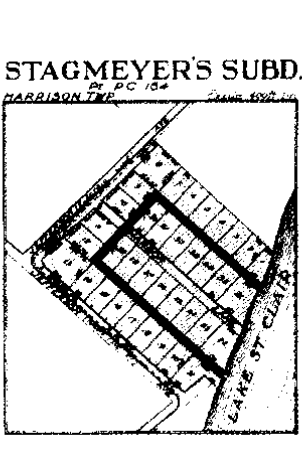
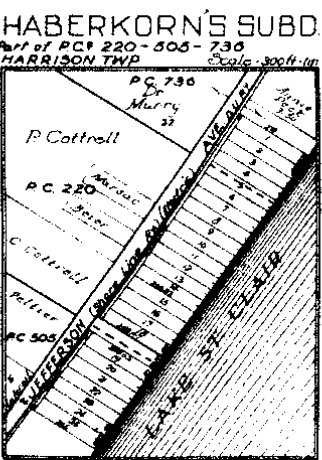
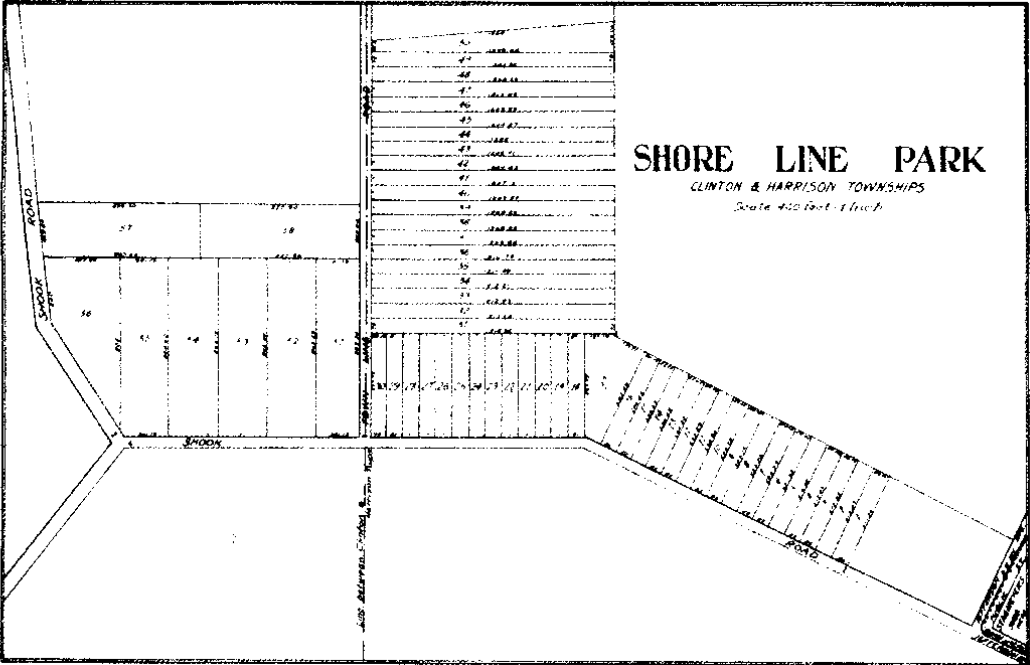




Part of Fractional Township 2 North, Range 16 East and
 Fractional Township 2 North, Range 14 East
 of the Michigan Meridian



Scanned By:
METCO
Engineers, Architects & Surveyors



Scanned By:
.METCO
Engineers, Architects & Surveyors

425

South Side of River Huron

415

Chains forty three links, to a post standing on the border of River Huron, thence along the border of said River down stream south fifty six degrees East three chains fifty links, thence south eighty degrees east seven chains, thence north fifty six degrees East twelve chains, thence north sixty four degrees east six chains fifty one links, to the place of beginning, containing two hundred and thirty five and sixty six hundredths of an acre.

Detroit July 18. 1810

Aaron Greeley Surveyor of private claims.

N^o. 501. South Side of River Huron
 Description N^o. 178 Confirmed to James Abbott commencing at a post standing on the border of River Huron between this tract and a tract confirmed to Joseph Robertson, thence south one hundred and sixty two chains eighty three links, to a post thence west thirty three chains eighteen links, to a post the north west corner of a tract confirmed to Joseph Clansforn on Lake St. Clair thence north one hundred and eighty eight chains forty links to an Elm tree, thence East six chains forty eight links, to a Buttonwood tree standing on the border of River Huron between this tract and a tract confirmed to Christian Clemans, thence along the border of said River down stream South twenty six degrees west eight chains forty links, thence South, three chains thence South forty-

476

South side of River Huron

one degree east six chains, thence south eighty eight degrees East Eighteen chains forty five links, thence south sixty seven degrees East three chains, thence south seventeen degrees west nine chains, thence south seventy one degrees East four chains, thence north sixty six degrees East four chains forty nine links to the place of beginning, containing five hundred and seventy seven acres and ninety four hundredths of an acre.

Detroit July 18. 1810

Huron Greeley Surveyor of private claims.

we
ee
fo
do
fy
ey
te
de
ch
de
fy
ee
ch
de
the
che
fo
ey
Gig
so
ch
we
pl
te
a
M
the
dec
the
tot

N^o 504" South side of River Huron Description N^o 502, Confirmed to Christian Clemens commencing at a Buttr nut tree standing on the border of River Huron between this tract and a tract of unceded land, thence south eighty three chains fifty nine links, to a post, thence East thirty four chains, to a post standing on the west line of a tract confirmed to James Abbott thence north one hundred and forty eight chains, forty links, to an Elm tree, thence East six chains forty eight links, to a Button wood tree standing on the border of River Huron between this tract and a tract confirmed to James Abbott, thence along the border of said River up stream north twenty six degrees East eight chains sixty links, thence north forty one degrees west seven chains, thence south eighty one degrees thirty minutes west Eighteen chains, thence south seventy five degrees

No. 453

No. 164 Confirmed to
Joseph Mitresse' dit
Sansfacon

LAKE ST. CLAIR

Description No. 164 Confirmed to Joseph Mitresse' dit

Sansfacon commencing at a post standing on the border of Lake St. Clair between this tract and a tract confirmed to Charles Chovin thence north seventy two degrees west one hundred and two chains thirty four links to a post thence north eighteen degrees east twenty three chains ninety two links to a post the south west corner of a tract confirmed to James Abbott on the south side of River Huron, thence along on the rear of said tract east thirty three chains eighteen links to a post the south east corner of said Abbotts tract, thence south sixty three degrees thirty minutes east fifty six chains to a post standing on the border of Lake St. Clair between this tract and a tract of unconceded land thence along the border of said lake south twelve degrees forty five minutes east thirty one chains twelve links to the place of beginning, containing two hundred and seventy seven acres & eighty seven hundredths of an acre ___.

Detroit July 18th, 1810

Aaron Greeley Surveyor
of private claims

JEFFERSON VILLA SUB. NO. 2

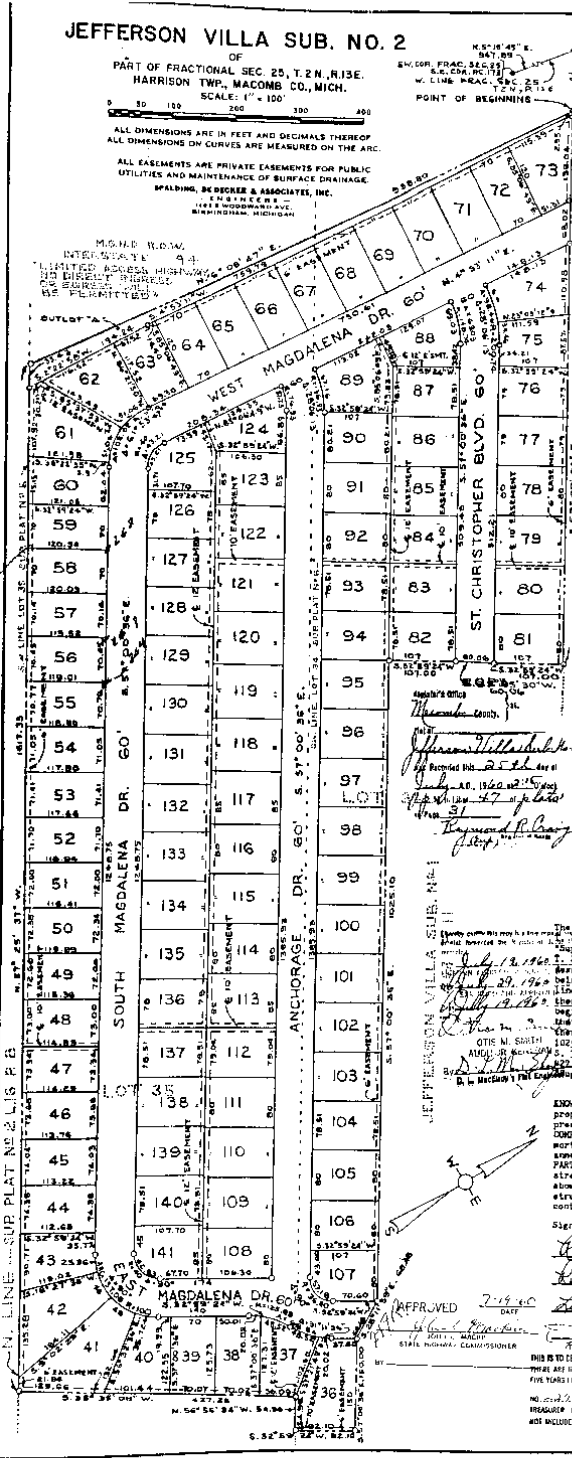
PART OF FRACTIONAL SEC. 25, T.2N., R.13E. HARRISON TWP., MACOMB CO., MICH.

SCALE: 1" = 100'

ALL DIMENSIONS ARE IN FEET AND DECIMALS THEREOF. ALL DIMENSIONS ON CURVES ARE MEASURED ON THE ARC.

ALL EASEMENTS ARE PRIVATE EASEMENTS FOR PUBLIC UTILITIES AND MAINTENANCE OF SURFACE DRAINAGE.

W. J. C. KAUFMAN, REGISTERED LAND SURVEYOR



I hereby certify that the plat herein delineated is a correct one and that permanent metal monuments consisting of bars not less than one-half inch in diameter and 36 inches in length...

This plat was approved by the Township Board of the Township of Harrison at a meeting held May 28, 1962...

STATE OF MICHIGAN COUNTY OF WAYNE Notary Public W. J. C. KAUFMAN

STATE OF MICHIGAN COUNTY OF WAYNE Notary Public W. J. C. KAUFMAN

STATE OF MICHIGAN COUNTY OF WAYNE Notary Public W. J. C. KAUFMAN

CERTIFICATE OF APPROVAL BY BOARD OF COUNTY ROAD COMMISSIONERS

CERTIFICATE AS TO STATE TRUNK LINE OR FEDERAL AID ROAD

COUNTY PLAT BOARD APPROVAL

DESCRIPTION

Signed in the presence of: W. J. C. KAUFMAN, REGISTERED LAND SURVEYOR

44-04-70
 90-00-00
 07-07-10
 82-04-13
 44-06-10
 7-01-10

Copy 376 26453

'SUPERVISOR'S PLAT No 6'
 PARTS OF FR. SEC'S 25 & 30, P.C. 173 T. 2 N. R. 13 & 14 E.
 HARRISON TWP., MACOMB CO., MICH.
 WALTER J. LEHNER
 MT CLEMENS, MICH.

Scale 1/2" = 200'
 All dimensions in feet
 and decimals thereof.

INDICATION

KNOW ALL MEN BY THESE PRESENTS, That I Floyd W. Roebig, Supervisor of the township of Harrison, Macomb county, state of Michigan by virtue of authority in me vested by Section 51, Act 172 of P. A. 1925 and authorized by the Township Board have caused the land shown in the annexed plat to be surveyed, laid out and plotted, to be known as 'Supervisor's Plat No. 6' of parts of Fr. Secs. 25 & 30, P.C. 173 and that the streets as shown have been dedicated to the public use of the Township of Harrison, Michigan.

M. H. Brown
 Clerk of the Board
 STATE OF MICHIGAN)
 COUNTY OF MACOMB)

On this fifth day of February A. D. 1934, before me a Notary Public in and for said county, personally appeared the above named Floyd W. Roebig, Supervisor of Harrison Twp., known to me to be the person who executed the above Indication and acknowledged the same to be his free act and deed as such Supervisor.

Floyd W. Roebig
 Notary Public in and for Macomb County, Michigan.
 My commission expires March 6, 1937.

TOWNSHIP APPROVAL
 This plat was approved by the township board of the township of Harrison at a meeting held on February fifth A. D. 1934.

Walter J. Lehner
 Township Clerk

DESCRIPTION
 THE LAND SHOWN IN THE ANNEXED PLAT OF 'SUPERVISOR'S PLAT No. 6' of Parts of Fr. Secs. 25 & 30, P. C. 173 P. 2 of T. 2 N. R. 13 & 14 E., Harrison Twp., Macomb Co., Mich. is described as follows: commencing at the intersection of the southerly line of P. C. 802 and the centerline of Jefferson Ave., so called; thence S. 37°-11'-30"W. 366.78 ft. thence S. 79°-11'-30"W. 622.38 ft. to a point of beginning; thence S. 79°-11'-30"W. 1211.70 ft.; thence S. 79°-11'-30"W. 688.20 ft.; thence S. 79°-11'-30"W. 1044.30 ft.; thence S. 79°-11'-30"W. 1044.30 ft.; thence S. 79°-11'-30"W. 1044.30 ft.; thence S. 79°-11'-30"W. 1044.30 ft.; thence S. 79°-11'-30"W. 1044.30 ft.; thence S. 79°-11'-30"W. 1044.30 ft.; thence S. 79°-11'-30"W. 1044.30 ft.; thence S. 79°-11'-30"W. 1044.30 ft. to the place of beginning.

This plat was approved by the County Board for Macomb County, Michigan, at a meeting held July 26, 1933.
Walter J. Lehner County Clerk
Walter J. Lehner County Treasurer

Examined and Approved
Walter J. Lehner
 Registered Civil Engineer

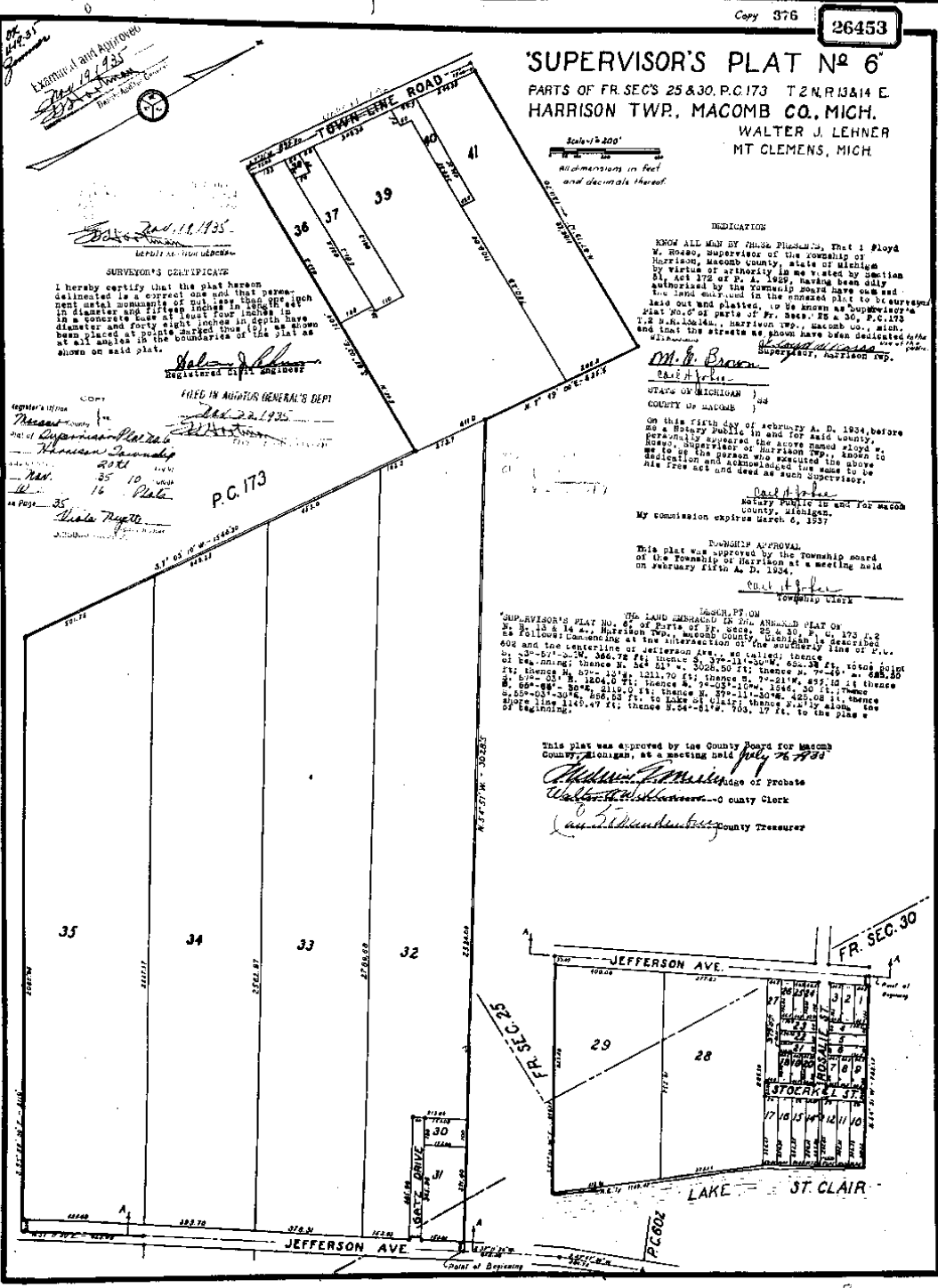
SURVEYOR'S CERTIFICATE
 I hereby certify that the plat hereon delineated is a correct one and that permanent metal monuments of not less than one inch in diameter and fifteen inches in length set in a concrete base at least four inches in diameter and forty eight inches in depth have been placed at points marked thereon (1), as shown on said plat.

Walter J. Lehner
 Registered Civil Engineer

FILED IN REGISTER GENERAL'S DEPT
Walter J. Lehner
 Feb 22 1935

Register's Office
 Macomb County
 Notary Public
 Harrison Township
 2031
 Feb. 16 1935
 35
Walter J. Lehner

P.C. 173



And Grand Jury

Exam 25683
May 10 - 1932
Walter J. Lehner
Register Public Surveyor

SUPERVISORS PLAT No 2

PART OF P.C.S. 173 & 164 T.2N.R.13&14E

HARRISON TWP.

MACOMB CO., MICH.

SCALE 1"=200'

WALTER J. LEHNER, REG. C.E.
177 CLEMENS, MICH.

Register's Office
Macomb County
Plat of
Superior Plat No 2
A.B. 1932
Filed in book 16 of Plate
J. W. Marshall
County Clerk

FILED IN SECTION 173 & 164
May 12 - 1932
J. W. Marshall
County Clerk

55	1176.58
52	1172.57
51	1178.45
50	1172.50
49	1189.24
48	1181.79
47	1182.02
46	1182.79
45	1182.00
44	1182.59
43	1182.59
42	1182.59
41	1182.57
40	1182.71
39	1182.15
38	1176.04
37	1182.28
36	1182.22
35	1182.71
34	1182.10

DEDICATION
KNOW ALL MEN BY THESE PRESENTS, That I, Floyd W. Rose, Supervisor of the Township of Harrison, Macomb County, State of Michigan, by virtue of authority in me vested by section 51, Act 192 of P.A. 1929, and having been duly authorized by the Township Board have caused the land embraced in the annexed plat to be surveyed, laid out and platted, to be known as SUPERVISORS PLAT NO. 2, a part of P.C.S. 173 & 164 T.2N.R.13&14E, Harrison Township, Macomb County, Mich., and that the streets as shown on said plat have been dedicated to the use of the public.

Witnesses,
F. W. Rose
George W. Hartman

DATE OF RECORD: 1932
COUNTY OF MACOMB

On this 10th day of May, A.D. 1932 before me a Notary Public in and for Macomb County, Michigan, the above named Floyd W. Rose, Supervisor of Harrison Twp., known to me to be the person who executed the above dedication and acknowledged the same to be his free act and deed as such Supervisor.

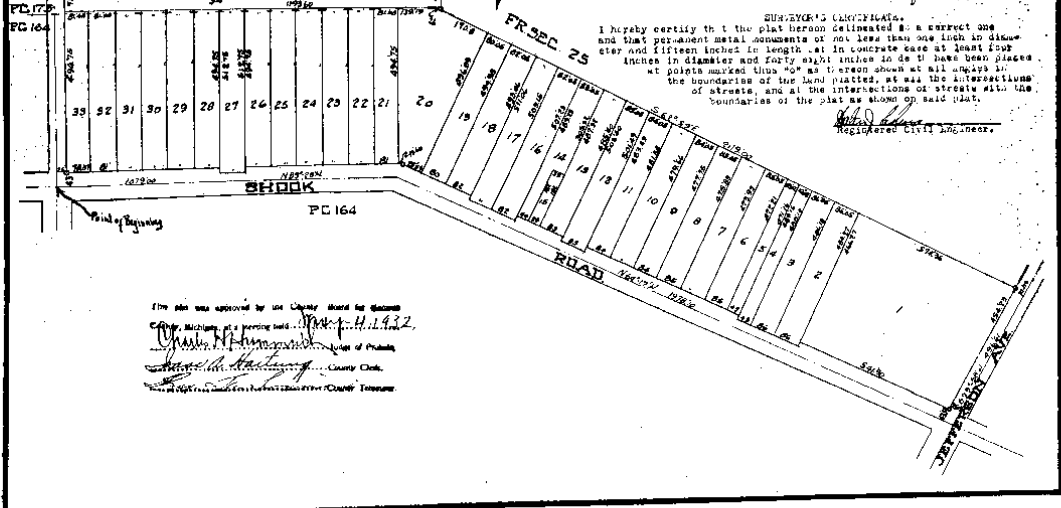
Notary Public in and for Macomb Co., Mich.
My commission expires May 1, 1933

The land embraced in the annexed plat of SUPERVISORS PLAT No. 2, a part of P.C.S. 173 & 164 T.2N.R.13&14E, Harrison Twp., Macomb County, Mich., is described as follows:
Commencing at the intersection of the center line of Cook road, so called, and (Harrison-Cintrop) Town Line Road, so called, and thence extending N. 89° 25' 45" E. 1200.00 ft. along the center of said Town Line Road; thence S. 89° 42' 00" E. 1204.00 ft.; thence S. 89° 42' 00" E. 1166.00 ft.; thence S. 62° 00' 00" E. 2129.00 ft.; thence S. 28° 48' 00" E. 496.00 ft. along the center of Jefferson Ave., so called; thence N. 61° 15' 00" E. 1216.00 ft.; and thence S. 69° 20' 00" E. 1072.00 ft. along the center of above road to point of beginning.

TOWNSHIP BOARD APPROVAL:
This plat was approved by the Township Board of the Township of Harrison at a meeting held May 7, 1932

I hereby certify that the plat hereon delineated is a correct one and that permanent metal monuments of not less than one inch in diameter and fifteen inches in length, set in concrete base at least four inches in diameter and forty eight inches in depth have been placed at points marked thus "X" as thereon shown at all corners of the boundaries of the land platted, at all the intersections of streets, and at the intersections of streets with the boundaries of the plat as shown on said plat.

Walter J. Lehner
Registered Civil Engineer



This plat was approved by the County Board for Macomb County, Michigan, at a meeting held May 11, 1932.
J. W. Marshall
County Clerk