

REC'D OCT 29 2007 4/30 P.M.

LAND CORNER RECORDATION CERTIFICATE
Filing Requirement of Act 74, Mich. P.A. 1970

For corners in

MACOMB (County) Located In: HARRISON TWP. Corner Code # PC-007
1. Public Land Survey T 2N R 14E
2. Property Controlling in Section S T R
3. Miscellaneous Number S T R
Property in Sec. S T R

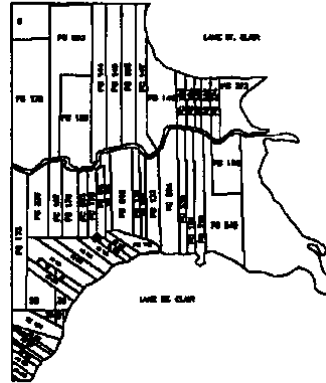
7151913 LIBER 19039 PAGE 436



11/08/2007 04:31:00 P.M. SEAL
MACOMB COUNTY, MI
CARNIELLA SABAUGH, REGISTER OF DEEDS

4. Lot No. , Recorded Plat
5. Private Claims PC-007, Southeast Corner of Private Claim 178 Common w/Southwest Corner of Private Claim 175

I, Steven E. Dunn, in a field survey on February 21, 22, 26, July 19 and 27, 2007, do hereby certify that under requirements of P.A. 74, Michigan P.A. of 1970, the corner points mentioned in lines 1 and 2 above were in conformance with regulations and rules therefore as required in the current manual of survey instructions of the United States Department of the Interior, Bureau of Land Management or by a decree of a Court of Law and/or that the corner points mentioned in lines 3, 4 and 5 above were in conformance with the rules of the Michigan Board of Land Surveyors or by a Decree of a Court of Law; established, re-established, monumented, re-monumented, recovered, found as expressed below:



NOTE: Not more than 2 corners, all in the same town and range, may be recorded on this certificate.

A. Description of original monument and accessories and/or subsequent restoration: Found no evidence of an original corner.

1. Black Ash Tree GLO Notes, Private Claim 175, Aaron Greeley July 18, 1810

(continued on back)

B. Description of corner evidence found and/or method applied in restoring or reestablishing corner: PC 007 Southeast corner of Private Claim 178 common with the Southwest corner of Private Claim 175. No evidence of existing monument found. First, we established the south line of Private Claims 187, 176, 833, 178 and 175 as follows: We found a concrete monument at the southwest corner of Private Claim 176 and a 1/2" steel rod on the south line of Private Claim 176 (also being the south right-of-way line of Tucker Avenue, 50' wide) at the corner common with Lot No. 165 and 166 of "Lakeside Gardens" as recorded in Liber 2 of Plats on Page 233 (MCR). Field measurement from the concrete monument east to the steel rod is 1053.96', within 0.43' of the calculated record (1053.53'). I then compared monumentation found along the north right-of-way line of Tucker Avenue with the south PC line as established above. The north right-of-way line appears to be parallel with the south PC line but falls +/- 2.00' short of the recorded width of Tucker Avenue (+/- 48.00' measured, 50.00' record). I held the line as established above as the south Private Claim line.

(continued on back)

FIELD MEASUREMENTS AND RECORD MEASUREMENTS (see back):

C. Description of monument for corner and accessories established to perpetuate locating the position of the corner: PC 007 Southeast corner of Private Claim 178 common with the southwest corner of Private Claim 175. Set a Mag nail in the concrete pavement of the left lane of westbound Metropolitan Parkway.

I replaced the Mag nail with a 3/4" X 24" Iron rod with a 2" diameter aluminum cap stamped "Macomb County Monument Mi. Act 345 1990 MCL, PC 007, 28408" in a new monument box.

WITNESSES:

- S.08"E. 26.68' Set Mag nail w/Macomb County Witness tag in northeast face of 14" Locust.
N.50"W. 21.75' Bottom of "7" of "273" stamped in north edge of concrete pavement of westbound Metropolitan Parkway.
N.17"W. 65.06' Set Mag nail w/Macomb County Witness tag in west face of utility pole.
S.62"W. 58.65' Set 1/2" steel rod w/control cap +/- 1.00' south of "50 Mile Per Hour Speed Limit" sign on south side of westbound Metropolitan Parkway.
N.70"W. 63.83' Set 1/2" steel rod w/control cap +/- 1.00' north of "50 Mile Per Hour Speed Limit" sign on north side of westbound Metropolitan Parkway.



THE SELECTED LOCATION IS ACCEPTED BY ME AND IS GENERALLY ACCEPTED BY PROFESSIONAL SURVEYORS AS THE BEST AVAILABLE EVIDENCE OF THE POSITION OF THE ORIGINAL CORNER.

ACCEPTED BY THE MACOMB COUNTY SURVEY PEER GROUP AS THE OFFICIAL CORNER UNDER MICHIGAN PUBLIC ACT 345 OF 1990 AT A MEETING HELD ON 9-18-07

Signed by Steven E. Dunn Surveyor's Michigan License No. 28408

Date 10-29-2007

For corners in

MACOMB Located In: Corner Code #
(County) HARRISON TWP.

1. Public Land Survey T.2N R.14E PC-007
T. R.

5. Private Claims PC-007, Southeast Corner of Private Claim 178 Common w/Southwest Corner of Private Claim 175

A. Description of original monument and accessories and/or subsequent restoration:

2. Ash Tree	GLO Notes, Private Claim 178, Aaron Greeley	July 18, 1810
3. Oak stake	Map, Survey of Louis DeHate Est., Samuel Crocker	April, 1906
4. N/A	Plat, Lakeshore Gardens - L. 3, P. 1 & 2	July 13, 1915
5. N/A	Plat, Winkler's Subdivision - L. 9, P. 49	June 30, 1925
6. N/A	Plat, Winkler's Subdivision No. 1 - L. 10, P. 45	June 8, 1926
7. N/A	Plat, Supervisors Plat No. 16 - L. 18, P. 23	May 8, 1937

B. Description of corner evidence found and/or method applied in restoring or reestablishing corner:

PC 007 Southeast corner of Private Claim 178 common with the southwest corner of Private Claim 175. Set a Mag nail in the concrete pavement of the left lane of westbound Metropolitan Parkway.

(continued)

We found a 1/2" steel pipe at the southeast corner of Harrison Township Tax Description 17-12-18-476-014 common with the southwest corner of Harrison Township Tax Description 17-12-18-476-015. The found steel pipe falls 10.00 feet east of the line common with Lots 17 and 18 of "Supervisors Plat No. 15" which is also called out as the line common with Private Claims 178 and 175. I set a point 10.00' west and perpendicular to the Private Claim line and did a line-line intersection from this point through a found concrete monument at the northeast corner of Lot No. 80 of "Winkler's Subdivision No. 1" as recorded in Liber 10 of Plats on Page 45 (MCR) with the south Private Claim line as established above and set a Mag nail in the concrete pavement of the left lane of westbound Metropolitan Parkway.

FIELD MEASUREMENTS AND RECORD MEASUREMENTS:

PC 007 to PC 010 (the southeast corner of Private Claim 175):

- 618.60' - Record, GLO (9 chains, 41 links).
- 627.89' - Calculated record, Winkler's Subdivision No. 1.
- 633.14' - Field.

PC 007 to PC 006 (southwest corner of Private Claim No. 178 common w/southeast corner Private Claim No. 633):

- 681.78' - Record, GLO (10 chains, 22links).
- 696.00' - Record, Map of Survey of Louis DeHate Est.
- 702.29' - Calculated record, Winkler's Subdivision.
- 697.15' - Field.

MACOMB COUNTY
INDEX OF SUPPORTING DOCUMENTATION FOR

Town 2 North, Range 14 East

Harrison Township

**Corner Code: PC 007 Southeast Corner of Private Claim No. 178 common with the Southwest
Corner of Private Claim No. 175.**

Section One:

- A. Index
- B. Pictures
 - 1. Before Pictures – July 27, 2007
 - 2. After Picture

Section Two:

- A. Preliminary LCRC – August 16, 2007
- B. Surveyor's Report – August 16, 2007

Section Three:

- A. Field Notes
 - 1. (2) February 21, 2007
 - 2. February 22, 2007
 - 3. February 26, 2007
 - 4. July 19, 2007
 - 5. July 27, 2007
- B. Legal Description – N/A
- C. Tax Description (2) – Harrison Township, 17-12-18-476-014 and 015
- D. Sketches – July 27, 2007
- E. Maps
 - 1. Standard Atlas of Macomb County (1875) – Map of Harrison Township.
 - 2. Standard Atlas of Macomb County (1895) – Map of Harrison Township.
 - 3. Survey of Louis DeHate Est. (April, 1906) – Samuel Crocker – Oak Stake
 - 4. Standard Atlas of Macomb County (1916) – Map of Harrison Township.
 - 5. Standard Atlas of Macomb County (1916) – Harrison Township, Lakeshore Gardens and Lakeside Gardens.
- F. Full size Composite Maps (5) – 12-19C, D, F,G and H (2006)

Section Four:

- A. Copies of original government notes
 - Aaron Greeley – Private Claim 178 July 18, 1810 – Ash Tree.
 - Aaron Greeley – Private Claim 175 – July 18, 1810 – Black Ash Tree
- B. Recorded LCRC's – N/A
- C. Recorded and unrecorded surveys – N/A
- D. Copies of all items listed in "Part A" of LCRC.
 - Plats
 - 1. Supervisors Plat No. 15 – L. 18, P. 23 May 8, 1937
 - 2. Winkler's Subdivision No. 1 – L. 10, P. 45 June 8, 1926
 - 3. Winkler's Subdivision – L. 9, P. 49 June 30, 1925
 - 4. Lakeshore Gardens – L. 3, P. 1 & 2 July 13, 1915

Survey Report
PC 007
Southeast Corner PC 178
Common w/Southwest Corner PC 175
T.2N., R.14E., Harrison

Letters asking for unrecorded information were sent to:

AEW, Inc. – Shelby Twp.
Fenn & Associates, Inc. - Shelby Twp.
GWE – Rochester Hills
Kennedy Surveying, Inc. - Oxford
Lehner Associates, Inc. – Clinton Twp.
GLA Surveyor – Plymouth
Professional Engineering Assoc. Inc. – Troy
R. J. Donnelly & Associates Inc. – Troy
George Jerome & Company – Roseville
King Surveying, Inc. – Armada
Michigan Surveying Inc. – Livonia
David C. Adams & Son – Redford
Urban Land Consultants – Shelby Township

GENERAL: Traverse points were set and points located then tied in with a Leica System 500 GPS unit. Corners from previous years were shot also and used to apply a scale factor to match the coordinates of the existing corners. Points not able to locate by GPS were side-shot off previously located points with a Leica TCA1103 Electronic Theodolite.

CORNER: Southeast corner of Private Claim 178 common with the southwest corner of Private Claim 175. No evidence of existing monument found. First, we established the south line of Private Claims 167, 176, 633, 178 and 175 as follows:

We found a concrete monument at the southwest corner of Private Claim 176 and a ½" steel rod on the south line of Private Claim 176 (also being the south right-of-way line of Tucker Avenue, 50' wide) at the corner common with Lot No. 165 and 166 of "Lakeside Gardens" as recorded in Liber 2 of Plats on Page 233 (MCR). Field measurement from the concrete monument east to the steel rod is 1053.96', within 0.43' of the calculated record (1053.53'). I then compared monumentation found along the north right-of-way line of Tucker Avenue with the south PC line as established above. The north right-of-way line appears to be parallel with the south PC line but falls ± 2.00' short of the recorded width of Tucker Avenue (± 48.00' measured, 50.00' record). I held the line as established above as the south Private Claim line.

We found a ½" steel pipe at the southeast corner of Harrison Township Tax Description 17-12-18-476-014 common with the southwest corner of Harrison Township Tax Description 17-12-18-476-015. The found steel pipe falls 10.00 feet east of the line common with Lots 17 and 18 of "Supervisors Plat No. 15" which is also called out as the line common with Private Claims 178 and 175. I set a point 10.00' west and perpendicular to the Private Claim line and did a line-line intersection from this point through a found concrete monument at the northeast corner of Lot No. 80 of "Winkler's Subdivision No. 1" as recorded in Liber 10 of Plats on Page 45 (MCR) with the south Private Claim line as established above and set a Mag nail in the concrete pavement of the left lane of westbound Metropolitan Parkway.

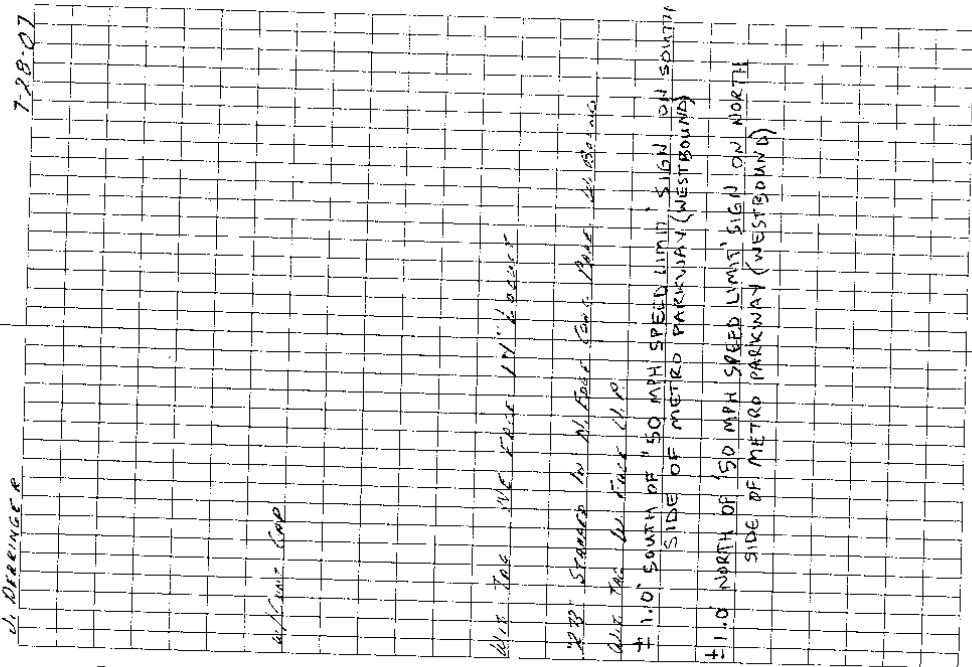
OBSERVATIONS: Field measurement from PC 007 to PC 010 (being the southeast corner of Private Claim No. 175) is 619.66'. 618.60' record GLO (9 chains, 41 links). 627.89' calculated record, "Winkler's Subdivision No. 1".

Field measurement from PC 007 to PC 006 (being the southwest corner of Private Claim No. 178 common with the southeast corner of Private Claim No. 633) is 697.15'. 681.78' record GLO (10 chains, 22 links). 696.00' record, Map of Survey of Louis DeHate Estate, Samuel Crocker, April, 1906. 702.29' calculated record, "Winkler's Subdivision".

RECOMMENDATION: My recommendation to the Peer Review Board is to accept the Mag nail as the proper location for the corner.

Respectfully submitted,

Steven E Dunn, PS #28408



07-100	MARION			
7c 12				
B.S. 201	60° 00' 00"	215.208		
315	352° 48' 48"	967.23		
204	257° 41' 57"	1589.03		
FS 816	353° 39' 32"	972.235	SET 1/2" IRON	
R. 216				
B.S. 12	90° 00' 00"	972.235		
315	70° 29' 08"	15.145	PC 007	
329	5.08° E.	26.66		
	253° 23'	120.50	SET 1/2" IRON	
N.W. 1/4	N. 68°	4.141	PAVE W. BOUND	
340	N. 50° W.	21.75		
	52° 41' 32"	33.80	PT OF "7" OF	
341	N. 17° W.	65.06		
	69° 52' 43"	79.433	SET 1/2" IRON	
342	35° 00' 57"	54.513	SET CAPPED IRON	
343	N. 70° 20' W.	63.83		
	25° 33' 1/2"	71.191	SET CAPPED IRON	
204	171° 57' 27"	618.238		
FS 217	166° 53' 52"	616.008		

4/1/01 CAP

4/1/01 TAKE ME FROM 1/1" EJECT

4/1/01 STANDER IN N. ROAD FOR 1/1" EJECT

4/1/01 TAKE ME FROM 1/1" EJECT

± 1.0 SOUTH OF "50 MPH SPEED LIMIT" SIGN ON SOUTH SIDE OF METRO PARKWAY (WESTBOUND)

± 1.0 NORTH OF "50 MPH SPEED LIMIT" SIGN ON NORTH SIDE OF METRO PARKWAY (WESTBOUND)

Be 499
972.135

7-19-2007

1412.04
183°42'00"

S.D.-L.R.

BALLARD & SUTHERLAND

ALBANY, TENNESSEE RR. CO. 184

1 1/2 STEEL PILES

EXCESSIVE LOADS HERE

97-100 MARANO

GAS

1201 FO. RR SPIKE IN HOOD BOLT & W-10

1302 " 3" STEEL ROD "

X51222 FO. MAS NAIL

B551224 00'00.00" 1412.047 FO. 1/2" STEEL ROD

1235.2521 30.824 FO. 3" STEEL ROD

104.2653 921.424 FO. 3" STEEL PIPE

Xc

B551224 00'00.00" 972.115

1500'00" 104.265 FO. 3" STEEL ROD IN

167'53"00" 128.228 FO. 1/2" STEEL PIPE

176'37"41 970.226 SET MOD. NAIL

X51224

B551222 00'00.00" 1412.04

188'41'00" 972.135

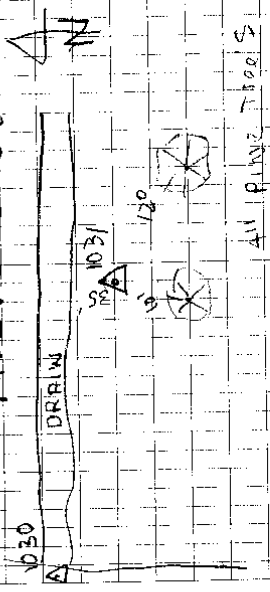
Xc

B551222 00'00.00" 972.248

172'23'03" 68.257 FO. STEEL ROD IN STEEL

7

FBG 22, 2007 FB-520
 FILE: 022710716



ALL PINE TREES

FD 1/2" I.R. 3599Z

"1031 - LEANING RIGHT ON ELEC. POLE"

SOUTH SIDE OF TURNKOF
 NORTH SIDE TURNKOF BETWEEN W. & K. C. L. 3 HAMAN

HARRISON TWP
 MAGOMBS

07-100			
7	TD 1021		
8	DS 1030	0-0-0-00	372, 395
83	1032	11-2-8-20	268, 118 F.O. 1/2" #5279
84	1033	150-25-26	137, 619 F.O. 1/2" I.P.
85	1034	188-0-6-53	129, 186 F.O. 1/2" I.R.
86	1035	220-0-8-25	182, 463 F.O. 1/2" I.P.
10	TD 1037		
11	BS 1038	0-0-0-00	346, 188
87	FS 1039	180-05-19	99, 947 F/O 1/2" I.R.
1040			
11	1036		
10	TD 1038		
88	DS 1037	0-0-0-00	346, 177
89	FS 1040	265-30-24	50, 262 F/O 1/2" I.R.
90	1012	259-57-25	329, 182 F/O 1/2" I.P. & D
89	1041	267-59-27	321, 105 "Wood FENCE POST"

2-21-07

07-100 Hagerman Top Remov.

5 AC-1015

4 BS-1014 2-2-00 883.402

BS-1024 75-58-12 113.722

BS-1014 ✓

2 AC-1012A

BS-1013 2-2-00 108.482

BS-1025 46-23-49 119.412

1026 91-42-04 69.536

76
00
RD

2-21-07 BK 520

5

FP 1/2 1/R

GPS POINT

GPS POINT

(p. 1/R & 07/10 (15 MW) = 23505 WRF

FP 1/2 ROW post w/ lots of flagging?

2-21-07

07-17-10 Harrison Top Run

4 72c

5 BS 1015 0-0-22 882.387

70 1016 26-10-24 228.934

73 1017 1-12-56 134.985

74 1018 27-52-48 266.928

75 1019 0-56-42 467.064

76 1020 359-42-81 742.467

72 1017

5 BS 1015 0-0-00 748.439

4 FS 1014 181-26-72 134.924

71 FS 1021 204-00-28 229.523

75 1019

5 BS 1015 0-0-00 406.457

4 1019 181-59-48 467.075

78 1022 280-53-14 231.512

76 1020

4 BS 1014 0-0-00 742.479

5 FS 1015 181-50-07 146.980

78 FS 1023 91-17-43 214.897

(S)

76
70
FD

21 2-21-07 BKS20

GPS POINT

GPS POINT

FR MONITORING BAK FIELD 1011-1012

AD 1/2 1 R in center. FILLED COFFEE CAN

GPS MON. 2/1/07

1/2 R 1019 14097

GPS POINT OF ALVARO

FD 1018

08/16/2007 11:25 FAX 586 469 5130

MACOMB CO REG-DEEDS

002

08/16/07

MACOMB COUNTY TREASURER
TED B. WAHBY

TAX HISTORY

HARRISON TWP

Property Number: 17-12-18-476-014

Alt. Property Number: 17-10-80-001-100

Property Address: 27193 SOUTH RIVER

School Code: 50140

TAX YEAR	TAX. VALUE	BASE TAX	BASE TAX DUE	INTEREST/FEES DUE	TOTAL DUE	LAST PMT
2006			0.00	0.00	0.00	
2005	0		0.00	0.00	0.00	
2004	0		0.00	0.00	0.00	
2003	0		0.00	0.00	0.00	
2002	0		0.00	0.00	0.00	
2001	0		0.00	0.00	0.00	
2000	0		0.00	0.00	0.00	
1999	0		0.00	0.00	0.00	
1998	0		0.00	0.00	0.00	
1997	0		0.00	0.00	0.00	
TOTAL			0.00	0.00	0.00	

Fees Due As Of: 08/16/07

DESCRIPTION OF PROPERTY:

SUPERVISORS PLAT NO 15 W 10.0 FT LOT 17 AND E 80.0 FT OF LOT 18

History Fees: 0.00

Taxpayer: ADKINS RONALD G
27193 SOUTH RIVER RD
HARRISON TWP

MI 48045

08/16/2007 11:25 FAX 586 469 5130

MACOMB CO REG-DEEDS

003

08/16/07

MACOMB COUNTY TREASURER
TED B. WAHBY

TAX HISTORY

HARRISON TWP

Property Number: 17-12-18-476-015

Alt. Property Number: 17-10-80-001-000

Property Address: 27261 SOUTH RIVER

School Code: 50140

TAX YEAR	TAX. VALUE	BASE TAX	BASE TAX DUE	INTEREST/FEES DUE	TOTAL DUE	LAST PMT
2006			0.00	0.00	0.00	
2005	0		0.00	0.00	0.00	
2004	0		0.00	0.00	0.00	
2003	0		0.00	0.00	0.00	
2002	0		0.00	0.00	0.00	
2001	0		0.00	0.00	0.00	
2000	0		0.00	0.00	0.00	
1999	0		0.00	0.00	0.00	
1998	0		0.00	0.00	0.00	
1997	0		0.00	0.00	0.00	
TOTAL			0.00	0.00	0.00	

Fees Due As Of: 08/16/07

DESCRIPTION OF PROPERTY:

SUPERVISORS PLAT NO 15 LOT 16 & LOT 17 EXC W 10 FT.

History Fees: 0.00

Taxpayer: MCNEIL MICHAEL & DIANE
27261 SOUTH RIVER RD
HARRISON TWP

MI 48045

07-100 HARRISON

PG 007, PG 010

7-27-2007

610.38 M.

Fd 2" STEEL
END 93009

Fd 3" STEEL ROD
0.57' W.

PG 178

Fd 2" STEEL ROD
2.34' E,
615.66 M.

PG 175

Fd 3" STEEL ROD
1.62' E.

Fd 4" STEEL PIPE
1.48' E.

Fd. CONC. MAN.

"WINELER'S SUB."

"WINELER'S SUB. 110.1"

"LAKESHORE GARDENS"

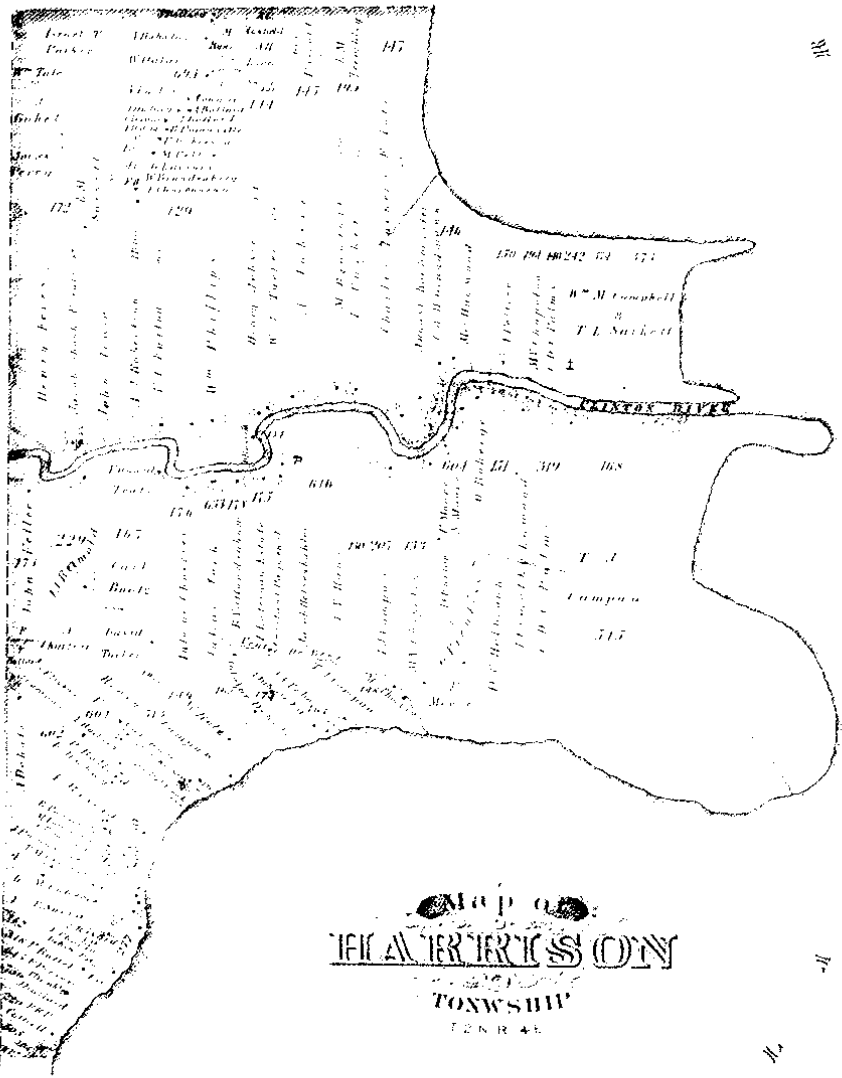
Fd 1/2"
STEEL PIPE
6.74' DIA
5184.97' M.

1330.23' CALC. REC. LS
1330.18' CALC. REC. WING.
1316.91' M.

697.15' M.
702.23' CALC. REC.
681.78 R-GLD
696.03 R. MAP

619.65'
627.89' CALC. REC.
618.60 R-GLD

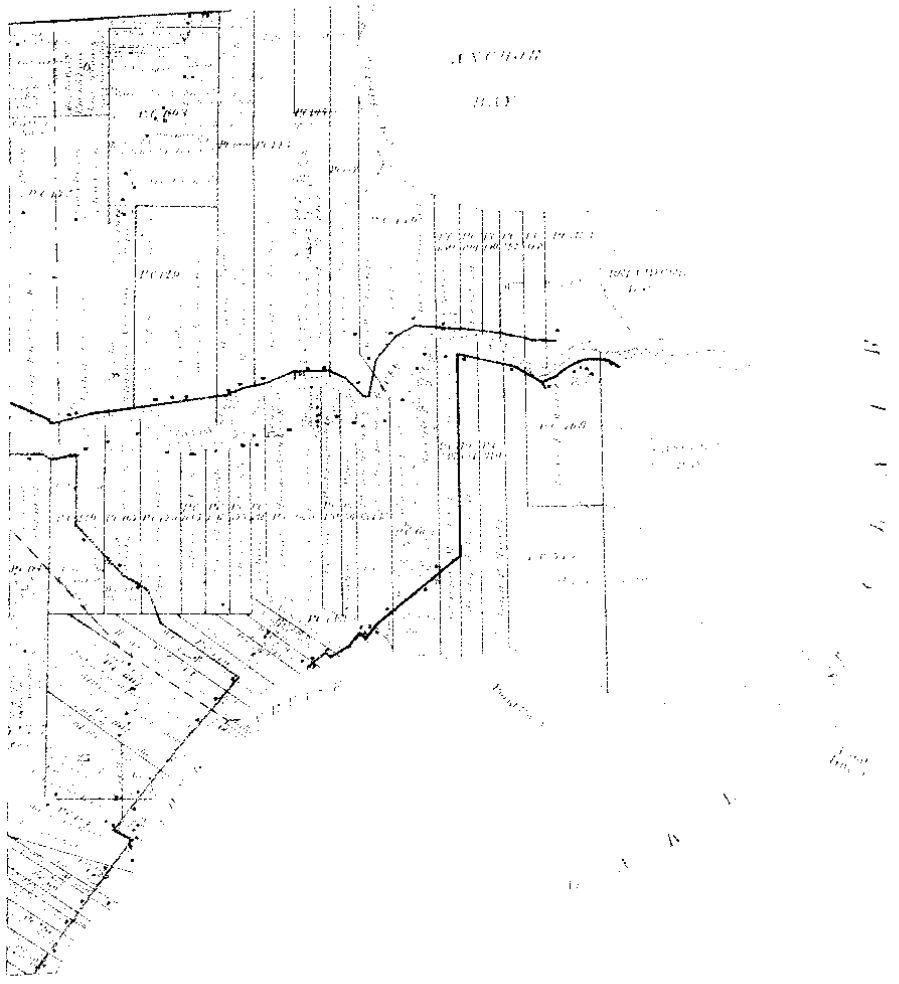
1316.91' M.
1314.60 R- MAP-GLD PG 175
1300.38 R-GLD
1316.91' M.

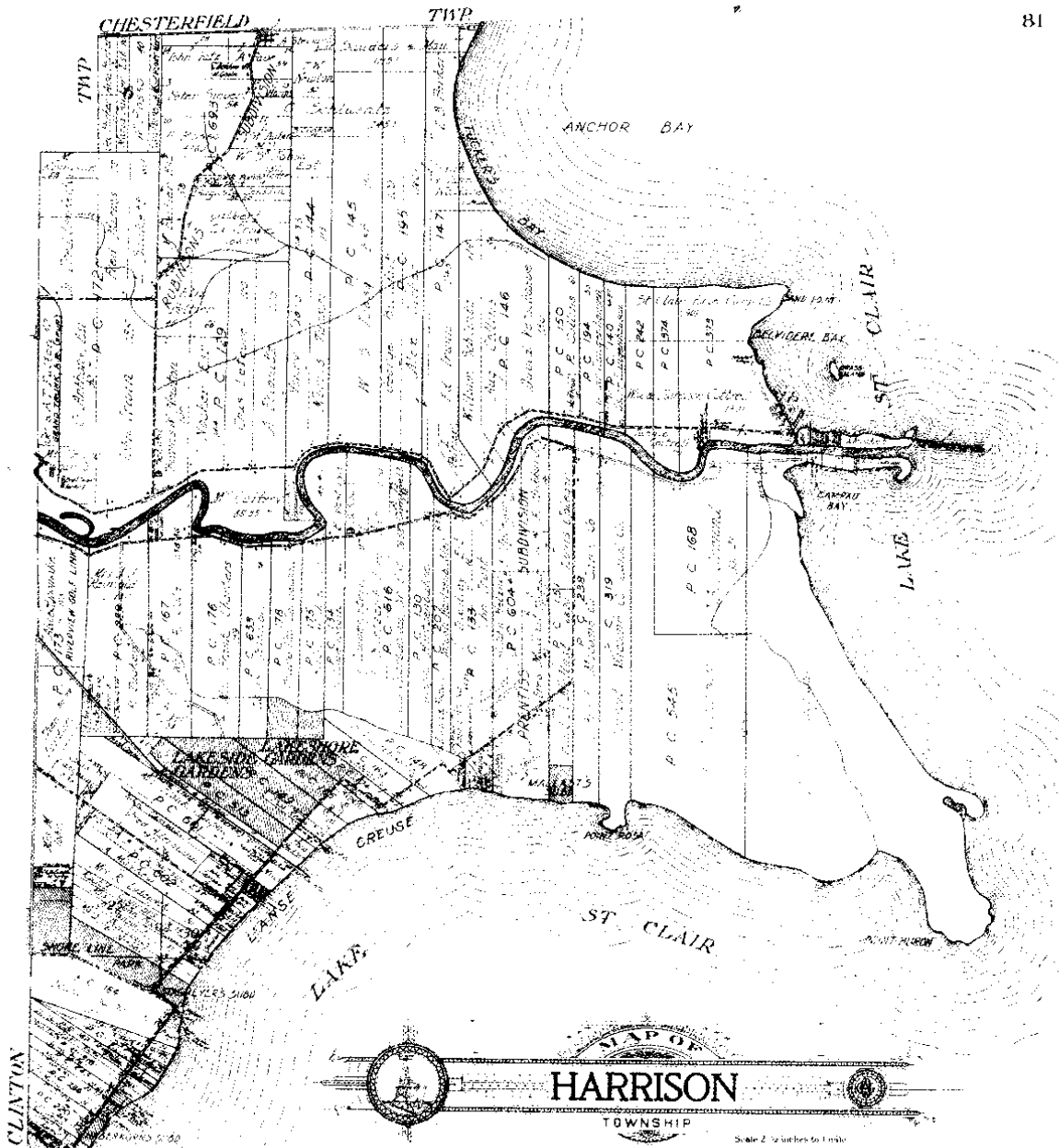


MAP OF
FIFTH TOWNSHIP
126 R 45

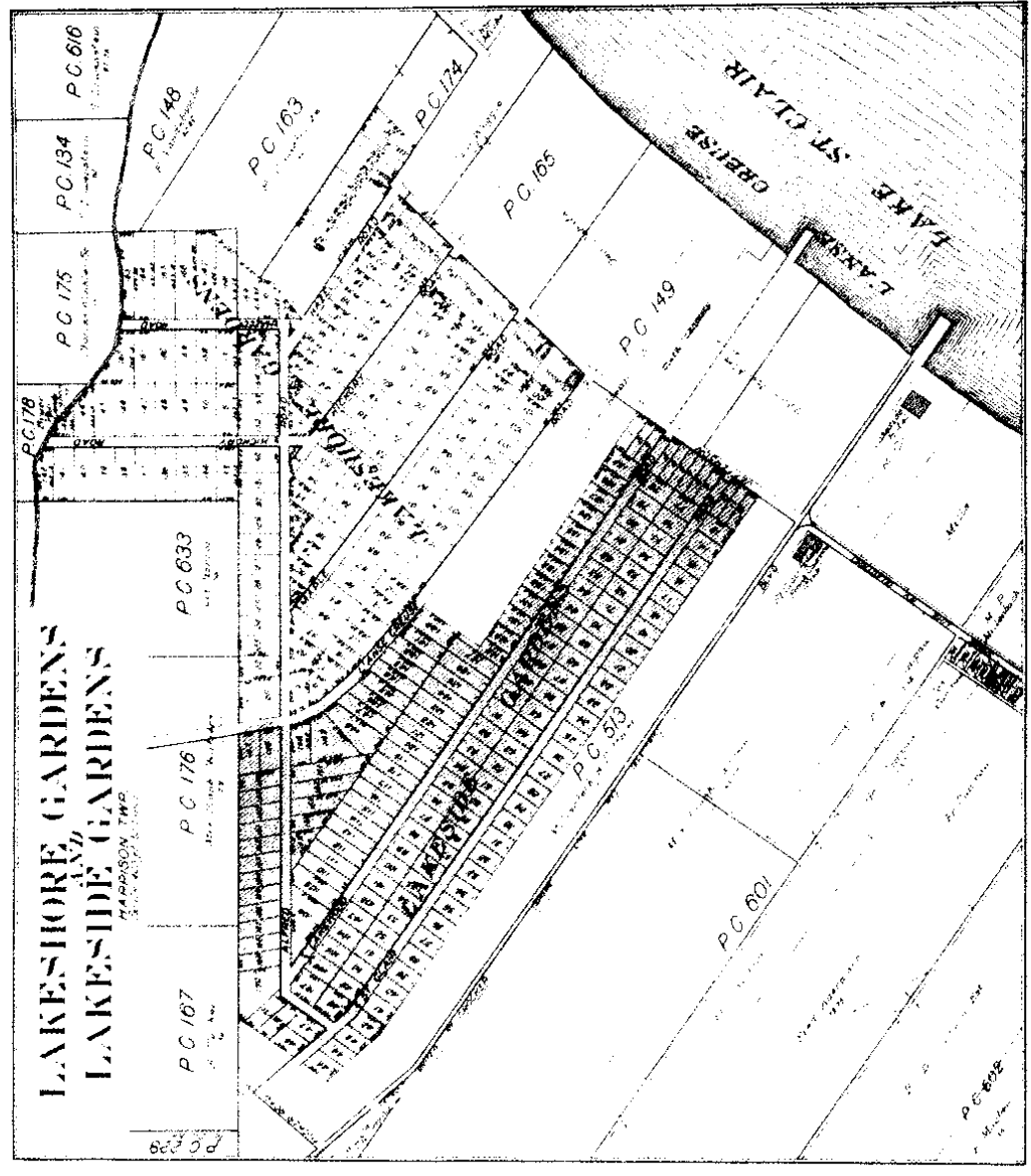
MAP OF HARRISON

Township 2 North Range 14 East





Part of Fractional Township 2 North, Range 13 East and
 Fractional Township 2 North, Range 14 East
 of the Michigan Meridian



South Line of Private Claims
N. 86° - 56' W.

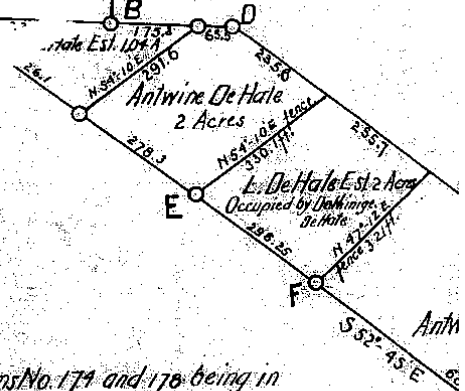
S. 3° - 09' W. West line
963.7'

Antwine De Hale
13.55 Acres

N. 3° - 09' E 615'

37.56

696.0



MAP

of Survey of Louis De Hale Est. in Private Claims No. 174 and 178 being in
 Harrison Tp. Macomb County Michigan, April 1906. The lower tract
 contains 9.14 acres; the tract occupied by Dominique De Hale contains 2 acres;
 The three cornered tract contains 1.04 acres; the tract in P.O. 178 south
 of the Centre De Beuf creek, contains 13.55 acres - total of 25.73 acres

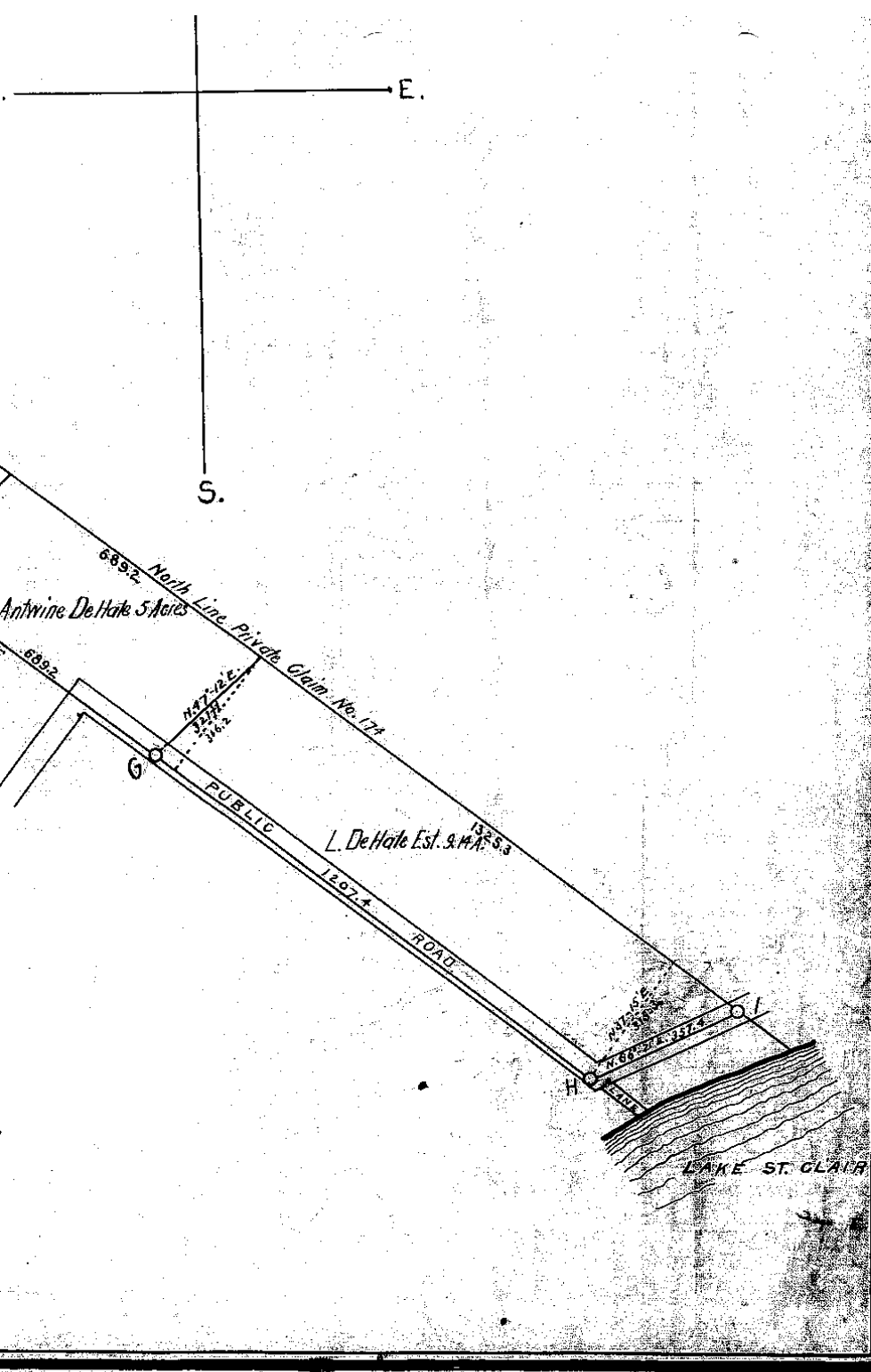
Description of corners

- A - An iron pipe 1 1/2 x 16 - a hickory N. 46° - 02' E 14d. 92 ft. dist.
- a birch 14" diam. N. 3° - 08' W. 57 ft. dist.
- a soft maple 20" N. 74° - 32' W. 82.8 ft. dist.
- B - an oak stake - D - an oak stake - E - an oak stake
- F - " " - G - an iron pipe 1 1/4 x 30 - H - a gun barrel
- I - an iron rod - J - a gun barrel driven in decayed remains of stake
- K - a hickory 15" diam. S. 40° - 52' E 96.8 ft. dist.
- " " " " N. 80° - 54' E 147.8 " "

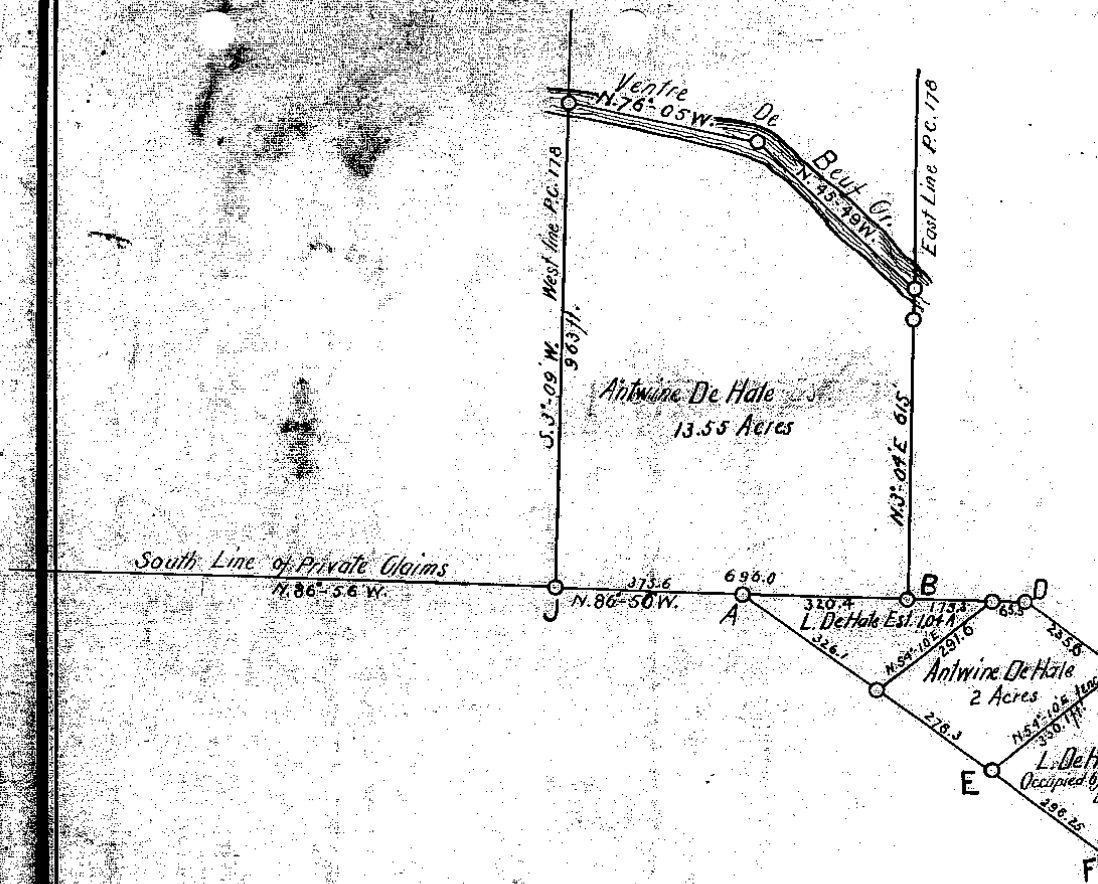
Scale 300ft. = 1 inch

All measurements of bearing trees are to centre of tree

Samuel Crocker Surveyor



PC 20

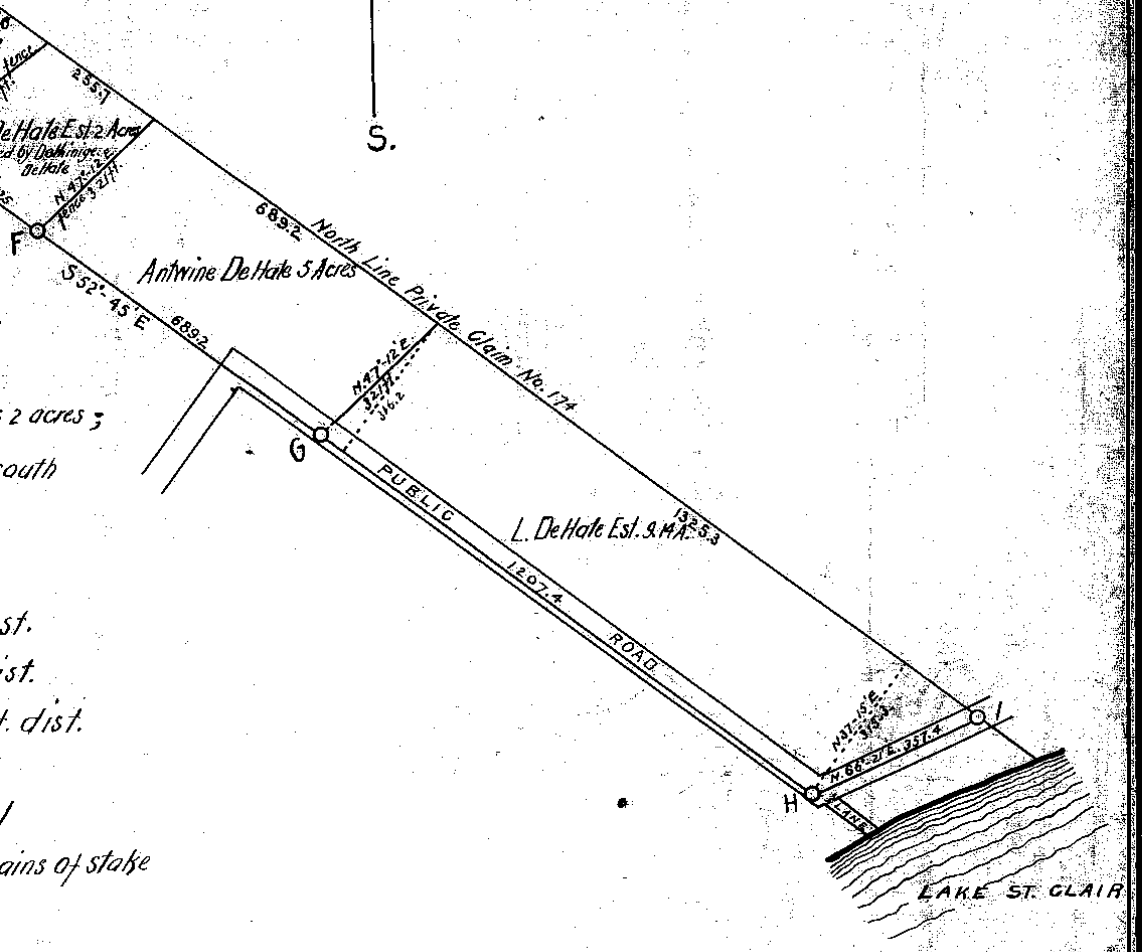
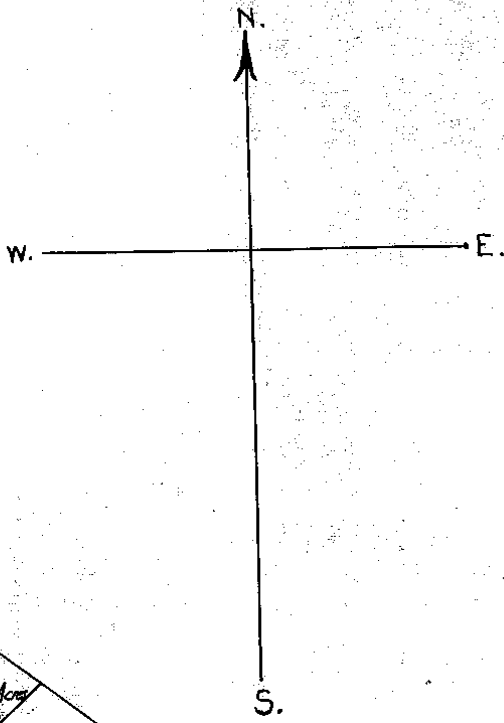


MAP

of Survey of Louis De Hale Est. in Private Claims No. 171 and 178 being in Harrison Tp. Macomb County Michigan, April 1906. The lower tract contains 9.74 acres; the tract occupied by Dominique De Hale contains 2. The three cornered tract contains 1.04 acres; the tract in P.C. 178 south of the Ventre De Beuf creek, contains 13.55 acres - total of 25.73 acres

Description of corners

- "A" An Iron pipe 1 1/2 x 48 - a hickory N. 46° 02' E 14' 92 ft. dist
a birch 14" diam. N. 3° 08' W. 57 ft. dist
a soft maple 20" N. 79° 32' W. 82.8 ft.
- "B" an oak stake - "D" an oak stake - "E" an oak stake
- "F" " " " - "G" an iron pipe 1 1/4 x 30 - "H" a gun barrel
- "I" an iron rod - "J" a gun barrel driven in decayed remain
- "D" a hickory 15" diam. S. 40° 52' E 96.8 ft. dist.



2 acres;
 outh
 st.
 ist.
 t. dist.
 /
 ains of stake

South Side of River Huron

Arnon Greeley Surveyor
of private Claims.

N. 473. South Side of River Huron
Description N. 178 Confirmed to
Pierre Phenix commencing at a post
standing on the border of River Huron
between this tract and a tract confirmed
to Louis Petit, thence south eighty six
chains forty links, to an Ash tree, -
thence west ten chains thirty two links,
to a post the South East corner of a tract
confirmed to Joseph Campseau, thence
north eighty six chains twenty two links,
to a post standing on the border of River
Huron, thence along the border of said
River, down stream north eighty nine
acres East, ten chains thirty two links,
to the place of beginning, containing
eighty eight acres, and eight hundredths
of an acre.

Detroit July 18. 1810

Arnon Greeley Surveyor
of private Claims.

N. 474. South Side of River Huron
Description N. 633. Confirmed to Joseph
Campseau commencing at a post standing
on the border of River Huron between the
tract and a tract confirmed to Pierre
Phenix, thence south eighty six chains
twenty two links, to a post, thence west
eight chains sixty six links, to a post the
South East corner of a tract confirmed
to Pierre Phenix thence north eighty six
chains seven links, to a post standing

or
ad
Sto
Six
if
us
D

5'

Pl

on

the

for

Six

we

to

on

Six

Be

of

for

in

of

Six

two

on

ac

of

of

of

of

of

of

of

H 21

South Side of River Huron

411

links, to a post thence west five chains
 sixty three links to a post standing
 on the border of River Huron thence along
 the border of said River down stream
 north sixteen degrees west twenty chains
 thence north thirty five degrees thirty nine
 sides East twenty chains twenty links
 thence north seventy four degrees East
 eight chains thirty links, to the place
 of beginning containing one hundred
 and twenty one acres, and ninety four
 hundredths of an acre.

Detroit July 18. 1810

Huron Gabley Surveyor
of private Claims.

N. 472, South Side of River Huron

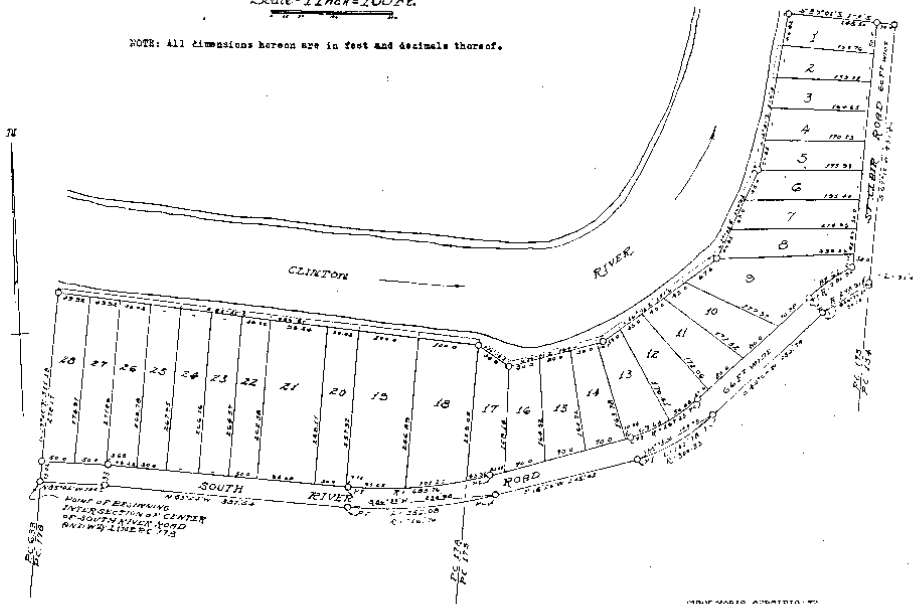
Description N. 175 Confirmed to
 Louis Petit commencing at a post
 standing on the border of River Huron
 between this tract and a tract confir-
 med to Joseph Campseau; thence East
 five chains sixty three links thence south
 ninety one chains sixteen links to an
 Black Ash tree, thence west nine chains
 forty one links to a Black Ash tree the
 north East corner of a tract confirmed
 to Pierre Phery, thence north, Eighty six
 chains forty links, to a post standing on
 the border of River Huron thence along
 the border of said River down stream
 north thirty nine degrees East six chains
 to the place of beginning, containing
 Eighty four acres, and nine tenths of
 an acre.

Detroit July 18. 1810

"SUPERVISORS PLAT No 15," PART OF P.C.s 175 & 178 T2N R14E, HARRISON TOWNSHIP, MACOMB COUNTY, MICHIGAN.

Scale - 1 Inch = 100 Ft.

NOTE: All dimensions hereon are in feet and decimals thereof.



DEDICATION

KNOW ALL MEN BY THESE PRESENTS, That I, James J. James, Supervisor of the Township of Harrison, Macomb County, Michigan, by Virtue of authority in me vested by Section 51, Act 172, of 1923, having been duly authorized by the Township Board, have caused the land described in the annexed plat to be surveyed, laid out and plotted, to be known as "SUPERVISORS PLAT No. 15", part of P. C.s 175 & 178, T2N, R14E, Harrison Township, Macomb County, Michigan, and that the streets and alleys as shown on said plat are now being used for such purposes.

Witnesses:

James J. James
Supervisor of the Township of Harrison.

SURVYOR'S CERTIFICATE

I hereby certify that the plat hereon delineated is a correct one and that permanent metal monuments of not less than one inch in diameter and fifteen inches in length set in a concrete base at least four inches in diameter and forty-eight inches in depth have been placed at points marked thereon, and forty-eight inches in depth have been placed at points marked thereon, at all the intersections of streets, intersections of alleys, or of streets and alleys, and at the intersections of streets and alleys with the boundaries of the plat as shown on said plat.

James J. James
Registered Civil Engineer.

CERTIFICATE OF MUNICIPAL APPROVAL

This plat was approved by the Township Board of the Township of Harrison at a meeting held _____, 1936.

James J. James
Township Clerk.

CERTIFICATE OF APPROVAL BY COUNTY BOARD

This plat was approved on the 15th day of January, 1936.

James J. James
5/15/37

James J. James
County Clerk.

James J. James
County Treasurer.

James J. James
County Treasurer.

ACKNOWLEDGMENT

STATE OF MICHIGAN, }
County of Macomb. } ss

On this 15th day of January, A. D. 1936, before us, a Notary Public in and for said County, personally came the above named Supervisor of the Township of Harrison, Macomb County, Michigan, whom we see to be the person who executed the above dedication, and acknowledged the same to be his free act and deed as such Supervisor.

James J. James
Notary Public in and for Macomb County.

My Commission Expires: January 1, 1937

DESCRIPTION OF LAND PLATED

The land embraced in the annexed plat of "SUPERVISORS PLAT No. 15", part of P. C.s 175 & 178, T2N, R14E, Harrison Township, Macomb County, Michigan, is described as follows: Beginning at the intersection of the center of the South River Road and the West line of P. C. 178; thence N 70°10' E 211.129 ft. to point on bank of Clinton River; thence N 70°10' E to water edge of Clinton River; thence down stream along river parallel to traverse line on above described as follows: S 81°21' E 896.80 ft.; thence S 80°08' E 88.9 ft.; thence N 78°01' E 160 ft.; thence N 58°08' E 237.4 ft.; thence N 77°54' E 184.85 ft.; thence N 38°55' E 174.10 ft.; thence S 68°01' E to pt. on bank of Clinton River; thence S 50°01' E 178.5 ft.; thence S 70°10' E 426.62 ft. to a point on a curve of 246.60 ft. rad.; thence S 70°10' E 223.74 ft. to P. O. of said curve of 246.60 ft. rad.; thence to right on said curve a dist. of 162.0 ft. to P. O. of curve of 206.33 ft. rad.; thence to right on said curve a dist. of 424.00 ft. to P. O. of curve of 216.76 ft. rad.; thence to right on said curve a dist. of 222.00 ft. to P. O. of curve of 216.76 ft. rad.; thence to right on said curve a dist. of 222.00 ft. to P. O. of curve of 216.76 ft. rad.; thence to right on said curve a dist. of 222.00 ft. to P. O. of curve of 216.76 ft. rad.; thence to right on said curve a dist. of 222.00 ft. to point of beginning.

WINKLER'S SUBDIVISION No 1

22217

OF PART OF
PRIVATE CLAIM 175
HARRISON TWP. MACOMB CO. MICHIGAN

Jan 7 1926
J. H. L. Lumber

SCALE 1 INCH = 200 FT

ALL DIMENSIONS ARE GIVEN IN FEET OR AVAILABLE THEREOF.

GRANTOR'S CERTIFICATION

I hereby certify that the plot herein delineated is a correct one, and of permanent and lasting benefit to the public, and that the same is in accordance with the provisions of the act in that behalf enacted, and that the same is in accordance with the provisions of the act in that behalf enacted, and that the same is in accordance with the provisions of the act in that behalf enacted.

H. J. Gentry
Register, Macomb Co.

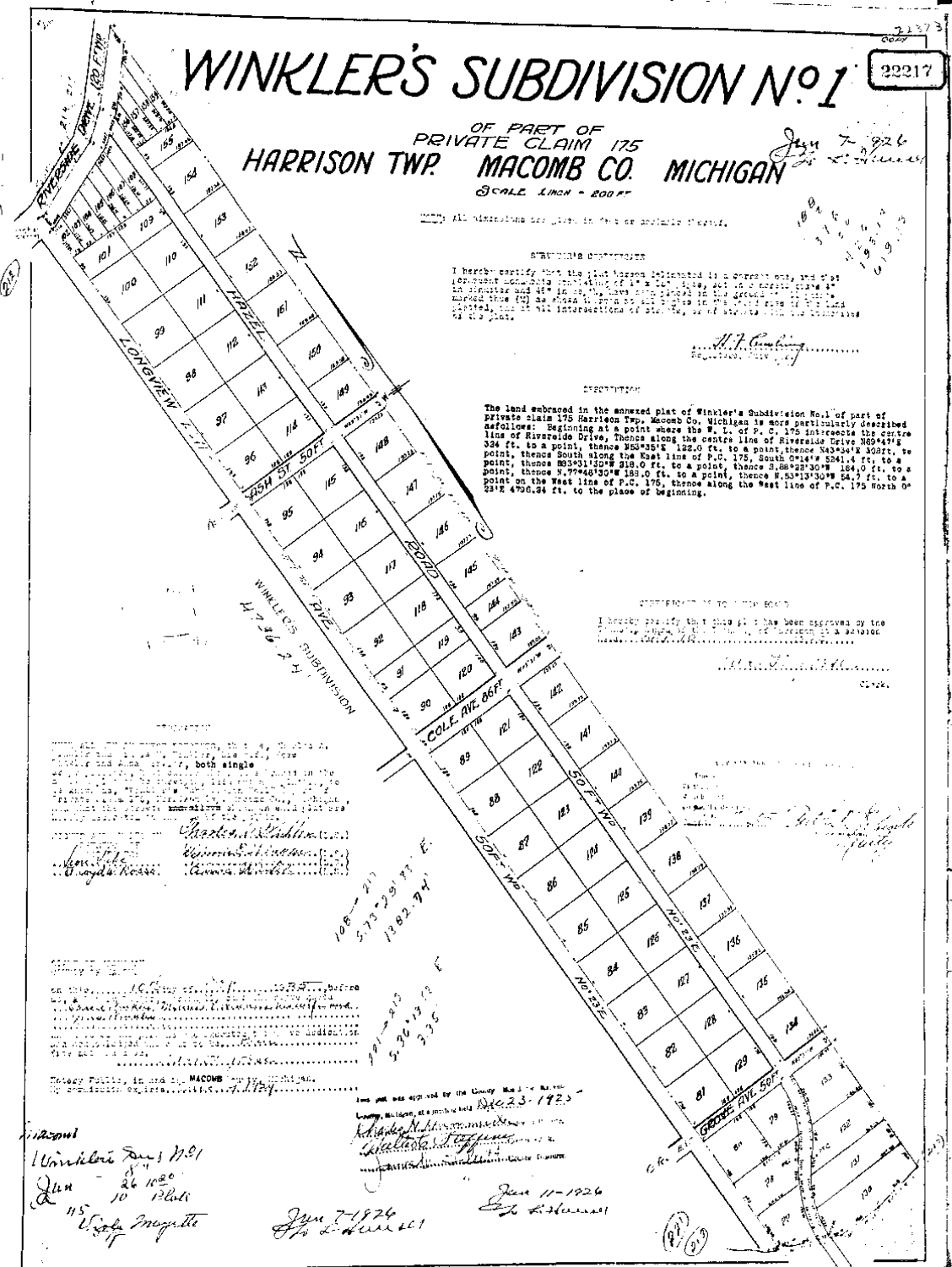
DESCRIPTION

The land embraced in the annexed plat of Winkler's Subdivision No. 1 of part of private claim 175 Harrison Twp., Macomb Co., Michigan is more particularly described as follows: Beginning at a point where the W. L. of P. C. 175 intersects the center line of Riverside Drive, thence along the center line of Riverside Drive N89°49'38" 384 ft. to a point, thence S82°35'18" 122.0 ft. to a point, thence S43°46'18" S68ft. to a point, thence S83°31'13" 219.0 ft. to a point, thence S84°22'30" 184.0 ft. to a point, thence S77°48'30" 183.0 ft. to a point, thence S53°13'30" 54.7 ft. to a point on the West line of P.C. 175, thence along the West line of P.C. 175 North 82°18' 476.24 ft. to the place of beginning.

CERTIFICATION BY THE BOARD

I hereby certify that this plat has been approved by the Board of Supervisors of Macomb County, Michigan, and that the same is in accordance with the provisions of the act in that behalf enacted.

Winkler's Subdivision
No. 1



Charles J. Winkler
J. H. L. Lumber
J. H. L. Lumber

108-213
5.75-29.91 ft. E.
1382.74

Dec 23 1925
J. H. L. Lumber

Winkler's Subd. No 1
Jan 10 1926
V. H. Maguire

Jan 7 1926
J. H. L. Lumber

Jan 11 1926
J. H. L. Lumber

"WINKLER'S SUBDIVISION"

OF PART OF
PRIVATE CLAIM 178
HARRISON TWP. MACOMB CO. MICHIGAN.

SCALE 1 inch = 200 feet
All dimensions given in feet or decimals thereof.

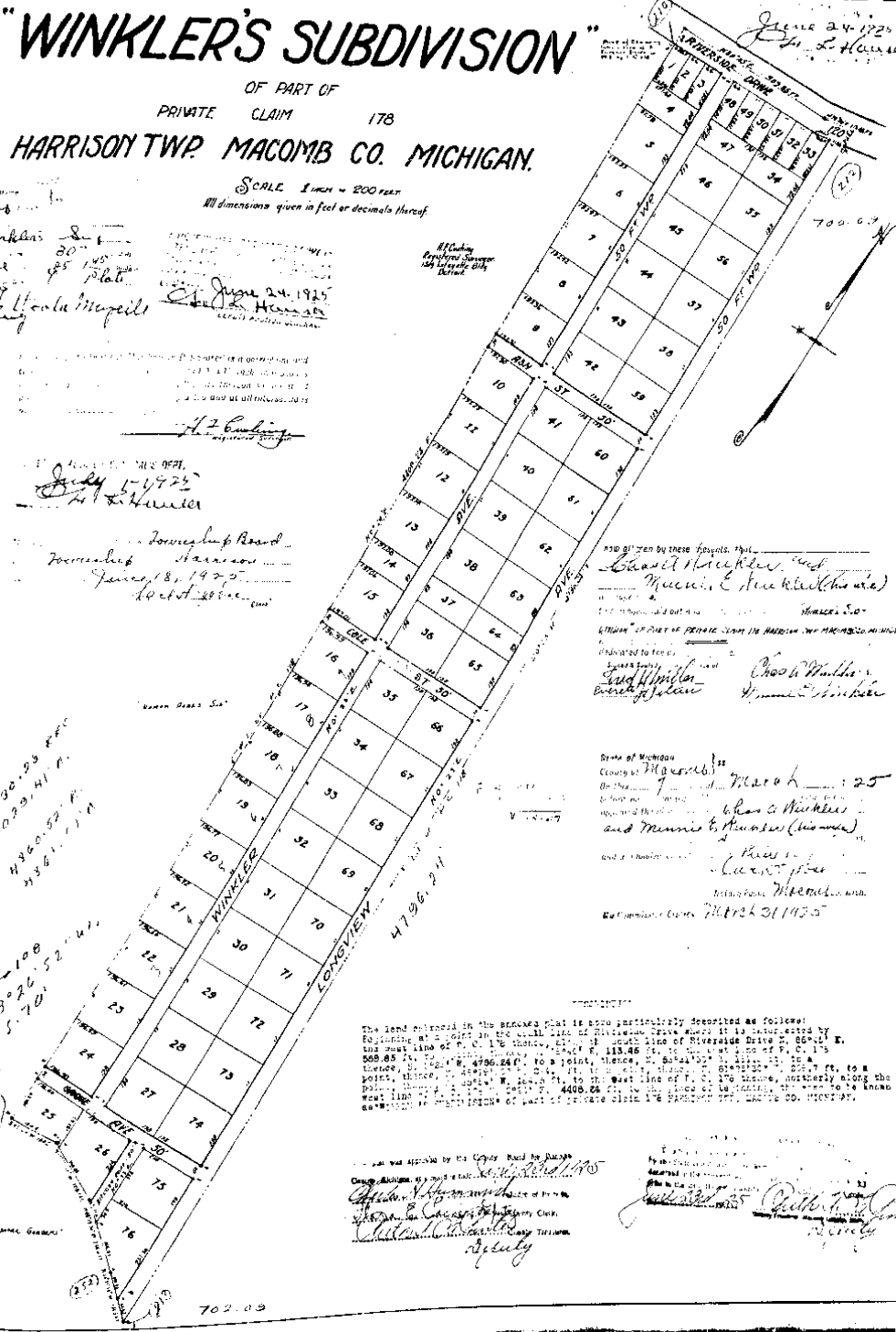
Winkler's Subd.
June 24, 1925
777 W. Maple St.
Detroit, Mich.
John J. Hanna
Surveyor

July 15, 1925
John J. Hanna

Donnell Road
Harrison
June 18, 1925

3000.25 P.C.
3029.41 P.C.
4360.52 P.C.
4381.11 P.C.

255-100
538-226
5-70



AND BE SEEN BY THESE PARTIES, THAT
Charles Winkler and
Minnie C. Winkler (his wife)
do hereby certify that the above
is a true and correct copy of the
original of the same as shown to
me by them.

Charles Winkler
Minnie C. Winkler

State of Michigan
County of Macomb
On this 15th day of March 1925
before me, the undersigned
notary public, Charles Winkler
and Minnie C. Winkler (his wife)
do hereby certify that the above
is a true and correct copy of the
original of the same as shown to
me by them.

Charles Winkler
Minnie C. Winkler

Notary Public
My Commission Expires March 31, 1925

DESCRIPTION
The land embraced in the annexed plat is more particularly described as follows:
Beginning at a point on the north line of Riverside Drive where it is intersected by
the west line of P. C. 178 thence, along the north line of Riverside Drive N. 85° 40' E.
the west line of P. C. 178 a distance of 113.86 ft. to the east line of P. C. 178
S 68° 05' E. a distance of 496.24 ft. to a point, thence, N. 82° 15' E. a distance of 10.00 ft. to a
point, thence, N. 85° 40' E. a distance of 10.00 ft. to the west line of P. C. 178 thence, along the
west line of P. C. 178 a distance of 4408.24 ft. to the place of beginning, the area to be known
as "Winkler's Subdivision" of part of private claim 178, Macomb Co., Michigan.

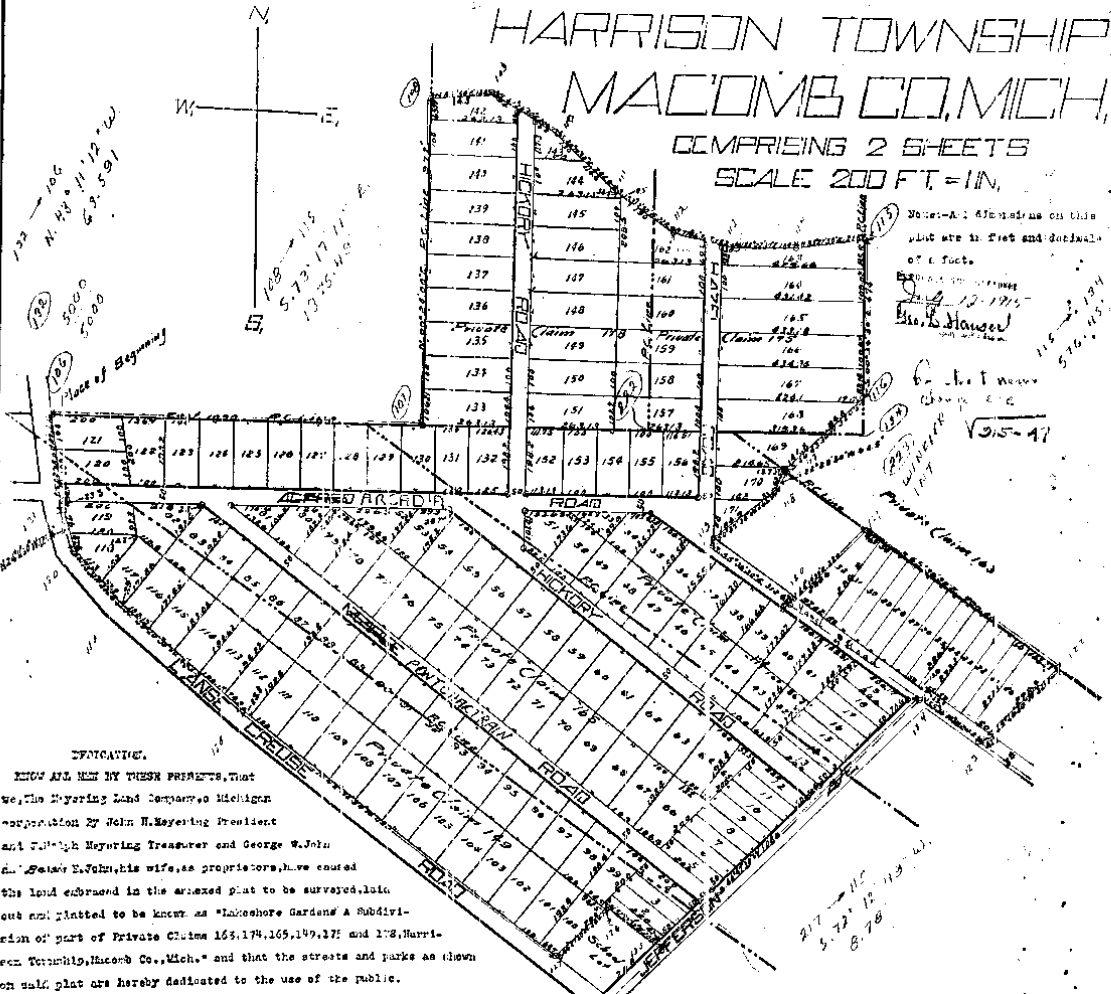
Approved by the City Board of Alders
City of Harrison, Michigan
John J. Hanna
Surveyor

Notary Public
John J. Hanna
My Commission Expires March 31, 1925

LAKE SHORE GARDENS

A SUBDIVISION OF PART OF PRIVATE CLAIMS 163, 174, 165, 149, 175 AND 178
HARRISON TOWNSHIP
MACOMB CO., MICH.

COMPRISING 2 SHEETS
SCALE 200 FT. = 1 IN.



WITNESSES.
KNOW ALL MEN BY THESE PRESENTS, that we, The Myerling Land Company, Michigan Corporation by John H. Myerling President and Ralph Myerling Treasurer and George W. Johns & Jessie E. Johns, his wife, as proprietors, have caused this land embraced in the annexed plat to be surveyed, laid out and platted to be known as "Lakeshore Gardens" a subdivision of part of Private Claims 163, 174, 165, 149, 175 and 178, Harrison Township, Macomb Co., Mich. and that the streets and parks as shown on said plat are hereby dedicated to the use of the public.

SIGNED AND SEALED BY THE FREE ACT OF
..... F. V. McVIE.....
..... J. H. Irwin.....
Notary Public Macomb Co., Mich.

STATE OF MICHIGAN ss. On this 22nd day of April A.D. 1913, before me, a Notary Public in and for said county appeared John H. Myerling and J. Ralph Myerling, to me personally known, who being each by me duly sworn did say that they are the President and Treasurer respectively of The Myerling Land Company, a Michigan corporation, and that the seal affixed to said instrument is the corporate seal of said corporation, and that said instrument was signed and sealed in behalf of said corporation by authority of its Board of Directors and the said John H. Myerling President and J. Ralph Myerling Treasurer acknowledged said instrument to be the free act and deed of said corporation.

By Commission expires December 26th 1918.

STATE OF MICHIGAN ss. On this 22nd day of April A.D. 1913, before me, a Notary Public in and for said county, personally came the above named George W. Johns and Jessie E. Johns, his wife. Know to me to be the persons who executed the above dedication, and acknowledged the same to be their free act and deed.
Geo. W. Johns
Notary Public, Macomb Co., Mich.
My Commission expires December 29th, 1918.

Witness
John H. Myerling
J. Ralph Myerling
Geo. W. Johns
Jessie E. Johns
S. J. H. Irwin

Notary Public
Filed in Justice General's Office
July 14/1913
S. J. H. Irwin

LAKE SHORE GARDENS

SHEET NO 2
9274

A SUBDIVISION OF PART OF PRIVATE CLAIMS 163, 174, 165, 149, 175 AND 178 HARRISON TOWNSHIP MACOMB CO, MICH, COMPRISING 2 SHEETS SCALE 200 FT. = 1 IN.

DESCRIPTION OF LAND PLATED.

The land embraced in the annexed plat of Lakeshore Gardens A Subdivision of part of Private Claims 163, 174, 165, 149, 175 and 178, Harrison Township, Macomb County, Mich. is described as follows: - Beginning at a point on the easterly line of the L'Anse au Loup Road where the same is intersected by the northerly line of Private Claim 165; thence easterly along the northerly line of Private Claim 165 and Private Claim 174 a distance of ten hundred and ninety (1090) feet to the westerly line of Private Claim 178; thence N.00° 24' 00" E. along the westerly line of said Private Claim 178 a distance of nine hundred and seventy-two (972) feet to the center of the Venore DeBoerf Creek; thence N.85° 54' 00" E. a distance of one hundred eighty-four and five tenths (184.5) feet; thence S.61° 25' 30" E. a distance of two hundred eight and seven tenths (208.7) feet; thence S.48° 19' 30" E. a distance of two hundred forty-four and eight tenths (244.8) feet; thence S.55° 11' 30" E. a distance of two hundred twenty-eight and five tenths (228.5) feet; thence S.77° 46' 30" E. a distance of one hundred and eighty-eight (188) feet; thence S.85° 22' 30" E. a distance of one hundred and eighty-four (184) feet; thence N.65° 21' 30" E. a distance of two hundred and eighty-two (282) feet to a point where the center of the Venore DeBoerf Creek is intersected by the easterly line of Private Claim 175; thence S.00° 36' 30" E. along the easterly line of Private Claim 175 a distance of four hundred and seventy-four (474) feet; thence S.46° 45' 30" W. a distance of three hundred twenty and five tenths (320.5) feet; thence S.22° 29' 30" W. a distance of sixty-two and five tenths (62.5) feet; thence S.50° 37' 30" W. a distance of two hundred sixty-five and nine tenths (265.9) feet; thence S.55° 36' 30" E. a distance of three hundred twenty and six tenths (320.6) feet; thence N.44° 19' 30" E. a distance of three hundred and twenty (320) feet; thence S.50° 36' 30" E. a distance of seven hundred and twenty-three hundredths (700.23) feet; thence S.45° 26' 30" W. a distance of three hundred twenty-one and one tenth (321.1) feet; thence N.55° 26' 30" W. a distance of two hundred eleven and two tenths (211.2) feet; thence S.41° 47' 30" W. a distance of ten hundred and eighty-six (1086) feet; thence N.52° 32' 30" W. a distance of two hundred and eight (208) feet; thence S.04° 27' 30" W. a distance of two hundred nine and one tenth (209.1) feet; thence N.52° 30' 30" W. a distance of eleven hundred and ninety (1190) feet; thence N.49° 20' 30" W. a distance of four hundred and eighty-three and three tenths (483.3) feet; thence N.43° 13' 30" W. a distance of two hundred and eight tenths (208.8) feet; thence N.24° 11' 30" W. a distance of one hundred twenty-three and four tenths (123.4) feet; thence N.7° 40' 00" W. a distance of two hundred seventy-three and seven tenths (273.7) feet to place of beginning.

ENGINEER'S CERTIFICATE.

I do hereby certify that the plat hereon delineated is a correct one, and that permanent monuments, consisting of 1/4" x 2 1/2" gas pipe have been planted at points marked thus (x) as thereon shown at all angles: 1. the boundaries of the land platted and at all intersections of streets.

Geo. W. Irwin Civil Engineer.

COUNTY TREASURER'S CERTIFICATE.

Office of County Treasurer, Macomb County,
State of Michigan, April 11, 1915.

I HEREBY CERTIFY that there are no tax liens or titles held by the State on the lands described above, and that there are no tax liens or titles held by individuals on said lands for the five years preceding the 17th day of April 1915, and that the taxes for said period of five years are paid, as shown by the records of this office.

William M. Kruse County Treasurer.

CERTIFICATE OF TOWN BOARD.

This plat was approved by the Town Board of the Township of Harrison, Macomb County, Michigan at a meeting held April 11th 1915
Edward LeFerre Clerk.

CERTIFICATE OF BOARD OF SUPERVISORS.

This plat was approved by the Board of Supervisors of the County of Macomb and State of Michigan at a meeting held April 11th 1915

Ivy Holst Chairman.
Geo. A. Buckers Clerk.