

LAND CORNER RECORDATION CERTIFICATE  
Filing Requirement of Act 74, Mich. P.A. 1970

C150804

For corners in

MACOMB

Located In:  
CLINTON TWP.

Corner Code #

LIBER 6523 PAGE 951

94 DEC -9 PM 2:50

REGISTER OF DEEDS  
CLINTON TWP.

Register of Deeds Stamp & File Number

1. Public Land Survey T 2N R 13E G-13  
T \_\_\_\_\_ R \_\_\_\_\_  
T \_\_\_\_\_ R \_\_\_\_\_  
T \_\_\_\_\_ R \_\_\_\_\_
2. Property Controlling in Section S \_\_\_\_\_ T \_\_\_\_\_ R \_\_\_\_\_  
S \_\_\_\_\_ T \_\_\_\_\_ R \_\_\_\_\_
3. Miscellaneous Property in Sec. S \_\_\_\_\_ T \_\_\_\_\_ R \_\_\_\_\_  
S \_\_\_\_\_ T \_\_\_\_\_ R \_\_\_\_\_
4. Lot No. \_\_\_\_\_, Recorded Plat \_\_\_\_\_
5. Private Claims \_\_\_\_\_

A	B	C	D	E	F	G	H	I	J	K	L	M
2	8	5	4	3	2							
3												
4	7	8	9	10	11	12						
5												
6	18	17	16	15	14	13						
7												
8	18	20	21	22	23	24						
9												
10	30	28	28	27	26	25						
11												
12	31	32	33	34	35	36						
13												

I, STEVEN E. DUNN, in a field survey on APRIL 4, 1994, do hereby certify that under requirements of P.A. 74, Michigan P.A. of 1970, the corner points mentioned in lines 1 and 2 above were in conformance with regulations and rules therefore as required in the current manual of survey instructions of the United States Department of the Interior, Bureau of Land Management or by a decree of a Court of Law and/or that the corner points mentioned in lines 3, 4 and 5 above were in conformance with the rules of the Michigan Board of Land Surveyors or by a Decree of a Court of Law; established, re-established, monumented, re-monumented, recovered, found as expressed below:

NOTE: Not more than 4 corners, all in the same town and range, may be recorded on this certificate.

A. Description of original monument and accessories and/or subsequent restoration:

GLO POST - NO EVIDENCE OF ORIGINAL CORNER FOUND  
GLO ORIGINAL SURVEY PERFORMED BY PRESTON 2-18-1818

L.C.R.C.	NAME AND NUMBER	DESCRIPTION	DATE
L. 2269 P. 4	GEORGE A. CIEMOCHOWSKI, #13577	SET PK AND BRASS CAP	MARCH 7, 1972
L. 2872 P. 57	DOUGLAS W. HOOTH, #7966	SET 1/2" IRON ROD IN MONUMENT BOX	OCTOBER 28, 1977
L. 3218 P. 53	WILLIAM E. SODERBERG, #17635	FOUND REROD IN MONUMENT BOX	MARCH 17, 1990

PLATS		
L. 7 P. 47	GRATIOT MASONIC PARK	JULY 19, 1924

B. Description of corner evidence found and/or method applied in restoring or reestablishing corner:

G-13 SECTION CORNER COMMON TO G-1 ERINLAKE TOWNSHIP  
FOUND REROD IN MONUMENT BOX IN CONCRETE PAVEMENT. VERIFIED LOCATION BY COMPARING FOUND WITNESSES OF ABOVE L.C.R.C.'s AND COMPARED M-DOT DISTANCES TO THE SECTION CORNERS TO THE EAST AND WEST.

**FOUND WITNESS TIES**

L. 3218 P. 53	AZ 74° 102.95'	PK. NAIL FOUND IN NORTHWEST FACE OF UTILITY POLE
	AZ 143° 53.24'	NAIL WITH M.D.S.H. TAG FOUND IN SOUTHWEST FACE OF UTILITY POLE
	AZ 253° 99.95'	NAIL WITH TAG FOUND IN NORTH FACE OF UTILITY POLE
	AZ 322° 35.87'	NAIL WITH M.D.S.H. TAG IN SOUTHWEST FACE OF UTILITY POLE

**FIELD MEASUREMENTS AND RECORDED DISTANCES**  
G-13 TO F-13 2672.53' (M.) 2672.80' "GRATIOT MASONIC PARK" (R.) L.7. P. 47 2640.00' G.L.O. (R.)

C. Description of monument for corner and accessories established to perpetuate locating the position of the corner:

G-13 T.2N., R.13E. I REPLACED 1/2" IRON ROD WITH 3/4" x 24" IRON ROD WITH 2" DIAMETER ALUMINUM CAP STAMPED "MACOMB COUNTY MONUMENT MI. ACT 345 #28408" IN AN EXISTING MONUMENT BOX.

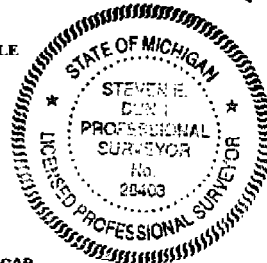
**WITNESSES**

AZ 74° 102.95'	SET PK NAIL AND M.C.R. WITNESS TAG IN NORTHWEST FACE OF UTILITY POLE
AZ 143° 53.24'	NAIL WITH M.D.S.H. TAG FOUND IN SOUTHWEST FACE OF UTILITY POLE
AZ 253° 99.95'	NAIL WITH TAG FOUND IN NORTH FACE OF UTILITY POLE
AZ 322° 35.87'	NAIL WITH M.D.S.H. TAG IN SOUTHWEST FACE OF UTILITY POLE

THE SELECTED LOCATION IS ACCEPTED BY ME AND IS GENERALLY ACCEPTED BY PROFESSIONAL SURVEYORS AS THE BEST AVAILABLE EVIDENCE OF THE POSITION OF THE ORIGINAL CORNER.

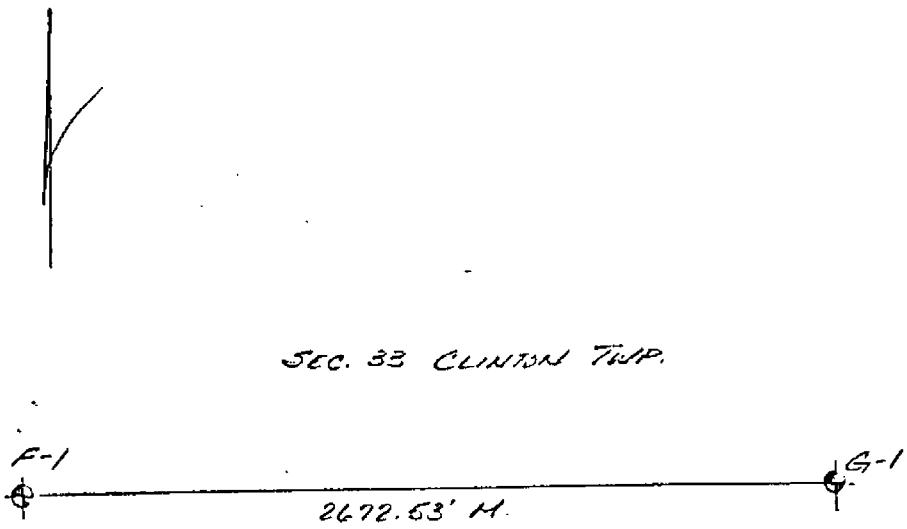
Signed by Steven E. Dunn Date Nov. 16, 1994  
Surveyor's Michigan License No. 28408

ACCEPTED BY THE MACOMB COUNTY SURVEY PEER GROUP AS THE OFFICIAL CORNER UNDER MICHIGAN PUBLIC ACT 345 OF 1990 AT A MEETING HELD ON 11-15-94  
WILLIAM E. SODERBERG, P.S., CHAIRMAN





22-141 50 SHEETS  
22-142 100 SHEETS  
22-144 200 SHEETS



SEC. 33 CLINTON TWP.

2672.53' H.  
2640.00 G.L.O. DIST.  
2672.80 "GRANT MASONIC FRANK"  
L. 7, P. 97

SEC. 4 ERIN LAKE TWP.

14-3A

FBI

ROSEVILLE

1/4 MILE

128.16

See Page 14.40

204 AVE

U.S. 25

STATION

AVE

1001  
4272

309.21

193.43

STATION  
STATION

G-13

DATE OF PHOTOGRAPHY: MAY 1980

14-4D



G-13



Copyright 1972  
MACOMB COUNTY, MICHIGAN

SCALE: 1" = 100'



Rev 1-88  
 REV 7-87  
 Rev. 5-85  
 REV 10-83  
 REV 4-83  
 REV 1-82  
 REV 1-80  
 REV 5-79  
 REV 9-78  
 REV 12-77  
 REV 5-76  
 REV 4-76

Copyright 1972  
 MACOMB COUNTY, MICHIGAN

SCALE: 1" = 100'

11-34E

G-13

W. 1/2, S.W.

C

# LAND CORNER RECORDATION CERTIFICATE

FILING REQUIREMENT OF ACT 74, MICH. P.A. 1970  
CITY OF ROSEVILLE

LIBER **3218** PAGE **53**  
**A6-11972**

FOR CORNERS OF--	LOCATED IN--	CORNER CODE NUMBER
1. PUBLIC LAND SURVEY _____	T. <u>1</u> N. <u>13</u> S. R. <u>13</u> E. <u>Y.</u>	_____
2. PROPERTY CONTROLLING IN SECTION <u>3</u>	T. <u>1</u> N. <u>13</u> S. R. <u>13</u> E. <u>Y.</u>	<u>G-1, G-2</u>
3. MISCELLANEOUS PROPERTY IN SECTION _____	T. _____ N. _____ S. R. _____ E. _____ W. _____	_____
4. LOT NO. _____, RECORDED PLAT _____		
5. PRIVATE CLAIMS _____		

RECORDED IN MACOMB COUNTY  
RECORDS AT: 12:20 P. M.

MAR 17 1980

*Edna M. Hill*  
CLERK - REGISTER OF DEEDS  
MACOMB COUNTY, MICHIGAN

REGISTER OF DEEDS STAMP AND  
FILING NUMBER

I, William E. Sodeberg, do hereby certify that under requirements of P.A. 74, Michigan P.A. of 1970, the corner points mentioned in lines 1 and 2 above were, in a field survey on December 6, 1979, established, re-established, monumented, re-monumented, recovered or restored as expressed below and in conformance with regulations and rules therefore as required in the current manual of survey instructions of the United States Department of the Interior, Bureau of Land Management or by a decree of a court of law. Furthermore, that the corner points mentioned in lines 3, 4 and 5 above were, in a field survey on \_\_\_\_\_, 19\_\_\_\_, found, recovered, restored, established or re-established as expressed below and in conformance with the rules of the Michigan State Board of Registration for Land Surveyors or, by a Decree of a Court of law:

A. Description of original monument and accessories and/or subsequent restoration:

B. Description of corner evidence found and/or method applied in restoring or re-establishing corner:

- G-1, N.W. Corner Sec. 3, found rerod in monument box.
- G-2, West Quarter Corner, Sec 3, found 1/2" rerod in monument box.

C. Description of monument for corner and accessories established to perpetuate locating the position of the corner:

- G-1
  - ✓1. E.N.E. 102.95' to P.K. nail set in west face of utility pole.
  - ✓2. S.E. 53.24' to nail W/M.D.S.H. tag found in south-west face of utility pole.
  - ✓3. W.S.W. 99.95' to nail W/M.D.S.H. tag found in north face of utility pole.
  - ✓4. N.W. 35.87' to nail W/M.D.S.H. tag in south-west face of utility pole.
- G-2
  - 1. N. 32.31' to P.K. nail set in east face of utility pole.
  - 2. N.E. 69.48' to south-east corner of brick pillar.
  - 3. S 10° E. 37.79' to north edge of manhole rim.
  - 4. S.S.W. 57.11' to P.K. nail found in east face of utility pole.

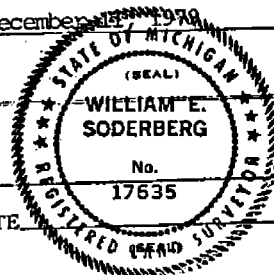
SIGNED BY William E. Sodeberg DATE December 6, 1979

SURVEYOR'S MICHIGAN REGISTRATION NO. 17635

FOR STATE AND UNITED STATES AGENCIES:

SIGNED BY \_\_\_\_\_ DATE \_\_\_\_\_

APPROVED AND SIGNED BY \_\_\_\_\_ DATE \_\_\_\_\_



SURVEYOR'S MICHIGAN REGISTRATION NO. \_\_\_\_\_

**00985**

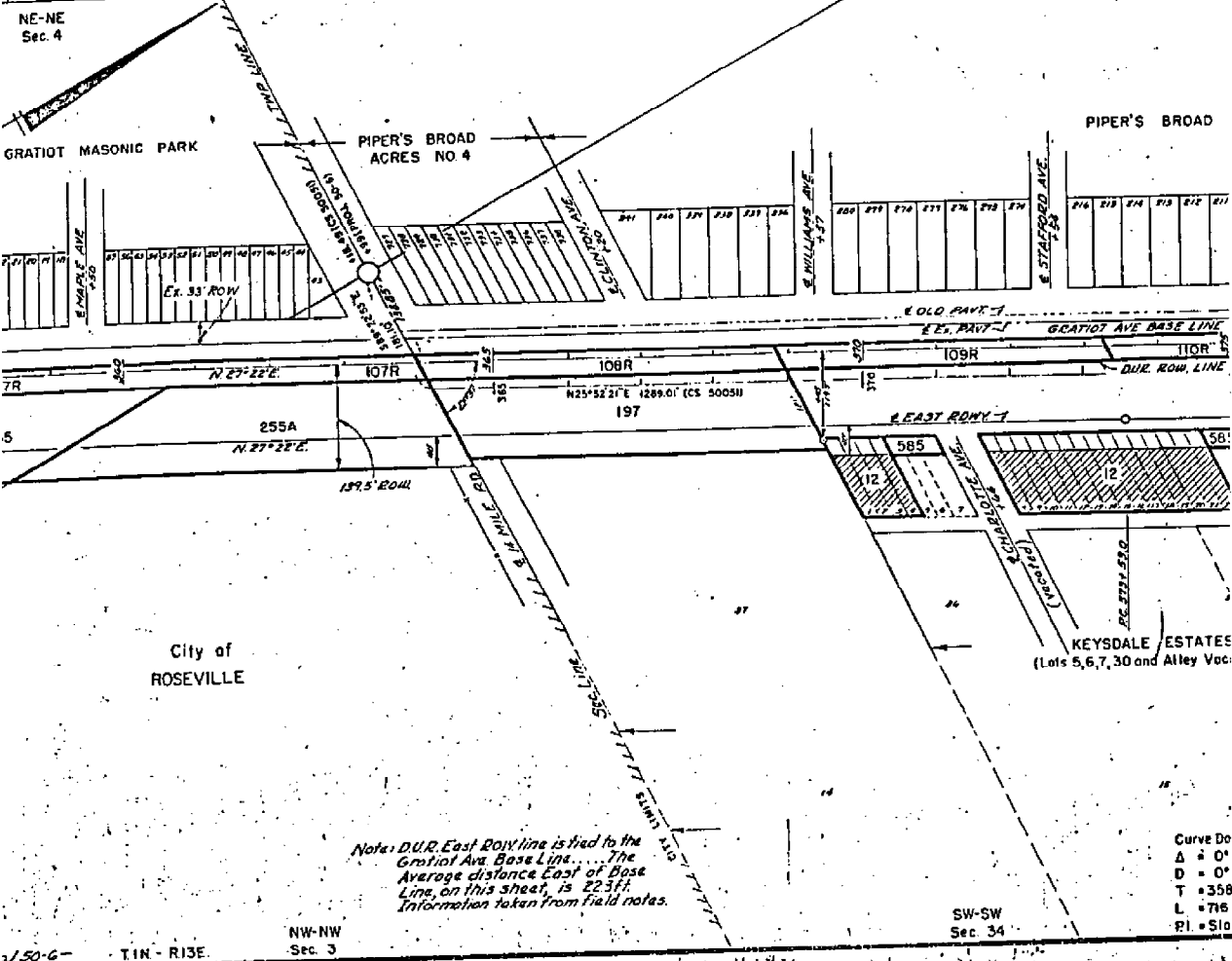


G-13

Grantor	Int.	Date Recorded	Liber-Page
Steve Szczepanski	D	3-10-86	235-632
Anthony J. Andre	"	4-21-86	269-281
John F. Keys	"	6-21-88	267-606
John Wilko	"	8-26-87	300-80
Peter McSweeney	"	8-27-81	308-68
Henry Couches	E	8-30-87	482-209
Julio Prasad	"	"	487-604
St. Ann's Church Ceme	"	5-6-87	354-179
Anthony J. Andre	D	"	352-294
Edy M. Hoover	"	7-9-80	360-94
Adam Stojaszewski	"	5-27-82	305-525
State Land Board	"	7-31-83	524-234
Stanley Kwalek	E	5-6-87	354-160
Rosa B. Pitko	"	"	354-159
Stefan Szczepanski	"	2-9-80	396-807
Radoslaw Grawdzinski	"	"	396-305
Stanley Kwalek	"	5-6-87	354-158
Stanley Jacynek	"	1-24-80	375-877
John Bank	"	5-6-87	354-157
"	"	"	354-156
Stanley Kwalek	"	"	354-155
Conservation Dept.	D	10-24-80	409-45
Stanley Kwalek	E	5-6-87	354-154
Conservation Dept.	D	10-24-80	409-45
John Bank	"	5-21-82	305-506
Stefan Szczepanski	E	2-9-80	396-807
Antoni Duszynski	"	8-30-81	452-605
Leon Nawak	"	"	452-606
Franciszka Krawczyk	D	5-21-82	305-505

DUR ROW

Parcel	Grantor	Int.	Date Recorded	Liber-Page
107R to 111R	Union Guardian Trust Co	D	5-12-86	342-272
111R	Tillie Moran	"	8-20-87	323-90



Note: D.U.R. East Row line is tied to the Gratiot Ave. Base Line. The Average distance East of Base Line, on this sheet, is 223ft. Information taken from field notes.

Curve Do  
 Δ = 0°  
 D = 0°  
 T = 358  
 L = 716  
 PI = 510

NW-NW  
 Sec. 3

SW-SW  
 Sec. 34

1.50-6- T.1N. R13E.

LAND CORNER RECORDATION CERTIFICATE  
 FILING REQUIREMENT OF ACT 74, MICH. P.A. 1970

A458940

FOR CORNERS OF—	LOCATED IN—	CORNER CODE NUMBER
1. PUBLIC LAND SURVEY	T. 2 N. S. R. 13 E. W.	G-13
2. PROPERTY CONTROLLING IN SECTION	T. _____ S. R. _____ W.	_____
3. MISCELLANEOUS PROPERTY IN SECTION	T. _____ S. R. _____ W.	_____
4. LOT NO. _____, RECORDED PLAT _____		
5. PRIVATE CLAIMS _____		

RECORDED IN MACOMB COUNTY RECORDS AT: 4:20 P. M.  
 OCT 28 1977  
*Edna H. Hoot*  
 CLERK - REGISTER OF DEEDS  
 MACOMB COUNTY, MICHIGAN  
 REGISTER OF DEEDS STAMP AND FILING NUMBER

I, Douglas W. Hooth, do hereby certify that under requirements of P.A. 74, Michigan P.A. of 1970, the corner points mentioned in lines 1 and 2 above were, in a field survey on AUG 16, 1977, established, re-established, monumented, re-monumented, recovered or restored as expressed below and in conformance with regulations and rules therefore as required in the current manual of survey instructions of the United States Department of the Interior, Bureau of Land Management or by a decree of a court of law. Furthermore, that the corner points mentioned in lines 3, 4 and 5 above were, in a field survey on \_\_\_\_\_, 19\_\_\_\_, found, recovered, restored, established or re-established as expressed below and in conformance with the rules of the Michigan State Board of Registration for Land Surveyors or, by a Decree of a Court of law:

A. Description of original monument and accessories and/or subsequent restoration:

No data available

B. Description of corner evidence found and/or method applied in restoring or re-establishing corner:

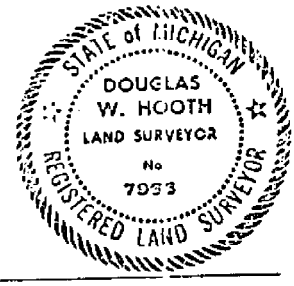
Found 1/2" pipe grouted in pavement. Position agrees with adjacent plats.

FOUND 1" I.R. . .

C. Description of monument for corner and accessories established to perpetuate locating the position of the corner:

Set copper clad iron rod in monument box. <sup>shot</sup> <sup>W.</sup> <sup>of</sup> <sup>sign base</sup>

- 1 ✓ S35°E 66.07' Center of ~~chisled square~~ in shell sign base
- 2 ✓ S70°W 99.92' Power Pole
- 3 ✓ N40°W 35.86' Tele. Pole
- 4 ✓ N05°W 78.36' SW corner of building (Service Station)



SIGNED BY \_\_\_\_\_ DATE \_\_\_\_\_

SURVEYOR'S MICHIGAN REGISTRATION NO. \_\_\_\_\_ (SEAL)

FOR STATE AND UNITED STATES AGENCIES:

SIGNED BY Erwin P. Miller RLS 13589 DATE August 17, 1977

APPROVED AND SIGNED BY Douglas W. Hooth DATE 8/21/77  
 CHIEF OF SURVEY PARTY  
 MICHIGAN REGISTERED LAND SURVEYOR  
 MICHIGAN DEPT. OF HIGHWAYS & TRANSPORTATION (SEAL)

SURVEYOR'S MICHIGAN REGISTRATION NO. 762 00650

# LAND CORNER RECORDATION CERTIFICATE

FILING REQUIREMENT OF ACT 74, MICH. P.A. 1970

LIBER **2269** PAGE **4**

A110173

FOR CORNERS OF--:	LOCATED IN--:	CORNER CODE NUMBER
1. PUBLIC LAND SURVEY _____	T. <u>1</u> N. <u>33</u> R. <u>13</u> E. <u>W</u>	G - 1
2. PROPERTY CONTROLLING IN SECTION _____	T. _____ N. _____ S. _____ R. _____ E. _____ W. _____	_____
3. MISCELLANEOUS PROPERTY IN SECTION _____	T. _____ N. _____ S. _____ R. _____ E. _____ W. _____	_____
4. LOT NO. _____, RECORDED PLAT _____		
5. PRIVATE CLAIMS _____		

REGISTER OF DEEDS STAMP AND FILING NUMBER

I, George A. Ciemochowski do hereby certify that under requirements of P.A. 74, Michigan P.A. of 1970, the corner points mentioned in lines 1 and 2 above (identified with circles on index code diagram - over) were, in a field survey on \_\_\_\_\_ 19\_\_\_\_, established, re-established, monumented, re-monumented, recovered or restored as expressed below and in conformance with regulations and rules therefore as required in the current manual of survey instructions of the United States Department of the Interior, Bureau of Land Management or by a decree of a court of law. Furthermore, that the corner points mentioned in lines 3, 4 and 5 above were, in a field survey of \_\_\_\_\_ 19\_\_\_\_, found, recovered, restored, established or re-established as expressed below and in conformance with the rules of the Michigan State Board of Registration for Land Surveyors or, by a Decree of a Court of law:

A. Description of original monument and accessories and/or subsequent restoration:

RECORDED IN MACOMB COUNTY  
RECORDS AT: 12:35 P.M.

MAR - 7 1972

*Edna Miller*

CLERK - REGISTER OF DEEDS  
MACOMB COUNTY, MICHIGAN

B. Description of corner evidence found and/or method applied in restoring or re-establishing corner:

**Intersection of North Line of Section 4 and East Line of Section 4.**

C. Description of monument for corner and accessories established to perpetuate locating the position of the corner

Provisionally set P.K. and brass cap on asphalt over concrete Road.

- ✓ N 20 W - 34.34 Ft. to P.K. and cap in Detroit Edison Pole
- ✓ S 45 E - 74.80 Ft. to P.K. and cap in Detroit Edison Pole
- ✓ S 80 W - 96.19 Ft. to P.K. and cap in Detroit Edison Pole

SIGNED BY <u>George A. Ciemochowski</u>	DATE <u>March 6, 1972</u>
SURVEYOR'S MICHIGAN REGISTRATION NO. <u>13577</u>	(SEAL)
FOR STATE AND UNITED STATES AGENCIES:	
SIGNED BY _____ CHIEF OF SURVEY PARTY	DATE _____
APPROVED AND SIGNED BY _____ MICHIGAN REGISTERED LAND SURVEYOR	DATE _____ (SEAL)

SURVEYOR'S MICHIGAN REGISTRATION NO. \_\_\_\_\_

00080

300  
C11 E

Survey 2 North Range 3 East

Team Lines

South Boundary

East from Post Cor B142 N 12° 13' E  
from which a Gum 12 in diam bears S 11° W 19 lks dist  
also a W Oak 36 in diam bears N 31° W 41 lks dist  
6.58 B. Oak 24 in diam  
19.50 Marsh  
33.50 Left Marsh  
36.00 Marsh  
40.00 Made 1/4 Sec Cor on a willow 8 in diam  
40.50 Left Marshy  
43.62 W.O. 24 in diam  
80.00 Made Cor for Sections 5, 6, 31, 32 on  
a Hornbeam 3 in diam  
Land 1<sup>st</sup> half mile 3<sup>rd</sup> rate  
last 1/2 mile 2<sup>nd</sup> rate part dry  
Timb W.O. B. Oak White Willow  
Hornbeam + c.

East

11.50 Made 1/4 Sec. Cor on a  
Hickory 7 in diam  
66.08 W.O. 30 in diam  
80.00 Made Cor for Sections 4, 5, 32 + 33 on  
a Sycamore - 40 inches diameter  
Level level and dry 2<sup>nd</sup> rate Timb  
W. Oak Lymus Poplar Beach Sugar  
+ c. Nudg<sup>ts</sup> Spice + c.  
40.00 Made 1/2 mile cor. on an  
Elm 18 in diam  
47.50 Lymus 11 in diam  
80.00 Set post for Sections 3, 4, 33 + 34  
from point which a Beech 8 in diam  
bears N 45° W 11 lks dist also a  
Beech 18 in diam bears N 41° E 16 lks  
dist Land 2<sup>nd</sup> rate level and dry

Run 2 North Range, East

Timber: W. Oak Sugar Poplar  
Lynx + 0 White Spruce

14.13 Birch 16 in diam  
20.00 Run 4 the course S.E.  
40.00 Made 1/2 mile on a  
Birch 10 in diam

80.00 Set post for cor of Section 2, 3, 34 + 35  
from which a Birch 11 in diam bears N  
53 @ 17 lbs dist also an Elm 24 in  
bears N 51 @ 31 lbs distant  
Land first 1/2 mile good 2<sup>nd</sup> rate  
last half 3<sup>rd</sup> rate Timber Birch  
Sugar W. Oak Poplar B. Ash + 0  
White Spruce + c.

24.15 W. Oak 18 in diam  
30.66 Intersect Private Claim No 123  
from the set post for cor of said  
Sections 2 + 35 from which a B. Ash  
10 in diam bears N 11 @ 41 lbs dist  
also a Lynx 7 in diam bears N 52  
@ 2 lbs dist Land dry good 2<sup>nd</sup> rate  
Timber Birch B. Ash Poplar + c.

Surveyed 1818 by Wm. Prescott D.S.

Surveyed by Wm. Prescott 1818

South East Boundary  
40.00 Set 1/4 Sec post from which an Elm 12 in  
diam bears S 15 N 23 lbs also a Lynx 12 in  
bears N 7 W 21 lbs.  
46.50 Burr. Oak 30 in diam  
46.95 Intersected P. Claim 19.20 East of cor of 1818  
Land good and wet 2<sup>nd</sup> rate Timber B. Ash  
Birch Lynx Sugar + c.

# INDEX MAPS

T. 1 N. R. 13 E. Mer.

Mich.

225 6	225 5	225 4	225 3	225 2	225 1
225 7	225 8	225 9	225 10	225 11	225 12
225 18	225 17	225 16	225 15	225 14	225 13
225 19	225 20	225 21	225 22	225 23	225 24
225 30	225 29	225 28	225 27	225 26	225 25
225 31	225 32	225 33	225 34	225 35	225 36

*Handwritten annotations: 224, 228, 229, 230, 231, 232, 233, 234, 235, 236, 237, 238, 239, 240, 241, 242, 243, 244, 245, 246, 247, 248, 249, 250, 251, 252, 253, 254, 255, 256, 257, 258, 259, 260, 261, 262, 263, 264, 265, 266, 267, 268, 269, 270, 271, 272, 273, 274, 275, 276, 277, 278, 279, 280, 281, 282, 283, 284, 285, 286, 287, 288, 289, 290, 291, 292, 293, 294, 295, 296, 297, 298, 299, 300, 301, 302, 303, 304, 305, 306, 307, 308, 309, 310, 311, 312, 313, 314, 315, 316, 317, 318, 319, 320, 321, 322, 323, 324, 325, 326, 327, 328, 329, 330, 331, 332, 333, 334, 335, 336, 337, 338, 339, 340, 341, 342, 343, 344, 345, 346, 347, 348, 349, 350, 351, 352, 353, 354, 355, 356, 357, 358, 359, 360, 361, 362, 363, 364, 365, 366, 367, 368, 369, 370, 371, 372, 373, 374, 375, 376, 377, 378, 379, 380, 381, 382, 383, 384, 385, 386, 387, 388, 389, 390, 391, 392, 393, 394, 395, 396, 397, 398, 399, 400.*

T. 2 N. R. 13 E. Mer.

Mich.

250 6	250 5	250 4	250 3	250 2	250 1	250
250 7	250 8	250 9	250 10	250 11	250 12	
250 18	250 17	250 16	250 15	250 14	250 13	
250 18	250 20	250 21	250 22	250 23	250 24	
250 30	250 29	250 28	250 27	250 26	250 25	250
250 31	250 32	250 33	250 34	250 35	250 36	250

*Handwritten annotations: 246, 247, 248, 249, 251, 252, 253, 254, 255, 256, 257, 258, 259, 260, 261, 262, 263, 264, 265, 266, 267, 268, 269, 270, 271, 272, 273, 274, 275, 276, 277, 278, 279, 280, 281, 282, 283, 284, 285, 286, 287, 288, 289, 290, 291, 292, 293, 294, 295, 296, 297, 298, 299, 300, 301, 302, 303, 304, 305, 306, 307, 308, 309, 310, 311, 312, 313, 314, 315, 316, 317, 318, 319, 320, 321, 322, 323, 324, 325, 326, 327, 328, 329, 330, 331, 332, 333, 334, 335, 336, 337, 338, 339, 340, 341, 342, 343, 344, 345, 346, 347, 348, 349, 350, 351, 352, 353, 354, 355, 356, 357, 358, 359, 360, 361, 362, 363, 364, 365, 366, 367, 368, 369, 370, 371, 372, 373, 374, 375, 376, 377, 378, 379, 380, 381, 382, 383, 384, 385, 386, 387, 388, 389, 390, 391, 392, 393, 394, 395, 396, 397, 398, 399, 400.*