

LAND CORNER RECORDATION CERTIFICATE
Filing Requirement of Act 74, Mich. P.A. 1970

C152278

94 DEC 14 AM 10:55

For corners in

MACOMB

(County)

Located In:
CLINTON

Corner Code #

CAD. REG. DEEDS
MACOMB COUNTY, MT.

1. Public Land Survey T 2N R 13E Corner Code # D-13
T _____ R _____
T _____ R _____
T _____ R _____
T _____ R _____
2. Property Controlling S _____ T _____ R _____
in Section S _____ T _____ R _____
3. Miscellaneous S _____ T _____ R _____
Property in Sec. S _____ T _____ R _____

LIBER 6527 PAGE 855

Register of Deeds Stamp & File Number

k. Lot No. _____, Recorded Plat _____
i. Private Claims _____

A	B	C	D	E	F	G	H	I	J	K	L	M
2	6	5	4	3	2							
3												
4	7	8	9	10	11	12						
5												
6	18	17	16	15	14	13						
7												
8	19	20	21	22	23	24						
9												
10	30	29	28	27	26	25						
11												
12	31	32	33	34	35	36						
13												

STEVEN E. DUNN, in a field survey on MARCH 20, 19 94, hereby certify that under requirements of P.A. 74, Michigan P.A. of 1970, the corner points mentioned in lines 1 and 2 above were in conformance with regulations and rules therefore required in the current manual of survey instructions of the United States Department of the Interior, Bureau of Land Management or by a decree of a Court of Law and /or that the corner points mentioned in lines 3, 4 and 5 above were in conformance with the rules of the Michigan Board of Land Surveyors or by a Decree of a Court of Law; established, re-established, monumented, re-monumented, recovered, found as expressed below:

NOTE: Not more than 4 corners, all in the same town and range, may be recorded on this certificate.

v. Description of original monument and accessories and/or subsequent restoration:

G.L.O POST - NO EVIDENCE OF ORIGINAL CORNER FOUND
G.L.O ORIGINAL SURVEY PERFORMED BY PRESTON 2-18-1818

L.C.R.C. D-13, T.2N, R.13E.	NAME AND NUMBER	DESCRIPTION	DATE
L. 3004 P. 130	WILLIAM J. COULTER, #14760	FOUND 1/2" STEEL ROD IN C/L ASPHALT PAVEMENT	SEPTEMBER 19, 1978
L.C.R.C. D-1, T.1N., R.13E.			
L. 3055 P. 814	GEORGE J. AVENDT, JR. #16034	FOUND 1/2" PIPE	JANUARY 15, 1979
L. 5298 P. 942	RAYMOND J. DONNELLY, #21563	FOUND 1/2" IRON PIPE	JANUARY 13, 1992

PLATS:

L. 12 P. 16	GARFIELD PARK SUBDIVISION NO. 1	DECEMBER 3, 1926
L. 14 P. 28	ASSESSOR'S PLAT NO. 4	MARCH 20, 1930
L. 17 P. 30	SUPERVISOR'S PLAT NO. 2	JULY 21, 1936

Description of corner evidence found and/or method applied in restoring or reestablishing corner:

D-13 1/4 CORNER COMMON TO D-1 ERINLAKE TOWNSHIP

FOUND 1/2" IRON PIPE IN MONUMENT BOX IN CONCRETE PAVEMENT
VERIFIED LOCATION BY COMPARING FOUND WITNESSES OF L.C.R.C.'s LISTED BELOW AND COMPARING DISTANCE FROM D-13 TO E-13 AS SHOWN ON SUPERVISOR'S PLAT NO. 2 AND MDOOT R/W MAP SHEET NO. 79 AND DISTANCE FROM D-13 TO C-13 AS SHOWN ON ASSESSOR'S PLAT NO. 4 AND GARFIELD PARK SUB NO. 1.

FOUND WITNESS TIES

L. 3004 P. 130	ENE	125.90'	PK. NAIL IN NORTHEAST FACE OF POLE
L. 5298 P. 942	MAG. AZ. 334°	37.58'	PK. NAIL IN NORTHEAST FACE OF UTILITY POLE

FIELD MEASUREMENTS AND RECORDED DISTANCES

D-13 TO C-13	2713.74' (M.)	2640.00' G.L.O. (R.)
D-13 TO F-13	2703.12' (M.)	2640.00' G.L.O. (R.)

Description of monument for corner and accessories established to perpetuate locating the position of the corner:

D-13 T.2N., R.13E. I REPLACED 1/2" IRON PIPE WITH A 3/4" x 24" IRON ROD WITH 2" DIAMETER ALUMINUM CAP STAMPED "MACOMB COUNTY MONUMENT MI. ACT 345 #28408 IN AN EXISTING MONUMENT BOX."

WITNESSES

N.21°W.	37.50'	FOUND PK NAIL IN EAST FACE OF UTILITY POLE.
N.03E.	56.73'	FOUND PK NAIL IN WEST FACE OF 24" MAPLE.
N.80°E.	125.92'	FOUND PK NAIL IN NORTH FACE OF UTILITY POLE.
S.61°E.	127.35'	FOUND PK NAIL W/WASHER IN NORTH FACE OF UTILITY POLE.
S.44°W.	67.75'	FOUND PK NAIL W/WASHER IN NORTHWEST FACE OF UTILITY POLE.

THE SELECTED LOCATION IS ACCEPTED BY ME AND IS GENERALLY ACCEPTED BY PROFESSIONAL SURVEYORS AS THE BEST AVAILABLE EVIDENCE OF THE POSITION OF THE ORIGINAL CORNER

Signed by Steven E. Dunn Date Nov. 9, 1994
Surveyor's Michigan License No. 28408



ACCEPTED BY THE MACOMB COUNTY SURVEY FEE GROUP AS THE OFFICIAL CORNER UNDER MICHIGAN PUBLIC ACT 345 OF 1990 AT A MEETING HELD ON 10-4-94
WILLIAM E. SCOFERBERG, P.S., CHAIRMAN

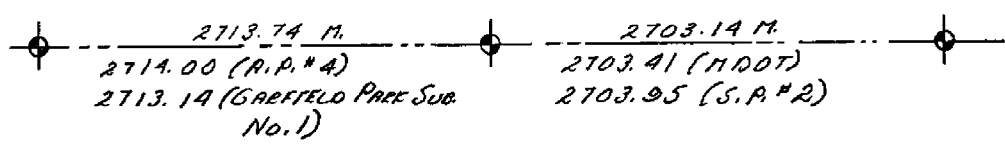
8.16.1994

22-141 50 SHEETS
22-142 100 SHEETS
22-144 200 SHEETS
AMPA



CLINTON TWP.

SEC. 32



SEC. 5

ERIN-LAKE TWP.

LAND CORNER RECORDATION CERTIFICATE
Filing Requirement of Act 74, Mich. P.A. 1970

1657065

RECORDED IN MACOMB COUNTY
RECORDS AT: 9:47A M.

JAN 13 1992

Edna M. ...

CLERK - REGISTER OF DEEDS
MACOMB COUNTY, MICHIGAN
Register of Deeds Stamp & File Number

For corners in	Located In:	Corner Code //
Macomb (County)		
1. Public Land Survey	T 1N R 13E	D-1
	T . . R .	
	T . . R .	
	T . . R .	
2. Property Controlling in Section	S T R	
	S T R	
3. Miscellaneous Property in Sec.	S T R	
	S T R	
4. Lot No. Recorded Plat		
5. Private Claims		

	A	B	C	D	E	F	G	H	I	J	K	L	M
2	6	5	4	3	2	1							
3													
4	7	8	9	10	11	12							
5													
6	16	17	18	19	20	21	22	23	24				
7													
8	19	20	21	22	23	24	25	26	27	28	29	30	31
9													
10	30	29	28	27	26	25	24	23	22	21	20	19	18
11													
12	31	32	33	34	35	36							
13													

I, Raymond J. Donnelly, in a field survey on December 28, 19 90
do hereby certify that under requirements of P.A. 74, Michigan P.A. of 1970, the corner points mentioned in lines 1 and 2 above were in conformance with regulations and rules therefore as required in the current manual of survey instructions of the United States Department of the Interior, Bureau of Land Management or by a decree of a Court of Law and/or that the corner points mentioned in lines 3, 4 and 5 above were in conformance with the rules of the Michigan Board of Land Surveyors or by a Decree of a Court of Law, established, re-established, monumented, re-monumented, recovered, found as expressed below.

NOTE: Not more than 4 corners, all in the same town and range, may be recorded on this certificate.

A. Description of original monument and accessories and/or subsequent restoration:

D-1 Unknown

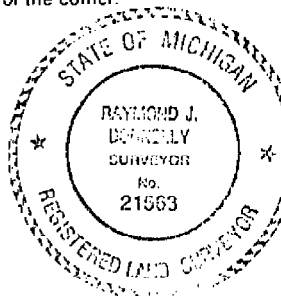
Erin Township, City of Fraser

B. Description of corner evidence found and/or method applied in restoring or reestablishing corner:

D-1 North 1/4 Corner Section 5
Found 1/2" Iron Pipe
South 39° West, 67.67' to M.C.R.C. tag in D.E. Pole
North 02° West, 33.06' to PK nail in D.E. Pole
North 29° East, 83.97' to SW corner of brick Security Building Cross Industries
South 16° East, 88.44' to NW corner of brick building ENS Company
Recovered using witnesses recorded in Liber 3055, Page 814, Macomb County Records

C. Description of monument for corner and accessories established to perpetuate locating the position of the corner:

D-1 North 1/4 Corner Section 5
Found 1/2" Iron Rod in Monument Box
Mag. AZ 28°, 83.80' to SW corner of brick "Cross Security" shack
Mag. AZ 163°, 88.47' to NW corner of brick "E.W.S." building
Mag. AZ 219°, 67.18' to PK nail with M.C.R.C. tag in NW face of Utility Pole
Mag. AZ 334°, 37.58' to PK nail in NE face of Utility Pole

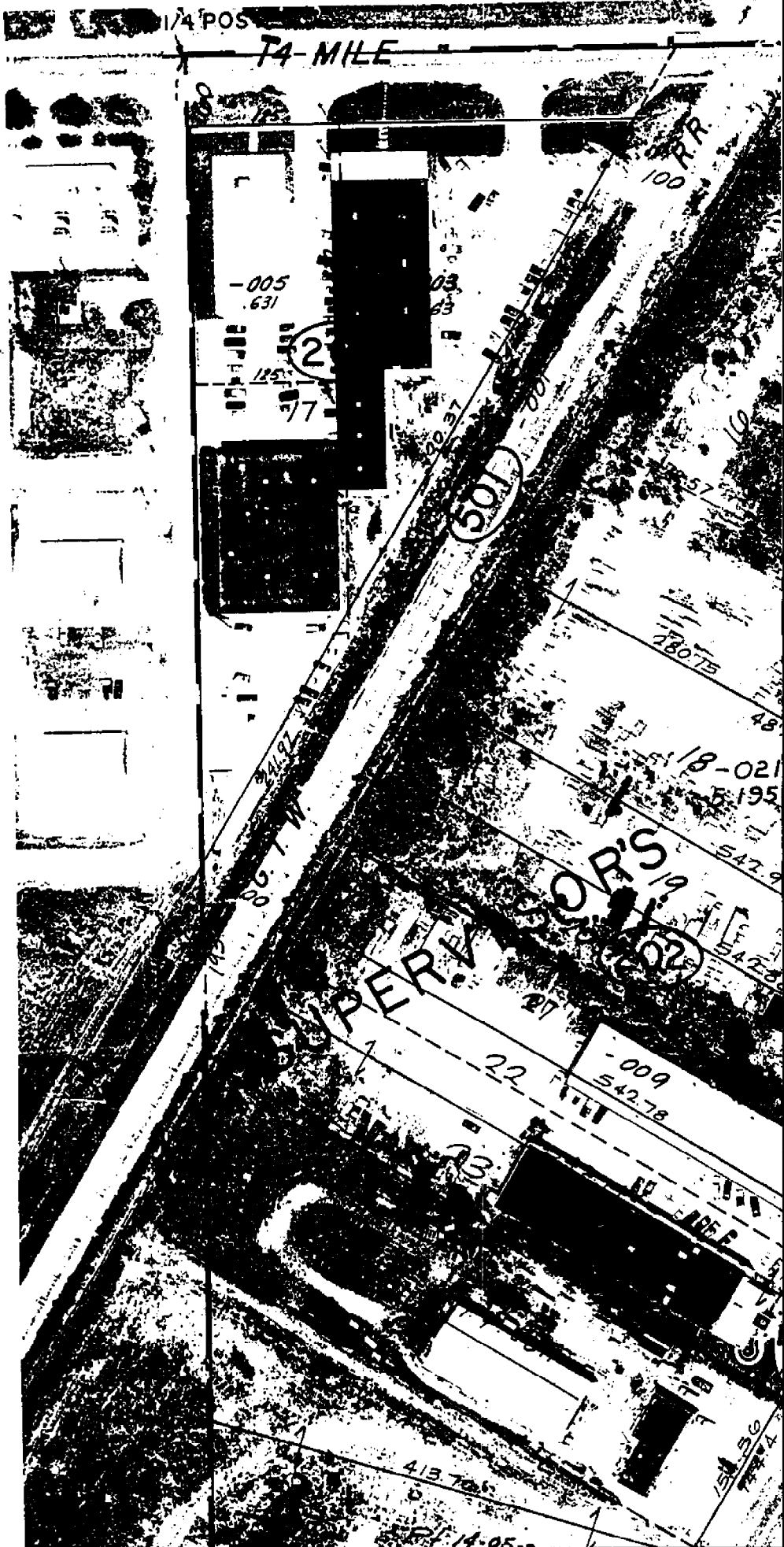


Signed by *Raymond J. Donnelly*
Surveyor's Michigan License No. 21563

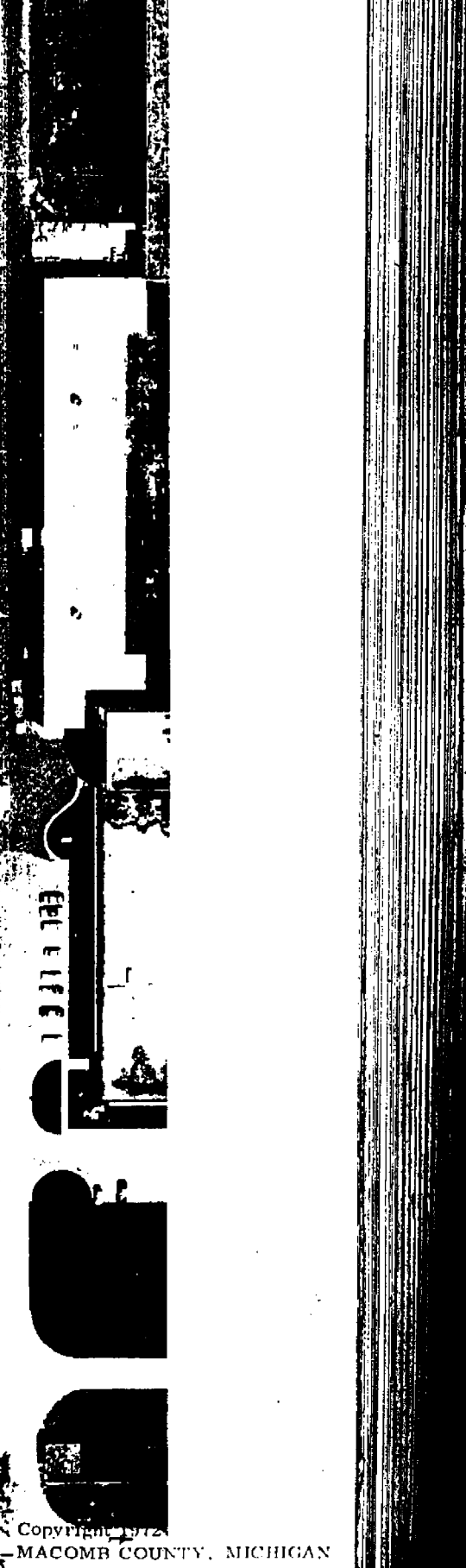
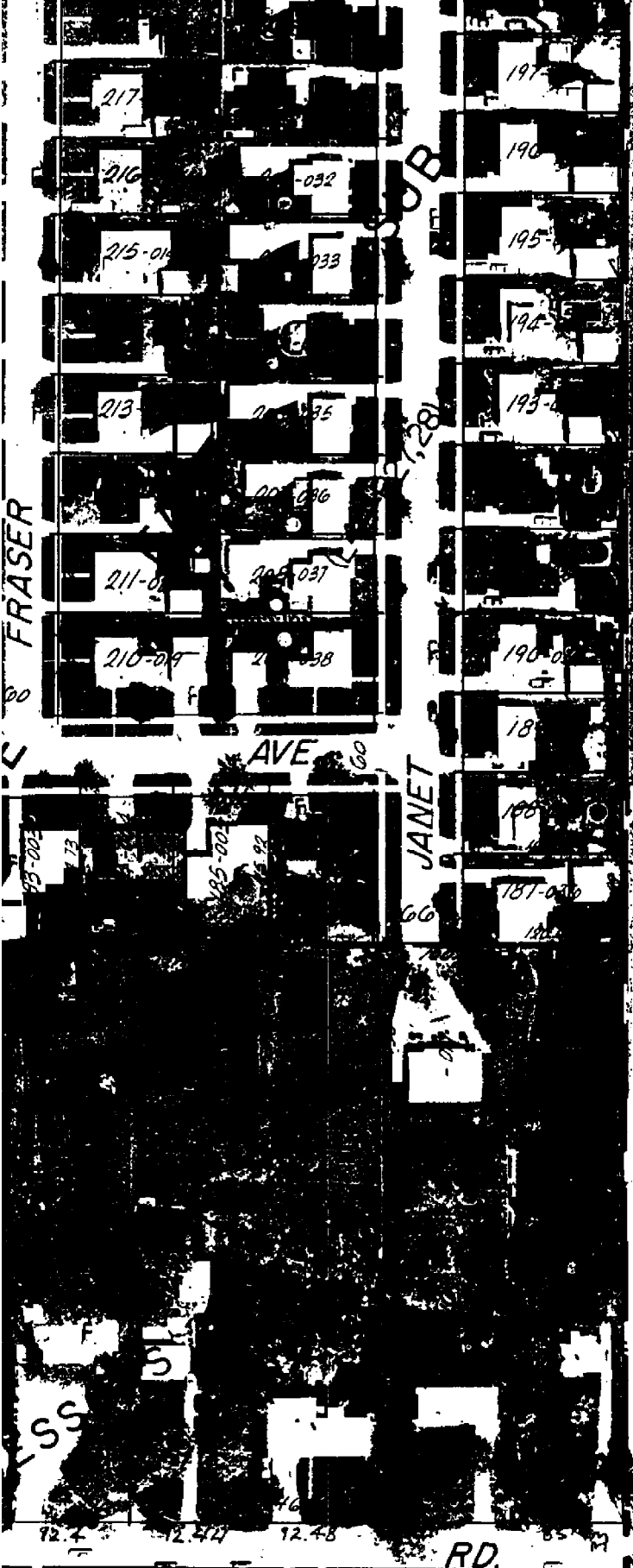
Date Jan. 4, 1992

01687





0-13



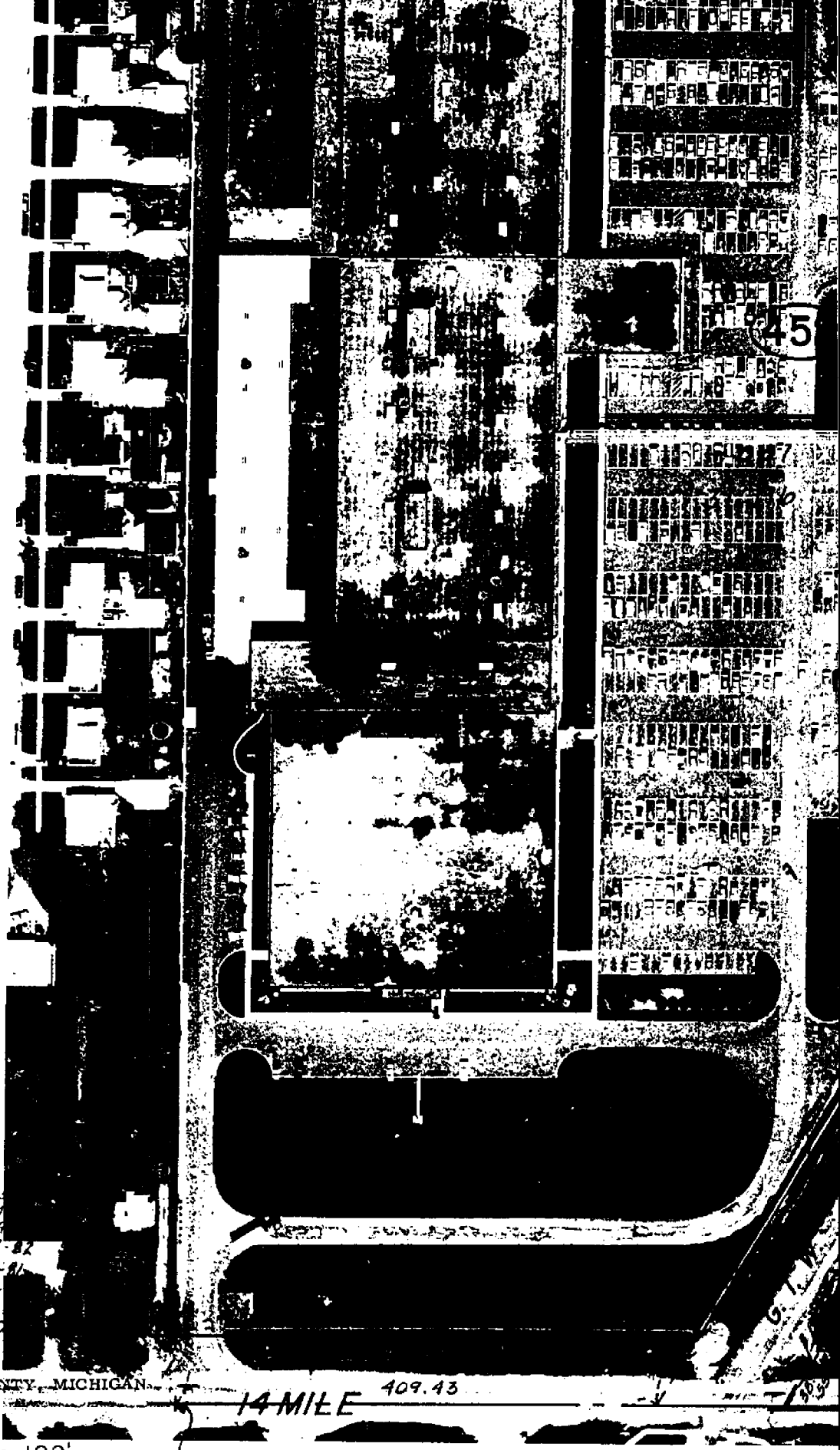
Copyright 1972
MACOMB COUNTY, MICHIGAN

SCALE 1" = 100'

R.13E.

D-13

11-32F



REV. 3-82
REV. 7-81
REV. 4-80
REV. 4-79
REV. 7-78

Copyright 1972
MACOMB COUNTY, MICHIGAN

14 MILE 409.43

SCALE: 1" = 100'

S 1/4 Post

11-32G

0-13

W. 1/2 S.E.

LAND CORNER RECORDATION CERTIFICATE

FILING REQUIREMENT OF ACT 74, MICH. P.A. 1970

City of Fraser, Macomb County, Michigan

A555927

FOR CORNERS OF: N. 1/2 LOCATED IN: Sec. 5

	T.	N.	R.	E.	CORNER CODE NUMBER
1. PUBLIC LAND SURVEY	1	13			D-1 N. 1/4 cor
2. PROPERTY CONTROLLING IN SECTION					
3. MISCELLANEOUS PROPERTY IN SECTION					
4. LOT NO. RECORDED PLAT					
5. PRIVATE CLAIMS					

RECORDED IN MACOMB COUNTY RECORDS AT: 8:30 P.M.
 JAN 15 1979
Edna H. Hill
 CLERK - REGISTER OF DEEDS
 MACOMB COUNTY, MICHIGAN
 REGISTER OF DEEDS STAMP AND FILING NUMBER

I, George J. Avendt, Jr. do hereby certify that under requirements of P.A. 74, Michigan P.A. of 1970, the corner points mentioned in lines 1 and 2 above (identified with circles on index code diagram - over) were, in a field survey on October 1978, established, re-established, monumented, re-monumented, recovered or restored as expressed below and in conformance with regulations and rules therefore as required in the current manual of survey instructions of the United States Department of the Interior, Bureau of Land Management or by a decree of a court of law. Furthermore, that the corner points mentioned in lines 3, 4 and 5 above were, in a field survey on _____ 19____, found, recovered, restored, established or re-established as expressed below and in conformance with the rules of the Michigan State Board of Registration for Land Surveyors or, by a Decree of a Court of law:

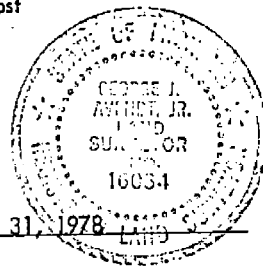
A. Description of original monument and accessories and/or subsequent restoration:

B. Description of corner evidence found and/or method applied in restoring or re-establishing corner:

D-1 Found 1/2" pipe

C. Description of monument for corner and accessories established to perpetuate locating the position of the corner:

D-1 North 33.08 ft. Found P.K. nail on West side of power pole
 N. N.E. 72.65 ft. Center of chain link anchor post
 S. S.E. 88.55 ft. NE corner brick shod #17730



SIGNED BY George J. Avendt, Jr. DATE October 31, 1978
 SURVEYOR'S MICHIGAN REGISTRATION NO. 16034 (SEAL)

FOR STATE AND UNITED STATES AGENCIES:

SIGNED BY _____ CHIEF OF SURVEY PARTY DATE _____
 APPROVED AND SIGNED BY _____ MICHIGAN REGISTERED LAND SURVEYOR DATE _____ (SEAL)

SURVEYOR'S MICHIGAN REGISTRATION NO. _____

00815

LAND CORNER RECORDATION CERTIFICATE

FILING REQUIREMENT OF ACT 74, MICH. P.A. 1970

LIBER **3004** PAGE **130**

FOR CORNERS OF--	LOCATED IN--	CORNER CODE NUMBER
1. PUBLIC LAND SURVEY _____	T. <u>2</u> N. <u>X</u> R. <u>13</u> E. <u>X</u>	<u>D-11, D-12, D-13</u>
2. PROPERTY CONTROLLING IN SECTION _____	T. _____ S. _____ R. _____ E. _____ W. _____	_____
3. MISCELLANEOUS PROPERTY IN SECTION _____	T. _____ S. _____ R. _____ E. _____ W. _____	_____
4. LOT NO. _____	RECORDED PLAT _____	_____
5. PRIVATE CLAIMS _____	_____	_____

A528593

RECORDED IN MACOMB COUNTY
RECORDS AT: 1:00 P. M.

SEP 19 1978

Edna Walker
CLERK - REGISTER OF DEEDS
MACOMB COUNTY, MICHIGAN
REGISTER OF DEEDS STAMP AND
FILING NUMBER

I, William J. Coulter, do hereby certify that under requirements of P.A. 74, Michigan P.A. of 1970, the corner points mentioned in lines 1 and 2 above were, in a field survey on Sept. 11, 1978, established, re-established, monumented, re-monumented, recovered or restored as expressed below and in conformance with regulations and rules therefore as required in the current manual of survey instructions of the United States Department of the Interior, Bureau of Land Management or by a decree of a court of law. Furthermore, that the corner points mentioned in lines 3, 4 and 5 above were, in a field survey on _____, 19____, found, recovered, restored, established or re-established as expressed below and in conformance with the rules of the Michigan State Board of Registration for Land Surveyors or, by a Decree of a Court of law:

A. Description of original monument and accessories and/or subsequent restoration:

B. Description of corner evidence found and/or method applied in restoring or re-establishing corner:

- D-11 1/2" steel rod found in E of Asphalt pavement
- D-12 4" diam. steel corner fence post, 8' high
- D-13 1/2" steel rod found in E of Asphalt pavement.

C. Description of monument for corner and accessories established to perpetuate locating the position of the corner:

- D-11 N.E. 34.30' P.K. in Light pole - North 60.00' Survey iron - South 60.00' Conc. Mar N.N.W. 34.40' Steel corner fence Post - South 51.95' P.K. in D.E. Pole
- D-12 South-8' steel fence on N-S 1/4 line - East -8' steel fence on E-W 1/4 line - East 6.0' south end of 6' conc. wall
- D-13 S.W. 67.58' M.C.R.C. Nail in D.E. Pole - North 33.02' P.K. in D.E. Pole - E.N.E. 125.90' P.K. in D.E. Pole.

SIGNED BY William J. Coulter DATE Sept 19, 1978

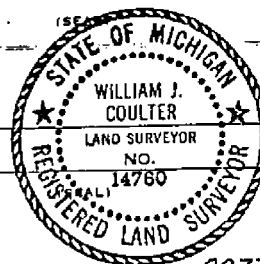
SURVEYOR'S MICHIGAN REGISTRATION NO. 14760

FOR STATE AND UNITED STATES AGENCIES:

SIGNED BY _____ DATE _____

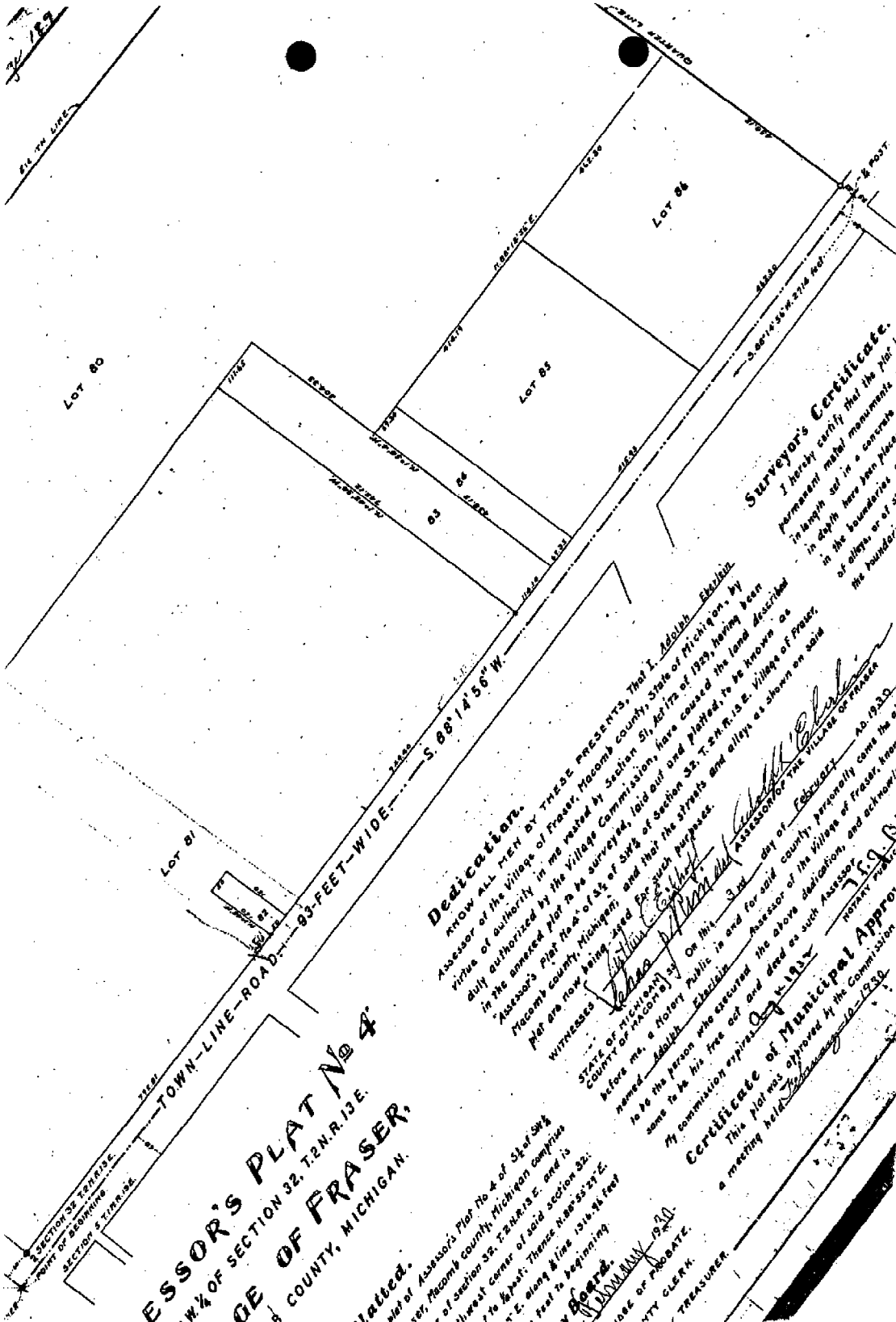
APPROVED AND SIGNED BY _____ DATE _____

SURVEYOR'S MICHIGAN REGISTRATION NO. _____



00776

208
2.11E



ESSOR'S PLAT No 4
W. 1/4 OF SECTION 32, T. 2 N. R. 13 E.
OF FRASER,
MI. COUNTY, MICHIGAN.

Dedication.
 KNOW ALL MEN BY THESE PRESENTS, That I, Adolph Etzelain, Assessor of the Village of Fraser, Macomb County, State of Michigan, by virtue of authority in me vested by Section 51, Act 176 of 1929, having been duly authorized by the Village Commission, have caused the land described in the annexed plat to be surveyed, laid out and platted, to be known as "Assessor's Plat No. 4" of S. 1/4 of S. 32 of Section 32, T. 2 N. R. 13 E., Village of Fraser, Macomb County, Michigan; and that the streets and alleys as shown on said plat are now being used for such purposes.

Surveyor's Certificate.
 I hereby certify that the plat is permanent metal monuments in depth and in a certain in the boundaries of alleys or of the boundary.

Witness my hand and the seal of said county, this 10th day of February, 1930, at Fraser, Michigan.
Adolph Etzelain
 Assessor of the Village of Fraser, Macomb County, Michigan.

Certificate of Municipal Approval.
 This plat was approved by the Commission at a meeting held on February 10, 1930.

John C. [Signature]
 Mayor

[Signature]
 City Clerk

[Signature]
 Treasurer

SECTION 32, T. 2 N. R. 13 E.
 COUNTY OF MACOMB, MICHIGAN

Town 2 North Range 13 East

Team LinesSouth Boundary

Call Iron Post Cor B. 12 N. R. 12 + 13 E
 from which a Gum 12 in diam bears S 11 W 17 1/2 dist
 also a W Oak 36 in diam bears N 31 W 41 1/2 dist

6.58 B. Oak 24 in diam
 19.50 Marsh
 33.30 Left Marsh
 36.00 Marsh
 40.00 Made 1/4 Sec Cor on a willow 8 in diam
 40.50 Left Marshy
 43.62 W. O. 24 in diam
 80.00 Made Cor for sections 5, 6, 31, 32 on
 a Hornbeam 3 in diam
 Land 1st half mile 3rd rate
 last 1/2 mile 2nd rate front dry
 Soil W. O. B. Oak Mudstone Millon
 Hornbeams + c.

East

11.00 Made 1/4 Sec. Cor on a
 Hickory 7 in diam
 66.05 W. O. 30 inches diam
 80.00 Made cor for sections 4, 5, 32 + 33 on
 a Sycamore - 40 inches diameter
 Level level and dry 2nd rate Soil
 W. Oak. Lym. Poplar Beech Sugar
 + Mudstone Spruce + c.

40.00 Made 1/2 mile cor on an
 Elm 18 in diam
 49.00 Lym 14 in diam
 80.00 Set post for sections 3, 4, 33 + 34
 from front which a Beech 8 in diam
 bears N 45 W 11 1/2 dist also a
 Beech 18 in diam bears N 41 O. 16 1/2
 dist Land 2nd rate level and dry

Town 2 North Range 13 East

Timber: W. Oak Sugar Poplar
Lynx + 0 Windy Spruce

11.13 Beech 16 in diam
20.00 Run 4 lks course S.E.
40.00 made 12 mile cr on a
Beech 10 in diam
8000 Set post 7' in cor of section 2, 3, 34 + 35
from which a Beech 11 in diam bears N
53 & 17 lks distant also an Elm 24 in
bears N 5 W 31 lks distant
Land first 12 mile good 2nd rate
last half 3rd rate Timber Beech
Sugar W. Oak Poplar B. Ash + 0
Windy Spruce + 0

21.15 W. Oak 18 in diam
30.00 Intersect Private Claim No 123
from the Set post for cor of past
Sections 2 + 35 from which a B. Ash
10 in diam bears N 71 & 4 lks dist
also a Lynx 7 in diam bears N 32
& 2 lks dist Land dry good 2nd rate
Timber Beech B. Ash Poplar + 0

Surveyed 1815 by Wm. Prescott D.S.

South East Boundary
4000 Set 74 Sec post from White an Elm 22 in
diam bears S 15 N 23 lks also a Lynx 12 in
bears N 7 W 21 lks.

46.50 Burn Oak 30 in diam

46.75 Intersect P. Claim 17, 20 East of cor of 15
Land land and met 2nd rate Timber B. Ash
Beech Lynx Sugar + 0 + 0

Surveyed by Wm. Prescott 1815