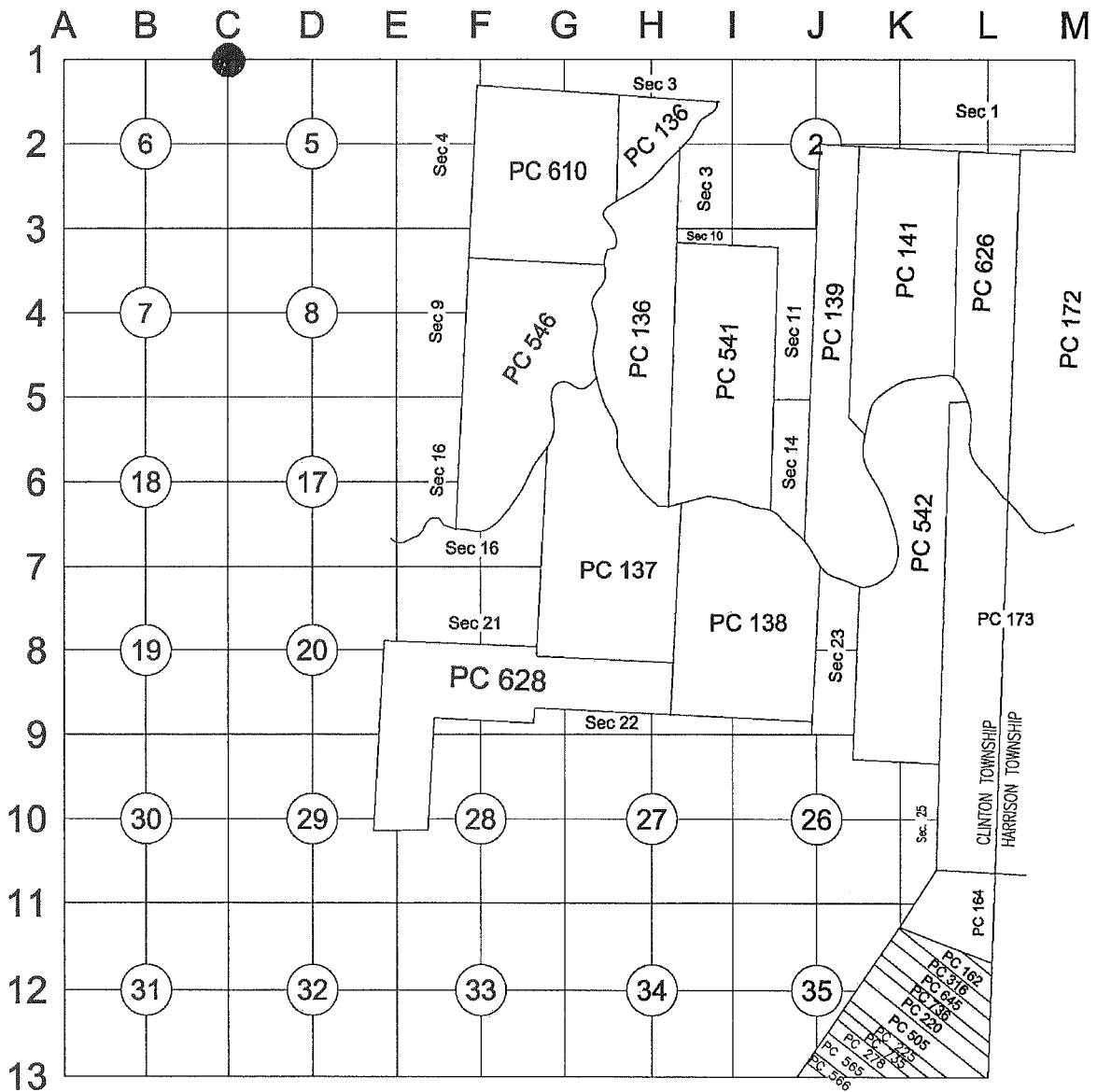


Land Corner Recordation Certificate
Authority: MICH. 1970 PA 74, MCL 54.205

Surveyor's Name: Robert J. Arnold
For Corner(s) in: Macomb County

Field Survey Date: December 5, 2018
Municipality: Clinton Township

Corner Type	Section Private Claim	Clinton Township				Corner Code
Original Public Land Survey Corner	Sec. <u>5,6</u>	T <u>2</u> N	R <u>13</u> E	<u>C-1</u>		



2

C

Part A: Corner History:

- 1) 1993 Bruce Antcliff P.S. #25826 presented evidence to the Macomb County Remonumentation Peer Review Group and obtained approval that this position is a faithful representation of the corner on 12/1/1993. Recorded LCRC Liber 06161 Page 239 dated 12/22/1993. He reported replacing a 1/2" Rebar with a "Macomb County Remonumentation Marker and Cap #25826 in exist. Mon. Box".
- 2) 1994 George Platz P.S. #33121 recorded LCRC Liber 6543 Page 325. He reported replacing the Antcliff monument with "Set 3/4" Iron Rod with Aluminum Disk Stamped "Macomb County Monument, MI Act 345, #38121 in Monument Box..." due to a road widening project on M-59.

Part B: Surveyor's Report on Perpetuation, Restoration, Reestablishment or Monumentation of Corner:

We found the Monument Box for the corner, but the lid had fused to the casting and could not be opened to verify the Monument itself in April of 2018. The attempted recovery was completed as part of a Monument Preservation effort for a MDOT road paving project prior to the commencement of construction activities.

We checked the position by navigating to the State Plane Coordinate published to LARA in 1995 which compared favorably with the coordinates published on the construction plans. The result landed on the centerline of the Monument Box.

No witnesses from either LCRC mentioned in Part A remained for verification.

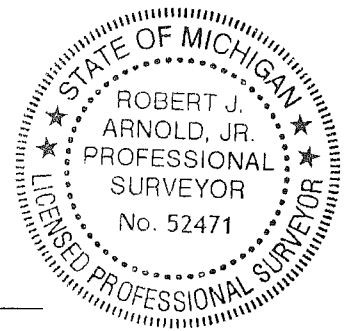
Part C: Field Evidence of Perpetuation or Monumentation of Corner:

Upon completion of the paving in this section we set a 24" long 3/4" re-rod with a Macomb County Remonumentation Cap stamped #52471 in a new monument box in the same location as reported in Part B.

The corner is being replaced, to the best of our ability, in the same position that the Macomb County Remonumentation Peer Group accepted for recording 12/1/1993, LCRC recorded on 12/22/93 in Liber 6161 Page 239.

Accessories:

- N 45° W 73.58' Set a Mag Nail and Shiner in the SW face of a utility pole
- N 45° E 83.11' Set a Mag Nail and Shiner in the SE face of a utility pole
- S 35° E 101.96' Set a Mag Nail and Shiner in the E face of a utility pole
- S 42° W 100.39' Set a Mag Nail and Shiner in a utility pole
- N 90° W 594.87' to C13 of T3N R13E



Robert J. Arnold, Jr.

 Robert J. Arnold, P/S.

1/3/19

 Date

Professional Surveyor's License No.: 52471

Prepared By:
 BMJ Engineers & Surveyors, Inc.
 519 Huron Ave.
 Port Huron, MI 48060

**THE MACOMB COUNTY SURVEY PEER GROUP
 PREVIOUSLY ACCEPTED THIS CORNER'S POSITION
 UNDER MICHIGAN PUBLIC ACT 345 OF 1990 AT A
 MEETING HELD ON 12-1-1993**

Martin C. Dunn

 MARTIN C. DUNN, P.S. CHAIRMAN

LAND CORNER RECORDATION CERTIFICATE
 Filing Requirement of Act 74, Mich. P.A. 1970

CLINTON TWP.

For corners in

<u>MACOMB</u> (County)	Located In:	Corner Code #
1. Public Land Survey	T 2N R 13E	C-1
	T R	
	T R	
	T R	
2. Property Controlling in Section	S T R	
	S T R	
3. Miscellaneous Property in Sec.	S T R	
	S T R	

Register of Deeds Stamp & File Number

4. Lot No. _____, Recorded Plat _____
 5. Private Claims _____
 ON 12-13-94

ACCEPTED BY THE MACOMB COUNTY SURVEY PEER GROUP AS THE OFFICIAL CORNER UNDER MICHIGAN PUBLIC ACT 345 OF 1990 AT A MEETING HELD ON 12-13-94
William E. Soderberg
 WILLIAM E. SODERBERG, P.S., CHAIRMAN

	A	B	C	D	E	F	G	H	I	J	K	L	M
2													
3	6	5	4	3	2	1							
4	7	8	9	10	11	12							
5													
6	18	17	16	15	14	13							
7													
8	19	20	21	22	23	24							
9													
10	30	29	28	27	26	25							
11													
12	31	32	33	34	35	36							
13													

I, George M. Platz, in a field survey on November 15, 19 94, do hereby certify that under requirements of P.A. 74, Michigan P.A. of 1970, the corner points mentioned in lines 1 and 2 above were in conformance with regulations and rules therefore as required in the current manual of survey instructions of the United States Department of the Interior, Bureau of Land Management or by a decree of a Court of Law and /or that the corner points mentioned in lines 3, 4 and 5 above were in conformance with the rules of the Michigan Board of Land Surveyors or by a Decree of a Court of Law; established, re-established, monumented, re-monumented, recovered, found as expressed below:

NOTE: Not more than 4 corners, all in the same town and range, may be recorded on this certificate.

A. Description of original monument and accessories and/or subsequent restoration:

- C-1 T.2N.,R.13E. G.L.O. Notes Pgs. 245-249 William Preston 1818 Set Post
- C-1 T.2N.,R.13E. MCRC Witness Card 1934 Cross in Pavement
- C-1 T.2N.,R.13E. MDOT Witness Card Clifford Lindgren 1971 Found Mon. Box w/ 1" Pin
- C-1 T.2N.,R.13E. LCRC Liber 4113, Pg. 178 John Fenn 1987 Found Mon. Box w/ Iron
- C-1 T.2N.,R.13E. MDOT Witness Card Keith H. Schultz 1988 Found Mon. Box w/ 1/2" Rod
- C-1 T.2N.,R.13E. LCRC Liber 6161, Pg. 239 Bruce Antcliff 1993 Set Macomb Co. Remon. Disk

B. Description of corner evidence found and/or method applied in restoring or reestablishing corner:

C-1 Set 3/4" Iron Rod with Aluminum Disk Stamped "Macomb County Monument, MI Act 345, #38121" in Location that was Accepted by the Macomb County Remonumentation Board in 1993. Bruce Antcliff, PS #25826, performed the Remonumentation Survey in 1993. The Corner was destroyed in the Spring of 1994 when M-59 was widened. Prior to its destruction, the point was witnessed by Spalding DeDecker & Associates and upon completion of the paving, the point was reset in the same position that was accepted by the Macomb County Remonumentation Board in 1993.

C. Description of monument for corner and accessories established to perpetuate locating the position of the corner:

C-1 Northeast Corner of Section 6 and Northwest Corner of Section 5, Clinton Twp. T.2N.,R.13E. Set 3/4" Iron Rod with Aluminum Disk Stamped "Macomb County Monument, MI Act 345, #38121" in Monument Box located in the Intersection of Garfield Rd. South and East Bound M-59 This point falls 594.9'+/- Easterly of the SW Corner of Section 32, Macomb Twp. T.3N.,R.13E.

- Az. 11° 267.41'; Set 1/2" Iron Rod w/"SDA TRAV." Cap at the Back of Curb
- Az. 63° 63.69'; Set Chiseled "+" in the West Face of a Steel Signal Pole
- Az. 140° 96.24'; Found P.K. Nail w/ "Macomb County Witness" Tag in SW Face of Utility Pole
- Az. 237° 192.35'; Set 1/2" Iron Rod w/"SDA TRAV." Cap at SE Corner of Conc.Pad to MCC Sign
- Az. 250° 118.64'; Set P.K. Nail w/Tag #38121 in SE Face of Utility Pole
- Az. 352° 114.26'; Set P.K. Nail w/Tag #38121 in East Face of Utility Pole
- Az. 359° 336.93'; Set 1/2" Iron Rod w/"SDA TRAV." Cap at NE Corner of a Concrete Headwall

The selected location is accepted by me and is generally accepted by Professional Surveyors as the best available evidence of the position of the original corner.

Signed by George M. Platz GEORGE M. PLATZ
 Surveyor's Michigan License No. 38121 SURVEYOR
 No. 38121



Engineering & Surveying Excellence
Since 1954

Between 12/9/93 and 12/12/94, there have been no surveys or LCRC's recorded in the Macomb County Register of Deeds relating to this corner.

George Platz
PS 38121

655 West Thirteen Mile Road • Madison Heights • MI 48071
Phone (810) 585-5545 • Fax (810) 585-2627

1997883

LAND CORNER RECORDATION CERTIFICATE
Filing Requirement of Act 74, Mich. P.A. 1970

93 DEC 22 AM 9:05

CAROL A. BAUGH
REGISTER OF DEEDS
MACOMB COUNTY, MI

For corners in

MACOMB

(County)

Located In:

CLINTON TWP.

Corner Code #:

C-1

- 1. Public Land Survey T 2N R 13E _____
T _____ R _____
T _____ R _____
T _____ R _____
- 2. Property Controlling S _____ T _____ R _____
in Section S _____ T _____ R _____
- 3. Miscellaneous S _____ T _____ R _____
Property in Sec. S _____ T _____ R _____
- 4. Lot No. _____, Recorded Plat _____
- 5. Private Claims _____

LIBER 061618239

Register of Deeds Stamp & File Number

I, BRUCE ANTCLIFF in a field survey on NOVEMBER 29, 19 93

do hereby certify that under requirements of P.A. 74, Michigan P.A. of 1970, the corner points mentioned in lines 1 and 2 above were in conformance with regulations and rules therefor as required in the current manual of survey instructions of the United States Department of the Interior, Bureau of Land Management or by a decree of a Court of Law and/or that the corner points mentioned in lines 3, 4 and 5 above were in conformance with the rules of the Michigan Board of Land Surveyors or by a Decree of a Court of Law; established, re-established, monumented, re-monumented, recovered, found as expressed below:

NOTE: Not more than 4 corners, all in the same town and range, may be recorded on this certificate.

A. Description of original monument and accessories and/or subsequent restoration:

GLO-Post, NO WITS. REMAIN

MDOT (1971)-1" PIN IN MON BOX
GUY POLE, S25E, 67.26'
PP, S32W, 66.91'
TEL POLE, N62W, 59.12'
GUY POLE, N45E, 26.42'

MCRC (1834)-CROSS IN PAVT
SPIKE IN DE POLE, SW, 56.50'
SPIKE IN DE POLE, SE, 38.06'
SPIKE IN DE POLE, NW, 37.3'
SPIKE IN TEL POLE, NLY, 23.4'

LCRC (1987) L4113, P178-IRON IN MON BOX
CENTER OF GATE WELL, NE, 53.35'
CENTER OF GATE WELL, NW, 52.10'
N&T #20623 SE FACE PP, SW, 66.82'
CENTER OF STORM MH, SE, 53.75'

MDOT (1988)-1/2" ROD IN MON BOX
MDOT N&T IN PP, S45W, 71.95'
MDOT N&T IN TEL POLE, N55W, 63.28'
MDOT N&T IN GUY/LIGHT POLE, N55E, 40.81'
MDOT N&T IN PP, S50E, 122.21'

A	B	C	D	E	F	G	H	I	J	K	L	M
2	6	5	4	3	2	1						
3												
4	7	8	9	10	11	12						
5												
6	18	17	16	15	14	13						
7												
8	19	20	21	22	23	24						
9												
10	30	29	28	27	26	25						
11												
12	31	32	33	34	35	36						
13												

B. Description of corner evidence found and/or method applied in restoring or reestablishing corner:

FOUND 1/2" ROD/MON BOX

NO PREVIOUS WITNESSES REMAIN.

VERIFIED MDOT DISTANCE TO C-13, T3N, R13E (R=594.85', M=594.89')
VERIFIED MDOT DISTANCE TO D-13, T3N, R13E (R=2080.13', M=2080.17')
VERIFIED MDOT DISTANCE TO C-2, T2N, R13E (R=2672.90', M=2672.89')

C. Description of monument for corner and accessories established to perpetuate locating the position of

SET MACOMB COUNTY REMONUMENTATION MARKER AND CAP #25826 IN EXIST. MON. BOX.
WITNESSES

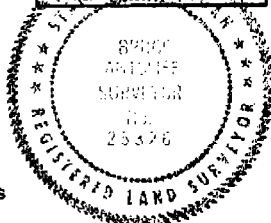
- C.L. STORM MH, S28E, 91.14'
- SET NAIL & MC TAG SW FACE PP, S40E, 96.14'
- SET NAIL & MC TAG SE FACE PP, S60W, 63.78'
- SET "*" TOP CURB N SIDE M-59, N40W, 40.89'
- SET NAIL & MC TAG SE FACE PP, N60E, 41.06'

The selected location is accepted by me and is generally accepted by Professional Surveyors as the best available evidence of the position of the original corner.

Signed by Bruce Antcliff Date 12-9-93

Surveyor's Michigan License No. 25826

ACCEPTED BY THE MACOMB COUNTY SURVEY PEER GROUP AS THE OFFICIAL CORNER UNDER MICHIGAN PUBLIC ACT 345 OF 1990 AT A MEETING HELD ON 12-1-93
Frank J. Dodecker
FRANK J. DODECKER, P.S., P.E., CHAIRMAN



LAND CORNER RECORDATION CERTIFICATE
Filing Requirement of Act 74, Mich. P.A. 1970

or corners in

Macomb County, County Located In: Corner Code #1

1. Public Land Survey T 2N R 13E C-1, C-2
T R C-3
T R
T R

2. Property Controlling S T R
in Section 5 S T R

3. Miscellaneous S T R
Property in Sec. S T R

Register of Deeds Stamp & File Number

1. Lot No. Recorded Plat
2. Private Claims

	A	B	C	D	E	F	G	H	I	J	K	L	M
2	6	5	4	3	2								
3													
4	7	8	9	10	11	12							
5													
6	18	17	16	15	14	13							
7													
8	19	20	21	22	23	24							
9													
10	30	29	28	27	26	25							
11													
12	31	32	33	34	35	36							
13													

John R. Fenn in a field survey on January 8, 19 87, to hereby certify that under requirements of P.A. 74, Michigan P.A. of 1970, the corner points mentioned in lines 1 and 2 above were in conformance with regulations and rules thereto as required in the current manual of survey instructions of the United States Department of the Interior, Bureau of Land Management or by a decree of a Court of Law and/or that the corner points mentioned in lines 3, 4 and 5 above were in conformance with the rules of the Michigan Board of Land Surveyors or by a Decree of a Court of Law, established, re-established, monumented, re-monumented, recovered, found as expressed below

NOTE: Not more than 4 corners, all in the same town and range, may be recorded on this certificate.

A. Description of original monument and accessories and/or subsequent restoration:

RECORDED IN MACOMB COUNTY
RECORDS AT: 9:37A

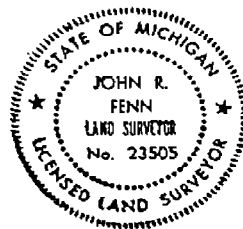
JAN 20 1987

Edna M. Hill

CLERK REGISTER OF DEEDS
MACOMB COUNTY, MICHIGAN

B. Description of corner evidence found and/or method applied in restoring or reestablishing corner:

- C-1 Iron in Monument Box
- C-2 Iron in Monument Box
- C-3 Iron in Monument Box



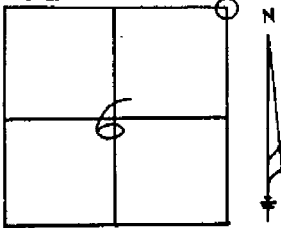
C. Description of monument for corner and accessories established to perpetuate locating the position of the corner:

- 1 Iron in Monument Box
N.E. 40.45 P.K. Nail in West Face Power Pole
N.W. 63.50 P.K. Nail in S.W. Face Power Pole
N. 26.60 P.K. Nail in East Face Guard Post
S.W. 72.00 Nail & Washer in S.E. Face Power Pole
- 2 Iron in Monument Box
S.W. 71.23 P.K. Nail & M.C.R.C. Tag in Power Pole
S.E. 38.15 Center of Storm Man Hole
E. 73.30 Center S.E. Michigan Gas Sign
N.W. 91.40 P.K. Nail in R.L.S. Tag in S.E. Face Power Pole
- C-3 Iron in Monument Box
N.E. 53.35 Center of Gate Well
N.W. 52.10 Center of Gate Well
S.W. 66.82 Nail & Tag #20623 in S.E. Face Power Pole
S.E. 53.75 Center of Storm Man Hole

Signed by *John R. Fenn* Date January 12, 1987
Surveyor's Michigan License No. #23505

Form 280
(Rev. 11/67)
GOV'T. MONUMENT WITNESSES RECORD

CO. MALCOMB TWP. CLINTON
T. 2 N R. 13 E SEC. NO. 6



DESCRIPTION

FOUND 1" PIN IN MON. BOX
IN $\frac{1}{2}$ M-59 $\frac{1}{2}$ E
GARFIELD RD. SOUTH

WITNESSES

S25°E-Guy P. 67.26
S32°W-P.P. 66.91
N62°W-T.P. 59.12
N45°E-Guy P. 26.42

Clifford C. Lindgren
SURVEY CHIEF

14098
REG. NO.

1-13-71
DATE

SE COR SEC 31
T3N, R13E

NW COR SEC 5
T2N, R13E C-1

SW COR SEC 31
T3N, R13E



S 02-11-26 E
2672.90 M

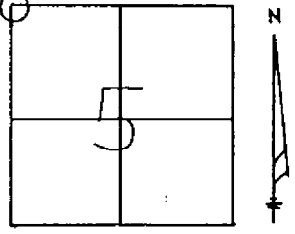
W 1/4 COR SEC 5
T2N, R13E C-2

280 (5/79) GOV'T. MONUMENT WITNESSES RECORD

CO. MACOMB TWP. CLINTON
T. 2N R. 13E SEC. NO. 5

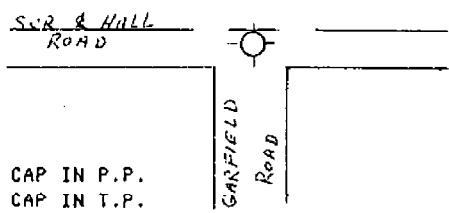
RECORDED

RECORDED: _____
(Date) (Libre) (Page)



DESCRIPTION

FOUND 1/2 IN. ROD IN MON. BOX
AS RECORDED IN H.C.R.D.
SECTION COR. IS 0.14'S. OF SUR &



WITNESSES

- S45W -71.95' - M.D.O.T. NAIL & CAP IN P.P.
- N55W -63.28' - M.D.O.T. NAIL & CAP IN T.P.
- N55E -40.81' - M.D.O.T. NAIL & CAP IN GUY & LIGHT POLE
- S50E-122.21' - H.D.O.T. NAIL & CAP IN P.P.



KEITH H. SCHULTZ
SURVEY CHIEF

31610
REG. NO.

08-15-88
DATE

C-1

Road File No. R-B

File Point No.	Date Filed	<u>July - 10</u>	<u>1934</u>
Assessment District No.	Station No.	<u>1089</u>	
Township	Section Corner	<u>Clinton</u>	<u>N. W. of sec - 5</u>
Type of Surface	Width	<u>concrete</u>	<u>20'</u>
Description of Monument	<u>cross in pavement</u>		
Monument in Relation to Center Line of Pavement	<u>R.</u>		
WITNESSES:			
1	<u>spike in E. pole</u>	<u>S.W.</u>	<u>56.50</u>
2	" "	<u>S.E.</u>	<u>38.05</u>
3	" "	<u>N.W.</u>	<u>37.3</u>
4	" <u>Top</u>	<u>N.Y.</u>	<u>23.4</u>

T2N, R13E
C-1

Lower 2 North Range 13 East

	<p>Meet <u>North Branch</u> Random 40.00 Set temp 1/2 mile 80.00 Set temp 1 mile front Land good 2nd rate dry Timber W. Oak Lymn Ash Sugar Beech & Undergrowth Spice Ash &c.</p>
	<p>40.00 Set temp 1/2 mile front 52.25 North Branch of Riv Hudson 1.00 wide course S.E. 68.00 Same ——— N.E. 68.50 Same ——— S.E. 2 80.00 Set temp 2 mile front Land good 2nd rate Timber W. Oak Beech Sugar Ash Lymn & Undergrowth Spice Beech &c.</p>
	<p>Meet 40.00 Set temp 1/2 mile front 45.00 Marsh 49.50 Left Marsh 2 (D) 80.00 Set temp 3 mile front Land 2nd rate Part mt Timber W. Oak Beech B. Ash Maple &c Undergrowth Ash Beech Spice &c.</p>
	<p>(C) 40.00 Set temp 1/2 mile front 61.50 Cr 40 lbs wide @ S.E. (C) 80.00 Set temp 4 mile front Land good 2nd rate level and dry Timber W. Oak B. Ash Lymn Elm &c Undergrowth Ash Spice &c</p>
	<p>Meet 38.00 Run 5 lbs wide course South (D) 40.00 Set temp 1/2 mile front</p>

Town 2 North Range 13 East

5 (B)	71.50 77.30 80.00	Cor 12 1/2 mile S. N. E. Same — S. E. Set temp 5 mile front * Land 2 nd rate level + part wet Timb W Oak Beech Elm + Undergrowth Ironwood Beech Hombear +.
6	40.00 71.30	Set temp 1/2 mile front Intersected Town boundary 2.38 North of Cor Land 2 nd level + wet Timb W Oak Beech Elm + Undergrowth Ironwood Hombear Beech +.
East	31.30 71.30	Corrected (T 3 NR 13 E) Set 14 sections front from which an Elm 13 in diam bears N 30012 the dist also an Elm 15 in diam bears S 54 E 18 the dist - Set 5 mile front for cor of sections * 31 + 32 from which a Sugar 13 in diam bears S 9 W 15 the dist also a Beech 4 in diam bears N 80 05 the distant
East	40.00 80.00	(T 3 NR 13 E) Set 14 sec front from which a B. Ash 16 in diam bears N 86 W 22 the dist also a W ash 11 in diam bears S 10 E 16 the dist Set 4 mile front for cor of sections 32 + 33 from which a Lym 18 in diam bears N 61 E 16 the dist Also a Lym 12 in diam bears S 12 W 17 the distant

Town 2 North Range 13 East

East Corrected (T3NR13E)
 40.00 Set post for Cor. of 1/4 Section from
 which a Beech 12 in diam bears
 S 80 W 9 lbs dist also an Ironwood
 6 in diam bears S 10 W 7 lbs dist
 80.00 Set 3 mile post for Cor. of sections
 33 + 34 from which a Maple 12
 in diam bears N 69 W 10 lbs dist
 also a Beech 10 in diam bears S 64
 E 16 lbs dist

East (T3NR13E)
 40.00 Set post for Cor. of 1/4 Sec from
 which an Elm 14 in diam bears
 N 43 E 13 lbs dist also a Beech 12
 in diam bears N 73 W 21 lbs distant
 80.00 Set 2 mile post for Cor. of sections
 34 + 35 from which a Beech 12 in
 diam bears N 60 E 10 lbs dist also
 a Beech 6 in diam bears S 59 W 10
 lbs distant

East Corrected (T3NR13E)
 40.00 Made 1/4 Sec Cor. on a Beech 4 in
 diameter
 80.00 Set mile post for Cor. of section
 35 + 36 from which an Elm 24 in diam
 bears N 24 E 17 lbs dist also a
 Hickory diam bears N 58 E 23 lbs
 distant
 40.00 Set post for Cor. 3/4 S from which
 a W Oak 10 in diam bears S 73 E 4 lbs distant
 also a Sassafras 8 in diam bears N 13 W
 13 lbs dist
 80.00 To Township Cor.

Surveyed 1885 by Wm. Peck - J.B.

Down 2 North Range 13 East (CLINTON)

<p>North 4.38 — 40.00 64.00 66.40 80.00</p>	<p>West Boundary (T2NR12E) → (STERLING)</p> <p>a. B. Ash 6 in diam — — — Swamp Set 1/4 S. post in swamp. Left swamp. W. Oak 3 in diam Set 1/2 mile post for Cor. of sec 25+36 from which a B. Ash 15 in diam bears N 30 E 15 lbs distant also a Beech 5 in diam bears S 40 W 14 lbs distant. Land first half mile S. 1/2 mile west first half same. Found W. Oak Beech B. Ash etc.</p>
<p>North 18.68 40.00 59.74 73.09 80.00</p>	<p>(T2NR12E)</p> <p>Sugar tree 22 in diam Made 1/4 Sec Cor on a small Beech W. Oak 18 in diam Cor 50 lbs mile course Ely Set 2 mile post for corner of Section 24+25 on the N. bank of a creek 30 lbs mile course N.E. from which a Lyrus 14 in diam bears N 87 W 2 1/2 lbs dist also a W. Oak 6 in diam bears dir N 32 lbs Land first half mile 2nd rate land and west last same (dry) Found W. Oak W. B. Ash Beech Sugar + Undergrowth Beech Dogwood + c. etc.</p>
<p>North 10.70</p>	<p>(T2NR12E)</p> <p>Main Branch of Riv. Huron 65 lbs mile course S. Ely</p>

Down 2 North Range 13 East

	* Clear stream gentle current [#]
11.35	Cross river set first Sycamore 30 N 62 646
20.00	W. Oak 24 in diam
40.00	Set post for Cor. of 1/4 S. from which a Lynn 8 in diam bears N 65 W 16 lks dist.
57.13	B. Oak 18 in diam
70.00	Pomaras swamp
80.00	Set 3 mile post for Cor. of section <u>13+24</u> (in swamp) no bedding trees Sound first half mile 2 nd rate Last half 3 rd rate level + met Timber W. Oak Birch + c. Undergrowth Dogwood Ironwood Sassafras + c.
	* Set first cor. of <u>sect 19, 24</u> Bench 10.5 4 8 70 lks
	# Navigable for small Boats part of the season

North	(<u>2 N R 12 E</u>)
6.50	Left Swamp
7.05	W. Oak 24 inch diam
40.00	Set 1/4 S. post from which a Sugar tree 6 in diam bears S 75 W 14 lks distant
51.46	W. Oak 30 in diam
80.00	Set 4 mile post for Cor. of section <u>12+13</u> from which a Hickory 10 in diam bears N 37 W 10 lks distant also a Red Oak 11 in diam bears S. 28 W 20 lks dist Sound first half mile 2 nd rate last part level and part met Timber W. Oak Ash Birch + sugar tree + c Undergrowth Sugar Ironwood Bench + c going 4 th 1817

Road File No. R-8

File Point No.	Date Filed	<u>July-10-1934</u>
Assessment District No. <u>1089</u>	Station No.	
Township <u>Clinton</u>	Section Corner	<u>N.W. of sec-5</u>
Type of Surface <u>concrete</u>	Width	<u>20'</u>
Description of Monument	<u>cross in pavement</u>	
Monument in Relation to Center Line of Pavement	<u>R.</u>	

T2N, R13E
C-1

WITNESSES:

1. spike in E.d. pole	S.W.	56.50
2. " " " "	S.E.	38.05
3. " " " "	N.W.	37.3
4. " " Tol. "	N.E.	23.4

280 (5/79) GOV'T. MONUMENT WITNESSES RECORD

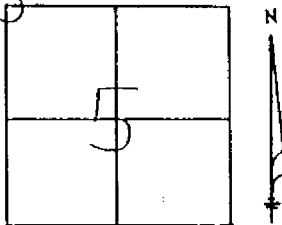
CO. MAGOMB

TWP. CLINTON

RECORDED ✓

T. 2N R. 13E SEC. NO. 5

RECORDED: _____ (Date) _____ (Libre) (Page)



DESCRIPTION

FOUND 1/2 IN. ROD IN MON. BOX
AS RECORDED IN M.C.R.D.

SECTION COR. IS 0.14' S. OF SUR &

SUR & HILL
ROAD

GARFIELD
ROAD

WITNESSES

- S45W -71.95' - M.D.O.T. NAIL & CAP IN P.P.
- N55W -63.28' - M.D.O.T. NAIL & CAP IN T.P.
- N55E -40.81' - M.D.O.T. NAIL & CAP IN GUY & LIGHT POLE
- S50E -122.21' - M.D.O.T. NAIL & CAP IN P.P.



KEITH H. SCHULTZ

31610

08-15-88

SURVEY CHIEF ✓

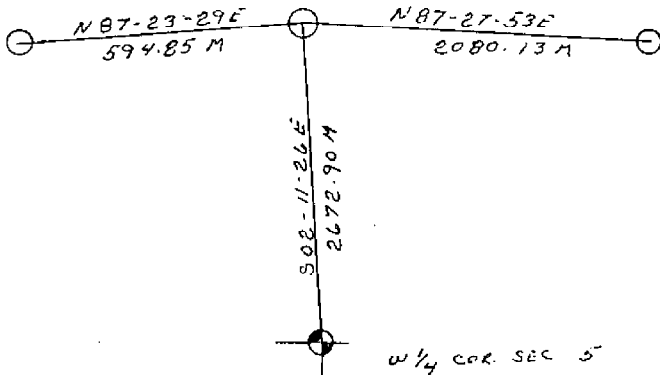
REG NO.

DATE

SE COR SEC 31
T3N, R13E

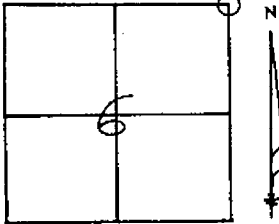
C-1
NW COR SEC 5
T2N, R13E

SE COR SEC 31
T3N, R13E



Form 280
(Rev. 11/1/67)
GOV'T. MONUMENT WITNESSES RECORD

CO. MACOMB TWP. CLINTON
T. 2 N R. 13 E SEC. NO. 6



DESCRIPTION

FOUND 1 PIN IN MON. BOX
IN E M-59 & E
GARFIELD RD. SOUTH

WITNESSES

525°E-GUY P. 67.26
532°W-P.P. 66.91
N62°W-T.P. 59.12
N45°E-Guy P. 26.42

Clifford C. Lindgren 14098 1-13-71
SURVEY CHIEF REG. NO. DATE

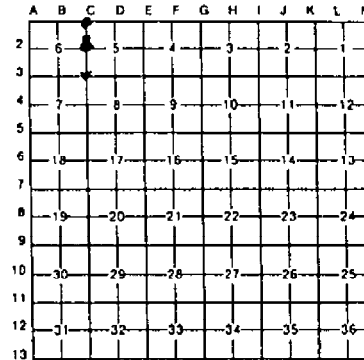
LAND CORNER RECORDATION CERTIFICATE
Filing Requirement of Act 74, Mich. P.A. 1970

or corners in

Macomb County <small>County</small>	Located In:	Corner Code #:
Public Land Survey	T 2N R 13E	C-1- C-2
	T R	C-3
	T R	
	T R	
2. Property Controlling in Section 5	S T R	
	S T R	
3. Miscellaneous Property in Sec.	S T R	
	S T R	

Register of Deeds Stamp & File Number

1. Lot No. _____ Recorded Plat _____
 2. Private Claims _____



John R. Fenn in a field survey on January 8, 1987
 to hereby certify that under requirements of P.A. 74, Michigan P.A. of 1970, the corner points mentioned
 in lines 1 and 2 above were in conformance with regulations and rules therefore as required in the
 current manual of survey instructions of the United States Department of the Interior, Bureau of Land
 Management or by a decree of a Court of Law and/or that the corner points mentioned in lines 3, 4 and 5
 above were in conformance with the rules of the Michigan Board of Land Surveyors or by a Decree of a
 Court of Law, established, re-established, monumented, re-monumented, recovered, found as
 expressed below

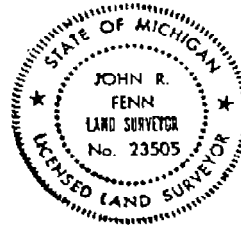
NOTE: Not more than 4 corners, all in the same town and range, may be recorded
 on this certificate.

A. Description of original monument and accessories and/or subsequent restoration:

RECORDED IN MACOMB COUNTY
 RECORDS AT: 9:37A
 JAN 20 1987
Edna Hill
 CLERK - REGISTER OF DEEDS
 MACOMB COUNTY, MICHIGAN

B. Description of corner evidence found and/or method applied in restoring or reestablishing corner:

- C-1 Iron in Monument Box
- C-2 Iron in Monument Box
- C-3 Iron in Monument Box



C. Description of monument for corner and accessories established to perpetuate locating the position of the corner:

- | | |
|---|---|
| -1 Iron in Monument Box | C-3 Iron in Monument Box |
| N.E. 40.45 P.K. Nail in West Face Power Pole | N.E. 53.35 Center of Gate Well |
| N.W. 63.50 P.K. Nail in S.W. Face Power Pole | N.W. 52.10 Center of Gate Well |
| N. 26.60 P.K. Nail in East Face Guard Post | S.W. 66.82 Nail & Tag #20623 in
S.E. Face Power Pole |
| S.W. 72.00 Nail & Washer in S.E. Face Power Pole | S.E. 53.75 Center of Storm Man Hole |
| -2 Iron in Monument Box | |
| S.W. 71.23 P.K. Nail & M.C.R.C. Tag in Power Pole | |
| S.E. 38.15 Center of Storm Man Hole | |
| E. 73.30 Center S.E. Michigan Gas Sign | |
| N.W. 91.40 P.K. Nail in R.L.S. Tag in S.E. Face
Power Pole | |

Signed by *John R. Fenn* Date January 12, 1987
 Surveyor's Michigan License No. #23505

01259



Date: 11-17-93

Client: M C REMON

Project No.: 92528

T2N, R13E

CORNER C-1

1817 GLO - W $\frac{1}{4}$ S to NWS =

NWS to N $\frac{1}{4}$ S =

1971 MDOT

1934 MCRC - W $\frac{1}{4}$ S to NWS = 2672.90

1993 WWES - W $\frac{1}{4}$ S to NWS = 2672.89

CORNER C-1

GLO -

1934 MCRC - CROSS IN PAVEMENT

1971 MDOT - 1" PIN IN MON BOX

1987 LCRC - IRON IN MON BOX

1988 MDOT - $\frac{1}{2}$ " ROD IN MON BOX

1993 WWES -

T-2000

MC 92528

11-29-93

2

T 2W R 13 E

C-1

BS 0-00 MNG NORTH

FD 1/2" ROD IN BOX	319.07.32	71.38'		
FD & STO M/H JC	188.48.21	26.92	S 28 E	91.14
SET NAIL & TAG SW FACE P. POLE SE	143.29.02	24.81	S 40 E	96.14
SET NAIL & TAG SE FACE P. POLE SW	281.51.48	103.72	S 60 W	63.78
SET "+" TOP CURB N. SIDE M-SR N W	319.26.29	112.27	N 40 W	40.89
SET NAIL & TAG SE FACE P. POLE N E	351.18.35	75.92	N 60 E	41.06