

C152215

LAND CORNER RECORDATION CERTIFICATE
Filing Requirement of Act 74, Mich. P.A. 1970

LISER 6527 PAGE 792

For corners in MACOMB (County)

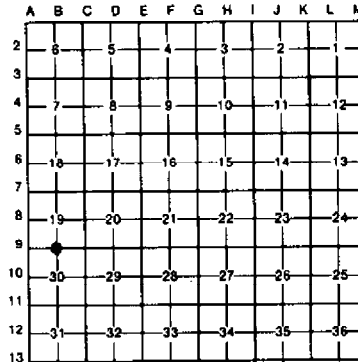
Located in: Clinton Township Corner Code #

- 1. Public Land Survey T 2N R 13E B-9
2. Property Controlling in Section S T R
3. Miscellaneous Property in Sec. S T R

94 DEC 14 AM 10:51
CLERK OF RECORDS
MACOMB COUNTY, MI

Register of Deeds Stamp & File Number

- 4. Lot No. Recorded Plat
5. Private Claims



I, Randy Kolehouse, in a field survey on Sept. 14, 1994, do hereby certify that under requirements of P.A. 74, Michigan P.A. of 1970, the corner points mentioned in lines 1 and 2 above were in conformance with regulations and rules therefore as required in the current manual of survey instructions of the United States Department of the Interior, Bureau of Land Management or by a decree of a Court of Law and/or that the corner points mentioned in lines 3, 4 and 5 above were in conformance with the rules of the Michigan Board of Land Surveyors or by a Decree of a Court of Law; established, re-established, monumented, re-monumented, recovered, found as expressed below:

NOTE: Not more than 4 corners, all in the same town and range, may be recorded on this certificate.

A. Description of original monument and accessories and/or subsequent restoration:

Table with 6 columns: Corner Code, Date, Description, Notes, Name, and Post. Row 1: B-9, 1817, G.L.O., Notes, Preston, NA, Post. Row 2: 1980, Cert. of Survey, #79/848, Coulter, #14780, Conc. Monument. Row 3: 1980, Lehner Assoc., Notes, NA, NA, Conc. Monument.

B. Description of corner evidence found and/or method applied in restoring or reestablishing corner:

B-9 Found 1/2" rebar with cap #30103 in a garden behind house #16002 Timberview. Checks distances as shown in Lot 17 Monterey Subdivision L. 82 P. 33, Macomb County Records.

Survey 79/848

Survey Notes - Lehner Assoc.

PK Nail in 16" Tree South 31.12'
PK Nail in 24" Tree West 36.12'

PK N Side 24" Oak West 36.15'
PK W Side 18" Ash SSW 31.10'

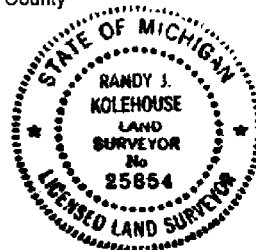
Measure West to A-9 = 2720.04 (G.L.O. 2640) (Monterey Sub. 2725.30)
Measure East to C-9 = 2669.97 (G.L.O. 2640) (Monterey Sub. 2670.27)

ACCEPTED BY THE MACOMB COUNTY SURVEY PEER GROUP AS THE OFFICIAL CORNER UNDER MICHIGAN PUBLIC ACT 345 OF 1980 AT A MEETING HELD ON 10-4-94
William E. Soderberg
WILLIAM E. SODERBERG, P.S., CHAIRMAN

C. Description of monument for corner and accessories established to perpetuate locating the position of the corner:

B-9 I replaced the found 1/2" rebar with a 3/4" x 24" Iron Rod w/2" diameter aluminum cap stamped "Macomb County Monument MI Act 345 #25854."

- Double Head Nail with Tag #30103 in W Face 20" Ash S 15° W 30.07'
Double Head Nail with Tag # 30103 in W Face Ash S 60° W 44.13'
PK & Macomb Co. Remon. Tag N Face 28° Oak N 75° W 35.89'
NW Cor. Brick Garage for House #16002 N 12° E 16.15'
Near Face Garage Perpendicular to Wall N 50° E 12.34'



The selected location is accepted by me and is generally accepted by professional surveyors as the best available evidence of the position of the original corner.

Signed by Randy J. Kolehouse 25854 Date 10/14/94
Surveyor's Michigan License No.

2-13-19

1000 1000 1000
1000 1000 1000

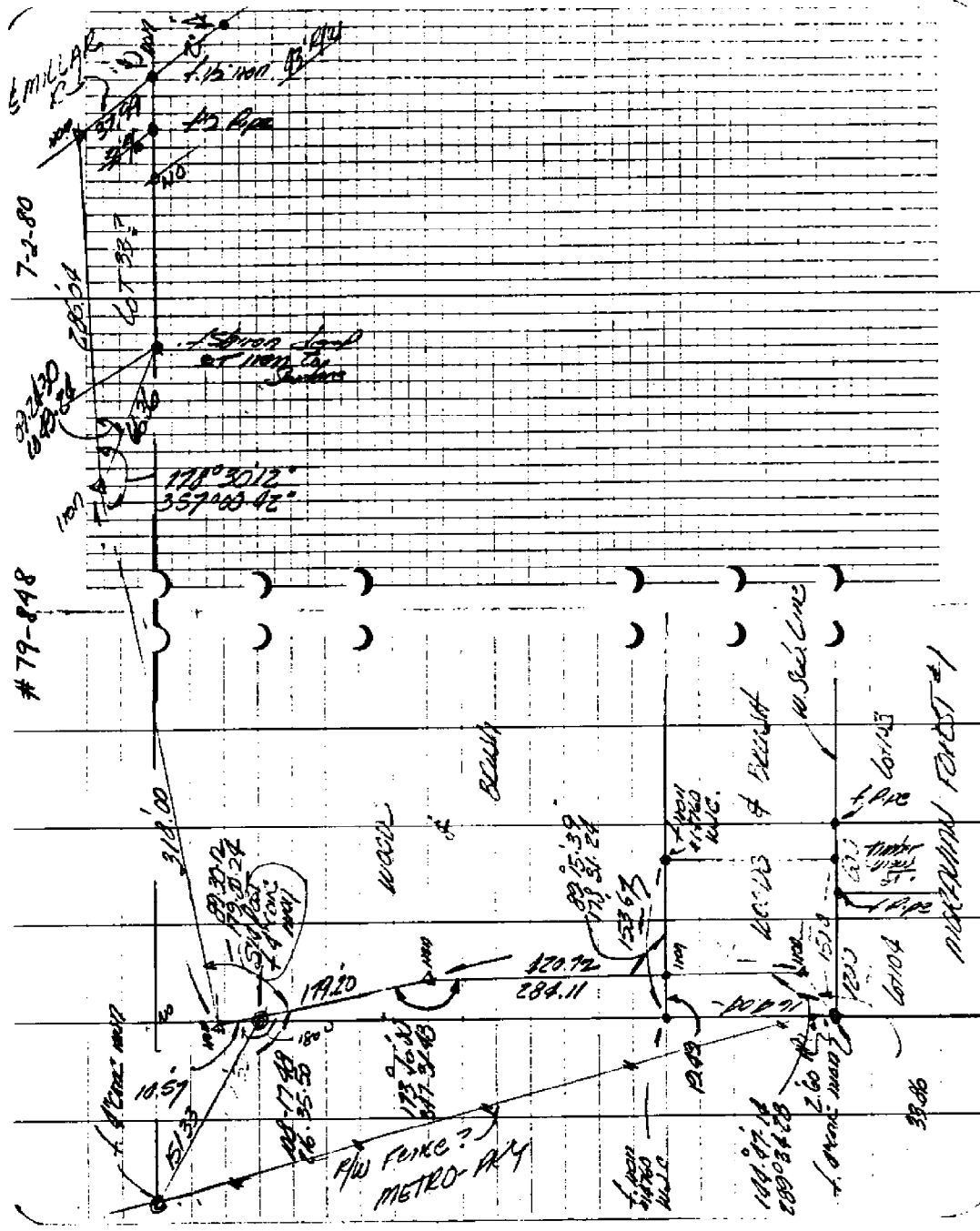
19.840

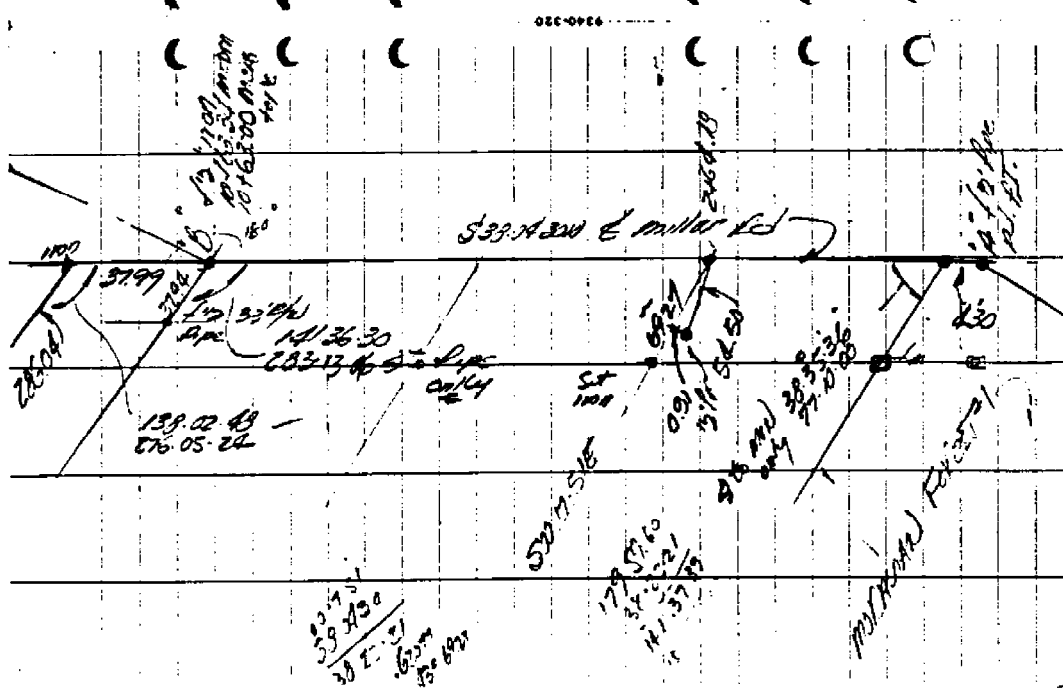
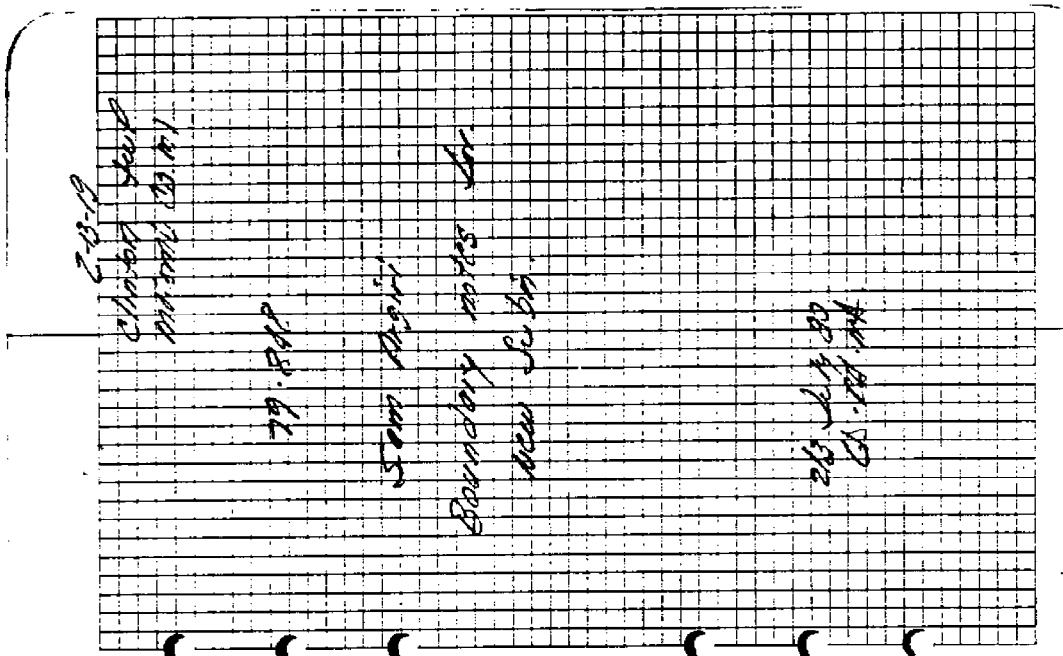
5000 10000

Boundary with
New Subin

1000 1000 1000
1000 1000 1000

022-0260





5562.82'M

2668.00'M

8508

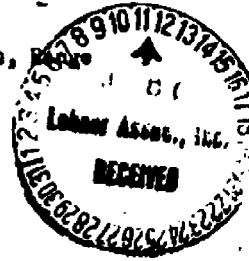
1679.56'

620 2042

FOUND PK IN ROAD
 17.00' EAST
 SET IRON ON CENTERLINE
 ROAD 2668' FROM SOUTH
 FOUND IRON AT R/W
 48.75' WEST

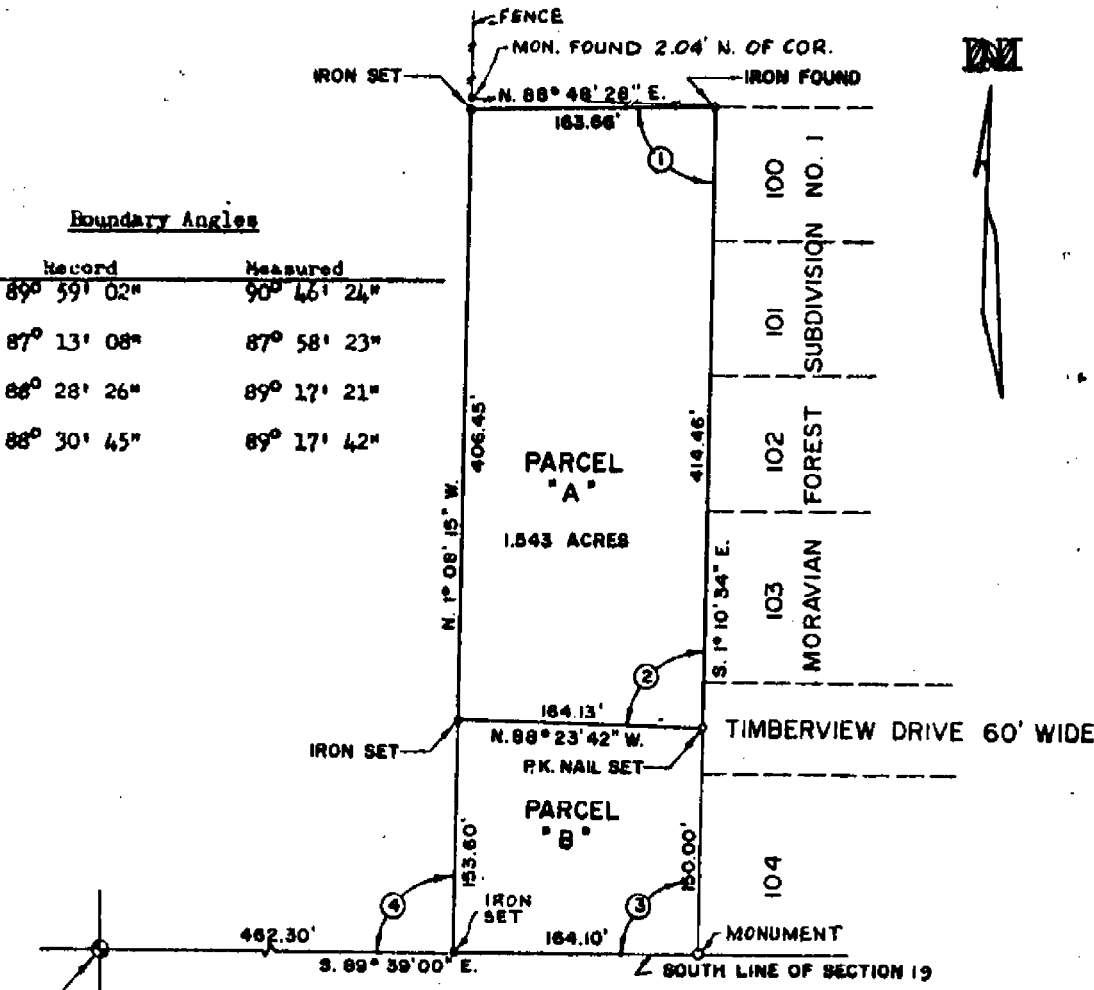
Certificate of Survey

Part of the Southeast 1/4 of Section 19, Town 2 North,
 13 East, Clinton Township, Macomb County, Michigan.
 See full legal description on sheet 2.

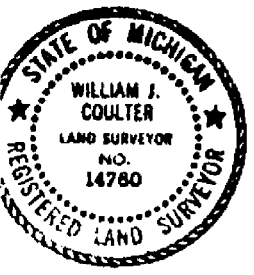


Boundary Angles

No.	Record	Measured
1	89° 59' 02"	90° 46' 24"
2	87° 13' 08"	87° 58' 23"
3	88° 28' 26"	89° 17' 21"
4	88° 30' 45"	89° 17' 42"



SOUTH 1/4 CORNER OF SECTION 19
 CONCRETE MONUMENT FOUND
 S.E. 15.85' P.K. NAIL IN 14" TREE
 SOUTH 31.12' P.K. NAIL IN 16" TREE
 WEST 36.12' P.K. NAIL IN 24" TREE



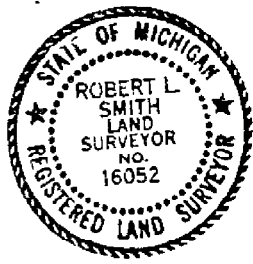
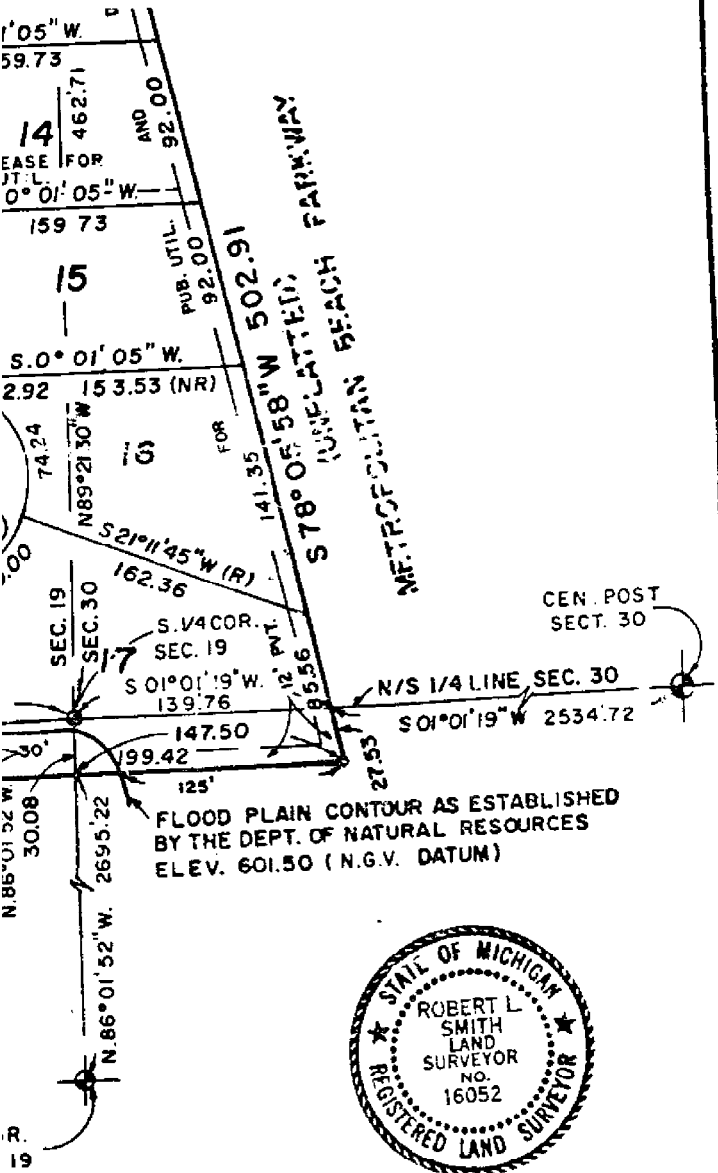
COULTER ASSOCIATES, INC. 48191 BLUEBIRD ST
 UTICA, MICHIGAN 48087

I hereby certify that I have surveyed the property described herein,
 with a relative error of closure less than 1 in 5000, that I have
 complied with the requirements of Section 3, Act 132, P.A. 1970, and
 that this map is a true representation of said survey.

William J. Coulter
 William J. Coulter, M.L.S. # 14780

Phone: 739-1141

Date of Survey May 14, 1980	Scale 1" = 100'	Michael Orlando	Drawing Number # 5354 - 79
--------------------------------	--------------------	-----------------	-------------------------------



Robert L. Smith
 ROBERT L. SMITH
 REGISTERED LAND SURVEYOR
 NO. 16052
 SECRETARY-LENNER ASSOCIATES

L.82 P.33