

LAND CORNER RECORDATION CERTIFICATE
Filing Requirement of Act 74, Mich. P.A. 1970

For corners in
MACOMB
(County)

Located In: Clinton Township Corner Code #B-5

LIBER 6527 PAGE 790

94 DEC 14 AM 10:51

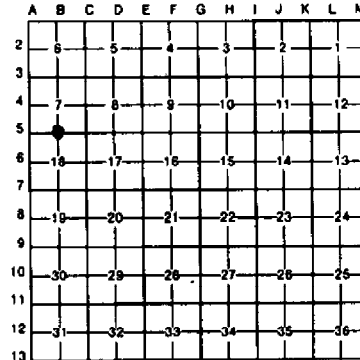
REGISTER OF DEEDS
MACOMB COUNTY, MI

Register of Deeds Stamp & File Number

- 1. Public Land Survey T 2N R 13E B-5
2. Property Controlling in Section S T R
3. Miscellaneous Property in Sec. S T R

- 4. Lot No. Recorded Plat
5. Private Claims

I, Randy Kolehouse, in a field survey on July 27, 1994, do hereby certify that under requirements of P.A. 74, Michigan P.A. of 1970, the corner points mentioned in lines 1 and 2 above were in conformance with regulations and rules therefore as required in the current manual of survey instructions of the United States Department of the Interior, Bureau of Land Management or by a decree of a Court of Law and/or that the corner points mentioned in lines 3, 4 and 5 above were in conformance with the rules of the Michigan Board of Land Surveyors or by a Decree of a Court of Law, established, re-established, monumented, re-monumented, recovered, found as expressed below:



NOTE: Not more than 4 corners, all in the same town and range, may be recorded on this certificate.

A. Description of original monument and accessories and/or subsequent restoration:

Table with 6 columns: Year, G.L.O., Notes, Name, NA, Post. Rows include 1917, 1973, 1978, 1988 with details on monuments and posts.

B. Description of corner evidence found and/or method applied in restoring or reestablishing corner:

B-5 Found 3/4" rod in Monument Box at center line at 18 Mile Road on plat line north and south.

L.C.R.C. L. 2484 P. 464
Conc. Mon. N 59.96'
NW Cor. Hse. #15950 WSW 174.97'

L.C.R.C. L. 4369 P. 430
Conc. Mon. S 60.00'
Conc. Mon. N 60.09'
PK in E Face Util. Pole N 61.41'

L.C.R.C. L. 2902 P. 559
PK in E Face Util. Pole N 61.31'

Measure W 2613.78 to A-5 (G.L.O. 2593.8)
Measure E 2676.55 to C-5 (G.L.O. 2640.0)

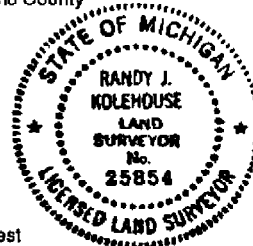
ACCEPTED BY THE MACOMB COUNTY SURVEY PEER GROUP AS THE OFFICIAL CORNER UNDER MICHIGAN PUBLIC ACT 345 OF 1980 AT A MEETING HELD ON 9-20-94

Signature of William E. Soderberg, P.S., Chairman

C. Description of monument for corner and accessories established to perpetuate locating the position of the corner:

B-5 I replaced the found 3/4" Rod with a 3/4" x 24" Iron Rod w/2" diameter aluminum cap stamped "Macomb County Monument MI Act 345 #25854" in an existing Monument Box.

Con. Mon. S 06° W 60.01'
Conc. Mon. N 07° E 59.94'
PK E Face Util. Pole N 06° E 61.20'
PK & Macomb Co. Remon. Tag in S'y Face 24" Oak N 75° E 115.07'
PK & Macomb Co. Remon. Tag in S'y Face 8" Maple N 62° W 118.23'



The selected location is accepted by me and is generally accepted by professional surveyors as the best available evidence of the position of the original corner.

Signed by Randy J. Kolehouse Date 10/14/94
Surveyor's Michigan License No. 25854

WW ENGINEERING & SCIENCE SECTION CORNER RECOVERY RECORD

CLIENT MC
 PROJ. # 9289Z
 DATE 7-27-94

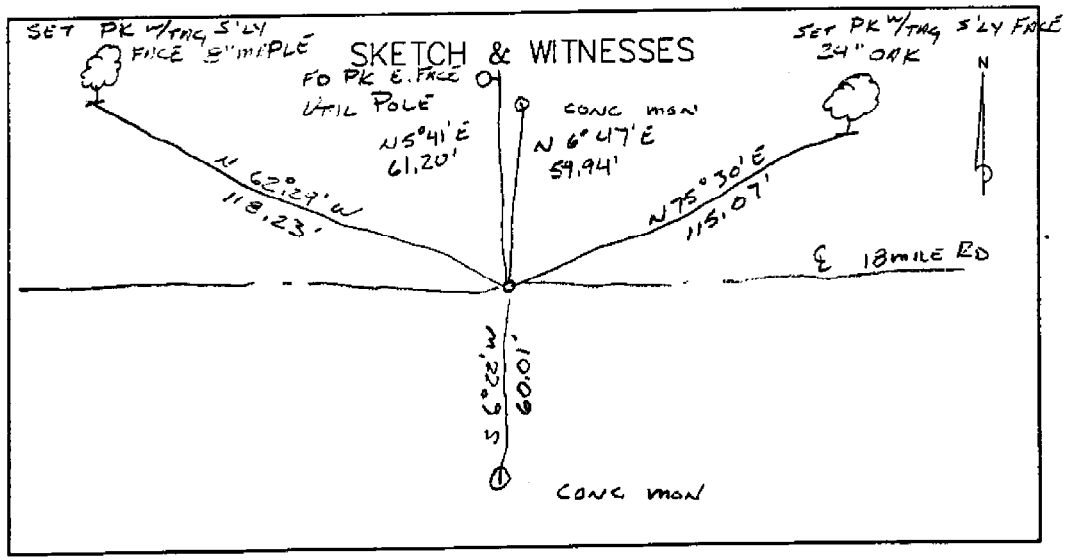
CREW CHIEF ASC
 RODMAN MM
 RODMAN _____

TOWN 2N RANGE 13E
 CORNER 13-5

RECORD MONUMENTATION: SEE ATTACHED
 RECORD LCRC? LIBER _____ PAGE _____ RC# _____
 LIBER _____ PAGE _____ RC# _____
 RECORD SURVEY? LIBER _____ PAGE _____
 LIBER _____ PAGE _____
 OTHER RECORD? _____

 MONUMENTATION/EVIDENCE FOUND: _____

| | A | B | C | D | E | F | G | H | I | J | K | L | M |
|----|----|---|----|---|---|----|---|----|---|----|---|----|---|
| 2 | 6 | | 5 | | | 4 | | 3 | | 2 | | 1 | |
| 3 | | | | | | | | | | | | | |
| 4 | 7 | | 8 | | | 9 | | 10 | | 11 | | 12 | |
| 5 | | | | | | | | | | | | | |
| 6 | 18 | | 17 | | | 16 | | 15 | | 14 | | 13 | |
| 7 | | | | | | | | | | | | | |
| 8 | 19 | | 20 | | | 21 | | 22 | | 23 | | 24 | |
| 9 | | | | | | | | | | | | | |
| 10 | 30 | | 29 | | | 28 | | 27 | | 26 | | 25 | |
| 11 | | | | | | | | | | | | | |
| 12 | 31 | | 32 | | | 33 | | 34 | | 35 | | 36 | |
| 13 | | | | | | | | | | | | | |





CORT Z N, R13E, B-5

FOUND _____

Date: _____

Client: MACOMB Co.

Project No.: 92862 92892

| | WITNESS | REC. | MEAS. |
|---|--------------------------------|-------------|-------------------|
| | LCRC L. 2464 P. 464 #577 | 11-29-73 | 3/4" BAR |
| ✓ | CAP IN 12" ASH | NE 29.92' | |
| | ✓ CONC. MON. | N 59.96' | |
| ✓ | CAP IN 12" ASH | NW 39.14' | |
| | NW COR HOUSE #13950 | WSW 174.97' | |
| | LCRC L. 2902 P. 559 #706 | 1-14-78 | 1" STEEL FORM PIN |
| ✓ | NAIL & CAP IN NW FACE 12" TREE | NE 29.88' | |
| ✓ | PK IN N FACE 8" TREE | SW 144.21' | |
| ✓ | NAIL & CAP IN SW FACE 12" TREE | NW 39.15' | |
| | ✓ PK IN E FACE U.P. | N 61.31' | 61.23 |
| | LCRC L. 4369 P. 430 #1335 | 2-16-88 | 3/4" STEEL BAR |
| | ✓ CONC. MON. | S. 60.00' | 59.94 |
| | ✓ CONC. MON. | N 60.09' | 60.01 |
| | ✓ PK IN E. FACE U.P. | N 61.41' | 61.33 |
| ✓ | PK IN N. FACE OF 10" CEDAR | SW 144.15' | |

T2N 21E B-5

FD 3/4" RD IN BOX E 18 MILE RD

NE SEC COR
BS 0,00,00 (MAG NORTH)

| | | |
|---------------------------------------------------------------------------------|-----------|--------|
| FD PK E. SIDE UTIL POLE | 5,41.15 | 61.20 |
| FD CONC MON | 6,46.57 | 59.94 |
| SET PK W/MAG S/E LY FACE 24" OAK PK IS JUST ABOVE FD PK SWALLOWED BY TREE | 75,30.25 | 115.07 |
| FD CONC MON | 186,21.37 | 60.01 |
| NW COR HOUSE # 15950 18 MILE RD | 258,52.49 | 175.18 |
| SET PK W/MAG S/LY FACE 8" MAPLE | 297,31.26 | 118.23 |

Description of monument 2" Wood Stake 3" down

Monument in Relation to Center Line of Pavement

WITNESSES:

- 1. 28.9 W to DE pole
- 2. 24.6 E " " "
- 3. 71.3 NE " Tel "
- 4.

18

Road File No. _____

61

E-5
TZNR

File Point No. _____ Date Filed _____ 19

Assessment District No. _____ Station No. _____

Township _____ Section Corner SE - Sec 8

Type of Surface _____ Width _____

Description of Monument RR spike 24" down

Monument in Relation to Center Line of Pavement

WITNESSES:

- 1. NW 55.2 - 20' apple
- 2. NE 41.9 - Ed. pole
- 3. SW 50.2 - DE pole
- 4.

10

Road File No. _____

64

B-5
TZNR

File Point No. _____ Date Filed _____ 19

Assessment District No. 18 Mile Rd Station No. _____

Township _____ Section Corner S 1/4 Sec 7

Type of Surface _____ Width _____

Description of Monument Brick - 6" down

Monument in Relation to Center Line of Pavement

WITNESSES:

- 1. N 26.7 - Fence post
- 2. S 19.6 - Fence post
- 3. NW 1/4 121.2 - 12" hickory tree

(3)

LAND CORNER RECORDATION CERTIFICATE

LIBER 2464 PAGE 464

FILING REQUIREMENT OF ACT 74, MICH. P.A. 1970 A225269

| FOR CORNERS OF:- | LOCATED IN:- | CORNER CODE NUMBER |
|-----------------------------------------------------------------------------|--------------|--------------------|
| 1. PUBLIC LAND SURVEY _____ T. <u>2</u> N. X. R. <u>13</u> E. _____ | | <u>B-5</u> |
| 2. PROPERTY CONTROLLING IN SECTION _____ T. _____ N. S. R. _____ E. _____ | | |
| 3. MISCELLANEOUS PROPERTY IN SECTION _____ T. _____ N. S. R. _____ E. _____ | | |
| 4. LOT NO. _____ RECORDED PLAT _____ | | |
| 5. PRIVATE CLAIMS _____ | | |

RECORDED IN MACOMB COUNTY RECORDS AT: 12:15 PM
DEC 3 1973

Edmond H. Hill
CLERK - REGISTER OF DEEDS
MACOMB COUNTY, MICHIGAN

REGISTER OF DEEDS STAMP AND FILING NUMBER

I, David L. South do hereby certify that under requirements of P.A. 74, Michigan P.A. of 1970, the corner points mentioned in lines 1 and 2 above (identified with circles on index code diagram - over) were, in a field survey on _____ 19____, established, re-established, monumented, re-monumented, recovered or restored as expressed below and in conformance with regulations and rules therefore as required in the current manual of survey instructions of the United States Department of the Interior, Bureau of Land Management or by a decree of a court of law. Furthermore, that the corner points mentioned in lines 3, 4 and 5 above were, in a field survey on November 29 1973, found, recovered, restored, established or re-established as expressed below and in conformance with the rules of the Michigan State Board of Registration for Land Surveyors or, by a Decree of a Court of law:

A. Description of original monument and accessories and/or subsequent restoration:

| | |
|------------------------------------------------------------------------------------------------------------------------------------------------------------------------|--------------------------------------------------------------------------------------------------------------------------|
| $\frac{1}{2}$ " smooth iron P.K. nail in 14" ash NE 23.12' P.K. nail in P.P. S 149.44' NE corner hse. #15950 159.50' (ref: records of Lenner Assoc., 1966) | $\frac{3}{4}$ " bar Also found $\frac{1}{2}$ " pipe 3.85' N. 0.57'E 3/4" bar used (ref. Kobs & Barnes, 1968) |
|------------------------------------------------------------------------------------------------------------------------------------------------------------------------|--------------------------------------------------------------------------------------------------------------------------|

B. Description of corner evidence found and/or method applied in restoring or re-establishing corner:

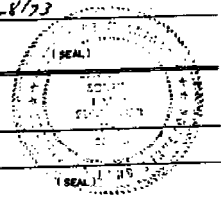
Found $\frac{3}{4}$ " bar from plat corners.
Hse. corner checked.

C. Description of monument for corner and accessories established to perpetuate locating the position of the corner:

Cap in 12" ash NE 29.92', up 2'
Conc. monument N. 59.96'
Cap in 12" ash N.W. 39.14', up 0.5'
N.W. corner hse. #15950 WSW 174.97'
C-5 N88°21'35"E
A-5 S88°40'34"W

*cap - metal cap with my reg. no. and "Survey Point" engraved.

SIGNED BY David L. South DATE 12/28/73
 SURVEYOR'S MICHIGAN REGISTRATION NO. 20623
 FOR STATE AND UNITED STATES AGENCIES:
 SIGNED BY _____ DATE _____
 APPROVED AND SIGNED BY _____ DATE _____
 MICHIGAN REGISTERED LAND SURVEYOR



00377

LIBER 2902 PAGE 559
LAND CORNER RECORDATION CERTIFICATE
 FILING REQUIREMENT OF ACT 74, MICH. P.A. 1970

A474796

| FOR CORNERS OF-- | LOCATED IN-- | CORNER CODE NUMBER |
|----------------------------------------------|------------------------------------------|--------------------|
| 1. PUBLIC LAND SURVEY _____ | T. <u>2</u> N. <u>13</u> E. <u>13</u> W. | A-5, A-6, B-5 |
| 2. PROPERTY CONTROLLING IN SECTION <u>18</u> | T. <u>2</u> N. <u>13</u> E. _____ W. | _____ |
| 3. MISCELLANEOUS PROPERTY IN SECTION _____ | T. _____ N. _____ E. _____ W. | _____ |
| 4. LOT NO. _____, RECORDED PLAT _____ | | |
| 5. PRIVATE CLAIMS _____ | | |

RECORDED IN MACOMB COUNTY
 RECORDS AT: 4:30 P. M.

JAN 16 1978

Edna M. Walker

CLERK - REGISTER OF DEEDS
 MACOMB COUNTY, MICHIGAN

REGISTER OF DEEDS STAMP AND
 FILING NUMBER

I, William E. Soderberg do hereby certify that under requirements of P.A. 74, Michigan P.A. of 1970, the corner points mentioned in lines 1 and 2 above (identified with circles on index code diagram - over) were, in a field survey on _____ 19____, established, re-established, monumented, re-monumented, recovered or restored as expressed below and in conformance with regulations and rules therefore as required in the current manual of survey instructions of the United States Department of the Interior, Bureau of Land Management or by a decree of a court of law. Furthermore, that the corner points mentioned in lines 3, 4 and 5 above were, in a field survey on _____ 19____, found, recovered, restored, established or re-established as expressed below and in conformance with the rules of the Michigan State Board of Registration for Land Surveyors or, by a Decree of a Court of law:

A. Description of original monument and accessories and/or subsequent restoration:

B. Description of corner evidence found and/or method applied in restoring or re-establishing corner:

- A-5 1" Iron Pipe
- A-6 1" Iron Pipe
- B-5 1" Steel Form Pin

C. Description of monument for corner and accessories established to perpetuate locating the position of the corner:

- | | |
|-------------------------------------------------------------------------------------------------------------------------------------------------------------------------------------------------------------------------------------------------------------------------------------------------------------------------------------------------------------------------------------------------------------------------------------------------------------------------------------|---------------------------------------------------------------------------------------------------------------------------------------------------------------------------------------------------------|
| A-5 1" Iron Pipe Nail in R.L.S. Washer S.E. Face of D.E. Pole N.W. 49.80' P.K. Nail in South Face D.E. Pole E.N.E. 39.55' Nail in R.L.S. Washer N. Face D.E. Pole E.S.E. 122.06' Top Centerline Hydrant S.S.W. 155.80' A-6 1" Iron Pipe Nail & Washer in N. Face of D.E. Pole - N.W. 57.64' Nail & Washer in S. Face of D.E. Pole - E. 59.23' Nail & Washer in S.W. Face of D.E. Pole E.S.E. 42.10' Nail & Washer in S.E. Face of D.E. Pole S.W. 138.42' | B-5 1" Steel Form Pin Nail & Cap in N.W. Face 12' tree N.E. 29.88' P.K. in N. Face 8" Tree S.W. 144.21' Nail & Cap in S.W. Face 12' Tree N.W. 39.15' P.K. in E. Face D.E. Pole North 61.31' |
|-------------------------------------------------------------------------------------------------------------------------------------------------------------------------------------------------------------------------------------------------------------------------------------------------------------------------------------------------------------------------------------------------------------------------------------------------------------------------------------|---------------------------------------------------------------------------------------------------------------------------------------------------------------------------------------------------------|

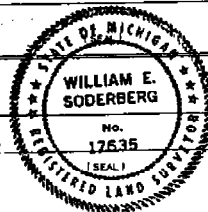
SIGNED BY William E. Soderberg DATE 1-14-78

SURVEYOR'S MICHIGAN REGISTRATION NO. 17635

FOR STATE AND UNITED STATES AGENCIES:

SIGNED BY _____ DATE _____

APPROVED AND SIGNED BY _____ DATE _____



SURVEYOR'S MICHIGAN REGISTRATION NO. _____

00706

LAND CORNER RECORDATION CERTIFICATE
Filing Requirement of Act 74, Mich. P.A. 1970

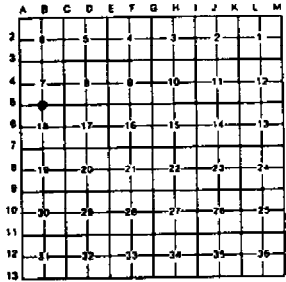
or corners in
MACOMB County Located in: Corner Code 8-5

Public Land Survey 18 T 2N R 13E

Property Controlling S T R
in Section S T R
Miscellaneous S T R
Property in Sec. S T R

Register of Deeds Stamp & File Number

Lot No. _____ Recorded Plat _____
Private Claims _____



WILLIAM E. SODERBERG in a field survey on January, 1986,
I hereby certify that under requirements of P.A. 74, Michigan P.A. of 1970, the corner points mentioned
in lines 1 and 2 above were in conformance with regulations and rules therefore as required in the
current manual of survey instructions of the United States Department of the Interior, Bureau of Land
Management or by a decree of a Court of Law and/or that the corner points mentioned in lines 3, 4 and 5
above were in conformance with the rules of the Michigan Board of Land Surveyors or by a Decree of a
Court of Law, established, re-established, monumented, re-monumented, recovered, found as
expressed below:

NOTE: Not more than 4 corners, all in the same town and range, may be recorded
on this certificate.

Description of original monument and accessories and/or subsequent restoration:

RECORDED IN MACOMB COUNTY
RECORDS AT: 2:10p. M.
FEB 16 1988

Edna H. Hill

Description of corner evidence found and/or method applied in restoring or reestablishing corner: B-5 North 1/4 Corner, Section 18 Found 3/4" Steel Bar
CLERK - REGISTER OF DEEDS
MACOMB COUNTY, MICHIGAN

Description of monument for corner and accessories established to perpetuate locating the position of the corner:

B-5 Found 3/4 Steel Bar 0.3' North and 0.1' East of 1" Steel Pin

South 60.00' Concrete Monument
North 60.09' Concrete Monument
North 61.41' P.K. Nail in East Face of U.P.
Southwest 144.15' P.K. Nail in North Face of 10" Cedar



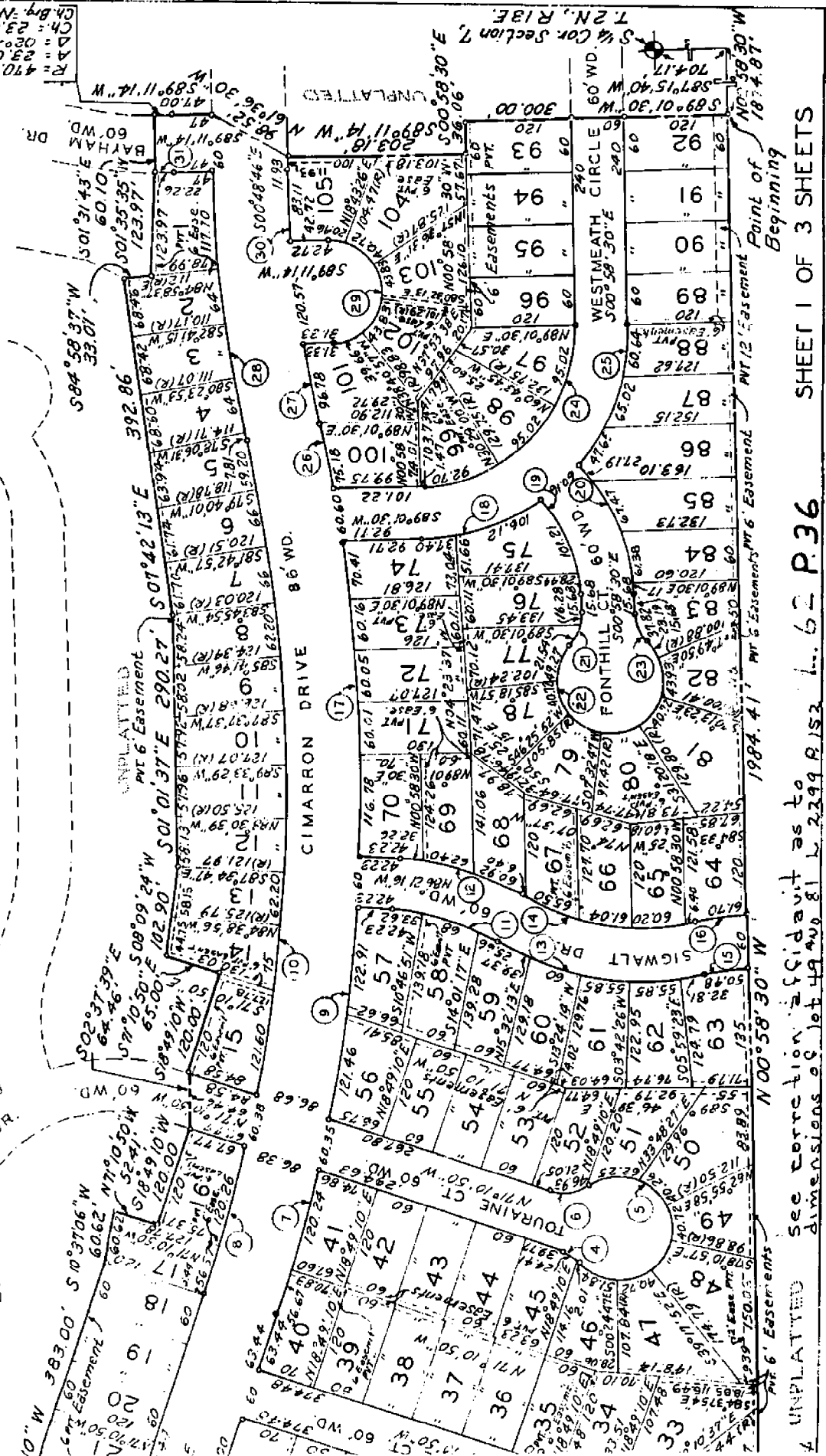
Signed by William E. Soderberg Date 2-25-87
Surveyor's Michigan License No. 17635

FORM APPROVED BY MICHIGAN STATE BOARD OF LAND SURVEYORS, JAN. 21, 1973
REVISED MAY 24, 1975
REVISED JAN. 1983

01335

Smokler - Clinton
 Sub #1 B-5
 1/4 SEC 7 T2N, R13E

| | | | | | | |
|----|---------|--------|------------|------------|---|--------|
| 20 | 240.00 | 11.33 | 41°26'31" | 517°42'46" | W | 169.57 |
| 26 | 1937.53 | 95.78 | 02°13'48" | 511°03'21" | E | 75.17 |
| 27 | 1515.68 | 96.78 | 03°59'30" | 510°20'30" | E | 96.76 |
| 28 | 1601.63 | 317.51 | 11°21'29" | 510°06'28" | W | 316.99 |
| 29 | 60.00 | 188.50 | 180°00'00" | 500°48'46" | E | 120.00 |
| 30 | 1515.68 | 83.11 | 03°00'00" | 502°23'01" | E | 83.10 |
| 31 | 530.00 | 22.26 | 02°24'21" | 589°36'35" | E | 22.25 |



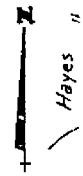
UNPLATTED
 See correction affidavit as to dimensions of lot 49 and 81 L 2349 R 13E
 SHEET 1 OF 3 SHEETS
 L. 62 P. 36
 Point of Beginning

R = 470.00
 Ch = 23.01
 Ch. Brg. N 89° 24' 37\"/>

TON
L.R.13E.,
HIGAN

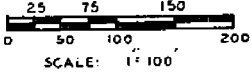
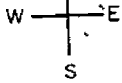
REGISTER # R 144763

Smokler-Clinton
Sub # 3
5 1/2 SEC 7
T2N, R13E
L.63, P.15
B-5



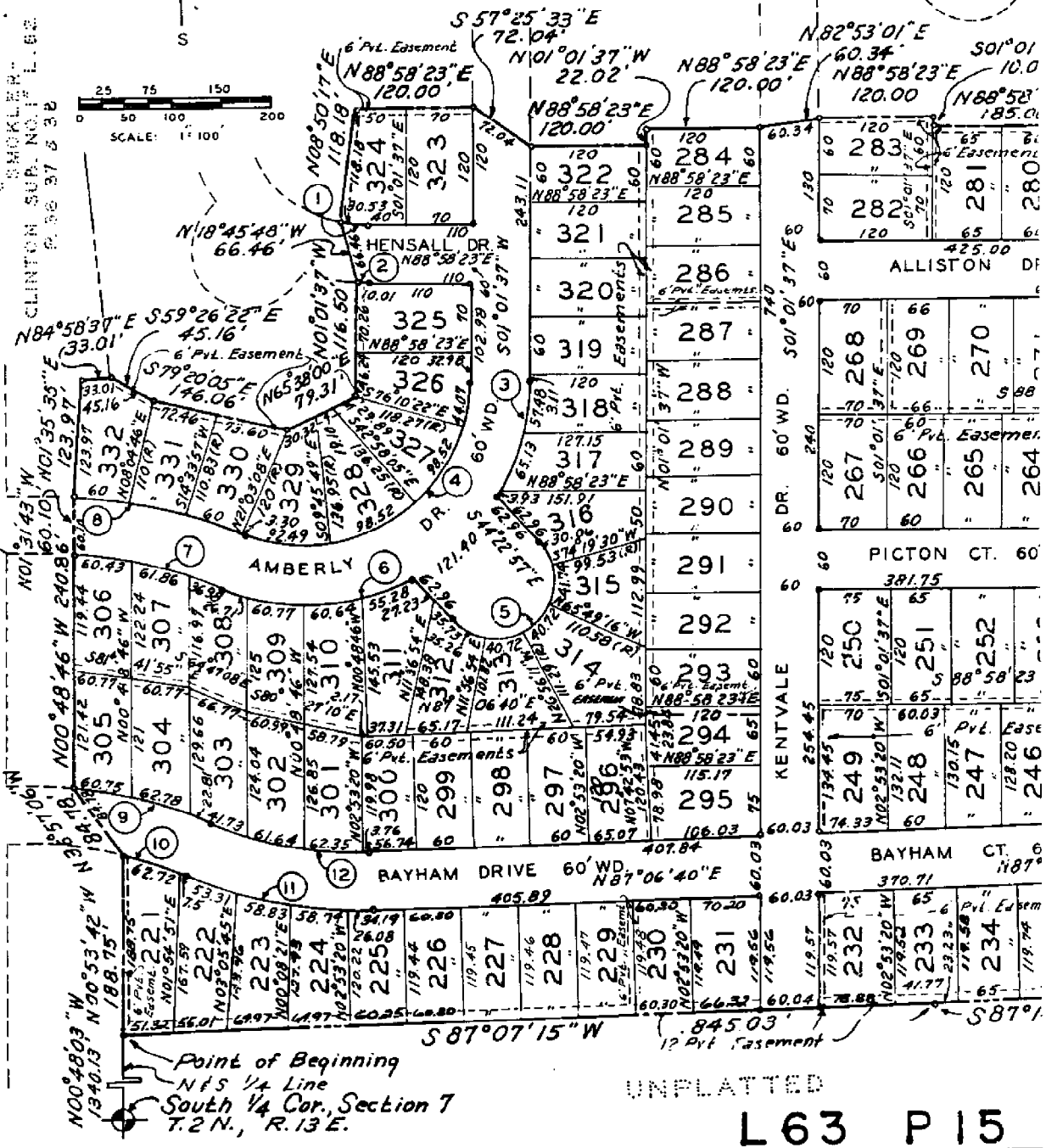
SEC. 12

UNPLATTED



ARC.
ID
ENC
A

CLINTON SUB. NO. 17 L. 63
P. 36 37 & 38



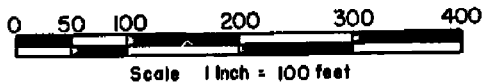
UNPLATTED

L 63 P 15

GREEN VALLEY SUBDIVISION NO. 3

OF

PART OF THE WEST 1/2 SECTION 7, T.2 N., R.13 E., REGISTER # A 41158
CLINTON TOWNSHIP, MACOMB COUNTY, MICHIGAN.



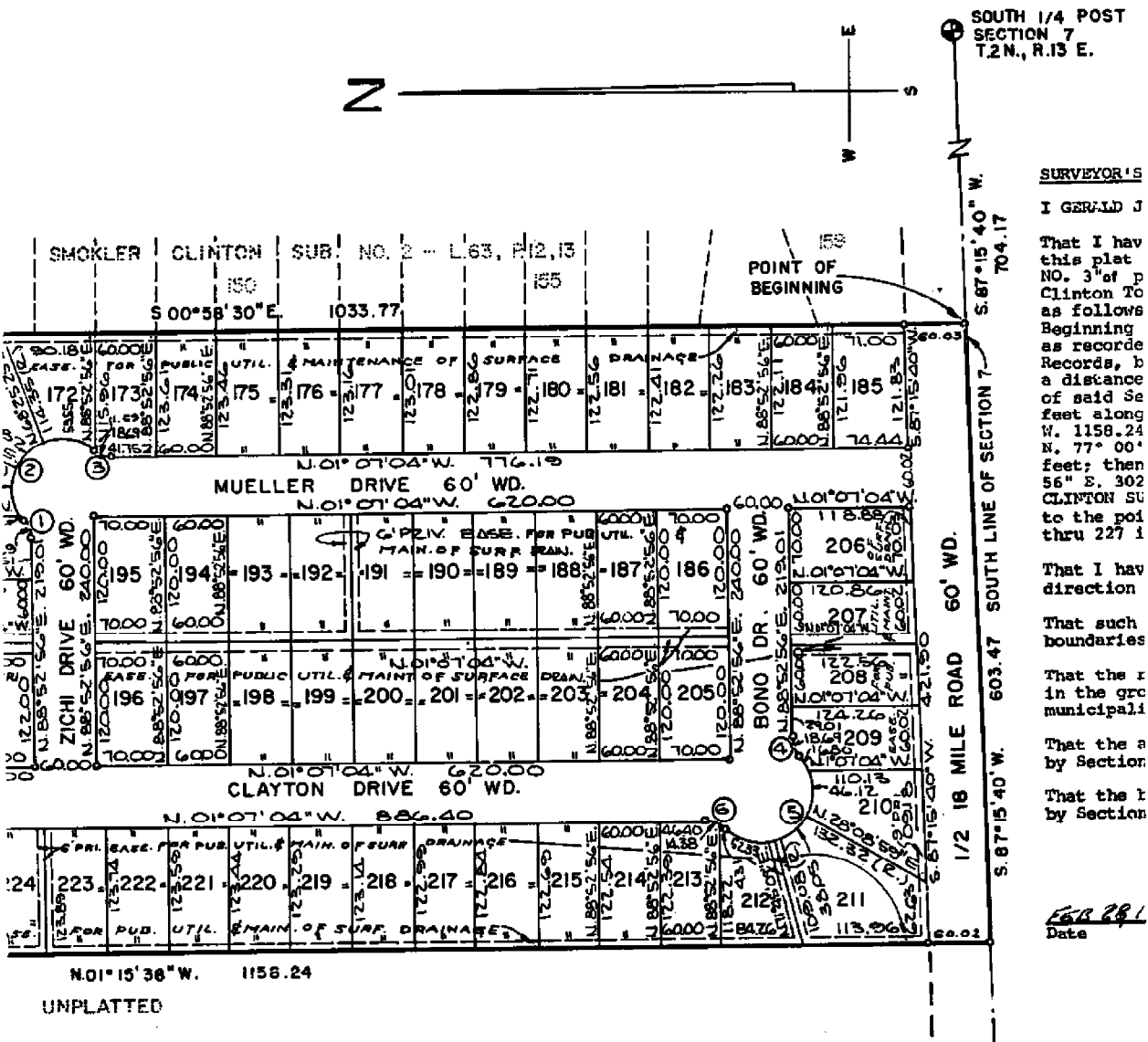
L. 68 P. 41

B-5

PLAT LEGEND

All Dimensions are given in feet.
All Curvilinear Dimensions are given along the arc.
The symbol "o" represents the location points of permanent concrete monuments.
Lot markers are 1/2" diameter by 18" long iron bar.
All Bearings are in relation to the Bearings of Smokler Clinton Sub. No. 1, as recorded in Liber 62 of Plats on pages 36, 37 and 38 of the Macomb County Records.
R. denotes radial.

| CHD. BEARING | CHORD |
|-------------------|-------|
| S. 69° 27' 56" W. | 18.26 |
| N. 46° 07' 04" W. | 89.83 |
| N. 20° 17' 56" E. | 18.26 |
| N. 67° 27' 56" E. | 18.26 |
| N. 46° 07' 04" W. | 89.83 |
| S. 20° 17' 56" W. | 18.26 |



SURVEYOR'S

I GERALD J

That I have this plat NO. 3 of p Clinton To as follows Beginning as records Records, b a distance of said Se feet along W. 1158.24 N. 77° 00' feet; then 56" E. 302 CLINTON SU to the poi thru 227 i

That I have direction

That such boundaries

That the r in the gro municipali

That the a by Section

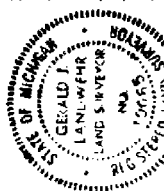
That the i by Section

Feb 28, 1961
Date

Section 126 of the Act.

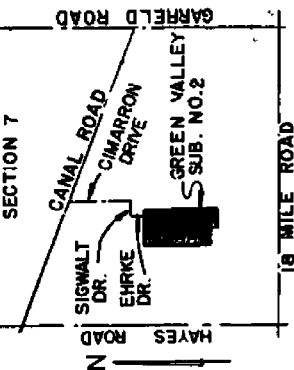
That the bearings shown on the plat are expressed as required by Section 126 (3) of the Act and as explained in the legend.

MAVIS, LANDWEHR & ASSOCIATES, INC.
29100 Van Dyke
Warren, Michigan 48093
Gerald J. Landwehr, R.L.S.
Vice President and Secretary
Michigan Reg. No. 10065



thence
East and
30' W.
thence
3" E.
CLAYTON
& 38 of
330.00
S. E. Land.
plat by
the

B-5
Green Valley Sub #2
S 1/4 Sec 7 T2N, R13E
L.C.B. P.39



LOCATION MAP
NO SCALE

SOUTH 1/4 POST
SECTION 7
T. 2 N., R. 13 E.
S.87°15'40" W.
704.17
N. 00°56'30" W. - 1033.77

EXAMINED AND APPROVED
Date 1/26 B. 1977
Richard C. ...
ALLISON GREEN
SITE INSPECTOR

| Lot | Area | Dimensions | Remarks | | | | | | | | | | | | | | | | | | | | |
|-----|---------|------------|----------------------------------------------|-----------------|----|----------|----|-----------------------|----|----|----|----|----|----|----|----|----|----|----|----|----|----|--|
| 101 | 1630.00 | 125 | SMOKLER CLINTON SUB NO. 2 - L. 63, R. 12, 13 | | | | | | | | | | | | | | | | | | | | |
| 72 | 73 | 74 | 75 | 76 | 77 | 78 | 79 | 80 | 81 | 82 | 83 | 84 | 85 | 86 | 87 | 88 | 89 | 90 | 91 | 92 | 93 | 94 | |
| | | | | S. 00°58'30" E. | | 14.50.51 | | EHKRE DRIVE 60' WD. | | | | | | | | | | | | | | | |
| | | | | N. 00°58'30" W. | | 12.50.50 | | EHKRE DRIVE 60' WD. | | | | | | | | | | | | | | | |
| | | | | N. 01°07'04" W. | | 12.50.30 | | CLAYTON DRIVE 60' WD. | | | | | | | | | | | | | | | |
| | | | | N. 01°07'04" W. | | 10.51.92 | | | | | | | | | | | | | | | | | |

UNPLATED
S. 88°52'56" W. 122.00
N. 00°07'04" W. 120.00
S. 88°52'56" W. 120.00
S. 87°00'58" W. 61.31
S. 88°52'56" W. 124.47
124.47

154
153
152
151
150
149
148
147
146
145
144
143
142
141
140
139
138
137
136
135
134
133
132
131
130
129
128
127
126
125
124
123
122
121
120
119
118
117
116
115
114
113
112
111
110
109
108
107
106
105
104
103
102
101
100
99
98
97
96
95
94
93
92
91
90
89
88
87
86
85
84
83
82
81
80
79
78
77
76
75
74
73
72
71
70
69
68
67
66
65
64
63
62
61
60
59
58
57
56
55
54
53
52
51
50
49
48
47
46
45
44
43
42
41
40
39
38
37
36
35
34
33
32
31
30
29
28
27
26
25
24
23
22
21
20
19
18
17
16
15
14
13
12
11
10
9
8
7
6
5
4
3
2
1

SOUTH 1/4 POST
SECTION 7
T.2N., R.13E.

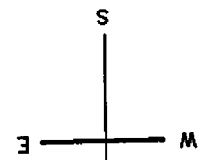
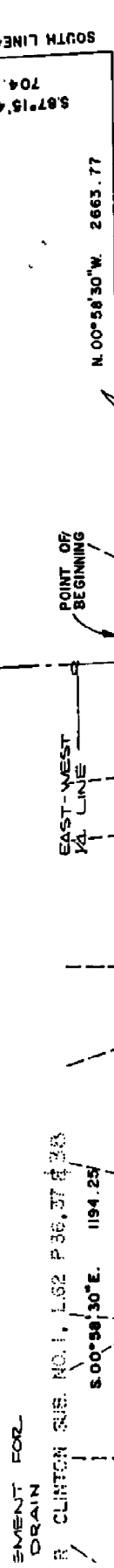


PLATE PREPARED AND RECORDED
Michigan Reg. No. 10065



is exterior
of it.



*Green Valley Sub #1
S 1/4 SEC 7 T2N, R13E
B-5*

PLAT LEGEND

All Dimensions are given in feet.
All Curvilinear Dimensions are given along the arc.
The symbol "o" represents the location points of permanent concrete monuments.
Lot markers are 1/2" diameter by 18" long iron bars.
All Bearings are in relation to the Bearings of Smokier Clinton Sub. No. 1, as recorded in Liber 62 of Plats on pages 36, 37 and 38 of the Macomb County Records.
R. denotes radii.

UNPLATTED

| NO. | RADIUS | ARC | DELTA | TANGENT | CHD. BEARING | CHORD |
|-----|--------|-------|------------|---------|--------------|-------|
| 1 | 524.85 | 64.86 | 07°04'51" | 32.47 | N.85°29'05"E | 64.82 |
| 2 | 464.85 | 57.45 | 07°04'51" | 28.76 | N.85°29'05"E | 57.41 |
| 3 | 464.85 | 57.45 | 07°04'51" | 28.76 | N.85°29'05"E | 57.41 |
| 4 | 524.85 | 64.86 | 07°04'51" | 32.47 | N.85°29'05"E | 64.82 |
| 5 | 25.00 | 18.68 | 42°50'00" | 9.81 | N.20°17'52"E | 18.26 |
| 6 | 50.00 | 37.36 | 175°40'00" | 18.21 | N.44°07'04"W | 37.36 |
| 7 | 25.00 | 18.68 | 42°50'00" | 9.81 | S.67°27'52"W | 18.26 |
| 8 | 25.00 | 18.68 | 42°50'00" | 9.81 | N.67°42'04"W | 18.26 |
| 9 | 50.00 | 37.36 | 175°40'00" | 18.21 | N.43°52'56"E | 37.36 |
| 10 | 25.00 | 18.68 | 42°50'00" | 9.81 | S.22°32'04"E | 18.26 |

L67 P32

UNPLATTED

