

LAND CORNER RECORDATION CERTIFICATE
Filing Requirement of Act 74, Mich. P.A. 1970

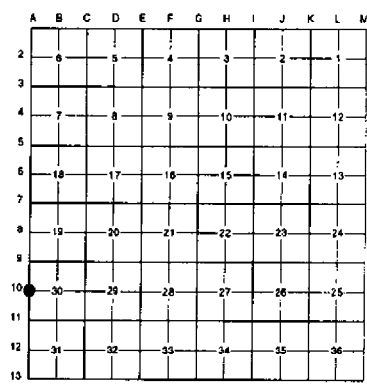
or corners in

<u>MACOMB</u> (County)	Located in: Clinton Township	Corner Code #
Public Land Survey	T <u>2N</u> R <u>13E</u>	<u>A-10</u>
	T _____ R _____	_____
	T _____ R _____	_____
Property Controlling in Section	S _____ T _____ R _____	_____
Miscellaneous Property in Sec.	S _____ T _____ R _____	_____

Register of Deeds Stamp & File Number

Lot No. _____, Recorded Plat _____
 Private Claims _____

Randy Kolehouse, in a field survey on April 24 19 96, hereby certify that under requirements of P.A. 74 Michigan P.A. of 1970, the corner points mentioned in lines 1 and 2 above were in conformance with regulations and rules therefore as required in the current manual of survey instructions of the United States Department of the Interior, Bureau of Land Management or by a decree of a Court of Law and/or that the corner points mentioned in lines 3, 4 and 5 above were in conformance with the rules of the Michigan Board of Land Surveyors or by a Decree of a Court of Law; established, re-established, monumented, re-monumented, recovered, found as expressed below:



NOTE: Not more than 4 corners, all in the same town and range, may be recorded on this certificate.

Description of original monument and accessories and/or subsequent restoration:

10	Records indicate this corner is common with M-10, T2N, R12E.
1817	G.L.O. Notes Preston N/A Small Beech
1983	L.C.R.C. L. 3475 P. 114 #14095 Kattouah Set 1/2" Capped Iron

Description of corner evidence found and/or method applied in restoring or reestablishing corner:

10 I found a 1/2" rebar w/cap No. 14095 15' ± South of the C/L of a drain which checks with the witnesses. This iron is on a straight line ± between M-9 and M-11. Also found iron pipe (no information on record) 0.19' NW'ly. No witnesses were given in Preston's G.L.O. notes.

L.C.R.C. L. #3475 P. 114
 P.K. Nail N. Face, 18" Oak West 30.74 Ft. (m. 30.71')
 South 31.17 Ft. P.K. Nail N. Face, Twin 12" Cherry
 P.K. Nail N. Face, T.R1, 12" Basswood East 3.25 Ft. (m. 3.49')
 East 33.11 Ft., Nail S. Face-Quad 15" Basswood (m. 33.04')

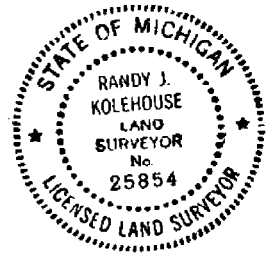
ACCEPTED BY THE MACOMB COUNTY SURVEY PEER GROUP AS THE OFFICIAL CORNER UNDER MICHIGAN PUBLIC ACT 345 OF 1990 AT A MEETING HELD ON 9-17-96

 WILLIAM E. SODERBERG, P.E., CHAIRMAN

Measure North 2776.14' to A-9 (G.L.O. = 2640.0')
 Measure South 2727.63' to A-11 (G.L.O. = 2640.0')

Description of monument for corner and accessories established to perpetuate locating the position of the corner:

10 I replaced the found 1/2" capped iron with a 4" x 36" concrete monument w/2" diameter aluminum cap stamped "Macomb County Monument MI Act 345 #25854."
 S 84° E 33.04' - Found Nail and Macomb Co. Remon. Tag in S Face 20" Quad. Tree
 S 79° E 3.49' - Found Nail and Macomb Co. Remon. Tag in N Face 18" Triple Tree
 S 06° W 31.17' - Found Nail and Macomb Co. Remon. Tag in W Face 18" Cherry
 N 86° W 30.71' - Found Nail and Macomb Co. Remon. Tag in N Face 20" Oak



The selected location is accepted by me and is generally accepted by professional surveyors as the best available evidence of the position of the original corner.

Surveyed by Randy J. Kolehouse Date 11/19/96
 Surveyor's Michigan License No. 25854

632

EARTH TECH
SECTION CORNER RECOVERY RECORD

CLIENT MACOMB Co T 2 N R 13 E CREW _____
PROJECT # 94103 CORNER A-10 _____
DATE _____

CORNER Now Common w/ M-10 T2N R12E

HISTORY

DATE	SURVEYOR/RLS#	LIBER	PAGE	MONUMENT
<u>1817</u>	<u>GLO-</u>			<u>SMALL BEECH</u>
<u>1983</u>	<u>KATOUAN *14095</u>	<u>3475</u>	<u>114</u>	<u>1/2" CAPPED ROD</u>

FOUND IN FIELD

SEE M-10 T2N R12E

Found a 1/2" cap rod w/ cap 15'±
South of the C/L of a drive

PK N Face 2' from S 31.17'

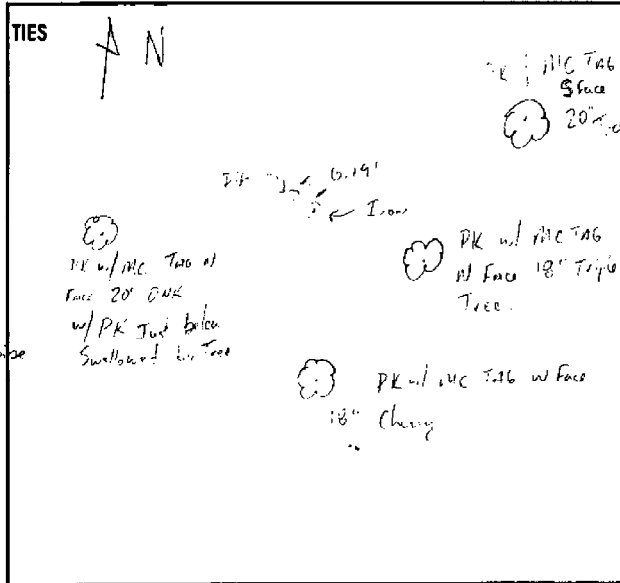
PK N Face 12' from S 31.17'

PK W Face 12' from E 31.17'

Found Cap 1 1/2" pipe 14095 ± 1/2" pipe

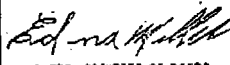
Found Iron cap Tree 40'± E of A

iron cap



LAND CORNER RECORDATION CERTIFICATE

FILING REQUIREMENT OF ACT 74, MICH. P.A. 1970

FOR CORNERS OF:	LOCATED IN:	CORNER CODE NUMBER	
1. PUBLIC LAND SURVEY	25 T 2 N R 12 E 30 T 2 N R 13 E	(M-10) 25, T2N, R. 13E	LIBER 3475 PAGE 114 A783856 RECORDED IN MACOMB COUNTY RECORDS AT: 8:45 A. M. FEB 18 1983  EDNA H. MILLER CLERK - REGISTER OF DEEDS MACOMB COUNTY, MICHIGAN REGISTER OF DEEDS STAMP AND FILING NUMBER
2. PROPERTY CONTROLLING IN SECTION	25 T 2 N R 12 E 30 T 2 N R 13 E	(A-10) 30, T2N, R. 13E	
3. MISCELLANEOUS PROPERTY IN SECTION	T. 2 N. R. 13 E.		
4. LOT NO. _____, RECORDED PLAT _____			
5. PRIVATE CLAIMS _____			

I, George E. Kattouah do hereby certify that under requirements of P.A. 74, Michigan P.A. of 1970, the corner points mentioned in lines 1 and 2 above (identified with circles on index code diagram-over) were, in a field survey on February 10, 1983, established, re-established, monumented, re-monumented, recovered or restored as expressed below and in conformance with regulations and rules therefore as required in the current manual of survey instructions of the United States Department of the Interior, Bureau of Land Management or by a decree of a court of law. Furthermore, that the corner points mentioned in lines 3, 4 and 5 above were, in a field survey on February 10, 1983, found, recovered, restored, established or re-established as expressed below and in conformance with the rules of the Michigan State Board of Registration for Land Surveyors or, by a Decree of a Court of law:

A. Description of original monument and accessories and/or subsequent restoration:

None Found

B. Description of corner evidence found and/or method applied in restoring or re-establishing corner:

Corner Established from data found in recorded plat for "Sterling Moravian Subdivision", as recorded in Liber 61, Page 13-15 of Plats, M.C.R.

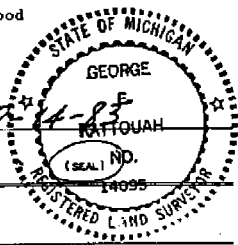
C. Description of monument for corner and accessories established to perpetuate locating the position of the corner:

- (M-10)
- Set 1/2" Capped Rod at Corner.
 - 1-P.K. Nail N. Face, 18" Oak West 30.74 Ft.
 - 2-South 31.17 Ft. P.K. Nail N. Face, Twin 12" Cherry
 - 3-P.K. Nail N. Face, T.R1, 12" Basswood East 3.25 Ft..
 - 4-East 33.11 Ft., Nail S. Face-Quad 15" Basswood

SIGNED BY George E. Kattouah

DATE 2-14-83

SURVEYOR'S MICHIGAN REGISTRATION NO. 14095



FOR STATE AND UNITED STATES AGENCIES:

SIGNED BY _____ DATE _____

APPROVED AND SIGNED BY _____ DATE _____

SURVEYOR'S MICHIGAN REGISTRATION NO. _____

01099-A

FORM APPROVED BY MICHIGAN STATE BOARD OF REGISTRATION, JAN. 28, 1971
 DISTRIBUTED BY MICHIGAN SOCIETY OF REGISTERED LAND SURVEYORS

PAGE 115

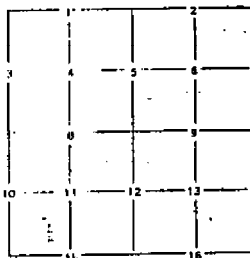
CORNER NUMBERING CODE DIAGRAMS FOR IDENTIFYING LAND CORNER RECORDATIONS AND INDEXING

FOR PUBLIC LAND SURVEY CORNERS IN THE
T. _____ R. _____ (MENTIONED OVER)

	A	B	C	D	E	F	G	H	I	J	K	L	M
2	6	5	4	3	2								
3													
4	7	8	9	10	11								
5													
6	18	17	16	15	14								
7													
8	19	20	21	22	23								
9													
10	30	29	28	27	26								
11													
12	31	32	33	34	35								
13													

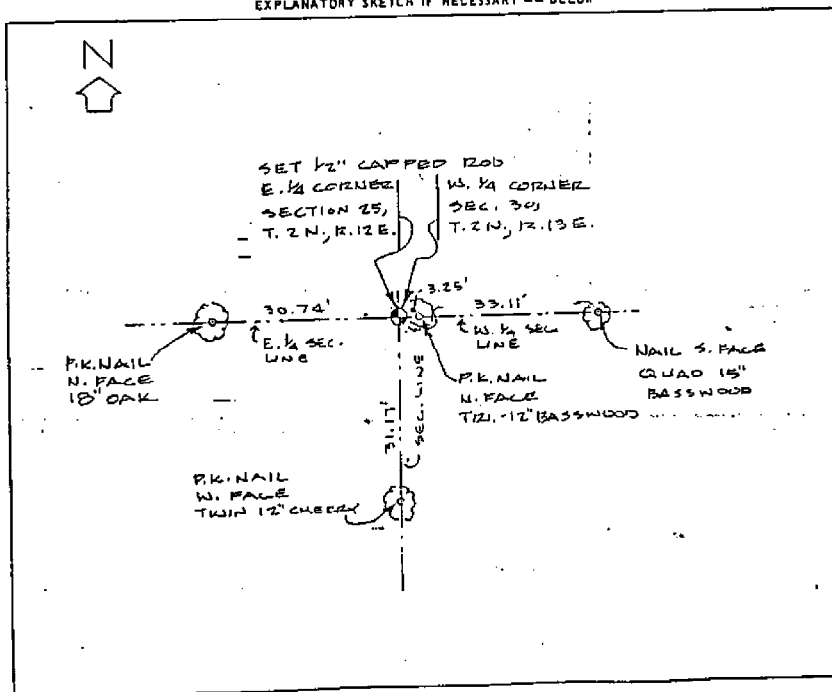
Apply letter prefix for corner points encircled above for identifying corner recordation numbers over.

FOR PROPERTY CONTROLLING AND MISC. PROPERTY CORNERS WITHIN THE SECTION (MENTIONED OVER AND EXCLUDE LOT CORNER)



1. Above coded numbers are positioned on 1/16 fractional lines of the section.
2. Township corner code numbers shall be applied to corners of above typical section not numbered.
3. Miscellaneous property corners within a section, located at points other than numbered above, shall be referenced to at least two of above corner code numbers.
4. Private claim corners to be tied to rectangular land corners if possible - sketch required below.

EXPLANATORY SKETCH IF NECESSARY -- BELOW



01099-B

Town 2 North Range 13 East (CLINTON)

A-13	North	<p style="text-align: center;"><u>West Boundary</u> (T2NR12E) ← (STERLING)</p> <p>4.38 a. B. Ash 6 in diam — — — — Swamp</p>
A-12	4000	Set 1/4 S. front in swamp
	64.00	Left swamp
	66.40	W. Oak 3 in diam
A-11	80.00	<p>Set mile front for Cor. of <u>sec 25+36</u> from which a B. Ash 15 in diam bears N 30 E 15 lbs distant also a Beech 5 in diam bears S 40 W 14 lbs distant. Land first half mile 3rd set with first half same. Timber W. Oak Beech B. Oak &c.</p>
	North	(T2NR12E)
	18.65	Sugar tree 22 in diam
A-10	40.00	Made 1/4 Sec Cor on a small Beech
	59.74	W. Oak 18 in diam
	73.09	Cor 50 lbs wide course Ely
A-9	80.00	<p>Set 2 mile front for corner of Section <u>24+25</u> on the N bank of a creek 30 lbs wide course N. E. from which a Lyrus 14 in diam bears N 87 W 27 lbs dist also a W Oak 6 in diam bears due N 32 lbs Land first half mile 2nd rate level and wet last 2.000 (dry) Timber W. Oak W. B. Ash Beech Sugar &c Undergrowth Beech Dogwood &c &c.</p>
	North	(T2NR12E)
	10.70	Main Branch of Riv. Huron 65 lbs wide course S. Ely

Form 2 North Range 13 East

A-11	70.11	Left sta. marsh
	79.89	Intersected Form line 15 links South of corner Land level front part 2 ^d part Timber W. Oak Beech Poplar Lyrus &c Undergrowth Spruce &c.
B-11	39.94	Corrected between S 30 & 31 Made 14 section corner on a Lyrus 18 in di at average distance on true line
C-11	79.89	To sections corner
North	29.64 40.00 77.84 80.00	Between sections 30 & 29 a W. Oak 24 in di Set half mile front from which a W. Oak 14 in di bears N 6 W 23 links also a Ironwood 10 in di bears S 28 W 11 links dist - a B. Oak 16 in di Made corner for sections 30, 29, 19, 20 on a W. Oak 18 in di 1 st half mile front dry 2 ^d part last half mile corner Timber W. Oak Beech Elm B. Ash &c Undergrowth Spruce &c.
West	40.00 70.00 78.00 79.00 80.00	Between sections 19 & 30 Set temporary half front a Run 3 links wide corner S.W. a Creek 15 links wide corner North. a Creek 10 links wide corner N.E. Int ^d West boundary on Form line at the corner Land front dry 2 ^d part - Hard part dry 2 ^d part Timber W. Oak Beech Sugar Poplar & Undergrowth Spruce & Beech &c.