

**Land Corner Recordation Certificate**  
**2016 Annual Grant Agreement**  
Authority: MICH. 1970 PA 74, MCL 54.205

**"LCRC BEING RECORDED FOR THE PURPOSE OF PUBLISHING MICHIGAN STATE PLANE COORDINATE DATA"**

**Surveyor's Name:** Steven E. Dunn, PS  
**For corner(s) in:** Macomb County

**Field Survey Date:** January 11, 2016  
**Municipality:** City of Sterling Heights & Clinton Township

Corner Type	Survey Township			Corner Code
Original Public Land Survey Corner	S	24	T 02N R 12E	M08
Protracted Public Land Survey Corner	S	19	T 02N R 13E	A08

	A	B	C	D	E	F	G	H	I	J	K	L	M	
1														1
2		6		5		4		3		2		1		2
3														3
4		7		8		9		10		11		12		4
5														5
6		18		17		16		15		14		13		6
7														7
8		19		20		21		22		23		24	⊙	8
9														9
10		30		29		28		27		26		25		10
11														11
12		31		32		33		34		35		36		12
13														13
	A	B	C	D	E	F	G	H	I	J	K	L	M	

**Part A: Corner History:** M08 East ¼ Corner Section 24. This corner is common with A08, T02N, R13E West ¼ Corner Section 19.

12-14-1994 LCRC for Remonumentation Corner by Randy J. Kolehouse, PS #25854, M08 recorded in L. 6527, P. 848, set ¾" X 24" iron rod with a 2" diameter aluminum cap stamped "MACOMB COUNTY MONUMENT MI ACT 345 25854" in a new monument box with 5 accessories.  
Peer Review Group Approval: September 20, 1994

Same as above for corner A08, 12-14-1994

12-14-1994 LCRC for Remonumentation Corner by Randy J. Kolehouse, PS #25854, A08 recorded in L. 6527, P. 788, set ¾" X 24" iron rod with a 2" diameter aluminum cap stamped "MACOMB COUNTY MONUMENT MI ACT 345 25854" in a new monument box with 5 accessories.  
Peer Review Group Approval: September 20, 1994

**Part B: Surveyor's Report on Perpetuation, Restoration, Reestablishment or Monumentation of Corner:**

Refer to: 12-14-1994 LCRCs for Remonumentation Corner by Randy J. Kolehouse, PS #25854, M08 recorded in L. 6527, P. 848 and A08 recorded in L. 6527, P. 788. Found monumentation of corner per above referenced LCRCs.

**Part C: Field Evidence of Perpetuation or Monumentation of Corner:**

1-11-2016 Found ½" rebar in a monument box with 4 of 5 matching accessories from the LCRCs listed in Part A. Occupied corner with GPS to obtain Geodetic Coordinate Data.

**Accessories:**

- S.82°E. 100.76' (R & M) Found PK nail w/tag "GW #78155" South face of 24" Ash.
- S.30°W. 80.04' (R & M) Found PK nail in East face of utility pole.
- N.28°W. 61.83' (R & M) Found nail w/tag "GW #78155" Southwest face of utility pole.
- S.50°W. 87.80' Set MAG nail w/Macomb County Remon tag in Southwest face tree.
- S.37°E. 65.90' (R & M) Center top nut fire hydrant.

*2 ml*

*C*

Part C: Continued

Date of Observation	Latitude	Longitude	Datum and Adjustment Year	Epoch Date
1-11-2016	N42°34'31.47283"	W82°58'16.22037"	NAD83 (2011)	2010.0000

Method for Latitude-Longitude determination: NGS OPUS Solution

State Plane Coordinates in international feet: N-395022.87', E-13499199.70'  
 Standard Deviation: 0.02' N – 0.02' E  
 South Zone  
 Combined Factor: 0.99989804  
 NGSPID: NE1250  
 Survey Method: MC GPS  
 Orthometric Height: 602.47'  
 Elev. Datum: NAVD 88

I, Steven E. Dunn, P.S., in a field survey on January 11, 2016, certify under the requirements of the State Survey and Remonumentation Act, 1990 PA 345, MCL 54.261 to 54.279, and the Corner Recordation Act, 1970 PA 74, MCL 54.201 to 54.210d, that the corner identified and described hereon has been perpetuated or monumented as described in Parts A, B, and C above, pursuant to the laws and rules of the State of Michigan.

*Steven E. Dunn*

Steven E. Dunn, P.S.

June 18, 2016

Date

Professional Surveyor's License No.: 28408

Great Lakes Geomatics, LLC  
 12504 Stephens  
 Warren, MI 48089



I, Martin C. Dunn, P.S., Macomb County Surveyor Representative, have reviewed the corner perpetuated in parts A, B and C above for the purpose of publishing its Michigan State Plane Coordinate values and relative data and is accepted for filing in the Macomb County Remonumentation Program.

*Martin C. Dunn*

Martin C. Dunn, P.S.

September 21, 2016

Date

Macomb County Surveyor Representative  
 License No. 30081

						Land Corner Recordation Certificate	
T	<u>02</u>	N	R	<u>12</u>	E	Code	<u>M08</u>
T	<u>02</u>	N	R	<u>13</u>	E	Code	<u>A08</u>

LAND CORNER RECORDATION CERTIFICATE
Filing Requirement of Act 74, Mich. P.A. 1970

For corners in
MACOMB
(County)

Located In: Clinton
Township Corner Code ##

- 1. Public Land Survey T 2N R 13E A-8
2. Property Controlling in Section S T R
3. Miscellaneous Property in Sec. S T R
4. Lot No. Recorded Plat
5. Private Claims

LIBER 6527 PAGE 788

94 DEC 14 AM 10:51

Register of Deeds Stamp & File Number

I, Randy Kolehouse, in a field survey on June 30, 1994, do hereby certify that under requirements of P.A. 74, Michigan P.A. of 1970, the corner points mentioned in lines 1 and 2 above were in conformance with regulations and rules therefore as required in the current manual of survey instructions of the United States Department of the Interior, Bureau of Land Management or by a decree of a Court of Law and/or that the corner points mentioned in lines 3, 4 and 5 above were in conformance with the rules of the Michigan Board of Land Surveyors or by a Decree of a Court of Law, established, re-established, monumented, re-monumented, recovered, found as expressed below:

NOTE: Not more than 4 corners, all in the same town and range, may be recorded on this certificate.

Grid table with columns A-M and rows 2-13. Cell (8,8) contains a star symbol.

A. Description of original monument and accessories and/or subsequent restoration:

Table with columns: A-8, 1817, G.L.O., Notes, Wampler, N/A, Post. Rows include 1934 MCRC Field Notes, 1984 MCRC Field Notes, 1991 L.C.R.C. L. 5509 P. 445 Patterson #17631.

B. Description of corner evidence found and/or method applied in restoring or reestablishing corner:

A-8 Found PK Nail in Center Line of Hayes Road over a 1" Iron pipe which is 6" below asphalt road surface in old concrete roadway.

MCRC Field Notes (1984) L.C.R.C. L. 5509 P. 445
PK in NE Face Util. Pole ESE 52.32' PK in 18" Ash E 100.87'
Center Line Hyd. SE 66.05' PK in Util. Pole S 45° W 80.14'
PK in SE Face Util. Pole SW 80.10' PK in Util. Pole N 30° W 66.88'

Measure N. 2701.00 to A-7 (River Park Estates = 2700.3) (G.L.O. 2640)
Measure S 2641.87 to M-9 (G.L.O. 2640)
This corner location is common with M-8 T2N R12E.

ACCEPTED BY THE MACOMB COUNTY SURVEY PEER GROUP AS THE OFFICIAL CORNER UNDER MICHIGAN PUBLIC ACT 345 OF 1990 AT A MEETING HELD ON 9-20-94
Signature: William E. Soderberg
WILLIAM E. SODERBERG, P.S., CHAIRMAN

C. Description of monument for corner and accessories established to perpetuate locating the position of the corner:

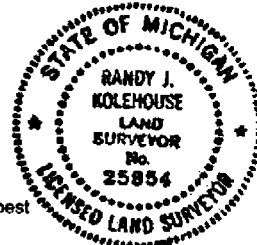
A-8 I replaced the found PK Nail with a 3/4" x 24" Iron Rod w/2" diameter aluminum cap stamped "Macomb County Monument MI Act 345 #25854," set Monument Box.

PK with Tag "GW #78155" S Face 24" Ash S 82° E 100.76'
PK NE Face Util. Pole S 36° E 52.27'
Center Line Top Nut Fire Hyd. S 37° E 65.90'
PK E. Face Util. Pole S 30° W 80.04'
Nail with Tag "GW #78154" SW Face Util. Pole N 28° W 61.83'

The selected location is accepted by me and is generally accepted by professional surveyors as the best available evidence of the position of the original corner.

Signed by Randy J. Kolehouse
Surveyor's Michigan License No. 25854

Date 10/14/94



# WW ENGINEERING & SCIENCE SECTION CORNER RECOVERY RECORD

CLIENT MC  
 PROJ. # 92892  
 DATE 6-30-94

CREW CHIEF ASC  
 RODMAN DP  
 RODMAN \_\_\_\_\_

TOWN ZK RANGE 12E  
13E

CORNER 1A-8  
A-8

RECORD MONUMENTATION: SEE ATTACHED

RECORD LCRC? LIBER \_\_\_\_\_ PAGE \_\_\_\_\_ RC# \_\_\_\_\_

LIBER \_\_\_\_\_ PAGE \_\_\_\_\_ RC# \_\_\_\_\_

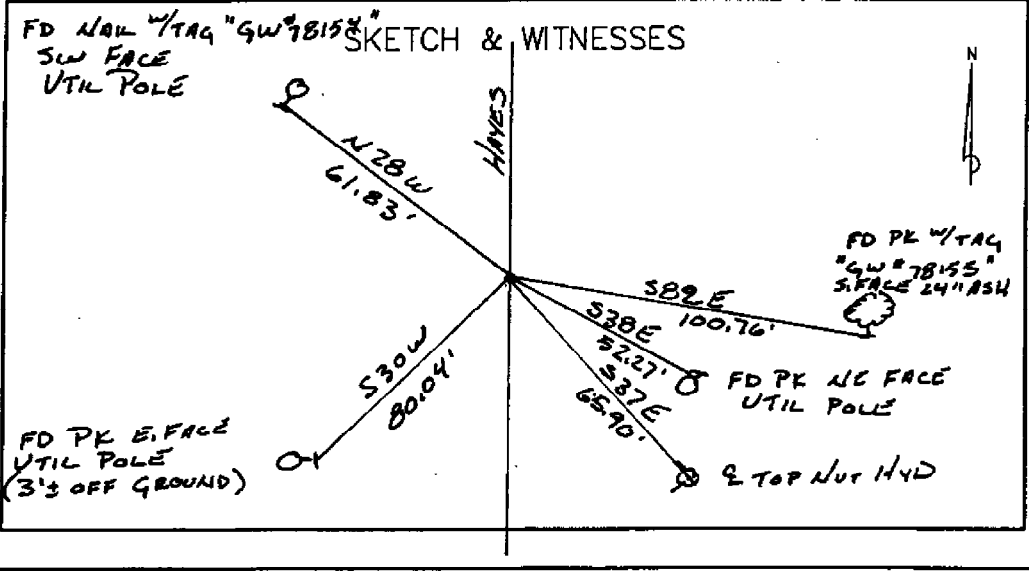
RECORD SURVEY? LIBER \_\_\_\_\_ PAGE \_\_\_\_\_

LIBER \_\_\_\_\_ PAGE \_\_\_\_\_

OTHER RECORD? \_\_\_\_\_

MONUMENTATION/EVIDENCE FOUND: \_\_\_\_\_

	A	B	C	D	E	F	G	H	I	J	K	L	M
2	6	5	4	3	2	1							
3													
4	7	8	9	10	11	12							
5													
6	18	17	16	15	14	13							
7													
8	19	20	21	22	23	24							
9													
10	30	29	28	27	26	25							
11													
12	31	32	33	34	35	36							
13													



Scale 1"=30'  
25' grid

Project MC 92092

Date 6-30-94

Page 1

TRN RISE	M-8		
TRN RISE	A-8		
Common Cor			
- FOUND.	PK 9 HAYES RD	300-16-31	19.64 (3)
RE	BS 0.00100 NORTH		
PK IN GW TAG # 78155	S. SIDE 24" HSH	91-58-20	83.04 (3)
			100.76
- PK NE FACE	UTILITY POLE	153-59-15	34.78 (4)
			52.27
- 9 TOP WHT	HYD	151-25-45	48.30 (5)
			65.90
		224-12-08	
PK IN GW TAG # 78154	E. FACE UTIL POLE	223-58-55	82.49 (6)
			80.07
- PK IN E. FACE	UTIL POLE (2" OFF GROUND)	224-12-08	82.46 (7)
			80.04
- NAIL W/TAG GW # 78154	SW'LY FACE UTIL POLE	324-09-42	79.27 (8)
			61.83



CORNER Z N, R 13 E, A-C CORNER

T2 N, R 12 E, M-B

FOUND \_\_\_\_\_

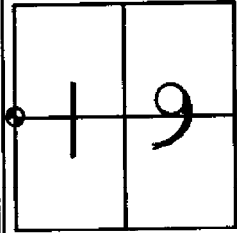
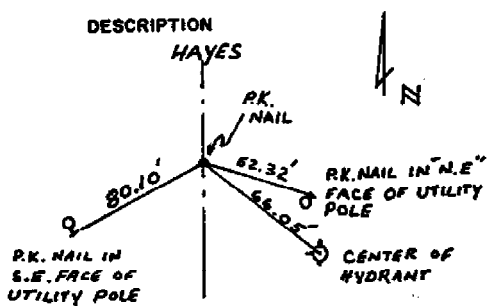
Date: \_\_\_\_\_

Client: MACOMB Co.

Project No.: 42862 92892

	WITNESS	REC.	MEA.
A-B	MCRC SEC #19 FILE #92	4-6-84	PK NAIL
	PK IN NE FACE U.P.	ESE 52.32'	52.27
	CENTER OF HYDRANT	SE 66.05'	65.90
	PK IN SE FACE U.P.	SW 80.10'	80.04
M-B	MCRC 6-29-34 FILE # 62		
	"+" IN PVMT		
	SPIKE IN CORNER POST E	37.65	
	" " FENCE POST S30E	41.35	
	LCRC L5509 P445 # 1713	3-7-91	PK in E
	PK in 10' ASH	EAST 100.87	100.76
CANT FIND	"+" FENCE POST CONCRETE	S45E 76.12	
	PK IN UTILITY POLE	S45W 80.14	80.07
	PK IN UTILITY POLE	N30W 61.88'	61.83

T2N, R13E  
A-8

T. N. R. E.		SEC. NO. / 9 FILE NO. 92	
MONUMENT WITNESSES RECORD			
		DESCRIPTION HAYES R.K. NAIL R.K. NAIL IN "N.E." FACE OF UTILITY POLE R.K. NAIL IN "S.E." FACE OF UTILITY POLE CENTER OF HYDRANT	
MACOMB COUNTY ROAD COMMISSION		<u>William SODERBERG</u> SURVEY CHIEF P.E.W.	<u>4/6/84</u> DATE



REGISTERED  
SURVEYOR

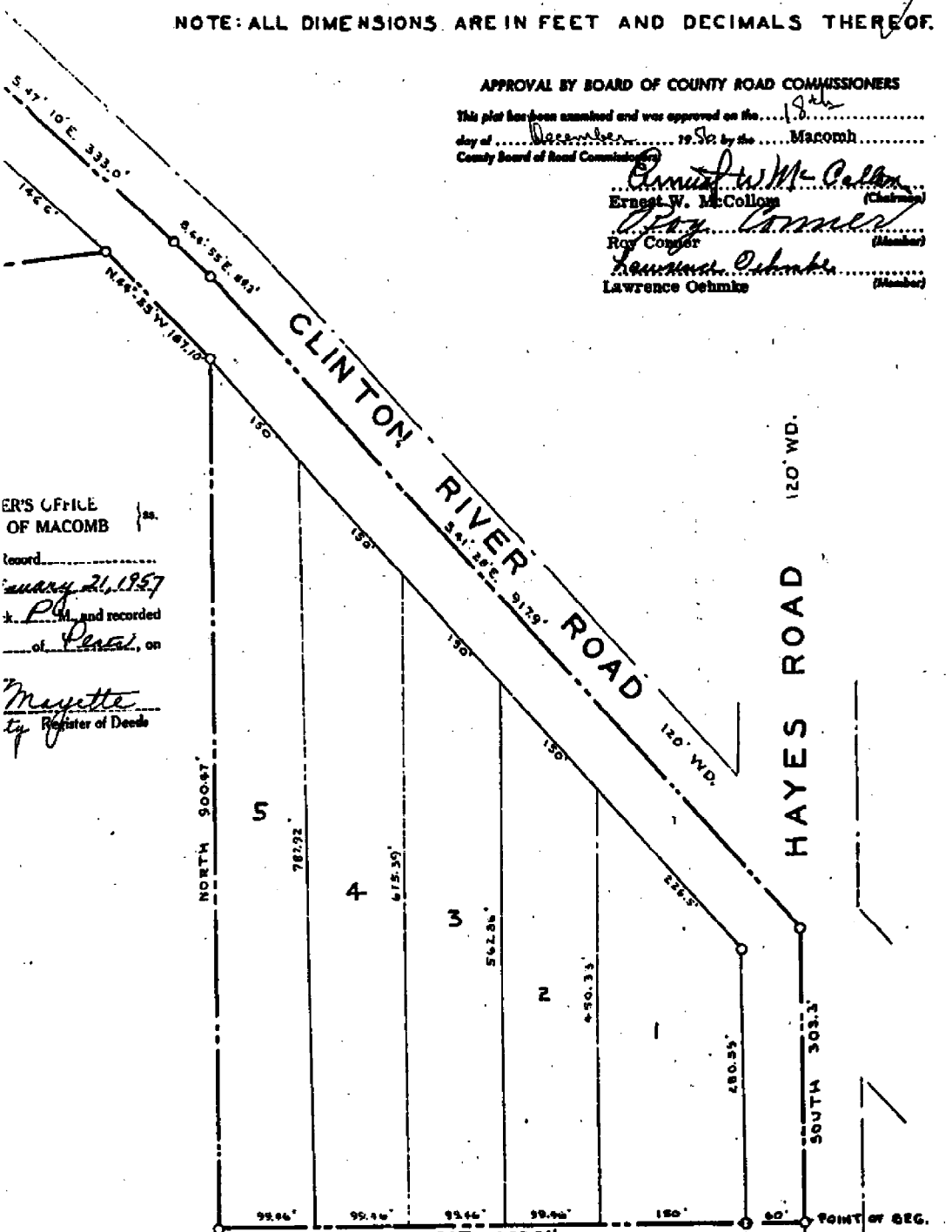
MULTIPLE GENERAL  
By *J. Masterson*  
PLAT ENGINEER

NOTE: ALL DIMENSIONS ARE IN FEET AND DECIMALS THEREOF.

APPROVAL BY BOARD OF COUNTY ROAD COMMISSIONERS

This plat has been examined and was approved on the 1st day of February, 1956 by the Macomb County Board of Road Commissioners

*Ernest W. McCollum* (Chairman)  
*Ray Conner* (Member)  
*Lawrence Oehmke* (Member)



REGISTRAR'S OFFICE OF MACOMB  
Recorded January 21, 1957  
by *P. H. [Signature]* and recorded  
of *[Signature]*, on  
*Meyette*  
Register of Deeds

MUNICIPAL APPROVAL  
approved by the Township Board  
of  Sterling  
held Dec. 4, 1956  
*Dorothy Talley* (Clerk)

APPROVAL BY COUNTY PLAT BOARD  
Approved on the 19th day of December, 1956 by the Macomb County Plat Board

*Aaron Burr* (County Register of Deeds)  
*Albert W. Wagner* (County Clerk)  
*Edmond Whelan*

*Oak Acres Sub.*  
*W 1/4 Sec. 19*  
*T. 2N, R. 13E*  
*L. 38, P. 32*

W. 1/2 POST SEC. 19  
CLINTON TWP  
T. 2N. R. 13E.

SURVEYOR'S CERTIFICATE

I hereby certify that the plat herein delineated is a correct one, and that permanent monuments consisting of iron rods at least one half inch in diameter and 30 inches in length, secured in concrete cylinders four inches in diameter and 20 inches in length, have been set at points marked thus (O) as thereon shown at all angles in the boundaries of the land platted, at all intersections of the lines of streets and at intersections of the lines of streets with the boundaries of the plat.

*J. Masterson*



Road File No. <i>104</i>	
File Point No.	Date Filed <i>6-29</i>
Assessment District No. <i>90</i>	Station No. <i>21447.35</i>
Township <i>Clinton Sterling</i>	Section Corner
Type of Surface	Width <i>E 1/4 - Sec 27</i>
Description of Monument <i>Cross in Post</i>	
Monument in Relation to Center Line of Pavement <i>4</i>	
WITNESSES:	
<i>Spike in Corner post East</i>	<i>37.65</i>
<i>Fence post S 30° E</i>	<i>44.35</i>
62	

T2N, R12E  
M-8

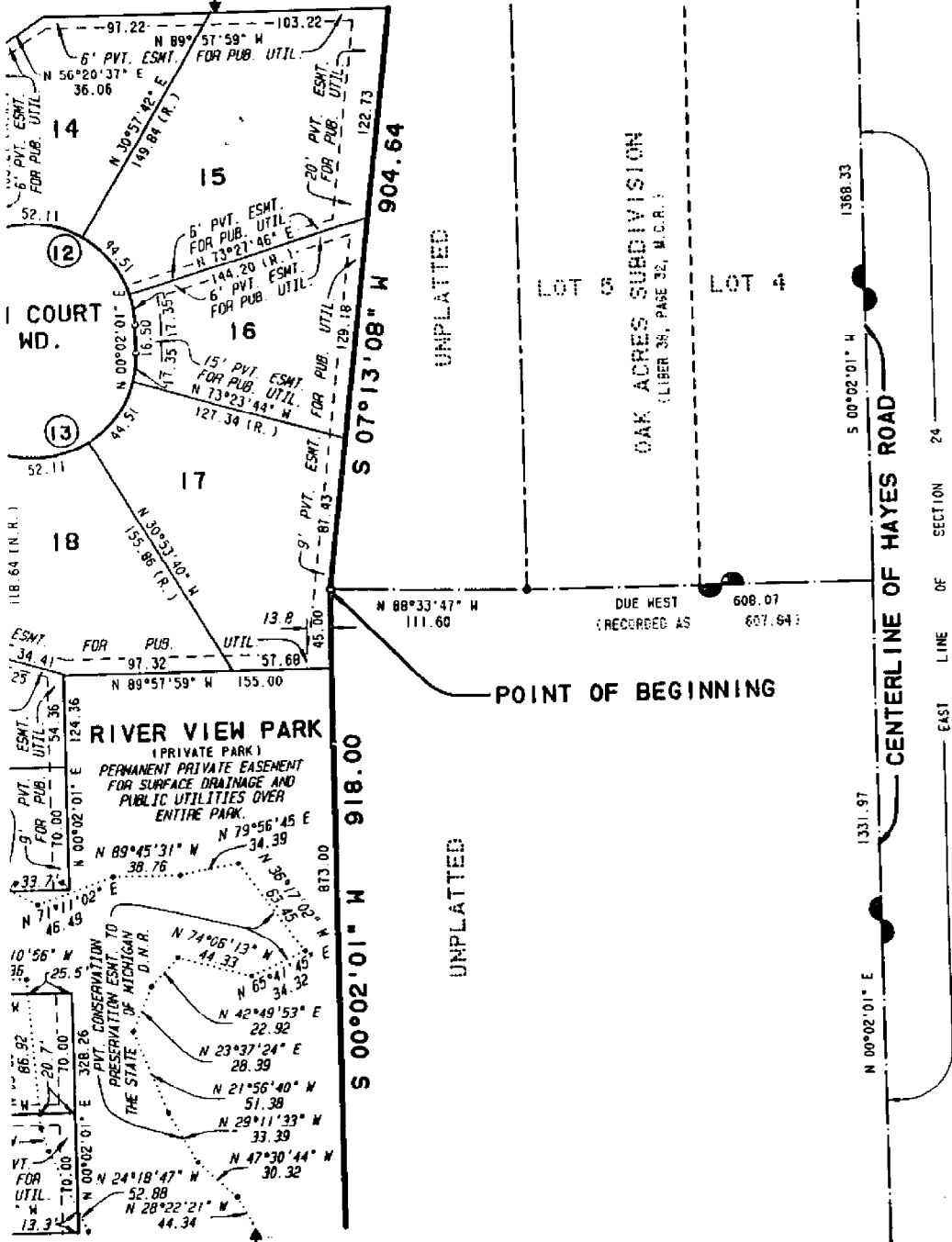
River Park Estates  
NE 1/4 Sec 24 T.2N., R.12E

LIBER 99, PAGE 26  
SHEET 2 OF 6 SHEETS

m-7  
m-8

NORTHEAST CORNER OF  
SECTION 24, T.2N., R.12E.,  
LIBER 5509, PAGE 445, M.C.R..

T NO. 1



EAST 1/4 CORNER OF  
SECTION 24, T.2N., R.12E.,  
LIBER 5509, PAGE 445, M.C.R..

EET NO. 3

NCS ASSOCIATES, INC.  
CIVIL ENGINEERING AND SURVEYING  
STERLING HEIGHTS, MICHIGAN 48314

Liber 99 Page 26