
**MACOMB COUNTY 2016 REMONUMENTATION GRANT
PROGRAM FOR CITY OF MT. CLEMENS
055 I/J05E**

Section One

Index

Pictures in the four cardinal directions; temporary corner and after setting the required monumentation.

Section Two

Surveyor's Report

Land Corner Recordation Certificate

Section Three

No field notes

1. GLO Map - 1817
2. Map of Clinton Township – 1875
3. Map of Clinton Township – 1895
4. Map of Clinton Township – 1916
5. Map of Clinton Township – 2006
6. Macomb County Composite Map 11-11E
7. Macomb County Composite Map 11-11F
8. Macomb County Composite Map 11-14A
9. Macomb County Composite Map 11-14B
10. Macomb County Composite Map 11-14E
11. Macomb County Composite Map 11-14F

Section Four

- 1.) GLO Notes
- 2.) 1870-DIAGRAM AND PLAT HUBBARDS ADDITION TO THE VILLAGE OF MT. CLEMENS, Liber 1, page 20, Sheet one of one
- 3.) 1873 - "DIAGRAM AND PLAT OF ROBERT P. ELREDGES ADDITION TO THE VILLAGE OF MT. CLEMENS AND STATE OF MICHIGAN", Liber 1, page 26, Sheet one of one
- 4.) 1874 - "MAP OF PETER GREINER'S ADDITION TO THE VILLAGE OF MT. CLEMENS", Book 2, page 5, Sheet one of one
- 5.) 1885 - "VANLANDEGHEM'S ADDITION TO THE CITY OF MT. CLEMENS", Book 2, page 29, Sheet one of one
- 6.) 1906 - "DR. WILSON'S ADDITION TO THE CITY OF MT. CLEMENS", Liber 2, page 97, Sheet one of one
- 7.) 1927 - "WOOLWORTH-FRANCIS SUBDIVISION", Liber 12, page 39, Sheet one of one
- 8.) 1927 - "ASSESSOR'S PLAT NO. 5", Liber 12, page 49, Sheet one of one
- 9.) 1929 - "ASSESSOR'S PLAT NO. 15", Liber 14, page 1, Sheet one of one
- 10) 1929 - "ASSESSOR'S PLAT NO. 16", Liber 14, page 2, Sheet one of one
- 11.) 1928 - "ASSESSOR'S PLAT NO. 18", Liber 13, page 35, Sheet one of one
- 12.) 1928 - "ASSESSOR'S PLAT NO. 19", Liber 13, page 8, Sheet one of one
- 13.) 1928 - "ASSESSOR'S PLAT NO. 20", Liber 13, page 37, Sheet one of one
- 14.) 1975 - "MASTROMATTEO SUBDIVISION", Liber 67, page 1, Sheet one of one
- 15.) Real estate map of Sections 10 & 11 of Clinton Township, Sheet #10



055 I/J05E
T2N, R13E
MT.
CLEMENS



055 I/J05E
T2N, R13E
MT.
CLEMENS





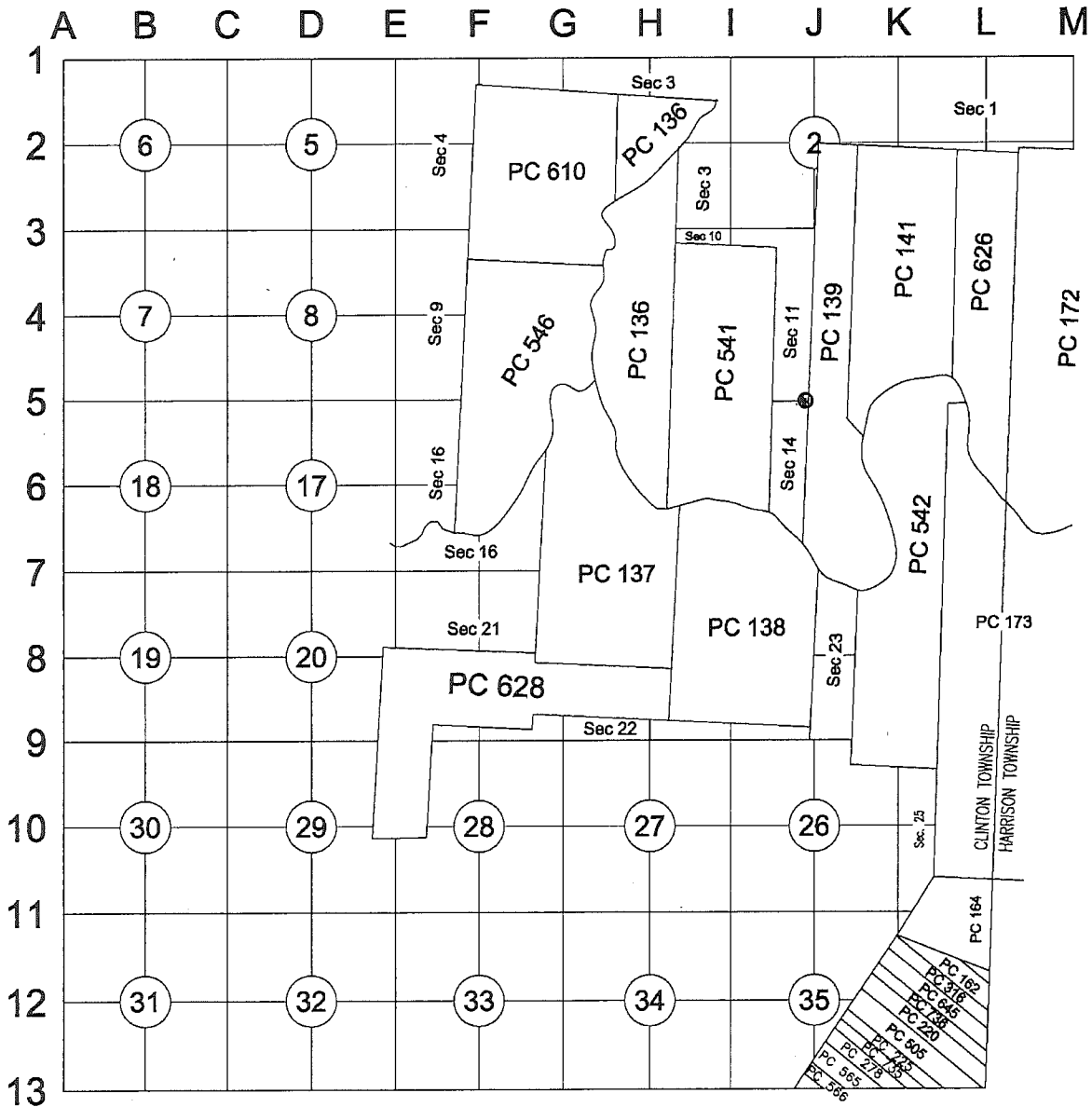
Land Corner Recordation Certificate
2016 Annual Grant Agreement
 Authority: MICH. 1970 PA 74, MCL 54.205

Surveyor's Name: Huston K. Kennedy
 For Corner(s) in: Macomb County

Field Survey Date: August 25, 2016
 Municipality: City of Mt. Clemens

Corner Type	Section Private Claim	Survey Township	Corner Code	Other Code
Original Public Land Survey Corner	Sec. 11 & 14 PC 139	T 2 N R 13 E	I/J05E	055

Other Code Corner Description: Southeast corner of Fractional Section 11 common with the Northeast corner of Fractional Section 14 on the west line of Private Claim No. 139.



Part A: Corner History:

- 1.) 1818 – W. Preston, D.S. The township was divided into sections with closing corners set on the north and west lines of the township, the post was not set for this corner 30" Black Ash N16°W 21 links; 10" White Ash S52°W 12 links
- 2.) 1870 -"DIAGRAM AND PLAT OF HUBBARDS ADDITION TO THE VILLAGE OF MT. CLEMENS, Liber 1, page 20.
- 3.) 1873 - "DIAGRAM AND PLAT OF ROBERT P. ELREDGES ADDITION TO THE VILLAGE OF MT. CLEMENS AND STATE OF MICHIGAN", Liber 1, page 26
- 4.) 1874 - "MAP OF PETER GREINER'S ADDITION TO THE VILLAGE OF MT. CLEMENS", Book 2, page 5
- 5.) 1885 - "VANLANDEGHEM'S ADDITION TO THE CITY OF MT. CLEMENS", Book 2, page 29
- 6.) 1906 - "DR. WILSON'S ADDITION TO THE CITY OF MT. CLEMENS", Liber 2, page 97
- 7.) 1927 - "WOOLWORTH-FRANCIS SUBDIVISION", Liber 12, page 39
- 8.) 1927 - "ASSESSOR'S PLAT NO. 5", Liber 12, page 49
- 9.) 1929 - "ASSESSOR'S PLAT NO. 15", Liber 14, page 1
- 10.) 1929 - "ASSESSOR'S PLAT NO. 16", Liber 14, page 2
- 11.) 1928 - "ASSESSOR'S PLAT NO. 18", Liber 13, page 35
- 12.) 1928 - "ASSESSOR'S PLAT NO. 19", Liber 13, page 8
- 13.) 1928 - "ASSESSOR'S PLAT NO. 20", Liber 13, page 37
- 14.) 1975 - "MASTROMATTEO SUBDIVISION", Liber 67, page 1

Part B: Surveyor's Report on Perpetuation, Restoration, Reestablishment or Monumentation of Corner:

1818 – W. Preston, D.S. The township was divided into sections with closing corners set on the north and west lines of the township.

East between Sections 2 & 11 34.85 chains, intersected private claims 43.00 chains from the northwest corner of Lot No. 139 confirmed to Harry Connor and made corner for Section 2 & 11 on a Sugar Tree 70" in diameter; continued 80.00 chains without marking; thence south 80.00 chains; thence west 50.15 chains, left claims 125.50 chains from northwest corner of Lot No. 139 confirmed to John Connor and set post for fractional Sections 11 & 14;

The southeast corner of Section 11 in common with the northeast corner of Section 14 on the west line of Private Claim No. 139 has not been perpetuated. There are many plat's that have been recorded in this area but none of which tie to or depict this corner. "WOOLWORTH-FRANCIS SUBDIVISION AND "MASTROMATTEO SUBDIVISION" acknowledge that they are part of fractional Section 11, but they do not tie to the corner, therefore, the corner has been determined to be a lost corner. I re-established this corner using a single proration of the GLO distance to the measured distance between the northwest and southwest corner of Private Claim No. 139.

The corner falls 1.5' north of back of curb for Union Street extending to the east and west which has a concrete surface. The corner falls between houses #66 and 68 which are both located on Lot 1, Block 3 of "DIAGRAM AND PLAT OF HUBBARDS ADDITION TO THE VILLAGE OF MT. CLEMENS".

I therefore, recommend to the Macomb County Survey Peer Group that they approve this location of 055 I/J05E as the best location for the corner to be perpetuated.

RECORDED, UNRECORDED AND FIELD MEASUREMENTS BETWEEN ADJACENT CORNERS

NW corner P.C. 139 to SW corner P.C. 139

GLO = 195.75 chains or 12,919.50 Ft.
S01°35'38" W 13,000.52 Ft.

055 I/J05E to NW corner P.C. 139

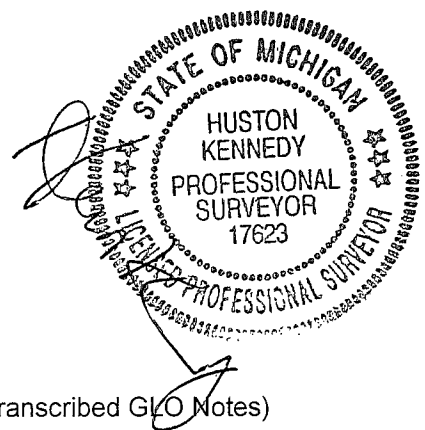
GLO = 125.50 chains or 8283.00 Ft.
Prorated GLO 126.29 chains or 8334.94 Ft.
N01°35'38" E 8334.94 Ft. (mea. 2016)

055 I/J05E to SW corner P.C. 139

GLO = 70.25 chains or 4636.50 Ft.
Prorated GLO = 70.69 chains or 4665.58 Ft.
S01°35'38" W 4665.58 Ft. (mea. 2016)

055 I/J05E to 054 I/J05W

GLO = 13.22 chains or 872.52 Ft. (per map) & 63.37 chains or 4182.47 Ft. (per the transcribed GLO Notes)
N89°42'52" W 820.32 Ft. (mea. 2010)



Part C: Field Evidence of Perpetuation or Monumentation of Corner:

055 I/J05E I set a 4" x 36" diameter concrete monument with a 1/2" iron rod with an aluminum brass cap stamped "Macomb County Monument MI Act #345" (055 I/J05E)

Accessories:

- N05°E 42.75' Set Mag nail w/Remon washer stamped "Macomb County Witness Tag" west face power pole
- N47°W 47.68' SE corner of house #68
- S05°E 30.69' Set Mag Nail w/Remon washer stamped "Macomb County Witness Tag" east face power pole
- S44°W 46.85' Set Mag Nail w/Remon washer stamped "Macomb County Witness Tag" NW face 14" Maple

I, Huston K. Kennedy, P.S., in a field survey on August 25, 2016, certify under the requirements of the State Survey and Remonumentation Act, 1990 PA 345, MCL 54.261 to 54.279, and the Corner Recordation Act, 1970 PA 74, MCL 54.201 to 54.210d, that the corner identified and described hereon has been perpetuated or monumented as described in Parts A, B, and C above, pursuant to the laws and rules of the State of Michigan.

Huston K. Kennedy September 28, 2016
 Huston K. Kennedy, P.S. Date

Professional Surveyor's License No.: 17623

Prepared By:
 Huston K. Kennedy, PS
 105 North Washington Street
 Oxford, Michigan 48371



Geodetic Coordinate Data for corner

Corner Code and Narrative Description: 055 I/J05E, T02N, R13E

Date of Observation	Latitude	Longitude	Datum and Adjustment Year	Epoch Date
12 September 2016	N42°35'56.612352"	W-82°53'03.587061"	NAD83 (2011)	2010.0000

Method for Latitude-Longitude determination: Dual Frequency Static Observations constraining to the CORS stations of Auburn Hills (AJ5557), Livonia (DK7841) and Brighton (AJ5553), with 3 dimensional least square adjustment.

Disclaimer on accuracy of values reported relative to their use: 1' ±.

State Plane Coordinates in international feet: N-404039.80, E-13522434.42
 Standard Deviation: N-0.05, E-0.06
 Zone South
 Combined Factor: 0.99989
 NGSPID: = Washington Station (DH 9019)
 Survey Method: GPS C2-11
 Orthometric Height: 610.00
 Elev. Datum: NAVD 88

I, Joseph C. Kapelczak, state under the requirements of the State Survey and Remonumentation Act, 1990 PA 345, MCL 54.261 to 54.279, that the Latitude and Longitude reported hereon were observed by me for the corner identified hereon and that the data reported meets the requirements prescribed for the State Survey and Remonumentation Program.

Joseph C. Kapelczak 9/28/2016
 Joseph C. Kapelczak, PS Date

Professional Surveyor's License No.: 24598

JCK Group, Inc.
 8615 Richardson Road
 Suite 100
 Commerce Township, MI 48390

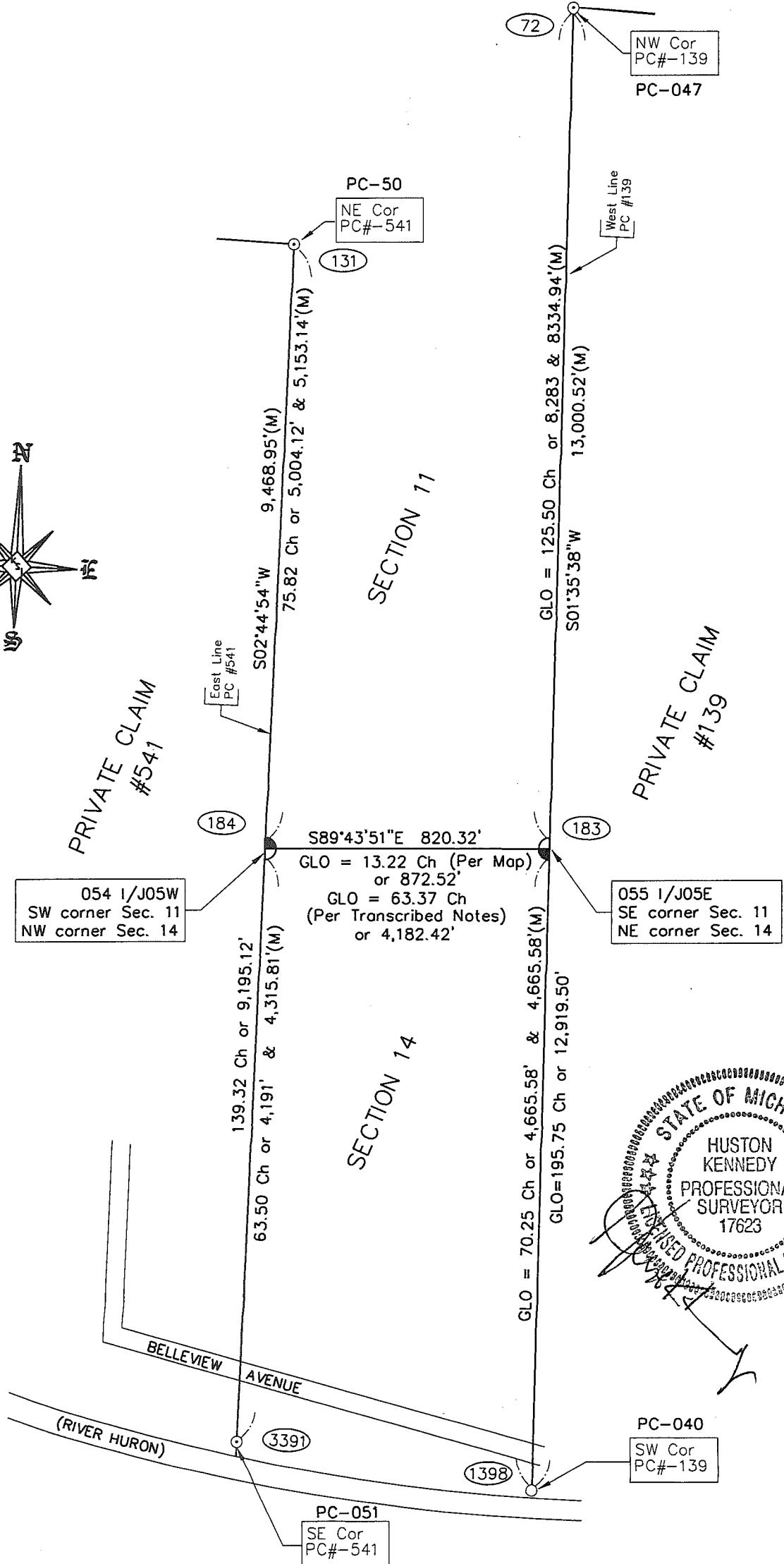
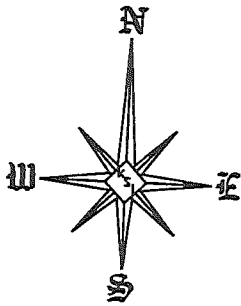


I, Martin C. Dunn, state that the corner(s) identified and described hereon and perpetuated or monumented as described in Parts A, B, and C above was presented to and reviewed by the Peer Review Group on September 27, 2016 and is accepted for filing in the Macomb County Remonumentation Program.

Martin C. Dunn 10-25-2016
 Martin C. Dunn, P.S. Date

Macomb County Surveyor Representative
 License No. 30081

SKETCH OF CORNER LOCATION



SCALE
Not To Scale

Land Corner Recordation Certificate
T 02 N R 13 E Code 055 I/J05E

**2016
MACOMB COUNTY REMONUMENTATION
GRANT PROGRAM FOR
CITY OF MT. CLEMENS
Research Dossier
055 I/J05E**

Prepared by:
Kennedy Surveying, Inc.
105 North Washington Street
Oxford, Michigan 48371

Sources of Information Researched For Macomb County 2016 Remonumentation Grant Program for City of Mt. Clemens

- 1) GLO Notes
- 2) Act 74 Recorded LCRC
- 3) Act 132 Recorded Surveys
- 4) Personal History and Records
- 5) LCRC's and Surveys
- 6) Letters to the Following, Requesting Unrecorded information
 - a) Anderson, Eckstein & Westrick
 - b) BMJ Engineers & Surveyors
 - c) Community Engineering & Surveying
 - d) David Little Land Surveyor
 - e) David P. Smith & Associates, Inc.
 - f) Fenn & Associates Surveying, Inc.
 - g) George Jerome & Company
 - h) Grant Ward Surveyors
 - i) Great Lakes Geomatics
 - j) JCK Group, Inc.
 - k) James Land Surveying
 - l) Kem-Tec & Associates
 - m) Kieft Engineering, Inc.
 - n) Lehner Associates, Inc.
 - o) Metco Land Sea Corp.,
 - p) Milletics & Associates
 - q) R. A. Duthler Land Surveyor, LLC
 - r) Reichert Surveying
 - s) R. J. Donnelly & Associates
 - t) Road Commission for Macomb County
 - u) Rowe Professional Services
 - v) Spalding, DeDecker & Associates
 - w) Urban Land Consultants, LLC
 - x) William J. Angus & Associates

055 I/J05E TOWN 02 NORTH, RANGE 13 EAST, CITY OF MT. CLEMENS

Southeast corner of fractional Section 11 in common with the Northeast corner of fractional Section 14 which intersected the west line of Private Claim No. 139.

GLO HISTORY

1818 – W. Preston, D.S. The township was divided into sections with closing corners set on the north and west lines of the township.

East between Sections 2 & 11 34.85 chains, intersected private claims 43.00 chains from the northwest corner of Lot No. 139 confirmed to Harry Connor and made corner for Section 2 & 11 on a Sugar Tree 70" in diameter; continued 80.00 chains without marking; thence south 80.00 chains; thence west 50.15 chains, left claims 125.50 chains from northwest corner of Lot No. 139 confirmed to John Connor and set post for fractional Sections 11 & 14;

GLO WITNESSES: 30" Black Ash N16°W 21 links; 10: White Ash S52°W 12 links

EXISTING FIELD CONDITIONS

The corner falls 1.5' north of back of curb for Union Street extending to the east and west which has a concrete surface. The corner falls between houses #66 and 68 which are both located on Lot 1, Block 3 of "DIAGRAM AND PLAT OF HUBBARDS ADDITION TO THE VILLAGE OF MT. CLEMENS".

RECORDED AND UNRECORDED INFORMATION USED TO RECOVER AND VERIFY THE LOCATION OF THIS CORNER

The following list of plats fall between the west line of Private Claim No. 139 and the east line of Private Claim No. 541 none of which gives a tie or even depicts the corner. "WOOLWORTH-FRANCIS SUBDIVISION" and "MASTROMATTEO SUBDIVISION" do acknowledge that they are part of the fractional Section 11.

January 21, 1870 - "DIAGRAM AND PLAT OF HUBBARDS ADDITION TO THE VILLAGE OF MT. CLEMENS, Liber 1, page 20.

February 19, 1873 - "DIAGRAM AND PLAT OF ROBERT P. ELREDGES ADDITION TO THE VILLAGE OF MT. CLEMENS AND STATE OF MICHIGAN", Liber 1, page 26.

July 30, 1874 - "MAP OF PETER GREINER'S ADDITION TO THE VILLAGE OF MT. CLEMENS", Book 2, page 5

November 9, 1885 - "VANLANDEGHEM'S ADDITION TO THE CITY OF MT. CLEMENS", Book 2, page 29

October 9, 1906 - "DR. WILSON'S ADDITION TO THE CITY OF MT. CLEMENS", Liber 2, page 97

August 23, 1927 - "WOOLWORTH-FRANCIS SUBDIVISION", Liber 12, page 39

October 12, 1927 - "ASSESSOR'S PLAT NO. 5", Liber 12, page 49

April 20, 1929 - "ASSESSOR'S PLAT NO. 15", Liber 14, page 1

April 20, 1929 - "ASSESSOR'S PLAT NO. 16", Liber 14, page 2

November 22, 1928 - "ASSESSOR'S PLAT NO. 18", Liber 13, page 35

November 22, 1928 - "ASSESSOR'S PLAT NO. 19", Liber 13, page 8

November 22, 1928 - "ASSESSOR'S PLAT NO. 20", Liber 13, page 37

September 16, 1975 - "MASTROMATTEO SUBDIVISION", Liber 67, page 1

RECORDED, UNRECORDED AND FIELD MEASUREMENTS BETWEEN ADJACENT CORNERS

NW corner P.C. 139 to SW corner P.C. 139

GLO = 195.75 chains or 12,919.50 Ft.
S01°35'38" W 13,000.52 Ft.

055 I/J05E to NW corner P.C. 139

GLO = 125.50 chains or 8283.00 Ft.
Prorated GLO 126.29 chains or 8334.94 Ft.
N01°35'38" E 8334.94 Ft. (mea. 2016)

055 I/J05E to SW corner P.C. 139


GLO = 70.25 chains or 4636.50 Ft.
Prorated GLO = 70.69 chains or 4665.58 Ft.
S01°35'38" W 4665.58 Ft. (mea. 2016)

055 I/J05E to 054 I/J05W

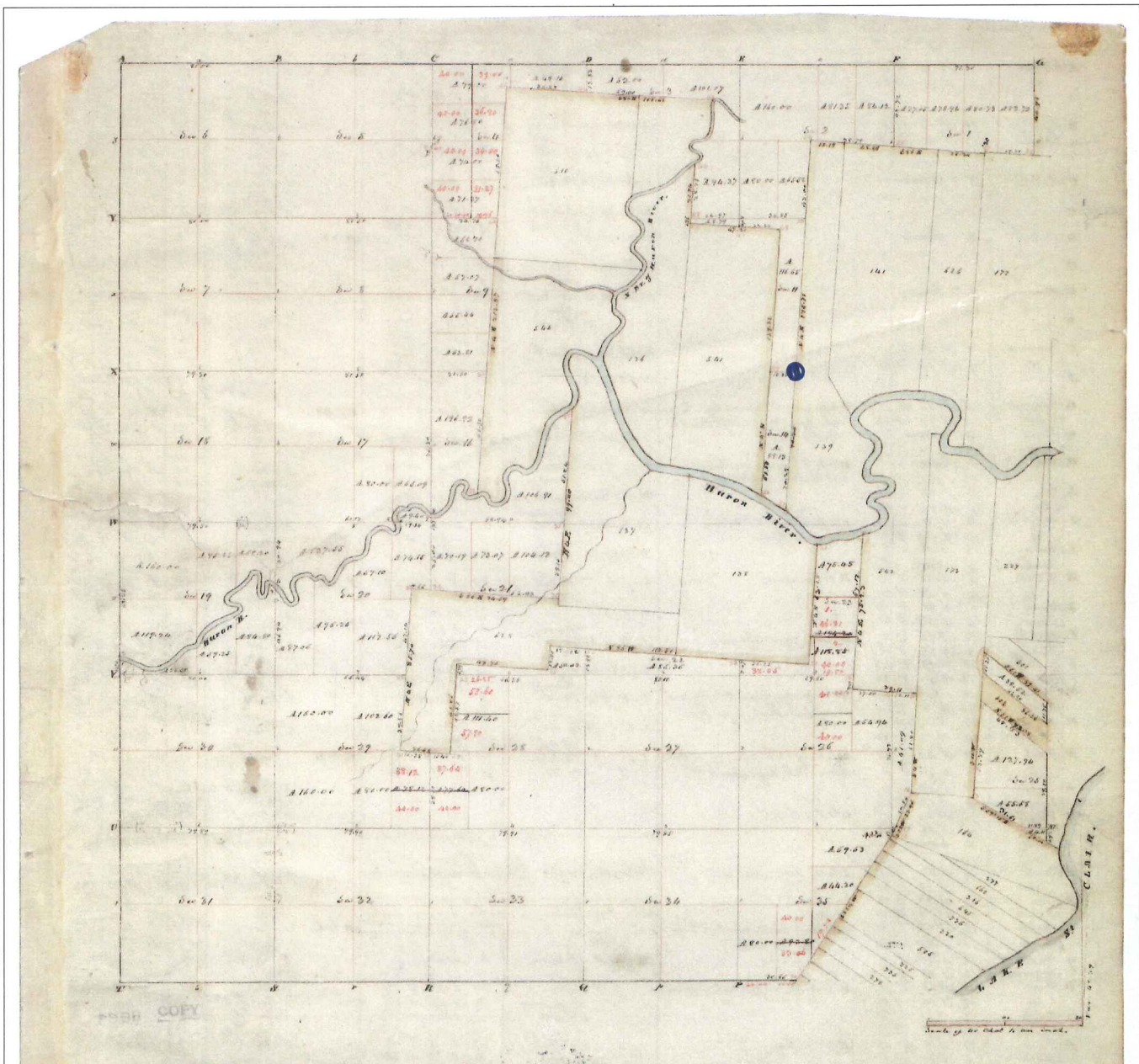
GLO = 13.22 chains or 872.52 Ft. (per map) & 63.37 chains or 4182.47 Ft. (per the transcribed GLO Notes)
N89°42'52" W 820.32 Ft. (mea. 2010)

SURVEYOR'S RECOMMENDATION

The southeast corner of Section 11 in common with the northeast corner of Section 14 on the west line of Private Claim No. 139 has not been perpetuated. There are many plat's that have been recorded in this area but none of which tie to or depict this corner. "WOOLWORTH-FRANCIS SUBDIVISION AND "MASTROMATTEO SUBDIVISION" acknowledge that they are part of fractional Section 11, but they do not tie to the corner, therefore it has been determined that this corner is a lost corner.. I re-established this corner using a single proration of the GLO distance to the measured distance between the northwest and southwest corner of Private Claim No. 139. I therefore, recommend to the Macomb County Survey Peer Group that they approve this location of 055 I/J05E as the best location to be perpetuated.


Huston K. Kennedy, PS
Kennedy Surveying, Inc.

HKK/clh



Township N^o 11 North, Range N^o 13 East of Mer. (Rich. Per)

surveyed by W^m Proctor.

1817

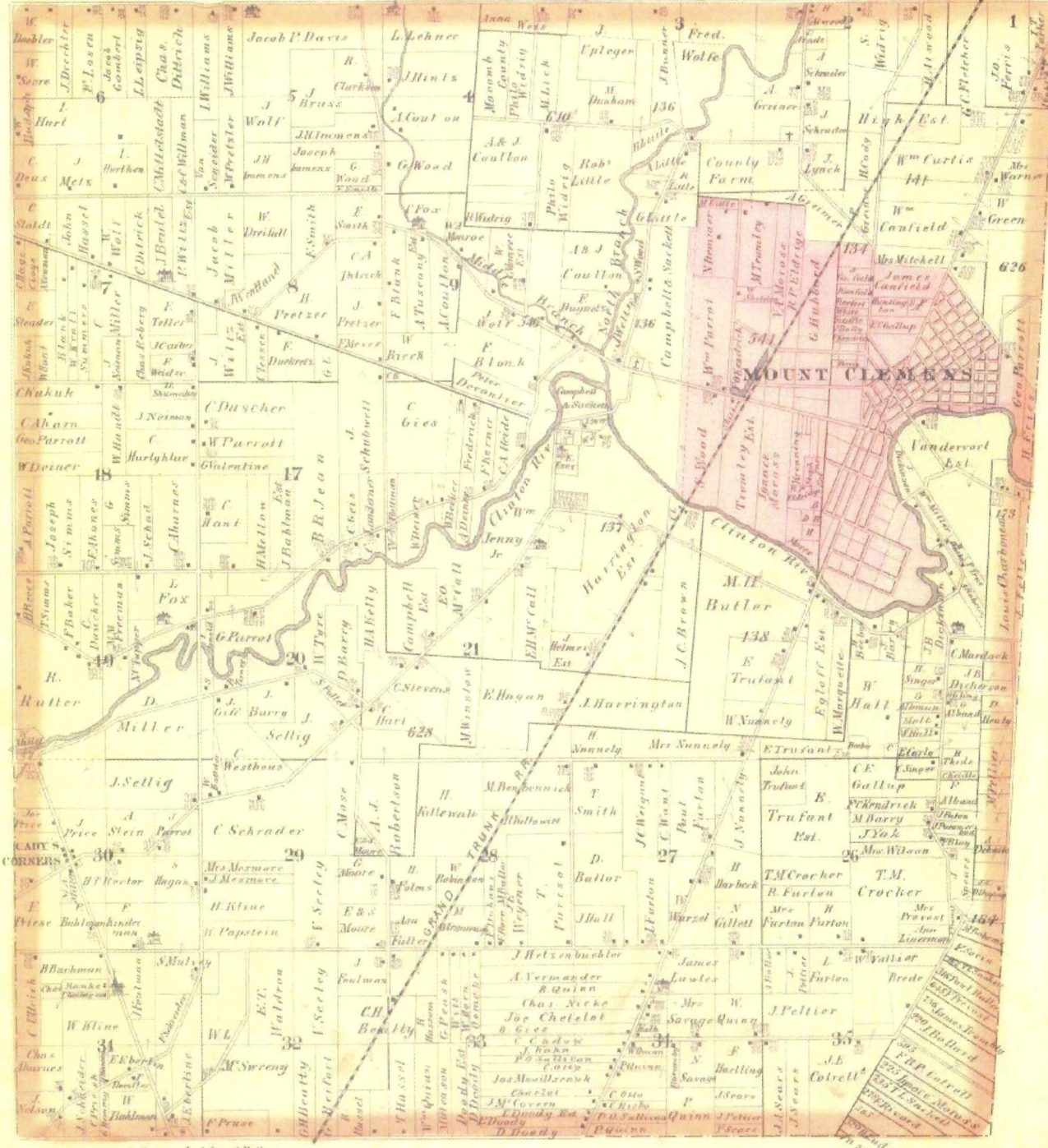
Description of the soil on the interior sectional lines

Section	Quality &c	Section	Quality &c
5. 6	1/2 clay & 1/2 sand, W. Blk. Sand, Sugar	29. 30	Loam & clay, Sugar, W. Blk. Sand, Sugar
6. 7	Loam & clay, Sugar, W. Blk. Sand, Sugar	19. 20	Loam
7. 8	Loam (part clay)	19. 20	1/2 of the same same
7. 10	Loam	21. 22	1/2 of same (part 1/2 with Great North, Sugar, Blk. Sand)
11. 12	Loam, Sugar, W. Blk. Sand, Sugar	29. 30	Loam, part clay, W. Blk. Sand, Blk. Sand, Sugar & Sugar
15. 16	Loam	23. 24	Loam, W. Blk. Sand
19. 20	Loam, Sugar, W. Blk. Sand, Blk. Sand, Sugar	26. 27	Loam
23. 24	Loam, Sugar, Sugar	28. 29	Loam
27. 28	Loam (1/2 sand)	25. 26	Loam with Sand, Sugar, Sugar, good land
31. 32	Loam & clay, Sugar, W. Blk. Sand, Sugar	21. 22	Loam
35. 36	Loam, Sugar, W. Blk. Sand, Sugar	27. 28	Loam
1. 2	Loam, Sugar, W. Blk. Sand, Sugar	31. 32	Loam
3. 4	Loam, Sugar, W. Blk. Sand, Sugar	35. 36	Loam
7. 8	Loam	31. 32	Loam
11. 12	Loam	35. 36	Loam
15. 16	Loam	31. 32	Loam
19. 20	Loam	35. 36	Loam
23. 24	Loam	31. 32	Loam
27. 28	Loam	35. 36	Loam
31. 32	Loam	31. 32	Loam
35. 36	Loam	35. 36	Loam



MAP OF CLINTON TOWNSHIP

TP 2 N R 13 E



Drawn and Compiled by A.D. Crane

2 1875

MAP OF CLINTON

Township 2 North Range 13 East

Scale 2 Inches to one Mile

of the Meridian of Michigan

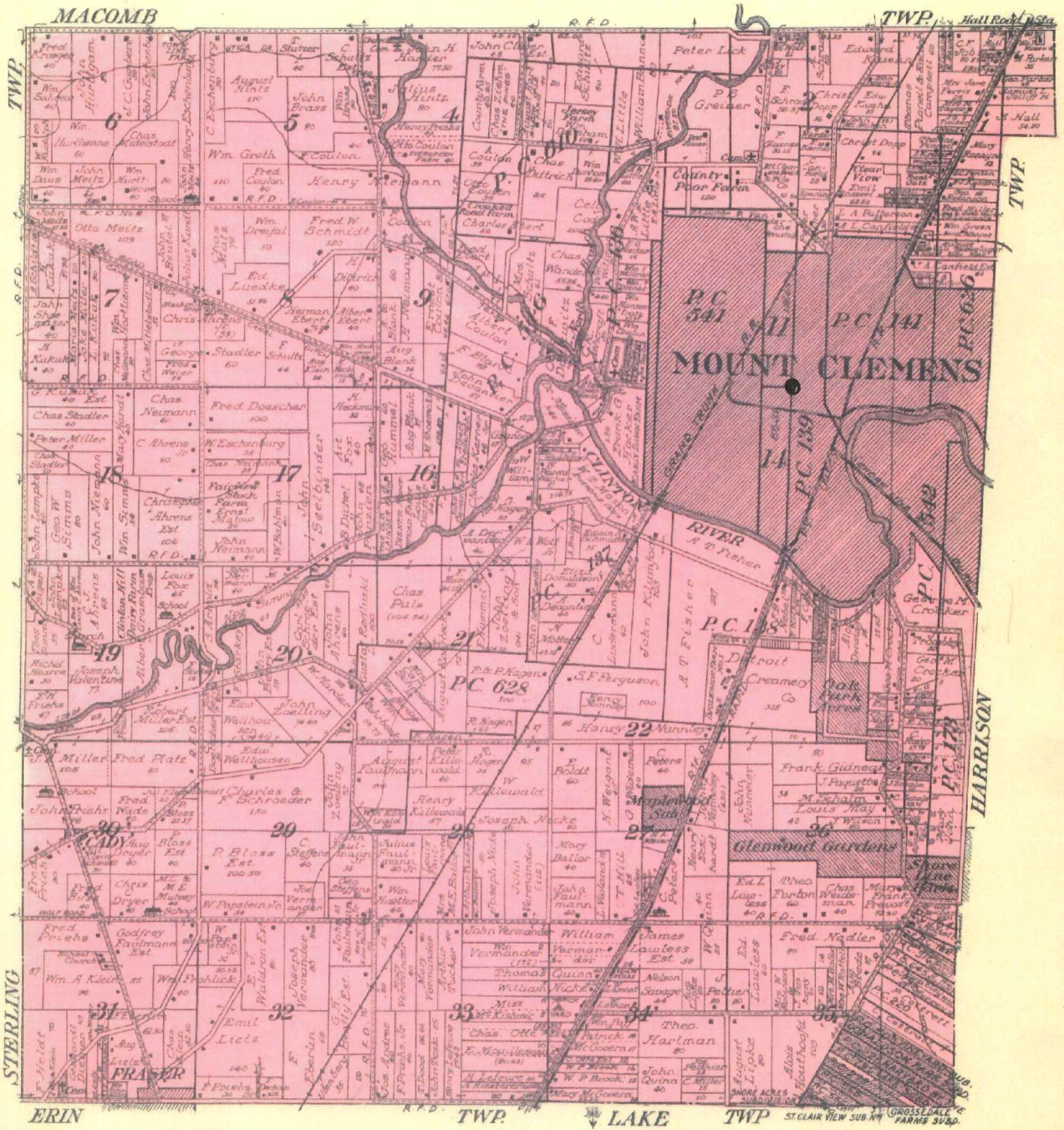


3 1895

MAP OF
CLINTON
 TOWNSHIP

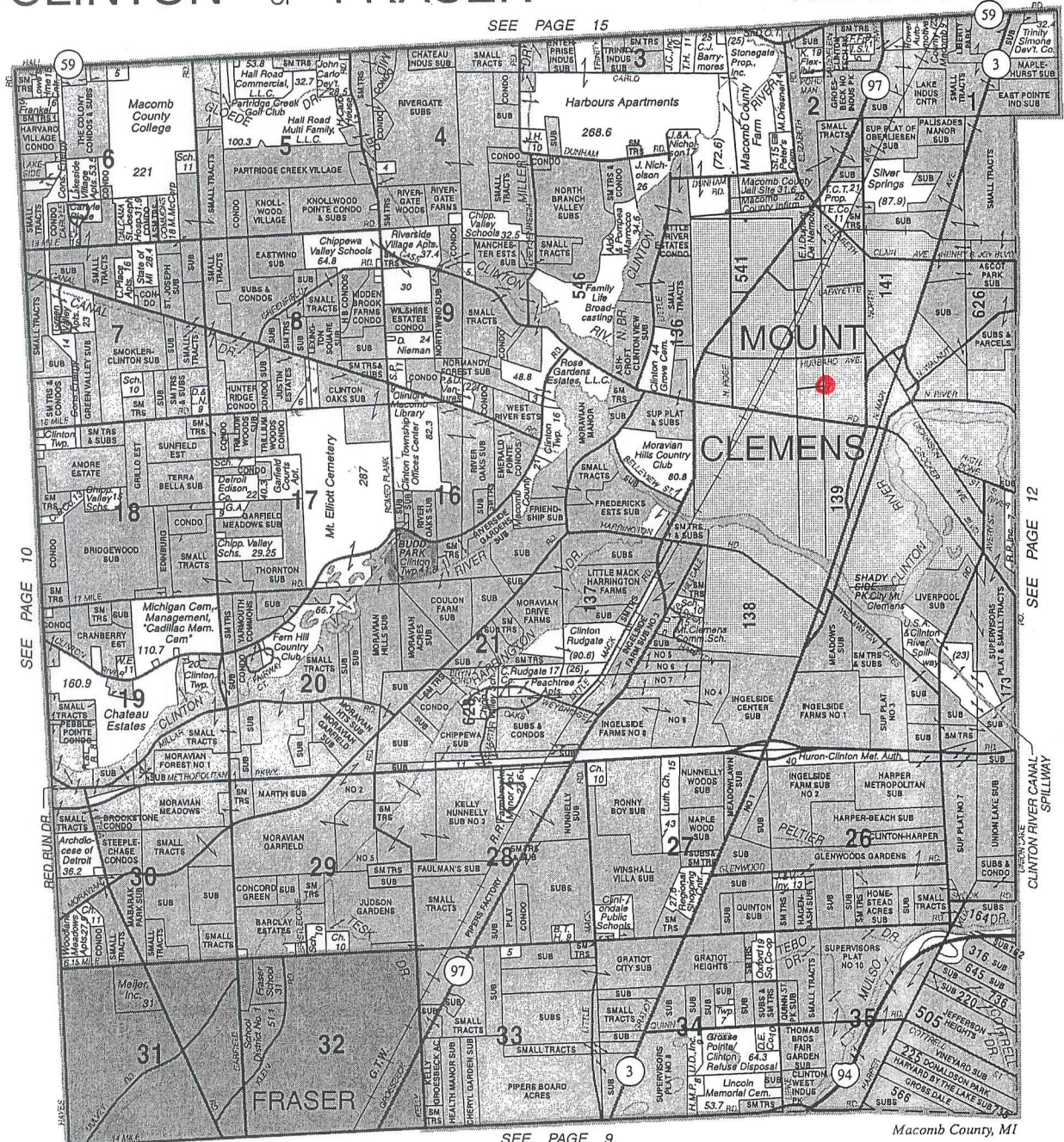
Scale 2 inches to 1 mile

Fractional Township 2 North, Range 13 East of the Michigan Meridian



④ 1916

SEE PAGE 15



© 2006 Rockford Map Publs., Inc.

Macomb County, MI



BOSS ENGINEERING

engineers • surveyors • planners • landscape architects

3121 EAST GRAND RIVER • HOWELL, MI 48843 • (517) 546-4836

24435 HALSTED • FARMINGTON HILLS, MI 48335 • (248) 626-2677

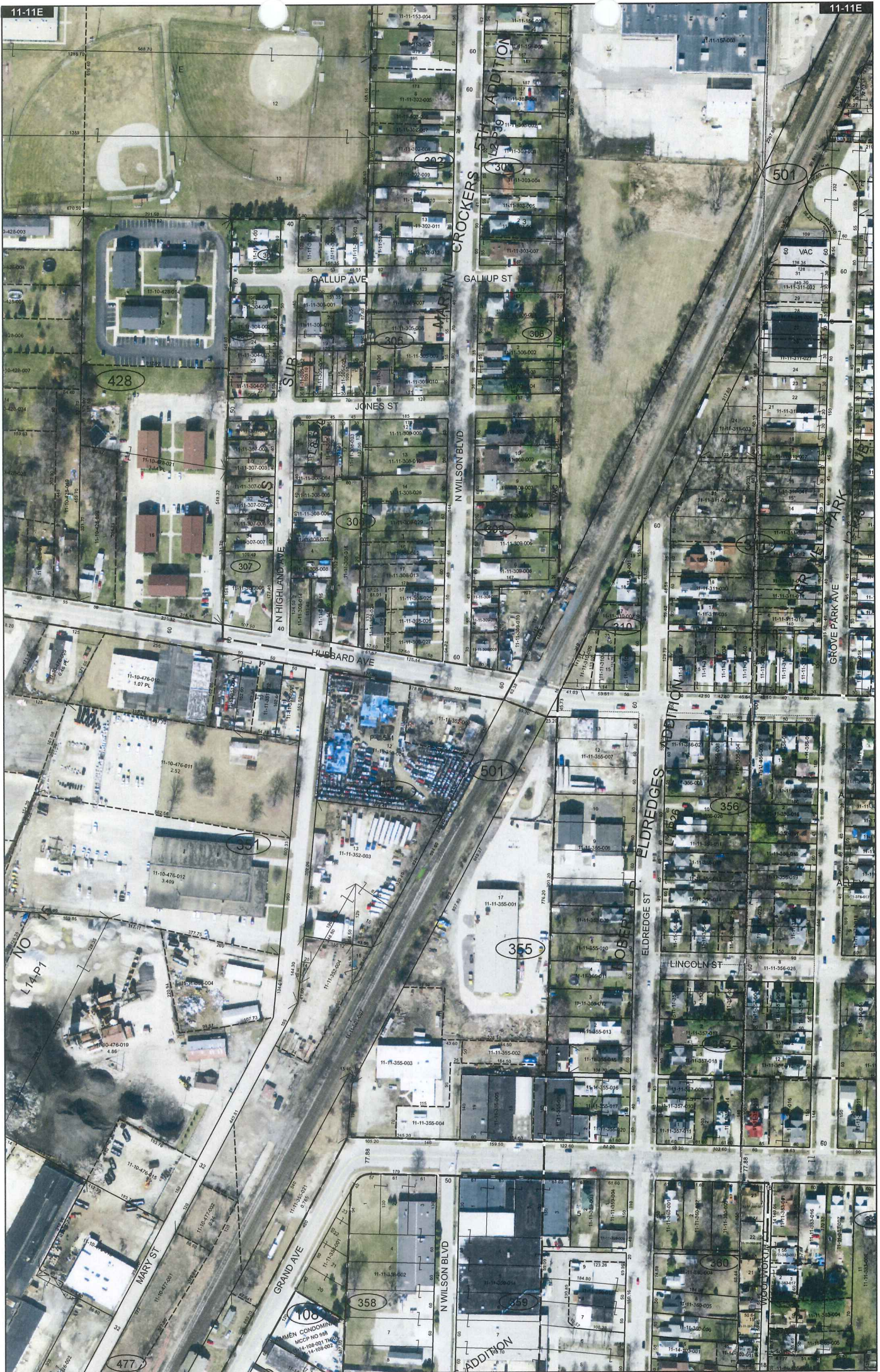
www.bosseng.com

- Residential Subdivisions
- Commercial Developments
- Planned Unit Developments

- Wastewater Treatment Plants
- Septic System Design
- Construction Staking

- Land Divisions
- Boundary and Lot Surveys
- Topographical Surveys
- ALTA Surveys





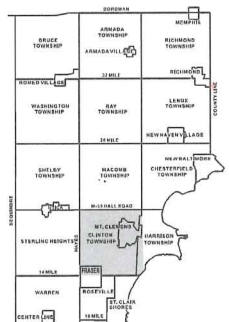
Date of Photography: Spring 2012
 100 50 0 100 200 Feet
 1:1,200

CLINTON TWP SHEET INDEX

DESCRIPTION OF PERMANENT REAL ESTATE INDEX NUMBER
13-19-302-018

11-11E
 MT. CLEMENS

W.1/2 S.W.1/4 SEC.11 T.2N. R.13E.



Legend

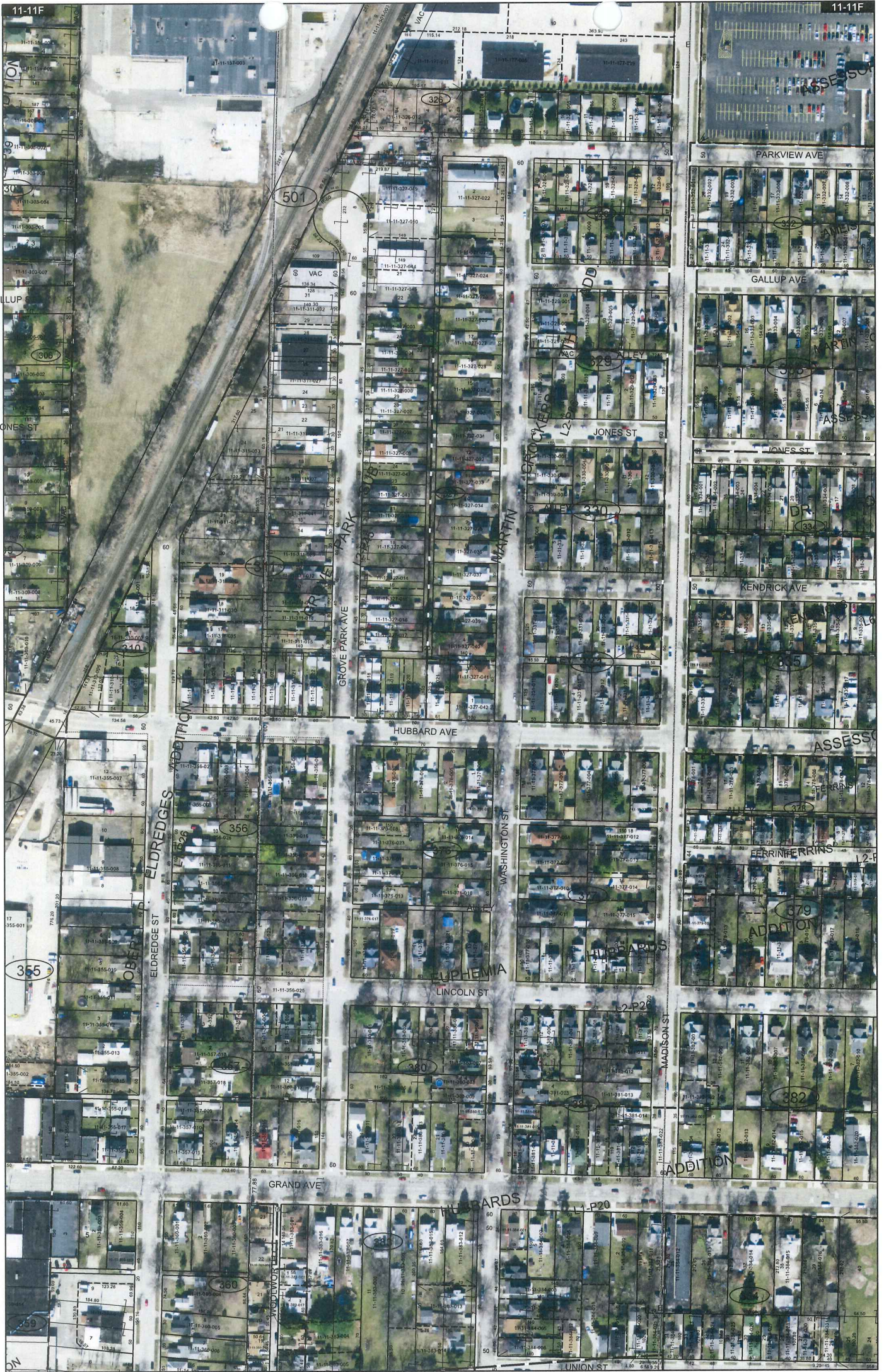
- Platted Area Boundary Line
- Property Line
- Property Split Line
- Property Combined Line
- Township Boundary Line
- Traverse Line
- Dimension Extent Marks
- Dimension Start Marks

Source: Macomb County Department of Planning and Economic Development
 - 2008 Digital Orthophotography Project
 - Parcel Conversion Project

Note:
 Digital Orthophotography horizontal positioning accuracy is 3 feet. Parcel boundary lines should be considered a graphical representation and not in any way a legal survey or engineering document. In general, the horizontal positioning and length accuracy is within 15 feet.

This map is intended for general planning purposes. Site specific evaluation should be verified by field inspection. This is a work in progress and may contain errors and omissions. Please report any potential revisions to (586)469-5285.



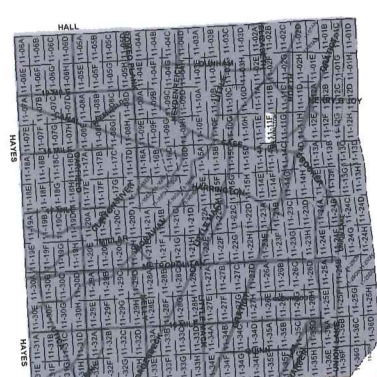
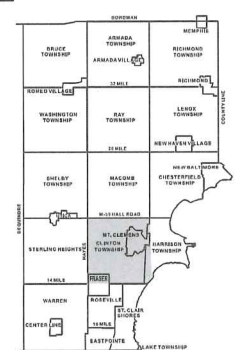


Date of Photography: Spring 2012
 100 50 0 100 200 Feet

CLINTON TWP SHEET INDEX

DESCRIPTION OF PERMANENT REAL ESTATE INDEX NUMBER
13-19-302-018

11-11F



AREA NUMBER	SECTION NUMBER	BLOCK NUMBER	PARCEL NUMBER
13	19	302	018

Legend
— Flatted Area Boundary Line
— Property Line
- - - Property Split Line
— Property Combined Line
- - - Township Boundary Line
— Traverse Line
— Dimension Extent Marks
— Dimension Start Marks

MT. CLEMENS
 E. 1/2 S.W. 1/4 SEC. 11 T. 2N. R. 13E.

Source: Macomb County Department of Planning and Economic Development
 - 2008 Digital Orthophoto Project
 - Parcel Conversion Project

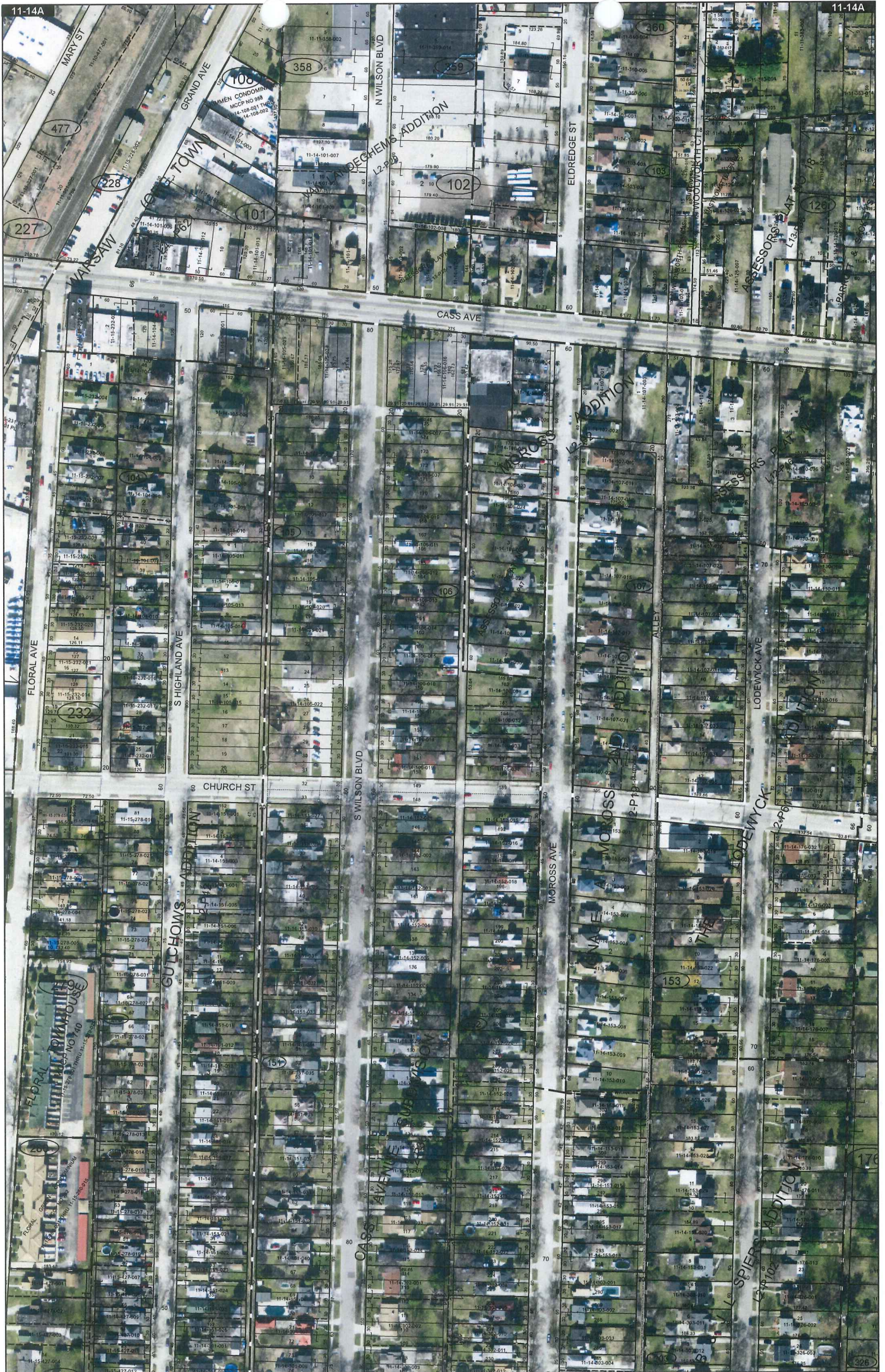
Note: Digital Orthophoto horizontal positioning accuracy is 3 feet. Parcel boundary lines should be considered a graphical representation and not in any way a legal survey or engineering document. In general, the horizontal positioning and length accuracy is within 15 feet.

This map is intended for general planning purposes. Site specific evaluation should be verified by field inspection. This is a work in progress and may contain errors and omissions. Please report any potential revisions to (586) 469-5255.

COPYRIGHT 2009
 MACOMB COUNTY, MI
 All Rights Reserved

GIS MACOMB COUNTY
 Planning and Economic
 Development Department

Published: Sep 27 2013



Date of Photography: Spring 2012
 100 50 0 100 200 Feet
 1:1,200

CLINTON TWP SHEET INDEX

DESCRIPTION OF PERMANENT REAL ESTATE INDEX NUMBER

13-19-302-018

ARE NUMBER (Platted Area)
 SUB AREA NUMBER (Sub-area)
 BLOCK NUMBER (Block)
 PARCEL NUMBER (Parcel)

Legend

- Platted Area Boundary Line
- Property Line
- Property Split Line
- Property Combined Line
- Township Boundary Line
- Traverse Line
- Dimension Extent Marks
- Dimension Start Marks

11-14A

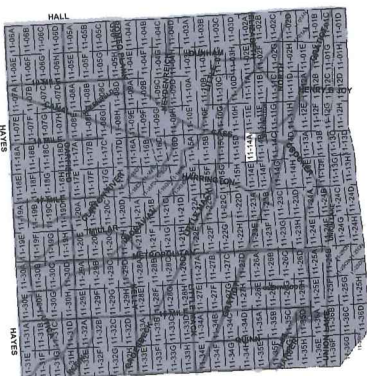
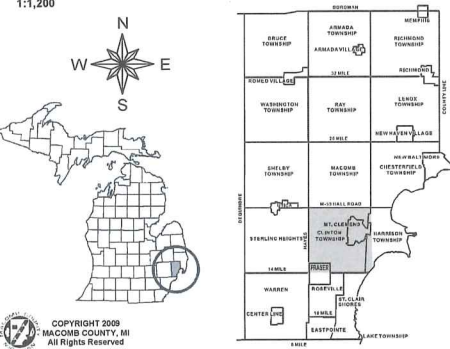
MT. CLEMENS

W.1/2 N.W.1/4 SEC.14 T.2N. R.13E.

Source: Macomb County Department of Planning and Economic Development
 - 2008 Digital Orthophoto Project
 - Parcel Conversion Project

Note: Digital Orthophotography horizontal positioning accuracy is 3 feet. Parcel boundary lines should be considered a graphical representation and not in any way a legal survey or engineering document. In general, the horizontal positioning and length accuracy is within 15 feet.

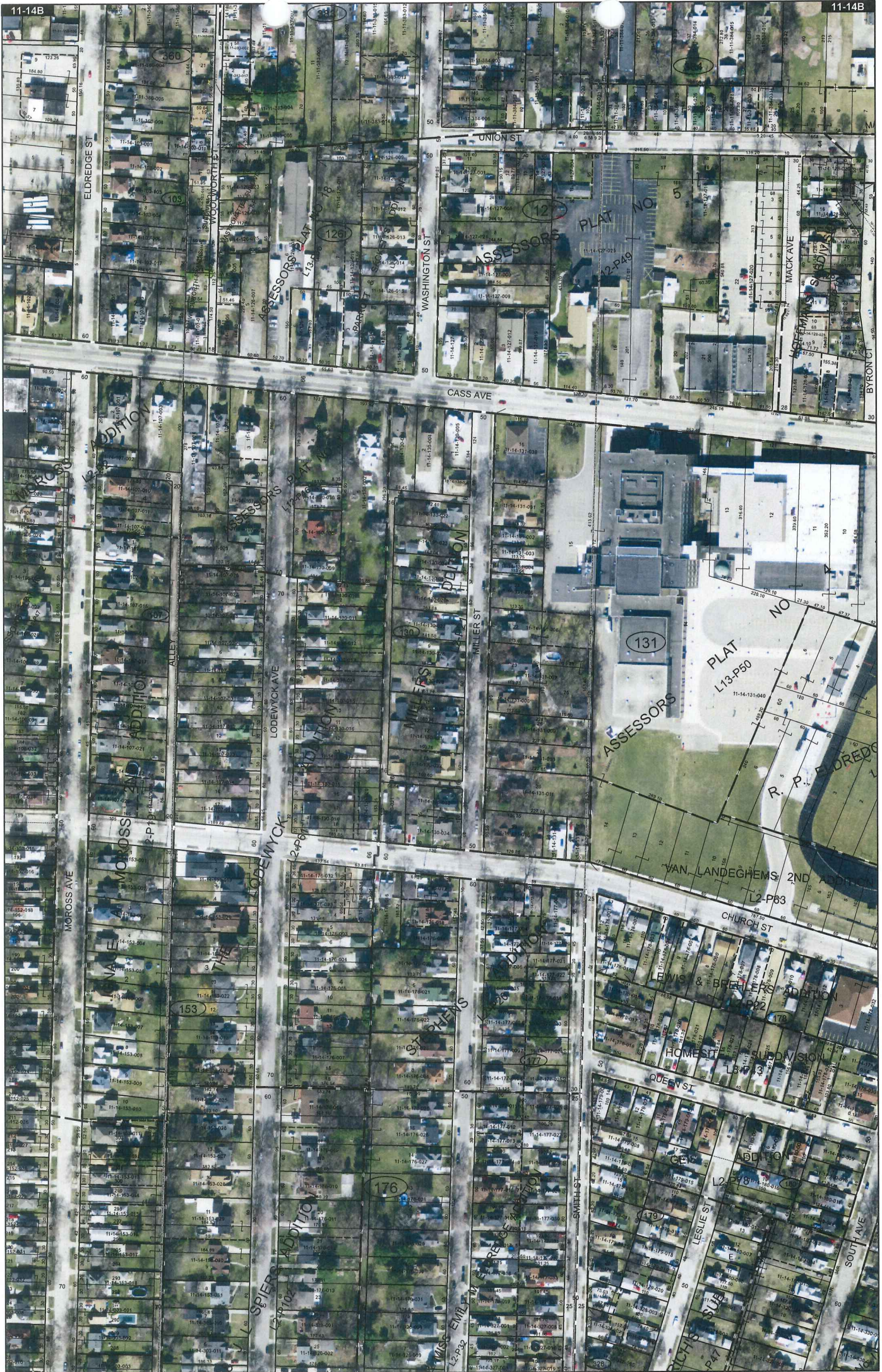
This map is intended for general planning purposes. Site specific evaluation should be verified by field inspection. This is a work in progress and may contain errors and omissions. Please report any potential revisions to (586)469-5285.



GIS MACOMB COUNTY
 Planning and Economic
 Development Department

Published: Jun 06 2013

COPYRIGHT 2009
 MACOMB COUNTY, MI
 All Rights Reserved



Date of Photography: Spring 2012
 100 50 0 100 200 Feet

CLINTON TWP SHEET INDEX

DESCRIPTION OF PERMANENT REAL ESTATE INDEX NUMBER

13-19-302-018

NUMBER SUB AREA NUMBER BLOCK NUMBER PARCEL NUMBER
(13-19-302-018)

- Legend**
- Platted Area Boundary Line
 - Property Line
 - - - Property Split Line
 - Property Combined Line
 - - - Township Boundary Line
 - Traverse Line
 - Dimension Extent Marks
 - Dimension Start Marks

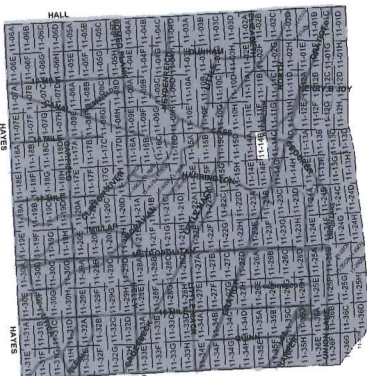
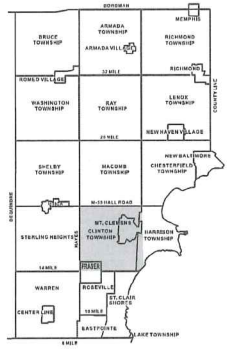
11-14B

MT. CLEMENS

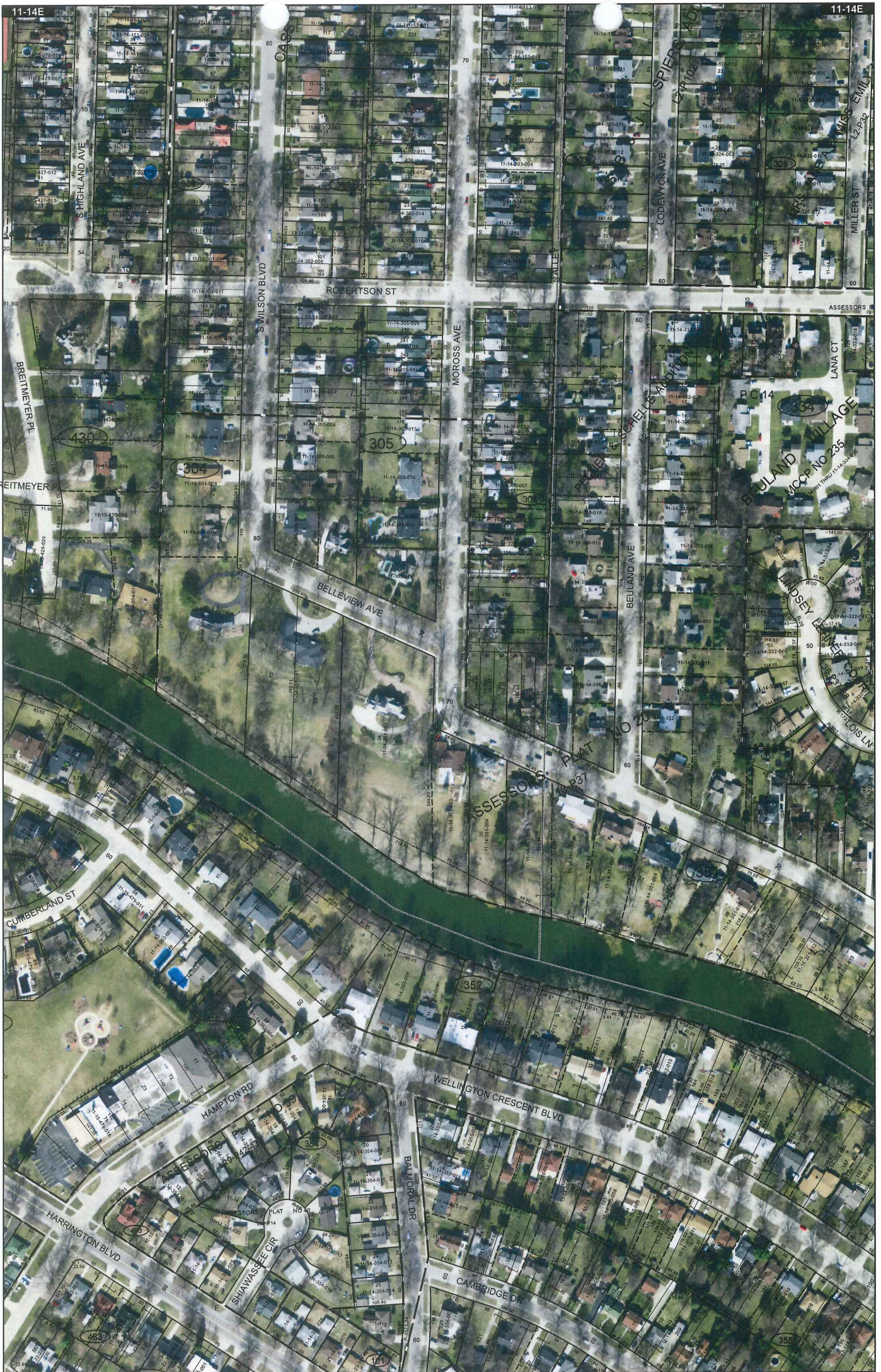
E. 1/2 N.W. 1/4 SEC. 14 T. 2N. R. 13E.

Source: Macomb County Department of Planning and Economic Development
 - 2008 Digital Orthophoto Project
 - Parcel Conversion Project

Note: Digital Orthophoto horizontal positioning accuracy is 3 feet. Parcel boundary lines should be considered a graphical representation and not in any way a legal survey or engineering document. In general, the horizontal positioning and length accuracy is within 15 feet. This map is intended for general planning purposes. Site specific evaluation should be verified by field inspection. This is a work in progress and may contain errors and omissions. Please report any potential revisions to (566)468-5265.



GIS MACOMB COUNTY
 Planning and Economic
 Development Department
 Published: May 16 2014



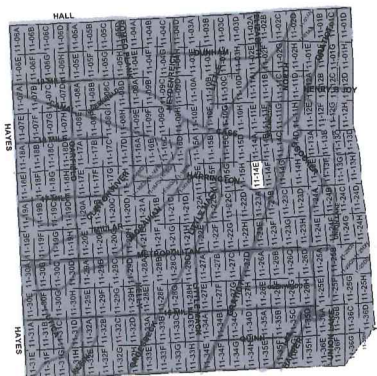
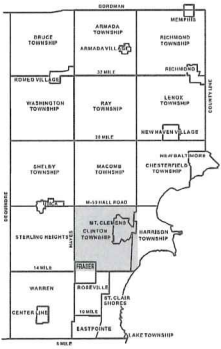
Date of Photography: Spring 2012
 100 50 0 100 200 Feet

CLINTON TWP SHEET INDEX

DESCRIPTION OF PERMANENT REAL ESTATE INDEX NUMBER
13-19-302-018

11-14E
 MT. CLEMENS

W. 1/2 S.W. 1/4 SEC. 14 T. 2N. R. 13E.



Legend

- Platted Area Boundary Line
- Property Line
- Property Split Line
- Township Boundary Line
- Traverse Line
- Dimension Extent Marks
- Dimension Start Marks

Source: Macomb County Department of Planning and Economic Development
 - 2008 Digital Orthophotography Project
 - Parcel Conversion Project

Note:
 Digital Orthophotography horizontal positioning accuracy is 3 feet. Parcel boundary lines should be considered a graphical representation and not in any way a legal survey or engineering document. In general, the horizontal positioning and length accuracy is within 1/8 inch.

This map is intended for general planning purposes. Site specific evaluation should be verified by field inspection. This is a work in progress and may contain errors and omissions. Please report any potential revisions to (586) 469-5265.

COPYRIGHT 2009
 MACOMB COUNTY, MI
 All Rights Reserved



GIS MACOMB COUNTY
 Planning and Economic
 Development Department

Published: Jun 06 2013

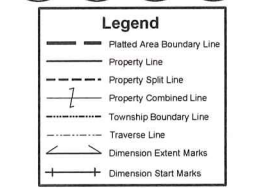
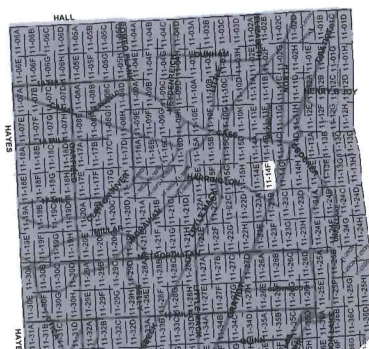
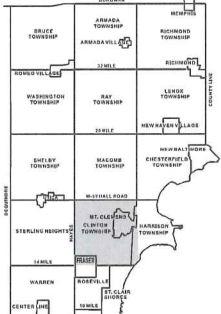


Date of Photography: Spring 2012
 100 50 0 100 200 Feet

CLINTON TWP SHEET INDEX

DESCRIPTION OF PERMANENT REAL ESTATE INDEX NUMBER
13-19-302-018

11-14F
 MT. CLEMENS
 E. 1/2 S.W. 1/4 SEC. 14 T. 2N. R. 13E.



Source: Macomb County Department of Planning and Economic Development
 - 2008 Digital Orthophoto Project
 - Parcel Conversion Project

Note:
 Digital Orthophoto horizontal positioning accuracy is 3 feet. Parcel boundary lines should be considered a graphical representation and not in any way a legal survey or engineering document. In general, the horizontal positioning and length accuracy is within 15 feet.

This map is intended for general planning purposes. Site specific evaluation should be verified by field inspection. This is a work in progress and may contain errors and omissions. Please report any potential revisions to (586)469-5285.

Copyright 2009 MACOMB COUNTY, MI
 All Rights Reserved



GISs MACOMB COUNTY
 Planning and Economic
 Development Department

Published: Jan 08 2015

Beech 14 inches bears S 23 W 22 links
also a Beech 8 in di bears N 84 E 21 links dist
61.47 a W. Ash 10 in di
80.00 Set post for Section 32.10.11 from
which an Elm 11 in dia bears N 30 E 9
links also a B. Ash 13 in bears S 32 E 18 links dist
1st half mile front dry 2^d rate last
half mile same Timber W Oak Beech
Sugar Poplar Lyrus Undergrowth Spire

West Between Sections 3 & 10
24.97 Int^d Private Claims No 136 confirmed
to John Connor 2.96 from the N.W.
Corner 541
Set post for frac section 3 & 10 from
which a B. Ash 12 in di bears N 21 W 10
links dist also a B. Ash 12 in di bears
S. 72 E 9 links dist
Land level and swampy 3^d rate
Timber Sassafras B. Ash & Elm

South Between Sections 10 & 11
4.08 Intersected Private Claims 22.22
west of corner of Lot No 541 confirmed
to Christian Clemens
Land very wet 3^d rate
Set post for cor of frac Sec 10 & 11 from
which a Maple 14 in diam bears
N 30 W 45 lbs dist also a Maple 18 in
diam bears N 21 E 38 links dist

East Between Sections 2 & 11
34.85 Int^d Private Claims 43.00 from the N.W.
corner of Lot No 139 confirmed to Henry Connor
and made corner for Section 2 & 11 on a

Sugar tree 20 in dia
Land level and dry 2^d rate
Timber W Oak Beech Sugar etc.
80.00 Continued without making Hence
South Belson Continued

80.00

West B

50.15 Lift the claim 125.50 from NW corner
of Lot No 139 Confirmed to John Connor
and set post for front Section 11+14 from
which a B. Oak 30 in di bears N 16 W 21
links also a W. Ash 10 in di bears S 52
W 12 links dist Contd

West Between front Sec 11+14

63.37

Intersect Private Claim 63.50 from
corner of Lot No 5411 Confirmed to
C. Clemens from S E corner
thereof and set post for front Section
11+14 from which a Spruce 24 in dia
S. 13 E 24 links dist also an Elm 14
in di bears S 71 E 5 links dist
Land level and dry 2^d rate
Timber W Oak Beech Sugar Spruce
Elm etc etc

South Between Section 2+1

28.90 a W Oak 30 in dia

DIAGRAM AND
OF
HUBBARD'S ADDITION

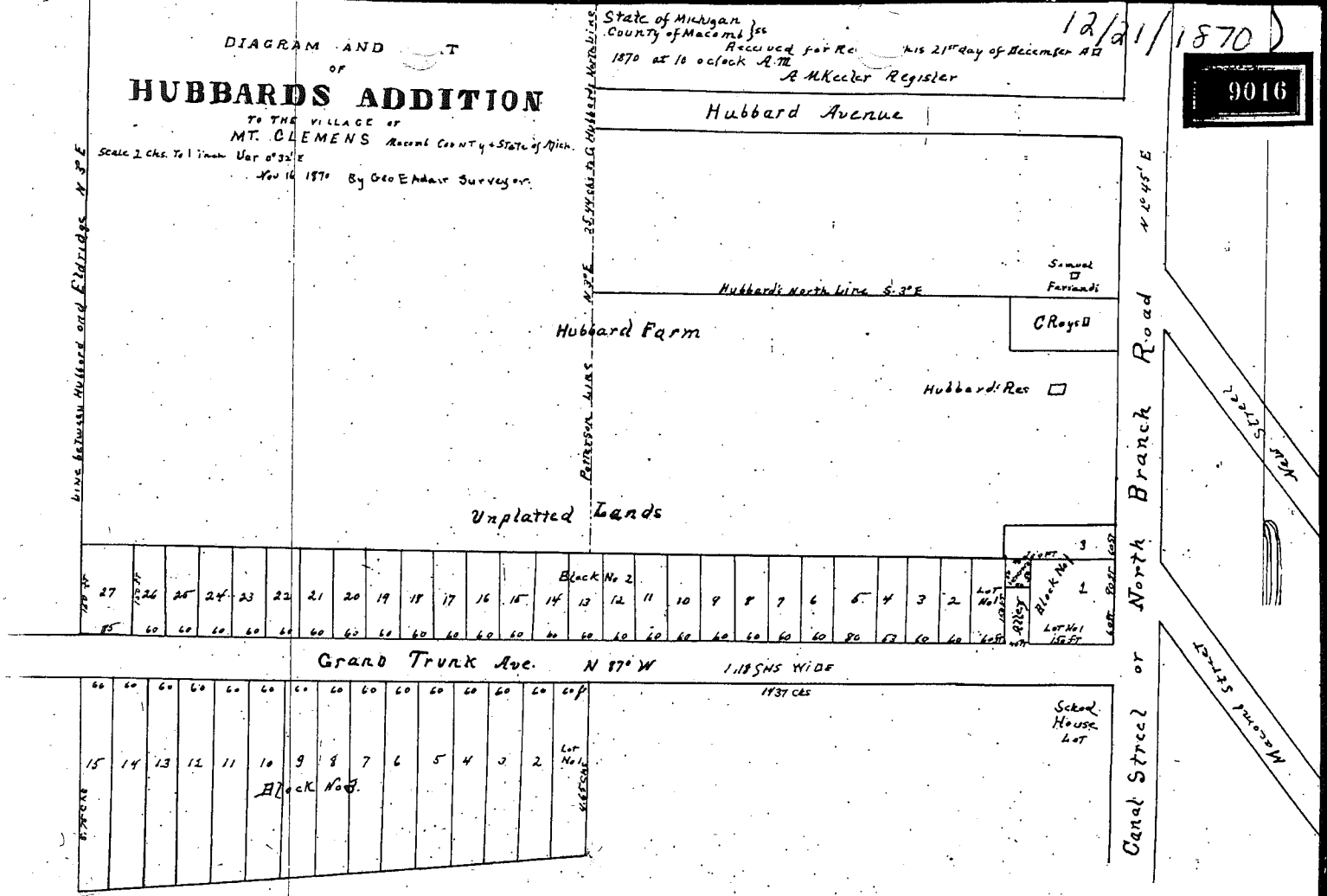
TO THE VILLAGE OF
MT. CLEMENS Macomb County + State of Mich.

Scale 2 chs. to 1 inch Var. of 32'E
Nov 16 1870 By Geo E. Heath Surveyor.

State of Michigan }
County of Macomb }
Received for Rec. this 21st day of December A.D.
1870 at 10 o'clock A.M.
A. M. Keeler Register

12/21/1870

9016



I, Giles Hubbard of Macomb County Michigan
Proprietor + Owner of the following described tract
of land (Taken from the South part of my land
occupied as a farm + situated within the Corporation
of the Village of Mt. Clemens in County) founded on the
South by the School house lot, by the lands of Thos. W.
Snook, Arthur Snook, Mrs. Pratt, John May George Nichol + Charles
Moser, on the West by the lands of Robert P. Edrings, on the
North by the unplatted lands of said Hubbard, and on
the East by North Branch road. do give notice that I have
caused the same to be subdivided in lots + streets
and added to said Village according to the annexed
Diagram + Plat, and do hereby ratify, and confirm
the same for record in said County
Dated December 21st A.D. 1870

In presence of
A. M. Keeler
Geo. E. Heath

Giles Hubbard

I hereby certify that this
plat is a correct copy of the
plat now on record in the
Register of Deeds office having
made, under the supervision
of the Auditor General by tracing
the Plat on record and affiling
thereto a carefully compared copy
of the dedication and Certificate
Dated the 28th day of March, 1870
By me, Ray B. Warner
Clerk Auditor General Department.

State of Michigan }
County of Macomb }
On this 21st day of December,
A.D. 1870 before me, Notary Public in and for
said County personally came Giles Hubbard known
to me to be the person who executed the above
instrument and acknowledged the same to be
his free act and deed.

A. M. Keeler
Notary Public

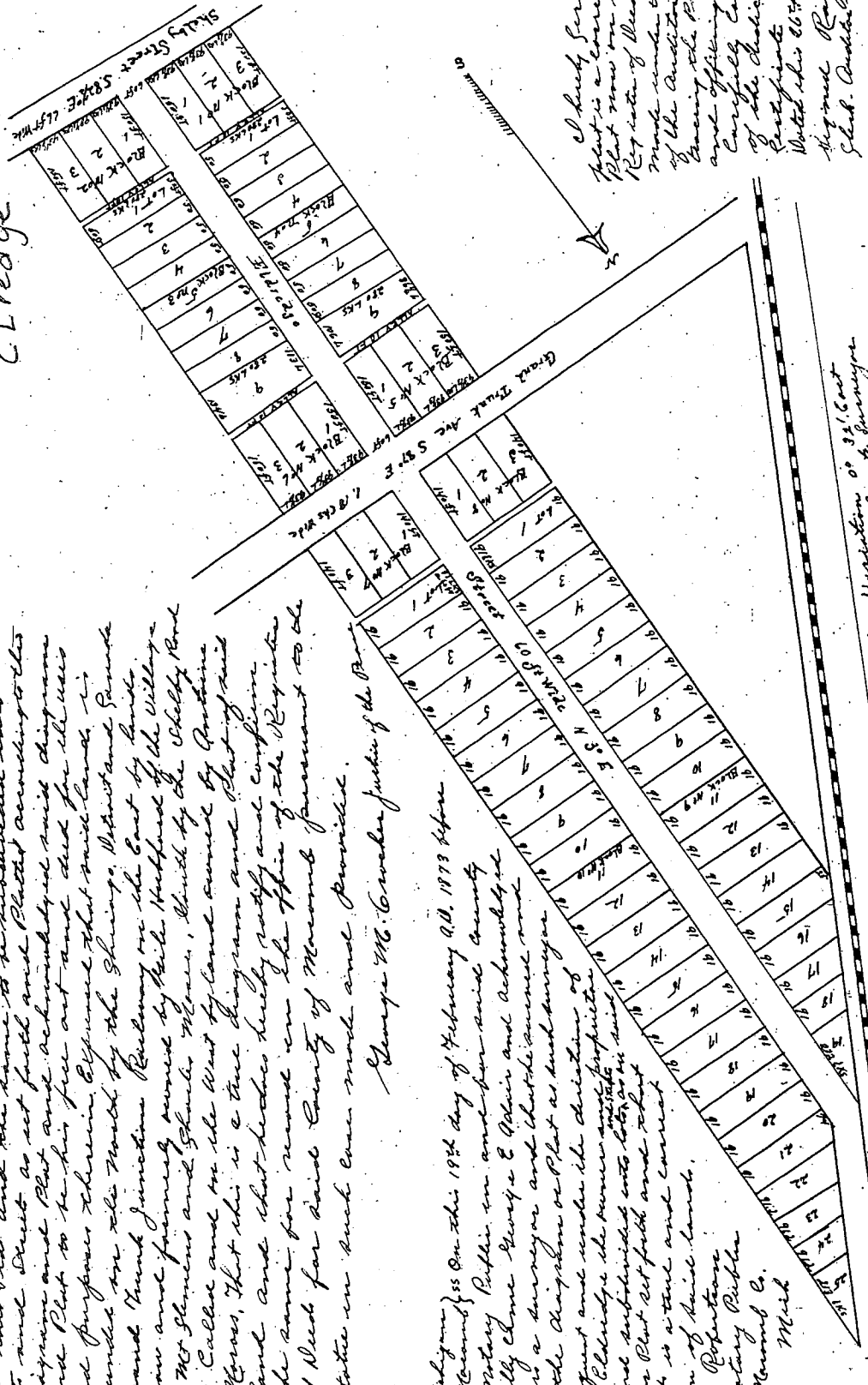
2

1893
d/19/1873

Michigan County }
Register Office }
for record when 1874
day of February a. D. 1873
at 2 B Grand Plat.
S. W. Robertson
Register

Diagram and Plat of
Robert P. Eldridge Addition to the
Village of Mt. Clemons
Macomb County and State of Michigan

Eldridge



I hereby certify that this
plat is a correct copy of the
Plat now on record in the
Register Office, and
marked under the Dispense
of the Auditor General by
having the Plat on record
and affixing thereto a
carefully compared copy
of the Ordination and
Plat file
Witness this 26th day of March 1874
Signed: Roy L. Warner
Shelby Auditor General Michigan

State of Michigan }
County of Macomb }
On this 28th day of January Eighteen
hundred and seventy three before me a Justice of the
Peace in and for said county personally appeared
Robert P. Eldridge known to me to be the person who
caused this Plat and plat to be submitted into
in this Plat and the same to be subdivided into
lots and street as set forth and plotted according to the
diagram and Plat and acknowledged said diagram
and Plat to be his free act and deed for the uses
and purposes therein expressed that said land is
situated in the town of the Shiloh, Macomb County
Grand Trunk Junction Railway on the east by lands
now and formerly owned by Kirk Husband of the Village
of Mt. Clemons and George W. Ross, known by the Shelly Plat
to Callie and on the west by land owned by Antoine
W. Ross, that this is a true diagram and Plat of said
land and that he who hereby signs and confirms
the same for record in the Office of the Register
of Deeds for said County of Macomb pursuant to the
Statute in and ever made and provided.

George W. Crosser Justice of the Peace

State of Michigan }
County of Macomb }
On this 19th day of February A.D. 1873 before
me a Notary Public in and for said county
personally came George P. Eldridge and acknowledged
that he is a surveyor and that he caused and
plotted the diagram or Plat as sub-division
of the tract and under the direction of
Robert P. Eldridge the owner and proprietor
of the land subdivided into lots as in and
shown on Plat set forth and that
this Plat is a true and correct
Subdivision of said land.

S. W. Robertson
Notary Public
Macomb Co.
Mich

Scale 2 Chains to 1 inch
Sept. 28, 1872. By Henry C. Adair County Surveyor
for Macomb County, State of Michigan
U. S. P. 31, Cont



7/30/1874
Book 2 pg. 13

MAP

OF PETER GREINER'S ADDITION TO THE VILLAGE OF MT. CLEMEN

Know all men by these presents that we Peter F. Greiner and Amelia Greiner his wife proprietors of the lands for which this Plat is laid out, do hereby acknowledge that we have caused said plat to be made of Peter Greiner's Addition in the Village of Mt. Clemens, subdivision of our Lot No. 1, 2 & 3 of Rehebers Addition in said Village on Private Claim No. 26, in Township No. 2, North, Range No. 23 East, Township of Clinton, County of Macomb and State of Michigan, as our free Act and Deed, and the Streets and Alleys therein laid out as hereby described to the use of the Public as provided by Law.

Witness, our hands and Seals this 30th day of June A.D. 1874.

P. Greiner
Amelia Greiner

State of Michigan }
County of Macomb }
On this 30th day of June A.D. 1874 before me a Notary Public in and for the County of Macomb, personally appeared before me Peter F. Greiner and Amelia Greiner his wife, known to me to be the persons who executed the above, and severally acknowledged the same to be their free Act and Deed, and the said Amelia Greiner on a private examination by me separate and apart from her said husband, acknowledged that she executed the same as and without fear or compulsion from any one.

Geo. S. Redair Notary Public
for Macomb County

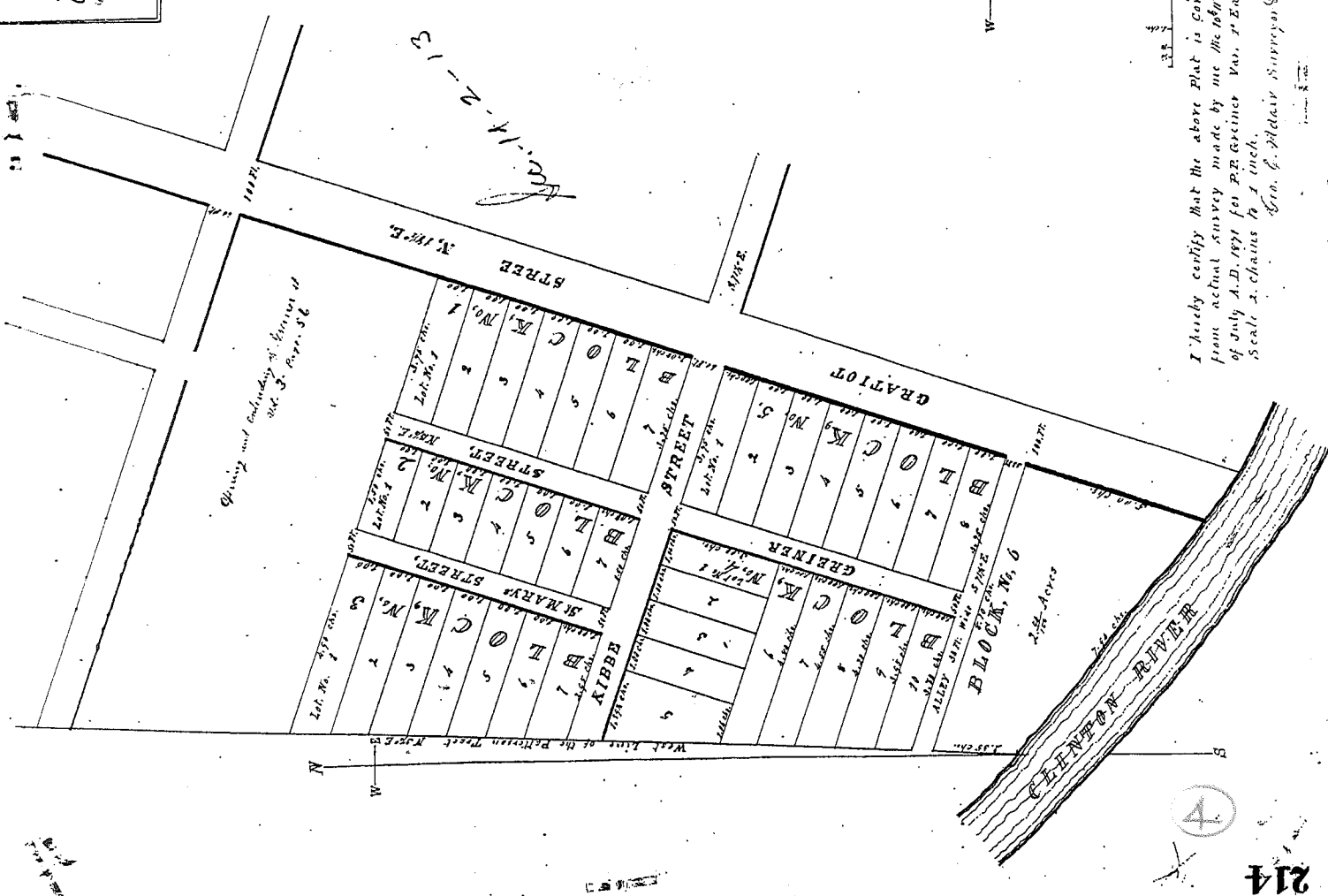
Macomb County ss. The duly sworn and lawfully qualified the above and foregoing Plat with a copy of the same having been filed in the office of the Register of Deeds for Macomb County on the 30th day of July 1874, and that it is an exact duplicate thereof of the original of said Plat, which was filed in the office of the Register of Deeds for Macomb County on the 30th day of July 1874.

Macomb County ss. Received for record this 30th day of July A.D. 1874 and recorded in Plat Book 2 on page 5
A.M. Keeler Register

I hereby certify that the above Plat is correct from actual survey made by me the Notary Public of July A.D. 1874 for Peter Greiner vs. Rehebers Addition in the Village of Mt. Clemens and that it is an exact duplicate thereof of the original of said Plat, which was filed in the office of the Register of Deeds for Macomb County on the 30th day of July 1874.

9157

A.M. Keeler Register
Geo. S. Redair Surveyor & Eng.



Received and filed in
Notary Public's Office
July 30, 1874
A.M. Keeler
of Macomb

4

214

PLAF - MT OLEMS

In the matter of the opening }
of the } Probate Court
Street in the city of Mt Clemens } File No 472E
Michigan } January 10-1908
Description of Property;

1/That piece of land bounded on the north by land of Ulrich, on the east be a continuation of the east side line of the present Greater Street if extended northerly. On the south by the North line of Greater Addition to Mt Clemens on the west by the west line of the present Greater Street if extended northerly.

2/That piece of land bounded South by Charles, East by a continuation of the east side line of the present Greater Street, West by the west side line of the present Greater Street, extending Northwardly, bounded North by Robertson Street; East by a continuation of the east side line of the present Greater Street, extending Northwardly, South by the land of Fleishman, bounded North by Robertson Street; East by a continuation of the east side line of the present Greater Street, extending Northwardly, South by the land of Ulrich, and West by the continuation of the west side line of the present Greater Street if extended Northerly.

Signed James G Rucker,
Circuit Judge

No Decees of Judge
Curtis A Taylor
Plat Examiners

W.C. PAT. - Page 9157

PLAF - MT OLEMS

In the matter of opening }
and extending Lealie Street } In Probate Court
Mt Clemens. } File No 441E

Description of Property
1/That part of Lot 1, of the survey and plat of part of the estate of Conrad Geis made in connection with the partition of said real estate and recorded in the Register of Deeds for said, Macomb County, in Liber 119 of Deeds on page 784-800, by the extension of the east and west side lines of said Lealie Street as now opened and the north and south side lines of said Lot 1.

2/That part of Lot 5, of said subdivision of a part of said Geis Estate bounded by the extension of the east and west side lines of said Lealie Street as now opened and the north and south side lines of said Lot 5.

3/That part of Lot 4, of said subdivision of part of said Geis Estate bounded by the extension of the east and west side lines of said Lealie Street as now opened and the north and south side lines of said Lot 4.

4/That part of Lot 3, of said subdivision of a part of said Geis Estate bounded by the extension of the east and west side lines of said Lealie Street as now opened and the north and south side lines of said Lot 3.

5/That part of Lot 2, of said subdivision of part of said Geis Estate bounded by the extension of the east and west side lines of said Lealie Street as now opened and the north and south side lines of said Lot 2.

6/That part of Lot 6, of said subdivision of part of said Geis Estate bounded north by Harold Street, East by the extension of the east side line of Lealie Street as now opened, south by Lot 5 of said subdivision, of said Geis Estate.

It is ordered, adjudged and decreed that the determination and award made by the jury empaneled in the above entitled cause be and the same are hereby confirmed as shown by the records and proceedings in said cause on file and of record in this cause. Seth W Knight
Judge of Probate

March 18-1908
Curtis A Taylor
Plat Examiners

16 X



1850 1854

9181

Plat OK No 29 Van Landeghem's Pg. 29

11/9/1885

State of Michigan
County of Macomb
We J. S. Farrar Register of Deeds
and L. M. Sackett Surveyor hereby certify that we have separately
carefully compared this duplicate plat with the original plat of
Van Landeghem's Addition to the City of Mt. Clemens
and that it is an exact duplicate thereof and of the
whole of each copy or plat

Addition
to the
City of Mt. Clemens

RECEIVED AND FILED
In Auditor General's Office
December 11 1885
A. H. [Signature]
Dep. Aud. Gen'l.

J. S. Farrar Register of Deeds
L. M. Sackett Surveyor

City of Mt. Clemens

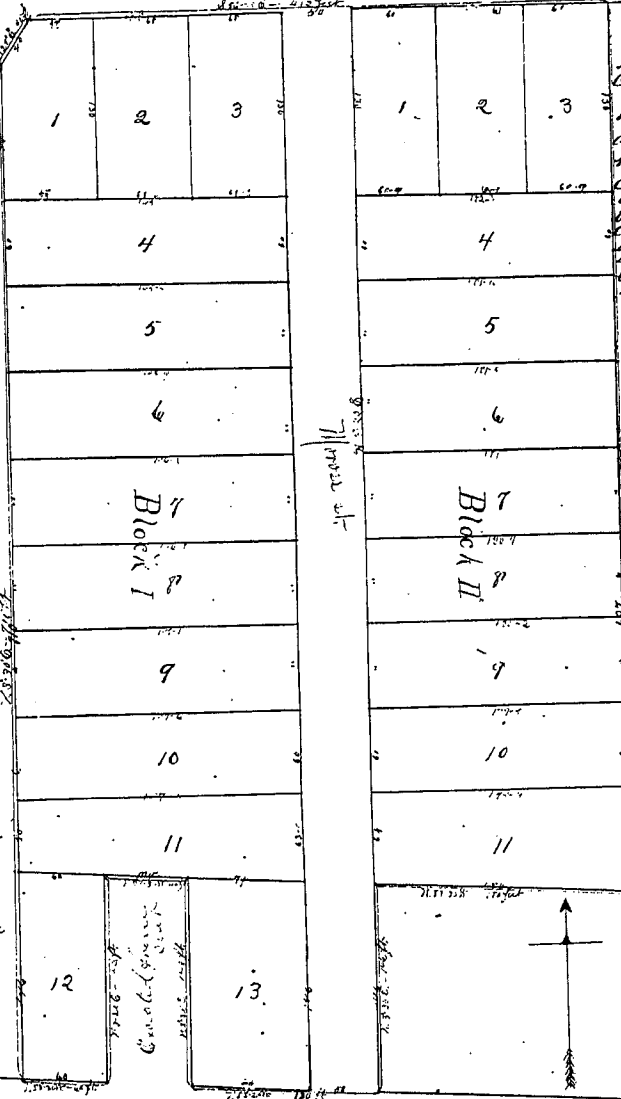
Registers Office
Macomb County
Received for Record this 9th day of November A.D. 1885
at 4 o'clock P.M. and recorded in Plat Book No 2 on page 29
J. S. Farrar
Register

Examined and Approved November 12, 1885
H. R. [Signature]
Register of Deeds

Probators Certificate
I do hereby certify that I
examined the copy of the land
plat titled and described and
that it is true and correct
J. S. Farrar
Register of Deeds

LEANDER ST.

GRAND TRUNK AVE.



State of Michigan
County of Macomb
We J. S. Farrar Register of Deeds
and L. M. Sackett Surveyor
hereby certify that the same
carefully compared the original
copy with the duplicate plat of
Van Landeghem's Addition to the
City of Mt. Clemens and that it
is an exact duplicate thereof
and of the whole of each copy
or plat.
J. S. Farrar Register of Deeds
L. M. Sackett Surveyor

Description

This plat is an addition
to the City of Mt. Clemens and is
situated in the City of Mt. Clemens
and is bounded as follows: Commencing at
the southerly corner of Lot No. 1, Block
City of Mt. Clemens, thence
North 87° 50' 00" West one hundred and
seventy feet to a stake, and then
North 87° 50' 00" East one hundred
and eighty feet to the corner of
Grand Trunk Ave. thence
South 87° 50' 00" East one hundred
and eighty feet to the corner of
Leander St. thence South 87° 50' 00"
West one hundred and eighty feet
to the corner of Leander St. and
Grand Trunk Ave. thence
North 87° 50' 00" West one hundred
and seventy feet to the corner of
Leander St. and Grand Trunk Ave.
thence South 87° 50' 00" East
one hundred and eighty feet to
the corner of Grand Trunk Ave. and
Leander St. thence North 87° 50' 00"
West one hundred and seventy feet
to the corner of Leander St. and
Grand Trunk Ave. thence
South 87° 50' 00" East one hundred
and eighty feet to the corner of
Leander St. and Grand Trunk Ave.
thence North 87° 50' 00" West
one hundred and seventy feet
to the corner of Leander St. and
Grand Trunk Ave. thence
South 87° 50' 00" East one hundred
and eighty feet to the corner of
Leander St. and Grand Trunk Ave.

SURVEYORS
CERTIFICATE

I do hereby certify
that the surveyor for
Dimitry [Name]
in the month of June, 1885,
Van Landeghem's Addition
to the City of Mt. Clemens,
is perfectly correct and just
in this matter.
L. M. Sackett
Surveyor

Shelby St.

State of Michigan
County of Macomb
On this 6th day of June A.D. 1885, before me
a Notary Public in and for said county personally appeared
Van Landeghem to whom to me to be the person who executed
the foregoing instrument and acknowledged the execution
of the same.
J. S. Farrar
Notary Public for Macomb County

MONROE ST.

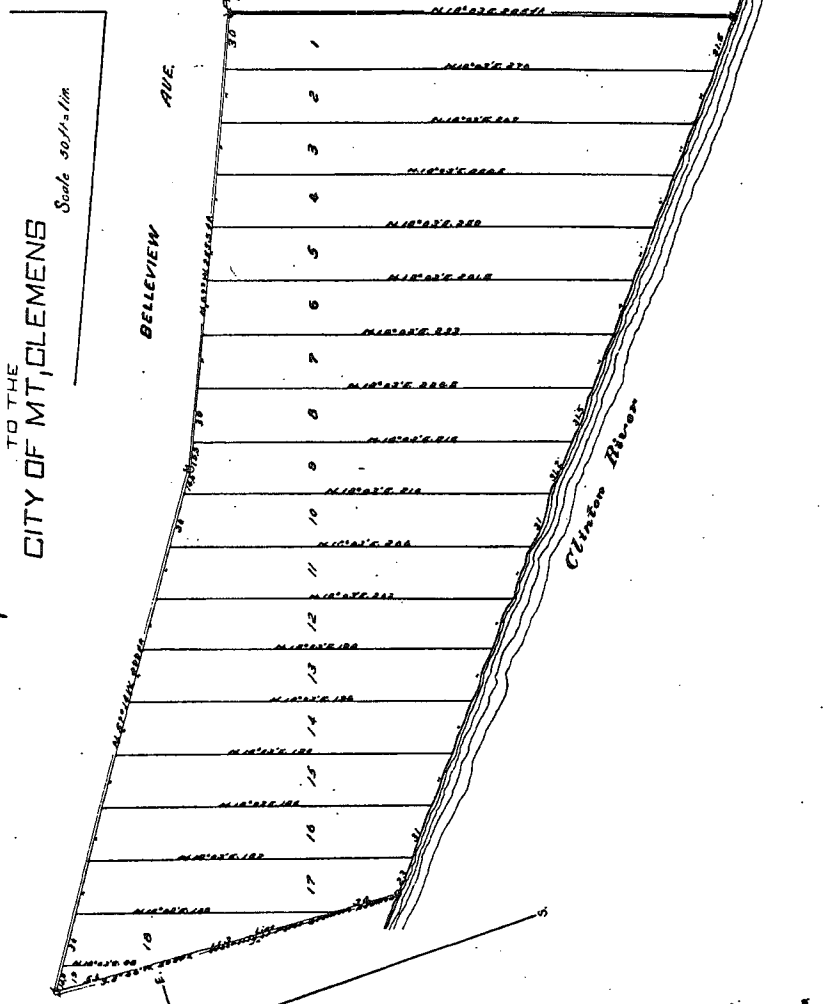
State of Michigan
County of Macomb
I, the undersigned, being one of the trustees of the City of Mt. Clemens,
do hereby certify that the plan and plat of the same
as shown to me by the person who executed the same, and
the division of the same, shown to me by the person who
executed the same, and the division of the same, shown to me
by the person who executed the same, and the division of the same,
shown to me by the person who executed the same, and the division
of the same, shown to me by the person who executed the same,
and that it is an exact duplicate thereof and of the whole of
each copy or plat.
Do this 6th day of June A.D. 1885.
[Signature]
Trustee

L 2 Pg 91
10/19/1906

1893

DR. WILSON'S ADDITION TO THE CITY OF MT. CLEMENS

Scale 50 ft. = 1 in.



DEDICATION

KNOW ALL MEN BY THESE PRESENTS That we William D. Wilson and Nellie Wilson, his wife have caused the land embraced in the annexed plat to be surveyed laid out and platted to be known as Dr. Wilson's Addition to the City of Mt. Clemens and that the streets and alleys as shown on said plat are hereby dedicated to the use of the public.

SIGNED AND SEALED IN PRESENCE OF

ELMER K. SUTTON
STUART H. SWITZER

WILLIAM D. WILSON
NELLIE WILSON

DESCRIPTION

The land embraced in the annexed plat of Dr. Wilson's Addition to the City of Mt. Clemens is described as follows: Commencing at a point on the westerly side line of South Gratiot Avenue where the same is intersected by the southerly side line of Bellevue Avenue in the City of Mt. Clemens; thence westerly along the southerly side line of Bellevue Avenue a distance of six hundred and twenty feet to the southerly corner of the lot of Mrs. Granger's Addition to the Village (now City) of Mt. Clemens; thence southerly along the said westerly line of Mrs. Granger's Addition a distance of one hundred and twenty feet to the westerly bank of the Clinton River; thence down stream along the westerly bank of the Clinton River to a point where the same is intersected by the westerly line of South Gratiot Avenue; thence westerly along the westerly line of South Gratiot Avenue a distance of one hundred and twenty feet to the point of State of Michigan's Addition to the Village of Mt. Clemens.

ENGINEER'S CERTIFICATE

I hereby certify that the plat herein attached is a correct one and that permanent monuments consisting of steel pins and other have been placed at all points and at all intersections of streets.

W. Wilson
Civil Engineer

State of Michigan ss.
County of Macomb

On this 18th day of July 1906 before me a Notary Public in and for said county, personally came the persons named William D. Wilson and Nellie Wilson, his wife, known to me to be the persons who executed the above dedication, and acknowledged the same to be their own free act and deed.

Elmer K. Sutton
Notary Public, Macomb Co. Mich.
My commission expires April 1, 1908

State of Michigan ss.
County of Macomb

We Elmer K. Sutton, Register of Deeds and J. William Civil Engineer, hereby certify that we have each carefully compared the annexed copy with the original plat of Dr. Wilson's Addition to the City of Mt. Clemens and that it is an exact copy hereof and of the whole of and original map or plat.

Elmer K. Sutton, Register of Deeds
J. W. Wilson, Civil Engineer

State of Michigan ss.
County of Macomb

We Elmer K. Sutton, Register of Deeds and J. William Civil Engineer, hereby certify that we have each carefully compared the annexed copy with the plat of Dr. Wilson's Addition to the City of Mt. Clemens now of record in the office of said Register of Deeds, and that it is a true transcript herefrom and of the whole of such record.

Elmer K. Sutton, Register of Deeds
J. W. Wilson, Civil Engineer

Examined and Approved
August 1, 1906
John F. Williams
Deputy Auditor General

RECEIVED AND FILED
IN AUDITOR GENERAL'S OFFICE,
Nov. 25, 1906
John F. Williams
Deputy Auditor General

STATE OF MICHIGAN ss.
MACOMB COUNTY, Oct 9 1906
M. Clemens, Notary Public.
This instrument was received for record this day at proper conflict was furnished in compliance with Act of 1905 (Comp. Laws, 1904, p. 1077).
Elmer K. Sutton, Register of Deeds, Macomb County, Michigan.

REGISTERS OFFICE,
City of Macomb,
Michigan.
Received the 9th day
of October, A. D. 1906, at
7:00 o'clock P. M. and file
d on Page 77 of 125
Elmer K. Sutton, Register.

9237

9237

9237

FILE NUMBER	DATE	LIBRARY	PAGE
10	11/15/55	15	15
11	11/15/55	15	15
12	11/15/55	15	15
13	11/15/55	15	15
14	11/15/55	15	15
15	11/15/55	15	15
16	11/15/55	15	15
17	11/15/55	15	15
18	11/15/55	15	15
19	11/15/55	15	15
20	11/15/55	15	15
21	11/15/55	15	15
22	11/15/55	15	15
23	11/15/55	15	15
24	11/15/55	15	15
25	11/15/55	15	15
26	11/15/55	15	15
27	11/15/55	15	15
28	11/15/55	15	15
29	11/15/55	15	15
30	11/15/55	15	15
31	11/15/55	15	15
32	11/15/55	15	15
33	11/15/55	15	15
34	11/15/55	15	15
35	11/15/55	15	15
36	11/15/55	15	15
37	11/15/55	15	15
38	11/15/55	15	15
39	11/15/55	15	15
40	11/15/55	15	15
41	11/15/55	15	15
42	11/15/55	15	15
43	11/15/55	15	15
44	11/15/55	15	15
45	11/15/55	15	15
46	11/15/55	15	15
47	11/15/55	15	15
48	11/15/55	15	15
49	11/15/55	15	15
50	11/15/55	15	15
51	11/15/55	15	15
52	11/15/55	15	15
53	11/15/55	15	15
54	11/15/55	15	15
55	11/15/55	15	15
56	11/15/55	15	15
57	11/15/55	15	15
58	11/15/55	15	15
59	11/15/55	15	15
60	11/15/55	15	15
61	11/15/55	15	15
62	11/15/55	15	15
63	11/15/55	15	15
64	11/15/55	15	15
65	11/15/55	15	15
66	11/15/55	15	15
67	11/15/55	15	15
68	11/15/55	15	15
69	11/15/55	15	15
70	11/15/55	15	15

FILE NUMBER	DATE	LIBRARY	PAGE
71	11/15/55	15	15
72	11/15/55	15	15
73	11/15/55	15	15
74	11/15/55	15	15
75	11/15/55	15	15
76	11/15/55	15	15
77	11/15/55	15	15
78	11/15/55	15	15
79	11/15/55	15	15
80	11/15/55	15	15
81	11/15/55	15	15
82	11/15/55	15	15
83	11/15/55	15	15
84	11/15/55	15	15
85	11/15/55	15	15
86	11/15/55	15	15
87	11/15/55	15	15
88	11/15/55	15	15
89	11/15/55	15	15
90	11/15/55	15	15
91	11/15/55	15	15
92	11/15/55	15	15
93	11/15/55	15	15
94	11/15/55	15	15
95	11/15/55	15	15
96	11/15/55	15	15
97	11/15/55	15	15
98	11/15/55	15	15
99	11/15/55	15	15
100	11/15/55	15	15

FILE NUMBER	DATE	LIBRARY	PAGE
101	11/15/55	15	15
102	11/15/55	15	15
103	11/15/55	15	15
104	11/15/55	15	15
105	11/15/55	15	15
106	11/15/55	15	15
107	11/15/55	15	15
108	11/15/55	15	15
109	11/15/55	15	15
110	11/15/55	15	15
111	11/15/55	15	15
112	11/15/55	15	15
113	11/15/55	15	15
114	11/15/55	15	15
115	11/15/55	15	15
116	11/15/55	15	15
117	11/15/55	15	15
118	11/15/55	15	15
119	11/15/55	15	15
120	11/15/55	15	15
121	11/15/55	15	15
122	11/15/55	15	15
123	11/15/55	15	15
124	11/15/55	15	15
125	11/15/55	15	15
126	11/15/55	15	15
127	11/15/55	15	15
128	11/15/55	15	15
129	11/15/55	15	15
130	11/15/55	15	15

9237

9237

9237

CITY OF MOUNT CLEMENS



1. Francis W. Hester, City Clerk for the City of Mount Clemens, do hereby certify that attached is a true and correct copy of the minutes of the Board of Mount Clemens City Commission at its meeting held on February 23, 1954.

Francis W. Hester
 City Clerk
 Mount Clemens, Michigan

CITY OF MOUNT CLEMENS



1. Francis W. Hester, City Clerk for the City of Mount Clemens, do hereby certify that attached is a true and correct copy of the minutes of the Board of Mount Clemens City Commission at its meeting held on February 23, 1954.

Francis W. Hester
 City Clerk
 Mount Clemens, Michigan

9237

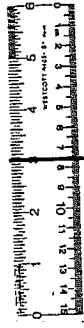
CITY OF MOUNT CLEMENS



1. Francis W. Hester, City Clerk for the City of Mount Clemens, do hereby certify that attached is a true and correct copy of the minutes of the Board of Mount Clemens City Commission at its meeting held on February 23, 1954.

Francis W. Hester
 City Clerk
 Mount Clemens, Michigan

24X



An American International Opportunity Company

An American International Opportunity Company

Auth. Sec

0123/1927
h. 12 pg. 39

23806

WOOLWORTH - FRANCIS SUBDIVISION

of a part of Fractional Section 14, T2N R13E,
City of Mount Clemens, Macomb County, Michigan.

Aug 22-1927
J. L. Haver

Book
8/22/27

Museum
Woolworth-Francis Sub
Aug 23 930
a 27 Plate
39 Hugh C. Whiting

All dimensions given in feet and decimals thereof

Aug 24-1927
J. L. Haver

KNOW ALL MEN BY THESE PRESENTS: That We, Raymond J. Francis, and Eva B. Francis, his wife, and Daniel R. Costello and Esther M. Costello, his wife as deed holders, and Herbert G. Chapton, President, Woolworth, and Nettie W. Woolworth, his wife, as deed holders, and Mt. Clemens Savings Bank, Swanson, formerly Emily Conklin, and Florence Little, as mortgagees, have caused the land embraced in the annexed plat to be surveyed, laid out and platted to be known as "WOOLWORTH-FRANCIS SUBDIVISION," of part of Fractional Section 14, T2N R13E, of the City of Mt. Clemens, Michigan and that the streets and alleys as shown on said plat are hereby dedicated to the use of the public.

SIGNED AND SEALED IN PRESENCE OF

Raymond J. Francis L.S.
Eva B. Francis L.S.
Daniel R. Costello L.S.
Esther M. Costello L.S.
Herbert G. Chapton L.S.
Nettie W. Woolworth L.S.
Emily Conklin L.S.
Florence Little L.S.
Thomas M. Little L.S.

C. J. Lebadie
Catherine S. Howland

STATE OF MICHIGAN }
COUNTY OF MACOMB } SS

On this 18 day of April A. D. 1927, before me a Notary Public in and for said County, personally came the above named Raymond J. Francis, and Eva B. Francis, his wife and Daniel R. Costello and Esther M. Costello, his wife and Herbert G. Chapton, President, Woolworth, and Nettie W. Woolworth, his wife and Emily Conklin, and Florence Little known to me to be the persons who executed the above dedication and acknowledged the same to be their free act and deed.

Notary Public, Macomb Co. Michigan.

My Commission expires Oct 9 1927

CERTIFICATE OF MUNICIPAL APPROVAL
This plat was approved by the City Commission of the City of Mt. Clemens, Mich. at an adjourned meeting held on the 7th day of April A. D. 1927.

SURVEYOR'S CERTIFICATE

I hereby certify that the plat hereon delineated is a correct one and that permanent metal monuments of not less than one inch in diameter and fifteen inches in length set in a concrete base at least four inches in diameter and forty-eight inches in depth have been placed at points marked thus (o) as thereon shown at all angles in the boundaries of the land platted, at all the intersections of streets, intersections of alleys, or of streets and alleys, and at the intersections of streets and alleys with the boundaries of the plat as shown on said plat.

Registered Surveyor.

DESCRIPTION.

Commencing at the Southeast corner of Grand Avenue and Eldredge Street in the City of Mt. Clemens, Michigan; thence S 87° 01' 44" E, and following the Southerly side line of Grand Avenue 784.42 feet to the point of beginning; thence S 87° 01' 44" E and following Southerly side line of Grand Avenue 67.91 feet; thence S 2° 44' 20" W, 140.06 feet; thence S 87° 06' E, 60.0 feet; thence S 2° 27' W, 235.40 feet; thence N 87° 05' 29" W, 9.35 feet; thence S 2° 13' 28" W, 446.30 feet; thence N 82° 30' 14" W, and following the Northerly side line of Cass Avenue 119.50 feet; thence N 5° 05' E, 422.77 feet; thence S 86° 49' 21" E, 2.15 feet; thence N 2° 27' 27" E, 389.02 feet to the point of beginning.

COUNTY TREASURER AS CERTIFY
This is to Certify, That there are no Tax Liens or Taxes due by the State or any individual agent, and that all Taxes on lands described in the record instrument have been paid FIVE YEARS prior to the date of recording, according to the records of this Office.

County Treasurer

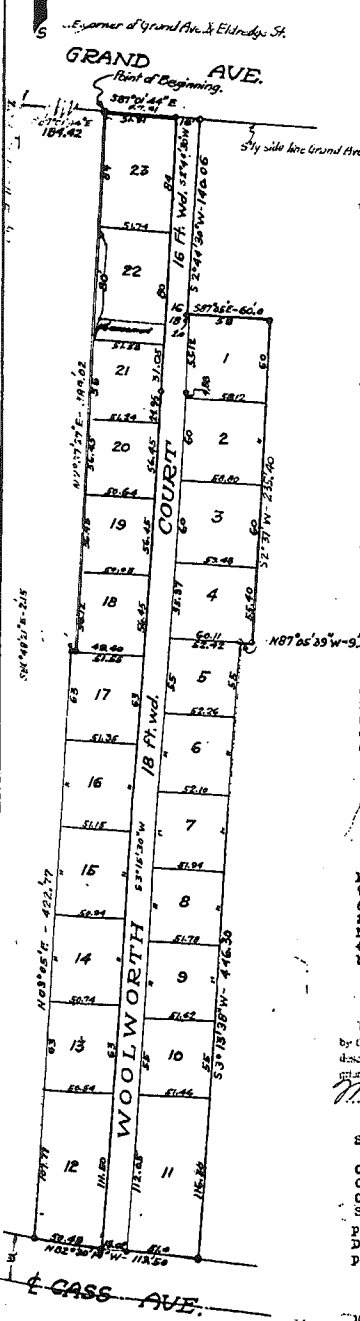
STATE OF MICHIGAN }
COUNTY OF MACOMB } SS

On this 16 day of August A. D. 1927 before me, a Notary Public in and for said county appeared Henry O. Chapton, to me personally known, who being by me duly sworn did say that he is the President of the Mt. Clemens Savings Bank, a Michigan Corporation and that the seal affixed to said instrument is the corporate seal of said corporation and that said instrument was signed and sealed in behalf of said corporation by authority of its Board of Directors and the said Henry O. Chapton acknowledged the said instrument to be the free act and deed of said corporation.

Notary Public

My Commission expires July 26 1929

Luke & Roese, SURVEYORS, Mt. Clemens, Mich.



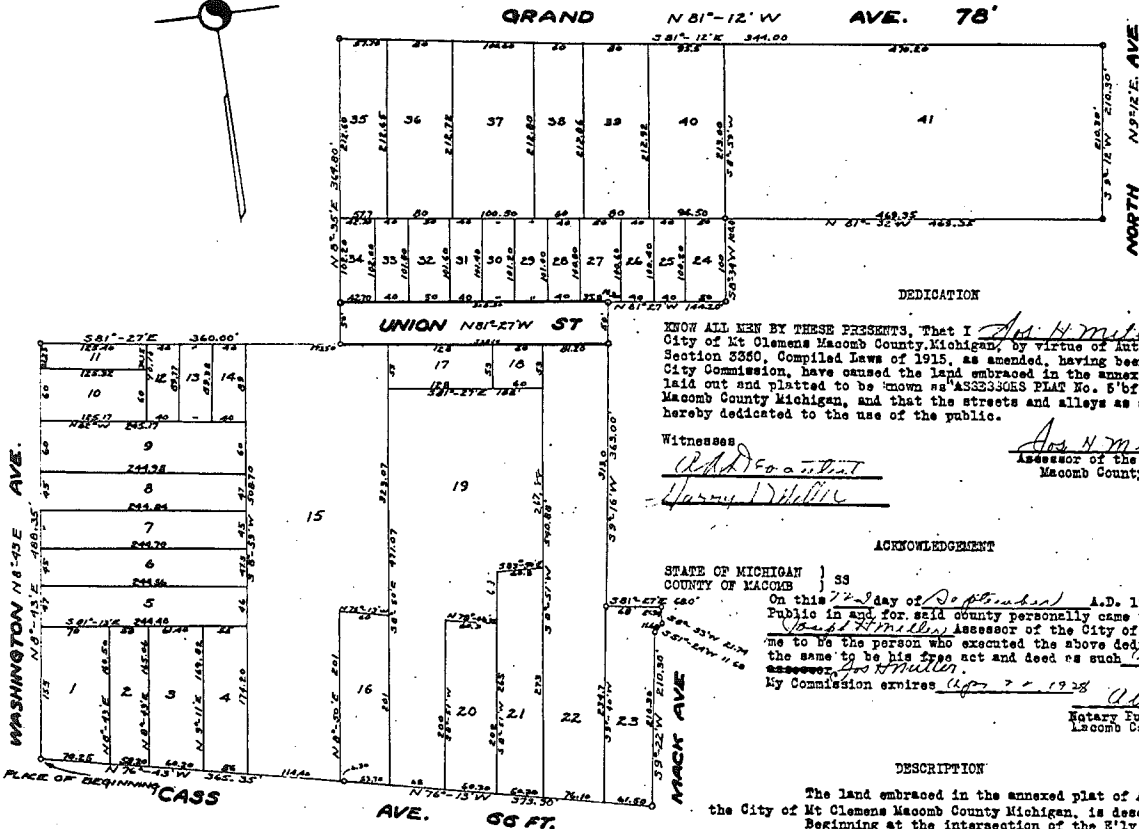
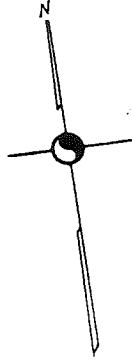
APPROVED
Oct 12-1927
J. R. Howell

ASSESSORS PLAT NO. 5

OF THE CITY OF
MT. CLEMENS, MACOMB CO., MICHIGAN.

SCALE 1"=100'

Note: All Dimensions hereon are in feet and decimals thereof.



DEDICATION

KNOW ALL MEN BY THESE PRESENTS, That I Ans. H. Miller Assessor of the City of Mt. Clemens Macomb County, Michigan, by virtue of Authority in me vested by Section 3360, Compiled Laws of 1915, as amended, having been duly authorized by the City Commission, have caused the land embraced in the annexed plat to be surveyed, laid out and platted to be known as ASSESSORS PLAT No. 5 of the City of Mt. Clemens Macomb County Michigan, and that the streets and alleys as shown on said plat are hereby dedicated to the use of the public.

Witnesses
W. D. Drayton
J. R. Howell

Ans. H. Miller AS
Assessor of the City of Mt. Clemens
Macomb County Mich.

ACKNOWLEDGMENT

STATE OF MICHIGAN } 33
COUNTY OF MACOMB }
On this 12 day of October A.D. 1927 before me a Notary Public in and for said county personally came the above named Ans. H. Miller Assessor of the City of Mt. Clemens, known to me to be the person who executed the above dedication and acknowledged the same to be his free act and deed as such 12
My Commission expires Apr 7 - 1928
W. D. Drayton
Notary Public in and for
Macomb County Mich.

DESCRIPTION

The land embraced in the annexed plat of ASSESSORS PLAT NO. 5 of the City of Mt. Clemens Macomb County Michigan, is described as follows:
Beginning at the intersection of the E'ly line of Washington Ave. with the N'ly line of Cass Ave. Thence N 8°42'E., 488.35 ft. Thence S 81°27'E., 360.00 ft. Thence N 8°35'E., 364.80 ft. Thence S 81°12'E., 344.00 ft. Thence S 9°12'W., 210.20 ft. Thence N 81°32'W., 469.25 ft. Thence S 8°54'W., 100.00 ft. Thence N 81°27'W., 144.20 ft. Thence S 9°16'W., 353.00 ft. Thence S 81°27'E., 69.00 ft. Thence S 8°33'W., 21.74 ft. Thence S 81°24'W., 11.68 ft. Thence S 9°22'W., 210.20 ft. Thence N 76°13'W., 379.90 ft. Thence N 76°45'W., 365.25 ft to place of Beginning.

Engineers Certificate.
I hereby certify that the plat hereon delineated is a correct one and that permanent metal monuments not less than one inch in diameter and fifteen inches in length set in a concrete base at least four inches in diameter and forty eight inches in depth have been placed at points marked thereon as shown at all angles in the boundaries of the land platted, at all intersections of streets, intersections of alleys, or of streets and alleys, and at the intersections of streets and alleys with the boundaries of the plat as shown on said plat.
Wm. H. Hanson
Registered Civil Engineer.

CERTIFICATE OF MUNICIPAL APPROVAL
This plat was approved by the City Commission of the City of Mt. Clemens Macomb County Michigan, at a meeting held Sept. 13, 1927
W. D. Drayton City Clerk

CERTIFICATE OF APPROVAL BY COUNTY BOARD
This plat was approved on the 12 day of Oct 1927
Charles H. Thurnmueller Judge of Probate
Walter B. Stiff County Clerk
Jessie C. Gillett County Treasurer

CERTIFICATE OF APPROVAL BY THE BOARD OF COUNTY AUDITORS
Approved by the board of county auditors of Macomb County Michigan, this 12 day of Oct 1927

CHAIRMAN

Macomb
Assessor Plat No. 5
13
27 12
17
J. R. Howell

Oct 12-1927
J. R. Howell
@ 17-1927
J. R. Howell

23785

23785

23785

PAID NUMBER	PAID NAME	DATE	PAID NUMBER	PAID NAME	DATE
11	ASSOCIATE'S PLAN	3/25/45	11	ASSOCIATE'S PLAN	3/25/45
12	ASSOCIATE'S PLAN	3/25/45	12	ASSOCIATE'S PLAN	3/25/45
13	ASSOCIATE'S PLAN	3/25/45	13	ASSOCIATE'S PLAN	3/25/45
14	ASSOCIATE'S PLAN	3/25/45	14	ASSOCIATE'S PLAN	3/25/45
15	ASSOCIATE'S PLAN	3/25/45	15	ASSOCIATE'S PLAN	3/25/45

PAID NUMBER	PAID NAME	DATE	PAID NUMBER	PAID NAME	DATE
16	ASSOCIATE'S PLAN	3/25/45	16	ASSOCIATE'S PLAN	3/25/45
17	ASSOCIATE'S PLAN	3/25/45	17	ASSOCIATE'S PLAN	3/25/45
18	ASSOCIATE'S PLAN	3/25/45	18	ASSOCIATE'S PLAN	3/25/45
19	ASSOCIATE'S PLAN	3/25/45	19	ASSOCIATE'S PLAN	3/25/45
20	ASSOCIATE'S PLAN	3/25/45	20	ASSOCIATE'S PLAN	3/25/45

PAID NUMBER	PAID NAME	DATE	PAID NUMBER	PAID NAME	DATE
21	ASSOCIATE'S PLAN	3/25/45	21	ASSOCIATE'S PLAN	3/25/45
22	ASSOCIATE'S PLAN	3/25/45	22	ASSOCIATE'S PLAN	3/25/45
23	ASSOCIATE'S PLAN	3/25/45	23	ASSOCIATE'S PLAN	3/25/45
24	ASSOCIATE'S PLAN	3/25/45	24	ASSOCIATE'S PLAN	3/25/45
25	ASSOCIATE'S PLAN	3/25/45	25	ASSOCIATE'S PLAN	3/25/45

PAID NUMBER	PAID NAME	DATE	PAID NUMBER	PAID NAME	DATE
26	ASSOCIATE'S PLAN	3/25/45	26	ASSOCIATE'S PLAN	3/25/45
27	ASSOCIATE'S PLAN	3/25/45	27	ASSOCIATE'S PLAN	3/25/45
28	ASSOCIATE'S PLAN	3/25/45	28	ASSOCIATE'S PLAN	3/25/45
29	ASSOCIATE'S PLAN	3/25/45	29	ASSOCIATE'S PLAN	3/25/45
30	ASSOCIATE'S PLAN	3/25/45	30	ASSOCIATE'S PLAN	3/25/45

23785

23785

23785

CITY OF MOUNT CLEMENS
 Mount Clemens, Michigan
 Board of City Commissioners



Resolved, That the City of Mount Clemens, Michigan, do hereby authorize the City Clerk to file the following with the Board of City Commissioners at a regular meeting held on February 21, 1945:

John A. Fitzgerald
 Mayor
 City Clerk

23785

23785

CITY OF MOUNT CLEMENS
 Mount Clemens, Michigan
 Board of City Commissioners



Resolved, That the City of Mount Clemens, Michigan, do hereby authorize the City Clerk to file the following with the Board of City Commissioners at a regular meeting held on February 21, 1945:

John A. Fitzgerald
 Mayor
 City Clerk

23785

23785

23785

Resolved, That the City of Mount Clemens, Michigan, do hereby authorize the City Clerk to file the following with the Board of City Commissioners at a regular meeting held on February 21, 1945:

John A. Fitzgerald
 Mayor
 City Clerk

Resolved, That the City of Mount Clemens, Michigan, do hereby authorize the City Clerk to file the following with the Board of City Commissioners at a regular meeting held on February 21, 1945:

John A. Fitzgerald
 Mayor
 City Clerk

Resolved, That the City of Mount Clemens, Michigan, do hereby authorize the City Clerk to file the following with the Board of City Commissioners at a regular meeting held on February 21, 1945:

John A. Fitzgerald
 Mayor
 City Clerk

240X



Attest: [Signature]

Attest: [Signature]

Attest: [Signature]

L. 14 4/20/1929
pg. 1

EX 04
4/19/29

add line

25 UPS

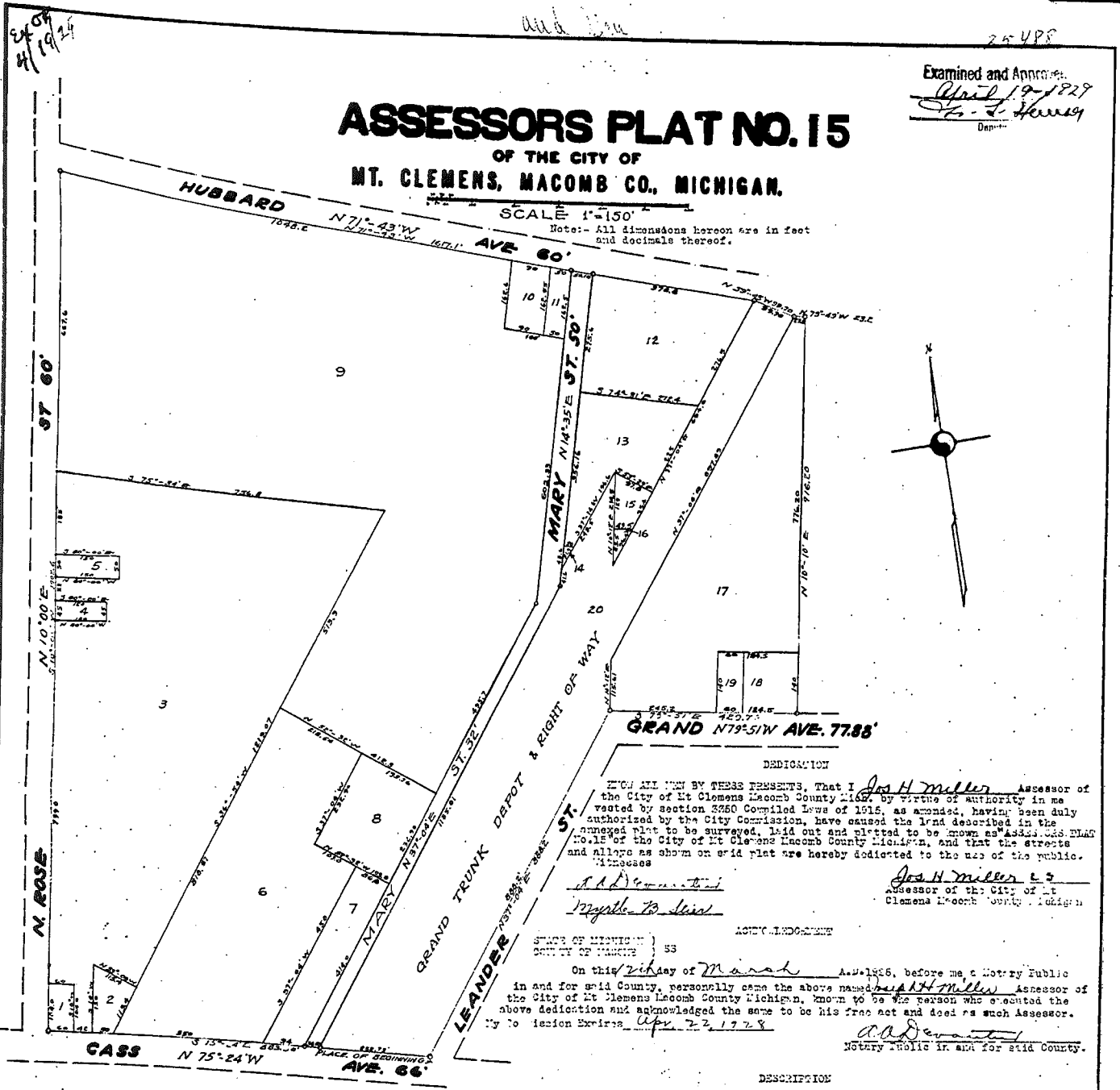
Examined and Approved
April 19 1929
Geo. L. Harvey
Deputy

ASSESSORS PLAT NO. 15

OF THE CITY OF MT. CLEMENS, MACOMB CO., MICHIGAN.

SCALE 1"=150'

Note: All dimensions hereon are in feet and decimals thereof.



BEFORE ALL MEN BY THESE PRESENTS, That I Geo. H. Miller Assessor of the City of Mt. Clemens Macomb County Mich., by virtue of authority in me vested by section 2350 Compiled Laws of 1916, as amended, having been duly authorized by the City Commission, have caused the land described in the annexed plat to be surveyed, laid out and plotted to be known as Assessors Plat No. 15 of the City of Mt. Clemens Macomb County Michigan, and that the streets and alleys as shown on said plat are hereby dedicated to the use of the public.

Witness my hand and seal of office this 14th day of April 1929.

Geo. H. Miller
Assessor of the City of Mt. Clemens Macomb County Michigan

STATE OF MICHIGAN)
COUNTY OF MACOMB) SS

On this 14th day of March A.D. 1928, before me, a Notary Public in and for said County, personally came the above named Geo. H. Miller Assessor of the City of Mt. Clemens Macomb County Michigan, known to be the person who executed the above dedication and acknowledged the same to be his free act and deed as such Assessor.

My Commission Expires Apr. 22, 1928

A. D. DeWanted
Notary Public in and for said County.

DESCRIPTION

The land embraced in the annexed plat of Assessors Plat No. 15 of the City of Mt. Clemens Macomb County Michigan, is described as follows:-

Beginning at the intersection of the N.W. 1/4 line of Cass Ave with the N.W. 1/4 line of Leander St. Thence S 27 04' E, 888.30 ft. Thence S 79 51' E, 429.70 ft. Thence N 10 12' E, 916.20 ft. Thence N 79 49' W, 25.2 ft. Thence S 59 45' W, 39.70 ft. Thence N 71 43' W, 1617.10 ft. Thence S 10 00' W, 1902.8 ft. Thence S 75 24' E, 683.20 ft to place of beginning. Excepting the Grand Trunk right of way known as lot 20.

BEFORE ME

I hereby certify that the plat hereon delineated is a correct one and that permanent metal monuments not less than one inch in diameter and fifteen inches in length set in a concrete base at least four inches in diameter and forty-eight inches in length have been placed at points marked thereon as shown. All angles in the boundaries of the land plotted, at all intersections of streets, intersections of alleys or of streets and alleys, and at the intersections of streets and alleys with the boundaries of the plat as shown on said plat

April 22-1929
Geo. L. Harvey
Registered Civil Engineer

CERTIFICATE OF MUNICIPAL AUTHORITY

This plat was approved by the City Commission of the City of Mt. Clemens Macomb County Mich. at a meeting held March 9, 1928

A. D. DeWanted City Clerk

CERTIFICATE OF APPROVAL BY THE COUNTY BOARD

This plat was approved on the 17th day of April 1929

Charles H. Hummel Mayor of Precinct
James H. Hartung County Clerk
William M. White County Treasurer

Macomb
Assessors Plat No. 15
20
April 14 1929
High & Whiting

2

L 14 4/20/1929
Pg. 2

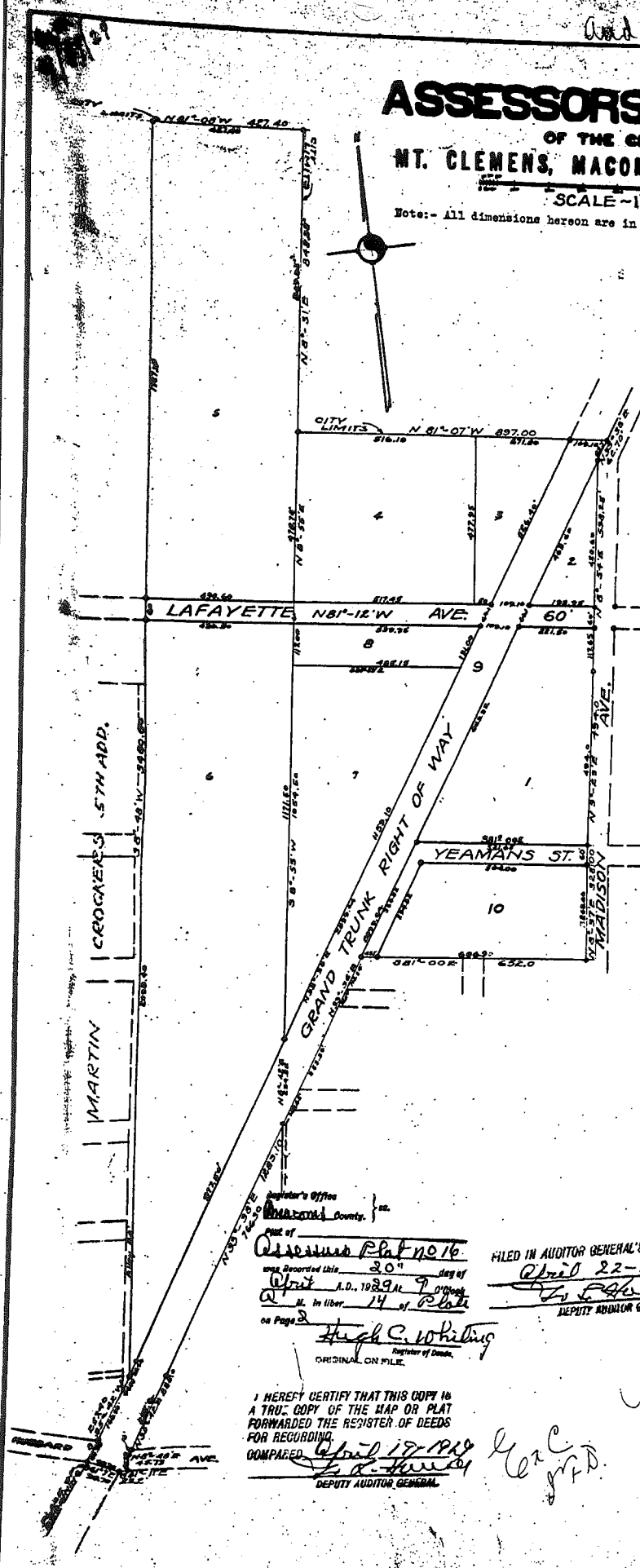
ASSESSORS PLAT NO. 16

OF THE CITY OF
MT. CLEMENS, MACOMB CO., MICHIGAN.

SCALE - 1" = 100'

Note: - All dimensions hereon are in feet and decimals thereof

Examined and Approved
April 19 1929
J. L. Hume
Deputy Auditor General



DEDICATION

KNOW ALL MEN BY THESE PRESENTS, That I Joe H. Miller Assessor of the City of Mt. Clemens, Macomb County Michigan, by virtue of authority in me vested by section 3350 Compiled Laws of 1915, as amended, having been duly authorized by the City Commission, have caused the land described in the annexed plat to be surveyed, laid out and platted to be known as 'ASSESSORS PLAT No. 16' of the City of Mt. Clemens Macomb County Michigan, and that the streets and alleys as shown on said plat are hereby dedicated to the use of the public.

Witnesses:
Ad Deventer
Myrtle B. Lewis
Joe H. Miller Assessor of the City of Mt. Clemens Macomb County Michigan

ACKNOWLEDGEMENT

STATE OF MICHIGAN }
COUNTY OF MACOMB } SSS

On this 17th day of March, A.D. 1929, before me a Notary Public in and for said County, personally came the above named Joe H. Miller Assessor of the City of Mt. Clemens Macomb County, known to be the person who executed the above dedication and acknowledged the same to be his free act and deed as such Assessor. My Commission expires Apr 22 1928

DESCRIPTION

The land embraced in the annexed plat of Assessors Plat No. 16 of the City of Mt. Clemens Macomb County Michigan, is described as follows:-
Beginning at a point S 35°42'W., 63.28 ft. from the intersection of the N.W. 1/4 line of Hubbard Ave with the N.W. 1/4 line of the C.D.C. Grand Trunk Jet. R.R. right of way. Thence S 81°07'E., 99.70 ft. Thence S 81°11'E., 35.2 ft. Thence N 8°48'E., 46.73 ft. Thence N 35°42'W., 225.00 ft. Thence N 35°38'E., 1283.10 ft. Thence S 81°00'E., 652.0 ft. Thence N 8°37'E., 328.0 ft. Thence N 9°23'E., 494.0 ft. Thence N 8°54'E., 598.25 ft. Thence N 35°38'E., 62.70 ft. Thence N 81°07'W., 997.0 ft. Thence N 8°31'E., 647.35 ft. Thence N 81°08'W., 427.40 ft. Thence S 8°48'W., 2480.50 ft. Thence S 35°42'W., 257.40 ft. to place of beginning. Excepting the Grand Trunk Right of Way, known as lot 9.

ENGINEERS CERTIFICATE

I hereby certify that the plat hereon delineated is a correct one and that permanent metal monuments not less than one inch in diameter and fifteen inches in length set in a concrete base at least four inches in diameter and forty-eight inches in depth have been placed at points marked thereon as shown at all angles in the boundaries of the land platted, at all intersections of streets, intersections of alleys or of streets and alleys and at the intersections of streets and alleys with the boundaries of the plat as shown on said plat.

CERTIFICATE OF MUNICIPAL APPROVAL

This plat was approved by the City Commission of the City of Mt. Clemens Macomb County Michigan, at a meeting held March 9, 1929
Ad Deventer City Clerk

CERTIFICATE OF APPROVAL BY THE COUNTY BOARD

This plat was approved on the 17th day of April, 1929
Charles W. Howard Judge of Probate
Joseph H. Hartung County Clerk
William M. Hume County Treasurer

part of
Assessors Plat No. 16
was recorded this 30th day of
April A.D. 1929 at 9 o'clock
A.M. in Liber 14 of Plate
on Page 2
High C. Whiting
Register of Deeds

FILED IN AUDITOR GENERAL'S DEPT.
April 22 - 1929
J. L. Hume
DEPUTY AUDITOR GENERAL

I HEREBY CERTIFY THAT THIS COPY IS A TRUE COPY OF THE MAP OR PLAT FORWARDED THE REGISTER OF DEEDS FOR RECORDING.
COMPARED April 19 1929
J. L. Hume
DEPUTY AUDITOR GENERAL

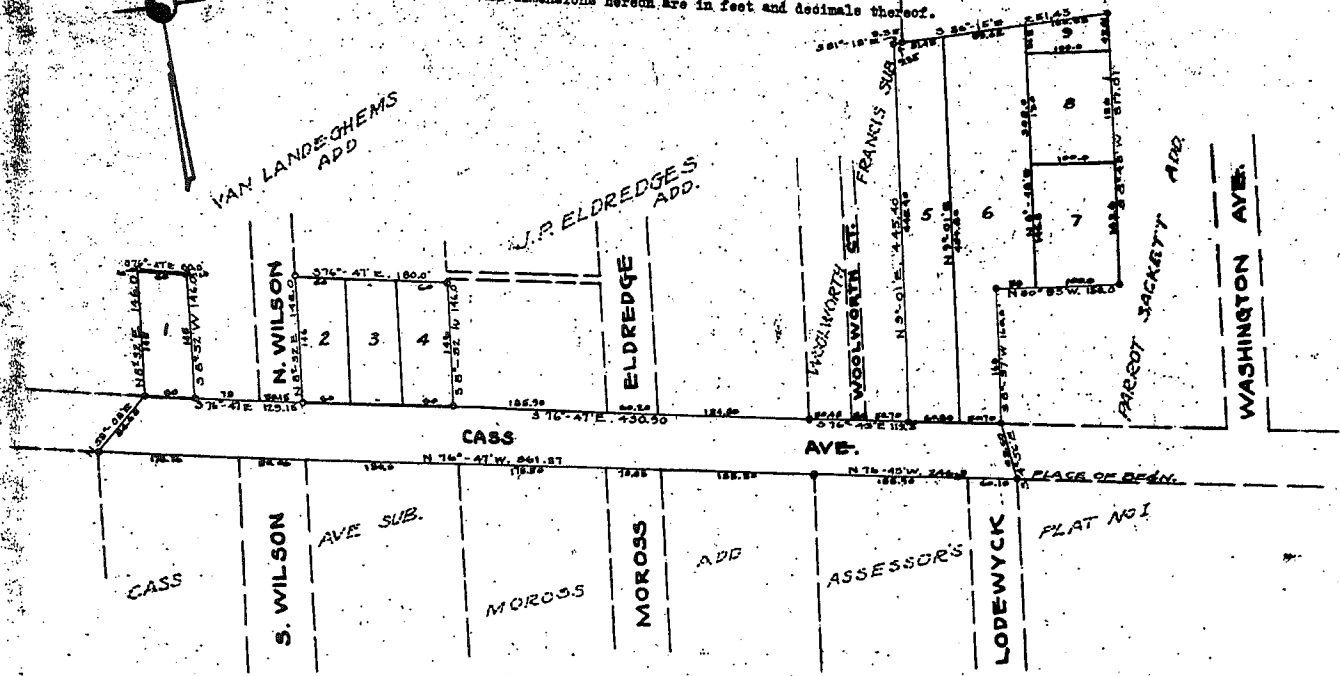
10

ASSESSORS PLAT NO. 18

OF THE CITY OF
 ST. CLEMENS, MACOMB CO., MICHIGAN.

SCALE 1"=100'

Note: All dimensions herein are in feet and decimals thereof.



DEDICATION

KNOW ALL MEN BY THESE PRESENTS, That I Ans H Miller Assessor of the City of St. Clemens Macomb County Mich. by virtue of authority in me vested by Section 3350, Compiled Laws of 1915, as amended, having been duly authorized by the City Commission, have caused the land described in the annexed plat to be surveyed, laid out and platted to be known as "Assessors Plat No. 18" of the City of St. Clemens Macomb County Michigan, and that the streets and alleys as shown on said plat are hereby dedicated to the use of the public.

Witnesses:-
Joseph [Signature]
Marie [Signature]

Ans H Miller Assessor of the City of St. Clemens Macomb County Michigan.

DESCRIPTION

The land embraced in the annexed plat of Assessors Plat No. 18 of the City of St. Clemens Macomb County Michigan, is described as follows:-
 Beginning at the intersection of the S'ly. line of Cass Ave. with the S'ly. line of Lodewyk Ave. Thence N 76° 47' W., 245.0 ft. Thence N 76° 47' W., 851.87 ft. Thence S 8° 32' E., 86.05 ft. Thence N 8° 32' E., 146.0 ft. Thence S 76° 47' W., 60.0 ft. Thence S 8° 32' W., 146.0 ft. Thence S 76° 47' E., 129.15 ft. Thence S 8° 32' E., 146.0 ft. Thence S 76° 47' E., 180.0 ft. Thence S 8° 32' W., 146.0 ft. Thence S 76° 47' W., 430.90 ft. Thence S 76° 42' E., 119.50 ft. Thence N 9° 01' E., 445.40 ft. Thence S 61° 18' E., 9.55 ft. Thence S 66° 15' E., 251.45 ft. Thence S 8° 45' W., 517.01 ft. Thence N 80° 55' W., 150.0 ft. Thence S 8° 57' W., 150.0 ft. Thence S 4° 56' E., 59.60 ft. to place of beginning.

ENGINEERS CERTIFICATE

I hereby certify that the plat heron delineated is a correct one and that permanent metal monuments not less than one inch in diameter and fifteen inches in length set in a concrete base at least four inches in diameter and forty-eight inches in depth have been placed at points marked thus o as shown at all intersections in the boundaries of the land platted, at all intersections of streets and alleys or of streets and alleys and at the intersections of streets and alleys with the boundaries of the plat as shown on said plat.

[Signature]
 Registered Civil Engineer

ACKNOWLEDGMENT

STATE OF MICHIGAN }
 COUNTY OF MACOMB } SS
 On this 4th day of November A.D. 1928, before me a Notary Public in and for said County, personally came the above named Ans H Miller Assessor of the City of St. Clemens, known to be the person who executed the above dedication and acknowledged the same to be his free act and deed as such Assessor.

My Commission expires April 17th 1932
Marie [Signature]
 Notary Public in and for said County

CERTIFICATE OF MUNICIPAL APPROVAL

This plat was approved by the City Commission of the City of St. Clemens Macomb County Mich. at a meeting held November 17th 1928

Thos J. [Signature] City Clerk

CERTIFICATE OF APPROVAL BY THE COUNTY BOARD

This plat was approved on the 16th day of November 1928

Charles H. [Signature] Judge of Probate
Walter [Signature] County Clerk
Jessie [Signature] County Treasurer

COPY
 Register's Office }
 Macomb County }
 Part of
Assessors Plat No. 18

HEREBY CERTIFY THAT THIS COPY IS
 A TRUE COPY OF THE MAP OR PLAT
 FILED IN THE REGISTER OF DEEDS
 RECORDS.

Nov 21-1928
Thos L. [Signature]
 DEPUTY AUDITOR GENERAL

was Recorded this 22nd day of
Nov A.D. 1928 at 7 o'clock
AM in Year 1928 of Plat
 as Page 35
Hugh B. [Signature]
 Register of Deeds
 ORIGINAL ON FILE

DEPUTY AUDITOR GENERAL'S DEP.
Nov 23-1928
[Signature]
 DEPUTY AUDITOR GENERAL



Examined and Approved
Nov 25 1928
24922
Density Auditor Genl

ASSESSORS PLAT NO. 19

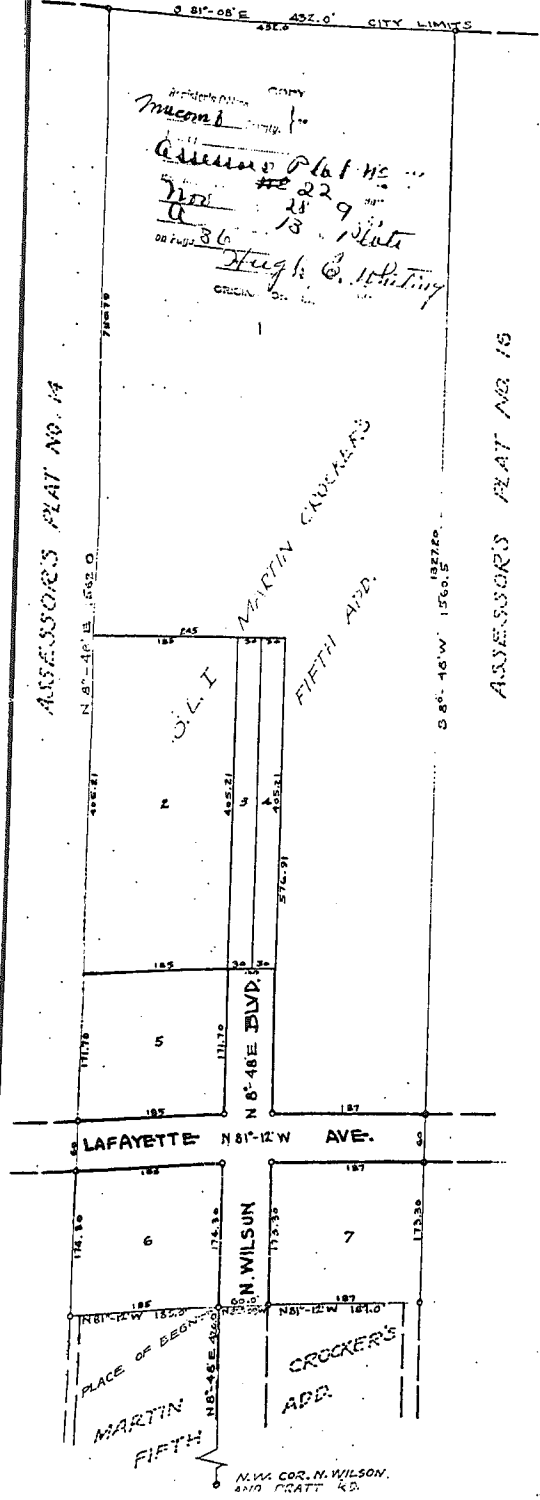
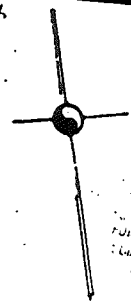
OF THE CITY OF
MT. CLEMENS, MACOMB CO., MICHIGAN.

SCALE - 1" = 100'

Note: All dimensions hereon are in feet and decimals thereof.

Nov 21 1928
FILED IN ASSESSOR'S PLAT NO. 19
Nov. 27 - 1928
Geo. R. Howell

EX-114
11/20/28



BEFORE ALL MEN BY THESE PRESENTS, That I Geo. H. Miller Assessor of the City of the City of Mt. Clemens Macomb County Michigan, by virtue of authority in me vested by section 3250, Compiled Laws of 1915, as amended, having been duly authorized by the City Commission, have caused the land described in the annexed plat to be surveyed, laid out and platted to be known as Assessor's Plat No. 19 of the City of Mt. Clemens Macomb County Michigan, and that the streets and alleys as shown on said plat are hereby dedicated to the use of the public.

Witness:-
Joseph H. Matthews
Maria Brandenburg

Geo. H. Miller A.S.
Assessor of the City of Mt. Clemens
Macomb County Michigan.

STATE OF MICHIGAN }
COUNTY OF MACOMB }

ACKNOWLEDGMENT

On this 27th day of November A.D. 1928 before me a Notary Public in and for said County, personally came the above named Geo. H. Miller Assessor of the City of Mt. Clemens, known to be the person who executed the above dedication and acknowledged the same to be his free act and deed as such Assessor.

Marie L. Binkley
Notary Public in and for said County

DESCRIPTION
The land embraced in the annexed plat of Assessor's Plat No. 19 of the City of Mt. Clemens Macomb County Michigan, is described as follows:-

Beginning at a point in S 94° 48' W. 420.0 ft from the intersection of the N 1/2 S. line of N. Wilson Blvd. with the N 1/2 W. line of Pratt Rd. Thence N 81° 12' W. 185.0 ft. Thence N 8° 45' E. 1572.0 ft. Thence S 81° 08' W. 432.0 ft. Thence S 8° 48' W. 1566.5 ft. Thence N 81° 18' W. 167.0 ft. Thence N 82° 09' W. 40.0 ft to place of beginning.

EIGHTENERS CERTIFICATE

I hereby certify that the plat hereon delineated is a correct one and that permanent metal monuments not less than one inch in diameter and fifteen inches in length set in a concrete base at least four inches in diameter and forty-eight inches in depth have been placed at points marked there on as shown at all angles in the boundaries of the land platted, at all intersections of streets, intersections of alleys or of streets and alleys and at the intersections of streets and alleys with the boundaries of the plat as shown on said plat.

Samuel H. ...
Registered Civil Engineer

CERTIFICATE OF APPROVAL BY THE COUNTY BOARD

This plat was approved on the 16th day of November 1928

Charles H. ... Judge of Probate
James C. ... County Clerk
James C. ... County Treasurer

CERTIFICATE OF MUNICIPAL APPROVAL

This plat was approved by the City Commission of the City of Mt. Clemens Macomb County Michigan, at a meeting held November 5th 1928

Marie L. Binkley City Clerk

11/22/1928

L. 13
Pg. 37

Examined and Approved
November 21, 1928
C. B. [Signature]
Deputy Auditor General
24923

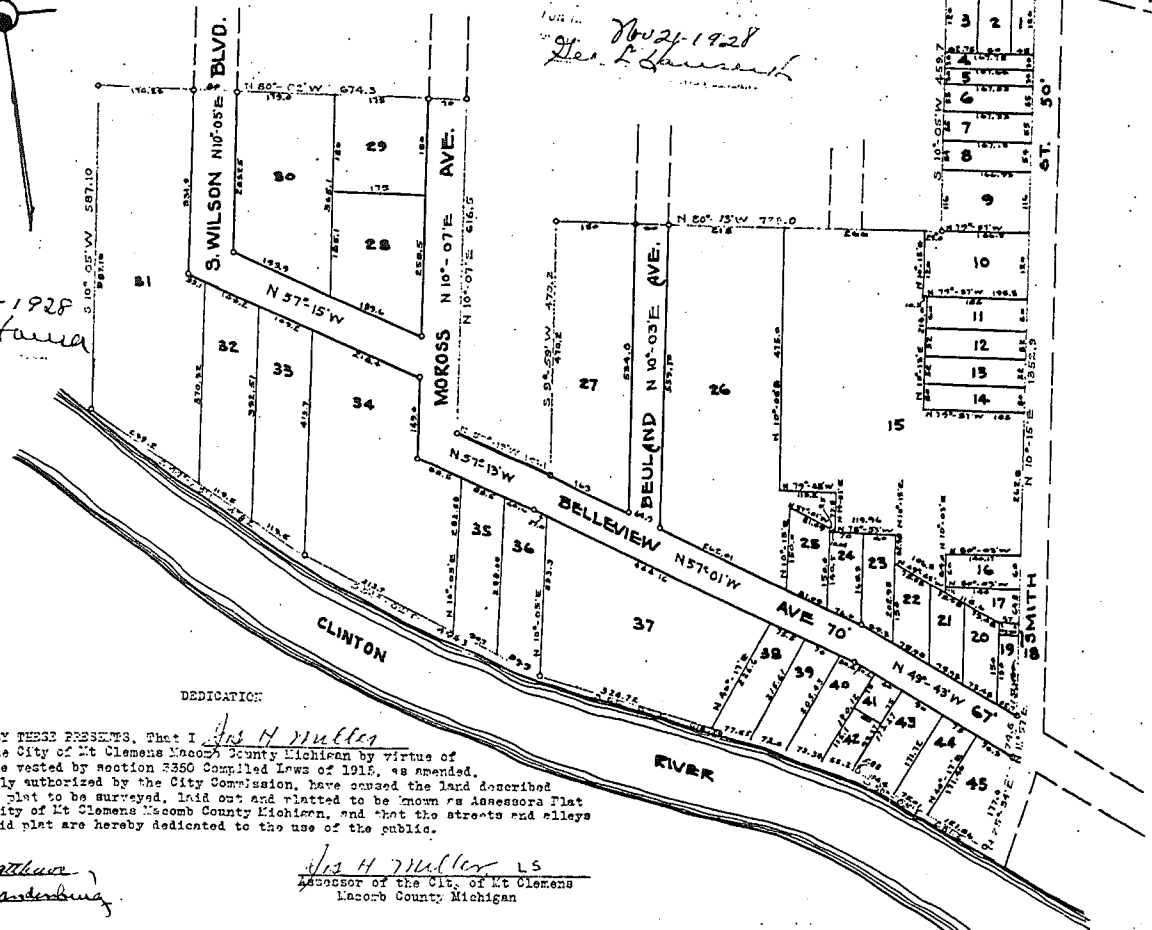
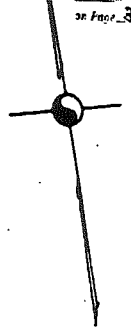
ASSESSORS PLAT NO. 20

OF THE CITY OF
MT. CLEMENS, MACOMB CO., MICHIGAN.

SCALE 1" = 150'

Note: - All dimensions hereon are in feet and decimals thereof.

COPY
Register's Office
Mason
Plat of
Assessors Plat No. 20
Date of
22
No. 13
Hugh C. Whiting



Nov 23-1928
R. Hanna

Nov 21-1928
H. L. [Signature]

DEDICATION

KNOW ALL MEN BY THESE PRESENTS, that I, Ans H. Muller, Assessor of the City of Mt Clemens Macomb County Michigan by virtue of authority in me vested by section 3350 Compiled Laws of 1915, as amended, having been duly authorized by the City Commission, have caused the land described in the annexed plat to be surveyed, laid out and platted to be known as Assessors Plat No. 20 of the City of Mt Clemens Macomb County Michigan, and that the streets and alleys as shown on said plat are hereby dedicated to the use of the public.

Hugh C. Whiting
Wm. [Signature]

Ans H. Muller LS
Assessor of the City of Mt Clemens
Macomb County Michigan

ACKNOWLEDGMENT

STATE OF MICHIGAN)
COUNTY OF MACOMB) SS
On this 21st day of November 1928 before me a Notary Public in and for said County, personally came the above named Ans H. Muller Assessor of the City of Mt Clemens, known to be the person who executed the above dedication and acknowledged the same to be his free act and deed as such Assessor.
My Commission expires Dec 12, 1931
Wm. [Signature]
Notary Public in and for said County

ENGINEERS CERTIFICATE

I hereby certify that the plat hereon delineated is a correct one and that permanent metal monuments not less than one inch in diameter and fifteen inches in length set in a concrete base at least four inches in diameter and forty-eight inches in depth have been placed at points marked thus o as shown at all angles in the boundaries of the land platted at all intersections of streets intersections of alleys or of streets and alleys and at the intersections of streets and alleys with the boundaries of the plat as shown on said plat.
[Signature]
Registered Civil Engineer

CERTIFICATE OF MUNICIPAL APPROVAL

This plat was approved by the City Commission of the City of Mt Clemens Macomb County Michigan, at a meeting held November 21, 1928
[Signature] City Clerk

CERTIFICATE OF APPROVAL BY THE COUNTY BOARD

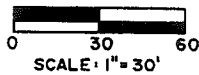
This plat was approved on the 16th day of November 1928
Charles H. [Signature] Judge of Probate
William [Signature] County Clerk
James [Signature] County Treasurer

13

MASTROMATTEO SUB., PART OF FRACTIONAL SEC. 11, T.2N., R.13E., CITY OF MT. CLEMENS, MACOMB CO., MICH.

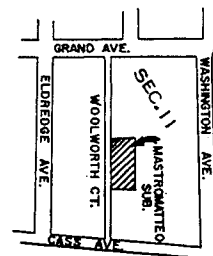
PREPARED AND DRAFTED BY:
LEHNER ASSOCIATES INC.,
REG. CIVIL ENGINEERS AND SURVEYORS
MT. CLEMENS, MICHIGAN.

REGISTER # A32252



PLAT LEGEND

All dimensions are shown in feet. All bearings are taken from "Woolworth-Francis Subdivision" as recorded in Liber 12 on Page 39, Macomb County Records. The symbol "o" indicates a concrete monument. All lot markers are 1/2" irons and are 18" long.



SURVEYOR'S CERTIFICATE

I, John D. Lehner, Surveyor, certify that I have surveyed, divided and mapped the land shown on this plat, described as follows: Mastromatteo Sub., Part of Fractional Sec. 11, T. 2 N., R. 13 E., City of Mt. Clemens, Macomb Co., Mich. being a replat of Lots 5, 6, 7 and 8 of "Woolworth-Francis Subdivision" of a part of Fractional Section 11, T. 2 N., R. 13 E., City of Mt. Clemens, Macomb County, Michigan, as recorded in Liber 12 of Plats on Page 39, Macomb County Records, and part of Lot 5 of "Assessor's Plat No. 18" of the City of Mt. Clemens, as recorded in Liber 13 of Plats on Page 35, Macomb County Records, and comprising of Lot 1 thru 4, both inclusive: Commencing at the Northeast corner of Private Claim 541 and thence extending the following courses and distances: S. 04°-17'-25" W. 4716.78 feet to the Southerly side line of Grand Avenue, S. 87°-01'-44" E. 67.91 feet along the Southerly side line of Grand Avenue to the Easterly side line of Woolworth Court, S. 02°-44'-30" W. 140.06 feet; S. 87°-05' E. 2.00 feet, S. 02°-44'-30" W. 55.12 feet and S. 03°-15'-30" W. 180.25 feet to the point of beginning. Said point of beginning being the Southwest corner of Lot 4 of said "Woolworth-Francis Subdivision" and thence extending S. 86°-58'-00" E. 61.77 feet along the Southerly line of Lot 4 of said "Woolworth-Francis Subdivision" thence N. 88°-05'-00" E. 51.45 feet; thence S. 03°-25'-03" W. 220.00 feet; thence S. 89°-50'-35" W. 60.80 feet; thence N. 86°-58'-00" W. 51.78 feet along the Southerly line of Lot 8 of said "Woolworth-Francis Subdivision"; thence N. 03°-15'-30" E. 220.00 feet along the Easterly line of Woolworth Court (18 ft. wide) to the point of beginning and containing 0.569 acres of land.

That I have made such survey, land-division and plat by the direction of the owners of such land.
That such plat is correct representation of all the exterior boundaries of the land surveyed and the subdivision of it.
That the required monuments and lot markers have been located in the ground as required by Section 125 of the Act.
That the accuracy of survey is within the limits required by Section 126 of the Act.
That the bearings shown on the plat are expressed as required by Section 126 (3) of the Act and as explained in the legend.



Lehner Associates, Inc.
22900 Wellington Crescent
Mount Clemens, Michigan 48043

John D. Lehner
John D. Lehner - No. 5787, President

Date July 24, 1975

PROPRIETOR'S CERTIFICATE

We, as proprietors certify that we caused the land embraced in this plat to be surveyed, divided, mapped and dedicated as represented on this plat and that the streets are for the use of the public, that the public utility easements are private easements and that all other easements are for the uses shown on the plat.

Witnesses:

James A. Bipes
James A. Bipes
Robert Walter
Robert Walter
STATE OF MICHIGAN) ss.
COUNTY OF MACOMB

Michele E. Mastromatteo
Michele E. Mastromatteo
173 South Wilson Blvd.
Mt. Clemens, Michigan 48043

Julia A. Mastromatteo
Julia A. Mastromatteo, his wife
173 South Wilson Blvd.
Mt. Clemens, Michigan 48043

Personally came before me this 30th day of July, 1975, the above named Michele E. Mastromatteo and Julia A. Mastromatteo, his wife, to me known to be the persons who executed the foregoing instrument and acknowledged that they executed the same as their free act and deed.

My Commission Expires: MAY 7, 1977

Duncan K. Allan
DUNCAN K. ALLAN Notary Public
MACOMB County, Michigan

COUNTY PLAT BOARD CERTIFICATE

This plat has been reviewed and is approved by the Macomb County Plat Board on August 27, 1975 as being in compliance with all of the provisions of Act 288, P.A., 1967, and the plat board's applicable rules and regulations.

Robert A. Vankut
Robert A. Vankut, Chairman of
the County Board of Commissioners

Edna Miller
Edna Miller, Clerk
Register of Deeds

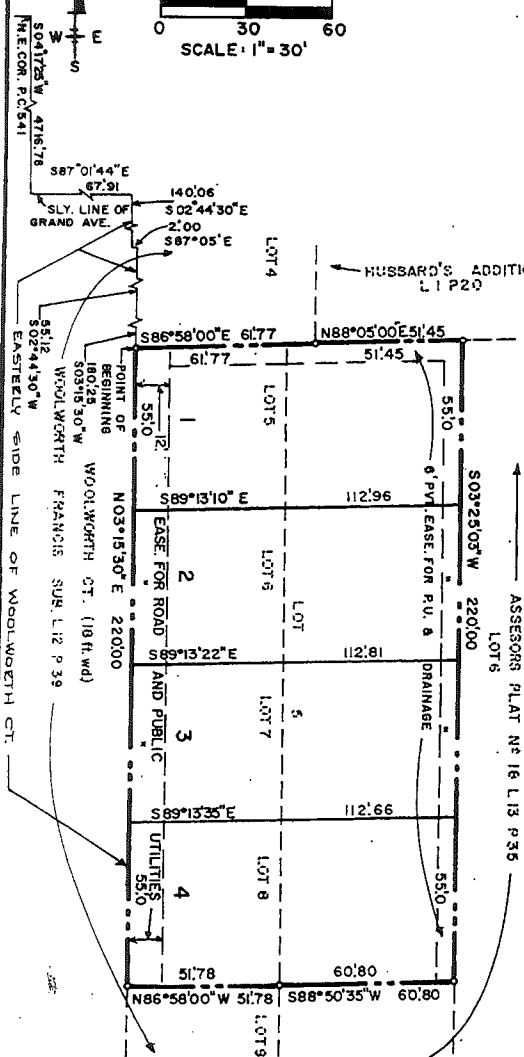
Adam E. Nowakowski
Adam E. Nowakowski, County Treasurer

RECORDING CERTIFICATE

STATE OF MICHIGAN) ss.
COUNTY OF MACOMB

The plat was received for recording on the 16th day of Sept., 1975, at 4:35 P.M. o'clock and is recorded in Liber 67 of Plats on Page 1

Kymora K. Craig
Kymora K. Craig, Deputy Register of Deeds



EXAMINED AND APPROVED
Date Sept 15, 1975

Allison Green
ALLISON GREEN
STATE TREASURER
By *Richard E. Lomax*
Richard E. Lomax, Not. Ex. Off.

COUNTY TREASURER'S CERTIFICATE

The records in my office show no unpaid taxes or special assessment for the five years preceding JULY 24, 1975 involving the lands included in this plat. # 541

Marilyn E. White
MARILYN E. WHITE, CLERK

COUNTY DRAIN COMMISSIONER'S CERTIFICATE

Approved on July 30th 1975, as complying with Section 192 of Act 288, P.A., 1967, and the applicable rules and regulations published by my office in the County of Macomb.

Thomas S. Welsh
Thomas S. Welsh, Macomb County Drain Commissioner

CERTIFICATE OF MUNICIPAL APPROVAL

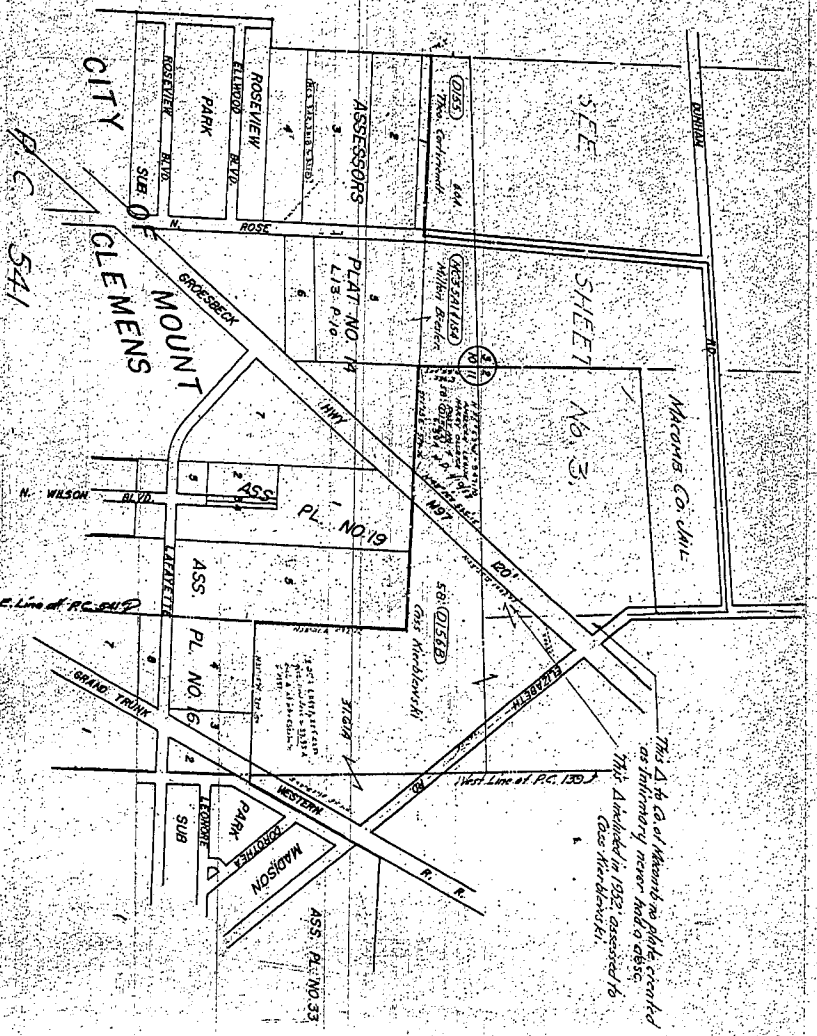
I certify that this plat was approved by the City Council of the City of Mount Clemens at a meeting held on July 30, 1975, and was reviewed and found to be in compliance with Act 288, P.A., 1967. That the minimum lot width and area required by Section 186 of the Act has been waived, and that the lots conform with the legally adopted zoning and subdivision control ordinance of the City. That the water mains and sanitary sewers are existing and ready for use within the plat.

Joanne T. Nelson
Joanne T. Nelson, City Clerk

67



By Light Line
Section Line
SCALE 1/4" = 400'



CLINTON TOWNSHIP, MACOMB CO.
SECTIONS 10 & 11
T2N. R13E

SHEET NO. 10

305

15