

MACOMB COUNTY 2015 REMONUMENTATION GRANT PROGRAM FOR CITY OF MOUNT CLEMENS PC-051

Section One

Index

Pictures in the four cardinal directions; temporary monumentation and after setting the required monumentation.

Section Two

Surveyor's Report

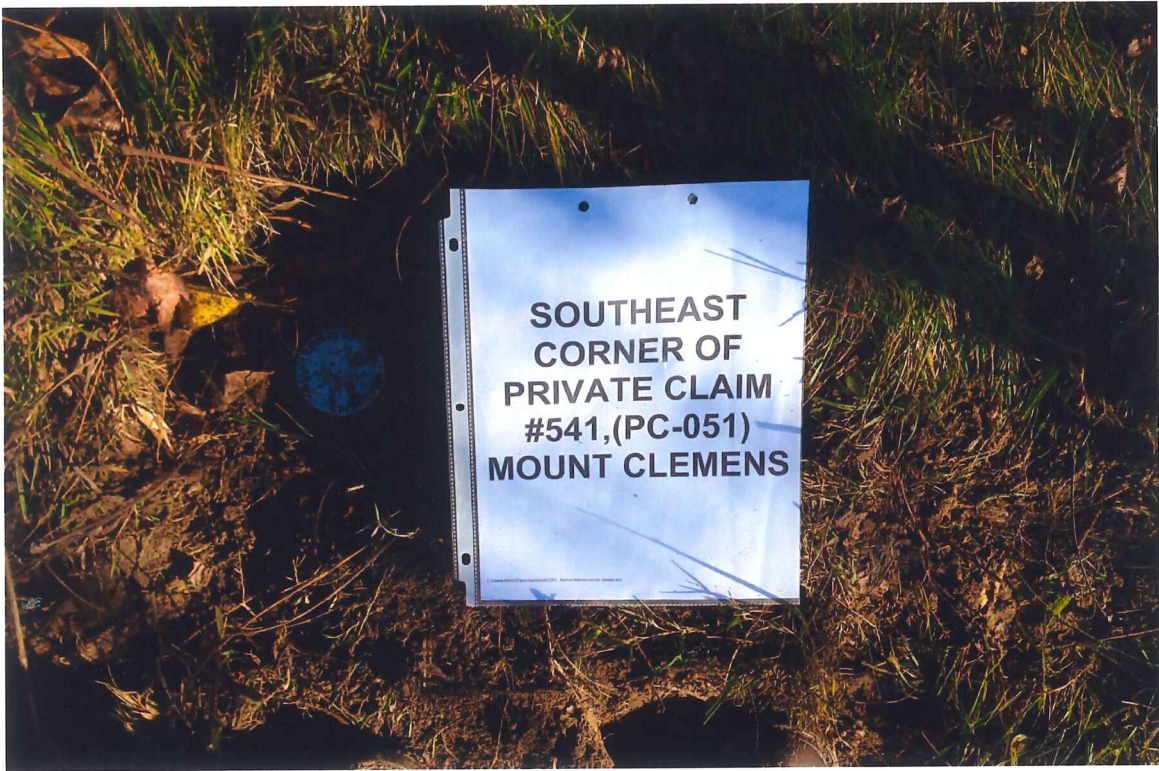
Land Corner Recordation Certificate

Section Three

1. Field Notes, Pages 1-10
2. Map of Clinton Township – 1875
3. Map of Clinton Township – 1895
4. Map of Clinton Township – 1916
5. Map of Clinton Township – 2006
6. West part of Mount Clemens – 1895
7. West part of Mount Clemens - 1916
8. Macomb County Composite Map 11-14E
9. Macomb County Composite Map 11-14F

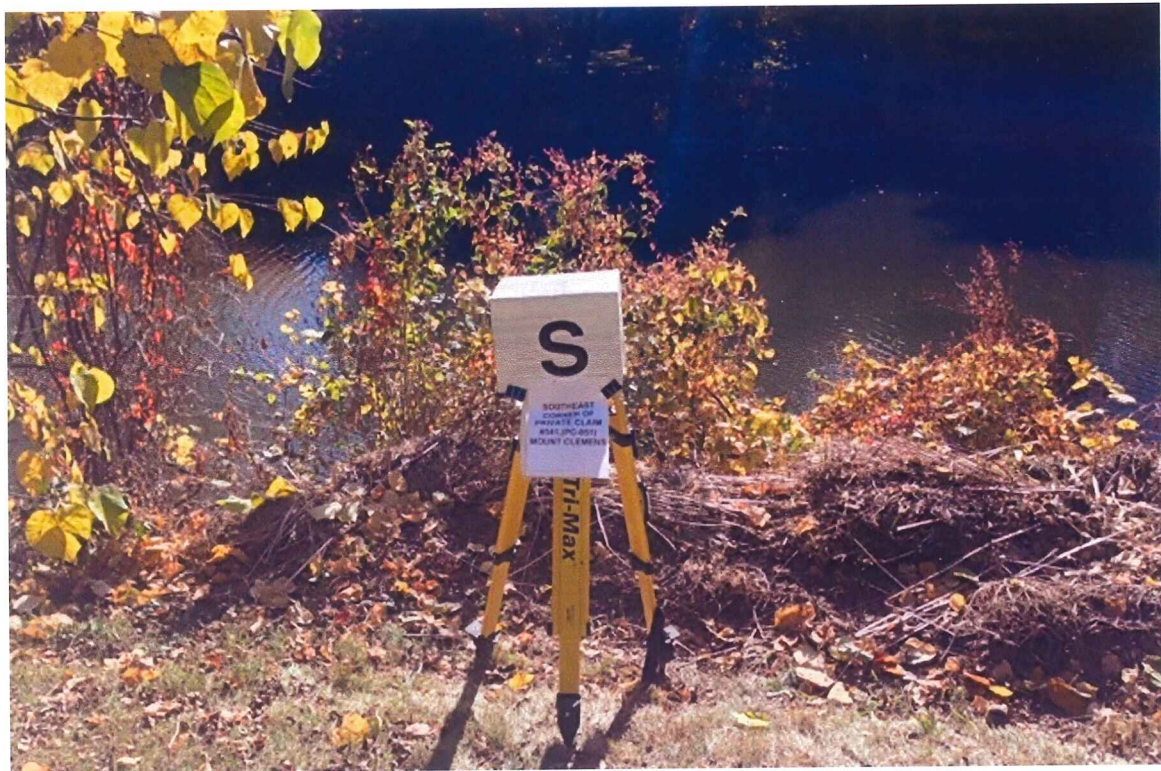
Section Four

1. Copy of the original description for PC #541 dated July 14, 1810, Page one of one
2. Copy of the transcribed description for PC #541 dated July 14, 1810, Page one of one
3. Copy of the field notes and plat of survey for "MARTEN ROSE" dated December 10 & 11, 1853, Page one of one
4. Partial copy of enlarged map of Clinton Township depicting Private Claim 541, 1875, Page one of one
5. Sketch of "SUBDIVISION OF LEANDER TROMBLEY" part of Private Claim 541, dated March 23, 1881, Page one of one
6. "CASS AVENUE SUBDIVISION", Volume #2, page 26, Page one of one
7. Enlargement of "CASS AVENUE SUBDIVISION", Page one of one
8. "MRS JANE A. and MISS EMILY M. ELRODGES ADDITION TO THE CITY OF MT. CLEMENS", Liber 2 page 32, Page one of one
9. "ASSESSOR'S PLAT NO. 2", Liber 13, page 37





**SOUTHEAST
CORNER OF
PRIVATE CLAIM
#541,(PC-051)
MOUNT CLEMENS**





Corrective Land Corner Recordation Certificate
Attachment B to 2015 Annual Grant Agreement
 Authority: MCL 54.205 and R54.202

This form is **ONLY** for corners filed under the 2015 State Survey and Remonumentation Grant Agreement

Filing Requirement: MCL 54.268(2) (a), 54.268(2) (d), 54.201 – 54.210d and 2015 State Survey and Remonumentation Grant Agreement

Notes:

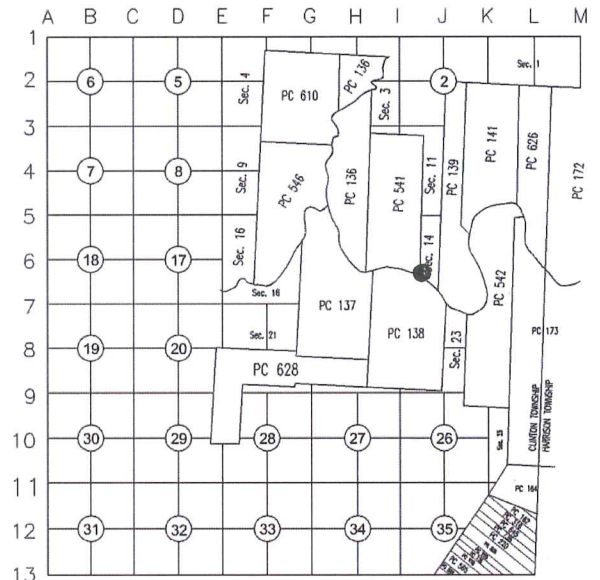
- No more than two Original Public Land Survey Corners can be recorded on this certificate
- If a corner reported hereon is common to two or more survey townships, each Town, Range and Corner Code for the corner may be identified on this certificate
- If a corner reported hereon is common to two or more counties, each county may be identified on this certificate and a copy of this certificate filed with the Register of Deeds in each county

For corner(s) in: Macomb County

City of Mount Clemens

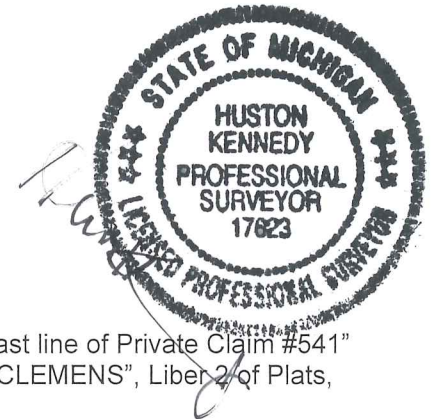
| Corner Type | Survey Township | Corner Code |
|--------------------------------------|---------------------------|---------------|
| Original Public Land Survey Corner | T <u>02N</u> R <u>13E</u> | <u>PC-051</u> |
| • MCL 54.202(g) | T _____ R _____ | _____ |
| • MCL 54.262(g) | T _____ R _____ | _____ |
| Property Controlling Corner | S _____ T _____ R _____ | _____ |
| • MCL 54.202(i) | S _____ T _____ R _____ | _____ |
| • MCL 54.262(h) | S _____ T _____ R _____ | _____ |
| Protracted Public Land Survey Corner | T _____ R _____ | _____ |
| • MCL 54.202(k) | T _____ R _____ | _____ |
| • MCL 54.262(i) | T _____ R _____ | _____ |

SE corner (PC-051) Private Claim #541



Part A: Corner(s) History

- 1.) 1810-Greeley, Surveyor of Private Claims
- 2.) 1810-Copy of the original description for PC #541
- 3.) 1810-Copy of the transcribed description for PC #541
- 4.) 1853- Copy of the field notes and plat of survey for "MARTEN ROSE"
- 5.) 1881-Sketch of "SUBDIVISION OF LEANDER TROMBLEY" part of Private Claim 541
- 6.) "CASS AVENUE SUBDIVISION", Volume #2, of Plats, page 26 cites the following "east line of Private Claim #541"
- 7.) "MRS JANE A. and MISS EMILY M. ELRODGES ADDITION TO THE CITY OF MT. CLEMENS", Liber 2 of Plats, Page 32, holds the east line of Private Claim #541 as the east line of said plat
- 8.) "ASSESSOR'S PLAT NO. 2", Liber 13, page 37



400

c

Part B: Surveyor's Report on Perpetuation or Monumentation of Corner

The Black Ash tree at the southeast corner of Private Claim #541 per Aaron Greeley's description has been destroyed and has not been perpetuated.

That part of the east line (the east line of a 20 foot wide public alley and the east line of Lot 252) of the above mentioned plat of "CASS AVENUE SUBDIVISION" is labeled as the "east line of Private Claim #541".

The west line of Lot 27 of the above mentioned "ASSESSOR'S PLAT NO. 20" is the east line of "CASS AVENUE SUBDIVISION". I found a concrete monument at the southwest corner of Lot 27, also found monumentation near the northwest corner of Lot 27.

Therefore, I held the found concrete monument at the southeast corner of Lot 27 along with the found monumentation along the west line of Lot 27 of the above mentioned "ASSESSOR'S PLAT NO. 20", and extended the line south 360.00 feet to a point near the top of the north bank of Clinton River (River Huron) to re-establish the southeast corner (PC-051) of Private Claim No. #541. The corner falls in the backyard of house #115 Belleview Avenue.

RECORDED, UNRECORDED AND FIELD MEASUREMENTS BETWEEN CORNERS

NE corner (PC-050) to SE corner (PC-051) (Private Claim #541)

1810 – Greeley = 135 chains, 47 links or 8,940.36 Ft.
S02°46'18" W 9468.57 Ft. (mea. 2015)

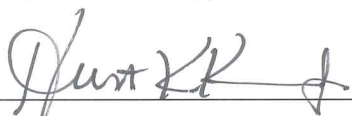
Part C: Field Evidence of Perpetuation or Monumentation of Corner

I set a 4" diameter 36" long concrete monument with 1/2" iron with a 2" diameter aluminum cap stamped "Macomb County Monument Act #345, #17623" PC-051

N73°W 34.47' Set Mag Nail w/remon washer stamped "Macomb County Witness Tag" north side 10" Elm
N41°W 96.29' Set Mag Nail w/remon washer stamped "Macomb County Witness Tag" NE side twin 14" tree
N07°E 81.91' Set Mag Nail w/remon washer stamped "Macomb County Witness Tag" west side 18" Walnut
N77°E 35.51' Set Mag Nail w/remon washer stamped "Macomb County Witness Tag" south face 30" Walnut
N01°W 360.00' 4" concrete monument

(See sketch on page 3 of 4)

I, Huston K. Kennedy, in a field survey on June 4, 2015, certify under the requirements of the State Survey and Remonumentation Act, 1990 PA 345, MCL 54.261 to 54.279, and the Corner Recordation Act, 1970 PA 74, MCL 54.201 to 54.210d, that the corner identified and described hereon has been perpetuated or monumented as described in Parts A, B, and C above, pursuant to the laws and rules of the State of Michigan.



Huston K. Kennedy, P.S.

November 11, 2015

Date

Professional Surveyor's License No.: 17623

105 North Washington Street, Oxford, Michigan 48371



I, Martin C. Dunn, P.S., Macomb County Surveyor Representative, confirm that the corner identified, described, and monumented as outlined Parts A, B, and C above was presented to and reviewed by the Macomb County Peer Review Group on November 10, 2015 and is accepted for filing in the Macomb County Remonumentation Program.



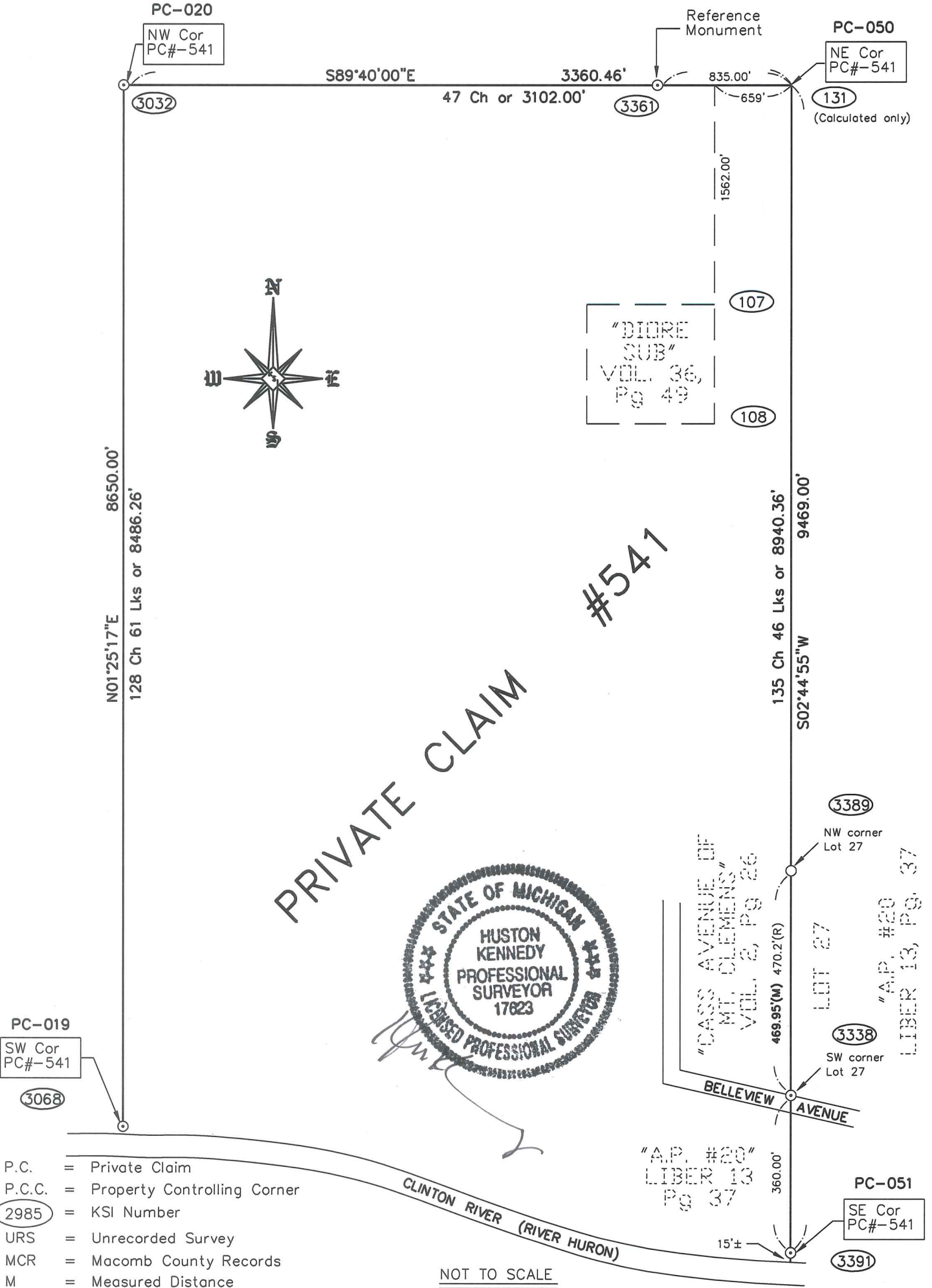
Martin C. Dunn, P.S.

5-31-2019

Date

Professional Surveyor's License No.: 30081

PRIVATE CLAIM #541
TOWN 2 NORTH, RANGE 13 EAST, CITY OF MT. CLEMENS



- P.C. = Private Claim
- P.C.C. = Property Controlling Corner
- 2985 = KSI Number
- URS = Unrecorded Survey
- MCR = Macomb County Records
- M = Measured Distance
- Cal = Calculated Distance
- Ch = Chain (66 feet)
- Lks = Links (0.66 feet)

NOT TO SCALE

Geodetic Coordinate Data for corner

Corner Code and Narrative Description: PC-051, T2N, R13E,

| Date of Observation | Latitude | Longitude | Datum and Adjustment Year | Epoch Date |
|---------------------|------------------|-------------------|---------------------------|------------|
| 4 November 2015 | N42°35'14.25350" | W-82°53'18.32975" | NAD83 (2011) | 2010.0000 |

Method for coordinate determination: Dual Frequency Static Observations constraining to the CORS stations of Auburn Hills (AJ5557), Livonia (DK7841) and Brighton (AJ5553), with 3 dimensional least square adjustment.

State Plane Coordinates in international feet: N399733.1545, E13521407.3061
Standard Deviation: 0.03 N-0.04 E
South Zone
Combine Factor: 0.99989
NGSPID = Auburn Hills (AJ 5557)
Survey Method: GPS C2-II
Orthometric Height: 581.35
Elev. Datum: NAVD 88

I, Joseph C. Kapelczak, state under the requirements of the State Survey and Remonumentation Act, 1990 PA 345, MCL 54.261 to 54.279, that the Latitude and Longitude reported hereon were observed by me for the corner identified hereon and that the data reported meets the requirements prescribed for the State Survey and Remonumentation Program.

Joseph C. Kapelczak
Joseph C. Kapelczak, PS

5/21/2019
Date

Professional Surveyor's License No.: 24598

JCK Group, Inc.
8615 Richardson Road
Suite 100
Commerce Township, MI 48390



Corrective Land Corner Recordation Certificate
Attachment B to 2015 Annual Grant Agreement
 Authority: MCL 54.205 and R54.202

This form is **ONLY** for corners filed under the 2015 State Survey and Remonumentation Grant Agreement

Filing Requirement: MCL 54.268(2) (a), 54.268(2) (d), 54.201 – 54.210d and 2015 State Survey and Remonumentation Grant Agreement

Notes:

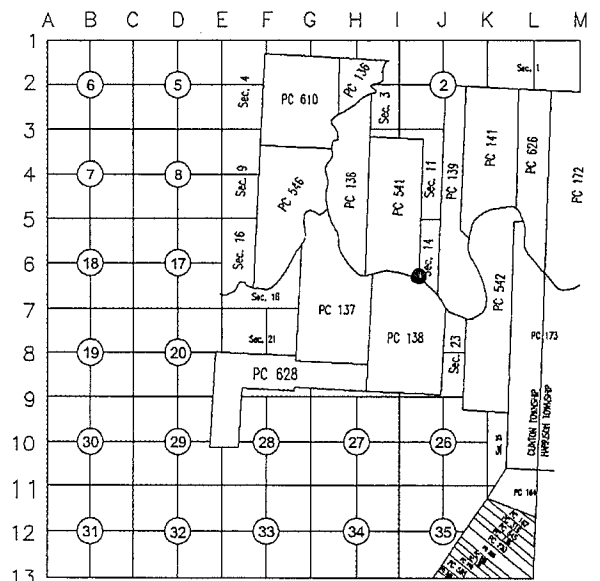
- No more than two Original Public Land Survey Corners can be recorded on this certificate
- If a corner reported hereon is common to two or more survey townships, each Town, Range and Corner Code for the corner may be identified on this certificate
- If a corner reported hereon is common to two or more counties, each county may be identified on this certificate and a copy of this certificate filed with the Register of Deeds in each county

For corner(s) in: Macomb County

City of Mount Clemens

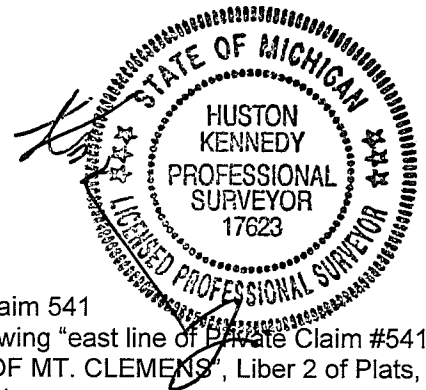
| Corner Type | Survey Township | Corner Code |
|--------------------------------------|---------------------------|---------------|
| Original Public Land Survey Corner | T <u>02N</u> R <u>13E</u> | <u>PC-051</u> |
| • MCL 54.202(g) | T _____ R _____ | _____ |
| • MCL 54.262(g) | T _____ R _____ | _____ |
| Property Controlling Corner | S _____ T _____ R _____ | _____ |
| • MCL 54.202(i) | S _____ T _____ R _____ | _____ |
| • MCL 54.262(h) | S _____ T _____ R _____ | _____ |
| Protracted Public Land Survey Corner | T _____ R _____ | _____ |
| • MCL 54.202(k) | T _____ R _____ | _____ |
| • MCL 54.262(i) | T _____ R _____ | _____ |

SE corner(PC-051)Private Claim #541



Part A: Corner(s) History

- 1.) 1810-Greeley, Surveyor of Private Claims
- 2.) 1810-Copy of the original description for PC #541
- 3.) 1810-Copy of the transcribed description for PC #541
- 4.) 1853- Copy of the field notes and plat of survey for "MARTEN ROSE"
- 5.) 1881-Sketch of "SUBDIVISION OF LEANDER TROMBLEY" part of Private Claim 541
- 6.) "CASS AVENUE SUBDIVISION", Volume #2, of Plats, page 26 cites the following "east line of Private Claim #541"
- 7.) "MRS JANE A. and MISS EMILY M. ELRODGES ADDITION TO THE CITY OF MT. CLEMENS", Liber 2 of Plats, Page 32, holds the east line of Private Claim #541 as the east line of said plat
- 8.) "ASSESSOR'S PLAT NO. 2", Liber 13, page 37



4

C

Part B: Surveyor's Report on Perpetuation or Monumentation of Corner

The Black Ash tree at the southeast corner of Private Claim #541 per Aaron Greeley's description has been destroyed and has not been perpetuated.

That part of the east line (the east line of a 20 foot wide public alley and the east line of Lot 252) of the above mentioned plat of "CASS AVENUE SUBDIVISION" is labeled as the "east line of Private Claim #541".

The west line of Lot 27 of the above mentioned "ASSESSOR'S PLAT NO. 20" is the east line of "CASS AVENUE SUBDIVISION". I found a concrete monument at the southwest corner of Lot 27, also found monumentation near the northwest corner of Lot 27.

Therefore, I held the found concrete monument at the southeast corner of Lot 27 along with the found monumentation along the west line of Lot 27 of the above mentioned "ASSESSOR'S PLAT NO. 20", and extended the line south 360.00 feet to a point near the top of the north bank of Clinton River (River Huron) to re-establish the southeast corner (PC-051) of Private Claim No. #541. The corner falls in the backyard of house #115 Belleview Avenue.

RECORDED, UNRECORDED AND FIELD MEASUREMENTS BETWEEN CORNERS

NE corner (PC-050) to SE corner (PC-051) (Private Claim #541)

1810 – Greeley = 135 chains, 47 links or 8,940.36 Ft.
S02°46'18" W 9468.57 Ft. (mea. 2015)

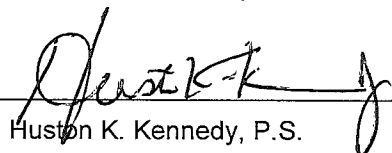
Part C: Field Evidence of Perpetuation or Monumentation of Corner

I set a 4" diameter 36" long concrete monument with 1/2" iron with a 2" diameter aluminum cap stamped "Macomb County Monument Act #345, #17623" PC-051

- N73°W 34.47' Set Mag Nail w/remon washer stamped "Macomb County Witness Tag" north side 10" Elm
- N41°W 96.29' Set Mag Nail w/remon washer stamped "Macomb County Witness Tag" NE side twin 14" tree
- N07°E 81.91' Set Mag Nail w/remon washer stamped "Macomb County Witness Tag" west side 18" Walnut
- N77°E 35.51' Set Mag Nail w/remon washer stamped "Macomb County Witness Tag" south face 30" Walnut
- N01°W 360.00' 4" concrete monument

(See sketch on page 3 of 4)

I, Huston K. Kennedy, in a field survey on June 4, 2015, certify under the requirements of the State Survey and Remonumentation Act, 1990 PA 345, MCL 54.261 to 54.279, and the Corner Recordation Act, 1970 PA 74, MCL 54.201 to 54.210d, that the corner identified and described hereon has been perpetuated or monumented as described in Parts A, B, and C above, pursuant to the laws and rules of the State of Michigan.


Huston K. Kennedy, P.S.

November 11, 2015
Date

Professional Surveyor's License No.: 17623
105 North Washington Street, Oxford, Michigan 48371



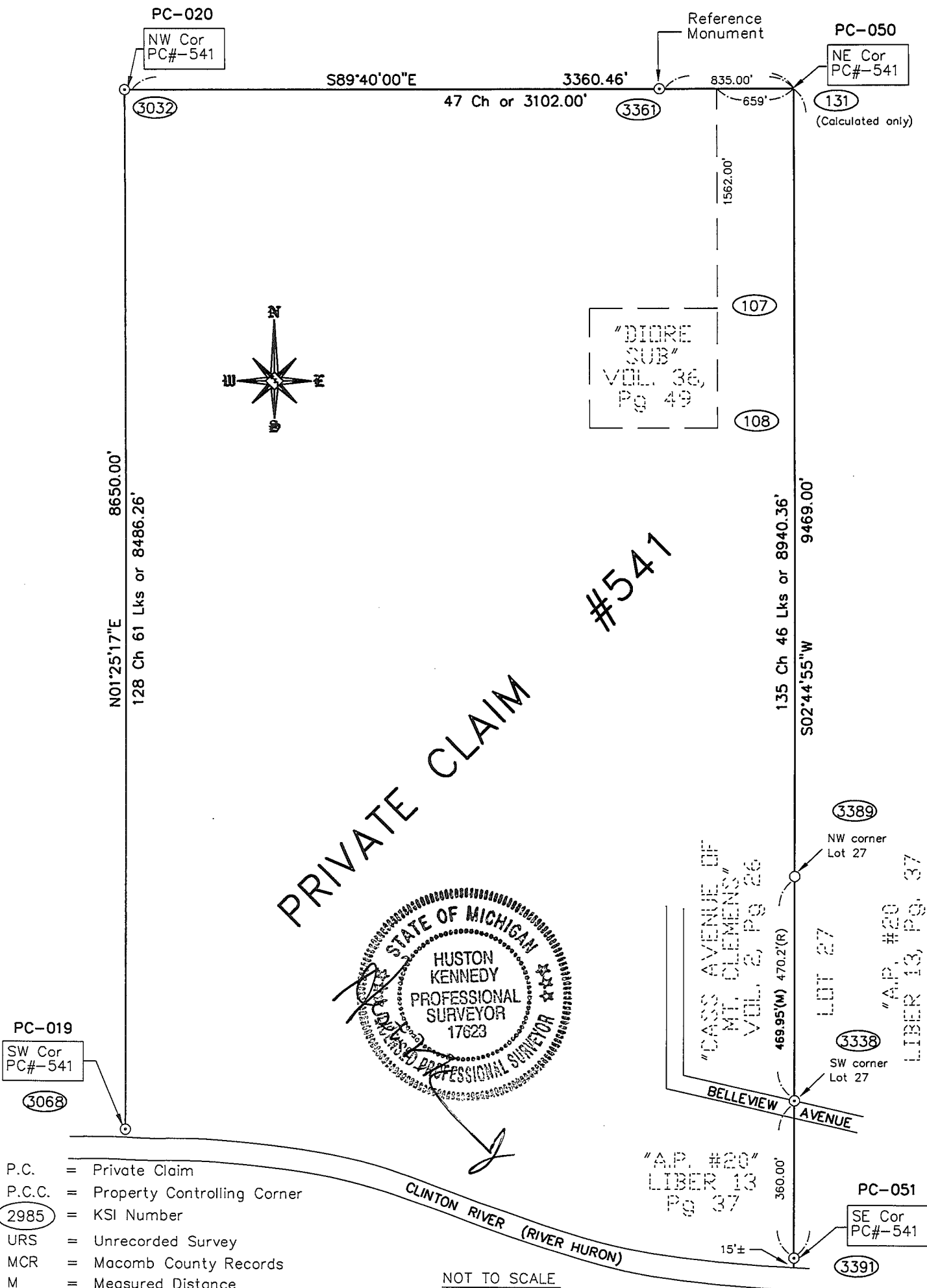
I, Martin C. Dunn, P.S., Macomb County Surveyor Representative, confirm that the corner identified, described, and monumented as outlined Parts A, B, and C above was presented to and reviewed by the Macomb County Peer Review Group on November 10, 2015 and is accepted for filing in the Macomb County Remonumentation Program.


Martin C. Dunn, P.S.

12-29-2015
Date

Professional Surveyor's License No.: 30081

PRIVATE CLAIM #541
TOWN 2 NORTH, RANGE 13 EAST, CITY OF MT. CLEMENS



- P.C. = Private Claim
- P.C.C. = Property Controlling Corner
- 2985 = KSI Number
- URS = Unrecorded Survey
- MCR = Macomb County Records
- M = Measured Distance
- Cal = Calculated Distance
- Ch = Chain (66 feet)
- Lks = Links (0.66 feet)

Geodetic Coordinate Data for corner

Corner Code and Narrative Description: PC-051, T2N, R13E,

| Date of Observation | Latitude | Longitude | Datum and Adjustment Year | Epoch Date |
|---------------------|------------------|-------------------|---------------------------|------------|
| 4 November 2015 | N42°35'14.25350" | W-83°53'18.32975" | NAD83 (2011) | 2010.0000 |

Method for coordinate determination: Dual Frequency Static Observations constraining to the CORS stations of Auburn Hills (AJ5557), Livonia (DK7841) and Brighton (AJ5553), with 3 dimensional least square adjustment.

State Plane Coordinates in international feet: N399733.1545, E13521407.3061

Standard Deviation: 0.03 N-0.04 E

South Zone

Combine Factor: 0.99989

NGSPID = Auburn Hills (AJ 5557)

Survey Method: GPS C2-II

Orthometric Height: 581.35

Elev. Datum: NAVD 88

I, Joseph C. Kapelczak, state under the requirements of the State Survey and Remonumentation Act, 1990 PA 345, MCL 54.261 to 54.279, that the Latitude and Longitude reported hereon were observed by me for the corner identified hereon and that the data reported meets the requirements prescribed for the State Survey and Remonumentation Program.

Joseph C. Kapelczak 11/11/2015
 Joseph C. Kapelczak, PS Date

Professional Surveyor's License No.: 24598

JCK Group, Inc.
 8615 Richardson Road
 Suite 100
 Commerce Township, MI 48390



**2015
MACOMB COUNTY REMONUMENTATION
GRANT PROGRAM FOR
CITY OF MOUNT CLEMENS
Research Dossier
PC-051 Southeast corner of Private Claim 541**

Prepared by:
Kennedy Surveying, Inc.
105 North Washington Street
Oxford, Michigan 48371

Sources of Information Researched For Macomb County 2015 Remonumentation Grant Program for City of Mount Clemens

- 1) GLO Notes
- 2) Act 74 Recorded LCRC
- 3) Act 132 Recorded Surveys
- 4) Personal History and Records
- 5) LCRC's and Surveys
- 6) Letters to the Following, Requesting Unrecorded information
 - a) Anderson, Eckstein & Westrick
 - b) BMJ Engineers & Surveyors
 - c) Community Engineering & Surveying
 - d) David Little Land Surveyor
 - e) David P. Smith & Associates, Inc.
 - f) Fenn & Associates Surveying, Inc.
 - g) George Jerome & Company
 - h) Grant Ward Surveyors
 - i) Great Lakes Geomatics
 - j) JCK Group, Inc.
 - k) Kem-Tec & Associates
 - l) Kieft Engineering, Inc.
 - m) King Surveying & Associates, Inc.
 - n) Lehner Associates, Inc.
 - o) Metco Land Sea Corp.,
 - p) Milletics & Associates
 - q) R. J. Donnelly & Associates, Inc.
 - r) R. A. Duthler Land Surveyor, LLC
 - s) Reichert Surveying
 - t) Road Commission for Macomb County
 - u) Rowe Incorporated
 - v) Urban Land Consultants, LLC
 - w) Williams & Gorinac Associates

PC-051

EXISTING FIELD CONDITIONS

The southeast corner of Private Claim #541 (PC 051) has not been perpetuated as it falls within the Axalta Coating System Facility.

GLO SURVEY HISTORY

Private Claim (PC) No. 541 which falls within the boundaries of Clinton Township, which was surveyed by Aaron Greeley, Surveyor of Private Claims on July 14, 1810 and confirmed to Christian Clemens and James Connor. The description cites the following: "commencing at an Oak tree standing on the border of the River Huron between this tract and a tract confirmed to James Connor. Thence north one-hundred twenty-eight chains sixty-one links to a post. Thence east forty-seven chains to Black Ash tree; thence south one-hundred and thirty-five chains, forty-six links to Black Ash tree standing on the border of the River Huron. The Black Ash tree represents the southeast corner of Private Claim #541.

RECORDED AND UNRECORDED LCRC'S AND CERTIFICATE OF SURVEYS

June 17, 1891 – "CASS AVENUE SUBDIVISION" recorded in Volume #2 of Plats, on page 26 cites the following "east line of Private Claim #541".

September 28, 1889 – "MRS JANE A. and "MISS EMILY M. ELRODGES ADDITION TO THE CITY OF MT. CLEMENS" recorded in Liber 2 of Plats on page 32, holds the east line of Private Claim #541 as the east line of said plat.

November 23, 1928 - "ASSESSOR'S PLAT NO. 20" recorded in Liber 13 of Plats, on page 37

RECORDED, UNRECORDED AND FIELD MEASUREMENTS BETWEEN ADJACENT CORNERS

NE corner (PC-050) to SE corner (PC-051) (Private Claim #541)

1810 – Greeley = 135 chains, 47 links or 8,940.36 Ft.
S02°46'18" W 9468.57 Ft. (mea. 2015)

SURVEYORS RECOMMENDATIONS

The Black Ash tree at the southeast corner of Private Claim #541 per Aaron Greeley's description has been destroyed and has not been perpetuated.

That part of the east line (the east line of a 20 foot wide public alley and the east line of Lot 252) of the above mentioned plat of "CASS AVENUE SUBDIVISION" is labeled as the "east line of Private Claim #541".

The west line of Lot 27 of the above mentioned "ASSESSOR'S PLAT NO. 20" is the east line of "CASS AVENUE SUBDIVISION". I found a concrete monument at the southwest corner of Lot 27, also found monumentation near the northwest corner of Lot 27.

Therefore, I held the found concrete monument at the southeast corner of Lot 27 along with the found monumentation along the west line of Lot 27 of the above mentioned "ASSESSOR'S PLAT NO. 20", and extended the line south 360.00 feet to a point near the top of the north bank of Clinton River (River Huron) to re-establish the southeast corner (PC-051) of Private Claim No. #541.



Huston K. Kennedy, P.S.
Kennedy, Surveying, Inc.

**2015
MACOMB COUNTY REMONUMENTATION
GRANT PROGRAM FOR NORTHEAST CORNER
OF (PC-050) & SOUTHEAST (PC-051)
PRIVATE CLAIM 541,
CITY OF MOUNT CLEMENS**

| | | | | | |
|------|---|-------|--|--|--|
| 3324 | Fd 3/4" PIPE | | | | |
| 3325 | Fd 1/2" PIPE | | | | |
| 3326 | Set #60 TRAV. Pt in grass | | | | |
| | Fd 1/2" I/R | | | | |
| | Fd 5/8" PIPE | | | | |
| | Fd 5/8" PIPE | | | | |
| | Fd 1/2" CI # | 17649 | | | |
| | Fd 2" PIPE | | | | |
| | Fd 1/2" PIPE | | | | |
| 3 | Fd 3/8" PIPE | | | | |
| 4 | Fd 1/2" PIPE | | | | |
| 5 | Fd 1/2" CI # | 19837 | | | |
| 6 | Set #60 TRAV. Pt. | | | | |
| 7 | Fd 1/2" PIPE | | | | |
| 8 | Fd 1/2" PIPE increased in square MON. | | | | |
| 9 | Fd 1/2" | | | | |
| 3340 | Fd 1/2" F/R +- 12' North of Clinton River | | | | |
| 3341 | | | | | |
| 3342 | Possible Rot Mon | | | | |
| 3343 | NE Low Pt. (34) | | | | |
| 3344 | | | | | |
| 3345 | | | | | |
| 3346 | | | | | |
| 3347 | Fd 1/2" PIPE Bent. | | | | |

| | | | | | |
|------|---|---------------|----------------------|--|--|
| 106 | Fd #60 TRAV Pt | | | | |
| 107 | Fd 1/2" PIPE | SW COR | LaFayette St. corner | | |
| 3301 | Set mag in conc. Solt. line | 15 E 17th | Wilson | | |
| 3302 | Set #60 TRAV. Pt 20 S. of R.C. | | | | |
| 3303 | Set #60 TRAV. Pt SW COR | Hubbards St # | Eldredge St. | | |
| | Fd 1/2" PIPE | | | | |
| | Fd 1/2" I/R | | | | |
| | Fd 5/8" PIPE | | | | |
| | Set Mag TRAV. Pt. @ Lincoln & Eldredge | | | | |
| | Set Mag TRAV. Pt. @ Grand Ave & Eldredge | | | | |
| | Fd 1/2" I/R | | | | |
| | Fd 1" + Iron w/cap | | | | |
| | Fd 1/2" I/R | | | | |
| | Set Mag TRAV. Pt @ Cass Ave & Moross St | | | | |
| | Fd 5/8" PIPE | | | | |
| | Set Mag TRAV. Pt @ Square Church & Moross | | | | |
| | Fd 1/2" PIPE | | | | |
| | Fd 1/2" I/R | | | | |
| 3311 | Fd 1/2" CI # 48781 | | | | |
| 3312 | Fd 1/2" CI # 48781 | | | | |
| 3313 | Set Mag TRAV. Pt. | | | | |
| 3320 | Fd 1/2" PIPE | | | | |
| 3321 | Fd 1/2" PIPE | | | | |
| 3322 | Fd 5/8" PIPE | | | | |
| 3323 | Fd 1/2" BAR | | | | |

| | | | | | | |
|---|-----------|------------|----|---|-----------|------------|
| X | Pl 3303 | To Pl 3310 | HR | X | 3307-3310 | FD Cap "T" |
| 1 | 96-56-00 | | | | 134.15 | m |
| 2 | 193-52-00 | | | | | |
| M | 96-56-00 | | | | | |

| | | | | | | |
|---|-----------|------------|----|---|-----------|------------|
| X | Pl 3303 | To Pl 3311 | HR | X | 3308-3311 | FD 1/2" IR |
| 1 | 109-09-40 | | | | 16.04 | m |
| 2 | 218-19-20 | | | | | |
| M | 109-09-40 | | | | | |

| | | | | | | |
|---|-----------|------------|----|---|-----------|-----------|
| X | Pl 3303 | To Pl 3312 | HR | X | 3308-3312 | TRAV. PT. |
| 1 | 182-11-35 | | | | 861.05 | m |
| 2 | 364-23-10 | | | | | |
| M | 182-11-35 | | | | | |

| | | | | | | |
|---|----------|------------|----|---|-----------|--------------|
| X | Pl 3308 | To Pl 3313 | HR | X | 3312-3313 | FD 5/8" PIPE |
| 1 | 15-17-25 | | | | 60.75 | m |
| 2 | 30-34-50 | | | | | |
| M | 15-17-25 | | | | | |

| | | | | | | |
|---|-----------|------------|----|---|-----------|--------------------------|
| X | Pl 3308 | To Pl 3314 | HR | X | 3312-3314 | Set MAG TRAV. PT. |
| 1 | 182-05-00 | | | | 1005.68 | m |
| 2 | 364-09-55 | | | | | |
| M | 182-04-58 | | | | | |
| | | | | | | by HSE * 6/6 MOROS st |

| | | | | | | |
|---|-----------|------------|----|---|-----------|------------|
| X | Pl 3302 | To Pl 3305 | HR | X | 3303-3305 | FD 1/2" IR |
| 1 | 174-07-05 | | | | 238.57 | m |
| 2 | 348-14-10 | | | | | |
| M | 174-07-05 | | | | | |

| | | | | | | |
|---|-----------|------------|----|---|-----------|--------------|
| X | Pl 3302 | To Pl 3306 | HR | X | 3303-3306 | FD 5/8" PIPE |
| 1 | 173-40-20 | | | | 388.49 | m |
| 2 | 347-20-40 | | | | | |
| M | 173-40-20 | | | | | |

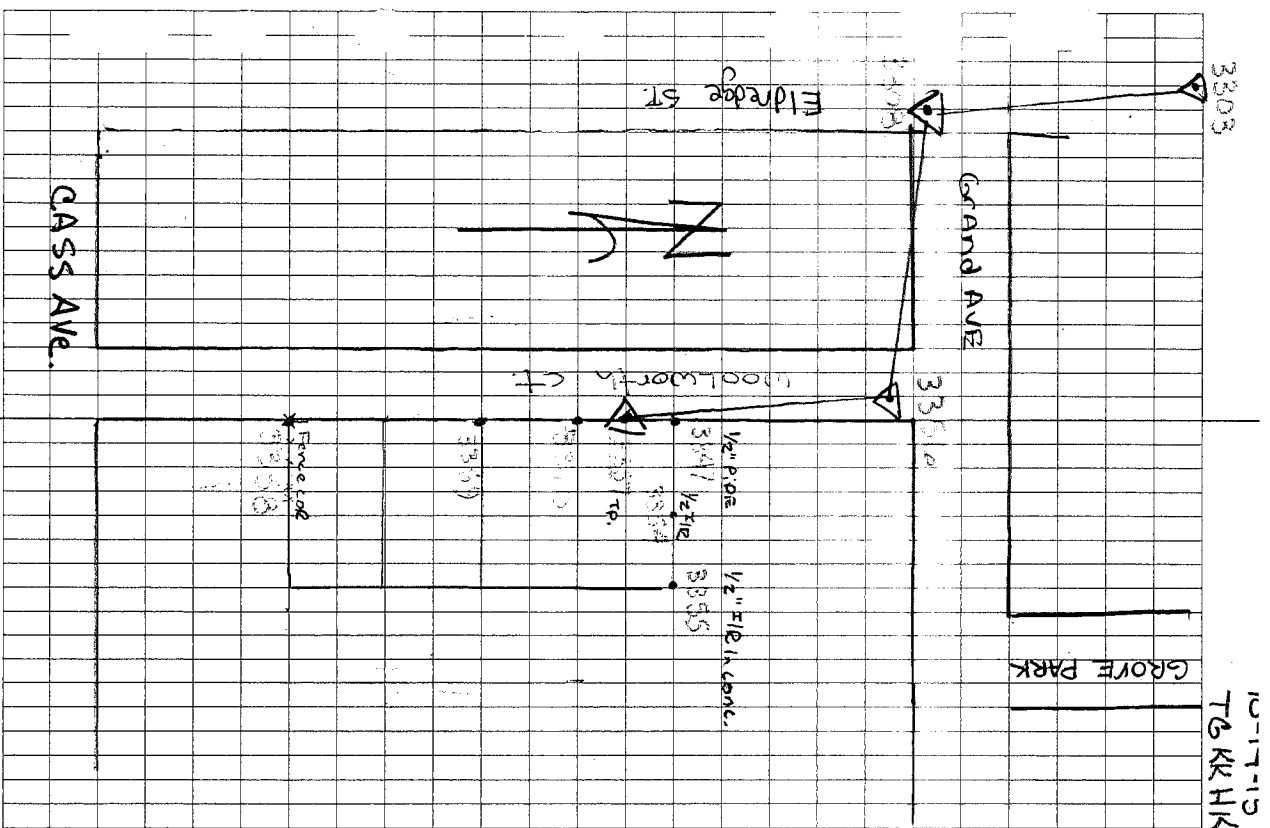
| | | | | | | |
|---|-----------|------------|----|---|-----------|-------------------|
| X | Pl 3302 | To Pl 3307 | HR | X | 3303-3307 | Set MAG TRAV. PT. |
| 1 | 258-40-40 | | | | 561.05 | m |
| 2 | 517-21-25 | | | | | |
| M | 258-40-43 | | | | | |

| | | | | | | |
|---|-----------|------------|----|---|-----------|-------------------|
| X | Pl 3302 | To Pl 3308 | HR | X | 3303-3308 | Set MAG TRAV. PT. |
| 1 | 260-32-10 | | | | 994.89 | m |
| 2 | 521-04-35 | | | | | |
| M | 260-32-18 | | | | | |

| | | | | | | |
|---|-----------|------------|----|---|-----------|------------|
| X | Pl 3303 | To Pl 3309 | HR | X | 3307-3309 | FD 1/2" IR |
| 1 | 118-45-40 | | | | 15.49 | m |
| 2 | 237-31-20 | | | | | |
| M | 118-45-40 | | | | | |

| | | | | | | | | | | | |
|------|-----------|-------|------------|---|-----------|----------|-----------------------|---|-----------|--------|---|
| X Pt | 3303 | To Pt | 3356 (HR) | X | 3308-3356 | TRAV. Pt | B/LC SET 1/2" O.D. | | | | |
| | | | | | | | | 1 | 93-02-55 | 270.12 | m |
| | | | | | | | | 2 | 186-05-55 | | |
| M | 93-02-58 | | | | | | | | | | |
| | | | | | | | | | | | |
| X Pt | 3308 | To Pt | 3357 (HL) | X | 3356-3357 | TRAV. Pt | SET 1/2" O.D. | | | | |
| | | | | | | | | 1 | 91-23-40 | 397.08 | m |
| 2 | 182-47-05 | | | | | | | | | | |
| | | M | 91-23-33 | | | | | | | | |
| | | | | | | | | | | | |
| X Pt | 3356 | To Pt | 3347 (FVR) | X | 3351-3347 | TRAV. Pt | SET 1/2" O.D. | | | | |
| | | | | | | | | 1 | 01-39-00 | 20.64 | m |
| 2 | 03-18-00 | | | | | | | | | | |
| | | M | 01-39-00 | | | | | | | | |
| | | | | | | | | | | | |
| X Pt | 3356 | To Pt | 3354 (HR) | X | 3357-3354 | TRAV. Pt | SET 1/2" O.D. | | | | |
| | | | | | | | | 1 | 70-22-40 | 60.37 | m |
| 2 | 140-45-20 | | | | | | | | | | |
| | | M | 70-22-40 | | | | | | | | |
| | | | | | | | | | | | |
| X Pt | 3356 | To Pt | 3355 (HR) | X | 3357-3355 | TRAV. Pt | SET 1/2" O.D. | | | | |
| | | | | | | | | 1 | 77-24-45 | 110.75 | m |
| 2 | 154-49-30 | | | | | | | | | | |
| | | M | 77-24-45 | | | | | | | | |
| | | | | | | | | | | | |

| | | | | | | | | | | | |
|------|-----------|-------|-----------|---|-----------|----------|---------------|---|-----------|---------|---|
| X Pt | 3312 | To Pt | 3315 (HR) | X | 3314-3315 | TRAV. Pt | SET 1/2" O.D. | | | | |
| | | | | | | | | 1 | 99-30-00 | 53.47 | m |
| | | | | | | | | 2 | 199-00-00 | | |
| M | 99-30-00 | | | | | | | | | | |
| | | | | | | | | | | | |
| X Pt | 3312 | To Pt | 3316 (HR) | X | 3314-3316 | TRAV. Pt | SET 1/2" O.D. | | | | |
| | | | | | | | | 1 | 93-52-55 | 237.50 | m |
| 2 | 187-45-40 | | | | | | | | | | |
| | | M | 93-52-50 | | | | | | | | |
| | | | | | | | | | | | |
| X Pt | 3312 | To Pt | 3317 (HR) | X | 3314-3317 | TRAV. Pt | SET 1/2" O.D. | | | | |
| | | | | | | | | 1 | 78-01-35 | 220.50 | m |
| 2 | 146-03-10 | | | | | | | | | | |
| | | M | 78-01-35 | | | | | | | | |
| | | | | | | | | | | | |
| X Pt | 3312 | To Pt | 3318 (HR) | X | 3314-3318 | TRAV. Pt | SET 1/2" O.D. | | | | |
| | | | | | | | | 1 | 73-03-35 | 163.37 | m |
| 2 | 146-07-10 | | | | | | | | | | |
| | | M | 73-03-35 | | | | | | | | |
| | | | | | | | | | | | |
| X Pt | 3312 | To Pt | 3319 (HR) | X | 3314-3319 | TRAV. Pt | SET 1/2" O.D. | | | | |
| | | | | | | | | 1 | 177-51-45 | 1503.13 | m |
| 2 | 355-43-23 | | | | | | | | | | |
| | | M | 177-51-43 | | | | | | | | |
| | | | | | | | | | | | |



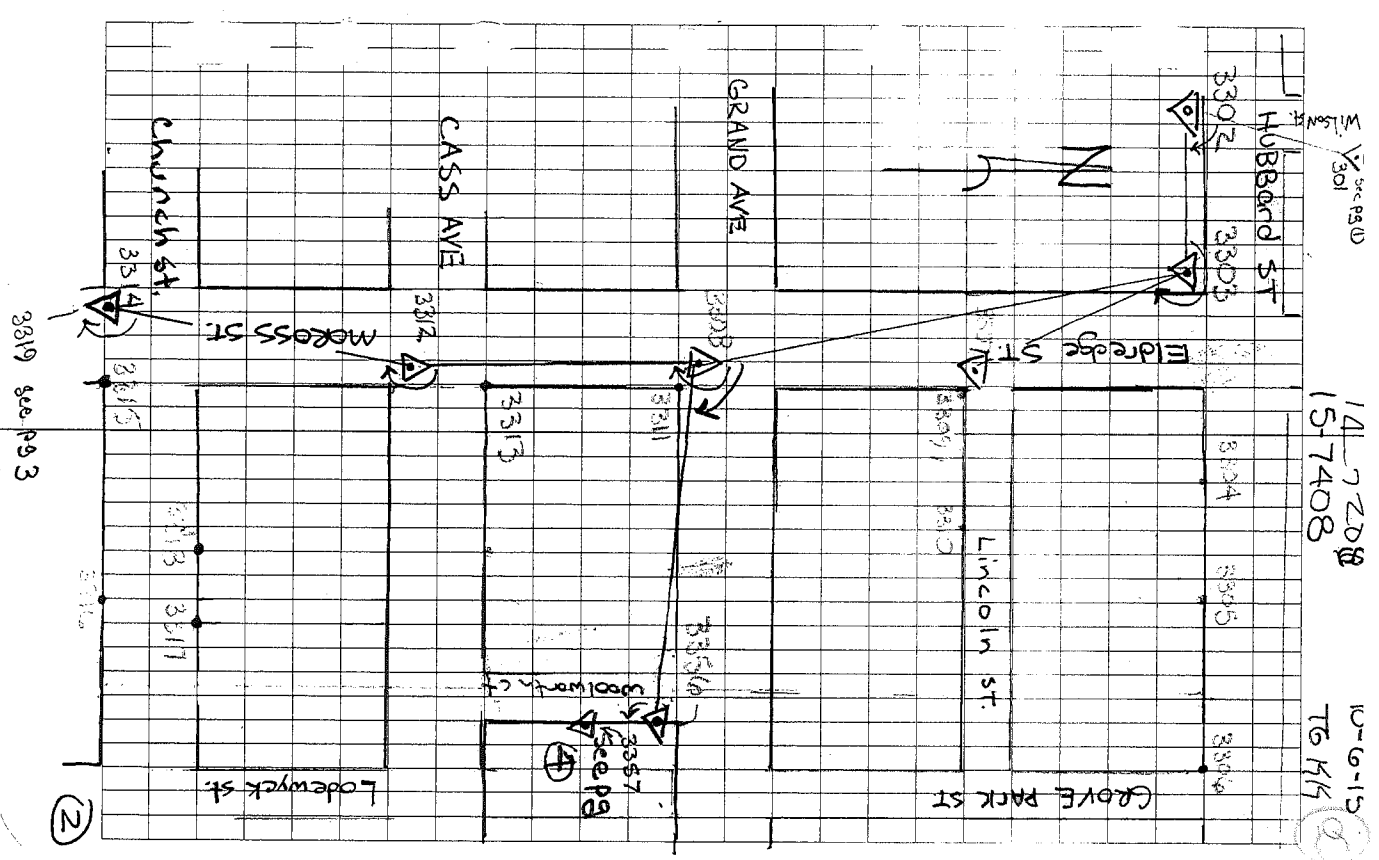
| | | | | |
|---|--------------------|------|-----------|------------|
| | | 5359 | 5359 | |
| X | Pl 3356 To Pl 3359 | HR | 3357-3359 | FD 1/2" IR |
| 1 | 180-39-40 | | 88.93 | M |
| 2 | 361-19-20 | | | |
| X | 180-39-40 | | | |
| | | 5359 | 5358 | |
| X | Pl 3356 To Pl 3358 | HR | 3357-3358 | FD 1/2" IR |
| 1 | 180-36-40 | | 199.08 | M |
| | | 5360 | 5360 | |
| X | Pl 3356 To Pl 3360 | HR | 3357-3360 | FD 1/2" IR |
| 1 | 180-25-15 | | 33.91 | M |
| 2 | 360-50-25 | | | |
| X | 180-25-13 | | | |

(A)

10-17-15
TG KR HK

(7)

| | | | | |
|----------------|---------|---|-----------|--------------|
| 4Pt 3314 To Pt | 3320 HR | Y | 3319-3320 | FD 1/2" PIPE |
| 1 Y 75-02-25 | | | 224.00M | |
| 2 150-04-50 | | | | |
| M 75-02-25 | | | | |
| 4Pt 3314 To Pt | 3321 HR | Y | 3319-3321 | FD 1/2" PIPE |
| 1 Y 82-14-40 | | | 428.94M | |
| 2 164-29-20 | | | | |
| M 82-14-40 | | | | |
| 4Pt 3314 To Pt | 3322 HR | Y | 3319-3322 | 5/8" PIPE |
| 1 Y 90-19-00 | | | 378.55M | |
| 2 180-38-00 | | | | |
| M 90-19-00 | | | | |
| 4Pt 3314 To Pt | 3323 HR | Y | 3319-3323 | FD 1/2" GAR |
| 1 Y 90-25-00 | | | 228.62M | |
| 2 180-50-00 | | | | |
| M 90-25-00 | | | | |
| 4Pt 3314 To Pt | 3324 HR | Y | 3319-3324 | FD 3/4" PIPE |
| 1 Y 93-00-25 | | | 48.76M | |
| 2 186-00-50 | | | | |
| M 93-00-25 | | | | |



| | | | |
|---------------------|----|-----------|----------------------|
| APt 3327 To Pt 3363 | HL | 3362-3363 | 3/4" BAR |
| 1 | | 17.40 | M |
| 2 | | | |
| M | | | |
| APt 3327 To Pt 3364 | HR | 3362-3364 | 5/8" PIPE |
| 1 | | 43.01 | M |
| 2 | | | |
| M | | | |
| APt 3327 To Pt 3365 | HR | 3362-3365 | 5/8" PIPE |
| 1 | | 182.53 | M |
| 2 | | | |
| M | | | |
| APt 3326 To Pt 3392 | HL | 3336-3392 | 5/8" PIPE TRAV PT |
| 1 | | 264.58 | M |
| 2 | | | |
| M | | | |
| APt 3336 To Pt 3391 | HR | 3392-3391 | 5/8" PIPE TRAV PT |
| 1 | | 27.29 | R |
| 2 | | 27.29 | M |
| M | | PC-051 | |

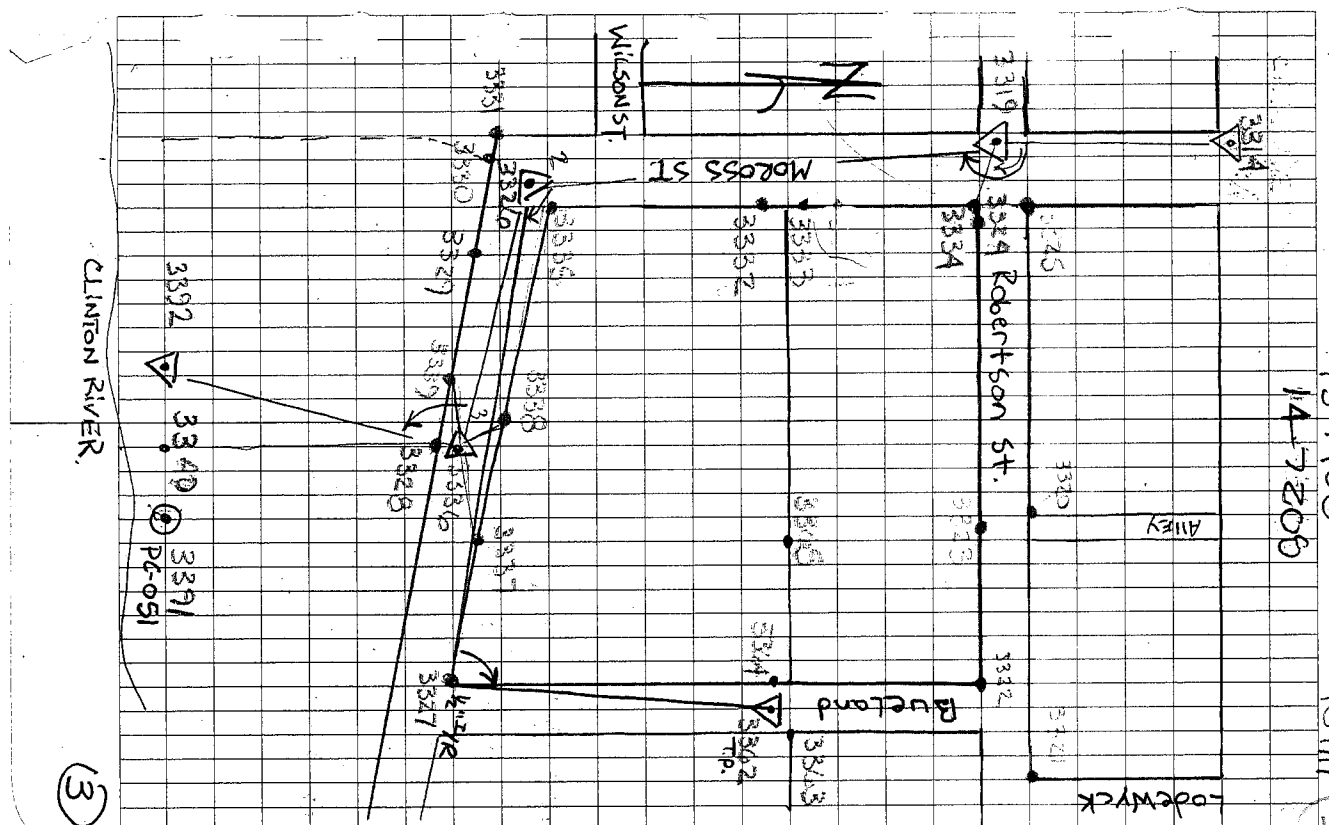
| | | | |
|--------------------------|----|-----------|----------------------|
| APt 3319 To Pt 3335 | HR | 3326-3335 | 5/8" PIPE TRAV PT |
| 1 | | 13.56 | M |
| 2 | | | |
| M | | | |
| APt 3319 To Pt 3336 | HR | 3326-3336 | 5/8" PIPE TRAV PT |
| 1 | | 253.14 | M |
| 2 | | | |
| M | | | |
| APt 3326 To Pt 3337 | HR | 3336-3337 | 5/8" PIPE |
| 1 | | 73.06 | M |
| 2 | | | |
| M | | | |
| APt 3326 To Pt 3338 | HR | 3336-3338 | 5/8" PIPE MON. |
| 1 | | 81.54 | M |
| 2 | | | |
| M | | | |
| APt 3326 To Pt 3339 (HL) | HR | 3336-3339 | 5/8" PIPE |
| 1 | | 42.44 | M |
| 2 | | | |
| M | | | |

4P# 3326 To P# 3340 HR # 3336-3340 Folye HR
 1 231-23-25 279.37 M
 2 462-46-50
 M 231-23-25

4P# 107 To P# 3361 (HR) # 3360-3361
 1 19-47-12 157.30
 2 39-34-20 835.00
 M 19-47-12

4P# 107 To P# 1 (HR) 106-#
 # VCG-39-40 186.77 3366
 # 24115-45-05 276.66 3367
 # 34189-29-00 217.70 3368
 # 4827-39-10 (HR) 49.63 3369
 # 523-17-25 (HR) 205.74 3370
 # 637-09-15 3371 149.47 Edge of
 # 7 44-41-25 19.06 3372 pit

4P# 3326 To P# 3362 HR # 3327-3362
 1 72-40-30 532.62 m Set marks
 2 145-21-10
 M 72-40-35



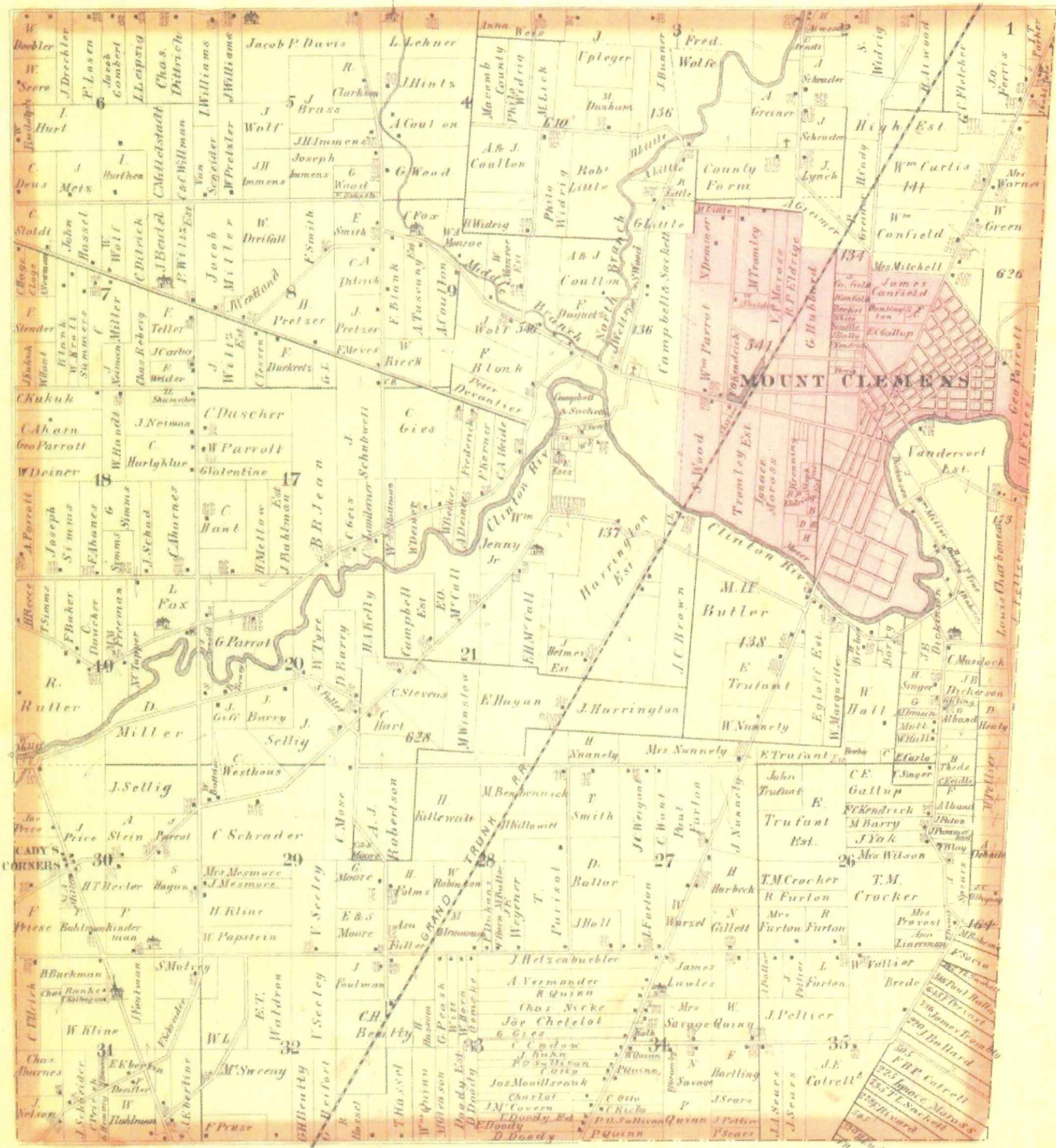
15-7408
14-7208

10-7-15
TG 44

(3)

MAP OF CLINTON TOWNSHIP

TP 2 N R 3 E



Drawn and Compiled by O.B. Crane



Scanned By:

METCO
Engineers, Architects & Surveyors

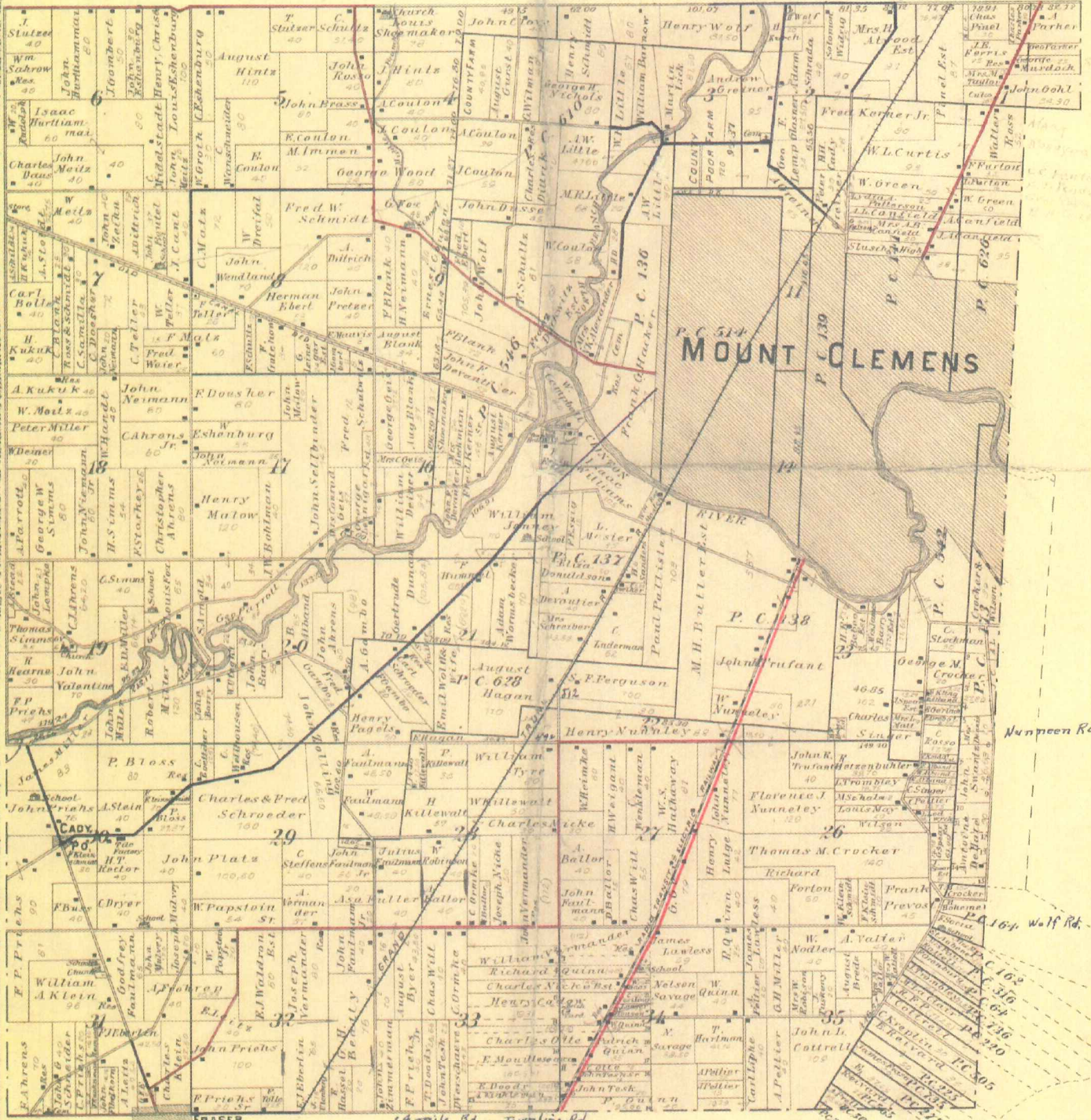
1875

MAP OF CLINTON

Township 2 North Range 13 East

Scale 2 Inches to one Mile.

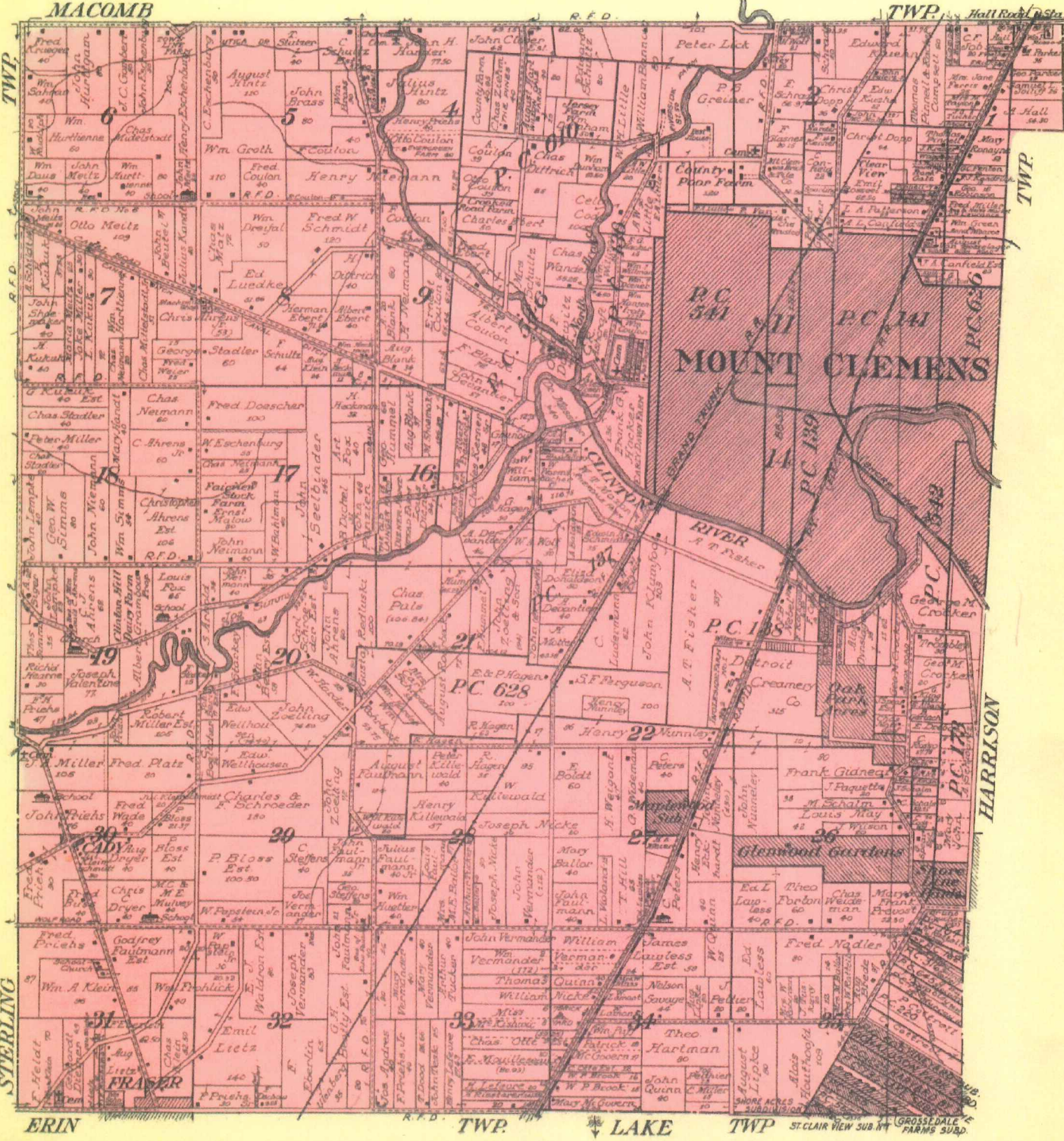
of the Meridian of Michigan



MAP OF
CLINTON
 TOWNSHIP

Scale 2 inches to 1 mile

Fractional Township 2 North, Range 13 East of the Michigan Meridian



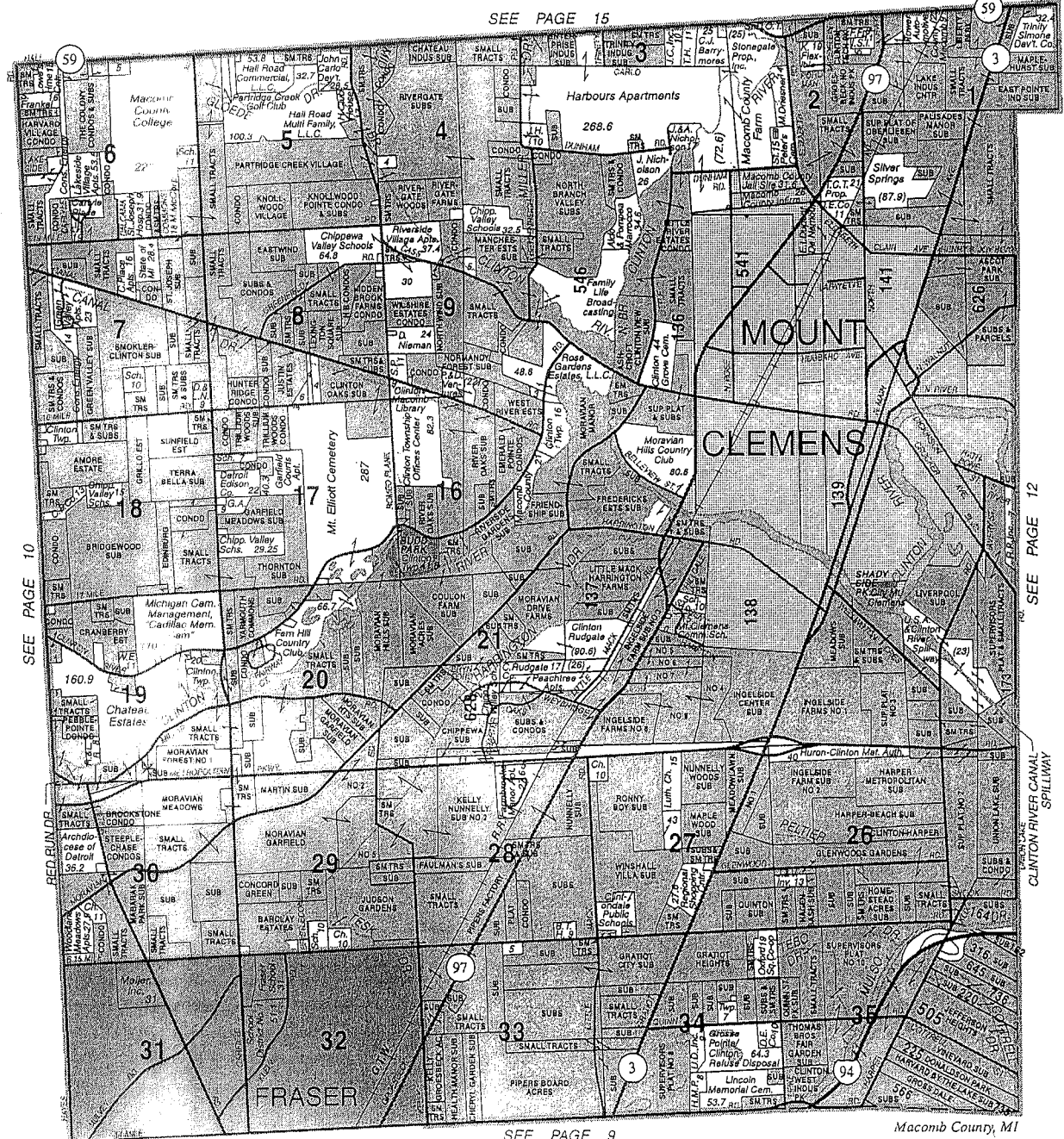
1916



CLINTON - CITY OF FRASER

T.2N.-R.13E.

SEE PAGE 15



SEE PAGE 10

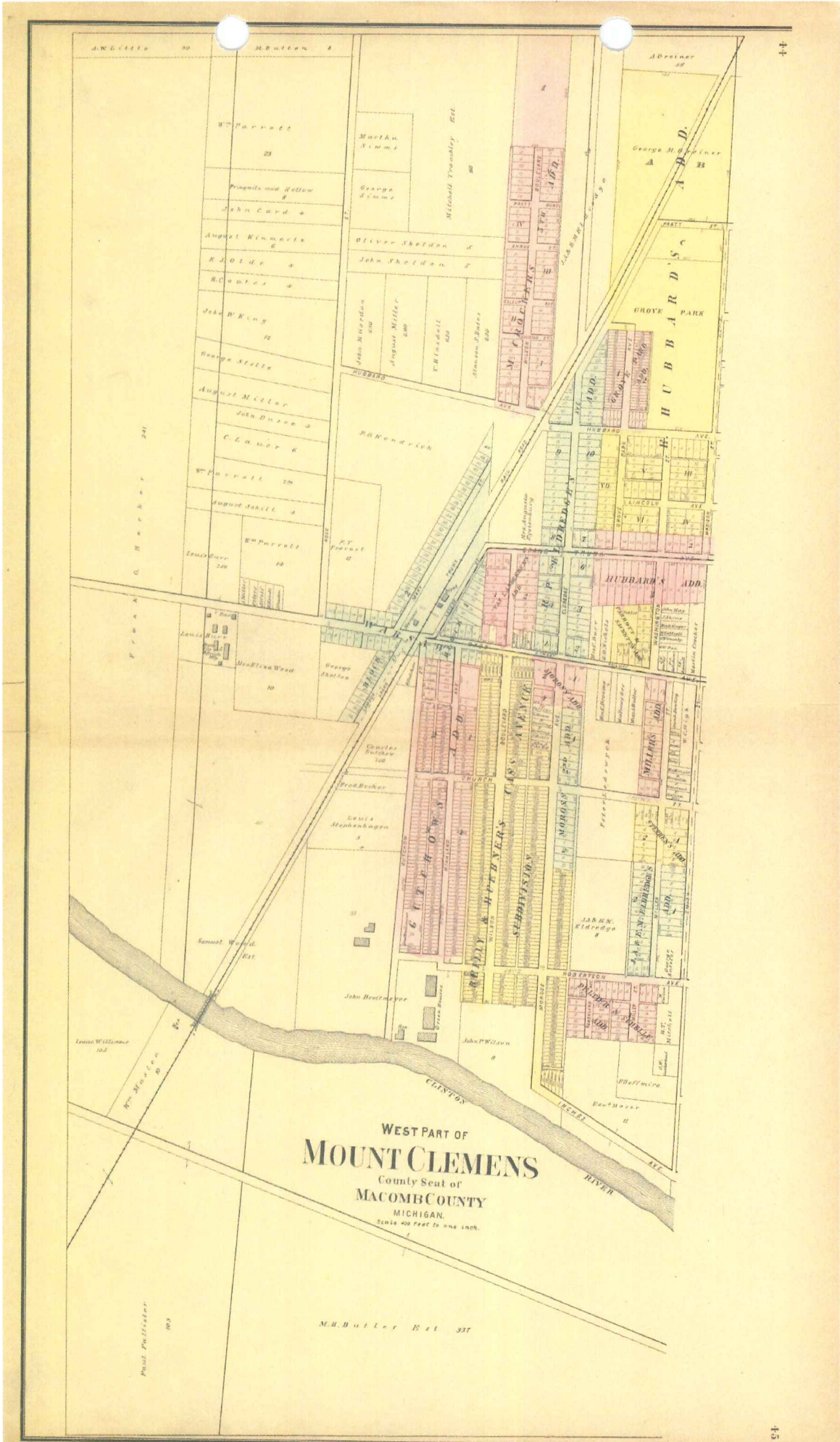
SEE PAGE 12

SEE PAGE 9

2006

Reproduced with permission of Rockford Map Publishers, Inc.
Rockford, Illinois

5



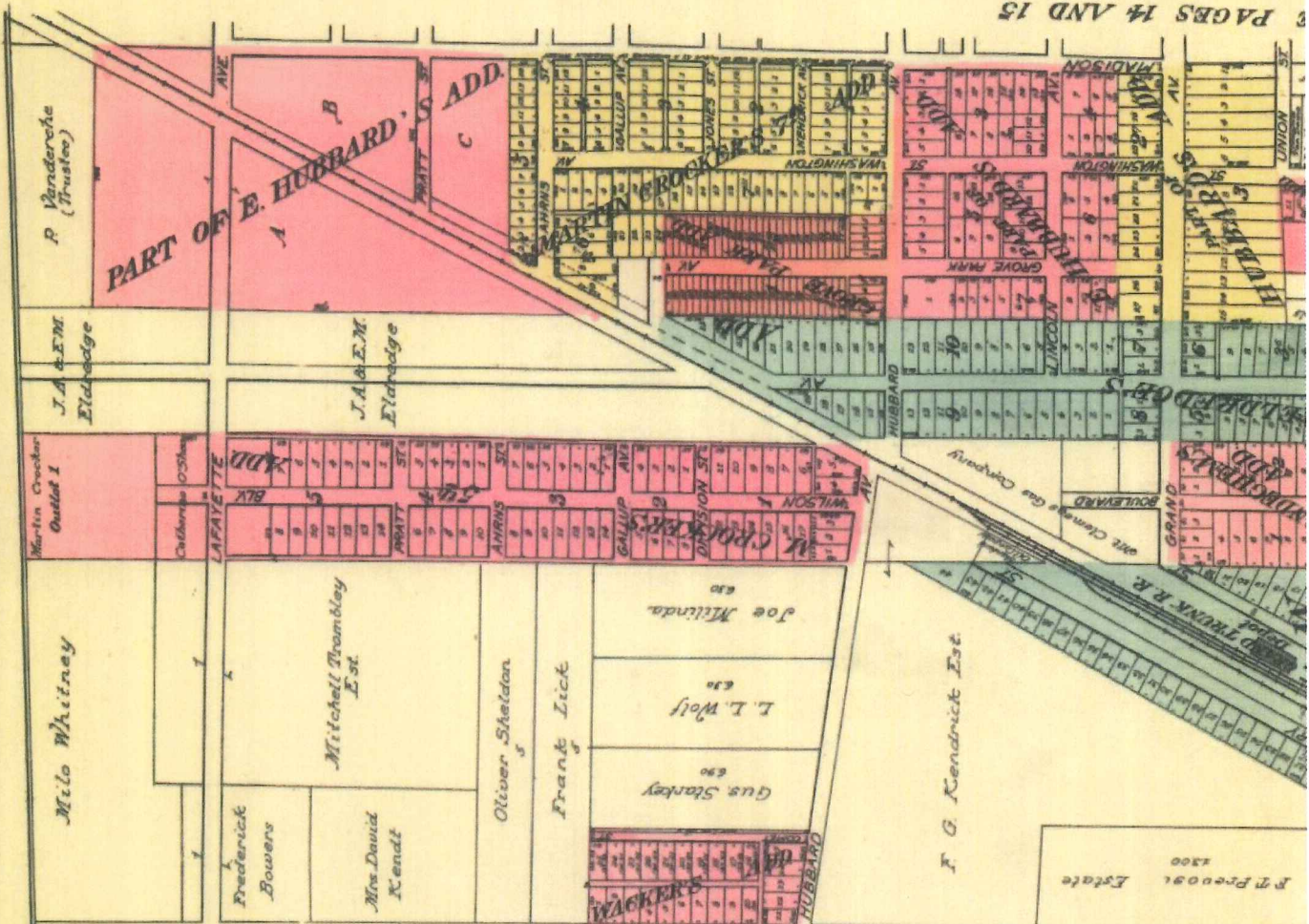
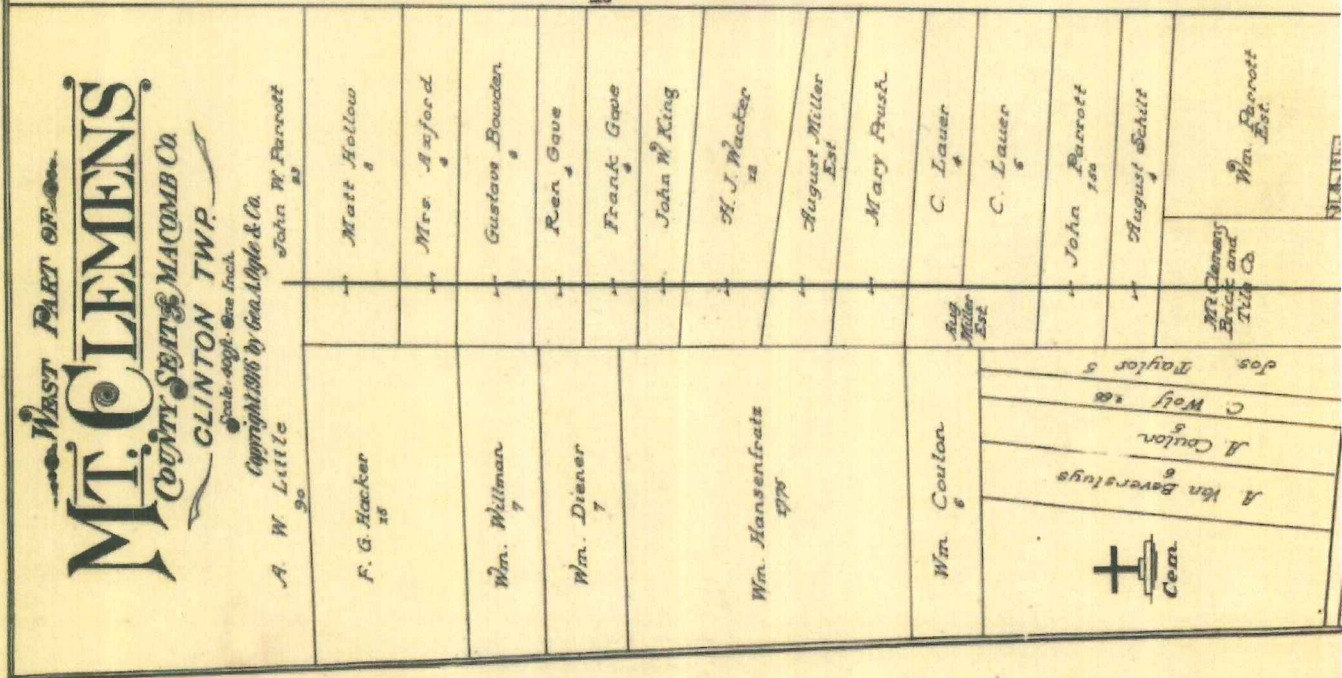
Paul Pfeiffer

1893

M.B. Butler Est. 337

⑥
1895

WEST PART OF
MT. CLEMENS
 COUNTY SEBASTIAN MACOMB Co
 CLINTON TWP.
 Scale - 40ft. = One Inch
 Copyright 1916 by Geo. A. Ogle & Co.
 John W. Parrott
 A. W. Little

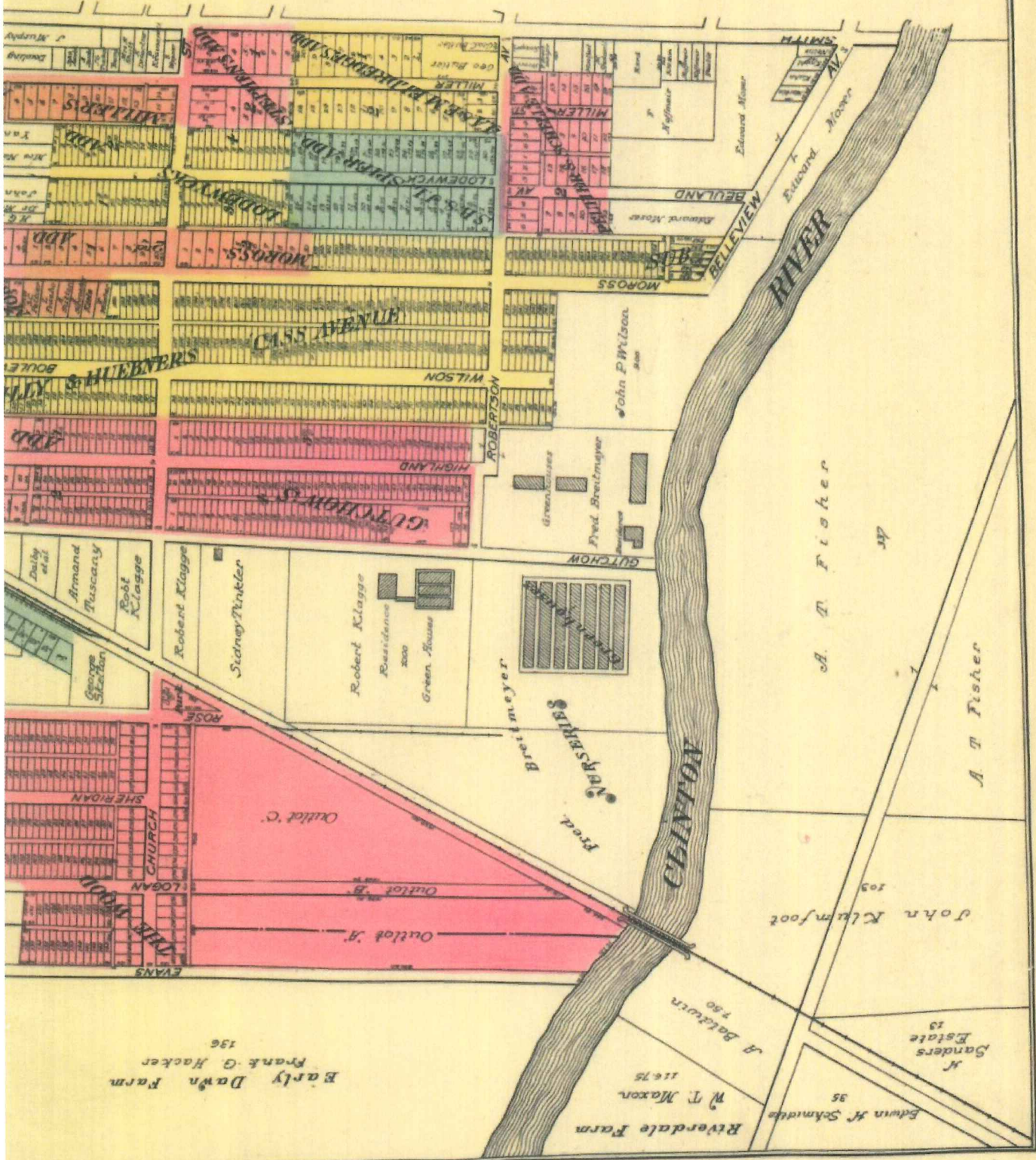


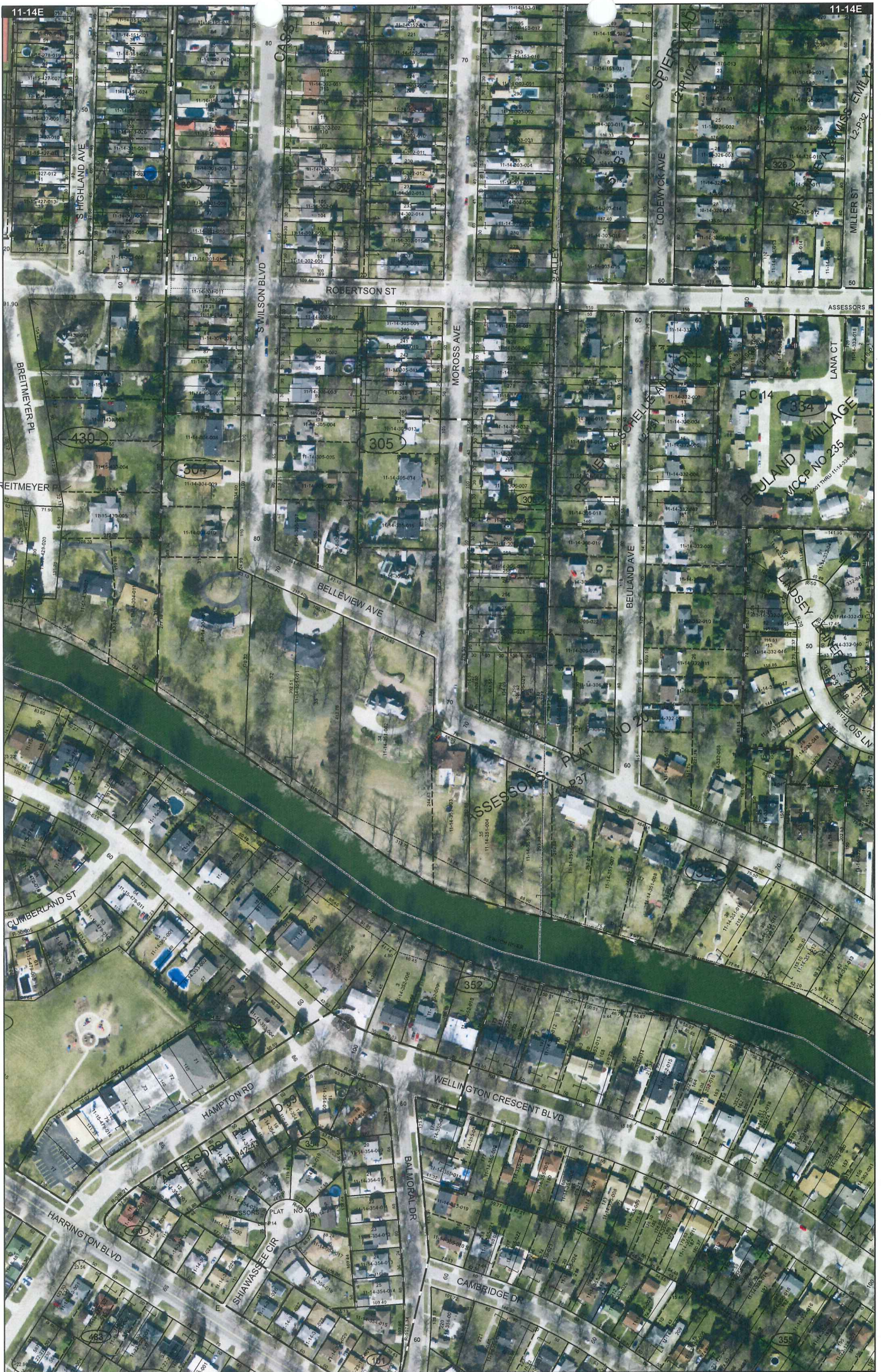
PAGES 14 AND 15

1916

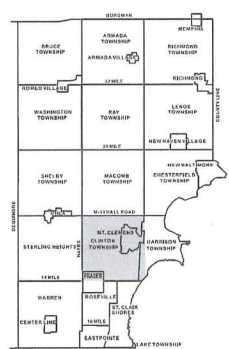
1916

FOR EAST PART OF MT. CL.

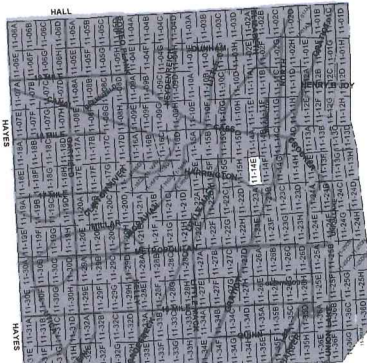




Date of Photography: Spring 2012
 100 50 0 100 200 Feet



CLINTON TWP SHEET INDEX



DESCRIPTION OF PERMANENT REAL ESTATE INDEX NUMBER
13-19-302-018

| AREA NUMBER | SUB AREA NUMBER | BLOCK NUMBER | PARCEL NUMBER |
|-------------|-----------------|--------------|---------------|
| 13 | 19 | 302 | 018 |

Legend

- Platted Area Boundary Line
- Property Split Line
- Property Combined Line
- Township Boundary Line
- Traverse Line
- Dimension Extent Marks
- Dimension Start Marks

11-14E

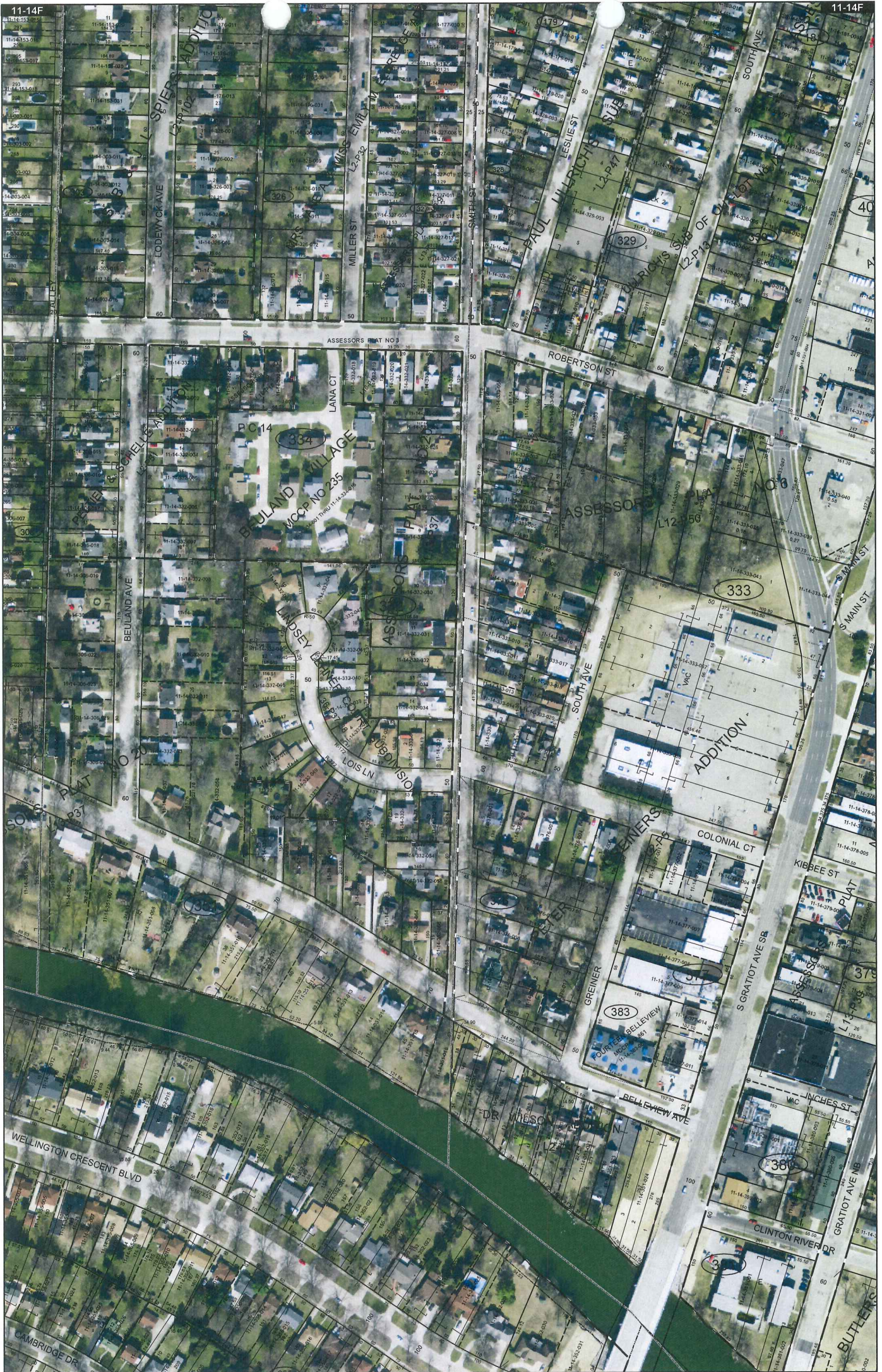
MT. CLEMENS
 W.1/2 S.W.1/4 SEC.14 T.2N. R.13E.

Source: Macomb County Department of Planning and Economic Development
 - 2008 Digital Orthophoto Project
 - Parcel Conversion Project

Note: Digital Orthophoto horizontal positioning accuracy is 3 feet. Parcel boundary lines should be considered a graphical representation and not in any way a legal survey or engineering document. In general, the horizontal positioning and length accuracy is within 15 feet.

This map is intended for general planning purposes. Site specific evaluation should be verified by field inspection. This is a work in progress and may contain errors and omissions. Please report any potential revisions to (586)469-5265.





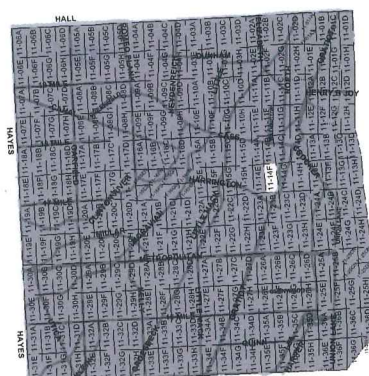
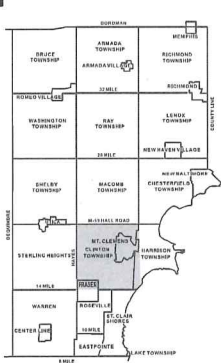
Date of Photography: Spring 2012
 100 50 0 100 200 Feet

CLINTON TWP SHEET INDEX

DESCRIPTION OF PERMANENT REAL ESTATE INDEX NUMBER

11-14F

1:1,200



13-19-302-018

| | | | |
|---------------------------------------|---|--|---|
| AREA NUMBER (FOR USE BY DEVELOPER) | SUB AREA NUMBER (FOR USE BY DEVELOPER) | BLOCK NUMBER (FOR USE BY DEVELOPER) | PARCEL NUMBER (FOR USE BY DEVELOPER) |
|---------------------------------------|---|--|---|

Legend

- Platted Area Boundary Line
- Property Line
- Property Split Line
- Property Combined Line
- Township Boundary Line
- Traverse Line
- Dimension Extent Marks
- Dimension Start Marks

MT. CLEMENS
 E. 1/2 S.W. 1/4 SEC. 14 T. 2N. R. 13E.

Source: Macomb County Department of Planning and Economic Development
 - 2008 Digital Orthophotography Project
 - Parcel Conversion Project

Note:
 Digital Orthophotography horizontal positioning accuracy is 3 feet. Parcel boundary lines should be considered a graphical representation and not in any way a legal survey or engineering document. In general, the horizontal positioning and length accuracy is within 15 feet.

This map is intended for general planning purposes. Site specific evaluation should be verified by field inspection. This is a work in progress and may contain errors and omissions. Please report any potential revisions to (566)469-5285.



493

(2)

NORTH SIDE OF RIVER HURON

Description No 541 Confirmed to Christian Olman
and James Connor commencing at an oak Tree
standing on the border of River Huron between
this tract and a tract confirmed to James
Connor thence north one hundred and twenty
eight chains sixty one links, to a post thence
East forty seven chains to a black ash Tree
thence South one hundred and thirty five chains
forty six links, to a black ash Tree standing
on the border of the River Huron between this
tract and a tract claimed by Tobias Newcome
thence along the border of said River up stream
north sixty nine degrees west twenty four
chains forty two links, thence South Eighty five
degrees thirty minutes west twenty four chains
twenty seven links to the place of beginning
containing six hundred and twenty acres

Detroit July 14. 1810

Arvon Guiley Surveyor
of private Claims

No. 493

No. 541 Confirmed to
Christian Clemans and
James Connor

NORTH SIDE OF RIVER HURON

Description No. 541 Confirmed to Christian Clemans and James Connor commencing at an oak tree standing on the border of River Huron between this tract and a tract confirmed to James Connor thence north one hundred and twenty eight chains sixty one links to a post thence east forty seven chains to a black ash tree thence south one hundred and thirty five chains forty six links to a black ash tree standing on the border of the River Huron between this tract and a tract claimed by Tobias Newcomer thence along the border of said river up stream north sixty nine degrees west twenty four chains forty two links thence south eighty five degrees thirty minutes west twenty four chains twenty seven links to the place of beginning, containing six hundred and twenty acres.

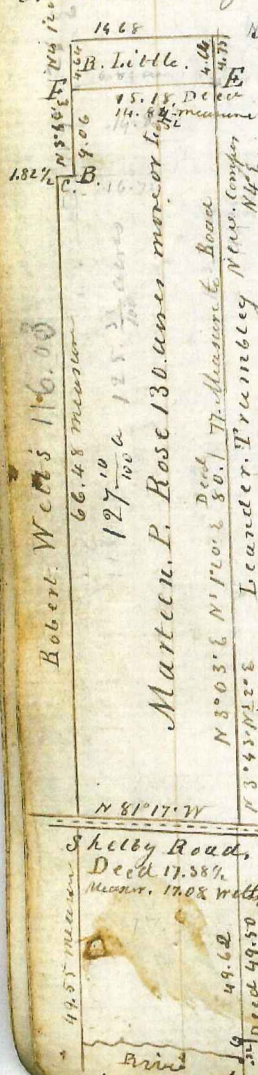
Detroit July 14, 1810

Aaron Greeley Surveyor

of private claims

A Plat of Marten P. Roses Land in
the Claim. N^o. 541. T. 2. N. R. 13. E.
according to his Deed from Sect. Cartwright.

in Liber X. of Deeds page 580. 581.



Nonius 1°59' E. Old Compass
Survey N^o. 102.
E. Ironwood 5. S 61° W 9.
" Walnut 4. N 15° W 23
E. Sugar 6 N 89° E 7
" B. ash 20 S 80° W 27
B. Sugar 21 N 80° E 23
" W. Oak 30 S 82° W 56
Calkers Sept. 13. 1854

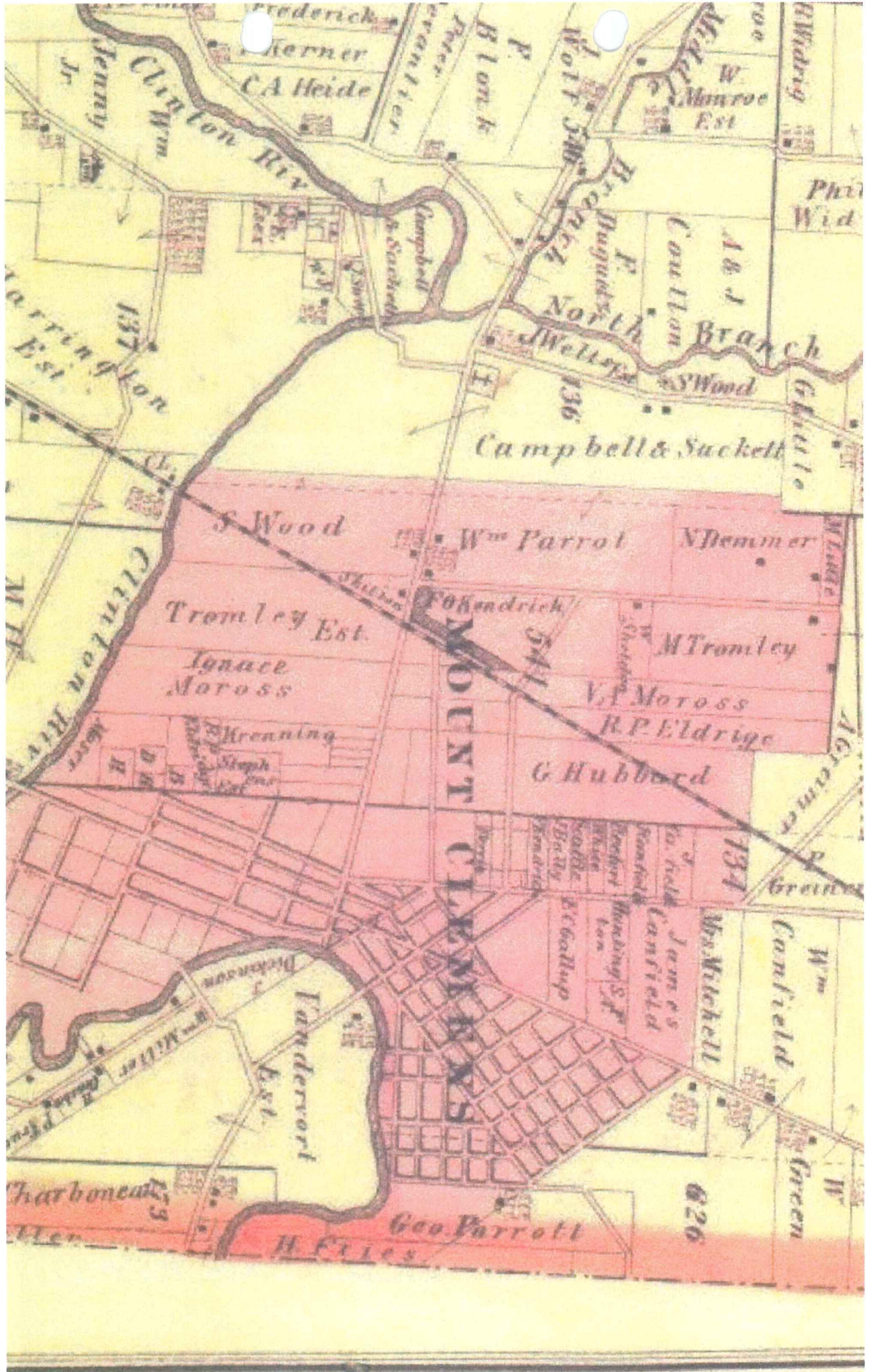
Nonius on O.
at c. Old Stake was man. 7
links North and 5 links east
Records of R. Little
Deed Liber. E of Deeds
Pag 310 of 311. in 1835
March 4th

1484
182
166
68

Surveyed December 10 & 11. 1853
Nonius 2° to Old compass or 1°59' E

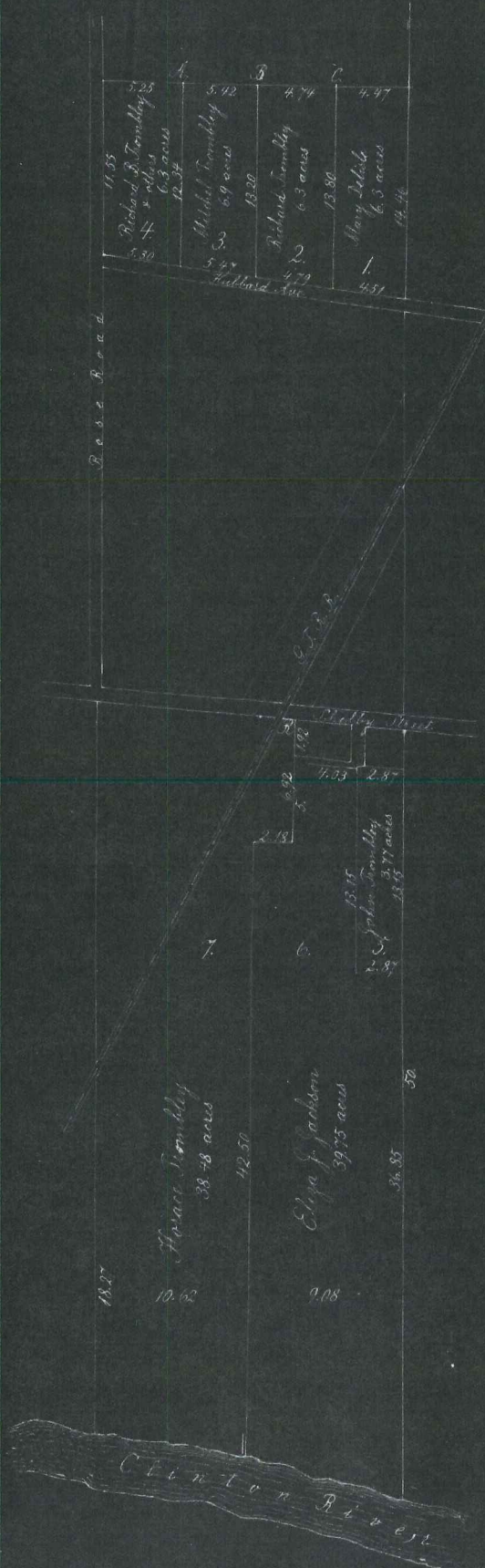
Were Sworn
Henry Trumbley Chain
J. J. Sturges Bearers
From B. By Pikes Compass Nonius 2°30' E.
B" 3.70. S 87° 3/4 W.
" 7.49 S 84° 1/2 W
" 3.84 N 70° 1/2 W
3.38 N 49° 08' W to Stone Suppose the corner
The Brush fence is 30 Links East of Stone on
the line S 49° 08' E.

From B. to Corner Between Morass and
Trumbley Pikes Compass Nonius 2°30' E
B" East. 4.44. .45 from River
" N 86° E 5.93 1.10 from River
" S 60° 1/4 E. 5.51. 25 from River
S 55° 05' E. 5.18 15 from River at the
Morasses and Trumbleys corner

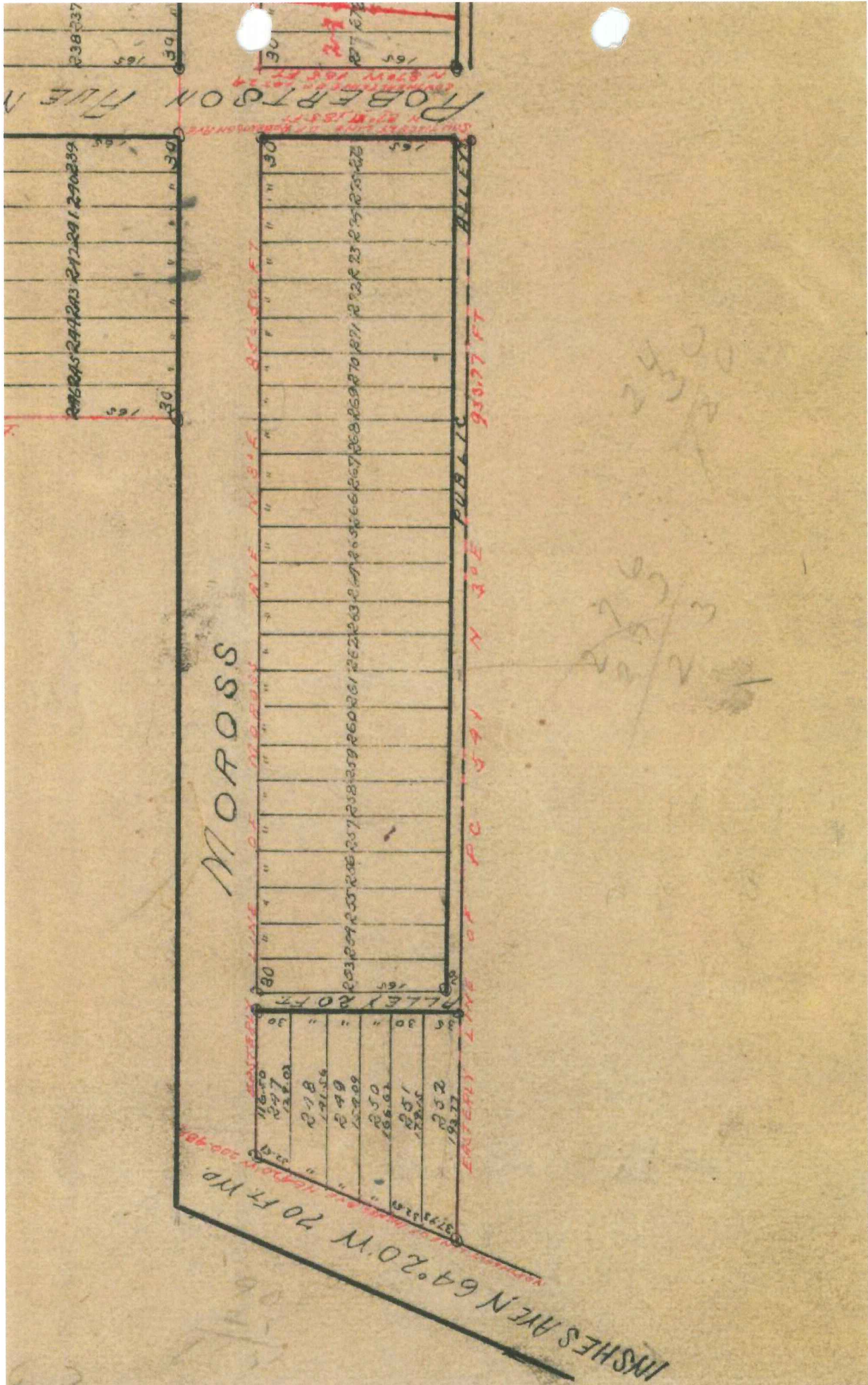


L1-79 PAGE 204

L1-79 PAGE 204



Subdivision of the Estate
of Grandson Frombley, Deceased,
being a part of Private Claim No 541.
March 23rd, 1881. O.S. Burgess
Surveyor.



MRS. JANE A. AND MISS. EMILY M. ELDRIDGES ADDITION TO THE CITY OF M^C CLEMENS.

Know all Men by these Presents, That We, Mrs. Jane A. Eldridge (widow of R. O. Eldridge) & Miss Emily M. Eldridge as proprietors, have caused the land embraced in the annexed plat to be surveyed, laid out and platted to be known as "Mrs. Jane A. & Miss Emily M. Eldridge's Addition to the City of M^C Clemens" and that the streets and alleys as shown on said plat are dedicated to the use of the public.

Signed & sealed in presence of
 Wm. H. Edwards }
 J. A. Collins }
 Emily M. Edwards }

State of Michigan }
 County of Macomb } Sd
 I, One, this 20th day of September, in the
 year One Thousand Eight Hundred and Eighty
 nine, before me, a Notary Public in and for
 said county, personally have the above named
 Jane A. Eldridge (widow of R. O. Eldridge) & Emily
 M. Eldridge, known to me to be the persons who
 executed the above dedication and acknowledged
 same to be her free act and deed.

Witness my hand and the seal of said
 Notary Public,
 this 20th day of September, 1889.

Description of Land Platted.

The Land embraced in the annexed plat of Mrs. Jane A. & Miss Emily M. Eldridges Addition to the City of M^C Clemens is described as follows; Commencing at an iron stake, 18 1/2" at the S.E. corner of Stephens Addition to the City of M^C Clemens, and on the East line of P.C. No. 541 from which an Elm tree 30 inches in diameter bears N 46 00 E, 47 ft 6 in. Thence N 86 30 W, 466 ft. 9 in. Thence S 5 30 W, 912 ft. to the N. line of Robinson Street. Thence S 86 30 E, 242 ft. 3 in. on W. line of Robinson Street. Thence N 5 15 E, 372 ft. Thence S 86 30 E, 231 ft. to E. line of P.C. No. 541. Thence N 5 15 E, on E. line of P.C. No. 541, 976 ft. to place of beginning. The above described land is located in P.C. No. 541, City of M^C Clemens, Macomb Co., Michigan.

Surveyors Certificate.

I hereby certify that the plat herein delineated is a correct one and that monuments consisting of iron rods, 18 1/2" in diameter, have been planted at points marked thereon, as thereon shown, at all angles on the boundaries of the land platted, and at all intersections of streets or streets and alleys.

L. M. Nichollett
 Surveyor.

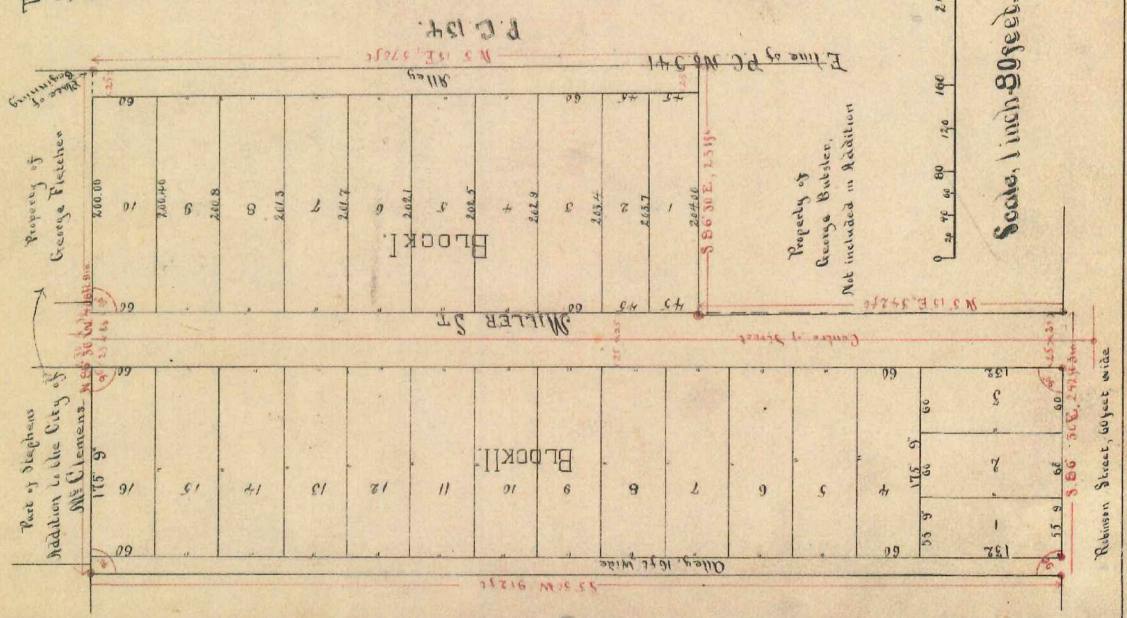


EXHIBIT 2000-1-1
 28th
 12th September 189
 2 of plate
 32
 M. E. Van Dyke

see Resolution Vacating alleys Nos. 13 & 14 Page 221 of Vol. 134 of M. C. C. Sec. 2000-1-1

L. 2.
 P. 32.

Nov. 21-1928
O.B. [Signature]

9372

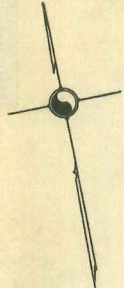
ASSESSORS PLAT NO. 20

OF THE CITY OF
MT. CLEMENS, MACOMB CO., MICHIGAN.

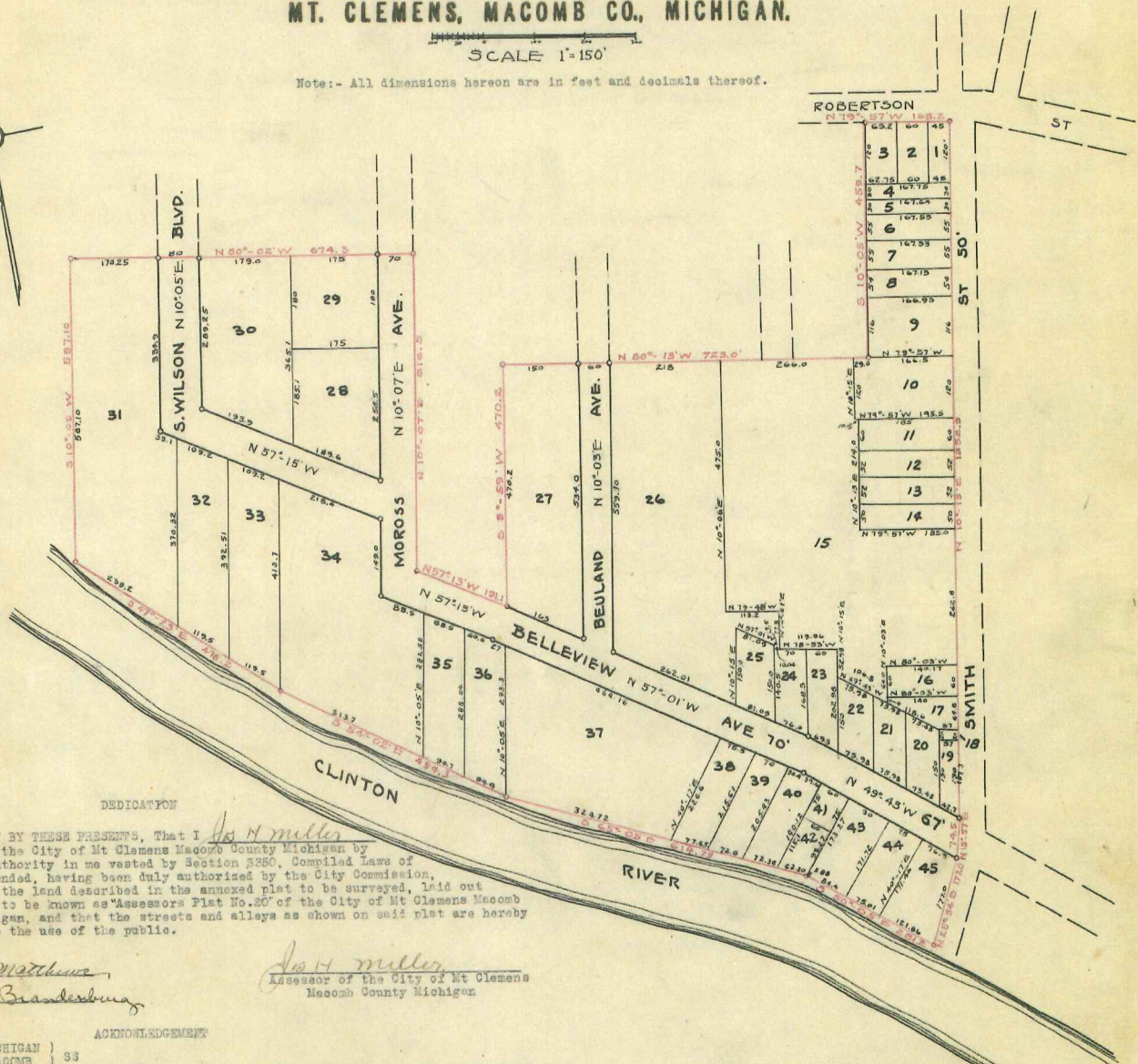
SCALE 1"=150'

Note:- All dimensions hereon are in feet and decimals thereof.

P. 37



See Plat of 1875, also 3rd of Michigan page 38
See Plat of 1875, also 3rd of Michigan page 38
See Plat of 1875, also 3rd of Michigan page 38



KNOW ALL MEN BY THESE PRESENTS, That I John H. Miller Assessor of the City of Mt Clemens Macomb County Michigan by virtue of authority in me vested by Section 3250, Compiled Laws of 1916, as amended, having been duly authorized by the City Commission, have caused the land described in the annexed plat to be surveyed, laid out and platted to be known as "Assessors Plat No. 20" of the City of Mt Clemens Macomb County Michigan, and that the streets and alleys as shown on said plat are hereby dedicated to the use of the public.

Witnesses:
Joseph H. [Signature]
Marie [Signature]

John H. Miller
Assessor of the City of Mt Clemens
Macomb County Michigan

STATE OF MICHIGAN)
COUNTY OF MACOMB) SS

Acknowledgement
On this 4th day of November A.D. 1928, before me a Notary Public in and for said County, personally came the above named John H. Miller Assessor of the City of Mt Clemens, known to be the person who executed the above dedication and acknowledged the same to be his free act and deed as such Assessor.

My Commission expires April 12th 1937
Marie J. Belzile
Notary Public in and for said County

DESCRIPTION
The land embraced in the annexed plat of Assessors Plat No. 20 of the City of Mt Clemens Macomb County Michigan, is described as follows:-
Beginning at the intersection of the S'ly. line of Robertson St. with the W'ly. line of Smith St. Thence N 79°57'W, 166.2 ft. Thence S 10°05'W, 459.7 ft. Thence N 80°13'W, 722.0 ft. Thence S 9°59'W, 470.2 ft. Thence N 59°05'W, 191.1 ft. Thence N 10°07'W, 616.5 ft. Thence S 80°02'W, 874.3 ft. Thence S 10°05'W, 567.10 ft. Thence S 47°22'E, 476.2 ft. Thence S 54°02'E, 491.8 ft. Thence S 48°05'W, 614.79 ft. Thence S 50°05'E, 281.2 ft. Thence N 25°24'E, 177.0 ft. Thence N 18°57'E, 74.5 ft. Thence N 10°15'E, 1252.9 ft to place of beginning.

ENGINEERS CERTIFICATE
I hereby certify that the plat hereon delineated is a correct one and that permanent metal monuments not less than one inch in diameter and fifteen inches in length set in a concrete base at least four inches in diameter and forty-eight inches in depth have been placed at points marked thereon as shown at all angles in the boundaries of the land platted, at all intersections of streets, intersections of alleys or of streets and alleys and at the intersections of streets and alleys with the boundaries of the plat as shown on said plat.

C. W. [Signature]
Registered Civil Engineer

CERTIFICATE OF MUNICIPAL APPROVAL
This plat was approved by the City Commission of the City of Mt Clemens Macomb County Michigan, at a meeting held November 9th 1928

Marie [Signature] City Clerk

CERTIFICATE OF APPROVAL BY THE COUNTY BOARD
This plat was approved on the 16th day of November 1928

Charles [Signature] Judge of Probate
Marie [Signature] County Clerk
James [Signature] County Treasurer

REGISTER'S OFFICE
County of Macomb) ss
Received for Record this 22nd day of November A.D. 1928 at 4:02 o'clock AM and Recorded in Liber 13 at Plat on Page 37
Hugh R. [Signature]

9