

MACOMB COUNTY 2015 REMONUMENTATION GRANT PROGRAM FOR CITY OF MOUNT CLEMENS PC-050

Section One

Index

Pictures in the four cardinal directions; temporary monumentation and after setting the required monumentation.

Section Two

Surveyor's Report

Land Corner Recordation Certificate

Section Three

1. Copy of the field notes, Pages 1-10
2. Map of Clinton Township – 1875
3. Map of Clinton Township – 1895
4. Map of Clinton Township – 1916
5. Map of Clinton Township – 2006
6. West part of Mount Clemens – 1895
7. West part of Mount Clemens - 1916
8. Macomb County Composite Map 11-11A
9. Macomb County Composite Map 11-11B

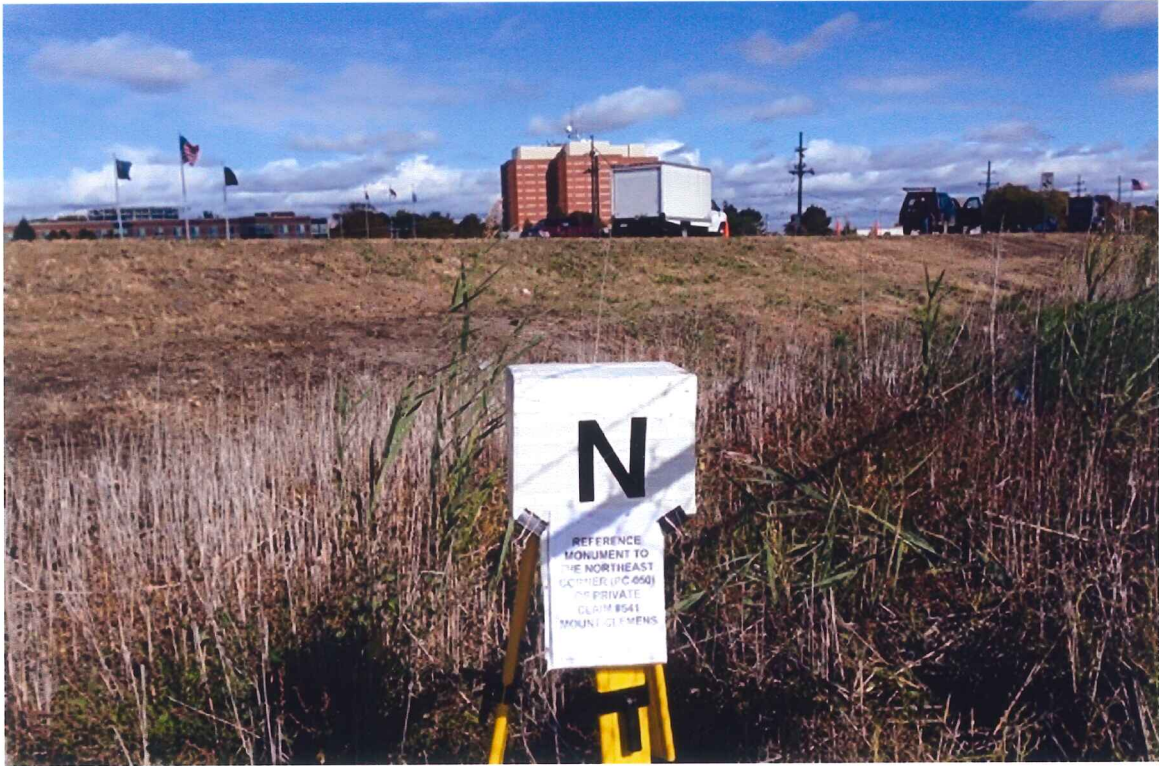
Section Four

1. Copy of the original description for PC #541 dated July 14, 1810, Page one of one
2. Copy of the transcribed description for PC #541 dated July 14, 1810, Page one of one
3. Copy of the field notes and plat of survey for "MARTEN ROSE" dated December 10 & 11, 1853, Page one of one
4. Partial copy of enlarged map of Clinton Township depicting Private Claim 541, 1875, Page one of one
5. Sketch of "SUBDIVISION OF LEANDER TROMBLEY" part of Private Claim 541, dated March 23, 1881, Page one of one
6. "CASS AVENUE SUBDIVISION", Volume #2, page 26, Page one of one
7. Enlargement of "CASS AVENUE SUBDIVISION", Page one of one
8. "MRS JANE A. and MISS EMILY M. ELRODGES ADDITION TO THE CITY OF MT. CLEMENS", Liber 2 page 32, Page one of one
9. "DIORE SUBDIVISION", Volume #36, page 49, Page one of one
10. "MASTROMATTEO SUBDIVISION" Liber 67, page 1, Page one of one









**Corrective Land Corner Recordation Certificate
 Attachment B to 2015 Annual Grant Agreement
 Authority: MCL 54.205 and R54.202**

This form is **ONLY** for corners filed under the 2015 State Survey and Remonumentation Grant Agreement

Filing Requirement: MCL 54.268(2) (a), 54.268(2) (d), 54.201 – 54.210d and 2015 State Survey and Remonumentation Grant Agreement

Notes:

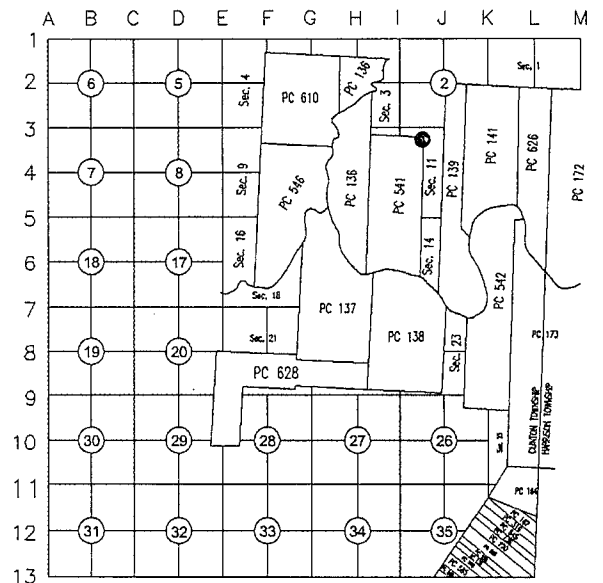
- No more than two Original Public Land Survey Corners can be recorded on this certificate
- If a corner reported hereon is common to two or more survey townships, each Town, Range and Corner Code for the corner may be identified on this certificate
- If a corner reported hereon is common to two or more counties, each county may be identified on this certificate and a copy of this certificate filed with the Register of Deeds in each county

For corner(s) in: Macomb County

City of Mount Clemens

Corner Type	Survey Township	Corner Code
Original Public Land Survey Corner	T 02N R 13E	PC-050
• MCL 54.202(g)	T _____ R _____	_____
• MCL 54.262(g)	T _____ R _____	_____
Property Controlling Corner	S _____ T _____ R _____	_____
• MCL 54.202(i)	S _____ T _____ R _____	_____
• MCL 54.262(h)	S _____ T _____ R _____	_____
Protracted Public Land Survey Corner	T _____ R _____	_____
• MCL 54.202(k)	T _____ R _____	_____
• MCL 54.262(i)	T _____ R _____	_____

NE corner (PC-050) Private Claim #541*



*PC-050 Northeast Corner of Private Claim 541. The corner is located within an existing industrial plant and is not accessible. A reference monument was set on the north line of Private Claim 541 at a distance of 835.00 feet west of the true position.

Part A: Corner(s) History

- 1.) 1810-Greeley, Surveyor of Private Claims
- 2.) 1810-Copy of the original description for PC #541
- 3.) 1810-Copy of the transcribed description for PC #541
- 4.) 1853- Copy of the field notes and plat of survey for "MARTEN ROSE"
- 5.) 1881-Sketch of "SUBDIVISION OF LEANDER TROMBLEY" part of Private Claim 541
- 6.) 1891-"CASS AVENUE SUBDIVISION", Volume #2 of Plats, page 26 cites the following "east line of Private Claim #541"
- 7.) 1889-"MRS JANE A. AND MISS EMILY M. ELRODGES ADDITION TO THE CITY OF MT. CLEMENS", Liber 2 of Plats, page 32, holds the east line of Private Claim #541 as the east line of said plat
- 8.) 1956-"DIORE SUBDIVISION", Volume #36 of Plats, page 49 cites the following "commencing at the northeast corner of Private Claim #541"
- 9.) 1975-"MASTROMATTEO SUBDIVISION", Liber 67 of Plats, page 1, cites the following "commencing at the northeast corner of Private Claim #541"



Correcting a previously recorded Land Corner Recordation Certificate, Liber 23768, Page 696. Correcting Town and Range on page 699.

4

U

Part B: Surveyor's Report on Perpetuation or Monumentation of Corner

Private Claim (PC) No. 541 that falls within the boundaries of Clinton Township was surveyed by Aaron Greeley, Surveyor of Private Claims on July 14, 1810 and confirmed to Christian Clemens and James Connor. The description cites the following: "commencing at an Oak tree standing on the border of the River Huron between this tract and a tract confirmed to James Connor. Thence north one-hundred and twenty-eight chains, sixty-one links to a post. Thence east forty-seven chains to a Black Ash tree, this tree represents the northeast corner of Private Claim #541".

The Black Ash tree at the northeast corner of Private Claim #541 per Aaron Greeley's description has been destroyed and has not been perpetuated as it falls within the Axalta Coating System facility.

The location of the northeast corner of Private Claim #541 (PC-050) was calculated using the description and monumentation found in said "DIORE SUBDIVISION". The calculated location for PC-050 falls within an existing building and would be very difficult to monument this location.

A reference monument was set on the north line of Private Claim No. 541, 835.00 feet west of PC-050. The reference monument falls 1' west of 7' chain link fence w/3 strands of barbwire extending in a northeast and southwest direction. Also 47' southeast of the edge of the bituminous surface shoulder for North Groesbeck Highway (M-97) also extending in a northeast and southwest direction.

RECORDED, UNRECORDED AND FIELD MEASUREMENTS BETWEEN CORNERS

NE corner (PC-050) to NW corner Private Claim #541

1810 – Greeley 47 chains or 3102.00 Ft.
N89°40'00" W 3360.31 Ft. (mea. 2015)

NE corner (PC-050) to SE corner (PC-051) Private Claim #541

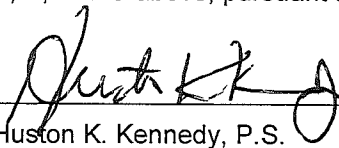
1810 – Greeley = 135 chains, 47 links or 8,940.36 Ft.
S02°46'18" W 9468.57 Ft. (mea. 2015)

Part C: Field Evidence of Perpetuation or Monumentation of Corner

I set a 4" diameter 36" long concrete monument with 1/2" iron with a 2" diameter aluminum cap stamped "Macomb County Monument Act #345, PC-050 PS #17623" as a reference monument to the NE corner (PC-050) Private Claim #541
N50W 147.53' Set Mag nail w/remon washer north face lite pole
N30°W 332.19' NE corner American Legion #401
N19°E 373.58' Set Mag nail w/remon washer NE face power pole
N41°E 129.08' Set 1/2" x 18" iron rod w/blue plastic cap stamped "MC Remon Wit Point" 1' NW of steel fence post
S39°W 49.62' Set 1/2" x 18" iron rod w/blue plastic cap stamped "MC Remon Wit Point" 1' NW of steel fence post
N21°E 140.30' Set #60 nail in bituminous surface shoulder for North Groesbeck Highway

(See sketch on page 3 of 4)

I, Huston K. Kennedy, in a field survey on October 6, 2015, certify under the requirements of the State Survey and Remonumentation Act, 1990 PA 345, MCL 54.261 to 54.279, and the Corner Recordation Act, 1970 PA 74, MCL 54.201 to 54.210d, that the corner identified and described hereon has been perpetuated or monumented as described in Parts A, B, and C above, pursuant to the laws and rules of the State of Michigan.



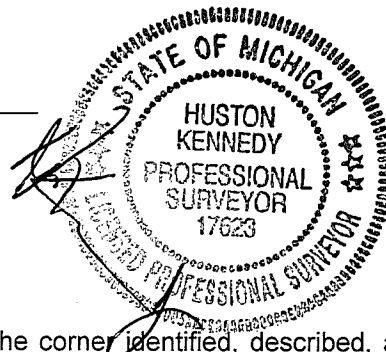
Huston K. Kennedy, P.S.

November 11, 2015

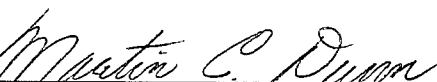
Date

Professional Surveyor's License No.: 17623

105 North Washington Street, Oxford, Michigan 48371



I, Martin C. Dunn, P.S., Macomb County Surveyor Representative, confirm that the corner identified, described, and monumented as outlined Parts A, B, and C above was presented to and reviewed by the Macomb County Peer Review Group on November 10, 2015 and is accepted for filing in the Macomb County Remonumentation Program.



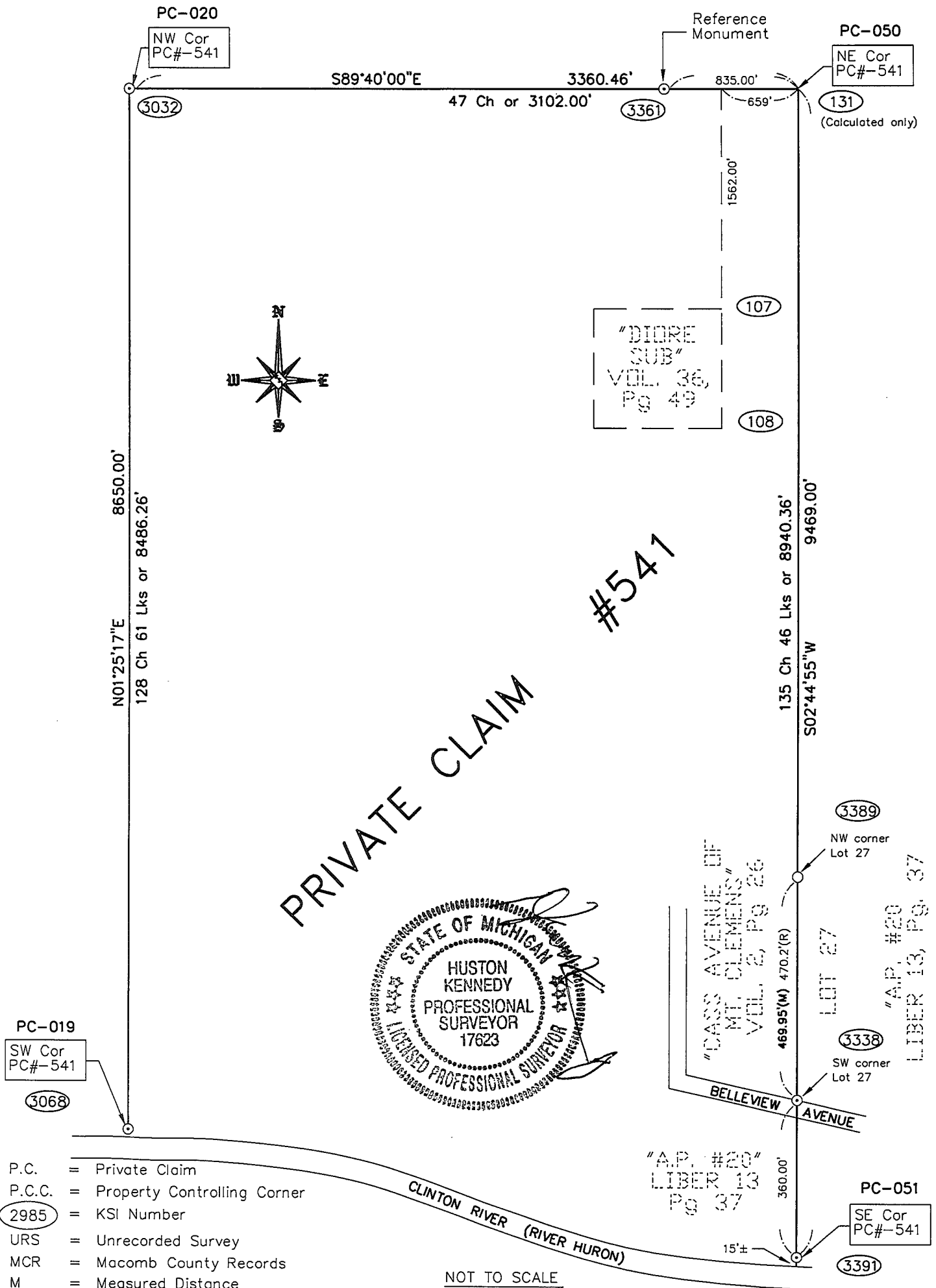
Martin C. Dunn, P.S.

12-29-2015

Date

Professional Surveyor's License No.: 30081

PRIVATE CLAIM #541
TOWN 2 NORTH, RANGE 13 EAST, CITY OF MT. CLEMENS



- P.C. = Private Claim
- P.C.C. = Property Controlling Corner
- (2985) = KSI Number
- URS = Unrecorded Survey
- MCR = Macomb County Records
- M = Measured Distance
- Cal = Calculated Distance
- Ch = Chain (66 feet)
- Lks = Links (0.66 feet)

Geodetic Coordinate Data for corner

Corner Code and Narrative Description: PC-050, T2N, R13E, (reference monument)

Date of Observation	Latitude	Longitude	Datum and Adjustment Year	Epoch Date
4 November 2015	N42°36'.47.76874"	W-82°53'21.19898"	NAD83 (2011)	2010.0000

Method for coordinate determination: Dual Frequency Static Observations constraining to the CORS stations of Auburn Hills (AJ5557), Livonia (DK7841) and Brighton (AJ5553), with 3 dimensional least square adjustment.

State Plane Coordinates in international feet: N40194.3340 E13521026.6065
Standard Deviation: 0.03 N-0.04 E
South Zone
Combine Factor: 0.99987
NGSPID = Auburn Hills Station (AJ 5557)
Survey Method: GPS C2-II
Orthometric Height: 601.62
Elev. Datum: NAVD 88

Geodetic Coordinate Data for corner

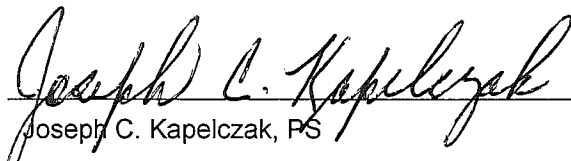
Corner Code and Narrative Description: PC-050, T2N, R13E, (inaccessible corner)

Date of Observation	Latitude	Longitude	Datum and Adjustment Year	Epoch Date
4 November 2015	N42°36'.47.574272"	W-82°53'10.035698"	NAD83 (2011)	2010.0000

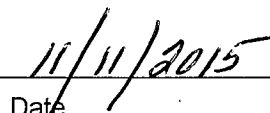
Method for coordinate determination: Dual Frequency Static Observations constraining to the CORS stations of Auburn Hills (AJ5557), Livonia (DK7841) and Brighton (AJ5553), with 3 dimensional least square adjustment.

State Plane Coordinates in international feet: N409189.3132 E13521861.5036
Standard Deviation: 0.05 N-0.22 E
South Zone
Combine Factor: 0.99987
NGSPID = Auburn Hills Station (AJ5557)
Survey Method: GPS C2-II
Orthometric Height: 601.62
Elev. Datum: NAVD 88

I, Joseph C. Kapelczak, state under the requirements of the State Survey and Remonumentation Act, 1990 PA 345, MCL 54.261 to 54.279, that the Latitude and Longitude reported hereon were observed by me for the corner identified hereon and that the data reported meets the requirements prescribed for the State Survey and Remonumentation Program.



Joseph C. Kapelczak, PS



Date

Professional Surveyor's License No.: 24598

JCK Group, Inc.
8615 Richardson Road
Suite 100
Commerce Township, MI 48390



**2015
MACOMB COUNTY REMONUMENTATION
GRANT PROGRAM FOR
CITY OF MOUNT CLEMENS
Research Dossier
PC-050 Northeast corner of Private Claim 541**

Prepared by:
Kennedy Surveying, Inc.
105 North Washington Street
Oxford, Michigan 48371

Sources of Information Researched For Macomb County 2015 Remonumentation Grant Program for City of Mount Clemens

- 1) GLO Notes
- 2) Act 74 Recorded LCRC
- 3) Act 132 Recorded Surveys
- 4) Personal History and Records
- 5) LCRC's and Surveys
- 6) Letters to the Following, Requesting Unrecorded information
 - a) Anderson, Eckstein & Westrick
 - b) BMJ Engineers & Surveyors
 - c) Community Engineering & Surveying
 - d) David Little Land Surveyor
 - e) David P. Smith & Associates, Inc.
 - f) Fenn & Associates Surveying, Inc.
 - g) George Jerome & Company
 - h) Grant Ward Surveyors
 - i) Great Lakes Geomatics
 - j) JCK Group, Inc.
 - k) Kem-Tec & Associates
 - l) Kieft Engineering, Inc.
 - m) King Surveying & Associates, Inc.
 - n) Lehner Associates, Inc.
 - o) Metco Land Sea Corp.,
 - p) Milletics & Associates
 - q) R. J. Donnelly & Associates, Inc.
 - r) R. A. Duthler Land Surveyor, LLC
 - s) Reichert Surveying
 - t) Road Commission for Macomb County
 - u) Rowe Incorporated
 - v) Urban Land Consultants, LLC
 - w) Williams & Gorinac Associates

PC-050

EXISTING FIELD CONDITIONS

The northeast corner of Private Claim #541 (PC 050) has not been perpetuated as it falls within the Axalta Coating System facility.

GLO SURVEY HISTORY

Private Claim (PC) No. 541 which falls within the boundaries of Clinton Township was surveyed by Aaron Greeley, Surveyor of Private Claims on July 14, 1810 and confirmed to Christian Clemens and James Connor. The description cites the following: "commencing at an Oak tree standing on the border of the River Huron between this tract and a tract confirmed to James Connor. Thence north one-hundred and twenty-eight chains, sixty-one links to a post. Thence east forty-seven chains to a Black Ash tree, this tree represents the northeast corner of Private Claim #541".

RECORDED AND UNRECORDED LCRC'S AND CERTIFICATE OF SURVEYS

June 17, 1891 – "CASS AVENUE SUBDIVISION" recorded in Volume #2 of Plats, on page 26 cites the following "east line of Private Claim #541".

September 28, 1889 – "MRS JANE A. and "MISS EMILY M. ELRODGES ADDITION TO THE CITY OF MT. CLEMENS" recorded in Liber 2 of Plats on page 32, holds the east line of Private Claim #541 as the east line of said plat.

July 25, 1956 – "DIORE SUBDIVISION" recorded in Volume #36 of Plats, on page 49 cites the following "commencing at the northeast corner of Private Claim #541".

September 16, 1975 – "MASTROMATTEO SUBDIVISION" recorded in Liber 67 of Plats, on page 1, cites the following "commencing at the northeast corner of Private Claim #541".

RECORDED, UNRECORDED AND FIELD MEASUREMENTS BETWEEN ADJACENT CORNERS

NE corner (PC-050) to NW corner (Private Claim #541)

1810 – Greeley 47 chains or 3102.00 Ft.
N89°40'00" W 3360.31 Ft. (mea. 2015)

NE corner (PC-050) to SE corner (PC-051) (Private Claim #541)

1810 – Greeley = 135 chains, 47 links or 8,940.36 Ft.
S02°46'18" W 9468.57 Ft. (mea. 2015)

SURVEYORS RECOMMENDATIONS

The Black Ash tree at the northeast corner of Private Claim #541 per Aaron Greeley's description has been destroyed and has not been perpetuated as it falls within the Axalta Coating System facility.

The location of the northeast corner of Private Claim #541 (PC-050) was calculated using the description and monumentation found in said "DIORE SUBDIVISION". The calculated location for PC-050 falls within an existing building and would be very difficult to monument this location.

A reference monument was set on the north line of Private Claim No. 541, 835.00 feet west of PC-050. The reference monument falls 1' west of a 7' chain link fence w/3 strands of barb wire extending in a northeast and southwest direction. Also 47' southeast of the edge of the bituminous surface shoulder for North Groesbeck Highway (M-97) also extending in a northeast and southwest direction.



Huston K. Kennedy, P.S.
Kennedy, Surveying, Inc.

3324	Fd 3/4" PIPE				
3325	Fd 1/2" PIPE				
3326	Set #60 TRAV. Pt in grass				
3327	Fd 1/2" I/R				
3328	Fd 5/8" PIPE				
3329	Fd 5/8" PIPE				
3330	Fd 1/2" CI #	17649			
3331	Fd 2" PIPE				
3332	Fd 1/2" PIPE				
3333	Fd 3/8" PIPE				
3334	Fd 1/2" PIPE				
3335	Fd 1/2" CI #	19837			
3336	Set #60 TRAV. Pt.				
3337	Fd 1/2" PIPE				
3338	Fd 1/2" PIPE increased in square MON.				
3339	Fd 1/2"				
3340	Fd 1/2" I/R +- 12' North of Clinton River				
3341					
3342	Possible Rd Mon				
3343	NE Loc PC 5141				
3344					
3345					
3346					
3347	Fd 1/2" PIPE Bent				

1066	Fd #60 TRAV. Pt				
107	Fd 1/2" PIPE	SUCOR	LA Fayette St. Union St		
3301	Set mag in conc. Solid line HSE TRAN. Wilson				
3302	Set #60 TRAV. Pt 2.0 S. of R/C				
3303	Set #60 TRAV. Pt SUCOR		Hubbards St # Eldredge St		
3304	Fd 1/2" PIPE				
3305	Fd 1/2" I/R				
3306	Fd 5/8" PIPE				
3307	Set Mag TRAV. Pt. @ Lincoln & Furber				
3308	Set Mag TRAV. Pt. @ Grand Ave & Eldredge				
3309	Fd 1/2" I/R				
3310	Fd 1 1/4" IRON w/cap				
3311	Fd 1/2" I/R				
3312	Set #60 TRAV. Pt @ CLASS AVE & MOROSS ST		HSE #60		
3313	Fd 5/8" PIPE				
3314	Set MAG TRAV. Pt. @ SUCOR Church & Moross				
3315	Fd 1/2" PIPE				
3316	Fd 1/2" I/R				
3317	Fd 1/2" CI # 48781				
3318	Fd 1/2" CI # 48781				
3319	Set MAG TRAV. Pt.				
3320	Fd 1/2" PIPE				
3321	Fd 1/2" PIPE				
3322	Fd 5/8" PIPE				
3323	Fd 1/2" BAR				

~~X~~ Pt 3303 To Pt 3310 HR X 3307-3310 IRON
 1 96-56-00 134.15 m
 2 193-52-00
 M 96-56-00

~~X~~ Pt 3303 To Pt 3311 HR X 3308-3311 Fd 5/8" IR
 1 109-09-40 16.04 m
 2 218-19-20
 M 109-09-40

~~X~~ Pt 3303 To Pt 3312 HR X 3308-3312 TRAV. Pt.
 1 182-11-35 861.05 m
 2 364-23-10
 M 182-11-35

~~X~~ Pt 3308 To Pt 3313 HR X 3312-3313 Fd 5/8" PIPE
 1 15-17-25 6075 m
 2 30-34-50
 M 15-17-25

~~X~~ Pt 3308 To Pt 3314 HR X 3312-3314 SET MAG TRAV. Pt.
 1 182-05-00 1005.68 m
 2 364-09-55 by HSE & 66
 M 182-04-58 MOROS st

~~X~~ Pt 3302 To Pt 3305 HR X 3303-3305 Fd 1/2" IR
 1 174-07-05 238.57 m
 2 348-14-10
 M 174-07-05

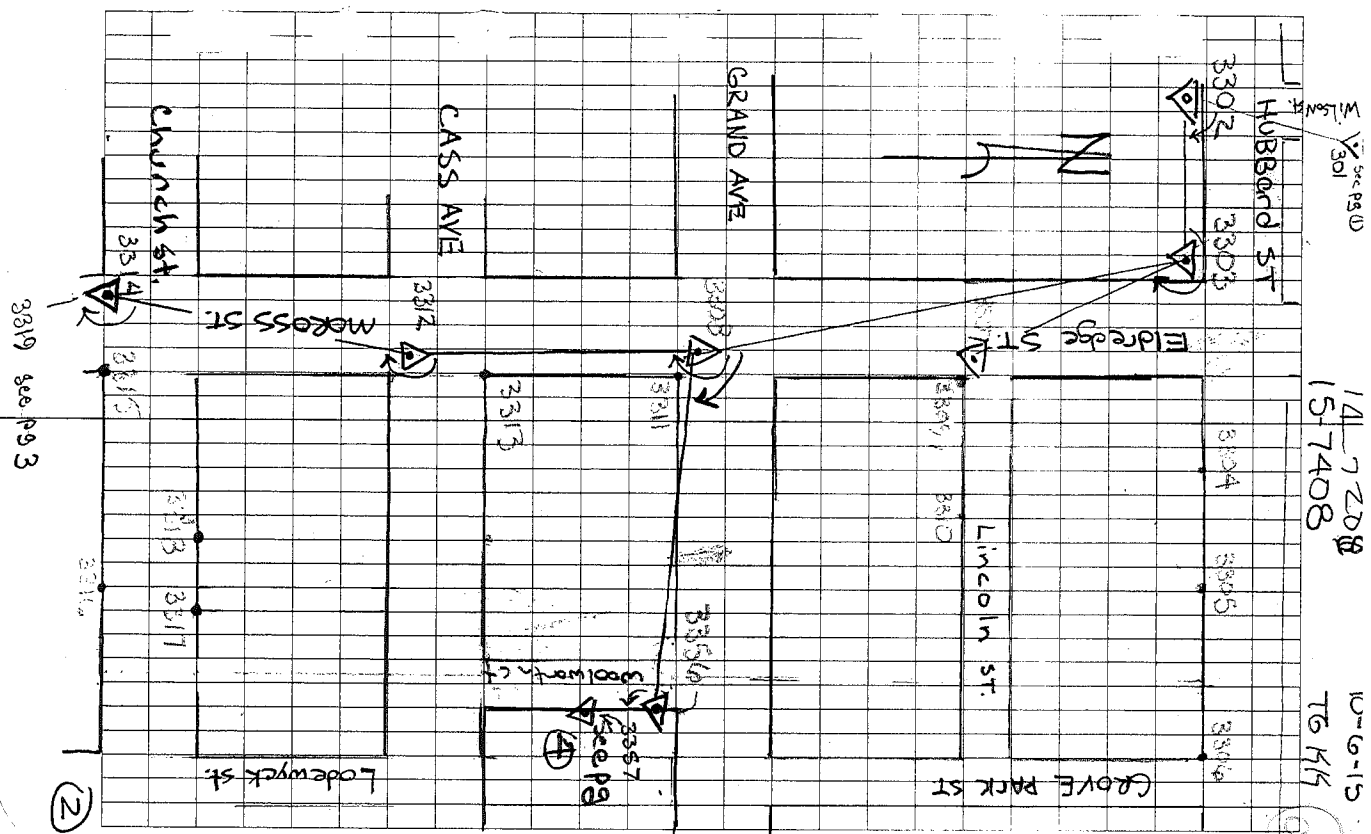
~~X~~ Pt 3302 To Pt 3306 HR X 3303-3306 Fd 5/8" PIPE
 1 173-40-20 388.49 m
 2 347-20-40
 M 173-40-20

~~X~~ Pt 3302 To Pt 3307 HR X 3303-3307 SET MAG TRAV. Pt.
 1 258-40-40 561.05 m
 2 517-21-25
 M 258-40-43

~~X~~ Pt 3302 To Pt 3308 HR X 3303-3308 SET MAG TRAV. Pt.
 1 260-32-10 994.89 m
 2 521-04-35
 M 260-32-18

~~X~~ Pt 3303 To Pt 3309 HR X 3307-3309 Fd 1/2" IR
 1 118-45-40 15.49 m
 2 237-31-20
 M 118-45-40

4P4 3314 TO Pt	3320 HR	Y	3319-3320	PIPE
1 Y 75-02-25			224.00 M	
2 150-04-50				
M 75-02-25				
4P4 3314 TO Pt	3321 HR	Y	3319-3321	PIPE
1 Y 82-14-40			428.94 M	
2 164-29-20				
M 82-14-40				
4P4 3314 TO Pt	3322 HR	Y	3319-3322	5/8" PIPE
1 Y 90-19-00			378.55 M	
2 180-38-00				
M 90-19-00				
4P4 3314 TO Pt	3323 HR	Y	3319-3323	3/4" GAR
1 Y 90-25-00			228.62 M	
2 180-50-00				
M 90-25-00				
4P4 3314 TO Pt	3324 HR	Y	3319-3324	3/4" PIPE
1 Y 93-00-25			48.76 M	
2 186-00-50				
M 93-00-25				



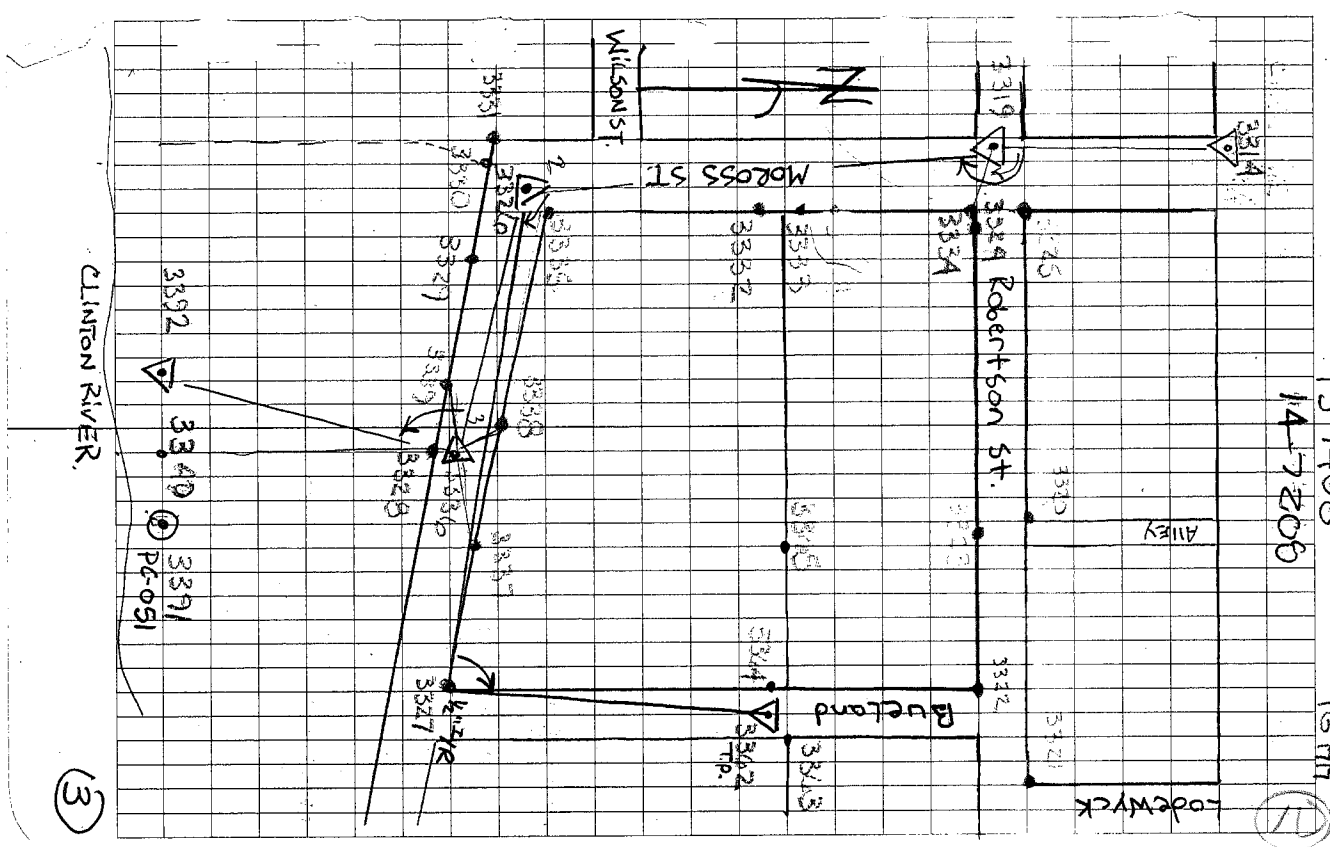
4PT 3319	To Pt	3330	HR	X	3326-3330	17649	F ^{1/2"} CI PIPE
1	223-34-20				68.43	M	
2	447-08-40						
M	123-34-20						
4PT 3319	To Pt	3331	HR	X	3326-3331		F ^{1/2"} PIPE
1	233-36-00				73.74	M	
2	467-12-00						
M	233-36-00						
4PT 3319	To Pt	3332	HR	X	3326-3332		F ^{1/2"} PIPE
1	05-23-00				278.46	M	
2	10-46-00						
M	05-23-00						
4PT 3319	To Pt	3333	HR	X	3326-3333		F ^{1/2"} PIPE
1	04-42-10				377.62	M	
2	09-22-20						
M	04-42-10						
4PT 3319	To Pt	3334	HR	X	3326-3334		F ^{1/2"} PIPE
1	03-29-00				858.06	M	
2	06-58-00						
M	03-29-00						

4PT 3314	To Pt	3326	HR	X	3319-3326		Set MAG TREN PT
1	177-22-50				861.38	M	
2	354-45-40						
M	177-22-50						
4PT 3319	To Pt	3325	HR	X	3324-3325		F ^{1/2"} PIPE
1	90-00-25				60.00	M	
2	180-00-50						
M	90-00-25						
4PT 3319	To Pt	3327	HR	X	3326-3327		F ^{1/2"} T/R
1	114-28-20				365.55	M	
2							
M							
4PT 3319	To Pt	3328	HR	X	3326-3328		F ^{5/8"} PIPE
1	129-40-55				261.60	M	
2	259-21-50						
M	129-40-55						
4PT 3319	To Pt	3329	HR	X	3326-3329		F ^{5/8"} PIPE
1	165-54-15				82.89	M	
2	331-48-30						
M	165-54-15						

15-7408
14-7206

10-7-15
TG 44

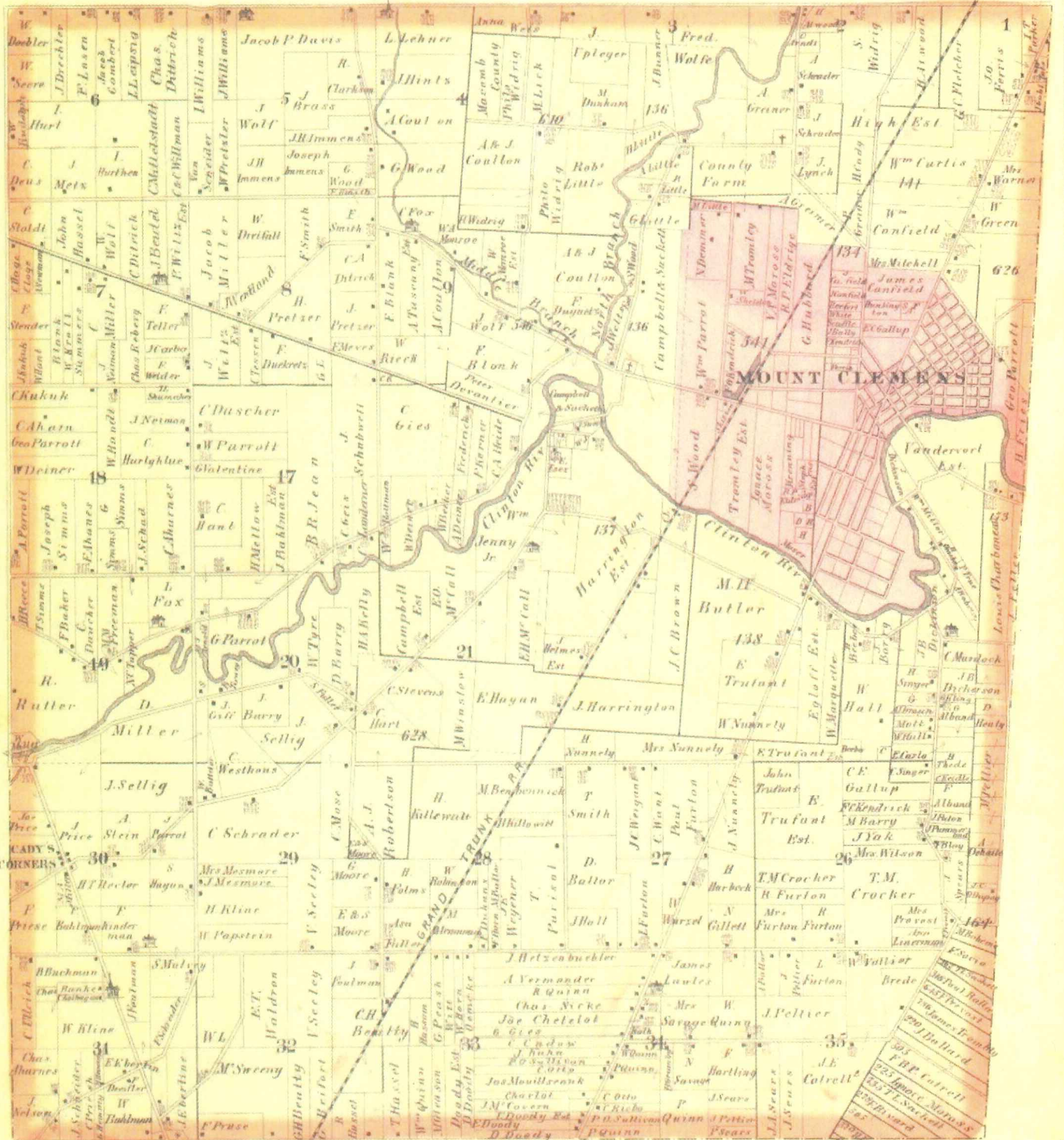
AP# 3326 To Pt 3340 HR	P 3336-3340	FAIR
1 231-23-25	279.37	M
2 462-46-50		
M 231-23-25		
XPR 107 TO P1 3361 (HR) 106-#		
1 19-47-12	157.30	
2 39-34-20	825.00	
M 19-47-16		
XPR 107 TO P1 #1 (HR) 106-#		
#1 VC9-39-40	186.77	3366
#2 115-45-05	276.66	3367
#3 189-29-00	217.70	3368
#4 27-39-10	49.63	3369
#5 23-17-25	205.74	3370
#6 37-09-15	149.47	Edge DF
#7 44-41-25	19.06	3372
XPR 3326 To Pt 3362 HR 3327-3362		
1 72-40-30	532.62	Set marks
2 145-21-10		TEMP Pt
M 72-40-35		



(3)

MAP OF CLINTON TOWNSHIP

TP 2 N R 3 E



Drawn and Compiled by O.B. Crane

7

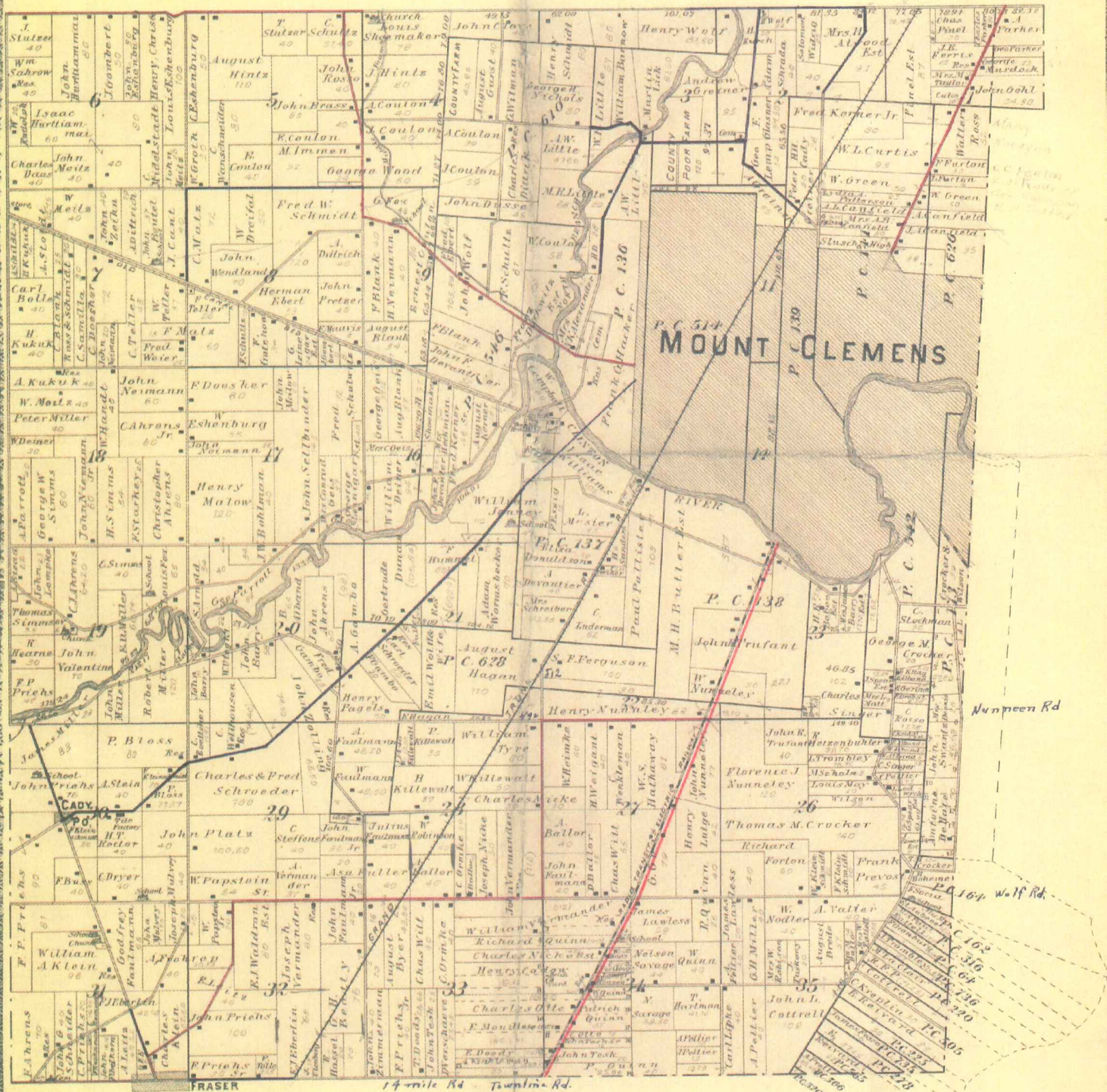
1875

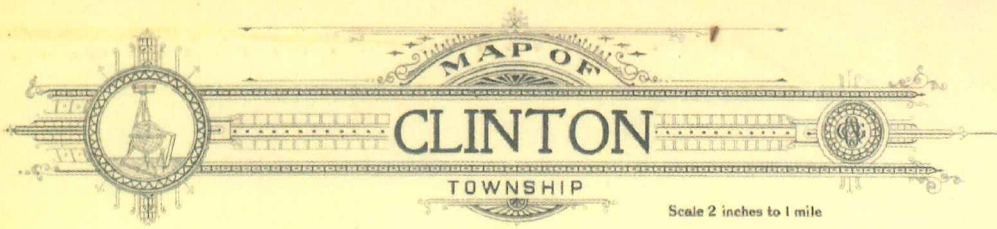
MAP OF CLINTON

Township 2 North Range 13 East

Scale 2 Inches to one Mile.

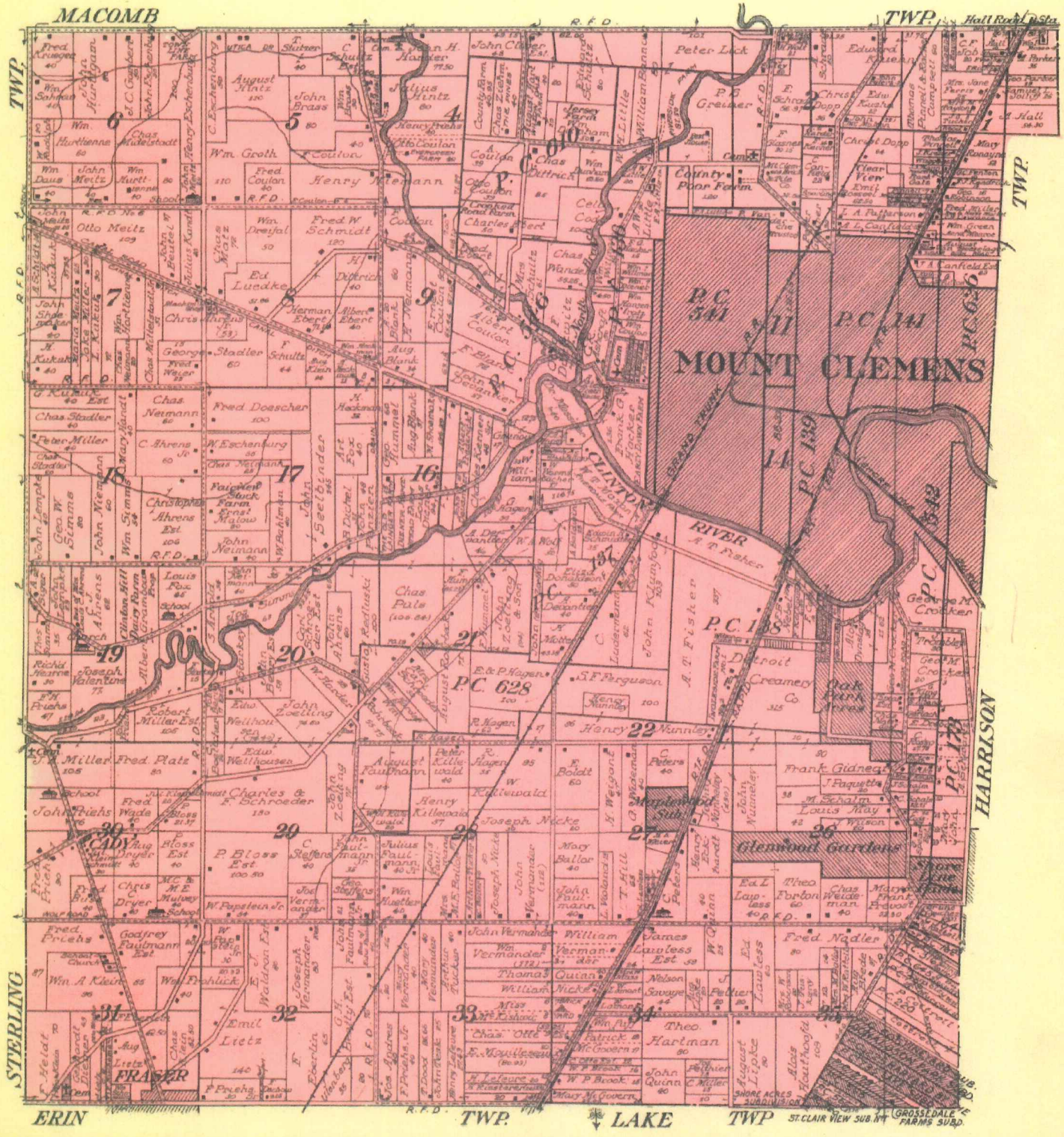
of the Meridian of Michigan





MAP OF
CLINTON
TOWNSHIP
 Scale 2 inches to 1 mile

Fractional Township 2 North, Range 13 East of the Michigan Meridian

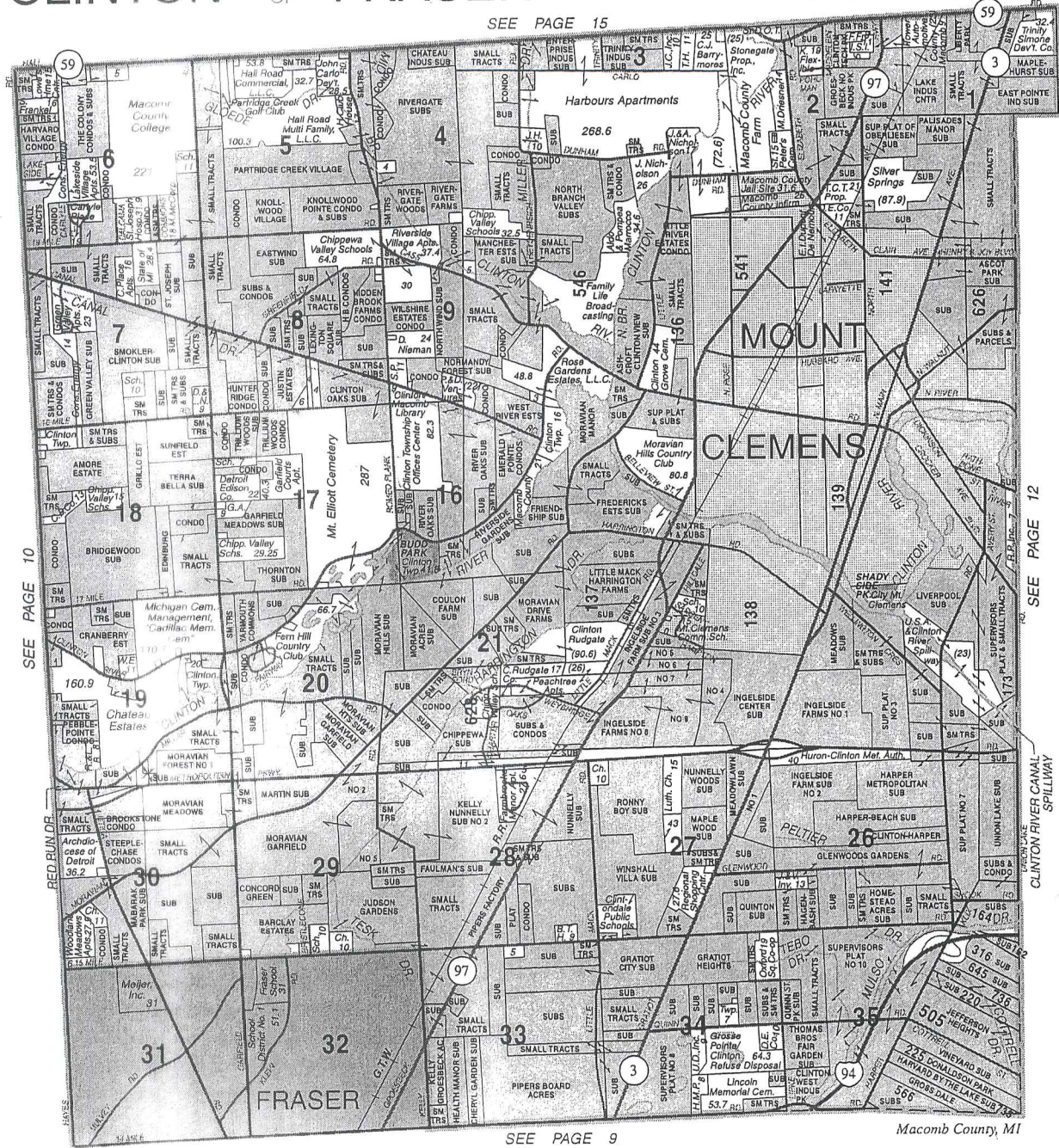


1914 (4)

CLINTON - CITY OF FRASER

T.2N.-R.13E.

SEE PAGE 15



SEE PAGE 10

SEE PAGE 12

SEE PAGE 9

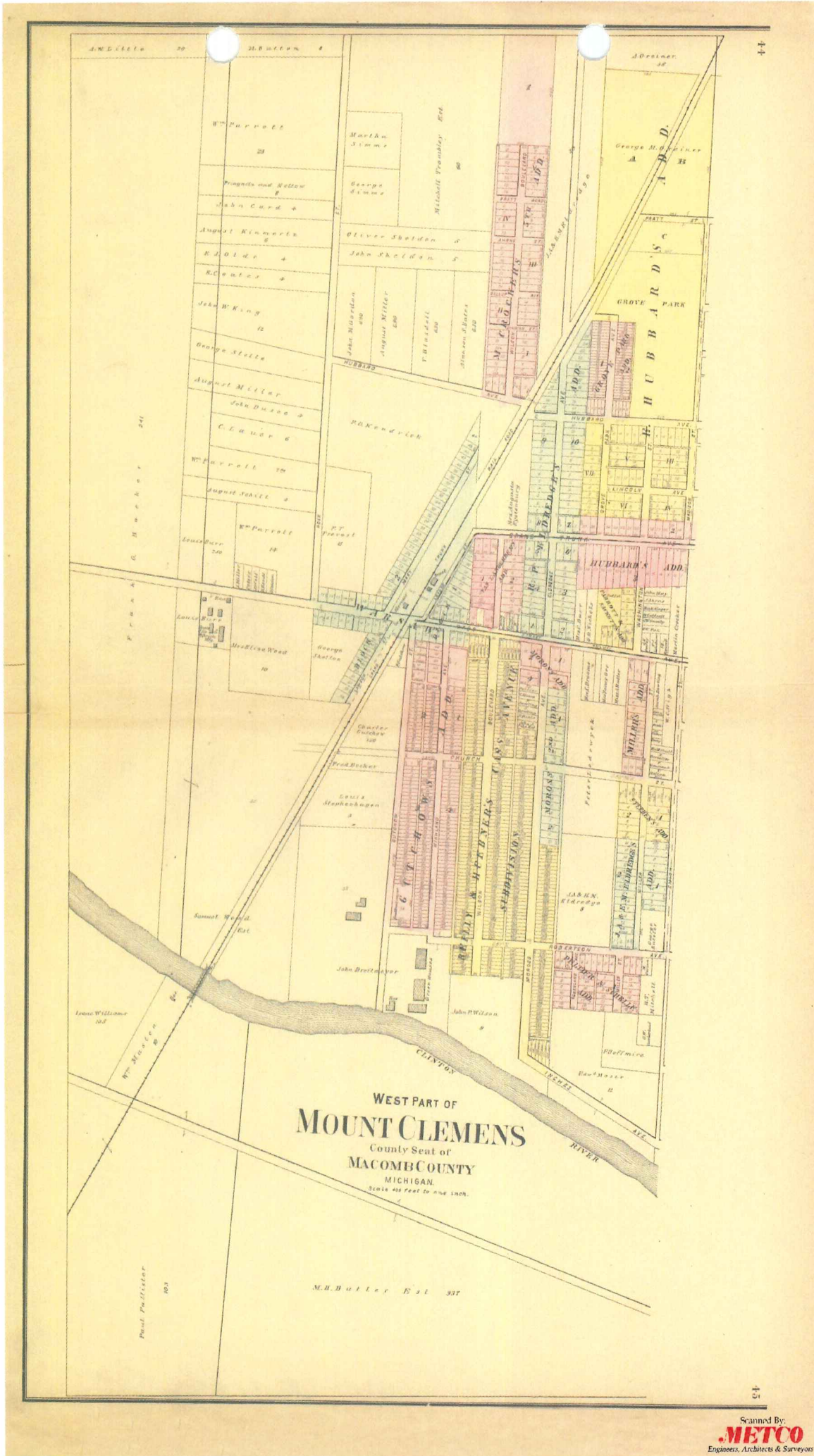
Macomb County, MI

© 2006 Rockford Map Publishers, Inc.

2006

Reproduced with permission of Rockford Map Publishers, Inc.
Rockford, Illinois

5



6
 1895

WEST PART OF
MT. CLEMENS
 COUNTY SEBASTIAN & MACOMB CO.
 CLINTON TWP.
 Scale 40ft. = One Inch
 Copyright 1916 by Geo. A. Hight & Co.
 John W. Parrott

A. W. Little 90
 Matt Hollow 9
 Mrs. Saxford 9
 Gustave Bowden 9
 Ren. Cove 9
 Frank Gove 9
 John W. King 9
 H. J. Wacker 12
 August Miller Est 12
 Mary Push 12
 C. Lauer 6
 C. Lauer 6
 John Parrott 100
 August Schitt 100
 Wm. Parrott Est. 100

F. G. Wacker 15

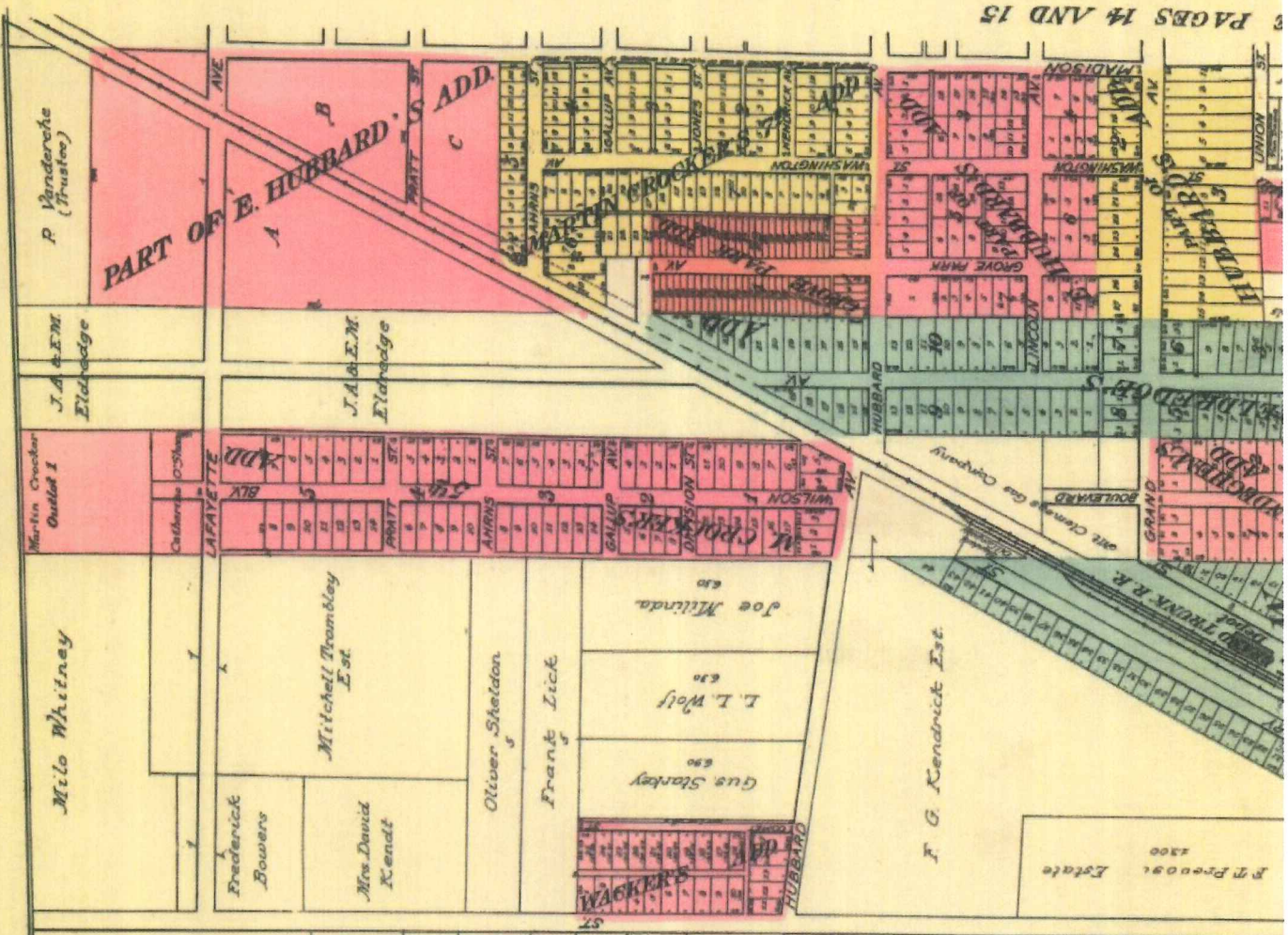
Wm. Wiltman 7

Wm. Diener 7

Wm. Hansensrats 170

Wm. Coulton 6

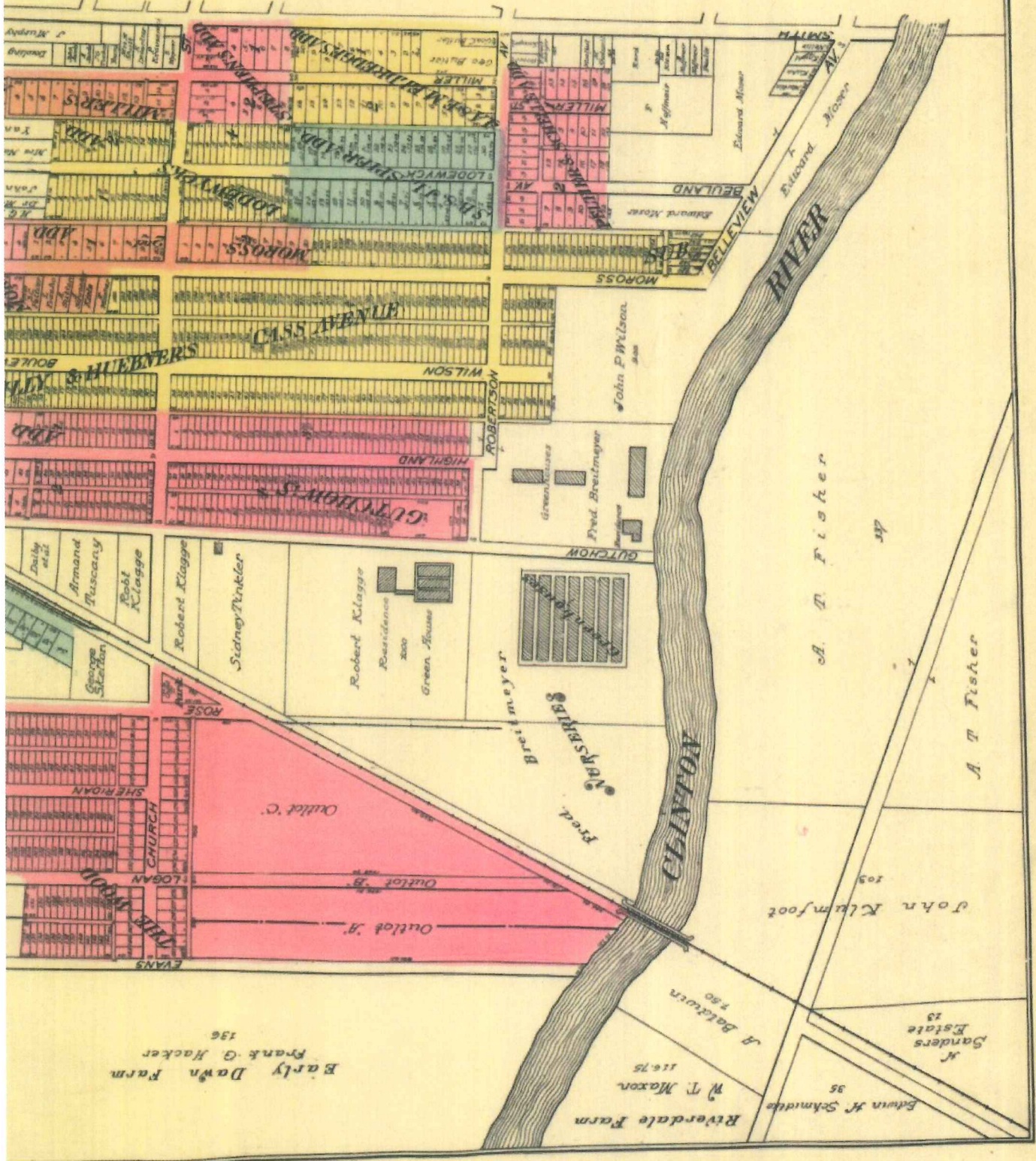
A. Van Beverstuyts 6
 J. Coulton 6
 C. Woy 100
 dos Taylor 5



PAGES 14 AND 15

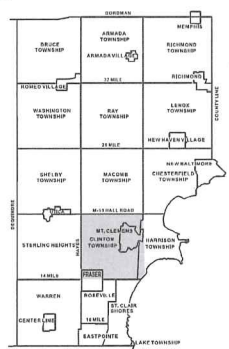
1916

FOR EAST PART OF MT CL

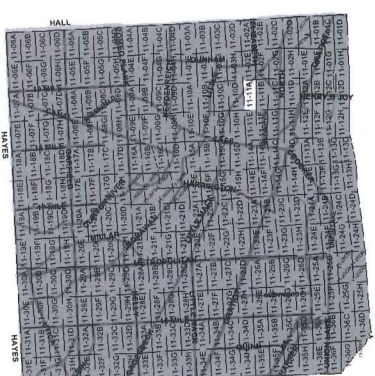




Date of Photography: Spring 2012
 100 50 0 100 200 Feet



CLINTON TWP SHEET INDEX



DESCRIPTION OF PERMANENT REAL ESTATE INDEX NUMBER
13-19-302-018

AREA NUMBER (PROPERTY IDENTIFICATION NUMBER)	SUB AREA NUMBER (SPLIT BLOCK IDENTIFICATION NUMBER)	BLOCK NUMBER (BLOCK IDENTIFICATION NUMBER)	PARCEL NUMBER (PARCEL IDENTIFICATION NUMBER)
---	--	---	---

Legend

- Platted Area Boundary Line
- Property Line
- Property Split Line
- Township Boundary Line
- Traverse Line
- Dimension Extent Marks
- Dimension Start Marks

11-11A

MT. CLEMENS

W.1/2 N.W.1/4 SEC.11 T.2N. R.13E.

Source: Macomb County Department of Planning and Economic Development
 - 2008 Digital Orthophotography Project
 - Parcel Conversion Project

Note: Digital Orthophotography horizontal positioning accuracy is 3 feet. Parcel boundary lines should be considered a graphical representation and not in any way a legal survey or engineering document. In general, the horizontal positioning and length accuracy is within 15 feet.

This map is intended for general planning purposes. Site specific evaluation should be verified by field inspection. This is a work in progress and may contain errors and omissions. Please report any potential revisions to (586)469-5285.

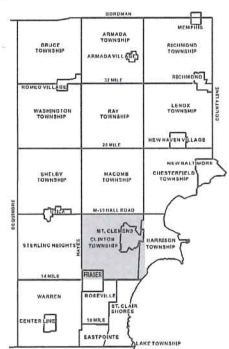


GIS MACOMB COUNTY
 Planning and Economic
 Development

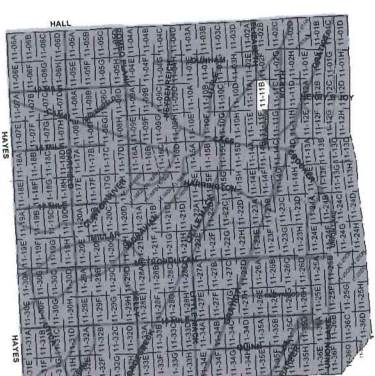
Published: Aug 22 2013



Date of Photography: Spring 2012
 100 50 0 100 200 Feet



CLINTON TWP SHEET INDEX



DESCRIPTION OF PERMANENT REAL ESTATE INDEX NUMBER
13-19-302-018

AREA NUMBER	SUB AREA NUMBER	BLOCK NUMBER	PARCEL NUMBER
13	19	302	018

Legend

- Platted Area Boundary Line
- Property Line
- Property Split Line
- Property Combined Line
- Township Boundary Line
- Traverse Line
- Dimension Extent Marks
- Dimension Start Marks

11-11B

MT. CLEMENS & CLINTON TWP.
 E. 1/2 N.W. 1/4 SEC. 11 T. 2N. R. 13E.

Source: Macomb County Department of Planning and Economic Development
 - 2008 Digital Orthophotography Project
 - Parcel Conversion Project

Note: Digital Orthophotography horizontal positioning accuracy is 3 feet. Parcel boundary lines should be considered a graphical representation and not in any way a legal survey or engineering document. In general, the horizontal positioning and length accuracy is within 15 feet.

This map is intended for general planning purposes. Site specific evaluation should be verified by field inspection. This is a work in progress and may contain errors and omissions. Please report any potential revisions to (586)469-5285.



GIS MACOMB COUNTY
 Planning and Economic
 Development Department

Published: Jun 06 2013



493

(2)

NORTH SIDE OF RIVER HURON

Description No 541 Confirmed to Christian Blmans
and James Connor commencing at an oak Tree
standing on the border of River Huron between
this tract and a tract confirmed to James
Connor thence north one hundred and twenty
eight chains sixty one links, to a post thence
west forty seven chains, to a black ash Tree
thence South one hundred and thirty five chains
forty six links, to a black ash Tree standing
on the border of the River Huron between this
tract and a tract claimed by Tobias Newcomer
thence along the border of said River up stream
north sixty nine degrees west twenty four
chains forty two links, thence South Eighty five
degrees thirty minutes west twenty four chains
twenty seven links, to the place of beginning
containing six hundred and sixty acres

Detroit July 14. 1810

Aaron Guiley Surveyor
of private Claims

No. 493

No. 541 Confirmed to
Christian Clemans and
James Connor

NORTH SIDE OF RIVER HURON

Description No. 541 Confirmed to Christian Clemans and James Connor commencing at an oak tree standing on the border of River Huron between this tract and a tract confirmed to James Connor thence north one hundred and twenty eight chains sixty one links to a post thence east forty seven chains to a black ash tree thence south one hundred and thirty five chains forty six links to a black ash tree standing on the border of the River Huron between this tract and a tract claimed by Tobias Newcomer thence along the border of said river up stream north sixty nine degrees west twenty four chains forty two links thence south eighty five degrees thirty minutes west twenty four chains twenty seven links to the place of beginning, containing six hundred and twenty acres.

Detroit July 14, 1810

Aaron Greeley Surveyor
of private claims

See Resolution dated 5-20 of Special Page 504
 See Resolution dated 6-17 of Special Page 10
 See report of S.W. Linn 16 page 18

MAP OF THE PELTIER AND SCHELLE ADDITION TO THE CITY OF MT. CLEMENS.

EXAMINED AND APPROVED

April 20 1883

R.B. Singer

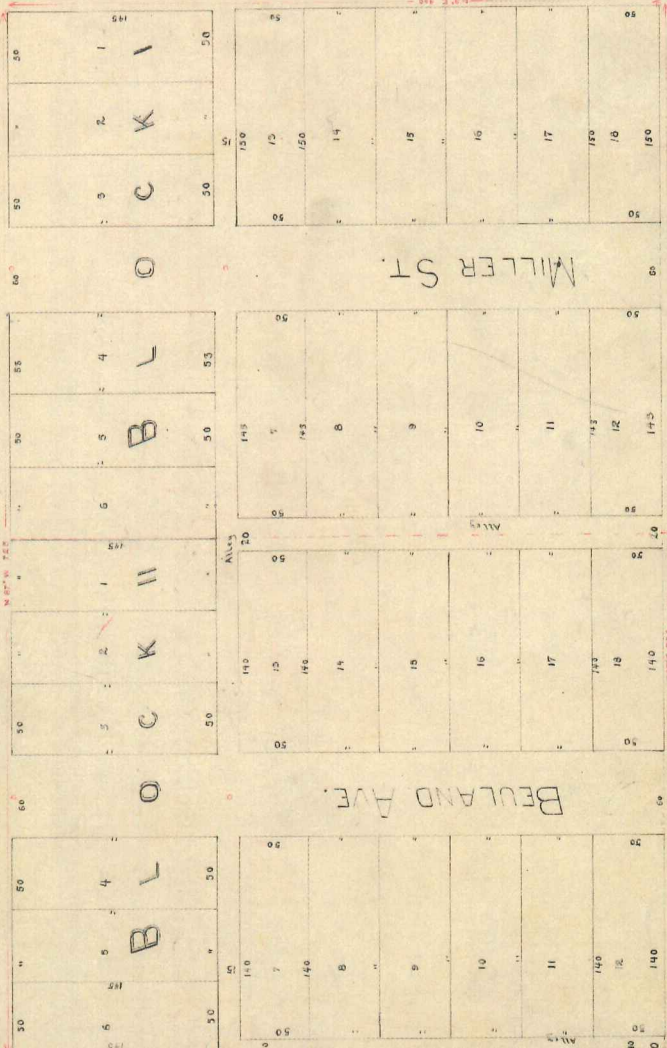
DEPUTY AUDITOR GENERAL

Know all Men by these presents, That we, Wm. Peltier, unmarried, and Anthony Schelle, and Anthony Schelle as proprietors and Elisabeth Schelle the wife of Anthony Schelle, have caused the land embraced in the annexed plat to be surveyed, laid out and platted; to be known as the Peltier and Schelle addition to the City of Mt. Clemens, and that the streets and alleys as shown on said plat are hereby dedicated to the use of the public.

Signed and Sealed in presence of
 James B. Blauvelt
 Robert S. Eldridge

William Peltier
 Anthony Schelle
 Elisabeth Schelle

ROBINSON ST.



State of Michigan } SS
 County of Washtenaw }

On this 16 day of April 1883 before me a Notary Public in and for said County, personally appeared the above named parties, who being duly sworn to me to be the persons who executed the above dedication and acknowledged the same to their free will and legal capacity, to wit: William Peltier, Anthony Schelle, and Elisabeth Schelle, and I, the undersigned, a Notary Public in and for said County, do hereby certify that the above named parties are the persons who executed the above dedication and acknowledged the same to their free will and legal capacity, to wit: William Peltier, Anthony Schelle, and Elisabeth Schelle.

The land embraced in the annexed plat of Peltier and Schelle's addition to the City of Mt. Clemens is described as follows: commencing at an iron stake standing on the SW corner of the line of Robinson street and ten feet East by from the North-East corner of lot No. 10 of Hebert and Reilly's addition to the City of Mt. Clemens; thence S 71° W, 40 feet; thence S 87° E, 225 feet; thence N 15° E, 40 feet; thence N 70° 25' E to the place of beginning, being part of P. C. No. 534.

It is hereby certified that the plat herein described is a correct one and that the same has been duly recorded in the office of the Auditor General of the State of Michigan, and that the same is a true and correct copy of the original plat as shown at all times on file in the office of the Auditor General of the State of Michigan, and that all incumbrances of record have been duly removed therefrom.

State of Michigan
 County of Washtenaw
 Wm. S. St. John, Register of Deeds and of the Sheriff's Office, county clerk, do hereby certify that we have personally examined the duplicate plat with the original, and find that the same is a true and correct copy of the original plat as shown at all times on file in the office of the Auditor General of the State of Michigan, and that all incumbrances of record have been duly removed therefrom.

Witness my hand and seal of office at the City of Detroit, Michigan, this 16th day of April, 1883.
 Wm. S. St. John, Register of Deeds and of the Sheriff's Office

STATE OF MICHIGAN
 County of Washtenaw
 J. D. St. John, Auditor General

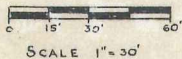
L.S. P. 51.

EXAMINED AND APPROVED
Date JUL 23 1956

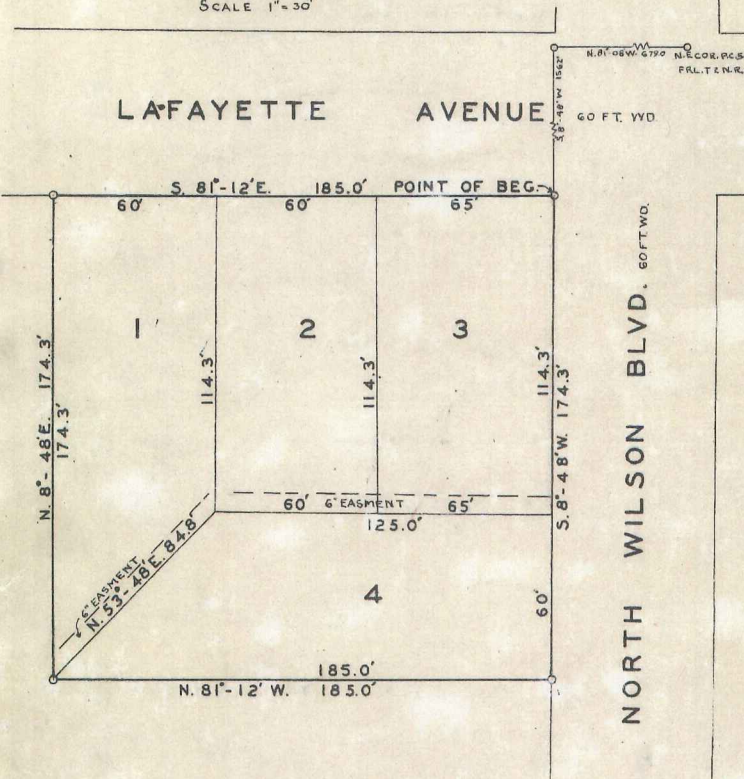
296017

DIORE SUBDIVISION

A REPLAT OF LOT 6 ASSESSORS PLAT 19 PART OF OUTLOT 1 OF MARTIN CROCKERS 5TH ADD. LOCATED IN P.C. 541 FRL. T.2N. R.13E. OF THE CITY OF MT. CLEMENS, MACOMB, CO. MICHIGAN.



NOTE: ALL DIMENSIONS ARE IN FEET AND DECIMALS THEREOF.



1 DEDICATION
KNOW ALL MEN BY THESE PRESENTS, that we, The Rose-View Building Company, a Michigan Corporation, by Irving Dworkin, President and Eli Friedman, Secretary, and John Sonnenberg and Ann E. Sonnenberg, his wife, as proprietors, have caused the land embraced in the annexed plat to be surveyed, laid out and platted, to be known as Diore Subdivision, a replat of Lot 6, Assessors Plat 19, which is a part of Outlot 1 of Martin Crocker's 5th Addition to the City of Mt. Clemens, Macomb County, Michigan, located in P.C. 541 FRL. T.2N. R.13E. and that the streets and alleys as shown on said plat are hereby dedicated to the use of the public.

Signed and Sealed in the Presence of
Irving Dworkin (President)
Eli Friedman (Secretary)
Wanda M. Brush (Witness)
Frank J. Kinzinger, Jr. (Witness)
John H. Sonnenberg (I.S.)
Ann E. Sonnenberg (I.S.)

ACKNOWLEDGMENT
STATE OF MICHIGAN } ss.
County of WAYNE }
On this 21st day of June, 1956, before me, a Notary Public in and for said County, personally came the above named John H. Sonnenberg and Ann E. Sonnenberg, his wife, known to me to be the persons who executed the above dedication, and acknowledged the same to be their free act and deed.
Irving Dworkin
Eli Friedman
Notary Public
My Commission expires 7-1-60

ACKNOWLEDGMENT
STATE OF Michigan } ss.
County of Wayne }
On this 21st day of June, A.D. 1956, before me, a Notary Public in and for said county appeared Irving Dworkin and Eli Friedman, to me personally known, who being each by me duly sworn did say that they are the President and Secretary respectively of the Rose-View Building Company, a Michigan corporation, and that the seal affixed to said instrument is the corporate seal of said corporation and that said instrument was signed and sealed in behalf of said corporation by authority of its Board of Directors and the said Irving Dworkin and Eli Friedman acknowledged said instrument to be the free act and deed of said corporation.
Notary Public
My Commission expires 7-1-60

DESCRIPTION OF LAND PLATTED
The land embraced in the annexed plat of Diore Subdivision, a replat of Lot 6 Assessors Plat 19, which is part of the Outlot 1 of Martin Crocker's 5th Addition to the City of Mt. Clemens, Macomb County, Michigan, located in P.C. 541 FRL. T.2N. R.13E. is described as follows: COMMENCING AT THE N.E. COR. P.C. 541 THENCE N. 81°-12' E. 185.0 FT. TO THE POINT OF BEGINNING AT THE SW CORNER OF LAFAYETTE STREET AND NORTH WILSON BOULEVARD THENCE S. 8° 48' W., 174.3 FT. ALONG THE W. SIDE OF NORTH WILSON BOULEVARD, THENCE N. 81° 12' W. 185 FT.; THENCE N. 8° 48' E., 174.3 FT.; THENCE S. 81° 12' E. 185 FT. ALONG THE S. SIDE OF LAFAYETTE STREET TO THE POINT OF BEGINNING.

THIS IS TO CERTIFY THAT ACCORDING TO THE COUNTY TREASURER'S RECORDS THERE ARE NO TAX DUES ON THIS PROPERTY AND THAT TAXES ARE PAID FOR FIVE YEARS PREVIOUS TO DATE OF THIS INSTRUMENT EXCEPT \$10.55
Lynn Whalen, MACOMB COUNTY TREASURER
DATE 7-5-56 PER [Signature]

APPROVAL BY COUNTY PLAT BOARD
This plat was approved on the 25th day of June, 1956, by the Macomb County Plat Board
Carson Burr (County Register of Deeds)
Albert Wagner (County Clerk)
Lynn Whalen (County Treasurer)
Frank Lohr (County Drain Commissioner)

REGISTER'S OFFICE COUNTY OF MACOMB
Received for Record July 22, 1956 at 2:30 o'clock P.M. and recorded in Vol. 36 of Plats, on Page 49
Carson Burr Register of Deeds

SURVEYOR'S CERTIFICATE
I hereby certify that the plat hereon delineated is a correct one, and that permanent monuments consisting of iron rods of at least one half inch in diameter and 30 inches in length, encased in concrete cylinders four inches in diameter and 36 inches in length, have been set at points marked thus (B) as shown at all angles in the boundaries of the land platted, at all intersections of the lines of streets and at intersections of the lines of streets with the boundaries of the plat.
Ernest L. Pottingill
Ernest L. Pottingill Registered Land Surveyor

MUNICIPAL APPROVAL
This plat was approved by the City Commission of the City of Mt. Clemens at a meeting held on July 11, 1956
John Hahn (Clerk)

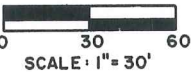
See Plat Book File 105 Page 46

LIBER 36 PAGE 49

MASTROMATTEO SUB., PART OF FRACTIONAL SEC. 11, T.2N., R.13E., CITY OF MT. CLEMENS, MACOMB CO., MICH.

PREPARED AND DRAFTED BY:
LEHNER ASSOCIATES INC.,
REG. CIVIL ENGINEERS AND SURVEYORS
MT. CLEMENS, MICHIGAN.

REGISTER # A322252



PLAT LEGEND

All dimensions are shown in feet. All bearings are taken from "Woolworth-Francis Subdivision" as recorded in Liber 12 on Page 39, Macomb County Records. The symbol "o" indicates a concrete monument. All lot markers are 1/2" irons and are 18" long.



LOCATION MAP
(NO SCALE)

SURVEYOR'S CERTIFICATE

I, John D. Lehner, Surveyor, certify that I have surveyed, divided and mapped the land shown on this plat, described as follows: Mastromatteo Sub., Part of Fractional Sec. 11, T. 2 N., R. 13 E., City of Mt. Clemens, Macomb Co., Mich., being a replat of Lots 5, 6, 7 and 8 of "Woolworth-Francis Subdivision" of a part of Fractional Section 11, T. 2 N., R. 13 E., City of Mt. Clemens, Macomb County, Michigan, as recorded in Liber 12 of Plats on Page 39, Macomb County Records, and part of Lot 5 of "Assessor's Plat No. 18" of the City of Mt. Clemens, as recorded in Liber 13 of Plats on Page 35, Macomb County Records, and comprising of Lot 1 thru 4, both inclusive: Commencing at the Northeast corner of Private Claim 541 and thence extending the following courses and distances: S. 04°-17'-25" W. 4716.78 feet to the Southerly side line of Grand Avenue, S. 87°-01'-44" E. 67.91 feet along the Southerly side line of Grand Avenue to the Easterly side line of Woolworth Court, S. 02°-44'-30" W. 140.06 feet; S. 87°-05' E. 2.00 feet; S. 02°-44'-30" W. 55.12 feet and S. 03°-15'-30" W. 180.25 feet to the point of beginning. Said point of beginning being the Southwest corner of Lot 4 of said "Woolworth-Francis Subdivision" and thence extending S. 86°-58'-00" E. 61.77 feet along the Southerly line of Lot 4 of said "Woolworth-Francis Subdivision" thence N. 88°-05'-00" E. 51.45 feet; thence S. 03°-25'-03" W. 220.00 feet; thence S. 88°-50'-35" W. 60.80 feet; thence N. 86°-58'-00" W. 51.78 feet along the Southerly line of Lot 8 of said "Woolworth-Francis Subdivision"; thence N. 03°-15'-30" E. 220.00 feet along the Easterly line of Woolworth Court (18 ft. wide) to the point of beginning and containing 0.569 acres of land.

That I have made such survey, land-division and plat by the direction of the owners of such land.
That such plat is correct representation of all the exterior boundaries of the land surveyed and the subdivision of it.
That the required monuments and lot markers have been located in the ground as required by Section 125 of the Act.
That the accuracy of survey is within the limits required by Section 126 of the Act.
That the bearings shown on the plat are expressed as required by Section 126 (3) of the Act and as explained in the legend.



Lehner Associates, Inc.
22900 Wellington Crescent
Mount Clemens, Michigan 48043

John D. Lehner
John D. Lehner - No. 5787, President

Date July 24, 1975

PROPRIETOR'S CERTIFICATE

We, as proprietors certify that we caused the land embraced in this plat to be surveyed, divided, mapped and dedicated as represented on this plat and that the streets are for the use of the public, that the public utility easements are private easements and that all other easements are for the uses shown on the plat.

Witnesses:

James H. Rogers
James H. Rogers
Robert Watts
Robert Watts
STATE OF MICHIGAN) SS.
COUNTY OF MACOMB

Michele E. Mastromatteo
Michele E. Mastromatteo
173 South Wilson Blvd.
Mt. Clemens, Michigan 48043

Julia A. Mastromatteo
Julia A. Mastromatteo, his wife
173 South Wilson Blvd.
Mt. Clemens, Michigan 48043

Personally came before me this 30th day of July, 1975, the above named Michele E. Mastromatteo and Julia A. Mastromatteo, his wife, to me known to be the persons who executed the foregoing instrument and acknowledged that they executed the same as their free act and deed.

My Commission Expires: MAY 7, 1977

Duncan K. Allan
DUNCAN K. ALLAN Notary Public
MACOMB County, Michigan

COUNTY PLAT BOARD CERTIFICATE

This plat has been reviewed and is approved by the Macomb County Plat Board on AUGUST 22, 1975 as being in compliance with all of the provisions of Act 288, P.A., 1967, and the plat Board's applicable rules and regulations.

Robert A. Verkuilen
Robert A. Verkuilen, Chairman of
the County Board of Commissioners

Edna Miller
Edna Miller, Clerk
Register of Deeds

Adam E. Nowakowski
Adam E. Nowakowski, County Treasurer

RECORDING CERTIFICATE

STATE OF MICHIGAN) SS.
COUNTY OF MACOMB)

The plat was received for recording on the 16th day of Sept., 1975, at 4:35 P.M. clock and is recorded in Liber 67 of Plats on Page 1

Rymond R. Craig
Rymond R. Craig, Deputy Register of Deeds

COUNTY TREASURER'S CERTIFICATE

The records in my office show no unpaid taxes or special assessment for the five years preceding JULY 30th 1975 involving the lands included in this plat. # 841

MARION E. WHITE
MARION E. WHITE, CLERK

Adam E. Nowakowski
Adam E. Nowakowski, Macomb County Treasurer

COUNTY DRAIN COMMISSIONER'S CERTIFICATE

Approved on July 30th 1975, as complying with Section 192 of Act 288, P.A., 1967, and the applicable rules and regulations published by my office in the County of Macomb.

Thomas S. Welsh
Thomas S. Welsh, Macomb County Drain Commissioner

CERTIFICATE OF MUNICIPAL APPROVAL

I certify that this plat was approved by the City Council of the City of Mount Clemens at a meeting held on July 30, 1975, and was reviewed and found to be in compliance with Act 288, P.A., 1967. That the minimum lot width and area required by Section 186 of the Act has been waived, and that the lots conform with the legally adopted zoning and subdivision control ordinance of the City. That the water mains and sanitary sewers are existing and ready for use within the plat.

Jeanne T. Nelson
Jeanne T. Nelson, City Clerk

EARNED AND APPROVED
Date Sept. 15, 1975

Richard E. Lomax
RICHARD GREEN
STATE TREASURER
By *Richard E. Lomax* Plat Examiner

67