

Land Corner Recordation Certificate
2018 Annual Grant Agreement
Authority: MICH. 1970 PA 74, MCL 54.205

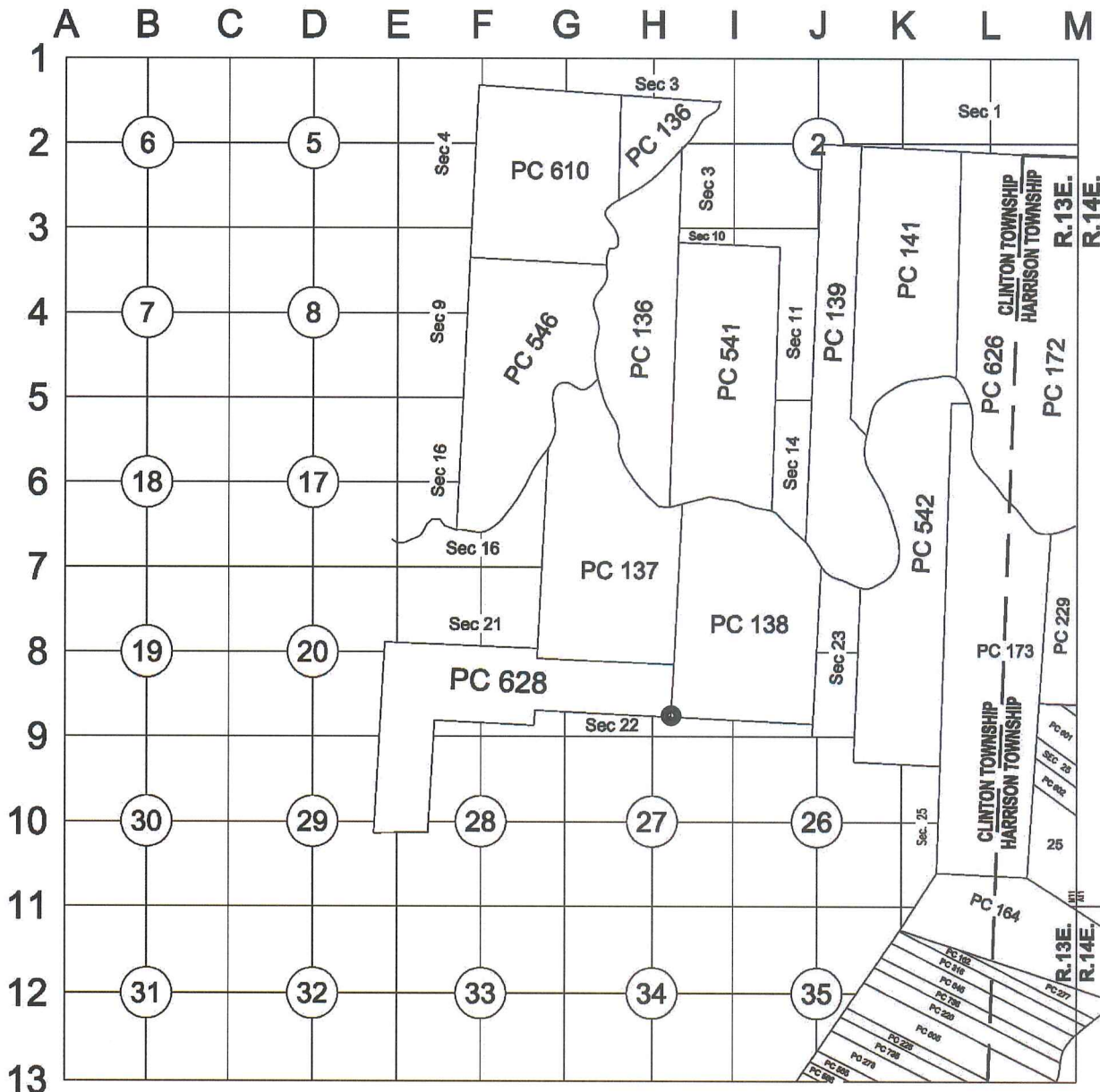
"LCRC BEING RECORDED FOR THE PURPOSE OF PUBLISHING MICHIGAN STATE PLANE COORDINATE DATA"

Surveyor's Name: Steven E. Dunn, P.S.
For Corner(s) in: Macomb County

Field Survey Date: May 7, 2018
Municipality: Clinton Township

Corner Type	Section Private Claim	Clinton Township	Corner Code	Other Code
Original Public Land Survey Corner	PC 138/628	T 02 N R 13 E		PC 028

Other Code Corner Description: Southeast corner of PC 628 Common with the Southwest corner of PC 138



Part A: Corner History: Southeast corner of PC 628 Common with the Southwest corner of PC 138. Set Post GLO notes – 1810.

12-13-2013 LCRC for Remonumentation Corner by Christopher A. Asiala, #49376 PC 028 recorded in L. 22590 of Deeds on P. 111 – 113. Placed a new 4"X6" concrete monument with a 2" aluminum cap stamped "MACOMB COUNTY MONUMENT MI ACT 345 CAA 49376 PC-028" with 4 accessories.
Peer Review Group Approval: November 12, 2013

2

C

Part B: Surveyor's Report on Perpetuation, Restoration, Reestablishment or Monumentation of Corner: Southeast corner of PC 628 Common with the Southwest corner of PC 138

Refer to: 12-13-2013 LCRC for Remonumentation Corner by Christopher A. Asiala, #49376 PC 028 recorded in L. 22590 of Deeds on P. 111 – 113. Placed a new 4"X6" concrete monument with a 2" aluminum cap stamped "MACOMB COUNTY MONUMENT MI ACT 345 CAA 49376 PC-028" with 4 accessories.

Part C: Field Evidence of Perpetuation or Monumentation of Corner: Southeast corner of PC 628 Common with the Southwest corner of PC 138

5-07-2018 Found a 4"X6" concrete monument with a 2" aluminum cap stamped "MACOMB COUNTY MONUMENT MI ACT 345 CAA 49376 PC-028" with 4 of 4 matching accessories from the LCRC listed in Part A. Occupied with GPS to obtain Geodetic Coordinate Data.

Accessories:

Due East 122.09' R&M SW corner brick house address #37140 Mulberry
 S30°E 75.45' M Center top nut hydrant (75.33' R)
 Due West 60.90' M NE corner brick garage at house #37123 (The LCRC calls it out as "S85°W 60.85' NE corner brick garage at house #37105")
 N10°W 7.10' M Found MAG nail with MCR washer in east face utility pole (7.07' R)

Date of Observation	Latitude	Longitude	Datum and Adjustment Year	Epoch Date
5-07-2018	N 42D34'17.11042"	W 82D53'55.82319"	NAD83 (2011)	2010

Method for Latitude-Longitude determination: NGS OPUS-RS Solution

State Plane Coordinates in international feet: N-393900.47', E-13518704.02'
 Standard Deviation: 0.06' N, 0.02' W
 Zone: South
 Combined Factor: 0.99989788
 NGSPID: NE1181
 Survey Method: MC GPS
 Orthometric Height: 613.94'
 Elev. Datum: NAVD88

I, Steven E. Dunn, P.S., in a field survey on May 7, 2018, certify under the requirements of the State Survey and Remonumentation Act, 1990 PA 345, MCL 54.261 to 54.279, and the Corner Recordation Act, 1970 PA 74, MCL 54.201 to 54.210d, that the corner identified and described hereon has been perpetuated or monumented as described in Parts A, B, and C above, pursuant to the laws and rules of the State of Michigan.

Steven E. Dunn

May 15, 2018

Steven E. Dunn, P.S.

Date

Professional Surveyor's License No.: 28408

Prepared By:
 Steven E. Dunn, P.S.
 Great Lakes Geomatics, LLC
 76 S. Main Street
 Mt. Clemens, Mi. 48043



I, Martin C. Dunn, P.S., Macomb County Surveyor Representative, have reviewed the corner perpetuated in parts A, B and C above for the purpose of publishing its Michigan State Plane Coordinate values and relative data and is accepted for filing in the Macomb County Remonumentation Program.

Martin C. Dunn

6-26-2018

Martin C. Dunn, P.S.

Date

Macomb County Surveyor Representative
 License No. 30081

MACOMB COUNTY
INDEX OF SUPPORTING DOCUMENTS FOR

PC-028

**SE CORNER OF PRIVATE CLAIM 628 COMMON WITH THE SW CORNER OF
PRIVATE CLAIM 138
CLINTON TOWNSHIP
T. 02 N., R. 13 E.**

SECTION 1

<u>ITEM & DATE</u>	<u>ITEM DESCRIPTION</u>
1) 2013	PHOTOS OF CORNER

SECTION 2

<u>ITEM & DATE</u>	<u>ITEM DESCRIPTION</u>
1) 2013	LCRC
2) 2013	SURVEYOR'S REPORT

SECTION 3

<u>ITEM & DATE</u>	<u>ITEM DESCRIPTION</u>
1) 2013	FIELD NOTES
2) 1995	PLAT MAP
3) 2009	COMPOSITE MAP WITH AERIAL IMAGE & TAX MAP

SECTION 4

<u>ITEM & DATE</u>	<u>ITEM DESCRIPTION</u>	<u>SURVEYOR</u>	<u>LICENSE</u>	<u>SOURCE</u>
(1) 1810	Private Claim Notes	A. Greeley		
(2)1818	GLO plats	W. Preston		
(3)1875	1875 Atlas			County Records
(4)1895	1895 Atlas			County Records
(5)1916	1916 Atlas			County Records
(6)1920's	Map of P.C. 138			County Records
(7)1945	Ingleside Farms Sub.	WJ Lehner	#123	L23 P1
(8)1945	Ingleside Farms Sub. No.1	WJ Lehner	#123	L23 P14
(9)1948	Ingleside Farms Sub. No.4	WJ Lehner	#123	L24 P44
(10)1950	Ingleside Farms Sub. No.5	WJ Lehner	#123	L25 P30
(11)1950	Ingleside Farms Sub. No.7	WJ Lehner	#123	L25 P50
(12)1950	Seminole Heights Sub. No.3	HJ Fuller		L26 P4
(13)1952	Seminole Heights Sub. No.4	HJ Fuller		L26 P35
(14)1952	Ingleside Farms Sub. No.9	WJ Lehner	#123	L27 P27
(15)1953	Ingleside Center Sub. No.1	WJ Lehner	#123	L28 P21
(16)1955	Seminole School Subdivision	JD Lehner	#5787	L32 P25
(17)1956	Addressograph map Sheet 24B			County Records
(18)1980	Tax Maps			County Records



PC-028

T-2-N, R-13-E, CLINTON TOWNSHIP

(Located in the SE 1/4 Section 22)

PC-028 SE Corner of PC628 common with SW Corner PC138



NORTH



EAST



SOUTH



WEST



LAND CORNER RECORDATION CERTIFICATE
Filing Requirement of Act 74, Mich. P.A. 1970

For corners in

Table with columns: Macomb (County), Located In: Clinton Twp., Corner Code #, and survey details (Public Land Survey, Property Controlling, etc.)

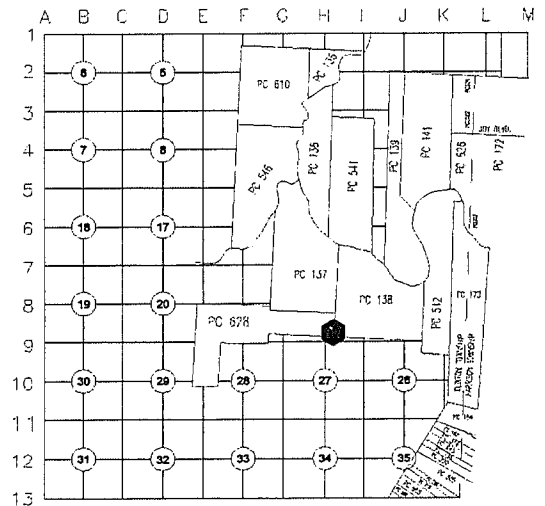
3182666 PAGE 1 OF 3
LIBER 22590 PAGE 111
12/13/2013 10:49:38 A.M.
MACOMB COUNTY, MI
CARMELLA SABAUGH, REGISTER OF DEEDS

Register of Deeds Stamp & File Number

4. Lot No. _____, Recorded Plat _____
5. Private Claims Southeast corner of PC 628 Common with
the Southwest corner of PC 138

I, Christopher A. Asiala, in a field survey on Aug. 26, 2013 do hereby state that under requirements of P.A. 74, Michigan P.A. of 1970, the corner points mentioned in lines 1 and 2 above were in conformance with regulations and rules therefore as required in the current manual of survey instructions of the United States Department of the Interior, Bureau of Land Management or be a decree of a Court of Law and/or that the corner points mentioned in lines 3, 4 and 5 above were in conformance with the rules of the Michigan Board of Land Surveyors or by a Decree of a Court of Law; established, re-established, monumented, recovered, found as expressed below:

NOTE: Not more than 2 corners, all in the same town and range, may be recorded on this certificate.



- A. Description of original monument and accessories and/or subsequent restoration: See page 2 of 3 for list of supporting documentation.
B. Description of corner evidence found and/or method applied in restoring or reestablishing corner:

The corner is described in the Private Claim notes as a "Post". Nothing was found the southeast corner of Private Claim 628 common with the Southwest corner of Private Claim 138. There is no field or record occupation of the Private Claim lines in the immediate vicinity to the North, East or West. The corner was reestablished at the intersection of the line Common to PCs 628 & 138 and the south line of PC 628 & 138. The establishment of the lines is described below:

Line common to Private Claim 138 and 628. The line common to PC 138 & 628 (also PC 137 to the north of PC628) was reestablished by holding a found monument at the northwest corner of lot 1 of "Assessor's Plat No. 38" (at the southeast corner of Mulberry Street and Harrington) and a found monument at the southwest corner of lot 327 of "Seminole Heights Sub. No. 3". Both monuments were offset 30' to the west to establish the Private Claim line. Several other monuments and irons recovered along the east line of Mulberry Street match the line as established by the held monuments. The north end of this line at the south bank of the Clinton River is being remonumented concurrently as PC-031.

South line of Private Claim 138. The south line of PC 138 and it's west extension (being the south line of PC 628) was established at PCC-027 (being concurrently remonumented in 2013). It's position was reestablished at the position 624.32' north of corner G-09 (remonumented in 2001) as shown on "Ingleside Farms Sub No. 3". The bearing of the section line was established by found monumentation along the east line of Little Mack and the north line of Metro Parkway. While the Subdivision does not explicitly name this corner, other documents including assessor's maps and Addressograph map sheet 13 appear to corroborate this position as shown on the plat. There is no field or record evidence as to the south PC line's position subsequent to the original notes east of Little Mack. The intersection of the GLO line common to section 22 & 23 at the south line of PC 138 was reestablished at the record GLO distance of 7.47 chains (493.02') to establish the eastern end of the line.

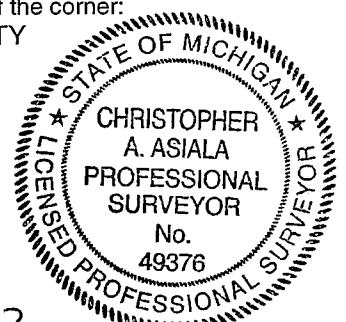
The corner falls approximately 95' north of the physical centerline of Ingleside Street (extended), approximately 44' west of the physical centerline of Mulberry Street and 1.95' north of the edge of driveway (concrete) for House #37105.

- c. Description of monument for corner and accessories established to perpetuate locating the position of the corner: I placed a new 4"x36" concrete monument with a 2" Aluminum cap stamped "MACOMB COUNTY MONUMENT MI ACT 345 CAA 49376 PCC-028". Witness ties are as follows:
DUE E 122.09' SW corner brick house address #37140 Mulberry.
S30°E 75.33' Centerline top nut of hydrant.
S85°W 60.85' NE corner brick garage at house #37105.
N10°W 7.07' Set MAG nail with M.C.R. washer in east face utility pole.

The selected location is accepted by me and generally accepted by professional surveyors as the best available evidence of the position of the original corner.

Signed by [Signature]
Surveyor's Michigan License No. 49376

Date 12-10-13



ACCEPTED BY THE MACOMB COUNTY SURVEY PEER GROUP AS THE OFFICIAL CORNER UNDER MICHIGAN PUBLIC ACT 345 OF 1990 AT A MEETING HELD ON 11-12-2013

PC-028, CLINTON TWP, T-02-N, R-13-E

Liber - 22590 Page 112

Section A:

A. Description of original monument and accessories and/or subsequent restoration:

<u>ITEM & DATE</u>	<u>ITEM DESCRIPTION</u>	<u>SURVEYOR</u>	<u>LICENSE</u>	<u>SOURCE</u>
(1) 1810	Private Claim Notes	A. Greeley		
(2) 1818	GLO plats	W. Preston		
(3) 1875	1875 Atlas			County Records
(4) 1895	1895 Atlas			County Records
(5) 1916	1916 Atlas			County Records
(6) 1920's	Map of P.C. 138			County Records
(7) 1945	Ingleside Farms Sub.	WJ Lehner	#123	L23 P1
(8) 1945	Ingleside Farms Sub. No.1	WJ Lehner	#123	L23 P14
(9) 1948	Ingleside Farms Sub. No.4	WJ Lehner	#123	L24 P44
(10) 1950	Ingleside Farms Sub. No.5	WJ Lehner	#123	L25 P30
(11) 1950	Ingleside Farms Sub. No.7	WJ Lehner	#123	L25 P50
(12) 1950	Seminole Heights Sub. No.3	HJ Fuller		L26 P4
(13) 1952	Seminole Heights Sub. No.4	HJ Fuller		L26 P35
(14) 1952	Ingleside Farms Sub. No.9	WJ Lehner	#123	L27 P27
(15) 1953	Ingleside Center Sub. No.1	WJ Lehner	#123	L28 P21
(16) 1955	Seminole School Subdivision	JD Lehner	#5787	L32 P25
(17) 1956	Addressograph map Sheet 24B			County Records
(18) 1980	Tax Maps			County Records

*see next page for sketch:

PC-031
 NORTHWEST CORNER OF PRIVATE CLAIM 138
 NORTHEAST CORNER OF PRIVATE CLAIM 137
 "BASSWOOD TREE STANDING ON THE
 BORDER OF RIVER HURON"

492 NW CORNER OF PC138
 AT CORNER OF WESTENDORF HEIGHTS SUB

CLINTON RIVER

MCLAREN
 HOSPITAL

WESTENDORF
 HEIGHTS SUB

834.71' M
 834.74' R

1580 FI

1572 FD MON HELD HARRINGTON ROAD

1575 FD MON 30.11'E

1574 FI BENT 30.04'E

SEMINOLE HEIGHTS
 SUB NO. 1

1576 FD T-IRON 30.15'E

1006 FI 30.28'W

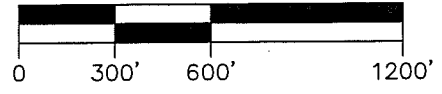
1005 FI 29.67'E

SEMINOLE HEIGHTS
 SUB NO. 4

SEMINOLE HEIGHTS SUB NO.3



SCALE: 1" = 600'



PRIVATE CLAIM 137

GROESBECK HIGHWAY

UNPLATTED

MULBERRY DRIVE

PC-029 TO PC-031
 4810.20' M
 4873.44' (73.84ch) PC notes

PC-028 TO PC-031
 6404.76' M
 6468.00' (98ch) PC notes

1001 FI 30.82'W

1002 FI 30.67'W

1003 SQ MON AT SW CORNER
 OF SEMINOLE HEIGHTS SUB NO. (HELD)

1073 ESTABLISHED PC LINE 30' WEST FROM SQUARE MON

INGLESIDE FARMS SUB. NO. 5

PC-029
 NE CORNER OF PRIVATE CLAIM 628
 SE CORNER OF PRIVATE CLAIM 137
 LOCATED ON THE WEST LINE OF PRIVATE CLAIM 138
 9 CALCULATED CORNER POSITION

PROPERTY LINE (PERCEIVED PC LINE)
 AS INDICATED BY RECORD DEEDS

PC-029 TO PC-022
 4367.66' M
 4336.20' (65.70ch) PC notes

INGLESIDE FARMS SUB. NO. 6

PRIVATE CLAIM 628

INGLESIDE FARMS SUB. NO. 4

PRIVATE CLAIM 138

PC-028 TO PC-030
 4568.35' M
 4769.16' (72.26ch) PC notes

PC-028 TO PC-026
 4,457.05' M
 4,336.20' (65.70ch) PC notes 9

SUB. NO. 9

PC-028
 SOUTHEAST CORNER OF PRIVATE CLAIM 628
 SOUTHWEST CORNER OF PRIVATE CLAIM 137
 "POST"
 8 CALCULATED CORNER

INTERSECTION OF LINE COMMON
 TO SECTIONS 22 & 23 WITH THE
 SOUTH LINE OF PRIVATE CLAIM 137
 198 CALCULATED CORNER

INGLESIDE FARMS

SECTION 22

INGLESIDE CENTER SUB NO. 1

N:\13137001\13784-62-Macomb 2013\Calclt1378463.DWG

giffels webster
 Engineers Surveyors Planners
 Landscape Architects
 Environmental Specialists

28 W. Adams Street
 Suite 1200
 Detroit, MI 48226
 p (313) 962-4442
 f (313) 962-5068
 www.giffelswebster.com

Executive:	JNR
Manager:	CAA
Designer:	CAA
Quality Control:	
Section:	T-02-N R-13-E

Developed For:
 PC-028, PC-029, & PC-031

DATE	ISSUE
Date	Issue

Date: 12-10-2013
 Scale: 1"=600'
 Sheet: 3 OF 3
 Project: 13784.62

Copyright © 2013 Giffels Webster.
 No reproduction shall be made without the prior
 written consent of Giffels Webster.

Private Claim 138

The description for Private Claim commences at the NW corner at a "***Basswood Tree (PC-031) standing on the border of the River Huron***" (Clinton River). The description then proceeds south and runs in a counter-clockwise manner. The description does not close.

The first course of the description reads "***South 98 chains to a post***" (PC-028). This line has been perpetuated and occupied along its north portion for approximately 4000 feet by the following record items:

Seminole Hills Sub No. 1
Ingleside Farms Sub No. 3
Seminole Heights Sub No. 4
Assessor's Plat No. 38
Seminole School Sub
Westendorf Heights Sub

The Southerly stretch of this line has no current occupation or record evidence as to its exact location. The southerly portion of the line does cross Ingleside Farms Sub No. 4 and Ingleside Farms Sub No. 9, however neither of the plats reference or show the line.

The second course of the Private Claim description is "***East 72 chains twenty six links to a post***" (PC-030). This line is not currently occupied or monumented. There is no record evidence of this line subsequent to the original PC description and GLO survey. The line crosses the following plats but are not shown or depicted:

Ingleside Farms Sub
Ingleside Farms Sub No. 1
Ingleside Farms Sub No. 4
Ingleside Center Sub No. 1

The GLO section line common to sections 22 & 23 intersects the south line of the Private Claim 7.47 chains north of I-09 at a point "***36.25 chains west of east corner of lot No. 138...***"

The third course of the Private Claim description is "***North 70 chains 94 links to a post*** (not currently Remonumented) ***standing on the border of River Huron between this tract and unconceded land. Thence along the border of said River up stream...***" The southern portion of this line is not currently occupied or monumented. The south 1000 feet (approximate) crosses Ingleside Farms Sub and the south portion of Ingleside Farms Sub No. 1, but neither show or depict the line. The north stretch of the PC line (approximate 3200 feet) is occupied and monumented by the following items:

Supervisor's Plat No. 3
Ingleside Farms Sub No.1
Wellington Heights Condo
Knottingham Apartments
Acreage parcels

The fourth thru seventh described courses are along the border of said river upstream.

Private Claim 628

The description for Private Claim 628 commences at "***a post***" (PC-028) at the SW corner of Private Claim 138 and is described in a counter-clockwise direction. The first course reads "***Thence west 65 chains 70 links to a post***" (PC-026)" This line is not currently occupied and there is no record evidence east of Little Mack. The line crosses both Ingleside Farms Sub No. 8 & 9, but neither show the line. The GLO section line common to sections 21 & 22 intersects this private claim line at Little Mack (PCC-027). Ingleside Farms Sub No. 3 shows the intersection point but does not explicitly name it.

West of Little Mack, there are several recorded documents that appear to follow the Private Claim line but do not explicitly name it, including Ingleside Farms Sub No. 3, Glenbrook Meadows Condominiums and Fox Chase Condominiums. Found monumentation and record evidence of this line would indicate that there would be at least two deflection points along the western portion of this Private Claim line. One deflection point being at the intersection of the GLO section line common to sections 21 & 22 (at Little Mack) and the other in the vicinity of the GTW railroad.

The second course of the Private Claim reads "***south 12 chains 14 links to a post***" (PC-025). There is no field or record evidence subsequent to the original surveys which show or define this line.

The third course of the description reads "***west 48 chains 86 links to a post***". This point was remonumented as PCC-023 in 2011). There is no monumentation or records defining this line near the east end. However the westerly portion is shown and defined by Chippewa Sub.

The private claim corners described in the fourth thru eighth course of the description have previously been remonumented as PC-013, PC-010, PC-009, PC-011, and PC-022.

The ninth course from PC-022 is described as "***east 65 chains 70 links to a post standing on the west line of the tract no. 138***" (PC-029). There is no current physical occupation or record evidence subsequent to the original survey which would define this line.

The tenth and final leg of the description reads "***south 24 chains 16 links to the place of beginning***" (PC-028). This line is common to the west line (first leg) of Private Claim 138 described above.

NW13137001.3784.62-Macomb 2013(Cale)1378463.DWG



PC-031
 NORTHWEST CORNER OF PRIVATE CLAIM 138
 NORTHEAST CORNER OF PRIVATE CLAIM 137
 "BASSWOOD TREE STANDING ON THE
 BORDER OF RIVER HURON"

492 NW CORNER OF PC138
 AT CORNER OF WESTENDORF HEIGHTS SUB.

1006 FT 30.28' W
 1005 FT 28.67' E

1572 FT MON. FIELD

1575 FT MON 30.11'E

1574 FT BENT 30.04'E

1578 FT T-IRON 30.18'E

PC-029 TO PC-031
 4810.22' W
 4873.44' (73.84ch) PC notes

1001 FT 30.82' W

1002 FT 30.67' W

PC-028 TO PC-031
 6404.75' W
 6468.00' (73.84ch) PC notes

1003 SQ MON AT SW CORNER
 OF SEMINOLE HEIGHTS SUB. NO. 4 (HELD)

1073 ESTABLISHED PC LINE 90 WEST FROM SQUARE MON

PC-029
 NE CORNER OF PRIVATE CLAIM 528
 SE CORNER OF PRIVATE CLAIM 137
 LOCATED ON THE WEST LINE OF PRIVATE CLAIM 138
 9 CALCULATED CORNER POSITION

PC-029 TO PC-028
 4367.65' M
 4336.20' (65.70ch) PC notes

PC-028 TO PC-028
 4457.05' M
 4336.20' (65.70ch) PC notes

PC-028
 SOUTHEAST CORNER OF PRIVATE CLAIM 528
 SOUTHWEST CORNER OF PRIVATE CLAIM 137
 "POST"
 8 CALCULATED CORNER

PC-028 TO PC-030
 4568.85' M
 4769.16' (72.25ch) PC notes

INTERSECTION OF LINE COMMON
 TO SECTIONS 22 & 23 WITH THE
 SOUTH LINE OF PRIVATE CLAIM 137
 196 CALCULATED CORNER

giffels webster
 Engineers Surveyors Planners
 Landscape Architects
 Environmental Specialists

28 W. Adams Street
 Suite 1200
 Detroit, MI 48226
 p (313) 962-4442
 f (313) 962-5068
 www.giffelswebster.com

Executive:	JNR
Manager:	CAA
Designer:	CAA
Quality Control:	
Section:	T-02-N R-13-E

Developed For:
 PC-028, PC-029, & PC-031

DATE:	ISSUE:
Date	Issue

Date:	12-10-2013
Scale:	1"=600'
Sheet:	3 OF 3
Project:	13784.62

Copyright © 2013 Giffels Webster.
 No reproduction shall be made without the prior
 written consent of Giffels Webster.



Google earth



SECTION CORNER WITNESS FIELD REPORT

DATE: 10-28-13 CREW: DA

WEATHER: 42° PT CLOUDY

TOWNSHIP: CLINTON

PRIVATE CLAIM/TTAT: SE PC628
SW PC137

TOWN 2N RANGE 13E

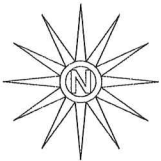
CORNER CODE/DESC: PC-028

DEPTH: FLUSH

	A	B	C	D	E	F	G	H	I	J	K	L	M
1													
2	6	5	4	3	2	1							
3													
4	7	8	9	10	11	12							
5													
6	18	17	16	15	14	13							
7													
8	19	20	21	22	23	24							
9													
10	30	29	28	27	26	25							
11													
12	31	32	33	34	35	36							
13													

LOCATION OF CORNER 1/2 60' N. OF Ingheside AND 1/2 27'
W. OF W. EDGE OF ASPHALT MULBERRY

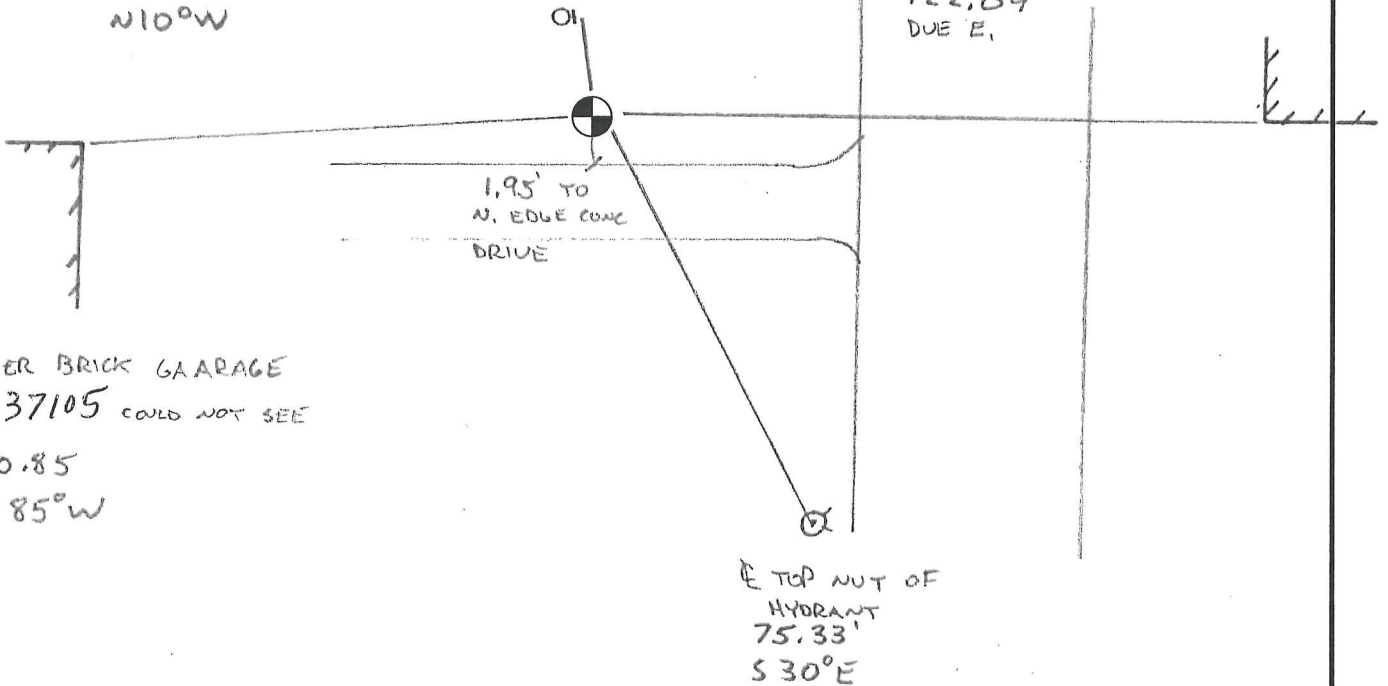
WHAT WAS FOUND? FD NOTHING / SET IRON



#37139

SET MAG NAIL W/MCR
WASHER E. FACE UPOLE
7.07'
N10°W

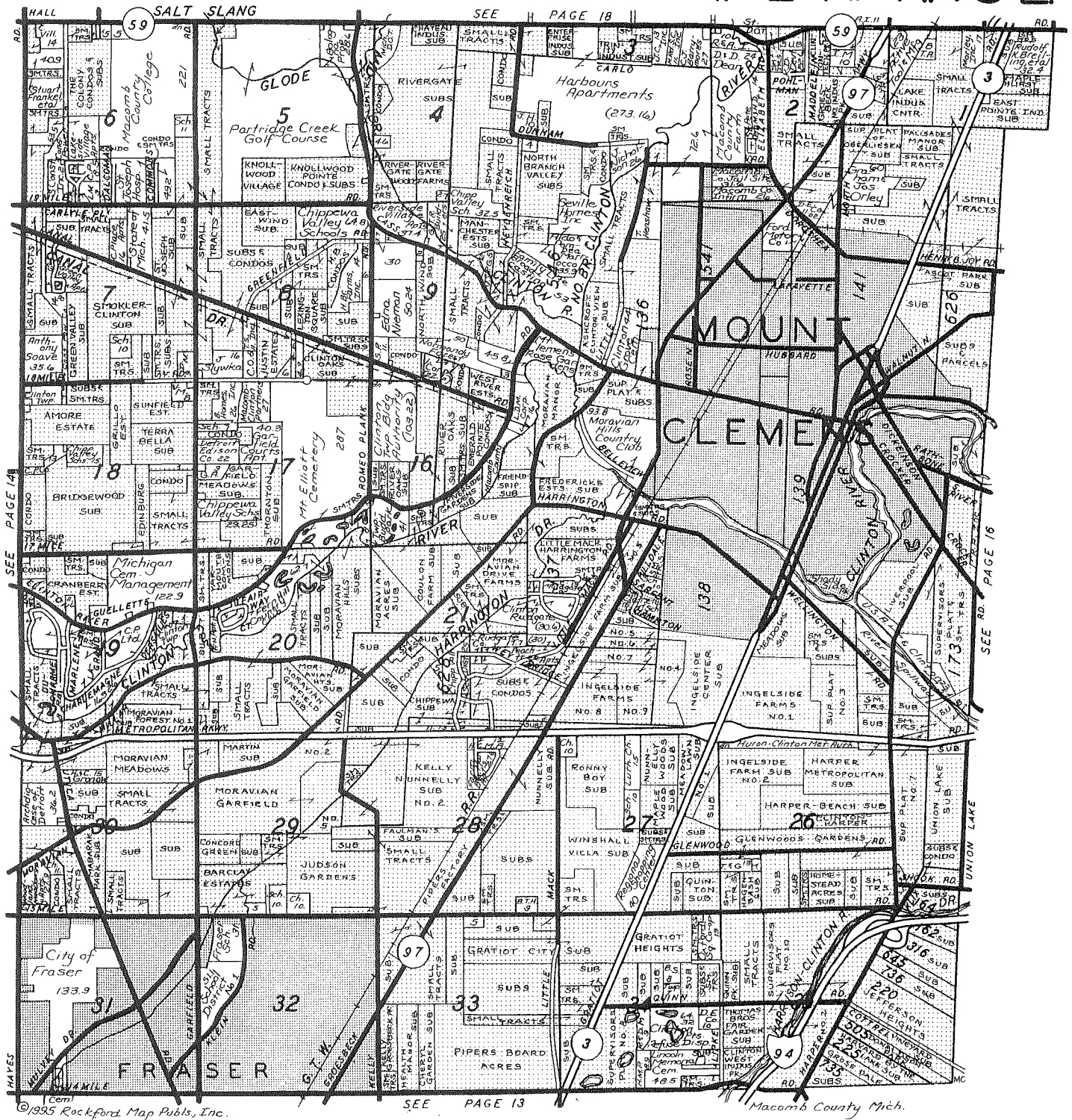
SW CORNER BRICK HSE
address #37140 MULBERRY
122.09
DUE E.



NE CORNER BRICK GAARAGE
HSE # 37105 COULD NOT SEE
60.85
S85°W

E TOP NUT OF
HYDRANT
75.33'
S30°E

#37105



©1995 Rockford Map Publs., Inc.

SEE PAGE 13

Macomb County Mich.

Charter Township of Clinton

BOARD OF TRUSTEES

- James R. Sinnamon
Supervisor
- Dennis C. Tomlinson
Clerk
- Robert H. Steiner
Treasurer
- Robert J. Cannon
Trustee
- Michael C. Contesti
Trustee
- Ernest O. Hornung
Trustee
- Nancy L. Dedenbach
Trustee

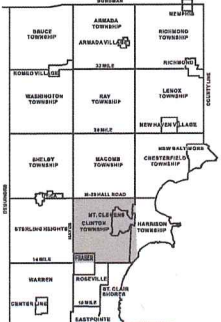
- ★ 1990 Population of 86,700,
Largest Township in Michigan
- ★ Excellent Educational, Medical
Recreational And Commercial Facilities
- ★ Economic Development Corporation;
Development Incentives For New Industry.
- ★ Prime Industrial, Commercial and
Residential Land Available

CIVIC CENTER ★ 40700 Romeo Plank Road ★ Clinton Township, Michigan 48038 ★ (810) 286-8000

1995



Date of Photography: Spring 2008
 100 50 0 100 200 Feet
 1:1,200



CLINTON TWP SHEET INDEX

SEAWAY	HALL
11-22-11-27A	11-22-11-27A
11-22-11-27B	11-22-11-27B
11-22-11-27C	11-22-11-27C
11-22-11-27D	11-22-11-27D
11-22-11-27E	11-22-11-27E
11-22-11-27F	11-22-11-27F
11-22-11-27G	11-22-11-27G
11-22-11-27H	11-22-11-27H
11-22-11-27I	11-22-11-27I
11-22-11-27J	11-22-11-27J
11-22-11-27K	11-22-11-27K
11-22-11-27L	11-22-11-27L
11-22-11-27M	11-22-11-27M
11-22-11-27N	11-22-11-27N
11-22-11-27O	11-22-11-27O
11-22-11-27P	11-22-11-27P
11-22-11-27Q	11-22-11-27Q
11-22-11-27R	11-22-11-27R
11-22-11-27S	11-22-11-27S
11-22-11-27T	11-22-11-27T
11-22-11-27U	11-22-11-27U
11-22-11-27V	11-22-11-27V
11-22-11-27W	11-22-11-27W
11-22-11-27X	11-22-11-27X
11-22-11-27Y	11-22-11-27Y
11-22-11-27Z	11-22-11-27Z

DESCRIPTION OF PERMANENT REAL ESTATE INDEX NUMBER

13-19-302-018

AREA NUMBER	SUBAREA NUMBER	BLOCK NUMBER	PARCEL NUMBER
13	19	302	018

Legend

- Platted Area Boundary Line
- Property Line
- Property Split Line
- Property Combined Line
- Township Boundary Line
- Traverse Line
- Dimension Extent Marks
- Dimension Start Marks

11-22F

CLINTON TWP.
 E. 1/2 S.W. 1/4 SEC. 22 T. 2N. R. 13E.

Source: Macomb County Department of Planning and Economic Development
 - 2008 Digital Orthophotography Project
 - Parcel Conversion Project

Note:
 Digital Orthophotography horizontal positioning accuracy is 3 feet. Parcel boundary lines should be considered a graphical representation and not in any way a legal survey or engineering document. In general, the horizontal positioning and length accuracy is within 15 feet.

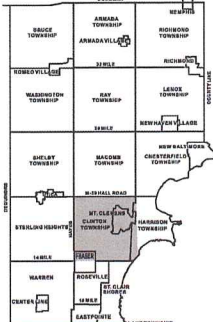
This map is intended for general planning purposes. Site specific evaluation should be verified by field inspection. This is a work in progress and may contain errors and omissions. Please report any potential revisions to (586)469-5285.

GIS **MACOMB COUNTY**
 Planning and Economic
 Development Department

Published: Jan 28, 2009



Date of Photography: Spring 2008
 100 50 0 100 200 Feet
 1:1,200



CLINTON TWP SHEET INDEX

11-22A	11-22B	11-22C	11-22D	11-22E	11-22F	11-22G	11-22H	11-22I	11-22J	11-22K	11-22L	11-22M	11-22N	11-22O	11-22P	11-22Q	11-22R	11-22S	11-22T	11-22U	11-22V	11-22W	11-22X	11-22Y	11-22Z
11-22A	11-22B	11-22C	11-22D	11-22E	11-22F	11-22G	11-22H	11-22I	11-22J	11-22K	11-22L	11-22M	11-22N	11-22O	11-22P	11-22Q	11-22R	11-22S	11-22T	11-22U	11-22V	11-22W	11-22X	11-22Y	11-22Z

DESCRIPTION OF PERMANENT REAL ESTATE INDEX NUMBER

13-19-302-018

Legend

- Platted Area Boundary Line
- Property Line
- Property Split Line
- Property Combined Line
- Township Boundary Line
- Traverse Line
- Dimension Extent Marks
- Dimension Start Marks

11-22G
 CLINTON TWP.
 W. 1/2 S.E. 1/4 SEC. 22 T. 2N. R. 13E.

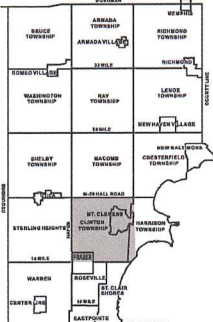
Source: Macomb County Department of Planning and Economic Development
 - 2008 Digital Orthophotography Project
 - Parcel Conversion Project

Note:
 Digital Orthophotography horizontal positioning accuracy is 3 feet. Parcel boundary lines should be considered a graphical representation and not in any way a legal survey or engineering document. In general, the horizontal positioning and length accuracy is within 15 feet.

This map is intended for general planning purposes. Site specific evaluation should be verified by field inspection. This is a work in progress and may contain errors and omissions. Please report any potential revisions to (586)469-5285.



Date of Photography: Spring 2010
 100 50 0 100 200 Feet



CLINTON TWP SHEET INDEX

SEAM	HALL
11-22-001-001	11-22-001-001
11-22-001-002	11-22-001-002
11-22-001-003	11-22-001-003
11-22-001-004	11-22-001-004
11-22-001-005	11-22-001-005
11-22-001-006	11-22-001-006
11-22-001-007	11-22-001-007
11-22-001-008	11-22-001-008
11-22-001-009	11-22-001-009
11-22-001-010	11-22-001-010
11-22-001-011	11-22-001-011
11-22-001-012	11-22-001-012
11-22-001-013	11-22-001-013
11-22-001-014	11-22-001-014
11-22-001-015	11-22-001-015
11-22-001-016	11-22-001-016
11-22-001-017	11-22-001-017
11-22-001-018	11-22-001-018
11-22-001-019	11-22-001-019
11-22-001-020	11-22-001-020
11-22-001-021	11-22-001-021
11-22-001-022	11-22-001-022
11-22-001-023	11-22-001-023
11-22-001-024	11-22-001-024
11-22-001-025	11-22-001-025
11-22-001-026	11-22-001-026
11-22-001-027	11-22-001-027
11-22-001-028	11-22-001-028
11-22-001-029	11-22-001-029
11-22-001-030	11-22-001-030
11-22-001-031	11-22-001-031
11-22-001-032	11-22-001-032
11-22-001-033	11-22-001-033
11-22-001-034	11-22-001-034
11-22-001-035	11-22-001-035
11-22-001-036	11-22-001-036
11-22-001-037	11-22-001-037
11-22-001-038	11-22-001-038
11-22-001-039	11-22-001-039
11-22-001-040	11-22-001-040
11-22-001-041	11-22-001-041
11-22-001-042	11-22-001-042
11-22-001-043	11-22-001-043
11-22-001-044	11-22-001-044
11-22-001-045	11-22-001-045
11-22-001-046	11-22-001-046
11-22-001-047	11-22-001-047
11-22-001-048	11-22-001-048
11-22-001-049	11-22-001-049
11-22-001-050	11-22-001-050
11-22-001-051	11-22-001-051
11-22-001-052	11-22-001-052
11-22-001-053	11-22-001-053
11-22-001-054	11-22-001-054
11-22-001-055	11-22-001-055
11-22-001-056	11-22-001-056
11-22-001-057	11-22-001-057
11-22-001-058	11-22-001-058
11-22-001-059	11-22-001-059
11-22-001-060	11-22-001-060
11-22-001-061	11-22-001-061
11-22-001-062	11-22-001-062
11-22-001-063	11-22-001-063
11-22-001-064	11-22-001-064
11-22-001-065	11-22-001-065
11-22-001-066	11-22-001-066
11-22-001-067	11-22-001-067
11-22-001-068	11-22-001-068
11-22-001-069	11-22-001-069
11-22-001-070	11-22-001-070
11-22-001-071	11-22-001-071
11-22-001-072	11-22-001-072
11-22-001-073	11-22-001-073
11-22-001-074	11-22-001-074
11-22-001-075	11-22-001-075
11-22-001-076	11-22-001-076
11-22-001-077	11-22-001-077
11-22-001-078	11-22-001-078
11-22-001-079	11-22-001-079
11-22-001-080	11-22-001-080
11-22-001-081	11-22-001-081
11-22-001-082	11-22-001-082
11-22-001-083	11-22-001-083
11-22-001-084	11-22-001-084
11-22-001-085	11-22-001-085
11-22-001-086	11-22-001-086
11-22-001-087	11-22-001-087
11-22-001-088	11-22-001-088
11-22-001-089	11-22-001-089
11-22-001-090	11-22-001-090
11-22-001-091	11-22-001-091
11-22-001-092	11-22-001-092
11-22-001-093	11-22-001-093
11-22-001-094	11-22-001-094
11-22-001-095	11-22-001-095
11-22-001-096	11-22-001-096
11-22-001-097	11-22-001-097
11-22-001-098	11-22-001-098
11-22-001-099	11-22-001-099
11-22-001-100	11-22-001-100

DESCRIPTION OF PERMANENT REAL ESTATE INDEX NUMBER

13-19-302-018

AREA NUMBER	SUBAREA NUMBER	BLOCK NUMBER	PARCEL NUMBER
13	19	302	018

Legend

- Platted Area Boundary Line
- Property Line
- Property Split Line
- Property Combined Line
- Township Boundary Line
- Traverse Line
- Dimension Extent Marks
- Dimension Start Marks

11-22C

MT. CLEMENS & CLINTON TWP.
 W.1/2 N.E.1/4 SEC.22 T.2N. R.13E.

Source: Macomb County Department of Planning and Economic Development
 - 2008 Digital Orthophotography Project
 - Parcel Conversion Project

Note: Digital Orthophotography horizontal positioning accuracy is 3 feet. Parcel boundary lines should be considered a graphical representation and not in any way a legal survey or engineering document. In general, the horizontal positioning and length accuracy is within 15 feet.

This map is intended for general planning purposes. Site specific evaluation should be verified by field inspection. This is a work in progress and may contain errors and omissions. Please report any potential revisions to (586)469-5285.



GISs MACOMB COUNTY
 Planning and Economic
 Development Department

Published: Nov 03, 2010

No. 498

No. 138 Confirmed to
the Widow & Heirs
of Richard Connor,
decd.

SOUTH SIDE OF RIVER HURON

Description No. 138 Confirmed to the widow and heirs of Richard Connor decd., commencing at a basswood tree standing on the border of River Huron between this tract and a tract confirmed to the claimants, thence south ninety eight chains to a post, thence east seventy two chains twenty six links to a post, thence north seventy chains ninety four links, to a post standing on the border of River Huron between this tract and unconceded land thence along the border of said River up stream north sixty one degrees west, thirteen chains, thence north forty five degrees west fourteen chains ninety four links, thence north sixty nine degrees west thirty eight chains, twenty four links, thence south eighty five degrees thirty minutes west fourteen chains sixty seven links, to the place of beginning, containing six hundred and forty acres _____

Detroit July 13, 1810

Aaron Greeley Surveyor
of private claims

No. 500

No. 137 Confirmed to
the widow and heirs of
Richard Connor, Deceased

SOUTH SIDE OF RIVER HURON

Description No. 137 Confirmed to the widow and heirs of Richard Connor deceased commencing at a post standing on the border of River Huron between this tract and a tract of unconceded land, thence south one hundred and four chains to a post thence east sixty five chains seventy links to a post standing on the west line of a tract confirmed to the claimants, thence north seventy three chains eighty four links, to a basswood tree standing on the border of River Huron thence along the border of said river up stream south eighty five degrees thirty minutes west nine chains sixty links, thence north forty nine degrees thirty minutes west twenty one chains sixty links, thence north sixty seven degrees west seventeen chains thence north thirty four degrees west nine chains thence north fourteen degrees west fifteen chains thence north six degrees west eleven chains fifty thence north sixty eight degrees west eighteen chains, thence south sixty eight degrees west six chains thence south twenty two degrees west four chains, thence south forty five degrees east thirteen chains, thence south twenty eight degrees thirty minutes east five chains thence south eight degrees west eleven chains fifty links to the place of beginning, containing six hundred and forty acres _____

Detroit July 13, 1810

Aaron Breeley Surveyor
of private claims

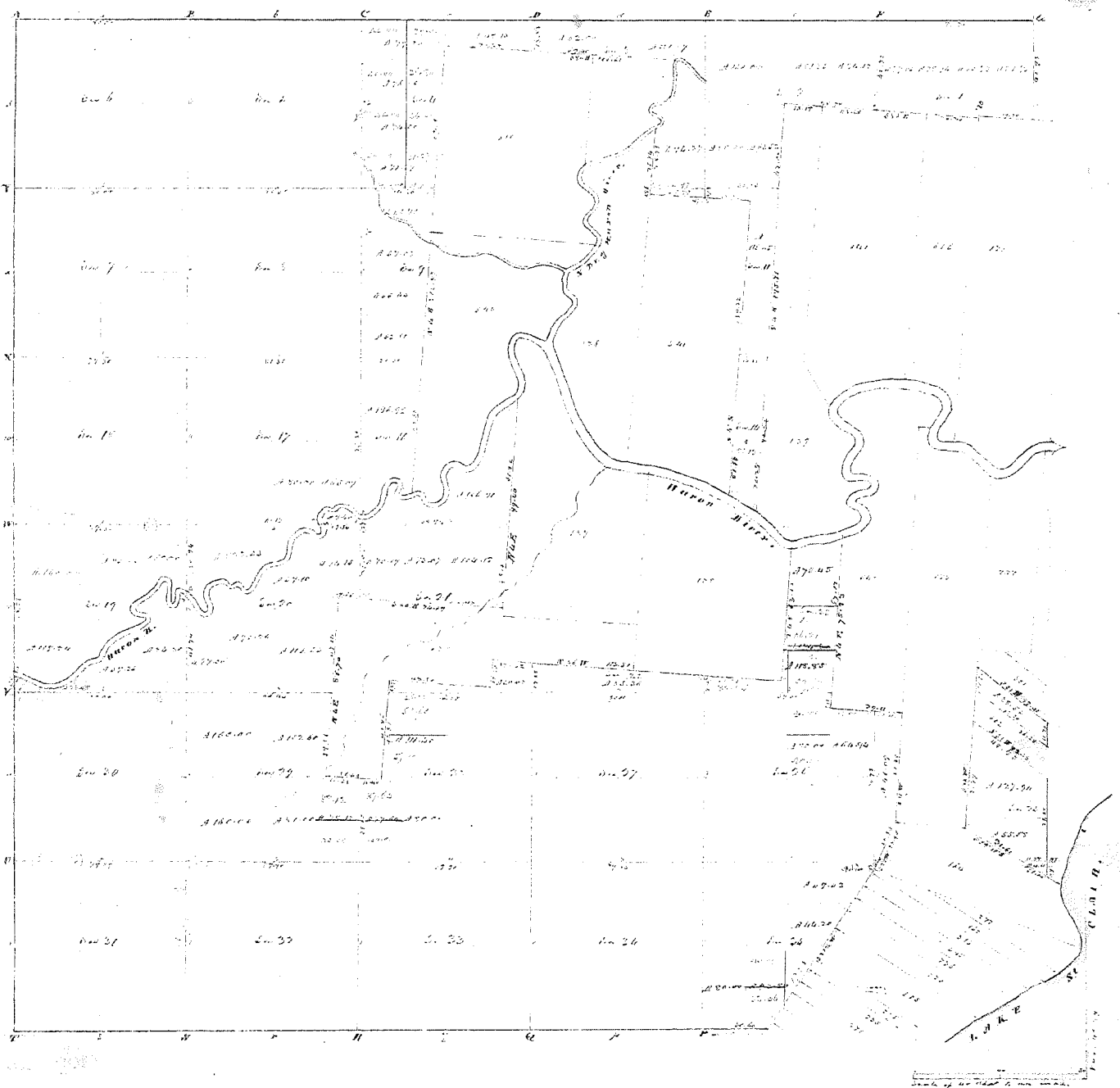
N^o. 499 " North Side of River Huron.

Description N^o. 628 Confirmed to the widow and Heirs of Richard Connor used commencing at a post it being the south west corner of a tract N^o. 138, Confirmed to the Claimants thence west Sixty five chains seventy links, to a post, thence south twelve chains fourteen links, to a post, thence west forty eight chains eighty six links, to a post, thence south forty eight chains eighty six links, to a post, thence west thirty one chains fourteen links to a

Walnut asp. Bee; thence north ninety chains to an Ash tree; thence East eighty chains to an Iron wood tree; thence south four chains eighty four links, to a post; thence East sixty five chains seventy links to a post standing on the west line of the tract N^o. 138, Confirmed to the Claimants, thence south twenty four chains sixteen links, to the place of beginning containing Six hundred and forty acres. —

Detroit July 18. 1810

Aaron Isaacley Surveyor
of private Claims.



Township N: II North, Range N: XIII East of Mer. (Wind. V. r.)

surveyed by W. P. Proctor.

1817

Description of the soil on the interior sectional lines

Section	Quality of Soil	Section	Quality of Soil
1	Dark clay soil, heavy, to blackish blue, sugar, & fine to	29	Dark & dry sand - to black, blue, sugar
2	Dark & wet sand, black, blue, blue, sugar	30	Same
3	Same (first day)	31	2 of the blue sugar
4	Same	32	W. S. same - wet, to wet, black, blue, blue
5	Wet, dry, sand, to black, blue, sugar, blue, blue	33	Dark, fat, dry, black, blue, blue, sugar, & blue
6	Same	34	Same, W. S. blue
7	Dark, dry, sand, black, blue, sugar, blue	35	Same
8	Same	36	Same
9	Same - (W. S. wet)	37	Same with sand, sugar, & blue, good land
10	Dark & wet sand, black, blue, sugar	38	Same
11	W. S. wet sand, blue, sugar, blue, to black, blue, sugar	39	Same
12	Dark, good sand, black, blue, sugar, blue, blue	40	Same
13	Dark, good sand, black, blue, sugar, blue, blue	41	Same
14	Dark, good sand, black, blue, sugar, blue, blue	42	Same
15	Dark, good sand, black, blue, sugar, blue, blue	43	Same
16	Dark, good sand, black, blue, sugar, blue, blue	44	Same
17	Dark, good sand, black, blue, sugar, blue, blue	45	Same
18	Dark, good sand, black, blue, sugar, blue, blue	46	Same
19	Dark, good sand, black, blue, sugar, blue, blue	47	Same
20	Dark, good sand, black, blue, sugar, blue, blue	48	Same
21	Dark, good sand, black, blue, sugar, blue, blue	49	Same
22	Dark, good sand, black, blue, sugar, blue, blue	50	Same
23	Dark, good sand, black, blue, sugar, blue, blue	51	Same
24	Dark, good sand, black, blue, sugar, blue, blue	52	Same
25	Dark, good sand, black, blue, sugar, blue, blue	53	Same
26	Dark, good sand, black, blue, sugar, blue, blue	54	Same
27	Dark, good sand, black, blue, sugar, blue, blue	55	Same
28	Dark, good sand, black, blue, sugar, blue, blue	56	Same
29	Dark, good sand, black, blue, sugar, blue, blue	57	Same
30	Dark, good sand, black, blue, sugar, blue, blue	58	Same
31	Dark, good sand, black, blue, sugar, blue, blue	59	Same
32	Dark, good sand, black, blue, sugar, blue, blue	60	Same
33	Dark, good sand, black, blue, sugar, blue, blue	61	Same
34	Dark, good sand, black, blue, sugar, blue, blue	62	Same
35	Dark, good sand, black, blue, sugar, blue, blue	63	Same
36	Dark, good sand, black, blue, sugar, blue, blue	64	Same

Township N^o. 11 North, Range N^o. XIII East of Mer. (Mich. Ter.)



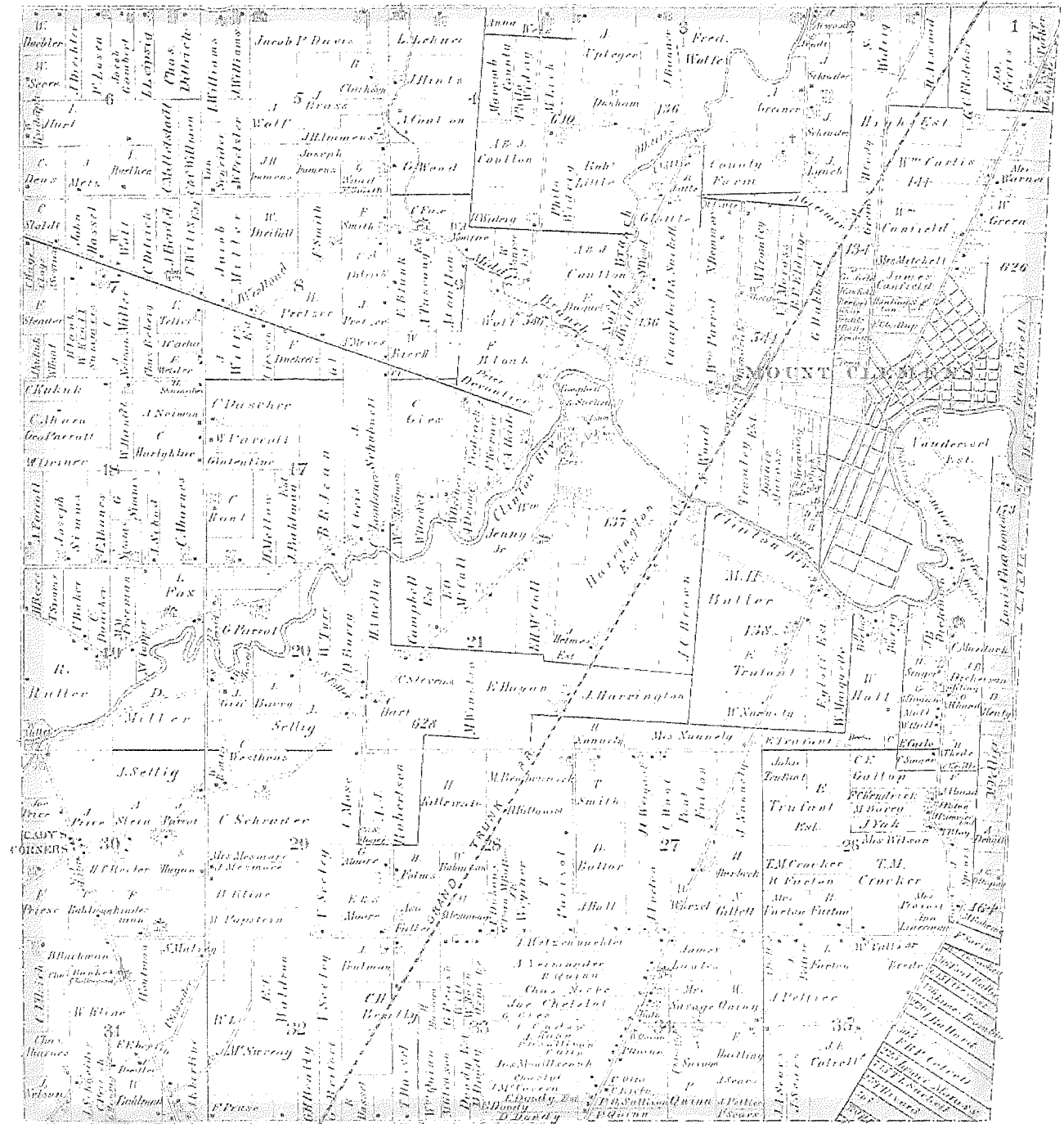
A true copy from the original on file in the Office of the
 Deputy Secretary of the General Land Office
 Chicago, Illinois
 Feb. 10th 1875

11. 302. 99
 3

Edward Coffin
 Deputy Secy. Gen. L. O.

(MAP OF CLINTON TOWNSHIP)

T. 2 N. R. 1 E.



Drawn and Compiled by B. B. Cress

CLINTON

Township 2 North Range 13 East

Scale 2 Inches to one Mile.

of the Meridian of Michigan

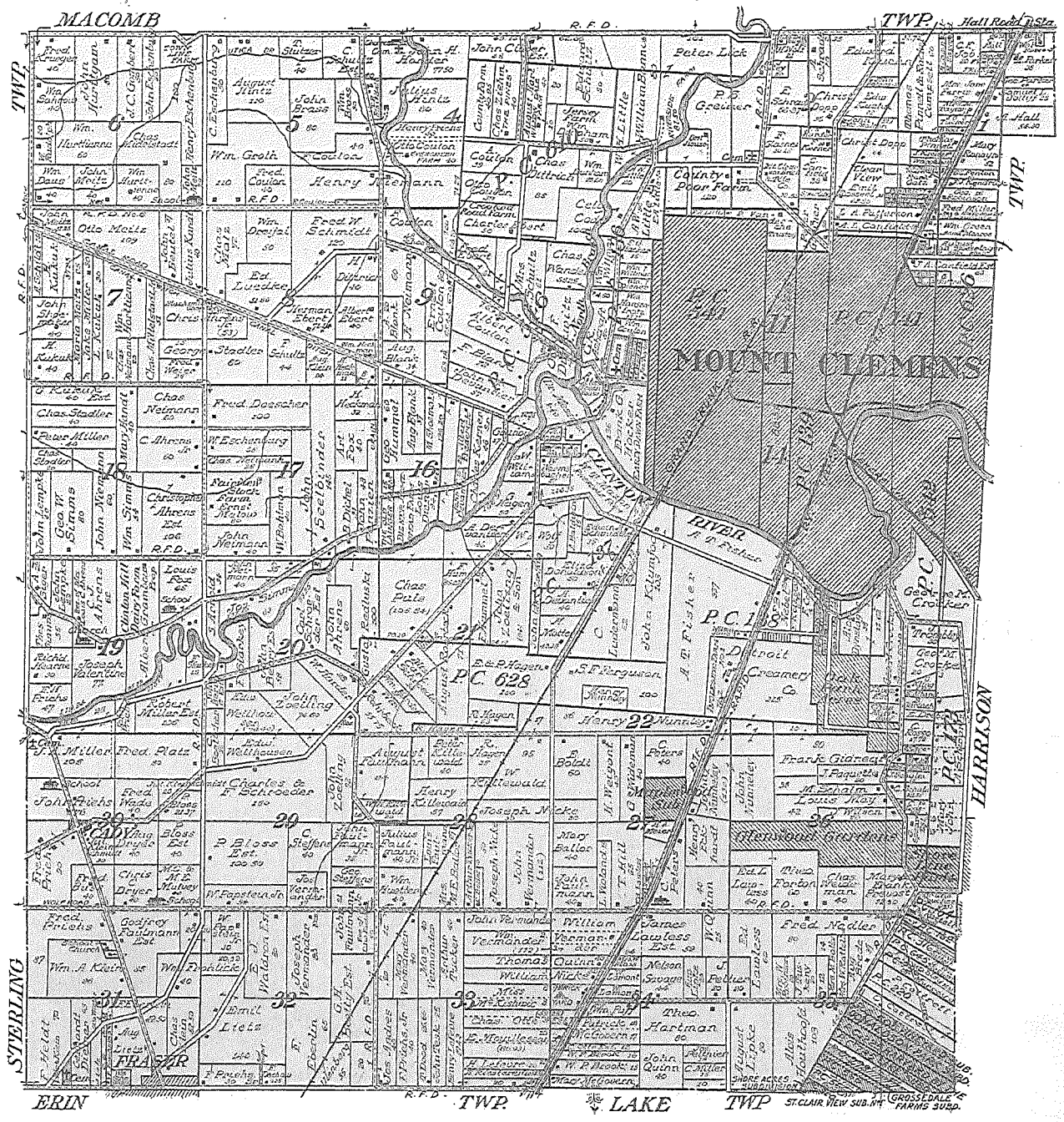


1895

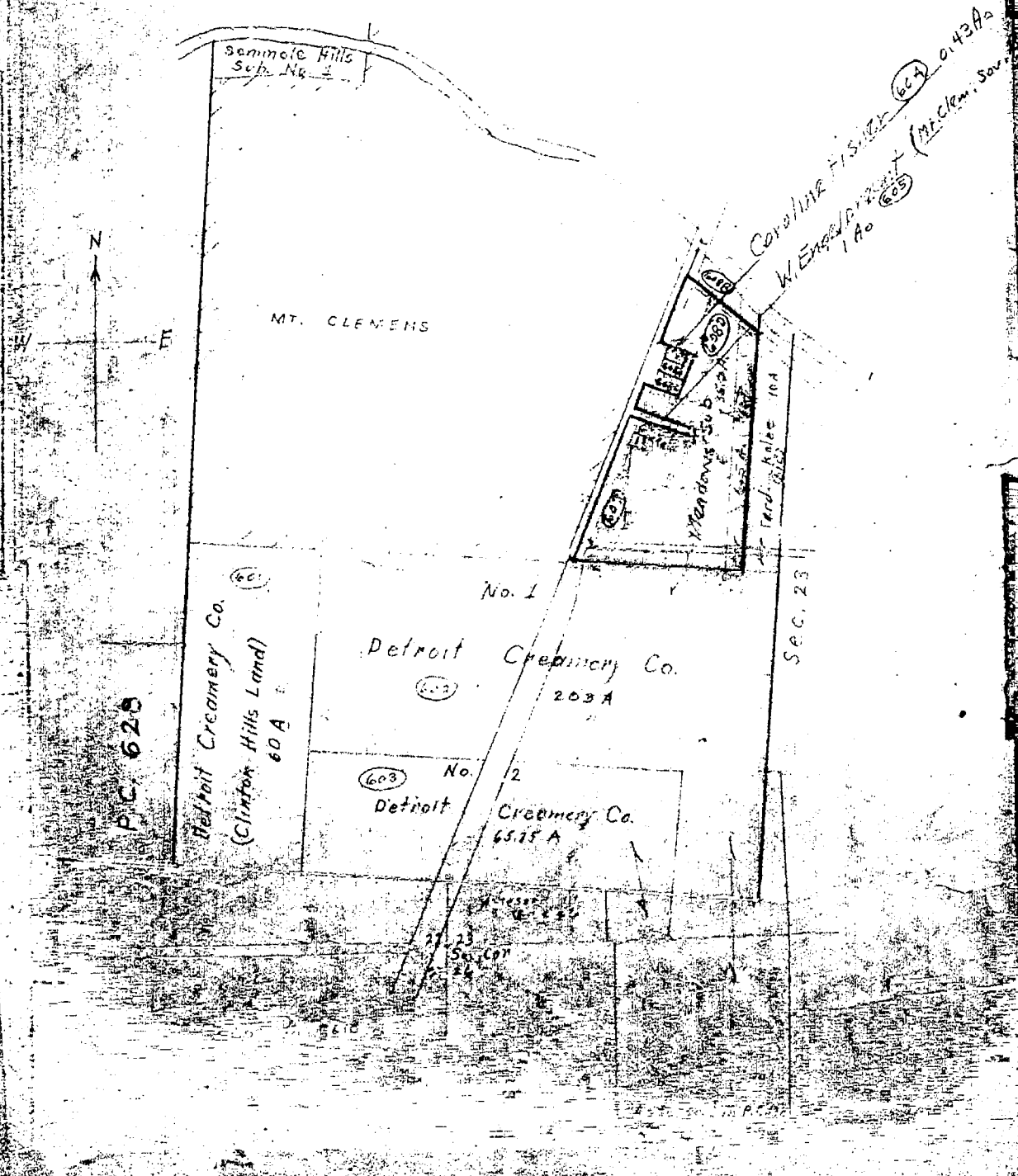
MAP OF
CLINTON
 TOWNSHIP

Scale 2 inches to 1 mile

Fractional Township 2 North, Range 13 East of the Michigan Meridian

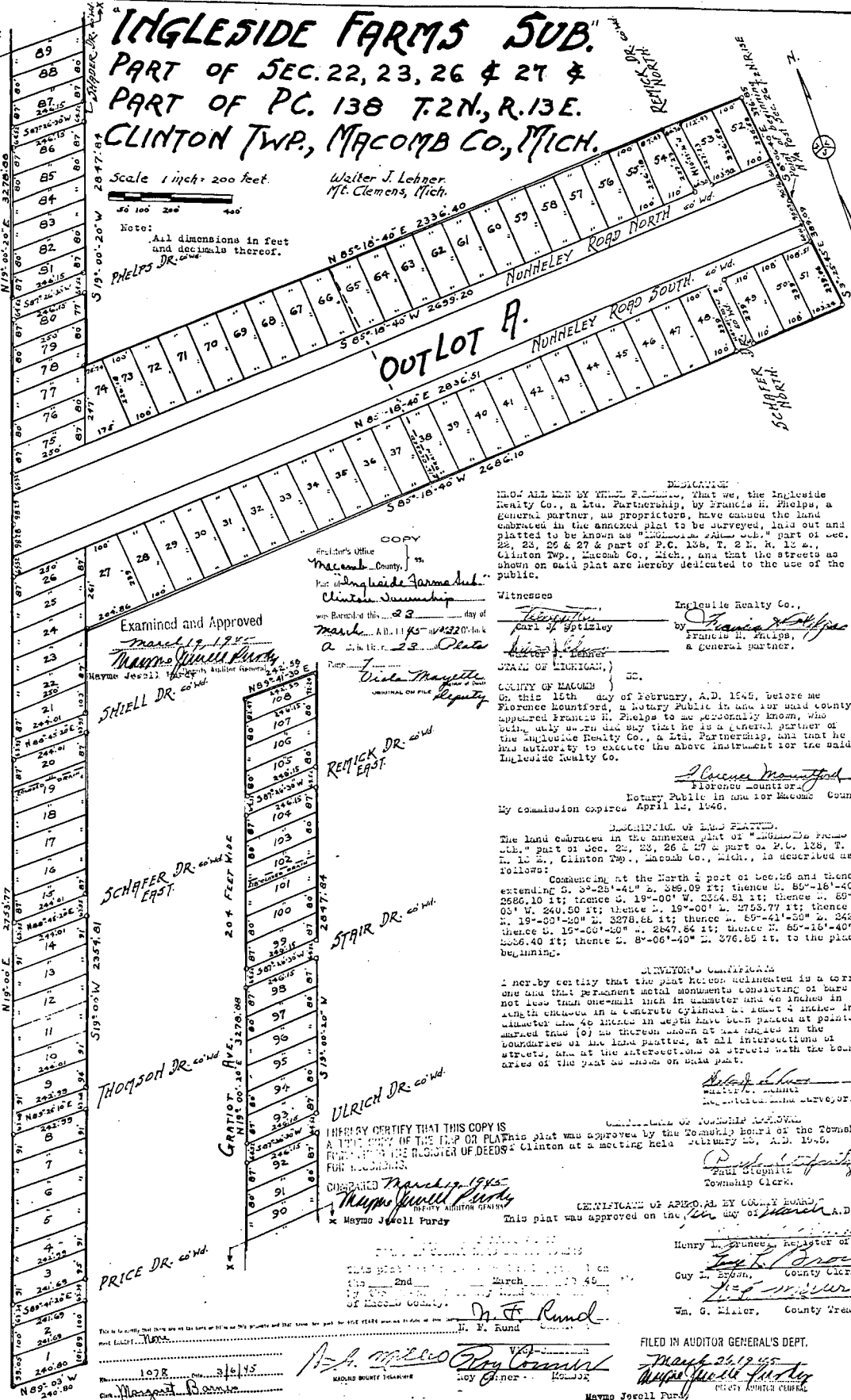


CLINTON TOWNSHIP MACOMB COUNTY
P. C. 138 TOWN 2 N RANGE 13E



GRATIOT AVE.

204 Feet Wide



"INGLESIDE FARMS SUB."
 PART OF SEC. 22, 23, 26 & 27 &
 PART OF PC. 138 T. 2 N., R. 13 E.
 CLINTON TWP., MACOMB CO., MICH.

Scale 1 inch = 200 feet.
 Note: All dimensions in feet and decimals thereof.

Walter J. Lehner
 Mt. Clemens, Mich.

29186

BEFORE ME, the undersigned authority, on this 15th day of February, A.D. 1945, before me appeared Francis H. Phelps, a General Partner, as proprietor, and the land embraced in the annexed plat to be surveyed, and that the streets as shown on said plat are hereby dedicated to the use of the public.

Witnesses
 Inglewile Realty Co.,
 by Francis H. Phelps
 a general partner.

On this 15th day of February, A.D. 1945, before me Florence Kuntford, a Notary Public in and for said county appeared Francis H. Phelps to me personally known, who being duly sworn did say that he is a general partner of the Ingleside Realty Co., a Ltd. Partnership, and that he has authority to execute the above instrument for the said Ingleside Realty Co.

COMMENCING at the North 1/2 part of Sec. 26 and thence extending S. 89°-25'-41" E. 349.09 ft; thence S. 85°-16'-40" W. 2686.10 ft; thence S. 19°-00' W. 2354.31 ft; thence S. 69°-00' W. 240.50 ft; thence S. 19°-00' W. 2753.77 ft; thence S. 19°-00'-20" E. 3278.85 ft; thence S. 89°-41'-55" E. 242.55 ft; thence S. 15°-00'-40" W. 2847.84 ft; thence S. 85°-16'-40" W. 2836.40 ft; thence S. 8°-06'-40" E. 376.85 ft. to the place of beginning.

I HEREBY CERTIFY THAT THIS COPY IS A TRUE COPY OF THE DEED OR PLAT AS THE SAME APPEARS IN THE REGISTER OF DEEDS FOR CLINTON AT A MEETING HELD FEBRUARY 15, A.D. 1945.

CERTIFICATE OF APPROVAL BY COUNTY BOARD
 This plat was approved on the 15th day of March, A.D. 1945.

HENRY L. BRUNER, Register of Deeds
 GUY L. BRUNER, County Clerk
 Wm. G. Minor, County Treasurer

FILED IN AUDITOR GENERAL'S DEPT.
 March 26, 1945
 MAYNO JEROLL PURDY, County Auditor

Examined and Approved
 March 19, 1945
 Mayno Jeroll Purdy
 County Auditor

Notary Public
 Florence Kuntford
 Notary Public in and for Macomb County.
 My commission expires April 12, 1946.

SHELL DR. co. wd.

REMIK DR. co. wd.

SCHAFFER DR. co. wd.

STAIR DR. co. wd.

THOMPSON DR. co. wd.

ULRICH DR. co. wd.

PRICE DR. co. wd.

H. F. Rund

Original

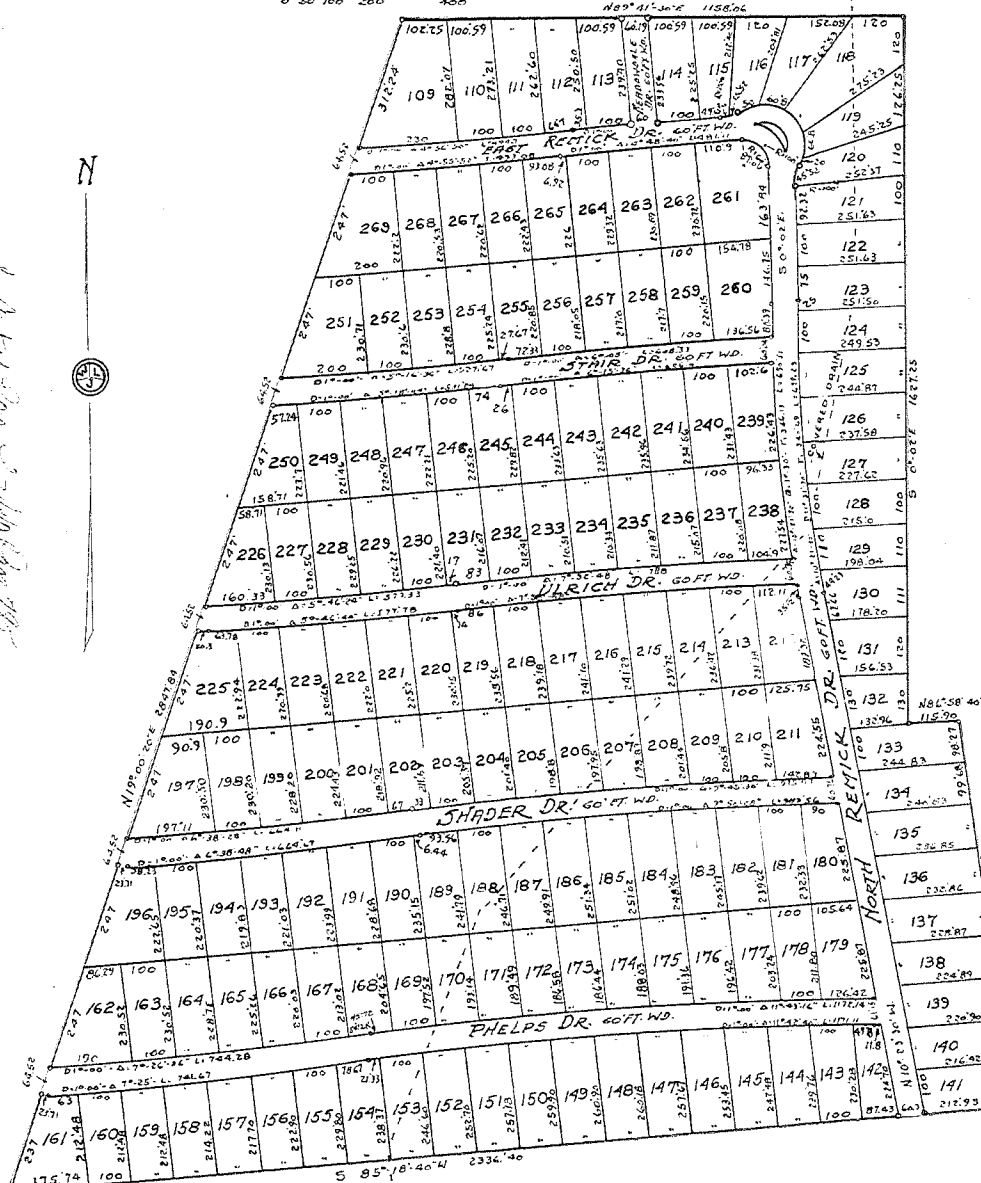
"INGLESIDE FARMS SUB. NO. 1"

PART OF FRACTIONAL SECTIONS 22 & 23 &
PART OF P.C. 138, T.2N., R.13E.,
CLINTON TWP., MACOMB CO., MICH.

Scale 1 inch = 200 feet.

Note: All dimensions in feet and decimals thereof

Walter J. Lehner
M. Clemens, Mich.



RECORDERS OFFICE,
County of Macomb,
Michigan
This plat was recorded
in the County of Macomb
Michigan on the 13th day of July
1945.

CERTIFICATE OF APPROVAL BY
BOARD OF COUNTY ROAD COMMISSIONERS
This plat has been examined and approved
on the 13th day of July, 1945
by the Board of County Road Commissioners
of Macomb County.

J. F. Ransel
Chairman
Wm. E. Brown
Vice-Chairman
Loy Conner
Member

Examined and Approved
Walter J. Lehner
Surveyor



DEDICATION
NOW ALL MEN BY THESE PRESENTS, That we, the Ingleside Realty Co., a Ltd. Partnership, by Francis H. Phelps, a general partner, as proprietors, have caused the land embraced in the annexed plat to be surveyed, laid out and platted to be known as "INGLESIDE FARMS SUB. NO. 1", part of Fractional Sections 22 & 23 and part of P.C. 138, T. 2 N. R. 13 E., Clinton Twp., Macomb Co., Mich., and that the streets as shown on said plat are hereby dedicated to the use of the public.

Witnesses
Walter J. Lehner
Carl J. Bartley
Francis H. Phelps
11119 SOUTHWEST

STATE OF MICHIGAN,)
COUNTY OF MACOMB,) ss.
On this 6th day of July, A.D. 1945, before me, Burton G. Morse, a Notary Public in and for said county, appeared Francis H. Phelps to me personally known, who being duly sworn did say that he is a general partner of the Ingleside Realty Co., a Ltd. Partnership, and that he has authority to execute the above instrument for the said Ingleside Realty Co.

Burton G. Morse
Notary Public in and for Macomb County
My commission expires 5-14-46

DESCRIPTION OF LAND PLATTED
The land embraced in the annexed plat of "INGLESIDE FARMS SUB. NO. 1", part of Fractional Sections 22 & 23 and part of P.C. 138, T. 2 N. R. 13 E., Clinton Twp., Macomb Co., Mich., is described as follows:
Commencing at a point 376.85 ft. N. 8°-06'-40" W. of the S. 1/4 post of Fractional Section 23, T. 2 N. R. 13 E., and thence extending S. 89°-18'-40" W. 2336.40 ft.; thence N. 15°-00'-20" E. 2347.54 ft.; thence N. 89°-41'-30" E. 1156.06 ft.; thence S. 0°-00' E. 1627.25 ft.; thence N. 80°-55'-40" E. 115.90 ft.; thence S. 8°-06'-40" E. 895.71 ft. to the place of beginning.

SURVEYOR'S CERTIFICATE
I hereby certify that the plat hereon delineated is a correct one and that permanent metal monuments consisting of bars not less than one half inch in diameter and 48 inches in length enclosed in a concrete cylinder at least 4 inches in diameter and 48 inches in depth have been placed at points marked thus (*) as thereon shown at all angles in the boundaries of the land platted, at all intersections of streets, and at the intersections said plat.

Walter J. Lehner
Registered Land Surveyor

CERTIFICATE OF TOWNSHIP APPROVAL
This plat was approved by the Township Board of the Township of Clinton at a meeting held May 9th A.D. 1945.

Elmore B. Lester
Township Clerk

CERTIFICATE OF APPROVAL BY COUNTY BOARD
This plat was approved on the 13th day of July, 1945.

J. F. Ransel
Henry W. Brown
Register of Deeds
Burton G. Morse
Notary Public
Wm. C. Miller, County Treasurer

CERTIFIED AS TO PLATE

L. 83
P. 14
See plat of 1900 & 1910 for description of land
See plat of 1900 & 1910 for description of land

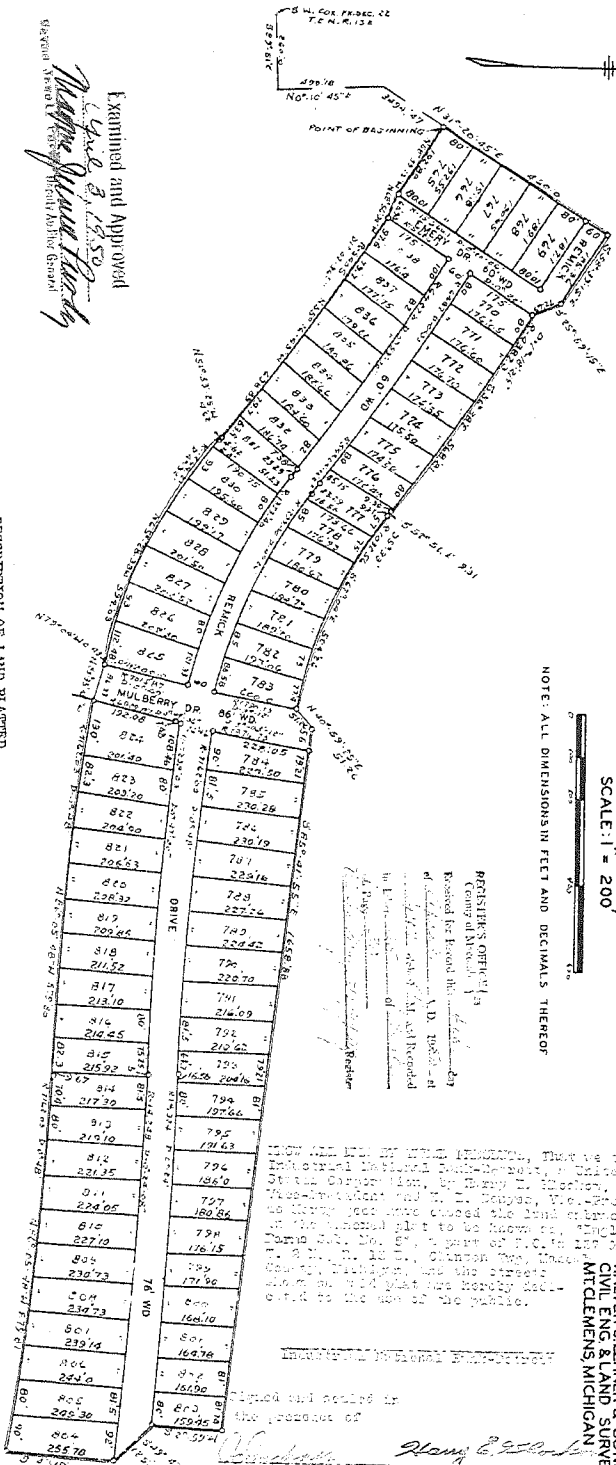
1945 L23
P.14

"INGLESIDE FARMS SUB. NO. 5"

A PART OF PCS 137 & 138 T2N13E, CLINTON TWP, MACOMB COUNTY, MICHIGAN

SCALE: 1" = 200'

NOTE: ALL DIMENSIONS IN FEET AND DECIMALS THEREOF



Examined and Approved
Walter Lehner & Sons
 Civil Engineers & Land Surveyors
 1000 W. Michigan
 Detroit, Michigan

DEDICATION

KNOW ALL MEN BY THESE PRESENTS, That we, the Ingleside Realty Co., a Ltd. Partnership, by Francis H. Phelps, a General partner, as plaintiffs, have caused the land depicted in the annexed plat to be surveyed, laid out and platted to be known as Ingleside Farms Sub. No. 5, a part of PCS 137 & 138, in Macomb County, Michigan, and that the streets on shown on said plat are hereby dedicated to the use of the public.

INTENDED REALTY CO.

By *Francis H. Phelps*
 a general partner.

Witnesses:

Francis H. Phelps
Carl J. Spitzley

STATE OF MICHIGAN

On this 19th day of March, A. D. 1950, before me, a Notary Public in and for said county, appeared Francis H. Phelps to me personally known, who being duly sworn did say that he is a General partner of the Ingleside Realty Co., a Ltd. Partnership, and that he has authority to execute the above instrument for the said Ingleside Realty Co.

Walter Lehner & Sons
 Notary Public, in and for
 Macomb County, Michigan

DESCRIPTION OF LAND PLATTED

The land embraced in the annexed plat of "Ingleside Farms Sub. No. 5", a part of P. C. 137 & 138, T. 2 N., R. 13 W., Clinton Township, Macomb County, Michigan, is described as follows:

Commencing at the S. E. corner of Fractional Lot 1, Township 2 N., Range 13 W., and thence N. 0° 10' 45" E. 483.18 ft; thence N. 31° 20' 15" E. 449.47 ft. to the point of beginning of this description; thence N. 31° 20' 15" E. 480.0 ft; thence S. 60° 39' 10" E. 180.26 ft; thence S. 60° 39' 10" E. 72.69 ft; thence along a curve (R. = 4387.3 ft.) concave to the S. W. and thence along chord bears S. 60° 39' 10" E. 9.53 ft; thence S. 60° 39' 10" E. 1032.56 ft.) concave to the N. E. and whose long chord bears S. 60° 04' E. a distance of 504.26 ft; thence N. 40° 58' 25" E. 81.28 ft; thence S. 69° 41' 55" E. 1088.88 ft; thence S. 2° 59' 11" E. 159.48 ft; thence S. 4° 18' 05" W. 256.78 ft; thence along a curve (R. = 1161.05 ft.) concave to the south and whose long chord bears S. 4° 18' 05" W. a distance of 1161.05 ft; thence N. 88° 08' 45" W. a distance of 678.40 ft; thence N. 88° 08' 45" W. 88.33 ft; thence N. 79° 04' N. 0° 45' E. thence along a curve (R. = 1204.21 ft.) concave to the N. E. and whose long chord bears N. 69° 20' 38" W. a distance of 684.03 ft; thence N. 61° 53' 26" W. 4.52 ft; thence along a curve (R. = 3608 ft.) concave to the S. W. and whose long chord bears S. 61° 53' 26" W. a distance of 3608 ft; thence N. 67° 55' 30" W. 60.84 ft; thence N. 66° 39' 15" W. 192.88 ft. to the point of beginning of this description.

SURVEYOR'S CERTIFICATE

I hereby certify that the plat herein contained was prepared and that the dimensions and bearings are correct and that the lots are not less than one half acre in area and 48 inches in length measured in a concrete cylinder at least 4 inches in diameter and 48 inches in length have been placed at points marked with the letters shown at all angles in the boundaries of the land platted, at all intersections of the plat with the boundaries of the plat as shown on said plat.

Walter Lehner & Sons
 Registered Land Surveyor

CERTIFICATE OF TOWNSHIP APPROVAL

This plat was approved by the Township Board of the Township of Clinton, at a meeting held March 14th, A. D., 1950.

Francis H. Phelps
 Township Clerk

CERTIFICATE OF APPROVAL BY COUNTY BOARD

This plat was approved on the 19th day of March, A. D., 1950.

Francis H. Phelps
 Francis H. Phelps (Deputy Clerk)
 County Clerk

Walter Lehner & Sons
 Registered Land Surveyor

CERTIFICATE OF APPROVAL

BY BOARD OF COUNTY ROAD COMMISSIONERS
 This plat has been examined and approved the 19th day of March, 1950, by the Board of County Road Commissioners of Macomb County.

Walter Lehner & Sons
 Registered Land Surveyor
 Vice-Chairman
 Roy Connor - Vice-Chairman
 Alfond Yonker

WALTER LEHNER & SONS
 CIVIL ENGINEERS & LAND SURVEYING
 MACLEMMEN, MICHIGAN

APPROVED AND ORDERED BY THE BOARD OF COUNTY ROAD COMMISSIONERS OF MACOMB COUNTY, MICHIGAN, this 19th day of March, 1950.

APPROVED AND ORDERED BY THE BOARD OF TOWNSHIP CLINTON, MICHIGAN, this 14th day of March, 1950.

ORIGINAL

"INGLESIDE FARMS SUB NO 7"

A PART OF PCS 137 & 628, T2NRI3E, CLINTON TWP, MACOMB COUNTY, MICHIGAN

SCALE 1" = 200'



ALL DIMENSIONS ARE IN FEET AND DECIMALS THEREOF

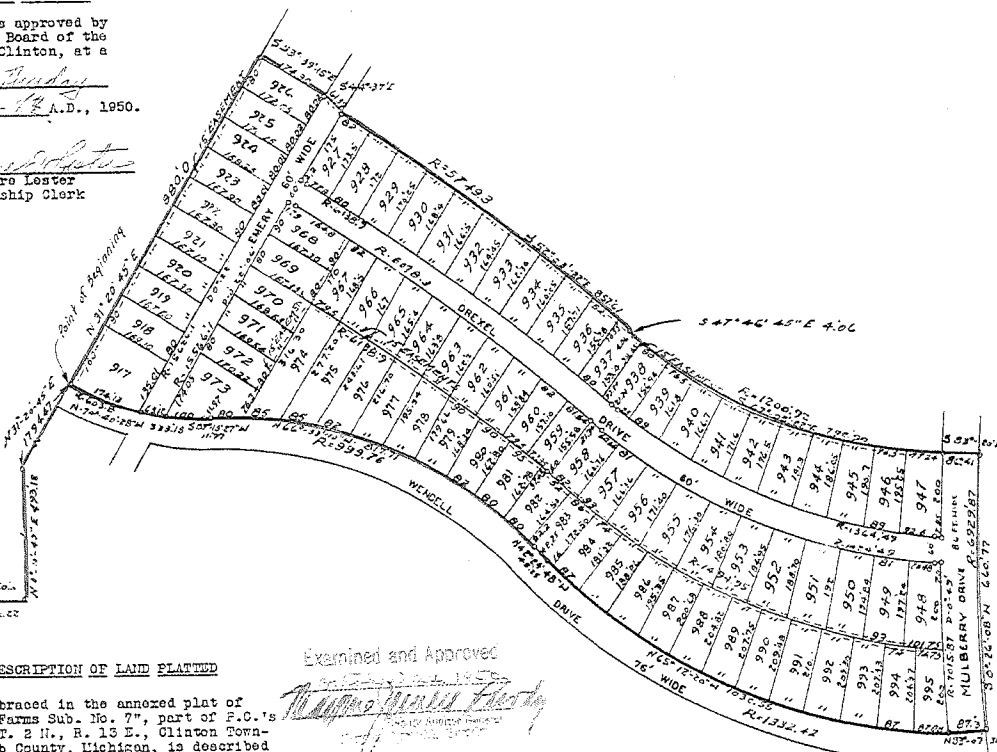
WALTER JLEHNER & SONS.
CIVIL ENG & LAND SURVEYING
MT. CLEMENS MICHIGAN.

CERTIFICATE

OF TOWNSHIP APPROVAL

This plat was approved by the Township Board of the Township of Clinton, at a meeting held Tuesday August 1st A.D., 1950.

Elmore Lester
Elmore Lester
Township Clerk



DESCRIPTION OF LAND ELATED

The land embraced in the annexed plat of "Ingleside Farms Sub. No. 7", part of P.C.'s 137 & 628, T. 2 N., R. 13 E., Clinton Township, Macomb County, Michigan, is described as follows:

Commencing at the S. W. corner of Fractional Section 22, T. 2 N., R. 13 E., and thence extending S. 89°-51' E. 260.0 ft; thence R. 0°-10'-45" E. 493.18 ft; thence N. 31°-20'-45" E. 174.47 ft. to the point of beginning of this description; thence N. 31°-20'-45" E. 880.00 ft; thence S. 58°-39'-15" E. 174.30 ft; thence S. 44°-37' E. 61.39 ft; thence along a curve (R.-5749.3 ft.) concave to the S. W. and whose long chord bears S. 52°-05'-22" E. and is 257.61 ft. in length; thence S. 47°-46'-45" E. 4.06 ft; thence along a curve (R.-1200.92 ft.) concave to the N. E. and whose long chord bears S. 67°-03'-22" E. and is 792.90 ft. in length; thence S. 82°-20' E. 86.41 ft; thence along a curve (R.-6928.27 ft.) concave to the East and whose long chord bears S. 0°-26'-08" W. and is 660.77 ft. in length; thence N. 82°-07'-30" W. 27.30 ft; thence along a curve (R.-1332.42 ft.) concave to the N. E. and whose long chord bears N. 65°-12'-20" W. and is 1032.55 ft. in length; thence N. 42°-24'-48" W. 48.25 ft; thence along a curve (R.-999.76 ft.) concave to the S. W. and whose long chord bears N. 66°-33'-10" W. and is 817.71 ft. in length; thence S. 89°-18'-27" W. 11.97 ft; thence along a curve (R.-603.8') concave to the North and whose long chord bears N. 74°-40'-28" W. and is 333.18 ft. in length to the point of beginning.

SURVEYOR'S CERTIFICATE

I hereby certify, that the plat hereon delineated is a correct one and that permanent metal monuments consisting of bars not less than one half inch in diameter and 48 inches in length encased in a concrete cylinder at least 4 inches in diameter and 48 inches in length, have been placed at point marked thus (*) as thereon shown at all angles in the boundaries of the land platted, at all intersections of streets, and at the intersection of streets with the boundaries of the plat as shown on said plat.

Walter J. Lehner
Walter J. Lehner
Registered Land Surveyor
No. 123

Examined and Approved
Francis H. Phelps
Francis H. Phelps
a general partner

DEDICATION

KNOW ALL MEN BY THESE PRESENTS, That we, the Ingleside Realty Co., a Ltd. Partnership, by Francis H. Phelps, a general partner, as proprietors, have caused the land embraced in the annexed plat to be surveyed, laid out and platted to be known as "Ingleside Farms Sub. No. 7", a part of P. C.'s 137 & 628, T. 2 N., R. 13 E., Clinton Township, Macomb County, Michigan, and that the streets as shown on said plat are hereby dedicated to the use of the public.

INGLESIDE REALTY CO.

By *Francis H. Phelps*
Francis H. Phelps
a general partner

WITNESSES:

Angus Callahan
Angus Callahan
Walter J. Lehner
Walter J. Lehner

STATE OF MICHIGAN)
COUNTY OF WAYNE) SS.

On this 1st day of August, A.D. 1950, before me, a Notary Public, in and for said county, appeared Francis H. Phelps, to me personally known, who being duly sworn did say that he is a general partner of the Ingleside Realty Co., a Ltd. Partnership, and that he has authority to execute the above instrument for the said Ingleside Realty Co.

Walter J. Lehner
Walter J. Lehner
Notary Public, in and for
Wayne County, Michigan

My Commission expires 4/27/51

CERTIFICATE OF APPROVAL BY COUNTY BOARD

This plat was approved on the 23rd day of October A. D., 1950.

Viola Mayette
Deputy, Register of Deeds-Viola Mayette
Eunice L. Rose
Chief Deputy, County Clerk-Eunice L. Rose
Lynn Whalen
Lynn Whalen
County Treasurer

CERTIFICATE OF APPROVAL

BY BOARD OF COUNTY ROAD COMMISSIONERS

This plat has been examined and approved on the 17th day of October A. D., 1950, by the Board of County Road Commissioners of Macomb County, Michigan.

Wm. E. Malow
Wm. E. Malow - Chairman
Roy Comer
Roy Comer - Vice-Chairman
Alfred Foerster
Alfred Foerster - Member

1950 D 66002+742
10-23-50
Walter J. Lehner

1950 L25 P50

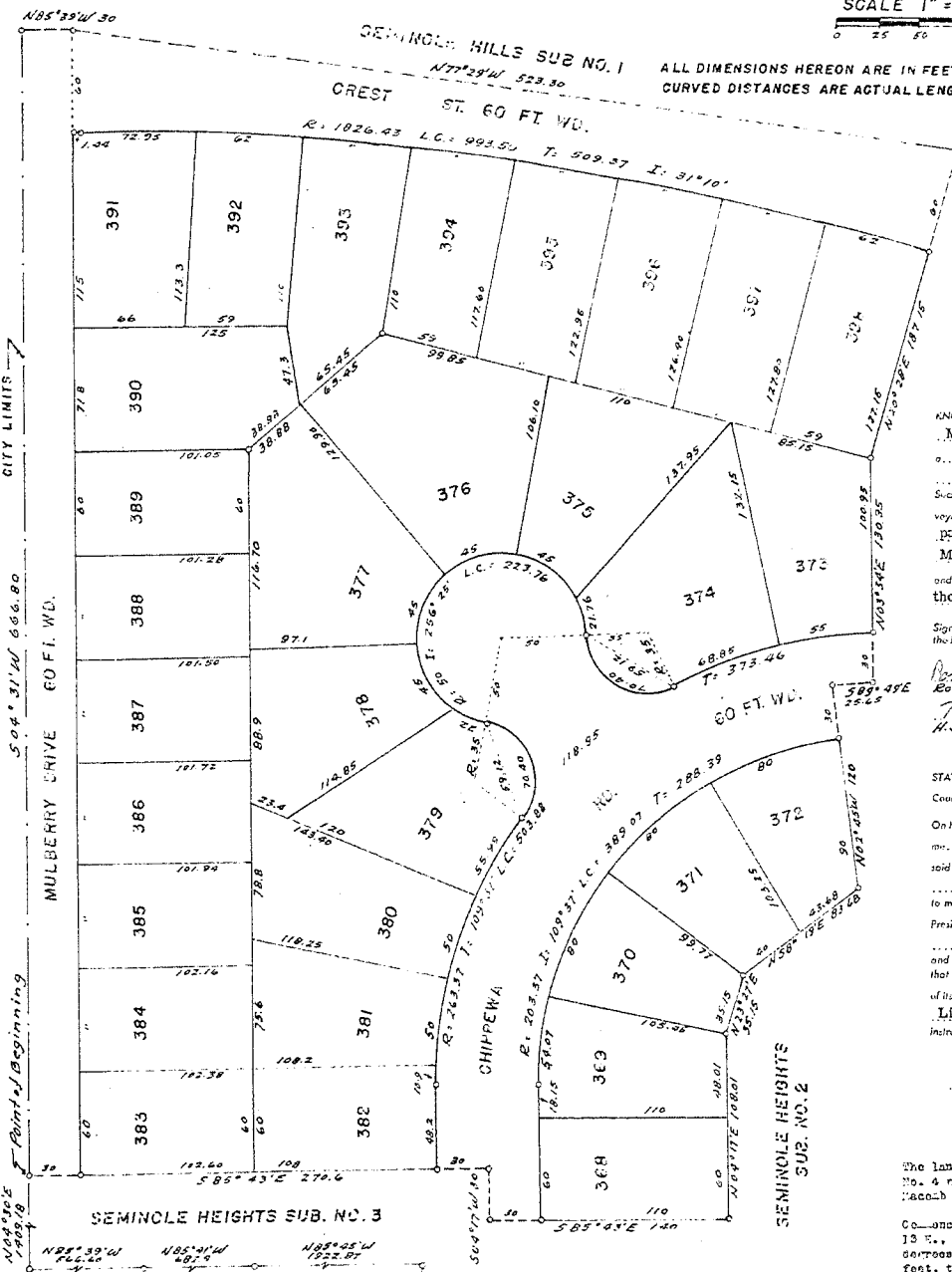
"Original"

"SEMINOLE HEIGHTS SUB. NO. 4"

PART OF P.C. 138 T. 2 N. R. 13 E.
CITY OF MT. CLEMENS, MACOMB CO. MICH.

SCALE 1" = 50'
0 25 50 100

7031221
FOR 10 17 1952



ALL DIMENSIONS HEREON ARE IN FEET AND DECIMALS THEREOF.
CURVED DISTANCES ARE ACTUAL LENGTHS OF 240.

HARRY J. FULLER
REGISTERED CIVIL ENGINEER
MT. CLEMENS MICH

DEDICATION

KNOW ALL MEN BY THESE PRESENTS, that we, Macomb Building Company, a Michigan corporation by Paul Litvin, President, and Morris Litvin, Secretary, as propleter, have caused the land embraced in the annexed plat to be surveyed, laid out and platted to be known as "Seminole Heights Sub. No. 4" part of P. C. 138, T. 2 N. R. 13 E., City of Mt. Clemens, Macomb County, Mich., and that the streets and alleys as shown on said plat are hereby dedicated to the use of the public.

Signed and Sealed in the Presence of:
 Ronald W. Chalfant, Paul Litvin (President)
 H. J. Fuller, Morris Litvin (Secretary)
 H. J. Fuller (Witness)

ACKNOWLEDGMENT

STATE OF MICHIGAN)
 County of MACOMB)
 On this 10th day of February, A.D. 1952, before me, Notary Public in and for said county appeared Paul Litvin and Morris Litvin, to me personally known, who being each by an duly sworn affidavit say that they are the President and Secretary respectively of the Macomb Building Company, a Michigan corporation, and that the seal affixed to said instrument is the corporate seal of said corporation and that said instrument was signed and sealed in behalf of said corporation by authority of its Board of Directors and the said Paul Litvin and Morris Litvin, Litvin, acknowledge said instrument to be the free act and deed of said corporation.

Notary Public, Macomb County
 My Commission expires 1953

DESCRIPTION OF LAND PLAT

The land embraced in the annexed plat of Seminole Heights No. 4 part of P.C. 138 T. 2 N. R. 13 E., City of Mt. Clemens, Macomb County, Michigan is described as follows:
 Commencing at the south 1/4 part of Tran. Sec. 23 P. 2 E. R. 13 E., thence N 89 degrees 47'40" 2774.0 feet, thence N 23 degrees 54' 2278.88 feet, thence N 85 degrees 45' 1022.07 feet, thence N 95 degrees 41' 682.9 feet, thence N 35 degrees 39' 566.60 feet, thence N 04 degrees 30' 1409.13 feet, to the point of beginning, thence S 85 degrees 43' 270.6 feet, thence S 04 degrees 17' 30 feet, thence S 95 degrees 42' 149 feet, thence N 04 degrees 17' 108.01 feet, thence N 23 degrees 27' 35.15 feet, thence N 88 degrees 19' 34.63 feet, thence N 02 degrees 45' 123 feet, thence N 89 degrees 49' 25.65 feet, thence N 02 degrees 34' 130.99 feet, thence N 20 degrees 23' 197.15 feet, thence N 77 degrees 29' 526.50 feet, thence N 45 degrees 33' 30 feet, thence S 04 degrees 31' 866.3 feet, to the point of beginning.

SURVEYOR'S CERTIFICATE

I hereby certify that the plat herein delineated is a correct one and that permanent metal monuments consisting of brass pins less than one-half inch in diameter and 48 inches in length, or shorter bars of not less than one-half inch in diameter tapped over each other at least 4 inches with an overall length of not less than 48 inches, encased in a concrete cylinder of at least 4 inches in diameter and 48 inches in depth have been placed at points marked thus (. . .) as thereon shown at all angles in the boundaries of the land platted, at all the intersections of streets, intersections of alleys, or of streets and alleys, and at the intersections of streets and alleys with the boundaries of the plat as shown on said plat.
 Harry J. Fuller
 Registered Land Surveyor

MUNICIPAL APPROVAL
 This plat was approved by the City Commission of the City of Mt. Clemens at a meeting held on January 6, 1952.
 Frederick Soole (Clerk)

Examined and Approved
 January 19, 1952
 Notary Public
 H. J. Fuller

APPROVAL BY COUNTY BOARD
 This plat was approved on the 10th day of February, 1952.
 Aaron Burr (County Register of Deeds)
 Robert A. Wagner (County Clerk)
 Lynn Whalen (County Treasurer)
 Frank Lohr County Drain Commissioner

REGISTERS OFFICE
 County of Macomb
 Received for Record this 20th day of February, A. D. 1952 at 12:47 o'clock and Recorded in Liber 26, Plate 35

THIS IS TO CERTIFY THAT THERE ARE NO TAX DUES OR LIENS ON THIS PROPERTY AND THAT TAXES ARE PAID FOR THE YEAR PREVIOUS TO DATE OF THIS INSTRUMENT. CONTAINED AS TO PART M.C. 2-182
 Betty Jenett

Original

Nov 10 2 15 PM '52

INGLESIDE FARMS SUB. NO. 9

A PART OF P.C. 628, FR. SEC. 22, T2N R13E, CLINTON TWP, MACOMB CO., MICH.

SCALE 1"=200'



NOTE: ALL DIMENSIONS IN FEET AND DECIMALS THEREOF

WALTER J. LEHNER & SONS
CIVIL ENG. & SURVEYING
MT. CLEMENS, MICHIGAN

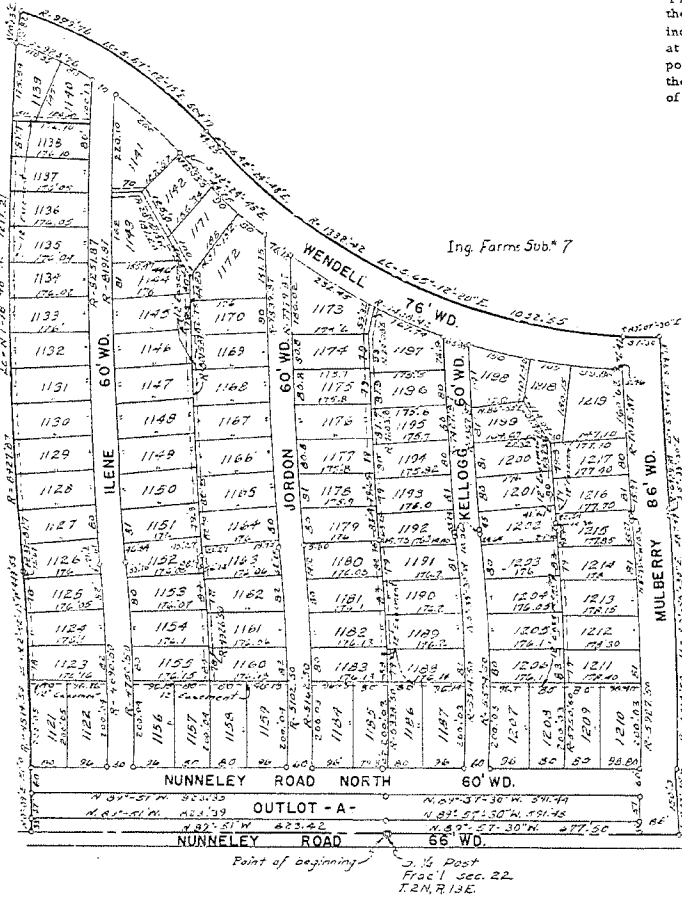
SURVEYOR'S CERTIFICATE

I hereby certify that the plat hereon delineated is a correct one and that the permanent metal monuments consisting of bars not less than one-half inch in diameter and 48 inches in length, encased in a concrete cylinder at least 4 inches in diameter and 48 inches in depth have been placed at points marked thus (o) as thereon shown at all angles in the boundaries of the land platted, at all the intersections of streets, and at the intersections of streets with the boundaries of the plat as shown on said plat.

Walter J. Lehner
Walter J. Lehner
Registered Land Surveyor
No. 123

CERTIFICATE OF MUNICIPAL APPROVAL

This plat was approved by the Township Board of the Township of Clinton at a meeting held October 28, 1952.
Elmore E. Lester
Elmore E. Lester, Clerk



Ing Farms Sub. #4

REGISTER'S OFFICE
County of Macomb
Received for record this 10th day of November, A. D. 1952, at 2:15 o'clock P. M. and Recorded in Liber 27 of Clinton at Page 227
Frank E. Lohr

DEDICATION

KNOW ALL MEN BY THESE PRESENTS, That we, the Ingleside Realty Co., a Ltd. Partnership, by Francis H. Phelps, a general partner, as proprietors, have caused the land embraced in the annexed plat to be surveyed, laid out and platted to be known as "Ingleside Farms Sub. No. 9", a part of P. C. 628 and Fr. Sec. 22 T. 2 N., R. 13 E., Clinton Township, Macomb County, Michigan, and that the streets as shown on said plat are hereby dedicated to the use of the public.

Signed and Sealed in the Presence of: Ingleside Realty Company

Francis H. Phelps
By Francis H. Phelps
a general partner

DESCRIPTION OF LAND PLATTED

The land embraced in the annexed plat of "Ingleside Farms Sub. No. 9", a part of P. C. 628 and Fr. Sec. 22, T. 2 N., R. 13 E. Clinton Township, Macomb County, Michigan, is described as follows: Commencing at the South Quarter Post of Fractional Section 22 and thence extending N. 89°-51' W. 823.42 feet; thence N. 0°-09' E. 150.0 feet; thence along a curve (R = 4514.50) concave to the West and whose long chord 449.55 feet in length bears N. 2°-42'-15" W.; thence along a curve (R = 8427.87) concave to the East and whose long chord 1217.21 feet in length bears N. 1°-28'-48" W.; thence N. 10°-13' E. 76.82 feet; thence along a curve (R = 999.76) concave to the Southwest, and whose long chord 500.79 feet in length bears S. 57°-02'-15" E.; thence S. 42°-24'-48" E. 48.25 feet; thence along a curve (R = 1332.42) concave to the Northeast, and whose long chord 1032.55 feet in length bears S. 65°-12'-20" E.; thence S. 83°-07'-30" E. 87.30 feet; thence along a curve (R = 6929.87) concave to the East and whose long chord 394.18 feet in length bears S. 3°-54' E.; thence S. 5°-33'-30" E. 10.36 feet; thence along a curve (R = 6013.50) concave to the West, and whose long chord 587.49 feet in length bears S. 2°-45'-30" E.; thence S. 0°-02'-30" W. 150.0 feet; thence N. 89°-57'-30" W. 677.50 feet to the point of beginning.

CERTIFICATE OF APPROVAL BY COUNTY BOARD

This plat was approved on the 10 day of October, 1952, by the Macomb County Plat Board.

Aaron Burr
Aaron Burr, Register of Deeds
Lynn Whalen
Lynn Whalen, County Treasurer
Albert A. Wagner
Albert A. Wagner, County Clerk
Frank E. Lohr
Frank E. Lohr, Drain Commissioner

CERTIFICATE OF APPROVAL BY BOARD OF COUNTY ROAD COMMISSIONERS

This plat has been examined and was approved on the 23rd day of Sept, 1952, by the Macomb County Board of Road Commissioners.

Roy Connors
Roy Connors, Road Chairman
Wm. Malow
Wm. Malow, Road Commissioner
Alfred Forrester
Alfred Forrester, Road Commissioner

ACKNOWLEDGEMENT

STATE OF MICHIGAN)
) SS.
COUNTY OF WAYNE)

On this 5th day of September, A. D. 1952, before me, a Notary Public, in and for said county, appeared Francis H. Phelps, to me personally known, who being duly sworn did say that he is a general partner of the Ingleside Realty Co., a Ltd. Partnership, and that he has authority to execute the above instrument for the said Ingleside Realty Co.

My Commission expires: April 15 1955
Francis H. Phelps
Notary Public, in and for said State of Michigan.

This is to certify that there are no liens or claims on this property and that there are no other liens or claims on this instrument. 201618-600622
10-1-52
Lynn Whalen, Register of Deeds, Macomb County, Michigan.
H. Wozniak

"INGLESIDE CENTER SUB NO. 1"

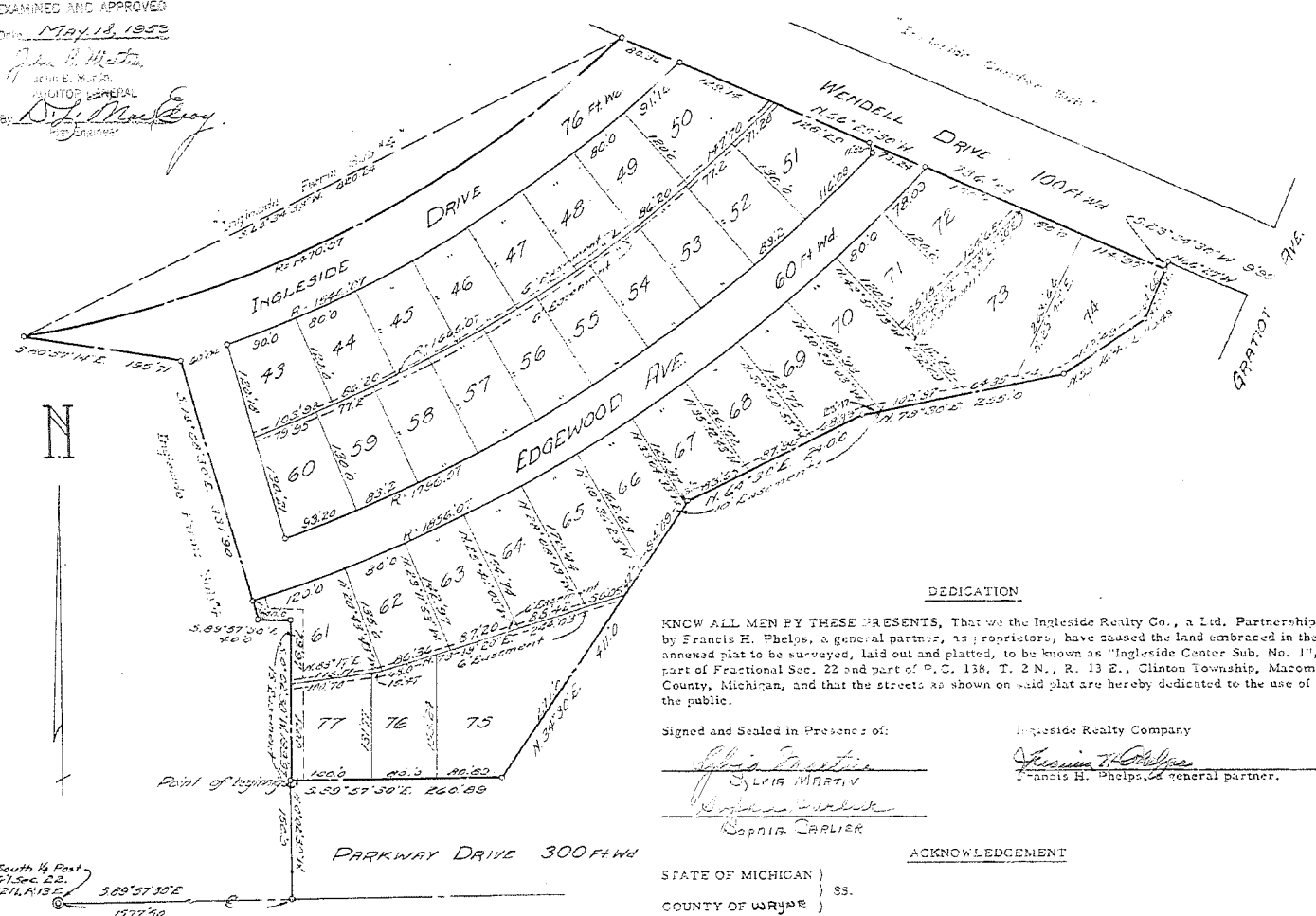
PART OF FRACTIONAL SEC. 22 AND PART OF P. C. 138, T.2N, R.13E.
CLINTON TWP., MACOMB CO., MICHIGAN

Scale: 1" = 100'
0 50 100 200

WALTER J. LEHNER & SONS
CIVIL ENG. & SURVEYING
MT. CLEMENS, MICHIGAN

Note: All dimensions are in feet and decimal thereof.

EXAMINED AND APPROVED
Date: MAY 18, 1953
John B. Martin
JAMES B. MARTIN
REGISTERED GENERAL
SURVEYOR



DEDICATION

KNOW ALL MEN BY THESE PRESENTS, That we the Ingleside Realty Co., a Ltd. Partnership, by Francis H. Phelps, a general partner, as copropriators, have caused the land embraced in the annexed plat to be surveyed, laid out and platted, to be known as "Ingleside Center Sub. No. 1", part of Fractional Sec. 22 and part of P. C. 138, T. 2 N., R. 13 E., Clinton Township, Macomb County, Michigan, and that the streets as shown on said plat are hereby dedicated to the use of the public.

Signed and Sealed in Presence of:

 SYLVIA MARTIN

 SOPHIE CARLIER
 Ingleside Realty Company
 Francis H. Phelps, general partner.

ACKNOWLEDGEMENT

STATE OF MICHIGAN }
 COUNTY OF WAYNE } SS.

On this 15th day of April, 1953, before me, a Notary Public in and for said county appeared FRANCIS H. Phelps, to me personally known, who being duly sworn did say that he is a general partner of the Ingleside Realty Co., a Ltd. Partnership, and that he had authority to execute the above instrument for the said Ingleside Realty Co.

My Commission expires:
April 15, 1955

 Notary Public, Wayne County, Michigan

SURVEYOR'S CERTIFICATE

I hereby certify that the plat hereon delineated is a correct one and that permanent metal monuments consisting of bars not less than one-half inch in diameter and 48 inches in length, encased in a concrete cylinder at least 4 inches in diameter and 48 inches in depth have been placed at points marked thus (O) as thereon shown at all angles in the boundaries of the land platted, at all the intersections of the lines of streets, and at the intersections of the lines of streets with the boundaries of the plat as shown on said plat.

 Walter J. Lehner,
 Registered Land Surveyor,
 No. 123.

CERTIFICATE OF MUNICIPAL APPROVAL

This plat was approved by the Township Board of the Township of Clinton at a meeting held on Wednesday May 2nd, 1953.

 Elmore E. Lester, Township Clerk.

DESCRIPTION OF LAND PLATTED
 The land embraced in the annexed plat of "Ingleside Center Sub. No. 1", part of Fractional Sec. 22 and part of P. C. 138, T. 2 N., R. 13 E., Clinton Township, Macomb County, Michigan is described as follows: Commencing at a point 1577.50 feet S. 89°-57'-30" E. and 159.0 feet N. 0°-02'-30" W. of the South Quarter Post of Fr. Sec. 22, T. 2 N., R. 13 E., and thence extending S. 89°-57'-30" E. 369.89 feet; thence N. 34°-30" E. 411.00 feet; thence N. 54°-30' E. 240.00 feet; thence N. 78°-30' E. 255.00 feet; thence N. 55°-16'-40" E. 119.49 feet; thence N. 23°-33' E. 64.66 feet; thence N. 66°-25'-30" W. 736.58 feet; thence along a curve (R-1470.07) concave to the Northwest, and whose long chord bears S. 63°-34'-33" W. and is 820.24 feet in length; thence S. 80°-57'-14" E. 195.71 feet; thence S. 16°-08'-30" E. 331.90 feet; thence S. 89°-57'-30" E. 40.0 feet; thence S. 0°-02'-30" W. 199.97 feet to the point of beginning.

CERTIFICATE OF APPROVAL BY BOARD OF COUNTY ROAD COMMISSIONERS
 This plat has been examined and was approved on the 7th day of May, 1953, by the Macomb County Board of Road Commissioners.

 Roy Conner, Chairman

 Wm. E. Malow, Member

 Alfred Forster, Vice-Chairman

CERTIFICATE OF APPROVAL BY COUNTY BOARD
 This plat was approved on the 12th day of May, 1953, by the Macomb County Plat Board.

 Aaron Burr, Register of Deeds

 Lynn Whalen, County Treasurer

 Albert A. Wagner, County Clerk

 Frank E. Lehr, Drain Commissioner

THIS IS TO CERTIFY that all persons to the county recording offices these are no tax liens on this property for the five years previous to date of this instrument.

 H. Heistlike

CLERK'S OFFICE
 County of Wayne
 Received for recording this _____ day of _____ D. 19____ at _____ M. and Recorded in Book _____ of _____ of _____

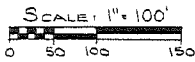
A true and correct copy of the original of this plat as shown to me by the Surveyor.

COPY

SEMINOLE SCHOOL SUBDIVISION

A PART OF P.C. 137, T.2 N., R.13 E.,
CLINTON TWP., MACOMB CO., MICHIGAN.

224646



Note: All dimensions are in feet and decimals thereof.

WALTER J. LEHNER & SONS
REG. CIVIL ENGINEERING & SURVEYING
MT. CLEMENS, MICHIGAN.

EXAMINED AND APPROVED
Date APR 29 1955

Victor Targemski
Victor Targemski
CAUTION GENERAL
By *Walter J. Lehner*
Flat Engineer

DESCRIPTION OF LAND PLATTED

The land embraced in the annexed plat of "Seminole School Subdivision", a Part of P.C. 137, T.2 N., R.13 E., Clinton Twp., Macomb Co., Michigan, is described as follows: Commencing at the Southwest corner of Fractional Section 22, T.2 N., R.13 E., and thence extending S. 89°-51'E. 260.0 feet, thence N. 0°-10'-45"E. 493.18 feet, thence N. 31°-20'-45"E. 3954.47 feet to the point of beginning of this description. Thence extending N. 31°-20'-45"E. 940.0 feet, thence S. 58°-39'-15"W. 159.10 feet, thence N. 69°-53'E. 96.21 feet, thence S. 31°-22'-15"W. 60.0 feet, thence Southwesterly along a curve (R = 15566.10 feet) concave to the East and whose long chord bears S. 29°-59'-20"W. and is 712.66 feet in length, thence Southerly along a curve (R = 15626.1 feet) concave to the West and whose long chord bears S. 28°-55'-40"W. and is 47.24 feet in length, thence Easterly along a curve (R = 3092.18 feet) concave to the South and whose long chord bears S. 56°-08'-30"E. and is 528.06 feet in length, thence S. 51°-14'-40"E. 7.25 feet, thence Easterly along a curve (R = 746.25 feet) concave to the North and whose long chord bears S. 68°-22'-30"E. 439.60 feet in length, thence S. 85°-30'-15"E. 30.0 feet, thence S. 4°-29'-45"W. 218.92 feet, thence S. 40°-59'-25"W. 51.26 feet, thence Westerly along a curve (R = 1032.56 feet) concave to the North and whose long chord bears N. 67°-04'W. 504.26 feet in length, thence N. 52°-56'W. 9.31 feet, thence along a curve (R = 4387.30 feet) concave to the South and whose long chord bears N. 56°-38'W. and is 568.81 feet in length, thence N. 25°-59'-15"W. 72.69 feet, thence N. 58°-39'-15"W. 185.36 feet to the point of beginning.

SURVEYOR'S CERTIFICATE

I hereby certify that the plat hereon delineated is a correct one and that permanent metal monuments consisting of bars not less than one-half inch in diameter and 36 inches in length, encased in a concrete cylinder at least 4 inches in diameter and 36 inches in depth have been placed at points marked thus (O) as thereon shown at all angles in the boundaries of the land platted, at all the intersections of the lines of streets, and at the intersections of the lines of streets with the boundaries of the plat as shown on said plat.

John D. Lehner
John D. Lehner
Registered Land Surveyor
No. 5787

REGISTERS OFFICE
COUNTY OF MACOMB

Received for Record May 2, 1955

at 1:45 o'clock P.M. and recorded
in Vol. 32 of Plats on
Page 272

Walter J. Lehner
Walter J. Lehner
Registered Land Surveyor

Walter J. Lehner
Walter J. Lehner
Registered Land Surveyor

Walter J. Lehner
Walter J. Lehner
Registered Land Surveyor

Walter J. Lehner
Walter J. Lehner
Registered Land Surveyor

Walter J. Lehner
Walter J. Lehner
Registered Land Surveyor

Walter J. Lehner
Walter J. Lehner
Registered Land Surveyor

Walter J. Lehner
Walter J. Lehner
Registered Land Surveyor

Walter J. Lehner
Walter J. Lehner
Registered Land Surveyor

Walter J. Lehner
Walter J. Lehner
Registered Land Surveyor

Walter J. Lehner
Walter J. Lehner
Registered Land Surveyor

Walter J. Lehner
Walter J. Lehner
Registered Land Surveyor

Walter J. Lehner
Walter J. Lehner
Registered Land Surveyor

Walter J. Lehner
Walter J. Lehner
Registered Land Surveyor

Walter J. Lehner
Walter J. Lehner
Registered Land Surveyor

Walter J. Lehner
Walter J. Lehner
Registered Land Surveyor

Walter J. Lehner
Walter J. Lehner
Registered Land Surveyor

Walter J. Lehner
Walter J. Lehner
Registered Land Surveyor

Walter J. Lehner
Walter J. Lehner
Registered Land Surveyor

Walter J. Lehner
Walter J. Lehner
Registered Land Surveyor

Walter J. Lehner
Walter J. Lehner
Registered Land Surveyor

Walter J. Lehner
Walter J. Lehner
Registered Land Surveyor

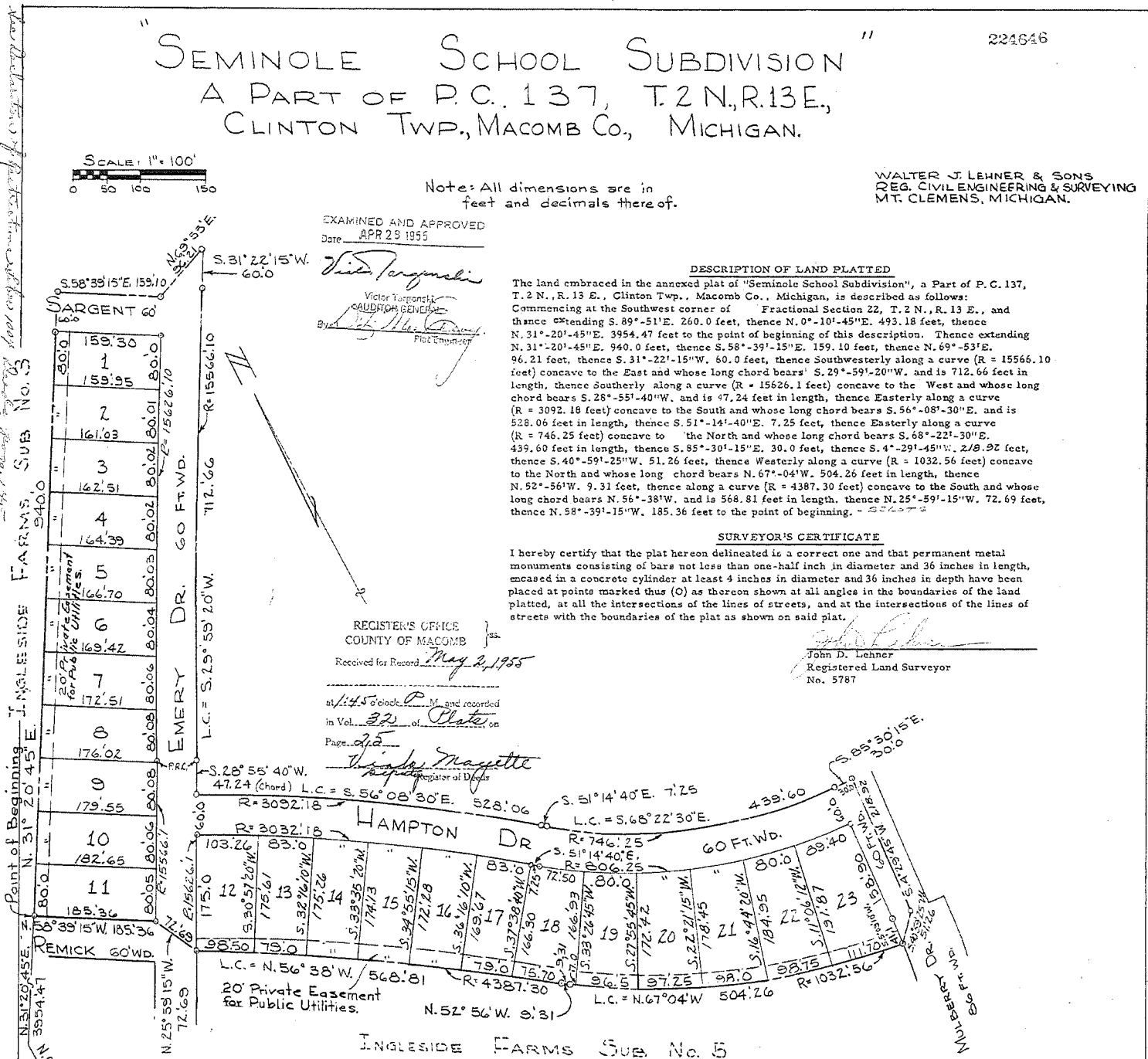
Walter J. Lehner
Walter J. Lehner
Registered Land Surveyor

Walter J. Lehner
Walter J. Lehner
Registered Land Surveyor

Walter J. Lehner
Walter J. Lehner
Registered Land Surveyor

Walter J. Lehner
Walter J. Lehner
Registered Land Surveyor

Walter J. Lehner
Walter J. Lehner
Registered Land Surveyor



Point of Beginning N. 31° 20' 45" E. 3554.47
N. 25° 59' 15" W. 72.69
N. 0° 10' 45" E. 493.18
N. 31° 20' 45" E. 940.0
N. 69° 53' E. 96.21
S. 58° 39' 15" W. 159.10
S. 31° 22' 15" W. 60.0
S. 29° 59' 20" W. 712.66
S. 28° 55' 40" W. 47.24
S. 51° 14' 40" E. 7.25
S. 85° 30' 15" E. 30.0
S. 4° 29' 45" W. 218.92
S. 40° 59' 25" W. 51.26
N. 67° 04' W. 504.26
N. 52° 56' W. 9.31
N. 56° 38' W. 568.81
N. 25° 59' 15" W. 72.69
N. 58° 39' 15" W. 185.36

S.W. Corner
Frac. Section 22
T.2 N., R.13 E.

BOOK 88
PAGE 52

DEDICATION

KNOW ALL MEN BY THESE PRESENTS, That we, the Ingleside Realty Co., a Ltd. Partnership, by Francis H. Phelps, a general partner, as proprietors, have caused the land embraced in the annexed plat to be surveyed, laid out and platted to be known as "Seminole School Subdivision", a Part of P.C. 137, T.2 N., R.13 E., Clinton Twp., Macomb Co., Michigan, and that the streets as shown on said plat are hereby dedicated to the use of the public, and that the private easements shown on said plat are hereby reserved for the use of the Public Utilities, or for the use of specific utilities as thereon noted, subject to the regulation and control of the use thereof by the local governmental authorities, and that no permanent structures are to be erected within the lines of said easements.

Signed and Sealed in the Presence of:
Carl J. Spitzley
Carl J. Spitzley
Fred H. Prengle
Fred H. Prengle
By *Francis H. Phelps*
Francis H. Phelps,
a general partner

STATE OF MICHIGAN }
COUNTY OF MACOMB } ss.
On this 11th day of April, A.D., 1955, before me, a Notary Public, in and for said county, appeared Francis H. Phelps, to me personally known, who being duly sworn did say that he is a general partner of the Ingleside Realty Co., a Ltd. Partnership, and that he has authority to execute the above instrument for the said Ingleside Realty Co.

My Commission expires
2 APR 1952
Walter J. Lehner
Walter J. Lehner
Notary Public,
MACOMB County, Michigan

CERTIFICATE OF APPROVAL BY BOARD OF COUNTY ROAD COMMISSIONERS

This plat has been examined and was approved on the 22nd day of April, 1955, by the Macomb County Board of Road Commissioners.

Roy Conner - Chairman
William E. Malow - Member
Ernest W. McCollom - Member

CERTIFICATE OF MUNICIPAL APPROVAL

This plat was approved by the Township Board of the Township of Clinton at a meeting held April 22, 1955.

Edward J. Fiedler
Edward J. Fiedler - Clerk

CERTIFICATE OF APPROVAL BY COUNTY BOARD

This plat was approved on the 22nd day of April, 1955, by the Macomb County Plat Board.

Aaron Burr
Aaron Burr - Register of Deeds
Albert A. Wagner
Albert A. Wagner - County Clerk
Lynn Whalen
Lynn Whalen - County Treasurer
Frank E. Lohr
Frank E. Lohr - Drain Commissioner

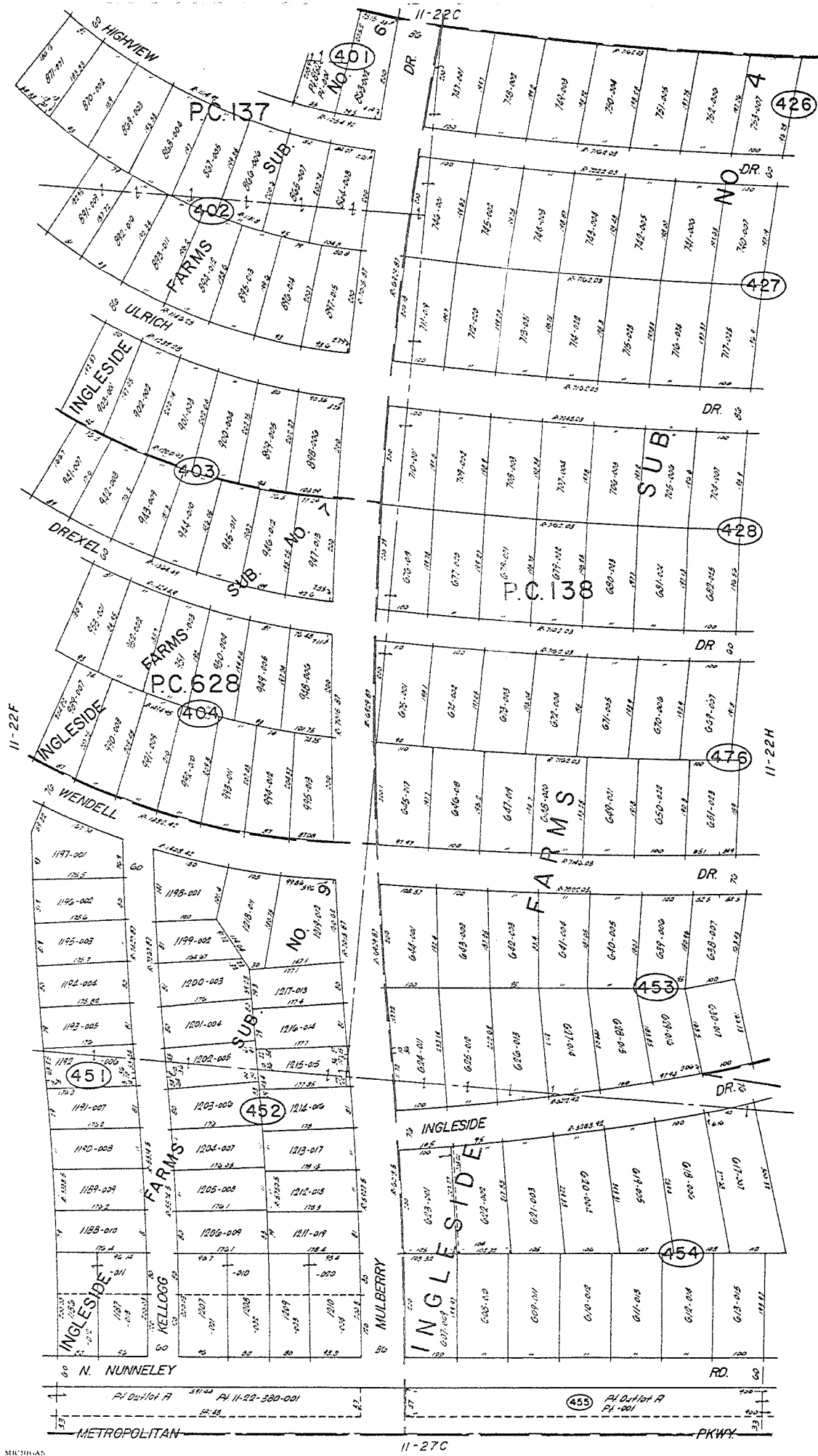
THIS IS TO CERTIFY THAT APPROVED TO THE COUNTY TREASURER BEING THREE AND SIX CENTS ON THE DOLLAR AND THAT THIS WAS PAID FIVE YEARS PREVIOUS TO DATE OF THIS INSTRUMENT.

RECORDED IN BOOK 88 PAGE 52 DATE 4-22-55

WALTER J. LEHNER & SONS
CIVIL ENGINEERING & SURVEYING
MT. CLEMENS, MICHIGAN

C. Hudson
C. Hudson

3 Jan. 1955 - 185



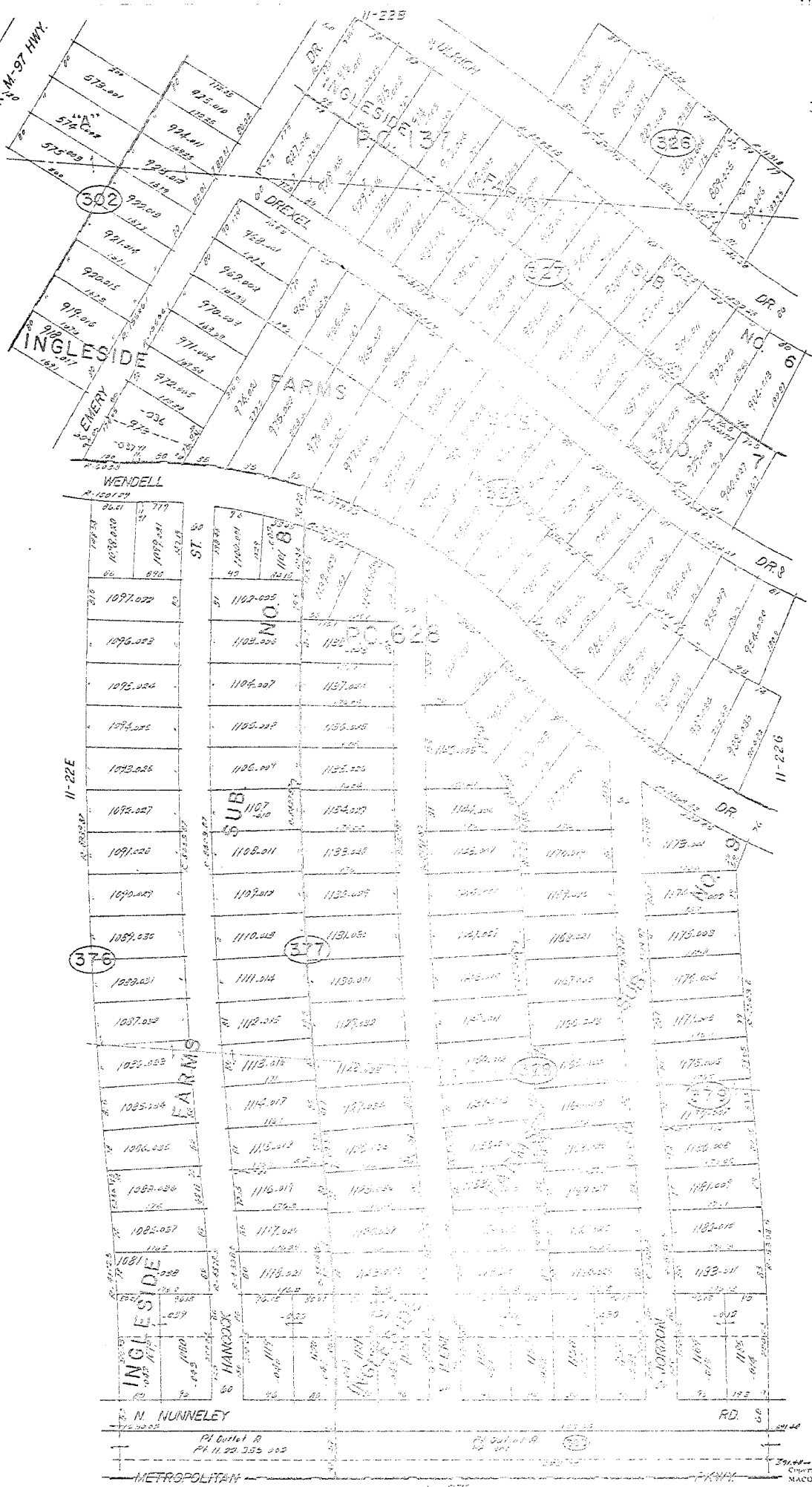
Copyright 1972
SACSH COUNTY, MICHIGAN

SCALE 1" = 100'
1175
11-22G

CLINTON TWP.
W. 1/2 SE 1/4 SEC. 22 & PT. PC. 137, 138 & 628 T.2N. R.13E.

GROSSBECK M-97 HWY.

INGLESIDE FARMS SUB. NO 3



Rev 8-75

R. N. NUNNELEY
 PL Outlet A
 PL 11-22-22F-002

RD. 06

METROPOLITAN

CLINTON TWP

E 1/2 SW 1/4 SEC. 22 S. 17. T. 2N. R. 13E.

SCALE 1" = 100'
 1174
 11-22F



REV. 8-75

Copyright 1972
MACOMB COUNTY, MICHIGAN

CLINTON TWP.
 E 1/2 SE 1/4 SEC. 22 S. PT. RD. 138 T.25. R.15E.

SCALE 1" = 100'
 1176
 11-22H

