

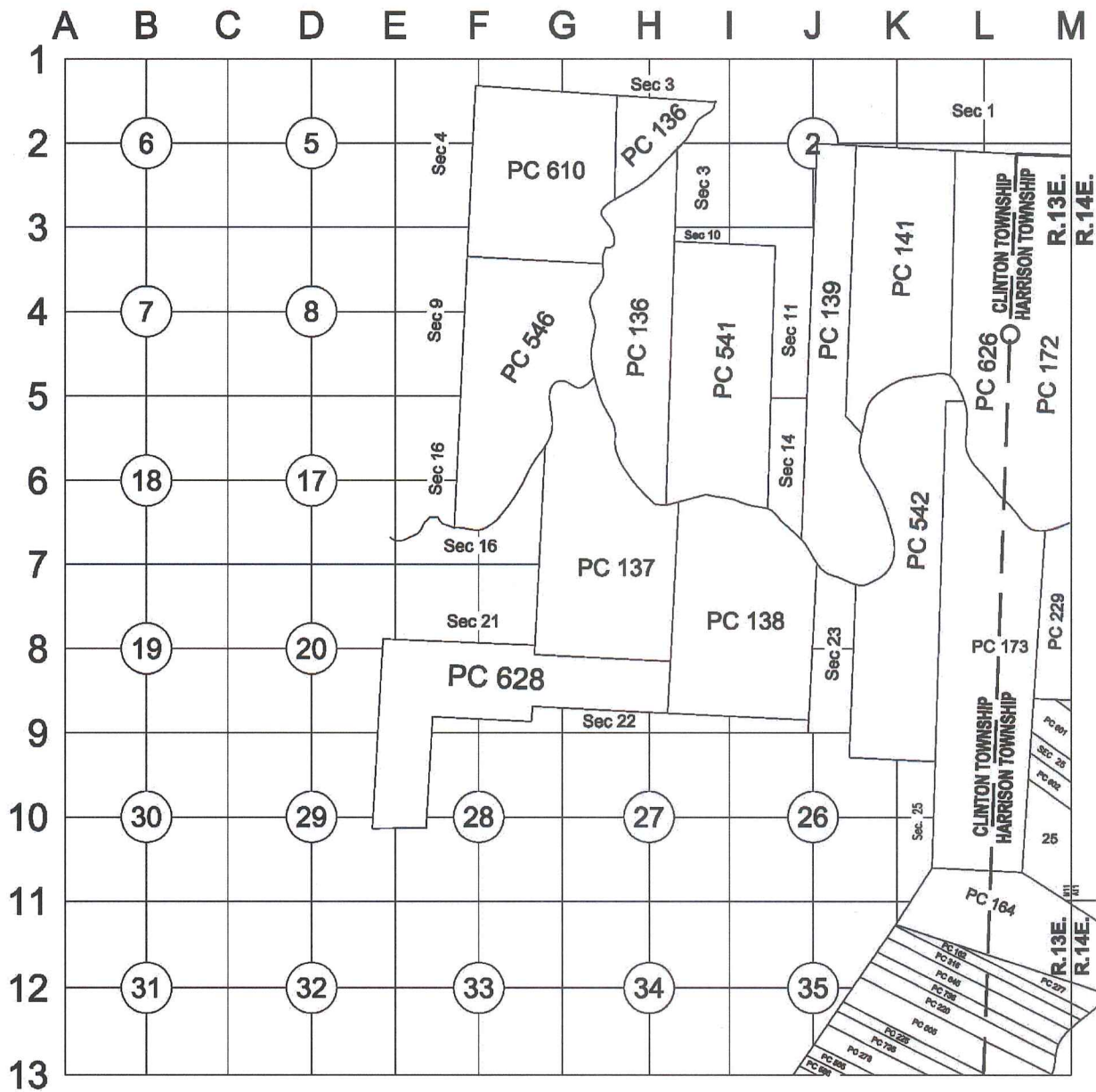
Land Corner Recordation Certificate
2018 Annual Grant Agreement
 Authority: MICH. 1970 PA 74, MCL 54.205

"LCRC BEING RECORDED FOR THE PURPOSE OF PUBLISHING MICHIGAN STATE PLANE COORDINATE DATA"
"LCRC BEING RECORDED TO REPLACE PREVIOUSLY RECORDED PCC 004 LCRC, L. 19502, P. 771 & 772
And PREVIOUSLY RECORDED T.02N., R.14E. PCC 019 LCRC, L. 19502, P. 769 & 770"

Surveyor's Name: Steven E. Dunn, P.S. **Field Survey Date:** June 6, 2018
For Corner(s) in: Macomb County **Municipality:** Clinton and Harrison Township

Corner Type	Section Private Claim	Clinton Township	Corner Code	Other Code
Property Controlling Corner	PC 172/626	T 2 N R 13 E		PCC 004

Other Code Corner Description: Intersection of the West line of Private Claim 172 common with the East line of Private Claim 626 with the centerline of Henry B. Joy Boulevard east-west and North Walnut south. Also being the municipality line between Clinton Township and Harrison Township.



3

C

Part A: Corner History:

	<u>DATE</u>	<u>RECORD ITEM AND SOURCE</u>	<u>SURVEYOR & LICENSE</u>	<u>CORNER DESCRIPTION</u>
1.	1810	Private Claim 172 Notes	Aaron Greeley	N/A
2.	1810	Private Claim 626 Notes	Aaron Greeley	N/A
3.	1921	Ascot Park Subdivision	Neil R. Sutton	1" Pipe
4.	1928	Assessors Plat No. 24	Burt W. Harvey, Engineer	N&S PC Line
5.	1934	Supervisors Plat No. 5	E. L. Pettingill, Engineer	N&S PC Line
6.	1968	Supervisor's Plat No. 19	Fitz J. Bridges, #5779	N&S PC Line
7.	1972	Certificate of Survey, unrecorded	Charles G. Melching, #14767	N&S PC Line
8.	1974	Certificate of Survey, unrecorded	William E. Soderberg, #17635	N&S PC Line
9.	1990	East Pointe Industrial Subdivision, L. 92, P. 47-50	Robert L. Smith, #16052	North PC Corner
10.	2005	LCRC, L. 16876, P. 699	Jack N. Owens, #20709	PK nail

Part B: Surveyor's Report on Perpetuation, Restoration, Reestablishment or Monumentation of Corner: PCC 004 Intersection of the West line of Private Claim 172 common with the East line of Private Claim 626 with the centerline of Henry B. Joy Boulevard east-west and North Walnut south. Also being the municipality line between Clinton Township and Harrison Township.
2008 Found PK nail at the centerline pavement intersection of Henry B. Joy Boulevard east-west and North Walnut south.

Verified the location of the found PK nail by comparing field measurements with record measurements.

FIELD MEASUREMENTS AND RECORD MEASUREMENTS:

PCC 004 to PC 002:

4209.77' – Record, Tax Descriptions, west side
4220.48' – Record, Tax Descriptions, east side
4215.13' – Mean of record above
4215.94' – Field, 2008 Remon

PCC 004 to found 3/4" steel rod at the intersection of the north right-of-way line of North River Road and the line common with PC 172 and PC 626:

4393.20' – Record, Plats
4394.82' – Field, 2008 Remon

PCC 004 to found PK nail at east line of Private Claim 172 (also being the centerline of Irwin Road south) and centerline of Henry B. Joy Boulevard:

2668.57' – Record, LCRC
2668.35' – Field, 2008 Remon

LCRC: L. 16876, P. 688, Jack N. Owens, #20709:

Found PK nail
N50°E 68.51' Set n/Rowe tag W. FC. P. Pole (Found 68.59' – Field, 2008 Remon)
S25°E 98.18' Top Ctr. Hydrant (Found – 98.12' – Field, 2008 Remon)
S60°W 81.70' Set n/Rowe tag W. FC. P. Pole (Found – 51.88' – Field, 2008 Remon)

Part C: Field Evidence of Perpetuation or Monumentation of Corner: Intersection of the West line of Private Claim 172 common with the East line of Private Claim 626 with the centerline of Henry B. Joy Boulevard east-west and North Walnut south. Also being the municipality line between Clinton Township and Harrison Township.
2008 Found PK nail at the centerline pavement intersection of Henry B. Joy Boulevard east-west and North Walnut south.

2008 Replaced the found PK nail with a 3/4" X 36" steel rod with an aluminum cap stamped "MACOMB COUNTY MONUMENT MI ACT 345 1990 MCL, 28408, PCC 001 (PCC 004)" in a new monument box with 4 accessories.

Accessories:

S41°W 81.72' M Found form nail w/tag "Rowe" on Southeast face of utility pole. (81.72'-Record, LCRC)
N29°W 51.88' R&M Found form nail w/tag "Rowe" on Southwest face of utility pole.
N51°E 68.59' M Found form nail w/tag "Rowe" on West face of utility pole. (68.51'-Record, LCRC)
S38°E 98.12' M Center top nut of hydrant. (98.18'-Record, LCRC)

"MICHIGAN STATE PLANE COORDINATE DATA"

9-26-2008 LCRC for Remonumentation Corner by Steven E. Dunn, PS #28408 PCC 004 recorded in L. 19502 of Deeds on P. 771 & 772. Found PK nail at the centerline pavement intersection of Henry B. Joy Boulevard east-west and North Walnut south. Matched 4 of 4 witness ties of LCRC listed above. Replaced the found PK nail with a 3/4" X 36" steel rod with an aluminum cap stamped "MACOMB COUNTY MONUMENT MI ACT 345 1990 MCL, 28408, PCC 001 (PCC 004)" in a new monument box with 4 accessories.
Peer Review Group Approval: June 3, 2008

6-06-2018 Found a 3/4" steel rod with a 2" diameter aluminum cap stamped "MACOMB COUNTY MONUMENT MI ACT 345 1990 MCL, 28408, PCC 001 (PCC 004)" in an existing monument box with 4 of 4 matching accessories from the LCRC listed in listed above.

Occupied corner with GPS to obtain Geodetic Coordinate Data.

Accessories:

S41°W 81.72' R&M Found form nail w/tag "Rowe" on Southeast face of utility pole.
 N29°W 51.88' R&M Found form nail w/tag "Rowe" on Southwest face of utility pole.
 N51°E 68.59' R&M Found form nail w/tag "Rowe" on West face of utility pole.
 S38°E 98.12' R&M Center top nut of hydrant.

Date of Observation	Latitude	Longitude	Datum and Adjustment Year	Epoch Date
6-06-2018	N 42D36'35.59295"	W 82D51'40.48616"	NAD83 (2011)	2010

Method for Latitude-Longitude determination: NGS OPUS-RS Solution

State Plane Coordinates in international feet: N-408095.38', E-13528577.77'
 Standard Deviation: 0.03' N, 0.02' W
 Zone: South
 Combined Factor: 0.99989566
 NGSPID: NE1168
 Survey Method: MC TRAV
 Orthometric Height: 588.80'
 Elev. Datum: NAVD88

I, Steven E. Dunn, P.S., in a field survey on June 6, 2018, certify under the requirements of the State Survey and Remonumentation Act, 1990 PA 345, MCL 54.261 to 54.279, and the Corner Recordation Act, 1970 PA 74, MCL 54.201 to 54.210d, that the corner identified and described hereon has been perpetuated or monumented as described in Parts A, B, and C above, pursuant to the laws and rules of the State of Michigan.

Steven E. Dunn June 13, 2018
 Steven E. Dunn, P.S. Date

Professional Surveyor's License No.: 28408

Prepared By:
 Steven E. Dunn, P.S.
 Great Lakes Geomatics, LLC
 76 S. Main Street
 Mt. Clemens, Mi. 48043



I, Martin C. Dunn, P.S., Macomb County Surveyor Representative, have reviewed the corner perpetuated in parts A, B and C above for the purpose of publishing its Michigan State Plane Coordinate values and relative data and is accepted for filing in the Macomb County Remonumentation Program.

Martin C. Dunn 6-26-2018
 Martin C. Dunn, P.S. Date

Macomb County Surveyor Representative
 License No. 30081

MACOMB COUNTY
INDEX OF SUPPORTING DOCUMENTATION FOR

Town 2 North, Range 13 East

Clinton Township and Harrison Township

Corner Code: PCC-004 Property Controlling Corner on line common with Private Claim 626 and Private Claim 172, Town 2 North, Range 14 East. Corner falls at the centerline intersection of Henry B. Joy Boulevard east-west and North Walnut south.

Section One:

- A. Index
- B. Pictures
 - 1. Before Pictures (3) – January 7, 2008
 - 2. After Picture – June 4, 2008

Section Two:

- A. Preliminary LCRC
- B. Surveyor's Report – April 28, 2008

Section Three:

- A. Field Notes – January 7, 2008
- B. Legal Description – N/A
- C. Tax Description – N/A
- D. Sketches – Field Measurement and Record Measurement Comparisons April 28, 2008
- E. Maps (6) – Macomb County Atlas
 - Harrison Township – 1875, 1895 and 1916
 - Clinton Township – 1875, 1895 and 1916
- F. Macomb County Composite Maps (7) – Date of photography April, 2004
 - 11-01H, 11-12D & H, 11-13C, D, F and G

Section Four:

- A. Copies of original government notes – No corner set originally.
- B. Recorded LCRC's
 - 1. L. 16876, P. 688, Jack N. Owens, #20709, Found PK nail July 6, 2005
- C. Recorded and unrecorded surveys
 - 1. Plat of Survey, Charles G. Melching, #14767 May, 1972
 - 2. Certificate of Survey, William E. Soderberg #17635, December 2, 1974
- D. Copies of all items listed in "Part A" of LCRC.
 - 1. Plats:
 - a. L. 5, P. 32 "Ascot Park Subdivision" April 26, 1921
 - b. L. 13, P. 40 Assessors Plat No. 24 November 22, 1928
 - c. L. 16, P. 23 Supervisors Plat No. 5 January 10, 1934
 - d. L. 59, P. 7 & 8 Supervisor's Plat No. 19 July 14, 1968
 - e. L. 92, P. 47-50 East Pointe Industrial Subdivision December 13, 1992



Before

PROPERTY CONTROLLING CORNER 004

On line common with P.C. 626 and P.C. 172, T.2N., R.14E. Corner falls at the centerline intersection of Henry B. Joy Blvd. east/west and North Walnut south T.2N., R.13E.

CLINTON TOWNSHIP

After



Management, Engineering & Technical Consultants



Before

PROPERTY CONTROLLING CORNER 002

On line common with P.C. 626 and P.C. 172, T.2N., R.14E. Corner falls at the centerline intersection of Henry B. Joy Blvd. east/west and North Walnut south T.2N., R.13E.

CLINTON TOWNSHIP

After





North

PROPERTY CONTROLLING CORNER 002

On line common with P.C. 626 and P.C. 172, T.2N., R.14E. Corner falls at the centerline intersection of Henry B. Joy Blvd. east/west and North Walnut south T.2N., R.13E.

CLINTON TOWNSHIP

South



Management, Engineering & Technical Consultants



East

PROPERTY CONTROLLING CORNER 002

On line common with P.C. 626 and P.C. 172, T.2N., R.14E. Corner falls at the centerline intersection of Henry B. Joy Blvd. east/west and North Walnut south T.2N., R.13E.

CLINTON TOWNSHIP

West



Management, Engineering & Technical Consultants

REC'D. MACOMB CO. AUG 12 2008 4:00 p.m.

REC'D. MACOMB CO. SEP 26 2008 11:00 a.m.



LAND CORNER RECORDATION CERTIFICATE
Filing Requirement of Act 74, Mich. P.A. 1970

For corners in

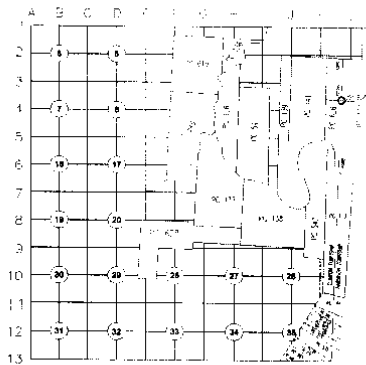
MACOMB (County) Located In: Clinton Twp. & Harrison Twp. Corner Code #
1. Public Land Survey T R
2. Property Controlling in Section S T R
3. Miscellaneous Property in Sec. S T R

8095126 LIBER 19452 PAGE 185
08/15/2008 08:41:24 A.M.
MACOMB COUNTY, MI SEAL
CARMELLA SABAUGH, REGISTER OF DEEDS
8110082 LIBER 19502 PAGE 771
09/26/2008 02:47:51 P.M.
MACOMB COUNTY, MI SEAL
CARMELLA SABAUGH, REGISTER OF DEEDS

4. Lot No. , Recorded Plat
5. Private Claims Property Controlling Corner on line common with the east line of Private Claim 626 and the west line of Private Claim 172, Town 2 North, Range 14 East, @ centerline intersection of Henry B. Joy Boulevard east-west and North Walnut south.

I, Steven E. Dunn, in a field survey on January 7, 2008, do hereby certify that under requirements of P.A. 74, Michigan P.A. of 1970, the corner points mentioned in lines 1 and 2 above were in conformance with regulations and rules therefore as required in the current manual of survey instructions of the United States Department of the Interior, Bureau of Land Management or by a decree of a Court of Law and /or that the corner points mentioned in lines 3, 4 and 5 above were in conformance with the rules of the Michigan Board of Land Surveyors or by a Decree of a Court of Law, established, re-established, monumented, re-monumented, recovered, found as expressed below:

NOTE: Not more than 2 corners, all in the same town and range, may be recorded on this certificate.



A. Description of original monument and accessories and/or subsequent restoration:

- 1810 N/A GLO Original survey performed by Aaron Greeley, L. 5, P. 32, "Ascot Park Subdivision"
1921 1" Pipe L. 5, P. 32, "Ascot Park Subdivision"
1928 N&S PC Line L. 13, P. 40, Assessors Plat No. 24
1934 N&S PC Line L. 16, P. 23, Supervisors Plat No. 5
1968 N&S PC Line L. 59, P. 7 & 8, Supervisor's Plat No. 19
1972 N&S PC Line Certificate of Survey, unrecorded, Charles G. Melching, #14767 (this corner not located on survey)
1974 N&S PC Line Certificate of Survey, unrecorded, William E. Soderberg, #17635 (this corner not located on survey)
1990 North PC Corner L. 92, P. 47-50, East Pointe Industrial Subdivision
2005 PK nail L. 16876, P. 688, LCRC, Jack N. Owens, #20709, (match 4 witness ties)



B. Description of corner evidence found and/or method applied in restoring or reestablishing corner:
PCC-002 East line of Private Claim 626 common with the West line of Private Claim 172, Town 2 North, Range 14 East. Found PK nail at the centerline pavement intersection of Henry B. Joy Road east-west and North Walnut south.

I verified the location of the found PK nail by comparing field measurements with record measurements.

FIELD MEASUREMENTS AND RECORD MEASUREMENTS (see back):

C. Description of monument for corner and accessories established to perpetuate locating the position of the corner:
PCC-002 East line of Private Claim 626 common with the West line of Private Claim 172, Town 2 North, Range 14 East. Found PK nail at the centerline pavement intersection of Henry B. Joy Road east-west and North Walnut south.

I replaced the found PK nail with a 3/4" X 36" steel rod with an aluminum cap stamped "Macomb County Monument Mi Act 345 1990 MCL, 28408, PCC-001, PCC-002" in a new monument box in asphalt pavement. Corner falls at the centerline of pavement intersection of Henry B. Joy Road east-west and North Walnut south.

WITNESSES:

- S.41°W. 81.72' Found form nail w/tag "Rowe" on southeast face of utility pole. (81.70'-Record, LCRC).
N.29°W. 51.88' Found form nail w/tag "Rowe" on southwest face of utility pole. (51.88'-Record, LCRC).
N.51°E. 68.59' Found form nail w/tag "Rowe" on west face of utility pole. (68.51'-Record, LCRC).
S.38°E. 98.12' Center top nut of hydrant. (98.18'-Record, LCRC).

THE SELECTED LOCATION IS ACCEPTED BY ME AND IS GENERALLY ACCEPTED BY PROFESSIONAL SURVEYORS AS THE BEST AVAILABLE EVIDENCE OF THE POSITION OF THE ORIGINAL CORNER.

ACCEPTED BY THE MACOMB COUNTY SURVEY PEER GROUP AS THE OFFICIAL CORNER UNDER MICHIGAN PUBLIC ACT 345 OF 1990 AT A MEETING HELD ON 6-3-08

Signed by Steven E. Dunn MARTIN C. DUNN, P.S. CHAIRMAN Date August 11, 2008
Surveyor's Michigan License No. 28408

* DOCUMENT BEING RECORDED TO CORRECT OTHER CODE FROM PCC 001 TO PCC 002

For corners in

<u>MACOMB</u> (County)	Located In: Clinton Twp. & Harrison Twp.	Corner Code #
---------------------------	--	---------------

- | | | |
|---------------------------------------|---------------------------------|-------------------|
| 1. Public Land Survey | T ___ R ___ | _____ |
| | T ___ R ___ | _____ |
| 2. Property Controlling
in Section | S ___ T <u>02N</u> R <u>13E</u> | <u>PCC-002</u> |
| | S ___ T ___ R ___ | <u>004 M.C.R.</u> |

5. Private Claims Property Controlling Corner on line common with the east line of Private Claim 626 and the west line of Private Claim 172, Town 2 North, Range 14 East, @ centerline intersection of Henry B. Joy Boulevard east-west and North Walnut south.

A. Description of original monument and accessories and/or subsequent restoration:

⁰⁰⁴
B. Description of corner evidence found and/or method applied in restoring or reestablishing corner:
PCC-002 East line of Private Claim 626 common with the West line of Private Claim 172, Town 2 North, Range 14 East. Found PK nail at the centerline pavement intersection of Henry B. Joy Road east-west and North Walnut south.

FIELD MEASUREMENTS AND RECORD MEASUREMENTS:

⁰⁰⁴ **PCC-002 (centerline intersection of Henry B. Joy Road and the line common with PC 172 and PC 626) to PC-004:** ⁰⁰²
4209.77' - Record, Tax Descriptions, west side.
4220.48' - Record, Tax Descriptions, east side.
4215.13' - Mean of record above.
4215.94' - Field. 2008 Remon.

⁰⁰⁴ **PCC-002 to found 3/4" steel rod at the intersection of the north right-of-way line of North River Road and the line common with PC 172 and PC 626:**
4393.20' - Record, Plats.
4394.82' - Field. 2008 Remon.

⁰⁰⁴ **PCC-002 to found PK nail at east line of Private Claim 172 (also being the centerline of Irwin Road south) and centerline of Henry B. Joy Road:**
2668.57' - Record, LCRC.
2668.35' - Field. 2008 Remon.

LCRC: L. 16876, P. 688, Jack N. Owens, #20709:

- Found PK nail
- N50°E 68.51' Set n/Rowe tag W. FC. P. Pole (68.59'-Field, 2008 Remon).
 - S25°E 98.18' Top Ctr. Hydrant (98.12'-Field, 2008 Remon).
 - S60°W 81.70' Set n/Rowe tag E. FC. P. Pole (81.72'-Field, 2008 Remon).
 - N20°W 51.88' Set n/Rowe tag W. FC. P. Pole (51.88'-Field, 2008 Remon).

REC'D. MACOMB CO. AUG 12 2008
REC'D. MACOMB CO. SEP 26 2008

4:00 P.M.
11:21



LAND CORNER RECORDATION CERTIFICATE
Filing Requirement of Act 74, Mich. P.A. 1970

For corners in

MACOMB (County) Located In: Harrison Twp. & Clinton Twp. Corner Code #
1. Public Land Survey T ___ R ___
2. Property Controlling in Section S ___ T 02N. R 14E. PCC-001 019
3. Miscellaneous Property in Sec. S ___ T ___ R ___

8095122
LIBER 19452 PAGE 179
08/15/2008 02:41:17 A.M.
MACOMB COUNTY, MI
CARMELLA SABAUGH, REGISTER OF DEEDS

8110081
LIBER 19502 PAGE 769
09/26/2008 02:47:51 P.M.
MACOMB COUNTY, MI
CARMELLA SABAUGH, REGISTER OF DEEDS

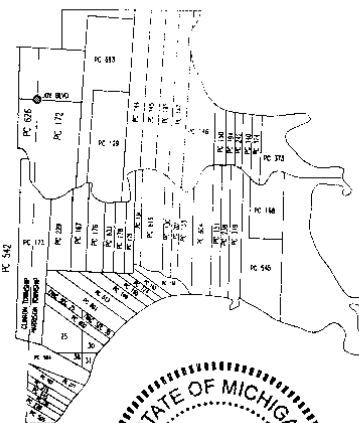
4. Lot No. ____, Recorded Plat ____
5. Private Claims Property Controlling Corner on line common with west line of Private Claim 172 and east line of Private Claim 626, Town 2 North, Range 13 East, @ centerline intersection of Henry B. Joy Road east-west and North Walnut south.

I, Steven E. Dunn, in a field survey on January 7, 2008, do hereby certify that under requirements of P.A. 74, Michigan P.A. of 1970, the corner points mentioned in lines 1 and 2 above were in conformance with regulations and rules therefore as required in the current manual of survey instructions of the United States Department of the Interior, Bureau of Land Management or by a decree of a Court of Law and /or that the corner points mentioned in lines 3, 4 and 5 above were in conformance with the rules of the Michigan Board of Land Surveyors or by a Decree of a Court of Law, established, re-established, monumented, re-monumented, recovered, found as expressed below:

NOTE: Not more than 2 corners, all in the same town and range, may be recorded on this certificate.

A. Description of original monument and accessories and/or subsequent restoration:

- 1810 N/A GLO Original survey performed by Aaron Greeley, L. 5, P. 32, "Ascot Park Subdivision"
- 1921 1" Pipe L. 5, P. 32, "Ascot Park Subdivision"
- 1928 N&S PC Line L. 13, P. 40, Assessors Plat No. 24
- 1934 N&S PC Line L. 16, P. 23, Supervisors Plat No. 5
- 1968 N&S PC Line L. 59, P. 7 & 8, Supervisor's Plat No. 19
- 1972 N&S PC Line Certificate of Survey, unrecorded, Charles G. Melching, #14767 (this corner not located on survey)
- 1974 N&S PC Line Certificate of Survey, unrecorded, William E. Soderberg, #17635 (this corner not located on survey)
- 1990 North PC Cor L. 92, P. 47-50, East Pointe Industrial Subdivision
- 2005 PK Nail L. 16876, P. 688, LCRC, Jack N. Owens, #20709 (match 4 witness ties)



B. Description of corner evidence found and/or method applied in restoring or reestablishing corner:

PCC-001 West line of Private Claim 172, common with the east line of Private Claim 626 Town 2 North, Range 13 East. Found PK nail at the centerline pavement intersection of Henry B. Joy Road east-west and North Walnut south.

FIELD MEASUREMENTS AND RECORD MEASUREMENTS (see back):

C. Description of monument for corner and accessories established to perpetuate locating the position of the corner:

PCC-001 West line of Private Claim 172, common with the east line of Private Claim 626 Town 2 North, Range 13 East. Found PK nail at the centerline pavement intersection of Henry B. Joy Road east-west and North Walnut south.

I replaced the found PK nail with a 3/4" X 3/8" steel rod with an aluminum cap stamped "Macomb County Monument Mi Act 345 1990 MCL, 28408, PCC-001, PCC-002" in a new monument box in asphalt pavement. Corner falls at the centerline of asphalt pavement intersection of Henry B. Joy Road east-west and North Walnut south.

WITNESSES:

- S.41°W. 81.72' Found form nail w/tag "Rowe" on southeast face of utility pole. (81.72'-Record, LCRC).
- N.29°W. 51.88' Found form nail w/tag "Rowe" on southwest face of utility pole. (51.88'-Record, LCRC).
- N.51°E. 68.59' Found form nail w/tag "Rowe" on west face of utility pole. (68.51'-Record, LCRC).
- S.38°E. 98.12' Cent. top nut of hydrant. (98.18'-Record, LCRC).

THE SELECTED LOCATION IS ACCEPTED BY ME AND IS GENERALLY ACCEPTED BY PROFESSIONAL SURVEYORS AS THE BEST AVAILABLE EVIDENCE OF THE POSITION OF THE ORIGINAL CORNER.

ACCEPTED BY THE MACOMB COUNTY SURVEY PEER GROUP AS THE OFFICIAL CORNER UNDER MICHIGAN PUBLIC ACT 345 OF 1990 AT A MEETING HELD ON 6-3-08

Signed by Steven E. Dunn Date August 11, 2008
Surveyor's Michigan License No. 28408

*DOCUMENT BEING RECORDED TO CORRECT OTHER CODE FROM PCC-001 TO PCC-019 AND PCC-002 TO PCC-004.

For corners in

<u>MACOMB</u> (County)	Located in: Harrison Twp. & Clinton Twp.	Corner Code #
1. Public Land Survey	T ___ R ___	_____
	T ___ R ___	_____
2. Property Controlling in Section	S ___ T <u>02N, R. 14E.</u>	<u>PCC-001 019 m d. 19</u>
	S ___ T ___ R ___	_____

5. Private Claims Property Controlling Corner on line common with west line of Private Claim 172 and east line of Private Claim 626, Town 2 North, Range 13 East, @ centerline intersection of Henry B. Joy Road east-west and North Walnut south.

A. Description of original monument and accessories and/or subsequent restoration:

B. Description of corner evidence found and/or method applied in restoring or reestablishing corner:
⁰¹⁹
 PCC-001 West line of Private Claim 172, common with the east line of Private Claim 626, Town 2 North, Range 13 East. Found PK nail at the centerline pavement intersection of Henry B. Joy Road east-west and North Walnut south.

FIELD MEASUREMENTS AND RECORD MEASUREMENTS:

⁰¹⁹
PCC-001 (centerline intersection of Henry B. Joy Road and the line common with PC 172 and PC 626) to PC 012:

4209.77' - Record, Tax Descriptions, west side.
 4220.48' - Record, Tax Descriptions, east side.
 4215.13' - Mean of record above.
 4215.94' - Field. 2008 Remon.

⁰¹⁹
PCC-001 to found 3/4" steel rod at the intersection of the north right-of-way line of North River Road and the line common with PC 172 and PC 626):

4393.20' - Record, Plats.
 4394.82' - Field. 2008 Remon.

⁰¹⁹
PCC-001 to found PK nail at east line of Private Claim 172 (also being the centerline of Irwin Road south) and centerline of Henry B. Joy Road:

2668.57' - Record, LCRC.
 2668.35' - Field. 2008 Remon.

LCRC: L. 16876, P. 688, Jack N. Owens, #20709:

Found PK nail
 N50°E 68.51' Set n/Rowe tag W. FC. P. Pole (68.59'-Field, 2008 Remon).
 S25°E 98.18' Top Ctr. Hydrant (98.12'-Field, 2008 Remon).
 S60°W 81.70' Set n/Rowe tag E. FC. P. Pole (81.72'-Field, 2008 Remon).
 N20°W 51.88' Set n/Rowe tag W. FC. P. Pole (51.88'-Field, 2008 Remon).

Survey Report
PCC-004
T.2N., R.13E., Clinton Twp.

Letters asking for unrecorded information were sent to:

AEW, Inc. – Shelby Twp.
Fenn & Associates, Inc. – Shelby Twp.
GWE – Rochester Hills
Kennedy Surveying, Inc. - Oxford
Lehner Associates, Inc. – Clinton Twp.
GLA Surveyor – Plymouth
Professional Engineering Assoc. Inc. – Troy
R. J. Donnelly & Associates Inc. – Troy
George Jerome & Company – Roseville
King Surveying, Inc. – Armada
Michigan Surveying Inc. – Livonia
David C. Adams & Son – Redford
Urban Land Consultants – Shelby Township

CORNER: Property Controlling Corner on east line of Private Claim 626 common with the west line of Private Claim 172, Harrison Township, Town 2 North, Range 14 East.

OBSERVATIONS: Found PK nail in asphalt pavement. Corner falls at the centerline pavement intersection of Henry B. Joy Boulevard east-west and North Walnut Avenue south.

PCC 004 to PC 002(Northeast Corner of Private Claim 626, Clinton Township, common with the Northwest Corner of Private Claim 172, Town 2 North, Range 14 East, Harrison Township) field measures 4215.94', within 0.81' of the mean of the record measurements tax descriptions (4209.77' record west side, 4220.48' record east side, 4215.13' mean).

PCC 004 to found ½" steel rod at the intersection of the north right-of-way line of North River Road and the line common with Private 626 and Private Claim 172 field measures 4394.82', within 1.62' of record (4393.20'), Plats.

PCC 004 to found PK nail at east line of Private Claim 172 (also being the centerline of Irwin Road south) field measures 2668.35', within 0.22' of record (2668.57' LCRC).

Also matches 4 of 4 witness ties of LCRC recorded by Jack N. Owens, #20709.

RECOMMENDATION: My recommendation to the Peer Review Board is to accept the found PK nail as the proper location for the corner.

Respectfully submitted,

Steven E Dunn, PS #28408

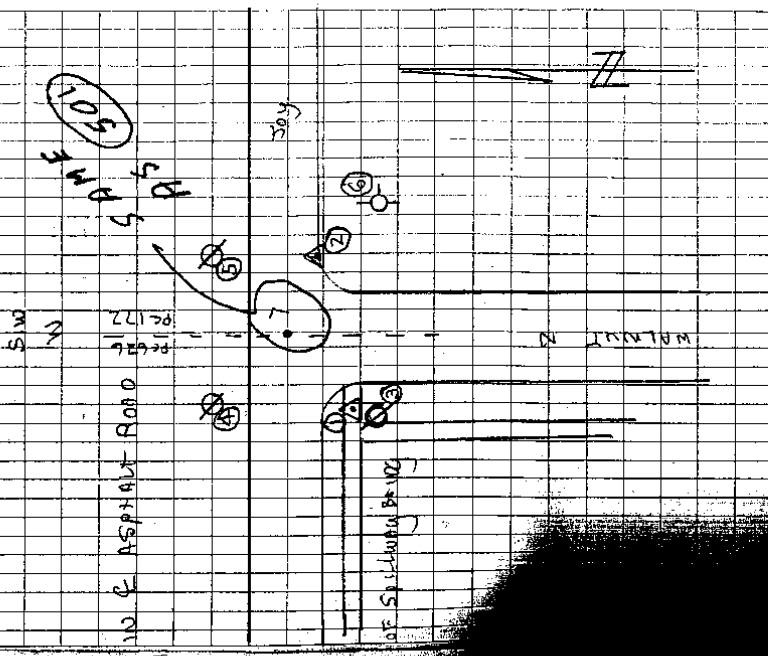
April 28, 2008

T6
SK

(26)

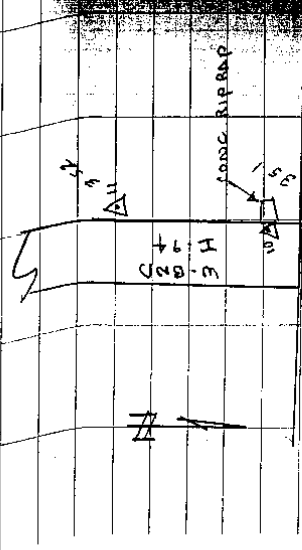
JAN 17, 2007 . FB-545

GPS FILE: 08160TIG17JAN08
DATA FILE: 17JAN08T6
"WASHER ROAD" ON S.E. SIDE OF U.D.



ID	ANGLE	DIST	SET MAG NAIL
1357			
1358			
1359			
1360			
1361			
1362			
1363			
1364			
1365			
1366			
1367			
1368			
1369			
1370			
1371			
1372			
1373			
1374			
1375			
1376			
1377			
1378			
1379			
1380			
1381			
1382			
1383			
1384			
1385			
1386			
1387			
1388			
1389			
1390			
1391			
1392			
1393			
1394			
1395			
1396			
1397			
1398			
1399			
1400			

GPS 10 SET MAG NAIL IN ASPHALT N.W. COR
GPS 11 SET 1/2" I.R. & REMON WITNESS CAP



CLINTON OVER SPILLWAY BRIDGE

HARRISON
CLINTON PCC01,002,PCC002 PCC012,013,PCC001 4-28-08

SOUTH 1/4 COR. 2295.83' N. 2295.70' E. SE COR.
FRAG. SEC. 1 0.36' SOUTH FRAG. SEC. 1
FD. 1/2" ROD W/ CAP 30103 PCC001 PCC012 FD. CONC. MARK
1009.81' N. 1009.85' E. 1286.03' N. 1285.85' E.

90°05'30" R.
30°04'09" N.
PC 626
TOWNSHIP
TOWNSHIP LINE
89°54'30" E.
89°58'04" N.
PC 172

1347-1749
1411-1437

& HENRY B. JOY PCC002 PCC001
2668.35' N.

90°03'55" N.

CLINTON HARRISON
10725.28' N.
N. RIVER
FD. 3/4" ST. ROD
2114.59' N.
IRWIN ROAD



PCC002 PCC013
FD. 3/4" ST. ROD

CLINTON RIVER

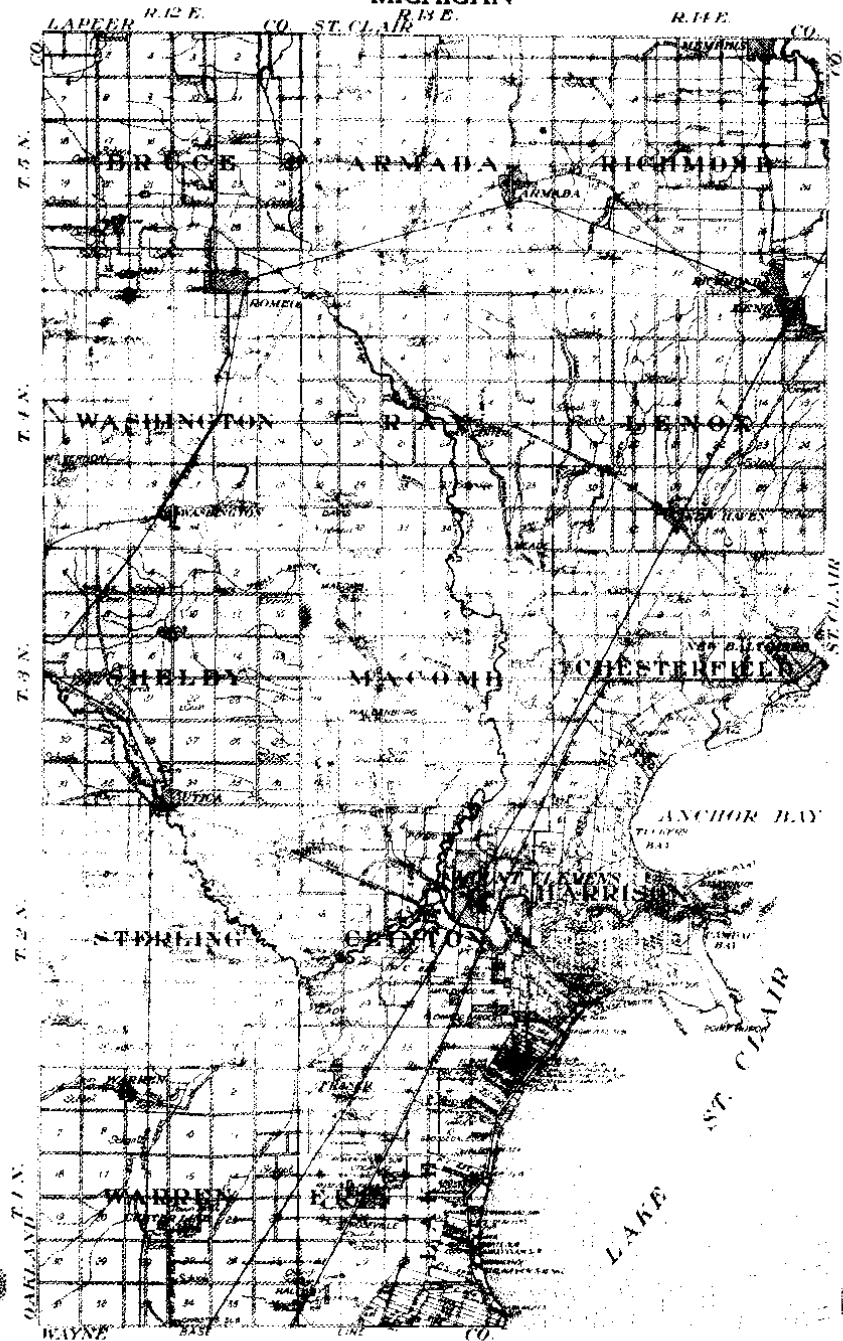
OUTLINE MAP OF
MACOMB COUNTY

MICHIGAN

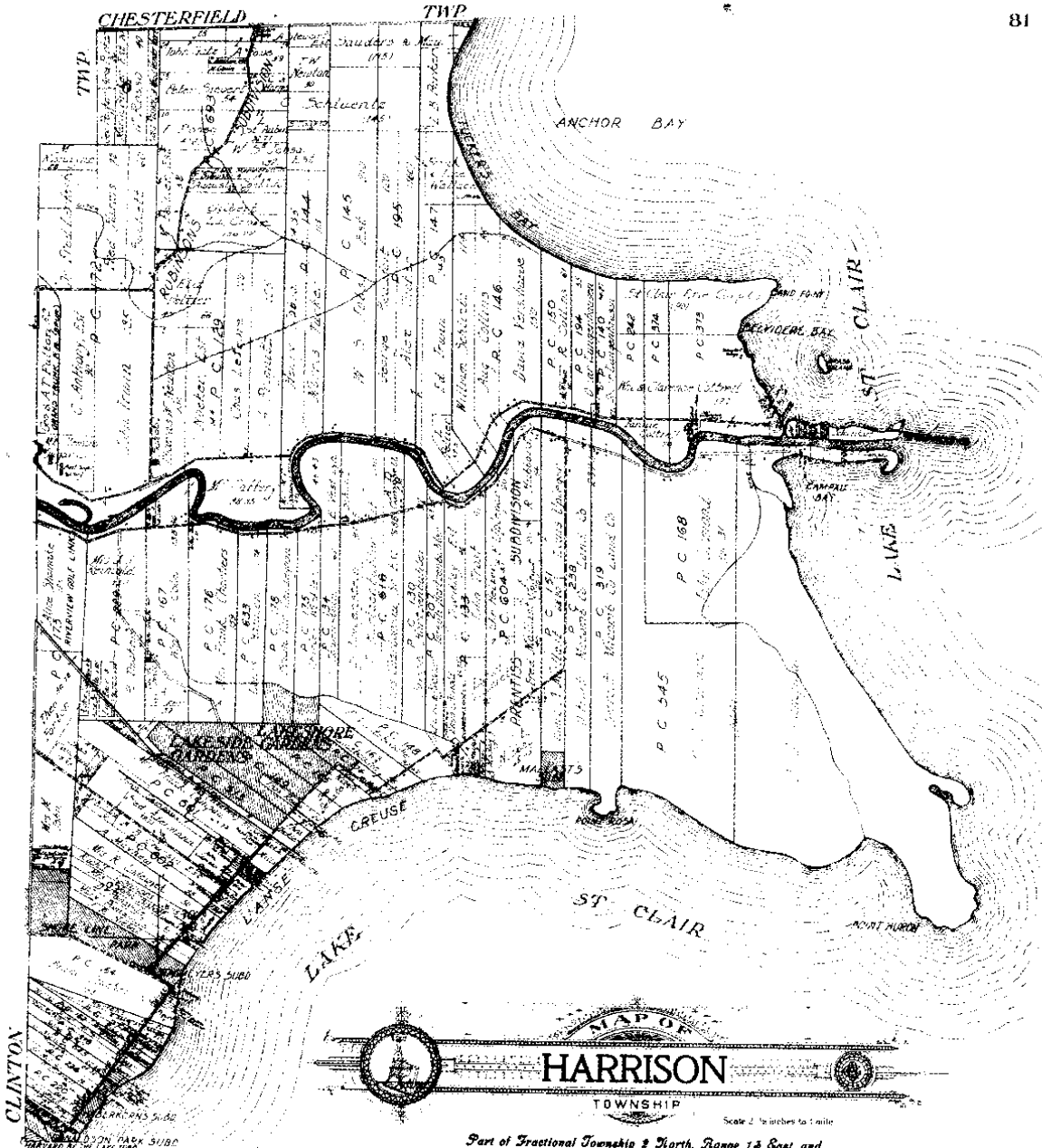
Scale 1/2 inch to 1 mile

7

Copyright 1914 by Geo. A. Ogle & Co.



Scanned By:
METCO
Engineers, Architects & Surveyors



CLINTON

CHESTERFIELD TWP

ANCHOR BAY

ST. CLAIR

ST. CLAIR

LAKE

HARRISON

TOWNSHIP

Scale 2 inches to 1 mile

Part of Fractional Township 2 North, Range 13 East and Fractional Township 2 North, Range 14 East of the Michigan Meridian

METCO

CLINTON

TOWNSHIP

Scale 2 miles to an inch

Fractional Township 2 North, Range 73 East of the Michigan Meridian

MACOMB

TWP

TWP

TWP

STERLING

HARRISON

BRIN

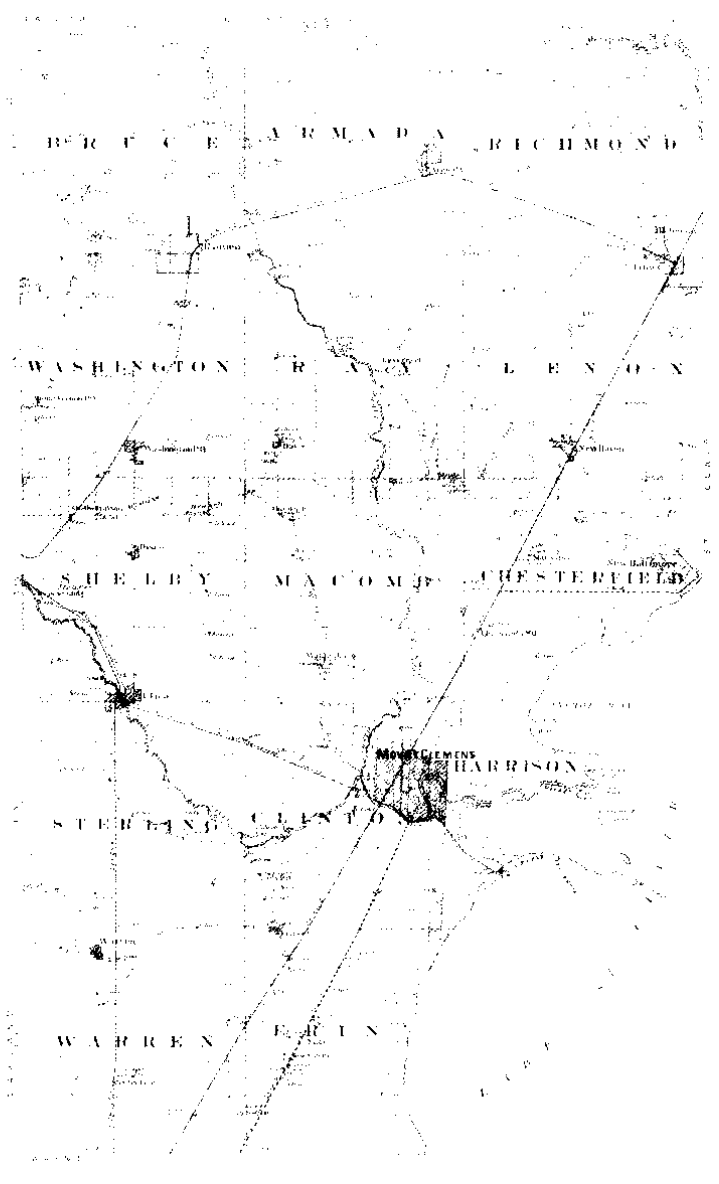
TWP

LAKE

TWP

METCO

OUTLINE MAP
of
MACOMB COUNTY MICHIGAN



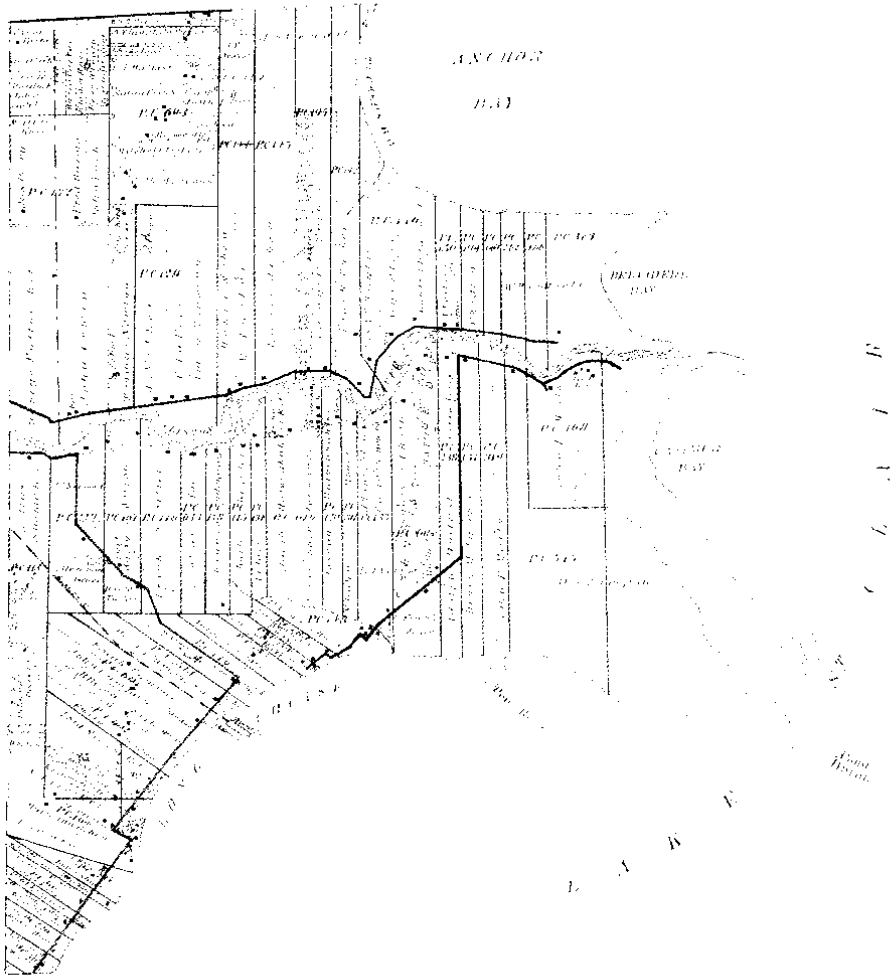
Scanned by
METCO
Farmers, McIntosh & Sweeney

MAP OF HARRISON

Township 2 North Range 11 East

Scale 1/2 inch = 1 mile

Copyright 1900

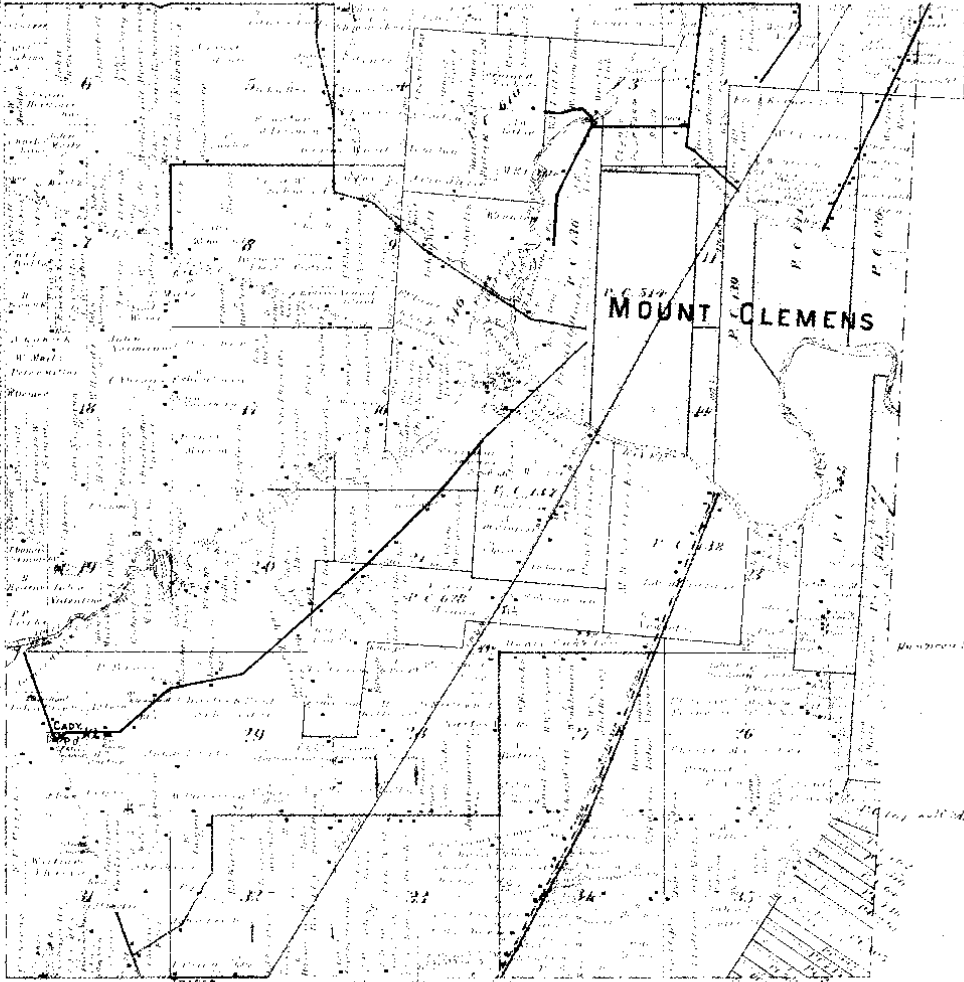


MAP OF CLINTON

Township 2 North Range 13 East

Scale 1 inch to one mile

Map of Mount Clemens



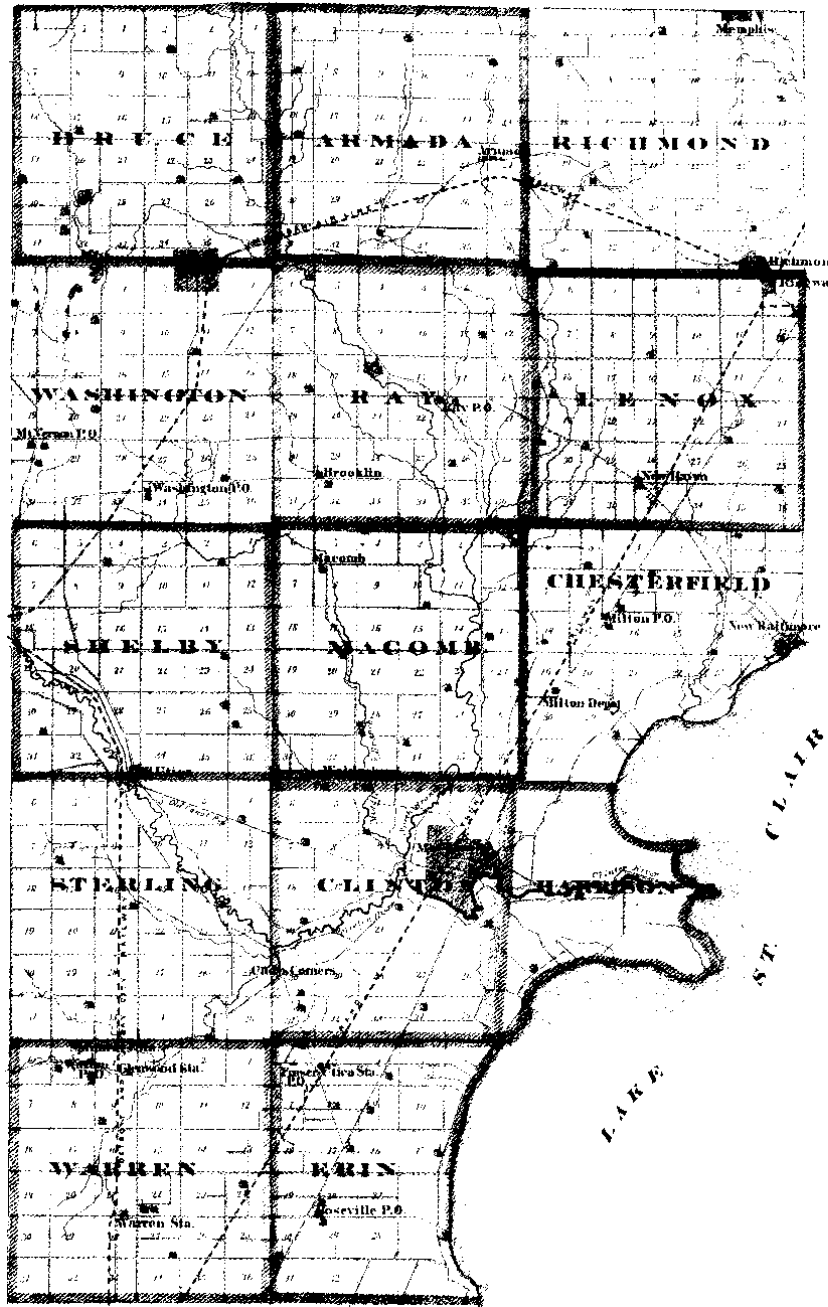
MARSHALL & COMPANY

RAILROAD MAP

1875

SCALE 7 MILES TO AN INCH

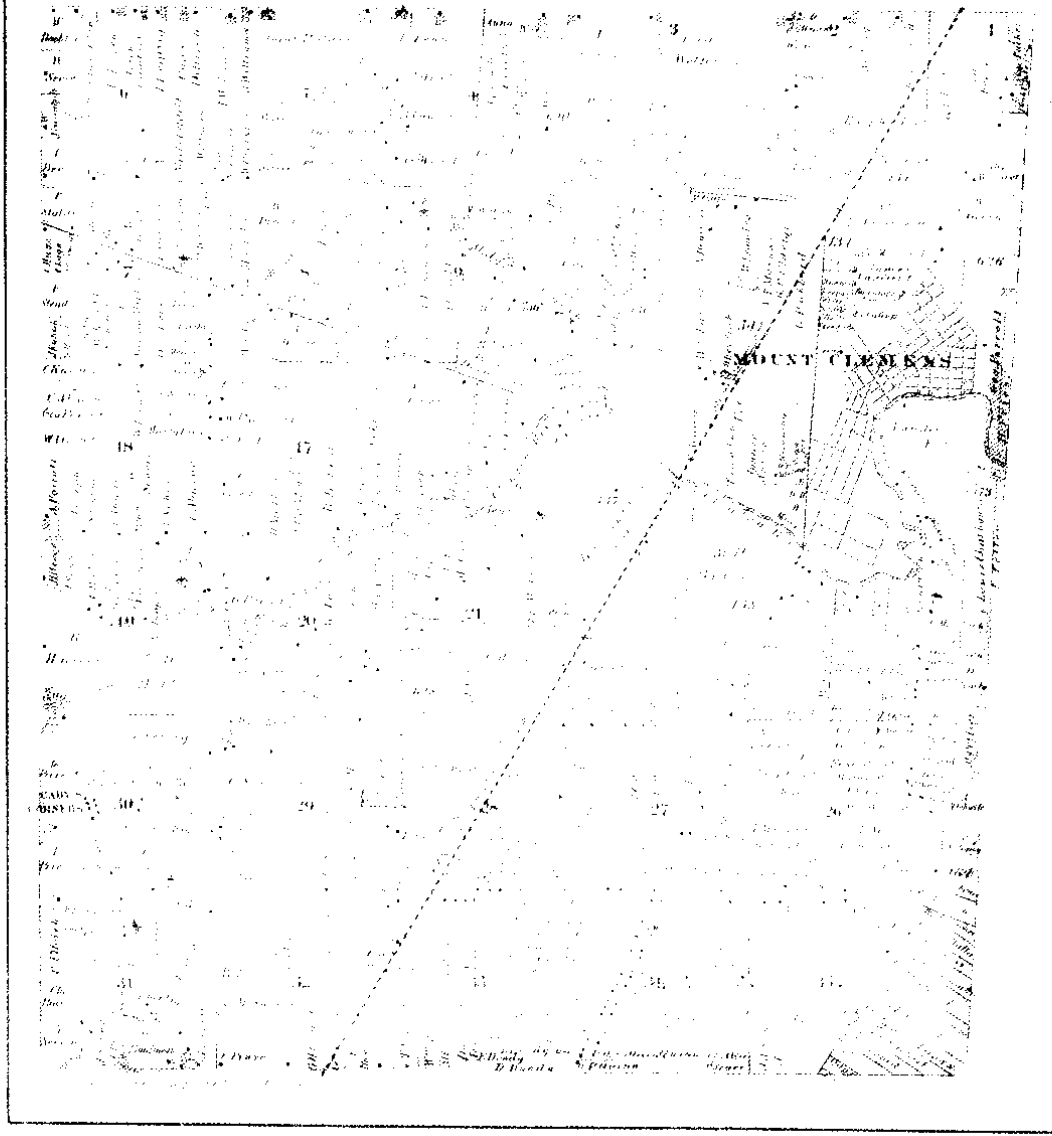
COMPILED & DRAWN BY OLIVER P. MACEEDY, C. E.



METCO
MADE IN U.S.A.

MAP OF CLINTON TOWNSHIP

1875



North Side of River Huron

Chains fifteen links, to a Buttonwood tree standing on the border of Oliver Huron. Thence along the border of said River up stream north Eighty eight degrees west seven chains. Thence north forty one degrees west six chains. Thence north three chains. Thence north twenty four degrees east seven chains. Thence north forty one degrees west seven chains. Thence north eighty one degrees thirty minutes west eighteen chains, to the place of beginning containing three hundred and fifty one acres and one tenth of an acre.

Detroit July 14 1810

Haron Greeley Surveyor of Private Claims.

North

west four or
degrees
Sixty seven
Thence
Seven chains
of beginning
and
south of
Detroit

N. 571

Description
William
standing on
between the
ed to John
two hundred
seven links
the tract is
East fifty six
Containing
ferred to
Eighty four
an acre
tract
West forty
the North
Common
and
foot
River
of said
ty four
seven

N. 490. North Side of River Huron

Description N. 172. Confirmed to John Astor Junior commencing at a Buttonwood tree standing on the border of Oliver Huron between this tract and a tract conferred to Christian Glesman Thence north one hundred and fifty two chains fifteen links, to a Black ash tree Thence East thirty seven chains fifty links to a Black ash tree. Thence south one hundred and fifty five chains fifty links to a post standing on the border of River Huron between this tract and unlocated land, Thence along the border of said River up stream north fifty six degrees west twelve chains, then north Eighty — degrees west seven chains Thence north Sixty six degrees west eight chains. Thence north twenty one degree

1 - 1 8457
North Side of River Huron

470

west four chains, thence north eleven and a half degrees east nine chains, thence north fifty seven degrees west three chains, thence north eighty eight degrees west eleven chains forty five links, to the place of beginning containing four hundred and sixteen acres and one hundred and thirty six rods.

Detroit July 14, 1810

James Greenleaf Esq. of Detroit
Attorney for the said Plaintiff.

No. 571. North Side of River Huron.

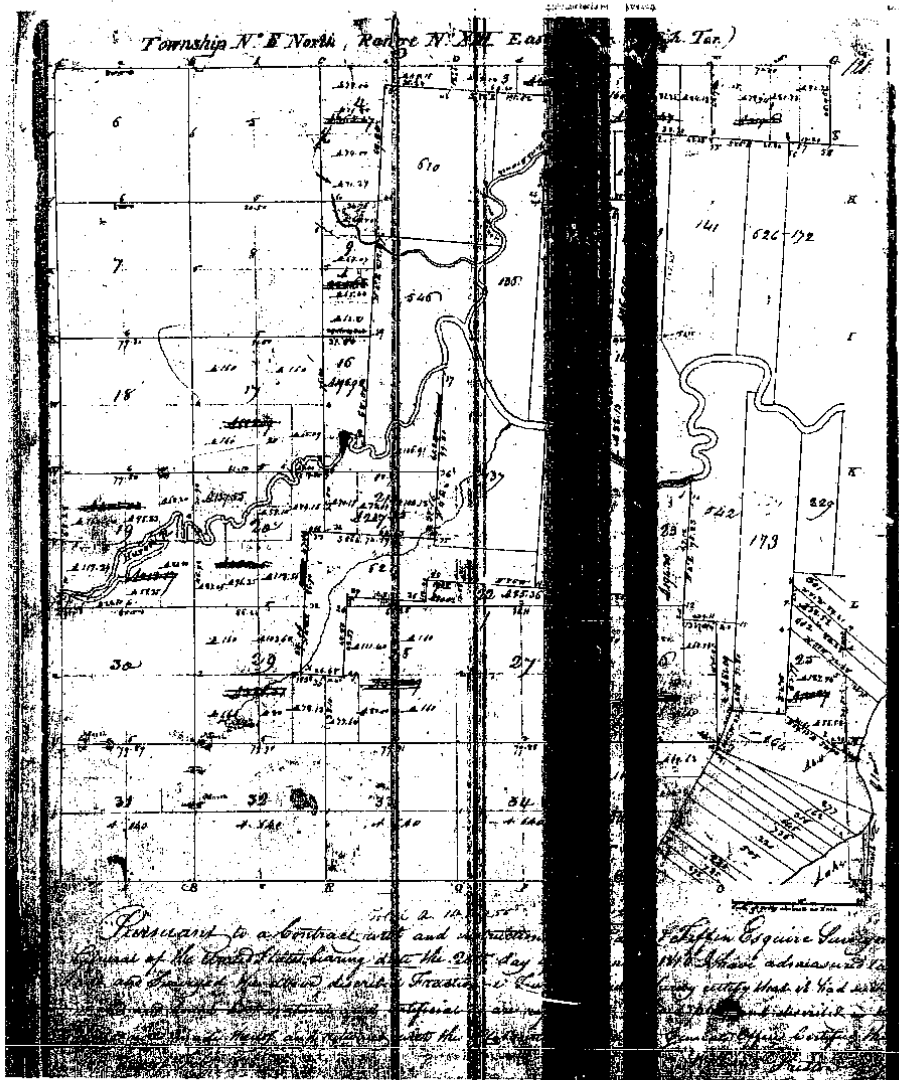
Description. No. 698 Confirmed to William Connor commencing at a post standing on the North border of River Huron between his tract and a tract conveyed to John Ashkin Junior; thence north two hundred and one chains thirty seven links; to a post standing between this tract and unconceded lands, thence East fifty three chains fifty links; to a post standing on the west line of a tract conveyed to John Suckor. Thence south eighty four chains forty seven links, to an Elm tree the North east corner of a tract confirmed to James Connor, thence West forty chains fifty links, to a post the North west corner of said James Connor's tract. Thence South one hundred and ten chains eighty two links, to a post standing on the North border of River Huron thence along the border of said River up stream South Sixty four degrees East fourteen chains forty seven links, to the place of beginning.

Huron
Bitter wood
of River Huron
of said River
the degrees west
forty one deg
north three
four degrees
north forty
links, thence
by river
place of begin
ward and
with four and

Huron
Claims.

Huron
confirmed to
commencing at a
on the border
is tract and
James Greenleaf
and fifty two
Black ash tree
in fifty links
south one
and fifty link
border of
act and
long this
North
links, thence
seven chains
west eight
y one degree

METCO



Management, Engineering & Technical Consultants

12504 Stephens Warren, MI 48089 (586) 755-5770 Fax (586) 755-5774

No. 491

No. 626 Confirmed to
Christian Clemans

NORTH SIDE OF RIVER HURON

Description No. 626 Confirmed to Christian Clemans commencing at a post standing on the border of River Huron between this tract and a tract confirmed to the claimant thence north one hundred and twenty six chains twenty three links to a post thence east twenty six chains forty one links to a post the northwest corner of a tract confirmed to John Askin Junior thence south one hundred and fifty two chains fifteen links to a bottomwood tree standing on the border of River Huron thence along the border of said river up stream north eighty eight degrees west seven chains thence north forty one degrees west six chains thence north north three chains thence north twenty four degrees east seventeen chains thence north forty one degrees west seven chains thence south eighty one degrees thirty minutes west eighteen chains to the place of beginning, containing three hundred and fifty one acres and one tenth of an acre ____

Detroit July 14th, 1810

Aaron Greeley Surveyor
of private claims

PCC002
CLINTON

LAND CORNER RECORDATION CERTIFICATE
Filing Requirement of Act 74, Mich. P.A. 1970

For corners in HARRISON TWP (2N) (14E)
MACOMB (County) Located In: Corner Code #

1. Public Land Survey	T	R	
	T	R	
	T	R	
2. Property Controlling In Section	S	T	R
	S	T	R
3. Miscellaneous Property In Sec.	S	PC172	T R N/A
	S	T	R

4. Lot No. _____ Recorded Plat _____
5. Private Claims 172 POINTS ON W. LINE & E. LINE PC172 (E. LINE PC626 & W. LINE PC693)

5120565
LIBER 16876 PAGE 688

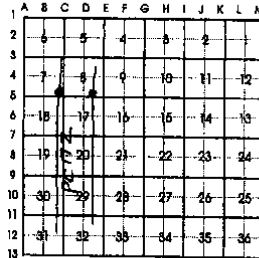


07/06/2005 02:38:34 P.M.
MACOMB COUNTY, MI SEAL
CARMELLA SABAUGH, REGISTER OF DEEDS

Register of Deeds Stamp & File Number

I, Jack N. Owens, Ps. in a field survey on June 24, 2005 do hereby certify that under requirements of P.A. 74, Michigan P.A. of 1970, the corner points mentioned in lines 1 and 2 above were in conformance with regulations and rules therefore as required in the current manual of survey instructions of the United States Department of the Interior, Bureau of Land Management or by a decree of a Court of Law and/or that the corner points mentioned in lines 3, 4 and 5 above were in conformance with the rules of the Michigan Board of Land Surveyors or by a Decree of a Court of Law; established, re-established, monumented, re-monumented, recovered, found as expressed below:

NOTE: Not more than 4 corners, all in the same town and range, may be recorded on this certificate.



A. Description of original monument and accessories and/or subsequent restoration:

GLO: NOT SET; GLO MARKED LINES BUT NOT MONUMENT ANY POINTS.

ONLY RECORD OBTAINED WAS A SURVEY BY LEHNER ASSOCIATES, INC., BY ^{ROBT} ~~JOHN~~ L. SMITH, PS, JOB NO. 98-757. SHOWS INTERSECTION OF C/L JOY RD. & CLINTON/HARRISON TWP. LINE (LINE BETWEEN PC 626 & 172). NOT DESCRIBE MONUMENT AT POSITION.

B. Description of corner evidence found and/or method applied in restoring or reestablishing corner:

RECOVERED A PK NAIL AT C/L CONC. PVMT. OF JOY ROAD AT W. LINE OF PC 172 AND C/L WALNUT RD. TO SOUTH. FOUND ANOTHER PK NAIL AT E. LINE PC 172 WHICH IS IT A GATE TO SELFRIDGE FIELD AN ON C/L IRWIN RD WHICH RUNS S ALONG E. LINE PC 172. FROM THE W'LY PK IT IS S²⁵³⁰^E 2668.57 FT. TO THE E'LY PK NAIL POSITIONS AGREE WITH USGS QUAD MAPS (BASED ON AERIAL MAPPING) SHOWING ROADS AND PC LINES/NOS. AND PLSS LINES AND SECTIONS.

C. Description of monument for corner and accessories established to perpetuate locating the position of the corner:

FOUND PK NAIL W. LINE PC 172	FOUND PK NAIL E. LINE PC 172
N50°E 68.51' SET N/ROWE TAG W. FC. P.POLE	N40°E 46.13' SET N/ROWE TAG SE. FC. P.POLE
S25°E 98.18' TOP CTR. HYDRANT	S20°E 80.58' SET N/ROWE TAG W. FC. P.POLE
S60°W 81.70' SET N/ROWE TAG E. FC. P.POLE	S40°W 87.07' SET N/ROWE TAG SE. FC. 12" ASH
N20°W 51.88' SET N/ROWE TAG W.F.C. P.POLE	N60°W 93.62' SET N/ROWE TAG SE. FC. P.POLE

Signed by Jack N. Owens
Surveyor's Michigan License No. 20709

Date June 30, 2005



REVISED MAY 14, 1975
REVISED JAN. 1989
ADAPTED FOR WORD PROCESSING MARCH 1992

DESCRIPTION

A parcel of land in and being a part of P.C. 172, T.2N., R.14E., Harrison Township, Macomb County, Michigan and being more particularly described as follows:

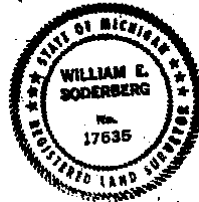
Beginning at a point on the North line of P.C. 172, S. 86° 39' 30" E. (S. 86° 36' E. Record) 926.0 feet from the Northwest corner of P.C. 172; thence S. 3° 15' W. (S. 3° 05' W. Record) 930.0 feet; thence S. 86° 39' 30" E. (S. 86° 22' E. Record) 380.0 feet; thence N. 2° 34' 18" E. (N. 2° 51' 48" E. Record) 520.0 feet; thence N. 00° 19' 18" E. 386.70 feet to the North line of P.C. 172; thence N. 86° 39' 30" W. (N. 86° 36' W. Record) 353.60 feet along the North line of P.C. 172 to the Point of Beginning and containing 7.802 Acres. Subject to Easements of Record. *Recon Set*

Together with the following easement for ingress and egress; beginning at a point on the West line of P.C. 172 S. 3° 15' W. 594.92 feet; thence S. 3° 15' W. (S. 3° 05' W. Record) 305.08 feet along the West line of P.C. 172; thence S. 86° 39' 20" E. (S. 86° 36' E. Record) 926.0 feet; thence S. 3° 15' W. (S. 3° 05' W. Record) 30.0 feet; thence N. 86° 39' 30" W. (N. 86° 36' W. Record) 946.0 feet; thence N. 3° 15' W. (N. 3° 05' W. Record) 285.20 feet to the South line of Barbret Court; thence N. 86° 19' W. 1341.39 feet along the South line of Barbret Court to the Easterly line of Gratiot Avenue; thence N. 21° 40' 10" W. 52.56 feet (N. 21° 41' E. 52.66 Record) along said line to the North line of Barbret Court; thence S. 86° 19' E. 1344.79 feet along said line to the Point of Beginning.

SURVEYOR'S CERTIFICATE: I hereby certify that I have surveyed and mapped the land above platted and/or described on 27. November, 1974 and that the ratio of closure on the unadjusted field observations of such survey was 1:5,000 and that all of the requirements of P.A. 132, 1970, have been complied with.

ANDERSON, ECKSTEIN AND WESTRICK, INC.

William E. Soderberg
 William E. Soderberg, R.L.S. No. 17635
 42800 Garfield Road
 Mount Clemens, Michigan, 48043



WITNESSES:

NW Corner P.C. 172
 Set ReRod. from previous survey in area

Back Curb South 24.20
 Center Storm Manhole S.W. 20.82
 Center Gatewell W.S.W. 53.13

AMENDED PLAT OF LOT 9 OF
EAST POINTE INDUSTRIAL SUBDIVISION
 A SUBDIVISION OF PART OF EAST 1/2 & WEST 1/2 OF
 FRACTIONAL SECTION 1, T.2N., R.13E., CLINTON TOWNSHIP,
 MACOMB COUNTY, MICHIGAN

SURVEYOR'S CERTIFICATE

I, ROBERT L. SMITH, SURVEYOR, CERTIFY THAT I HAVE SURVEYED, DIVIDED AND MAPPED THE LAND SHOWN ON THIS PLAT, DESCRIBED AS

AMENDED PLAT OF LOT 9 OF EAST POINTE INDUSTRIAL SUBDIVISION

A SUBDIVISION OF PART OF EAST 1/2 AND WEST 1/2 OF FRACTIONAL SECTION 1, T.2N., R.13E., CLINTON TOWNSHIP, MACOMB COUNTY, MICHIGAN, AND BEING MORE PARTICULARLY DESCRIBED AS FOLLOWS:

COMMENCING AT THE NORTHEAST CORNER OF FRACTIONAL SECTION 1, THENCE S.03°24'00"W. 2747.62 FT. ALONG THE EAST LINE OF FRACTIONAL SECTION 1, ALSO BEING A LINE COMMON TO HARRISON TOWNSHIP AND CLINTON TOWNSHIP, TO THE POINT OF BEGINNING; THENCE S.89°22'30"W. W. 4622.57 FT. TO THE SOUTH LINE OF FRACTIONAL SECTION 1, ALSO BEING THE NORTH LINE OF S.C. 172; THENCE S.82°22'30"W. W. 4622.57 FT. TO THE EAST LINE OF LOT 10 OF "EAST POINTE INDUSTRIAL SUBDIVISION", AS RECORDED IN LIBER 92 PAGE 47; THENCE ALONG THE EAST LINE OF SAID LOT 10 TO 1607.19 FT.; 430.11 FT. TO THE SOUTH RIGHT OF WAY LINE OF CAPITAL BLVD. AND THE NORTHEAST CORNER OF SAID A CURVE (RADIUS 77.00 FT.) TO THE LEFT; THENCE ALONG SAID CURVE TO THE POINT OF BEGINNING; BEARS N.89°22'30"W. 88.18 FT. TO THE SOUTH WEST CORNER OF LOT 8 OF SAID "EAST POINTE INDUSTRIAL SUBDIVISION", AS RECORDED IN LIBER 92 PAGE 47; THENCE S.82°40'44"E. 374.82 FT. ALONG THE SOUTH LINE OF SAID LOT 8 OF "EAST POINTE INDUSTRIAL SUBDIVISION", AS RECORDED IN LIBER 92 PAGE 47; THENCE S.82°40'44"E. 374.82 FT. TO AN INTERMEDIATE TRANSVERSE LINE, THENCE ALONG SAID LINE THREE BEARING AND DISTANCES S.03°24'00"W. 2747.62 FT. TO THE POINT OF BEGINNING; BEARS N.89°22'30"W. 88.18 FT. TO THE SOUTH LINE OF SAID LOT 8 OF "EAST POINTE INDUSTRIAL SUBDIVISION", AS RECORDED IN LIBER 92 PAGE 47; 450.44 FT. TO THE SOUTH LINE OF SAID LOT 9 OF "EAST POINTE INDUSTRIAL SUBDIVISION", AS RECORDED IN LIBER 92 PAGE 47; 28.07 FT. TO THE POINT OF BEGINNING, CONTAINING ONE LOT NUMBERED 9 AND CONTAINING 5.08 ACRES OF LAND.

THAT I HAVE MADE SUCH SURVEY, LAND DIVISION AND PLAT BY THE DIRECTION OF THE OWNERS OF SAID LAND THAT SUCH PLAT IS A CORRECT REPRESENTATION OF ALL THE EXTERIOR BOUNDARIES OF THE LAND SURVEYED AND THE LOCATION OF ALL THE ACQUIRED MONUMENTS AND LOT MARKERS HAVE BEEN LOCATED IN THE GROUND, AS REQUIRED BY SECTION 125 OF THE ACT; THAT THE ACCURACY OF SURVEY IS WITHIN THE LIMITS REQUIRED BY SECTION 126 OF THE ACT; THAT THE ACCURACY OF SURVEY IS WITHIN THE LIMITS REQUIRED BY SECTION 126 (3) OF THE ACT AND AS EXPLAINED IN THE LEGEND.

DATE: MAY 10 2004



LEHNER ASSOCIATES, INC.
 17009 19 MILE ROAD - SUITE 3
 CLINTON TOWNSHIP, MICHIGAN 48038
 REGISTERED PROFESSIONAL SURVEYOR NO. 16052
 VICE PRESIDENT, LEHNER ASSOCIATES, INC.

CERTIFIED TRUE COPY OF
 RECORDED PLAT
 BY DEPARTMENT OF LABOR
 BY THE ECONOMIC GROWTH
 AND INFRASTRUCTURE
 DIVISION, AS DIRECTOR OF
 OFFICE OF LAND SURVEY
 AND COMMENSURATION
 DATE: 5-11-04

I, ROBERT L. SMITH, SURVEYOR, DO HEREBY CERTIFY THAT THE AMENDED PLAT OF LOT 9 OF "EAST POINTE INDUSTRIAL SUBDIVISION", A SUBDIVISION OF PART OF EAST 1/2 & WEST 1/2 OF FRACTIONAL SECTION 1, T.2N., R.13E., CLINTON TOWNSHIP, MACOMB COUNTY, MICHIGAN, WAS PREPARED AND MAPPED BY ME OR UNDER MY CLOSE PERSONAL SUPERVISION AND IN ACCORDANCE WITH THE REQUIREMENTS OF THE ACT, AS AMENDED BY THE ORDER IN THE MATTER OF DRAKE ENTERPRISES, INC., A MICHIGAN CORPORATION, PETITIONER WHICH WAS ENTERED BY CIRCUIT JUDGE DONALD C. MILLER IN CIRCUIT COURT, UNDER CASE NO. 02-2722-SM, COUNTY OF MACOMB, STATE OF MICHIGAN, IN TESTIMONY WHEREOF I HAVE HEREUNTO SET MY HAND AND OFFICIAL SEAL AT THE COUNTY OF MACOMB, STATE OF MICHIGAN, THIS 29th DAY OF JUNE, 2004.



ROBERT L. SMITH
 PROFESSIONAL SURVEYOR NO. 16052

I, CARMELLA SABAUGH, COUNTY CLERK, DO HEREBY CERTIFY THAT THE AMENDED PLAT 1/2 & WEST 1/2 OF FRACTIONAL SECTION 1, T.2N., R.13E., CLINTON TOWNSHIP, MACOMB COUNTY, MICHIGAN IS A TRUE AND EXACT COPY OF THE PORTION OF THE PLAT AS AMENDED BY THE ORDER IN THE MATTER OF DRAKE ENTERPRISES, INC., A MICHIGAN CORPORATION, PETITIONER WHICH WAS ENTERED BY CIRCUIT JUDGE DONALD C. MILLER IN CIRCUIT COURT, UNDER CASE NO. 02-2722-SM, COUNTY OF MACOMB, STATE OF MICHIGAN, IN TESTIMONY WHEREOF I HAVE HEREUNTO SET MY HAND AND OFFICIAL SEAL AT THE COUNTY OF MACOMB, STATE OF MICHIGAN, THIS 29th DAY OF JUNE, 2004.

Carmella Sabaugh
 CARMELLA SABAUGH, COUNTY CLERK
 REGISTER OF DEEDS

RECORDING CERTIFICATE
 STATE OF MICHIGAN)
 COUNTY OF MACOMB)

THIS PLAT WAS RECEIVED FOR RECORD ON
 THE DAY OF May
 2004 AT 2:07 PM AND RECORDED
 IN LIBER 151 OF PLATS ON PAGE 16, 17

Carmella Sabaugh
 CLERK
 REGISTER OF DEEDS

LEHNER ASSOCIATES, INC.
 PROFESSIONAL ENGINEERS & SURVEYORS
 17009 19 MILE ROAD - SUITE 3
 CLINTON TOWNSHIP, MICHIGAN 48038
 586-412-7050
 FAX: 586-412-7114

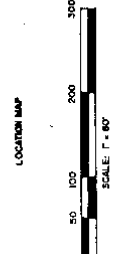
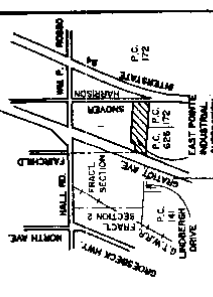
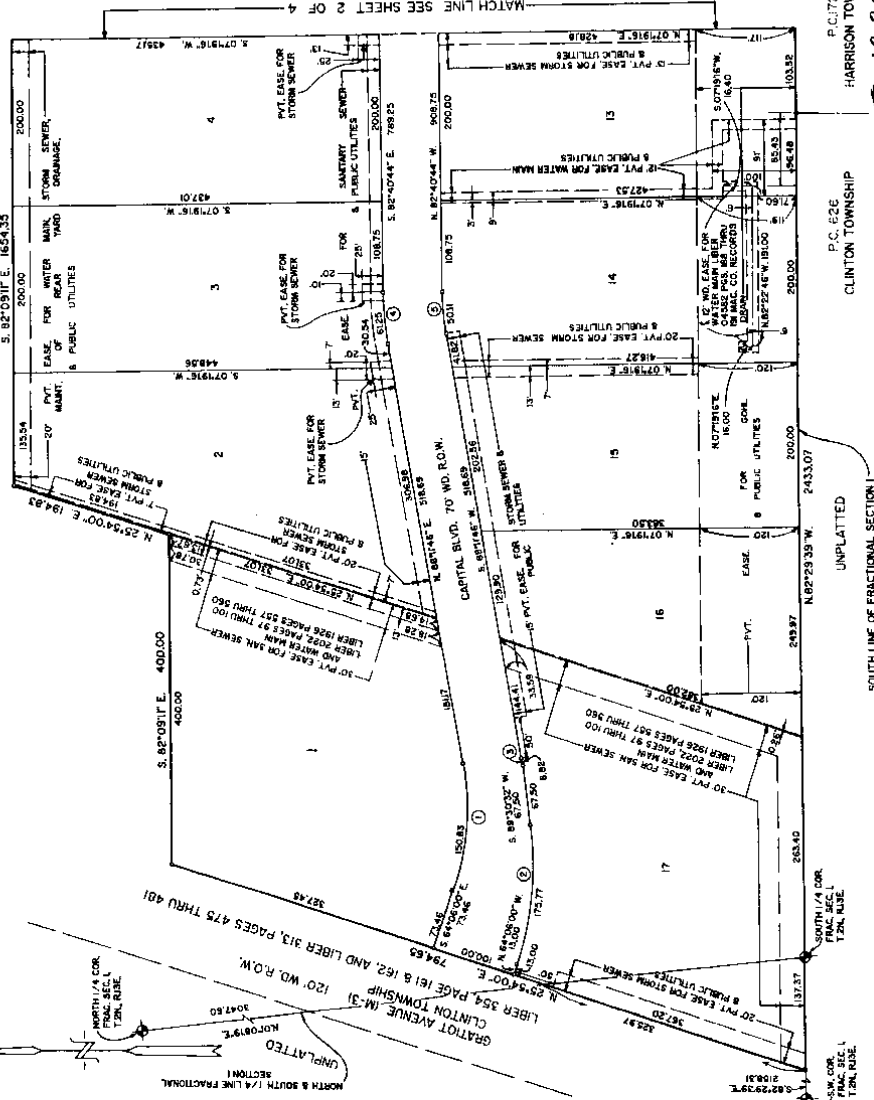
67438

SHEET 2 OF 2

EAST POINTE INDUSTRIAL SUBDIVISION
 A SUBDIVISION OF PART OF EAST 1/2 & WEST 1/2 OF
 FRACTIONAL SECTION 1, T.2N., R.13E., CLINTON TOWNSHIP,
 MACOMB CO., MICHIGAN

CURVE #	BAUMUS	ARC	LONG CHORD	COORD.	DELTA
1	312.00	12.31	5.7178707 E.	50.65	271.4233
2	315.00	17.33	5.7717435 E.	75.77	287.9377
3	315.00	18.33	5.7823215 E.	83.22	292.4848
4	315.00	18.33	5.7823215 E.	83.22	292.4848
5	315.00	18.07	5.7712252 E.	50.00	287.0330

UNPLATTED.



CERTIFIED TRUE COPY OF
 RECORDING PLAT
 BY DEPARTMENT OF COMMERCE
 STATE OF MICHIGAN
 REGISTERED PROFESSIONAL SURVEYOR
 ROBERT L. SMITH
 No. 12858
 EXPIRES 12/31/2013

LEGEND
 ALL DIMENSIONS ARE SHOWN IN FEET.
 ALL CURVILINEAR DIMENSIONS ARE SHOWN
 ALONG THE CHORD.
 THE SYMBOL \curvearrowright INDICATES A 4" DIAMETER
 MONUMENT \curvearrowright 1/2" IRON ROD CENTER CONCRETE
 MONUMENT.
 ALL LOT MARKERS ARE 18" LONG 1/2" IRONS.
 000 INDICATES RADIAL LOT LINES.
 0000 INDICATES NOT RADIAL LOT LINES.
 THE CENTER LINE OF THE CENTER LINE OF
 NORTH GRADIT HEIGHTS SUB. AS RECORDED IN
 LIBER 21 PAGE 3, MACOMB COUNTY RECORDS.
 THERE SHALL BE NO DIRECT VEHICULAR ACCESS
 TO GRATNOT AVENUE (M-31) FROM LOTS 1, 2, 3, 4, 5,
 6, 7, 8, 9, 10, 11, 12, 13, 14, 15, 16, 17, 18, 19, 20, 21, 22,
 ACCESS TO THE 1/4" 24" CONNECTOR (SHOWER ROAD)
 FROM LOTS 8 AND 9.



ROBERT L. SMITH

12.85.85

SHEET 1 OF 4

051720

1. 92, P. 47-50

12-13-1994



EAST POINTE INDUSTRIAL SUBDIVISION
A SUBDIVISION OF PART OF EAST 1/2 & WEST 1/2 OF
FRACTIONAL SECTION 1, T.2N., R.13E., CLINTON TOWNSHIP,
MACOMB CO., MICHIGAN

COUNTY TREASURER'S CERTIFICATE

The records in my office show no unpaid taxes or special assessments for the lots shown on this plat, involving the lands included in this plat.

Robert L. Smith
 COUNTY TREASURER
 MACOMB COUNTY OF MICHIGAN

CERTIFICATE OF MUNICIPAL APPROVAL

I certify that this plat was approved by the Township Board of the Township of Clinton, Michigan, and was reviewed and found to be in compliance with Act 208, P.A. 1980, and that the public sewer and public water services have been installed and are ready for use within this plat.

and that surety is posted for one year to insure the placement of monuments and lot markers.

Robert L. Smith
 DEPUTY TOWNSHIP CLERK

COUNTY DRAIN COMMISSIONER'S CERTIFICATE

Approved on 10/13/1980 as complying with Section 19 of Act 208, P.A. 1980, and the applicable rules and regulations of the Board of Drain Commissioners in the County of Macomb.

Robert L. Smith
 COUNTY DRAIN COMMISSIONER
 MACOMB COUNTY OF MICHIGAN

MICHIGAN DEPARTMENT OF TRANSPORTATION
 APPROVED ON 10/13/1980 AS COMPLYING WITH ACT 208, P.A. OF 1980 AND THE APPLICABLE RULES AND REGULATIONS OF THE DEPARTMENT OF TRANSPORTATION.

James R. Kelly
 JAMES R. KELLY, DIRECTOR

CERTIFICATE OF COUNTY ROAD COMMISSIONER'S

Approved on 10/13/1980 as complying with Section 18B of Act 208, P.A. 1980, and the applicable published rules and regulations of the Board of Road Commissioners of Macomb County.

Robert L. Smith
 COUNTY ROAD COMMISSIONER
 MACOMB COUNTY OF MICHIGAN

COUNTY PLAT BOARD CERTIFICATE

This plat has been reviewed and is approved by the Macomb County Plat Board on 10/13/1980 as being in compliance with the applicable rules and regulations.

Mark A. Stebbins
 MARK A. STEBBINS
 CHAIRMAN, COUNTY BOARD OF COMMISSIONERS

Robert L. Smith
 ROBERT L. SMITH
 COUNTY TREASURER

DEPUTY CLERK, REGISTER OF DEEDS

RECORDING CERTIFICATE

STATE OF MICHIGAN
 MACOMB COUNTY

This plat was required for record on the 13 day of Oct, 1980, at 1:00 P.M. and recorded in Liber 100 of Plats on 10/13/1980 at 1:00 P.M.

Robert L. Smith
 REGISTER OF DEEDS



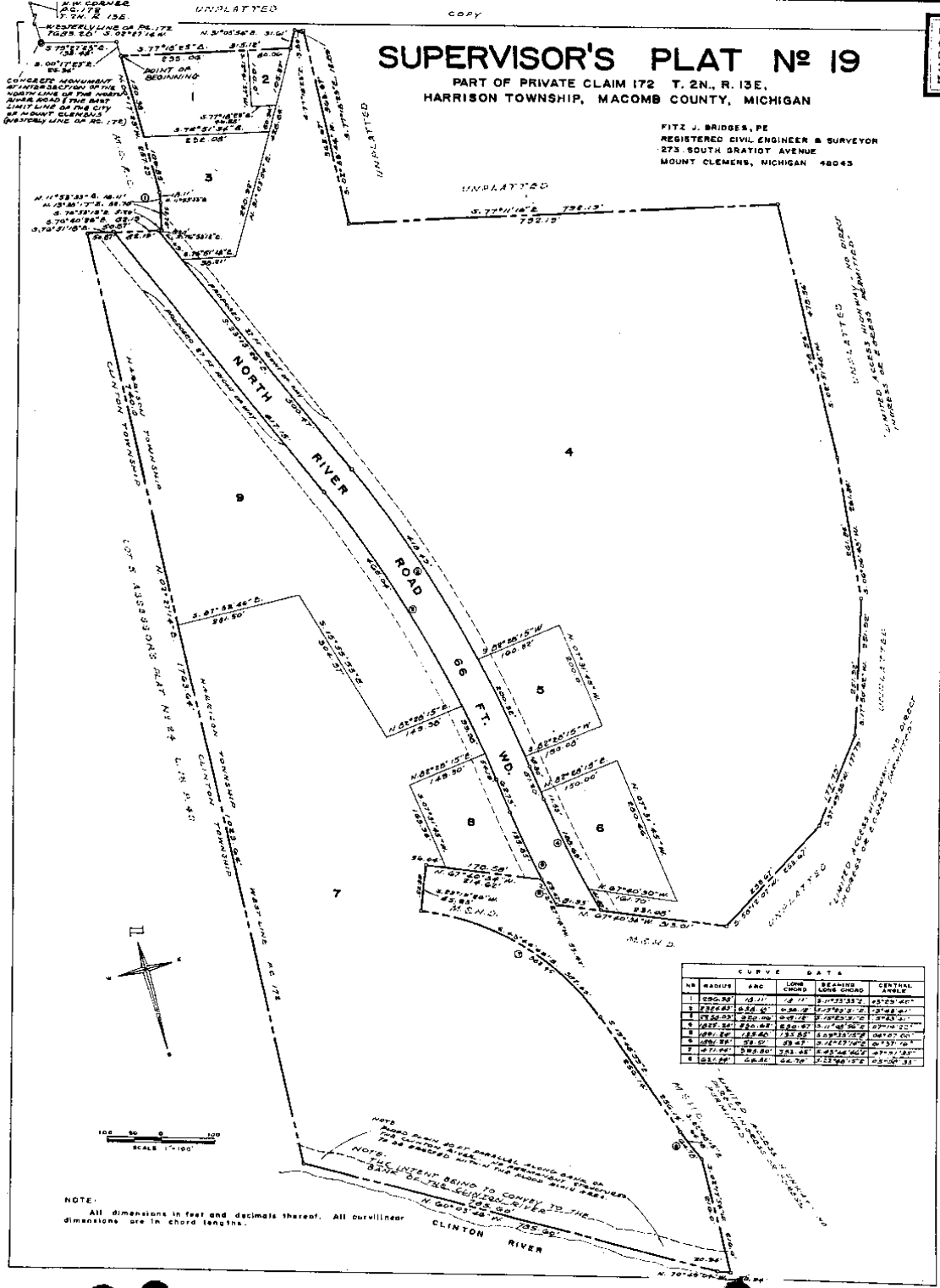
Robert L. Smith
 ROBERT L. SMITH

SUPERVISOR'S PLAT N^o 19

PART OF PRIVATE CLAIM 172 T. 2N., R. 13E,
HARRISON TOWNSHIP, MACOMB COUNTY, MICHIGAN

FITZ J. BRIDGES, P.E.
REGISTERED CIVIL ENGINEER & SURVEYOR
273 SOUTH GRATIOT AVENUE
MOUNT CLEMENS, MICHIGAN 48043

50278



CURVE DATA				
NO	RADIUS	ARC	LOW CHORD	CENTRAL ANGLE
1	1200.00	12.11	12.11	2.1431332
2	1200.00	12.11	12.11	2.1431332
3	1200.00	12.11	12.11	2.1431332
4	1200.00	12.11	12.11	2.1431332
5	1200.00	12.11	12.11	2.1431332
6	1200.00	12.11	12.11	2.1431332
7	1200.00	12.11	12.11	2.1431332
8	1200.00	12.11	12.11	2.1431332
9	1200.00	12.11	12.11	2.1431332
10	1200.00	12.11	12.11	2.1431332

SCALE 1"=100'

NOTE: All dimensions in feet and decimals thereof. All curvilinear dimensions are in chord lengths.

K. S. J. P. 7-8 6-14-1968

26085

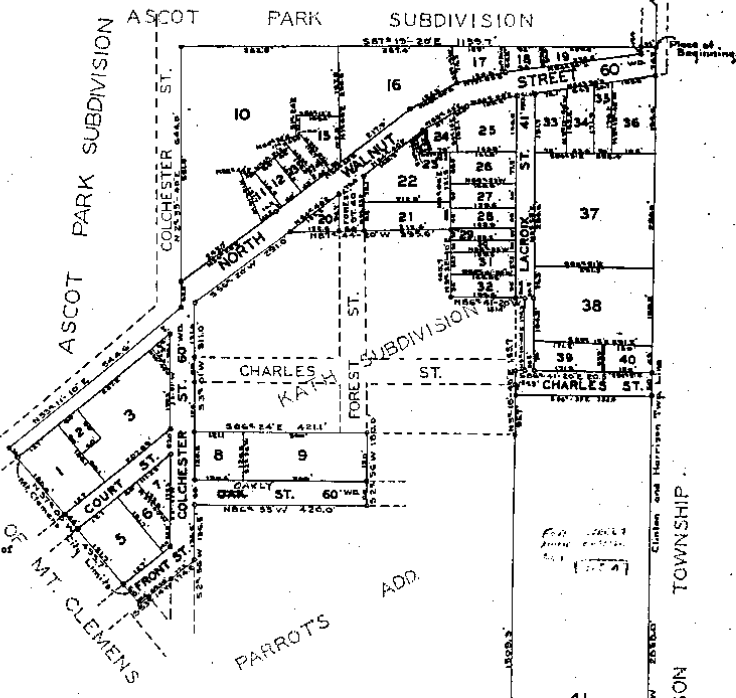
SUPERVISORS PLAT NO. 5.

PART OF P. C. 626 T. 2. N. R. 13 E.
CLINTON TOWNSHIP
MACOMB CO. MICHIGAN.
SCALE 1"=150'

Examined and
Jan 9 1934
J. B. Howell
Deputy Registrar

Continuation of
Henry B. Howell
and Charles
Harrison Top
Line.

66-1112
 SUPERVISORS PLAT NO. 5
 SUPERVISORS
 SUPERVISOR AT P. O.
 Jan 9 1934
 J. B. Howell
 SUPERVISOR AT P. O.
 Jan 17 1934
 J. B. Howell



MINUTE OF APPROVAL BY THE
COUNTY BOARD
 This plat was approved on the 27th day of
December, 1933
 J. B. Howell JUDGE OF PEACE
 J. B. Howell COUNTY CLERK
 J. B. Howell COUNTY TREASURER

Dedication.

KNOW ALL MEN BY THESE PRESENTS, that I, Otto Sherbrook Supervisor
of Clinton Township Macomb County, State of Michigan, by virtue of
authority in me vested by Section 61, Act 472, of 1929, having
been duly authorized by the Township Board have caused the land
described in the annexed plat to be surveyed, laid out and platted
to be known as Supervisors Plat No. 5 of part of P. C. 626, and
that the streets and alleys as shown on said plat are now being
used for such purposes.

Otto Sherbrook
Supervisor of Clinton Twp.

Witnessed:
 J. B. Howell
 J. B. Howell

Acknowledgment.

STATE OF MICHIGAN)
 COUNTY OF MACOMB)
 On this 27th day of December A. D. 1933
 before me, a Notary Public in and for said county, personally came
 the above named Otto Sherbrook Supervisor of Clinton Township known
 to me to be the person who executed the above dedication, and
 acknowledgment the same to be his free act and deed as such Super-
 visor.
 J. B. Howell
 Notary Public in and for Macomb County.
 My Commission expires January 1, 1934.

SURVEYORS CERTIFICATE.

I hereby certify that the plat hereto delineated is a correct one
and that permanent metal monuments of not less than one inch in
diameter and fifteen inches in length set in concrete have at least
four inches in diameter and forty-eight inches in depth have been
placed at points marked thereon as thereon shown at all angles in the
boundaries of the land platted, at all the intersections of streets,
intersections of alleys, or of streets and alleys, and at the inter-
sections of streets and alleys with the boundaries of the plat as
shown on said plat.

Description of Land Platted

The land embraced in the annexed plat of
Supervisors Plat No. 5 of part of P. C. 626
Clinton Township Macomb County Michigan
is described as follows:-

Commencing at the
 intersection of Henry B. Joy Road and the
 Clinton Harrison Township line, thence N 3°
 13'-40" W 1169.0 feet along the township
 line to the place of beginning, thence S 30°
 12'-40" W 2058.0 feet along the township
 thence N 87° 00'-20" W 830.3 feet along the
 St. Clemens City line, thence N 87° 41'-20"
 E 1509.3 feet along the east boundary of Par-
 rot's Add. thence S 3°-10'-40" E 100.7 feet
 along the east boundary of Kath Subdivision,
 thence S 80°-41'-30" W 828.7 feet along the
 south boundary of Kath Subdivision, thence
 N 30°-12'-40" E 174.3 feet along the east
 boundary of Kath Subdivision, thence N 85°-
 41'-20" E 181.1 feet along the north boundary of Kath Sub-
 division, thence S 3°-32'-40" W 100.7 feet along
 the east boundary of Kath Subdivision, thence N
 87°-41'-20" E 120.0 feet along the north bound-
 ary of Kath Subdivision, thence S 80°-20" W
 291.0 feet along Kath Subdivision and south
 side of Walnut Street, thence S 3°-01'-W 311.0
 feet along the east side of Colchester Street
 thence N 80°-20" E 421.1 feet along the Kath
 Subdivision, thence S 80°-20" E 120.0 feet along
 Parrot's Addition, thence N 60°-33'-W 420.0
 feet along Parrot's Addition and south side of
 Oak Street, thence S 87°-10" E 120.0 feet along
 Parrot's Addition and east side of Colchester Street,
 thence N 13°-41' W 174.0 feet along Parrot's Addition
 and south side of Forest Street, thence N 37°-40' E 49.3
 feet along the St. Clemens City line, thence S 80°-11'-
 10" E 84.8 feet along the center line of North Walnut St.,
 thence N 87°-41'-20" E 644.0 feet along the east side of
 Colchester Street, thence N 87°-41'-20" E 1109.7 along the
 south line of Ascot Park Subdivision to the point of beginning.

TOWNSHIP APPROVAL

This plat was approved by the Township Board of the Township
of Clinton at a meeting held on Jan 9 1934
 J. B. Howell
 Township Clerk

1-10-1934
 J. B. Howell

17469

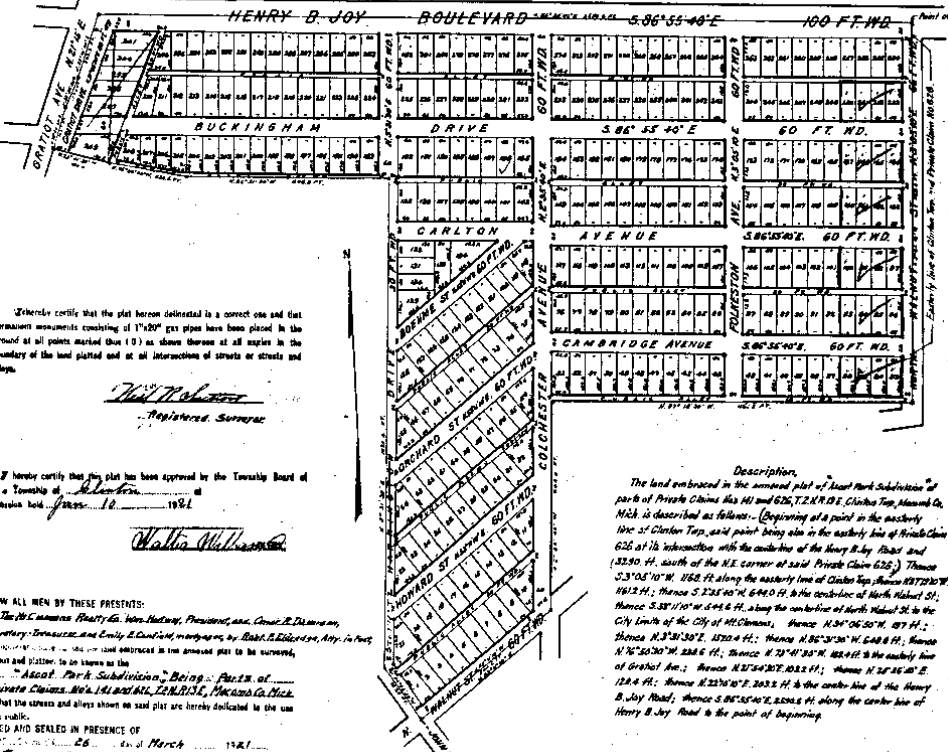
ASCOT PARK SUBDIVISION

Being parts of Private Claims Nos 41 and 626, T.Z.N.R.3.E.

Clinton Twp. Macomb Co.,
MICHIGAN

Scale 200 Feet = 1 Inch.

Examined and Approved
Chas. E. Newman
Deputy Auditor General



I hereby certify that the plat herein delineated is a correct one and that permanent monuments consisting of 1 1/2\"/>

Walter Williams
Registered Surveyor

I hereby certify that this plat has been approved by the Township Board of Clinton Township, Michigan, on this 10th day of March, 1921.

Walter Williams

KNOW ALL MEN BY THESE PRESENTS:

The Macomb Realty Co., Vice-Presidents, President, and Cashier, D. Williams, Secretary, Treasurer, and Emily E. Canfield, in presence of Board of Directors, City of Macomb, Michigan, do hereby certify that the above plat is a correct one and that the streets and alleys shown on said plat are hereby dedicated to the use of the public.

SIGNED AND SEALED IN PRESENCE OF
Notary Public for Macomb County, Michigan, on this 26th day of March, 1921.

Walter Williams
The Macomb Realty Co.
Walter Williams
Emily E. Canfield
Walter Williams
Walter Williams

Description.
The land embraced in the annexed plat of Ascot Park Subdivision of parts of Private Claims Nos 41 and 626, T.Z.N.R.3.E., Clinton Twp., Macomb Co., Mich., is described as follows: (Beginning at a point in the westerly line of Clinton Twp., said point being also in the westerly line of Private Claim 626 of its subdivision with the centerline of the Henry B. Joy Road and 123.90 ft. south of the N.E. corner of said Clinton Twp. (shown #172130 W. S. 3° 05' 10\"/>

This was done by me, Emily Eldredge, Notary Public for Macomb County, Michigan, on this 21st day of March, 1921.
Emily Eldredge
Notary Public for Macomb County, Michigan.

Walter Williams
I HEREBY CERTIFY THAT THE COPY IS A TRUE COPY OF THE ORIGINAL PLAT FORWARDED TO THE REGISTER OF DEEDS FOR RECORD.
CHAS. E. NEWMAN
DEPUTY AUDITOR GENERAL

FILED IN AUDITOR GENERAL'S DEPT.
April 27-1921
Chas. E. Newman

STATE OF MICHIGAN
COUNTY OF MACOMB
On this 26th day of March, 1921, before me a Notary Public in and for said county, personally came the above named *Walter Williams* and *Emily E. Canfield*, to me personally known, who being each by me duly sworn did say that they are the President and Secretary, Treasurer respectively of the *Macomb Realty Co.*, a Michigan Corporation and that the plat offered to said Notary Public is the corporate deed of said corporation and the said instrument was signed and sealed in behalf of said corporation by authority of its Board of Directors and the said *Walter Williams* and *Emily E. Canfield* acknowledged said instrument to be the free act and deed of said corporation.
Walter Williams
Notary Public in and for Macomb County, Michigan.

STATE OF MICHIGAN) s.s.
COUNTY OF MACOMB)

ON THIS 21st DAY OF MARCH, 1921, BEFORE ME A NOTARY PUBLIC IN AND FOR SAID COUNTY, PERSONALLY APPEARED ROBERT F. ELDRIDGE TO ME PERSONALLY KNOWN, WHO BEING BY ME DULY SWORN DID SAY THAT HE WAS ATTORNEY IN FACT FOR EMILY E. CANFIELD, MORTGAGEE AND ACKNOWLEDGED SIGNATURE OF SAID INSTRUMENT TO BE THE FREE ACT AND DEED OF SAID EMILY E. CANFIELD, ACTING THROUGH HIM, HER ATTORNEY IN FACT.

Robert F. Eldredge
NOTARY PUBLIC IN AND FOR MACOMB COUNTY, MICHIGAN.

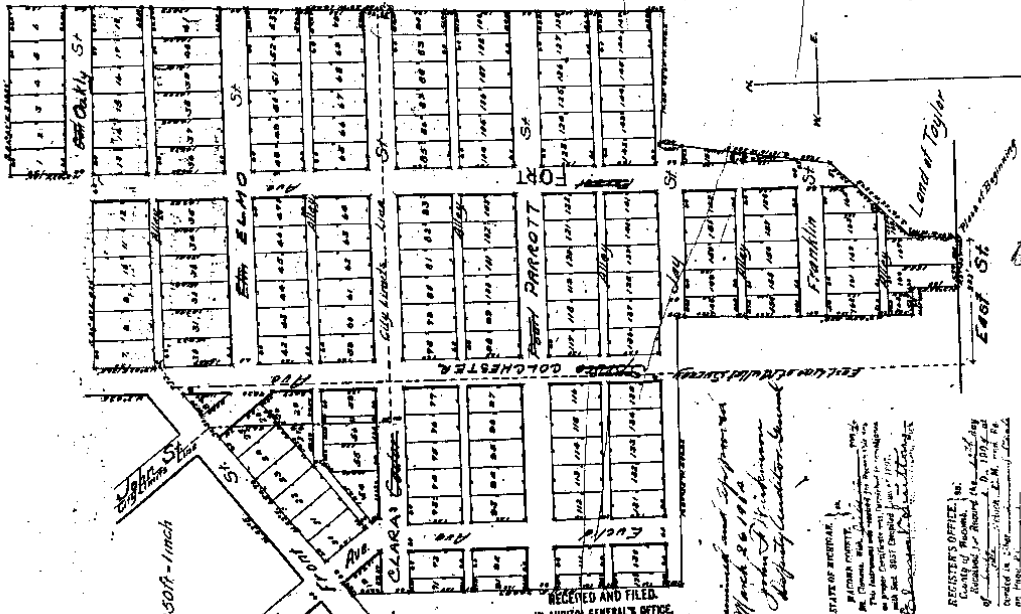
MY COMMISSION EXPIRES March 22, 1925

NOTE: All dimensions on this plat are given in feet and decimals thereof.

H-26-1921
K-5, P. 32

5540

9229



for about same
change is see
V315-11

Dedication
Know all men by these presents that I, *Emily E. Parrott*, of the County of Macomb, State of Michigan, do hereby dedicate to the City of Mt. Clemens, Michigan, the following described land, to-wit: *the land shown on the plat hereunto annexed and called to the use of the public.*
WITNESSED AND SIGNED IN PRESENCE OF
William H. Parrott
Emily E. Parrott (S.)
Emily E. Parrott (S.)

State of Michigan ss.
County of Macomb }
I, *John W. Parrott*, Clerk of the County of Macomb, do hereby certify that the foregoing plat was duly filed in my office on the 20th day of March, 1904, and that the same is a true and correct copy of the original plat on file in my office.

Description
The land embraced in the annexed plat of Parrotts Addition to the City of Mt. Clemens is situated in the County of Macomb, State of Michigan, and is bounded on the north by the lands of the City of Mt. Clemens, on the east by the lands of the City of Mt. Clemens, on the south by the lands of the City of Mt. Clemens, and on the west by the lands of the City of Mt. Clemens. The land is shown on the plat hereunto annexed and called to the use of the public.

Surveyors Certificate
I hereby certify that the plat hereunto annexed is a correct and true copy of the original plat on file in my office, and that the same is a true and correct copy of the original plat on file in my office.

State of Michigan ss.
County of Macomb }
I, *John W. Parrott*, Clerk of the County of Macomb, do hereby certify that the foregoing plat was duly filed in my office on the 20th day of March, 1904, and that the same is a true and correct copy of the original plat on file in my office.

State of Michigan ss.
County of Macomb }
I, *John W. Parrott*, Clerk of the County of Macomb, do hereby certify that the foregoing plat was duly filed in my office on the 20th day of March, 1904, and that the same is a true and correct copy of the original plat on file in my office.

A. R. B. S. 7-19-1904

RECEIVED AND FILED
IN AUDITOR GENERAL'S OFFICE
March 20 1904
John W. Parrott
County Clerk

STATE OF MICHIGAN
COUNTY OF MACOMB
I, *John W. Parrott*, Clerk of the County of Macomb, do hereby certify that the foregoing plat was duly filed in my office on the 20th day of March, 1904, and that the same is a true and correct copy of the original plat on file in my office.

REGISTERS OFFICE
County of Macomb
I, *John W. Parrott*, Clerk of the County of Macomb, do hereby certify that the foregoing plat was duly filed in my office on the 20th day of March, 1904, and that the same is a true and correct copy of the original plat on file in my office.