

**MACOMB COUNTY**  
**INDEX OF SUPPORTING DOCUMENTATION FOR**

**Town 2 North, Range 13 East**

**Clinton Township and Harrison Township**

**Corner Code: PC-003 Reference Monument Southeast corner Private Claim 626 common with the Southwest corner of Private Claim 172, Town 2 North, Range 14 East, @ the northerly border of the Clinton River.**

**Section One:**

- A. Index
- B. Pictures
  - 1. Before Pictures (3) – January 7, 2008
  - 2. After Picture – August 7, 2008

**Section Two:**

- A. Preliminary LCRC
- B. Surveyor's Report – April 28, 2008

**Section Three:**

- A. Field Notes (2)
  - 1. January 7, 2008
  - 2. July 24, 1996 – Metco Services
- B. Legal Description – N/A
- C. Tax Description – N/A
- D. Sketches – Field Measurement and Record Measurement Comparisons      April 28, 2008
- E. Maps (6) – Macomb County Atlas
  - Harrison Township – 1875, 1895 and 1916
  - Clinton Township – 1875, 1895 and 1916
- F. Macomb County Composite Maps (7) – Date of photography      April, 2004
  - 11-01H, 11-12D & H, 11-13C, D, F and G

**Section Four:**

- A. Copies of original government notes (3)
  - Private Claim 172 (2) – Post. Original Survey performed by Aaron Greeley      July 18, 1810
  - Private Claim 626 – Post. Original Survey performed by Aaron Greeley      July 14, 1810
- B. Recorded LCRC's
  - 1. L. 7245, P. 444 – Martin C. Dunn, #30081, Found ¼" iron rod      November 14, 1996
- C. Recorded and unrecorded surveys
  - 1. Plat of Survey, Charles G. Melching, #14767      May, 1972
  - 2. Certificate of Survey, William E. Soderberg #17635,      December 2, 1974
- D. Copies of all items listed in "Part A" of LCRC.
  - 1. Plats:
    - a. L. 5, P. 32 "Ascot Park Subdivision"      April 26, 1921
    - b. L. 13, P. 40 Assessors Plat No. 24      November 22, 1928
    - c. L. 16, P. 23 Supervisors Plat No. 5      January 10, 1934
    - d. L. 59, P. 7 & 8 Supervisor's Plat No. 19      July 14, 1968
    - e. L. 92, P. 47-50 East Pointe Industrial Subdivision      December 13, 1992
    - f. L. 157, P. 16 & 17 Amended Plat of Lot 9 of East Point Industrial Subdivision      August 3, 2004



*Before*

**PRIVATE CLAIM 003**

***Southeast corner P.C. 626 Common with the Southwest corner of  
172 P.C., T.2N., R.14E., @ the northerly border of Clinton River.***

***T.2N., R.14E.***

**CLINTON TOWNSHIP**

*After*



*Management, Engineering & Technical Consultants*



*Before*

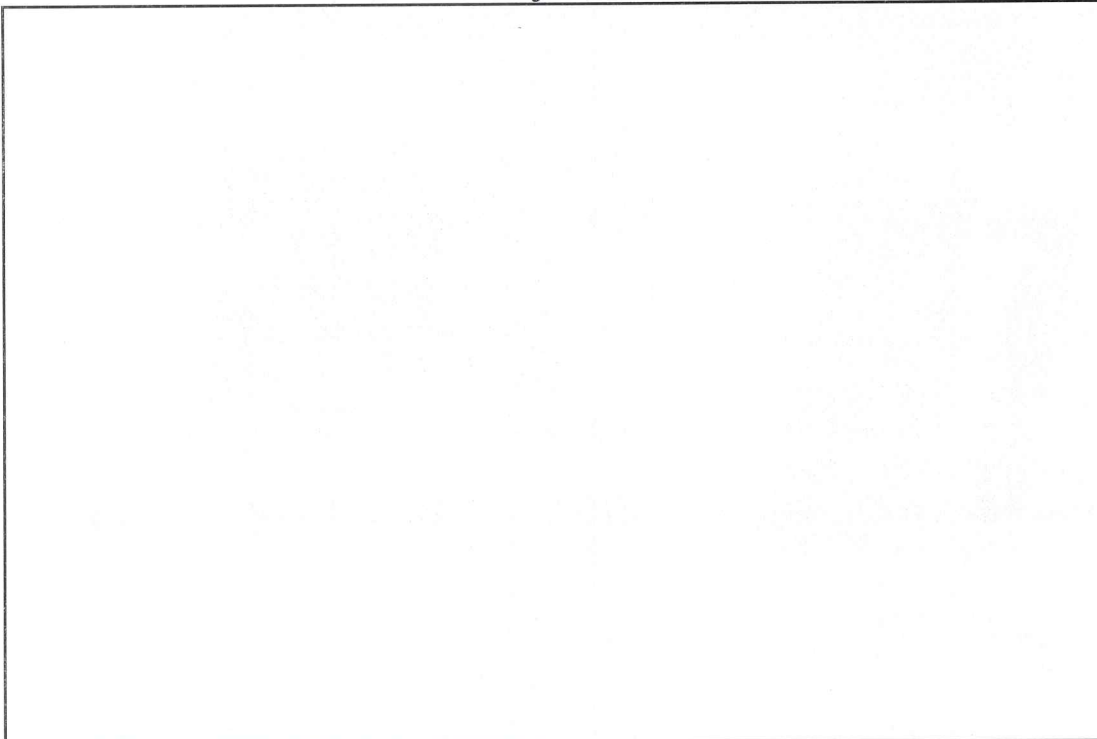
**PRIVATE CLAIM 002**

*Southeast corner P.C. 626 Common with the Southwest corner of  
172 P.C., T.2N., R.14E., @ the northerly border of Clinton River.*

*T.2N., R.14E.*

**CLINTON TOWNSHIP**

*After*





*North*

**PRIVATE CLAIM 002**

***Southeast corner P.C. 626 Common with the Southwest corner of  
172 P.C., T.2N., R.14E., @ the northerly border of Clinton River.  
T.2N., R.14E.***

**CLINTON TOWNSHIP**

*South*



*Management, Engineering & Technical Consultants*



*East*

**PRIVATE CLAIM 002**

***Southeast corner P.C. 626 Common with the Southwest corner of  
172 P.C., T.2N., R.14E., @ the northerly border of Clinton River.  
T.2N., R.14E.***

**CLINTON TOWNSHIP**

*West*



*Management, Engineering & Technical Consultants*

REC'D. MACOMB CO. AUG 12 2008  
REC'D. MACOMB CO. SEP 26 2008

400000  
1/2008



LAND CORNER RECORDATION CERTIFICATE  
Filing Requirement of Act 74, Mich. P.A. 1970

For corners in

MACOMB (County)  
Located In: Clinton Twp. & Harrison Twp.  
Corner Code # M.C.R. 003  
1. Public Land Survey T 02N, R13E, PC-002  
2. Property Controlling in Section S T R Reference Monument  
3. Miscellaneous Property in Sec. S T R

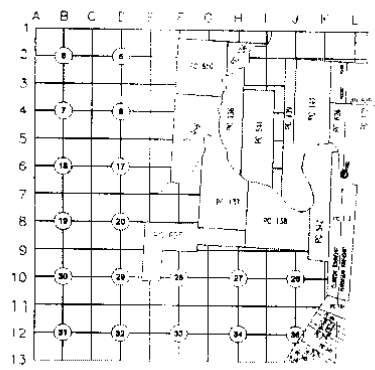
8095125  
LIBER 19452 PAGE 183  
08/15/2008 08:41:24 A.M.  
MACOMB COUNTY, MI  
SEAL  
CARMELLA SABAUGH, REGISTER OF DEEDS

8110080  
LIBER 19502 PAGE 767  
09/26/2008 02:47:47 P.M.  
MACOMB COUNTY, MI  
SEAL  
CARMELLA SABAUGH, REGISTER OF DEEDS

4. Lot No. \_\_\_\_\_, Recorded Plat \_\_\_\_\_  
5. Private Claims Reference Monument to the Southeast Corner Private Claim 626 and to the Southwest Corner Private Claim 172, Town 2 North, Range 14 East, Harrison Township @ the border of the Clinton River (a.k.a. River Huron).

I, Steven E. Dunn, in a field survey on January 9, 2008, do hereby certify that under requirements of P.A. 74, Michigan P.A. of 1970, the corner points mentioned in lines 1 and 2 above were in conformance with regulations and rules therefore as required in the current manual of survey instructions of the United States Department of the Interior, Bureau of Land Management or by a decree of a Court of Law and for that the corner points mentioned in lines 3, 4 and 5 above were in conformance with the rules of the Michigan Board of Land Surveyors or by a Decree of a Court of Law, established, re-established, monumented, re-monumented, recovered, found as expressed below:

NOTE: Not more than 2 corners, all in the same town and range, may be recorded on this certificate.



A. Description of original monument and accessories and/or subsequent restoration:

- 1810 Butterwood Tree GLO Original survey performed by Aaron Greeley, L. 5, P. 32, "Ascot Park Subdivision"
- 1921 N&S PC Line L. 13, P. 40, Assessors Plat No. 24
- 1928 N&S PC Line L. 16, P. 23, Supervisors Plat No. 5
- 1934 N&S PC Line L. 59, P. 7 & 8, Supervisor's Plat No. 19
- 1968 N&S PC Line

(continued on back)



B. Description of corner evidence found and/or method applied in restoring or reestablishing corner:  
PC-002 Reference Monument to the Southeast Corner Private Claim 626 and to the Southwest Corner Private Claim 172, Town 2 North, Range 14 East, Harrison Township @ the border of the Clinton River (a.k.a. River Huron). Found 3/4" steel rod. Did not set the actual corner as using found monumentation and retracing the GLO notes for Private Claims the corner falls 683.38' north of the found 3/4" steel rod and ± 710' north of the existing top of north bank of the Clinton River (a.k.a. River Huron). I verified the location by comparing field measurements with record measurements.

FIELD MEASUREMENTS AND RECORD MEASUREMENTS (see back):

C. Description of monument for corner and accessories established to perpetuate locating the position of the corner:  
PC-002 Reference Monument to the Southeast Corner Private Claim 626 and to the Southwest Corner Private Claim 172, Town 2 North, Range 14 East, Harrison Township @ the border of the Clinton River (a.k.a. River Huron). Found 3/4" steel rod.

I replaced the found 3/4" steel rod with a 4" X 36" concrete monument with an aluminum cap stamped "Macomb County Monument Mi Act 345 1990 MCL, 28408, REF MON, PC 013, PC-002"

WITNESSES:

- N.14°W. 8.70' Found small Mag nail w/plastic Metco tag in east face of 18" Ash. (8.70'-Record, LCRC and Field Notes).
- N.20°E. 22.18' Set Mag nail w/MCR witness tag in west face of 4" tree.
- S.68°E. 10.31' Set Mag nail w/MCR witness tag in south face of 12" tree.
- N.82°W. 21.68' Found small Mag nail w/Metco tag on top of 12" stump.
- N.84°W. 66.30' Corner of seawall.
- S.45°W! 4.00' Set 1/2" steel rod w/Metco Control Cap.
- S.07°W. ± 25' Water's edge.

THE SELECTED LOCATION IS ACCEPTED BY ME AND IS GENERALLY ACCEPTED BY PROFESSIONAL SURVEYORS AS THE BEST AVAILABLE EVIDENCE OF THE POSITION OF THE ORIGINAL CORNER.

ACCEPTED BY THE MACOMB COUNTY SURVEY PEER GROUP AS THE OFFICIAL CORNER UNDER MICHIGAN PUBLIC ACT 345 OF 1990 AT A MEETING HELD ON 6-3-08  
Martin C. Dunn  
MARTIN C. DUNN, P.S. CHAIRMAN

Signed by Steven E. Dunn Date August 8, 2008  
Surveyor's Michigan License No. 28408

THIS DOCUMENT BEING RECORDED TO CORRECT OTHER CODE RECORD TO 003 AND RECORD TO 0000.

For corners in

MACOMB (County) Located In: Clinton Twp. & Harrison Twp. Corner Code #

- 1. Public Land Survey T 02N, R13E, PC-002
2. Property Controlling S T R Reference Monument

5. Private Claims Reference Monument to the Southeast Corner Private Claim 626 and to the Southwest Corner Private Claim 172, Town 2 North, Range 14 East, Harrison Township @ the border of the Clinton River (a.k.a. River Huron).

A. Description of original monument and accessories and/or subsequent restoration:

- 1972 N&S PC Line Certificate of Survey, unrecorded, Charles G. Melching, #14767, corner not located on survey.
1974 N&S PC Line Certificate of Survey, unrecorded, William E. Soderberg, #17635, corner not located on survey.
1990 NE PC Cor L. 92, P. 47-50, East Pointe Industrial Subdivision
1996 3/4" iron rod Field Notes, Metco Services, Found 1 matching witness tie
1996 3/4" iron rod L. 7245, P. 444, LCRC, Martin C. Dunn, #30081, Found 1 matching witness tie
2004 North PC Line L. 157, P. 16 & 17, Amended Plat of Lot 9 of East Pointe Industrial Subdivision

B. Description of corner evidence found and/or method applied in restoring or reestablishing corner: PC-002 Reference Monument to the Southeast Corner Private Claim 626 and to the Southwest Corner Private Claim 172, Town 2 North, Range 14 East, Harrison Township @ the border of the Clinton River (a.k.a. River Huron). Found 3/4" steel rod. Did not set the actual corner as using found monumentation and retracing the GLO notes for Private Claims the corner falls 683.38' north of the found 3/4" steel rod and +/- 710' north of the existing top of north bank of the Clinton River (a.k.a. River Huron). I verified the location by comparing field measurements with record measurements.

FIELD MEASUREMENTS AND RECORD MEASUREMENTS:

PC-002 to PC-001 (being the northeast corner of Private Claim 626):

- 10,041.90' - Record, GLO (152 chains, 15 links).
10,725.28' - Field. 2008 Remon.

PC-002 to found 3/4" steel rod at the intersection of the north right-of-way line of North River Road and the line common with PC 172 and PC 626:

2114.58' - Field. 2008 Remon.

LCRC, L. 7245, P. 444 - Martin C. Dunn, #30081:

Found 3/4" iron rod. N.15°W. 8.70' Set PK nail w/tag in east face of a 20" Ash. (8.70'-Field, 2008 Remon).

Field Notes, Metco Services - Martin C. Dunn, #30081

Found 3/4" iron rod. Az. 345° 8.70' Set PK nail w/tag in east face of a 20" Ash. (8.70'-Field, 2008 Remon).

REC'D. MACOMB CO. AUG 12 2008 4:00 p.m.

REC'D. MACOMB CO. SEP 26 2008 11:20 a.m.



LAND CORNER RECORDATION CERTIFICATE
Filing Requirement of Act 74, Mich. P.A. 1970

For corners in

MACOMB (County)

Located In: Harrison Twp. & Clinton Twp.

Corner Code #

- 1. Public Land Survey T 02N, R 14E, PC-013
2. Property Controlling in Section S T R Reference Monument
3. Miscellaneous Property in Sec. S T R

- 4. Lot No. , Recorded Plat
5. Private Claims Reference Monument to the Southwest Corner Private Claim 172 and to the Southeast Corner Private Claim 626, Town 2 North, Range 13 East, Clinton Township @ the border of the Clinton River (a.k.a. River Huron).

I, Steven E. Dunn, in a field survey on January 9, 2008, do hereby certify that under requirements of P.A. 74, Michigan P.A. of 1970, the corner points mentioned in lines 1 and 2 above were in conformance with regulations and rules therefore as required in the current manual of survey instructions of the United States Department of the Interior, Bureau of Land Management or by a decree of a Court of Law and for that the corner points mentioned in lines 3, 4 and 5 above were in conformance with the rules of the Michigan Board of Land Surveyors or by a Decree of a Court of Law, established, re-established, monumented, re-monumented, recovered, found as expressed below:

NOTE: Not more than 2 corners, all in the same town and range, may be recorded on this certificate.



A. Description of original monument and accessories and/or subsequent restoration:

- 1810 Butterwood GLO Original survey performed by Aaron Greeley,
1921 N&S PC Line L. 5, P. 32, "Ascot Park Subdivision"

(continued on back)

B. Description of corner evidence found and/or method applied in restoring or reestablishing corner:

PC 013 Reference Monument to the Southwest Corner Private Claim 172 and to the Southeast Corner Private Claim 626, Town 2 North, Range 13 East, Clinton Township @ the border of the Clinton River (a.k.a. Huron River). Found 3/4" steel rod. Did not set the actual corner as using found monumentation and retracing the GLO notes for Private Claims the corner falls 683.38' north of the found 3/4" steel rod and +/- 710' north of the existing top of north bank of the Clinton River (a.k.a. River Huron). I verified the location by comparing field measurements with record measurements.

FIELD MEASUREMENTS AND RECORD MEASUREMENTS (see back):

C. Description of monument for corner and accessories established to perpetuate locating the position of the corner:

PC 013 Reference Monument to the Southwest Corner Private Claim 172 and to the Southeast Corner Private Claim 626, Town 2 North, Range 13 East, Clinton Township @ the border of the Clinton River (a.k.a. River Huron). Found 3/4" steel rod

I replaced the found 3/4" steel rod with a 4" X 36" concrete monument with an aluminum cap stamped "Macomb County Monument Mi Act 345 1990 MCL, 28408, REF MON, PC 013, PC-002"

WITNESSES:

- N.14°W. 8.70' Found small Mag nail w/plastic Metco tag in east face of 18" Ash. (8.70'-Record, LCRC and Field Notes).
N.20°E. 22.18' Set Mag nail w/MCR witness tag in west face of 4" Poplar.
S.68°E. 10.31' Set Mag nail w/MCR witness tag in south face of 12" Poplar.
N.82°W. 21.68' Found small Mag nail w/Metco tag on top of 12" stump.
N.84°W. 66.30' Corner of seawall.
S.45°W. 4.00' Set 1/2" steel rod w/Metco Control cap.
S.07°W. +/- 25' Water's edge.

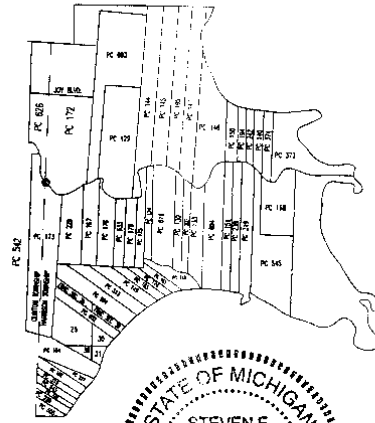
THE SELECTED LOCATION IS ACCEPTED BY ME AND IS GENERALLY ACCEPTED BY PROFESSIONAL SURVEYORS AS THE BEST AVAILABLE EVIDENCE OF THE POSITION OF THE ORIGINAL CORNER.

ACCEPTED BY THE MACOMB COUNTY SURVEY PEER GROUP AS THE OFFICIAL CORNER UNDER MICHIGAN PUBLIC ACT 345 OF 1990 AT A MEETING HELD ON 6-3-08

Signed by Steven E. Dunn
Surveyor's Michigan License No. 28408

Martin C. Dunn, P.S. CHAIRMAN August 11, 2008

8095115 LIBER 19452 PAGE 169
08/15/2008 02:40:43 A.M.
MACOMB COUNTY, MI SEAL
CARMELLA SABAUGH, REGISTER OF DEEDS
8110079 LIBER 19502 PAGE 765
09/26/2008 02:47:24 P.M.
MACOMB COUNTY, MI SEAL
CARMELLA SABAUGH, REGISTER OF DEEDS



\* DOCUMENT BEING RECORDED TO CORRECT OTHER CODE FROM PC008 TO PC003



For corners in

<u>MACOMB</u> (County)	Located In: Harrison Twp. & Clinton Twp.	Corner Code #
---------------------------	--	---------------

1. Public Land Survey	<u>T 02N, R 14E</u>	<u>PC-013</u>
	<u>T ___ R ___</u>	<u>Reference</u>
2. Property Controlling	S ___ T ___ R ___	<u>Monument</u>

5. Private Claims Reference Monument to the Southwest Corner Private Claim 172 and to the Southeast Corner Private Claim 626, Town 2 North, Range 13 East, Clinton Township @ the border of the Clinton River (a.k.a. River Huron).

- A. Description of original monument and accessories and/or subsequent restoration:
- 1928 N&S PC Line L. 13, P. 40, Assessors Plat No. 24
  - 1934 N&S PC Line L. 16, P. 23, Supervisors Plat No. 5
  - 1968 N&S PC Line L. 59, P. 7 & 8, Supervisor's Plat No. 19
  - 1972 N&S PC Line Certificate of Survey, unrecorded, Charles G. Melching, #14767, corner not located on survey.
  - 1974 N&S PC Line Certificate of Survey, unrecorded, William E. Soderberg, #17635, corner not located on survey.
  - 1990 NW PC Cor L. 92, P. 47-50, East Pointe Industrial Subdivision
  - 1996 3/4" iron rod Field Notes, Metco Services, Found 1 matching witness tie
  - 1996 3/4" iron rod L. 7245, P. 444, LCRC, Martin C. Dunn, #30081, Found 1 matching witness tie
  - 2004 N Line of PC 172 L. 157, P. 16 & 17, Amended Plat of Lot 9 of East Pointe Industrial Subdivision

B. Description of corner evidence found and/or method applied in restoring or reestablishing corner:  
 PC 013 Reference Monument to the Southwest Corner Private Claim 172 and to the Southeast Corner Private Claim 626, Town 2 North, Range 13 East, Clinton Township @ the border of the Clinton River (a.k.a. River Huron). Found 3/4" steel rod.

**FIELD MEASUREMENTS AND RECORD MEASUREMENTS:**

**PC 013 to PC 012 (being the northwest corner of Private Claim 172):**  
 10,041.90' - Record, GLO (152 chains, 15 links).  
 10,725.28' - Field. 2008 Remon.

**PC 013 to found 3/4" steel rod at the intersection of the north right-of-way line of North River Road and the line common with PC 172 and PC 626:**  
 2114.58' - Field. 2008 Remon.

**LCRC, L. 7245, P. 444 - Martin C. Dunn, #30081:**  
 Found 3/4" iron rod.  
 N.15°W. 8.70' Set PK nail w/tag in east face of a 20" Ash. (8.70'-Field, 2008 Remon).

**Field Notes, Metco Services - Martin C. Dunn, #30081**  
 Found 3/4" iron rod.  
 Az. 345° 8.70' Set PK nail w/tag in east face of a 20" Ash. (8.70'-Field, 2008 Remon).

***Survey Report***  
***PC-003***  
***T.2N., R.13E., Clinton Twp.***

**Letters asking for unrecorded information were sent to:**

*AEW, Inc. – Shelby Twp.*  
*Fenn & Associates, Inc. – Shelby Twp.*  
*GWE – Rochester Hills*  
*Kennedy Surveying, Inc. - Oxford*  
*Lehner Associates, Inc. – Clinton Twp.*  
*GLA Surveyor – Plymouth*  
*Professional Engineering Assoc. Inc. – Troy*  
*R. J. Donnelly & Associates Inc. – Troy*  
*George Jerome & Company – Roseville*  
*King Surveying, Inc. – Armada*  
*Michigan Surveying Inc. – Livonia*  
*David C. Adams & Son – Redford*  
*Urban Land Consultants – Shelby Township*

**CORNER:** *Reference Monument Southeast Corner of Private Claim 626, common with the Southwest Corner of Private Claim 172, Harrison Township, Town 2 North, Range 14 East @ the northerly border of the Clinton River. Found a ¾" steel rod ± 25' north of the bank of the Clinton River.*

**OBSERVATIONS:** *The found ¾" steel rod appears to be on the Private Claim line as monumented from there north to a found ¾" steel rod at the intersection of the north right-of-way line of North River Road and the line common with Private Claim 626 and Private Claim 172. Three additional found steel rods are 0.63' or less of being on the same line.*

*Found steel rod also matches 1 witness tie on field notes from Metco Services and a recorded LCRC, Martin C. Dunn, #30081, from 1996. N15°W. 8.70', Set PK nail w/tag in east face of 20" Ash (8.70' – Field).*

*PC 003 to a found ¾" steel rod at the intersection of the north right-of-way line of North River Road and the line common with Private Claim 626 and Private Claim 172 field measures 2114.58'.*

**RECOMMENDATION:** *My recommendation to the Peer Review Board is to accept the found ¾" steel rod as the proper location for a reference monument.*

*Respectfully submitted,*

---

*Steven E Dunn, PS #28408*

*April 28, 2008*

TG  
AS

34

CLINTON TWP	MACOMB CO	DESC
1340	FD 3/4" I.R.	
1341	SET 1/2" I.R. WITH CONSIDER PT CAP	
1342	SET MARG OF FACE OF WALK IN ASPH	
1343	FD 1/2" I.R. ON FENCE LINE	
1344	FD 1/2" I.R.	
1345	FD 3/4" I.R.	
1346	FD 1/2" I.R. #45	
1340B	0-00-00	47.990
BS1341	0-00-00	47.990
FS1340A	57-50-40	8.703
1340B	91-52-16	22.178
1340C	183-42-47	10.131
1340D	349-23-32	21.168
1340E	347-26-24	66.303
1340F	250-04-54	25.059
1341	359-59-55	117.991

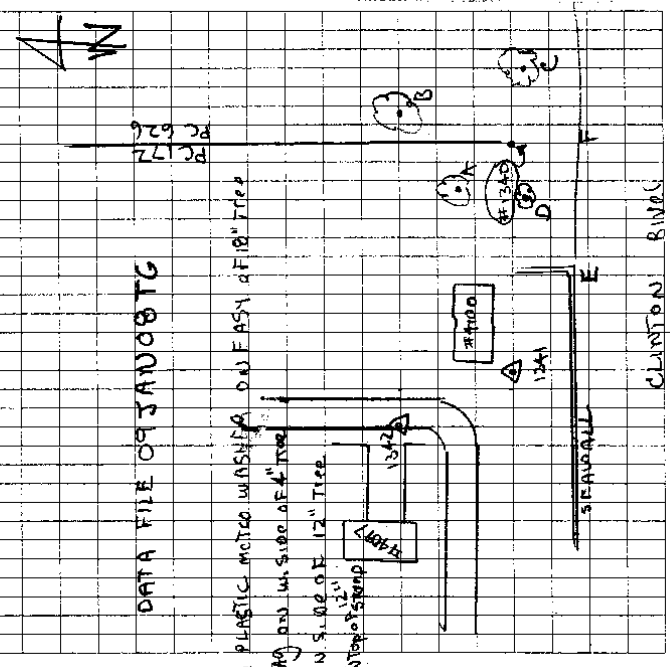
JAW 9, 2008

CPS FILE 08100TG09JAW08

S.W. OF TRAILER #4100  
@ EDGE OF DRIVE @ #4100

DATA FILE 09JAW08TG

PLASTIC MOTOR WASHING ON EASY OF 18" TREE  
TRIP AND W. SIDE OF 12" TREE  
ON S. SIDE OF 12" TREE  
12"  
ANTHROPOMORPHIC





CLINTON PCC001, 002, PCC002      HARRISON PCC012, 013, PCC001      4-28-08

SOUTH 1/4 COR. 2295.83' N. 2295.70' E. SE COR.  
FRAC. SEC. 1 0.36' SOUTH FRAC. SEC. 1  
FD. 1/2" Rod w/CAP 30103 PCC001 PCC012 FD. CONC. MON.  
1003.81' N. 1009.85' E. 1286.03' N. 1285.85' E.

90°05'30" E.  
90°04'09" N.  
PC 626  
TOWNSHIP  
TOWNSHIP LINE  
89°54'30" E.  
89°58'04" N.  
PC 172  
TOWNSHIP

1347-1348  
1411-1437

2 HENRY B. JOY PCC002 845 PCC001 2668.35' N.

90°03'55" N.

CLINTON HARRISON  
10725.28' N. N. RIVER BR. 1845  
2114.58' N. FD. 3/4" ST. ROD  
1840  
1845  
1840  
1845  
IRWIN ROAD



PCC002 PCC013  
FD. 3/4" ST. ROD

CLINTON RIVER

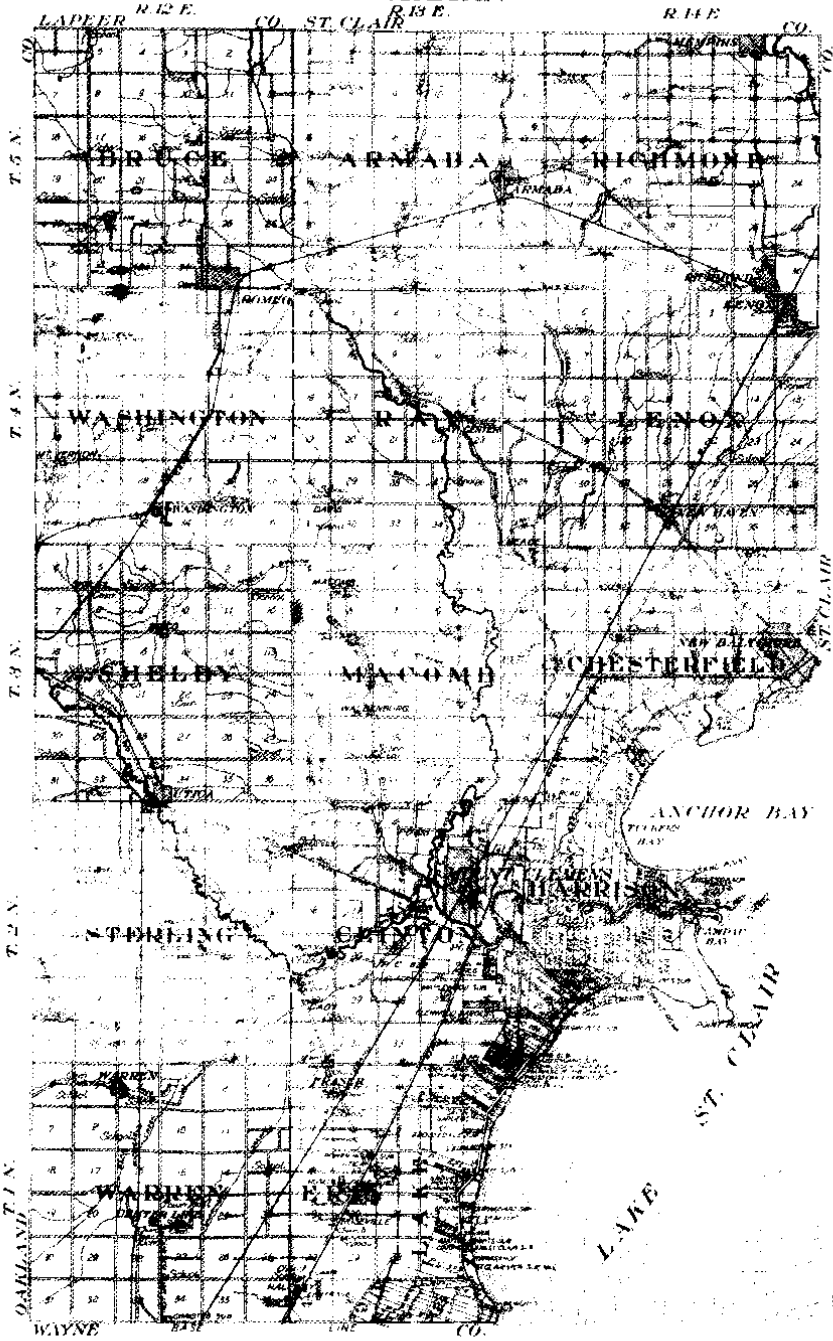
OUTLINE MAP OF  
MACOMB COUNTY

Copyright 1916 by Geo. Vogel & Co.

MICHIGAN

Scale 1 inch to 1 mile

7



Scanned By:  
**METCO**  
Engineers, Architects & Surveyors



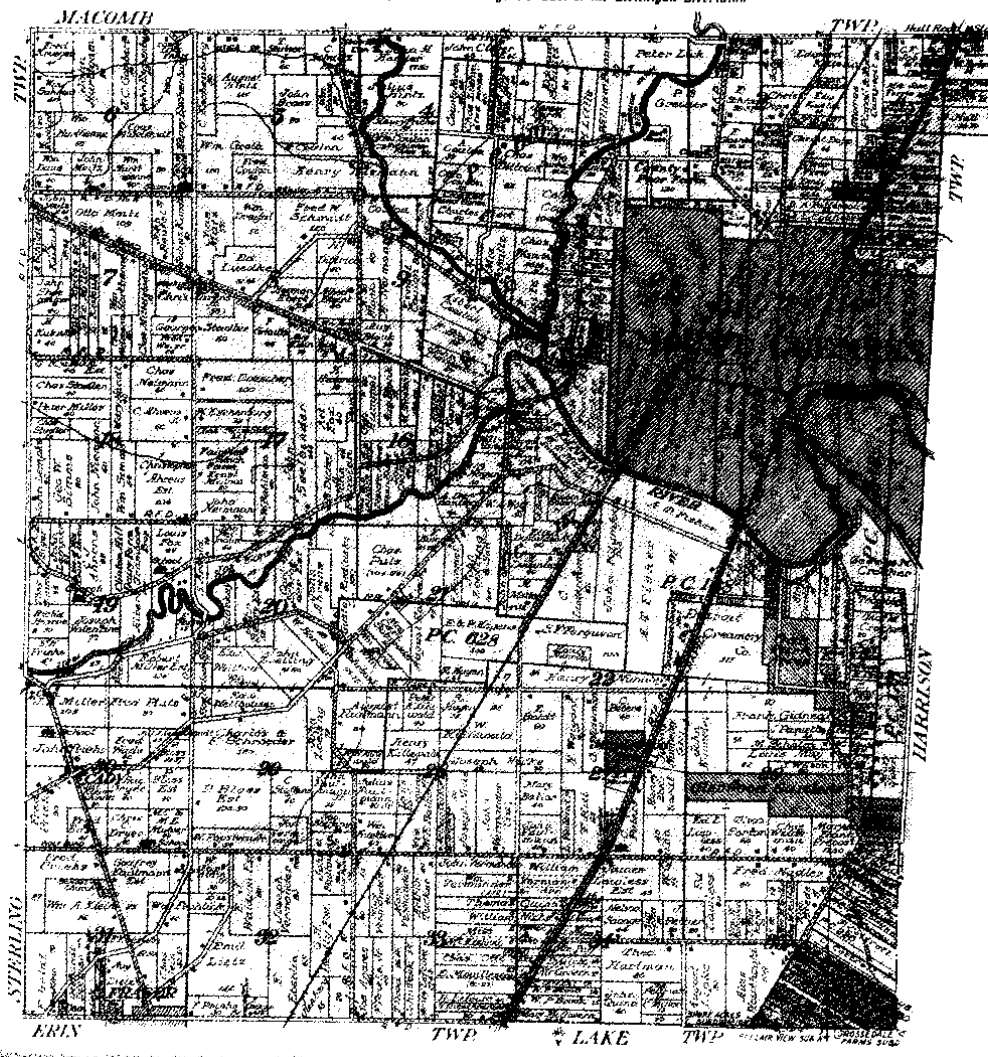
Part of Fractional Township 2 North, Range 16 East and  
 Fractional Township 2 North, Range 14 East  
 of the Michigan Meridian

Surveyed by  
**METCO**  
 Engineers and Surveyors

MAP OF  
**CLINTON**  
 TOWNSHIP

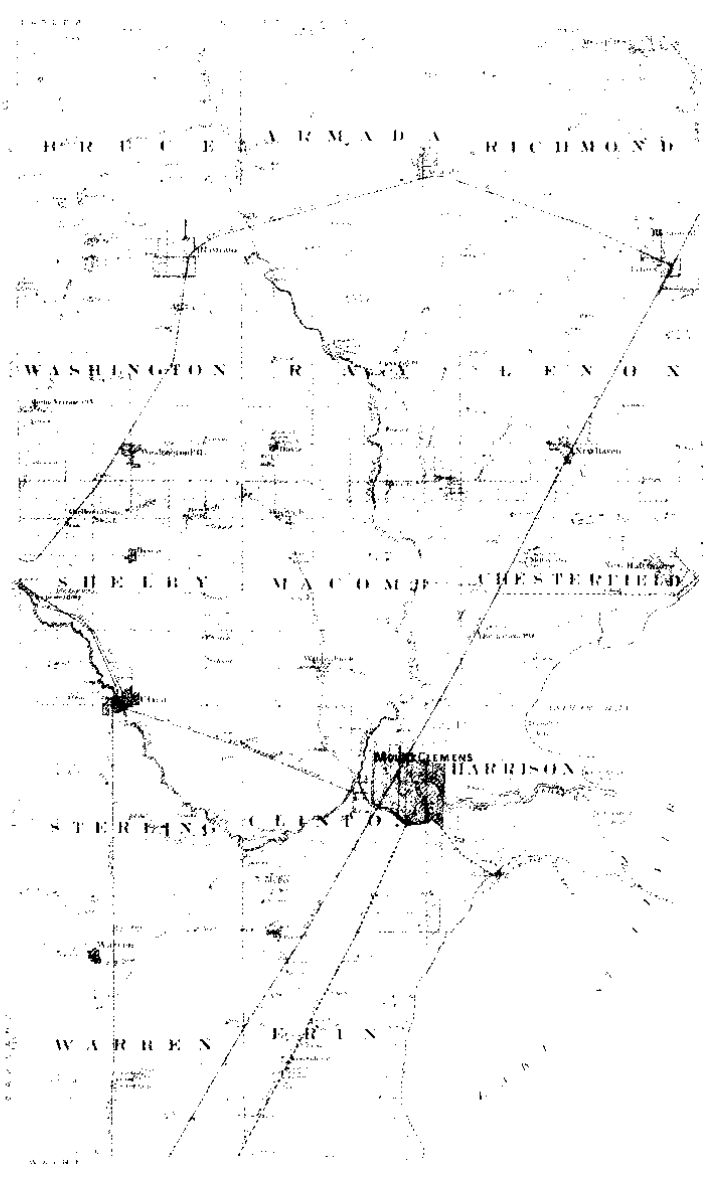
Fractional Township 2 North, Range 13 East of the Michigan Meridian

Scale 2 inches to 1 mile





OUTLINE MAP  
of **MACOMB COUNTY** MICHIGAN.



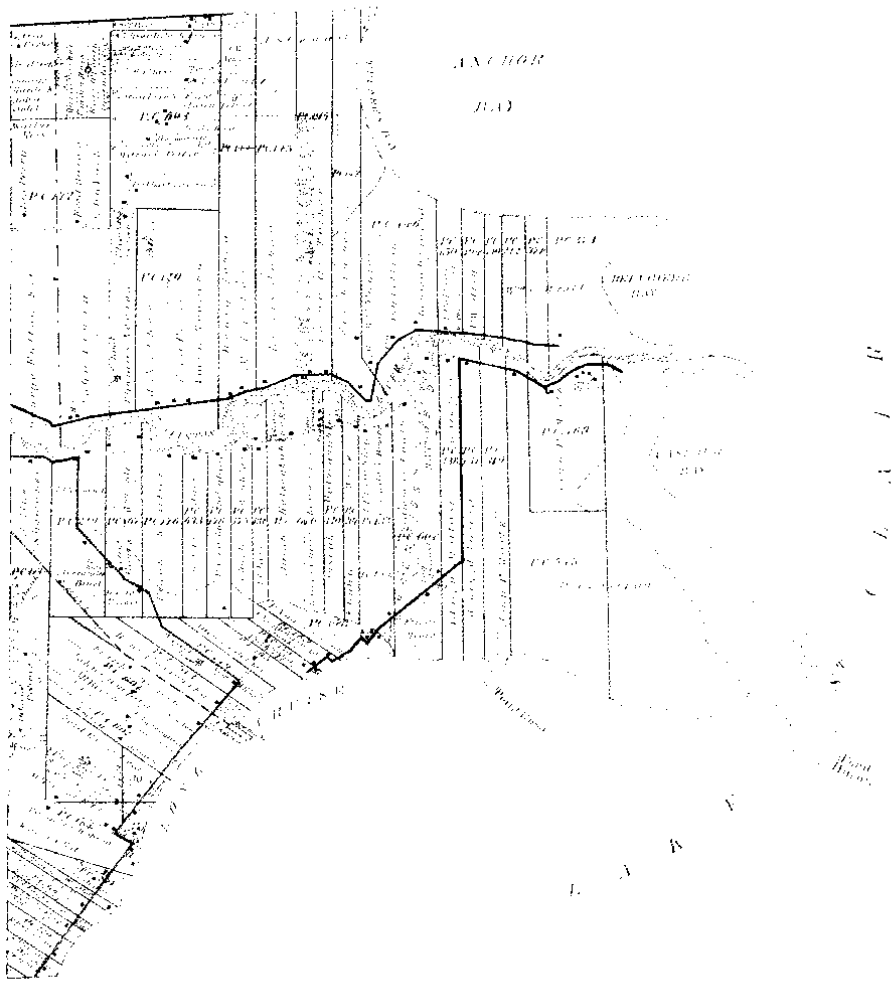
Surveyed by  
**METCO**  
Englewood, Architects & Surveyors

# HARRISON

Township 2 North Range 11 East

North 1/2 Sec. 10, 11, 12, 13, 14, 15, 16, 17, 18, 19, 20

West 1/2 Sec. 10, 11, 12, 13, 14, 15, 16, 17, 18, 19, 20

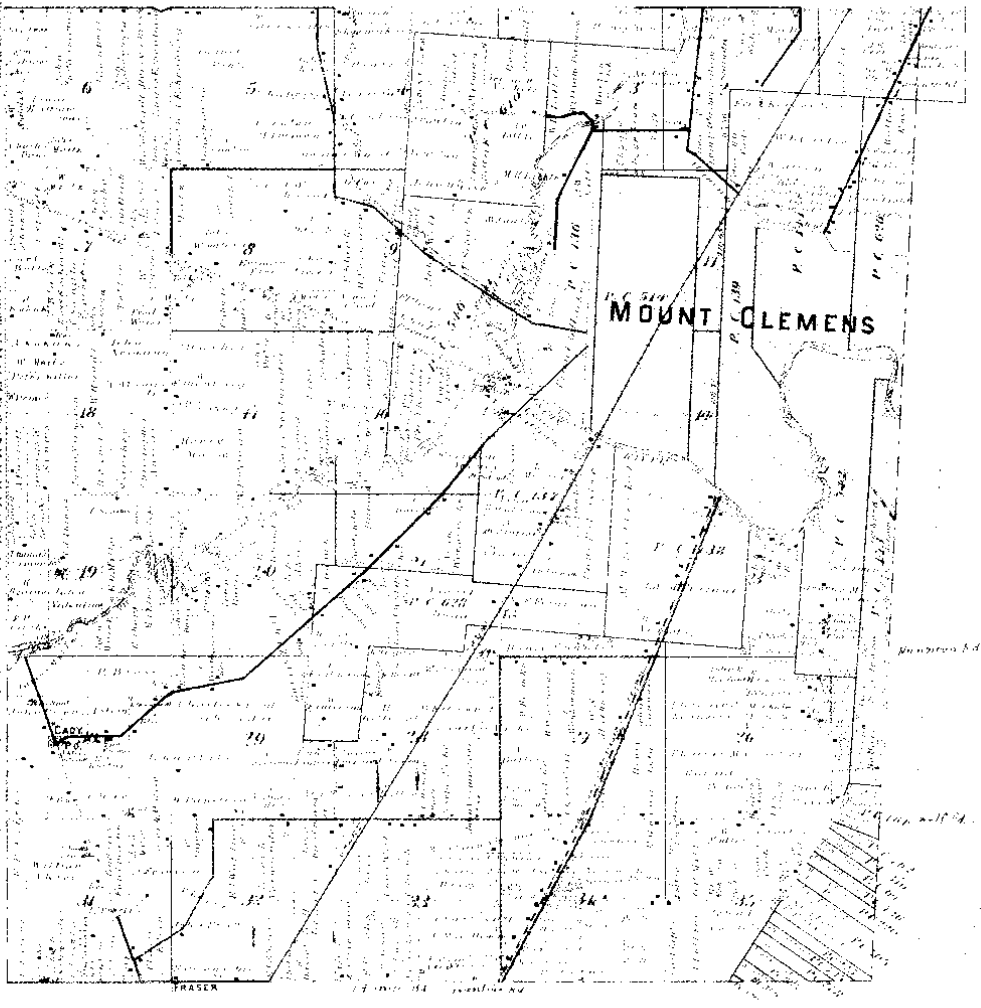


# MAP OF CLINTON

Township 2 North Range 13 East

Scale 2 inches to one Mile

of the Division of Maps



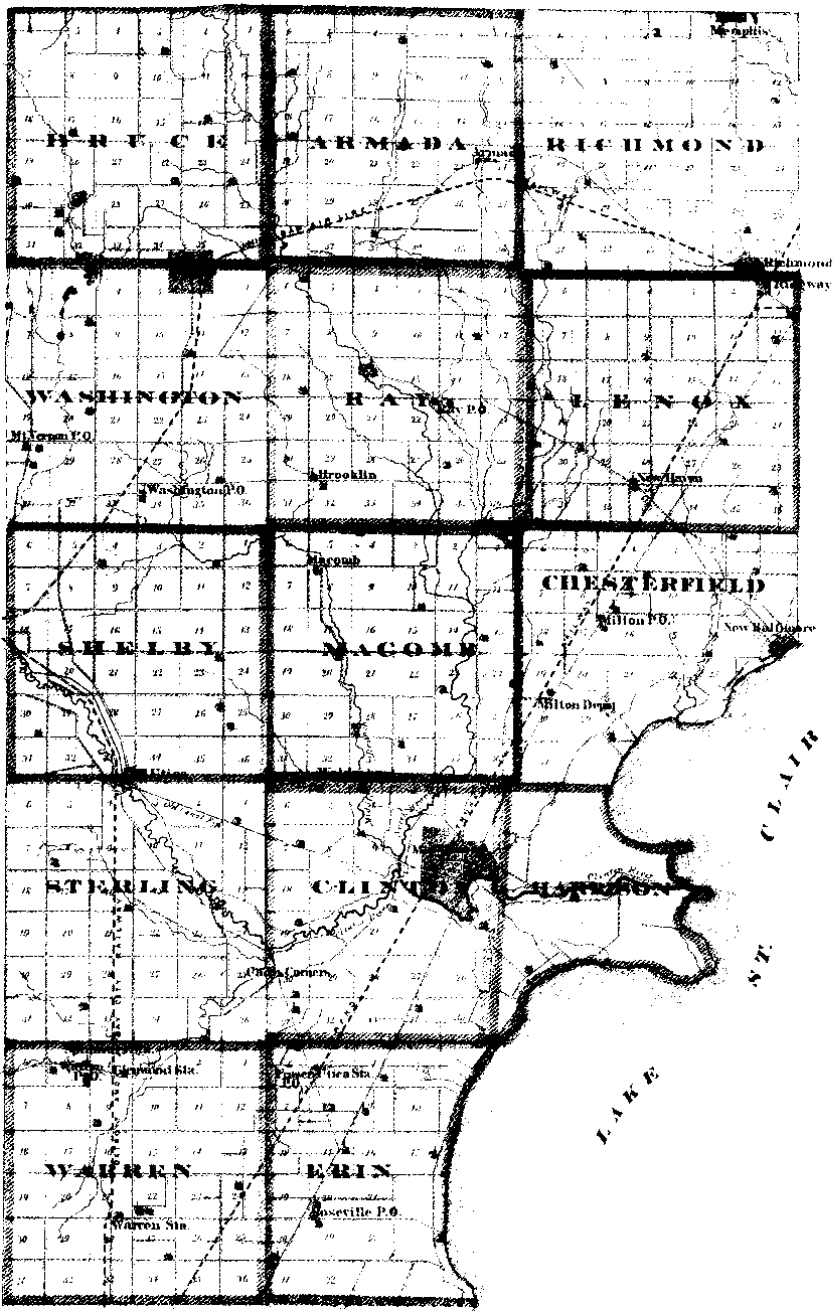
# WASHINGTON

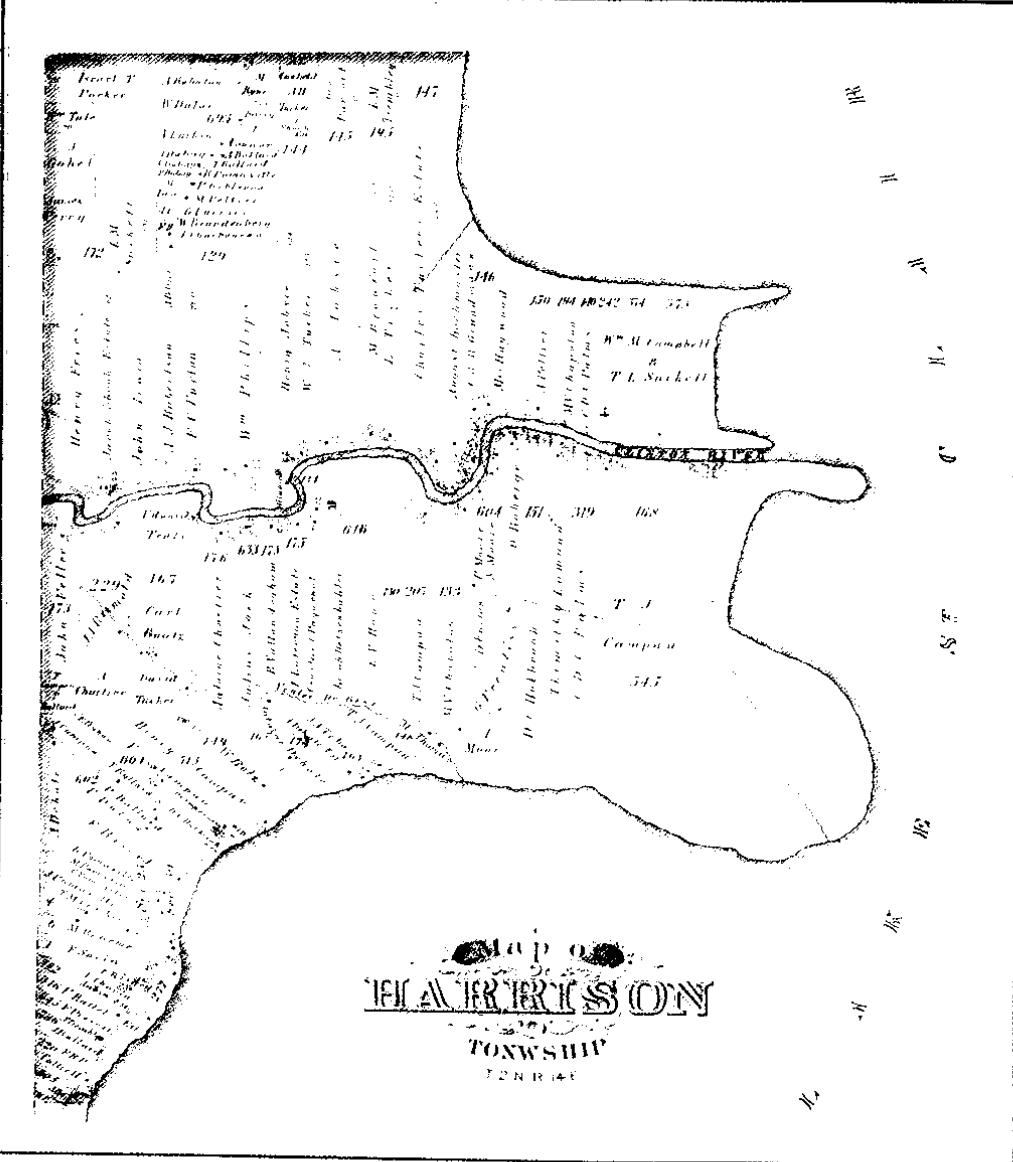
## RAVOLIOTIPI

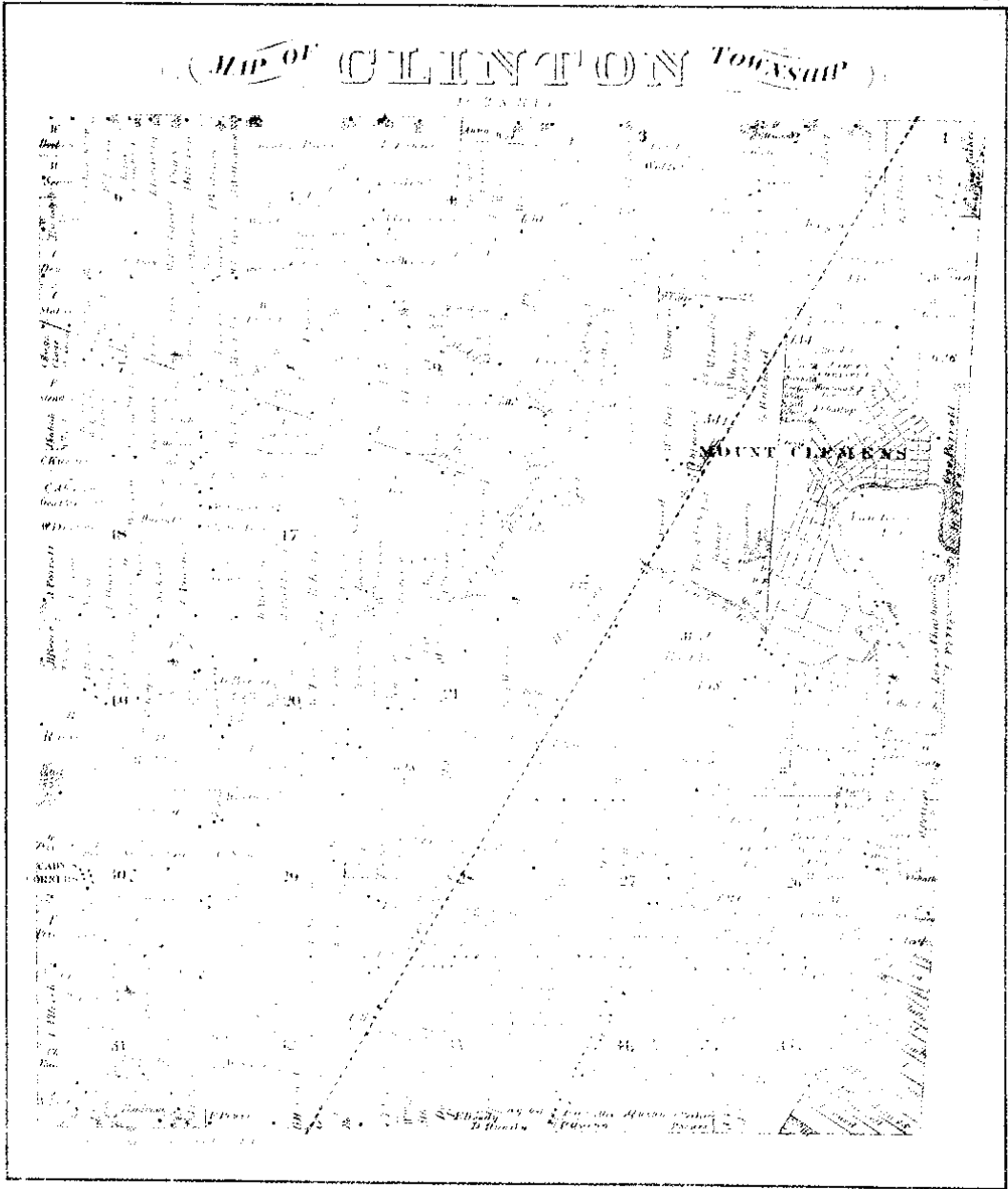
1878

COMPILED DRAWING BY S. J. WILSON, F. C. E.

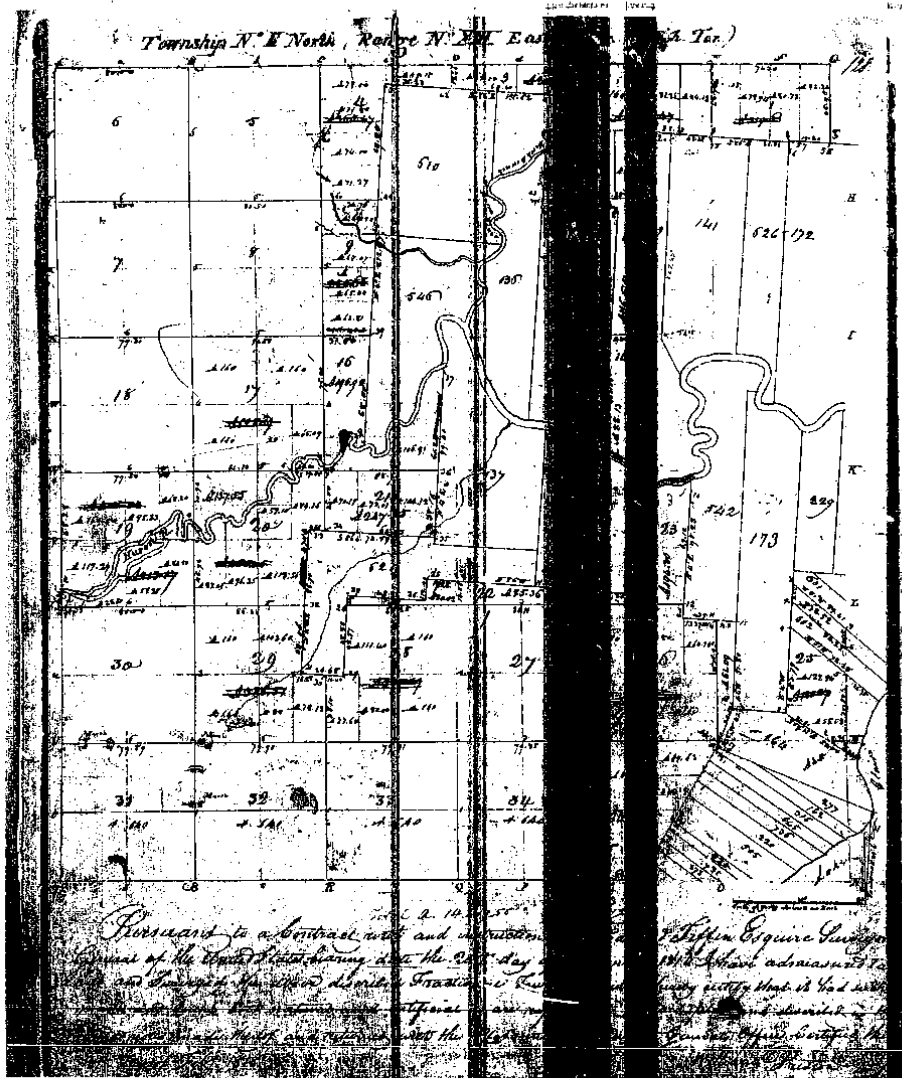
SCALE 2 MILES TO AN INCH







# METCO



Management, Engineering & Technical Consultants

12504 Stephens Warren, MI 48089 (586) 755-5770 Fax (586) 755-5774

No. 491

No. 626 Confirmed to  
Christian Clemans

NORTH SIDE OF RIVER HURON

Description No. 626 Confirmed to Christian Clemans commencing at a post standing on the border of River Huron between this tract and a tract confirmed to the claimant thence north one hundred and twenty six chains twenty three links to a post thence east twenty six chains forty one links to a post the northwest corner of a tract confirmed to John Askin Junior thence south one hundred and fifty two chains fifteen links to a bottomwood tree standing on the border of River Huron thence along the border of said river up stream north eighty eight degrees west seven chains thence north forty one degrees west six chains thence north north three chains thence north twenty four degrees east seventeen chains thence north forty one degrees west seven chains thence south eighty one degrees thirty minutes west eighteen chains to the place of beginning, containing three hundred and fifty one acres and one tenth of an acre \_\_\_\_

Detroit July 14th, 1810

Aaron Greeley Surveyor  
of private claims





North Side of River Huron

Chains fifteen links, to a Buttonwood tree standing on the border of River Huron. Thence along the border of said River up Stream North Eighty eight degrees west seven chains. Thence north forty one degrees west six chains. Thence north three chains. Thence north twenty four degrees East seventeen chains. Thence south forty one degrees west seven chains. Thence north eighty one degree thirty minutes west eighteen chains, to the place of beginning containing three hundred and fifty one acres and one tenth of an acre.

Detroit July 14 1810

Haron Greeley Surveyor of Private Claims.

North

west four or  
degrees  
Eighty seven  
Thence  
Seven chains  
of beginning  
and  
south of  
Detroit

N. 571

Down  
William  
standing on  
between the  
and to John  
two hundred  
seven links  
this tract is  
East fifty six  
Chains  
finished to  
Eighty four  
and above the  
tract  
West forty  
the North  
Corner  
and less  
foot  
River Huron  
of said  
four degrees  
seven links

N. 490. North Side of River Huron

Description N. 172. Confirmed to John Astor Junior commencing at a Buttonwood tree standing on the border of River Huron between this tract and a tract confirmed to Christian Gleason Thence north one hundred and fifty two chains fifteen links, to a Black ash tree Thence East thirty seven chains fifty links to a Black ash tree. Thence south one hundred and fifty five chains fifty links to a post standing on the border of River Huron between this tract and uninclosed land, Thence along the border of said River up Stream North fifty six degrees west twelve chains, Thence north Eighty degrees west seven chains Thence South Sixty six degrees west eight chains. Thence north twenty one degree

1 - 1 8457  
North Side of River Huron

420

west four chains, thence north eleven and a half degrees east nine chains, thence north fifty seven degrees west three chains, thence north eighty eight degrees west eleven chains forty five links, to the place of beginning containing four hundred and sixteen acres and one hundred and thirty six square rods.

Detroit July 14, 1810

James G. Coley  
Surveyor  
of Private Claims.

No. 571. North Side of River Huron -  
Description. No. 698 Confirmed to William Connor commencing at a post standing on the North border of Oliver Beaman between his tract and a tract confirmed to John Ashim Junior, thence north two hundred and one chains thirty seven links, to a post standing between this tract and unlocated lands, thence East fifty three chains fifty links, to a post standing on the west line of a tract confirmed to John Sucker, thence north eighty four chains forty seven links, to an Elm tree the North east corner of a tract confirmed to James Connor, thence West forty chains fifty links, to a post the North west corner of said James Connor's tract, thence South one hundred and ten chains eighty two links, to a post standing on the North border of River Huron thence along the border of said River up stream South Sixty four degrees East fourteen chains forty seven links, to the place of beginning.

Huron  
Billon wood  
er of River Huron  
of said River  
the degrees west  
forty one deg.  
- north three  
y four degrees  
a north forty  
and, thence  
by minutes  
place of begin  
and west and  
with four acre  
y Surveyor  
Claims  
- Huron  
- confirmed to  
commencing at a  
on the border  
is tract and  
James Gleason  
and fifty two  
Black ash tree  
in fifty links  
south one  
and fifty link  
border of  
act and  
long the  
- North  
chains, thence  
seven chains  
west eight  
y one degree

PC002  
CLINTON

07/08/2008 10:41 FAX 586 489 5130

MACOMB CO REG-DEEDS

003

LAND CORNER RECORDATION CERTIFICATE  
Filing Requirement of Act 74, Mich. P.A. 1970

For corners in

<u>MACOMB</u> <small>(County)</small>	Located In: MT. CLEMENS	Corner Code # PC 172
1. Public Land Survey	T ___ R ___	_____
	T ___ R ___	_____
	T ___ R ___	_____
	T ___ R ___	_____
2. Property Controlling in Section	S ___ T ___ R ___	_____
	S ___ T ___ R ___	_____
3. Miscellaneous Property in Sec.	S ___ T ___ R ___	_____
	S ___ T ___ R ___	_____

Register of Deeds Stamp & File Number

4. Lot No. \_\_\_\_\_, Recorded Plat \_\_\_\_\_  
 5. Private Claims INTERSECTION OF THE WEST LINE OF P.C. 172 T.2N., R.13E, AND THE NORTH TOP OF BANK OF THE CLINTON RIVER

	A	B	C	D	E	F	G	H	I	J	K	L	M
2	0	8	4	2	2	1							
3													
4	7	0	0	10	11	12							
5													
6	1	17	18	15	14	13							
7													
8	0	20	21	22	23	24							
9													
10	3	20	20	27	20	25							
11													
12	31	32	33	34	35	38							
13													

PC 172

I, MARTIN C. DUNN, in a field survey on JULY 24, 19 96, do hereby certify that under requirements of P.A. 74, Michigan P.A. of 1970, the corner points mentioned in lines 1 and 2 above were in conformance with regulations and rules therefore as required in the current manual of survey instructions of the United States Department of the Interior, Bureau of Land Management or by a decree of a Court of Law and/or that the corner points mentioned in lines 3, 4 and 5 above were in conformance with the rules of the Michigan Board of Land Surveyors or by a Decree of a Court of Law, established, re-established, monumented, re-monumented, recovered, found as expressed below:

NOTE: Not more than 2 corners, all in the same town and range, may be recorded on this certificate.

A. Description of original monument and accessories and/or subsequent restoration:

NONE

B. Description of corner evidence found and/or method applied in restoring or reestablishing corner:

SUPERVISOR'S FLAT NO. 19 L. 09, P. 7 & 8

FOUND 3/4" IRON ROD

VERIFIED WITH FOUND IRONS ON WEST SUBDIVISION LINE.

C0438571 LIBER:07245 PAGE:444 09:34A 11/14/1996  
CARMELLA SABAUGH-MACOMB COUNTY, MI REG/DEEDS

C. Description of monument for corner and accessories established to perpetuate locating the position of the corner:

FOUND 3/4" IRON ROD AT TOP OF BANK, 475 FEET NORTH OF CENTERLINE OF THE CLINTON RIVER

WITNESSES

- |              |        |   |
|--------------|--------|---|
| 1. S.70°E.   | 10.00' | SET PK NAIL W/TAG IN SW FACE OF A 6" ASH.     |
| 2. DUE SOUTH | 12.43' | FOUND 2" PIPE IN WATER.                       |
| 3. DUE WEST  | 21.35' | SET PK NAIL W/TAG IN NORTH FACE OF A 10" ASH. |
| 4. N.15°W.   | 1.70'  | SET PK NAIL W/TAG IN EAST FACE OF A 20" ASH.  |



Signed by Martin C. Dunn  
Surveyor's Michigan License No. 30081

Date Sept. 24, 1996



DESCRIPTION

A parcel of land in and being a part of P.C. 172, T.2N., R.14E., Harrison Township, Macomb County, Michigan and being more particularly described as follows:

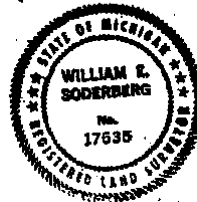
Beginning at a point on the North line of P.C. 172, S. 86° 39' 30" E. (S. 86° 36' E. Record) 926.0 feet from the Northwest corner of P.C. 172; thence S. 3° 15' W. (S. 3° 05' W. Record) 930.0 feet; thence S. 86° 39' 30" E. (S. 86° 22' E. Record) 380.0 feet; thence N. 2° 34' 18" E. (N. 2° 51' 48" E. Record) 520.0 feet; thence N. 00° 19' 18" E. 386.70 feet to the North line of P.C. 172; thence N. 86° 39' 30" W. (N. 86° 36' W. Record) 353.60 feet along the North line of P.C. 172 to the Point of Beginning and containing 7.802 Acres. Subject to Easements of Record.

Together with the following easement for ingress and egress; beginning at a point on the West line of P.C. 172 S. 3° 15' W. 594.92 feet; thence S. 3° 15' W. (S. 3° 05' W. Record) 305.08 feet along the West line of P.C. 172; thence S. 86° 39' 20" E. (S. 86° 36' E. Record) 926.0 feet; thence S. 3° 15' W. (S. 3° 05' W. Record) 30.0 feet; thence N. 86° 39' 30" W. (N. 86° 36' W. Record) 946.0 feet; thence N. 3° 15' W. (N. 3° 05' W. Record) 285.20 feet to the South line of Barbret Court; thence N. 86° 19' W. 1341.39 feet along the South line of Barbret Court to the Easterly line of Gratiot Avenue; thence N. 21° 40' 10" W. 52.56 feet (N. 21° 41' E. 52.66 Record) along said line to the North line of Barbret Court; thence S. 86° 19' E. 1344.79 feet along said line to the Point of Beginning.

**SURVEYOR'S CERTIFICATE:** I hereby certify that I have surveyed and mapped the land above platted and/or described on 27. November, 1974 and that the ratio of closure on the unadjusted field observations of such survey was 1:5,000 and that all of the requirements of P.A. 132, 1970, have been complied with.

ANDERSON, ECKSTEIN AND WESTRICK, INC.

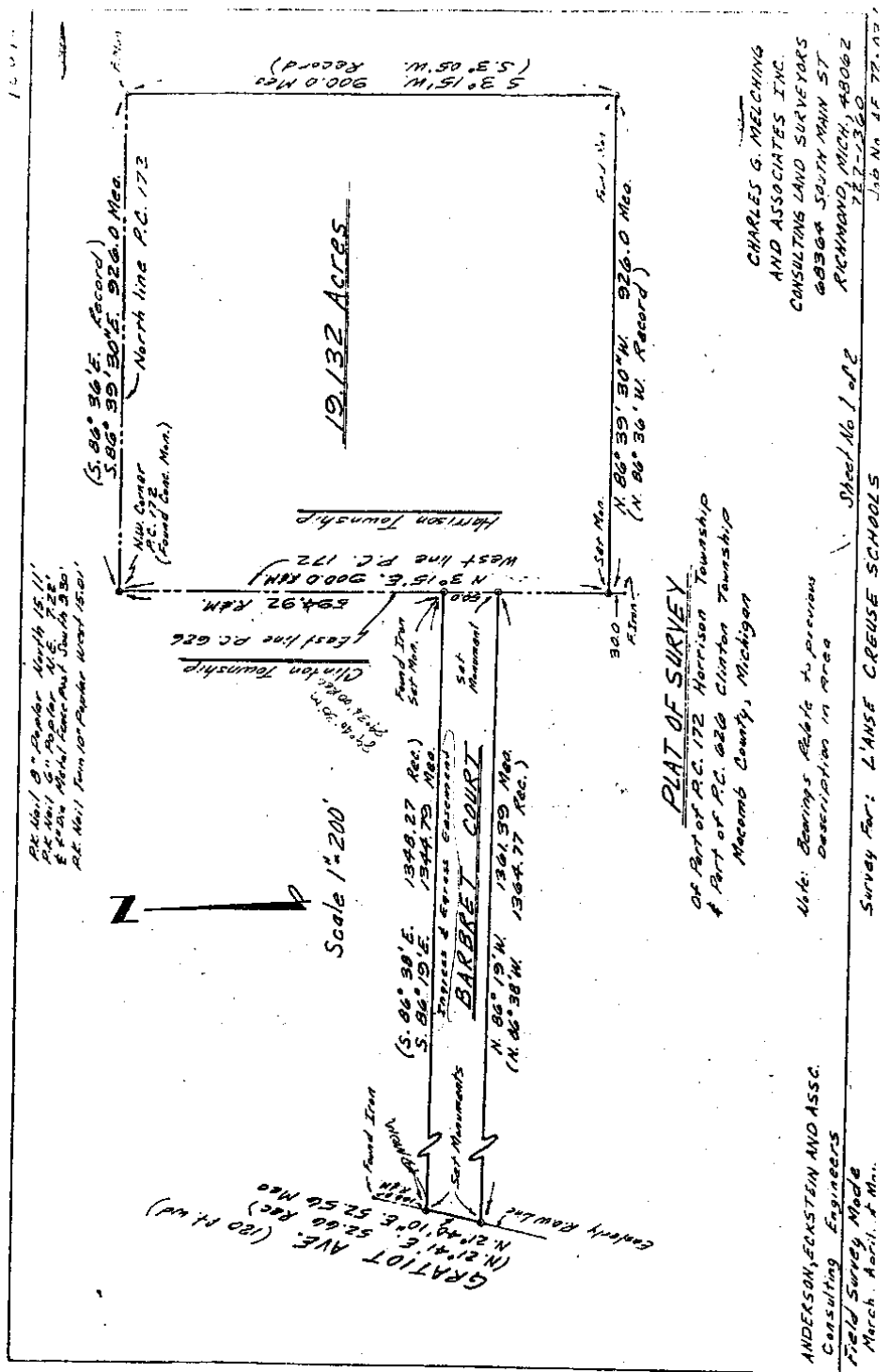
*William E. Soderberg*  
 William E. Soderberg, R.L.S. No. 17635  
 42800 Garfield Road  
 Mount Clemens, Michigan, 48043



WITNESSES:

NW Corner P.C. 172  
 Set ReRod. from previous survey in area

Back Curb South 24.20  
 Center Storm Manhole S.W. 20.82  
 Center Gatewell W.S.W. 53.13



Plat No. 1 of 2  
 Pl. No. 1 of 2  
 E 1/2 Sec. 10, Twp. 10 N., R. 15 W.  
 Pl. No. 1 of 2  
 Pl. No. 1 of 2

**PLAT OF SURVEY**  
 OF Part of P.C. 172 Harrison Township  
 & Part of P.C. 626 Clinton Township  
 Mecomb County, Michigan

Note: Bearings Refer to previous  
 Description in Area

**ANDERSON, ECKSTEIN AND ASSC.**  
 Consulting Engineers  
 Field Survey Made  
 March, April, & May

**CHARLES G. MEECHING**  
 AND ASSOCIATES INC.  
 CONSULTING LAND SURVEYORS  
 68304 SOUTH MAIN ST  
 RICHMOND, MICH, 48062  
 P.E. 1-1360  
 Job No. 14 77.10

Survey For: **L'ANSE CREUSE SCHOOLS**  
 Sheet No. 1 of 2

AMENDED PLAT OF LOT 9 OF

# EAST POINTE INDUSTRIAL SUBDIVISION A SUBDIVISION OF PART OF EAST 1/2 & WEST 1/2 OF FRACTIONAL SECTION 1, T.2N., R.13E., CLINTON TOWNSHIP, MACOMB COUNTY, MICHIGAN



**NORTH**

### LEGEND

ALL DIMENSIONS ARE SHOWN IN FEET.  
ALL CURVILINEAR DIMENSIONS ARE SHOWN  
ALONG THE CHORD.  
"O" INDICATES A 4" DIAMETER  
STEEL ROD CENTER  
CONCRETE MONUMENT HAS BEEN SET.  
(R) INDICATES RADIAL LOT LINES.  
(NR) INDICATES NON RADIAL LOT LINES.  
BEARINGS BASED ON THE EASTERLY LINE OF LOT 8  
OR THE WESTERLY LINE OF LOT 10  
DENOTES FOUND MONUMENT (1/2" DIAMETER  
STEEL ROD IN 4" DIAMETER CONCRETE)

NORTHEAST CORNER OF  
FRACTIONAL SECTION 1  
T.2N., R.13E.  
LIBER 5006  
PAGE 48

SOUTH LINE OF LOT 8  
RECORDED IN LIBER 92 PAGE 47

WESTERLY LINE OF LOT 8  
RECORDED IN LIBER 92 PAGE 47

WESTERLY LINE OF LOT 8  
RECORDED IN LIBER 92 PAGE 47

WESTERLY LINE OF LOT 8  
RECORDED IN LIBER 92 PAGE 47

WESTERLY LINE OF LOT 8  
RECORDED IN LIBER 92 PAGE 47

WESTERLY LINE OF LOT 8  
RECORDED IN LIBER 92 PAGE 47

WESTERLY LINE OF LOT 8  
RECORDED IN LIBER 92 PAGE 47

WESTERLY LINE OF LOT 8  
RECORDED IN LIBER 92 PAGE 47

WESTERLY LINE OF LOT 8  
RECORDED IN LIBER 92 PAGE 47

WESTERLY LINE OF LOT 8  
RECORDED IN LIBER 92 PAGE 47

WESTERLY LINE OF LOT 8  
RECORDED IN LIBER 92 PAGE 47

WESTERLY LINE OF LOT 8  
RECORDED IN LIBER 92 PAGE 47

WESTERLY LINE OF LOT 8  
RECORDED IN LIBER 92 PAGE 47

WESTERLY LINE OF LOT 8  
RECORDED IN LIBER 92 PAGE 47

WESTERLY LINE OF LOT 8  
RECORDED IN LIBER 92 PAGE 47

WESTERLY LINE OF LOT 8  
RECORDED IN LIBER 92 PAGE 47

WESTERLY LINE OF LOT 8  
RECORDED IN LIBER 92 PAGE 47

WESTERLY LINE OF LOT 8  
RECORDED IN LIBER 92 PAGE 47

WESTERLY LINE OF LOT 8  
RECORDED IN LIBER 92 PAGE 47

WESTERLY LINE OF LOT 8  
RECORDED IN LIBER 92 PAGE 47

WESTERLY LINE OF LOT 8  
RECORDED IN LIBER 92 PAGE 47

WESTERLY LINE OF LOT 8  
RECORDED IN LIBER 92 PAGE 47

WESTERLY LINE OF LOT 8  
RECORDED IN LIBER 92 PAGE 47

WESTERLY LINE OF LOT 8  
RECORDED IN LIBER 92 PAGE 47

WESTERLY LINE OF LOT 8  
RECORDED IN LIBER 92 PAGE 47

WESTERLY LINE OF LOT 8  
RECORDED IN LIBER 92 PAGE 47

WESTERLY LINE OF LOT 8  
RECORDED IN LIBER 92 PAGE 47

WESTERLY LINE OF LOT 8  
RECORDED IN LIBER 92 PAGE 47

WESTERLY LINE OF LOT 8  
RECORDED IN LIBER 92 PAGE 47

WESTERLY LINE OF LOT 8  
RECORDED IN LIBER 92 PAGE 47

WESTERLY LINE OF LOT 8  
RECORDED IN LIBER 92 PAGE 47

WESTERLY LINE OF LOT 8  
RECORDED IN LIBER 92 PAGE 47

WESTERLY LINE OF LOT 8  
RECORDED IN LIBER 92 PAGE 47

WESTERLY LINE OF LOT 8  
RECORDED IN LIBER 92 PAGE 47

WESTERLY LINE OF LOT 8  
RECORDED IN LIBER 92 PAGE 47

WESTERLY LINE OF LOT 8  
RECORDED IN LIBER 92 PAGE 47

WESTERLY LINE OF LOT 8  
RECORDED IN LIBER 92 PAGE 47

WESTERLY LINE OF LOT 8  
RECORDED IN LIBER 92 PAGE 47

WESTERLY LINE OF LOT 8  
RECORDED IN LIBER 92 PAGE 47

WESTERLY LINE OF LOT 8  
RECORDED IN LIBER 92 PAGE 47

WESTERLY LINE OF LOT 8  
RECORDED IN LIBER 92 PAGE 47

WESTERLY LINE OF LOT 8  
RECORDED IN LIBER 92 PAGE 47

WESTERLY LINE OF LOT 8  
RECORDED IN LIBER 92 PAGE 47

WESTERLY LINE OF LOT 8  
RECORDED IN LIBER 92 PAGE 47

WESTERLY LINE OF LOT 8  
RECORDED IN LIBER 92 PAGE 47

WESTERLY LINE OF LOT 8  
RECORDED IN LIBER 92 PAGE 47

WESTERLY LINE OF LOT 8  
RECORDED IN LIBER 92 PAGE 47

WESTERLY LINE OF LOT 8  
RECORDED IN LIBER 92 PAGE 47

WESTERLY LINE OF LOT 8  
RECORDED IN LIBER 92 PAGE 47

WESTERLY LINE OF LOT 8  
RECORDED IN LIBER 92 PAGE 47

WESTERLY LINE OF LOT 8  
RECORDED IN LIBER 92 PAGE 47

WESTERLY LINE OF LOT 8  
RECORDED IN LIBER 92 PAGE 47

WESTERLY LINE OF LOT 8  
RECORDED IN LIBER 92 PAGE 47

WESTERLY LINE OF LOT 8  
RECORDED IN LIBER 92 PAGE 47

WESTERLY LINE OF LOT 8  
RECORDED IN LIBER 92 PAGE 47

WESTERLY LINE OF LOT 8  
RECORDED IN LIBER 92 PAGE 47

WESTERLY LINE OF LOT 8  
RECORDED IN LIBER 92 PAGE 47

WESTERLY LINE OF LOT 8  
RECORDED IN LIBER 92 PAGE 47

WESTERLY LINE OF LOT 8  
RECORDED IN LIBER 92 PAGE 47

WESTERLY LINE OF LOT 8  
RECORDED IN LIBER 92 PAGE 47

WESTERLY LINE OF LOT 8  
RECORDED IN LIBER 92 PAGE 47

WESTERLY LINE OF LOT 8  
RECORDED IN LIBER 92 PAGE 47

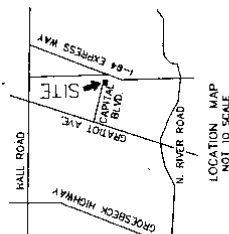
WESTERLY LINE OF LOT 8  
RECORDED IN LIBER 92 PAGE 47

WESTERLY LINE OF LOT 8  
RECORDED IN LIBER 92 PAGE 47

WESTERLY LINE OF LOT 8  
RECORDED IN LIBER 92 PAGE 47

WESTERLY LINE OF LOT 8  
RECORDED IN LIBER 92 PAGE 47

WESTERLY LINE OF LOT 8  
RECORDED IN LIBER 92 PAGE 47



LOCATION MAP  
NOT TO SCALE

LIBER PAGE

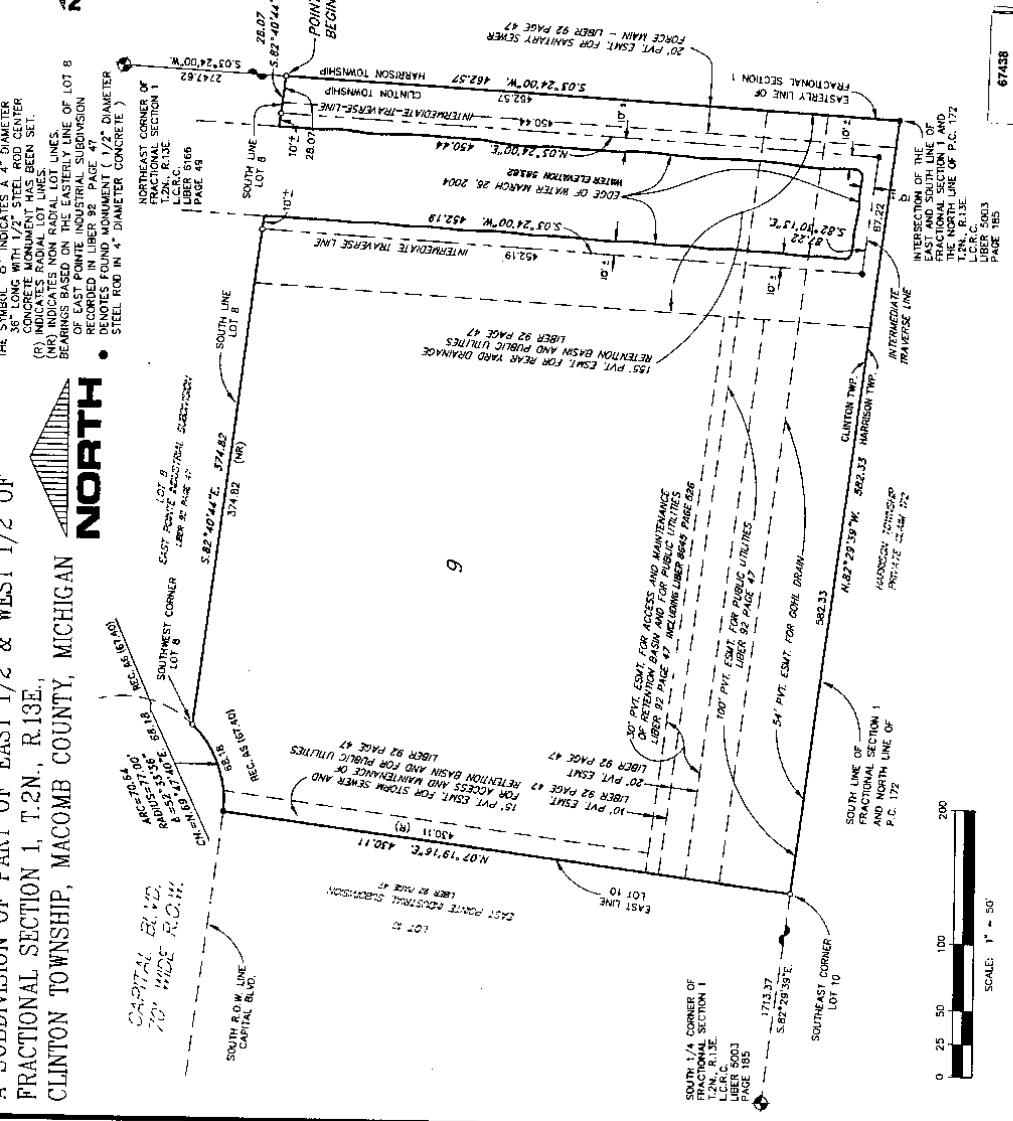


**NORTH**

LEHNER ASSOCIATES, INC.  
PROFESSIONAL ENGINEERS & SURVEYORS  
17000 19 MILE ROAD - SUITE 3  
CLINTON TOWNSHIP, MICHIGAN 48036  
586-412-7050  
FAX: 586-412-7114

ROBERT L. SMITH  
PROFESSIONAL SURVEYOR NO. 16032

SHEET 1 OF 2



67438

4-15-17, P. 16-17

8-3-2004



AMENDED PLAT OF LOT 9 OF  
**EAST POINTE INDUSTRIAL SUBDIVISION**  
 A SUBDIVISION OF PART OF EAST 1/2 & WEST 1/2 OF  
 FRACTIONAL SECTION 1, T.2N., R.13E., CLINTON TOWNSHIP,  
 MACOMB COUNTY, MICHIGAN

**SURVEYOR'S CERTIFICATE**

I, ROBERT L. SMITH, SURVEYOR, CERTIFY THAT I HAVE SURVEYED, DIVIDED AND MAPPED THE LAND SHOWN ON THIS PLAT, DESCRIBED AS  
 AMENDED PLAT OF LOT 9 OF EAST POINTE INDUSTRIAL SUBDIVISION

A SUBDIVISION OF PART OF EAST 1/2 AND WEST 1/2 OF FRACTIONAL SECTION 1, T.2N., R.13E., CLINTON TOWNSHIP, MACOMB COUNTY, MICHIGAN, AND BEING MORE PARTICULARLY DESCRIBED AS FOLLOWS:  
 COMMENCING AT THE NORTHEAST CORNER OF FRACTIONAL SECTION 1, THENCE S.07°24'00"W. 2747.62 FT. ALONG THE EAST LINE OF SAID SECTION 1 TO HARRISON TOWNSHIP AND CLINTON TOWNSHIP, TO THE POINT OF BEGINNING, THENCE S.07°28'57"W. 489.97 FT. TO THE POINT OF BEGINNING OF LOT 10 OF "EAST POINTE INDUSTRIAL SUBDIVISION", AS RECORDED IN LIBER 92 PAGE 47, THENCE ALONG THE EAST LINE OF SAID LOT 10 TO 100.91 FT. TO THE SOUTH RIGHT OF WAY LINE OF CAPITAL BLVD. AND THE NORTHEAST CORNER OF SAID A CURVE (R.A.D.=77.00 FT.) TO THE LEFT, WITH AN CHORD BEARING S.18°59'47.40"E 88.18 FT. TO THE SOUTH WEST CORNER OF LOT 8 OF SAID "EAST POINTE INDUSTRIAL SUBDIVISION", AS RECORDED IN LIBER 92 PAGE 47, THENCE S.02°40'44"E. 374.82 FT. ALONG THE SOUTH LINE OF SAID LOT 8 OF "EAST POINTE INDUSTRIAL SUBDIVISION", AS RECORDED IN LIBER 92 PAGE 47, TO AN INTERMEDIATE TRAVERSE LINE, THENCE ALONG SAID LINE THREE BEARINGS AND DISTANCES: S.07°24'00"W. 282.70 FT. TO THE POINT OF BEGINNING OF SAID LOT 9, THENCE S.02°40'44"E. 400.44 FT. TO THE SOUTH LINE OF SAID LOT 8 OF "EAST POINTE INDUSTRIAL SUBDIVISION", AS RECORDED IN LIBER 92 PAGE 47, THENCE S.07°24'00"W. 282.70 FT. TO THE POINT OF BEGINNING, CONTAINING ONE LOT NUMBERED 9 AND CONTAINING 2.08 ACRES OF LAND.

THAT I HAVE MADE SUCH SURVEY, LAND DIVISION AND PLAT BY THE DIRECTION OF THE OWNERS OF SUCH LAND THAT SUCH PLAT IS A CORRECT REPRESENTATION OF ALL THE EXTERIOR BOUNDARIES OF THE LAND SURVEYED AND THAT THE REQUIRED MONUMENTS AND LOT MARKERS HAVE BEEN LOCATED IN THE GROUND, AS REQUIRED BY SECTION 125 OF THE ACT.  
 THAT THE ACCURACY OF SURVEY IS WITHIN THE LIMITS REQUIRED BY SECTION 126 OF THE ACT.  
 THE BEARINGS SHOWN ON THE PLAT ARE EXPRESSED AS REQUIRED BY SECTION 126 (3) OF THE ACT AND AS EXPLAINED IN THE LEGEND.



MAY 22 2004  
 DATE

LEHNER ASSOCIATES, INC.  
 17001 19 MILE ROAD - SUITE 3  
 CLINTON TOWNSHIP, MICHIGAN 48008  
 ROBERT L. SMITH  
 PROFESSIONAL SURVEYOR NO. 16052  
 VICE PRESIDENT, LEHNER ASSOCIATES, INC.

CERTIFIED TRUE COPY OF  
 RECORDED PLAT  
 BY DEPARTMENT OF LABOR  
 BY *M. G. Smith*  
 MAY 20 2004 10:30 AM  
 OFFICE OF LAND SURVEY  
 AND ADMINISTRATION  
 DATE: 5-22-2004

LIBER \_\_\_\_\_ PAGE \_\_\_\_\_

I, ROBERT L. SMITH, SURVEYOR, DO HEREBY CERTIFY THAT THE AMENDED PLAT OF LOT 9 OF "EAST POINTE INDUSTRIAL SUBDIVISION", A SUBDIVISION OF PART OF EAST 1/2 & WEST 1/2 OF FRACTIONAL SECTION 1, T.2N., R.13E., CLINTON TOWNSHIP, MACOMB COUNTY, MICHIGAN, AND BEING MORE PARTICULARLY DESCRIBED AS FOLLOWS:  
 AMENDED PLAT OF LOT 9 OF EAST POINTE INDUSTRIAL SUBDIVISION, AS RECORDED IN LIBER 92 PAGE 47, THENCE ALONG THE EAST LINE OF SAID LOT 9 TO THE SOUTH RIGHT OF WAY LINE OF CAPITAL BLVD. AND THE NORTHEAST CORNER OF SAID A CURVE (R.A.D.=77.00 FT.) TO THE LEFT, WITH AN CHORD BEARING S.18°59'47.40"E 88.18 FT. TO THE SOUTH WEST CORNER OF LOT 8 OF SAID "EAST POINTE INDUSTRIAL SUBDIVISION", AS RECORDED IN LIBER 92 PAGE 47, THENCE S.02°40'44"E. 374.82 FT. ALONG THE SOUTH LINE OF SAID LOT 8 OF "EAST POINTE INDUSTRIAL SUBDIVISION", AS RECORDED IN LIBER 92 PAGE 47, TO AN INTERMEDIATE TRAVERSE LINE, THENCE ALONG SAID LINE THREE BEARINGS AND DISTANCES: S.07°24'00"W. 282.70 FT. TO THE POINT OF BEGINNING OF SAID LOT 9, THENCE S.02°40'44"E. 400.44 FT. TO THE SOUTH LINE OF SAID LOT 8 OF "EAST POINTE INDUSTRIAL SUBDIVISION", AS RECORDED IN LIBER 92 PAGE 47, THENCE S.07°24'00"W. 282.70 FT. TO THE POINT OF BEGINNING, CONTAINING ONE LOT NUMBERED 9 AND CONTAINING 2.08 ACRES OF LAND.



ROBERT L. SMITH  
 PROFESSIONAL SURVEYOR NO. 16052

I, CARMELLA SABAUGH, COUNTY CLERK, DO HEREBY CERTIFY THAT THE AMENDED PLAT OF LOT 9 OF "EAST POINTE INDUSTRIAL SUBDIVISION", A SUBDIVISION OF PART OF EAST 1/2 & WEST 1/2 OF FRACTIONAL SECTION 1, T.2N., R.13E., CLINTON TOWNSHIP, MACOMB COUNTY, MICHIGAN IS A TRUE AND EXACT COPY OF THE PORTION OF THE PLAT AS COMPILED BY THE ORDER IN THE MATTER OF DRAKE ENTERPRISES, INC., A MICHIGAN CORPORATION, PETITIONER WHICH WAS ENTERED BY CIRCUIT JUDGE DONALD C. MILLER IN CIRCUIT COURT, UNDER CASE NO. 02-5722-AW, COUNTY OF MACOMB STATE OF MICHIGAN, IN TESTIMONY WHEREOF, I HAVE HERETO SET MY HAND AND OFFICIAL SEAL AT THE COUNTY OF MACOMB, STATE OF MICHIGAN, THIS 29 DAY OF JUNE, 2004.

*Carmella Sabaugh*  
 CARMELLA SABAUGH, COUNTY CLERK  
 REGISTER OF DEEDS

RECORDING CERTIFICATE  
 STATE OF MICHIGAN )  
 COUNTY OF MACOMB )

THIS PLAT WAS RECEIVED FOR RECORD ON  
 THE DAY OF JUNE  
 2004 AT 12:00 PM AND RECORDED  
 IN LIBER 157 OF PLATS ON PAGE 1617

*Carmella Sabaugh*  
 CARMELLA SABAUGH - CLERK  
 REGISTER OF DEEDS

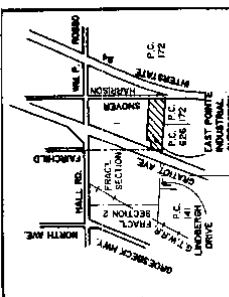
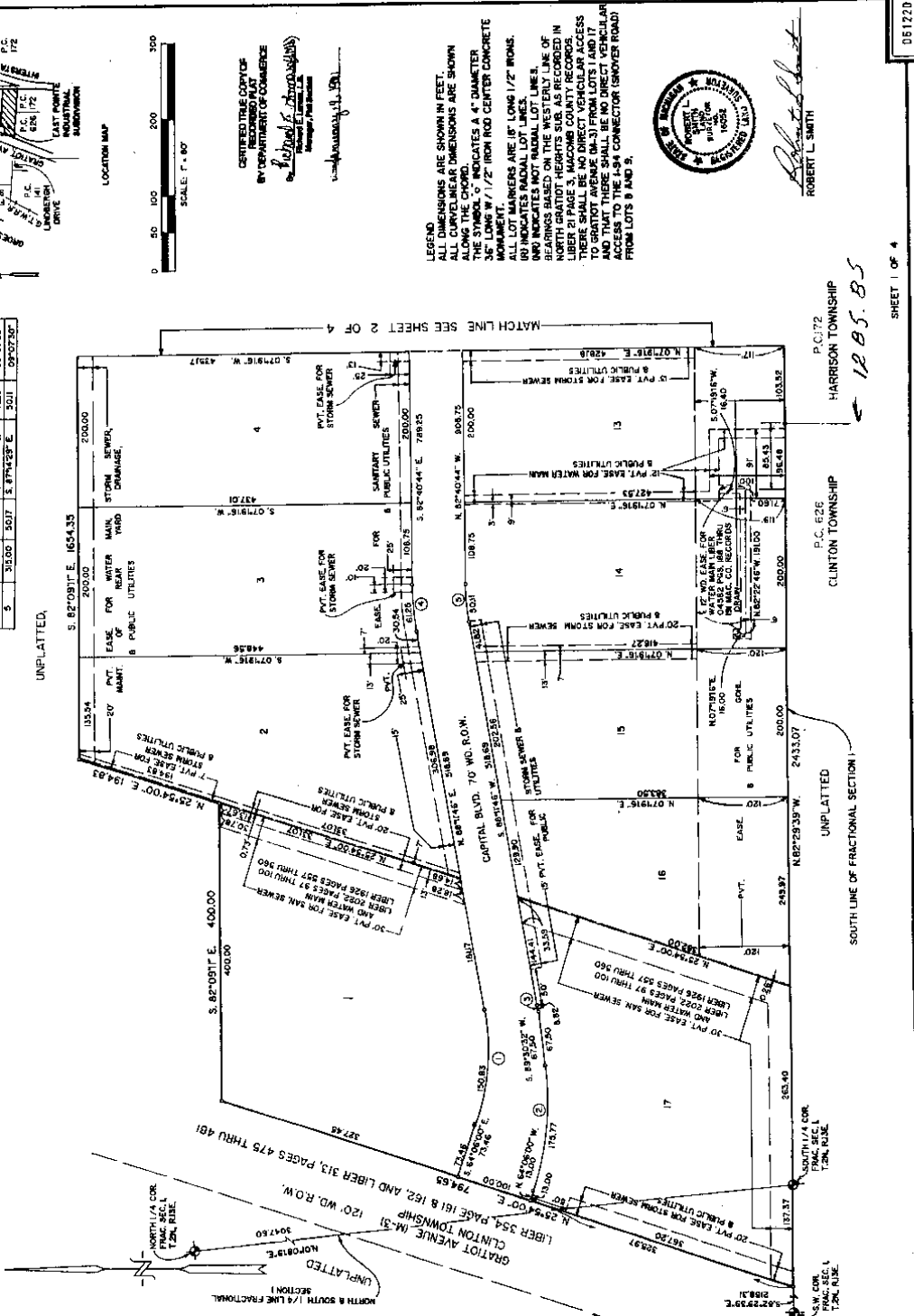
**LEHNER ASSOCIATES, INC.**  
 PROFESSIONAL ENGINEERS & SURVEYORS  
 17001 19 MILE ROAD - SUITE 3  
 CLINTON TOWNSHIP, MICHIGAN 48008  
 588-412-7650  
 FAX: 588-412-7114

67438

SHEET 2 OF 2

**EAST POINTE INDUSTRIAL SUBDIVISION**  
 A SUBDIVISION OF PART OF EAST 1/2 & WEST 1/2 OF  
 FRACTIONAL SECTION 1, T.2N., R.13E., CLINTON TOWNSHIP,  
 MACOMB CO., MICHIGAN

CURVE #	BEARINGS	ARC	LONG CHORD	CHORD	DELTA
1	S. 22° 00' 00" E.	152.31	S. 77° 07' 07" E.	150.85	27° 42' 13"
2	S. 85° 00' 00" E.	173.35	S. 77° 07' 07" E.	175.77	28° 23' 27"
3	S. 85° 00' 00" E.	346.70	S. 77° 07' 07" E.	351.54	28° 23' 27"
4	S. 85° 00' 00" E.	346.70	S. 77° 07' 07" E.	351.54	28° 23' 27"
5	S. 85° 00' 00" E.	346.70	S. 77° 07' 07" E.	351.54	28° 23' 27"



LOCATION MAP  
 SCALE: 1" = 60'

CERTIFIED TRUE COPY OF  
 RECORDED PLAT  
 BY DEPARTMENT OF COMMERCE  
 STATE OF MICHIGAN  
 REGISTERED PROFESSIONAL SURVEYOR  
 ROBERT L. SMITH  
 No. 12047  
 EXPIRES 12/31/93

LEGEND  
 ALL DIMENSIONS ARE SHOWN IN FEET.  
 ALL CURVILINEAR DIMENSIONS ARE SHOWN  
 ALONG THE CHORD.  
 THE SYMBOL "O" INDICATES A 4" DIAMETER  
 MONUMENT.  
 ALL 1/2" IRON ROD CENTER CONCRETE  
 MONUMENTS ARE 18" LONG 1/2" IRONS.  
 "O" INDICATES RADIAL LOT LINES.  
 "O" INDICATES NOT RADIAL LOT LINES.  
 THE LINE WITH THE "O" SYMBOL IS A LINE OF  
 NORTH GRADIENT HERBERTS SUB. AS RECORDED IN  
 LIBER 21 PAGE 3, MACOMB COUNTY RECORDS.  
 THERE SHALL BE NO DIRECT VEHICULAR ACCESS  
 TO GRATIOT AVENUE (M-31) FROM LOTS 1 AND 2.  
 THERE SHALL BE NO DIRECT VEHICULAR  
 ACCESS TO THE I-54 CONNECTOR (SMOYER ROAD)  
 FROM LOTS 8 AND 9.



ROBERT L. SMITH

12-13-1992

05172D

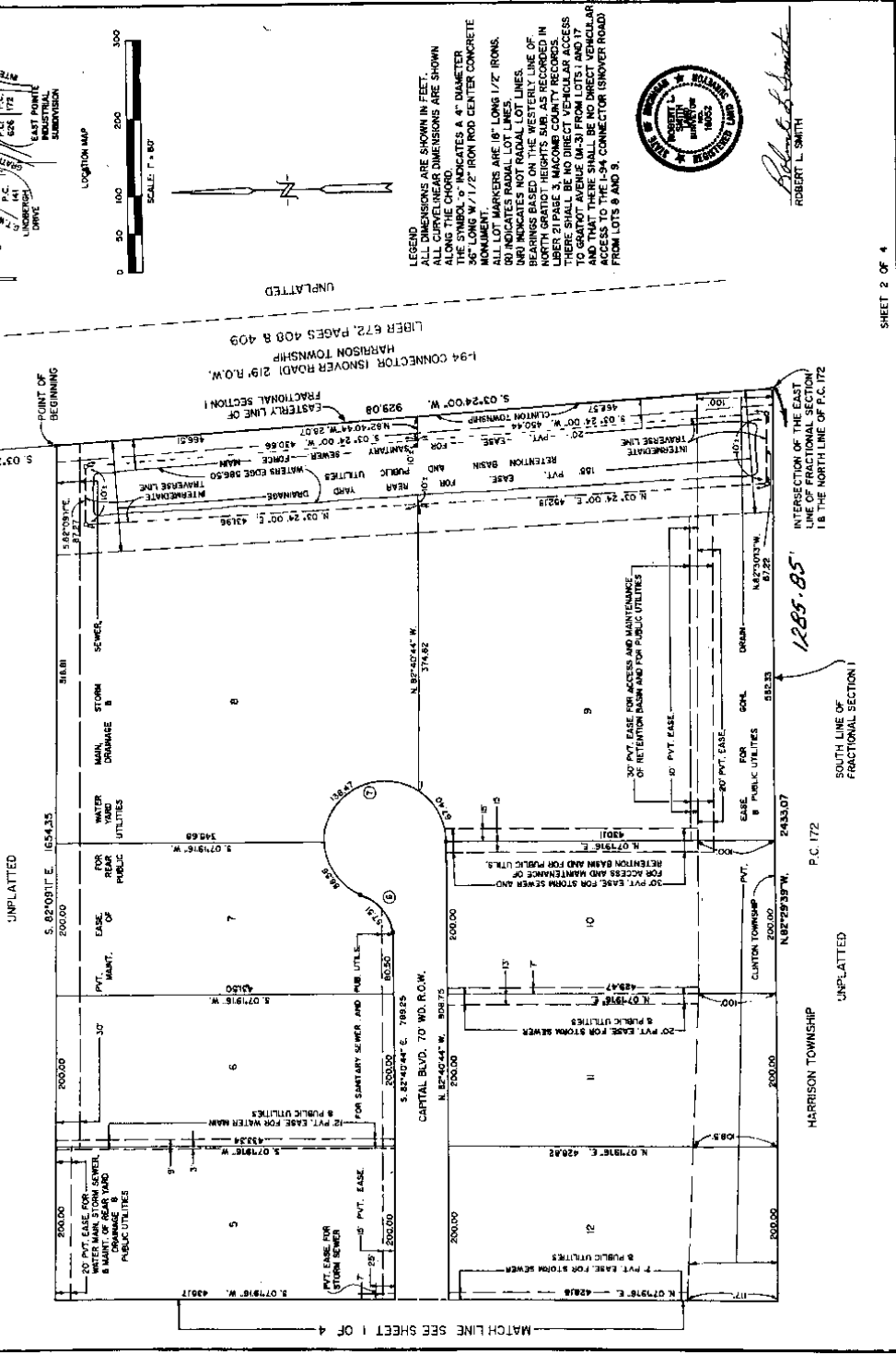
1. 92, P. 47-50

12-13-1992

SHEET 1 OF 4

**EAST POINTE INDUSTRIAL SUBDIVISION**  
 A SUBDIVISION OF PART OF EAST 1/2 & WEST 1/2 OF  
 FRACTIONAL SECTION 1, T.2N., R.13E., CLINTON TOWNSHIP,  
 MACOMB CO., MICHIGAN

CURVE DATA				
CURVE #	RADIUS	ARC	CHORD	DELTA
6	50.00	62.7	5.824235 W.	37.3
7	77.00	58.26	5.274707 E.	25.0724



LEGEND  
 DIMENSIONS ARE SHOWN IN FEET.  
 ALL CURVILINEAR DIMENSIONS ARE SHOWN  
 ALONG THE CHORD.  
 THE SYMBOL "o" INDICATES A 4" DIAMETER  
 90° LONG W/ 1/2" IRON ROD CENTER CONCRETE  
 ALL LOT MARKERS ARE 16" LONG 1/2" IRONS.  
 "M" INDICATES RADIAL LOT LINES.  
 BEARINGS BASED ON THE WESTERN LINE OF  
 THE EAST POINTE INDUSTRIAL SUBDIVISION IN  
 LAYER 21 PAGE 3, MACOMB COUNTY RECORDS.  
 THERE SHALL BE NO DIRECT VEHICULAR ACCESS  
 TO GRATIOT AVENUE (M-31) FROM LOTS 1 AND 7  
 AND THAT THERE SHALL BE NO DIRECT VEHICULAR  
 ACCESS TO THE 1/4" CONNECTOR (ISNOVER ROAD)  
 FROM LOTS 8 AND 9.



*Robert L. Smith*  
 ROBERT L. SMITH

N.E. CORNER  
 FRACTIONAL  
 SECTION 1,  
 T. 2 N., R. 13 E.

UNPLATTED  
 LIBER 672, PAGES 408 & 409  
 HARRISON TOWNSHIP  
 1-94 CONNECTOR (ISNOVER ROAD) 219' R.O.W.

INTERSECTION OF THE EAST  
 SECTION LINE  
 18' THE NORTH LINE OF P.C. 172

P.C. 172  
 2433.07  
 1285.85'  
 SOUTH LINE OF  
 FRACTIONAL SECTION 1

61.007



**EAST POINTE INDUSTRIAL SUBDIVISION**  
**A SUBDIVISION OF PART OF EAST 1/2 8 WEST 1/2 OF**  
**FRACTIONAL SECTION 1, T.2N., R.13E., CLINTON TOWNSHIP,**  
**MACOMB CO., MICHIGAN**

**COUNTY TREASURER'S CERTIFICATE**

The records in my office show no unpaid taxes or special assessments for including the land, including the land, included in this plat.

*Robert L. Smith*  
 ROBERT L. SMITH, COUNTY TREASURER

**CERTIFICATE OF MUNICIPAL APPROVAL**

I certify that this plat was approved by the Township Board of the Township of Clinton, Michigan, on the 21st day of October, 1980, and that the public sewer and public water services have been installed and are ready for use within this plat.

and that survey is posted for one year to insure the placement of monuments and lot markers.

*Demetrius Tomlinson*  
 DEMETRIUS TOMLINSON, TOWNSHIP CLERK

**COUNTY CLERK COMMISSIONER'S CERTIFICATE**

Approved on the 21st day of October, 1980, as complying with Section 136 of Act 208, 1967, Public Act 208, as amended, and the regulations published in the County of Macomb.

*Robert L. Smith*  
 ROBERT L. SMITH, COMMISSIONER OF PUBLIC WORKS

**MICHIGAN DEPARTMENT OF TRANSPORTATION**

APPROVED ON THE 21st DAY OF OCTOBER, 1980, AS COMPLYING WITH ACT 208, PUBLIC ACT 208, AS AMENDED, AND REGULATIONS PUBLISHED IN THE DEPARTMENT OF TRANSPORTATION.

**MICHIGAN DEPARTMENT OF TRANSPORTATION**

*James P. White*  
 JAMES P. WHITE, DIRECTOR

**CERTIFICATE OF COUNTY ROAD COMMISSIONER'S**

Approved on the 21st day of October, 1980, as complying with Section 136 of Act 208, P.A. 1967, and the applicable published rules and regulations of the Board of Road Commissioners of Macomb County.

*Robert L. Smith*  
 ROBERT L. SMITH, VICE-CHAIRPERSON  
 JAMES P. WHITE, CHAIRPERSON

**COUNTY PLAT BOARD CERTIFICATE**

This plat has been reviewed and is approved by the Macomb County Plat Board on the 21st day of October, 1980, as being in compliance with all rules and regulations.

*Mark A. Stebbins*  
 MARK A. STEBBINS, CHAIRMAN, COUNTY BOARD OF COMMISSIONERS

*Edna White*  
 EDNA WHITE, CLERK, REGISTER OF DEEDS

**RECORDING CERTIFICATE**

STATE OF MICHIGAN  
 MACOMB COUNTY

This plat was received for record on the 21st day of October, 1980, at 1:00 P.M. and recorded in Liber 130 of Plats on Page 142-143-144-145-146-147-148-149-150 of the Register of Deeds.



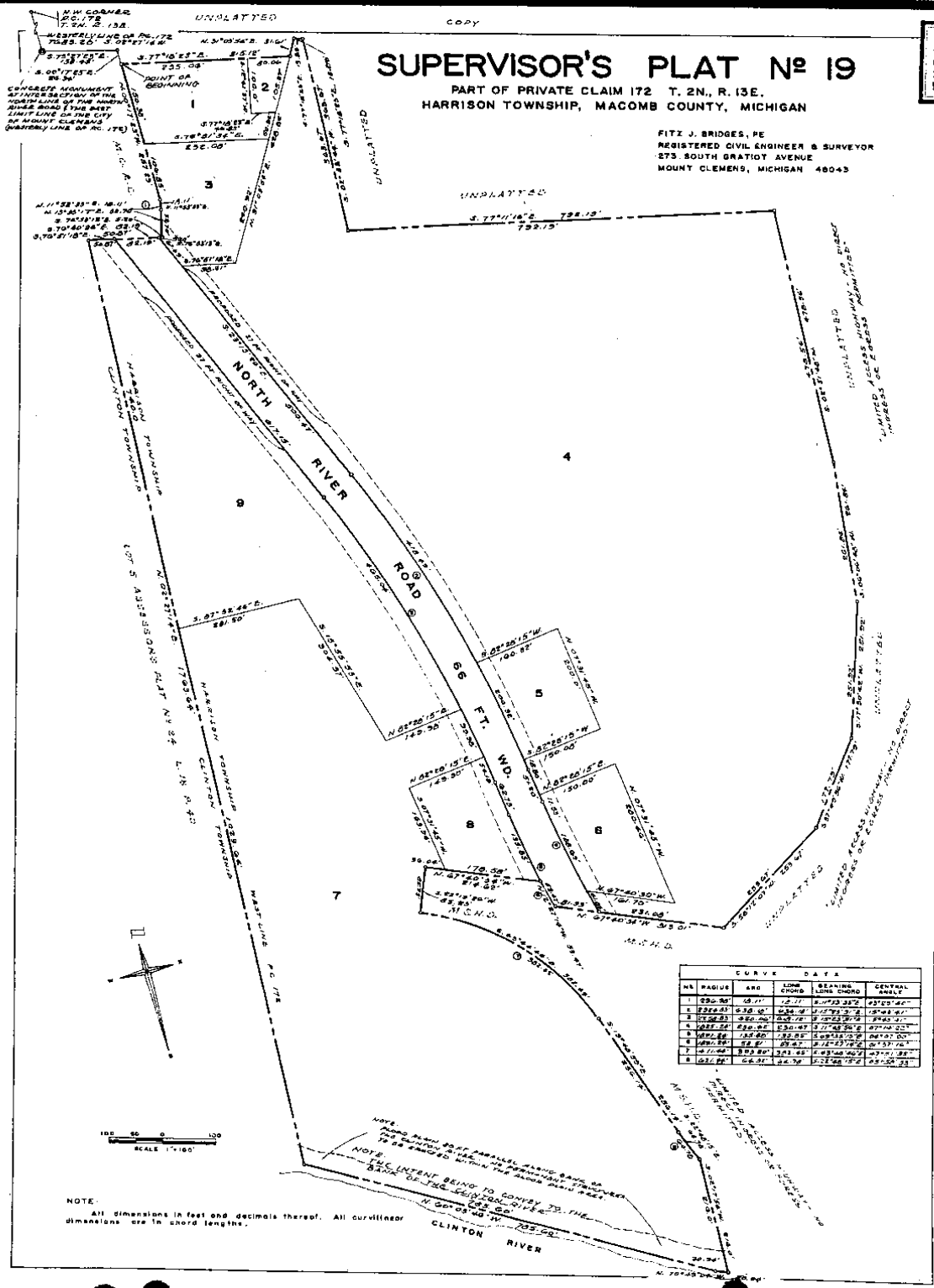
*Robert L. Smith*  
 ROBERT L. SMITH

# SUPERVISOR'S PLAT N<sup>o</sup> 19

PART OF PRIVATE CLAIM 172 T. 2N., R. 13E.  
HARRISON TOWNSHIP, MACOMB COUNTY, MICHIGAN

FITZ J. BRIDGES, P.E.  
REGISTERED CIVIL ENGINEER & SURVEYOR  
273 SOUTH GRATIOT AVENUE  
MOUNT CLEMENS, MICHIGAN 48043

50279



CURVE DATA					
NO.	RADIUS	ARC	LONG CHORD	BEARING LONG CHORD	CENTRAL ANGLE
1	230.30'	68.17'	12.17'	S. 17° 23' 28" W.	43° 05' 46"
2	230.30'	68.17'	12.17'	S. 17° 23' 28" W.	43° 05' 46"
3	230.30'	68.17'	12.17'	S. 17° 23' 28" W.	43° 05' 46"
4	230.30'	68.17'	12.17'	S. 17° 23' 28" W.	43° 05' 46"
5	230.30'	68.17'	12.17'	S. 17° 23' 28" W.	43° 05' 46"
6	230.30'	68.17'	12.17'	S. 17° 23' 28" W.	43° 05' 46"
7	230.30'	68.17'	12.17'	S. 17° 23' 28" W.	43° 05' 46"
8	230.30'	68.17'	12.17'	S. 17° 23' 28" W.	43° 05' 46"

K. 5-91, P. 7-8 6-14-1968

COPY

5607

# SUPERVISOR'S PLAT No 19

PART OF PRIVATE CLAIM 172 T. 2N., R. 13E,  
HARRISON TOWNSHIP, MACOMB COUNTY, MICHIGAN

FITZ J. BRIDGES REG. CIVIL ENGINEER & SURVEYOR MOUNT CLEMENS, MICHIGAN

### DESCRIPTION

The land embraced in the annexed plat of Supervisor's Plat No. 19 part of Private Claim 172 T. 2N., R. 13E., Harrison Township, Macomb County, Michigan and being more particularly described as follows:

Commencing at the N. W. corner of P. C. 172; thence S. 02°27'14"W. 7689.20 ft., along the Westerly line of P. C. 172 to a monument at the intersection of the North line of the North River Road and East limit line City of Mount Clemens (Westerly line of P. C. 172); thence S. 75°27'23"E. 136.45 ft.; thence S. 00°17'23"E. 26.34 ft., to the point of beginning; thence S. 77°18'23"E. 315.12 ft.; thence N. 51°03'54"E. 31.61 ft.; thence S. 77°18'23"E. 13.89 ft.; thence S. 02°33'54"W. 363.57 ft.; thence S. 77°11'16"E. 792.19 ft.; thence S. 02°51'48"W. 478.56 ft.; thence S. 06°08'48"W. 261.84 ft.; thence S. 17°50'42"W. 231.92 ft.; thence S. 37°49'36"W. 177.79 ft.; thence S. 58°12'07"W. 253.57 ft.; thence N. 67°40'34"W. 313.01 ft.; thence along a curve to the left (radius 1891.24 ft., central angle 1°37'16" whose long chord bears N. 12°27'14"W. 53.47 ft.); thence N. 67°40'34"W. 214.62 ft.; thence S. 22°19'26"W. 85.23 ft.; thence along a curve to the right (radius 471.44 ft., central angle 47°51'35" whose long chord bears S. 43°44'46"E. 382.45 ft.; thence S. 15°48'59"E. 255.14 ft.; thence along a curve to the left (radius 521.44 ft., central angle 5°58'39" whose long chord bears S. 22°48'15"E. 64.78 ft.; thence S. 02°17'54"W. 216.0 ft.; thence N. 70°49'04"W. 20.94 ft.; thence N. 60°03'46"W. 785.60 ft.; thence N. 02°27'14"E. 1763.64 ft.; thence S. 76°51'18"W. 50.87 ft.; thence S. 76°40'26"E. 82.19 ft.; thence S. 76°53'13"E. 5.20 ft.; thence N. 13°38'17"E. 52.70 ft.; thence along a curve to the left (radius 296.98 ft., central angle 3°29'40" whose long chord bears N. 11°53'33"E. 16.11 ft.; thence N. 00°17'23"W. 257.23 ft., to the point of beginning. Containing lots 1 through 9 inclusive.

### DEDICATION

KNOW ALL MEN BY THESE PRESENTS, that I, Ralph E. Beaufait, Supervisor of the Township of Harrison of Macomb County, State of Michigan, by virtue of authority in me vested by Section 51, Act 172, of 1929, having been duly authorized by the Township Board have caused the land described in the annexed plat to be surveyed, laid out and platted, to be known as, Supervisor's Plat No. 19, part of Private Claim 172, T. 2N., R. 13E., Harrison Township, Macomb County, Michigan and that the streets and easement as shown on said plat are now being used for such purposes, and that the plat conforms with the requirements of Section 51, Act 172, of Public Acts of 1929, as amended.

Signed and Sealed in the presence of:  
*Ralph E. Beaufait*  
Witness: *Joseph J. ...*  
*Thomas S. ...*  
Witness: *George ...*

*Ralph E. Beaufait*  
Ralph E. Beaufait, Supervisor  
Township of Harrison  
38151 L'Anse Creuse  
Mount Clemens, Michigan 48043

### ACKNOWLEDGEMENT

State of Michigan }  
County of Macomb }

On this 27th day of July, 1967, before me a Notary Public in and for said County, personally came the above named, Ralph E. Beaufait, Supervisor of the Township of Harrison known to me to be the person who executed the above dedication and acknowledged the same to be his free act and deed as such Supervisor.

My commission expires 10-10-71

*Shirley K. ...*  
Notary Public, Macomb County,  
Michigan

### CERTIFICATE OF MUNICIPAL APPROVAL

This Plat was approved by the Township Board of the Township of Harrison at a meeting held 27th day of July, 1967 and complies with Section 19A and the width of lots is in compliance with requirements of Section 10, Act 172, of 1929, as amended.

*Richard W. ...*  
Richard W. Munroe, Clerk

### CERTIFICATE OF APPROVAL BY THE BOARD OF COUNTY ROAD COMMISSIONERS

This Plat has been examined and was approved on the 3 day of October, A. D. 1967 by the Macomb County Board of Road Commissioners.

*Lawrence ...*  
Lawrence ... Chairman  
*Keith ...*  
Keith ... Vice Chairman

Ernest W. McCollom, Member

### CERTIFICATE OF APPROVAL BY THE COUNTY BOARD

This Plat was approved on the 29th day of November, A. D. 1967 by the Macomb County Board.

*Thomas S. ...*  
Thomas S. ... County Treasurer  
*Thomas S. ...*  
Thomas S. ... Drain Commissioner  
*Wm. J. ...*  
Wm. J. ...

### SURVEYOR'S CERTIFICATE

I hereby certify the plat heron delineated is a correct one and that permanent metal monuments consisting of bars not less than one-half inch in diameter and 36 inches in length, encased in a concrete cylinder at least 4 inches in diameter and 36 inches in depth have been placed at points marked thus (O) as shown at all angles in the boundaries of the land platted, at all the intersections of the lines of streets, and at the intersections of the lines of streets with the boundaries of the plat as shown on said plat.

Prepared and Drafted by:

*Fitz J. Bridges*  
Fitz J. Bridges, P. E.  
Registered Land Surveyor No. 5779  
273 South Gratiot Avenue  
Mount Clemens, Michigan 48043

*Richard W. ...*  
Richard W. Munroe, Clerk

APPROVED July 26, 1967

MICHIGAN HIGHWAY COMMISSION

*Henry E. ...*  
HENRY E. STANLEY  
State Highway Engineer

### COPY

Recorder's Office  
Macomb County  
Filed for Record  
July 19, 1967  
148  
1967  
159  
on Page 1 and 2  
*Raymond R. ...*  
Raymond R. ...

I hereby certify that this is a true and correct copy of the original as filed in my office.  
*James H. ...*  
James H. ...  
*Charles ...*  
Charles ...  
*Richard W. ...*  
Richard W. ...  
*Richard W. ...*  
Richard W. ...

26085

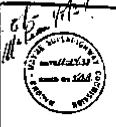
# SUPERVISORS PLAT NO. 5.

PART OF P. C. 826 T. 2. N. R. 13 E.  
CLINTON TOWNSHIP  
MACOMB CO. MICHIGAN.

Examined and  
Jan. 9, 1934  
Geo. B. Hurrell  
Notary Public

SCALE 1"=50'

Continuation of  
Henry B. Joy Rd.  
and Charles  
Harrison Trp.  
Line.



Supervisor  
Jan 9 1934  
Alice R. Hurrell

Supervisor  
Jan 9 1934  
Geo. B. Hurrell

Jan 17 1934  
Geo. B. Hurrell

CERTIFICATE OF APPROVAL BY THE  
COUNTY BOARD  
This plat was approved on the 24th day of  
February, 1933  
J. H. Woodard JUDGE OF PROBATE  
James P. Pruden COUNTY CLERK  
J. H. Woodard COUNTY TREASURER

### Dedication.

KNOW ALL MEN BY THESE PRESENTS, that I, Otto Sherbeck Supervisor  
of Clinton Township Macomb County, State of Michigan, by virtue of  
authority in me vested by Section 51, Art. 172, of 1925, having  
been duly authorized by the Township Board have caused the land  
described in the annexed plat to be surveyed, laid out and plotted  
to be known as Supervisors Plat No. 5 of part of P. C. 826, and  
that the streets and alleys as shown on said plat are now being  
used for such purpose.

*Otto Sherbeck*  
Supervisor of Clinton Twp.

Witnesses:  
*Geo. B. Hurrell*  
*Charles Hurrell*

### Acknowledgment.

STATE OF MICHIGAN )  
COUNTY OF MACOMB )  
ON this 9th day of January, A. D. 1934  
before me, a Notary Public in and for said county, personally came  
the above named Otto Sherbeck Supervisor of Clinton Township known  
to me to be the person who executed the above dedication, and  
acknowledgment the same to be his free act and deed as such Super-  
visor.

Notary Public in and for Macomb County.  
My commission expires Jan 10 1935

### SURVEYOR'S CERTIFICATE.

I hereby certify that the plat hereto delineated is a correct one  
and that permanent metal monuments of not less than one inch in  
diameter and fifteen inches in length set in concrete base at least  
four inches in diameter and forty-eight inches in depth have been  
placed at points marked thereon as shown above at all angles in the  
boundaries of the land plotted, at all the intersections of streets,  
intersections of alleys, or of streets and alleys, and at the inter-  
sections of streets and alleys with the boundaries of the plat as  
shown on said plat.

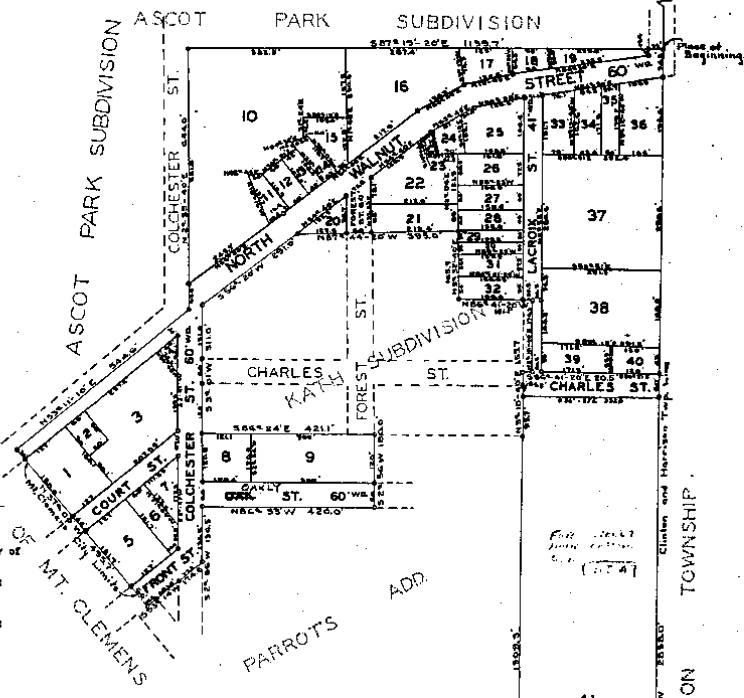
### Description of Land Platted

The land embraced in the annexed plat of  
Supervisors Plat No. 5 part of P. C. 826  
Clinton Township Macomb County Michigan  
is described as follows:

Commencing at the  
intersection of Henry B. Joy Road and the  
Clinton Harrison Township line, thence S 3°  
12'-40" W 118.0 feet along the township  
line to the place of beginning, thence S 3°  
12'-40" W 2058.0 feet along the township  
line, thence S 31° 00' 30" W 813.3 feet along the  
St. Clements City limits, thence N 8° 11' 00"  
E 1809.3 feet along the east boundary of Par-  
rots Add., thence S 3° 12' 40" E 155.7 feet  
along the east boundary of Kath Subdivision,  
thence S 58° 41' 30" W 823.7 feet along the  
south boundary of Kath Subdivision, thence  
S 30° 12' 00" E 174.3 feet along the east  
boundary of Kath Subdivision, thence N 86°  
41' 20" W 121.1 feet along the north boundary of Kath Sub-  
division, thence S 3° 32' 40" W 107.7 feet along the  
east boundary of Kath Subdivision, thence N  
67° 44' 00" E 295.0 feet along the north bou-  
ndary of Kath Subdivision, thence S 86° 30' E  
302.0 feet along Kath Subdivision and south  
side of Walnut Street, thence S 3° 32' 40" W  
111.0 feet along the east side of Colchester Street,  
thence S 86° 24' W 421.1 feet along the Kath  
Subdivision, thence S 86° 24' W 120.0 feet along  
Parrots Addition, thence S 60° 30' W 420.0  
feet along Parrots Addition and south side of  
Colchester Street, thence S 60° 30' W 120.0 feet along  
Parrots Addition and east side of Colchester Street,  
thence S 83° 14' W 174.0 feet along Parrots Addition  
and south side of Walnut Street, thence S 37° 00' W 495  
feet along the St. Clements City line, thence S 23° 11'  
10" W 54.8 feet along the center line of North Walnut St.,  
thence N 23° 11' 10" E 644.0 feet along the east side of  
Colchester Street, thence S 87° 45' 20" W 1159.7 along the  
south line of Ascot Park Subdivision to the point of beginning.

### TOWNSHIP APPROVAL

This plat was approved by the Township Board of the Township  
of Clinton at a meeting held on Jan 9, 1934  
Township Clerk



HARRISON TOWNSHIP

1-10-1934



24926

# ASSESSORS PLAT NO. 24

OF THE CITY OF  
MT. CLEMENS, MACOMB CO., MICHIGAN.

SCALE - 1"=40'

Notes - All dimensions hereon are in feet and decimals thereof

FILED IN 1928  
Nov 22 - 1928  
J. L. Haverly

Nov 21 1928  
J. L. Haverly

### DEDICATION

KNOW ALL MEN BY THESE PRESENTS, That J. H. Miller Assessor of the City of Mt. Clemens Macomb County Michigan, by virtue of authority in me vested by section 2550, Compiled Laws of 1915 as amended, having been duly authorized by the City Commission, have caused the land described in the annexed plat to be surveyed, laid out and plotted to be known as Assessors Plat No. 24 of the City of Mt. Clemens Macomb County Michigan, and that the streets and alleys as shown on said plat are hereby dedicated to the use of the public.

Wm. J. Matthews  
Mayor

J. H. Miller A.S.  
Assessor of the City of Mt. Clemens  
Macomb County Michigan.

Witness my hand and seal of office this 21st day of November 1928.  
Hugh C. Wolberg  
Notary Public

### ACKNOWLEDGMENT

STATE OF MICHIGAN ) ss  
COUNTY OF MACOMB )  
On this 21 day of November A.D. 1928 before me a Notary Public in and for said County, personally came the above named J. H. Miller Assessor of the City of Mt. Clemens, known to be the person who executed the above dedication and acknowledged the same to be his free act and deed as such Assessor. My Commission expires Nov 15 1931.

Wm. J. Matthews  
Notary Public in and for said County

### DESCRIPTION

The land embraced in the annexed plat of Assessors Plat No. 24 of the City of Mt. Clemens Macomb County Michigan, is described as follows:-  
Beginning at the intersection of the 2 1/2" line of East Broadway with the Clinton-Harrison Twp. line. Thence S 74°42' E, 247.2 ft. Thence E 87°07' N, 813.2 ft. Thence E 87°07' N, 68.8 ft. Thence N 82°35' W, 500.0 ft. Thence S 1°03' E, 304.4 ft. Thence S 40°15' E, 27.8 ft. Thence E 87°50' N, 110.2 ft. Thence S 82°55' E, 106.0 ft. Thence S 79°23' E, 102.2 ft. Thence S 74°06' E, 180.5 ft. Thence S 78°11' E, 41.3 ft. Thence S 80°54' E, 129.3 ft. Thence S 70°42' E, 204.5 ft. Thence S 31°21' E, 335.5 ft. Thence S 76°42' E, 412.4 ft. Thence S 18°51' E, 269.7 ft. Thence S 44°10' E, 222.5 ft. Thence S 80°15' E, 418.4 ft. Thence E 1°49' E, 117.2 ft. to place of begin.

### ENGINEERS CERTIFICATE

I hereby certify that the plat hereon delineated is a correct one and that permanent metal monuments not less than one inch in diameter and fifteen inches in length set in a concrete base at least four inches in diameter and forty-eight inches in depth have been placed at points marked thereon as shown at all angles in the boundaries of the land plotted, at all intersections of streets, intersections of alleys or of streets and alleys and at the intersections of streets and alleys with the boundaries of the plat as shown on said plat.

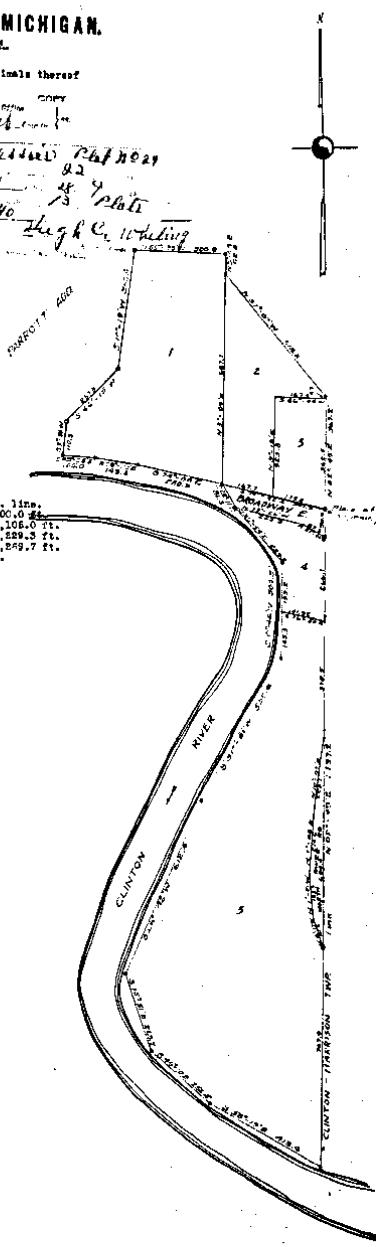
Paul W. H. ...  
Registered Civil Engineer

### CERTIFICATE OF MUNICIPAL APPROVAL

This plat was approved by the City Commission of the City of Mt. Clemens Macomb County Michigan, at a meeting held November 14 1928.  
Wm. J. Matthews City Clerk

### CERTIFICATE OF APPROVAL BY THE COUNTY BOARD

This plat was approved on the 16th day of November 1928.  
Charles H. ... Judge of Probate  
Wm. J. ... County Clerk  
James G. ... County Treasurer



11-22-1928

17465

# 'ASCOT PARK SUBDIVISION'

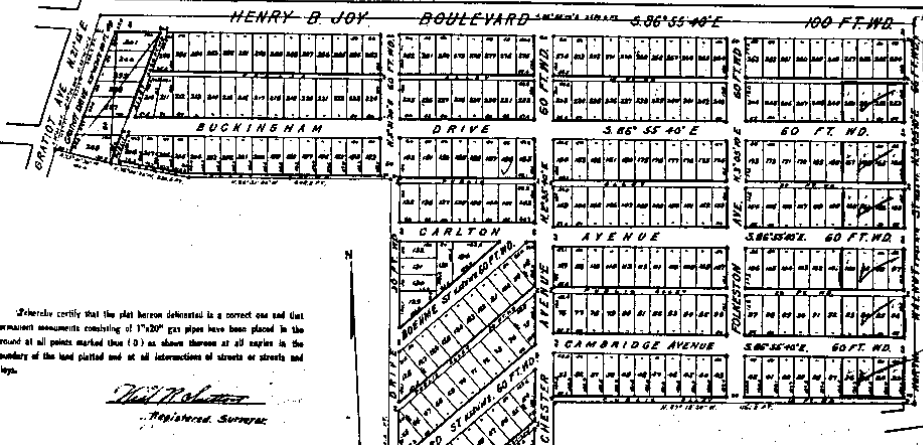
Being parts of Private Claims Nos 141 and 636, T.2.N.R.13 E.

Clinton Twp. Macomb Co.,

MICHIGAN

Scale 200 Feet = 1 Inch.

Examined and Approved  
*Chas. E. Hennessey*  
Deputy Auditor General



I hereby certify that the plat herein delineated is a correct one and that permanent measurements consisting of 1 1/2\"/>

*Walter Williams*  
Registered Surveyor

I hereby certify that this plat has been approved by the Township Board of the Township of Clinton on the 10th day of March, 1921.

*Walter Williams*

### KNOW ALL MEN BY THESE PRESENTS:

The Michigan Realty Co., Vice President, and Cecil E. DeWore, Secretary-Treasurer, and Emily C. DeWore, Secretary, of the Michigan Realty Co., do hereby certify that the above plat is a correct and true copy of the original plat as shown to the Township Board of Clinton on the 10th day of March, 1921, and that the streets and alleys shown on said plat are hereby dedicated to the use of the public.

SIGNED AND SEALED IN PRESENCE OF  
March 26, 1921

*Walter Williams*  
*Emily C. DeWore*  
*Cecil E. DeWore*  
*Walter Williams*  
*Emily C. DeWore*  
*Cecil E. DeWore*

**Description.**  
The land embraced in the annexed plat of Ascot Park Subdivision of parts of Private Claims Nos 141 and 636, T.2.N.R.13 E., Clinton Twp., Macomb Co., Mich. is described as follows: (Beginning at a point in the westerly line of Clinton Twp., said point being also in the westerly line of Private Claim 636 of its intersection with the centerline of the Henry B. Joy Road and 128.0 ft. south of the N.E. corner of said Private Claim 636.) Thence S. 3° 05' 10\"/>

*Walter Williams*  
*Emily C. DeWore*  
*Cecil E. DeWore*

**NOTARIAL CERTIFICATE**  
I HEREBY CERTIFY THAT THE ABOVE IS A TRUE COPY OF THE ORIGINAL PLAT FORWARDED THE REGISTRAR OF DEEDS FOR RECORDING.  
DEPUTY AUDITOR GENERAL

STATE OF MICHIGAN  
COUNTY OF MACOMB  
Notary Public in and for said county, personally knew the above named *Walter Williams* and *Emily C. DeWore* to me personally known, who being each by me duly sworn did say that they are the President and Secretary-Treasurer respectively of the *Michigan Realty Co.* a Michigan Corporation and that the said plat was prepared in the corporate seal of said corporation and the said instrument was signed and sealed in behalf of said corporation, by authority of its Board of Directors and the said *Walter Williams* and *Emily C. DeWore* acknowledged and instrument to be the free act and deed of said corporation.  
*Walter Williams*  
Notary Public in and for Macomb County, Michigan

STATE OF MICHIGAN) S.B.  
COUNTY OF MACOMB)  
ON THIS 27th DAY OF APRIL 1921 BEFORE ME A NOTARY PUBLIC IN AND FOR SAID COUNTY, PERSONALLY APPEARED ROBERT F. ELDRIDGE TO ME PERSONALLY KNOWN, WHO BEING BY ME DULY SWORN DID SAY THAT HE WAS ATTORNEY IN FACT FOR EMILY E. CANFIELD, MORTGAGEE AND ACKNOWLEDGED SIGNATURE OF SAID INSTRUMENT OF BE THE FREE ACT AND DEED OF SAID EMILY E. CANFIELD, ACTING THROUGH HIM, HER ATTORNEY IN FACT.

*Robert F. Eldridge*  
NOTARY PUBLIC IN AND FOR MACOMB COUNTY, MICHIGAN.

MY COMMISSION EXPIRES *March 22, 1925*

NOTE: All dimensions on this plat are given in feet and decimals thereof.

17465  
H-26-1921  
1.5, P. 32



5540

9229



**Dedication**  
 of  
**Plat**  
 of  
**Parrotts Addition**  
 to the  
**City of Mt. Clemons**  
 Scaled 160ft = 1 inch  
 Surveyed & Platted by  
 J. H. Durrin, Civil Engineer

**State of Michigan**  
 County of Macomb  
 ss. On this 10th day of February 1904 before me a Notary Public in and for the County of Macomb, State of Michigan, personally appeared Emily E. Parrott, who is well known to me to be the same person who executed the foregoing plat, and acknowledged to me that she executed the same for the purposes therein expressed.

Witness my hand and seal of office this 10th day of February, 1904.

Notary Public, Macomb County, Michigan  
 My Commission Expires March 31st 1905

**Description**  
 The area contained in the attached plat of Parrotts Addition to the City of Mt. Clemons is bounded on the north by the City of Mt. Clemons, on the south by the City of Macomb, on the east by the City of Macomb, and on the west by the City of Macomb. The plat shows a total area of 32.00 acres, more or less, divided into 160 lots, each of 200 square feet. The lots are numbered as shown on the plat. The plat also shows the streets of Euclid, Columbus, Parrott, Elmo, Franklin, and Taylor. The plat was prepared by J. H. Durrin, Civil Engineer, and is subject to the provisions of the Act of March 1st, 1892, in relation to the dedication of streets.

**Surveyors Certificate**  
 I hereby certify that the plat hereon exhibited is a correct one, and that the same is in conformity with the Act of March 1st, 1892, in relation to the dedication of streets. The plat was prepared by J. H. Durrin, Civil Engineer, and is subject to the provisions of the Act of March 1st, 1892, in relation to the dedication of streets.

J. H. Durrin, Civil Engineer

**State of Michigan**  
 County of Macomb  
 ss. We, Emma C. Durrin, Register of Deeds, and J. H. Durrin, Civil Engineer, do hereby certify that the foregoing plat is a correct one, and that the same is in conformity with the Act of March 1st, 1892, in relation to the dedication of streets.

**State of Michigan**  
 County of Macomb  
 ss. We, Emma C. Durrin, Register of Deeds, and J. H. Durrin, Civil Engineer, do hereby certify that the foregoing plat is a correct one, and that the same is in conformity with the Act of March 1st, 1892, in relation to the dedication of streets.

RECEIVED AND FILED  
 IN AUDITOR GENERAL'S OFFICE  
 March 9th 1904  
 J. H. Durrin, Civil Engineer

STATE OF MICHIGAN  
 REGISTER OF DEEDS  
 Emma C. Durrin  
 J. H. Durrin, Civil Engineer

STATE OF MICHIGAN  
 REGISTER OF DEEDS  
 Emma C. Durrin  
 J. H. Durrin, Civil Engineer

J. A. A. B. S. 7-19-1904