

MACOMB COUNTY
INDEX OF SUPPORTING DOCUMENTATION FOR

Town 2 North, Range 13 East
Clinton Township and Harrison Township
Corner Code: PC-002 Northeast corner of Private Claim 626 common with the Northwest corner of Private Claim 172, Town 2 North, Range 14 East.

Section One:

- A. Index
- B. Pictures
 - 1. Before Pictures (3) – January 7, 2008
 - 2. After Picture – August 7, 2008

Section Two:

- A. Preliminary LCRC
- B. Surveyor's Report – April 28, 2008

Section Three:

- A. Field Notes – January 7, 2008
- B. Legal Description – N/A
- C. Tax Description – N/A
- D. Sketches – Field Measurement and Record Measurement Comparisons April 28, 2008
- E. Maps (6) – Macomb County Atlas
 - Harrison Township – 1875, 1895 and 1916
 - Clinton Township – 1875, 1895 and 1916
- F. Macomb County Composite Maps (7) – Date of photography April, 2004
 - 11-01H, 11-12D & H, 11-13C, D, F and G

Section Four:

- A. Copies of original government notes (3)
 - Private Claim 172 (2) – Post. Original Survey performed by Aaron Greeley July 18, 1810
 - Private Claim 626 – Post. Original Survey performed by Aaron Greeley July 14, 1810
- B. Recorded LCRC's – N/A
- C. Recorded and unrecorded surveys
 - 1. Plat of Survey, Charles G. Melching, #14767 Found concrete monument May, 1972
 - 2. Certificate of Survey, William E. Soderberg #17635, Set ReRod December 2, 1974
- D. Copies of all items listed in "Part A" of LCRC.
 - I. Plats:
 - a. L. 5, P. 32 "Ascot Park Subdivision" April 26, 1921
 - b. L. 13, P. 40 Assessors Plat No. 24 November 22, 1928
 - c. L. 16, P. 23 Supervisors Plat No. 5 January 10, 1934
 - d. L. 59, P. 7 & 8 Supervisor's Plat No. 19 July 14, 1968
 - e. L. 92, P. 47-50 East Pointe Industrial Subdivision December 13, 1992



Before

PRIVATE CLAIM 002

*Northeast corner of P.C. 626 common with the
Northwest corner of P.C. 172, T.2N., R.14E.,
Town 2 North, Range 13East
CLINTON TOWNSHIP*

After



Management, Engineering & Technical Consultants



Before

PRIVATE CLAIM 001

*Northeast corner of P.C. 626 common with the
Northwest corner of P.C. 172, T.2N., R.14E.,
Town 2 North, Range 13East
CLINTON TOWNSHIP*

After





North

PRIVATE CLAIM 001

***Northeast corner of P.C. 626 common with the
Northwest corner of P.C. 172, T.2N., R.14E.,
Town 2 North, Range 13East
CLINTON TOWNSHIP***

South



Management, Engineering & Technical Consultants



East

PRIVATE CLAIM 001

***Northeast corner of P.C. 626 common with the
Northwest corner of P.C. 172, T.2N., R.14E.,
Town 2 North, Range 13East
CLINTON TOWNSHIP***

West



Management, Engineering & Technical Consultants

REC'D. MACOMB CO. AUG 12 2008 4:00 p.m.
REC'D. MACOMB CO. SEP 26 2008 11:00 a.m.

LAND CORNER RECORDATION CERTIFICATE
Filing Requirement of Act 74, Mich. P.A. 1970

For corners in

MACOMB (County)
Located In: Clinton Twp. & Harrison Twp.
Corner Code # M.E.D. 002 PC-001
1. Public Land Survey T.02N. R.13E. PC-001
2. Property Controlling in Section S. T. R.
3. Miscellaneous Property in Sec. S. T. R.

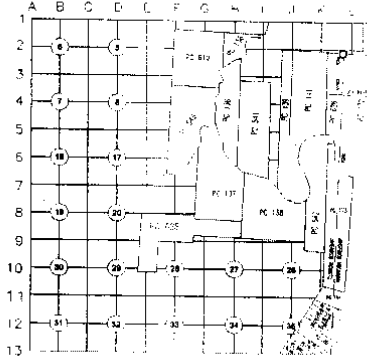
8095124
LIBER 19452 PAGE 181
08/15/2008 08:41:24 A.M.
MACOMB COUNTY, MI
CARMELLA SABAUGH, REGISTER OF DEEDS

8110078
LIBER 19502 PAGE 763
09/26/2008 02:47:14 P.M.
MACOMB COUNTY, MI
CARMELLA SABAUGH, REGISTER OF DEEDS

4. Lot No. _____, Recorded Plat _____
5. Private Claims Northeast Corner Private Claim 626 common with the Northwest Corner of Private Claim 172, Town 2 North, Range 14 East

I, Steven E. Dunn, in a field survey on January 7, 2008, do hereby certify that under requirements of P.A. 74, Michigan P.A. of 1970, the corner points mentioned in lines 1 and 2 above were in conformance with regulations and rules therefore as required in the current manual of survey instructions of the United States Department of the Interior, Bureau of Land Management or by a decree of a Court of Law and for that the corner points mentioned in lines 3, 4 and 5 above were in conformance with the rules of the Michigan Board of Land Surveyors or by a Decree of a Court of Law; established, re-established, monumented, re-monumented, recovered, found as expressed below.

NOTE: Not more than 2 corners, all in the same town and range, may be recorded on this certificate.



- A. Description of original monument and accessories and/or subsequent restoration:
1810 Post GLO Original survey performed by Aaron Greeley, L. 5, P. 32, "Ascot Park Subdivision"
1921 N&S PC Line L. 13, P. 40, Assessors Plat No. 24
1928 N&S PC Line L. 16, P. 23, Supervisors Plat No. 5
1934 N&S PC Line L. 59, P. 7 & 8, Supervisor's Plat No. 19
1968 N&S PC Line Certificate of Survey, unrecorded, Charles G. Melching, #14767 (no witnesses found)
1972 Conc. Monument Certificate of Survey, unrecorded, William E. Soderberg, #17635 (no witnesses found)
1974 Iron L. 92, P. 47-50, East Pointe Industrial Subdivision
1990 Conc. Monument L. 157, P. 16 & 17, Amended Plat of Lot 9 of East Pointe Industrial Subdivision
2004 North PC Line

ACCEPTED BY THE MACOMB COUNTY SURVEY PEER GROUP AS THE OFFICIAL CORNER UNDER MICHIGAN PUBLIC ACT 345 OF 1990 AT A MEETING HELD ON 6-3-08
Martin C. Dunn
MARTIN C. DUNN, P.S. CHAIRMAN

B. Description of corner evidence found and/or method applied in restoring or reestablishing corner:
PC-001 Northeast Corner of Private Claim 626 common with the Northwest Corner of Private Claim 172, Town 2 North, Range 14 East. Found concrete monument ± 2' north of south toe of slope of Gohl Drain and ± 20' north of chain link fence along the south bank of the Gohl Drain.

I verified the location of the found concrete monument by comparing field measurements with record measurements.

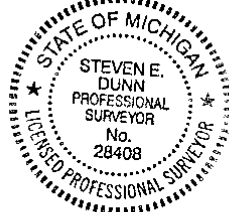
FIELD MEASUREMENTS AND RECORD MEASUREMENTS (see back):

C. Description of monument for corner and accessories established to perpetuate locating the position of the corner:
PC-001 Northeast Corner of Private Claim 626 common with the Northwest Corner of Private Claim 172, Town 2 North, Range 14 East. Found concrete monument ± 2' north of south toe of slope of Gohl Drain and ± 20' north of chain link fence along the south bank of the Gohl Drain.

I accepted the found concrete monument ± 2' north of the south toe of slope of the Gohl Drain and set an aluminum cap stamped "Macomb County Monument Mi Act 345 1990 MCL, PC-001, PC 012, 28408" on the 1/2" steel rod.

- WITNESSES:
S.33°E. 29.60' Set 1/2" steel rod w/blue cap stamped "MC REMON WIT POINT".
S.22°W. 26.31' Set 1/2" steel rod w/blue cap stamped "MC REMON WIT POINT".
N.36°W. 87.67' Set 1/2" steel rod w/blue cap stamped "MC REMON WIT POINT".
N.36°E. 84.24' Set 1/2" steel rod w/blue cap stamped "MC REMON WIT POINT".
South ± 20' Chain link fence along the south bank of the Gohl Drain.

THE SELECTED LOCATION IS ACCEPTED BY ME AND IS GENERALLY ACCEPTED BY PROFESSIONAL SURVEYORS AS THE BEST AVAILABLE EVIDENCE OF THE POSITION OF THE ORIGINAL CORNER.



Signed by Steven E. Dunn Date August 8, 2008
Surveyor's Michigan License No. 28408

DOCUMENT BEING RECORDED TO CORRECT OTHER CODE FROM PC 001 TO PC 002 AND PC 002 TO PC 003.

For corners in

MACOMB
(County)

Located In:
Clinton Twp.
& Harrison Twp.

Corner Code #

M.C.D.

002

PC-001

- 1. Public Land Survey T 02N. R13E.
- 2. Property Controlling in Section S T R
- 3. Miscellaneous Property in Sec. S T R

- 4. Lot No. , Recorded Plat
- 5. Private Claims Northeast Corner Private Claim 626 common with the Northwest Corner of Private Claim 172, T.2N., R. 14E.

A. Description of original monument and accessories and/or subsequent restoration:

002
B. Description of corner evidence found and/or method applied in restoring or reestablishing corner:
~~PC-001~~ Northeast Corner of Private Claim 626 common with the Northwest Corner of Private Claim 172, Town 2 North, Range 14 East. Found concrete monument ± 2' north of south toe of slope of Gohl Drain and ± 20' north of chain link fence along the south bank of the Gohl Drain.

FIELD MEASUREMENTS AND RECORD MEASUREMENTS:

002
PC-004 to M3 (not a remon corner):
1285.85' - Record, East Pointe Industrial Subdivision.
1286.03' - Field. 2008 Remon.

002
PC-004 to L3:
1009.85' - Record, East Pointe Industrial Subdivision.
1009.81' - Field. 2008 Remon.

002 003
PC-004 to PCC-002 (centerline intersection of Henry B. Joy Road and the line common with PC 172 and PC 626):
4209.77' - Record, Tax Descriptions, west side.
4220.48' - Record, Tax Descriptions, east side.
4215.13' - Mean of record above.
4215.94' - Field. 2008 Remon.

002 003
Angle M3 (not a remon corner)/PC-004/PCC-002:
89°54'30" - Record, Certificate of Survey (2).
89°58'04" - Field. 2008 Remon.

003 002
Angle PCC-002/PC-004/L3 (not a remon corner):
90°04'09" - Field. 2008 Remon.

REC'D. MACOMB CO. AUG 12 2008 4:00 p.m.
 REC'D. MACOMB CO. SEP 26 2008 11:2 a.m.

LAND CORNER RECORDATION CERTIFICATE
 Filing Requirement of Act 74, Mich. P.A. 1970

For corners in

MACOMB
 (County)

Located In:
 Harrison Twp.
 & Clinton Twp.

Corner Code #

8110077
 LIBER 19502 PAGE 761
 09/26/2008 02:46:53 P.M.
 MACOMB COUNTY, MI
 CARMELLA SABAUGH, REGISTER OF DEEDS

- | | | |
|------------------------------------|-------------------------------------|----------------|
| 1. Public Land Survey | T <u>02N</u> , R <u>14E</u> | PC- <u>012</u> |
| | T <u> </u> R <u> </u> | _____ |
| 2. Property Controlling in Section | S <u> </u> T <u> </u> R <u> </u> | _____ |
| | S <u> </u> T <u> </u> R <u> </u> | _____ |
| 3. Miscellaneous Property in Sec. | S <u> </u> T <u> </u> R <u> </u> | _____ |
| | S <u> </u> T <u> </u> R <u> </u> | _____ |

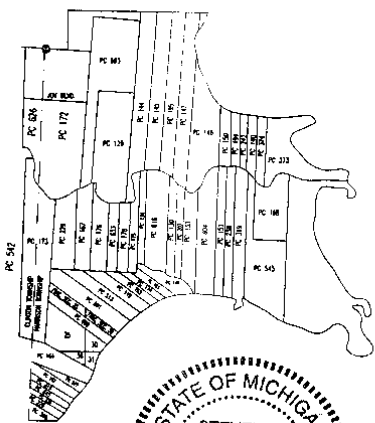
8095113
 LIBER 19452 PAGE 167
 09/15/2008 12:40:15 A.M.
 MACOMB COUNTY, MI
 CARMELLA SABAUGH, REGISTER OF DEEDS

Register of Deeds Stamp & File Number

4. Lot No. _____, Recorded Plat _____
 5. Private Claims Northwest Corner Private Claim 172 common with the Northeast Corner of Private Claim 626, T.2N., R. 13E.

I, Steven E. Dunn, in a field survey on January 7, 2008, do hereby certify that under requirements of P.A. 74, Michigan P.A. of 1970, the corner points mentioned in lines 1 and 2 above were in conformance with regulations and rules therefore as required in the current manual of survey instructions of the United States Department of the Interior, Bureau of Land Management or by a decree of a Court of Law and/or that the corner points mentioned in lines 3, 4 and 5 above were in conformance with the rules of the Michigan Board of Land Surveyors or by a Decree of a Court of Law, established, re-established, monumented, re-monumented, recovered, found as expressed below:

NOTE: Not more than 2 corners, all in the same town and range, may be recorded on this certificate.



A. Description of original monument and accessories and/or subsequent restoration:

- | | |
|---------------------|--|
| 1810 Black Ash | GLO Original survey performed by Aaron Greeley, |
| 1921 N&S PC Line | L. 5, P. 32, "Ascot Park Subdivision" |
| 1928 N&S PC Line | L. 13, P. 40, Assessors Plat No. 24 |
| 1934 N&S PC Line | L. 16, P. 23, Supervisors Plat No. 5 |
| 1968 N&S PC Line | L. 59, P. 7 & 8, Supervisor's Plat No. 19 |
| 1972 Conc. Monument | Certificate of Survey, unrecorded, Charles G. Melching, #14767 (no witnesses found) |
| 1974 Iron | Certificate of Survey, unrecorded, William E. Soderberg, #17635 (no witnesses found) |
| 1990 Conc. Monument | L. 92, P. 47-50, East Pointe Industrial Subdivision |
| 2004 North PC Line | L. 157, P. 16 & 17, Amended Plat of Lot 9 of East Pointe Industrial Subdivision |

B. Description of corner evidence found and/or method applied in restoring or reestablishing corner:
 PC 012 Northwest Corner of Private Claim 172 common with the Northeast Corner of Private Claim 626, Town 2 North, Range 13 East. Found concrete monument ± 2' north of south toe of slope of Gohl Drain and ± 20' north of chain link fence along the south bank of the Gohl Drain.

I verified the location of the found concrete monument by comparing field measurements with record measurements.

FIELD MEASUREMENTS AND RECORD MEASUREMENTS (see back):

C. Description of monument for corner and accessories established to perpetuate locating the position of the corner:
 PC 012 Northwest Corner of Private Claim 172 common with the Northeast Corner of Private Claim 626, Town 2 North, Range 13 East. Found concrete monument ± 2' north of south toe of slope of Gohl Drain and ± 20' north of chain link fence along the south bank of the Gohl Drain.

I accepted the found concrete monument ± 2' north of the south toe of slope of the Gohl Drain and set an aluminum cap stamped "Macomb County Monument Mi Act 345 1990 MCL, 28408, PC 012 PC 004" on the 1/2" steel rod.

WITNESSES:

- S.33°E 29.80' Set 1/2" steel rod w/blue cap stamped "MC REMON WIT POINT".
- S.22°W. 26.31' Set 1/2" steel rod w/blue cap stamped "MC REMON WIT POINT".
- N.36°W. 87.67' Set 1/2" steel rod w/blue cap stamped "MC REMON WIT POINT".
- N.36°E. 84.24' Set 1/2" steel rod w/blue cap stamped "MC REMON WIT POINT".
- South ± 20' Chain link fence along the south bank of the Gohl Drain.

ACCEPTED BY THE MACOMB COUNTY SURVEY PEEF GROUP AS THE OFFICIAL CORNER UNDER MICHIGAN PUBLIC ACT 345 OF 1990 AT A MEETING HELD ON 6-3-08
Martin C. Dunn
 MARTIN C. DUNN, P.S. CHAIRMAN

THE SELECTED LOCATION IS ACCEPTED BY ME AND IS GENERALLY ACCEPTED BY PROFESSIONAL SURVEYORS AS THE BEST AVAILABLE EVIDENCE OF THE POSITION OF THE ORIGINAL CORNER.



Signed by Steven E. Dunn Date August 8, 2008
 Surveyor's Michigan License No. 28408

DOCUMENT BEING RECORDED TO CORRECT OTHER CODE FROM PC 001 TO PC 004

Survey Report
PC-002
T.2N., R.13E., Clinton Twp.

Letters asking for unrecorded information were sent to:

AEW, Inc. – Shelby Twp.
Fenn & Associates, Inc. – Shelby Twp.
GWE – Rochester Hills
Kennedy Surveying, Inc. - Oxford
Lehner Associates, Inc. – Clinton Twp.
GLA Surveyor – Plymouth
Professional Engineering Assoc. Inc. – Troy
R. J. Donnelly & Associates Inc. – Troy
George Jerome & Company – Roseville
King Surveying, Inc. – Armada
Michigan Surveying Inc. – Livonia
David C. Adams & Son – Redford
Urban Land Consultants – Shelby Township

CORNER: Northeast Corner of Private Claim 626, Clinton Township, common with the Northwest Corner of Private Claim 172, Town 2 North, Range 14 East, Harrison Township. Found a concrete monument $\pm 2'$ north of south toe of slope of Gohl Drain.

OBSERVATIONS: The found monument falls 0.36' south of the line from L03 (not a remon corner) and M03 (not a remon corner).

PC 002 to L03 field measures 1009.81', within 0.04' of record (1009.85') of East Pointe Industrial Subdivision, as recorded in Liber 92 of Plats on Pages 47-50.

PC 002 to M03 field measures 1286.03', within 0.18' of record (1285.85') of said East Pointe Industrial Subdivision.

PC 002 to PCC 004 (centerline intersection of Henry B. Joy Road and the line common with Private Claim 172 and Private Claim 626) field measures 4215.94', within 0.81' of the mean of the record measurements tax descriptions (4209.77' record west side, 4220.48' record east side, 4215.13' mean).

RECOMMENDATION: My recommendation to the Peer Review Board is to accept the found concrete monument as the proper location for the corner.

Respectfully submitted,

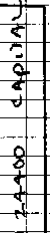
Steven E Dunn, PS #28408

April 28, 2008

TG
AS

JAN 7, 2007 FB-520

GPS FILE DB100.TG OTTANOB



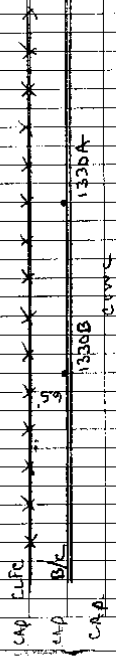
ASPHALT

1330C

1330D

DITCH

1330 FENCE MON



1330B CIVIC

1330A

FENCE BBH.53 N. 121° 47' 03" E

FENCE 1.54.05" N. 01° 47' 03" E

LUNG

CLINTON TWP.
MACOMB CO.

DESC

1325	FD 1/2" IR # 30092	
1326	FD 1/2" IR 30103	FENCE COR SEC 1
1327	FD 1/2" I.R.	
1328	FO 1/2" I.R.	
1329	FD 1/2" I.R.	
1330	FD CONC MON IN DITCH 2' No	
	OE SOUTH TOP OF SLOPE	
1331	FD 1/2" I.R. # 28419	
1330A	SET 1/2" IR WITH BLUE " MC REMON WIT POINT "	
1330B	SET 1/2" IR WITH BLUE " MC REMON WIT POINT "	
1330C	SET 1/2" IR WITH BLUE " MC REMON WIT POINT "	
1330D	SET 1/2" IR WITH BLUE " MC REMON WIT POINT "	
1332	FD 3/4" IRON PIPE 0.50 EAST OF	
1333	FD 1" IRON SPIKE 0.80 EAST OF	
1334	FD 1/2" IRON ROD # 47955 ALONG FENCE	

HARRISON
CLINTON, PCC001, 002, PCC002, PCC012, 013, PCC001 4-28-08

SOUTH 1/4 COR. 2295.83' N. 2295.70' E. SE COR.
FRAC. SEC. 1 0.36' SOUTH FRAC. SEC. 1
FD. 3/4" R.O. w/CAP 30103 PCC001 PCC012 FD. CONC. MON.
1009.81' N. 1009.85' E. 1286.03' N. 1285.85' E.

90°05'30" R.
90°04'09" N.

TOWNSHIP LINE
89°54'30" E.
89°58'04" N.

PC 626

PC 172

TOWNSHIP

TOWNSHIP

90°18'32" N.

1347-1949
1411-1437

HENRY B. JOY PCC002 PCC001
845 2668.35' N.

90°03'55" N.

CLINTON

HARRISON

10725.28' N.

N. RIVER

FD. 3/4" ST. R.O.

LEWIN ROAD



PCC002 PCC013
1340 FD. 3/4" ST. R.O.

CLINTON RIVER

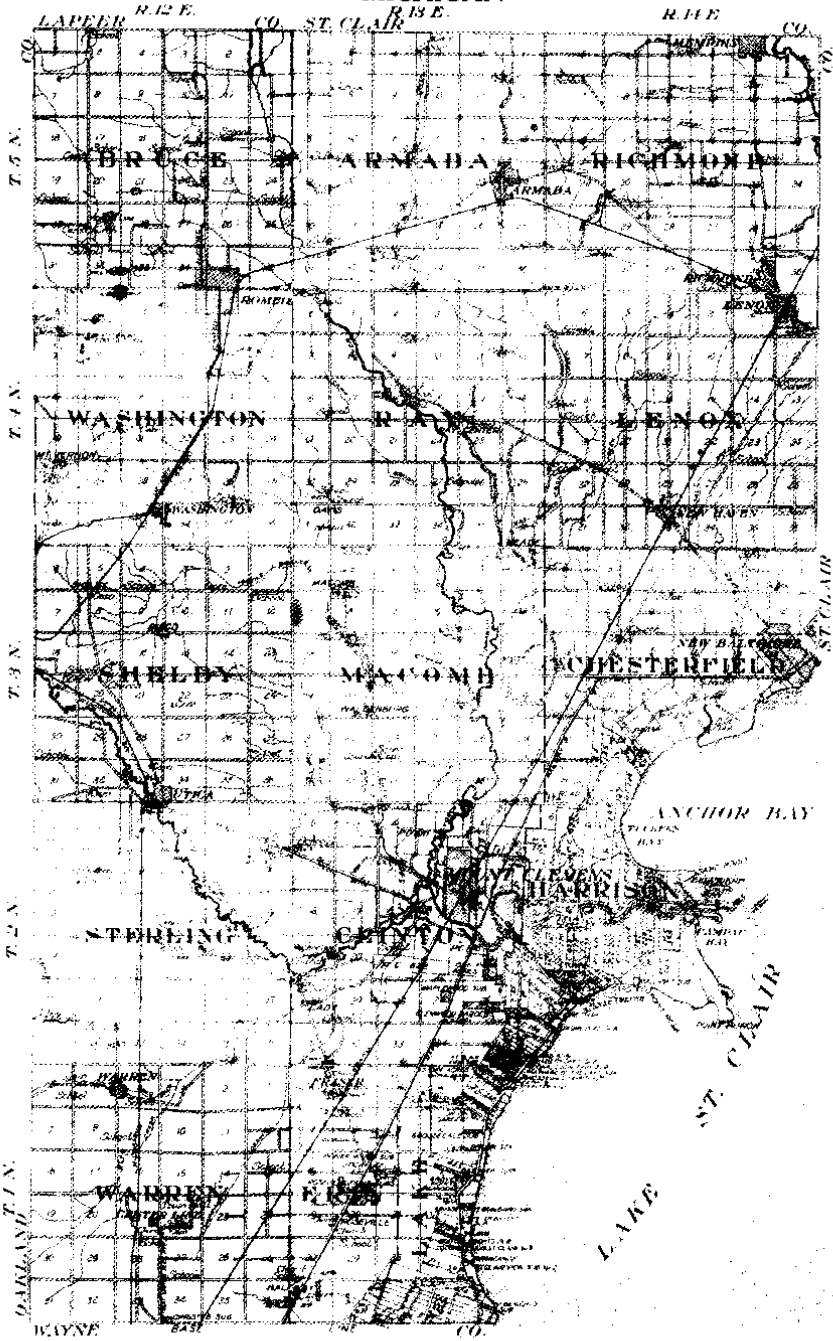
OUTLINE MAP OF
MACOMB COUNTY

Copyright 1916 by Geo. A. Ogle & Co.

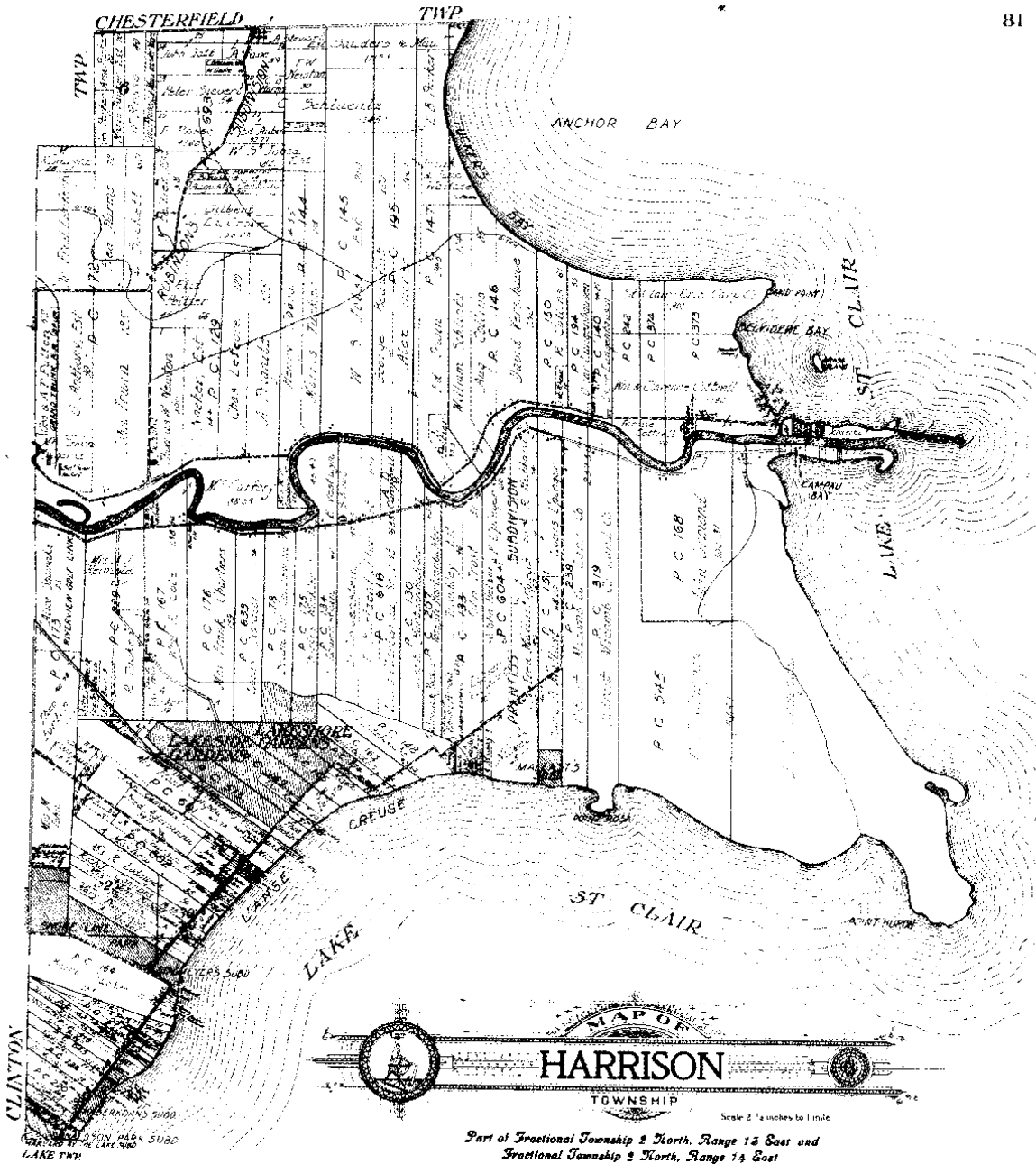
MICHIGAN

Scale 1/2 inch to 1 mile

7



Scanned By:
.METCO
Engineers, Architects & Surveyors



CLINTON

CHESTERFIELD TWP

ANCHOR BAY

CLAIR ST

LAKE ST. CLAIR

HARRISON

TOWNSHIP

Scale 2 1/2 inches to 1 mile

Part of Fractional Township 2 North, Range 13 East and Fractional Township 2 North, Range 14 East of the Michigan Meridian

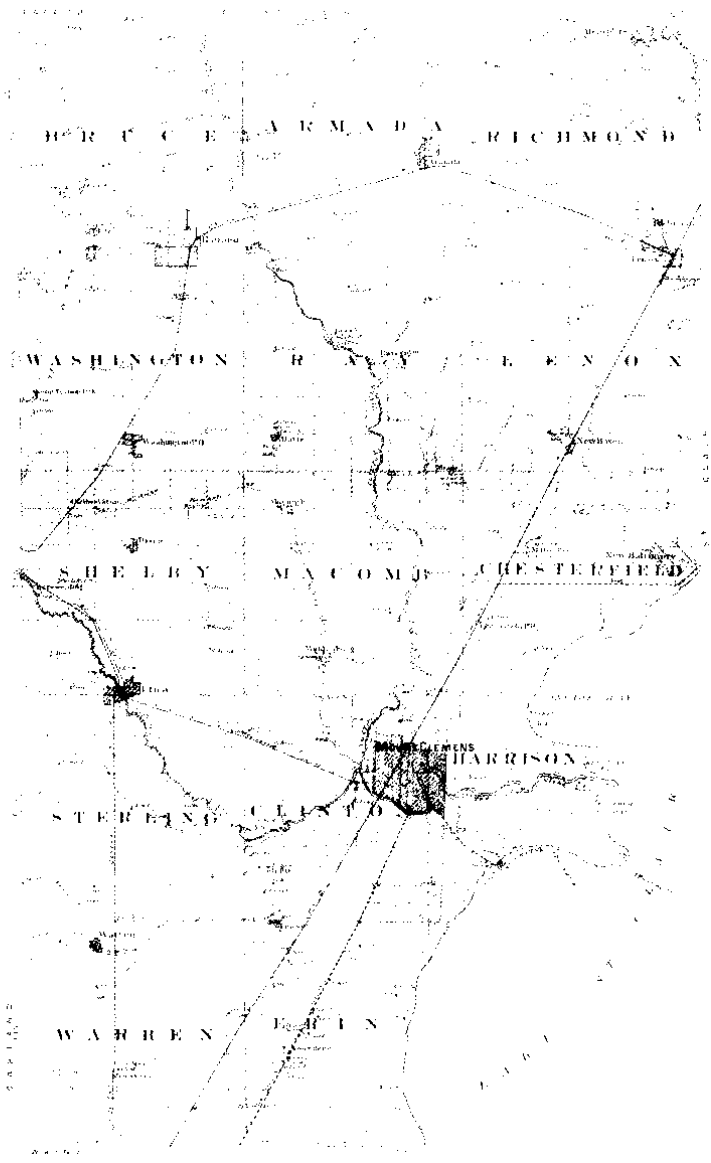
METCO
Mapmakers, Surveyors & Engineers

MAP OF
CLINTON
 TOWNSHIP

Fractional Township 2 North, Range 12 East of the Michigan Meridian



OUTLINE MAP
OF
MACOMB COUNTY MICHIGAN

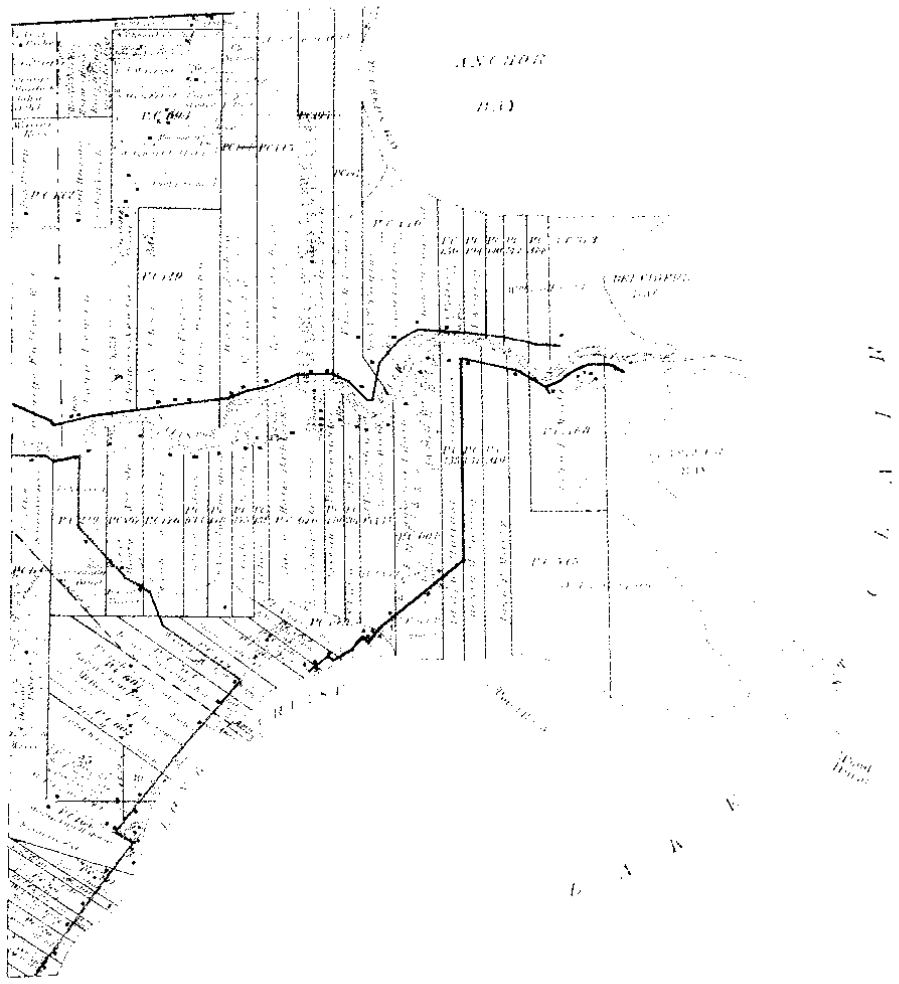


Scanned by
METCO
Engineers, Architects & Surveyors

MAP OF HARRISON

Township 2 North Range 14 East

Scale 1/2 inch = 1 mile

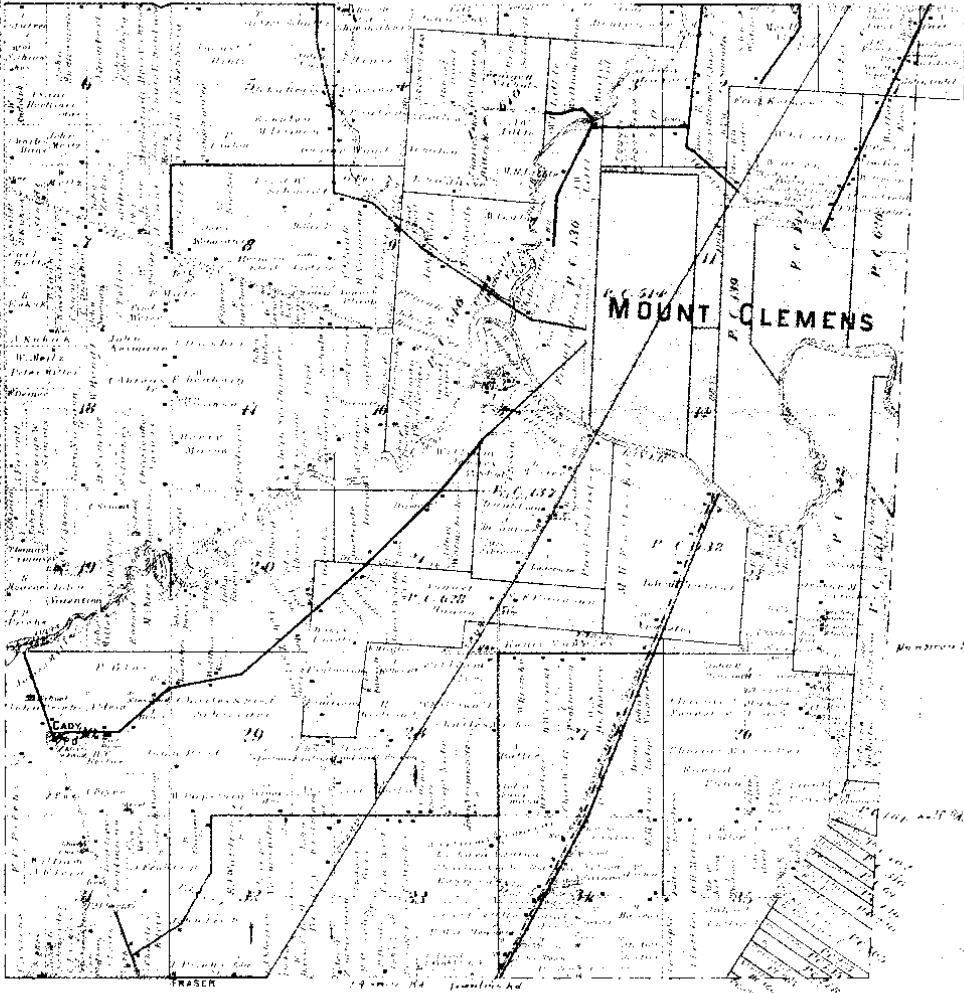


MAP OF CLINTON

Township 2 North Range 13 East

Scale 2 Inches to one Mile

Copyright 1900 by Metcalf & Eddy



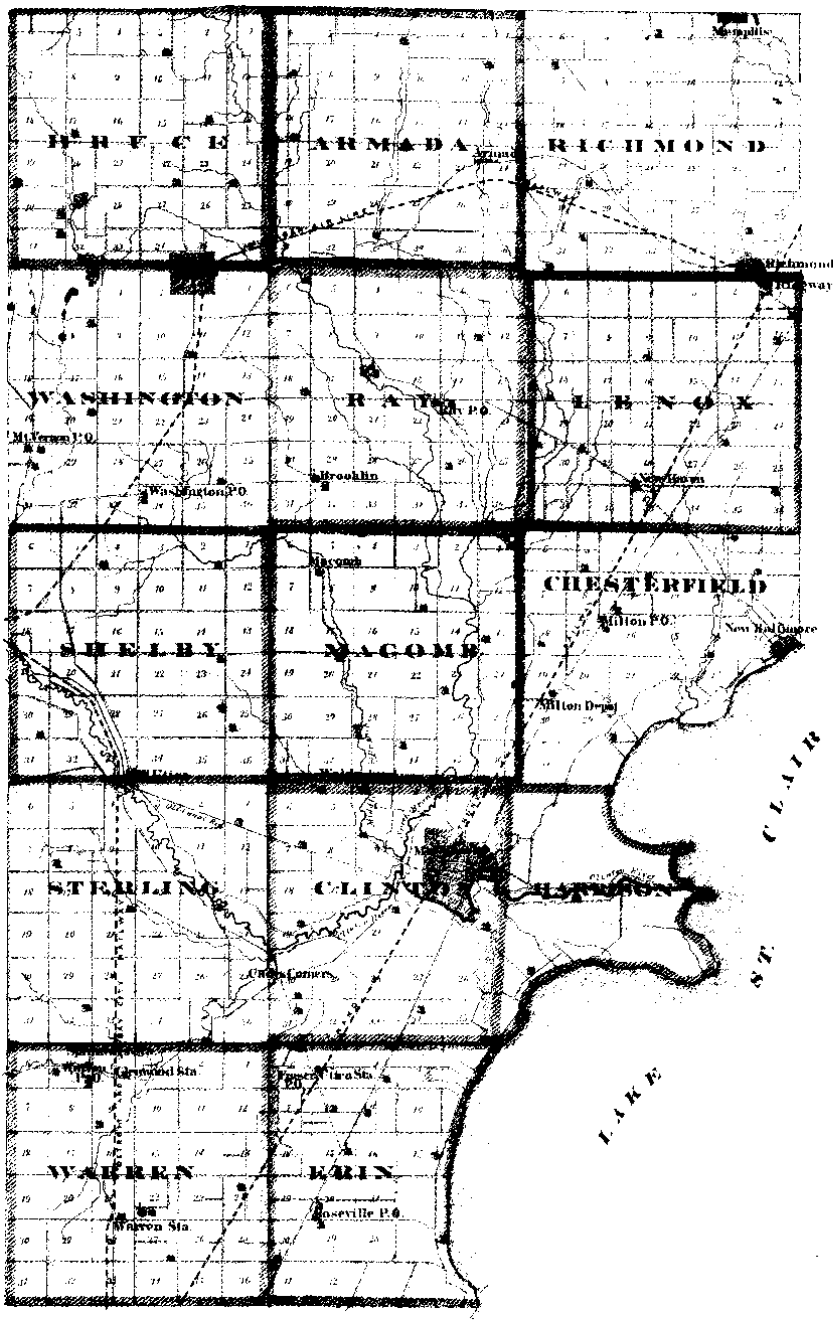
WARREN CO.

NAVIGATION

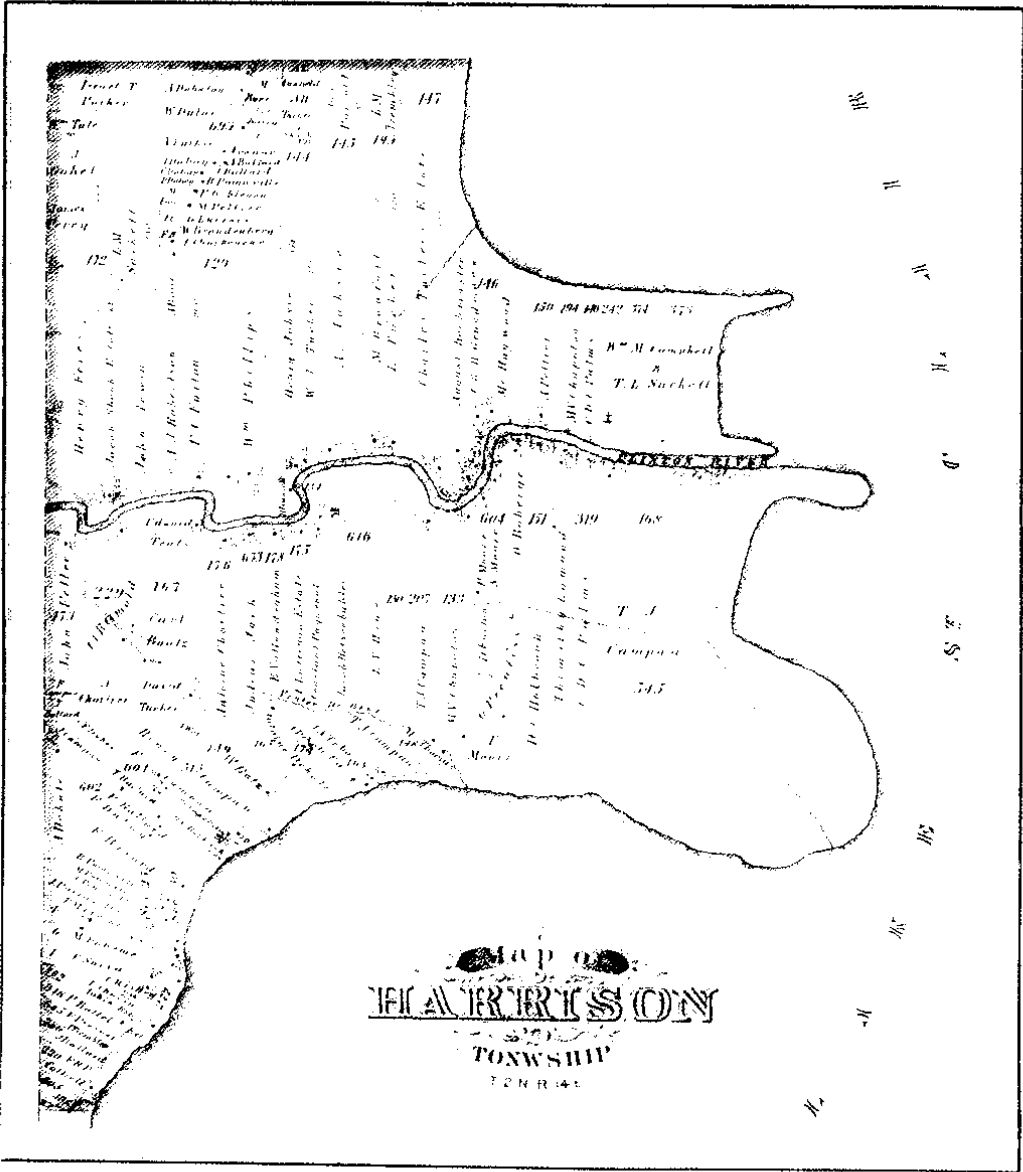
1875

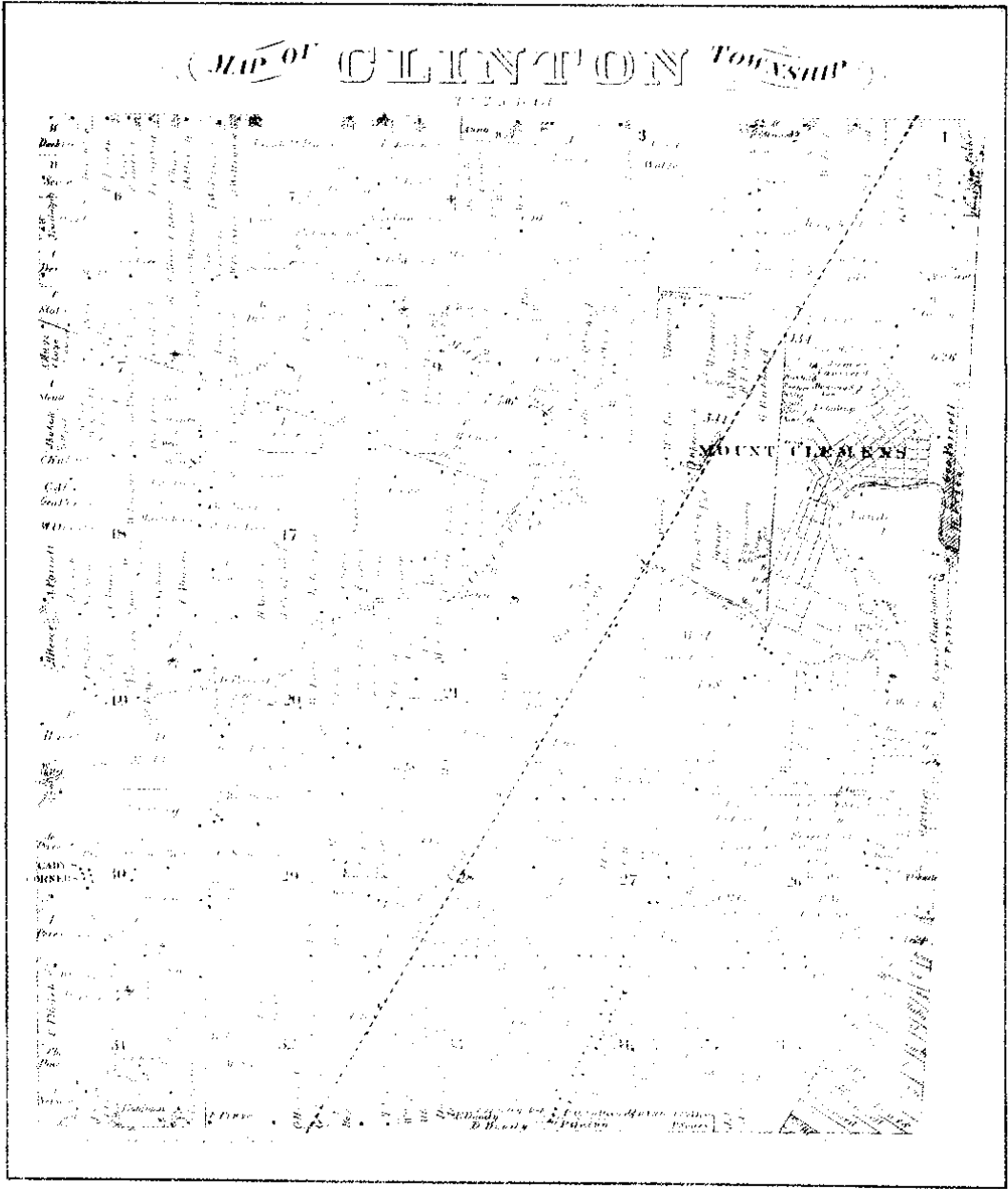
COMPILED FROM CHARTS BY HENRY C. F.

SCALE 2 MILES TO AN INCH

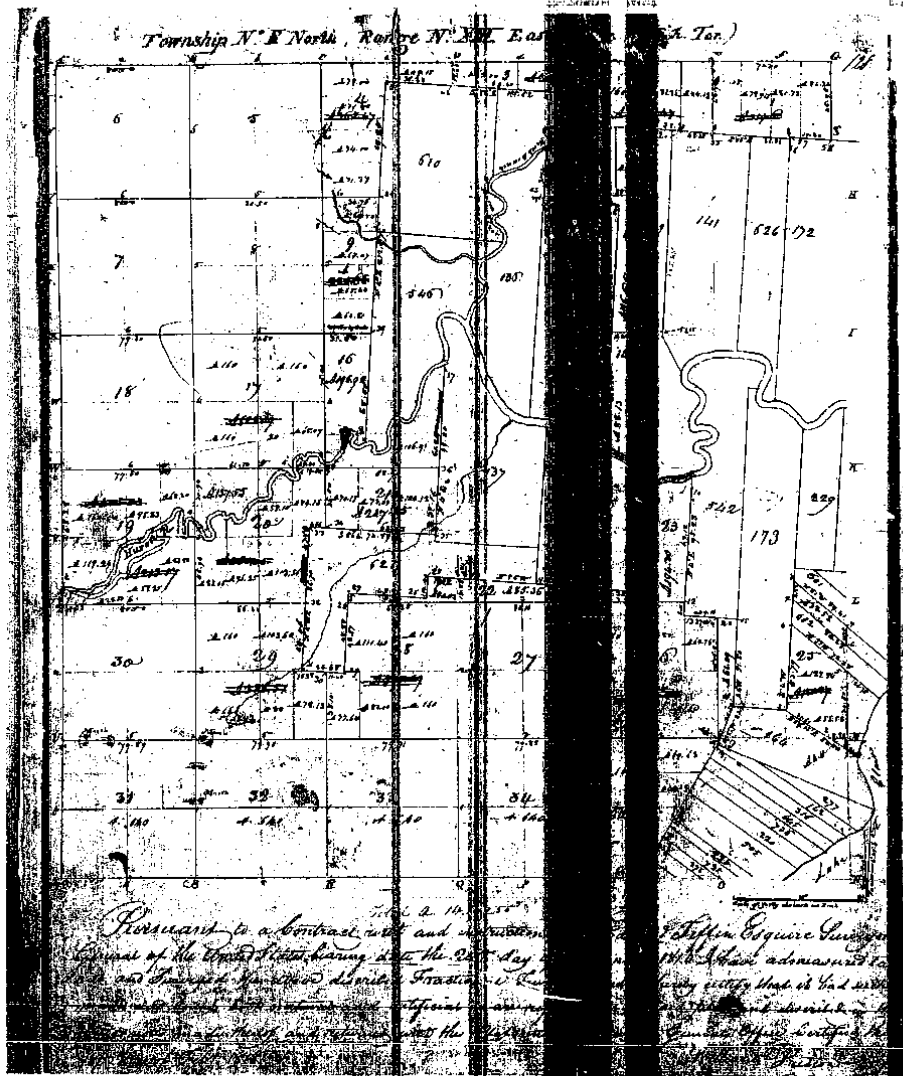


W. H. C. & CO.
NEW YORK





METCO



Management, Engineering & Technical Consultants

12504 Stephens Warren, MI 48089 (586) 755-5770 Fax (586) 755-5774

No. 491

No. 626 Confirmed to
Christian Clemans

NORTH SIDE OF RIVER HURON

Description No. 626 Confirmed to Christian Clemans commencing at a post standing on the border of River Huron between this tract and a tract confirmed to the claimant thence north one hundred and twenty six chains twenty three links to a post thence east twenty six chains forty one links to a post the northwest corner of a tract confirmed to Jorn Askin Junior thence south one hundred and fifty two chains fifteen links to a buttonwood tree standing on the border of River Huron thence along the border of said river up stream north eighty eight degrees west seven chains thence north forty one degrees west six chains thence north north three chains thence north twenty four degrees east seventeen chains thence north forty one degrees west seven chains thence south eighty one degrees thirty minutes west eighteen chains to the place of beginning, containing three hundred and fifty one acres and one tenth of an acre ____

Detroit July 14th, 1810

Aaron Greeley Surveyor
of private claims

North Side of River Huron

Chains fifteen links, to a Buttonwood tree standing on the border of River Huron. Thence along the border of said River up stream north eighty eight degrees west seven chains, thence north forty one degrees west six chains, thence north three chains, thence north twenty four degrees east seven chains, thence south forty one degrees west seven chains, thence south eighty one degrees thirty minutes west eight chains, to the place of beginning containing three hundred and fifty one acres and one tenth of an acre.

Detroit July 14 1810

Haron Greeley Surveyor of Private Claims.

North

west four degrees
 west seven
 fifty seven
 thence in
 eleven chains
 of beginning
 and with
 north of
 Detroit

N. 571.
 D. W. S.
 William C. S.
 standing on
 between the
 ed to John
 two hundred
 seven links
 the tract is
 east fifty six
 standing on
 -ferred to
 eighty four
 an eleven six
 tract begins
 west forty
 the North
 Common tra
 and less th
 post standi
 River Huron
 of said Riv
 -ty four degre
 seven links

N. 440. North Side of River Huron

Description N. 172. Confirmed to John Astor Junior commencing at a Buttonwood tree standing on the border of River Huron between this tract and a tract confirmed to Christian Gleason thence north one hundred and fifty two chains fifteen links, to a Black ash tree thence east thirty seven chains fifty links to a Black ash tree; thence south one hundred and fifty five chains fifty links to a post standing on the border of River Huron between this tract and unincorporated land, thence along the border of said River up stream north fifty six degrees west twelve chains, thence north eighty degrees west seven chains thence south sixty six degrees west eight chains, thence north eighty one degree

Huron

Between wood
er of River Huron
er of said River
the degrees west
forty one deg
north three
by four degrees
north forty
ains, thence
ly minutes
place of begin
and end
with of an acre

Surveyor
Claims.

Huron
inferred to
concerning it
on the border
is tract and
ian Glesman
and fifty two
Black ash tree
in fifty links
south one
in fifty link
border of
act and
long the
south
ains, thence
seven chain
west eight
of one degree

1 - 1 8457
North Side of River Huron

420

west four chains, thence north eleven
degrees east nine chains, thence south
eighty seven degrees west three chains,
thence north eighty eight degrees west
eleven chains forty five links, to the place
of beginning containing four hundred
and thirteen acres and one hundred
and thirty six rods.

Detroit July 14, 1810

James G. Leitch
of Detroit Michigan

N^o. 571. North Side of River Huron.
Description. N^o. 592 Conferred to
William Connor commencing at a post
standing on the North border of River Huron
between this tract and a tract conveyed
to John Skinn Junior, thence North
two hundred and one chains thirty
seven links, to a post standing between
this tract and unconceded lands, thence
East fifty three chains fifty links, to a post
standing on the west line of a tract con-
ferred to John Sucker. Thence south
eighty four chains forty seven links, to
an Elm tree the North east corner of a
tract conferred to James Connor, thence
West forty chains fifty links, to a post
the North west corner of said James
Connor tract. Thence South one hundred
and ten chains sixty two links, to a
post standing on the North border of
River Huron thence along the border
of said River up stream South Six-
ty four degrees east fourteen chains forty
seven links, to the place of beginning.

DESCRIPTION

A parcel of land in and being a part of P.C. 172, T.2N., R.14E., Harrison Township, Macomb County, Michigan and being more particularly described as follows: *Pooler Set*

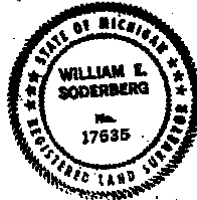
Beginning at a point on the North line of P.C. 172, S. 86° 39' 30" E. (S. 86° 36' E. Record) 926.0 feet from the Northwest corner of P.C. 172; thence S. 3° 15' W. (S. 3° 05' W. Record) 930.0 feet; thence S. 86° 39' 30" E. (S. 86° 22' E. Record) 380.0 feet; thence N. 2° 34' 18" E. (N. 2° 51' 48" E. Record) 520.0 feet; thence N. 00° 19' 18" E. 386.70 feet to the North line of P.C. 172; thence N. 86° 39' 30" W. (N. 86° 36' W. Record) 353.60 feet along the North line of P.C. 172 to the Point of Beginning and containing 7.802 Acres. Subject to Easements of Record.

Together with the following easement for ingress and egress; beginning at a point on the West line of P.C. 172 S. 3° 15' W. 594.92 feet; thence S. 3° 15' W. (S. 3° 05' W. Record) 305.08 feet along the West line of P.C. 172; thence S. 86° 39' 20" E. (S. 86° 36' E. Record) 926.0 feet; thence S. 3° 15' W. (S. 3° 05' W. Record) 30.0 feet; thence N. 86° 39' 30" W. (N. 86° 36' W. Record) 946.0 feet; thence N. 3° 15' W. (N. 3° 05' W. Record) 285.20 feet to the South line of Barbret Court; thence N. 86° 19' W. 1341.39 feet along the South line of Barbret Court to the Easterly line of Gratiot Avenue; thence N. 21° 40' 10" W. 52.56 feet (N. 21° 41' E. 52.66 Record) along said line to the North line of Barbret Court; thence S. 86° 19' E. 1344.79 feet along said line to the Point of Beginning.

SURVEYOR'S CERTIFICATE: I hereby certify that I have surveyed and mapped the land above platted and/or described on 27. November, 1974 and that the ratio of closure on the unadjusted field observations of such survey was 1:5,000 and that all of the requirements of P.A. 132, 1970, have been complied with.

ANDERSON, ECKSTEIN AND WESTRICK, INC.

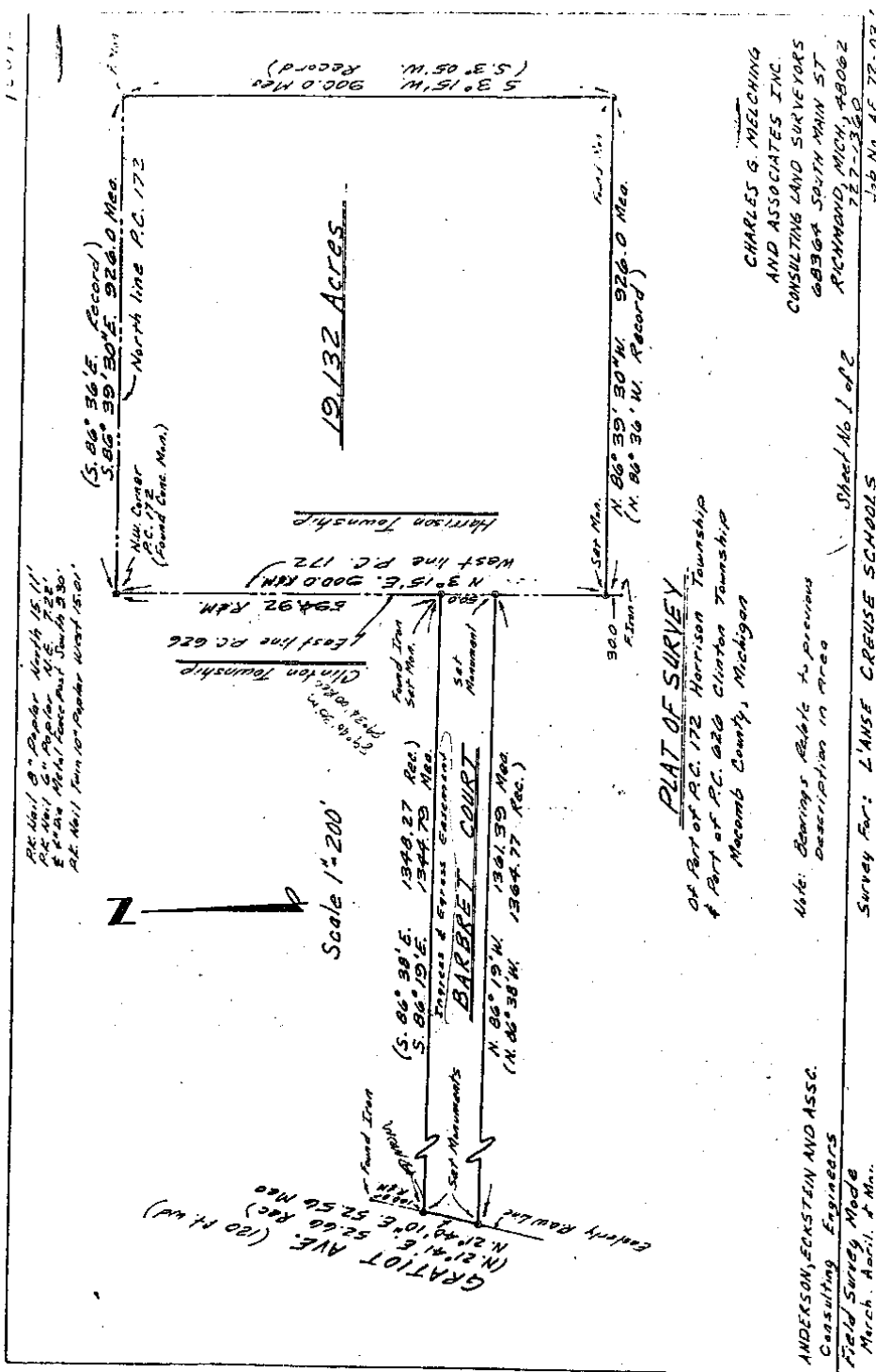
William E. Soderberg
William E. Soderberg, R.L.S. No. 17635
42800 Garfield Road
Mount Clemens, Michigan, 48043



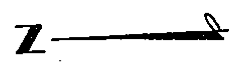
WITNESSES:

NW Corner P.C. 172
Set ReRod. from previous survey in area

Back Curb South 24.20
Center Storm Manhole S.W. 20.82
Center Gatewell W.S.W. 53.13



Plat No. 1 of 2
 4 x 6 in. Paper
 10" x 10" Paper
 15" x 20" Paper



Scale 1" = 200'

19.132 Acres

PLAT OF SURVEY

OF PART OF P.C. 172 Harrison Township
 & PART OF P.C. 020 Clinton Township
 Macomb County, Michigan

ANDERSON, ECKSTEIN AND ASSC.
 Consulting Engineers
 Field Survey Made
 March, April, & May.

Note: Bearings Refer to previous
 description in area

Survey For: L'ANSE CREUSE SCHOOLS

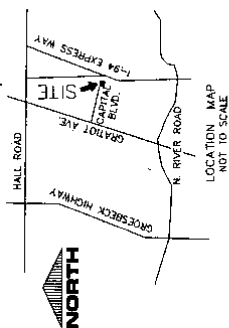
CHARLES G. MEECHING
 AND ASSOCIATES INC.
 CONSULTING LAND SURVEYORS
 69304 SOUTH MAIN ST
 RICHMOND MICH, 48062
 727-1300
 Job No. 17-77-02

EAST POINTE INDUSTRIAL SUBDIVISION A SUBDIVISION OF PART OF EAST 1/2 & WEST 1/2 OF FRACTIONAL SECTION 1, T.2N., R.13E., CLINTON TOWNSHIP, MACOMB COUNTY, MICHIGAN

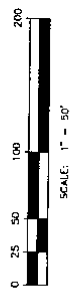
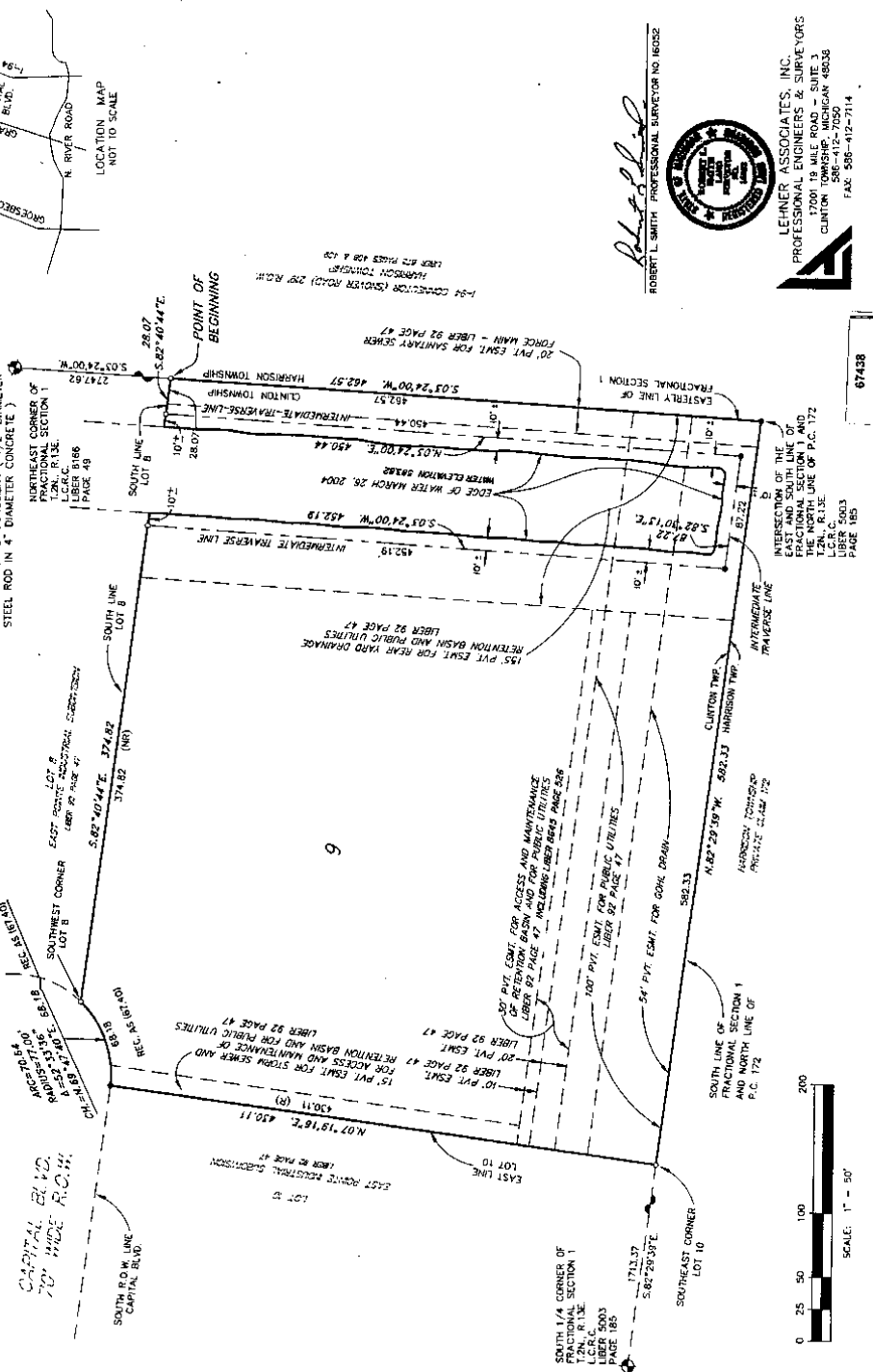


NORTH

LEGEND
ALL DIMENSIONS ARE SHOWN IN FEET.
ALL CURVILINEAR DIMENSIONS ARE SHOWN
ALONG THE CHORD.
DIMENSIONS WITH A * INDICATES A 4" DIAMETER
STEEL ROD WITH CENTER
CONCRETE MONUMENT HAS BEEN SET.
(R) INDICATES RADIAL LOT LINES.
(RW) INDICATES NON RADIAL LOT LINES.
BENCH MARKS ARE SHOWN WITH THE LINE OF LOT 8
OF EAST POINTE INDUSTRIAL SUBDIVISION
RECORDED IN LIBER 92, PAGE 47.
DENOTES FOUND MONUMENT (1/2" DIAMETER
STEEL ROD IN 4" DIAMETER CONCRETE)



LOCATION MAP
NOT TO SCALE



SCALE: 1" = 50'

K-157, R-16-17

8-3-2004

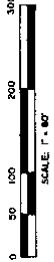
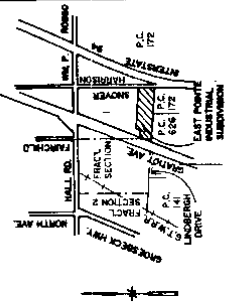
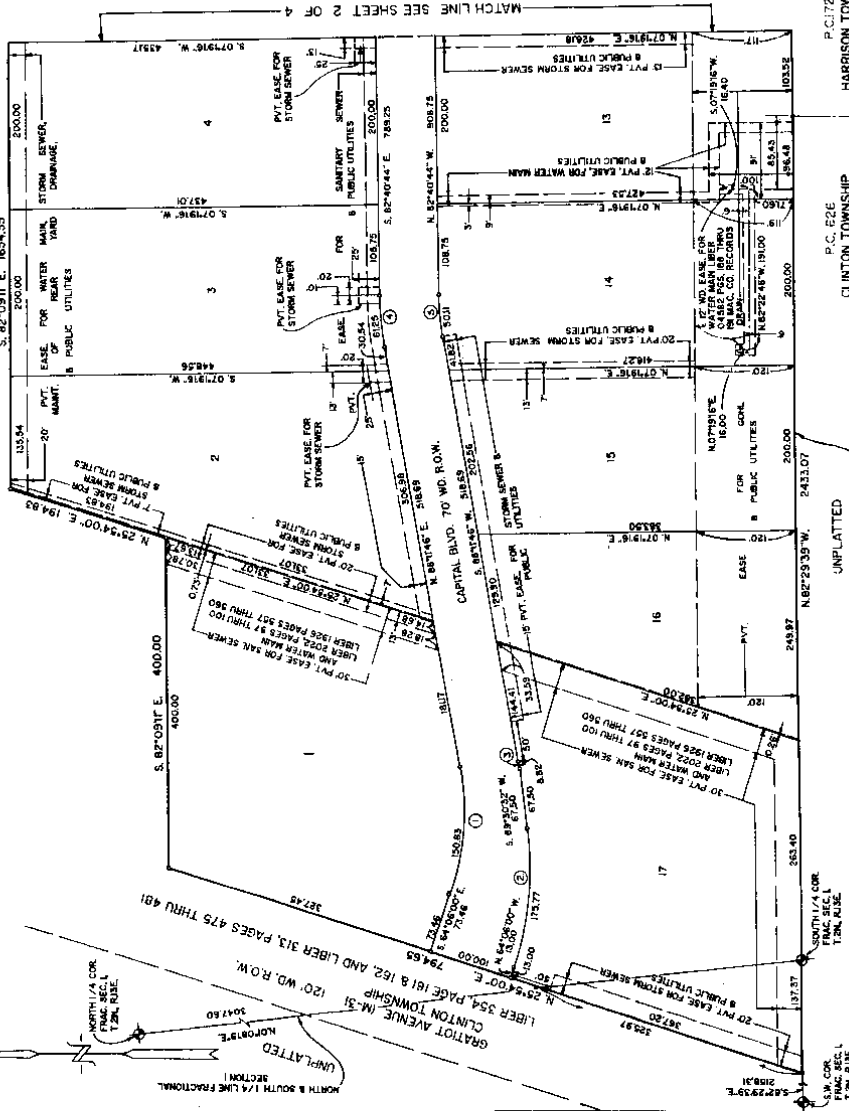
67438

Professional seal and signature of Robert L. Smith, Professional Surveyor No. 16032. The seal is circular with 'MICHIGAN' and 'PROFESSIONAL SURVEYOR' around the perimeter. To the right, the text reads: 'LEHNER ASSOCIATES, INC. PROFESSIONAL ENGINEERS & SURVEYORS 17001 19 MILE ROAD - SUITE 3 CLINTON TOWNSHIP, MICHIGAN 48038 PHONE: 517-351-7114 FAX: 517-412-7114'.

EAST POINTE INDUSTRIAL SUBDIVISION
 A SUBDIVISION OF PART OF EAST 1/2 8 WEST 1/2 OF
 FRACTIONAL SECTION 1, T.2N., R.13E., CLINTON TOWNSHIP,
 MACOMB CO., MICHIGAN

CURVE #	BACKS	ARC	LONG CHORD	CHORD	DELTA
1	312.00	152.31	5 77°57'07" E	50.43	27°42'21"
2	350.00	177.33	5 77°43'45" E	125.77	26°23'27"
3	350.00	177.33	5 87°42'45" E	125.77	26°23'27"
4	312.00	152.31	5 87°42'45" E	50.43	27°42'21"
5	312.00	152.31	5 87°42'45" E	50.43	27°42'21"

UNPLATTED.



CERTIFIED TRUE COPIES
 BY DEPARTMENT OF COMMERCE
 OF THE STATE OF MICHIGAN
 REGISTERED PROFESSIONAL SURVEYOR
 ROBERT L. SMITH
 LICENSE NO. 13,128

LEGEND
 ALL DIMENSIONS ARE SHOWN IN FEET.
 ALL CURVILINEAR DIMENSIONS ARE SHOWN
 ALONG THE CHORD.
 ALL DIMENSIONS ARE TO THE CENTER OF THE
 MONUMENT.
 ALL LOT MARKERS ARE 18" LONG 1/2" IRONS.
 (R) INDICATES RADIAL LOT LINES.
 (W) INDICATES WESTERLY LINE OF
 NORTH GRANT HEIGHTS SUB. AS RECORDED IN
 LIBER 21 PAGE 3, MACOMB COUNTY RECORDS.
 THERE SHALL BE NO DIRECT VEHICULAR ACCESS
 TO GRANT HEIGHTS FROM THE WESTERLY LINE OF
 ACCESS TO THE L-54 CONNECTOR (SHOWER ROAD)
 FROM LOTS 8 AND 9.



ROBERT L. SMITH

P.C. 172
 HARRISON TOWNSHIP

P.C. 226
 CLINTON TOWNSHIP

UNPLATTED
 SOUTH LINE OF FRACTIONAL SECTION 1

S.W. COR.
 FRACTIONAL SECTION
 T.2N., R.13E.

12.95.85

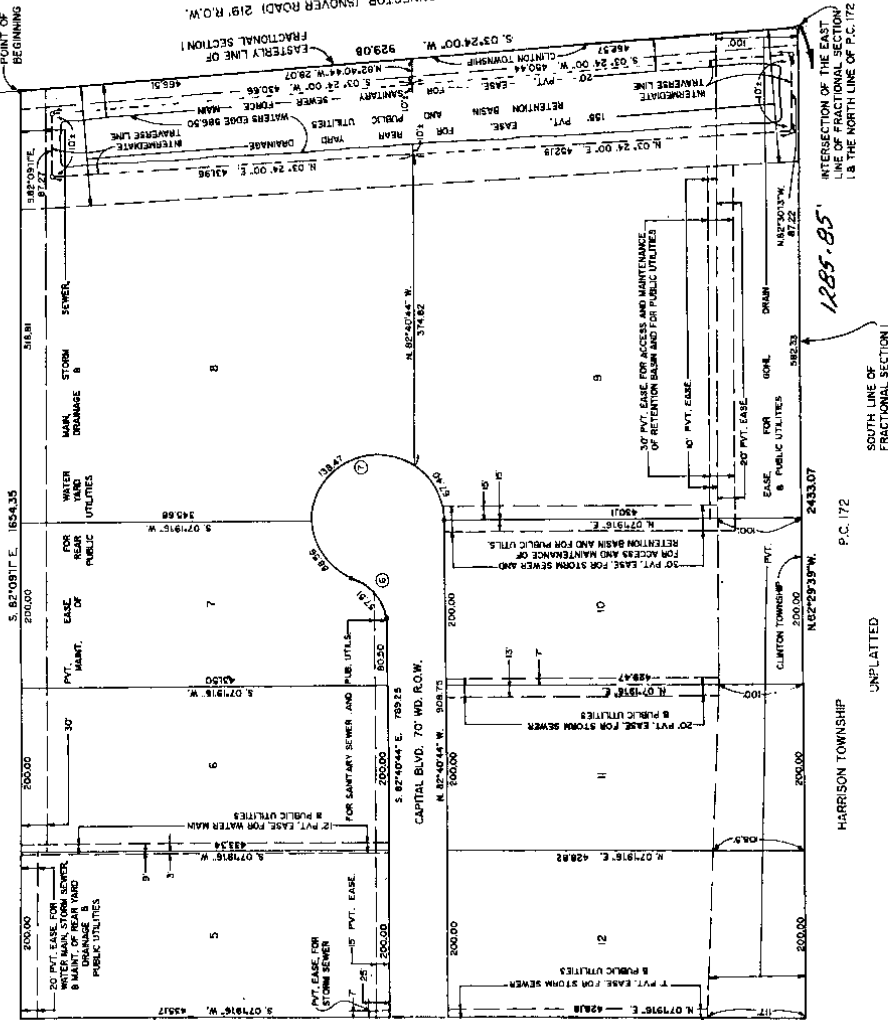
SHEET 1 OF 4

1. 92, P. 47-50
 12-13-1994

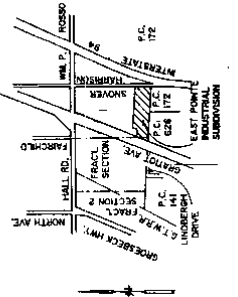
061220

EAST POINTE INDUSTRIAL SUBDIVISION
 A SUBDIVISION OF PART OF EAST 1/2 & WEST 1/2 OF
 FRACTIONAL SECTION 1, T.2N., R.13E., CLINTON TOWNSHIP,
 MACOMB CO., MICHIGAN

UNPLATTED



LINE #	BEARING	DIST.	POINT	DELTA
1	S. 82°08'17\"	1654.35	3726	10°26'24\"
2	S. 03°24'00\"	22811	3727	10°26'24\"
3	S. 82°08'17\"	1654.35	3728	25°02'34\"
4	S. 03°24'00\"	22811	3729	25°02'34\"



LEGEND
 DIMENSIONS ARE SHOWN IN FEET
 ALL CURVE LINEAR DIMENSIONS ARE SHOWN
 ALONG THE CHORD.
 THE SYMBOL 'x' INDICATES A 4\"

36\"

MONUMENT MARKERS ARE 18\"

BEARINGS BASED ON THE WESTERLY LINE OF
 NORTH GRID TOWNSHIP 2 S. AS PER RECORDS IN
 THESE RECORDS. THERE SHALL BE NO DIRECT VEHICULAR ACCESS
 TO GRAYTOWN AVENUE (M-3) FROM LOTS 1 AND 17
 AND THAT THERE SHALL BE NO DIRECT VEHICULAR
 ACCESS TO THE I-94 CONNECTOR (ISNOVER ROAD)
 FROM LOTS 8 AND 9.



ROBERT L. SMITH

SHEET 2 OF 4

06.10.20

EAST POINTE INDUSTRIAL SUBDIVISION
 A SUBDIVISION OF PART OF EAST 1/2 & WEST 1/2 OF
 FRACTIONAL SECTION 1, T.2N., R.13E., CLINTON TOWNSHIP,
 MACOMB CO., MICHIGAN

CERTIFICATE OF MUNICIPAL APPROVAL

I certify that this plat was approved by the Township Board of the Township of Clinton, at a meeting held May 21, 1960 and was reviewed and found to be in compliance with Act 288, P.A. 1957, and the applicable published rules and regulations of the Board of Road Commissioners of Macomb County, Michigan, and that all other matters which are required to be placed on this plat when services have been installed and are ready for use within this plat.

and that same is posted for one year to insure the placement of monuments and lot markers.

Robert L. Smith
 TOWNSHIP CLERK

COUNTY TREASURER'S CERTIFICATE

The records in my office show no unpaid taxes or special assessments for the five years preceding 5/21/60, involving the lands included in this plat.

George J. Sprinck
 TREASURER COUNTY OF MACOMB

COUNTY DRAIN COMMISSIONER'S CERTIFICATE

Approved on May 23, 1960 as complying with Section 190 of Act 288, P.A. 1957, and the applicable published rules and regulations published by my office in the County of Macomb.

Thomas S. Welsh
 THOMAS S. WELSH, COMMISSIONER OF PUBLIC WORKS

MICHIGAN DEPARTMENT OF TRANSPORTATION
 APPROVED ON 5.24.1960 AS COMPLYING WITH ACT 288, P.A. OF 1957 AND THE APPLICABLE PUBLISHED RULES AND REGULATIONS OF THE DEPARTMENT OF TRANSPORTATION.

James R. Pritz
 JAMES R. PRITZ, DIRECTOR

CERTIFICATE OF COUNTY ROAD COMMISSIONERS

Approved on May 23, 1960 as complying with Section 181 of Act 288, P.A. 1957, and the applicable published rules and regulations of the Board of Road Commissioners of Macomb County.

Robert L. Smith
 ROBERT L. SMITH, CHAIRPERSON
 BOARD OF ROAD COMMISSIONERS

COUNTY PLAT BOARD CERTIFICATE

This plat has been reviewed and is approved by the Macomb County Plat Board as being in compliance with all of the provisions of Act 288, P.A. 1957, and the plat board's applicable rules and regulations.

Robert L. Smith
 ROBERT L. SMITH, CHAIRPERSON
 COUNTY PLAT BOARD OF COMMISSIONERS

Eric Miller
 ERIC MILLER, CLERK, REGISTER OF DEEDS

RECORDING CERTIFICATE

STATE OF MICHIGAN
 MACOMB COUNTY

This plat was received for record on the 15 day of May, 1960, at 1:00 P.M. and recorded in Liber 38 of Plats on Register of Deeds.

Eric Miller
 ERIC MILLER, REGISTER OF DEEDS



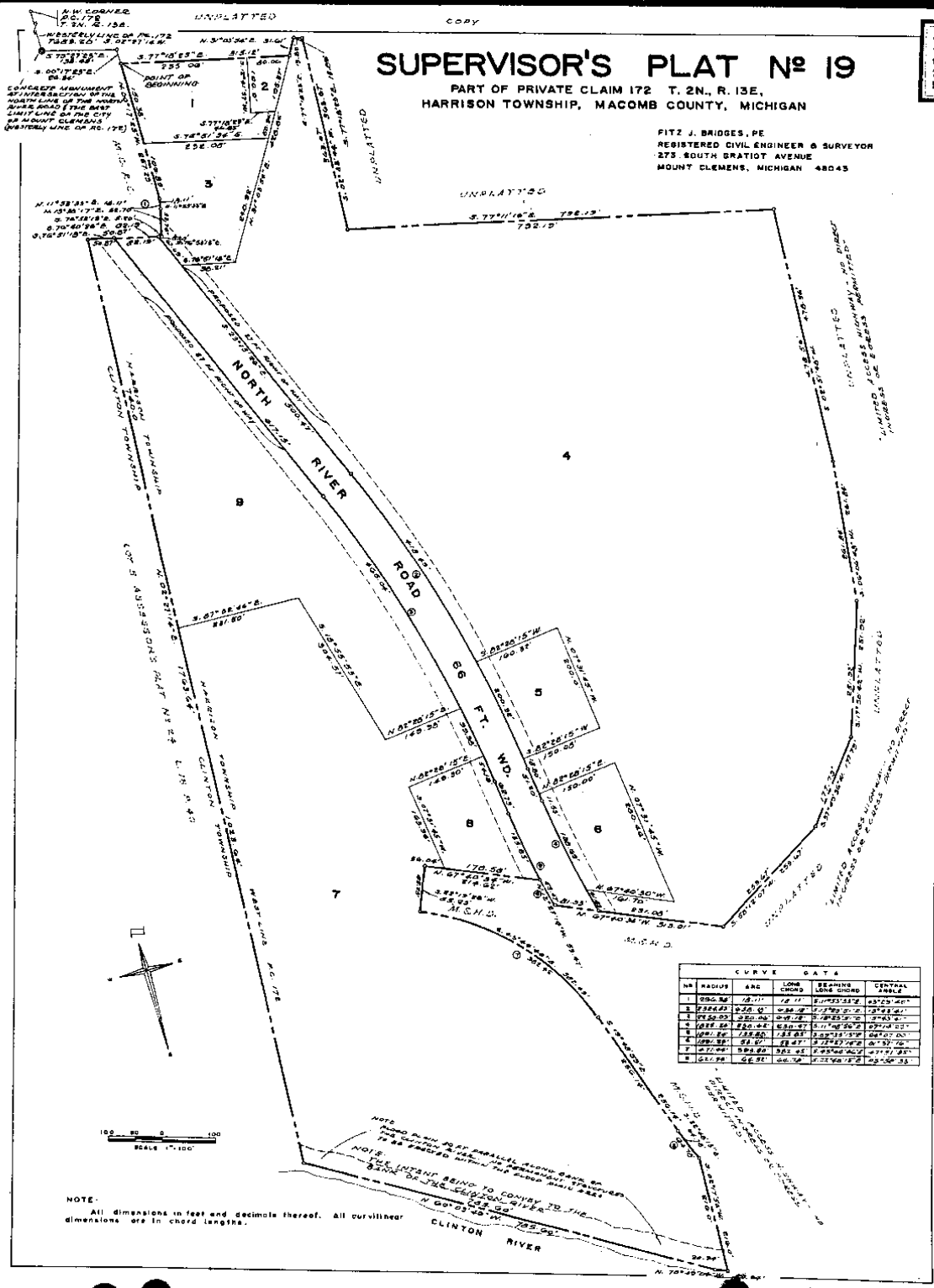
Robert L. Smith
 ROBERT L. SMITH

SUPERVISOR'S PLAT No 19

PART OF PRIVATE CLAIM 172 T. 2N., R. 13E.,
HARRISON TOWNSHIP, MACOMB COUNTY, MICHIGAN

FITZ J. BRIDGES, P.E.
REGISTERED CIVIL ENGINEER & SURVEYOR
275 SOUTH GRATIOT AVENUE
MOUNT CLEMENS, MICHIGAN 48043

50278



CURVE DATA				
NO	RADIUS	ARC	LONG CHORD	CENTRAL ANGLE
1	250.00	12.11	12.11	2.8751372
2	250.00	25.00	25.00	5.7603857
3	250.00	37.50	37.50	8.6407342
4	250.00	50.00	50.00	11.5210827
5	250.00	62.50	62.50	14.4014312
6	250.00	75.00	75.00	17.2817797
7	250.00	87.50	87.50	20.1621282
8	250.00	100.00	100.00	23.0424767

L. 5-9, P. 7-8 G-14-1968

COPY

SUPERVISOR'S PLAT No 19

PART OF PRIVATE CLAIM 172 T. 2N., R. 13E.,
HARRISON TOWNSHIP, MACOMB COUNTY, MICHIGAN

FITZ J. BRIDGES REG. CIVIL ENGINEER & SURVEYOR MOUNT CLEMENS, MICHIGAN

DESCRIPTION

The land embraced in the annexed plat of Supervisor's Plat No. 19, part of Private Claim 172 T. 2N., R. 13E., Harrison Township, Macomb County, Michigan and being more particularly described as follows:

Commencing at the N. W. corner of P. C. 172; thence S. 02°27'14"W. 7683.20 ft. along the Westerly line of P. C. 172 to a monument at the intersection of the North line of the North River Road and East limit line City of Mount Clemens (Westerly line of P. C. 172); thence S. 75°27'23"E. 138.45 ft.; thence S. 00°17'23"E. 26.34 ft. to the point of beginning; thence S. 77°18'23"E. 315.12 ft.; thence N. 31°03'54"E. 31.61 ft.; thence S. 77°18'23"E. 15.89 ft.; thence S. 02°13'54"W. 563.67 ft.; thence S. 77°11'16"E. 792.19 ft.; thence S. 02°51'48"W. 478.56 ft.; thence S. 06°08'54"W. 261.84 ft.; thence S. 17°50'42"W. 251.92 ft.; thence S. 37°49'36"W. 177.79 ft.; thence S. 58°12'07"W. 253.67 ft.; thence N. 67°40'34"W. 313.01 ft.; thence along a curve to the left (C) radius 1891.24 ft., central angle 1°37'16" whose long chord bears N. 12°27'14"W. 53.47 ft.; thence N. 67°40'34"W. 214.62 ft.; thence S. 22°19'26"W. 85.23 ft.; thence along a curve to the right (C) radius 471.44 ft. central angle 47°51'13" whose long chord bears S. 43°44'46"E. 382.45 ft.; thence S. 19°48'59"E. 256.14 ft.; thence along a curve to the left (C) radius 621.44 ft. central angle 1°58'33" whose long chord bears S. 23°48'15"E. 54.78 ft.; thence S. 02°17'54"W. 216.0 ft.; thence N. 70°49'04"W. 20.94 ft.; thence N. 60°03'46"W. 785.40 ft.; thence N. 02°27'14"E. 1763.64 ft.; thence S. 76°51'18"E. 50.87 ft.; thence S. 76°40'26"E. 82.19 ft.; thence S. 76°53'13"E. 5.20 ft.; thence N. 13°38'17"W. 52.70 ft.; thence along a curve to the left (C) radius 296.98 ft. central angle 3°29'40" whose long chord bears N. 11°53'33" E. 18.11 ft.; thence N. 00°17'23"W. 257.23 ft. to the point of beginning. Containing lots 1 through 9 inclusive.

DEDICATION

KNOW ALL MEN BY THESE PRESENTS, that I, Ralph E. Beaufait, Supervisor of the Township of Harrison of Macomb County, State of Michigan, by virtue of authority in me vested by Section 51, Act 172, of 1929, having been duly authorized by the Township Board have caused the land described in the annexed plat to be surveyed, laid out and platted, to be known as, Supervisor's Plat No. 19, part of Private Claim 172, T. 2N., R. 13E., Harrison Township, Macomb County, Michigan and that the streets and easement as shown on said plat are now being used for such purposes, and that the plat conforms with the requirements of Section 51, Act 172, of Public Acts of 1929, as amended.

Witness my hand and seal in the presence of:
Thomas J. Brainerd
Witness: *Thomas J. Brainerd*
George Phillips
Witness: *George Phillips*

Ralph E. Beaufait
Ralph E. Beaufait, Supervisor
Township of Harrison
38151 L'Anse Creuse
Mount Clemens, Michigan 48043

ACKNOWLEDGEMENT

State of Michigan)
County of Macomb)

On this 29th day of JULY, 1967, before me a Notary Public in and for said County, personally came the above named, Ralph E. Beaufait, Supervisor of the Township of Harrison known to me to be the person who executed the above dedication and acknowledged the same to be his free act and deed as such Supervisor.

My commission expires 12-18-71

Richard W. Mulrow
Richard W. Mulrow
Notary Public, Macomb County,
Michigan

CERTIFICATE OF MUNICIPAL APPROVAL

This Plat was approved by the Township Board of the Township of Harrison at a meeting held on the 27th day of November, 1967 and complies with Section 19A and the width of lots in compliance with requirements of Section 19, Act 172, of 1929, as amended.

Richard W. Mulrow
Richard W. Mulrow, Clerk

CERTIFICATE OF APPROVAL BY THE BOARD OF COUNTY ROAD COMMISSIONERS

This Plat has been examined and was approved on the 29th day of July, A. D. 1967 by the Macomb County Board of Road Commissioners.

Lawrence Osburn
Lawrence Osburn, Chairman

Reth Bovenachen
Reth Bovenachen, Vice Chairman

Ernest W. McCollom, Member

CERTIFICATE OF APPROVAL BY THE COUNTY BOARD

This Plat was approved on the 27th day of November, A. D. 1967 by the Macomb County Plat Board.

Raymond Craig Rippey
Raymond Craig Rippey
Raymond K. Lewis, Deputy
Edna Miller
Edna Miller, County Clerk

Lynn Shalen
Lynn Shalen, County Treasurer
Thomas S. Habel
Thomas S. Habel
Thomas S. Habel, Drain Commissioner
W. J. Haines
W. J. Haines, Mayor

SURVEYOR'S CERTIFICATE

I hereby certify the plat hereon delineated is a correct one and that permanent metal monuments consisting of bars not less than one-half inch in diameter and 36 inches in length, encased in a concrete cylinder at least 4 inches in diameter and 36 inches in depth have been placed at points marked thus (O) as thereon shown at all angles in the boundaries of the land platted, at all the intersections of the lines of streets, and at the intersections of the lines of streets with the boundaries of the plat as shown on said plat.

Prepared and Drafted by:

Fix J. Rutledge
Fix J. Rutledge, P. E.
Registered Land Surveyor No. 5779
273 South Cratiot Avenue
Mount Clemens, Michigan 48043

Richard W. Mulrow
Richard W. Mulrow
Notary Public
Notary Public, Macomb County,
Michigan

APPROVED *Richard W. Mulrow*

MICHIGAN STATE SURVEY COMMISSION
Richard W. Mulrow
HENRIK E. STANBATH
STATE SURVEYOR

COPY

Register's Office
Macomb County, Michigan
1967 JUL 29
144
15507
157
James
Raymond C. Rippey
Deputy

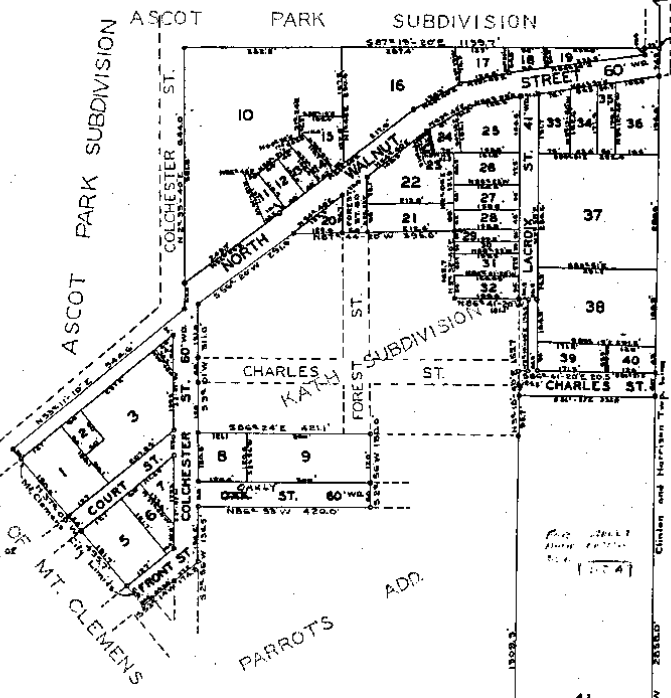
I hereby certify this copy is a true and correct copy of the original as recorded in the Register's Office for the County of Macomb, Michigan.
Date: *July 29, 1967*
By: *Richard W. Mulrow*
Notary Public
By: *Richard W. Mulrow*
Notary Public

26085

SUPERVISORS PLAT NO. 5.

PART OF P. C. 626 T. 2. N. R. 13 E.
CLINTON TOWNSHIP
MACOMB CO. MICHIGAN
SCALE 1"=50'

Jan. 9, 1934
Geo. L. Howell
Plat Surveyor



66
 Superior Plat No. 5
 Jan 9 1934
 Geo. L. Howell
 Plat Surveyor

CERTIFICATE OF APPROVAL BY THE COUNTY BOARD
 This plat was approved on the 20th day of January, 1934.
 JUDGE OF PROBATE
 COUNTY CLERK
 COUNTY TREASURER

Dedication
 KNOW ALL MEN BY THESE PRESENTS, that I, Otto Sherbeck Supervisor of Clinton Township Macomb County Michigan, by virtue of authority in me vested by Section 51, Act 175, of 1929, having been duly authorized by the Township Board have caused the land described in the annexed plat to be surveyed, laid out and platted to be known as Supervisors Plat No. 5 of part of P. C. 626, and that the streets and alleys as shown on said plat are now being used for such purposes.

Otto Sherbeck
 Supervisor of Clinton Twp.

Witnesses:
Wm. J. Rogers
Edward J. Williams

Acknowledgment.
 COUNTY OF MICHIGAN
 ON this 17th day of January, A. D. 1934, before me, a Notary Public in and for said county, personally came the above named Otto Sherbeck Supervisor of Clinton Township known to me to be the person who executed the above dedication, and acknowledged the same to be his free act and deed as such Supervisor.

Otto Sherbeck
 Notary Public in and for Macomb County.
 My Commission expires June 1, 1935.

SURVEYOR'S CERTIFICATE.
 I hereby certify that the plat hereto delineated is a correct one and that permanent metal monuments of not less than one inch in diameter and fifteen inches in length set in concrete base at least four inches in diameter and forty-eight inches in depth have been placed at points marked thus G as thereon shown at all angles in the boundaries of the land platted, at all the intersections of streets, intersections of alleys, or of streets and alleys, and at the intersections of streets and alleys with the boundaries of the plat as shown on said plat.

Geo. L. Howell
 Plat Surveyor

Description of Land Platted
 The land embraced in the annexed plat of Supervisors Plat No. 5 part of P. C. 626 Clinton Township Macomb County Michigan is described as follows:

Commencing at the intersection of Henry B. Fay Road and the Clinton Harrison Township line. Thence S 30° 22'-40" W 1188.0 feet along the township line to the place of beginning. Thence S 30° 12'-40" W 2055.0 feet along the township line. Thence S 27° 00'-20" W 213.3 feet along the N. W. Corner City limits. Thence N 82° 11'-00" W 1509.3 feet along the east boundary of Parrots Add. Thence S 3°-18'-40" W 155.7 feet along the east boundary of Kath Subdivision. Thence S 60°-41'-20" W 225.7 feet along the south boundary of Kath Subdivision. Thence N 60°-41'-20" W 176.5 feet along the east boundary of Kath Subdivision. Thence N 60°-41'-20" W 181.1 feet along the north boundary of Kath Sub. Thence S 3°-20'-40" W 155.7 feet along the east boundary of Kath Subdivision. Thence N 60°-41'-20" W 225.7 feet along the north boundary of Kath Subdivision. Thence S 30°-22'-40" W 1188.0 feet along the township line to the place of beginning. Thence S 30° 12'-40" W 2055.0 feet along the township line and south side of Walnut Street. Thence S 3°-20'-40" W 155.7 feet along the east side of Colchester Street. Thence S 60°-41'-20" W 421.1 feet along the Kath Subdivision. Thence S 20°-20" W 130.0 feet along Parrots Addition. Thence N 60°-33'-W 420.0 feet along Parrots Addition and south side of Colchester Street. Thence S 20°-20" W 130.0 feet along Parrots Addition and east side of Colchester Street. Thence S 20°-20" W 130.0 feet along Parrots Addition and south side of Colchester Street. Thence S 20°-20" W 130.0 feet along Parrots Addition and south side of Colchester Street. Thence S 20°-20" W 130.0 feet along Parrots Addition and south side of Colchester Street.

TOWNSHIP APPROVAL
 This plat was approved by the Township Board of the Township of Clinton at a meeting held on Jan. 9, 1934.

Geo. L. Howell
 Township Clerk

1-16, P. 23 1-10-1934

17363

'ASCOT PARK SUBDIVISION'

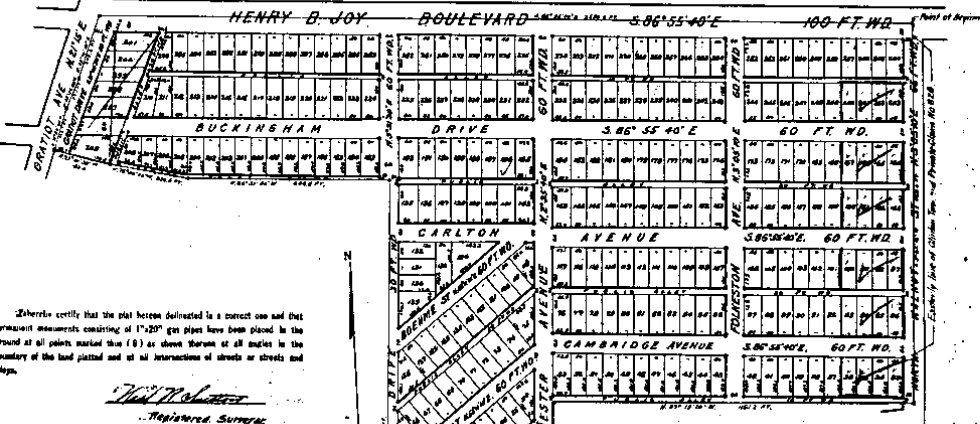
Being parts of Private Claims Nos 41 and 626, T.Z.N.R.3 E.

Clinton Twp. Macomb Co.,

MICHIGAN

Scale 200 Feet = 1 Inch.

Examined and Approved
Chas. J. Williams
Deputy Auditor General



I hereby certify that the plat herein delineated is a correct one and that permanent monuments consisting of 1" x 20" galv pipes have been placed in the ground at all points marked thus (6) as above shown at all angles in the boundary of the land platted and of all intersections of streets and alleys.

Will McManis
Registered Surveyor

I hereby certify that this plat has been approved by the Township Board of Clinton Twp. Macomb Co. Michigan on March 10, 1921.

Walter Williams

Description.
The land embraced in the annexed plat of Ascot Park Subdivision is parts of Private Claims Nos 41 and 626, T.Z.N.R.3 E., Clinton Twp., Macomb Co., Mich. as described as follows: (Beginning at a point in the westerly line of Clinton Twp., said point being also in the westerly line of Private Claim 626 at its intersection with the centerline of the Henry B. Joy Road and 128.6 ft. south of the N.E. corner of said Private Claim 626.) Thence S. 85° 05' 10" W. 168 ft. along the westerly line of Clinton Twp. Section 1872307 W. 641.3 ft.; thence S. 27° 45' 30" W. 648.0 ft. to the centerline of North Hill St.; thence S. 82° 17' 10" W. 548.6 ft. along the centerline of North Hill St. to the City limits of the City of Macomb; thence S. 84° 05' 30" W. 107 ft.; thence N. 3° 30' 30" E. 128.6 ft.; thence N. 82° 33' 30" W. 648.0 ft.; thence N. 7° 50' 30" W. 228.6 ft.; thence N. 73° 41' 30" W. 684.4 ft. to the westerly line of Carlton Ave.; thence N. 22° 45' 30" W. 107.2 ft.; thence N. 25° 16' 40" E. 128.6 ft.; thence N. 22° 45' 30" W. 228.6 ft. to the centerline of the Henry B. Joy Road; thence S. 85° 05' 10" W. 128.6 ft. along the centerline of Henry B. Joy Road to the point of beginning.

KNOW ALL MEN BY THESE PRESENTS:

The Macomb Realty Co. John H. Nelson, President, and Charles E. DeWane, Secretary, Treasurer, and Lewis E. Condit, Mortgagee, by *Walter Williams*, Attorney in Fact, do hereby certify that the above plat to be surveyed, laid out and platted, is to be known as the

'Ascot Park Subdivision,' Being: Parts of Private Claims Nos 41 and 626, T.Z.N.R.3 E., Michigan as above shown and that the streets and alleys shown on said plat are hereby dedicated to the use of the public.

SIGNED AND SEALED IN PRESENCE OF

Walter Williams The Macomb Realty Co.
Charles E. DeWane
John H. Nelson
Walter Williams Attorney in Fact
Walter Williams Attorney in Fact
Walter Williams Attorney in Fact

I HEREBY CERTIFY THAT THE ABOVE IS A TRUE COPY OF THE ORIGINAL FILED IN THE REGISTER OF DEEDS FOR RECORD IN MACOMB COUNTY, MICHIGAN, ON MARCH 25, 1921.
CHAS. J. WILLIAMS
DEPUTY AUDITOR GENERAL

FILED IN AUDITOR GENERAL'S DEPT.
APRIL 27, 1921
CHAS. J. WILLIAMS
DEPUTY AUDITOR GENERAL

STATE OF MICHIGAN) S.S.
COUNTY OF MACOMB)
On this 24th day of March, 1921, before me a Notary Public in and for said county, personally came the above named *Walter Williams* and *Charles E. DeWane*, to me personally known, who being each by me duly sworn did say that they are the President and Secretary-Treasurer respectively of the *Macomb Realty Co.* a Michigan Corporation and that the said plat in said instrument is the corporate seal of said corporation and the said instrument was signed and sealed in behalf of said corporation, the validity of its Board of Directors and the said *Walter Williams* and *Charles E. DeWane* acknowledged and instrument to be the true act and deed of said corporation.
Walter Williams
Notary Public in and for Macomb County, Michigan.
My commission expires Feb. 1, 1922.

Walter Williams
Charles E. DeWane
Walter Williams
Walter Williams

STATE OF MICHIGAN) S.S.
COUNTY OF MACOMB)
ON THIS 24th DAY OF MARCH, 1921, BEFORE ME A NOTARY PUBLIC IN AND FOR SAID COUNTY, PERSONALLY APPEARED ROBERT F. ELDRIDGE TO ME PERSONALLY KNOWN, WHO BEING BY ME DULY SWORN DID SAY THAT HE WAS ATTORNEY IN FACT FOR EMILY E. CAMFIELD, MORTGAGEE AND ACKNOWLEDGED SIGNATURE OF SAID INSTRUMENT OF BE THE TRUE ACT AND DEED OF SAID EMILY E. CAMFIELD, ACTING THROUGH HIM, HER ATTORNEY IN FACT.

Robert F. Eldridge
NOTARY PUBLIC IN AND FOR MACOMB COUNTY, MICHIGAN.

MY COMMISSION EXPIRES March 22, 1925

NOTE: All dimensions on this plat are given in feet and decimals thereof.

H-16-1921
1.5, P. 32

