

REC'D NOV 20 2007 12:15pm

LAND CORNER RECORDATION CERTIFICATE  
Filing Requirement of Act 74, Mich. P.A. 1970

For corners in

Macomb  
(County)

Located In: City of St. Clair Shores  
Corner Code # \_\_\_\_\_

7158666  
LIBER 19067 PAGE 923  
11/29/2007 09:07:10 A.M.  
MACOMB COUNTY, MI  
CARMELLA SABAUGH, REGISTER OF DEEDS

- 1. Public Land Survey T 1N R 13E H-2  
T \_\_\_\_\_ R \_\_\_\_\_  
T \_\_\_\_\_ R \_\_\_\_\_  
T \_\_\_\_\_ R \_\_\_\_\_
- 2. Property Controlling In Section S \_\_\_\_\_ T \_\_\_\_\_ R \_\_\_\_\_  
S \_\_\_\_\_ T \_\_\_\_\_ R \_\_\_\_\_
- 3. Miscellaneous Property In Sec. S \_\_\_\_\_ T \_\_\_\_\_ R \_\_\_\_\_  
S \_\_\_\_\_ T \_\_\_\_\_ R \_\_\_\_\_

- 4. Lot No. \_\_\_\_\_, Recorded Plat
- 5. Private Claims

I, Robert H. Birkett, in a field survey on, August 24, 2007 do hereby state that under requirements of P.A. 74, Michigan P.A. of 1970, the corner points mentioned in lines 1 and 2 above were in conformance with regulations and rules therefore as required in the current manual of survey instructions of the United States Department of the Interior, Bureau of Land Management or by a decree of a Court of Law and for that the corner points mentioned in lines 3, 4 and 5 above were in conformance with the rules of the Michigan Board of Land Surveyors or by a Decree of a Court of Law; established, re-established, monumented, re-monumented, recovered, found as expressed below:

NOTE: Not more than 2 corners, all in the same town and range, may be recorded on this certificate.

Register of Deeds Stamp & File Number

A	B	C	D	E	F	G	H	I	J	K	L
2	6	5	4	3	2	1					
3											
4	7	6	5	4	3	2	1				
5											
6	16	17	18	19	20	21	22	23	24		
7											
8	18	20	21	22	23	24					
9											
10	30	29	28	27	26	25					
11											
12	31	32	33	34	35	36					
13											



A. Description of original monument and accessories and/or subsequent restoration:

H-2 Center of section 3, corner was not set by the Government Land Office.

- a. 1916 G Jerome, "Meadow Spring Acres Sub.", L. 3, P. 75
- b. 1919 W Lehner #123, "Grosse Pointe Lake Side Farms", L. 3, P. 203
- c. 1922 G. Kennedy #210, "Storm & Fowler's Golf Club Sub.", L. 5, P. 84
- d. 1922 W Lehner #123, "Meadow Spring Sub.", L. 5, P. 82
- e. 1923 G Kennedy #210, "Carl T. Storm's Golf Club Sub.", L. 6, P. 30
- f. 1931 WJ Lehner #123, "Assessors Plat No. 34", L. 15, P. 25
- g. 1931 WJ Lehner #123, "Assessors Plat No. 40", L. 15, P. 31
- h. 1955 ML Brown #8310, "Masonic Heights Sub. No. 1", L. 33, P. 48
- i. 1955 ML Brown #8310, "Masonic Heights Sub. No. 2", L. 34, P. 28
- j. 1955 WJ Lehner #123, "William P. Hull Sub. No. 2", L. 31, P. 38
- k. 1955 WJ Lehner #123, "William P. Hull Sub. No. 1", L. 31, P. 35
- l. 1979 WE Soderburg #17835, LCRC, L. 3218, P. 52 (Recovered 2 witnesses).
- m. 2000 SE Dunn #28408, LCRC, L. 9712, P. 749 (Recovered 2 witnesses).
- n. 2005 JN Owens #20709, LCRC, L. 16876, P. 690 (Recovered 3 witnesses).

ACCEPTED BY THE MACOMB COUNTY SURVEY PEER GROUP AS THE OFFICIAL CORNER UNDER MICHIGAN PUBLIC ACT 345 OF 1990 AT A MEETING HELD ON 9-18-07  
*Martin C. Dunn*  
MARTIN C. DUNN, P.S. CHAIRMAN

B. Description of corner evidence found and/or method applied in restoring or reestablishing corner:

H-2 Found 1/2" iron in monument box. 5.5 feet east of the centerline of Thomcrest in the Masonic turnaround. The found iron is verified by l, m & n from section "A" above and government corner G-2

Field Measurements From H-2  
See reverse side

C. Description of monument for corner and accessories established to perpetuate locating the position of the corner:

H-2 Set an aluminum cap stamped "Macomb County Monument, MI ACT 345, 41094, H2" on existing 1/2" iron at the centerline concrete Masonic, in an existing monument box.

- AZ 280° - 81.10' - Centerline top nut of hydrant.
- AZ 94° - 91.87' - Southwest bolt in light pole base.
- AZ 0° - 53.60' - To six foot chain link fence.
- AZ 204° - 79.55' - "PK" with tag #17835 in the east face 29" maple.
- AZ 225° - 72.55' - Found "PK" nail with Rowe tag in east face 29" maple.
- AZ 280° - 108.85' - Set remon tag north face 15" oak.
- AZ 0° - 48.10' - North of back of curb.
- AZ 145° - 90.50' - Northwest corner of house #32130.



The selected location is accepted by me and is generally accepted by professional surveyors as the best available evidence of the position of the original corner.

Signed by *R. Birkett*  
Surveyor's Michigan License No. 41094

Date 10-31-07

LAND CORNER RECORDATION CERTIFICATE  
Filing Requirement of Act 74, Mich. P.A. 1970

For corners in

Macomb  
(County)

Located in: Corner Code #  
City of St. Clair Shores

- |                                       |  |            |
|---------------------------------------|--|------------|
| 1. Public Land Survey                 | T <u>1N</u> R <u>13E</u>               | <u>H-2</u> |
|                                       | T <u>   </u> R <u>   </u>              | <u>   </u> |
|                                       | T <u>   </u> R <u>   </u>              | <u>   </u> |
|                                       | T <u>   </u> R <u>   </u>              | <u>   </u> |
| 2. Property Controlling<br>In Section | S <u>   </u> T <u>   </u> R <u>   </u> | <u>   </u> |
|                                       | S <u>   </u> T <u>   </u> R <u>   </u> | <u>   </u> |
| 3. Miscellaneous<br>Property in Sec.  | S <u>   </u> T <u>   </u> R <u>   </u> | <u>   </u> |
|                                       | S <u>   </u> T <u>   </u> R <u>   </u> | <u>   </u> |
4. Lot No. \_\_\_\_\_, Recorded Plat  
5. Private Claims

B. Description of corner evidence found and/or method applied in restoring or reestablishing corner  
H-2 Continued from front side

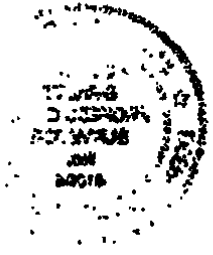
Field Measurements From H-2  
Continued from front side

To H-1  
Remon 2007 = 2725.05

To G-2  
Remon 2007 = 2694.61  
MDOT = 2696.21'

To H-3  
Remon 2007 = 2736.36

To I-2  
Remon 2007 = 2713.43



2007

**MACOMB COUNTY REMONUMENTATION  
PROGRAM FOR CITY OF ST. CLAIR SHORES**

Research Dossier for H-02

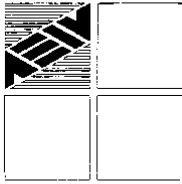
Prepared by:  
Anderson, Eckstein & Westrick, Inc.  
51301 Schoenherr Road  
Shelby Twp., Michigan 48315

**Sources of Information Researched  
For Macomb County 2007 Remonumentation Program  
For City of St. Clair Shores**

- 1) GLO Notes
- 2) Act 74 Recorded LCRC
- 3) Act 132 Recorded Surveys
- 4) Personal History and Records
- 5) Unrecorded LCRC's and Surveys
- 6) Letters to the Following, Requesting Unrecorded information

Midwestern Consulting LLC  
Atwell Hicks Inc  
ANR Pipeline Company  
BMJ Engineers & Surveyors  
Air Land Surveys, Inc.  
Lehner Associates, Inc.  
Kem-Tec Land Surveyors  
Boss Engineering Company, Inc.  
Engineering & Surveying Consultant  
Charles E. Raines Co.  
Johnson & Anderson, Inc.  
Earl Gravlin Surveyor  
Del-Tec Surveying & Engineering  
David J. Little Land Surveyors  
David C. Adams & Son  
Coulter & Associates  
Fenn & Associates Surveying, Inc.  
Donald H. DeKeyser, Surveyor  
Huron Clinton Metropolitan Authority  
Fazal Khan & Associates  
Davis Land Surveying, P.C.  
Guaranty Survey Company  
Grant Ward Surveyors  
North Star Engineering, LLC  
Giffels-Webster Engineers  
George Jerome & Company  
Michael J. Yambor Associates, Inc.  
MCS Associates, Inc.  
McNeely & Lincoln Associates, Inc.  
King Surveyors & Associates, Inc.  
RK Engineering & Survey Associates  
RJ Donnelly & Associates, Inc.  
Professional Engineering Associates

Rowe, Inc.  
Hubble Roth & Clark  
John Lansky  
Wilcox Professional Services  
RCMC  
Bruen Land Surveying  
SCCRC  
Alpine Land Surveying, Inc.  
McNamee, Porter & Seeley  
Advanced Geomatics  
GLA Surveyor  
Mason L. Brown & Asso.  
RA Duthler Land Surveyor  
Project Control Engineering  
Tetra Tech  
Nowak & Fraus PLLC  
Land Engineering Services  
Michigan Consolidated Gas  
Williams, Gorinac Assoc.  
Urban Land Consultants  
T & A, Inc.  
Detroit Edison, ROW Div.  
SSOE, Inc.  
Spalding, DeDecker & Assoc  
Kennedy Surveying, Inc.  
JL Bishop Surveying  
Reichert Surveying, Inc.  
Metco Services



# ANDERSON, ECKSTEIN AND WESTRICK, INC.

51301 Schoenherr Road, Shelby Township, Michigan 48315  
Civil Engineers • Surveyors • Architects (586) 726-1234

H-2  
City of St. Clair Shores  
Macomb County 2007 Remonumentation

## Section One

- A. Index
- B. Before and after pictures of the monument.

## Section Two

- A. LCRC
- B. Surveyor's report.

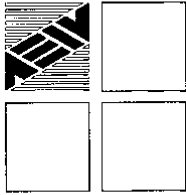
## Section Three

- 1. Field notes.
- 2. Field notes
- 3. Sketch of area and found monumentation.
- 4. Composite maps, 14-03A,B,C,D,E,F,G,H

## Section Four

### Part "A" from LCRC

- a-1916, G Jerome, "Meadow Spring Acres Sub.", L. 3, P. 75
- b-1919, W Lehner #123, "Grosse Pointe Lake Side Farms", L. 3, P. 203
- c-1922, G. Kennedy #210, "Storm & Fowler's Golf Club Sub.", L. 5, P. 84
- d-1922, W Lehner #123, "Meadow Spring Sub.", L. 5, P. 82
- e-1923, G Kennedy #210, "Carl T. Storm's Golf Club Sub.", L. 6, P. 30
- f-1931, WJ Lehner #123, "Assessors Plat No. 34", L. 15, P. 25
- g-1931, WJ Lehner #123, "Assessors Plat No. 40", L. 15, P. 31
- h-1955, ML Brown #8310, "Masonic Heights Sub. No. 1", L. 33, P. 48
- i-1955, ML Brown #8310, "Masonic Heights Sub. No. 2", L. 34, P. 28
- j-1955, WJ Lehner #123, "William P. Hull Sub. No. 2", L. 31, P. 36
- k-1955, WJ Lehner #123, "William P. Hull Sub. No. 1", L. 31, P. 35
- l-1979, WE Soderburg #17635, LCRC, L. 3218, P. 52 (Recovered 2 witnesses).
- m-2000, SE Dunn #28408, LCRC, L. 9712, P. 749 (Recovered 2 witnesses).
- n-2005, JN Owens #20709, LCRC, L. 16876, P. 690 (Recovered 3 witnesses).



# ANDERSON, ECKSTEIN AND WESTRICK, INC.

51301 Schoenherr Road, Shelby Township, Michigan 48315  
Civil Engineers • Surveyors • Architects 586-726-1234

## Report of Survey H-02 St. Clair Shores Town 1 North, Range 13 East Macomb County, Michigan

### Corner Information

H-2 Center of section 3, corner was not set by the Government Land Office.

### Existing Conditions

Found ½" iron in monument box 5.5 feet east centerline concrete Thorncrest and concrete Masonic turnaround.

### Plats

1916 G Jerome, "Meadow Spring Acres Sub.", L. 3, P. 75  
1919 W Lehner #123, "Grosse Pointe Lake Side Farms", L. 3, P. 203  
1922 G. Kennedy #210, "Storm & Fowler's Golf Club Sub.", L. 5, P. 84  
1922 W Lehner #123, "Meadow Spring Sub.", L. 5, P. 82  
1923 G Kennedy #210, "Carl T. Storm's Golf Club Sub.", L. 6, P. 30  
1931 WJ Lehner #123, "Assessors Plat No. 34", L. 15, P. 25  
1931 WJ Lehner #123, "Assessors Plat No. 40", L. 15, P. 31  
1955 ML Brown #8310, "Masonic Heights Sub. No. 1", L. 33, P. 48  
1955 ML Brown #8310, "Masonic Heights Sub. No. 2", L. 34, P. 28  
1955 WJ Lehner #123, "William P. Hull Sub. No. 2", L. 31, P. 36  
1955 WJ Lehner #123, "William P. Hull Sub. No. 1", L. 31, P. 35

### Condominiums

None that reference section corner.

### Land Corner Recordation Certificate

1979, W.E. Soderberg No. 17635, Found ½" Rerod in monument box, LCRC L. 3218, P. 52  
\*N. 53.55' 6' High chain link fence running east and west  
\*ENE 91.87' SW Bolt on light pole base.  
SSW 79.78' PK set in east face of a 17" Maple tree  
WNW 61.06' Centerline of top of fire hydrant

2000, S.E. Dunn No. 28408, Found ½" Iron rod in monument box  
S16°W 79.45' Found PK nail and tag #17635 in east face of 24" Maple  
\*N 89°W 61.06' Center top nut of hydrant  
N88°W 25.36' Center top of southeast bolt of light pole  
\*N84°E 91.87' Center top of southwest bolt of light pole  
S05°W 47.63' Set Mag nail on centerline Thomcrest expansion joint

2005, J.N. Owens No. 20709, Recovered ½" Rerod in monument box in centerline of Masonic Blvd  
\*N 46.12' B/C westbound pavement  
\*S40°E 90.38' NW corner house #32130  
\*S60°W 72.46' Set N/Rowe tag East face 27" Maple  
N80°W 106.47' Set N/Rowe tag South face 15' Oak

### Recorded Surveys

None

### Unrecorded Surveys

None



### Observations From H-2

#### Field Measurements From H-2

To H-1  
Remon 2007 = 2725.05'

To G-2

Remon 2007 = 2694.61'  
MDOT = 2696.21'

To H-3  
Remon 2007 = 2736.36'

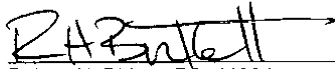
To I-2

Remon 2007 = 2713.43'

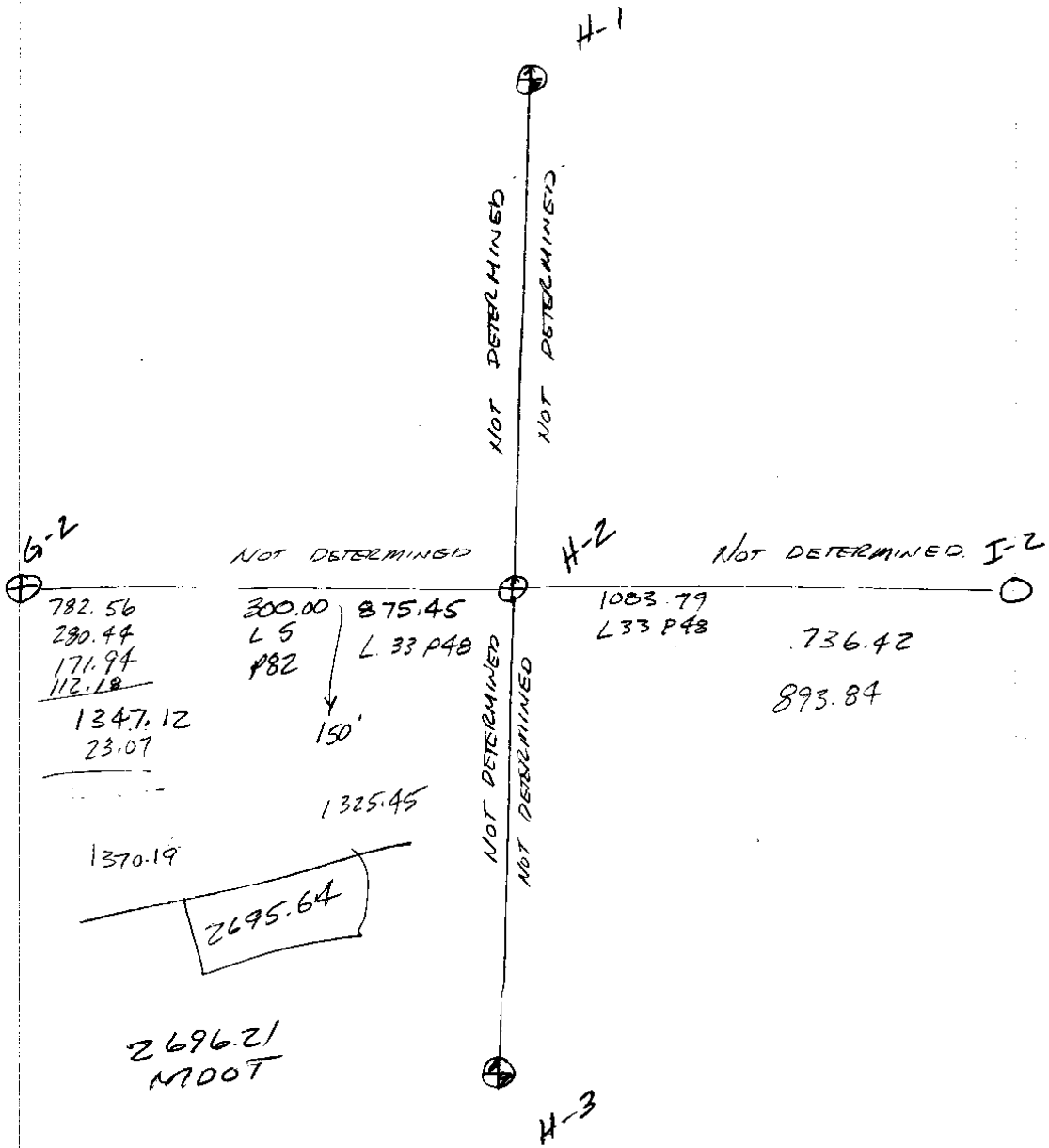
Theoretical Position  
1.28' South  
3.51' East

### Recommendation

A 1/2" iron was found in a monument box. Based on found monumentation from recorded sources LCRC L. 3218, P. 52, LCRC L. 9712, P. 749 & LCRC L. 16876, P. 690 and government corner G-2, I therefore recommend to the Macomb County Peer Group that they accept the found 1/2" iron as the best evidence of the corner position as being perpetuated.

 10/31/07  
Robert H. Birkett, PS 41094  
Anderson, Eckstein and Westrick, Inc.

22-141 50 SHEETS  
22-142 100 SHEETS  
22-143 100 SHEETS





223050  
72507  
MIS. MAT.

2007 REMON

H-Z

1/2" RE IN MON BOX

S.S. IE OF E THORNCREST

IN MASONIC TURNAROUND

AZ DIST DESC

280° 61.10 E TOP NOT HYD

94° 91.87 SW BOLT L.P. EASE

0° 53.60 6' CH LINK FENCE (E.W.)

204° 79.55 PR w/TAG # 17055 E. FACE  
29" MAPLE

225° 70.55 NAIL w/ROVE TAG E. FACE  
29" MAPLE

195° 47.66 MING NAIL E THORNCREST  
EXP. JOINT

280° 100.65 SET REMAIN TAG N. FACE 15' OAK

0° 46.10 N. BLAKE  
145° 90.50 NW COR HSE # 32130

PLATS #	DESC
103-0612	TOP
0613	TOP
0614	LOOKING WEST
0615	"
0616	"
0617	"

N  
E  
S

223.030  
7-26-07  
MUD, MAT

2007 REMON  
H-2 ACCESS  
223030C

BASE 7' @ LAKE SHORE 1.286m

PT#	DESC
030-133	NAIL @ LAKE SHORE E-27646.18 N-35106.22
134	H-2
135	G-2 REMON IN BOX
136	G-1 REMON IN BOX
137	H-1 3/4" RR IN BOX
138	I-1 REMON IN BOX
139	I-2 REMON # 23505 IN BOX
140	1/2" PR. W/ MASONIC # ROBESON
141	1/2" PR (BEST) NW "
142	1/2" PR @ BLWALK
143	1/2" RR # 10065
144-150	BLWALK
151	G-3 - 3/4" RR IN BOX
152	H-3 REMON # 23505
153	I-3 REMON # 23505
✓ 154	G-4 3/4" RR IN BOX
155	G-5 REMON # 34970
✓ 156	1/2" PIPE SW GROSSEDAL # G MACK
157	1/2" PR SE GROSSECKE # GLORIA
158	5/8" PIPE SW # MAISON
159	1/2" PIPE SE " # MAREGRONE
160	EAST 1/2" PIPE SE GROSSECKE # OAK GROVE

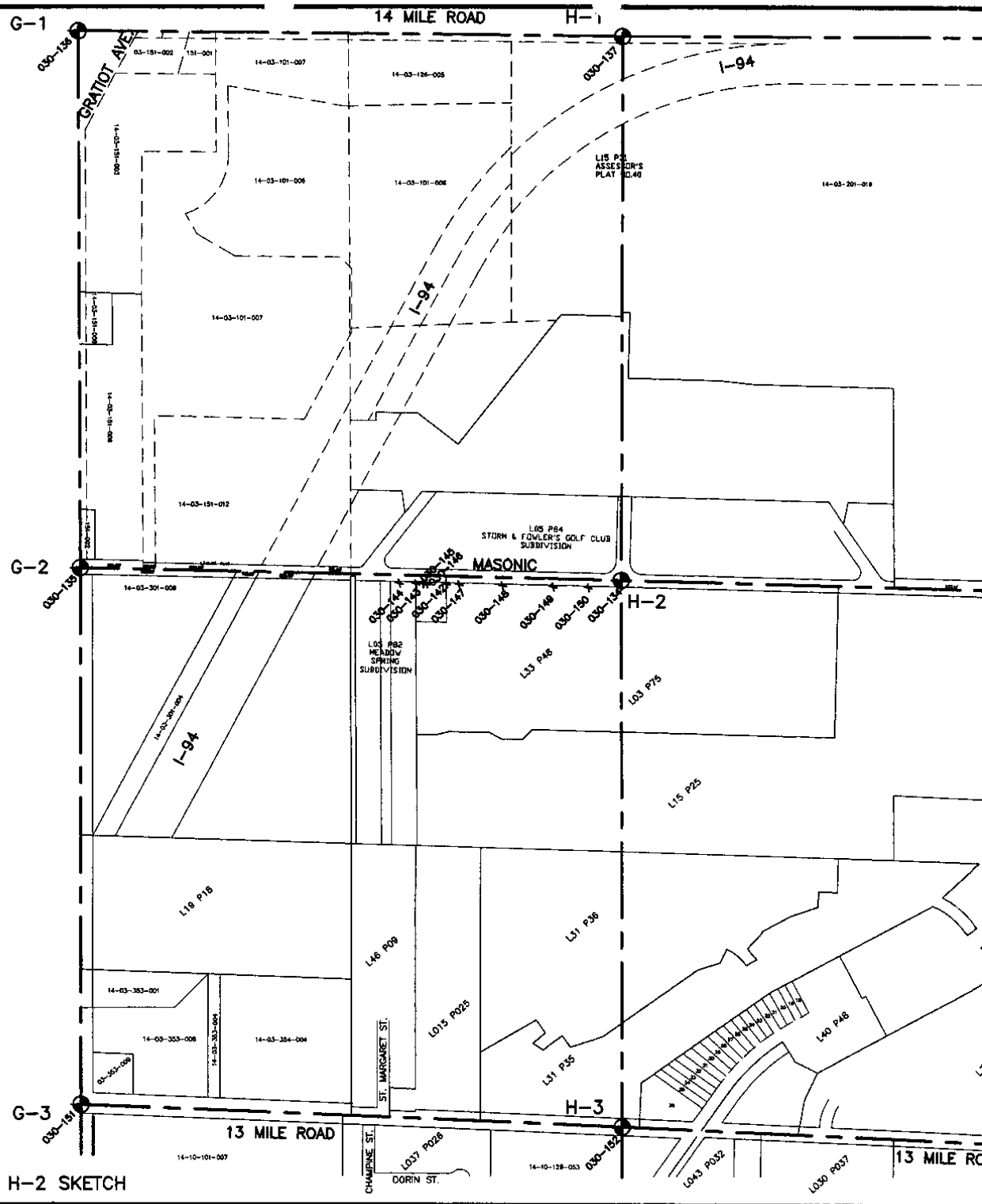
A-2651

A-3150

B-3740

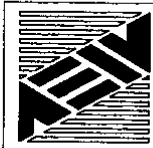
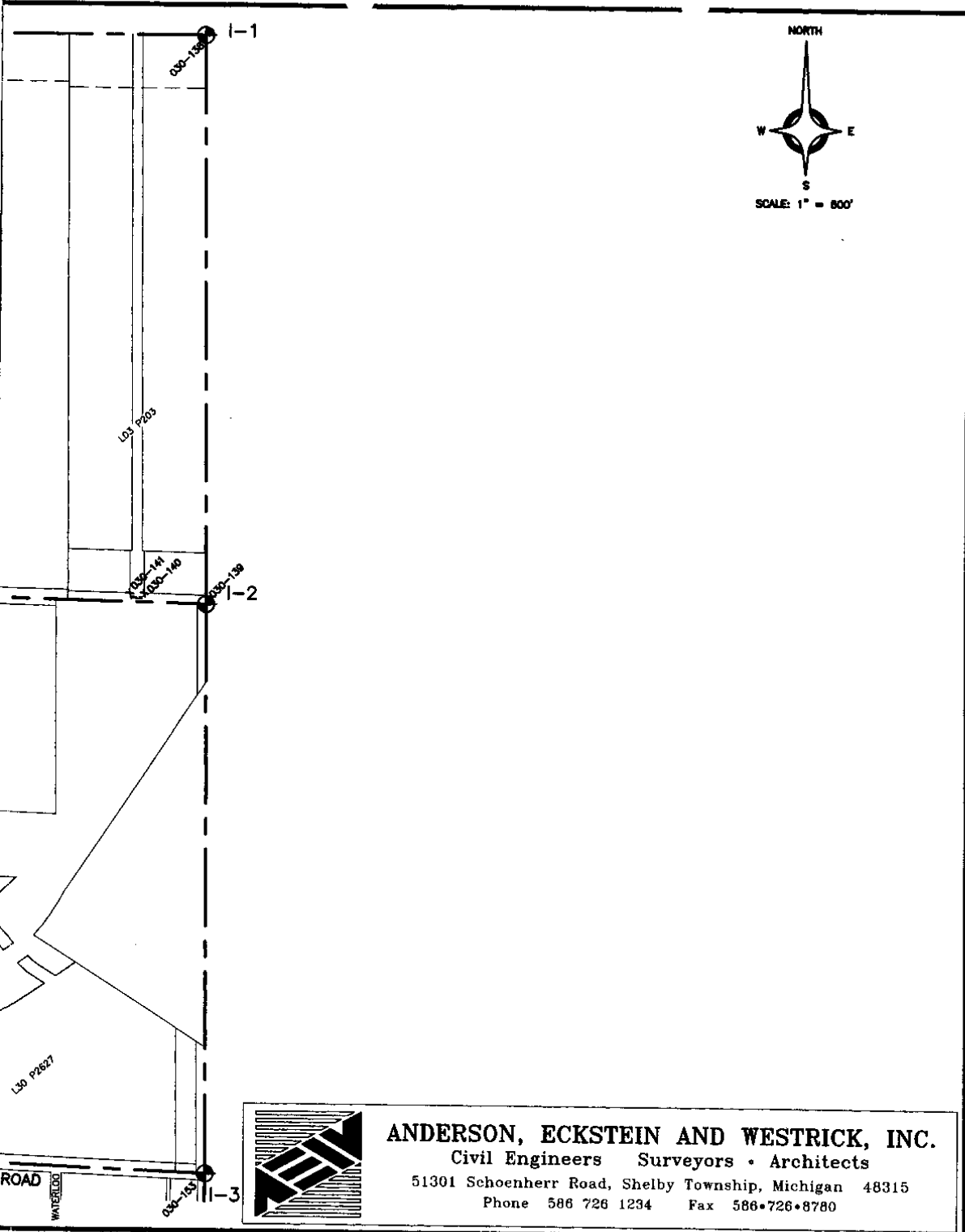
No 2705

11



H-2 SKETCH

C:\252525\GIS\WORKING\GIS\SKETCHES\H2\_SKETCH.DWG, MOORE, 9/18/2017 5:55:11 PM, www.secdirect.com\sketch\9007\_1000



**ANDERSON, ECKSTEIN AND WESTRICK, INC.**

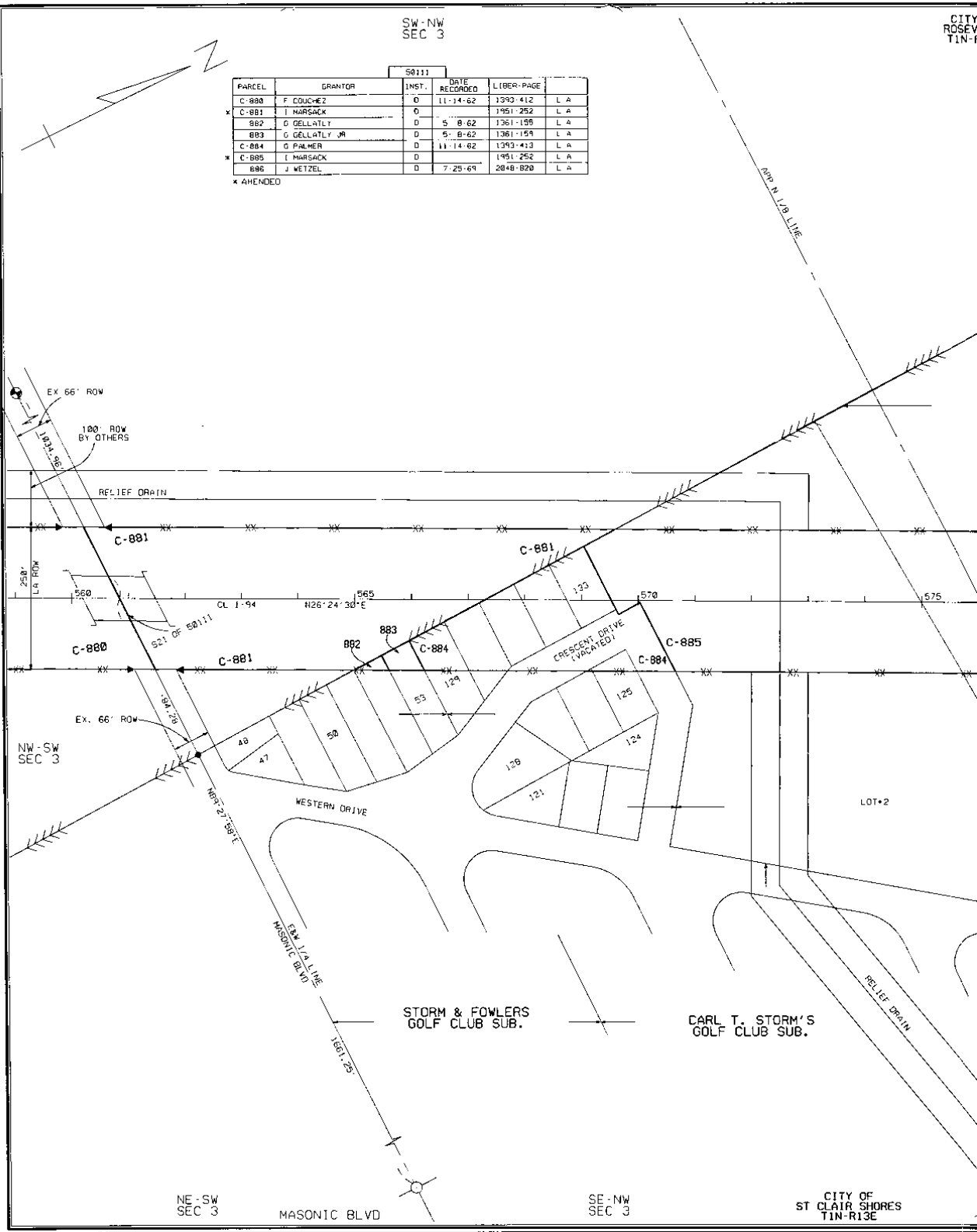
Civil Engineers Surveyors • Architects

51301 Schoenherr Road, Shelby Township, Michigan 48315

Phone 586 726 1234 Fax 586•726•8780

50111				
PARCEL	GRANTOR	INST.	DATE RECORDED	LIBER-PAGE
C-880	F COUCHEZ	D	11-14-62	1393-412 L.A.
C-881	I MARSACK	D	1951-252	L.A.
882	G DELLATLY	D	5-8-62	1361-156 L.A.
883	G DELLATLY JR	D	5-8-62	1361-159 L.A.
C-884	G PALMER	D	11-14-62	1393-413 L.A.
C-885	I MARSACK	D	1951-252	L.A.
886	J WETZEL	D	7-25-69	2048-820 L.A.

\* AHENDEO



STORM & FOWLERS  
GOLF CLUB SUB.

CARL T. STORM'S  
GOLF CLUB SUB.

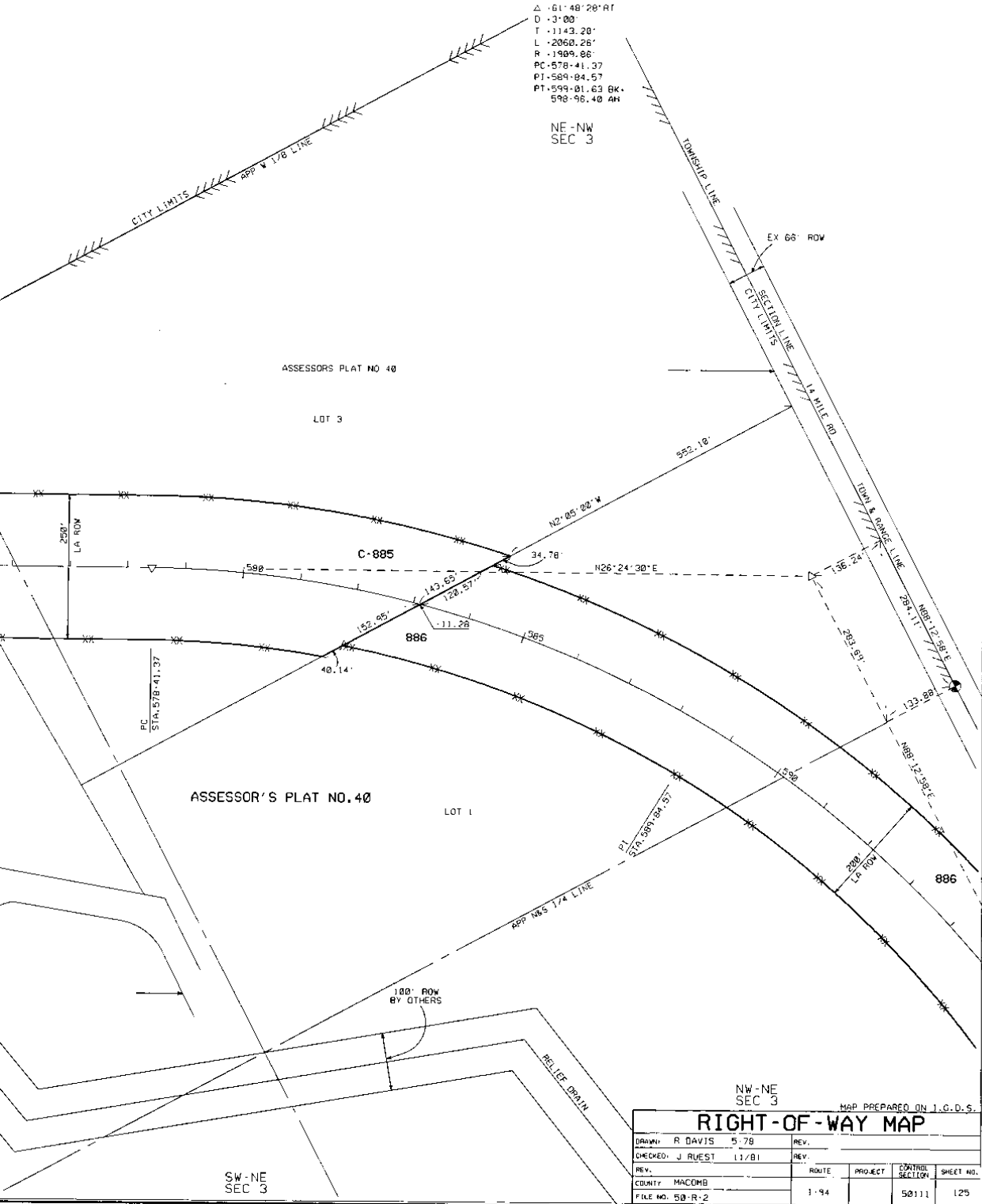
NE-SW  
SEC 3

SE-NW  
SEC 3

CITY OF  
ST CLAIR SHORES  
TIN-R13E

CURVE DATA 1-94 CL  
Δ -61°48'28" RT  
D -3°00'  
T -1143.28'  
L -2060.26'  
R -1989.86'  
PC -578+41.37  
PT -589+84.57  
PI -599+01.63 BK -  
598+96.40 AH

NE-NW  
SEC 3



ASSESSOR'S PLAT NO. 40

ASSESSORS PLAT NO 40

LOT 3

LOT 1

NW-NE  
SEC 3

MAP PREPARED ON I.G.D.S.

### RIGHT-OF-WAY MAP

DRAWN: R DAVIS	5-78	REV.	
CHECKED: J RUEST	11/81	REV.	
REV.		ROUTE	
COUNTY: MACOMB		PROJECT	
FILE NO. 50-R-2		CONTROL SECTION	50111
		SHEET NO.	125

SW-NE  
SEC 3

Explored and Approved

January 17, 1917  
George Jerome

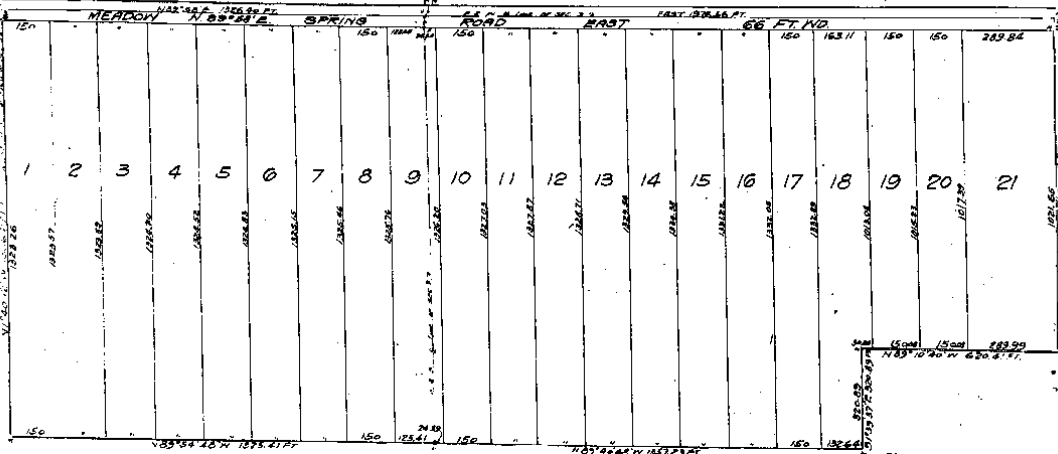
# "MEADOW SPRING ACRES SUBD'N."

OF NE 1/4 OF S.W. 1/4, N.W. 1/4 OF S.E. 1/4 & PART OF N.E. 1/4 OF S.E. 1/4 OF FRACTIONAL SEC. 3.  
LAKE TWP, MACOMB COUNTY, MICHIGAN.

SCALE: 1" = 200 FT.

NOTE: ALL DIMENSIONS ARE SHOWN IN FEET OR DECIMALS THEREOF.

GEORGE JEROME  
SURVEYOR  
CIVIL AND MUNICIPAL ENGINEER  
1329-21 MARSHALL BLDG.  
DETROIT, MICH.



REGISTER'S OFFICE  
COUNTY OF MACOMB  
Filed for Record this 18th day  
of January A. D. 1917  
George Jerome, Surveyor  
of Lake Twp. Mich.

I hereby certify that the Plat herein delineated is a correct one and that permanent monuments consisting of 1/2 x 1 1/2 inch iron spikes have been planted at points marked 'M' as thereon shown at all angles in the boundaries of the land plotted and at all intersections of streets or streets and alleys.

George Jerome  
Surveyor

This plat was approved by the Township Board  
of the Township of Lake, Macomb Co., Mich.  
at a meeting held Jan 2nd 1917  
Charles C. ...  
Clerk

Description of Land Plotted  
The Land embraced in the annexed Plat of Meadow Spring Acres  
is described as follows: Beginning at the center point of  
Sec. 3 T. 14 N. R. 12 E.; thence South along E. 1/2 N. & Line  
of said Sec. 3 1876.36 Ft. to a point; thence S. 78° 40' 10"  
154.56 Ft. to a point; thence N. 85° 10' 40" W. 620.61 Ft.  
to a point; thence S. 17° 33' 37" E. 330.83 Ft. to a point;  
thence N. 8° 40' 40" W. 1367.23 Ft. to a point; thence N. 85° 10' 40" W.  
1325.41 Ft. to a point; thence N. 70° 12' 14" W. 1268.27 Ft. to a point; to E. 1/2 N. & Line of Sec. 3.  
thence N. 87° 58' 14" 1226.42 Ft. to place of beginning.

This plat was approved by the County  
Board for Macomb County, January 15th 1917  
George Jerome  
Surveyor

Know all men by these presents, that Edward L. Ballew and  
Edna Mae Ballew, his wife, Andrew H. Ballew and  
Edna Mae Ballew, his wife, have caused the land embraced in the annexed plat to  
be surveyed, laid out and plotted, to be known as Meadow Spring  
Acres, and have caused the same to be recorded in the office of the Register of  
Deeds of Macomb County, Michigan, and that the streets and alleys as shown on said plat are hereby  
dedicated to the use of the public.

State of Michigan  
County of Macomb  
On this 18th day of January, A. D. 1917  
before me, a Notary Public in and for said County, personally came  
the above named Edward L. Ballew and Edna Mae Ballew  
Andrew H. Ballew and Edna Mae Ballew  
known to me to be the persons who executed the above dedication,  
and acknowledged the same to be their free act and deed.

Notary Public, Walter On With  
My Commission Expires Feb 1, 1918

County Treasurer Certificate  
This is to certify that there are no  
tax liens or other claims held by the State  
or any municipality against the above  
mentioned property and that all  
taxes due thereon have been paid and  
the same are in full compliance with  
the provisions of this Act.  
JAN 18 1917  
County Treasurer  
Macomb County, Michigan

See Building Specifications, Labor 178 Road & Job 431

1916

UNRECORDED

L.3 P75

H-2

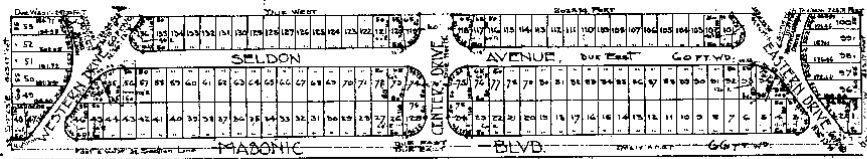




# STORM & FOWLER'S GOLF CLUB SUBDIVISION

OF PART OF THE WEST 1/2 OF THE NORTH EAST 1/4 AND PART OF THE SOUTH HALF OF THE EAST HALF OF THE NORTH WEST 1/4 OF SECTIONS 2, T. 1. N. R. 13. E. LAKE TOWNSHIP, MACOMB COUNTY, MICHIGAN.

L 5  
P 8



Plat for change of street name - Seldon Blvd 116 1/2' wide plat page 402. Reason for change in street name R 1944-P 58

All dimensions on this plat are in feet or decimals thereof.

I hereby certify that the plat herein delineated is a correct one, and that permanent monuments have been placed consisting of 5/8" iron pipe at points marked thus "P" as thereon shown at all angles in the boundaries of the land plotted and at all intersections of streets or streets and alleys.

*[Signature]*  
Registered Surveyor.

Know ALL MEN by THESE PRESENTS, that we Carl Storm and Louise R Storm his wife, Albert H. Fowler and Fanny E. Fowler his wife, James Wilson and Hannah Wilson his wife, Nellie Lawless, William Wilson a single man, Mrs. Wilson and Henry Schick a single man, Edward Schick a single man, as proprietors have caused the land hereinafter described to be surveyed, laid out and plotted to be known as STORM AND FOWLER'S GOLF CLUB SUBDIVISION of part of the west 1/2 of the North East 1/4 and part of the South 1/2 of the East 1/2 of the North West 1/4 of Section 2, T. 1. N. R. 13. E. Lake Township, Macomb County, Michigan, and that the streets and alleys as shown on said plat, are hereby dedicated to the use of the public.

*[Signatures of owners]*  
 I Allan Smith  
 Carl Storm  
 Louise R Storm  
 Albert H. Fowler  
 Fanny E. Fowler  
 James Wilson  
 Hannah Wilson  
 Nellie Lawless  
 William Wilson  
 Henry Schick  
 Edward Schick  
 William Wilson

STATE OF MICHIGAN  
 COUNTY OF MACOMB  
 On this 29th day of Decr. 1921 before me a Notary Public in and for said County personally came the above named Carl Storm and Louise R Storm his wife, Albert H. Fowler and Fanny E. Fowler his wife, James Wilson and Hannah Wilson his wife, Nellie Lawless, William Wilson a single man, Mrs. Wilson and Henry Schick a single man and Edward Schick a single man known to me to be the persons who executed the above dedication and acknowledged the same to be their free act and deed.

My commission expires *[Date]*  
*[Signature]*  
 Notary Public, County, Michigan.

**DESCRIPTION**  
 The land embraced in the annexed plat is described as follows: Beginning at a point on the East and West 1/2 section line of Section 2, T. 1. N. R. 13. E. Lake Township, Macomb County, Michigan, a distance of 7,247.20 feet to a corner, the East line the Westerly line of said Section 2, thence the East line the North and West 1/2 section line of Section 2, T. 1. N. R. 13. E. Lake Township, Macomb County, Michigan, a distance of 125.77 feet to a point, thence S 77° 15' 11" W 111.97 feet to a point, thence S 77° 15' 11" W 125.24 feet to a point, thence due East 1,000 feet to a point, thence S 77° 15' 11" W 125.24 feet to a point, thence S 77° 15' 11" W 111.97 feet to a point, thence due West 247.51 feet to a point, thence S 77° 15' 11" W 125.24 feet to a point, thence due North 125.24 feet to the place of beginning.

This plat was approved by the Township Board of the Township of Lake, Macomb County, Michigan, at a meeting held on *[Date]* day of December 1921.

*[Signature]* Township Clerk.

This plat was approved by the County Board for Macomb County, Michigan, at a meeting held on *[Date]*  
*[Signature]* Secretary of Board  
*[Signature]* County Clerk  
*[Signature]* County Treasurer

COUNTY TREASURER'S CERTIFICATE  
 This is to Certify that there are no Tax Dues or Taxes due by the State or any other authority upon the land hereinafter described by the State or any other authority, and that the same are due to the Tax Collector, according to the records of the County of Macomb, Michigan, on this 29th day of December 1921.

*[Signature]* James B. Gillett

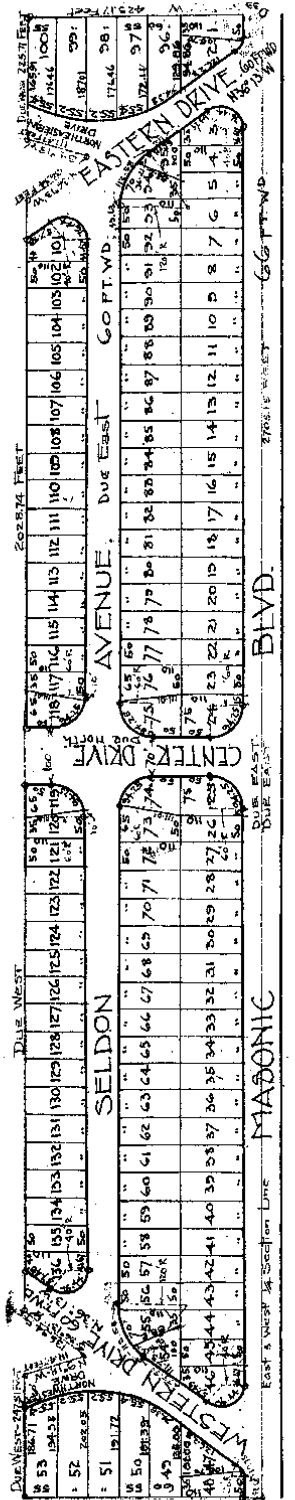
See Assessment Order 1171 Page 484 & 485  
 " " " 1171 " 487 " "  
 " " " 1171 " 488 " "  
 " " " 1171 " 489 " "  
 " " " 1171 " 490 " "  
 " " " 1171 " 491 " "  
 " " " 1171 " 492 " "  
 " " " 1171 " 493 " "  
 " " " 1171 " 494 " "  
 " " " 1171 " 495 " "  
 " " " 1172 " 77 " "

Reasons for Order executing plat, Order 2044 P. 604  
 ROW Order 3666 Page 644  
 Assessment Order 3130 Page 888  
 Assessment Order 376 Page 185

1922  
L.S.P. 84  
UNKNOWN

2-4

STORM & FOWLER'S  
GOLF CLUB SUBDIVISION  
July 23-1922  
OF PART OF THE WEST 1/2 OF THE NORTH EAST 1/4 AND PART OF THE SOUTH HALF OF THE EAST HALF OF THE NORTH WEST 1/4 OF SECTIONS 3, 4, 5, 6, 7, 8, 9, 10, 11, 12, 13, 14, 15, 16, 17, 18, 19, 20, 21, 22, 23, 24, 25, 26, 27, 28, 29, 30, 31, 32, 33, 34, 35, 36, 37, 38, 39, 40, 41, 42, 43, 44, 45, 46, 47, 48, 49, 50, 51, 52, 53, 54, 55, 56, 57, 58, 59, 60, 61, 62, 63, 64, 65, 66, 67, 68, 69, 70, 71, 72, 73, 74, 75, 76, 77, 78, 79, 80, 81, 82, 83, 84, 85, 86, 87, 88, 89, 90, 91, 92, 93, 94, 95, 96, 97, 98, 99, 100, 101, 102, 103, 104, 105, 106, 107, 108, 109, 110, 111, 112, 113, 114, 115, 116, 117, 118, 119, 120, 121, 122, 123, 124, 125, 126, 127, 128, 129, 130, 131, 132, 133, 134, 135, 136, 137, 138, 139, 140, 141, 142, 143, 144, 145, 146, 147, 148, 149, 150, 151, 152, 153, 154, 155, 156, 157, 158, 159, 160, 161, 162, 163, 164, 165, 166, 167, 168, 169, 170, 171, 172, 173, 174, 175, 176, 177, 178, 179, 180, 181, 182, 183, 184, 185, 186, 187, 188, 189, 190, 191, 192, 193, 194, 195, 196, 197, 198, 199, 200, 201, 202, 203, 204, 205, 206, 207, 208, 209, 210, 211, 212, 213, 214, 215, 216, 217, 218, 219, 220, 221, 222, 223, 224, 225, 226, 227, 228, 229, 230, 231, 232, 233, 234, 235, 236, 237, 238, 239, 240, 241, 242, 243, 244, 245, 246, 247, 248, 249, 250, 251, 252, 253, 254, 255, 256, 257, 258, 259, 260, 261, 262, 263, 264, 265, 266, 267, 268, 269, 270, 271, 272, 273, 274, 275, 276, 277, 278, 279, 280, 281, 282, 283, 284, 285, 286, 287, 288, 289, 290, 291, 292, 293, 294, 295, 296, 297, 298, 299, 300, 301, 302, 303, 304, 305, 306, 307, 308, 309, 310, 311, 312, 313, 314, 315, 316, 317, 318, 319, 320, 321, 322, 323, 324, 325, 326, 327, 328, 329, 330, 331, 332, 333, 334, 335, 336, 337, 338, 339, 340, 341, 342, 343, 344, 345, 346, 347, 348, 349, 350, 351, 352, 353, 354, 355, 356, 357, 358, 359, 360, 361, 362, 363, 364, 365, 366, 367, 368, 369, 370, 371, 372, 373, 374, 375, 376, 377, 378, 379, 380, 381, 382, 383, 384, 385, 386, 387, 388, 389, 390, 391, 392, 393, 394, 395, 396, 397, 398, 399, 400, 401, 402, 403, 404, 405, 406, 407, 408, 409, 410, 411, 412, 413, 414, 415, 416, 417, 418, 419, 420, 421, 422, 423, 424, 425, 426, 427, 428, 429, 430, 431, 432, 433, 434, 435, 436, 437, 438, 439, 440, 441, 442, 443, 444, 445, 446, 447, 448, 449, 450, 451, 452, 453, 454, 455, 456, 457, 458, 459, 460, 461, 462, 463, 464, 465, 466, 467, 468, 469, 470, 471, 472, 473, 474, 475, 476, 477, 478, 479, 480, 481, 482, 483, 484, 485, 486, 487, 488, 489, 490, 491, 492, 493, 494, 495, 496, 497, 498, 499, 500, 501, 502, 503, 504, 505, 506, 507, 508, 509, 510, 511, 512, 513, 514, 515, 516, 517, 518, 519, 520, 521, 522, 523, 524, 525, 526, 527, 528, 529, 530, 531, 532, 533, 534, 535, 536, 537, 538, 539, 540, 541, 542, 543, 544, 545, 546, 547, 548, 549, 550, 551, 552, 553, 554, 555, 556, 557, 558, 559, 560, 561, 562, 563, 564, 565, 566, 567, 568, 569, 570, 571, 572, 573, 574, 575, 576, 577, 578, 579, 580, 581, 582, 583, 584, 585, 586, 587, 588, 589, 590, 591, 592, 593, 594, 595, 596, 597, 598, 599, 600, 601, 602, 603, 604, 605, 606, 607, 608, 609, 610, 611, 612, 613, 614, 615, 616, 617, 618, 619, 620, 621, 622, 623, 624, 625, 626, 627, 628, 629, 630, 631, 632, 633, 634, 635, 636, 637, 638, 639, 640, 641, 642, 643, 644, 645, 646, 647, 648, 649, 650, 651, 652, 653, 654, 655, 656, 657, 658, 659, 660, 661, 662, 663, 664, 665, 666, 667, 668, 669, 670, 671, 672, 673, 674, 675, 676, 677, 678, 679, 680, 681, 682, 683, 684, 685, 686, 687, 688, 689, 690, 691, 692, 693, 694, 695, 696, 697, 698, 699, 700, 701, 702, 703, 704, 705, 706, 707, 708, 709, 710, 711, 712, 713, 714, 715, 716, 717, 718, 719, 720, 721, 722, 723, 724, 725, 726, 727, 728, 729, 730, 731, 732, 733, 734, 735, 736, 737, 738, 739, 740, 741, 742, 743, 744, 745, 746, 747, 748, 749, 750, 751, 752, 753, 754, 755, 756, 757, 758, 759, 760, 761, 762, 763, 764, 765, 766, 767, 768, 769, 770, 771, 772, 773, 774, 775, 776, 777, 778, 779, 780, 781, 782, 783, 784, 785, 786, 787, 788, 789, 790, 791, 792, 793, 794, 795, 796, 797, 798, 799, 800, 801, 802, 803, 804, 805, 806, 807, 808, 809, 810, 811, 812, 813, 814, 815, 816, 817, 818, 819, 820, 821, 822, 823, 824, 825, 826, 827, 828, 829, 830, 831, 832, 833, 834, 835, 836, 837, 838, 839, 840, 841, 842, 843, 844, 845, 846, 847, 848, 849, 850, 851, 852, 853, 854, 855, 856, 857, 858, 859, 860, 861, 862, 863, 864, 865, 866, 867, 868, 869, 870, 871, 872, 873, 874, 875, 876, 877, 878, 879, 880, 881, 882, 883, 884, 885, 886, 887, 888, 889, 890, 891, 892, 893, 894, 895, 896, 897, 898, 899, 900, 901, 902, 903, 904, 905, 906, 907, 908, 909, 910, 911, 912, 913, 914, 915, 916, 917, 918, 919, 920, 921, 922, 923, 924, 925, 926, 927, 928, 929, 930, 931, 932, 933, 934, 935, 936, 937, 938, 939, 940, 941, 942, 943, 944, 945, 946, 947, 948, 949, 950, 951, 952, 953, 954, 955, 956, 957, 958, 959, 960, 961, 962, 963, 964, 965, 966, 967, 968, 969, 970, 971, 972, 973, 974, 975, 976, 977, 978, 979, 980, 981, 982, 983, 984, 985, 986, 987, 988, 989, 990, 991, 992, 993, 994, 995, 996, 997, 998, 999, 1000.



All dimensions on this plat are in feet or decimals thereof.

I hereby certify that the plat herein delineated is a correct one and that permanent monuments have been placed consisting of 5/8" x 20" iron pipe at points marked thus "O" as thereon shown at all enclosures in the boundaries of the land platted and at all intersections of streets or streets and alleys.

L.S.P. 84

1922

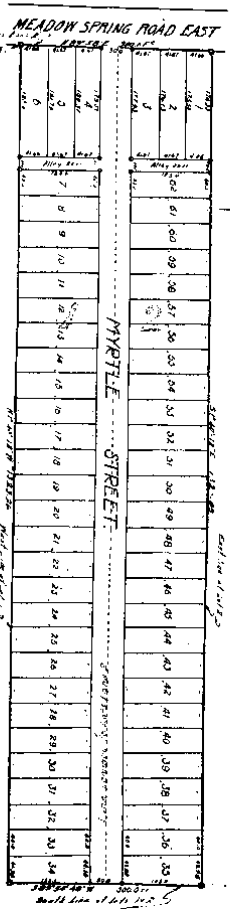
# MEADOW SPRING SUBDIVISION

OF LOTS 1 AND 2 OF MEADOW SPRING ACRES SUBDIVISION OF NE 1/4 OF SW 1/4, NW 1/4 OF SE 1/4 + PART OF NE 1/4 OF SE 1/4 OF FRACTIONAL SEC. 3  
T.11N. R.13.E. L.136 Macomb Co. Mich.

WALTER J. LENNER, REG. C. S.  
MT. CLEMENS, MICH.

Know all men by these presents that John S. Baird  
Maria Baird John S. Baird as proprietors  
and their heirs and assigns have by their said Street and Allie plat  
as hereinafter set forth have caused the land embraced in the annexed  
plat to be surveyed, laid out and platted, to be known as Meadow Spring Subdivision of Lots 1 and 2 of Meadow  
Spring Acres Subdivision of NE 1/4 of SW 1/4, NW 1/4 of SE 1/4 + PART OF NE 1/4 OF SE 1/4 OF FRACTIONAL SEC. 3 T.11N. R.13.E. L.136 Macomb Co. Mich.  
and that the streets and alleys on shown on said plat are  
herby dedicated to the use of the public.

John S. Baird  
Maria Baird  
John S. Baird



State of Michigan  
County of Macomb  
On this 11th day of May 1922  
before me, a Notary Public in and for said County, personally  
came the above named John S. Baird Maria Baird John S. Baird  
known to me to be the persons, who executed the above  
dedication, and acknowledged the same to be their free act and deed.

I hereby certify that the plat hereinafore described is a correct  
and that permanent iron pins consisting of a 18 inch bar  
stakes have been planted at points marked "B" as shown  
shown at all angles in the boundaries of the land platted and  
at all intersections of streets or streets and alleys.

**Description of Land Platted**  
The Land embraced in the annexed Plat of Meadow Spring Subdivision of Lots 1 and 2 of  
Meadow Spring Acres Subdivision of NE 1/4 of SW 1/4, NW 1/4 of SE 1/4 + PART OF NE 1/4 OF SE 1/4 OF  
Fractional Sec. 3 T.11N. R.13.E. L.136 Macomb Co. Mich.  
is described as follows: Beginning at the NW cor. of Lot number 1 of aforesaid plat  
thence N 82° 50' E 300.00' thence S 14° 12' E 122.60' thence S 29° 54' 40" W  
344.67' thence N 40° 12' W 122.260' to the point of beginning.

This is to certify that the above plat was approved by the  
Township Board of the Township of Saline  
May 4 1922  
Macomb County, Michigan, at a meeting held this 4th  
day of May 1922.

This was approved by the Board of the Board of  
County, Michigan, at a meeting held this 11th day of May 1922  
John S. Baird  
Maria Baird  
John S. Baird

**COUNTY TOWNSHIP CERTIFICATE**  
This is to Certify That there are no Fee Taxes or other taxes  
due by the State or any individual person, and that the  
document in the annexed instrument has been duly  
recorded in the State of Michigan, according to the laws  
of the State of Michigan.

REGISTRARS OFFICE  
COUNTY OF MACOMB  
Recorded for the State of Michigan  
January 11, 1922  
Walter J. Lenner  
Walter J. Lenner



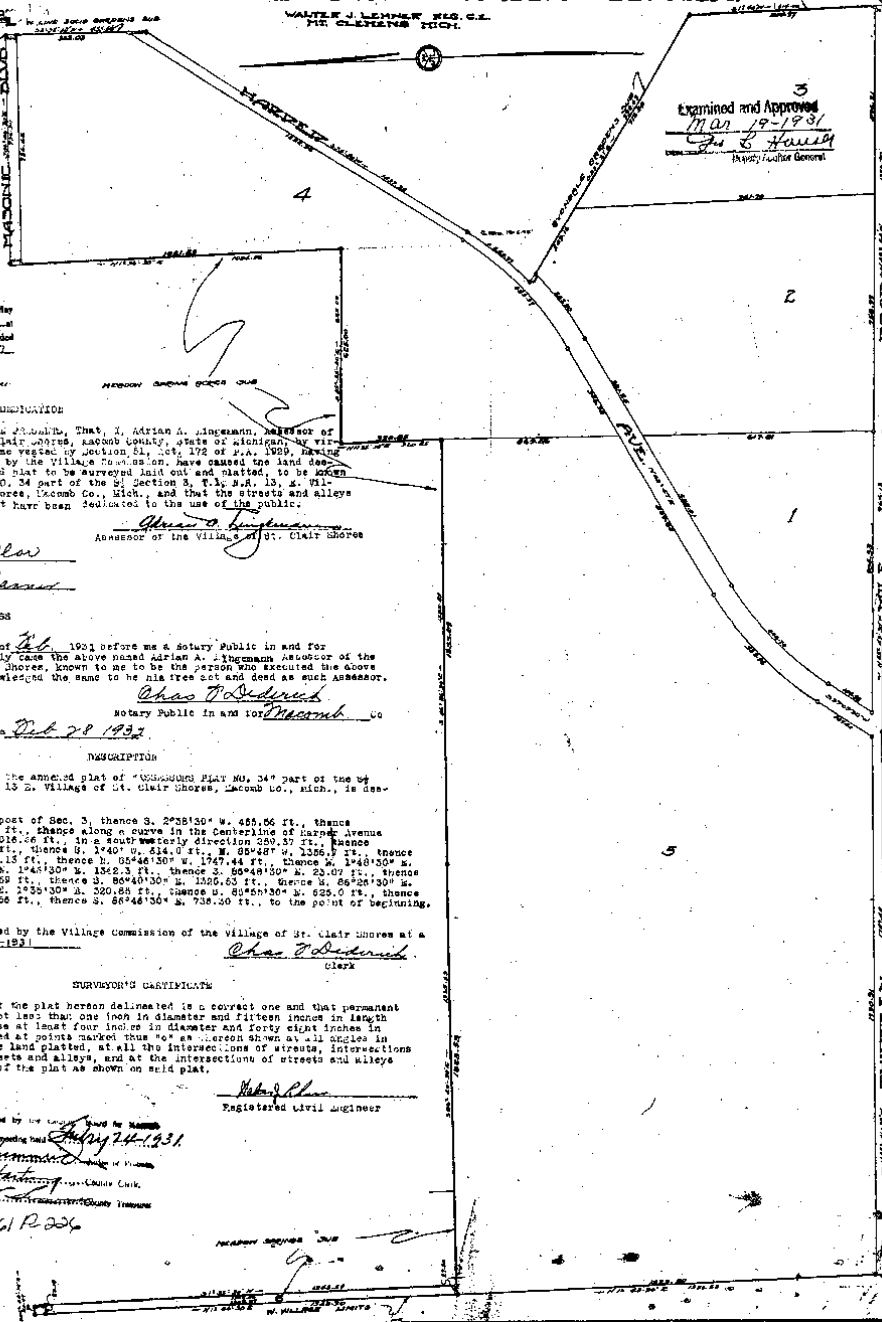
# ASSESSORS PLAT 1461 N<sup>o</sup> 34

PART OF THE 5<sup>th</sup> SECTION 3 T14R15E.  
VILLAGE OF ST CLAIR SHORES MACOMB CO. MICH.

SCALE 1"=60'

WALTER J. LEHNER, REG. C.E.  
112 CLAYTONS BLDG.

Examined and Approved  
Mar 19-1931  
Geo S. Howell  
Surveyor General



RECORDERS OFFICE  
County of Macomb  
Received for Record this 20<sup>th</sup> day of March A.D. 1931 at 2:30 P.M. and recorded in Liber 123 of Assessor's Plats at page 226

RECITAL  
BEFORE ALL ME BY Adrian A. Jingsmann, Assessor of the Village of St. Clair Shores, Macomb County, State of Michigan, by virtue of authority in me vested by Section 51, Act of J.A. 1929, having been duly authorized by the Village Commission, have caused the land described in the annexed plat to be surveyed laid out and platted, to be known as "ASSESSORS PLAT NO. 34 part of the 5<sup>th</sup> Section 3, T14, R. 15, E. Village of St. Clair Shores, Macomb Co., Mich., and that the streets and alleys as shown on said plat have been dedicated to the use of the public.

Witness  
Adrian A. Jingsmann  
Assessor of the Village of St. Clair Shores  
Carl Allen  
Elizabeth Warren

STATE OF MICHIGAN  
COUNTY OF MACOMB

On this 21st day of Feb. 1931 before me a Notary Public in and for said county personally came the above named Adrian A. Jingsmann Assessor of the Village of St. Clair Shores, known to me to be the person who executed the above dedication and acknowledged the same to be his free act and deed as such Assessor.  
Chas. F. DeLoraine  
Notary Public in and for Macomb Co  
My Commission expires Feb 28 1932

DESCRIPTION

The land embraced in the annexed plat of "ASSESSORS PLAT NO. 34" part of the 5<sup>th</sup> Section 3, T14, R. 15, E. Village of St. Clair Shores, Macomb Co., Mich., is described as follows:

Beginning at the N<sup>o</sup> post of Sec. 3, thence S. 27°21'30" W. 455.56 ft., thence S. 53°40' W. 1497.35 ft., thence along a curve in the Centerline of Harper Avenue having a radius of 1016.56 ft., in a southerly direction 290.37 ft., thence S. 59°27' W. 398.89 ft., thence S. 1°40' W. 634.0 ft., thence S. 88°48' W. 1356.7 ft., thence S. 86°43'30" W. 885.15 ft., thence N. 88°46'30" W. 1767.44 ft., thence N. 1°48'30" W. 1356.53 ft., thence N. 1°45'30" W. 1342.3 ft., thence S. 68°48'30" W. 23.07 ft., thence S. 12°38'30" W. 1343.59 ft., thence S. 88°40'30" W. 1326.63 ft., thence S. 86°28'30" W. 1253.89 ft., thence N. 1°35'30" W. 320.85 ft., thence S. 88°43'30" W. 825.0 ft., thence N. 1°36'30" W. 1054.56 ft., thence S. 88°46'30" W. 738.50 ft., to the point of beginning.

This plat was approved by the Village Commission of the Village of St. Clair Shores at a meeting held Feb. 12-1931.  
Chas. F. DeLoraine  
Clerk

SURVEYOR'S CERTIFICATE

I hereby certify that the plat hereon delineated is a correct one and that permanent metal monuments of not less than one foot in diameter and fifteen inches in length set in a concrete base at least four inches in diameter and forty eight inches in depth have been placed at points marked thus "x" as hereon shown at all angles in the boundaries of the land platted, at all the intersections of streets, intersections of alleys, or of streets and alleys, and at the intersections of streets and alleys with the boundaries of the plat as shown on said plat.

Walter J. Lehner  
Registered Civil Engineer

This plat was approved by the Board for Macomb County, Mich., at a meeting held February 24-1931  
Philip M. Hammond  
County Clerk

See Document S-3661 R-226

See Commission Expires 10/16/32  
By order of the Board for Macomb County, Mich., at a meeting held February 24-1931  
Philip M. Hammond  
County Clerk

RECEIVED  
FEB 22 1931  
COUNTY OF MACOMB

1931

W. J. LEHNER  
123

L15  
P25

H-2

1463

# ASSESSORS PLAT N<sup>o</sup> 40

PART OF THE N<sup>o</sup> 4 OF SEC. 3 T1N13E  
VILLAGE OF ST CLAIR SHORES MACOMB CO. MICH.

Filed  
MAR 19 1931  
W. J. Lehner

SCALE 1/2" = 100'

WALTER J. LEHNER, REG. C.E.  
BY CLARENCE MICH.

### DEDICATION

KNOW ALL MEN BY THESE PRESENTS, that I Adrian A. Litchman, Assessor of the Village of St. Clair Shores, Macomb Co., State of Michigan, by virtue of authority in me vested by section 51, Act No. 27, P.A. 1928, having been duly authorized by the Village Commission have caused the land described in the annexed plat to be surveyed, laid out and plotted, to be known as "ASSESSORS PLAT NO. 40" part of the N<sup>o</sup> 4 of Sec. 3, T1N, R1E, 13 E, Village of St. Clair Shores, Macomb Co., Mich., and that the streets and alleys as shown on the said plat have been dedicated to the use of the public.

Assessor of the Village of St. Clair Shores  
Witness:  
Gold Allen  
Elizabeth Warner  
STATE OF MICHIGAN  
COUNTY OF MACOMB

On this 24th day of Feb 1931 before me a Notary Public in and for said county, personally came the above named Adrian A. Litchman, Assessor of the Village of St. Clair Shores, known to me to be the person who executed the above dedication and acknowledged the same to be his free act and deed as such Assessor.

Chas. J. DeSmet  
Notary Public in and for Macomb Co.  
My Commission expires Feb 18 1932

### DESCRIPTION

The land embraced in the annexed plat of "ASSESSORS PLAT NO. 40" part of the N<sup>o</sup> 4 of Sec. 3, T1N, R1E, 13 E, Village of St. Clair Shores, Macomb Co., Mich., is described as follows:

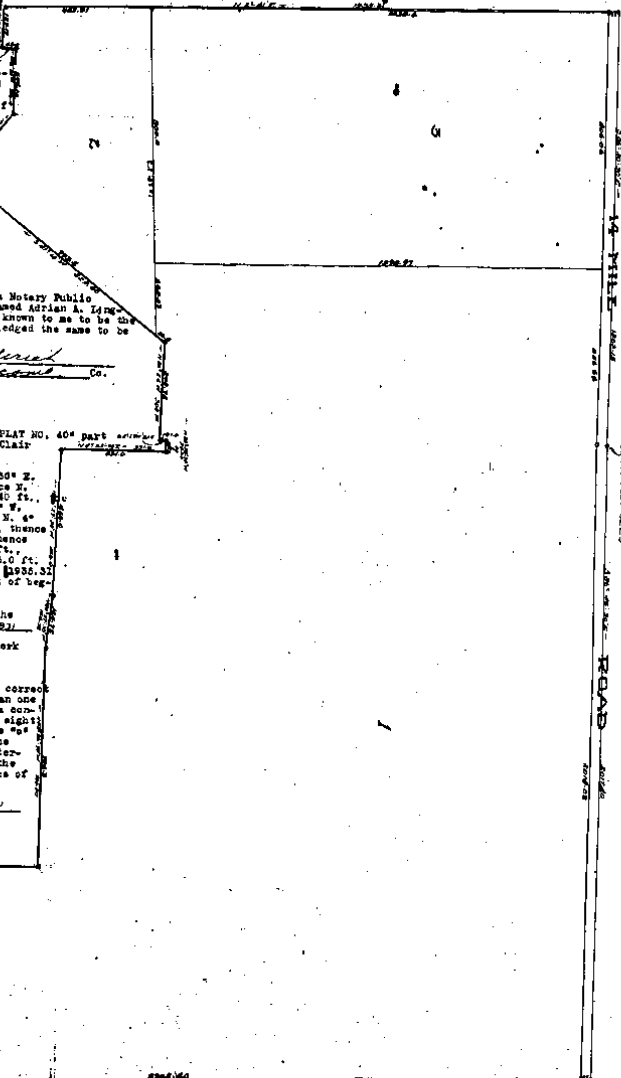
Beginning at the N<sup>o</sup> 4 post of Sec. 3, thence E. 86°41'30" E. 2017.40 ft., thence S. 2°33'30" W. 2771.40 ft., thence N. 80°20'10" W. 877.10 ft., thence E. 2°53'30" E. 1007.40 ft., thence N. 88°26'30" W. 810.3 ft., thence E. 80°27'10" E. 164.75 ft., thence N. 88°27'30" W. 480.0 ft., thence N. 4°30'10" E. 311.0 ft., thence E. 88°28'30" W. 36.2 ft., thence S. 41°15' W. 828.80 ft., thence E. 49°01' W. 251.83 ft., thence N. 88°24' W. 308.10 ft., thence S. 3°19' W. 43.0 ft., thence N. 88°24'30" W. 128.17 ft., thence E. 2°21' E. 8235.52 ft., thence S. 88°20'30" E. 1163.15 ft., to the point of beginning.

This plat was approved by the Village Commission of the Village of St. Clair Shores at a meeting held Feb 17 1931  
Chas. J. DeSmet Clerk

### SURVEYOR'S CERTIFICATE

I hereby certify that the plat hereon delineated is a correct one and that permanent metal monuments of not less than one inch in diameter and fifteen inches in length set in a concrete base at least four inches in diameter and forty eight inches in depth have been placed at points marked thereon as shown at all angles in the boundaries of the land plotted, at all the intersections of streets, intersections of streets and alleys, and at the intersections of streets and alleys with the boundaries of the lands shown on said plat.

W. J. Lehner  
Registered Civil Engineer



This plat was approved by the County Board on Record  
Chas. J. DeSmet Clerk  
W. J. Lehner Registered Civil Engineer

1931

L15  
P31

W. J. LEHNER  
123

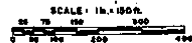
A-2

# MASONIC HEIGHTS SUBDIVISION No. 1

OF PART OF THE S. 1/2 OF SEC. 3, T. 1 N., R. 13 E.,  
CITY OF ST. CLAIR SHORES, MACOMB CO., MICHIGAN.

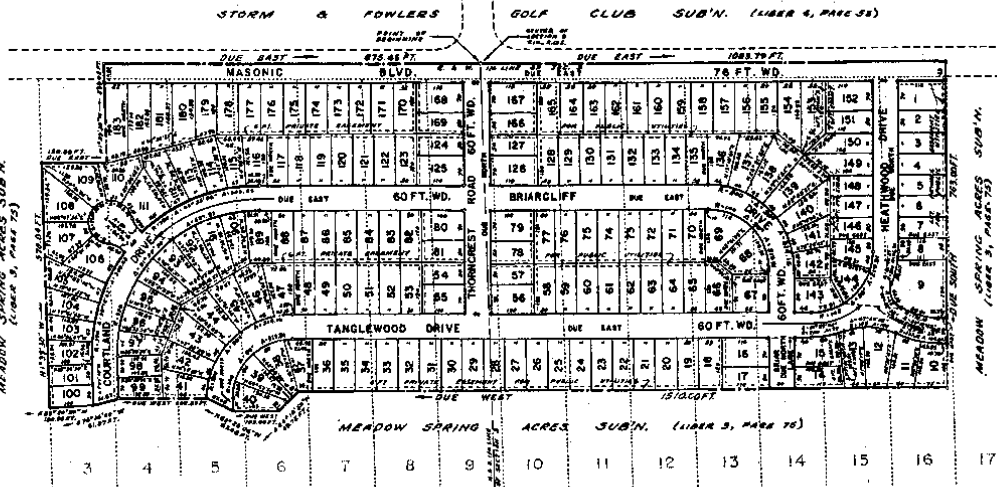
851988

MASON L. BROWN & SON  
CIVIL ENGINEERS & SURVEYORS  
115 MEADOW SPRING MICHIGAN  
DETROIT 26, MICHIGAN



NOTE: Dimensions between arcs in feet and decimals thereof. All horizontal dimensions are shown along the arc.

See app. to plan 1003 dated by 45  
MEADOW SPRING ACRES SUB'D (Liber 3, Page 75)



**DESCRIPTION**

The land embraced in the annexed plat of MASONIC HEIGHTS SUBDIVISION No. 1 OF PART OF THE S. 1/2 OF SEC. 3, T. 1 N., R. 13 E., CITY OF ST. CLAIR SHORES, MACOMB CO., MICHIGAN, being a resubdivision of part of Lots 3 to 17 inclusive of Meadow Spring Acres Sub'n. (Liber 3, Page 75) comprised of Lots 1 to 173 inclusive, is described as follows: Beginning at the center post of Section 3, T. 1 N., R. 13 E.; thence along the S. & W. 1/4 line of Sec. 3, which line is also the S'ly line of Storm & Fowlers Golf Club Sub'n. (Liber 6, Page 63); Due East 1083.78 ft.; thence Due South 763.00 ft.; thence Due West 110.00 ft.; thence S. 44°10'50" W. 69.72 ft.; thence Due East 100.00 ft.; thence N. 85°30'05" W. 87.02 ft.; thence Due West 302.89 ft.; thence S. 74°14'05" W. 61.87 ft.; thence S. 86°30'30" W. 100.00 ft.; thence along the W. line of Lot 3 of said Meadow Spring Acres Sub'n. N. 1°39'30" W. 570.04 ft.; thence Due East 150.00 ft.; thence N. 1°39'30" W. 235.02 ft.; thence along the S. & W. 1/4 line of Sec. 3, which line is also the S'ly line of said Storm & Fowlers Golf Club Sub'n.; Due East 870.45 ft. to the point of beginning.

**CERTIFICATE OF COUNTY APPROVAL**

We hereby certify that this plat was approved by the Macomb County Plat Board at a meeting held on the 30th day of April, 1956.

*Robert Burr*, Registrar of Deeds  
*Albert Wagner*, County Clerk  
*Frank Loh*, Drain Commissioner

**CERTIFICATE OF MUNICIPAL APPROVAL**

I hereby certify that this plat has been approved by the City Council of the City of St. Clair Shores at a regular meeting held on the 5 day of April, 1956.

*D. J. [Signature]*, City Clerk

**CERTIFICATE OF PLANNING COMMISSION APPROVAL**

We hereby certify that this plat has been approved by the City Planning Commission of the City of St. Clair Shores at a meeting held on the 23rd day of August, 1955.

*A. O. [Signature]*, Chairman  
*R. A. [Signature]*, Secretary

**SURVEYOR'S CERTIFICATE**

I hereby certify that the plat herein delineated is a correct one and that permanent metal monuments consisting of iron rods at least one-half inch in diameter and 24 inches in length, encased in concrete cylinders four inches in diameter and 24 inches in length, have been set at 4 points marked thus (O) as thereon shown at all angles in the boundaries of the land platted, at all intersections of the lines of streets, and at the intersections of the lines of streets with the boundaries of the land platted.

*Mason L. Brown*  
MASON L. BROWN  
Registered Land Surveyor

**REGISTER'S OFFICE  
COUNTY OF MACOMB**

Received for Record  
October 16, 1956  
in Vol. 33 of Plat. 176  
Page 49  
*Clarence [Signature]*  
Register of Deeds

38 48

M. L. Brown  
8310 L33 P48

1955

H-2

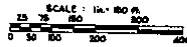
# MASONIC HEIGHTS SUBDIVISION No. 2

OF PART OF THE S. 1/2 OF SEC. 3, T. 1 N., R. 13 E.,  
CITY OF ST. CLAIR SHORES, MACOMB CO., MICHIGAN.

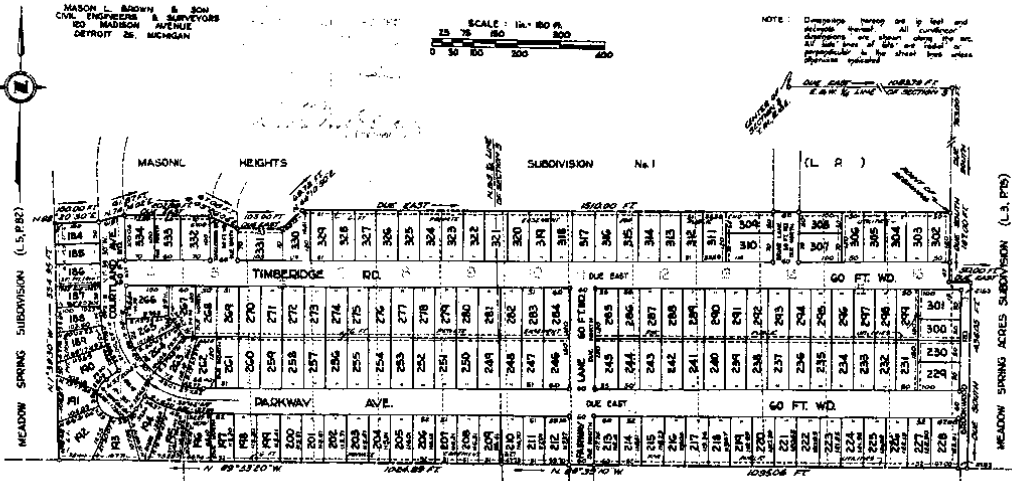
263677

JULY 27 1955

MASON L. BROWN & SON  
CIVIL ENGINEERS & SURVEYORS  
80 HURON AVENUE  
DETROIT 26, MICHIGAN



NOTE: Dimensions shown on this map and plat are based on all landowners' records and are subject to change if any error is discovered in the original records. The street lines shown are approximate and are not to be used for legal purposes.



MEADOW SPRING SUBDIVISION (L.S.P. 2)      ASSESSOR'S PLAT No 34 (L. 15, P. 25)      WILLIAM P. HULL SUBDIVISION No. 2 (L. 31, P. 36 & 37)      WILLIAM P. HULL SUBDIVISION No. 7 (L. 31, P. 35)

**DESCRIPTION**  
The land embraced in the annexed plat of "MASONIC HEIGHTS SUBDIVISION NO. 2 OF PART OF THE S. 1/2 OF SEC. 3, T. 1 N., R. 13 E., CITY OF ST. CLAIR SHORES, MACOMB CO., MICHIGAN", being a subdivision of part of Lots 3 to 17 inclusive of Meadow Spring Acres Sub'n. (Liber 3, Page 74) comprised of Lots 144 to 254 inclusive, is described as follows: Beginning at a point which point is distant Due East 1063.79 ft. along the E. & W. 1/4 line of Sec. 3 and Due South 742.00 ft. from the center of Sec. 3, T. 1 N., R. 13 E.; thence Due South 197.00 ft.; thence Due East 80.00 ft.; thence Due South 416.00 ft.; thence along the W. line of William P. Hull's Subdivision No. 1 (Liber 31, Page 23) and William P. Hull's Subdivision No. 2 (Liber 31, Pages 38 and 37) E. 89°28'10" W. 1098.00 ft.; thence along the N. line of said William P. Hull's Subdivision No. 2 and Assessor's Plat No. 34 (Liber 16, Page 18) E. 88°05'50" W. 1494.00 ft.; thence along the W. line of Lot 3 of said Meadow Spring Acres Sub'n. E. 1°28'00" W. 554.00 ft.; thence along the S'ly line of Masonic Heights Subdivision No. 1 (Liber 38, Pages 44 and 45) E. 88°50'30" W. 180.00 ft. and S. 74°14'02" E. 61.67 ft. and Due East 202.00 ft. and S. 63°18'00" E. 67.00 ft. and Due East 102.00 ft. and S. 64°10'50" E. 60.79 ft. and Due East 1910.00 ft. to the point of beginning.

W. P. Hull  
Register of Deeds

1955      M.L.B.      K.A.L. BROWN      8310      L34      p28      H-2



# "WILLIAM P. HULL SUBDIVISION NO. 1"

OF PART OF LOTS 4 AND 5 OF ASSESSOR'S PLAT NO.  
34 OF PART OF THE S. 1/2 SECTION 3, T. 1 N., R. 13 E.,  
CITY OF ST. CLAIR SHORES, MACOMB CO., MICHIGAN.

206649

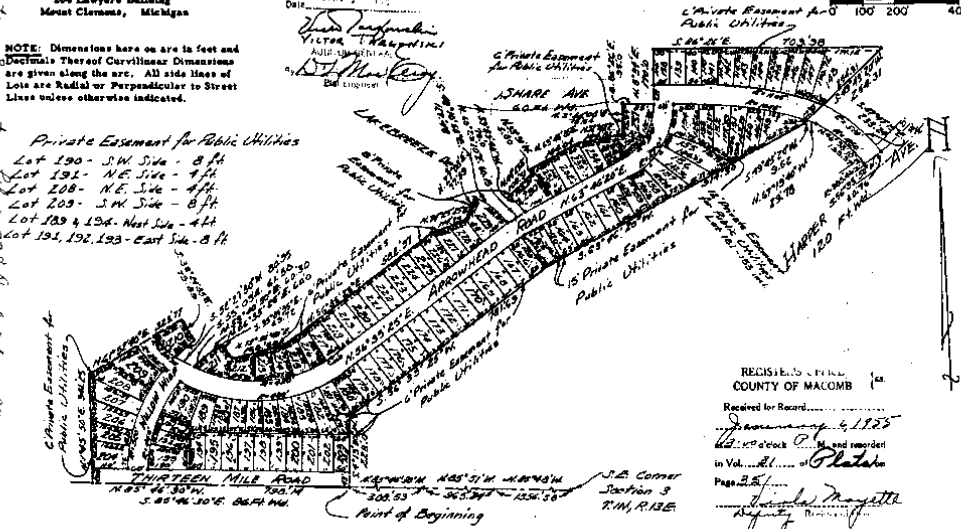
WALTER J. LEHNER & SONS  
Civil Engineers & Surveyors  
266 Lawyers Building  
Mount Clemens, Michigan

EXAMINED AND APPROVED  
DATE: JAN 1 1955

Scale: 1" = 200'

NOTE: Dimensions here on are in feet and Decimals Thereof. Curvilinear Dimensions are given along the arc. All side lines of Lots are Radial or Perpendicular to Street Lines unless otherwise indicated.

Private Easement for Public Utilities  
Lot 190 - S.W. Side - 8 ft  
Lot 191 - N.E. Side - 4 ft  
Lot 192 - N.E. Side - 4 ft  
Lot 193 - S.W. Side - 8 ft  
Lot 194 & 195 - West Side - 4 ft  
Lot 191, 192, 193 - East Side - 8 ft



**DEDICATION**  
KNOW ALL MEN BY THESE PRESENTS, That we, Benjamin B. Couchman, a single man, proprietor, and the Burhull Land Company, a Michigan Corporation by William P. Hull, Vice President and Nathaniel Share, Secretary Treasurer, as vendee under Land Contract, have caused the land embraced in the annexed plat to be surveyed, laid out and platted to be known as "William P. Hull Subdivision No. 1", of Part of Lots 4 and 5, of Assessor's Plat No. 34, of Part of the S. 1/2 Section 3, T. 1 N., R. 13 E., City of St. Clair Shores, Macomb Co., Michigan, and that the streets as shown on said plat are hereby dedicated to the use of the public, and that the private easements shown on said plat are hereby reserved for the use of Public Utilities, or for the use of specific utilities as thereon noted, subject to the regulation and control of the use thereof by the local governmental authorities, and that no permanent structures are to be erected within the lines of said easements.

Signed and Sealed in the Presence of:

*Walter J. Lehner*  
Walter J. Lehner  
Mary M. Piccirilli  
Ephraim Madson  
Ralph D. Pearson  
Lyle M. Johnson

Benjamin B. Couchman  
Burhull Land Company  
William P. Hull, Vice-President  
Nathaniel Share, Secretary-Treasurer

On this 11th day of November, A. D. 1954, before me, a Notary Public in and for said county appeared William P. Hull and Nathaniel Share to me personally known, who being each by me duly sworn did say that they are the Vice-President and Secretary-Treasurer respectively of the Burhull Land Company, a Michigan Corporation, and that the seal affixed to a

Instrument is the corporate seal of said corporation, and that said instrument was signed, and sealed in behalf of said corporation by authority of its Board of Directors and said William P. Hull and Nathaniel Share acknowledged said instrument to be the free act and deed of said corporation.

My Commission expires: *W. J. Lehner*  
STATE OF MICHIGAN  
County of Macomb

On this 11th day of November, 1954 before me, a Notary Public in and for said county, personally came the above named Benjamin B. Couchman, a single man, known to me to be the person who executed the above dedication, and acknowledged the same to be their free act and deed.

My Commission expires: *W. J. Lehner*  
STATE OF MICHIGAN  
County of Macomb

This plat was approved by the Council of the City of St. Clair Shores at a meeting held November 11, 1954. 175-1432

Approved by the City of St. Clair Shores Planning Commission on the 27th day of Dec 1954.  
*W. J. Lehner*  
W. J. Lehner, Secretary

**DESCRIPTION OF LAND PLATTED**

The land embraced in the annexed plat of "William P. Hull Subdivision No. 1", of Part of Lots 4 and 5, of Assessor's Plat No. 34, of Part of the S. 1/2 Section 3, T. 1 N., R. 13 E., City of St. Clair Shores, Macomb Co., Michigan, is described as follows: Commencing at the Southeast corner of Section 3, T. 1 N., R. 13 E., thence N. 85°-48'W, 1156.58 feet; thence N. 85°-51'W, 965.24 feet; thence N. 85°-45'-30"W, 308.59 feet to the point of beginning. Thence N. 85°-46'-30"W, 798.14 feet; thence N. 1°-45'-50"E, 341.25 feet; thence N. 61°-52'-40"E, 323.77 feet; thence S. 33°-26'-35"W, 750.07 feet; thence S. 52°-27'-30"W, 80.95 feet; thence S. 55°-05'E, 61.50 feet; thence N. 53°-40'-30"E, 60.38 feet; thence N. 55°-35'-25"E, 60.0 feet; thence S. 33°-24'-35"E, 59.72 feet; thence N. 73°-48'-40"E, 168.58 feet; thence N. 56°-15'-25"E, 582.97 feet; thence N. 74°-25'-25"E, 114.29 feet; thence N. 27°-03'E, 77.39 feet; thence along a curve (R = 250') concave to the Southwest, and whose long chord bears S. 48°-10'-30"E, and is 127.48 feet in length; thence N. 60°-29'-10"E, 60.15 feet; thence along a curve (R = 330') concave to the Southwest, and whose long chord bears N. 39°-09'-40"W, and is 70.0 feet in length; thence N. 44°-23'E, 108.51 feet; thence N. 35°-30"W, 5.80 feet; thence N. 63°-46'-20"E, 164.04 feet; thence N. 72°-42'E, 144.61 feet; thence N. 3°-54'-08"E, 75.04 feet; thence S. 86°-26'E, 95.0 feet; thence N. 3°-34'E, 170.0 feet; thence S. 86°-26'E, 709.58 feet; thence S. 49°-43'-20"W, 254.31 feet; thence along a curve (R = 510') concave to the Southwest and whose long chord bears S. 47°-47'-18"E, and is 233.24 feet in length; thence along a curve (R = 903.46') concave to the Southeast and whose long chord bears S. 56°-35'-30"W, and is 50.76 feet in length; thence along a curve (R = 450') concave to the Southwest and whose long chord bears N. 42°-06'-04", and is 190.87 feet in length; thence along a curve (R = 1045.0') concave to the South, and whose long chord bears N. 47°-19'-40"W, and is 29.78 feet in length; thence S. 49°-43'-20"W, 9.52 feet; thence S. 63°-46'-20"W, 914.50 feet; thence S. 56°-35'-25"W, 781.89 feet; thence S. 4°-13'-30"W, 223.0 feet to the point of beginning.

**SURVEYORS CERTIFICATE**

I hereby certify that the plat hereon delineated is a correct one and that permanent metal monuments consisting of bars not less than one-half inch in diameter and 48 inches in length, encased in a concrete cylinder at least 4 inches in diameter and 48 inches in depth have been placed at all points marked thus (O) as hereon shown at all angles in the boundaries of the land platted, at all the intersections of the lines of streets, and at the intersections of the lines of streets with the boundaries of the plat as shown on said plat.

*Walter J. Lehner*  
Walter J. Lehner  
Registered Land Surveyor - No. 123

**CERTIFICATE OF APPROVAL BY COUNTY BOARD**

This plat was approved on the 27th day of December, 1954, by the Macomb County Plat Board.  
*Aaron Burr* Aaron Burr - Register of Deeds  
*Lyle Johnson* Lyle Johnson - County Treasurer  
*Albert A. Wagner* Albert A. Wagner - County Clerk  
*Frank E. Lohr* Frank E. Lohr - Drain Commissioner

THIS IS TO CERTIFY THAT ACCORDING TO THE COUNTY TREASURER'S RECORD THERE HAS NOT BEEN ON THIS PROPERTY ANY OTHER TAXES OR TAXES FOR FIVE YEARS PREVIOUS TO DATE OF THIS INSTRUMENT.  
1954  
Lyle Johnson, Macomb County Treasurer, 206  
Lyle Johnson, Macomb County Treasurer, 206

1955

W. J. LEHNER  
123

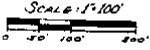
L31  
P35

H-2

ORIGINAL

"WILLIAM P. HULL SUBDIVISION No 2"  
OF PART OF LOT 5 OF ASSESSOR'S PLAT No 34,  
OF PART OF THE 3 1/2 SECTION 3, T1N, R13E,  
CITY OF ST. CLAIR SHORES, MACOMB CO., MICHIGAN.

206653



Note: All dimensions are in feet and decimals thereof. Curvilinear Dimensions are given along the arcs. All side lines of Lots are Radial or Perpendicular to Street Lines unless otherwise indicated.

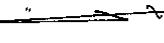
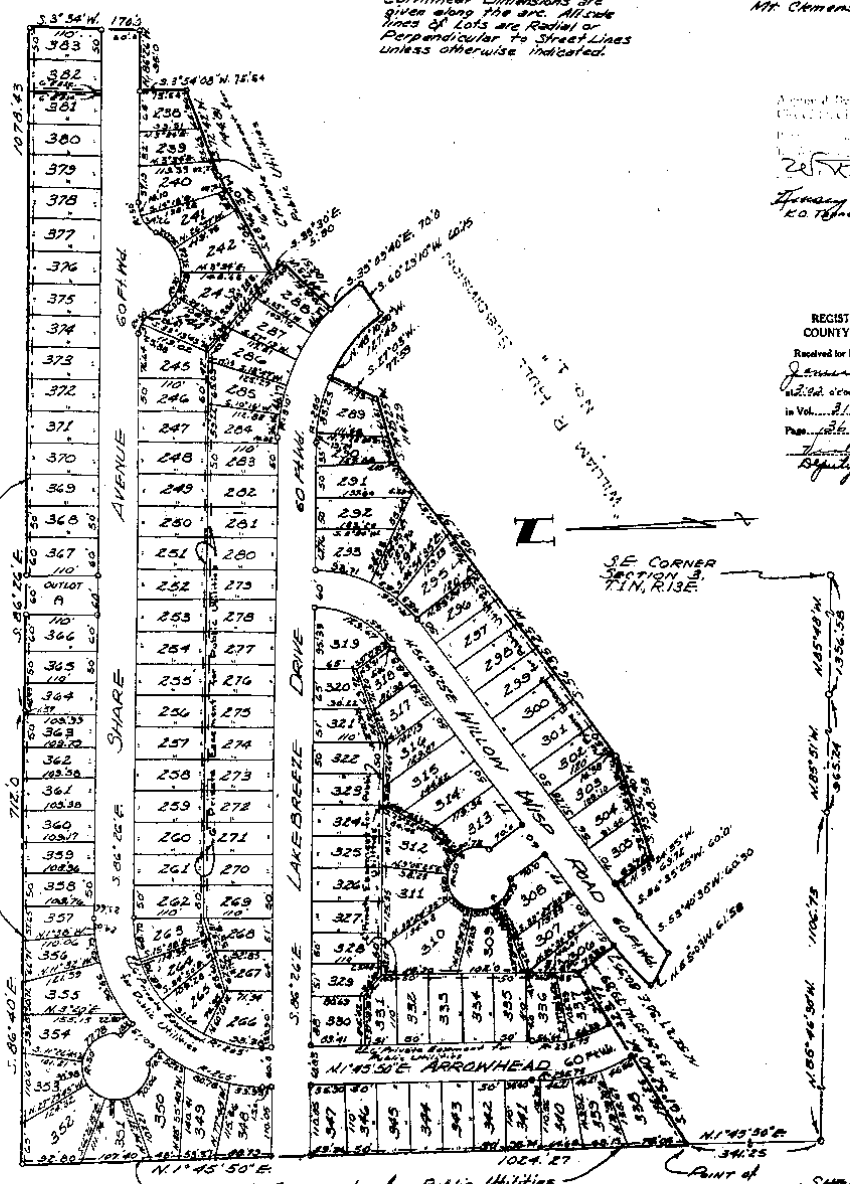
Walter J. Lehner & Sons  
Reg. Civil Engs & Surveyors.  
Mt. Clemens, Michigan.

Approved by  
County Clerk  
Dec 28 1955  
W. J. Lehner  
Henry C. ...  
K.O. 78/100

REGISTER'S OFFICE  
COUNTY OF MACOMB

Received for Record...  
January 4, 1956  
at 10:00 A.M. and recorded  
in Vol. 21... of State... on  
Page 281...  
[Signature]

Vertical text on the left margin: "Private Easement for Public Utilities"



SE CORNER SECTION 3, T1N, R13E.

POINT OF BEGINNING  
SHEET 1 of 2

1955

W.J. LEHNER  
123

L31  
P36

H-2

**"WILLIAM P. HULL SUBDIVISION No. 2"**  
 OF PART OF LOT 5 OF ASSESSOR'S PLAT No. 34,  
 OF PART OF THE S. 1/2 SECTION 3, T. 1 N., R. 13 E.,  
 CITY OF ST. CLAIR SHORES, MACOMB CO., MICHIGAN.

206653

*Walter J. Lehner & Sons*  
*Reg. Civil Engs. & Surveyors*  
*St. Clair Shores, Mich.*

*Walter J. Lehner & Sons*  
*Reg. Civil Engs. & Surveyors*  
*St. Clair Shores, Michigan.*

**DEDICATION**  
 KNOW ALL MEN BY THESE PRESENTS, That we, Benjamin B. Couches, a single man, as proprietor, and the Burkull Land Company, a Michigan Corporation by William P. Hull, Vice-President and Nathaniel Share, Secretary Treasurer, as vendee under Land Contract, have caused the land embraced in the annexed plat to be surveyed, laid out and platted to be known as "William P. Hull Subdivision No. 2" of Part of Lot 5 of Assessor's Plat No. 34, of Part of the S. 1/2 Section 3, T. 1 N., R. 13 E., City of St. Clair Shores, Macomb Co., Michigan, and that the streets as shown on said plat are hereby dedicated to the use of the public, and that the private easements shown on said plat are hereby reserved for the use of Public Utilities, or for the use of specific utilities as thereon noted, subject to the regulation and control of the use thereof by the local governmental authorities, and that no permanent structures are to be erected within the lines of said easements.

**SURVEYORS CERTIFICATE**  
 I hereby certify that the plat hereon delineated is a correct one and that permanent metal monuments consisting of bars not less than one-half inch in diameter and 36 inches in length, encased in a concrete cylinder at least 4 inches in diameter and 36 inches in depth have been placed at all points marked thus (O) as hereon shown at all angles in the boundaries of the land platted, at all the intersections of the lines of streets, and at the intersections of the lines of streets with the boundaries of the plat as shown on said plat.

*Walter J. Lehner*  
 Registered Land Surveyor - No. 123

**CERTIFICATE OF APPROVAL BY COUNTY BOARD**  
 This plat was approved on the 22nd day of March, 1954, by the Macomb County Plat Board.

*Arnon Burr* - Register of Deeds  
*Albert A. Wagner* - County Clerk  
*Edmund Whalen* - County Treasurer  
*Frank E. Lohr* - Drain Commissioner

Signed and Sealed in the Presence of:

*Benjamin B. Couches*  
 Notary Public  
*William P. Hull*  
 Vice-President  
*Nathaniel Share*  
 Secretary-Treasurer

**ACKNOWLEDGMENTS**

**STATE OF MICHIGAN**,  
 County of Macomb  
 On this 22nd day of March A.D., 1954, before me, a Notary Public in and for said county appeared William P. Hull and Nathaniel Share to me personally known, who being each by me duly sworn did say that they are the Vice-President and Secretary-Treasurer respectively of the Burkull Land Company, a Michigan Corporation, and that the seal affixed to said instrument is the corporate seal of said corporation, and that said instrument was signed and sealed in behalf of said corporation by authority of its Board of Directors and said William P. Hull and Nathaniel Share acknowledged said instrument to be the free act and deed of said corporation.  
 My Commission expires:

*Benjamin B. Couches*  
 Notary Public, Macomb County, Mich.  
*Lila M. Pearson*

**STATE OF MICHIGAN**

County of Macomb  
 On this 22nd day of March, 1954 before me, a Notary Public in and for said county, personally came the above named Benjamin B. Couches, a single man, known to me to be the person who executed the above dedication, and acknowledged the same to be his free act and deed.  
 My Commission expires:

*Benjamin B. Couches*  
 Notary Public, Macomb County, Mich.  
*Lila M. Pearson*

**CERTIFICATE OF MUNICIPAL APPROVAL**

This plat was approved by the Council of the City of St. Clair Shores at a meeting held Dec 6, 1954.

*U. J. Macm. Clark*  
 U. J. Macm. Clark

Approved by the City of St. Clair Shores Planning Commission on the 22nd day of March, 1954.

*W. R. Blick*  
 W. R. Blick, Chairman

**DESCRIPTION OF LAND PLATTED.**

The land embraced in the annexed plat of "William P. Hull Subdivision No. 2" of Part of Lot 5 of Assessor's Plat No. 34, of Part of the S. 1/2 Section 3, T. 1 N., R. 13 E., City of St. Clair Shores, Macomb Co., Michigan, is described as follows: Commencing at the Southeast corner of Section 3, T. 1 N., R. 13 E., and thence extending N. 85°-48' W. 1356.58 feet; thence N. 85°-51' W. 965.24 feet; thence N. 85°-46'-30" W. 1106.73 feet; thence N. 1°-45'-30" E. 341.25 feet to the point of beginning of this description. Thence N. 1°-45'-50" E. 1024.27 feet; thence S. 86°-40' E. 732.00 feet; thence S. 86°-26' E. 1075.43 feet; thence S. 3°-24' W. 170.00 feet; thence N. 85°-26' W. 95.00 feet; thence S. 3°-54'-08" W. 75.54 feet; thence S. 72°-42' W. 164.81 feet; thence S. 63°-46'-30" W. 164.04 feet; thence S. 33°-30' E. 5.80 feet; thence S. 44°-23' W. 108.51 feet; thence along a curve (R=310.0 feet) concave to the Southwest, whose long chord bears S. 39°-09'-40" E. and is 70.0 feet in length; thence S. 60°-29'-10" W. 60.15 feet; thence along a curve (R=250.0 feet) concave to the Southwest whose long chord bears N. 48°-10'-50" W. and is 127.48 feet in length; thence S. 27°-03' W. 77.59 feet; thence S. 74°-29'-29" W. 114.29 feet; thence S. 35°-35'-25" W. 582.97 feet; thence S. 73°-56'-40" W. 168.58 feet; thence N. 33°-24'-28" W. 69.52 feet; thence S. 56°-35'-25" W. 60.00 feet; thence S. 53°-40'-30" W. 60.30 feet; thence N. 59°-03' W. 61.58 feet; thence N. 32°-27'-30" E. 80.55 feet; thence N. 33°-24'-35" W. 79.89 feet; thence S. 61°-52'-40" W. 323.77 feet to the point of beginning.

REGISTRAR'S OFFICE  
 COUNTY OF MACOMB

Received for Record  
*January 4/1954*  
 in Vol. 111 of Plats, on  
*Walter J. Lehner*  
 Deputy Registrar

REC 81 MAR 37

THIS IS TO CERTIFY THAT THE ABOVE IS THE COUNTY RECORD OF THIS PLAT AS THE SAME WAS FILED IN THE REGISTER'S OFFICE AND THAT THERE IS NO OTHER FILED COPY OF THIS INSTRUMENT.  
 REGISTERED IN THE COUNTY RECORD ON 17th day of March, 1954.  
 (The provisions of this act apply to plats of any kind in violation of regulations of the State Board of Land-Collection Officers.)  
*Walter J. Lehner*  
 Registrar

LAND CORNER RECORDATION CERTIFICATE

FILING REQUIREMENT OF ACT 74, MICH. P.A.1970

CITY OF ROSEVILLE

FOR CORNERS OF--	LOCATED IN--	CORNER CODE NUMBER
1. PUBLIC LAND SURVEY	T. <u>1</u> N. <u>13</u> E. <u>13</u> W.	
2. PROPERTY CONTROLLING IN SECTION <u>3</u>	T. <u>1</u> N. <u>13</u> E. <u>13</u> W.	H-1, H-2
3. MISCELLANEOUS PROPERTY IN SECTION	T. _____ N. _____ E. _____ W.	
4. LOT NO. _____, RECORDED PLAT _____		
5. PRIVATE CLAIMS _____		

1641971  
 RECORDED IN MACOMB COUNTY RECORDS AT: 12:20 P.M.  
 MAR 17 1980  
*Edna Hill*  
 CLERK - REGISTER OF DEEDS  
 MACOMB COUNTY, MICHIGAN  
 REGISTER OF DEEDS STAMP AND FILING NUMBER

I, William E. Soderberg, do hereby certify that under requirements of P.A. 74, Michigan P.A. of 1970, the corner points mentioned in lines 1 and 2 above were, in a field survey on December 6, 1979, established, re-established, monumented, re-monumented, recovered or restored as expressed below and in conformance with regulations and rules therefore as required in the current manual of survey instructions of the United States Department of the Interior, Bureau of Land Management or by a decree of a court of law. Furthermore, that the corner points mentioned in lines 3, 4 and 5 above were, in a field survey on \_\_\_\_\_, 19\_\_\_\_, found, recovered, restored, established or re-established as expressed below and in conformance with the rules of the Michigan State Board of Registration for Land Surveyors or, by a Decree of a Court of law:

A. Description of original monument and accessories and/or subsequent restoration:

B. Description of corner evidence found and/or method applied in restoring or re-establishing corner:  
 H-1, N. Quarter Cor. Sec. 3 Found 1/2" Rerod in Monument Box.  
 H-2, Center Post, Sec. 3 Found 1/2" Rerod in Monument Box.

C. Description of monument for corner and accessories established to perpetuate locating the position of the corner:  
 H-1 Found 1/2" Rerod in Monument Box  
 1. N. 32.65' to S.E. corner of brick column on west side of driveway to Hebrew Memorial Park Cemetary.  
 2. N.E. 65.93' to P.K. W/M.C.R.C. tag in south face of utility pole.  
 3. S.W. 51.04' to P.K. nail set in north-west face of twin 8" tree.  
 4. N.W. 143.38' to P.K. W/M.C.R.C. tag in south face of utility pole.  
 H-2 Found 1/2" Rerod in Monument Box  
 1. N. 53.55' to 6' High chain link fence running east and west.  
 2. E.N.E. 91.87' to S.W. Bolt on light pole base.  
 3. S.S.W. 79.78' to P.K. Set in E. face of 17" maple tree.  
 4. W.N.W. 61.06' to Centerline of top of fire hydrant.

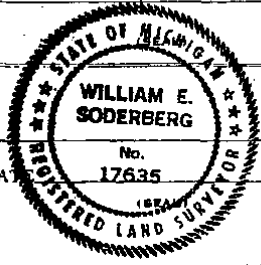
SIGNED BY William E. Soderberg DATE December 11, 1979

SURVEYOR'S MICHIGAN REGISTRATION NO. 17635

FOR STATE AND UNITED STATES AGENCIES:

SIGNED BY \_\_\_\_\_ DATE \_\_\_\_\_

APPROVED AND SIGNED BY \_\_\_\_\_ DATE \_\_\_\_\_  
CHIEF OF SURVEY PARTY  
MICHIGAN REGISTERED LAND SURVEYOR



SURVEYOR'S MICHIGAN REGISTRATION NO. \_\_\_\_\_ 00984

H-2

**LAND CORNER RECORDATION CERTIFICATE**  
**Filing Requirement of Act 74, Mich. P.A. 1970**

For corners in

MACOMB Located In: Erin Township (now City of Roseville) Corner Code # \_\_\_\_\_  
 (County)

1. Public Land Survey T 13E H-2  
 T \_\_\_\_\_  
 T \_\_\_\_\_  
 T \_\_\_\_\_

2. Property Controlling in Section S \_\_\_\_\_ T \_\_\_\_\_ R \_\_\_\_\_  
 S \_\_\_\_\_ T \_\_\_\_\_ R \_\_\_\_\_

3. Miscellaneous Property in Sec. S \_\_\_\_\_ T \_\_\_\_\_ R \_\_\_\_\_  
 S \_\_\_\_\_ T \_\_\_\_\_ R \_\_\_\_\_

4. Lot No. \_\_\_\_\_, Recorded Plat \_\_\_\_\_  
 5. Private Claims \_\_\_\_\_

135542  
 LIBER 9712 PAGE 749  
 08/14/2000 03:13:00 P.M.  
 MACOMB COUNTY, MI  
 CARHELLA SABROUGH, REG/DEEDS

Register of Deeds Stamp & File Number

	A	B	C	D	E	F	G	H	I	J	K	L	M
2	6	5		4				2					
3													
4	7			8		10		11		12			
5													
6	18	17		16		15		14		13			
7													
8	19	20		21		22		23		24			
9													
10	20	28		28		27		28		25			
11													
12	31	32		31		34		35		38			
13													

I, STEVEN E. DUNN, in a field survey on July 10 and 15, 2000, do hereby certify that under requirements of P.A. 74, Michigan P.A. of 1970, the corner points mentioned in lines 1 and 2 above were in conformance with regulations and rules therefore as required in the current manual of survey instructions of the United States Department of the Interior, Bureau of Land Management or by a decree of a Court of Law and for that the corner points mentioned in lines 3, 4 and 5 above were in conformance with the rules of the Michigan Board of Land Surveyors or by a Decree of a Court of Law; established, re-established, monumented, re-monumented, recovered, found as expressed below:

**NOTE: Not more than 2 corners, all in the same town and range, may be recorded on this certificate.**

A. Description of original monument and accessories/or subsequent restoration:  
 No corner originally set.

MDOT Right-of-way Map	Macomb County	Sheet 125	May, 1978
L.C.R.C.'s:	William E. Soderberg, #17635	Found 1/2" rod in monument box.	March 17 1980
L.3218, P.52			

B. Description of corner evidence found and/or method applied in restoring or reestablishing corner:  
 H-2, Center Post, Section 3. Found 1/2" iron rod monument box in concrete pavement in access drive to westbound Masonic from Thorncrest Drive, Centerline of Thorncrest Drive to south.

I verified the location of the found 1/2" iron rod comparing field measurements with record measurements of items listed above

**FIELD MEASUREMENTS AND RECORD MEASUREMENTS:**

<b>H-2 to G-2:</b> 2696.21'-MDOT 2695.14'-Plats and Tax Descriptions. 2694.44'-Field	<b>L.C.R.C. Witness Ties:</b> E.N.E. 91.87' to S.W. bolt on light pole base. (91.87' m.) W.N.W. 61.06' to centerline of top of fire hydrant. (61.06' m.)
---	--

C. Description of monument for corner and accessories established to perpetuate locating the position of the corner:  
 H-2, Center Post of Section 3.

Found 1/2" iron rod in monument box.

**WITNESSES:**

S. 16°W. 79.45'	Found PK nail and tag #17635 in east face of 24" Maple.
N. 89°W. 61.06'	Center top nut of hydrant.
N. 88°W. 25.36'	Center top of southeast bolt of light pole.
N. 84°E. 91.87'	Center top of southwest bolt of light pole.
S. 05°W. 47.63'	Set Mag nail on centerline Thorncrest expansion joint.



Signed by Steven E. Dunn Date August 10, 2000  
 Surveyor's Michigan License No. 28408

FORM APPROVED BY MICHIGAN STATE BOARD OF LAND SURVEYORS, JAN. 26, 1971  
 REVISED MAY 14, 1975  
 REVISED JAN., 1983

3530

H-2

**LAND CORNER RECORDATION CERTIFICATE**

Filing Requirement of Act 74, Mich. P.A. 1970

For corners in MACOMB Located In: ST. CLAIR SHORES Corner Code # \_\_\_\_\_  
 (County)

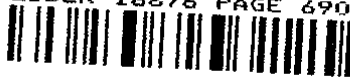
1. Public Land Survey T 1N R 13E H-2  
 T \_\_\_\_\_ R \_\_\_\_\_  
 T \_\_\_\_\_ R \_\_\_\_\_

2. Property Controlling S \_\_\_\_\_ T \_\_\_\_\_  
 in Section S \_\_\_\_\_ T \_\_\_\_\_  
 S \_\_\_\_\_ T \_\_\_\_\_

3. Miscellaneous S \_\_\_\_\_ T \_\_\_\_\_  
 Property in Sec. S \_\_\_\_\_ T \_\_\_\_\_

4. Lot No. \_\_\_\_\_, Recorded Plat \_\_\_\_\_  
 5. Private Claims \_\_\_\_\_

5120567  
 LIBER 16876 PAGE 690



07/06/2005 02:36:48 P.M.  
 MACOMB COUNTY, MI SEAL  
 CARMELLA SABAUGH, REGISTER OF DEEDS

Register of Deeds Stamp & File Number

I, Jack N. Owens, PS, in a field survey on June 24, 2005 do hereby certify that under requirements of P.A. 74, Michigan P.A. of 1970, the corner points mentioned in lines 1 and 2 above were in conformance with regulations and rules therefore as required in the current manual of survey instructions of the United States Department of the Interior, Bureau of Land Management or by a decree of a Court of Law and/or that the corner points mentioned in lines 3, 4 and 5 above were in conformance with the rules of the Michigan Board of Land Surveyors or by a Decree of a Court of Law; established, re-established, monumented, re-monumented, recovered, found as expressed below:

**NOTE: Not more than 4 corners, all in the same town and range, may be recorded on this certificate.**

	A	B	C	D	E	F	G	H	I	J	K	L	M
1													
2	6	5	4	3	2	1							
3													
4	7	8	9	10	11	12							
5													
6	16	17	18	15	14	13							
7													
8	17	20	21	22	23	24							
9													
10	30	29	28	27	26	25							
11													
12	31	32	33	34	35	36							
13													

**A. Description of original monument and accessories and/or subsequent restoration:**

GLO: NOT SET, PROTRACTED ON GLO PLAT ONLY.

ROD 1925: PLAT OF STORM & FOWLER'S GOLF CLUB SUB, PL 5,84, GUY KENNEDY, RLS; SHOWS E-W ¼ LINE BUT NOT SHOW CENTER OF SECTION. PLAT IS NORTH SIDE OF ¼ LINE.

MDOT 1962: SHOWS CORNER ON ROW MAP, SHEET 125, MACOMB CO. ROW MAP BOOK AT 1661.25' EAST OF C/L I-94 AND 2696.21' EAST OF COR H-3

DID NOT RESEARCH OTHER RECORDS

**B. Description of corner evidence found and/or method applied in restoring or reestablishing corner:**

RECOVERED ½" REROD IN MON BOX IN C/L MASONIC BLVD.

MEASURED AT 1659.59' EAST OF "BEST-FIT" C/L I-94 AND 2694.58' EAST OF COR H-3

**C. Description of monument for corner and accessories established to perpetuate locating the position of the corner:**

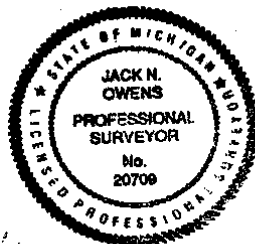
½" REROD IN MON BOX IN C/L PAVEMENT

NORTH 46.12' B/C WESTBOUND PVMT.

S40°E 90.38' NW COR HSE #32130

S60°W 72.46' SET N/ROWE TAD E. FACE 27" MAPLE

N80°W 106.47' SET N/ROWE TAG S.FACE 15' OAK



Signed by Jack N. Owens  
 Surveyor's Michigan License No. 20709

Date June 30, 2005

4247

REVISED MAY 14, 1976  
 REVISED JAN., 1983  
 ADAPTED FOR WORD PROCESSING MARCH, 1993

H-2