

**LAND CORNER RECORDATION CERTIFICATE**  
**Filing Requirement of Act 74, Mich. P.A. 1970**

For corners in

Macomb

(County)

Located In:

Corner Code #G10

Erin Lake Township

- |                                    |       |                   |            |
|------------------------------------|-------|-------------------|------------|
| 1. Public Land Survey              |       | <u>T 1N R 13E</u> | <u>G10</u> |
|                                    |       | T ___ R ___       | _____      |
|                                    |       | T ___ R ___       | _____      |
|                                    |       | T ___ R ___       | _____      |
| 2. Property Controlling in Section | S ___ | T ___ R ___       | _____      |
|                                    | S ___ | T ___ R ___       | _____      |
| 3. Miscellaneous Property in Sec.  | S ___ | T ___ R ___       | _____      |
|                                    | S ___ | T ___ R ___       | _____      |

Register of Deeds Stamp & File Number

4. Lot No. \_\_\_\_\_, Recorded Plat \_\_\_\_\_  
 5. Private Claims \_\_\_\_\_

I, Craig P. Amey, in a field survey on August 8, 1995 do hereby certify that under requirements of P.A. 74, Michigan P.A. of 1970, the corner points mentioned in lines 1 and 2 above were in conformance with regulations and rules therefore as required in the current manual of survey instructions of the United States Department of the Interior, Bureau of Land Management or by a decree of a Court of Law and for that the corner points mentioned in lines 3, 4 and 5 above were in conformance with the rules of the Michigan Board of Land Surveyors or by a Decree of a Court of Law; established, re-established, monumented, re-monumented, recovered, found as expressed below:

**NOTE: Not more than 4 corners, all in the same town and range, may be recorded on this certificate.**

1	A	B	C	D	E	F	G	H	I	J	K	L	M
2		6		5		4		3		2		1	
3													
4		7		8		9		10		11		12	
5													
6		18		17		16		15		14		13	
7													
8		19		20		21		22		23		24	
9													
10		30		29		28	●	27		26		25	
11													
12		31		32		33		34		35		36	
13													

A. Description of original monument and accessories and/or subsequent restoration:

1818 GLO Willam Preston No witnesses remain

B. Description of corner evidence found and/or method applied in restoring or reestablishing corner:

Found PK nail in the intersection of the physical centerlines of Little Mack Road and Stephens Road

This corner verified by:

"Dyer Subdivision", as recorded in Liber 11, Page 11, Macomb County Records. The east line of this subdivision is coincident with a portion of the line extending from the west quarter post of section 7 (G10) and the intersection of the "G" line and PC 599. The record distance is 1690.41 feet. The measured distance is 1689.42 feet.

"Assessor's Plat No. 73", as recorded in Liber 47, Page 29, Macomb County Records.

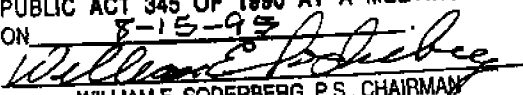
The record angle subtended by Stephens and Little Mack Road is 89°40'05". The measured angle is 89°37'54"

- N 2713.86 Northeast corner of section 28 (G9) (GLO = 40ch)  
 S 1689.37 Intersection of "G" line and PC 599 (No GLO distance of record)

C. Description of monument for corner and accessories established to perpetuate locating the position of the corner:

- REPLACED PK WITH 3/4" X 24" IRON WITH MCR CAP #34970 IN A NEW MONUMENT BOX  
 AZ 74° 88.61 Found PK nail and MCR tag in the southeast face of a utility pole  
 AZ 129° 51.86 Chiseled "X" in the base of a steel guy pole  
 AZ 310° 54.34 Found PK nail and MCR tag in the north face of a utility pole  
 AZ 252° 90.42 Northerly corner of a brick building (U-Haul)

The selected location is accepted by me and is generally accepted by professional surveyors as the best available evidence of the position of the original corner.

ACCEPTED BY THE MACOMB COUNTY SURVEY PEER GROUP AS THE OFFICIAL CORNER UNDER MICHIGAN PUBLIC ACT 345 OF 1990 AT A MEETING HELD ON 8-15-95  
  
 WILLIAM E. SODERBERG, P.S., CHAIRMAN



Signed by  Date 12-15-95  
 Surveyor's Michigan License No. 34970

FORM APPROVED BY MICHIGAN STATE BOARD OF LAND SURVEYORS, JAN. 28, 1971

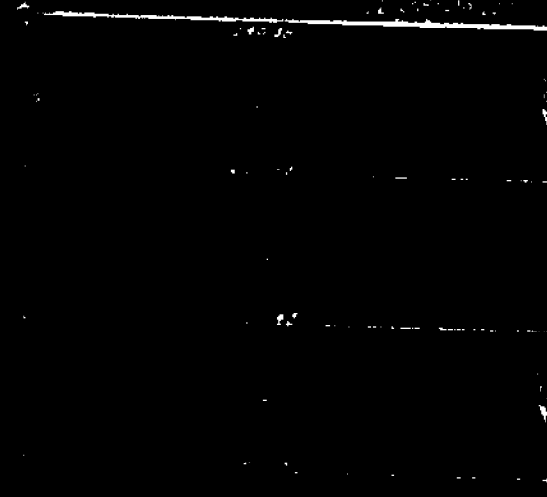
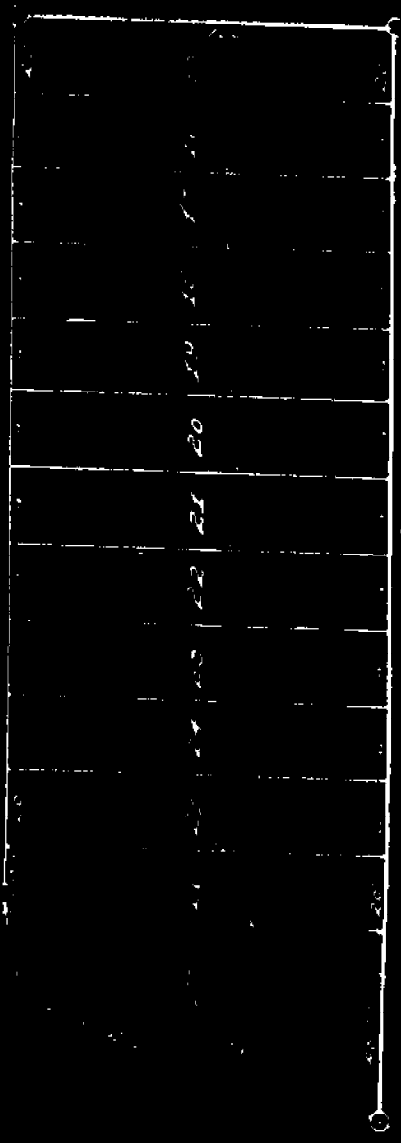
REVISED MAY 14, 1975  
 REVISED JAN., 1983

GROVE

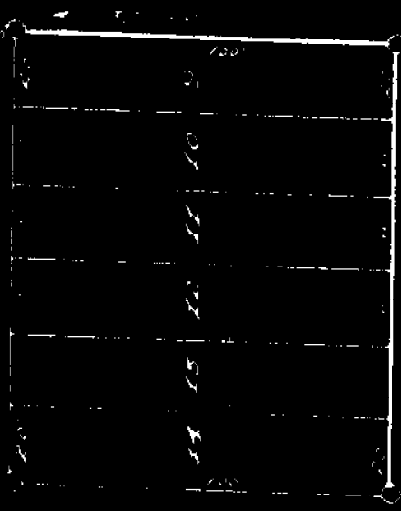
AVE



20 FOOT PUBLIC



ALLEY



FERRY

AVE.

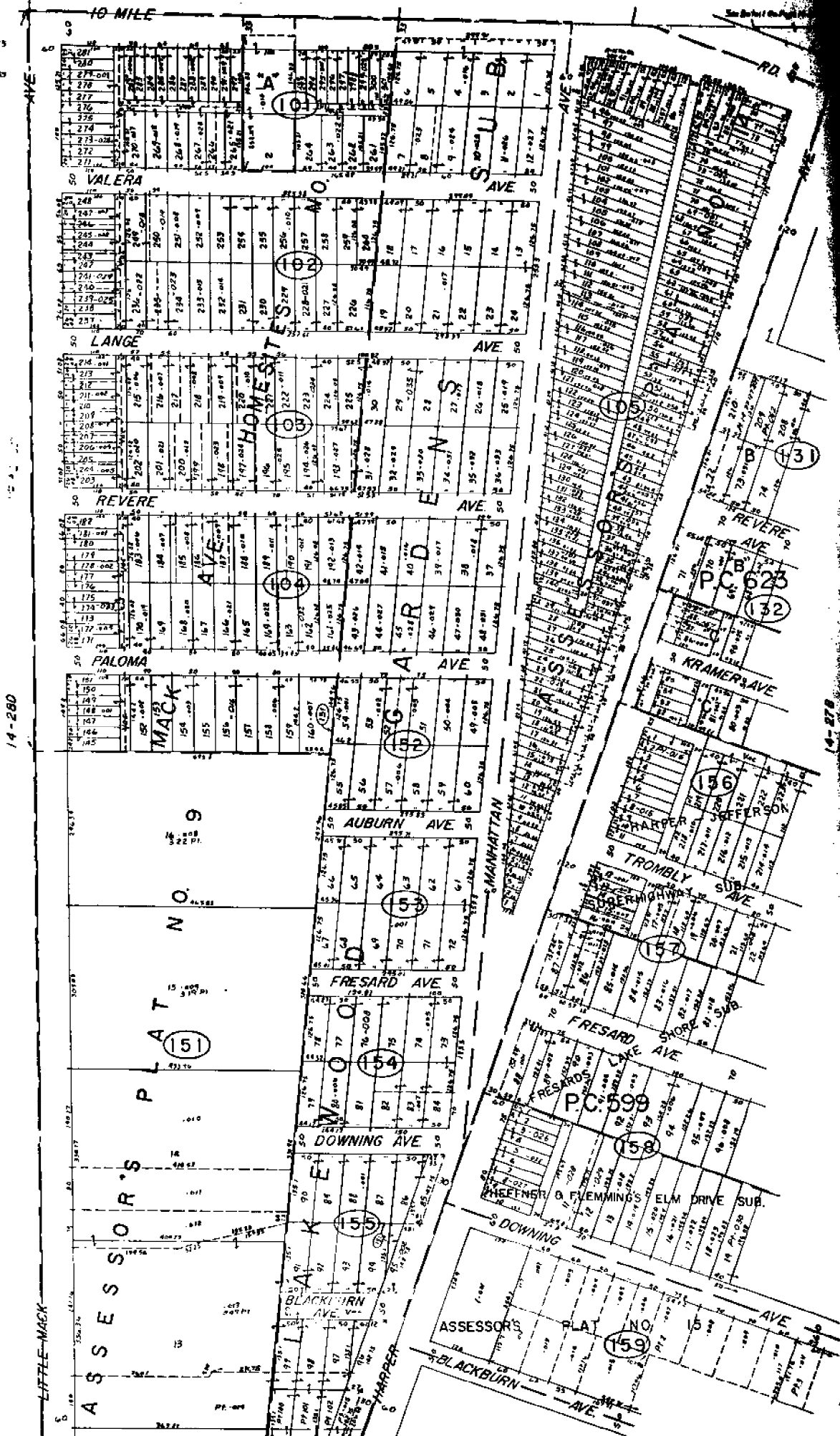
MICK

AVE.



RESSESSOR'S PLAT NO 18  
GILMORE & CHRYWELL'S  
JEFFERSON AVE SUB  
RESSESSOR'S PLAT NO 43

14-22E



14-280

14-278

14-27E

REV. 7-77  
REV. 4-76  
REV. 1-77  
REV. 1-77  
REV. 1-76

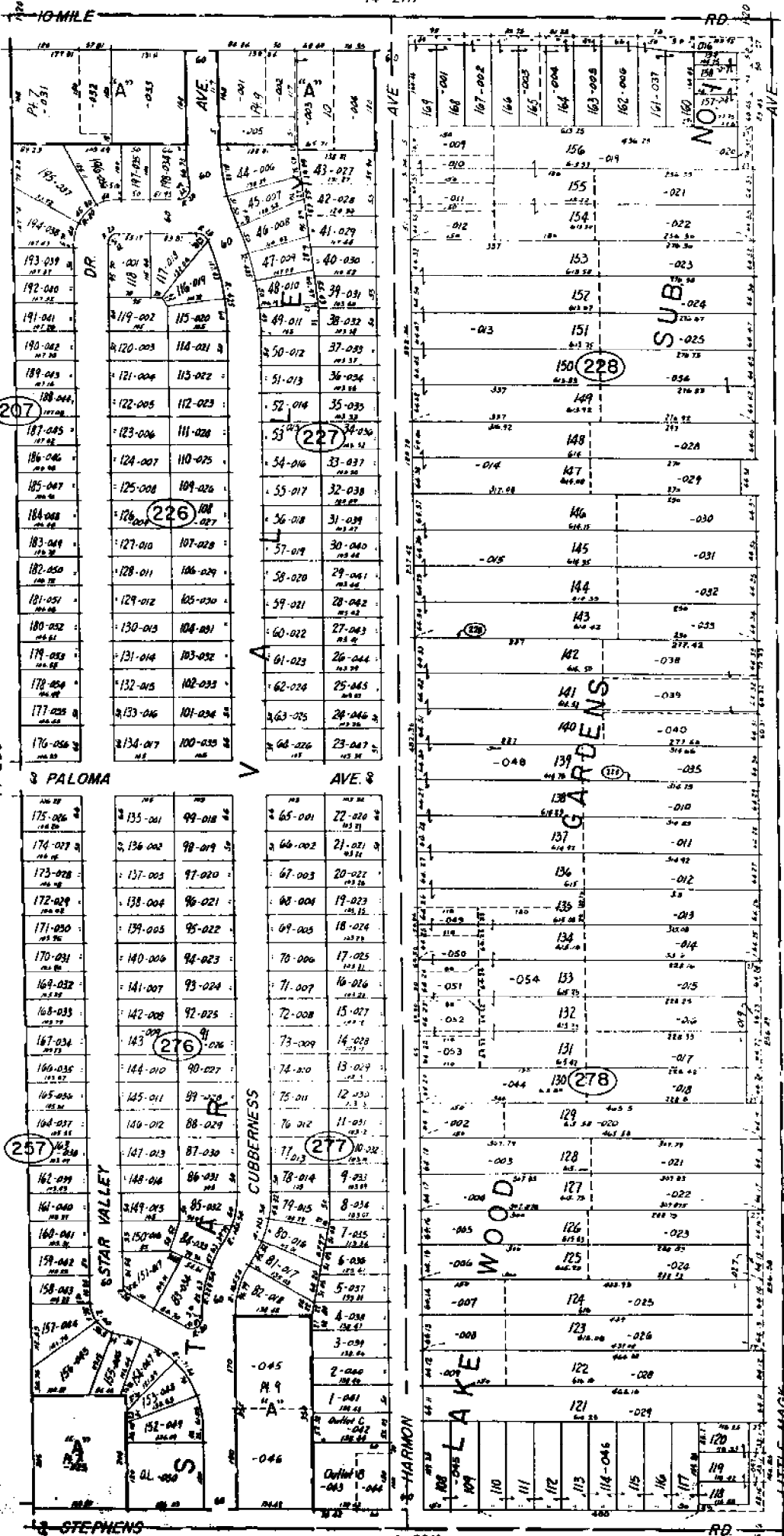
SCALE: 1" = 100'  
1881  
14-27A

Copyright 1978  
MACOMB COUNTY, MICHIGAN

### ST. CLAIR SHORES

W. 1/2 NW. 1/4 SEC 27 & PT. PC. 599, 623 T.1N. R.13E.

REV. 7-77  
REV. 4-76  
REV. 1-77  
REV. 1-77  
REV. 1-76



ASSESSORS PLAT NO. 12

14-28C

14-27A

ST. CLAIR SHORES  
 E. 1/2 NE. 1/4 SEC. 28 T. 13E.

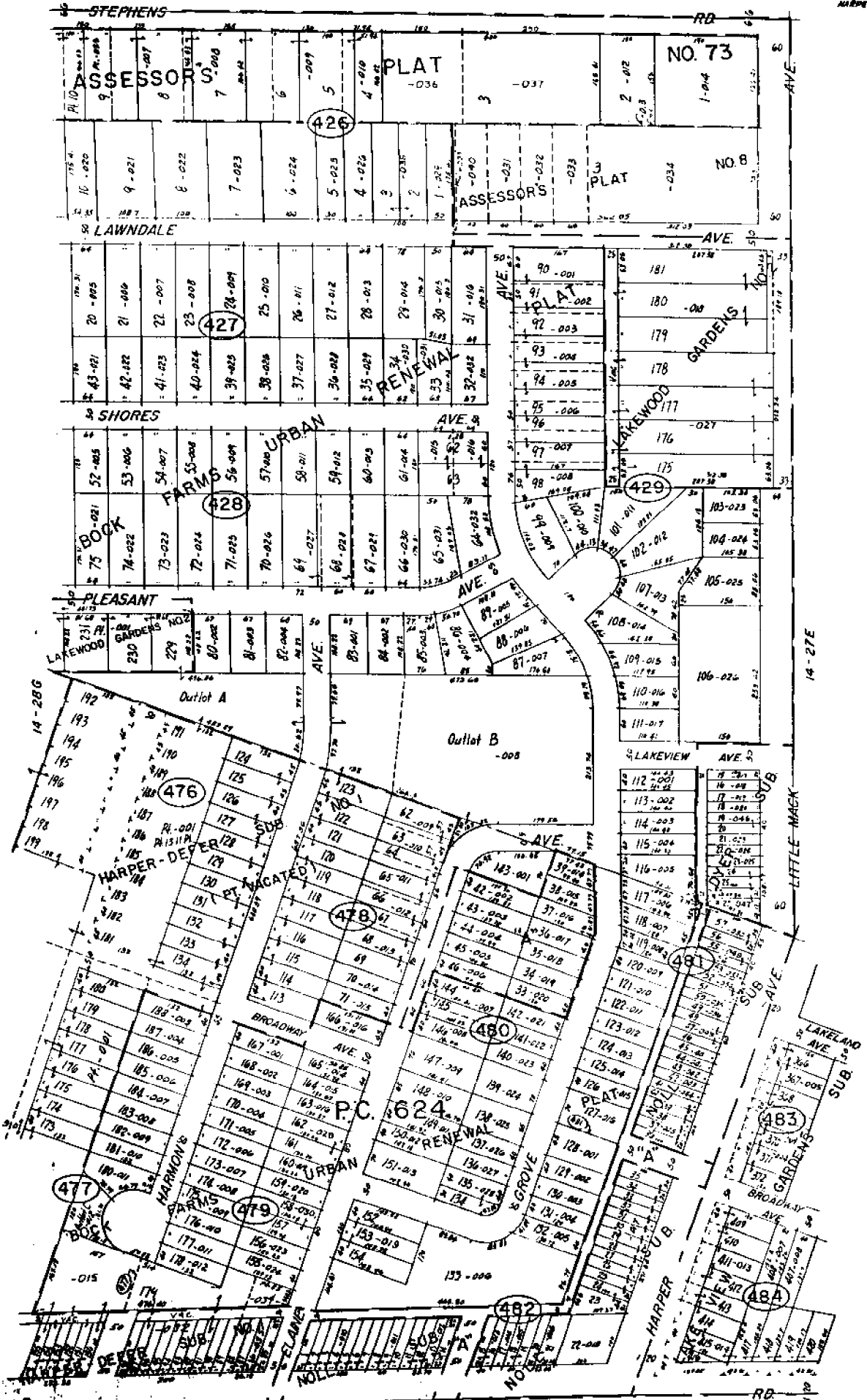
Copyright 1978  
MACOMBE COUNTY, MICHIGAN

SCALE: 1" = 100'  
1892  
14-28D

14-28H

14-280

HARPER-DEFFER SUR.



1/4 MILE

14-330

Copyright 1978  
MACOMBS SOCIETY, INDIANAPOLIS, INDIANA

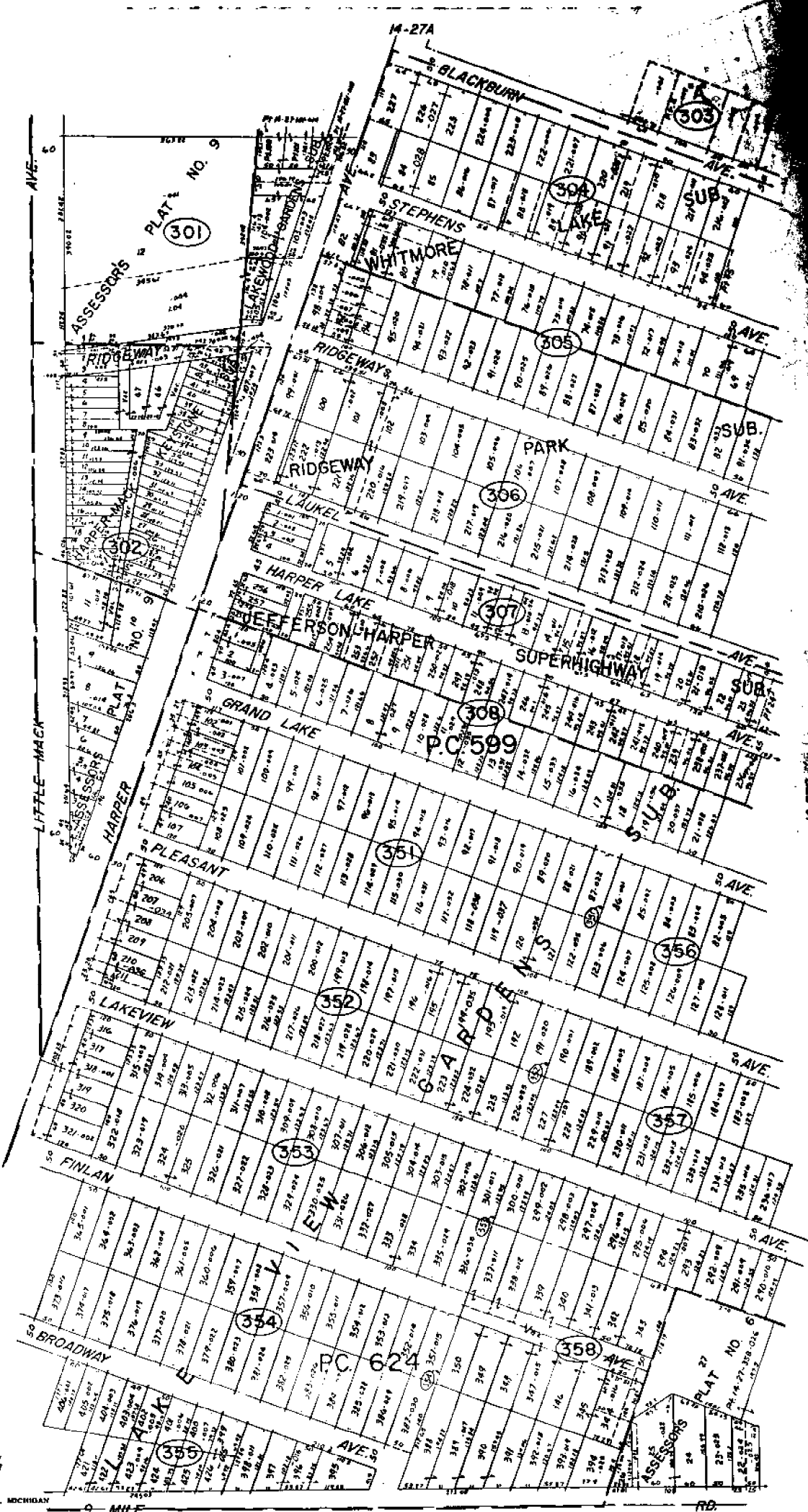
ST. CLAIR SHORES  
E 1/2 SE 1/4 SEC. 28 & PT. P.C. 624 T.1N. R.13E.

SCALE 1/8" = 100'

14-28

11

14-28H



REV. 1/27  
REV. 1/27  
REV. 5/78  
Copyright 1978  
MACOMB COUNTY, MICHIGAN

SCALE: 1"=100'  
1885  
14-27E

ST. CLAIR SHORES  
PT. SEC. 27 & PT. P.C. 599, 624 T.1N. R.13E.

14-34A