

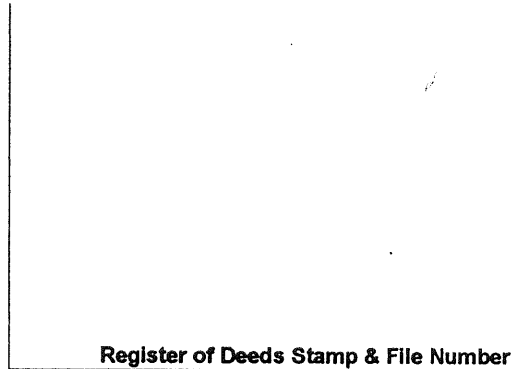
LAND CORNER RECORDATION CERTIFICATE
Filing Requirement of Act 74, Mich. P.A. 1970

For corners in

Macomb Located In: ErinLake Township
 (County) Corner Code #G6

1. Public Land Survey T 1N R 13E G6
 T ___ R ___
 T ___ R ___
 T ___ R ___
 2. Property Controlling S ___ T ___ R ___
 in Section S ___ T ___ R ___
 3. Miscellaneous S ___ T ___ R ___
 Property in Sec. S ___ T ___ R ___

4. Lot No. _____, Recorded Plat _____
 5. Private Claims _____



I, Craig P. Amey, in a field survey on August 7, 1995 do hereby certify that under requirements of P.A. 74, Michigan P.A. of 1970, the corner points mentioned in lines 1 and 2 above were in conformance with regulations and rules therefore as required in the current manual of survey instructions of the United States Department of the Interior, Bureau of Land Management or by a decree of a Court of Law and /or that the corner points mentioned in lines 3, 4 and 5 above were in conformance with the rules of the Michigan Board of Land Surveyors or by a Decree of a Court of Law; established, re-established, monumented, re-monumented, recovered, found as expressed below:

NOTE: Not more than 4 corners, all in the same town and range, may be recorded on this certificate.

	A	B	C	D	E	F	G	H	I	J	K	L	M
1													
2		6		5		4		3		2		1	
3													
4		7		8		9		10		11		12	
5													
6		16		17		16	●	15		14		13	
7													
8		19		20		21		22		23		24	
9													
10		30		29		28		27		26		25	
11													
12		31		32		33		34		35		36	
13													

A. Description of original monument and accessories and/or subsequent restoration:

1818 GLO William Preston No witnesses remain
 1994 Cert. of Survey Shelby W. Money #30092 Found chiseled "x" in concrete and replaced with 1/2" iron and cap #17635

B. Description of corner evidence found and/or method applied in restoring or reestablishing corner:

Found iron with cap #17635 in the centerline of 13 Mile Road (concrete)

This corner verified by:

Witnesses from Cert. of Survey, Shelby W. Money
 30° 99.21 Southwest corner of a house
 315° 119.45 Southeast corner of a house

S 2697.24 Southeast corner of section 16 (G7) (GLO = 40ch)
 N 2688.21 Northeast corner of section 16 (G5) (GLO = 40ch)

C. Description of monument for corner and accessories established to perpetuate locating the position of the corner:

REPLACED IRON WITH 3/4" X 24" IRON WITH MCR CAP #34970 IN A NEW MONUMENT BOX
 27° 65.35 Concrete monument
 156° 38.61 Set PK and MCR tag in W face of a utility pole
 222° 88.58 Chiseled "X" on the E side of a manhole rim
 313° 74.01 Set PK and MCR tag in the SW face of a utility pole

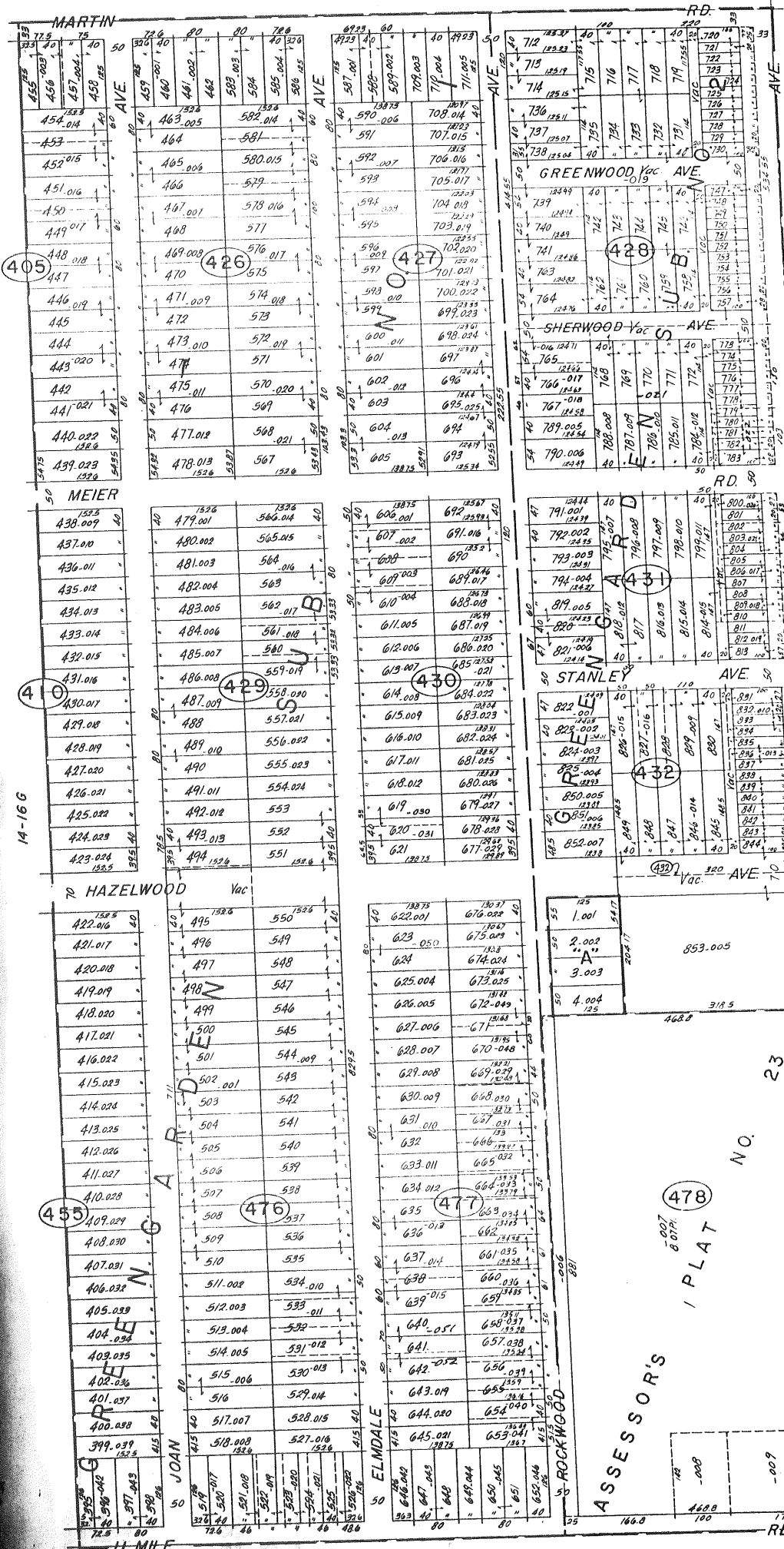
The selected location is accepted by me and is generally accepted by professional surveyors as the best available evidence of the position of the original corner.

ACCEPTED BY THE MACOMB COUNTY SURVEY PEER GROUP AS THE OFFICIAL CORNER UNDER MICHIGAN PUBLIC ACT 345 OF 1990 AT A MEETING HELD ON 8-15-95
William E. Soderberg
 WILLIAM E. SODERBERG, P.S., CHAIRMAN



Signed by C. Amey Date 12.15.95
 Surveyor's Michigan License No. 34970

FORM APPROVED BY MICHIGAN STATE BOARD OF LAND SURVEYORS, JAN. 28, 1971



M. M. ROCKWOOD SUB.

14-15E

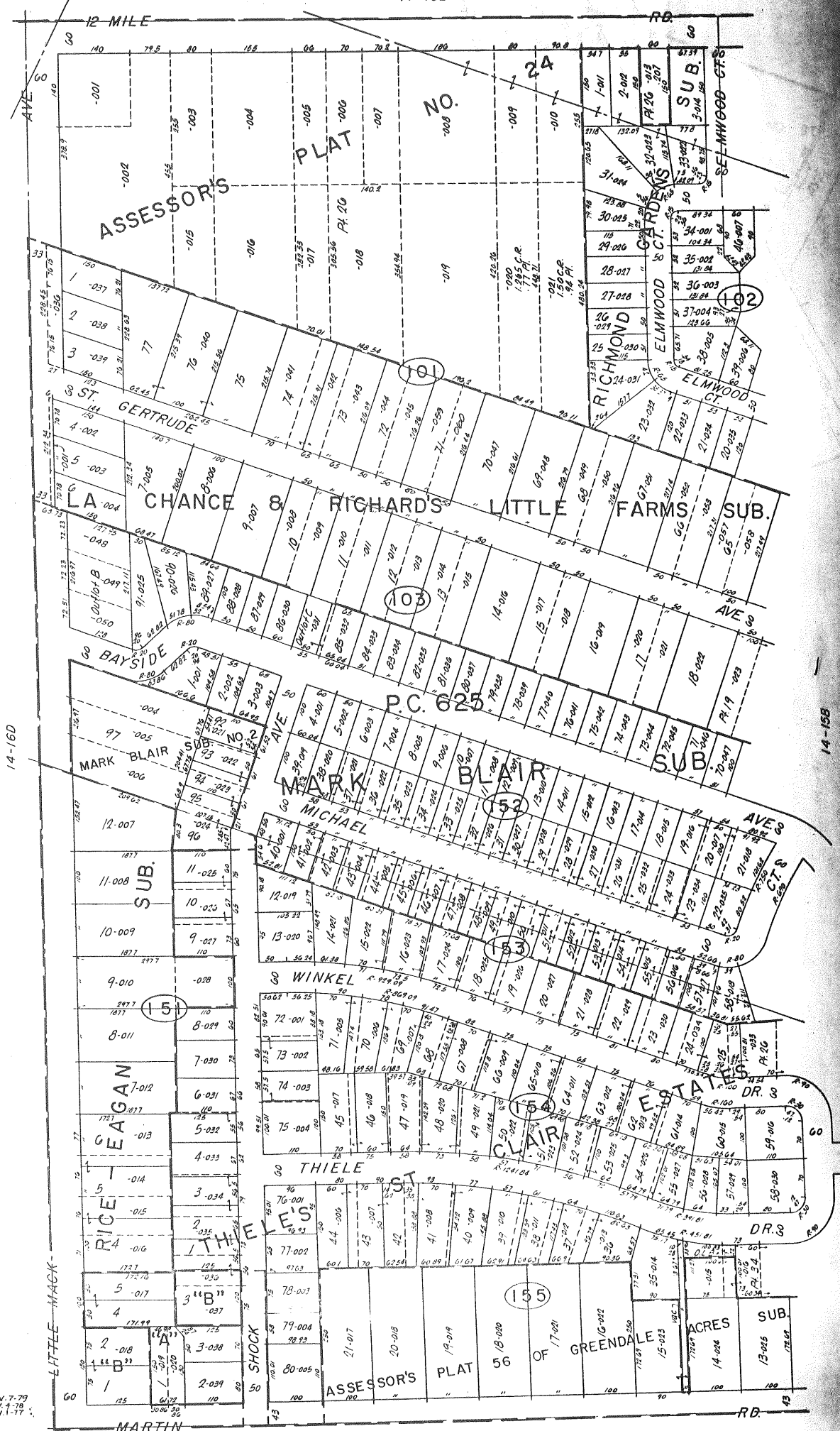
LITTLE HAWK

Copyright 1978 MACOMB COUNTY, MICH.

14-21D
 ST. CLAIR SHORES
 E. 1/2 S.E. 1/4 SEC. 16 T.1N. R.13E.

SCALE: 1" = 182'
 14-11

"A" HAMILTON & LIND SUB.
"B" RICE-EAGAN SUB.



14-16D

14-15B

REV. 7-79
REV. 4-78
REV. 1-77

ST. CLAIR SHORES

W. 1/2 N.W. 1/4 SEC. 15 & PT. P.C. 625 T. 13E.

SCALE: 1" = 60'
1807
14-15A

Copyright 1973
MACOMB COUNTY, MICHIGAN

REV. 3
REV. 4
REV. 5

14-9H



"A"
ROSEVILLE
GARDENS SUB.
"B"
THIELE BRECKEN
SUB.

14-16C

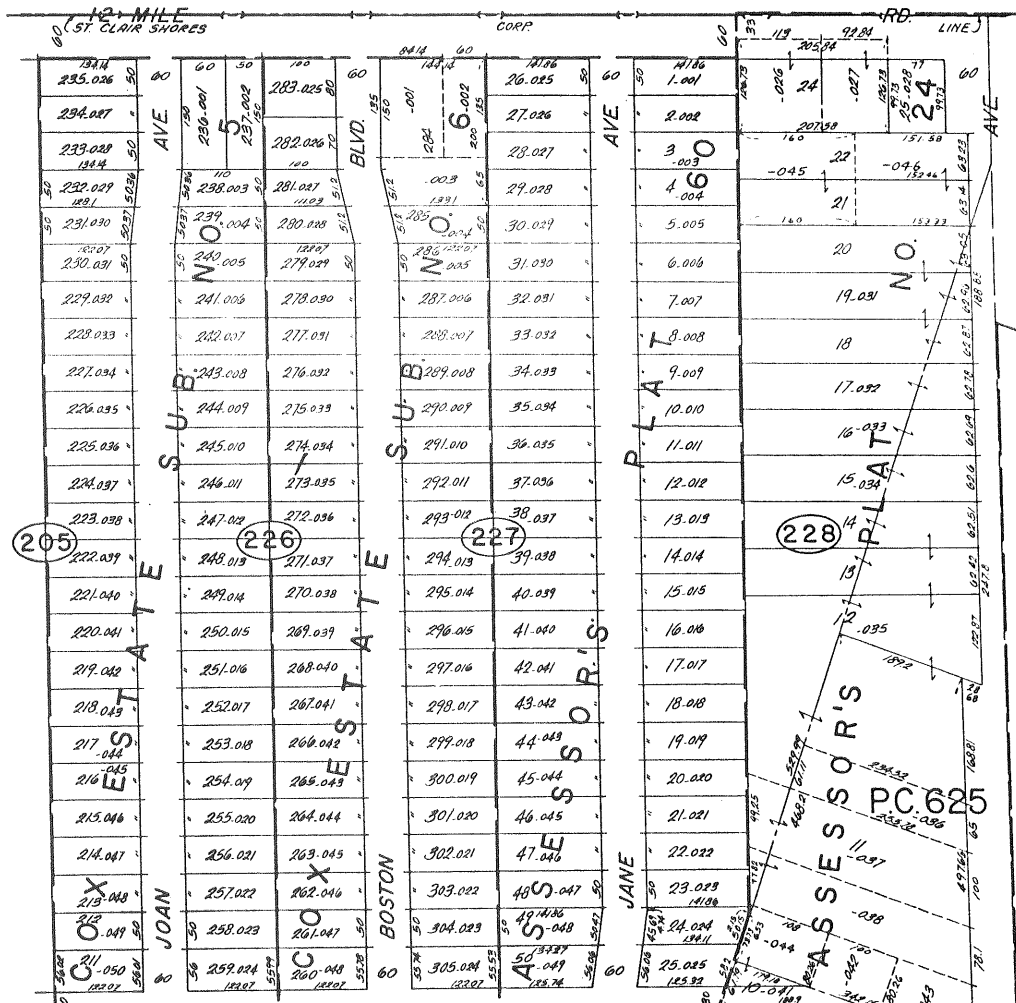
14-15A

ST. CLAIR SHORES

E. 1/2 N.E. 1/4 SEC. 16 & PT. P.C. 625 T.1N. R.13E.

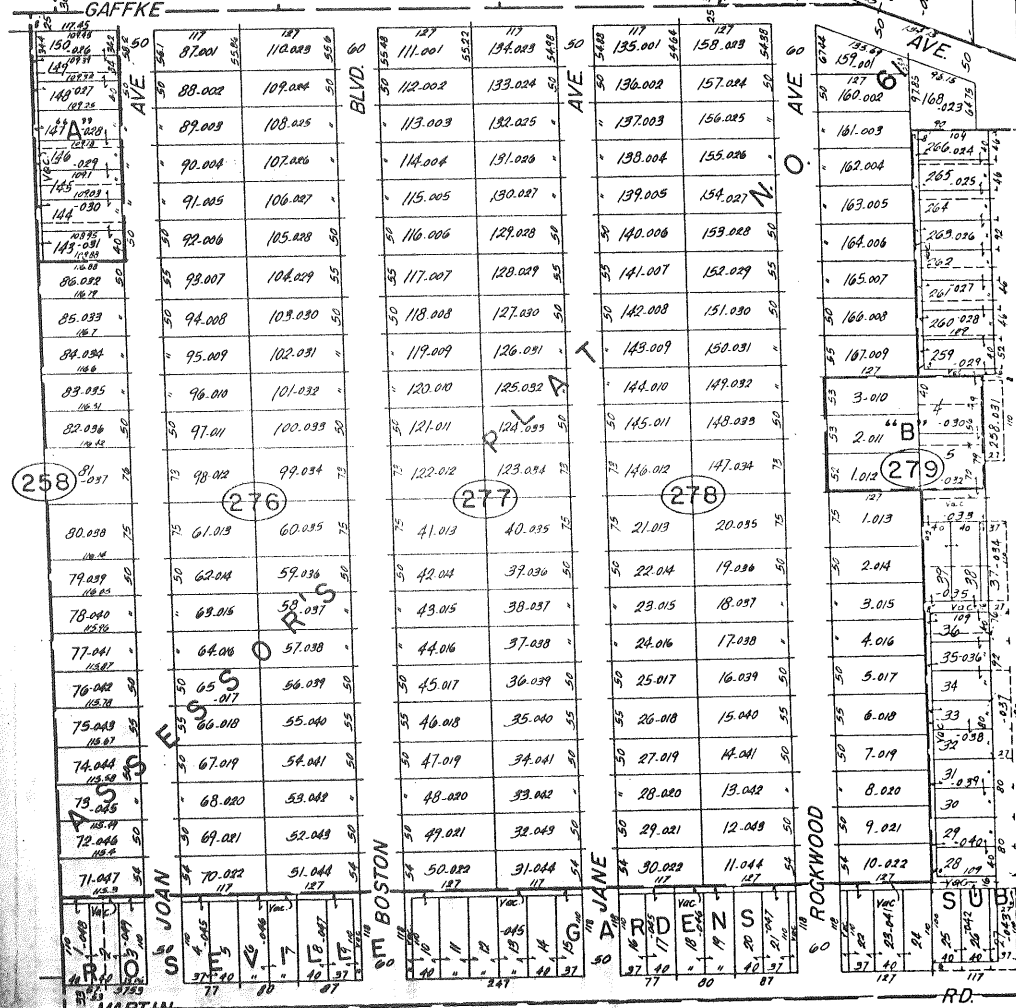
Copyright 1973
MACOMB COUNTY, MICHIGAN

SCALE: 1" = 100'
1818
14-16D



"A"
ROSEVILLE
GARDENS SUB.
"B"
THIELE BRECKER
SUB.

14-16C



14-15A

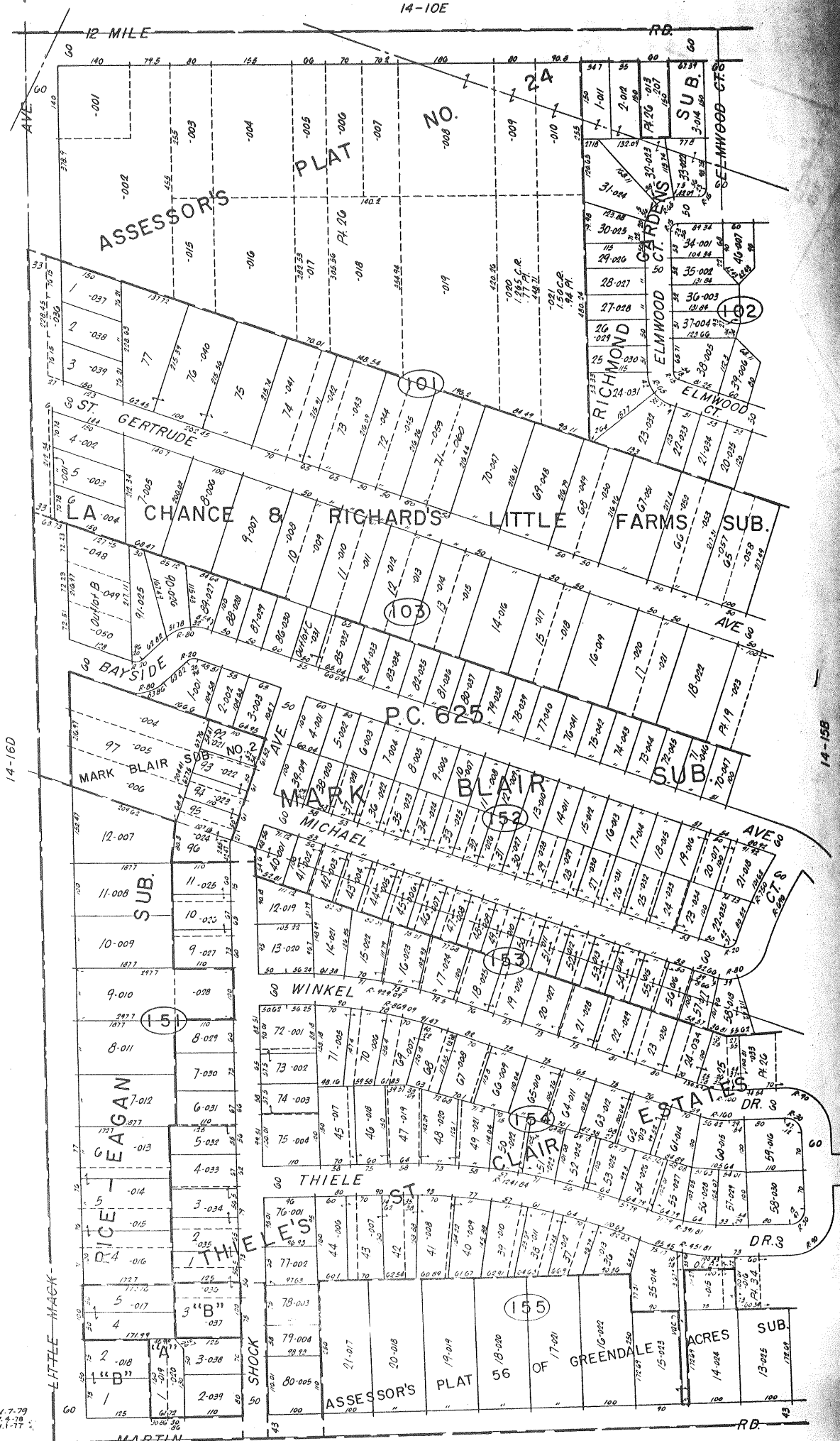
M-16H
ST. CLAIR SHORES

E. 1/2 N.E. 1/4 SEC. 16 & PT. P.C. 625 T.1N. R.13E.

Copyright 1973
MACOMB COUNTY, MICHIGAN

SCALE: 1" = 100'
14-16D

"A" HAMILTON & LIND SUB.
"B" RICE-EGAN SUB.



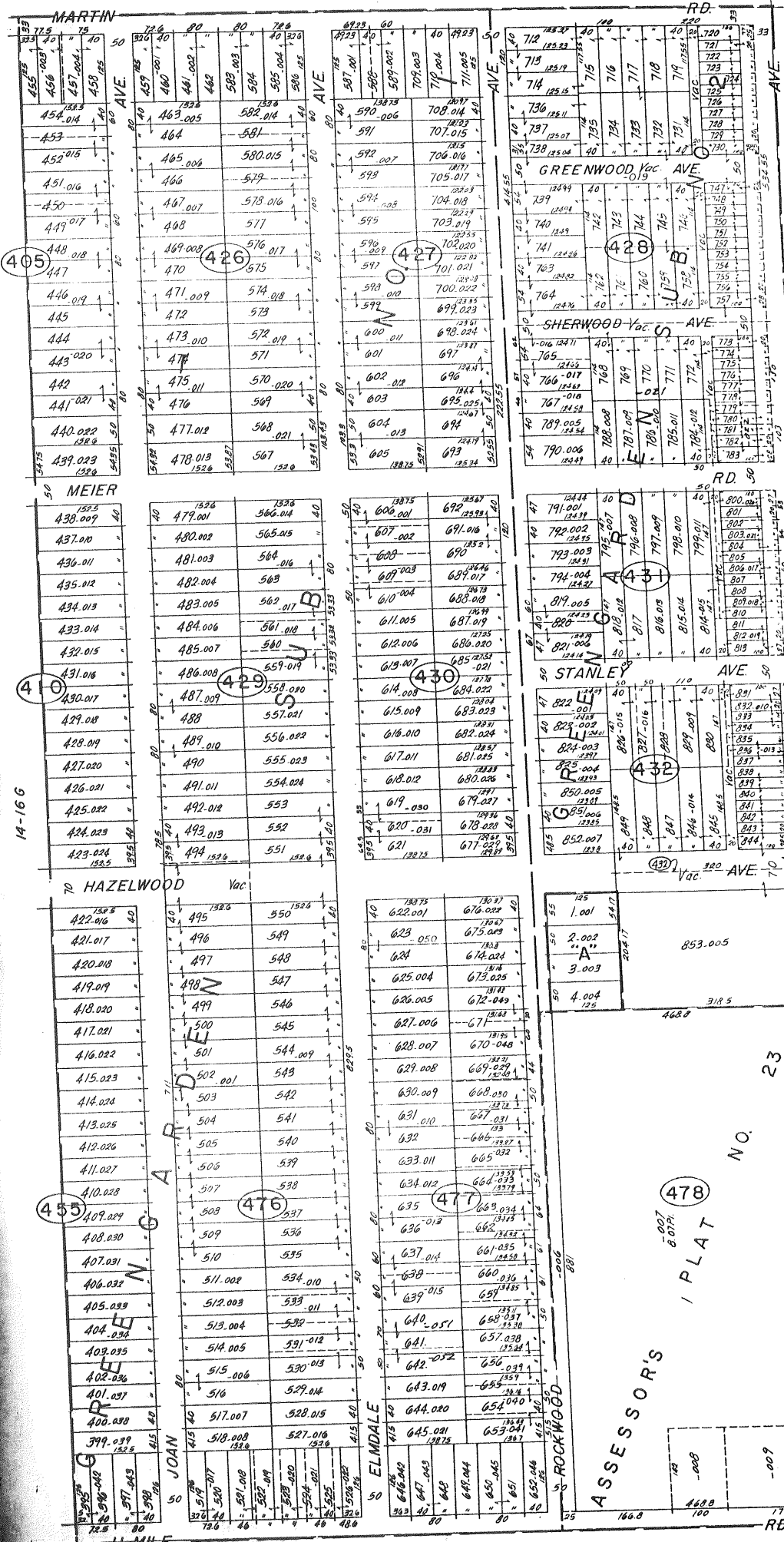
SCALE: 1" = 40'
14-15A

Copyright 1973
MACOMB COUNTY, MICHIGAN

ST. CLAIR SHORES

W. 1/2 N.W. 1/4 SEC. 15 & PT. P.C. 625 T.13E.

REV. 3
REV. 1



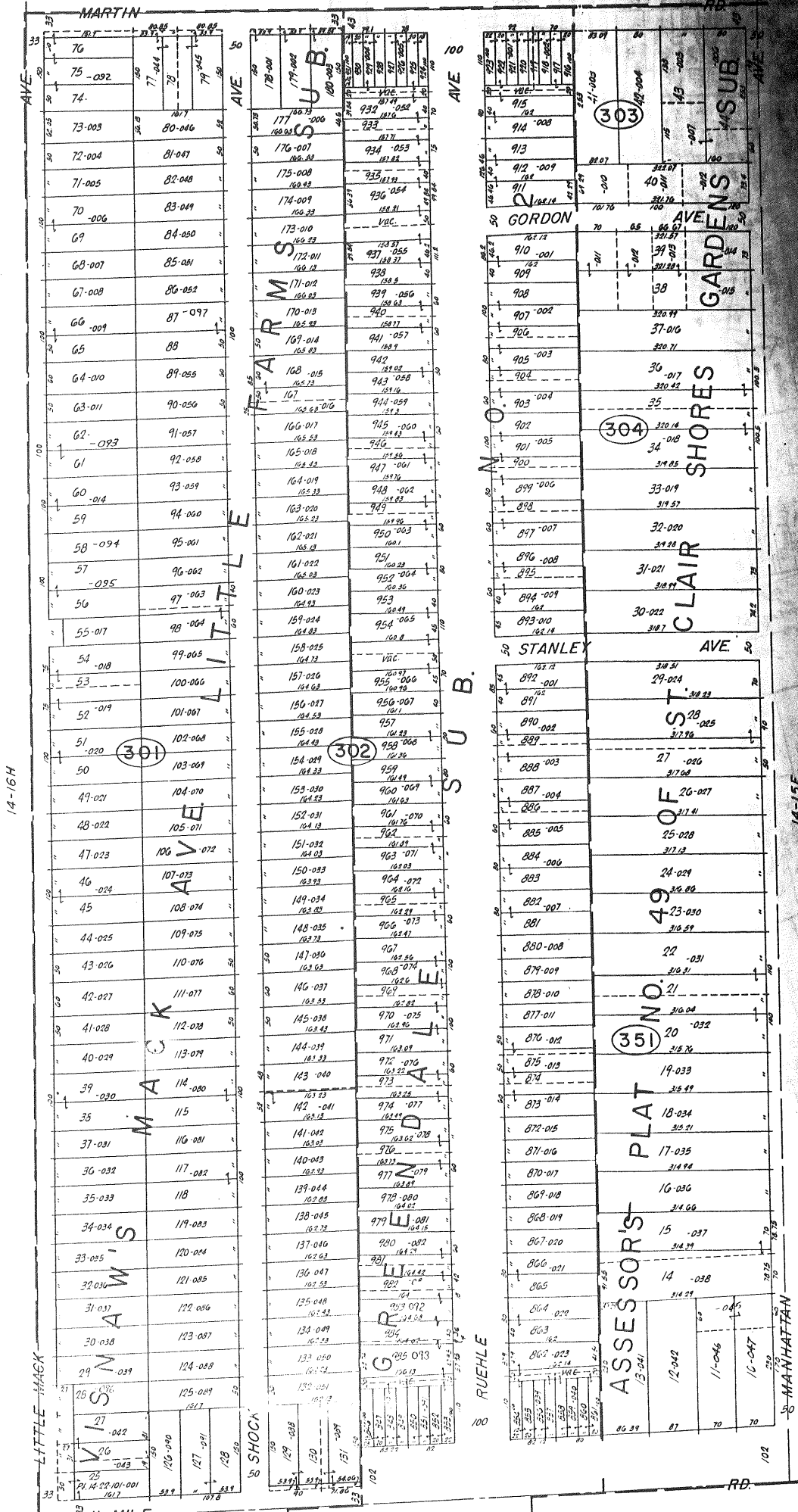
M & M ROCKWOOD 508.

14-16 G

14-15 E

14-21D
 ST. CLAIR SHORES
 E. 1/2 S.E. 1/4 SEC. 16 T.1N. R.13E.

SCALE: 1" = 182'
 14-11



REV 7-79
REV 1-77

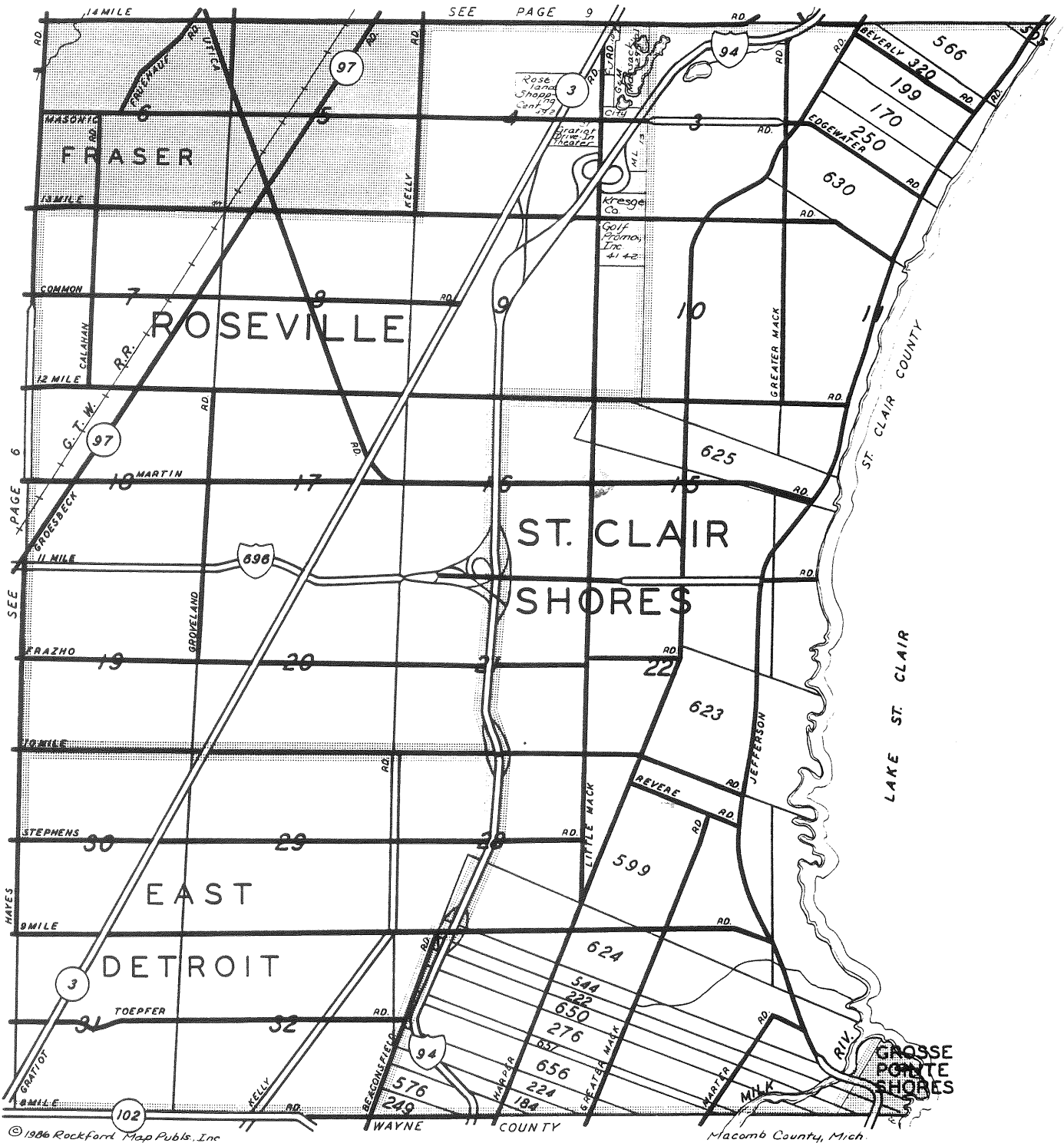
Copyright 1973
MACOMB COUNTY, MICHIGAN

SCALE: 1" = 100'
1811
14-15E

ST. CLAIR SHORES
W. 1/2 S.W. 1/4 SEC. 15 T.1N. R.13E.

CITIES OF ST. CLAIR SHORES - ROSEVILLE -
 EAST DETROIT - FRASER -
 GROSSE POINTE SHORES

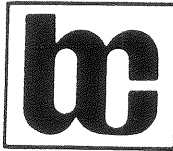
T. 1 N. - R. 13 E.



The Strong Banks for a Strong Future.

MEMBER FDIC

Hamtramck - Warren - Center Line
 Rochester Hills - Utica - Mt. Clemens



BANK OF COMMERCE



STATE BANK OF FRASER

Fraser

Reproduced with permission of Rockford Map Publishers, Inc.
 Rockford, Illinois