

LAND CORNER RECORDATION CERTIFICATE
Filing Requirement of Act 74, Mich. P.A. 1970

For corners in

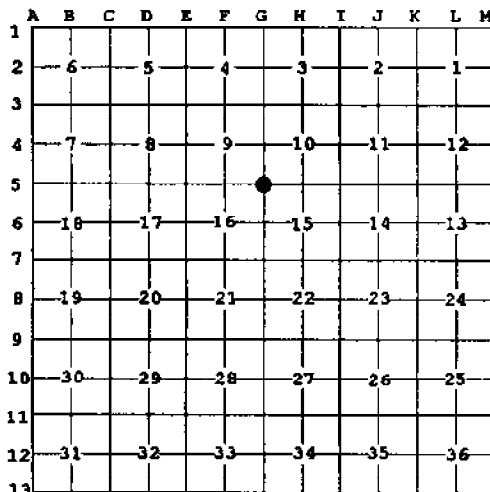
Macomb Located In: Erin/Lake Township Corner Code #G5
 (County)

1. Public Land Survey T 1N R 13E G5
 T _____ R _____
 T _____ R _____
 T _____ R _____
 2. Property Controlling S _____ T _____ R _____
 in Section S _____ T _____ R _____
 3. Miscellaneous S _____ T _____ R _____
 Property in Sec. S _____ T _____ R _____

Register of Deeds Stamp & File Number

4. Lot No. _____, Recorded Plat _____
 5. Private Claims _____

I, Craig P. Amey, in a field survey on August 8, 1995 do hereby certify that under requirements of P.A. 74, Michigan P.A. of 1970, the corner points mentioned in lines 1 and 2 above were in conformance with regulations and rules therefore as required in the current manual of survey instructions of the United States Department of the Interior, Bureau of Land Management or by a decree of a Court of Law and for that the corner points mentioned in lines 3, 4 and 5 above were in conformance with the rules of the Michigan Board of Land Surveyors or by a Decree of a Court of Law, established, re-established, monumented, re-monumented, recovered, found as expressed below:



NOTE: Not more than 4 corners, all in the same town and range, may be recorded on this certificate.

A. Description of original monument and accessories and/or subsequent restoration:

1818 GLO William Preston No witnesses remain

B. Description of corner evidence found and/or method applied in restoring or reestablishing corner:

No evidence of the corner was found. Due to the widening of 12 Mile Road and Little Mack Road, there was no existing monumentation in subdivisions adjacent to the corner. "Mack Avenue Farms No. 2" is located in the northwest quadrant of this corner, and it has interior roads from which the corner could be reestablished. Irons found at the intersections of Harding, Coolidge, Congress and Washington fit the centerline of the roads. Irons found at the intersection of Harding, Coolidge, Congress and 12 Mile also fit the centerline of the roads. The south line of section 9 was established by extending the centerlines of Harding, Coolidge and Congress record distance to the section line. The centerline of Washington was extended to the east establishing the east line of section 9. Record distance along the south line of section 9 fit the existing centerline of Little Mack. This position is also within 0.12' of the record distance to Washington (1332.50R 1332.38R).

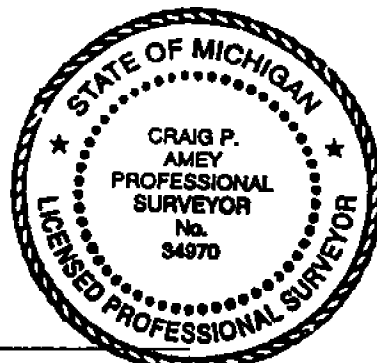
N 2683.22 East quarter post of section 9 (G4) (GLO = 40ch)
 S 2688.21 East quarter post of section 16 (G6) (GLO = 40 ch)

C. Description of monument for corner and accessories established to perpetuate locating the position of the corner:

SET A 3/4" X 24" IRON WITH MCR CAP #34970 IN A NEW MONUMENT BOX
 150° 72.48 Set PK and Tag #17365 in the southwest face of a utility pole
 228° 68.32 Set PK and Tag #17365 in the northwest face of a utility pole
 314° 75.72 Set PK and Tag #17365 in the southwest face of a utility pole
 43° 60.62 Set PK and Tag #17365 in the northwest face of a utility pole

The selected location is accepted by me and is generally accepted by professional surveyors as the best available evidence of the position of the original corner.

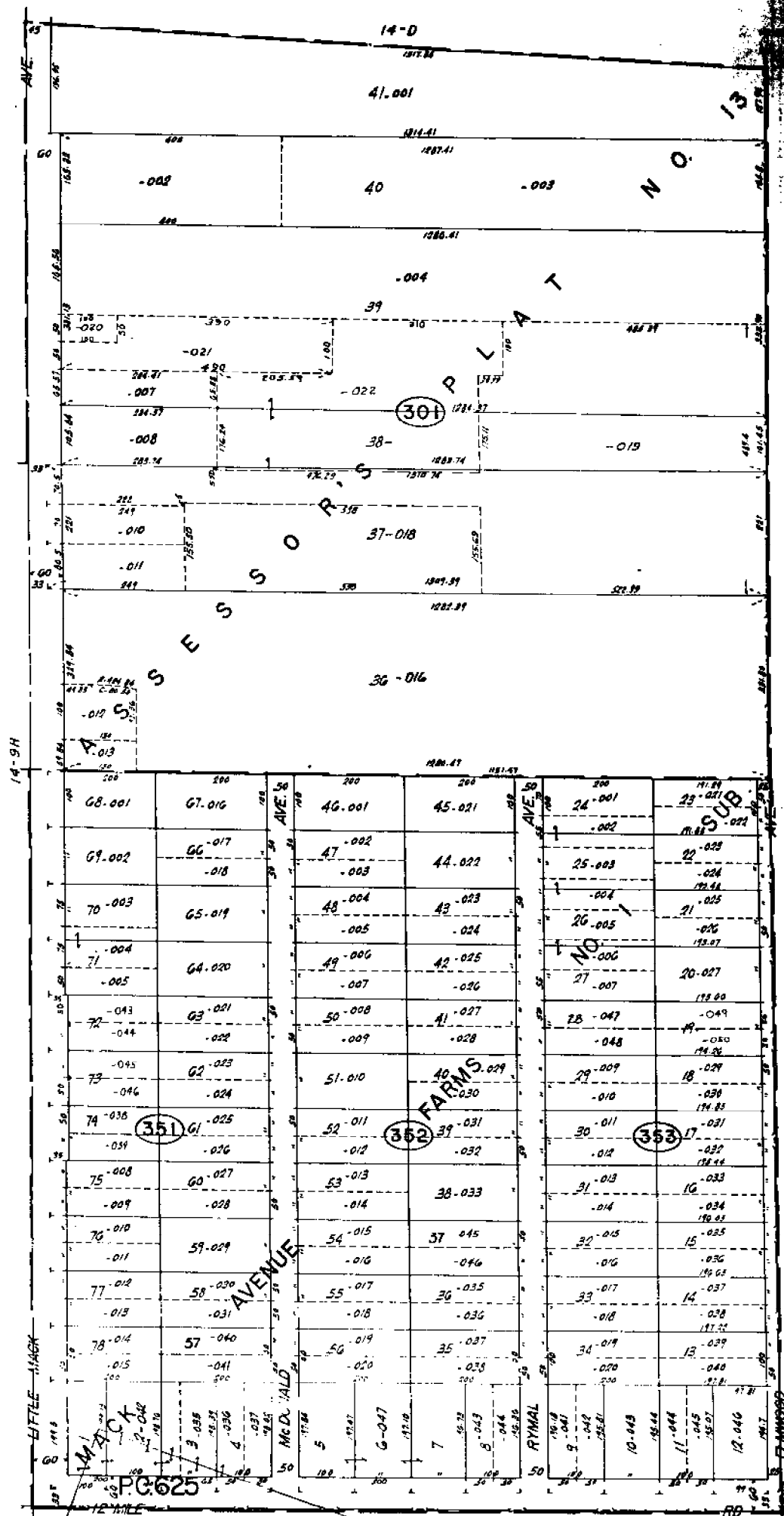
ACCEPTED BY THE MACOMB COUNTY SURVEY PEER GROUP AS THE OFFICIAL CORNER UNDER MICHIGAN PUBLIC ACT 345 OF 1990 AT A MEETING HELD ON 8-15-95
William E. Soderberg
 WILLIAM E. SODERBERG, P.S., CHAIRMAN



Signed by C.P.A. Date 12-15-95
 Surveyor's Michigan License No. 34970

FORM APPROVED BY MICHIGAN STATE BOARD OF LAND SURVEYORS, JAN. 28, 1971

REVISED MAY 14, 1975
 REVISED JAN., 1983



REV. 11-76
REV. 12-77
REV. 12-74

Copyright 1972
TACOMM CO., INC., ANN ARBOR

REV. 7-77

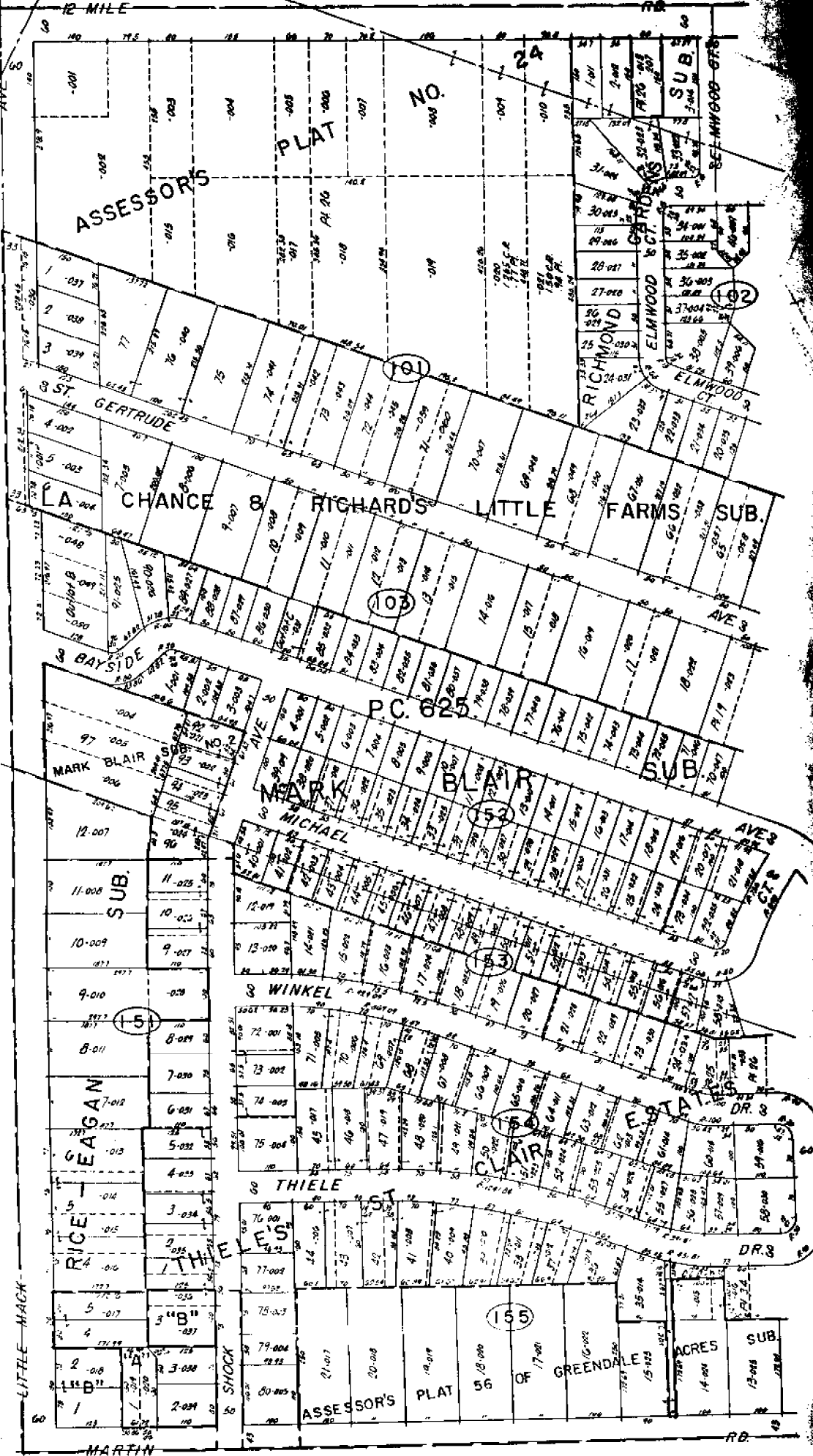
SCALE 1" = 100'
1793
4-10E

14-15A
ROSEVILLE
W. 1/2 S.W. 1/4 SEC. 10 & PT. P.C. 625 T.1N. R.13E.

14-10E

12 MILE

HAMILTON & LIND SUB.
RICE & MARTIN SUB.



14-16D

14-15E

SCALE: 1" = 100'
1807

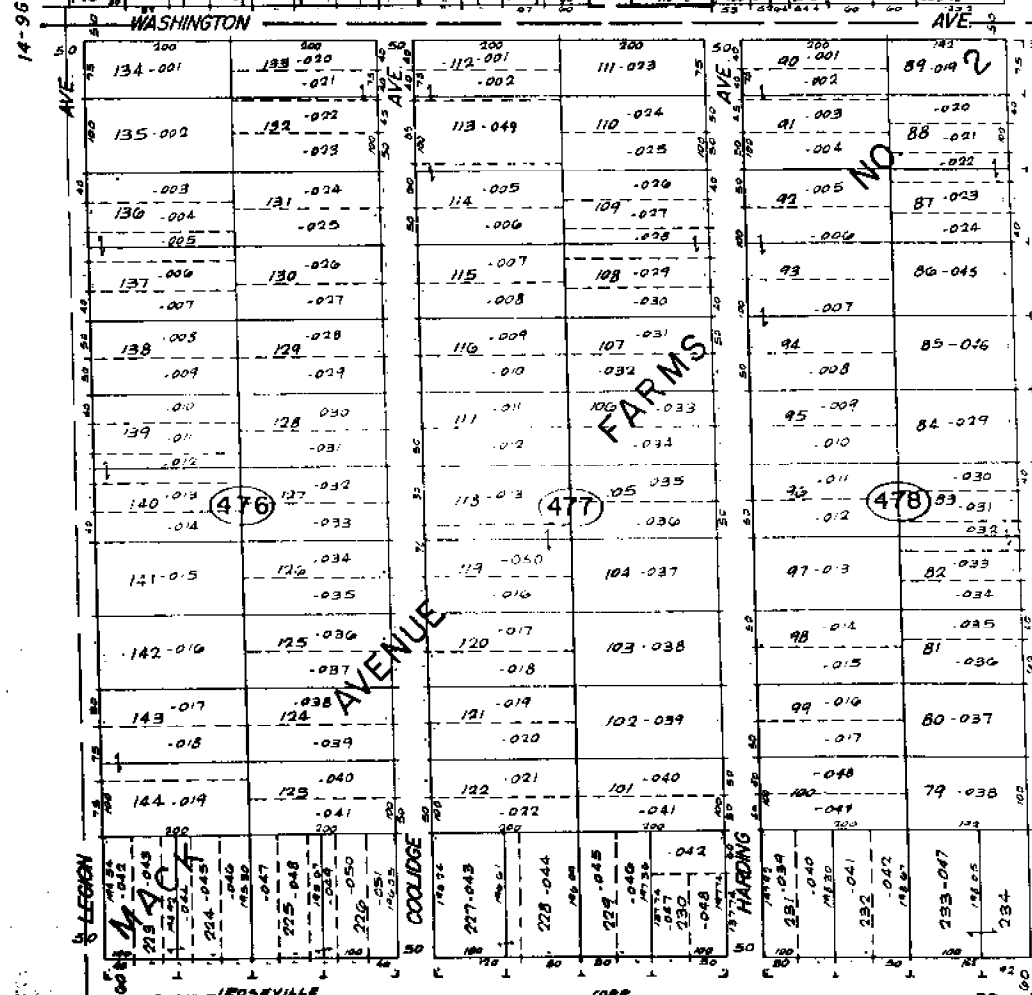
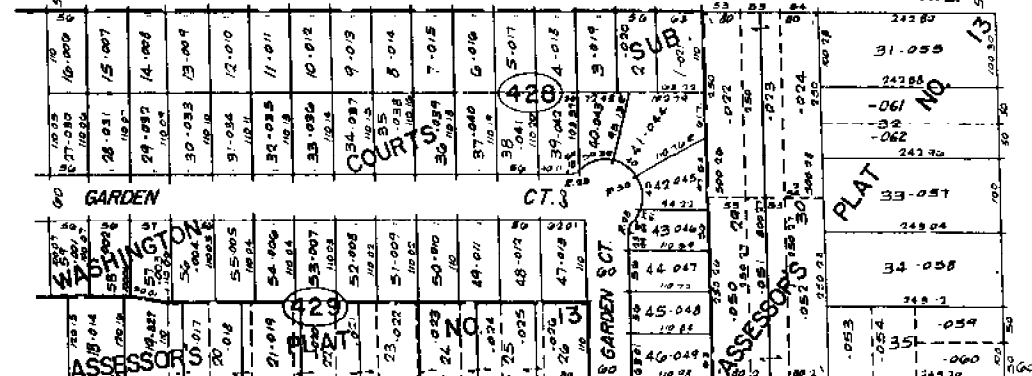
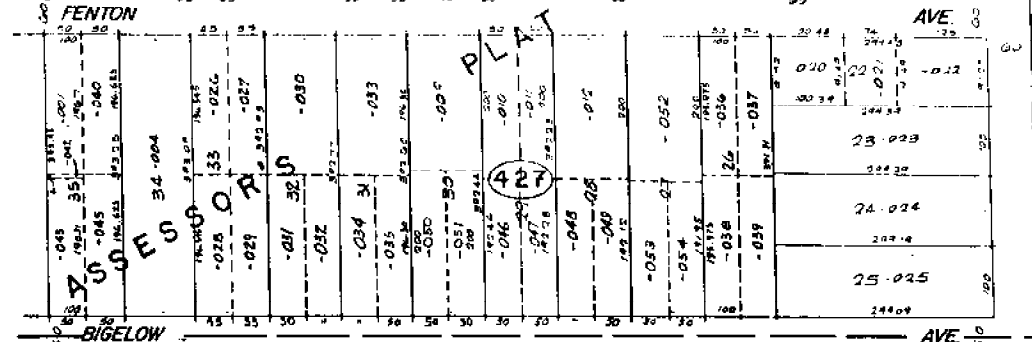
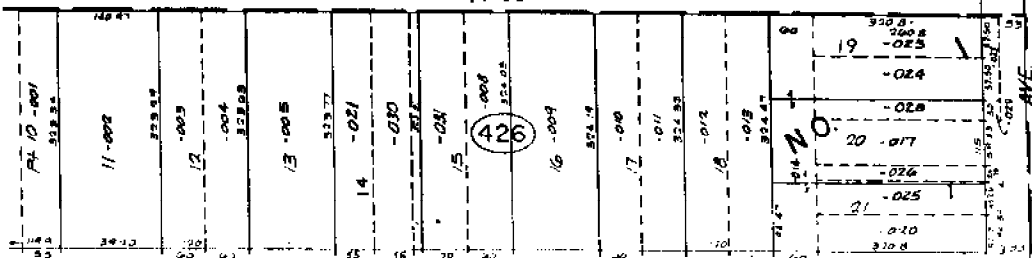
Copyright 1973
MACOMR EXHIBIT, MICHIGAN

ST. CLAIR SHORES

W. 1/2 N.W. 1/4 SEC. 15 & PT. P.C. 625 T.1N. R.13E.

14-15A

14-9D

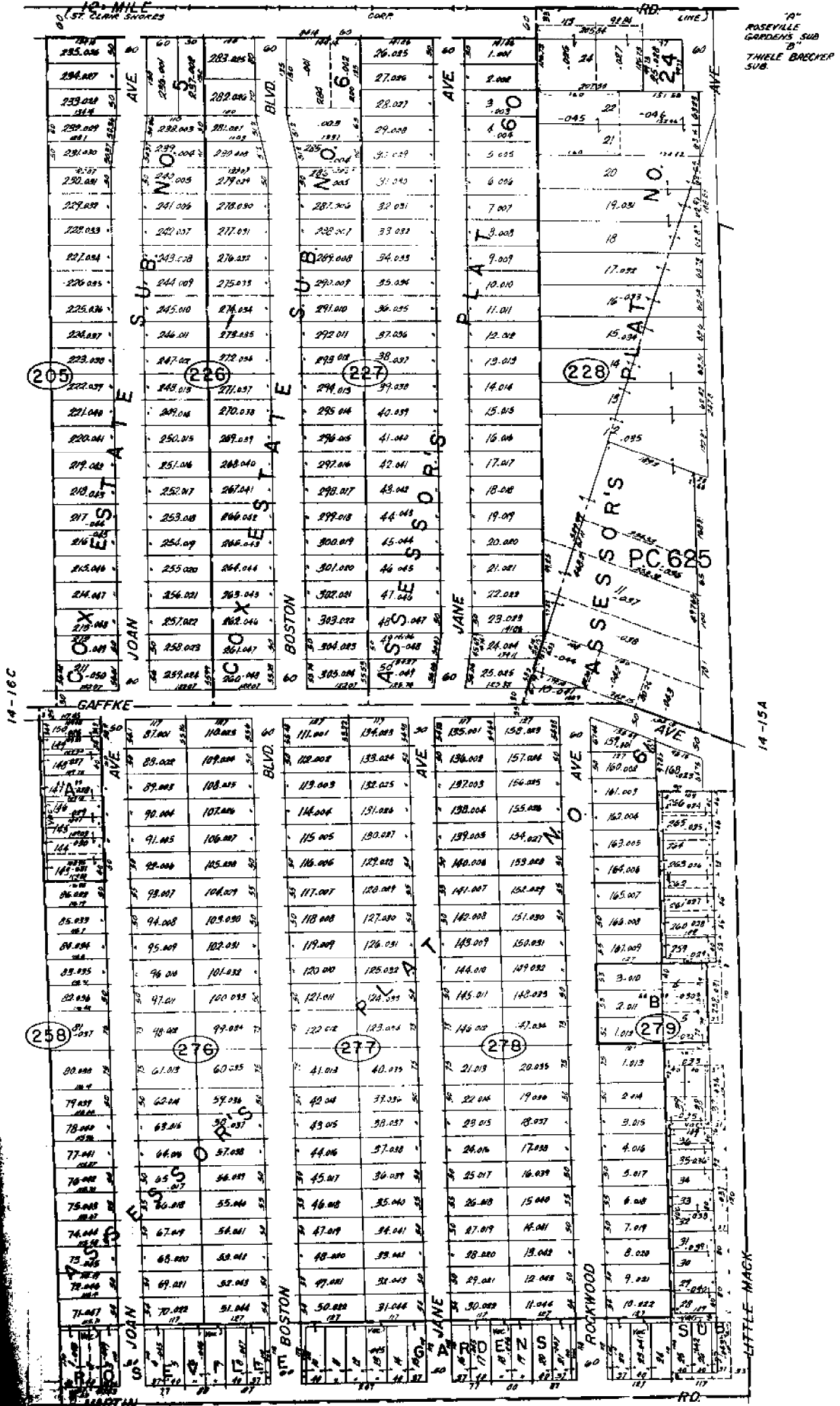


14-96

ROSEVILLE
E 1/2 S.E. 1/4 SEC. 9 T.1N. R.13E.

SCALE 1"=80'
14-9H

Copyright 1972
LUCAS COUNTY, OHIO



18" ROSEVILLE GARDENS SUB
THIELE BAECHER SUB.

ST. CLAIR SHORES

E. 1/2 N.E. 1/4 SEC. 16 & PT. P.C. 625 T.1N. R.13E.

Copyright 1973
MACOMB COUNTY, MICHIGAN

SCALE 1" = 100'
1818
14-16D

C
 CIA HP. MS
 8.10.95
 273.015

Book # 1208

17

22	89 41 55	1350.84	72 98	RESURF TAG SW FACE UP
23	269 37 00	1332.50	68 32	PK 1 SWM TAG NW FACE UP
24	269 47 00	1337.38	75 72	PK 1 WEST TAG SW FACE UP
			60 62	PK 1 SWM TAG SW FACE UP

