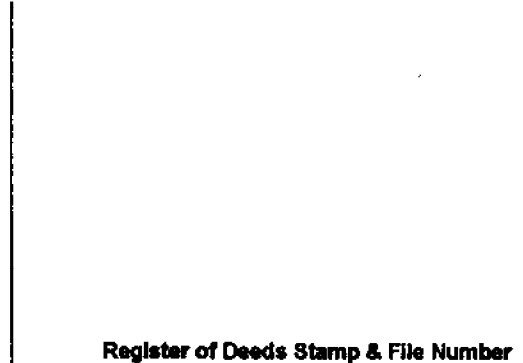


LAND CORNER RECORDATION CERTIFICATE
Filing Requirement of Act 74, Mich. P.A. 1970

For corners in

Macomb Located In: Erin/Lake Township Corner Code #G3
 (County)

1. Public Land Survey T 1N R 13E G3
 T _____ R _____
 T _____ R _____
 T _____ R _____
 2. Property Controlling S _____ T _____ R _____
 in Section S _____ T _____ R _____
 3. Miscellaneous S _____ T _____ R _____
 Property in Sec. S _____ T _____ R _____



4. Lot No. _____, Recorded Plat _____
 5. Private Claims _____

I, Craig P. Amey, in a field survey on August 7, 1995 do hereby certify that under requirements of P.A. 74, Michigan P.A. of 1970, the corner points mentioned in lines 1 and 2 above were in conformance with regulations and rules therefore as required in the current manual of survey instructions of the United States Department of the Interior, Bureau of Land Management or by a decree of a Court of Law and for that the corner points mentioned in lines 3, 4 and 5 above were in conformance with the rules of the Michigan Board of Land Surveyors or by a Decree of a Court of Law; established, re-established, monumented, re-monumented, recovered, found as expressed below:

NOTE: Not more than 4 corners, all in the same town and range, may be recorded on this certificate.

| | | | | | | | | | | | | |
|----|----|----|----|----|----|----|---|---|---|---|---|---|
| A | B | C | D | E | F | G | H | I | J | K | L | H |
| 1 | | | | | | | | | | | | |
| 2 | 6 | 5 | 4 | 3 | 2 | 1 | | | | | | |
| 3 | | | | | | | | | | | | |
| 4 | 7 | 8 | 9 | 10 | 11 | 12 | | | | | | |
| 5 | | | | | | | | | | | | |
| 6 | 18 | 17 | 16 | 15 | 14 | 13 | | | | | | |
| 7 | | | | | | | | | | | | |
| 8 | 19 | 20 | 21 | 22 | 23 | 24 | | | | | | |
| 9 | | | | | | | | | | | | |
| 10 | 30 | 29 | 28 | 27 | 26 | 25 | | | | | | |
| 11 | | | | | | | | | | | | |
| 12 | 31 | 32 | 33 | 34 | 35 | 36 | | | | | | |
| 13 | | | | | | | | | | | | |

A. Description of original monument and accessories and/or subsequent restoration:

1818 GLO William Preston No witnesses remain
 1983 LCRC L3551 P371 William E. Soderberg Found boat spike in mon box at 13 Mile and Little Mack

B. Description of corner evidence found and/or method applied in restoring or reestablishing corner:

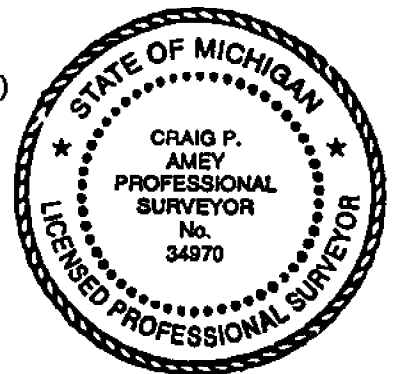
Found boat spike in a monument box at the intersection of 13 Mile and Little Mack (Concrete)

This corner verified by:

Witnesses from LCRC, L3551 P371

N56E 81.21 PK Nail in the SE side of a utility pole
 S36W 61.33 PK and shiner in the NE side of a utility pole
 N37W 57.55 PK and shiner in the SE side of a utility pole

W 2699.58' South quarter post of section 4 (F3)
 S 2696.39' East quarter post of section 9 (G4)



C. Description of monument for corner and accessories established to perpetuate locating the position of the corner:

REPLACED BOAT SPIKE WITH 3/4" X 24" IRON WITH MCR CAP #34970 IN THE EXISTING MONUMENT BOX

AZ 130° 73.07 PK and MCRC tag in the SW face of a utility pole
 AZ 220° 61.80 PK and GW tag in the NW face of a utility pole
 AZ 320° 58.52 PK and GW tag in the SW face of a utility pole
 AZ 60° 81.10 PK and GW tag in the SE face of a utility pole

The selected location is accepted by me and is generally accepted by professional surveyors as the best available evidence of the position of the original corner.

ACCEPTED BY THE MACOMB COUNTY SURVEY PEER GROUP AS THE OFFICIAL CORNER UNDER MICHIGAN PUBLIC ACT 345 OF 1990 AT A MEETING HELD ON 8-15-95
William E. Soderberg
 WILLIAM E. SODERBERG, P.S., CHAIRMAN

Signed by C. P. Amey Date 12-15-95
 Surveyor's Michigan License No. 34970

FORM APPROVED BY MICHIGAN STATE BOARD OF LAND SURVEYORS, JAN. 28, 1971

REVISED MAY 14, 1975
 REVISED JAN., 1983

LAND CORNER RECORDATION CERTIFICATE
FILING REQUIREMENT OF ACT 74, MICH. P.A. 1970
ERIN TOWNSHIP

| FOR CORNERS OF-- | LOCATED IN-- | CORNER CODE NUMBER |
|---------------------------------------|---------------------|--------------------|
| 1. PUBLIC LAND SURVEY | T. 1 N. R. 13 E. W. | G-3, G-4 |
| 2. PROPERTY CONTROLLING IN SECTION | T. N. S. R. E. W. | |
| 3. MISCELLANEOUS PROPERTY IN SECTION | T. N. S. R. E. W. | |
| 4. LOT NO. _____, RECORDED PLAT _____ | | |
| 5. PRIVATE CLAIMS _____ | | |

A824543
 RECORDED IN MACOMB COUNTY RECORDS AT: **9:15 A**
OCT 13 1983
Edna Kelle
 CLERK - REGISTER OF DEEDS
 MACOMB COUNTY, MICHIGAN
 REGISTER OF DEEDS STAMP AND FILING NUMBER

I, William E. Soberberg, do hereby certify that under requirements of P.A. 74, Michigan P.A. of 1970 the corner points mentioned in lines 1 and 2 above were, in a field survey on January 3, 1980, established, re-established, monumented, re-monumented, recovered or restored as expressed below and in conformance with regulations and rules therefore as required in the current manual of survey instructions of the United States Department of the Interior Bureau of Land Management or by a decree of a court of law. Furthermore, that the corner points mentioned in lines 3 and 5 above were, in a field survey on _____, 19____, found, recovered, restored, established or re-established as expressed below and in conformance with the rules of the Michigan State Board of Registration for Land Surveyors or, by Decree of a Court of law:

A. Description of original monument and accessories and/or subsequent restoration:

B. Description of corner evidence found and/or method applied in restoring or re-establishing corner:

- G-3 Fd. Boat Spike in Mon. Box at Intersection of Little Mack and 13 Mile Road
- G-4 Fd. Rerod in Mon. Box Located in Centerline of Little Mack

C. Description of monument for corner and accessories established to perpetuate locating the position of the corner:

- | | |
|---|---|
| <p>G-3 Fd. Boat Spike in Mon. Box N. 56* E. 81.21' to Pk. Set in S.E. Face of U.P. S. 44* E. 53.32' to Pk. Set in S.W. Face of U.P. S. 36* W. 61.33' to Nail w/Tag Fd. in N.E. Face of U.P. N. 37* W. 57.55' to Nail w/Tag Fd. in S.E. Face of U.P.</p> | <p>G-4 Fd. Rerod in Mon. Box N. 72* E. 35.00' to N.W. Corner of Catch Basin S. 51* E. 67.32' to Pk. Fd. in S.W. Face of U.P. W. 34.00' to Nail w/Tag Fd. in N. Face of U.P. N. 11* W. 118.72' to Pk. Set in E. Face of U.P.</p> |
|---|---|

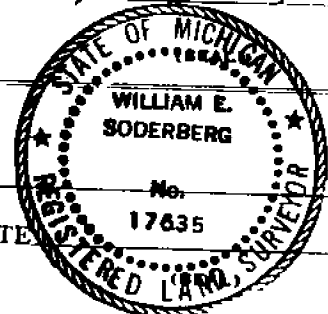
SIGNED BY William E. Soberberg DATE August 18, 1983

SURVEYOR'S MICHIGAN REGISTRATION NO. 17635

FOR STATE AND UNITED STATES AGENCIES:

SIGNED BY _____ DATE _____
CHIEF OF SURVEY PARTY

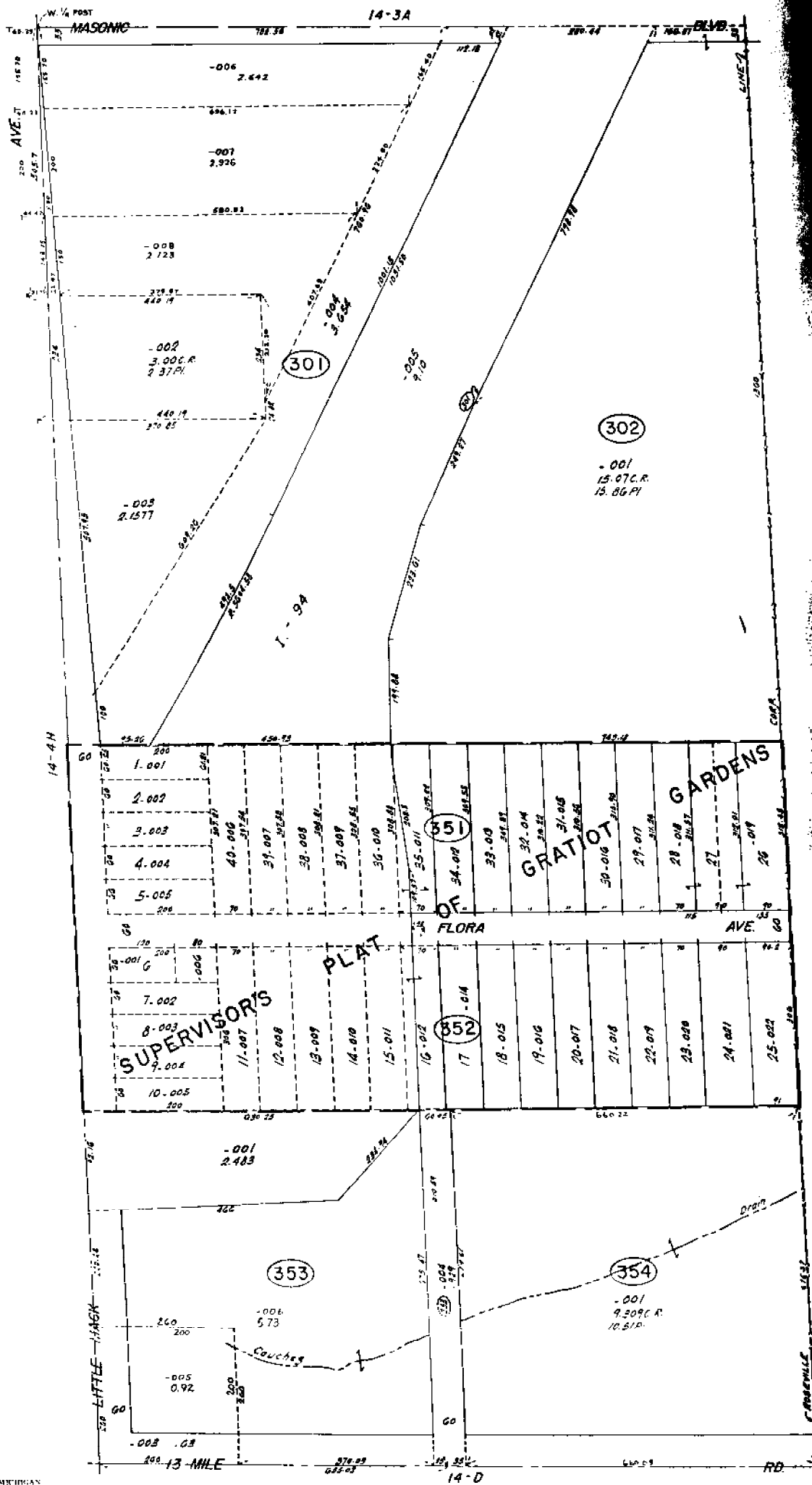
APPROVED AND SIGNED BY _____ DATE _____
MICHIGAN REGISTERED LAND SURVEYOR



SURVEYOR'S MICHIGAN REGISTRATION NO. _____

3-

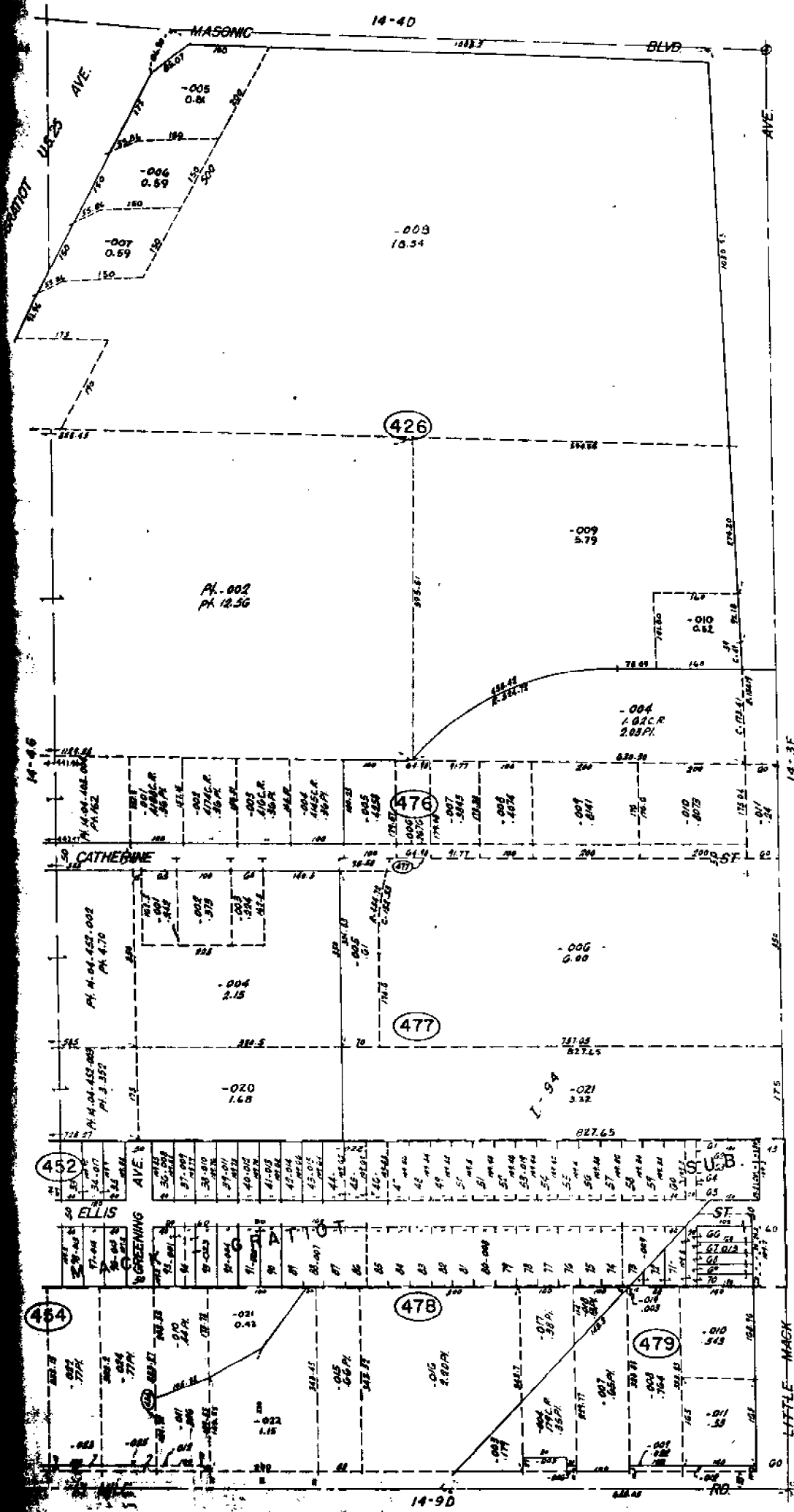
01111



REV 11-73
 REV 11-74
 REV 0-75
 REV 11-74
 Copyright 1972
 SAGINAW COUNTY, MICHIGAN

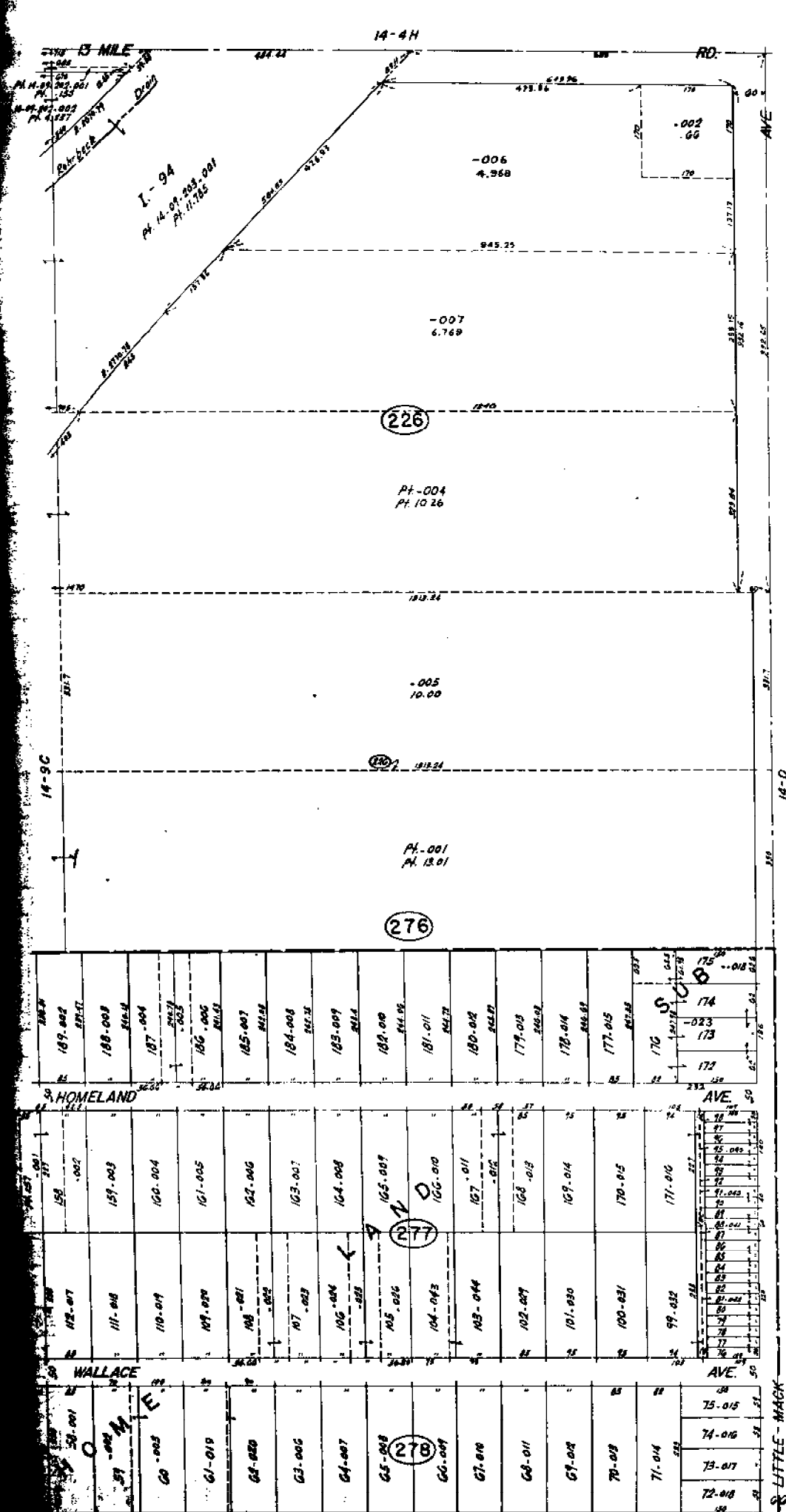
SCALE 1" = 100'
 1737
 14-3E

ROSEVILLE
 W. 1/2 SW. 1/4 SEC. 3 T. 13N. R. 13E.



ROSEVILLE
 E 1/2 SE 1/4 SEC. 4 T.1N. R.13E.

SCALE: 1" = 100'
 1748
 14-4H



14-9H
ROSEVILLE
 E 1/2 NE 1/4 SEC. 9 T.1N. R.13E.

Copyright 1972
 MACOMB COUNTY, MICHIGAN

SCALE 1" = 100'
1784
 14-9D