

LAND CORNER RECORDATION CERTIFICATE
Filing Requirement of Act 74, Mich. P.A. 1970

For corners in

Macomb Located In: Corner Code #
 (County) City of Roseville, City of St. Clair Shores

1. Public Land Survey T 1N R 13E F-10
 T _____ R _____
 T _____ R _____
 T _____ R _____

2. Property Controlling S _____ T _____ R _____
 in Section S _____ T _____ R _____

3. Miscellaneous S _____ T _____ R _____
 Property in Sec. S _____ T _____ R _____

5229374
 LIBER 17446 PAGE 169



12/20/2005 01:56:19 P.M.
 MACOMB COUNTY, MI SEAL
 CARMELLA SABAUGH, REGISTER OF DEEDS

Register of Deeds Stamp & File Number

	A	B	C	D	E	F	G	H	I	J	K	L	M
2	6		5		4		3		2		1		
3													
4	7		8		9		10		11		12		
5													
6	18		17		16		15		14		13		
7													
8	19		20		21		22		23		24		
9													
10	30		29		28		27		26		25		
11													
12	31		32		33		34		35		36		
13													

4. Lot No. _____, Recorded Plat
 5. Private Claims

I, Robert H. Birkett, in a field survey on, August 23, 2005 do hereby state that under requirements of P.A. 74, Michigan P.A. of 1970, the corner points mentioned in lines 1 and 2 above were in conformance with regulations and rules therefore as required in the current manual of survey instructions of the United States Department of the Interior, Bureau of Land Management or by a decree of a Court of Law and for that the corner points mentioned in lines 3, 4 and 5 above were in conformance with the rules of the Michigan Board of Land Surveyors or by a Decree of a Court of Law; established, re-established, monumented, re-monumented, recovered, found as expressed below:

NOTE: Not more than 2 corners, all in the same town and range, may be recorded on this certificate.

A. Description of original monument and accessories and/or subsequent restoration:

- F-10 Center Post of Section 28. Corner not set by GLO
- a 1924, W. J. Lehner No. 123, "Lake Wood Gardens Subdivision", L007 P052 M.C.R.
- b 1925, G. H. Rubling (C.E.), "Kelly Super Highway", L010, P019 M.C.R.
- c 1930, W. J. Lehner No. 123, "Assessor's Plat No. 8", L012, P039 M.C.R.
- d 1953, H. J. Filler No. 1645, "Hamilton Subdivision", L029, P021 M.C.R.
- e 1954, T. W. Postiff No. 6522, "Sun Valley", L030, P047-048 M.C.R.
- f 1955, H. J. Filler No. 1645, "Mucciante Subdivision", L032, P027 M.C.R.
- g 1955, T. W. Postiff No. 6522, "Star Valley", L032, P052 M.C.R.
- h 1955, J. D. Lehner No. 5787, "Ronna Lynn Subdivision", L032, P046 M.C.R.
- i 1955, H. J. Fuller (C.E.), "Fairway Golf Course Subdivision", L033, P004, M.C.R.
- j 1955, H. J. Filler No. 1645, "Fairway Golf Course Subdivision No. 1", L034, P011 M.C.R.
- k 1956, V. Wilson No. 3032, "Pincket's Subdivion", L037, P010 M.C.R.
- l 1957, H. J. Filler No. 1645, "Assessor's Plat No. 33", L039, P042 M.C.R.



B. Description of corner evidence found and/or method applied in restoring or reestablishing corner:

F-10 Center Post Section 21. Re-set corner at centerline of Stephens Road 80' +/- west of the centerline of Interstate I-94 using the found irons and monumentation from (e), (ij) and (j) in section A.

Field Measurements Between Corners

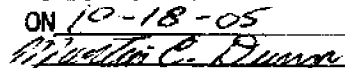
- F-10 to F-9 - 2705.78' 2005 remon, record east of 2705.00' and record west of 2706.19'.
- F-10 to G-10 - 2713.59' 2005 remon, record south 2715.90', record north 2711.60'.
- F-10 to E-10 - 2704.71' 2005 remon, record south 2708.92', record north 2735.45'.
- F-10 to North Line PC 624 - 743.23 2005 remon, record 743.92'.

C. Description of monument for corner and accessories established to perpetuate locating the position of the corner:

F-10 Set a brass plug on an existing bridge deck on the centerline of Stephens Road over Interstate I-94, marked "Macomb County Monument, MI, ACT 345, 41094, F-10".

- Az. 0° - 13.07' - South face of curb face walk.
- Az. 25° - 21.59' - Set chiseled "X" on southwest bolt light pole base.
- Az. 180° - 12.85' - North face of curb face walk.
- Az. 270° - 16.88' - Edge of concrete at end of bridge deck.
- Az. 290° - 125.64' - Southwest corner house # 19451.

The Selected location is accepted by me and is generally accepted by Professional Surveyors as the best available evidence of the position of the original corner.

ACCEPTED BY THE MACOMB COUNTY SURVEY PEEPL
 GROUP AS THE OFFICIAL CORNER UNDER MICHIGAN
 PUBLIC ACT 345 OF 1990 AT A MEETING HELD
 ON 10-18-05

 MARTIN C. DUNN, P.S. CHAIRMAN

Signed by Robert H. Birkett
 Surveyor's Michigan License No. 41094

Date November 18, 2005

**Report of Survey
F-10, Erin Township
Town 1 North, Range 13 East**

Corner Information

Center Post Section 28.

Tax Descriptions

None

Plats

F-10 Center Post of Section 28. Corner not set by GLO
1924, W. J. Lehner No. 123, "Lake Wood Gardens Subdivision", L007 P052 M.C.R.
1925, G. H. Rubling (C.E.), "Kelly Super Highway", L010, P019 M.C.R.
1930, W. J. Lehner No. 123, "Assessor's Plat No. 8", L012, P039 M.C.R.
1953, H. J. Filler No. 1645, "Hamilton Subdivision", L029, P021 M.C.R.
1954, T. W. Postiff No. 6522, "Sun Valley", L030, P047-048 M.C.R.
1955, H. J. Filler No. 1645, "Mucciante Subdivision", L032, P027 M.C.R.
1955, T. W. Postiff No. 6522, "Star Valley", L032, P052 M.C.R.
1955, J. D. Lehner No. 5787, "Ronna Lynn Subdivision", L032, P046 M.C.R.
1955, H. J. Fuller (C.E.), "Fairway Golf Course Subdivision", L033, P004, M.C.R.
1955, H. J. Filler No. 1645, "Fairway Golf Course Subdivision No. 1", L034, P011 M.C.R.
1956, V. Wilson No. 3032, "Pincket's Subdivion", L037, P010 M.C.R.
1957, H. J. Filler No. 1645, "Assessor's Plat No. 33", L039, P042 M.C.R.

Recorded Surveys

None

Miscellaneous

1958, RCMC Witness Card
N 12° W - 72.19' - Southeast corner house #19461
N 35° W - 88.51' - Southwest corner house #19461
S 12° W - 35.22' - 6" twin box elder

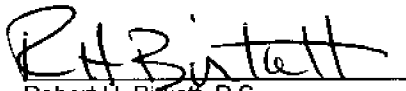
Undated, RCMC Witness Card
N 12° W - 72.19' - Southeast corner house #19461
N 35° W - 88.51' - Southwest corner house #19461
S 12° W - 35.22' - 6" twin box elder

Observations From F-10

F-10 to F-9 - 2705.78' 2005 remon, record east of 2705.00' and record west of 2706.19'.
F-10 to G-10 - 2713.59' 2005 remon, record south 2715.90', record north 2711.60'.
F-10 to E-10 - 2704.71' 2005 remon, record south 2708.92', record north 2735.45'.
F-10 to North Line PC 624 - 743.23 2005 remon, record 743.92'.

Recommendation

The recommendation to the Peer Review Board is to accept the above position as the faithful perpetuation of the corner.



Robert H. Birkett, P.S.
Michigan No. 41094

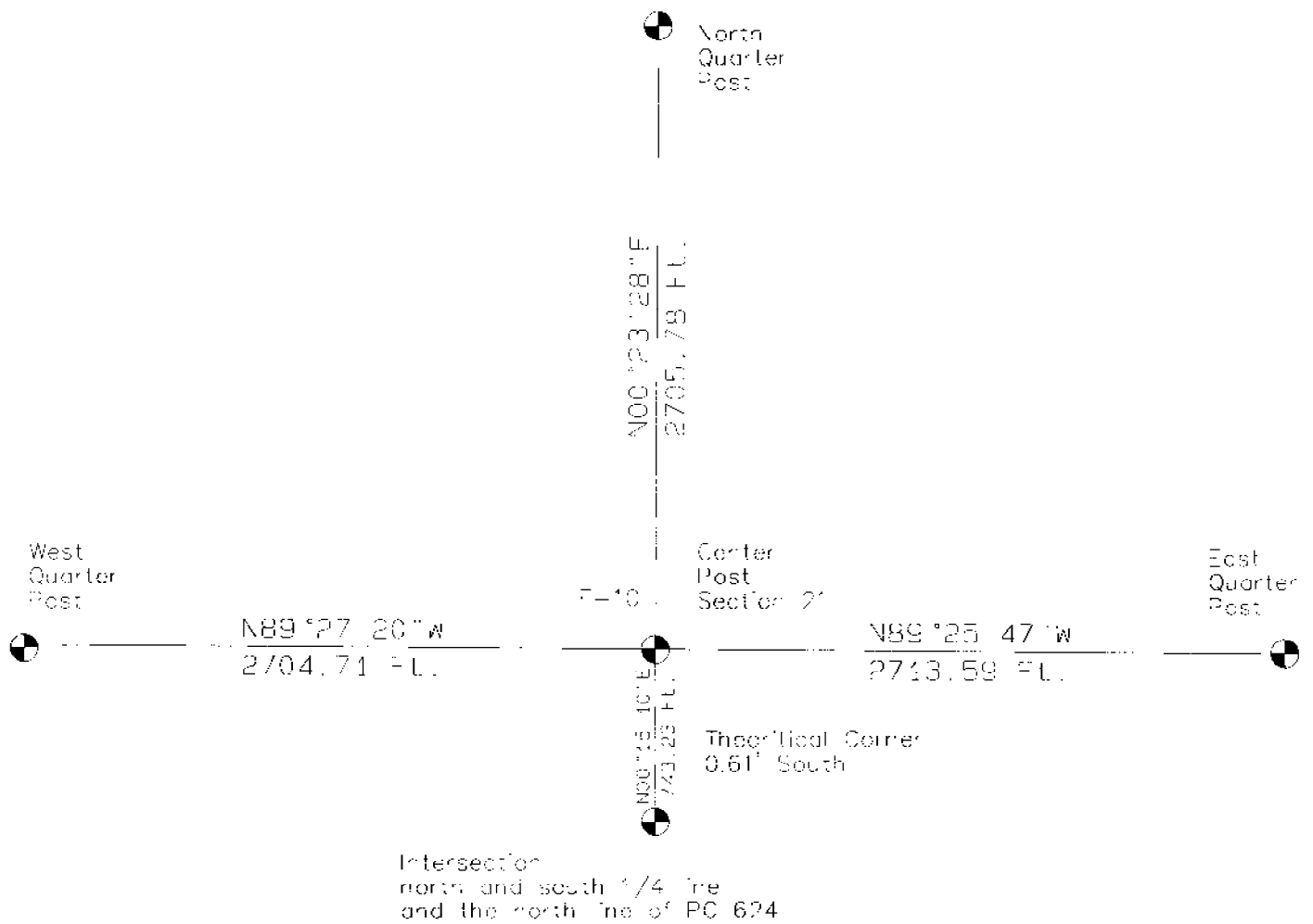
223-026 2005 MACOMBS REMON
 8-21-05 F-10
 M.D. CUR T.M. & B.E. E.M.U. - EAST PONTE

SET CHS 'X' ON BRIDGE DECK
 @ E. STEPHENS BOAT W. OF
 E 194

AZ	DIST	DECK
0°	13.07	S. FACE CURB FAKED WALK
180°	12.85	N. FACE CURB FAKED WALK
270°	14.88	W. E/CONG BRIDGE DECK
285°	21.59	SET CHS 'X' ON SW BOAT LIGHT POLE BASE
290°	125.64	SW COR HOUSE # 19451

NJ-18040. 373
 E-16718. 692

Town 1 North
 Range 13 East
 City of Eastpointe and St. Clair Shores



1A-28A

1A-28B

"HAMILTON SUB."
L. 29 P. 21

"FAIRWAY GOLF COURSE
SUB."
L. 33 P. 4

"FAIRWAY GOLF COURSE
SUB. NO. 1"
L. 34 P. 11

MULLEN SUB.
L. 32 P. 27

E-10

1016.90

~~1720.45~~

1318.00

336.75

975'

379.80

F-10

STEPHENS

1390.92

"A.P. No. 33"

L. 39 P. 42

CENTRIC
POST

"KELLY SUPER
HOLIDAY"
L. 10 P. 19

2708.92

1A-28C

1A-28F

14-28D

(2706.19)

"PINCKET'S SUB"
L. 37 P. 10

"FAIRWAY GOLF COURSE SUB"
L. 34 P. 11

1340.79

1085.40

280.00

⊕

1390.14

1364.86

"SUN VALLEY"
L. 30 P. 47-48

"LYNN SUB"
L. 32 P. 46

F-10

F-9

(2705.00)

14-28C

2711.60

1A-28C

L. 32
"Sun Valley"
P. 47-48

7'-10" ⊕

1362.65

STEPHENIS

669.40

2715.90'

"ASSESSOR'S PLAT No. 8"
L. 12 P. 39

1A-28G

1A-28H

1A-28D

L. 17 P. 52
"Grace Wood"
No. 21
MADSEN

679.55

11'-0" ⊕

RPD ELUCRUP
N. 33911.51
E 14676.21
612.69

2005 MACOMB REMON
E-4/F-4
TIN RISE
702 026 187

THE DRAIN

026-248 RPS BASE 745"
MO'S N. 33911.50
E 14676.27

026-249 1/2" PIPE ON S.W. 1/4 LINE, W. SIDE OF
BACKWATER

026-250 1/2" PIPE W. SIDE GREEN

026-251 BOY 1/2" N. SIDE GREEN

026-252 1/2" PIPE N. SIDE GREEN

026-253 1/2" PIPE N. SIDE GREEN

026-254 3/4" P. S. SIDE GREEN

026-255 1/2" PIPE S. SIDE GREEN

026-256 3/4" PIPE S. SIDE GREEN

026-257 1/2" PIPE S. SIDE GREEN

223-026 2005 N/A 026 REMON
8-6-05 E-4 / F-4

MUD, C/C
TIN RIBE
223026 TR 7"

D-# D-3

026-253 1" HEX BAR S SIDE COMMON
WEST OF GRATOT

026-257 1/2" RE # 41094 S SIDE COMMON

026-260 1/2" PIPE S SIDE COMMON

026-261 E-4 1/2" RE IN MAIN BOX

026-262 5/8" EA SE KELLY & EASTLAND

026-263 1/2" PIPE SE COMMON & PARK

026-264 BEAT 1/2" RE NW COMMON & PARK

026-265 1/2" RE SE QUINCEY & FRANK

026-266 3/4" BAR NE QUINCEY & FRANK

D-4 NOTHING FOUND

026-267 E-3 REMON # 34970

223070 2005 MACHINIS REMON F 2

WUJ 2 TIN RIBS

223070 F 2

Pfth WCC

026-268 F-3 REMON IN MON BOX

026-269 G-2 REMON IN MON BOX

F-2 NORTHERLY FEEDING

026-270 CONC MIGN SW BEKONISFERS & BRANDT

026-271 TP # 27 NALC NW BEKONISFERS &

VOLCANO

026-272 1/2" PIPE SE BEKONISFERS & MACEL

026-273 F-1 REMON # 22408 IN BOX

026-274 1/2" PIPE SE SOLON & BRANDT

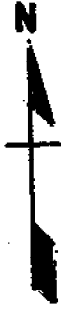
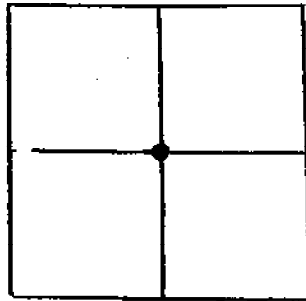
026-275 PFD 11312

MISC N: 33911.482

E: 14676.333

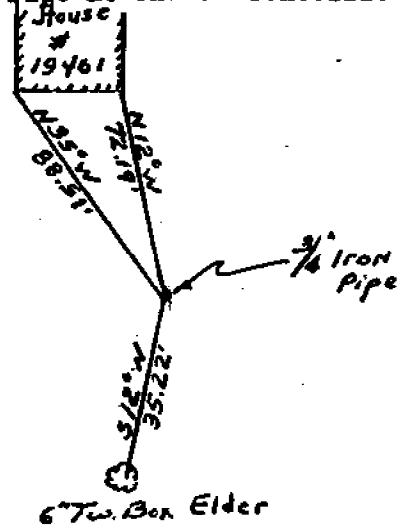
123

F-10



REMARKS

Center Post Sec. 28
Found 1 1/2" Pipe at end of Conc. Slab



WITNESSES

- SE Cor House #19461
N 12° W 72.19'
- SW Cor House #19461
N 35° W 88.51'
- 6" Twin Box Elder
S 12° W 35.22'

F-10

Road File No.	
File Name No.	Date Filed December 10
Assessment District No.	Station No.
Locality City of St. Clair Shores	Section Corner Center Post Sec. 28
Type of Surface	Width
Description of Monument 1 1/2" Pipe at end of Concrete Slab	
Monument in Relation to Center Line of Pavement	
WITNESSES:	
1. S.E. Cor. House #19461 N. 12° W. 72.19'	
2. S.W. Cor. House #19461 N. 35° W. 88.51'	
3. 6" Twin Box Elder S. 12° W. 35.22'	
4.	

EXAMINED AND APPROVED
MAY 1 1935

L. J. ...
...

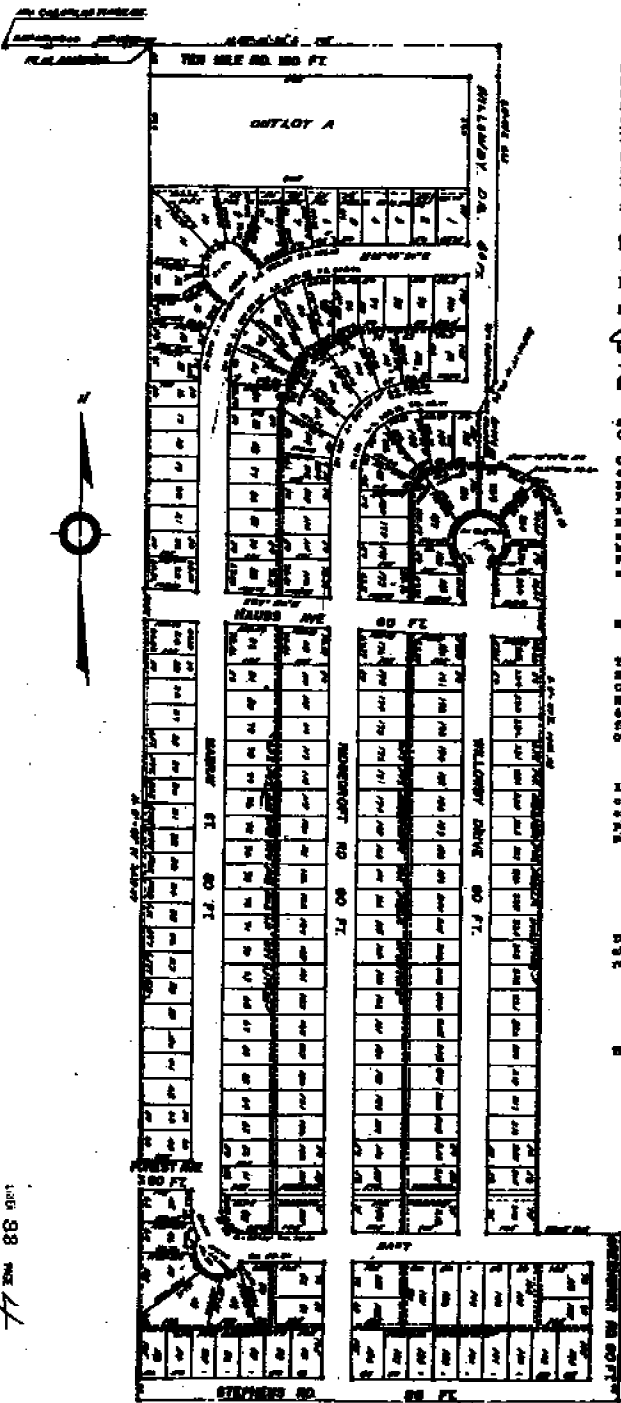
"FAIRWAY GOLF COURSE SUBDIVISION" PART OF THE N.W. 1/4 SEC. 28 T. 1N. R. 13E. EAST DETROIT MAGOMB CO. MICH.

235469

SCALE: 1" = 40'

NOTE: ALL MEASUREMENTS ARE IN FEET AND DECIMALS THEREOF.

HARRY J. FULLER
REGISTERED CIVIL ENGINEER
ST. CLEMENS MICH.



WHEREAS the Board of Directors of the Fairway Golf Club, Inc., a Michigan Corporation, has caused the land embraced in the attached plat to be surveyed, laid out and plotted to be known as "FAIRWAY GOLF COURSE SUBDIVISION" part of the N.W. 1/4 Sec. 28, T. 1 N., R. 13 E., East Detroit, Macomb Co., Michigan and that the streets shown on said plat are hereby dedicated to the use of the public and that the easements or rights on said plat are hereby reserved for the use of public utilities and no permanent structures are to be erected within the lines of said easements. Registration of the use thereof is vested in the local governmental authority.

Accepted and filed in the presence of:
[Signatures]
FAIRWAY GOLF CLUB, INC.
[Signatures]
L. A. S. COMPANY
[Signatures]

STATE OF MICHIGAN }
County of Macomb }
On this 1st day of May 1935 A.D., before me a Notary Public in and for said county appeared *[Signatures]* and *[Signatures]*, all being each by me duly sworn and they are President and Secretary respectively of Fairway Golf Club, Inc.; President and Vice President respectively of L. A. S. Company, Vice President and Assistant Secretary respectively of Equitable Detroit Company and a Michigan Corporation and that the aforesaid plat and instrument made in the corporate name of said corporation and that said instrument was signed and sealed in behalf of said corporation by authority of its Board of Directors and that said John Fisher and Paul Fisher, L. A. S. and William F. Hall, and William J. Bunker and Marguerite Metz acknowledged said instrument to be the free act and deed of said corporation.

By Commission Expires *[Signature]*
Notary Public, Macomb Co., Michigan

I hereby certify that the plat herein delineated is a correct one and that permanent metal monuments consisting of bars of one inch square iron in standard and thirty six inches in length secured in a concrete cylinder of three feet diameter and thirty six inches in diameter have been placed at points marked thereon (a) as shown about all angles in the boundaries of the land plotted, at all the intersections of the streets, intersections of alleys, or of streets and alleys, corners of the plat as shown on said plat.

CERTIFICATE OF MUNICIPAL APPROVAL
This plat was approved by the City Council of the City of East Detroit of Macomb County, Michigan at a meeting held *[Date]*. All public sewage and water facilities are installed ready for connection.

CERTIFICATE OF APPROVAL BY COUNTY BOARD
This plat was approved on the *[Date]* 1935.
[Signatures]
County Registrar of Deeds
[Signatures]
County Treasurer
[Signatures]
County Clerk

NOT TO BE RECORDED UNTIL THE COUNTY REGISTER'S OFFICE HAS RECEIVED THE ORIGINAL PLAT AND THE ORIGINAL INSTRUMENTS AND THE ORIGINAL INSTRUMENTS HAVE BEEN RECORDED IN THE COUNTY REGISTER'S OFFICE.

REGISTER'S OFFICE
COUNTY OF MACOMB
Recorded by Notary
[Signature]
MAY 6 1935
MAGOMB CO. MICH.
Page 4
[Signatures]

See Particulars Concerning This Plat on Page 457

100 88
4

C. 16
P. 39

~~E-4~~
F-10

1930 W. J. LEHNER No. 123

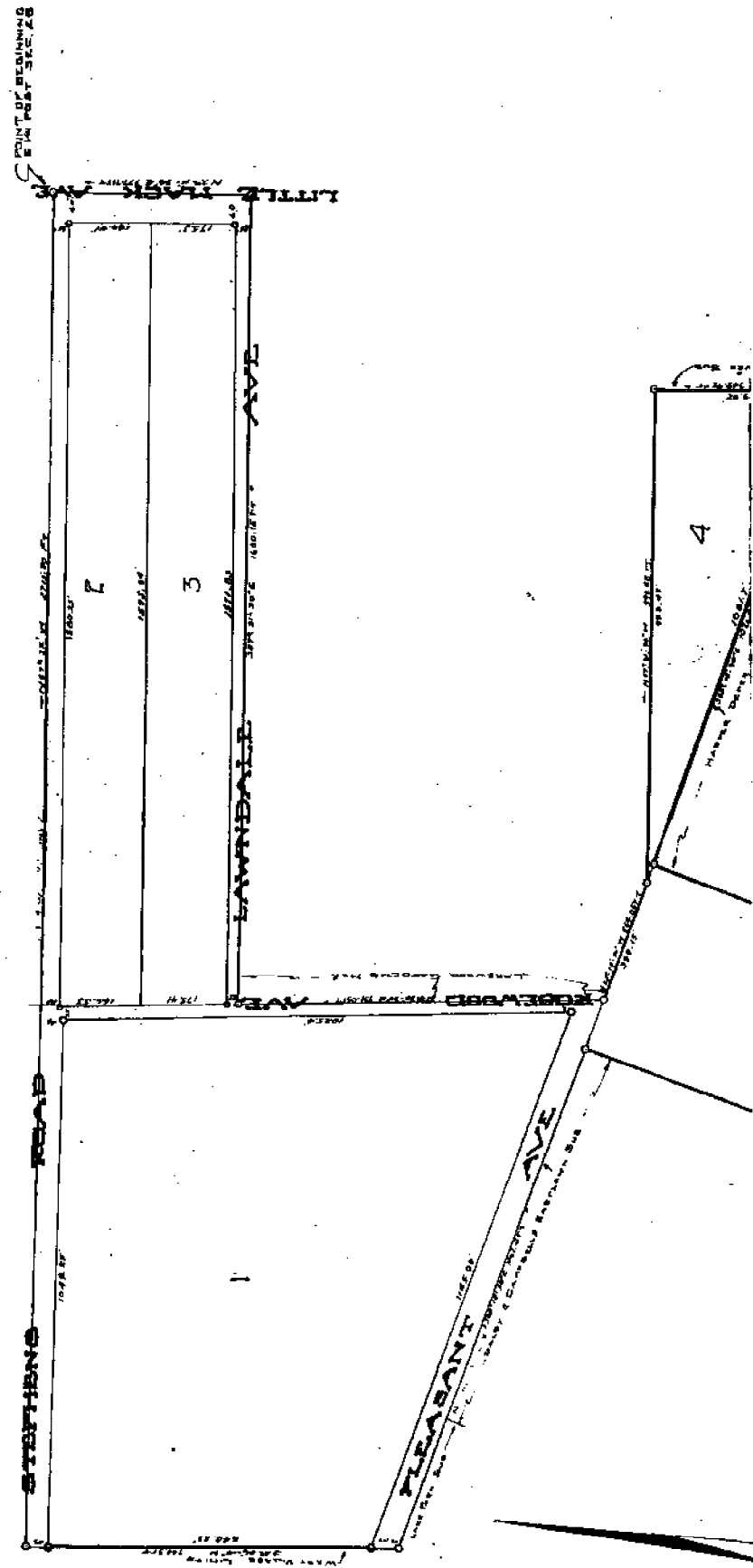
ASSESSORS PLAT No 8

April 27/1930
to 6
Hauled

PARTS OF P.C. 624 & S.E. 1/4 SEC. 68 T19R18E.
VILLAGE OF ST CLAIR SHORED MACOMB CO. MICH

WALTER J. LEHNER REG. C.E.
BY: CLEMENS MICK

SCALE 1"=100'



F-10

7
P52

1924 W. J. LEHNER

Map 100

Plan 15 1124
By L. H. Kopp

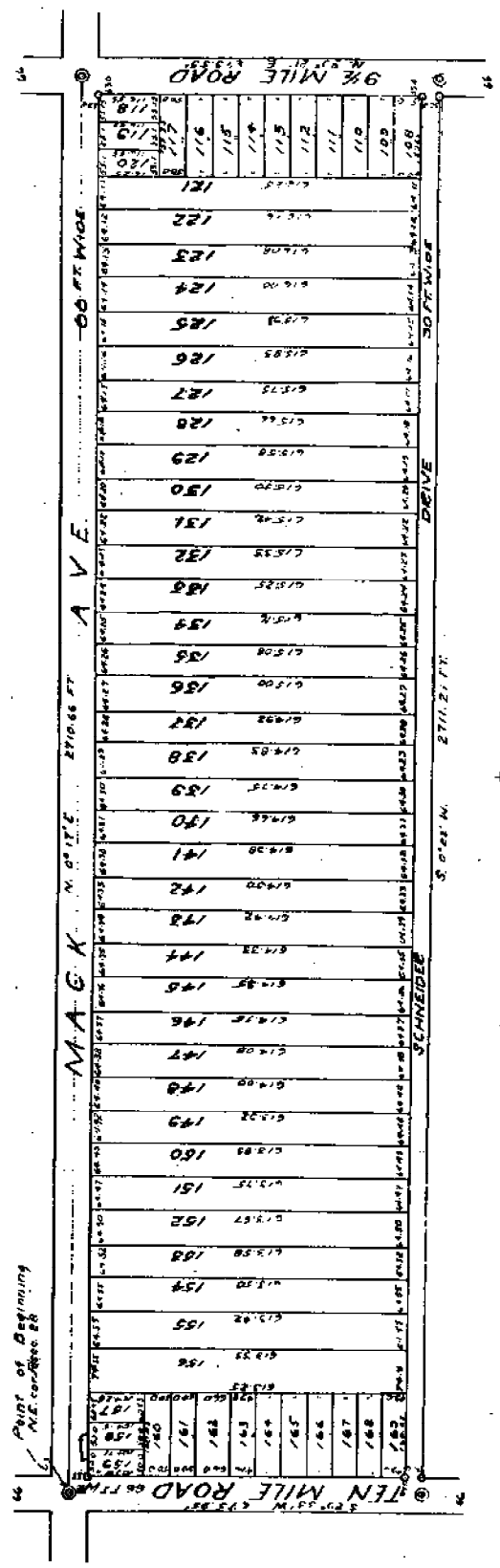
LAKE WOOD GARDENS SUBDIVISION No. 1

OF THE E. 1/2 OF THE E. 1/4 OF PBL. SEC. 28, T. 1 N. R. 13 E. LAKE TOWNSHIP
MACOMB COUNTY MICHIGAN

Scale 1" = 200'



Walter J. Lehner, Reg. C.E.
Mt. Clemens Michigan



Survey of property by Walter J. Lehner, Reg. C.E., Mt. Clemens, Michigan.

This is to certify that the above plat was approved by the Township Board of the Township of...

Macomb County, Michigan, at a meeting held on the 13th day of March, 1923.

Alfred A. Schaefer

Description of Land Platted
This Land embraced in the annexed Plat of Levin & Sons Subdivision No. 1 of the 6th of 7th N. 1st E. of 28 T. 1 N. R. 31 E. Sec. 28, Lake Township, Macomb Co., Mich. is described as follows: Beginning at the N.E. cor. of P-1 sec 28 T. 1 N. R. 31 E. Lake Twp. Macomb Co. Michigan thence S. 89° 35' W. 670.55 FT., thence S. 0° 22' W. 2711.21 FT., thence N. 89° 21' E. 679.55 FT., thence N. 0° 17' E. 2710.86 FT., to point of beginning.

I hereby certify that the plat herein is correct in all particulars and that the same is in accordance with the laws of Michigan and that all proper notices have been given to all persons interested in the land platted and that all necessary provisions of the laws of Michigan have been complied with.

Alfred A. Schaefer County Clerk

The plat was approved by the Board of Supervisors of Macomb County, Michigan on the 13th day of March, 1923.

Charles A. Thompson

Alfred A. Schaefer

Deputy

12th
March
1923
Plat
52
Alfred A. Schaefer

Walter H. Schaefer
Walter H. Schaefer
Walter H. Schaefer
Walter H. Schaefer

Lake Wood Gardens, Subdivision # 1, Sec. 28 T. 1 N. R. 31 E. Lake Twp. Macomb Co., Michigan.

Alfred A. Schaefer

Alfred A. Schaefer

Mr. Christian Bohm and Mrs. Maria Bohm sign their names as German.

County of Michigan

City of Macomb

On this 13th day of March, 1923, I, the County Clerk, personally saw the above named *Walter H. Schaefer* and *Walter H. Schaefer* and they acknowledged to me to be the persons who executed the above plat.

Alfred A. Schaefer

Alfred A. Schaefer

Feb - 2 - 1926

COUNTY TREASURER

Walter H. Schaefer

Deputy

Original

"ASSESSORS PLAT NO.33" PART OF SEC 28 T.1N.R.13E. CITY OF EAST DETROIT MACOMB CO. MICHIGAN

EXAMINED AND APPROVED
Date AUG 14 1957

Frank S. Schwanicki
FRANK S. SCHWANICKI
AUGUSTOR GENERAL

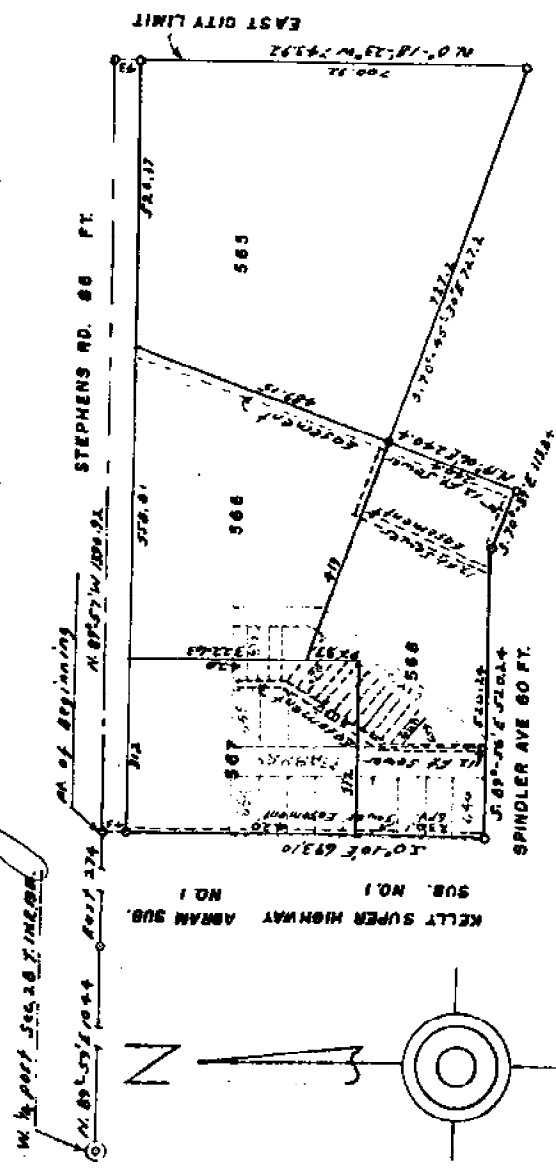


SCALE: 1" = 200'

NOTE: ALL MEASUREMENTS ARE IN FEET AND DECIMALS THEREOF.

HARRY J. FULLER
REGISTERED CIVIL ENGINEER
MT. CLEMENS MICH.

348479



REGISTER'S OFFICE
COUNTY OF MACOMB
Received by Record
in Vol. 32 of Plat 33, on
August 15, 1957
at 2:50 o'clock P. M. and recorded
Leron Bunn
Register of Deeds

DEDICATION

KNOW ALL MEN BY THESE PRESENTS, that I Howard L. Ledbetter, Assessor of the City of East Detroit, Macomb County, Michigan, by virtue of authority in me vested by Section 51 Act 172 of 1929, having been duly authorized by the City Council, have caused the land described in the annexed plat to be surveyed, laid out, and platted to be known as "ASSESSORS PLAT NO. 33" part of Section 28, T. 1 N. R. 13 E., City of East Detroit, Macomb County, Michigan and that the easements and streets as shown on said plat have been acquired by deed, dedication and adverse possession.

CERTIFICATE OF MUNICIPAL APPROVAL

This plat was approved by the City Council of the City of East Detroit of Macomb County, Michigan at a meeting held on MAY 27 1957

Charles Beaudion
Charles Beaudion, Clerk

CERTIFICATE OF MUNICIPAL APPROVAL

This plat was approved by the City Council of the City of East Detroit of Macomb County, Michigan at a meeting held on May 27, 1957.

Charles Esaubian, Clerk

CERTIFICATE OF APPROVAL BY COUNTY BOARD

This plat was approved on the 2nd day of August, 1957.

Carson Burr
Aaron Burr, County Register of Deeds

Albert Wagner
Albert Wagner, County Clerk

Frank Lohr
Frank Lohr, County Treasurer

Frank Lohr
Frank Lohr, County Drain Commissioner

KNOW ALL MEN BY THESE PRESENTS, that I Howard L. Leebetter, Assessor of the City of East Detroit, Macomb County, Michigan, by virtue of authority in me vested by Section 51 Art 1/2 of 1929, having been duly authorized by the City Council, have caused the land described in the annexed plat to be surveyed, laid out, and platted to be known as "ASSESSORS PLAT NO. 33" part of Section 25, T. 1 N. R. 13 E., City of East Detroit, Macomb County, Michigan and that the easements and streets as shown on said plat have been acquired by deed, dedication and adverse possession.

WITNESSES:
Howard L. Leebetter
Howard L. Leebetter,
Assessor of the City of East Detroit
Donald C. Brannan
Donald C. Brannan

ACKNOWLEDGMENT

STATE OF MICHIGAN)
COUNTY OF MACOMB) ss.

On this 2nd day of July, A. D. 1957, before me a Notary Public in and for said County, personally came the above named Assessor of the City of East Detroit, known to me to be the person who executed the above dedication and acknowledged the same to be his free act and deed as such Assessor.

My Commission Expires December 14, 1961
Robert Reardon
Notary Public, Macomb Co., Michi an

DESCRIPTION OF LAND PLATTED

The land embraced in the annexed plat of "ASSESSORS PLAT NO. 33" part of Section 25, T. 1 N. R. 13 E. and a replat of vacated Lots 545 to 576 inclusive, vacated Hubray Avenue and Division Avenue and vacated Alley of Kelly Super Highway Sub. No. 1 and other land all a part of Section 25, T. 1 N. R. 13 E., City of East Detroit, Macomb County, Michigan is described as follows:

Commencing at the West & east Section 25, T. 1 N. R. 13 E., thence North 69° 59' East 1044 feet, thence East 27 1/4 feet to the point of beginning, thence South 0° 10' East 693.10 feet, thence South 56° East 520.24 feet, thence South 70° 57' East 113.54 feet, thence North 19° 05' East 240.4 feet, thence South 70° 45' 30" East 727.2 feet, thence North 0° 18' 23" West 743.92 feet, thence North 69° 57' East 1390.92 feet, to the point of beginning.

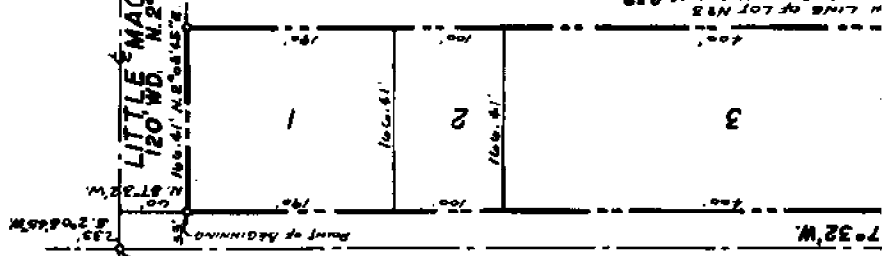
SURVEYOR'S CERTIFICATE

I hereby certify that the plat hereon delineated is a correct one and that permanent metal monuments consisting of bars of not less than one-half inch in diameter and thirty six inches in length encased in a concrete cylinder at least 4 inches in diameter and thirty six inches in depth have been placed at points marked thus (c) as thereon shown at all angles in the boundaries of the land platted, at all the intersections of the streets, intersections of alleys, of streets and alleys, and at the intersections of streets and alleys with the boundaries of the plat as shown on said plat.

Harry J. Fuller
Harry J. Fuller, Registered Land Surveyor

"ASSESSOR'S PLAT NO 73"

A REPLAT OF LOT 2 OF ASSESSOR'S PLAT NO 8 OF PART OF P.C. 624 AND OF PART OF S.E. 1/4 OF SEC. 28, T.1N., R.13E., CITY OF ST. CLAIR SHORES, MACOMB CO., MICHIGAN.



SCALE: 1"=100'

NOTE: ALL DIMENSIONS SHOWN ARE GIVEN
IN FEET AND DECIMALS THEREOF

482282

DESCRIPTION
Land embraced in the annex plat of "Assessor's Plat No. 73 a replat of lot 2 of Assessor's Plat No. 8, of part of P.C. 624 and of part of S.E. 1/4 of section 28, T. 1N., R. 13E., City of St. Clair Shores, Macomb County, Michigan" described as commencing at the P. of B. of section 28, T. 1N., R. 13E., thence South 28° 08' 43" West 35 ft., thence North 87° 32' West 30 ft. to the point of beginning; thence North 87° 32' West 1579.93 ft.; thence South 0° 30' 50" West 166.41 ft.; thence South 87° 32' 03" East 1578.19 ft.; thence North 28° 08' 43" East 166.41 ft. to the point of beginning. This plat contains 13 lots numbered 1 to 13 inclusive.

DEDICATION
KNOW ALL MEN BY THESE PRESENTS, that I, Lavern Grochman, Assessor of the City of St. Clair Shores, Macomb County, State of Michigan, by virtue of authority in me vested by Section 51 of Act 172, of the Public Acts of 1929, having been duly authorized by the Council of the City of St. Clair Shores, have caused the land described in the annexed plat to be surveyed, laid out and platted to be known as "Assessor's Plat No. 73 a replat of lot 2 of Assessor's Plat No. 8, of part of P.C. 624 and of part of S.E. 1/4 of section 28, T. 1N., R. 13 E., City of St. Clair Shores, Macomb County, Michigan" and that the title to the streets as shown on said plat have been acquired by the public by reason of purchase, dedication, condemnation, or adverse possession for public use.

SIGNED AND SEALED
IN THE PRESENCE OF:

Loyise Gustrine
Loyise Gustrine
Assessor of the City of St. Clair Shores

Lavern Grochman
Lavern Grochman
Assessor of the City of St. Clair Shores

JOHN F. DEBUSSCHER
REGISTERED LAND SURVEYOR

EXAMINED AND APPROVED
Date *July 13, 1934*

Otis M. Smith
OTIS M. SMITH
AUDITOR-GENERAL
By *[Signature]*
S. T. [Signature] - Notary Public

REGISTERS OFFICE
COUNTY OF MACOMB

acquired by the public by reason of purchase, dedication, condemnation, or adverse possession for public use.

SIGNED AND SEALED IN THE PRESENCE OF:

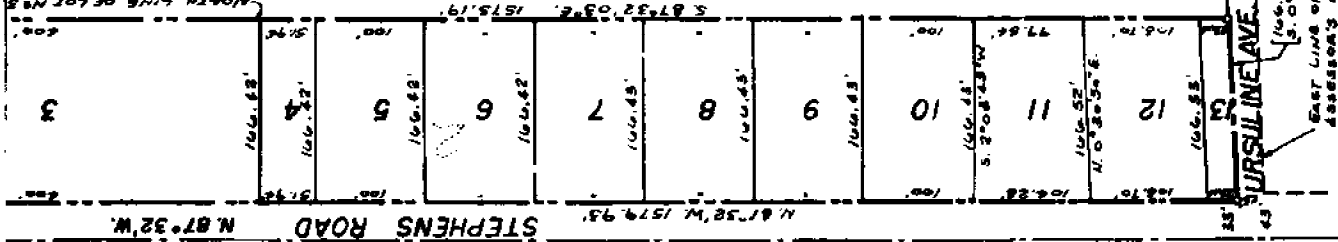
Lois Quattrone
Lois Quattrone
Clifford M. Leon

Lavern Crouchman
Lavern Crouchman
Assessor of the City of St. Clair Shores

REGISTER'S OFFICE
COUNTY OF MACOMB

Received for Record
July 15, 1960
at 12:36 o'clock P.M. and recorded
in Vol. 47 of *Plats*, on
Page 29

Raymond R. Smith
Raymond R. Smith
Register of Deeds



ACKNOWLEDGMENT
State of Michigan)
County of Macomb) ss

On this 15th day of July, 1960, A.D., before me, a Notary Public in and for said County, personally appeared the above named Lavern Crouchman and known to me to be the Assessor of the City of St. Clair Shores and the person who executed the above dedication and acknowledged the same to be the free act and deed of such Assessor.

Donald F. Girardin
Donald F. Girardin
Notary Public - Macomb County
My Commission expires April 11, 1964

MUNICIPAL APPROVAL
This plat was approved by the Council of the City of St. Clair Shores at a meeting held 6-23-60.

Donald J. Harm
Donald J. Harm, Clerk

APPROVAL BY COUNTY PLAT BOARD
This plat was approved on the 30th day of June, 1960, by the Macomb County Plat Board.

Albert A. Wagner
Albert A. Wagner, Clerk
Frank E. Lohr
Frank E. Lohr, Drain Comm'r.

PLAN COMMISSION APPROVAL
This plat was approved by the Planning Commission of the City of St. Clair Shores at a meeting held June 24, 1960.

William Larivee
William Larivee, Chmn.
Robert Baden
Robert Baden, Secty.

SURVEYOR'S CERTIFICATE
I hereby certify that the plat hereon delineated is a correct one, and that permanent monuments consisting of iron rods at least one-half inch in diameter and 36 inches in length, encased in concrete cylinders four inches in diameter and 36 inches in length have been set at points marked thus (c) as thereon shown at all angles in the boundaries of the land platted, at all intersections of the lines of streets and at intersections of the lines of streets with the boundaries of the plat.

John V. DeBuscher
John V. DeBuscher
Registered Land Surveyor

SURVEILINEAVE. 25' W. S. 0° 30' 50" W.
100.43'
5.0' x 8.23'
EAST LINE OF LOT NO. 1
ASSESSOR'S PLAT NO. 2, 195, 1957

111-37 Page 10

REGISTERS OFFICE
COUNTY OF MACOMB

Received for Record
August 1, 1956

Map No. 39
in Vol. 37

Richard M. Magallon
Register of Deeds

PINCKET'S SUBDIVISION

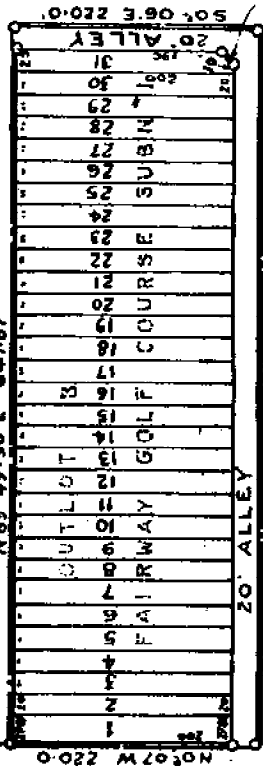
OF PART OF THE N.W. 1/4 OF SECTION 28 T.1N.R.13E
CITY OF EAST DETROIT MACOMB CO. MICH. PAGE 10

SCALE 1"=100'
Note: All dimensions are in feet and
decimals thereof.

297130
TEN MILE ROAD 120 WD.

EXAMINED AND APPROVED
Date: JUL 31 1956
Frank S. Somerski
AUDITOR GENERAL

WILLOWBY DR60
N89°49'30"E 647.87'
S89°49'30"W 647.87'



FAIRWAY GOLF COURSE SUB 1 L527711

DESCRIPTION:

The land embraced in the annexed Plat of Pincket's Subdivision of part of the North West 1/4 of Section 28, Town 1 North Range 13 East, City of East Detroit, Macomb County, Michigan, consisting of Lots 1 to 31 inclusive, being a re-subdivision of Parcel 'B' of Fairway Golf Course Subdivision No. 1 as recorded in Volume 34 of Plats on Page 11, Macomb County Records. More particularly described as: Commencing at the Northwest Corner of Section 28, Town 1 North, Range 13 East, Thence North 89° 49' 30" East 705.0' along the North line Section 28, 366.75', thence North 0° 07' East 60.0' to the point of beginning, thence North 89° 49' 30" East 647.87', Thence South 0° 06' East 220.0', Thence South 89° 49' 30" West 647.87', Thence North 0° 07' East 220.0' to the point of beginning.

DEDICATION:

Know all men by these presents that we, The Fairway Golf Club, Incorporated, a Michigan corporation, by Jules Finckel, President, and Paul Finckel, Secretary-Treasurer, have caused the land embraced in the annexed Plat to be surveyed, laid out and platted to be known as Pincket's Subdivision of Part of the Northwest 1/4 of Section 28, Town 1 North, Range 13 East, City of East Detroit, Macomb County, Michigan, and the streets and alleys as shown on said Plat are hereby dedicated to the use of the public.

CERTIFICATE OF MUNICIPAL APPROVAL

This Plat was approved by the Council of the City of East Detroit, Macomb County, Michigan, at a meeting held July 2, 1956. All public sewage and water facilities are installed ready for connection.

Charles Baudouin
Charles Baudouin, City Clerk

This Plat was approved by the Planning Board of the City of East Detroit, Macomb County, Michigan, FOR BUSINESS PURPOSES ONLY

Charles Baudouin
CHARLES BAUDOIN - CITY MANAGER

SAVINGS' CERTIFICATE

I hereby certify that the plat hereon delineated is a correct one, and that all necessary requirements consisting of iron rods at least one half inch

FAIRWAY GOLF COURSE, INCORPORATED

Jules Finckel
President

described as: Commencing at the Northwest Corner of Section 28, Town 1 North, Range 13 East, Thence North 89° 45' East 2011.44', Thence North 89° 45' East 336.75', Thence North 89° 49' 30" East 705.0' along the North line Section 28, Thence South 0° 07' East 66.0' to the point of beginning, thence North 89° 49' 30" East 647.87', Thence South 0° 06' East 220.0', Thence South 89° 49' 30" West 647.87', Thence North 0° 07' West 220.0' to the point of beginning.

DEDICATION:

Know all men by these presents that we, The Fairway Golf Club, Incorporated, a Michigan corporation, by Jules Pinchot, President, and Paul Pinchot, Secretary-Treasurer, have caused the land enclosed in the annexed Plat to be surveyed, laid out and platted to be known as Pinchot's Subdivision of Part of the Northwest 1/4 of Section 28, Town 1 North, Range 13 East, City of East Detroit, Macomb County, Michigan, and the streets and alleys as shown on said Plat are hereby dedicated to the use of the public.

FAIRWAY GOLF CLUB, INCORPORATED

IN THE PRESENCE OF:
Walter M. Pinchot, Jules Pinchot, President
Paul M. Pinchot, Secretary-Treasurer
JULIUS PINCHOT
PAUL PINCHOT, Secretary-Treasurer

ACKNOWLEDGMENT

State of Michigan }
County of Macomb }

On this 2nd day of July, A. D. 1956, before me a Notary Public in and for said County, appeared Jules Pinchot and Paul Pinchot, President and Secretary-Treasurer of the Fairway Golf Club, Incorporated, a Michigan corporation, and that the said affidavit to said instrument is the personal and legal act of said corporation by authority of its board of directors and the said Jules Pinchot and Paul Pinchot acknowledge said instrument to be the free act and deed of said corporation.

Walter M. Kendall
Notary Public, Macomb County
My commission expires Dec 14 1960

Charles B. Bannan
Charles Bannan, City Clerk

This Plat was approved by the Planning Board of the City of East Detroit, Macomb County, Michigan, for business purposes only.

Charles Bannan
CHARLES BANNAN - City Manager

SURVEYOR'S CERTIFICATE

I hereby certify that the plat herein delineated is a correct one, and that permanent monuments consisting of iron rods at least one half inch in diameter and 36 inches in length, encased in concrete cylinders four inches in diameter and 36 inches in length have been set at points marked thus (O) as thereon shown at all angles in the boundaries of the land platted, at all intersections of the lines of streets and at intersections of the lines of streets with the boundaries of the plat.

Vernon Wilson
Vernon Wilson
Registered Land Surveyor 3177

APPROVAL OF COUNTY PLAT BOARD

This Plat was approved on the _____ day of _____ 1956, by the Macomb County Plat Board.

THIS IS TO CERTIFY THAT ALL TAXES DUE TO THE COUNTY TILL JULIUS RECORDS THERE ARE NO TAX LIES ON THIS PROPERTY AND THAT TAXES ARE PAID FOR THE YEARS PREVIOUS TO DATE OF THIS INSTRUMENT EXCEPT _____

No. 11555 Lynn Whaley Macomb County Treasurer
DATE 7-26-56 R. J. Whaley

This plat was approved by the Macomb County Plat Board on this 2nd day of July, 1956.
Jules Pinchot
President, Fairway Golf Club
Paul M. Pinchot
Secretary-Treasurer
Frank E. Lohr
Drain Commissioner

EXAMINED AND APPROVED
Date JUN 2 1955

Victor Targonski

VICTOR TARGONSKI
AUDITOR GENERAL
MICHIGAN
MAY 20 1955

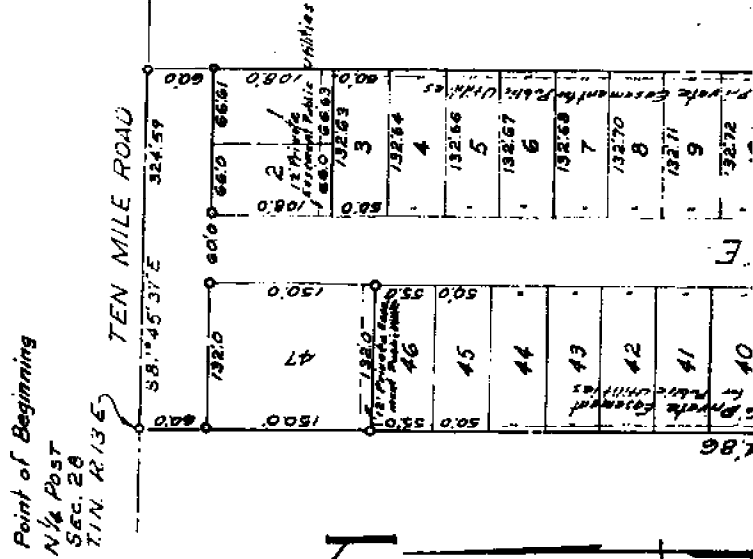
"RONNA LYNN SUBDIVISION"

ALL OF LOT 1 OF ASSESSORS PLAT NO. 12.,
PART OF THE N.E. 1/4 OF FRACT'L. SEC. 28, T.1N., R.13E.,
CITY OF ST. CLAIR SHORES, MACOMB CO., MICHIGAN



Note: All dimensions are in feet
and decimals thereof.

Walter J. Lehner & Sons
Reg. Civil Eng. & Surveyors
Mt. Clemens, Michigan



MEN BY THESE PRESENTS, That we, Frank Mallat and Lucy Mallat, his wife and child, a single woman, Louis Mallat and Juliana Mallat, his wife, Joseph Mallat et Mallat, his wife, as proprietors, and Joseph S. Dresner and Vera C. Dresner, his wife, vendees under land contract, have caused the land embraced in the plat to be surveyed, laid out and platted to be known as "RONNA LYNN SUBDIVISION", a part of Assessor's Plat No. 12., Part of the N. E. 1/4 of Fract'l. Sec. 28, T. 1 N., R. 13 E., City of St. Clair Shores, Macomb Co., Michigan, and that the streets shown on said plat are hereby dedicated to the use of the Public Utilities, or of specific utilities as thereon noted, subject to the regulation and control of and by the local governmental authorities, and that no permanent structures erected within the lines of said easements.

Frank Mallat (L.S.)
Lucy Mallat (L.S.)
Caroline Lichte (L.S.)
Louis Mallat (L.S.)
Julia Mallat (L.S.)
Joseph Mallat (L.S.)
Margarit Mallat (L.S.)
Joseph S. Dresner (L.S.)
Vera C. Dresner (L.S.)

1955, before me, a Notary Public in and for the County of Macomb, Michigan, personally came the above named Frank Mallat and Lucy Mallat, his wife, Joseph Mallat and Juliana Mallat, his wife, Joseph Mallat, his wife, and Vera C. Dresner, his wife, and acknowledged to me to be the persons who executed the above dedication, and acknowledged their free act and deed.

Notary Public, _____ County, Michigan.

Received for Record _____
RECORDS CLERK
COUNTY OF MACOMB

233145

ORIGINAL

KELLY SUPER HIGHWAY SUBDIVISION NO. 1

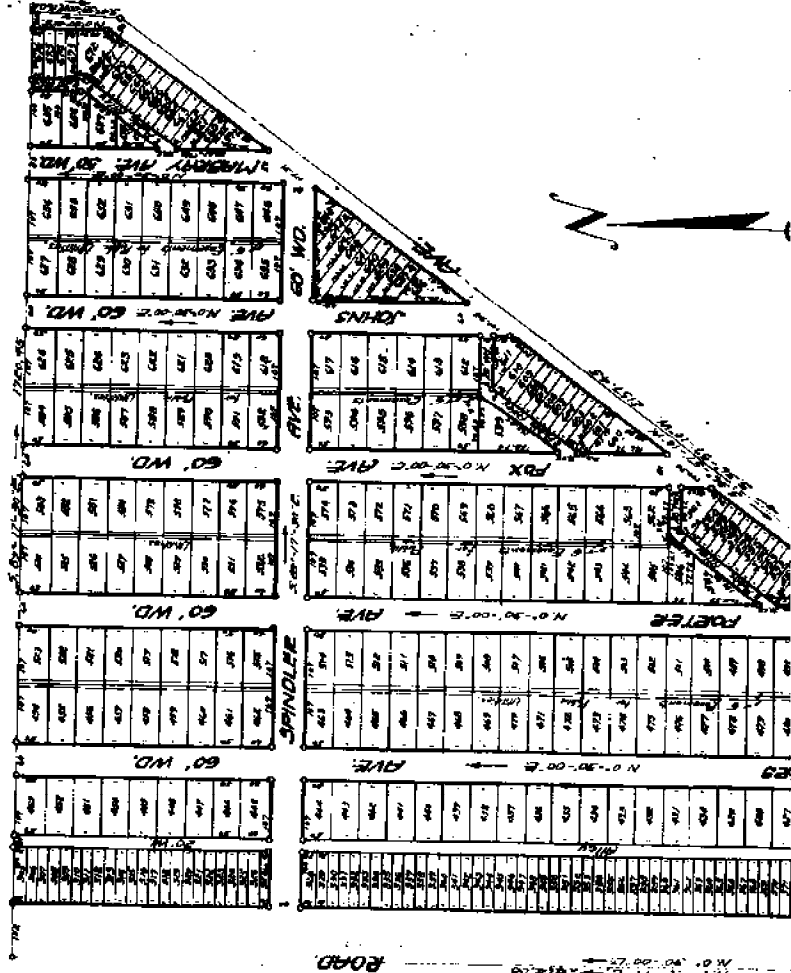
A PART OF THE S.W. 1/4 OF FRACTIONAL SEC. 28, T-1-N., R-13-E.,
ERIN TWP., MACOMB CO., MICH.

Aug 26-1929
R. Hainey

FURLING & HOLSINGER
REGISTERED CIVIL ENGINEERS
DETROIT, MICH.

Scale 1"=200'

Note: All dimensions are given in feet and decimals thereof and adjusted to a temperature correction of 62° F.



DEDICATION

Know All Men By These Presents, That
Claud A. Trumbley & Margaret Trumbley
 his wife, as proprietors and
 CAPITOL LAND CORPORATION, a Michigan
 Corporation, by *R. S. Martill Pres.*
 and *John F. Linchen Sec.*
 as vendors have created the land embraced in the annexed plat to be
 surveyed, laid out, and platted, to be known as "Kelly Super
 Highway Subdivision No. 1," a part of the S.W. 1/4
 of fractional Sec. 28, T-1-N., R-13-E.,
 Erin Twp., Macomb Co., Mich.

and that the streets and alleys in plan and plat are hereby dedicated
 to the use of the public.

SIGNED AND SEALED
 IN PRESENCE OF
Edward R. Trumbley
 CAPTOL LAND CORPORATION
Robert L. ...
...

ASSESSORS PLAT N^o 8

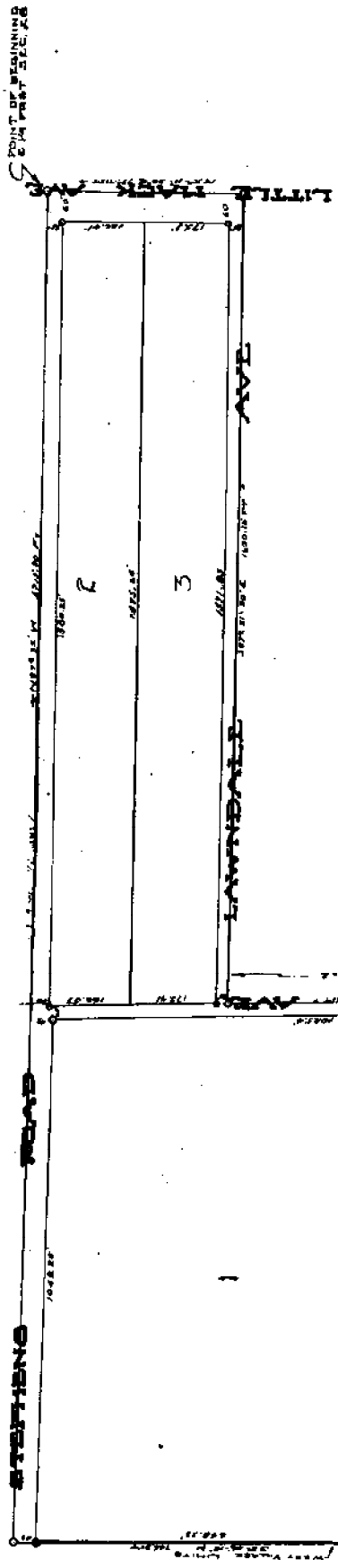
copy 2/7/1930
to C. Hawley

PARTS OF P.C. 824 & S.E. 1/4 SEC. 28 T19R.12E.

VILLAGE OF ST CLAIR SHORES MACOMB CO. MICH.

SCALE 1" = 400'

WALTER J. LEINER, REG. C.E.
MR. CLEMENS MICH.



PLEASANT AVE
1/4 SECTION 28 T19R.12E.
MACOMB COUNTY MICH.



NOTED BY THE REGISTERED SURVEYOR, MR. J. LEINER, IN HIS FIELD BOOK, AS BEING PART OF THE VILLAGE OF ST. CLAIR SHORES, MACOMB COUNTY, MICH., AS PLAT N^o 8, OF VILLAGE MAP N^o 1, AS FILED FOR RECORD IN THE OFFICE OF THE REGISTERED SURVEYOR, ST. CLAIR COUNTY, MICH., ON FEBRUARY 15, 1928.

STAR VALLEY
BEING A SUBN. OF PART OF THE N.E. 1/4 OF FRACT'L SEC. 28, T.1N., R.1E.,
CITY OF ST. CLAIR SHORES, MACOMB COUNTY, MICHIGAN.

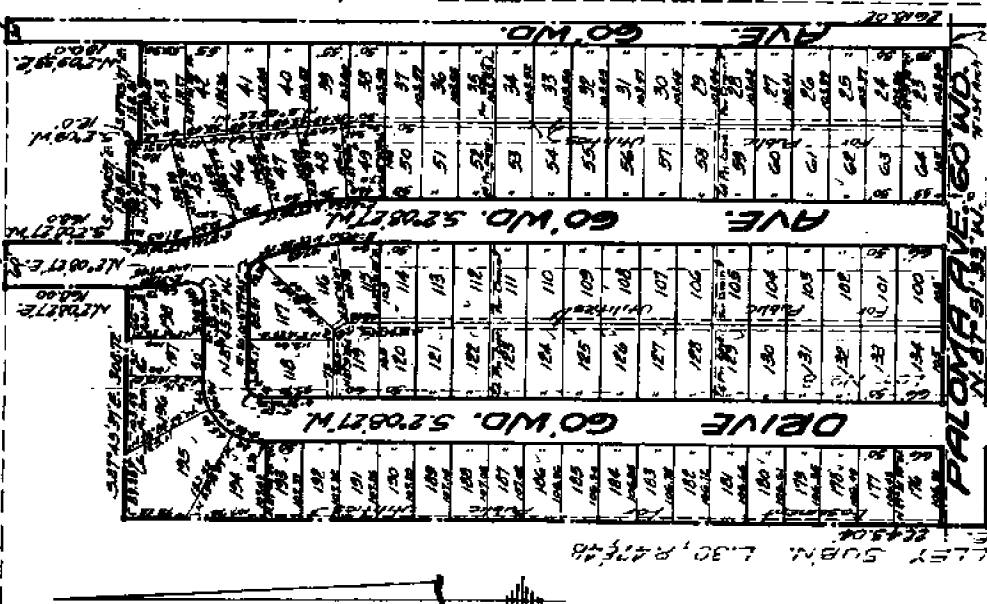
232524

SCALE 1"=150'

ASSESSOR'S PLAT NO. 48
 L.119, 1874

TEN MILE ROAD 180' W.D.
 N. 87° 45' 57" W.

Note: All dimensions shown are given in feet and decimals thereof.
 Curvilinear dimensions are given along the arc.
 All lots are not 1/25 then 50' wide at the building line.
 SHEET 1 OF 2



Description of land platted

Land embraced in the annexed plat of Star Valley being a sub'n. of part of the N.E. 1/4 of Fract'l. Sec. 28, T.1N., R.1E., City of St. Clair Shores, Macomb County, Michigan, consisting of Lots 1 to 199, both inclusive and Orleans 7th, 8th, and 9th, being part of Lots 7 to 11 inclusive of Isaacson's Plat No. 12, as recorded in Liber 21 of Plats on Page 43, Macomb County Records, more particularly described as:

Beginning at a point on the east line of Sun Valley Sub'n. (L. 30-7-47 & 48), said point being S. 87°-35'-27"W., 1382.05' and S. 2°-01'-23"W., 236.0' from the center post of Fractional Section 28, T.1N., R.1E., thence S. 7°-01'-23"W., along the east line of said Sun Valley Sub'n., 2213.04', thence S. 87°-15'-37"W., 108.72', thence S. 2°-01'-23"W., 168.0', thence S. 87°-15'-37"W., along the south line of Ten Mile Road (200' wide), 60.0', thence S. 2°-08'-27"W., 168.0', thence S. 87°-15'-37"W., 138.01', thence S. 2°-09'-33"W., 180.0', thence S. 87°-15'-37"W., along the east line of Ten Mile Road, 30.0', thence S. 2°-09'-33"W., along the west line of Ingham Gardens Sub'n. No. 1 (L. 7-7-52), 2618.02', thence S. 87°-35'-27"W., along the north line of Stephens Avenue (66' wide), 168.02', thence S. 2°-09'-33"W., 350.0', thence S. 87°-35'-27"W., 136.48', thence S. 2°-08'-27"W., 350.0', thence S. 87°-35'-27"W., along the said north line of Stephens Avenue, 196.33', thence S. 2°-15'-18"W., 205.0', thence S. 87°-35'-27"W., 170.15' to the point of beginning.

Dedication

Know all men by these presents, that we, James J. Souligy and Juantia A. Souligy, his wife, Phillip Sobolsky and Margaret Laethem, his wife, as proprietors, and Irving Green and Beatrice Green, his wife, and Hymon Green and Fely Green, his wife, as vendors, have caused the land embraced in the annexed plat to be surveyed, laid out and platted to be known as Star Valley being a sub'n. of part of the N.E. 1/4 of Fract'l. Sec. 28, T.1N., R.1E., City of St. Clair Shores, Macomb County, Michigan, and that the streets as shown on said plat are hereby dedicated to the use of the public and that the private easements indicated on said plat are hereby reserved for the use of public utilities and that no permanent structures are to be erected within the lines of said easements.

Signed and sealed
 in the presence of:

[Signatures]
 PHILIP SOBOLSKY (L.S.)
 JAMES J. SOULIGY
 JUANITIA A. SOULIGY
 IRVING GREEN
 BEATRICE GREEN
 HYMON GREEN
 FELY GREEN

Acknowledgment

State of Michigan }
 County of Macomb }
 On this 4 day of February 1955, before me, a Notary Public in and for said county, appeared James J. Souligy and Juantia A. Souligy, his wife, Phillip Sobolsky and Margaret Laethem, his wife, and Irving Green and Beatrice Green, his wife, known to me to be the persons who executed the above dedication and acknowledged the same to be their free act and deed.

[Signature]
 Leo Derrigo
 Notary Public for Macomb County
 My Comm. Expires 1-1-56

Acknowledgment

State of Michigan }
 County of Macomb }
 On this 4 day of February 1955, before me, a Notary Public in and for said county, appeared Morris Green and Julian Klein, to me personally known, who being each by me duly sworn, did say that they are the President and Secretary respectively of Green and Klein, Inc., a Michigan Corporation, and that the seal affixed to said instrument is the corporate seal of said corporation and that said instrument was signed and sealed in behalf of said corporation by authority of its Board of Directors and the said Morris Green and Julian Klein acknowledged said instrument to be the free act and deed of said corporation.

[Signature]
 Notary Public
 County
 My Commission Expires

Municipal Approval

This plat was approved by the Council of the City of St. Clair Shores at a meeting held 2-7 1955.

[Signature]
 Clark, City Clerk

See Restrictions & Subj. 1007 Page 1
 See Amendment to Restrictions & Subj. 1015 Page 5 & 6

Free not the deed of said corporation.
 Notary Public _____ County _____
 My Commission Expires _____

Municipal Approval
 This plat was approved by the Council of the City of St. Clair Shores at a meeting held 2-7 1955.

Approval of County Plat Board
 This plat was approved on the 7th day of February 1955 by the Macomb County Plat Board.

Approval by City of St. Clair Shores Planning Commission
 on the 7th day of February 1955.

Signed and sealed in the presence of:
 James F. Sullivan (L.S.)
 James J. Sullivan (L.S.)
 Philip J. Sullivan (L.S.)
 Margaret Sabol (L.S.)
 Edward J. Sullivan (L.S.)
 Joseph J. Sullivan (L.S.)
 Robert S. Walker (L.S.)
 Herbert S. Walker (L.S.)
 Leo Davis (L.S.)
 Leo Davis (L.S.)

Signed and sealed in the presence of:
 James F. Sullivan (L.S.)
 James J. Sullivan (L.S.)
 Philip J. Sullivan (L.S.)
 Margaret Sabol (L.S.)
 Edward J. Sullivan (L.S.)
 Joseph J. Sullivan (L.S.)
 Robert S. Walker (L.S.)
 Herbert S. Walker (L.S.)
 Leo Davis (L.S.)
 Leo Davis (L.S.)

Signed and sealed in the presence of:
 James F. Sullivan (L.S.)
 James J. Sullivan (L.S.)
 Philip J. Sullivan (L.S.)
 Margaret Sabol (L.S.)
 Edward J. Sullivan (L.S.)
 Joseph J. Sullivan (L.S.)
 Robert S. Walker (L.S.)
 Herbert S. Walker (L.S.)
 Leo Davis (L.S.)
 Leo Davis (L.S.)

Surveyor's Certificate
 I hereby certify that the plat hereon delineated is a correct one, and that permanent monuments consisting of iron rods at least one half inch in diameter and 36 inches in length, encased in concrete cylinders four inches in diameter and 36 inches in length have been set at points marked thus (O) as thereon shown at all angles in the boundaries of the land platted, at all intersections of the lines of streets and at the inter-sections of the lines of streets with the boundaries of the plat.

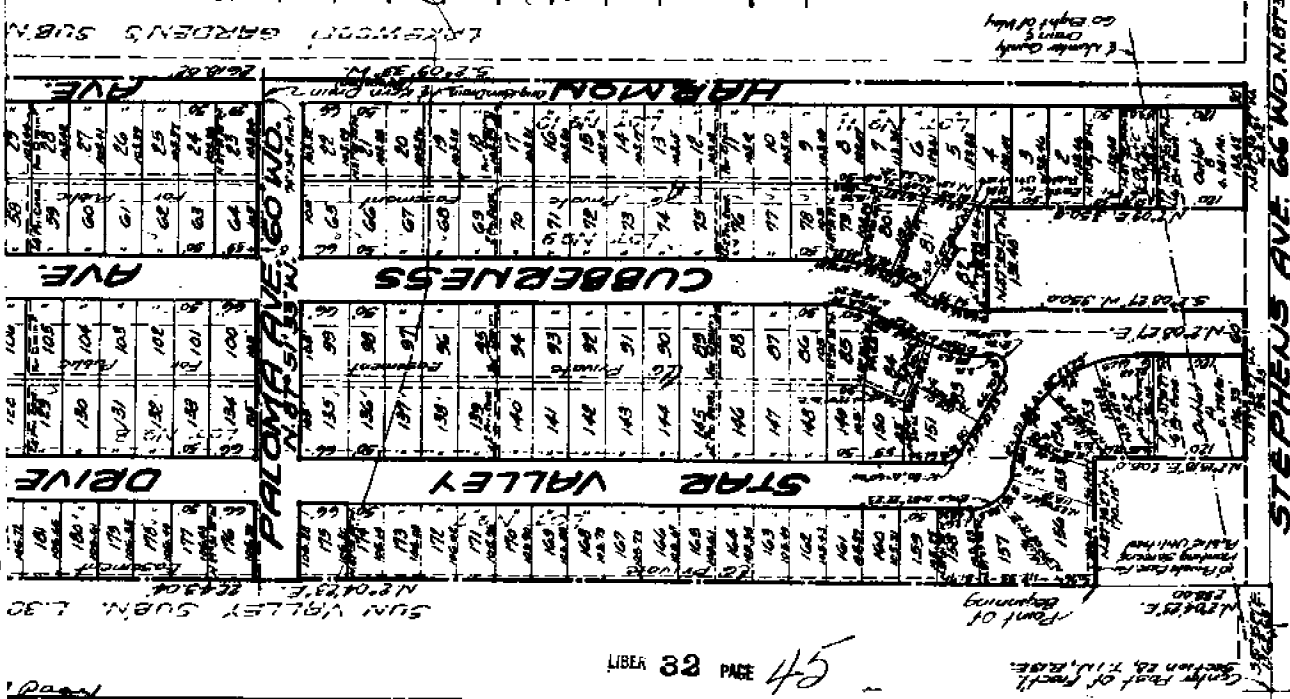
Surveyor's Certificate
 I hereby certify that the plat hereon delineated is a correct one, and that permanent monuments consisting of iron rods at least one half inch in diameter and 36 inches in length, encased in concrete cylinders four inches in diameter and 36 inches in length have been set at points marked thus (O) as thereon shown at all angles in the boundaries of the land platted, at all intersections of the lines of streets and at the inter-sections of the lines of streets with the boundaries of the plat.

Surveyor's Certificate
 I hereby certify that the plat hereon delineated is a correct one, and that permanent monuments consisting of iron rods at least one half inch in diameter and 36 inches in length, encased in concrete cylinders four inches in diameter and 36 inches in length have been set at points marked thus (O) as thereon shown at all angles in the boundaries of the land platted, at all intersections of the lines of streets and at the inter-sections of the lines of streets with the boundaries of the plat.

REGISTERED SURVEYOR
 Thomas E. Postill
 Registered Land Surveyor

REGISTERED SURVEYOR
 Thomas E. Postill
 Registered Land Surveyor

REGISTERED SURVEYOR
 Thomas E. Postill
 Registered Land Surveyor



THIS IS TO CERTIFY THAT ACCORDING TO THE SURVEYOR'S RECORDS THERE ARE NO TAX LOTS ON THIS PROPERTY AND THAT TAXES ARE PAID FOR FIVE YEARS PREVIOUS TO DATE OF THIS INSTRUMENT. GIVEN AS TO MY HAND AND SEAL OF OFFICE THIS 7th DAY OF FEBRUARY 1955. T. E. POSTILL, REGISTERED LAND SURVEYOR.

REGISTERED SURVEYOR
 Thomas E. Postill
 Registered Land Surveyor

REGISTERED SURVEYOR
 Thomas E. Postill
 Registered Land Surveyor

REGISTERED SURVEYOR
 Thomas E. Postill
 Registered Land Surveyor

... as the corporate seal of said corporation and that said instrument was signed and sealed in behalf of said corporation by authority of its Board of Directors and the said Charles Goldberg and George De Grew acknowledged said instrument to be the free act and deed of said corporation.

Robert Raymond
 ROBERT RAYMOND
 Notary Public for the State of Michigan

My Commission expires SEP 22 1937

DESCRIPTION OF LAND PLATED

The land embraced in the annexed plat of "HAMILTON SUBDIVISION" part of the M.H. 1/4 Sec. 28, T. 1 N. R. 13 E. East Detroit, Macomb County, Michigan is described as follows:
 Commencing at the N.W. corner of Section 28 T. 1 N. R. 13 E., thence N 89° 45' 18" 474 feet to the point of beginning, thence South 471.78 feet, thence N 85° 14' 17" 475.64 feet, thence South 2263.23 feet, thence N 89° 59' 18" 1016.90 feet, thence N 0° 07' 14" 2696.72 feet, thence S 89° 45' 18" 537.46 feet to the point of beginning.

SURVEYOR'S CERTIFICATE

I hereby certify that the plat hereon delineated is a correct one and that permanent metal monuments consisting of bars of not less than one-half inch in diameter and forty-eight inches in length encased in a concrete cylinder at least 4 inches in diameter and forty-eight inches in depth have been placed at points marked thus (O) as shown shown at all angles in the boundaries of the land platted, at all the intersections of the streets, intersections of alleys, or of streets and alleys, and at the intersections of streets and alleys with the boundaries of the plat as shown on said plat.

Harold Fuller
 Harold Fuller, Registered Land Surveyor

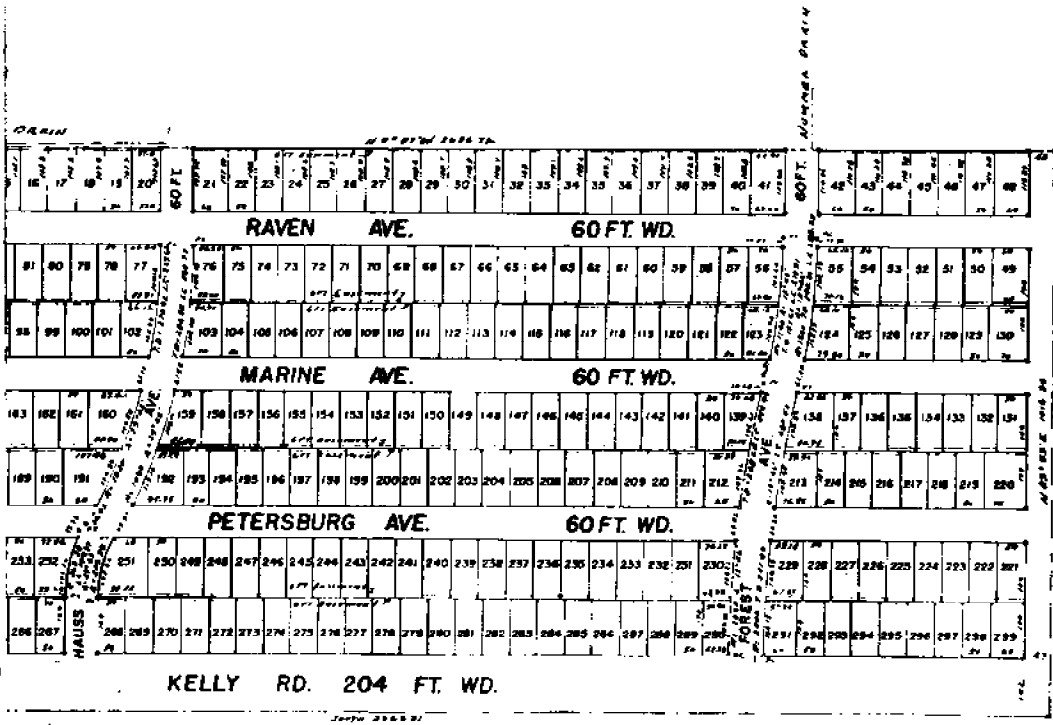
CERTIFICATE OF MUNICIPAL APPROVAL

This plat was approved by the City Council of the City of East Detroit of Macomb County, Michigan at a meeting held SEP 2 1937
Charles Beaudin
 Charles Beaudin (Clerk)

CERTIFICATE OF APPROVAL BY COUNTY BOARD

This plat was approved on the 24th day of September 1937
Alvin Burt (County Register of Deeds)
Albert O. Johnson (County Clerk)
Lynn Gilliam (County Treasurer)
Frank John (County Deeds Commissioner)

CLERK'S OFFICE
 County of Macomb
 Received for Record this 11th day of September A. D. 1937, at 9:51 o'clock P.M. and Recorded in Liber 29 of Plats
Frank J. Hayes



THIS PLAT IS SUBJECT TO THE COUNTY REVENUE STATUTES THAT ARE IN FULL FORCE ON THE DATE OF THIS PLAT. THE FOUR YEAR PERIOD PREVIOUS TO DATE OF THIS INSTRUMENT IS NOT AFFECTED BY THIS PLAT. THE TAXES ON THIS PLAT ARE IN FULL PAYMENT OF ALL TAXES DUE ON THIS PLAT. THE TAXES ON THIS PLAT ARE IN FULL PAYMENT OF ALL TAXES DUE ON THIS PLAT.

"MUCCIANTE SUBDIVISION"
 PART OF THE N.W. 1/4 OF SEC. 28 T.19.R.13E.
 CITY OF EAST DETROIT, MACOMB CO. MICH.

226057

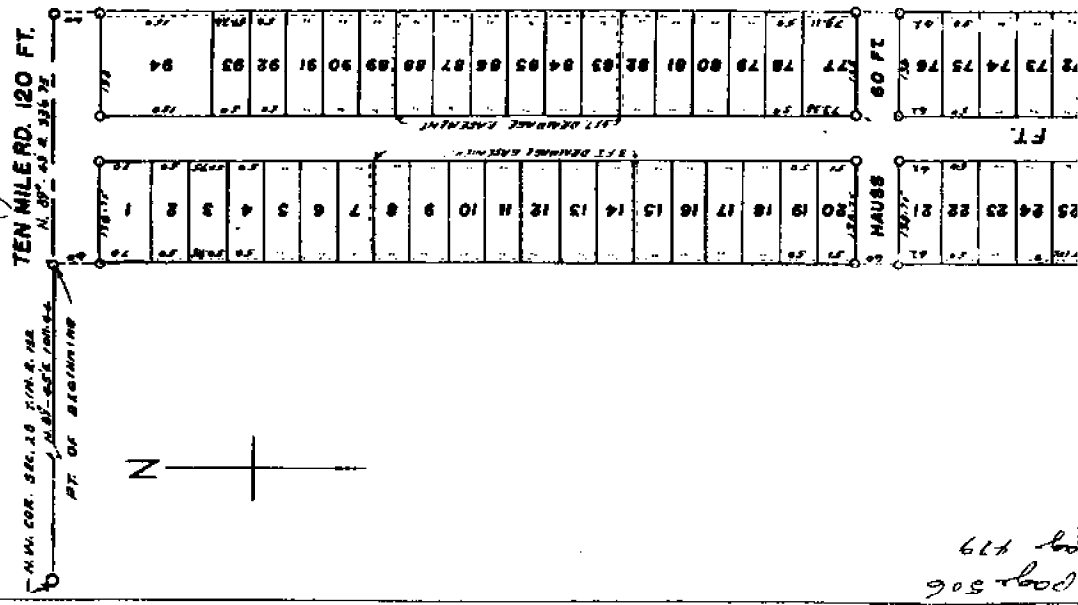
SCALE: 1" = 150'

NOTE: ALL MEASUREMENTS ARE IN FEET AND DECIMALS THEREOF

EXAMINED AND APPROVED
 Date MAY 11 1955

Victor Targonski
 Victor Targonski
 AUDITOR GENERAL

By *H. J. Fuller*
 HARRY J. FULLER
 REGISTERED CIVIL ENGINEER
 MICH.



DEDICATION

KNOW ALL MEN BY THESE PRESENTS, That we Michael A. Blalak and Jennie Blalak, his wife as Vendees, and Robert Beck and Emilie Beck his wife, and the Pacific Land Company, a Michigan Corporation by William P. Hall, Vice President and Nathaniel Sherr, Secretary-Treasurer, as proprietors have caused the land embraced in the annexed plat to be surveyed, laid out and platted to be known as "MUCCIANTE SUBDIVISION" part of the N.W. 1/4 of Sec. 28 T. 19 R. 13 E., City of East Detroit, Macomb Co., Michigan and that the streets as shown on said plat are hereby dedicated to the use of the public and that the easements as shown on said plat are hereby reserved for the use of public utilities and no permanent structures are to be erected within the lines of said easements. Regulation of the use thereof is vested in the local governmental authority.

Signed and Sealed in the Presence of:
Victor Targonski
 Victor Targonski
 Auditor General
Michael A. Blalak
 Michael A. Blalak
Jennie Blalak
 Jennie Blalak
Robert Beck
 Robert Beck
Emilie Beck
 Emilie Beck
 PACIFIC LAND COMPANY
William P. Hall
 William P. Hall, Vice Pres.
Nathaniel Sherr
 Nathaniel Sherr, Sec.-Treas.

ACKNOWLEDGMENT

STATE OF MICHIGAN
 County of Macomb ss.
 On this 11th day of May, A.D. 1955 before me a Notary Public in and for said County appeared Michael A. Blalak and Jennie Blalak his wife and Robert Beck and Emilie Beck his wife, known to me to be the persons who executed the above dedication, and acknowledged the same to be their free act and deed.
Edna H. Malzoch
 Edna H. Malzoch
 Notary Public Wayne Co., Michigan

SUBDIVISION CERTIFICATE

I hereby certify that the plat hereon delineated is a correct one and that permanent metal monuments consisting of bars of not less than one-half inch in diameter and thirty six inches in length encased in a concrete cylinder at least 4 inches in diameter and thirty six inches in depth have been placed at points marked thus (a) as the corners shown at all angles in the boundaries of the land platted, at all the intersections of the streets, intersections of streets and alleys, or of streets and alleys, and at the intersections of streets and alleys with the boundaries of the plat as shown on said plat.

Harry J. Fuller
 Harry J. Fuller, Registered Land Surveyor

CERTIFICATE OF MUNICIPAL APPROVAL

This plat was approved by the City Council of the City of East Detroit of Macomb County, Michigan at a meeting held March 14th, 1955. All public sewage and water facilities are installed ready for connection.

Charles Beaubien
 Charles Beaubien (Clerk)

CERTIFICATE OF APPROVAL BY COUNTY BOARD

This plat was approved on the 12th day of March, 1955.

Alfred J. Jorgensen
 Alfred J. Jorgensen (County Registrar of Deeds)
Albert Wagner
 Albert Wagner (County Clerk)
Frank J. Lohr
 Frank J. Lohr (County Drain Commissioner)

614 200
 908 200

ACKNOWLEDGMENT

STATE OF MICHIGAN }
County of Macomb } ss.

On this 11th day of March, A.D. 1955 before me a Notary Public in and for said county appeared Michael A. Blalak and Jennie Blalak his wife and Robert Beck and Nellie Beck his wife, known to me to be the persons who executed the above dedication, and acknowledged the same to be their free act and deed.

Lila M. Pearson
Notary Public Wayne Co., Michigan
My Commission expires 1-1-57

STATE OF MICHIGAN }
County of Macomb } ss.

On this 11th day of March, A.D. 1955 before me a Notary Public in and for said county appeared William F. Hull and Nathaniel Shaw to me personally known who being each by me fully sworn did say that they are the Vice President and Secretary-Treasurer respectively of the Pacific Land Company a Michigan Corporation and that the seal affixed to said instrument is the corporate seal of said corporation and that said instrument was signed and sealed in behalf of said corporation by authority of its Board of Directors and the said William F. Hull and Nathaniel Shaw acknowledged said instrument to be the free act and deed of said corporation.

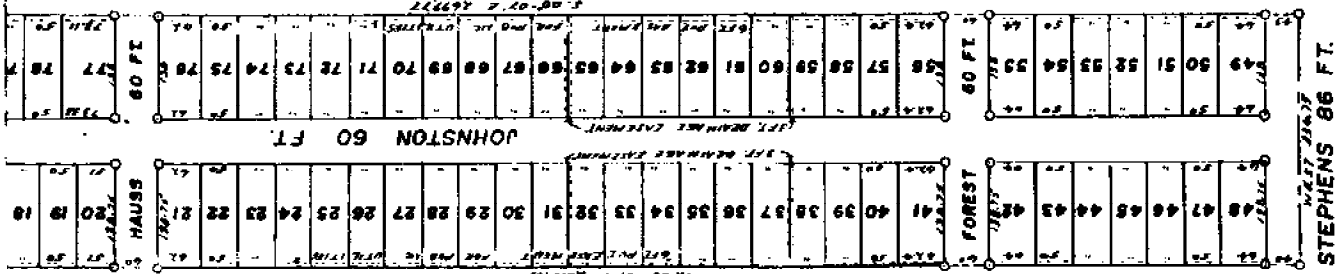
Lila M. Pearson
Notary Public Wayne Co., Michigan
My Commission expires 1-1-57

DESCRIPTION OF LAND PLATTED

The land embraced in the annexed plat of "MUGGLES SUBDIVISION" part of the N.W. 1/4 of Sec. 28 T. 1 N.R. 13 E., City of East Detroit, Macomb Co., Michigan is described as follows:

Commencing at the N.W. corner of Section 28, thence N 89° 45' E 101.44 feet to the point of beginning, thence N 89° 43' E 336.75 feet, thence S 00° 07' E 2699.77 feet, thence West 336.75 feet, thence N 00° 07' W 2697.35 feet to the point of beginning.

THIS IS TO CERTIFY THAT ACCORDING TO THE COUNTY TREASURER'S RECORDS THERE ARE NO TAXES ON THE PROPERTY AND THAT TAXES ARE DUE FOR FIVE YEARS PREVIOUS TO DATE OF THIS INSTRUMENT.
Certified to the Public Records on 3-11-55 DATE
THIS CERTIFICATE DOES NOT APPLY TO TAXES, IF ANY, FOR IN PROCESS OF COLLECTION BY TOWNSHIP CITY OR VILLAGE COLLECTING OFFICIALS.
Lila M. Pearson
Notary Public Wayne Co., Michigan



Lila M. Pearson
Notary Public Wayne Co., Michigan
My Commission expires 1-1-57

REGISTERS OFFICE }
COUNTY OF MACOMB }

Received for Record
March 11, 1955
at 10:30 o'clock A.M., and recorded
in Vol. 33 of Platteau, on
Page 87

Lila M. Pearson
Notary Public Wayne Co., Michigan

See information of plat in volume 396 page 506
for previous comments to volume 1006 page 479

"FAIRWAY GOLF COURSE SUBDIVISION NO. 1" PART OF THE N.W. 1/4 SEC. 28 T. 1 N. R. 13 E. EAST DETROIT MACOMB CO. MICH.

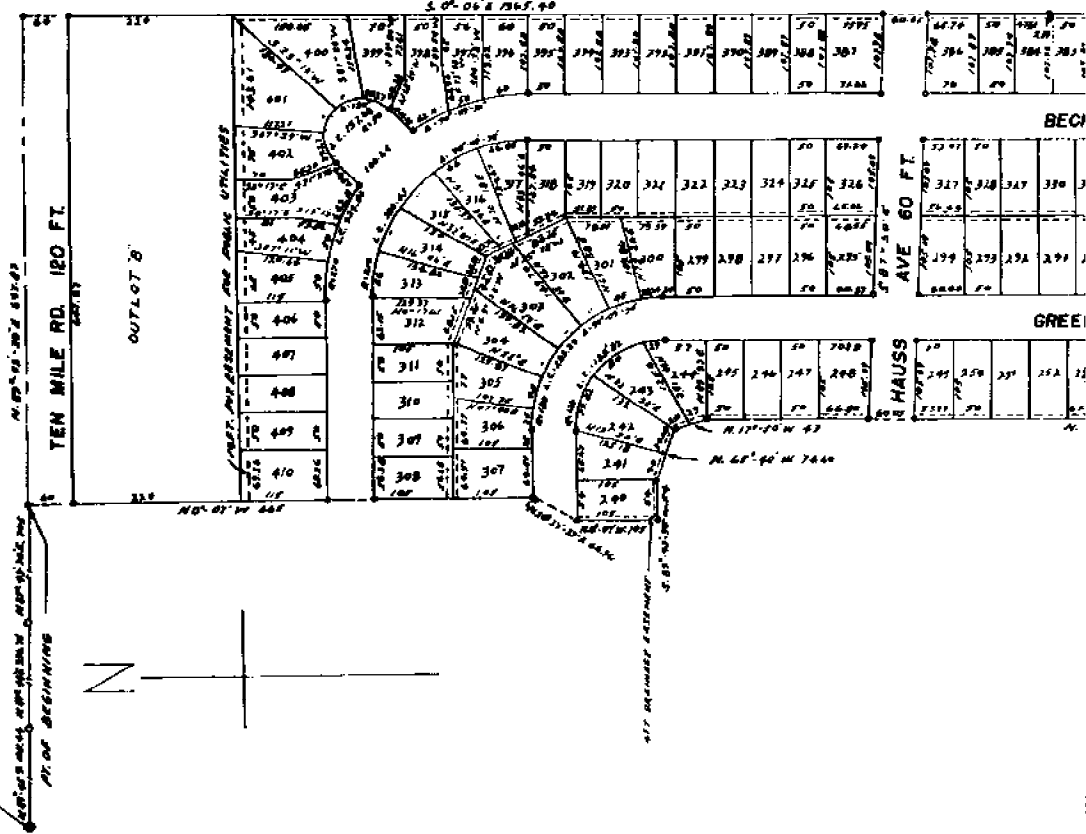
257212

SCALE: 1" = 150'



NOTE: ALL MEASUREMENTS ARE IN FEET AND DECIMALS THEREOF.
ALL CURVE MEASUREMENTS ARE GIVEN ALONG THE ARC OF THE CURVE.

HARRY J. FULLER
REGISTERED CIVIL ENGINEER
MICH.
MT. CLEMENS



DEDICATION

KNOW ALL MEN BY THESE PRESENTS, That we the Fairway Golf Club Inc. a Michigan Corporation by Jules Pinckert, President and Paul Pinckert Secretary, and the L. & N. Corporation a Michigan Corporation by L.S. Burton, President and William P. Hall, Vice President as proprietors and the Equitable Detroit Company, a Michigan Corporation by Wilbur J. Danaher, Vice President and Marjorie Mair, Assistant Secretary as Mortgagee have caused the land embraced in the annexed plat to be surveyed, laid out and platted to be known as "FAIRWAY GOLF COURSE SUBDIVISION NO. 1" part of the N.W. 1/4 Sec. 28 T. 1 N.R. 13 E., East Detroit, Macomb Co., Michigan and that the streets as shown on said plat are hereby dedicated to the use of the public and that the easements as shown on said plat are hereby reserved for the use of public utilities and no permanent structures are to be erected within the lines of said easements. Regulation of the use thereof is vested in the local governmental authority.

Signed and Sealed in the presence of:

William P. Hall
William P. Hall, President
Paul Pinckert
Paul Pinckert, Secretary
L. & N. Corporation
L. & N. CORPORATION
L.S. Burton
L.S. Burton, President
William P. Hall
William P. Hall, Vice President

FAIRWAY GOLF CLUB, INC.

ACKNOWLEDGMENT

STATE OF MICHIGAN }
County of Macomb } ss.

On this 14th day of *October*, 1955 A.D., before me a Notary Public in and for said county appeared Jules Pinckert and Paul Pinckert; L.S. Burton and William P. Hall; Wilbur J. Danaher, and Marjorie Mair, to me personally known, who being each by me duly sworn did say that they are President and Secretary respectively of Fairway Golf Club, Inc.; President and Vice President respectively of L. & N. Corporation; Vice President and Assistant Secretary respectively of Equitable Detroit Company each a Michigan Corporation and that the seals affixed to said instruments is the corporate seal of said corporation and that said instrument was signed and sealed in behalf of said corporation with authority of its Board of Directors and that said Jules Pinckert and Paul Pinckert, L.S. Burton and William P. Hall, and Wilbur J. Danaher and Marjorie Mair acknowledged said instrument to be the free act and deed of said corporation.

Kila M. Pierson
Kila M. Pierson
Notary Public, Wayne Co., Michigan
My Commission expires *10/15/56*

DESCRIPTION OF LAND PLATTED
THE LAND embraced in the annexed plat "FAIRWAY GOLF COURSE SUBDIVISION NO. 1" part of the N.W. 1/4 of Sec. 28 T. 1 N.R. 13 E., East Detroit, Macomb County, Michigan, is described as follows:
Reference is made to the plat of the N.W. 1/4 of Sec. 28 T. 1 N.R. 13 E., East Detroit, Macomb County, Michigan, as described as follows:

See Protective Covenants hereon filed with this plat.

... President and Secretary respectively of Fairway Golf Club, Inc.; President and Vice President respectively of L. & N. Corporation; Vice President and Assistant Secretary respectively of Equitable Detroit Company such a Michigan Corporation and that the seals affixed to said instruments is the corporate seal of said corporation and that said instrument was signed and sealed in behalf of said corporation by authority of its Board of Directors and that said Jules Pinckert and Paul Pinckert, L.S., Burton and William P. Hull, and Wilbur J. Danaher and Marjorie Mair acknowledged said instrument to be the free act and deed of said corporation.

My Commission expires 12/31/1935
 File N. Pierceon
 Notary Public, Wayne Co., Michigan

DESCRIPTION OF LAND PLATED
 The land embraced in the annexed plat of FAIRWAY GOLF COURSE, SUBDIVISION NO. 1st part of the N.W. 1/4 of Sec. 28 T. 1 N.R. 13 E., East Detroit, Macomb County, Michigan, is described as follows:
 Commencing at the N.W. corner of Section 28, T. 1 N.R. 13 E., thence N 89° 45' 10" E 1011.44 feet, thence N 89° 43' 10" E 336.75 feet, thence N 89° 43' 30" E 705 feet to the point of beginning, thence N 89° 43' 30" E 647.87 feet, thence S 0° 06' 10" E 1265.40 feet, thence S 0° 11' 10" E 1340.79 feet, thence S 0° 11' 10" E 1463.53 feet, thence N 1° 17' 50" W 43 feet, thence N 65° 10' 10" W 74.60 feet, thence S 89° 43' 30" W 54 feet, thence N 0° 07' 10" W 105 feet, thence N 26° 27' 27" E 66.96 feet, thence N 0° 07' 10" W 665 feet to the point of beginning.

SHIRAZIUS CERTIFICATE
 I hereby certify that the plat hereon delineated is a correct one and that permanent metal monuments consisting of bars of not less than one-half inch in diameter and thirty six inches in length encased in a concrete cylinder at least 4 inches in diameter and thirty six inches in depth have been placed at points marked thus (c) as thereon shown at all angles in the boundaries of the land plated, at all the intersections of the streets, intersections of alleys, or of streets and alleys, boundaries of the plat as shown on said plat.

Harry J. Fuller
 Harry J. Fuller, Registered Land Surveyor

CERTIFICATE OF MUNICIPAL APPROVAL
 This plat was approved by the City Council of the City of East Detroit of Macomb County, Michigan at a meeting held 12/1/35. All public sewers and water facilities are installed ready for connection.

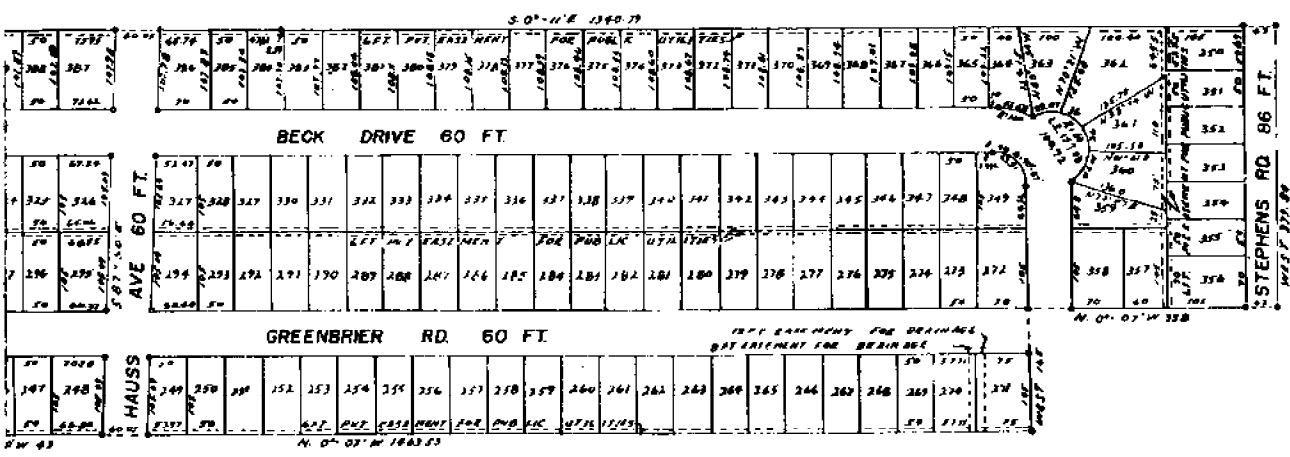
Charles Beaubien
 (Clerk)

CERTIFICATE OF APPROVAL BY COUNTY BOARD
 This plat was approved on the 12/1/35 day of December 1935.

Leon Burt
 (County Register of Deeds)

Lyons Whalen
 (County Treasurer)

Frank Lohr
 (County Urban Commissioner)



Handwritten notes and signatures at the bottom right of the page, including a signature that appears to be 'L. & N. Corporation'.

6.12

P. 39

~~4~~

F-10

1930

W. J. LEHNER No. 123

ASSESSORS PLAT No 8

PARTS OF T.C. 624 & S.E. 1/4 SEC. 28 TNR. 12E.

VILLAGE OF ST CLAIR SHORES MACOMB CO. MICH.

SCALE 1" = 400'

WALTER J. LEHNER, REG. C.E.
MT. CLEMENS, MICH.

April 24, 1930
City of St. Clair

