

**Land Corner Recordation Certificate
2017 Annual Grant Agreement
Authority: MICH. 1970 PA 74, MCL 54.205**

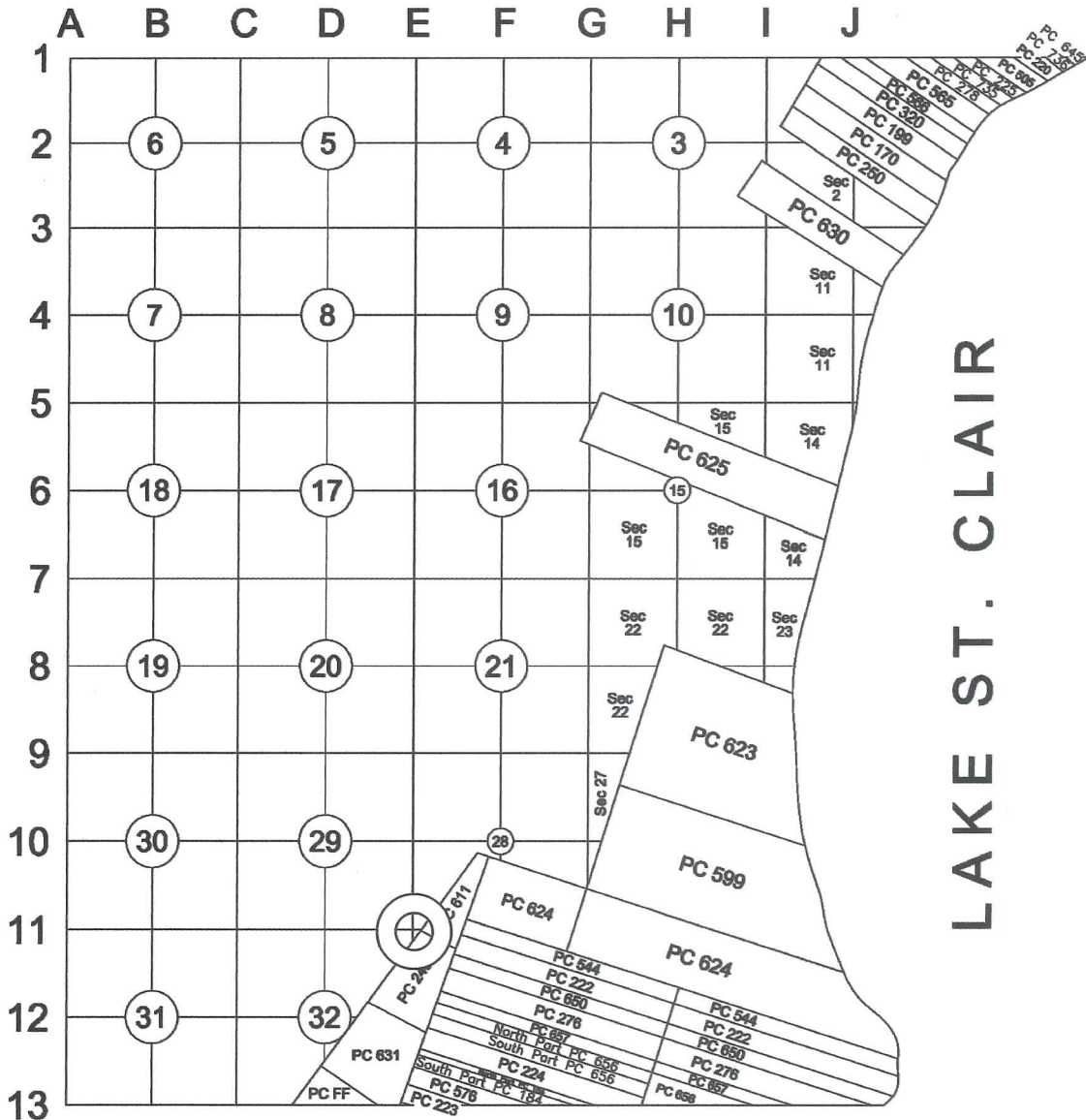
"LCRC BEING RECORDED FOR THE PURPOSE OF PUBLISHING MICHIGAN STATE PLANE COORDINATE DATA"

Surveyor's Name: Steven E. Dunn, P.S.
For Corner(s) in: Macomb County

Field Survey Date: May 15, 2017
Municipality: City of Eastpointe

Corner Type	Section	Survey Township	Corner Code	Other Code
Original Public Land Survey Corner	Sec. 28,29,32,33	T 01 N R 13 E	E11	

Other Code Corner Description: Section Corner common with Sections 28, 29, 32 and 33



Part A: Corner History: Section Corner common with Sections 28, 29, 32 and 33

12-21-2004 LCRC for Remonumentation Corner by Robert H. Birkett, PS #41094, E11 recorded in L. 16216 of Deeds on P. 209. Set a 3/4" X 24" iron with an aluminum cap stamped "MACOMB COUNTY MONUMENT, MI ACT 345, 41094, E11" at the center of Nine Mile Road with Schroeder Road to the north in a new monument box with 4 accessories.
Peer Review Group Approval: October 12, 2004

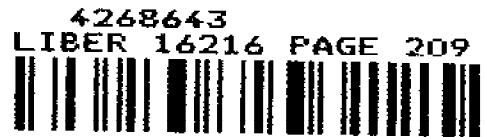
2 MD

C

LAND CORNER RECORDATION CERTIFICATE
Filing Requirement of Act 74, Mich. P.A. 1970 as Amended

For corners in Erin Township, City of Eastpointe

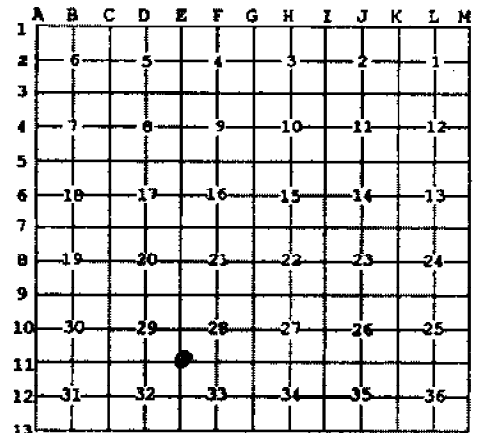
<u>Macomb County</u> (County)	Located In:	Corner Code #
1. Public Land Survey	T <u>01N</u> R <u>13E</u>	<u>E-11</u>
	T _____ R _____	_____
	T _____ R _____	_____
	T _____ R _____	_____
2. Property Controlling In Section	S _____ T _____ R _____	_____
	s _____ T _____ R _____	_____
3. Miscellaneous Property in Sec.	S _____ T _____ R _____	_____
	S _____ T _____ R _____	_____
4. Lot No. _____, Recorded Plat		
5. Private Claims		



12/21/2004 02:19:47 P.M.
 MACOMB COUNTY, MI SEAL
 CARMELLA SABAUGH, REGISTER OF DEEDS

Register of Deeds Stamp & File
 Number

I, Robert H. Birkett, in a field survey on August 7, 20 04 do hereby state that under requirements of P.A. 74, Michigan P.A. of 1970, the corner points mentioned in lines 1 and 2 above were in conformance with regulations and rules therefore as required in the current manual of survey instructions of the United States Department of the Interior, Bureau of Land Management or by a decree of a Court of Law and /or that the corner points mentioned in lines 3, 4 and 5 above were in conformance with the rules of the Michigan Board of Land Surveyors or by a Decree of a Court of Law; established, re-established, monumented, recovered, found as expressed below:



NOTE: Not more than 2 corners, all in the same town and range, may be recorded on this certificate.

A. Description of original monument and accessories and/or subsequent restoration:
 E-11 1818, W. Preston set post.

B. Description of corner evidence found and/or method applied in restoring or reestablishing corner:
 E-11 Corner is an obliterated corner. The corner was re-established at the center of nine mile road with Schroeder road to the north, using existing field information of the following recorded subdivisions:

- * 1924, A. Brauch, "Elm Tree Sub.", L. 007, P. 073, MCR
- * 1924, G. Jerome, No. 4723, "Kelly - Halfway Sub.", L. 007, P. 076, MCR
- * 1924, H. R. O'Mara, "Teppert's Golden Gate Sub.", L. 007, P. 077, MCR
- * 1924, H. R. O'Mara, "Koppins Halfway Homes Sub. No. 1", L. 008, P. 017, MCR
- * 1925, G. Rubbing, "Kelly Super Highway Sub.", L. 010, P. 019, MCR
- * 1926, H. J. Fuller, No. 1645, "Babcock & Crawford & Strevenson's Bacrason Sub., L. 011, P. 028, MCR
- * 1942, H. J. Fuller, No. 1645, "Assessors Plat No. 9", L. 022, P. 004, MCR
- * 1956, H. J. Fuller, No. 1645, "Abram Sub.", L. 030, P. 029, MCR
- * 1957, H. J. Fuller, No. 1645, "Assessors Plat No. 32", L. 038, P. 039, MCR

ACCEPTED BY THE MACOMB COUNTY SURVEYING GROUP AS THE OFFICIAL CORNER UNDER MICHIGAN PUBLIC ACT 345 OF 1990 AT A MEETING HELD ON 10/12/04

Martin C. Dunn
 MARTIN C. DUNN, P.S. CHAIRMAN

FIELD MEASUREMENTS BETWEEN CORNERS

- E-11 TO D-10 2004 Remon (2696.59'), Plats East of Kelly (2696.20'), Plats West of Kelly (2697.90'), 1818 GLO 40.00 Ch. (2640.00').
- E-11 TO D-12 2004 Remon (2682.36'), Plats North of 9 Mile (2684.80'), (1818) GLO 40.00 Ch. (2640.00')

C. Description of monument for corner and accessories established to perpetuate locating the position of the corner:
 E-11 Set 3/4" x 24" iron with aluminum cap at the center of nine mile road with Schroeder road to the north, marked "Macomb County Monument, MI, ACT 345, 41094, E-11", in a new monument box.

- Az. 0° - 59.82' - Set ch. "X" on Southeast bolt metal traffic light pole base.
- Az. 121° - 83.24' - Set ch. "X" on west bolt metal traffic light pole base.
- Az. 237° - 113.81' - Set ch. "X" on north bolt metal pole base.
- Az. 304° - 87.92' - Set remon tag in Northeast face utility pole with light.

The Selected location is accepted by me and is generally accepted by Professional Surveyors as the best available evidence of the position of the original corner.



Signed by Robert H. Birkett

Date 12-15-04

Surveyor's Michigan License No. 41094

**2004 MACOMB COUNTY RE-MONUMENTATION
E-11, TOWN 1 NORTH, RANGE 13 EAST,
ERIN TOWNSHIP, CITY OF EASTPOINTE**

GENERAL LAND OFFICE HISTORY

WILLIAM PRESTON SUBDIVIDED TOWN 1 NORTH, RANGE 13 EAST IN 1818. NO EVIDENCE OF THE POST SET WAS RECOVERED.

EXISTING CONDITIONS

E-11 IS A OBLITERATED CORNER. THE RECOVERED CORNER IS LOCATED IN THE CENTER OF NINE MILE ROAD WITH SCHROEDER ROAD TO THE NORTH. OBSERVABLE OCCUPATION TO THE IS NOT VISIBLE OR MONUMENTED.

CERTIFICATE OF SURVEYS & LAND CORNER RECORDATION CERTIFICATES

- * NO ACT 132 CERTIFICATES AVAILABLE FOR THIS CORNER.
- * NO LAND CORNER RECORDATION CERTIFICATES AVAILABLE FOR THIS CORNER.

SUBDIVISION REFERENCING E-11

- * 1924, A. BRAUCH, "ELM TREE SUB.", LIBER 007, PAGE 073, MCR
- * 1924, G. JEROME, "KELLY - HALFWAY SUB.", LIBER 007, PAGE 076, MCR
- * 1924, H. R. O'MARA, "TEPPERT'S GOLDEN GATE SUB.", LIBER 007, PAGE 077, MCR
- * 1924, H. R. O'MARA, "KOPPINS HALFWAY HOMES SUB. No. 1", LIBER 008, PAGE 017, MCR
- * 1925, G. RUBBING, "KELLY SUPER HIGHWAY SUB.", LIBER 010, PAGE 019, MCR
- * 1926, H. J. FULLER, "BABCOCK & CRAWFORD & STREVENSON'S BACRASON SUB.,
LIBER 011, PAGE 028, MCR
- * 1956, H. J. FULLER, "ABRAM SUB.", LIBER 030, PAGE 029, MCR
- * 1957, H. FULLER, "ASSESSORS PLAT No. 32", LIBER 038, PAGE 039, MCR

UNRECORDED INFORMATION

- * NO UNRECORDED INFORMATION WAS RECEIVED FOR THIS CORNER.

WITNESSES RECOVERED

- * NO PREVIOUS WITNESSES FOR THIS CORNER.
- * E-11 WAS SET USING THE ABOVE RECORD PLATS FIELD MONUMENTS.

FIELD MEASUREMENTS BETWEEN CORNERS

E-11 TO D-10 2004 Remon (2696.59'), Plats East of Kelly (2696.20'), Plats West of Kelly (2697.90'),
1818 GLO 40.00 Ch. (2640.00').
E-11 TO D-12 2004 Remon (2682.36'), Plats North of 9 Mile (2684.80'), (1818) GLO 40.00 Ch. (2640.00')

RECOMMENDATIONS

TO ACCEPT THE LOCATION DOCUMENTED AS THE FAITHFUL RECOVERY OF THE OBLITERATED CORNER E-11.

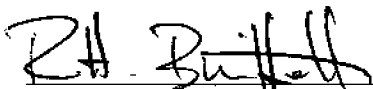
PLACE THE FOLLOWING STATEMENT ON THE NEW LCRC:

"THE SELECTED LOCATION IS ACCEPTED BY ME AND IS GENERALLY ACCEPTED BY PROFESSIONAL SURVEYORS AS THE BEST AVAILABLE EVIDENCE OF THE POSITION OF THE ORIGINAL CORNER."

MONUMENT SET AND WITNESSES

SET ¾" IRON WITH CAP MARKED "MACOMB COUNTY MONUMENT, MI, ACT 345, 41094, E-11", IN A NEW MONUMENT BOX.

- Az. 0° - 59.82' - Set ch. "X" on Southeast bolt metal traffic light pole base.
- Az. 121° - 83.24' - Set ch. "X" on west bolt metal traffic light pole base.
- Az. 237° - 113.81' - Set ch. "X" on north bolt metal pole base.
- Az. 304° - 87.92' - Set remon tag in Northeast face utility pole with light.



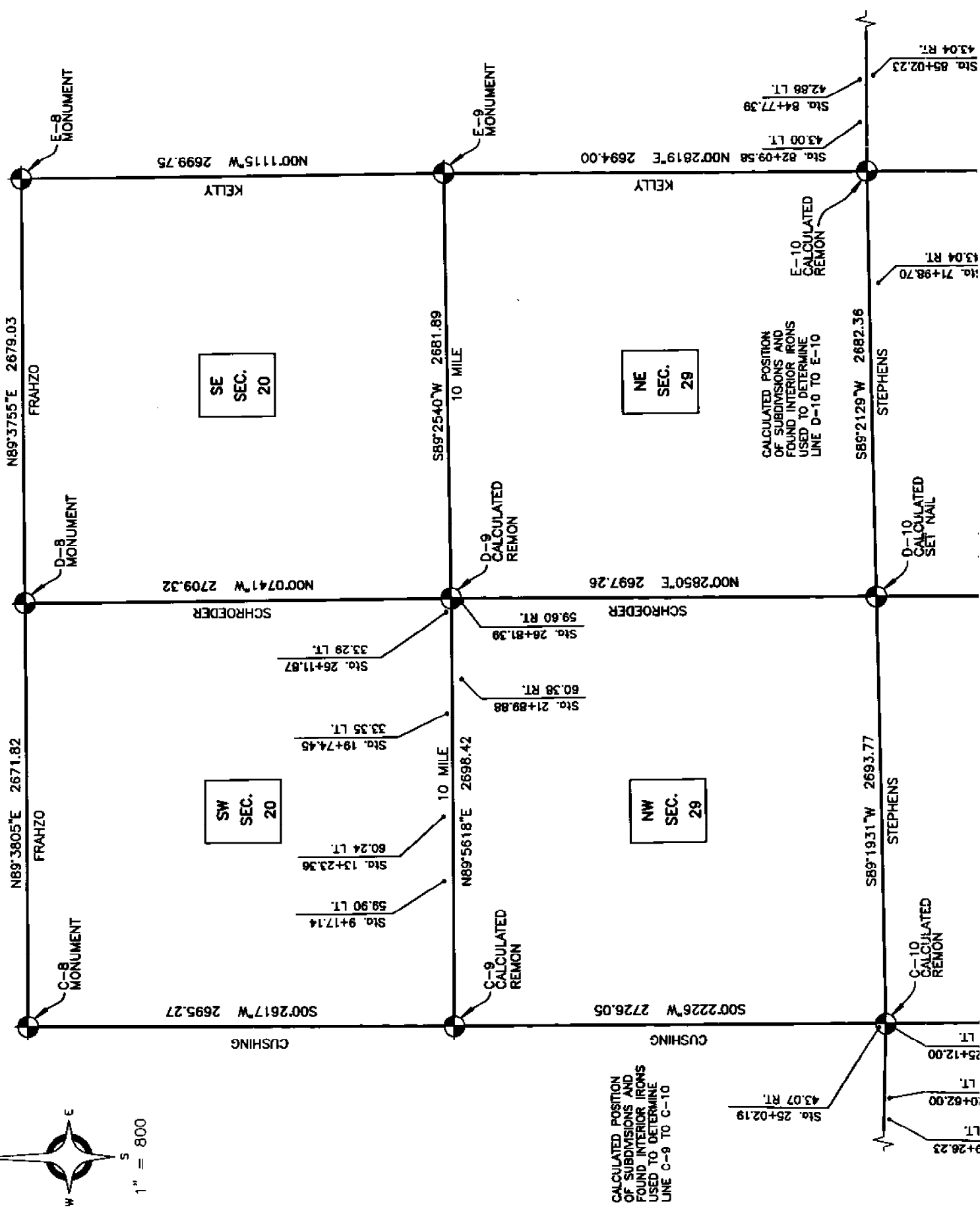
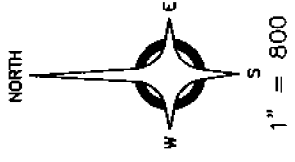
ROBERT H. BIRKETT, P.S.

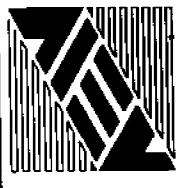
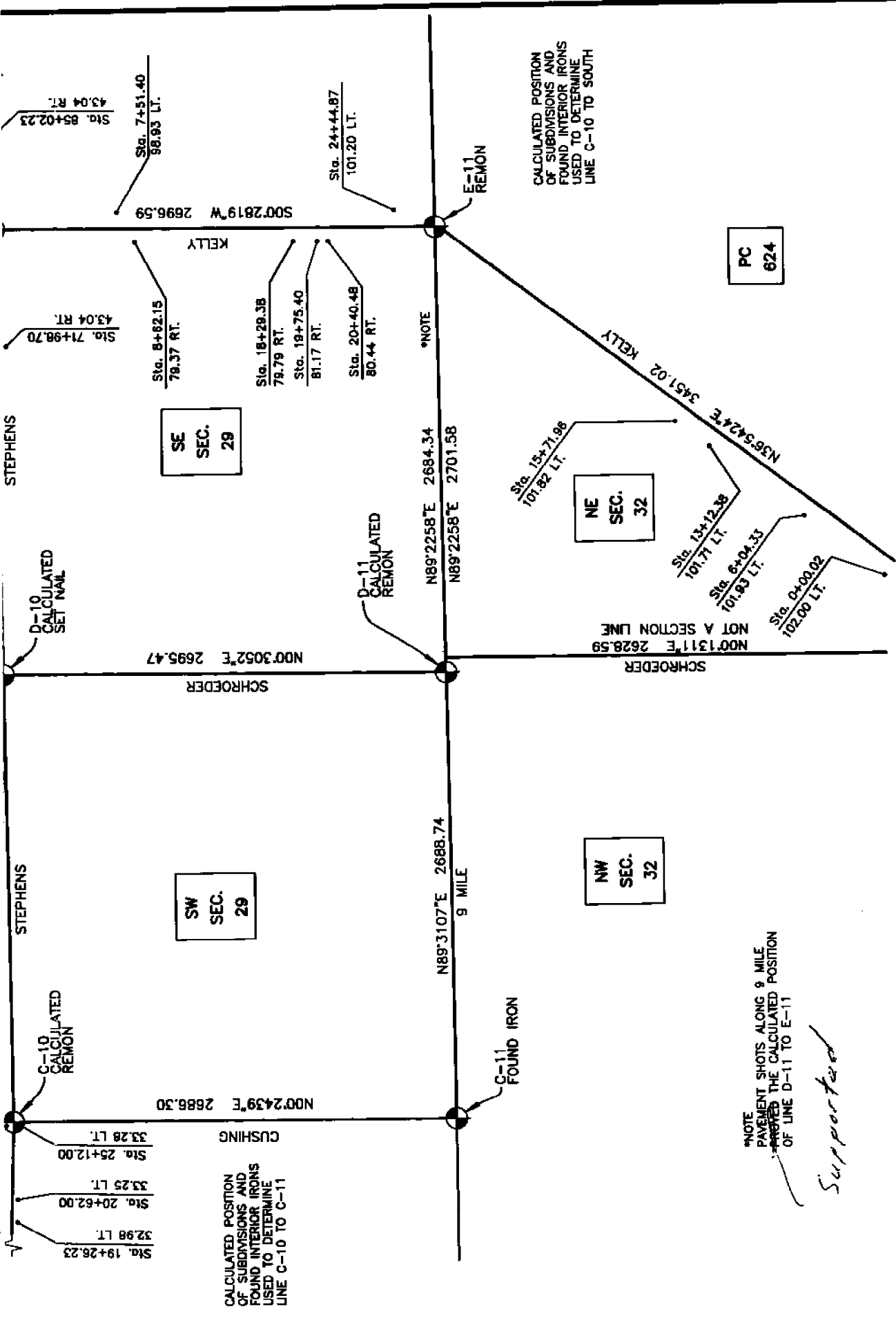
41094

12-13-04

DATE

EASTPOINTE / ERIN TOWNSHIP



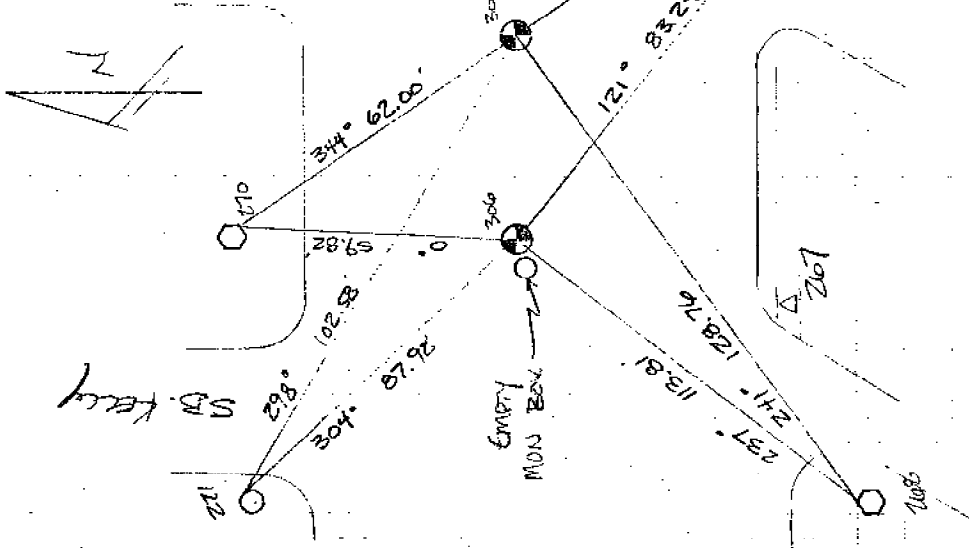


ANDERSON, ECKSTEIN AND WESTRICK, INC.
 Civil Engineers • Surveyors • Architects
 51301 Schoenherr Road, Shelby Township, Michigan 48315
 Phone 586•726•1234 Fax 586•726•8780

"NOTE: PAVEMENT SHOTS ALONG 9 MILE... APPROVED THE CALCULATED POSITION OF LINE D-11 TO E-11"
Supported

No 2340

NB KEY



2004 Remond

E-11 EBN TWP

SET PK IN ASPH @ N. CORNER
EB LANDS 9 MILES

T.C. 267 → 306

266	00-00-00	42.60	SET PK
267	17-43-42	51.90	SET PK
268	231-40-00	82.59	SET CHAIN 'X' N. JOST
			METAL PINE ZONE
269	69-50-13	87.69	SET CURB X IN BOLT TRAFFIC
			METAL CURB PINE ZONE
270	346-47-27	100.48	SET CURB X SE BOLT TRAFFIC
			METAL CURB PINE ZONE
271	304-37-02	104.83	SET EMBROID TAP
			NO FACE UP of LIGHT

223-026
87-04
103-106

2004 Remon

Keyly Bl Cuts - 9 miles to STEPHENS

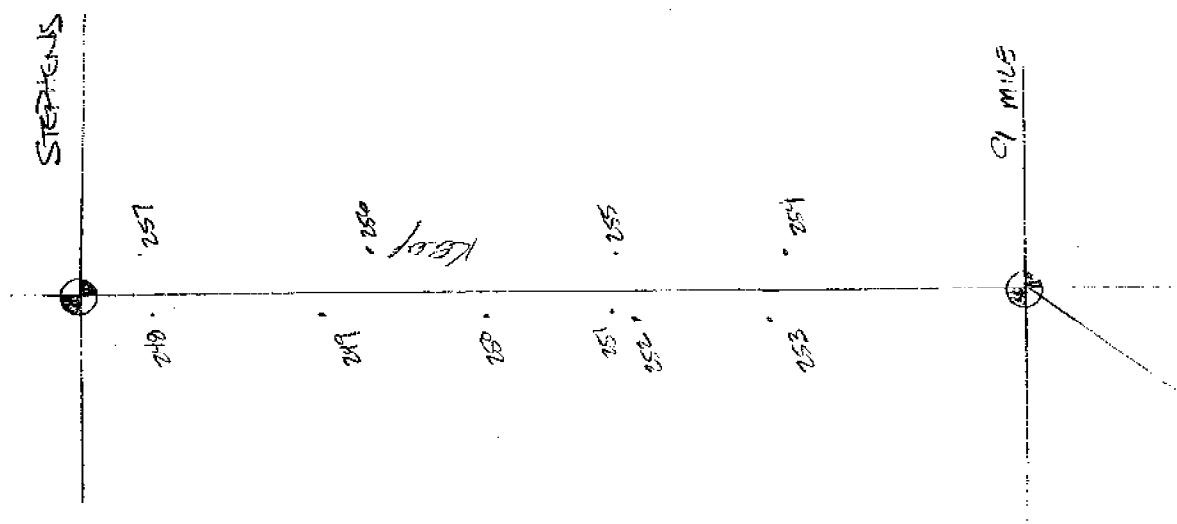
Point# Desc

249-251 Blc W. Side Keyly

252-253 Blc W. Side Keyly After Jct

254-257 Blc E. Side Keyly

No 2340



2231004
8-7-04
M. J. [unclear]

2104 Remon

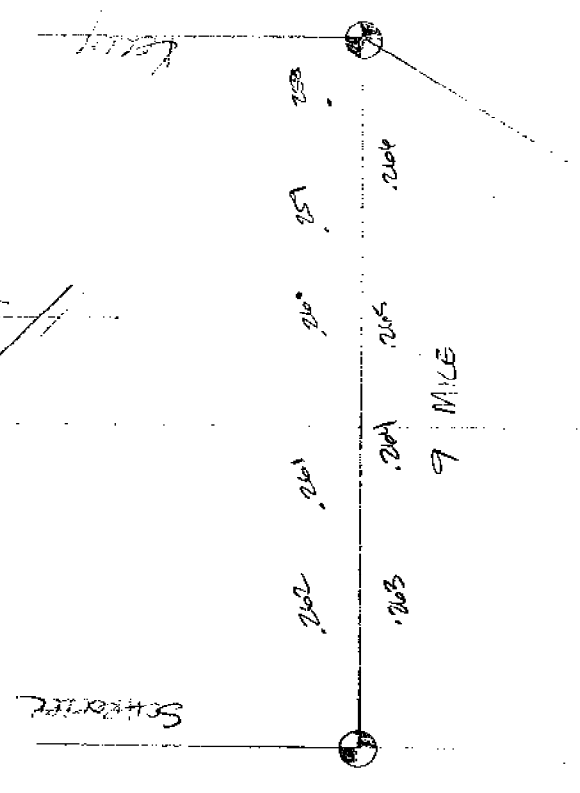
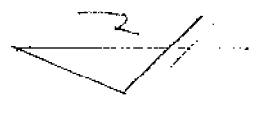
9 Mile Curve - Kelly to Schreder

Point# Desc

258-262 B/C N. Side 9 Mile

263-264 B/C S. Side 9 Mile

No 2340



"Acc. of ..."

8-10

"ABSTRACT ..."

651.0

"Hades ..."

1.000

651.0

651.0

TEMPERATURE ...

1847.70

1847.70

WESTERN

L. 7 P. 73
"EUM TREE SUB"

D-11

"ASSESSORS PLAT
No. 32"
L 038 P 039

336.0'

643.80

WILMONT AVE 50.00

"BARBROCK & CLAUFRON
STEVENSON BACCHASON SUB"
L. 011 P 028

994.95'

"TEPPERT'S GOLDEN
GATE SUB"

L 007 P 77

2041.00

1320.43 PER PLAT
+ 319.2 (L. 011 P. 028) 715

"KELLY HAUF WY SUB"
L. 007 P 076

TOTAL
2701.38

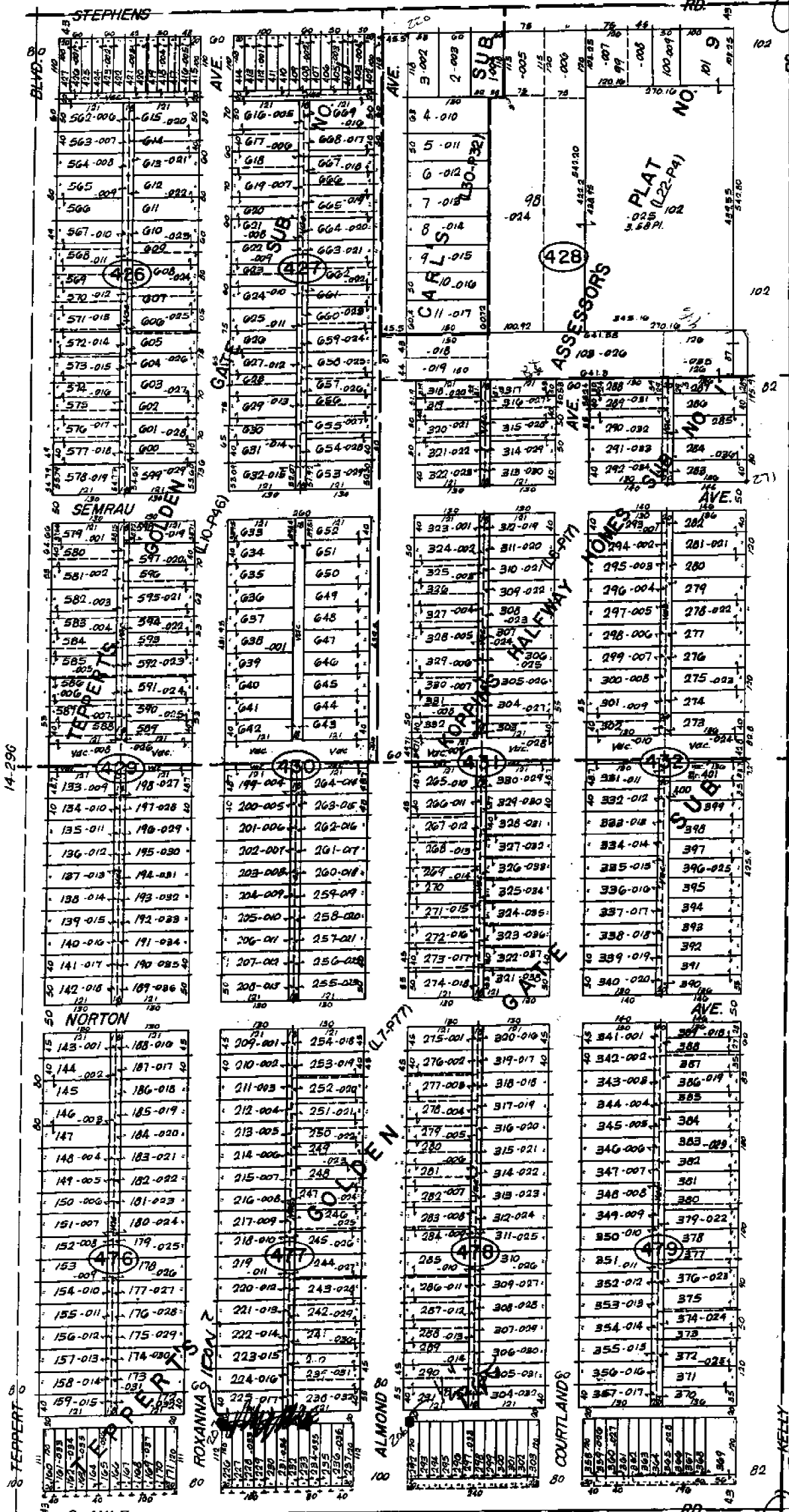
NOT TO SCALE

E-11 NORTH

E-11 SOUTH

TOTAL
2684.80

DE-10
REMON

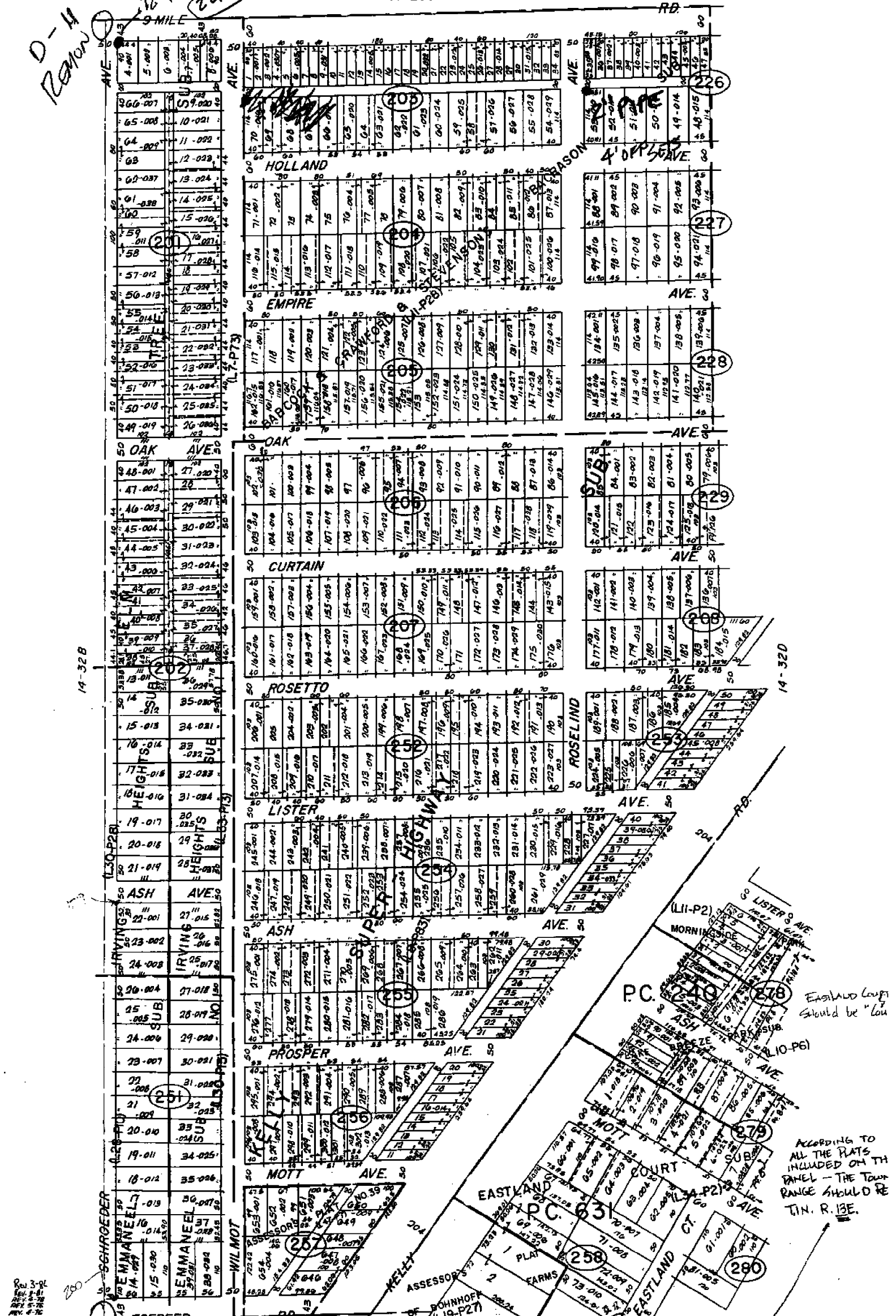


REV. 3-81
REV. 4-78
REV. 5-76
REV. 4-76

Changes to Base Map
KELLY
Box
NOT VERIFIED
VERIFIED

EAST DETROIT

D-14
RANGE
1/2 200'



Rev. 3-82
Rev. 8-81
Rev. 6-79
Rev. 5-78
Rev. 4-76

Copyright 1973
MACOMB COUNTY, MICHIGAN

SCALE: 1" = 100'

14-32C

EAST DETROIT

W. 1/2 NE. 1/4 SEC. 32 & PT. PC. 240 & 631 T.1N. R.12E.

ACCORDING TO ALL THE PLATS INCLUDED ON THIS PANEL - THE TOWN RANGE SHOULD BE T1N. R. 13E.

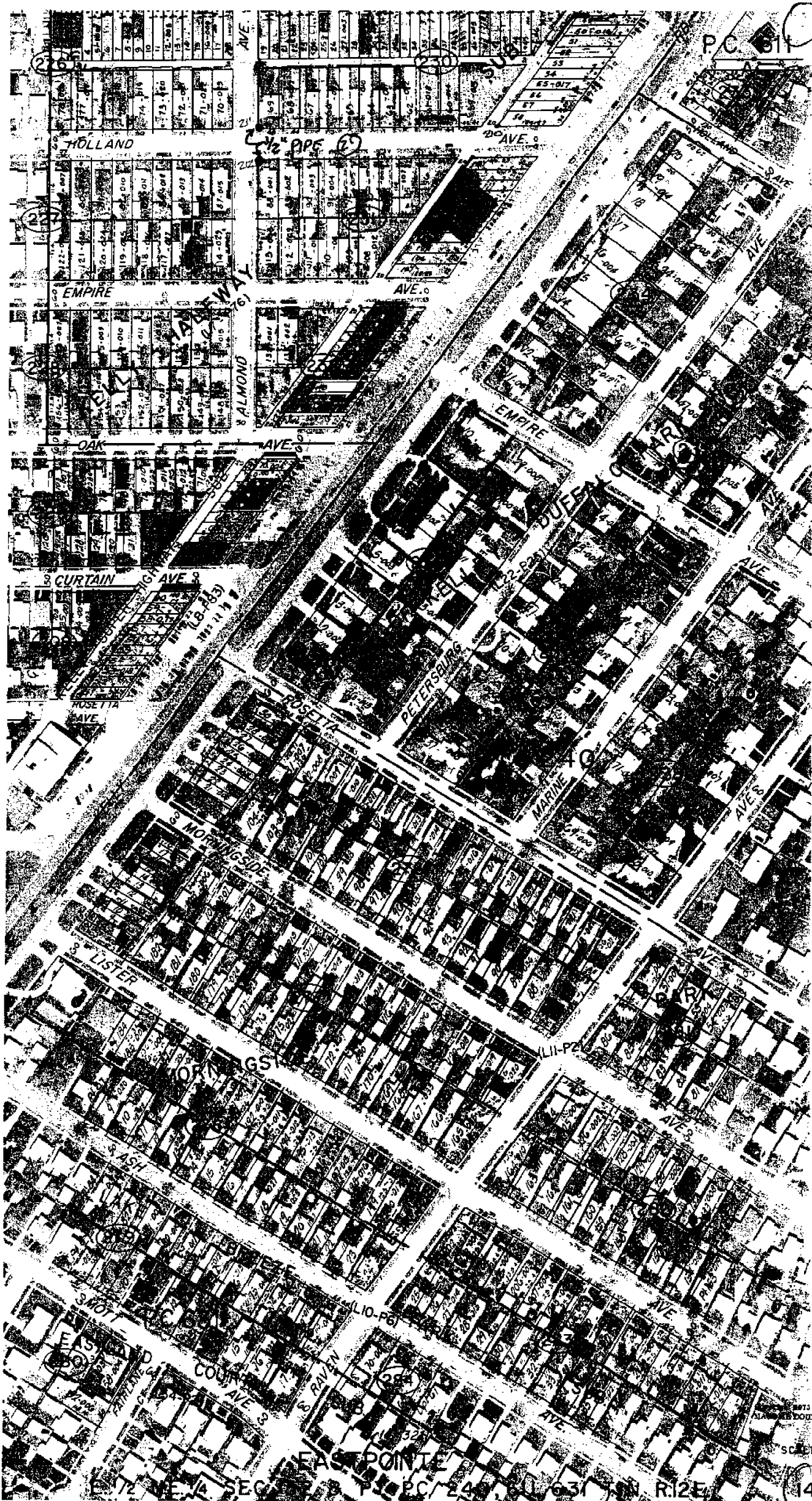
CHANGES TO BASE MAP NOT VERIFIED

VERIFIED

D-12
LOCATIONS
2005 NOT EXIST

EASTLAND COURT SHOULD BE "LOW"

E-11
LORION



14-334

E-12
LORION

14-320

14-334

West On Random between S 20 + 29
 40.00 Set temporary half mile pt
 79.79 End West boundary at the corner
 Land level and dry good 2 $\frac{1}{2}$ rate
 Timber W. Oak Beech Sugar Poplar
 Lym + Undergrowth Spice + c

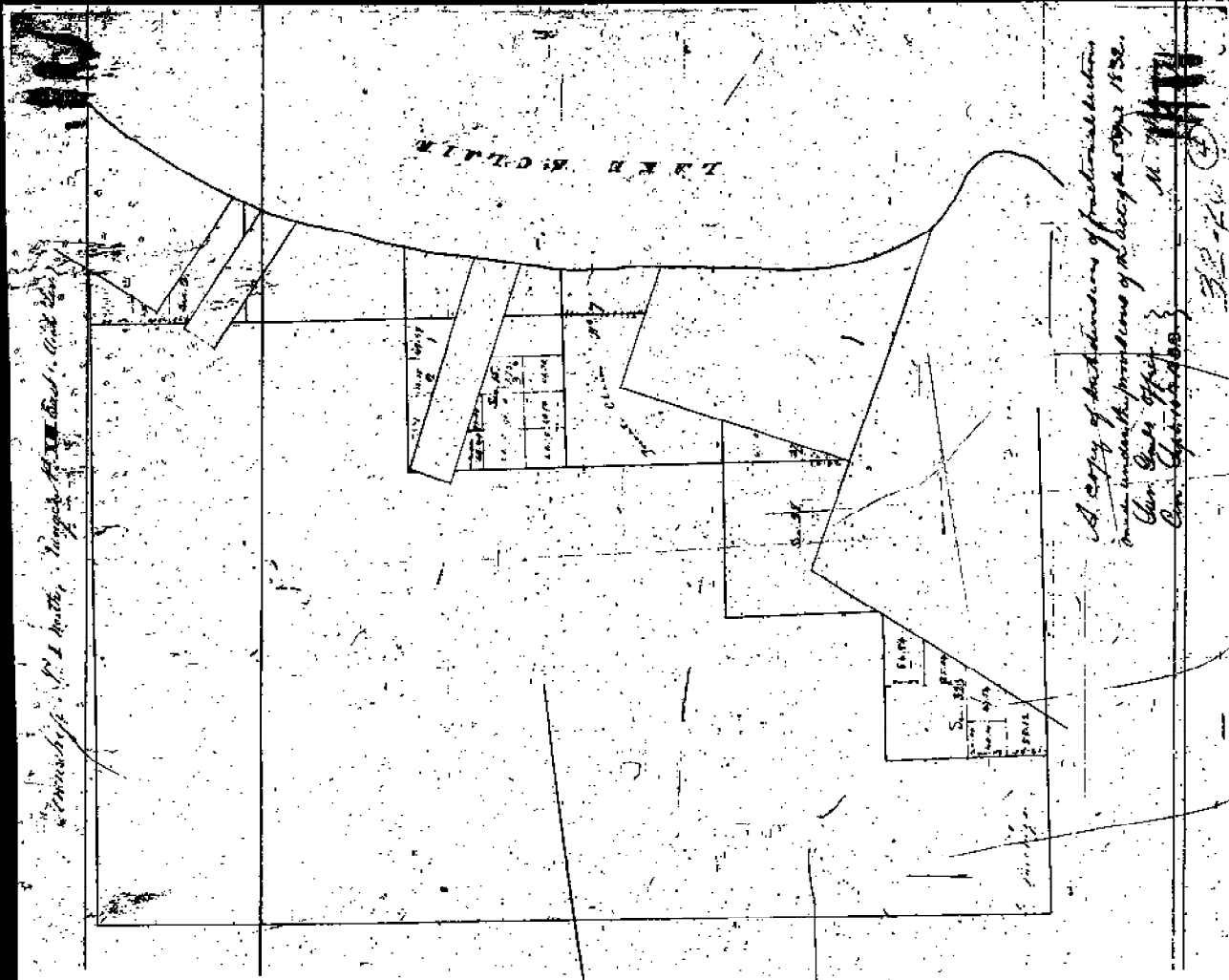
East Corrected between S. 20 + 29
 39.89 Made 1/4 Section corner on a
 Ironwood 5 in diam at average dist
 79.79 To Section corner

South Between Sections 29 + 28
 16.64 an Elm 24 in dia
 40.00 Made half mile corner on a
 B. Ash 5 in dia
 57.17 an Elm 20 in dia
 80.00 Made corner for Section 29, 28, 32, 33
 on a B. Ash 6 in dia
 1 $\frac{1}{2}$ half mile part dry 2 $\frac{1}{2}$ rate
 last half mile wet 1 $\frac{1}{2}$ rate
 Timber B. Ash Elm Lym Buck
 Undergrowth Hornbeam Bash + c

West On Random between S 29 + 32
 40.00 Set temporary half mile Pt
 80.00 End West boundary 1/4 link South
 of corner Land level and dry good
 2 $\frac{1}{2}$ rate Timber W. Oak Poplar Beech
 Sugar Lym Undergrowth Spice
 Hornbeam

East Corrected between 29 + 32
 40.00 Made 1/4 section corner on a B. Ash 8 in dia





Proposed by C. J. Smith, Engineer, City of New York

*A copy of the plan of the proposed
 and the provisions of the City of New York
 City of New York
 City of New York*

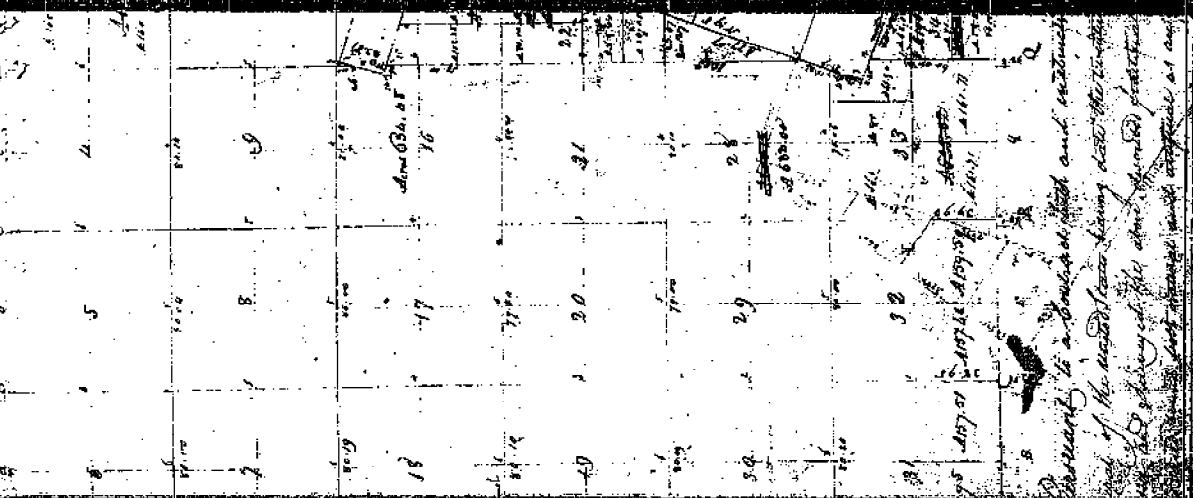
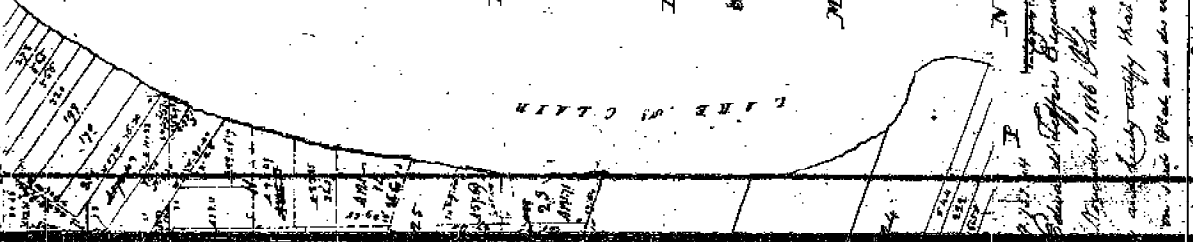
11. 11. 11

32-76

32-26
32-26
32-26

Michigan Territory

No. 1 North Range NE 1/4 of Sec 1



Surveyed by
John W. Coffin Engineer
Michigan, 1866
and being copy of the original
in the office of the
Michigan Territory

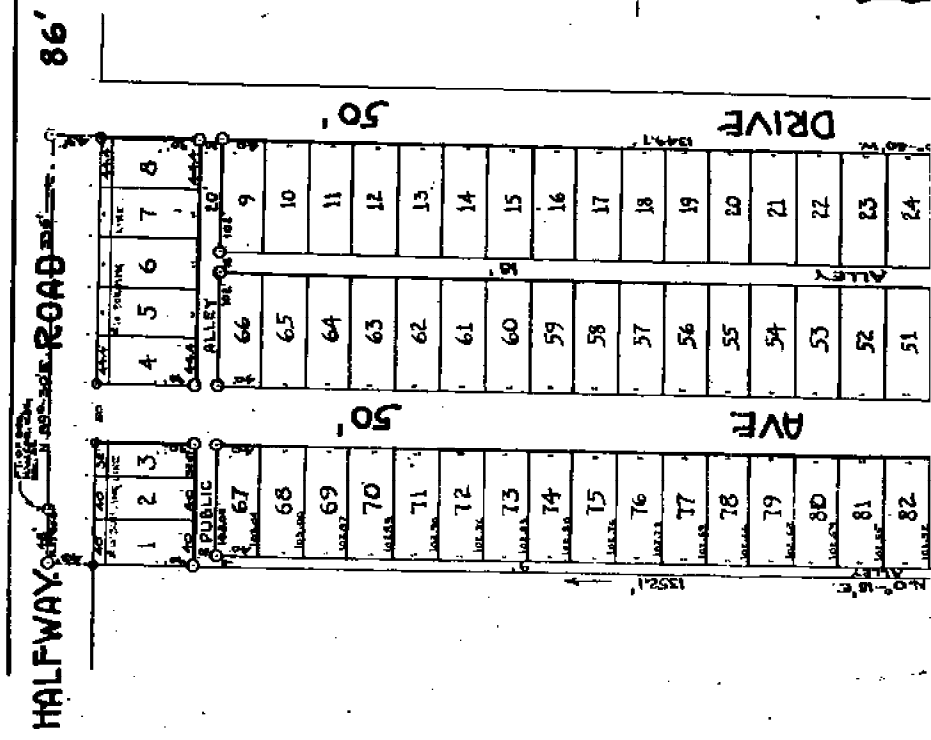
Surveyed by
John W. Coffin Engineer
Michigan, 1866
and being copy of the original
in the office of the
Michigan Territory

John W. Coffin
Engineer

John W. Coffin
Engineer

"ELM TREE SUBDIVISION" PART OF N. 1/2 OF SEC. 32, T. 1 N., R. 13 E., ERIN TWP. MACOMB COUNTY, MICH.

SCALE: 1" = 100'
ALL DIMENSIONS IN FEET AND DECIMALS



KNOW ALL MEN BY THESE PRESENTS that we William C. Shuster as proprietor and Elizabeth Shuster his wife and John A. Shuster as proprietors and William C. Shuster his wife and John A. Shuster as proprietor and Elizabeth Shuster his wife have caused the land embraced in the annexed plat to be surveyed, laid out and platted to be known as "Elm Tree Subdivision" Part of N. 1/2 of Sec. 32, T. 1 N., R. 13 E., Erin Twp., Macomb County, Mich. and that the streets and alleys as shown on said plat are hereby dedicated to the use of the public.

William C. Shuster
Elizabeth Shuster
John A. Shuster

STATE OF MICHIGAN
County of Wayne ss
On this 29th day of April 1924 before me, a Notary Public in and for said county, personally came the above named William C. Shuster, Elizabeth Shuster, John A. Shuster, William C. Shuster and John A. Shuster, all of whom are known to me to be the persons who executed the above dedication and acknowledged the same to be their free act and deed.

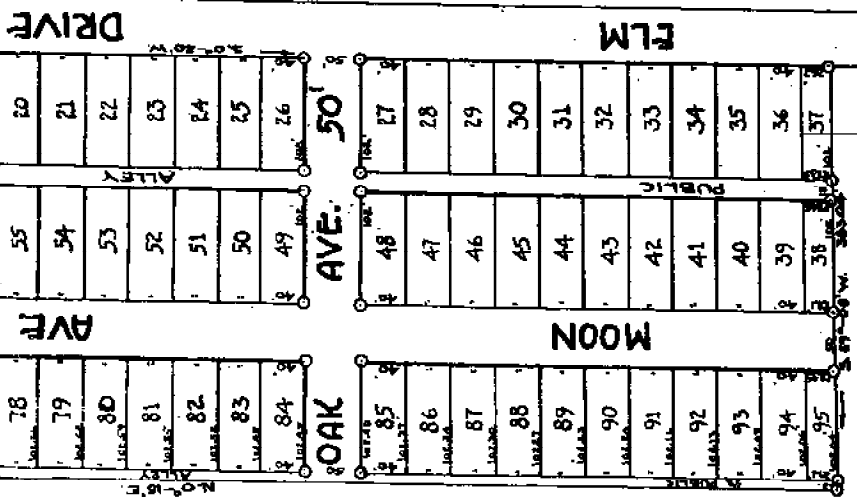
My commission expires March 16, 1926

John V. Jackson
Notary Public, Wayne County, Michigan

DESCRIPTION
The land embraced in the annexed plat of "Elm Tree Subdivision" Part of N. 1/2 of Sec. 32, T. 1 N., R. 13 E., Erin Twp., Macomb County, Mich. is described as follows: Beginning at the corner of the E. 1/2 of Sec. 32, T. 1 N., R. 13 E., Macomb County, Michigan; thence N. 89° 30' 00" W. 883.64 ft. to a point of beginning; thence S. 89° 30' 00" W. 18 ft. to the point of beginning.

SURVEYORS CERTIFICATE
I hereby certify that the plat hereon delineated is a correct one and that permanent monuments consisting of iron pipes 2 1/2" x 20", have been planted at points marked thereon as shown above and at the boundaries of the land embraced in the same.

77-1924
87-1924
John A. Shuster



DESCRIPTION

The land embraced in the annexed plat of "Eda Tree Subdivision" part of N. 1/4 of sec. 27, T. 1 N., R. 13 W. of S. 31, Sec. 20, Mich., is described as follows: Beginning at 66.00 ft. corner of the S. 31 - 20' E. 114.00 ft. 1/4 Sec. 27, T. 1 N., R. 13 W., Sec. 20, Mich., thence N. 89.30' E. 307.00 ft. to the point of beginning.

SURVYORS CERTIFICATE

I hereby certify that the plat hereto delineated is a correct one and that permanent monuments consisting of iron pipes, 2 1/2" x 20" have been placed at points marked thereon shown, at all angles in the boundaries of the land platted and at all interest lines of streets or alleys and alleys.

[Signature]
Registered Civil Engineer

TOWNSHIP APPROVAL

This plat was approved by the Township Board of Eden Township, Washtenaw County, Michigan at a meeting held *at 7:30 P.M. on May 17, 1934*

[Signature]
Township Clerk

COUNTY OF WAASHENAW

Recorded for libration into *2216*

[Signature] A. D. HALL, Clerk
[Signature] J. A. Plate, Deputy
[Signature] J. A. Plate, Deputy

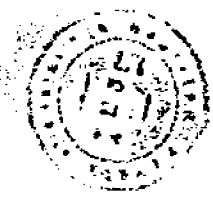
This plat was approved by the County Board for Washtenaw County, Michigan, at a meeting held *May 17, 1934*

[Signature] J. A. Plate, Clerk
[Signature] J. A. Plate, Deputy

COUNTY TREASURERS CERTIFICATE

This is to certify that there are no Tax Liens or Taxes due by the State or any individual against and that all Taxes due have been paid in the approved instrument have been paid in full.

[Signature] J. A. Plate, Deputy



73 75

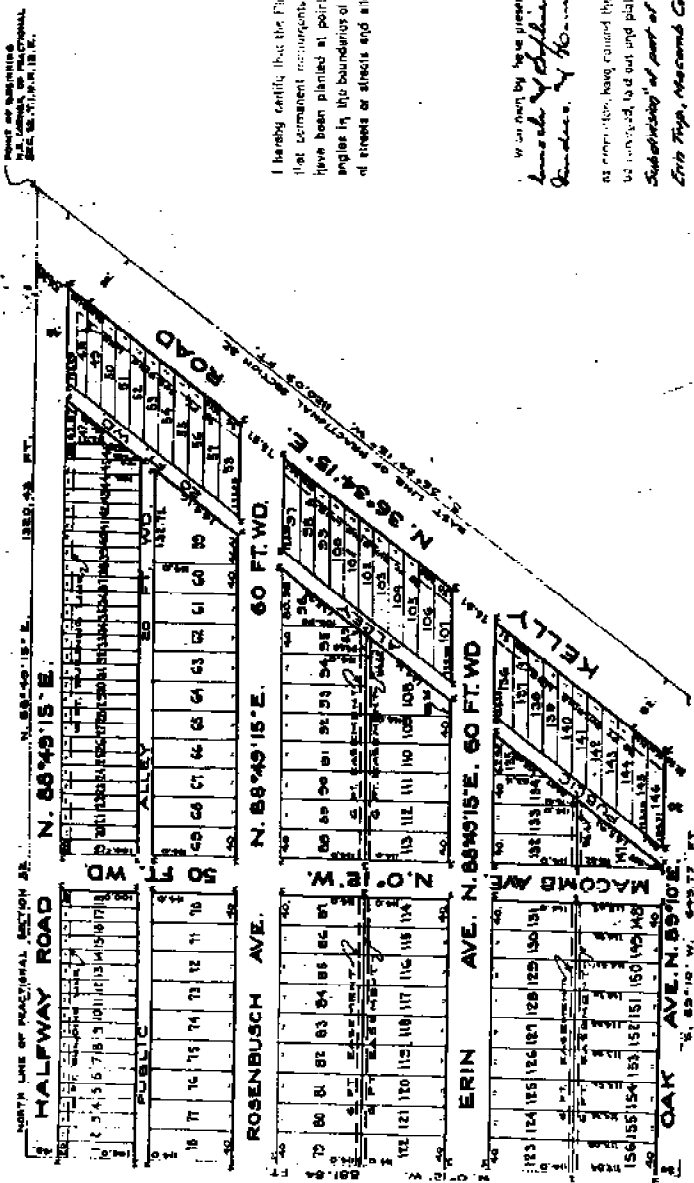
1007
P073

Kelly - Halfway Subdivision

Of part of Fractional Section 32, T.1.N., R.13.East.
Erie Twp., Macomb Co., Michigan

Scale 150 Feet = 1 Inch.

Note: - All distances are given in feet and decimals thereof.



RECORDED IN THE REGISTERED SURVEYOR'S OFFICE OF MACOMB COUNTY, MICHIGAN.

I hereby certify that the Plat herein delineated is a correct one and that permanent monuments were set at 1/2 x 1 1/2 inch iron stakes have been planted at points marked 'M' as the iron stakes at all angles in the boundaries of the land plat and at all intersections of streets or streets and alleys.

Wm. L. ...
REGISTERED SURVEYOR

Witness my hand and seal this 15th day of June 1927.

Witness my hand and seal this 15th day of June 1927.

and that the streets and alleys be shown and just as hereinafter dedicated to the use of the public.

Signed & Sealed in the presence of
Henry W. ...
John W. ...
...

APPROVED
 June 6-1927
Bo L. ...

Direction of Layl's Pasture
This is a proposed in the surface Eas of Kelly-Halfway Subdivision
of part of Fractional Section 32, T.11N. R. 18.E., E. 1st Twp., Macomb Co., Michigan.

is described as follows: Beginning at the N.E. corner of Fractional Section 32, T.11N. R. 18.E., E. 1st Twp., Macomb Co., Michigan.
Thence S. 86° 34' 15" W., 100.09 feet along the Easterly line of the said Fractional Section 32 to a point.
Thence S. 69° 10' N., 605.77 feet to a point.
Thence N. 0° 12' N., 801.94 feet to a point on the North line of the said Fractional Section 32.
Thence N. 88° 40' 15" E., 180.43 feet along the North line of the said Fractional Section 32 to the point at beginning.

TO THE COUNTY CLERK OF MACOMB COUNTY, MICHIGAN
May 29, 1924
I hereby certify that the above is a true and correct copy of the original of the above described easement as filed in the office of the County Clerk of Macomb County, Michigan, on this 29th day of May, 1924.
County Clerk
Charles J. Whitman
My Comm. Expires March 2, 1925

COUNTY CLERK OF MACOMB COUNTY, MICHIGAN
This is to certify that the above is a true and correct copy of the original of the above described easement as filed in the office of the County Clerk of Macomb County, Michigan, on this 29th day of May, 1924.
County Clerk
Charles J. Whitman
My Comm. Expires March 2, 1925

NOTARY PUBLIC
I hereby certify that the above is a true and correct copy of the original of the above described easement as filed in the office of the County Clerk of Macomb County, Michigan, on this 29th day of May, 1924.
Notary Public
Charles J. Whitman
My Comm. Expires March 2, 1925

and that the streets and alleys as shown on said plat are hereby dedicated to the use of the public.
Signed & Sealed in the Presence of
Herman J. Remondet, L.S.
Mrs. W. H. Harkins, L.S.
Joseph Beck, L.S.

County of Macomb }
in }
On this 29th day of May, 1924 }
before me, a Notary Public in and for said County, personally came the above named Charles J. Whitman, who being duly sworn, depose and testify that he is the owner of the above described easement and that he executed the same for the purposes and objects therein stated and acknowledged the same to be his own free act and deed.
Charles J. Whitman

Notary Public
My Commission Expires March 2, 1925

76
76
That was approved by the Council of Board
to Finance Dept. on
a meeting held May 1, 1924.
Walter H. Kern, Top

4007
p076

ORIGINAL

HEPPELERT'S GOLDEN GATE SUBDIVISION

OF PART OF THE S 1/4 OF THE S.E. 1/4 OF SEC. 29 T11N, R15E.

ERIN TWP.

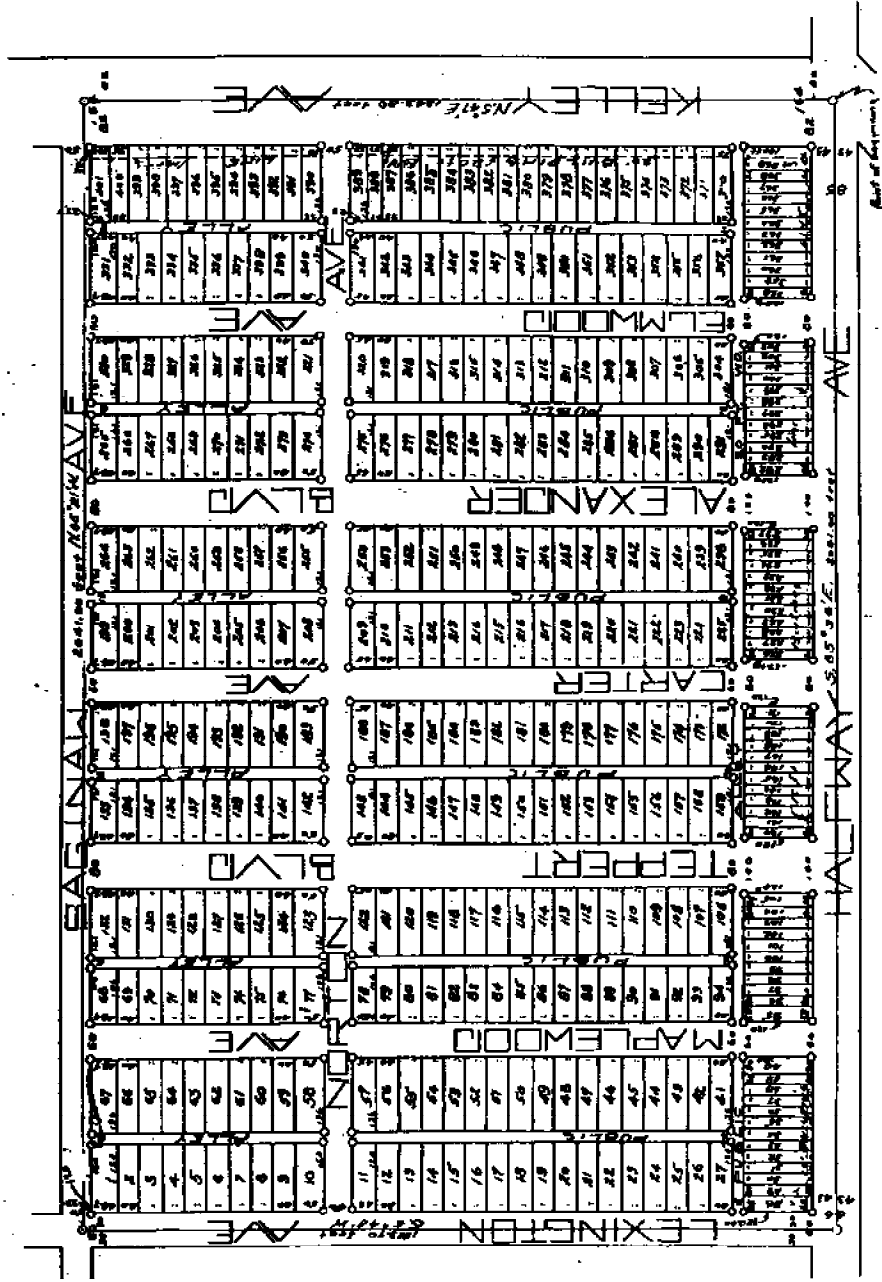
MACOMBS CO.

MICH.

SCALE 1"=200'

June 11-1924
J. L. Harper

NOTE: ALL DIMENSIONS ARE GIVEN IN FEET ON ORIGINAL THEODOLITE



APPROVED BY THE TOWNSHIP BOARD

This plat was approved by the township board of the township of Erin, at a meeting held at the day of 1924.

.....
 Township Clerk

.....
 A single man of Detroit Mich. as proprietor and executor of the estate of and Augusta Purhoff his wife, of Erin Twp. Macomb Co. Mich. as mortgagee and Charles Schroeder and Christine Schroeder his wife as mortgagees have caused the land embraced in the annexed plat to be surveyed, laid out and platted, to be known as "GOLDEN GATE SUBDIVISION" of part of the S. 1/4 of Sec. 29 T11N, R15E, Erin Twp., Macomb Co., Mich.

See Amended Plat of Macomb Co. as Original of Plat

11-5917-119

11-5917-119

11-5917-119

...day of... month of... 1927
before me a Notary Public in and for said county personally came the
above named Joseph Wappert and Frederick Purpoff and also Purpoff his
wife, and Charles Schroeder and Christian Schroeder his wife known to me
to be the persons who executed the above dedication and acknowledged the
same to be their free act and deed.

On this day... day of... month of... 1927
before me a Notary Public in and for said county personally came the
above named Joseph Wappert and Frederick Purpoff and also Purpoff his
wife, and Charles Schroeder and Christian Schroeder his wife known to me
to be the persons who executed the above dedication and acknowledged the
same to be their free act and deed.

Notary Public, Macomb County, Mich.
My commission expires Oct. 18 1927

ENGINEERS CERTIFICATE

I hereby certify that the plat hereon delineated is a correct one,
and that permanent monuments consisting of 2" iron gage pipe 1 1/2' long
have been placed at points marked (a) to (g) as thereon shown at all
angles in the boundaries of the land platted, at all intersections of
streets or streets and alleys.

Registered Civil Engineer

This plat was approved by the township board of the township of Erin, at a
public meeting held on the 18th day of May, 1927.

Notary Public, Macomb County, Mich.
My commission expires Oct. 18 1927

Notary Public, Macomb County, Mich.
My commission expires Oct. 18 1927

COUNTY TREASURER'S CERTIFICATE

This is to certify that the amount of \$2001.00 was paid to the State of Michigan by the State of Michigan on the 18th day of May, 1927.

Notary Public, Macomb County, Mich.
My commission expires Oct. 18 1927

DESCRIPTION OF LAND PLATTED

The Land embraced in the annexed plat of "VIRBERT'S
COMMON GATE SUBDIVISION" of part of the 5th of the S. 2 E. 1
of Sec. 29 T. 1 N. R. 15 E. Erin Twp. Macomb Co. Mich. is
described as follows: Beginning at the S. W. corner of Sec. 29
T. 1 N. R. 15 E. Erin Twp. Macomb Co. Mich. Thence S 85 deg. 21' N
4 1/2' W. a distance of 154 9/16 feet. Thence S 85 deg. 21' N
a distance of 2041.00 feet. Thence S 85 deg. 48 1/4' W. a distance
of 1485.90 feet. Thence S 85 deg. 38 1/2' W. a distance of 2041.00
feet. to the point of beginning.

Resubdivision of 300 x 150 ft. lots
into 150 x 75 ft. lots
T. 1 N. R. 15 E. Erin Twp. Macomb Co. Mich.

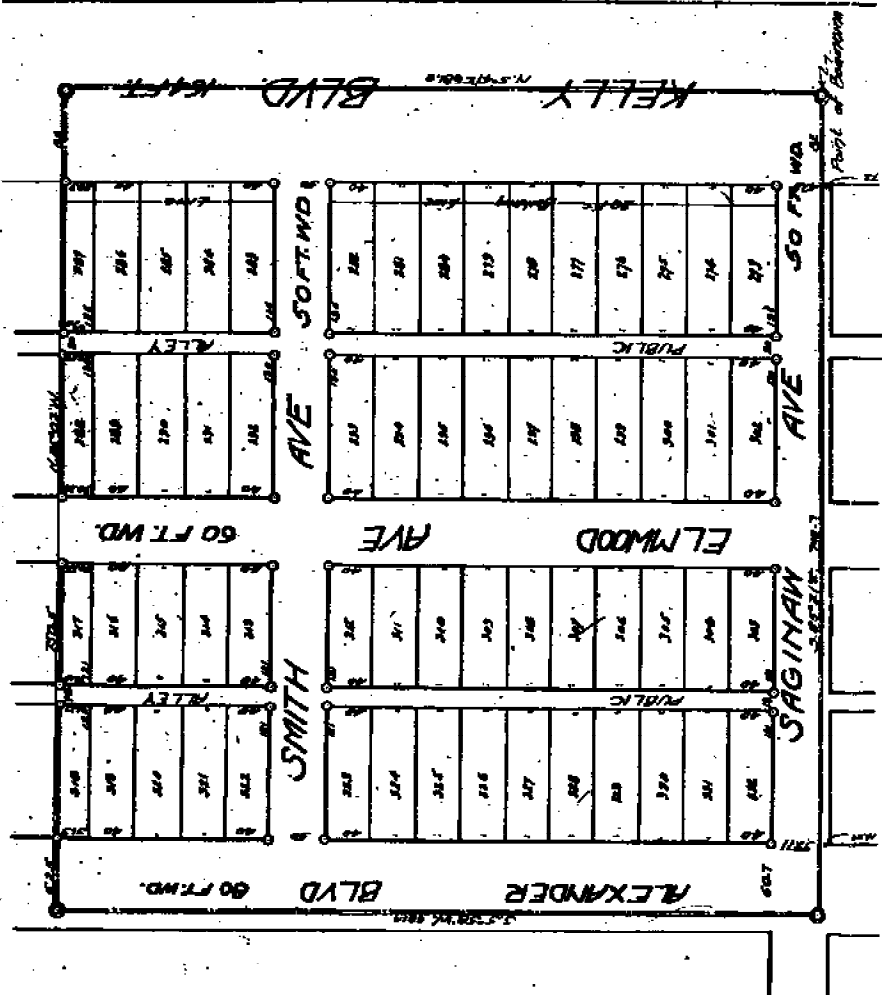
7-99
L-007
P-077

10/1/21
 L. J. Sullivan
 10/1/21

HALF BLOCKS SUBDIVISION NO. 1
 OF PART OF THE SE 1/4 OF Sec. 29 T19R3E.
ERIN TIERE MAACOMB CO. MICH.

SCALE 1/4" = 100' FEET

NOTE: All dimensions are given in feet or decimal fractions thereof.



See Rec. 10/1/21 for change of street names. See Ridge 523 of Books - Page 681

EXHIBIT ALL LOTS BY THESE INSTRUMENTS, THAT NO

CERTIFICATE OF TOWNSHIP BOARD



KNOW ALL MEN BY THESE PRESENTS, That we John Schack and his wife as proprietors, have caused the lot hereunto described to be surveyed, laid out and platted to be known as LOT 1 of SUBDIVISION # 1 of part of the S.W. 1/4 of sec. 23 T. 15. N. R. 13 E. Erin Twp., Macomb Co., Mich. and that the streets and alleys as shown on said plat are hereby dedicated to the use of the public.

CERTIFICATE OF TOWNSHIP BOARD
 This plat was approved by the township board of the township of Erin at a Special meeting held on the 16 day of Dec A.D. 1927

Signed and sealed in the presence of
John Schack (U.S.)
John Schack (U.S.)
John Schack (U.S.)
 State of MICHIGAN)
 County of Macomb.)SS

John Schack
 TOWNSHIP CLERK.

On this 15 day of Aug, A.D. 19 27
 before me a Notary Public in and for said County, personally came the above named John Schack and his wife
 who with me known to me to be the persons who executed the above dedication, and acknowledged the same to be their free act and deed.

John Schack
 Notary Public Macomb Co., Mich.
 My commission expires Oct 14 1927 A.D. 19 27

ENGINEER'S CERTIFICATE
 I hereby certify that the plat hereon delineated is a correct one and that permanent monuments consisting of 2 iron gas pipe 1 1/2" long have been placed at all points marked thus (O) as thereon shown at all angles in the boundaries of the land platted, and at all intersections of streets or streets and alleys.

REGISTERED CIVIL ENGINEER
John Schack
 REGISTERED CIVIL ENGINEER
 My commission expires Oct 14 1927 A.D. 19 27

RECIPIT OF LAND PLATTED
 The land embraced in the annexed plat of LOT 1 of SUBDIVISION # 1 of part of the S.W. 1/4 of sec. 23 of T. 15. N. R. 13 E. Erin Twp., Macomb Co., Mich. was platted and shown on said plat as follows: 1 lot, 1/2 acre from the S.W. corner Sec. 23

COUNTY TREASURER'S CERTIFICATE
 This receipt is given in full for the amount of Five dollars in full paid by the John Schack and his wife for the purchase of Lot 1 of Subdivision # 1 of part of the S.W. 1/4 of sec. 23 of T. 15. N. R. 13 E. Erin Twp., Macomb Co., Mich. on the 15 day of Aug, A.D. 19 27

This plat was approved by the County Board for Macomb County, Michigan at a meeting held Aug 14 1927
Charles E. Gunn Justice of Probate
John E. Gunn County Clerk
John Schack County Treasurer

17
 6007
 9007

KELLY SUPER HIGHWAY SUBDIVISION NO. 1

A PART OF THE S.W. 1/4 OF FRACTIONAL SEC. 28, T-1-N, R-13-E.

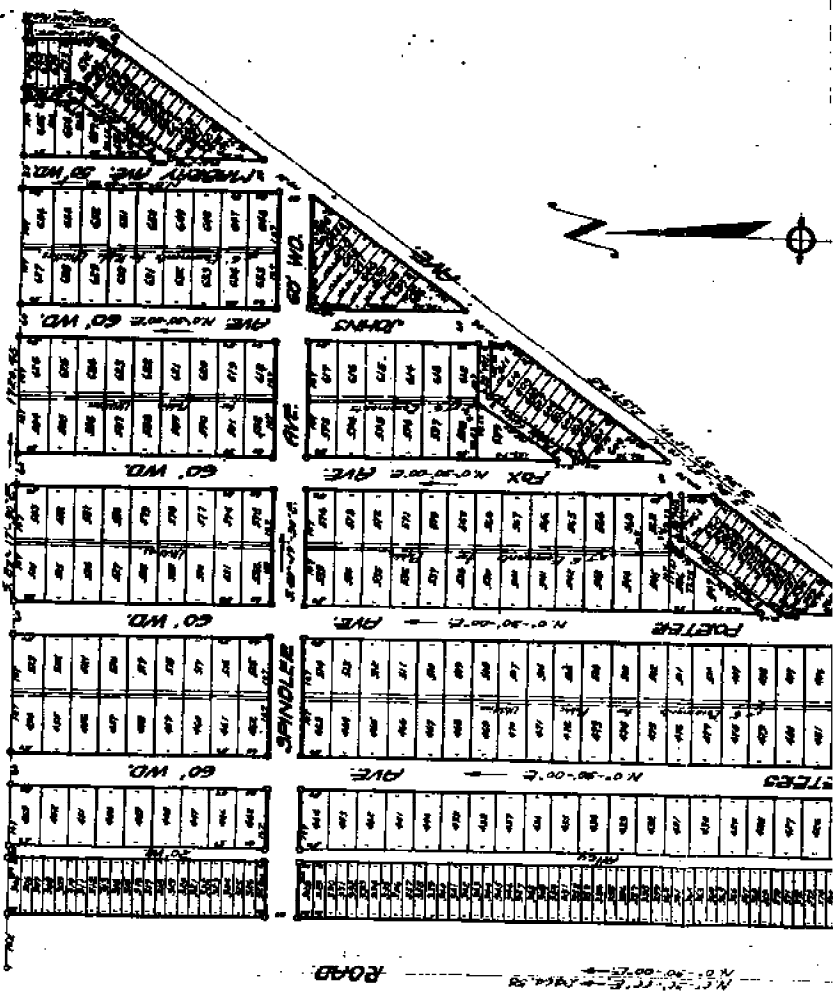
ERIN TWP, MACOMB CO., MICH.

Scale 1"=200'

Aug 26-1929
R. Heiney

ERLING & HOLDSWORTH
REGISTERED CIVIL ENGINEERS
DETROIT, MICH.

Note: All dimensions are given in feet and decimals thereof and adjusted to a temperature correction of 62° F.

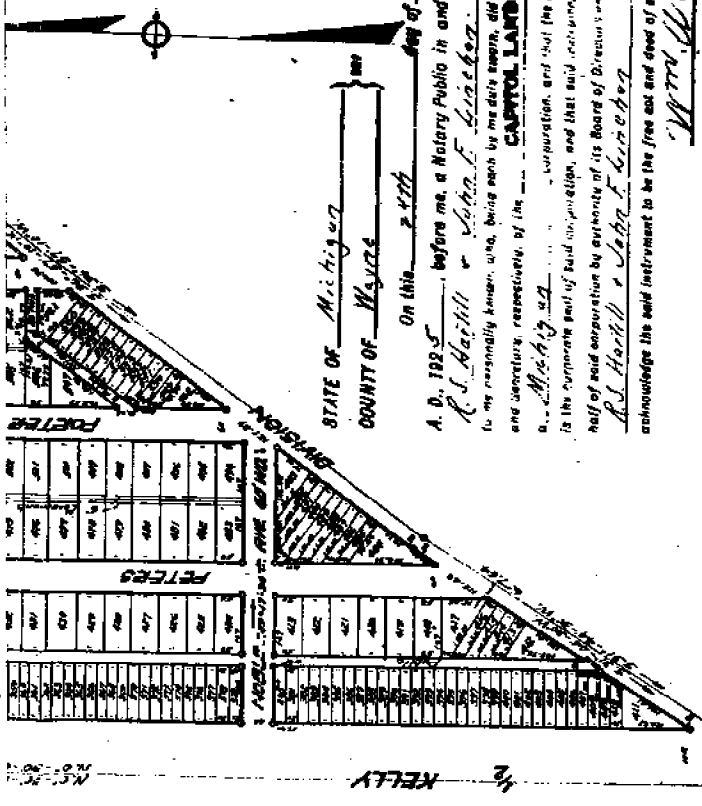


DEDICATION

Know All Men By These Presents, That
Clara A. Trumble & Margaret Trumble
 his wife, as proprietors and
 CARROLL LAND CORPORATION, a Michigan
 Corporation, by *R. S. Hatchell, Pres.*
 and *John F. Luncheon, Sec.*
 as vendors have ceded the land embraced in the annexed plat to be
 strayed, laid out, and placed to be known as "Kelly Super
 Highway Subdivision No. 1", a part of the S.W. 1/4
 of fractional Sec. 28, T-1-N, R-13-E,
 Erin Twp., Macomb Co., Mich.
 and that the street and alleys as shown on and plat are hereby dedicated
 to the use of the public.

SIGNED AND SEALED
 IN PRESENCE OF

Edward A. Kennedy, Jr.
 WITNESSES
 CARROLL LAND CORPORATION
Edward A. Kennedy, Jr.
John F. Luncheon
 ERIN TWP., MACOMB CO., MICH.



Wm. W. Hobbs
 This plat was approved by the Michigan State Board of Land
 at Lansing, Michigan on June 14, 1926 at 10:30 A.M.
 in the presence of Wm. W. Hobbs and Wm. W. Hobbs
 Clerk

CERTIFICATE OF JUDICIAL APPROVAL

This plat was approved by the Michigan State Board of Land
 at Lansing, Michigan on June 14, 1926 at 10:30 A.M.
 in the presence of Wm. W. Hobbs and Wm. W. Hobbs
 Clerk

STATE OF Michigan
 COUNTY OF Washtenaw

On this 24th day of August
 A. D. 1926, before me, a Notary Public in and for said county appeared
R. S. Hartill & John F. Lischka
 to me personally known, who, being each by me duly sworn, did say that they are the President
 and Secretary, respectively, of the CAPITOL LAND CORPORATION

of Michigan, a corporation, and that the said articles of said instrument
 is the supreme part of said corporation, and that said corporation is a corporation and one of its
 half of said corporation by authority of its Board of Directors, and do hereby certify that they are the President
R. S. Hartill & John F. Lischka
 acknowledge the said instrument to be the free act and deed of said corporation.

Wm. W. Hobbs
 Notary Public, Washtenaw County
 My Commission Expires July 17, 1929

ENGINEER'S CERTIFICATE

I hereby certify that the plat hereto referred to is correct and, and that government monuments
 mentioned thereon have been set in place and that the same have been placed at all points
 marked thereon as shown above, at all angles in the possession of the land plat, and at all
 intersections of streets, or streets and alleys
Wm. W. Hobbs
 Notary Public

STATE OF MICHIGAN
 COUNTY OF Washtenaw

On this 24th day of August
 A. D. 1926, before me, a Notary Public in and for said county, personally being
 the above named Clara P. Trevelly & Margaret Trumble
 his wife

DESCRIPTION
 The land embraced in the annexed plat of Kelly Super Highway
 Subdivision, No. 1, a part of the S.W. 1/4 of Fractional Sec. 29, T-1-N,
 E-19-E, Enn Township, Washtenaw Co., Mich. is described as follows:
 Beginning at the S.W. Cor. of Fractional Sec. 29, T-1-N, E-19-E;
 thence N. 0° 30' 00" W. 262.00 feet; thence S. 89° 17' 30" E. 100.00 feet;
 thence S. 4° 28' 00" W. 102.00 feet; thence S. 31° 57' 10" W. 217.25 feet;
 thence S. 31° 44' 30" W. 277.64 feet; thence S. 89° 17' 30" E. 100.00 feet
 to the place of beginning.

This plat was approved by the County Board for Washtenaw
 County, Michigan, at its regular meeting held at Lansing, Mich. on June 14, 1926
Wm. W. Hobbs
 County Clerk

Clara P. Trevelly
Margaret Trumble
 My Commission Expires July 17, 1929

known to me to be the person, who executed the above description and monuments thereon
 to be their free act and deed.
Harold J. Lammson
 Notary Public, Washtenaw County, Mich.
 My commission expires June 14, 1926

Received for Record this 24th day of August
 A. D. 1926 at 10:30 A.M. and Registered
 in Liber 19 of Plats
 on Page 19
Wm. W. Hobbs
 Register

19
 1919
 Resolution June 1920 by 584 Resolution June 1921 by 584 Resolution June 1922 by 584
 Resolution June 1923 by 584 Resolution June 1924 by 584 Resolution June 1925 by 584
 Resolution June 1926 by 584 Resolution June 1927 by 584 Resolution June 1928 by 584
 Resolution June 1929 by 584 Resolution June 1930 by 584 Resolution June 1931 by 584
 Resolution June 1932 by 584 Resolution June 1933 by 584 Resolution June 1934 by 584
 Resolution June 1935 by 584 Resolution June 1936 by 584 Resolution June 1937 by 584
 Resolution June 1938 by 584 Resolution June 1939 by 584 Resolution June 1940 by 584
 Resolution June 1941 by 584 Resolution June 1942 by 584 Resolution June 1943 by 584
 Resolution June 1944 by 584 Resolution June 1945 by 584 Resolution June 1946 by 584
 Resolution June 1947 by 584 Resolution June 1948 by 584 Resolution June 1949 by 584
 Resolution June 1950 by 584 Resolution June 1951 by 584 Resolution June 1952 by 584
 Resolution June 1953 by 584 Resolution June 1954 by 584 Resolution June 1955 by 584
 Resolution June 1956 by 584 Resolution June 1957 by 584 Resolution June 1958 by 584
 Resolution June 1959 by 584 Resolution June 1960 by 584 Resolution June 1961 by 584
 Resolution June 1962 by 584 Resolution June 1963 by 584 Resolution June 1964 by 584
 Resolution June 1965 by 584 Resolution June 1966 by 584 Resolution June 1967 by 584
 Resolution June 1968 by 584 Resolution June 1969 by 584 Resolution June 1970 by 584
 Resolution June 1971 by 584 Resolution June 1972 by 584 Resolution June 1973 by 584
 Resolution June 1974 by 584 Resolution June 1975 by 584 Resolution June 1976 by 584
 Resolution June 1977 by 584 Resolution June 1978 by 584 Resolution June 1979 by 584
 Resolution June 1980 by 584 Resolution June 1981 by 584 Resolution June 1982 by 584
 Resolution June 1983 by 584 Resolution June 1984 by 584 Resolution June 1985 by 584
 Resolution June 1986 by 584 Resolution June 1987 by 584 Resolution June 1988 by 584
 Resolution June 1989 by 584 Resolution June 1990 by 584 Resolution June 1991 by 584
 Resolution June 1992 by 584 Resolution June 1993 by 584 Resolution June 1994 by 584
 Resolution June 1995 by 584 Resolution June 1996 by 584 Resolution June 1997 by 584
 Resolution June 1998 by 584 Resolution June 1999 by 584 Resolution June 2000 by 584

7169

Aug 6-1926
J. J. & Howard

BABCOCK + CRAWFORD + STEVENSON'S BACRASON SUBDIVISION

OF PART OF THE NE 1/4 OF SECTION 32

ERIN TWP. MACOMB CO. MICHIGAN

SCALE 1"=150'

H. R. OMARA,

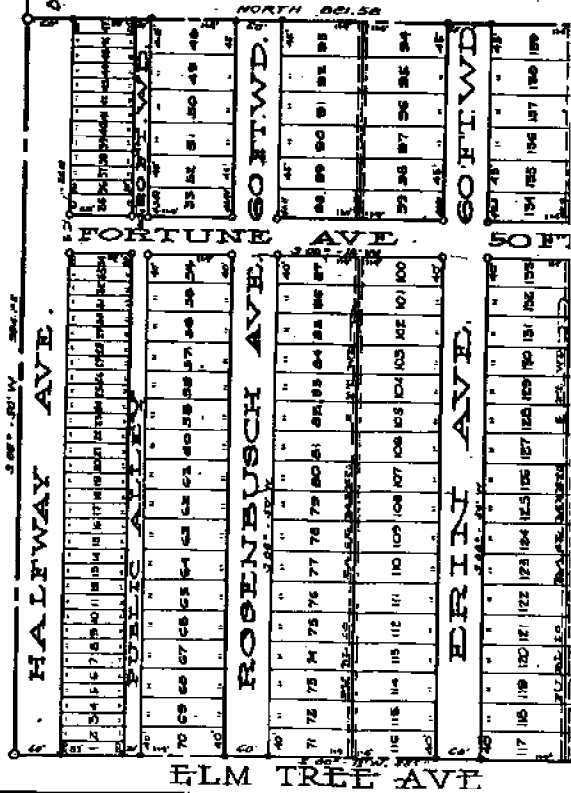
PLATTE CIVIL ENGINEER,
"TRADE-WAY", BALTIMORE.

KNOW ALL MEN BY THESE PRESENTS, That we Joseph J. Omara and Howard Robert and William Babcock and Henry Stevenson hereby witness as owners under last aforesaid title of the land herein described as being the land embraced in the annexed plat to be surveyed and platted to be known as "Babcock-Stevenson's Bacrasen Subdivision" of part of the NE 1/4 of Section 32, Erin Twp., Macomb Co., Michigan, and that the streets and alleys as shown on the said plat are hereby dedicated to the use of the public.

SIGNED AND SEALED IN THE PRESENCE OF:

- Joseph J. Omara (L.S.)
- Howard (L.S.)
- Robert (L.S.)
- William Babcock Jr. (L.S.)
- Henry Stevenson (L.S.)

Joseph J. Omara
Howard
Robert
William Babcock Jr.
Henry Stevenson



SEAL OF MICHIGAN
SECRETARY OF STATE

On this 29th day of August, 1926, before me, a Notary Public in and for said county, personally appeared Joseph J. Omara, Howard, Robert, William Babcock Jr. and Henry Stevenson, all of whom are known to me to be their free act and deed.

My commission expires Sept 19, 1929
Joseph J. Omara
Notary Public for Michigan

I hereby certify that the plat herein delineated is a correct one and that permanent metal monuments were set in the corners of the lots and that the plat is correct in length, width and area. The plat has been placed at point marked thus (C) as thereon shown at all angles in the boundaries of the land platted, at all the intersections of the streets, intersections of alleys, or of streets and alleys, and at the plat as shown on said plat.

See also plat of Block 581

70208
70209

RECORDER'S OFFICE

I hereby certify that the plat hereon deposited is a correct one and that permanent metal monuments of at least one inch in diameter and fifteen inches in length set at least one inch in depth and at least four inches in diameter and set at least one inch in depth have been placed at points marked thus (O) as thereon shown at all angles in the boundaries of the land plotted, at all the intersections of streets, intersections of alleys, or of streets and alleys, as at the intersections of streets and alleys with the boundaries of the plat as shown on said plat.

John V. Higgins
Recorder's Office

RECEIVED FOR COUNTY OF MICHIGAN

This plat was approved by the City Board of the City of Detroit at a meeting held February 19-1926

Robert A. Hill
City Clerk

DESCRIPTION OF LAND PLANNED

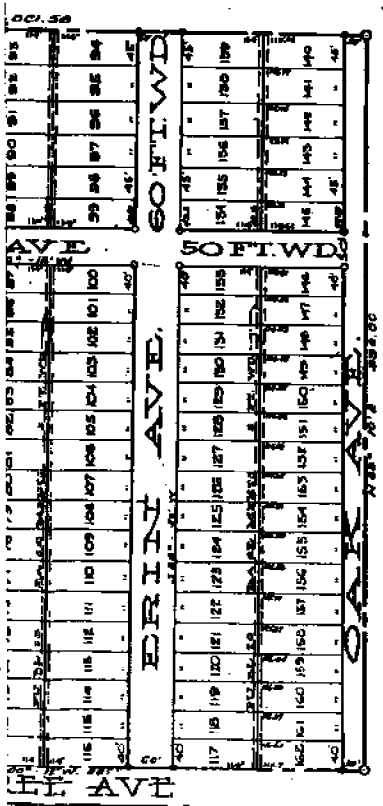
The land embraced in the annexed plat of "Zabcock-Drumford-Stevenson's BARRIAGE SUBDIVISION" of part of the NE 1/4 of Section 24, T11N R7E, Macomb Co., Michigan is described as follows:

Beginning at a point on the W 1/2 line of 330' W. T11N, R7E, which is S. 89° 50' W. a distance of 139.13 ft. from the intersection of said W 1/2 line with the West line of 24th St., T11N, R7E, Erie Cwp., Macomb Co., Michigan. Thence S. 89° 50' W. a distance of 99.88 ft. thence S. 89° 18' W. a distance of 88.7 ft. thence N. 89° 10' E. a distance of 99.00 ft. thence North a distance of 88.58 ft. to the point of beginning.

RECORDED FOR COUNTY OF MICHIGAN
This plat was approved by the City Board of the City of Detroit at a meeting held February 19-1926

John V. Higgins
Recorder's Office

James L. Elliott
Recorder's Office



RECORDERS OFFICE
County of Macomb

Received for Record this 7 day of February A.D. 1926 at 10:30 o'clock A.M. and registered on Page 21 of Book

James L. Elliott
Recorder's Office

"ASSESSORS PLAT NO. 9"
OF PART OF THE S. E. 1/4 OF SEC. 29 T.1 N. R. 13 E.
CITY OF EAST DETROIT MACOMB CO. MICH.

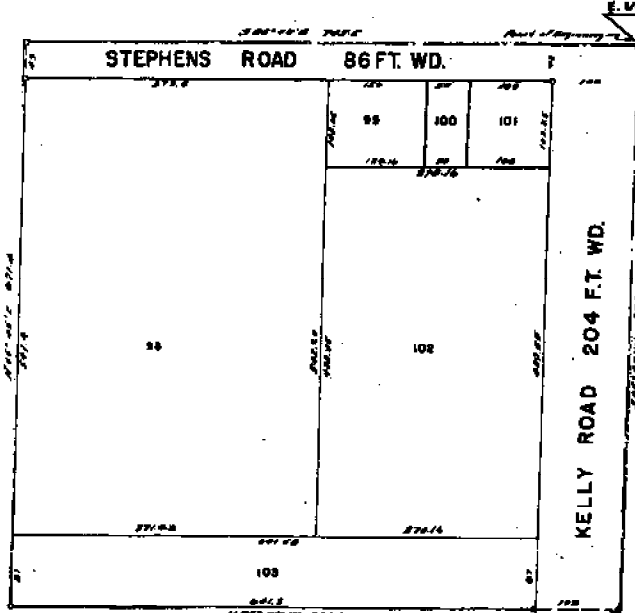
Mar 25 12 10 PM '42

SCALE: 1" = 100'

NOTE: ALL MEASUREMENTS ARE IN FEET AND DECIMALS THEREOF.

HARRY J. FULLER
 REGISTERED CIVIL ENGINEER & SURVEYOR
 MICHIGAN

TEPPERTS
 GOLDEN GATE SUB. NO. 1



DEDICATION

KNOW ALL MEN BY THESE PRESENTS, That I, Stephen R. Henderson, Assessor of the City of East Detroit, Macomb County, State of Michigan, by virtue of authority in me vested by Section 51, Act 172, of 1929, having been duly authorized by the City Council have caused the land described in the annexed plat to be surveyed, laid out, and listed to be known as "ASSESSORS PLAT NO. 9" of part of the S.E. 1/4 of Sec. 29, T. 1 N. R. 13 E., City of East Detroit, Macomb County, Michigan, and that the streets as shown on said plat have been acquired by adverse possession.

WITNESSES:
Edward A. Beattie
 Edward A. Beattie, Notary Public
Stephen R. Henderson
 Stephen R. Henderson, Assessor of the City of East Detroit

ACKNOWLEDGMENT
 STATE OF MICHIGAN)
 County of Macomb) ss
 On this 22nd day of March, A.D. 1942, before me a Notary Public in and for said County, personally came the above named Assessor of the City of East Detroit, known to me to be the person who executed the above dedication and acknowledged the same to be his free act and deed as such Assessor.
Stephen R. Henderson
 Notary Public in and for Macomb County
 My commission expires Feb-16-1946

CERTIFICATE OF MUNICIPAL APPROVAL
 This plat was approved by the City Council of the City of East Detroit at a meeting held February 9, 1942.
Stephen R. Henderson
 Stephen R. Henderson, City Clerk

DESCRIPTION OF LAND PLATTED

The land embraced in the annexed plat of ASSESSORS PLAT NO. 9 of part of the S.E. 1/4 of Sec. 29, T. 1 N. R. 13 E., City of East Detroit, Macomb Co., Mich., is described as follows: Commencing at the E. 1/4 post of Sec. 29, T. 1 N. R. 13 E., thence S. 05°-55' W. 673.0 feet, thence S. 85°-02' W. 743.5 feet, thence N. 05°-45' E. 671.4 feet, thence S. 85°-08' E. 745.5 feet to the point of beginning.

SURVEYOR'S CERTIFICATE

I hereby certify that the plat herein delineated is a correct one and that permanent metal monuments consisting of bars of not less than one half inch in diameter and forty eight inches in length encased in a concrete cylinder at least 4 inches in diameter and forty eight inches in depth have been placed at points marked thus * as thereon shown at all angles in the boundaries of the land platted, at all the intersections of the streets, intersections of alleys, or of streets and alleys, and at the intersections of streets and alleys with the boundaries of the plat as shown on said plat.

Harry J. Fuller
 Harry J. Fuller, Registered Land Surveyor

CERTIFICATE OF APPROVAL BY COUNTY BOARD

This plat was approved on the 6th day of March, 1942.

Wm. J. Tomlin
 Wm. J. Tomlin, Register of Deeds
Wm. J. Tomlin
 Wm. J. Tomlin, County Clerk
Wm. J. Tomlin
 Wm. J. Tomlin, County Treasurer

REGISTER'S OFFICE:
 County of Macomb
 Mailed for Record this 22nd day of March, A.D. 1942
 in Book 2 of Plats
 on Page 1

Examined and Approved
March 11, 1942
Harold J. Brady
 Harold J. Brady, Deputy Auditor General

LF

EXAMINED AND APPROVED
JUN 9 1953

John B. Martin
John B. Martin
AUDITOR GENERAL
D. J. Mack
Civil Engineer

"ABRAM SUB."

178652

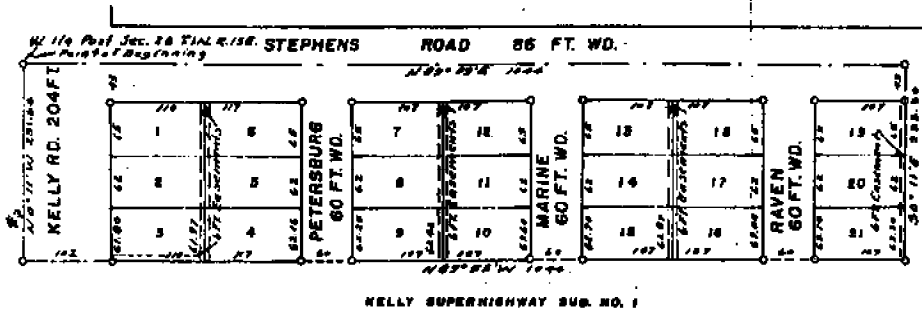
PART OF THE S.W. 1/4 SEC. 28 T.1N. R.13E.
EAST DETROIT MACOMB CO. MICH.

SCALE: 1" = 100'



NOTE: ALL MEASUREMENTS ARE IN FEET AND DECIMALS THEREOF.

HARRY J. FULLER
REGISTERED CIVIL ENGINEER
MICHIGAN



DEDICATION

KNOW ALL MEN BY THESE PRESENTS, That we Carl Abram and Clara Abram, his wife as proprietors, have caused the land embraced in the annexed plat to be surveyed, laid out and platted, to be known as "ABRAM SUB." part of the S.W. 1/4 Sec. 28 T. 1 N. E. 13 E., East Detroit, Macomb Co., Michigan and that the streets and easements as shown on said plat are hereby dedicated to the use of the public.

Signed and Sealed in Presence of

Carl B. Wynn (Witness)
Carl Abram
Shirley M. Melick (Witness)
Clara Abram

DESCRIPTION OF LAND PLATTED

The land embraced in the annexed plat of "ABRAM SUB." part of the S.W. 1/4 Section 28 T. 1 N. E. 13 E., East Detroit, Macomb County, Michigan is described as follows:

Commencing at the N 1/4 part Section 28, T. 1 N. E. 13 E., thence N 89° 59' 10 1/2" 1044 feet, thence S 0° 11' 23.30 feet, thence E 89° 55' 10 1/2" 1044 feet, thence S 0° 11' 23.64 feet to the point of beginning.

SURVEYOR'S CERTIFICATE

I hereby certify that the plat herein delineated is a correct one and that permanent metal monuments consisting of bars of not less than one-half inch in diameter and forty eight inches in length encased in a concrete cylinder at least 4 inches in diameter and forty eight inches in depth have been placed at points marked thus (o) as shown shown at all angles in the boundaries of the land platted, at all the intersections of the streets, interjections of alleys, or of streets and alleys, and at the intersections of streets and alleys with the boundaries of the plat as shown on said plat.

Harry J. Fuller
Harry J. Fuller, Registered Land Surveyor

ACKNOWLEDGMENT

STATE OF MICHIGAN }
County of Macomb }

On this 22nd day of May A.D. 1953 before me a Notary Public in and for said county, personally came the above named Carl Abram and Clara Abram, his wife known to me to be the persons who executed the above dedication, and acknowledged the same to be their free act and deed.

Shirley M. Melick
Notary Public in and for Macomb County
MICHIGAN

My Commission expires May 16, 1956

CERTIFICATE OF MUNICIPAL APPROVAL

This plat was approved by the City Council of the City of East Detroit of Macomb County, Michigan at a meeting held December 16, 1952

Charles Beaulieu
Charles Beaulieu (Clerk)

CERTIFICATE OF APPROVAL BY COUNTY BOARD

This plat was approved on the 22nd day of May, 1953.

Arden Burr
Arden Burr (County Register of Deeds)
Robert A. ...
Robert A. ... (County Clerk)
Frank Lehr
Frank Lehr (County Drain Commissioner)

REGISTRY OFFICE
COUNTY OF MACOMB

Received for Record

June 11, 1953
at 2:15 p.m. C. M. and recorded
in Vol. 32 of Plate

Frank Lehr
Deputy Register of Deeds

68 08 39

68 03 20

"ASSESSORS PLAT NO 32"
OF PART OF THE S.E. 1/4 & THE S.W. 1/4 OF SEC 29 T14N R13E.
CITY OF EAST DETROIT MACOMB CO. MICHIGAN

SCALE: 1" = 150'

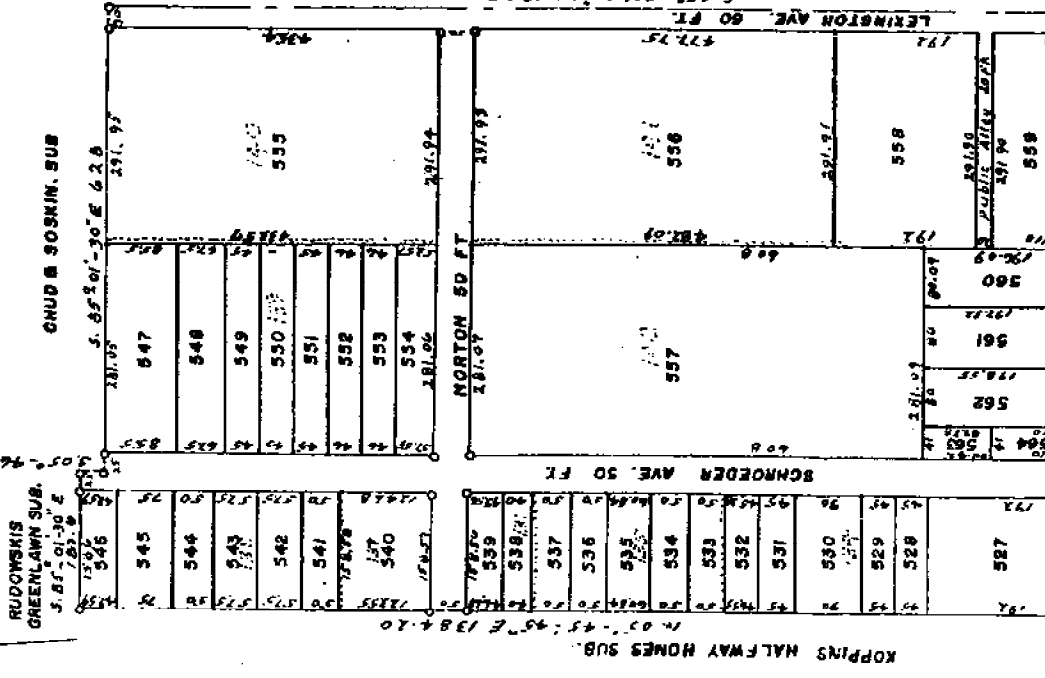
323712

NOTE: ALL MEASUREMENTS ARE IN FEET AND DECIMALS THEREOF.

HARRY J FULLER
 REGISTERED CIVIL ENGINEER
 MICH.
WT. CLEMENS

EXAMINED AND APPROVED
 Date **JAN 24 1957**

Frank S. Szymanski
Frank S. Szymanski
 AUDITOR GENERAL



DEDICATION
 KNOW ALL MEN BY THESE PRESENTS, that I Howard L. Ledbetter, Assessor of the City of East Detroit, Macomb Co., Michigan, by virtue of authority in me vested by Section 51, Act 172 of 1929, having been duly authorized by the City Council, have caused the land described in the annexed plat to be surveyed, laid out and platted to be known as "ASSESSORS PLAT NO. 32" of part of the S. E. 1/4 and S. W. 1/4 of Section 29 T. 14 N. R. 13 E. City of East Detroit, Macomb Co., Michigan and that the streets and easements as shown on said plat have been acquired by deed, dedication and adverse possession.

WITNESSES:
Robert L. Purnell
 Robert L. Purnell
Robert L. Purnell
 Robert L. Purnell

ACKNOWLEDGMENT
 STATE OF MICHIGAN } ss.
 County of Macomb }

On this 25th day of January, A. D. 1957, before me a Notary Public in and for said County, personally came the above named Assessor of the City of East Detroit, known to me to be the person who executed the above dedication and acknowledged the same to be his free act and deed as such Assessor.

Donald Rubin
 Donald Rubin
 Notary Public
 Co., Michigan

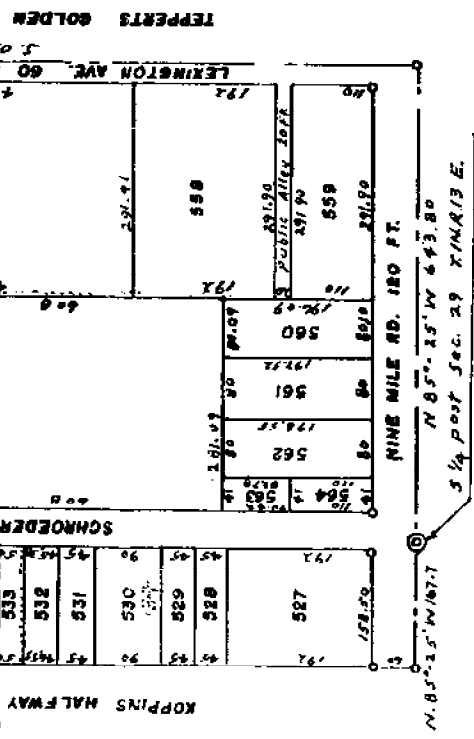
By Commission expires 12 15 1957

DESCRIPTION OF LAND PLATTED

The land embraced in the annexed plat of "ASSESSORS PLAT NO. 32" of part of the S. E. 1/4 and the S. W. 1/4 of Section 29 T. 14 N. R. 13 E. and replat of lots 134 to 142 inclusive of Assessor's Plat No. 12, City of East Detroit, Macomb Co., Michigan, is described as follows: Commencing at the S. 1/4 post of Section 29 T. 14 N. R. 13 E. as point of beginning, thence N. 85° 25' 7" 157.7 feet, thence S. 05° 45' 45" E. 1384.20 feet, thence S. 85° 01' 30" E. 137.2 feet, thence S. 05° 45' 45" E. 33 feet, thence S. 85° 01' 30" E. 628 feet, thence S. 05° 45' 30" E. 1345.15 feet, thence N. 85° 25' 7" E. 642.60 feet to the point of beginning consisting of lots 527 to 564 inclusive, numbering 38 lots.

SURVEYOR'S CERTIFICATE

I hereby certify that the plat hereon delineated is a correct one and that permanent metal monuments consisting of bars of not less than one-half inch in diameter and thirty six inches in length encased in a concrete cylinder at least 4 inches in diameter and thirty six inches



DESCRIPTION OF LAND PLATTED

The land embraced in the annexed plat No. 32 of part of the S. E. 1/4 and the S. W. 1/4 of Section 29 T. 15. N. R. 13 E. and replat of lots 134 to 142 inclusive of Assessor's Plat No. 12, City of East Detroit, Macomb Co., Michigan, is described as follows: Commencing at the S. 1/4 post of Section 29 T. 15. N. R. 13 E. as point of beginning, thence N. 85°-25' E. 157.7 feet, thence S. 05°-15' E. 134.20 feet, thence S. 85°-01'-30" E. 157.6 feet, thence S. 05°-15' E. 33 feet thence S. 85°-01'-30" E. 628 feet thence S. 05°-43'-30" E. 145.15 feet, thence N. 85°-25' E. 643.60 feet to the point of beginning consisting of lots 527 to 534 inclusive, numbering 36 lots.

SURVEYOR'S CERTIFICATE

I hereby certify that the plat hereon delineated is a correct one and that permanent metal monuments consisting of bars of not less than one-half inch in diameter and thirty six inches in length encased in a concrete cylinder at least 4 inches in diameter and thirty six inches in depth have been placed at points marked thus (c) as thereon shown at all angles in the boundaries of the land platted, at all the intersections of the streets, intersections of alleys, of streets and alleys, and at the intersections of streets and alleys with the boundaries of the plat as shown on said plat.

Harry P. Fuller
 Harry P. Fuller, Registered Land Surveyor

CERTIFICATE OF MUNICIPAL APPROVAL

This plat was approved by the City Council of the City of East Detroit of Macomb County, Michigan at a meeting held January 7, 1957

Charles Beaubien
 Charles Beaubien, Clerk

CERTIFICATE OF APPROVAL BY COUNTY BOARD

This plat was approved on the 14th day of January, 1957.

REGISTRAR'S OFFICE
 COUNTY OF MACOMB

Received for Record
January 21, 1957
 at 2:01 o'clock P.M. and recorded
 in Vol. 38 of Plats, on
 Page 39
Opava Bush
 Registrar of Deeds

Opava Bush
 Opava Bush, County Registrar of Deeds
Albert Warner
 Albert Warner, County Clerk
Frank Lohr
 Frank Lohr, County Treasurer
 Frank Lohr, County Drain Commissioner

L 038