

LAND CORNER RECORDATION CERTIFICATE
Filing Requirement of Act 74, Mich. P.A. 1970 as Amended

For corners in

City of Eastpointe
 Erin Township

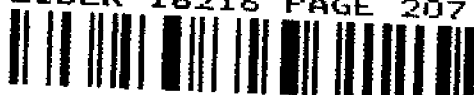
MACOMB COUNTY
 (County)

Located in:

Corner Code #

- | | | | | | |
|------------------------------------|---|------------|---|------------|-------------|
| 1. Public Land Survey | T | <u>01N</u> | R | <u>13E</u> | <u>E-10</u> |
| | T | | R | | |
| | T | | R | | |
| | T | | R | | |
| 2. Property Controlling In Section | S | | T | R | |
| | s | | T | R | |
| 3. Miscellaneous Property in Sec. | S | | T | R | |
| | S | | T | R | |
4. Lot No. _____, Recorded Plat
 5. Private Claims

4268642
 LIBER 16216 PAGE 207



12/21/2004 02:19:47 P.M.
 MACOMB COUNTY, MI
 CARNELLA SABAUGH, REGISTER OF DEEDS

Register of Deeds Stamp & File Number

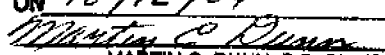
I, Robert H. Birkett, in a field survey on August 7, 2004 do hereby state that under requirements of P.A. 74, Michigan P.A. of 1970, the corner points mentioned in lines 1 and 2 above were in conformance with regulations and rules therefore as required in the current manual of survey instructions of the United States Department of the Interior, Bureau of Land Management or by a decree of a Court of Law and /or that the corner points mentioned in lines 3, 4 and 5 above were in conformance with the rules of the Michigan Board of Land Surveyors or by a Decree of a Court of Law; established, re-established, monumented, recovered, found as expressed below:

1	A	B	C	D	E	F	G	H	I	J	K	L	M
2		6		5		4		3		2		1	
3													
4		7		8		9		10		11		12	
5													
6		18		17		16		15		14		13	
7													
8		19		20		21		22		23		24	
9													
10		30		29		28		27		26		25	
11													
12		31		32		33		34		35		36	
13													

NOTE: Not more than 2 corners, all in the same town and range, may be recorded on this certificate.

A. Description of original monument and accessories and/or subsequent restoration:
 E-10 1818, W. Preston set post.

B. Description of corner evidence found and/or method applied in restoring or reestablishing corner:
 E-10 Corner is an obliterated corner. The corner was re-established using existing field information of the following recorded subdivisions:

ACCEPTED BY THE MACOMB COUNTY SURVEY PEE
 GROUP AS THE OFFICIAL CORNER UNDER MICHIGA
 PUBLIC ACT 345 OF 1990 AT A MEETING HELD
 ON 10/12/04

 MARTIN C. DUNN, P.B. CHAIRMAN

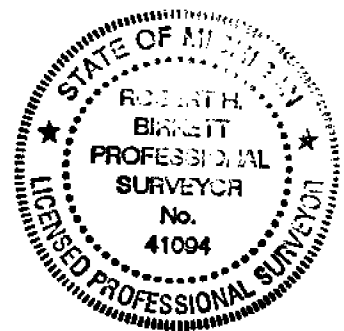
- * 1927, H. R. O'Mara, "Teppert's Golden Gate", L. 007, P. 077, MCR.
- * 1924, H. R. O'Mara, "Koppin's Halfway Homes Sub. No. 1", L. 008, P. 017, MCR.
- * 1924, H. R. O'Mara, "Rudowski's Green Lawn Sub.", L. 008, P. 036, MCR.
- * 1925, G. H. Rubling, "Kelly Super Highway Sub. No. 1", L. 010, P. 019, MCR.
- * 1926, "Reppert's Golden Gate Sub. No. 1", L. 010, P. 046, MCR.
- * 1927, W. J. Lehner, No. 123, "Richmond Sub.", L. 012, P. 24, MCR.
- * 1942, H. J. Fuller, No. 1645, "Assessors Plat No. 9", L. 022, P. 004, MCR.
- * 1942, A. H. Arens, No. 3659, "Assessors Plat No. 20", (East Detroit), L. 022, P. 024, MCR.
- * 1953, H. J. Fuller, No. 1645, "Abram Sub.", L. 030, P. 029, MCR.
- * 1954, H. J. Fuller, No. 1645, "Michael Subdivision", L. 031, P. 032, MCR.
- * 1955, H. J. Fuller, No. 1645, "Michael Subdivision No. 1", L. 033, P. 027, MCR.
- * 1957, H. J. Fuller, No. 1645, "Assessors Plat No. 24", (East Detroit), L. 034, P. 050, MCR.
- * 1956, H. J. Fuller, No. 1645, "Vanity Sub. No. 1", L. 034, P. 028-029, MCR.
- * 1960, H. J. Fuller, No. 1645, "Assessors Plat No. 40", (East Detroit), L. 047, P. 008, MCR

FIELD MEASUREMENTS BETWEEN CORNERS
 (see reverse side)

C. Description of monument for corner and accessories established to perpetuate locating the position of the corner:
 E-10 Set 3/4" x 24" iron with aluminum cap marked "Macomb County Monument, MI, ACT 345, 41094, E-10", in a new monument box.

- Az. 35° - 40.05' - Easterly outside corner of concrete base for traffic signal.
- Az. 175° - 29.01' - Set chizeled "X" on West rim sanitary man hole.
- Az. 230° - 60.45' - Set remon tag in Southeast face utility pole with light.
- Az. 310° - 66.03' - Set remon tag in Southwest face utility pole with light.

The Selected location is accepted by me and is generally accepted by Professional Surveyors as the best available evidence of the position of the original corner.



Signed by RH Birkett
 Surveyor's Michigan License No. 41094

Date 12-15-04

Section B continued from the front:
Town 01 North, Range 13 East
E-10

FIELD MEASUREMENTS BETWEEN CORNERS

E-10 TO E-9 2004 Remon (2694.00'), Plats East of Kelly (2693.39'), Plats West of Kelly (2692.60'), 1818 GLO 40.00 Ch. (2640').
E-10 TO E-11 2004 Remon (2797.03'), Plats East of Kelly (2696.20'), Plats West of Kelly (2697.90'), 1818 GLO 40.00 Ch. (2640').
E-10 TO c-10 2004 Remon (5376.13'), Plats North of Stephens (5375.00'), Plats South of Stephens (5374.50'), No GLO Distance.

**2004 MACOMB COUNTY RE-MONUMENTATION
E-10, TOWN 1 NORTH, RANGE 13 EAST,
ERIN TOWNSHIP, CITY OF EASTPOINTE, MICHIGAN**

GENERAL LAND OFFICE HISTORY

WILLIAM PRESTON SUBDIVIDED TOWN 1 NORTH, RANGE 13 EAST IN 1814. NO EVIDENCE OF THE POST SET WAS RECOVERED.

EXISTING CONDITIONS

E-10 IS A OBLITERATED CORNER. THE RECOVERED CORNER IS LOCATED IN THE CENTER OF STEPHENS ROAD WITH CUSHING TO THE WEST. OBSERVABLE OCCUPATION TO THE NORTH AND SOUTH IS NOT VISIBLE OR MONUMENTED.

**CERTIFICATE OF SURVEYS &
LAND CORNER RECORDATION CERTIFICATES**

- * NO ACT 132 CERTIFICATES AVAILABLE FOR THIS CORNER.
- * NO LAND CORNER RECORDATION CERTIFICATES AVAILABLE FOR THIS CORNER.

SUBDIVISION REFERENCING E-10

- * 1927, H. R. O'MARA, "TEPPERT'S GOLDEN GATE", L. 007, P. 077, MCR.
- * 1924, H. R. O'MARA, "KOPPIN'S HALFWAY HOMES SUB. No. 1", L. 008, P. 017, MCR.
- * 1924, H. R. O'MARA, "RUDOWSKI'S GREEN LAWN SUB.", L. 008, P. 036, MCR.
- * 1925, G. H. RUBLING, "KELLY SUPER HIGHWAY SUB. No. 1", L. 010, P. 019, MCR.
- * 1926, UNKNOWN, "REPPERT'S GOLDEN GATE SUB. No. 1", L. 010, P. 046, MCR.
- * 1927, W. J. LEHNER, "RICHMOND SUB.", L. 012, P. 24, MCR.
- * 1942, H. J. FULLER, "ASSESSORS PLAT No. 9", L. 022, P. 004, MCR.
- * 1942, A. H. AHENS, "ASSESSOR'S PLAT No. 20", (EAST DETROIT), L. 022, P. 024, MCR.
- * 1953, H. J. FULLER, "ABRAM SUB.", L. 030, P. 029, MCR.
- * 1954, H. J. FULLER, "MICHAEL SUBDIVISION", L. 031, P. 032, MCR.
- * 1955, H. J. FULLER, "MICHAEL SUBDIVISION No. 1", L. 033, P. 027, MCR.
- * 1957, H. J. FULLER, "ASSESSOR'S PLAT No. 24", (EAST DETROIT), L. 034, P. 050, MCR.
- * 1956, H. J. FULLER, "VANITY SUB. No. 1", L. 034, P. 028-029, MCR.
- * 1960, H. J. FULLER, "ASSESSOR'S PLAT No. 40", (EAST DETROIT), L. 047, P. 008, MCR.

UNRECORDED INFORMATION

- * NO UNRECORDED INFORMATION WAS RECEIVED FOR THIS CORNER.

WITNESSES RECOVERED

- * NO PREVIOUS WITNESSES FOR THIS CORNER.
- * C-9 WAS SET USING THE ABOVE RECORD PLATS FIELD MONUMENTS.

FIELD MEASUREMENTS BETWEEN CORNERS

E-10 TO E-9 2004 Remon (2694.00'), Plats East of Kelly (2693.39'), Plats West of Kelly (2692.60'), 1818 GLO 40.00 Ch. (2640').

E-10 TO E-11 2004 Remon (2797.03'), Plats East of Kelly (2696.20'), Plats West of Kelly (2697.90'), 1818 GLO 40.00 Ch. (2640').

E-10 TO c-10 2004 Remon (5376.13'), Plats North of Stephens (5375.00'), Plats South of Stephens (5374.50'), No GLO Distance.

RECOMMENDATIONS

TO ACCEPT THE LOCATION DOCUMENTED AS THE FAITHFUL RECOVERY OF THE OBLITERATED CORNER E-10.

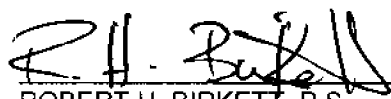
PLACE THE FOLLOWING STATEMENT ON THE NEW LCRC:

"THE SELECTED LOCATION IS ACCEPTED BY ME AND IS GENERALLY ACCEPTED BY PROFESSIONAL SURVEYORS AS THE BEST AVAILABLE EVIDENCE OF THE POSITION OF THE ORIGINAL CORNER."

MONUMENT SET AND WITNESSES

SET ¾" IRON WITH CAP MARKED "MACOMB COUNTY MONUMENT, MI, ACT 345, 41094, E-10", IN A NEW MONUMENT BOX.

- Az. 35° - 40.05' - Easterly outside corner of concrete base for traffic signal.
- Az. 175° - 29.01' - Set chizeled "X" on West rim sanitary man hole.
- Az. 230° - 60.45' - Set remon tag in Southeast face utility pole with light.
- Az. 310° - 66.03' - Set remon tag in Southwest face utility pole with light.

 12-13-04
ROBERT H. BIRKETT, P.S. 41094 DATE

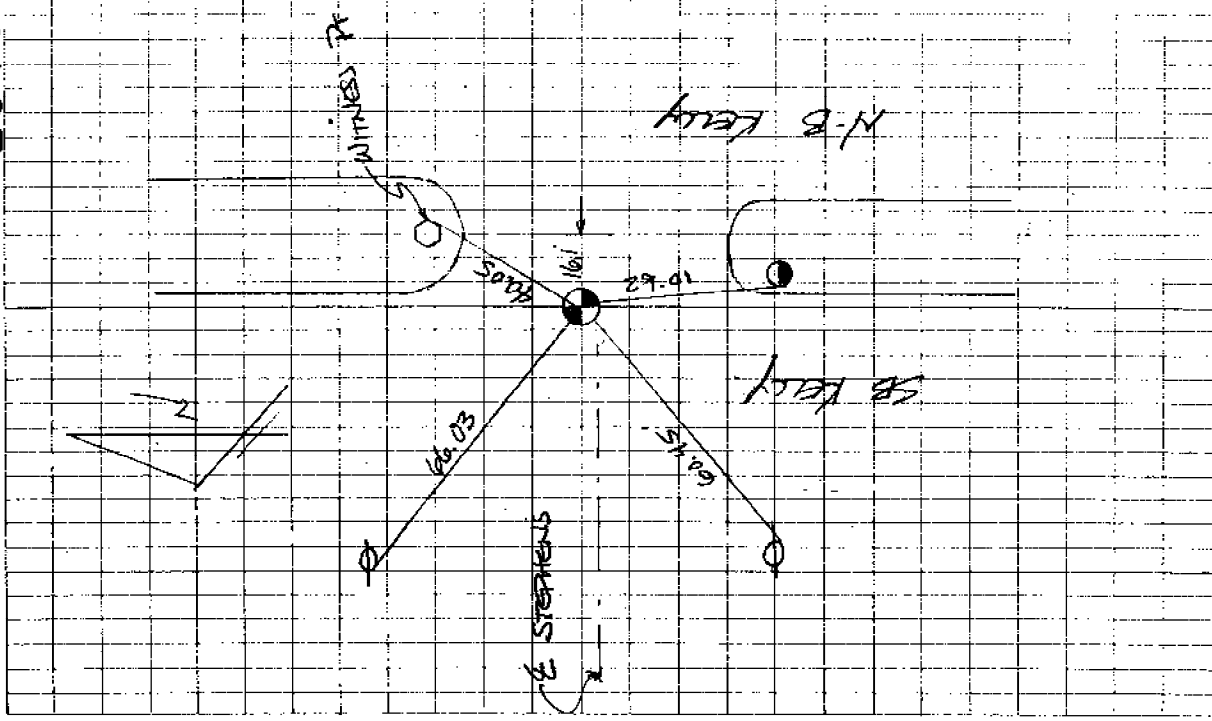
203004
8704
MIDDY

2004 REMON

	E.I.P.	GRIND	TAP
	SET PR	IN CONC	
	38	N. OF PHYS & STEPHENS	
	16.1'	W. OF E. KERRY RD BOUND TO N	
Ac	25	DEK	
175	27.01	SET CHS. 'X' ON W. RIM	
		SAN. MH	
230	60.45	SET REMON TAG IN SE FACE	
		U.P. w/ LIGHT	
310	66.03	SET REMON TAG IN SW FACE	
		U.P. w/ TRAFFIC LIGHT (UP DATED 2002)	
35	40.05	Ely OUTSIDE COE OF CONC	
		BASE FOR TRAFFIC SIGNAL	

304

No 2340



223.1

"MICHAEL SUE 191"
L. 033 R. 037

A.P. No. 20
1927 1924

4. 37

117.00

"ASSESSOR'S Plat No. 40"

L. 047 R. 223

1676.92'

2263.2'

"HAMILTON SUE"
L. 029 R. 021

430.79 (2)

"A.P. No. 40"



Hamilton SUE

1927

E-10

E-15

"WELL" Super Handicap No. 1

"KOPPING" HOME
No. 9
L 222 8.207

"KOPPING" HOME
No. 9
L 222 8.207

"KOPPING" HOME
No. 9
L 222 8.207

"WELL" Super Handicap No. 1
L 210 8.217

681.00

248 4.56

1343.10

2517.00

1343.10

EXHIBIT 153

872.11
L. 032
D. 11
A. 11
A. 11
A. 11

1. 11
1. 11
1. 11
1. 11
1. 11

"Teprenit"
GOLDEN
L. 034
P. 044

243.11
"A.P. No. 24"
L. 034 P. 050

1288.80
234.11
"VANITY SUB"
L. 034 P. 013-019

300.00
"A.P. # 20"
L. 022 P. 038

"L. 034"

1071.00
203.11
761.89

1. 11
1. 11
1. 11
1. 11
1. 11

1. 11

1071.00

Town 1 North Range 13 East

pp. 231

West On Random between S 20 + 29

40.00 Set temporary half mile pt

79.79 Put West boundary at the corner

Land level and dry good 2^d rate

Timber W. Oak Beech Sugar Poplar

Lynx + Undergrowth Spice + c

East Corrected between S. 20 + 29

39.89 Made 1/4 Section corner on and

Ironwood 5 in diam at average dist

79.79 To Section corner

South Between Sections 29 + 28

16.64 an Elm 24 in dia

40.00 Made half mile corner on a

B. Ash 5 in dia

57.17 an Elm 20 in dia

80.00 Made corner for Section 29, 28, 32, 33

on a B. Ash 6 in di

1st half mile front dry 2^d rate

last half mile wet 2^d rate

Timber B. Ash Elm Lynx Beech

Undergrowth Hornbeam Bash + c

West On Random between S 29 + 32

40.00 Set temporary half mile Pt

80.00 Put West boundary 1/4 link South

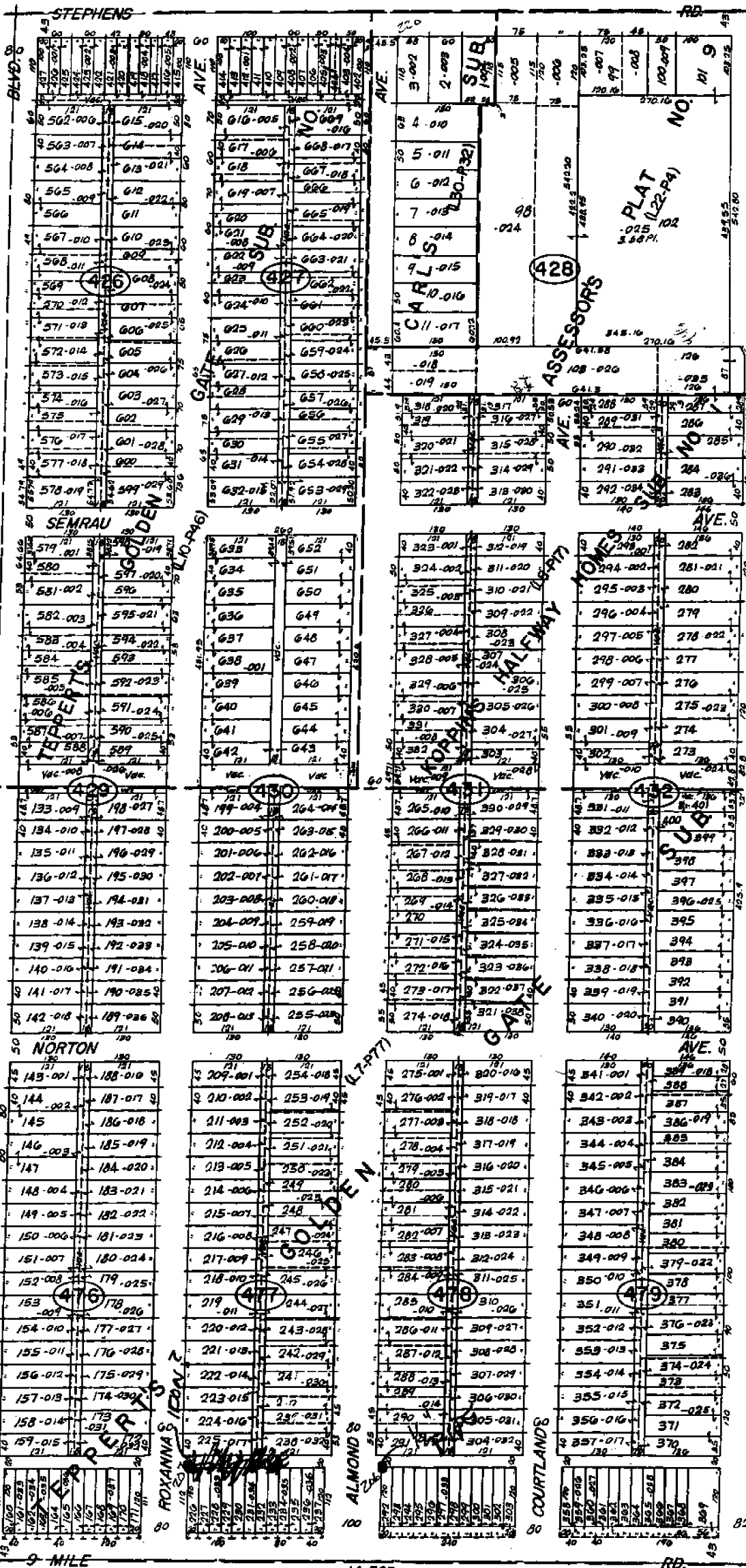
of corner Land level and dry good

2^d rate Timber W. Oak Poplar Beech

Sugar Lynx Undergrowth Spice

Hornbeam

E-10
REMON



14-29C

14-28E

TEPERT

Changes to Base Map
NOT VERIFIED
VERIFIED

1-81
2-78
3-76
4-76

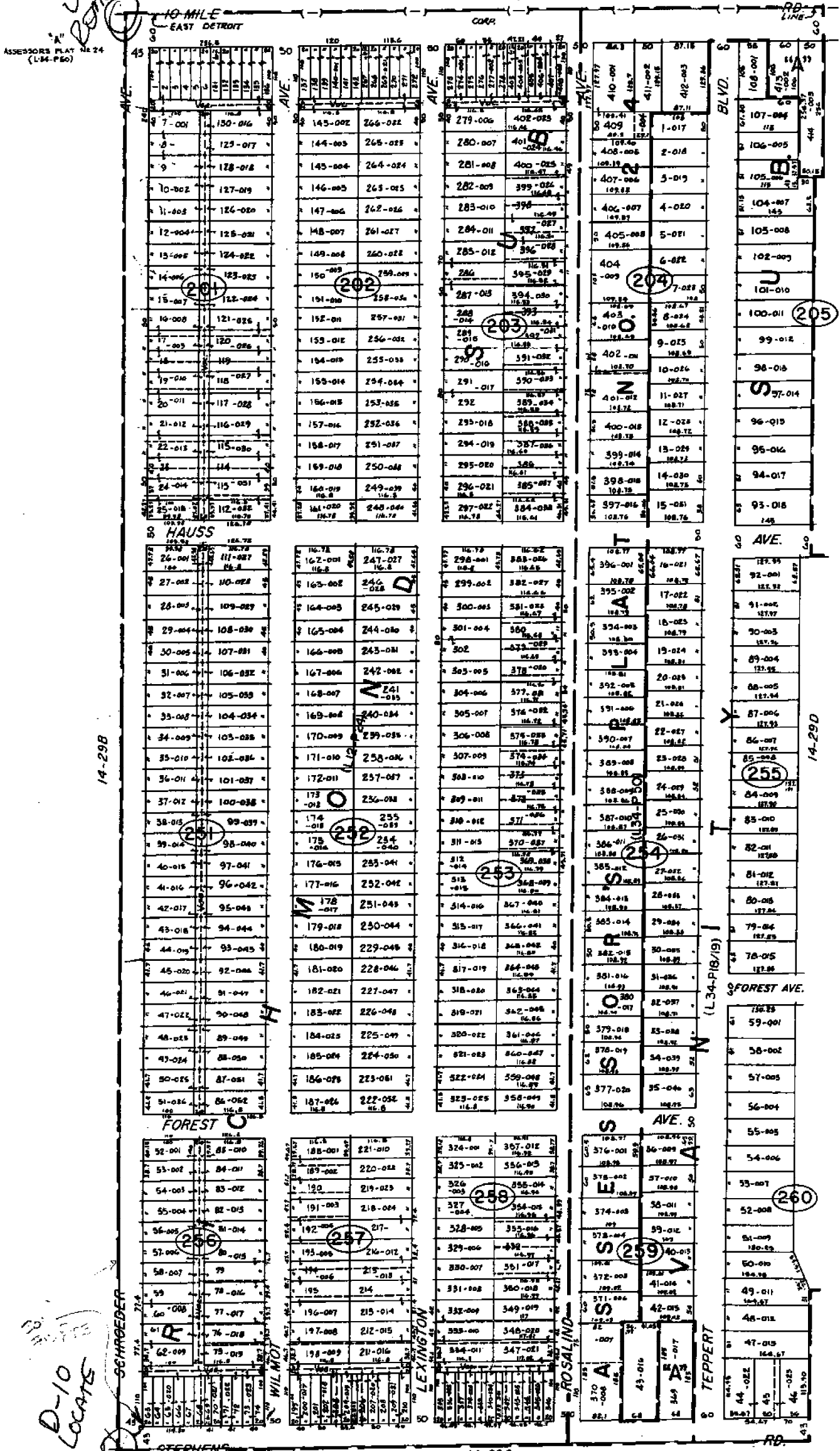
Copyright 1973
MACOMBS COUNTY, MICHIGAN
SCALE: 1"=100'

EAST DETROIT

1/4 SEC 20 T17N R17E

ASSASSORS' PLAN No. 24
(L34-P60)

14-206



REV. 10-85
REV. E-81
SCALE: 1"=100'

14-29C

14-296
EAST DETROIT
W. 1/2 NE. 1/4 SEC. 29 T. 13E.

Copyright 1973
MACOMB COUNTY, MICHIGAN

CHANGES to BASE MAP

LINE

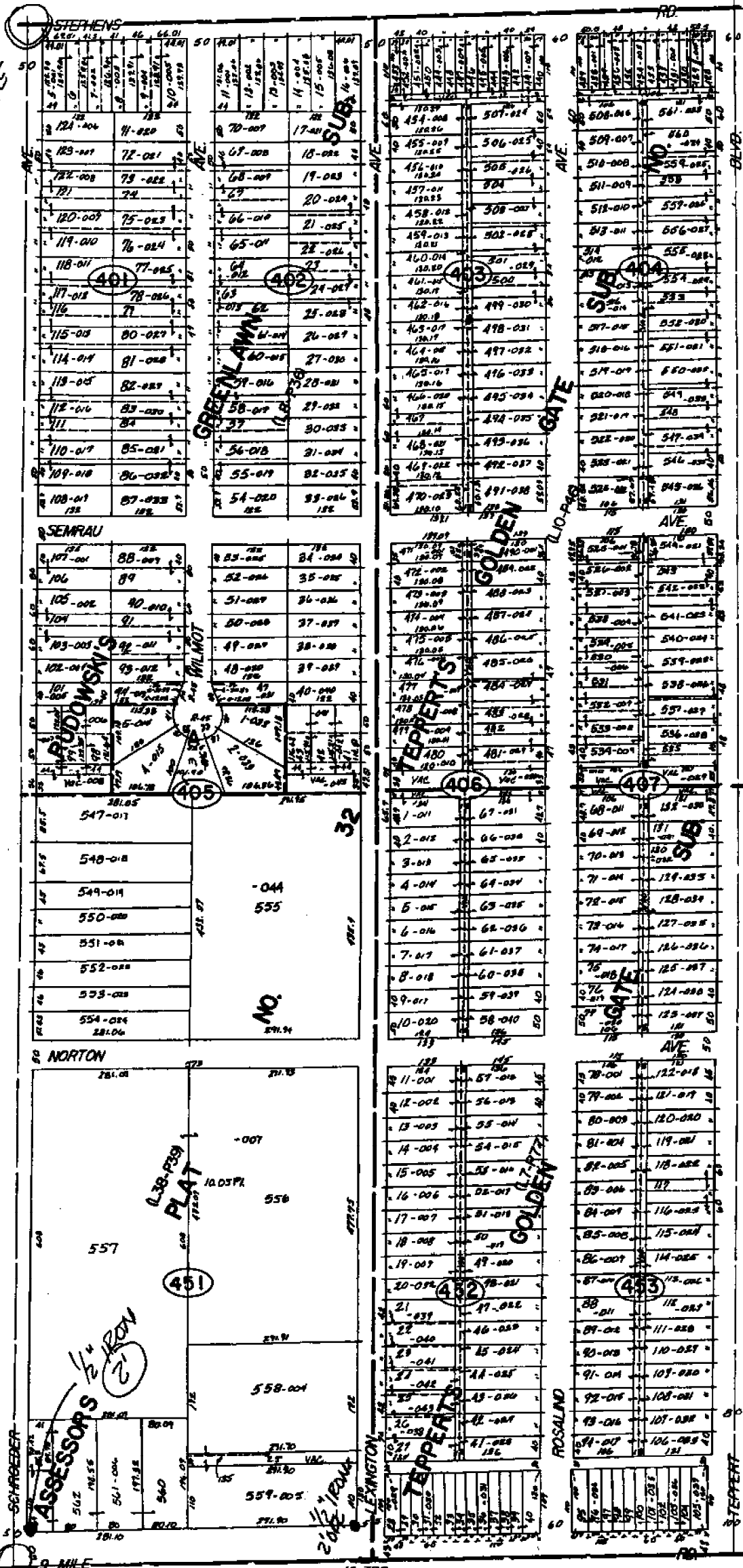
LOCATIONS

D-10
LOCATE

14-29F

SCALE: 1" = 100'

14-29G



D-11
REMON

EASTPOINTE

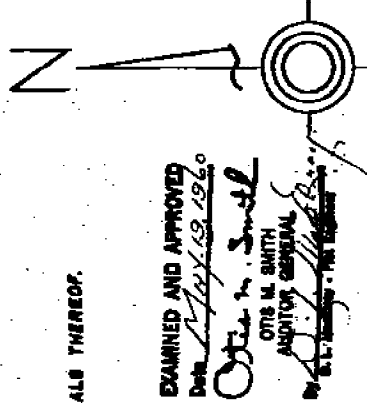
W.1/2 S.E.1/4 SEC. 29 T.1N. R.13E.

14-29G

PLAT NO. 40

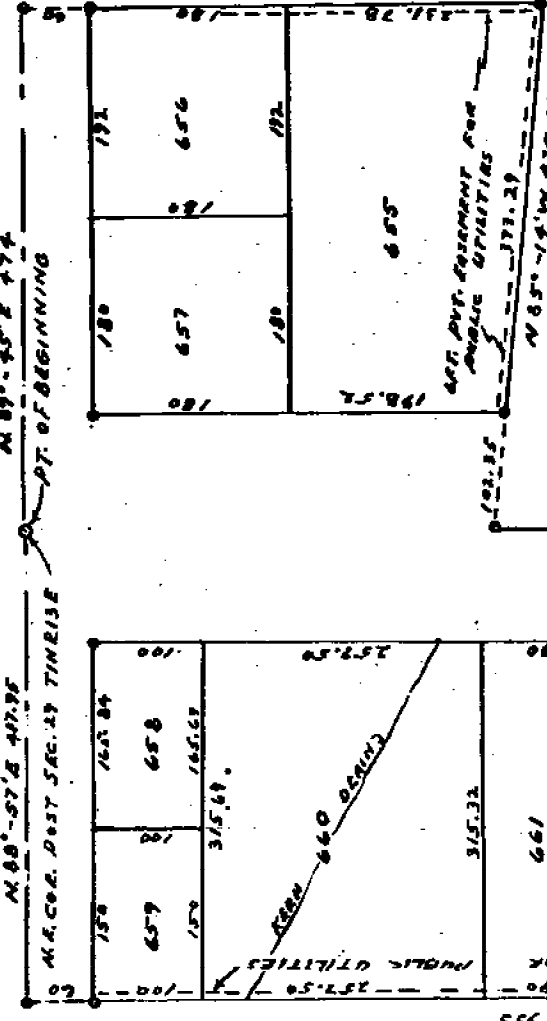
OF PART OF THE N.E. 1/4 OF SEC. 29 & N.W. 1/4 OF SEC. 28 T1N.R.13E.
 CITY OF EAST DETROIT MACOMB CO. MICHIGAN

474865



HARRY J. FULLER
 REGISTERED LAND SURVEYOR
 MT. CLEMENS MICH.

TEN MILE RD. 120 FT. WD.
 N 89° 45' E 474



EXAMINED AND APPROVED
 Date May 19, 1960
Otis M. Smith
 OTIS M. SMITH
 AUDITOR GENERAL

DEDICATION

KNOW ALL MEN BY THESE PRESENTS, That I, Donald C. Branham, Assessor of the City of East Detroit, Macomb County, Michigan by virtue of authority in me vested by Section 51, Act 172, of 1929, having been duly authorized by the City Council, have caused the land described in the annexed plat to be surveyed, laid out and platted, to be known as "SUBDIVISION OF SECTION 28 T. 1 N., R. 13 E. City of East Detroit, Macomb County, Michigan and the elements and streets as shown on said plat have been acquired by deed, dedication and adverse possession.

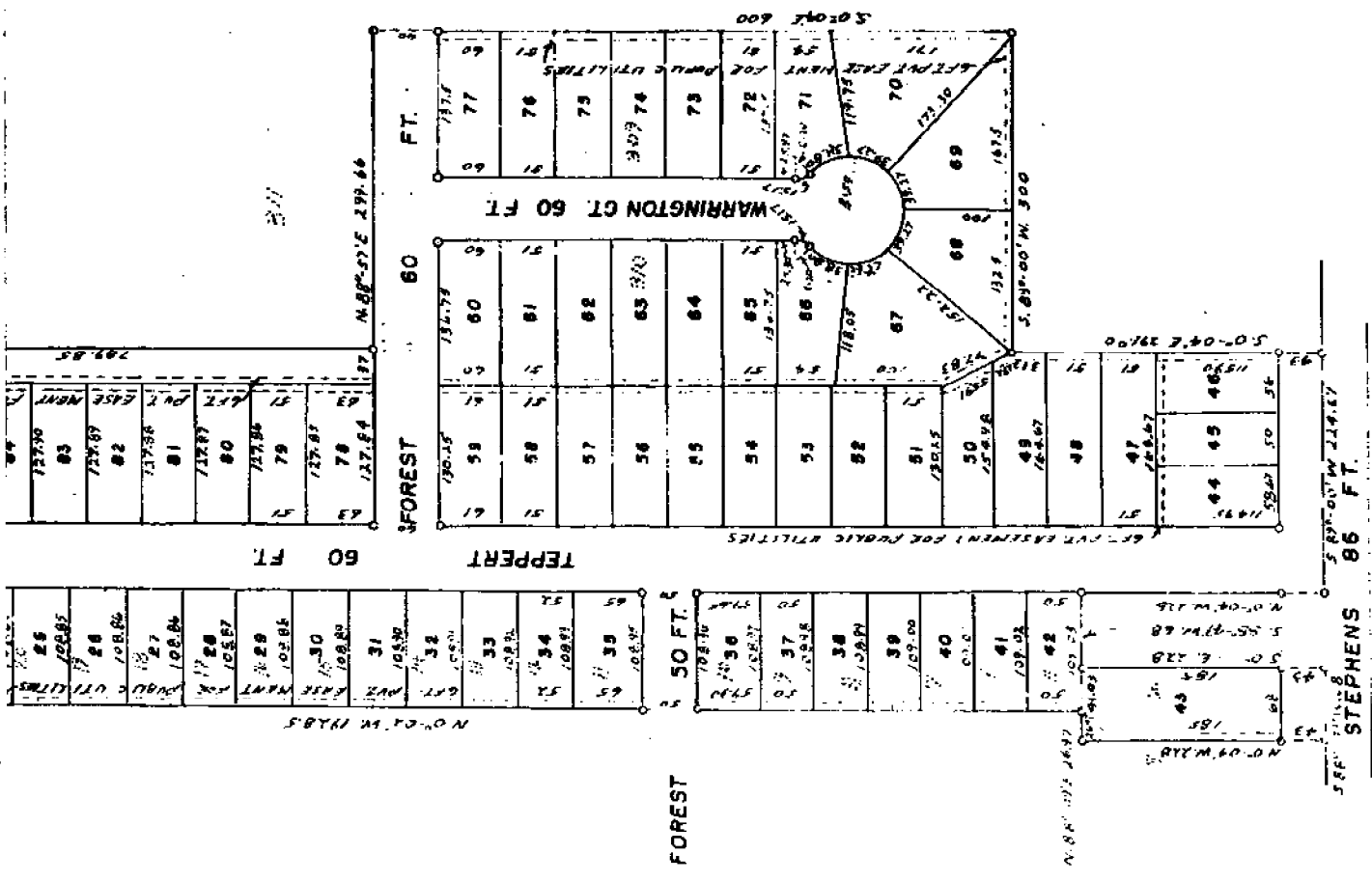
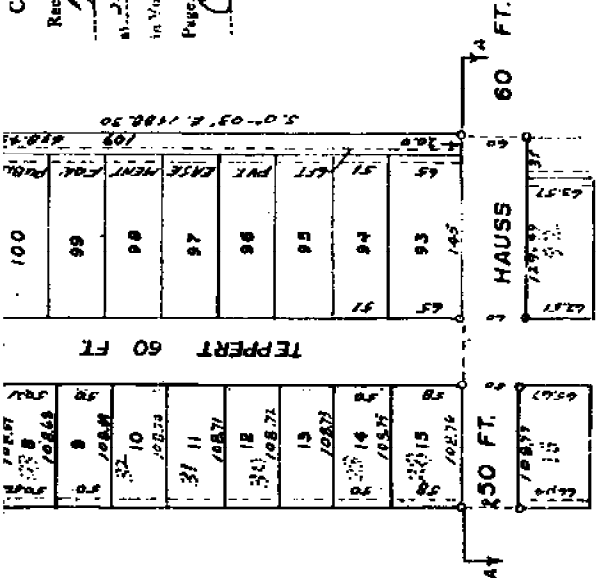
WITNESSES:
Donald C. Branham
 Donald C. Branham
 Assessor of the City of East Detroit

ACKNOWLEDGMENT

STATE OF MICHIGAN } ss.
 County of Macomb }
 On this 19th day of May, 1960 before me, a Notary Public in and for said County, personally came the above named Assessor of the City of East Detroit, known to me to be the person who executed the above dedication, and acknowledged the same to be his free act and deed as such assessor.

My Commission expires May 1961
 Notary Public Macomb Co., Michigan

COUNTY OF MACOMB
 Received for Record
 of Block... and recorded
 in Volume... of...
 Page...
 Register of Deeds



at 10:00 AM 7/24
 100-042-297-005

Tab. 34 Page 18

"VANITY SUBDIVISION"

PART OF N.E. 1/4 SEC. 29 T. 1 N. R. 13 E. CITY OF EAST DETROIT MACOMB CO. MICH.

SHEET 1 OF 2

259792

HARRY J. FULLER
REGISTERED LAND SURVEYOR
MT. CLEMENS MICH.

DEDICATION

KNOW ALL MEN BY THESE PRESENTS, that we Mary M. Everts a widow, and Alice Dittman a single woman, and Ralph D. O'Neal and Clara S. O'Neal his wife, and Bernice Milligan a single woman, and Mary Milligan a widow, and Harry C. Probert, Jr. and Susanne Probert his wife, and Vernon V. Harbour and Viola D. Harbour his wife, and Charles A. Chabot and Beaulie Chabot his wife, and Clifford A. Milligan and Mary Milligan his wife, and Joseph Maganck and Jennie Maganck his wife, and John F. Hamilton and Olive Hamilton his wife, and Frank DeMight and Madeline DeMight his wife, and Anthony Ryden and Jane Ryden his wife, and Irving J. Topper Secretary-Treasurer, as proprietors, have caused the land embraced in the annexed plat to be surveyed, laid out and platted to be known as "VANITY SUBDIVISION" a part of the N.E. 1/4 of Section 29 T. 1 N. R. 13 E., City of East Detroit, Macomb Co., Michigan and that the streets and alleys shown on said plat are hereby dedicated to the use of the public and that the easements as shown on said plat are hereby dedicated to the use of public utilities and no permanent structures are to be erected within the lines of said easements. Regulation of the use thereof is vested in the local governmental authority.
SIGNED AND SEALED IN THE PRESENCE OF:

Mary M. Everts
Alice Dittman
Ralph D. O'Neal
Clara S. O'Neal
Bernice Milligan
Mary Milligan
Harry C. Probert, Jr.
Susanne Probert
Vernon V. Harbour
Viola D. Harbour
Charles A. Chabot
Beaulie Chabot
Margaret Oala

Herbert S. Charfoos, President
Irving J. Topper, Secretary & Treasurer
Frank DeMight
Kadeline DeMight
Anthony Ryden
Jane Ryden
Clifford A. Milligan
Mary Milligan
Corinne M. Krause

STATE OF MICHIGAN }
County of Macomb }

On this 21st day of March A.D. 1955 before me a Notary Public in and for said county appeared Herbert S. Charfoos and Irving J. Topper to me personally known, who being each by me duly sworn did say that they are the President and Secretary-Treasurer respectively of the VANITY HOMES INC., a Michigan Corporation, and that the seal affixed to said instrument is the corporate seal of said corporation, and that said instrument was signed and sealed in behalf of said corporation by authority of its Board of Directors and the said Herbert S. Charfoos and Irving J. Topper acknowledged said instrument to be the free act and deed of said corporation.

Herbert S. Charfoos
Irving J. Topper
Notary Public in and for the State of Michigan

DESCRIPTION

The land embraced in the annexed plat of "VANITY SUBDIVISION" a part of the N.E. 1/4 Section 29 T. 1 N. R. 13 E. a replat of parts of lots 309 and 310 of the Cassoway Plat No. 20 of part of the N.E. 1/4 of Section 29 T. 1 N. R. 13 E., City of East Detroit, Macomb Co., Michigan and a replat of parts of lots 23 and 24 and lots 5 to 33 inclusive of Assessors Plat of East Detroit Little Farms Sub. No. 1 of part of the N.E. 1/4 of Sec. 29 T. 1 N. R. 13 E., City of East Detroit, Macomb Co. Mich. and other land is described as follows:

Commencing at the N.E. corner post of Sec. 29 T. 1 N. R. 13 E., thence S 89° 50' N 1452.95 feet to the point of beginning, thence S 0° 01' E 166 feet, thence N 89° 48' 48" E 60 feet, thence S 0° 04' E 150.37 feet, thence N 89° 51' E 30.15 feet, thence S 0° 01' E 1466.3 feet, thence N 89° 51' E 299.66 feet, thence S 89° 00' N 300 feet, thence S 89° 00' N 300 feet, thence S 0° 04' E 291.9 feet, thence S 89° 00' N 224.67 feet, thence N 0° 04' W 228 feet, thence S 89° 19' N 68 feet, thence S 0° 04' E 228 feet, thence S 89° 19' N 68 feet, thence N 0° 04' W 228 feet, thence N 89° 19' E 26.97 feet, thence N 0° 02' W 1928.5 feet, thence N 89° 14' E 0.67 feet, thence N 0° 04' W 350 feet, thence N 89° 14' E 108 feet, thence N 0° 04' W 169.66 feet, thence N 89° 59' E 115 feet to the point of beginning.

SUBSCRIBERS CERTIFICATE

I hereby certify that the plat herein delineated is a correct one and that permanent metal monuments consisting of bars of not less than one-half inch in diameter and thirty six inches in length enclosed in a concrete cylinder at least 2 inches in diameter and thirty six inches in depth have been placed at points marked thus (o) as shown above at all angles in the boundaries of the land platted, at all the intersections of the streets, intersections of alleys, or of streets and alleys, and at the intersections of streets and alleys with the boundaries of the plat as shown on said plat.

Harry J. Fuller
Registered Land Surveyor

CERTIFICATE OF MUNICIPAL APPROVAL

This plat was approved by the City Council of the City of East Detroit of Macomb County, Michigan, at a meeting held February 21st 1955. All public sewage and water facilities are shown.

SURVEYORS CERTIFICATE

I hereby certify that the plat herein delineated in a correct one and that permanent metal monuments consisting of bars of not less than one-half inch in diameter and thirty six inches in length incased in a concrete cylinder at least 6 inches in diameter and thirty six inches in depth have been placed at points marked thus (o) as the record shown at all angles in the boundaries of the land platted, at all the intersections of the streets, intersections of alleys, or of streets and alleys, and at the intersections of streets and alleys with the boundaries of the plat as shown on said plat.

Harry C. Probert Jr.
HARRY C. PROBERT, Registered Land Surveyor

CERTIFICATE OF MUNICIPAL APPROVAL

This plat was approved by the City Council of the City of East Detroit of Macomb County, Michigan, at a meeting held October 27th 1955. All public sewage and water facilities are installed ready for connection.

Charles D. ...
CHARLES ... (CLERK)

CERTIFICATE OF APPROVAL BY COUNTY BOARD

This plat was approved on the 15th day of November, 1955.

Aaron Day (County Register of Deeds)
Frank Lohr (County Drain Commissioner)

ACKNOWLEDGMENT

STATE OF MICHIGAN }
County of Macomb }

On this 15th day of November, A.D. 1955 before me a Notary Public in and for said county appeared Mary M. Zverva's widow, and Alice Dittman a single woman and Leppa D. O'Donnell and Clara S. O'Donnell his wife, and Bernice Milligan a single woman, and Mary Milligan a widow, and Harry C. Probert Jr. and Suzanne Probert his wife, and Vernon V. Harbour and Violet D. Harbour his wife, and Charles A. Chabot and Bessie Chabot his wife, and Clifford A. Milligan and Mary Milligan his wife, and Margaret Gale a widow, and Corinus M. Kraus a widow, and Joseph Meaganck and Joanna Meaganck his wife, and R. Harold Ling and Marie Ling his wife and John Y. Hamilton and Olive Hamilton his wife, and Frank DeMight and Maddeline DeMight his wife, and Anthony Ryden and Janis Ryden his wife, known to me to be the persons who executed the above dedications and acknowledged the same to be their free act and deed.

My Commission expires July 1, 1956
Notary Public Joseph M. ... Do., Michigan

REGISTERS OFFICE
COUNTY OF MACOMB

Received for Record

November 28, 1955
in Volume 40 of Plats

Page 111
Charles A. ...
Register of Deeds

This is to certify that according to the survey measurements annexed hereon and as the plat on this record may be read and run out five years previous to date of this instrument.

Map of ... showing ...
Acreage
2 1/2
2 1/2
2 1/2
2 1/2
2 1/2
2 1/2
2 1/2
2 1/2
2 1/2
2 1/2

"ASSESSORS PLAT NO. 24" OF PART OF THE N.E. 1/4 SEC. 29 T. 1 N. R. 13 E. CITY OF EAST DETROIT MACOMB CO. MICHIGAN

268151

SCALE: 1" = 150'

EXAMINED AND APPROVED

Date _____

Walter J. Fuller

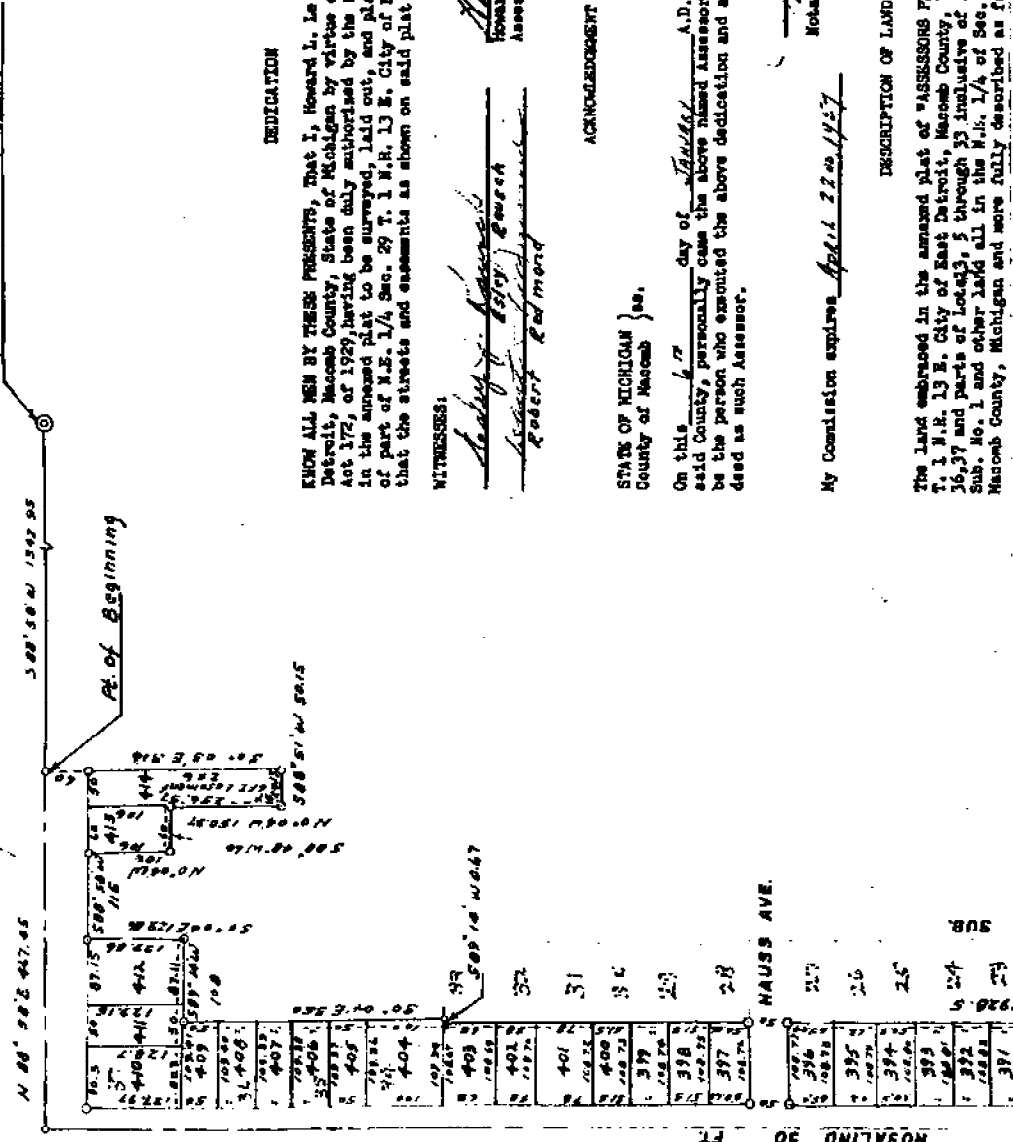
Walter J. Fuller
REGISTERED CIVIL ENGINEER
MICH.

HARRY J. FULLER
REGISTERED CIVIL ENGINEER
MICH.
MT. CLEMENS

NOTE: ALL MEASUREMENTS ARE IN FEET AND DECIMALS THEREOF

N.E. Cor. Post Sec. 29 T. 1 N. R. 13 E.

TEN MILE RD. 120 FT.



DEDICATION

KNOW ALL MEN BY THESE PRESENTS, That I, Howard L. Le Abetter, Assessor of the City of East Detroit, Macomb County, State of Michigan by virtue of authority in me vested by Section 52, Act 372, of 1929, having been duly authorized by the City Council, have caused the land described in the annexed plat to be surveyed, laid out, and platted to be known as "ASSESSORS PLAT NO. 24" of part of N.E. 1/4 Sec. 29 T. 1 N.R. 13 E., City of East Detroit, Macomb County, Michigan, and that the streets and easements as shown on said plat are now being used for such purposes.

WITNESSES:

Robert Raymond
Robert Raymond
Howard L. Le Abetter
Howard L. Le Abetter
Assessor of the City of East Detroit

ACKNOWLEDGMENT

STATE OF MICHIGAN }
County of Macomb } ss.

On this 17 day of October A.D. 1956, before me a Notary Public in and for said County, personally came the above named Assessor of the City of East Detroit, known to me to be the person who executed the above dedication and acknowledged the same to be his free act and deed as such Assessor.

Robert Raymond
Notary Public Macomb County, Michigan

My Commission expires April 22nd 1957

DESCRIPTION OF LAND PLATTED

The land embraced in the annexed plat of "ASSESSORS PLAT NO. 24" of part of the N.E. 1/4 Sec. 29 T. 1 N.R. 13 E., City of East Detroit, Macomb County, Michigan, being a replat of Lots 1, 2, 3, 4, 5, 6, 7, 8, 9, 10, 11, 12, 13, 14, 15, 16, 17 and parts of Lots 1, 2, 3, 4, 5, 6, 7, 8, 9, 10, 11, 12, 13, 14, 15, 16, 17, 18, 19, 20, 21, 22, 23, 24, 25, 26, 27, 28, 29, T. 1 N.R. 13 E., City of East Detroit, Macomb County, Michigan and more fully described as follows:

On this 6th day of January A.D. 1956, before me a Notary Public in and for said County, personally came the above named Assessor of the City of East Detroit, known to me to be the person who executed the above dedication and acknowledged the same to be his free act and deed as such Assessor.

Notary Public
Notary Public Macomb County, Michigan

My Commission expires April 22nd 1957

DESCRIPTION OF LAND PLATED

The land embraced in the annexed plat of "ASSESSORS PLAT NO. 24" of part of the N.E. 1/4 Sec. 29 T. 1 N.R. 13 E. City of East Detroit, Macomb County, Michigan, being a replat of Lots 1, 2, 3, 35, 36, 37 and parts of Lots 23, 5 through 33 inclusive of Assessors Plat of East Detroit Little Farm Sub. No. 1 and other land all in the N.E. 1/4 of Sec. 29, T. 1 N.R. 13 E., City of East Detroit, Macomb County, Michigan and were fully described as follows:

Commencing at the N.W. Corner of Sec. 29 T. 1 N.R. 13 E. thence S. 89°-58' W. 1342.95 feet to the point of beginning thence S. 0°-01' E. 316 feet thence S. 89°-51' W. 50.15 feet thence N. 0°-04' W. 150.37 feet thence S. 89°-48' W. 60 feet, thence N. 0°-04' W. 106 feet, thence S. 89°-58' W. 115 feet, thence S. 0°-04' E. 129.86 feet, thence S. 89°-44' W. 108 feet, thence S. 0°-04' E. 350 feet, thence S. 89°-51' W. 467 feet, thence S. 0°-02' E. 1928.5 feet, thence S. 89°-49' W. 26.97 feet, thence S. 0°-04' E. 185 feet, thence N. 89°-49' E. 68 feet, thence N. 0°-04' W. 185 feet, thence N. 89°-49' E. 66 feet, thence S. 0°-04' E. 228 feet, thence S. 89°-49' W. 243.1 feet, thence North 2696.02 feet thence N. 89°-58' E. 467.45 feet to the point of beginning.

SURVEYOR'S CERTIFICATE

I hereby certify that the plat herein delineated is a correct one and that permanent metal monuments consisting of bars of not less than one-half inch in diameter and thirty six inches in length spaced in a concrete cylinder at least 4 inches in diameter and thirty six inches in depth have been placed at points marked thus (e) as shown above at all angles in the boundaries of the land platted, at all the intersections of the streets, intersections of alleys, of streets and alleys, and at the intersections of streets and alleys with the boundaries of the plat as shown on said plat.

Henry J. Kuller
Henry J. Kuller, Registered Land Surveyor

CERTIFICATE OF MUNICIPAL APPROVAL

This plat was approved by the City Council of the City of East Detroit of Macomb County, Michigan at a meeting held Jan 11 1956

Charles Beaubien, Clerk

CERTIFICATE OF APPROVAL BY COUNTY BOARD

This plat was approved on the 11th day of Jan, 1956.

Albert W. Wagner
Albert W. Wagner, County Register of Deeds

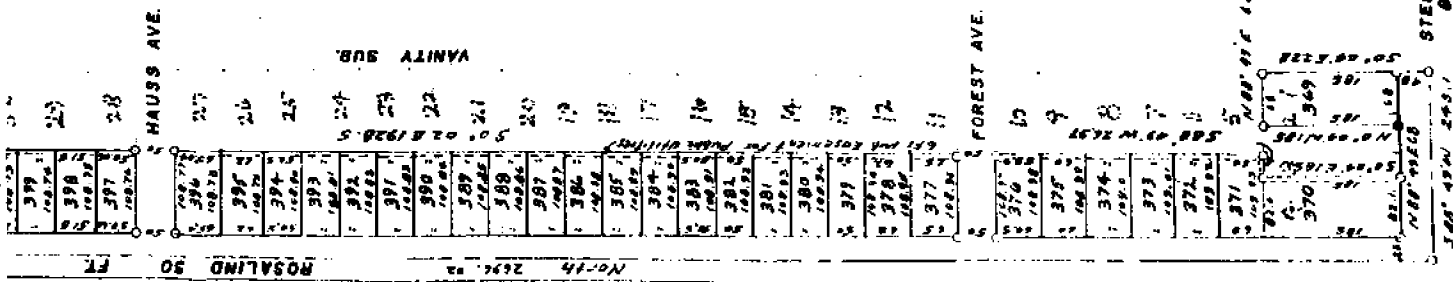
Frank Lohr
Frank Lohr, County Drain Commissioner

RECORDED
COUNTY REGISTER OF DEEDS

January 19, 1956

Frank Lohr
Frank Lohr, County Drain Commissioner

Caron Burr



"MICHAEL SUBDIVISION NO. 1" PART OF THE N.E. 1/4 SEC. 29 T. 1 N. R. 13 E. EAST DETROIT MICH. MAGOMB CO.

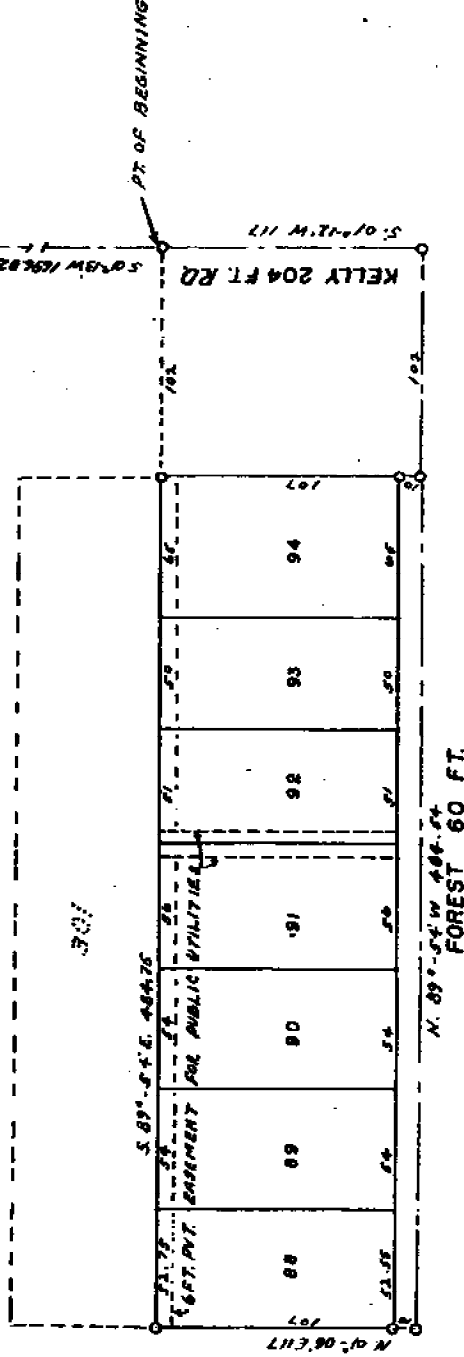
SCALE: 1" = 60'



NOTE: ALL DIMENSIONS ARE IN FEET AND DECIMALS THEREOF.

HARRY J. FULLER
REGISTERED LAND SURVEYOR
MT. CLEMENS MICH.

N.E. COR. SEC. 29 T. 1 N. R. 13 E.



DEDICATION

KNOW ALL MEN BY THESE PRESENTS, That we, The Eastern Construction Company, a Michigan Corporation by Charles Goldberg, President, and Ross C. Goldberg, Secretary as proprietors and the Raven Home Builders, Inc., a Michigan Corporation by Allen A. Sabin, President and Jeanne C. Ayre, Secretary as vendors, have caused the land embraced in the annexed plat to be surveyed, laid out and platted to be known as "MICHAEL SUBDIVISION NO. 1" a part of the N.E. 1/4 Sec. 29 T. 1 N.R. 13 E. East Detroit, Macomb Co., Michigan and that the streets shown in said plat are hereby dedicated to the use of the public, and that the easements shown on said plat are hereby reserved for the use of public utilities and no permanent structures are to be erected within the lines of said easements. Regulation of the use thereof is vested in the local governmental authority.

Witness:
 Charles Goldberg, President
 Allen A. Sabin, Secretary
 Jeanne C. Ayre, Secretary
 Ross C. Goldberg, Secretary

WITNESSES:
 Charles Goldberg, President
 Allen A. Sabin, Secretary
 Jeanne C. Ayre, Secretary
 Ross C. Goldberg, Secretary

DESCRIPTION OF LAND PLATTED

The land embraced in the annexed plat of "MICHAEL SUBDIVISION NO. 1" part of the N.E. 1/4 Sec. 29 T. 1 N.R. 13 E. East Detroit, Macomb Co., Michigan, being a replat of part of Lot 301 of Assessor's Plat No. 20, a Subdivision of part of the N.E. 1/4 Sec. 29 T. 1 N.R. 13 E. East Detroit, Macomb Co., Michigan, is described as follows:
 Commencing at the N.E. corner of Section 29 T. 1 N.R. 13 E., thence S 0° 13' 14" 1696.82 feet to the point of beginning, thence S 0° 12' 14" 117 feet, thence N 89° 54' 14" 486.54 feet, thence S 0° 06' 17" 117 feet, thence S 89° 54' 13" 486.75 feet to the point of beginning.

SURVEYOR'S CERTIFICATE

I hereby certify that the plat herein delineated is a correct one and that permanent metal monuments consisting of bars of not less than one-half inch in diameter and 36 inches in length encased in a concrete cylinder at least 4 inches in diameter and 36 inches in depth have been placed at points marked thus (o) as the reason shown at all angles in the boundaries of the land platted, at all the intersections of the streets, intersections of alleys, or of streets and alleys, and at the intersections of the streets and alleys with the boundaries of the plat as shown on said plat.

Harry J. Fuller

KNOW ALL MEN BY THESE PRESENTS, That we, The Eastern Construction Company, a Michigan Corporation, Charles Goldberg, President, and Rose C. Goldberg, Secretary as proprietors and the Haven Home Builders, Inc., a Michigan Corporation by Allen A. Sals, President and Jeanes L. Ayre, Secretary as vendors, have caused the land embraced in the annexed plat to be surveyed, laid out and platted to be known as "MICHAEL SUBDIVISION NO. 1" a part of the N.E. 1/4 Sec. 29 T. 1 N.R. 13 E. East Detroit, Macomb Co., Michigan and that the streets shown in said plat are hereby dedicated to the use of the public, and that the easements shown on said plat are hereby reserved for the use of public utilities, and no permanent structures are to be erected within the lines of said easements. Regulation of the use thereof is vested in the local governmental authority.

Witnesses:
Charles Cowan
 CHARLES COWAN
William Beer
 WILLIAM BEER
Charles Goldberg
 CHARLES GOLDBERG, President
Rose C. Goldberg
 ROSE C. GOLDBERG, Secretary
 HAVEN HOME BUILDERS, INC.
Allen A. Sals
 ALLEN A. SALS, President
Jeanes L. Ayre
 JEANES L. AYRE, Secretary

ACKNOWLEDGEMENT

STATE OF MICHIGAN }
 County of Macomb } ss.
 On this 21 day of June, 1955 A.D., before me, a Notary Public in and for said county, appeared Charles Goldberg and Rose C. Goldberg to me personally known, who being each by me duly sworn did say that they are the President and Secretary respectively of Haven Home Builders, Inc., a Michigan Corporation, and that the seals affixed to said instrument is the corporate seal of said corporation and that said instrument was signed and sealed in behalf of said corporation by authority of its Board of Directors and that said Charles Goldberg and Rose C. Goldberg acknowledged said instrument to be the free act and deed of said corporation.

My Commission expires June 2, 1956
William Beer
 WILLIAM BEER
 Notary Public in and for Macomb Co., Mich.

STATE OF MICHIGAN }
 County of Macomb } ss.
 On this 21 day of June, 1955 A.D., before me a Notary Public in and for said county, appeared Allen A. Sals and Jeanes L. Ayre to me personally known, who being each by me duly sworn, did say that they are the President and Secretary respectively of Haven Home Builders, Inc., a Michigan Corporation, and that the seals affixed to said instrument is the corporate seal of said corporation and that said instrument was signed and sealed in behalf of said corporation by authority of its Board of Directors and that said Allen A. Sals and Jeanes L. Ayre acknowledged said instrument to be the free act and deed of said corporation.

My Commission expires June 2, 1956
William Beer
 WILLIAM BEER
 Notary Public in and for Macomb Co., Mich.

The land embraced in the annexed plat of MICHAEL SUBDIVISION NO. 1, a part of the N.E. 1/4 Sec. 29 T. 1 N.R. 13 E. East Detroit, Macomb Co., Michigan, being a replat of part of lot 301 of Assessors Plat No. 20, a Subdivision of part of the N.E. 1/4 Sec. 29 T. 1 N.R. 13 E. East Detroit, Macomb Co., Michigan, is described as follows:
 Commencing at the N.E. corner of Section 29 T. 1 N.R. 13 E., thence S 01° 13' 14" 1696.82 feet to the point of beginning, thence S 01° 12' 14" 117 feet, thence S 89° 54' 48.54 feet, thence N 01° 06' 17 feet, thence S 89° 54' 48.54 feet to the point of beginning.

SURVEYOR'S CERTIFICATE

I hereby certify that the plat herein delineated is a correct one and that permanent metal monuments consisting of bars of not less than one-half inch in diameter and 36 inches in length encased in a concrete cylinder at least 4 inches in diameter and 36 inches in depth have been placed at points marked thus (o) as the reason shown at all angles in the boundaries of the land platted, at all the intersections of the streets, intersections of alleys, or of streets and alleys, and at the intersections of the streets and alleys with the boundaries of the plat as shown on said plat.

Harry V. Miller
 HARRY V. MILLER, Registered Land Surveyor

CERTIFICATE OF MUNICIPAL APPROVAL

This plat was approved by the City Council of the City of East Detroit of Macomb County, Michigan at a meeting held June 2, 1955. All public sewage and water facilities are installed ready for connection.

Charles Beambien
 Charles Beambien (Clerk)

CERTIFICATE OF APPROVAL BY COUNTY BOARD

This plat was approved on the 21 day of June, 1955.

Aaron Burr
 Aaron Burr (County Register of Deeds)
Albert Wagner
 Albert Wagner (County Clerk)
John Whelan
 John Whelan (County Treasurer)
Frank Lohr
 Frank Lohr (County Drain Commissioner)

THIS IS TO CERTIFY THAT APPROVED IN THE COUNTY TREASURER'S OFFICE THIS DAY AND THE DATE OF THE PROPERTY AND THAT THE TAXES ARE PAID FOR FIVE YEARS PREVIOUS TO DATE OF THIS INSTRUMENT. June 21, A.D. 1955 1955-1959
 THIS INSTRUMENT MUST NOT BE RECORDED IN ANY PUBLIC OFFICE OR COLLECTION BY ANY OFFICE OR OFFICIAL UNLESS THE SAME IS FIRST RECORDED IN THE OFFICE OF THE COUNTY REGISTER OF DEEDS.

REGISTERS OFFICE
 COUNTY OF MACOMB

Received by Record
August 4, 1955
W. B. Sals
 W. B. Sals, M. and recorded
 in Vol. 23 of Plats, on
 Page 27
Charles Cowan
 Register of Deeds

"MICHAEL SUBDIVISION"

PART OF THE NE. 1/4 SEC. 29 T. 14 N. R. 13 E.
EAST DETROIT MACOMB CO. MICH.

REVIEWED AND APPROVED

DATE: 21, 1954

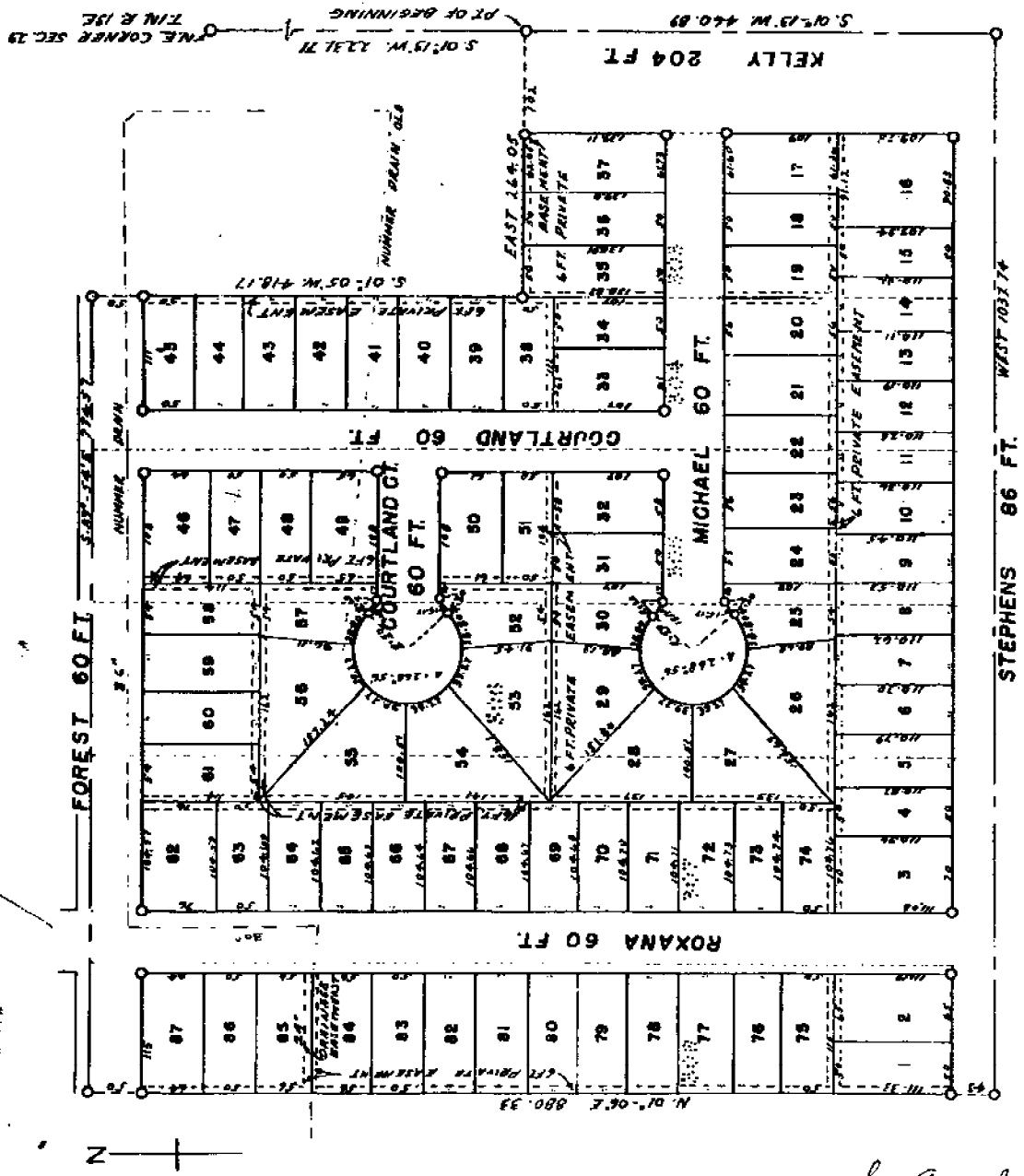
D. J. Miller
REGISTERED SURVEYOR

204425

SCALE: 1" = 100'

NOTE: ALL MEASUREMENTS ARE IN FEET AND DECIMALS THEREOF

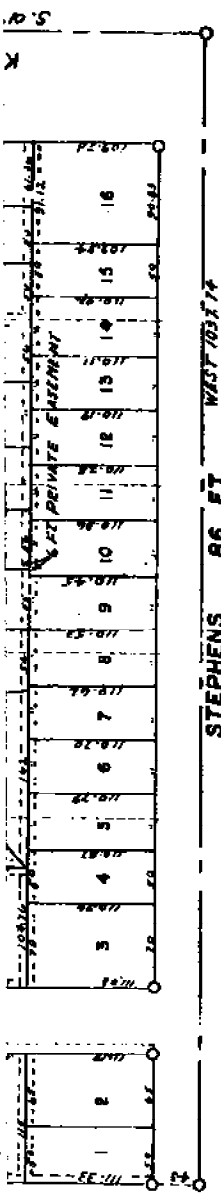
HARRY J. FULLER
REGISTERED SURVEYOR
MT. CLEMENS MICH.



DESCRIPTION OF LAND PLATTED

DEDICATION

See Restrictions = Liber 974 of Deeds, pg 32 See Amendment to See Amendment to



DEDICATION

KNOW ALL MEN BY THESE PARTS, That we, Eastern Construction Co., a Michigan Corporation, Charles Goldberg President, and Rose C. Goldberg, Secretary and the Gloria Construction Co., a Michigan Corporation, by Charles Goldberg President, and Rose C. Goldberg, Secretary as proprietors, have caused the land surveyed in the annexed plat to be surveyed, laid out and platted to be known as "MICHIGAN SUBDIVISION" a part of the N.E. 1/4 of Sec. 29 T. 1 N.E. 13 E. City of East Detroit, Macomb Co., Michigan and that the streets shown in said plat are hereby dedicated to the use of the public, and that the easements shown on said plat are hereby reserved for the use of public utilities and that no permanent structures are to be erected within the lines of said easements. Regulation of the use thereof is vested in the local governmental authority.

Witnesses:
Charles Goldberg President
Rose C. Goldberg Secretary
Charles Goldberg President
Rose C. Goldberg Secretary
Charles Goldberg President
Rose C. Goldberg Secretary

ACKNOWLEDGMENT

STATE OF MICHIGAN } ss.
 County of Macomb }
 On this 15th day of December, 1954 A.D., before me, a Notary Public in and for said county, appeared Charles Goldberg and Rose C. Goldberg to me personally known, who being each by me duly sworn did say that they are the President and Secretary respectively of Eastern Construction Co., a Michigan Corporation, and of Gloria Construction Co., a Michigan Corporation and that the seal affixed to said instrument is the corporate seal of said corporations and that said instrument was signed and sealed in behalf of said corporations by authority of its Board of Directors and that said Charles Goldberg and Rose C. Goldberg acknowledged said instrument to be the free act and deed of said corporation.

My Commission expires February 22, 1957
Charles Reaubien
 Notary Public - Macomb Co.

RECORDED IN THE PUBLIC RECORDS OF THE COUNTY OF MACOMB, MICHIGAN, THIS INSTRUMENT BEING ONE OF THE INSTRUMENTS RECORDED IN THE PUBLIC RECORDS OF SAID COUNTY AND SAID STATE ON THE 15th DAY OF DECEMBER, 1954, AT 10:30 A.M.

DESCRIPTION OF LAND PLATTED

The land embraced in the annexed plat of "MICHIGAN SUBDIVISION" of part of the N.E. 1/4 Sec. 29 T. 1 N.E. 13 E. City of East Detroit, Macomb Co., Michigan, a part of Lots 303 to 308, Inc. of Messers Plat No. 20 a subdivision of part of the N.E. 1/4 Sec. 29 T. 1 N.E. 13 E. City of East Detroit, Macomb Co., Michigan, as depicted on the plat, contains 1.314 Acres, more or less, consisting of the E.S. corner of Section 29 T. 1 N.E. 13 E., thence S 01° 13' 14" 233.71 feet to the point of beginning, thence S 01° 13' 14" 460.89 feet, thence West 1037.74 feet, thence N 01° 06' 18" 880.33 feet, thence S 89° 54' 18" 774.57 feet, thence S 01° 05' 14" 418.17 feet, thence East 264.05 feet to the point of beginning.

SURVEYOR'S CERTIFICATE

I hereby certify that the plat herein delineated is a correct one and that permanent metal monuments consisting of bars of not less than one-half inch diameter and four inches in length encased in a concrete cylinder at least 4 inches in diameter and four inches in depth have been placed at points marked thus (C) as thereon shown at all angles in the boundaries of the land platted at all the intersections of the streets, and at the intersections of the streets with the boundaries of the plat as shown on said plat.

Harry J. Miller
 HARRY J. MILLER, Registered Land Surveyor

CERTIFICATE OF MUNICIPAL APPROVAL

This plat was approved by the City Council of the City of East Detroit of Macomb County, Michigan at a meeting held October 14, 1954

Charles Beaubien
 Charles Beaubien (Clark)

CERTIFICATE OF APPROVAL BY COUNTY BOARD

This plat was approved on this 6th day of December, 1954.

Harvey Burr (County Register of Deeds)
Albert Wagner (County Clerk)
John Kaplan (County Treasurer)

Frank Lohr (County Drain Commissioner)

1. Clerk of County Board
 Received for record in Vol. 31 of Public Records, on December 22, 1954.
 4:56 P.M. and recorded in Vol. 31 of Public Records, on Page 32.
Charles Goldberg
 Register of Deeds

1034

EXAMINED AND APPROVED
JUN 9 1953

John R. Martin
John R. Martin
AUDITOR GENERAL
Det. M. C. [Signature]
City Engineer

"ABRAM SUB."

178652

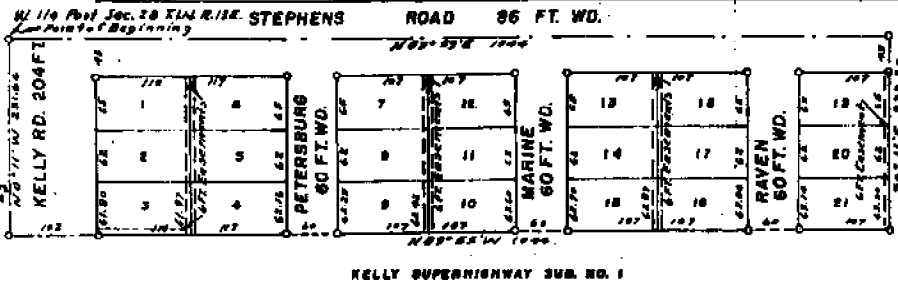
PART OF THE S.W. 1/4 SEC. 28 T.1N. R.13E.
EAST DETROIT MACOMB CO. MICH.

SCALE: 1" = 100'



NOTE: ALL MEASUREMENTS ARE IN FEET AND DECIMALS THEREOF.

HARRY J. FULLEN
REGISTERED CIVIL ENGINEER
MICHIGAN



DEDICATION

KNOW ALL MEN BY THESE PRESENTS, That we Carl Abram and Clara Abram, his wife as proprietors, have caused the land embraced in the annexed plat to be surveyed, laid out and platted, to be known as "ABRAM SUB." part of the S.W. 1/4 Sec. 28 T. 1 N.R. 13 E. East Detroit, Macomb Co., Michigan and that the streets and easements as shown on said plat are hereby dedicated to the use of the public.

Signed and Sealed in Presence of

Carl B. Wynn Carl Abram
Clara Abram Clara Abram
Walter M. [Signature] (Witness)
Walter M. [Signature] (Witness)

DESCRIPTION OF LAND PLATTED

The land embraced in the annexed plat of "ABRAM SUB." part of the S.W. 1/4 Section 28 T. 1 N.R. 13 E. East Detroit, Macomb County, Michigan is described as follows:

Commencing at the W 1/4 post Section 28, T. 1 N.R. 13 E., thence N 89° 59' 10 1/2" E 104.6 feet, thence S 8° 11' 11 1/2" W 231.30 feet, thence N 89° 59' 10 1/2" W 104.6 feet, thence W 8° 11' 11 1/2" E 231.64 feet to the point of beginning.

SURVEYOR'S CERTIFICATE

I hereby certify that the plat herein delineated is a correct one and that permanent metal monuments consisting of bars of not less than one-half inch in diameter and forty eight inches in length set in a concrete cylinder at least 6 inches in diameter and forty eight inches in depth have been placed at points marked (a) as shown shown at all angles in the boundaries of the land platted, at all the intersections of the streets, intersections of alleys, or of streets and alleys, and at the intersections of streets and alleys with the boundaries of the plat as shown on said plat.

Harry J. Fullen
Harry J. Fullen, Registered Land Surveyor

CERTIFICATE OF APPROVAL BY COUNTY BOARD

This plat was approved on the 22nd day of May, 1953.

Ernest [Signature]
Ernest [Signature] (County Register of Deeds)
Albert [Signature]
Albert [Signature] (County Clerk)
Frank [Signature]
Frank [Signature] (County Brain Commissioner)

ACKNOWLEDGMENT

STATE OF MICHIGAN) ss.
County of Macomb) ss.

On this 22th day of May, A.D. 1953 before me a Notary Public in and for said county, personally came the above named Carl Abram and Clara Abram, his wife known to me to be the persons who executed the above dedication, and acknowledged the same to be their free act and deed.

Walter M. [Signature]
Walter M. [Signature]
Notary Public in and for Macomb County
MICHIGAN

My Commission expires May 6, 1956

CERTIFICATE OF MUNICIPAL APPROVAL

This plat was approved by the City Council of the City of East Detroit of Macomb County, Michigan at a meeting held December 14, 1953

Charles [Signature]
Charles [Signature] (Clerk)

644825A

577-527-84
R. Vermeer

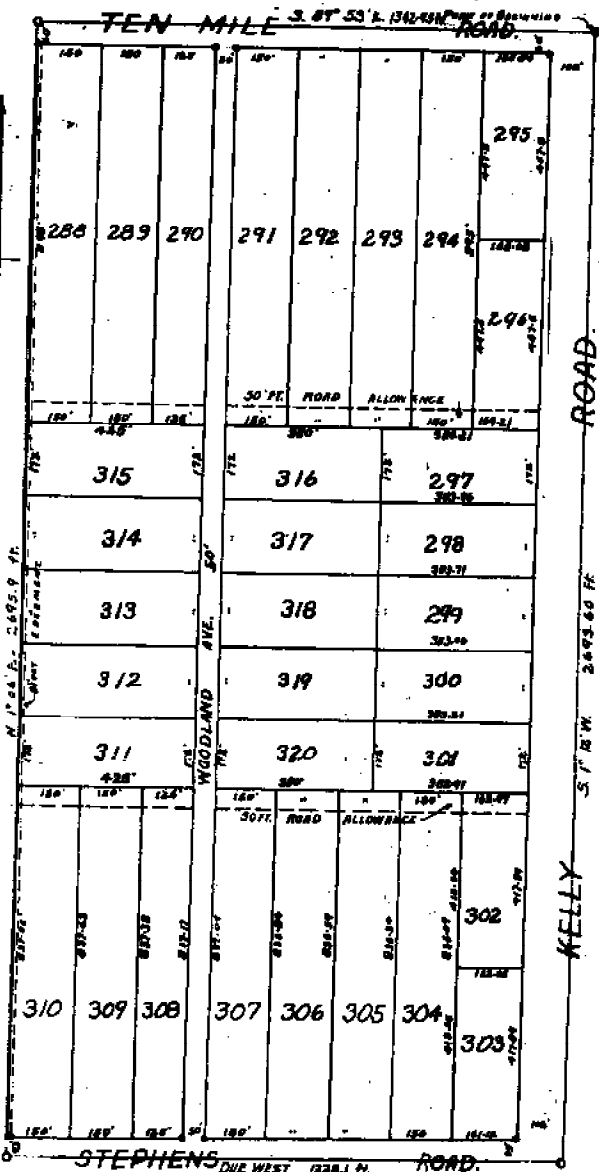
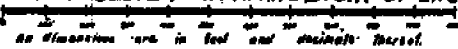
REGISTER'S OFFICE COUNTY OF MACOMB

Received for Record
June 11, 1953
at 3:11 P.M. and recorded
in Vol. 34 of Plats, on
Page 27
Frank [Signature]
Deputy Register of Deeds

LIB 80 MAY 29

ASSESSOR'S PLAT NO. 20. 16593

A SUBDIVISION OF PART OF THE N.E. 1/4 OF SEC. 29 T.1 N. R.13 E. CITY OF EAST DETROIT, MACOMB CO. MICH.



Aug 19 1942 AM '42

DEDICATION

KNOW ALL MEN BY THESE PRESENTS, That I, Stephen K. Henderson, Assessor of the City of East Detroit of Macomb County, State of Michigan, by virtue of authority in me vested by Section 11, Act 178, of 1928, having been duly authorized by the City Council have caused the land described in the annexed plat to be surveyed, laid out and platted, to be known as "ASSESSOR'S PLAT NO. 20, A SUBDIVISION OF PART OF THE N.E. 1/4 OF SEC. 29 T.1 N. R.13 E. CITY OF EAST DETROIT, MACOMB CO., MICHIGAN," and that the streets as shown on said plat are now being used for such purposes.

Witness: Stephen K. Henderson
STEPHEN K. HENDERSON
 ASSESSOR OF THE CITY OF EAST DETROIT

ACKNOWLEDGMENT

STATE OF MICHIGAN)
 County of Macomb) ss.
 On this 31st day of JULY A.D. 1942, before me, a Notary Public in and for said County, personally came the above named Stephen K. Henderson, Assessor of the City of East Detroit, known to me to be the person who executed the above dedication, and acknowledged the same to be his free act and deed as such Assessor.

Lyman Eckhardt
 Notary Public in and for the County of Macomb
 My Commission expires 2-26-1943

DESCRIPTION OF LAND PLATTED

The land embraced in the annexed plat of "Assessor's Plat No. 20, a subdivision of part of the N.E. 1/4 of Sec. 29 T.1 N. R.13 E., City of East Detroit, Macomb Co., Michigan" is described as follows: Beginning at the N.E. corner of Sec. 29 T.1 N. R.13 E., thence S. 1° 18' W. 2885.60 ft., thence due west 1288.1 ft., thence N. 1° 06' E. 2885.6 ft., thence S. 26° 33' E. 1542.95 ft. to the point of beginning.

SURVEYOR'S CERTIFICATE

I hereby certify that the plat herein delineated is a correct one and that permanent metal monuments consisting of bars not less than one-half inch in diameter and 48 inches in length, or shorter bars of not less than one-half inch in diameter lapped over each other at least 6 inches with an over-all length of not less than 48 inches encased in a concrete cylinder at least 4 inches in diameter and 48 inches in depth have been placed at points marked thus O as thereon shown at all angles in the boundaries of the land platted, at all the intersections of alleys, or of streets and alleys, and at the intersections of streets and alleys with the boundaries of the plat as shown on said plat.

Edolph H. Hines
 EDOLPH H. HINES
 Registered Land Surveyor

APPROVAL BY BOARD OF COUNTY ROAD COMMISSIONERS

This plat has been examined and was approved on the 31st day of July 1942 by the Macomb County Board of Road Commissioners.

MUNICIPAL APPROVAL

This plat was approved by the City Commission of the City of East Detroit at a meeting held June 11, 1942

APPROVAL BY COUNTY BOARD

This plat was approved on the 31st day of July 1942

APPROVAL BY BOARD OF COUNTY AUDITORS
 Approved by the Board of County Auditors of Macomb County, Michigan, this _____ day of _____ 1942.

RECORDED IN OFFICE
 County of Macomb
 Received by Record this _____ day
 of _____ A.D. 1942
1942
 in Liber 22 of Plate
1942

CERTIFICATE AS TO STATE TRUNK LINE OR FEDERAL AID ROAD
 We hereby certify that said plat appears to include land located on a state trunk line or Federal aid road.

Examined and Approved
August 12, 1942
Rayne Jewell Purdy
 Deputy Auditor General

See Resolution for change of Street Name from S. Hunter to S. Kelly

"ASSESSORS PLAT NO. 9"
OF PART OF THE S.E. 1/4 OF SEC. 29 T.1N.R.13E.
CITY OF EAST DETROIT MACOMB CO. MICH.

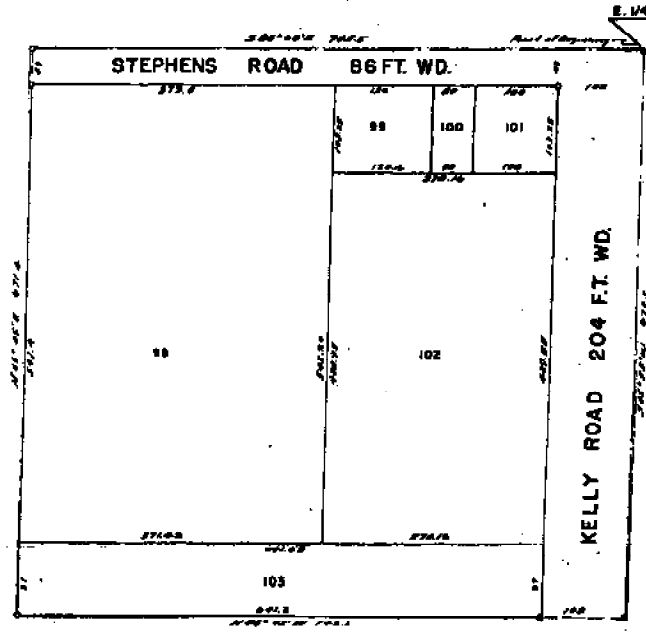
MAR 28 12 10 PM '42

SCALE: 1" = 100'

NOTE: ALL MEASUREMENTS ARE IN FEET AND DECIMALS THEREOF.

HARRY J. FULLER
 REGISTERED CIVIL ENGINEER & SURVEYOR
 MICHIGAN MICH.

TEPPER'S
GOLDEN BATE SUB. NO. 1



KOPPING
HALFWAY HOMES SUB. NO. 1

DEDICATION

KNOW ALL MEN BY THESE PRESENTS, That I, Stephen R. Henderson, Assessor of the City of East Detroit, Macomb County, State of Michigan, by virtue of authority in me vested by Section 51, Act 172, of 1929, having been duly authorized by the City Council have caused the land described in the annexed plat to be surveyed, laid out, and plotted to be known as "ASSESSORS PLAT NO. 9" of part of the S.E. 1/4 of Sec. 29, T. 1 N. R. 13 E., City of East Detroit, Macomb County, Michigan, and that the streets as shown on said plat have been acquired by adverse possession.

DESCRIPTION OF LAND PLATTED

The land embraced in the annexed plat of ASSESSORS PLAT NO. 9 of part of the S.E. 1/4 of Sec. 29, T. 1 N. R. 13 E., City of East Detroit, Macomb Co., Mich., is described as follows: Commencing at the E. 1/4 post of Sec. 29, T. 1 N. R. 13 E., thence S. 05°-45' W. 673.0 feet, thence N. 85°-02' E. 743.5 feet, thence W. 05°-45' E. 571.4 feet, thence S. 85°-02' E. 745.5 feet to the point of beginning.

SURVEYOR'S CERTIFICATE

I hereby certify that the plat hereon delineated is a correct one and that permanent metal monuments consisting of bars of not less than one half inch in diameter and forty eight inches in length encased in a concrete cylinder at least 8 inches in diameter and forty eight inches in depth have been placed at points marked thus * as thereon shown at all angles in the boundaries of the land platted, at all the intersections of the streets, intersections of alleys, or of streets and alleys, and at the intersections of streets and alleys with the boundaries of the plat as shown on said plat.

Harry J. Fuller
 Harry J. Fuller, Registered Land Surveyor

WITNESSES:
C. N. Bernheim *Stephen R. Henderson*
 C. N. Bernheim Assessor of the City of East Detroit
Edward J. Huette
 Edward J. Huette

ACKNOWLEDGMENT

STATE OF MICHIGAN)
 County of Macomb) ss
 On this 28th day of March A.D. 1942, before me a Notary Public in and for said County, personally came the above named Assessor of the City of East Detroit, known to me to be the person who executed the above Dedication and acknowledged the same to be his free act and deed as such Assessor.

Stephen R. Henderson
 Notary Public in and for Macomb County

My commission expires Feb. 16 - 1946

CERTIFICATE OF APPROVAL BY COUNTY BOARD

This plat was approved on the 6th day of March, 1942.

Wm. J. Tucker
 Registrar of Deeds
Ray B. Brown
 County Clerk
Carl B. Henderson
 County Treasurer

CERTIFICATE OF MUNICIPAL APPROVAL

This plat was approved by the City Council of the City of East Detroit at a meeting held February 2, 1942
Stephen R. Henderson
 Stephen R. Henderson, City Clerk

REGISTER'S OFFICE:
 County of Macomb
 Received for Record this 28th day of March A.D. 1942
 in Book 22 of Plats
 on Page 5695
Wm. J. Tucker
 Registrar of Deeds

Examined and Approved
March 17, 1942
Wayne Joseph Kelly
 Wayne Joseph Kelly, Deputy Auditor General

On this, the 24th day of January, A.D. 1927, before me, a Notary Public in and for said county, appeared Clara E. Brambley and Hugo J. Kasse, to me personally known, who being each by me duly sworn did say that they are the Vice President and Secretary respectively of the "Our Associates Inc., a Michigan Corporation, and that the seal affixed to said instrument is the corporate seal of said corporation, and that said instrument was signed and sealed in behalf of said corporation by the authority of its Board of Directors and the said Clara E. Brambley and Hugo J. Kasse acknowledged the said instrument to be the free act and deed of said corporation.



My Commission expires Oct. 16, 1928.
 Notary Public, Notary Public, State of Michigan

STATE OF MICHIGAN
 S.S.

County of Macomb

On this, the 24th day of January, A.D. 1927, before me, a Notary Public, in and for said county, personally came the above named Henry Saubh, a widower, and Henry Prasse, a single man, and Julius Prasse, a single man, known to me to be the persons who executed the above declaration and acknowledge the same to be their free act and deed.

My Commission expires Oct. 16, 1928.
 Notary Public, Notary Public, State of Michigan

The land, in the annexed plat of EXTENDED SUBDIVISION, a part of the plat of Sub. 20, T. 13 N., R. 13 E., Brin 179, Macomb Co., Mich., is described as

Beginning at the N. 1/4 of Sec. 20, thence S. 89° 53' E. 871.60 ft., thence S. 81° 08' 40" W. 2595.73 ft., thence N. 89° 50' W. 872.31 ft., thence N. 1° 09' 30" W. 2597.25 ft., to the point of beginning.

This plat was approved by the Township Board of the Township of Wain at a meeting held, Jan. 16, 1927, at Wain, Mich.

I hereby certify that the plat hereon delineated is a correct one and that in length set in a concrete base at least four inches in diameter and fifteen inches in depth have been placed at points marked thus: as thereon shown at all sections of the boundary of the land platted, at all intersections of streets, intersections of alleys, or of streets and alleys, and at the intersections of streets and alleys with the boundaries of the plat as shown on said plat.

Edward J. Kasse
 Registered Civil Engineer

COUNTY TREASURERS CERTIFICATE

This is to certify that there are no Tax Lists or Taxes due to the County, for the year 1927, on the above described land.

103	160	161	162	163	164	165	166	167	168	169	170	171	172	173	174	175	176	177	178	179	180	181	182	183	184	185	186	187	188	189	190	191	192	193	194	195	196	197	198	199	200								
201	202	203	204	205	206	207	208	209	210	211	212	213	214	215	216	217	218	219	220	221	222	223	224	225	226	227	228	229	230	231	232	233	234	235	236	237	238	239	240	241	242	243	244	245	246	247	248	249	250

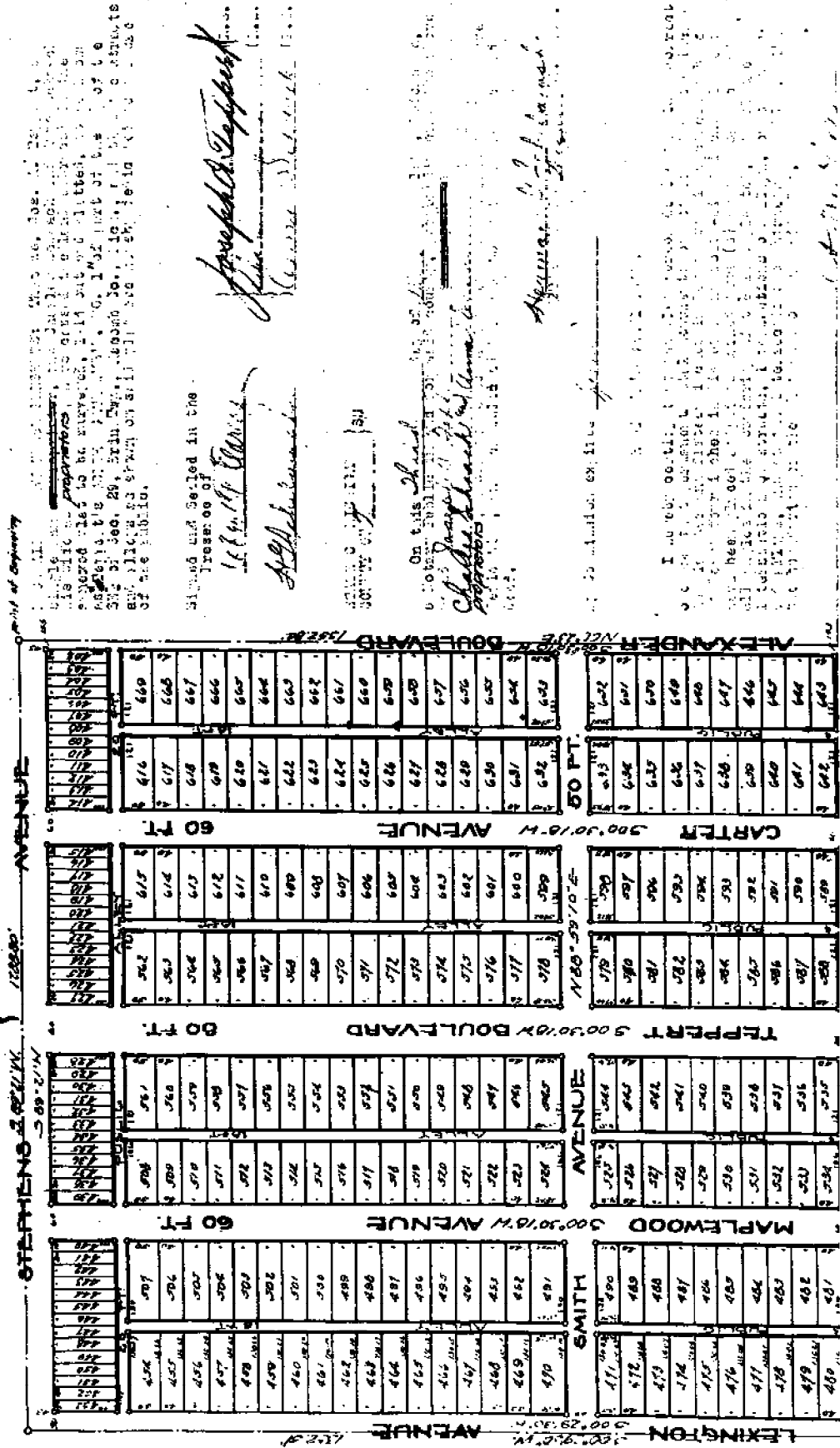
129.523 of 523 pages 128

TEPPER'S GOLDEN GATE SUBN. NO. 1 OF PART OF THE N 1/2 OF THE SE 1/4 OF SECTION 29 ERIN TWP. MACOMB COUNTY MICHIGAN

Jan 7-1926
H. W. Allen

SCALE - 1 IN. = 100 FT.

145



LEXINGTON	MAPLEWOOD	TREPPERT	CARTER	ALEXANDER
411	490	500	500	500
412	485	505	505	505
413	480	510	510	510
414	475	515	515	515
415	470	520	520	520
416	465	525	525	525
417	460	530	530	530
418	455	535	535	535
419	450	540	540	540
420	445	545	545	545
421	440	550	550	550
422	435	555	555	555
423	430	560	560	560
424	425	565	565	565
425	420	570	570	570
426	415	575	575	575
427	410	580	580	580
428	405	585	585	585
429	400	590	590	590
430	395	595	595	595
431	390	600	600	600
432	385	605	605	605
433	380	610	610	610
434	375	615	615	615
435	370	620	620	620
436	365	625	625	625
437	360	630	630	630
438	355	635	635	635
439	350	640	640	640
440	345	645	645	645
441	340	650	650	650
442	335	655	655	655
443	330	660	660	660
444	325	665	665	665
445	320	670	670	670
446	315	675	675	675
447	310	680	680	680
448	305	685	685	685
449	300	690	690	690
450	295	695	695	695
451	290	700	700	700
452	285	705	705	705
453	280	710	710	710
454	275	715	715	715
455	270	720	720	720
456	265	725	725	725
457	260	730	730	730
458	255	735	735	735
459	250	740	740	740
460	245	745	745	745
461	240	750	750	750
462	235	755	755	755
463	230	760	760	760
464	225	765	765	765
465	220	770	770	770
466	215	775	775	775
467	210	780	780	780
468	205	785	785	785
469	200	790	790	790
470	195	795	795	795
471	190	800	800	800
472	185	805	805	805
473	180	810	810	810
474	175	815	815	815
475	170	820	820	820
476	165	825	825	825
477	160	830	830	830
478	155	835	835	835
479	150	840	840	840
480	145	845	845	845
481	140	850	850	850
482	135	855	855	855
483	130	860	860	860
484	125	865	865	865
485	120	870	870	870
486	115	875	875	875
487	110	880	880	880
488	105	885	885	885
489	100	890	890	890
490	95	895	895	895
491	90	900	900	900
492	85	905	905	905
493	80	910	910	910
494	75	915	915	915
495	70	920	920	920
496	65	925	925	925
497	60	930	930	930
498	55	935	935	935
499	50	940	940	940
500	45	945	945	945

COUNTY TREASURERS CERTIFICATE
 This is to certify that the sum of \$1000.00 has been received from the sale of land in the County of Macomb, Michigan, for the year 1924.

Wm. A. ...
 Wm. A. ...
 Wm. A. ...

REGISTERED AT
 County of Macomb
 Received for Record this ... day
 of ... AD 1924
 at ...
 in Liber ... of ...
 on Page ...

I have certified that the above is a true and correct copy of the original as shown to me by the person presenting the same for record.

Notary Public
 State of Michigan

Notary Public
 State of Michigan
 Dec 14 1924

The land to which this certificate refers is situated in the Township of ... County of Macomb, Michigan, and is described as follows: ...

The following release to be in force and effect from the date hereof until the date hereof shall be observed by the following persons: ...

See Redirection letter 859 pag 157

Notary Public for change of land records for other county records

KELLY SUPER HIGHWAY SUBDIVISION NO. 1

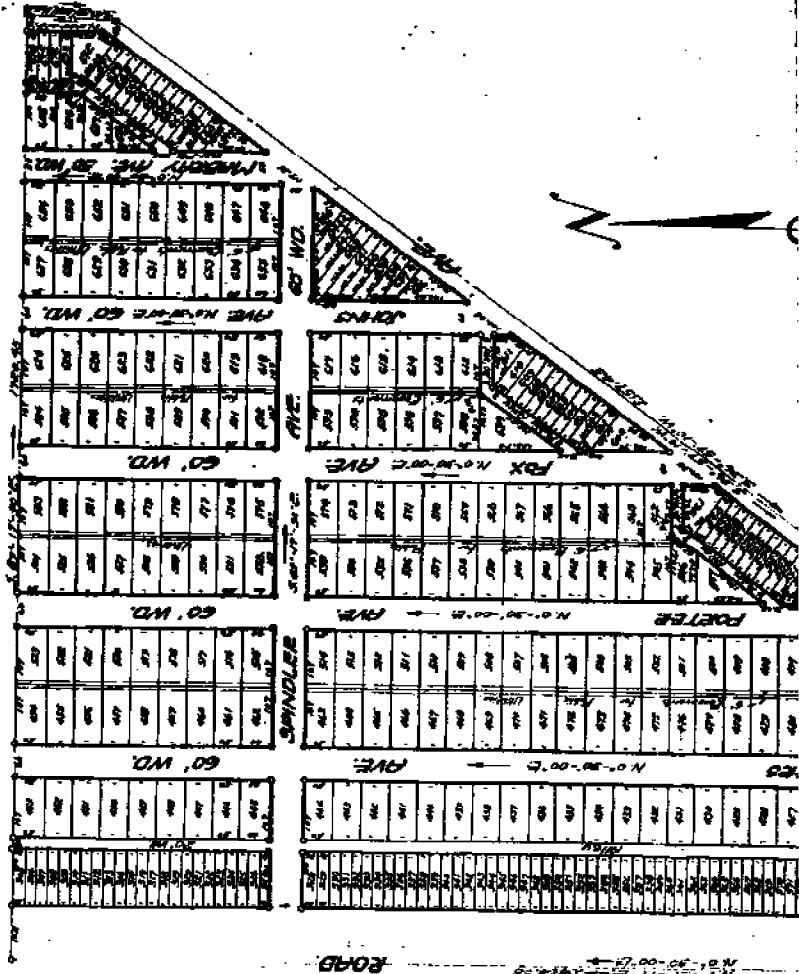
A PART OF THE S.W. 1/4 OF FRACTIONAL SEC. 28, T-1-N, R-13-E,
 EBIN TWP., MACOMB CO., MICH.

Aug 26-1928
 R. Hainey

FLUJINS & HOLDEN
 ENGINEERS
 DETROIT, MICH.

Scale 1"=500'

Note: All dimensions are given in feet, and decimals thereof and adjusted to a temperature correction of 62°F.



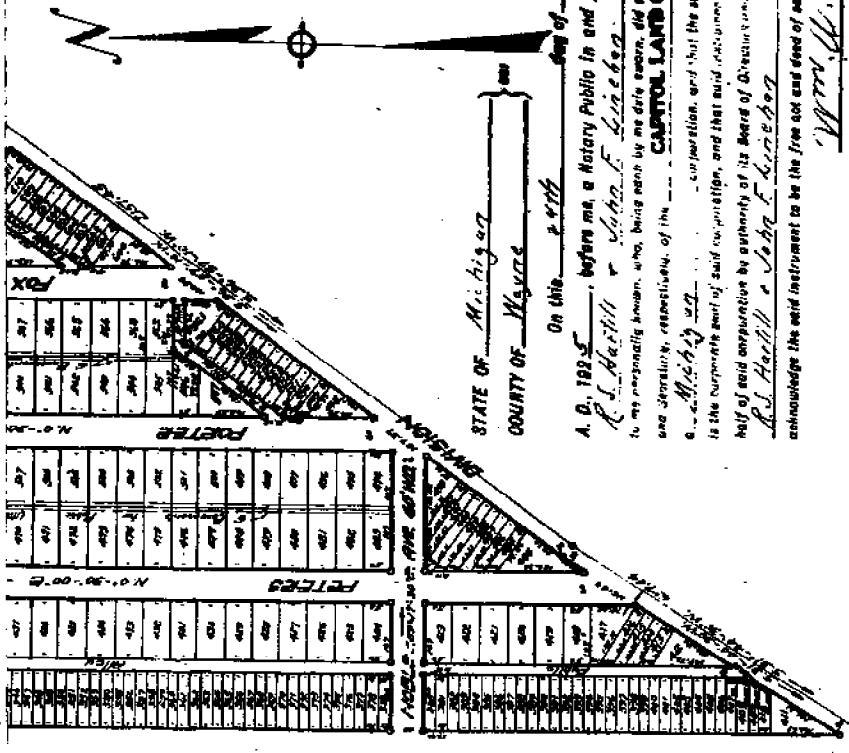
DEDICATION

Know All Men By These Presents, That
Clyde R. Tenney, Margaret Tenney,
his wife, as proprietors and
CARROLL LAND CORPORATION, a Michigan
Corporation, by R. S. Hartill, Pres.
and John F. Luncheon, Sec.
 do hereby certify that the land indicated in the annexed plat to be
 surveyed, laid out and platted to be known as Kelly Super
Highway Subdivision No. 1, a part of the S.W. 1/4
of Fractional Sec. 28, T-1-N, R-13-E,
Ebin Twp., Macomb Co., Mich.
 and that the streets and alleys on which plat are hereby dedicated
 to the use of the public.

WITNESSED AND SEALED
 IN PRESENCE OF

Edward J. Tenney, Jr.
Charles J. Tenney
John F. Tenney
 CARROLL LAND CORPORATION
 by R. S. Hartill, Pres.
John F. Luncheon, Sec.

581-100
 N. 1/2 Sec. 28, T-1-N, R-13-E, Macomb Co., Mich.
 N. 1/2 Sec. 28, T-1-N, R-13-E, Macomb Co., Mich.



STATE OF Michigan
 COUNTY OF Wayne
 On this 27th day of August
 A. D. 1924 before me, a Notary Public in and for said county appeared
R. L. Heath & John F. Liska
 to my personal knowen, who, being each by me duly sworn, did say that they are the President
 and Secretary, respectively, of the
CANTON LAND CORPORATION
 a corporation, and that the said instrument is the true and correct copy of the instrument in the corporate and of said corporation, and that said instrument was read and put up in full of said corporation by authority of its Board of Directors and the said
R. L. Heath & John F. Liska
 acknowledge the said instrument to be the free act and deed of said corporation.

Wm. H. Hobbs
 Notary Public, Wayne County
 My Commission Expires July 7, 1924

DESCRIPTION

The land embraced in the annexed plot of Kelly Super Highway Subdivision, No. 1, a part of the 3 1/2 of Fractional Sec. 25, T14N, R13E, Michigan, Erie Co., Michigan, is described as follows: Beginning at the 1/4 corner of Fractional Sec. 25, T14N, R13E, thence S. 89-27-30" E. 200.00 feet; thence S. 89-27-30" E. 200.00 feet; thence S. 89-27-30" E. 200.00 feet; thence S. 89-27-30" E. 200.00 feet; thence S. 89-27-30" E. 200.00 feet to the place of beginning.

This part was approved by the County Board for Monroe County, Michigan, on the 17th day of August, 1924.
Chas. E. ...
John F. ...
John F. ...
John F. ...
John F. ...

SIGNED AND SEALED IN PRESENCE OF
Harold J. ...
James P. ...
John F. ...
John F. ...

CERTIFICATE OF MUNICIPAL APPROVAL

This plat was approved by the Board of Health of the City of Detroit, Michigan, on the 14th day of August, 1924, and is hereby certified as being correct and conforming to the provisions of the Health Department of said City.

ENGINEER'S CERTIFICATE

I hereby certify that the plat herein delineated is a correct one, and that permanent monuments marking the boundaries of the land herein shown have been placed at all points required there (9) in the proper places, and all copies in the possession of the land plattee, and of all distributions of records, or records and plans.

STATE OF MICHIGAN
 COUNTY OF Wayne

On this 27th day of August, A. D. 1924, before me, a Notary Public in and for said county, personally appearing the above named Charles R. Teasdale & Margaret & Family his wife

known to me to be the person(s) who executed the above description and instrument, and known to be their free act and deed.
Harold J. ...
 Notary Public, Wayne County, Mich.
 My commission expires June 14, 1926

Received by Sec'y of State this 27th day of August, A. D. 1924, in Lib. of ...
 in Page 19
State Register of Property

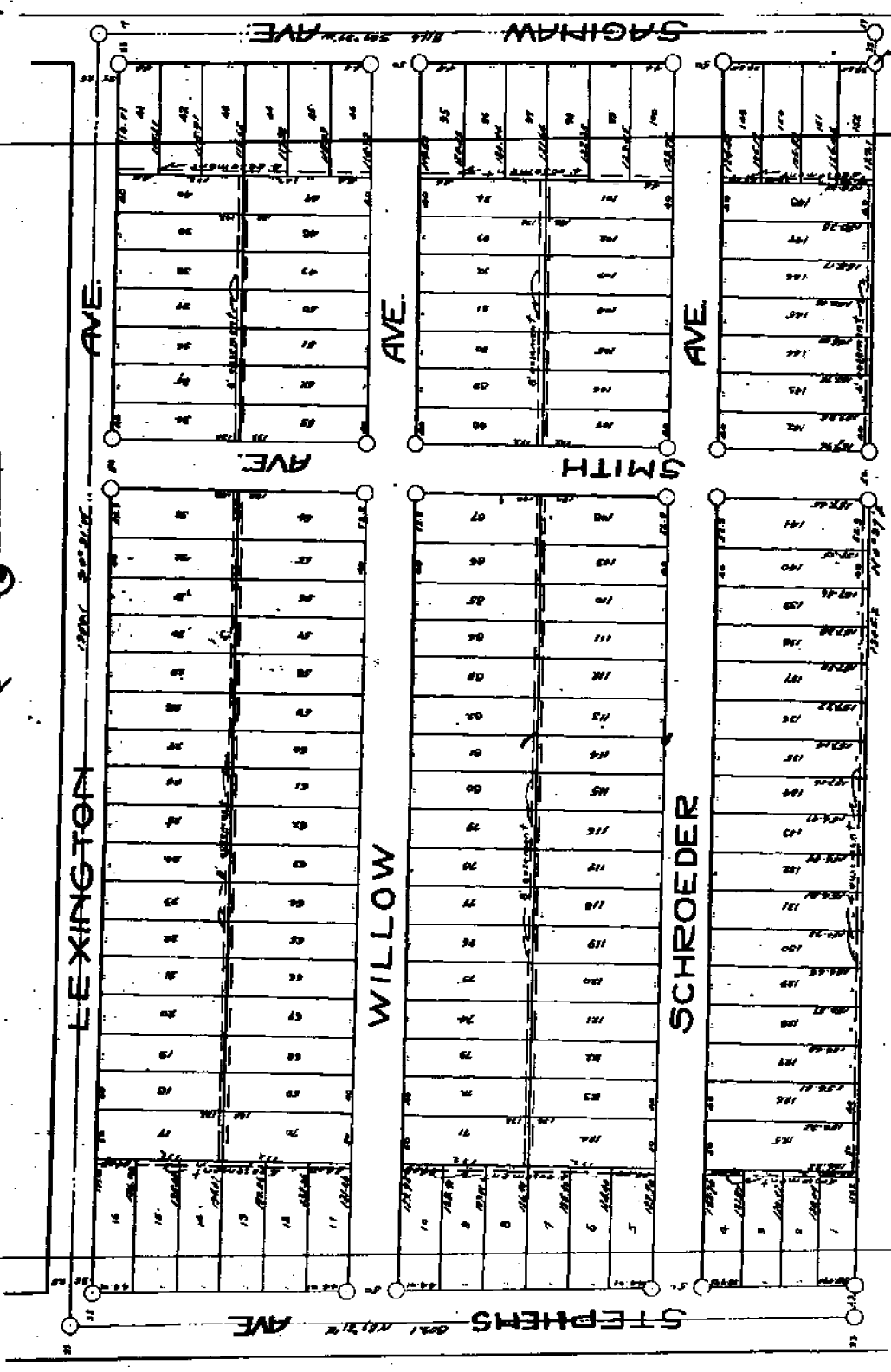
Real Estate Files 1924 1925 1926 1927 1928 1929 1930 1931 1932 1933 1934 1935 1936 1937 1938 1939 1940 1941 1942 1943 1944 1945 1946 1947 1948 1949 1950 1951 1952 1953 1954 1955 1956 1957 1958 1959 1960 1961 1962 1963 1964 1965 1966 1967 1968 1969 1970 1971 1972 1973 1974 1975 1976 1977 1978 1979 1980 1981 1982 1983 1984 1985 1986 1987 1988 1989 1990 1991 1992 1993 1994 1995 1996 1997 1998 1999 2000 2001 2002 2003 2004 2005 2006 2007 2008 2009 2010 2011 2012 2013 2014 2015 2016 2017 2018 2019 2020 2021 2022 2023 2024 2025 2026 2027 2028 2029 2030 2031 2032 2033 2034 2035 2036 2037 2038 2039 2040 2041 2042 2043 2044 2045 2046 2047 2048 2049 2050 2051 2052 2053 2054 2055 2056 2057 2058 2059 2060 2061 2062 2063 2064 2065 2066 2067 2068 2069 2070 2071 2072 2073 2074 2075 2076 2077 2078 2079 2080 2081 2082 2083 2084 2085 2086 2087 2088 2089 2090 2091 2092 2093 2094 2095 2096 2097 2098 2099 2100

ERIN TWP. MACOMB COUNTY MICHIGAN.
PART OF THE 34 OF SEC. 20 T1N. R1E.
DIVISION

Examined and Approved
 Sept 9-9-1924
 City of Detroit

SCALE 1"=100'

NOTE: All dimensions are given in feet and decimal fractions thereof.



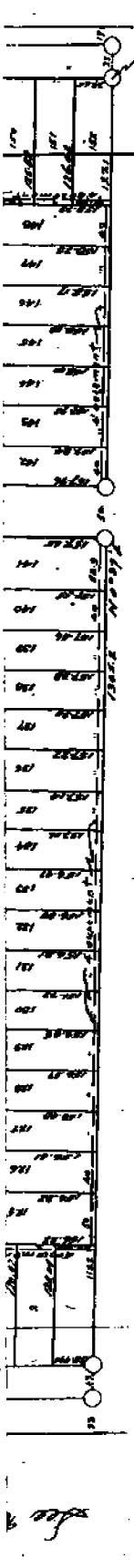
See Resolution for change of street name in Block 56, City of Detroit.

DEDICATION

BEFORE ALL MEN BY THESE PRESENTS: That we Jeffery and Rudzinski
 and Luigi his wife Anna Rudzinski
 and Richard Schroeder his wife Anna Schroeder
 the said Luigi and Richard do hereby dedicate to the public use
 the land embraced in the above plat to be surveyed, laid out and plat
 the same as shown on the above plat and as shown on the above plat.

CERTIFICATE OF COUNTY BOARD

This plat was approved on the 23 day of Sept 1924
Charles W. Williams Judge of Probate
W. H. Taylor County Clerk



DEDICATION

THESE LOTS ARE HEREBY DEDICATED TO THE PUBLIC BY THE UNDERSIGNED: That we Edward and Rudolph and Charles and Charles his wife, as proprietors, have caused the land embraced in the annexed plat to be surveyed, and that plat to be known as the GREENLAW SUBDIVISION of part of the Sec. 34, T. 18 N., R. 13 W., Macomb Co., Mich., and that the streets and alleys as shown on said plat are hereby dedicated to the use of the public.

Signed and Sealed in Presence of Edward and Rudolph (I.S.)
James C. Bell (I.S.)
Geo. F. Bell (I.S.)
Schmitt and Schwandt (I.S.)

STATE OF MICHIGAN,
 County of Macomb } ss

On this 2 day of Sept, 1924, before me, a Notary Public in and for said county, personally seen the above named Edward and Rudolph and Charles and Charles his wife known to me to be the persons who executed the above dedication, and acknowledged the same to be their free act and deed.

606 Edward F. Bell
 Notary Public Macomb Co., MICH.
 My Commission Expires Sept 27 - 1927

ENGINEERS CERTIFICATE

I hereby certify that the plat hereon delineated is a correct one, and that permanent monuments consisting of iron pipe 1 1/2" long have been placed at points marked thereon shown at all angles in the boundaries of the land platted, and at all intersections of streets and alleys.

A. P. Moran
 REGISTERED CIVIL ENGINEER.

CERTIFICATE OF COUNTY BOARD

This plat was approved on the 23 day of Sept, 1924
Charles H. Miller Judge of Probate
Walter S. Johnson County Clerk
Frank B. H. Johnson County Treasurer

CERTIFICATE OF TOWNSHIP BOARD

This plat was approved by the township board of the township of Lake at a Special meeting held on the 11 day of Sept, 1924
John Bell Township Clerk.

COUNTY TOWNSHIP BOARD

This is to certify that the land described in this plat is the same as the land described in the plat of Sept 23, 1924 filed for record.

DESCRIPTION OF LAND PLATTED

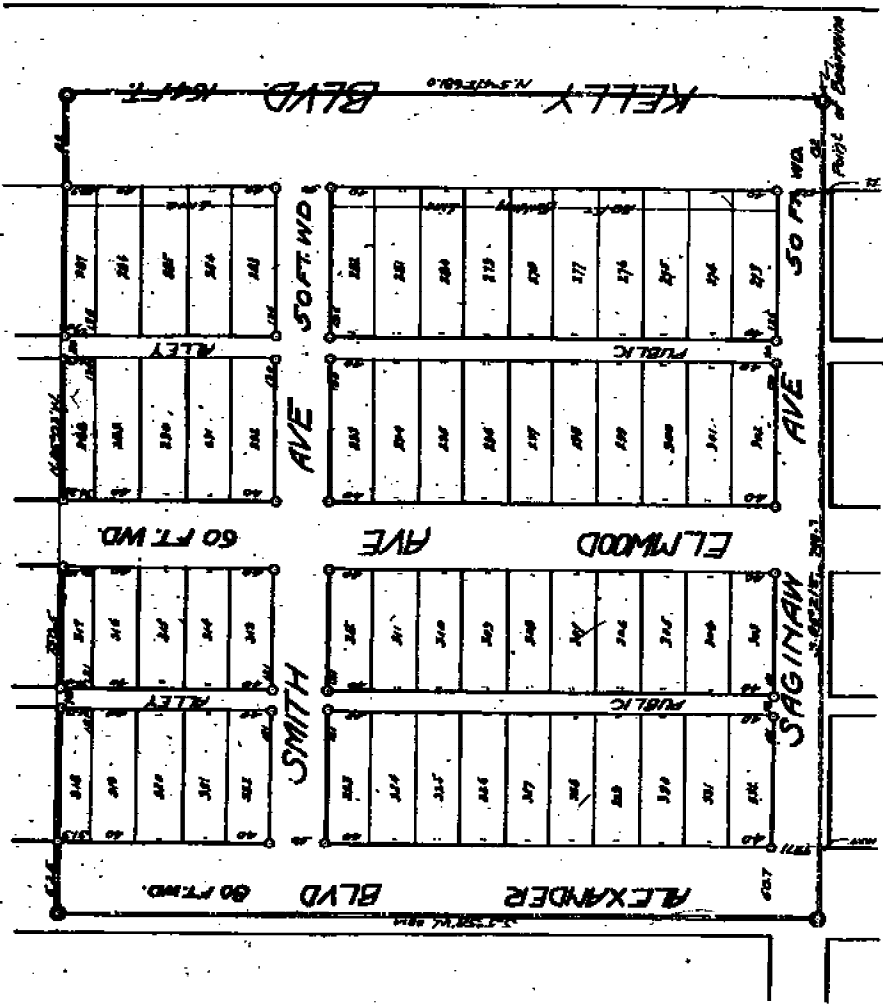
The land embraced in the annexed plat of "GREENLAW SUBDIVISION" of part of the Sec. 34 of T. 18 N., R. 13 W., Macomb Co., Michigan, is described as follows to wit:
 Beginning at a point which is 30 degrees 57' 1/2" a distance of 1385.07 feet from a point in the S line of Sec. 34 which is 167.7 feet 869 degrees 54' 1/2" from the NW corner of Sec. 34, thence S 30 degrees 57' 1/2" a distance of 1241.2 feet, thence S 87 degrees 21' 1/2" a distance of 5041 feet, thence S 0 degrees 51' 1/2" a distance of 1540.1 feet, thence S 87 degrees 21' 1/2" a distance of 511.6 feet to the point of beginning.

The boundaries to the westward of the plat are the part of the plat of Greenlaw Subdivision, Sec. 34, T. 18 N., R. 13 W., Macomb Co., Mich., filed for record on Sept 23, 1924.

1921
 May 1, 1921
 E. J. HULL

HULL TOWNSHIP SUBDIVISION NO 1
 OF PART OF THE SE 1/4 OF Sec 29 T19N R3E.
 ERIN TRUP MACOMB CO. MICH.

SCALE 1 inch = 100 feet



See Resolution No change of front yards. See plat Sec 23 of Book - Page 281

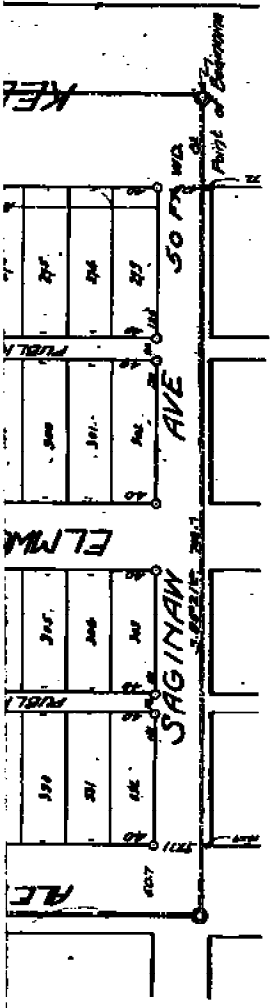
NOTE: All dimensions are given in feet or decimal thereof.

REG. ALL LOTS IN THIS SUBDIVISION
 WITHIN 90 DAYS OF THE DATE OF THIS
 PLAT BEING FILED.

These lots are to be sold as per map on page 281, 282 & 283.

CERTIFICATE OF TOWNSHIP BOARD

This plat was approved by the township board of the township of Erin
 at a public meeting held on the 1st day of May 1921.



REC'D ALL THE ABOVE SAID PROPERTY, THAT HE
John Schack and his wife as proprietors, have
 granted to the undersigned what to be surveyed,
 laid out and platted to be known as *ELM AVE. & SAGINAW AVE.*
 SUBDIVISION # 1 of part of the S.E. 1/4 of sec. 25 T.14. R.13 E.
 Erin Twp., Macomb Co. Mich. and that the streets and alleys as
 shown on said plat are hereby dedicated to the use of the public.

Signed and sealed in the presence of
R. J. Hara
John Schack (L.S.)
Max J. Staller
Clara Schack (L.S.)
 State of MICHIGAN)
 County of Macomb.) 188

On this 13 day of August, A.D. 19 24
 before me, a Notary Public in and for said County, personally came
 the above named John Schack and Clara Schack
and with known to me to be the persons who
 executed the above dedication, and acknowledged the same to be their free act and
 deed.

W. H. C. Bennett
 Notary Public Macomb Co., Mich.
 My commission expires Oct. 14 1927 A.D. 19

ENGINEER'S CERTIFICATE
 I hereby certify that the plat herein delineated is a correct one and
 that permanent monuments consisting of iron gas pipe 1 1/2" long
 have been planted at all points marked (O) as thereon shown at
 all angles in the boundaries of the land platted, and at all
 intersections of streets or streets and alleys.

W. H. C. Bennett
 REGISTERED CIVIL ENGINEER

DESCRIPTION OF LAND PLATTED
 The land enclosed in the annexed plat of JOHN'S HIGHWAY MAPS, containing 10.3
 acres of the S.E. 1/4 of sec. 25 of T. 14 R. 13 E., Macomb Co., Michigan, is described
 as follows: to wit: *John Schack and Clara Schack* from the S.E. 1/4 of sec. 25 of T. 14 R. 13 E.,
 Macomb Co., Michigan, to the S.E. 1/4 of sec. 25 of T. 14 R. 13 E., Macomb Co., Michigan, as
 shown on said plat.

CERTIFICATE OF TOWNSHIP BOARD

This plat was approved by the township board of the township of Erin
 at a Special meeting held on the 16 day of August, A.D. 1924

John Schack
 Township Clerk.

COUNTY TREASURER'S CERTIFICATE

This plat is in compliance with the provisions of Section 1111
 of the Public Acts of the Legislature of the State of Michigan, and
 the same is hereby acknowledged to be in compliance with the provisions
 of the said section.

Aug. 14 1924
James B. Gullett
 County Treasurer

This plat was approved by the County Board for Macomb

County Michigan, at a meeting held Aug. 14 1924
James B. Gullett
James B. Gullett
 County Clerk
James B. Gullett
 County Treasurer

ENGINEER'S CERTIFICATE
 COUNTY OF MACOMB, MICH.
 I hereby certify that the plat herein delineated is a correct one and
 that permanent monuments consisting of iron gas pipe 1 1/2" long
 have been planted at all points marked (O) as thereon shown at
 all angles in the boundaries of the land platted, and at all
 intersections of streets or streets and alleys.

W. H. C. Bennett
 REGISTERED CIVIL ENGINEER



FEARLERT'S GOLDEN GATE SUBDIVISION

OF PART OF THE S 1/4 OF THE S.E. 1/4 OF SEC. 29 T. 1 N. R. 15 E.

MICH.

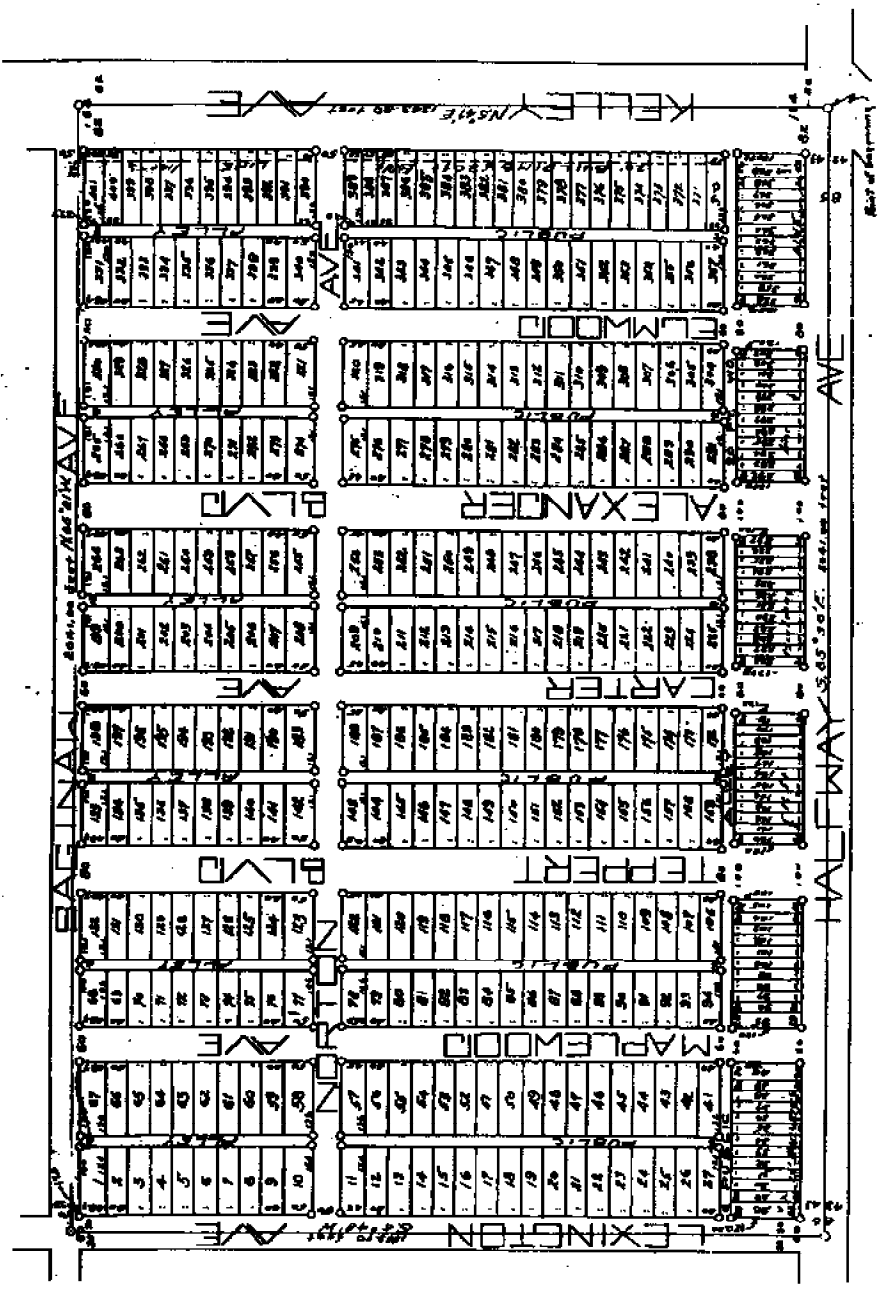
MACOMB CO.

ERIN TWP.

SCALE 1"=200'

June 11-1924
Geo. L. Harrison

NOTE: ALL DIMENSIONS ARE GIVEN IN FEET OR DECIMALS THEREOF



APPROVED BY THE TOWNSHIP BOARD

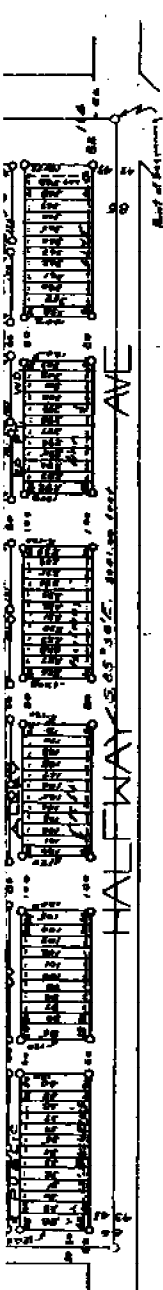
This plan is approved by the township board of the township of Erin, at a meeting held on the 11th day of June, 1924.

Geo. L. Harrison
Township Clerk

A plan of the Golden Gate Subdivision, as shown on the plat hereto attached, was approved by the Detroit High, at Proctor and London St. Mich. and Augustus Purpoff his wife, of Erin, Mich. as mortgagee, and Charles Schreyer and Christian Alexander his wife as mortgagee, and the land embraced in the aforesaid plat to be surveyed, laid out and platted, to be known as the Golden Gate Subdivision, of part of the S. 1/4 of Sec. 29 T. 1 N. R. 15 E.

See Approved Plat No. 25 Registered of Plans

Plan 607 of 1920
June 11-1924



APPROVED BY TOWNSHIP BOARD

This plat was approved by the township board of the township of Erin, at a meeting held on the 19th day of May, 1927, at 7:30 P.M.

RECORDER'S OFFICE
COUNTY OF MACOMB, MICH.

Approved for Record this 19th day of May, 1927.

Attest: A. T. HAYES, Recorder

7:30 P.M.

August O. Whiting

The plat was approved by the County Board of Macomb County, Michigan, at a meeting held on the 19th day of May, 1927, at 7:30 P.M.

Charles C. ...

...

COUNTY TREASURER'S CERTIFICATE

This is to certify that the sum of five hundred dollars (\$500.00) has been paid by the State of Michigan to the County of Macomb, Michigan, for the purpose of paying the taxes on the land described in the foregoing plat, and that the same has been received by the County Treasurer, and is hereby acknowledged.

May 10, 1927

Charles C. ...

DESCRIPTION OF LAND PLANNED

The land embraced in the annexed plat of "MERRITT'S SCOTCH GATE SUBDIVISION" of part of the S¹/₄ of the S.E. 1/4 of Sec. 29 T. 12 N., R. 13 E., Erin Twp. Macomb Co., Mich., is described as follows: Beginning at the S.E. corner of Sec. 29 T. 12 N., R. 13 E., Erin Twp., Macomb Co., Mich.; thence N 8 deg. 47 1/2' W. a distance of 1245.90 feet; thence N 88 deg. 21' W. a distance of 2041.00 feet; thence S 5 deg. 48 3/4' W. a distance of 1245.90 feet; thence S 88 deg. 50' E. a distance of 2041.00 feet, to the point of beginning.

On this day, the 19th day of May, 1927, before me a Notary Public in and for said county, personally came the above named Joseph Ruppert and Frederick Ruppert and August Ruppert his wife, and Charles Schrader and Christian Schrader his wife known to me to be the persons who executed the above dedication and acknowledged it to be their free act and deed.

Signed and sealed in presence of:

Joseph Ruppert

Frederick Ruppert

August Ruppert

Charles Schrader

Christian Schrader

Notary Public, Macomb County, Mich.

My commission expires Oct. 18, 1927.

ENGINEER'S CERTIFICATE

I hereby certify that the plat herein delineated is a correct one, and that permanent monuments consisting of 3/4" iron pipe 1 1/2" long have been placed at points marked thus (O) as thereon shown at all angles in the boundaries of the land platted, at all intersections of streets or streets and alleys.

...

Registered Civil Engineer

...