

**Land Corner Recordation Certificate**  
**2017 Annual Grant Agreement**  
Authority: MICH. 1970 PA 74, MCL 54.205

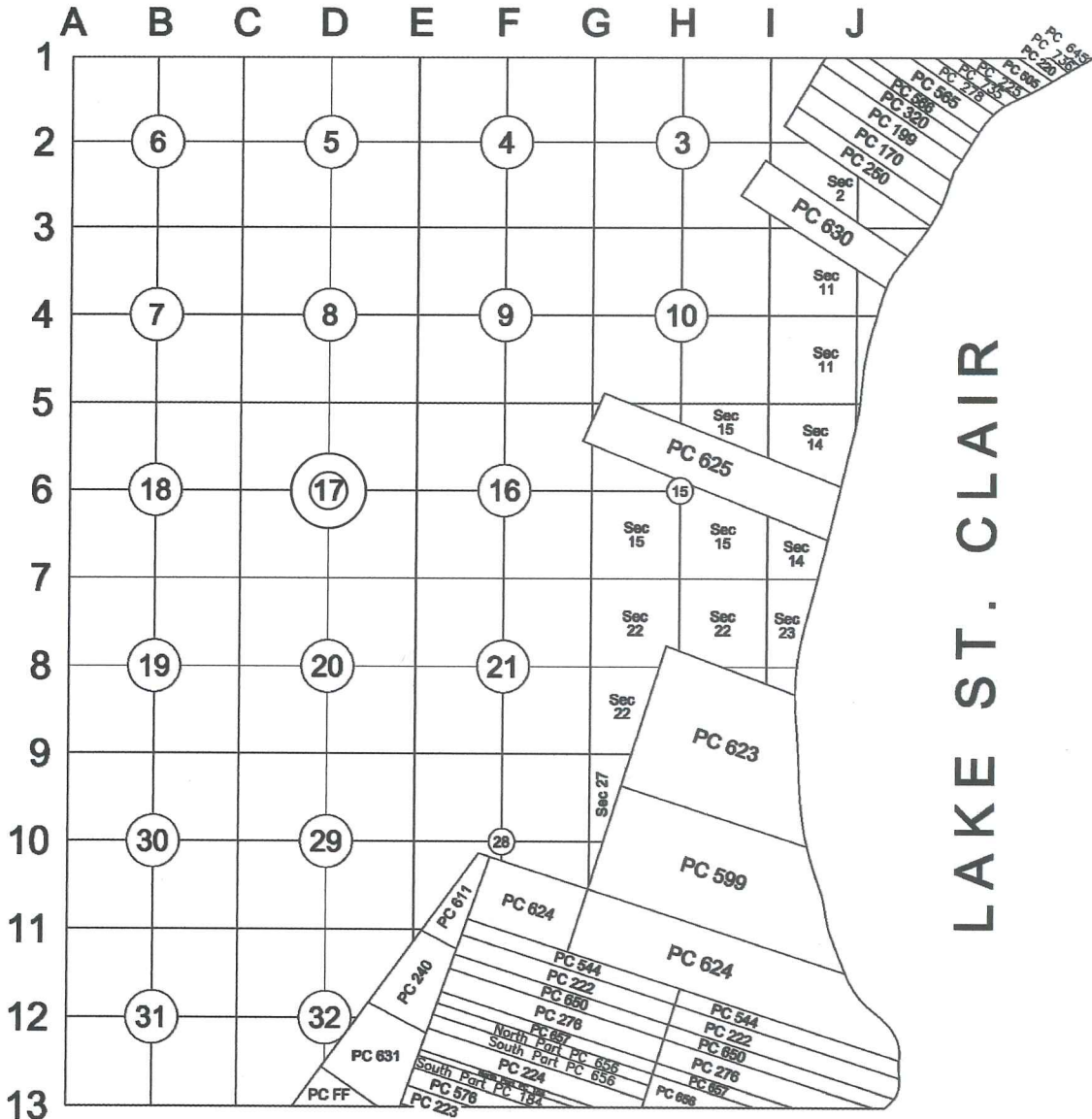
**"LCRC BEING RECORDED FOR THE PURPOSE OF PUBLISHING MICHIGAN STATE PLANE COORDINATE DATA"**

**Surveyor's Name:** Steven E. Dunn, P.S.  
**For Corner(s) in:** Macomb County

**Field Survey Date:** March 15, 2017  
**Municipality:** City of Roseville

Corner Type	Section	Survey Township	Corner Code	Other Code
Protracted Public Land Survey Corner	Sec. 17	T 01 N R 13 E	D06	

**Other Code Corner Description:** Center Post Section 17



**Part A: Corner History:** Center Post Section 17

11-28-2006 LCRC for Remonumentation Corner by Robert H. Birkett, PS #41094, D06 recorded in L. 18332 of Deeds on P. 685. Set a 3/4" X 24" iron with an aluminum cap stamped "MACOMB COUNTY MONUMENT, MI ACT 345, 41094, D06" in centerline of Martin Street (east-west) and 5' east of the centerline Pinehurst Street (north) in a new monument box with 4 accessories.  
Peer Review Group Approval: October 10, 2006

2 MD

C

**Part B: Surveyor's Report on Perpetuation, Restoration, Reestablishment or Monumentation of Corner:**

Refer to: 11-28-2006 LCRC for Remonumentation Corner by Robert H. Birkett, PS #41094, D06 recorded in L. 18332 of Deeds on P. 685. Set a 3/4" X 24" iron with an aluminum cap stamped "MACOMB COUNTY MONUMENT, MI ACT 345, 41094, D06" in centerline of Martin Street (east-west) and 5' east of the centerline Pinehurst Street (north) in a new monument box with 4 accessories.

**Part C: Field Evidence of Perpetuation or Monumentation of Corner:**

3-15-2017 Found a 3/4" X 24" iron with an aluminum cap stamped "MACOMB COUNTY MONUMENT, MI ACT 345, 41094, D06" in a monument box in centerline of Martin Street (east-west) and 5' east of the centerline Pinehurst Street (north) with 4 of 4 matching accessories from the LCRC listed in Part A  
Occupied corner with GPS to obtain Geodetic Coordinate Data.

**Accessories:**

- AZ. 51° 74.69' (R&M) Southwest corner of brick building #28010 Pinehurst
- AZ. 150° 30.28' (R&M) Found Macomb County Witness tag in northeast face utility pole
- AZ. 227° 54.30' (R&M) Northeast corner brick porch #17748
- AZ. 340° 46.74' (R&M) Found chiseled "X" south rim gate valve in well

Date of Observation	Latitude	Longitude	Datum and Adjustment Year	Epoch Date
15-Mar-17	N 42D30'07.75115"	W 82D56'16.80303"	NAD83 (2011)	2010.0000

Method for Latitude-Longitude determination: NGS OPUS-RS Solution

State Plane Coordinates in international feet: N-368480.54', E-13508585.72'  
 Standard Deviation: 0.06'N, 0.02'W  
 Zone: South  
 Combined Factor: 0.99990514  
 NGSPID: AB5949  
 Survey Method: MC GPS  
 Orthometric Height: 614.48'  
 Elev. Datum: NAVD88

I, Steven E. Dunn, P.S., in a field survey on March 15, 2017, certify under the requirements of the State Survey and Remonumentation Act, 1990 PA 345, MCL 54.261 to 54.279, and the Corner Recordation Act, 1970 PA 74, MCL 54.201 to 54.210d, that the corner identified and described hereon has been perpetuated or monumented as described in Parts A, B, and C above, pursuant to the laws and rules of the State of Michigan.

Steven E. Dunn May 15, 2017  
 Steven E. Dunn, P.S. Date

Professional Surveyor's License No.: 28408

Prepared By:  
 Steven E. Dunn, P.S.  
 Great Lakes Geomatics, LLC  
 12504 Stephens  
 Warren, MI 48089



I, Martin C. Dunn, P.S., Macomb County Surveyor Representative, have reviewed the corner perpetuated in parts A, B and C above for the purpose of publishing its Michigan State Plane Coordinate values and relative data and is accepted for filing in the Macomb County Remonumentation Program.

Martin C. Dunn 6-8-2017  
 Martin C. Dunn, P.S. Date

Macomb County Surveyor Representative  
 License No. 30081

REC'D NOV 27 2006  
B. S. H. M.

LAND CORNER RECORDATION CERTIFICATE  
Filing Requirement of Act 74, Mich. P.A. 1970

For corners in

<u>Macomb</u> (County)	Located In: City of Roseville	Corner Code #
1. Public Land Survey	T. 1N. R. 13E	D-6
	T. R.	
	T. R.	
	T. R.	
2. Property Controlling in Section	S. T. R.	
	S. T. R.	
3. Miscellaneous Property in Sec.	S. T. R.	
	S. T. R.	



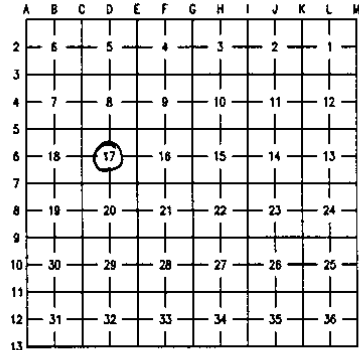
11/28/2006 03:57:24 P.M.  
MACOMB COUNTY, MI  
CARMELLA SABAUGH, REGISTER OF DEEDS

Register of Deeds Stamp & File Number

- 4. Lot No. \_\_\_\_\_, Recorded Plat
- 5. Private Claims

I, Robert H. Birkett, in a field survey on, August 10, 2006 do hereby state that under requirements of P.A. 74, Michigan P.A. of 1970, the corner points mentioned in lines 1 and 2 above were in conformance with regulations and rules therefore as required in the current manual of survey instructions of the United States Department of the Interior, Bureau of Land Management or by a decree of a Court of Law and for that the corner points mentioned in lines 3, 4 and 5 above were in conformance with the rules of the Michigan Board of Land Surveyors or by a Decree of a Court of Law; established, re-established, monumented, re-monumented, recovered, found as expressed below:

**NOTE: Not more than 2 corners, all in the same town and range, may be recorded on this certificate.**



**A. Description of original monument and accessories and/or subsequent restoration:**

- D-6 1818, Center of section 17 was not set by the General Land Office
- a-1898, ML Brown No 8310, "The Power House Sub", L 002 P 062 M.C.R.
- b-1915, WJ Lehner No 123, "Roseville Farms No 3", L 002 P 245 M.C.R.
- c-1917, WJ Miller No 67, "Junction Little Farms", L 003 P 133 M.C.R.
- d-1917, WJ Lehner No 123, "Garden Farms Sub", L 003 P 137 M.C.R.
- e-1920, WJ Lehner No 123, "Roseville Erin Heights Sub", L 005 P 017 M.C.R.
- f-1923, BT Colman (CE), "Piper's Roseville City", L 006 P 050 M.C.R.
- g-1923, WJ Lehner No 123, "Elm Grove Sub", L 007 P 017 M.C.R.
- h-1924, BT Colman (CE), "Felician Manor", L 007 P 044 M.C.R.
- i-1924, BT Colman (CE), "Felician Manor No 1", L 007 P 061 M.C.R.
- j-1924, WJ Lehner No 123, "Dedenbach Estate Sub", L 007 P 065 M.C.R.
- k-1924, JW Irwin (CE), "Oak View Sub", L 008 P 063 M.C.R.
- l-1925, HR O'Mara, "Pomante's Sub", L 008 P 087 M.C.R.
- m-1925, WJ Lehner No 123, "Peter's Sub", L 009 P 056 M.C.R.
- n-1926, WJ Lehner No 123, "Baynes Sub", L 010 P 063 M.C.R.
- o-1926, WJ Lehner No 123, "Central Park", L 011 P 009 M.C.R.
- p-1932, JV Vincent, "Assessor's Roseville Farms State Sub", L 016 P 013 M.C.R.
- q-1936, PK McCarthy (CE), "Assessors Plat No 7", L 017 P 021 M.C.R.
- r-1937, PK McCarthy (CE), "Assessors Plat No 10", L 018 P 029 M.C.R.
- s-1950, SA Boyd No 158, "Dickerson Sub", L 025 P 028 M.C.R.
- t-1952, FJ Bridges No 5779, "Stieber's Renaud Hill Sub", L 026 P 050 M.C.R.
- u-1952, JD Lehner No 5787, "Stieber's Renaud Hill Sub 1", M.C.R.
- v-1952, JD Lehner No 5787, "Stieber's Renaud Hill Sub 2", L 027 P 026 M.C.R.
- w-1953, JD Lehner No 5787, "Stieber's Renaud Hill Sub 3", L 027 P 039 M.C.R.
- 1917, Lehner, Not Described, Field Notes

ACCEPTED BY THE MACOMB COUNTY SURVEY PEER GROUP AS THE OFFICIAL CORNER UNDER MICHIGAN PUBLIC ACT 345 OF 1990 AT A MEETING HELD ON 10-10-06  
*Martin C. Dunn*  
MARTIN C. DUNN, P.S. CHAIRMAN



**B. Description of corner evidence found and/or method applied in restoring or reestablishing corner:**

D-6 No monumentation at the location of this corner. Existing evidence consists of paved centerline Martin Rd. east and west, paved centerline Pinehurst St. north, and a platted subdivision to the south. Corner location was re-established from existing monumentation supported by monumentation in (d), (f), (j), (m), and (n) from section A, and the measured distance between adjacent government corners C-6, D-5.

**Field Measurements Between Corners**

- To C-6 Remon 2006 = 2663.46, Record North = 2664.24, Record South = 2662.75
- To E-6 Remon 2006 = 2691.27, Record North = N/A, Record South = N/A
- To D-5 Remon 2006 = 2713.22, Record East = 2713.45, Record West = 2693.84
- To D-7 Remon 2006 = 2682.31, Record East = N/A, Record west = N/A

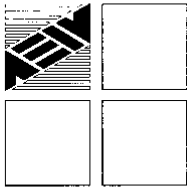
**C. Description of monument for corner and accessories established to perpetuate locating the position of the corner:**

Set a 3/4" x 24" iron with an aluminum cap stamped, "Macomb County Monument, MI, ACT 345, 41094, D-6" in centerline Martin St. and 5' east of the centerline of Pinehurst to the north in a new monument box.

- AZ 51° - 74.69' - Southwest corner of brick building number 28010 Pinehurst.
- AZ 150° - 30.28' - Set Macomb County Witness tag in northeast face utility pole.
- AZ 227° - 54.30' - Northeast corner brick porch #17748.
- AZ 340° - 46.74' - Set chiseled "X" south rim gate valve in well.

The selected location is accepted by me and is generally accepted by Professional Surveyors as the best available evidence of the position of the original corner.

Signed by R. H. Birkett Date 11-27-06  
Surveyor's Michigan License No. 41094



# ANDERSON, ECKSTEIN AND WESTRICK, INC.

51301 Schoenherr Road, Shelby Township, Michigan 48315  
Civil Engineers • Surveyors • Architects 586-726-1234

## Report of Survey D-6, Roseville Town 1 North, Range 13 East Macomb County, Michigan

### Corner Information

D-6 was not set by the General Land Office, during the original survey in 1818  
This corner is the center of section 17

### Existing Conditions

Nothing occupies the location of this corner. Existing evidence consists of paved Martin Rd. east and west, paved centerline Pinehurst St. to the north and a platted subdivision to the south. Corner location was re-established from calculated position supported by monumentation in (d), (f), (j), (m), and (n) from plats below, and the measured distance between adjacent government corners C-6, D-5.

### Plats

a-1898, ML Brown No 8310, "The Power House Sub", L 002 P 062 M.C.R.  
b-1915, WJ Lehner No 123, "Roseville Farms No 3", L 002 P 245 M.C.R.  
c-1917, WJ Miller No 67, "Junction Little Farms", L 003 P 133 M.C.R.  
d-1917, WJ Lehner No 123, "Garden Farms Sub", L 003 P 137 M.C.R.  
e-1920, WJ Lehner No 123, "Roseville Erin Heights Sub", L 005 P 017 M.C.R.  
f-1923, BT Colman(CE), "Piper's Roseville City", L 006 P 050 M.C.R.  
g-1923, WJ Lehner No 123, "Elm Grove Sub", L 007 P 017 M.C.R.  
h-1924, BT Colman (CE), "Felician Manor", L 007 P 044 M.C.R.  
i-1924, BT Colman (CE), "Felician Manor No 1", L 007 P 061 M.C.R.  
j-1924, WJ Lehner No 123, "Dedenbach Estate Sub", L 007 P 085 M.C.R.  
k-1924, JW Irwin (CE), "Oak View Sub", L 008 P 063 M.C.R.  
l-1925, HR O'Mara, "Pomante's Sub", L 008 P 087 M.C.R.  
m-1925, WJ Lehner No 123, "Peter's Sub", L 009 P 056 M.C.R.  
n-1926, WJ Lehner No 123, "Baynes Sub", L 010 P 063 M.C.R.  
o-1926, WJ Lehner No 123, "Central Park", L 011 P 009 M.C.R.  
p-1932, JV Vincent, "Assessor's Roseville Farms State Sub", L 016 P 013 M.C.R.  
q-1936, PK McCarthy (CE), "Assessors Plat No 7", L 017 P 021 M.C.R.  
r-1937, PK McCarthy (CE), "Assessors Plat No 10", L 018 P 029 M.C.R.  
s-1950, SA Boyd No 158, "Dickerson Sub", L 025 P 028 M.C.R.  
t-1952, FJ Bridges No 5779, "Stieber's Renaud Hill Sub", L 026 P 050 M.C.R.  
u-1952, JD Lehner No 5787, "Stieber's Renaud Hill Sub 1", M.C.R.  
v-1952, JD Lehner No 5787, "Stieber's Renaud Hill Sub 2", L 027 P 026 M.C.R.  
w-1953, JD Lehner No 5787, "Stieber's Renaud Hill Sub 3", L 027 P 039 M.C.R.

### Condominiums

None

### Land Corner Recordation Certificate

None

### Recorded Surveys

None

### Miscellaneous

1917, Lehner, Not Described, Field Notes

**Observations From D-6**

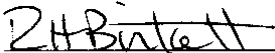
To C-6 Remon 2006 = 2663.46, Record North = 2664.24, Record South = 2662.75  
To E-6 Remon 2006 = 2691.27, Record North = N/A, Record South = N/A  
To D-5 Remon 2006 = 2713.22, Record East = 2713.45, Record West = 2693.84  
To D-7 Remon 2006 = 2682.31, Record East = N/A, Record west = N/A

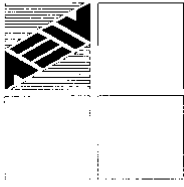
Remon NE 88° 59' 24" L.017 P.021 89° 00' 00"  
Remon SE 91° 02' 37" No adjacent subdivision on section line  
Remon SW 88° 51' 01" No adjacent subdivision on section line  
Remon NW 91° 06' 59" L.011 P.009 91° 46' 00"

The theoretical location of corner D-6 is on the east and west section line and 0.80' west of the set corner

**Recommendation**

Found monumentation from plats (d), (f), and (g), and the measured distance to adjacent government corners C-6, D-5, was used to verify the location of the new monumentation. I therefore recommend to the Macomb County Peer Group that they accept the corner as the best evidence of the corner position as being perpetuated

 11-2-06  
Robert H. Birkett, PS 41094  
Anderson, Eckstein and Westrick, Inc.



# ANDERSON, ECKSTEIN AND WESTRICK, INC.

51301 Schoenherr Road, Shelby Township, Michigan 48315  
Civil Engineers • Surveyors • Architects (586) 726-1234

D-6  
City of Roseville  
Macomb County 2006 Remonumentation

## Section One

- A. Index
- B. Before and after pictures of the monument.

## Section Two

- A. LCRC
- B. Surveyor's report.

## Section Three

1. Field notes.
2. Field notes.
3. Field notes.
4. Field notes.
5. Field notes.
6. Sketch of area and found monumentation.
7. Composite maps, 14-17A, 14-17B, 14-17C, 14-17D,  
14-17E, 14-17F, 14-17G, 14-17H

## Section Four

### **A. Recorded plats.**

- a-1898, ML Brown No 8310, "The Power House Sub", L 002 P 062 M.C.R.
- b-1915, WJ Lehner No 123, "Roseville Farms No 3", L 002 P 245 M.C.R.
- c-1917, WJ Miller No 67, "Junction Little Farms", L 003 P 133 M.C.R.
- d-1917, WJ Lehner No 123, "Garden Farms Sub", L 003 P 137 M.C.R.
- e-1920, WJ Lehner No 123, "Roseville Erin Heights Sub", L 005 P 017 M.C.R.
- f-1923, BT Colman(CE), "Piper's Roseville City", L 006 P 050 M.C.R.
- g-1923, WJ Lehner No 123, "Elm Grove Sub", L 007 P 017 M.C.R.
- h-1924, BT Colman (CE), "Felician Manor", L 007 P 044 M.C.R.
- i-1924, BT Colman (CE), "Felician Manor No 1", L 007 P 061 M.C.R.
- j-1924, WJ Lehner No 123, "Dedenbach Estate Sub", L 007 P 085 M.C.R.
- k-1924, JW Irwin (CE), "Oak View Sub", L 008 P 063 M.C.R.
- l-1925, HR O'Mara, "Pomante's Sub", L 008 P 087 M.C.R.
- m-1925, WJ Lehner No 123, "Peter's Sub", L 009 P 056 M.C.R.
- n-1926, WJ Lehner No 123, "Baynes Sub", L 010 P 063 M.C.R.
- o-1926, WJ Lehner No 123, "Central Park", L 011 P 009 M.C.R.
- p-1932, JV Vincent, "Assessor's Roseville Farms State Sub", L 016 P 013 M.C.R.
- q-1936, PK McCarthy (CE), "Assessors Plat No 7", L 017 P 021 M.C.R.
- r-1937, PK McCarthy (CE), "Assessors Plat No 10", L 018 P 029 M.C.R.
- s-1950, SA Boyd No 158, "Dickerson Sub", L 025 P 028 M.C.R.
- t-1952, FJ Bridges No 5779, "Stieber's Renaud Hill Sub", L 026 P 050 M.C.R.
- u-1952, JD Lehner No 5787, "Stieber's Renaud Hill Sub 1", M.C.R.
- v-1952, JD Lehner No 5787, "Stieber's Renaud Hill Sub 2", L 027 P 026 M.C.R.
- w-1953, JD Lehner No 5787, "Stieber's Renaud Hill Sub 3", L 027 P 039 M.C.R.

### **B. Field notes from other sources.**

1. 1917, Lehner, Not Described, Field Notes

**2006**

**MACOMB COUNTY REMONUMENTATION**

**PROGRAM FOR CITY OF ROSEVILLE**

Research Dossier for D-6

Prepared by:  
Anderson, Eckstein & Westrick, Inc.  
51301 Schoenherr Road  
Shelby Twp., Michigan 48315

**Sources of Information Researched  
For Macomb County 2006 Remonumentation Program  
For City of Roseville**

- 1) GLO Notes
- 2) Act 74 Recorded LCRC
- 3) Act 132 Recorded Surveys
- 4) Personal History and Records
- 5) Unrecorded LCRC's and Surveys
- 6) Letters to the Following, Requesting Unrecorded information

Midwestern Consulting LLC  
Atwell Hicks Inc  
ANR Pipeline Company  
BMJ Engineers & Surveyors  
Air Land Surveys, Inc.  
Lehner Associates, Inc.  
Kem-Tec Land Surveyors  
Boss Engineering Company, Inc.  
Engineering & Surveying Consultant  
Charles E. Raines Co.  
Johnson & Anderson, Inc.  
Earl Gravlin Surveyor  
Del-Tec Surveying & Engineering  
David J. Little Land Surveyors  
David C. Adams & Son  
Coulter & Associates  
Fenn & Associates Surveying, Inc.  
Donald H. DeKeyser, Surveyor  
Huron Clinton Metropolitan Authority  
Fazal Khan & Associates  
Davis Land Surveying, P.C.  
Guaranty Survey Company  
Grant Ward Surveyors  
North Star Engineering, LLC  
Giffels-Webster Engineers  
George Jerome & Company  
Michael J. Yambor Associates, Inc.  
MCS Associates, Inc.  
McNeely & Lincoln Associates, Inc.  
King Surveyors & Associates, Inc.  
RK Engineering & Survey Associates  
RJ Donnelly & Associates, Inc.  
Professional Engineering Associates

Rowe, Inc.  
Hubble Roth & Clark  
John Lansky  
Wilcox Professional Services  
RCMC  
Bruen Land Surveying  
SCCRC  
Alpine Land Surveying, Inc.  
McNamee, Porter & Seeley  
Advanced Geomatics  
GLA Surveyor  
Mason L. Brown & Asso.  
RA Duthler Land Surveyor  
Project Control Engineering  
Tetra Tech  
Nowak & Fraus PLLC  
Land Engineering Services  
Michigan Consolidated Gas  
Williams, Gorinac Assoc.  
Urban Land Consultants  
T & A, Inc.  
Detroit Edison, ROW Div.  
SSOE, Inc.  
Spalding, DeDecker & Assoc  
Kennedy Surveying, Inc.  
JL Bishop Surveying  
Reichert Surveying, Inc.  
Metco Services



9-9

Side	Angle	Beaming	R.S.	Dist.	Dist.	Dist.
A-B	89°-04'	N-00°-50'W	2674.4			
B-C	91°-03'	N-58°-10'E	3287			
C-D	89°-03'	S-1°-11'W	2676.3			
D-A	90°-50'	S-52°-06'E	333.0			
Sta.	Z	Com. Bearing	SIN	COS	Dist	
A	89°-04'	N-00°-50'W	9.999288	6955743	2674.3	
B	91°-03'	N-58°-10'E	7.630000	3287.999999	3287.5	
C	89°-03'	S-1°-11'W	9.999905	8.820027	2675.9	
D	90°-50'	N-52°-06'E	7.866146	6999991	333.2	
	SIN					
	3.427376					
	9.999882					
	3.427376					
	2674.3					
	2.516283					
	7.866146					
	0.152851					
	THAT					
	3.427376					
	9.999882					
	3.427376					
	2675.3					
	2.522705					
	7.906146					
	0.322851					
	2.1					

9 Dist	DEPT	DEPT	DEPT
272.2	+ 60.7	+ 2674.6	+ 60.7
25.5	+ 1.4	2875.1	+ 1.4
7.4	+ 33.2	2675.3	+ 33.2
2705	+ 21		00.0

$A = \frac{1}{2} [ (2674.6) + (2675.3) + (2675.9) + (2674.3) ] - 2(60.7)$   
 $A = \frac{1}{2} [ 10729.9 + 11071.2 + 11071.2 + 11071.2 ] - 121.4$   
 $A = \frac{1}{2} [ 43943.5 ] - 121.4$   
 $A = 21971.75 - 121.4$   
 $A = 21850.35$

Henry Bohn Farm

Henry Bohn Farm

Henry Bohn Farm

- 1. Post Sec. 17
- 1. 1.8" Willow bears Nly
- 2. Tel. pole bears N-30°E
- 3. 10" Maple N-60°E

26.0  
28.7  
71.9

- 1. 1/4 Post Sec. 17
- Anchor post bears Nly
- Tel. pole N-45°E
- Elm S-10°E

25.0  
34.1  
44.3

- Point A
- 1. Tel. pole bears S-45°W
- 2. Anchor post N-15°
- 3. S.W. Cor. of barn N-45°E

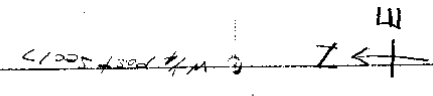
42.5  
29.4  
81.3

- Point C
- 1. Anchor Post bears Sly
- 2. 4" Elm S-15°E
- 3. Tel. pole N-75°E

30.3  
31.8  
75.4

- Point B
- 1. Anchor Post bears Sly
- 2. Fence Nly
- 3. Tel. pole N-45°E

30.0  
24.2  
61.3

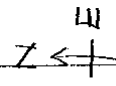


Roseville Sub N&R

Henry Bohn Farm

Town Hall Rd.

AB 328.7  
BC 264.9  
CD 333.0  
DA 2746.0



Roseville Sub N&R

Henry Bohn Farm

Town Hall Rd.

AB 328.7  
BC 264.9  
CD 333.0  
DA 2746.0

203-008  
9-15-06

2006 REMON

MUDY CCB

D-16 ERM TWP

SET CHIS X IN CORNER

0.1 N OF E MARTIN

S ± E OF E PINEHURST TO N.

Az

DIST

DESC

150°

30.28

SET REMON TAG NE FACE U.P.

227°

54.30

NE COR BRICK PIER # 1774B

340°

46.74

SET X CUT S. RIM GUN

51°

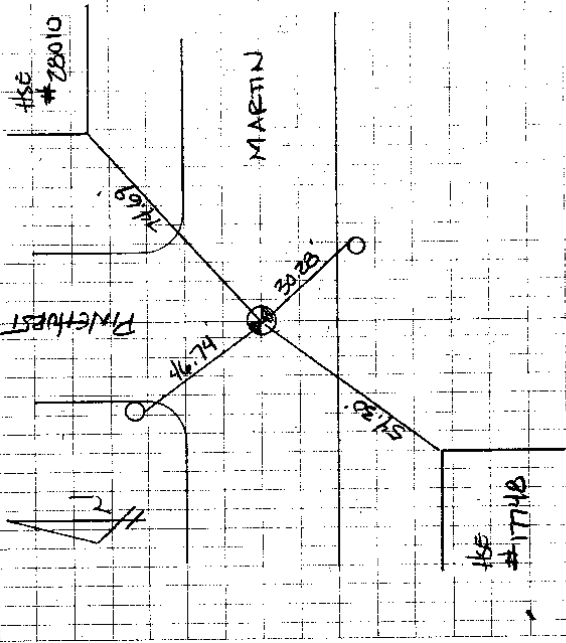
74.69

SW COR BRICK BUDS # 28010 PINEHURST

SET N- 28831.645  
E- 1387.116

75

No 2449



# 1774B

Photo #

101-0160

461

462

463

464

DESC

TOP

LOOKING

NORTH

EAST

SOUTH

WEST

2006 PCMON

223-028  
9-12-06

B6.157/CG/DK

MU, CCB

223028 TR 13

BASE X @ RPD 1.198-

LAT 42° 30' 58.95845" N

LONG 82° 55' 35.11421" W

EAT 152.1847 m

PT# DCS

- 431 TEAU PT # 21 JOB 211045 F BK TRV PG 40
- 432 TEAU PT # 30 JOB 211045 I BK TRV PG 18
- 433 1/2 RR E MARTIN @ E BAREMAN TO SOUTH
- 434 FND "X" CUT IN CONC WALK
- 435 ENJ CONC. MIDN
- 436 E-G RENDON
- 437 FR NW MARTIN E HILLVIEW
- 438 1/2 P. NE MARTIN E MAPLE
- 439 1/2 RR NW MARTIN E BOHN
- 440 1/2 RR # 10065 SE MARTIN E BOHN
- 441 1/2 P. SW MARTIN E MAPLE
- 442 1/2 P. SW MARTIN E PINEHURST

2006 028  
9-13-06

2006 Remon

MUS CCS

CL / DB ACCESSORIES

283028 TR 14

PT #	DESC				
028-443	3/4" PR SE	PINEHURST	ELIZABETH		
444-443	CORL SIDING				
449	CONC MON NE	PINEHURST	BETHL		
453	CONC MON SE	"	BAYNE		
451	1/2" RR SE	"	PETERS		
455	FENCE POST NW	"	WELINGTON		
459	1/2" PR * NW	10065 NW	WELINGTON	ESSEX	
460	1/2" RR NE	"	"		
462	1/2" P. SW	WELINGTON	MAPLE		
464	1/2" RR NW	NORTHVIEW	HILLVIEW		
466	1/2" P. NW	"	ESSEX		
467	1/2" P SE	"	"		
470	1/2" P. NE	"	MAPLE		
471	1/2" P NW	"	FELICIAN		
472	1/2" RR SW	"	"		
477	1/2" P. SE	"	ROSEMONT		
478	1/2" P SW	"	"		

No 2449

205008 2006 BEMON

9/14/06

MURDER ACCESSORIES

223028 TR 15

PT #	DESC	CL/DL	ACCESSORIES
477	FENCE POST NW	NORTHVIEW	EDWARDS
482	1/2" RR SE	NORTHVIEW E	BOHN
484	1/2" RR NE	"	HOLLYWOOD
485	CONC MON SW	NORTHVIEW	GROVELAND
486	CONC MON NW	"	"
488	BROKEN MON NW	WELLINGTON	GROVELAND
491	END MON NE	WELLINGTON	BOHN
492	FUR MON SW	WELLINGTON	BOHN
493	1/2" RR SE	WELLINGTON	EDWARDS
494	FUR MON SW	"	"
497	END 1/2 PIPE SW	WELLINGTON	WAGNER
498	<del>CONC</del> WITNESS CROSSING	NOTHING FOUND	
501	1/2" RR NW	CHESTNUT	BOHN
504	1/2 PIPE SW	EDWARD	IVANHOE
506	FENCE POST SE	DENICK	IVANHOE
507	FENCE POST SW	"	"
508	1/2 PIPE SE	MARLE	IVANHOE
511	1/2 PIPE NW	LOWELL	PINEHURST
512	FENCE POST SE	"	"
513	FENCE POST NE	LOWELL	MARLE
516	FUR MON SE	LOWELL	EDWARDS

2009 Remon

223-028  
9-14-06

Cl. Dk Accessories

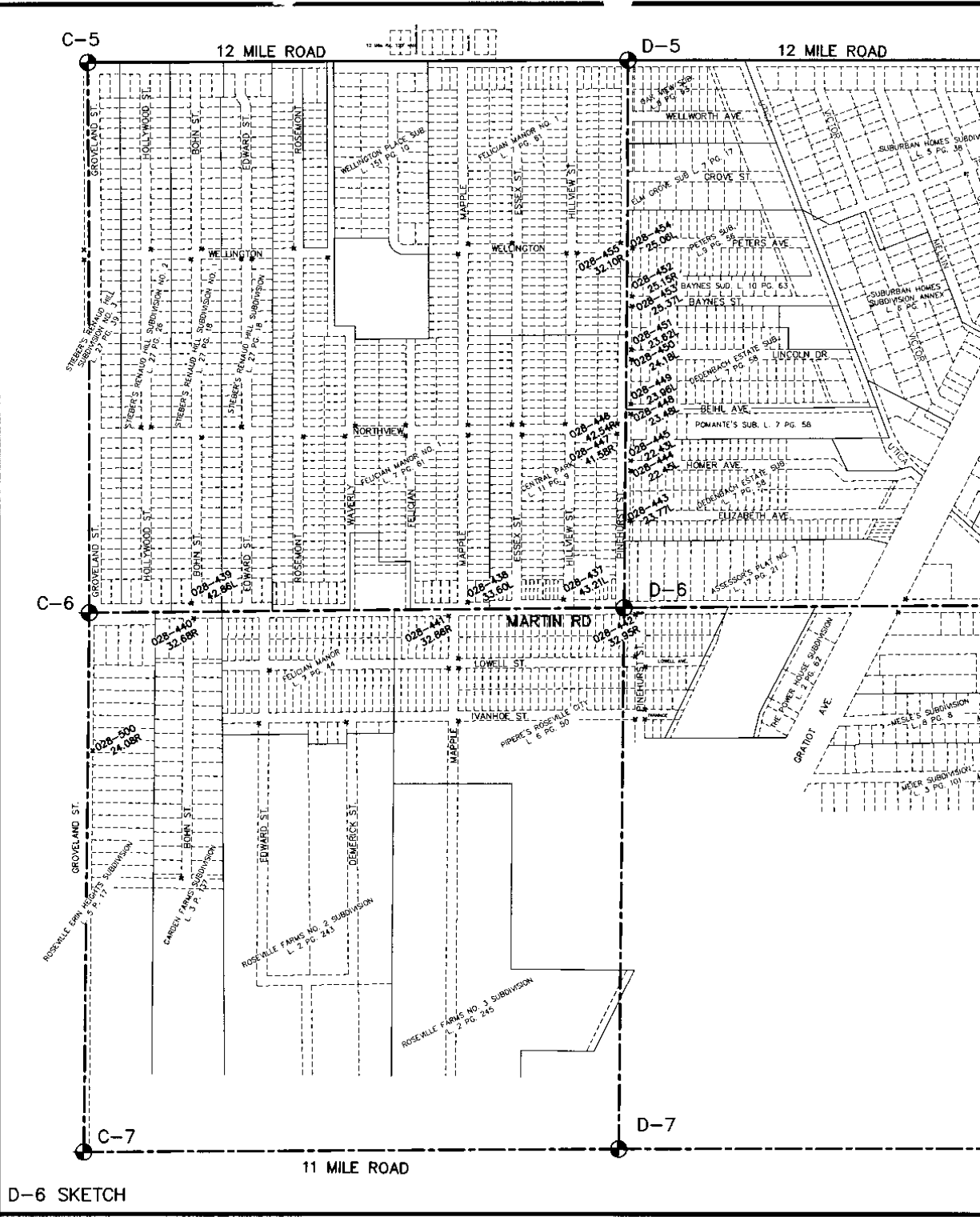
23008 TR IS

R#	DESC
028-59	1/2 RR S SIDE CHARLESTON (238 39 + 43)
028-523	FND MON SE WELLINGTON + FOUNTAIN
524	FND POST N SIDE WELLINGTON @ SUBLINE
525	FND POO S. SIDE WELLINGTON @ SUBLINE
526	FND MON S. SIDE WELLINGTON, W. R
527	OF FOUNTAIN ELEMENTARY SCHOOL
529	FND POST SE WELLINGTON + BREAKMAN
530	FND 1/2 RR NW CITATION + WELLINGTON
531	1/2 RR NW "
532	FND POST SE SECRETARIAT + COLE
534	1/2 RR NE WELLINGTON + COLE
535	FND MON SE BEVERLY + COLE
544	Conc. Mon N. Side Kentucky @ R
552	C-5 FND Remon IN Box
553	D-5 FND Remon IN Box
554	B-5 FND Remon IN Box
555	A-4 FND Remon IN Box
556	D-4 FND IRON E COMMON + PINE TREES
557	FND 1/2 RR N. SIDE COMMON @ D-4
558	E-4 FND Remon IN Box

BETWEEN FOUNTAIN + FOUNTAIN

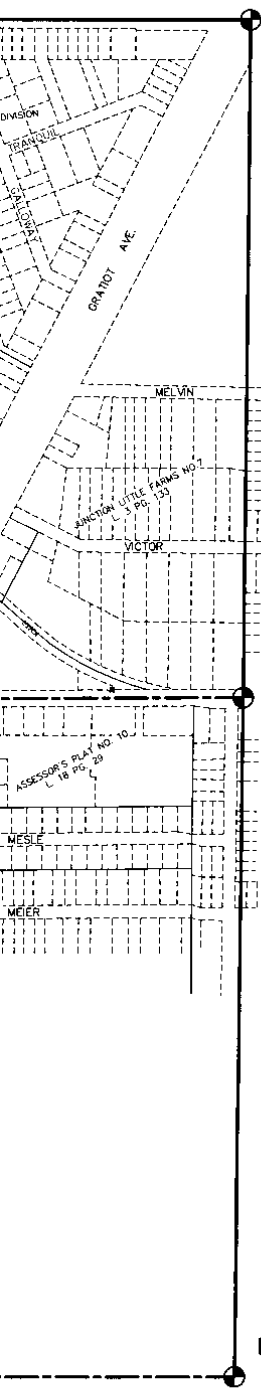


G:\223\223-028\DWG\SURVEY\SKETCHES\ID6\_SKETCH.dwg, Model: 10/9/2006 5:37:50 PM, \VIEW-SECONDARY\HP\_LaserJet\_9040, 1:600



D-6 SKETCH

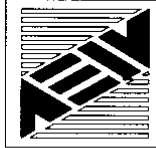




E-5

E-6

E-7



**ANDERSON, ECKSTEIN AND WESTRICK, INC.**

Civil Engineers • Surveyors • Architects

51301 Schoenherr Road, Shelby Township, Michigan 48315

Phone 586•726•1234 Fax 586•726•8780



County Clerk's Office  
 A. D. 1920  
 State of Michigan  
 County of Macomb



REGISTER'S OFFICE  
 COUNTY OF MACOMB

Received for Record Book No. 12345  
 of 2247  
 A. D. 1920  
 of 12345  
 of 12345  
 of 12345

Lot	Area	Value	Owner
1	100	100	John Doe
2	200	200	Jane Smith
3	300	300	Bob Johnson
4	400	400	Alice Brown
5	500	500	Charlie White
6	600	600	Diana Green
7	700	700	Frank Black
8	800	800	Grace Grey
9	900	900	Henry Blue
10	1000	1000	Irene Red
11	1100	1100	Jack Yellow
12	1200	1200	Karen Purple
13	1300	1300	Larry Orange
14	1400	1400	Mary Silver
15	1500	1500	Ned Bronze
16	1600	1600	Olivia Gold
17	1700	1700	Paul Platinum
18	1800	1800	Quinn Nickel
19	1900	1900	Rachel Copper
20	2000	2000	Sam Tin
21	2100	2100	Tina Lead
22	2200	2200	Ulysses Zinc
23	2300	2300	Vernon Iron
24	2400	2400	Walter Steel
25	2500	2500	Xavier Aluminum
26	2600	2600	Yvonne Magnesium
27	2700	2700	Zachary Silicon
28	2800	2800	Adam Germanium
29	2900	2900	Betty Selenium
30	3000	3000	Carl Tellurium
31	3100	3100	Dora Polonium
32	3200	3200	Edward Astatine
33	3300	3300	Fred Francium
34	3400	3400	Grace Radium
35	3500	3500	Henry Actinium
36	3600	3600	Irene Thorium
37	3700	3700	Jack Protactinium
38	3800	3800	Karen Uranium
39	3900	3900	Larry Neptunium
40	4000	4000	Mary Plutonium
41	4100	4100	Ned Americium
42	4200	4200	Olivia Curium
43	4300	4300	Paul Berkelium
44	4400	4400	Quinn Californium
45	4500	4500	Rachel Einsteinium
46	4600	4600	Sam Fermium
47	4700	4700	Tina Mendelevium
48	4800	4800	Ulysses Nobelium
49	4900	4900	Vernon Lawrencium
50	5000	5000	Walter Rutherfordium
51	5100	5100	Xavier Dubnium
52	5200	5200	Yvonne Seaborgium
53	5300	5300	Zachary Bohrium
54	5400	5400	Adam Hassium
55	5500	5500	Betty Meitnerium
56	5600	5600	Carl Darmstadtium
57	5700	5700	Dora Tennessium
58	5800	5800	Edward Oganesson
59	5900	5900	Fred Moscovium
60	6000	6000	Grace Livermorium
61	6100	6100	Henry Tennessium
62	6200	6200	Irene Oganesson
63	6300	6300	Jack Moscovium
64	6400	6400	Karen Livermorium
65	6500	6500	Larry Tennessium
66	6600	6600	Mary Oganesson
67	6700	6700	Ned Moscovium
68	6800	6800	Olivia Livermorium
69	6900	6900	Paul Tennessium
70	7000	7000	Quinn Oganesson
71	7100	7100	Rachel Moscovium
72	7200	7200	Sam Livermorium
73	7300	7300	Tina Tennessium
74	7400	7400	Ulysses Oganesson
75	7500	7500	Vernon Moscovium
76	7600	7600	Walter Livermorium
77	7700	7700	Xavier Tennessium
78	7800	7800	Yvonne Oganesson
79	7900	7900	Zachary Moscovium
80	8000	8000	Adam Livermorium
81	8100	8100	Betty Tennessium
82	8200	8200	Carl Oganesson
83	8300	8300	Dora Moscovium
84	8400	8400	Edward Livermorium
85	8500	8500	Fred Tennessium
86	8600	8600	Grace Oganesson
87	8700	8700	Henry Moscovium
88	8800	8800	Irene Livermorium
89	8900	8900	Jack Tennessium
90	9000	9000	Karen Oganesson
91	9100	9100	Larry Moscovium
92	9200	9200	Mary Livermorium
93	9300	9300	Ned Tennessium
94	9400	9400	Olivia Oganesson
95	9500	9500	Paul Moscovium
96	9600	9600	Quinn Livermorium
97	9700	9700	Rachel Tennessium
98	9800	9800	Sam Oganesson
99	9900	9900	Tina Moscovium
100	10000	10000	Ulysses Livermorium

DESCRIPTION  
 The land embraced in the several parts of  
 this plat is a subdivision of a part of the 35  
 1/2 acre tract known as the Thomas & Clark  
 tract, situated in the Township of ...  
 County of Macomb, Michigan.  
 The land is divided into 100 lots, each of  
 100 square feet, and is to be used for  
 residential purposes.  
 The plat is approved by the Board of  
 Health and Safety of the Township of ...  
 County of Macomb, Michigan, on the 27th  
 day of October, 1920.

See resolution L-303 P. 323  
 See Resolution L-3574 P. 423

COUNTY TREASURER'S CERTIFICATE  
 This is to certify that the Tax Lists of 1920 have  
 been prepared and are correct and true to the  
 best of my knowledge and belief.  
 Dated this 27th day of October, 1920.  
 County Treasurer, Macomb County, Mich.

This plat was approved by the County Board for the  
 City of ...  
 Judge of Probate  
 County Clerk

I hereby certify that the plat herein filed is a correct and  
 true copy of the original plat as filed in the office of the  
 Register of Deeds for the County of Macomb, Michigan, and that  
 all points marked thereon are true and correct as to their  
 location and extent, and that the same conform to the  
 requirements of the laws of this State in that behalf made.  
 My Commission expires ...

This plat was approved by the Township Board of ...  
 Township Clerk



My Commission Expires *August 1st 1911*  
 Notary Public *Macomb Co., Mich.*

REGISTRAR'S OFFICE  
 COUNTY OF MACOMB  
 To wit: For Record this *18th* day of *March* A.D. 19*11*  
 in Liber *5* of *Plats*  
 on Page *17*  
*John A. ...* Registrar

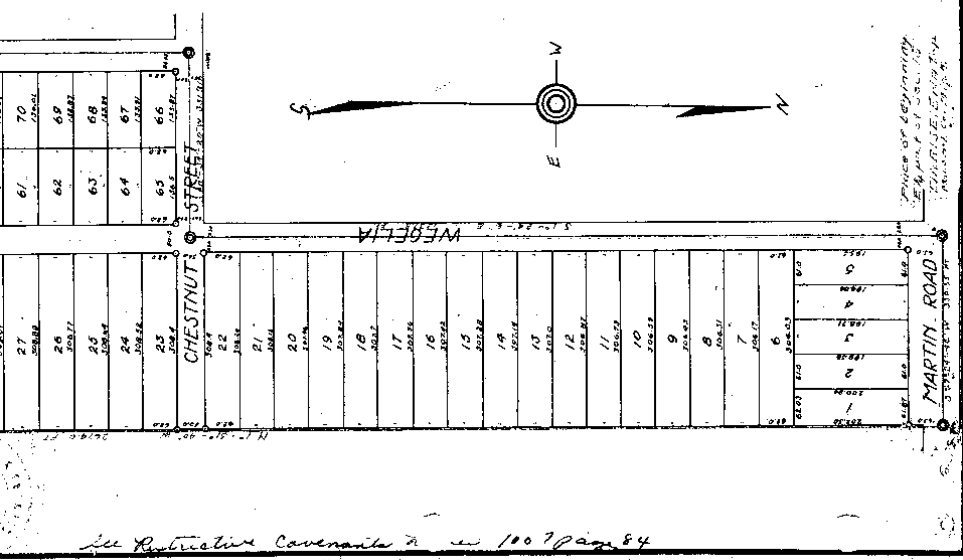
This plat was approved by the County Board for Macomb County, Michigan, on the *13th* day of *March* 19*11*  
*John A. ...* County Clerk

COUNTY TREASURER: E. H. ...  
 This is to Certify that there are no Tax Lists or Taxes held by the State or any individual applicant, and free of Taxes on lands described in the annexed instrument have been paid from the date thereof, according to the records of this Office.  
*E. H. ...* County Treasurer

Description of Land Plotted  
 The Land embraced in the annexed Plat of *Reserve from Apple's subdivision* of *part of W 1/2 of W 1/2 of Sec. 2, Township 35 N., Range 12 E., Macomb Co., Mich.*  
 is described as follows: Commencing at E. 1/4 part of Sec. 18 T. 35 N., R. 12 E., Macomb Co., Mich., thence Sec. 18 T. 35 N., R. 12 E., E. 1/4 part of Sec. 18 T. 35 N., R. 12 E., thence S 88° 34' 20" W. 301.9 ft., thence E 31° 25' E. 133.5 ft., thence N 88° 37' 10" E. 335.9 ft., thence N 1° 31' 40" W. 247.0 ft., thence S 87° 24' 12" W. 330.55 ft. to place of beginning.

I hereby certify that the plat hereon delineated is a correct one and that permanent monuments consisting of *1/4 x 1/8 inch iron* stakes have been placed at points marked "O" as thereon shown at all angles in the boundaries of the land plotted and at all intersections of streets or streets and alleys.  
*John A. ...* Registrar and Notary

This is to certify that the above plat was approved by the Township Board of the Township of *...* Macomb County, Michigan, at a meeting held this *17th* day of *March* 19*11*.  
*John A. ...* Township Clerk



PLACE OF BEGINNING  
 SEE PART OF SEC. 18  
 T. 35 N., R. 12 E.,  
 MACOMB CO., MICH.

See Restraintive Covenants to see 1007 page 84

# PLAT

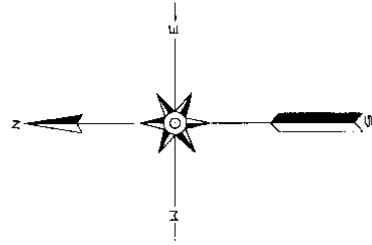
# GARDEN FARMS SUBDIVISION

E 1/2 OF W 1/2 OF SW 1/4 OF SEC. 17 T19N R13E  
 ERIN TOWNSHIP  
 MACOMB COUNTY MICHIGAN

Dec-17-1916  
 J. H. Hildner

L. 3  
 P. 137

35	36	37	38	39	40	41	42	43	44	45	46	47	48	49	50	51	52	53	54	55	56
----	----	----	----	----	----	----	----	----	----	----	----	----	----	----	----	----	----	----	----	----	----



Scale 200 Feet to an Inch

STATE OF INDIANA, ALLEN COUNTY, SS.  
 I, Notary Public for said County, do hereby certify that the within and over the County of Allen, State of Indiana, at the Court of Records and Clerks of said County, at the City of Fort Wayne, Indiana, on the 17th day of December, 1916, before me, the undersigned, appeared the following persons, to-wit: Margaret M. Monahan, Esq., whose certificate of acknowledgment is annexed to the instrument of writing to which this is attached, was at the date of making the same, an acting Notary Public within and for said County and State, duly commissioned and qualified according to law; that her commission as such Notary Public is dated Dec. 28, 1916, and will expire Dec. 27, 1920, and that the said instrument is executed, and acknowledged in conformity with the laws of said State; that I am personally acquainted with the handwriting of said Notary Public aforesaid; that I am personally acquainted with the persons to whom the same is made, and that I have full faith and credit as to due, and of right ought to be given.

IN WITNESS WHEREOF, Witness my name and the Seal of said Court, hereunto subscribed and affixed, this 2nd day of June, 1917, at the City of Fort Wayne.

*David C. Hest*  
 Clerk Allen Circuit Court.



SURVEYOR'S CERTIFICATE  
 I hereby certify that the plat hereto enclosed is a correct one, and that the several lots, consisting of 56 subdivided lots in Section 17, Township 19 North, Range 13 East, as shown shown at all angles, its boundaries of the land situated, and of all intersections of streets or streets and alleys.

*Richard J. Johnson*  
 Surveyor.

DEDICATION  
 KNOW ALL MEN BY THESE PRESENTS, That we Henry J. Bohn, as proprietor, and Selma Bohn his wife, and Martin Boeckenhauer, as proprietor and Lena Boeckenhauer his wife, have caused the land embraced in the annexed plat to be surveyed, laid out and plotted, to be known as Garden Farms Subdivision, E. 1/2 of W. 1/2 of S. 17 T. 19 N. R. 13 E., Erin Township, Macomb County, Michigan, and that the

CERTIFICATE OF MUNICIPAL AGRIVAL  
 This plat was approved by the Township Board of the Township of Erin at a meeting held on June 17, 1917.

*In resolution to Varata Alley & Drive  
 Sec R3 town 19-3785 P. 949*

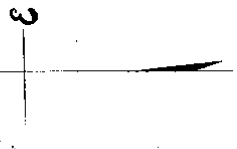


original

"Junction Little Farms"  
 Part of N. E. 1/4 of Section 17  
 T. 1. N. R. 13 E.  
 Erin Twp. Mich.

Scale 1" = 200'

October 4 1917  
J. J. Miller



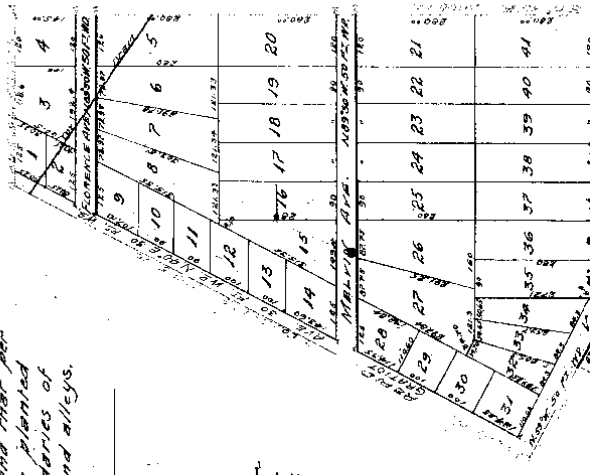
I hereby certify that the plat hereon delineated is a correct one and that permanent monuments consisting of 3" by 10" iron pipe have been planted at points marked "A" as thereon shown at all angles in the boundaries of the land platted, and at all intersections of streets or alleys and alleys.

*J. J. Miller*  
 Surveyor

Know All Men By These Presents - That We  
 David Trombly } as proprietors  
 Joseph W. Trombly }  
 have caused the land embraced in the annexed plat to be surveyed laid out and platted to be known as "JUNCTION LITTLE FARMS" of part of N. E. 1/4 Sect. 17 T. 1. N. R. 13 E. Erin Twp. Macomb Co. Mich. and that the streets and alleys as shown on said plat are hereby dedicated to the use of the public.

Signed and Sealed  
 in presence of  
*J. J. Miller* *David Trombly* *Joseph W. Trombly*  
 Surveyor Proprietor Proprietor  
*Margaret M. Truesell* *John W. Truesell* *John W. Truesell*  
 Attorney in Fact. Attorney in Fact. Attorney in Fact.

State of Michigan }  
 County of Macomb } S.S.



F. 703  
 133



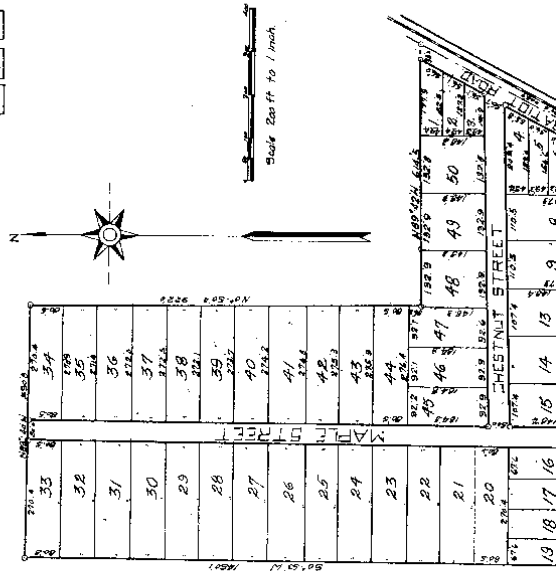


Charles H. Hester

# ROSEVILLE FARMS No 3 SUBDIVISION

OF PART OF SOUTH 4 OF SEC 17 T 11  
N R 13 E ERIN TOWNSHIP MACOMB  
COUNTY MICH

L. 2  
P. 245



9-30  
Plate  
245  
Charles H. Hester

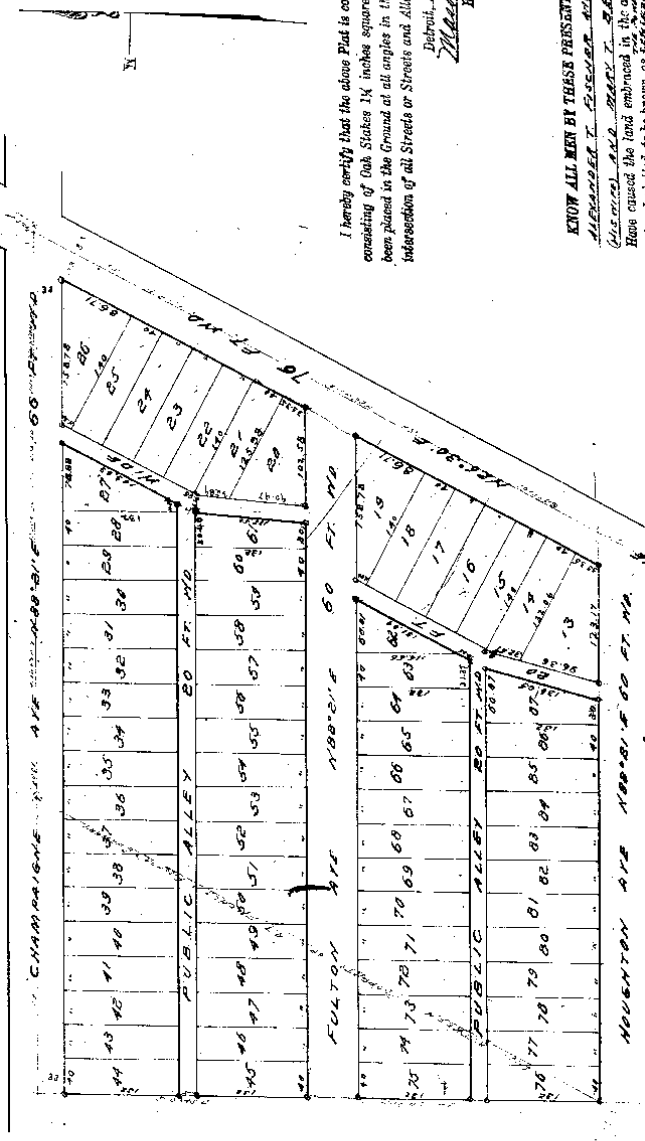


Record

THE  
**POWER HOUSE SUB**  
 OF THE ELY PART OF SECTION 17, T14N, R13E  
 LYING WEST OF GANTT AVENUE  
 TOWNSHIP OF FERIN, MACOMB CO.  
 MICHIGAN.

John L. Brown  
 Civil Engineer & Surveyor  
 251 N. 1st St. Detroit, Michigan

SCALE 100 FT = 1 IN.



I hereby certify that the above Plat is correct, and that Monuments consisting of Oak Stakes 1 1/2 inches square and 18 inches long have been placed in the Ground at all angles in the Boundaries, and at the Intersection of all Streets or Streets and Alleys, as shown on this by O.  
 Detroit, March 3 1898.  
Mauro C. Gentry  
 Engineer and Surveyor.

KNOW ALL MEN BY THESE PRESENTS, that ME  
ALEXANDER T. FISHER AND MARTIN FOSBER  
ALBERT T. FISHER T. BEANETT  
 Have caused the land embraced in the above plat to be surveyed, laid  
 out and platted in the herein as indicated by the above plat.

L. O.

P. 69.

Record Book No. 334 (p. 69)

KNOW ALL MEN BY THESE PRESENTS, that I, WILLIAM T. FLETCHER, of the County of Washtenaw, State of MICHIGAN, do hereby certify that the above and foregoing plat of SAVAGE and GRANT lots, as shown on said plat, are hereby dedicated to the use of the public, and that the streets and alleys shown on said plat are hereby dedicated to the use of the public.

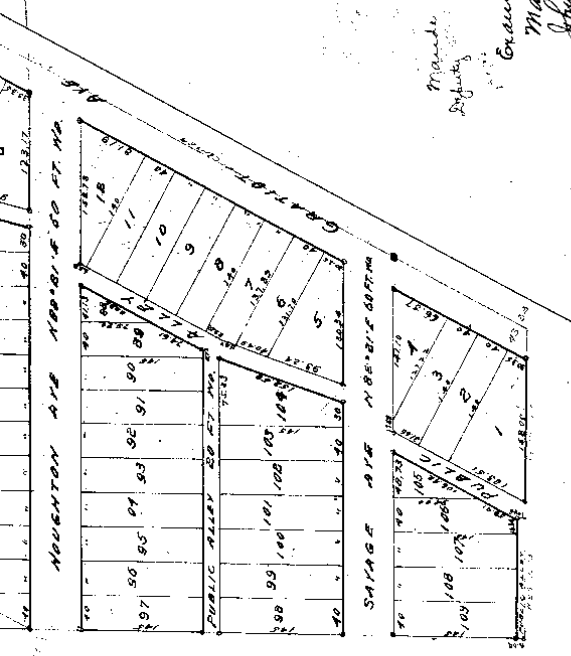
In presence of:  
Adam Roberts  
Mary J. Conant  
Mary J. Conant

STATE OF MICHIGAN  
 COUNTY OF Washtenaw  
 On this, the 21st day of February, 1898, before me, a Notary Public in and for said county, personally appeared the above named WILLIAM T. FLETCHER and ADAM ROBERTS, known to me to be the same persons who executed the above dedication, and who acknowledged the same to be their deed and act.

WILLIAM T. FLETCHER  
ADAM ROBERTS  
Notary Public  
Washtenaw County, Michigan

STATE OF MICHIGAN  
 County of Washtenaw  
 I, WILLIAM T. FLETCHER, Notary Public, do hereby certify that we have each carefully compared this copy with the original plat of the above and foregoing lots, as shown on said plat, and that it is an exact copy thereof and of the whole of such original map or plat.

WILLIAM T. FLETCHER  
Notary Public  
Washtenaw County, Michigan



THE PROPERTY HEREIN PLATED IS DESCRIBED AS follows, to wit: The lots in the plat of the above and foregoing lots, as shown on said plat, and that it is an exact copy thereof and of the whole of such original map or plat.

28 Mar 1898  
 Made & Published by  
 Examined & Approved  
 March 7th 1898  
 John F. Wilkinson  
 Deputy Auditor General

March 10 2 1898  
 Made & Published by

File 1898-100-100

L. 2 F 62

# PETERS SUBDIVISION

OF LOTS 16 & 17 OF CORBY SUBDIVISION OF THE WEST PART OF THE NE 1/4 OF

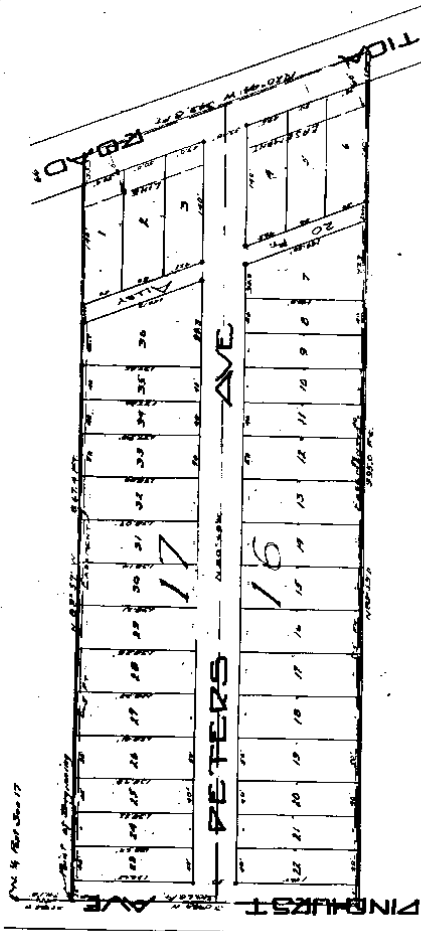
SEC. 17, T17N, R12E MICH. JEFFERSON COUNTY

ERIN TWP. MACOMB CO.

9. 1925  
Edw. R. Peters

5613

SEALE  
1-100'



Now all men by these presents that August Peters...

and Anna Peters his wife...

...do hereby have granted, sold and conveyed to the said August Peters...  
of Erin Twp. Macomb Co. Mich. the West part of the NE 1/4 of Sec. 17...  
T17N, R12E MICH. JEFFERSON COUNTY

*August R. Peters*  
*Anna B. Peters*

...description of Land Platted

...the land embraced in the annexed Plat of Peters Subdivision  
of Sec. 17, T17N, R12E MICH. JEFFERSON COUNTY  
of Erin Twp. Macomb Co. Mich. Beginning at a point on the N 1/2 of Sec. 17...  
of Erin Twp. Macomb Co. Mich. the West part of the NE 1/4 of Sec. 17...  
T17N, R12E MICH. JEFFERSON COUNTY

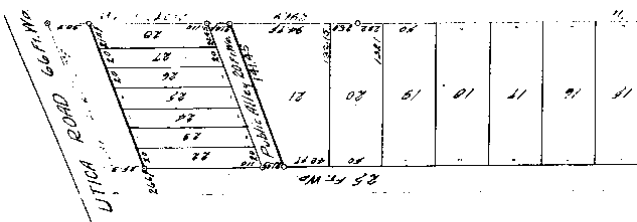
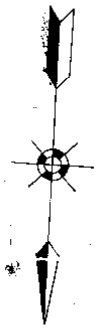
PROVIDED That the above plat and subdivision is hereby  
subjected to the conditions and covenants which  
shall be observed by these proprietors in their description



# POMANTE'S SUBDIVISION

OF THE  
WEST PART OF THE NE 1/4 OF SEC. 17 T. 1 N. R. 13 E.  
ERIN TWP. MACOMB CO. MICH.  
SCALE 1"=100'

Map 17-1924  
F. H. H. H.



KNOW ALL MEN BY THESE PRESENTS, that we John Pomante and John B. Bickel and John B. Bickel as proprietors, have opened the land embraced in the above plat to be and John Pomante as known as the owner of the SUBDIVISION of the West part of the N.E. 1/4 of Sec. 17, T. 1 N. R. 13 E., Macomb Co., Michigan, and that the streets and alleys as shown on said plat are hereby dedicated to the use of the public.

Signed and Sealed in the Presence of

John Pomante (L.S.)  
John B. Bickel (L.S.)  
John B. Bickel (L.S.)  
John B. Bickel (L.S.)  
John B. Bickel (L.S.)  
John B. Bickel (L.S.)

STATE OF MICHIGAN  
COUNTY OF MACOMB

On this 12th day of January, A.D. 1924, before me, a Notary Public in and for said county personally came the above named John Pomante and John B. Bickel and John B. Bickel, known to me to be the persons who executed the above dedication, and acknowledged the same to be their free act and deed.

My commission expires January 1, 1925  
NOTARY PUBLIC Macomb Co., MICH.

### DESCRIPTION

The land embraced in the annexed plat of Pomante's SUBDIVISION of the West part of the N.E. 1/4 of Sec. 17, T. 1 N. R. 13 E., Erin Twp., Macomb Co., Mich. is described as follows:  
Beginning at a point which is N 1 deg. 35' W a distance of 850.0 feet from the center post of Sec. 17 T. 1 N. R. 13 E., Erin Twp., Macomb Co., Mich. Thence N 1 deg. 25' W a distance of 157.1 feet to a point. Thence N 66 deg. 45' E a distance of 1254.4 feet to a point. Thence S 25 deg. 38' E a distance of 169.1 feet.







and that the taxes for said period of five years have been paid, as shown by the records of this office.

*James B. Gillett*  
County Treasurer

CERTIFICATE OF COUNTY PLATTING BOARD.

This plat was approved on the 5th day of *March* 1924, by the County Clerk, *James B. Gillett*, and the County Treasurer, *James B. Gillett*.

CERTIFICATE OF TOWNSHIP BOARD.

This plat was approved by the Township Board of the Township of *Utica*, Macomb County, Michigan, at a meeting held on the 5th day of *March*, 1924.

*Notary Public*  
*James B. Gillett*  
*Notary Public*  
*James B. Gillett*

*William J. Peters* (L.S.)  
*Anna Peters* (L.S.)  
*William J. Peters* (L.S.)  
*Anna Peters* (L.S.)

On this 1st day of October 1924 before me, a Notary Public in and for said county, personally came the above named *William J. Peters*, a widower, and *Anna Peters*, his wife, both of legal age, and known to me to be the persons who executed the above dedication and acknowledged the same to be their free act and deed.

*William J. Peters*  
*Anna Peters*

My commission expires January 3rd, 1927.  
Notary Public Macomb County, Michigan.

ENGINEER'S CERTIFICATE.

I hereby certify that the plat hereon delineated is a correct one, and that permanent monuments consisting of iron gas pipe 15 inches long and 1/2 inch in diameter have been planted at all points marked thus (o) as thereon shown at all angles in the boundaries of the land platted and at all intersections of streets or streets and alleys.

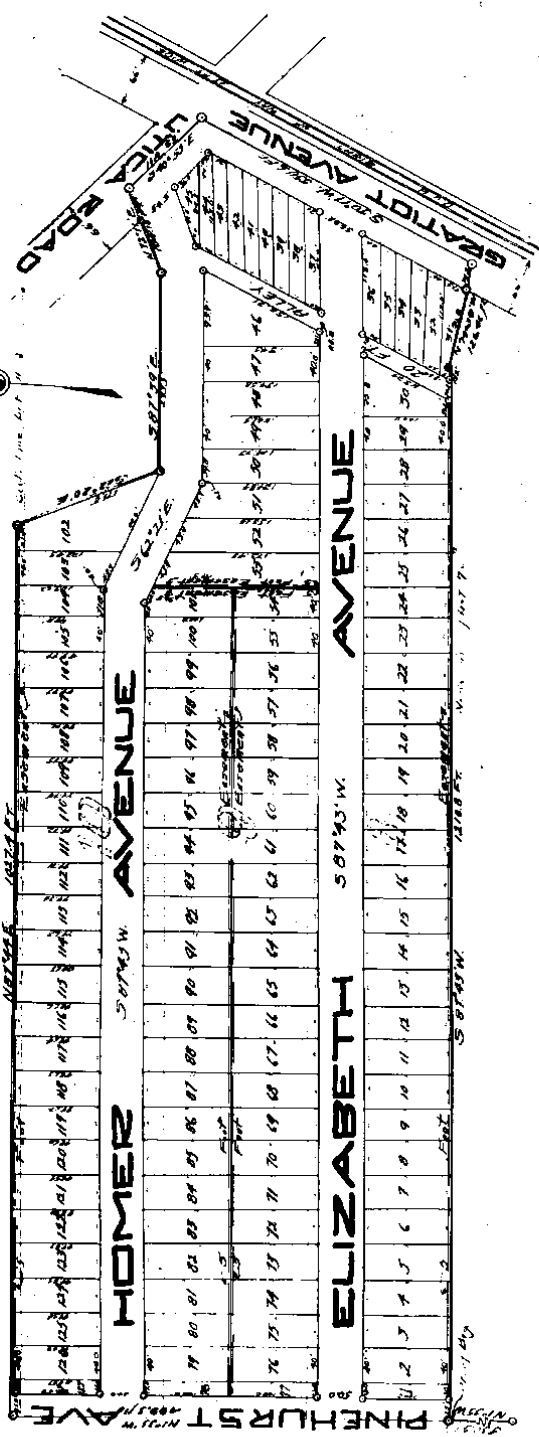
DESCRIPTION.

The lands embraced in the annexed plat of "OAK VIEW SUBDIVISION" OF PART OF SECTION 17 T.1 N. R. 13 E. MACOMB COUNTY MICHIGAN is described as follows: to wit: Beginning on the south line of the Champline Road where the same is intersected by the southwest line of the Utica Junction Road; thence S. 89° 52' W., along the said south line of the Champline Road a distance of 555.38 feet to the North and South Quarter (1/4) Section 17, of section 17, T.1 N. R. 13 E. Macomb County, Michigan; thence S. 60° 40' W. along said quarter section line a distance of 382.13 feet; thence N. 89° 52' E. a distance of 704.46 feet to the said southwest line of the Utica Junction Road; thence N. 20° 47' W. a distance of 408.25 feet to the place of beginning. All of the above described lands are in the Northeast Quarter (1/4) of Section 17, T.1 N. R. 13 E. Macomb County, Michigan.

58 871 / 198 85

**DEDENBACH ESTATE SUBDIVISION**  
 LOTS 619 AND PART OF LOT 620 OF THE WEST PART OF THE NE 1/4 OF SECTION 17  
 T24N R12W  
**BRIN TWA**  
**MAEOMB CO.**  
 MICHIGAN  
 PLATTED BY  
 J. I. HANSEN

June 21-1924  
 J. I. Hansen



As per plat of 1917, the lot 61, 62, 63, 64, 65, 66, 67, 68, 69, 70, 71, 72, 73, 74, 75, 76, 77, 78, 79, 80, 81, 82, 83, 84, 85, 86, 87, 88, 89, 90, 91, 92, 93, 94, 95, 96, 97, 98, 99, 100, 101, 102, 103, 104, 105, 106, 107, 108, 109, 110, 111, 112, 113, 114, 115, 116, 117, 118, 119, 120, 121, 122, 123, 124, 125, 126, 127, 128, 129, 130, 131, 132, 133, 134, 135, 136, 137, 138, 139, 140, 141, 142, 143, 144, 145, 146, 147, 148, 149, 150, 151, 152, 153, 154, 155, 156, 157, 158, 159, 160, 161, 162, 163, 164, 165, 166, 167, 168, 169, 170, 171, 172, 173, 174, 175, 176, 177, 178, 179, 180, 181, 182, 183, 184, 185, 186, 187, 188, 189, 190, 191, 192, 193, 194, 195, 196, 197, 198, 199, 200, 201, 202, 203, 204, 205, 206, 207, 208, 209, 210, 211, 212, 213, 214, 215, 216, 217, 218, 219, 220, 221, 222, 223, 224, 225, 226, 227, 228, 229, 230, 231, 232, 233, 234, 235, 236, 237, 238, 239, 240, 241, 242, 243, 244, 245, 246, 247, 248, 249, 250, 251, 252, 253, 254, 255, 256, 257, 258, 259, 260, 261, 262, 263, 264, 265, 266, 267, 268, 269, 270, 271, 272, 273, 274, 275, 276, 277, 278, 279, 280, 281, 282, 283, 284, 285, 286, 287, 288, 289, 290, 291, 292, 293, 294, 295, 296, 297, 298, 299, 300, 301, 302, 303, 304, 305, 306, 307, 308, 309, 310, 311, 312, 313, 314, 315, 316, 317, 318, 319, 320, 321, 322, 323, 324, 325, 326, 327, 328, 329, 330, 331, 332, 333, 334, 335, 336, 337, 338, 339, 340, 341, 342, 343, 344, 345, 346, 347, 348, 349, 350, 351, 352, 353, 354, 355, 356, 357, 358, 359, 360, 361, 362, 363, 364, 365, 366, 367, 368, 369, 370, 371, 372, 373, 374, 375, 376, 377, 378, 379, 380, 381, 382, 383, 384, 385, 386, 387, 388, 389, 390, 391, 392, 393, 394, 395, 396, 397, 398, 399, 400, 401, 402, 403, 404, 405, 406, 407, 408, 409, 410, 411, 412, 413, 414, 415, 416, 417, 418, 419, 420, 421, 422, 423, 424, 425, 426, 427, 428, 429, 430, 431, 432, 433, 434, 435, 436, 437, 438, 439, 440, 441, 442, 443, 444, 445, 446, 447, 448, 449, 450, 451, 452, 453, 454, 455, 456, 457, 458, 459, 460, 461, 462, 463, 464, 465, 466, 467, 468, 469, 470, 471, 472, 473, 474, 475, 476, 477, 478, 479, 480, 481, 482, 483, 484, 485, 486, 487, 488, 489, 490, 491, 492, 493, 494, 495, 496, 497, 498, 499, 500, 501, 502, 503, 504, 505, 506, 507, 508, 509, 510, 511, 512, 513, 514, 515, 516, 517, 518, 519, 520, 521, 522, 523, 524, 525, 526, 527, 528, 529, 530, 531, 532, 533, 534, 535, 536, 537, 538, 539, 540, 541, 542, 543, 544, 545, 546, 547, 548, 549, 550, 551, 552, 553, 554, 555, 556, 557, 558, 559, 560, 561, 562, 563, 564, 565, 566, 567, 568, 569, 570, 571, 572, 573, 574, 575, 576, 577, 578, 579, 580, 581, 582, 583, 584, 585, 586, 587, 588, 589, 590, 591, 592, 593, 594, 595, 596, 597, 598, 599, 600, 601, 602, 603, 604, 605, 606, 607, 608, 609, 610, 611, 612, 613, 614, 615, 616, 617, 618, 619, 620, 621, 622, 623, 624, 625, 626, 627, 628, 629, 630, 631, 632, 633, 634, 635, 636, 637, 638, 639, 640, 641, 642, 643, 644, 645, 646, 647, 648, 649, 650, 651, 652, 653, 654, 655, 656, 657, 658, 659, 660, 661, 662, 663, 664, 665, 666, 667, 668, 669, 670, 671, 672, 673, 674, 675, 676, 677, 678, 679, 680, 681, 682, 683, 684, 685, 686, 687, 688, 689, 690, 691, 692, 693, 694, 695, 696, 697, 698, 699, 700, 701, 702, 703, 704, 705, 706, 707, 708, 709, 710, 711, 712, 713, 714, 715, 716, 717, 718, 719, 720, 721, 722, 723, 724, 725, 726, 727, 728, 729, 730, 731, 732, 733, 734, 735, 736, 737, 738, 739, 740, 741, 742, 743, 744, 745, 746, 747, 748, 749, 750, 751, 752, 753, 754, 755, 756, 757, 758, 759, 760, 761, 762, 763, 764, 765, 766, 767, 768, 769, 770, 771, 772, 773, 774, 775, 776, 777, 778, 779, 780, 781, 782, 783, 784, 785, 786, 787, 788, 789, 790, 791, 792, 793, 794, 795, 796, 797, 798, 799, 800, 801, 802, 803, 804, 805, 806, 807, 808, 809, 810, 811, 812, 813, 814, 815, 816, 817, 818, 819, 820, 821, 822, 823, 824, 825, 826, 827, 828, 829, 830, 831, 832, 833, 834, 835, 836, 837, 838, 839, 840, 841, 842, 843, 844, 845, 846, 847, 848, 849, 850, 851, 852, 853, 854, 855, 856, 857, 858, 859, 860, 861, 862, 863, 864, 865, 866, 867, 868, 869, 870, 871, 872, 873, 874, 875, 876, 877, 878, 879, 880, 881, 882, 883, 884, 885, 886, 887, 888, 889, 890, 891, 892, 893, 894, 895, 896, 897, 898, 899, 900, 901, 902, 903, 904, 905, 906, 907, 908, 909, 910, 911, 912, 913, 914, 915, 916, 917, 918, 919, 920, 921, 922, 923, 924, 925, 926, 927, 928, 929, 930, 931, 932, 933, 934, 935, 936, 937, 938, 939, 940, 941, 942, 943, 944, 945, 946, 947, 948, 949, 950, 951, 952, 953, 954, 955, 956, 957, 958, 959, 960, 961, 962, 963, 964, 965, 966, 967, 968, 969, 970, 971, 972, 973, 974, 975, 976, 977, 978, 979, 980, 981, 982, 983, 984, 985, 986, 987, 988, 989, 990, 991, 992, 993, 994, 995, 996, 997, 998, 999, 1000.

Description of Land Platted  
 1. Land embraced in the General Plat of Dedebach Estate Subdivision  
 Lots 619 and part of Lot 620 of the West part of the NE 1/4 of Section 17  
 T24N R12W is described as follows: Commencing at the Center point of said section 17  
 N125°W 495.0 ft thence N87°49'E 102.24 ft thence S22°00'E  
 175.8 ft thence S87°39'E 233.5 ft thence N72°11'E 106.16 ft thence  
 S40°51'E 118.67 ft thence S30°17'W 57.07 ft thence N72°11'E 106.16 ft thence  
 N125°W 495.0 ft to the point of beginning.

J. I. Hansen  
 Registrar

and that the streets and alleys as shown on said plat are hereby dedicated to the use of the public.

Approved and the President of  
August J. Deckerbach  
Paul J. Deckerbach  
Anthony Deckerbach  
Deckerbach

This plat was approved by the County Board for the  
County Board  
County Board  
County Board  
County Board

County of Macomb  
On this 31 day of March 1924  
before me, a Notary Public in and for said County, personally  
came the above named John Deckerbach, August Deckerbach,  
Paul Deckerbach, Elizabeth Deckerbach and Lewis Deckerbach  
known to me to be the persons who executed the above sign-  
atures, and acknowledged the same to be their free act and deed.  
Notary Public, Macomb Co., Mich.  
My Commission Expires April 22 1928

RECORDED IN THE  
OFFICE OF THE COUNTY CLERK  
OF MACOMB COUNTY  
MICHIGAN  
APR 1 1924  
RECORDED IN THE  
OFFICE OF THE COUNTY CLERK  
OF MACOMB COUNTY  
MICHIGAN  
APR 1 1924

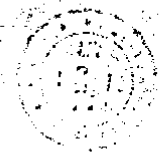
This is to certify that the plat herein submitted as a correct and  
true copy of the original plat, and that all the same are  
deposited in the proper public places, and that all the same  
are to be kept on file, according to the provisions of the  
Act in that behalf made.  
James C. West  
County Clerk

This is to certify that the above plat was approved by  
the County Board of the Township of Franklin

County of Macomb, Michigan, at a meeting held this 22 day  
of April 1924  
James C. West  
Township Clerk

It is to be certified that the plat herein submitted as a correct and  
true copy of the original plat, and that all the same are  
deposited in the proper public places, and that all the same  
are to be kept on file, according to the provisions of the  
Act in that behalf made.  
James C. West  
County Clerk

James C. West  
County Clerk





Cable and Working, Inc.  
 Specialty and Construction Eng'g.  
 2000 E. Main St.  
 Denver, Colo.  
 Planned by James J. Gorman  
 8/20/1924

SOFT	507	508	509	510	511	512	513	514	515	516	517	518	519	520	521	522	523	524	525	526	527	528	529	530	531	532	533	534	535	536	537	538	539	540	541	542	543	544	545	546	547	548	549	550	551	552	553	554	555	556	557	558	559	560	561	562	563	564	565	566	567	568	569	570	571	572	573	574	575	576	577	578	579	580	581	582	583	584	585	586	587	588	589	590	591	592	593	594	595	596	597	598	599	600	601	602	603	604	605	606	607	608	609	610	611	612	613	614	615	616	617	618	619	620	621	622	623	624	625	626	627	628	629	630	631	632	633	634	635	636	637	638	639	640	641	642	643	644	645	646	647	648	649	650	651	652	653	654	655	656	657	658	659	660	661	662	663	664	665	666	667	668	669	670	671	672	673	674	675	676	677	678	679	680	681	682	683	684	685	686	687	688	689	690	691	692	693	694	695	696	697	698	699	700	701	702	703	704	705	706	707	708	709	710	711	712	713	714	715	716	717	718	719	720	721	722	723	724	725	726	727	728	729	730	731	732	733	734	735	736	737	738	739	740	741	742	743	744	745	746	747	748	749	750	751	752	753	754	755	756	757	758	759	760	761	762	763	764	765	766	767	768	769	770	771	772	773	774	775	776	777	778	779	780	781	782	783	784	785	786	787	788	789	790	791	792	793	794	795	796	797	798	799	800
------	-----	-----	-----	-----	-----	-----	-----	-----	-----	-----	-----	-----	-----	-----	-----	-----	-----	-----	-----	-----	-----	-----	-----	-----	-----	-----	-----	-----	-----	-----	-----	-----	-----	-----	-----	-----	-----	-----	-----	-----	-----	-----	-----	-----	-----	-----	-----	-----	-----	-----	-----	-----	-----	-----	-----	-----	-----	-----	-----	-----	-----	-----	-----	-----	-----	-----	-----	-----	-----	-----	-----	-----	-----	-----	-----	-----	-----	-----	-----	-----	-----	-----	-----	-----	-----	-----	-----	-----	-----	-----	-----	-----	-----	-----	-----	-----	-----	-----	-----	-----	-----	-----	-----	-----	-----	-----	-----	-----	-----	-----	-----	-----	-----	-----	-----	-----	-----	-----	-----	-----	-----	-----	-----	-----	-----	-----	-----	-----	-----	-----	-----	-----	-----	-----	-----	-----	-----	-----	-----	-----	-----	-----	-----	-----	-----	-----	-----	-----	-----	-----	-----	-----	-----	-----	-----	-----	-----	-----	-----	-----	-----	-----	-----	-----	-----	-----	-----	-----	-----	-----	-----	-----	-----	-----	-----	-----	-----	-----	-----	-----	-----	-----	-----	-----	-----	-----	-----	-----	-----	-----	-----	-----	-----	-----	-----	-----	-----	-----	-----	-----	-----	-----	-----	-----	-----	-----	-----	-----	-----	-----	-----	-----	-----	-----	-----	-----	-----	-----	-----	-----	-----	-----	-----	-----	-----	-----	-----	-----	-----	-----	-----	-----	-----	-----	-----	-----	-----	-----	-----	-----	-----	-----	-----	-----	-----	-----	-----	-----	-----	-----	-----	-----	-----	-----	-----	-----	-----	-----	-----	-----	-----	-----	-----	-----	-----	-----	-----	-----	-----	-----	-----	-----	-----	-----	-----	-----	-----	-----	-----	-----	-----	-----	-----	-----	-----	-----	-----	-----	-----	-----	-----	-----	-----	-----

I hereby certify that the plot herein attached is a correct one and that permanent monuments have been placed at the corners of the same and that the same is in accordance with the original plan of the same as shown on the records of the County of Adams and State of Missouri and that the same is in accordance with the records of the County of Adams and State of Missouri.

James J. Gorman, Surveyor, City of Denver, Colo.

COUNTY TREASURER'S CERTIFICATE

This is to certify that the amount of \$1000.00 has been received from the County of Adams, State of Missouri, for the purpose of the purchase of land in the County of Adams, State of Missouri, and that the same is in accordance with the records of the County of Adams and State of Missouri.

James J. Gorman, Treasurer, City of Denver, Colo.

REGISTERED OFFICE COUNTY OF ADAMS

Book of Records, 1000  
 Page 1000  
 Date 8/20/1924  
 Signature: James J. Gorman



Control of Records Development Co.  
 Charles B. ...  
 James J. Gorman

Notary Public  
 Charles B. ...  
 James J. Gorman

James J. Gorman, Surveyor, City of Denver, Colo.

Subdiv 7 1924

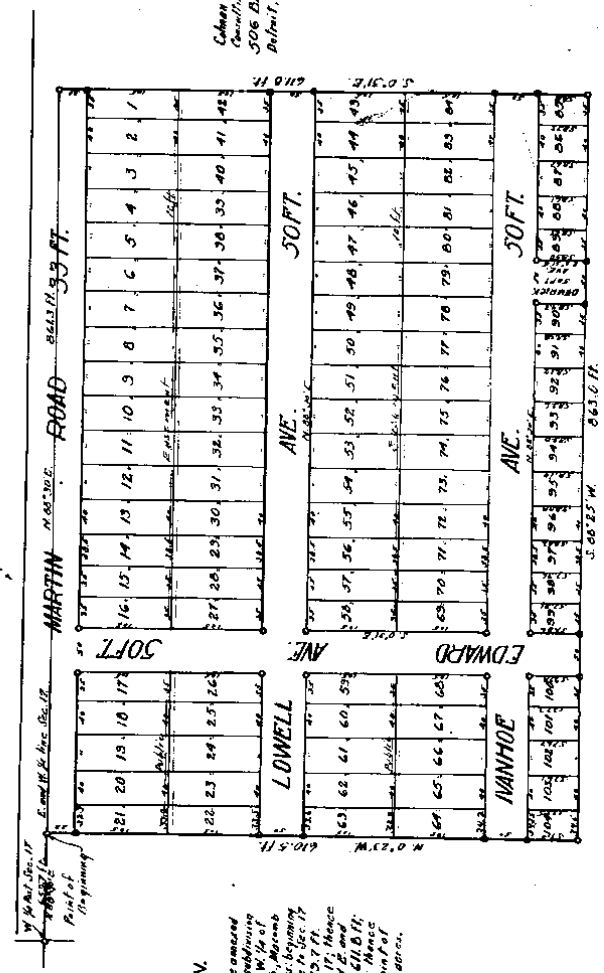
Feb 15-1924  
J. L. Keweenaw

# "TELICIAN MANDR"

A SUBDIVISION OF A PART  
OF THE N 1/2 OF THE S.W. 1/4 OF SEC. 17  
T. 1 N. R. 13 E., ERIN TWP., MALDEN CO.,  
MICH.

Scale 1" = 100' - 0"

NOTE: All dimensions in feet and decimals thereof.



### DESCRIPTION.

The land embraced in the aforesaid plat is the property of MALDEN CO., a subsidiary of T. I. N. R. 13 E., Erin Twp., Mich. It is described as follows: Beginning at a point on the E. and W. 1/4 line to Sec. 17, T. 1 N. R. 13 E., N. 80° 30' E. 653.7 ft. thence N. 82° 16' W. 1/4 part of said Sec. 17, thence W. 1/4 line, S. 61° 17' E. 100 ft. and thence S. 80° 25' W. 863.0 ft. to the point of beginning, containing 11.053 acres.

Chas. and Harding Inc.  
Contracting and Construction Eng'rs.  
306 Bankers Bldg.  
Detroit, Mich.  
Blair & Johnson  
7/7/1924



MANHOE	100	101	102	103	104	105	106	107	108	109	110	111	112	113	114	115	116	117	118	119	120	121	122	123	124	125	126	127	128	129	130	131	132	133	134	135	136	137	138	139	140	141	142	143	144	145	146	147	148	149	150	151	152	153	154	155	156	157	158	159	160	161	162	163	164	165	166	167	168	169	170	171	172	173	174	175	176	177	178	179	180	181	182	183	184	185	186	187	188	189	190	191	192	193	194	195	196	197	198	199	200
--------	-----	-----	-----	-----	-----	-----	-----	-----	-----	-----	-----	-----	-----	-----	-----	-----	-----	-----	-----	-----	-----	-----	-----	-----	-----	-----	-----	-----	-----	-----	-----	-----	-----	-----	-----	-----	-----	-----	-----	-----	-----	-----	-----	-----	-----	-----	-----	-----	-----	-----	-----	-----	-----	-----	-----	-----	-----	-----	-----	-----	-----	-----	-----	-----	-----	-----	-----	-----	-----	-----	-----	-----	-----	-----	-----	-----	-----	-----	-----	-----	-----	-----	-----	-----	-----	-----	-----	-----	-----	-----	-----	-----	-----	-----	-----	-----	-----	-----	-----	-----	-----

MANHOE AVE. 30 FT. 663.0 FT. 3.00 2.5 W.



KNOW ALL MEN BY THESE PRESENTS, that I, Frank S. Paine, of the County of Wayne, State of Michigan, do hereby certify that the following is a true and correct copy of the original of the same as the same appears in the files of the County Clerk of the County of Wayne, State of Michigan, to-wit:

Frank S. Paine  
April 22, 1924

STATE OF MICHIGAN  
 County of Wayne  
 Do hereby certify that the above is a true and correct copy of the original of the same as the same appears in the files of the County Clerk of the County of Wayne, State of Michigan.

Charles H. Burtin  
 County Clerk

IN WITNESS WHEREOF, I have hereunto set my hand and the seal of the County of Wayne, State of Michigan, this 22nd day of April, 1924.

Frank S. Paine  
April 22, 1924

IN WITNESS WHEREOF, I have hereunto set my hand and the seal of the County of Wayne, State of Michigan, this 22nd day of April, 1924.

Charles H. Burtin  
 County Clerk

RECORDED UNDER  
 COUNTY OF Wayne  
1120  
7  
1924  
April 22, 1924

COUNTY TREASURERS CERTIFICATE  
 This is to certify, That the above is a true and correct copy of the original of the same as the same appears in the files of the County Clerk of the County of Wayne, State of Michigan.

April 24, 1924  
Robert J. [Signature]  
 County Treasurer

IN WITNESS WHEREOF, I have hereunto set my hand and the seal of the County of Wayne, State of Michigan, this 24th day of April, 1924.

Robert J. [Signature]  
 County Treasurer

L-713

1923-15-1723

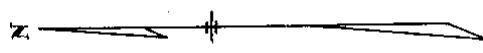
Walter J. Lehaer  
Reg. Civil Eng.  
Mt. Clemens, Mich.

# ELM GROVE SUBDIVISION - OF LOTS 18 & 19 OF CORBY SUBDIVISION OF THE WEST PART OF THE NE 1/4 OF SEC. 17, T. 1 N., R. 13 E., ERIN TWP., MACOMB CO., MICH.

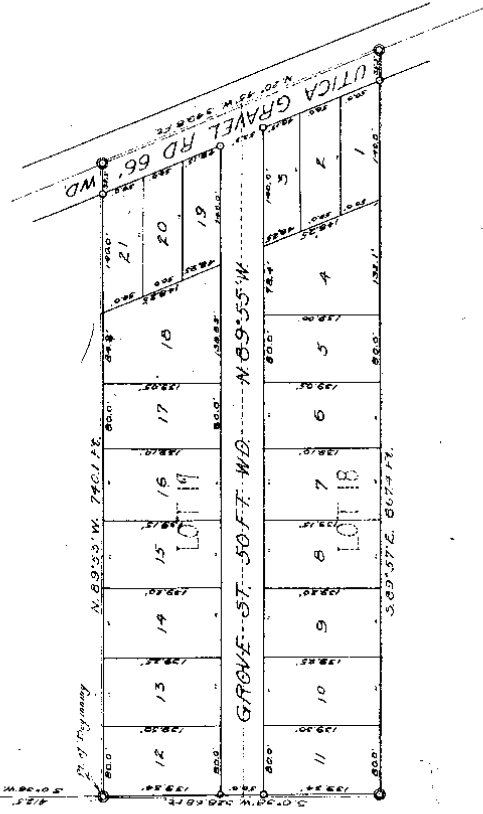
Walter J. Lehaer  
Reg. Civil Eng.  
Mt. Clemens, Mich.

N.W. 1/4 Sec. 17, T. 1 N., R. 13 E.  
Erin Twp., Macomb Co., Mich.

Scale 1 inch = 100 ft.



L. 7  
P. 17



Know all men by these presents, that Richard A. Hunt and  
Michael S. Hunt hereby certify and  
George S. Hunt as  
attestants, have caused the land embraced in the annexed  
plat to be surveyed, laid out and plotted, to be known as  
Elm Grove Subdivision of lots 18 & 19 of Corby  
and that the same are shown on said plat in  
accordance with the act of the Legislature,  
approved March 27, 1891, and amended.

State of Michigan  
County of Macomb  
On this 17th day of July, 1923,  
before me, a Notary Public in and for said County, personally  
came the aboves named Richard A. Hunt, it appeared  
Michael S. Hunt and George S. Hunt, known  
to me to be the persons who executed the above dis-  
position, and authorized the same to be hereunto set and legal.

Richard A. Hunt

See plat & map of plat 11268 page 416 & 417  
Subdivision to split lot 18 & 19 of Corby

ORIGINAL

came the above named tract to the above named person. It was known to me to be the person who executed the above deed, and acknowledged the same to be his free act and deed.

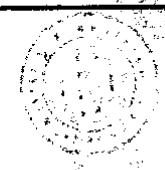
Mr. Commissioner Expires 1st day of July 1923 by 1923

This is to certify that the above plat was approved by the majority board of the Township of St. Louis

of St. Louis County, Missouri, at a meeting held this 17th day of October 1922 at St. Louis, Missouri.

Secretary of the Board of Supervisors

Secretary of the Board of Supervisors



SECRETARY'S OFFICE  
COUNTY OF MADISON  
Missouri  
Approved by Board this 17th day of October A. D. 1922 at St. Louis, Mo. and recorded in Liber 777 of Records on page 117  
August R. Whiting Secretary

I hereby certify that the plat hereon delineated is a correct one and that permanent monuments consisting of  $\frac{1}{2}$  x 18 inch iron stakes have been placed at points marked "a" as therein shown at all angles in the boundaries of the land platted and at all intersections of streets or alleys.

Nelson J. Johnson Reg. S.S.

Recreation of Land Plotted  
New land set apart in the original Plat of Eliza Greene Subdivision  
of lots 13 & 14 of Carroll Sub. of the west part of the NE  $\frac{1}{4}$  of  
Sec. 17, T. 14 N., R. 13 E., Franklin Town, Madison Co., Missouri  
is described as follows: Starting at the N  $\frac{1}{2}$  cor. of Sec. 17  
thence S 0° 30' W a distance of 42.5 ft. measured  
along the N  $\frac{1}{2}$  & line of Sec. 17, thence S 0° 58' W a dist.  
of 36.68 ft., thence S 89° 57' E a distance of 86.74 ft.  
to the E. of the so called Ulica Gravel Pit, thence N 20°  
45' W a distance of 345.6 ft. measured along  $\frac{1}{2}$  of Ulica  
Gravel Pit, thence N 89° 53' W a distance of 240.14 ft. to  
the point of beginning, being in all 3.79 acres more or  
less.

Sept 21, 1923  
Charles H. Hummingbird  
John C. Galt  
Sept 21, 1923

L.7 R.17

EXAMINED AND APPROVED

Date January 25, 1952

John B. Martin, Jr.  
AUDITOR GENERAL

By: *D.H. MacGregor*  
P.M. Engineer

# STIEBER'S RENAUD HILL SUB # 3

PART OF W 1/2 OF NW 1/4 OF SEC. 17 & PART OF  
NE 1/4 OF SEC. 18, T. 1 N., R. 13 E., VILLAGE OF ROSEVILLE  
MACOMB CO., MICHIGAN

Feb 2 3 20 PM '52

109501

SCALE - 1" = 150'

0 150 300

NOTE: All dimensions are in feet and decimals thereof.

WALTER J. LENNER & SONS  
CIVIL ENGINEERING & SURVEYING  
MT. CLEMENS, MICHIGAN

### SURVEYOR'S CERTIFICATE

I hereby certify that the plat hereon delineated is a correct one and that permanent metal monuments consisting of bars not less than one-half inch in diameter and 48 inches in length, incased in a concrete cylinder at least 4 inches in diameter and 48 inches in depth have been placed at points marked thus (O) as thereon shown at all angles in the boundaries of the land platted, at all intersections of streets, and at the intersections of streets with the boundaries of the plat as shown on said plat.

*John D. Lehner*  
John D. Lehner,  
Registered Land Surveyor,  
No. 5787.

### CERTIFICATE OF MUNICIPAL APPROVAL

This plat was approved by the Village Commission of the Village of Roseville, Macomb County, Michigan, at a meeting held *August 19*, 1952.

*Robert J. Nuyt*  
Robert J. Nuyt, Village Clerk

### CERTIFICATE OF APPROVAL BY COUNTY BOARD

This plat was approved on the *17* day of *November*, 1952, by the Macomb Co. Plat Board.

*Carson Bunn*  
Carson Bunn, Registrar of Deeds  
*Albert A. Wagner*  
Albert A. Wagner, County Clerk

TWELVE MILE RD. 120 WD.

293	294	295	296	297	298	299	300	301	302	303	304	305	306	307	308	309	310	311
312	313	314	315	316	317	318	319	320	321	322	323	324	325	326	327	328	329	330

SWELLINGTON AVE. 50' W.D.

ROAD

### DEDICATION

KNOW ALL MEN BY THESE PRESENTS, That we Metro Yetsko and Margaret Yetsko, his wife and the Gratiot Macomb Development Co., by J. Hesse, President and Florence D. Southeim, Secretary of Texas and the Stieber Realty Co., by Bruno A. Stieber, President and Harold Stieber, Secretary-Treasurer, have caused the land embraced in the annexed plat to be surveyed, laid out and platted to be known as "Stieber Renaud Hill Sub. # 3, part of the W. 1/2 of N. W. 1/4 of Section 17 and part of N. E. 1/4 of Section 18, T. 1 N., R. 13 E., Village of Roseville, Macomb County, Michigan, and that the streets as shown on said plat are hereby dedicated to the use of the public.

GRATIOT MACOMB DEVELOPMENT CO.

*Metro Yetsko*  
Metro Yetsko (L.S.)  
*Florence D. Southeim*  
Florence D. Southeim, Secy.-Treas.  
*Harold Stieber*  
Harold Stieber, Secy.-Treas.

STIEBER REALTY COMPANY

*Bruno A. Stieber*  
Bruno A. Stieber, President  
*Harold Stieber*  
Harold Stieber, Secy.-Treas.

### ACKNOWLEDGEMENT

STATE OF MICHIGAN )  
COUNTY OF MACOMB ) SS.

On this *17* day of *November*, 1952, before me,

*Building Restrictions for Sub. 3, 1952*

STATE OF MICHIGAN ) SS.  
COUNTY OF MACOMB )

On this 10th day of February, 1952, before me, a Notary Public in and for said county, personally appeared Metro Yeshko and Margaret Yeshko, his wife, known to me to be the persons who executed the above dedication, and acknowledged the same to be their free act and deed.

My Commission expires: Feb 26 1952  
Notary Public, Macomb County, Michigan.

On this 10th day of February, 1952, before me, a Notary Public in and for said county, personally appeared Hesse, and Florence D. Southcomb to me personally known to be the persons who executed the above dedication, and acknowledged the same to be their free act and deed.

My Commission expires: Feb 26 1952  
Notary Public, Macomb County, Michigan.

DESCRIPTION OF LAND PLAT  
The land embraced in the annexed plat of "Stieber Hill Sub. # 1" part of the W. 1/2 of N. W. 1/4 of Section 17 and part of Section 18, Township 37 N., R. 13 E., Village of Roseville, Macomb County, Michigan, as per plat following, commencing at the West Quarter Post in Section 17, 1/4 N. 1/4 E., and thence running N. 0°-55' W. 81.34 feet to the S. 89°-30' W. 133.0 feet; thence N. 0°-55' W. 2446.75 feet; thence S. 89°-30' W. 133.0 feet; thence N. 89°-30' W. 160.0 feet to the point of beginning.

REGISTER'S OFFICE  
County of Macomb, Michigan  
Received for Record  
This Instrument  
is Liberated  
on Payment of  
Fees  
\$ 1.00

309	360
310	361
311	362
312	363
313	364
314	365
315	366
316	367
317	368
318	369
319	370
320	371
321	372
322	373
323	374
324	375
325	376
326	377
327	378
328	379
329	380
330	381
331	382
332	383
333	384
334	385
335	386
336	387
337	388
338	389
339	390
340	391
341	392
342	393
343	394
344	395
345	396
346	397
347	398
348	399
349	400
350	401
351	402
352	403
353	404
354	405
355	406
356	407
357	408
358	409
359	410
360	411
361	412
362	413
363	414
364	415
365	416
366	417
367	418
368	419
369	420
370	421
371	422
372	423
373	424
374	425
375	426
376	427
377	428
378	429
379	430
380	431
381	432
382	433
383	434
384	435
385	436
386	437
387	438
388	439
389	440
390	441
391	442
392	443
393	444
394	445
395	446
396	447
397	448
398	449
399	450
400	451

Alphonse Wyckstendt, as proprietor, and Celina Wyckstendt, his wife, have caused the land embraced in the annexed plat to be surveyed, laid out and platted, to be known as "Stieber's Rapaud Hill Sub. # 1", part of W. 1/2 of N. W. 1/4 of Section 17 and part of N. E. 1/4 of Section 18, T. 37 N., R. 13 E., Village of Roseville, Macomb County, Michigan, and that the streets as shown on said plats are hereby dedicated to the use of the public.

Signed and Sealed in the presence of:  
Alphonse Wyckstendt (L.S.)  
Celina Wyckstendt (L.S.)

ACKNOWLEDGEMENT  
STATE OF MICHIGAN ) SS.  
COUNTY OF MACOMB )  
On this 10th day of February, 1952, before me, a Notary Public in and for said county, personally came the above named, Alphonse Wyckstendt and Celina Wyckstendt, his wife, known to me to be the persons who executed the above dedication and acknowledged the same to be their free act and deed.

My Commission expires: Feb 26 1952  
Notary Public in and for said Macomb County, Michigan.

REGISTER'S OFFICE  
County of Macomb, Michigan  
Received for Record  
This Instrument  
is Liberated  
on Payment of  
Fees  
\$ 1.00

# "STIEBER'S RENAUD HILL SUB 2"

PART OF W 1/2 OF NW 1/4 OF SEC. 17, T. 19 N., R. 13 E.  
VILLAGE OF ROSEVILLE,  
MACOMB CO., MICHIGAN

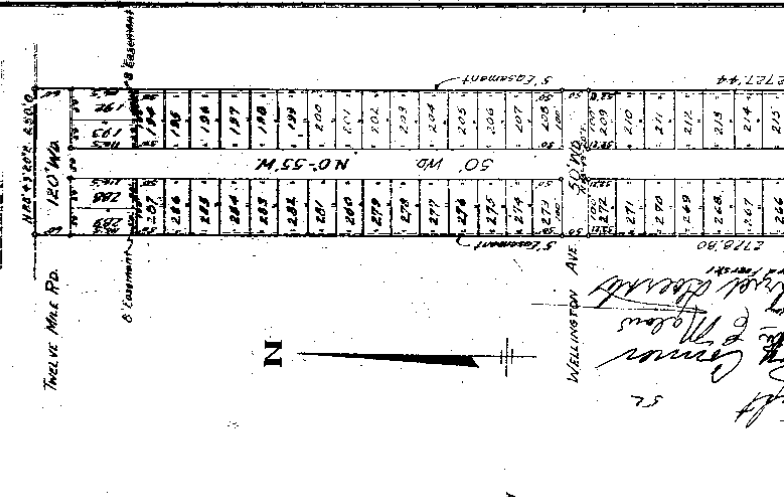
140525

REGISTERS OFFICE  
County of Macomb  
Received for Record this \_\_\_\_\_ day of \_\_\_\_\_  
1952  
at \_\_\_\_\_ o'clock P.M. and recorded  
in Liber \_\_\_\_\_ of \_\_\_\_\_  
at \_\_\_\_\_ o'clock \_\_\_\_\_ of \_\_\_\_\_

WALTER J. LEHNER & SONS  
CIVIL ENGINEERING & SURVEYING  
MT. CLEMENS, MICHIGAN

SCALE - 1/4" = 150'  
0 150 300  
NOTE: ALL DIMENSIONS ARE IN FEET AND DECIMALS THEREOF.

Examined and approved  
See Page 30, 1952  
*[Signature]*



### DEDICATION

KNOW ALL MEN BY THESE PRESENTS, That we Metro Yetsko and Margaret Yetsko, his wife, and the Gratiot Macomb Development Co., by Hugo I. Hesse, President and Florence D. Southcomb, Secretary-Treasurer, and the Stieber Realty Co., by Bruno A. Stieber, President, and Harold J. Stieber, Secretary-Treasurer, have caused the land embraced in the annexed plat to be surveyed, laid out and platted to be known as "Stieber Renaud Hill Sub. # 2", part of the W. 1/2 of N. W. 1/4 of Section 17, T. 19 N., R. 13 E., Village of Roseville, Macomb County, Michigan, and that the streets as shown on said plat are hereby dedicated to the use of the public.

GRATIOT MACOMB DEVELOPMENT CO.

*[Signature]*  
Hugo I. Hesse, President  
*[Signature]*  
Florence D. Southcomb, Secretary-Treasurer  
STIEBER REALTY CO.  
*[Signature]*  
Bruno A. Stieber, President  
*[Signature]*  
Harold J. Stieber, Secretary-Treasurer

*[Signature]*  
Metro Yetsko  
*[Signature]*  
Margaret Yetsko  
Signed and Seated in the presence of:  
*[Signature]*  
S. Marie Hesse  
*[Signature]*  
Helo B. Widmer

### ACKNOWLEDGMENT

STATE OF MICHIGAN ) SS.  
COUNTY OF MACOMB)  
On this 28th day of August, A. D., 1952, before me, a Notary Public in and for said county, personally came the above named Metro Yetsko and Margaret Yetsko, his wife, known to me to be the persons who executed the above dedication, and acknowledged the same to be their free act and deed.

My Commission expires:  
July 1955  
*[Signature]*  
Notary Public, in and for Macomb County, Mich.

### ACKNOWLEDGMENT

STATE OF MICHIGAN ) SS.  
COUNTY OF MACOMB)  
On this 28th day of August, A. D., 1952, before me, a Notary Public in and for said county, personally appeared Hugo I. Hesse and Bruno A. Stieber, respectively of the Gratiot Macomb Development Co., a corporation of Michigan, and Bruno A. Stieber and Harold J. Stieber, to me personally known, who being each by me duly sworn did say that they are the President and Secretary-Treasurer, respectively of the Gratiot Macomb Development Co., a corporation of Michigan and Bruno A. Stieber and Harold J. Stieber, to me personally known, who being each by me duly sworn did say that they are the President and Secretary-Treasurer, respectively of the Gratiot Macomb Development Co., a corporation of Michigan.

COUNTY OF MACOMB) SS.

On this 15th day of August, A. D. 1952, before me, a Notary Public in and for said county, personally appeared Hugo J. Hesse and George D. Southcomb to me personally known, who being each by me duly sworn did say that they are the President and Secretary-Treasurer, respectively of the Gratrot Macomb Development Co., a corporation of Michigan and Bruno A. Stieber and Harold J. Stieber, to me personally known, who being each by me duly sworn did say that they are the President and Secretary-Treasurer, respectively of the Stieber Realty Co., a corporation of Michigan, and that the seals affixed to said instrument are the corporate seals of said corporations and that said instrument was signed and sealed in behalf of said corporations by authority of its Boards of Directors and the said Hugo J. Hesse, Florence D. Southcomb, Bruno A. Stieber and Harold J. Stieber acknowledged said instrument to be the free act and deed of said corporations.

My Commission expires: February 23, 1957

Hugo J. Hesse  
Notary Public, in and for Macomb Co., Mich.

DESCRIPTION OF LAND PLATTED

The land embraced in the annexed plat of "Stieber's Renaud Hill Sub. # 2", part of W. 1/2 of N. W. 1/4 of Section 17, T. 1 N., R. 13 E., Village of Roseville, Macomb County, Michigan is described as follows: Commencing at a point 160.0 feet N. 88°-30'-30" E. of the West Quarter Post of said Section 17 and thence extending N. 0°-55' W. 2728.80 feet; thence N. 88°-40'-20" E. 250.0 feet; thence S. 0°-55' E. 2727.44 feet; thence S. 88°-30'-30" W. 250.0 feet to the point of beginning.

SURVEYOR'S CERTIFICATE

I hereby certify that the plat hereon delineated is a correct one and that permanent metal monuments consisting of bars not less than one-half inch in diameter and 48 inches in length enclosed in a concrete cylinder at least 4 inches in diameter and 48 inches in depth have been placed at points marked thus (O) as thereon shown at all angles in the boundaries of the land platted, at all intersections of streets, and at the intersections of streets with the boundaries of the plat as shown on said plat.

John D. Lehner  
Registered Land Surveyor,  
No. 5787.

CERTIFICATE OF MUNICIPAL APPROVAL

This plat was approved by the Village Commission of the Village of Roseville, Macomb County, Michigan, at a meeting held August 7, 1952.

Robert J. Nunn  
Village Clerk

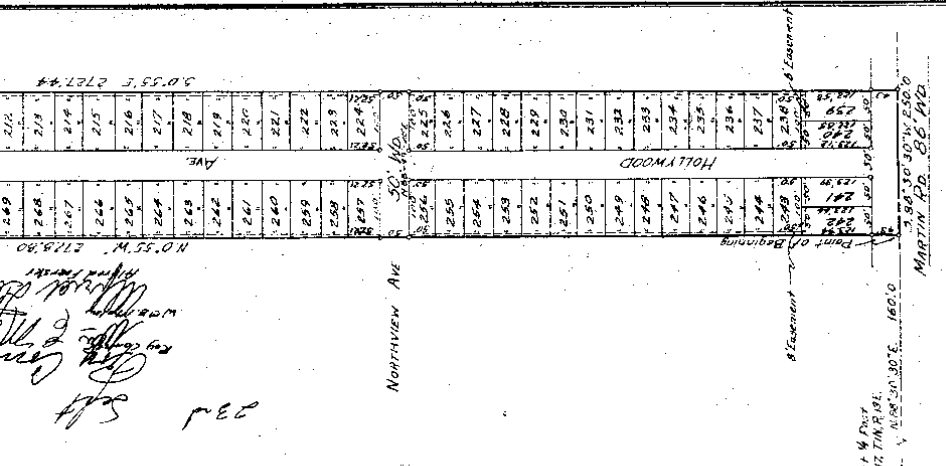
CERTIFICATE OF APPROVAL BY COUNTY BOARD

This plat was approved on the 15th day of August, 1952, by the Macomb County Plat Board.

Aaron Burr, Register of Deeds  
Frank E. Loch, County Treasurer

THIS IS TO CERTIFY THAT THE PLAT HEREON DELINEATED IS A CORRECT ONE AND THAT PERMANENT METAL MONUMENTS CONSISTING OF BARS NOT LESS THAN ONE-HALF INCH IN DIAMETER AND 48 INCHES IN LENGTH ENCLOSED IN A CONCRETE CYLINDER AT LEAST 4 INCHES IN DIAMETER AND 48 INCHES IN DEPTH HAVE BEEN PLACED AT POINTS MARKED THUS (O) AS THEREON SHOWN AT ALL ANGLES IN THE BOUNDARIES OF THE LAND PLATTED, AT ALL INTERSECTIONS OF STREETS, AND AT THE INTERSECTIONS OF STREETS WITH THE BOUNDARIES OF THE PLAT AS SHOWN ON SAID PLAT.

FILED FOR RECORD IN THE OFFICE OF THE REGISTER OF DEEDS, COUNTY OF MACOMB, MICHIGAN, ON AUGUST 15, 1952, AT 10:15 A.M.



L. 27 P. 26

ORIGINAL

# "STIEBER'S RENAUD HILL SUB # 1"

PART OF W 1/2 OF NW 1/4 OF SEC. 17, T. 1 N., R. 13 E.  
VILLAGE OF ROSEVILLE,  
MACOMB CO., MICHIGAN

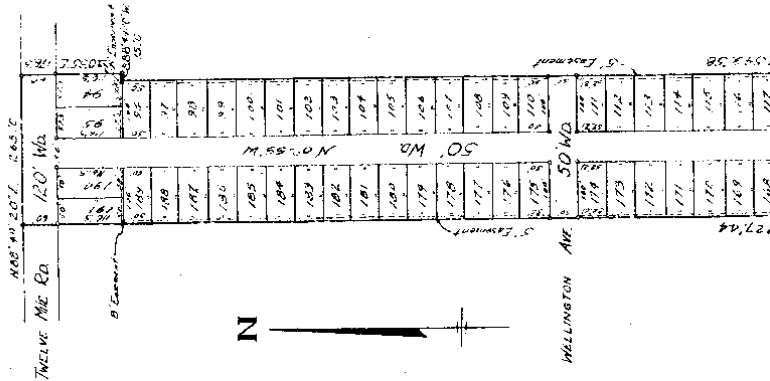
117514

SCALE - 1"=50'



NOTE: ALL DIMENSIONS ARE IN FEET AND DECIMALS THEREOF

WALTER J. LEHNER & SONS  
CIVIL ENGINEERING & SURVEYING  
MT. CLEMENS, MICHIGAN



### DEDICATION

KNOW ALL MEN BY THESE PRESENTS, That we the Gratiot Macomb Development a Michigan Corporation by Hugo J. Hesse, President and Florence D. Southcomb, Secretary-Treasurer, and the Stieber Realty Company, a Michigan Corporation by Bruno A. Stieber, President and Harold J. Stieber, Secretary-Treasurer, as proprietors, have caused the land embraced in the annexed plat to be surveyed, laid out and platted to be known as, "Stieber's Renaud Hill Sub. #1", Part of W. 1/2 of N. W. 1/4 of Section 17, T. 1 N., R. 13 E., Village of Roseville, Macomb County, Michigan, and that the streets as shown on said plat are hereby dedicated to the use of the public.

GRATIOT MACOMB DEVELOPMENT CO.

*Hugo J. Hesse*  
Hugo J. Hesse - President  
*Florence D. Southcomb*  
Florence D. Southcomb - Secretary-Treasurer

Signed and Sealed in the Presence of:

*Walter J. Lehner*  
Walter J. Lehner  
*Vinla B. Widmer*  
Vinla B. Widmer

STIEBER REALTY COMPANY

*Bruno A. Stieber*  
Bruno A. Stieber - President  
*Harold J. Stieber*  
Harold J. Stieber - Secretary-Treasurer

### ACKNOWLEDGMENT

STATE OF MICHIGAN )  
COUNTY OF MACOMB ) SS.

On this 19th day of July, 1952, before me, a Notary Public in and for said county appeared Hugo J. Hesse and Florence D. Southcomb, to me personally known, who being each by me duly sworn did say that they are the President and Secretary-Treasurer, respectively of the Gratiot Macomb Development Co., a corporation of Michigan and Bruno A. Stieber and Harold J. Stieber to me personally known who being each by me duly sworn did say that they are the President and Secretary-Treasurer, respectively of the Stieber Realty Co., a corporation of Michigan, and that the seals affixed to said instruments are the corporate seals of said corporations and that said instrument was signed and sealed in behalf of said corporations by authority of its Boards of Directors and the said Hugo J. Hesse, Florence D. Southcomb, Bruno A. Stieber and Harold J. Stieber acknowledged said instrument to be the free act and deed of said corporations.

My Commission expires:

February 26, 1957

*John B. Widmer*  
John B. Widmer  
Notary Public, in and for Macomb County,  
Michigan.

RECORDATION OF LAND PLATTED



Commission Expires

February 26, 1952

Notary Public, in and for Macomb County, Michigan.

DESCRIPTION OF LAND PLATTED

The land embrace in the annexed plat of "Stieber's Renaud Hill Sub. # 1", Part of the W. 1/2 of N. W. 1/4 of Section 17, T. 1 N., R. 13 E., Village of Roseville, Macomb County, Michigan is described as follows: Commencing at a point 410.0 feet N. 88°-30'-30" E. of the West Quarter Post of said Section 17; T. 1 N., R. 13 E., and thence extending N. 0°-55' W. 2727.44 feet; thence N. 88°-49'-20" E. 265.0 feet; thence S. 88°-49'-20" W. 131.0 feet; thence S. 0°-55' E. 2549.58 feet; thence S. 88°-30'-30" W. 250.0 feet to the point of beginning.

CERTIFICATE OF MUNICIPAL APPROVAL

This plat was approved by the Village Commission of the Village of Roseville, Macomb County, Michigan, at a meeting held on the 14th day of August, 1952.

Robert J. Nunn, Village Clerk

CERTIFICATE OF APPROVAL BY COUNTY BOARD

A. D., 1952.

Albert A. Wagner - County Clerk  
Frank E. Lohr - Drain Commissioner

This plat was approved on the 14th day of August, 1952.

Aaron Burr - Register of Deeds  
James W. H. H. - County Treasurer

SURVEYOR'S CERTIFICATE

I hereby certify that the plat hereon delineated is a correct one and that permanent metal monuments consisting of bars not less than one-half in diameter and 48 inches in length encased in a concrete cylinder at least 4 inches in diameter and 48 inches in depth have been placed at points marked thus (O) as thereon shown at all angles in the boundaries of the land platted, at all intersection of streets and at the intersections of streets with the boundaries of the plat as shown on said plat.

John D. Lehner, Registered Land Surveyor, No. 5787.

REGISTRY'S OFFICE

County of Macomb  
Received for Record this 29th day of August, A. D. 1952, at 1:57 P. M. and is filed on Page 18

THIS PLAT HAS BEEN FILED IN THE REGISTER'S OFFICE AND FOR THE PURPOSES OF THE ACTS OF MARCH 27, 1899 AND MARCH 2, 1907, IS DEEMED TO BE A VALID RECORD OF THE PLAT OF THE PART OF THE VILLAGE OF ROSEVILLE, MACOMB COUNTY, MICHIGAN, AS SHOWN ON SAID PLAT, AND TO BE SUBJECT TO THE PROVISIONS OF THE ACTS OF MARCH 27, 1899 AND MARCH 2, 1907.

Examined and Approved

Maime Jarrell Purdy, Deputy Auditor General

MAINE JARRELL PURDY

505 50 00' W. 250.0'

505 50 00' W. 250.0'

MARTIN RD - 86.140'

171	174	177	180	183	186	189	192	195	198	201	204	207	210	213	216	219	222	225	228	231	234	237	240	243	246	249	252	255	258	261	264	267	270	273	276	279	282	285	288	291	294	297	300	303	306	309	312	315	318	321	324	327	330	333	336	339	342	345	348	351	354	357	360	363	366	369	372	375	378	381	384	387	390	393	396	399	402	405	408	411	414	417	420	423	426	429	432	435	438	441	444	447	450	453	456	459	462	465	468	471	474	477	480	483	486	489	492	495	498	501	504	507	510	513	516	519	522	525	528	531	534	537	540	543	546	549	552	555	558	561	564	567	570	573	576	579	582	585	588	591	594	597	600	603	606	609	612	615	618	621	624	627	630	633	636	639	642	645	648	651	654	657	660	663	666	669	672	675	678	681	684	687	690	693	696	699	702	705	708	711	714	717	720	723	726	729	732	735	738	741	744	747	750	753	756	759	762	765	768	771	774	777	780	783	786	789	792	795	798	801	804	807	810	813	816	819	822	825	828	831	834	837	840	843	846	849	852	855	858	861	864	867	870	873	876	879	882	885	888	891	894	897	900	903	906	909	912	915	918	921	924	927	930	933	936	939	942	945	948	951	954	957	960	963	966	969	972	975	978	981	984	987	990	993	996	999	1002	1005	1008	1011	1014	1017	1020	1023	1026	1029	1032	1035	1038	1041	1044	1047	1050	1053	1056	1059	1062	1065	1068	1071	1074	1077	1080	1083	1086	1089	1092	1095	1098	1101	1104	1107	1110	1113	1116	1119	1122	1125	1128	1131	1134	1137	1140	1143	1146	1149	1152	1155	1158	1161	1164	1167	1170	1173	1176	1179	1182	1185	1188	1191	1194	1197	1200	1203	1206	1209	1212	1215	1218	1221	1224	1227	1230	1233	1236	1239	1242	1245	1248	1251	1254	1257	1260	1263	1266	1269	1272	1275	1278	1281	1284	1287	1290	1293	1296	1299	1302	1305	1308	1311	1314	1317	1320	1323	1326	1329	1332	1335	1338	1341	1344	1347	1350	1353	1356	1359	1362	1365	1368	1371	1374	1377	1380	1383	1386	1389	1392	1395	1398	1401	1404	1407	1410	1413	1416	1419	1422	1425	1428	1431	1434	1437	1440	1443	1446	1449	1452	1455	1458	1461	1464	1467	1470	1473	1476	1479	1482	1485	1488	1491	1494	1497	1500	1503	1506	1509	1512	1515	1518	1521	1524	1527	1530	1533	1536	1539	1542	1545	1548	1551	1554	1557	1560	1563	1566	1569	1572	1575	1578	1581	1584	1587	1590	1593	1596	1599	1602	1605	1608	1611	1614	1617	1620	1623	1626	1629	1632	1635	1638	1641	1644	1647	1650	1653	1656	1659	1662	1665	1668	1671	1674	1677	1680	1683	1686	1689	1692	1695	1698	1701	1704	1707	1710	1713	1716	1719	1722	1725	1728	1731	1734	1737	1740	1743	1746	1749	1752	1755	1758	1761	1764	1767	1770	1773	1776	1779	1782	1785	1788	1791	1794	1797	1800	1803	1806	1809	1812	1815	1818	1821	1824	1827	1830	1833	1836	1839	1842	1845	1848	1851	1854	1857	1860	1863	1866	1869	1872	1875	1878	1881	1884	1887	1890	1893	1896	1899	1902	1905	1908	1911	1914	1917	1920	1923	1926	1929	1932	1935	1938	1941	1944	1947	1950	1953	1956	1959	1962	1965	1968	1971	1974	1977	1980	1983	1986	1989	1992	1995	1998	2001	2004	2007	2010	2013	2016	2019	2022	2025	2028	2031	2034	2037	2040	2043	2046	2049	2052	2055	2058	2061	2064	2067	2070	2073	2076	2079	2082	2085	2088	2091	2094	2097	2100	2103	2106	2109	2112	2115	2118	2121	2124	2127	2130	2133	2136	2139	2142	2145	2148	2151	2154	2157	2160	2163	2166	2169	2172	2175	2178	2181	2184	2187	2190	2193	2196	2199	2202	2205	2208	2211	2214	2217	2220	2223	2226	2229	2232	2235	2238	2241	2244	2247	2250	2253	2256	2259	2262	2265	2268	2271	2274	2277	2280	2283	2286	2289	2292	2295	2298	2301	2304	2307	2310	2313	2316	2319	2322	2325	2328	2331	2334	2337	2340	2343	2346	2349	2352	2355	2358	2361	2364	2367	2370	2373	2376	2379	2382	2385	2388	2391	2394	2397	2400	2403	2406	2409	2412	2415	2418	2421	2424	2427	2430	2433	2436	2439	2442	2445	2448	2451	2454	2457	2460	2463	2466	2469	2472	2475	2478	2481	2484	2487	2490	2493	2496	2499	2502	2505	2508	2511	2514	2517	2520	2523	2526	2529	2532	2535	2538	2541	2544	2547	2550	2553	2556	2559	2562	2565	2568	2571	2574	2577	2580	2583	2586	2589	2592	2595	2598	2601	2604	2607	2610	2613	2616	2619	2622	2625	2628	2631	2634	2637	2640	2643	2646	2649	2652	2655	2658	2661	2664	2667	2670	2673	2676	2679	2682	2685	2688	2691	2694	2697	2700	2703	2706	2709	2712	2715	2718	2721	2724	2727	2730	2733	2736	2739	2742	2745	2748	2751	2754	2757	2760	2763	2766	2769	2772	2775	2778	2781	2784	2787	2790	2793	2796	2799	2802	2805	2808	2811	2814	2817	2820	2823	2826	2829	2832	2835	2838	2841	2844	2847	2850	2853	2856	2859	2862	2865	2868	2871	2874	2877	2880	2883	2886	2889	2892	2895	2898	2901	2904	2907	2910	2913	2916	2919	2922	2925	2928	2931	2934	2937	2940	2943	2946	2949	2952	2955	2958	2961	2964	2967	2970	2973	2976	2979	2982	2985	2988	2991	2994	2997	3000
-----	-----	-----	-----	-----	-----	-----	-----	-----	-----	-----	-----	-----	-----	-----	-----	-----	-----	-----	-----	-----	-----	-----	-----	-----	-----	-----	-----	-----	-----	-----	-----	-----	-----	-----	-----	-----	-----	-----	-----	-----	-----	-----	-----	-----	-----	-----	-----	-----	-----	-----	-----	-----	-----	-----	-----	-----	-----	-----	-----	-----	-----	-----	-----	-----	-----	-----	-----	-----	-----	-----	-----	-----	-----	-----	-----	-----	-----	-----	-----	-----	-----	-----	-----	-----	-----	-----	-----	-----	-----	-----	-----	-----	-----	-----	-----	-----	-----	-----	-----	-----	-----	-----	-----	-----	-----	-----	-----	-----	-----	-----	-----	-----	-----	-----	-----	-----	-----	-----	-----	-----	-----	-----	-----	-----	-----	-----	-----	-----	-----	-----	-----	-----	-----	-----	-----	-----	-----	-----	-----	-----	-----	-----	-----	-----	-----	-----	-----	-----	-----	-----	-----	-----	-----	-----	-----	-----	-----	-----	-----	-----	-----	-----	-----	-----	-----	-----	-----	-----	-----	-----	-----	-----	-----	-----	-----	-----	-----	-----	-----	-----	-----	-----	-----	-----	-----	-----	-----	-----	-----	-----	-----	-----	-----	-----	-----	-----	-----	-----	-----	-----	-----	-----	-----	-----	-----	-----	-----	-----	-----	-----	-----	-----	-----	-----	-----	-----	-----	-----	-----	-----	-----	-----	-----	-----	-----	-----	-----	-----	-----	-----	-----	-----	-----	-----	-----	-----	-----	-----	-----	-----	-----	-----	-----	-----	-----	-----	-----	-----	-----	-----	-----	-----	-----	-----	-----	-----	-----	-----	-----	-----	-----	-----	-----	-----	-----	-----	-----	-----	-----	-----	-----	-----	-----	-----	-----	-----	------	------	------	------	------	------	------	------	------	------	------	------	------	------	------	------	------	------	------	------	------	------	------	------	------	------	------	------	------	------	------	------	------	------	------	------	------	------	------	------	------	------	------	------	------	------	------	------	------	------	------	------	------	------	------	------	------	------	------	------	------	------	------	------	------	------	------	------	------	------	------	------	------	------	------	------	------	------	------	------	------	------	------	------	------	------	------	------	------	------	------	------	------	------	------	------	------	------	------	------	------	------	------	------	------	------	------	------	------	------	------	------	------	------	------	------	------	------	------	------	------	------	------	------	------	------	------	------	------	------	------	------	------	------	------	------	------	------	------	------	------	------	------	------	------	------	------	------	------	------	------	------	------	------	------	------	------	------	------	------	------	------	------	------	------	------	------	------	------	------	------	------	------	------	------	------	------	------	------	------	------	------	------	------	------	------	------	------	------	------	------	------	------	------	------	------	------	------	------	------	------	------	------	------	------	------	------	------	------	------	------	------	------	------	------	------	------	------	------	------	------	------	------	------	------	------	------	------	------	------	------	------	------	------	------	------	------	------	------	------	------	------	------	------	------	------	------	------	------	------	------	------	------	------	------	------	------	------	------	------	------	------	------	------	------	------	------	------	------	------	------	------	------	------	------	------	------	------	------	------	------	------	------	------	------	------	------	------	------	------	------	------	------	------	------	------	------	------	------	------	------	------	------	------	------	------	------	------	------	------	------	------	------	------	------	------	------	------	------	------	------	------	------	------	------	------	------	------	------	------	------	------	------	------	------	------	------	------	------	------	------	------	------	------	------	------	------	------	------	------	------	------	------	------	------	------	------	------	------	------	------	------	------	------	------	------	------	------	------	------	------	------	------	------	------	------	------	------	------	------	------	------	------	------	------	------	------	------	------	------	------	------	------	------	------	------	------	------	------	------	------	------	------	------	------	------	------	------	------	------	------	------	------	------	------	------	------	------	------	------	------	------	------	------	------	------	------	------	------	------	------	------	------	------	------	------	------	------	------	------	------	------	------	------	------	------	------	------	------	------	------	------	------	------	------	------	------	------	------	------	------	------	------	------	------	------	------	------	------	------	------	------	------	------	------	------	------	------	------	------	------	------	------	------	------	------	------	------	------	------	------	------	------	------	------	------	------	------	------	------	------	------	------	------	------	------	------	------	------	------	------	------	------	------	------	------	------	------	------	------	------	------	------	------	------	------	------	------	------	------	------	------	------	------	------	------	------	------	------	------	------	------	------	------	------	------	------	------	------	------	------	------	------	------	------	------	------	------	------	------	------	------	------	------	------	------	------	------	------	------	------	------	------	------	------	------	------	------	------	------	------	------	------	------	------	------	------	------	------	------	------	------	------	------	------	------	------	------	------	------	------	------	------	------	------	------	------	------	------	------	------	------	------	------	------	------	------	------	------	------	------	------	------	------	------	------	------	------	------	------	------	------	------	------	------	------	------	------	------	------	------	------	------	------	------	------	------	------	------	------	------	------	------	------	------	------	------	------	------	------	------	------	------	------	------	------	------

L.27 P.18

Confirmation of Plat No. 899 of Book AP, p. 247

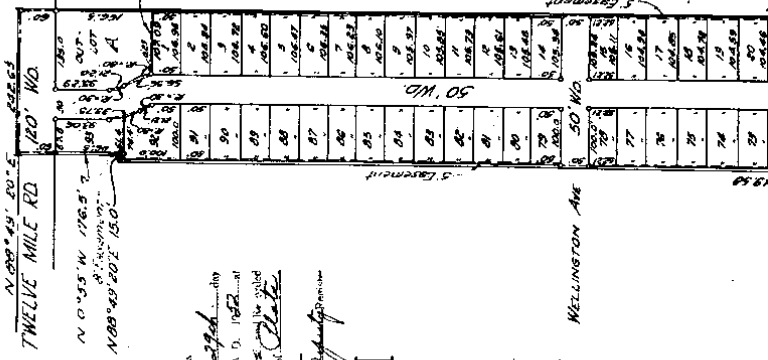
107882

# "STIEBER'S RENAUD HILL SUB"

## PART OF W 1/2 OF NW 1/4 OF SEC. 17, T. 11 N., R. 13 E., VILLAGE OF ROSEVILLE, MACOMB COUNTY, MICHIGAN.

MAY 23 10 03 AM '52

SCALE 1" = 100'  
100' 000'  
NOTE: ALL DIMENSIONS ARE IN FEET AND DECIMALS THEREOF.



WALTER J. LENNER & SONS  
Civil Engineering & Surveying  
101 Citizens, Michigan

KNOW ALL MEN BY THESE PRESENTS, That we, Joseph L. Mitchell and Angeline C. Mitchell his wife, and Metro Yeteko and Margaret Yeteko, his wife, and the Gratiot Macomb Development Co., by Hugo J. Messer, President and Florence D. Southcomb, Secretary-Treasurer, and the Stieber Realty Company, by Bruno A. Stieber, President, have caused the land embraced in the annexed plat to be surveyed, laid out and platted to be known as "Stieber's Renaud Hill Sub."

Part of W. 1/2 of N. W. 1/4 of Sec. 17 T. 11 N., R. 13 E., Village of Roseville, Macomb Co., Michigan, and that the streets as shown on said plat are hereby dedicated to the use of the public.

WITNESSES:

Joseph L. Mitchell  
Angeline C. Mitchell  
Metro Yeteko  
Margaret Yeteko  
Hugo J. Messer  
Florence D. Southcomb  
Bruno A. Stieber

STATE OF MICHIGAN )  
COUNTY OF MACOMB ) SS.

On this 18th day of May, 1951, before me a Notary Public in and for said County, personally came the above named Joseph L. Mitchell, and Angeline C. Mitchell, his wife and Metro Yeteko, his wife, known to me to be the persons who executed the above dedication, and acknowledged the same to be their free act and deed.

My Commission expires

July 21, 1951

STATE OF MICHIGAN )

Examined and Approved

Notary Public, in and for Macomb County, Michigan

July 19, 1951

STATE OF MICHIGAN )

Examined and Approved

Notary Public, in and for Macomb County, Michigan

July 19, 1951

STATE OF MICHIGAN )

Examined and Approved

Notary Public, in and for Macomb County, Michigan

July 19, 1951

STATE OF MICHIGAN )

Examined and Approved

Notary Public, in and for Macomb County, Michigan

July 19, 1951

STATE OF MICHIGAN )

Examined and Approved

Notary Public, in and for Macomb County, Michigan

July 19, 1951

STATE OF MICHIGAN )

Examined and Approved

Notary Public, in and for Macomb County, Michigan

July 19, 1951

STATE OF MICHIGAN )

Examined and Approved

Notary Public, in and for Macomb County, Michigan

July 19, 1951

STATE OF MICHIGAN )

Examined and Approved

Notary Public, in and for Macomb County, Michigan

July 19, 1951

STATE OF MICHIGAN )

Examined and Approved

Notary Public, in and for Macomb County, Michigan

July 19, 1951

STATE OF MICHIGAN )

Examined and Approved

Notary Public, in and for Macomb County, Michigan

July 19, 1951

STATE OF MICHIGAN )

Examined and Approved

Notary Public, in and for Macomb County, Michigan

July 19, 1951

STATE OF MICHIGAN )

Examined and Approved

Notary Public, in and for Macomb County, Michigan

July 19, 1951

STATE OF MICHIGAN )

Examined and Approved

Notary Public, in and for Macomb County, Michigan

July 19, 1951

My Commission expires Feb. 25, 1911

Examined and Approved  
*Wm. E. Malow*  
 Notary Public, in and for  
 Macomb County, Michigan

STATE OF MICHIGAN )  
 COUNTY OF MACOMB ) SS.

On this 10th day of April, 1911, before me, a Notary Public in and for said County, personally appeared Hugo J. Hesse and Florence D. Southcomb to me personally known, who being each by the duly sworn a corporation of Michigan and Bruno A. Steiber, to me personally known, who being by me duly sworn did say he is the President of the Stieber Realty Company, a corporation of Michigan, and that the estate affixed to said instrument are the corporate seals of said corporations and that said instrument was signed and sealed in behalf and Bruno A. Steiber acknowledged said instrument to be the free act and deed of said corporations.

My Commission expires  
Feb. 25, 1911  
 Notary Public, in and for  
 Macomb County, Michigan

**SURVEYOR'S CERTIFICATE**

I hereby certify that the plat hereon delineated is a correct one and that permanent metal monuments consisting of pipes not less than one-half inch in diameter and 48 inches in length encased in a concrete cylinder of four inches in diameter and 48 inches in depth have been placed at points marked thus (\*) as thereon shown at all angles in the boundaries of the land platted, at all the intersections of streets, and at the intersections of streets with the boundaries of the plat as shown on said plat.

**DESCRIPTION OF LAND PLATTED**

Land embraced in the annexed plat of "Stieber Remand Hill Sub." part of W. 1/4 of N. W. 1/4 of Sec. 17, T. 1N. R. 13 E., Village of Roseville, Macomb County, Michigan and is described as follows:

Commencing at a point 659.89 feet N. 88°-30'-30" E. of the West quarter post of said Sec. 17, and thence extending N. 0°-55' W. 2549.58 feet; thence M. 88°-49'-20" E. 15.0 feet; thence N. 0°-55' W. 176.50 feet; thence N. 88°-49'-20" E. 242.65 feet; thence S. 0°-46'-28" E. 2724.71 feet; thence S. 88°-30'-30" W. 250.91 feet to the point of beginning.

**CERTIFICATE OF APPROVAL BY BOARD OF COUNTY ROAD COMMISSIONERS**

This plat has been examined and was approved on the 10th day of April, 1911 by the Macomb County Board of Road Commissioners.

*Wm. E. Malow*  
 Wm. E. Malow - Chairman

*Alfred Bassler*  
 Alfred Bassler - Member

**CERTIFICATE OF MUNICIPAL APPROVAL**

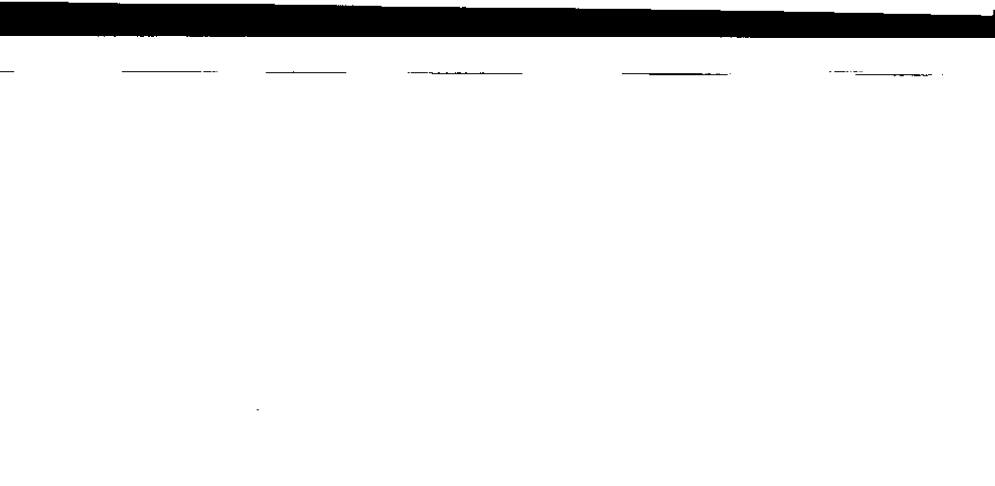
This plat was approved by the Village Commission of the Village of Roseville at a meeting held April 10th, 1911.

*Howard S. Cochran*  
 Howard S. Cochran  
 Village Clerk

THIS IS TO CERTIFY THAT THIS IS THE TRUE AND CORRECT COPY OF THE ORIGINAL AND THAT THIS COPY IS TRUE AND CORRECT AS TO THE CONTENTS OF THE ORIGINAL. IN WITNESS WHEREOF I HAVE HEREUNTO SET MY HAND AND SEAL OF OFFICE AT ROSEVILLE, MICHIGAN, THIS 10TH DAY OF APRIL, 1911.

*Wm. E. Malow*  
 Wm. E. Malow - Chairman

*Alfred Bassler*  
 Alfred Bassler - Member

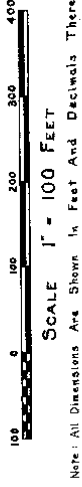


ORIGINAL

**DICKERSON SUBDIVISION**

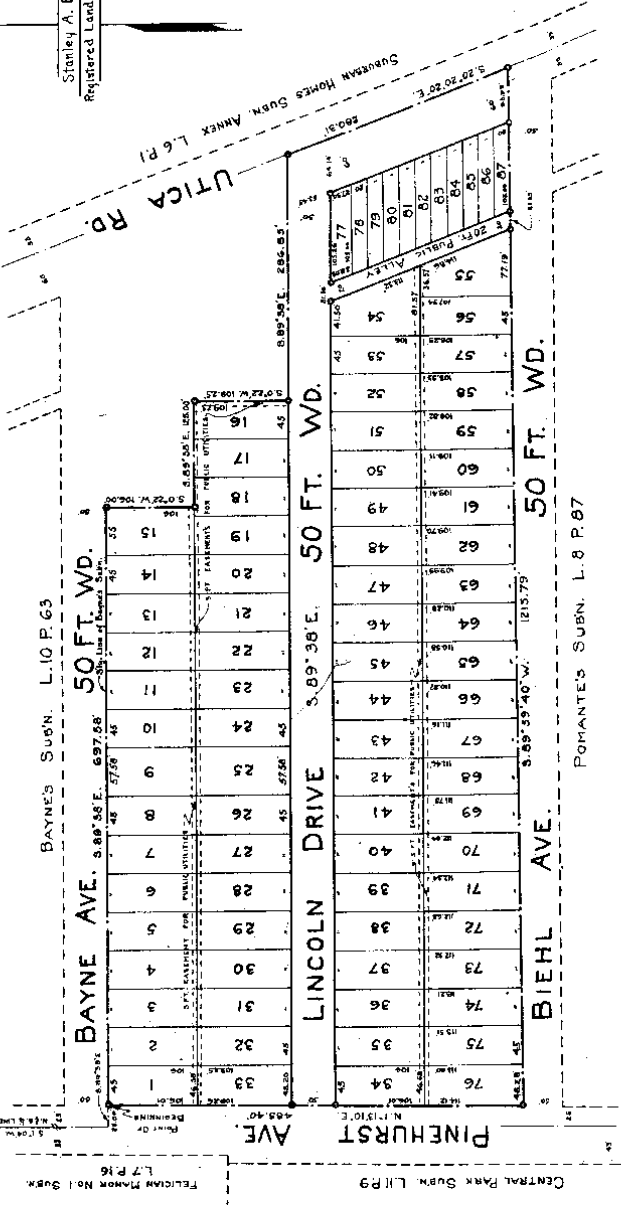
OF PART OF THE N.E. ¼ SECTION 17, T.1, N.R.13, E.  
VILLAGE OF ROSEVILLE - MACOMB COUNTY-MICHIGAN

65205  
69 51 AM 19  
REGISTERS SERVICE  
County of Macomb  
MAR 13 1954  
Received for Record  
Liberty and Bonded  
of  
L.S.A. Clerk of Court  
of  
Liberty and Bonded  
of



Stanley A. Bogd  
Registered Land Surveyor

N. ½ CORNER SECTION 17, T.1, N.13, E.  
BAYNE AVENUE, S. 89° 58' E., 697.68' (Line of Town Subn.)



DEDICATION.  
Know all men by these presents, that we, August H. Peters and

SURVEYORS CERTIFICATE.  
Know all men by these presents, that we, August H. Peters and

PAGE 28  
LIBER 25

Under File 205

**SURVEYORS CERTIFICATE.**

I hereby certify that the plat herein delineated is a correct one and that permanent metal monuments consisting of bars and iron, one-half inch in diameter, and 48 inches in length, or shorter bars of not less than one-half inch in diameter heaped over each other at least 6 inches with an overall length of not less than 48 inches, have been placed at the corners of the land embraced in the annexed plat to be surveyed, laid out, and platted and to be known as "Dickerson Subdivision of part of Section 17, T.14.R.15.E. Village of Roseville - Macomb County - Michigan" and that the streets and alleys, and at the intersections of streets and alleys with the boundaries of the plat as shown on said plat.

*Stanley A. Boyd*  
Stanley A. Boyd  
Registered Land Surveyor

**DESCRIPTION OF LAND PLATTED.**

The land embraced in the annexed plat of "Dickerson Subdivision of part of the N.E. 1/4 Section 17, T.14.R.15.E. Village of Roseville - Macomb County - Michigan" is described as follows: Beginning at a point and point being distant 3,170' W., 226.00' S.E., 26.00' East from the N.E. corner of Section 17, T.14.R.15.E.; thence S. 69° 25' 40" W., 100.25' to the boundary line of Bangs Subd., recorded on page 20 of the Macomb County records, 67.58' East from the N.E. corner of Section 17, T.14.R.15.E.; thence S. 69° 25' 40" W., 100.25' to a point; thence S. 89° 25' 40" E., 286.82' to a point; thence S. 20° 20' 20" E., along the centerline of Utica Road, 280.00' to a point; thence S. 69° 25' 40" W., 103.75' to a point; thence N. 1° 15' 10" E., 400.00' feet to the place of beginning.

**CERTIFICATE OF MUNICIPAL APPROVAL.**

This plat was approved by the commission of the Village of Roseville at a meeting held on February 11, 1953 at 11:00 A.M. by John B. Glacoble Mayor and Helen E. M. Duan Clerk.

**CERTIFICATE OF APPROVAL BY COUNTY BOARD.**

This plat was approved on the 11 day of February, 1953, by the Macomb County Plat Board.

*Charles Burr* County Register of Deeds  
*William J. H. H. H.* County Clerk  
*Edward W. Walker* County Treasurer

**CERTIFICATE OF THE BOARD OF COUNTY ROAD COMMISSIONERS.**

This plat has been examined and approved by the Board of County Road Commissioners of Macomb County.

*W. E. Mahant* Chairman  
*Ray C. ...* Member  
*Alfred ...* Member

**DEDICATION.**

Know all men by these presents, that we, August H. Peters and Saviah Peters his wife and Anita Woyen and Dickerson Construction Company by John Glacoble and John B. Glacoble co-partners as Vendors have caused the land embraced in the annexed plat to be surveyed, laid out, and platted and to be known as "Dickerson Subdivision of part of Section 17, T.14.R.15.E. Village of Roseville - Macomb County - Michigan" and that the streets and alleys as shown on said plat are hereby dedicated to the use of the public.

Signed and Sealed in Presence of

*Anna Kammelle*  
Anna Kammelle  
*Charles Peters*  
Charles Peters  
*John Glacoble*  
John Glacoble

*August H. Peters*  
August H. Peters  
*Saviah Peters*  
Saviah Peters  
*John Glacoble*  
John Glacoble  
*John B. Glacoble*  
John B. Glacoble

The Macomb County Clerk has filed this plat with the proper authorities and the same is on file in the office of the County Clerk, Macomb County, Michigan, at the City of Macomb, Michigan, on this 11 day of February, 1953.

**ACKNOWLEDGMENT.**

STATE OF MICHIGAN }  
County of Macomb } ss.

On this 11 day of FEBRUARY A.D. 1953, before me, a Notary Public in and for said county, personally came the above named August H. Peters and Saviah Peters, his wife and Anita Woyen, known to me to be the persons who executed the above dedication, and acknowledged the same to be their free act and deed.

*Joseph L. Lawrence*  
Joseph L. Lawrence  
Notary Public in and for Macomb County

**ACKNOWLEDGMENT.**

STATE OF MICHIGAN }  
County of Macomb } ss.

On this 11 day of FEBRUARY A.D. 1953, before me, a Notary Public in and for said county, appeared John Glacoble and John B. Glacoble as Vendors, who being each by me duly sworn did say that they are co-partners of Dickerson Construction Company, known to me to be the persons who executed the above dedication, and acknowledged the same to be their free act and deed.

*Joseph L. Lawrence*  
Joseph L. Lawrence  
Notary Public in and for Macomb County

Examined and Approved  
*W. E. Mahant*  
W. E. Mahant  
Chairman, Board of County Road Commissioners

A 25 P 28

ORIGINAL

# "ASSESSORS PLAT N<sup>o</sup> 10" PART OF NE 1/4 SEC. 17, T17N R13E, VILLAGE OF ROSEVILLE MACOMB COUNTY MICHIGAN.

Scale - 1 Inch = 100 Ft.

NOTE: All dimensions hereon are in feet and decimals thereof.

### DEFINITION

KNOW ALL MEN BY THESE PRESENTS, That I, Adelbert J. Burgess, Assessor of the Village of Roseville, Macomb County, State of Michigan, by virtue of authority in me vested by Section 51, Act 172, of 1922, having been duly authorized by the Village Council, have caused the land described in the annexed plat to be surveyed, laid out and platted, to be known as ASSESSORS PLAT N<sup>o</sup> 10, part of NE 1/4 Sec. 17, T17N, R13E, Village of Roseville, Macomb County, Michigan, and that the streets and alleys as shown on said plat are now being used for such purposes.

Witnesses:

Edward B. Smith  
Thomas H. Edwards

Adelbert J. Burgess  
Assessor of the Village of Roseville.

### ACKNOWLEDGMENT

STATE OF MICHIGAN, )  
County of Macomb, ) ss

On this 16th day of July, A. D. 1936, before me, a Notary Public in and for the County of Macomb, Michigan, personally appeared the above named Adelbert J. Burgess, Assessor of the Village of Roseville, Macomb County, Michigan, who acknowledged to me that he was the author of the above recitation, and acknowledged the same to be his free act and deed as such assessor.

John J. Smith  
Notary Public in and for Macomb County.

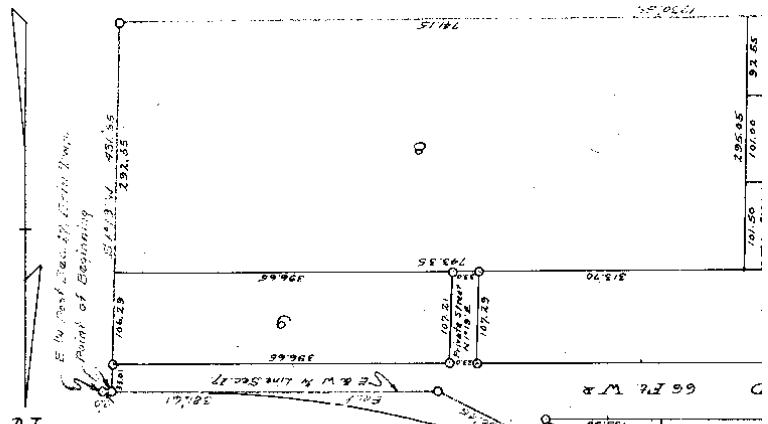
My Commission Expires: July 11, 1937

### DESCRIPTION OF LINED PENTAGON

The land embraced in the annexed plat of "ASSESSORS PLAT N<sup>o</sup> 10", part of NE 1/4 Sec. 17, T17N, R13E, Village of Roseville, Macomb County, Michigan, is described as follows: Beginning at a point 20.00 feet east of S. 1620.00 ft., thence S 10° 18' 45" W 431.65 ft; thence S 68° 52' 50" W 430.65 ft; thence S 11° 56' 50" W 1185.50 ft; thence S 46° 57' E 622.00 ft; thence S 22° 32' E 460.65 ft; thence East 381.61 ft. to point of beginning.

### SURVEYOR'S CERTIFICATE

I hereby certify that the plat herein delineated is a correct one and that permanent metal monuments of not less than one inch in diameter and fifteen inches in length set in a concrete base at least four inches in diameter and



L. 18  
P. 29

SUBDIVISION CERTIFICATE

I hereby certify that the plat hereon delineated is a correct one and that permanent metal monuments of not less than one inch in diameter and fifteen inches in length set in a concrete base at least four inches in diameter and spaced eight inches in depth have been placed at points marked thus: "01" as shown on said plat in the boundary of the land platted, at all the intersections of streets, alleys, or of streets and alleys, and at the intersections of streets and alleys with the boundaries of the plat as shown on said plat.

*R. H. McClure*  
Registered Civil Engineer

**CERTIFICATE OF JURISDICTION APPROVAL**

This plat was examined by the Village Commission of the Village of Roseville at a meeting held **DEC. 7, 1936**.

*John P. Smith*  
Village Clerk

**CERTIFICATE OF APPROVAL BY COUNTY BOARD**

This plat was approved on the **19th** day of **December**, 1936.

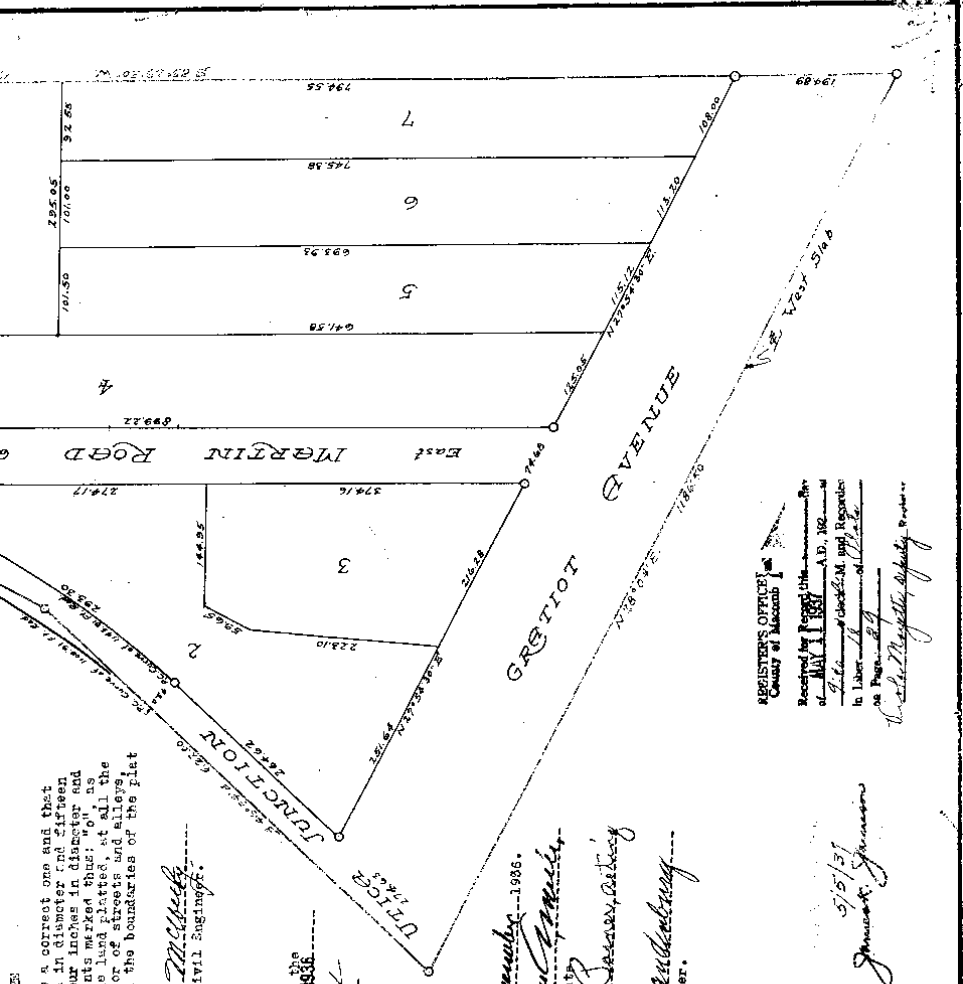
*William C. Smith*  
Judge of Probate

*W. H. C. Cressney, Secretary*  
County Clerk

*Earl B. Brundage*  
County Treasurer

REGISTERS OFFICE  
County of Macomb  
Received by *[Signature]* Clerk  
of **Nov 11 1936** A.D. 1936  
In Liber **18** and Register  
of **Plats**  
Page **89**  
*W. H. Cressney, Secretary*

*James G. Johnson*  
5/15/37



L 18 P. 29





I hereby certify that the plat herein delineated is a correct one and that permanent metal monuments of not less than one inch in diameter and fifteen inches in length were set in concrete in the corners of the lots shown on the plat and that the same have been placed at points in marked thereon as thereon shown at all angles in the boundaries of the land platted, at all the intersections of streets, intersections of alleys, or of streets and alleys, and at the intersections of streets & alleys with the boundaries of the plat as shown on said plat.

*D. K. McCurdy*  
Registered Civil Engineer

CERTIFICATE OF PUBLIC APPROVAL

This plat was approved by the Village Commission of the Village of Roseville at a meeting held ~~June 15th~~ *June 15th* A.D. 1936.

*John E. Miller*  
Village Clerk

CERTIFICATE OF APPROVAL BY COUNTY BOARD

This Plat was approved on the *ninth* day of *June*, 1936.

*John E. Miller*  
Judge of Probate  
*James E. Johnson, Acting*  
County Clerk  
*Carl B. Bamberger*  
County Treasurer

RECORDED  
JUN 15 1936  
COUNTY CLERK

FOR THE USE OF THESE PURPOSES, that I, *Carlton S. Brown*, Assessor of the Village of Roseville, Macomb County, State of Michigan, by virtue of authority in me vested by Section 51, Act 172, of 1929, having been duly authorized by the Village Commission have caused the land described in the annexed plat to be surveyed, laid out and platted, to be shown as Macomb County, Michigan, and the streets and alleys as shown on said plat and now being used for such purposes.

Witness my hand and seal of office this *15th* day of *June*, 1936.  
*Carlton S. Brown*  
Assessor of the Village of Roseville

APPROVAL

STATE OF MICHIGAN }  
County of Macomb }

On this *15th* day of *June*, A.D. 1936, before me, a Notary Public in and for said County, personally saw the above named Assessor of the Village of Roseville, Macomb County, Michigan known to me to be the person who executed the above dedication, and acknowledged the same to be his free act and deed as such Assessor.

*John E. Miller*  
Notary Public in and for Macomb County.

My Commission Expires *June 16-1939*

DESCRIPTION OF LAND PLATTED

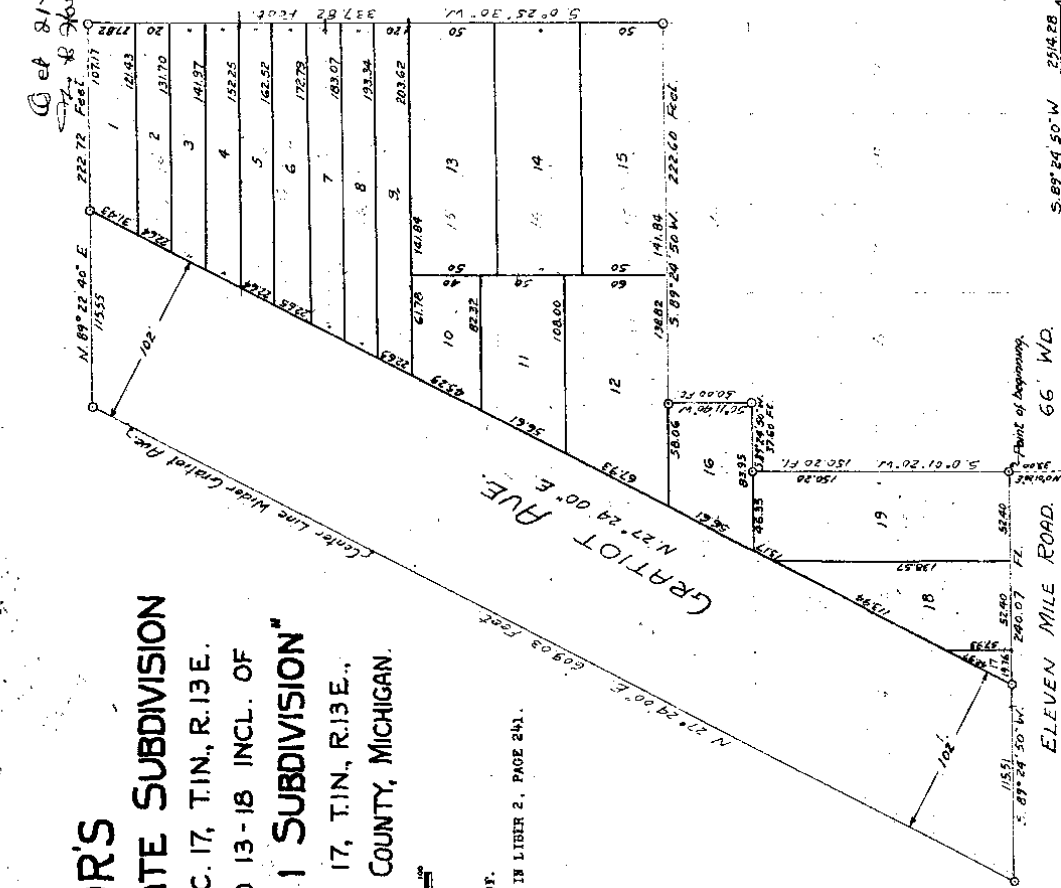
The land embraced in the annexed plat of "ANNEXING PLAT TO V", Part of Sec. 17, T19R13E, Village of Roseville, Macomb County, Michigan is described as follows: Beginning at the NW corner of Lot 1 of S 770501 R 124 20 711 to S 27000 1 W 342 20 71; Th. S 89000 1 W 1184 73 ft to the point of beginning.

REGISTERED OFFICER  
County of Macomb  
*John E. Miller*  
Notary Public

L.17 P.21

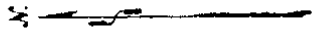
Dep 81-1982  
 J. B. Howell

**"ASSESSOR'S  
 ROSEVILLE FARMS STATE SUBDIVISION  
 OF PART OF THE S. 1/2 OF SEC. 17, T.1N., R.13E.  
 AND OF LOTS 1-6 INCL. AND 13-18 INCL. OF  
 ROSEVILLE FARMS NO. 1 SUBDIVISION"  
 OF PART OF THE S. 1/2 OF SEC. 17, T.1N., R.13E.,  
 VILLAGE OF ROSEVILLE, MACOMB COUNTY, MICHIGAN.**



SCALE 1" = 50'

ALL DIMENSIONS GIVEN IN FEET AND DECIMALS THEREOF.  
 ORIGINAL PLAT RECORDED IN MACOMB COUNTY RECORDS IN LITER 2, PAGE 241.



County of Macomb  
 Received for Record this  
 22<sup>nd</sup> day of  
 1952 A. J. 100

*See Party Wall Agreement Lites 1147 pages 3-46 by record*

County of Macomb  
 Received for Record this 25th day of May 1934 A.D. 1934  
 in Liber 20007 of Page 13  
 Charles J. Bergstrom, Register

17 N 52.40  
 171 W 52.40  
 200.07 FT  
 11.51  
 89° 24' 50" W  
 ELEVEN MILE ROAD

Point of beginning  
 66 WD  
 S. 89° 24' 50" W 294.28 ft  
 S. 89° 24' 50" W 294.28 ft

KNOW ALL MEN BY THESE PRESENTS, that I, **Ray J. Casper**, Assessor of the Village of Roseville, County of Macomb, State of Michigan, by virtue of authority in me vested by Section 51, Act 172, Public Acts of 1929, have caused the land described in the annexed plat to be surveyed, laid out and platted, to be known as "ASSESSOR'S ROSEVILLE FARMS STATE SUBDIVISION OF PART OF THE S. 1/2 OF Sec. 17, T. 18 N., R. 13 E., and of Lots 1 - 6 Incl. of Roseville of part of the S. 1/2 of Sec. 17, T. 18 N., R. 13 E., Village of Roseville, Macomb County, Michigan, as described as follows: Beginning at the southwest corner of Lot No. 7 of Roseville Farms No. 1, at being 8.00' S. 89° 24' 50" W. 250.00 feet and 20° E. 13° 40' N. 300.00 feet, then S. 60° 00' E. 250.00 feet, along the north line of the Eleven Mile Road 240.07 feet to a point on the center line of Wider Gratiot Avenue; thence N. 27° 24' 50" E. along said center line of Wider Gratiot Avenue 509.09 feet; thence N. 69° 22' 40" E. 222.72 feet to a point on the west line of School Street; thence S. 0° 25' 20" E. along the west line of School Street 337.82 feet to Lot 12, 222.60 feet; thence S. 0° 11' 40" W. 50.00 feet; thence S. 59° 24' 50" W. 37.60 feet; thence S. 0° 01' 20" W. 150.20 feet to the point of beginning.

SIGNED AND SEALED IN PRESENCE OF WITNESSES.  
 Ray J. Casper, Assessor  
 Notary Public in and for Macomb Co., Mich.  
 On this 12th day of April, 1934, before me, a Notary Public, in and for said county, personally came the above named **Ray J. Casper**, Assessor of the Village of Roseville, County of Macomb, State of Michigan, known to me to be the person who executed the above dedication and acknowledged the same to be his free act and deed as such Assessor.

My commission expires...  
 KNOW ALL MEN BY THESE PRESENTS, that I, **Grover C. Dillman**, State Highway Commissioner, join in the above plat for the purpose of dedicating the streets and alleys thereof, which are in addition to or substituted for any streets and alleys shown in the original plat.

SIGNED AND SEALED IN PRESENCE OF WITNESSES.  
 Grover C. Dillman, State Highway Commissioner  
 Notary Public in and for Macomb Co., Mich.  
 On this 15th day of May, 1934, before me, a Notary Public, in and for said county, personally came the above named **Grover C. Dillman**, State Highway Commissioner, known to me to be the person who executed the above dedication and acknowledged the same to be his free act and deed as such Commissioner.

My commission expires... May 25, 1934  
 Notary Public in and for Macomb Co., Mich.

The land embraced in the annexed plat of "ASSESSOR'S ROSEVILLE FARMS STATE SUBDIVISION OF PART OF THE S. 1/2 OF Sec. 17, T. 18 N., R. 13 E., and of Lots 1 - 6 Incl. and 13 - 15 Incl. of Roseville Farms No. 1 Subdivision of part of the S. 1/2 of Sec. 17, T. 18 N., R. 13 E., Village of Roseville, Macomb County, Michigan, as described as follows: Beginning at the southwest corner of Lot No. 7 of Roseville Farms No. 1, at being 8.00' S. 89° 24' 50" W. 250.00 feet and 20° E. 13° 40' N. 300.00 feet, then S. 60° 00' E. 250.00 feet, along the north line of the Eleven Mile Road 240.07 feet to a point on the center line of Wider Gratiot Avenue; thence N. 27° 24' 50" E. along said center line of Wider Gratiot Avenue 509.09 feet; thence N. 69° 22' 40" E. 222.72 feet to a point on the west line of School Street; thence S. 0° 25' 20" E. along the west line of School Street 337.82 feet to Lot 12, 222.60 feet; thence S. 0° 11' 40" W. 50.00 feet; thence S. 59° 24' 50" W. 37.60 feet; thence S. 0° 01' 20" W. 150.20 feet to the point of beginning.

I hereby certify that the plat hereon delineated is a correct and true copy of the original as submitted to me by **Ray J. Casper**, Assessor of the Village of Roseville, Macomb County, Michigan, at a meeting held on **Sept. 19, 1932**.

This plat was approved by the Village Board of Roseville, Michigan, on **Sept. 19, 1932**.  
 Village Clerk  
 Notary Public in and for Macomb Co., Mich.

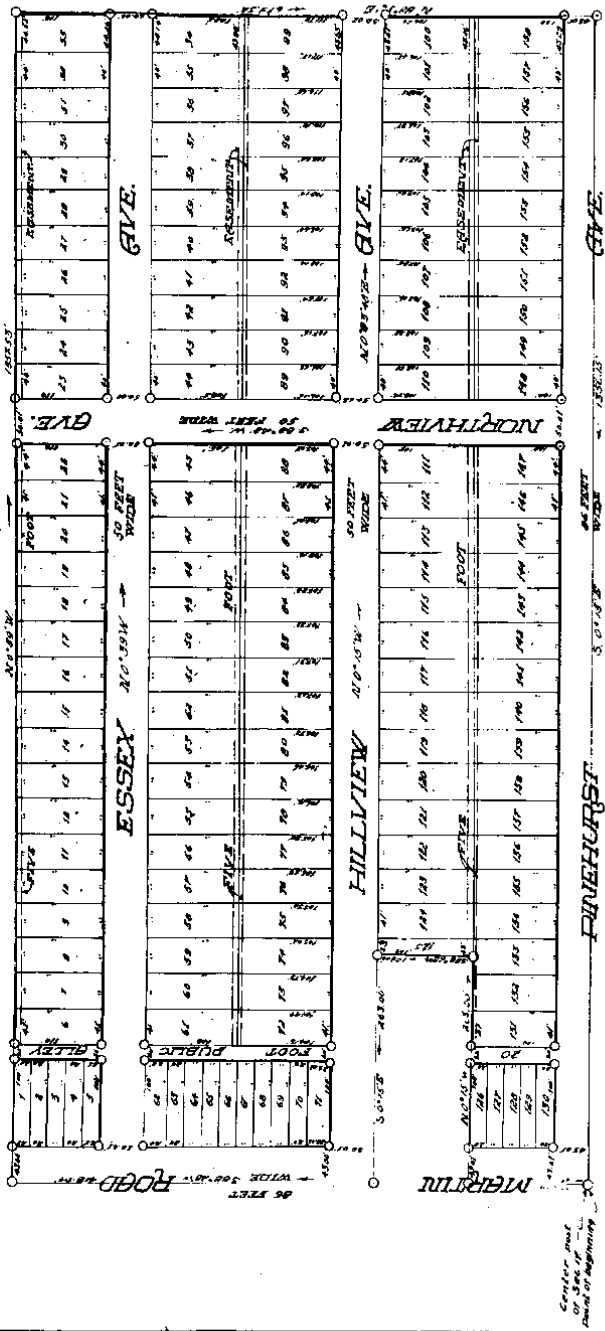
Examined and Approved  
 May 10, 1922  
 Deputy Auditor General

# CENTRAL PARK

A SUBDIVISION OF PART OF THE S.E. 1/4 OF THE R.W. 1/4 OF SEC. 17  
 ERIN TOWNSHIP, MACOMB COUNTY MICH.

Walter J. Lehner Reg. C.E.  
 116 Clarence, Mich.

5085



The land embraced in the annexed plat of "CENTRAL PARK," a subdivision of part of the S.E. 1/4 of the R.W. 1/4 of Sec. 17, T.13. N., R.13. W., Erin Township, Macomb County, Mich., is described as follows:

Beginning at the center post of Sec. 17, thence S. 89°28' W. 145.01 ft., thence S. 0°15' W. 225.00 ft., thence S. 89°28' W. 109.01 ft., thence S. 0°15' W. 263.01 ft., thence S. 89°28' W. 419.04 ft., thence S. 89°28' W. 145.01 ft., to the center post of Sec. 17.

BEFORE ALL MEN BY THESE PRESENTS, That we, The Four Associates, Inc., a Michigan corporation by Walter C. Piper, President and Hugo J. Sasse, Secretary, as owners in fee-simple, and George Wiggant, mortgagee, have caused the land embraced in the annexed plat to be surveyed, laid out and platted to be known as "CENTRAL PARK," a subdivision of part of the S.E. 1/4 of the R.W. 1/4 of Sec. 17, T.13. N. 13. W., Erin Township, Macomb County, Mich., and that the streets and alleys as shown on said plat are hereby dedicated to the use of the public.

as indicated by the annexed plat of CENTRAL PARK, a subdivision of the S.W. 1/4 of the S.W. 1/4 of Sec. 17, T.13. N., R.13. W., Erin township, Macomb county, Mich., is described as follows:

Beginning at the center post of Sec. 17, thence S. 89°28' W. 145.01 ft., thence S. 0°15' W. 283.00 ft., thence S. 89°28' W. 109.0 ft., thence S. 0°15' W. 283.0 ft., thence S. 89°28' W. 419.04 ft., thence S. 0°39' W. 189.83 ft., thence S. 89°36' W. 679.52 ft., thence S. 0°15' W. 1556.15 ft. to the point of beginning.

This plat was approved by the Township board of the Township of Erin, Macomb county, Michigan, at a meeting held on the 14th day of May, 1926.

*Robert J. Nease*  
Township Clerk

I hereby certify that the plat hereon delineated is a correct one and that permanent metal monuments of not less than one inch in diameter and fifteen inches in length set in a concrete base at least four inches in diameter and forty-eight inches in depth have been placed at each corner and at all the intersections of streets, intersections of streets and alleys, and at the intersections of streets and alleys with the boundaries of the plat as shown on said plat.

*Walter C. Piper*  
Registered civil Engineer

REGISTER'S OFFICE  
County of Macomb  
Received for Record this 14th day of May, 1926, at 1:30 o'clock P.M. and Recorded in Lib. of \_\_\_\_\_ of Erin, Michigan.

COUNTY OF \_\_\_\_\_ CERTIFICATE  
The fees on this plat are \$10.00 for the plat and \$10.00 for the survey. The same were paid to me by \_\_\_\_\_ on the 14th day of May, 1926.

This plat was approved by the County Board for Macomb County, Michigan, on the 14th day of May, 1926.

*Robert J. Nease*  
County Clerk

The Dyer Associates, Inc. a Michigan corporation by Walter C. Piper, President, and Hugo J. Nease, Secretary, as owners in fee-simple, and George Wiggant, mortgagee, have caused this land embraced in the annexed plat to be surveyed, laid out and platted to be known as CENTRAL PARK, a subdivision of part of the S.W. 1/4 of the S.W. 1/4 of Sec. 17, T.13. N. 13. W., Erin township, Macomb county, Mich., and that the streets and alleys as shown on said plat are hereby dedicated to the use of the public.

Witness my hand and seal in the presence of \_\_\_\_\_  
Notary Public, Macomb County, Michigan.

STATE OF MICHIGAN  
County of \_\_\_\_\_

On this 14th day of May, 1926, before me, \_\_\_\_\_, Notary Public in and for said county appeared Walter C. Piper and Hugo J. Nease to me personally known, who being each by me duly sworn did say to me that they are the President and Secretary respectively of the Dyer Associates, Inc., a Michigan corporation, and that the annexed plat and instrument is the corporate seal of said corporation and that said instrument was signed and sealed in behalf of said corporation by authority of its Board of Directors and the said Walter C. Piper and Hugo J. Nease acknowledged said instrument to be the free act and deed of said corporation.

*Walter C. Piper*  
Notary Public, Macomb County, Mich.

My Commission expires June 29, 1930.

STATE OF MICHIGAN  
County of \_\_\_\_\_

On this 14th day of May, 1926, before me, a Notary Public in and for said county, \_\_\_\_\_, known to me to be the person who executed the above dedication, and acknowledged the same to be his free act and deed.

*Robert J. Nease*  
Notary Public, Macomb County, Mich.

My Commission expires Oct. 14, 1927.

**BEYNE'S**  
 A PART OF LOT 15 OF COREY  
 ERIN TWP.

**SUBDIVISION**  
 SUBDIVISION OF WEST PART OF THE NE 1/4 SEC. 17 TWP. 35 N. R. 26 W.  
 MACOMB CO. MICHIGAN

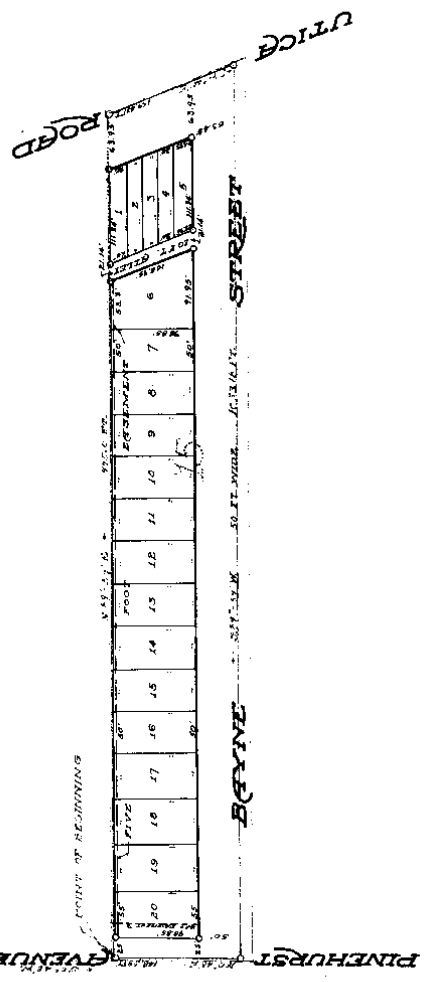
July 20-1926

SCALE: 1" = 100'

W. J. Leber, Reg. C.E.  
 Mount Clemens, Mich.

W. J. Leber (Reg. C.E.)

See Vacation of easement from 1101 of 1102 Page 64



KNOW ALL MEN BY THESE PRESENTS, That Ida Wayne and Ida Wayne, his wife, as proprietors, have caused the land embraced in the annexed plat to be surveyed, laid out and partitioned, to be known as "BEYNE'S SUBDIVISION OF WEST PART OF LOT 15 OF COREY ERIN TWP. MACOMB CO. MICHIGAN," and that the streets and alleys as shown on said plat are hereby dedicated to the use of the public.

Signed and sealed in the presence of  
 Ida Wayne  
 Ida Wayne

The land embraced in the annexed plat of BEYNE'S SUBDIVISION a part of Lot 15 of Corey Twp., Macomb Co., Michigan, is more fully described as follows:  
 Beginning at a point 1069.66 ft. S. 0°48' W. of the S. 1/4 post of Sec. 17, thence N. 89°59' E. 2.985.0 ft., thence S. 80°44' E. 159.43 ft., thence S. 89°59' W. 1053.18 ft., thence S. 0°48' W. 148.65 ft., to the point of beginning.

This is to certify that the above plat was approved by the Township Board of the Township of Erin, Macomb County, Michigan, at a meeting held this 22 day of August, 1926.

Township Clerk

This is to certify that the above plat was approved by the Township Board of the Township of ... Macomb County, Michigan, at a meeting held this 22 day of August, 1926.

I hereby certify that the plat heron delineated is a correct one and that pertinent remarks comments or any remarks such as ...

... *Harvey J. ...* ...  
Registered Civil Engineer

Provided That the above plat and specification is hereby subjected to the following easement and covenant which shall be observed by these proprietors as herein described and their heirs, devisees, executors, and assigns of them to wit:

That the westerly 18 ft. of Lot 20 shall be kept free of all buildings and other encumbrances and shall be dedicated for road purposes at such time as same may be required, without any compensation to the owners.

REGISTER'S OFFICE  
County of Macomb, Mich.

Received by Record this 22nd day of August 1926 at 11:20 a.m. of ...  
in Liber ... of ...  
...  
*Myself*

17

... *Harvey J. ...* ...  
Notary Public, Macomb Co., Mich.

SEAL OF MICHIGAN  
S.S.  
County of Macomb

On this 9 day of August, 1926 before me, a Notary Public in and for said county, personally, came the above named ...  
Ira Reine, his wife, known to me to be the persons who executed the above dedication, and acknowledged the same to be their free act and deed.

... *Harvey J. ...* ...  
Notary Public, Macomb Co., Mich.  
By Commission expires ...

*April 10 1926*  
*James L. ...*  
*James L. ...*

*Mar 26 26*  
*Arthur W. ...*  
*Deputy*