

LAND CORNER RECORDATION CERTIFICATE
Filing Requirement of Act 74, Mich. P.A. 1970

For corners in

MACOMB Located In: ERIN Corner Code # _____
 (County)

1. Public Land Survey T 1N R 13E C-12
 T _____ R _____
 T _____ R _____
 T _____ R _____

2. Property Controlling S _____ T _____ R _____
 in Section S _____ T _____ R _____

3. Miscellaneous S _____ T _____ R _____
 Property in Sec. S _____ T _____ R _____

4. Lot No. _____, Recorded Plat _____

5. Private Claims _____

C0623805 LIBER:07784 PAGE:382 08:57A 12/22/1997
CARMELLA SABAUGH-MACOMB COUNTY, MI REG/DEEDS

Register of Deeds Stamp & File Number

I, STEVEN E. DUNN, in a field survey on OCTOBER 14, 1997, do hereby certify that under requirements of P.A. 74, Michigan P.A. of 1970, the corner points mentioned in lines 1 and 2 above were in conformance with regulations and rules therefore as required in the current manual of survey instructions of the United States Department of the Interior, Bureau of Land Management or by a decree of a Court of Law and/or that the corner points mentioned in lines 3, 4 and 5 above were in conformance with the rules of the Michigan Board of Land Surveyors or by a Decree of a Court of Law; established, re-established, monumented, re-monumented, recovered, found as expressed below:

NOTE: Not more than 2 corners, all in the same town and range, may be recorded on this certificate.

A. Description of original monument and accessories and/or subsequent restoration:

	A	B	C	D	E	F	G	H	I	J	K	L	M
2		6		5		4		3		2		1	
3													
4		7		8		9		10		11		12	
5													
6		18		17		16		15		14		13	
7													
8		19		20		21		22		23		24	
9													
10		30		29		28		27		26		25	
11													
12		31		32		33		34		35		36	
13													

GLO POST - NO EVIDENCE OF ORIGINAL CORNER FOUND - ORIGINAL SURVEY PERFORMED BY WILLIAM PRESTON - 1817

PLATS:

L. 4, P. 83	KEY'S REALTY HALFWAY SMALL FARMS SUB.	JUN 09, 1920
L. 6, P. 90	LONGACRES SUBDIVISION	JUL 26, 1923
L. 7, P. 12	LONGSCRES SUBDIVISION NO. 1	SEPT. 12, 1923
L. 9, P. 60	JOHN BOLDT'S AVON PARK SUB.	JUL 15, 1925
L. 10, P. 42	LAMBRECHT'S HOMESITES SUB.	DEC. 14, 1925
L. 31, P. 31	RIDGEMONT HOMES SUB.	APR. 05, 1950
L. 29, P. 24	RIDGEMONT GOLF COURSE SUB.	DEC. 24, 1953
L. 37, P. 44	CHUD & SOSKIN SUBD'N NO. 1	OCT. 02, 1956
L. 38, P. 29	A.P. #29	JAN. 09, 1957

B. Description of corner evidence found and/or method applied in restoring or reestablishing corner:

C - 12 NO PHYSICAL EVIDENCE OF CORNER FOUND.

I RE-ESTABLISHED CORNER LOCATION BY USING FOUND CONCRETE MONUMENTS IN "RIDGEMONT HOMES SUBDIVISION" TO ESTABLISH THE EAST SECTION LINE AND E - W 1/4 LINE. I THEN DID AN INTERSECTION TO ESTABLISH THE 1/4 CORNER. CORNER IS 1.20 NORTH OF CENTERLINE OF TOEPFER AND IS 39.57' EAST OF CENTERLINE CUSHING ROAD NORTH AND 16.95' WEST OF CENTERLINE CUSHING ROAD SOUTH.
 I VERIFIED THE LOCATION BY COMPARING FIELD MEASUREMENTS TO RECORD MEASUREMENTS OF CORNERS FOUND IN PLATS LISTED ABOVE.

FIELD MEASUREMENTS & RECORD MEASUREMENT:

C - 12 TO C - 11	ANGLE:
GLO - 40 CHAINS OR 2640.00'	NE CORNER RIDGEMONT HOMES SUB. 90°29'00"
FIELD - 2661.94'	FIELD - 90°29'06"
C - 12 TO C - 13	NW CORNER "JOHN BOLDT'S AVON PARK SUB." - 89°08'00"
GLO - 40 CHAINS OR 2640.00'	FIELD - 89°10'34"
PLATS - EAST SIDE - 2651.05'	
PLATS - WEST SIDE - 2651.30'	
FIELD - 2650.79'	

ACCEPTED BY THE MACOMB COUNTY SURVEY PEER GROUP AS THE OFFICIAL CORNER UNDER MICHIGAN PUBLIC ACT 345 OF 1990 AT A MEETING HELD ON 11-18-97

C. Description of monument for corner and accessories established to perpetuate locating the position of the corner:

William E. Soderberg
 WILLIAM E. SODERBERG, P.S., CHAIRMAN

I SET A 3/4"x24" IRON ROD WITH 2" DIAMETER ALUMINUM CAP STAMPED "MACOMB COUNTY MONUMENT MI. ACT 345" #28408 IN A NEW MONUMENT BOX IN ASPHALT CAPPED CONCRETE PAVEMENT

WITNESSES:

- S. 29°W. - 50.06' - FOUND CONCRETE MONUMENT.
- S. 53°E. - 67.97' - SET MAG NAIL & MCR WITNESS TAG IN N. FACE OF UTILITY POLE.
- N. 27°W. - 35.63' - STEEL FENCE POST AT NE CORNER TOEPFER & CUSHING.
- N. 66°W. - 72.84' - STEEL FENCE POST AT NW CORNER TOEPFER & CUSHING.



THE SELECTED LOCATION IS ACCEPTED BY ME AND IS GENERALLY ACCEPTED BY PROFESSIONAL SURVEYORS AS THE BEST AVAILABLE EVIDENCE OF THE POSITION OF THE ORIGINAL CORNER.

Signed by Steven E. Dunn Date Dec. 18, 1997
 Surveyor's Michigan License No. 28408

MACOMB COUNTY PUBLIC LAND SURVEY
REMONUMENTATION PROGRAM

RESEARCH DOSSIER

CORNER LOCATION
T.1N., R.13E.

ACT 74 CORNER CODE
C-12

SECTION CORNER
East 1/4 Corner of Section 31 and the West 1/4 Corner of Section 32.

ORIGINAL CORNER IDENTIFICATION PER GOVERNMENT LAND OFFICE RECORDS:
Set corner post.

INTERIM CORNER IDENTIFICATION: None.

CURRENT CORNER IDENTIFICATION: None.
I re-established the corner location by using found concrete monuments to establish the the section line common to 31 and 32 and the East-West 1/4 line of Section 31. I then did an intersection to establish the 1/4 corner.
I then verified the location by comparing field measurements to record measurements of corners found in plats listed above.

A field measurement was made between corners;
C-12 to C-11 G.L.O.-40 chains or 2640.00'
Field-2661.94'
C-12 to C-13 G.L.O.-40 chains or 2640.00'
Plats-East side-2651.05'
West side-2651.30'
Field-2650.79'

Angle:

N.E. Corner of "Ridgemont Homes Sub."-90°29'00"
Field-90°29'06"
N.W. Corner of "John Boldt's Avon Park Sub."-89°08'00"
Field-89°10'34"

SUMMARY AND RECOMMENDATIONS:

The selected location is accepted by me and is generally accepted by Professional Surveyors as the best available evidence of the corner.

MACOMB COUNTY PUBLIC LAND SURVEY

CORNER VERIFICATION CHECKLIST

RECORDED SURVEY FILE: None.

LAND FILES: Composites 14-31D and H. 14-32A and E.

COUNTY SURVEYOR RECORDS: G.L.O. notes and plat.

LOCAL SURVEYOR FILES: None.

MUNICIPAL AGENCIES:

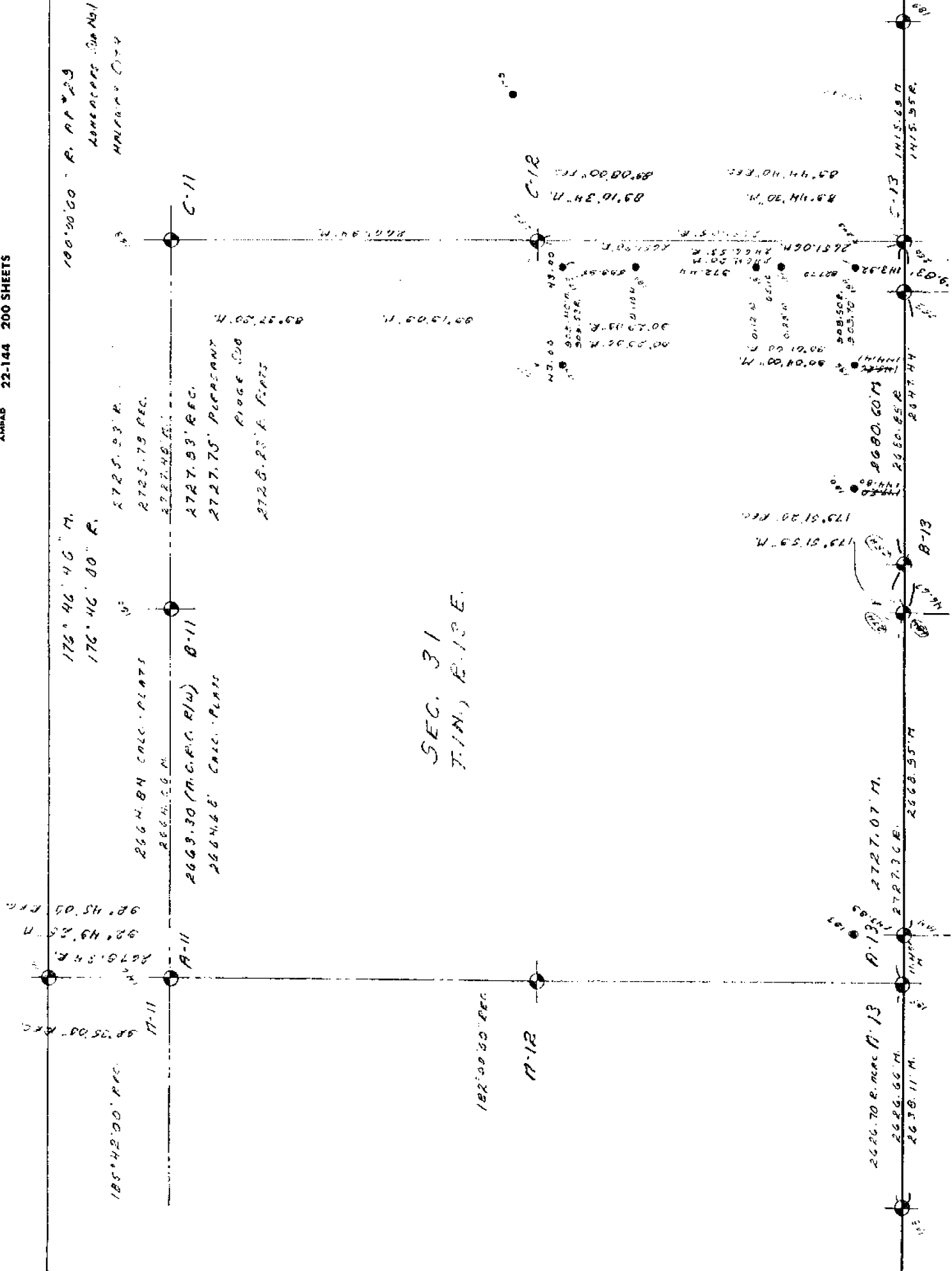
A. MDOT: None.
B. M.C.R.C.: None.
C. M.D.N.R.: None.
D. Macomb County Register of Deeds:
 Land Corner Recordation Certificates: None
 Recorded Surveys: None
 Recorded Condominium Documents: None
 Plats:
 L.4, P.83 Key's Realty Halfway Small Farms Subdivision 6-09-1920
 L.6, P.90 Longacres Subdivision 7-26-1923
 L.7, P.12 Longacres Subdivision No. 1 9-12-1923
 L.9, P.60 John Boldt's Avon Park Sub. 7-15-1925
 L.10, P.42 Lambrecht's Homesites Sub. 12-14-1925
 L.31, P.31 Ridgemont Homes Sub. 4-05-1950
 L.29, P.24 Ridgemont Golf Course Sub. 12-24-1953
 L.37, P.44 Chud & Soskin Subdivision No. 1 10-28-1956
 L.38, P.29 A.P. #29 1-09-1957

UTILITY COMPANIES:

A. Detroit Edison: None.
B. Michigan Bell: None.
C. Michigan Consolidated Gas: None.
D. Consumers Power Company: None.
E. Pipeline Companies: None.
F. City of Detroit Water Board: None.
G. Railroads: None.

CONTACT WITH ADJOINING PROPERTY OWNERS:

No contact was made regarding this corner.



175° 46' 46\" M.
 176° 46' 00\" R.

266 M. BN CALC. PLATS
 2725.93 R.
 2725.79 REC.
 2727.49 G.C.

2669.30 (M.C.P.C. R/W) B-11
 266 N. 66' CALC. PLATS

2727.75' PUPPANT
 Ridge 500
 2726.23' R. PLATS

SEC. 31
 T.1N., R.13E.

185° 42' 00\" R.C.

M-11

182° 00' 00\" REC.

M-12

2626.70 R. REC. N. 13
 2626.66 M.
 2638.11 M.

A-13

2727.07 M.
 2727.36 E.
 2727.36 E.

B-13

2668.55 M.

B-13

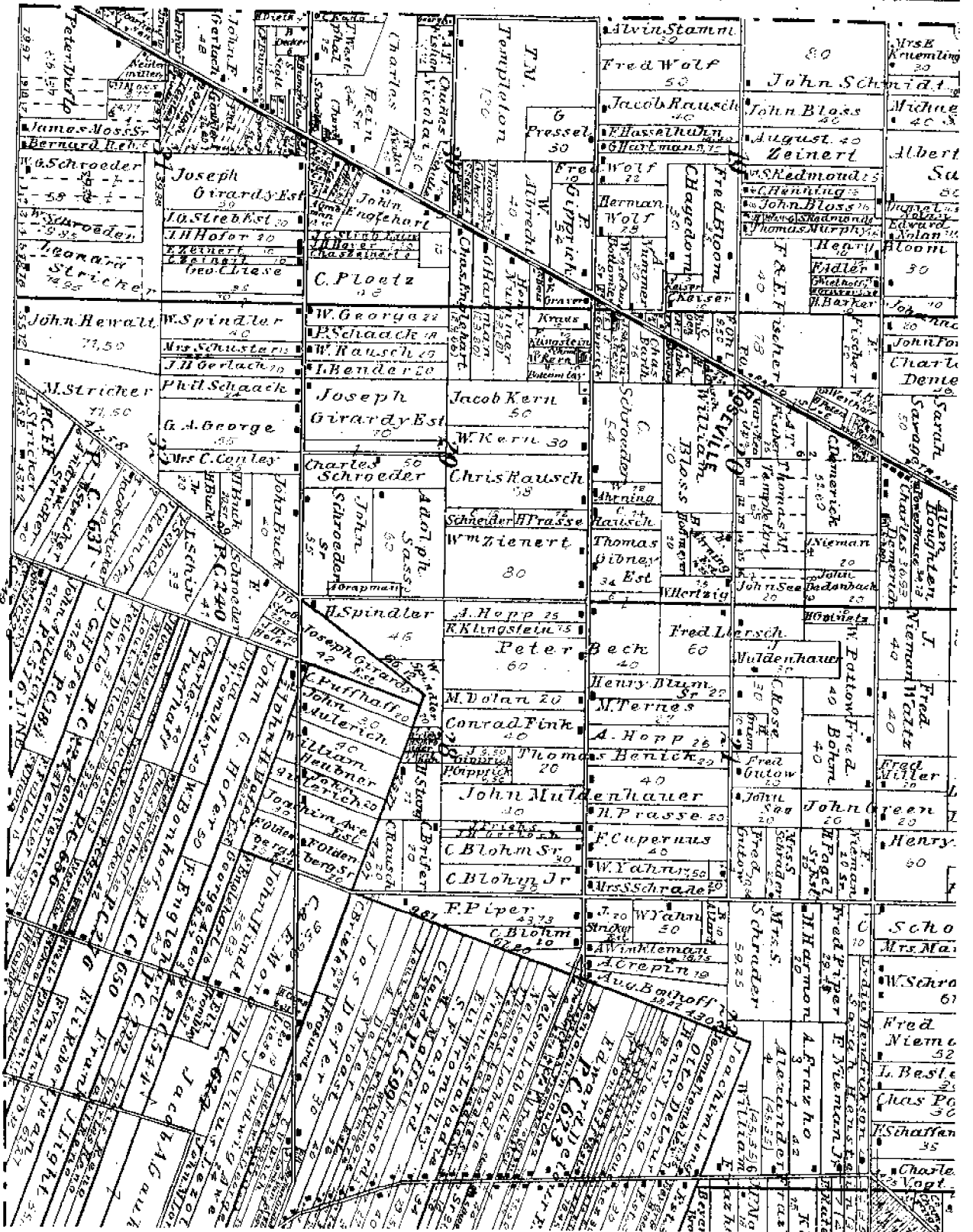
2680.60 M.
 2660.85 R.
 2647.74

C-13

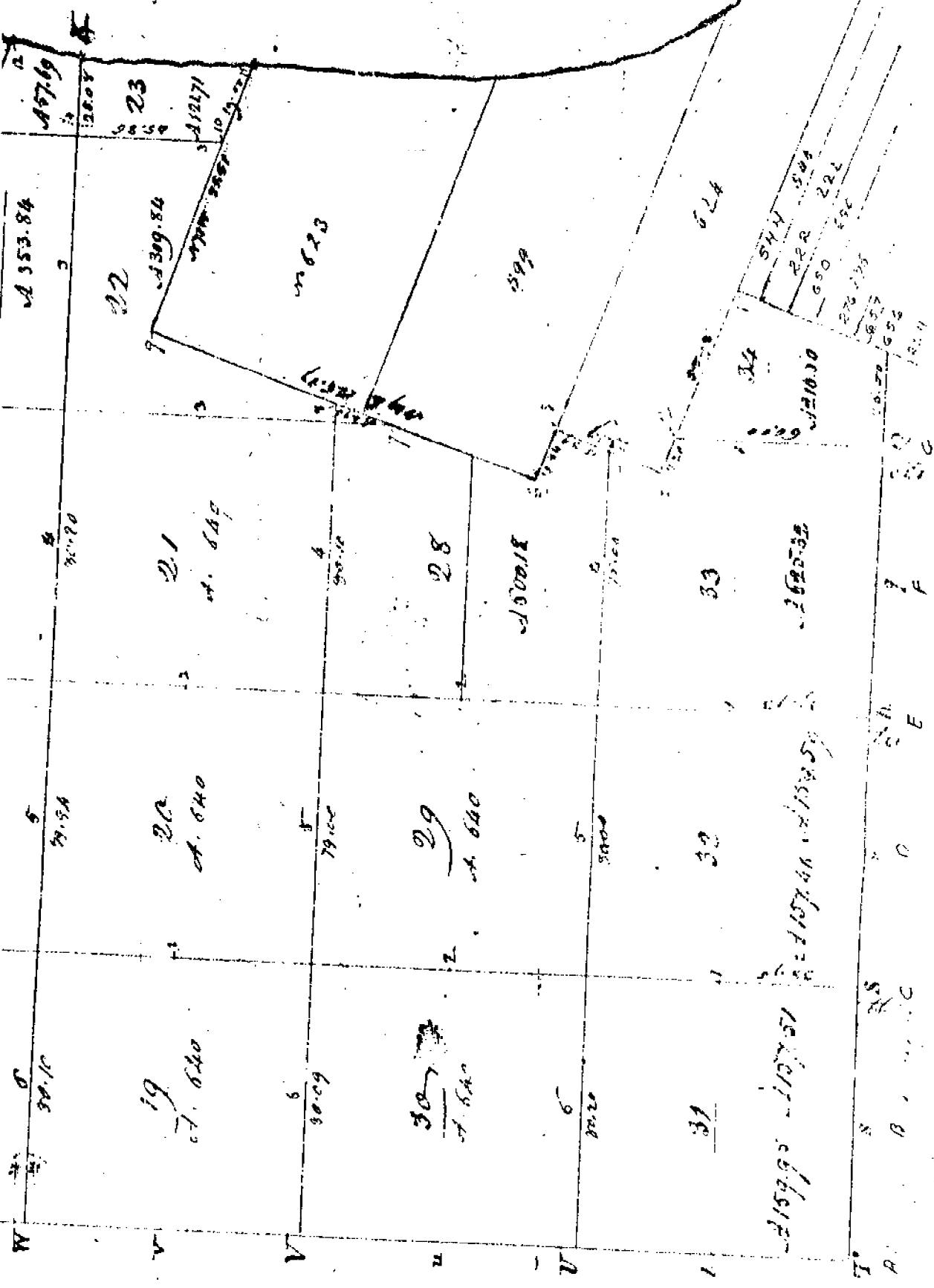
1415.68 M.
 1415.95 R.

B-13

STANFORD PLATS OF MADISON CO.
 1895



W. C. T. A. T.



Handwritten notes and signatures on the right side of the page. The notes appear to be a list of names or locations, possibly related to the survey. A large signature is visible at the top right of the page.