

LAND CORNER RECORDATION CERTIFICATE
Filing Requirement of Act 74, Mich. P.A. 1970

For corners in

Macomb Located In: Erin/Lake Township Corner Code # C3
 (County)

- | | | | |
|------------------------------------|---------------|-----------------------------|-------------|
| 1. Public Land Survey | | <u>T 1N R 13E</u> | <u>C3</u> |
| | | T <u> </u> R <u> </u> | <u> </u> |
| | | T <u> </u> R <u> </u> | <u> </u> |
| | | T <u> </u> R <u> </u> | <u> </u> |
| 2. Property Controlling in Section | S <u> </u> | T <u> </u> R <u> </u> | <u> </u> |
| | S <u> </u> | T <u> </u> R <u> </u> | <u> </u> |
| 3. Miscellaneous Property in Sec. | S <u> </u> | T <u> </u> R <u> </u> | <u> </u> |
| | S <u> </u> | T <u> </u> R <u> </u> | <u> </u> |

4. Lot No. , Recorded Plat
 5. Private Claims

I, Craig P. Amey, in a field survey on August 7, 1995 do hereby certify that under requirements of P.A. 74, Michigan P.A. of 1970, the corner points mentioned in lines 1 and 2 above were in conformance with regulations and rules therefore as required in the current manual of survey instructions of the United States Department of the Interior, Bureau of Land Management or by a decree of a Court of Law and /or that the corner points mentioned in lines 3, 4 and 5 above were in conformance with the rules of the Michigan Board of Land Surveyors or by a Decree of a Court of Law; established, re-established, monumented, re-monumented, recovered, found as expressed below:

NOTE: Not more than 4 corners, all in the same town and range, may be recorded on this certificate.

A. Description of original monument and accessories and/or subsequent restoration:

1818	GLO		William Preston	No witnesses remain
1987	LCRC	L4241 P429	Daniel Sandomierski	Found 3/8" iron as per MCRC
1990	Cert. of Survey		William E. Soderberg	Found 3/8" iron in mon box
1994	Cert. of Survey		Raymond J. Donnelly	Found 1/2" iron in mon box

B. Description of corner evidence found and/or method applied in restoring or reestablishing corner: Found 3/8" iron in mon box in the centerline of 13 Mile Road (concrete)

ACCEPTED BY THE MACOMB COUNTY SURVEY PROFESSIONAL SURVEYORS GROUP AS THE OFFICIAL CORNER UNDER MICHIGAN PUBLIC ACT 345 OF 1990 AT A MEETING HELD ON 8-15-95.

William E. Soderberg
 WILLIAM E. SODERBERG, P.S., CHAIRMAN

This corner verified by:

Witnesses from LCRC L4241 P429

- | | | |
|-------|-------|--|
| N22°E | 59.44 | PK in E side of utility pole |
| N05°E | 48.72 | Nail and MCRC tag in W face of a utility pole |
| N41°W | 40.03 | "X" on the SE bolt in RR signal post |
| S34°W | 43.50 | Nail and MCRC tag in SE face of a utility pole |

Witnesses from Cert. of Survey, William E. Soderberg

- | | | |
|----|-------|--|
| NE | 48.72 | Nail and MCRC tag in W face of a utility pole |
| NE | 59.44 | PK in east face of a utility pole |
| SW | 43.50 | Nail and MCRC tag in SE face of a utility pole |
| NW | 40.03 | "X" on SE bolt of RR signal |

Witnesses from Cert. of Survey, Raymond J. Donnelly

- | | | |
|------|--------|---|
| 10° | 48.73 | PK and MCRC tag in E face of a utility pole |
| 26° | 59.26 | Spike with RJD tag in SW face of a utility pole |
| 115° | 109.58 | Centerline of a hydrant |
| 323° | 43.45 | Nail and MCRC tag in S face of a utility pole |

E 2726.60 South quarter post of section 5 (D3) (GLO distance =40ch)

C. Description of monument for corner and accessories established to perpetuate locating the position of the corner:

REPLACED 3/8" IRON WITH 3/4" X 24" IRON WITH MCR CAP #34970 IN EXISTING MONUMENT BOX

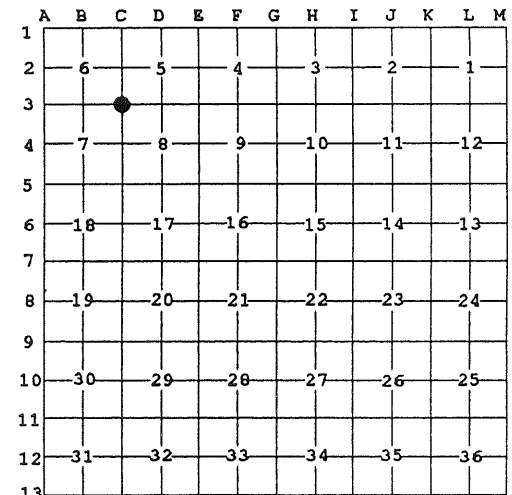
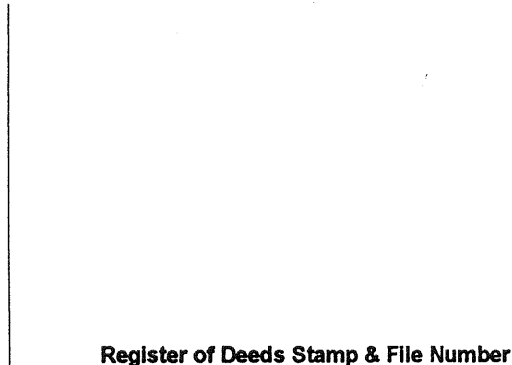
- | | | |
|---------|--------|---|
| AZ 10° | 48.73 | PK and MCRC tag in E face of a utility pole |
| AZ 26° | 59.26 | Spike with RJD tag in SW face of a utility pole |
| AZ 115° | 109.58 | Centerline of a hydrant |
| AZ 323° | 43.45 | Nail and MCRC tag in S face of a utility pole |

The selected location is accepted by me and is generally accepted by professional surveyors as the best available evidence of the position of the original corner.

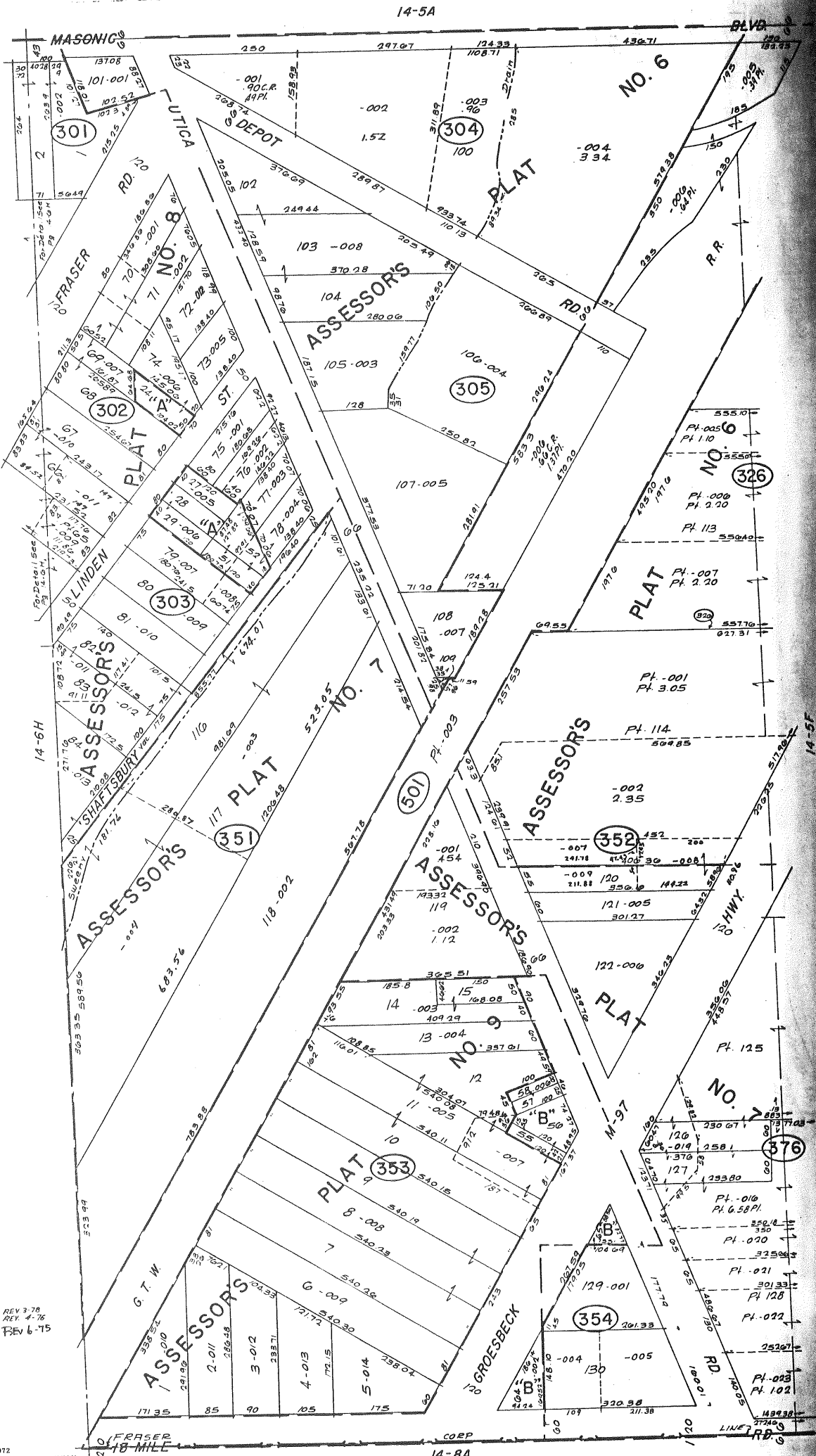
Signed by C.P.A. Date 12-15-95
 Surveyor's Michigan License No. 34970

FORM APPROVED BY MICHIGAN STATE BOARD OF LAND SURVEYORS, JAN. 28,

1971 REVISED MAY 14, 1975
 REVISED JAN., 1983



A
ALFRED F. STEINER'S
HWY. SUB.
B
INDUSTRIAL PARK
SUB.

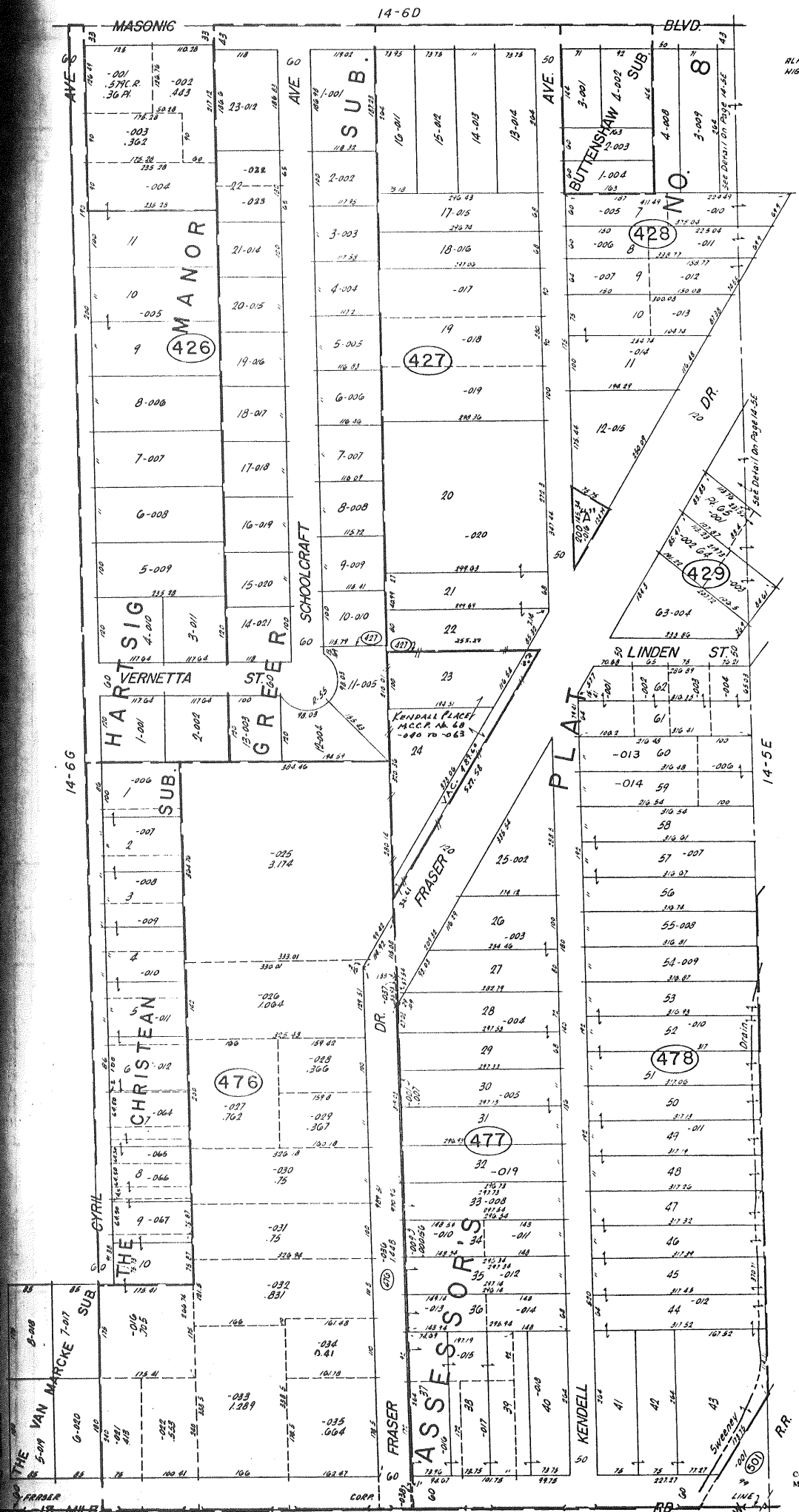


REV 3-78
REV 4-76
REV 6-75

Copyright 1972
MACOMB COUNTY, MICHIGAN

SCALE: 1" = 100'
1753
14-5E

FRASER
W. 1/2 S.W. 1/4 SEC. 5 T.1N. R.13E.

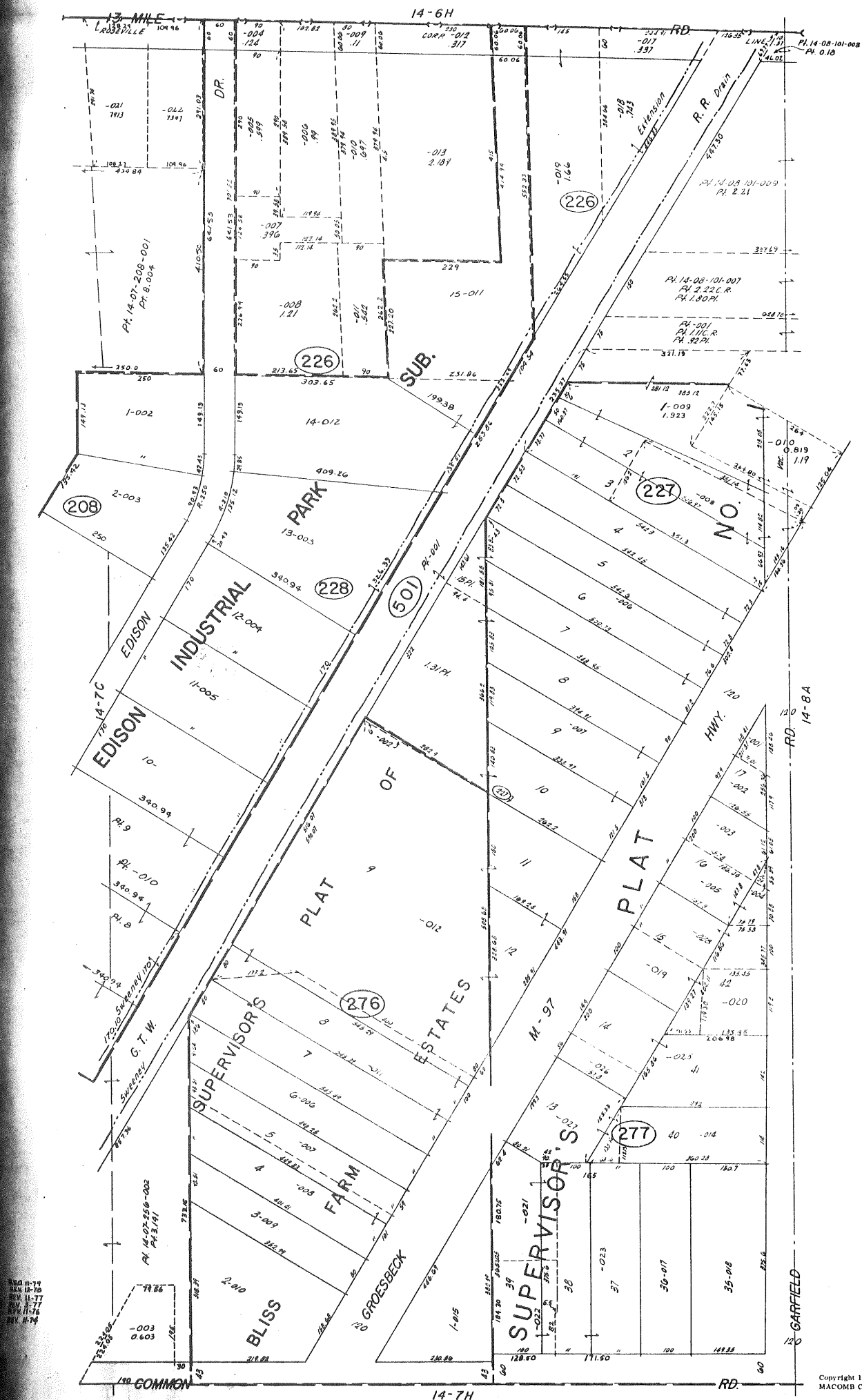


"A"
ALFRED K. STEINLER'S
HIGHWAY SUB.

Copyright 1972
MACOMB COUNTY, MICHIGAN

14-7D
FRASER
E. 1/2 SE. 1/4 SEC. 6 T. 13. E.

SCALE: 1" = 100'
1764
14-6H



REV. 11-74
REV. 11-73
REV. 11-72
REV. 11-71
REV. 11-70
REV. 11-69

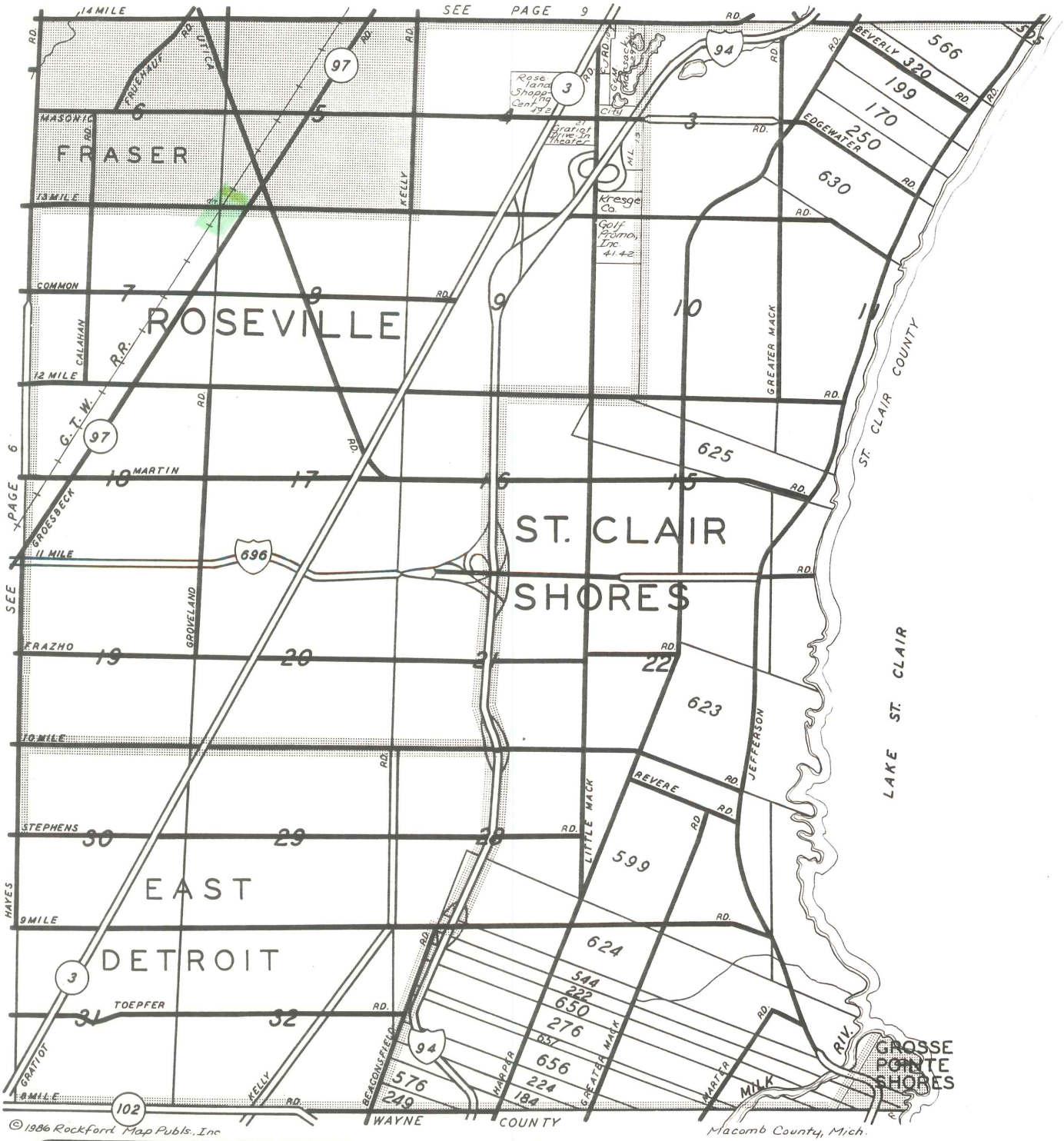
ROSEVILLE
E. 1/2 NE. 1/4 SEC. 7 T. 13E. R. 13E.

Copyright 1972
MACOMB COUNTY, MICHIGAN

SCALE 1" = 100'
1768
14-7D

CITIES OF ST. CLAIR SHORES - ROSEVILLE -
 EAST DETROIT - FRASER -
 GROSSE POINTE SHORES

T.1N.-R.13E.



© 1986 Rockford Map Pubs., Inc.

The Strong Banks for a Strong Future.

MEMBER FDIC

Hamtramck - Warren - Center Line
 Rochester Hills - Utica - Mt. Clemens

Fraser



BANK OF COMMERCE STATE BANK OF FRASER

Reproduced with permission of Rockford Map Publishers, Inc. Rockford, Illinois

LAND CORNER RECORDATION CERTIFICATE

Filing Requirement of Act 74, Mich. P.A. 1970

ROSEVILLE, MICHIGAN

For corners in

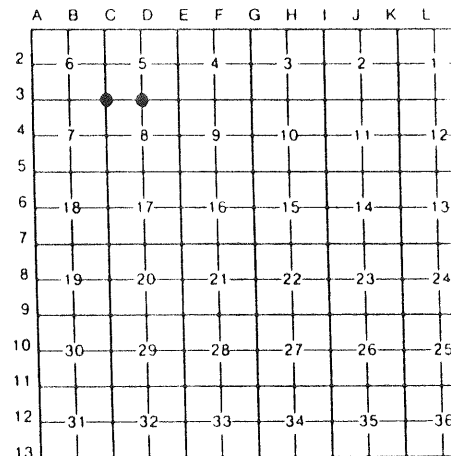
MACOMB	Located In	SEC. 8	Corner Code	//
Public Land Survey	T. 1N.	R. 13E.	C-3	
	T. 1N.	R. 13E.	D-3	
	T	R		
	T	R		
Property Controlling in Section	S	T	R	
	S	T	R	
Miscellaneous Property in Sec.	S	T	R	
	S	T	R	

Register of Deeds Stamp & File Number

1. Lot No. _____, Recorded Plat _____
 2. Private Claims _____

DANIEL SANDOMIERSKI in a field survey on JUNE 10, 19 87, do hereby certify that under requirements of P.A. 74, Michigan P.A. of 1970, the corner points mentioned in lines 1 and 2 above were in conformance with regulations and rules therefore as required in the current manual of survey instructions of the United States Department of the Interior, Bureau of Land Management or by a decree of a Court of Law and/or that the corner points mentioned in lines 3, 4 and 5 above were in conformance with the rules of the Michigan Board of Land Surveyors or by a Decree of a Court of Law, established, re-established, monumented, re-monumented, recovered, found as expressed below:

NOTE: Not more than 4 corners, all in the same town and range, may be recorded on this certificate.



A Description of original monument and accessories and/or subsequent restoration:

- AS PER MACOMB CO. ROAD COMMISSION
- (C-3) R.R. SPK. N.W. COR., SEC. 8
- N.62°W., 37.56' TO CROSS ON R.R. SIGNAL LIGHT
- N.12°E., 48.45' TO EDISON POLE
- S.40°W., 43.35' TO EDISON POLE

B Description of corner evidence found and/or method applied in restoring or reestablishing corner:

- C-3 FOUND 3/8" RE-ROD IN MONUMENT BOX.
- D-3 FOUND 1/2" IRON PIPE IN MONUMENT BOX.

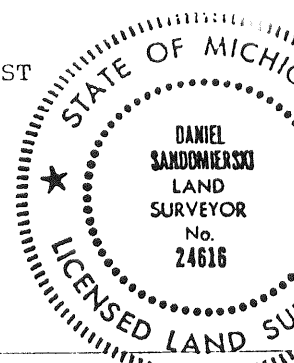
RECORDED IN MACOMB COUNTY
 RECORDS AT: 9:02 A.M.
 JUL 13 1987
[Signature]
 CLERK - REGISTER OF DEEDS
 MACOMB COUNTY, MICHIGAN

C Description of monument for corner and accessories established to perpetuate locating the position of the corner:
 SET WITNESSES

- (C-3) N.05°15'E., 48.72' TO M.C.R.C. REF. NAIL W. SIDE UTILITY POLE
- N.22°16'E., 59.44' TO P.K. NAIL E. SIDE UTILITY POLE
- S.33°47'W., 43.50' TO M.C.R.C. REF. NAIL S.E. SIDE D.E. LIGHT POLE
- N.41°34'W., 40.03' TO CROSS ON S.E. BOLT IN BASE OF R.R. SIGNAL POST
- (D-3) N.41°53'E., 65.86' TO P.K. NAIL N.W. SIDE 12" MAPLE
- S.56°25'W., 85.35' TO CENTERLINE TOP BOLT F. HYD.
- N.26°30'W., 103.75' TO COR. OF BRICK AT S.E. COR. CHURCH BLDG.
- N.04°40'W., 53.73' TO M.C.R.C. REF. NAIL W. SIDE D.E. POLE

Signed by Daniel Sandomierski Date 7/08/87

Surveyor's Michigan License No. 24616



LAND CORNER RECORDATION CERTIFICATE
Filing Requirement of Act 74, Mich. P.A. 1970

For corners in

<u>MACOMB</u> (County)	Located In:	Corner Code #/
1. Public Land Survey	T <u>1N R 13E</u>	<u>C-3</u>
	T <u>1N R 13E</u>	<u>D-3</u>
	T	R
	T	R
2. Property Controlling in Section	S	T
	S	T
3. Miscellaneous Property in Sec.	S	T
	S	T
4. Lot No.	Recorded Plat	
5. Private Claims		

Register of Deeds Stamp & File Number

I, _____, in a field survey on _____, 19____, do hereby certify that under requirements of P.A. 74, Michigan P.A. of 1970, the corner points mentioned in lines 1 and 2 above were in conformance with regulations and rules therefore as required in the current manual of survey instructions of the United States Department of the Interior, Bureau of Land Management or by a decree of a Court of Law and/or that the corner points mentioned in lines 3, 4 and 5 above were in conformance with the rules of the Michigan Board of Land Surveyors or by a Decree of a Court of Law, established, re-established, monumented, re-monumented, recovered, found as expressed below.

NOTE: Not more than 4 corners, all in the same town and range, may be recorded on this certificate.

	A	B	C	D	E	F	G	H	I	J	K	L
2	6		5		4		3		2			
3												
4	7		8		9		10		11			12
5												
6	18		17		16		15		14			13
7												
8	19		20		21		22		23			24
9												
10	30		29		28		27		26			25
11												
12	31		32		33		34		35			36
13												

ROSEVILLE TWP

A. Description of original monument and accessories and/or subsequent restoration:

- (C-3) N.05°15'E., 48.72' TO M.C.R.C. REF. NAIL W. SIDE UTILITY POLE
- N.22°16'E., 59.44' TO P.K. NAIL E. SIDE UTILITY POLE
- S.33°47'W., 43.50' TO M.C.R.C. REF. NAIL S.E. SIDE D.E. LIGHT POLE
- N.41°34'W., 40.03' TO CROSS ON S.E. BOLT IN BASE OF R.R. SIGNAL POST
- (D-3) N.41°53'E., 65.86' TO P.K. NAIL N.W. SIDE 12" MAPLE
- S.56°25'W., 85.35' TO CENTERLINE TOP BOLT F. HYD.
- N.26°30'W., 103.75' TO COR. OF BRICK AT S.E. COR. CHURCH BLDG.
- N.04°40'W., 53.73' TO M.C.R.C. REF. NAIL W. SIDE D.E. POLE

B. Description of corner evidence found and/or method applied in restoring or reestablishing corner:

C-3 FOUND 1/2" IRON IN MON. BOX

D-3 FOUND 1" PIPE IN MON. BOX

(Found this buried in project file - never typed out for record)

C. Description of monument for corner and accessories established to perpetuate locating the position of the corner:

- C-3 NORTHWEST COR. SEC. B TIN R 13E; FOUND 1/2" IRON IN MON. BOX
- AZ 10° @ 48.73' TO NAIL W/MCRL TAG IN E. FACE U. POLE
- AZ 26° @ 59.26' TO SPK W/RSD TAG IN S.W. FACE U. POLE
- AZ 115° @ 109.58' TO THE Q OF A FIRE HYDRANT
- AZ 323° @ 43.45' TO NAIL W/MCRL TAG IN S. FACE U. POLE
- D-3 N 1/4 COR. SEC B TIN R 13E; FOUND 1" IRON PIPE IN MON BOX
- AZ 3° @ 118.75' TO NAIL W/MCRL TAG IN E. FACE UPOLE
- AZ 152° @ 35.29' TO SPK W/RSD TAG IN W. FACE UPOLE
- AZ 232° @ 85.33' TO THE Q OF A FIRE HYDRANT
- AZ 349° @ 52.74' TO SPK W/RSD TAG IN SW. FACE UPOLE

New by RFD crew

New by RFD crew

Signed by _____ Date _____

Surveyor's Michigan License No. _____

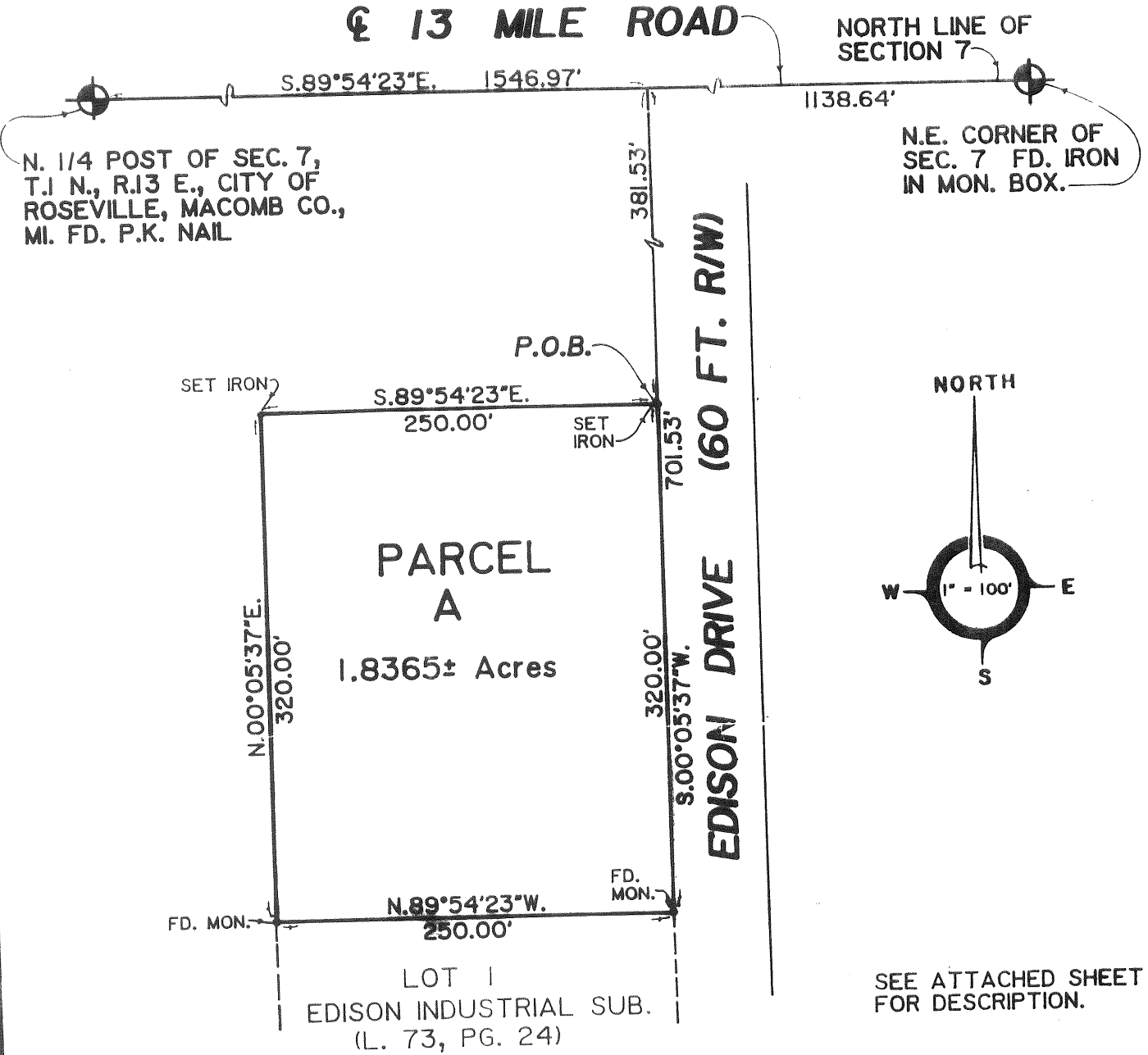
CERTIFICATE OF SURVEY



ANDERSON, ECKSTEIN & WESTRICK, INC.
 42800 GARFIELD ROAD
 MT. CLEMENS, MICH. 48044

PHONE NUMBER
 (313) 286-1234

C3



SEE ATTACHED SHEET FOR DESCRIPTION.

WITNESSES:

- N.E. CORNER FOUND 3/8" R.R. IN MON. BOX
- N.E.- 48.72 TO MCRC TAG WEST SIDE UTILITY POLE.
- N.E.- 59.44 TO P.K. NAIL, EAST SIDE UTILITY POLE.
- S.W.- 43.50 TO MCRC TAG S.E. SIDE D.E. LIGHT POLE.
- N.W.- 40.03 TO CROSS ON S.E. BOLT OF R.R. SIGNAL POST.

- N. 1/4 POST FOUND P.K. NAIL
- N. - 52.58 A.E.W. TAG IN E. FACE UTILITY POLE.
- N.E.- 59.85 TOP OF HYDRANT
- S.E.- 34.25 TOP OF HYDRANT
- S.- 51.35 A.E.W. TAG E. FACE UTILITY POLE.

CERTIFY TO: CITY OF ROSEVILLE
 ADDRESS: 29777 GRATIOT AVENUE, P.O. BOX 290
 CITY, STATE & ZIP: ROSEVILLE, MI 48066
 TWP: ERIN SEC: 7 COUNTY: MACOMB
 DATE: 1-12-90 DRAWN BY: L.A.H.
 A.E.W. NO.: 29708 SHEET NO.: 1 of 2
 SCALE: 1" = 100'
 BOOK NO. 908

I hereby certify that I have surveyed and mapped the land above and / or described on JAN. 8, 1990 and that the ratio of closure on the unadjusted field observations of such survey was 1/10,000 and that all of the requirements of Public Act 132, of 1870 have been complied with.

Bearings shown on this survey were determined as follows.
EDISON INDUSTRIAL SUBDIVISION