

C152282

LAND CORNER RECORDATION CERTIFICATE
Filing Requirement of Act 74, Mich. P.A. 1970

94 DEC 14 AM 10:55

corners in

MACOMB

Located In: ERIN/LAKE

Corner Code #

MACOMB COUNTY REGISTER OF DEEDS

Public Land Survey

T 1N R 13E

C-1

Property Controlling in Section

S T R

Miscellaneous

S T R

Property in Sec.

S T R

LIBER 6527 PAGE 859

Register of Deeds Stamp & File Number

Lot No. , Recorded Plat
Private Claims

Grid table with columns A-M and rows 2-13. A dot is marked at the intersection of column C and row 2.

STEVEN E. DUNN, in a field survey on MARCH 20, 19 94, hereby certify that under requirements of P.A. 74, Michigan P.A. of 1970, the corner points mentioned in lines 1 and 2 above were in conformance with regulations and rules therefore required in the current manual of survey instructions of the United States Department of Interior, Bureau of Land Management or by a decree of a Court of Law and /or that the corner points mentioned in lines 3, 4 and 5 above were in conformance with the rules of the Michigan Board of Land Surveyors or by a Decree of a Court of Law; established, re-established, monumented, re-monumented, recovered, found as expressed below:

NOTE: Not more than 4 corners, all in the same town and range, may be recorded on this certificate.

Description of original monument and accessories and/or subsequent restoration:

GLO POST - NO EVIDENCE OF ORIGINAL CORNER FOUND

GLO ORIGINAL SURVEY PERFORMED BY PRESTON 2-18-1818

Table with columns PLATS, GARFIELD PARK SUBDIVISION NO. 1, and DECEMBER 3, 1926. Rows include L. 12 P. 12, L. 14 P. 27, L. 14 P. 28, and L. 49P. 12.



Description of corner evidence found and/or method applied in restoring or reestablishing corner:

C-1 SECTION CORNER COMMON TO C-13 CLINTON TOWNSHIP

FOUND 1/2" IRON ROD IN MONUMENT BOX IN CONCRETE PAVEMENT VERIFIED LOCATION BY COMPARING ANGLE AT NORTHEAST QUADRANT WITH ANGLE OF KENNEDY SUB AND ASSESSOR'S PLAT NO. 4, ANGLE AT NORTHWEST QUADRANT WITH ANGLE OF ASSESSOR'S PLAT NO. 3, AND COMPARING DISTANCE FROM C-1 TO B-1 WITH THAT ON ASSESSOR'S PLAT NO. 3 AND DISTANCE FROM C-1 TO D-1 WITH ASSESSOR'S PLAT NO. 4 AND GARFIELD PARK SUB NO. 1.

ACCEPTED BY THE MACOMB COUNTY SURVEY PEER GROUP AS THE OFFICIAL CORNER UNDER MICHIGAN PUBLIC ACT 345 OF 1990 AT A MEETING HELD ON 10-4-94

Signature of William E. Soderberg, P.S., Chairman

Description of monument for corner and accessories established to perpetuate locating the position of the corner:

C-1 T.1N., R.13E. I REPLACED 1/2" IRON ROD WITH A 3/4" x 24" IRON ROD WITH 2" DIAMETER ALUMINUM CAP STAMPED " MACOMB COUNTY MONUMENT MI. ACT 345 #28408 IN AN EXISTING MONUMENT BOX.

WITNESSES

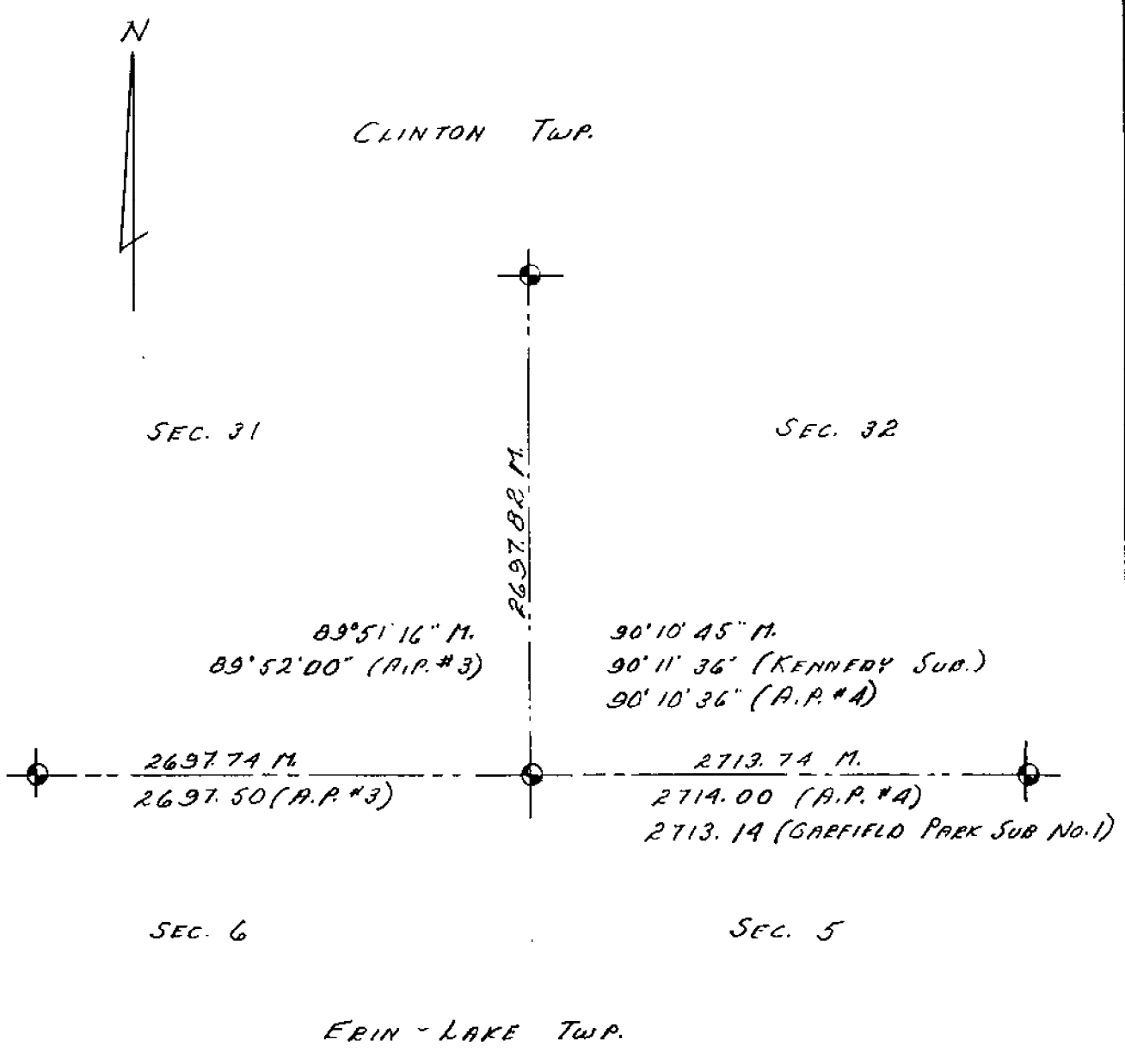
- N.55°W. 78.09' CENTER TOP NUT OF HYDRANT.
N.49°E. 72.06' SET PK NAIL IN SOUTH FACE OF UTILITY POLE.
S.48°E. 64.32' FOUND PK NAIL W/M.C.R.C. TAG IN SOUTHWEST FACE OF UTILITY POLE
S.73°W 126.93' NORTHEAST CORNER OF METAL GUY POLE.

THE SELECTED LOCATION IS ACCEPTED BY ME AND IS GENERALLY ACCEPTED BY PROFESSIONAL SURVEYORS AS THE BEST AVAILABLE EVIDENCE OF THE POSITION OF THE ORIGINAL CORNER

Signed by Steven E. Dunn Date Nov. 9, 1994
Surveyor's Michigan License No. 28408

6.16.1994

22-141 50 SHEETS
22-142 100 SHEETS
22-144 200 SHEETS
AMRAD





N.E. COR.

A
AND PARK SUB
ATED (L11-P25)
B
PLAT NO 5
(L14-P29)

NEW COR

FRASER SCHOOL
SUB (L)

RR

60
59
58
57
56
55

100 120 40

507
508
509

WILHELMINE

17
16
15
14
13
12
11
10
09
08

100 120 40

554

421
422
423

PARK

82
281
280
279
278
277
276
275
274
273
272
271

100 120 40

288
289
290
291
292
293
294
295
296
297
298
299
300
301
302
303
304
305
306
307
308
309
310

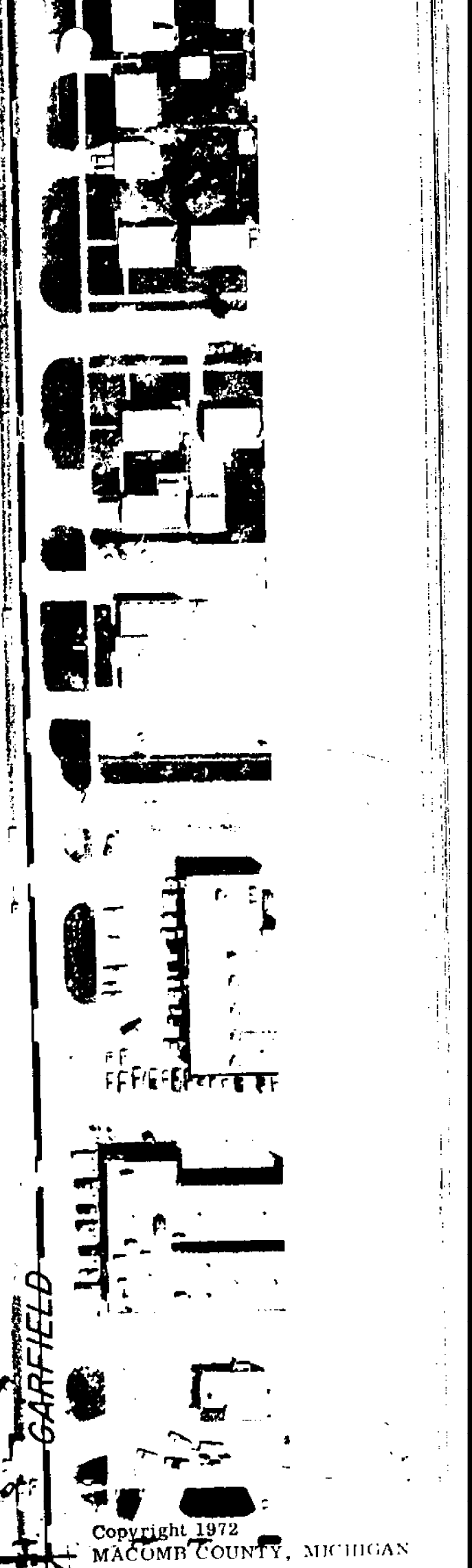
ANITA

19
20
21
22
23
24
25
26

100 120 40

307
308
309
310
311
312
313
314
315
316
317
318
319
320
321
322
323
324
325
326
327
328
329
330
331
332
333
334
335
336
337
338
339
340
341
342
343
344
345
346
347
348
349
350
351
352
353
354
355
356
357
358
359
360
361
362
363
364
365
366
367
368
369
370
371
372
373
374
375
376
377
378
379
380
381
382
383
384
385
386
387
388
389
390
391
392
393
394
395
396
397
398
399
400

6-1



Copyright 1972
MACOMB COUNTY, MICHIGAN

S.E. COR SCALE: 1" = 100'

C-1

2N. R.13E.

11-31H

REV. 5-86
REV. 1-85
REV. 10-83
REV. 4-83

SW. COR.

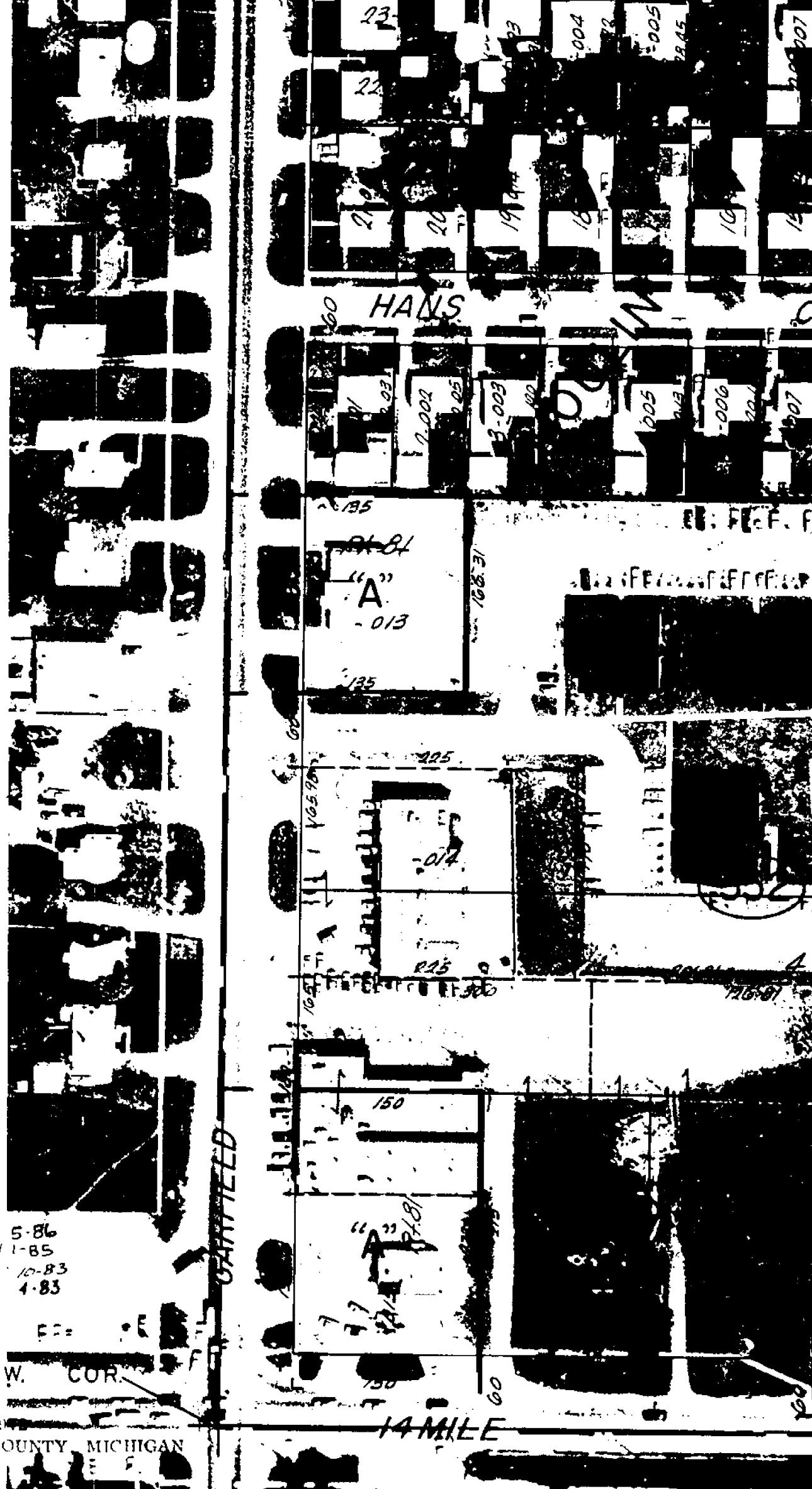
Copyright 1983
MACOMB COUNTY, MICHIGAN

SCALE: 1" = 100'

11-32 E

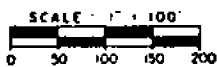
G-1

W. 1/2 S.V



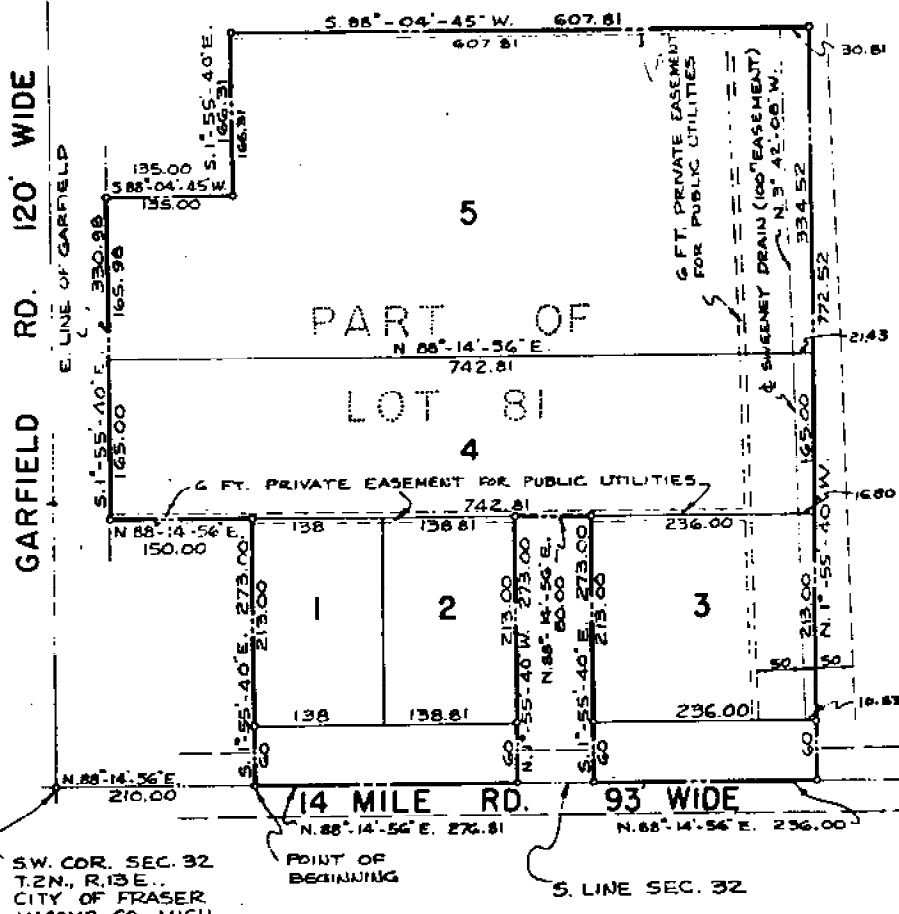
T. 2 N., R. 13 E., CITY OF FRASER,
MACOMB COUNTY, MICHIGAN.

CERTIFIED PLAT BY
MORRISON ENGINEERING CO.
DETROIT, MICHIGAN
STATEWIDE
ENGINEERING & SURVEYING
SERVICES



ALL DIMENSIONS ARE SHOWN IN FEET AND DECIMALS THEREOF.
MOULIN ROUGE EAST SUB'N. NO. 1 LIBER 44 PAGE 25

Arthur J. ... County Clerk
James ... County Treasurer
...
Thomas B. ... Brain Commissioner



DESCRIPTION OF LAND PLATTED

The land embraced in the annexed plat of Kennedy Subdivision of part of S. W. 1/4 Section 32, T. 2 N., R. 13 E., City of Fraser, Macomb County, Michigan, comprises Lots 1 thru 5, both inclusive, being a re-subdivision of part of Lot 81 of Assessor's Plat No. 4 of South 1/3 of Southwest 1/4 of Section 32, T. 2 N., R. 13 E., Village of Fraser, Clinton Twp., Macomb County, Michigan, as recorded in Liber 14, Page 28 of Plats, Macomb County Records, is more particularly described as follows:

Beginning at a point in the South line of Section 32 distant 210.00 feet measured North 88°-14'-56" East along the South line of Section 32, from the Southwest corner of Section 32, T. 2 N., R. 13 E., City of Fraser, Macomb County, Michigan, Thence North 88°-14'-56" East measured along the South line of Section 32, a distance of 276.81 feet; Thence North 1°-55'-40" West a distance of 273.00 feet; Thence North 88°-14'-56" East a distance of 80.00 feet; Thence South 1°-55'-40" East a distance of 273.00 feet to a point in the South line of Section 32; Thence North 88°-14'-56" East measured along the South line of Section 32 a distance of 238.00 feet; Thence North 1°-55'-40" West a distance of 773.52 feet; Thence South 88°-04'-45" seconds West a distance of 807.81 feet; Thence South 1°-55'-40" East a distance of 168.31 feet; Thence South 88°-04'-45" West a distance of 135.00 feet to a point in the East line of Garfield Road, 120 feet wide, as now established; Thence South 1°-55'-40" East and measured along the East line of Garfield Road a distance of 330.98 feet; Thence North 88°-14'-56" East a distance of 150.00 feet; Thence South 1°-55'-40" East a distance of 273.00 feet to the point of beginning.

CERTIFICATE OF APPROVAL BY
BOARD OF COUNTY ROAD COMMISSIONERS

This plat has been approved by the Board of County Road Commissioners of Macomb County, Michigan, on the 7th day of January 1961.

Lawrence ...
Notary Public

ACKNOWLEDGMENT

State of Michigan
County of Macomb

On this 28th day of January 1961 before me, a Notary Public in and for said County, personally came the above named Elmer M. Kennedy, Florence V. Kennedy, his wife, and Marion E. Nance, M.D., and Leona R. Barker, known to me to be the persons who executed the above dedication and acknowledged the same to be their free act and deed.

Blair ...
Notary Public
My Commission expires Jan. 9, 1965

DEDICATION

KNOW ALL MEN BY THESE PRESENTS, That we, Elmer M. Kennedy, as proprietor, and Florence V. Kennedy, his wife, and Marion E. Nance, M.D., as vendee, and Leona R. Barker, as vendee, have caused the land embraced in the annexed plat to be surveyed, laid out and platted, to be known as Kennedy Subdivision of part of S.W. 1/4, Section 32, T. 2 N., R. 13 E., City of Fraser, Macomb County, Michigan, and that the streets as shown on said plat is hereby dedicated to the use of the public and that the private easements shown on said plat are hereby reserved for the use of the public utilities or for specific purposes as thereon noted, subject to the regulation and control of the use thereof by the local governmental authorities, and that no permanent structures are to be erected within the boundaries of said easements.

Signed and Sealed
in the Presence of:

Blair ...
Anna Bennett
Blair ...
Anna Bennett
Blair ...
Anna Bennett
Blair ...
Anna Bennett
Blair ...
Anna Bennett

By Elmer M. Kennedy
By Florence V. Kennedy
By Marion E. Nance, M.D.
By Leona R. Barker

THIS IS TO CERTIFY THAT ACCORDING TO THE COUNTY RECORDS RECORDS...
Treasurer ...

CERTIFICATE OF MUNICIPAL APPROVAL

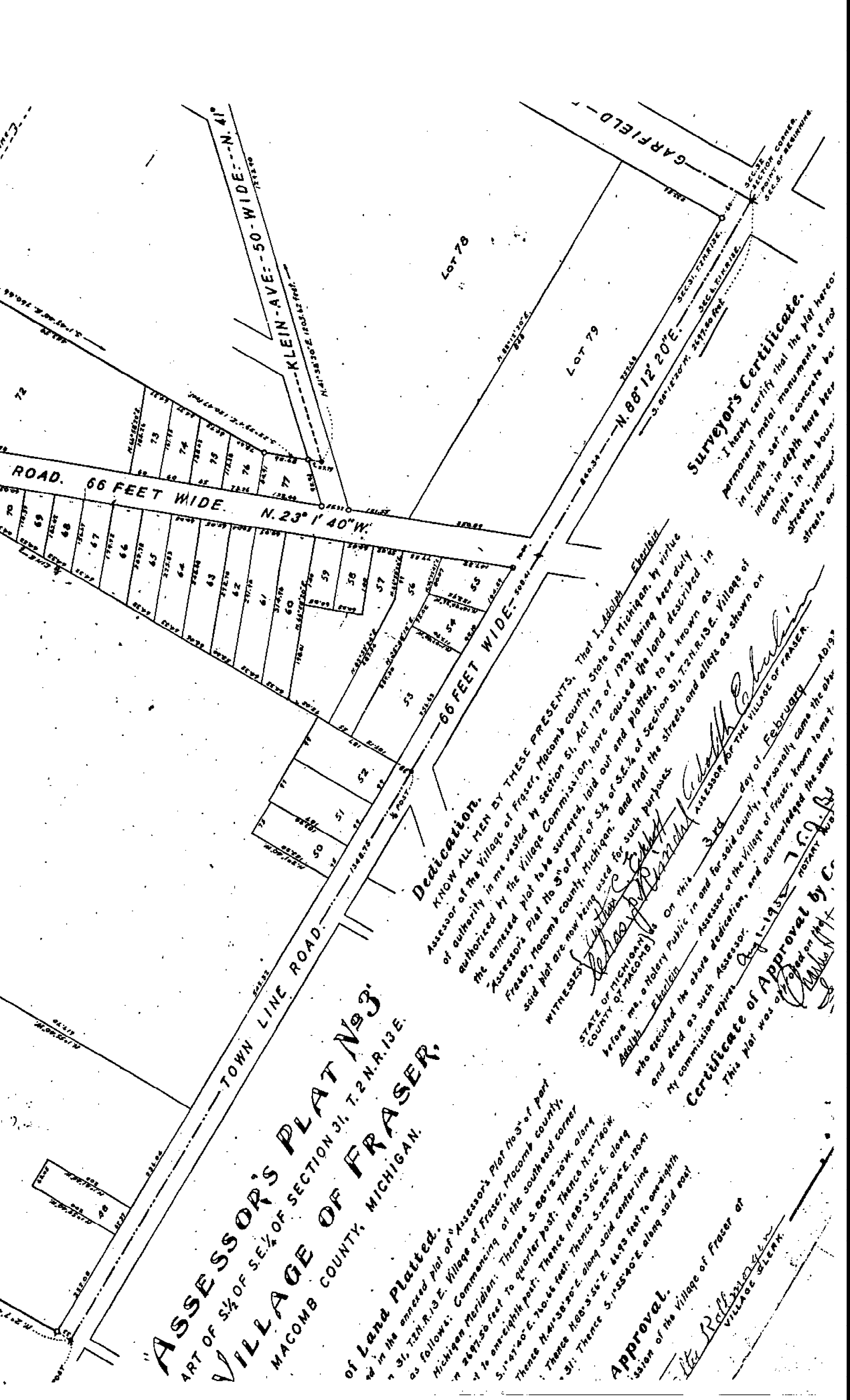
I hereby certify that this plat has been approved by the City Council of the City of Fraser at a meeting held January 8, 1961, and that the width of lots is in compliance with requirements of Section 30, Act 173 of 1928 as amended, and that adequate security has been deposited with the municipality to ensure the installation of public sanitary sewer and water facilities within the plat.

Richard ...
Approved:
Mayor

SURVEYOR'S CERTIFICATE

I hereby certify that the plat herein delineated is a correct one and that permanent monuments consisting of iron bars of at least one-half inch in diameter and 36 inches in length, secured in concrete cylinders 4 inches in diameter and 36 inches in length have been set at points marked (a) as thereon shown at all angles in the boundaries of the land platted and at the intersections of streets with the boundaries of the plat as shown on said plat.

John J. ...
Registered Land Surveyor #4019



ASSESSOR'S PLAT No. 3
 PART OF S.E. 1/4 OF SECTION 31, T. 2 N. R. 13 E.
VILLAGE OF FRASER,
 MACOMB COUNTY, MICHIGAN.

of Land Platted.
 in the annexed plat of Assessor's Plat No. 3 of part
 of Section 31, T. 2 N. R. 13 E. Village of Fraser, Macomb County,
 Michigan Meridian: Commencing at the southeast corner
 of the southeast quarter post; Thence N. 29° 12' 20\"/>

Approval.
 of the Village of Fraser or
 Village Clerk.

Dedication.

KNOW ALL MEN BY THESE PRESENTS, That I, Alolph Elvén,
 Assessor of the Village of Fraser, Macomb County, State of Michigan, by virtue
 of authority in me vested by Section 51, Act 172 of 1929, having been duly
 authorized by the Village Commission, have caused the land described in
 the annexed plat to be surveyed, laid out and platted, to be known as
 Assessor's Plat No. 3 of part of S.E. 1/4 of Section 31, T. 2 N. R. 13 E. Village of
 Fraser, Macomb County, Michigan, and that the streets and alleys as shown on
 said plat are now being used for such purposes.

WITNESSES
 STATE OF MICHIGAN
 COUNTY OF MACOMB
 before me, a Notary Public, on this 3rd day of February A.D. 1930
Alolph Elvén Assessor of the Village of Fraser, personally came to me
 and declared the above dedication, and acknowledged the same
 My commission expires July 1, 1930
Certificate of Approval by C.
 This plat was approved on 1930
 notary

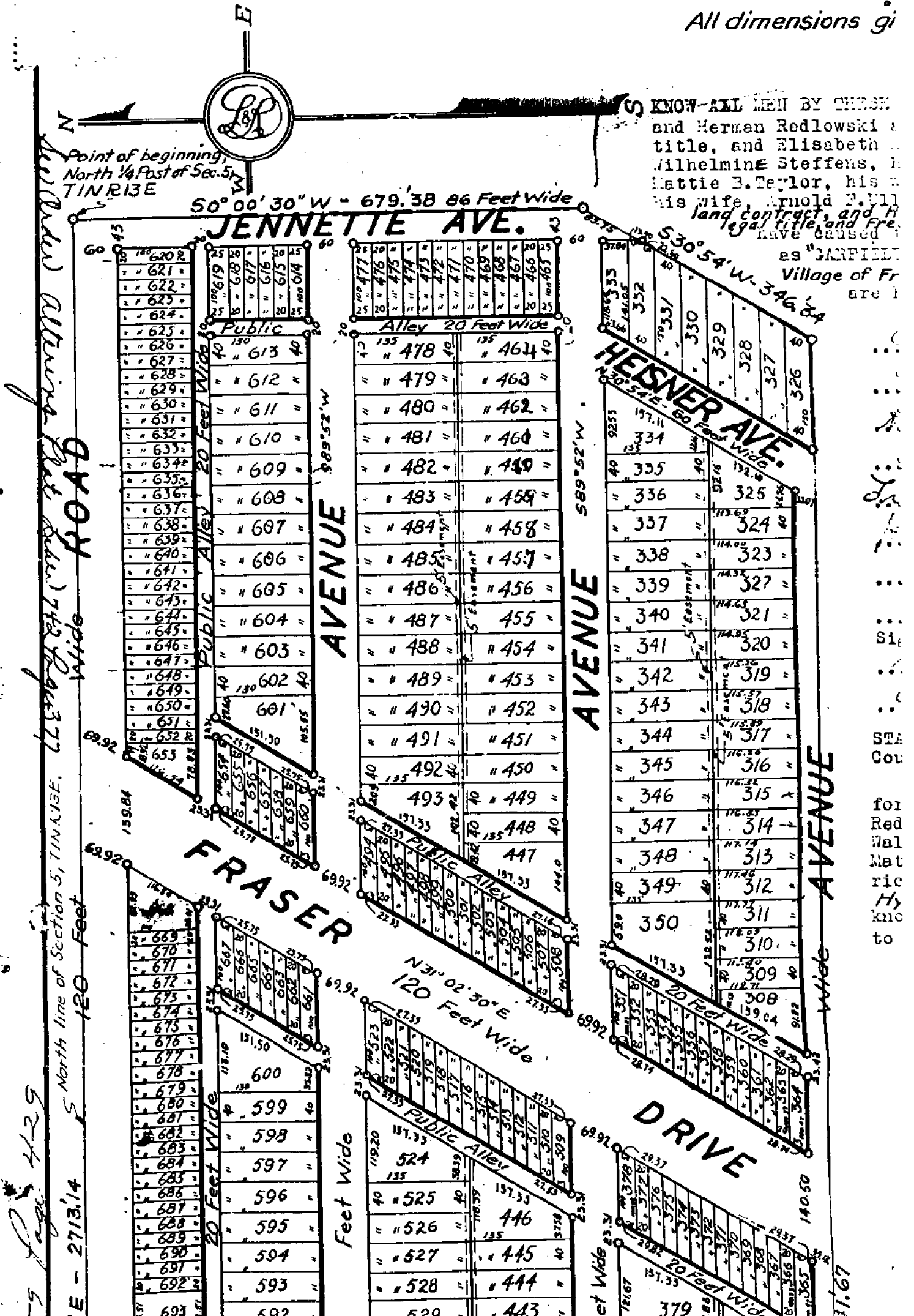
Surveyors Certificate.
 I hereby certify that the plat hereto
 permanent metal monuments of no
 inches in depth have been
 angles in the bound
 streets, interest

718
2/17

GARFIELD PAT

Being part of the N.W. 1/4
Village of Fra.
Sco.

All dimensions gi



KNOW-ALL MEN BY THESE
and Herman Redlowski
title, and Elisabeth
Wilhelmine Steffens,
Mattie B. Taylor, his
his wife, Arnold P. Vill
land contract, and Fr.
have caused
as "GARFIELD
Village of Fr
are i

Point of beginning,
North 1/4 Post of Sec. 5,
T1N R13E

50° 00' 30" W - 679.38 86 Feet Wide

JENNETTE AVE.

530.54' W - 346.84

HESPER AVE.

589° 52' W

FRASER AVE.

120 Feet Wide

2713.14

120 Feet

429

North line of Section 5, T1N R13E.

Page 377

for
Red
Wal
Mat
ric
Hy
kne
to

Town 1 North Range 13 East

June 12 8 3 3 6

Do 12 8 40 6 6

No public lands East of this corner

North Boundary

East

6 58 13. Oak 24 in diam
 19.00 Marsh
 33.30 2nd marsh
 36.50 Marsh
 41.00 made 74 Sec. cor in a willow in diam
 40.50 2nd marsh
 42.62 W.C. 24 in diam
 10.00 made cor. for sections 31, 32, 33 on
 a hemlock 3 in diam
 Land 1st half mile 1st rate last 1/2 mile
 2nd rate part dry Timber W.C. 13 Oak
 Elm White Birch Cornbeam &c.

East

40.00 made 74 Sec. cor in a Hickory 7 in diam
 66.66 W.C. 30 inches diam
 10.00 made cor. for sections 31, 32, 33
 on a Sycamore 110 inches diameter
 Land level and dry 2nd rate Timber
 11 Oak 2 1/2 in 10 Alder 13 Oak Sugar 10
 Wood 7th Spruce 10

46.00 made 1/2 mile cor in an Elm 18 in diam
 49.00 Spruce 14 in diam
 10.00 2nd part for sections 34, 33, 34
 East from point which a Birch 2 in diam
 bears N 115 W 11 the dist also a Birch
 diam bears N 111 E 16 the dist - same
 2nd rate level and dry Timber W.C.

Town 1 North Range 13 East

Sugar Poplar Lynx 10 Hudgth Spruce

14.13 Birch 16 in diam
 20.00 Run 1/4 the course S.E.
 116.00 Made 1/2 mile cor on a Birch 10 in diam
 10.00 Set post for cor of sections 2, 3, 24 & 35
 from which a Birch 11 in diam bears
 N 53 E 17 lbs dist also an Elm 24 in
 diam bears N 5 W 31 lbs distant
 Land first 1/2 mile good 2nd rate
 last half 3rd rate Timber Birch Sugar
 W Oak Poplar B. Ash + Hudgth Spruce

20.15 W Oak 18 in diam
 30.66 Intersected Private Claim N: 123 - same
 Set post for cor of sections 2 & 35 -
 from which a B. Ash 10 in diam
 bears N 71 E 11 lbs dist also a
 Lynx 7 in diam bears N 52 E 7 lbs
 dist Land dry good 2nd rate Timber
 Birch B. Ash Poplar + c

West Boundary

North of the first Meridian of the Territory
 Chatter of Michigan

12.34 Poplar 36 inches diameter
 110.00 Set post for cor of 1/4 section from
 which a Sugar tree 13 inches diam
 bears South 7 lbs distant
 118.62 Sycamore 36 in diam
 10.00 Set mile post for cor of sections
 25 & 36 from which an Elm 10 in
 diam bears S 77 E 10 lbs distant
 also a Lynx 10 in diam bears N 35
 W 20 lbs dist Land first half