

LAND CORNER RECORDATION CERTIFICATE
Filing Requirement of Act 74, Mich. P.A. 1970

For corners in

<u>MACOMB</u> (County)	Located In: <u>ERIN</u>	Corner Code # <u>A-11</u>
1. Public Land Survey	T <u>1N</u> R <u>13E</u>	<u>A-11</u>
	T <u> </u> R <u> </u>	<u> </u>
	T <u> </u> R <u> </u>	<u> </u>
	T <u> </u> R <u> </u>	<u> </u>
2. Property Controlling in Section	S <u> </u> T <u> </u> R <u> </u>	<u> </u>
	S <u> </u> T <u> </u> R <u> </u>	<u> </u>
3. Miscellaneous Property in Sec.	S <u> </u> T <u> </u> R <u> </u>	<u> </u>
	S <u> </u> T <u> </u> R <u> </u>	<u> </u>
4. Lot No. <u> </u> , Recorded Plat <u> </u>		
5. Private Claims <u> </u>		

ACCEPTED BY THE MACOMB COUNTY SURVEY PEER
GROUP AS THE OFFICIAL CORNER UNDER MICHIGAN
PUBLIC ACT 345 OF 1990 AT A MEETING HELD
ON 11-18-97

William E. Soderberg
WILLIAM E. SODERBERG, P.S., CHAIRMAN

Register of Deeds Stamp & File Number

I, STEVEN E. DUNN, in a field survey on OCTOBER 14, 1997,
do hereby certify that under requirements of P.A. 74, Michigan P.A. of 1970, the corner
points mentioned in lines 1 and 2 above were in conformance with regulations and rules
therefore as required in the current manual of survey instructions of the United States
Department of the Interior, Bureau of Land Management or by a decree of a Court of Law
and/or that the corner points mentioned in lines 3, 4 and 5 above were in conformance with
the rules of the Michigan Board of Land Surveyors or by a Decree of a Court of Law;
established, re-established, monumented, re-monumented, recovered, found as
expressed below:

	A	B	C	D	E	F	G	H	I	J	K	L	M
2	6	5	4	3	2	1							
3													
4	7	8	9	10	11	12							
5													
6	18	17	16	15	14	13							
7													
8	19	20	21	22	23	24							
9													
10	30	29	28	27	26	25							
11													
12	31	32	33	34	35	36							
13													

**NOTE: Not more than 2 corners, all in the same town and range, may be
recorded on this certificate.**

A. Description of original monument and accessories and/or subsequent restoration:

GLO POST-NO EVIDENCE OF ORIGINAL CORNER FOUND-GLO ORIGINAL SURVEY PERFORMED BY WILLIAM PRESTON-1817
CORNER CLOSED ON M-11.

PLATS:

L.3, P. 127	HALFWAY LITTLE FARMS
L.3, P. 155	REIN'S SUBDIVISION
L.4, P. 21	REIN'S SUBDIVISION NO. 1
L.4, P. 45	GEORGE FISCHER'S SUBDIVISION
L.5, P. 58	HENRY A. STERNBERGER SUBDIVISION
L.22, P. 16	A.P. #13
L.22, P. 17	A.P. #14
L.23, P. 42	MERTZ SUBDIVISION
L.32, P. 7	DOUGLAS HEIGHTS SUB.
L.52, P. 47	A.P. #45

AUG. 21, 1917
APR. 23, 1919
FEB. 13, 1920
MAR. 30, 1920
SEPT. 10, 1921
MAY 16, 1942
MAY 23, 1942
SEPT. 20, 1946
MAR. 23, 1955
JAN. 13, 1964



M.C.R.C. RIGHT-OF-WAY MAP SHEET 85 SEPT. 1981

B. Description of corner evidence found and/or method applied in restoring or reestablishing corner:

A-11 FOUND 1/2" IRON ROD IN MONUMENT BOX IN ASPHALT CAPPED CONCRETE PAVEMENT. CORNER COMMON TO M-11, T.1N., R.12E.

I VERIFIED THE LOCATION OF FOUND 1/2" IRON ROD BY COMPARING FIELD MEASUREMENTS TO RECORD MEASUREMENTS OF CORNERS FOUND
IN PLATS LISTED ABOVE. CORNER IS AT INTERSECTION OF CENTERLINE OF HAYES ROAD NORTH AND NORTH LINE OF LEFT TURN LANE AT
9 MILE ROAD.

FIELD MEASUREMENTS AND RECORD MEASUREMENTS:

A-11 TO A-12	A-11 TO A-10	A-11 TO B-11
GLO- 40 CHAINS OR 2640.00'	GLO - 40 CHAINS OR 2640.00'	GLO - 40 CHAINS OR 2640.00'
FIELD-2713.91'	PLATS - EASTSIDE - 2700.98'	PLATS - NORTHSIDE - 2663.30'
	FIELD - 2690.90'	PLATS - SOUTHSIDE - 2664.68'
		FIELD - 2664.06'

C. Description of monument for corner and accessories established to perpetuate locating the position of the corner:

A-11, T.1N., R.13E.

I REPLACED FOUND 1/2" IRON WITH A 3/4"X24" IRON ROD WITH A 2" DIAMETER ALUMINUM CAP STAMPED
"MACOMB COUNTY MONUMENT MI. ACT 345 #28408" IN EXISTING MONUMENT BOX.

WITNESSES:

N.58°E - 46.86'	SET MAG NAIL W/MACOMB COUNTY REMONUMENTATION WITNESS TAG IN SE FACE OF UTILITY POLE
S.57°W - 60.20'	FOUND PK NAIL IN NW FACE OF UTILITY POLE
N.45°W - 43.10'	FOUND PK NAIL IN SW FACE OF UTILITY POLE
N.45°W - 47.00'	CUT "+" IN CONCRETE SIDEWALK
S.68°E - 104.80'	SET MAG NAIL W/MACOMB COUNTY RREMONUMENTATION WITNESS TAG IN NE FACE LIGHT POLE

THE SELECTED LOCATION IS ACCEPTED BY ME AND IS GENERALLY ACCEPTED BY PROFESSIONAL SURVEYORS AS THE BEST AVAILABLE
EVIDENCE OF THE POSITION OF THE ORIGINAL CORNER.

Signed by Steven E. Dunn Date Dec. 18, 1997
Surveyor's Michigan License No. 28408

MACOMB COUNTY PUBLIC LAND SURVEY
REMONUMENTATION PROGRAM

RESEARCH DOSSIER

CORNER LOCATION
T.1N., R.13E.

ACT 74 CORNER CODE
A-11

SECTION CORNER

Section corner common to sections 30 and 31. Corner is also being used as a common corner common to sections 25 and 36, Town 1 North, Range 12 East, Warren.

ORIGINAL CORNER IDENTIFICATION PER GOVERNMENT LAND OFFICE RECORDS:

Set corner post.

INTERIM CORNER IDENTIFICATION: None.

CURRENT CORNER IDENTIFICATION:

Found a 1/2" iron rod in a monument box in asphalt capped concrete pavement.

A field measurement was made between corners:

A-11 to A-12	G.L.O.-40 chains or 2640.00'
	Field-2713.91'
A-11 to A-10	G.L.O.-40 chains or 2640.00'
	Plats-Eastside-2700.98'
	Field-2690.90'
A-11 to B-11	G.L.O.-40 chains or 2640.00'
	Plats-Northside-2663.30'
	Plats-Southside-2664.68'
	Field-2664.06'

SUMMARY AND RECOMMENDATIONS:

The selected location is accepted by me and is generally accepted by Professional Surveyors as the best available evidence of the corner.

MACOMB COUNTY PUBLIC LAND SURVEY

CORNER VERIFICATION CHECKLIST

RECORDED SURVEY FILE: None.

LAND FILES: Composites 14-30E and F, 14-31A and B.

COUNTY SURVEYOR RECORDS: G.L.O. notes and plat.

LOCAL SURVEYOR FILES: None.

MUNICIPAL AGENCIES:

A. MDOT:	None.	
B. M.C.R.C.:		
Right-of-way map Sheet 85		Sept. 1981
C. M.D.N.R.:	None.	
D. Macomb County Register of Deeds:		
Land Corner Recordation Certificates:		None
Recorded Surveys:		None
Recorded Condominium Documents:		None
Plats:		
L.3, P.127 Halfway Little Farms		8-21-1917
L.3, P.155 Rein's Subdivision		4-23-1919
L.4, P.21 Rein's Subdivision No. 1		2-13-1920
L.4, P.45 George Fischer's Subdivision		3-30-1920
L.5, P.58 Henry A. Sternberger Subdivision		9-10-1921
L.22, P.16 A.P. #13		5-16-1942
L.22, P.17 A.P. #14		5-23-1942
L.23, P.42 Mertz Subdivision		9-20-1946
L.32, P.7 Douglas Heights Subdivision		3-23-1955
L.52, P.47 A.P. #45		1-13-1964

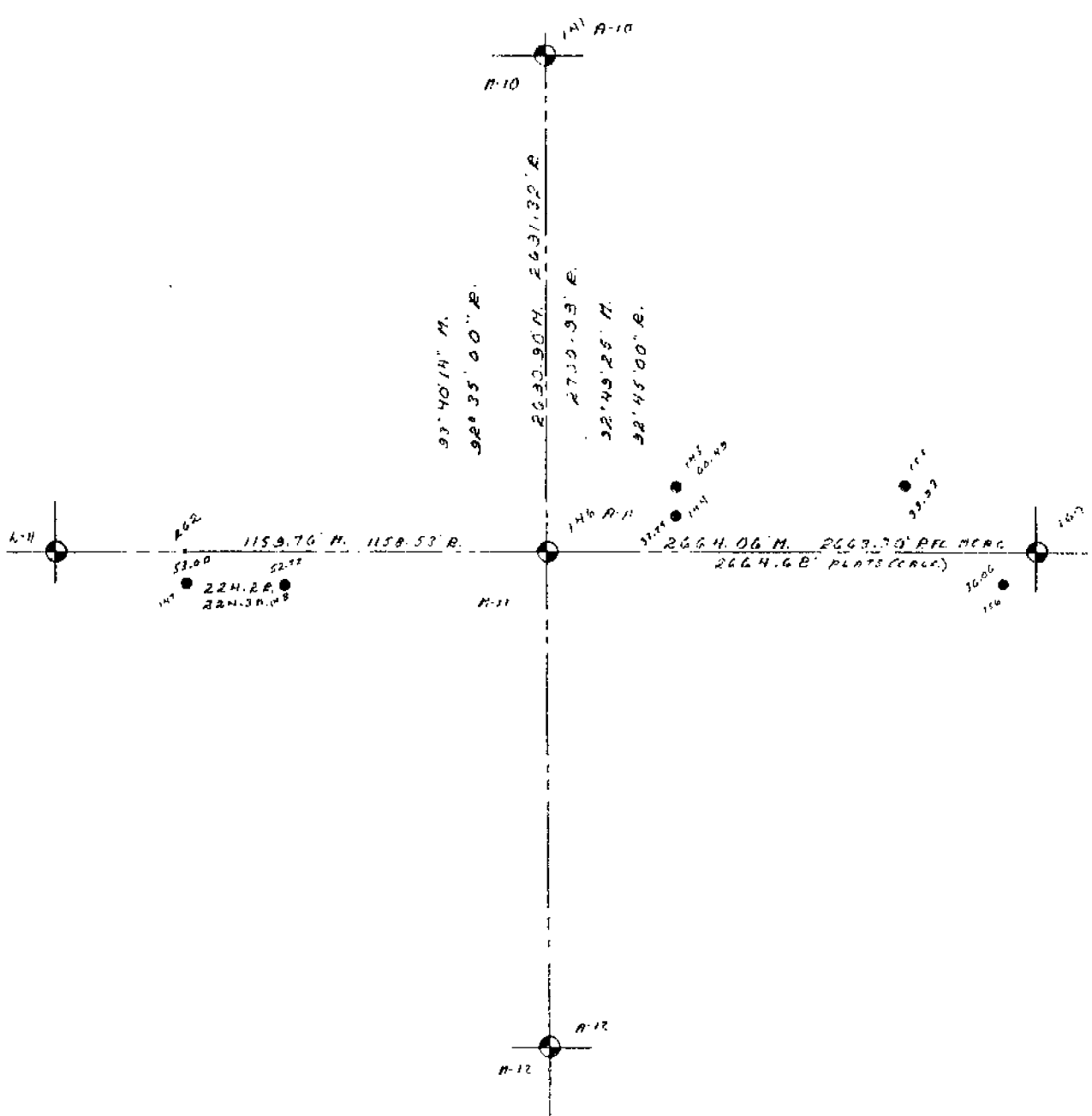
UTILITY COMPANIES:

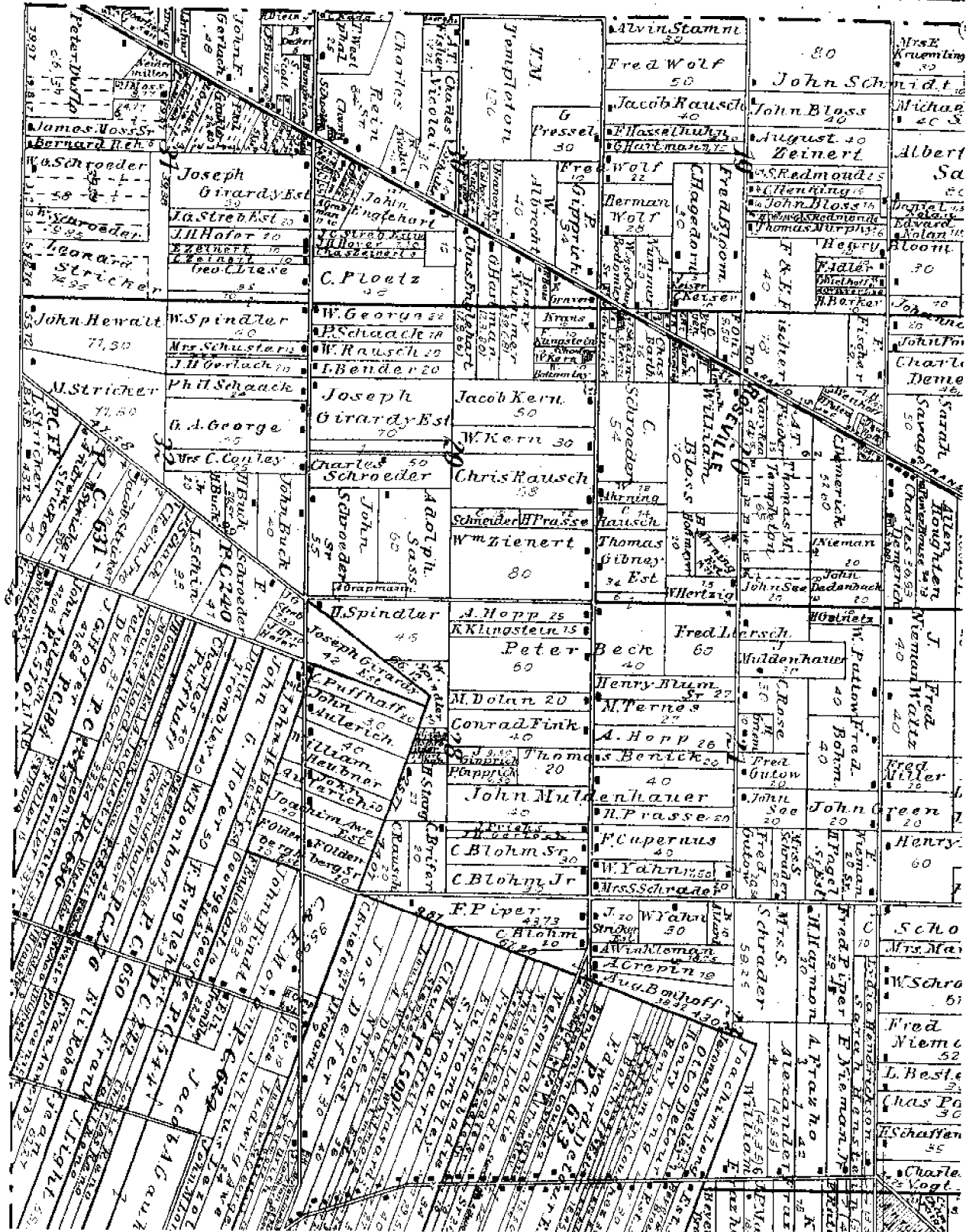
A. Detroit Edison:	None.
B. Michigan Bell:	None.
C. Michigan Consolidated Gas:	None.
D. Consumers Power Company:	None.
E. Pipeline Companies:	None.
F. City of Detroit Water Board:	None.
G. Railroads:	None.

CONTACT WITH ADJOINING PROPERTY OWNERS:

No contact was made regarding this corner.

22-141 50 SHEETS
 22-142 100 SHEETS
 22-144 200 SHEETS





Township Lines

East Boundary

North Between Townships N19.1 N,

Range 127.1 E. East

12.34 Poplar 26 inches diameter

41.11 Set post for corner of 1/4 sec.

Sugar 13. Spwth 9 1/2 lbs

48.62 Sycamore 36 inches diameter

80.01 Set 9 mile post for corner of Section

253361 Ash 10.8 77 1/2 lbs

Sycamore 13 1/2 lbs

Land 1 1/2 mile 1/4 sec.

Post half hewn Timber Sugar

Ash Sycamore Birch Poplar

North Between Towns 191 W Range

1271 R. E.

1801 Hickory 13 inches diameter

40.10 Set 1/4 sec. Post

Bush 14 N 84 E 17 lbs

49.40 Poplar 41 inches diameter

80.00 Set 2 mile Post for corner of Section

253355

Bush 18 83 W 26 lbs

Maple 15 1/2 lbs

Land first 1/4 mile 2 1/4 water land

Post h. hewn Timber Sugar

Bush Ash 10 length 1/2 hewn wood

Bush 10

J 1 N. R 12-E

North Between Towns 19 1 N. Range

12713 E

14.34 Burr Oak 38 inches diam.

37.50 B. Oak & Tamarack Swamp

40.00 S. 4-4 Section Post

March 13 at 57 N 11th

75.54 Tamarack 15 inches diam.

80.00 Made 3d. Mile Post for cor. of

Sections 187 2d

Tamarack 6 1/4 N 11th

Tamarack 5 1/4 N 25

Land 1st half mile 3d. rate last

1/2 same from B. Oak & Tamarack

J 1 N. R 12 E

North Between Towns, 17 1 N. Range 12713 E

32.50 Left Tamarack Swamp

34.64 Birch 20 inches diam.

40.00 S. 4-4 Sec. Post

Edm 18 North 5th

Standing on the border of Swamp

44.68 Edm 38 inches diam.

80.00 Set 4th mile post

Edm 24 3/8 N 11th

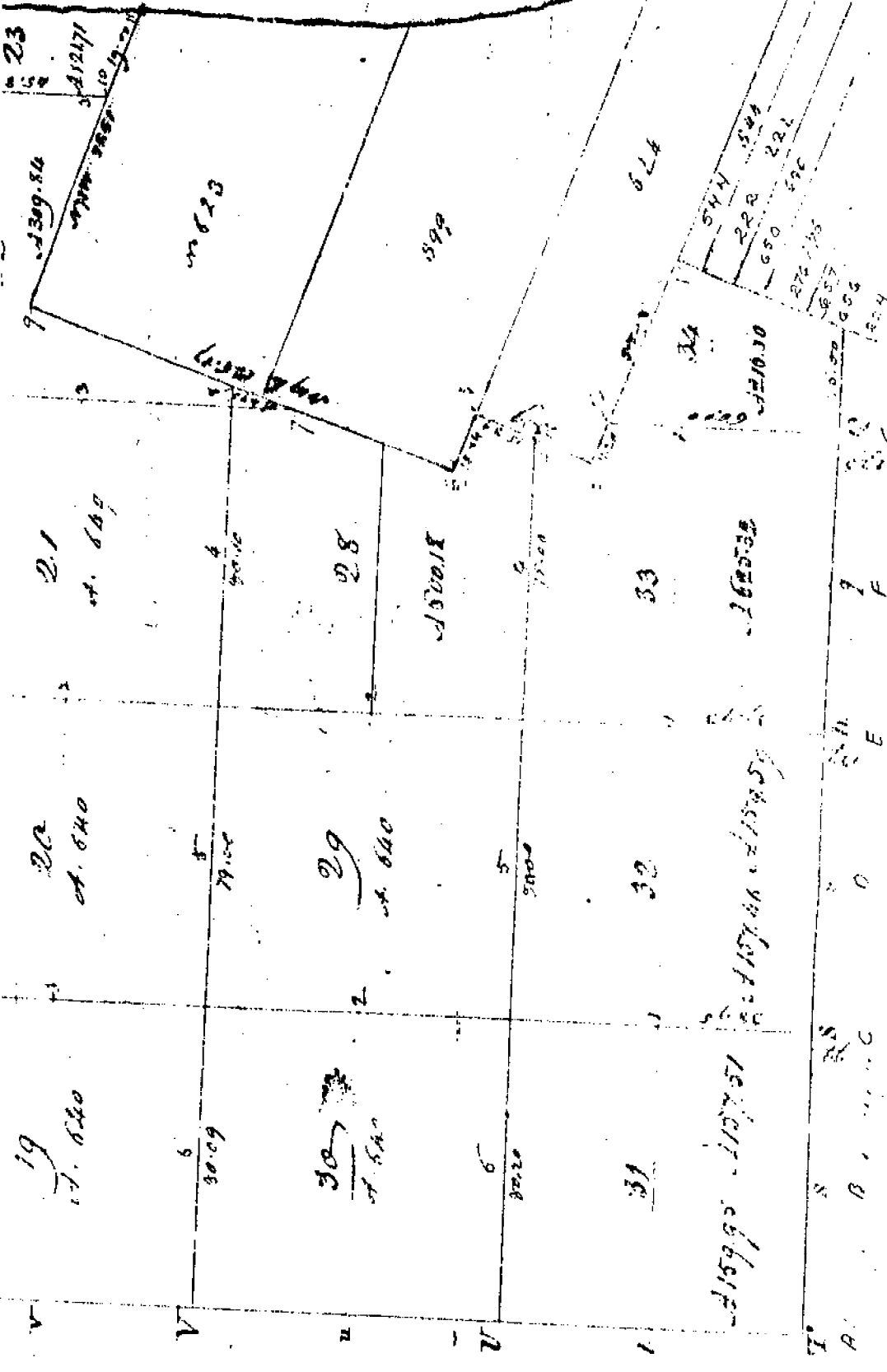
B. Oak 8 1/2 7 1/2

(Corner of sections 127 13) Land

first 1/2 mile 3d. rate last

Last 1/2 same Timber B. Oak

B. Oak 7 1/2



Handwritten signature or name

Vertical handwritten text, possibly a title or description of the survey.