

**LAND CORNER RECORDATION CERTIFICATE**  
**Filing Requirement of Act 74, Mich. P.A. 1970**

For corners in

<b>MACOMB</b> (County)	Located In: ERIN/LAKE	Corner Code # A-5
Public Land Survey	T <u>1N</u> R <u>13E</u>	<u>A-5</u>
	T <u>   </u> R <u>   </u>	<u>   </u>
	T <u>   </u> R <u>   </u>	<u>   </u>
	T <u>   </u> R <u>   </u>	<u>   </u>
Property Controlling in Section	S <u>   </u> T <u>   </u> R <u>   </u>	<u>   </u>
	S <u>   </u> T <u>   </u> R <u>   </u>	<u>   </u>
Miscellaneous Property in Sec.	S <u>   </u> T <u>   </u> R <u>   </u>	<u>   </u>
	S <u>   </u> T <u>   </u> R <u>   </u>	<u>   </u>

Register of Deeds Stamp & File Number

Lot No. \_\_\_\_\_, Recorded Plat \_\_\_\_\_  
 Private Claims

*C0438540 LIBER:07245 PAGE:401 08:59A 11/14/1996*  
*CARMELLA SABAUGH-MACOMB COUNTY, MI REG/DEEDS*

STEVEN E. DUNN, in a field survey on MARCH 29, 19 96,  
 do hereby certify that under requirements of P.A. 74, Michigan P.A. of 1970, the corner points mentioned in lines 1 and 2 above were in conformance with regulations and rules therefore as required in the current manual of survey instructions of the United States Department of the Interior, Bureau of Land Management or by a decree of Court of Law and/or that the corner points mentioned in lines 3, 4 and 5 above were in conformance with the rules of the Michigan Board of Land Surveyors or by a Decree of a Court of Law, established, re-established, re-monumented, re-monumented, recovered, found as expressed below:

A	B	C	D	E	F	G	H	I	J	K	L	M
2	8	5	4	3	2	1						
3												
4	7	8	9	10	11	12						
5												
6	18	17	16	15	14	13						
7												
8	19	20	21	22	23	24						
9												
10	30	29	28	27	26	25						
11												
12	31	32	33	34	35	36						
13												

**NOTE: Not more than 2 corners, all in the same town and range, may be recorded on this certificate.**

A. Description of original monument and accessories and/or subsequent restoration:

**GLO POST-NO EVIDENCE OF ORIGINAL CORNER FOUND ORIGINAL SURVEY PERFORMED BY PRESTON-1817**

<u>L.C.R.C.</u> L.2361, P. 613	ROBERT A CAMPBELL, JR. #13028	FOUND IRON IN MONUMENT BOX	JAN. 16, 1973
L.2879, P. 821	JOHN J. MCMAHON #4018	FOUND IRON IN HANDHOLE	NOV. 15, 1977

ACCEPTED BY THE MACOMB COUNTY SURVEY PEER GROUP AS THE OFFICIAL CORNER UNDER MICHIGAN PUBLIC ACT 345 OF 1990 AT A MEETING HELD ON 8/20/96  
*William E. Soderberg*  
 WILLIAM E. SODERBERG, P.S., CHAIRMAN

B. Description of corner evidence found and/or method applied in restoring or reestablishing corner:

A-5 SECTION CORNER COMMON TO M-5, T.1N., R.12 E.  
 FOUND 1/2" IRON ROD IN MONUMENT BOX IN CONCRETE PAVEMENT. MATCHED 1 OF 2 TIES ON L.C.R.C. L. 2361, P. 613

L.C.R.C.  
 L. 2361, P. 613 SW 94.42' TOP NUT ON HYDRANT (94.46' MEAS.)

FIELD MEASUREMENTS AND RECORDED DISTANCES  
 A-5 TOA-4 2683.81'M. 2684.22' REC. (TAX DESC.) 40 CHAINS (GLO 2640.00')  
 A-5 TO A-6 2669.23'M. 40 CHAINS (GLO 2640.00')



C. Description of monument for corner and accessories established to perpetuate locating the position of the corner:

A-5 T.1N.,R.13E.  
 I REPLACED 1/2" IRON ROD WITH A 3/4" IRON ROD WITH 2" DIAMETER ALUMINUM CAP STAMPED "MACOMB COUNTY MONUMENT, MI ACT 345 #28408" IN AN EXISTING MONUMENT BOX

WITNESSES

S.58°W.	94.46'	FOUND CENTER TOP NUT HYDRANT
S.04°E.	39.65'	CENTER TOP NUT HYDRANT
N.56°W.	85.59'	SCRIBED "+" SOUTH END CONCRETE PAD FOR WALK SIGN
N.03°E.	52.71'	FOUND P.K. NAIL WITH TAG #19837 IN WEST FACE UTILITY POLE
N.62°E.	92.95'	FOUND P.K. NAIL WITH TAG #19837 IN NW FACE UTILITY POLE
N.50°E.	84.93'	FOUND "+" CUT IN CONCRETE WALK
S.46°E.	84.32'	SET MAG NAIL W/MACOMB COUNTY REMONUMENTATION WITNESS TAG IN SW FACE UTILITY POLE
S.07°E.	42.41'	FOUND NAIL AND SET MAG NAIL W/MACOMB COUNTY REMONUMENTATION WITNESS TAG IN WEST FACE UTILITY POLE

THE SELECTED LOCATION IS ACCEPTED BY ME AND IS GENERALLY ACCEPTED BY PROFESSIONAL SURVEYORS AS THE BEST AVAILABLE EVIDENCE OF THE POSITION OF THE CORNER

Signed by Steven E. Dunn Date Sep. 17, 1996  
 Surveyor's Michigan License No. 28408



MACOMB COUNTY PUBLIC LAND SURVEY  
REMONUMENTATION PROGRAM

RESEARCH DOSSIER

CORNER LOCATION  
T.1N., R.13E.

ACT 74 CORNER CODE  
A-5

SECTION CORNER

Southwest Corner Section 7 and Northwest Corner Section 18.  
Corner is also common to corner M-5, Town 1 North, Range 12  
East, Warren.

ORIGINAL CORNER IDENTIFICATION PER GOVERNMENT LAND OFFICE

RECORDS:

Set corner post.

INTERIM CORNER IDENTIFICATION:

Iron in mon. box. R. Campbell, Jr. #13028 L. 2361, P. 613  
Iron in handhole. J. McMahon #4018 L. 2879, P. 821

CURRENT CORNER IDENTIFICATION:

Found 1/2" iron rod in monument box in concrete pavement. Matched  
1 of 4 witness ties on L.C.R.C. L. 2361, P. 613:

SW 94.42' Top of nut on hydrant. S.58°W. 94.46' meas.

A field measurement was made between corners:

M-4 to M-5	2683.81' meas.
	2684.22' rec. Tax descriptions.
	40 chains G.L.O. 2640.00'
M-5 to L-5	2562.96' meas.

SUMMARY AND RECOMMENDATIONS:

The selected location is accepted by me and is generally  
accepted by Professional Surveyors as the best available  
evidence of the corner.

MACOMB COUNTY PUBLIC LAND SURVEY

CORNER VERIFICATION CHECKLIST

RECORDED SURVEY FILE:

LAND FILES:

COUNTY SURVEYOR FILES: G.L.O. notes.

LOCAL SURVEYOR FILES: None.

MUNICIPAL AGENCIES:

A. MDOT:	None.
B. M.C.R.C.:	None.
C. M.D.N.R.:	None.
D. Macomb County Register of Deeds:	
Land Corner Recordation Certificates:	
Recorded Surveys:	None.
Recorded Condominium Documents:	None.

UTILITY COMPANIES:

A. Detroit Edison:	None.
B. Michigan Bell:	None.
C. Michigan Consolidated Gas:	None.
D. Consumers Power Company:	None.
E. Pipeline Companies:	None.
F. City of Detroit Water Board:	None.
G. Railroads:	None.

CONTACT WITH ADJOINING PROPERTY OWNERS:

No contact was made regarding this corner.



22-141 50 SHEETS  
22-142 100 SHEETS  
22-144 200 SHEETS



	N	F.	
<b>A-6</b>			
1024	5396.865	15104.721	
1025	5396.850	15104.724	
1026	5396.850	15104.719	
1027	5396.854	15104.716	
1028	5396.869	15104.719	
TOTAL			
MEAN	5396.858	15104.720	(57)
<b>L-6</b>			
1029	2247.226	12588.314	
1030	2247.247	12588.309	
1031	2247.310	12588.395	
TOTAL			
MEAN	2247.261	12588.339	(58)
<b>A-7</b>			
1032	2474.459	15198.882	
1033	2474.456	15198.985	
1034	2474.459	15198.987	
1035	2474.459	15198.887	
1036	2474.459	15198.895	
TOTAL			
MEAN	2474.458	15198.887	(59)
<b>B-6</b>			
1037	5453.793	17825.751	
1038	5453.804	17825.756	
1039	5453.793	17825.762	
1040	5453.790	17825.721	
1041	5453.804	17825.724	
TOTAL			
MEAN	5453.797	17825.743	(60)
<b>Fd. 1/2" Iron Rod</b>			
1042	5485.901	17791.755	
1043	5485.890	17791.741	
1044	5485.886	17791.749	
TOTAL			
MEAN	5485.892	17791.748	(61)
<b>Fd. 1/2" Iron Rod</b>			
1045	5487.411	17857.656	
1046	5487.411	17857.635	
1047	5487.389	17857.637	
TOTAL			
MEAN	5487.404	17857.643	(62)

	N	F.	
<i>FD. CONC. MON.</i>			
1048	16144.959	14710.321	
1049	16144.959	14710.316	
1050	16144.945	14710.308	
TOTAL			
MEAN	16144.954	14710.317	(63)

<i>FD. 1/2" IRON PIPE</i>			
1051	16008.794	13466.614	
1052	16008.776	13466.617	
1053	16008.772	13466.606	
TOTAL			
MEAN	16008.781	13466.612	(64)

1054	18446.665	4239.883	
1055	18446.684	4239.870	
1056	18446.680	4239.870	
1057	18446.687	4239.875	
1058	18446.665	4239.886	
TOTAL			
MEAN	18446.676	4239.877	(65)

22-141 50 SHEETS  
22-142 100 SHEETS  
22-144 200 SHEETS



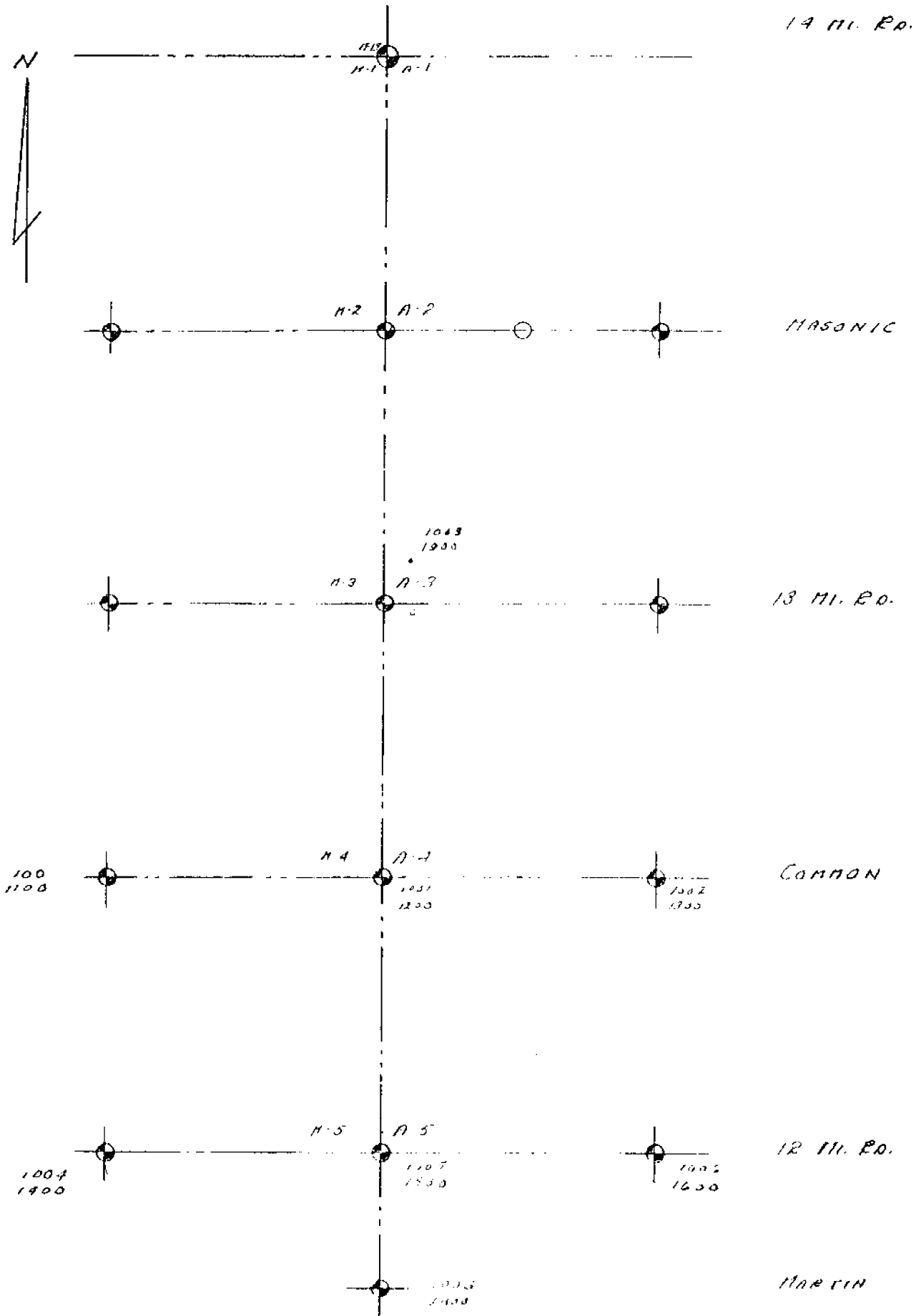
	3-29-96	5-31-96
A-5 To A-6	S.01°42'18" E. 2669.234	S.01°42'18" E. 2669.26
A-4 To A-5	S.01°50'31" E. 2683.911	S.01°50'32" E. 2683.789

22-141 50 SHEETS  
22-142 100 SHEETS  
22-144 200 SHEETS





22-141 50 SHEETS  
22-142 100 SHEETS  
22-144 200 SHEETS





L-N	N	E.
100	10426.547	12233.023
1100	10426.580	12233.025
TOTAL		
MEAN	10426.564	12233.024

M-N, A-N		
1001	10747.306	14939.017
1000	10747.310	14939.007
1200	10747.317	14939.399
TOTAL		
MEAN	10747.311	14939.008

O-N		
1003	10836.491	17647.840
1300	10836.480	17647.848
TOTAL		
MEAN	10836.486	17647.844

L-5		
1004	7848.595	12471.459
1400	7848.587	12471.453
TOTAL		
MEAN	7848.591	12471.456

M-5, A-5		
1005	8064.887	15025.276
1500	8064.897	15025.231
TOTAL		
MEAN	8064.887	15025.270

B-5		
1006	8153.254	17732.040
1600	8153.260	17732.049
TOTAL		
MEAN	8153.252	17732.042

M-6, A-6		
1007	5396.819	15104.699
1008	5396.834	15104.693
1700	5396.852	15104.736
TOTAL		
MEAN	5396.835	15104.699

	N	E.
<i>M-3, A-3 TRAVERSE POINT</i>		
1000	13510.861	14883.118
1300	13510.861	14883.116
TOTAL	27021.722	
MEAN	13510.861	14883.117

Pt. No.	N	E	
1 BASE STA.	10,000.000	10,000.000	
2 L-4	10,426.564	12,233.024	
3 M-4, A-4	10,747.311	14,339.008	
4 B-4	10,836.486	17,647.844	
5 L-5	7848.591	12,471.456	
6 M-5, A-5	8064.887	15,025.278	
7 B-5	8153.252	17,732.042	
8 M-6, A-6	5396.835	15,104.639	
9 M-3, A-3	13,510.861	14,883.117	<i>TRAVERSE POINT</i>

14-6E



L4-6E

13 MILE  
ROSEVILLE

RD

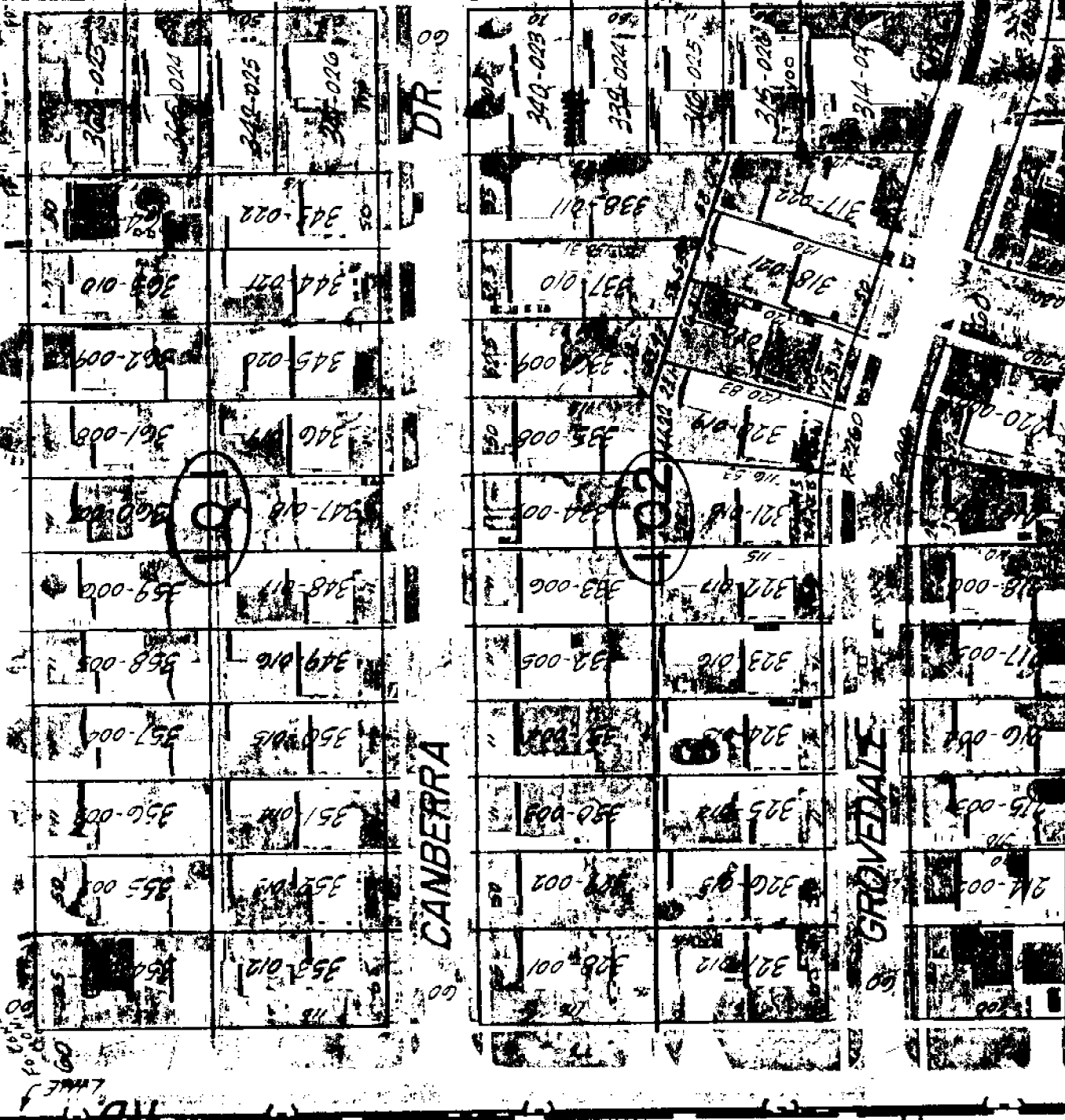
CORP

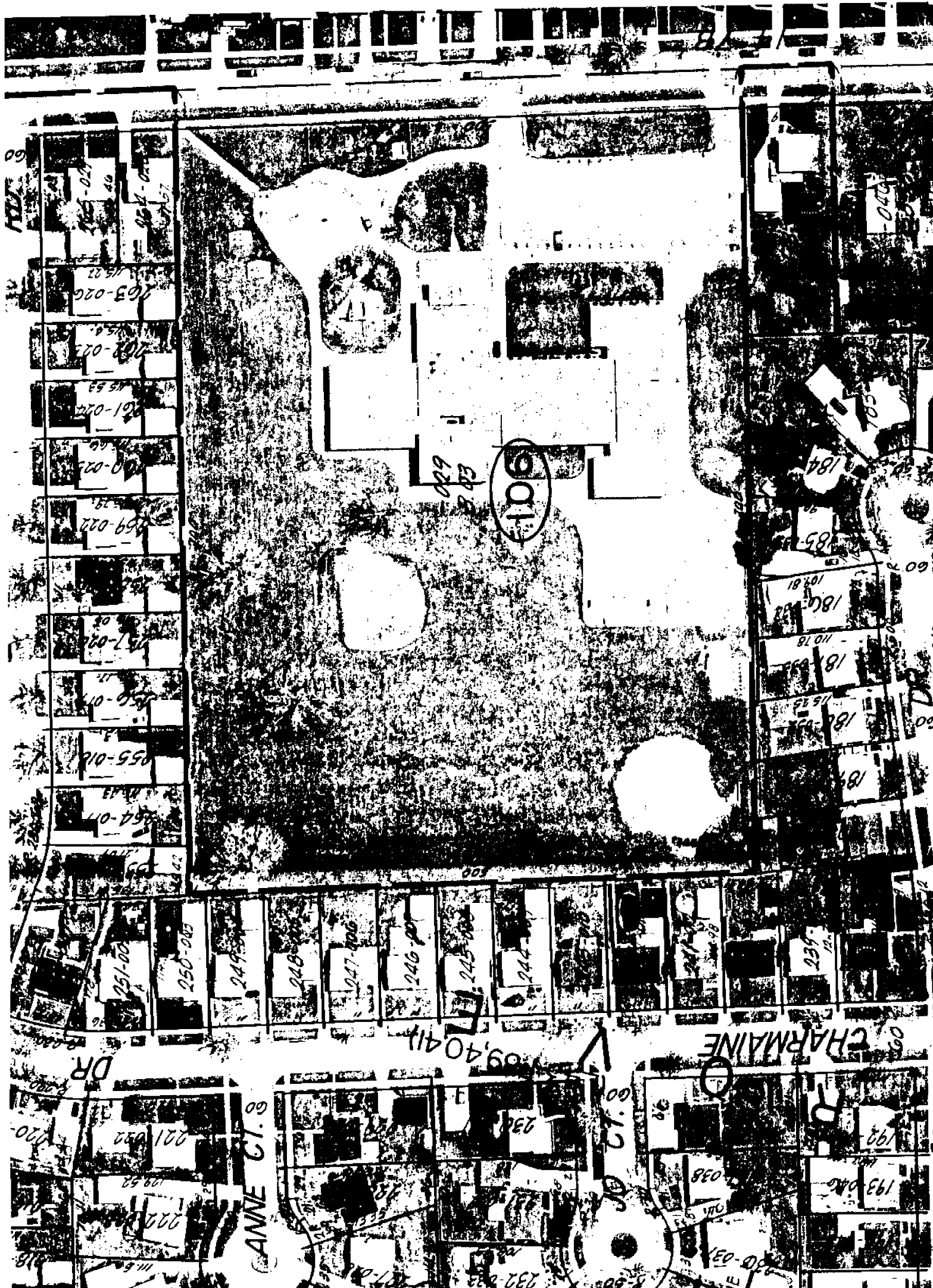
DR

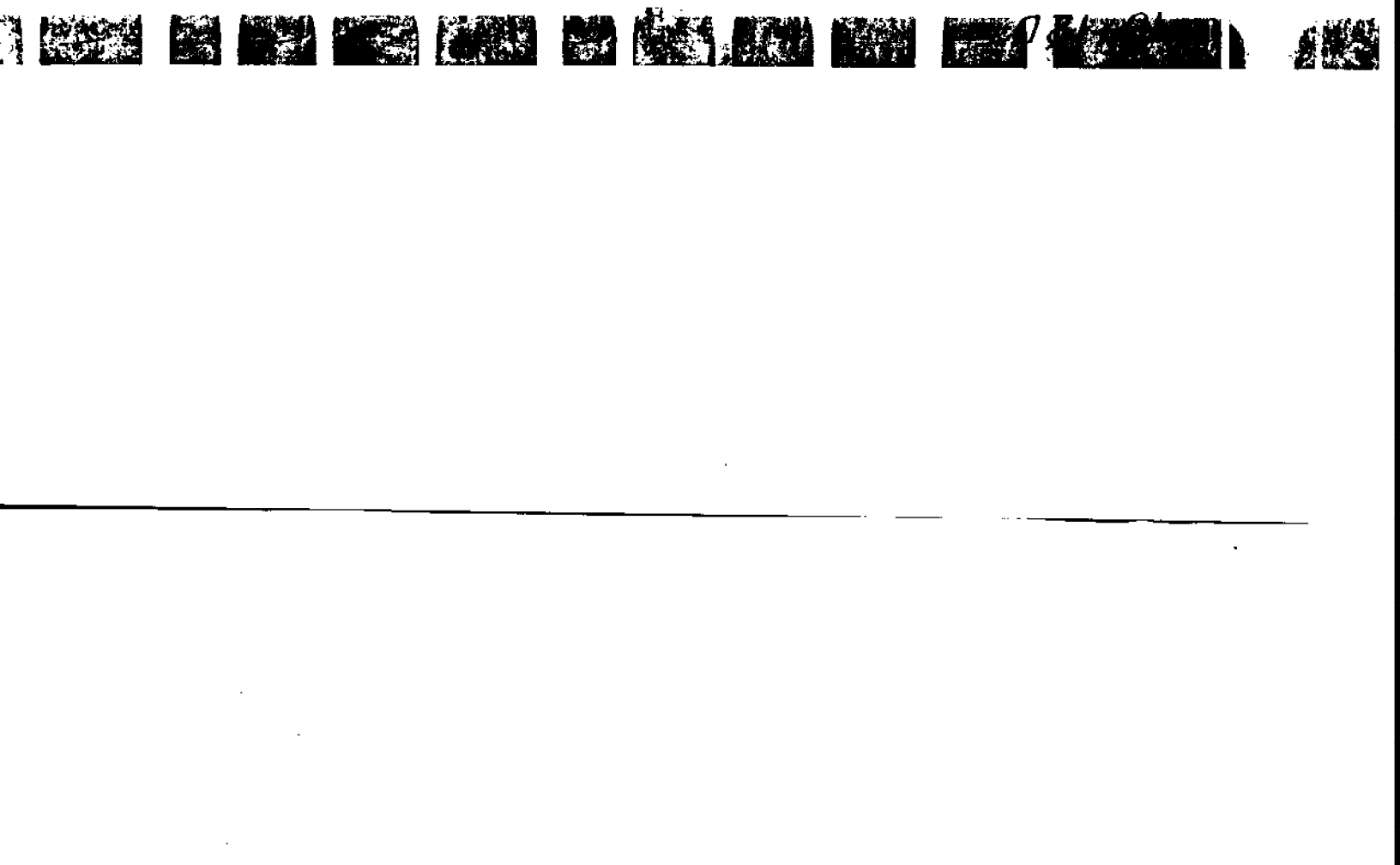
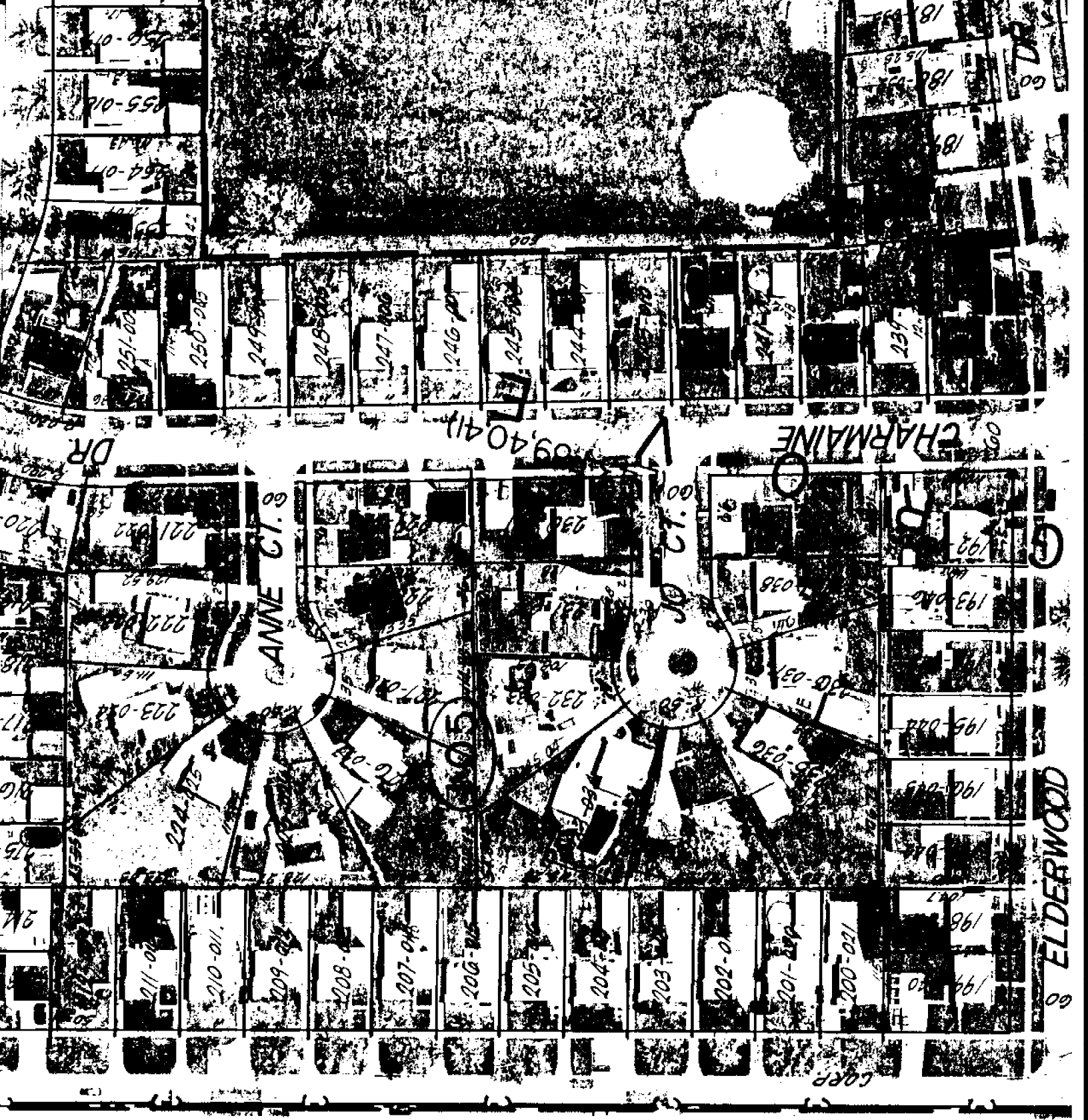
CANBERRA

BLOSSOM

GROVEDALE











69 DR.

17-030  
17-031  
17-032

10-030

RD. 00

150-021  
150-022

150-023  
150-024

150-025  
150-026

DR. 60

106-011  
106-012  
106-013

148-014  
148-015  
148-016  
148-017  
148-018  
148-019  
148-020  
148-021  
148-022  
148-023  
148-024  
148-025  
148-026  
148-027  
148-028  
148-029  
148-030  
148-031  
148-032  
148-033  
148-034  
148-035  
148-036  
148-037  
148-038  
148-039  
148-040

110-011  
110-012  
110-013  
110-014  
110-015  
110-016  
110-017  
110-018  
110-019  
110-020  
110-021  
110-022  
110-023  
110-024  
110-025  
110-026  
110-027  
110-028  
110-029  
110-030  
110-031  
110-032  
110-033  
110-034  
110-035  
110-036  
110-037  
110-038  
110-039  
110-040

104-011  
104-012  
104-013  
104-014  
104-015  
104-016  
104-017  
104-018  
104-019  
104-020  
104-021  
104-022  
104-023  
104-024  
104-025  
104-026  
104-027  
104-028  
104-029  
104-030  
104-031  
104-032  
104-033  
104-034  
104-035  
104-036  
104-037  
104-038  
104-039  
104-040

60

ELDERWOOD

149-001  
149-002  
149-003  
149-004  
149-005  
149-006  
149-007  
149-008  
149-009  
149-010  
149-011  
149-012  
149-013  
149-014  
149-015  
149-016  
149-017  
149-018  
149-019  
149-020  
149-021  
149-022  
149-023  
149-024  
149-025  
149-026  
149-027  
149-028  
149-029  
149-030  
149-031  
149-032  
149-033  
149-034  
149-035  
149-036  
149-037  
149-038  
149-039  
149-040

ROYCROFT

116-001  
116-002  
116-003  
116-004  
116-005  
116-006  
116-007  
116-008  
116-009  
116-010  
116-011  
116-012  
116-013  
116-014  
116-015  
116-016  
116-017  
116-018  
116-019  
116-020  
116-021  
116-022  
116-023  
116-024  
116-025  
116-026  
116-027  
116-028  
116-029  
116-030  
116-031  
116-032  
116-033  
116-034  
116-035  
116-036  
116-037  
116-038  
116-039  
116-040

EVERLY

97-001  
97-002  
97-003  
97-004  
97-005  
97-006  
97-007  
97-008  
97-009  
97-010  
97-011  
97-012  
97-013  
97-014  
97-015  
97-016  
97-017  
97-018  
97-019  
97-020  
97-021  
97-022  
97-023  
97-024  
97-025  
97-026  
97-027  
97-028  
97-029  
97-030  
97-031  
97-032  
97-033  
97-034  
97-035  
97-036  
97-037  
97-038  
97-039  
97-040

60

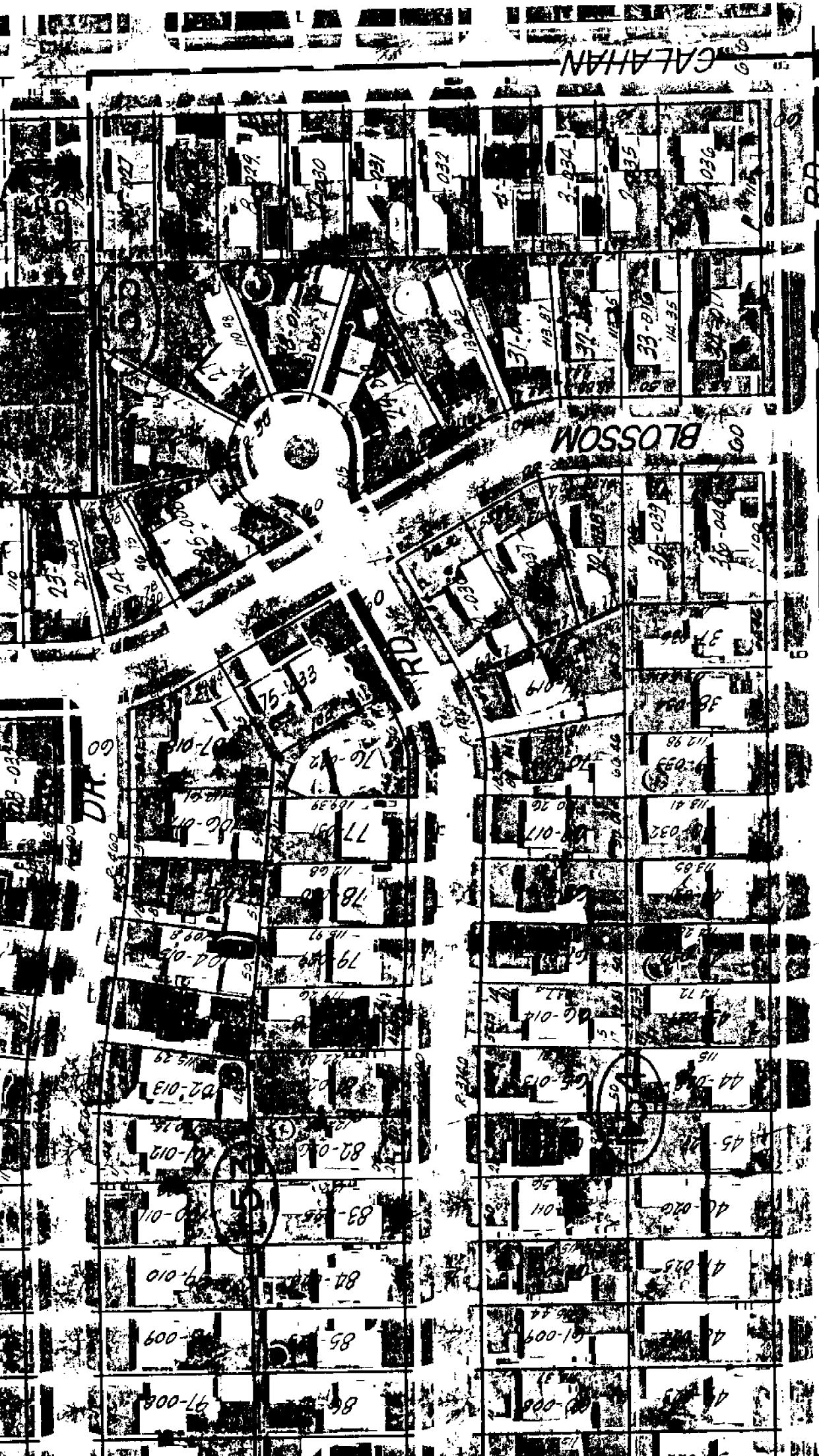
154-001  
154-002  
154-003  
154-004  
154-005  
154-006  
154-007  
154-008  
154-009  
154-010  
154-011  
154-012  
154-013  
154-014  
154-015  
154-016  
154-017  
154-018  
154-019  
154-020  
154-021  
154-022  
154-023  
154-024  
154-025  
154-026  
154-027  
154-028  
154-029  
154-030  
154-031  
154-032  
154-033  
154-034  
154-035  
154-036  
154-037  
154-038  
154-039  
154-040

60

100-001  
100-002  
100-003  
100-004  
100-005  
100-006  
100-007  
100-008  
100-009  
100-010  
100-011  
100-012  
100-013  
100-014  
100-015  
100-016  
100-017  
100-018  
100-019  
100-020  
100-021  
100-022  
100-023  
100-024  
100-025  
100-026  
100-027  
100-028  
100-029  
100-030  
100-031  
100-032  
100-033  
100-034  
100-035  
100-036  
100-037  
100-038  
100-039  
100-040

60

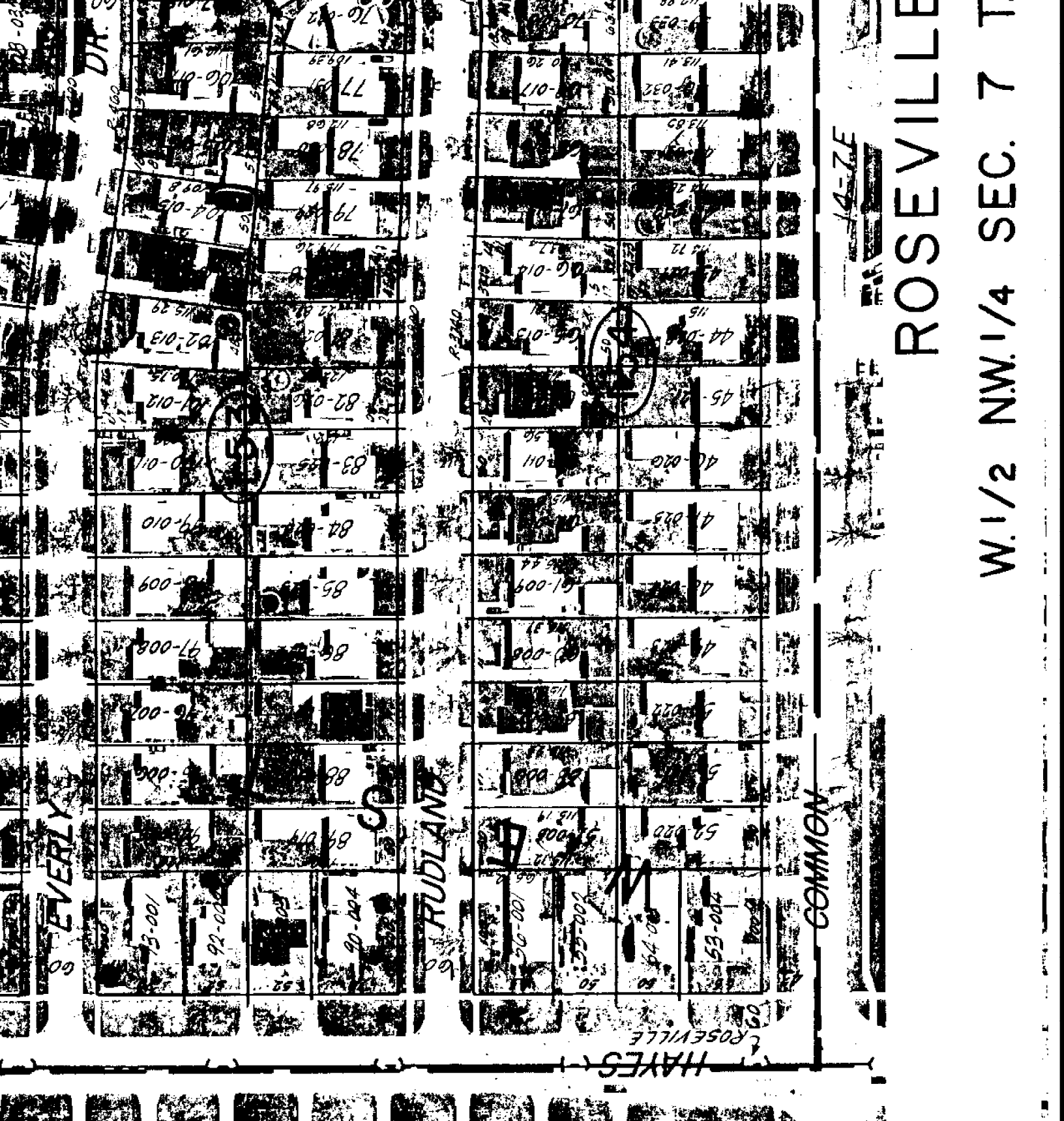
92-001  
92-002  
92-003  
92-004  
92-005  
92-006  
92-007  
92-008  
92-009  
92-010  
92-011  
92-012  
92-013  
92-014  
92-015  
92-016  
92-017  
92-018  
92-019  
92-020  
92-021  
92-022  
92-023  
92-024  
92-025  
92-026  
92-027  
92-028  
92-029  
92-030  
92-031  
92-032  
92-033  
92-034  
92-035  
92-036  
92-037  
92-038  
92-039  
92-040



14-2E

# ROSEVILLE

W. 1/2 NW. 1/4 SEC. 7 T. 1N. R. 13E.



REV. 93  
REV. 8-75

COPYRIGHT 1995 MACOMB COUNTY, MI.  
All Rights Reserved.

SCALE: 1" = 100'

14-7A

ROSEVILLE

W.1/2 NW.1/4 SEC. 7 T.

14-7E

COMMON

RUDLAND

EVERLY

DR.

HAYES

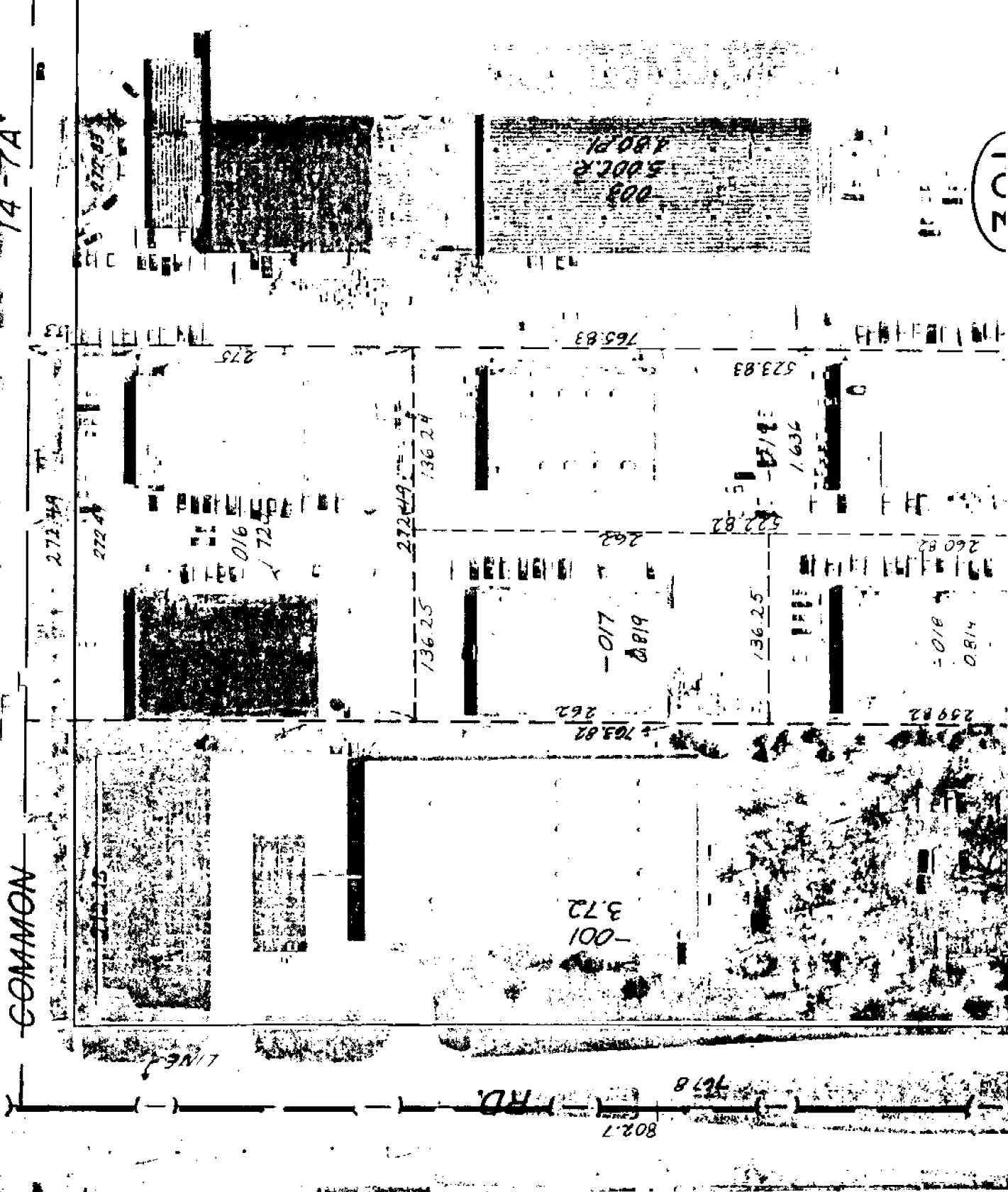
ROSEVILLE



COMMON

14-7A

A  
HEFFNER FLEETINGS  
GROESBECK BLVD SUB  
(L.P.S.)



100

100

100

100

100

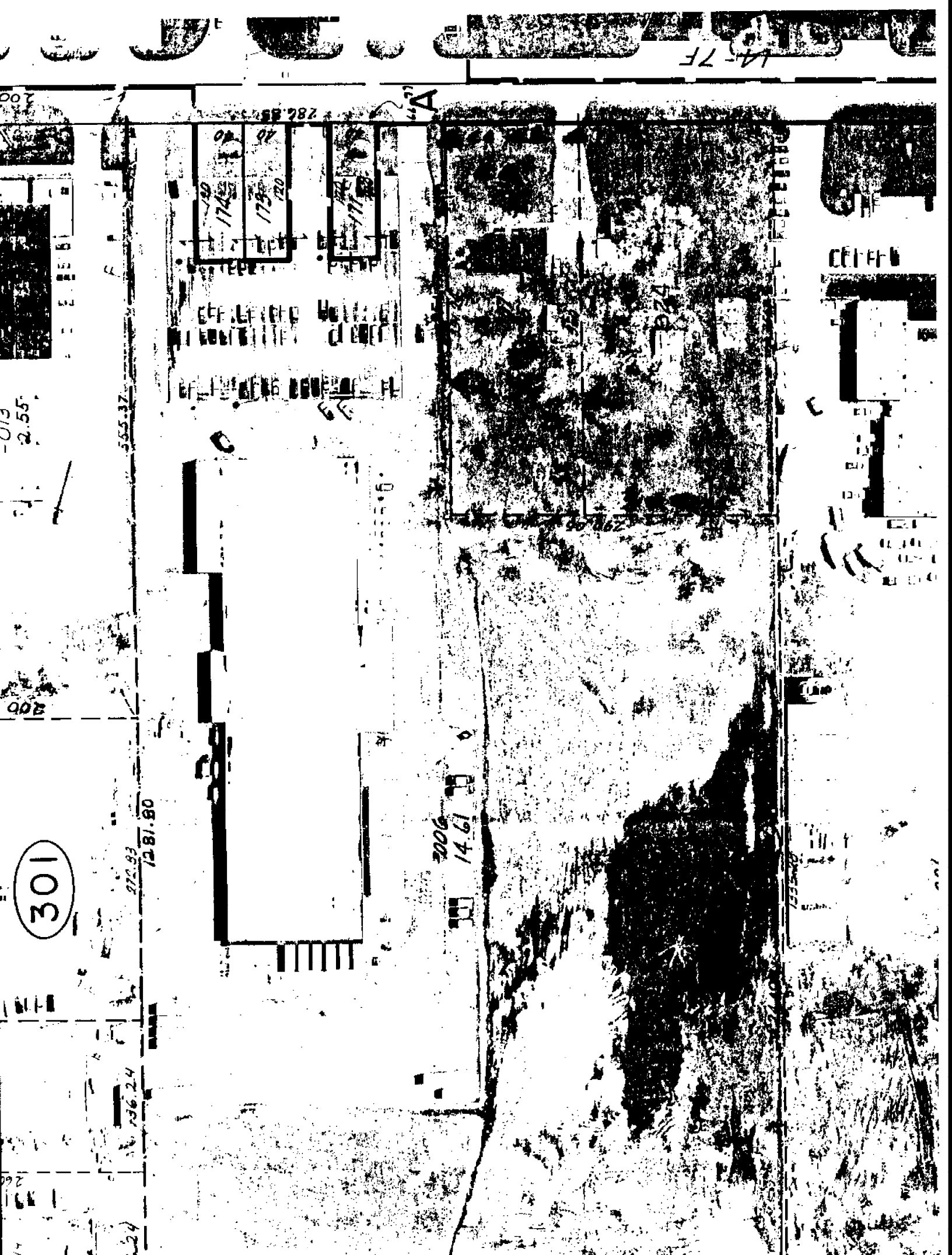
100

100

100

100

100



301

2006 2.55

2006 14.61

286.85

174  
173  
170  
177  
178

A

2006 14.61

LA-7F

301

300

272.93

12.81.80

136.24

136.24

136.24

136.24

136.24

136.24

136.24

136.24

3006

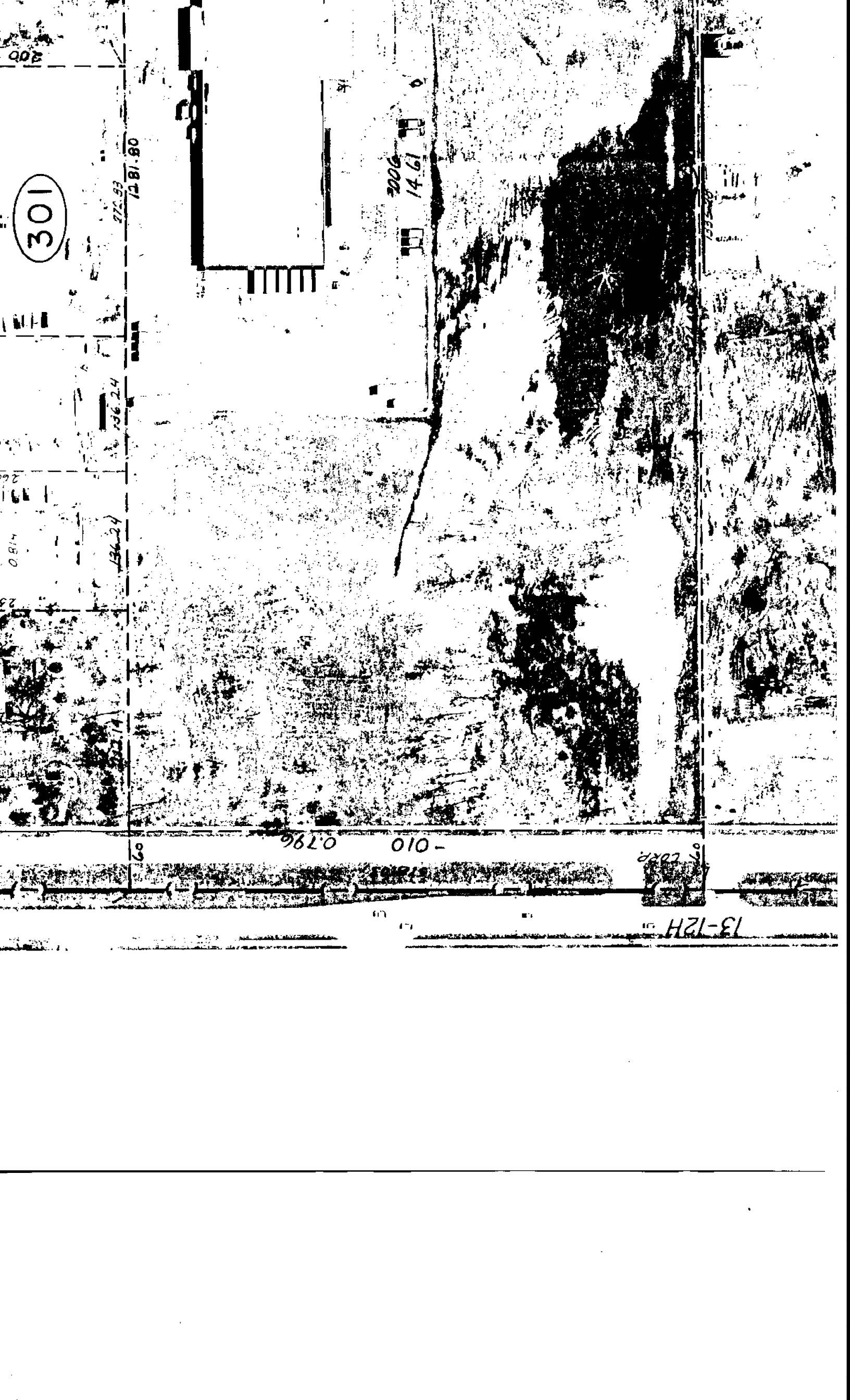
14.61

0.796

-0.10

0.002

13-12H





-001  
9.488

12319

908.15

-002  
7.18

125.06

350

746.87

399.94

400

270

250

-0.23  
0.45  
250

0.23  
0.52

200

79

Clopp 79  
20.00

420.27



001  
9 488

13369

002  
812  
718

205 DE

908.15

14.82

420.27

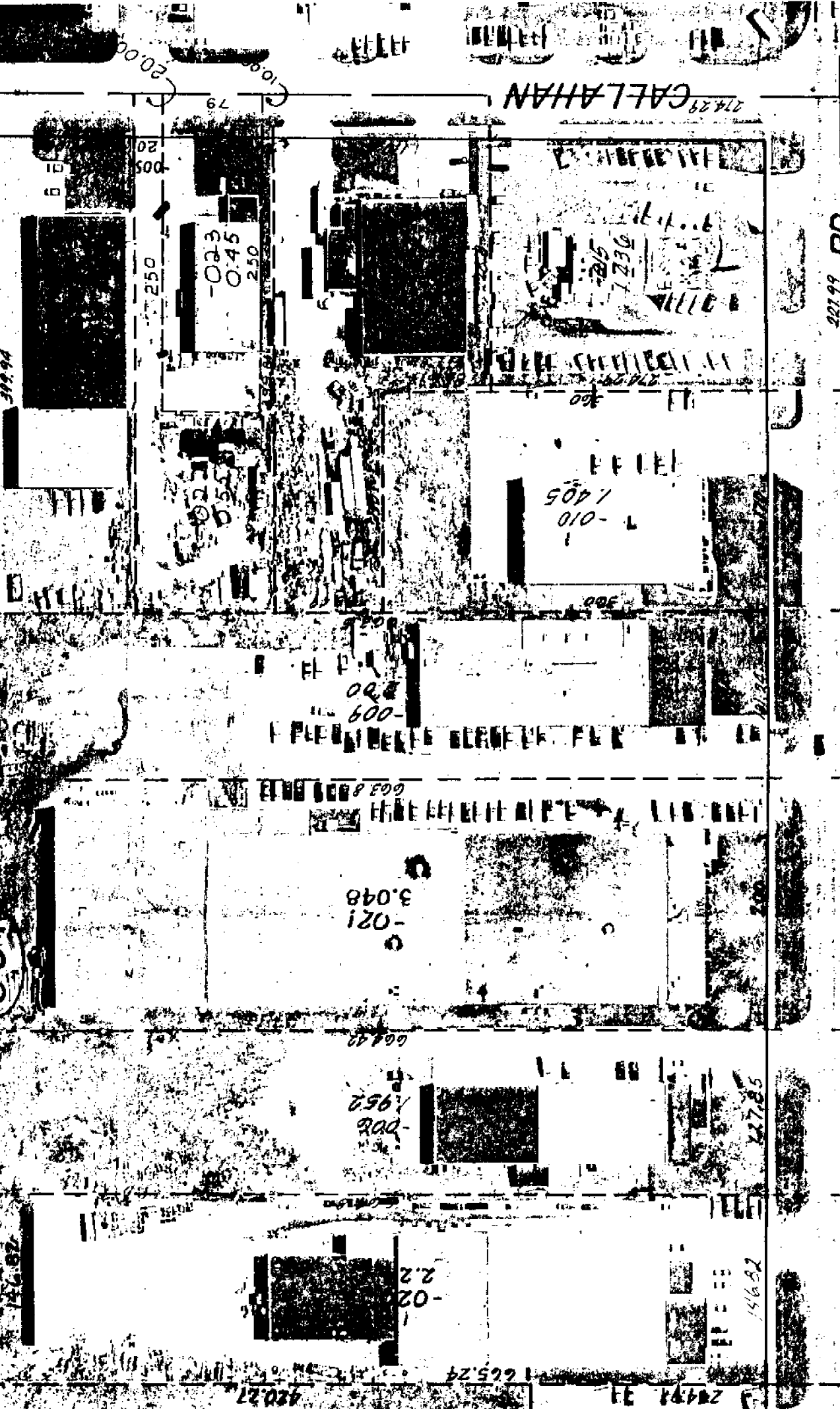
295

016  
2.85

50

015

421.7



227.99 RD.

14-18A

# ROSEVILLE

W. 1/2 S.W. 1/4 SEC. 7 T. 13N. R. 13E.



Rev 7.9  
 Rev 4.14  
 Rev 8.19  
 Rev 1.15  
 Rev 1.74

COPYRIGHT 1995 MACOMB COUNTY, MI  
 All Rights Reserved.

SCALE: 1" = 100'

1/2 MILE

14-18A

ROSEVILLE

14-7E

W. 1/2 S.W. 1/4 SEC. 7 T. 14 N.

# LAND CORNER RECORDATION CERTIFICATE

FILING REQUIREMENT OF ACT 74, MICH. P.A. 1970

A462949

FOR CORNERS OF—	LOCATED IN—	CORNER CODE NUMBER
1. PUBLIC LAND SURVEY	T L <sup>①</sup> S. R. 13 <sup>①</sup> W.	AS, BS
2. PROPERTY CONTROLLING IN SECTION	T S. R. W.	
3. MISCELLANEOUS PROPERTY IN SECTION	T S. R. W.	
4. LOT NO.	RECORDED PLAT	
5. PRIVATE CLAIMS		

RECORDED IN MACOMB COUNTY RECORDS AT 11:30 A.M.  
 NOV 15 1977  
 Clerk of the Court  
 MACOMB COUNTY, MICHIGAN  
 REGISTER OF DEEDS STAMP AND FILING NUMBER

I, JOHN McMAHON, do hereby certify that under requirements of P.A. 74, Michigan P.A. of 1970, the corner points mentioned in lines 1 and 2 above were, in a field survey on MAY 25, 1977, established, re-established, monumented, re-monumented, recovered or restored as expressed below and in conformance with regulations and rules therefore as required in the current manual of survey instructions of the United States Department of the Interior, Bureau of Land Management or by a decree of a court of law. Furthermore, that the corner points mentioned in lines 3, 4 and 5 above were, in a field survey on MAY 25, 1977, found, recovered, restored, established or re-established as expressed below and in conformance with the rules of the Michigan State Board of Registration for Land Surveyors or, by a Decree of a Court of law:

A. Description of original monument and accessories and/or subsequent restoration:

B. Description of corner evidence found and/or method applied in restoring or re-establishing corner:

AS FOUND IRON IN HANDHOLE.  
 BS FOUND IRON IN HANDHOLE.

C. Description of monument for corner and accessories established to perpetuate locating the position of the corner:

AS N 34° W 78.30' CENTER OF A.B.T. POLE  
 N 42° E 41.80' CENTER OF A.B.T. POLE  
 S 24° E 43.06' CENTER OF MANHOLE  
 BS N 75° W 19.0' CENTER OF MANHOLE  
 NORTH 32.50' LIGHT POST  
 N 30° 19' E 35.00' NAIL ON W. SIDE OF A.B.T. POLE.

SIGNED BY John McMahon DATE 7/10/77

SURVEYOR'S MICHIGAN REGISTRATION NO. 4018 (SEAL)

FOR STATE AND UNITED STATES AGENCIES:

SIGNED BY \_\_\_\_\_ DATE \_\_\_\_\_  
CHIEF OF SURVEY PARTY

APPROVED AND SIGNED BY \_\_\_\_\_ DATE \_\_\_\_\_  
MICHIGAN REGISTERED LAND SURVEYOR (SEAL)

filed

SURVEYOR'S MICHIGAN REGISTRATION NO. \_\_\_\_\_

00660

3  
 ROSEVILLE,  
 MACOMB CO.  
 12-27-77

# LAND CORNER RECORDATION CERTIFICATE

FILING REQUIREMENT OF ACT 74, MICH. P.A. 1970

UGER **2361** PAGE **613**

**A165221**

FOR CORNERS OF—:	LOCATED IN—:	CORNER CODE NUMBER
1. PUBLIC LAND SURVEY _____	T. <u>1</u> S. R. <u>13</u> W.	<u>A-5</u>
2. PROPERTY CONTROLLING IN SECTION _____	T. _____ S. R. _____ W.	_____
3. MISCELLANEOUS PROPERTY IN SECTION _____	T. _____ S. R. _____ W.	_____
4. LOT NO. _____, RECORDED PLAT _____	_____	_____
5. PRIVATE CLAIMS _____	_____	_____

RECORDED IN MACOMB COUNTY  
RECORDS AT: 11:50 A.M.  
**JAN 16 1973**  
*Edna Hill*  
CLERK - REGISTER OF DEEDS  
MACOMB COUNTY, MICHIGAN  
REGISTER OF DEEDS STAMP AND  
FILING NUMBER

I, ROBERT A. CAMPBELL, JR. do hereby certify that under requirements of P.A. 74, Michigan P.A. of 1970, the corner points mentioned in lines 1 and 2 above (identified with circles on index code diagram—over) were, in a field survey on JANUARY 4 1973, established, re-established, monumented, re-monumented, recovered or restored as expressed below and in conformance with regulations and rules therefore as required in the current manual of survey instructions of the United States Department of the Interior, Bureau of Land Management or by a decree of a court of law. Furthermore, that the corner points mentioned in lines 3, 4 and 5 above were, in a field survey on \_\_\_\_\_ 19\_\_\_\_, found, recovered, restored, established or re-established as expressed below and in conformance with the rules of the Michigan State Board of Registration for Land Surveyors or, by a Decree of a Court of law:

A. Description of original monument and accessories and/or subsequent restoration:

**UNKNOWN.**

B. Description of corner evidence found and/or method applied in restoring or re-establishing corner:

**FOUND AND USED IRON IN MONUMENT BOX AT INTERSECTION OF HAYES AND 12 MILE ROAD**

C. Description of monument for corner and accessories established to perpetuate locating the position of the corner:

**IRON UNDER EAST EDGE OF HOMEMADE MONUMENT BOX, 1.5' ± DEEP**

TOP NUT ON HYDRANT, S. 34.07'  
TOP NUT ON HYDRANT, S.W. 94.42'

SIGNED BY *Robert A. Campbell, Jr.* DATE 15 Jan. 1973  
SURVEYOR'S MICHIGAN REGISTRATION NO. 13028 (SEAL)

FOR STATE AND UNITED STATES AGENCIES:

SIGNED BY \_\_\_\_\_ DATE \_\_\_\_\_  
CHIEF OF SURVEY PARTY

APPROVED AND SIGNED BY \_\_\_\_\_ DATE \_\_\_\_\_  
MICHIGAN REGISTERED LAND SURVEYOR (SEAL)

SURVEYOR'S MICHIGAN REGISTRATION NO. \_\_\_\_\_

**00266**

5!

MACOMB COUNTY REMONUMENTATION PROGRAM  
WILLIAM E. SODERBERG P.S  
MACOMB COUNTY SURVEYOR - REPRESENTATIVE  
10 NORTH MAIN  
COUNTY BUILDING SECOND FLOOR  
MOUNT CLEMENS, MICHIGAN 48043  
PHONE 810-469-7916 FAX 810-469-5130

Memo 96-07

May 2, 1996

Metco Services, Inc.  
12504 Stevens  
Warren, Michigan 48089

Attention: Steve Dunn

Reference: GLO notes for 1996 Remonumentation program.

I finally got my turn on the microfilm viewer to do the requested search. Here is the information.

South line of Sterling, used as the North line of Warren.  
Surveyed West to East, then corrected back to the West.  
Surveyed by Wampler in 1817.  
From corner common to section 34 and 33 W 40 chs, set post; W 40  
chs, set post common to sec 33 and 32; Page 331  
W 40 chs, set post; W 40 chs, set post common to sec 32 and 31;  
Page 331  
W 40 chs, set post; W 39.98 chs to post common to Township corner.  
Page 332.

Subdivision of Warren, surveyed by Wampler in 1817.  
North between sec 3 & 4, intec 50 lks E. Page 348  
North between sec 4 & 5, intec 42 lks E. Page 353  
North between sec 5 & 6, intec 87 lks E. Page 359

Line common to Warren and Erin/Lake surveyed by Preston in 1817.  
Surveyed S to N. All post were set at 40 chs, including Township  
corner. Page 327.

Erin/Lake surveyed by Preston in 1818.  
Surveyed N to S and W to E.  
W between 6 & 7 to point common with Warren Page 224.  
W between 7 & 18 to point common with Warren Page 225.  
W between 18 & 24 to point common with Warren Page 226.

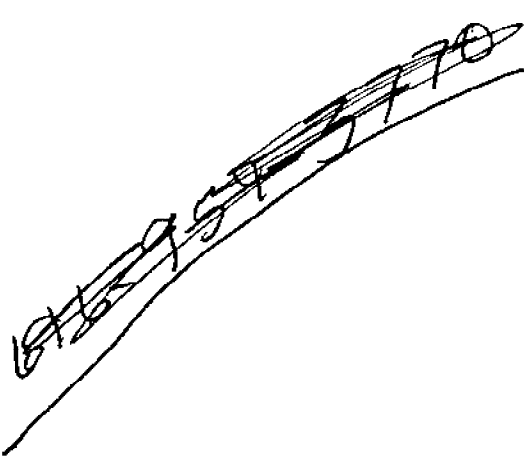
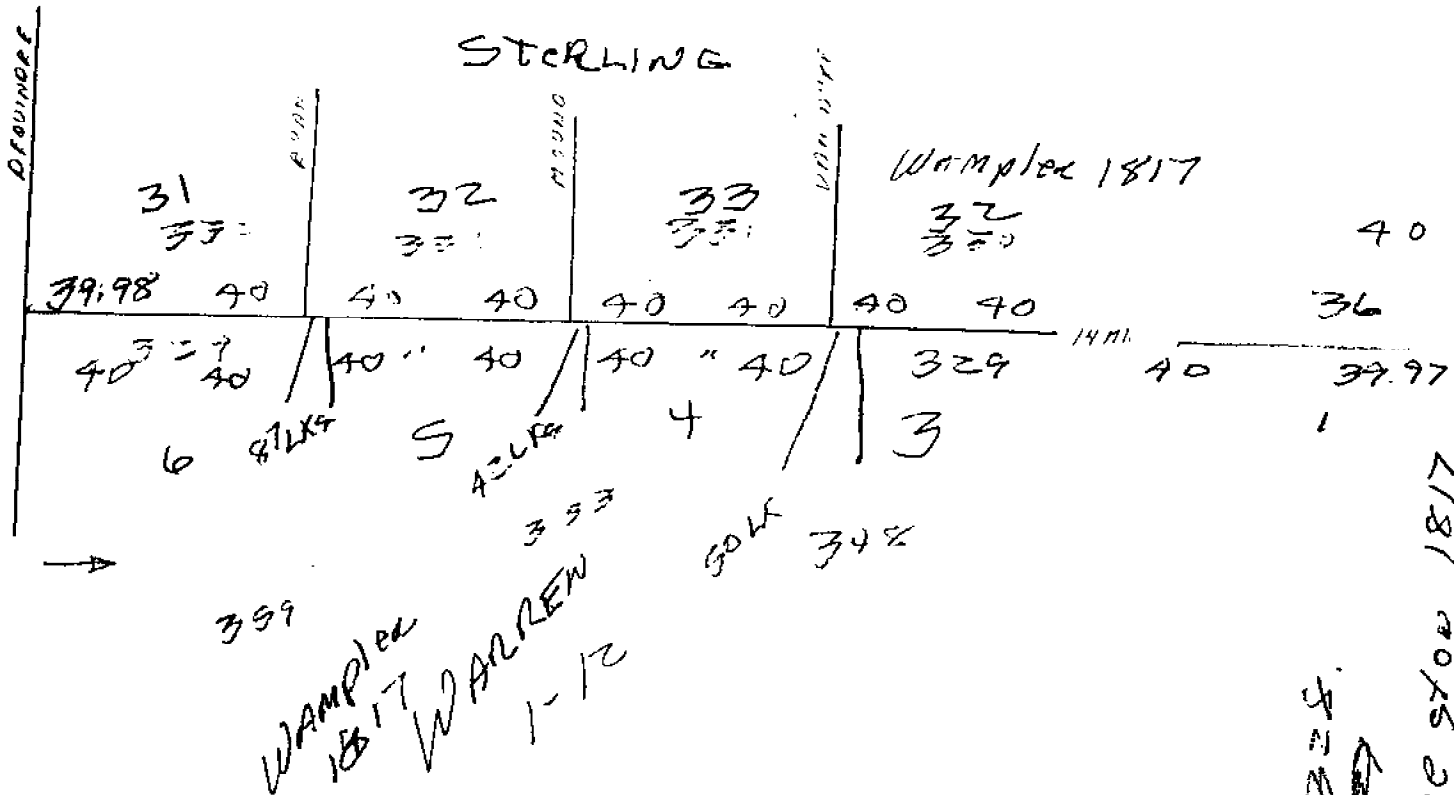
If you have any questions, please contact me.  
Sincerely;



William E. Soderberg, P.S  
Macomb Surveyor/Representative.

2-12

STERLING



NORTH  
↓  
SOUTH  
WEST  
TO  
EAST

WARREN.

