

LAND CORNER RECORDATION CERTIFICATE
Filing Requirement of Act 74, Mich. P.A. 1970

For corners in

<u>MACOMB</u> (County)	Located In: <u>ERIN/LAKE TWP.</u>	Corner Code # <u>A-3</u>
1. Public Land Survey	<u>T 1N R 13E</u> T ___ R ___	_____
	T ___ R ___	_____
	T ___ R ___	_____
2. Property Controlling in Section	S ___ T ___ R ___	_____
	S ___ T ___ R ___	_____
3. Miscellaneous Property in Sec.	S ___ T ___ R ___	_____
	S ___ T ___ R ___	_____

Register of Deeds Stamp & File Number

4. Lot No. _____, Recorded Plat _____
 5. Private Claims _____

C0438539 LIBER:07245 PAGE:400 08:59A 11/14/1996
CARMELLA SABAUGH-MACOMB COUNTY, MI REG/DEEDS

I, STEVEN E. DUNN, in a field survey on MAY 4, 19 96
do hereby certify that under requirements of P.A. 74, Michigan P.A. of 1970, the corner points mentioned in lines 1 and 2
above were in conformance with regulations and rules therefore as required in the current manual of survey
instructions of the United States Department of the Interior, Bureau of Land Management or by a decree of a Court of
Law and/or that the corner points mentioned in lines 3, 4 and 5 above were in conformance with the rules of the Michigan
Board of Land Surveyors or by a Decree of a Court of Law, established, re-established, monumented, re-monumented,
recovered, found as expressed below:

	A	B	C	D	E	F	G	H	I	J	K	L	M
2		8		5		4		3		2		1	
3													
4		7		8		9		10		11		12	
5													
6		18		17		16		15		14		13	
7													
8		19		20		21		22		23		24	
9													
10		30		29		28		27		26		25	
11													
12		31		32		33		34		35		36	
13													

NOTE: Not more than 2 corners, all in the same town and range, may be recorded on this certificate.

A. Description of original monument and accessories and/or subsequent restoration:

GLO POST-NO EVIDENCE OF ORIGINAL CORNER FOUND
GLO ORIGINAL SURVEY PERFORMED BY WILLIAM PRESTON-1817

PLATS

FRASER PARK SUBDIVISION	L.9 P.42	JUNE 25, 1925
VENETION VILLAGE GROVE	L.41 P.35-38	MAY 14, 1958
WEST GROVE SUBDIVISION	L.43 P.39-41	APR. 3, 1959

ACCEPTED BY THE MACOMB COUNTY SURVEY PEER GROUP AS THE OFFICIAL CORNER UNDER MICHIGAN PUBLIC ACT 345 OF 1990 AT A MEETING HELD ON

8/20/96
William E. Soderberg
 WILLIAM E. SODERBERG, P.S., CHAIRMAN

B. Description of corner evidence found and/or method applied in restoring or reestablishing corner:

A-3 SECTION CORNER COMMON TO M-3,T.1N., R.12E.

FOUND IRON ROD IN MONUMENT BOX IN CONCRETE PAVEMENT. ALSO FOUND IRON ROD IN MONUMENT BOX 1.63' NORTH. VERIFIED LOCATION OF CORRECT CORNER BY COMPARING MEASURED DISTANCES AND ANGLES WITH RECORD DISTANCES AND ANGLES OF PLATS LISTED ABOVE.

FIELD MEASUREMENTS AND RECORDED DISTANCES
 A-3 TO A-2 2697.80'M. 40 CH (GLO 2640.00) 2697.80' R. (FRASER PARK SUB & TAX DESC.)
 A-3 TO A-4 2710.81'M 40 CH (GLO 2640.00) 2711.63 R. (WEST GROVE SUB.)
 A-3 TO B-3 2687.54'M
 ANGLE A-2/A-3/B-3 90°10'45" M. 90°09'00" R. (FRASER PARK SUB.)
 ANGLE B-3/A-3/A-4 89°59'13" M. 89°58'52" R. (WEST GROVE SUB.)



C. Description of monument for corner and accessories established to perpetuate locating the position of the corner:

A-3 T.1N.R.13E.

I REPLACED IRON ROD WITH 3/4"X24" IRON ROD WITH 2" DIAMETER ALUMINUM CAP STAMPED "MACOMB COUNTY MONUMENT, MI ACT345 #28408" IN AN EXISTING MONUMENT BOX

WITNESSES

NORTH 1.63'	FOUND IRON ROD IN MONUMENT BOX
N.43°W. 62.71'	SET P.K. NAIL W/MACOMB COUNTY REMONUMENTATION WITNESS TAG IN NE FACE UTILITY POLE
S.34°N. 70.22'	SET P.K. NAIL W/MACOMB COUNTY REMONUMENTATION WITNESS TAG IN SE FACE UTILITY POLE
S.47°E. 71.77'	SET P.K. NAIL W/MACOMB COUNTY REMONUMENTATION WITNESS TAG IN NE FACE UTILITY POLE
N.45°E. 64.41'	SET P.K. NAIL W/MACOMB COUNTY REMONUMENTATION WITNESS TAG IN NW FACE UTILITY POLE

THE SELECTED LOCATION IS ACCEPTED BY ME AND IS GENERALLY ACCEPTED BY PROFESSIONAL SURVEYORS AS THE BEST AVAILABLE EVIDENCE OF THE POSITION OF THE ORIGINAL CORNER.

Signed by Steven E. Dunn Date Sep. 17, 1996

Surveyor's Michigan License No. 28408

MACOMB COUNTY PUBLIC LAND SURVEY
REMONUMENTATION PROGRAM

RESEARCH DOSSIER

CORNER LOCATION
T. 1N., R.13E.

ACT 74 CORNER CODE
A-3

SECTION CORNER

Southwest corner Section 6 and Northwest corner Section 7. Corner is also common corner common to M-3, Town 2 North, Range 12 East, Warren.

ORIGINAL CORNER IDENTIFICATION PER GOVERNMENT LAND OFFICE RECORDS:

Set corner post.

INTERIM CORNER IDENTIFICATION:

None.

CURRENT CORNER IDENTIFICATION:

Found iron rod in monument box in concrete pavement. Also found iron rod in monument box 1.63' North. Determined location of correct corner by comparing measured distances and angles with record distances and angles of plats listed above.

A field measurement was made between corners;

A-3 to A-2	2697.80' meas. 2697.80' rec. Fraser Park Sub. and tax descriptions.
A-3 to A-4	40 chains G.L.O. 2640.00'. 2710.81' meas. 2711.63' rec. West Grove Sub.
A-3 to B-3	40 chains G.L.O. 2640.00'. 2687.54' meas.

SUMMARY AND RECOMMENDATIONS:

The selected location is accepted by me and is generally accepted by Professional Surveyors as the best available evidence of the corner.

MACOMB COUNTY PUBLIC LAND SURVEY

CORNER VERIFICATION CHECKLIST

RECORDED SURVEY FILE: None.

LAND FILES: None.

COUNTY SURVEYOR FILES: G.L.O. notes.

LOCAL SURVEYOR FILES: None.

MUNICIPAL AGENCIES:

A. MDOT:	None.
B. M.C.R.C.:	None.
C. M.D.N.R.:	None.
D. Macomb County Register of Deeds:	
Land Corner Recordation Certificates:	None.
Recorded Surveys:	None.
Recorded Condominium Documents:	None.

UTILITY COMPANIES:

A. Detroit Edison:	None.
B. Michigan Bell:	None.
C. Michigan Consolidated Gas:	None.
D. Consumers Power Company:	None.
E. Pipeline Companies:	None.
F. City of Detroit Water Board:	None.
G. Railroads:	None.

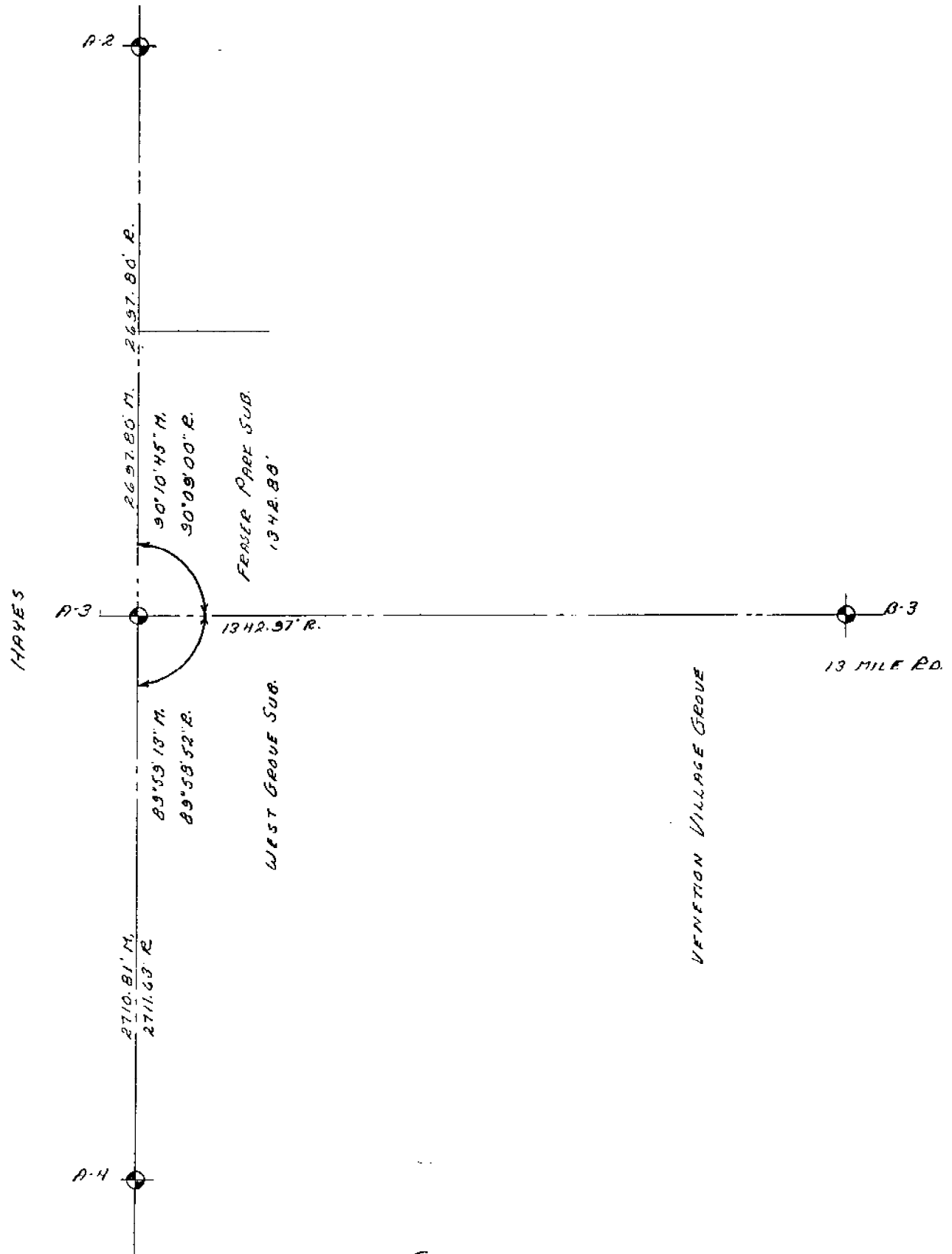
CONTACT WITH ADJOINING PROPERTY OWNERS:

No contact was made regarding this corner.

22-141 50 SHEETS
22-142 100 SHEETS
22-144 200 SHEETS



MASONIC



J. Dunn, A. Gress, A. K. Richardson

5.4.26

96-100 Incomer Co.

X 1.9 → 3032 (12)

3032 0.0' 0.0' 0.0' 1001.68

168' 07' 0.4" 25.49.96 Fa. 1/2" I. Rod

191' 52' 5.3"

353' 59' 57"

X 1.17 → 9

00' 10' 0.0" 2549.96

306' 42' 55" 144.40 Fa. 1/2" I. Pipe

223' 03' 38" 168.41 Fa. St. Fl. Post

X 3032 → 9 (12)

00' 00' 0.0" 1021.68

182' 55' 51" 1655.01 Fa. 1/2" I. Rod In Mon. Box

177' 04' 11"

355' 59' 62"

172' 01' 00" 352.28 Fa. 1/2" I. Rod

X 9 → 3032 (12)

22' 00' 0.0' 0.0' 1001.67

22' 55' 10" 115.24 Fa. Conc. Man.

273' 12' 42" 248.48 Fa. T. Iron

171' 23' 28" 253.86 Fa. 1/2" I. Rod

158' 53' 17" 538.93 " " "

S. DUNK, B. GREGG, D. KRECHER BDM 5-4-96

36-100 Mason & Co.

(Cont.)

26 355° 47' 41" 354.79 Fe. 1/2" 1. Box in Case # 16052

27 6° 41' 37" 593.10 SET PK NAIL

252° 18' 14"

259° 59' 51"

28 70° 27' 1A
70° 27' - 30.32

29 00° 00' 00" 418.37

30 63° 46' 01" 15.18 Fe. 1/2" 1. Box in Case. For St. Post

31 12° 41' 03" 118.93 Fe. Conc. Man.

32 7° 14' 9"

33 00° 00' 00" 2645.10

34 270° 49' 56" 1375.52 Fe. 1. Pier. 1/8" Case

82° 10' 02"

359° 59' 58"

37 270° 51' 07" 2688.24 Fe. 1/2" 1. Riv. C.P.

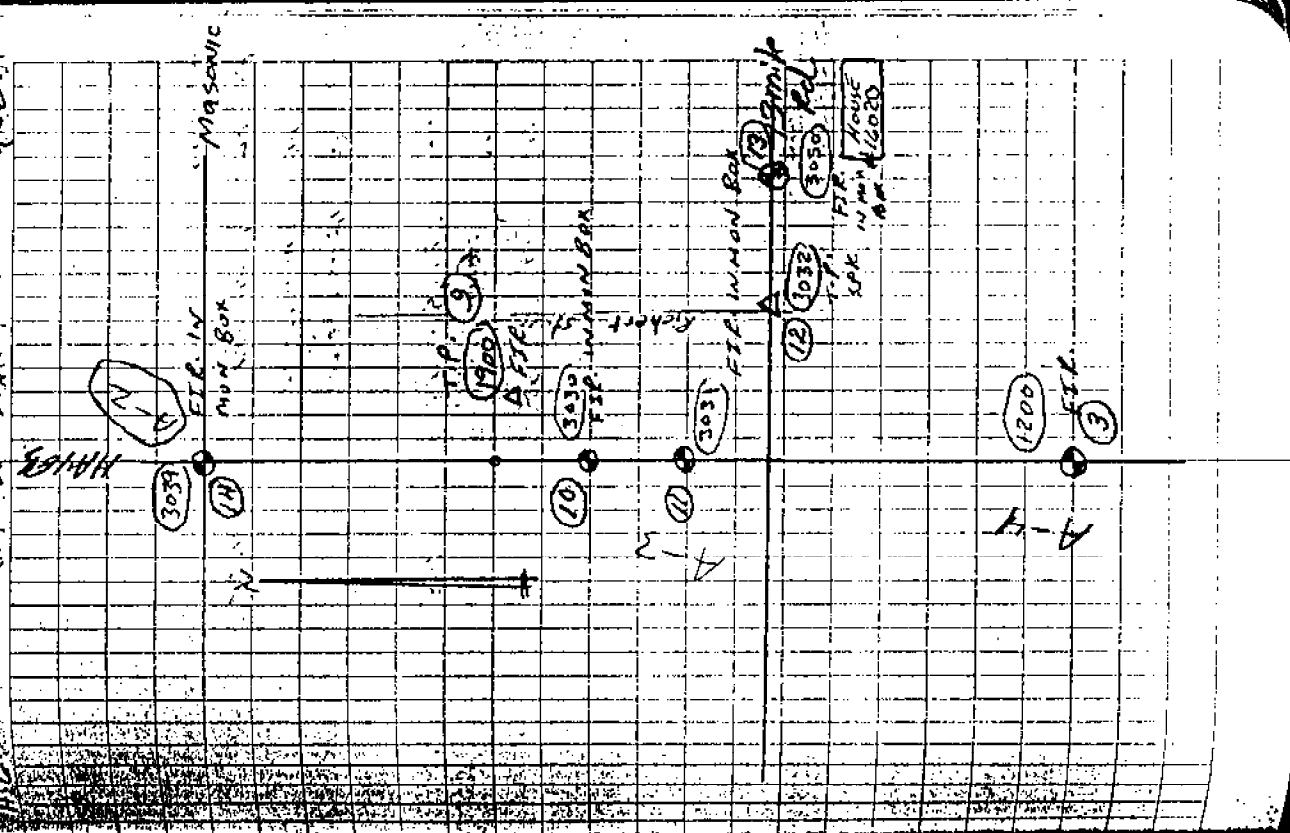
82° 08' 53"

359° 59' 56"

4-10-96

02-199

(22)



Macomb Re Mor

96/100

3039	178-27-50	2645.09	
INV:	358-27-49		
BS	175-59-55		
3038	179-57-53		
INV:	92-18-52		
BS	272-18-52	1001.68	
3037	30-58-38	62.04	
3036	31-31-12	60.71	
3035	00-00-00	2763.94	
3034			
3033			
3032			
3031			
3030			
3029			
3028			
3027			
3026			
3025			
3024			
3023			
3022			
3021			
3020			
3019			
3018			
3017			
3016			
3015			
3014			
3013			
3012			
3011			
3010			
3009			
3008			
3007			
3006			
3005			
3004			
3003			
3002			
3001			
3000			
2999			
2998			
2997			
2996			
2995			
2994			
2993			
2992			
2991			
2990			
2989			
2988			
2987			
2986			
2985			
2984			
2983			
2982			
2981			
2980			
2979			
2978			
2977			
2976			
2975			
2974			
2973			
2972			
2971			
2970			
2969			
2968			
2967			
2966			
2965			
2964			
2963			
2962			
2961			
2960			
2959			
2958			
2957			
2956			
2955			
2954			
2953			
2952			
2951			
2950			
2949			
2948			
2947			
2946			
2945			
2944			
2943			
2942			
2941			
2940			
2939			
2938			
2937			
2936			
2935			
2934			
2933			
2932			
2931			
2930			
2929			
2928			
2927			
2926			
2925			
2924			
2923			
2922			
2921			
2920			
2919			
2918			
2917			
2916			
2915			
2914			
2913			
2912			
2911			
2910			
2909			
2908			
2907			
2906			
2905			
2904			
2903			
2902			
2901			
2900			
2899			
2898			
2897			
2896			
2895			
2894			
2893			
2892			
2891			
2890			
2889			
2888			
2887			
2886			
2885			
2884			
2883			
2882			
2881			
2880			
2879			
2878			
2877			
2876			
2875			
2874			
2873			
2872			
2871			
2870			
2869			
2868			
2867			
2866			
2865			
2864			
2863			
2862			
2861			
2860			
2859			
2858			
2857			
2856			
2855			
2854			
2853			
2852			
2851			
2850			
2849			
2848			
2847			
2846			
2845			
2844			
2843			
2842			
2841			
2840			
2839			
2838			
2837			
2836			
2835			
2834			
2833			
2832			
2831			
2830			
2829			
2828			
2827			
2826			
2825			
2824			
2823			
2822			
2821			
2820			
2819			
2818			
2817			
2816			
2815			
2814			
2813			
2812			
2811			
2810			
2809			
2808			
2807			
2806			
2805			
2804			
2803			
2802			
2801			
2800			
2799			
2798			
2797			
2796			
2795			
2794			
2793			
2792			
2791			
2790			
2789			
2788			
2787			
2786			
2785			
2784			
2783			
2782			
2781			
2780			
2779			
2778			
2777			
2776			
2775			
2774			
2773			
2772			
2771			
2770			
2769			
2768			
2767			
2766			
2765			
2764			
2763			
2762			
2761			
2760			
2759			
2758			
2757			
2756			
2755			
2754			
2753			
2752			
2751			
2750			
2749			
2748			
2747			
2746			
2745			
2744			
2743			
2742			
2741			
2740			
2739			
2738			
2737			
2736			
2735			
2734			
2733			
2732			
2731			
2730			
2729			
2728			
2727			
2726			
2725			
2724			
2723			
2722			
2721			
2720			
2719			
2718			
2717			
2716			
2715			
2714			
2713			
2712			
2711			
2710			
2709			
2708			
2707			
2706			
2705			
2704			
2703			
2702			
2701			
2700			
2699			
2698			
2697			
2696			
2695			
2694			
2693			
2692			
2691			
2690			
2689			
2688			
2687			
2686			
2685			
2684			
2683			
2682			
2681			
2680		</	

4-12-96

50
.. cloudy

4-12-96

50
.. cloudy

Done

change 3045 70
3001

Remon

Macomb

96100

302
TO 3002

301
BS 3001

342
ES 3042

inv.
BS

346
3046

inv.
BS

00-00-00

90-41-30

270-41-34

180-00-01

270-50-42

90-50-38

179-59-54

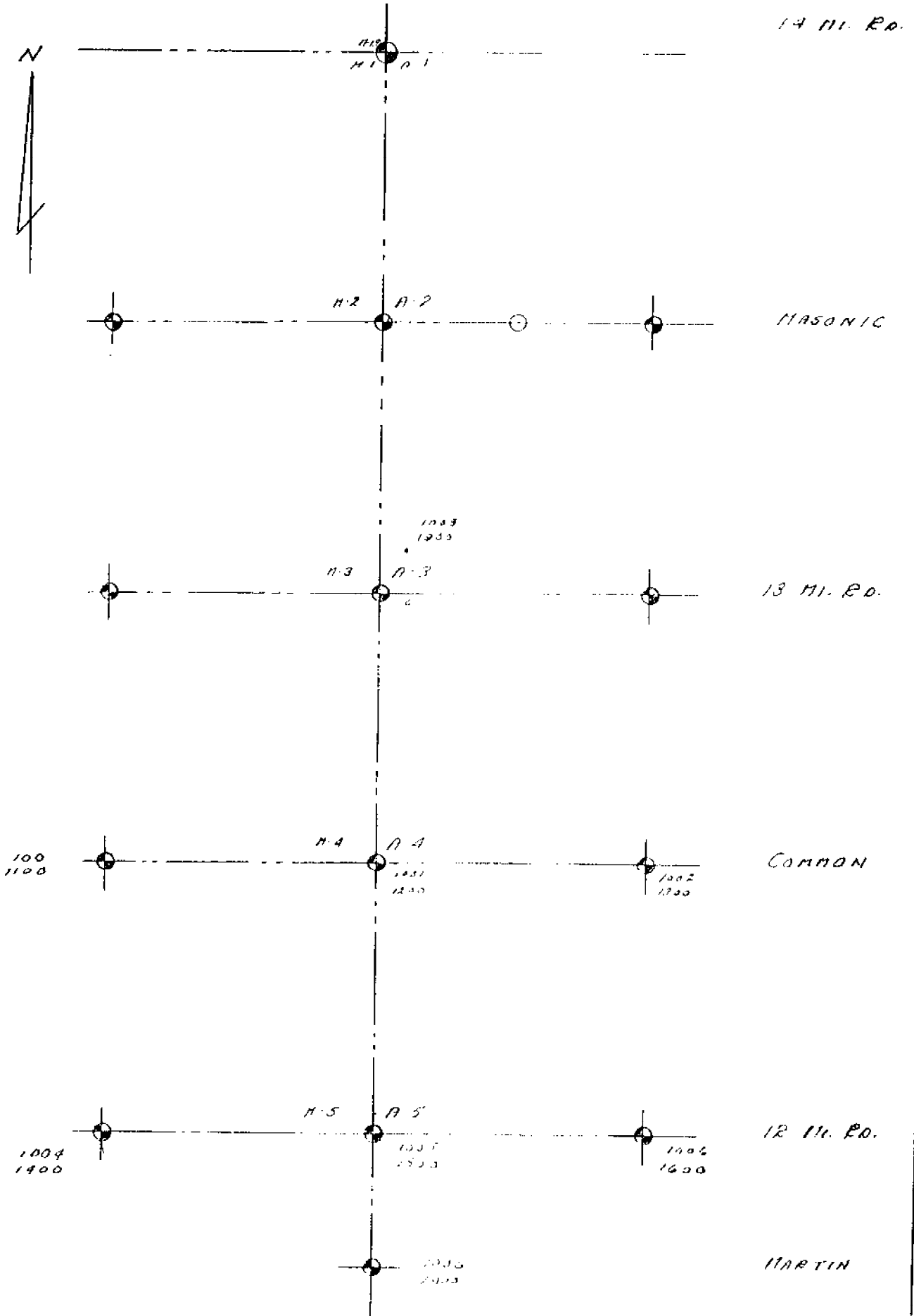
2438.23

2636.89

2952.12



22-141 50 SHEETS
22-142 100 SHEETS
22-144 200 SHEETS





L-N	N	E.
100	10426.547	12233.023
1100	10426.580	12233.025
TOTAL		
MEAN	10426.564	12233.024

M-N, A-N	N	E.
1001	10747.306	14939.017
1000	10747.310	14939.007
1200	10747.317	14938.999
TOTAL		
MEAN	10747.311	14939.008

B-N	N	E.
1003	10836.491	17647.840
1300	10836.480	17647.848
TOTAL		
MEAN	10836.486	17647.844

L-5	N	E.
1004	7848.595	12471.459
1400	7848.587	12471.453
TOTAL		
MEAN	7848.591	12471.456

M-5, A-5	N	E.
1005	8064.887	15025.276
1500	8064.887	15025.281
TOTAL		
MEAN	8064.887	15025.278

B-5	N	E.
1006	8153.254	17732.040
1600	8153.260	17732.043
TOTAL		
MEAN	8153.252	17732.042

M-6, A-6	N	E.
1007	5396.819	15104.698
1008	5396.834	15104.699
1700	5396.852	15104.705
TOTAL		
MEAN	5396.835	15104.699

22-141 50 SHEETS
 22-142 100 SHEETS
 22-144 200 SHEETS



	N	E
<i>M-3, A-3 TRAVERSE POINT</i>		
1000	13510.861	14883.118
1300	13510.861	14883.116
TOTAL	27021.722	
MEAN	13510.861	14883.117

Pt. No.	N	E	
1 BASE STA.	10,000.000	10,000.000	
2 L-4	10,426.564	12,233.024	
3 M-4, A-4	10,747.311	14,939.008	
4 B-4	10,836.486	17,647.844	
5 L-5	7848.591	12,471.456	
6 M-5, A-5	8064.887	15,025.278	
7 B-5	8153.252	17,732.042	
8 M-6, A-6	5396.835	15,104.639	
9 M-3, A-3	13,510.861	14,883.117	<i>TRAVERSE POINT</i>

MACOMB COUNTY REMONUMENTATION PROGRAM
WILLIAM E. SODERBERG P.S
MACOMB COUNTY SURVEYOR - REPRESENTATIVE
10 NORTH MAIN
COUNTY BUILDING SECOND FLOOR
MOUNT CLEMENS, MICHIGAN 48043
PHONE 810-469-7916 FAX 810-469-5130

Memo 96-07

May 2, 1996

Metco Services, Inc.
12504 Stevens
Warren, Michigan 48089

Attention: Steve Dunn

Reference: GLO notes for 1996 Remonumentation program.

I finally got my turn on the microfilm viewer to do the requested search. Here is the information.

South line of Sterling, used as the North line of Warren.
Surveyed West to East, then corrected back to the West.
Surveyed by Wampler in 1817.
From corner common to section 34 and 33 W 40 chs, set post; W 40
chs, set post common to sec 33 and 32; Page 331
W 40 chs, set post; W 40 chs, set post common to sec 32 and 31;
Page 331
W 40 chs, set post; W 39.98 chs to post common to Township corner.
Page 332.

Subdivision of Warren, surveyed by Wampler in 1817.
North between sec 3 & 4, intec 50 lks E. Page 348
North between sec 4 & 5, intec 42 lks E. Page 353
North between sec 5 & 6, intec 87 lks E. Page 359

Line common to Warren and Erin/Lake surveyed by Preston in 1817.
Surveyed S to N. All post were set at 40 chs, including Township
corner. Page 327.

Erin/Lake surveyed by Preston in 1818.
Surveyed N to S and W to E.
W between 6 & 7 to point common with Warren Page 224.
W between 7 & 18 to point common with Warren Page 225.
W between 18 & 24 to point common with Warren Page 226.

If you have any questions, please contact me.
Sincerely;



William E. Soderberg, P.S
Macomb Surveyor/Representative.

