

# ANDERSON, ECKSTEIN AND WESTRICK, INC.

51301 Schoenherr Road, Shelby Township, Michigan 48315  
Civil Engineers • Surveyors • Architects 586-726-1234

## 2012 Remonumentation

Corner: PCC-028: Intersection of the west line of Section 15 with the westerly line of PC 625.

### Index

- I. Section 1
  - A. Index
  - B. Composite
  - C. Photographs
  
- II. Section 2
  - A. LCRC
  - B. Surveyor's Report
  
- III. Section 3
  - A. Field Notes
    - 1. Corner Witnesses
    - 2. GPS Notes
    - 3. Sketch
  
- IV. Section 4
  - A. GLO Notes and Plats
    - 1. 1810 Private Claim Description – Greeley
    - 2. 1810 Private Claim Notes - Greeley
    - 3. 1817 Township Plat – Preston
    - 4. 1817 GLO Notes
    - 5. 1895 Atlas
    - 6. 1930 Assessor's Plat No. 24
  
  - B. Original Corner LCRC's
    - 1. G-05 L:6862 P:831
    - 2. G-06 L:6862 P:832
    - 3. PC-023 L:21034 P:779
    - 4. PC-024 L:21034 P:781

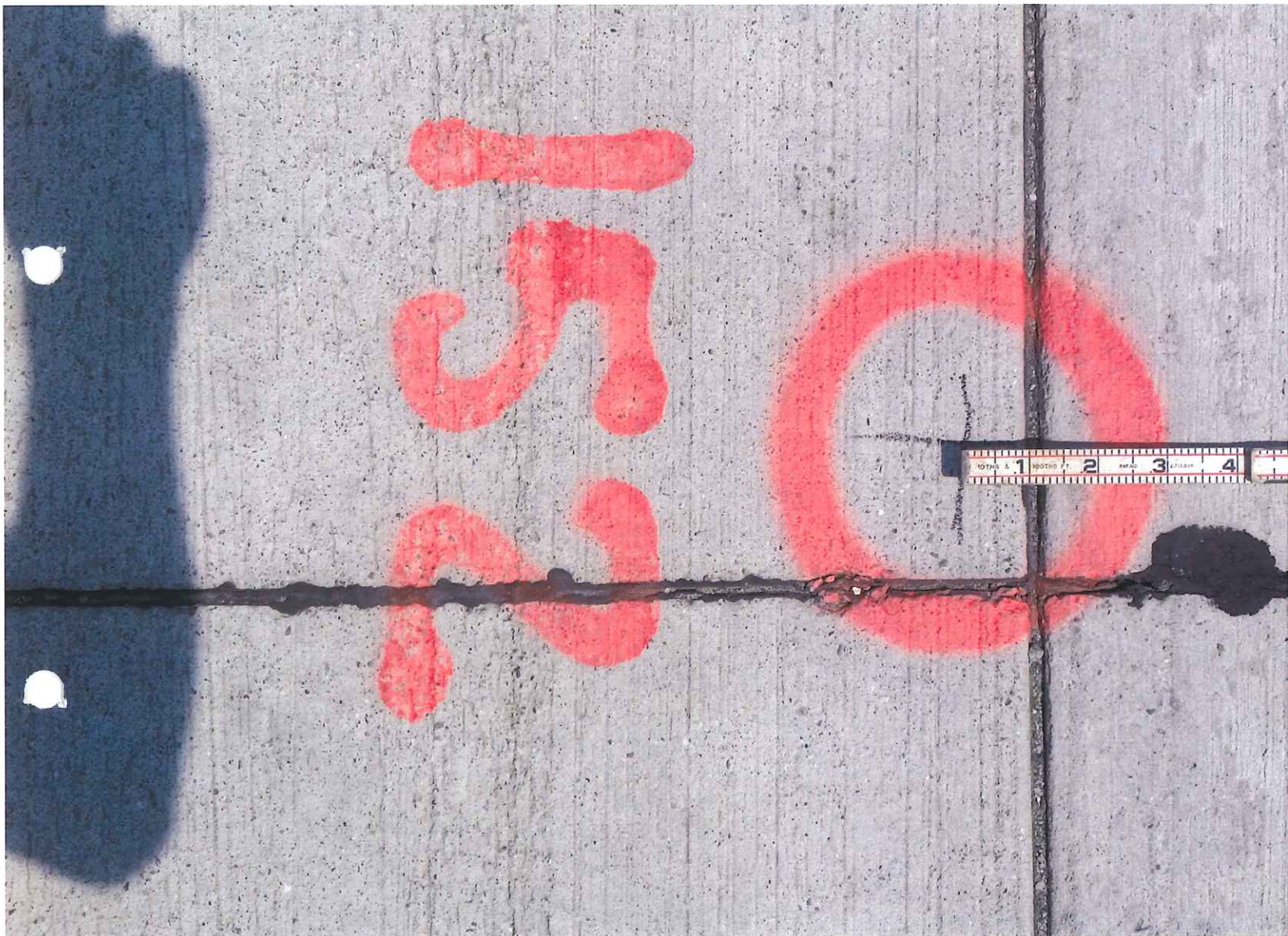




MADISON COUNTY MONUMENT  
REF. PT.  
P.C. 3000  
P.S. 3000  
1845



MACOMB COUNTY MONUMENT M.I. ACT #345  
REF PT  
PCC 028  
PS 34970



PCC-028



PCC-028



PCC-028



PCC-028





DCC-028



PCC-028



PCC-028



PCC-028



PCC-028



# Carmella Sabaugh

Macomb County  
Clerk/Register of Deeds

Todd Schmitz  
Deputy Clerk

Craig A. Jones  
Deputy Register of Deeds

## REMONUMENTATION PROGRAM

Martin C. Dunn, P.S., Surveyor Representative  
Office: 586-469-7916 ♦ Cellular: 810-217-7275  
martin.dunn@macombgov.org

December 12, 2013

COPY

Mr. Christopher Beland, P.S. Director  
LARA/Bureau of Construction Codes  
Office of Land Survey & Remonumentation  
P.O. Box 30254  
Lansing, MI 48909

RE: Assigned Corners; Grant Year 2012; T1N.R13E: Other Codes PCC-027 and PCC-028

Mr. Beland,

The Macomb County Peer Group has reviewed the LCRCs for corners T1N.R13E: Other Codes PCC-027 and PCC-028 per your email dated June 10, 2013. The peer group agrees that the location of the monuments in the center line of Little Mack Road does not create an unsafe condition and therefore, the requirement of setting at least four reference monuments as required by Act 74, 1970 will not be necessary.

The city of St. Clair Shores had requested that the surveyor not set the required monuments and monument boxes in the center line of Little Mack Road. The road had been recently repaved with a new construction technique and they were afraid placing the monuments and boxes would damage the pavement.

You also commented that, "In addition, we were unable to discern any related angular and linear measurements between the reference monuments and the corner." The contracted surveyor, Mr. Craig Amey, P.S. has addressed this issue and has submitted new LCRCs to add angular and linear measurements between the reference monuments and the corner. Mr. Amey performed this work at no additional cost to the Remonumentation Program.

**Clerk's Office**  
40 N. Main St.  
Mount Clemens, MI 48043  
586-469-5120  
Fax: 586-783-8184

<http://www.macombcountymi.gov/clerksoffice>  
clerksoffice@macombcountymi.gov

**Fax-on-Demand**  
Michigan: 1-888-99-CLERK  
Out-of-State: 310-575-5035

**Register of Deeds**  
32 Market Street  
Mount Clemens, MI 48043  
586-469-5175  
Fax: 586-469-5130

<http://www.macombcountymi.gov/registerdeeds>  
registerdeeds@macombcountymi.gov

COPY

Mr. Christopher Beland, P.S. Director

RE: Assigned Corners; Grant Year 2012; T1N.R13E: Other Codes PCC-027 and PCC-028

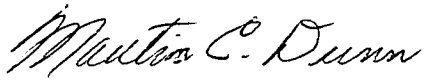
December 12, 2013

Page Two

Enclosed are copies of the latest recorded LCRCs, along with a sketch of the location. This documentation has been included in their respective dossiers. Additionally, this most recent data has been entered into the State Index System.

The Macomb County Peer Group hopes that the LCRC revisions meet with your approval. Please contact the Remonumentation office if you have any questions or comments regarding this matter.

Sincerely,



Martin C. Dunn, P.S.  
Macomb County Surveyor Representative

Enclosure

MCD/mj

cc: Craig A. Jones, Grant Administrator  
Craig P. Amey, P.S.



---

## Macomb County's 2012 Remonumentation Completion Report

---

**Beland, Christopher (LARA)** <BelandC@michigan.gov>  
To: "martin.dunn@macombgov.org" <martin.dunn@macombgov.org>

Mon, Jun 10, 2013 at 4:53 PM

While reviewing the 2012 LCRC documents it was identified that, the attached LCRC's note the use of reference monuments to perpetuate the corners.

Please be advised, the LCRC's indicate only two reference monuments were placed, Section 7 of the Corner Recordation Act, 1970 PA 74, "...states the surveyor may install at least 4 reference monuments interrelated and visible with the corner location and each other by angular and linear measurements." In addition, we were unable to discern any related angular and linear measurements between the reference monuments and the corner. We will be filing the LCRC's as submitted; however, only placing two reference monuments and not providing the interrelated measurements, the surveyor may be a violation of the Corner Recordation Act, 1970 PA 74.

Thank you

**Chris Beland, Director**

**Office of Land Survey & Remonumentation**

Department of Licensing and Regulatory Affairs

*"Customer Driven. Business Minded."*

---

**2012 Macomb.pdf**  
360K

---

**Martin Dunn** <martin.dunn@macombgov.org>  
To: Craig Amey <camey@aewinc.com>

Tue, Jun 11, 2013 at 8:44 AM

FYI  
[Quoted text hidden]

—  
Thank you,



Martin C. Dunn, P.S., Remonumentation Surveyor/Representative  
Macomb County Register of Deeds  
10 North Main Street, 2nd Floor  
Mount Clemens, MI 48043  
Phone: (586) 469-6752; Fax: (586) 469-5130  
E-mail: martin.dunn@macombgov.org  
Web: www.macombcountymi.gov/clerksoffice



PRIVACY NOTICE: This message is intended only for the individual or entity to which it is addressed. It may contain privileged, confidential information, which is exempt from disclosure under applicable laws. If you are not the intended recipient, please note that you are strictly prohibited from disseminating or distributing this information (other than to the intended recipient) or copying this information. If you have received this communication in error, please notify me immediately by the email address or telephone number listed above. Thank you.

---

**Martin Dunn** <martin.dunn@macombgov.org>  
To: "Beland, Christopher (LARA)" <BelandC@michigan.gov>

Tue, Jun 11, 2013 at 9:05 AM

Good Morning Chris,

We will review your comments at our next Peer Group meeting. I will let you know what the action of the group wants to take.

Thanks,  
Marty

On Mon, Jun 10, 2013 at 4:53 PM, Beland, Christopher (LARA) <BelandC@michigan.gov> wrote:  
[Quoted text hidden]

—  
Thank you,

Martin C. Dunn, P.S., Remonumentation Surveyor/Representative  
Macomb County Register of Deeds  
10 North Main Street, 2nd Floor  
Mount Clemens, MI 48043  
Phone: (586) 469-6752; Fax: (586) 469-5130  
E-mail: martin.dunn@macombgov.org  
Web: www.macombcountymi.gov/clerksoffice

PRIVACY NOTICE: This message is intended only for the individual or entity to which it is addressed. It may contain privileged, confidential information, which is exempt from disclosure under applicable laws. If you are not the intended recipient, please note that you are strictly prohibited from disseminating or distributing this information (other than to the intended recipient) or copying this information. If you have received this communication in error, please notify me immediately by the email address or telephone number listed above. Thank you.

**LAND CORNER RECORDATION CERTIFICATE**  
**Filing Requirement of Act 74, Mich. P.A. 1970 as Amended**

For corners in

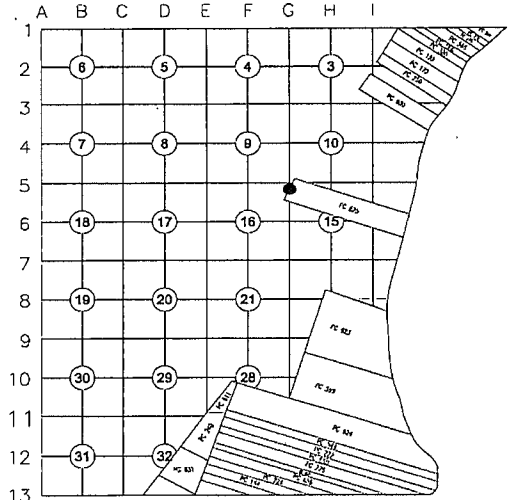
<u>Macomb</u> (County)	Located In: City of St. Clair Shores	Corner Code # PCC 028
1. Public Land Survey	T <u>1N</u> R <u>13E</u>	_____
	T _____ R _____	_____
	T _____ R _____	_____
	T _____ R _____	_____
2. Property Controlling In Section	S _____ T _____ R _____	_____
	s _____ T _____ R _____	_____
3. Miscellaneous Property in Sec.	S _____ T _____ R _____	_____
	S _____ T _____ R _____	_____

3177218 PAGE 1 OF 2  
 LIBER 22548 PAGE 802  
 12/03/2013 03:19:43 P.M.  
 MACOMB COUNTY, MI SEAL  
 CARMELLA SABAUGH, REGISTER OF DEEDS

**Register of Deeds Stamp & File Number**

4. Lot No. \_\_\_\_\_, Recorded Plat  
 5. Private Claims Intersection of the West line of Section 15 with the Westerly line of PC 625

I, Craig P. Amey, in a field survey on July 12, 2012 do hereby state that under requirements of P.A. 74, Michigan P.A. of 1970, the corner points mentioned in lines 1 and 2 above were in conformance with regulations and rules therefore as required in the current manual of survey instructions of the United States Department of the Interior, Bureau of Land Management or by a decree of a Court of Law and /or that the corner points mentioned in lines 3, 4 and 5 above were in conformance with the rules of the Michigan Board of Land Surveyors or by a Decree of a Court of Law; established, re-established, monumented, recovered, found as expressed below:



**NOTE: Not more than 2 corners, all in the same town and range, may be recorded on this certificate.**

**A. Description of original monument and accessories and/or subsequent restoration:**

Item	Date	L	P	Document	Name	#	Cor. Desc.
1	1810	--	--	Private Claim Description	Greeley	---	Post
2	1810	--	--	Private Claim Notes	Greeley	---	Post
3	1817	--	--	Township Plat	Preston	---	Not Indicated
4	1817	--	--	GLO Notes	Preston	---	Not Indicated
5	1895	--	--	1895 Atlas	--	---	Not Indicated
6	1930	15	67	Assessor's Plat No. 24	Lehner	123	Not Indicated

**B. Description of corner evidence found and/or method applied in restoring or reestablishing corner:**

PCC-028 is Intersection of the West line of Section 15 with the Westerly line of PC 625. A research of the public records and a request sent to all area surveyors provided no recorded surveys that reference this corner. To locate the position, I intersected the westerly line of PC 625 as approved by the Macomb County Peer Review group in 2011 and monumented by corners recorded in Liber 21034, Page 781 MCR and Liber 21034, Page 779, MCR, with the west line of section 15 as defined the northwest corner of section 15, as recorded in Liber 6862, Page 831, MCR, and the west quarter corner of Section 15 as recorded in Liber 6862, Page 832 MCR. The corner location is in the center of Little Mack Avenue, a concrete surface, and is located approximately 0.11' west of the centerline. No monumentation could be set at the corner location. The Road Commission of Macomb County has recently resurfaced the road with a new overlay process. Coring the road for a monument box may cause problems with the new process. Therefore, reference monuments were set (and witnessed) on the west line of PC 625 at the westerly right of way line of Little Mack, and on the west line of PC 625 at a point 33' east of the west line of section 15. (See distance comparison on next page)

**C. Description of monument for corner and accessories established to perpetuate locating the position of the corner:**

PCC-028 corner location established and witnessed, but no monumentation set at this corner location due to overlay pavement construction.

- Az 29° 67.59' Set a chiseled "X" in south rim of a storm sewer manhole on east side of Little Mack Ave.
- Az 128° 84.43' Set a chiseled "X" on the northwest of a concrete light pole base on east side of Little Mack Ave.
- Az 240° 74.34' Set a chiseled "X" in east rim of a storm sewer catch basin in the centerline of an entrance drive to #28983 Little Mack
- Az 258° 32.60' Set a chiseled "X" in east rim of a storm sewer catch basin on the west side of Little Mack Ave.
- Az 332° 65.23' Set a chiseled "X" in southeast rim of a storm sewer road basin on the west side of Little Mack Ave.

(Witnesses continued on back)

THE SELECTED LOCATION IS ACCEPTED BY ME AND IS GENERALLY ACCEPTED BY PROFESSIONAL SURVEYORS AS THE BEST AVAILABLE EVIDENCE OF THE POSITION OF THIS CORNER



Signed by Craig P. Amey  
 Surveyor's Michigan License No. 34970

Date Nov 18, 2013

2. m)

C

**LAND CORNER RECORDATION CERTIFICATE**  
**Filing Requirement of Act 74, Mich. P.A. 1970 as Amended**

For corners in

<u>Macomb</u> (County)	Located In: City of St. Clair Shores	Corner Code # PCC 028
1. Public Land Survey	T 1N R 13E	_____
	T _____ R _____	_____
	T _____ R _____	_____
	T _____ R _____	_____
2. Property Controlling In Section	S _____ T _____ R _____	_____
	s _____ T _____ R _____	_____
3. Miscellaneous Property in Sec.	S _____ T _____ R _____	_____
	S _____ T _____ R _____	_____

**Register of Deeds Stamp & File Number**

**B. (Cont.)**

Distance Comparisons	GLO	AEW	Diff
PCC 028 to southwest'ly cor of PC 625 (PC-023)	18.55 ch. (1224.30')	1156.46'	67.84'
PCC 028 to northwest corner of PC 625	5.06 ch. (333.96')	357.68'	23.72'
PCC 028 to PCC 027	17.77 ch. (1172.82')	1227.80'	54.98'
PCC 028 to northwest corner of Section 15	4.24 ch. (279.84')	191.15'	88.69'

**C. (Cont.)**

Description of monument for corner and accessories established to perpetuate locating the position of the corner:  
Reference monument is a 4" x 36" concrete monument with an aluminum remonumentation cap stamped "REF. PT., PCC-028, PS 34970" and is set on the westerly line of PC 625 at a location that is 60' west of the west line of Section 15.

- Az 8° 55.07' Set a CST nail in west face utility pole on west side Little Mack Ave. at the north face of building of "Moulon Square Apartments" extended.
- Az 90° 1.00' West edge of sidewalk
- Az 245° 14.46' Southeast corner of building for "Moulon Square Apartments".
- Az 349° 47.25' Northeast corner of building for "Moulon Square Apartments".
- AZ 10° 2.17' Concrete monument with cap #34970
- AZ 180° 29.71' Northeast corner of a stone wall at the entrance for "Moulon Square Apartments"
- AZ 16° 180.43' Calculated position of PCC 028 (Could not set monument at location due to overlay pavement construction)

Reference monument is a 4" x 36" concrete monument with an aluminum remonumentation cap stamped "REF. PT., PCC-028, PS 34970" and is set on the westerly line of PC 625 at a location that is 33' east of the west line of Section 15.

- Az 90° 21.33' Set a pk nail in a sidewalk joint, 0.5' east of the westerly edge of sidewalk.
- Az 190° 33.55' Northwest corner of a catch basin rim, in the easterly back of curb of Little Mack
- Az 270° 3.42' East back of curb of Little Mack.
- AZ 05° 34.91' Set a CST nail in south face utility pole at the southeast corner of 12 Mile road and Little Mack Ave.
- AZ 196° 99.23' Calculated position of PCC 028. (Could not set monument at location due to overlay pavement construction)

ACCEPTED BY THE MACOMB COUNTY SURVEY PEER  
GROUP AS THE OFFICIAL CORNER UNDER MICHIGAN  
PUBLIC ACT 345 OF 1990 AT A MEETING HELD  
ON 8-7-2012  
Martin C. Dunn  
MARTIN C. DUNN, P.S. CHAIRMAN



Todd Schmitz  
Deputy Clerk

# Carmella Sabaugh

Macomb County  
Clerk/Register of Deeds

Betty A. Oleksik  
Deputy Register of Deeds

REMONUMENTATION PROGRAM  
MARTIN C. DUNN. SURVEYOR REPRESENTATIVE  
OFFICE: 586-469-7916 ♦ CELLULAR: 810-217-7275

December 14, 2012

Nancy Johnston  
LARA/Bureau of Construction Codes  
Office of Land Survey & Remonumentation  
P.O. Box 30254  
Lansing, MI 48909

Dear Ms. Johnston,

Please find enclosed, recorded copies of the following Land Corner Recordation Certificates assigned in the 2012 Grant Year:

**T5N/R13E:** A03.

**T3N/R14E:** Other Codes: PCC-045, PCC-046, PC-047, PCC-048, PCC-049, PC-050.

**T1N/R13E:** Other Codes: PCC-027, PCC-028, PCC-029, PCC-030.

The above referenced Land Corners and Land Corner Recordation Certificates have been entered into the State Corner Index System. Please contact the Remonumentation office at (586) 469-7916 if you have any questions. Thank you.

Sincerely,

Betty A. Oleksik  
Macomb County Grant Administrator

Enclosure

BAO/mj

cc: Martin C. Dunn, P.S.

Clerk's Office  
40 N. Main St.  
Mount Clemens, MI 48043  
586-469-5120  
Fax: 586-783-8184

<http://www.macombcountymi.gov/clerksoffice>  
clerksoffice@macombcountymi.gov

Fax-on-Demand  
Michigan: 1-888-99-CLERK  
Out-of-State: 310-575-5035

Register of Deeds  
10 N. Main St.  
Mount Clemens, MI 48043  
586-469-5175  
Fax: 586-469-5130

<http://www.macombcountymi.gov/registerdeeds>  
registerdeeds@macombcountymi.gov

**LAND CORNER RECORDATION CERTIFICATE**  
**Filing Requirement of Act 74, Mich. P.A. 1970 as Amended**

For corners in

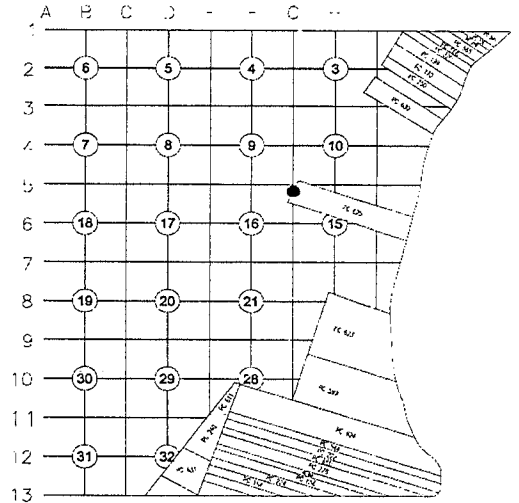
<u>Macomb</u> (County)	Located In: City of St. Clair Shores	Corner Code # PCC 028
1. Public Land Survey	T <u>1N</u> R <u>13E</u>	_____
	T _____ R _____	_____
	T _____ R _____	_____
	T _____ R _____	_____
2. Property Controlling In Section	S _____ T _____ R _____	_____
	s _____ T _____ R _____	_____
3. Miscellaneous Property in Sec.	S _____ T _____ R _____	_____
	S _____ T _____ R _____	_____

2175899 PAGE 1 OF 2  
 LIBER 21777 PAGE 133  
 12/13/2012 09:52:07 A.M.  
 MACOMB COUNTY, MI SEAL  
 CARMELLA SABAUGH, REGISTER OF DEEDS

**Register of Deeds Stamp & File Number**

4. Lot No. \_\_\_\_\_, Recorded Plat  
 5. Private Claims Intersection of the West line of Section 15 with the Westerly line of PC 625

I, Craig P. Amey, in a field survey on July 12, 2012 do hereby state that under requirements of P.A. 74, Michigan P.A. of 1970, the corner points mentioned in lines 1 and 2 above were in conformance with regulations and rules therefore as required in the current manual of survey instructions of the United States Department of the Interior, Bureau of Land Management or by a decree of a Court of Law and /or that the corner points mentioned in lines 3, 4 and 5 above were in conformance with the rules of the Michigan Board of Land Surveyors or by a Decree of a Court of Law; established, re-established, monumented, recovered, found as expressed below:



**NOTE: Not more than 2 corners, all in the same town and range, may be recorded on this certificate.**

**A. Description of original monument and accessories and/or subsequent restoration:**

Item	Date	L	P	Document	Name	#	Cor. Desc.
1	1810	--	--	Private Claim Description	Greeley	---	Post
2	1810	--	--	Private Claim Notes	Greeley	---	Post
3	1817	--	--	Township Plat	Preston	---	Not Indicated
4	1817	--	--	GLO Notes	Preston	---	Not Indicated

**B. Description of corner evidence found and/or method applied in restoring or reestablishing corner:**

PCC-028 is Intersection of the West line of Section 15 with the Westerly line of PC 625. A research of the public records and a request sent to all area surveyors provided no recorded surveys that reference this corner. To locate the position, I intersected the westerly line of PC 625 as approved by the Macomb County Peer Review group in 2011 and monumented by corners recorded in Liber 21034, Page 781 MCR and Liber 21034, Page 779, MCR, with the west line of section 15 as defined the northwest corner of section 15, as recorded in Liber 6862, Page 831, MCR, and the west quarter corner of Section 15 as recorded in Liber 6862, Page 832 MCR. The corner location is in the center of Little Mack Avenue, a concrete surface, and is located approximately 0.11' west of the centerline. No monumentation could be set at the corner location. The Road Commission of Macomb County has recently resurfaced the road with a new process, and coring the road for a monument box may cause problems with the new process. Therefore, reference monuments were set (and witnessed) on the west line of PC 625 at the easterly and westerly right of way lines of Little Mack.

Distance Comparisons	GLO	AEW	Diff
PCC 028 to southwest'ly cor of PC 625 (PC-023)	18.55 ch. (1224.30')	1156.46'	67.84'
PCC 028 to northwest corner of PC 625	5.06 ch. (333.96')	357.68'	23.72'
PCC 028 to PCC 027	17.77 ch. (1172.82')	1227.80'	54.98'
PCC 028 to northwest corner of Section 15	4.24 ch. (279.84')	191.15'	88.69'

**C. Description of monument for corner and accessories established to perpetuate locating the position of the corner:**

PCC-028 corner location established and witnessed, but no monumentation set at this corner

- Az 29° 67.59' Set a chiseled "X" in south rim of a storm sewer manhole on east side of Little Mack Ave.
- Az 128° 84.43' Set a chiseled "X" on the northwest of a concrete light pole base on east side of Little Mack Ave.
- Az 240° 74.34' Set a chiseled "X" in east rim of a storm sewer catch basin in the centerline of an entrance drive to #28983 Little Mack
- Az 258° 32.60' Set a chiseled "X" in east rim of a storm sewer catch basin on the west side of Little Mack Ave.
- Az 332° 65.23' Set a chiseled "X" in southeast rim of a storm sewer road basin on the west side of Little Mack Ave.

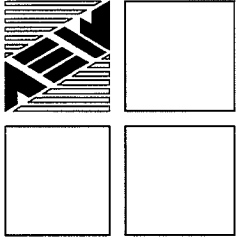
(Witnesses continued on back)

THE SELECTED LOCATION IS ACCEPTED BY ME AND IS GENERALLY ACCEPTED BY PROFESSIONAL SURVEYORS AS THE BEST AVAILABLE EVIDENCE OF THE POSITION OF THIS CORNER.



Signed by [Signature]  
 Surveyor's Michigan License No. 34970

Date 12-04-12



# ANDERSON, ECKSTEIN AND WESTRICK, INC.

51301 Schoenherr Road, Shelby Township, Michigan 48315

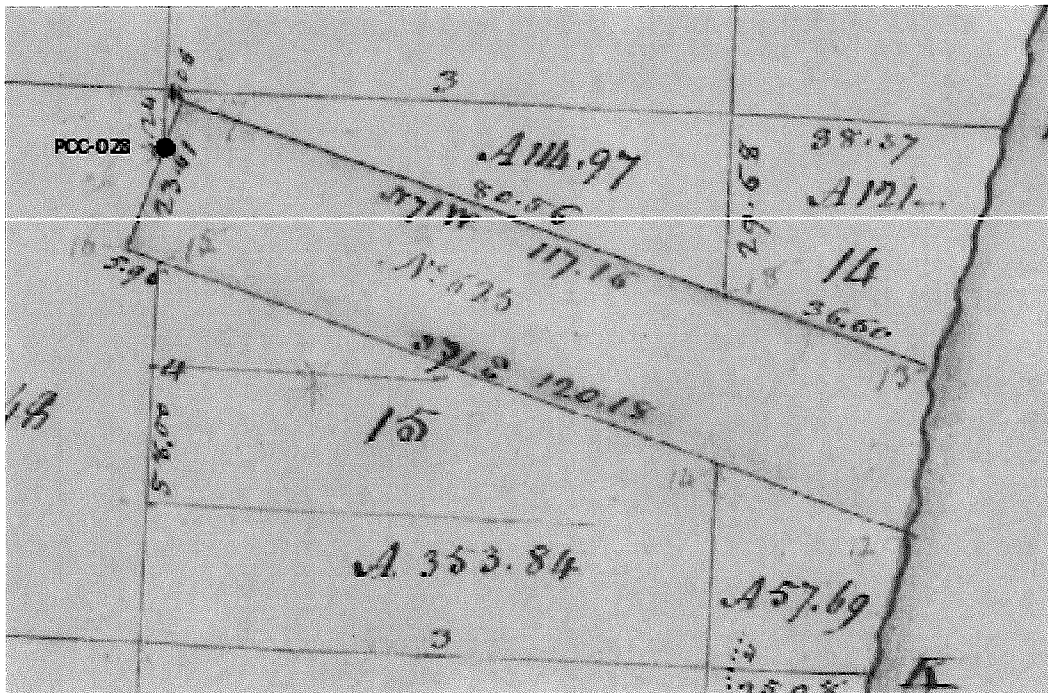
Civil Engineers • Surveyors • Architects 586-726-1234

## 2012 Remonumentation

Corner: PCC-028 Intersection of the West line of Section 15 with the Westerly line of PC 625

### Surveyor's Report

PCC-028 is the Intersection of the West line of Section 15 with the Westerly line of PC 625. In 1817, William Preston, D.S. was contracted to subdivide section 15. PC 625 lies diagonally across Section 15 in a northwest/southeast orientation, extending from the northwesterly corner of Section 15 to Lake St. Clair. Although Preston does not call out the intersection of the west line of section 15 with the southerly line of PC 625 when he originally ran the west line of section 15, the GLO notes do include additional entries defining this position. We have been contracted by Macomb County to locate and, if necessary, remonument this position.



PCC-028 is Intersection of the West line of Section 15 with the Westerly line of PC 625. A research of the public records and a request sent to all area surveyors provided no recorded surveys that reference this corner. To locate the position, I intersected the westerly line of PC 625 as approved by the Macomb County Peer Review group in 2011 and monumented by corners recorded in Liber 21034, Page 781 MCR and Liber 21034, Page 779, MCR, with the west line of section 15 as defined by the northwest corner of section 15, as recorded in Liber 6862, Page 831, MCR, and the west quarter corner of Section 15 as recorded in Liber 6862, Page 832 MCR. The corner location is in the center of Little Mack Avenue, a concrete surface, and is located approximately 0.11' west of the centerline.

I believe that the method described above has determined the best location of the Intersection of the west line of Section 15 with the westerly line of PC 625.

Respectfully Submitted,

Craig P. Amey, PS

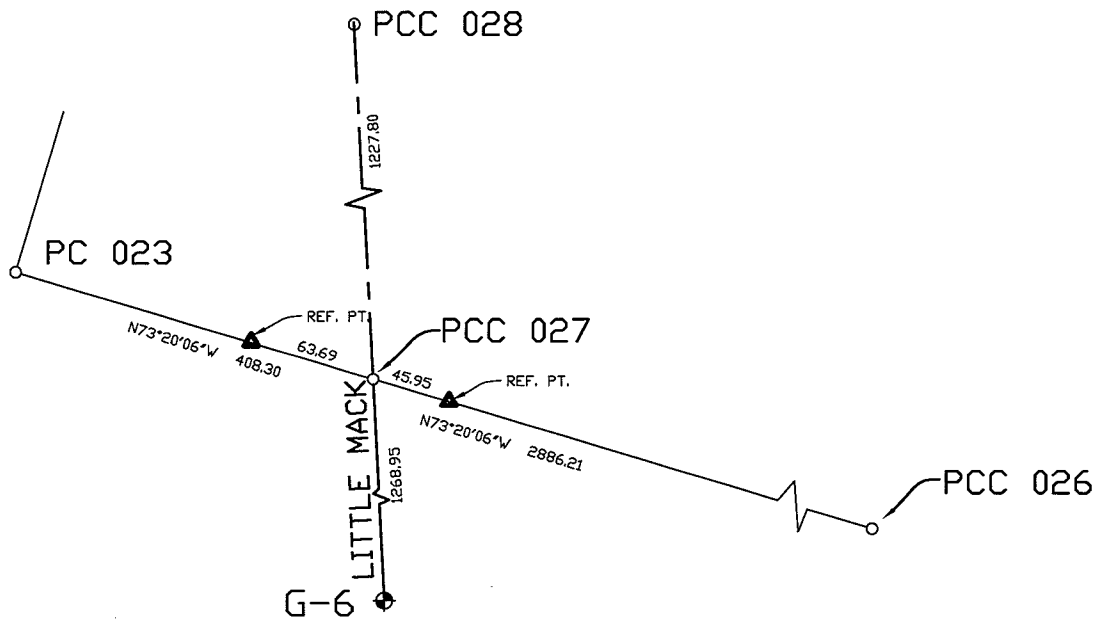
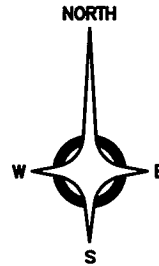
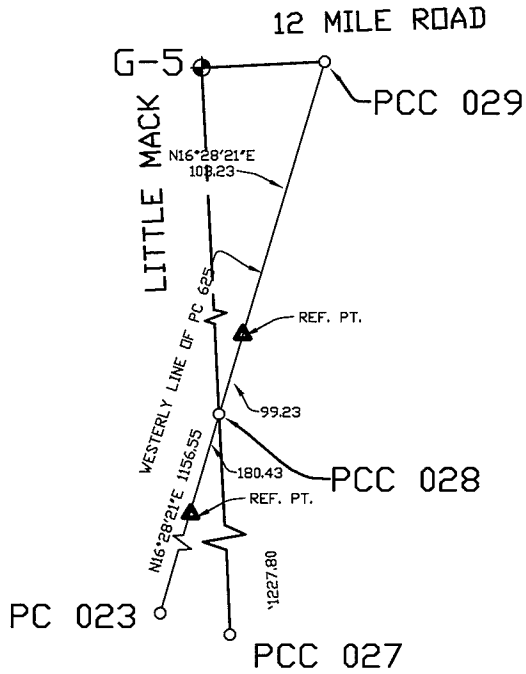
2-B

Reference Points

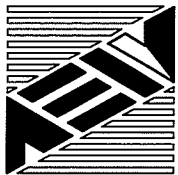
Private Claim: PC-625

Town: 01N

Range: 13E



REVISED 10-24-13



**ANDERSON, ECKSTEIN  
AND WESTRICK, INC.**  
Civil Engineers • Surveyors • Architects  
51301 Schoenherr Road, Shelby Township, Michigan 48315  
Phone 586•726•1234 Fax 586•726•8780

PROJECT

**Macomb Co.  
Remon  
2012**

DATE

12/12

DRAWN BY

JJG

CHECKED BY

CPA

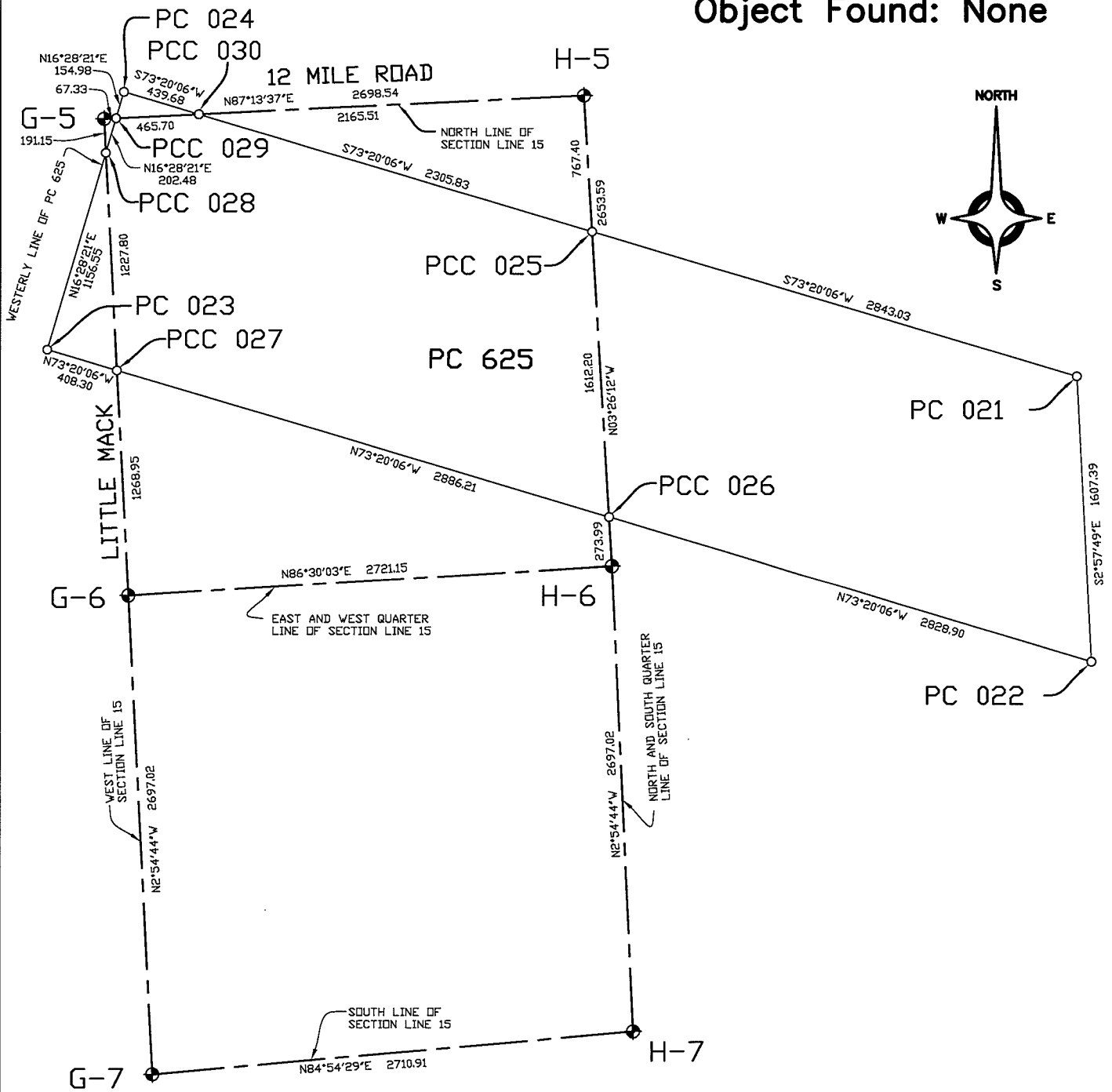
PROJECT NO.

0223-0036

SHEET No.

**PC-625**

Private Claim: PC-625  
 Town: 01N  
 Range: 13E  
 Object Found: None



REVISED 10-24-13



**ANDERSON, ECKSTEIN  
 AND WESTRICK, INC.**

Civil Engineers • Surveyors • Architects  
 51301 Schoenherr Road, Shelby Township, Michigan 48315  
 Phone 586•726•1234 Fax 586•726•8760

PROJECT

**Macomb Co.  
 Remon  
 2012**

DATE

12/12

DRAWN BY

JJG

CHECKED BY

CPA

PROJECT NO.

0223-0036

SHEET No.

**PC-625**



0280056  
 7-11-53  
 MAT

2002

2012 RETURN

WITNESSES #152

PT# PCC-028

101524 CH15 "X" ON S. FACE OF STM MH

AZ: 29° ON S. SIDE LITTLE MACK, 133' +/-

DIST: 67.59' SOUTH OF Q 12 mile Rd.

101525 CH15 "J" ON NW COR OF CONC. C.P.

AZ: 128° BASS ON S. SIDE LITTLE MACK AVE

DIST: 84.43' @ ENT TO #2900D LITTLE MACK (DALLAS GENERAL)

101526 CH15 "X" ON EAST RIM OF STM

AZ: 240° CR IN Q ENT TO #28983 LITTLE

DIST: 74.34' MACK AVE (DRAINAGES) ON W. SIDE C.M.

10152D CH15 "X" ON EAST RIM OF STM CB

AZ: 258° ON WEST SIDE LITTLE MACK AVE @

DIST: 32.60' #28983 LITTLE MACK AVE

10152E CH15 "X" ON S.E. COR OF STM RB

AZ: 332° ON WEST SIDE LITTLE MACK AVE

DIST: 65.23' IN ENT DRIVE TO #20730 ("MUFFLER BRAKES AND MORE")

- EXACT LOCATION OF PCC-028 IS O.I.I.

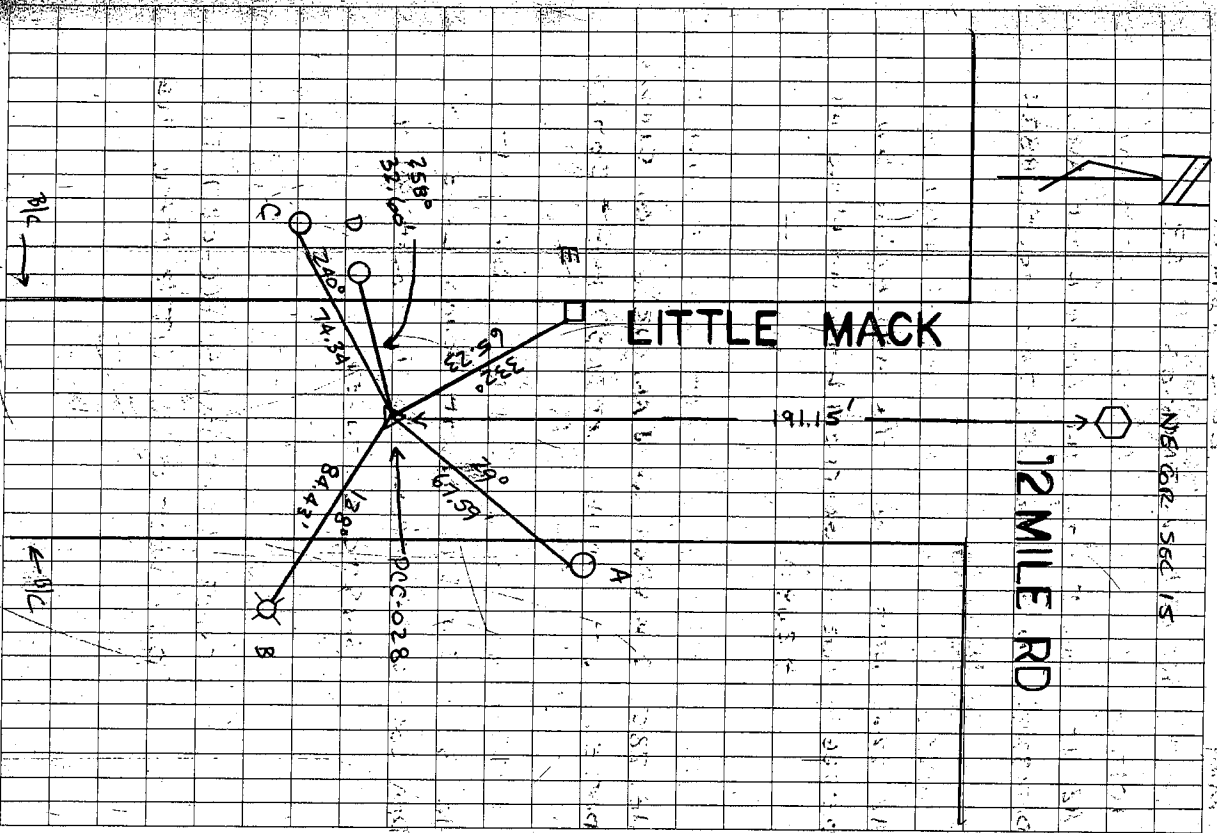
WEST OF THE Q LITTLE MACK AVE

30053 28

NORTH SIDE IS

12 MILE RD

LITTLE MACK



3-A

No. 87

No. 625 Confirmed to  
Pierre Duchesne

LAKE ST. CLAIR

Description No. 625 Confirmed to Piere Duchane commencing at a post standing on the border of Lake St. Clair between this tract and unceded land thence north seventy five degrees west one hundred and nineteen chains sixty four links to a post thence north fifteen degrees east twenty three chains to a post thence south seventy five degrees east one hundred and sixteen chains to a post standing on the border of Lake St. Clair between this tract and a tract of unceded lands, thence along the border of said lake south six degrees west twenty three chains twenty eight links to the place of beginning, containing two hundred and seventy acres and ninety eight hundredths of an acre,

Detroit Jan'y 4th, 1810

Aaron Greeley Surveyor  
of private claims

4-A-1

N. 87.

Lake St. Clair

Description N. 625 confirmed to Am. Ducane, commencing at a post standing on the border of Lake St. Clair between this tract and unconceded land, thence north seventy five degrees west one hundred and nineteen chains sixty four links to a post thence north fifteen degrees east twenty three chains to a post thence south seventy five degrees east one hundred and sixteen chains, to a post standing on the border of Lake St. Clair between this tract and a tract of unconceded lands, thence along the border of said lake south six degrees west twenty three chains twenty eight links, to the place of beginning containing two hundred and seventy acres, and ninety eight hundredths of an acre.

Detroit January 4 1810

Aaron Greeley Surveyor  
of private Claims.

625



From 1. into Range 13 East

East Corrected between 4+7

40.97 Made 1/4 Section corner on a Hickory  
24 in dia

80.14 To Section corner

South Between Sections 9+10

410.00 made half mile corner on a  
B. Ash 6 in dia

72.00 a B. Ash 18 ins

80.00 Set post for sections 9, 10, 16, 15 from  
which a B. Ash 8 in dia bears S15W  
10 links also a B. Ash 10 in dia bears  
N85E 11 links dist

1<sup>st</sup> half mile level and dry 2<sup>nd</sup> rate  
last half mile part dry 2<sup>nd</sup> rate  
Timber W. Oak Poplar B. Ash Elm  
Sugar B. Ash + Undergrowth Spice  
Buck

West On Ranges between S 9+16

40.00 Set temporary half mile post

80.00 Intersected west boundary at the corner

Level and dry good 2<sup>nd</sup> rate  
Level land. Timber W. Oak B. Ash  
Elm Sugar Poplar + Undergrowth  
Spice Lyrus +

East Corrected between 9+16

40.00 Set 1/4 section post from which  
a Sugar 24 inches bears S52E 20 lin  
also a Buck 12 in dia bears S32W  
12 links dis

80.00 To section corner

South Between Sections 16+15

\* 22.85 an Elm 14 in dia

18/8

## Town 1 North Range 13 East

- 40.00 Made half mile corner on  
a W. Oak 6 in di
- 41.17 a B. Ash 16 in di
- 80.00 Set post for Section 16.15.22.21  
from which a B. Oak 14 in di bears  
S. 5. E 11 lin also a B. Ash 16 in di  
bears N 30 W 25 links  
1<sup>st</sup> half mile level and wet 2<sup>d</sup> rate  
last half mile same  
Timber B. Ash Beech Elm Lymn  
& Undergrowth Lymn B. Ash &c
- \* 41.24 but private claim No. 625 confirmed  
to Purse Duchesne 50.6.  
South of the N.W. Cor. thereof  
Made Cor. for frac sects 15 & 16 on an  
Ash 8 in diam East
- 22.01 Left the claim 5.96 from the S.W. Cor.  
thereof Made Cor for frac. sec 15 & 16  
on B. Ash 14 in diam
- 23 This claim was not observed  
in running the section when the first  
notes were made

West On Randon between S. 16 & 21  
40.00 Set tempy half mile post  
80.20 In<sup>st</sup> West boundary 15 links South  
of corner Land level Part dry 2<sup>d</sup> rate  
Timber B. Ash Beech Sugar Lymn  
Undergrowth Spice &c

East Cor<sup>d</sup> between 16 & 21  
40.10 Made 1/4 section corner on a  
B. Ash 7 in dia at average distance  
from line

4-A-4

Town 1. nite Range 13 East

80.00 Set post for sections 10.11-14.15  
from which a Beech 14 in di bears N  
23 & 8 links also a Beech 6 in di  
bears N 65 W 6 links dist  
first half mile good 2 $\frac{1}{2}$  rate  
last half mile same  
Timber W. Oak Beech Sugar &  
Undergrowth spruce

West On Roadway between S. 10 + 15  
40.00 Set temp. half mile pt  
80.04 Ent<sup>d</sup> West boundary at the corner  
Level level Part dry 2 $\frac{1}{2}$  rate  
Timber Beech Elm &c

East Corrected between 10 + 15  
40.02 Made 14 section corner on a Beech  
4 in di at average distance  
80.04 To section corner

East Between sections 11 + 14  
38.37 Enter<sup>d</sup> Lake St Clair and  
Set post for fractional sections 11 + 14  
from which a Sycamore 18 in di  
bears N 37 & 53 links also a  
Maple 12 in bears S 47 W 45  
links dist Town post dry 2 $\frac{1}{2}$  rate  
Timber Beech B. Ash Elm &c

South Between sections 14 + 15  
5.00 a B. Ash 18 in di  
29.68 Enter<sup>d</sup> Prvt. claim 80.56 from  
N.W. corner of Lot No 6.25 and  
Made corner on an Iron rod 4 in  
dia for frac. sect 14 + 15 = 52.60 dist

Town 1 North Range 13 East

80.00 Set post for sections 10, 11 - 14, 15  
from which a Beech 14 in di bears N  
23 & 8 links also a Beech 6 in di  
bears N 65 W 6 links dist  
first half mile good 2 $\frac{1}{2}$  rate  
last half mile same  
Timber W. Oak Beech Sugar &  
Undergrowth spruce

West On Roadway between S. 10 + 15  
40.00 Set temp. half mile pt  
80.04 Ent<sup>d</sup> West boundary at the corner  
Land level Part dry 2 $\frac{1}{2}$  rate  
Timber Beech Elm &c

East Corrected between 10 + 15  
40.02 Made 14 section corner on a Beech  
4 in di at average distance  
80.04 To section corner

East Between sections 11 + 14  
38.37 Enter<sup>d</sup> Lake St Clair and  
Set post for fractional sections 11 + 14  
from which a Sycamore 18 in di  
bears N 37 & 53 links also a  
Maple 12 in bears S 47 W 45  
links dist Town part dry 2 $\frac{1}{2}$  rate  
Timber Beech B. Ash Elm &c

South Between sections 14 + 15  
5.00 a B. Ash 18 in di  
29.68 Enter<sup>d</sup> Pr<sup>v</sup> Claim 8056 from  
N.W. corner of Lot No 6.25 and  
made corner on an Ironrod 4 in  
dia for frac sect 14 + 15 = 52.60 left



# MAP OF ERIN

Township 1 North Range 13 East

Scale 2 inches to one Mile

of the Meridian of Washington



L.A.B.E. ST. CLAIR

4-A-5



# SURVEY & REMONUMENTATION

APR 29 1996

## COMMISSION LAND CORNER RECORDATION CERTIFICATE Filing Requirement of Act 74, Mich. P.A. 1970

For corners in

Macomb	Located In:	Corner Code #G5
(County)	Erin/Lake Township	
1. Public Land Survey	T <u>1N</u> R <u>13E</u>	<u>G5</u>
	T ___ R ___	_____
	T ___ R ___	_____
	T ___ R ___	_____
	T ___ R ___	_____
2. Property Controlling in Section	S ___ T ___ R ___	_____
	S ___ T ___ R ___	_____
3. Miscellaneous Property in Sec.	S ___ T ___ R ___	_____
	S ___ T ___ R ___	_____

Register of Deeds Stamp & File Number

4. Lot No. \_\_\_\_\_, Recorded Plat \_\_\_\_\_  
5. Private Claims \_\_\_\_\_

I, Craig P. Arney, in a field survey on August 8, 1995 do hereby certify that under requirements of P.A. 74, Michigan P.A. of 1970, the corner points mentioned in lines 1 and 2 above were in conformance with regulations and rules therefore as required in the current manual of survey instructions of the United States Department of the Interior, Bureau of Land Management or by a decree of a Court of Law and /or that the corner points mentioned in lines 3, 4 and 5 above were in conformance with the rules of the Michigan Board of Land Surveyors or by a Decree of a Court of Law; established, re-established, monumented, re-monumented, recovered, found as expressed below:

**NOTE: Not more than 4 corners, all in the same town and range, may be recorded on this certificate.**

	A	B	C	D	E	F	G	H	I	J	K	L	M
1													
2	6		5		4		3		2		1		
3													
4	7		8		9		10		11		12		
5							●						
6	16		17		18		19		20		21		
7													
8	19		20		21		22		23		24		
9													
10	30		29		28		27		26		25		
11													
12	31		32		33		34		35		36		
13													

A. Description of original monument and accessories and/or subsequent restoration:

1818 GLO Willam Preston No witnesses remain

B. Description of corner evidence found and/or method applied in restoring or reestablishing corner:

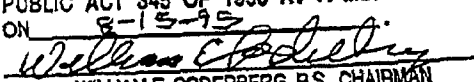
No evidence of the corner was found. Due to the widening of 12 Mile Road and Little Mack Road, there was no existing monumentation in subdivisions adjacent to the corner. "Mack Avenue Farms No. 2" is located in the northwest quadrant of this corner, and it has interior roads from which the corner could be reestablished. Irons found at the intersections of Harding, Coolidge, Congress and Washington fit the centerline of the roads. Irons found at the intersection of Harding, Coolidge, Congress and 12 Mile also fit the centerline of the roads. The south line of section 9 was established by extending the centerlines of Harding, Coolidge and Congress record distance to the section line. The centerline of Washington was extended to the east establishing the east line of section 8. Record distance along the south line of section 9 fit the existing centerline of Little Mack. This position is also within 0.12' of the record distance to Washington (1332.50R 1332.38R).

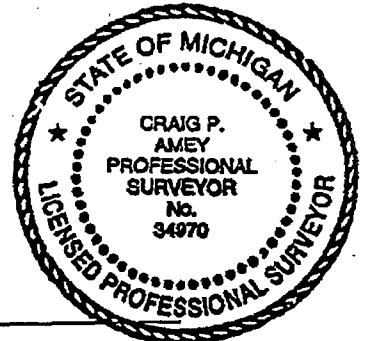
N 2683.22 East quarter post of section 9 (G4) (GLO = 40ch)  
S 2688.21 East quarter post of section 16 (G6) (GLO = 40 ch)

C. Description of monument for corner and accessories established to perpetuate locating the position of the corner:

SET A 3/4" X 24" IRON WITH MCR CAP #34970 IN A NEW MONUMENT BOX  
 150° 72.48 Set PK and Tag #17365 in the southwest face of a utility pole  
 228° 68.32 Set PK and Tag #17365 in the northwest face of a utility pole  
 314° 75.72 Set PK and Tag #17365 in the southwest face of a utility pole  
 43° 60.62 Set PK and Tag #17365 in the northwest face of a utility pole

The selected location is accepted by me and is generally accepted by professional surveyors as the best available evidence of the position of the original corner.

ACCEPTED BY THE MACOMB COUNTY SURVEY PEER GROUP AS THE OFFICIAL CORNER UNDER MICHIGAN PUBLIC ACT 345 OF 1990 AT A MEETING HELD ON 8-15-95  
  
 WILLIAM E. SODERBERG, P.S., CHAIRMAN



Signed by C. Arney  
 Surveyor's Michigan License No. 34970

Date 12-15-95

FORM APPROVED BY MICHIGAN STATE BOARD OF LAND SURVEYORS, JAN. 28, 1971

REVISED MAY 14, 1976  
REVISED JAN, 1983

C0292272 LIBER:06862 PAGE:831 11:11A 12/21/1995  
 CARMELLA SABAUGH-MACOMB COUNTY, MI REG/DEEDS

4-B-1

**SURVEY & REMONUMENTATION**

APR 29 1996

**COMMISSION LAND CORNER RECORDATION CERTIFICATE**  
 Filing Requirement of Act 74, Mich. P.A. 1970

For corners in

Macomb  
 (County)

Located In: ErinLake Township  
 Corner Code #G6

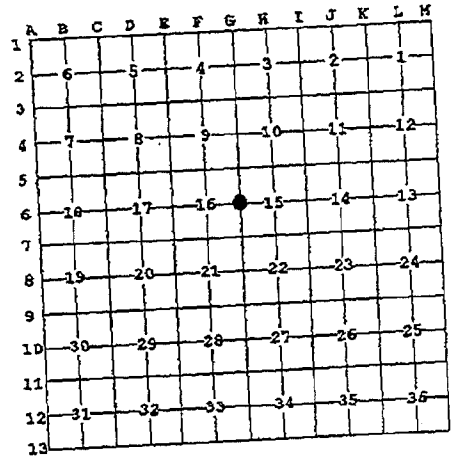
- |                                    |                          |           |
|------------------------------------|--------------------------|-----------|
| 1. Public Land Survey              | T <u>1N</u> R <u>13E</u> | <u>G6</u> |
|                                    | T _____ R _____          | _____     |
|                                    | T _____ R _____          | _____     |
|                                    | T _____ R _____          | _____     |
| 2. Property Controlling in Section | S _____ T _____ R _____  | _____     |
|                                    | S _____ T _____ R _____  | _____     |
| 3. Miscellaneous Property in Sec.  | S _____ T _____ R _____  | _____     |
|                                    | S _____ T _____ R _____  | _____     |

Register of Deeds Stamp & File Number

4. Lot No. \_\_\_\_\_, Recorded Plat \_\_\_\_\_  
 5. Private Claims \_\_\_\_\_

I, Craig P. Amey, in a field survey on August 7, 1995 do hereby certify that under requirements of P.A. 74, Michigan P.A. of 1970, the corner points mentioned in lines 1 and 2 above were in conformance with regulations and rules therefore as required in the current manual of survey instructions of the United States Department of the Interior, Bureau of Land Management or by a decree of a Court of Law and for that the corner points mentioned in lines 3, 4 and 5 above were in conformance with the rules of the Michigan Board of Land Surveyors or by a Decree of a Court of Law; established, re-established, monumented, re-monumented, recovered, found as expressed below:

**NOTE: Not more than 4 corners, all in the same town and range, may be recorded on this certificate.**



A. Description of original monument and accessories and/or subsequent restoration:

1818 GLO	William Preston	No witnesses remain
1994 Cert. of Survey	Shelby W. Money #30092	Found chiseled "X" in concrete and replaced with 1/2" iron and cap #17635

B. Description of corner evidence found and/or method applied in restoring or reestablishing corner:

Found iron with cap #17635 in the centerline of 13 Mile Road (concrete)  
 This corner verified by:

Witnesses from Cert. of Survey, Shelby W. Money  
 30° 99.21 Southwest corner of a house  
 315° 119.45 Southeast corner of a house

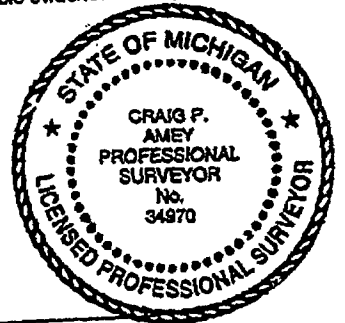
S 2697.24 Southeast corner of section 16 (G7) (GLO = 40ch)  
 N 2688.21 Northeast corner of section 16 (G5) (GLO = 40ch)

C. Description of monument for corner and accessories established to perpetuate locating the position of the corner:

REPLACED IRON WITH 3/4" X 24" IRON WITH MCR CAP #34970 IN A NEW MONUMENT BOX  
 27° 65.35 Concrete monument  
 158° 38.61 Set PK and MCR tag in W face of a utility pole  
 222° 88.58 Chiseled "X" on the E side of a manhole rim  
 313° 74.01 Set PK and MCR tag in the SW face of a utility pole

The selected location is accepted by me and is generally accepted by professional surveyors as the best available evidence of the position of the original corner.

ACCEPTED BY THE MACOMB COUNTY SURVEY PEER GROUP AS THE OFFICIAL CORNER UNDER MICHIGAN PUBLIC ACT 345 OF 1990 AT A MEETING HELD ON 8-15-95  
William E. Soderberg  
 WILLIAM E. SODERBERG, P.S., CHAIRMAN



Signed by C. Amey  
 Surveyor's Michigan License No. 34970

Date 12-15-95

FORM APPROVED BY MICHIGAN STATE BOARD OF LAND SURVEYORS, JAN. 26, 1971  
 REVISED MAY 14, 1976  
 REVISED JAN., 1983

C0292273 LIBER:06862 PAGE:832 11:11A 12/21/1995  
 CARMELLA SABAUGH-MACOMB COUNTY, MI REG/DEEDS

4-B-2

**LAND CORNER RECORDATION CERTIFICATE**  
**Filing Requirement of Act 74, Mich. P.A. 1970 as Amended**

For corners in

<u>Macomb</u> (County)	Located In: City of St. Clair Shores	Corner Code # PC 023
1. Public Land Survey	T <u>1N</u> R <u>13E</u>	_____
	T _____ R _____	_____
	T _____ R _____	_____
	T _____ R _____	_____
2. Property Controlling In Section	S _____ T _____ R _____	_____
	s _____ T _____ R _____	_____
3. Miscellaneous Property in Sec.	S _____ T _____ R _____	_____
	S _____ T _____ R _____	_____

1237200  
**LIBER 21034 PAGE 779**  
 12/15/2011 09:05:49 A.M.  
 MACOMB COUNTY, MI  
 CARHELLA SABAUGH, REGISTER OF DEEDS  
 SEAL

Register of Deeds Stamp & File Number

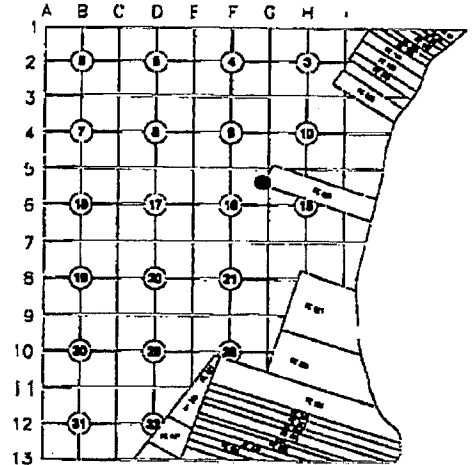
4. Lot No. \_\_\_\_\_, Recorded Plat  
 5. Private Claims Southwest Corner of PC 625

I, Craig P. Amey, in a field survey on July 30, 2011 do hereby state that under requirements of P.A. 74, Michigan P.A. of 1970, the corner points mentioned in lines 1 and 2 above were in conformance with regulations and rules therefore as required in the current manual of survey instructions of the United States Department of the Interior, Bureau of Land Management or by a decree of a Court of Law and /or that the corner points mentioned in lines 3, 4 and 5 above were in conformance with the rules of the Michigan Board of Land Surveyors or by a Decree of a Court of Law; established, re-established, monumented, recovered, found as expressed below:

**NOTE: Not more than 2 corners, all in the same town and range, may be recorded on this certificate.**

**A. Description of original monument and accessories and/or subsequent restoration:**

Item	Date	L	P	Document	Name	#	Cor. Desc.
1	1810	--	--	Private Claim Description	Greeley	---	Post
2	1810	--	--	Private Claim Notes	Greeley	---	Post
3	1817	--	--	Township Plat	Preston	---	Not Indicated
4	1924	7	50	Roseville Gardens Subdivision	Lehner	123	Not Indicated
5	1932	15	6	Assessors Plat No 24	Lehner	123	Not Indicated
6	1955	32	49	Assessors Plat No. 60	Bridges	5779	Not Indicated
7	1956	38	23	Assessors Plat No. 61	Lehner	123	Not Indicated
8	2011	--	--	MCPEDD Tax Map	---	---	---



**B. Description of corner evidence found and/or method applied in restoring or reestablishing corner:**

PC-023 is the southwest corner of Private Claim 625 (PC 625). On January 4<sup>th</sup>, 1810, Aaron Greeley, "Surveyor of Private Claims", filed a description of his survey of PC625. In his description, he references this corner by citing "to a post".

A research of the public records and a request sent to all area surveyors provided no recorded surveys that reference this corner. A number of recorded plats depict the southerly and westerly lines of PC 625, but only one plat depicts the southwest corner of PC 625. Assessors Plat No. 24, as recorded in Liber 15 of plats, Page 6, Macomb County Records (Figure 1), shows the intersection of the "West Line of PC 625" and the "S. Line of PC 625". Additionally, precise dimensions are shown from corners within the plat to the southwest corner of PC625. In my opinion, this is the best recorded evidence of the corner. (Cont. on back).

**C. Description of monument for corner and accessories established to perpetuate locating the position of the corner:**

Set a 4" x 36" concrete monument with embedded aluminum cap, stamped "MACOMB COUNTY MONUMENT MI ACT 345", "PC--023 REF. PT.", "34970" set in grass of house #20701 Gaffke Street.

- Az 90° 18.24' Sw corner of garage #20701 Gaffke Street
- Az 142° 42.13' Set a chiseled "X" in north rim of sanitary sewer manhole.
- Az 210° 37.50' Set CST nail w/tag #34970 in southeast face of utility pole on north side of Gaffke Street.
- Az 350° 7.79' Fence post at "T" Intersection of three 4' high chain link fences.
- Az 300° 5.00' Fence post at Swly corner of PC 625(PC-023)

THE SELECTED LOCATION IS ACCEPTED BY ME AND IS GENERALLY ACCEPTED BY PROFESSIONAL SURVEYORS AS THE BEST AVAILABLE EVIDENCE OF THE POSITION OF THIS CORNER.



Signed by [Signature]  
 Surveyor's Michigan License No. 34970


Date Dec 09, 2011

4-B-3

For comers in

Macomb Located In: Corner Code #  
 (County) City of St. Clair Shores PC 023

- 1. Public Land Survey T 1N R 13E \_\_\_\_\_  
 T \_\_\_\_\_ R \_\_\_\_\_  
 T \_\_\_\_\_ R \_\_\_\_\_  
 T \_\_\_\_\_ R \_\_\_\_\_
- 2. Property Controlling S \_\_\_\_\_ T \_\_\_\_\_ R \_\_\_\_\_  
 In Section s \_\_\_\_\_ T \_\_\_\_\_ R \_\_\_\_\_
- 3. Miscellaneous S \_\_\_\_\_ T \_\_\_\_\_ R \_\_\_\_\_  
 Property in Sec. S \_\_\_\_\_ T \_\_\_\_\_ R \_\_\_\_\_
- 4. Lot No. \_\_\_\_\_, Recorded Plat
- 5. Private Claims Southwest Corner of PC 625

ACCEPTED BY THE MACOMB COUNTY SURVEY PEER GROUP AS THE OFFICIAL CORNER UNDER MICHIGAN PUBLIC ACT 345 OF 1990 AT A MEETING HELD ON 11-2-2011  
  
 MARTIN C. DUNN, P.S. CHAIRMAN

**B. Description of corner evidence found and/or method applied in restoring or reestablishing corner:**

(Cont. from front) To locate this position in the field, we found monumentation in Assessors Plat 60, as recorded in Liber 32 of Plats, Page 49, Macomb County Records (Figure 2). The southeast corner of Assessors Plat No 60 is coincident with the lot lines in Assessors Plat No. 24 that define the location of the corner. We were able to find enough monumentation in Assessors Plat No 60 to establish the common lot lines between the two plats. Then we mathematically calculated the corner position from the dimensions as depicted on Assessors Plat No. 24.

The corner falls in the concrete base of a fence post to a four feet high chain link fence. An alternative position to set the concrete monument was at the intersection of the south line of PC 625, and the north line of Gaffke Street. Since that location falls in the middle of a concrete driveway, we opted to set the concrete monument in the grass at a point 5.00 feet southeasterly from the corner along the south line of PC 625.

Distance Comparisons	GLO	AEW	Diff
Nwly cor of PC 625 (PC-024) to Swly cor of PC 625 (PC-023)	23.00ch (1518.00')	1514.10'	3.90'
Swly cor of PC 625 (PC-023) to Sely cor of PC 625 (PC-022)	116.00ch (7656.00')	7506' to water's edge.	150'

4-B-3

**LAND CORNER RECORDATION CERTIFICATE**  
 Filling Requirement of Act 74, Mich. P.A. 1970 as Amended

For corners in

<u>Macomb</u> (County)	Located In: City of St. Clair Shores	Corner Code # PC 024
1. Public Land Survey	T 1N R 13E	_____
	T _____ R _____	_____
	T _____ R _____	_____
	T _____ R _____	_____
2. Property Controlling In Section	S _____ T _____ R _____	_____
	s _____ T _____ R _____	_____
3. Miscellaneous Property in Sec.	S _____ T _____ R _____	_____
	S _____ T _____ R _____	_____

1237201  
**LIBER 21034 PAGE 781**  
 12/15/2011 09:05:49 A.M.  
 MACOMB COUNTY, MI SEAL  
 CARHELLA SABAUGH, REGISTER OF DEEDS

Register of Deeds Stamp & File  
 Number

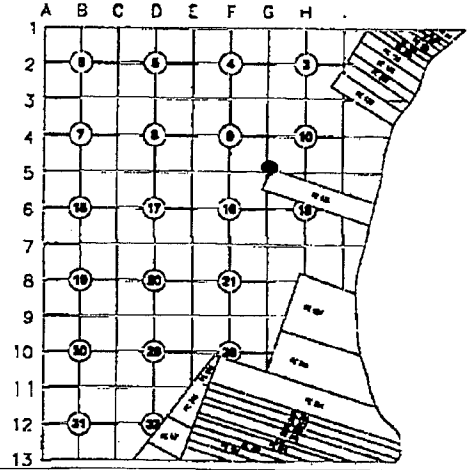
4. Lot No. \_\_\_\_\_, Recorded Plat  
 5. Private Claims Northwest Corner of PC 625

I, Craig P. Amey, in a field survey on July 30, 2011 do hereby state that under requirements of P.A. 74, Michigan P.A. of 1970, the corner points mentioned in lines 1 and 2 above were in conformance with regulations and rules therefore as required in the current manual of survey instructions of the United States Department of the Interior, Bureau of Land Management or by a decree of a Court of Law and /or that the corner points mentioned in lines 3, 4 and 5 above were in conformance with the rules of the Michigan Board of Land Surveyors or by a Decree of a Court of Law; established, re-established, monumented, recovered, found as expressed below:

**NOTE: Not more than 2 corners, all in the same town and range, may be recorded on this certificate.**

**A. Description of original monument and accessories and/or subsequent restoration:**

Item	Date	L	P	Document	Name	#	Cor. Desc.
1	1810	-	-	Private Claim Description	Greeley	---	Post
2	1810	-	-	Private Claim Notes	Greeley	---	Post
3	1817	-	-	Township Plat	Preston	---	Not Indicated
4	1920	4	55	Mack Avenue Farms No. 1 Sub.	Lehner	123	Not Indicated
5	1924	7	50	Roseville Gardens Subdivision	Lehner	123	Not Indicated
6	1930	15	6	Assessors Plat No. 24	Lehner	123	Not Indicated
7	1955	32	49	Assessors Plat No. 60	Bridges	5779	Not Indicated
8	2011	-	-	MCPEDD Tax Map	---	---	---



**B. Description of corner evidence found and/or method applied in restoring or reestablishing corner:**

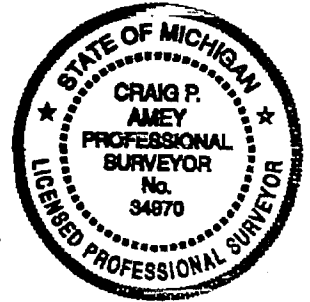
A research of the public records and a request sent to all area surveyors provided no recorded surveys that reference this corner. The only plat that dimensions this location is Mack Avenue Farms No 1 Subdivision, as recorded in Liber 4 of Plats, Page 55, Macomb County Records (Figure 1). The plat clearly shows the corner to be north of north line of Section 15 (centerline of Champaign, as shown is the north line of Section 15). According to the GLO Township Plat this corner should be south of the northerly section 15. The GLO notes also do not show the Private Claim line intersecting the northerly line. After reviewing the notes, the township plat, and having discussions with other surveyors, I believe that the section was improperly surveyed by inadvertently omitting calls to the intersection of the west line and north line of section 15 with PC 625. (Cont on back)

**C. Description of monument for corner and accessories established to perpetuate locating the position of the corner:**

Set a 4" x 36" concrete monument with embedded aluminum cap, stamped "MACOMB COUNTY MONUMENT MI ACT 345", "PC-024 REF. PT.", "34970" set in grass of parkway between the sidewalk and the back of curb of westbound 12 Mile Road, 100.00 feet southwesterly from the northwesterly corner of PC 625 (PC-024).

- Az 23° 91.81' Sw corner of Mobile gas station.
- Az 136° 98.71' Center of top of hydrant on the south side of 12 Mile Road, East of Little Mack
- Az 267° 44.32' Set CST nail w/tag #34970 in north face of utility pole w/camera at northeast corner of 12 Mile Road and Little Mack Avenue.
- Az 312° 23.33' Set a chiseled "X" in southeast corner of concrete base for Mobile" sign

THE SELECTED LOCATION IS ACCEPTED BY ME AND IS GENERALLY ACCEPTED BY PROFESSIONAL SURVEYORS AS THE BEST AVAILABLE EVIDENCE OF THE POSITION OF THIS CORNER.



Signed by Craig P. Amey  
 Surveyor's Michigan License No. 34970

Date DEC 09, 2011

ACCEPTED BY THE MACOMB COUNTY SURVEY PEER GROUP AS THE OFFICIAL CORNER UNDER MICHIGAN PUBLIC ACT 345 OF 1990 AT A MEETING HELD ON 11-2-2011  
Martin C. Dunn  
 MARTIN C. DUNN, P.S. CHAIRMAN

APPROVED BY MICHIGAN STATE BOARD OF PROFESSIONAL SURVEYORS, JAN. 28, 1971  
 Revised May 14, 1973  
 Revised Jan., 1983  
 Revised Oct., 1993

For corners in

Macomb Located in: Corner Code #  
 (County) City of St. Clair Shores PC 024

- 1. Public Land Survey T 1N R 13E \_\_\_\_\_  
 T \_\_\_\_\_ R \_\_\_\_\_  
 T \_\_\_\_\_ R \_\_\_\_\_  
 T \_\_\_\_\_ R \_\_\_\_\_
- 2. Property Controlling S \_\_\_\_\_ T \_\_\_\_\_ R \_\_\_\_\_  
 In Section s \_\_\_\_\_ T \_\_\_\_\_ R \_\_\_\_\_
- 3. Miscellaneous S \_\_\_\_\_ T \_\_\_\_\_ R \_\_\_\_\_  
 Property in Sec. S \_\_\_\_\_ T \_\_\_\_\_ R \_\_\_\_\_
- 4. Lot No. \_\_\_\_\_, Recorded Plat
- 5. Private Claims Northwest Corner of PC 625

**B. Description of corner evidence found and/or method applied in restoring or reestablishing corner:**

(Cont. from front) In 1818, William Preston, Deputy Surveyor, surveyed Town 1 North, Range 13 East. Section 15 is a fractional section, and therefore did not follow the normal sequence of subdividing a section as set forth in the 1815 Instructions, issued by Edward Tiffen, Surveyor General. As a result, the west line of Section 15 was the first line surveyed and it was surveyed from North to South, as shown on page 234 of the GLO notes. On Page 239, Preston surveyed the north line of Section 15 by running a random line and correcting back. Any reference to a Private Claim was also omitted from this line. Also on Page 239, Preston surveys the east line of Section 15. As he is running this line, he notes the Private Claims. I believe that at this point, Preston realized his error and attempted to correct his error. It is clear, based on calculations using Preston's dimensions, that this corner does fall northerly of the north line of section 15, as shown on Mack Avenue Farms No.1 Subdivision.

Therefore, I used the dimensions from Mack Avenue Farms No.1 Subdivision to set the location of this corner relative to the section lines of Section 15.

The corner position cannot be monumented because it falls within a structure (currently a gas station). An alternate location along the northerly or westerly line of PC 625 at the right of way of 12 Mile Road also was not suitable due to asphalt paving. We opted to set the monument along the westerly right of way line of PC 625 in the grassy parkway between the sidewalk and curb of westbound 12 Mile Road.

Distance Comparisons	GLO	AEW	Diff
Nwly cor of PC 625 (PC-024) to Swly cor of PC 625 (PC-023)	23.00ch (1518.00')	1514.10	3.90
Nwly cor of PC 625 (PC-024) to int of E line of Sec 15 with Nly line of PC 625 (PCC-025)	80.56ch (5316.96')	5588.94	167.87