

LAND CORNER RECORDATION CERTIFICATE
Filing Requirement of Act 74, Mich. P.A. 1970 as Amended

For corners in

Table with columns: Macomb (County), Located In: City of St. Clair Shores, Corner Code # PCC 012. Rows include Public Land Survey, Property Controlling In Section, and Miscellaneous Property in Sec.

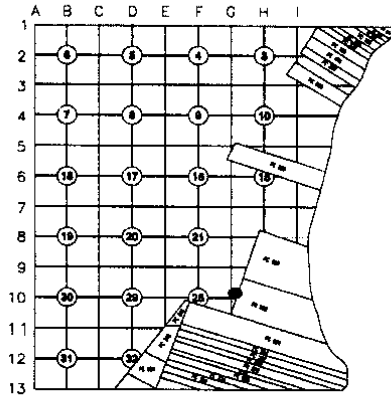
9133238
LIBER 20064 PAGE 892
12/15/2009 01:18:32 P.M.
MACOMB COUNTY, MI
CARNELLA SABAUGH, REGISTER OF DEEDS

Register of Deeds Stamp & File Number

4. Lot No. \_\_\_\_\_, Recorded Plat
5. Private Claims intersection of the East-West 1/4 Line of Section 27 with the Westerly Line of PC 599.

I, Craig P. Amey, in a field survey on August 5, 2009 do hereby state that under requirements of P.A. 74, Michigan P.A. of 1970, the corner points mentioned in lines 1 and 2 above were in conformance with regulations and rules therefore as required in the current manual of survey instructions of the United States Department of the Interior, Bureau of Land Management or by a decree of a Court of Law and /or that the corner points mentioned in lines 3, 4 and 5 above were in conformance with the rules of the Michigan Board of Land Surveyors or by a Decree of a Court of Law; established, re-established, monumented, recovered, found as expressed below:

NOTE: Not more than 2 corners, all in the same town and range, may be recorded on this certificate.



A. Description of original monument and accessories and/or subsequent restoration: Corner was not set during the GLO surveys.



B. Description of corner evidence found and/or method applied in restoring or reestablishing corner:

With no evidence of the east and west quarter line of section 27, I have reestablished the corner by following the rules set forth in the 1973 Manual of instructions for Surveys of the Public Lands as follows:

That in a fractional section where no opposite corresponding quarter-section corner has been or can be established, the center line of such section must be run from the proper quarter-section corner as nearly in a cardinal direction to the meander line, reservation, or other boundary of such fractional section, as due parallelism with section lines will permit.

Due to the convergence of the westerly line of PC 599, there is no south line of section 27. Therefore, I used the bearing from the north line of section 27 to extend a line from the west quarter corner of section 27 easterly to the intersection of the westerly line of PC 599. The corner is in the center turn lane of Harper Avenue (concrete).

Distance from PCC 012 to PC 008: 1558.48'
Distance from PCC 012 to PC 007: 1797.13'

C. Description of monument for corner and accessories established to perpetuate locating the position of the corner:

I replaced the chiseled "X" with a 1/2" x 24" Iron with 2" aluminum cap stamped "MACOMB COUNTY MONUMENT MI ACT 345 1990 MCL PCC 012 PS 34970" in a new monument box.

- Az 146° 41.80 Set chiseled "X" in south rim of GVW
Az 51° 109.02 Set chiseled "X" in southwest bolt of light pole base
Az 355° 91.18 Set MCR tag and nail in the southwest face of a utility pole
Az 239° 91.91 Set MCR tag and nail in the northwest face of a utility pole

ACCEPTED BY THE MACOMB COUNTY SURVEY PEER GROUP AS THE OFFICIAL CORNER UNDER MICHIGAN PUBLIC ACT 345 OF 1990 AT A MEETING HELD ON 9-29-09

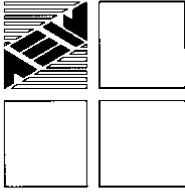
Martin C. Dunn, P.S. Chairman

THE SELECTED LOCATION IS ACCEPTED BY ME AND IS GENERALLY ACCEPTED BY PROFESSIONAL SURVEYORS AS THE BEST AVAILABLE EVIDENCE OF THE POSITION OF THIS CORNER.



Signed by [Signature]
Surveyor's Michigan License No. 34970

Date Dec 2, 2009



**ANDERSON, ECKSTEIN AND WESTRICK, INC.**

51301 Schoenherr Road, Shelby Township, Michigan 48315  
Civil Engineers • Surveyors • Architects 586-726-1234

2009 Remonumentation  
Corner: PCC 012

In 2009, AEW was contracted by Macomb County to remonument PC 012 which is the intersection of the east and west quarter line of section 27, T1N, R13E, and the westerly line of PC 599, pursuant to ACT 345 of 1990.

In early February, we solicited information from area surveyors. None of the surveyors contacted had any unrecorded information pertinent to this corner. I also researched the public records. No surveys, LCRC's or platted subdivision reference this corner. The corner was not set during the GLO surveys, so no GLO field notes exist for this corner.

With no evidence of the east and west quarter line of section 27, I have reestablished the corner by following the rules set forth in the 1973 Manual of Instructions for Surveys of the Public Lands as follows:

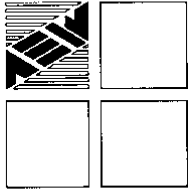
*That in a fractional section where no opposite corresponding quarter- section corner has been or can be established, the center line of such section must be run from the proper quarter-section corner as nearly in a cardinal direction to the meander line, reservation, or other boundary of such fractional section, as due parallelism with section lines will permit.*

Due to the convergence of the westerly line of PC 599, there is no south line of section 27. Therefore, I used the bearing from the north line of section 27 to extend a line from the west quarter corner of section 27 easterly to the intersection of the westerly line of PC 599.

I believe that the method described above has determined the best location of the intersection of the east and west quarter line of section 27 with the westerly line of PC 599.

Respectfully Submitted,

\_\_\_\_\_  
Craig P. Amey, PS



# ANDERSON, ECKSTEIN AND WESTRICK, INC.

51301 Schoenherr Road, Shelby Township, Michigan 48315  
Civil Engineers • Surveyors • Architects 586-726-1234

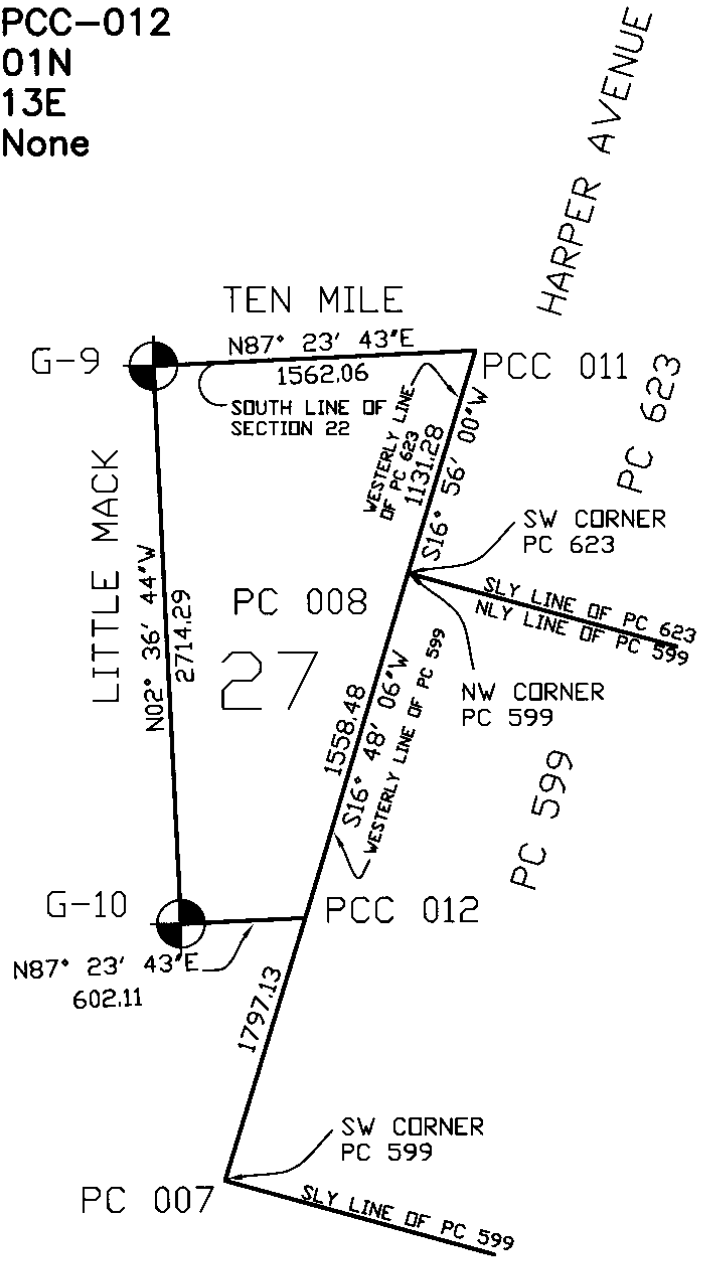
2009 Remonumentation  
Corner: PCC-012

## Index

- I. Section 1
  - A. Index
  - B. Photographs
- II. Section 2
  - A. LCRC
  - B. Surveyor's Report
- III. Section 3
  - A. Field Notes
    - 1. Corner Witnesses
    - 2. GPS Notes
  - B. Composites
    - 1. 27A
    - 2. 27E
- IV. Section 4
  - A. GLO Notes and Plats
    - 1. 1916 Atlas

A

Corner Code: PCC-012  
 Town: 01N  
 Range: 13E  
 Object Found: None



**ANDERSON, ECKSTEIN  
 AND WESTRICK, INC.**  
 Civil Engineers • Surveyors • Architects  
 51301 Schoenherr Road, Shelby Township, Michigan 48315  
 Phone 586-726-1234 Fax 586-726-8780

PROJECT

**Macomb Co.  
 Remon  
 2009**

DATE

11/09

DRAWN BY

cpa

CHECKED BY

cpa

PROJECT NO.

223-032

SHEET No.

**PCC-012**

223-022  
9-3-01  
1/2 VFC

21 140000  
REC 02 95-

201 N 358102.04  
E-1351794.80

NO 2105

210 X in CONCRE LANE  
HARRIS #13 E. ME 4E

A2 DIST DECE  
D' ECT MAINTENANCE NOPTIF

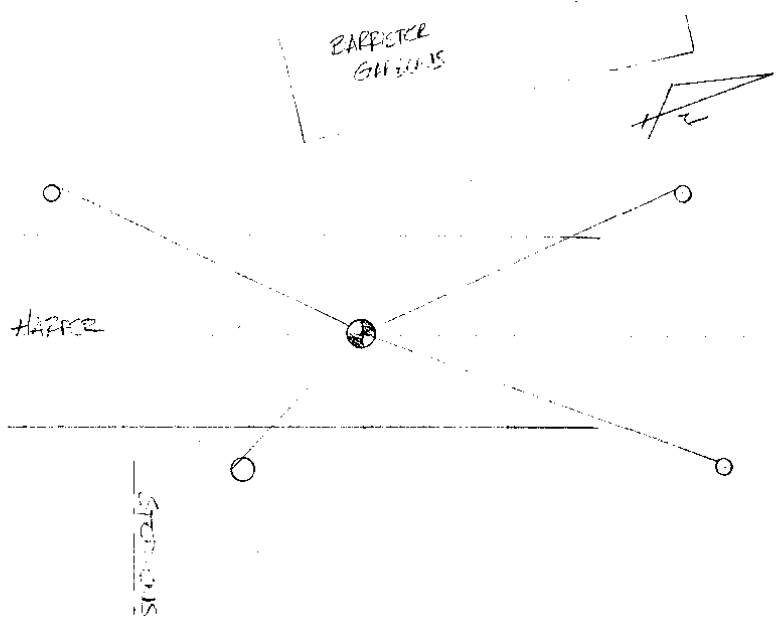
1404130' 4150' 850' 200' X 5' PAV GNM

210' 108' 71' 45' 415 X 50' 800' LP 210E

85' 42' 02' 2105' 85' 800' 114' 500' 210E

201 201 201 21091' 85' 800' 114' 500' 210E

BARRIER  
GUILDS



3A1

223-033  
DPA, MAT  
08-05-07

PC-012

N 2705

106 REMON CAA IN MB, STEPHENS & LITTLE ROCK  
107 REMON CAA IN MB, 10 MI S LITTLE ROCK  
108 FI # 5234 GFD, NE COR AP 49  
AT INTERSECTION OF ROKES  
1033 COR DI FENCE, N LINE OF AP 49

3A2