

**Land Corner Recordation Certificate**  
**2017 Annual Grant Agreement**  
Authority: MICH. 1970 PA 74, MCL 54.205

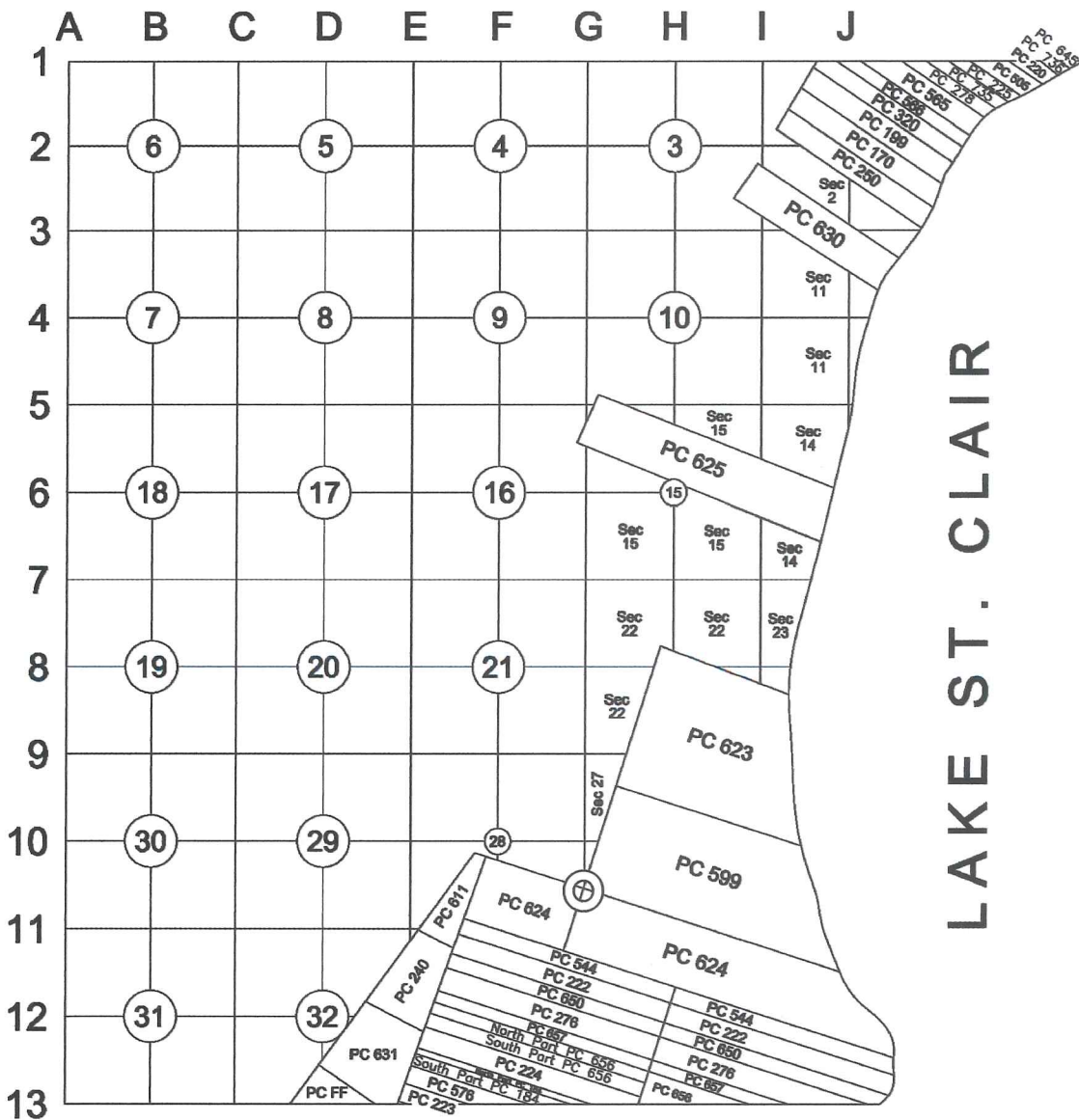
**"LCRC BEING RECORDED FOR THE PURPOSE OF PUBLISHING MICHIGAN STATE PLANE COORDINATE DATA"**

**Surveyor's Name:** Steven E. Dunn, P.S.  
**For Corner(s) in:** Macomb County

**Field Survey Date:** May 9, 2017  
**Municipality:** City of St. Clair Shores

Corner Type	Private Claim	Survey Township	Corner Code	Other Code
Original Public Land Survey Corner	PC 599/624	T 01 N R 13 E		PC 007

**Other Code Corner Description:** Southwest Corner Original Private Claim 599/Northwest Corner Original Private Claim 624 common with the Northeast Corner Additional Donation to Original Private Claim 624



**Part A: Corner History:** Southwest Corner Original Private Claim 599/Northwest Corner Original Private Claim 624 common with the Northeast Corner Additional Donation to Original Private Claim 624

12-18-2008 LCRC for Remonumentation Corner by Craig P. Amey, PS #34970 PC 007 recorded in L. 19594 of Deeds on P. 447 & 448. Set a 3/4" X 24" iron with an aluminum cap stamped "MACOMB COUNTY MONUMENT, MI ACT 345, 1990 MCL PC 007 34970" centerline Harper Avenue in a new monument box with 5 accessories.  
Peer Review Group Approval: August 26, 2008

2MD

e

**Part B: Surveyor's Report on Perpetuation, Restoration, Reestablishment or Monumentation of Corner:**

Refer to: 12-18-2008 LCRC for Remonumentation Corner by Craig P. Amey, PS #34970 PC 007 recorded in L. 19594 of Deeds on P. 447 & 448. Set a 3/4" X 24" iron with an aluminum cap stamped "MACOMB COUNTY MONUMENT, MI ACT 345, 1990 MCL PC 007 34970" centerline Harper Avenue in a new monument box with 5 accessories.

**Part C: Field Evidence of Perpetuation or Monumentation of Corner:**

2-22-2017 Found 3/4" X 24" iron with an aluminum cap stamped "MACOMB COUNTY MONUMENT, MI ACT 345, 1990 MCL PC 007 34970" centerline Harper Avenue in a monument box with 5 of 5 matching accessories from the LCRC listed in Part A.  
Occupied corner with GPS to obtain Geodetic Coordinate Data.

**Accessories:**

N65°E	85.46 R&M	Northwest corner of #23550 Harper Avenue "CRCI Inc."
S52°E	64.31' R&M	Southwest corner of #23550 Harper Avenue "CRCI Inc."
S79°W	69.10' R&M	Southeast corner of #23513 Harper Avenue "Visiting Angels"
N33°W	47.52' R&M	Found chiseled "X" in north rim of sanitary manhole
N20°E	1.49' R&M	Found remon capped iron in monument box, intersection of the "G" line (east line of Section 28) with the northwesterly line of PC 599

Date of Observation	Latitude	Longitude	Datum and Adjustment Year	Epoch Date
9-May-17	N 42D28'06.79913"	W 82D54'24.14837"	NAD83 (2011)	2010.0000

Method for Latitude-Longitude determination: NGS OPUS-RS Solution

State Plane Coordinates in international feet: N-356383.44', E-13517235.03'  
 Standard Deviation: 0.04'N, 0.02'W  
 Zone: South  
 Combined Factor: 0.99991062  
 NGSPID: NE0896  
 Survey Method: MC GPS  
 Orthometric Height: 584.79'  
 Elev. Datum: NAVD88

I, Steven E. Dunn, P.S., in a field survey on May 9, 2017, certify under the requirements of the State Survey and Remonumentation Act, 1990 PA 345, MCL 54.261 to 54.279, and the Corner Recordation Act, 1970 PA 74, MCL 54.201 to 54.210d, that the corner identified and described hereon has been perpetuated or monumented as described in Parts A, B, and C above, pursuant to the laws and rules of the State of Michigan.

*Steven E. Dunn*

Steven E. Dunn, P.S.

May 22, 2017

Date

Professional Surveyor's License No.: 28408

Prepared By:  
 Steven E. Dunn, PS  
 Great Lakes Geomatics, LLC  
 12504 Stephens  
 Warren, MI 48089



I, Martin C. Dunn, P.S., Macomb County Surveyor Representative, have reviewed the corner perpetuated in parts A, B and C above for the purpose of publishing its Michigan State Plane Coordinate values and relative data and is accepted for filing in the Macomb County Remonumentation Program.

*Martin C. Dunn*

Martin C. Dunn, P.S.

6-8-2017

Date

Macomb County Surveyor Representative  
 License No. 30081

**LAND CORNER RECORDATION CERTIFICATE**  
**Filing Requirement of Act 74, Mich. P.A. 1970 as Amended**

For corners in

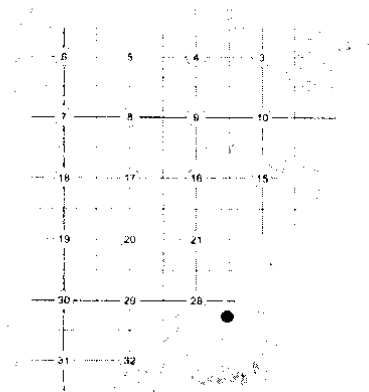
<u>Macomb</u> (County)	Located In: City of St. Clair Shores	Corner Code # PC 007
1. Public Land Survey	T 1N R 13E	_____
	T _____ R _____	_____
	T _____ R _____	_____
	T _____ R _____	_____
2. Property Controlling In Section	S _____ T _____ R _____	_____
	s _____ T _____ R _____	_____
3. Miscellaneous Property in Sec.	S _____ T _____ R _____	_____
	S _____ T _____ R _____	_____

8137290  
 LIBER 19594 PAGE 447  
 12/18/2008 01:19:42 P.M.  
 MACOMB COUNTY, MI SEAL  
 CARNELLA SABAUGH, REGISTER OF DEEDS

Register of Deeds Stamp & File Number

4. Lot No. \_\_\_\_\_, Recorded Plat  
 5. Private Claims Southwest Corner PC 599, PC-007

I, Craig P. Amey, in a field survey on June 13, 2008 do hereby state that under requirements of P.A. 74, Michigan P.A. of 1970, the corner points mentioned in lines 1 and 2 above were in conformance with regulations and rules therefore as required in the current manual of survey instructions of the United States Department of the Interior, Bureau of Land Management or by a decree of a Court of Law and /or that the corner points mentioned in lines 3, 4 and 5 above were in conformance with the rules of the Michigan Board of Land Surveyors or by a Decree of a Court of Law; established, re-established, monumented, recovered, found as expressed below:



NOTE: Not more than 2 corners, all in the same town and range, may be recorded on this certificate.



A. Description of original monument and accessories and/or subsequent restoration:

Item	Date	L	P	Document	Name	#	Cor. Desc.
1	1810			Private Claim Description	Greely	--	Beech
2	1840			Subdivision of PC 599 and 623	Hathorn(?)	--	12" Beech
3	1920	4	88	Lake View Gardens Subdivision	W. Miller	67	Not Stated

B. Description of corner evidence found and/or method applied in restoring or reestablishing corner:

There is no monumentation or witnesses for this corner. To establish the corner, monumentation in Lake View Gardens Subdivision was used to define the south line of PC 599. This line was intersected with the centerline of Harper Avenue as defined by Harper Avenue right of way monumentation. A LCRC, recorded by me in 1994 in Liber 6862, Page 845, for the corner at the intersection of the "G" line and the westerly line of PC 599, had a distance to the southwest corner of PC 599 of 2.65 feet. After locating additional monumentation in Lake View Gardens Subdivision, I have determined the distance from the corner monumented in the previous LCRC to be 1.49 feet. (See sketch on back)

Distances

SW cor PC 599 to NW cor PC 599	SW cor PC 599 to Intersection of "G" line and Westerly line of PC 599
3544.77 Remon 08	1.49 Remon 08
3554.10(53.85ch) Greely	2.65 LCRC L. 6862 P. 845

C. Description of monument for corner and accessories established to perpetuate locating the position of the corner:

I set a 3/4" x 24" iron with 2" aluminum cap stamped "MACOMB COUNTY MONUMENT MI ACT 345 1990 MCL PC-007 P5 34970" in a new monument box.

- N 65° E 85.46 Northwest corner of #23550 Harper Avenue "CRCI Inc."
- S 52° E 64.31 Southwest corner of #23550 Harper Avenue "CRCI Inc"
- S 79° W 69.10 Southeast corner of #23513 Harper Avenue "Visiting Angels"
- N 33° W 47.52 Chiseled "X" in north rim of sanitary manhole
- N 20° E 1.49 Found remon capped iron in monument box, Intersection of the "G" line (ease line of section 28) with the northwesterly line of PC 599.



THE SELECTED LOCATION IS ACCEPTED BY ME AND IS GENERALLY ACCEPTED BY PROFESSIONAL SURVEYORS AS THE BEST AVAILABLE EVIDENCE OF THE POSITION OF THIS CORNER

Signed by [Signature]  
 Surveyor's Michigan License No. 34970

Date Nov 12, 2008

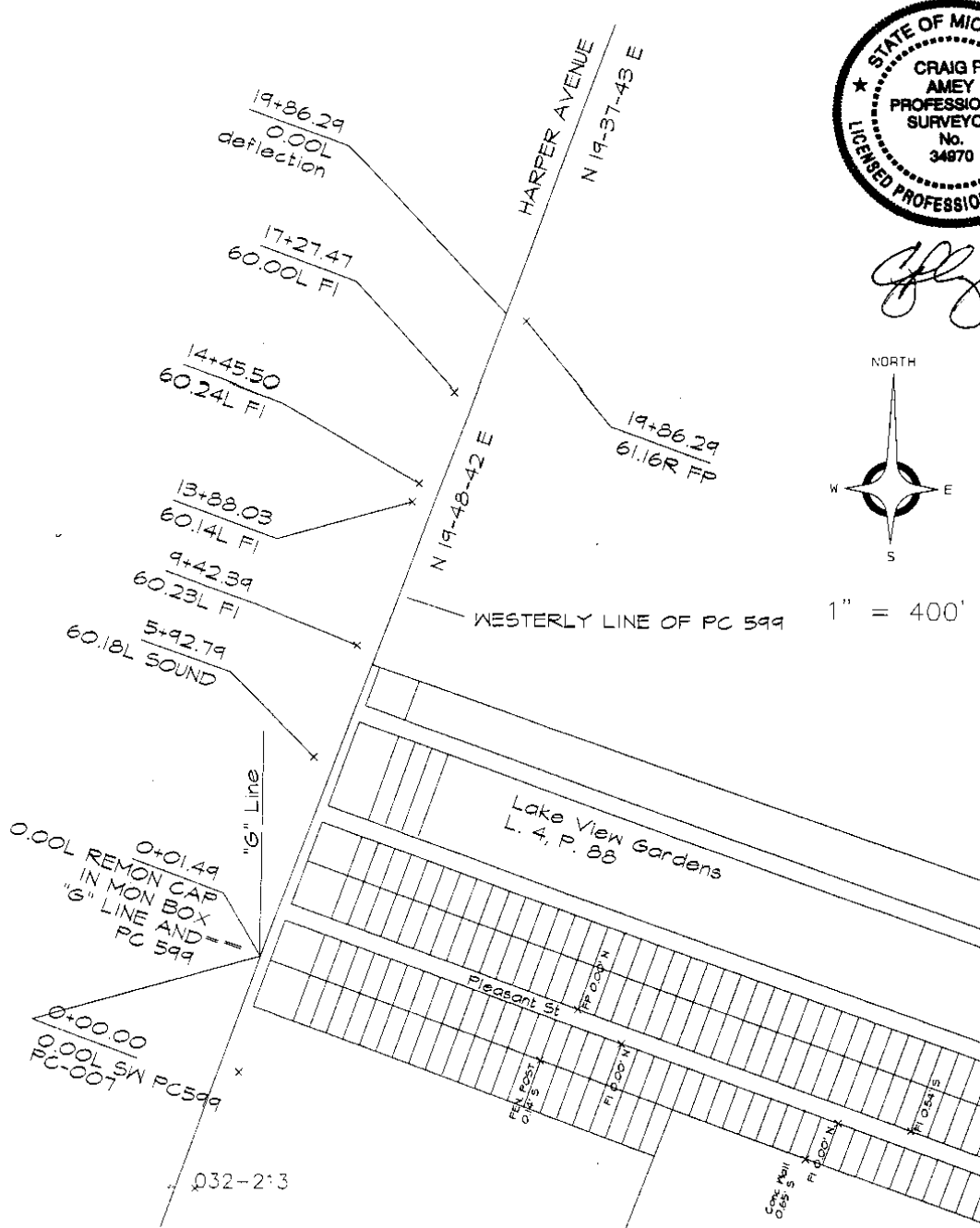
ACCEPTED BY THE MACOMB COUNTY SURVEY PEER GROUP AS THE OFFICIAL CORNER UNDER MICHIGAN PUBLIC ACT 345 OF 1990 AT A MEETING HELD ON 8-26-2008  
[Signature]  
 MARTIN C. DUNN, P.S. CHAIRMAN

**LAND CORNER RECORDATION CERTIFICATE**  
**Filing Requirement of Act 74, Mich. P.A. 1970 as Amended**

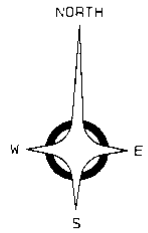
For corners in

Macomb Located In: City of St. Clair Shores Corner Code # PC 007  
(County)

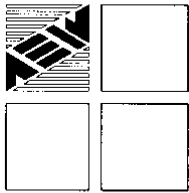
- |                                    |   |    |   |     |                         |
|------------------------------------|---|----|---|-----|-------------------------|
| 1. Public Land Survey              | T | 1N | R | 13E | Liber 019594 Page 00448 |
|                                    | T |    | R |     |                         |
|                                    | T |    | R |     |                         |
|                                    | T |    | R |     |                         |
| 2. Property Controlling In Section | S |    | R |     |                         |
|                                    | s |    | R |     |                         |
| 3. Miscellaneous Property in Sec.  | S |    | R |     |                         |
|                                    | S |    | R |     |                         |
4. Lot No. \_\_\_\_\_, Recorded Plat  
 5. Private Claims Southwest Corner PC 599, PC-007



*C. P. Amey*



1" = 400'



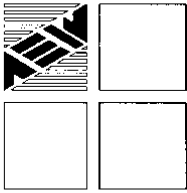
# ANDERSON, ECKSTEIN AND WESTRICK, INC.

51301 Schoenherr Road, Shelby Township, Michigan 48315  
Civil Engineers • Surveyors • Architects 586-726-1234

## 2008 Remonumentation Southwest Corner of PC 599 Corner: PC 007

### Index

- I. Section 1
  - A. Index
  - B. Photographs
  
- II. Section 2
  - A. LCRC
  - B. Surveyor's Report
  
- III. Section 3
  - A. Field Notes
    - 1. Corner Witnesses
    - 2. Macomb County Atlas 1875
    - 3. Macomb County Atlas 1895
    - 4. Macomb County Atlas 1916-1
    - 5. Macomb County Atlas 1916-2
  
  - B. Composites
    - 1. 27E
  
- IV. Section 4
  - A. GLO Notes and Plats
    - 1. Private Claim 599
    - 2. Subdivision of Private Claims 599 and 623
    - 3. Lake View Gardens Subdivision
    - 4. LCRC L. 6862 P. 845



**ANDERSON, ECKSTEIN AND V. ESTRICK, INC.**

51301 Schoenherr Road, Shelby Township, Michigan 48315  
Civil Engineers • Surveyors • Architects 586-726-1234

2008 Remonumentation  
Corner: Southwest corner of PC 599  
PC 007

Surveyor's Report


In 2008, we were contracted by Macomb County to remonument the northwest corner of PC 623, PC 003, pursuant to ACT 345 of 1990.

In early February, we solicited information from area surveyors. None of the surveyors contacted had any unrecorded information pertinent to this corner. We also researched the public records and found that the only reference to the corner is platted subdivisions.

During a field survey for this corner, conducted on June 13, 2008, we found nothing at the corner, which is in Harper Avenue (concrete). To establish the corner, monumentation in Lake View Gardens Subdivision was used to define the south line of PC 599. This line was intersected with the centerline of Harper Avenue as defined by Harper Avenue right of way monumentation. A LCRC, recorded by me in 1994 in Liber 6862, Page 845, for the corner at the intersection of the "G" line and the westerly line of PC 599, had a distance to the southwest corner of PC 599 of 2.65 feet. After locating additional monumentation in Lake View Gardens Subdivision, I have determined the distance from the corner monumented in the previous LCRC to be 1.49 feet.

Distances	
SW cor PC 599 to NW cor PC 599	SW cor PC 599 to Intersection of "G" line and Westerly line of PC 599
3544.77 Remon 08	1.49 Remon 08
3554.10(53.85ch) Greely	2.65 LCRC L. 6862 P. 845

Respectfully Submitted,

  
Craig P. Amey, PS



233-032  
08-09-08  
MJD:JLS:EA

2008 REMAIN  
SW COR PLS 59

SEE CHISELED "X" IN CENTER HANES  
OF HARPER

NO. 1.45 INTERSECTION OF W LINE PLS 59  
AND "G" LINE

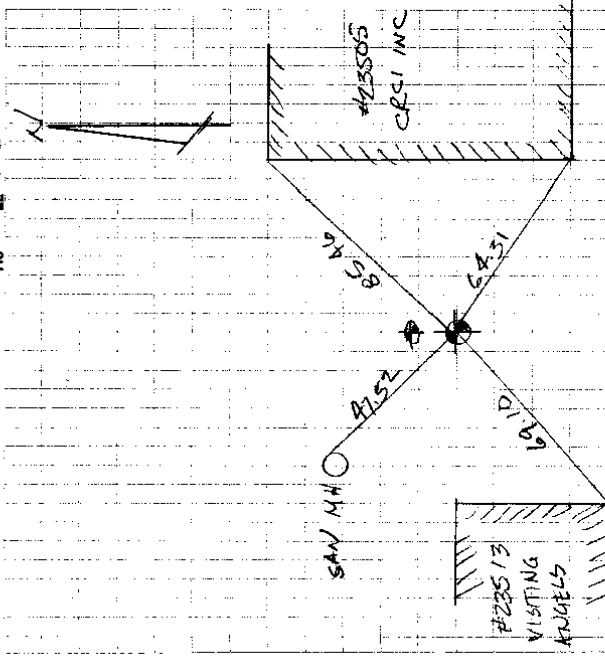
327° 41.52 CHISELED "X" IN N. RIM #  
SANITARY MANHOLE

259° 69.10 SE COR OF BLDG # 23513  
"VISITING KNIGHTS"

128° 64.31 SW COR OF BLDG # 23550  
"CRCI INC"

65° 85.46 NW COR OF BLDG # 23550  
"CRCI INC"

No 2705







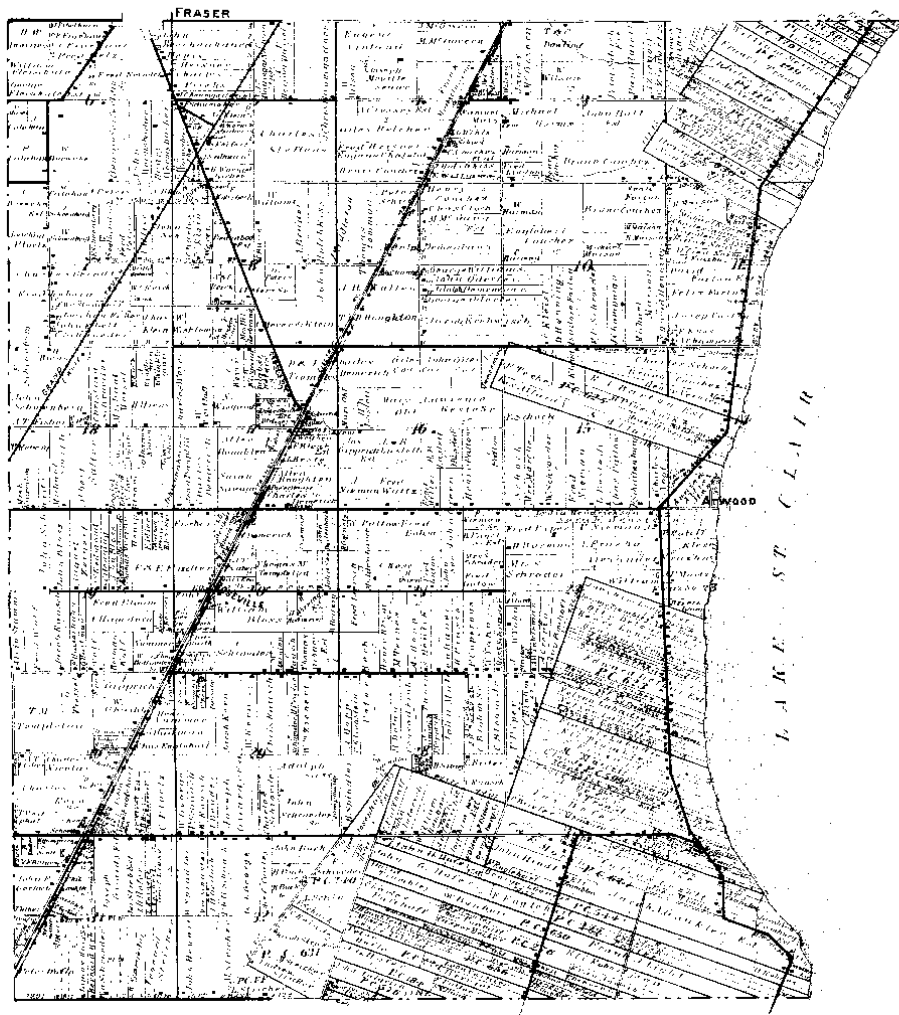


# MAP OF ERIN

Township 1 North Range 13 East

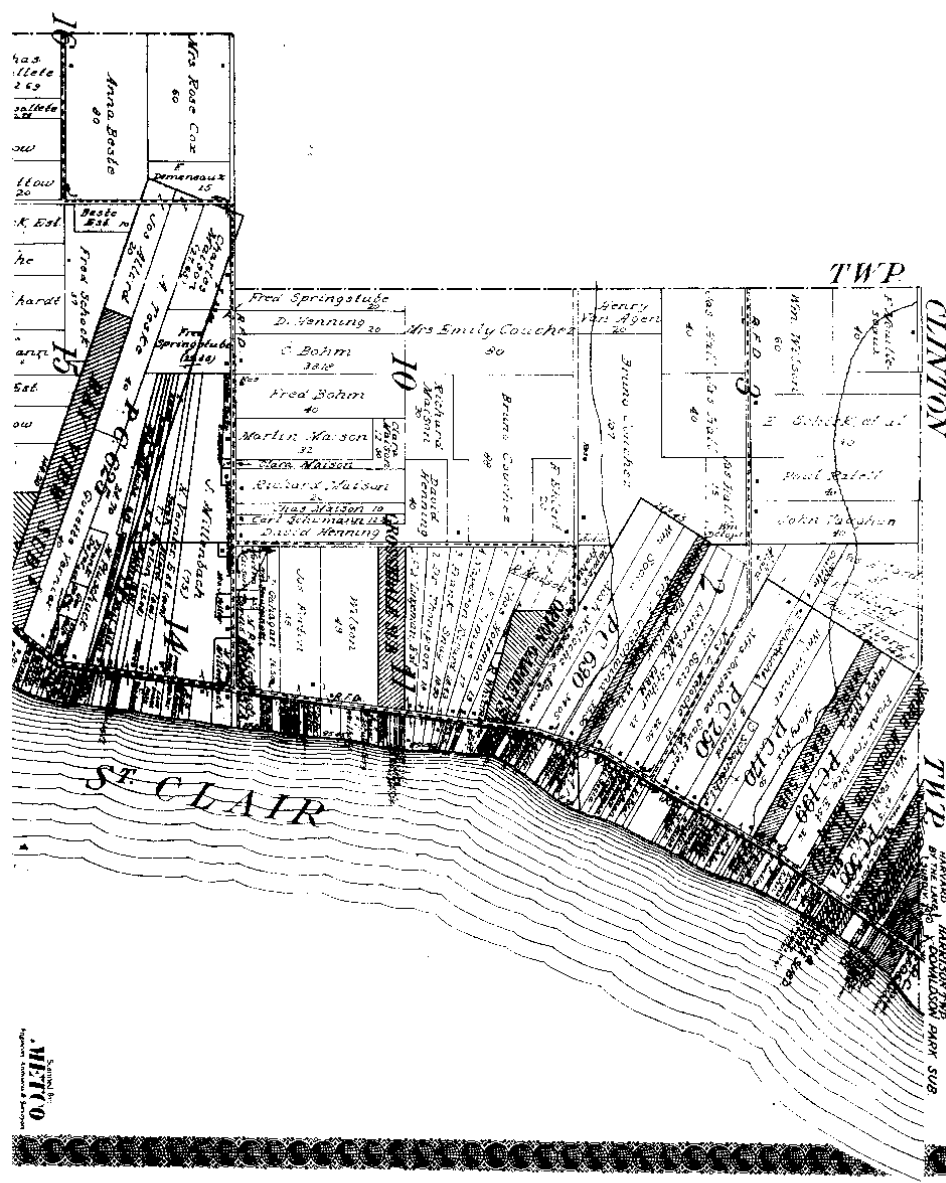
Scale 1 inch to one Mile

of the Meridian of Measurement

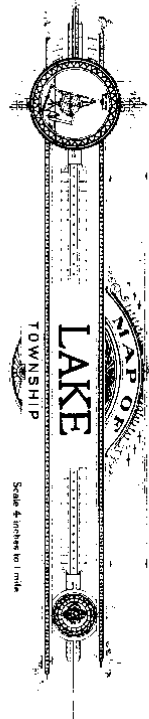


1895

Scanned By  
**METCO**  
Engineers, Architects & Surveyors



Part of Sectional Township 1 North, Range 13 East of the Michigan Meridian



1-916-1



No. 88

No. 599 Confirmed to the  
legal heirs of  
James Abbott

LAKE ST. CLAIR

Description No. 599 Confirmed to the legal heirs of James Abbott deceased commencing at a post standing on the west border of Milk River between this tract and a tract confirmed to Gaget Tremble thence north seventy five degrees west one hundred and forty five chains thirty one links to a post thence north fifteen degrees east fifty three chains and eighty five links to a post the south-west corner of a tract confirmed to the claimants, thence south seventy five degrees east one hundred and two chains eighty eight links to a post standing on the border of Lake St. Clair thence down the border of said lake south twelve degrees east twenty six chains fifty two links thence south twenty eight degrees thirty minutes east twenty nine chains thence south forty four degrees east thirteen chains to the confluence of Milk River with the lake, thence ~~up~~ the border of said river south eight degrees west two chains and fifty links to the place of beginning, containing six hundred and thirty nine acres and ninety eight hundredths of an acre.

Detroit January 4th, 1810

Aaron Greeley Surveyor  
of private claims

Subdivision of Dennis Schmitt  
 579

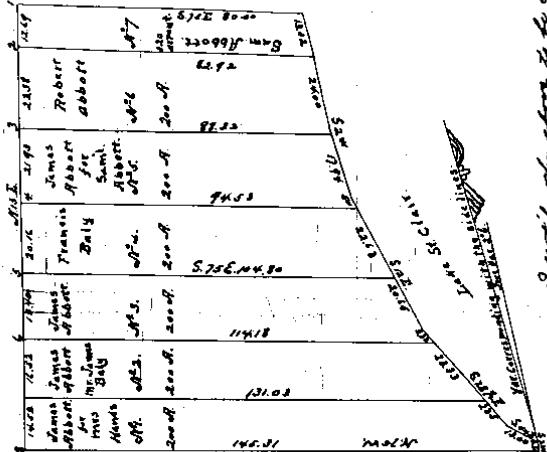
I hereby certify that I am personally present at the division of the within area bounded more or less and the same is surveyed by lot and piece as the same runs on the plat (No. 14) to wit:  
 1. James Abbott for Mary Abbott,  
 2. James Abbott for Elizabeth Baily,  
 3. James Abbott - E. V. Dennis Baily,  
 4. James Abbott - E. V. Dennis Abbott,  
 5. Robert Abbott - Edward James 1843.

I hereby certify that the plat is a correct copy of the plat here recorded in the Registry of Deeds Office, being made under the supervision of the said James by returning the plat in person and affixing thereto a legally competent copy of the original.

Dated this 11th day of April 1890.  
 E. V. Dennis,  
 Justice of the Peace.

Part of Lot 3  
 Re Subdivided  
 See Vol 212 - p. 16490

1. Bunch's Corner.
2. Elm 36
- do 20 S.W. 14
3. B. 94 15 S.W. 4
- Elm 10 S.W. 11
4. Lynn 16 S.W. 7
- B. 94 12 N.E. 27
5. B. 94 20 S.W. 4
- Lynn 10 S.W. 3
6. Elm 10 S.W. 3
- Spencer and 22 E. in
7. Not made.



I certify the above to be correct  
 from actual survey, dated 11th April 1890

E. V. Dennis

8224



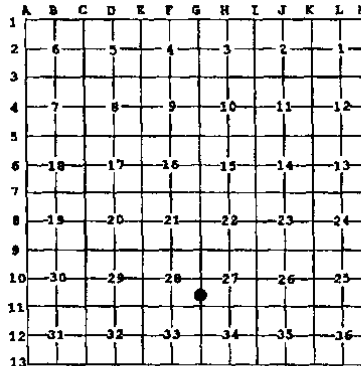
**LAND CORNER RECORDATION CERTIFICATE**  
**Filing Requirement of Act 74, Mich. P.A. 1970**

For corners in

<u>Macomb</u> (County)	Located in: <u>Erin Lake Township</u>	Corner Code # _____
1. Public Land Survey	<u>T 1N R 13E</u>	_____
	T _____ R _____	_____
	T _____ R _____	_____
	T _____ R _____	_____
2. Property Controlling in Section	S _____ T _____ R _____	_____
	S _____ T _____ R _____	_____
3. Miscellaneous Property in Sec.	S _____ T _____ R _____	_____
	S _____ T _____ R _____	_____

Register of Deeds Stamp & File Number

4. Lot No. \_\_\_\_\_, Recorded Plat \_\_\_\_\_  
 5. Private Claims Intersection of "G" line and Private Claim 599



I, Craig P. Amey, in a field survey on August 8, 1995 do hereby certify that under requirements of P.A. 74, Michigan P.A. of 1970, the corner points mentioned in lines 1 and 2 above were in conformance with regulations and rules therefore as required in the current manual of survey instructions of the United States Department of the Interior, Bureau of Land Management or by a decree of a Court of Law and /or that the corner points mentioned in lines 3, 4 and 5 above were in conformance with the rules of the Michigan Board of Land Surveyors or by a Decree of a Court of Law, established, re-established, monumented, re-monumented, recovered, found as expressed below:

**NOTE: Not more than 4 corners, all in the same town and range, may be recorded on this certificate.**

A. Description of original monument and accessories and/or subsequent restoration:

1818 GLO William Preston No witnesses remain

B. Description of corner evidence found and/or method applied in restoring or reestablishing corner:

To reestablish the corner, ties from adjacent subdivisions were used. "Dyer Subdivision", as recorded in Liber 11, Page 11, Macomb County Plats, is coincident with the northwesterly line of PC 599. "Lake View Garden Sub'n" is coincident with "G" line and the northwesterly line of PC 599. Original monumentation for "Lake View Garden Sub'n" no longer exists due to road widening. Two original monuments for "Dyer Subdivision" were found and used to reestablish this corner. The southwesterly corner of the subdivision was used with building lines to establish the south line of the subdivision. An interior monument was used along with the east quarter post of section 28 to establish the east line of the subdivision which is coincident with "G" line. By extending the "G" line southerly record distance (which is the location of the corner) and extending the south line of the subdivision southeasterly record distance, a gap of 2.65 feet is created as compared to the record distance of 2.8 feet. This gap is also coincident with the northwesterly line of "Lake View Garden Sub'n" and is within 0.3 feet of record distance to property irons within the subdivision, confirming the location of this corner. A sketch of this method of reestablishing this corner is included with the dossier submitted to the Macomb County Remonumentation Peer Review Committee.

N 1689.37 East quarter post of section 28 (G10)

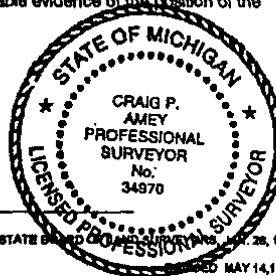
C. Description of monument for corner and accessories established to perpetuate locating the position of the corner:

- PLACED 3/4" x 24" IRON WITH MCR CAP #34970 IN A NEW MONUMENT BOX
- AZ 45° 122.78 Chiseled "X" in the northwest bolt on the base of a light pole
- AZ 145° 64.83 Southwest corner of "Shores Medical Inc." #23550 Harper
- AZ 276° 69.90 Southeast corner of a brick building #23513 Harper
- AZ 133° 50.06 Chiseled "X" in the southeast bolt on the base of a light pole

The selected location is accepted by me and is generally accepted by professional surveyors as the best available evidence of the position of the original corner.

See BACK

ACCEPTED BY THE MACOMB COUNTY SURVEY PEER GROUP AS THE OFFICIAL CORNER UNDER MICHIGAN PUBLIC ACT 345 OF 1990 AT A MEETING HELD ON 8-15-95  
*William E. Soderberg*  
 WILLIAM E. SODERBERG, P.S., CHAIRMAN

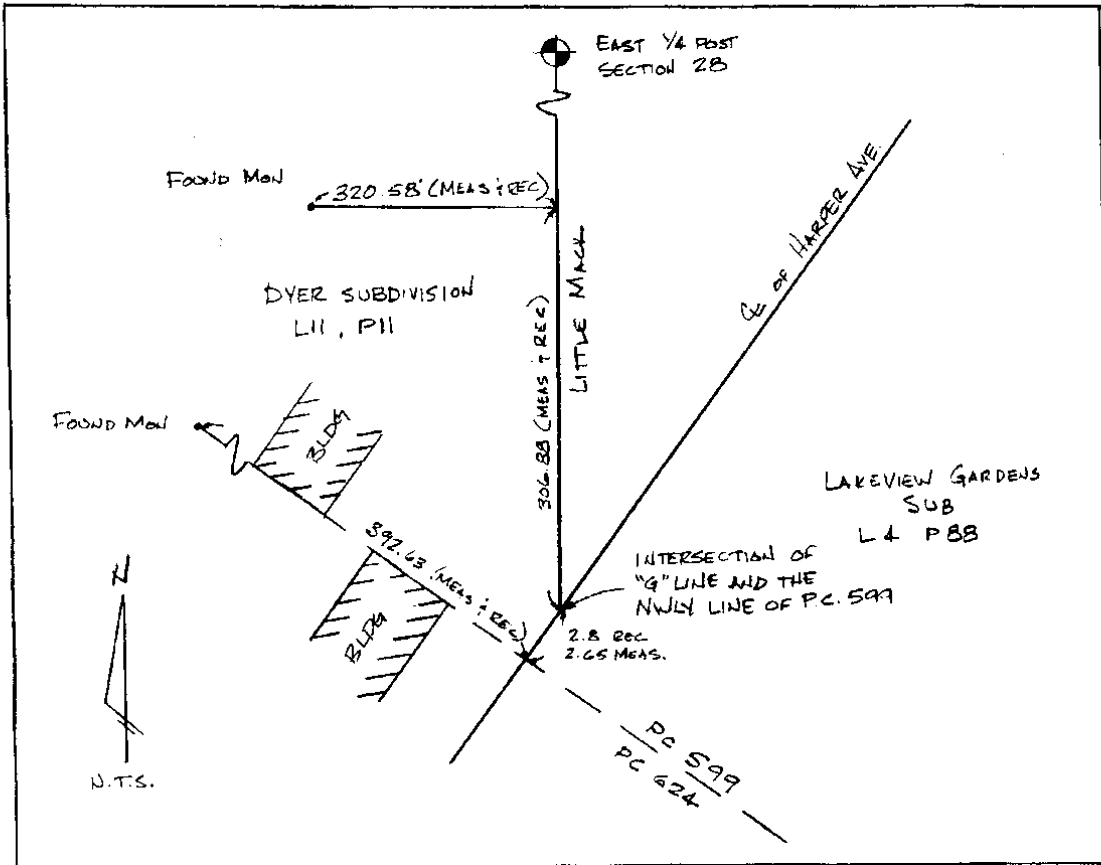


Signed by *C. Amey* Date 12-15-95  
 Surveyor's Michigan License No. 34970

FORM APPROVED BY MICHIGAN STATE BOARD OF PROFESSIONAL SURVEYORS, 1972

REVISED MAY 14, 1978  
 REVISED JAN, 1983





C0292284 LIBER:06862 PAGE:846 11:11A 12/21/1995  
 CARMELLA SABAUGH-MACOMB COUNTY, MI REG/DEEDS